

THE REPORTER-TELEGRAM

Evenings (except Saturday) and Sunday Morning 112 West Missouri—Midland, Texas

JAMES N. ALLISON Editor and Publisher J. LEO McLAUGHLIN Advertising Manager

Entered as second class matter at the postoffice at Midland, Texas, under the Act of March 30, 1879.

Subscription Price Per Year \$5.00 Per Month 50c

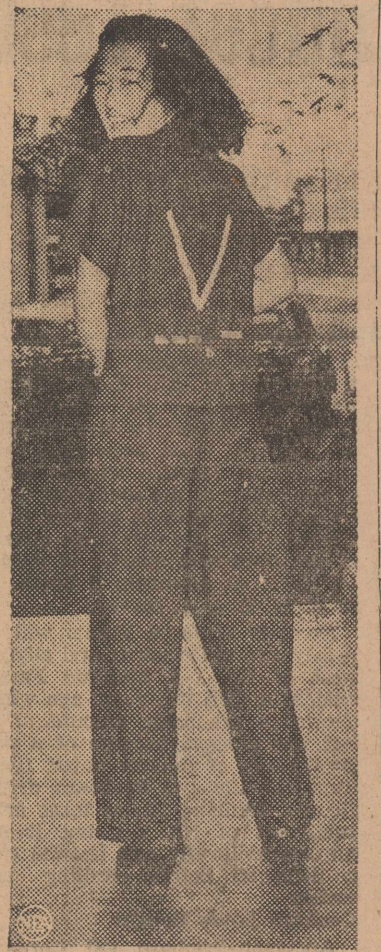
Advertising Rates Display advertising rates on application. Classified rate, 2c per word; minimum charge 25c.

MEMBER ASSOCIATED PRESS The Associated Press is exclusively entitled to use for publication all news dispatches credited to it or otherwise credited in this paper and local news of spontaneous origin published herein.

WE CAN LISTEN TO OUR CONSCIENCE, IT IS GOD'S VOICE. DON'T GO AGAINST IT: I will hear what God the Lord will speak. —Psalm 85:8.



Dress Call



Styles on Oahu island show Hawaiians see one end: victory.

Syrup Rationing Is Explained By Coca-Cola Company

The Coca-Cola Company in response to numerous inquiries concerning rationing of syrup Thursday issued the following statement: 'The Federal Government through OPM, recently issued an order which restricts any manufacturer using sugar also any jobber or wholesaler from accepting larger deliveries from an importer or refiner in any one month...

Cranium Crackers

VETERAN LEADERS Many statesmen and fighters of World War I were equally active in World War II. Do you recall the major war role played by each of the following during the 1914-18 conflict...

Tennessee Rigrant Has Important Problem

NASHVILLE, Tenn. (AP) — "Dear Mr. President," wrote a worried Davidson County registrant. "Confidentially, I am married and in Class 3-A. My wife is some 12 years older than me. What I want to know is, if I divorce her and marry Miss x x x who is several years younger and loves me very much, will you still keep me in Class 3-A?"

Speed As Usual

Business as usual—that's what some people are saying about American industrial production in 1941. According to them, industry didn't change quickly from making consumer goods to making weapons.

Not Too Big

An airplane every four minutes . . . two ships a day . . . a tank every seven minutes. That's the war work schedule President Roosevelt has set for American industry. That's what 125,000 planes, 75,000 tanks and 10,000,000 tons of shipping mean in terms of actual production.

Merchants In The Emergency

Current plans call for doubling the proportion of the national income spent for war purposes, inside the year. Some believe that an even higher rate of arms spending may be achieved.

Bishop Says Berlin Must Be Invaded To Whip German People

DALLAS (AP)—Invasion of Germany and capture of Berlin "that the German people may know and feel the meaning of invasion," is the expressed hope of Bishop Harry T. Moore.

Monahans Bank Names Officers, Directors

MONAHANS (Sp)—John C. Dunagan has been named president of the First State Bank and J. B. Tubb have been elected vice presidents.

Spend all your time chasing rainbows and you'll run into a storm.

Ohio jury with eight women on it returned a verdict in two minutes. Wonder where the sale was.

Army bought 700 million feet of lumber in one week. All a board for defense construction!

Some fall in love at first sight, and out of love at first sight.

Synthetic Rubber Factories Urged For Texas Areas

WASHINGTON (AP)—Factors the government will take into consideration in selecting sites for the location of plants to manufacture 100 octane aviation gasoline and synthetic rubber were discussed Thursday by Representative Beckwith (D-Tex.) who has urged establishment of such projects in his East Texas congressional district.

Elephants, Motor Sleds Enter War

BERLIN (Official Broadcast Recorded By AP)—Dispatches from Bangkok said Thursday the Japanese were using elephants from Thailand in their Burma invasion.

Finer FOODS AT LOWER PRICES

Advertisement for Finer Foods featuring various food products like bananas, oranges, and pickles.

Advertisement for Fruits and Vegetables featuring bananas, oranges, and oats.

Advertisement for Crackers and Pickles.

Advertisement for Meats featuring pure pork sausage, pork chops, and longhorn cheese.

H & H FOOD STORE 121 So. Main Phone 205

Mrs. D. X. Bible Dies Suddenly At Home

AUSTIN (AP)—Mrs. D. X. Bible died at her home here Wednesday night after a long illness.

Well, Now, There Could Be Something To It!

MONAHANS (Sp)—Mrs. Ira M. Morris is looking for the person who started a rumor about Ward County.

Do FALSE TEETH Rock, Slide or Slip?

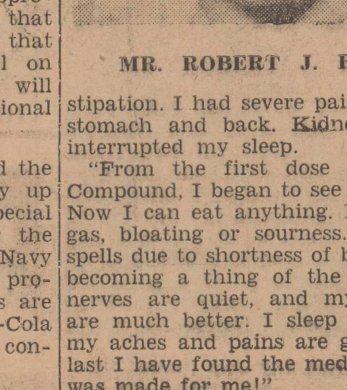
FASTTEETH, an improved powder to be sprinkled on upper or lower plates, holds false teeth more firmly in place.

Advertisement for KARO sweet potatoes, featuring a picture of a sweet potato and text describing the 'KARO way' of preparation.

Advertisement for Defense Food For KARO, featuring a picture of a KARO tin and text about its benefits.

Hoyt's Relieved Chronic Distress Says Lubbock Man

Robert Rich says Hoyt's Compound ended nervousness, indigestion, sourness, gas bloating, and fainting spells.



MR. ROBERT J. RICH

MONARCH
COFFEE
Lb. **27c**
Vacuum Packed



DEFENSE
Begins in the Kitchen

Join the vast army of folks who are planning better meals and eating more healthful foods. Piggly-Wiggly shelves are full of nutritious and delicious food items which will protect you and your family from the ravages of winter illness.

Specials For Friday and Saturday

DAIRYLAND OR BANNER BUTTER
Lb. **39c**

Quality
Is The Only Bargain
In Baby Foods

HEINZ STRAINED TOMATOES
2 Cans **15c**

HEINZ FOODS

Admiration
Coffee
HAPPINESS IN EVERY CUP
31c

FOLGERS
Coffee
Drip or Regular
Lb. **32c**

MONARCH
Cranberry Sauce
17 oz. can
14c

MONARCH
SLICED PINEAPPLE
No. 1 1/4 Can
2 Cans **35c**

MONARCH
Sliced Pineapple
No. 2 1/2 can
27c

GELATIN DESSERT
3 1/2 Oz. Package
2 For **11c**

CRISCO
Super-Creamed
DIGESTIBLE
3 Lbs. **65c**

Armour's
Vienna Sausage
2 Cans **23c**

MONARCH
Small Cut
Green Beans
No. 2 Can
20c

MONARCH
PICKLED PEACHES
No. 2 1/2 Can
28c

MONARCH
Tiny Sifted
PEAS
No. 2 Can
21c

BAKE-RITE
The PERFECT SHORTENING
For... Fine Baking, Cooking, Frying
3 Lbs. **59c**

Ritz
Crackers
1 Lb. Box **22c**

Armour's
CORN BEEF HASH
No. 2 Can **19c**

Wolf Brand
TAMALES
12 to Can **2** Cans **33c**

Aunt Jemima
PAN CAKE FLOUR
20 oz. Pkg. **14c**

Armour's
CHILI
2 Cans **35c**

VEGETOLE, 4 Lbs. **71c**

MONARCH
Waif
Pink Salmon
No. 1 Tall
23c

MONARCH
APPLE JUICE
20 Oz. Can **2** Cans **23c**

MONARCH
ORANGE JUICE
12 Oz. Can **2** Cans **21c**

MONARCH
BAKING POWDER
1 LB. CAN **16c**
8 OZ. CAN **9c**

MONARCH
Red Sockeye
SALMON
No. 1 Tall
44c

MOTHER'S
OATS
WITH CHINA
2 lb. box **25c**

NUCOA
1 Lb.
23c

MEATS of QUALITY *Guaranteed*

Armour Star
PATTIES
1 Lb. Box **25c**

Fresh Calf
TONGUE **19c**

Special
SLICED BACON **31c**

Nice and Lean
PORK CHOPS **27c**

Choice Baby Beef
CHUCK ROAST **25c**

Our Own Pork
SAUSAGE **27c**

Armour Star
SLICED BACON
LB. **35c**

PLENTY OF CHOICE MILK-FED HENS AND FRYERS

Hi Ho
CRACKERS
1 LB. BOX
19c
The Sunshine Cracker

COOKIES
10 oz. Box **29c**

CRACKERS
1 Lb. Box **19c**

WHEAT FLAKES
2 Pkgs. **25c**

FRESHEST PRODUCE

Calif. Ice Berg LETTUCE 2 Heads 13c	Texas Valley CABBAGE Green Lb. 4 1/2c
Calif. Sunkist ORANGES 200 Size Dozen 25c	Calif. Sunkist LEMONS Dozen 19c
Washington State APPLES Delicious Lge. Size, Dozen 25c	Colo. No. 1 SPUDS 10 Lbs. For 27c
20 Size CALAVOS 2 For 29c	Winesap APPLES Lge. Size Dozen 23c
Texas Sweet G'FRUIT 3 Size 54 For 17c White or Pink	Eatmore CRANBERRIES Lb. 17c
	Sweet Spanish ONIONS 2 Lbs. 13c
	East Texas YAMS 3 Lbs. 20c

WE ISSUE "D.W." GREEN DISCOUNT STAMPS

TURKEYS
A Few Choice Turkey Toms Dressed And Drawn
Lb. **27c**

PIGGLY WIGGLY
CONNER BROS.
MIDLAND, TEXAS

FRESH
Strawberries . . Chinese Cabbage . .
Broccoli . . Red Cabbage . . Fresh
Tomatoes . . Utah Celery . . Parsnips
Brussel Sprouts . . Acorn Squash . .
Egg Plant . . Rhubarb.

HEADQUARTERS
For Birdseye Frozen Foods
Fruits . . Vegetables . . Sea Foods.