



# THE REPORTER-TELEGRAM

Evenings (except Saturday) and Sunday Morning  
112 West Missouri — Midland, Texas

JAMES N. ALLISON ..... Editor and Publisher  
J. LEO McLAUGHLIN ..... Advertising Manager

Entered as second-class matter at the post office at Midland, Texas, under the Act of March 30, 1879.

Subscription Price	Advertising Rates
One Year .....\$7.00	Display advertising rates on application. Classified rate, 2c per word; minimum charge, 25c. Local readers, 10c per line.
Six Months ..... 3.00	
One Month ..... .65	

Any erroneous reflection upon the character, standing or reputation of any person, firm or corporation which may occur in the columns of The Reporter-Telegram will be gladly corrected upon being brought to the attention of the editor.

### MEMBER ASSOCIATED PRESS

The Associated Press is exclusively entitled to use for publication all news dispatches credited to it or not otherwise credited in this paper and local news of spontaneous origin published herein. Rights of publication of all other matter herein also reserved.

If we keep the inner channel open, many things will be revealed to us. It is worthwhile: Flesh and blood hath not revealed it unto you, but my Father which is in heaven.—Matt. 16:17.

## Solving Some Problems

Something new in the way of questionnaire surveys is the one made by a large aircraft corporation which queried its employees on some of their inmost thoughts. The results are most interesting. To the question, "Do you think the top management of the company is competent, sincere, interested in you?" the answers were far in the affirmative. And when asked, "What is the most serious problem this company and its employees must overcome to make the greatest possible contribution to victory?" employees listed shortage of materials, absenteeism, and inadequacy of trained personnel as the chief problems.

Other questions were: "What do you think can accomplish most toward building 'morale'—the will to work to win—among employees?" "How do you feel about possible enemy attacks on this plant?" "There are all brands of foremen; what do you think of yours?" "Do you think the majority of your fellow employees are competent, sincere, doing their best?" "If you were hired within the past year were you courteously treated by the personnel office, the plant police, your fellow workers? Were you placed on the job for which best fitted? Is the personnel department aiding you?" "Are you receiving enough gasoline for necessary driving to and from work?" There were many more questions of a similarly pertinent nature.

The answers were most gratifying to the company. They showed a staff of employees for the most part well pleased with company policy and procedure, and fully conscious of the problems of war production in their plant. Aside from this, however, the survey is most significant. The very fact that it was made shows cognizance on the part of modern industrial management of the problems that beset the war worker. The effort expended in this survey shows most convincingly that industry is anxious to enlist the wholehearted aid of its employees in creating better understanding and in solving mutual problems.

## First Things First

There is a growing awareness today, among people of all occupations, of the necessity to preserve the American system of freedom of enterprise, if democracy is to survive after the war. More and more, as business undergoes the necessary wartime restrictions, Americans are coming to understand that the prime requisite for post-war reconstruction is the lifting of these restrictions when the need for them is ended.

### —Buy War Bonds And Savings Stamps—

## Just Peace

The Swedish bishops, foreseeing collapse of the Axis, have made a joint radio plea for a just peace rather than one of vengeance. In that, on general principles, we join. But— A just, unvengeful peace can—and must—be a hard peace. We should not punish just to salve our own lacerated feelings—but we must punish and restrain, however painful to our present enemies or even to our friends and ourselves, to prevent or defer future wars. One reason we are fighting now is that Germany, in 1918, didn't learn the penalty for starting a World War. Whatever may be the reason for World War III, it must not be that.

## PERSONALS

Harry Brown, well known oil man of Oklahoma City, is visiting in Midland, and is a guest at the Scharbauer.

Mr. and Mrs. J. D. Arthur have moved to Midland from Big Spring and are living at 1805 West Wall Street in a home they recently purchased. Arthur is in the oil business.

George Conley, radioman third class of the U. S. Navy, has arrived here from Los Angeles for a visit with his mother, Mrs. J. O. Shannon.

Pvt. Stephen Shannon of the Army's veterinary school at Kansas State College, Manhattan, Kas., is here on furlough visiting his father, Dr. J. O. Shannon.

Mrs. D. R. Carter has as her guest her sister, Mrs. R. M. Nicol of Jacksonville, who will spend several weeks here.

Mr. and Mrs. E. Ellis of Graham are guests of their daughter, Mrs. A. Knickerbocker, for a few days.

John Motyl, who has been ill in Western Clinic Hospital, has returned home.

Jeff King, who has been ill in Western Clinic Hospital, has returned home.

Mr. and Mrs. Henry E. Meadows and two children of New Orleans, La., are visiting Dr. and Mrs. John B. Thomas this week.

Dale Mickey and Glenn Murray left Wednesday for Arlington, where they will enter North Texas Agricultural College.

L. C. Gilbert of Garden City is reported ill in the Western Clinic Hospital.

Mrs. R. A. Estes has returned from a recent visit in Houston, and was accompanied home by Mrs. G. B. Randolph of Houston, formerly of this city.

### Congratulations To

Lt. and Mrs. R. J. Banks on the birth of a son Wednesday.

OZARKA WATER CO. welcomes these new arrivals. Phone 111 and a bottle of OZARKA will be delivered to you free.—Adv.

## VOICE FROM THE FRONT



From Al Duckett, Detroit Times. U. S. Treasury Department

## State Comptroller Sheppard Urges County Officials To Equalize Taxes

State Comptroller George H. Sheppard Wednesday urged members of the West Texas County Judges' and Commissioners' Association to equalize taxes on a uniform basis according to the constitution and laws of the State of Texas.

"The burden is on you officials," he told them at the open forum in the Civic Auditorium. The discussion's theme was "War Time Economy and Efficiency in County Government."

Sheppard said his first duty was to collect revenues for the state and his second duty is to protect taxpayers. He asserted he favors a reduction in bonded indebtedness as rapidly as possible to relieve taxpayers, and also that he favors protection of resources of the state.

"People don't complain if every one is treated equally," he continued. Sheppard asserted the state ad valorem tax law calls for 100 per cent valuations and then asserted that if all property taxes were based on at least 50 percent valuation, Texas would have a tax valuation of 10 billion dollars rather than four billion dollars.

**Millions Do Not Contribute**  
"Millions of people do not contribute one cent to the support of county and state governments," he added. "Eliminate special privileges. Let every citizen pay his part. Practice economy every way possible. Treat all fairly and alike and they'll have no kick coming. Let's preserve our democratic form of government."

Judge John V. Lyles of Clay County, who presided at the forum, said judges and commissioners are going to have to follow the constitution and laws of the State of Texas, as the citizens still believe in fair and equal treatment.

Judge Lyles asserted that nine-tenths of county offices are over-stuffed. He urged all officials to study state laws concerning county offices and to demand that they be followed 100 percent.

"Then the taxpayers will back you," he told the judges and commissioners.

**All Can Economize**  
Judge Gilbert Smith of Anson, president of the association, opened the forum and presented Judge Lyles who said every county regardless of its tax rate can effect economies.

Judge M. O. Goodpasture of Memphis asserted tax rates could be reduced if citizens quit asking "so much."  
"If citizens get value received, they don't mind paying taxes," he added.

R. L. Miller of Midland complimented the West Texas officials on the fair treatment they provide taxpayers and said cooperation is essential in the building of the great West Texas empire.

Judge Charles Roberts of Andrews related his experiences and said no WPA or PWA funds came to his county.

Judge A. S. Ware of Bryan, president of the County Judges and Commissioners Association of Texas, said the operations of county governments affect every citizen of the county and citizens have not shown proper interest in their county's affairs. He asserted county governments give the kinds of administrations that taxpayers demand.

Joe Nelson of the state bond board at Austin discussed the recalling and refunding of bonds as a result of the recent Supreme Court action in the Cochran County case and also lateral road funds of counties.

The executive committee of the

### HUGE CANADIAN FORCE ARRIVES IN ENGLAND

AN EAST CANADIAN PORT — (P)— Safe arrival in Great Britain of a huge draft of Canadian reinforcements, including 300 army nursing sisters, which left this port recently, was announced Wednesday night.



MIDLAND MAID BREAD  
MIDLAND BAKERY  
Phone 1106 112 S. Main

## Over 200 Guardsmen To Take Part In Maneuvers Near Odessa Saturday

More than 200 members of the First and 34th Battalions, Texas State Guard, will take part in a maneuver Saturday night and Sunday about 12 miles west of Odessa when mock battle conditions will be staged and problems worked out. Plans for the event were made at a meeting of officers of the two battalions at Odessa this week.

Planes and motorized column will be utilized in the bi-battalion maneuver, and officers from the Midland Army Air Field will serve as umpires. Two members of the state adjutant general's staff will have charge of the practice event.

One company of guardsmen will be designated the enemy in the practice event, and will have planes and cars at its disposal. Flour

sack bombs will be used, and each guardsman will be equipped with five flour hand grenades. The planes will attempt to bomb the cars and enemy concentrations out of the maneuver, and actual battle conditions will be developed.

The guardsmen will leave Odessa for the maneuver area at 7 p. m. Saturday. Members of units in Midland, Monahans, Grandfalls, Wink, Kermit, Odessa, Crane, McCamey Andrews and Brownfield are expected to participate. The First Battalion is under the command of Major Ben Meek of Kermit and the 34th is commanded by Major Joe Pyron of Odessa.

Members of Midland Company E, 34th Battalion, attending the meeting at Odessa were Captain James H. Goodman, First Lt. Henry C. Hannafor, and Second Lt. S. Ross Carr.

The guardsmen will prepare the Saturday night meal and breakfast and lunch on Sunday at the maneuver area.

Special equipment for use on the maneuver will be issued to members of the Midland unit at the regular meeting at 7:30 p. m. Thursday. Plans for the company's part in the event also will be made.

### Increase In Cotton Ginnings Reported

WASHINGTON — (P)— The Census Bureau reported Thursday that cotton of this year's growth ginned to Sept. 16 totaled 3,734,129 running bales, amounting round as half bales and excluding linters, compared with 2,977,933 to that date a year ago, and 2,091,389 two years ago.

Ginnings by states, with comparative figures for a year ago, included: Texas 1,125,919 and 599,007.

The Wisconsin State Historical Library at the University of Wisconsin is said to be the largest of its kind in the United States.



### Gable Participates In Raid On Nantes

A U. S. FLYING Fortress BASE IN ENGLAND —(P)— Capt. Clark Gable, who went on Thursday's raid on Nantes, France, disclosed after his plane returned that he will leave for the United States soon with a gunnery training film he has been directing. He said he hoped to see active service in some other theater before the war is over.

The swastika, generally interpreted as a sun symbol, is one of the most ancient ornamental forms, used by early peoples in both hemispheres.

### PHOTOGRAPHS

WATERS STUDIO  
105 S. Main  
Midland, Texas



## From where I sit...

by Joe Marsh

"Jeep Nerves"—that's what Dan O'Neill calls the jumpy way some folks react to the strain of wartime living.

Not that Dan blames 'em. When you work 12 hours a day and travel in crowded busses—live in trailers and put up with inconveniences—it's only natural to get tense and irritable.

"Folks must learn to relax," says Dan, "and take it easy."

And Dan thinks he has the formula. Soon as he's through at the shop he comes straight

home, picks out the comfortable chair and pours himself a tall, cool glass of beer.

Then he sips it—slowly and appreciatively—like good beer should be enjoyed.

And by the time that glass of beer is gone, Dan says his disposition is as good as new... and the day's work seems well worth tackling again tomorrow.

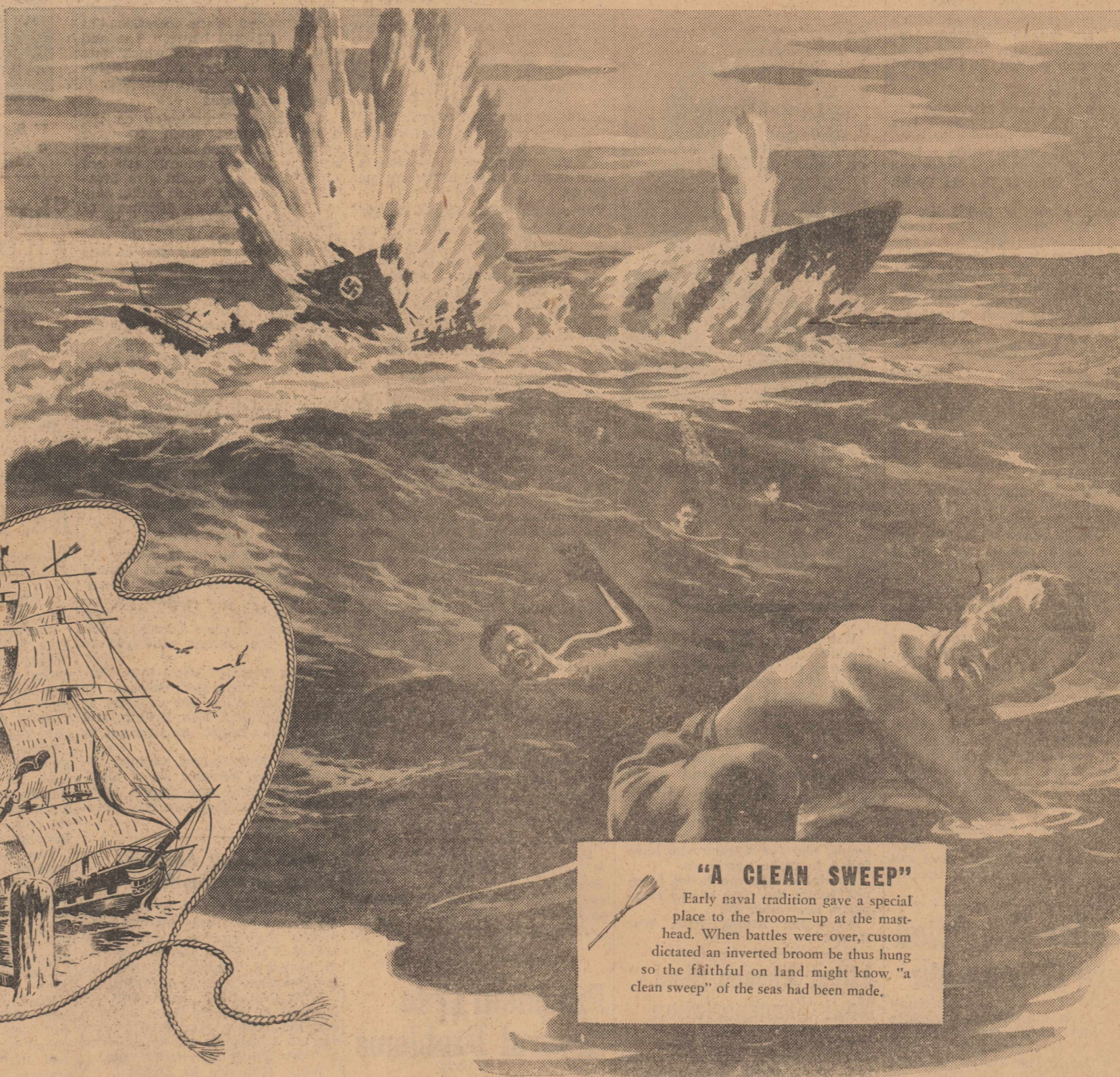
It's a real effective formula. I know; I've tried it!

Joe Marsh

No. 63 of a Series

Copyright, 1943, Brewing Industry Foundation

# The Broom is at the Mast



**"A CLEAN SWEEP"**  
Early naval tradition gave a special place to the broom—up at the mast-head. When battles were over, custom dictated an inverted broom be thus hung so the faithful on land might know "a clean sweep" of the seas had been made.

Through the daring and perfection of our armed forces, the seas surrounding coffee producing areas have been swept clean of Axis U-boats. Thus it is possible once again to enjoy unrestricted use of the world's most delicious beverage.

# Admiral

## Coffee



Admiral's traditional freshness isn't accidental. Thermal-Roasting retains flavor, aroma and richness. Scientifically designed Admiral containers then seal in and preserve all this goodness—until you're ready to re-ferve it into your cup.

# Society

## Education For Democracy Is Topic At Fine Arts Club Meeting Here

The Fine Arts Club met Wednesday afternoon in the home of Mrs. J. M. White, 702 West Storey, when the regular study program was presented.

The program opened with the members repeating in unison the club collect by Mary Stewart.

Miss Ruth Adams of Philadelphia, Pa., was a special guest of the club.

Mrs. Roy Parks, president, announced that the City-County Federation will hold its opening coffee home of Mrs. Andrew Fasken, 1511 West Missouri.

A report of war bonds purchased

on Thursday, September 30, in the by the club members was made.

The principal talk of the program was given by Mrs. Fred H. Fuhrman, who spoke on "Education for Democracy."

Mrs. White presented movies of scenes taken in Bolivia and Peru by her son who is in foreign service.

A social hour followed the program.

Those present were: Mesdames E. H. Barron, T. Paul Barron, Tom C. Bobo, L. G. Byerley, Lee Cornelius, Fred H. Fuhrman, Roy Parks, George Kidd, R. C. Tucker, Anton Theis, Lydie G. Watson, J. M. White, and Fred H. Wilcox.

## Nadine Manning Is Chosen President Of Warfield Club

An election of officers featured the meeting of Warfield 4-H Club Monday in the school building when Nadine Manning was elected president. Other officers named included: vice president, Sammie Swalls; secretary, Janie Manning; reporter, Mary Louise Baze; yearbook, Mary Louise Baze. The offices of recreation and program chairmen are to be chosen at the next meeting.

Miss Alpha Lynn, home demonstration agent, gave an interesting demonstration on the canning of vegetables and fruits. Vegetables canned included beans, peas, okra, tomatoes, mustard greens, and tomato gumbo.

Present were Misses Louise Baze, Dorothy Mattson, Nadine Manning, Janie Manning, Mary Lynn Manning, Lela Norwood, Pauline Norwood, Sammie Swalls, and Miss Lynn, county home demonstration agent.

## Sorority Chapter Has Delightful Cloverdale Picnic

The Beta Kappa chapter of Delta Kappa Gamma Sorority held a delightful picnic at Cloverdale Park Wednesday, as its initial event of the season.

The group has been meeting in the three cities of Midland, Odessa and Big Spring, throughout the season, but at the business session, which preceded the picnic supper, it was voted to hold all meetings this season in Midland, because of transportation difficulties.

Miss Ida McCown of Odessa, president of the chapter, presided at the business session.

Present were: Misses Anne Martin, Letha Amerson, Anne Harding, Juanita McCarty, and Louise Holden of Big Spring; Ida McCown, Mary Logsdon, Eujan Smith, Carsh Beecroft, Rita Cox, Pauline Buschbaum, Dorothy Brenbaum, Lilla Hickerson, Dorothy Ray, Helen Brewer, and Miss Reeves all of Odessa. Midland guests included Iva Butler, Ruth Carden, Winnie Heizer, Mildred Holt, Theresa Klapproth, Mary Lowry, Margaret Stur, Mrs. Alma Thomas, and Mrs. Rosita Holler.

## Sassy Rinker Feted On Fourth Birthday

Mrs. J. C. Rinker, 1010 West Indiana, entertained Wednesday afternoon in honor of the fourth birthday anniversary of her young daughter, Sassy. Games were played by the children on the lawn.

The guest of honor greeted her friends at the door.

Following games, refreshments were served.

Present were Gretchen Meiserheimer, Jackie Collins, Sandra Kay Aycock, Marga Ruth and Paula Gene Smith, Caroline Jeannette Adams, Joe Liberty, Linda Merlstraener and Gay Lynn Dorsey.

## Work Continues At Red Cross Workroom

The surgical dressings department of the Red Cross in the courthouse had as supervisor Wednesday Mrs. D. H. Griffith. Workers included Mesdames Harry Adams, R. A. Doran, W. H. Fehon, Jr., R. R. Pickett, John Dublin, R. M. Murray, J. R. Martin, James H. Chapple, Roy Downey, A. C. Lynch, Ralph Lowe, Ralph Wright, and George Kidd, and Miss Marian Wadley. Mrs. Ross Williams is chairman.

The hours were spent making gauze sponges.

## KIDNEYS MUST REMOVE EXCESS ACIDS

Help 15 Miles of Kidney Tubes Flush Out Poisonous Waste

If you have an excess of acids in your blood, your 15 miles of kidney tubes may be overworked. These tiny filters and tubes are working day and night to help Nature rid your system of excess acids and poisonous waste.

When disorder of kidney function permits poisonous matter to remain in your blood, it may cause nagging backache, rheumatic pains, leg pains, loss of pep and energy, getting up at night, swelling, puffiness under the eyes, and dizziness. Frequent or scanty urinating and burning or stinging in the bladder.

Don't help the same as bowels, but over 40 years. They help rid your blood of poisonous waste from

## Look Young



Look young, look slim too, by wearing this fresh, original frock through your busy, long days. The cut of the bodice is an attractive feature and easy to sew, too.

Pattern No. 8452 is in size 32, 34, 36, 38, 40, 42, 44 and 46. Size 34 short sleeves, requires 3 1/4 yards 30-inch material.

For this attractive pattern, send 15 cents, plus 1 cent for postage, in coins, with your name, address, pattern number and size to the Reporter-Telegram, Today's Pattern Service, 530 South Wells St., Chicago, Ill.

Keep up your wartime sewing, this you are helping bring victory sooner. You'll find 52 pages of absorbing sewing news, 102 new designs in the new fall issue of "FASHION," just out. A copy is 25 cents.

## Look! BARGAIN TABLEWARE OFFER!

### NEW LOVELY PIECE WITH EVERY PACKAGE OF MOTHER'S OATS!

LATEST DESIGNS NOW FEATURED AT YOUR GROCER

BE FIRST TO GET A COMPLETE SET THIS THIRTY-EASY WAY!

Act now to get a complete set of this lovely tableware in the very latest pattern—a set you'll be proud to own! Start today by getting a "Premium Package" of delicious, healthful Mother's Oats—America's Super Breakfast. Enjoy its rich, tempting whole-grain flavor. Whole grain oatmeal, famous as a healthful food, leads all natural cereals in body building Protein—meat's main element. Start your set today!

**MOTHER'S OATS**  
(PREMIUM IN PACKAGE)  
Truly, America's SUPER Breakfast Food

## Mrs. Allison Is Hostess To Club

The Edelweiss Club held its opening meeting of the season in the home of Mrs. James N. Allison, 1606 West Texas, when a dessert-bridge featured the hours.

In the game of bridge Mrs. Hal C. Peck won high score and Mrs. J. B. Richards won second.

Special guests included Mesdames C. L. Bradshaw, I. E. Daniel, and J. B. Richards.

Others present included Mesdames Clyde Cowden, John Dublin, Selman J. Lones, J. R. Martin, Tom Nance, Roy Parks, Hal C. Peck, John Speed, Jr., and Mayme Stokes.

The club meets the first and third Tuesdays of each month.

## Junior High P.T.A. To Have Program For School Children

The next regular meeting of the Junior High School Parent-Teachers Association will be held October 5, in the school auditorium.

A board meeting of the association was held Monday when plans were made for the year's project, which will be a recreational program for children of the school.

Committees will be appointed at a later date.

## Mildred Smith Circle Meets With Mrs. Hill

The Mildred Smith Circle of the Calvary Baptist Church was entertained in the home of Mrs. Maggie Hill Monday afternoon.

The opening prayer, given by Mrs. Hill, was followed by a program on "The Home Mission," and the "Commission Magazine."

The benediction was pronounced by Mrs. D. B. Smith after which a social hour and refreshments featured.

Present were Mesdames D. B. Smith, Barney Hightower, Charles Pierson, A. W. Smith, Annie McLaughlin, Alice Paddock, E. E. Bishop, Maggie Hill, and Mrs. Dunn.

## Week Of Prayer

The Woman's Missionary Union will meet from 10:00 a. m. to 11:00 a. m. every day from September 27 through October 1, for the observing of a week of prayer for home missions.

Harvesting the nation's corn crop this year calls for more than 217 million man-hours.

## Men, Women! Old at 40, 50, 60! Get Pep Feel Years Younger, Full of Vim

Don't blame exhausted, worn-out, run-down feeling on your age. Thousands amazed at what a little pep and vim with Oxtrel will do. Contains special tonic often needed after 40—by bodies lacking iron, calcium, phosphorus, Vitamin B<sub>12</sub>. Introductory size Oxtrel Tonic Tablets only 85c. Why feel old? Start feeling peppy and younger... this very day. For sale at all drug stores everywhere—in Midland at Midland Drug.—Adv.

wear? discouraged? GET A LIFT in a **SPENCER** That Improves Your Posture! MRS. R. O. COLLINS 701 N. Big Spring, Ph. 6373



NOTED artist and decorator Peter Hunt worked out the swell idea for recreating something old and discarded into something new and useful. The smart cheese tray pictured above was just an old oval picture frame, salvaged from the attic junk pile. Hunt cut a piece of plywood to fit the whole back and fastened it in securely. Finishing it with quick-drying lacquer, he painted the whole tray coral (mix equal parts of Chinese Red and white) and decorated the edge with a black wavy stripe accented with white dots.

## PACK THEIR LUNCHES WITH THE BASIC 7

Safeway Has The "Makings"

FOR HEALTH... eat some food from each group... every day!  
In Addition to the Basic 7... EAT ANY OTHER FOODS YOU WANT!

**CRISCO** Creamy Shortening 1-Lb. Jar 24¢ Points 4 Per Jar

**Sunnybank MARGARINE** 1-Lb. 17¢ Points 4 Per Lb.

**OLEO** 4 Red Points Per Pound

**CRACKERS** Busy Baker Crisp Sodas 1-Lb. Pkg. 15¢

**MOLASSES** Grandma's Old Fashioned 32-Oz. Jar 39¢

**MACARONI** or Spaghetti Target 7-Oz. Pkg. 4¢

**BREAD** Julie Lee Wright's Enriched Dated 24-Oz. Loaf 10¢

**FLOUR** Kitchen Craft Enriched 10-Lb. Bag 53¢

**FLOUR** Gold Medal Fine Quality 10-Lb. Bag 56¢

**POST TOASTIES** 11-Oz. Pkg. 9¢

**BRAN FLAKES** Post's 8-Oz. Pkg. 9¢

**CRACKERS** Cocktail Saltines 15-Oz. Pkg. 20¢

**FRESH COFFEE** You See It Ground—You Know It's Fresh! **AIRWAY** 3-Lb. Bag 59¢

**AIRWAY** 1-Lb. 20¢

**COFFEE** Edwards Fine Quality 1-Lb. Bag 25¢

**COFFEE** Folger's Fine Quality 1-Lb. Crtn. 31¢

**FANCY CALIFORNIA TOMATOES**

Apples Fancy Missouri Jonathan Lb. 15¢

Potatoes No. 1 Cobbler Lb. 4¢

Cabbage Colorado Firm Green Lb. 4¢

Sunkist Lemons Lb. 12¢

**FINE FOR SLICING** Lb. 12¢

**TURNIPS AND TOPS** 2 behs. 15¢

**YELLOW ONIONS** Colorado No. 1 Lb. 5¢

**LETTUCE** Fresh Crisp Firm Heads Lb. 12¢

**TEXAS YAMS** No. 1 East Texas Grown Lb. 10¢

**SAFEGWAY QUALITY MEATS**

U. S. Branded Beef **CHUCK ROAST** Lb. 28¢ Points 9 Per Lb. 9

**SMOKED SLAB BACON** In the Piece Lb. 32¢ Points Per Lb. 5

**HAMBURGER MEAT** Ground Beef Lb. 25¢ Points Per Lb. 7

**YOUNG FRYERS** Dressed and Drawn Waste-Free Lb. 58¢ Not Rationed ••

**SALT PORK** Clear Bellies Lb. 21¢ Points Per Lb. 4

**SALT JOWLS** For Boiling Lb. 15¢ Points Per Lb. 2

**SLICED BACON** Grade "A" Lb. 41¢ Points Per Lb. 6

**PORK CHOPS** Center Cuts Lb. 36¢ Points Per Lb. 9

**BEEF STEWS** Plate or Short Rib Lb. 18¢ Points Per Lb. 6

**PORK LIVER** Fresh Sliced Lb. 20¢ Points Per Lb. 3

**PICKLE, TOMATO, MACARONI AND CHEESE BAKED LOAVES** Lb. 29¢ Points Per Lb. 4

## Schlosser Ranch Home Is Opened To Social Coterie Of Midlanders

Of much interest socially to matrons and maids of Midland was the reception given in Denton Saturday evening by Mr. and Mrs. Paul Schlosser and their two daughters, Melba and Elsie, formerly of Midland, in honor of Midland girls who are entering T.S.C.W. at Denton.

The Schlosser ranch-home, just out of Denton, is situated on top of a high hill, and is a beautiful place, surrounded by trees and shrubs. The home is a large and spacious one, where much entertaining may be done where two attractive daughters, of college age are in the home.

Present at the reception were Mrs. Percy Mims and her daughter, Margaret, who is entering T.S.C.W.; Mrs. R. M. Nicol and daughter, Betty, of Jacksonville; Mrs. C. F. Butcher and daughter, Patsy; Misses Alberta Smith, Jacqueline Theis, Norma Jean Stice, Isabel Morehouse and Billie Walker; Frank Smith, Mrs. D. R. Carter and daughter, Miss Mary Frances Carter.

Austin Hall of T.S.C.W. at Denton where most of the Midland girls are domiciled, is a most attractive place, and Midland is well represented there.

**Coming Events**

FRIDAY—The Belmont Bible Class will meet at 3:30 p. m. in the education building of the First Methodist Church.

There are 2,981,000 miles of rural roads in the United States.

## Naomi Ruth Circle Meets With Mrs. Jones

The Naomi Ruth Circle of the Calvary Baptist Church met Monday afternoon in the home of Mrs. L. L. Jones when Mrs. F. M. Morrow presided.

Mrs. C. M. Tunnell opened the meeting with prayer, after which a brief business session featured.

The Bible study included Acts 25 and First Corinthians 16, at the conclusion of which Mrs. Morrow pronounced the benediction.

Present were Mesdames Mildred Jones, Jessie Friday, Morrow, L. L. Jones, C. M. Tunnell, and Mattie White. Mesdames Tunnell and White were special guests.

Remove Stains, add New Sparkle to FALSE TEETH NO BRUSHING

KLEENITE ends messy, harmful brushing. Just put your plate or bridge-work in a glass of water, add a little Kleenite, presto! Blackest stains, tarnish, food film disappear. Your teeth sparkle like new.

Get KLEENITE today from Palace Drug Store, Midland Drug Company, Cameron or any good drug store.

KLEENITE needs no brush.

**BACK THE ATTACK WITH WAR BONDS**

Ball **Fruit Jars** Pints Dozen 59¢

**S.A.S. Dehydrated Dog Food** 6-Oz. Pkg. 5¢

**P & G LAUNDRY SOAP** Reg. Bar 4¢

**DUZ** Washing Powder 2 1/2-Oz. Pkg. 23¢

**Green Beans** Standard Quality No. 2 Can 11¢

10 Blue Points Per Can

**BUY WAR BONDS—World's Safest Investment!**

**PEANUT BUTTER** Beverly 32-Oz. Jar 55¢

**DRESSING** Dutchess 16-Oz. Jar 23¢

**CANE SUGAR** 5-Lb. Bag 34¢

**SIMONIZE** Assorted Wax 6-Oz. Can 45¢

**Blue Stamp Values**

**SWEET PEAS** Highway No. 2 Can 14¢ Points Per Can 18

**GREEN BEANS** French Style No. 2 Can 15¢ Points Per Can 10

**CHILI SAUCE** Maneta 12-Oz. Bot. 18¢ Points Per Bot. 15

**TOMATO JUICE** Sunny Down No. 2 Can 11¢ Points Per Can 3

**JUICE** Standard Grapefruit No. 2 Can 12¢ Points Per Can 2

**TOMATOES** Gardenside Standard No. 2 Can 11¢ Points Per Can 18

**CATSUP** Red Hill Tomato 14-Oz. Bot. 15¢ Points Per Bot. 15

**CHERUB MILK** Tall Can 9¢

1 Red Point Per Can

**SAFEGWAY**

### Course For Vocational Agriculture Teachers Starts Here

A graduate course in agricultural education for teachers of vocational agriculture in the Midland district was inaugurated here Wednesday afternoon in the V. A. room at the high school. Teachers from this district will meet once each week for 12 weeks and the classes will be under the direction of Ray Chappelle, professor of vocational agriculture at Texas Tech.

W. E. Williams of Alpine, area supervisor of vocational agriculture work, opened the meeting Wednesday with a discussion of the program for this year. Outlines of a new food production war training program were given the group. Courses under this new program which will be stressed by the teachers this year include farm machinery repair; production, conservation and processing of food for family use; home vegetable gardening, and increased farm production. Williams said that \$25,000 has been set aside for operation of the course in this area.

Chappelle is being assisted in conducting the extension course for teachers by T. L. Leach, itinerant teacher trainer at Texas Tech. Vocational agriculture teachers here for the first class Wednesday were Harlan Howell, Midland; R. K. McCoy of Stanton; H. M. Carter of Sterling City; Judge Rhea of Knott; Harold Ward of Grandfalls; E. G. Caudle of Big Lake, and Marvin Scott of Garden City.



*I Christen Thee . . . . .*

From every vantage point about the shipyard the thousands of safety-helmeted workers listen in silence to the dedicatory address . . . The champagne bottle crashes on the bow, the band strikes up a martial air, a great cheer surges up from the crowd as the sleek ship slides down the ways . . .

MASS assembly lines, plus sustained energy and determination are rolling ships off the ways these days in an endless procession that is motion only to the Axis.

Oil and ships are close partners in today's battle for the supremacy of the seas. From stem to stern, from crow's nest to keel, petroleum serves in many ways. As fuel and lubricant for the mighty engines, as a base for non-corrosive greases for deck machinery, as an essential ingredient of marine paints and rust preventives, and as lubricants for the launching ways, petroleum and its products work for victory.

Humble-Penola Launching Lubricants serve at one of the most critical moments of a ship's life. They have smoothed the

ways for a great many of the fighting and merchant vessels that form our bridge of ships to the global battle fronts.

Launching Lubricants are only a part of the long list of Humble's petroleum war products, a list that includes 100-octane aviation gasoline, Toluene for T.N.T., Aviation engine oils and stratosphere greases, rust preventives, Navy fuels and lubricants, and soon will include synthetic rubber for military uses. Humble's war products are the result of the same ceaseless research and engineering skill that give you Esso, 997 and Velvet Motor Oil for your car and which holds bright promise for even better petroleum products for the days of peace that are to come.

**HUMBLE PRODUCTS FOR THE MACHINES OF WAR:** Asphalt, Aviation Gasolines and Aviation Engine Oils, Camouflage Paints, Diesel Fuels, Engine Oils, Univis Instrument Oils, Marine Paints, Navy Symbol Lubricants, Recoil Oils, Rust-Ban Protective Coatings, Stratosphere Greases, Toluene, Torpedo Greases, Waxes, Waterproof Lubricants, and soon, Synthetic Rubber for military uses. **FOR THE MACHINES OF INDUSTRY:** Automotive Lubricants, Cutting Fluids, Cleaners, Diesel Fuels, Gasolines, Industrial Lubricants, Launching Lubricants, Motor Oils, Paints, Petroleum Solvents, Quenching Oils, Rust Preventives, Waxes. **FOR YOUR CAR:** Products and service to help you care for your car for your country.

**HUMBLE OIL & REFINING COMPANY**

**HUMBLE** 13,000 Texans United in the War Effort

Follow Our Ads for the

# Best POINT VALUES

SHOP HERE AND SAVE

Fresh Infertile

## EGGS

DOZEN

### 47¢

<b>MISSION ENGLISH PEAS</b>	18 Points No. 2 Can	17¢
<b>WAFFLE OR HOT MUFFIN MIX</b>	DUFF'S Package	24¢
<b>TOMATOES</b>	18 Points No. 2 Can	12¢
<b>WHITE KARO</b>	(No Limit) 1 1/2 Lb. Bottle	18¢
<b>PINEAPPLE</b>	Dole's Crushed, 23 Points No. 2 Can	23¢
<b>TOMATO JUICE</b>	House Of George, 5 Points 46 Ounce Can	25¢
<b>PINEAPPLE JUICE</b>	22 Points 46 Ounce Can	43¢
<b>GREEN BEANS</b>	Treasure State, 10 Points No. 2 Can	15¢

<b>Pet Milk</b>	Tall Can	10¢
<b>Honey</b>	Pint	33¢
<b>Post Toasties</b>	Box	10¢
<b>Prune Juice</b>	Quart	31¢
<b>Gro-Pup</b>	Dog Meal Box	10¢
<b>Pop Corn</b>	Box	10¢
<b>Macaroni</b>	Skinnners Package	9¢
<b>Cleansing Tissue</b>	200 count	13¢
<b>Prunes</b>	4 Points Pound	18¢
<b>Raisin Bran</b>	Box	12¢
<b>Grape Nuts</b>	Box	15¢
<b>Post Bran</b>	Box	11¢
<b>Coffee</b>	Monarch Pound	29¢
<b>Klek</b>	For Washing Dishes Box	11¢

<b>CHARMIN TISSUE</b>	<b>BAB-O</b>	<b>RED BOW Asparagus</b>
4 ROLLS 25¢	2 CANS 25¢	CUT GREEN No. 2 Can 23¢ 14 POINTS

**FRESH TOMATOES** LB. 15¢

**FRESH CRISP LETTUCE** Head 11¢

**FRESH SWEET BELL PEPPER** LB. 19¢

**TOKAY GRAPES** LB. 15¢

**NO. 1 IDAHO POTATOES** LB. 5¢

**FRESH GREEN SPINACH** 2 LBS. 35¢

**YELLOW ONIONS** 2 LBS. 15¢

Wilson's Bakerite

**SHORTENING**

HYDROGENATED

3 LB. CAN 69¢ 12 Red Points

**DRESSED HENS** LB. 29¢

**SUGAR CURED (3 Pts. Lb.) Bacon Squares** LB. 25¢

**HICKORY SMOKED CHEESE** Kaukona Club 7 3/4 Oz., 4 Pts. 39¢

**BABY BEEF ROUND STEAK** 13 Pts. Pound 43¢

Get Vitamins and GOODNESS too!

**BREAKFAST HERRING**

EACH 19¢ POINT FREE

**SPENCER ROLLED ROAST** 10 Points Pound 38¢

# MORRIS SYSTEM

## GROCERY and MARKET

Phone 28 or 29      425 West Texas Street      Phone 28 or 29



# UNLOCKING ADVENTURE

By Charles Courtney  
Charles Courtney is the world's highest paid legal Jimmie Valentine. This is the true story of his many adventures unlocking safes around the earth and under the sea.

CHAPTER XXII  
DURING the winter I had no word from Sir Basil Zaharoff and told myself that the affair was finished, but when he telephoned me from London early in 1934, I was glad to hear his voice. Next day I sailed on the Europa for England.

In London I met the executive board of the salvaging company. The company was in difficulties with the British Admiralty over the ownership of the gold, so a committee, of which I was a member, was appointed to meet the Admiralty and try to find some grounds of co-operation.

While these debates were going on, Sir Basil introduced me to a French banker, M. Maubeuge, a member of a syndicate that had recently made a deal with the Soviet government for the Russian crown jewels. Some of the chests in which they were stored could not be opened, and Sir Basil had recommended me to unlock them.

Back to London I went with the French banker who arranged my credentials at the Russian embassy. The next day we took a train from Croton airport.

After 12 days the chests were opened and M. Maubeuge had looked in his bank the massively set rubies, diamonds, and emeralds, some of them almost as big as pullets' eggs. Commissar Kazoff, who had been assigned as my translator, showed me the Kremlin. He took me to the palace in

which—its exact location was a secret—was Stalin's office. We went up the flight of marble steps, down long bare halls filled with alert soldiers, then through section after section of high-ceilinged offices, with men everywhere but not a girl secretary in sight.

Finally we passed through several ante-rooms and were ushered into Stalin's own office, an enormous room with a polished floor that looked as long as a hayfield between us and the stolid man who rose from the desk at the other end.

STALIN was a plain utilitarian figure in soft, black, high boots, riding breeches, and a white tunic with a band of red embroidery around the thick neck. Studying him, I doubted if there was a flabby ounce of flesh on his body.

Stalin's little eyes sized me up. Almost before I spoke a word, I felt that he had picked my brains. With Comrade Kazoff acting as interpreter, he spent about 20 minutes asking me about the diving equipment we used in salvaging. The adventures of treasure hunting under the sea meant nothing to this man who was never without danger at his elbow, but information that he might sometime use he pigeonholed in his avaricious brain.

In one of the museums I wandered into a dusty side room which was full of odds and ends that had not been hung. On the floor in the corner lay a pile of metal that looked like the bottom of a junkman's heap. To a piece of it was tied a dirty tag labeled "Catherine II." The chain was made of 98 links, each link a padlock with its own tiny key.

As I looked down at that rusty iron, I had never wanted anything so much.

"Twenty dollars, American money," Kazoff told me. "Come back for them tomorrow, and you will have their history in English."

# RAF Ruined Nazi Plans For Attack On British Isles

LONDON—(AP)—The gigantic air attack that Germany hurled at London three years ago this month definitely was the preliminary step toward invasion of Britain, it was disclosed Thursday.

Twenty-five hundred barges massed in ports across the English Channel and the North Sea were to have carried Hitler's invasion hordes to the shores of England as the climax of a five-week program culminating in mid-September.

The planned preliminary steps were to have been the knocking out of the RAF and then the bombing of London to shatter the will and ability of the British people to resist.

This information, obtained from sources which may not be specified, presented a broader picture of events that occurred during those dark days than it was possible to give then or since.

The daring and tireless pilots of the RAF carried the major burden of throwing this enemy invasion program awry—the men who long ago were immortalized by the words of Winston Churchill: "Never in the field of human conflict was so much owed by so many to so few."

The RAF then was out-numbered four to one by the German air force's 3,450 planes.

Besides courage, the RAF's big assets were a radio location system, an efficient operational system, and the Germans' sequence of mistakes.

The Germans counted on dive-bombing, but evasive tactics which saved the Stukas in Spain failed to work in Britain. Without armor, the Nazi bombers were forced into high altitude pattern bombing by daylight, a system in which they didn't believe.

# Rockefeller Center Elevator Men Strike

NEW YORK—(AP)—Many of Rockefeller Center's 27,000 tenants were faced with the possibility of another day of trudging up and down stairways Thursday as elevator operators continued their walkout which began Wednesday shortly before the 5 o'clock rush hour.

Center officials and representatives of the employees met for more than three hours early Thursday

# Argentina Is Jealous Of U. S. Aid To Brazil

SALT LAKE CITY—(AP)—Argentina is bitterly jealous of war aid the United States is giving Brazil and other South American countries, Richard Henry Mortensen, Latter Day Saints church missionary in Argentina for the past two and one-half years, said Thursday upon his return here.

In an effort to end the work stoppage but were unable to reach an agreement.

# RAF Beaufighters Hit Jap Communications

NEW DELHI, INDIA—(AP)—Plying through the difficult conditions of the declining monsoon, RAF Beaufighters destroyed and damaged a number of locomotives, sampans and trucks in a new series of blows at Japanese communications in Burma, it was announced Thursday.

The principal attacks were in the Katha district, along the Irrawaddy and on Cheduba Island along the coast.

# FFA Members Operate Stand During Games

Members of the Future Farmers of America chapter at the high school are operating the refreshment stand during football games at Lackey Field. Profits from the enterprise will be used to carry out the organization's projects.

Soft drinks, candy and popcorn are sold, and cushions are rented out by the members.

# OUR BOARDING HOUSE —with MAJOR HOOPLE OUT OUR WAY



By J. R. WILLIAMS

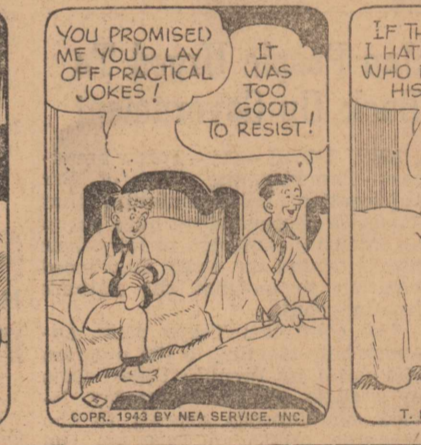
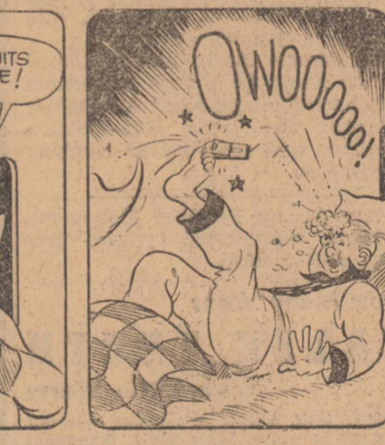
# BOOTS AND HER BUDDIES



By EDGAR MARTIN

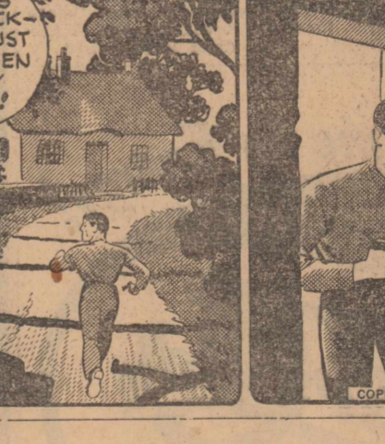
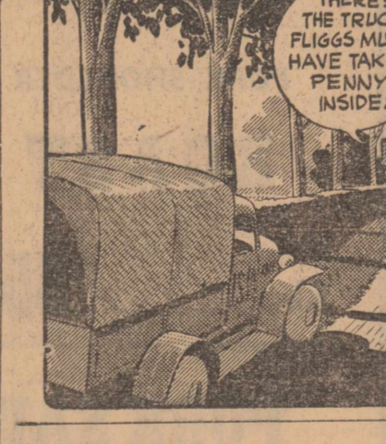
# buy MEAD'S fine BREAD

# FRECKLES AND HIS FRIENDS



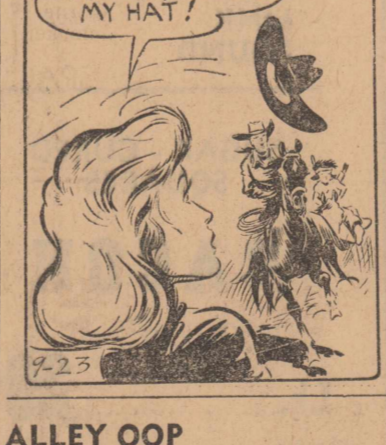
By MERRILL BLOSSER

# WASH TUBBS



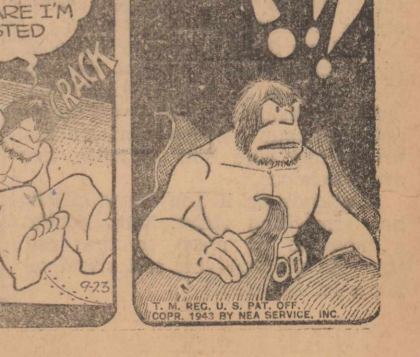
By LESLIE TURNER

# RED RYDER



By FRED HARMAN

# ALLEY OOP



By V. T. HAMLIN

# SIDE GLANCES



COPY, 1943 BY NEA SERVICE, INC. T. M. REG. U. S. PAT. OFF.

# McKENNEY ON BRIDGE

By WILLIAM E. MCKENNEY America's Card Authority

Most fine players prefer to make light opening bids, and in tournaments they make them unusually light. Mrs. Wilkinson Wagar of Atlantic, Ga., one of the country's leading women players and the holder of many national titles, found the South hand shown to-

♠ J 9 7 5	♥ K J 10 2	♦ J 6 4 2	♣ A
♠ 2	♥ A 8 3	♦ K 10 9 7	♣ 8 6 5 3 2
N	W	E	S
♠ K 10 4	♥ 9 7 6	♦ A Q 3	♣ K 9 7 4
Mrs. Wagar	♠ A Q 8 6 3	♥ Q 5 4	♦ 8 5
	♠ Q J 10		
Duplicate—All vul.			
South	West	North	East
1 ♠	Pass	3 ♠	Pass
4 ♠	Pass	Pass	Pass
Opening—♠ 3. 23			

day worth a bid, when most people would pass it originally.

In playing and making her contract, Mrs. Wagar also followed expert practice in preferring to play for a three-trump break, rather than two-two. Dummy's ace took the club opening and the jack of spades was led. If a low spade had been led and the queen hit, the play would have been lost, but when East covered the spade jack, South still had a play for the contract.

The ace of spades won and a heart was led. West ducked and dummy's ten won. A low spade was led, East played low and South put in the eight-spade. It held and the queen drew the last trump. Now the ace of hearts and two diamonds were all the defenders could get.

# Borrowed Book Returns

LOMA LINDA, CALIF.—(AP)—One of Dr. Edwin Lee's classmates was a Japanese, who returned to Japan to practice medicine.

An anatomy textbook of Dr. Lee's disappeared at the time they were students five years ago.

The book recently was sent to him. It had been found on the Island of Attu.

# Read Reporter-Telegram Want-Ads



9 23

# Briton Who Saw Big Nazi West Wall Says It Can Be Crumbled

LONDON—(AP)—The House of Commons was told Wednesday by a man who saw Hitler's vaunted west wall from the inside that it is doubtless very strong, but not so strong that Allied invaders couldn't break through.

Naval Commander R. M. Prior, a Briton who escaped after being captured at Dieppe and finally reached safety by way of Spain after nine months of wandering in France, declared:

"In my view it could be assaulted and breached by a determined assault, well organized."

Prior walked through France disguised as a French workman after dropping from a German hospital train. He said that during his flight he had opportunity for a close inspection of part of the wall.

# Officers Prepared To Arrest Thomas

HOUSTON—(AP)—If R. J. Thomas wants to test a new law prohibiting soliciting union memberships without an organizer's card issued by the Texas secretary of state, Texas officials apparently are ready to meet him half way.

Attorney General Gerald Mann obtained in Austin a temporary order restraining Thomas, president of the United Automobile Workers union (CIO), from violating the law.

Sheriff Neal Polk of Harris County said at Houston that Thomas would be arrested if he asked anyone at a rally of oil workers and others at Pelly, Texas, Thursday night to join the oil workers union. Assistant District Attorney W. K. Richardson said Harris County prosecutors were ready to press such a case.

# Carrier And Land Based Planes Team Up In Isle Attacks

PEARL HARBOR, T. H.—(AP)—For the first time in the Pacific war, carrier planes and heavy land-based bombers have teamed up in a smashing offensive against Japanese island possessions.

This was disclosed by Admiral Chester W. Nimitz in amplified reports on operations the night of Sept. 18 and throughout the day Sept. 19 against enemy installations in the Gilbert Islands area.

Land-based planes from both the South Pacific and Central Pacific joined with carrier planes in making more than 200 sorties over a 500-square-mile area against islands near the equator about 2,500 statute miles southwest of Hawaii.

In a communique Wednesday, Admiral Nimitz also disclosed that these attacks took in Makin and Apamama Islands as well as Tarawa and Nauru as reported earlier.

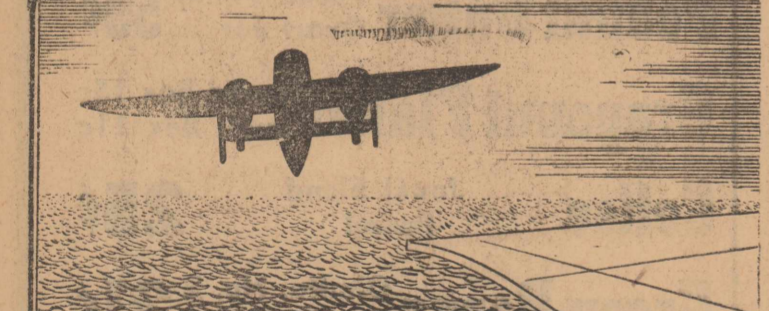
# Court of Honor Will Be Held By Boy Scouts

Midland Boy Scouts will hold their court of honor for September in the district courtroom at 8 p. m. Thursday. The Rev. Hubert Hopper is advancement chairman.

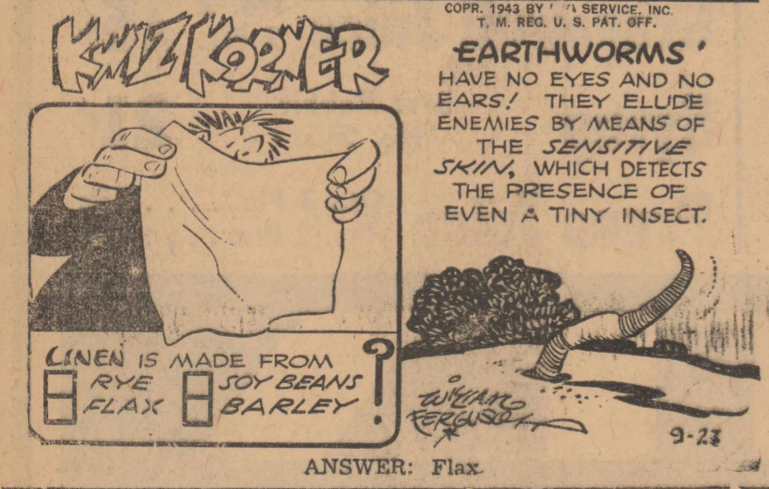
# HURRICANE THREATS CUT OIL PRODUCTION

WASHINGTON—(AP)—Threats of the recent hurricane which finally stripped the Texas coast east 400,000 barrels of crude oil through shutdown of refineries and delayed movement of 550,000 barrels of oil to the east coast, Secretary of Interior Ickes reported Wednesday.

# THIS CURIOUS WORLD By William Ferguson



JIMMY DOOLITTLE'S FLIGHTS TO THE NATIONAL CAPITALS, TOKYO AND ROME, ARE STILL FRESH IN OUR MEMORY, BUT BACK IN 1931 HE FLEW OVER THE THREE GREAT NORTH AMERICAN NATIONAL CAPITALS, OTTAWA, WASHINGTON, AND MEXICO CITY, IN A PERIOD OF TWELVE HOURS!



ANSWER: Flax.

★ Find It ★ Sell It ★ Buy It  
With A Want Ad! With A Want Ad! With A Want Ad!  
★ Phone 7 or 8 ★



