

ROTAN ADVANCE

VOL. 67 NO. 36

THURSDAY, OCTOBER 16, 1975

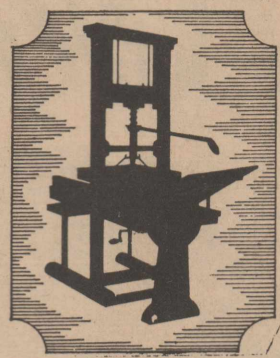
FISHER COUNTY TEXAS

SINGLE COPY PRICE 20 CENTS

TWELVE PAGES



ROBY HOMECOMING QUEEN AND KING: Marilyn (Webb) White of Lubbock and Jerry (Scooter) Stuart of Roby were named 1975 Homecoming King and Queen.



Cotton Meeting Planned For Roby Monday

An important cotton meeting will be held Monday, Oct. 20, at 8:00 p.m. in the District Courtroom in Roby, according to Richard Spencer, County Agent.

The purpose of the meeting is to set up the Cotton Pest Management Program for Fisher and Jones counties where professional Extension Entomologists will be employed full time to live in Fisher County.

In order to get the entomologist, the two counties must have a total of 6,000 acres of cotton or grain sorghum committed to the program. Maximum acres will be 15,000.

The cost of the program to the producers will be approximately \$2 per acre to pay the scouting fee. The crops will be checked at least once a week and reports issued on a weekly basis.

The program will be explained in detail at the meeting by members of the Texas Agricultural Extension Service Staff.

The program is very important to both counties, and producers are urged to support it, according to Spencer.

The public is invited to the meeting.

Rotan FFA Will Hold Car Wash This Saturday

The members of the Rotan Future Farmers of America have scheduled a car wash for Saturday, October 18, according to advisors Ronnie Teichelman and Jackie Miller.

The car wash will be held, weather permitting, from 9:00 a.m. until 4:00 p.m. at the Rotan FFA building. Students will wash cars inside and out for \$3.00 with profits being used to improve the school farm facilities.

Anyone desiring to assist the FFA with this fund raising project is asked to deliver their car to the school or call 735-3041 prior to Friday afternoon in order that the car can be picked up and delivered.

Jessie Flores Has Probation Revoked Here

Jessie Flores, age 20, of Rotan had his probation revoked and was sentenced to two-four years in the Texas Department of Corrections by District Judge Weldon Kirk of the 32nd District Court on October 9, according to Rotan Police Chief Glenn Willeford.

Flores was on probation for a felony forgery charge. While on probation he was charged with disorderly conduct on July 11 and felony theft for a stolen car on August 30.

County 4-H Banquet Award Ceremony Sat.

The annual Fisher County 4-H Awards Banquet will be held Sat. Oct. 18, 7:00 p.m. at the Rotan School Cafeteria, according to Richard Spencer and Alice Ballenger, County Extension Agents.

The master of ceremonies will be Dr. Charles Church. Cindy Posey will give the invocation. The 4-H Pledge and Motto will be led by Gary Don Harkey. Monte Morrow will give the

welcome. Penny Coker will introduce guests. Brad Stuart will introduce the speaker, Ed Gannett, District III Extension Agent from Vernon.

County Judge Dwight Lovett will present the Gold Star Awards. Max Kemp and Patricia Posey will present the Adult Leader Awards.

The banquet is being sponsored this year by Midwest Electric Coop and Citizens State Bank of Roby.

First National Bank of Rotan sponsors the Spur Clip Friend of 4-H Award.

The program sponsor is Planters Gin Co. of Longworth.

School Superintendents Comment... Attorney General Opinion Will Cost Taxpayers Pretty Penny

The recent opinion by the Texas Attorney General will have a profound wallop on the pocketbooks of all Fisher County taxpayers. The Attorney General's opinion NO. H-702 concerning the authority of school districts to charge fees for certain courses, school supplies and extra curricular activities could mean as much as \$10 to \$12,000 dollars in extra money to Fisher County taxpayers.

In brief, the ruling by the Attorney General said that schools could no longer charge fees for workbooks, typing lab fees and other miscellaneous fees.

Caffey Welch, superintendent of the Roby School, said in a phone interview last Tuesday morning that the financial impact of the ruling could mean as much as \$5,000 to \$8,000 to the Roby Schools. At the present time students are purchasing football and basketball shoes and socks, this item alone will be a big dollar figure when the school begins footing the bill. Another area is band uniform rentals, according to Welch.

"Band students are currently paying a \$10.00 band fee to cover the cost of uniform upkeep and cleaning", said Welch. The school also charges band students a fee for horns provided by the school. This fee covers the cost of keeping the horn in good condition.

Tom Harkey at the Rotan School discussed the Attorney General's opinion in the school board meeting held last Monday night. He was of the opinion that the ruling would have a sizeable effect on the budget of the school in the future. One of the prime areas of concern was the fee currently being charged by the school to cover the drivers education program.

Bill Denman at Hobbs estimated that the ruling could mean as much as a \$1,000 increase in the budget at his school. Hobbs is already providing many of the services outlined in the ruling. They do not charge for any workbooks or classroom supplies. Hobbs does however charge students for football shoes and basketball shoes. Hobbs is not currently charging students for driver education.

Superintendent Farmer at McCaulley indicated that the ruling would not have a lot of effect on McCaulley. He did say that the ruling could have a far reaching effect in future years.

One of the Fisher County School Superintendents indicated that the opinion is expected to cost the Houston school district approximately \$10 million dollars. Abilene is expected to see a budget increase of \$30,000 to \$50,000 as a direct result for the Attorney General's ruling.

The Texas Education Agency sent state school districts the following information concerning the ruling.

(1) The effective date is the date of the ruling, October 1, 1975. The Attorney General's Opinion did not cover fees collected prior to the date of October 1, 1975.

(2) The ruling does not speak to students furnishing traditional supplies such as pencils, paper, etc.

(3) Fees charged to buy such materials as workbooks, etc., are covered under the ruling. Fees for typing, labs, etc., are also covered by the ruling.

(4) Materials necessary for the student to acquire basic skills in vocational education courses must be furnished by the school district. However, the school district may allow a student, at his option, to furnish costlier or different vocational materials for continued to page 5

that the opinion is expected to cost the Houston school district approximately \$10 million dollars. Abilene is expected to see a budget increase of \$30,000 to \$50,000 as a direct result for the Attorney General's ruling.

The Texas Education Agency sent state school districts the following information concerning the ruling.

(1) The effective date is the date of the ruling, October 1, 1975. The Attorney General's Opinion did not cover fees collected prior to the date of October 1, 1975.

(2) The ruling does not speak to students furnishing traditional supplies such as pencils, paper, etc.

(3) Fees charged to buy such materials as workbooks, etc., are covered under the ruling. Fees for typing, labs, etc., are also covered by the ruling.

(4) Materials necessary for the student to acquire basic skills in vocational education courses must be furnished by the school district. However, the school district may allow a student, at his option, to furnish costlier or different vocational materials for continued to page 5

(5) The ruling does not speak to students furnishing traditional supplies such as pencils, paper, etc.

(6) Fees charged to buy such materials as workbooks, etc., are covered under the ruling. Fees for typing, labs, etc., are also covered by the ruling.

(7) Materials necessary for the student to acquire basic skills in vocational education courses must be furnished by the school district. However, the school district may allow a student, at his option, to furnish costlier or different vocational materials for continued to page 5

(8) The ruling does not speak to students furnishing traditional supplies such as pencils, paper, etc.

(9) Fees charged to buy such materials as workbooks, etc., are covered under the ruling. Fees for typing, labs, etc., are also covered by the ruling.

(10) Materials necessary for the student to acquire basic skills in vocational education courses must be furnished by the school district. However, the school district may allow a student, at his option, to furnish costlier or different vocational materials for continued to page 5

(11) The ruling does not speak to students furnishing traditional supplies such as pencils, paper, etc.

(12) Fees charged to buy such materials as workbooks, etc., are covered under the ruling. Fees for typing, labs, etc., are also covered by the ruling.

(13) Materials necessary for the student to acquire basic skills in vocational education courses must be furnished by the school district. However, the school district may allow a student, at his option, to furnish costlier or different vocational materials for continued to page 5

(14) The ruling does not speak to students furnishing traditional supplies such as pencils, paper, etc.

(15) Fees charged to buy such materials as workbooks, etc., are covered under the ruling. Fees for typing, labs, etc., are also covered by the ruling.

(16) Materials necessary for the student to acquire basic skills in vocational education courses must be furnished by the school district. However, the school district may allow a student, at his option, to furnish costlier or different vocational materials for continued to page 5

(17) The ruling does not speak to students furnishing traditional supplies such as pencils, paper, etc.

(18) Fees charged to buy such materials as workbooks, etc., are covered under the ruling. Fees for typing, labs, etc., are also covered by the ruling.

that the opinion is expected to cost the Houston school district approximately \$10 million dollars. Abilene is expected to see a budget increase of \$30,000 to \$50,000 as a direct result for the Attorney General's ruling.

The Texas Education Agency sent state school districts the following information concerning the ruling.

(1) The effective date is the date of the ruling, October 1, 1975. The Attorney General's Opinion did not cover fees collected prior to the date of October 1, 1975.

(2) The ruling does not speak to students furnishing traditional supplies such as pencils, paper, etc.

(3) Fees charged to buy such materials as workbooks, etc., are covered under the ruling. Fees for typing, labs, etc., are also covered by the ruling.

(4) Materials necessary for the student to acquire basic skills in vocational education courses must be furnished by the school district. However, the school district may allow a student, at his option, to furnish costlier or different vocational materials for continued to page 5

(5) The ruling does not speak to students furnishing traditional supplies such as pencils, paper, etc.

(6) Fees charged to buy such materials as workbooks, etc., are covered under the ruling. Fees for typing, labs, etc., are also covered by the ruling.

(7) Materials necessary for the student to acquire basic skills in vocational education courses must be furnished by the school district. However, the school district may allow a student, at his option, to furnish costlier or different vocational materials for continued to page 5

(8) The ruling does not speak to students furnishing traditional supplies such as pencils, paper, etc.

(9) Fees charged to buy such materials as workbooks, etc., are covered under the ruling. Fees for typing, labs, etc., are also covered by the ruling.

(10) Materials necessary for the student to acquire basic skills in vocational education courses must be furnished by the school district. However, the school district may allow a student, at his option, to furnish costlier or different vocational materials for continued to page 5

(11) The ruling does not speak to students furnishing traditional supplies such as pencils, paper, etc.

(12) Fees charged to buy such materials as workbooks, etc., are covered under the ruling. Fees for typing, labs, etc., are also covered by the ruling.

(13) Materials necessary for the student to acquire basic skills in vocational education courses must be furnished by the school district. However, the school district may allow a student, at his option, to furnish costlier or different vocational materials for continued to page 5

(14) The ruling does not speak to students furnishing traditional supplies such as pencils, paper, etc.

(15) Fees charged to buy such materials as workbooks, etc., are covered under the ruling. Fees for typing, labs, etc., are also covered by the ruling.

(16) Materials necessary for the student to acquire basic skills in vocational education courses must be furnished by the school district. However, the school district may allow a student, at his option, to furnish costlier or different vocational materials for continued to page 5

(17) The ruling does not speak to students furnishing traditional supplies such as pencils, paper, etc.

(18) Fees charged to buy such materials as workbooks, etc., are covered under the ruling. Fees for typing, labs, etc., are also covered by the ruling.

that the opinion is expected to cost the Houston school district approximately \$10 million dollars. Abilene is expected to see a budget increase of \$30,000 to \$50,000 as a direct result for the Attorney General's ruling.

The Texas Education Agency sent state school districts the following information concerning the ruling.

(1) The effective date is the date of the ruling, October 1, 1975. The Attorney General's Opinion did not cover fees collected prior to the date of October 1, 1975.

(2) The ruling does not speak to students furnishing traditional supplies such as pencils, paper, etc.

(3) Fees charged to buy such materials as workbooks, etc., are covered under the ruling. Fees for typing, labs, etc., are also covered by the ruling.

(4) Materials necessary for the student to acquire basic skills in vocational education courses must be furnished by the school district. However, the school district may allow a student, at his option, to furnish costlier or different vocational materials for continued to page 5

(5) The ruling does not speak to students furnishing traditional supplies such as pencils, paper, etc.

(6) Fees charged to buy such materials as workbooks, etc., are covered under the ruling. Fees for typing, labs, etc., are also covered by the ruling.

(7) Materials necessary for the student to acquire basic skills in vocational education courses must be furnished by the school district. However, the school district may allow a student, at his option, to furnish costlier or different vocational materials for continued to page 5

(8) The ruling does not speak to students furnishing traditional supplies such as pencils, paper, etc.

(9) Fees charged to buy such materials as workbooks, etc., are covered under the ruling. Fees for typing, labs, etc., are also covered by the ruling.

(10) Materials necessary for the student to acquire basic skills in vocational education courses must be furnished by the school district. However, the school district may allow a student, at his option, to furnish costlier or different vocational materials for continued to page 5

(11) The ruling does not speak to students furnishing traditional supplies such as pencils, paper, etc.

(12) Fees charged to buy such materials as workbooks, etc., are covered under the ruling. Fees for typing, labs, etc., are also covered by the ruling.

(13) Materials necessary for the student to acquire basic skills in vocational education courses must be furnished by the school district. However, the school district may allow a student, at his option, to furnish costlier or different vocational materials for continued to page 5

(14) The ruling does not speak to students furnishing traditional supplies such as pencils, paper, etc.

(15) Fees charged to buy such materials as workbooks, etc., are covered under the ruling. Fees for typing, labs, etc., are also covered by the ruling.

(16) Materials necessary for the student to acquire basic skills in vocational education courses must be furnished by the school district. However, the school district may allow a student, at his option, to furnish costlier or different vocational materials for continued to page 5

(17) The ruling does not speak to students furnishing traditional supplies such as pencils, paper, etc.

(18) Fees charged to buy such materials as workbooks, etc., are covered under the ruling. Fees for typing, labs, etc., are also covered by the ruling.

Rotan Tables Phone Hike Service Is Improving

The Rotan City Council tabled action on a Southwestern Bell Telephone rate increase at last Tuesday night's City Council meeting.

Milton Palmer, repair supervisor, appeared before the council and assured members that his company was doing everything possible to correct any existing service problems.

PALMER INDICATED THAT HE HAD ASSIGNED FOUR EXTRA SERVICEMEN TO THE Rotan and Roby area in an effort to correct problems in a speedy manner. Palmer also urged Rotan Southwestern Bell customers to report any telephone trouble, either currently or in the future, by dialing '0' and asking for repair service.

A big problem to Southwestern Bell has been the service at National Gypsum Company. According to Palmer, almost all the cable has been replaced by his company and service is much improved. Several of the councilmen relayed instances of service trouble to Palmer, that

Rotan, will discuss Self Employment Retirement Systems.

The November 18 meeting will deal with new Income Tax Laws that pertain to farmers and ranchers. Norman Brints will also present the information on income tax. The program should be very useful to farmers and ranchers of the areas, according to Spencer. The shortcourse is being sponsored by the Crop and Livestock Committees of the County Program Building Committee.

The programs are open to the public regardless of race, color, or national origin.

Farm Management Class Being Offered In Roby

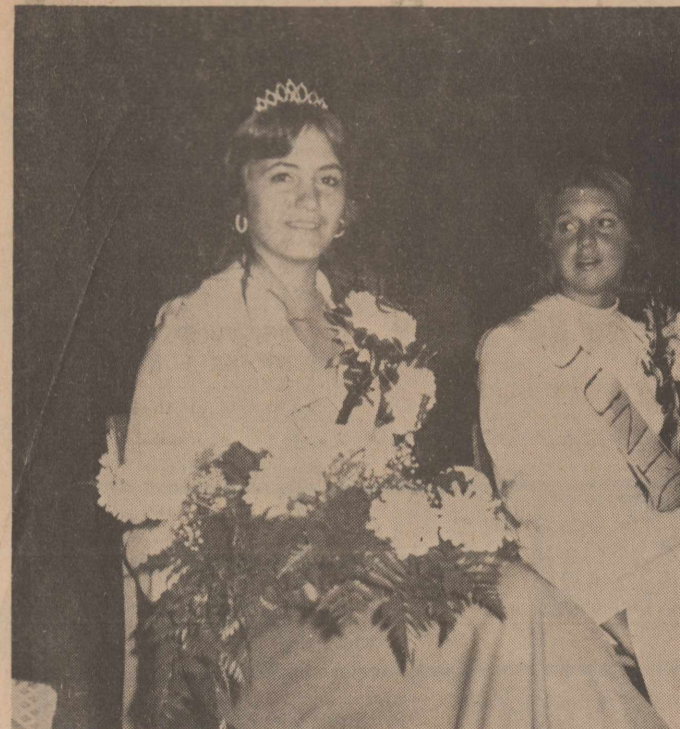
A two-night shortcourse on Farm Management information will be held October 21 and November 18 beginning at 8:00 p.m. at the Midwest Electric Cooperative Meeting Room in Roby. Both meetings are on Tuesday night, according to Richard Spencer, County Extension Agent.

The October 21 meeting will deal with Estate Planning and Self-Employment Retirement Systems. Norman Brints, Area Extension Economist from Vernon, will discuss general Estate Planning and James Springer, President of First National Bank,

Rotan, will discuss Self Employment Retirement Systems.

The November 18 meeting will deal with new Income Tax Laws that pertain to farmers and ranchers. Norman Brints will also present the information on income tax. The program should be very useful to farmers and ranchers of the areas, according to Spencer. The shortcourse is being sponsored by the Crop and Livestock Committees of the County Program Building Committee.

The programs are open to the public regardless of race, color, or national origin.



HIGH SCHOOL QUEEN: Penny Anderson, daughter of Mr. and Mrs. Zanna Anderson, was named the 1975 Roby High School Queen during pre-game ceremonies last Friday night.

Twenty Eight Honored At Roby

A total of 28 Roby ex-students were honored at halftime ceremonies last Friday night during homecoming activities but bouquet of red roses went to Marilyn Webb White of Lubbock as Homecoming Queen and Jerry (Scooter) Stuart of Roby as Homecoming King. The couple represented the class of 1954.

High School Queen honors went to Penny Anderson representing the senior class. She was escorted by Craig Randolph. High School Dutchesses were Rhonda Welch representing the junior class and escorted by Ricky Morton; Penny Coker of the sophomore class escorted by Don Campbell and Michelle Cox of the freshman class escorted by Ricky Kiser.

The incoming officers of the

Roby Board Discusses New Tax Equalizations

Roby School Board members met in regular session last Monday night and discussed the equalization of taxes within the district with members of the citizen's equalization committee. "The group is going to attempt to make taxes equitable so everyone will be assessed on 49 per cent of their true value,"

Roby Homecoming Association are Tommie Jack Stuart, class of 1958, president; Johnny Farrar, class of 1955, first vice president; Harmon Holcomb, class of 1949, second vice president; and Barbara Palmer Rasco, class of 1957, secretary-treasurer.

Those participating in the half time activities include: Class of 1914, Nancy McWhirter Clark of Roby and Hubert (Son) Hodges of Abilene. Class of 1915, Mary Barlow Conley of San Angelo and Buck Hughs of Roby. Class of 1924, Gwenn (Barnett) Jay of Abilene and Luther Encke of Roby. Class of 1925, Miss Dudley Ben Hambright of Roby and Ike Jay of Abilene.

Also, Class of 1934, Ollene (Knox) McAnally of Kermit and James Cave of Roby. Class of

1935, Lucille (Jay) Cunningham of Hamlin and Hue Dorsey Moore of Roby. Class of 1944, Marion (Nail) Crowder of Dallas and James Headstream of Abilene. Class of 1945, Billie Marie (Wetsel) Marion of Abilene and Eugene Turnbow of British Columbia, Canada.

And, Class of 1954, Marilyn (Webb) White of Lubbock and Jerry Scooter Stuart of Roby. Class of 1955, Barbara (Farley) Grounds of San Antonio and Johnny Farrar of Roby. Class of 1964, Linda Gay (Hale) Rembert of San Angelo and Ronnie McCormick of Idalou. Class of 1965, Bambi Moore Randolph of Roby and Mike Terry of Roby. Class of 1974, Dana Sue Anderson of Roby and Dale Evers of Odessa. Class of 1975, Jill Laurie of Roby and Pax Beauchamp of Snyder.

The Anne Pettus Shelburne Chapter, DAR, will meet in the home of Mrs. Virgil Weems, Monday, October 20. The program will be, "The First Americans".

Local DAR To Hold Meeting

The Anne Pettus Shelburne Chapter, DAR, will meet in the home of Mrs. Virgil Weems, Monday, October 20. The program will be, "The First Americans".

Hobbs Junior High Wins Over Ira Team

Hobbs Jr. High defeated Ira 27-13 last Thursday night at Ira. The scoring was evenly divided as Wade Pierson scored two TD's, Wayne Jones scored one and James Ratliff scored one TD on a pass from Jeff Anderle and Ratliff also kicked one extra point and ran for one extra point.

The Jr. High team will play Highland Thursday night, Oct. 16, at 7 p.m. at Hobbs.

Calendar Club Plans Supper At Smith Home

Calendar Club members and their husbands are invited to a chili and bean supper Friday, Oct. 17, at 7:30 at the home of Bobby and Joyce Smith.

The food and drinks will be furnished by the social committee. Please call the hostess or the social committee if you can not attend.



NO BALLET DANCE: Rotan girls volleyball coach Carolyn Luckenbach, facing, gives last minute pep talk to her volleyball players prior to last Monday's game against Hamlin. Others in the picture, left to right, are Tammy Reed, Leola Gentry, and Linda Kay Gunn.

continued from page 1
 work for 8 years and is a junior at McCaulley High School. He has carried projects in swine, field crops, leadership, dog care, horses and foods.
 Max has been very active in 4-H leadership activities including parts on the 4-H banquet, record workshop and rally day. He also presented a talk at the tea honoring State Rep. and Mrs. Elmer Martin of Colorado City. He is also a leader for the McCaulley 4-H Club and serves on the Fisher County 4-H Council.

He has placed his swine high at all major stock shows over the state including Houston, Ft. Worth, Dallas, and San Angelo. He has shown numerous champions at Fisher County shows.

The Kemp family is very active in 4-H work in Fisher County where Mr. and Mrs. Kemp serve as adult leaders and their daughter also received the Gold Star Award.

Max is also very active in McCaulley School activities and participates in varsity athletics. He is a member of the Baptist Church.

He is a very dependable and capable 4-H member and has worked real hard for the award, according to Spencer.

Hobbs HDC Has Monthly Meet

The Hobbs Home Demonstration Club met with Mrs. Walter Byrd October 9. President, Mrs. Turner Houghton, was in charge of the meeting. She called for the Secretary, Mrs. Clarence Anderson, to call the roll and read the minutes of the last meeting. Mrs. Dale Cave gave the council report.

Mrs. Billy Speck had tupper ware products there for sale.

Refreshments were served to those mentioned above, one visitor, Mrs. Ed Hawkins of Abilene, and Mmes. James Nettleton, Connie Tutt, Bill Hardy, J.P. Phillips and the hostess, Mrs. Byrd.

The next meeting will be with Mrs. Dale Cave, October 23 at 2:30 p.m. The program will be on cleaning, care, and adjustment of sewing machines.

Hobbs Panthers

The Hobbs Panthers were beaten 54-6 by the Benjamin Mustangs last Friday night. The Panthers played a real good first quarter as the score was 12-6 for Benjamin. However, the Mustangs came alive and the game was called early in the 4th quarter.

Hobbs' only score came in the first quarter on a 43 yard pass from Charles Wright to Johnny Medrano. Hobbs begins district play on Saturday, Oct. 18, at 2 p.m. at Hermleigh.

continued from page 1
 sophomore in Rotan High School.

Projects Patricia has carried in 4-H include clothing, child care, foods, home improvement and leadership. She has won blue ribbons in County 4-H Dress Revue six years, winning first place in her division in 1974 and participating in District III Dress Revue. She also received the second place Cotton Award in District Dress Revue in 1974.

In 1975, Patricia was a member of the Fisher County Electric Team Demonstration which won first place in State 4-H Roundup. Patricia has won first place in County Food Show two years and first in District Food Show in 1974.

She has served her local club as president, secretary, Council Delegate, and vice president. She serves as a Junior Leader for a group of younger 4-H girls.

Patricia is an honor student. She participates in Rotan High School Band, plays basketball, tennis and participates in UIL events.

To be considered for this award, the 4-H member must be thirteen years of age before January 1 of the year she is being judged, have been a member of 4-H three years and currently participating in 4-H projects, events, and activities.

Patricia and other girls eligible for the award were judged by a committee who visited the girls, saw their projects, talked with the girls and looked at their 4-H record book. On the committee doing the judging were Mrs. Bill Hardy, Mrs. Jerry Hoodenpyle and Morris Guelker.

Friendly Fairy 4 H Club Has Monthly Meet

The Friendly Fairies 4-H Club met Saturday, Oct. 4, at Hinds Department Store. The front window of the store was decorated with ribbons and projects of the club for National 4-H Week.

Those displaying items are Vickie Moore, Jeannie Swafford, Connie Posey, LaRhea Smith, Russell Smith, Dena Tucker, Sherrie Wall, Delores Yanez and Veronica Carrillo.

The club expressed their thanks to the store for the opportunity again this year to show everyone that 4-H is working and the members are working.

YOUR Independent AGENT
 If we can't help you, nobody can.
 ROTAN INSURANCE AGENCY
 Joe D. Burk

Worship Together



- CHURCH OF CHRIST**
 Rotan, Texas
 Joe Barina, Minister
 Bible Study-9:45 a.m.
 Worship-10:30 a.m.
- FIRST UNITED METHODIST CHURCH**
 Rotan, Texas
 Rev. Cecil M. Tune, Pastor
 Sunday School-9:30 a.m.
 Worship-10:30 a.m.
- CHURCH OF NAZARENE**
 Rotan, Texas
 F. W. Rogers, Pastor
 Bible Class-9:45 a.m.
 Worship-10:50 a.m.
 Evening Service-7:00 p.m.
- SYLVESTER BAPTIST CHURCH**
 James Holdridge, Pastor
 Sunday School-10:00 a.m.
 Worship-11:00 a.m.
 Sunday Night-7:00 p.m.
- SARDIS BAPTIST CHURCH**
 9 Miles SW of Rotan
 Bro. Henry Dickson, Hawley
 Sunday School-10:00 a.m.
 Worship-11:00 a.m.
- FIRST ASSEMBLY OF GOD**
 Rotan, Texas
 Sunday School-10:00 a.m.
 Church-11:00 a.m.
 Night Services-7:30 p.m.
- CHURCH OF CHRIST**
 Rotan Latin American
 Bible Class-10:00 a.m.
 Worship-11:00 a.m.
- FIRST UNITED METHODIST CHURCH**
 Sylvester, Texas
 Kenneth James, Pastor
 Morning Worship-9:45 a.m.
 Sunday School-10:30 a.m.
- CALVARY BAPTIST CHURCH**
 Rotan, Texas
 Steven Sweet, Pastor
 Sunday School-10:00 a.m.
 Worship-11:00 a.m.
- ST. JOSEPH'S CATHOLIC**
 Rotan, Texas
 John Hoorman, Pastor
 Mass-Saturday Eve.-7:30 p.m.
 Mass-Sunday-9:00 a.m.
- LITTLE ZION BAPTIST**
 Rotan, Texas
 Rev. John Josery
 Sunday School-9:45 a.m.
 Worship-11:00 a.m.
- CHURCH OF CHRIST**
 Roby, Texas
 Wardell Halliburton, Minister
 Bible Class-10:00 a.m.
 Worship-11:00 a.m.

- EMMANUEL BAPTIST CHURCH**
 Rotan, Texas
 Sunday School-10:00 a.m.
 Worship-11:00 a.m.
- CROSS ROADS BAPTIST**
 6 Miles SW of Rotan
 Rev. Ross Anderson, Pastor
 Sunday School-10:00 a.m.
 Worship-11:00 a.m.
- FIRST UNITED METHODIST CHURCH**
 Roby, Texas
 Rev. Kenneth James, Pastor
 Sunday School-10:00 a.m.
 Worship-11:00 a.m.
- HOBBS BAPTIST CHURCH**
 Hobbs Community
 J. H. Skiles, Pastor
 Sunday School-10:00 a.m.
 Worship-11:00 a.m.
- FIRST BAPTIST CHURCH**
 Roby, Texas
 Rev. Allen Cartrite, Pastor
 Sunday School-10:00 a.m.
 Worship-11:00 a.m.
- FOUR SQUARE CHURCH**
 Rotan, Texas
 Eighth and Genevieve
 Rev. Richard L. Dickerson
 Sunday School-10:00 a.m.
 Worship-11:00 a.m.
- EL PASO BAPTIST CHURCH**
 South of Roby
 F. E. Healer, Pastor
 Sunday School-10:00 a.m.
 Worship-11:00 a.m.
- FIRST BAPTIST CHURCH**
 Rotan, Texas
 Rev. Fred Thomas, Pastor
 Sunday School-9:45 a.m.
 Worship-10:55 a.m.
- METHODIST CHURCH**
 Longworth, Texas
 Gene Greer, Pastor
 Sunday School-10:00 a.m.
 Worship-11:00 a.m.
- LONGWORTH BAPTIST**
 Longworth, Texas
 Rev. Billy Oliver, Pastor
 Sunday School-10:00 a.m.
 Worship-11:00 a.m.
- MCCAULLEY BAPTIST**
 McCaulley, Texas
 Rev. George Caffey, Pastor
 Sunday School-10:00 a.m.
 Worship-11:00 a.m.
- PRIMITIVE BAPTIST CHURCH**
 Roby, Texas
 Elder J.R. Knight
 Song Serv. 10 a.m.-4th Sun.
 Worship-11 a.m.- 4th Sun.
- FIRST UNITED METHODIST CHURCH**
 McCaulley, Texas
 James Holdridge, Pastor
 Sunday School-10:00 a.m.
 Worship-11:00 a.m.

Christopher Columbus had trouble recruiting sailors for his early voyages. Men were afraid, but the bravest enlisted and sailed off to the wonders of a new world.
 Most of us are afraid of the unknown. We have our qualms and doubts about a new job, moving to a strange city, beginning a marriage, or simply facing the uncertainties of tomorrow. We do not know what lies ahead, and we worry about being able to cope with it. In this ever-changing world, we instinctively yearn for that which does not change.
 Whatever tomorrow brings, we can have the peaceful conviction that the love of God for His children is trustworthy and everlasting.
 Discover an abiding security. Worship this Sunday.

Scriptures Selected By The American Bible Society

Sunday Job 1:18-22	Monday Job 2:7-10	Tuesday Job 5:17-20	Wednesday Psalms 11:1-7	Thursday Titus 2:2-6	Friday Titus 2:7-8	Saturday Jeremiah 5:7-9
--------------------------	-------------------------	---------------------------	-------------------------------	----------------------------	--------------------------	-------------------------------

This Church Page Is Published In Hope That More People Will Attend Church. It Is Paid For By Firms And Individuals 100% Interested In This County. Let Them Know That You Appreciate Them Supporting This Page. Each Week We Feature One Supporter In Hope That You Will Make A Special Effort To Let Your Appreciation Be Known To This Church Page Supporter.

Hatahroe Drive Inn

"77 CLUB" DONUT SALE
 ON MAIN ST. SAT MORNING, OCT. 18TH
 TO ORDER YOUR DONUTS EARLY,
 CALL 735-2576
 FREE DELIVERY ON EARLY SALES



In time of sorrow, quiet and capable handling of those necessary details can help to bring a measure of serenity to those who are bereaved. We strive always to attend to final arrangements in a dignified manner, out of respect for the departed as well as consideration for the living.

Weathersbee Funeral Home
 Rotan, Texas 735-2255

Sweetwater Prod. Credit Dwalyn Parker - Manager 776-2311 - Roby, Texas	Trail's End 735-3575 Rotan, Texas	Atwell Cleaners Mr. and Mrs. Charles Atwell Rotan, Texas	Citizens State Bank Roby, Texas Member D.D.I.C.
Central Lumber & Supply Mr. and Mrs. Carl Mathies 776-2371 - Roby, Texas	Fisher County Farm Bureau 215 West Snyder Rotan, Texas	Tom Collins Small Engine Repair 735-3232	Weathersbee Funeral Home 735-2255 Rotan, Texas
Roby Insurance Agency 776-2361 Roby, Texas	First National Bank Of Rotan Accounts Insured to \$40,000 735-2224	Fisher County Nursing 735-3291 Rotan, Texas	
Crestview Lodge 711 East 5th Rotan, Texas	Roby Hydro Inc. Mr. and Mrs. Ralph Ammons Roby, Texas		
Martinez Dairy Rudy, Joe B. and Emilio Martinez Hobbs, Texas	Clinic Pharmacy George McDonald, R. PH. 735-2500	Rotan Insurance Agency Joe Burk, Agent Rotan, Texas	Hatahroe Drive Inn Mr. and Mrs. Ernest Ragan Rotan, Texas
Rockwell Bros. & Co. "LUMBERMEN"	Farmers Union Co-Op Gin Foy Mitchell, Mgr. Roby, Texas	Hinds Department Store Gold Bond Stamps Rotan, Texas	Rotan Paint & Body Mr. and Mrs. Carlton Burrow Rotan, Texas
Bart Strayhorn 735-2231 Rotan, Texas	H. L. Davis & Co. Bill and Elaine Day Rotan, Texas	Midwest Electric Roby 776-2244 Roby, Texas	
Landes Furniture Loys Landes - Larry Landes Rotan, Texas	Home Lumber Co. Mr. and Mrs. H. Thompson Rotan, Texas	Noles Drug Store Roby, Texas	

Public Notice

NOTICE OF INTENTION TO LEASE LANDS OF CITY OF HAMLIN FOR OIL AND GAS DEVELOPMENT PURPOSES

Notice is hereby given of the intention of the City Council of the City of Hamlin, Jones County, Texas to lease the lands hereinafter described for the purpose of investigating, exploring, prospecting, drilling and mining for and producing oil and gas. The City Council of the City of Hamlin will receive sealed bids at its office in the City Hall of said City up to seven o'clock P. M. on October 20, 1975, when said governing board shall receive and consider any and all bids submitted for such mineral leases of said lands or any portions thereof as the City Council or governing board determines to make and in the discretion of such governing body shall award the lease to the highest and best bidder submitting a bid therefor, provided that if in the judgment of such governing body the bids submitted do not represent the fair value of such lease or leases the governing body may in their discretion reject any and all bids.

Said land offered for oil and gas lease is in Fisher County, Texas and is described as follows:

TRACT 1: Being that tract of land known as the J. T. Nipp Survey and patented to him on July 16, 1895, Patent No. 556, Vol. 27 duly recorded in the Patent Records of Fisher County, Texas in Vol. One, Page 127 and described by metes and bounds, as follows:

BEGINNING at a stone set in the ground the S. W. Cor. of Survey No. 353 in the name of Charles Gates, fr. wh. a Mes. 4' brs. N. 38 1/2 W. 9 1/2 vrs. do6' brs. N. 33 1/2 vrs. (as surveyed by Geo. F. Williams Surveyor of Jones County, Texas).

THENCE N. 15 W. 2001 vrs. stk. in W. B. line of said Chas. Gates Sur;

THENCE S. 75 W. crossing branch 460 vrs. stk. in E. B. line of Sur. No. 11 in name of Sallie English;

THENCE S. 140 51' E. crossing California Creek 2001 vrs. stk. in N. B. line of Sur. No. 354 in name of Austin & Williams;

THENCE N. 75 E. to the place of beginning, containing 160 acres of land in Fisher County, Texas.

TRACT 2: Being all that certain tract or parcel of land lying and being situated in Fisher County, Texas, and being a part of the Charles

Gates 3/4 League Sur. No. 353, in N. E. part of Fisher County, Texas, and the N. W. part of Jones County, Texas, from a stone in the ground set for Cor;

Thence S. 15 E. at 2211 ft. the center of the M. K. & T. Ry. Co. tract at 2473 ft. the beginning Cor. of this tract, an iron stk. st. in W. B. L. of said Chas. Gates 3/4 league; **Thence** S. 83 E. 835 ft. an iron stk. for Cor. from which a Mes. 2' in dia. brs. S. 25 E. 1-1/2 ft. a willow tree in a cluster 4' in dia. brs. S. 44 E. 35 ft. mkd. X;

Thence N. 62 E. 965 ft. an iron stk. for Cor. from which a Mes. 8' in dia. brs. S. 37-1/2 E. 59-1/2 ft. another Mes. 6' in dia. brs. S. 74 W. 52 ft. Mkd. X;

Thence N. 65-1/2 E. 1037 ft. a Mes. tree 5' in dia. for Cor. from which a Mes. 8' in dia. brs. N. 18 E. 49 ft. another Mes. 4' in dia. brs. S. 39-1/4 E. 28-1/2 ft. another Mes. 5' in dia. brs. S. 42 W. 44 ft. mkd. X;

Thence N. 44 E. 838 ft. an iron stk. for Cor. from which a Mes. 2' in dia. brs. N. 56 W. 5 ft. mkd. X;

Thence S. 58 E. 475 ft. an iron stk. set for Cor. from which a Mes. 2' in dia. brs. S. 17-1/2 W. 10 ft. another Mes. 6' in dia. brs. N. 60 W. 125 ft. mkd X'

Thence S. 45 E. 670 ft. an iron stk. for Cor.;

Thence N. 90 E. 747 ft. an iron stk. for Cor. from which a Mes. 4' in dia. brs. N. 25-1/2 E. 12-1/2 ft. another Mes. 6' in dia. brs. S. 43 E. 30 ft. mkd X;

Thence S. 33 E. 459 ft. crossing creek an iron stk. for Cor. from which a Mes. 6' in dia. brs. S. 78-1/2 W. 19 ft. another Mes. 6' in dia. brs. N. 44 E. 25 ft. mkd. X;

Thence S. 63-1/2 W. 480 ft. an iron stk. for Cor. from which a Mes. 13' in dia. brs. S. 36 E. 47 ft. another Mes. 6' in dia. brs. S. 57-1/2-72 ft. mkd. X;

Thence S. 72 W. 687 ft. to a Mes. tree for Cor. 7' in dia. blazed and backed;

Thence N. 75 W. 1380 ft. to a Mes. for 10' in dia. blazed & hacked from which a willow 4' in dia. brs. S. 83-1/2 W. 50 ft. also a Mes. 10' in dia. brs. S. 59 E. 35 ft. mkd X;

Thence S. 72 W. 1975 ft. an iron pipe for Cor. on gyp hill;

Thence S. 78-1/2 W. 703 ft. an iron stk for Cor. in W. B. L. of said Chas. Gates 3/4 League from which a Mes. 10' in dia. crooked near ground, bearing to the S. brs. S. 69 E. 70 ft. another Mes. 3' in dia. brs. S. 47 E. 20 ft. mkd. X;

Thence N. 15 W. 673 ft. along W. B. L. of said Chas. Gates 3/4 league crossing creek to place of beginning, containing 72.6 acres of land, more or less.

TRACT 3: Being all that certain tract of land, containing 41.09 acres more or less, and being a part of the Charles Gates Survey No. 353, situated in Fisher County, Texas, and described as follows, to wit:

BEGINNING at an iron pin under the South right-of-way line of the M. K. & T. Ry. Co., and in the West line of the Chas. Gates Survey No. 353, in Fisher County, Texas;

THENCE with the west line of said Gates Survey, south 15 degrees East, 209.6 feet to a stake the original Northwest corner of a tract of land sold by Mrs. R. D. Moore to D. C. Pratt for lake purposes from which an iron pin in a concrete monument bears south

25 degrees 30 minutes East, 9.9 feet;

THENCE with the North line of said Lake Tract south 83 degrees East 835 feet, to a stake from which a concrete monument bears North 23 degrees 30 minutes East, 38.9 feet;

THENCE North 62 degrees East 965 feet to a stake from which a concrete monument bears North 12 degrees West 128.8 feet;

THENCE North 65 1/2 degrees East 1037 feet to a stake from which concrete monument bears North 48 degrees 30 minutes West 220.8 feet;

THENCE North 44 degrees East, 838 feet to an original iron pin from which a mesquite stump bears north 56 degrees West 5 feet and a concrete monument bears South 40 degrees 15 minutes East 45.6 feet;

THENCE South 58 degrees East 475 feet to a stake from which a concrete monument bears North 8 degrees 30 minutes East 8.1 feet;

THENCE South 45 degrees East 670 feet to a stake from which concrete monument bears North 32 degrees 45 minutes East, 26.1 feet;

THENCE North 80 degrees East, 747 feet to a stake from which a concrete monument bears North 3 degrees 30 minutes West 112.3 feet;

THENCE South 33 degrees East 459 feet to a stake;

THENCE North 8 degrees

18 minutes East 96.2 feet to a concrete monument;

THENCE North 15 degrees West, 692.3 feet to an iron pin under the North line of a road;

THENCE South 75 degrees West 1070 feet to an iron pipe just Southeast of the Southwest corner of a yard about a house;

THENCE North 29 degrees West 1070 feet to an iron pipe just Northwesterly of the northwest corner of a barnyard;

THENCE North 59 degrees 30 minutes West 573 feet to an iron pin in a field.

THENCE South 66 degrees 35 minutes West 3000 feet to an iron pin;

THENCE North 37 degrees 30 minutes West 204.6 feet to an iron pin under the South Right-of-way line of the M. K. & T. Ry. Co.;

THENCE with the South line of said R-W South 57 degrees 30 minutes West, 474.6 feet to the place of beginning.

Information regarding the terms, conditions, restrictions, reservations and covenants to be required by the governing body of said City may be had by requesting same from Mr. John H. Steele, City Secretary, City of Hamlin at

his office in the City Hall of the City located at 353 South Central, Hamlin, Texas. Dated September 30, 1975
ATTEST:
 Joe E. Ford Mayor
 John H. Steele City Secretary

LEGAL NOTICE

Fisher County Commissioners will accept bids on one used D-5 Cat Dozer, power transmission-no trade in.

Bids will be opened at the meeting of the Fisher County Commissioners Court on Monday, October 13, 1975 at 9:00 a.m.

Bids will be in writing and mailed to Fisher County Judge, Fisher County Courthouse, Roby, Texas and clearly marked "Bids". The Commissioners retain the right to accept or reject any and all bids.

34-2tc

Roby Class Of 1966 Has Meet

A reunion party was held Friday night following the ball game for the class of 1966 in the home of Mr. and Mrs. Ronnie Teichelman of Rotan. Following are the fourteen members and their spouses who attended:

Mr. Abel Beauchamp, Mr. and Mrs. Gil Cherry, Mr. and Mrs. Larry Dennis, Mr. and Mrs. Latham Burk, Mr. and Mrs. Terry Neepser, Mr. Marion Parke, Mr. and Mrs. Rick Mahaffey (Pam Palmer), Mr. and Mrs. Marshall Waldon (Pat Eaton), Mr. and Mrs. Calvin Jones (Ginger Melton), Mrs. Larry Field (Elaine Randolph), Mr. and Mrs. Jimmy Muff (Sally Smith), Mr. and Mrs. Thomas Dixon (Peggy Terry), and Mr. and Mrs. Ronnie Teichelman (LaDonna Goforth).

The group enjoyed seeing all those who attended and hope to see everyone next time. If you were not contacted this year and would like to attend next time please contact Mrs. Ronnie Teichelman, Rotan, or Mr. Gil Cherry, Sweetwater.

Roby Class Of 1966 Has Meet

A reunion party was held Friday night following the ball game for the class of 1966 in the home of Mr. and Mrs. Ronnie Teichelman of Rotan. Following are the fourteen members and their spouses who attended:

Mr. Abel Beauchamp, Mr. and Mrs. Gil Cherry, Mr. and Mrs. Larry Dennis, Mr. and Mrs. Latham Burk, Mr. and Mrs. Terry Neepser, Mr. Marion Parke, Mr. and Mrs. Rick Mahaffey (Pam Palmer), Mr. and Mrs. Marshall Waldon (Pat Eaton), Mr. and Mrs. Calvin Jones (Ginger Melton), Mrs. Larry Field (Elaine Randolph), Mr. and Mrs. Jimmy Muff (Sally Smith), Mr. and Mrs. Thomas Dixon (Peggy Terry), and Mr. and Mrs. Ronnie Teichelman (LaDonna Goforth).

The group enjoyed seeing all those who attended and hope to see everyone next time. If you were not contacted this year and would like to attend next time please contact Mrs. Ronnie Teichelman, Rotan, or Mr. Gil Cherry, Sweetwater.



Mr. and Mrs. Jerry Don Lankford
Jenna McClure, Jerry Don Lankford Exchange Vows

Miss Jenna Marlene McClure became the bride of Jerry Don Lankford at 7 o'clock candle light ceremony on September 6 in the First Baptist Church, Roby. The Rev. Ben Warton of the First Baptist Church of Snyder officiated at the double ring ceremony.

The bride is the daughter of Mr. and Mrs. Jack McClure of Roby and the groom is the son of Mr. and Mrs. Cecil Lankford of Snyder.

Special music was provided by Sheree Knox and Susan Ayers accompanied by Mrs. Ruth Davis. They sang "Children of Our Heavenly Father".

The bride was given in marriage by her father. She was gowned in traditional white satin which featured long sleeves and bodice of lace. Her lace trimmed Grecian veil flowed the length of the dress train. She carried a cascade of white carnations.

Sharon Blakeley of Austin was maid of honor. Mrs. Tommy Moyers of Houston was bridesmaid. Both wore floor length gowns of blue crepe with a lace bodice. Light blue hats trimmed in dark blue ribbons matched their gowns and they carried bouquets of yellow roses centered with a lighted candle.

Candle lighters were Genia Terry and Charles Green, both of Snyder. Miss Terry wore a gown and hat matching those worn by the maid of honor and bridesmaid. Mrs. Billy Grimmett, sister of the bridegroom, registered guests.

Tommy Davis, of Snyder, served as best man, and Kenneth Stanley, Snyder, was groomsman.

The guests were seated by Billy Grimmett of Snyder, brother-in-law of the bridegroom and Jeff McClure, Lubbock, brother of the bride.

The bride's parents hosted the reception in Fellowship Hall. The three tier cake was decorated in blue and topped with white bells.

It was baked by Mrs. Dee Gann, Snyder, cousin of the bride. Dining room hostess was Mrs. Bobby Morgan, friend of the family. She was assisted by Mrs. Johnnye Blakeley and Debra Sutton. Mrs. Billy Grimmett, sister of the bridegroom, presided at the silver coffee service and Mrs. Gary Claxton and Mrs. Roger Ownes, sisters of the bridegroom, served the wedding cake. Peyton Claxton, nephew of the bridegroom, handed out the rice bags.

After a wedding trip to Dallas, the couple are living at 1911 Coleman Apts., Apt. 3, Snyder.

The bride is a graduate of Roby High School and is employed with Gibson Discount Store. A graduate of Snyder High School, the bridegroom is employed at Grimmett Brothers Construction.

Special guests for the wedding were the bridegroom's grandparents, Mr. and Mrs. L. C. Lankford of Roby.

The bridegroom's parents hosted the rehearsal dinner in the Fellowship Hall.

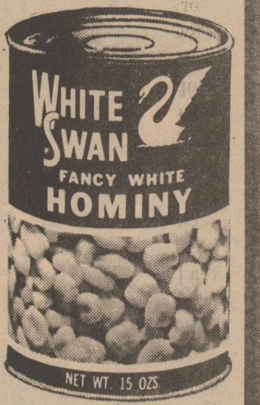
Sgt. H. Velez Finishes Tng.

Marine Sgt. Hector Velez, son of Mr. and Mrs. Antonio R. Velez of 511 E. 6th, Rotan, was graduated from Basic Aviation Electricians Mate School at the Naval Air Technical Training Center, Millington, Tenn.

The 11-week course includes instruction on the maintenance and repair of aircraft instruments, flight stabilization equipment, cabin temperature control units and lighting, ignition and electro-hydraulic systems.

A 1972 graduate of Rotan High School, he joined the Marine Corps in July 1972.

STOCK THE PANTRY SALE WITH WHITE SWAN



303 SIZE Luncheon Peas 3 FOR 99¢

303 SIZE New Potatoes 4 FOR \$1

303 SIZE Whole Beets 3 FOR 99¢

300 Size Hominy 5 FOR \$1

303 SIZE Whole Kernal Corn 3 FOR 99¢

1/2 GALLON Bleach 45¢

1/2 GALLON Fabric Softner 55¢

3 OZ JAR INSTANT TEA \$1.09

8 OZ CAN RANCH STYLE BEANS 5 FOR \$1

10 OZ VASELINE INTENSIVE-CARE LOTION 99¢

8 OZ EVERY NIGHT BOTTLE RINSE & CONDITIONER \$1.09

PRODUCE MARKET

Cabbage LB 10¢ T-Bone Steak \$1.79 LB

YELLOW Squash LB 19¢ Beef \$1.79 LB

RED Grapefruit 2 FOR 29¢ Cutletts

YELLOW Onions LB 15¢ Round Steak \$1.19 LB

PKG Cranberries 49¢ Pikes Peak OR Rump Roast \$1.29 LB

Potatoes 99¢

CANDIED CHERRIES AND PINEAPPLE FOR YOUR FRUIT CAKE-ARE HERE



KASH FOODS

PHONE 735-2266 ROTAN-TEXAS

Hospital News

Fisher County hospital news October 7 thru October 13, 1975. Local patients: Mickey Martinez, Martinez Baby, Vera Strayhorn.

Out of town patients: Lynn Deen, Deen Baby, Guyman, Okla.; Eva Blanton, Verna Prichard, Aspermont; Julia Etheredge, Sweetwater; Lucy Ramon, Ramon Baby, Connie Williamson, Roby; Wanda Roquemore, Snyder.

WMU Meeting

The WMU of First Baptist Church Roby met Tuesday, October 7, at 2 p.m. at the church.

The Bible lesson was taught by Mrs. J. B. Hughey.

Roby Garden Club Meets

Mrs. Roland Ray, Sr. and Mrs. Richard Ray were hostesses to the Roby Garden Club Thursday, Oct. 9, at 9:30 a.m., at the Midwest Electric Coop Inc.

The meeting was called to order by the president, Mrs. Richard Ray. After a short business session she showed slides on "Gardening in West Texas". This was very interesting.

Members present were Mmes. W. W. Morton, W. A. Hughey, Edd Carter, Dwalyn Parker, Thurman Terry, Max Carriker, Harvey Hood, L. L. Stuart, and the hostesses.

Refreshments were served buffet style from an appointed table that held an attractive arrangement of flowers.

NOTICE

We Are Now Equipped To Handle MILO

And Are Buying Daily

Smith-Douglass 16-20-0 \$165.00 Ton

Also Limited Quantity : Elbon Rye @ \$13.00 per Hundred

Rotan Delinting Co.

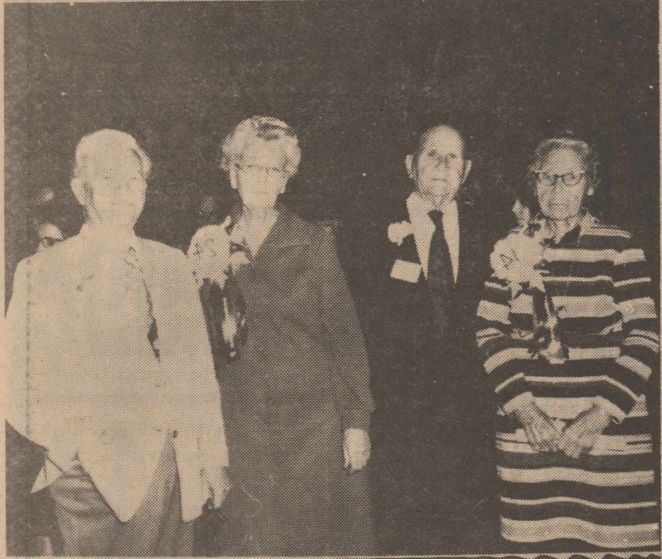
YOUR BUSINESS APPRECIATED

BONDED INSURED

PHONE 735-3341



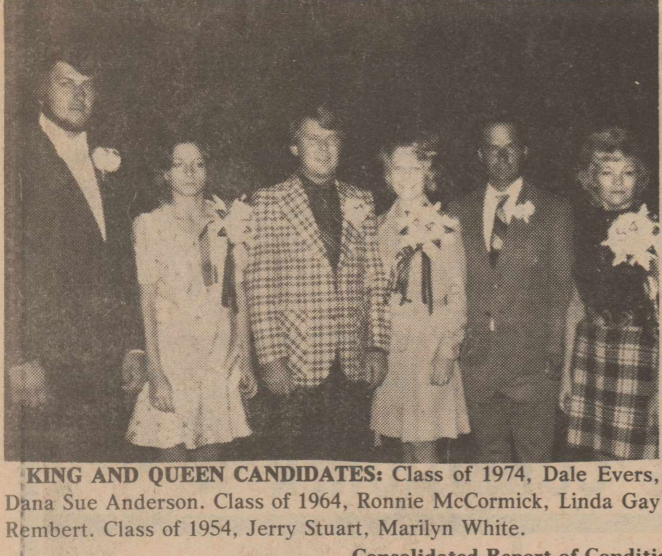
KING AND QUEEN CANDIDATES: Class of 1944, James Headstream, Marion Nail Crowder. Class of 1934, Jems Cave, Olene Knox McAnallv.



KING AND QUEEN CANDIDATES: Class of 1914, Nancy McWhirter Clark, Hubert [Son] Hodges. Class of 1924, Gwenn Barnett Jay, Luther Encke.



KING AND QUEEN CANDIDATES: Class of 1975, Pax Beauchamp, unidentified. Class of 1965, Bambi Moore Randolph, Mike Terry.



KING AND QUEEN CANDIDATES: Class of 1974, Dale Evers, Dana Sue Anderson. Class of 1964, Ronnie McCormick, Linda Gay Rembert. Class of 1954, Jerry Stuart, Marilyn White.

Do your troubles come in bunches? Never fear. You can set them right in a hurry. By making sure you're covered through an independent insurance agent.

We're experts on trouble. And we're available day and night to give you professional service and help you with your claims.

Rotan Insurance Agency
 Joe D. Burk
 Peggy Morrow
 C.D.(Monk) Herron
 Janie Phillips

If we can't help you, nobody can.

Consolidated Report of Condition of **CITIZENS STATE BANK** of **ROBY** in the State of **TEXAS** and Domestic Subsidiaries at the close of business on **September 30, 1975**.

	DOLLARS	Cts.
ASSETS		
1. Cash and due from banks (including \$ none unposted debits)	418	420 09
2. (a) U.S. Treasury securities \$ 430,210.75 (Total items)	xxx	xxx xx
(b) Obligations of Federal Financing Bank \$ 107,625.00 2(a) & (b) =	637	835 71
3. Obligations of other U.S. Government agencies and corporations	none	3
4. Obligations of States and political subdivisions	1 110	769 52
5. Other securities (including \$ none corporate stocks)	none	5
6. Trading account securities	500	000 00
7. Federal funds sold and securities purchased under agreements to resell	1 934	841 29
8. Other loans	1 28	427 57
9. Bank premises, furniture and fixtures, and other assets representing bank premises	none	10
10. Real estate owned other than bank premises	none	11
11. Investments in subsidiaries not consolidated	none	12
12. Customer's liability to this bank on acceptances outstanding	none	13
13. Other assets (item 6 of "Other Assets") (including \$ none direct lease financing)	4 530	307 35
14. TOTAL ASSETS	1 564	741 92
LIABILITIES		
15. Demand deposits of individuals, partnerships, and corporations	1 695	110 21
16. Time and savings deposits of individuals, partnerships, and corporations	11	392 85
17. Deposits of United States Government	908	720 52
18. Deposits of States and political subdivisions	none	19
19. Deposits of foreign governments and official institutions	none	20
20. Deposits of commercial banks	20	791 38
21. Certified and officers' checks, etc.	xxx	xxx xx
22. TOTAL DEPOSITS \$ 4,090,746.88 (a) Total demand deposits xxx xxx xx (a) (b) Total time and savings deposits xxx xxx xx (b)	xxx	xxx xx
23. Federal funds purchased and securities sold under agreements to repurchase	none	23
24. Other liabilities for borrowed money	none	24
25. Mortgage indebtedness	none	25
26. Acceptances executed by or for account of this bank and outstanding	none	26
27. Other liabilities	4 090	746 88
28. TOTAL LIABILITIES \$ 4,090,746.88	4 090	746 88
29. MINORITY INTEREST IN CONSOLIDATED SUBSIDIARIES	none	29
RESERVES ON LOANS AND SECURITIES		
30. Reserve for bad debt losses on loans (set up pursuant to Internal Revenue Service rulings)	39	470 39
31. Other reserves on loans	none	31
32. Reserves on securities	39	470 39
33. TOTAL RESERVES ON LOANS AND SECURITIES	78	940 78
CAPITAL ACCOUNTS		
34. Capital notes and debentures (specify interest rate and maturity of each issue outstanding)	400	090 09
35. Equity capital, total	none	35
36. Preferred stock-total par value (No. shares outstanding - none)	50	000 00
37. Common stock-total par value (No. shares authorized - 500) (No. shares outstanding - 500)	150	000 00
38. Surplus	200	090 09
39. Undivided profits	none	39
40. Reserve for contingencies and other capital reserves	400	090 09
41. TOTAL CAPITAL ACCOUNTS \$ 4,090,746.88	4 090	746 88
42. TOTAL LIABILITIES, RESERVES, AND CAPITAL ACCOUNTS	4 530	307 35
MEMORANDA		
1. Average of total deposits for the 15 calendar days ending with call date	4 119	154 67
2. Average of total loans for the 15 calendar days ending with call date	1 020	069 01
3. Unearned discount on installment loans included in total capital accounts	10	000 00
4. Standby letters of credit	none	4

I, **Zenna Anderson, Cashier**, of the above-named bank, do solemnly **SWEAR** that this report of condition is true and correct, to the best of my knowledge and belief.

Correct - Attest: *Zenna Anderson*

Johnnie Ammons
B. C. Drinkard
Cecil J. King } Directors

State of **Texas**, County of **Fisher**,
 Sworn to and subscribed before me this **7th** day of **October**, 1975.
 and I hereby certify that I am not an officer or director of this bank.
 My commission expires **6-1-77**.

Paul Slaughter, Notary Public.

Orange Streaks

By Don Mullins

We are thankful that we made it to our open date without any serious injuries. We have several that are hopping around on sore ankles and knees and will take advantage of the open date to try to heal everyone.

The Yellowhammers still maintain they are going to be district champions and with this attitude, this week will go by very fast. It's real hard, having an open date, nothing to look forward to on Friday night but with our winning attitude, I think we will overcome and will be ready to play Baird in two weeks.

The Yellowhammers have had tremendous desire and a change of attitude in the past two weeks and the results are very evident. We haven't been scored upon in district play and everyone is giving 100 per cent. We may not be the quickest or the fastest and in some cases our men are out weighed 30-50 pounds. You can line up two players, run a 40 yard dash and one will probably beat the other one, put two more on the scales and weigh them, one could out weigh the other 50 pounds, but put them against each other in a game and the one who got beat in the foot race beats the other one that previously had out run him and the 50 pound advantage wouldn't make that much difference. The only possible answer is the less advantaged person must have something going for him. In many cases the Yellowhammers find themselves in this situation. I think this proves that if a person wants to win, and sets a goal to win every game, they will win in every case. With the desire and attitude the Yellowhammers have, I have no doubt that they will be undefeated in district play.

Our game with Wylie wasn't much the first half out with a few minor changes at the half they came back and proved they weren't going to let the Bulldogs take it away. Again, it was a team effort all the way.

We are especially proud of the defense, especially since they haven't been scored on in two district games. Kim Gray, Dan Burk, Jerry Carr, Frank Lopez and James Goodwin were the top five on defense with scores of 59, 46, 41, 31 and 29 respectively.

Our offense had problems the first half, especially in the running department. We couldn't seem to find an empty hole and when we did it closed very quickly. Our biggest problem in the first district games are our turn overs. Eleven in two games. We lost 2 fumbles and had one pass intercepted the first half against Wylie. In each case we were driving the ball and had fair field position. These costly turnovers will cost us in a close game. Offensively we had to rely on the pass and Frank had

another 200 plus throwing to Gray, Stanberry and Vic Wilkinson. Our offensive line did a great job cutting off the line backer rush that they came with about 80 percent of the time. Grade wise, Frank Lopez, James Goodwin, and Tim Allen graded high enough to receive an offensive star. Others that did above average to win were Burt Weathersbee, Kim Gray, Paul Hinson, Monte Morrow, James Stanberry and Bryan Cave with score of 79, 79, 79, 75, 71, and 71 respectively.

At this point in our season I would like to thank those who have been an important part in helping thus far. The names are too many to mention but we felt that without you we couldn't have done what we have done. The help in many areas is greatly appreciated and will be remembered in the months to come. I would like to thank my assistant coaches, John Harbison, Sid McCown and Rogers Lankford for the job they have done in developing our team. They have spent many hours away from home and it is this type of dedication that is greatly appreciated.

Seventh Grade, Coach Harbison
 The Yellowhammer 7th grade played the Wylie Bulldogs last Thursday, Oct. 9, to a 6-0 game. Defense was the name of the game for the first three quarters. Early in the third quarter Wylie was moving the ball well until the Hammer defense toughened up. With a fourth down and 2 yards to go on the 15 yard line Wylie powered over the left guard only to be stopped and moved back by the Hammer defensive line and linebackers.

The Yellowhammers' offense started rolling from the 15 yard line, and a series of sweeps and passes moved the ball down to the Wylie 30 yard line. With time running out byran Weathersbee hit Clarence Conner for a first down on the 20 yard line. As 30 seconds showed on the clock a sweep around right end by Keith Mullins led by the Hammer offense put the ball on the two yard line. Only 18 seconds remained in the game when Weathersbee called a quick dive right to Mullins for 6 points. The 2 point extra point try failed. The game ended with the Yellowhammers winning 6-0.

The defense played a great ball game and is still unscored upon. Every team member did a good job offensively, as well as defensively. This is a hard working Seventh Grade team that wants to be a winner.

Eighth Grade, Coach Lankford
 The 8th grade was soundly defeated by a much larger Wylie team Thursday evening. We were overwhelmed and totally outclassed. We played as well as continued to page 5



KING AND QUEEN CANDIDATES: Class of 1935, Hughe Dor Moore, and Lucille Cunningham, front.



KING AND QUEEN CANDIDATES: Class of 1925, Ike Jay, Dudley Ben Hambricht, front.

Rotan Girls Volleyball Lose To Hamlin

The Rotan girls volleyball team played Hamlin last Monday night and were defeated in all four games. In the first game the Rotan girls lost by a score of 14-16 and 6-15. Scoring for Rotan in the first game was Leola Gentry, 1; Melody Walker, 1; Adriana Forest, 5; and Patti Williams, 5. Not scoring in the first game were Linda Gunn, Dianna May and Gloria Reyes.

In the second game Rotan was defeated 3-15 and 9-15 by the Hamlin girls.

Rotan will play Snyder at 5:30 Thursday, Oct. 16, in Snyder and will play Hamlin at 6 p.m. on October 20 in Hamlin.

Team managers are Tammy Reed and Helen West. Volleyball coach, Carolyn Luckenbach, expressed her appreciation to the following people that assisted with the game last Monday, Coach Rogers Lankford, Mrs. Bart Strayhorn, Mrs. Betty Strickland, Sue Branch, Barbara Gray, Sheila Gruben and Verna Mae Pittman.



CROWN AND FLOWER BEARERS: Jeffery Morton, left, carried the crown and Michele Burk, right, carried the flowers that were presented to the 1975 Roby Homecoming Queen.

AUCTION
 SATURDAY 10:30 A.M.
 OCTOBER 18, 1975
 PHILIP HOMER-OWNER
 MUNDAY, TEXAS

Due To A Bad Location, This Sale Will Be Held On the Premises Of Knox Prairie seed Co. at Munday, Texas.

2-1972 John Deere "4320" Diesel tractors.
 4-1972 John Deere "282" Cotton Strippers and Baskets; 9-"Vada" All Steel Cotton Trailers (8x8x24); 14- Steel Cotton Trailers (8x8x24); 2- Tandem Axle Cotton Trailers (8x9x28); 4- All Steel Cotton Trailers (8x9x24); 1- Combine Trailers; 1-Header Trailer; 2- "Lilliston" 6-row Cultivators; 1- 4-Row Bush Hog Shredder; 1- 2-Bottom Rollover Moldboard Plow; 1- Sand Fighter- 9-Row; 1-Stalk Cutter; 2- Sets Bed Rippers for Lilliston Cultivator.

Also Several Tractors Are Consigned To This Sale. Other Farm Equipment Consignments Are Welcomed. Loader Tractor Available-No Charge- Courtesy of Auctioneer.

COL. TEX HERRING
 License #1012
 [Full Time Auctioneer]
 Lawn, Texas Phone 915-583-2244

IN SORGHUM COUNTRY

SCALE TICKETS TALK

They show **NK262** is our highest-yielding downy mildew resistant grain sorghum

High performance is bred into New NK262-Northrup King's star in the medium maturity class. It's our highest-yielding downy mildew resistant grain sorghum. This high-yield performance shows up when it really counts-on your scale tickets at weigh-out time. That's what we mean when we say scale tickets talk yield. And with NK262, they talk big. Profit is why you're in the sorghum business. That calls for a hybrid with dependably high yields. NK262 grain sorghum. It makes profit.

DOWNY MILDEW RESISTANT. Disease resistance is an important factor in NK262' dependability. Resistance to downy mildew means more high quality grain fuller heads and less lodging. In addition, NK262 is resistant to MDMV and anthracnose. Semi-open heads full of yellow endosperm grain on strong-standing stalks dry down fast for easy, efficient harvests.

ORDER A YIELD LEADER
 EARLY. NK262's highly desirable qualities are putting it at the head of the list for sorghum growers this year. See your NK dealer now. And let your scale tickets show you how high yielding new NK262 is...compare it to what you've been growing at the scale, where yield really counts.

Plant all you can get!

The grain sorghum head pictured does not represent any particular hybrid.

NK NORTHROP KING

MARK MAHAFFEY-ROBY-776-2760 **RICHARD POSEY-ROTAN-735-2065**

Yellowhammers Pass Over Wylie, Defense Credited

By Jim Markham

Last Friday night the Rotan Yellowhammers won their 2nd district game by defeating the tough Wylie Bulldogs by the score of 12-0. The first half was a defensive battle which Wylie was the only team that could move the ball on offense. The Hammers' defense held Wylie on 4-2 from Rotan's 28, 4-11 on Rotan's 11 and 4-15 on the 30. Rotan had five turnovers in the first half to stop them from moving the ball and mounting a serious drive. Kim Gray intercepted a pass in the 2nd quarter which was Wylie's only turnover in the first half.

In the third quarter on their 3rd possession, the Hammers had a 1-10 on their own 29 and in six plays scored the first TD of the night. Quarterback, Frank Lopez passed to Gray for a first at Wylie's 47. Lopez then threw to Vic Wilinson for 34 yards. Next play Rotan was penalized 5 yards and on 2-12 at Wylie's 49 Lopez passed to James Goodwin for 17 yards and a first down at Wylie's 32. Then Lopez hit James Stanberry for 12 yards at Wylie's 20. On the scoring play Lopez passed the final 20 yards to Wilinson for the TD. Goodwin's PAT was no good with 2:40 left in the 3rd quarter.

Rotan kicked off to Wylie and held them to 3 plays and they punted on the fourth. Rotan could not move the ball and on 4-9 from their own 17 they punted. But a roughing the kicker penalty was marked off against Wylie and it gave Rotan a 1-10 on their own 33. Eight plays later Rotan scored their second and final TD of the night. Goodwin got 3 yards, Tim Allen got 9, Lopez got 5, Jerry Carr was stopped at the line of scrimmage and on 3-5 from the 50 Gray leaped high in the air and came down with a 32 yd. pass from Lopez. Lopez lost 2 on the next play then he hit Allen

with a 15 yard pass. Lopez then took the ball in for the score. The EP was no good as Lopez threw to Gray but it fell incomplete with 8:34 left in the final quarter. On Rotan's last possession they moved the ball from Wylie's 48 to score but a penalty called it back. Lopez had a good night passing. The offensive line gave him enough time. The turning point in the game was the roughing the kicker penalty against Wylie which set up the second TD for Rotan and iced the victory.

The defense played superb stopping Wylie from scoring. Defensive standouts were Goodwin, Allen, Buddy Hooper, Gray, Dan Burk, John Cox, Lopez and Stanberry.

Rotan is open next week then play Baird for Homecoming October 24.

Two Rotan High Students Make Angelo Meeting

On Oct. 7 and 8, Tammy Strickland and Dee Ann Weathersbee, Rotan High School Student Congress officers, and Mrs. Rudy V. Hamric, Student Congress Sponsor, attended the West Texas Conference on State Affairs at Angelo State University. This conference was sponsored by the San Angelo Standard-Times, the West Texas Chamber of Commerce, and Angelo State University.

The theme of the conference was "Making Government More Responsive to The People". Major addresses were given by and the participants were given the opportunity to meet the following: Gov. Dolph Briscoe and Mrs. Briscoe, Joe Christie, Chairman, Texas Insurance Board; U.S. Congressman Robert Krueger; Bob Armstrong, Commissioner of the General Land Office of Texas; and George Romney, former governor of Michigan, Secretary of the Department of Housing and



Diane Carriker and Freddie Reagan

Diane Carriker And Freddie Reagan Engaged

Diane Carriker, daughter of Mr. and Mrs. Max Carriker of Roby and Freddie M. Reagan, son of Mr. and Mrs. Roy M. Reagan of Austin will be married November 1st in the home of the bride-elect's parents.

Inside The Lion's Den

--By Paul Mitchell

We had four players grade out at 80 percent for the Forsan ball game and that is very good. Our defense is good but untimely penalties keep us from sustaining consistent drives. Against Forsan we ran well and I feel they were a good defensive ball club.

As for the upcoming game against Bronte, we will try to control the ball and play very aggressive on defense. Bronte has won 17 out of their last 18 ball games and are undefeated this year. It will be their home coming and they will be very high for the game. We lost to them 57-7 last year and our boys remember that loss. We are going down there to upset the Longhorns as we know we can do it. They have fine personnel with their quarterback being outstanding. They can throw and have a good ground attack. They run out of the straight T backfield and also show you a pro set. They throw out of both sets and Coulter the quarterback runs a lot if his receivers are not open. They are good but so are the Roby Lions.

Jessie Castor, Mitch Welch, Richard Gaona and Ricky Morton were the players who graded the highest in the Forsan game. Welch recovered a Carlos Jones fumble in the end zone for our score and Morton ran over the try after. Over all, we had good team effort in the game. We must improve on some mental errors we keep making and get more aggressive on defense. We are proud of the boys for hanging tough this year, as there has been many obstacles to overcome.

We have won three games thus far and plan on winning five more. We catch Bronte, Jayton, Sterling City, Sands and Hawley in our remaining games, and they are all tough competition. We are proud of several players for their performance last

Friday, Danny Terry started his first high school ball game at guard and graded out high for a freshman. Mitch Welch played his best game this year. Richard Gaona played very well at his defensive position and looks as though he has arrived as a secondary player. Jessie Castor, Ricky Morton, and Craig Randolph also played very well. We have a manager by the name of Mike Putnam who has to be the best manager in the State of Texas. He is the hardest worker we have in the football program. We are proud of Mike and want him to be recognized for all his hard work on Saturday and Sunday washing and cleaning up. He helps me when I grade films and is my sidekick most all the time. Thanks, Mike. We are planning on reporting on a big up set next week. Thanks for all your support.

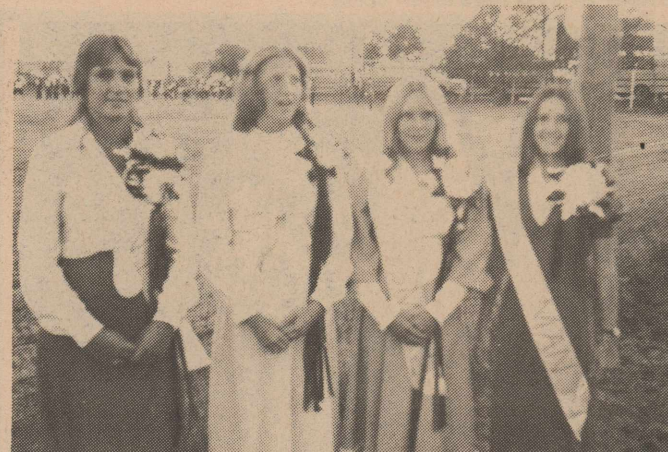
continued from page 1

approved projects undertaken for credit in such courses without incurring any obligation to pay for such materials, so long as the materials and the projects created from them remain the property of the student.

(5) A school district may charge tuition for driver training if taught in the student's fourth quarter (summer school). This is one of the areas in which tuition may be charged as indicated in Texas Education Code 16.865.

(6) A school district may charge non-participating students admission to extra curricular activities where attendance is voluntary.

(7) A rental fee may not be charged for band uniforms. The opinion does not address the question of students furnishing their own uniforms and/or equipment.



ROBY HIGH SCHOOL QUEEN: Representing the four classes of Roby High School for High School Queen honors, were left to right, Penny Anderson, Rhonda Welch, Penny Coker, and Michele Cox.

Rotan Yellowhammers do your plotting against the Baird Bears over a Hatahoe Hamburger

Hatahoe Drive Inn

735-3161

301 S. Cleveland

Rotan, Texas

ROTAN HIGH SCHOOL HOMECOMING 1975

OCTOBER 24-25th

FRIDAY, OCTOBER 24, 1975

7:30 P. M. Football Game with Baird. Registration with Coffee and Donuts after the Game at Rotan High School Cafeteria.

SATURDAY, OCTOBER 25

11:30 A. M. Luncheon and Visitation at Rotan Community Center, 201 W. McArthur.

6:30 P. M. Banquet and Business Meeting at Rotan High School Cafeteria.

9:00 P. M. Dance at Rotan Community Center, 201 W. McArthur.

SEND ADVANCE DUES OF \$3.00 PER PERSON TO:

ROTAN EX-STUDENTS ASS'N.
ROTAN, TEXAS 79546

Barbara Denman On WTC Basketball Dusters

The Western Texas College Dusters will open their season on Nov. 10 in a game with Angelo State University in San Angelo.

The Homecoming game on Nov. 15 will be the first home contest of the season. It is scheduled for 6 p.m. in the Scurry County Coliseum with Clarendon College the opponent. The Westerner men's team will be playing Texas State Technical Institute at 8 p.m. on Nov. 15, also in the Coliseum.

The Dusters, who won the Western Conference championship last year in their first season, will have three returning players. They are Dale Mitchell and Theresa Beal from Coahoma

and Marilyn Payton from Lubbock. Also on the roster is Barbara Denman of Hobbs. Dr. Sid Simpson, WTC Athletic Director, is women's coach.

continued from page 1

PHONE COMPANY were brought to their attention by Rotan residents. Some councilmen seemed convinced that the company was making a sincere effort to improve the service situation.

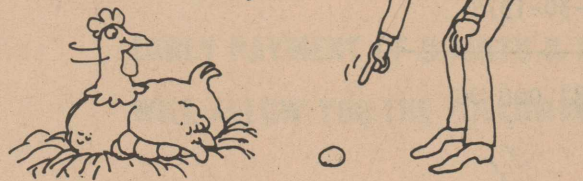
Palmer was extremely sympathetic with local customers, very businesslike in his attitude before the council and vowed more than once that he and the members of his staff were working diligently to correct the existing problems. Palmer was complimentary of the efforts being made by the two local servicemen in attempting to improve service.

In other council business discussion was centered in the following areas: city attorney, the sale of city owned property, city grants and the police department.

Card Of Thanks

We, the family of Billy Holcomb, wish to say thank you to all our friends for their help through prayers, flowers, food and other kindnesses during our time of sadness.

CONFIDENCE IS AN AGENT THAT POINTS OUT EXPOSURES THAT YOU MAY HAVE OVERLOOKED.



Deaton Insurance Agency

P.O. Box 186 Post Office Building
Roby, Texas 79543 776-2228

Planning On Defoliating?

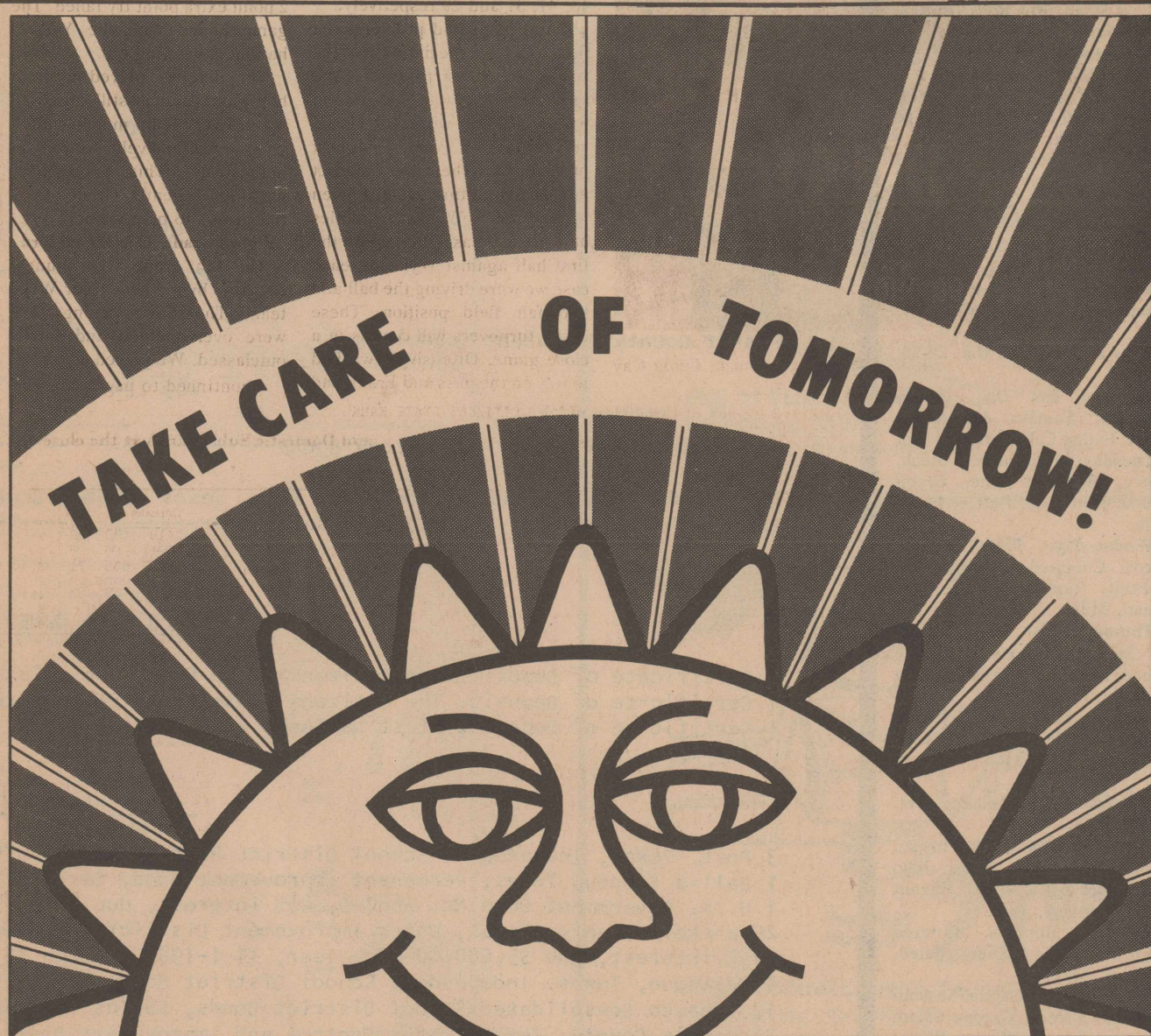
Call **Randy Murphree** At **Murphree Flying Service**

WE HAVE **ARSENIC ACID-PARAQUAT-SODIUM CHLORATE** WE'LL SCHEDULE YOUR DEFOLIATION TO MEET YOUR HARVEST NEEDS.

WE CAN APPLY CHEMICALS TO PROVIDE GRADUAL LEAF DROP IN PREPARATION FOR LATER HARVEST DATE OR WE CAN GIVE YOU A FAST KILL FOR EARLIER HARVESTING.

Call Us At: 735-2349

WE'LL HELP YOU WITH YOUR DEFOLIATING PLANS.



OPEN AN INDIVIDUAL RETIREMENT ACCOUNT TODAY

Save three ways with a First National Bank Individual Retirement Account. Save when you deposit money. Save now on Taxes. Save in the future, because your tax base is lower. You're eligible for an Individual Retirement Account if not covered by any other pension plan. IRA, another best of all possible services at First National Bank.

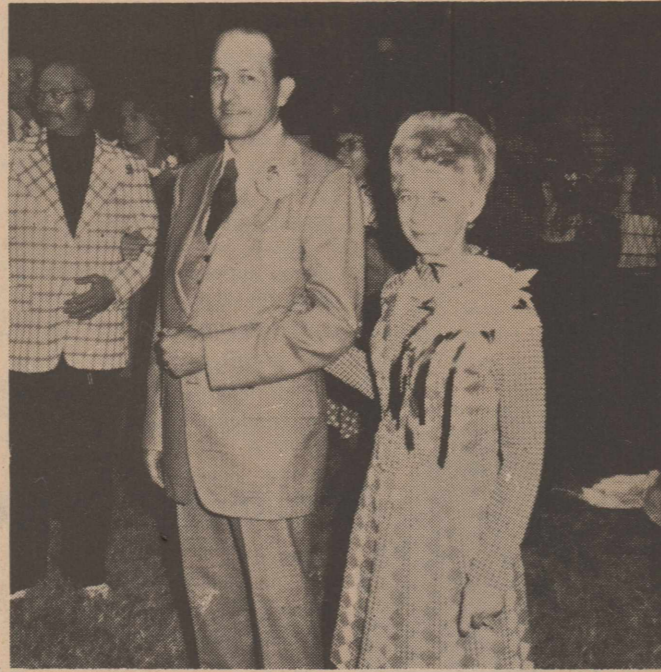
THE BEST OF ALL POSSIBLE BANKS

1ST NATIONAL BANK OF ROTAN

Member F.D.I.C.-Accounts Insured To \$40,000.00



KING AND QUEEN CANDIDATES: Class of 1955, Johnny Farrar, Barbara Grounds. Class of 1945, Eugene Turnbow, Billie Marie Marion.



KING AND QUEEN CANDIDATES: Class of 1915, Buck Hughs, Mary Conley.

Complete Auto Service

Here's Your Chance...
ZAP
High Prices!

- MAJOR OVERHAUL
- ENGINE EXCHANGE
- BRAKE SERVICE
- TUNE UP SERVICE
- WHEEL BALANCING
- MUFFLERS & TAIL PIPES

S&L Auto Service

735-3200

ROTAN, TEXAS

Card Of Thanks

We would like to express our appreciation to our neighbors and friends for all their kindness and concern shown during the loss of my brother and our loved one, Lee Roy Smith of Alice, Texas.

Mrs. LaRue Vann, Kenneth Joe and Linda

County Schools Lunch Menu



Rotan School menu October 20-24, 1975.

Monday: Frito Pie, Buttered Corn, Refried Beans, Tomato Wedges, Bread, Butter, Chocolate Pudding, Milk.

Tuesday: Country Fried Steak, Gravy, Whipped Potatoes, Buttered Peas, Carrot-Orange Congealed Salad, Hot Rolls, Butter, Apple Sauce, Milk.

Wednesday: Vegetable Beef Stew (Potatoes, Carrots & Onions), Tossed Green Salad, Hot Rolls, Butter, Spiced Cake Squares, Milk.

Thursday: Tacos w/Beef and Cheese, Spanish Rice, Pinto Beans, Lettuce & Tomato Salad, Bread, Butter, Cookies, Milk.

Friday: Fish Sticks w/Tartar Sauce, Oven Fried Potatoes w/Catsup, Seasoned Green Beans, Fruit Cobbler, Milk.

Roby school menu Oct. 20-24, 1975.

Monday: Hot Dog, Cream Potatoes, Tomato & Lettuce Salad, Fudge Cake, Milk, Bread.

Tuesday: Hamburger Steak, Gravy, Buttered Rice, Green Beans, Hot Rolls, Butter, Fruit, Milk.

Wednesday: Pinto Beans, Tacos, Chopped Lettuce, Jello w/Fruit, Vanilla Wafer, Corn Bread, Milk.

Thursday: Fish Sticks w/Tartar Sauce, Potatoes in White Sauce, Black Eyed Peas, Banana pudding, Milk, Bread.

Friday: Hamburger, Potato Chips, Lettuce, Tomato, Baked Beans, Brownie, Milk.

Hobbs school menu Oct. 20-24, 1975.

Monday: Macaroni & Cheese, Green Vegetable, Lime Jello Salad, Hot Rolls, Butter, Peanut Butter Cookies, Milk.

Tuesday: Burritos, Buttered Corn, Pineapple & Cheese Salad, Cookies, Milk.

Wednesday: Lasagna, Seasoned English Peas, Garden Salad, Orange Juice, Whole Wheat Rolls, Peanut Butter Spread, Milk.

Thursday: Turkey and Dressing, Cranberry Sauce, Celery, Green Beans, Hot Rolls, Butter, Fruit Jello, Milk.

Friday: Beef-Vegetable Stew, Cole Slaw, Corn Bread, Cinnamon Rolls, Milk.

CALVIN CROW

REPRESENTING THE

Reliable

Insurance Co.

Life & Fire

735-2995

ROTAN, TEXAS

Fisher County Quarterly Report

On October 13, 1975, the Commissioners Court of Fisher County, met in regular session, examined and compared the Quarterly Report of Inez Pullig, County Treasurer, for the quarter ending September 30, 1975, and found the same and the respective amounts to have been received and paid out during the quarter.

Fund	Balance 6-30-75	Received Last Quarter	in	out	Paid Out Last Quarter	Balance 9-30-75
Jury	4 832 19	55 00			1 888 17	2 999 02
General	88 765 28	9 169 81			26 945 43	70 989 66
Officers Salary	33 551 67	23 223 40			41 982 90	14 792 17
Public Building & Permanent Improvement	752 70	-0-			111 47	641 23
Road & Bridge, Operating, Precinct # 1	63 786 58	1 382 94			11 943 94	53 225 58
# 2	9 909 97	1 250 74			10 472 28	688 43
# 3	13 678 65	1 250 76			12 271 03	2 658 38
# 4	16 065 10	1 250 75			14 957 04	2 358 81
Social Security	10 858 63	4 508 77			9 011 23	6 356 17
Courthouse Certificate of Obligation	7 505 71	240 03			7 175 00	570 74
Lateral Road Fund, Precinct # 1	5 698 22	7 121 94			3 650 00	9 170 16
# 2	9 35	7 121 95			-0-	7 131 30
# 3	3 188 21	7 121 95			2 431 36	7 878 80
# 4	105 62	7 121 95			-0-	7 227 57
Revenue Sharing Fund	-0-	30 547 00			16 623 29	13 923 71
Airport Fund	30 260 00	-0-			9 260 15	20 999 85
	<u>288 967 88</u>	<u>101 366 99</u>			<u>168 723 29</u>	<u>221 611 58</u>
Fisher County Permanent School Fund	266 46	523 32			523 32	266 46
	<u>289 234 34</u>	<u>101 890 31</u>			<u>169 246 61</u>	<u>221 878 04</u>

On Deposit with County Depository Banks-----	221 522 78
On Deposit with Citizens State Bank, Roby, Texas (Fisher County Permanent School Fund)-----	266 46
Cash on hand in County Treasurer's safe-----	88 80
	<u>221 878 04</u>

SECURITIES OWNED BY THE COURTHOUSE CERTIFICATES OF OBLIGATION

1 Certificate of Deposit, The Citizens State Bank, Roby, Texas, No. 1032, 5 1/2% interest, due 3-4-76	33 250 00
1 Certificate of Deposit, The Citizens State Bank, Roby, Texas, No. 1033, 5 1/2% interest, due 3-4-76	16 879 83
1 Certificate of Deposit, First National Bank, Rotan, Texas, No. 7273, 5 1/2% interest, due 3-6-1976	50 245 00
	<u>100 374 83</u>

FISHER COUNTY PERMANENT SCHOOL FUND INVESTMENTS

3 Post, Texas, Independent School District Bonds Nos. 572-574, 4% interest, due 5-1-1980	3 000 00
1 Dallas County, Texas, Permanent Improvement Bond, Series 1953, No. 3938, 2 1/2% interest, due 1-1-1979/69	1 000 00
1 U. S. Government Bond No. 2682-D, 4 1/2% interest, due 8-15-1992/87	1 000 00
25 Haskell County, Texas, Water Improvement District, waterworks revenue and unlimited tax bonds Nos. 66-90 4 1/2% interest, due \$5,000.00 each year, 11-1-1982 through 11-1-1986	25 000 00
5 Quitaque, Texas, Independent School District Bonds No. 50-54, 4 1/2% interest, due 7-1-1978	5 000 00
12 Tobasco Consolidated School District Bonds, Series 1961 Nos. 536-547, 4.40% interest, due 1-1-1982/76	12 000 00
36 Harris County, Texas, Water Control and Improvement District No. 58, waterworks revenue unlimited tax bonds, Series 1961, Nos. 6-40 and No. 48, 5% interest, due 5M 4-1-1980, 10 M 4-1-1981-83, 1 M 4-1-1984	36 000 00
1 Certificate of Deposit, Citizens State Bank, Roby, Texas, No. 1203, 5 1/2% interest, due 7-20-1976	2 000 00
1 Certificate of Deposit, Citizens State Bank, Roby, Texas, No. 1075, 5 1/2% interest, due 5-27-1976	1 000 00
	<u>86 000 00</u>

FISHER COUNTY BUILDING FUND WARRANT INDEBTEDNESS

Courthouse Certificate of Obligation	Original Issue	Redeemed Prior Years	Redeemed This Year	Outstanding 9-30-1975
	357 000 00	40 000 00	30 000 00	287 000 00

A. J. Ford, Commissioner, Precinct # 1

Wayne Porter, Commissioner, Precinct # 3

D. L. Lovett, County Judge

E. J. Kiker, Commissioner, Precinct # 2

Thurman Terry, Commissioner, Precinct # 4

Subscribed and sworn to this the 13th day of October, 1975

Notary Public, Fisher County, Texas

Roby Happenings

By Buelene Shipp

Hi, boy what a weekend. This was one of the best homecomings. It all started Thursday night when our Jr. High boys won their game with Loraine. This game was followed by a long snakedance to the bonfire. And what a bonfire. It was huge and burned so hot that everyone there had to back up about 100 feet. Then on Friday night the Roby Lions were victorious against Forsan. The High School homecoming princess, Penny Anderson, was crowned before the game and during the halftime performance the Homecoming Exes crowned Marilyn Webb White as Queen and Jerry Stuart as King of the Homecoming Activities. After that, everything else seemed to fall into place very smoothly. The Band's luncheon was great, the business meeting was fabulous and the ball at the Elks Club in Sweetwater was fantastic.

Congratulations to **Dennis and Lynn Deen** on the birth of their second son, Travis, born Wednesday, Oct. 8 at 7:55 a.m. He weighed in at 8 pounds, 6 ounces. Both mother and baby are doing real good and plan to move to Hereford as soon as possible, where daddy has been waiting for them for a month. Travis has an older brother, Trampas, who is 2 years old.

Bruce Wyatt, son of Mr. and Mrs. Barcy Wyatt, was seriously burned while working at the Magnesium Plant in Snyder last week. He was entered in San Antonio's Brook General Hospital for treatment. At last report he was undergoing some very painful treatment, but is holding his own and would love to hear from all of us. His address is Bruce Wyatt, Brook General Hospital, Burn Unit Ward 14A, San Antonio, Texas 78200.

Dudley and Linda McClure and children of Houston were in this past week visiting his grandmother **Jessie Asheley** and her parents **Mr. and Mrs. Waldon Gatewood**. Also visiting Jessie were George and Cynthia Kiker, Lisa and Laura; Dude, Betty and Johnnie McClure, all of the Fort Worth area.

I want to commend the Homecoming Committee on their choice for the outstanding citizen award. It was awarded to **Miss Dudley Hambright**, a very deserving lady who has lived most her life in the service of helping other people.

Attending the 1972 Class reunion Saturday evening were Mr. and Mrs. Joe E. Hull, Sharon Justiss, and Mr. and Mrs. David Cooper of Sweetwater; Eddie Thornburg of Pecos; Jeffie Dennis of Stephenville; and Mr. and Mrs. Larry Gruben, Mr. and Mrs. Tim Riggins, Mr. and Mrs. Terry Palmer, Keith Mathies, Tubby Moore, Bobbie Beauchamp and Becca Frierson, all of Roby.

Mr. and Mrs. Pat Wilburn and children of Carlsbad, N.M. were home this past weekend visiting his mother, **Mrs. Lorene Wilburn**, her parents, **Dr. and Mrs. R.T. Wilkerson**, and Mr. Louie Wilburn of Sweetwater.

Visiting **Mr. and Mrs. Garland Moore** this past weekend were Mr. and Mrs. Billy Mac Moore and children of Huntsville and Joretta Browning of Andrews.

Doris (Chandler) Brooks and Lisa were home visiting her parents, **Mr. and Mrs. Aubrey Chandler**.

Marsha and Alvin Smith of Sweetwater spent the weekend with **Mr. and Mrs. L.V. Armstrong**.

Fenton and Debbie Brown and children of Spearman were in to see **Mr. and Mrs. Odds Brown** and attend the homecoming activities.

Visiting **Ava Nell Dennis** this past weekend was Mr. and Mrs. Jeffie Dennis of Stephenville.

Visiting with **Lizzie, LaNeta and Georgia Young** for the weekend were Mrs. Gene Griffin and Sha of Sedan, Kansas, Mr. and Mrs. Hubert Young, Stephanie and Brent, Mr. and Mrs. Wayne Moore and Todd, and Mrs. Rick Wittie, all of Abilene. And, for Sunday dinner they were joined by Billy Ray and Thana Terry and Mr. and Mrs. Steve Terry of Roby.

Mr. and Mrs. Charles Holland of Fort Worth spent the weekend with **Mr. and Mrs. Jerry Branson** of Sweetwater and attended the homecoming activities.

Mr. and Mrs. Eugene [Sonny] Turnbow traveled the greatest distance to attend the Homecoming activities. Their home is in Nicola, Canada.

Keven and Zana Beth Brynham of Zapata were weekend guests of **Mr. and Mrs. Zana Anderson**.

Mr. and Mrs. Johnnie Edmondson went to the State Fair and Rodeo in Dallas last week, where Johnnie won in the first go round of the calf roping and got second in the average.

Mr. and Mrs. Lance McWilliams of Lubbock spent the weekend with her parents, **Mr. and Mrs. Ted Posey**.

George [Shorty] Stuart and his granddaughter Teresa Powell of Honeygrove visited this weekend with other relatives here in Roby.

Mr. and Mrs. J.R. Mahaffey of Tontana, California attended the homecoming activities.

Visiting **Mr. and Mrs. O.D. Knox** last week was Mrs. J.R. McNally of Kermit and then on Sunday Delar Burk of Baird dropped by after visiting his parents, Mr. and Mrs. J.W. Burk.

Brenda Carey returned home to San Antonio on Tuesday after spending several days with her parents, **Mr. and Mrs. Garland Moore**.

I will try to get the rest of the names and addresses for next week of more people that were home this week. I'm sorry, but I just couldn't get them all. See you then.

Fisher County Nursing Home News

This week's column starts out with a poem from one of our residents, Mrs. Pearl Henry. The Long Ago.

Since some are wandering how elderly people lived in "The Long Ago" without social security or any kind of aid and since I was there, I will try to tell you as best I can.

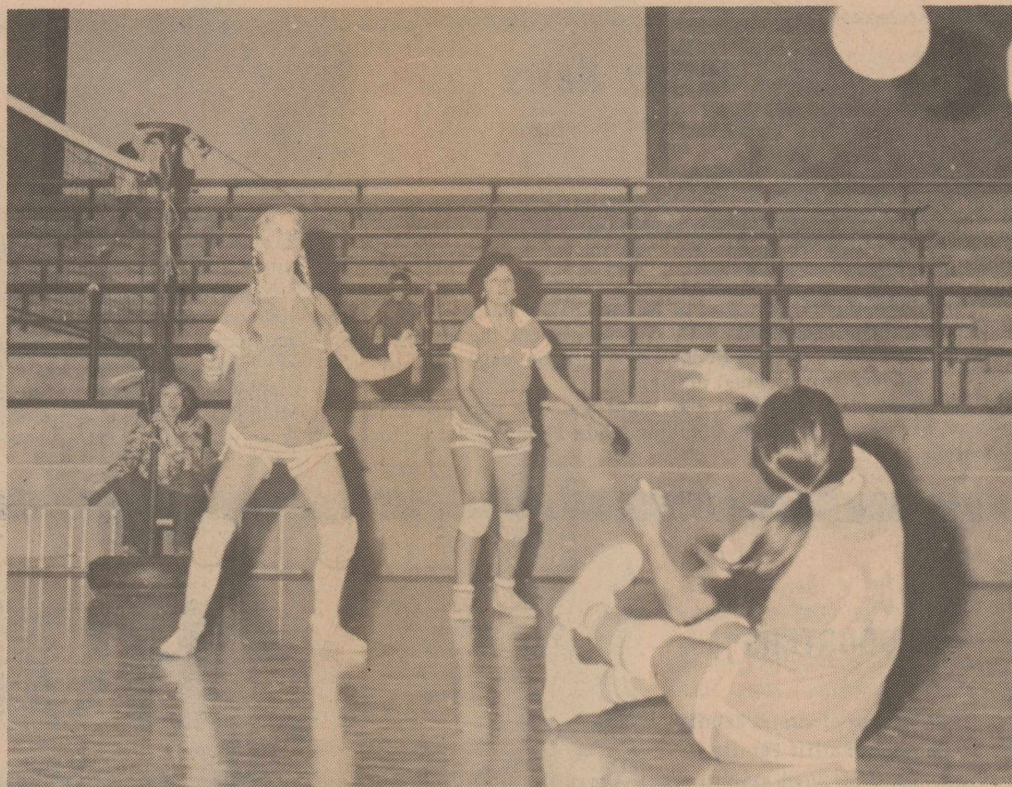
We had chickens and eggs, milk and butter, meat and lard, fruit and vegetables, all raised at home. No cars or gas, no gas for heating or cooking, no electricity, just coal oil lamps. No telephones, no TV's, no air conditioners, no radios, no water bills, no electric irons. No hair sets or permanent, no washing machines or dryers, no ice boxes, no dishwashers, and no money. No tractors or strippers, just hoes and cotton sacks, mules and cultivators, wood stoves and fire places. Just friends and neighbors and pleasant living. Everyone liked everyone else and most of all, there was very little crime. Everyone worked.

Respectfully, Mrs. Henry That was a very nice poem, Mrs. Henry.

Our visitors for this week were Mrs. Neeper, Mrs. Martin, and Vivian Hefferman from Sweetwater visited Mrs. Bates; Charles Meeks visited his mother, Mrs. Meeks; and Mr. and Mrs. Clayton Weems took Mrs. Bettis to Roscoe Sunday to visit with relatives there.

The G.A. girls from the Baptist Church visited throughout the home Monday afternoon. Congratulations to Walter Burk on his birthday, October 1.

Well, that's all the news for this week, see you next week.



SLIDES TO THE FLOOR: JoAnn Martinez, 23, slaps the volleyball in the direction of team mates Renee Underwood, left, and Mary Ann Ramirez, right, during action against Hamlin last Monday night.



ROBY JUNIOR HIGH CHEERLEADERS: Left to right, Sue Hall, Jackie Shipp, Tina Hataway, and Jan Wright.

Funeral Service Aileen Moore

Services for Mrs. James H. (Norma Aileen) Moore, 56, of Route 1, Overton, were held at 2 p.m. Sunday. Burial was at Mt. Hope Cemetery, Overton.

Mrs. Moore died Friday, Oct. 10, in an Overton hospital after a long illness.

Born Norma Aileen Coan, daughter of the late Mr. and Mrs. Grier F. Coan, Feb. 15, 1919 in DeLeon. She moved to East Texas in 1965 from Dallas. She was a Baptist.

Survivors include her husband; three daughters, Mrs. Jo Dale Nelson of Santa Maria,

Calif., Mrs. Jerry Lee Arnold of Henderson and Terri Kim Moore of Overton; one brother, Grier D. Coan of Rotan; three sisters, Mrs. W.R. Ashton of Sweetwater, Mrs. L.T. Ashley of Blythe Calif. and Mrs. Morice Stricklin of Rotan; eight grandchildren.

He helps me when I grudge and is my sidekick most all the time. Thanks, Mike.

We are planning on reporting a big up set next week. Thanks for all your support.

Billy Holcomb

Billy Holcomb, 47, of Roby, died at 5 a.m. Thursday, Oct. 9, at the Veterans Administration Hospital in Big Spring. Services were held at 2 p.m. Friday at Weathersbee Funeral Home Chapel in Rotan.

The Rev. Kenneth James, pastor of First United Methodist Church of Roby, officiated. Burial was in Roby Cemetery.

Born May 9, 1928, in Roby, he had lived in Roby all of his life except for a short period of residency in Abilene and San Angelo.

He was the son of the late Harman Holcomb Sr. and Mrs. Gladys Holcomb Sr. of Roby.

Mr. Holcomb was a Methodist and a member of American Legion. He was a veteran of World War II.

Survivors include two sons, Randy of Garland and Ricky of Abilene; a daughter, Mrs. Paul Jenkins of Abilene; his mother, a brother, Harman Jr. of Roby; two sisters, Mrs. T.L. Carter of Roby and Mrs. Sam Rhodes of Sweetwater; and a granddaughter.

Erdine Patton

Funeral services were held Monday, Oct. 6, in Arlington for Erdine Moore Patton who died Oct. 3 following a short illness. She was preceded in death by her husband, A. G. Patton who died 3 weeks earlier.

Survivors are a daughter, Donna Clanton; a son, A.G. (Pat) Patton, Jr.; two grandchildren; two brothers, Garland Moore of Roby and Calvin Moore of Midland; and two sisters, Louise Samsel of Abernathy, and Joretta Browning of Andrews.

National Farmers Union Insurance Companies

WILEY AGENCY

Roby, Texas 776-2529

Offering Complete Multiple-Line Insurance Service

AUTO

FARM AND PERSONAL LIABILITY

HOMEOWNERS

FARMOWNERS

CROP HAIL

FIRE

HOSPITAL

LIFE

One-Stop Insurance Service for Home, Family and Farm

TAX DISCOUNT NOTICE

EARLY PAYMENT OF COUNTY & STATE TAXES WILL ALLOW YOU THE FOLLOWING DISCOUNTS.

3% OCTOBER 1 TO OCTOBER 31
2% NOVEMBER 1 TO NOVEMBER 30
1% DECEMBER 1 TO DECEMBER 31

Robert Buck
 Tax Assessor-Collector

Call No. 495 Charter No. 8693 National Bank Region No. _____

REPORT OF CONDITION, CONSOLIDATING DOMESTIC SUBSIDIARIES, OF THE

The First National Bank of Rotan

IN THE STATE OF Texas AT THE CLOSE OF BUSINESS ON September 30, 1975 PUBLISHED IN RESPONSE TO CALL MADE BY COMPTROLLER OF THE CURRENCY, UNDER TITLE 12, UNITED STATES CODE, SECTION 161.

ASSETS	Dollars	Cts.
Cash and due from banks (including \$ none unposted debits)	1,645,601	27
U.S. Treasury securities	2,295,330	50
Obligations of other U. S. Government agencies and corporations	2,298,062	50
Obligations of States and political subdivisions	1,538,506	69
Other securities (including \$ none corporate stock)	9,000	00
Trading account securities	500,000	00
Federal funds sold and securities purchased under agreements to resell	4,029,914	07
Loans	47,191	56
Bank premises, furniture and fixtures, and other assets representing bank premises	none	00
Real estate owned other than bank premises	none	00
Investments in unconsolidated subsidiaries and "associated companies"	none	00
Customers' liability to this bank on acceptances outstanding	3,379	07
Other assets (including \$ none direct lease financing)	12,366,988	66
TOTAL ASSETS	12,366,988	66
LIABILITIES		
Demand deposits of individuals, partnerships, and corporations	4,632,819	72
Time and savings deposits of individuals, partnerships, and corporations	5,134,707	32
Deposits of United States Government	34,079	27
Deposits of States and political subdivisions	1,022,893	59
Deposits of foreign governments and official institutions	none	00
Deposits of commercial banks	none	00
Certified and officers' checks, etc.	54,130	46
TOTAL DEPOSITS	11,178,660	36
(a) Total demand deposits	5,101,318	13
(b) Total time and savings deposits	5,077,342	23
Federal funds purchased and securities sold under agreements to repurchase	none	00
Liabilities for borrowed money	none	00
Mortgage indebtedness	none	00
Acceptances executed by or for account of this bank and outstanding	none	00
Other liabilities	58,521	21
TOTAL LIABILITIES	11,237,181	57
MINORITY INTEREST IN CONSOLIDATED SUBSIDIARIES	none	00
RESERVES ON LOANS AND SECURITIES		
Reserve for bad debt losses on loans (set up pursuant to IRS rulings)	112,779	89
Other reserves on loans	none	00
Reserves on securities	none	00
TOTAL RESERVES ON LOANS AND SECURITIES	112,779	89
CAPITAL ACCOUNTS		
Capital notes and debentures	none	00
% Due \$ none		
Equity capital-total	1,017,021	20
Preferred stock-total par value	none	00
No. shares outstanding none		
Common Stock-total par value	100,000	00
No. shares authorized 1000		
No. shares outstanding none		
Surplus	200,000	00
Undivided profits	200,000	00
Reserve for contingencies and other capital reserves	517,021	20
TOTAL CAPITAL ACCOUNTS	1,017,021	20
TOTAL LIABILITIES, RESERVES, AND CAPITAL ACCOUNTS	12,366,988	66
MEMORANDA		
Average of total deposits for the 15 calendar days ending with call date	11,180,991	15
Average of total loans for the 15 calendar days ending with call date	3,997,168	12
Interest collected not earned on installment loans included in total capital accounts	33,303	80
Standby letters of credit	none	00

I, Dan Park, Cashier of the above-named bank do hereby declare that this report of condition is true and correct to the best of my knowledge and belief.

We, the undersigned directors attest the correctness of this report of condition and declare that it has been examined by us and to the best of our knowledge and belief is true and correct.

[Signatures] Directors

T.V. REPAIRMAN
 AVAILABLE
4 DAYS A WEEK
 WE REPAIR
ALL MAKES & MODELS CALL 776-2131

26" Lawn Sweeper
 Spring suspended brushes direct debris into center of heavy duty hamper. 50456 12-B

2749
 Reg. 43.95
 Save 16.46

Special Sale

888

Leaf Bag & Can Caddy
 2 position bag holder. Semi-pneumatic tires. 42-1 12-A

Special Sale

BUY NOW

3987
 Reg. 42.95
 Save 3.08

Electric Food Grinder
 Grinds a great variety of foods! Complete with extra large grinding hopper, food pusher, 2 cutting discs. Easily disassembles for quick cleaning. 996-08 10d-C

BONUS OFFER

Now Only! **4/99c**

Pkg. of 4 Light Bulbs
 Your choice: 60 W, 75 W, 100 W. Limit 3 pkg. per customer. 1-B

SPECIAL HOME VALUES

2788
 Reg. 36.95
 Save 9.07

Single Control Lavatory Faucet
 Brass valving. "Drip-Free" design guaranteed for 5 years. Includes pop-up waste. 04089 6-A

10" Electric Chain Saw
 2 HP, 120V AC, 5200 RPM. Double insulated. Features 4 oz. manual oiler, 10" Oregon reversible bar & micro chisel chain. 1100 12-E

4444
 Reg. 59.95
 Save 15.51

Roby Hardware
 "South Side Courthouse Square"
 776-2131
 Roby, Texas

McCaulley News

By Mrs. Fred Kemp

Fall weather was certainly in full swing this past week with cooler days and even wind on Saturday and Sunday.

McCaulley football teams both were defeated this week. Junior High boys played Hermleigh on Wednesday at McCaulley and are showing progress. High School played their last non-conference game with O'Brian Friday night. Although we lost the game, good sportsmanship was shown by the members of both teams and the official swere good. High school boys will play their first conference game with Highland Friday night at McCaulley.

The Fred Kemps are enjoying a visit from Mr. and Mrs. Jim Kincaid and Jennifer Michele of Valdosta, Georgia. We do have to share them with the G.W. Kincaids of Hamlin, but knowing they are

nearby gives us great pleasure. McCaulley Baptists are having students from Hardin Simmons University Sunday conduct the morning and evening services. Lunch will be served at the church. We urge our youth to attend and enjoy these services.

Tiny Ann Smart, daughter of Mr. and Mrs. James Smart, was home for the weekend from WTC in time to attend the football game at O'Brian. Also, Daniel Benavides who is on leave from the Air Corps in Germany attended the game.

Vivian Farmer spent Saturday night with her parents, Mr. and Mrs. Ed Farmer. Vivian is attending South Plains Junior College at Levelland.

Max and Fred Kemp attended the Roscoe Swine Breeders sale at Sweetwater Saturday afternoon to select animals for the shows this winter and spring.

More than 60 guests registered for the birthday dinner at the homemaking building Sunday honoring Mrs. Beatrice Kemp who had her 98th birthday on October 14. Nine of Mrs. Kemp's children were present. Members of the family attended from Portales, N.M., Gladewater, Abernath, McKinney, Ponder, Lubbock, Houston, Midland, San Angelo, Sweetwater, Roby, Hamlin, Sylvester, and Tulsa, Okla. and Valdosta, Georgia.

Diamond Point
Modification Lamp Center
 LAMP REPAIRS, POLE, TABLE,
 FLOOR & CEILING
 109 N. Garfield- Rotan, Texas

Legal Notice

An Ordinance Fixing and Determining The General Service Rate To Be Charged For Sale of Natural Gas To Residential and Commercial Consumers Within The City Limits of Roby, Fisher County, Texas, and Providing For The Manner In Which Such Rate May Be Changed, Adjusted And Amended.

Be it ordained by the City Council of the City of Roby:

Section 1. Effective with the first gas bills rendered from the date of final passage of this ordinance, the maximum general service rate for sales of natural gas rendered to residential and commercial consumers within the city limits of Roby by Lone Star Gas Company, a Texas Corporation, its successors and assigns, is hereby fixed and determined as follows:

First 800 Cu. Ft. or Fraction There of \$2.4932 Gross; \$2.2439 Net. Next 1,200 Cu. Ft. \$2.3988 Per Mcf Gross; \$2.1589 Per Mcf Net. Next 3,000 Cu. Ft. \$1.8432 Per Mcf Gross; \$1.6589 Per Mcf Net. Next 20,000 Cu. Ft. \$1.5654 Per Mcf Gross; \$1.4089 Per Mcf Net. Over 25,000 Cu. Ft. \$1.5099 Per Mcf Gross; \$1.3589 Per Mcf Net.

No gas bill will be rendered to any residential or commercial consumer served under the above rate not consuming any gas during any monthly billing period, except that where customer's only use for gas service is in an outdoor grill and/or a fireplace starter, the amount shown for the first consumption block shall constitute a minimum monthly bill.

Adjustments

The amount of each net monthly bill computed at the above stated rates shall be subject to the following adjustments: Plus or minus the amount of any increase or decrease, respectively, above or below the \$1.0399 per Mcf level in the intracompany city gate charge as authorized by the Railroad Commission of the State of Texas or other regulatory body having jurisdiction for gas delivered to Lone Star Gas Company's distribution system for sale to residential and commercial consumers where such changes are caused by increases or decreases in the cost of gas purchased by the Company; plus an amount equivalent to the proportionate part of any new tax, or increased tax, or any other governmental imposition, rental, fee or charge (except state, county, city and special district ad valorem taxes and taxes on net income) levied, assessed or imposed subsequent to July 1, 1975, upon or allocable to the Company's distribution operations, by any new or amended law, ordinance or contract. Each gross monthly bill shall be adjusted proportionately. Company, at its option, may forego the application of any adjustment if such adjustment would result in an increase in the monthly bill; however, failure of Company to apply any adjustment shall not constitute a waiver of Company's right from time to time, or at any time, to make any adjustment, in whole or in part, in any subsequent currently monthly bill that may be applicable to such bill.

Net rate shall apply to all bills paid within ten days from monthly billing date; gross rate shall be applicable thereafter.

In addition to the aforesaid rates, Compa

The above rate is applicable to each residential and commercial consumer per meter per month or for any part of a month for which gas is used at the same location.

In addition to the aforesaid rates, Company shall have the right to collect such reasonable charges as are necessary to conduct its business and to carry out its reasonable rules and regulations in effect.

Section 2. The rate set forth in Section 1 may be changed and amended by either the City or Company furnishing gas in the manner provided by law. Service hereunder is subject to the orders of regulatory bodies having jurisdiction, and to the Company's Rules and Regulations currently on file in the Company's office.

Section 3. It is hereby found and determined that the meeting at which this ordinance was passed was open to the public, as required by Texas law, and that advance public notice of the time, place and purpose of said meeting was given.

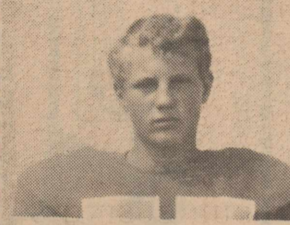
Passed and Approved on this the 15th day of September, A.D. 1975.

Attest:
 Billie L. Wetsel Cecil King
 Secretary Mayor
 City of Roby, Texas



BOOSTERS

- The Marcos Medrano Family
- The James Ratliff Family
- Mr. and Mrs. Rudy Hamric and Conrad
- The Kenneth Wink Family
- Mr. and Mrs. Gus Simmons and Family
- Mrs. Helen Faulkenbery
- Dwight, Merle and Tisa Lovett
- The Oscar Garcia, Sr. Family
- Maudie Gober, Lisa and Tammy
- Mr. and Mrs. Dale Cave
- Mr. and Mrs. C. L. Casey
- Mary Medina and Family
- Mr. and Mrs. J. P. Phillips
- The Geroge Price Family
- The Orville Anderle Family
- The Don Pullig Family
- Bishop and Randy Gordon
- The Benito Medrano Family
- The Lazaro Mirando Family
- Eula Mae, Beva Jo. and Cathy Hull
- Mr. and Mrs. B. S. Wright
- Mr. and Mrs. Glen Odom, Freda and Donald
- The Windle Cave Family
- Mr. and Mrs. Sim Groves
- The Mickey Templeton Family
- Mr. and Mrs. Emilio Martinez, Patty, June, Nancy and Matt
- The Pierson Family
- The Howard Gurdon Family
- The Odell Rains Family
- Mr. and Mrs. Ivy Jones, Kirk and Kayla



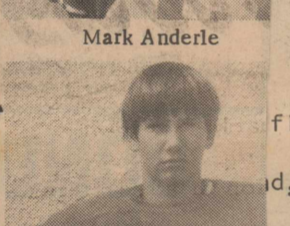
Willie Ogden



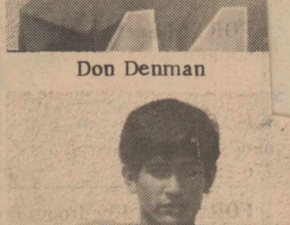
Mark Anderle



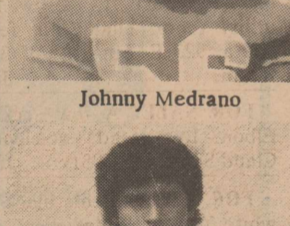
Don Denman



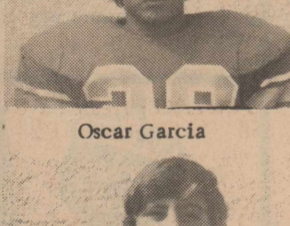
Johnny Medrano



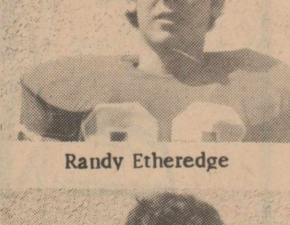
Oscar Garcia



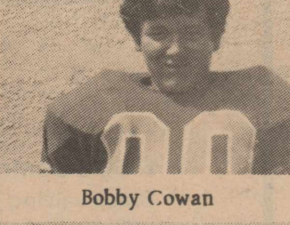
Randy Etheredge



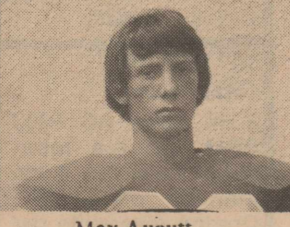
Bobby Cowan



Max Aucutt



Charlie Wright



Mike Martin

HOBBS PANTHERS

Football

This Weeks Game

Hobbs Panthers

VS

Hermleigh
 Kickoff

7:30 p.m.

Friday October 17



Mac Rains



Mark Pierson



Hobbs Team Photo

1975 PANTHERS FOOTBALL SCHEDULE

OPPONENT	TIME	PLACE
WEINERT	8:00	T
PAINT-CREEK	8:00	T
LEUDERS AVOCA	8:00	H
GUTHRIE	8:00	H
BENJAMIN	8:00	H
HERMLEIGH	7:30	T
TRENT	7:30	H
IRA	7:30	H
HIGHLAND	7:30	T
MCCAULLEY	7:30	T

Operating, Precinct #	10 858 63
# 2	7 505 71
# 3	5 698 22
# 4	9 35
# 1	3 188 21

- The Jackie W. Etheredge Family
- The Billy Allen Family
- The Bill Denman Family
- Mr. and Mrs. Andrew Williams
- The R. Cantu Family
- Mr. and Mrs. L. E. Hardin
- Mr. and Mrs. Frank Boydston
- The Bennie Alaniz Family
- Mr. and Mrs. Gary Floyd and Matt
- The Jerry Marshall Family
- Mr. and Mrs. E. C. Nobles and Family

Hobbs Grocery

MR & MRS BOBBY WRIGHT
 HOBBS, TEXAS

Dryden's Shoes

Your Family Shoe Store
 Eastside of the Square
 SNYDER, TEXAS

Carter's Western Wear

Dress and Work Clothes
 Visit Our Bargain Basement
 Northeast Corner of the Square
 SNYDER, TEXAS

Burgess Professional Pharmacy

Pho 573-7582 Snyder, Texas
 Rayburn Burgess
 Jerry McWilliams

Key Bros. Implement Co., Inc.

2612 College Avenue
 Snyder, Texas 79549
 Milton Ham, Owner

Top Dollar Store

Top Value
 SNYDER, TEXAS

Thompsons Shoe Store

Your Family Store
 SNYDER, TEXAS

Erwin's Jewelry

Southside of Square
 SNYDER, TEXAS

N-J's

Fashions for Misses & Juniors
 25522 Ave R. 573-8730
 SNYDER, TEXAS

Snyder Savings & Loan Association

"Save Where Saving Pays"

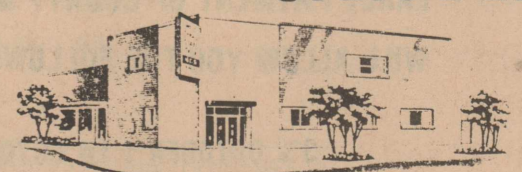
Pho. 573-9305 SNYDER, TEXAS

Raun's Photography

"WHERE PHOTOGRAPHY MEANS ARTISTRY"

1800 - 26th St. P. O. Box 402
 Phone (915) 573-5989
 SNYDER, TEXAS 79549

West Texas State Bank



Box 919 All Banking Services 573-5441

City Auto Supply

ROTAN, TEXAS

Weathersbee Funeral Home

ROTAN, TEXAS

Fenton's Dad & Lad

Eastside of Square
 SNYDER, TEXAS

Bennett's Office Supply

Furniture-Supplies-Equipment A. B. Dick Copy Machines
 Royal & Smith Corona Typewriters
 Electric & Portable
 Gibson Cards-Art Supplies
 1819 25th SNYDER, TEXAS 573-7202

Hustlin' Round Hobbs

By Mrs Jimmy Walker
Hobbs, Texas 735-2840

Well we've had another beautiful week and we are getting a little bit spoiled for when it turns off cold, which its going to do one of these days pretty soon. But then all the hay fever and sinus sufferers will be happy just as soon as it frosts.

Mr. and Mrs. J.D. Kincaid went to Plains Saturday to attend a tea for Janis and Randy Carter. They were accompanied by Mr. and Mrs. Windle Kincaid of Rotan. They all spent Saturday night and Sunday with Mr. and Mrs. Randy Carter at Lubbock. While at Lubbock the Kincaids visited Dewey Price from Abernathy who is in the Methodist Hospital at Lubbock.

Visiting with **Mr. Vida Boyer** Saturday and Sunday were Mr. and Mrs. M.L. (Buck) Cave from Newcastle.

Dutch Parks preached at Hobbs Sunday in the absence of Bro. Skiles who is on vacation.

Visiting with **Mr. and Mrs. Lester Hardin** Sunday for dinner were Mr. and Mrs. W.B. Hardin and Mrs. Danny Baker, Damon and Derrick. Spending Saturday afternoon with the Hardins were Mr. and Mrs. Jimmy Wayne Hardin and children from Rotan, and Linda's mother and sister and a friend from Corpus Christi.

Visiting with **Mr. and Mrs. J.C. Cave** for the weekend were Mr. and Mrs. Billy Carter and boys from Brownwood. They also visited in Roby with Mr. and Mrs. Ed Carter and attended the Roby homecoming. Mr. and Mrs. Buck Cave of Newcastle spent Sunday afternoon visiting with the J.C. Caves. Mr. and Mrs. Eugene Duke from Lorraine visited with J.C. and Alice on Wednesday.

Visiting with **Mr. and Mrs. Rudolph Martinez** for the weekend were Rosemary and Gloria Martinez from Fort Worth, also Mr. and Mrs. Mike White from Midland, Mr. and Mrs. Gil Warren and family from Snyder and Mr. and Mrs. Steve Warren and family, also from Snyder. Mr. and Mrs. Rudy Martinez and Jennifer from Rotan were also visiting with them all. Father John from Rotan ate Sunday dinner with the Rudolph Martinezes and their visitors. Belle and Rodney Martinez from Fort Worth also came home for the weekend and visited with **Mr. and Mrs. Emilio Martinez**.

Mr. and Mrs. Jimmy Walker went to Abilene on Friday and visited with Mr. and Mrs. Tonnie Griffin. We were on the way to the Wylie-Rotan football game, and so decided to go early and visit with Jim's sister who is now home from the hospital once more. We spent the weekend at Lamesa in the W.T.B.R.A. Finals, and we had nice sunny weather for it for a change. It usually rains. Melody took a new horse which we have been training for Jim's nephew in Houston. She only entered in the novice horse class and did pretty good considering she hasn't got to ride him hardly at all. This was also his first time to be out in competition and we were real proud of his last run. Melody also rode Misty in the pole bending and had a real good run, but got the end pole. Saw lots of old friends who came just to visit at the roping.

Monday, Jim and I accompanied Mrs. Sheila Gruben, Carye and Donnie Carl to Breckenridge.

Well, that's about all for this week, so if I missed anyone call me and we'll put it in next week's paper.

Rotan Cited For Top Career Minicourse

Rotan I.S.D. was notified by the Texas Education Agency of the selection of the eighth grade Career Education minicourse as one of the thirty outstanding guidance practices in Texas. Mrs. Rudy V. Hamric, Fisher

County Counselor, is the person responsible for designing the minicourse. Mr. Larry Dooley, Guidance Consultant for the Region XIV Education Service Center, provided leadership in selecting materials and providing equipment. This year, this minicourse has been expanded and schools throughout the Region XIV will have the opportunity to utilize the idea and the materials on a two week

loan basis.

Mrs. Hamric developed the unit for the eighth grade social studies class. It takes place in a classroom converted to a multimedia learning center. Learning stations are set up in carrels using filmstrips, slides, cassettes, filmstrip/cassette combinations, 16 mm movies, microfiche, film loops, and printed materials for reading. In addition, students obtain career

information by interviewing employees who work in fields in which the students are interested. Students contract to investigate a certain number of careers and then work to fulfill their contracts. Mr. Dooley and Mrs. Hamric train student leaders to handle all the equipment and be responsible for the various stations. This activity has proven to be very enjoyable and profitable for the students.

Ex Rotan Man Center Of Texas Tower Movie Sat.

Editors Note: Fisher County television viewers will be able to view the movie "The Deadly Tower" with more than usual interest when it is televised this Saturday night at 8 p.m. over KRBC, channel 9 in Abilene. The Deadly Tower story centers around the part ex-Rotan student Ramior Martinez, son of Manuel Martinez of Austin, played during the tragic sniping at the University of Texas Tower in August of 1966. The following information was printed in the Houston Chronicle on September 1, 1975, concerning Martinez.

On a scorching day in August 1966, an off-duty Austin policeman breathed a prayer, rode an elevator to the 26th floor of the University of Texas tower, and there shot and killed Charles J. Whitman, the mad sniper.

Ramior Martinez, the policeman said later that his mind was bland when he emptied his

service revolver at Whitman, who died clutching an M-1 carbine.

Later Martinez said, he realized that Whitman, a former marine, had killed 15 persons and wounded 35 others.

Whitman had killed his mother and wife the night before he barricaded himself inside the tower and started firing one deadly shot after another.

But the Whitman case does not linger in Martinez's mind today.

"It was just another point in my life," says Martinez, now 38 and a Texas Ranger. "It's just like any other case. I can't sit down and dwell on it."

Besides, Martinez has his hands full these days investigating Duval County in South Texas.

His headquarters are in Laredo but his jurisdiction encompasses 6,000 square miles and four counties: Zapata, Jim Hogg, Webb and Duval.

On April 3, two days after George Parr, the "Duke of Duval," committed suicide, Martinez got in his car and drove to the scandal-torn county. He has been there most days since.

The county has long been in a state of turmoil over the open feud between the Parr family's establishment party and a splinter group headed by State Dist. Judge O.P. Carrillo, who now faces impeachment charges before the Texas Legislature.

"What we are primarily concerned about in Duval County is felony theft," Martinez says. "It's a tough situation here but we'll prevail in the end."

There are other problems in South Texas that Martinez must tend to besides the Duval County case.

Oil production in South Texas has stepped up lately, causing an influx of workers and usual law enforcement problems, Martinez says.

Also, the rangers are assisting the Texas attorney general's office in checking out rumors that some new wells have been dug with slanting shafts in order to draw oil from beneath contiguous property.

The pace is of the job fast and often frenzied, Martinez says, but in spite of it all he says he is happy as a Texas Ranger.

Martinez became the third Mexican-American in the 88-man brigade when he was sworn in two years ago. Prior to that, he served as a Department of Public Safety narcotics officer in

Houston.

It was a job that almost got him killed. In June 1970, a narcotics suspect fired point-blank at Martinez and then tried to run him down with his car when the shot missed.

Martinez emerged without a scratch, but his undercover status was blown since the incident was reported in the newspapers.

"I liked the undercover work okay but it got old real quick. I just don't like to run around with the kind of people I had to run around with," Martinez says.

He is aware that the slaying of Whitman has had a major effect upon his law enforcement career but is quick to say: "I've never used it as a crutch."

Trail's End Restaurant

JOHN ROSS HALE-OWNER

Open 5:30 A.M. - 10:00 P.M.
7 Days A Week

Tuesday Night-Bar-B-Que-5:30
Thursday Night-Fried Chicken 5:30
Friday Night-Fish Fry-5:30

WE APPRECIATE YOUR BUSINESS

210 N. CLEVELAND
735-3575
ROTAN, TEXAS

1 gal. Ext. Latex Paint Sale 4.95 Reg. \$5.25

PANELING Other Patterns In Stock MOLDING And MATCHING NAILS

Storm Window Kits Reg 49c Sale 43¢

Rockwell Bros. & Co. "Lumbermen" 735-2431 Rotan, Texas

In China, a key is given to an only son to lock him into life!

WTC Rodeo Club

The Western Texas College Rodeo Club will sponsor a series of five jackpot ropings on Oct. 14, Oct. 28, Nov. 4, Nov. 11 and Nov. 18.

All are to be held in the new livestock barn adjacent to the Scurry County Coliseum on the East Highway in Snyder. Books will open at 6:30 p.m. each day with the roping to start at 7:30 p.m. Entry fee will be \$37 for two head.

The public is invited to attend and there will be no admission charge.

Persons wishing further information may contact Van Rigby, Rodo Club sponsor, at WTC by calling 573-8511, extension 216, mornings or at 573-3863 nights.


NOTICE

THE CITY OF ROTAN AND THE ROTAN MUNICIPAL WATER AUTHORITY WILL ALLOW THE FOLLOWING DISCOUNTS FOR EARLY TAX PAYMENTS:

3% OCTOBER 1 TO OCTOBER 31
2% NOVEMBER 1 TO NOVEMBER 30
1% DECEMBER 1 TO DECEMBER 31

First And Last Days Inclusive

CITY OF ROTAN



A Land Bank loan at work

Both pasture land and crop land qualify for a Federal Land Bank loan if properly managed. Remember that the Land Bank Association located right in your area is familiar with local conditions and local needs—and will do everything possible to provide a long-term loan at reasonable cost.

Refinancing could produce this year's most important "cash crop."

Federal Land Bank Association Of Roby

Serving Fisher, Nolan, & Taylor Counties

E. J. Richardson-Manager
776-2321

Advertise the Action Way! The Want Ad Way!

Classified Advertising cost is 5¢ per word, \$1.00 minimum. Cards of Thanks are \$1.00 minimum up to 40 words, 5¢ word thereafter. Name, not phone number, must be given on all charge classified advertising and full payment is due upon publication of advertising.

FOR SALE: Caddo Wheat seed. Also some Triticale seed. G.H. Hoggard, call Jayton 806-237-6115. 34-3tp

FOR SALE: 1969 Olds Cutlass in real good condition. Cleanest of its kind around. For more information call 776-2258 or 776-2477. 36-tfc

BACK YARD SALE: 3 families, 612 E. Lee St. Rotan, Saturday and Sunday afternoon. 36-tfc

FOR SALE: 2 bedroom home at 706 E. 5th St. Will sell for \$2,500 cash. For further information contact 776-2141. 36-2tc

LOCAL HAY HAULING: Large or small amounts. Harold Freeman, 512 Mead St., Rotan, call 735-2312, or Cooper 735-2573. 34-tfc

CUSTOM FARMING: Dozier work, dirt work. Call Richard Scott 915-235-3877 or 235-9655, Sweetwater. 50-tfc

HAND MADE GIFTS: Vera's Gift Shop. Open 9 to 11 a.m. and 1 to 5 p.m. daily. 908 E. 8th St. Rotan. 49-tfc

MATTRESSES: New and Renovated. Choice color, firmness and size. Save on renovating. Guaranteed. Made by Western Mattress Co. Call 735-3421, J&J Supply, Rotan. Roby call 776-9211 leave name. 41-tfc

WANTED: Need a baby sitter to come to my home. See Mrs. Donnie Gann, house behind the rest home, Roby. 33-4tc

HOUSE FOR SALE: in Roby, on S 5th St. 3 bedroom, carpet, fully carpeted, asbestos siding. Call Kenneth Martin 776-2147, Roby. 29-tfc

FOR SALE: Alfalfa hay. Carl Singley 735-2992. 14-tfc

FOR SALE: Two 2-year old Charolais bulls, call Leon or William Duke. 735-3421 or 735-2343. 28-tfc

FOR SALE: Village Flower and Gift Shop. Contact Ruby White at 735-3131 or 735-2469, Rotan. 29-tfc

Gary's Automotive

Now An Official State Inspection Station

776-2655

Hwy 180 West
Gary Terry-Owner
Roby, Texas

CUSTOM BALING

Two Swathers & Balers

Heck Robertson 776-2538 **Claude Brafford 776-2369**

Farm & Ranch Loans

Through the FEDERAL LAND BANK ASSOCIATION OF ROBY

Richardson, Jr. Manager
915-776-2321

FOR SALE: 1968 Olds Cutlass, clean and good. Phone 735-2802, Rotan. 36-tfc

NOTICE: For your tupperware needs, contact Carolyn Nichols, 776-2550. 36-2tp

FOR SALE: 3 bedroom house, paneled, carpet, dishwasher, utility room, chain link fence. See at 923 E. 5th St., 735-3340, Rotan. 36-tfc

FOR SALE: A few sacks of Elbon Rye seed, re-cleaned. Claud Senn, 735-3051. 35-2tc

FOR SALE: 12 in. black and white Zenith "Sidekicker" television. Almost brand new. Ideal for Christmas gift. Call 735-2242. 35-tfc

FOR SALE: Treated Rye seed. Call Jack Barker 735-2962, Rotan. 35-2tp

FOR SALE: Rye Seed, '73 half ton pickup, automatic, air, power steering, long wide bed. Larry Williamson, 735-2090. 34-4tc

FREE: To be given away, 6 cute puppies, 3 male, 3 female, two months old, 776-1770. 36-1tc

WANTED: Parents of former Cub Scouts to donate old Cub shirts and books. They will be given to those that will appreciate and use them. Drop off at Hatahoo in Rotan. 35-2tc

WANTED: Several section of 3 legged TV tower. Claud Senn, Senn Grain, Rotan. 34-3tc

FOR SALE: Wheat seed, call 735-2042. 32-tfc

NOTICE: Bone Meal! Brewers Yeast! Rose Hips! Lecithin! Protein! and many more naturals, see the Harvestime Display at Summers Drugs. 29-10tp

FOR SALE: 1969 Olds Cutlass in real good condition. Cleanest of its kind around. For more information call 776-2258 or 776-2477. 36-tfc

BACK YARD SALE: 3 families, 612 E. Lee St. Rotan, Saturday and Sunday afternoon. 36-tfc

FOR SALE: 2 bedroom home at 706 E. 5th St. Will sell for \$2,500 cash. For further information contact 776-2141. 36-2tc

LOCAL HAY HAULING: Large or small amounts. Harold Freeman, 512 Mead St., Rotan, call 735-2312, or Cooper 735-2573. 34-tfc

CUSTOM FARMING: Dozier work, dirt work. Call Richard Scott 915-235-3877 or 235-9655, Sweetwater. 50-tfc

HAND MADE GIFTS: Vera's Gift Shop. Open 9 to 11 a.m. and 1 to 5 p.m. daily. 908 E. 8th St. Rotan. 49-tfc

MATTRESSES: New and Renovated. Choice color, firmness and size. Save on renovating. Guaranteed. Made by Western Mattress Co. Call 735-3421, J&J Supply, Rotan. Roby call 776-9211 leave name. 41-tfc

WANTED: Need a baby sitter to come to my home. See Mrs. Donnie Gann, house behind the rest home, Roby. 33-4tc

HOUSE FOR SALE: in Roby, on S 5th St. 3 bedroom, carpet, fully carpeted, asbestos siding. Call Kenneth Martin 776-2147, Roby. 29-tfc

FOR SALE: Alfalfa hay. Carl Singley 735-2992. 14-tfc

FOR SALE: Two 2-year old Charolais bulls, call Leon or William Duke. 735-3421 or 735-2343. 28-tfc

FOR SALE: Village Flower and Gift Shop. Contact Ruby White at 735-3131 or 735-2469, Rotan. 29-tfc

Texas Farmers Union

Get Into The Fight For Parity For Parity

"FARMER POWER" With Farmers Union

SUPPORT THE Farmers Union

FRAME THAT PICTURE: If you're looking for an inexpensive picture frame, look no further than Marie's Art Studio. Hundreds of frames, pre-cut, from small 5x7 to large 30x40 in stock. Frames from 3 to 6 inches thick in oak, gold leaf, and pine. Shop around before you buy. Marie's Art Studio, West Snyder Avenue, Rotan, Tex. 21-tfc

THE ROTAN ADVANCE-ROBY STAR RECORD published each Thursday except last Thursday in the year by Kim Pease. Editor and Publisher: Jancee Pease, Associate Editor, 113 E. Snyder Avenue, Rotan, Texas. Second class postage paid at Rotan, Texas 79546. Subscription rates by mail: In Fisher County, \$6.50; in Jones, Scurry, Kent, Stonewall and Nolan Counties, \$6.50; in other Texas Counties, \$7.50; Continental United States \$8.50; Outside Continental U.S., APO-FPO \$9.50 yearly.

FOR SALE: Located at 6th and Tyler, six room house, asbestos siding, completely re-finished. Call Juston Morrow, 735-3254. 51tfc

FOR THOSE DEPENDABLE Hoover Vacuums

IT BEATS AS IT SWEEPS AS IT CLEANS. FULL LINE AT REASONABLE PRICES.

Also Vacuum bags for all brand and models.

LANDES FURNITURE

113 N. Garfield Rotan

Picture Frames

We'll help you select just the right color and style frame for your favorite picture

We have a large selection of frames. We also have non-glare glass to accent your favorite photo.

Your satisfaction is guaranteed when you visit

Landes Furniture

for Picture Frames 735-3171

The O.E.S. meets each **Second Tuesday**

At 7:30 In The Hall

Lane Phillips - W.N.
Gene Wallace - V.N.
Bettie Hargrove - Secretary
Visitors Welcome

Remembering The Good Old Days In Texas History

By Deila Baird

When one utters the expression, "The good old days", it is probable that they would think for a long while before choosing another time in history in which to live--provided they had a choice. It is even difficult, if not impossible, to name a particular period of Texas history that is more interesting than any other. Texas history in the making was fascinating and spectacular with revolutions, wars for independence, Indian battles and ranching days. It has been said that it reached the height of romantic interest during the two decades that the stage coaches galloped the routes between the far-flung settlements of Texas.

The first stage line to be established in Texas was the latter part of 1853 and ran from San Antonio to El Paso. It usually took about a month to make the round trip. The light stage, pulled by five mules, could carry seven passengers, besides the mail bags. There was the ever present danger of Indian attacks on the entire route. Passengers were heavily armed--each supposedly carrying sufficient weapons and ammunition to insure the safe arrival of his own scalp.

During the two year period from 1857 to 1859 the lines in Texas grew from two in number to the point where one could go by stage to almost any point in Texas. Practically all of the lines were under contract with the Post Office Department to carry mail. In most cases the government required that the vehicle used also be large enough to carry passengers. The government fixed the rate of postage, but the owners could decide their own transportation fares which were usually ten cents per mile.

The Butterfield line had no connection with the Post Office Department and could set its own mail charges. For ordinary letters the fee was 25 cents an

ounce, and at times one letter cost its sender as much as \$2.00. In Texas this stage was pulled by six mules--two at wheel and four abreast.

In 1860 the largest mail contract in the United States was held by the Sawyer Company. They controlled sixteen of the thirty-one stage lines in Texas. Even under the adverse circumstances during the war between the states they were able to keep

the mail service on a high plane of efficiency.

When the railroads started across the state the stage line owners were forced to constantly rearrange their schedules to meet the new situation. The railroad terminals became the starting points for the stage coaches. This was especially true after 1870. As settlers had not come into Fisher County at this time there was no reason for a stage coach line to run here. The Butterfield Company carried the

overland mail as near as Fort Phantom Hill. To the north in Kent County there remains dim traces of a long forgotten stage coach station. Fragments of a child's doll were found--did it belong to a settler's child or a traveler? A few empty shells--were they from guns protecting the stage depot or from those of feuding frontiersmen? These are questions which remain unanswered.

A long Sawyer and Risher stage coach with the traditional emblem of the eagle, and bearing the inscription "U.S. Mail", stands near Round Rock,

Texas. It is on the grounds of the restored Winedale Inn which was built on an original Mexican land grant in the 1830's by William

Townsend, one of the seven Townsend brothers who came to Texas. He was a brother of Asa

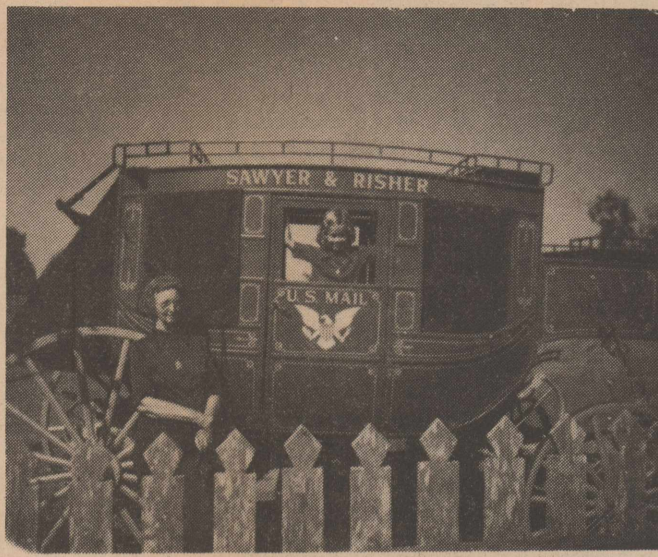
Townsend of Colorado County whose grandson, J.F. Bostick, was one of the pre 1900 settlers of Fisher County.

The original Townsend house comprises half of the stagecoach inn. The remainder of the structure was added by a later owner.

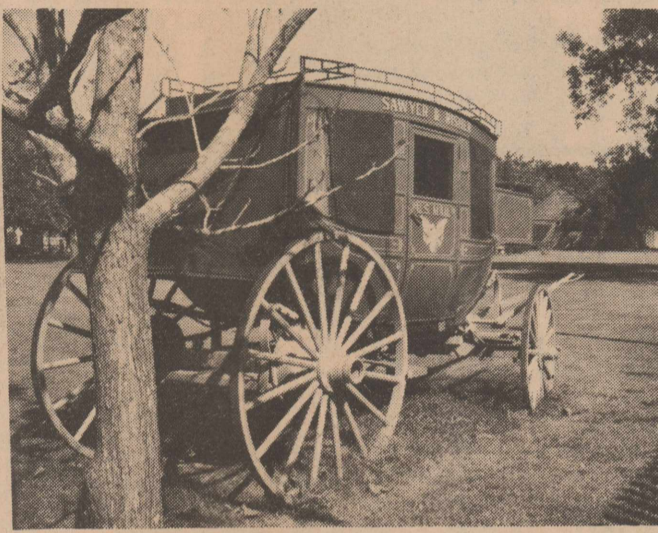
Also on the grounds are other restored pioneer homes and barns. Each building houses authentic furnishings and relics. It is now a University of Texas center for the study of cultural influences of immigrant groups (predominantly German) who settled the area following the advent of the first families who came from other areas to the Texas frontier when the danger of Indian confrontation was a daily threat. The restoration was made possible by the generosity of the late Miss Ima Hogg whose father was once governor of Texas.

A visit to Winedale is a brief journey into the romantic era of early Texas history. One can almost hear the phantom clop clop of mules' hoofs as they race across the Lone Star State.

No other American institution passed so quickly from the public scene as did the stage coach. There was a reason--they simply did not serve the people. They were patronized by the few who had to ride them, but their prime service was in carrying the mail. As soon as the railroads entered the picture they simply ceased to run. They went to and from the settlements, but the railroads brought settlers. The stage line played its destined role and receded into history.



A Sawyer Risher Stage Coach



Sawyer and Risher Stage Coach

Roby Junior High Takes Hawley Loss, B Team OK

The Cubs of Roby lost a close defensive battle to Hawley 8-0, in a makeup game Monday night.

Fine offensive efforts were given by Shelby Thompson and Britt Stuart. At one point the Cubs were 1-and goal to go on the 9 yard line, but could not move in to score. Hawley scored late in the third quarter after recovering a Roby fumble on the 20 yard line.

Strong defensive plays were turned in by Curry Campbell, Denny Cox, Mark Pope. Gordon

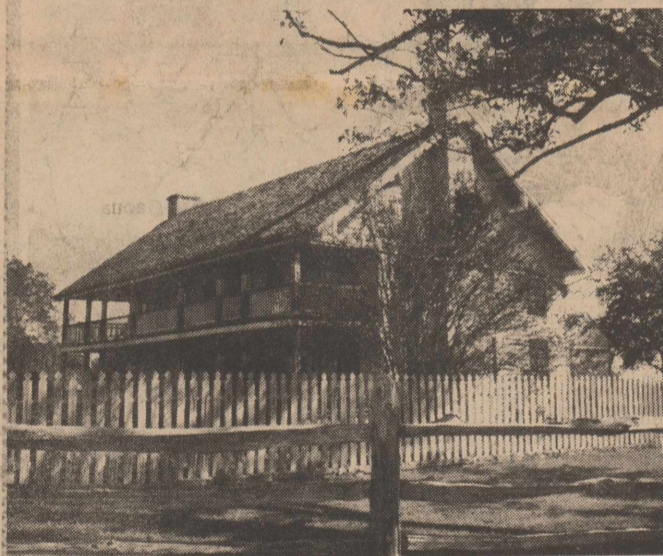
Maberry, Greg Jennings, Todd McCright, Shelby Thompson and Britt Stuart.

A "B" game between the two Jr. Highs was played with Roby winning 12-8. Curry Campbell scored both touchdowns for Roby in the game. Kenny Martin set up one touchdown, catching a pass from Joe Don Guelker, covering 30 yards. On the last play of the game Allan Johnson intercepted a pass and was TD bound before being caught from behind. The "B" team was made up of 5th, 6th, and 7th graders.

Enroll Now
Painting Lessons

Beginners To Advanced Artist
3 Hour Lessons Begin At
9:00 A.M., 1:00 P.M. & 4:00 P.M.
Thursday Night Lesson-5:30 to 8:30
School Student Lessons From 4:00 to 7:00

Marie's Art Studio
736-2316 ROTAN, TEXAS



Stage Coach Inn at Winedale, Texas

Rotan FFA Class Learning Wiring

Currently, in the new General Agricultural Mechanics class in Rotan High School, the students are studying electricity. They are divided into two groups, one of which is composed of Dan Burk, Randy Callan and Keith Callan. This group is wiring Mr. Harkey's barn.

The second group, composed of Glenn Wilfong, Monte Morrow and Brian Harrison is wiring Wendell Morrow's playroom.

After classroom with both groups had to figure what types of circuits, amount of wire and cost in each location and are now wiring each project. They are starting with the breaker box and wiring all the complete circuits, including a single pole toggle switch controlling a ceiling light fixture, multi-convenience duplex outlets, and three way switches.

This weekend, call any other state* and talk five minutes for 86¢ or less... usually less!

*Except Alaska and Hawaii

Our weekend One-Plus rates are so low that you can talk awhile and still spend less than a dollar. For instance, a five-minute coast-to-coast Long Distance call dialed direct all Saturday and Sunday until 5 p.m. is only 86¢. An out-of-state call spanning fewer miles costs even less. If you can't wait till the weekend these same low rates are in effect every night from 11 p.m. to 8 a.m.

Where One-Plus dialing isn't available, One-Plus rates apply on station calls. If you dial direct and reach a wrong number, call the operator. You won't be charged.

Travel by Long Distance... and stay awhile.



Emmett Kelly Jr. for Southwestern Bell

Want to know more ways to save on out-of-state Long Distance calls? Return this coupon and we'll send you a free calling guide.

Southwestern Bell
P.O. Box 787
St. Louis, Missouri 63188

Name _____
Address _____
City _____
State _____

*For rates to Alaska and Hawaii, call the operator. One-Plus rates don't apply to person, coin, hotel-guest, credit card or collect calls, or calls charged to another number.

Rotan Advance-Roby Star Record

YOUR Independent AGENT
SERVES YOU FIRST

We represent you first.

ROTAN INSURANCE AGENCY
C.D.(Monk) Herron

Before You Purchase A New Car Or Pick-up... Give Us A Chance To Show You How Much You'll Save At

F & M Chevrolet-Buick
Complete Sales & Service
735-2244
Murl McKinney-Yoke Fleming
105 S Cleveland Rotan, Texas

BUY IN ROBY, TEXAS BANK

AT OUR BANK

IT PAYS TO DEAL WITH LOCAL FOLKS.

Citizens State Bank

MEMBER F.D.I.C.
ACCOUNTS INSURED TO \$40,000

776-2261
ROBY, TEXAS

Exquisite Form
'FUL-LY' SALE
Nobody understands the full figure like 'Ful-ly'!

Stretch panels surrounding each cup hold you firmly comfortably

Diamond center panel gives you complete separation

Wide straps and slip-on shoulder pads relieve shoulder strain

Wider 3-section cups give real support, never sag

Wider sides eliminate fleshy bulges

Stretch undercup keeps you tucked in without digging or binding

#532

WE HAVE A LARGE SELECTION OF BRAS, GIRDLES & BRIEFS IN STOCK. WE INVITE YOU TO COME IN THIS WEEK AND INSPECT THEM.

H.L. DAVIS & CO.

"The Friendly Store"
Rotan, Texas

Fisher County Nursing Home News

Our visitors for this week are Mrs. Floyd McCain from Sylvest visited Neda Kiser; Lucille Biers from Sweetwater visited her father Homer Lawlis; Mr. and Mrs. Ricky Stanford and baby from Abilene and Mrs. Dewey Donham from Hamlin visited Mrs. Meeks; Charlie and Margie Whitfield visited Mrs. Whitfield and Lulline Blunt and also took Lulline and Lucille out to dinner Monday.

Visiting Bill House was his sister from Delena, Calif., Mrs. Roberta Brown and daughter Mrs. Kaye Thompson. Their brother and wife, Mr. and Mrs. J.W. House, Jr. from Weatherford, Mr. and Mrs. Robert Fisher

and daughter Miss Aurelia Fisher from Dallas.

Mrs. Moffett and Mrs. Stephens both ate dinner at Earl Holcomb's house to celebrate both their birthdays on Sunday, October 12. Congratulations!

This week's feature resident is Mr. John Dave Snapp. Mr. Snapp was born July 13, 1905 at Sherman, Tex. He was later admitted to our home on Dec. 1, 1974 due to ill health. Dave enjoys sitting in the lobby and on the porch when the weather permits. He is a member of the Baptist Church.

Well, that's all the news for this week. See you again next week.



ROTAN FFA PROJECT: The Rotan FFA members constructed a chicken coop to be for chickens used as projects by some of the members. The chicken coop was built by the Vo Ag III Class.

County Farm Bureau Hold Convention Tues.

The Annual Fisher County Farm Bureau Convention will be held in the Community Center in Rotan Tuesday, Oct. 21, at 7:30 p.m., according to Horace Carter, president.

Mr. Bill Reid of Lamesa will be the featured speaker. Mr. Reid, a cotton farmer, is currently serving as the vice president of the State Board of Directors of the 185,000 member organiza-

tion.

Carter is expected to announce a record high membership for the County Farm Bureau as well as the State at this meeting. Other program personalities include Steve Cochran, area field man for Texas Farm Bureau; Glen Gruben, treasurer; Betty Carter, secretary; and Richard Posey, vice president.

INSURANCE		
FOR YOUR HOME RANCH FARM AUTO CROPS LIFE	Do I need workmen's compensation insurance when I hire an employee for farm and ranch work?	
For help with insurance questions and needs call . . .		Ben Reaid
TEXAS FARM BUREAU INSURANCE COMPANIES		
735-3491 Rotan, Texas		



ROBY LIONS

vs

Bronte

7:30 Friday Oct. 17

At Bronte



Coach Walter Holik - Coach Paul Mitchell

Craig Randolph

Dwaine Rivers

David Posey

Don Campbell

Carlos Jones

Danny Terry

Mark Daniel

David Kiser

Jay Jennings

Curtis Chapman

Brad Stuart

Ricky Morton

Timmy Morton

Cam Campbell

Ricky King

Richard Gaona

James Putnam

Ricky Kiser

Mitch Welch

Rudy Flores

Jay Hilliard

John Rivas

Brad Etheredge

Brad Boyd

Stephen Evers

Rod Whitfill

Bruce Goodrum

Simon Castor

Lesse Castor

Farmers Union Co-op Gin Roby, Texas		Sweetwater Production Credit Roby, Texas	
Rotan Gin "Go Lions Go" Rotan, Texas	Hatahoe Roby, Texas	Deaton Insurance  Roby, Texas	Hinds Department Store Rotan, Texas
City Grocery & Market Roby, Texas		Citizens State Bank Roby, Texas	
Sweetwater Savings Association SWEETWATER ROTAN ROSCOE HAMLIN		Armstrong Implement J. I. Case Sales & Service Mr. and Mrs. L. V. Armstrong	Roby Flower & Gift Mr & Mrs. Erwin Burk
Central Lumber & Supply Co "All The Way Lions" Roby, Texas		Wilkinson Clinic Roby, Texas	
City Auto Supply Roby, Texas		Rotan Insurance Agency Joe D. Burk-Agent	Roby Aero Spraying Bob Terry 776-2727 Roby
STEWART SHAMROCK Roby, Texas	ROBY INSURANCE AGENCY Roby, Texas	NOLES DRUG Roby, Texas	WEATHERSBEE FUNERAL HOME Roby, Texas
		ROBY HYDRO INC. Roby, Texas	ROBY HARDWARE Westinghouse Appl Roby, Texas
		Randolph Grocery Larry Randolph-Larry Fields Roby, Texas	

- Mr. & Mrs. C. L. Evers
- The Dwight Lovett Family
- The Bennie LeBleu Family
- The Rudy Hamric Family
- The Glen Holt Family
- Mr. & Mrs. Paul Mitchell
- Mr. and Mrs. Ted Posey, Jeff, David, and Cindy
- The Keifer Cauble Family
- The Thomas Dickson Family
- The Jay Donham Family
- The Tommie Frierson Family
- Mr. & Mrs. Shorty Field
- The Bob Fournier Family
- The Ronald Green Family
- The Leon Helm Family
- The Charlie Horton Family
- J. B. & Lena Hughey
- Penny Jennings & Children
- Mr. & Mrs. T. C. Jinkens
- Mr. & Mrs. John Kiker
- Billy, Delphine, Randy, Ricky & Robby King
- Mr. & Mrs. John Matthies, Todd & Rodney
- Mr. & Mrs. Garland Moore
- Mr. & Mrs. J. T. Moore
- Mr. & Mrs. Tubby Moore & Jessica
- The Gayle Morgeson Family
- The Jack Morton Family
- Ben & Pat Neeper
- Mildred, Willardene & Maurcene Parker
- James & Cynthia Putnam & Boys
- The Ruben Rodriguez Family
- The Eugene Shipp Family
- Mr. & Mrs. L. L. Stuart
- Mr. & Mrs. Billy Ray Terry
- Mr. & Mrs. Cullen Terry
- Mr. & Mrs. Kermit Terry
- The Mike Terry Family
- Orpha Terry, Juanita Terry & Merry Lou Fuller
- The Caffey Welch Family
- The Larry Williamson Family
- Mr. & Mrs. Johnnie Ammons
- Mr. & Mrs. Don Ballenger
- Mr. & Mrs. Latham Burk, Tab & Leslie

Leisure Lodge News BY Ima Berry

Happy to have Mrs. Campbell back home again. She seems to be doing fine.
Also have a new resident, Mr. Sevens Palomina, glad to have him.
Have had lots of company the past week. Visiting the Harman Meadors were Mr. and Mrs. D.C. Bradley of Childress. Mrs. Mary Lu Barker visited Mrs. Nancy White.
Mrs. Frannie Beth Goodrum's brother and wife, Mr. and Mrs. Everett Erwin of Sundown came

by Friday. They were enroute to Breckenridge to attend the funeral of Mrs. Laura McDonald who was Mrs. Goodrum's and Mrs. Erwin's sister. All our sympathy to her family.
Everyone really enjoyed the Fisher County singing last Tuesday night. Think we had the largest crowd ever.
Wish happy birthday to Maudie Moize whose birthday was the 13th.
Come to see us. See you next week.

Card Of Thanks

We would like to express our gratitude and sincere thanks to our many friends who have helped us during Rex's surgery and recuperation.
The visits, flowers, cards and telephone calls were greatly appreciated. We especially thank the ones who cared for our cattle and plowed our land.
Rex, Neva, Lana And Sue Hall ***
Mr. and Mrs. Hill G. Smith of Lewisville visited with Mr. and Mrs. Worth Smith of Rotan and helped celebrate Worth Smith's 81st birthday.

HELLO:

**CHET
CHESS
DAPHNE**

**WE HAD A WONDERFUL VISIT.
Mom and Pop**

CROP CLINIC

WE CAN DEFOLIATE AND STRIP YOUR COTTON TO MEET YOUR SCHEDULE

CALL STANLEY TAYLOR HAROLD HAYNES 766-3917

CARPET!

We Have A Good Supply Of Fine Quality Carpet At Reasonable Prices
Professional Carpet Installers
Offer Guaranteed Satisfaction

SEE US FOR ALL YOUR CARPET NEEDS

LANDES FURNITURE
ROTAN, TEXAS



99¢
SHURFRESH 1/2 GAL.
Butter-milk
69¢

BAKERITE 3# CAN
Short-ening
\$1.19

SHURFINE 40 OZ
Grape Juice
\$1.19

PURNIA REGULAR 25#
Dog Chow
\$5.49

VIKINS 12"x25'
Foil
3 FOR \$1

WE NOW HAVE SOME OLE FASHION SORGHUM
Syrup
1/2 GAL. **\$2.98**

FROM ALABAMA

Thriftway's Harvest of Food Ideas!

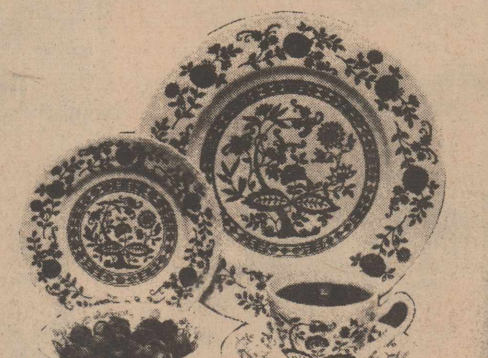
THRIFTY GROCERY BUYS

- SUNSHINE CHEEZ-IT Crackers 16 OZ. PKG. **69¢**
- NABISCO Oreo Cookies 19 OZ. PKG. **99¢**
- CARNATION Dry Milk 8 QT. BOX **\$1.79**
- SANITARY, REG. OR SUPER Kotex Napkins 24 CT. BOX **\$1.09**
- CARNATION HOT Cocoa Mix 30 OZ. JAR **\$1.99**
- CARNATION HOT Cocoa Mix 12 ENV. **\$1.00**
- BAMA RED PLUM Jam 18 OZ. JAR **69¢**

GRANULATED C&H SUGAR
\$1.19
LIMIT ONE
5 LB. BAG

HEALTH & BEAUTY AIDS

- GILLETTE TRAC II RAZOR BLADES 9 CT. PKG. **\$1.79**
- LISTERINE MOUTHWASH ANTISEPTIC 7 OZ. BTL. **59¢**
- DISPOSABLE LIGHTERS EA. **99¢**
- EVERYNIGHT SHAMPOO 8 OZ. BTL. **79¢**



BLUE HERITAGE IRONSTONE DINNERWARE
THIS WEEK'S ITEM: SAUCER
EACH BASIC PLACE SETTING WITH EVERY \$5.00 PURCHASE
49¢

FAMILY CIRCLE DO-IT-YOURSELF Encyclopedia
THIS WEEK'S VOLUME NO. 8 EACH **\$1.79**

- WILSON CERTIFIED-IN QTRS. MARGARINE 1-LB. PKG. **39¢**
- SHURFINE CHUNK LIGHT TUNA 6 1/2 OZ. FLAT CAN **45¢**

U.S.D.A. INSPECTED
WHOLE FRYERS LB. **49¢**

- SPLIT Fryer Breasts LB. **89¢**
- FRYER Drumsticks LB. **79¢**
- FRESH DRESSED Fryer Thighs LB. **79¢**
- NECKS, BACKS & WINGS Dumplin' Pac LB. **29¢**
- WHOLE CUT-UP FRYERS LB. **59¢**
- OSCAR MAYER WIENERS OR Beef Franks 1-LB. PKG. **\$1.29**
- OSCAR MAYER Bologna 8 OZ. PKG. **79¢**
- CENTER CUT Ham Slices LB. **\$2.19**
- CENTER CUT Ham Roast LB. **\$2.09**
- KAHN'S HALF OR WHOLE Boneless HAMS WATER ADDED LB. **\$1.89**

THRIFTWAY FROZEN FOODS

- ALL VARIETIES FROZEN Jeno's Pizza 13 1/2 OZ. PKG. **79¢**
- SHURFINE PRE-COOKED Fish Sticks 8 OZ. PKG. **49¢**
- (EXCEPT BEEF & HAM) REGULAR FROZEN Morton Dinners 11 OZ. PKG. **59¢**

DISHWASHING LIQUID
DAWN 20" OFF LABEL KING SIZE BTL. **99¢**

PRE-SOAK 10" OFF LABEL
BIZ GIANT BOX **79¢**

FOLGER'S MOUNTAIN GROWN COFFEE
LB. CAN **\$1.19**
LIMIT ONE

WOLF BRAND PLAIN Chili 19 OZ. CAN **79¢**
SHURFRESH Crackers 1 LB. BOX **49¢**

PERSONAL SIZE SOAP
IVORY 6" OFF LABEL 4 BAR PKG. **44¢**

WASHINGTON RED OR GOLDEN DELICIOUS-MIX OR MATCH
APPLE DAY 3 APPLES LB. **89¢**

- TEXAS NEW CROP Oranges 5 LB. POLY BAG **69¢**
- RUSSET ALL PURPOSE Potatoes 10 LB. BAG **98¢**
- GREEN Cabbage LB. **10¢**
- GREEN Onions 2 BUNCHES **29¢**

Maxwell House 10 Oz. Instant
COFFEE
\$2.29

- MORE THRIFTY GROCERY BUYS**
- PAPER Sofflin Towels JUMBO ROLL **49¢**
 - SHURFINE Spinach 4 15 OZ. CANS **\$1.00**
 - SHURFINE Salad Dressing QT. JAR **89¢**
 - ROXEY RATION Dog Food 7 NO. 1 CANS **\$1.00**
 - JOHNSON'S LEMON WAX FURNITURE POLISH Favor 12 OZ. CAN **\$1.19**
 - 10" OFF-SHOOT AEROSOL Pre-Wash 12 OZ. CAN **79¢**
 - ASSTD. MAMA'S Cookies 3 7 OZ. PKGS. **\$1.00**

THRIFTWAY DAIRY ITEMS

- PILLSBURY HONEY BUTTER OR CINNAMON ROLLS 9 1/2 OZ. CAN **59¢**
- PILLSBURY BUTTERMILK BISCUITS 9 1/2 OZ. CANS **\$1.00**

- SOFT PARKAY Margarine 2-8 OZ. TUBS **69¢**
- MIRACLE-6 STICKS Margarine 1-LB. PKG. **59¢**
- AMERICAN OR PIMENTO DELUXE SLICED Kraft Cheese 6 OZ. PKG. **59¢**
- KRAFT CRACKER BARREL Horn Cheese 12 OZ. PKG. **\$1.19**

SHURFINE 303 CAN
Tomatoes
3 For \$1

CLIP AND SAVE!

10¢ VALUABLE COUPON 10¢
BETTY CROCKER ASSTD. HAMBURGER NO. 23208
Helper BOX **59¢**
WITH THIS COUPON VOID AFTER OCTOBER 22 1975 LIMIT ONE COUPON PER CUSTOMER
10¢ **THRIFTWAY** 10¢

10¢ VALUABLE COUPON 10¢
COCOA OR FRUITY Pebbles Cereal 11 OZ. BOX **69¢**
WITH THIS COUPON VOID AFTER OCTOBER 22 1975 LIMIT ONE COUPON PER CUSTOMER
10¢ **THRIFTWAY** 10¢

8¢ VALUABLE COUPON 8¢
BREAKFAST CEREAL NO. 23206
Wheaties 12 OZ. BOX **49¢**
WITH THIS COUPON VOID AFTER OCTOBER 22 1975 LIMIT ONE COUPON PER CUSTOMER
8¢ **THRIFTWAY** 8¢