

PRIMARY ELECTION EXTRA!

# Haskell Free Press

Caution, do not Mail—This paper contains non-mailable Matter.

Haskell, Haskell County, Texas

Sunday, July 26, 1936

Eight Pages

## RATLIFF GIVEN MAJORITY FOR DISTRICT JUDGE

### Kemp Nominated for Sheriff Over Both Opponents

Taking a lead early in the night as returns from the county's 22 voting boxes trickled in, Giles Kemp, Sheriff seeking re-election for a second term, defeated both his opponents, W. T. Sarrels, former Sheriff, and J. V. (Jake) Jenkins of Rochester, without the necessity of a run-off campaign.

Tabulation of returns from all voting boxes in the county show that the present Sheriff received a plurality of 157 over his opponents. Vote for Kemp was 2,296, while Sarrels received 1,050 and Jenkins 1,089.

### Heavy Vote Is Recorded

Bearing out predictions that voters were more interested in Saturday's Primary than was indicated on the surface, approximately 4,450 Haskell county citizens registered their preference for district, county and precinct officers yesterday.

Voting started early after the polls were opened and continued steadily until closing time.

First returns, complete, came in shortly after 7 o'clock from Precinct 3, followed by Precinct 1 report.

Result in all county races follow:

- District Judge**  
Dennis P. Ratliff 2996. Henry F. Grindstaff 1381.
- District Attorney: F. M. Robertson 1529; B. C. Chapman 1936; Vernon D. Adcock 927.**
- County Judge: O. L. (Jim) Darden 1787; Joe A. Jones 594; Charlie Conner 2041.**
- County Attorney: W. H. Murchison 2439; Johnny Banks 1963.**
- County Clerk: Jason W. Smith 2463; Herman K. Henry 1960.**
- Sheriff: Giles Kemp 2296; W. T. Sarrels 1050; J. V. Jenkins 1089.**
- County Treasurer: Byron Wright 2247; J. E. Walling 2104.**
- Commissioner Precinct No. 2: Tom Mapes received a total of 485 votes; I. A. Leonard was second with 284; C. T. Jones 200; J. R. Mitchell 94.**
- Commissioner Precinct No. 3: P. G. Kendrick led the ticket with 269 votes; H. G. Hammer second with 103; Marshall Davis 96; R. W. Clanton 87.**
- Commissioner Precinct No. 4: R. H. Rife and L. C. Phillips will go into the runoff, each candidate receiving the following votes: R. H. Rife, 224; L. C. Phillips 182; P. H. Martin 165; C. R. Cook 100; B. M. Gregory 68; F. C. Pilley 48; W. F. Bosse 43; F. B. Reynolds 39.**
- Public Weigher Precinct No. 1 Haskell: R. L. Lemmon led the ticket with a total vote of 859; A. M. Williamson second with 644; and W. F. Patterson 469.**
- Public Weigher Precinct No. 2, Sagerton: T. C. Clark was elected over G. A. Leach by a vote of 342 to 164.**
- Public Weigher Precinct No. 3, Rochester: B. G. Swinson 233;**

### Given Approval



Now serving his first term, Giles Kemp was renominated for a second term in Saturday's primary with a plurality of 157 votes over two opponents.

### Date of First Primary Chosen As Wedding Day

Although date of the first primary will always be recalled as an important one by both fortunate and unsuccessful candidates, July 25th was an eventful one for two young Haskell county people who will observe this day as their wedding anniversary in years to come.

Miss Birdie Lillian Howard and Oscar Tidwell, popular young couple of the Howard community were united in marriage by Justice of the Peace R. H. Davis in his office in the courthouse at 10 o'clock Saturday morning.

### Mahon Is Easy Victor

On the face of partial returns from every county in the 19th Congressional District at 11 o'clock Saturday night, Congressman George Mahon of Colorado won renomination but a large majority over his opponent, E. B. Speck of Lubbock.

Vote for Mahon in Haskell county totalled 3,060, and for Speck 992.

This ratio was prevailing throughout the district, according to Abilene and Big Spring newspapers, who were tabulating returns in this race.

Ocie McGuire 182; Lester Brown 123.

In Constable Precinct No. 1, Haskell: J. H. Ivey defeated R. P. Glenn by 17 votes. Ivey receiving 931; Glenn 934.

**Tabulated Returns**  
Complete tabulated returns on all state, district and county races from all voting boxes in Haskell county will be found on pages 4 and 5.

### ALLRED LEADS OVER ALL HIS OPPONENTS

Compilation of returns in the Governor's race, as indicated at 9 o'clock last night, gave Governor James V. Allred a clear majority over all of his opponents.

Although Allred's lead was small, he had held it steadily throughout the day, gradually increasing his lead as additional returns from over the State were tabulated.

At 11 o'clock, Allred's majority over all opponents had become so conclusive that flashes from the Texas Election Bureau neglected to give vote totals—merely stating that he had been renominated conclusively without the necessity of a run-off campaign.

Tabulation of 350,000 votes in the state at 11 o'clock showed Governor Allred to have a majority of 14,000 over all opponents, he reported in a telephone conversation with R. C. Lowe of this city.

**Wood Leads Bullock**  
The same tabulation at 9 o'clock give State Superintendent L. A. Wood an indication that he would receive a majority over A. A. (Pat) Bullock of San Antonio.

### Religious Relics Featured In Holy City Exhibition

One of the largest as well as finest religious art exhibits ever shown in this country is assembled in the Holy City at the head of the Midway at the Texas Centennial Central Exposition. Included in the exhibit are more than 200 authentic shuffles of the Holy Land.

The masterpiece of the display, however, is the 8-foot mother of pearl, hand-carved cross designed and assembled by Antonio Bartlio in the Holy City of Jerusalem in the eighteenth century. The crucifix, which displays the fourteen stations in the life of Christ is made up of more than 15,000 pieces of mother of pearl and took more than ten years to complete.

The Lord's Last Supper, another art treasure, also executed by Bartlio is the only one of its kind in the world. Made of colored mother of pearl it delineates the detail of the Leonardo d'Vinci painting in the most minute conception. This carving is over 200 years old and contains over 3,000 separate pieces of mother of pearl.

There is a series of over 200 water colors depicting the story of both the Old and New Testaments. These were done on actual location in the Holy Land.

More than a million people visited the Holy Land exhibit during its two years' showing at the Century of Progress Exposition in Chicago and the unanimous expression of its many appreciative admirers was, "It is the next best thing to a trip to the Holy Land itself."

T. A. Gardner of Weinert, was transacting business in our city Friday.

Sam Davis of Rule, was a visitor in our city Saturday.

### Practically Complete Returns Over District Indicate Decisive Majority

#### Winner



Jas. V. Allred, Texas' Centennial Governor, appeared certain to win re-nomination without a run-off, on the face of incomplete returns from over the State late Saturday night.

### 'First' Honors In Voting Are Taken by Ladies

Honor of being "first" to vote in the four Haskell boxes went to three women and one man—and the ballots were cast within a few minutes after the polls opened at 8 o'clock.

First to vote were:  
Precinct 1—Mrs. Jesse B. Smith.  
Precinct No. 2—Belton Duncan.  
Precinct No. 3—Mrs. N. E. Cearley.  
Precinct No. 4—Velma Hambleton.

### Vote for Unopposed Candidates Not Listed in Returns

In the tabulated election returns on Pages 4 and 5, vote for county candidates who had no opposition were not listed in all boxes.

For this reason, Mike Watson for Assessor-Collector, and Roy Ratliff, for District Clerk, are credited with votes in only a few boxes—but in reality they received approximately 4,450 votes each. Official returns in next week's Free Press will show the exact number received by each candidate.

Returns incomplete, although conclusive, from the four counties comprising the 39th Judicial District, Throckmorton, Haskell, Stonewall and Kent, gave Judge Dennis P. Ratliff a clear majority over his opponent, Henry F. Grindstaff, for the office of District Judge.

Judge Ratliff was appointed in May of last year to succeed Clyde Grissom, resigned, and was seeking nomination for the unexpired two years term.

Ratliff received 2996 votes in Haskell county, with 1381 being cast for Grindstaff.

In Throckmorton county, with about 80 percent of the votes tabulated, Grindstaff had received 750 and Ratliff 720.

Kent county gave Ratliff 575 and Grindstaff 453. This was an incomplete tabulation.

Incomplete returns from Stonewall indicated that Judge Ratliff had received 683 votes, to 583 for his opponents.

### Cowboy Reunion At Centennial Is Called Off

The Texas Cowboy Reunion rodeo which was scheduled to be held at the Centennial Exposition in Dallas August 1 to 9 has been cancelled by mutual consent of Exposition and Reunion officials.

In announcing the cancellation here, W. C. Swenson, president and manager of the Reunion, explained that the cancellation came at the request of the Exposition management.

"Because attendance at a previous rodeo was very disappointing and the Exposition experienced a large financial loss, the Texas Centennial at Dallas has decided that it is inexpedient to hold another rodeo there and has asked us to cancel our engagement at Dallas from August 1st to 9th," Swenson said.

"The arrangements we had made with them have been cancelled by mutual consent because of their anxiety over the possible gate receipts, but not because of any unwillingness on our part to go through with our part of the contract. We had expected to have a show that would have been a high mark for amateur rodeos, and we regret that circumstances have arisen which have made it impractical to go through with it."

"We didn't seek the engagement and only agreed to put on the rodeo at the Dallas show after urgent and repeated requests," Swenson explained. "Therefore, when the Centennial officials expressed a desire to cancel, we acceded."

### Chapman and Robertson in Run-Off for Attorney

Complete returns from all Haskell county boxes, and practically complete totals from other counties in the 39th District at 12 o'clock Saturday night indicated that Ben Charlie Chapman would go into the run-off for District Attorney with a decisive lead over French M. Robertson.

In Haskell county the vote was, Chapman 1996, Robertson 1529. Throckmorton county, practically complete, gave Chapman 711, and

Robertson 549. Kent county, with some 100 votes yet to be compiled showed Chapman had received 296 and Robertson 205. In Stonewall county Chapman received 657, and Robertson 623.

Vernon D. Adcock, third candidate in the race for District Attorney, received 927 votes in Haskell county, and 1080 in the other three counties of the district, on the face of incomplete returns.

# STONEWALL NEGRO SHOOTSELF AFTER ATTACK ON WOMAN

### Attacker Dies While Being Rushed From Scene to Prevent Mobbing

Two members of a Stonewall county ranch family, Mrs. J. D. Patterson Jr., and 11-year old daughter, J. Dean, and their three guests from Houston, were terrified for an hour Thursday by a demented negro cook who brought a wild morning to the end by shooting and killing himself in the ranch house.

The negro was Sam Cyrus, 24. Guests of the Pattersons were Miss Louise Russell, her 17-year old brother Louis, and a younger brother, eight.

Mrs. Patterson, beaten over the head with a 22-rifle in the hands of the negro, lay unconscious for several hours after the attack. During the afternoon she was removed by ambulance to a Stamford hospital, arriving there at 7 p. m. She recovered consciousness during the night and today was reported in a favorable condition.

#### North of Peacock

The Patterson ranch is six miles north of Peacock, Miss Russell and her two brothers, friends of the Patterson family, had stopped there for a short visit while en route to Lubbock where Louis Russell will enter Texas Technological college. The day's wild events began about 9 o'clock Tuesday morning, an hour after Mr. Patterson had left for Olney for a load of gasoline.

Cyrus, heretofore a trusted employe became menacing when Mrs. Patterson scolded him about his work. When Louis Russell interceded the negro hit him over the head with his rifle, then herded both boys into an ice house in the yard locking them in.

Hearing the commotion, Mrs. Patterson ran into the yard. The negro met her with a stunning blow from the rifle butt and she fell unconscious.

#### Invades House

Cyrus then invaded the house, driving Miss Lois Russell into a small room and seating himself against the door.

In the meantime J. Dean Patterson fled screaming. The negro started to pursue her, but she escaped to the home of her grandparents, Mr. and Mrs. J. D. Patterson, Sr., three-fourths of a mile away. As Cyrus returned to the room where Louis Russell was imprisoned she leaped to safety from a window.

With the escape of two of his victims the negro propped a chair against the door, sat in it, turned the rifle on himself and fired one shot into his temple, toppling over unconscious.

#### Help Assembled

Help was assembled by telephone from the elder Patterson's ranch. Bailey Bingham, sheriff of Stonewall county, hastened to the scene from Aspermont, with T. F. Vaughan, deputy sheriff, Houston Bingham, son of the sheriff, and a posse of citizens. Before their arrival the Russell boys had gotten out of the ice house, and with Mrs. Russell had taken Mrs. Patterson to the home of her parents-in-law. An ambulance was summoned from Peacock. Mr. Patterson was reached as he arrived in Olney and hastened home.

Violence was threatened for the dying negro, but the officers firmly took charge of the situation, placing Cyrus in an automobile and starting to Aspermont. He died in route, near Swenson. At Aspermont, his body was turned over to other negroes and he was buried immediately.

The Pattersons are a well known ranch family of Stonewall county, all natives of that section. Mrs. Patterson was formerly Miss Vada Rash, daughter of Mr. and Mrs. Ed Rash pioneers.

The sale of Texas Centennial half-dollars is now being conducted in 338 banks in Texas and in 150 leading hotels, drug stores and cafes. The coins are being sold to augment state and federal funds in the building of the first unit of The Texas Memorial Museum at Austin.

### Lupe at Fair



Lupe Velez, firebrand of the screen, enjoys herself on the Midway of the Texas Centennial Exposition in Dallas.

### Summer Hints on Practical Cookery

We cannot have fresh fruits from our orchards the year round so we must conserve them in a usable way.

Jams are prepared by boiling the whole fruit pulp with sugar to a moderately thick consistency without retaining the shape of the fruit. Apricots, peaches, figs, tomatoes, blackberries, loganberries, raspberries, and loquats are especially good for jams.

Fruit butters are prepared by boiling fruit pulp from which all seeds or pits have been removed, with or without sugar, fruit juices and spices to a semi-solid mass of homogeneous consistency. As a usual thing, it is heavily spiced and prepared without sugar. Sweet butters are prepared by using 3-4 pound of sugar to one pound of pulp.

Left over pulp from jelly is often used in this way.

Pastes are made by cooking fruit butters or jams down slowly without scorching. They are then evaporated on the back of the stove or in the sun until very stiff. This paste is cut in squares and used as a confection.

Marmalades are good jellies with pieces of fruit suspended therein and should not have the consistency of a butter of jam. There are two types of marmalade. The English marmalade is bitter and the American is sweet. Oranges are most commonly used. However, grapefruit and lemons or combinations of these may be used.

Preserves are prepared by cooking fruit in sugar syrup, taking care to retain the shape of the fruit. The mixture should be bailed until the syrup reaches the consistency of honey. The fruit may be left in the syrup over night to plump after boiling.

To each pound of firm varieties of fruit add one pound of sugar and one quart of water. To berries or very ripe soft fruit only. Heat firm fruits in an open kettle to a temperature of 221 degrees F. or until the consistency of honey; boil berries with gentle stirring three or four minutes only. Allow to cool in an open vessel, shaking frequently during cooking and during cooling. Set aside for

twenty four hours to allow the fruit to absorb the syrup.

Pack fruit carefully in glass jars or cans. Heat the syrup from the fruit to boiling and fill the jars. Seal the jars and process for 30 minutes in water 185 degrees F.

**CHERRY BUTTER:** 3 cups seeded red cherries, 7 cups sugar, 1 T lemon juice. Mix ingredients and let stand 15 minutes to draw the juice. Boil gently 25 minutes or until mixture thickens. Pour into sterilized jars and seal when cool.

**TROPICAL DELIGHT:** 1 cup brown sugar, 2 T flour, 1-4 cup chopped dates, 1-2 cup chopped pineapple, 1-2 cup nuts, 1-4 cup pineapple juice, 1 T lemon juice, 1 cup water, 1-3 t salt. Blend flour with sugar. Add rest of ingredients and cook slowly, stirring constantly with creamy sauce forms. Beat well and cool.

### Snakes Cannot Strike As Far As Own Length

How far can poisonous snakes strike? About one-half to three fourths their length, says the United States Bureau of Biological Survey. The greater distance is rarely reached even during times of extreme excitement, and the longer strokes have little accuracy. It is commonly believed that they strike their full length or greater distances.

In striking at an object a snake simply straightens out the S-shaped curves in its body with great speed. When coiled it uncoils about half of the front part of its body and hurls that part forward from a looped position. Snakes can strike short distances from almost any position. The western diamond back rattlesnake, when excited,

frequently raises its head 10 to 15 inches above the ground. From this position it strikes sideways and downward.

Poisonous snakes often misjudge distance in striking at objects. Venom flying from their fangs when they strike at objects beyond their reach, accounts for stories of American snakes spitting poison. An African species really does this.

Reports of persons bitten by venomous snakes indicate that in most cases the victims were bitten on the legs or feet. High topped boots or heavy leggings therefore are an efficient safeguard against most attempts of snakes to bite. Most attempts of snakes to bite. Waist-high rubber wading boots with inserted canvas shank gives good protection in swamps and lowlands.

Often it's wise to swallow your pride and conserve your capital.

ANNOUNCING

# CUSTOMERS' PAY-DAY

We Are Going to Share Our Profits With Our Customers!

One Day Each Month We Will Give Our Patrons FREE Merchandise to the amount of their Redeemable Coupons dated on the day selected as

CUSTOMERS PAY-DAY

Ask About This Plan. It Will Pay You.

### CUSTOMERS "PAY DAY"

Ask for and Keep Your CASH Receipts for Everything You Buy In Our Store

One day each month we will have Customer's "Pay-Day", and your cash receipts bearing that particular date are good for any merchandise in our store, in the amount of your receipt.

This day will change each month, in accord with our business, but ALL who have cash receipts or registered, dated that day will be entitled to participate in our profits to the extent of getting FREE merchandise in a percentage of their business.

Such receipts will be made good at any time within 30 days after date selected as "Pay Day" but are void after that time and void if not stamped with our name and date.

EXAMPLE: Mr. S— comes into Hunt's Store and buys a \$10.00 bill. Then at the end of the month if the Customers Pay Day is selected as "Pay Day" Mr. S— brings his dated tickets in showing that he purchased a \$10.00 bill on Monday of that date. He is then entitled to pick out \$10.00 worth of merchandise

Absolutely Free of Charge

THE MORE YOU BUY

THE MORE YOU GET FREE

# Hunt's

A HOME OWNED STORE

# PERKINS-TIMBERLAKE COMPANY INCORPORATED

## THE "FINISH!" -JULY- CLEARANCE SALE

Not an item of Summer merchandise reserved . . . positively everything goes into these eight days of furious selling. Tables, counters, and racks loaded with clearance items, on which you'll find deep cut prices. Be here when the store opens Friday morning . . . look through the entire store. In this limited space it's impossible to list all the bargains. . . But it's July Clearance time and out they go at some price.

*Final Clearance! Sheer Crepe*

### DRESSES

We have grouped our remaining stock of sheer crepe Dresses, for final clearance at exceptional values. These Dresses are new, stylish models . . . only 14 remain at the low price of

# \$3.79



### SUMMER BLOUSES

One lot of Batiste Blouses, all printed patterns. For Final Clearance . . .

## 29c and 49c

### LADIES WHITE SHOES

Spring and summer stock of Ladies White Shoes, formerly selling for \$3.98, reduced for Final Clearance to—

## \$1.98

#### Two Special Fabric Groups for

Pepperell Lawn and Batiste. A large assortment of patterns to select from. Every yard fast color . . .

## 10c

One table of Seersucker, Dotted Swiss and other summer materials. Values to 49c. July Clearance, yard . . .

## 23c

#### Washable Ties

Our stock of popular 25c Wash Ties for men and boys have been reduced for final clearance to only . . .

## 12c

#### Men's Ties

Final clearance on Men's Ties! One dozen beautiful ties which formerly sold for \$1.00, priced for final clearance . . .

## 39c

#### Men's White Caps

These are all large head sizes. Priced for final clearance . . .

## 19c

#### Men's Summer Hats

One lot Khaki and White Mesh hat for men, for final July Clearance . . .

## 19c

#### Men's Straws

One special lot of thirteen nifty Straws, for final clearance . . .

## 39c

#### Boys Wash Pants

Our remaining stock of Boys Wash Pants . . . only 36 in this lot, priced for final clearance . . .

## 69c

#### "SURPRISE" TABLE

On this table you'll find Women's Blouses, Children's Dresses, Brassieres, Panties, Slips and other items. Your choice . . .

## 19c

Men's White Cotton Sport Shirts, in desirable patterns, for final clearance . . . (Also Boys Sizes)

## 29c

#### MEN'S WASH PANTS

You'll want several pairs of these popular patterns in Men's Wash Pants, and we have only sixty left for final clearance, priced . . .

## 79c

### MEN'S Summer Suits

Here's a saving opportunity for men! Our remaining stock of Summer Suits, all late style models, well tailored of quality material to assure plenty of service during the remaining months of hot weather. For final clearance we have disregarded all former selling prices and marked these suits for final clearance at

# 5.98

Extra Pants, \$1.00

Special Purchase  
**MEN'S DRESS SHIRTS**  
Slight irregulars from 79c and \$1.00 lines . . . all fast colors and nice new patterns . . . Sizes 14 to 18 . . . in this Sale at . . .

## 59c



|                     | For United States Senator: |                 |               | For Congress:   |              |                 | For Governor: |              |                | For State Comptroller: |               |                 | For State Treasurer: |                         |                    | For Land Commissioner: |               |               | For State Superintendent: |                 |                     |                     |            |
|---------------------|----------------------------|-----------------|---------------|-----------------|--------------|-----------------|---------------|--------------|----------------|------------------------|---------------|-----------------|----------------------|-------------------------|--------------------|------------------------|---------------|---------------|---------------------------|-----------------|---------------------|---------------------|------------|
|                     | Morris Sheppard            | J. Edward Glenn | Guy B. Fisher | Joseph H. Price | Joe H. Eagle | Richard C. Bush | E. B. Speck   | George Mahon | Roy Sanderford | Tom F. Hunter          | F. W. Fischer | James V. Allred | P. Pierce Brooks     | Walter Walton Covington | George H. Sheppard | Sam Houston Terrell    | Garland Adair | Harry Hopkins | Charlie Lockhart          | John W. Hawkins | William H. McDonald | A. A. (Pat) Bullock | L. A. Wood |
| No. 1—Haskell       | 527                        | 16              | 16            | 16              | 39           | 17              | 78            | 563          | 32             | 131                    | 46            | 431             | 11                   | 52                      | 468                | 106                    | 48            | 137           | 450                       | 157             | 481                 | 284                 | 358        |
| No. 2—Haskell       | 273                        | 15              | 21            | 17              | 29           | 30              | 81            | 317          | 15             | 120                    | 37            | 212             | 16                   | 44                      | 263                | 72                     | 46            | 116           | 225                       | 86              | 297                 | 193                 | 198        |
| No. 3—Haskell       | 192                        | 23              | 37            | 7               | 35           | 18              | 106           | 218          | 25             | 136                    | 59            | 100             | 19                   | 75                      | 194                | 55                     | 57            | 93            | 172                       | 90              | 232                 | 192                 | 139        |
| No. 4—Haskell       | 187                        | 16              | 204           | 14              | 20           | 23              | 72            | 236          | 22             | 117                    | 26            | 141             | 13                   | 42                      | 200                | 54                     | 30            | 62            | 207                       | 78              | 222                 | 128                 | 176        |
| No. 5—Rule          |                            | 16              | 9             | 13              | 11           |                 | 44            | 190          | 13             | 39                     | 29            | 150             | 13                   | 42                      | 135                | 48                     | 35            | 61            | 124                       | 63              | 159                 | 120                 | 104        |
| No. 6—Rochester     | 249                        | 25              | 47            | 23              | 26           | 20              | 127           | 287          | 36             | 98                     | 80            | 203             | 14                   | 76                      | 241                |                        | 7             |               | 232                       | 99              | 300                 | 222                 | 186        |
| No. 7—O'Brien       | 100                        | 5               | 6             | 3               | 3            | 8               | 69            | 81           | 2              | 58                     | 17            | 80              | 3                    | 26                      | 88                 | 18                     | 19            | 35            | 79                        | 32              | 106                 | 62                  | 84         |
| No. 8—Jud           | 53                         | 8               | 6             | 3               | 4            | 5               | 20            | 61           | 17             | 29                     | 12            | 25              | 4                    | 22                      | 47                 | 10                     | 7             | 19            | 55                        | 16              | 66                  | 47                  | 36         |
| No. 9—Cliff         | 52                         |                 | 2             |                 | 2            | 1               | 21            | 37           |                | 16                     | 11            | 30              | 3                    | 4                       | 49                 | 5                      | 5             | 18            | 29                        | 1               | 12                  | 45                  | 32         |
| No. 10—Weinert      | 244                        | 16              | 17            | 5               | 20           | 19              | 74            | 270          | 8              | 111                    | 43            | 191             | 5                    | 48                      | 219                | 60                     | 26            | 82            | 228                       | 67              | 255                 | 167                 | 168        |
| No. 11—Brushy       | 79                         | 5               | 1             | 5               | 1            | 4               | 31            | 62           | 7              | 19                     | 4             | 66              | 1                    | 6                       | 73                 | 9                      | 9             | 20            | 58                        | 16              | 70                  | 47                  | 43         |
| No. 12—Cottonwood   | 60                         | 8               | 4             | 6               | 12           | 11              | 28            | 85           | 13             | 39                     | 18            | 46              | 5                    | 17                      | 71                 | 15                     | 11            | 29            | 66                        | 22              | 86                  | 58                  | 54         |
| No. 13—Jim Hogg     | 24                         | 2               |               | 1               | 15           | 4               | 19            | 36           | 25             | 17                     | 5             | 8               | 4                    | 9                       | 24                 | 18                     | 5             | 7             | 41                        | 5               | 46                  | 18                  | 35         |
| No. 14—Howard       | 45                         | 4               | 7             | 5               | 3            | 3               |               |              | 6              | 26                     | 5             | 35              | 8                    | 9                       | 42                 | 24                     | 7             | 24            | 40                        | 2               | 52                  | 44                  | 31         |
| No. 15—Cobb         | 31                         |                 | 2             | 3               | 1            | 2               | 13            | 27           | 4              | 11                     | 3             | 32              |                      | 3                       | 34                 | 7                      | 7             | 10            | 24                        | 8               | 32                  | 29                  | 17         |
| No. 16—McConnell    | 49                         | 2               | 6             | 2               | 2            | 4               | 31            | 34           | 5              | 21                     | 13            | 28              | 4                    | 11                      | 40                 | 15                     | 11            | 12            | 42                        | 17              | 47                  | 30                  | 37         |
| No. 17—Sagerton     | 105                        | 11              | 21            | 20              | 27           | 9               | 86            | 162          | 14             | 161                    | 44            | 127             | 19                   |                         | 167                | 47                     | 7             | 59            | 149                       | 68              | 197                 | 120                 | 124        |
| No. 18—Joe Bailey   | 69                         | 5               | 9             |                 | 3            | 7               | 48            | 53           | 4              | 41                     | 17            | 43              | 10                   | 13                      | 71                 | 17                     | 8             | 14            | 80                        | 23              | 75                  | 53                  | 45         |
| No. 19—Tanner Paint | 42                         | 7               | 1             | 1               | 7            | 2               | 7             | 57           | 1              | 19                     | 9             | 36              | 7                    | 8                       | 37                 | 12                     | 5             | 11            | 43                        | 15              | 45                  | 41                  | 19         |
| No. 20—Bunker Hill  | 34                         | 2               |               | 4               | 2            |                 | 21            | 20           | 3              | 21                     | 2             | 21              | 2                    | 3                       | 28                 | 7                      | 10            | 6             | 25                        | 8               | 32                  | 21                  | 21         |
| No. 21—Post         | 45                         | 11              | 6             | 5               | 1            | 3               | 16            | 49           | 1              | 14                     | 9             | 43              | 6                    | 9                       | 45                 | 12                     | 8             | 18            | 39                        | 14              | 47                  | 32                  | 36         |
| No. 22—Rule         | 202                        | 20              | 4             | 7               |              | 21              | 4             | 215          | 16             | 45                     | 15            | 193             | 3                    | 28                      | 191                | 29                     | 19            | 36            | 195                       | 64              | 185                 | 157                 | 106        |
| TOTAL               | 2662                       | 181             | 431           | 152             | 247          | 214             | 992           | 3060         | 249            | 1289                   | 504           | 2241            | 160                  | 547                     | 2727               | 640                    | 387           | 869           | 2603                      | 981             | 3077                | 2097                | 2043       |

## TO THE PEOPLE OF THE 39TH JUDICIAL DISTRICT

I want to say that I gratefully appreciate the good vote I received. I am still running, and I solicit the support of all the people in the coming campaign.

**F. M. ROBERTSON**

## TO THE VOTERS OF THE 39TH JUDICIAL DISTRICT

Please accept my profound appreciation for the splendid vote given me in my race for District Attorney, and I earnestly solicit your support in the second primary.

**BEN CHARLIE CHAPMAN**

## TO THE PEOPLE OF HASKELL COUNTY

I wish to express my sincere thanks to those who supported me in Saturday's Primary. I feel very grateful to you for the good vote that I received, which places me in the run-off Primary August 22nd.

I will appreciate the same consideration of everyone during the remainder of the campaign.

Sincerely Yours,

**O. L. (JIM) DARDEN**

## TO THE PEOPLE OF HASKELL COUNTY

I wish to express my appreciation to the people of Haskell County for the excellent vote I received Saturday, giving me a plurality over my opponents.

Your approval of my service as Sheriff strengthens my desire to make you a more efficient and capable officer in the future, and I ask your cooperation to this end.

Gratefully and Sincerely,

**GILES KEMP**

|                            |                |               |                |                 |                     |                    |                |                |                      |                     |                   |                  |                        |                     |                     |                  |                   |                    |              |                |                      |                 |                      |                     |             |                   |                |                 |              |            |               |                      |                             |                |                       |                 |                    |
|----------------------------|----------------|---------------|----------------|-----------------|---------------------|--------------------|----------------|----------------|----------------------|---------------------|-------------------|------------------|------------------------|---------------------|---------------------|------------------|-------------------|--------------------|--------------|----------------|----------------------|-----------------|----------------------|---------------------|-------------|-------------------|----------------|-----------------|--------------|------------|---------------|----------------------|-----------------------------|----------------|-----------------------|-----------------|--------------------|
| For Railroad Commissioner: | Carl C. Hardin | H. O. Johnson | Goodson Reiger | Frank S. Morris | Earnest O. Thompson | For State Senator: | Y. L. Thompson | Harry Tom King | Wilbourne B. Collier | For District Judge: | Dennis P. Ratliff | H. F. Grindstaff | For District Attorney: | French M. Robertson | Ben Charlie Chapman | Vernon D. Adcock | For County Judge: | O. L. (Jim) Darden | Joe A. Jones | Charlie Conner | For County Attorney: | W. H. Murchison | J. H. (Johnny) Banks | For District Clerk: | Roy Ratliff | For County Clerk: | Jason W. Smith | Herman K. Henry | For Sheriff: | Giles Kemp | W. T. Sarrels | J. V. (Jake) Jenkins | For Assessor and Collector: | Mike E. Watson | For County Treasurer: | Byron G. Wright | J. E. Walling, Sr. |
| 200                        | 30             | 5             | 67             | 34              | 224                 | 72                 | 333            | 487            | 162                  | 288                 | 253               | 107              | 249                    | 118                 | 281                 | 319              | 330               | 330                | 318          | 340            | 154                  | 155             | 346                  | 298                 |             |                   |                |                 |              |            |               |                      |                             |                |                       |                 |                    |
| 112                        | 15             | 8             | 61             | 186             | 183                 | 71                 | 151            | 296            | 116                  | 163                 | 163               | 83               | 183                    | 51                  | 173                 | 205              | 203               | 206                | 202          | 227            | 96                   | 92              | 253                  | 154                 |             |                   |                |                 |              |            |               |                      |                             |                |                       |                 |                    |
| 105                        | 9              | 13            | 59             | 132             | 156                 | 70                 | 109            | 202            | 136                  | 157                 | 95                | 92               | 167                    | 37                  | 139                 | 169              | 174               | 312                | 208          | 135            | 160                  | 112             | 73                   | 312                 | 215         | 129               |                |                 |              |            |               |                      |                             |                |                       |                 |                    |
| 96                         | 29             | 7             | 36             | 128             | 156                 | 70                 | 107            | 255            | 66                   | 161                 | 93                | 66               | 137                    | 47                  | 137                 | 170              | 151               | 189                | 129          | 144            | 108                  | 73              | 158                  | 157                 |             |                   |                |                 |              |            |               |                      |                             |                |                       |                 |                    |
| 91                         | 13             | 2             | 32             | 97              | 71                  | 52                 | 102            | 157            | 83                   | 63                  | 146               | 33               | 81                     | 51                  | 112                 | 148              | 94                | 112                | 131          | 152            | 44                   | 48              | 79                   | 159                 |             |                   |                |                 |              |            |               |                      |                             |                |                       |                 |                    |
| 136                        | 16             | 10            | 61             | 71              | 149                 | 107                | 161            | 341            | 98                   | 75                  | 318               | 46               | 187                    | 39                  | 211                 | 212              | 228               | 243                | 196          | 161            | 46                   | 235             | 211                  | 209                 |             |                   |                |                 |              |            |               |                      |                             |                |                       |                 |                    |
| 57                         | 7              | 1             | 15             | 45              | 72                  | 20                 | 51             | 110            | 53                   | 45                  | 89                | 23               | 36                     | 15                  | 111                 | 104              | 59                | 166                | 100          | 64             | 117                  | 14              | 30                   | 46                  | 111         |                   |                |                 |              |            |               |                      |                             |                |                       |                 |                    |
| 34                         | 1              | 1             | 15             | 28              | 46                  | 17                 | 22             | 61             | 27                   | 15                  | 70                | 2                | 24                     | 7                   | 58                  | 51               | 38                | 55                 | 38           | 33             | 25                   | 31              | 47                   | 40                  |             |                   |                |                 |              |            |               |                      |                             |                |                       |                 |                    |
| 14                         | 3              | 2             | 10             | 24              | 31                  | 8                  | 18             | 40             | 21                   | 18                  | 34                | 9                | 14                     | 3                   | 44                  | 31               | 30                | 62                 | 51           | 11             | 3                    | 10              | 14                   | 62                  | 27          | 30                |                |                 |              |            |               |                      |                             |                |                       |                 |                    |
| 90                         | 21             | 9             | 71             | 131             | 162                 | 92                 | 94             | 216            | 146                  | 157                 | 143               | 62               | 157                    | 24                  | 183                 | 218              | 145               | 209                | 160          | 19             | 69                   | 105             | 242                  | 118                 |             |                   |                |                 |              |            |               |                      |                             |                |                       |                 |                    |
| 27                         | 4              | 1             | 14             | 39              | 59                  | 19                 | 12             | 78             | 20                   | 18                  | 48                | 31               | 36                     | 2                   | 60                  | 63               | 35                | 62                 | 38           | 51             | 19                   | 27              | 58                   | 39                  |             |                   |                |                 |              |            |               |                      |                             |                |                       |                 |                    |
| 24                         | 5              | 18            | 49             | 69              | 28                  | 19                 | 77             | 44             | 47                   | 54                  | 21                | 66               | 18                     | 38                  | 75                  | 46               | 86                | 33                 | 61           | 44             | 15                   | 95              | 28                   |                     |             |                   |                |                 |              |            |               |                      |                             |                |                       |                 |                    |
| 11                         | 2              | 4             | 9              | 24              | 49                  | 3                  | 5              | 31             | 29                   | 27                  | 15                | 19               | 48                     | 1                   | 12                  | 48               | 13                | 46                 | 15           | 25             | 32                   | 4               | 55                   | 5                   |             |                   |                |                 |              |            |               |                      |                             |                |                       |                 |                    |
| 19                         | 5              | 20            | 27             | 42              | 26                  | 10                 | 54             | 29             | 15                   | 13                  | 55                | 55               | 5                      | 24                  | 54                  | 28               | 39                | 46                 | 39           | 23             | 23                   | 61              | 22                   |                     |             |                   |                |                 |              |            |               |                      |                             |                |                       |                 |                    |
| 14                         | 1              | 2             | 4              | 17              | 22                  | 4                  | 16             | 22             | 26                   | 12                  | 28                | 6                | 4                      | 4                   | 43                  | 41               | 7                 | 48                 | 2            | 45             | 11                   | 5               | 22                   | 28                  |             |                   |                |                 |              |            |               |                      |                             |                |                       |                 |                    |
| 14                         | 10             | 2             | 8              | 31              | 30                  | 13                 | 25             | 60             | 12                   | 10                  | 27                | 36               | 15                     | 12                  | 46                  | 36               | 35                | 47                 | 27           | 50             | 10                   | 13              | 27                   | 43                  |             |                   |                |                 |              |            |               |                      |                             |                |                       |                 |                    |
| 78                         | 11             | 9             | 35             | 97              | 112                 | 34                 | 108            | 182            | 81                   | 77                  | 117               | 71               | 162                    | 11                  | 100                 | 183              | 84                | 129                | 142          | 129            | 95                   | 46              | 97                   | 168                 |             |                   |                |                 |              |            |               |                      |                             |                |                       |                 |                    |
| 33                         | 4              | 16            | 40             | 58              | 15                  | 53                 | 77             | 40             | 38                   | 53                  | 19                | 37               | 6                      | 73                  | 56                  | 58               | 63                | 51                 | 74           | 24             | 19                   | 49              | 63                   |                     |             |                   |                |                 |              |            |               |                      |                             |                |                       |                 |                    |
| 22                         | 4              | 1             | 12             | 19              | 24                  | 13                 | 25             | 43             | 24                   | 29                  | 24                | 14               | 20                     | 21                  | 28                  | 38               | 30                | 31                 | 37           | 36             | 25                   | 9               | 17                   | 48                  |             |                   |                |                 |              |            |               |                      |                             |                |                       |                 |                    |
| 11                         | 1              | 12            | 16             | 25              | 13                  | 7                  | 22             | 25             | 24                   | 10                  | 14                | 18               | 3                      | 28                  | 25                  | 23               | 34                | 15                 | 19           | 13             | 18                   | 16              | 33                   |                     |             |                   |                |                 |              |            |               |                      |                             |                |                       |                 |                    |
| 12                         | 2              | 2             | 16             | 27              | 39                  | 7                  | 24             | 57             | 16                   | 15                  | 7                 | 52               | 26                     | 7                   | 41                  | 39               | 34                | 45                 | 28           | 28             | 13                   | 33              | 35                   | 37                  |             |                   |                |                 |              |            |               |                      |                             |                |                       |                 |                    |
| 87                         | 6              | 1             | 25             | 151             | 39                  | 28                 | 201            | 138            | 127                  | 75                  | 132               | 66               | 65                     | 112                 | 99                  | 154              | 118               | 129                | 142          | 180            | 74                   | 21              | 91                   | 182                 |             |                   |                |                 |              |            |               |                      |                             |                |                       |                 |                    |
| 1287                       | 189            | 85            | 626            | 1413            | 1818                | 782                | 1633           | 2996           | 1381                 | 1529                | 1936              | 927              | 1787                   | 594                 | 2041                | 2439             | 1963              | 2463               | 1964         | 2296           | 1050                 | 1089            | 2247                 | 2104                |             |                   |                |                 |              |            |               |                      |                             |                |                       |                 |                    |

## THANKS

Until I can see you personally I take this method of expressing my appreciation to the voters of the 39th Judicial District for the vote of confidence given me in my race for District Judge. It shall be my constant aim to discharge the duties of the office with fairness and impartiality to everyone, thus endeavoring to show you that your confidence has not been unworthily bestowed.

Sincerely,

**DENNIS P. RATLIFF**

## TO THE VOTERS

To state that I appreciate the vote given me for re-election would be putting it mildly.

I take this method to thank everyone who voted for me, and if I can see you personally I will thank you again.

Sincerely,

**JASON W. SMITH**

## THANKS TO ALL OF YOU

I wish to express my sincere appreciation to my many friends for their confidence and vote, as evidenced by the result of Saturday's primary. It will be my pleasure to repay you with the best service of which I am capable, as your County Attorney.

I shall endeavor to conduct the affairs of the office in such a manner that will be satisfactory to all concerned.

**WALTER MURCHISON**

## TO THE PEOPLE OF HASKELL COUNTY

I wish to thank you for the splendid vote you gave me Saturday, and solicit not only your vote, but the vote of those who saw fit to support someone else.

Again I pledge my best service and assure you of an efficient, courteous and accomodating administration, if you honor me by re-electing me your County Judge.

**CHARLIE CONNER**

### TEXAS ELECTION LAWS ARE DUE FOR OVERHAULING SOON

By BYRON G. UTECHT  
In the Fort Worth Star-Telegram

The Texas elections laws are due for an overhauling when the legislature meets. For several years many members have desired amendment, but there has been no centralized effort. Several things have happened in the last year or two to cause legislators to believe a redraft of the law can not be delayed longer. Those who have studied the present election laws say there are 100 flaws.

A San Antonio court not long ago held the statute limiting the expenses of a gubernatorial candidate to \$10,000 is unconstitutional. Opinions have been expressed that this ruling, therefore applies to candidates for other offices, leaving the situation muddled. Besides, the San Antonio decision was not taken to the supreme court. However, in the present campaign, candidates are filing their sworn statements to expense accounts.

Various state officials and legislators believe it is folly to have the State Democratic Convention adopt a platform after the elections are a thing of the past, when every one has been elected on his own individual platform. So there is much sentiment to have the law require this convention to be held in the spring instead of the fall. As it stands, no one pays any attention to the platform.

The election laws fill more than 100 printed pages, so to remodel these statutes is an enormous undertaking and could be done only at a four-month regular session.

Investigation at the offices of the secretary of state discloses many candidates for legislative posts failed to file their expense accounts by July 1, as required by law. Some officials are looking into the San Antonio ruling to determine whether it also holds this provision as unconstitutional. But informal opinion of the attorney general's department is that the San Antonio decision does not affect legislative candidates. The constitution provides that the legislature has the right to regulate qualifications of its own members. But the legislature, the San Antonio court pointed out, under the constitution, does not have the same right to regulate the gubernatorial candidates' qualifications, the constitution itself setting forth what these qualifications must be.

The forty-fourth legislature added a new chapter to the election laws, a strong, rigid statute forbidding employees assisting in electing heads of state departments, and the head of a department is subject to removal if he makes use of employees efforts. A department head now can not make use of stationary, stamps, automobile, time or any other departmental device or facility in a campaign, and employees are prohibited from writing letters to friends urging political support.

Back in 1905 the election law was amended with this significant provision: "Any head of any departments of state or other public officer who shall demand or receive any money or thing of value from any clerk or other person in his office for his election expenses, or to reimburse him for money already expended, or who shall remove from office any competent clerk who declines to make such contribution shall be fined not to exceed \$500."

Some departmental employees have resigned temporarily to help out in a campaign or two, but this year state departments are much more guarded in their political efforts.

There are some who believe the stringent law enacted by the forty fourth would be held unconstitutional if tested in the court under the assumption the constitution guarantees to every citizen the right to speak for and work for any candidate. But no test suit has been brought.

Should there be a move to disqualify the nearly 60 candidates for legislative seats who failed to file their expense accounts by July 1 here it would be an unusual and perhaps disturbing event because so many of them failed to "go under the wire" by the time specified. The law itself is plain spoken in saying such candidates shall not have their names on the ballot in the primaries, but it does not directly command the

### Rodeo Sponsor



Louise Voelker, of Wichita Falls, will be one of the district sponsors at the Stamford Cowboy Reunion and Roundup in the Texas Centennial Exposition's Cotton Bowl at Dallas, Aug. 1-9. The Stamford rodeo is considered on a par with those at Cheyenne and Pendleton.

attorney general's department, state executive committee or any other agency to institute quo warranto proceedings.

Any citizen may bring suit against such candidate, but there is a court ruling, Staples vs. State, in which it was held that such proceedings must be brought by a county attorney, district attorney or by the attorney general.

State officials and legislators

have felt an increasing demand to so amend the law as to eliminate the second or run-off primary in contests, but no acceptable bill on this ever has been introduced.

When Dan Moody and Mrs. Miriam A. Ferguson were governors, each called a special session soon after the Democratic primaries, and general election when new sets of legislators were chosen. Should the newly elected members or the defeated members be entitled to sit at these called sessions? This became an all important issue at the time, but it was found impossible for the newly elected to qualify. The issue settled itself, but it left something not clearly defined in the statutes.

### Bonus Payments Decline Sharply; 'Vets' Keep Bonds

Bonus payments slowed to a trickle last week, with Treasury officials at Washington expressing surprise at the large number of veterans apparently preferring interest-bearing bonds to immediate cash.

Under the process of payment, the veteran first is given bonds covering the money due. He is privileged to convert the bonds into cash at once, or he may hold them and turn them in with accumulated interest when they mature in 1945.

Thus far, of \$1,708,600,000 in bonds issued to the veterans, a total of \$1,064,300,000 has been presented for cash payment. This was against an estimate made in May that the cash cost of the bonus would run to \$2,237,000,000.

The figures, too, showed both bond and cash payments rapidly dwindling. In approximately the last 15 days of June \$1,668,700,000 in bonds were issued of which the veterans cashed \$724,200,000.

By comparison, approximately the same number of days in July saw only \$39,000,000 in bonds go to the former soldiers and \$340,000,000 presented for cash payment.

If, as some officials think is indicated, the payments are thus sloping away, a revision in the year's budget figures may become necessary.

## I'M THANKFUL TO YOU ALL

It is a source of great pleasure to me to realize that the people of Haskell county, whom I have tried to serve faithfully and acceptably during my first term, have given me their endorsement for a second term without opposition. Let me thank every one of you for this honor.

This office belongs to you, and I am your servant. When I can be helpful to you in any way, let me know. It is always a pleasure to serve you.

### ROY RATLIFF

DISTRICT CLERK

READ THE FREE PRESS WANT ADS EVERY WEEK

The New 1937

## CROSLEY RADIOS

Have received a vote of confidence from thousands of Radio owners. They are here for your inspection, in a range of prices from \$19.99 up.

### The CROSLEY FIVER

An electric set priced within the reach of every home. New performance, New Beauty, and New Value is found in this popular model. 5 tubes . . . two bands . . . full floating moving coil Electro-Dynamic speaker . . . A real sensation in a low priced radio.

Complete **\$19.99**

## FREE! FREE!

We will give away absolutely Free on August 8th at 5:30 p. m., a beautiful set of dishes with luncheon set to match. Tickets are given with each 50c purchase. . . Save your tickets and attend the drawing on the above date.

### CROSLEY BATTERY SETS . . .

Two big values . . . Four and Five Tube super-hetrodyne . . . operates from 6 volt storage battery . . . No "B" batteries required. Either model a real buy at the price—

**\$34.50** and **\$44.50**

With either one of the above models we will sell you a \$44.50 wind charger that will keep your battery up at all times and light your home for the low price of only—

**\$15.00**

Whatever happens . . . You're there with a Crosley.

## Fouts Dry Goods and Variety

West Side

Haskell



## A QUALIFICATION

Modern complicated life has made it impossible for everybody to be thoroughly versed in every subject that he may be called upon to deal with at some time in his life. In each field specialists have risen—specialists who have made a thorough, life-long study of their respective lines of work and are fully qualified by training and experience to perform it.

That, in substance, describes the qualifications of the Jones, Cox & Company establishment.

### Jones, Cox & Company

FUNERAL CHAPEL

W. O. Holden in Charge

Ambulance Service

Office Phone 55

Night Phone 442

(100) days from the bid opening. No bid may be withdrawn within thirty (30) days after the date on which the bids are procured from the above upon a deposit of \$5.00 each, as a guarantee of their bona fide interest.

### 4-H Clubs to Make Nationwide Study of Leisure Time Use

A nation wide study to improve rural and small town social and recreational life is to be a major activity of 4-H local dealers and members in the next few months. The program seeks to discover the best ways by which the youth of a community may use its leisure time and thus offset tendencies common today which are destructive to the development of the finest manhood and womanhood.

Guides for the study are being distributed to 75,000 state, county and local club leaders of the United States by the National Committee on Boys and Girls Club Work which is launching the project, and has secured for its sponsorship the Radio Corporation of America and affiliates, National Broadcasting Company and RCA Victor, which provide prizes valued at approximately \$17,000 to successful contestants.

**Blank Forms Supplied**

The guide is in the form of a report blank and calls for information on such activities of 4-H Clubs as contests and personal growth opportunities as indicated by school records, reading habits, music participation and use of radio, church and secular programs. Other desired data is on parties, camps, tours, public entertainments, discussion groups and community enterprises like park and playground development, libraries, fire prevention and cooperation in local fairs. Conservation and social service in all of their aspects complete the list of subjects for which information is desired.

Reports of local clubs are to be completed and filed with county extension agents for the selection of a county champion club early in October. The records of the county winning clubs are to be submitted to the State Club Leader in time for the selection of a

### "Typical Ranger" Statue Ready



"The Typical Ranger" statue to be presented to the Texas Rangers at the headquarters on the Texas Centennial Exposition grounds in Dallas, is nearing completion in Hollywood. It will be unveiled at

the world premiere of "The Texas Rangers," a Paramount super-film, in Dallas. At right is Capt. Bill McMurray, who posed as the typical Ranger. In front of him is David Silva, the sculptor.

state champion club by November 9. State reports in each of the four extension divisions of the United States will be judged to choose a winner therein, and one of these four will be named national champion club.

County winning clubs each receive a handsome year book to record its activities. The leader of each county champion club receives a gold medal, and its respective county extension office a silver plaque. The state winning club receives a library of 120 Victor records selected for recreational use and an RCA Victor record player. The leader of the

club receives a \$100 RCA fully equipped radio set.

**Includes 44 Chicago Trips**

To each member of the four regional winning clubs up to ten members and their leaders is awarded an all expense educational trip to the fifteenth National Club Congress to be held in Chicago November 27—December 5 in connection with the International Livestock Exposition.

The members of the national champion club receive a gold medal, and to their county goes a combination RCA radio-phonograph and 461 selected Victor records valued at \$1550. Two \$500 college scholarships complete the prize list which are to be awarded each to a boy and girl participating in the contest who best typify the objectives of 4-H Clubs. The scholarships are to be presented in June, 1937 in Radio City, N. Y. by Mr. David Sarnoff, President of Radio Corporation of America, who also provides a trip for each recipient and chaperon.

It is always fashionable to be sensible.

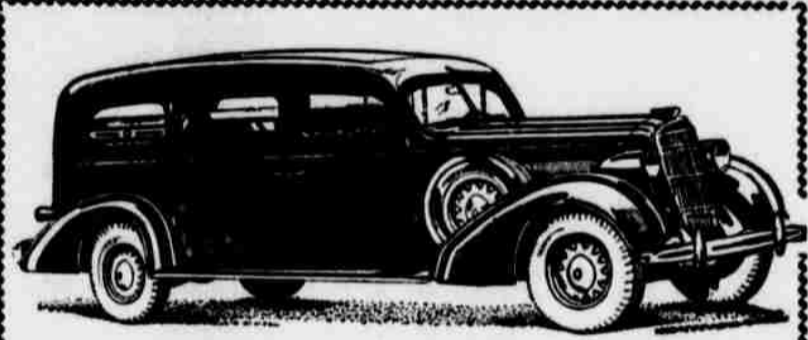
### NOTICE TO BANKING CORPORATIONS

Notice is hereby given to all banking corporations that the City Council of the City of Haskell, Texas, will on the 17th day of August A. D. 1936, receive proposals from any banking corporation that may desire to be selected as a depository of the funds of the said City of Haskell, Texas. Said proposals shall be delivered to the City Secretary of the City of Haskell, Texas, not later than 10 A. M., on the date above mentioned.

Done by order of the City Council of the City of Haskell, Texas.  
F. G. ALEXANDER, Mayor.  
R. A. COBURN, Secretary. 4tc.

The Centennial half dollars, depicting the history of the State itself, are much sought after for souvenirs from the Texas Centennial Exposition by out-of-state visitors and Texans.

If machines are a menace to civilization, why do so many unemployed girls refuse to do housework and seek jobs in factories?



Prompt, Dependable Ambulance Service  
Day or Night



# FREE!

\$5.00  
BASKET OF  
GROCERIES  
EVERY  
FRIDAY

Tickets Given  
With Each  
\$1.00  
Purchase



**DRAWING HELD EACH FRIDAY AFTERNOON AT 4 O'CLOCK**

Person Holding Lucky Number Must Be Present To Win.  
If Winner is not present, award increases \$5.00 each week until person whose number is drawn is present.

# Gholson Grocery

## TO THE CITIZENS OF HASKELL COUNTY:

Please accept my thanks for your approval of my service as your Tax Assessor-Collector, which has led you to nominate me for re-election without opposition. Such friendliness strengthens my desire to give you an increasingly efficient service. I can do this best as you give me your continued cooperation.

Thanks again! And don't fail to call upon me when I can be of service.

**Mike B. Watson**  
Tax Assessor-Collector

### Swimming Hazards Should Be Heeded During Summer

In Texas, during 1935, there were 371 deaths from accidental drowning according to records in the State Bureau of Vital Statistics. This is an increase of 54 over the number reported for the year 1934, and an increase of 85 over the number reported for 1933.

"While water sports are the greatest of all sports during the summer season, they present certain hazards which should be heeded," said Dr. John W. Brown, State Health Officer. "Accidental drowning would not occur if each individual respected the fact that water is not man's natural element, and governed his activities in the water by standards of safety."

"Certain precautions should be taken by all swimmers:

1. Never swim alone—especially in deserted places where no rescue is available in case of an emergency.
  2. Do not let young children go out in deep water even if they know how to swim, unless some older person proficient in life saving, is with them.
  3. Do not go in bathing directly after eating. Wait two hours before taking the plunge.
  4. Do not dive in unfamiliar places until you are sure of the depth of water and the absence of rocks.
  5. Do not overtax your strength—work up gradually to a long swim by strengthening the muscles first.
  6. Do not swim when fatigued.
  7. Do not create a hazard for other swimmers by childish pranks and smart tricks.
- "Accidental drownings, with few exceptions, occur through lack of proper safeguards or in places without adequate supervision. Take your swim in one of the approved sanitary swimming pools now available in most communities, and help reduce the deaths in Texas from drowning."

Art shows being sponsored by the University of Texas Centennial Exposition now in progress in Austin are featuring Texas art and Texas artists only. Artists from all parts of the state are exhibiting in the shows.

### Double-Header Comets May Soon Be Easily Seen

Two comets are now visible to the naked eye in the evening sky, an extremely rare occurrence, Harvard astronomers at Cambridge, Mass., have observed. In addition to the Peltier, which may be seen in the northern sky, there is another comet known as the Kaho Comet which was discovered recently by an amateur variable star observer, Siguro Kaho in Sappora, Japan. The Kaho Comet is visible early every evening low in the western sky, it was said at the Harvard Observatory.

A determination of the position of the Kaho Comet was made at Harvard's Oak Ridge station which is now computing the orbit of the comet.

The following is a report by the observatory:

Kaho Comet, discovered July 17 in the western sky not far from the sun (by Siguro Kaho, amateur observer in Sappora, Japan) was reported originally by Kaho with a wrong position and motion, but following the first announcement the comet was nevertheless observed July 18 at Tokyo and Lick observatories."

"Subsequent observations have been received from Lick, Yerkes and Harvard observatories and from Taskent in Turkestan.

"The comet's position, as determined from photographs made last night at Harvard's Oak Ridge station by L. E. Cunningham, is right ascension nine hours, 50 minutes, 20 seconds; declination north 35 degrees, 59 minutes, 60 seconds with very small motion."

"The comet is just at the limit of the naked eye visibility, about sixth magnitude, and has a tail nearly a degree long away from the sun. Probably the first orbit will indicate whether the object is brightening or fading."

Shorts in public are all right for those who look well in them, but the decision should be left to a committee.

You don't know how good food can taste unless you've eaten a slice of bologna and a slice of onion between two pieces of rye bread at midnight.

### 'Last Frontier' Depicts Early Days In Texas

Texas and the Southwest as it was 100 years ago is pictured in a high exciting spectacle known as "The Last Frontier," at the Ft. Worth Frontier Centennial. This western saga set to music expresses the heritage of Texas and the Southwest. It is not a pageant, not a pageant, but a rip-roaring dramatization that every westerner will love as a part of the background in which he lives; it is also a show that thrills the easterner.

This cowboy about whom much of the show revolves, was given an unexpected opportunity to demonstrate his resourcefulness at the opening performance when Sundown, one of the horses in the broncho-busting episode bucked himself and Chuck Williams into the pool at the foot of the waterfall. The crowd got back in its seats only after the rider crawled out of the pool and the cowboys in the arena roped the horse, dragged him from the water and helped him to his feet. Neither was hurt.

The show is notable for its sequence of western pictures alone for the train of prairie schooners that comes winding down out of the mountains, for the breath-taking lightning on the longhorn herd as it disappears up the trail.

The sonorous voice of Capt. Irving O'Hay gives the background!

"Many, many moons ago, the smile of the Great Spirit beamed upon the land of that red man. Great herds of shaggy buffalo thundered westward..."

And as the spectacle unfolds, the audience experiences the beauty of its water fall, of the lithe young square dancers forming a wagon wheel and a star, of the indescribably appealing music that Producer Billy Rose and his staff have added to the songs of the West.

It experiences the thrills of an Indian attack on the wagon trail, of one of the schooners leaving the arena in flames.

There never was another show like it. It brought its spectators to the edge of their seats time and again. And with the finale, it brought them to their feet to blend their voices with the stirring music of "The Eyes of Texas".

Miss Helen David of Ada, Oklahoma, who has spent the past three weeks with her aunt, Mr. and Mrs. C. H. Spurlin of Sager-ton, left for her home Friday morning. She sopped in Haskell for a short visit in the home of Mr and Mrs. R. H. Crow. Miss Davis was accompanied to Haskell by Mr. and Mrs. Spurlin.

A man usually thinks the price of the admission will cover the cost, but he forgets that his wife will spend \$50 for new clothes.

# NORGE

MORE for your money



For bigger values from any angle, invest in a Norge Rollator Refrigerator. It has everything—beauty, convenience, efficiency, greater dependability. And more, it has the famous Rollator Compressor, the almost everlasting mechanism that provides more cold, uses less current. Come in and see this greatest Norge of all time. Prices are low, terms easy.

- CHOOSE NORGE FOR ITS**
- Press Action Lazzilatch \* Combination Bottle and Dairy Rack
  - Sliding Utility Basket \* Adjustable Shelf \* Improved Automatic Flood Light
  - Closely Spaced Shelf Bars
  - Almost Everlasting Rollator Compressor \* Many other improvements and refinements.

## REEVES-BURTON MOTOR COMPANY

# FREE!

Every Saturday

## 32-Piece Dinner Set

See It In Our Windows

Chances Given With Each 50c Purchase!

Drawing Held at 4 P. M. each Saturday, and you must be present to win—drawing continues until someone wins the Dinner Set.

# SMITTY'S

# \$150 Free!

BANK NIGHT—TUES. JULY 28  
HOLDER OF LUCKY NUMBER MUST BE PRESENT OR REGISTERED

PICTURE ATTRACTION: Frances Dee and Brian Donley IN

## "HALF ANGEL"

Matinee at 1 P. M.



ALWAYS COOL AND COMFORTABLE