

## Jojola Skips Bail, Back In F.C. Jail

Antonio Garcia Jojola of Midland, charged with attempted murder and aggravated assault in connection with the shooting of Danny Terry earlier this year is back in Fisher County Jail after "jumping bail" and failing to appear in 32nd District Court on August 4.

Jojola was awaiting trial and was out of jail on a \$20,000 bond made through B&B Bonding Company of Midland.

He was scheduled to appear in 32nd District Court on Monday, August 4, but failed to appear. District Judge Weldon Kirk ordered the bond forfeited and an arrest warrant was issued by the Fisher County Sheriff's Department to all Texas Law Enforcement agencies.

On Sunday, August 10, Jojola was arrested in Fort Worth by Fort Worth law officers. He was held in a Fort Worth jail and on Monday, August 11, Deputy John Walker transported Jojola to the Fisher County jail where he is currently in confinement without bond.

His appearance before the 32nd District Court is being re-scheduled.

## Rotan Booster Club Meeting This Friday

There will be a meeting of the Rotan Booster Club on Friday night, August 15, according to president Stanley Nowlin.

The meeting has been set for 8:30 p.m. at the High School Cafeteria. Refreshments will be served.

The purpose of the meeting is to organize and elect officers for the 1980-81 season.

All parents and friends of Rotan athletes are invited to attend.



## \$100 Month Raise For F.C. Employees Pending

The Fisher County Commissioners are proposing an across the board \$100.00 a month salary increase for all Fisher County employees, according to information released last Monday in the preliminary budget hearing and information from Judge Marshal Bennett last Tuesday morning.

Bennett said that in years past, percentage increases have been given all employees. In this manner higher paid personnel receive more money. It was felt that the straight across \$100.00 a month increase to all employees from road hands to the County Judge and County Attorney would be more equitable.

The commissioners are also expected to implement a longevity or

seniority pay raise incentive. When the 1981 budget is finally adopted in September commissioners are expected to ask for a \$25.00 a month salary increase for all employees employed by the county for more than 5 years. This will be adjusted in two year intervals with a \$25.00 a month increase added for employees with 7 years, additional \$25.00 a month for employees with 9 years, etc.

Another salary adjust-

ment proposal expected to be included in the final budget is the possible addition of a \$25.00 a month increase for the formen of road crews.

Fisher County has approximately 43 county employees. The \$100.00 a month straight-across salary increase will amount to \$5,160.00 a year.

Final action on the salary increases will take place at the final budget hearing set for September of 1980.

## Hobbs School Begins Classes August 21st

Hobbs I.S.D. will begin the 1980-81 school year on Monday, August 18. There will be three new teachers, DeeAnn Weathersbee, Cecilia Greenlee and Walter Miers, along with returning teachers Maudie Gober, Kathleen Hale and Gary Finley. Hobbs will have grades Kindergarten through six, and feel all students will get much work accomplished and enjoy the school year.

The first three days, Aug. 18-20, are teacher in-service and workdays. The buses will run and lunch will be served for students on August 21.

The school system has installed the ceilings, closed and insulated windows and installed new lights in eight rooms. This should save energy as well as cut the cost to heat the buildings. Also, this had greatly improved the appearance of the classrooms.

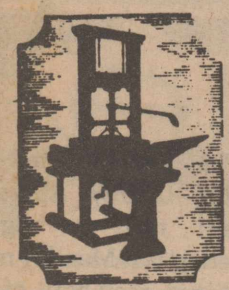
## Roby School Registration

Roby High School students will register for classes Wednesday, August 20. Seniors will register at 10:00 a.m., juniors, 11:00 a.m., sophomores at 1:00 p.m. and freshmen at 2:00 p.m.

Classes will start August 21. Roby teachers start their inservice on Monday, August 18, at 9:00.

Sheep production in the Rolling Plains of Texas and the southwestern United States offers an unlimited opportunity for producers. Sheep have traditionally been associated with farms and ranches. Small ewe flocks are becoming more popular among urban dwellers with small acreages. Sheep are fun, are well suited for families and offer an economic opportunity.

How can sheep fit in today's agricultural picture? Sheep are ruminant animals, having a specialized digestive tract. Through evolution the ruminant digestive tract has been fine-tuned for the utilization of forages and roughages. It consists of four compartments: the rumen, reticulum, omasum and abomasum. Millions of bacteria and protozoa inhabit the rumen and reticulum of the sheep digestive tract. Here lies one of the keys to the uniqueness of sheep. These microorganisms



# Roby Star-Record

The Voice Of Fisher County Since 1907

## ROTAN ADVANCE

THURSDAY, AUGUST 14, 1980

VOL. 72 NO. 25

FISHER COUNTY TEXAS

EIGHT PAGES

## Census Office Goofs, New Figures Released

Fisher County lost another 443 people through a mis-calculation on the part of personnel in the census office in Lubbock, according to a report mailed to Fisher County Judge Marshal Bennett.

Preliminary census figures released in Late July indicated the total county population had declined from 6,344 in 1970 to 5,860 in 1980. This preliminary figure reflected a loss of 484 people. According to the new census figures mailed to Judge Bennett last Monday, Fisher County lost an additional 443 people.

New figures, as of August 11th, indicate that the total population in Fisher County had declined from 6,344 in 1970 to 5,417 as of the latest revised census department figures. This newest figure reflects a total loss over the 10 year period of 927 people.

Roby took the loss

### Rotan Auxil.

### Covered Dish

### Dinner Friday

The Rotan Firemen's Auxiliary is holding a covered dish supper Friday, August 15, from 7:00 to 9:00.

All active and honorary firemen and their families are invited.

The supper will be held at the Firehall.

almost exclusively. In the first preliminary count Roby's population was listed as 1242, up from 784 in 1970. This total figure was revised by Lubbock census officials to now reflect a total of 811 people in Roby instead of the first reported 1242. This reflects a loss of 431 people.

According to the newest figures released by the census office, Roby had 784 people in 1970 and as of the last revised report has 811 people in 1980.

This is an overall gain of 27 people in the 10 year period.

Rotan's count was also adjusted, according to the figures released to Judge Bennett. Rotan had 2404 people in 1970 and the preliminary figures indicated that Rotan had dropped to 2005, a loss of 399 people. Rotan's count, after the latest adjustment, indicates that the population as of April 1, 1980 was 1934 or some 71 less than originally indi-

cated at the end of July 1980.

Fisher County Judge Marshal Bennett and the members of the Fisher County Commissioners Court have authorized an advertisement in this week's paper asking people that have not been counted to fill out the newspaper form. It is estimated that each new person gained could mean as much as \$200.00 in Federal Revenue monies to the county.



APPEAR BEFORE COMMISSIONERS: George Johnson, left, of Mobil Oil and Jerry Krupka, right, of Conoco Oil, appeared before the Commissioners last Monday morning as the tax rate for 1981 was set.

## County Taxes Are Reduced

Members of the Fisher County Commissioners Court met last Monday morning after the regular monthly Commissioners Court meeting to set the tax rate for 1981.

George Johnson, representing Mobil Oil Company, and Jerry Krupka, representing Conoco Oil Company, were present for the meeting.

Commissioners unveiled a \$935,874.25 budget estimate for 1981 that is based on a total county value of \$70 million dollars.

The 1981 total county tax roll of \$70 million is up from \$48 million in 1980. The prime reason is the increase in oil values in Fisher County. Oil and

utility values accounted for some \$23 million in 1980 and will be \$43 million in 1981.

The \$48 million county valuation in 1980 generated approximately \$456,000 while the \$70 million in

1981 is expected to generate \$650,000. The total 1980 budget for Fisher County was approximately \$800,000 with the anticipated 1981 budget estimated at \$935,874.00.

Fisher County Commis-

sioners voted last Monday to leave the ratio of assessed value at 26 percent for 1981, the same as it was for 1980. Commissioners did lower the tax rate from 95 cents per \$100 valuation in 1980

to 93 cents per \$100 valuation in 1981. By lowering the valuation 2 cents, based on 97 percent collections, Fisher County reduced the estimated tax income from \$621,000 to \$607,00 for 1981.



EARLY MORNING PRACTICE: The Rotan football coaches keep a watchful eye on the 54 boys that reported last Monday morning for the first two-a-day practice.

Rotan, which will be playing a tough district schedule begins the first of two scrimmages on Friday, August 22 against Munday on the home field.

## Kim's Korner By Kim Pease

### Gone Fishing

Some people just can't take a practical joke. Evelyn Carter, our Fisher County Auditor, is sharp with figures but had a hard time last week finding humor in the trick that her husband, T.L., pulled in jest.

According to Evelyn, she went home after a hard day at the office last Friday to find a large note attached to the back door. "Gone Fishing, see you Monday-T.L." Evelyn said, "I didn't know what to think-he knew we were going to Colorado City on Saturday".

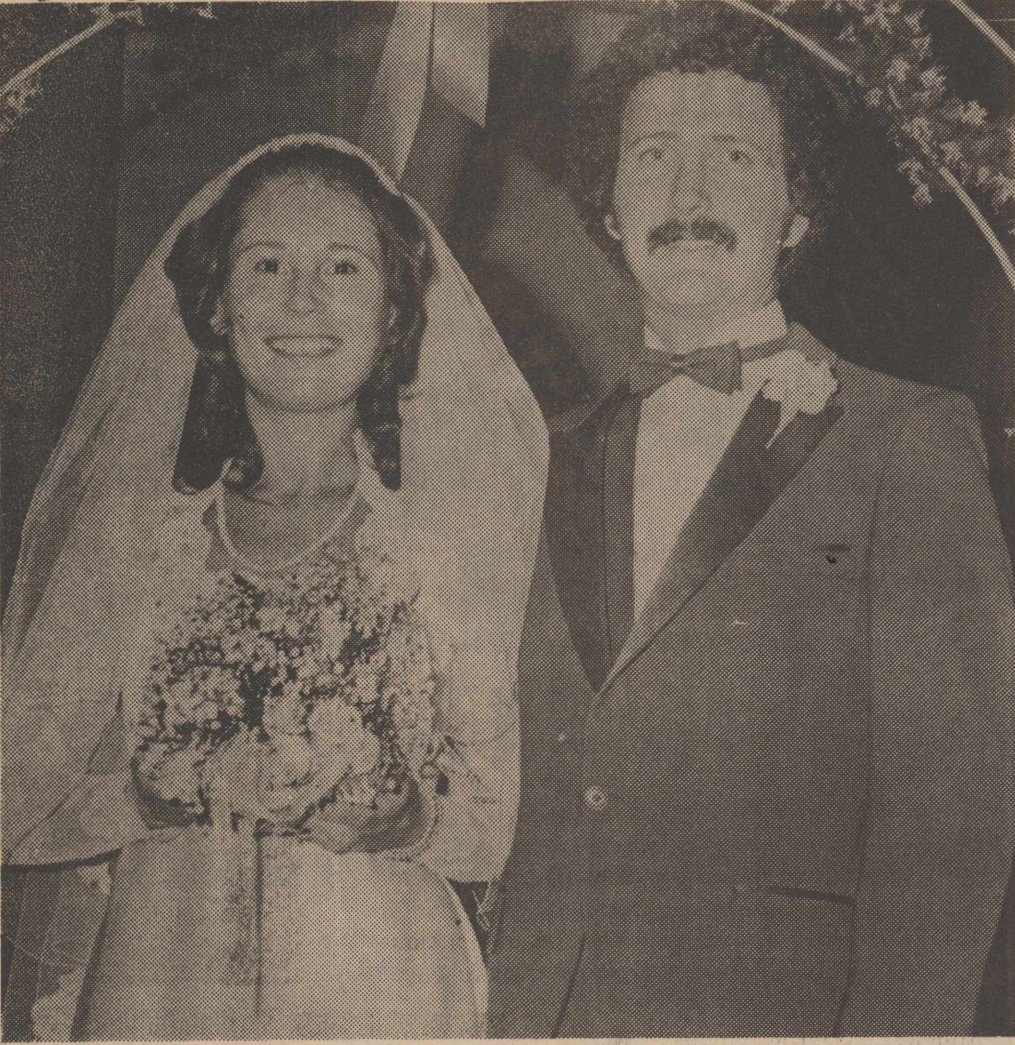
Continuing on with the story, after Evelyn walked in the back door, a little bewildered and mumbling to herself, she noticed a No. 3 washtub full of freshly picked peas [in the shell] at her feet. At this point the note began to make some sense, T.L. had decided to go fishing because he didn't want to spend the weekend shelling peas.

After walking past the peas and into the living room, T.L. jumped out from behind the door with his accomplice, Leon Helm, and both were doubled over with laughter.

Leon and T.L. thought it would be humorous to play a joke on Evelyn. Leon grew the peas and gave them to T.L. and both conjured up the "Gone Fishing" story.

The joke didn't last long and I'll bet Evelyn has the last laugh.

Rumors are that the next time T.L. and Leon really go fishing, she is going to pack a lunch of sardine and peanut butter sandwiches and conveniently forget to pack anything to drink.



Mr. and Mrs. Roger Graham

## Lenore Templeton, Roger Graham Exchange Vows

In a double ring ceremony, Lenore Monette Templeton became the bride of Roger Duncan Graham at 7:00 P.M., August 7th at the First Baptist Church of Rotan with the Rev. Clyde Cook, pastor of the Central Baptist church of Stamford, Texas officiating.

The bride is the daughter of Mr. and Mrs. Joe Templeton of Washington, D.C. The bridegroom is the son of Mr. and Mrs. W.D. (Bill) Graham of Rotan, Texas.

Mrs. Johnny Joe Eicke, sister of the bridegroom, organist, rendered nuptial selections before the wedding and after the vows were read.

Guests were registered by Mrs. Randall C. Murphree of Rotan. The bride was given in marriage by her father, Mr. Joe Templeton. The bride's matron of honor was Mrs. Carol Cook of Lubbock. Candlelighters and ushers were Michael Templeton of Atlanta, Georgia, brother of the bride, and Mr. Johnny Joe Eicke of Snyder, Texas, brother-in-law of the bridegroom. Mr. Randall C. Murphree of Rotan served as the best man.

The reception was held in the home of the bridegroom's parents, Mr. and Mrs. W.D. Graham. Serving at the bride's table were Mr. Jeffery Wayne Turner of Snyder,

cousin to the bridegroom and Mrs. Randall C. Murphree of Rotan. Serving at the groom's table were Mrs. Joe Helms and Mrs. Doyle Walker, both of Rotan.

The bride was a graduate of Bethesda-Chevy Chase High School in Bethesda, Maryland; attended Emory University in Atlanta, Georgia and graduated from the American University in Washington, D.C. with a degree in political science. She attended a law seminar at the University of London in London, England prior to enrolling in Texas Tech University School of Law in Lubbock, Texas where she is a third year law student.

The groom graduated from Rotan High School and Texas Tech University in Lubbock, Texas. He

graduated summa cum laude with BS degree in Petroleum Engineering. He was employed by Shell Oil Company in Denver, Colorado and Houston, Texas prior to enrollment in Texas Tech University School of Law. He is also a third year law student. Both the bride and groom plan to graduate in the spring of 1981.

After a wedding trip to Ruidoso, N. M. and Cancun, Mexico, the couple will live in Lubbock, Texas at 4702 4th Street.

The rehearsal dinner was hosted by the bride's parents at the Crossties Steak House in Sweetwater, Texas. Lunch on the same day was at the Shack In Snyder, Texas. W.D. Graham and Mr. and Mrs. Johnny Joe Eicke.



**Naturalizer:**  
The shoe with the beautiful fit.

### Card Of Thanks

Thank you for the many ways in which you helped us during our bereavement. We deeply appreciate your kindness.

Dorothy Barron  
Jane Perry and family

THE VOICE OF FISHER COUNTY  
THE ROB STAR RECORD  
AND  
THE ROTAN ADVANCE  
Combined June 13, 1979  
"The Supreme Test of Good Journalism is the Measure of Public Service."  
Walter Williams, Editor  
H.C. Shelton, Publisher 1965-1968  
E.H. Shelton, Publisher 1968-1970  
KIM PEARCE, Editor & Publisher  
JANECE PEARCE, Associate Editor  
Published: Thursdays Except Last Thursday In The Year  
Any erroneous reflection upon the Character, Standing, or Reputation of any Person, Firm or Corporation which may appear in the columns of this newspaper will be gladly corrected upon due notice given to the publisher at the office at 114 Snyder Ave., Rotan, Texas. The publisher reserves the right to accept or reject any article or manuscript submitted for publication.  
SUBSCRIPTION RATES  
\$7.50 in Fisher, Jones, Stonevall, Kent, Nolan and Seely Counties.  
\$8.50 in Other Texas Counties  
\$9.50 in Continental United States  
\$12.50 Outside U.S., APO and FPO Addresses  
1st class second class matter at the Post Office in Rotan, Texas under the act of Congress of March 3, 1879. Second class postage paid at Rotan, Texas.

**Hinds Shoes & Apparel**  
Rotan, Texas

## Ap] By Joy Walker

### obbs

The members of the Fisher County Appraisal Board met in regular meeting last Monday night with two members of the Fisher County Commissioners Court in attendance.

Fisher County Judge Marshal Bennett and Commissioner Jimmy Wright met with board members Dennis Dooley, Dick Edwards, Robert Doyle and Kyle Moore for the purpose of discussing the possibility of Fisher County.

### Roby Fire

The Roby Volunteer Fire Department met Thursday night, August 7, and voted to have their annual Turkey Shoot on October 12. Details of this event will follow in a later paper. In the same meeting, members also voted to give away a Marlin 30-30.

Walker and Melody went to day we went to Merkel and sponsored barrel races they went to Sweetwater and Melody barrels at the Sweetwater play RA parents night Monday at the as held prior to the AJRA finals week. We got to visit with lots didn't see since last year.

Fort Worth and Mrs. Charles with Mr. and Mrs. Emilio Mrs. Crite is an old friend of had a good time visiting and

Hyer and family from Andrews with the J.D. Kincaids.

Approximately 42 people went to help build the church in Grand Rapids, Minnesota. The group departed July 21 and returned July 31, the church was built in 6 days, completely weathered in and sheet rocked. The Baptist Churches of the Double Mountain Area and contributions from individuals raised the money to build the church, Grand Rapids Baptist Church.

Donham, Carl and Polly Matthies, Roby; Larry Pam, Diann, and Tom Dennis, J.R. and Ne Williams, Mark Whitmore, Rule; Parry and Midge Evans, Abilen Terry Foster, Offutt AF

Moore and the other members of the board discussed a new applicant for the position of Chief Appraiser. They made no decision on hiring a Chief Appraiser. Some six applications are on file and a decision is not expected to be reached on the new Chief Appraiser until November.

CE OF TEXAS HIGHWAY ANCE WORK  
a maintenance contract for sites at various locations in e received at the State ys and Public Transporta- ilene, Texas, 79604, until August 21, 1980, and then ad.  
fications are available at Nelson Shave, District Abilene, Texas, or Mr. Jr., Fisher County Roby, Texas.

25-2tc

Minneapolis Church

Baptists Join In Minnesota Church

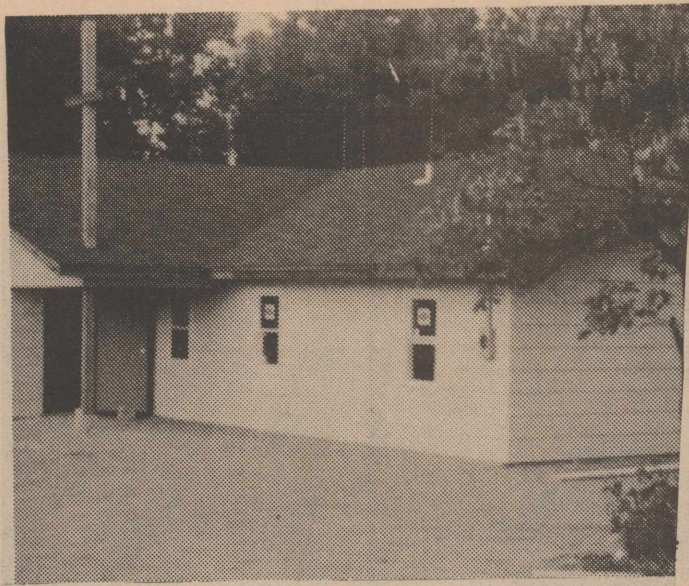
Approximately 42 people went to help build the church in Grand Rapids, Minnesota. The group departed July 21 and returned July 31, the church was built in 6 days, completely weathered in and sheet rocked. The Baptist Churches of the Double Mountain Area and contributions from individuals raised the money to build the church, Grand Rapids Baptist Church.

Donham, Carl and Polly Matthies, Roby; Larry Pam, Diann, and Tom Dennis, J.R. and Ne Williams, Mark Whitmore, Rule; Parry and Midge Evans, Abilen Terry Foster, Offutt AF

Moore and the other members of the board discussed a new applicant for the position of Chief Appraiser. They made no decision on hiring a Chief Appraiser. Some six applications are on file and a decision is not expected to be reached on the new Chief Appraiser until November.

CE OF TEXAS HIGHWAY ANCE WORK  
a maintenance contract for sites at various locations in e received at the State ys and Public Transporta- ilene, Texas, 79604, until August 21, 1980, and then ad.  
fications are available at Nelson Shave, District Abilene, Texas, or Mr. Jr., Fisher County Roby, Texas.

25-2tc



Minnesota Church

## Baptists Join In Minnesota Church

Approximately 42 people went to help build the church in Grand Rapids, Minnesota. The group departed July 21 and returned July 31, the church was built in 6 days, completely weathered in and sheet rocked. The Baptist Churches of the Double Mountain Area and contributions from individuals raised the money to build the church, Grand Rapids Baptist Church.

Donham, Carl and Polly Matthies, Roby; Larry Pam, Diann, and Tom Dennis, J.R. and Ne Williams, Mark Whitmore, Rule; Parry and Midge Evans, Abilen Terry Foster, Offutt AF

Moore and the other members of the board discussed a new applicant for the position of Chief Appraiser. They made no decision on hiring a Chief Appraiser. Some six applications are on file and a decision is not expected to be reached on the new Chief Appraiser until November.

CE OF TEXAS HIGHWAY ANCE WORK  
a maintenance contract for sites at various locations in e received at the State ys and Public Transporta- ilene, Texas, 79604, until August 21, 1980, and then ad.  
fications are available at Nelson Shave, District Abilene, Texas, or Mr. Jr., Fisher County Roby, Texas.

25-2tc

Minneapolis Church

Baptists Join In Minnesota Church

Approximately 42 people went to help build the church in Grand Rapids, Minnesota. The group departed July 21 and returned July 31, the church was built in 6 days, completely weathered in and sheet rocked. The Baptist Churches of the Double Mountain Area and contributions from individuals raised the money to build the church, Grand Rapids Baptist Church.

Donham, Carl and Polly Matthies, Roby; Larry Pam, Diann, and Tom Dennis, J.R. and Ne Williams, Mark Whitmore, Rule; Parry and Midge Evans, Abilen Terry Foster, Offutt AF

Moore and the other members of the board discussed a new applicant for the position of Chief Appraiser. They made no decision on hiring a Chief Appraiser. Some six applications are on file and a decision is not expected to be reached on the new Chief Appraiser until November.

CE OF TEXAS HIGHWAY ANCE WORK  
a maintenance contract for sites at various locations in e received at the State ys and Public Transporta- ilene, Texas, 79604, until August 21, 1980, and then ad.  
fications are available at Nelson Shave, District Abilene, Texas, or Mr. Jr., Fisher County Roby, Texas.

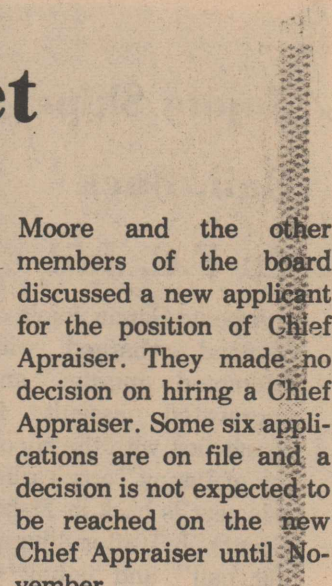
25-2tc

Minneapolis Church

Baptists Join In Minnesota Church

Approximately 42 people went to help build the church in Grand Rapids, Minnesota. The group departed July 21 and returned July 31, the church was built in 6 days, completely weathered in and sheet rocked. The Baptist Churches of the Double Mountain Area and contributions from individuals raised the money to build the church, Grand Rapids Baptist Church.

Donham, Carl and Polly Matthies, Roby; Larry Pam, Diann, and Tom Dennis, J.R. and Ne Williams, Mark Whitmore, Rule; Parry and Midge Evans, Abilen Terry Foster, Offutt AF



Minnesota Church

## Baptists Join In Minnesota Church

Approximately 42 people went to help build the church in Grand Rapids, Minnesota. The group departed July 21 and returned July 31, the church was built in 6 days, completely weathered in and sheet rocked. The Baptist Churches of the Double Mountain Area and contributions from individuals raised the money to build the church, Grand Rapids Baptist Church.

Donham, Carl and Polly Matthies, Roby; Larry Pam, Diann, and Tom Dennis, J.R. and Ne Williams, Mark Whitmore, Rule; Parry and Midge Evans, Abilen Terry Foster, Offutt AF

Moore and the other members of the board discussed a new applicant for the position of Chief Appraiser. They made no decision on hiring a Chief Appraiser. Some six applications are on file and a decision is not expected to be reached on the new Chief Appraiser until November.

CE OF TEXAS HIGHWAY ANCE WORK  
a maintenance contract for sites at various locations in e received at the State ys and Public Transporta- ilene, Texas, 79604, until August 21, 1980, and then ad.  
fications are available at Nelson Shave, District Abilene, Texas, or Mr. Jr., Fisher County Roby, Texas.

25-2tc

Minneapolis Church

Baptists Join In Minnesota Church

Approximately 42 people went to help build the church in Grand Rapids, Minnesota. The group departed July 21 and returned July 31, the church was built in 6 days, completely weathered in and sheet rocked. The Baptist Churches of the Double Mountain Area and contributions from individuals raised the money to build the church, Grand Rapids Baptist Church.

Donham, Carl and Polly Matthies, Roby; Larry Pam, Diann, and Tom Dennis, J.R. and Ne Williams, Mark Whitmore, Rule; Parry and Midge Evans, Abilen Terry Foster, Offutt AF

Moore and the other members of the board discussed a new applicant for the position of Chief Appraiser. They made no decision on hiring a Chief Appraiser. Some six applications are on file and a decision is not expected to be reached on the new Chief Appraiser until November.

CE OF TEXAS HIGHWAY ANCE WORK  
a maintenance contract for sites at various locations in e received at the State ys and Public Transporta- ilene, Texas, 79604, until August 21, 1980, and then ad.  
fications are available at Nelson Shave, District Abilene, Texas, or Mr. Jr., Fisher County Roby, Texas.

25-2tc

Minneapolis Church

Baptists Join In Minnesota Church

Approximately 42 people went to help build the church in Grand Rapids, Minnesota. The group departed July 21 and returned July 31, the church was built in 6 days, completely weathered in and sheet rocked. The Baptist Churches of the Double Mountain Area and contributions from individuals raised the money to build the church, Grand Rapids Baptist Church.

Donham, Carl and Polly Matthies, Roby; Larry Pam, Diann, and Tom Dennis, J.R. and Ne Williams, Mark Whitmore, Rule; Parry and Midge Evans, Abilen Terry Foster, Offutt AF



# ROUND WE GO

Going around in circles used to be fun. Now it has become the identifying mark of human bewilderment. For millions of people life seems a whirling confusion that takes them nowhere...

All religions have one thing in common: they stress the belief that life has purpose which man needs to seek, discover and fulfil. In short, religion is the cure for going around in circles.




Christianity inspires people to seek life's purpose in the love and will of God. When we join with others in the worship and work of our churches we discover goals for living and the spiritual strength to reach them.

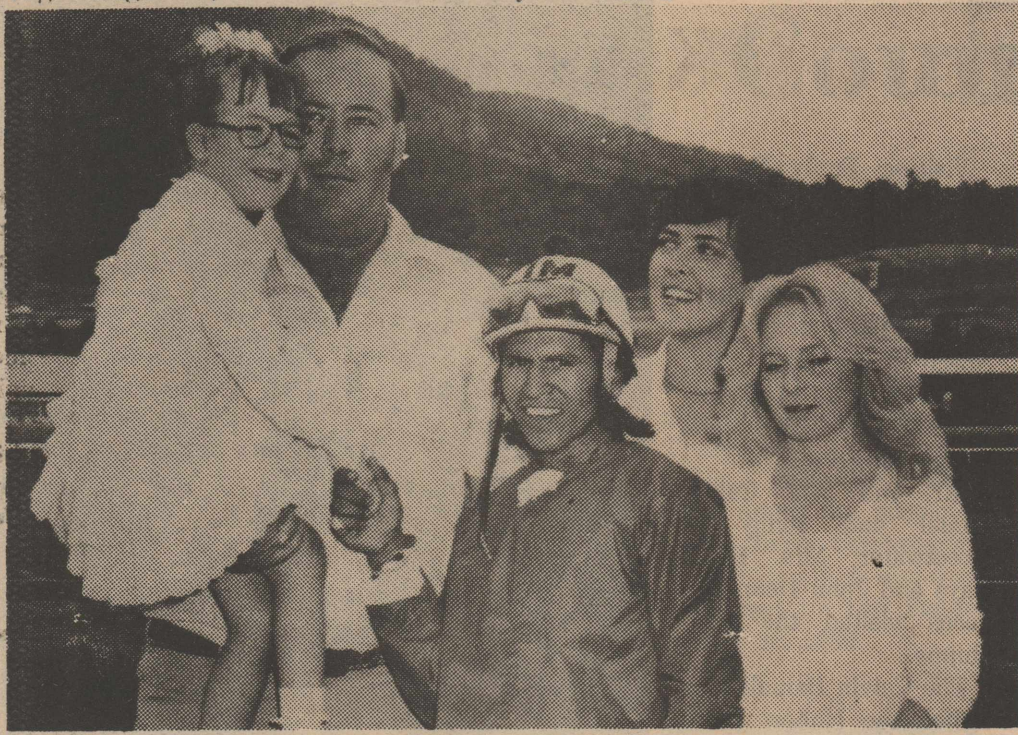
When the merry-go-round has ceased to be merry it's time to get off. Yes, and time to get on with purposeful Christian living.

Copyright 1980 Keister Advertising Service  
P.O. Box 8024, Charlottesville, Virginia 22906

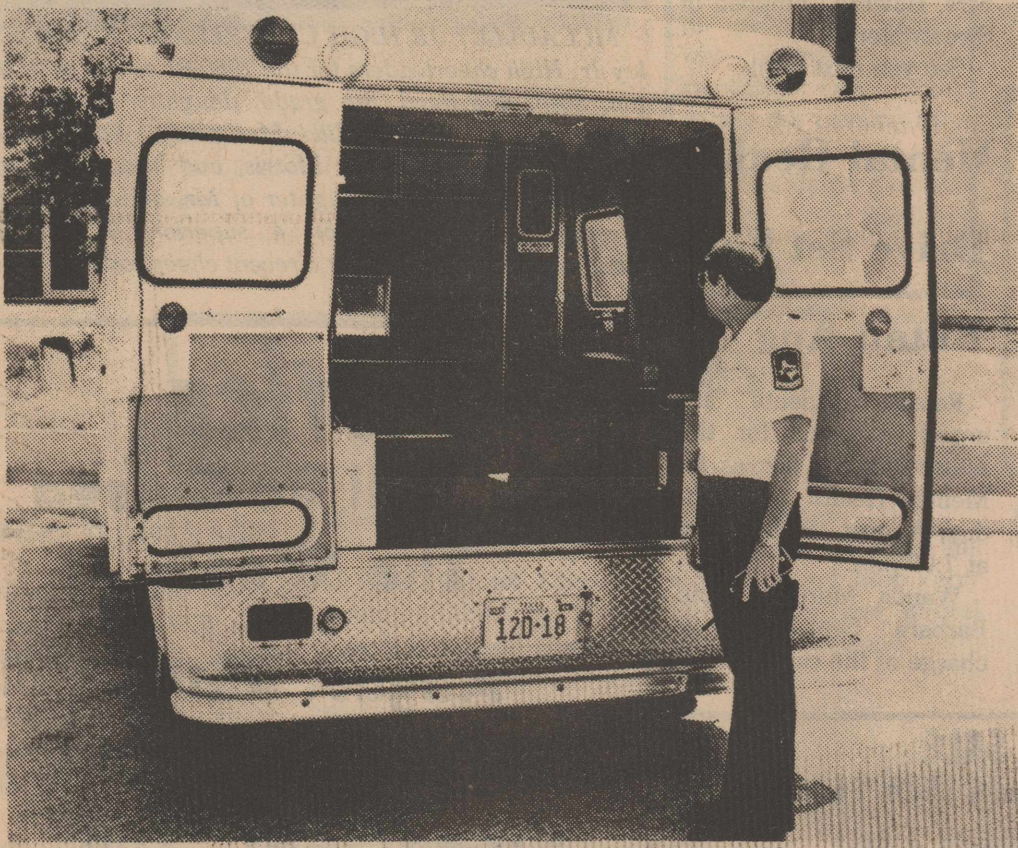
## This Week's Featured Church Page Sponsor

### Fisher County Nursing Home

	<b>Crestview Lodge</b> 711 East 5th Rotan, Texas	<b>Bart Strayhorn</b> 735-2231 Rotan, Texas	<b>Roby Insurance Agency</b> 776-2361 Roby, Texas	<b>Fisher County Nursing Home</b> 735-3291 Rotan, Texas
<b>Central Lumber &amp; Supply</b> 776-2371 Roby, Texas	<b>Martinez Dairy</b> Rudy, Joe B. & Emilio Martinez Hobbs Community	<b>Landes Furniture</b> Loys Landes Larry Landes Rotan, Texas	<b>J&amp;R Grocery &amp; Market</b> Judi & Robert Wall 735-2564 Rotan, Texas	<b>Fisher County Farm Bureau</b> 215 W. Snyder Rotan, Texas
<b>Farmers Union Co-op Gin</b> Roby, Texas	<b>Rotan Paint &amp; Body Shop</b> Rotan, Texas	<b>M&amp;C Lumber &amp; Hdw. Inc.</b> Rotan, Texas		



**POSTER GIRL:** Littly Holly Brown, 5, was the center of attention in the Ruidoso Downs winner's circle over the weekend. Holly has been serving as the poster child for a March of Dimes cerebral palsy campaign in Texas for the past three years. She's the daughter of Randy and Becky Brown, both in photo, of Hamlin. Jockey Joe Martinez, who won the race in Holly's honor, gives the poster girl a handshake. Mrs. Martinez is at right, in front.



**NEW AMBULANCE ARRIVES:** Fisher County Judge Marshal Bennett turned the keys over to acting Hospital Administrator Rajford Hargrove to the new \$14,000 ambulance last Friday. Above, Tommy Harbin, paramedic, inspects the vehicle that was purchased through Summers Ambulance Service at Duncanville.

### The members of the Fisher County Commissioners Court will Hold Annual Signing

There will be an annual signing party Sunday, August 17, at 2:00 p.m. at the City Park in Rotan.

All Rotan students and teachers are invited to attend to sign annuals and eat ice cream.

### Services Are Held For Henry Gruben

Longtime Fisher County resident Henry J. Gruben, 88, of Roby died at 2 p.m. Thursday, Aug. 7, at Fisher County Hospital. Services were held at 2 p.m. Saturday, Aug. 9, at Weathersbee Chapel.

Burial was in Roby Cemetery.

Born March 11, 1892, in Kansas, Mr. Gruben moved to Fisher County Sept. 8, 1899, from Henrietta. He married Mary Elizabeth Ellison Aug. 1, 1919, in Columbia County. He was a jeweler, blacksmith and a farmer. He was a member of the Royston Baptist church for many years. Mr. Gruben had lived in the Royston community before moving to Roby.

His wife died July 3, 1979. Two brothers and three sisters also preceded him in death.

Survivors include two sons, John H. of Shirley, Ark. and James F. of Dallas; and nine grandchildren.

# Commissioners OK Screening

Commissioners Court met last Monday morning and approved a request by the Texas Department of Health to set up a Child Health Screening Clinic in the courthouse annex. Commissioners agreed to enter into the program for a period of 6 months at no cost to the county.

Under the new program, the following services will be offered to children from birth to 8 years of age

during home visits and individual appointments in the office; (a) health history, (b) temperature, height, weight, head and chest circumference as applicable and blood pressure if over 3 years of age, (c) urine tested by N-Multistix, (d) hematocrit, (e) Denver Development Screening Test, up to 6 years of age, (f) 2nd PKU to infants up to one year,

and (g) Physical Nursing assessment.

As part of the new program Dr. Vidal Simpao and Dr. Virgilio Carandang will be offering monthly medical child health conferences.

In other action the commissioners authorized Judge Marshal Bennett to negotiate with the English Water Well Service concerning the possibility of drilling a well at the courthouse for watering purposes.

Commissioners named Annie Mae Weems as the new coordinator of the Senior Citizens Center by a 4-0 vote.

In final action the commissioners gave audi-

ence to W.P. Womble, coordinator of the area Alcohol and Drug Abuse program. He was requesting that the county commissioners give consideration to increasing the \$25.00 a month fee paid to the association. Commissioners took no action on the request.

### Donnie Stephens Parents

Mr. and Mrs. Donnie Stephens of Tuscola, announce the birth of their daughter, Jessica Diane, Aug. 2, at 8:55 p.m. at Hendrick Medical Center in Abilene. She weighed 7 lbs. 15½ ozs. and was 20

inches long. Grandparents are Mr. and Mrs. Ardis Stephens of Roby, Mrs. Betty Dozier and Mr. Carl Moses of Abilene. Great-grandparents are Mr. and Mrs. W.O. Stephens of Roby.

**WEDDING GOWNS**  
IN STOCK-20% OFF  
SPECIAL ORDER-REG. PRICE

**FORMAL GOWNS**  
LG. SELECTION-50% OFF

**RENTALS**  
TUXEDOS, CANDELABRAS,  
PUNCH BOWLS, CUPS, PLATES  
SILVER COFFEE SERVICE

AT  
**SPECIAL MOMENTS**  
4206 COLLEGE AVE.  
573-4802  
SNYDER, TEXAS

**Come And See Us For All Your Back-To-School Supplies**

**Roby Flower, Fabric & Gift Shop**

776-2292 Night 776-2613  
Roby, Texas



## New Car?

it's in the bag!



with an auto loan from your "hometown bank"

First National Bank of Rotan

Member FDIC

Rotan, Texas

## FALL PREVIEW

New Fall Shipments

In Every Department

Mens, Womens,

Boys & Girls

Come In And Make

Your Selections.

H.L. Davis & Co.

'The Friendly Store'

735-2591

Rotan, Texas



Mrs. Kenneth Fincher

## Susan Anderson And Kenneth Fincher Wed

Sandra Susan Anderson and Kenneth Carl Fincher were married Saturday, Aug. 9, at Central Baptist Church in Aspermont with Rev. James Woods officiating.

The bride is the daughter of Grace Anderson and the late Leon Anderson. The bridegroom's parents are Mr. and Mrs. Orb Fincher of Water Valley.

The bride was presented in marriage by her brother, Jimmy Gus Anderson.

Nita Isabel of Sterling City was matron of honor. Wayne Fincher of Smyer was his brother's best man.

Seating guests were Andy L. Anderson, brother of the bride; W.G. Fincher of Sterling City, the bridegroom's brother, and Eddie Isbell, also of Sterling City.

The bride's mother hosted the reception in her home. The bridegroom hosted the rehearsal dinner at Hickman's Restaurant.

Church services at the Assembly of God Church begin at 7:00 p.m., each Wednesday with Sunday morning worship set for 10:00 a.m., and Sunday evening services at 7:00 p.m.

Plans are to build a new wing on the church and begin bricking the outside in the near future.

Plans are to build a new wing on the church and begin bricking the outside in the near future.

## Leisure Lodge

We thank Mr. and Mrs. Bill Cade for the blackeyed peas. Our residents really enjoyed them. Thanks so much.

Also, thanks to the Fisher County Singing Group last Tuesday night. It was great.

### Roby Athletic Club Names Parker Head

Roby Athletic Club members met Monday, August 11, with the largest crowd ever. Purpose was to organize for the coming year. Officers elected are, Mildred Parker, president; Mike Terry, vice president; Pat Porter, secretary; Jan Morgeson, treasurer; Mary Jo Pope, reporter.

The members are looking forward for a real good year in all Roby sports. Meetings are held each Tuesday, at 8:00 p.m. at Roby High School. Next meeting will be August 26.

### Oden Is New

### Assembly Of God Pastor

Norman Oden, formerly assistant pastor at Merkel, has been named the new pastor of the Assembly of God Church in Rotan it was announced.

Rev. Oden and his wife have three children, Robert age 11, Keith age 8, and Jenny age 6. They will be living at 910 East 5th Street.

Church services at the Assembly of God Church begin at 7:00 p.m., each Wednesday with Sunday morning worship set for 10:00 a.m., and Sunday evening services at 7:00 p.m.

Plans are to build a new wing on the church and begin bricking the outside in the near future.

Mr. and Mrs. Jess Hallmark of Gorman, Mr. and Mrs. Jimmy Hallmark, Lori, Laura and Devyn of Gorman visited the home.

Kathryn Bailey of near Ft. Worth visited Maudie Moize last week.

Visiting the Gaines Smiths were his sisters Mrs. Barbara Houghton of El Paso, Bertie Taylor, also of El Paso, and Vida Alsbrook of Lorraine.

Mr. and Mrs. John Bailey of Abilene and Mrs. Neva Harbin of Snyder visited Rose Hale last week.

### Area Rest Home Opens Cool Doors

The Leisure Lodge Nursing Home of Rotan is making their facility available to senior citizens with out air conditioning during the remainder of the heatwave. Senior citizens are invited during the hours of 9:00 a.m. through 4:30 p.m. Lunch may be purchased for only \$1.00. Sleeping arrangements are not available, but there will be comfortable chairs available.

Senior citizens are welcome to visit with the residents and join in on the activities of the day.

Leisure Lodge is located at 711 E. 5th in Rotan.

Visiting Emily Garrett was Luna Kilb and Mrs. Howard Campbell of Sweetwater.

Visiting Mary Lee Barker was Luna Kolb, Mrs. Howard Campbell and John White all of Sweetwater and the Jack Barkers of Roby.

Mr. and Mrs. Calvin Danial and Jenny of Sweetwater, Mrs. Hazel Hays and John Dennis of Pecos visited the R.T. Shippis.

The Calvin Danials also visited the Hubert Danials.

Visiting Bud Crawford were Mr. and Mrs. Johnnie Floyd of Midland, Mr. and Mrs. Odell Crawford of Odessa and Mrs. Howard Campbell of Sweetwater.

See you next week.

### Mental Health

### Drive Set For

### Rotan Aug 18

Rotan residents are urged to watch for the house-to-house canvas for Mental Health on Monday, August 18, beginning at 7:00 p.m.

Wanda Murphree and Barbara Gray are in charge of the canvas.



MCCAULLEY JR HIGH CHEERLEADERS: McCaulley Jr. High cheerleaders for the 1980-81 school year are top, Stephanie Reed, 8th grade, daughter of Mr. and Mrs. Marion Reed; Jill McKinney, 8th grade granddaughter of Pauline Morris, and bottom, Marcia Stevenson, 4th grade, daughter of Mr. and Mrs. Gene Stevenson. The girls won 4 superior, 3 excellent ribbons and a spirit stick at a recent cheerleader camp at Hardin Simmon University.

**NOTICE**  
**We Will Be Closed**  
**The Week**  
**of**  
**August 25th**  
**Closed Labor Day**  
**Open Sept. 2nd**  
**We Appreciate**  
**Your Business**  
**Porter**  
**Locker Plant**  
**Rotan**

**FOR SALE**  
**Former Fisher County Clinic Building In**  
**Roby, Including 3 Lots**  
**Readily Converted Into Residence**  
**Contact Administrator, Fisher County**  
**Hospital**  
**Phone 735-2256 Or 735-2868 (Night)**  
**Or**  
**Contact Hermit Terry, Board Of Directors**  
**Phone 776-2257 Or 776-2106 (Night)**

Suburban by Sachs  
 • 150 m.p. gal.  
 • 49 cc engine  
 See It Today  
 AT  
**TOM'S MARINE**  
 East Hwy. Sales & Service 573-6562  
 Snyder, Texas

## W.T.C. Fall Registration

Registration for fall classes at the Sweetwater extension center of Western Texas College will be held from 6:30-8:00 p.m. Aug. 18 in the Sweetwater High School cafeteria.

Classes are to begin on Aug. 27. All classes meet during evening hours.

Courses on the fall

schedule are Accounting 231, Agricultural Economics 124, Freehand Drawing 133, Painting 232, English 131, History 131, Mathematic Concepts 135, Psychology 232, College Reading 131, Sociology 231, Law Enforcement 234 and 239, and Mid-Management 135, 136, 234, 237 and 238.

**A sweetheart of a deal for Peppers**

**Now Thru Sun.**

**DR PEPPER IN A 32 OZ. REUSABLE CUP 59¢**

**Be a Pepper**

**Rotan Dairy Queen**

**Frigidaire**

**Dependable Chest or Upright Food Freezers offering organized storage in a wide range of sizes.**

Built-in lock with pop-out key helps protect your food investment.  
 Slide aside basket provides easy access to packages underneath.  
 Movable divider lets you separate meats and vegetables into convenient "compartments."  
 Safety signal light glows reassurance and alerts you to power failures or temperature fluctuations when off.

**Choose the Frigidaire Food Freezer with the capacity and the conveniences just right for you.**

Frigi-Foam insulation inside cabinet walls on most models keeps cold air in, warm air out and energy consumption down.  
 Temperature Control can be adjusted to maintain zero degree storage conditions.  
 Bookcase shelves keep packages neatly organized with labels in full view.  
 Full-width interior shelves provide organized storage, plenty of room.

**WEST TEXAS UTILITIES COMPANY**  
 An Equal Opportunity Employer  
**WTU**  
 A Member of The Central and South West System

Qualified Factory-Trained Servicemen Offer You the Finest in Appliance Service

Mr. and Mrs. Howard H. Crenshaw request the honour of your presence at the marriage of their daughter Kellye to Mr. Ricky Ray Starnes Sunday afternoon, the seventeenth of August Nineteen hundred and eighty at two o'clock in the afternoon 37th Street Church of Christ Snyder, Texas

Reception following  
 Martha Ann Woman's Club



FIXING HELMETS: Head Rotan football coach Don Mullins repairs one of several helmets in preparation for two-a-day workouts.

# County Jail Gets Yearly Inspection

The Fisher County jail underwent another inspection recently and according to a report issued to Judge Marshal Bennet, the jail system was in non-compliance in total of 27 areas.

The inspection took place under the auspices of the Texas Commission On Jail Standards and was performed by Lee Slater on July 31, 1980.

Of the 27 areas of non-compliance, Slater recommended that Fisher County apply for a variance or waiver on 9 items. These include such discrepancies as (1) visiting facilities do not prevent the passage of contraband, (2) dayrooms are not provided for two bunk female/juvenile cell, (3) conduit and/or pipe is

within reach of inmates inside the two dayrooms, etc.

Slater noted in his inspection report that 6 items could be eliminated by adding a jailer to the Fisher County Sheriff's Department staff.

Of the remaining 12 areas of non-compliance Sheriff Counts said, "I don't have any idea what the cost would be to correct the last 12 areas of non-compliance. I think the two most expensive items (not including the addition of the jailer to the staff-because this would be an on-going expense) would be the remote control operation of doors in the jail and the installation of a communi-

cations system in the jail area".

Sheriff Counts said that Fisher County had already expended some \$30,000 in material alone attempting to get the jail within acceptable compliance bounds. This money was spent some three years ago. "Taking a rough guess, I would estimate that we could easily spend an additional \$20,000 attempting to put the jail in further compliance with the dozen deficient areas that we were cited for in July", said Counts.

Fisher County has undergone some 5 inspections since 1976 and has reduced the number of unacceptable areas each year. "In 1976, the first year we were inspected, we were cited for 114

deficient or unacceptable areas", noted the Sheriff. He noted that the progress has been positive and that the Commissioners Court would determine what deficient areas are corrected in the future.

## Card Of Thanks

We want to express our appreciation to the people of Rotan who showed their sympathy and love during the passing of our loved one.

The Hattie Aaron family

## Roby School Registration

Roby Elementary School grades 1-8 will pre-register at the Elementary building August 20, at 10 a.m.

## CAKES FOR ALL OCCASIONS



Birthday, Anniversary  
Shower or Any Special  
Event

SPECIALIZING IN WEDDING CAKES  
Fountain and Stairway Available

JAYE NEICE CLEMENTS  
735-3281 or 735-2010  
6:00 P.M. and Weekends

## Farm Bureau Insurance

- All Lines
- Auto ● Life
- Home
- Liability

We Care For Our Own

Ben Reaid  
215 W. Snyder  
735-3491  
Rotan, Texas

## Attention

You people in the City of Rotan are fortunate to be blessed with an abundance of underground water. A water well is a long-time improvement to your property, plus the satisfaction of having a beautiful yard and garden.

I will discuss with you a way to accomplish this project.

Our pumps have a five year warranty, our wells have my lifetime guarantee.

See your neighbor and share a well.

My Business is Going in The Hole  
A.B. ENGLISH

**E.&C. Drilling Co.**  
**Windmill & Pump Supply**  
Star Route Box 12B  
Aspermont, Texas  
Phone 817-989-3555

## Funeral Services

### Mae Robinson

Mae Robinson, 59, of Rotan died at 5:15 p.m. Saturday, Aug. 2, in Fisher County Hospital following a brief illness. Services were held at 10 a.m. Wednesday, Aug. 6, at Weathersbee Funeral Home Chapel.

The Rev. Bill Williams, pastor of Calvary Baptist Church, officiated. Burial was at Rotan Cemetery.

Born Sept. 3, 1920, in Justin, she was the daughter of the late Mr. and Mrs. John Price of Rotan. She married S.J. Robinson Nov. 9, 1941, in Rotan. She moved with her family to Fisher County in 1923 from Justin. She was a member of the Veterans of Foreign Wars Auxiliary and she was a Baptist.

Survivors include her husband of Rotan; four sons, Jerry of Roby, J.A. of the Army in Korea, Jackie and Jim, both of Rotan; a brother, Frank Price of Roby; three sisters, Rubye Costner of Visalia, Calif., Ruth Martin of Bruceville and Mildred Stewart of Roswell, N.M.; and three grandchildren.

Pallbearers were M.G. Polk, Al Polk, Charles Ray Polk, J.D. Price, John Price, Glen Odom and Dale Herron.

### Troy Ramirez

Troy Eric Ramirez, infant son of Mr. and Mrs. Hilario Ramirez of Snyder, died at 5 a.m. Wednesday, Aug. 6, at Fisher County Hospital. Services were held at 10 a.m. Thursday, Aug. 7, at Rotan Cemetery directed by Weathersbee Funeral Home.

The Rev. Ruben Ramirez, pastor of the Gethsemane Spanish Assembly of God, officiated.

Survivors include his parents; paternal grandfather, E.M. Ramirez of Snyder; maternal grandmother, Mrs. Antonio Garcia of Lubbock; a sister; a half-sister; and four half-brothers.

### Grace Barth

Grace Barth, 79, a longtime resident of Rotan died at 2:53 p.m. Thursday, Aug. 7, at a Lockney hospital after a long

illness. Services were held at 2 p.m. Sunday, Aug. 10, at First Baptist Church, Rotan, directed by Weathersbee Funeral Home.

The Rev. Howard Jones, pastor of First Baptist Church in Hamlin, officiated. Burial was at Rotan Cemetery.

Born Nov. 1, 1900, in McLennan County, she married C.B. Barth Dec. 12, 1921, in Vernon. They moved to Rotan in 1922 from Quanah. She was a member of the Order of the Eastern Star and was a Baptist.

Her husband died Mar. 1, 1961. Survivors include two brothers, Clarence L. Edmondson of Escondido, Calif. and O.K. Edmondson of Dallas; three sisters, Anna Mae Edmondson of Quanah, Lorene Grooms of Amarillo and Mary Rodgers of San Pueblo, Calif.; nine nieces and seven nephews.

She was preceded in death by four brothers and a sister.

### W.E. Barron

Longtime Fisher County resident W.E. "Mike" Barron, 78, of Roscoe died at 12:30 p.m. Wednesday, Aug. 6, at a Sweetwater hospital. Services were held at 2 p.m. Friday, Aug. 8, at Weathersbee Chapel.

The Rev. John Robertson, minister of the First United Methodist Church, officiated. Burial was at Rotan Cemetery.

Born May 28, 1902, in Fisher County, son of the late Mr. and Mrs. W.W. Barron, early settlers of Fisher County. He was a retired rancher and implement dealer. He had lived in Fisher County most of his life. He married Dorothy Price Dec. 25,

1920, in Rotan.

Survivors include his wife; a sister, Jane Perry of Lampasas; and several nieces and nephews.

## B AND T Real Estate

113 W. Snyder  
735-2571

NEW LISTING: 3 bedroom, living room, kitchen, bath, garage, fenced yard.

NEW LISTING: Older white stucco, 3 bedroom home.

CORNER LOT - 2 bedroom rock house, \$3500.

WHY WAIT? - 3 bedroom, living room, kitchen, utility, basement, garage with storage, fenced.

TAKE ADVANTAGE - Remodeled 3 bedroom, living room, utility, kitchen, bath patio, fenced.

NEW LISTING - Older home, partly remodeled on four lots, \$13,500.

CALL NOW - Brick 3 bedroom, 2 bath, kitchen, den, living room, garage, water well.

EXTRA NICE - 2 bedroom, kitchen, bath, den, living room, garage, storm cellar, fenced, excellent location.

EXCELLENT LOCATION - 2 bedroom, stone house on corner lot with second house next door. Both for \$22,000.

TWO FOR ONE PRICE - Two adjacent houses, do the fix up yourself then rent.

Joe D. Burk, Broker  
H. Thompson, Salesman, 735-2421  
Myla Black, Salesman  
735-3091

FOR RENT: 2 bedroom house, call 735-3546. Fred Hawkins. 26-1tp

FOR SALE: Piano, see at 101 8th St. or call 735-2448. 25-2tc

NOTICE: A new concept to Beauty, Penegan Cosmetics. Contact LaFaye McDonald or Pansy Hale. 25-3tp

FOR RENT: 3 bedroom house in country, call 735-2385. 23-4tc

FOR SALE: 3 bedroom house, fireplace, new carpet, built-ins. Perry Hunsaker 735-2117. 23-tfc

ALOE VERA: Skin care, hair care, and health care products. Donna Hargrove 735-2878. 26-3tp

FOR SALE: 1979 Toyota Celica ST, 5 speed, 23,000 miles, excellent condition. Call 915-235-3303 or 776-2455 after 6:00. 26-1tc

NOTICE: For Christi Harris products call or see Peggy Diamond, 735-2094. 26-2tc

NOTICE: Blackeyed peas for sale. Dorothy Soliz, 735-3311. 26-1tc

FOR RENT: Small 3 room house, large yard, recently remodeled, call 776-2744. 24-tfc

BACKYARD SALE: Saturday only, 211 W. Johnston, clothes, books and misc. 26-1tp

## Card of Thanks

Thanks to our dear friends, most of all for your prayers during our stay in Hendrick and Fisher County Hospitals. We are still in need of your prayers. Thanks for all the cards, flowers, food and phone calls. We just don't know what we would do without our good christian friends and neighbors.

Mr. and Mrs. Oral Sparks and their children and families  
\*\*\*\*\*

FOR SALE: 1975 Honda CB360T good condition, only 3135 miles, \$700.00. 735-3581. 26-1tp

WANTED: Have a five room house for a couple to live in for exchange for taking care of me. Will deed the house to them for the care, see W.T. Trimble at Fisher County Nursing Home, Rotan. 25-2tp

NOTICE: I will do baby sitting in my home for age 18 months and older, 776-2249. 26-2tc

3-11 LVN needed in 100 bed nursing facility. New benefit privilege available which includes insurance program and vacation after 1 year. Competitive salary. Contact Pam at 236-6653. 24-tfc

ANOTICE: Are your hands water logged? Try Christi Harris Hand Lotion it will stay on twice as long. Call Becca Frierson Dist., 776-2673. 26-1tc

HAND MADE GIFTS: Vera's Gift Shop. Open 9 to 11 A.M. and 1 to 5 P.M., 908 E. 8th St., Rotan. 49-tfc

FOR SALE: Older model mobile home, one bedroom, 14x64, call 735-2444. 26-1tp

FOR RENT: Apartment in Roby, call 776-2131 or 776-2312. 23-tfc

CAKES for any birthday, holiday or special occasion. Great for any party. Call Debrah, 776-2159. 19-tfc

MATTRESSES: New and renovated, choice of color, firmness and size. Save on renovating, guaranteed. Made by Western Mattress Company. Call Mrs. Turnbow, 735-2313, Rotan, leave name. 50-tfc

## PAINTER

- \* Interior
  - \* Exterior
- Reasonable Prices

Call  
HOSS CARRILLO  
735-2559  
Good Equipment

**PRINTING**  
COMPLETE PRINTING SERVICE  
The Newspaper Office

CLASSIFIED ADVERTISING cost is \$2.50 minimum for 20 words, 10 cents per word thereafter; \$3.00 if charged. If charged means if not paid by 12:00 noon on Wednesday they are charged. Cards of Thanks are \$5.00 minimum.

GARAGE SALE: Friday and Saturday, 105 E. Johnston, baby things, dishes, sheets-full and king, clothes-all sizes, toys, tricycle, home decorations, salt cured ham steaks and bacon. 26-1tc

FOR SALE: 1971 Chev. Impala, good running condition, new tires, call 735-3457. 25-tfc

WANTED: Your plumbing and repair work, sewer clean out. Senior citizens discount. No job too small. Call 735-3220 after 4:00. 24-4tp

BUSY: Fuller Brush Dealer, Desperately needs help, we train, \$3.00-\$6.00 per hour possible. Write A. Cisneros, 2405 30th Snyder, Tex. 79549. 24-6tp

NOTICE: The annuals are in at the Rotan High School. Students desiring to pickup annuals from Primary, Jr. High and High School should see Mrs. Blair, high school secretary. 26-1tp

CAMP SPRINGS WELDING: Portable welding at shop or in the field. Service 24 hours. Call 573-0078. 17-tfc

NOTICE: Drug abuse and alcoholism education and information consultation and referral agency. Tri-County Council on Alcoholism, Scurry, Mitchell and Fisher Counties, 118 E. Hwy., 573-3233, Snyder, Texas. 24 hour service. 23-tfc

NEW HOME SEWING MACHINES: Electrolux cleaners, repair all makes. H.B. Stevens, 1101 James Street, Sweetwater, 235-2889. 27-tfc

NOTICE: We buy scrap iron. Farm Tractor & Service, "Your John Deere Dealer", Rotan, Texas. 52-tfc

**FOR RENT**  
Storage spaces  
from \$13.50-Up  
per month.  
Lock it and  
leave it.  
Rotan  
Self-Storage  
735-3171

NOTICE: Fresh vegetables for sale. Helen Yeats Shop, Roby. 22-tfc

NOTICE: Ceramic tile work, paint acoustical ceilings, caulk windows. Call 776-2551 after 7:00 p.m. Free estimate. 26-4tp

FOR SALE: 1971 Mercury in good shape, good motor, power, good tires, \$650.00. Call 776-2389. 26-1tp

NOTICE: Will paint houses, inside and outside; putty windows; install doors; 16 years experience. Call 776-2551 after 7:00 p.m. Frank Castor, Roby, Tex. 40-4tp

FARM WELDING and X-ray tested pipe welding and fabrication. Lee Welding Service, Roby, 776-2166. 2tfc

LOST: 100 to 200 church members. We can't find them anywhere on Sunday morning. They are very precious to the Lord. Contact FBC, Roby. 25-tfc

## Boot & Shoe Repair

at Longhorn Leather Works, 211 Lamar, Sweetwater, next to Ken's Drive Inn Gro. Open 8:30 to 5:00 Monday-Friday; 8:30 to 12 noon Saturday. Open through lunch hour. Call 235-4250. 2-4tc

**TU Repairman**  
will be in Western Auto. Work on all Makes & Models \$2.50 (Locally) for Pick-up & Delivery. Extra Charge for Out of Town. Call 735-3322 or Come By Western Auto

**We Sell**  
Legal & Letter Size  
Filing Cabinets  
The Newspaper Office

# Law Investigates Pharmacy Burglary

Fisher County Sheriff Mickey Counts investigated an attempted burglary

## Legal Notice

Notice is hereby given that the Fisher County Hospital District Board of Directors will receive bids for the sale of the Fisher County Clinic building in Roby up until and not later than 9:30 a.m. Monday, August 25, 1980.

This sale will include three lots including the clinic building. All bids must be submitted to the administrator's office by the above time and date.

A complete legal description of this property may be obtained at the administrator's office at the Fisher County Hospital, Highway 70, Rotan, Texas.

All bids will be opened and read out loud at a special meeting of the Board of Directors of the Fisher County Hospital District, Monday, August 25, 1980, at 9:30 A.M. in the hospital dining room.

The Hospital District Board reserves the right to accept and reject all bids.

Perry Hunsaker,  
Administrator  
24-2tc

of the "Country Farmacy" at the new Fisher County Doctor's Clinic last Sunday.

Counts indicated that entry was gained into the clinic area and later into the pharmacy area by pushing a ceiling tile out and dropping down behind the locked pharmacy door.

"It appears that after entry was gained to the

pharmacy, an activated burglar alarm frightened the would-be burglars and they hastily departed,

falling through the ceiling to the women's rest room near the pharmacy area", said Counts.

He indicated that from preliminary reports no merchandise was removed in the attempted burglary. "Prior to the attempted burglary, at approximately 3:00 p.m. the alarm at Summers Pharmacy was activated", said the Sheriff. He indicated that the possibility was strong that the same person or persons were responsible for both incidents.

## Foursquare Revival Dates Are Established

The local Foursquare Church will begin a Revival Sunday, August 17, and continue until August 22. Evangelist Rev. Lee Wall and wife Vonna will hold the Revival.

Rev. Wall is a graduate of Life Bible College in Los Angeles, Calif. He has been pastoring for several years, first at Weinert then to Spur, Levelland, Garland, Wichita Falls and now First Church in Amarillo.

Rev. and Mrs. Wall have a daughter who is married and lives in Amarillo, they also have a young son, a student in Life Bible College.

This couple has a ministry in singing, music as well as preaching the old time Gospel. There will be a 10:00 a.m. service for prayer and a 7:00 p.m. service nightly.

Everyone is invited to attend. There will be prayer for healing of soul

and body, everyone is welcome.

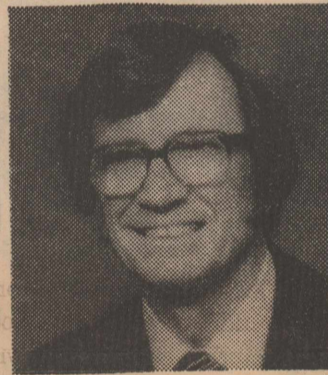
## Tim Riggan Returns From Convention

Tim Riggan, Farmland Insurance sales representative and his wife, Dianna, participated in Farmland's 1980 Annual Sales Conference held at the Grand Hotel, Mackinac Island, Michigan, June 15-18.

Mr. Riggan qualified for the Conference by attaining membership in the Farmland Insurance Topper Club, a club which recognizes outstanding achievements in multiple-line insurance sales.

Mackinac Island and the Grand Hotel provided an outstanding site for this year's Sales Conference. Known for its beauty and historical significance, the island today retains much of its early-American charm and luxury.

Farmland Insurance is composed of a group of companies-Farmland Life Insurance Company, Farmland Mutual Insurance Company, and Farmland Insurance Company-which are headquartered in Des Moines, Iowa.



## Public Notice

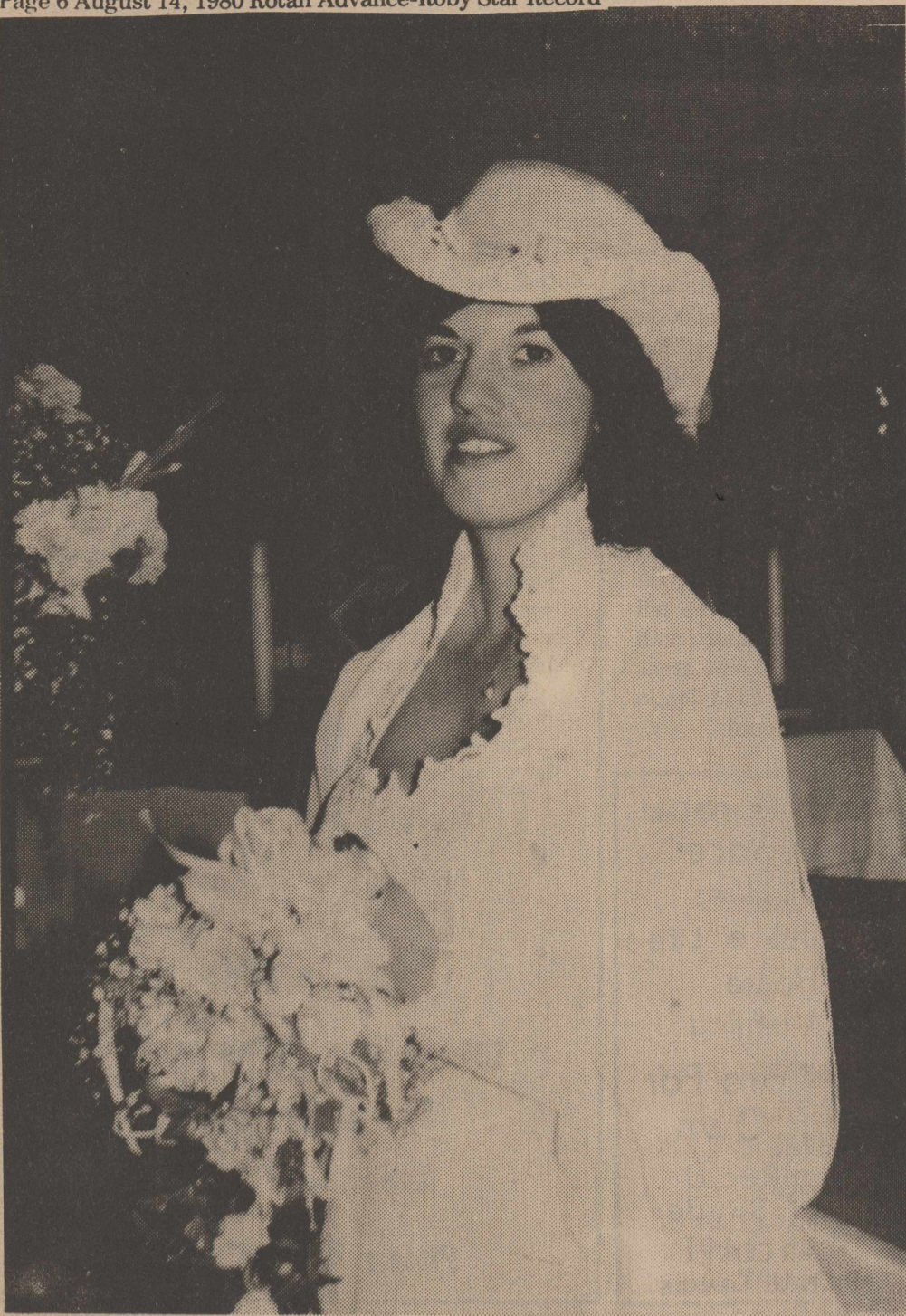
The Board of Trustees of the Hobbs Independent School District will hold a public hearing relating to the 1980-81 fiscal budget for the Hobbs I.S.D. on Aug. 20, 1980, at 10:00 a.m. at the Hobbs School.

26-1tc

## Hospital News

Patients admitted to Fisher County Hospital August 5-11, 1980.

W.H. Bailey, Matthew Glenn Cave, Willie L. Rivers, Anita Yanez, Patricia Tankersley, Carrie Allen, Emma J. Lenued, Rosemary Powell, S.L. Etheredge, Inez Elrod, Whit Clark, Eunice Clegg, Emelia Martinez, C.O. Rollins, Rotan; Louise Killingsworth, Hamlin; Debbie Sullivan, Josie Ramirez, Snyder; Carl Murff, Juanita Marquez, Charlie Barnes, Roby; Greg Rains, Trent, Chandra Sears, Mary LeLeon, Sweetwater.



Mrs. Oliver Martinez

## Eloisa Cantu, Oliver Martinez Are United

Eloisa Cantu and Oliver Martinez exchanged wedding vows in a double ring ceremony Saturday, July 26, at 2:00 p.m. at St. Joseph's Catholic Church of Rotan. Rev. John Hoorman officiated.

The bride is the daughter of Mr. and Mrs.

Rogelio Cantu of Hobbs community. The bridegroom is the son of Mr. and Mrs. Joe Martinez of Kress, Texas.

Matron of honor was Sylvia Tyler of Dallas. Bridesmaids were Jane Diaz of Fort Worth, Margot Gonzalez of Lub-

bock and Mary Holguin of Odessa.

Steve DeLeon of Midland served as best man. Groomsmen were Rogelio Cantu Jr. of Tennessee, Juan Gonzalez of Lubbock and Jesus Holguin of Odessa.

Mitchell and Michael Montez, cousins of the bride, were ring bearers. Raymond Cantu and Armando Montez seated guests.

Teresa Cantu registered guests at the reception.

Organist was Mrs. N.D. Miers of Rotan.

The reception was held in the Parish Hall of the church, hosted by the parents of the bride and groom. Serving cake was Lydia Martinez, sister of the bride, of Fort Worth, and Minerva Lopez of Abilene. Punch was served by Dora Mijares, cousin of the bride, of Odessa.

After a wedding trip to the Bahamas the couple will make their home in Midland.

Harkey in 1956 in Lubbock. He was a member of the Cooper United Methodist Church and a World War II veteran.

Survivors include his wife; two sons, Joe Ray and James Edward, both of Austin; his father, John Edward of Roby; his brother, Ray of Rotan; and a sister, Nadine Bohannon of Tulsa, Okla.

Pallbearers were Gary Stennett, Cary Stennett, Mike Harkey, Douglas Conway, David Walker and Ronnie Peck.

## Services Conducted For Ralph Brown

Services for Ralph Edward Brown, 69, of Lubbock were held at 11 a.m. Friday, Aug. 8, at the Franklin-Bartley Funeral Home Chapel with Rev. Fred Brown, pastor of Cooper United Methodist Church, and Rev. Johnny F. Williams, retired Methodist minister from Lubbock, officiating.

Burial was in Idalou Cemetery directed by Franklin-Bartley Funeral Home.

Brown died at 12:55 p.m. Wednesday, Aug. 6, at Methodist Hospital after an illness.

He was a native of Troy, Okla., and had lived in Lubbock since 1942. He moved there from Ardmore, Okla. He was a retired accountant for the State of Texas.

He married Geneva

## 22 Attend 4-H Family Weekend

The Annual 4-H Family Retreat was held Saturday and Sunday, August 9 and 10, at the State 4-H Center on Lake Brownwood.

The group enjoyed canoeing, swimming, dominoes, and other recreation.

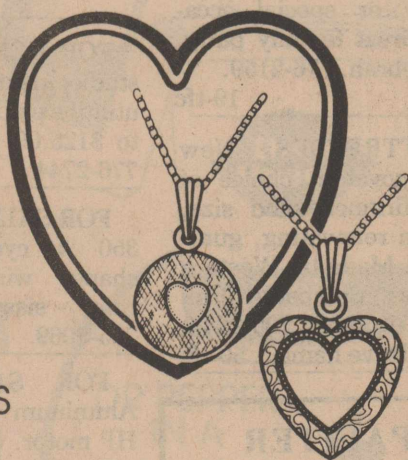
Attending from the county were Mr. and Mrs. Gary Floyd, Matt, Anita and Billy Mac; Mr. and Mrs. Jerry Upshaw, Jeff and Kerrie; Mr. and Mrs. Truman Upshaw; Mr. and Mrs. Jerry Stuart, Kevin and Jerry Wayne; Mr. and Mrs. E.J. Kiker and Alan; and Mr. and Mrs. Richard Spencer, Ricky and Reggy.

## Fine Jewelry

A GIFT FOR SOMEONE SPECIAL

NECKLACES  
PENDANTS  
PINS

• PIERCED EARRINGS  
JEWELRY BOXES



Summers

Free Prescription Delivery

Pharmacy

735-2442  
735-3150

Nights-Emerg. Have Your Doctor Call Us!

## Because you're picky, pick Mickey.



The Mickey Mouse Phone. © Walt Disney Productions Housing produced by American Telecommunications Corp.

A certain kind of person shops for quality first. And if something's a little unusual, a little different, so much the better. If that's you, then it's time you discovered your Bell Business Office.

We've got phones in all styles; antique, ultramodern, warmly nostalgic. Phones that help make your life easier. From a simple extension, to one that'll dial the number for you.

But even more important, at Southwestern Bell you'll get genuine Bell. That means the working parts remain phone company property, so you can be sure they'll work. Or we'll fix them free. It's a level of quality—and service—you've come to expect from Southwestern Bell.

So when it comes to phones, come to your Bell Business Office. Because although you love Mickey Mouse...why waste your time with mickey-mouse details?

Southwestern Bell. We talk your style.





Mrs. Wes Morrow

## Terrie Mullins, Wes Morrow United In Rotan Ceremony

Miss Teresa Mae Mullins became the bride of Wesley Lee Morrow in a double ring ceremony at 7:00 p.m. Saturday, Aug. 9, at First Baptist Church with Bro. Fred Thomas officiating.

The bride is the daughter of Mr. and Mrs. Franky Don Mullins and parents of the bridegroom are Mr. and Mrs. Wendell Morrow.

Maid of honor was Rhonda Skiles of Knox City. Bridesmaids were BeeAnn Weathersbee of Rotan, Debbie Smith of Rotan and Tamara Sorrells of Haskell. They wore floor length gowns of baby blue tulle with sheer capes and carried white baskets with baby blue and white carnations.

Best man was Joe Bob Huddleston of De Leon. Groomsman were Monte Morrow and Mike Morrow, cousins of the bridegroom, of Rotan, and Donny Mullins, brother of the bride, of Rotan. The groom was attired in a white tuxedo and groomsman in navy blue tuxedos.

Brandi Murphree was flower girl and Nathan Sherman, cousin of the bride, was ring bearer.

Given in marriage by her father, the bride wore a white organza gown with

butterfly sleeves that settled gracefully in tiers around the shoulders. Blue satin ribbon was pulled through the Venice lace on the high Empire waist. The neckline was a Venice sculptured-vee. A chapel train graced the back of the gown. Her fingertip veil was held by a Juliet cap of Venice lace entwined with seeded pearls.

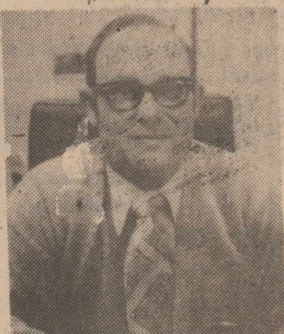
Mrs. Mac Weathersbee rendered nuptial selections including the wedding march and recession. She accompanied Sherry and Stacey Moore as they sang "The Twelfth of

Never", "There Is Love" and Patti Morrow on flute to "Colour My World". For something old the bride wore her great-grandmother's pearls, something blue was her garter, something new was her veil and something borrowed was the wedding gown of her aunt. In the bride's bouquet she carried an old white linen handkerchief given by her grandmother.

The parents of the bride hosted the reception in Fellowship Hall of the church. The bride's table held a four tier traditional wedding cake while the groom's table had a red velvet cake. Traci Hull passed out rice bags.

The bridegroom's parents hosted the rehearsal dinner at the "Shack" in

*I'm an Independent Insurance Agent. If you need auto, home, business or life insurance, I'll look over policies from a number of strong, reliable companies and select the best for you. The best coverage, the best price.*



I don't work for a company. I work for you.



**Rotan Insurance Agency**  
Joe D. Burk  
735-2571  
Rotan

Sheep production in the Rolling Plains of Texas and the southwestern United States offers an unlimited opportunity for producers. Sheep have traditionally been associated with farms and ranches. Small ewe flocks are becoming more popular among urban dwellers with small acreages. Sheep are fun, are well suited for families and offer an economic opportunity.

How can sheep fit in today's agricultural picture? Sheep are ruminant animals, having a specialized digestive tract. Through evolution the ruminant digestive tract has been fine-tuned for the utilization of forages and roughages. It consists of four compartments: the rumen, reticulum, omasum and abomasum. Millions of bacteria and protozoa inhabit the rumen and reticulum of the sheep digestive tract. Here lies one of the keys to the uniqueness of sheep.

These microorganisms are capable of breaking down high fibrous materials (forages and roughages) to nutrients which are utilized by the sheep in the production of weight gain, fetal growth and wool.

An economic analysis of any livestock enterprise shows feed costs comprise the most expenses. Sheep are capable of utilizing a wide variety of feedstuffs. Hays of all types, grains, and protein feeds have made up traditional feeds. Sheep have shown their uniqueness through the years in the utilization of lower quality substandard hays, grains and protein meals. Many sheep oper-

**JOHN DEERE BIG TRACTOR BONUSES**  
GET \$3,000 ON 4-WHEEL DRIVES UP TO \$1,700 ON ROW-CROP TRACTORS



The chart below shows the John Deere Money bonus you can earn for buying or leasing any new John Deere 4-Wheel-Drive or 90- to 180-hp Row-Crop Tractor before October 31, 1980. It'll pay you to act promptly, though, because you'll earn the biggest bonus between now and September 15. After you take delivery, your John Deere Money bonus will be mailed to you—money you can spend for goods or services at our dealership.

There's more: Finance your tractor with John Deere and no finance charges will begin to accrue until March 1, 1981. And the first payment on your annual payment contract won't be due until you harvest your principal crop in 1981. Or lease your new tractor and implements for it and John Deere will discount lease payments by 15 percent. Act now: Get John Deere **BIG TRACTOR BONUSES.**

Tractor Model	Bonus July 15, thru Sept. 15, 1980	Bonus Sept. 16 thru Oct. 31, 1980
8640—4WD, 275 eng. hp	\$3,000	\$2,000
8440—4WD, 215 eng. hp	\$3,000	\$1,600
4840—2WD, 180 PTO hp	\$1,700	\$1,000
4640—2WD, 155 PTO hp	\$1,400	\$ 800
4440—2WD, 130 PTO hp	\$1,200	\$ 700
4240—2WD, 110 PTO hp	\$1,000	\$ 600
4040—2WD, 90 PTO hp	\$ 900	\$ 500

**Farm Tractor & Service Inc.**  
Rotan, Texas

## Fisher County AGENT

RICHARD SPENCER

ations have subsisted on reject feed ingredients from the feed industry.

As industry and agriculture begins to refine production technology, sheep are emerging as utilizers of by-product feedstuffs. Industry in years past has disposed of by-product feedstuffs principally because they were not produced in large enough quantities to enter the feed trade channels. With tightening EPA regulations, industry is looking again at its waste products. Sheep and their unique digestive tract can successfully utilize some of the by-products.

A recent symposium focused on harvested feedstuffs for sheep. Feedstuffs include crop residues from corn, sorghum, wheat and cotton. Corn producers who suffered wind damage at harvest last year could have utilized sheep to maximize the recovery of grain losses on the ground. Milo stalks offer another residue forage potential. Wheat, oat and barley straw with proper supplementation can support

good sheep gains. By-product whole seed and meal are all fed. Other by-product feeds include mung beans and guar meal.

Alert sheep producers can take advantage of crop residues and by-product feedstuffs. With proper supplementation rations can be formulated for lambs, ewes or bucks using by-product feeds. This approach can reduce feed costs and increase economic return to the producer.

Sheep can provide enjoyment for the entire family. They can be easily handled and provide good learning experiences for youth. The production of club lambs has mushroomed in recent years, providing education and recrea-

tion for thousands of 4-H and FFA youngsters.

History reveals many 4-H projects where the beginnings of successful sheep operations. Club lamb projects have also provided the nucleus of many college educations.

Sheep production offers opportunity for the fun and economic incentives. If you are interested in sheep production, more information can be obtained from all breed associations.

**SWEETWATER LIVESTOCK AUCTION, INC.**  
LET US HANDLE NEEDS WHETHER BUYING OR SELLING  
**Sale Every Wed. 11:00**  
CECIL SELLERS, PRESIDENT  
Hamlin 576-3618  
Sweetwater 236-6378

We're Independent Insurance Agents. We place insurance with any one of a number of fine companies. Which means we're in a position to negotiate in your behalf. A benefit you'll appreciate today more than ever.

**YOUR Independent Insurance AGENT SERVES YOU FIRST**

**We don't work for just one company. We work for you.**

**Deaton Insurance Agency**  
776-2228  
Ed Deaton-Agent-Roby, Texas

**ALLSUP'S CONVENIENCE STORES**

**LET US TAKE YOU...**

**SHURFRESH BUTTERMILK SWEETMILK BISCUITS**  
8 OZ. CANS **7 \$1.00**

**SHURFINE FROZEN ORANGE JUICE**  
12 OZ. CAN **59¢**

**SHURFINE ASSORTED PIZZA**  
12 OZ. PKG. **89¢**

**REFRESHING DR. PEPPER**  
6 CAN CTN. **\$1.59**  
6 BTL. CTN. **\$1.89**

**BORDEN'S ICE CREAM SANDWICHES OR NUTTY BUDDIES**  
8 CT. PKG. **89¢**

**SHURFRESH INDIVIDUALLY WRAPPED SLICED AMERICAN CHEESE**  
12 OZ. PKG. **\$1.29**

**THRIFTKING PRE-CREAMED SHORTENING**  
42 OZ. CAN **99¢**

**SHURFINE PORK AND BEANS**  
16 OZ. CANS **4 \$1.00**

**SHURFINE BLEACH**  
64 OZ. JUG **49¢**

**BACK-TO-SCHOOL**

**WE RESERVE THE RIGHT TO LIMIT PRICES EFFECTIVE AUGUST 14-16, 1980 SPECIALS GOOD WHILE SUPPLY LASTS - LIMITED SUPPLY**

**SHURFRESH QUARTERS MARGARINE**  
16 OZ. PKGS. **2 79¢**

**SHURFINE CUT GREEN BEANS**  
16 OZ. CANS **3 \$1.00**

**BORDEN'S ASSORTED YOGURT**  
8 OZ. CTNS. **3 \$1.00**

**BORDEN'S HI PROTEIN MILK**  
1/2 GAL. CTN. **\$1.19**

**CLOVER CLUB POTATO CHIPS**  
PKG. **69¢**

**SHURFRESH HALFMOON CHEDDAR CHEESE**  
8 OZ. PKG. **99¢**

**SHURFINE SPINACH**  
15 OZ. CANS **3 \$1.00**

**PRESTONE ANTI-FREEZE**  
GAL. **\$3.99**



Col. Harleigh Allen

## Harleigh Allen Active In Civil Air Patrol

Lieutenant Col. Harleigh H. Allen, Sr., a new resident of Roby and member of the Civil Air Patrol, appeared before the Fisher County Commissioners last Monday morning offering the assistance of the Southwest Region Civil Air Patrol and outlining some of the services available to Fisher County.

Lt. Col. Allen is Deputy Chief of Staff, communications, Southwest Region of the Civil Air Patrol and is responsible for the direction and supervision of communications in the six states comprising the southwest region. These states include Arizona, Arkansas, Louisiana, New Mexico, Oklahoma and Texas.

Lt. Col. Allen has recently moved to Roby and informed the commis-

sioners that his organization, working through the United States Air Force, can offer Fisher County numerous services in time of need.

Some of the services include (a) Emergency search and rescue (ground and air), (b) evacuation of key personnel in an emergency situation, (c) air transportation to blood plasma, (d) air transportation of doctors and staff, (e) cooperation with all Red Cross efforts, (f) cooperation with all Civil Defense emergencies, (g) full coverage radio communications with auxiliary power, and (h) his own personal airplane (based at Fisher County Airport) will be available and on stand-by for any emergency.

In emergency situa-

tions, Allen said his organization could fly blood plasma from Dallas, assist in searches and could relay emergency messages to friends and relatives in other states.

He plans on opening a machine shop in Roby in the near future. He will be doing lathe work, milling, general welding and hydraulic press work.

Allen and his wife were both associated with the Los Alamos Scientific Laboratory in Los Alamos, New Mexico.

Anyone needing emergency assistance can contact Col. Allen at 776-2621, home, or 776-2296, shop.

## Hustlin' By Joy Walker Round Hobbs

Well we didn't get that good rain we thought we might get from the Hurricane but its really turned off cooler and that helps. We may still get a rain as the weatherman is predicting some in the next two days.

Mr. and Mrs. Billy Carter and boys from Brownwood visited with Mr. and Mrs. J.C. Cave on Wednesday morning and they all went to Farmington, New Mexico that day and stayed until Saturday. While there they visited with Mr. and Mrs. Don Cave and family and Mr. and Mrs. Jackie Cave and family, also Mr. and Mrs. John Schofield and son. They really enjoyed their visit. The Carters spent Saturday night with J.C. and Alice and went on home Sunday, visiting with Mr. and Mrs. Edd Carter in Roby before they went back to Brownwood.

Mr. and Mrs. Frank Boydston have been in Mesquite. They left last Friday and came back on Wednesday. While there they visited with both of their sons, Mr. and Mrs. Wayne Boydston and family and Mr. and Mrs. Fred Boydston and family.

Mr. and Mrs. Jimmy Walker and Melody went to Snyder on Tuesday. Friday we went to Merkel and Melody rode in the WTBRA sponsored barrel races they had. Saturday night we went to Sweetwater and Melody worked her horse on the barrels at the Sweetwater play night. We went to the AJRA parents night Monday at the Snyder Coliseum which was held prior to the AJRA finals which will be going on all week. We got to visit with lots of old friends who we hadn't seen since last year.

Mrs. Aggie Crite from Fort Worth and Mrs. Charles Shipp from Rotan visited with Mr. and Mrs. Emilio Martinez on Sunday. Mrs. Crite is an old friend of Marv's so they really had a good time visiting and reminiscing.

Mr. and Mrs. Neal Hyer and family from Andrews stayed until Wednesday with the J.D. Kincaids.

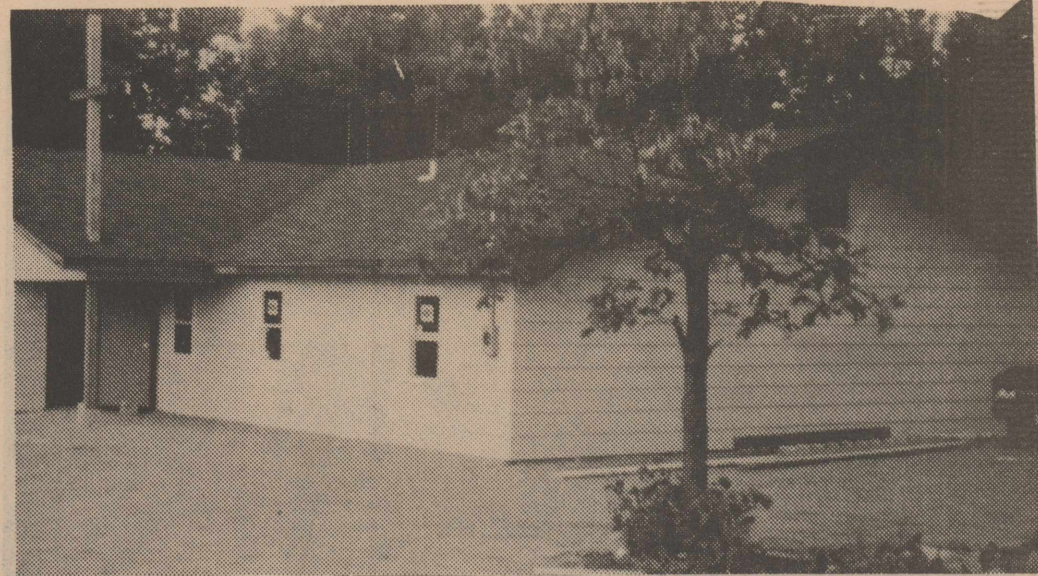
Mrs. Bea Hardin, Lisa Hardin and Kathy Price all went to Marble Falls on Thursday and they visited with Mr. and Mrs. Jim Noles. They came back on Sunday. Mrs. Francene Hardin and family and Mr. and Mrs. Melvin Sparks and family all visited with the Noles while Bea was there. Mr. and Mrs. Bubba Smith also visited with them. They are all from Portland. Morris Hardin from Lubbock spent Saturday and Sunday with Bea. Dallas Hardin from Portland is going to be visiting with Bea and Lisa for the next few days.

Got a nice letter from J.R. Mahaffey who lives in Fontana, Calif. It is always nice to hear from him.

The Etheredge reunion was held on Sunday at the Hobbs School annex. There were 110 present for dinner and so there was lots of visiting and everyone had a wonderful time. Some of the folks visiting were from Cloudcroft and Lovington, New Mexico, and Las Vegas, New Mexico; Spearman, Dumas, Gainesville, Waco, Gorman, Odessa, Lamesa, Abilene, San Angelo, Tahoka and Tyler. Nine out of the eleven of the Will Etheredge children were present.

Mr. and Mrs. Ernest Etheredge, Mr. and Ms. Al Etheredge, Tina and Allen all from Tyler spent the weekend with the Sam Etheredges. Diedra Gantt, daughter of Mr. and Mrs. George Gantt, from Smithville is here spending a few days visiting with her grandmother, Mrs. Sarah Etheredge.

Well this is all for this week. See you next Thursday.



Minnesota Church

## Baptists Join In Building Minnesota Church

Approximately 42 people went to help build the church in Grand Rapids, Minnesota. The group departed July 21 and returned July 31, the church was built in 6 days, completely weathered in and sheet rocked. The Baptist Churches of the Double Mountain Area and contributions from individuals raised the money to build the church, Grand Rapids Baptist Church.

Those who went from Fisher County and other area towns were, Roy and Mary Adams, Ken, Susan and Lonie Foster, J.A. and Faye McClain, Carroll and Wanda Murphree, Rotan, James and Beatie Baird, Pampa; Tim and Traleta Cockrell, Anson; Trevor Dickson, Hawley; J. Rosemary, Todd and Shawn

Donham, Carl and Polly Matthies, Roby; Larry, Pam, Diann, and Toby Dennis, J.R. and Nell Williams, Mark Whittmore, Rule; Parry and Midge Evans, Abilene; Terry Foster, Offutt AFB;

Don R. and Brian Hayes, Stamford; Mike, Helen, David and Mark Hicks, Rotan; Norman, Vernell and Tanya and Greg Sadick, Spicewood; T.O. and Georgie Upshaw, Stamford.

## Maximum Rate Money Market Certificates

Since 1934 we have helped the Big Country grow because we believe we're here to help. Come let us help you grow with maximum rates on all our savings plans.

**6 MONTH - \$10,000 MINIMUM**  
ANNUAL RATE **9.141%** ANNUAL YIELD\* **9.483%**  
Effective Thru August 20

**30 MONTH CERTIFICATE**  
ANNUAL RATE **9.70%** ANNUAL YIELD\* **10.33%**

**HOMESTATE SAVINGS**  
SWEETWATER ROSCOE ROTAN HAMLIN COLORADO CITY ABILENE

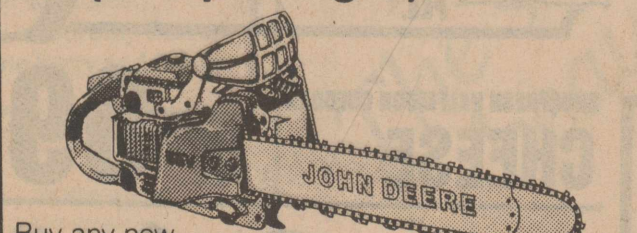
### Weather

Ag.80 Prec.	Hi	Lo
Tue.5 .02	97	76
Wed.6	96	78
Thr.7	95	74
Fri.8	96	73
Sat.9	99	74
Su.10	96	74
Mn.11	92	67

## Everything but the gas SALE



Buy a new John Deere Chain Saw and get everything you need to begin cutting firewood (except the gas) on us



Buy any new John Deere Chain Saw and we'll give you a woodcutter's kit at no extra cost. Valued at up to \$53, this kit contains everything you need to begin cutting firewood, except the gas. It includes a 2 1/2-gallon gas can, engine oil, bar and chain lube, felling wedge, a pair of cowhide gloves, and more. See us soon to take advantage of this limited-time offer. Offer Expires Sept. 13

**Farm Tractor & Service Inc.**  
Rotan, Texas

## WERE YOU COUNTED?

The 1980 Census of Population and Housing is now almost finished. It is very important that the census be complete and correct. If you believe that you (or anyone else in your household, including visitors) were NOT counted, please fill out the form below and mail it IMMEDIATELY to: U.S. Census Office 1220 Broadway, Suite 405, Lubbock, Texas 79408

PLEASE PRINT OR WRITE CLEARLY

I have checked with the members of my household, and I believe that one (or more) of us was NOT counted in the 1980 Census.

On April 1, 1980, I lived at \_\_\_\_\_ (House number) \_\_\_\_\_ (Street, road, etc.) \_\_\_\_\_ (Apartment number or location) \_\_\_\_\_ (City) \_\_\_\_\_ (County) \_\_\_\_\_ (State) \_\_\_\_\_ (ZIP code)

This address is located between \_\_\_\_\_ (Street, road, etc.) and \_\_\_\_\_ (Street, road, etc.)

I am listing below the name and required information for myself and each member of my household.

INSTRUCTIONS FOR WHOM TO INCLUDE IN YOUR HOUSEHOLD: APRIL 1, 1980

PLEASE INCLUDE	DO NOT INCLUDE
All family members and other relatives living here, including babies.	Any college student who stays somewhere else while attending college.
All lodgers, boarders, and other persons living here.	Any person away from here in the Armed Forces or in an institution such as a home for the aged or mental hospital.
All persons who usually live here but are temporarily away.	Any person who usually stays somewhere else most of the week while working there.
All persons with a home elsewhere but who stay here most of the week while working or attending college.	Any person visiting here who has a usual home elsewhere.
Anyone staying or visiting here who had no other home.	

NAMES OF ALL PERSONS LIVING IN THIS HOUSEHOLD ON APRIL 1, 1980 AND THOSE STAYING OR VISITING HERE WHO HAD NO OTHER HOME			How is this person related to the person on line 1? For example: Husband/wife Son/daughter Father/mother Grandson Mother-in-law Roomer, boarder, Partner, roommate	Male or Female M or F	Is this person - White Black (Negro) Japanese Chinese Filipino Korean Vietnamese Indian (Amer.) Print tribe	Asian Indian Hawaiian Guamanian Samoan Eskimo Aleut Other - Specify	When was this person born? Month Year	Is this person - Now married Widowed Divorced Separated Single (never married)	Is this person of Spanish/Hispanic origin or descent? No - Not Spanish/Hispanic Yes - Mexican Mexican-American Puerto Rican Cuban Other Spanish/Hispanic
Last name	First name	Middle Initial							
1									
2									
3									
4									
5									
6									

(If there are more than 6 persons, use an additional sheet)  
 Name of person who filled this form

NOTICE - This census is authorized by title 13, United States Code, and you are required by law to answer the questions to the best of your knowledge. The same law protects the confidentiality of your answers. Census employees are subject to fine and/or imprisonment for any disclosure of your answers. Only after 72 years does your information become available.