

OFFICIAL STUDENT PUBLICATION  
OF WESTERN TEXAS COLLEGE

# The Western Texan

Friday, December 12, 1980  
Snyder, Texas 79549  
Volume 10, Issue 7

## INSIDE

Editorials	2
Female draft	3
Spring classes	6/7
'Xmas' spirit	8/9
Basketball	10/11

## Candidates screened by board

WTC's board of trustees is continuing its search for a new president.

The board has completed its screening of applicants for the presidency. Four or five will be interviewed within the next two or three weeks, Edwin Parks, board president, said. Eighteen applications were received and reviewed.

Other applicants may be called in at a later time, Parks added. He emphasized that the board wishes to move as quickly as possible, yet take as much time as needed to select the best qualified person.

Dr. Robert Clinton, president since 1970, announced his resignation earlier. He will become director of the Texas Public Community/Junior College Association in Austin, and will be leaving Feb. 1.

In the regular board session Monday night, trustees accepted the resignation of Randy Mosley, head of petroleum technology. He will head up a training program for the Western Company, headquartered in Ft. Worth.

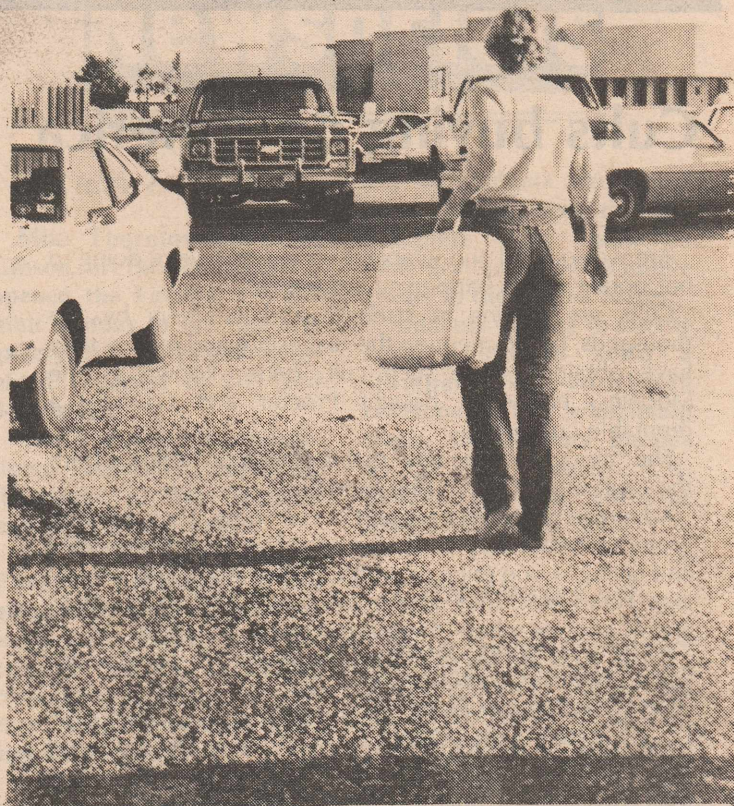
Trustees ratified the employment of James Parker as director of student financial aid. The announcement was made last month and Parker joined the staff Monday. He previously had been financial aid advisor at West Texas State University in Canyon.

The audit of federal funds was presented by the firm of Anderson and Anderson and the board approved it as presented. Buster Anderson, CPA, said the audit of college funds would not be completed until later this month.

Also meeting with the board was rodeo coach Bob Doty who proposed that WTC co-sponsor a rodeo with Howard College. He said the college rodeo would be held April 14-17 at the Scurry County Coliseum, then would be held in Big Spring the next year.

The board endorsed the legislative program proposed by the Texas Junior College Association and a bill prefilled by State Sen. Roy Blake which would tighten enforcement of the state unemployment compensation laws.

The bill provides that a person terminated from a job due to misconduct would be denied benefits until he returns to work for six consecutive weeks at a salary equal to or greater than the weekly benefit amount.



Cindy Boone, Haskell sophomore, packs her car to beat the moving-out rush next week. -Jesse Sanchez photo

## Dorms close Saturday Sophs sign-up Jan. 19

Dormitories will close Saturday, Dec. 20 at 2 p.m. They will reopen for the spring semester Monday, Jan. 19, at 10 a.m.

The fall semester officially ends Dec. 20 rather than Dec. 19 because of a day made up due to bad weather.

The spring semester will start Wednesday, Jan. 14 for faculty in-service. School will officially open Jan. 19.

Registration of sophomore students will be 1-5 p.m. and evening students 6:30-9 p.m. Jan. 19. Surnames L-R will sign up from 1-2 p.m., S-Z from 2-3 p.m., A-D from 3-4

p.m. and E-K from 4-5 p.m.

Registration of freshman students will be 9 a.m.-noon Jan. 20. Surnames A-D will sign up from 9-9:45 a.m., E-K from 9:45-10:30 a.m., L-R from 10:30-11:15 a.m. and S-Z from 11:15-noon.

Continued registration for all students will be 1-5 p.m., also Jan. 20.

Beginning class day will be Wednesday, Jan. 21 at 8 a.m. for day classes and 6:30 p.m. for evening classes.

Last day to register, change schedules or add courses will be Friday, Jan. 30.

## Extension center classes listed

Several academic and occupational-technical credit courses will be offered evenings this spring at five extension centers.

Sweetwater classes include MTH 136, RET 134, ACC 232 and HPE 212 Mondays; PSY 231 and MGT 137 Tuesdays; ENG 132, HPE 132, SOC 233 and HPE 212 Wednesdays; ART 239, HIS 132 and LE 231 Thursdays, and LE 233 TBA.

Courses set at Haskell are

ENG 131 Mondays; MTH 134 and ACC 232 Tuesdays; GOV 232 Wednesdays, and SOC 231, MGT 139 and RET 231 Thursdays.

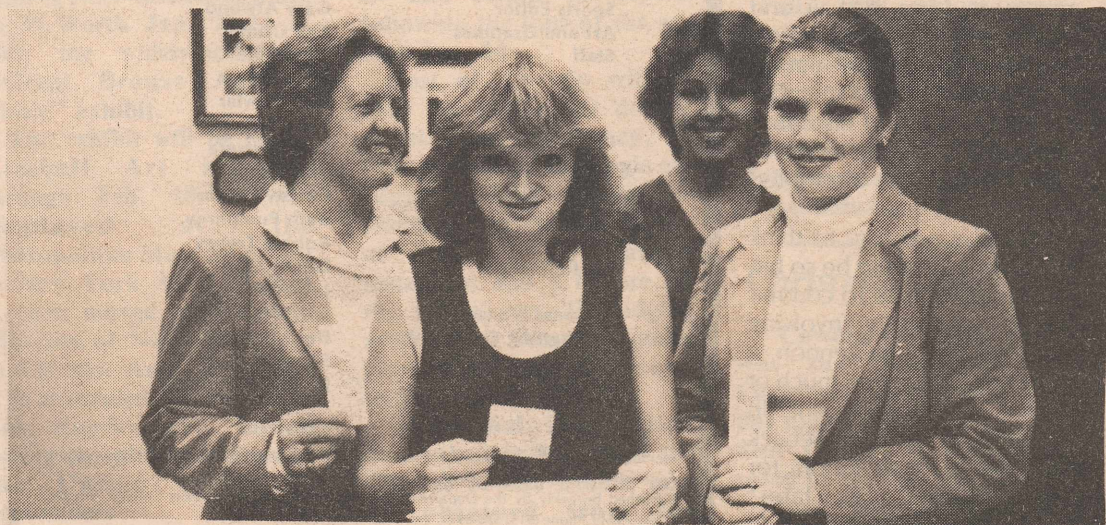
Hamlin classes include BIO 145 and HPE 212 Mondays; ART 232, HIS 131 and RET 131 Tuesdays; MGT 132 and BIO 145 Wednesdays, and SPE 131, SPE 232 and HPE 212 Thursdays.

Two classes set for Colorado City are HIS 131

Tuesdays and MGT 131 Wednesdays.

Crosbyton courses include ENG 132 and MTH 133 Mondays; CHM 142 and HIS 131 Tuesdays; SOC 232 Wednesdays, and CHM 142, GEO 132, SPE 131 and SPE 232 Thursdays.

For further information on registration schedules concerning these classes, contact the registrar's office in the administration building.



Susan Sullivan, Snyder freshman, won tickets to the Dallas-Philadelphia game set Sunday, Dec. 21. The contest was sponsored by PTK. -Aline Parks photo

## FINAL EXAM SCHEDULE

Due to the day that was lost because of snow, an additional classroom day has been added on Monday, Dec. 15. The final examination schedule will be run as follows:

CLASS MEETING TIME	EXAMINATION TIME
8:30- 9:20 MWF	8 a.m., Wednesday, Dec. 17
9:25-10:15 MWF	10 a.m., Thursday, Dec. 18
10:20-11:10 MWF	10 a.m., Wednesday, Dec. 17
11:15-12:05 MWF	10 a.m., Friday, Dec. 19
12:10- 1:00 MWF	8 a.m., Friday, Dec. 19
8:35- 9:50 TTH	8 a.m., Tuesday, Dec. 16
9:55-11:10 TTH	8 a.m., Thursday, Dec. 18
11:55- 1:10 TTH	10 a.m., Tuesday, Dec. 16

### EVENING CLASSES

6:30- 9:20 M	6:30- 8:30, Monday, Dec. 15
6:30- 9:20 T	6:30- 8:30, Tuesday, Dec. 16
6:30- 9:20 W	6:30- 8:30, Wednesday, Dec. 17
6:30- 9:20 TH	6:30- 8:30, Thursday, Dec. 18

## Cults buying up America

Are we so blind and wrapped up in what we're doing to not notice what's happening around us?

Cults are gaining in strength and numbers by the thousands, not to mention the real estate and money they have obtained. One such cult, better known as the Moonies, has even bought Procter and Gamble, a reputable company.

The "thought for the day" that is played on radios is from the Unification Church (the Moonies).

Advertisements are a big part of cults now. Their aim is to project a better way of life for people who are pressured and failing at one thing or another. They hit mainly on college campuses. They appear on street corners, in malls and in airports where there are crowds of people.

These cults are tax-exempt because they're going under the heading of a religious organization.

It's harder to get out of a cult than it is to get into one. Most cults will not let members be alone at any time, and they are either not allowed or discouraged from seeing their own families. Brainwashing is a major technique used, and if parents do get their children back they must be de-programmed.

People must become more aware of these cults and start fighting back to stop their spread. It isn't a problem that will solve itself or something that, if we forget about it or pretend that it isn't there, will just go away.

Legislation should be introduced to tax religious organizations to weed out cults who use "religion" for tax-exempt purposes. As Christians, we should be willing to take care of our churches and chip in to cover our churches' expenses. We should get back to the basic family institution where young people will not have to go out and search for meaning in their lives and search for those who will show them that they care for them and that they aren't the failure their family and society has made them out to be. Children need to be shown they are loved by parents and that they can achieve, so that the child can have a positive attitude about himself.

Awareness is another answer to stopping these cults. Know what is going on and speak out or stop using products that are supplied by them.

The problem will go unsolved unless people become aware of the money, land, influence these cults have on young people, advertising and products they own, then work together to stop it.

-Lynda Cain

## Hot-rod V-8s to disappear

Another rare form of wild-life in America is in danger of becoming extinct, the American hot rodder. The system is out to exterminate this species through requiring smog-control devices and eliminating the big-block engines. These two strategies are more damaging to the hot rodder than the 55 mph speed limit and the new radar traps combined.

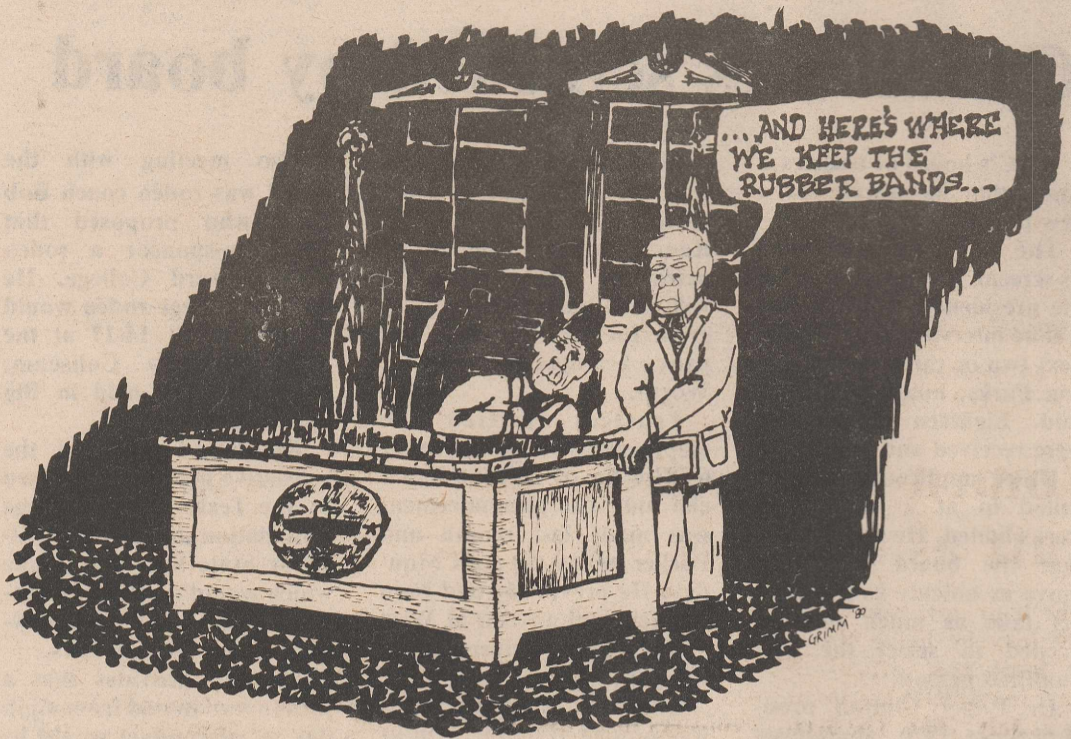
Engine performance was greatly damaged with the introduction of the catalytic converter and other worthless smog-control devices. Many people (not just hot rodders) found ways to bypass these devices. Others compensated for this with engine modifications or simply removed the devices altogether. Now many parts of the country, particularly California, carry heavy fines for tampering with smog-control devices.

1979 was the last year General Motors offered their 454 and 400 engines. Soon they plan to axe the 350's and later the 305's. Ford also cancelled their big-block 460 and 400 engines, and will most likely follow General Motors in doing away with the V-8's.

There are some among us who will never understand or appreciate the thrill of high-speed driving. If we exterminate the hot rodder, America will lose a character that's already in history. He is a part of heritage like the cowboy and the lumberjack.

-Robbie Trevey

## Opinion



## Anything goes

Tragedy struck former Beatle John Lennon as he was murdered in front of his New York apartment building Monday night. A 25-year-old former mental patient and "devout Beatles fan" apparently came to "The Big Apple" expressly to shoot Lennon.

Crowds gathered in front of the luxury Dakota apartment building by the thousands, as Lennon's wife, Yoko Ono, told them to please leave.

The assailant, Mark Chapman, was from Hawaii and was arrested Tuesday morning. He entered no plea at his arraignment in Manhattan Criminal Court, but his court-appointed attorney said his client had twice attempted suicide in the past.

It really is a shame to think that someone could be so bitter and full of hate to commit murder, especially involving someone like John Lennon, a man who devoted so much of his life to entertainment. In fact, he was on a comeback after living in seclusion for several years. His latest album, "Double Fantasy," had just been released.

-Terry Green

### WESTERN TEXAN PUBLICATIONS POLICY

#### LETTERS TO THE EDITOR:

Letters are welcomed but must be signed by the author with attached phone number for verification and are subject to review by the editor.

#### PAPER ERRORS:

Any errors of fact will be corrected upon request. Editorial statements are the opinion of the signed staff individual(s) and are not necessarily that of the entire staff, faculty, administration, and Board of Trustees of Western Texas College.

## The Western Texan

OFFICIAL STUDENT PUBLICATION OF WESTERN TEXAS COLLEGE

#### Editor Assistant Editors

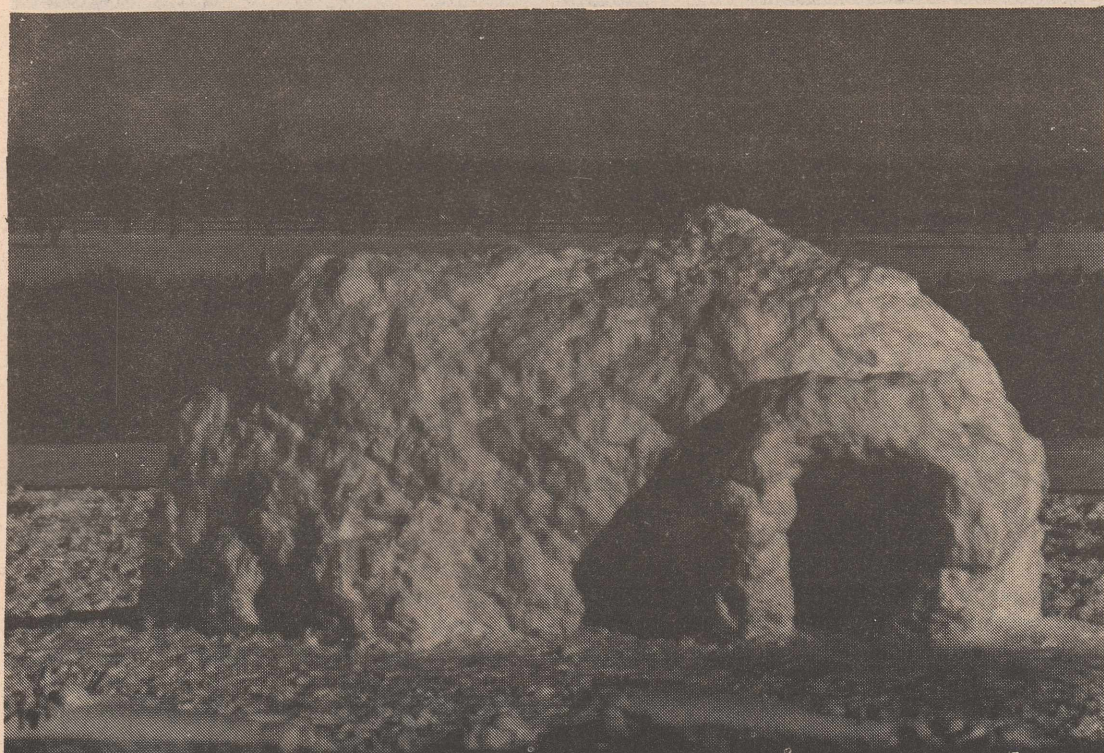
J.D. Helm  
Linda Belvin  
Lynda Cain  
Tracie Gilstrap  
Gary Atwood  
Ken Grimm  
Terri Cole  
Pat Farmer  
Billy Fowler  
Terry Green  
Lucy Herrera  
Kim James  
Christy Jinkins  
Beth Pumphrey  
Robbie Trevey  
Denny Cox  
Jesse Sanchez  
Lori Hollowell  
Beverly Cross  
Susan Tolbert  
Dr. Mike McBride

#### Sports Editor Art and Graphics Staff

#### Photographers

#### Business Manager Typesetting Coordinator Office Coordinator Adviser

Member Texas Junior College Press Association, Texas Intercollegiate Press Association, Associated Collegiate Press, Rocky Mountain Collegiate Press Association. Published biweekly by the Department of Journalism, Western Texas College, Snyder, Texas 79549 Phone (915) 573-8511, ext. 273. Opinions expressed are those of the student staff members and not necessarily those of the student body, faculty or administration of the college. The Western Texan is printed by Snyder Daily News.



With an apparent housing shortage on campus, ingenious dorm students pulled a 'snow job' north of the Student Center. But the tenants had to vacate when the sun came out. —Staff photo

## Women may register for draft as early as July

Like it or not, women 18 to 19 may be lining up at their local post offices to register for military service as early as July, 1981. The decision has been left up to the Supreme Court on whether or not women should be included for military service or draft registration.

The decision is expected to be made by May or June.

The controversy began last July when a three-judge federal court in Philadelphia put the male-only draft system to the test, saying that the present system is unconstitutional sex-biased.

If the higher court does rule this unconstitutional, Congress must then amend that women be included as possible draftees to the

Military Selective Service Act.

The case currently does not involve requiring female enlistees to be assigned combat duty.

Despite the lower court decision, men 18 to 19 were required to register for the draft last July. Some four million men were required to register. Women were able to register on a volunteer basis.

One reason for the lower court decision was that in 1976 the Supreme Court decided that "laws treating men and women differently cannot stand if they do not serve important governmental objectives and are not substantially related to achieving such objectives."

—Lynda Cain

## Scurry museum to push Ft. Worth art excursion

The Scurry County Museum Association is accepting reservations for a trip to Ft. Worth Jan. 23-24 to view the widely-acclaimed "Great Bronze Age of China" exhibit.

The exhibit will be in the Kimbell Art Museum through Feb. 18. It was displayed at the Metropolitan Museum of Art in New York April 12-June 9, then moved to the Field Museum of Natural History in Chicago Aug. 20-Oct. 29. It is scheduled for display in Los Angeles and Boston before completing its tour of the United States in September.

Persons making the trip

will leave Snyder by chartered bus at noon Jan. 23 and return to Snyder following the tour of the exhibit Jan. 24.

Cost of the trip will be \$100 per person for double motel room occupancy, or \$120 per person for single occupancy. This charge includes transportation, dinner at Jimmy Dip's Chinese restaurant and a lecture on the exhibit Jan. 23, lodging at the Best Western Kahler Green Oaks Inn, and tickets to the exhibit.

Additional information about the trip and about the Chinese bronze exhibit may be obtained from the museum office.

## Newspaper takes 2nd in contest

The Western Texan, has received a Second Place rating for 1979-80 from the Columbia Scholastic Press Association at Columbia University in New York City.

The publication earned a total 805 points of a possible 1,000, only 45 points shy of First Place in the junior/community college division.

Judged in four categories, the paper received 184 of a possible 225 in Content/Coverage, 320 of a possible 425 in Writing/Editing, 266 of a possible 300 in Design/Display, and 35 of a possible 50 in Special Credit.

Critic judge James Paschal, of the University of Oklahoma School of Journalism, wrote, "A very newsy campus newspaper --one that's even interesting in its array of offerings. This underscores concern of the paper's staff."

Fall, 1979 editors were Sheila Sandbothe and Monette Sentell, and Spring, 1980 editor was Lois Gleason.

Adviser is Dr. Michael McBride, associate professor of journalism.

## Christmas dance

"Cowboy Christmas Ball" was the theme of the Christmas Dance, held Friday night, Dec. 5, in the Student Center. It was sponsored by the Senate.

Music was provided by Travelin' Sound of Odessa.

# Newsbriefs

### Faculty exhibit

Mike Thornton and John Gibson, art faculty members, opened the Faculty Art Exhibit Sunday in the fine arts gallery. It features their combined expertise in 2-D and 3-D designs.

The works are representational landscapes, capturing the essence of West Texas in paintings and ceramics.

A "West Texas Dinner Party" highlighted an original-design stoneware service for eight, plus accessory pieces including casseroles, platters, a pitcher, butter or cheese dish, and knife rests.

The oven-proof stoneware is for sale, as are all works in the show.

The Faculty Art Exhibit is to remain in place through Dec. 19 and may be seen weekdays from 9 a.m. to 4 p.m. The gallery features a variety of exhibits throughout the year.

### Moneys available

College students should begin applying now for a variety of new scholarships and work opportunities announced by The Scholarship Bank, a nation-wide scholarship search service for college students.

According to Steve Danz, director, several of the new programs are a work program sponsored by The Scholarship Bank for 200 students throughout America, a series of new programs for female students (especially those returning to campus after some years away) and new scholarship programs for students in law, education, political science, medicine and social work.

The Scholarship Bank is anxious to hear from those students who need additional financial aid or work opportunities to stay in school or to

pay for graduate school next year. They maintain the only complete data bank of undergraduate and graduate grants in the United States.

Students wishing to use the service should send a stamped, self-addressed envelope to The Scholarship Bank, 10100 Santa Monica no. 750, Los Angeles, CA. 90067, or call toll-free 800-327-9009, ext. 397.

### CPR classes set

Basic cardiopulmonary resuscitation techniques will be taught in a one-day course Saturday on campus.

Students who complete the course are eligible for American Red Cross certification.

Winnie Poyner, RN, and Diane Beard, RN, have received special training to serve as CPR instructors.

"We will be teaching the students how to determine when CPR is needed and the basic techniques for applying CPR to infants, children and adults," Poyner said.

CPR includes artificial respiration, cardiac compression and procedures to be followed when treating choking victims.

### Recognition dinner

Plans have been finalized for a dinner in honor of Dr. and Mrs. Robert Clinton in the cafeteria at 7 p.m. Thursday, Jan. 15. Dr. Clinton has resigned as president of WTC, effective Feb. 1.

Hors d'oeuvres will be served in the Student Center lobby from 6:15-7 p.m.

The program will consist of vocal solos by Jane Womack, choir director, and "toast" speeches by representatives of the board of trustees, administration, faculty, students, church and community.

## M & M ELECTRONICS SALES & SERVICE

SONY  
TEKNICA  
COLOR TV  
Consoles &  
Portables



COLOR TV SPECIALISTS  
Expert Service On All Makes  
• Auto Stereo • Tape Decks • Tapes

Complete Line Of Accessories  
**Gobra** 573-0508  
CB RADIOS Leroy Thrower - Owner

1910 27th.  
Snyder, Tx.



Roscoe sophomore, Gina Willman, is WTC's entry in the "Glamour" magazine Top 10 contest. -J.D. Helm photo

## Willman only coed entered in contest

Deadline for college females to enter the Top 10 Glamour Contest sponsored by *Glamour* magazine is Dec. 15. Material should include an application, essay of 500 words or more and an 8x10 photograph.

The contest is designed to recognize female students who have made certain contributions and achievements during their years as college students. The contest judges will recognize 10 top female essays. The photograph is for the magazine to show readers the winners when they publish who won.

The 10 women chosen will win a trip to New York furnished by *Glamour*.

WTC held its own Top 10 contest with plans to send winners' material on to *Glamour* before the deadline. The women were to write an essay on their college accomplishments, goals and plans for careers. They were also required to fill out an application and turn in an 8x10 photograph.

A tea was planned where judges from the college would read the essays and ask questions from them to the students. Then the win-

ners would be announced at the Cowboy Ball dance that Friday night. Due to lack of participation among students, the campus contest was canceled. One student did enter from WTC, Gina Willman, Roscoe sophomore.

"It troubles me that more students didn't enter the contest from here. It should be a learning experience for anyone to just enter the contest, whether or not they win or lose," stated Willman.

Her material will be sent on to *Glamour* for the national contest. -Lynda Cain

## Is there life after cancer?

Some people think that even when a cancer is cured, the patient will never live a normal life again.

The American Cancer Society knows better.

It helps people return to their homes and their jobs.

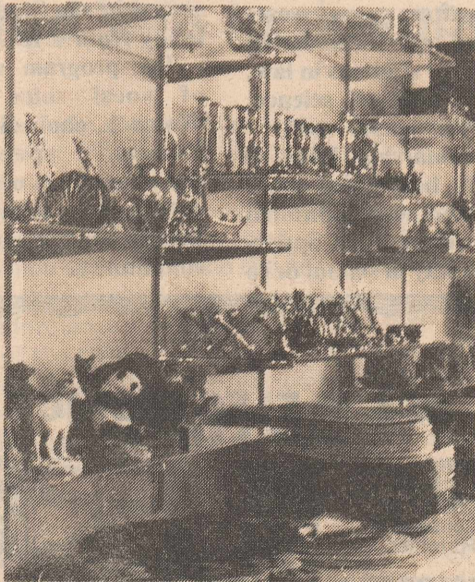
There is life after cancer. Two million people are living proof. If you or anyone close to you needs help, call us.



American Cancer Society

This space contributed as a public service

## Special Moments



GIFT SHOP

4206 College Ave.

573-4802

THE FINEST IN MEXICAN FOODS  
**Spanish Inn**

2212 COLLEGE  
SNYDER, TEXAS



DOROTHY RODRIGUEZ  
573-2355

CHON RODRIGUEZ II  
573-0242



Friendly

Flower Shop

3001 College Ave.

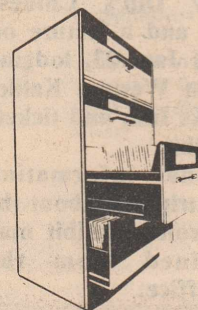
573-3851



573-7620

"Service with the speed of Sound"

4100 South College



**BENNETT  
OFFICE  
SUPPLY**

1819-25th St.

573-7202

Furniture • Supplies • Equipment

# Campus



Pam Holland, law enforcement major, and Donna Browning, drama major, were named outstanding fall PTK members. —Aline Parks photo

## Holland, Browning cited PTK most active fall term members

Members of the Psi Zeta chapter of Phi Theta Kappa were recognized in their classes Nov. 19 in honor of PTK Founder's Day.

Linda Belvin resigned as reporter of PTK. Neva Reaves, president, appointed Gina Willman to serve as reporter for the rest of the year.

The officers of Psi Zeta decided to select an outstanding member each month. The criteria are based on which member has been most active and has contributed in all phases of Phi Theta Kap-

pa for the given month.

During October, several members were active, so choosing the outstanding student was difficult, said Dr. Mary Hood, sponsor. Donna Browning, sophomore drama major from Snyder, was selected for the following contributions: loading and unloading catalogs contributed by the registrar's office for the paper drive and collecting donations for the "Dollars for Scholars" money-making project while rehearsing for the play "Becket."

Pam Holland, sophomore law enforcement major from Earth, was the outstanding member for November. A new member of PTK, she helped with the paper drive, sorted paper and collected donations. Holland is a member of the Senate, Fellowship of Christian Athletes and is trainer for the Dusters.

PTK's party is set Sunday, Dec. 14 at 4:30 p.m. at Dr. Duane Hood's home, 3000 Crockett. All PTK members and dates or spouses are invited.

## Journalism offers classes for news expressionists

A new course and classes on an individualized study basis are among the offerings available through the journalism department during the spring semester.

Advanced Photography, listed as JOU 234, is scheduled Tuesday evenings from 6:30-9:20. Recently approved by the Coordinating Board, the course is designed for students who have completed JOU 130, Introductory Photography, or who have experience in or a working knowledge of photography.

The class will stress the finer points of film processing and printmaking, plus advanced composition, technical data, creative display and special effects picture taking. Creativity in theory and design will be important concepts, as well as the individual interests of class members.

This is the third course in photography available at WTC.

Two journalism courses available either at a specified class time or on an instructor-approved individual study basis are JOU 132, Introduction to Mass Communication, and JOU 233, Principles of Advertising.

JOU 132, also offered from 11:15-12:05 MWF, is a

survey course of the mass media in America, which includes the study of basic factors affecting human interaction through mass communication.

This is the core course for all communications majors and minors in most colleges and universities, and is highly-recommended as an important elective for non-communications majors.

JOU 233, also offered from 10:20-11:10 MWF, involves study in the fundamentals of advertising in the mass media, as well as advertising appeals, copy writing, layout and media selection. The role of advertising in America is emphasized.

This class is offered in many four-year schools at the freshman-sophomore level, and is fully acceptable for transfer. It is a recommended elective, especially for business, marketing-management, economics and psychology majors.

Other classes offered are JOU 231, News Editing and Copy Reading, from 9:55-11:10 TTh; JOU 112, Publications (Newspaper staff lab credit), from 11:15-11:55 T; and JOU 113, Publications (Yearbook staff lab credit), from 11:15-11:55 Th.

Present this coupon for a  
**20% DISCOUNT**  
on your next purchase

# ANN LEE

"For the Woman Who Knows Value"



573-2362

3014 Varsity Square

Janie Gibson, Owner

**Jack's**  
ROADBORING  
Pipeline Construction

P.O. Box 1273  
Snyder, Texas  
573-0135

**PENNY  
LANE**

☆ Chicken Fried Steak  
☆ Seafood  
☆ Chicken  
3030 Varsity Square  
573-9389

**LOTA' BURGER**

"A Square Meal  
On a Round Bun"



3900 College  
573-2922

**Thompson's  
Shoe Store**



2526 Ave. R

573-5501

**SNYDER BOOKSTORE  
& GIFT SHOP**

- Bibles
- Religious
- Paperbacks

3902 College  
573-6447

# SPRING CLASS SCHEDULE

Snyder Campus  
Registration

(Day) Jan. 19-Sophomores  
Jan. 20-Freshmen  
(Evening) Jan. 19

1-5 p.m.  
9 a.m.-noon  
6:30-9 p.m.

Classes begin Wednesday, Jan. 21

## ACADEMIC CREDIT

### Day Courses

COURSE NO	COMP NO	COURSE TITLE	DAYS	PERIOD	NO HR	ROOM	INSTRUCTOR	CLASS LIMIT	LAB FEE
ACC 232	200	PRIN/ACCOUNTING	MWF	11:15-12:05	03	7A-117	HALBERT, W	(50)	
AG 134	001	AG ECONOMICS	TTH	8:35- 9:50	03	7B-105	DOTY, B	(30)	
AG 135	002	HORSEMANSHIP I LAB (4 HOURS)	TBA	9:25-10:15	03	7A-117	DOTY, B	(30)	\$15
AG 221	003	LIVESTOCK EVAL LAB	W	9:25-10:15	02	7A-117	DOTY, B	(30)	\$10
AG 232	004	DAIRY SCIENCE LAB (2 HOURS)	TTH	9:55-11:10	03	7B-105	DOTY, B	(30)	\$10
AG 234	005	AGROSTOLOGY LAB	MW	10:20-11:10	03	7B-105	DOTY, B	(30)	\$10
AG 240	006	ANIM PHYSIOLOGY LAB	MW	8:30- 9:20	04	7A-107	DOTY, B	(30)	\$10
AG 241	007	SOILS LAB	MWF	11:15-12:05	04	2A-105	STAFF	(30)	\$10
ANT 232	201	CULTURAL ANTHRO	TTH	8:35- 9:50	03	MUSEUM	SUTTON, S	(99)	
ART 133	100	FREHAND DRAW LAB	MW	1:05- 1:55	03	FA-117	GIBSON, J	(15)	\$ 5
ART 135	103	DESIGN 3-D LAB	TTH	1:15- 2:30	03	FA-117	THORNTON, M	(15)	\$ 5
ART 137	101	ART HIS/SUR II	MWF	8:30- 9:20	03	FA-107	GIBSON, J	(25)	
ART 231	102	GRAPHIC DESIGN LAB	TTH	8:35- 9:50	03	FA-117	GIBSON/THORNTON(15)	(15)	\$10
BIO 146	050	PRIN OF BIOLOGY	MWF	8:30- 9:20	04	2A-101	ALSUP, H	(45)	\$10
BIO 146	051	PRIN OF BIOLOGY	MWF	10:20-11:10	04	2A-101	CARTER, J	(45)	\$10
BIO 146	052	PRIN OF BIOLOGY	TTH	8:35- 9:50	04	2A-101	CARTER, J	(45)	\$10
BIO 146	053	PRIN OF BIOLOGY LAB I BIO 146	M	1:15- 4:15	04	2A-111	CARTER, J	(45)	
BIO 146	053	LAB II BIO 146	T	1:15- 4:15	04	2A-111	CARTER, J	(45)	
BIO 146	053	LAB III BIO 146	W	1:15- 4:15	04	2A-111	CARTER, J	(45)	
BIO 146	053	LAB IV BIO 146	TH	1:15- 4:15	04	2A-111	ALSUP, H	(45)	
BIO 242	055	HUMAN ANA/PHYS LAB	TTH	8:35- 9:50	04	2A-105	ALSUP, H	(30)	\$10
BIO 246	056	ENVIRON BIOLOGY LAB	MWF	9:25-10:15	04	2A-105	CARTER, J	(30)	\$10
BIO 247	057	MICROBIOLOGY LAB	MWF	9:25-10:15	04	2A-102	ALSUP, H	(45)	\$10
BUS 131	202	INTRO TO BUS	MWF	9:25-10:15	03	7A-105	HALBERT, W	(99)	
BUS 232	203	BUSINESS LAW	MWF	10:20-11:10	03	2B-106	HALBERT, W	(25)	
BUS 232	204	BUSINESS LAW	TTH	9:55-11:10	03	2B-106	HALBERT, W	(25)	
CHM 142	058	FUND OF CHEM II LAB	TTH	9:55-11:10	04	2A-102	OTTO, F	(45)	\$10
CHM 144	059	GENERAL CHEM II LAB	MWF	9:25-10:15	04	2A-101	HILLIS, S	(45)	\$10
CHM 242	060	ORGANIC CHEM LAB	MWF	8:30- 9:20	04	2A-102	HILLIS, S	(45)	\$10
DR 112	160	THEATRE ACT	TBA	TBA	01	FAT	RAMBO, J	(99)	\$ 5
DR 131	161	INTRO/THEATRE	MWF	11:15-12:05	03	FAT	RAMBO, J	(99)	
DR 212	162	THEATRE ACT	TBA	TBA	01	FAT	RAMBO, J	(99)	\$ 5
DR 231	163	ACTING I LAB	DAILY	1:00- 2:00	03	FAT	RAMBO, J	(99)	
DR 232	164	STAGECRAFT II LAB	MWF	2:00- 3:00	03	FAT	RAMBO, J	(99)	\$ 5
ECO 232	207	PRIN OF ECO	MWF	10:20-11:10	03	2C-104	PALMER, J	(25)	
ECO 232	208	PRIN OF ECO	TTH	8:35- 9:50	03	2C-104	PALMER, J	(25)	
EGR 231	061	STATICS	MWF	8:30- 9:20	03	7B-101	MOSLEY, J	(30)	
ENG 131	300	COMPOSITION I	MWF	9:25-10:15	03	2B-110	LANCASTER, R	(25)	
ENG 132	302	COMPOSITION II	MWF	8:30- 9:20	03	2B-110	LANCASTER, R	(25)	
ENG 132	303	COMPOSITION II	MWF	9:25-10:15	03	LRC-101	BARKOWSKY, E	(25)	
ENG 132	304	COMPOSITION II	MWF	9:25-10:15	03	LRC-203	LANCASTER, M	(20)	
ENG 132	305	COMPOSITION II	MWF	10:20-11:10	03	7B-101	HALBERT, J	(25)	
ENG 132	306	COMPOSITION II	MWF	11:15-12:05	03	LRC-101	HALBERT, J	(25)	
ENG 132	307	COMPOSITION II	TTH	8:35- 9:50	03	LRC-101	LANCASTER, R	(25)	
ENG 132	308	COMPOSITION II	TTH	8:35- 9:50	03	7B-101	HALBERT, J	(25)	
ENG 132	309	COMPOSITION II	TTH	9:55-11:10	03	LRC-101	HALBERT, J	(25)	
ENG 132	310	COMPOSITION II	TTH	11:55- 1:10	03	2B-110	LANCASTER, M	(25)	
ENG 135	313	COMPOSITION I	DAILY	8:30- 9:20	03	LRC-203	LANCASTER, M	(25)	
ENG 232	315	ENGLISH LIT	MWF	10:20-11:10	03	2B-110	LANCASTER, R	(30)	
ENG 232	316	*ENGLISH LIT *EMPHASIS ON SHAKESPEARE	TTH	9:55-11:10	03	2B-110	BARKOWSKY, E	(30)	
ENG 236	319	WORLD LIT	MWF	11:15-12:05	03	LRC-203	LANCASTER, M	(30)	
GEO 132	210	WORLD GEOGRAPHY	MWF	8:30- 9:20	03	2C-104	PALMER, J	(99)	
GEL 142	062	HISTORICAL GEOL LAB	MWF	11:15-12:05	04	2A-102	OTTO, F	(24)	\$10
GOV 231	218	U.S. GOVERNMENT	MWF	10:20-11:10	03	2C-103	ADAMS, R	(40)	
GOV 232	212	STATE/LOCAL GOV	MWF	8:30- 9:20	03	2C-101	ADAMS, R	(25)	
GOV 232	213	STATE/LOCAL GOV	MWF	9:25-10:15	03	2C-101	PRUITT, F	(25)	
GOV 232	214	STATE/LOCAL GOV	MWF	11:15-12:05	03	2C-101	ADAMS, R	(25)	
GOV 232	215	STATE/LOCAL GOV	TTH	8:35- 9:50	03	2C-101	PRUITT, F	(25)	
GOV 232	216	STATE/LOCAL GOV	TTH	9:55-11:10	03	2C-101	ADAMS, R	(25)	
<b>ACTIVITY</b>									
HPE 212	400	BEG/ADV RACBALL	MWF	8:00- 9:00	01	COURTS	CUSHING, J	(16)	\$10
HPE 212	401	WT TRAINING	MWF	9:25-10:15	01	GYM 109	BURKE, O	(15)	\$10
HPE 212	402	AEROBIC DANCE	MWF	9:25-10:15	01	GYM 108	TREADAWAY, G	(50)	\$10
HPE 212	403	TENNIS	MWF	10:20-11:10	01	COURTS	TREADAWAY, G	(12)	\$10
HPE 212	404	BEG RACQUETBALL	MWF	10:20-11:10	01	GYM 107	BURKE, O	(04)	\$10
HPE 212	405	BEGINNING GOLF	MWF	10:20-11:10	01	GOLF COU	O'DAY, R	(20)	\$25
HPE 212	406	ADV AIKIDO	MWF	11:15-12:05	01	GYM 101	HILLIS, S	(30)	\$10
HPE 212	407	BEG RACQUETBALL	MWF	11:15-12:05	01	GYM 107	TREADAWAY, G	(04)	\$10
HPE 212	408	BEGINNING GOLF	MWF	11:15-12:05	01	GOLF COU	O'DAY, R	(20)	\$25
HPE 212	409	BODY CONDITION	MWF	12:10- 1:00	01	GYM 108	BURKE, O	(99)	\$10
HPE 212	410	ADV RACQUETBALL APPROVAL OF INSTRUCTOR IS REQUIRED	MWF	12:10- 1:00	01	GYM 107	TREADAWAY, G	(04)	\$10
HPE 212	411	SR LIFESAVING	MW	1:05- 2:15	01	POOL	BURKE, O	(12)	\$10
HPE 212	412	AEROBICS	TTH	8:35- 9:50	01	GYM 108	BURKE, O	(20)	\$10
HPE 212	413	BEG/ADV RACBALL	TTH	9:55-11:10	01	COURTS	BURKE, O	(16)	\$10
HPE 212	414	BEGINNING GOLF	TTH	9:55-11:10	01	GOLF COU	O'DAY, R	(20)	\$25

HPE 212	415	BOWLING	TTH	11:55- 1:10	01	GYM LNS	TREADAWAY, G	(20)	\$25
HPE 212	416	BEG AIKIDO	TTH	11:55- 1:10	01	GYM 101	HILLIS, S	(30)	\$10
HPE 212	417	BEGINNING GOLF	TTH	11:55- 1:10	01	GOLF COU	O'DAY, R	(20)	\$25
HPE 212	418	SWIMMING	TTH	1:15- 2:30	01	POOL	BURKE, O	(20)	\$10
HPE 212	419	ADVANCED GOLF	TTH	1:15- 2:30	01	GOLF COU	O'DAY, R	(50)	\$25
HPE 212	420	DIM OF MOVEMENT	TTH	1:15- 2:30	01	GYM 103	LAMBERT, E	(10)	\$10
HPE 212	422	IND INSTRUCTION	TBA	TBA	01	TBA	TREADAWAY, G	(99)	\$10
HPE 214	425	VAR BB WOMEN	DAILY	1:05- 3:35	01	GYM 108	CUSHING, J	(50)	\$10
HPE 214	426	VAR BB MEN	DAILY	3:35- 6:00	01	GYM 108	DUNAWAY, L	(50)	\$10
HPE 214	427	VAR GOLF	DAILY	1:00- 5:30	01	GOLF COU	O'DAY, R	(50)	\$10
HPE 217	428	RODEO ACTIVITY	W	4:00- 6:50	01	RODEO GR	DOTY, B	(50)	\$15
HPE 217	429	RODEO ACTIVITY	M	4:00- 6:50	01	RODEO GR	DOTY, B	(50)	\$15

<b>NON-ACTIVITY</b>									
HPE 131	451	FOUND OF PE	TTH	9:55-11:10	03	2C-107	TREADAWAY, G	(25)	
HPE 231	450	PER/COM HEALTH	TTH	8:35- 9:50	03	2C-107	TREADAWAY, G	(25)	
HPE 232	452	COACHING ATH	MWF	10:20-11:10	03	2C-107	DUNAWAY, L	(25)	
HIS 131	228	US HIS TO 1865	MWF	11:15-12:05	03	2C-102	PALMER, J	(30)	
HIS 132	220	US HIS 1865 -	MWF	8:30- 9:20	03	2C-103	KRENEK, H	(20)	
HIS 132	221	US HIS 1865 -	MWF	9:25-10:15	03	2C-103	KRENEK, H	(20)	
HIS 132	222	US HIS 1865 -	MWF	10:20-11:10	03	2C-101	PRUITT, F	(20)	
HIS 132	223	US HIS 1865 -	MWF	11:15-12:05	03	2C-103	KRENEK, H	(20)	
HIS 132	224	US HIS 1865 -	TTH	8:35- 9:50	03	2C-103	KRENEK, H	(20)	
HIS 132	225	US HIS 1865 -	TTH	9:55-11:10	03	2C-103	KRENEK, H	(20)	
HIS 232	226	WES CIV 1660 -	MWF	12:10- 1:00	03	2C-101	PRUITT, F	(99)	

HUMAN DEVELOPMENT CLASSES: A Human Development class is required for each entering freshman. Any student taking ENG 135 is REQUIRED to take one section or more of RE 111. Other students may take HD 111 or RE 111.

HD 112	285	LIBRARY SKILLS	W	11:15-12:05	01	LRC-102	STEPHENS, K	(99)	
JOU 112	330	PUBLIC (NEWS) LAB (3 HOURS)	T	TBA	01	SC-106	MCBRIDE, M	(20)	\$10
JOU 112	330	PUBLIC (NEWS) LAB (3 HOURS)	TBA	TBA	01	SC-106	MCBRIDE, M	(20)	
JOU 113	331	PUBLIC (ANNUAL) LAB (3 HOURS)	TH	TBA	01	SC-106	MCBRIDE, M	(20)	\$10
JOU 113	331	PUBLIC (ANNUAL) LAB (3 HOURS)	TBA	TBA	01	SC-106	MCBRIDE, M	(20)	
JOU 132	332*	INTRO MASS COM LAB (3 HOURS)	MWF	11:15-12:05	03	SC-106	MCBRIDE, M	(20)	\$10
JOU 132	332*	INTRO MASS COM LAB (3 HOURS)	TBA	TBA	03	SC-106	MCBRIDE, M	(20)	
JOU 231	333	NEWS EDIT COPY LAB (2 HOURS)	TTH	9:55-11:10	03	SC-106	MCBRIDE, M	(20)	\$10
JOU 231	333	NEWS EDIT COPY LAB (2 HOURS)	TBA	TBA	03	SC-106	MCBRIDE, M	(20)	
JOU 233	334*	PRIN OF ADVER LAB (2 HOURS)	MWF	10:20-11:10	03	SC-106	MCBRIDE, M	(20)	\$10
JOU 233	334*	PRIN OF ADVER LAB (2 HOURS)	TBA	TBA	03	SC-106	MCBRIDE, M	(20)	

\* MAY BE TAKEN ON INDIVIDUALIZED BASIS WITH PERMISSION OF INSTRUCTOR.

MTH 132	070*	INTER ALGEBRA	MWF	8:30- 9:20	03	2B-106	ANDERSON, E	(30)	
MTH 133	07								

## ACADEMIC CREDIT

### Evening Courses

COURSE NO	COMP NO	COURSE TITLE	DAYS	PERIOD	NO HR	ROOM	INSTRUCTOR	CLASS LIMIT	LAB FEE
ACC 232	205	PRIN/ACCOUNTING	T	6:30-9:20	03	2C-103	HILL, H	(50)	
ART 230	104	ART ELEMEN/ED LAB	W	6:30-9:20	03	FA-103	STAFF	(25)	\$ 5
ART 232	105	PAINTING LAB	TH	6:30-9:20	03	FA-117	GIBSON, J	(15)	\$ 5
ART 234	106	CERAMICS LAB	T	6:30-9:20	03	FA-122	THORNTON, M	(10)	\$10
ART 235	107	JEWELRY LAB	M	6:30-9:20	03	FA-122	THORNTON, M	(04)	\$10
ART 236	109	LIFE DRAWING LAB	M	6:30-9:20	03	FA-117	GIBSON, J	(15)	\$10
ART 237	114	SCULPTURE LAB	TH	6:30-9:20	03	FA-122	GILBRETH, T	(12)	\$40
ART 239	110	S/P PAINTING LAB	TH	6:30-9:20	03	FA-117	GIBSON, J	(10)	\$ 5
ART 239	111	S/P CERAMICS LAB	T	6:30-9:20	03	FA-122	THORNTON, M	(10)	\$10
ART 239	112	S/P JEWELRY LAB	M	6:30-9:20	03	FA-122	THORNTON, M	(08)	\$10
BIO 146	054	PRIN OF BIOLOGY LAB	M	6:30-9:20	04	2A-101	ALSUP, H	(30)	\$10
BUS 131	206	INTRO TO BUS	M	6:30-9:20	03	2B-106	HALBERT, W	(30)	
ENG 132	311	COMPOSITION II	T	6:30-9:20	03	2B-110	BARKOWSKY, E	(30)	
ENG 233	318*	MASTERS OF LIT	T	6:30-9:20	03	LRC-101	HALBERT, J	(30)	\$ 5
* PERMISSION OF INSTRUCTOR REQUIRED.									
GER 132	370	CONVERS GERMAN	TH	6:30-9:20	03	2C-104	JONES, W	(25)	
GOV 232	217	STATE/LOCAL GOV	TH	6:30-9:20	03	2C-101	STAFF	(35)	
HPE 212	461	SPORT JUDO	TTH	6:30-8:00	01	GYM 101	HILLIS, S	(30)	\$10
HPE 212	462	AEROBIC DANCE	TTH	6:30-8:00	01	GYM 108	TRUDAWAY, G	(99)	\$10
HIS 233	229	TEXAS HISTORY	T	6:30-9:20	03	2C-101	BRUITT, F	(99)	
JOU 234	335	ADVANCED PHOTO LAB (3 HOURS)	T	6:30-9:20	03	SC-105	MCBRIDE, M	(15)	\$10
MTH 136	082	MATH CONCEPTS II	T	6:30-9:20	03	2B-109	ANDERSON, E	(40)	
MTH 236	084	COMP/PROG/COBOL LAB	T	6:00-10:00	03	7B-101	HOOD, D	(99)	\$10
MUS 131	147	MUSIC APPREC	M	6:30-9:20	03	FA-103	GAMBLE, G	(20)	
MUS 133	148	MUSIC LIT	M	6:30-9:20	03	FA-103	GAMBLE, G	(20)	
IMU 111	149	CLASS PIANO	M	6:30-9:20	01	FA-105	WOMACK, J	(06)	\$ 5
IMU 115	150	CLASS GUITAR	T	6:30-9:20	01	FA-103	GAMBLE, G	(10)	\$ 5
PSC 141	085	PHY SCIENCE LAB	TTH	6:30-7:50 8:00-9:50	04	2A-102 2A-105	OTTO, F	(30)	\$10
PSY 232	236	CHILD GROW/DEV	W	6:30-9:20	03	SC-105	HOOD, M	(99)	
RE 131	350	COLLEGE READING	W	6:30-9:20	03	LRC-207	CORKRAN, G	(15)	\$ 5
RE 132	359	ADVANCED READ	W	6:30-9:20	03	LRC-207	CORKRAN, G	(15)	\$ 5
REL 231	363	LIFE OF CHRIST	M	6:30-9:20	03	BSU	SUMMERS, J	(99)	
REL 232	364	LIFE OF PAUL	M	6:30-9:20	03	CSC	MASSEY, R	(99)	
SSC 231	245	EXPLOR/SOCIETY	TBA	6:30-9:20	03	MUSEUM	SUTTON, S	(99)	
SOC 232	242	CON SOC PROBLEM	W	6:30-9:20	03	2C-102	REAVES, J	(99)	
SPA 132	374	CONVERS SPANISH	T	6:30-9:20	03	2C-104	JONES, W	(20)	
SPE 131	180	FUND/SPEECH	TH	6:30-9:20	03	FA-107	STAFF	(15)	
SPE 232	181	BUS/PROF SPEAK	TH	6:30-9:20	03	FA-107	STAFF	(15)	

## OCCUPATIONAL-TECHNICAL

### Day Courses

COURSE NO	COMP NO	COURSE TITLE	DAYS	PERIOD	NO HR	ROOM	INSTRUCTOR	CLASS LIMIT	LAB FEE
AM 161	500	ELECTRICAL SYST	DAILY	1:00-2:40	06	7D-105	HESS, J	(99)	\$20
AM 162	501	ENGINE TUNE-UP	DAILY	2:40-4:00	06	7D-105	HESS, J	(99)	\$20
AM 263	502	CHASSIS & POWER	DAILY	1:00-2:40	06	7D-105	HESS, J	(99)	\$20
AM 284	503	TROUBLE SHOOT	DAILY	2:40-5:10	08	7D-105	HESS, J	(99)	\$20
BUS 110	510	LEADERSHIP/DEV	T	11:10-11:55	01	7A-104	LIGHT, C	(40)	
BUS 130	511	BEGIN TYPING LAB	MWF	8:30-9:20	03	7A-102	LIGHT, C	(25)	\$10
BUS 131	202	INTRO TO BUS	MWF	9:25-10:15	03	2B-106	HALBERT, W	(25)	
BUS 133	512	INTER TYPING LAB	MWF	8:30-9:20	03	7A-105	WRIGHT, L	(22)	\$10
BUS 134	513	INTER SHORTHAND LAB	TTH	8:35-9:50	03	7A-105	WRIGHT, L	(30)	\$10
BUS 135	514	BUS MACHINES	TTH	8:35-9:50	03	7A-104	LIGHT, C	(15)	\$10
BUS 135	515	BUS MACHINES	TTH	9:55-11:10	03	7A-104	WRIGHT, L	(15)	\$10
BUS 231	516	ADVANCE TYPING LAB	MWF	9:25-10:15	03	7A-102	LIGHT, C	(25)	\$10
BUS 232	203	BUSINESS LAW	MWF	10:20-11:10	03	2B-106	HALBERT, W	(25)	
BUS 232	204	BUSINESS LAW	TTH	9:55-11:10	03	2B-106	HALBERT, W	(25)	
BUS 233	517	BUSINESS COM	TTH	8:35-9:50	03	2B-110	BARKOWSKY, E	(35)	
BUS 234	518	OPC PROCEDURES LAB	MWF	10:20-11:10	03	7A-102	LIGHT, C	(20)	\$10
BUS 237	519	OFFICE MGT	MWF	10:20-11:10	03	7A-105	WRIGHT, L	(25)	
LB 234	523	LEGAL APPLIC LAB	MWF	11:15-12:05	03	7A-105	MCQUEEN, B	(25)	
<b>COSMETOLOGY</b>									
APPLICATIONS FOR CLASSES ARE NOW BEING TAKEN BY CALLING EXTENSION 267.									
DM 163	530	D ENG OVERHAUL	DAILY	8:00-9:50	06	7D-103	PILGRIM, J	(07)	\$20
DM 164	531	D ELEC SYSTEMS	DAILY	10:00-11:50	06	7D-103	PILGRIM, J	(07)	\$20
DM 263	532	INJECTOR SERV	DAILY	8:00-9:50	06	7D-103	PILGRIM, J	(05)	\$20
DM 284	533	DIESEL ENG SERV	DAILY	10:00-12:50	08	7D-103	PILGRIM, J	(05)	\$20
EGR 231	061	STATICS	MWF	8:30-9:20	03	7B-101	MOSLEY, J	(99)	
EM 244	540	SYSTEM ANALYSIS LAB	MWF	9:25-10:15	04	7C-104	HIGGINS, D	(20)	\$10
ET 132	541	MAT & MFG PROC	MWF	11:15-12:05	03	7D-110	MOSLEY, J	(30)	\$10
ET 142	542	ELEC DEVICES LAB	MWF	8:30-9:20	04	7C-104	HIGGINS, D	(25)	\$10
ET 242	543	INDUSTRIAL ELEC LAB	MWF	10:20-11:10	04	7C-104	MOSLEY, J	(20)	\$10
ET 243	544	COMP PROG FRTRN LAB	MWF	10:20-11:10	04	2A-102	HIGGINS, D	(99)	\$10
ET 244	545	AUTO CONTROLS LAB	MWF	11:15-12:05	04	7C-104	HIGGINS, D	(20)	\$10

GLT 131	560	LANDSCAPE MNTN LAB	MWF	8:30-9:20	03	7D-110	EBY, J	(20)	\$10
GLT 132	561	TURFGRASS MNTN LAB	MWF	9:25-10:15	03	7D-110	EBY, J	(20)	\$10
GLT 134	562	BAS/SUR/EARTH LAB	MW	10:20-11:10	03	7D-110	EBY, J	(20)	\$10
GLT 242	563	APP AG CHEMICAL LAB	TT	8:35-9:50	04	7D-110	EBY, J	(20)	\$10
GLT 243	564	GC&L CONSTRUCT LAB	TTH	9:55-11:10	04	7D-110	EBY, J	(20)	\$10
LE 133	570	LEG ASP OF LE	T	8:35-11:10	03	7A-117	ROBBINS, R	(99)	
LE 237	571	PENENOLOGY	TH	8:35-11:10	03	7A-117	ROBBINS, R	(99)	
MGT 133	580	RETAILING	MWF	9:25-10:15	03	7A-107	HAYS, R	(40)	
MGT 135	581	INTERNSHIP I	TBA	TBA	03	7A-107	HAYS, R	(99)	
MGT 136	582	INTERNSHIP II	TBA	TBA	03	7A-107	HAYS, R	(99)	
MGT 237	583	INTERNSHIP III	TBA	TBA	03	7A-107	CANNON, F	(99)	
MGT 238	584	INTERNSHIP IV	TBA	TBA	03	7A-107	CANNON, F	(99)	
MGT 239	585	MGMENT SEMINAR	MWF	12:00-1:00	03	7A-107	CANNON, F	(99)	
PT 232	590	PETRO ECONOMICS	MWF	8:30-9:20	03	7B-105	STAFF	(30)	
PT 241	591	PT RECOV METHOD	TTH	8:00-9:50	04	7C-104	STAFF	(30)	
PT 242	592	PT EQUIP TECH LAB	MWF	9:25-10:15	04	7B-105	STAFF	(30)	\$10

#### RESIDENTIAL CONSTRUCTION

CLASSES WILL MEET FOR SIX-HOUR/DAY. STUDENT APPLICATIONS WILL BE TAKEN BY CALLING EXTENSION 220.

#### VOCATIONAL NURSING

APPLICATIONS FOR CLASSES ARE NOW BEING TAKEN BY CALLING EXTENSION 229.

W 132	605	INTRO WELDING	MWF	7:35-8:25	03	W-15	WALKER, C	(99)	\$45
W 161	606	BASIC ACET WELD	MWF	7:35-9:20	06	W-15	WALKER, C	(99)	\$45
W 162	607	ELEC ARC WELD	MWF	9:25-11:10	06	W-15	WALKER, C	(99)	\$45
W 163	608	ELEC ARC WELD	MWF	7:35-9:20	06	W-15	WALKER, C	(99)	\$45
W 164	609	ADV ACET WELD	MWF	9:25-11:10	06	W-15	WALKER, C	(99)	\$45
W 251	610	BLUEPRINT READ	DAILY	12:10-1:00	05	W-15	MURRY, D	(30)	
W 261	611	ADV PLATE WELD	MWF	7:35-9:20	06	W-15	WALKER, C	(99)	\$45
W 262	612	ADV PIPE WELD	MWF	9:25-11:10	06	W-15	WALKER, C	(99)	\$45
W 263	613	SPEC WELD/TIG	MWF	7:35-9:20	06	W-15	WALKER, C	(99)	\$45
W 284	614	SPEC WELD/MIG	MWF	9:25-12:05	08	W-15	WALKER, C	(99)	\$45

#### RELATED COURSES

AS 131	625	APPL PHYSICS I LAB	MWF	11:15-12:05	03	7B-105	STAFF	(25)	\$10
COM 131	626	TECH COMM	MWF	12:10-1:00	03	LRC-207	CORKRAN, G	(99)	
DFT 133	627	DFT FOR WELDERS LAB	MWF	11:15-12:05	03	W-15	MURRY, D	(99)	\$10
SS 121	628	IND HISTORY/GOV	TTH	12:10-1:00	02	2B-105	STAFF	(99)	
TPH 142	629	TECH PHYSICS II LAB	MWF	9:25-10:15	04	7B-101	STAFF	(25)	\$10

## OCCUPATIONAL-TECHNICAL

### Evening Courses

COURSE NO	COMP NO	COURSE TITLE	DAYS	PERIOD	NO HR	ROOM	INSTRUCTOR	CLASS LIMIT	LAB FEE
AM 161	505	ELECTRICAL SYST	MW	6:30-11:20	06	7D-105	STAFF	(99)	\$20
AM 162	506	ENGINE TUNE-UP	MW	6:30-11:20	06	7D-105	STAFF	(99)	\$20
AM 165	507	GEN OVERHAUL	MW	6:30-11:20	06	7D-105	STAFF	(99)	\$20
AM 284	508	TROUBLE SHOOT	MWTH	6:30-11:20	08	7D-105	STAFF	(99)	\$20
BUS 135	521	BUS MACHINES	M	6:30-9:20	03	7A-104	STAFF	(15)	\$10
BUS 133	522	INTER TYPING	TTH	6:30-9:20	03	7A-102	CHAVEZ, C	(30)	\$10
DM 161	535	PRIN/DIESEL	MW	6:00-11:00	06	7D-103	PILGRIM, J	(99)	\$20
DM 162	536	D ENG SYSTEMS	MW	6:00-11:00	06	7D-103	PILGRIM, J	(07)	\$20
DM 164	537	D ELEC SYSTEMS	MW	6:00-11:00	06	7D-103	PILGRIM, J	(03)	\$20
ET 132	548	MAT & MFG PROC	W	6:30-9:20	03	7B-105	STAFF	(30)	
ET 141	549	BASIC ELECTRON LAB	T	6:00-10:00	04	7D-110	CROMEENS, J		

# 'Christmas Happening' on campus



Jerry Baird serves cowboy coffee made over an open fire to all the folks willing to try the brew.



Up to bat and strike one at the decorated pinata.

*Tracie Gilstrap and*

**'tra-la-  
la-la-la  
-la-la-  
la-la'**



Ed Barkowsky places children in carriage for 'ole-timey' photo session.



**cowboy coffee, Xmas card-making,**



# features pinata party, Santa Claus,



Mrs. Roberts, Snyder High School homemaking instructor, shows home craft ideas for gift wrapping.



Mrs. Holt, a community artist, helps children decorate Christmas cards to reveal their creative talents, with expertise and patience.

Billy Fowler photos



Mrs. Mock, Snyder Independent School teacher, samples the chewy candy just made.



Santa Claus gives out candy canes to all the tiny tots that came to sit on his lap in the museum wonderland.



Scrambling for candy is fun for everyone. Even the adults enjoy the excitement when the pinata breaks and candy tumbles to the ground.

**Merry  
Christmas!**

# candy making, package decorating

# Sports

## Westerners defeat Military Institute

Coach Larry Dunaway's Westerners got back on the winning track, defeating NMMI, 111-86, Dec. 4 in the Scurry County Coliseum, after losing to South Plains College in Levelland Dec. 2. This left the team 1-1 in WJCAC play and 9-2 on the year, while NMMI fell to 0-2 and 2-7.

WTC led by 6 points early in the ball game, 8-2, then NMMI came back and pulled within three, 14-11. The Westerners ripped the nets for 16 consecutive points and took a commanding lead, 30-11, never to be relinquished.

WTC took a 24-point lead with a little more than 7 minutes left in the half, then coasted to a comfortable 63-37 halftime advantage.

Almost halfway through the second half, WTC held a 36-point lead, 98-62, then the coach substituted freely. In all, nine players put Westerner points on the board.

Keith Denis scored 26, followed closely by Chuck North with 25 points. Troy Stevenson had 16 points, Darren Lee 13, Donald Warren 12, Ceasar Scott 8, Brett

Smith 6, Dwayne Dickey 3 and Brian Baker 2.

"Everybody played, and we began to play more like a team the way we started out the season. NMMI is a team that will beat you if you play around with them," commented Warren, Oneonta, Ala. sophomore.

Porter Cutrell paced NMMI with 20 points and J.C. Baty added 19.

The Westerners' second loss in a row came at the hands of the South Plains' Texans, 84-73, their first loop loss and opening conference game.

The "Green Machine" apparently broke down early, falling behind, but geared up and caught SPC in the last 10 minutes of the first half. They went to the dressing room with a 43-40 bulge, but South Plains came back to outscore WTC, 44-30, for the win.

Denis was the top Westerner scorer with 18 points, North bucketed 17 and Scott scored 10. WTC had only 6 rebounds in the second half.

B.J. Jones led the Texans with 21 points.

-Gary Atwood



Stella Bickley attracts a crowd of South Plains Texanettes. The Dusters won, 74-67, in Levelland. -Jesse Sanchez photo

### Hawks down 'Machine'

## Dusters edge HCC, 58-57

Arch-rival Howard College fell to WTC's Dusters, 58-57, Monday night in Big Spring, but the Westerners lost a tough conference game to the Hawks, 88-82.

The Dusters were 2-0 in conference play, going into last night's Odessa College game in the coliseum, but the men's team held a 1-2 loop mark.

Coach Joe Cushing's fems trailed HCC at halftime, 26-25, but came back to take the lead, 47-46, midway through the second period. WTC hit a cold spell and Howard scored 8 points and led, 57-51.

WTC's Valorie Wells bucketed 2 free throws with just a little over two minutes left to make the score, 57-54, with HCC out in front. The Hawk Queens turned the ball over to WTC, who capitalized on HCC's error to make the score 57-56.

The Queens sent Kellie Mull to the line with 1:28 left on the clock. She missed both ends of a two-shot foul. WTC's Cindy Maddox pulled down the rebound, and Wells grabbed the missing WTC shot to put it back up and in, making the score 58-57, WTC.

HCC's Melissa Luna missed 2 shots from the line with 53 seconds left in the game, and again WTC hauled down the rebound. WTC was unable to control the ball as it rolled out of bounds off a WTC player.

With 33 seconds left, Howard tried a shot from the top of the key that bounced off the rim and was rebounded by WTC's Shari Teal.

The game ended as Duster Linda Holubec was fouled with four seconds showing. She had to leave the game, though, because of a back injury. Freshman Kathy

Rodolph came to shoot 2 from the line for the injured sophomore. Both were off but Teal came down with the rebound as the buzzer sounded.

Holubec led the team in scoring with 16 points, 9 rebounds, 3 assists and 2 steals; Wells scored 15 points and had 8 rebounds, 2 assists, 5 steals and 1 blocked shot; Teal bucketed 14 points and had 7 rebounds, 2 steals and 2 blocked shots, and Stella Bickley scored 8 points, had 5 rebounds, 4 assists and 4 steals.

Howard College led the 9-3 Westerners, 41-29, during the first half, but Larry Dunaway's forces came back to make the score 41-37 at halftime on the shooting of Chuck North and Ceasar Scott.

WTC's Donald Warren fouled out with 5:34 left in the game. Howard was leading, 71-59.

WTC battled back to a 77-65 standing, but HCC forged ahead to pace, 84-70. They held on for the final score.

Scott led the team with 24 points, while North scored 17, Keith Denis notched 16, Warren added 13 and Troy Stevenson and Darren Lee had 9 points apiece.

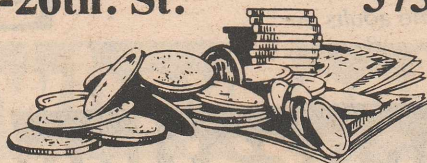
-Gary Atwood

**WEST TEXAS STATE BANK**



1901-26th. St.

573-5441



**Bee Gee**  
LIQUOR STORE

700 W. Broadway  
206 Mulberry  
Sweetwater

235-9081 • 235-9116

Liquor Wine Beer  
Keqs Mixes Ice

**SNYDER ATHLETIC CENTER**

College Heights Shopping Center



**WINNING PRICES EVERYDAY!**

573-8551

**HOLDER Construction Co. Inc.**

573-5418  
573-5419  
573-5410

C.O. (Bob) Holder, Jr. — President  
T.W. Holder — Vice-President

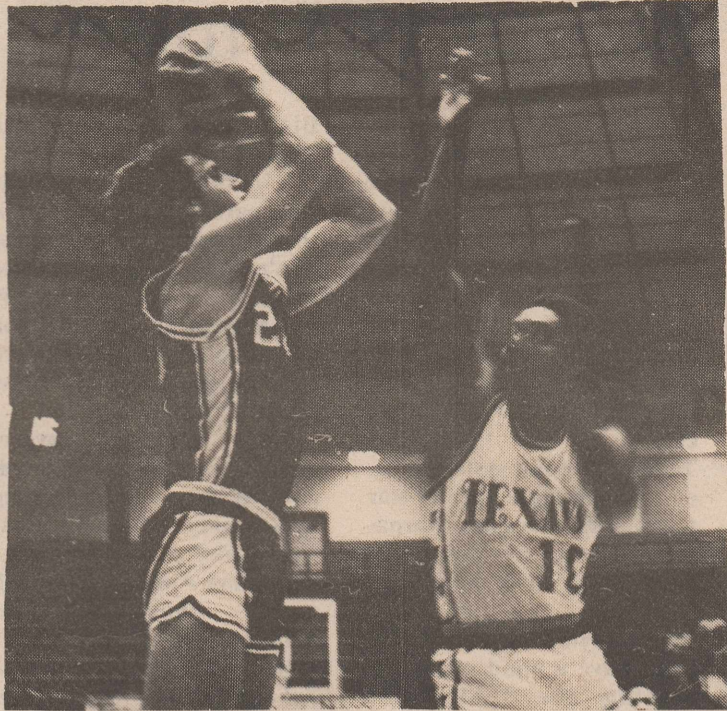
P.O. Drawer H

"Watch for the Orange Football"

**SNYDER LANES & GRILL**

"America's #1 Participation Sport"

1910-35th St.  
573-2811



Chuck North fires for two points, but WTC fell before South Plains in their conference opener. —Jesse Sanchez photo

## Golfers end fall season

### Johnson 4th in standings

Going into the spring golf season, WTC is in third place in the Western Conference. However, WTC's fall conference and non-conference statistics are impressive.

The following is a summary of the linksters' fall team and individual statistics. In dual match competition, Bob O'Day's team won 6 matches and lost none. WTC has 2 firsts, 2 seconds, 2 thirds and 1 seventh place finish.

In conference play, WTC is in third place behind Odessa Junior College and New Mexico Junior College, currently tied for first.

Odessa and NMJC have 12 conference points apiece. WTC has 8½ points, just 3½ shy of first in opening spring competition. In the total strokes department, Odessa leads at 903, followed by NMJC at 904 and WTC at 909.

WTC has 6 players listed in the top 20 conference leaders. Sophomore Chris Johnson is 4th in the group with a 225 for the three conference meets, while sophomore Jeff Wagner is 7th with 228 strokes. Sophomore Gary Hodge is right behind with a 229 for 8th place.

Freshman Phillip Jones is 11th at 232, sophomore Richard White is 14th at 235, and freshman Jeff Seger is 19th with 239.

## Fems down S-Plains

Coach Joe Cushing's Dusters started their 1980-81 conference season by defeating South Plains College, 74-67, Dec. 2 in Levelland. They lost a tough non-conference road game to Tarleton State University before Thanksgiving, then rebounded against McMurry College here to set up loop action.

The Dusters were 11-2 for the season and 1-0 in conference play, as Linda Holubec was high point with 20. Shari Teal hit 18 and Cindy Maddox added 17 to help WTC.

Maddox had 5 steals, Stella Bickley had 4 and Lori Watson had 4. Bickley led the team with 10 assists, while Teal notched 15 rebounds.

Top SPC scorer was Lynette Joiner with 28.

WTC hit 35 of 83 shots from the field and 4 of 6 free throws. The Dusters also out-rebounded South Plains, 48-29.

The Dusters lost a tough game to Tarleton, 67-64, in Stephenville Nov. 24, only the second this year for the 10-2 team.

WTC outplayed Tarleton on paper in the statistics department, outrebounding TSU, 46-31, outstealing the Texanettes, 24-16, and outblocking them, 10-3. But Tarleton took the game seriously, leading to a physical affair with few whistles, according to Cushing.

WTC was 8 of 14 from the line. Holubec was high-point with 19, Teal hit 15, Watson notched 9 and Maddox 8. Other scorers were Dorcas Perkins 6, Wendy Parsons 5 and Bickley 2.

They came back, though, to soundly defeat the McMurry Indian Maidens, 87-66, Dec. 4 at the Scurry County Coliseum.

Teal gave WTC an opening lead, scoring 4 straight points to break a 2-2 tie. The Dusters went on to take a 20-6 lead and led at intermission, 43-26.

WTC opened up the second half with 5 straight points from the New Deal sophomore. The Dusters led, 68-28, eventually defeating McMurry by 21 points.

Teal played an outstanding ball game, scoring 19 points. Thirteen of those points were from the line as she hit 13 of 14 charity shots. She also had 10 rebounds, 3 blocked shots and 2 steals.

Holubec had 16 points, 7 rebounds, 3 assists and 1 steal. Bickley scored 16 points and had 4 steals, while Maddox and Kathy Rodolph had 10 points apiece. Maddox also had 6 assists, 4 rebounds and 2 blocked shots.

The Dusters stood at 12-2 on the season after McMurry's tilt.

—Gary Atwood

## JUCO cage title lives on

The memory of last year's national JUCO basketball championship lives on.

Former Westerner Coach Nolan Richardson led his Tulsa University Hurricanes to a 68-60 win over NCAA Top-Ten ranked Louisville last week, a team with four returning starters, then had former WTC All-American Paul Pressey named Missouri Valley Conference player of the week Monday.

Louisville Coach Denny Crum said his defending NCAA champion Cardinals were "outhustled" by a scrappy Tulsa squad in his team's second straight loss. They were edged in the season opener by No. 1 DePaul, 86-80, in the Hall of Fame game at Springfield, Mass.

Meanwhile, Richardson, in his first year at TU, has the Hurricanes undefeated. He has started four players from last year's unbeaten WTC team, Pressey, David Brown, Greg Stewart and Phil Spradling.

Pressey won the MVC honor over four other nominated players, one each from Creighton, Bradley, New Mexico State and West Texas State. In three games, he scored just 26 points but added 23 rebounds, 19 assists and 12 steals, keying the Tulsa defense and forcing the turnovers.

Last year he averaged just 13 points a game for WTC but led the team in steals and assists.



PAR Producing Company

P. O. BOX 619  
SNYDER, TEXAS 79549

Cloyce Talbott

Phone (915) 573-6848

Snyder  
Drug

"The Store With More  
of What You're Looking For"

3609 College Ave.

573-9333

TEXAS

ELECTRIC SERVICE COMPANY

OPEN MONDAY — FRIDAY

8:00 a.m. — 5:00 p.m.

2515 College Ave.

573-5461

"Let Us  
Fill Your  
Next  
Prescription"



3706 College

573-7512

SNYDER  
NATIONAL  
BANK



1715-25th. St.

573-2681

A FULL  
SERVICE  
BANK



## Rodeo wins second at Sul Ross

The men's rodeo team finished second in the region for the fall semester by taking second place at the Texas Tech University NIRA rodeo in Lubbock. The team trails only Sul Ross State University in Region V.

WTC's Dave Appleton placed second in all-around championship scoring with 144 points. Appleton was just six points shy of the championship under Sul Ross' Mack Wallace.

Appleton was first in bareback riding and third in saddle-bronc riding. Tim Gradous was fifth in saddle-bronc riding, but earned enough points to stay in first place in the region. Teammate Appleton is not far behind Gradous in the standings.

James Zant was fifth in calf roping. Chris Welch split fourth and fifth place in bull riding. He is currently in a close race for first place in the region in bull riding competition. Ray McKnight took over first place in the region by splitting second and third in his event at Tech.

Other members of the men's team competing in the Tech rodeo were Troy Reynolds, calf roping, and James Garlick, bareback riding.

In the women's events, Mandy Tubb was second in barrel racing. Her time of 19.06 was .03 seconds short of winning first place. Nannette Fine also competed for the WTC women's team.

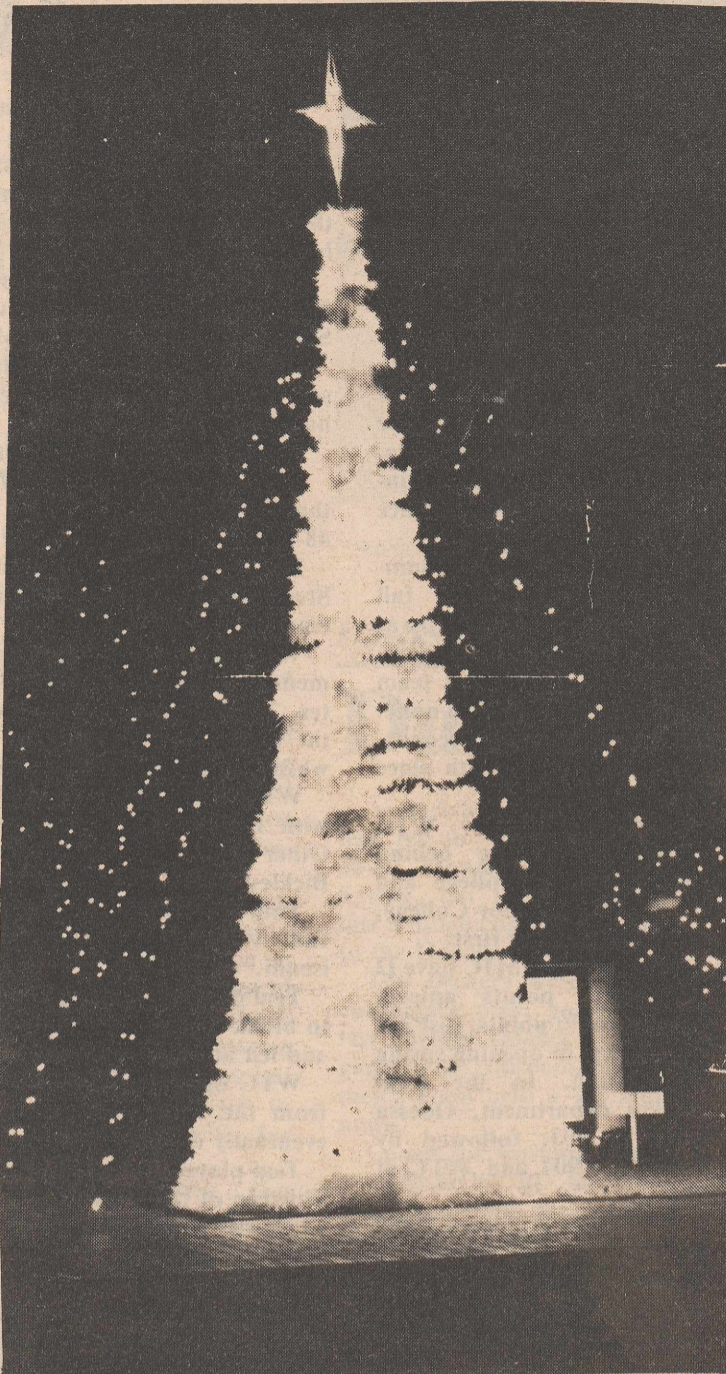
## ASU JV cuts longest win streak at 45

WTC's 45-game winning streak, longest in the nation, was halted by Angelo State University JV, 104-87, in San Angelo two weeks ago. The non-conference loss left the Westerners' season winning string at 8-1.

Earlier in the year, the Rams' JV fell 36-point victims to WTC.

The Westerners bucketed 57 points in the second half, but ASU scored 60 points. They were outpointed, 44-30, in the initial stanza.

Top scorer for WTC was Ceasar Scott with 21 points. Donald Warren hit the nets for 17, Keith Denis had 16 and Chuck North 13. Two former Snyder High School stars, Kyle Short and Randy Courtney, had a great game for ASU.



A sign of the season is evident on campus. Students and faculty are looking forward to a long enjoyable holiday season. -Staff photo

## Judo at TCU today

WTC's Judo team journeys to TCU today to compete in the Texas Open Judo Tournament at Ft. Worth, the final meet of the 1980 season.

The team competes in four tournaments a year sponsored by the Texas Blackbelt Association. Each year the top eight men and women are chosen as the "All-Texas Team." A point system is used to determine the all-star team. First place in a tournament is worth five points, second place three and third place one.

Two members of the WTC team have a good chance at making the "All-Texas Team," according to Dr. Shell Hillis, coach. They are

Blake Riggs and Mark Thomas.

"Judo is a sport anyone can participate in, even if they're hurt. Just because you're hurt is no reason to miss practice or tournaments. If you're hurt, you still go to the meets and work as a judge, referee or time-keeper," Hillis said.

Next semester, several Judo classes will be offered. Anyone from beginners up will meet 6:30-8 p.m. Tuesdays and Thursdays. Beginning Aikido classes will meet Tuesdays and Thursdays from 11:55 a.m.-1:10 p.m. Advanced Aikido classes will meet Mondays, Wednesdays and Fridays from 11:15 a.m.-12:05 p.m.

MEN - WOMEN

### Soldiers start college richer.

Up to \$14,100 richer. Through participation in the Veterans' Educational Assistance Program, you can accumulate up to \$8,100. For every \$1 saved from Army pay (up to \$75 a month), the government will add \$2. If you enlist for 3 years in one of several specified skills and meet other qualifications, the Army will add a special bonus of \$4,000 to your fund. A 4-year enlistment could mean a \$6,000 bonus.

**Call Army Opportunities**

Ssg Bill Drinnon-(214)677-8122 Collect

Join the people who've joined the Army.

An Equal Opportunity Employer

LINCOLN-MILLER WELDING MACHINES      VICTOR-UNIWELD NATIONAL TORCHES

### McDONALD WELDING SUPPLY

1110 COLLEGE AVENUE — 915/573-5329  
SNYDER, TEXAS 79549

OXYGEN • ACETYLENE • COMPRESSED AIR • NITROGEN  
HELIUM • CO2 LIQUID AND GAS • ARGON

## CLUB WILD COUNTRY

Sunday — Closed  
Monday — Budweiser - .50  
Tuesday — Beer-Bust - 4.00  
Wednesday — College Nite (I.D.'s required)  
College Membership \$10.00 (Wed. nite only)  
Thursday — Tequila or Bourbon - .75  
Fri. & Sat. — Disco - every other weekend starting Oct. 10-11

1304 E. Hwy.      573-4791

## THE WATERBED SHOP

JOE BOB MARTINEZ      4202 COLLEGE AVE.  
MANAGER      NEXT TO  
PH: 573-5381      TAPE TOWN

### Christmas Special

\$299

on Super Single Waterbed