

# The Western Texan

December 8, 1983

Western Texas College

Snyder, Texas

Volume 13, Issue 6

## Mid-winter enlistment up; five tentative courses set

by Jana Harris

Pre-registration is off to a good start for the mid-winter session to be held during Christmas vacation.

The eight-day session is scheduled Jan. 3-11, excluding Sunday. Each class will assemble from 9-11:45 a.m. and 2-4:45 p.m. daily. Finals will be taken on the last day.

As of this week, 20 students have pre-registered. History 132, Government 232 and English 232 each have five students. English 231 has three and Government 231, two.

"For this early, that's pretty good," Dr. Harry Krenek, dean of instruction said. Approximately half of the session's participants are usually those home for the holidays from other colleges.

The tuition fee is \$41. Registration continues until Jan. 3. Each course is

equivalent to three-hours of credit and a student may enroll in only one course at a time.

John Forshee, who will instruct American State and Local Government, notes the unique personalized learning experience. The students are much more involved in class. His class will do most of the work during the day including library research. "There won't be any homework other than reading," Forshee said.

The students will take an in-depth look at the primary election, procedures and offices as well as the finances of government.

"The major advantage is that you receive information in a very short period of time and you're less likely to forget it," Forshee said.

All students are encouraged to sign up before they depart for the Christmas holidays.

## Judoists upset Air Force, lose to Olympic Center

by Brenda Johnson

For the first time in three tries, the WTC judo team defeated the United States Air Force Academy team at Colorado Springs, Colo., in a dual meet. They took a 6-3 victory over the A team and a 7-2 win from the B team.

The squad then traveled to the Olympic Training Center to enter the Rocky Mountain Five Man Team Judo Championships. Seven teams were entered and WTC finished second.

The men tied with the Olympic Training Center's team in matches won (each had two) and lost only to the Olympic Training Center.

"When this happens, you go to a secondary scoring method, the way each match was won is scored," Coach Shell Hillis said.

WTC ended up with six points from their two matches while the Olympic Training Center had 13. WTC came home with a second place trophy.

## Higher fees implemented

by Jana Harris

A new registration fee will be implemented for WTC students in the spring. The per-semester-hour charge is expected to also increase beginning in the fall.

Under the new schedule, students who register for one to 11 hours will pay a \$10 registration fee, while students enrolling for 12 to 22 hours will pay \$20.

The former charge was \$5 for this one-time registration fee. With the new rate, a full-time student taking 12 hours will pay a total of \$92 plus lab

fees where required. Students who take one three-hour course will now pay \$41.

The 1984 Fall proposed tuition increase which is assessed for each hour of college credit, is not finalized yet. Trustees are to consider it at this month's meeting.

The proposal previously made by administrators consists of an increase from \$4 to \$6 per-hour. A normal student load of 15 college hours would entail a \$30 per semester increase.

All other charges for the spring remain unaltered.



YES, MY DEAR?—Sophomores, Kim Lunsford (Major Barbara) and Billy Kelley (Adolphus Cusins) converse over their affairs. —Staff photo

## Major Barbara, satirical humor, debuts tonight in college theater

by Joyce Wallace

"This production is probably the most difficult one we've done since I've been here," Jim Rambo, associate professor of speech and drama and director of the satire comedy, *Major Barbara* said. The play will be staged Dec. 8-11 in the Fine Arts Theatre.

George Bernard Shaw, a 19th and 20th century playwright, wrote *Major Barbara*.

"Do not be alarmed: you will not be bored by it. It is, I hope, both true and inspired, some of the people in it are real people whom I have met and talked to," Shaw said in reference to *Major Barbara*. Rambo describes the play as "one of Shaw's most provocative comedies."

The plot centers around the Undershaft family in 1906. The father, Andrew, is the very wealthy owner of a cannon works. After a 20 year absence he returns to his home and his family.

Andrew tries to convert his daughter, Major Barbara, a general in the Salvation Army, to his materialistic way of thinking. The main conflict in this three-act play is between their moral differences.

"Not only is religious satire involved, but also undertones of politics and economics are explored," Rambo said. "There are many subtle allegories to look for."

*Major Barbara* employs a large cast which includes Stephen Undershaft, Jeff Combs; Lady Britomart,

Lorie Grandclair; Morrison, Aaron Knight; Sarah Undershaft, Teri Duvall; Major Barbara, Kim Lunsford; Adolphus Cusins, Billy Kelley; Charles Lomax, Duncan Joys; Andrew Undershaft VII, Robert Loveless; Snobby Price, Jimmy Ticer; Rummy Mitchens, Cynthia Sayers; Jenny, Martha Hargrove; Peter Shirley, Kevin Huddleston; Bill Walker, Kelly Deavers; and Mrs. Baines, Rene King.

"The production is a very huge challenge for all the students," Rambo said.

The play will be presented Dec. 8-10 at 8 p.m. and Dec. 11 at 8:30 p.m. with tickets costing \$4 for adults and \$2 for students. Reservations are recommended.

# Opinion

## Students fail to reply

Most students are guilty of it. It's almost a status thing. Admit it. You've griped about the cafeteria food.

But how many students have actually done anything about it? Even when given the opportunity, only 33 percent attempted to help the situation.

Director of food management, George Gann, gave out 196 questionnaires to dorm residents trying to find out what students wanted to eat. Only 64 forms were returned.

Quite a selection was given. Over 130 meat dishes, 100 salad choices and 100 deserts to choose from.

Why were so few questionnaires turned in?

"I didn't have enough time to."

"It's just a waste of time."

"It won't do any good anyway."

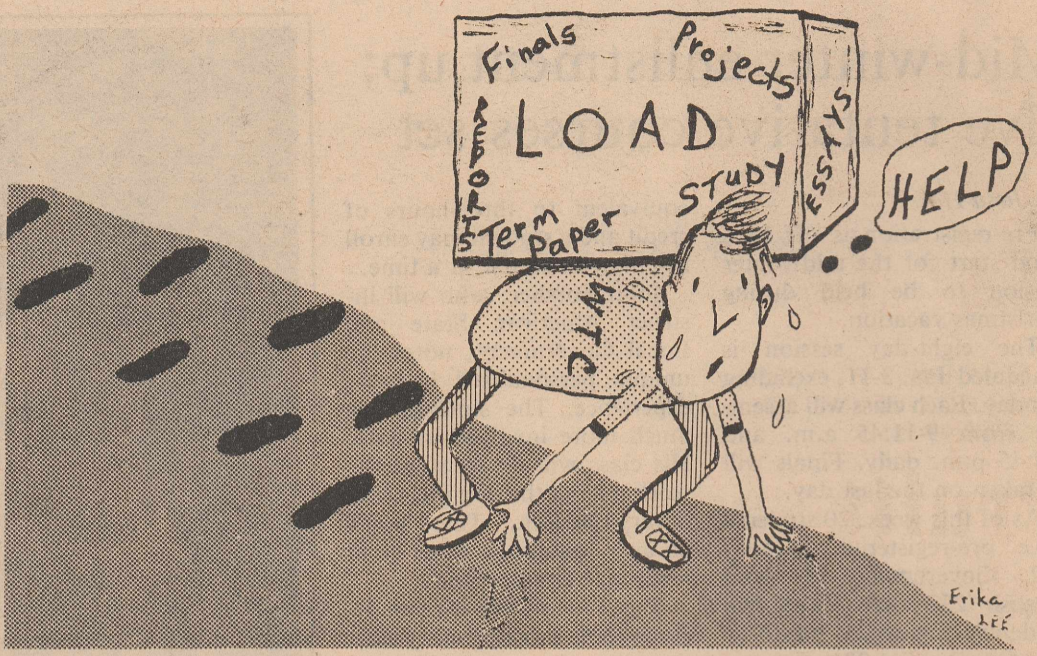
"Did I get one?"

Too many students are just plain lazy. They're willing to gripe but not willing to act.

George Gann is willing. He has already begun to process the questionnaires. "I'm sure it will change the menu," he said. "I've had requests for things that in the past they wouldn't eat. Hopefully I'll come up with a complete new menu."

Hopefully, this 'new menu' will start next semester off right, with a little less griping and a little more eating.

## It's almost over!?!



## Backstage with Bill

### *All the Right Moves* evokes, 'rekindles' football memories

Tom Cruise hits the movie scene once again. This time he uses 'all the right moves' to stimulate audience appeal.

The movie, *All the Right Moves*, tells the story of a young man's burning desire to be lifted from the abyss of the Pittsburgh steelmills by way of a football scholarship. Cruise offers his usual subtleties: the smile, the little giggles, the boy-like naivety that automatically zeros the audience in on him.

Cruise does seem a little slow in this movie, however, his business doesn't seem to

have the same zip as it did in *Risky Business*. The script in *Business* is different, I know, but Cruise just didn't capitalize on the subtext of the script.

The movie seemed to move slowly but it didn't drag. A lot of the business in the movie was surrounded by football paraphernalia: helmets, locker rooms, athletic tape and butterflies before a game. The actors mastered the feeling of winning spirit and the coach had some nice moments portraying the hot-headed image of a basic stereotype of the

coaching staff.

Cruise does handle some dramatic really well. His dealings with the coach, the problem of his best friend's girlfriend getting pregnant, and just dealing with himself were all very believable.

Cruise's girlfriend turned in a nice performance. She backed him up when times were bad and helped him over the hump of getting kicked off the team. The only problem was her display of love at the beginning of the movie. It seemed that the two were just dating, then wham! She came

out with this "I love you" stuff without ever showing that love before.

*All the Right Moves* was basically a good show. It pinpointed some of the feelings of a high school football team but left others uncovered. The coach was obsessed with winning and not the true meaning of sportsmanship. But everything turns out rosy.

*Moves* is recommended for those who want to rekindle those football fires of high school and everyone else who had any part of the football trend. Coaches, players,

cheerleaders, band members—all will enjoy.

Rating: 3

## Letters to the editor

Dear Editor

I feel that many students may be able to identify with this article.

To Each His Own

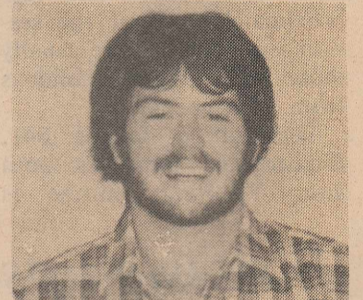
To each his own can be a problem for those of us who are on our own. It's hard for us to get in with a group. It seems that we don't fit in for some reason. No matter how hard we try, it just seems impossible, for reasons we do not understand. It seems unfair, but we are strong. We have been making it all on our own. We have a good upbringing that we believe in. No one can hurt that belief because we are strong.

Sincerely,  
Randy Hawkins

#### RATING SYSTEM:

- 4 Excellent
- 3 Good
- 2 Fair
- 1 Poor

Billy Kelley



## The Western Texan

#### LETTERS TO THE EDITOR:

Letters are welcomed but must be signed by the author with attached phone number for verification and are subject to review by the editor.

#### PAPER ERRORS:

Any errors of fact will be corrected upon request. Editorial statements are the opinion of the signed staff individuals(s) and are not necessarily that of the entire staff, faculty, administration, and/or Board of Trustees of Western Texas College.

#### ADVERTISING MATERIAL:

The staff reserves the right to accept or reject questionable advertising material.

#### POLICY CHANGES:

The staff reserves the right to make any needed changes concerning THE WESTERN TEXAN publication policy.

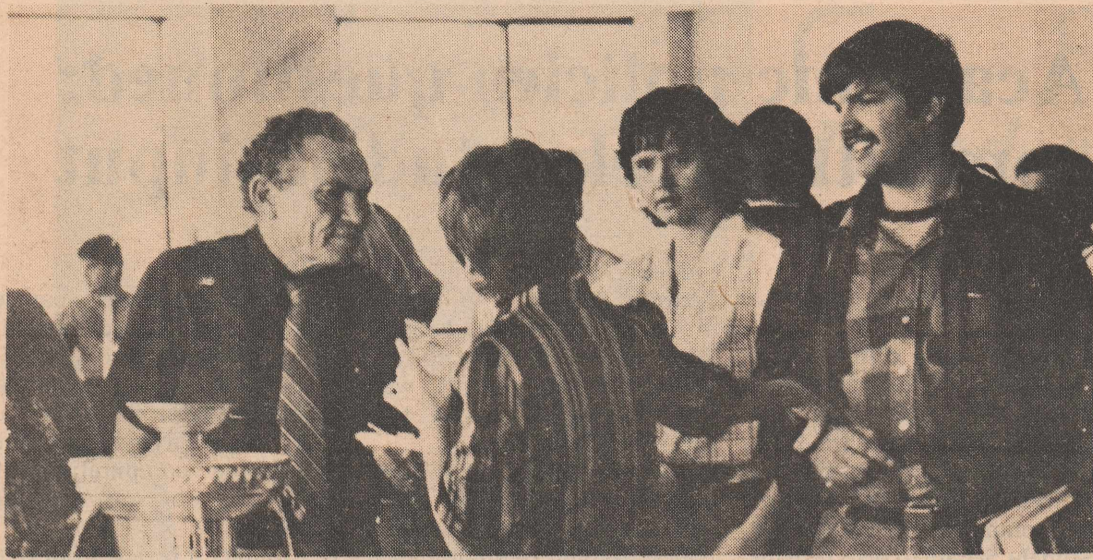
Member Texas Junior College Press Assn., Texas Intercollegiate Press Assn., Associated Collegiate Press, Rocky Mountain Collegiate Press Assn., Columbia Scholastic Press Assn., ASPA. Published biweekly by the Department of Journalism, Western Texas College, Snyder, Texas 79549. Phone (915) 573-8511, ext. 273/393.

Opinions expressed are those of the student staff members and not necessarily those of the student body, faculty or administration of the college. The Western Texan is printed by Snyder Daily News.

## The Western Texan

OFFICIAL STUDENT PUBLICATION OF WESTERN TEXAS COLLEGE

- Editor ..... Jana Harris
- News Editor ..... Sherry Spells
- Feature Editor ..... Erika Lee
- Sports Editor ..... Brenda Johnson
- Photo Editor ..... Kevin Starnes
- Associate Photo Editor ..... Candy Turnbo
- Business/Circulation Manager ..... Cynthia Trujillo
- Reporters ..... Julie Crow, Johnnie Evans, John Foster  
Jeff Gibson, Billy Kelley, John Moesch, Lynn Quiros  
Toby Villa, Joyce Wallace, Bendi Wolf
- Photographers ..... Laura York, Mike Luera
- Advisers ..... Darla Doty - Beverly Cross



HE'S GRAND—Dr. Franklin Pruitt (left), voted the outstanding personality on campus by Phi Theta Kappa members, was besieged by friends offering congratulations during the Founder's Day celebration. —Mike Luera photo

## Pruitt secures PTK honor

Phi Theta Kappa celebrated Founder's Day Nov. 17 along with the Student Senate honoring Dr. Franklin Pruitt, as the outstanding personality on campus.

"Someone who is student oriented, cares about students and goes out of his way to help students," Dr. Mary Hood, PTK sponsor said as she described Dr. Franklin Pruitt, history and government professor.

A plaque given to Pruitt read: *In appreciation of*

*outstanding service to the students of Western Texas College.*

"I feel greatly honored. I deeply appreciate it very much because I consider this group of students here the best group I've ever known," Dr. Pruitt said.

Pruitt is scheduled to speak on the honor's topic at the chapter's Dec. 8 meeting. This honor will be given to other outstanding persons in the upcoming years.

PTK members worked the

concession stand at the Amitee Study Club's Second Annual Country Christmas Dance Dec. 3.

Hood stated that members will be ushers at the drama department's production of *Major Barbara*.

Patsy Martin, college switchboard operator, received the Dallas Cowboy game tickets given away as a fundraiser for PTK. Kappans, Bill Harrison and Katrina Walker also received tickets for submitting the most donations.

## Forshee offers additional spring semester electives

by Cyndi Trujillo

International Relations is one of two electives being offered in political science next semester, with John Forshee as instructor.

The course is designed for political science and pre-law majors but is open to everyone.

"The purpose of this course is to increase a person's knowledge on the basic principles of relations between nations and how nations do business with each other on a

government level," Forshee said. "The course is open to anyone who is interested in the United State's involvement in world affairs."

No text will be required. Reading will come from various books, magazines and journals. This will not be a lecture course. The student will be involved in a great deal of work with the instructor serving as director.

For more information, contact Forshee at 573'8511, ext. 296.

## WTC sets writing seminar

The English department will be hosting a two-day seminar for writing teachers on Jan. 13-14. Professor William E. Coles, Jr., a well-known teacher and writer will be leading the workshop.

The topic for the two-day program is "Teaching Writing with Student Writing." The workshop sessions will be Friday and Saturday from 9-12 a.m. A lunch will be served with sessions continuing from 2-4 p.m.

Fees for the seminar are individual at \$15 and maximum institutional at \$40 with three or more participants from the same institution. The

workshop materials are included in the fee.

Cole is the former director of composition at the University of Pittsburgh and the author of several textbooks such as *Composing, Teaching Composing, Composing II* and the highly praised *The Plural I*. He has been published in *College Composition and Communication* and also *Freshman English News*. Cole has conducted four seminars on the teaching of writing for the National Endowment of the Humanities.

For more information contact Richard Lancaster, department of English, ext. 289.

## Campus briefs

### Spring Schedules

Schedules for the upcoming spring semester may be picked up in the student services office or at the switchboard in the administration building.

Classes are scheduled to begin Jan. 18. Registrations will be Jan. 16-17. No pre-registration is planned.

### Krenek's review

Dr. Harry Krenek, dean of instruction, has written a book review, *The Power Vested*, which will appear in the 1983 *West Texas Historical Association Yearbook*.

*Oil booms: Social Change in Five Texas Towns*, written by Roger M. Olien and Diana David Olien, is the book reviewed by Krenek.

Booms in Midland, Odessa, McCamey, Wink and Snyder are looked at in an attempt to determine the affect of petroleum activity on community life. "After the Boom," the last chapter, concludes the study.

Krenek covered a different aspect of Texas in his book, which concerns the role of the Texas National Guard as the state's primary law enforcement agency from 1912-1913.

### Sunday dinner

A Sunday dinner along with an action packed film will be taking place at the Baptist Student Union Dec. 11 at 1 p.m.

Students staying on campus for the weekend, student athletes or someone who happens to be in the area are invited to attend.

The dinner will consist of barbequed brisket, casseroles, salads and vegetables, homemade desserts, rolls and tea.

"Football Fever," will be shown afterwards. This is a film on spectacular plays and hilarious moments in pro football games. Brief spots on Christian pro athletes will also be shown.

The dinner will be over in time for the Cowboys vs. Redskins game. Reservations are \$1 which is the total cost and must be in by Dec. 9.

For more information contact Jerry Summer, BSU director at 573-8511, ext. 271.

### Cox graduates

Deborah Cox of Colorado City has graduated from the WTC cosmetology program. She was honored with a reception and will be employed at the Style Shack in her hometown.

Judy Border, cosmetology instructor, is still accepting enrollments for anyone interested in taking the class. For more information call 573-8511, ext. 267.

### New exhibits

The Diamond M Museum urges visitors to view the new paintings acquired in November. The first painting, "Alleyn's Ride With a Message For the Prince" has been added to the museum's N.C. Wyeth exhibit. A powerful black horse bearing a bloodied rider is the central figure in the painting.

Robert Wood's "Helotes Creek," an autumn landscape of the Texas Hill Country, is the museum's second new acquisition. It joins a Wyoming mountain landscape by Wood which is said to be one of the first in the collection of art that became the Diamond M Museum.

### Happy Holidays

May you all have a relaxing, joyful and memorable vacation. See you in '84.

### Intramural pool tourney

The recreation committee of the Student Senate held a singles intramural pool tournament Wed., Dec. 30.

Twelve men participated along with four women.

Bob Stangby walked away with first place in the men's divisions with Randy Hawkins second and Barry Boyett third.

In the women's division, Sherry Ellis placed first and Rhonda Hoelting was second.

"The tournament was real successful and we really appreciate the student participation," Danny Hunter, advisor for the recreation committee said.

Trophies will be presented to the first and second place winners in both divisions.

A intramural doubles pool tournament is scheduled for the spring semester.

### Accounting

Principles of Accounting I and II are required of students who will eventually earn a Bachelor of Business Administration Degree in Texas.

Those who enroll for Accounting I may not have had Bookkeeping in high school or it may have been several years since the course was taken. In either case, enrolling in Bus. 235, Office Accounting I, is highly recommended to prepare for the Principles of Accounting class.

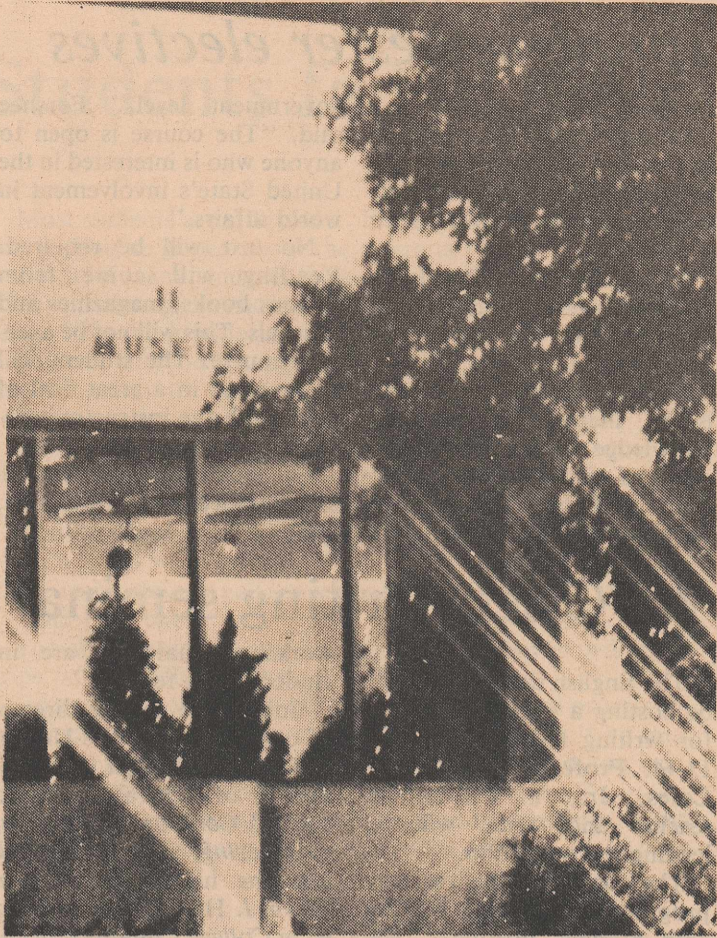
Please refer to the enclosed spring schedule for class times. for further information contact Bill Halbert, ext. 243 or Linda Wright, ext. 266.

### BSU mission

BSU students are teaming up with a group from South Plains College for a mission project to Juarez and El Porvenir, Mexico, Dec. 16-22.

Plans are to do construction and renovation work on two church buildings, work with children in the afternoon and send a medical team to provide basic medical care in several towns and villages.

Contact the BSU for more information.



A CAMPUS CHRISTMAS

-Kevin Starnes photo

## Academic policies questioned; committee seeks student input

by Cyndi Trujillo

A curriculum committee, formed by the WTC administration, is composing a questionnaire on academic policy. The committee will propose policy changes from the questionnaire's results.

Wendell Jones, chairman of the committee, has asked the Student Senate to help provide student input by submitting questions and by relaying questions from other students.

"I'm asking for questions from students as well as faculty members," Jones said. "We need a good number of questions to develop a good questionnaire to cover everything we need to consider."

The questionnaire will be distributed to students and faculty members to rate. The results will be presented to

students, faculty and the board of trustees.

"The questions will be kept separate so we will be able to distinguish the students' way of thinking from the teachers," Jones said.

Questions pertaining to full and part-time students along with credit and non-credit courses should be submitted.

Some questions being considered by the curriculum committee are:

1. Should "D" grades be accepted for degree credit? Should "D" grades be transferred for degree credit?
2. Can students declare "academic bankruptcy?" Under what conditions? Penalties? (time limit, only certain institutions, etc.)
3. Should grades at previous colleges be included when computing cumulative GPA's

at WTC?

4. If a student retakes a course that he has already taken, which grade or grades (both, highest, most recent) should be considered in the GPA?

5. Other recommendations concerning computation of GPA and /or awarding of credit.

6. Conduct a review of degree requirement and/or degrees offered.

A recent question brought forth by an older adult student is, Should adult students be required to take P.E.?

Any related or additional questions which can be relayed will be greatly appreciated. They may be taken to Mickey Baird's office, given to John Bill Hedrick or to any senator.

Persons submitting questions do not have to sign their names to the questions.

## Fashion expose



Steven Regalado

## Parched skin needs moisturizers

As the temperatures plunge during these soon to be winter months, have you noticed your skin is dryer? Is your skin beginning to look and feel parched?

The crucial elements causing this is the amount of humidity in the air. When the air is dry, your body releases more of its own vital moisture into the environment. What's needed for dry environments is a barrier to water or moisture loss.

Moisturizers create an occlusive barrier to keep water in—pollution out. However, many men consider them unnecessary and avoid moisturizers. Some men may be reluctant because they feel moisturizers will provoke acne flareups; some just don't like the fragrance.

If this is what prevents you from using moisturizers, you're in luck. There is a moisturizer that doesn't have a

fragrance or odor, none of the mineral oil that can act as a pore-clogging agent and it contains all the emollients necessary for a good facial moisturizer. It's Neutrogena Moisture which costs approximately \$6 for 20 oz.

Shaving is another avenue of grooming where men have problems. Have you ever gotten that dreaded razor burn or cut that you didn't know you had until you felt the sting? The problem is improper shaving techniques.

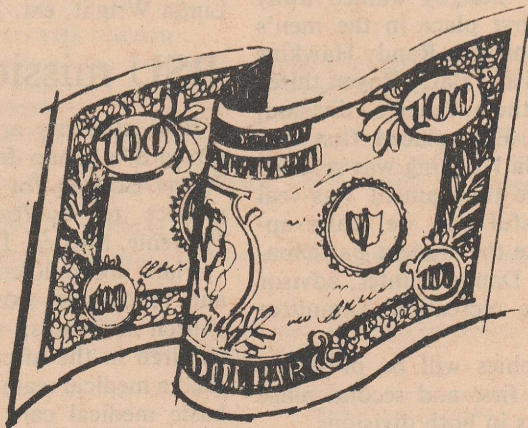
Many guys take the razor to the face and never realize there's a proper technique. The technique's main principal is to shave the hair in the direction in which it grows. This means shaving the facial hair downward only and hair

under the chin and neck, in upward strokes.

Have you noticed that you can't smell your own cologne anymore? If so, fragrance immunity has developed and it's time to change. For a total change, some new scents just out are Alain Delon—clear, cool, with a spicy citrus base. Halston 101—a mixture of amber and myrrh with a cool freshness which Halston says gives a little more than 100 percent. Wall Street—cool, clean citrus over spice and sandalwood. Last, but not least, Awesome—warm, bright and intriguing blend of amber and orange with a civet note. Half the pleasure of wearing cologne is smelling it yourself, so go ahead—try something new. (GQ Nov. 1983; Dec. 1983)

## Snyder National Bank

Turn your small investments into big benefits with our variety of services.



573-2681

FDIC

1715-25TH ST.

## Jack's ROADBORING Pipeline Construction

P.O. Box 1273 • Snyder, Tx 79549

Jack Greene Jack Greene, Jr. Larry Greene  
(915)573-0135 (915)573-8901 (915)573-5116

LOANS MADE ON ANYTHING OF VALUE

## SNYDER PAWN SHOP

WE BUY-SELL-TRADE

915/573-3871 - 3419 AVENUE T

Connie Stom, Owner



ROCK-ON—All dressed up, Mike Valentine and Terri Rosas do the jingle-bell rock. —Mike Luera Photo

## Psi Beta honors top psychology students

by Cyndi Trujillo

Dr. Joe Reaves, professor of psychology, is sponsoring a new honor society. Psi Beta is for students interested in psychology.

Before the society could be considered, a constitution had to be written up stating its purpose. It was then presented to the Student Senate to examine and vote on. The Senators voted unanimously in favor of the Psi Beta honor society.

Qualifications for membership include a 3.0 overall college average and a B average in psychology with at least one semester of work.

A \$20 fee is required by the National Psi Beta Organization. It will cover a student for as long as they are attending a

community college.

Being a member of Psi Beta could be profitable when applying for a job after graduation because of the grade point average requirements.

Some activities being planned include trips to nearby mental hospitals and institutions for the mentally retarded. Pursuing subjects such as stress management, which are not studied in regular classes, is another activity. Students will also be given hands-on experience with computers.

Any student interested in becoming a member of Psi Beta or who would like further information should contact Dr. Reaves at 573-8511 ext. 269. Psi Beta needs to get started as soon as possible.

### FINAL EXAM SCHEDULE

CLASS TIME	EXAM TIME
8:30 - 9:20 MWF	8 a.m., Wed., Dec. 14
9:25 - 10:15 MWF	10 a.m., Tue., Dec. 13
10:20 - 11:10 MWF	Noon, Mon., Dec. 12
11:15 - 12:05 MWF	10 a.m., Wed., Dec. 14
12:10 - 1:00 MWF	10 a.m., Mon., Dec. 12
8:35 - 9:50 TTH	Noon, Tue., Dec. 13
9:55 - 11:10 TTH	8 a.m., Mon., Dec. 12
11:55 - 1:10 TTH	8 a.m., Tue., Dec. 13

Monday Evening Classes ..... Dec. 12-6:30 p.m.  
 Tuesday Evening Classes ..... Dec. 13-6:30 p.m.  
 Wednesday Evening Classes ..... Dec. 14-6:30 p.m.  
 Thursday Evening Classes ..... Dec. 8-6:30 p.m.

Classes which do not meet at the hours prescribed above should be scheduled on WEDNESDAY, DECEMBER 14 at 1 p.m. or 2 p.m.

## ODDS AND ENDS

# Dead chickens spoil eaters

by John Dunnam

Won't be long until you cafeteria eaters will be back to munching on mom's home cooking again. Enjoy it while you can because there is still another semester of college fare to endure.

George Gann's grub isn't half bad, I don't care what anybody says. After more than 15 years of eating my own cooking, believe me when I say I'm an authority on bad food.

The trouble here is the same as at any other institution, not enough diversion. After a while everything tastes like chicken patties. More recipes and a whole new attitude is needed. College is a place to try different things, right? Too long have we been spoiled to eating only dead chickens, or

the embryo's of same; the flesh of bygone pigs, cattle, fish and an occasional lamb. We swill it all down with the pale product of the cow's mammary glands, or poison our system with a concoction of sugary syrup and fizzy carbon dioxide. Of course some prefer a dose of caffeine

Mr. Gann should take a lesson from Dr. Francis Buckland, a 19th century surgeon. On one occasion he served his fellow students at Oxford mouse-on-toast. From that he graduated to the delight of boiled elephant's trunk. Dr. Buckland was the founding member of the Society for the Acclimatization of Animals in the United Kingdom. The purpose of that organization was to increase the nation's food supply by in-

roducing new animals to England and thus new variations in the diets of his countrymen.

Eating what crawls, hops or slithers is not a new concept to civilized man, but perhaps the good doctor was a bit more imaginative than most. After his usual breakfast of crocodile and orange juice, he spent many of his hours pioneering new recipes for the general public. Slug soup and kangaroo dinners were among these.

Of course he had his failures too. He said he could not stop his broiled porpoise heads from tasting like the wick on an oil lamp. His worst dish was stewed moles. Even he admitted he could not eat these.

Chicken patties are beginning to sound pretty good.

## Western Texas College Mid-Winter 1984 Semester Schedule

COURSE NO	COMP NO	COURSE TITLE	DAYS & PERIOD	NO HR	ROOM	INSTRUCTOR	LAB FEE
ENG 231	300	AMERICAN LIT	*DAILY	03	2B-106	LANCASTER, M	
ENG 232	301	ENGLISH LIT	*DAILY	03	2B-110	BARKOWSKY, E	
GOV 231	200	AM/ST/LOCAL GOV	*DAILY	03	2C-104	FORSHEE, J	
GOV 232	201	AM/ST/LOCAL GOV	*DAILY	03	2C-103	ADAMS, R	
HIS 132	202	US HIS 1865 --	*DAILY	03	2C-101	PRUITT, F	

\*ALL CLASSES MEET FROM 9:00 TO 11:45 A.M. AND FROM 2:00 TO 4:30 P.M. BEGINNING TUESDAY, JANUARY 3, 1984, THROUGH SATURDAY, JANUARY 7, AND MONDAY, JANUARY 9 THROUGH WEDNESDAY, JANUARY 11, 1984. FINAL EXAMINATIONS ARE SCHEDULED FOR WEDNESDAY MORNING, JANUARY 11, 1984. STUDENTS MUST ATTEND ALL SESSIONS TO OBTAIN CREDIT.

FINAL REGISTRATION IS SCHEDULED FROM 8:00 TO 9:00 A.M. ON JANUARY 3, 1984. PRE-REGISTRATION IS PREFERRED FOR PLANNING PURPOSES.

STUDENTS WHO HAVE PREVIOUSLY ATTENDED WESTERN TEXAS COLLEGE FOR CREDIT MAY REGISTER BY COMPLETING THE FORM BELOW AND REMITTING \$41.00.

STUDENTS WHO HAVE NEVER ATTENDED MUST APPLY FOR ADMISSION BEFORE REGISTERING (CHECK APPROPRIATE BOX BELOW).

PLEASE PRINT

NAME \_\_\_\_\_ SS# \_\_\_\_\_  
 ADDRESS \_\_\_\_\_ CITY \_\_\_\_\_ ZIP \_\_\_\_\_ PHONE \_\_\_\_\_

Please enroll me for the course \_\_\_\_\_ at WTC for the Mid-Winter Session. Enclosed is my check for \$41.00. I last attended WTC during the \_\_\_\_\_ Semester of 19\_\_.

Please mail me an application for admission to the Mid-Winter Session.

Please mail your check made payable to Western Texas College to:

Dr. Duane Hood  
 Western Texas College  
 Snyder, Texas 79549

# Spring 1984 Class Schedule

## Academic Day Courses

COURSE NO.	COMP NO.	COURSE TITLE	DAYS	PERIOD	NO HR	ROOM	INSTRUCTOR	LAB FEE
ACC 232 175		PRIN OF ACCOUNT MWF		8:30- 9:20	03	7A-117	HALBERT, W	
AG 132 004		CROP SCIENCE LAB	MT	8:30- 9:20 1:15- 4:00	03	7B-105 7B-105	DOTY, B DOTY, B	\$10
AG 134 002		AGRI ECONOMICS LAB	TTH	8:35- 9:50	03	7B-105	DOTY, B	
AG 135 003		HORSEMANSHIP I LAB	M	10:20-11:10	03	7B-105	DOTY, B	\$10
AG 235 005		RODEO PROD MGT LAB	TTH	9:55-11:10	03	7B-105	DOTY, B	\$10
AG 236 007		PLANT PROPAGAT LAB	MT	10:20-11:10 6:30- 9:30	03	7D-110 7D-110	RITCHEY, J RITCHEY, J	\$10
AG 241 006		SOILS LAB	TTH	8:35- 9:50 1:05- 2:50	04	7D-110 7D-110	RITCHEY, J RITCHEY, J	\$10
ART 133 100		FRESHMAN DRAW LAB (4 HOURS)	MT	1:05- 1:55	03	FA-117	GIBSON, J	\$10
ART 135 101		DESIGN 3-D LAB (4 HOURS)	TTH	1:15- 2:30	03	FA-117	THORNTON, M	\$10
ART 230 102		ART/ELEMENT ED LAB (3 HOURS)	TTH	9:55-11:10	03	FA-117	GIBSON, J	\$10
ART 233 103		ADV/DESIGN 3-D LAB (4 HOURS)	MT	9:25-10:15	03	FA-103	THORNTON, M	\$10
ART 234 104		CERAMICS LAB (4 HOURS)	M	1:05- 2:50	03	FA-122	THORNTON, M	\$10
ART 235 105		JEWELRY LAB (4 HOURS)	MT	9:25-10:15	03	FA-103	THORNTON, M	\$10
ART 239 106		S/P CERAMICS LAB (4 HOURS)	M	1:05- 2:50	03	FA-122	THORNTON, M	\$10
ART 239 107		S/P JEWELRY LAB (4 HOURS)	MT	9:25-10:15	03	FA-103	THORNTON, M	\$10
BIO 146 026		PRIN OF BIO II	MWF	8:30- 9:20	04	2A-101	OTTO, F	\$10
BIO 146 027		PRIN OF BIO II	MWF	10:20-11:10	04	2A-101	CARTER, J	\$10
BIO 146 028		PRIN OF BIO II	TTH	8:35- 9:50	04	2A-101	HILLIS, S	\$10
BIO 146 029		PRIN OF BIO II	TTH	9:55-11:10	04	2A-101	CARTER, J	\$10
BIO 146 030		PRIN OF BIO II	TTH	11:55- 1:10	04	2A-101	OTTO, F	\$10
BIOLOGY STUDENTS MUST ATTEND ONE OF THE FOLLOWING LABS:								
		LAB SECTION 1	M	1:15- 4:00		2A-111	CARTER, J	
		LAB SECTION 2	T	1:15- 4:00		2A-111	HILLIS, S	
		LAB SECTION 3	W	1:15- 4:00		2A-111	OTTO, F	
		LAB SECTION 4	TH	1:15- 4:00		2A-111	OTTO, F	
BIO 242 032		HUMAN ANAT/PHYS LAB	TTH	8:35- 9:50 1:15- 5:00	04	2A-105 2A-105	CARTER, J CARTER, J	\$10
BIO 244 033		PLANT FORM/FUNC LAB	MT	12:10- 1:00 1:15- 5:00	04	2A-101 2A-105	CARTER, J CARTER, J	\$10
BIO 247 034		MICROBIOLOGY LAB	MWF	11:15-12:05 1:15- 5:00	04	2A-102 2A-110	HILLIS, S HILLIS, S	\$10
BUS 131 176		INTRO TO BUS	TTH	9:55-11:10	03	2B-106	HALBERT, W	
BUS 232 177		BUSINESS LAW	MWF	9:25-10:15	03	2B-106	HALBERT, W	
BUS 232 178		BUSINESS LAW	TTH	8:35- 9:50	03	2B-106	HALBERT, W	
BUS 233 183		BUSINESS COMM	TTH	8:35- 9:50	03	2C-107	BARKOWSKY, E	
CHM 142 035		FUND OF CHEM II LAB	TTH	9:55-11:10 1:15- 5:00	04	2A-102 2A-104	MCRAE, J MCRAE, J	\$10
CHM 144 036		GENERAL CHEM II LAB (SECTION 1)	M	9:25-10:15 1:15- 5:00	04	2A-101 2A-104	HILLIS, S HILLIS, S	\$10
CHM 242 037		ORGANIC CHEM II LAB	TBA		04	2A-102	HILLIS, S	\$10
CHM 243 038		NUTRITION LAB	MWF	9:25-10:15 1:15- 5:00	04	2A-102 2A-110	CARTER, J CARTER, J	\$10
CS 231 179		COMP PROG/BASIC LAB	MT	10:20-11:10	03	7B-101	HIGGINS, D	\$20
CS 232 180		ADV PROG/BASIC LAB	TTH	8:35- 9:50	03	7B-101	HIGGINS, D	\$20
CS 233 181		COM PROG/FORTRN LAB	MWF	9:25-10:15	03	7B-101	STAFF	\$20
CS 234 182		ADV PROG/FORTRN LAB	MWF	11:55-12:05	03	7B-101	STAFF	\$20
DR 112 121		THEATRE ACT LAB	TBA		01	FAT	RAMBO, J	\$ 5
DR 212 122		THEATRE ACT LAB	TBA		01	FAT	RAMBO, J	\$ 5
DR 132 123		STAGECRAFT LAB	M	1:30- 2:45	03	FAT	RAMBO, J	\$ 5
DR 231 124		ACTING I LAB	MWF	9:25-10:15 9:55-11:10	03	FAT	RAMBO, J RAMBO, J	
DR 236 125		ORAL INTERPRET LAB	TTH	11:55- 1:10	03	FA-107	RAMBO, J	
ECO 232 225		PRIN ECONOMICS (HONORS CLASS--BY INVITATION OF INSTRUCTOR ONLY)	MWF	10:20-11:10	03	2C-104	PALMER, J	
ECO 232 226		PRIN ECONOMICS	TTH	8:35- 9:50	03	2C-104	PALMER, J	
ENG 131 300		COMPOSITION I	TTH	9:55-11:10	03	2B-110	BARKOWSKY, E	
ENG 132 301		HONORS COMP II (BY INVITATION OF INSTRUCTOR ONLY)	MWF	9:25-10:15	03	2B-110	BARKOWSKY, E	
ENG 132 302		COMPOSITION II	MWF	8:30- 9:20	03	LRC-101	LANCASTER, M	
ENG 132 303		COMPOSITION II	MWF	9:25-10:15	03	LRC-101	LANCASTER, R	
ENG 132 304		COMPOSITION II	MWF	10:20-11:10	03	LRC-101	LANCASTER, R	
ENG 132 305		COMPOSITION II	MWF	11:15-12:05	03	LRC-101	HALBERT, J	
ENG 132 306		COMPOSITION II	TTH	8:35- 9:50	03	LRC-101	HALBERT, J	
ENG 132 307		COMPOSITION II	TTH	9:55-11:10	03	LRC-101	HALBERT, J	
ENG 132 308		COMPOSITION II	TTH	11:55- 1:10	03	LRC-101	LANCASTER, R	
ENG 135 310		COMPOSITION I	MWF	9:25-10:15 9:55-11:10	03	LRC-203 LRC-203	LANCASTER, M LANCASTER, M	
ENG 136 311		COMPOSITION II	MWF	10:20-11:10	03	LRC-203	LANCASTER, M	
ENG 232 312		ENGLISH LIT	MWF	10:20-11:10	03	2B-110	HALBERT, J	
ENG 232 313		ENGLISH LIT	TTH	8:35- 9:50	03	2B-110	LANCASTER, R	
ENG 232 314		ENGLISH LIT	TTH	11:55- 1:10	03	2B-110	BARKOWSKY, E	
GEO 132 228		WORLD GEOGRAPHY	MWF	11:15-12:05	03	2C-104	PALMER, J	
GEL 142 040		HISTORICAL GEOL LAB	M	10:20-11:10 1:15- 5:00	04	2A-105 2A-105	OTTO, F OTTO, F	\$10
GER 142 362		BEGIN GERMAN LAB (3 HOURS)	TBA	9:55-11:10	04	2C-104	JONES, W	
GOV 231 229		AM/ST/LOCAL GOV	MWF	8:30- 9:20	03	2C-101	FORSHEE, J	
GOV 231 230		AM/ST/LOCAL GOV	MWF	9:25-10:15	03	2C-103	ADAMS, R	
GOV 231 231		AM/ST/LOCAL GOV	MWF	11:15-12:05	03	2C-101	FORSHEE, J	
GOV 231 232		AM/ST/LOCAL GOV	TTH	8:35- 9:50	03	2C-103	ADAMS, R	
GOV 231 233		AM/ST/LOCAL GOV	TTH	9:55-11:10	03	2C-101	FORSHEE, J	
GOV 232 235		AM/ST/LOCAL GOV	MWF	10:20-11:10	03	2C-103	FORSHEE, J	
GOV 235 236		INTER/RELATIONS	TTH	11:55- 1:10	03	2C-103	FORSHEE, J	
<b>ACTIVITY</b>								
HPE 212 400		BEG RACQUETBALL	MWF	8:30- 9:20	01	R-COURTS	CUSHING, J	\$10
HPE 212 401		WEIGHT TRAINING	MWF	9:25-10:15	01	GYM 108	BURKE, O	\$10
HPE 212 402		WT TRAINING/JOG	MWF	10:20-11:10	01	GYM 108	DAVIS, B	\$10
HPE 212 403		BEG RACQUETBALL	MWF	10:20-11:10	01	R-COURTS	BURKE, O	\$10
HPE 212 404		TENNIS	MWF	10:20-11:10	01	T-COURTS	SPRADLING, P	\$10
HPE 212 405		AEROBICS	MWF	10:20-11:10	01	GYM 108	MCKINNEY, J	\$10
HPE 212 406		BEGINNING GOLF	MWF	10:20-11:10	01	GOLF COU	STAFF	\$25
HPE 212 407		ADVANCED AIKIDO	MWF	11:15-12:05	01	GYM 101	BURKE, O	\$10
HPE 212 409		BEG RACQUETBALL	MWF	11:15-12:05	01	R-COURTS	CUSHING, J	\$10
HPE 212 410		BODY CONDITION	MWF	12:10- 1:00	01	GYM 108	BURKE, O	\$10
HPE 212 411		BEG RACQUETBALL	M	1:00- 2:20	01	R-COURTS	BURKE, O	\$10
HPE 212 416		BEG BASKETBALL	TTH	8:35- 9:50	01	GYM 108	SPRADLING, P	\$10
HPE 212 417		BEG RACQUETBALL	TTH	9:55-11:10	01	R-COURTS	BURKE, O	\$10
HPE 212 418		VOLLEYBALL	TTH	9:55-11:10	01	GYM 108	BANE, P	\$10
HPE 212 419		TENNIS	TTH	9:55-11:10	01	T-COURTS	SPRADLING, P	\$10
HPE 212 420		BEGINNING GOLF	TTH	9:55-11:10	01	GOLF COU	STAFF	\$25
HPE 212 421		CO-ED AEROBICS	TTH	11:30-12:45	01	GYM 108	MCKINNEY, J	\$10
HPE 212 422		BEGIN AIKIDO	TTH	11:55- 1:10	01	GYM 101	BURKE, O	\$10
HPE 212 423		BOWLING	TTH	11:55- 1:10	01	GYM/LNS	BANE, P	\$40
HPE 212 424		BEGINNING SWIM	TTH	1:30- 2:50	01	POOL	BANE, P	\$10
HPE 212 425		ADVANCED GOLF	TTH	1:15- 2:30	01	GOLF COU	FOSTER, J	\$25
HPE 212 426		ADV RACQUETBALL	TTH	2:00- 3:20	01	R-COURTS	BURKE, O	\$10
HPE 212 427		ADV SWIM/DIVING	TTH	3:00- 4:20	01	POOL	BANE, P	\$10
HPE 212 428		RACQUETBALL SATURDAY MORNING CLASS	SAT	9:00-10:00	01	R-COURTS	HOOD, D	\$10
HPE 212 429		AQUAROBICS	MWF	4:00- 5:00	01	POOL	MCKINNEY, J	\$10
HPE 214 432		VARSITY GOLF	DAILY	1:05- 5:05	01	GOLF COU	FOSTER, J	\$10
HPE 214 433		VAR BS/WOMEN	DAILY	1:00- 3:30	01	GYM 108	CUSHING, J	\$10
HPE 214 434		VAR BS/MEN	DAILY	3:30- 6:00	01	GYM 108	DAVIS, B	\$10
HPE 217 430		RODEO ACTIVITY	W	4:00- 6:50	01	RODEO GR	DOTY, B	\$10
HPE 217 431		RODEO ACTIVITY	M	4:00- 6:50	01	RODEO GR	DOTY, B	\$10
<b>NON-ACTIVITY</b>								
HPE 231 440		PER/COM HEALTH	TTH	8:35- 9:50	03	GYM 109	BURKE, O	
HPE 232 441		COACH ATHLETICS	TTH	9:55-11:10	03	GYM 109	DAVIS, B	
HIS 131 238		US HIS TO 1865	TTH	11:55- 1:10	03	2C-101	PALMER, J	
HIS 132 239		US HIS 1865 --	MWF	9:25-10:15	03	2C-101	FRUITT, F	
HIS 132 240		US HIS 1865 --	MWF	10:20-11:10	03	2C-101	FRUITT, F	
HIS 132 241		US HIS 1865 --	MWF	11:15-12:05	03	2C-103	ADAMS, R	
HIS 132 242		US HIS 1865 --	TTH	8:35- 9:50	03	2C-101	FRUITT, F	
HIS 132 243		US HIS 1865 --	TTH	9:55-11:10	03	2C-103	ADAMS, R	
HIS 232 246		WESTERN CIV	MWF	12:10- 1:00	03	2C-101	FRUITT, F	
HUMAN DEVELOPMENT CLASSES: A Human Development class is required for each entering freshman. Any student taking ENG 135 is required to take one section or more of RE 111. Other students may take HD 111 or RE 111.								
HD 112 075		LIBRARY SKILLS	W	11:15-12:05	01	LRC-202	STEPHENS, K	
HD 111 076		CAREER ASSESS	TBA		01	7A-113	MCOUEEN, B	
PERMISSION OF INSTRUCTOR IS REQUIRED								
RE 111 340		STUDY SKILLS (FIRST SIX WEEKS ONLY)	TTH	11:55- 1:10	01	LRC-207	CORKRAN, G	
RE 111 349		STUDY SKILLS (SECOND SIX WEEKS ONLY)	TTH	11:55- 1:10	01	LRC-207	CORKRAN, G	
JOU 112 330		NEWSPAPER ACTIV LAB (3 HOURS)	TBA		01	SC-106	DOTY, D	\$10
JOU 113 331		TYPESET ACTIV LAB (3 HOURS)	TBA		01	SC-105	CROSS, B	\$10
JOU 132 332		INTRO MASS COMM LAB (3 HOURS)	MWF	11:15-12:05	03	SC-106	DOTY, D	\$10
JOU 231 333		NEWS EDIT COPY LAB (3 HOURS)	TTH	9:55-11:10	03	SC-106	DOTY, D	\$10
JOU 232 334		INTRO RADIO/TV LAB (2 HOURS)	MWF	10:20-11:10	03	SC-106	DOTY, D	\$10
MTH 132 183		INTER ALGEBRA	MWF	8:30- 9:20	03	2B-106	ANDERSON, E	
MTH 133 184		COLLEGE ALGEBRA	MWF	8:30- 9:20	0			

## Academic Evening Courses

COURSE NO	COMP NO	COURSE TITLE	DAYS	PERIOD	NO HR	ROOM	INSTRUCTOR	LAB FEE
ART 137	108	ART HIS/SURV II	M	6:30-9:20	03	FA-107	GIBSON, J	
ART 232	109	PAINTING LAB (3 HOURS)	TH	6:30-9:20	03	FA-117	GIBSON, J	\$10
ART 233	110	ADV/DESIGN 3-D LAB (3 HOURS)	M	6:30-9:20	03	FA-103	THORNTON, M	\$10
ART 235	111	JEWELRY LAB (3 HOURS)	M	6:30-9:20	03	FA-103	THORNTON, M	\$10
ART 239	112	S/P JEWELRY LAB (3 HOURS)	M	6:30-9:20	03	FA-103	THORNTON, M	\$10
ART 239	113	S/P PAINTING LAB (3 HOURS)	TH	6:30-9:20	03	FA-117	GIBSON, J	\$10
BIO 146	031	PRIN OF BIO II LAB	M	6:30-9:20	04	2A-101	OTTO, F	\$10
CHM 142	039	FUND OF CHEM II LAB	TTH	6:30-7:50	04	2A-102	MCRAE, J	\$10
CS 230	193	INTRO COMP SCI	W	6:30-9:20	03	2B-109	FORSHEE, J	\$ 5
CS 231	194	COMP PROG/BASIC LAB	M	6:30-9:20	03	7B-101	PYLANT, S	\$20
CS 232	195	ADV PROG/BASIC LAB	M	6:30-9:20	03	2B-110	HIGGINS, D	\$20
CS 236	196	ADV PROG/CODOL LAB	TTH	6:30-8:30	03	2B-110	HOOD, D	\$20
CS 238	197	COMP APPLICAT LAB	T	6:30-9:20	03	7B-101	PYLANT, S	\$20
EGR 231	043	EGR STATICS	TH	6:30-9:20	03	2A-101	STAFF	
ENG 132	309	COMPOSITION II	TH	6:30-9:20	03	LRG-101	HALBERT, J	
ENG 233	315	MASTERS OF LIT PERMISSION OF INSTRUCTOR IS REQUIRED	T	6:30-9:20	03	LRG-101	LANCASTER, R	
GOV 231	234	AM/ST/LOCAL GOV	T	6:30-9:20	03	2C-103	ADAMS, R	
HPE 212	428	RACQUETSBALL SATURDAY MORNING CLASS	SAT	9:00-10:00	01	R-COURTS	HOOD, D	\$10
HPE 212	450	HI-LEVEL AEROB	MWF	6:00-7:20	01	GYM 108	MCKINNEY, J	\$10
HPE 212	451	LO-LEVEL AEROB	MWF	7:30-8:30	01	GYM 108	MCKINNEY, J	\$10
HPE 212	452	AQUAROBICS	TTH	4:45-6:00	01	POOL	MCKINNEY, J	\$10
HPE 212	453	AQUAROBICS	TTH	6:00-7:20	01	POOL	MCKINNEY, J	\$10
HPE 212	454	AEROBICS	TTH	7:30-8:50	01	GYM 108	MCKINNEY, J	\$10
HPE 212	455	BODY CONDITION	TTH	5:15-6:30	01	GYM 101	BANE, P	\$10
HPE 212	456	SPORT JUDO	TTH	6:30-8:00	01	GYM 101	HILLIS, S	\$10
HPE 219	457	VARSITY JUDO	MWTH	6:30-8:00	01	GYM 101	HILLIS, S	\$10
HPE 219	458	THEATRE DANCE	TTH	5:45-7:15	01	TBA	RAMBO, J	\$10
HIS 132	245	US HIS 1865 --	W	6:30-9:20	03	MUSEUM	IRWIN, E	
HD 111	076	CAREER ASSESS PERMISSION OF INSTRUCTOR IS REQUIRED	TBA	TBA	01	7A-113	MCQUEEN, B	
JOU 234	335	INTRO PHOTO II LAB (3 HOURS)	TH	6:30-9:20	03	SC-106	FARLEY, D	\$10
MTH 133	198	COLLECT ALGEBRA	T	6:30-9:20	03	2B-109	STAFF	
MTH 134	199	TRIGONOMETRY	TH	6:30-9:20	03	2B-109	STAFF	
MUS 112	139	JAZZ ENSEMBLE LAB	M	8:00-9:30	01	FA-102	GAMBLE, G	
MUS 212	140	JAZZ ENSEMBLE LAB	M	8:00-9:30	01	FA-102	GAMBLE, G	
PHI 132	338	ETHICS	W	6:30-9:20	03	2B-110	FLEER, G	
PSY 231	247	GEN PSYCHOLOGY	M	6:30-9:20	03	2C-102	REAVES, J	
REL 232	355	LIFE/LIT'S PAUL	M	6:30-9:20	03	CSC	RTICHEY, J	
SOC 231	253	INTRO SOCIOLOGY INDEPENDENT STUDY--PERMISSION OF INSTRUCTOR IS REQUIRED	TBA	TBA	03	TBA	REAVES, J	

## Oc-Tech Day Courses

COURSE NO	COMP NO	COURSE TITLE	DAYS	PERIOD	NO HR	ROOM	INSTRUCTOR	LAB FEE
<b>AUTOMOBILE MECHANICS</b>								
AM 161	500	ELECT SYSTEMS	DAILY	1:00-2:40	06	7D-105	DANIEL, G	\$35
AM 162	501	ENGINE TUNE-UP	DAILY	2:40-4:20	06	7D-105	DANIEL, G	\$35
AM 263	502	CHASSIS & POWER	DAILY	1:00-2:40	06	7D-105	DANIEL, G	\$35
AM 284	503	TROUBLE SHOOT	DAILY	2:40-4:20	08	7D-105	DANIEL, G	\$40
<b>BUSINESS (OFFICE CAREERS)</b>								
BUS 130	626	BEGIN TYPING LAB	MWF	11:15-12:05	03	7A-102	NOBLE, J	\$15
BUS 131	176	INTRO TO BUS	TTH	9:55-11:10	03	2B-106	HALBERT, W	
BUS 133	627	INTER TYPING LAB	MWF	10:20-11:10	03	7A-102	LIGHT, C	\$15
BUS 134	628	INTER SHORTHAND LAB	TTH	8:35-9:50	03	7A-105	LIGHT, C	\$15
BUS 135	629	BUS MACHINES	TTH	11:55-1:10	03	7A-107	NOBLE, J	\$15
BUS 231	630	ADVANCED TYPING LAB	MWF	9:25-10:15	03	7A-102	NOBLE, J	\$15
BUS 232	177	BUSINESS LAW	MWF	9:25-10:15	03	2B-106	HALBERT, W	
BUS 232	178	BUSINESS LAW	TTH	8:35-9:50	03	2B-106	HALBERT, W	
BUS 234	631	OFFICE PROCEDUR	TTH	9:55-11:10	03	7A-105	NOBLE, J	
BUS 235	632	OFFICE ACCOUNT	MWF	11:15-12:05	03	7A-107	LIGHT, C	
BUS 238	633	WORD PROCES APP LAB	MWF	10:20-11:10	03	7A-105	NOBLE, J	\$15
LB 234	634	LEGAL APPLICAT LAB	MWF	8:30-9:20	03	7A-105	LIGHT, C	\$15
<b>CONSTRUCTION TECHNOLOGY</b>								
CT 236	545	ESTIMATING	TTH	8:35-9:50	03	CT-BLDG	BAIRD, J	\$15
CT 245	546	CABINERY/MILL LAB	TTH	9:55-11:10	04	CT-BLDG	BAIRD, J	\$15
CT 247	547	HOME MAINTEN LAB	W	8:35-11:05	04	CT-BLDG	BAIRD, J	\$15
<b>COSMETOLOGY</b>								
APPLICATIONS FOR CLASSES ARE NOW BEING TAKEN BY CALLING EXTENSION 267.								
<b>DIESEL MECHANICS</b>								
DM 163	530	D ENG OVERHAUL	DAILY	7:40-9:30	06	7D-106	GUINN, C	\$35
DM 164	531	D ELECT SYSTEMS	DAILY	9:30-11:20	06	7D-106	GUINN, C	\$35
DM 262	533	D ENG OVERHAUL	DAILY	9:30-11:20	06	7D-106	GUINN, C	\$35
DM 263	532	INJECTOR SERV	DAILY	7:40-9:30	06	7D-106	GUINN, C	\$35
<b>ELECTROMECHANICAL TECHNOLOGY</b>								
EM 246	635	MICROPROCESS II LAB	TTH	9:55-11:10	04	7C-101	HIGGINS, D	\$20
<b>SOLE COURSE OPERATIONS AND LANDSCAPE TECHNOLOGY</b>								
GLT 131	552	LANDSCAPE MAINT LAB	MWF	8:30-9:20	03	7D-110	EBY, J	\$10
GLT 132	553	TURFCRASS MAINT LAB	MWF	9:25-10:15	03	7D-110	EBY, J	\$10
GLT 134	558	BAS/SURV/EARTH LAB	MWF	10:20-11:10	03	7D-110	EBY, J	\$10
GLT 135	557	RELATE WORK EXP	TBA	TBA	03	7D-110	EBY, J	
GLT 232	554	GC/LANDSCAPE/PLAN	MWF	11:15-12:05	03	7D-110	EBY, J	
GLT 243	556	GC/FOU/LND/CON LAB	TTH	9:55-11:10	04	7D-110	EBY, J	\$10
<b>HUMAN DEVELOPMENT</b>								
HD 111	076	CAREER ASSESS PERMISSION OF INSTRUCTOR IS REQUIRED	TBA	TBA	01	7A-113	MCQUEEN, B	
<b>LAW ENFORCEMENT</b>								
LE 134	676	CRIM EVID/PROC	T	8:35-11:10	03	2C-106	ROBBINS, R	
LE 231	677	POL ORG/ADMINIS	TH	8:35-11:10	03	2C-106	ROBBINS, R	
<b>MID-MANAGEMENT</b>								
MGT 135	638	INTERNSHIP I	TBA	TBA	03	7A-117	SHAWN, M	
MGT 136	639	INTERNSHIP II	TBA	TBA	03	7A-117	SHAWN, M	
MGT 137	636	MANAGERIAL COMM	MWF	10:20-11:10	03	7A-117	SHAWN, M	
MGT 237	640	INTERNSHIP III	TBA	TBA	03	7A-117	SHAWN, M	
MGT 238	641	INTERNSHIP IV	TBA	TBA	03	7A-117	SHAWN, M	
MGT 239	637	MGT SEMINAR	MWF	12:10-1:00	03	7A-117	SHAWN, M	

## VOCATIONAL TRAINING

APPLICATIONS FOR CLASSES ARE NOW BEING TAKEN BY CALLING EXTENSION 229.

COURSE NO	COMP NO	COURSE TITLE	DAYS	PERIOD	NO HR	ROOM	INSTRUCTOR	LAB FEE
<b>WELDING</b>								
W 132	581	INTRO WELDING	DAILY	7:00-8:00	03	W-15	WALKER, C	\$45
W 132	580	INTRO WELDING FOR THOSE STUDENTS WHO REQUIRE THIS COURSE TO GRADUATE	DAILY	7:00-8:00	03	W-15	WALKER, C	\$35
W 161	582	BASIC ACET WELD	DAILY	7:00-9:00	05	W-15	WALKER, C	\$45
W 162	583	ELEC ARC WELD	DAILY	9:00-11:00	06	W-15	WALKER, C	\$45
W 163	584	ELEC ARC WELD	DAILY	7:00-9:00	06	W-15	WALKER, C	\$45
W 164	585	ADV ACET WELD	DAILY	9:00-11:00	06	W-15	WALKER, C	\$45
W 251	586	BLUEPRINT READ	TBA	TBA	05	W-15	WALKER, C	
W 261	587	ADV PLATE WELD	DAILY	7:00-9:00	06	W-15	WALKER, C	\$45
W 262	588	ADV PIPE WELD	DAILY	7:00-9:00	06	W-15	WALKER, C	\$45
W 263	589	SPEC WELD/TIG	DAILY	7:00-9:00	06	W-15	WALKER, C	\$45
W 284	590	SPEC WELD/MIG	DAILY	9:00-12:00	08	W-15	WALKER, C	\$45
<b>RELATED COURSES</b>								
AS 131	625	APPL PHYSICS LAB	MWF	12:05-1:10	03	7C-104	GILMORE, H	\$10
COM 131	624	TECHNICAL COMM	MWF	11:15-12:05	03	LRG-207	CORREAN, G	
DFT 133	603	DFT FOR WELDERS	MWF	12:00-1:00	03	W-15	WALKER, C	\$10

## Oc-Tech Evening Courses

COURSE NO	COMP NO	COURSE TITLE	DAYS	PERIOD	NO HR	ROOM	INSTRUCTOR	LAB FEE
<b>AUTOMOBILE MECHANICS</b>								
AM 161	505	ELECTRIC SYSTEM	MW	6:30-11:20	06	7D-105	DANIEL, G	\$35
AM 162	506	ENGINE TUNE-UP	MW	6:30-11:20	06	7D-105	SPRADLIN, B	\$35
AM 164	508	PRIN OF ENGINES	MW	6:30-11:20	06	7D-105	SPRADLIN, B	\$35
AM 165	509	GEN OVERHAUL	MW	6:30-11:20	06	7D-105	SPRADLIN, B	\$35
AM 262	504	AUTOMATIC TRANS	MW	6:30-11:20	06	7D-105	DANIEL, G	\$35
AM 264	507	AUTO ATR CONDI	MW	6:30-11:20	06	7D-105	DANIEL, G	\$35
<b>BUSINESS (OFFICE CAREERS)</b>								
BUS 234	643	OFFICE PROCEDUR	T	6:30-9:20	03	7A-105	NOBLE, J	
BUS 236	642	OFFICE ACCOUNT	M	6:30-9:20	03	7A-107	LIGHT, C	
<b>DIESEL MECHANICS</b>								
DM 161	527	PRIN OF DIESEL	TTH	6:00-11:00	06	7D-106	GUINN, C	\$35
DM 162	528	D ENGINE SYSTEM	TTH	6:00-11:00	06	7D-106	GUINN, C	\$35
DM 163	529	D ENG OVERHAUL	TTH	6:00-11:00	06	7D-106	GUINN, C	\$35
<b>ELECTROMECHANICAL TECHNOLOGY</b>								
ET 142	644	ELECTRON DEVICE LAB	M	6:30-9:20	04	7C-104	GILMORE, H	\$20
ET 242	645	INDUST ELECTRON LAB	W	6:30-9:20	04	7C-104	GILMORE, H	\$20
ET 244	646	AUTOMAT CONTROL LAB	TH	6:30-9:20	04	7C-104	GILMORE, H	\$20
<b>SOLE COURSE OPERATIONS AND LANDSCAPE TECHNOLOGY</b>								
GLT 234	559	MACHINERY/SHOP	TBA	6:00-10:00	03	7D-110	BUCKLAND, D	\$10
<b>HUMAN DEVELOPMENT</b>								
HD 111	076	CAREER ASSESS PERMISSION OF INSTRUCTOR IS REQUIRED	TBA	TBA	01	7A-113	MCQUEEN, B	
<b>LAW ENFORCEMENT</b>								
LE 133	675	LEG ASPECTS/LE	M	6:30-9:20	03	2C-106	ROBBINS, R	
LE 233	678	CRIMINAL INVEST	T	6:30-9:20	03	2C-106	ROBBINS, R	
LE 237	679	PENOLGY	W	6:30-9:20	03	2C-106	ROBBINS, R	
<b>MID-MANAGEMENT</b>								
MGT 134	647	SALESMANSHIP	T	6:30-9:20	03	7A-117	SHAWN, M	
MGT 135	638	INTERNSHIP I	TBA	TBA	03	7A-117	SHAWN, M	
MGT 136	639	INTERNSHIP II	TBA	TBA	03	7A-117	SHAWN, M	
MGT 139	648	PERSONNEL MGT	TH	6:30-9:20	03	7A-117	SHAWN, M	
MGT 237	640	INTERNSHIP III						

# Sports

## Dusters boast 3-0 record; Campbell, Clayton set pace

by Toby Villa

Clara Campbell led all scorers and set a blocked shots record in the Duster's 68-61 victory over Cisco Junior College Monday.

Campbell had 23 points and nine blocked shots to break Dorcas Perkins' record of eight blocked shots in a single game.

The women also defeated Ranger Junior College Dec. 4, 75-54. Several players came off the bench to contribute to the win.

The squad placed fourth in the Hawk Queen Classic in Big Spring Nov. 17-19.

Facing the Weatherford Coyotes in the first round of the Classic was not an easy chore. The Dusters, however, slipped on to the second round by defeating Weatherford 79-70. Mary Nell Clayton led the scoring with 29 points. Her all-time high at WTC. Clayton also made nine out of 10 freethrows.

In the second round of the classic, the Dusters defeated New Mexico Junior College 85-72. Campbell was high point with 23, followed by Clayton with 22. The win against NMJC advanced the Dusters on to the semifinals.

The Dusters failed to defeat their opponent in the semi's. Odessa triumphed 66-59.

The loss to Odessa put the Dusters in the position to take third in the classic, but Tyler Junior College also took a victory from the Dusters, 78-76. What seemed to be an overtime game was just a short-lived dream for WTC. The official ruled a last second shot no good as time ran out.

Clayton scored 32 points in the game and 105 in the classic.

The Dusters played Cisco Nov. 23 and defeated their host 55-53. The squad had to fight to the very end of the game.

In the Second Annual Duster Classic, the host team defeated Blinn Junior College 84-69 and Yavapai College 80-65. They finished with a 2-0 record in the classic.

Conference play opened Dec. 1 as WTC defeated South Plains College 71-50.

Clayton had her ninth straight 20 point game. The Dusters record is now 13-3 on the year and 3-0 in conference.

The Dusters will host Howard College tonight in what Coach Joe Cushing called an important game.



SLAP!—Sophomore Karen Kuykendall is fouled by a South Plains College player as she goes up for a shot. —Candy Turnbo photo

## WTC racquetball tourney billed

by Brenda Johnson

WTC's First Annual Fall Student Raquetball tournament will be held Dec. 9-10.

There is no entry fee and any WTC student in raquetball classes can compete. Entry deadline, however, was Dec. 5. Play begins at 9 a.m. Friday and concludes Saturday at 3 p.m.

day at 3 p.m.

The playing schedule is now available at the campus pro shop.

There are divisions for men and women. Prizes will be given in both categories for first, second and consolation.

In championship play, players will have to win two of

three games to 15 with an 11 point tiebreaker in the third game to win the match. All consolation matches (except finals) will be one game played to 31 points.

For more information contact one of the directors: Duane Hood, Phil Spradling, Lee Burke or Va' Chavez.

## Dorm residents close semester

by Cyndi Trujillo

Dorm students are nearing the end of what once seemed like a "life-time" semester. Dorms will close at 10 a.m. Dec. 15.

Students are required to turn in room keys before leaving for the holidays. This is done for safety precautions and as a check-in when students return in the spring. The keys will be put in the

mailboxes.

Personal belongings may be left in the dorms. "The school will provide a reasonable amount of security," said dorm director, David Harr. "If anything is missing, the school will not be responsible. For the most part, there is no one going into the rooms unless there is some kind of maintenance problem."

He suggests that students

take valuables such as stereos and televisions home with them.

Students may keep their cable hook up but will have to pay for another semester before it will be connected. Those not planning to return in the spring must move out completely. They must also turn in their keys and pay all fines. All residents are asked to clean the rooms before leaving.

Returning students will be assigned their fall rooms in the spring unless otherwise requested. Students may contact Harr if they wish to make different arrangements. Room changes will be made in January.

Dorms will re-open on Jan. 16 at 10 a.m. to kick off the spring semester. Registration will take place Jan. 16 and 17. Classes commence Jan. 18.

### Just For WTC Students

- ★ Checks in WTC colors Imprinted with WTC emblem
- ★ No Service Charge Checking
- ★ 24-hour Teller Card



**EASY MONEY NEVER CLOSES!**

Snyder's Most Convenient Banking Hours

Mini Bank Hours  
8 a.m. to 6 p.m. Daily

Lobby Hours  
9 a.m. - 3 p.m. Daily  
9 a.m. - 6 p.m. Fridays

Drive-In Windows  
Open Daily  
8 a.m. - 6 p.m.

Most Convenient to WTC

**FNB** First National Bank

3610 College



573-4041

### SNYDER DRUG

3609 COLLEGE  
PHONE: 573-9333



P.O. Sub-Station  
Prescriptions  
Gift Items

### Bar-H-Bar WESTERN WEAR

College Heights Shopping Center

3205 College Avenue  
Snyder, Texas 79549  
Phone: (915)573-6763

KEITH HACKFELD, OWNER

**Anthony's**  
C. R. ANTHONY CO.

1809 25th Street

573-3972

Howard Limmer, Manager

**KEEPS YOU LOOKING GOOD...FOR LESS**

### Joe Graham Cleaners

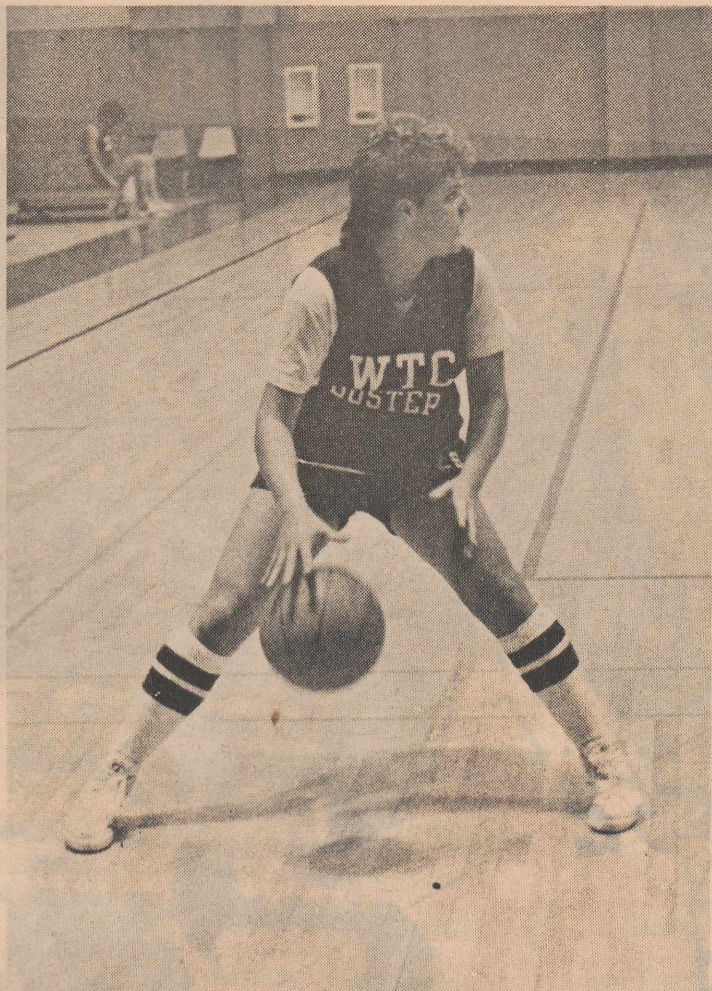
"For those who Care"

Pick-Up and Delivery Custom Care Finish

2417 College Ave.

**573-3401**





WHO, ME?—Duster point guard Rhonda Hoelting handles the ball in practice. Mike Luera photo

## Hoelting accents team; says 'we're a cut above'

by Erika Lee

Nazareth, Texas where's that? You may not have heard of Nazareth but you'll probably be hearing a lot about Duster freshman, Rhonda Hoelting.

Hoelting plays point guard for the Dusters and says that she's gotta handle the ball now that she's playing in college.

She started playing basketball in the fifth grade and has been at it ever since. "I don't know if I would have come to college if I couldn't have played basketball," Hoelting said.

When describing a Duster she said, "Coach always says we're a cut above. I also believe she has to have confidence in herself as well as the team and help the team and teammates when they're down."

Hoelting remarked that leadership and responsibility are the differences between high school and college ball.

She explained that in high school she had to have leadership but at college she has more responsibility.

During Hoelting's senior year she was All-District and All-State first team. She also played on the East-West All Star team and received most valuable player. She averaged 12 points a game in high school and six points in college.

Hoelting is majoring in physical education. "I want to be a coach," she said.

573-7582

**Burgess-McWilliams Pharmacy**

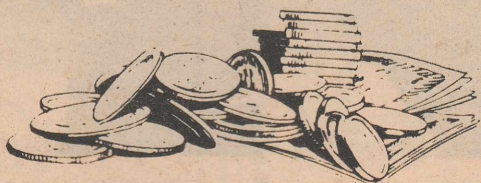
3706 College

"LET US FILL YOUR NEXT PRESCRIPTION"

**West Texas State Bank**

1901-26th St.

573-5441



Member FDIC

# Pro Cowboys conduct school; three roughstock events covered

by John Foster

WTC is sponsoring a Rodeo School Dec. 27-29 in the Scurry County Ag Complex Arena located behind the coliseum. Professional cowboys will be on hand to conduct the session.

The events covered are bareback, saddlebronc and bull riding. Dave Appleton, bareback riding champion at the Copenhagen-Skoal Match in 1983, is the bareback riding instructor. Buddy Reynolds, winner of the saddlebronc riding at Cheyenne in 1982, will instruct the bronc riding, and Cody Lambert, one of the first people to ride Harry Volds 777, will be instructing the bull riding.

Rodeo coach Bob Doty said, "These guys are very

capable in their events and with instruction." Doty will also be assisting in the school and looking for "prospects" for his rodeo team.

The school will start at 10 a.m. Tuesday, Dec. 27 and finish up around noon on Thursday, Dec. 29. A small jackpot will be held after lunch on the last day for those students who wish to participate.

Rides will be video-taped every day with discussion to follow. There will also be some past National Finals Rodeos on video for the students to watch. An 'El Toro' bucking machine will be used to improve student's techniques.

A trip to Abilene is planned for Wednesday night, to watch

the PRCA Lone Star Circuit Finals. Transportation will be provided and tickets will cost about \$5.00.

Tuition for the school will be \$200.00 with a \$75.00 deposit due before Dec. 15. There will be a minimum of 30 students required (10 in each event). Accident Insurance will be required at \$7.50 per student. It is \$25.00 deductible and a \$2,000.00 maximum. This insurance is for those participating in the school. Each student will also need a personal accidental injury policy from his family insurance. This is in case of injury exceeding \$2,000.00.

If you have any questions, contact Bob Doty at WTC (915) 573-8511 or at home (915) 573-8912.

## New rodeo course offered

A Rodeo Production Management course is being offered for the spring semester by the Agricultural Department. Instructor of the course will be rodeo coach and Ag teacher, Bob Doty.

According to Doty, the objective of the class is to teach the student the rules and procedures of rodeo, such as how to set an arena, how long to set a roping barrier, where to put barrel stakes, and all other rules pertaining to rodeo.

Students will also learn how

to pick the best stock contractor, choose the right facilities and how to figure a favorable ticket price. In addition, the course will teach students how to arrange promotions for a rodeo.

The class will meet on Tuesday and Thursday mornings from 9:55 to 11:10. There will be a lab in which the students will actually promote the WTC rodeo to be held April 12-15.

"This would be a good course for anyone who plans

to go into teaching or become a County Agent," Doty said. "Students will probably have to use this course as an elective, because it probably won't transfer as an Ag class."

Doty also said that the Rodeo Production Management course will teach students more about the rules and fundamentals of producing a rodeo better than the Rodeo P.E. already offered. The current class mainly teaches the students how to compete in the rodeo events.

\* **WEDNESDAY** \*

**STUDENT NIGHT**

10 % off with ID  
(FOOD ONLY)

**Shakey's**

**Not Only the Pizza Place  
But Food and Fun for the  
Whole Family**

•Game Room •Big Screen TV Room  
Memberships Available

Try Shakey's Buffet:

Pizza, Chicken, Mojo's, Spaghetti,  
Garlic Bread and a Trip to the Salad & Soup Bar.

Buffet: Mon.-Fri. 11:00-1:30 p.m.  
Tues.-Thurs. 5:30-8:00 p.m.

Sun. Super Buffet  
12:00-1:30 p.m.

**Shakey's Pizza Parlor**

314 E. Hwy.

573-1131

## Men hungry for victory; romp past Broncos 59-50

by Jeff Gibson

The Westerners were 0-2 going into their third conference game of the season. They traveled to Roswell N.M. to take on the New Mexico Military Institute Broncos.

"We really wanted to win this and I think we were a little hungrier," point guard Billy Chambers said. And hungry they were. With 5:07 left on the clock, the Westerners took the lead off a Richie Fells' jumpshot and the Broncos never regained the lead.

The Westerners played their first conference game against Midland last Nov. 28. The hoopsters came out smoking but with two minutes remaining in the first half, gave up the lead. The score at the half was 39-31 in favor of the Chapparals.

In the second half the men couldn't find the bucket, shooting 40 percent from the field.

"We didn't let our offense run all the way through and that hurt," freshman guard, Anthony Smith said.

The Westerners shot 60 percent from the line and lost the game 82-62. The high scorers were Larry Banks and Smith

with 12 a piece.

In the second conference game, the Westerners looked sharp against the number one ranked team in the WJCAC conference.

"South Plains brought great athletes," freshman Vince Turner said. South Plains led from the outset and jumped to a 7-0 lead before the ballers could find the hole. But the hoopsters applied the half court press and the visitors started turning over the ball. The Westerners went into the locker-room down, 45-38.

WTC came out with baskets from Fells, Robert Mitchell and Banks to make it 45-44.

With 5:07 left to play, South Plains was up 68-58. Floyd Singleton hit a one and one but missed the technical called on South Plains' player to bring WTC within two.

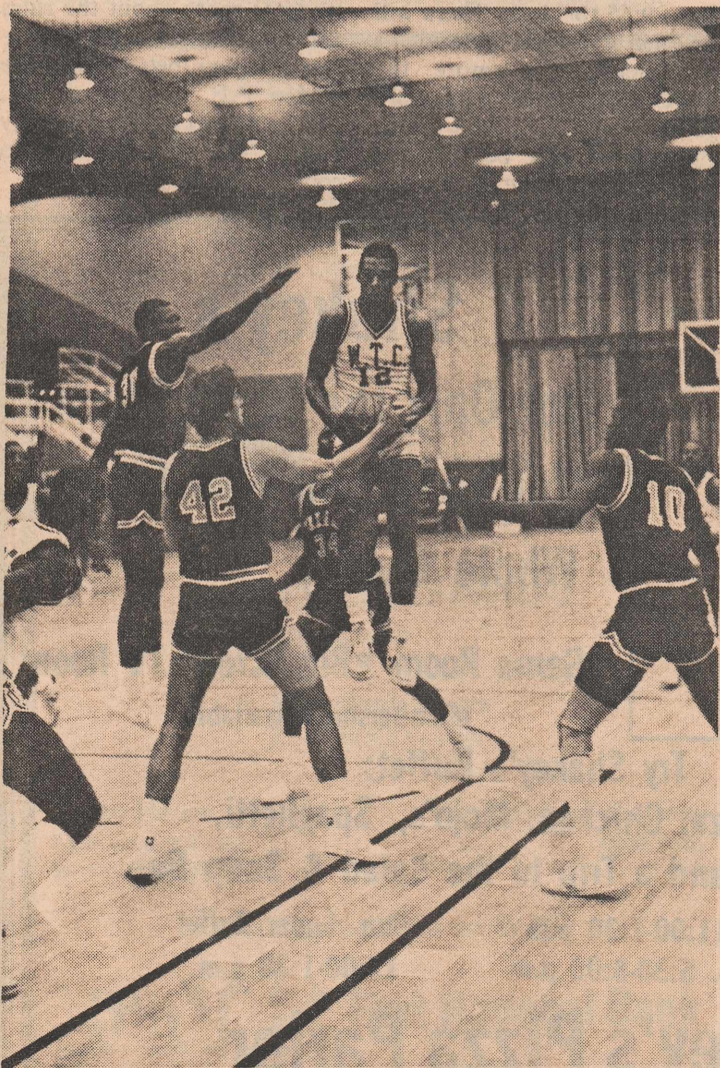
The men gave up two fastbreak lay-ups at the end of the game to lose 82-77. "That really hurt us," Victor Spencer, freshman guard said. The attack was led by Fells who put in 18 and Banks, 16.

The men romped Angelo State JV by 45 points. Fells and Singleton each had 19 points and Smith with 18.

-Mike Luera' photos



NOT THIS TIME—An Angelo State defender attempts to block Larry Banks' shot in the Westerner's 45 point margin victory.



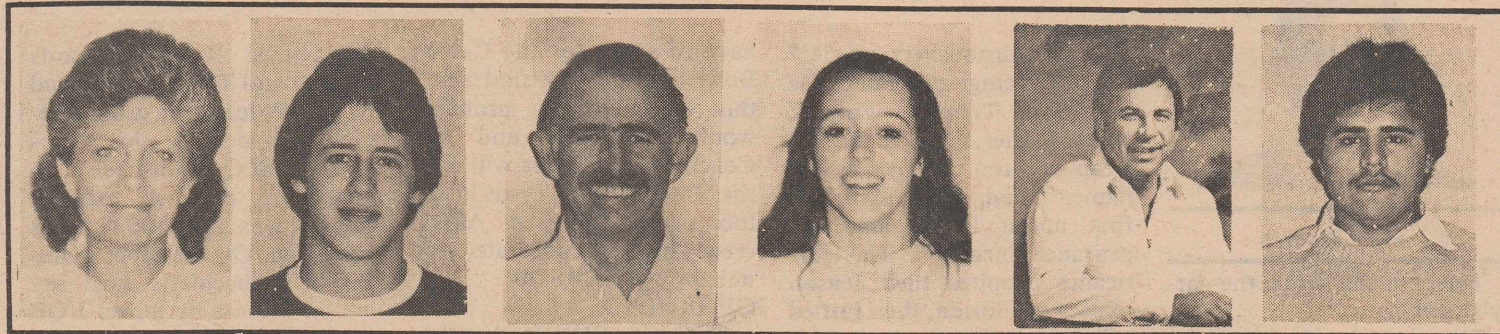
NOW WHAT?—Surrounded by the enemy, Richie Fells hangs in mid-air with the rebound.



AIM HIGH—Sophomore Richie Fells goes up with the ball in an attempt to make it to the basket.



# The armchair quarterbacks



Alabama vs SMU
Baylor vs Oklahoma State
Nebraska vs Miami
Georgia vs Texas
New England at LA Rams
Washington at Dallas
San Francisco at Buffalo
NY Jets at Miami
Cincinnati at Minnesota
Last Week's Record
Season Percentage

MICKEY BAIRD	JOHN MOESCH	DUANE HOOD	BRENDA JOHNSON	JERRY BAIRD	TOBY VILLA	
SMU	SMU	SMU	Alabama	Alabama	Alabama	
Oklahoma	Oklahoma	Oklahoma	Baylor	Baylor	Oklahoma	
Nebraska	Nebraska	Nebraska	Nebraska	Nebraska	Nebraska	
Texas	Texas	Texas	Texas	Texas	Texas	
Rams	Rams	Rams	Rams	New England	Rams	
Dallas	Dallas	Dallas	Dallas	Dallas	Dallas	
Buffalo	San Francisco	San Francisco	Buffalo	San Francisco	Buffalo	
Miami	Miami	Miami	Miami	Miami	Miami	
Minnesota	Minnesota	Minnesota	Minnesota	Minnesota	Cincinnati	
Last Week's Record	7-2	6-3	7-2	8-1	6-3	7-2
Season Percentage	.690	.666	.619	.642	.571	.595

## Racquetball league names three division champions

The semester is almost over and so is WTC racquetball league play. However, there will be another league starting in the last of Jan. or early Feb. for both men and women.

Joe's Jocks took the men's rookie divisions with a 22-8 record while Joan's Jets won

in the All-Doll league.

In the Men's Pro divisions the results are not final, but according to Duane Hood, league director, it will probably end in a tie between Richard's Rockets and Dalton's Dogs.

Up for second place in the

rookie bracket are Dave's Devils and Steve's Saints.

Second in the Women's division were Bekky's Bruisers.

Richard Arthur and Nancy Wilson ended the tournament with perfect 6-0 records while Joe Cushing, Eddie Stewart,

Joe Fowler, Mike Freeman, Rick Martin, Craig Alexander, Linda Berryman, Tracey Williams, Temi Boren and Linda Martin lost only one.

The Jocks consist of Cushing, Stewart, George Alderete, Freeman and Morris Sewell.

Joan Bunch, Boren, Cathy Chavez and Martin play for the Jets; Arthur, Raymond Zammaripp, Leslie O'Pry and Mark Duke play for the Rockets and Dalton Walton, Laddie McMillam, Tom Holcomb and Mike Graves play for the Dogs.

**CALL THE TRAVEL NUMBER**

(915)573-4074

**SNYDER TRAVEL**  
3018 Varsity Square  
Snyder, TX 79549

For all your automobile needs  
**SEE US!**

**Ben Wilson Supply**

**MR. GASKET CO.**

1507-25th St.  
(across from Central Tire)

**Eddie Peterson Pharmacy**

Prescriptions  
Candies  
Gifts  
Greeting Cards

8:30-6 M-F      8:30 SAT.

**573-8591**

**Thompson's Shoes**

"For A Fine Fit"

2526 Avenue R

**573-5501**

**Johnson Insurance Agency**

R. E. (BOB) JOHNSON

915/573-9314

**YOUR Independent AGENT**  
SERVES YOU FIRST

2411 AVENUE R  
SNYDER, TEXAS 79549

**SONIC DRIVE-IN**

4100 S. COLLEGE  
SNYDER, TEXAS 79549

**Mac and Virginia Humphrey**

**573-7620**

**McDONALD WELDING SUPPLY**

1110 College Ave.  
**573-5329**

OXYGEN  
HELIUM CO2 LIQUID AND GAS ARGON  
ACETYLENE COMPRESSED AIR NITROGEN

## Notes from the bench

# Bowl games unfold; Cowboys host 'Skins



John Moesch

Turn out the lights, the party's over....

These will be the last notes from the bench for this semester, so let's look at some bowl games and anything else worth noting in the world of sports.

First and foremost, the **ORANGE BOWL**: No. 1 and unstoppable Nebraska against Miami. This will be the best matchup of the four major bowls. We all know the story

on the Cornhuskers, a 51.7 scoring average per game, the Heisman Trophy winner, Mike Rozier, and a list of weapons too numerous to name. Miami is making its first major bowl game appearance since 1951. The Hurricanes dropped their season opener to Florida, then rattled off ten straight to earn the bid. Coach Howard Schellenberger is glad to have the chance to play the best team in college football in front of a nationwide audience. But the chance to play is the only one the Hurricanes have, **NEBRASKA 31, MIAMI 14.**

**COTTON BOWL**: Texas would be the best team in the nation if not for UN. They will

have to settle for the Cotton Bowl title and "second best" this year. Georgia probably won't lay down and die. Coach Vince Dooley will have the Dawgs ready. Texas is just too powerful. Fred Akers' crew winds up undefeated and unhappy. **TEXAS 30, GEORGIA 7.**

**SUGAR BOWL**: Another great matchup. The Tigers and Wolverines have never met before. Coming off a tough 23-20 win over SEC arch-rival Alabama, the Tigers have shown the nation they have a great squad after the schedule makers put Auburn against seven teams in the top twenty. Sophomore running sensation Bo Jackson, who had a field

day against 'Bama (256 yards rushing and TD runs of 71 and 69 yards), leads the ground attack. On defense the Tigers lead the SEC against the rush giving up only six rushing touchdowns and 106.4 yards per game. On the other hand, Bo Schmebechler's men are led on offense by power I QB Steve Smith who's passed for big numbers this year. The Wolverine defense is equally stingy allowing only an average 88 yards over an eight-game span. I like the Tigers. **AUBURN 14, MICHIGAN 10.**

You are probably wondering why I'm not commenting on the **ROSE BOWL**. Simply, this is not a good pairing. The two teams involved are as far apart as night and day. No. 4 Illinois should have an easy time against thrice-beaten and once tied UCLA. The Bruins shouldn't be here and this edition of the Rose Bowl is more pageantry than football game.

You want World War III? Be in front of your TV or radio Sunday, Dec. 11 for the long-awaited return of

Cowboys and Redskins—part 2.

The Dallas Cowboys and the Washington Redskins square off in Texas Stadium for the NFC East Crown. Look for another close game and possibly a few more fights. Let's face it, the Cowboys and Redskins flat don't like each other. Tony Dorsett said in an interview this week that he thought the Cowboys are just a little more hungry than the Skins. We shall see, Tony D. Look for the Cowboys to claim the win and the crown, **COWBOYS 24, REDSKINS 21.**

Finally, the answer to my trivia question in the last issue. It was probably worded a little wrong. It should have read, Roger Staubach received only one flagrant penalty in his career, name the player who Staubach slugged to get that personal foul call? Well, it was Pat Fischer, a secondary man for the Redskins who saw a lot of Cowboy-Redskin wars in his pro career. Oh, by the way, the game that Staubach punched Fischer also saw the Pokes lose 30-24 in overtime.



OUTA MY WAY—Bryan Carter and Steve Ortiz clash in the 'mural finals. -Kevin Starnes photo

## Parker's, Sixers triumph

Two champion teams were crowned Tuesday.

Parker's Hour of Power was named 1983 Intramural Football champion. They edged past the Punk Rockers 20-14 to capture the win.

Craig Raughton scored the

winning touchdown off a deflected pass while Jim Cottingham ran in for two extra points. Steve Ortiz scored the first touchdown for the team.

Other team members included Kip Nehmir, Mark Bailey, Tim Blanchard, Dean Mackey, Bryan Carter, Danny Hunter, Mitch Gill and Billy Kelley.

To reach the finals of the tournament, Parker's Hour of Power defeated East Second's Alki's, three first downs to two. They advanced to the playoffs with a 4-0 record while the Alki's were 2-2.

The Punk Rockers (2-0) won over the Ruff Cutt (3-1), two penetrations to one to qualify.

In intramural volleyball, the Sixers, Powder River and Faculty I advanced to the finals with 4-1 records. The Fixx had to face the Silver Bullets with an alike 3-2 record. The Fixx made the playoffs by taking a two game victory.

In the semi-finals, Powder River and Sixers each came out victorious. Powder River defeated the Fixx 2-1 while Sixers earned a 2-0 victory over Faculty I.

Winning two straight games, the Sixers ran past Powder River 15-8, 15-2 for the title.

**NOW!**

**\$2.00**  
plus tax

1 Whataburger  
1 Order large fries  
1 Medium soft drink

4612 College Ave.  
573-4954

Expires: Jan. 15, 1984

**College Bookstore...  
Christmas Sale**

**SOME items 50 percent off  
ALL items 20 percent off**  
(except. candies & textbooks)

**SOME items buy 1 get 1 FREE**

**FREE GIFTWRAP**  
We have Christmas Cards, too

**\* TO GIVE AWAY \***  
AM-FM Westclock Clock Radio  
Windsor Cassette Tape Recorder

Drawing 10 a.m. Wednesday  
Register in Bookstore  
**\$5 PURCHASE REQUIRED**