

HASKELL, HASKELL COUNTY, TEXAS, THURSDAY AUG. 24, 1950

Many Improvements Made In Haskell School Plant For Beginning New Term

Public schools will open next year with a number of improvements on and around the property, according to Supt. S. H. Vaughter, superintendent of schools.



S. H. VAUGHTER
Superintendent



JAMES L. REED
Grade School Principal

Season Tickets for Indians Home Games On Sale Monday

Season tickets for all Haskell Indian home football games will go on sale at 9 o'clock Monday morning, August 28, at the Haskell National Bank. Sale of tickets continues until all seats are sold. Superintendent S. H. Vaughter announced today.

Price for season tickets are \$6 for the six games that will be played on the home gridiron. They will be sold in "first come, first serve" fashion. Supt. Vaughter said. All tickets must be secured in person he added.

Members of First Baptist Consider New Building

Members of the First Baptist Church are considering an enlarged new building for the church, which is believed would fill a long-felt need and provide much-needed additional seating capacity as well as additional classrooms for the Sunday School department.

Reprints of the architect's sketch of the proposed new building have been distributed to members and friends of the church, with the result that the project has received much favorable comment and support.

Office of Drivers License Examiner Closing Sept. 2-9

Office of the Drivers License Examiner in the courthouse will be closed the first two Saturdays in September, the 2nd and 9th, until a new schedule is worked out by the State Department of Public Safety, it was announced today.

Haskell Nat'l Bank To Observe Legal Holiday Saturday

The Haskell National Bank will observe a legal holiday Saturday, August 26, date for the second primary. Bank patrons and businessmen are reminded to keep the closing date in mind in arranging their banking transactions for the week end.

Rev. C. Jones To Conduct Revival Meeting Here

A revival meeting will be held at the Fundamental Baptist Church in this city, beginning Wednesday evening, August 30, with the Rev. C. Jones of Haskell doing the preaching. Services will be held nightly, beginning at 8 o'clock. A program of gospel singing will be a feature at each service.

The church is conveniently located on South 2nd and Ave D with comfortable seating arrangements for a large audience. A cordial invitation is extended to everyone to attend the revival.

Joe Daws Given Promotion; Goes To Houston

Promotion to the rank of Sergeant and transfer to Houston of Joe Daws, drivers license examiner for the State Department of Public Safety in the Haskell office, has been announced by the department, effective Sept. 1.

Election Returns To Be Announced Here Saturday

Returns from second primary voting next Saturday will be posted on the bulletin board on the court house lawn, as was done in the first primary.

High School Students To Register Friday For New Term

Haskell High School students will register for the 1950-51 term Friday, Sept. 1, and begin regular classes Monday morning, September 4, S. H. Vaughter, superintendent, announced today.

Indians Head Into Stiff Workouts This Week

The Haskell Indians have begun their stiffest workouts this week after a week of more or less preparation and conditioning, according to Coach Jack Roten.

High School Students To Register Friday For New Term

Haskell High School students will register for the 1950-51 term Friday, Sept. 1, and begin regular classes Monday morning, September 4, S. H. Vaughter, superintendent, announced today.

Three HHS Band Students Will Attend Twirling School

Three HHS band students will attend a five day twirling school at Sam Houston State Teachers College in Huntsville beginning Monday, August 28, according to an announcement made this week.

Sheriff and Mrs. Bob Cousins Parents of Son

Sheriff and Mrs. Bob Cousins are the parents of a baby boy, born Sunday evening in the Haskell hospital. He has been named Robert Ching. Grandparents are Mrs. Bruce King and Mr. and Mrs. Al Cousins of this city.

Voting In Second Primary Saturday Due To Fall Far Below July 22 Balloting

Voting in the second Democratic primary, to be held Saturday in the county's 20 voting precincts, is expected to fall far below the 3,370 total recorded in the first primary unless last-minute interest develops in the five State races remaining to be decided in August balloting.

Jarrin' John Kimbrough Named To Hall of Fame

Jarrin' John Kimbrough of Haskell, Texas A&M All-American fullback in 1939-40, Tuesday was named to the Helms Hall College football Hall of Fame. He was one of five so honored by the Helms Hall Board this year.

Methodist Revival Will Begin Here Sunday

The First Methodist Church of Haskell will hold an eight day revival from August 27 to Sept. 3. The Rev. P. E. Yarbrough of Rotan will be the visiting preacher.

Final Rites For Marion Long Held Here Friday

Funeral rites for Francis Marion Long, 55 long-time resident of Haskell county who died Aug. 17 at 4:40 p.m. at the family home seven miles southeast of Haskell, were held at the First Baptist Church Friday at 3 p.m. The Rev. Sullivan Wallace of San Angelo and Rev. Charley Sargent of Weinert conducted the service.



JACK ROTEN
Head Coach

Indians Head Into Stiff Workouts This Week

The Haskell Indians have begun their stiffest workouts this week after a week of more or less preparation and conditioning, according to Coach Jack Roten.

Bill J. Dean, Jr., New HHS Band Director

Bill J. Dean, Jr., 1948 graduate of Baylor University, has assumed his duties as band director of the Haskell High School Band, succeeding James Hobbs who took over the same job at Sweetwater.

Methodist Revival Will Begin Here Sunday

The First Methodist Church of Haskell will hold an eight day revival from August 27 to Sept. 3. The Rev. P. E. Yarbrough of Rotan will be the visiting preacher.

Final Rites For Marion Long Held Here Friday

Funeral rites for Francis Marion Long, 55 long-time resident of Haskell county who died Aug. 17 at 4:40 p.m. at the family home seven miles southeast of Haskell, were held at the First Baptist Church Friday at 3 p.m. The Rev. Sullivan Wallace of San Angelo and Rev. Charley Sargent of Weinert conducted the service.

First Bale of 1950 Cotton Ginned Here Wednesday

City Grants Increase In Phone Rates Scaled Down From Company's Schedule



BILL J. DEAN, JR.
Band Director

Bill J. Dean, Jr., New HHS Band Director

Bill J. Dean, Jr., 1948 graduate of Baylor University, has assumed his duties as band director of the Haskell High School Band, succeeding James Hobbs who took over the same job at Sweetwater.

Methodist Revival Will Begin Here Sunday

The First Methodist Church of Haskell will hold an eight day revival from August 27 to Sept. 3. The Rev. P. E. Yarbrough of Rotan will be the visiting preacher.

Final Rites For Marion Long Held Here Friday

Funeral rites for Francis Marion Long, 55 long-time resident of Haskell county who died Aug. 17 at 4:40 p.m. at the family home seven miles southeast of Haskell, were held at the First Baptist Church Friday at 3 p.m. The Rev. Sullivan Wallace of San Angelo and Rev. Charley Sargent of Weinert conducted the service.

The City Council, in regular meeting Tuesday night, granted an increase in local telephone rates to the Southwestern Associated Telephone Company, but the hike was scaled down from the original rate schedule sought by the phone company.

Also, the Council stipulated that the increase granted was conditioned on an improvement of telephone service to patrons of the local exchange. Since application for permission to increase the rates was filed with the Council several weeks ago, members of the Council have maintained that service should be improved before higher charges were put in force.

Under the new rate schedule set up by the Council, comparable with charges for telephone service in 13 other Texas cities in the Haskell population bracket, the following rates would prevail:

Single business telephone, \$6.00 per month against present rate of \$4.25.
Two-party business telephone, \$4.00 against present rate of \$2.25.
Single residence telephone, \$2.75 per month against present rate of \$1.75.
Two-party residence telephone, \$2.25 per month against present rate of \$1.75.

In the application for higher rates, the company had asked for a schedule which would have made a charge of \$6.50 per month for single business telephone, and \$5 for two-party business phone; \$3.25 for single residence phone; and \$2.75 for two-party residence phone.

F. A. Robinette, district manager of Southwestern Associated, who met with the Council, said that he did not believe his company would accept the rate as scaled down by the Council from the original request.

Methodist Revival Will Begin Here Sunday

The First Methodist Church of Haskell will hold an eight day revival from August 27 to Sept. 3. The Rev. P. E. Yarbrough of Rotan will be the visiting preacher.

Final Rites For Marion Long Held Here Friday

Funeral rites for Francis Marion Long, 55 long-time resident of Haskell county who died Aug. 17 at 4:40 p.m. at the family home seven miles southeast of Haskell, were held at the First Baptist Church Friday at 3 p.m. The Rev. Sullivan Wallace of San Angelo and Rev. Charley Sargent of Weinert conducted the service.

First bale of cotton ginned in Haskell from the 1950 crop was brought in Wednesday by J. E. Lovvorn, farmer living in the Plainview community southwest of town. The bale was processed by Duncan Gin Company and weighed 690 pounds, a turn-out from approximately 3,300 pounds of cotton bolls.

The bale was purchased by the Central West Texas Warehouse Company of this city at a premium price of 40 cents a pound. Grade and class was not announced, but the staple was uniformly good, buyer for the company said.

The bale was ginned free by Duncan's Gin, and the Agriculture Committee of the Chamber of Commerce gave \$50 premium, which added to the bonus price paid for the bale, netted Mr. Lovvorn slightly more than \$100 as a "first bale" premium.

Mr. Lovvorn, owner of a large farm in the Plainview community, estimated that he went over approximately 20 acres of partially open bolls in gathering the bale. The tract of early cotton was planted around April 10 and is opening rapidly, he said. In all, he has 76 acres planted to cotton.

Sixty Registrants To Report Aug. 29 For Examination

Local Board No. 77, which embraces the counties of Haskell, Jones and Shackelford, has instructed 68 registrants to report for physical examination at the Abilene Army Induction Station on Tuesday, August 29. This will complete the August quota of men to be examined in the three-county draft board district. Two previous calls this month on August 10 and August 17, sent 60 men to the Dallas station for examination.

Approximately one-third of the men called have been from Haskell County, a member of the Board estimated.

Final Rites For Marion Long Held Here Friday

Funeral rites for Francis Marion Long, 55 long-time resident of Haskell county who died Aug. 17 at 4:40 p.m. at the family home seven miles southeast of Haskell, were held at the First Baptist Church Friday at 3 p.m. The Rev. Sullivan Wallace of San Angelo and Rev. Charley Sargent of Weinert conducted the service.

Interment was in the Weinert cemetery under the direction of Holden Funeral Home. Pallbearers were Glenn Merchant, Virgil Shaw, Fred Howard, Truett C. Cobb, Richard Darden, Altrud Turnbull.

The Haskell Free Press

Established January 1, 1886
Published every Thursday

Jetty V. Clare, Owner and Publisher
Alonzo Pate, Editor

Entered as second-class matter at the postoffice at Haskell, Texas, under the act of March 3, 1879.

NOTICE TO THE PUBLIC — Any erroneous reflection upon the character, reputation or standing of any firm, individual or corporation will be gladly corrected upon being called to the attention of the publishers.

HASKELL COUNTY HISTORY

Brief Items Taken from Old Copies of The Free Press

30 Years Ago—Aug. 21, 1903
Misses Louise Brooks and Madeline Hunt and George Neely have returned from Dallas where they attended Sanger Bros. annual Style Show and purchased fall and winter merchandise for Hunt's Store.

County Clerk Jason W. Smith reports 53 absentee ballots had been received in his office to Tuesday night, for the second primary which will be held Saturday.

A new dry goods store is to be opened in Haskell by John H. Robertson, who is moving the stocks from his Clyde and Baird stores here to be located on the east side of the square. He expects to open for business around Sept. 1.

The first bale of 1930 cotton was brought in Monday by Shelby Harris from his farm southwest of town. The bale was ginned by Sanders & Crawford, and weighed 490 pounds. The cotton, of reasonably good staple, was sold to John E. Robertson of this city for 11 1-2 cents a pound. Haskell merchants also gave a \$58.50 premium on the bale.

Mr. and Mrs. Dennis Ratliff have returned from a short visit with relatives in Ballinger and other points.
Mrs. Tom French of Dallas and Miss Maye Belle Taylor, who have been visiting their sister and family, Mrs. Richard Sherrill of Pittsburgh, Penn., have returned to Haskell. Mrs. French will remain for a visit with her parents before returning to her home in Dallas.

Mr. and Mrs. Hardy Grissom of Abilene spent the week here with relatives and friends.

Mr. and Mrs. M. O. Shook and daughter Frances of Gordon, are visiting his parents, Mr. and Mrs. M. S. Shook and other relatives here this week.

J. M. Diggs, former businessman of Haskell who now lives at Altus, Okla., was here the first of the week. He says crops here are better than in most of the sections of West Texas he had visited lately.

T. J. Arbuckle made a business trip to Wichita Falls Saturday.

40 Years Ago—Aug. 20, 1910
The Commissioners Court has employed Gaylord Kline as special Tax Collector in charge of collection of delinquent taxes for the county and State.

The new iron fencing for the cemetery has arrived and is now being placed around the property. Mr. and Mrs. R. E. Sherrill entertained quite a crowd of the young people Tuesday night at their home.

Born to Mr. and Mrs. Leon Gilliam on the 13th inst., a fine boy.

H. B. Lancaster and C. McDonald have opened up the old Wigwam stand.

Carl Gilbert left this week for El Paso where he has accepted a position with a street railway company.

The Haskell Bottling Works sold to Moser & Miller at Rule Monday, 166 cases of soda water. They

are putting out their products over a wide section of West Texas.

Mr. and Mrs. Ira N. Ellis entertained a party of young people at their home in the west part of town Monday night.

Mrs. M. A. Clifton and children have returned from a visit to Eastland county.

Mrs. J. D. Bryan and son, W. E., of Mumfords, Tenn., are visiting Mrs. J. W. Meadows and family this week.

The second primary last Saturday brought out a good vote. The offices contested were County Clerk, Tax Collector, and a few precinct offices. The full returns are not yet in but it is known that Meadors defeated Robertson for Clerk by a majority of some 80 votes. Walling defeated his opponent, J. H. Meadors, for tax collector. In this precinct Lambert defeated DeBard for Constable by six votes, and Post defeated Hill for Justice of the Peace by a good majority, and Russell defeated Northcutt for Public Weigher.

Mr. and Mrs. Alvy Couch of Weinert were in Haskell several days this week.

50 Years Ago—Aug. 18, 1900
The Haskell public schools will open Monday, Sept. 3. Principal L. T. Litsey says that pupils wishing to retain their places in their grades should be prompt in entering.

Several parties from Montague and Wise counties were here this week prospecting, and we learn that lands have been purchased and some eight or ten families will move out this fall to locate in Haskell county.

W. L. Hills has accepted a position as assistant cashier in the new national bank at Stamford. He plans to move to Stamford about the first of next month.

C. D. Grissom, recently of Alford, is building in the northwest part of town what will be one of the best residences in Haskell. It will be two stories and contain ten rooms.

E. H. Green was here from Buffalo Gap this week looking after his farm and ranch interests. He told friends he planned to move back to Haskell soon.

Miss Lanna Morris of Hillsboro arrived yesterday on a visit to her relatives, the Couches. Miss Florence Couch returned with her, after a visit in Hillsboro.

Sanitation of Major Importance To Turkey Flocks

Sanitation is an all important factor in the control of diseases and parasites in turkey flocks. According to Dr. W. C. Banks, extension veterinarian of Texas A. & M. College, nine times out of ten, parasites and diseases, if neglected, will wipe out the profits of the turkey owner.

He says that about the best definition of sanitation that he has heard was given by a prominent poultry breeder who said: "Sanitation consists of equal parts of five solution and elbow grease applied vigorously with a brush at frequent intervals."

However, Dr. Banks says that, J. F. Pinkerton left Thursday on a business trip to Hamilton.

Judge H. G. McConnell and family went down to the river Wednesday to spend a few days in camp fishing and hunting.

Rev. D. James has been conducting a very interesting meeting at Mesquite school house. Twelve or fifteen have joined the church during the meeting.

D. W. (Bullie) Fields has announced his candidacy for county treasurer and J. T. Bowman has come out for Commissioner of Precinct 1.

W. C. Jones and daughter, Miss Ethel, left Monday to visit their son and brother in Stephens county.

even with the use of plenty of lye solution and elbow grease, there are other factors that enter into a sanitation program, such as type of soil, its drainage, freedom from surface water; suitable housing with proper floors and good ventilation; sunshine; and manure disposal.

He cautions that crowding the birds in too small a house or on too small a piece of ground is one mistake in sanitation, while allowing the flock to run all over the farm at random is another.

Dr. Banks recommends that not more than 200 to 300 birds be kept on each acre of ground, depending on the age, breed, and size of the turkeys. In addition, he says that it is always good to have some extra and available to which the birds can be moved if trouble appears in the flock.

He warns against moving the sick birds when disease appears, saying that the healthy appearing birds are the ones that should be moved to clean ground, and the sick ones left where they are.

Dry litter is a simple precaution against losses from coccidiosis, a parasitic disease caused by an organism which requires warmth and moisture to survive.

Poulters are born free from intestinal parasites, and Dr. Banks says that loss from these organisms can best be prevented by keeping the poulters in frequently-cleaned brooder houses, not letting them have any contact with old chickens or turkeys, and keeping them on clean ground.

In summarizing a sanitation program, he points out that the poulters should be started clean,

CARD OF THANKS

We wish to express our deepest appreciation and gratification for the lovely remembrances and heartfelt sympathies extended to us during our beloved's recent illness and bereavement. We are most grateful to all our friends and to those that ministered unto us. May we renew our thanks and appreciation to all.—Mrs. G. G. Herren, Nathan Tinkle, Mr. and Mrs. D. H. Brown and children.

kept clean, and fed from clean equipment and emphasizes that sanitation is a must on the turkey farm.

Farmers — Farm Machinery Is In Demand — Sell it Through Want Ads.



WELCOME... Students and Teachers

At this, the beginning of another school term, we want to invite you to visit when in Haskell for...

GUARANTEED WATCH REPAIRING
FREE WATCH INSPECTION

BASSING JEWELRY

In Block Just North of Post Office



MY ADVICE —
Take Your **JOHN DEERE** EQUIPMENT to the Man who knows it Best.

It doesn't take a crystal gazer to know so have John Deere Equipment repaired by your John Deere Dealer... by our shop.
Why? For three important reasons: (1) mechanics are trained to service John Deere Equipment the way the factory recommends (2 and 3) We've equipped our shop with precision tools... stocked it with only John Deere Parts.
No other shop in this community can give this efficient, economical service. See us details the next time you're in town.

BUY ONLY GENUINE JOHN DEERE PARTS - THEY FIT AND WEAR LIKE THE ORIGINAL

Gilmore Implement Co.

East North First St. Phone 14

FEDERAL LAND BANK LOANS

Time 34 1/2 years. Net interest costs 3.75% or less. Loans may be paid in part or in full on any business day in the year. We have no balloon payments.

National Farm Loan Assn. Office
W. H. McCandless, Secty.-Treas.
HASKELL, TEXAS

Every sign proves that

"Better Balance" makes MERCURY a better car for you!

1. YOU GET THE RIGHT POWER!

You can head up the high ones with plenty of power to spare in Mercury! Its big, V-type, 8-cylinder, made-only-for-Mercury engine is way ahead in thriftiness, too! Mercury is "America's No. 1 Economy Car!"



2. YOU GET THE RIGHT RIDING COMFORT!

Rough roads are smooth roads—when you travel in Mercury! Owners say "Cushion-Coil" springing... foam-rubber cushioned seats... Fiberglass sound-proofing make it the most comfortable car on the road! And they mean any road!



3. YOU GET THE RIGHT ROADABILITY!

On curves... in traffic... in tight parking spaces, this big beautiful Mercury is sure-footed as a cat. You can U-turn it "on a quarter," stop it "on a dime"! Try it yourself—and see!



Go for a ride—and you'll go for MERCURY

BILL WILSON MOTOR COMPANY

SALES AND SERVICE
HASKELL, TEXAS



well-mannered suit by
Shirley Lee
junior petites



Juniors will love this "Little Thoroughbred"... a wearable suit of houndstooth rayon suiting. Jacket dips to point in back... sports button-down tabs at neckline. Interesting skirt has soft pleats in front. Junior petite sizes 7-15.

\$10.95

DAN RIVER FABRIC

AS SEEN IN SEVENTEEN

WIN A \$100 SHIRLEY LEE WARDROBE
Come in and ask about the Shirley Lee contest. 21 winners EACH WEEK! Nothing to buy... get your entry blanks free!

Other Shirley Lee Junior Petites from \$8.95

The Fair Store

From Sagerton

Haskell Sandefur of Killeen, Texas, returned to visit his parents, Mr. and Mrs. Lambert, and his family from the week-end with and they had just returned. Sandefur came with his wife, Mrs. Lambert, and their children, Mr. and Mrs. Taffy, and their children, Mrs. J. W. Veldt, their children, Mrs. Bruce Gibson, her mother's home last week.

Albert Knipping visited Mr. and Mrs. Sunday afternoon, Manske and children, E. Manske, Patricia and Bubba Hickey, who have visited here

for the past two weeks, returned home with their parents.

Mr. and Mrs. Lois Young went to Oklahoma City Sunday and returned Monday. They helped their daughter, Yvonne, and her husband, Joe Swofford, move there where Mr. Swofford has taken a job.

Miss Dahlia Knipping spent this week in Lubbock with her roommate. She received her U. S. degree in home economics from Texas Tech Wednesday, August 23. Miss Knipping will teach in the Homemaking department at Rule high school beginning September 4. She is the daughter of Mr. and Mrs. Arthur Knipping.

Mrs. Christie Balzer of Schulenburg spent several days here visiting Mr. and Mrs. August Balzer.

Miss Joyce Lehrmann and Lloyd Cleveland were united in marriage at the Zion Lutheran Church at 8:30 Sunday evening by the Rev. H. E. Driessner.

Guests in the home of Mr. and Mrs. F. A. Stegemoeller Friday were Mr. and Mrs. Eddie Tegeler and Larry, Mrs. Ernest Tegeler and Mrs. Minnie Tegeler, all of Burton, Mr. and Mrs. A. C. Knipping and Mrs. Wm. Knipping and son, Henry.

A son, Lyndell Keith was born to Mr. and Mrs. Glynna Quade Friday morning, August 18 at the Stamford Hospital. He weighed 7 lbs. and 7 ozs. The Quades have

another son, Larry. Mrs. Quade's mother, Mrs. Lawrence of Aspermont, is staying with the Quades for a while.

Mr. and Mrs. Auda Neinst of Dallas and daughter, Zola spent the week-end here. Their daughter remained for a longer visit.

Mrs. Thomas Hemphill and daughter, Carol Ann, left Friday for Newburg, N. Y. where they joined Mr. Hemphill. They will make their home there. Mrs. Hemphill is the former Lorene Neinst, daughter of Mr. and Mrs. Oscar Neinst.

Mr. and Mrs. Edgar Diers and children from Vernon are visiting Mr. and Mrs. Fritz Diers.

Mr. and Mrs. Dick Gibson made a trip to Lockhart last week-end to visit relatives.

Ramona Guinn of Rule and Joyce Gibson of Pecos spent the week-end with their cousin, Ruby Gay Gibson.

The Sagerton school will open Monday, September 4.

Johnny Cobb, 2-year-old son of Mr. and Mrs. Leslie Cobb of Midland, is visiting his grandparents, Mr. and Mrs. John Clark while the Cobbs are on a vacation trip to Mexico.

Mrs. Cary Clark of Lockhart left Sunday for her home after spending last week visiting Mr. and Mrs. John Clark.

The ladies of the Sagerton Home Demonstration and the Bluebonnet Club sponsored a ball game last Monday night between the boys dressed as girls and the girls dressed as service men. They also served homemade ice cream, cake, pie and punch at the Sagerton ball park.

Mrs. H. Helm is still at the Stamford Hospital and Mrs. H. E. Driessner is a patient there also.

Mr. and Mrs. G. M. Sims of Haskell and Mr. and Mrs. Sam Smith of Lueders spent Sunday with Mr. and Mrs. Carl Sims.

Mr. and Mrs. J. C. Schwartz of Borger, Mr. and Mrs. Carl Opitz and Sammy of Haskell, Mr. and Mrs. Otto Lehmann and children, Mr. and Mrs. Alvin Holle, Mr. and Mrs. Clancey Lehmann, Margie and James Lehmann and Doris Monse went fishing to Fort Phantom last week-end.

Mr. and Mrs. Marion Hicks of Stamford and Mr. and Mrs. T. J. Wilson visited Mr. and Mrs. E. C. Laughlin Sunday.

Guests of G. H. Nehring Sunday were Mr. and Mrs. George Minderman and children, Edna Mae and Alton, Mr. and Mrs. Adolph Ender and Raymond, Mary Bolt, Mr. and Mrs. Bueford Letz and Martha Kaye, Mr. and Mrs. Alfred Letz and Lisbon, Mr. and Mrs. Walter Kretschner, G. L. Nehring and Dimpel and Miss Mathilda Nehring.

Mr. and Mrs. W. F. Teichelman, visited Mrs. J. B. Hester of Lawn who is in St. Ann Hospital in Abilene, Saturday.

Guests in the Ben Hess and John L. Guinn homes last week

Cream Peas Best For Freezing, Experiments Show

Varieties and selections of peas in the cream group produced the more attractive packs when experimental freezing trials were conducted with varieties and selections of Southern peas grown at College Station.

These freezing trials were conducted by Thomas S. Stephes and W. H. Brittingham of the department of horticulture, Texas A. & M. College.

The group of cream selections and varieties were of excellent appearance when they were removed from the freezer at the end of three months and allowed to thaw at room temperature prior to opening the container. One cream selection was slightly chalky in appearance.

The researchers say that the brightness along with a light color or which the cream group possessed could give them the advantage of "eye appeal" and consumer acceptance.

They found that the most attractive pack in the pigmented "eye" group was obtained by using varieties or selections with light (buff) eye color because the dark (maroon and black) eye diffuse into the body of the pea when frozen.

The peas were examined for splits and defects after thawing and after cooking, but there was no indication, except in case of one of the cream selections, that a variety or selection which had a low split and defect percentage after thawing would exhibit the same low split and defect percentage after cooking.

After being cooked, nearly half of the California No. 5 Blackeye peas were split, while one of the cream selections had a split percentage of only about 10 percent after cooking. The Jackson Purple Hull packages had the highest percentage of defective peas both after thawing and after cooking.

Stephens and Brittingham say that they consider Jackson Purple Hull the least attractive of the varieties tested for freezing preservation because of the tendency for this variety to much, as evidenced by the highest percentage of defective peas before and after cooking, and because of the deep maroon color which diffuses into the body of the pea.

RETURN FROM VISIT IN GRUVER

Mr. and Mrs. Frank McCurley have returned from a visit in Gruver, where they have been visiting in the homes of relatives and friends. They visited his sister, Mrs. Fannie Snow.

VISITOR FROM LUBBOCK

Mrs. C. M. Kaigler of Lubbock, former resident of this city, spent several days here this week visiting friends, and in Rochester with relatives. She had just returned from a visit with her daughter and family of Denton.

FINER...

Good

TEA



WHITE SWAN TEA
ICED-HOT

Revival

Preaching The Word
Each Night 8 P. M.
Fundamental Baptist Church
messenger:
C. JONES, Local Minister
message:
"Grace Are Ye Saved Through Faith"
"How All May Escape Hell"
GREAT GOSPEL SINGING BY CHOIR
AND CONGREGATION
LED BY L. B. WARD, Jr.
Beginning August 30th Through
Sept. 10, 1950
CORDIAL WELCOME TO ALL



YOU CAN'T PUT OUT WATER

like a fire, but you can insure against water damage from overflowing fixtures, bursting pipes, etc. Important protection and not expensive.

John F. Ivy
Insurance Agency
Representing The Alico Casualty and Surety Company of Hartford, Conn.

IMPERIAL...is the word for it!

"Imperial," says Webster, means "superior excellence." IMPERIAL, says Chrysler, is this luxurious new car that excels anything on wheels in the sheer exquisiteness of its styling. Come look inside this reigning beauty... look at the lavish wool broadcloth fabrics, tastefully combined with topgrain leathers. Look at the lovely color harmonies, the soft sheen of the butler-finished chrome. Consider the advantages of Fluid Drive... exclusive new automatic transmission... Waterproof Ignition... Full Flow Oil Filter... High Compression Spitfire Engine... electric window lifts... the CLEARBAC rear window for exceptional driver vision... and dozens more. Surely, of all the world's fine automobiles, only the Chrysler CROWN IMPERIAL, this car's running mate, achieves the same aristocratic distinction. Come see the flawless workmanship, the fine materials, the superb Chrysler engineering... and you'll agree that no other car, at any price, compares with the Chrysler IMPERIAL. Inside or out, there is no finer car in America!



Chrysler IMPERIAL offers you this absolutely unique system of window control! Each window has separate electric motor... each one will be raised and lowered independently from the rest of the window itself. And that's not all! So many other de luxe features... the kind you only find in the "special order, extra cost" category... are STANDARD EQUIPMENT on the Chrysler IMPERIAL. For example: armrests on all four doors... foam rubber seat cushions and seat heads... double-width center armrests in front as well as rear seats... stainless steel wheel covers... white sidewall low-pressure tires... carpeted luggage compartment... Full Flow oil filter and many other engine features! Yes, you get all these extras as standard equipment with your beautiful new Chrysler Imperial.



Inside and out... it has no equal at any price...
the beautiful
Chrysler
Imperial

Cox Motor Company
Haskell, Texas
Avenue D, South 1st Street



Boy Oh Boy!

Forced Air Central Gas Heating makes summertime out of Winter

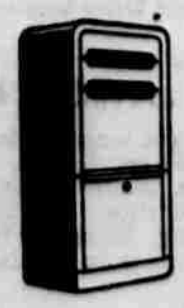
Winter preys on your children's health. Its dangers lurk in drafts... on chilly floors... in unheated rooms. Now, with the many new types of forced air central gas heating systems, any home can be as healthful in winter as in summer.

Through a system of ducts and registers, forced air central gas heating delivers fresh, warm air to every nook and cranny... and returns cold, stale air to the out-of-doors. There are no chilly floors or drafts which cause discomfort and may cause dangerous colds. No heat hangs at the ceiling or wastes itself when you are asleep or away. There's no overheating when "just a little heat" will do.

Forced air central gas heating gives your children the health protection at home that authorities insist they have at school.

You have only to talk to a heating contractor or a Lone Star Gas Company heating specialist to see how practical and how little it takes to put one of the new forced air central gas heating systems in your home. See him—won't you?

Why not, today?



Central gas heating can be installed in a closet, or in the attic, under the floor and in a wall. Here certainly is the heating system for modern living.

See your Gas Heating Contractor or Lone Star Gas Company, today

Court House News

The following instruments were filed in the County Clerk's office during the period from August 12 to August 19.

Warranty Deeds

W. E. Adkns, et ux to H. H. Fischer, 85 acres out of Subdivision 17 and 20 of the James Scott League and Labor Survey 118, Abstract 368.
J. C. Davis, et ux, to W. W. (Sully) Kitley, 14 1-3 acres of Survey 5 of the J. Pointevent Survey.
W. R. Terry to W. H. Pitman, The West 70 feet of Lot 11 in Block "C" of the Foster Addition to the town of Haskell.

Quit Claim Deeds

H. M. Rike to E. M. and John

Kimrough, 330 acres of Subdivision 6 of the Subdivisions of the Corvell County School Land League Survey 72, Abstract 99.
Crate Dalton to S. M. Davis, All of lots 5, 6, 7 and 8 in Block 30 in the original town of Rule.

Paving Contracts

53 paving contracts were filed to Starin and Brown, Incorp., all fronting the East and West side of Avenue "G" in the town of Haskell and read as follows:
E. R. Lowe, et ux, 75 feet on the East side, E. M. Frierson, et ux, 75 feet on the East side, Ira L. Sturdivant, et ux, 132.78 feet on the East side, Harold R. Spain, et ux, 60 feet on the East side, James E. Miller, et ux, 72 feet on the East side, H. G. Haammer, et ux, 66.39 feet on the West side, R. P. Haattox, et ux, 66.39

feet on the West side, Virgil Thomas, et ux, 66.39 feet on the West side, L. H. Cooper, et ux, 116 feet on the East side, John A. Miller, et ux, 50 feet on the East side, Willis A. Lowe, et ux, 49.56 feet on the East side, Ira Hester, et ux, 132.78 feet on the West side, Herbert Ray, et ux, 70 feet on the East side, James C. Alvis, et ux, 62.78 feet on the East side, Hugh C. Watson, et ux, 60 feet on the West side, Thomas W. Watson, et ux, 72.78 feet on the West side, John H. Banks, et ux, 80 feet on the East side, Myrtle Whiteker, Guardian of B. M. Whiteker, 150 feet on the East side, G. H. Taylor, 50 feet on the West side, Roy E. Cook, et ux, 50 feet on the East side, John B. Martin, et ux, 70 feet on the West side, W. F. Gresham, et ux, 80 feet on the West side.

W. H. Starr, Jr., et ux, 90 feet on the West side, John F. Ivy, et ux, 60 feet on the West side, Arthur C. Foster, et ux, 75 feet on the East side, Thurmond Bynum, et ux, 75 feet on the East side, Robert C. Cobb, et ux, 93 feet on the East side, O. W. Tooley, et ux, 109 feet on the East side, Fred Gilliam, et ux, 54.5 feet on the West side, James M. Williams, et ux, 77.5 feet on the West side, George W. Fouts, et ux, 70 feet on the West side.

Ethel Alexander Irby, widow, 70 feet on the East side, Floyd Lusk, et ux, 70 feet on the East side, V. D. Rogers, et ux, 160 feet on the West side, J. V. Josslet, et ux, 50 feet on the West side, Ed F. Fouts, et ux, 80 feet on the West side, W. P. Ratliff, et ux, 90 feet on the West side, J. T. Everett, et ux, 65 feet on the West side, M. L. Blohm, et ux, 52.5 feet on the East side, Leon Pearsey, et ux, 140 feet on the East side, Olen Dotson, et ux, 142.2 feet on the West side, P. C. Kendrick, et ux, 142.2 feet on the East side, John B. McMillin, et ux, 140 feet on the East side, Mary Ollie Welsh, widow, 140 feet on the East side, C. E. Phelps, et ux, 140 feet on the West side.

L. F. Taylor, et ux, 140 feet on the West side, Peggy T. Vaughter, et vir, 140 feet on the East side, S. E. Campbell, 70 feet on the West side, M. J. Laine, et ux, 70 feet on the West side, R. J. Reynolds, 70 feet on the West side, J. T. Ellis, et ux, 140 feet on the East side, John A. Couch, et ux, 70 feet on the West side.

Lucille Marlow, Individually and as Administrator of the Estate of John Dorsey Marlow, deceased, 70 feet on the East side.

Oil, Gas and Mineral Lease.

Oran Chamberlin, et ux to C. S. Brown, 200 acres being a part of Section 6 in Block 46 of the H&TC RR Co. Lands.

C. S. Brown to Skelly Oil Co., 200 acres being a part of Section 6 in Block 46 of the H&TC RR Co. Lands.

Exploration Drilling, Inc. to Floyd D. Herndon, 1060.5 acres being the South part of the Antonio Rodriguez Survey.

L. W. Hobert, et ux to C. S. Brown, 430 acres being a part of Section 6 in Block 46 of the H&TC RR Co. Survey.

C. S. Brown to Skelly Oil Co., 430 acres being a part of Section 6 in Block 46 of the H&TC RR Co. Survey.

O. G. Neinast, et ux, to J. C. Downs, 140 acres out of the North end of the Julia A. Beard Survey, Abstract 646, and 40 acres out of the South end of the C. A. Hardin Survey 656.

L. W. Jones, et ux, to Robert A. Shaw, 282 acres out of the Jesse White Survey, Abstract 427, and 113 acres out of the R. T. Carine Survey 4, Abstract 542.

R. H. Allen to Robert A. Shaw, 229.65 acres in 2 tracts out of the Arthur Slaydon Surveys 57 and 58.

Robert A. Shaw to Magnolia Petroleum Co., 229.65 acres in 2 tracts out of the Arthur Slaydon Surveys 57 and 58.

R. R. Clark, et ux to Drilling and Exploration Co., Inc., 188 acres of the George W. Lang Survey, Abstract 306.

W. A. Ivey to Robert A. Shaw, 167.43 acres in Block 9 of the Arthur Slaydon Survey 58, Abstract 364.

Robert A. Shaw to Skelly Oil Co., 167.43 acres in Block 9 of the Arthur Slaydon Survey 58, Abstract 364.

A. H. Hutchens to Robert A. Shaw, 167.43 acres in Block 2 of the Arthur Slaydon Survey 58, Abstract 364.

O. R. Kitley, et ux to Paul Hicks, 60 acres on the West side of the Northwest 1-4 Section 73 in Block 1 of the H&TC RR Co. lands, Abstract 222.

W. T. Hines et ux to Paul Hicks, 10 acres being a part of the Northwest 1-4 of Section 84 in Block 1 of the H&TC RR Co. lands.

W. T. Hines et ux to Paul Hicks, 50 acres out of the South side of a 160 acre tract known as the Northwest 1-4 Section 84 in Block 1 of the H&TC RR Co. lands and 160 acres being all of the Southwest 1-4 Section 84 in Block 1 of the H&TC RR Co. Survey.

Paul Hicks to Southern Petroleum Exploration, Inc., 60 acres out of the West side of the Northwest 1-4 of Section 73 in Block 1 of the H&TC RR Co. lands, Abstract 222.

Paul Hicks to Southern Petroleum Exploration, Inc., 80 acres being a part of the Southwest 1-4 of Section 84 in Block 1 of the H&TC RR Co. Survey.

Eva H. Davenport, et al to Crown Central Petroleum Corp., 160 acres being the Northwest 1-4 of Section 10 in Block 3 of the H&TC RR Co. lands, Abstract 960 and 1918.

Jesse Brown, et al to James H. Rice, 160 acres being the Southeast 1-4 Section 18 in Block 1 of the BBB&R RR Co. Survey.

Elmer Penick, et ux to Paul M. Hicks, 130 acres out of the East 1-2 of a 262.5 acre tract in Block "T" of the W. P. Rice Survey 5, Abstract 665.

J. C. Davis, et ux to Magnolia Petroleum Co., 284 acres of the George W. Lang Survey, Abstract 306.

Belle Sager et al to Magnolia Petroleum Co., 284 acres of the George W. Lang Survey, Abstract 306.

Otto Schaake, et ux to Magnolia Petroleum Co., 89.54 acres being a part of the Ed Williams Survey 669 and a part of the Cynthia A. Hardin Survey, Abstract 656.

Dora Dippel, et al to Magnolia Petroleum Co., 1 1-2 acres of the J. Pointevent Survey, 19 acres in the Ed Williams Survey and 76 1-4 acres in the Cynthia A. Hardin Survey.

Marvin D. Fulbright to Magnolia Petroleum Co., 120 acres being a part of the George Lang Survey, Abstract 306.

Other instruments filed in County Clerk's office were: Mineral Deed; H. C. Crmer, et ux to Freeda Kauri, Part of Section 14 in Block 1 of the H&TC RR Co. Survey, Abstract 565.

Subordination of Lien: The Federal Land Bank of Houston to J. C. Downs, 180 acres being a part of the Julia A. Beard Survey, Abstract 646, and a part of the C. A. Hardin Survey, Abstract 656.

Two releases and 26 Chattel Mortgages were filed.

Marriage Licenses Issued

Guy Carvin Denson and Geraldine Simpson.

William Phil Schultz and Catherine Sherrill Davis.

Billy Joe McGuire and Andrey La Nelle Glover.

The following automobiles were registered in the County Tax Assessor-Collector's office during period from August 12 to August 19.

Passenger Cars

Eugene Perry, Haskell, a 1950 Ford tudor.

Kenneth Anders, Haskell, a 1936 Pontiac coach.

Ernest Peiser, Haskell, a 1950 Dodge 4 door sedan.

James M. Williams, Haskell, a 1950 Dodge club coupe.

Lone Star Buick Co., Abilene, a 1950 Plymouth de luxe tudor.

H. W. Johnston, Bomarton, a 1950 Dodge.

Gaunt Funeral Home, Rule, a 1950 Pontiac sedan.

R. Q. Wilson, Sagerton, a 1950 Ford 4 door sedan.

Rev. George Shelton, Haskell, a 1936 Plymouth sedan.

E. K. Schwartz, Stamford, a 1950 Buick Riviera.

L. P. Orsburn, Haskell, a 1950 Chevrolet 4 door sedan.

Bill Fouts, Haskell, a 1950 Chevrolet 4 door sedan.

R. D. Mercant, Haskell, a 1950 Mercury 4 door sedan.

Dale Condon, Throckmorton, a 1950 Ford 4 door sedan.

T. W. Free, Haskell, a 1950 Mercury sport sedan.

J. C. Wheatley, Haskell, a 1950 Plymouth 4 door sedan.

Billy Oman, Wenert, a 1950 Chevrolet tudor sedan.

J. V. Hudson, Haskell, a 1950 Plymouth 4 door sedan.

Gordon Wilson, Lueders, a 1935 Chevrolet Coach.

Theodore De Anda, Rule, a 1937 Dodge sedan.

R. C. Couch, Jr., Haskell, a 1950 Mercury 6 passenger coupe.

J. E. Kitley, Rule, a 1950 Buick 4 door sedan.

Trucks

D&R Construction Co., Lubbock, a 1946 Ford.

R. W. Turnbow, Haskell, a 1950 Dodge.

W. R. Gibson, Sagerton, a 1938 International.

Demaro Arrendondo, Haskell, a 1942 truck.

C. S. Owen, Rochester, a 1931 Ford.

Ray Drilling Co., Haskell, a 1950 Ford.

J. C. Powell, Jr., Haskell, a 1950 Chevrolet.

West Texas Sheet Metal, Haskell, a 1950 Ford.

Fire Always Strikes Home



It strikes everywhere, bringing ruin and loss. See us for insurance that protects.

INSURANCE IS THE BEST POLICY

W. I. (Scotch) COGGINS

390 Office PHONE: 551-J Home South Side Square

Looking for a "good break"?



You get the best brakes on DODGE "Job-Rated" TRUCKS



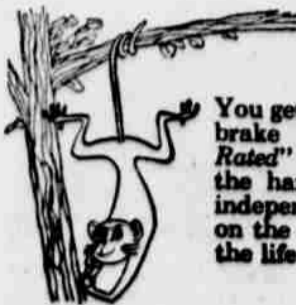
Best for stopping ...

Smooth, sure stops are yours with a Dodge "Job-Rated" truck ... thanks to extra-large braking area. The driver has full control of brake action, because of "equal-pressure" design of service brakes. These famous hydraulic brakes are easy to adjust, too.



Best for parking ...

You get the added safety of two separate brake systems in your Dodge "Job-Rated" truck. On every Dodge model, the hand parking brake is completely independent of service brakes. Operating on the propeller shaft, it helps lengthen the life of the service brakes.



Job-Rated for low cost transportation

NOW! gyro FLUID DRIVE!

Available on all 1/2-, 3/4- and 1-ton models. Reduces wear, lowers upkeep costs. Ask us for Fluid Drive booklet.

... and the best brake lining, too!

You get longer lining life and better braking with Cyclebond linings. It's fused to the shoe! No rivets means lining can be used practically down to the shoe ... with virtually no danger of drum scoring. Ends are full-thickness—not tapered—to provide more braking surface.



POWER: ... 8 great truck engines—each "Job-Rated" for PLUS power.
ECONOMY: ... priced with the lowest "Job-Rated" for dependability and long life.
BIGGER PAYLOADS: ... carry more without overloading axles or springs because of "Job-Rated" WEIGHT DISTRIBUTION.
EASIER HANDLING: ... sharp-

er turning! Parks in tight places. "Job-Rated" maneuverability!
COMFORT: ... widest seats ... windshield with best vision of any popular truck. Air-cushioned, adjustable "chair-height" seats.
SAFETY: ... finest truck brakes in the industry ... hand brake operating independently on propeller shaft on all models—1/2-ton and up.

With all their extra value **DODGE "Job-Rated" TRUCKS** are priced with the lowest **PITMAN MOTOR Co.** Avenue E and North 2nd. Haskell Texas

To protect your family and stretch your "food-dollars" your Refrigerator needs the SURPLUS POWER OF ELECTRIC REFRIGERATION for HOT SUMMER DAYS



Of course it's ELECTRIC

There's a FRIGIDAIRE for you
Yes, you can have the finest—a genuine Frigidaire Refrigerator for your home. There's a model and a size to fit your needs and your budget. Visit our showroom—you'll be delighted with the moderate prices and the many styles available. Be sure before you buy! Ask for proof! Compare feature for feature, dollar for dollar—and you'll see why you can't match a Frigidaire. Every inch of a Frigidaire is built to unbeatable quality standards—built with the surplus power needed to protect your family and help stretch your kitchen dollar during these hot, hot summer days. Don't accept substitutes—Frigidaire offers time and money-saving advantages found in no other refrigerator.

West Texas Utilities Company



ANNOUNCEMENTS

CURRY CHAPEL BAPTIST CHURCH
Pastor, Rev. John W. Seay
Sunday School 10 a. m.
Morning Service 11:00 a. m.
Evening Service 7:00 p. m.

FIRST BAPTIST CHURCH
Corner 3rd and Ave. E
Dr. Allen O. Webb, Pastor
Regular Services:
9:45—Sunday School.
11:00—Preaching Service.

CHURCH OF CHRIST
Joe Burton, Minister
Our Regular Schedule:
Sunday: Bible classes for all ages
9:45-10:40
Regular Worship Service 10:45-12:00

Leader With Great War Tells How Hadacol Has Him Physically

Down, weak, after service in South Pacific
Efficiencies of Vitamins B1, B2, Iron and Niacin



Donald W. Hedburg, who returned from the South Pacific District of the great Wichita paper for over four

Hadacol is recommended by many doctors not only to their patients but to members of their own families who have such deficiencies. Before giving up hope you owe it to yourself to at least give HADACOL a chance to help you.

EAST SIDE BAPTIST CHURCH
Rev. W. T. Friddy, Pastor
8:30 A. M. Radio Sermon by the pastor, Rev. W. T. Friddy, over station KDWT, Stamford.

MATTSON BAPTIST CHURCH
Rev. Bill Austin
10:00 A. M. Sunday School.
11:00 A. M. Preaching Service.
7:45 P. M. Evening Service.

PLAINVIEW BAPTIST CHURCH
H. G. Hammer, Pastor
Sunday School 10 a. m.
Morning Message, 11 a. m.
Regular preaching days, second and fourth Sundays.

PINKERTON BAPTIST CHURCH
Jack D. Westler, Pastor
Sunday School—10:00 A. M.
Morning Sermon—11:00 A. M.
Training Union—7:30 P. M.

FRIENDSHIP BAPTIST CHURCH
Corner South 7th and Ave F
Rev. Joe Scheels, Pastor
Sunday School—9:45 a. m.
Preaching Service—11 a. m.

WEINERT METHODIST CHURCH
L. W. Tucker, Pastor
Church School—10:00 a. m.
Morning Worship—11:00 a. m.

BIBLE BAPTIST CHURCH
Corner N. 3 and Ave. C
Rev. R. B. Turner, Pastor
Regular services each Sunday:
9:45 a. m.—Sunday School.
11:00 a. m.—Preaching Service.

THE CHURCH OF GOD
909 South 1st Street, East
Geo. Ivy, Pastor
Sunday School at 9:45 A. M.
Message at 11:00 A. M.

ASSEMBLY OF GOD CHURCH
400 South Avenue E.
C. U. McMullen, Pastor
Morning Worship 10:00 a. m.
Message by the pastor.

5TH ST. BAPTIST CHURCH
(Corner 8th St. & Ave. J)
R. L. E. Jones, Pastor
9:45 A. M. Sunday School.
11:00 A. M. Preaching Service.

WEINERT FOUR SQUARE CHURCH
Weinert, Texas
Wm. O. Pritchett, Pastor
Sunday School—10:00 a. m.
Morning Worship—11:00 a. m.

FIRST PRESBYTERIAN CHURCH
R. K. McCall, D.D., Minister
N. Ave E at Fourth St.
Haskell, Texas
Sunday School 9:45 a. m.
Morning Worship 11:00 a. m.

SCHOOL-TIME VALUES



Friday & Saturday Specials

Balancing the family budget's easy as adding two and two, when you do your marketing here. Check the values on this page. You'll discover that in the long run, our prices mean money in the bank for you!



LOTS OF EASY Parking Space
Popular Brands CIGARETTES
Pkg. 20c Reg. Price
Wrigley's GUM 10c
Palmolive 7c
Val-Sweet Grape Nectar 37c
SMA 29c

Adams ORANGE JUICE 15c
Del Monte PINEAPPLE JUICE 10c
Bluebonnet COLORED OLEO 29c
Aunt Jemima CORN MEAL 44c
Imperial Pure Cane SUGAR 46c



FRESH AND CURED MEATS
Dexter SLICED BACON 47c
FRYERS 59c
Pure Pork SAUSAGE 48c
Armour's Star WEINERS 51c
Dry SALT BACON 27c

IT'S COOL IN HERE! Swansdown Cake Flour 42c
Welch's Pineapple PRESERVES 32c
Kraft's CARAMELS 32c
Old Fashioned CHOCOLATES 25c

FRESH FRUITS AND VEGETABLES
Thompson SEEDLESS GRAPES 10c
California TOMATOES 15c
4 Dozen Size LETTUCE 10c
Sunkist LEMONS 12c
Golden Sweet CORN 5c
LIMES 15c



California Pears 19c
Wapco Red Sour Pitted Cherries 19c
Kraft's MIRACLE WHIP 49c
Wilson's Roll BUTTER 69c
Martinelli PURE APPLE CIDER 62c

Atkeison Food Store

We Reserve the Right to Limit and Refuse to Sell to Dealers
Phone 99 504 N. 2nd

BACK TO SCHOOL

First grader to graduate-to-be, students find they need for better school work here. We have a complete stock of all the basic needs for learning!

- Crayolas 5c 10c 15c 25c 59c
Pencils, All Kinds 5c each, 2 for 5c
Memo Books 5c
Reinforcements 5c
Pencil Leads 5c
Rulers 5c and 10c
Compasses 10c
Protractors 10c
Scissors 15c
Paste and Glue 10c
Typing Paper Pkg. 5c
Typing Paper Pkg. 10c
Beginners Tablets 5c
Perry Brothers 5c-10c-25c Store



Many other items not listed here to select from.

Better SAFE Than SORRY
Accidents are sometimes unavoidable. But losses can be reduced with one of our accident policies at an extremely low cost to you. Call now!
Phone 507



Leonard T. Florence
INSURANCE AGENCY
Tonkawa Hotel Bldg.

Miss Catherine Davis Is Bride of William Phil Schultz In Sunday Ceremony

Miss Catherine Davis, daughter of Mr. and Mrs. Tom Davis, of Haskell, became the bride of Mr. William Phil Schultz, son of Mrs. Roy Johnson of Haskell, and Mr. Philip Schultz of Shreveport, La., in a formal candlelight ceremony Sunday evening in the Presbyterian Church.

Mrs. Pippin and Miss Johnson wore dresses of claret slipper satin. The boleros worn during the ceremony were removed at the reception to reveal a bodice of heavy lace, dyed to match the satin in the same color as their dresses were worn.

The bride's uncle, Dr. L. F. Sherrill of New York City read the nuptials in front of an altar banked with ferns, palms and gladioli. Flame-tipped tapers in wrought iron candelabra accented the choir section.

The bridesmaid's dresses were identical to those of Mrs. Pippin and Miss Johnson except for their color, which was woodrose pink. Pink and claret gladioli were carried by all the attendants.

Sharon Haney of Crowell sang "Through the Years" and "At Dawning". Mrs. John W. Pace, at the organ played traditional wedding music and during the ceremony, "Oh, Promise Me". The bride's father gave her in marriage.

Charles Chapman, cousin of the bride, was the ring-bearer. He was dressed in all white.

Her dress, which was selected to accent her veil, was of candle light ivory satin, fashioned with an illusion yoke embroidered with pearls and rhinestones. The two-tiered veil was of imported illusion, applied along the edges with lace from her mother's wedding dress. The veil was caught to a fitted cap of satin covered with the same lace as the veil and embroidered with pearls, sequins, and rhinestones. She carried white orchids intermingled with stephanotis and lily-of-the-valley, and wore pearls, a gift of the bridegroom.

Tommy Davis of Haskell, brother of the bride, served as best man. Ushers were Jack Pippin of Austin, Wallace Cox of Big Spring, Gray Wooten, Jr., and Larry Scarborough of Abilene; Robert Schultz of Midland; Bill Rains of Ft. Worth; Bennett Wilson of Longview; Rentz Gullick and Douglas Tucker of Houston.

Her honor attendants were Mrs. Jack Pippin of Austin and Miss Catherine Johnson of Haskell. Bridesmaids were Miss Betty Parks of Raymondville; Mrs. Howard Bell of Crowell; Mrs. Alfred Walker of Spur; Miss Anne Katherine Rike of Haskell; Mrs. Bill Lane of Haskell; Mrs. J. C. Oneal of Anna, and Miss Carolyn Wooten of Abilene.

After the wedding a reception was held in the yard of the bride's mother and father. The house party included Mrs. Ben Charles Chapman and Mrs. Carrie Williams, sisters of the bride's mother; Mrs. Wallace Cox, Mrs. Alfred Pierson, Mrs. John W. Pace, Mrs. Claiborne Payne, Mrs. W. P. Price, Mrs. Kenneth Thornton, Mrs. Roger Garrett of Anson and Mrs. Gray Wooten of Abilene. Misses Pat Harrison, Mary Beth Payne, Nabeela Hassen, Nancy Furrh of Haskell; Mary Wilson of Rule; Jacque Dennell of Elliasville; Jeanette Henshaw of Abilene; Mrs. Bill Tatum of Gainesville; Marinda Robertson of Abilene and Jane Bradford of Sweetwater.

The bride wore a suit of beige wool sharkskin with brown accessories complemented with orchids as they left for a two-weeks' wedding trip.

The bride is a graduate of Haskell High School and attended T. C. U. and Texas Technological College. Mr. Schultz is a graduate of Abilene High School and Rice Institute. He served as an Ensign in the Navy during World War II. They will make their home in Houston, where Mr. Schultz is connected with Humble Oil Company.



MRS. WILLIAM PHIL SCHULTZ (Photo by Zelma)

Weinert Bulldogs To Begin Season Under New Coach

The Weinert Bulldogs, regional six-man football champions, will begin the 1950 grid season with a new coach and around 18 or 19 prospective footballers.

The new coach is William R. Aaron, a 1950 graduate of North Texas State College. He is now doing graduate work at the school but will be located in Weinert before September 1 when workouts will begin.

Last season the Bulldogs walked away with the highest honors in six-man football. They first took the District 3 six-man football championship, then walked away with the Bi-district championship by defeating Wilson. In the Regional championship game the Bulldogs outscored Gruver to win the Regional six-man title. At the recent six man all-star game in San Marcos Weinert placed two men Carl Marshall, quarterback, and James Yandell, halfback, in the all-star starting lineup. The game was a finale to the six man coaching school held there the first part of August.

From the prospective gridmen that will be issued pads on September 1 will be seven lettermen. The Bulldogs lost only six men from last seasons lineup. The lettermen are Billy Joe Robinson, 2 years, 150 lb. halfback; Bobby Therwanger, 2 years, 155 lb. fullback; Bill McGuire, 2 years, 165 lb. end; Johnny Sargeant, 2 years, 110 lb. quarterback; J. W. Alexander, 1 year, 170 lb. center; Kenneth Owens, 1 year, 165 lb. halfback, and Don Yandell, 1 year, 160 lb. end.

The Bulldog schedule has not been completed but will be available as soon as arrangements can be made.

Farmers - Farm Machinery Is In Demand - Sell It Through Want Ads.

Children Gather In Sims Home For Week-End

Mr. and Mrs. T. J. Sims had as guests over the week-end of their children, Mr. and Mrs. Dan Sims and sons, Guy, Bill and Tommy of South Gate, Calif., Mr. and Mrs. L. R. Gamble of Lubbock, and Mr. and Mrs. Jack Sims of Chillicothe. Also a sister, Mrs. R. E. Skiles and niece, Mrs. Brannon and children, Betty, and Robert Lee, all of Malakoff.

Good Interest And Attendance At Roberts Revival

Unusual interest is being shown in the revival now in progress at the Roberts Baptist Church, and good attendance is reported at each service. Rev. Harry Hannah, Baptist pastor of Elbert, is the evangelist, and Max Copeland, pastor of the Roberts church is in charge of the music. Everyone is invited to attend the services at 10:30 a. m. and 8 p. m. through Sunday, Aug. 27.

RETURN FROM VISIT IN CORSICANA

Mr. and Mrs. R. A. Hays have returned from an extended visit in Corsicana with their son, E. W. Hays and family. They also visited two of Mrs. Hays nieces, Mrs. Hazel and Mrs. Allen in Titus county, and visited points in Arkansas while away.

Genuine zipper leather binders, \$1.95-\$4.25. The Free Press.

Former Pastor, Rev. Kenneth Copeland, To Preach Sunday

The Rev. Kenneth Copeland, former pastor of the First Methodist church here in Haskell will preach on Sunday morning at the 11 o'clock hour in the local church. His many friends will surely want to be present and hear their former pastor and friend preach again. Rev. Copeland is now pastor of Travis Park Church in San Antonio.

Band Booster Club Meeting Called for Friday Night

There will be a call meeting of the Band Booster Club at 7:30 o'clock Friday night, August 25, in the band hall. The meeting has been called for every one to get acquainted and to discuss fund raising ideas for the support of the band. Anyone interested in the care and building of a better band in Haskell high school is invited to attend.

Pullets which retain their ability to produce eggs with a high percent of thick albumen are the ones to keep for breeding purposes.

Low moisture content is necessary for long, safe storage of grain, especially of grain sorghum, which should not test over 12 percent.

Don't neglect summer cultivation, because all of the moisture during the late season...

MOVE
My Office From Haskell Nat. Bank to 606 1/2 North Main Street Just West of Main Church
J. G. Vaughn
Dentist
Phones: Off. 246. Res.

Welcome Students and Teachers

We wish to extend hearty welcome to the students and teachers of Haskell county visit us.

You are striving for greater knowledge - we for greater service - and our best wishes go with you throughout the year.

For your convenience we invite your charge account.

Jaunty Junior

As advertised in MADEMOISELLE

Petti

3 is a crowd... not in this set! All three of Petti's separates want to be seen together.

All-wool jersey blouse, with 3/4 sleeves and little collar. In grey or tan.

All-wool lined jersey vest. In navy, brown or green.

Plaid all-around shirt of 100% Duperry checked wool. In navy, brown or green.

Sizes 9 to 15.

LANE-FLEEK
FASHIONS OF DISTINCTION

School-Time is Skirt-Time

Now! "BEAU CATCHER" Skirt of fine Wool JERSEY

Want to look your best on busiest days? Then take a tip and match or contrast this flattering, new "Beau Catcher" skirt with our other BOBBIE BROOKS jersey beauties. Fashioned of down-soft 100% worsted jersey, the waist-whittling front slit and graceful, flaring lines tag you as "best dressed"! Lovely neutral or new vivid tones in sizes 9 to 15.

Personality Shoppe
HASKELL, TEXAS

Off to School FOOT HAPPY

Comfort Sturdiness! Good Looks! Assured in our Back-to-School styled shoes

Most important on their back-to-school shopping list - good, sensible but attractive shoes. Made to last. Made to fit. At budget-easy prices.

A National Best Seller
Brown Leather Loafers with or without straps. Ideal for all school wear.
All sizes M to S widths
\$5.95

Saddle Oxfords
Brown and White Saddle Oxfords keep step with style and savings. The flawless case, the delicious comfort. This you'll learn when you try a pair on.

The Fashion Shoppe
E. R. CLIFTON SHOE DEPARTMENT

Family Held At Lake

of the Grimsley fam- residents of Haskell held at Cisco Lake when members of gathered from many state and spent the present included Mr. D. Grimsley of Olton, Mrs. Floyd Grimsley, Mrs. Janice of Norton, Mrs. Frank Haley and Mrs. Chita Falls, Mr. and Mrs. Lusk, Shelton and Rule, Mr. and Mrs. son and Linda of Rule, Mrs. Monroe Hallmark, Miss Vera Jane Grimsley, Mr. and Mrs. Cecil son of Cisco, Mr. and Mrs. Robert Jr. and son of Ben Allen Hall of

R. Collins at Dinner in City

R. Collins was honored today with a beautiful party at the back lawn of Mr. Norman Howell of Knox received several beautiful Snapshots were made of the group which included her family. Attending were Mr. and Mrs. Tidwell and girls, Mr. and Mrs. Bobby Tidwell, Mr. and Mrs. Ray, Mr. and Mrs. Les- Bobby and Judy, Mr. Marvin Collins and boys, Mrs. Barbara, Lois and Mrs. Jeff Fitchell, Mrs. N. M. Howell, Mrs. H. R. Collins and Mrs. Mae Pittman and hostess, Mr. Norman Howell and

Luncheon for Catherine Sunday

er luncheon honoring Miss Doris Jean Norton and Clarence Edward Tucker at the home of Anne Rike. The room was decorated with daisies and bowls of fruit. A three-course luncheon was served to the out- guests and bridesmaids Mrs. Schults wedding. A large picture window formed the background for the wedding arch which was entwined with greenery and white bows. Large baskets of white gladioli with white bows and streamers flanked the arch. The bride was given in marriage by her father. She wore a white dress combining a crepe skirt and lace blouse. He wore a



MRS. CLARENCE E. TUCKER

Miss Doris Jean Norton and Clarence Edward Tucker Wed In Merkel Sunday

Wedding vows were repeated by Doris Jean Norton and Clarence Edward Tucker at 3 o'clock Sunday, August 20, in the home of Mr. and Mrs. H. J. Carson. Mrs. Carson is a sister of the bride. Miss Norton, whose Abilene address is 1034 North 18th St., is the daughter of Mr. and Mrs. W. C. Norton of Haskell. The bridegroom is a son of Mrs. C. O. Tucker, 1140 North Seventh St., Abilene. Officiating at the double ring ceremony was the Rev. Joe Allen of Merkel who is pastor of the First Baptist Church. Attendants were Mrs. Carson and Otis L. Tucker of Anson, brother of the groom. A large picture window formed the background for the wedding arch which was entwined with greenery and white bows. Large baskets of white gladioli with white bows and streamers flanked the arch. The bride was given in marriage by her father. She wore a white dress combining a crepe skirt and lace blouse. He wore a

Jobs For Late Summer In The Fruit Orchard

The peach season is just about over in most sections of the state, but there are jobs in the orchard that need attention right now. According to John Hutchinson, associate extension horticulturist of Texas A. & M. College, one of those jobs is checking each tree for San Jose scale. He says San Jose scale often spreads throughout the orchard during the late summer and fall. The tiny sucking insect is carried from one tree to another by the wind or on the feet of birds or by insects as they move from tree to tree. It soon becomes established and may do serious damage to the trees. It is first seen as a gray ashy surface over the bark of the tree.

If you find San Jose in your orchard, Hutchinson says you should take steps to bring it under control or at least check its spread until effective control measures can be applied. He recommends the use of a solution made by mixing one pound of dry lime sulphur in three gallons of water. Apply the solution with an old paint brush to the trunk and framework branches of the tree. Do not, he cautions, allow the solution to come in contact with the foliage for it will burn leaves.

This is only a stop-gap remedy, Hutchinson points out. Effective control can be obtained by spraying the trees with a 3 percent dormant oil spray during the winter when the trees are dormant. Don't neglect the summer cultivation job for trees need all the moisture and plant food that is available, particularly during the late summer, says Hutchinson. During this period the fruit buds that will be responsible for next year's crop are being differentiated. Plant food is being stored in the tissues of the plant which will keep the trees healthy and help to insure a good fruit crop next year.

Summer cultivation is especially important this year, because many peach trees are still suffering from the effects of delayed foliage. The trees are especially low in vigor and must be given the best possible care if they are to live and set fruit buds for next year's crop. Hutchinson says the orchard should not be neglected just because the fruit season is over. The productive life of the orchard may well depend upon the treatment and care you give the trees during the late summer and fall months.

For spraying grain bins for insects before filling them with grain a water suspension of DDT can be prepared by mixing ten and one-half pounds of 50 percent wettable DDT powder in 25 gallons of water.

A growing plant requires access to some 20 chemical elements. PENCILS — Writing, Copying, Indelible, Drawing, and Marking Pencils. The Free Press.

Typewriter and Adding Machine Ribbons. Most all makes in black, blue, or two-color. The Free Press. Never marry a woman who looks good in black!

Shell color of eggs does not affect the flavor, the food value. There is no advantage to the homemaker in paying more for brown or white eggs of the same quality and size.

WELCOME...

Teachers and students, both new and old, to our store and in our midst again. Make our store your headquarters throughout the months to come.

JOSEPH LOVE DRESSES In sizes 1 through 14, beautifully styled \$1.98 to \$5.95

advertised in "GLAMOUR"



Fine Wyner Wool Jersey two-piece. "Multiple idea" skirt and blouse with easy, simple lines for endless mixing. Sand, mist grey, beige, chartreuse... Sizes 10 to 20 \$17.95

Coffield's Shop



\$8.95 to \$10.95

JUMPER... of crease-resistant gabardine... plus JACKET... of woven check rayon

Both Jacket and Jumper have famous elasticized "Automatic Waistline"

Wear 'em together... wear 'em separately... mix 'em, mate 'em, match 'em... They're a wonderful wardrobe-in-one... from "School-Time-Dressed" to "Sunday-Best"! New tones of Red, Green, Navy, Brown.

Also available in Washable... 3 to 6x, Teens... 8 to 14.



Beige Stitched Loafer for all-round school wear. In sizes 4 1/2 to 10



Black and White Duo Strapper. In sizes 4 1/2 to 10



Stitched Calfskin Oxford in Black and Brown. Exclusive for Pep Squad members. In sizes 4 1/2 to 10

Advertisement for 'A Lucky High School Girl Will Win' contest. Features a city skyline, a girl holding a sign, and text: 'a Trip to New York!', 'Friendly Teen Shoes CONTEST', 'Nothing to Buy! Get Your Entry Blank!', 'YOU MAY BE THE GRAND PRIZE WINNER OF A Free Trip to New York With All Expenses Paid for You and Your Parent or Chaperone at the Fabulous Waldorf-Astoria Hotel', 'DOZENS MORE PRIZES!', 'PICK UP YOUR OFFICIAL ENTRY BLANK AT'.



BENADDI Deb Dark Green Suede with Tan Trim. Sizes 4 1/2 to 9



GAIL WEST Deb Brown Suedes. Sizes 4 1/2 to 9



Sedulous Deb Black Suedes. Sizes 3 1/2 to 10

The Booterie

East Side Square Haskell, Texas

Gold Medal
FLOUR
5 Pound Bag
45^c

LIPTON'S TEA
Pound Box
\$1.15

SPRY
3 lb. can
85^c

Frozen
STRAWBERRIES
Pound Box
47^c

Gold Medal
FLOUR
10 lb. Bag
89^c

Campbell's
TOMATO SOUP
can
10^c

Del Monte
PINEAPPLE JUICE
46 oz. can
45^c

PINK SALMON
Tall Can
53^c

Heinz
BABY FOOD
3 CANS 25^c

Miracle Whip
SALAD DRESSING
Pint Jar 35^c

JELLO
2 Boxes 15^c



WHY TAKE A CHANCE?

**WHEN YOU ALWAYS GET
WHAT YOU WANT AT**



LOW PRICES EVERY DAY

WELCOME —

Teachers and students to Has-
kell County for the coming school
term.

We want to invite you to make
our store your headquarters. We
carry many items you will need.

Meat Makes the Meal

Wilson's Corn King

BACON Tray Pack, pound 55^c

Armour's Star

WEINERS Cello Pack, pound 55^c

CHUCK STEAK pound 59^c

BEEF RIBS
Pound 39^c



LEMONS DOZ. 29^c

Frozen Can

ORANGE JUICE 29^c

Frozen Can

GRAPEFRUIT JUICE 25^c



**Low
Prices**
Plus Extra Savings
With
**S & H
Green
Stamps**

Means an extra low gro-
cery budget when you
trade with us.

And don't forget, S. & H. Green Stamps are
redeemable in such valuable items as electric
mixers, electric irons and hundreds of other
desired items.
Be sure to ask for your stamps and get your
catalogue with your next purchase if you are
not already saving S. & H. Green Stamps.

CIGARETTES
All Popular Brands
\$1.83

FOLGER'S COFFEE
Pound Can
79^c

Libby's
PINEAPPLE JUICE
46 oz. can
45^c

Del Monte
CORN
303 Size Can
2 FOR 35^c

Miracle Whip
SALAD DRESSING
Quart Jar 59^c

ICE CREAM
Pint
19^c



We Reserve the Right to Limit

WANT AD SECTION

BUYING SELLING TRADING RENTING LOANS SERVICE

REAL ESTATE—

FOR SALE—
A well located large house 8 rooms suited for two families, a bargain priced at \$8000.
A 4 room and bath on North 4th St. \$3875, about \$2,000 will handle.
Two houses in north part of Haskell, a 4 room and bath and a 3 room and bath adjoining, will sell either or both. Priced \$8,400.
Several new houses in the T. & P. Addition, priced from \$6250 to \$8250.
A 4 1-2 frame house and bath in Weinert, Texas, to move for \$2850.
A 3 room house in Weinert to move \$700.00.
See W. A. HOLT 34c

FOR SALE
5 room house on North 5th, modern.
5 room house and bath, Avenue A.
2 bedroom home on Ave G. A beautiful home. Shown by appointment.
5 rooms, bath, garage, cellar, 2 blocks from town. \$5,000.
Small grocery store on highway.
Several good lots for sale.
Laundry for sale. If you want to do a clean job, you'll buy this deal.
311 acre farm for lease, 50 acres cotton, 50 acres feed, 10 cows and 4 calves. Lease for this year and next paid. 3 1/2 miles southeast of Rule. You get it all for \$6,000.
163 acre farm with modern home. Priced right.
156 acre farm: southeast of Rule. \$110 per acre, all of the minerals go.
234-acre farm northeast of town. \$65 per acre. Part minerals.
100 acre farm. \$65 per acre. Some minerals, 60 acres in grass. 40 in cultivation, southeast of town.
5 lots on north 8th St. \$2150.
163 acre farm southeast of town. \$100 per acre. Has good loan.
170 acre farm south of town. All grass land. \$75 per acre.
160 acre farm east of town. \$68 per acre.
GEO. W. BURKETT
Real Estate
Haskell, Texas. Phone 330-J
"Use Me While I Live"

MISCELLANEOUS—

I WILL Keep your child by the hour or day. Call 137-W. 33-34p

"VISIT Our Largest Apple Orchard in Texas" for new crop sweet and juicy apples and pears. Also modern O. I. C. fast-growing pears, bred gills, boars. Shanks Nursery Apple Orchards, Clyde, Texas. 33-34-35-36p

SAVE MORE than 1-2 on your floor sanding by renting our heavy duty fast cutting sanders by the hour. We show you how to operate. Gene Dunlap, phone 448W, 908 Ave. E. 25tfc

SEE US regarding any type yard work you may need, such as leveling, plowing, etc. We also plow garden plots. All our work is done with first-class motorized equipment. Prompt, efficient service. Basil Murphy, first house south of cemetery or call 660J.

GET YOUR Spirella fitted at the Novelty Shop. Mrs. H. R. Whatley. 33tfc

BUSINESS SERVICE—

I DO ONE-WAYING, build new terraces or repair old ones. Sylvester Bledsoe, 112 North 1st St., Phone 33W. 30 tfc

FLOOR SANDING and finishing. Latest model heavy duty machines and skilled operators. New low prices, 12 years in this business in Haskell. Estimates gladly given. Gene Dunlap, phone 448W, 908 S. Ave. E. 25-tfc

SEPTIC TANKS, cess pools and shallow wells cleaned. Average home, from \$20 to \$35. Give 24-hour service. Phone 381-M, Box 224, Seymour, Tex. J. H. Crawford. 1-tfc

BUTTONS COVERED: Belt buckles and belts made. Buckles covered with Maxant button machine. Coffieds Shop, south east corner of square. 11tfc

SALESMEN WANTED—

CAN USE two men with cars for Haskell and surrounding territories. Our men earn \$100.00 per week and up. Write all inquiries to the Kirby Company, 1422 Pine, Abilene, Texas. 34p

FARM MACHINERY

FOR SALE—M-M Combine, 6 ft., in good condition. E. A. Schaake, Haskell, Rt. 3. 34-39p

FOR SALE—Several types of Tee-jet Nozzles for power sprayers. Also parts for drop extensions. Trice Hatchery. 33-34p

HOUSEHOLD GOODS—

FOR SALE OR TRADE—2 piece living room suite, with slip cover, makes into a bed. Clay Smith. 34p

FOR SALE—8 piece dining room suite, 2 piece living room suite, 4 rockers, 1 coffee table, bed and dresses to match, twin beds, good mattress and springs, 1 chest & drawers, 4 ft. Norge electric refrigerator, 1 apartment stove. W. L. (Bill) Holt, 8 miles east, 3 miles north. 34-38p

FOR SALE—Used living room suite and coffee table. See me after one o'clock. 606 N. 14th. 33-34-p

AUTOMOBILES—

CARS FOR SALE

1-1950 Oldsmobile de luxe four door, \$2850.
1-1949 Ford tudor, loaded, custom eight \$1450.
1-1949 four door de luxe Stye-line Chevrolet, loaded \$1475.
See or phone Wallace Wooten, 433-J. 34-p

USED CARS AND TRUCKS—

FOR SALE—1938 Ford truck, worth the money, \$250. See Roy Pitman. 34p

FOR SALE—1940 Buick, 4-door sedan, excellent condition. Roy E. Frierson. Phone 137-J. 34tfc

USED CARS—

1947 Plymouth coupe.
1941 Chevrolet club coupe.
1941 Ford tudor.
1936 Plymouth four door.
Bynum Texaco Station
200 S. Avenue E.

POULTRY—

Get MORE for your EGGS, practically the year around if you have a good flock. We are buying hatching eggs now from heavy breed flocks. Have 5 or 6 months season on Leghorns. Extra premium in big flocks, 300 birds or more. Bill Rice, Manager, Colonial Hatcheries in Sweetwater will call on you at no obligation. SEE US TODAY! 34-39c

FOR SALE—
FOR SALE—E Flat alto Saxophone. Phone 344-W. Mrs. T. P. Perdue. 34p

FOR SALE: Set of Encyclopedia Britannica, latest edition, at a bargain. See Gene Campbell at Campbell Service Station, phone 485. 19tfc

HASKELL COUNTY ABSTRACT CO.
Abstracts, Maps
Title Insurance
South Side Square Haskell

CALVIN HENSON
LAWYER
Haskell, Texas

JASON W. SMITH
Abstracts — Title Insurance
Haskell, Texas

Political Announcements
Second Primary August 26, 1950

For Commissioner Precinct 4:
C. L. (Roy) Clark.
D. S. (Dave) Strickland.

CARD OF THANKS
The M. B. Howard family wish to take this means to express their sincere thanks and appreciation to those who helped us in any way during the loss of our loved one—Mrs. M. B. Howard and Children.

Typewriter and Adding Machine Ribbons. Most all makes in black, blue, or two-color. The Free Press.

Gertrude Robinson
CHIROPRACTIC CLINIC
Highway 277
Office Phone 108. Res. 14
House Calls Day or Night

HASKELL VISITORS
Mrs. Loyce Tabor and Jo Peacock of San Angelo were visitors Sunday in the home of Dr. and Mrs. Arthur Edwards. They were accompanied home by Marilyn Tabor, who has been visiting in the Edwards home.

Your Local USED-COW Dealer
Removes Dead Stock
FREE
For Immediate Service
PHONE 250 COLLECT
Stamford, Texas

CENTRAL HIDE & RENDERING CO.

BARNES INSURANCE AGENCY
General Insurance
316 1/2 N. 1st Street
H. F. Barnes C. L. Lewis

HAVE YOUR EYES EXAMINED EACH YEAR

By **Frank C. Scott, M. D. SPECIALIST**

Diseases and Surgery of the Eye, Ear, Nose, Throat — Fitting of Glasses
Complete Test for Allergic Conditions
OFFICE HOURS:
9:00 to 11:30 a. m. and 2 to 5 p. m.
Office: Scott's Clinic

WILLS WANTED—
I am taught Monday, Mary Jo Jones, 24tfc

City Loans to build
L. Johnson, Tele. Residence 459J, Office West side 21tfc

Black cockers, moth-
sup. Reward. Phone 40. Carroll Bledsoe. 34p

AMS CLINIC
Williams, M. D., M. Prudeaux, M. D., Phone 111
J. Kemp, D. D. S., Phone 508
WELL, TEXAS

FOR SALE
5 room house on North 5th, modern.
5 room house and bath, Avenue A.
2 bedroom home on Ave G. A beautiful home. Shown by appointment.
5 rooms, bath, garage, cellar, 2 blocks from town. \$5,000.
Small grocery store on highway.
Several good lots for sale.
Laundry for sale. If you want to do a clean job, you'll buy this deal.
311 acre farm for lease, 50 acres cotton, 50 acres feed, 10 cows and 4 calves. Lease for this year and next paid. 3 1/2 miles southeast of Rule. You get it all for \$6,000.
163 acre farm with modern home. Priced right.
156 acre farm: southeast of Rule. \$110 per acre, all of the minerals go.
234-acre farm northeast of town. \$65 per acre. Part minerals.
100 acre farm. \$65 per acre. Some minerals, 60 acres in grass. 40 in cultivation, southeast of town.
5 lots on north 8th St. \$2150.
163 acre farm southeast of town. \$100 per acre. Has good loan.
170 acre farm south of town. All grass land. \$75 per acre.
160 acre farm east of town. \$68 per acre.
GEO. W. BURKETT
Real Estate
Haskell, Texas. Phone 330-J
"Use Me While I Live"

FOR SALE—2 bedroom house, modern conveniences, located at 1401 N. Ave. H. Call Bernard Phelps at 302W or 349. 31-tfc

FOR SALE—320 acre farm to settle estate of P. C. Patterson. See W. F. Patterson at Gulf Station. 34-35c

Read the bargains listed in Free Press Want Ads each week.

SCRATCH DALLAS!

Why Should Dallas Run Texas?
Four of five run-off races have Dallas candidates — TOO MUCH DALLAS!

For Lieutenant Governor:
BIRCE D. BROOKS of Dallas County EAST TEXAS
BEN RAMSEY of San Augustine County ←

For Associate Justice of Supreme Court (Place 1):
WILL WILSON of Dallas County SOUTH TEXAS
FAGAN DICKSON of Bexar County ←

For Associate Justice of Supreme Court (Place 3):
MEADE F. GRIFFIN of Hale County ← WEST TEXAS
GEO. W. HARWOOD of Dallas County ←

For Judge of the Court of Criminal Appeals:
W. A. MORRISON of Milam County ← CENTRAL TEXAS
ROBERT L. (BOB) LATTIMORE of Dallas County ←

SCRATCH DALLAS ON AUGUST 26
COMMITTEE FOR STATEWIDE GOVERNMENT
Chairman EMMETT ALEXANDER, Marble Falls, Texas

STARR WELDING SHOP
ALL KINDS OF WELDING
One Block West of Square Haskell, Texas

Check YOUR RADIATOR

Before going on your vacation. Many things can happen to your car as a result of radiator trouble. We are able to give you ONE DAY SERVICE on your radiator along with a 90 day guarantee. Let our expert mechanics check your car TODAY.

HASKELL NASH COMPANY
O. L. Johnson and M. W. Johnson, Owners tfc

"10" Star Agency Policy
Farm Bureau 28-32c

WATCH REPAIRS
Name the Day—
Have It Ready
Watchmaster
Dates Guessing
ALL WORK
GUARANTEED
Machine Material
Used

ask for your
Stamp here

elber's Jewelry
Phone 109W
WELL, TEXAS

FOR SALE—2 bedroom house, modern conveniences, located at 1401 N. Ave. H. Call Bernard Phelps at 302W or 349. 31-tfc

FOR SALE—320 acre farm to settle estate of P. C. Patterson. See W. F. Patterson at Gulf Station. 34-35c

Read the bargains listed in Free Press Want Ads each week.

Radio & Appliance Service
Call 25W for prompt service on Radios, Washers, Electric Irons and all small appliances. Also lawn mower sharpening. 22 years in this business in Haskell. Pickup & Delivery Service

WOODSON
Radio & Electric
512 North 1st Street 83c

FOR SALE—M-M Combine, 6 ft., in good condition. E. A. Schaake, Haskell, Rt. 3. 34-39p

FOR SALE—Several types of Tee-jet Nozzles for power sprayers. Also parts for drop extensions. Trice Hatchery. 33-34p

Chevrolet alone offers such a wide and wonderful choice ... and at the lowest prices, too!

Come in and take your choice of swank Convertible or steel-topped Bel Air

Here's the most beautiful Convertible in the entire low-price field! And one ride will tell you its performance is as smooth and spirited as its looks. The automatic top lifts or lowers at the touch of a button to assure perfect comfort in all weather.

Choose the fleet, fashionable, steel-topped Bel Air, with its extra-wide windows and gray, leather-trimmed upholstery, and you'll have the only car of its kind in the low-price field. A distinctive style star of the finest quality and a performance star as well!

Take your choice of Standard Drive or POWERGLIDE Automatic Transmission

You can buy a Chevrolet with the sensational Powerglide Automatic Transmission* and 105-h.p. Valve-in-Head Engine for finest no-shift driving at lowest cost or a Chevrolet with the highly improved standard Valve-in-Head Engine and Silent Synchro-Mesh Transmission for finest standard driving at lowest cost. Both are exclusive to Chevrolet in its field.

*Combination of Powerglide Automatic Transmission and 105-h.p. Engine optional on De Luxe models at extra cost.

Take your choice of Styleline or Fleetline styling at the same price

Many an admiring glance will follow you when you roll by in your new Chevrolet with Body by Fisher. That's true whether you choose a Styleline model or a Fleetline model. Both are available on all Chevrolet sedans and at the same price! Remember—Chevrolet is the only low-priced car that offers these two outstandingly beautiful types of styling... thus giving you an opportunity to express your own individual taste in motor car beauty. Come in, convince yourself that only Chevrolet offers such a wide and wonderful choice at lowest cost!

America's Best Seller CHEVROLET America's Best Buy!

Burton Chevrolet Company
"Where Friend Meets Friend"
R. L. Burton, Owner
Haskell, Texas
Phone 2-J

Government Approved Storage For Grain Sorghums

With a bumper Milo crop in prospect, it will be profitable for you to store your grain in our modern new warehouse. No unnecessary red tape or delay.

YOU CAN DELIVER YOUR MAIZE AND GET YOUR MONEY THE SAME DAY

You get 100% Support Price on any quantity and your grain remains in local warehouse, where it can be delivered to you immediately if you find advantageous, to sell if the market advances above the support price. You get your money out of your crop now, and still can take your profit if the price goes up. We take White Maize and Higari for Government Storage.

WE WEIGH ON BONDED AUTOMATIC ELECTRIC SCALES

WE BUY ALL KINDS OF GRAIN

MARKET POULTRY & EGG CO.
HASKELL, TEXAS
Phone 109W
Haskell, Texas

Rule Bobcats Have Promising List Of Squadmen

A returning letterman will fill every position except the wing-back slot for the Rule Bobcats in the coming football season that opens September 8 on foreign grounds.

The Bobcats, 1949 District Champions and regional finalists, will have 12 lettermen returning to the home gridiron out of the 22 footballers that lettered last season.

Tomman Nix, 1948 graduate of McMurry College, is going into his second year as head mentor of the Bobcats. His first year there he opened the door to the district 9-B title but was defeated by Wylie for regional championship.

Nix also stated that one of his probable starters, Bobby Kitley, a one year letterman and extra point specialist would be unable to continue his high school football career this year after his recent development of polio.

Returning lettermen are Roy Dean Smith, 1 year 220 lb. tackle; Marv Stegemoller, 3 years, 170 lb. end; George Denison, 2 years, 155 lb. center; Jan Fouts, 1 year, 130 lb. guard; Tinker Barbee, 2 years, 155 lb. center and tackle, alternately; Jackie Tabor, 2 years, 155 lb. end; Bobby Wilson, 1 year, 160 lb. quarterback; Jack Burson, 1 year, 160 lb. halfback; Pat Wester, 1 year, 150 lb. halfback; Zed Wadzick, 1 year, 155

Revival Services In Progress At Weinert Church

Revival services began last Sunday night at the Weinert Four Square church to continue through Sept. 3.

Rev. Mattie Thompson of Palm-dale, Calif. is the evangelist. She and her husband pastored the church at Weinert and the Gilliam Four Square church several years ago.

Services will be held each night at 8:00 and on Tuesday through Fridays at 10:00 a. m. There will be special music and singing at the revival services, and fervent preaching of the old-time Gospel. A warm welcome is extended to all.

Black Indians Win Over Munday; Play Hamlin Sunday

The Haskell Black Indians defeated the Munday Moguls in a one-sided game here Sunday, 8 to 3. Hammond, Indian's moundsman, went the entire 9 innings for his fifth win of the season out of six games hurled.

Next Sunday the Indians play the Hamlin Blue Jays at Fair Park Field beginning at 3:30 p. m. The Blue Jays defeated the Indians two weeks ago at Hamlin, and the locals will be out to even the record in Sundays encounter.

lb. fullback; and Billy R. Payne, 2 years, 160 lb. tackle. Among this group are only 4 seniors.

Other squadmen are Billy Hollinsworth, a 145 lb. halfback, and some first year prospect will be Alvin Hines 150 lb. quarterback; Roy Casey, 145 lb. guard; Troy Casey, 145 lb. tackle; Gene R h o d e s, 150 lb. guard; Tom Pyatt, 150 lb. guard; and Dallas Baugh, 125 lb. end.

The Bobcats will begin work-outs September 1 with dummy blocking and stiff scrimmages in order to be well prepared for the first game September 8 at Clyde.

Co-captains for the Rule team are Jackie Tabor and Bobby Wilson.

The Bobcat schedule reads: Sept. 8—Clyde at Clyde. Sept. 15—Open.

Sept. 22—Haskell at Haskell. Sept. 29—Munday at Munday. Oct. 6—Hermleigh at Rule.

*Oct. 13—Trent at Trent. *Oct. 20—Woodson at Woodson. *Oct. 27—Aspermont at Rule. Nov. 3—Open.

*Nov. 11—Lueders at Rule. After-noon game.

*Nov. 17—Rochester at Rule. *Denotes conference games.

Rule Masons have made arrangements for all the football team to attend the Oil Bowl Classic at Wichita Falls August 25.

Singing Planned At Pinkerton Church Sunday Afternoon

An afternoon program of singing will be held at the Pinkerton Baptist Church Sunday, August 27, beginning at 2 p. m.

All singers and music lovers of this section are invited to attend, and a large attendance is expected, sponsors of the program said.

Haskell Schools—

(Continued From Page 1)

faculty include S. H. Vaughter, superintendent, who has held that position for 4 years and holds a BA and MA degree; Pyatt Mc-

SEE our gay colored, genuine leather bound binders. The Free Press.

Collum, principal, 8 years, a BS and MS degree; Mrs. Thelma Thomas, commercial subjects, 3 years, a BA degree; Joe Tyson, Weaver, English, 5 years, a BA and MA degree; Mrs. Mildred Byrd, English and Spanish, 4 years, a BA degree; Joe Tyson, science, 3 years, a BS and MS degree; Jack Roten, social studies and coach, 3 years, a BA degree; Royce Smith, math and assistant coach, 1 year, a BS degree; Lucille Watson, home economics, 1 year, a BS and MS degree; and Haskell

Stone, vocational agriculture, 6 years, a BS degree. Junior high and elementary teachers are Dale Beldsoe, 2 years, a BBA degree; Kathleen Diggs, 6 years, a BS and MS degree; Louise Green, 12 years, a BS degree; Mrs. T. B. Roberson, 3 years, a BS degree; Margaret Walker, 2 years, a BS degree; Mrs. Mary House Martin, 5 years, a BA degree; Mrs. Ima Dell Fitzgerald, 5 years, a BS degree; Mrs. Myriam Weaver, 5 years, a BS degree; Fredda Brooks, 23 years,

a BS degree; Mrs. Kenneth Thornton, 5 years, a BS degree; Opal Nanny, 5 years, a BS degree, and Brucille Nelums, 3 years, a BS degree. Also, Miss Lucy P'Pool, 13 years, a BS degree; Mrs. S. H. Vaughter, 4 years, a BS degree; Lela Duncan, 8 years, a BA degree; Ray Overton, 1 year, a BS degree; Amelia Fagan, 7 years, a BS degree; J. E. Berryhill, 5 years, a BA and MA degree; Herschel D. Peel, junior high principal, 1 year, a BS degree; Madaline

Hunt, 15 years, a BS degree; Mrs. Jack Hunt, a BS degree; and Edleton, 3 years, a BS degree. Teachers in the school are Weldon Elbert, 1 year, a BS degree; Janie May Hargest, 1 year, a BS degree; the Haskell Public School, Sam P. Herron, secretary, Ed Hester, Walter T. W. Williams, and

Perkins-Timberlake BACK TO SCHOOL SAVINGS FOR YOU...

SAVE MONEY ON BACK-TO-SCHOOL APPAREL BY BUYING NOW! OUR STOCKS ARE COMPLETE! COME IN AND MAKE YOUR SELECTIONS TODAY!

Boy's Army Cloth Pants - Shirts

Heavy weight Army cloth, nicely tailored. Zipper closure. Just like Dad's.

Pant \$2.98
Shirt \$2.49
6 - 16

Boy's Texan JEANS

Heavy denim, copper rivets, orange stitching. Double knee for extra wear.

0-6 \$2.25
7-16 \$2.50

Boy's Liberty Stripe OVERALLS

8 oz. denim, sanforized shrunk. Bar-tacked. Cut in the right proportion for perfect fit.

0-11 \$1.79



Boy's Plaid SHIRTS

Colors as bright and true as we could find, printed on long wearing broadcloth and poplin. Fast color and shrunk.

Sizes 6 - 16
\$1.79

Boy's Polo SHIRTS

Long sleeves, short sleeves, bright bold stripes in many color combinations. Color fast. Wear every day, wash and dry.

Sizes 6 - 16
\$1.00



CHILDREN'S DRESSES

Dresses of style and quality for Tots and Teens. There are many styles to choose from — you will select several. They are a dream for school wear.

Sizes 7-14
\$3.98
Others \$2.98 and \$5.95

CHILDREN'S COATS

Plaid • Solids • Mixtures

These are the latest styles in all wool coats. Boxy styles, styles, double and single breasted. Colors: Green, Tan, Red.

3 to 6X **12.95**
7 - 14 **19.95**
Others \$15.95 - \$24.95

CHILDREN'S BLOUSES

You'll love "LITTLE CHARMER" — a great name in the for the "pigtail" crowd. Convertible and Peter Pan Long and short sleeves. Embroidery trimmed. White, Blue, Maize.

Sizes 2 - 14
1.98
Others \$1.89 - \$2.98

CORDUROY JACKETS

Boxy styles, in fine wale corduroy. Wear everywhere everything. Mix and match in ensembles with those pants.

8 - 14 **5.95**
Matching Skirt **3.98**

Children's SWEATERS

A must for school. Soft, fluffy sweaters in cardigan and button styles, so warm and comfortable — and you will find them in a wide variety of colors, priced

1.98 .. 3.98

Children's SKIRTS

To complete your ensemble, select one of these smart skirts. In plaid and solid colors.

Sizes 7-14
3.98

Children's Rayon Panties

Two Bar Tricot with lace and Rosebud trim. Elastic leg.

Sizes 1 - 14
5.98

POLL PRE-TESTED Parrot SHOES FOR BOYS AND GIRLS

For 21 years boys and girls have pre-tested every pattern of Poll Parrot Shoes in actual wear. Here are just three styles we offer you for back-to-school, hard, comfortable wear.

1. Brown military strap that makes a hit with every boy. Wears well. Neat toe.

8 1/2 - 12 **5.50**
12 1/2 - 3 **5.95**

2. Brown wing tip, fancy welt. Strong, sturdy for active boys. Bull for lots of service.

8 1/2 **5.50**
12 1/2 **5.95**

3. Girls and misses oxford, fancy toe. Red, Brown.

8 1/2 - 12 **\$4.50**
12 - 3 **\$5.95**
4-9 **\$4.50**

Phoenix ANKLETS

- Boys "Jr. Woodman" Anklet, fancy plaid... **49c**
- Girls Staple Anklets, wide range colors, 6-11 **39c**
- Girls "Coylon" Anklets, Nylon & cotton, 7-10 1/2 **59c**

HOW MUCH COTTON IS USED TO MAKE GLOVES EACH YEAR? ...

APPROXIMATELY **69,670,000** POUNDS OF COTTON ARE USED IN THE MANUFACTURE OF GLOVES ANNUALLY!

OUR WORK IS GOOD OUR PRICES ARE FAIR

Isn't That What You Want When Your Car Needs Repair?

All Makes of Cars and Trucks Serviced Quickly and Well

Our New and Modern Equipment Insures Satisfaction Guaranteed

Phone 644-J

ROBERTSON PONTIAC CO.

PONTIAC DEALER

AUBREY LONG, Service Manager

Phone 644-J 401 S. Ave E

Editor:

Letters start. Then

THE CHRISTIAN MONITOR

how much they

world-wide

is the most

edited news-

U. S. . . .

and in teach-

is complete

Monitor surely is a

success

will find the Monitor

we, with complete

we, and as neces-

your HOME TOWN

coupon for a Special

or subscription — 26

FOR ONLY \$1—And

day nights over ABC

to. The Christian

Monitor. Views the

Science Monitor

St. Boston 15, Mass., U.S.A.

me an introductory sub-

The Christian Science

books. I enclose \$1.

(Name)

(Address)

(City)

(State)

Guaranteed

Boys SOCKS

4 Months of Wear or 4 Pairs FREE!

Colorful patterns. Nylon reinforced heel. Size 7-14

4 Pairs \$1.00

Including the Amazing MAGIC PENCIL

That changes color as you write!

BACK TO SCHOOL FASHIONS FOR Teen Ager &

FROM WACO
SPEND VACATION IN MINNESOTA
 Mr. and Mrs. E. L. Hilliard and two children Ronald Lee and Patricia Ann, and Ellen Hilliard have returned home after spending their vacation in Minneapolis, Minn., visiting relative and friends.

Welcome

Teachers and Students...

As you begin this, another school year, our best wishes will be for you throughout the coming year and we want you to visit us. You will find in our stock many varied items that you will want at money-saving prices.

- Children's Anklets, pair..... **25c**
- Combs, Mechanical..... **69c**
- Combs, assorted colors..... **69c**
- Blue Jeans, Boys and Girls..... **1.98**
- Sneakers, Belts, Model Aeroplanes and many other things boys and girls will want

Re-Sale Shop

East Side of Square

Back To School Values

Beautiful new Fall styles in wide range of colors and fabrics. A size and style for every child.

These lovely new A-ires Dresses for school. Sizes 7 to 14. Checks, Stripes and..... **2.98**

Bobby Teen Dresses. Lovely styles for the girl who will between girls and ladies sizes. Sizes 10 to 14.

3.98 TO 5.95

Beautiful Betty Bates Dresses. A style for every little Miss. Prints, Plaids and Stripes. Sizes 1 to 6X. Prices range—

2.98 And 3.98

The Haskell Free Press

HASKELL, TEXAS, THURSDAY AUG. 24, 1950

General Assembly Will Mark Opening of Weinert Schools on Monday, Sept. 4th

A general assembly will open the Weinert rural schools at 9 o'clock Monday morning, September 4, with the Rev. Temple Lewis, pastor of the Weinert Baptist church as guest speaker, Connor Horton, superintendent, announced this week.

General assembly of students and parents will be held in the auditorium of the school. Students will register for the 1950-51 term at 10 o'clock immediately following the assembly.

Mr. Horton said the buses would make their regular routes Monday morning to pick up all rural students.

Monday classes will run on a short schedule but will continue long enough to meet the requirements of the Gilmer-Aikin Bill, Supt. Horton said.

During the past few years many helpful instruments have been installed in the Weinert school to give it a higher standard and to aid both teachers and students. They are now able to give students a visual education through the use of a 16 mm. movie projector and a 2x2 slide projector. Recently the school has purchased a number of recording machines for use in the speech department. They have installed an intercommunication system that reaches 23 rooms in the school.

Supt. Horton said that 328 students were enrolled in elementary and high school last year and they maintained an average daily attendance of 275. He said enrollment was expected to run a little higher than last year. To accommodate the student body,



CONNOR HORTON
Weinert Superintendent



WM. R. AARON
Weinert Coach

the school campus contains seven buildings. The elementary school, high school, gymnasium, lunchroom and home economics are located in one large building. They also have a vocational agriculture building, four teacherages and the janitor's home. One of the teacherages has been added to the school property recently and is occupied by Supt. Horton and family.

The lunchroom, under the direction of Mrs. John Earp, prepares one meal a day for 20 cents a meal and serves an average of 268 students daily.

The school operates seven buses that covers 210 square miles to benefit the majority of its attendance. They are under the care and maintenance of Ted Boykin.

An active Future Farmers of America chapter is organized in the Weinert school. It is under the direction of Willie Lee Medford. They also have an active Future Homemakers of America chapter

under the supervision of Mrs. Irene McAfee.

Members of the high school faculty are Connor Horton, superintendent. He has been with the Weinert school for 5 years and holds a BS-MS degree; J. Julian, principal, 2 years, a BS degree; Wm. R. Aaron, coach, social science and health education, first year, a BS degree; Turley Wheeler, math and science, 1 year, a BS degree; Mrs. Frank Alexander, speech and English, 1 year, a BS degree; Mrs. Irene McAfee, home economics, 3 years, a BS degree; and Willie Lee Medford, vocational agriculture, 4 years, a BS degree.

Grade school teachers are Mrs. Dorthy Myers, 1st grade, 1 year, a BS degree; Mrs. Vern Derr, second grade, 7 years, a BS degree; Mrs. Margaret Wheeler, third grade, 1 year, a BS degree; Mrs. J. W. Rutherford, fourth grade, 8 years, a BS degree; Mrs. Fola Julian, 5th grade, 2 years, a BS degree; Mrs. Connor Horton, 6th grade, four years, a BS degree; Frank Alexander, seventh grade, first year, a BS degree; and Douglas Myers, elementary principal, eighth grade, 1 year, a BS degree.

Ten out of the fifteen members of the faculty have been attending various colleges and universities over the state working toward a Master's degree.

Members of the Weinert school board are Frank Oman, president; Chester Smith, vice-president; P. E. Weinert, secretary; J. T. Therman, R. M. Walker and J. C. Dunning.

Three members of the Weinert faculty will be teaching in the Weinert school for their first time this year. They are Mrs. Frank Alexander, speech and English; William R. Aaron, coach and social sciences; and Frank Alexander, grade school principal.

Supt. Connor Horton Receives Degrees

Connor Horton, superintendent of Weinert Rural High School for the past five years was among the 753 students scheduled to receive their degrees from ETS Teacher's College in summer commencement exercises Sunday, Aug. 20. He will receive Master Degrees of Arts and Master of Education. Registrar John Wendell reported the graduates formed the largest graduation class in the history of the College. Eight types of degrees were awarded. They included 319 candidates for the bachelors degree and 433 candidates for the Masters degree.

Dr. D. A. Duncan, Baptist minister of Greenville, gave the baccalaureate address at 11 a.m. in Ferguson Auditorium. At 3 p.m. L. P. Sturgeon, of Austin, associate commissioner of education delivered the commencement address. A graduate of ETS, Sturgeon is a former superintendent of the New Boston schools.

SAVE Quality Foods for less Money SAVE

Gold Medal FLOUR	25 Lbs. \$1.98	Bright & Early COFFEE	Lb. 71c
Del Haven TOMATOES	No. 2 Can 14c	TREND	2 Pkgs. 35c
Fireside, Boiled Beans With Pork	Can 12c	Sweet Potatoes	Lb. 10c
Armour's Vienna Sausage	Can 19c	White Seedless GRAPES	Lb. 20c
White Swan Grapefruit Juice	No. 2 Can 15c	Fresh CARROTS	Pkg. 15c
Adam's Orange Juice	No. 2 Can 20c	BELL PEPPER	Lb. 19c
Aunt Jemima Pancake Mix	1 lb., 4 oz. Box 19c	Yellow ONIONS	Lb. 8c
Quaker's CORN MEAL	Box 15c	360 Size LEMONS	Doz. 30c

Highest Quality MEATS

PLENTY OF FRESH DRESSED FRYERS AND FROZEN FOODS

Armour's Star BACON	Lb. 63c	Assorted LUNCH MEATS	Lb. 49c
Armour's Star SAUSAGE	2 lb. Sack 52c	Armour's Clover Bloom BUTTER	Lb. 69c
CHEESE	1/2 lb. Block 29c	Oven Ready BISCUITS	2 Cans 25c

— Shop and Save At —

E. R. Clifton Clover Farm

PHONE 332 WE DELIVER

ALL NEW PIECE GOODS

Lovely new patterns in all wanted materials. One lot Quadriga Cloth in wide range of patterns for Dresses, Blouses, Shirts and Skirts. Special, yard..... **45c**

One lot Fast Color Prints in new fall patterns. Per yard..... **29c**

Beautiful new Comal Cottons. Wide range of Plaids and Checks. This New Braunfels Cottons make ideal school dresses. Per yard..... **79c**

New Pin Wale Corduroy for Dresses, Slacks, Jackets. All good Fall colors. Special, per yard..... **1.65**

BOYS HANES T-SHIRTS

in white, blue, tan and gray. None better. **85c**

BOYS AND GIRLS SHOES

All styles for school. Extra well made for hard wear. A size for every boy and girl.

One lot Boys heavy Lug Soles Oxfords Sizes 3 to 6. Dark brown..... **5.45**

Assortment Boys and Girls School Oxfords in sizes 3 to 6. **2.98**

For every child in a style and price to please mother. Prices range—

1.98 up to **5.95**
 Girls Golden Tan Slippers. One strap slip-on Sizes 3 1/2 to 5. **2.98**

ANKLETS

Wide range of colors in all sizes.

35c

BOYS AND GIRLS JEANS AND JACKETS



Blue Jeans for every boy. All standard made brands. Dickie, Hawk, Lee, and Tuf Nut. All well made, 8 oz sanforized. Size 0 through 16.

1.98

One lot Boys Khaki Pants. Extra well made. Sizes 8 to 16. Special—

2.45

Select your School Jacket now. All new styles in wide range of materials and colors. A jacket to suit you. Priced at—

3.98 up to **9.95**

Back To School Graduation

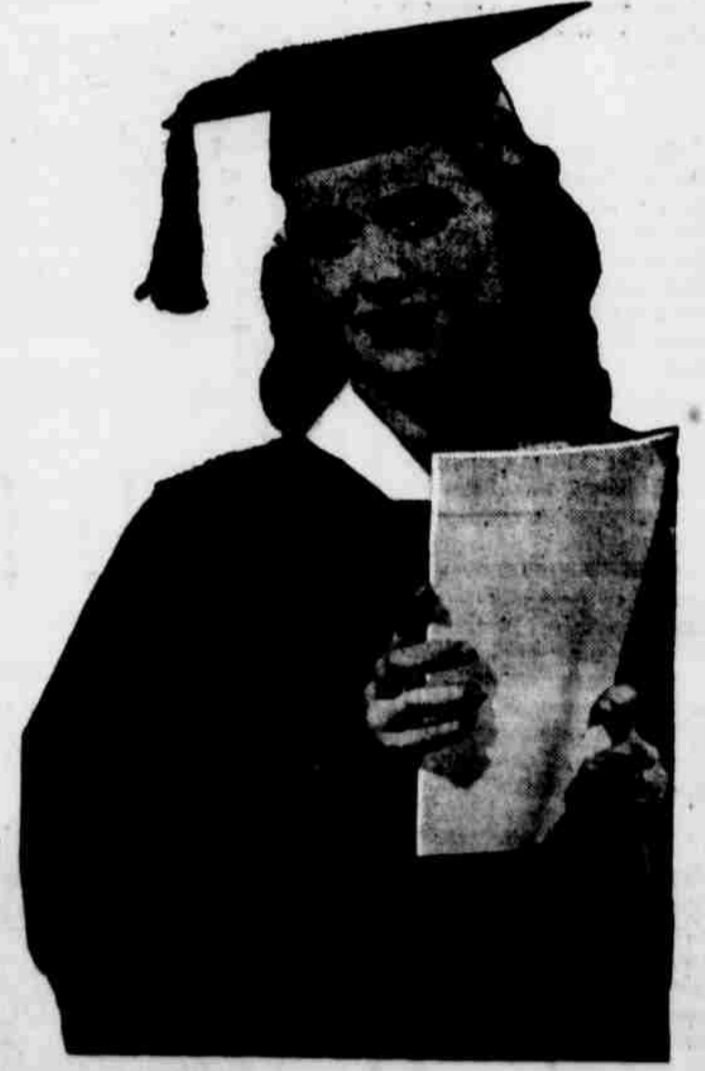
MEANS ANOTHER MILESTONE IN THE GOAL YOU ARE SEEKING

With the pursuit of this goal comes opportunity—opportunity for knowledge, the development of leadership, a greater appreciation of the finer things of life and finally graduation and good citizenship.

All this and more can be had in our great school system of free America.

Therefore let us encourage you to do your best at all times during your school days.

We are also striving for a goal, that of serving our community and each individual therein better and it is through the help and cooperation of the individual that we build a better newspaper.



MR. AND MRS. J. V. CLARE,
 Owner and Publishers
 ALONZO PATE, Editor
 KENNETH TOOLEY, Advertising Manager
 DELBERT ROSE, Printer
 MIKE CAMPBELL, Linotype Operator
 BILLIE BLAKE, Apprentice
 JEWELLA COUCH, Office Assistant

Haskell Free Press

First in The Hearts of Haskell County Readers For 64 Years

Jones Dry Goods "The Cash Store"

Remodelled Classrooms Ready for Opening of Sagerton School

Completely remodelled classrooms and refurnished furniture will be awaiting Sagerton students when they register for the 1950-51 school term September 4, said Miss Irene Stewart, principal.

Miss Stewart has been principal of the school for the past two years. She holds a BS degree from McMurry College and is doing graduate work at Hardin-Simmons University.

The Sagerton school is an elementary school accounting for grades one through eight. The high school students are transported to Rube by bus owned and maintained by the elementary school.

Although high school students are not in attendance there, the elementary enrollment average 110 students last year, Miss Stewart said that she expected about the same number to enroll for the coming term. To account for this large enrollment, the school owns two buses that make daily routes in both morning and afternoon.

One building houses all class-

rooms that are needed and the school lunch room. The lunchroom is maintained by Mrs. M. Y. Benton and Mrs. Cliff Le Fevre. Both ladies attended a workshop at Texas Tech to study ways to plan well-balanced meals that will benefit in the students health, Miss Stewart said. John Ball is serving his first year as janitor of the three-teacher school, succeeding Lee Ball.

Sagerton parents have an active Parent-Teachers Association that meets one night each month. Both men and women cooperate in the association with W. R. Gibson serving as president.

Miss Stewart said this year would be the first year that the school would have a grade school six-man football team. Plans have not been completed for a schedule arranged she said. They will probably play Paint Creek, O'Brien and Mattson, she added.

Members of the school board are W. R. Gibson, chairman; Carl Hurlst, secretary; Claude Bland, Herman Nauret, B. Kupatt, A. H. Teichmann and J. J. Thames.

Northern Star Seed Farms Field Day Set Sept. 7

Annual field day and tour of the Northern Star Seed Farms near O'Brien will be held Thursday, Sept. 7, it was announced this week by S. N. Reed, manager of the seed farms.

The day's program will begin with a meeting at the O'Brien Gin office at 9:30 Thursday morning. Next will be a tour and inspection of the seed block from 9:30 to 10:30, with the group leaving from the gin office.

Following the inspection, a program will be held at the O'Brien Baptist Church, with Reed serving as master of ceremonies.

W. R. Woodward, manager of the Wacona Seed Farms in Waco will make the welcome address, and Kenneth O. Lewis of Benjamin, Knox County Agent, will give the response.

"Outlook for Better Seed" will be the topic discussed by R. V. Miller of Austin, Chief Inspector for the State Department of Agriculture. Prof. J. S. Mogford of the Texas A. & M. College department of agronomy will discuss "Breeding Work of Northern Star Seed Farms."

Entertainment will be provided by a magician, and the Stamps Ozark Quartet of Wichita Falls will furnish a program of music and singing.

A barbecue will be served at noon, to be followed with an afternoon baseball game on the O'Brien Field. Arrangements are being made to match a game and a team from Sheppard Field at Wichita Falls.



W. P. McCollum

W. P. McCollum, HHS Principal, Earns MA Degree

W. P. McCollum, Haskell High School principal, was among the group of 130 who received Masters degrees from Hardin-Simmons University, Abilene, Monday August 21.

Mr. McCollum, who has been a member of the High School faculty here for the past eight years, received the Master of Arts degree.

Approximately 280 students received degrees in the summer commencement program. Of this number 130 received master degrees, master of art and master of education.

Judge T. Whitfield Davidson, United States District Judge from Dallas, gave the commencement address.

William E. King, formerly pastor of the Abilene University Baptist Church, delivered the baccalaureate. Rev. King is pastor of the First Baptist Church of Clovis, N. M.

The number of graduate degrees awarded was the highest in H-SU history, partly due to the influence of the Gilmer-Aikin laws.

The spadefish is almost circular in shape, according to the Encyclopedia Britannica.

Texas Public School System Advances To Higher Level Under New Laws

Texas' already vastly improved public school system will be on an even higher level during the 1950-51 school year it was predicted today, by one of the State's foremost educators.

More classroom facilities and more and better trained teachers will be available, it was pointed out by L. P. Sturgeon, state associate commissioner of education.

Under the new Gilmer-Aikin laws which went into effect last fall the teaching staff was increased by 200 and more than half of the school districts of the state added to their classroom facilities.

An additional 1,500 teachers will be hired for the next school year, Sturgeon said. A survey disclosed many more schools will increase their facilities, Sturgeon also said.

Increase in pay for teachers has added to their morale and made the profession far more attractive to young people, Sturgeon pointed out. More young people are preparing for careers as teachers and these better trained instructors will be available in larger numbers next year to replace retiring instructors and those less adequately trained, according to Sturgeon.

School districts which met the requirements of state law in order to receive additional financial aid from the state had a teacher for every twenty-five pupils in average daily attendance during the last school year, but many districts were forced to put pupils on half-time basis.

"This will be partly alleviated during the 1950-51 school year by the construction of more classrooms and the availability of more teachers," Sturgeon said.

"This will add to the great benefits derived by a great many of our school children in the last school year through their being in smaller classes, where they could get more personal attention."

During the 1948-49 school year a survey conducted by the Texas State Teachers Association disclosed that more than half of the classrooms in the entire state were badly over-crowded.

Sturgeon also had high praise for the state's teachers.

"While pay increases under the Gilmer-Aikin laws averaged only \$500 for teachers, their morale is at the highest in the history of Texas," he said.

"I can see that in their interest in and their attendance of professional meetings I have attended throughout the entire state."

"Superintendents are almost unanimous in their reports of the willingness of teachers to accept additional assignments and to participate in extra-curricular activities."

"Teachers are satisfied and are proud of their profession. That means better education for our children in rooms presided over by well-trained instructors. It is only reasonable that happy, efficient teachers can do far more in imparting knowledge than dissatisfied, inefficient persons."

Increased enrollments in courses leading to degrees in education in the state's colleges was also pointed out by Sturgeon as an indication of the attractive benefits to the children.

Rule High School Faculty Complete For 1950-51 Term

Faculties for Rule's Junior-Senior High School and Grade school have been completed with the election of Miss Dahlia Dean Knippling of Sagerton, a recent graduate of Texas Tech, as home-making teacher, Ewell Sessom, formerly coach at Salado and a 1949 graduate of San Marcos, as basketball coach, assistant football coach, social studies and mathematics teacher, and Mrs. Stella Mae Trice as second grade teacher.

Miss Knippling had a year's experience in elementary work at Old Glory before completing her degree in homemaking. Superintendent J. P. Rudd states that she has expressed approval of the condition of the department, and that Rule High School is looking forward to a progressive and popular homemaking program under her guidance. Girls interested in this work are invited to meet their new instructor at the school during the week before school opens.

Mr. Sessom comes from a year's successful coaching in Central Texas. His athletic experience was gained at Brady High School and Southwest Texas State College. His principal sports were football, basketball, and track. Mr. Sessom is a veteran of World War II serving in the Air Force. With Mrs. Sessom, also a former teacher will move to Rule the latter part of August from San Marcos, where he has been working toward a M. A. degree in physical education. He recently attended the Texas Coaching School at Austin and has just finished assisting in the annual state-wide six-man football and basketball clinic at San Marcos.

Mrs. Trice is returning to the classroom after a brief absence because of her health. Supt Rudd reports that the School Board was happy to welcome her back to the regular faculty after her emergency work last year in completing the term of a resigned teacher.

Completion of the faculty for the colored school was delayed pending some personal interviews of qualified applicants. A better and more comprehensive program is to be provided there with the renovation of the present building improvement facilities, and addition of two teachers.

VISITORS IN HASEN HOME SUNDAY
Mr. and Mrs. D. Hassen from the old country, Syria, Mr. and Mrs. Joe Schaded and family of Paducah, Mrs. B. Hassen and family of Hamlin, Mrs. K. M. Sobe of Sweetwater, Mrs. Sam Salem of Munday, and Mrs. Armon Hassen and children of Sulphur, Okla., were visitors in the home of Mr. and Mrs. S. Hassen Sunday.

CARD OF THANKS
We wish to express our grateful appreciation for the many kindnesses, and beautiful floral offerings during the illness and death of our loved one, F. M. Long. May God bless each of you.—Mrs. F. M. Long and children, Mrs. Addie Long, Mrs. Mamie Angley, R. W. Long and family, J. D. Long and family.

Simplify your record keeping with Card Index Filing System.
All sizes, metal, wood, fiber, complete with cards and index. The Free Press.

IT'S TIME for BROOKS!

Because...
Something must be done now about the runaway cost of our state government—a cost which has increased more than 500 percent in the period between 1935 and 1950. Aside from the cost of World War II, the cost of the Federal government did not increase that much during the same period.

With the State plunging wildly towards a financial crisis, the Lt. Governorship is a business rather than a political office. It needs a business man with a business viewpoint.

Only by the election of a business man can the people of Texas be assured of a direct and vigorous attack on this runaway cost, useless waste, and needless extravagance in our State government.

Only a business man who has not been a part of the system which spawned this era of waste and extravagance can give the problem that searching inquiry and impartial analysis needed now. Pierce Brooks is that man.

The next Lt. Governor of Texas should be above any internal friction, beyond all cross currents of politics, and completely judicial when clashes of personalities arise among members of the Senate. He must be in a position to treat them all alike, to be fair to each, and also to be true to his obligations to the people. Pierce Brooks meets these tests.

Pierce Brooks is the only candidate completely free from the entangling alliances, political obligations, cliques, clans and groups which grow up when men stay in office too long.

The Lt. Governor to be elected in 1950 should not come from the confused atmosphere of the State government, but direct from the people with a program for the people. Pierce Brooks is such a man.

In these crucial times the next Lieutenant Governor should be answerable to the people of the State and not to any group of special interests that has made millions of dollars off the taxpayers.

Pierce Brooks for Lt. Governor

Music Pupils To Be Presented in Recital

The music pupils of Miss Mary Jo Jones, 1950 graduate of Haskell High School, will be presented in a musical recital Thursday night, August 24, at the Magazine Club beginning at 8:00. The music pupils are as follows: Freddie and Gwen Gilliam, Clinton Herren, Jr., Linda Gale Spain, Charlene Cunningham, Pansy Hammer, Mary and Peggy Pogue, Bobby Case, Culver Carney, Lelia Nell Jones, Janice Coker and Cynthia Russell. Everyone is cordially invited to attend.

News that is vital to you can be found in the want ads.

are your brakes



ready for school?

School-time's here again—and that means it's more important than ever that your car's brakes be in quick-stopping shape! Play safe... protect our school children! Be sure of your brakes.



← PLAY SAFE! MAKE THIS SIMPLE BRAKE TEST!

Depress your brake pedal. If it goes within one inch of the floor, an adjustment is needed. If so, see us soon!

Robertson Pontiac Co.
301 S. Ave. E Haskell, Texas

WELCOME BACK TO SCHOOL
School and Home Needs
BYNUM'S HASKELL

RETURNED FROM VACATION
Mr. and Mrs. Rollo Harrell and sons, Jimmie and Gary and Mrs. I. H. Harrell recently returned from a vacation trip in Arkansas, Tennessee, Alabama, Mississippi and Louisiana. They visited Lookout Mountain and the Rock City Garden in Chattanooga, Tenn. A very enjoyable time was reported by all.

Try a want ad in The Free Press

Remember Your First Day At School?



A photograph of your child on her first day at school will help her to remember all those happy memories in later years.

Have your child's photograph made before school opens. Call us and arrange an appointment now! We offer a wide selection of proofs... finished portraits in black-and-white or sepia.

BLOHM STUDIOS
HASKELL, TEXAS

SOMETHING TO CHEER ABOUT!

A COMPLETE STOCK OF SCHOOL SUPPLIES TO GIVE YOU MORE SCHOOL GOING SPIRIT

Our superior selection includes such "must-have" items as:

- WRITING TABLETS All kinds
- RING BINDERS for lots of uses
- PENCILS, PENS All kinds

EVERYBODY'S CHEERING OUR FINE SCHOOL SUPPLIES

REID'S Drug Store
Haskell, Texas

Go Anywhere with FRAZIER

New RCA Victor Portable

PERFECT FOR... PERFECT FOR...

For a trip to the evening in your here's a real compact all new RCA Victor with lots of power and bring you your favorite Has the famous tone system. Why play it on its RCA at home on AC or Come in and ask for RCA Victor BXS.

only \$39.95

FRAZIER Radio & Records

WE ARE IN THE MARKET FOR YOUR

Milo And All Other Grains

We are equipped to give you accurate bonded weights and test, and are paying

Top Market Prices

Bring us your Milo, we guarantee prompt satisfactory service.

Clifton Gro. & Grain Co.
Phone 10

O'Brien Schools To Begin New Year Monday, Sept. 4

Assignments made by the school board will be around the O'Brien schools. Joe Davis, superintendent, said that a few short days before the first meeting of the board, he said, full-length assignments will be made for the school heads.

The O'Brien school grounds locate the high school vocational agriculture shop and gym in one building, the home economics building, a lunchroom and a football field. The first four grades are taught in the home economics building and grades five through eight are taught in the high school building.

The school lunchroom serves one meal a day that is prepared by Mrs. Walter Beasley, Mrs. Ola West and Mrs. Ranz Herrington.

The school owns three teacherages that are located on the campus. One echerage was completed this year for the elementary principal and another teacherage has recently been refinished to make comfortable living quarters for the school heads.

Three buses are owned by the school, one of them being purchased recently. They are operated by Henry Clarke, W. L. Mann and F. A. Johnston.

O'Brien football fans are able to boast of the only lighted six-man football gridiron in the county.

Student organizations is one of the many activities carried on in the school. They have an active Future Homemakers of America chapter under the direction of Mrs. O. K. Edmondson, an active pep squad composed of high school girls and sponsored by Miss Margie Lowrey and this year a Future Farmers of America chapter will be organized and headed by F. A. Johnston.

Two new teachers have been added to the faculty this year. Joe Marshall will begin his first year at O'Brien teaching English. He has a Bachelor's degree and F. A. Johnston who also has a Bachelor's degree will teach vocational agriculture.

Other members of the faculty are Joe Davis, superintendent has been teaching at O'Brien 2 years, teaching commercial subjects and has a Master's degree; William Mann, high school principal, 2 years, science, a Bachelor's degree; O. K. Edmondson, elementary principal and coach, 1 year, 5th grade, Master's degree; Aubrey Fox, 8 years, math, a Bachelor's degree; Margie Lowrey, 1 year, 8th grade, a Bachelor's degree; Robbie Jones, 2 years, 6th grade, a Bachelor's degree; Paulene Autry, 1 year, 3rd and 4th grades, a Bachelor's degree; Gladys Fox, 8 years, 2nd and 3rd grades, a Bachelor's degree; Ruth Robbin, 6 years, 1st grade; Mildred Edmondson, 1 year, home economics, Bachelor's degree.

The school board is composed of Milton Rowan, president; John L. Grindstaff, secretary; Willis Hines, Tolbert Beason, Burt Davis, Grady Ellis and Leonard Force.



JOE DAVIS
O'Brien Superintendent



O. K. EDMONDSON
O'Brien Coach

O'Brien High School Six-Man Football Team To Open Season Sept. 8th

O'Brien six man gridmen will open the pigskin season before home fans when they meet Odell in the first game of the year September 8.

Coach O. K. Edmondson announced this week that workouts would begin September 1 with hard workouts and stiff scrimmages.

Six lettermen will return to the gridiron after losing only three men from last year's team. The lettermen will receive some stiff competition from seven returning squadmen and seven other prospects who will adorn pads for the first time.

Vocational Ag New Course Added In O'Brien School

Vocational Agriculture courses will make its first appearance in O'Brien High School this year, according to an announcement made this week.

J. A. Johnston, a new teacher assignment, will begin his first year in the O'Brien High School as instructor of the new courses.

The course is one that is basic in most rural schools because knowledge of it will be of practical use later in life. Boys will learn planting time, terracing, useful farming habits, how to grade seeds, how to judge farm habits, surveying, woodcraft, and a general knowledge of things that male high school students should know.

Returning lettermen are Dub Johnston, 2 years, 172 lb. end; Roy Hines, 2 years, 150 lb. back; Derwin Lancaster, 2 years, 158 lb. back; Leonard Phipps, 1 year, 172 lb. back; Wallace Cox, 1 year, 138 lb. center; and Wayne Hutchinson, 1 year, 148 lb. end.

Returning squadmen are Billy Samples, 218 lb. end; Clyde Sander, 185 lb. center; Irby Fox, 150 lb. center; Darrel Thomas, 135 lb. end; Aderle Herring, 150 back; Cecil Epply, 105 lb. back; and Early Lancaster, 126 lb. end.

Prospective footballers that will be out the first time are: John L. Grindstaff, 147 lb. back; Bill Dodd Matura, 140 lb. back; Paul Dean Gothard, 127 lb. end; Claude Sanders, 160 lb. center; Jerry Beasley, 109 lb. back; Weldon Hutchinson, 135 lb. end; and J. A. Samples, 106 lb. back.

The 1950 schedule is:
Sept. 8—Odell at O'Brien.
Sept. 14—Goree at O'Brien.
Sept. 21—Benjamin at Benjamin.
Oct. 5—Knox City.
Oct. 12—To be filled.
Oct. 19—Open.
Oct. 26—Paint Creek at Paint Creek.
Nov. 2—Mattson at O'Brien.
Nov. 9—Weinert at Weinert.

For a temporary location, the school has provided a refinished room in the high school building for classes to be held and a shop to be located. After courses are better organized, board members plan to build a vocational agriculture shop. It is in the shop that students study vocations and get their practical training, the announcement said.

Waterfowl Shooting Season In Texas Will Open November 3 for 45 Days

The executive secretary of the Game, Fish and Oyster Commission said Saturday that the annual fall waterfowl season in Texas will open Friday, November 3, and probably last 45 days.

This is not the date preferred by the Commission for the whole state since it voted at its May meeting for a zoning plan to benefit the widely separated north and south parts of the state. It proposed November 10 for the opening date should the zoning suggestion fail.

The Fish and Wildlife Service which sets the shooting periods, rejected the Texas proposal and then gave the Commission the choice of either November 3 or November 17 as the opener for the entire state.

Since liberalized Central Flying regulations are in prospect, a slightly higher bag limit on ducks is considered likely. The limit on ducks last year was four per day per hunter and eight in possession. The Commission at its July meeting requested that both the daily bag and possession limits be set at eight ducks. It is believed that the limit may be placed at five per day and ten in possession.

The limit on geese has not been indicated. Last year Texas hunters could bag five geese per day but could have no more than five in possession.

At its May meeting, the Commission voted for a zoning system whereby the hunters in the Panhandle would be permitted to shoot earlier in conformity with the seasons in Oklahoma and New Mexico which frame the extreme northern area of Texas. But the Federal authorities ignored this proposal. The apparent theory was that having two seasons in one state would place an extra burden on the waterfowl since the hunters themselves might become migratory from one part of the state to the other to take advantage of the varied season dates.

In 1949, Texas had a split duck season of 36 days, dating from November 4 to November 21 for the first half and from December 21 to January 7 for the last half. The executive secretary explained that this arrangement did not suit most of the hunters because of the full-month's spread between the shooting periods.

"It's the same old problem," said the executive secretary. "In a state as big as Texas, which really covers as much area as the average three states, we have extreme difficulty adjusting our hunting needs to the restrictions applied by the Fish and Wildlife Service."

"An early winter in the north that sends the ducks and geese down sooner could give all Texas hunters a break. Always we must keep her duck's angle in mind. The birds must be safeguarded or else we will have no duck hunting at all."

Thorough cleaning of grain bins is necessary to prevent the infestation of the new crop with insects.

Freedom from blood and meat spots in eggs is a factor which is governed mainly by breeding.

Farmers Advised to Control Insects In Stored Grain

Much of the bumper crop of grain sorghum being produced in Texas this year will be stored on the farm. J. A. Deer, assistant extension entomologist of Texas A. & M. College, recommends that farmers give special attention to controlling insect infestations in the stored grain.

Thorough cleaning of the bins is necessary to prevent the new crop of grain being mixed with old grain which is already infested. If the bins are constructed of wood, apply a residual spray per 1000 square feet of surface area. Spray steel bins around the door frames and other places where the insects may be concealed.

Deer says that sprays consisting of two and one-half parts DDT or chlordane as emulsions or water suspensions have been found satisfactory for treating grain bins. A water suspension of DDT can be prepared by mixing ten and one-half pounds of 50 percent wettable DDT powder in 25 gallons of water.

A further precaution against insects, Deer advises removing all sources of infestation, including feed waste grain and other materials stored or accumulated near the bins, before the new grain sorghum is moved in.

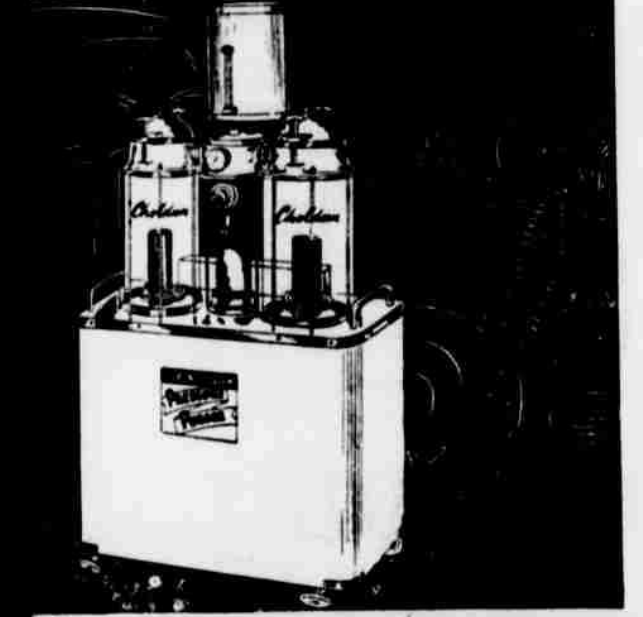
Deer warns also that grain sorghum should be as dry as possible when stored. If the moisture content is higher than 12 percent, the insect infestation will be heavier.

Just a 15 Minute Drive To West Texas' Most Modern
H-H Drive-In Theatre
Now Showing Big First Run Pictures
Fri.-Sat., Aug. 25-26

HIT THE ICE
Sun.-Mon., Aug. 27-28

Davy Crockett INDIAN SCOUT
GEORGE MONTGOMERY • ELEN BERRY
TUES. IS BUCK NITE
\$1.00 Per Carload
of People on Regular Admission
Whichever Cost You Less
STRIKE IT RICH
with ROD CAMERON
Wed.-Thurs., Aug. 30-31
ROBERT ROBINSON BATTLE
Key Largo

VENT OVERHEATING!



Pressure Purger
MODERN WAY TO CLEAN COOLING SYSTEMS
We Pressure Purge your Radiator and Motor thoroughly by:
1. HEATED CHEMICAL ACTION
2. MECHANICAL AGITATION
Approved and used by leading Car Factories and Oil Companies
WILSON TEXACO STATION
200 South Ave. E
Phone 319-W

POWER CHAMP
OF THE 5 LEADING MAKES IN THE 16,000-LB. G.V.W. RANGE

NEW FORD 110-H.P. SIX

ONLY FORD GIVES YOU A CHOICE OF V-8 OR SIX IN 4 GREAT ECONOMY ENGINES

95-h.p. 226 cu. in. Six. For all models except BIG JOBS.	100-h.p. 230 cu. in. V-8. For all models except Ford Delivery and BIG JOBS.	105-h.p. 254 cu. in. V-8. For use in Series F-4.	105-h.p. 237 cu. in. V-8. For BIG JOBS only.
--	---	--	--

Ford F-6 with 110-h.p. engine brings you more than any of the other 4 leading makes in its class—hard none! This new Six, plus 4-speed Synchro Silent transmission, and bigger drive shaft available in the F-6 make it a top performer in the heavy-duty field.

High-lift camshaft... free exhaust valves... chrome-plated top rings... you get these and many other advancements in the 110-h.p. Six. See your Ford Dealer today. Get all the facts on this 254-cu. in. powerhouse!

Ford Trucks Last Longer
Ford Trucking Costs Less Because—
FORD TRUCKS LAST LONGER
Ford latest registration data on 4,502,000 trucks. No insurance experts prove Ford Trucks last longer. P.A.A.

BILL WILSON MOTOR COMPANY
SALES AND SERVICE
HASKELL, TEXAS

Back to School

Book Satchels 98c to \$1.79	Boy's Sox 25c to 45c pair
Loose Leaf Notebooks 19c to 39c	Boy's Blue Jeans \$1.98
Leather Zipper Notebooks \$1.79	Boy's Cowboy Shirts \$1.98
School Scissors 15c and 25c	Corded Yarn Polo Shirts 98c
Notebook Paper 5c-10c-25c sizes	Girl's School Oxfords \$2.69 to \$3.98
Girl's School Dresses Sizes 7 - 12 \$1.98	Boy's Plaid Gingham Shirts \$1.98
Humpty Dumpty Anklets 39c pair	Boy's School Oxfords \$2.98 to \$5.95

Fouts Dry Goods & Variety

Get Ready for
SCHOOL

"CAREERIST"
by BETTY BARCLAY

So much a part of your well groomed career or campus life, this handsome dress with bands of tucking on the bodice! Smartly styled in Burlington's gabardine and in these lively fall colors: Evergreen, butterscotch, doe beige, gaucho red, flag blue, cobra, Sizes 9 to 15. \$8.95.

Others in plaid gingham and solid color in pima cloth.
(As seen in August Charm)

Fashion Shoppe
MRS. LEONE PEARSEY

23 Squadmen Due To Report This Year At Rochester

Twenty-three prospective Rochester Steers are expected to report for football workouts September 1. Coach Phil Simmons has announced.

Uniforms and pads will be issued every prospect on September 1 and workouts will begin as soon as possible in order for every player to be in good condition in time for the first game September 8.

Among the 23 expected footballers will be 13 returning lettermen. Two of them were elected to the 1949 all-district 9-B team and two of them made the second all-district team.

Arlow Hearne, fullback, and Eugene Parker, halfback, starred on the Steer team and loomed into all-district lineup. Mack Ray Clark, quarterback and Bob Clover, tackle, made the second all-district team.

Seven Steers graduated from the Rochester team last year, but the Coach is expecting a good season with 13 lettermen, other 1949 squadmen and a number of freshmen who will be playing for the first time on the varsity team.

Returning lettermen are: Mack Ray Clark, 2 years, 155 lbs., quarterback; Arlos Hearne, 2 years, 155 lbs., fullback; Eugene Parker, 2 years, 160 lbs., halfback; J. T. Sego, 2 years, 131 lbs., end; Bill Campbell, 2 years, 130 lbs., end; Dan Smith, 2 years, 143 lbs., guard; Joe Davidson, 2 years, 140 lbs., guard; Ernest Lewis, 1 year, 135 lbs., guard; Carlos Hargraves, 1 year, 156 lbs., center; George Mullins, 2 years, 195 lbs., tackle; Bob Glover, 2 years, 150 lbs., tackle; and Alvin Pitman, 1 year, 152 lbs., tackle.

Co-Captains for the Steers during the 1950 season will be Mack Ray Clark and Arlos Hearne.

Schedule

- Sept. 8—Lorraine at Lorraine.
 - Sept. 15—Clyde at Rochester.
 - Sept. 22—Estelina at Rochester.
 - Sept. 29—Open.
 - Oct. 6—Aspermont at Rochester.
 - Oct. 13—Woodson at Woodson.
 - Oct. 20—Trent at Trent.
 - Oct. 27—Lueders at Lueders.
 - Nov. 3—Valey Vew at Rochester.
 - Nov. 10—Hobbs at Rochester.
 - Nov. 17—Rule at Rule.
- *Denotes conference games.



ROBERT E. KING
Rochester Superintendent



PHIL SIMMONS
Rochester Coach

Rochester School System To Begin New Term Monday, September 4th

Monday, September 4, will mark the opening of the 1950-51 school year for the Rochester public schools, Robert R. King, superintendent, announced this week.

One new member of the faculty has been added to the teaching staff and another is to be elected to teach first graders. Sallie Graham will be teaching the first grade this year for the first time in the Rochester school. All other members of the school staff were re-elected.

Enrollment last year in elementary school was about 325 while high school enrollment was approximately 100. Supt. King said that according to his expectations the enrollment would be about the same after students are enrolled September 4.

Five buildings and an athletic field are located on the school's property. They have a vocational agriculture building, a gymnasium, a lunchroom, elementary school and the high school building.

One bus has recently been purchased to make a total of five buses owned and operated by the Rochester school district. They are under the maintenance of Troy Sanders.

It was reported that general repair work had been done throughout the school buildings. The major construction was re-

finishing the high school building and completely refinishing the home economics department.

Rochester has an active Future Homemakers of America chapter and an active Future Farmers of America chapter. The FHA is supervised by Bettie Herring and the FFA is under the sponsorship of Kenneth Roberts. They also have a very active pep squad and band organization. Maxine Hamilton heads the pep squad girls while Hilmar Wagner directs the band.

The high school faculty is composed of Robert R. King, superintendent who has been at Rochester 4 years and holds a BA degree; Phil R. Simmons, principal and coach, 6 years, a BS and MA degree; Bettie Herring, home economics, 1 year, a BA degree; Kenneth Roberts, vocational agriculture, 3 years, a BS degree; Maxine Hamilton, commercial subjects, 3 years, a BS degree; Troy Gauntt, assistant coach, math and science, a BS degree; Mrs. Bess Porter, English, 11 years, a BA degree; and Hilmar Wagner, band and music, 1 year, a BS degree.

Members of the grade school teaching staff are Sallie Graham, first grade, first year, a BS degree; Mrs. Violet Hamilton, second grade, 9 years, a BS degree; Mrs. Ruth Hardy, third grade, a BA degree; Mrs. Sidney Corley, fourth

Practice for Mattson Mustangs to Begin Wednesday

First practice session for the Mattson Mustangs 8-man football squad has been scheduled for Wednesday afternoon, Aug. 30. Coach John Hosea has announced.

Rigorous workout schedules will be followed in conditioning all squadmen for the coming season, and if possible, several practice games will be billed.

District schedule has not been definitely worked out, but the Mustangs will face four traditional opponents in conference play: Goree, Benjamin, Paint Creek and OBrien.

VISITING IN HASKELL AND KNOX CITY

Mr. and Mrs. John Atterbury, Jr., and children, Joan and John Henry of Bryan, are spending a summer vacation in the home of her parents, Mrs. Elam Parikh of this city, and with his parents, Mr. and Mrs. John Atterbury, Sr., of Knox City.

HASKELL VISITOR

Frank Martin, tractor and farm implement dealer of Seymour was a business visitor in Haskell Tuesday.

COMMUNITY MEETING TO MARK OPENING DAY OF PAINT CREEK SCHOOL

Following an annual custom, patrons and residents of the district will hold a community meeting at Paint Creek rural high school Monday morning preceding the opening of school. A brief program will be held in the school auditorium.

grade, 15 years, a BA degree; Mrs. Georgeanne Simmons, fifth grade, 2 years, a BA degree; Mrs. Eunice Michael, sixth grade, 9 years, a BS degree; Mrs. Garvin Foote, seventh grade, 3 years, a BA degree; and Orville Hamilton, principal, 4 years, a BA degree.

Composing the Rochester school board are John Wheeler Lee, president; Manford Reeves, Jess Pinkerton, Lewis Nanny, Pete Huntsman, Willard Mitchell, and Pete Tanner.

MATTSON ADDS NEW PLAYGROUND EQUIPMENT

A new slide and swing set has been added to the playground equipment of Mattson rural high school, and the new units will be installed and ready for opening of the term Monday.

VISITORS FROM MEMPHIS, TENN.

Visitors in the home of Mrs. T. J. Hodgin and Mrs. I. H. Harrell were their nephew, Mr. and Mrs. Pinkney Freeman and son, Don, of Memphis, Tenn.

CARD OF THANKS

We want to express our deep appreciation and gratitude to our many friends for the many kind expressions of love and sympathy at the time of the death of our loved one. To those who brought

food and the lovely singing. May God bless everyone.—Mrs. S. L. Sr. and family.

Put pep in the putting profitable job.



"I spent 5 minutes and saved \$100"

Says Walter Boyd, Los Angeles, Calif.



Come in... see how you could pay \$1,000 more and still get all Dodge extra room... ease of handling... famous dependability.

You can surely spare 5 minutes—especially when that's all it takes to see exactly how you could pay \$1,000 more without getting everything Dodge gives you!

Yes, in just 5 minutes behind the wheel, you'll discover roominess that costs more than you don't give you.

NEW BIGGER DODGE
Just a few dollars more than the lowest-priced cars!

Pitman Motor Company
Ave E and N. 2nd Haskell

Back to School VALUES

At **FELKER'S**

not just "sales talk" but **guaranteed**

— for longer wear!
— for better looks!
— for bigger value!

Visit our store for all your needs. We have the best stock of merchandise we have had in seven years. All are popular, well-known brands such as—

- Curlee Suits
- Berkely Square Suits
- Campus Togs Suits
- Freeman Shoes
- Dobbs Hats
- Resistol Hats
- Borsalino Hats
- Interwoven Socks
- Arrow Shirts, (Underwear and Ties)
- Ripon Loafer Socks
- Hickok Belts
- Hickok Cuff Links

- B V D Sport Shirts
- Botany Sport Shirts
- Arrow Sport Shirts
- Botany Pants
- Esquire Pants
- Californian Leather Coats
- H & L Block Corduroy Coats
- Botany Sport Coats
- Brentwood Sweaters
- Lamb Knit Sweaters
- Knothe Pajamas
- Stafford Robes

FREE!

Every student buying as much as \$50.00, will receive a \$5.95 Sport Shirt FREE!

Felker Men's Wear
"THE STORE OF FAMOUS BRANDS"

Berkely Square

Cash in on these BUYS

Special for Friday & Saturday, Aug. 25-26

<p>Cherry Bell MEAL 5 Lbs. 42c</p>	<p>Admiration Coffee 1 Lb. 78c</p>	<p>Our Darling CORN No. 303 Can 19c</p>
<p>Libby's PINEAPPLE JUICE No. 2 Can 19c</p>	<p>SLICED PINEAPPLE No. 2 Can 33c</p>	<p>TOMATOES Can 2 for 2</p>
<p>West Texas MAPLE FLAVOR SYRUP \$1.10</p>	<p>Morton's Free Running SALT box 10c</p>	<p>GINGERBREAD MIX Dromedary 2</p>
<p>Regular Size OXYDOL 26c</p>	<p>Northern TISSUE 3 Rolls 29c</p>	<p>AJAX CLEANSER can</p>

MEATS

Pickle	Pound	
PIMENTO LOAF		38c
Smoked	Pound	
Bacon Squares		35c
Velveeta	2 Lb. Box	
CHEESE		83c
Bulk	Pound	
WEINERS		36c

PLENTY OF NICE FRESH DRESSED FRYERS

FRUIT JARS 7

RICE 3

OATS 1

Ball 1 Doz. 7

White House 2 lb. 3

3 Minute 20 oz. 1

GHOLSON GROCERY

Phone Us Your Orders—We Deliver—Phone 79. All Groceries Sold Quality Guaranteed

Creek School Term To Begin 28 Under New Superintendent

Veteran West Texas... approximately 225 students is anticipated... with around 65 of this number in high school divisions.

beginning his second year with the Haskell county school. E. A. Howard, with a BA degree from Texas Tech will teach vocational agriculture for the second year.



DAN McRAE
Paint Creek Superintendent



L. W. NORMAN
Mattson Superintendent

Early Opening of 1950-51 School Term Scheduled at Mattson Rural High

Mattson Rural High School will officially begin the 1950-51 school term Monday, August 28, in order to compensate for any time which may be lost due to "rained out" roads during winter months, and perhaps a week of cotton pulling later in the fall.

in preparation for the coming term. The facilities include the main building, housing 12 classrooms and a gymnasium, a lunchroom building, three modern teacherages and garages, school bus sheds, and well equipped playground and football field.

According to L. W. Norman, who is beginning his third year as superintendent of the progressive rural high school, the program for the ensuing school year will be enriched with new audiovisual aids, a refinished and fully equipped school plant, and an excellently trained faculty.

Considerable work has been done on the interior of all buildings, including the refinishing and placing of new flooring in the structures. A new 20 foot deep freeze unit has been added to the lunch room this year. An average of 100 students are served by the lunchroom daily during the school term.

John Hosea, former Golden Gloves champion and TWC grid star will take over coaching duties at Mattson this year. He has been coach and principal of Gary High School, where 11-man football was played, but he likes the fast-moving, open type of 6-man play, and has coached a six man team for two years.

The Mattson district operates four buses in extending school facilities to all scholastics in the 165 square mile district. With the opening of the term Monday, the buses will run about 8:30 a. m. and return before noon Monday. Drivers of the buses and routes traveled are: Swenson Ranch route — Mrs. Anna Mae Roberts, Irby-Douglas—Jake Howard, Cottonwood-Brushy — G. H. Forehand, and Pleasant Valley—John Hosea.

Other members of the faculty include George Beard, principal; Mrs. Anna Mae Roberts, Mrs. John Hosea, Mrs. Ruby Faye Norman, and Miss Jew Williams. Many improvements have been made on the modern school plant during the spring and summer

Mattson School Head Is Veteran Educator

Beginning his third year as head of the Mattson Rural High School system, Supt. L. W. Norman has a background of training and more than 12 years teaching experience. He has both a BA and MA degree from North Texas State, Denton.

Norman began his teaching career as principal of Sagerton schools, a position he held for two years. Then he served for a similar period at Chillicothe, and was superintendent at Medicine Mound for one year. He served three years in the Army Air Force during the last war, and was discharged with the rank of First Sergeant. Next he was a member of the Rule High School faculty for two years before accepting the Mattson superintendency.

Norman is an active member of the Mattson Baptist Church, and treasurer of the church building fund. He is a member of the Royal Arch Masons, a Legionnaire, an ex-Rotarian, Mrs. Norman is the former Ruby Fay Doyle of Rule and they have a 4-year-old son, James Lee.

Try a Want Ad In The Free Press

TO THE VOTERS OF PRECINCT NO. 4:

With only a few days remaining before the Second Primary, there are many of you I will not be able to see personally. For that reason, please allow me to take this method of asking for your consideration and support.

I am grateful for the splendid vote given me in the first primary, and for the encouragement expressed by the people of the precinct in recent days.

If honored with the office of Commissioner, I will devote my full time toward making you an efficient, accomodating official.

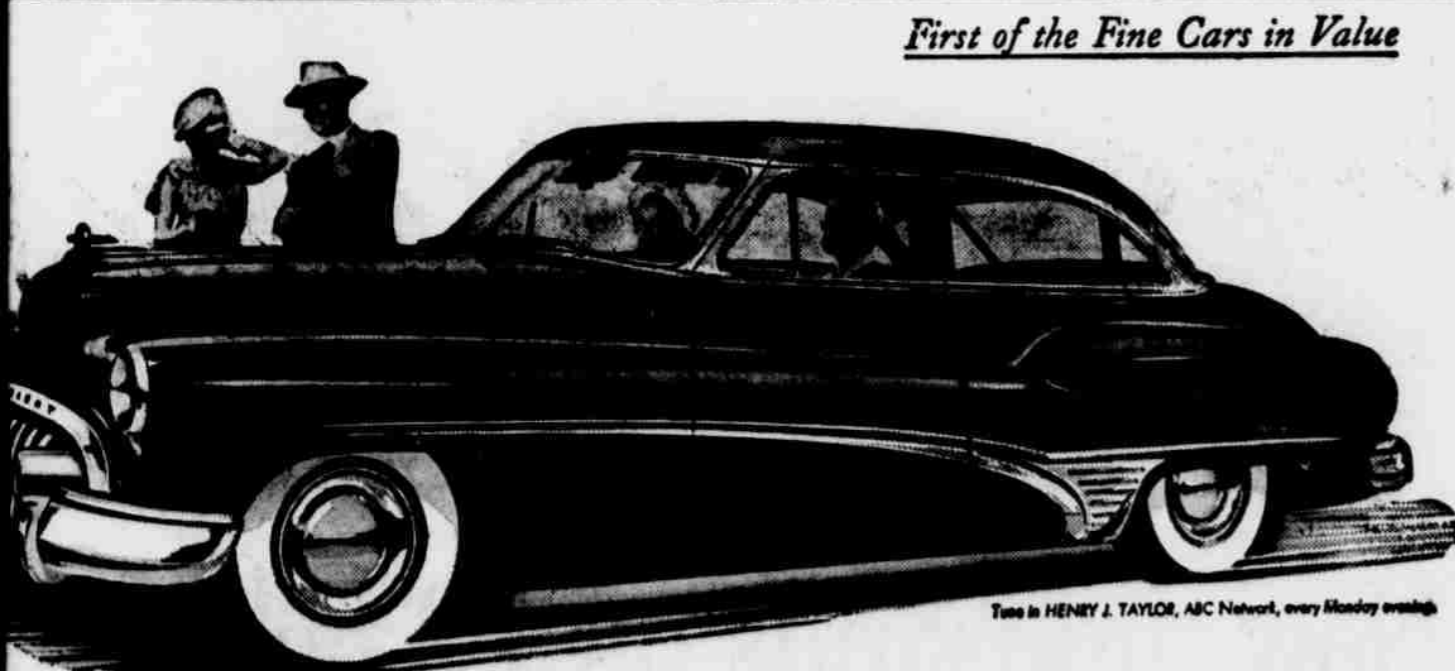
D. S. (DAVE) STRICKLAND

QUALIFIED
By Experience
for
Supreme Court
Place 3

MEADE F. GRIFFIN OF PLAINVIEW

Appointed to the Texas Supreme Court in April, 1949... leader over three opponents in Primary—His home county voted 18-1 for Judge Griffin.

JUDGE MEADE F. GRIFFIN
FOR
A TERM OF HIS OWN



First of the Fine Cars in Value

It's a very satisfying feeling

YES, it's good to slip into a truly fine automobile and sense its richness, its comfort, its room.

And there's a great thrill in touching off the waiting power of a great-hearted straight-eight and feeling its swift response at its speed.

It's fun to count the quick, admiring glances thrown your way.

It's nice to have a car that parks easily, for all its inches. It's very pleasant to do away with gear-shifting and clutch-pedal pushing, and know in its stead the utter smoothness of Dynaflow Drive's silken transmission of power.

And still that doesn't probe the depths of a ROADMASTER owner's secret satisfaction.

For while he knows he has a fine car, by its look, its feel, its appointments—

While he has performance at his command that needs play second fiddle to no other on the road—

While he enjoys a very special measure of creature comfort in the quite matchless gentleness of ROADMASTER's ever-level ride—

He knows too that he has made

an exceptionally wise investment: He has spent his money for the things that make a fine car fine—and nothing simply for show.

He has paid the lowest price per pound in the fine-car field—he has the very satisfying feeling of knowing his dollars have given him solid merit, and solid merit alone.

We'd like to have you try ROADMASTER in honest comparison with the highest-priced cars to be found. We'd like to have you try to match it for room, for comfort, for finish, for handling ease and for ability on the road.

Then check the prices—and see if your own sense of value doesn't advise signing up right now with your Buick dealer for a Buick ROADMASTER.

YOUR KEY TO GREATER VALUE

Buick Roadmaster

FOUR-WAY FOREFRONT
This rugged front end (1) sets the style note, (2) saves on repair costs—vertical bars are individually replaceable, (3) avoids "locking horns," (4) makes parking and gorging easier.

Richey - Strain Co.

510 South First

Haskell, Texas

Rule Bobcats Will Play Opener In New Stadium

The Rule Bobcats, District 9-B football champions and 1949 regional finalists, will play their first scheduled home game on an improved gridiron and new stadium.

Earlier this spring, fresh dirt was spread on the grass. Along with his other duties in reconditioning the school buildings, the custodian and his helpers have kept the bermuda watered and cut until there will be a deep resilient turf by game time. When the field is lined, by the time the whistle blows for the opening kick off, no high school in this part of the state will have a better sod underfoot. Superintendent Rudd voices the opinion that, as soon as the school can get a practice field underway on adjoining property, the playing field can be kept in top condition throughout the season.

In appreciation of the public interest in and support of the school demonstrated by their overwhelming vote earlier this year to raise the tax rate for school purposes, the Rule school board felt it mandatory upon them to raise necessary funds for repair, replacement, and improvement of the stands on the athletic field from sources other than taxes. At the last regular session of the school board, trustees adopted a plan to finance a 504-seat steel stand through the sale of 4 per cent interest bearing notes secured only by reserved seat sales. The local Rotary Club undertook the sponsoring of this sale, and they were sold out before the first day of the sale was over.

As a result of his planning and the successful financial drive to back it, school officials advise that spectators can expect to have available in the center of the east side a modern, comfortable, new steel stand 80 feet long by nine rows high which will compare favorably with any in this section of the state. Lumber from the razing of this part of the present stand will be used to repair and improve the remaining stands on the east and the visitors' stands on the west. Work is expected to begin shortly on the removal of the central portion of the east stands to make way for the pouring of concrete piers and beams upon which the steel is to be erected. It is hoped that labor contributed by interested persons to this demolition and in applying wooden seats and walkways to the finished steel will materially reduce the maximum cost, leaving a margin for added repairs and improvements.

GLENN MARUGG EMPLOYED BY BYNUM SERVICE STATION
Glenn Marugg who has been farming for the last several months is now employed by Bynum's Texaco Station. He started his duties at the above business Monday morning of this week.



Camp Fire	Can	Our Value, Cut	No. 2 Can
Pork & Beans	9c	Green Beans	15c
Don Rio	No. 2 Can	MILK	small 7c
TOMATOES	10c		
Our Darling			
CORN		No. 303 Can	19c
White Swan			
TINY TOT PEAS		No. 303 Can	31c

ONEAL'S RECIPE OF THE WEEK By Mary Lee Taylor

Ranch Style Corn
1/2 cup finely cut bacon
3 tablespoons finely cut onion
1 1/2 cups canned, cream style corn

1/2 teaspoon salt
few grains pepper
2 tablespoons egg
1/4 cup hot milk
Cook bacon slowly until crisp. Drain off fat; save bacon. Put 2 tablesp. fat back into skillet. Add onion and cook slowly 5 min. Add corn, salt and pepper. Heat to boiling. Add all at once the eggs and milk. Cook and stir over low heat about 3 min., or until mixture thickens. Add bacon. Makes 4 servings.

You Will Need:
Pet Milk, Cream Style Corn, Bacon, Eggs and Onions.

Pinto 2 Lbs.
BEANS 25c

Northern Facial 300 Count
TISSUES 25c

SEEDLESS GRAPES lb. 10c

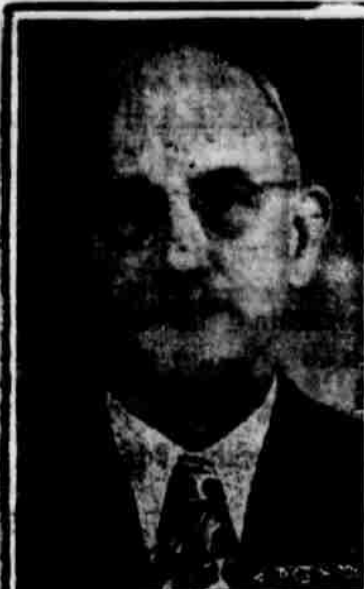
SPUDS pound 6c

BANANAS pound 12c

O'Neal's Food Store

PHONE 23

WE DELIVER



Judge Meade Griffin's

Home town people of Plainview, Hale County, invite their friends and neighbors of this area to join them in giving a real old style West Texas Boost to Judge Griffin for his first elective term to the Supreme Court. He carried his home county in the first primary 4,234 votes to 256 for his three opponents and had a big statewide lead.

He's Efficient Energetic Honest

Having served with distinction for 15 months since appointment, he now deserves a full elective term.

Vote August 26th

Paid by Hale County Friends

NOTICE
 TO ALL OWNERS OR CLAIMING ANY PROPERTY ABUTTING UPON THE HERINAFTER MENTIONED PORTIONS OF STREETS AND AVENUES IN THE CITY OF HASKELL, TEXAS, AND TO ALL OWNING OR CLAIMING ANY INTEREST IN ANY SUCH PROPERTY:

The Governing Body, the City Council of the City of Haskell, Texas, has ordered that certain portions of streets and avenues in the City of Haskell, Texas, be improved by raising, grading and filling same and installing concrete curbs and gutters where adequate curbs and gutters are not now installed on proper grade and line and by paving with a triple penetration asphalt surface on a six (6) inch compacted caliche base course, together with incidentals and appurtenances, all in accordance with the Plans and Specifications and Contract Documents titled "SPECIFICATIONS FOR STREET IMPROVEMENTS CITY OF HASKELL, TEXAS," which said Plans and Specifications and Contract Documents are on file with the City of Haskell, Texas; and contract has been made and entered into with Strain & Brown, Inc., a corporation with its principal office and place of business in San Angelo, Texas, for the making and construction of such improvements.

Estimates of the cost of such improvements for each portion of said streets and avenues have been prepared and approved.

The portions of said streets and avenues so to be improved, together with the estimated cost of the improvements for each such portion of said streets and avenues and the amount or amounts per front foot proposed to be assessed against the abutting property and owners thereof, on each such portion of said streets and avenues, are as follows:

On NORTH 2ND STREET, from its intersection with the east property line of Avenue E to its intersection with the east property line of Avenue C, SAVE AND EXCEPT its intersection with Avenue D, known and designated as Unit No. 31; the estimated cost of the improvements is \$7,799.03; the estimated amount per front foot to be assessed against abutting property and the owners thereof for curb and gutter is \$1.35; the estimated amount per front foot to be assessed against abutting property and the owners thereof for improvements exclusive of curb and gutter is \$3,185.00; total estimated amount per front foot to be assessed against abutting property and the owners thereof is \$4,535.00.

On AVENUE D, from its intersection with the north property line of North 2nd Street to its intersection with the south property line of North 4th Street, SAVE AND EXCEPT that portion of its intersection with North 3rd Street lying east of the east curb line of Avenue D, known and designated as Unit No. 32; the estimated cost of the improvements is \$5,594.45; the estimated amount per front foot to be assessed against abutting property and the owners thereof for curb and gutter is \$1.35; the estimated amount per front foot to be assessed against abutting property and the owners thereof for improvements exclusive of curb and gutter is \$2,531.7; total estimated amount per front foot to be assessed against abutting property and the owners thereof is \$3,881.7.

On AVENUE C, from its intersection with the north property line of South 1st Street to its intersection with the south property line of North 2nd Street, SAVE AND EXCEPT its intersection with North 1st Street, known and designated as Unit No. 33; the estimated cost of the improvements is \$5,489.31; the estimated amount per front foot to be assessed against abutting property and the owners thereof for curb and gutter is \$1.35; the estimated amount per front foot to be assessed against abutting property and the owners thereof for improvements exclusive of curb and gutter is \$3,185.00; total estimated amount per front foot to be assessed against abutting property and the owners thereof is \$4,535.00.

On NORTH 4TH STREET, from its intersection with the east property line of Avenue E to its intersection with the east property line of that portion of Avenue C that intersects North 4th Street on the south SAVE AND EXCEPT its intersection with Avenue D, known and designated as Unit No. 34; the estimated cost of the improvements is \$5,221.29; the estimated amount per front foot to be assessed against abutting property and the owners thereof for curb and gutter is \$1.35; the estimated amount per front foot to be assessed against abutting property and the owners thereof for improvements exclusive of curb and gutter is \$2,123.3; total estimated amount per front foot to be assessed against abutting property and the owners thereof is \$3,473.3.

On AVENUE D, from its intersection with the south property line of North 4th Street to its intersection with the south property line of North 6th Street, known and designated as Unit No. 35; the estimated cost of the improvements is \$5,594.13; the estimated amount per front foot to be assessed against abutting property and the owners thereof for curb and gutter is \$1.35; the estimated amount per front foot to be assessed against abutting property and the owners thereof for improvements exclusive of curb and gutter is \$3,473.3; total estimated amount per front foot to be assessed against abutting property and the owners thereof is \$4,847.43.

On AVENUE D, from its intersection with the north property line of North 11th Street to its intersection with the south property line of North 13th Street, known and designated as Unit No. 39; the estimated cost of the improvements is \$4,614.30; the estimated amount per front foot to be assessed against abutting property and the owners thereof for curb and gutter is \$1.35; the estimated amount per front foot to be assessed against abutting property and the owners thereof for improvements exclusive of curb and gutter is \$2,123.3; total estimated amount per front foot to be assessed against abutting property and the owners thereof is \$3,473.3.

On AVENUE D, from its intersection with the north property line of North 11th Street to its intersection with the south property line of North 13th Street, known and designated as Unit No. 40; the estimated cost of the improvements is \$2,131.67; the estimated amount per front foot to be assessed against abutting property and the owners thereof for curb and gutter is \$1.35; the estimated amount per front foot to be assessed against abutting property and the owners thereof for improvements exclusive of curb and gutter is \$2,123.3; total estimated amount per front foot to be assessed against abutting property and the owners thereof is \$4,355.00.

On AVENUE D, from its intersection with the north property line of North 14th Street, known and designated as Unit No. 41; the estimated cost of the improvements is \$2,352.81; the estimated amount per front foot to be assessed against abutting property and the owners thereof for curb and gutter is \$1.35; the estimated amount per front foot to be assessed against abutting property and the owners thereof for improvements exclusive of curb and gutter is \$2,123.3; total estimated amount per front foot to be assessed against abutting property and the owners thereof is \$4,535.00.

On AVENUE D, from its intersection with the north property line of North 14th Street, known and designated as Unit No. 42; the estimated cost of the improvements is \$4,260.83; the estimated amount per front foot to be assessed against abutting property and the owners thereof for curb and gutter is \$1.35; the estimated amount per front foot to be assessed against abutting property and the owners thereof for improvements exclusive of curb and gutter is \$1,715.00; total estimated amount per front foot to be assessed against abutting property and the owners thereof is \$3,065.00.

On AVENUE D, from its intersection with the south property line of South 1st Street to its intersection with the south property line of South 2nd Street, SAVE AND EXCEPT that portion of its intersection with South 2nd Street lying west of the west curb line of Avenue D, known and designated as Unit No. 43; the estimated cost of the improvements is \$3,413.37; the estimated amount per front foot to be assessed against abutting property and the owners thereof for curb and gutter is \$1.35; the estimated amount per front foot to be assessed against abutting property and the owners thereof for improvements exclusive of curb and gutter is \$3,185.00; total estimated amount per front foot to be assessed against abutting property and the owners thereof is \$4,535.00.

On AVENUE D, from its intersection with the south property line of South 2nd Street to its intersection with the south property line of South 3rd Street, SAVE AND EXCEPT that portion of its intersection with South 3rd Street lying west of the west curb line of Avenue D, known and designated as Unit No. 44; the estimated cost of the improvements is \$3,396.75; the estimated amount per front foot to be assessed against abutting property and the owners thereof for curb and gutter is \$1.35; the estimated amount per front foot to be assessed against abutting property and the owners thereof for improvements exclusive of curb and gutter is \$3,185.00; total estimated amount per front foot to be assessed against abutting property and the owners thereof is \$4,535.00.

On AVENUE D, from its intersection with the south property line of South 3rd Street, SAVE AND EXCEPT its intersection with Avenue D, known and designated as Unit No. 45; the estimated cost of the improvements is \$3,448.10; the estimated amount per front foot to be assessed against abutting property and the owners thereof for curb and gutter is \$1.35; the estimated amount per front foot to be assessed against abutting property and the owners thereof for improvements exclusive of curb and gutter is \$3,185.00; total estimated amount per front foot to be assessed against abutting property and the owners thereof is \$4,535.00.

On SOUTH 2ND STREET, from its intersection with the east property line of Avenue E to its intersection with the west curb line of Avenue D, known and designated as Unit No. 46; the estimated cost of the improvements is \$2,967.12; the estimated amount per front foot to be assessed against abutting property and the owners thereof for curb and gutter is \$1.35; the estimated amount per front foot to be assessed against abutting property and the owners thereof for improvements exclusive of curb and gutter is \$3,185.00; total estimated amount per front foot to be assessed against abutting property and the owners thereof is \$4,535.00.

and gutter is \$2,123.3; total estimated amount per front foot to be assessed against abutting property and the owners thereof is \$3,473.3.

On AVENUE D, from its intersection with the north property line of North 6th Street to its intersection with the south property line of North 8th Street, known and designated as Unit No. 36; the estimated cost of the improvements is \$3,882.81; the estimated amount per front foot to be assessed against abutting property and the owners thereof for curb and gutter is \$1.35; the estimated amount per front foot to be assessed against abutting property and the owners thereof for improvements exclusive of curb and gutter is \$2,531.7; total estimated amount per front foot to be assessed against abutting property and the owners thereof is \$3,881.7.

On AVENUE D, from its intersection with the north property line of North 8th Street to its intersection with the south property line of North 10th Street, known and designated as Unit No. 37; the estimated cost of the improvements is \$2,274.27; the estimated amount per front foot to be assessed against abutting property and the owners thereof for curb and gutter is \$1.35; the estimated amount per front foot to be assessed against abutting property and the owners thereof for improvements exclusive of curb and gutter is \$2,123.3; total estimated amount per front foot to be assessed against abutting property and the owners thereof is \$3,473.3.

On AVENUE D, from its intersection with the south property line of North 9th Street to its intersection with the North property line of North 11th Street, known and designated as Unit No. 38; the estimated cost of the improvements is \$5,755.65; the estimated amount per front foot to be assessed against abutting property and the owners thereof for curb and gutter is \$1.35; the estimated amount per front foot to be assessed against abutting property and the owners thereof for improvements exclusive of curb and gutter is \$2,123.3; total estimated amount per front foot to be assessed against abutting property and the owners thereof is \$3,473.3.

On AVENUE D, from its intersection with the north property line of North 11th Street to its intersection with the south property line of North 13th Street, known and designated as Unit No. 39; the estimated cost of the improvements is \$4,614.30; the estimated amount per front foot to be assessed against abutting property and the owners thereof for curb and gutter is \$1.35; the estimated amount per front foot to be assessed against abutting property and the owners thereof for improvements exclusive of curb and gutter is \$2,123.3; total estimated amount per front foot to be assessed against abutting property and the owners thereof is \$4,847.43.

gutter is \$2,123.3; total estimated amount per front foot to be assessed against abutting property and the owners thereof is \$3,473.3.

On NORTH 12TH STREET, from its intersection with the east property line of Avenue E to its intersection with the west property line of Avenue D, known and designated as Unit No. 40; the estimated cost of the improvements is \$2,131.67; the estimated amount per front foot to be assessed against abutting property and the owners thereof for curb and gutter is \$1.35; the estimated amount per front foot to be assessed against abutting property and the owners thereof for improvements exclusive of curb and gutter is \$2,123.3; total estimated amount per front foot to be assessed against abutting property and the owners thereof is \$4,355.00.

On AVENUE D, from its intersection with the north property line of North 13th Street to its intersection with the north property line of North 14th Street, known and designated as Unit No. 41; the estimated cost of the improvements is \$2,352.81; the estimated amount per front foot to be assessed against abutting property and the owners thereof for curb and gutter is \$1.35; the estimated amount per front foot to be assessed against abutting property and the owners thereof for improvements exclusive of curb and gutter is \$2,123.3; total estimated amount per front foot to be assessed against abutting property and the owners thereof is \$4,535.00.

On AVENUE D, from its intersection with the north property line of North 14th Street, known and designated as Unit No. 42; the estimated cost of the improvements is \$4,260.83; the estimated amount per front foot to be assessed against abutting property and the owners thereof for curb and gutter is \$1.35; the estimated amount per front foot to be assessed against abutting property and the owners thereof for improvements exclusive of curb and gutter is \$1,715.00; total estimated amount per front foot to be assessed against abutting property and the owners thereof is \$3,065.00.

On AVENUE D, from its intersection with the south property line of South 1st Street to its intersection with the south property line of South 2nd Street, SAVE AND EXCEPT that portion of its intersection with South 2nd Street lying west of the west curb line of Avenue D, known and designated as Unit No. 43; the estimated cost of the improvements is \$3,413.37; the estimated amount per front foot to be assessed against abutting property and the owners thereof for curb and gutter is \$1.35; the estimated amount per front foot to be assessed against abutting property and the owners thereof for improvements exclusive of curb and gutter is \$3,185.00; total estimated amount per front foot to be assessed against abutting property and the owners thereof is \$4,535.00.

On AVENUE D, from its intersection with the south property line of South 2nd Street to its intersection with the south property line of South 3rd Street, SAVE AND EXCEPT that portion of its intersection with South 3rd Street lying west of the west curb line of Avenue D, known and designated as Unit No. 44; the estimated cost of the improvements is \$3,396.75; the estimated amount per front foot to be assessed against abutting property and the owners thereof for curb and gutter is \$1.35; the estimated amount per front foot to be assessed against abutting property and the owners thereof for improvements exclusive of curb and gutter is \$3,185.00; total estimated amount per front foot to be assessed against abutting property and the owners thereof is \$4,535.00.

On AVENUE D, from its intersection with the south property line of South 3rd Street, SAVE AND EXCEPT its intersection with Avenue D, known and designated as Unit No. 45; the estimated cost of the improvements is \$3,448.10; the estimated amount per front foot to be assessed against abutting property and the owners thereof for curb and gutter is \$1.35; the estimated amount per front foot to be assessed against abutting property and the owners thereof for improvements exclusive of curb and gutter is \$3,185.00; total estimated amount per front foot to be assessed against abutting property and the owners thereof is \$4,535.00.

On SOUTH 2ND STREET, from its intersection with the east property line of Avenue E to its intersection with the west curb line of Avenue D, known and designated as Unit No. 46; the estimated cost of the improvements is \$2,967.12; the estimated amount per front foot to be assessed against abutting property and the owners thereof for curb and gutter is \$1.35; the estimated amount per front foot to be assessed against abutting property and the owners thereof for improvements exclusive of curb and gutter is \$3,185.00; total estimated amount per front foot to be assessed against abutting property and the owners thereof is \$4,535.00.

AND EXCEPT that portion of its intersection with South 2nd Street lying west of the west curb line of Avenue D, known and designated as Unit No. 43; the estimated cost of the improvements is \$3,413.37; the estimated amount per front foot to be assessed against abutting property and the owners thereof for curb and gutter is \$1.35; the estimated amount per front foot to be assessed against abutting property and the owners thereof for improvements exclusive of curb and gutter is \$3,185.00; total estimated amount per front foot to be assessed against abutting property and the owners thereof is \$4,535.00.

On AVENUE D, from its intersection with the south property line of South 2nd Street to its intersection with the south property line of South 3rd Street, SAVE AND EXCEPT that portion of its intersection with South 3rd Street lying west of the west curb line of Avenue D, known and designated as Unit No. 44; the estimated cost of the improvements is \$3,396.75; the estimated amount per front foot to be assessed against abutting property and the owners thereof for curb and gutter is \$1.35; the estimated amount per front foot to be assessed against abutting property and the owners thereof for improvements exclusive of curb and gutter is \$3,185.00; total estimated amount per front foot to be assessed against abutting property and the owners thereof is \$4,535.00.

On AVENUE D, from its intersection with the south property line of South 3rd Street, SAVE AND EXCEPT its intersection with Avenue D, known and designated as Unit No. 45; the estimated cost of the improvements is \$3,448.10; the estimated amount per front foot to be assessed against abutting property and the owners thereof for curb and gutter is \$1.35; the estimated amount per front foot to be assessed against abutting property and the owners thereof for improvements exclusive of curb and gutter is \$3,185.00; total estimated amount per front foot to be assessed against abutting property and the owners thereof is \$4,535.00.

On SOUTH 2ND STREET, from its intersection with the east property line of Avenue E to its intersection with the west curb line of Avenue D, known and designated as Unit No. 46; the estimated cost of the improvements is \$2,967.12; the estimated amount per front foot to be assessed against abutting property and the owners thereof for curb and gutter is \$1.35; the estimated amount per front foot to be assessed against abutting property and the owners thereof for improvements exclusive of curb and gutter is \$3,185.00; total estimated amount per front foot to be assessed against abutting property and the owners thereof is \$4,535.00.

against abutting property and the owners thereof is \$4,535.00.

On SOUTH 2ND STREET, from its intersection with the east property line of Avenue E to its intersection with the west curb line of Avenue D, known and designated as Unit No. 46; the estimated cost of the improvements is \$2,967.12; the estimated amount per front foot to be assessed against abutting property and the owners thereof for curb and gutter is \$1.35; the estimated amount per front foot to be assessed against abutting property and the owners thereof for improvements exclusive of curb and gutter is \$3,185.00; total estimated amount per front foot to be assessed against abutting property and the owners thereof is \$4,535.00.

(Continued to page 7)

against abutting property and the owners thereof is \$4,535.00.

On SOUTH 2ND STREET, from its intersection with the east property line of Avenue E to its intersection with the west curb line of Avenue D, known and designated as Unit No. 46; the estimated cost of the improvements is \$2,967.12; the estimated amount per front foot to be assessed against abutting property and the owners thereof for curb and gutter is \$1.35; the estimated amount per front foot to be assessed against abutting property and the owners thereof for improvements exclusive of curb and gutter is \$3,185.00; total estimated amount per front foot to be assessed against abutting property and the owners thereof is \$4,535.00.

(Continued to page 7)

Bill Skaine

On Throckmorton Highway
Opposite Depot
Haskell, Texas

- No. 1 Cast Iron, no steel \$20
- No. 1 Cast Iron, with steel \$16
- No. 1 Steel, short, under 2 ft lengths and heavy \$16
- No. 2 Steel, short \$14
- Mixed Steel Casting, any kind \$12
- Oil Field Cable in rolls \$12
- Barbed Wire in rolls \$ 6
- Car Body, tin \$ 4
- Old Tires of all kinds \$ 4
- Junk Batteries \$1.50
- Copper Wire 10c Per
- Mixed Metals 6c Per
- Junk Radios 8c Per



Now thousands own 2 Fine Ford

When over a quarter-million families are two-Ford families there must be a reason! And there are many! These families love the convenience of the extra car! And they've found that, while dividing the family mileage, two money-saving Fords cost little more than driving one higher priced car.



they're that easy on the purse!



Ford offers a choice of two great engines—a 100 h.p. V-8 or a 95 h.p. V-6 with King-Size Brakes... with a "Luggage" Body... with "Fashion Car" styling... in and see for yourself... Drive a '30 Ford today.

BILL WILSON MOTOR COMPANY
SALES AND SERVICE
HASKELL, TEXAS

Vote for a Loyal Democrat

One who has always supported the Democratic Party

John C. White

Capable—Efficient—A Proven Business Man

With A Qualified Farm Background

For

Commissioner of Agriculture

GO TO THE POLLS AUGUST 26 AND ELECT
A MAN WHO IS INTERESTED IN YOUR
WELFARE

Paid for by Haskell County friends of John C. White — a friend to the farmer.

from page 6)

abutting property thereof for curb and gutter is \$3.4733; the estimated amount per front foot to be assessed against abutting property and the owners thereof for improvements exclusive of curb and gutter is \$2.5317; total estimated amount per front foot to be assessed against abutting property and the owners thereof is \$3.4733.

On SOUTH 1ST STREET, from its intersection with the west property line of Avenue F to its intersection with the west property line of Avenue G, known and designated as Unit No. 53; the estimated cost of the improvements is \$3,101.88; the estimated amount per front foot to be assessed against abutting property and the owners thereof for curb and gutter is \$1.35; the estimated amount per front foot to be assessed against abutting property and the owners thereof for improvements exclusive of curb and gutter is \$2.5317; total estimated amount per front foot to be assessed against abutting property and the owners thereof is \$3.8817.

On SOUTH 1ST STREET, from its intersection with the east property line of Avenue H to its intersection with the east property line of Avenue K, known and designated as Unit No. 54; the estimated cost of the improvements is \$8,218.03; the estimated amount per front foot to be assessed against abutting property and the owners thereof for curb and gutter is \$1.35; the estimated amount per front foot to be assessed against abutting property and the owners thereof for improvements exclusive of curb and gutter is \$2.1233; total estimated amount per front foot to be assessed against abutting property and the owners thereof is \$3.4733.

On SOUTH 1ST STREET, from its intersection with the east property line of Avenue K to its intersection with the west property line of Avenue N, known and designated as Unit No. 55; the estimated cost of the improvements is \$8,090.30; the estimated amount per front foot to be assessed against abutting property and the owners thereof for curb and gutter is \$1.35; the estimated amount per front foot to be assessed against abutting property and the owners thereof for improvements exclusive of curb and gutter is \$2.1233; total estimated amount per front foot to be assessed against abutting property and the owners thereof is \$3.4733.

On SOUTH 1ST STREET, from its intersection with the west property line of Avenue N to its intersection with the west property line of Avenue O, known and designated as Unit No. 56; the estimated cost of the improvements is \$3,418.05; the estimated amount per front foot to be assessed against abutting property and the owners thereof for curb and gutter is \$1.35; the estimated amount per front foot to be assessed against abutting property and the owners thereof for improvements exclusive of curb and gutter is \$2.1233; total estimated amount per front foot to be assessed against abutting property and the owners thereof for improvements exclusive of curb and gutter is \$2.1233; total estimated amount per front foot to be assessed against abutting property and the owners thereof is \$3.8817.

On NORTH 6TH STREET, from its intersection with the east curb line of Avenue I to its intersection with the west curb line of Avenue H, known and designated as Unit No. 58; the estimated cost of the improvements is \$1,742.07; the estimated amount

per front foot to be assessed against abutting property and the owners thereof for curb and gutter is \$1.35; the estimated amount per front foot to be assessed against abutting property and the owners thereof for improvements exclusive of curb and gutter is \$1.9596; total estimated amount per front foot to be assessed against abutting property and the owners thereof is \$3.3096.

On NORTH 15TH STREET, from its intersection with the east curb line of Avenue H to its intersection with the west property line of Avenue E, SAVE AND EXCEPT its intersection with Avenue F and that portion of its intersection with Avenue G lying within the curb line of Avenue G, known and designated as Unit No. 59; the estimated cost of the improvements is \$6,160.39; the estimated amount per front foot to be assessed against abutting property and the owners thereof for curb and gutter is \$1.35; the estimated amount per front foot to be assessed against abutting property and the owners thereof for improvements exclusive of curb and gutter is \$1.7150; total estimated amount per front foot to be assessed against abutting property and the owners thereof is \$3.0650.

On SOUTH 4TH STREET, from its intersection with the east property line of Avenue E to its intersection with the west curb line of Avenue D, known and designated as Unit No. 60; the estimated cost of the improvements is \$2,282.61; the estimated amount per front foot to be assessed against abutting property and the owners thereof for curb and gutter is \$1.35; the estimated amount per front foot to be assessed against abutting property and the owners thereof for improvements exclusive of curb and gutter is \$2.1233; total estimated amount per front foot to be assessed against abutting property and the owners thereof is \$3.4733.

On AVENUE D, from its intersection with the south property line of South 4th Street to a point 150 feet south of the south line of South 4th Street, known and designated as Unit No. 61; the estimated cost of the improvements is \$1,042.98; the estimated amount per front foot to be assessed against abutting property and the owners thereof for curb and gutter is \$1.35; the estimated amount per front foot to be assessed against abutting property and the owners thereof for improvements exclusive of curb and gutter is \$2.1233; total estimated amount per front foot to be assessed against abutting property and the owners thereof is \$3.4733.

On NORTH 7TH STREET, from its intersection with the east curb line of Avenue G to its intersection with the west property line of Avenue F, known and designated as Unit No. 62; the estimated cost of the improvements is \$2,311.53; the estimated amount per front foot to be assessed against abutting property and the owners thereof for curb and gutter is \$1.35; the estimated amount per front foot to be assessed against abutting property and the owners thereof for improvements exclusive of curb and gutter is \$2.1233; total estimated amount per front foot to be assessed against abutting property and the owners thereof is \$3.4733.

On NORTH 7TH STREET, from its intersection with the east property line of Avenue F to its intersection with the west property line of Avenue E, known and designated as Unit No. 63; the estimated cost of the improvements is \$2,455.34; the estimated amount per front foot to be assessed against abutting property and the owners thereof for curb and gutter is \$1.35; the estimated amount per front foot to be assessed against abutting property and the owners thereof for improvements exclusive of curb and gutter is \$1.9596; total estimated amount per front foot to be assessed against abutting property and the owners thereof is \$3.4733.

ter is \$1.35; the estimated amount per front foot to be assessed against abutting property and the owners thereof for improvements exclusive of curb and gutter is \$2.1233; total estimated amount per front foot to be assessed against abutting property and the owners thereof is \$3.4733.

On NORTH 8TH STREET, from its intersection with the east property line of Avenue F to its intersection with the west property line of Avenue E, known and designated as Unit No. 64; the estimated cost of the improvements is \$2,134.26; the estimated amount per front foot to be assessed against abutting property and the owners thereof for curb and gutter is \$1.35; the estimated amount per front foot to be assessed against abutting property and the owners thereof for improvements exclusive of curb and gutter is \$2.1233; total estimated amount per front foot to be assessed against abutting property and the owners thereof is \$3.4733.

On NORTH 8TH STREET, from its intersection with the east property line of Avenue E to its intersection with the west property line of Avenue D, known and designated as Unit No. 65; the estimated cost of the improvements is \$2,582.48; the estimated amount per front foot to be assessed against abutting property and the owners thereof for curb and gutter is \$1.35; the estimated amount per front foot to be assessed against abutting property and the owners thereof for improvements exclusive of curb and gutter is \$2.5317; total estimated amount per front foot to be assessed against abutting property and the owners thereof is \$3.8817.

A hearing will be given and held by and before the Governing Body of the City of Haskell, Texas, on the 25th day of August, A. D. 1950, at 2:30 o'clock P. M., in the Council Room of the City Hall in the City of Haskell, Texas, to all owning or claiming any property abutting upon said portions of streets and avenues and to all owning or claiming any interest therein, shall be and appear and will be fully heard concerning said improvements, the cost thereof, the amounts to be assessed therefor, the benefits to the respective parcels of abutting property by means of the improvements on the portions of said streets and avenues upon which the property abuts, and concerning the regularity, validity and sufficiency of the contract for and all proceedings relating to such improvements and proposed assessments therefor, and concerning any matter as to which they are entitled to hearing under the law in force in the City and under the proceedings of the City with reference to said matters. Following such hearing, assessments will be levied against abutting property and the owners thereof, and such assessments, when levied, shall be a personal liability of the owners of such property, and a first and prior lien upon the property as provided by the law in force in the City and under which the proceedings are taken, being the Act passed at the First Called Session of the State of Texas, known as Chapter 106 of the Acts of said Session and now shown as Article 1105b of Vernon's Texas Civil Statutes.

The improvements on each said portion of said streets and avenues constitute an entirely separate and distinct unit of improvement, all to the same extent as if entirely separate and distinct proceedings had been taken with reference to the improvements and assessments therefor in connection with improvements on each such portion of said streets and avenues and the assessments against the property abutting upon any unit shall be and are in nowise affected by any fact or circumstances relating to or connected with the improvements in other units.

Of all said matters and things, all owning or claiming any such property or any interest therein, as well as all others in anywise interested or affected, will take notice.

DONE by order of the City Council of the City of Haskell, Texas, this 8th day of August, A. D. 1950.

(Seal) T. J. Arbuckle,
City Secretary, City of Haskell,
32-34c

World Renowned Road Record for Economy and Long Life



Just give it plenty of exercise!



Dollar for Dollar you can't beat a PONTIAC

Robertson Pontiac Company
Haskell, Texas

CARD OF THANKS

We take this means of expressing our appreciation to all of those who helped us in any way at the passing of our loved one.

—S. T. Buford and Family.

HENDERSON ELECTRIC SERVICE
Electric Motor Repair
Any Make or Size
704 South Third Street
Phone 581-W

T. R. ODELL
Attorney at Law
Rooms 4-5-6, Odell Bldg.
Phone No. 303

RATLIFF & RATLIFF
LAWYERS
Haskell Nat'l Bank Bldg.
Haskell, Texas

Back-To-School Safety

Your Car Accidents

Automobile Safety Begins in the Shop

CHECK THE FOLLOWING NOW:

- BRAKES**
 1. Foot Brakes
 2. Emergency Brakes
 3. Hydraulic System
- FRONT END**
 1. Steering System
 2. Spring and Suspension System
 3. Tires
- LIGHTS**
 1. Headlights
 2. Tail Lights
 3. Horn and Ignition Wiring
- VISION**
 1. Windshield Wipers
 2. Safety Glasses
 3. View Obstructions

Burton Chevrolet Company
"Where Friend Meets Friend"
R. L. Burton, Owner
Haskell, Texas

FORT WORTH COUPLE VISITS IN HASKELL

Mr. and Mrs. H. Weldon Owens spent Thursday night of last week visiting in the home of Mr. and Mrs. Jetty V. Clare. They were on

a return trip from a vacation in New Mexico. Owens is editor and manager of the Southwest Magazine of Fort Worth.

Try a want ad in The Free Press.

Qualifications for a government loan require that grain be stored in bins or granaries where it will not be subject to damage from moisture, insects, rodents, or other causes.

Rule Schools Will Begin 1950-51 Term With J. P. Rudd As New Superintendent

Rule Public schools will open September 4 with a new superintendent and two new teachers. J. P. Rudd will take over the duties of school superintendent succeeding J. B. Lawson who has been with the Rule school for the past fifteen years. Mr. Rudd comes to Rule from Brady where he served as high school principal for thirteen years. He is 36 years of age holds a B. A. and M. A. degrees from Hardin-Simmons University. Along with the superintendent's duties, Mr. Rudd will instruct the science courses during the school year.

Miss Dahlia Dean Knippling and Ewell Sessom will be teaching in the Rule high school for their first year. Miss Knippling will teach home economics and Mr. Sessom will teach social studies and mathematics along with his duties as assistant coach.

Enrollment in the Rule elementary and high school will average 355 and the colored school will average 31 Mr. Rudd said. He stated that he expected about the same number to enter school for the 1950-51 term.

Located on the school grounds are six buildings—the elementary school, junior-senior high school, a vocational agriculture shop, a gymnasium, the bus garage and the lunchroom. Also in the colored section of town, they maintain a colored school has recently been renovated from one teacher to a three teacher school.

Also located on the Rule campus is the athletic field. The football field has been well taken care of this year, Mr. Rudd said. The ground has been re-sodded and we are now in the process of adding a 504 seat steel grandstand section to the football stadium. It will equal any stadium in this section of the state, he added.

The Rule public schools own four buses under the maintenance of Holly Bristol. The buses make their regular runs in mornings and afternoon for the convenience of rural school attendants.

For better development of school spirit, Rule has a very active pep squad consisting of high school girls. This group of girls travel to all the games with the football and basketball squads to keep the teams spirits high and give them the will to win. The pep squad is under the direction of Mrs. Dean Waller.

They also have an active Future Homemakers of America chapter under the direction of Miss Dahlia Knippling and an active Future Farmers of America chapter headed by Walter Hadley.

Twenty instructors make up the Rule teaching staff in the ele-

mentary grades are Mrs. Flora S. Eaton who has been teaching in the Rule school for the past 33 years. Mrs. Eaton holds a B. A. degree. Mrs. Stella Mae Trice has been teaching in Rule 4 years and has a BS degree; Mrs. Geraldine Pool, 4 years, a BS degree; Mrs. Peggy Kitley, 2 years, a BS degree; Mrs. Ala Carothers, 3 years, a BS degree; Roy F. Braswell, 1 year, a BS degree; Robert W. Johnson, 2 years, a BS degree; and Jack D. Wester, principal of the elementary school has been there 2 years and holds a BS degree.

In junior-senior high school are J. P. Rudd, superintendent with BA and MA degrees and teaches science. James W. Simpson, principal, has been in the Rule school 1 year, teaching math and holds a BS degree. Mrs. Pauline Kieke, 6 years, teaches commercial subjects, a BS degree; Mrs. Irene Braswell, 1 year, teaches English, a BA and MA degree; Mrs. Deen Waller, 1 year, English, a BS degree; Miss Dahlia Knippling first year, home economics, a BS degree; Walter C. Hadley, 8 years, vocational agriculture, a BS degree; Ewell Sessom, first year, math and assistant coach, a BS degree; and Truman Nix, 1 year, social studies and head coach, a BS degree.

Mrs. Dora E. Jordan is the only teacher that has been elected to the colored school while two vacancies there are to be filled. Mrs. Jordan has been there 4 years and has a BS degree.

Members of the school board are A. T. Gauntt, president; Clyde Grice, vice-president; Robert Sollock, secretary; Boyce Foil, E. C. Smith, Ray Carter, and A. E. Ball.

Rule Trustees Adopt School Calendar For Term

The School Board of the Rule Independent School District adopted in its regular meeting, the 1950-51 school calendar, according to Superintendent J. P. Rudd.

School will open Monday, September 4. Since both morning and afternoon classes are needed to meet Gilmer-Aikin requirements for a day of school, students will be held for a full day. Bus routes will be run, and a renovated and re-staffed cafeteria will serve an appetizing and balanced meal at the customary low price, Mr. Rudd said.

Holidays which will be observed are the annual Haskell County Fair, Armistice, November 11, Thanksgiving, November 23-24, Christmas, December 23. January 1, and Spring holidays, March 23-26. If bad weather or similar misfortune does not necessitate additional dismissals, Supt. Rudd anticipates May 18 or 21 as the closing date for school.

Classified ads pay.

RITA
The Theatre of Proven Hits!
Phone 398J
Open Fri. 6:45-Sat. 12:45
Sunday 1:45 and 7:30
Closed Tuesday and Wednesday and Thursday
Fri.-Sat., Aug. 25-26
Double Feature
"Son of a Badman"
—Plus—
"East Side Kids"
Sun.-Mon., Aug. 27-28
"In The Navy"
Cartoon — Novelty

THE TEXAS
Fri.-Sat., Aug 25-26
"Tarzan and the Slave Girl"
—With—
Lex Baxter
—Plus—
Chapter Two
ATOM MAN VS. Superman
Owl Show
Saturday, August 26
"The Tattooed Stranger"
with
John Miles
Patricia White
Sun.-Mon., Aug. 27-28
"The Furies"
—With—
Barbara Stanwyck
Wendell Corey
Tuesday Only, August 29
Gene Kelly and
J. Carol Nash
—In—
"Black Hand"
Wed.-Thurs., Aug. 30-31
"High Lonesome"
—With—
John Barrymore, Jr., and
Chill Wills

Sky-Drive
Movies are Better
Open 7 P.M.
Please Call 133 for information about our program
Thurs.-Fri., Aug. 24-25
Robert Mitchell
Martha O'Driscoll
—In—
"Fighting Command"
Sat. Only, Aug. 26
Victor Mature
Lizabeth Scott
"Easy Living"
Sun.-Mon., Aug. 27-28
"When the Day Rode"
—With—
Randolph Scott
Tues.-Wed., Aug. 29-30
Tuesday Night
BUCK NYLON
\$1.00 per Carolan
Regardless of the size of the car
"Cover Up"
—With—
William Bendix
Dennis O'Keefe

Climbing Climbing Climbing



Up the Ladder of Success Rung by Rung

The beginning of another school year marks the beginning of another step in the never ending pursuit of knowledge and success of free American boys and girls. We want both students and teachers to know that we are interested in you and wish for you a happy, successful year.

We too, are ever in pursuit—pursuit of that which will make our store an asset to our community and a pleasure to those whom we are privileged to serve.

We want to welcome new teachers and students to our county and invite both old and new to visit us. If you admire quality and love beauty we believe you will enjoy coming to our store, where you will find

The Best Known Names In China and Silver Gifts for Every Occasion

An inspection of your watch by our jeweler will insure you of time that will keep you on time.

W. A. Lyles, Jeweler

KNOWN BY THE BRANDS YOU KNOW

The Old School Bell

RINGS OUT A CHALLENGE

For Another Milestone In the Lives of Teachers and Students



And as you return to your duties we want to wish you well.

It is through knowledge that we are better able to serve and service is the essence of greatness. Knowledge broadens your vision and enriches your life and no where else in the world do we have the free access to education that is offered by our great school system.

Therefore let us encourage you to take advantage of the opportunity to grow in qualities which make great men and women—knowledge, service, understanding and self reliance.

We too, are striving to serve in a capacity which means advancement for our community and an opportunity to those with initiative and ambition. We invite your inquiry of our banking service and are anxious to help you in any way possible.

OFFICERS

- A. C. Pierson, President
- J. W. Gholson, Vice President
- W. R. Johnson, Cashier
- Nettie I. McCollum, Asst. Cashier
- Charles E. Swinson, Asst. Cashier
- Tom M. Patterson, Asst. Cashier

Haskell National Bank

MEMBER FDIC

SERVING SINCE 1890

HASKELL

Every Day is At **POGUE'S**
Phone 17-W Free Delivery
We Reserve The Right To Limit Quantities
BARGAIN DAY
Friday and Saturday Specials

Chicken of the Sea— Tuna	Can 33c
Mountain Brand, Dill or Sour PICKLES	Quart 20c
Northern TISSUE	Roll 9c
Banner ICE CREAM	Pint 19c
12 Oz. Jar Peter Pan PEANUT BUTTER	33c
1 Lb. Bag Kraft CARAMELS	29c
Large Size POST TOASTIES	2 Boxes 35c
Bright & Early TEA (With Glass)	25c

Old Bill and Chuck Time VIENNA SAUSAGE	1
Likin's Supreme DOG FOOD	2 cans 13c
Su Mar PORK & BEANS	23c
Campbell's TOMATO SOUP	10c
MEATS	
Fresh SAUSAGE	Pound 45c
Skinless WEINERS	Pound 38c
Waller's Pickle & Pimiento Loaf	Pound 45c