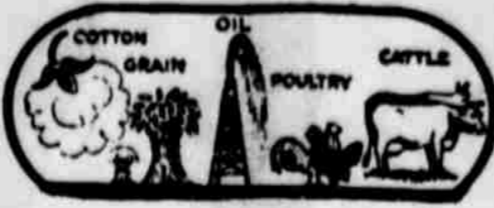


5¢
per copy

THE HASKELL



FREE PRESS

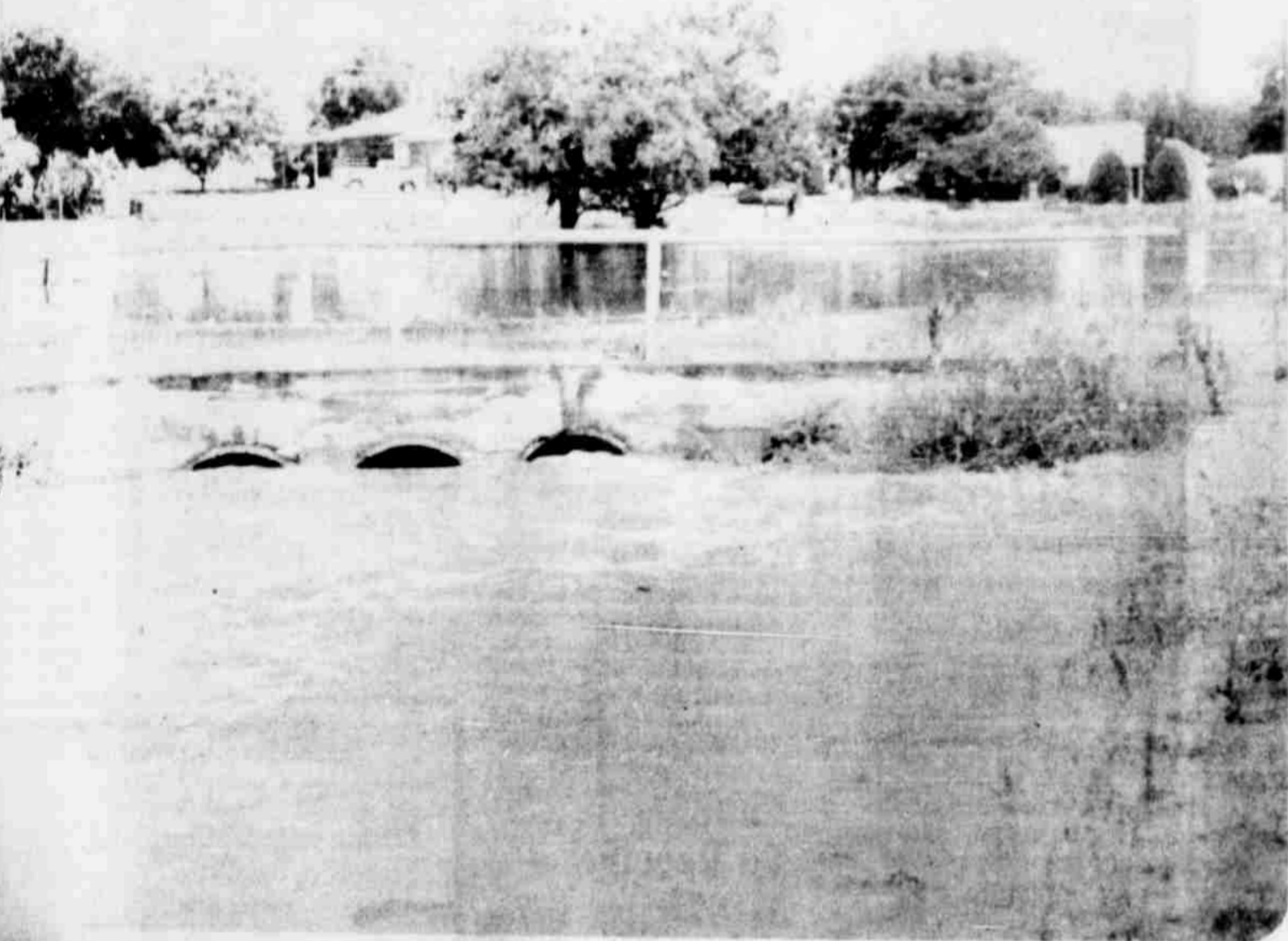


"HASKELL—A GOOD PLACE TO VISIT; A BETTER PLACE TO LIVE"

EIGHTY-NINE

HASKELL, TEXAS 79521, THURSDAY, MAY 29, 1975

NUMBER TWENTY-TWO



STREETS in Haskell were closed following heavy rains Thursday night. In some places Rice Springs Creek was almost as deep as city streets. Hail caused some damage to area crops and running water caused erosion damage to idle croplands.

From one to two inches of rain was received in most of the County early Wednesday morning and it is expected that it will be some time before wheat harvest will get underway.

(Staff Photo By Don Comedy)

Heavy Rains Received

Heavy rains, hail and high winds blanketed Haskell Thursday night. In some places Rice Springs Creek was almost as deep as city streets. Hail caused some damage to area crops and running water caused erosion damage to idle croplands.

severe erosion and in several places washed gullies through terraces.

According to J. C. Yeary, District Soil Conservationist, it will be some time before estimates can be completed.

Lake Stamford caught just over three feet of water from the rains and water was still running into Miller Creek Lake Tuesday afternoon.

Lightning struck a house at 306 S. Ave. H. at about 10:30 p.m. Thursday night. Mrs. Ethel Lou Shelton and her brother and sister, H. W. and Betty Clanton, reside in the house and were all in the cellar of the house along with several of their neighbors.

Mrs. Shelton said they didn't know about the lightning until the storm was over. She said the house did not catch on fire and damage was limited to two TV's, a small table and paneling in the living room was scorched.

The largest amount of rainfall reported to the Free Press was 5.3 inches received by J. R. Perry of Paint Creek. Buford Cox reported 5 inches and Cecil Lewis reported 4.03, six miles northwest of Rule, J. C. New reported 4 inches east of Sagerton and R. B. Townsend reported 3.5 inches in Rochester.

O. R. Cox of Rochester also reported 3.5 inches and the

Paint Creek Power Plant registered 3.1 inches. Bobby Raynes recorded 3 inches in Weinert and Harlan Weinert reported 2.2 inches west of Weinert.

Sam Herren, official weather observer for Haskell recorded 4.65 inches with a trace of hail.

Another rainstorm dumped more moisture on Haskell Wednesday morning beginning at 5 a.m.

Herren received a total of 1.85 Wednesday to bring his total to 6.50 inches for the week.

Other reports Wednesday morning ranged from 1 inch at Rule and Sagerton, 1.3 inches in Weinert and 1.9 inches at the Power Plant.

Wednesday's rain put Haskell over the average normal for the year by a substantial margin according to Herren's statistics.

WEATHER SUMMARY By Sam Herren May 20-27

RAINFALL	
23rd	4.53*
24th	.12
28th	1.85
* Trace of Hail	
Normal to date	8.61
Total to date	10.49
TEMPERATURE	
Hi	95°
Lo	56°
	23rd

VBS Set For Methodists, Presbyterians

Vacation Bible School for the Presbyterian and Methodist Churches will be held June 2-6 from 9 to 11 a.m.

Theme for the Bible School is "Clap Your Hands, Jesus Is Lord" and closing exercises will be held June 8, at 7 p.m. Coordinators for the school are Mrs. Larry Gilliam and Mrs. Wallace Cox, Jr. Mrs. Kenneth Lane and Mrs. Cliff Dunnam will be in charge of refreshments.

BIBLE SCHOOL

East Side Baptist Church will hold Vacation Bible School, June 2-6 from 8:30 to 11 a.m. A parade and picnic at the City Park has been scheduled May 31. The parade will begin at 9 a.m.

Promotions At Haskell Natl. Announced

Abe Turner, president of Haskell National Bank has announced the following promotions made during the May 9, meeting of the board of directors.

R. C. Couch, Jr. to Senior vice-president and senior trust officer; Carolyn Everett to assistant vice-president and cer; and assistant

Bicentennial Plans Continuing

At a recent meeting of the Bicentennial steering committee, held in the chamber of commerce office, members discussed the current status of Haskell's application for a City-County Commission relative to the 200th anniversary of America. Notice was received by the Texas commission that the application had been approved and

forwarded to Washington, D.C. for National approval. It is expected by committee members that this national approval will be made within a short time, and then preparations for the designation of a City-County Bicentennial commission, will be made.

A discussion was held in regards to other projects outlined in the overall plans for the observance, to include the beautification of Spring Creek and the first house erected in Haskell. Those present were of the opinion that the house should be preserved and the current owner to be contacted in regards to this.

Other business was to set the dates for Haskell's Frontier Days Celebration for the week of June 23rd through Saturday, June 28th. The annual celebration prior to this year has been in conjunction with the Jaycee rodeo but due to the fact that this was not staged this year, committee members decided to add other features to the weeks' celebration. These will include the Queen's Pageant to be held on

Tuesday night, June 24th, with place to be designated at a later date. The old time square dance on one night and the final big event to be in the form of an old time picnic in the city park with a huge stage show to be presented with a format like the frontier days medicine show.

Present plans call for the weeks' celebration to be centered in the park due to its picturesque setting and to the fact that is where the town of Haskell originated after the Indians, who used it for a camp ground for countless years, had been moved to Indian Territory.

Little Dribblers Attend Reg. Tournament

Haskell's 11 and 12 year old Little Dribbler's all-stars took second place at the regional tournament in Idalou last weekend.

The girls, coached by Delight Jones and Janay Morrison, were defeated by Crowell 36-25 in the first game of the double elimination tournament.

They then defeated Silverton, 29-20; Crosbyton, 41-16; and Idalou, 37-36. Crowell defeated Haskell in the final game of the tournament 38-32 to give Haskell second place. Each girl on the team received a second place trophy.

The 9 and 10 year old team, coached by Neva Van Story, Adrina Donnell and Jean Turnbow, defeated Silverton 41-9 in their first game.

They were downed by Seymour 24-20 and then beat Ralls, 23-21 before falling to Crosbyton 20-18.

HHS Favorites Named

Jim Pippin and Karen Croft have been selected Mr. and Mrs. H.H.S. by members of the student body during a recent election.

Other favorites elected were: Chris Colbert and Sherrie Everett, freshmen; John Cox and Kem Kemp, sophomore; Jamie Mickler and Emily Thigpen, Christie McAdams (tie), junior; Terry Strickland and Karen Croft, senior; Jim Pippin and Adam Sanchez (tie), Mr. Spirit; and Emily Thigpen, Miss Spirit.

Over 700 Attend Jaycee Rest Stop

Over 700 people stopped at the Haskell County Jaycees Memorial Day Rest Stop according to Earl Procter and Charles Prewitt, co-chairmen.

Those stopping at the Rest Stop represented eight states including Connecticut and Michigan.

The rest stop was open from 6 p.m. to 6 a.m. Friday, Saturday, and Sunday nights and from 9 to 12 Monday night.

During that time members of the newly formed Jaycees served over 500 cups of coffee and other refreshments to Memorial Day travelers.

Members of the Jaycees have expressed their thanks to all merchants who donated supplies to the Rest Stop and also to the City and County for their assistance in the project.

RAILROAD MUSEUM
The Haskell County Railroad Museum will be open every Friday and Saturday from 8:00 a.m. until 5:00 p.m. The Museum will open on Sunday by request.

26 Play In Big 5 Golf Meeting

26 women participated in the Ladies Big 5 Golf Association meeting recently in Throckmorton.

Participants represented Haskell, Munday, Knox City, Hamlin and Throckmorton.

Winners in the First Flight were: low gross, Dorothy Neeley, Throckmorton; runner up, Ruby Medford, Haskell; Low Net, Dorothy Smith, Hamlin; runner up low net, Lola Milstead, Hamlin; low putts, Noami Bell, Hamlin.

Winners in the second flight were: low gross, Arnell Denton, Knox City; runner up, Margie Rowland, Throckmorton; low net, Billie Thorp, Throckmorton; runner up low net, Imogene Alexander, Knox City; and low putts, Betty Baker, Munday.

Winners in the third flight were: low gross, Mary Kennedy, Haskell; runner up, Inez Stribling, Throckmorton; low net, Estelle Skiles, Knox City; runner up low net, Marion Frierson, Haskell; low putts, Dean Nuckles, Munday.

Winner of the longest drive was Ruby Medford and closest to the pen was Estelle Skiles. The next meeting will be in Knox City June 17.

PECAN SPRAYING
County Agent Max Stapleton has announced that pecan trees should be sprayed the first time between May 29 and 31 and the second spray should be 7 to 10 days later.

GARAGE SALE
The youth of First Baptist Church will hold a garage sale this Thursday, Friday and Saturday in front of Johnson Pharmacy according to Ted Burgess, Music and Youth Director of the Church.



KAREN CROFT

JIM PIPPIN

Jaycees Set Bass Tournney

Members of the Haskell Jaycees will hold their annual open Bass Tournament this Saturday, May 31, at Lake Stamford according to Bill Joseph Thigpen, co-chairmen of the project.

Entry fee for the tournament is \$7.50 and must be paid at headquarters before fishing and no later than 8 a.m.

Fishing in the big fish only

tournament will be permitted from 6:30 a.m. to 3 p.m.

Members of the Jaycees will guarantee \$150.00 in cash prizes and many fine merchandise prizes.

Prize money will be paid \$75.00 or 35% of total entry fee for first place; \$50.00 or 20% of total entry fee for second place; and \$25.00 or 15% of total entry fee for third place.

Merchandise prizes donated to the Jaycees are on display on the north side of the square between Bassings and Oates Drug Store.

Entry blanks complete with rules are listed below and may be mailed to Haskell County Jaycees, Box 744, Haskell, Tex. 79521 with a check for \$7.50 or brought to tournament headquarters.

Promotions At Haskell Natl. Announced

Abe Turner, president of Haskell National Bank has announced the following promotions made during the May 9, meeting of the board of directors.

R. C. Couch, Jr. to Senior vice-president and senior trust officer; Carolyn Everett to assistant vice-president and cer; and assistant

Signature: _____

RULES AND REGULATIONS

Entry fee is \$7.50 per person.

Black Bass only by artificial baits only (no trolling or live bait).

Only one big fish per person will be weighed.

Entry fee must be paid at headquarters before fishing (no later than 8:00 a.m.).

To qualify, contestants must pick up number at the tournament headquarters before fishing.

Boat, tube, kayak, or wade fishing permitted.

All state, local and federal laws will be obeyed.

Fishing hours are from sunrise to 3:00 p.m.

All fish must be 12" long or longer in length with mouth open and lip stretched.

Weigh-in time is from 1:00 to 3:00 p.m. Contestants must be in line no later than 3:00 p.m. to be weighed in.

No iced or frozen fish will be weighed.

The Haskell Jaycees reserve the right to not weigh-in any questionable fish.

No non-contestants will be allowed to be in a contestants boat during fishing hours.

The Haskell Jaycees reserve the right to refuse entry to anyone of questionable nature.

Anyone of questionable nature.

There will be no refund of entry fee.

All ties will be decided by a drawing from a hat.

Fishing will be done in waters of Lake Stamford only.

A contestant must not allow any fish caught by him or her to be counted by another contestant.

Violations automatically disqualifies. All decisions of



WOOTEN, (left) Texas State Trapshooting President, straight pin on Glenn Crum of 3022 Alta Vista Ln, San Antonio, after Glenn had the only perfect century to take the State President's Singles Championship, at the Trap Club, Haskell, Texas. This was Glenn's first 100 ever.

Chapmans To Enter At NIRA Finals

Terry and Glenda Gayle Chapman, son and daughter of Mr. and Mrs. Jack Chapman of Haskell, will both compete in the National Intercollegiate Rodeo Association (NIRA) Finals this summer in Bozeman, Mont. Terry, a student at Texas

A&M, finished first in the Saddle Bronc Riding of the Southern Region to qualify for the NIRA Finals.

Glenda Gayle will be entered in the NIRA Queen Contest. She was selected



TERRY CHAPMAN



GLENDA GAYLE CHAPMAN

Evans HDC Holds Meeting

Members of the Evans Home Demonstration Club met May 22, in the CAP Center for their regular meeting.

Mrs. Barbara Elliott, County Extension Agent, gave the program on freezing and canning foods. She also gave points on home gardening.

She will test pressure cookers on May 30, at 9:30 a.m. at the CAP Center and will answer questions concerning canning and freezing.

Texas Tech Rodeo Association Queen during the all-school rodeo April 26. She will also compete in the Miss Rodeo

Texas Contest in August. Terry, a 1970 graduate of Haskell High School, participated in eight rodeos with the A&M team and won first place in four of them. He also won second and fourth at two others. He will enter the NIRA Finals as one of the top 10 Saddle Bronc Riders in the

nation. Glenda Gayle, a 1973 graduate of Haskell High School, was selected Rodeo Queen at

New Collegiate Dictionary. Perfect gift for the high school graduate—he or she will appreciate word-power at his or her fingertips. We have it at The Haskell Free Press.

Tech over 15 other contestants. They were judged on horsemanship, appearance and personality.

Terry and Glenda Gayle's older brother, Keith, qualified for the NIRA Finals two years while attending A&M. The NIRA Finals will be held June 17-21.

Student's Shoot

Haskell Trap Club held annual Texas State Trapshoot, Saturday, to honor the student, W. E. Wooten, who shot with over 300 points.

The shoot was started with primary events, with Wooten, Abilene, shooting Doubles score.

Primary Handicap by Bobby Young, after a 25 target with Church Hay, Abilene, both with Young the Hay the Hay the Hay.

Texas State Presidables had a two way shot, with the State W. E. Wooten and Wooten of Abilene, 10 target shoot-off, Wooten out by Hancock's 19. Texas State President recorded some scores. John Hancock 100 to top his competitor, John Gainsville who had

Texas State Presidables had one perfect shot, Wooten of San Antonio, his first 100 ever to take the title.

Hancock of Abilene High-Over-All on the targets for the two 500.

your COM- GOINGS by 864-2686.

National 4-H Photo Exhibition Scheduled

Famed photographer Henri Cartier-Bresson has called the camera "an extension of the eye." Young camera enthusiasts who use their vision to best capture the image of 4-H on film may have their work selected for display at the second National 4-H Photo Exhibition.

The show will be held Nov. 29-Dec. 4 during National 4-H Congress in Chicago. It is open to all 4-H members from 9 to 19 and is not limited to those enrolled in 4-H photography projects.

The exhibit will be sponsored again this year by Eastman Kodak Company in association with the Cooperative Extension Service, the National 4-H Service Committee and the National 4-H Foundation.

The 1975 show will focus on individual photos and picture series that tell the 4-H story by recording and interpreting the activities and interests of 4-H youth as they "learn by doing." Its goal is to recognize the photographic competencies of 4-H'ers and, at the same time, to improve public understanding of 4-H.

Entries can be black and white or color photos made from negatives or slides. Negatives must be provided along with a print showing preferred cropping. When slides are submitted, prints are not necessary.

From the negative or color slide Eastman Kodak Company will make an exhibition print, mount it, and affix a gold seal to indicate national recognition. Each exhibitor will receive a print for his

personal use. On their way to the national exhibition, 4-H members will enter photographs in preliminary selection contests at local, county and state events. Up to four photos per state will be chosen from among these entries.

The 1974 National 4-H photo Exhibition included 230 prints representing the work of boys and girls from 39 states. It was such a success that one set of prints is now traveling to national and regional 4-H events to tell the 4-H story, and a second set has been provided for display at the 4-H Center and the U.S. Department of Agriculture in Washington, D.C.

Eastman Kodak Company, the exhibit's sponsor, also underwrites the 4-H photography program. This is a year-round activity conducted by the Cooperative Extension Service and designed to develop technical skills and encourage creative expression.

The company also provides incentives and recognition in the form of medals of honor, expense-paid trips to National 4-H Congress, and six national scholarships of \$1,000 each.

The "Shutter Bugs" Haskell County 4-H Photo Club will meet tonight, Thursday, at 7:30 p.m. at the Haskell Free Press.

FU President To Speak In Roby

Tony Dechant, president of the National Farmers Union will be guest speaker at Roby June 2, at 8:30 p.m. in the Agricultural Building.

He will be introduced by Jay Naman, president of the Texas Farmers Union. Dechant is an official with the International Farm Association and will speak on the World, National and Local Agricultural situation. He will discuss why we lost our farm bill that was recently vetoed and will talk on where we go from there.

The people of this area are invited to attend the meeting.

INEXPENSIVE Pen & Pencils sets by Papermate & Sheaffer. Haskell Free Press.

Ella Mentry
WHAT CITY WAS NAMED BY FLIPPING A COIN?
No Coin Flipping When It's A Question Of Workmen's Compensation Insurance...
Could You PAY A Heavy Judgment If You Were Named In A Damage Suit? New Applies To Businesses With One Or Two Employees! The city is Portland, Oregon.
Bolton Duncan Insurance
844-2444
306 N. 1st St. Haskell

Haskell, Texas Home Owned

-We Reserve the Right to Limit-

Parker's Super Market

506 North Second Phone 864-3454

-Just West of Telephone Building-

USDA Food Stamps Coupons Gladly Accepted

<p>CHICKEN-OF-SEA CHUNK LIGHT TUNA 6 1/2 OZ 49¢</p>	<p>ENRICHED SOFT N LITE FLOUR 69¢ 5 LB BAG</p>
<p>WHITE SWAN Salad Dressing 32 OZ SIZE 79¢</p>	<p>4 FOR \$1</p> <p>\$1.29</p>
<p>ATKINS OLD FASHIONED PICKLE CHIPS 16 OZ</p>	
<p>JEWEL PRE-CREAMED SHORTENING 42 OZ CAN</p>	
<p>KRAFT 1000 ISLAND Dressing 8 OZ 47¢</p>	<p>5 QT BUCKET FOREMOST ICE CREAM \$2.59</p>
<p>MORTONS POT PIES ASST KINDS 4 FOR 1.00</p>	<p>FLEISHMANN'S EGG BEATERS 89¢ 16 OZ SIZE</p>
<p>WHITE SWAN FABRIC BLEACH 1 GAL. 69¢</p>	<p>BORDEN 1 GAL PLASTIC JUG HOMO MILK \$1.49</p>
<p>WHITE SWAN FABRIC FABRIC SOFT'NER 1/2 GAL. 59¢</p>	<p>SPARKLING FRESH PRODUCE</p> <p>RUSSET 10 LB BAG POTATOES 79¢</p> <p>TEXAS CANTALOUPE LB. 19¢</p> <p>YELLOW SQUASH LB. 29¢</p>
<p>JUMBO ROLLS PRINTED Coronet TOWELS 45¢</p>	<p>28 OUNCE PEPSI-COLAS 3 FOR \$1 NO DEPOSIT</p>

NOW OPEN
NEW FINA CAR WASH
In Rule
HOT SOFT WATER
EAST HIGHWAY 380

RUSS AGRICULTURE FLYING AERIAL SPRAYING
GREEN BUGS & MIDGE
Milogard & Caparol
Russ Matthews, Owner
Call 864-2035
Haskell, Texas

THE SCIENTISTS TELL ME ...

By Robert L. Haney, Science Writer
The Texas Agricultural Experiment Station

Rural Land Resources Need Protection During Development

Land use and land resource planning and management have increasing interest and significance to Texans. There is recognition of major problems emerging from the rapid rate of growth and development in the Texas coastal zone, near metropolitan growth centers, and around most inland lakes. These and other land use problems have been studied closely by the Texas Agricultural Experiment Station to determine how to both protect and develop essential natural resources without undue costs to either private or community interests.

According to John McNeely, resource economist in the Experiment Station, there are no costless solutions to land use problems. For example, economists and engineers have summarized vast amounts of data about the State's ground water aquifers which presently supply about three-fourths of the water used in Texas. It is fully verified that in the High Plains and elsewhere, the water level is dropping and pumping costs are increasing. A Texas Water Plan to provide substitute water could involve costs in the billions of dollars if fully implemented.

Overpumping of ground water by municipalities, industry and agriculture from under the Houston metropolitan area has caused serious subsidence and millions of dollars in flood damages, according to research by Lonnie Jones, economist with the Experiment Station. The

Texas legislature is considering legal measures to control the pumping and require the use of other, but higher cost water supplies. This is part of the issue of who will manage ground water.

The owner of land is the absolute owner of water beneath his land unless it is in an underground stream with defined channels, according to Don Levi, Experiment Station legal researcher. He can withdraw for use all the water he wants without regard to its effect upon his neighbors. The surface waters in the state and the aquatic life within them are publicly owned and the public has the right to fish and travel on these waters. But the public does not have the right to cross privately owned land to reach these waters. This limited right of access to public resources is sometimes a problem along the coast's beaches, bay and gulf waters, freshwater reservoirs and lakes, and the State's rivers and streams.

McNeely finds that Texans are concerned about who will make future land use decisions and what these decisions will be. They want to preserve private property rights while still avoiding hazards to human life and property in such areas as floodplains and strip mines. They want a balance between economic development and environmental quality. But the objectives of those favoring development, conservation and protection or preservation clearly

conflict.

Urbanization is a dominant movement affecting land use in present-day Texas. Four out of every five Texans now live in urban situations, and future population growth will take place there also according to Robert Skrabanek, former Experiment Station demographer. Considerable acreages of land are being converted from crop, range and forest uses to urban purposes. Land use is sometimes changed well in advance of development. Urban effects on rural land ownership and use are complicated further by growing recreational and energy needs in a state with comparatively little publicly owned land. Competition for productive land and water between agriculture and other uses is already intense. McNeely finds that it might be in the public interest to reserve some of the best agricultural lands for this use when a choice is possible.

These are by no means all of the land use pressures. Recreation scientists point out that more and more land and water are in demand for recreation purposes. Water-oriented activities are the most popular outdoor recreation activities in Texas. Hunting opportunities are also in demand, and the citizens of Texas own the wildlife. It is held in trust for them by the State, but the landowner has the legal right to prevent hunters from entering his land. This makes the leasing of hunting privileges a common practice on range lands in Texas.

Coastal wetlands and estuaries are the indispensable nursery grounds of fin and shellfish resources

according to fisheries scientists. In terms of yield of living things, these are probably the most productive sites on earth. But they are destroyed as breeding areas by economic developments such as dredging and disposal of spoil, drainage and filling of marshes and disposal of wastes and runoff from urban and agricultural areas.

Looking to the future, Experiment Station scientists believe that accomplishments of specific land use policies can be substantial. Land use policy includes social constraints and incentives affecting the use of private land as well as decisions on the uses of public land and the location of public facilities. It is generally oriented toward guiding the future uses of undeveloped land rather than altering the use patterns of developed land. Fortunately, Texas still has substantial resources for whose development final and irreversible decisions have not yet been made. Guidance in decision making is a happy and useful product of good research.

Editor's Note -- Any questions regarding this column should be addressed to Science Writer, Dept. of Agricultural Communications, Texas A&M University, College Station, Texas, 77843.

HASKELL FREE PRESS

Please tell us who--Elopes--Dies--Has an accident--Has a party--Gets married--Has guests--Goes away--Has a fire--Is ill--Has an operation--Wins a prize--Receives an award--Makes a speech--Moves to Haskell--Holds a meeting--Takes part in any unusual event. That's NEWS and we want it.

CONSERVATION VIEWPOINTS USDA Soil Conservation Service

Assisting

California Creek and Wichita-Brazos

Soil and Water Conservation Districts

The Haskell County Development Group met on May 22, 1975 for the purpose of formulating the 1975 Agricultural Conservation Program for Haskell County.

Conservation practices selected for cost-share assistance are:

1. RE-1: Establishment of Permanent Vegetative Cover including seedbed preparation, seeding operation, dead litter, fertilizer (if needed based on a current soils test), and seed costs. RE-1 applies only to cropland that is being converted to grassland.

2. RE-2: Improvement of Permanent Vegetative Cover including seeding operation, seed costs, and brush control by rootplowing, tree dozing, hand grubbing, or chemical methods.

3. RE-5: Water Impoundment Reservoirs.

4. RE-7: Constructing Terrace systems to include standard level terraces and parallel terraces.

5. RE-8: Diversions

6. RE-12: Sediment Retention Erosion and Water Control Structures-Grassed Waterways-This will include grading, shaping and filling; seeding operations and seed costs. Fertilizer will be cost-shared when needed.

7. RE-14: Reorganizing Irrigation Systems (Underground irrigation pipe).

8. S-1: Land Leveling of irrigated land. This practice will be adopted pending State Approval.

All practices will be cost-shared at 50% of the average cost except waterways which will be cost-shared at the rate of 75% of average costs.

Maximum cost-shares per farm will be \$2500, unless a lower limitation is set by the County Committee based on

certain circumstances.

Applications will be accepted by the Haskell County ASCS Office just as soon as approval of the County program can be secured.

Jim Boykin, local Soil Conservationist with the Haskell Field Office, Soil Conservation Service, is being transferred to Terrell, Texas, effective June 8, as District Conservationist. We wish Jim and his wife, Carol, success in their new field of employment. James D. Hudson, of Winnsboro, Texas will be coming to Haskell Field Office to replace Boykin, effective June 22. Hudson and his wife were in the office last week, house hunting. Both of the Hudson's hail from Lawn, Texas.

J. C. Yeary, Jr.
District Conservationist

HOSPITAL NOTES

ADMISSIONS

MEDICAL: Mertes E. Jones, Haskell; Audrey Ellen Bell, Lueders; Yolanda Garcia, Munday; James Lopez, Stamford; Grace Walker, Munday; Alex Torres, Rule; Annie M. Howard, Haskell. Marvin Medford, Haskell, Exa L. Lott, Rule.

SURGICAL: D. W. Counts, Sagerton, Minnie Holcomb, Haskell; Kay Campbell, Haskell.

DISMISSED

Mertes E. Jones, Audrey Ellen Bell, Yolanda Garcia.

LOOK WHO'S NEW

Mr. and Mrs. Jerry Allen King of Munday announce the birth of a son, Chad Allen, born May 22, 1975, weighing 6 lbs., 15 1/2 oz.

College News

Mrs. Alice Agnew Jones received a degree in business education from Texas Tech, Lubbock, May 16.

Mr. and Mrs. L. W. Jones, Bill Jones, Rule, Mr. and Mrs. Charles McBeath, Amarillo, Mrs. Bobby Agnew, Janet Agnew, Abilene, and Mrs. Edith Agnew, Stamford attended the graduation exercises.

PAPER MATE PENS, featuring the Men of the Pump Room. The pen that pumps the ink, automatically, so your Paper Mate writes smoother at any angle.

MAX WHEELER
And THE COUNTRY SPECIALS
Will Play at a Dance
Friday, May 30,
at Old Glory Hall
9 p.m. to 1 a.m.

HERE'S TO YOUR HEALTH
from

Calling all adolescents with acne. Dr. Louis Wexler, a New York dermatologist says rigorous sports and exercise are helpful for acne. Profuse perspiration loosens blackheads plugging sebaceous glands, allowing a freer flow of sebum. Washing thoroughly after perspiring with an antibacterial soap also helps.

OATES Drug
PHONE 864-2512 HASKELL

Calendar of Events - JUNE

1 Attend the Church of Your Choice	2 Fire Department ASC Commissioners Court Masonic Lodge No. 682 Farmers Union Guild Presbyterian Women	3 Lions Rainbow Sewing Club Weinert HDC UFW Junior Garden Chamber of Commerce Lutheran Council, 7:30 WMU	4 Church of Christ Ladies Bible Class Church Night FBC, RA's, GA's, Youth FBC Prayer Meeting	5 Jaycees Rotary Club Garden Club Cancer Center Center Point HDC LOC HDC ALCW American Legion	6 YOUR SAVINGS DRAW GOOD INTEREST AT HNB	7 USE OUR DRIVE WINDOW TO SAVE TIME AND MONEY
8 Attend the Church of Your Choice Lutheran League, 2:30	9 Fire Department ASC Comm. Cub Scouts Haskell Commandery No. 49, K.T.	10 Order of Eastern Star Lions Josselot HDC WMU UFW Farm Bureau City Council School Board	11 Same as June 4 HD Council Sr. Citizens	12 Cancer Center Rotary Club Garden Club Jaycees	13 THE HASKELL NATIONAL BANK-- THE COMPLETE BANKING FACILITY	14 HASKELL NATIONAL BANK FIRST CONCERN IS THIS AREA'S ECONOMIC PROGRESS
15 Attend the Church of Your Choice Lutheran Pioneers, 1:30 Father's Day	16 Fire Department ASC Masonic Lodge 682 CowBelles, 7:30 Chamber of Commerce	17 Ruth Class Lions WMU UFW Hospital Board Rainbow Sewing Club Men's Prayer Breakfast, City Cafe, 6:30	18 Same as June 4	19 Rotary Club Cancer Center Jaycees American Legion	20 CHOOSE YOUR 1975 CAR... SEE THE HASKELL NATIONAL BANK FOR FINANCING	21 Summer Begins
22 Attend the Church of Your Choice	23 Fire Department ASC	24 Lions Club WMU City Council VFW Lutheran Comm. Night Commissioners Court	25 Sr. Citizens Same as June 4	26 Cancer Center Rotary Jaycees	27	28
29 Attend the Church of Your Choice	30 Fire Dept. ASC					

FOR YOUR CONVENIENCE...
CLIP THIS CALENDAR FOR
DATES YOU WANT TO
REMEMBER

MAKE YOUR
MORE SECURE
OPEN A HASKELL
NATIONAL BANK
SAVINGS ACCOUNT

master charge

PUBLISHED AS A
PUBLIC SERVICE BY

HASKELL NATIONAL BANK

— MEMBER F. D. I. C. —

A FULL
SERVICE
BANK

"THEY SOLD IT IN TWO WEEKS".

List your property with Hartsfield Agency. We have both the prospects and the mortgage loan connections for a quick sale.



Want to buy or sell a property? It may happen sooner if you list with us. We have many buyers for various types of property and the mortgage loan connections, too.

The HARTSFIELD AGENCY

HASKELL PH. 864-2665

MR. FARMER...

For the best price on your grain, contact Leon Jones, New Mgr. at Circle Seven Grain Co., North 3rd at Railroad Track.

We Also feature a complete line of Funk Seeds.

Circle Seven Grain Co.

864-2166
Haskell, Texas

Sagerton News

from Sagerton and surrounding area gathered at Sagerton Community Center Monday evening to see and Molly, as well as Pastor and Mrs. of Faith Lutheran here, and to send with our best wishes ahead in their

Quade of Garland Quade of Lawrence, have been visiting parents, the Glyn Lyndell made a Day week-end visit, leaving for Mexico and America. A summer from Washburn of Topeka, where professor of Anthropology allow him to visit the archeological ancient cultures. He participate on the pre-built the pyramids Mexico City, and the of Yucatan and who built large centers. Mrs. Rueben of Idalou, former of Sagerton visited Tuesday of last old friends on their from Lake Hub-

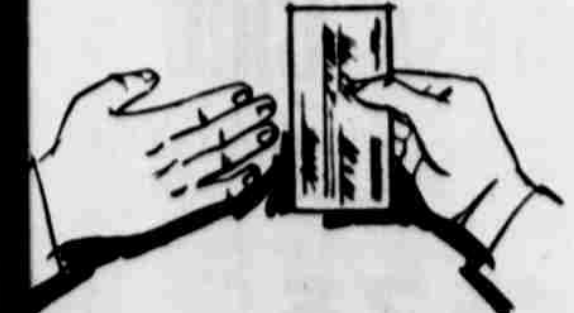
MR. FARMER...

the best price on your grain, contact Leon Jones, Mgr. at Circle Seven Grain Co., North 3rd at Railroad Track. We Also feature a complete line of Funk feeds.

Circle Seven Grain Co.
864-2166
Haskell, Texas

HASKELL FREE PRESS WANT ADS

BRING THE BUYER & SELLER TOGETHER



PLACE A WANT-AD TODAY! ADS PLACED BY 3:00 PM TUESDAY WILL START THURSDAY

Leisure Lodge News

We want to say "thank you" to all the nice people who visited us Sunday at open house, observing "Nursing Home Week". Guests were from Rule, Goree, Weinert, Stamford, Jacksboro, Abilene, Andrews, Pasadena, Dallas, and Midland, Texas, Los Angeles, Calif. and Ignacio, Colorado. Thanks, to Mrs. Eunan Linton, Mrs. G. L. Nehring, Mrs. Marie Branch, Mrs. Marie Townsend and the Garden Club for the fresh flowers that decorated our building. We also thank Mrs. Ray Overton, Sr., Mrs. Mildred Green, and Mrs. Carlton Couch for the piano selections. Mrs. W. E. Johnson was our honored guest as being our oldest resident. She is 95 years young, and will be 96 in August. Mrs. Christine Uhrich was a close runner-up being 95 and will be 96 in February. Mrs. Johnson was presented a beautiful red pillow corsage. Mr. Billy K. Fry was our photographer, grandson of Mrs. Wester. Mrs. Marie Townsend, past Administrator, Anna Lee Tribbey, Activity Director, Jo W. Fry, daughter of Mrs. Dewie Wester, of Abilene, were hostesses along with Mrs. Dewie Wester, N.H.A. We were so happy that you all came and please do come back and visit us again.

Visiting with Mrs. Carrie Edwards were Mrs. Manfred Reid and Mrs. Cecil Jetton of Rochester. Mrs. Edwards went out to eat with her sister, Mr. and Mrs. Harry Bradley on Tuesday.

Mrs. Nancy Howard went to visit her son, Mr. and Mrs. Hubert Wilson for a couple of days in Rochester.

Visiting Mr. and Mrs. John Brock on Sat. were Mr. and Mrs. Ulner Connelly of Level-land.

Hester V. Rowland had as her guests this week, Mrs. Wade Rowland, Grace Fant Key, and Mrs. Sam Robb Davis of Throckmorton.

Mrs. Trudie Bush went to Abilene for a check-up this week and found that she has glaucoma. We surely hope that the drops the Dr. gave her controls it.

Mrs. Nettie Stephens is a hospital patient and has been quite ill. We surely hope she will soon be feeling better.

Visiting with Mr. and Mrs. W. O. Lewis were Mr. and Mrs. Clyde Rodgers of Weinert.

Visiting with Mrs. Etta Crosson, were Mr. and Mrs. Danny Wilson and Jay, Mr. Verson Jonas, Miss Carol Wheeler of Ballinger, Mr. and Mrs. Buddy Sutton, Sweetwater, Rev. Kenneth Blair, Mrs. Pearl Soloman, Mrs. Velma Hill, Mrs. Margaret Santerre, all of Haskell, Mr. and Mrs. Jack Gore, Lane and Missie, Neda Threet, Mrs. Earlene Smith, Mrs. Ruth Saffel, Mrs. Opal Stryker, Mrs. H. R. Trussel, Mrs. Jeff Reynolds, and Bro. Danny Johnson, all of Rule, Mrs. Iva Flowers of Stamford, and Mr. and Mrs. J. B. Maxwell of Andrews.

Visiting with Mrs. Easter Mullis this week was Mrs. Clara Cross of Rochester.

Visiting with Mr. Tom Rhoads this week were, Mrs. Nellie Pearson, Jay L. and Rudolph Mock of Weatherford, Raymond and Debra Rhoads of Abilene, Mr. and Mrs. George Rhoads of Old Glory, Dorothy Rhoads, Lila Ann Hutchens, Lowell and Scotty of Munday.

Sunday Services were held by the Church of Christ and the Lutheran. Tuesday devotion was brought by the Four Square ladies.

Visiting Carrie Edwards on Wednesday was Mrs. Victor

Lambert of Monahans. Mr. and Mrs. Hollis Rucker of Friona are visiting her mother, Mr. Trudie Bush. Mrs. Bush will be visiting the Rucker's at the home of her daughter, Mrs. Earlene Smith of Rule.

Mr. Mertis E. Jones is a hospital patient. Mr. Jones has been quite ill, but is improved at this time. We hope he will soon be back with us.

Eugene Rhoads and son, Leonard of Rule visited their uncle, Tom Rhoads on Friday.

LOOK WHO'S NEW
Mr. and Mrs. Douglas Dwayne Moore of Alamogordo, N.M. announce the birth of a daughter, Marsha Lynn, born May 20, 1975, weighing 9 lbs., 4 oz. Maternal grandmother is Mrs. Wilma John Pruett, paternal grandmother is Mrs. Gracie Moore, great-grandparents are Mr. and Mrs. Hardin Cofield, all of Haskell. She also has two older sisters, Marilyn and Doretha.

Cobb Named New PCA President

J. R. Gleaton, President, Rolling Plains Production Credit Association has announced his plans to retire July 11, 1975 having completed 32 years with the Association. He announced his plans to the Board of Directors at its regular meeting held in Stamford, May 22, 1975.

Mr. Gleaton was reared in Jones County, moved to Stamford in 1934 and began his employment with the Association in 1943. He served as Vice-President from 1953 until his appointment as President June 30, 1972.

Mr. and Mrs. Gleaton will continue to make their home in Stamford. J. R. states that they plan to spend considerable time traveling and enjoying retirement.

The Board of Directors announced the appointment of R. C. Cobb as President

effective upon the retirement of Mr. Gleaton. Mr. Cobb was employed with the Rolling Plains Production Credit Association September, 1939.

Mr. Cobb entered the Army in mid 1942 and served 3 1/2 years throughout much of Europe and received a battle-field commission as 2nd Lieutenant in February, 1944. Mr. Cobb was recalled to active duty during the Korean War and served from July 1951 to December 1952. He also served in the Army Reserve and holds the rank of Major in Retired Reserve.

Mr. Cobb was Assistant Manager in the Haskell Office and was transferred to Stamford in 1955, having served since then as Vice-President and Secretary. For four months in 1974, Mr. Cobb worked on a special assign-



J. R. GLEATON

R. C. COBB

ment with the Intermediate Credit Bank of Houston in writing an operations manual for Production Credit Associations. The Board of Directors expressed its pleasure in having the qualifications and

capabilities of Mr. Cobb to fill this position. The Rolling Plains PCA serves the credit needs of farmers and ranchers in a 17 county area and has capital of almost \$6 million.

CROP HAIL INSURANCE
WALLACE MOORHOUSE INSURANCE
Phone 422-4341 "Your Protection our Profession" Munday, Texas

OUR WINNING PRICES WHIP INFLATION!

DOTTIE	PRODUCE
BISCUITS 6 CANS 59¢	POTATOES 10 LB BAG 67¢
MEAT HAMBURGER LB 69¢	FRESH CALIFORNIA Strawberries CTN. 39¢
GOOCH SAUSAGE	WASHINGTON PEARS LB 29¢
HOT LINKS LB 79¢	FOREMOST BIG DIP 1/2 GAL. 69¢
FRESH SLICED BEEF LIVER LB 59¢	LIBBY'S FROZEN SQUASH BOX 33¢
POWDERED SUGAR 1 LB BOX 39¢	SNICKERS MILKY WAY 3 MUSKEETERS PKG OF 6 BARS 69¢
TRETT ARMOURS 12 OZ CAN 89¢	LITTLE DEBBIE CAKES BOX 69¢
BRYAN VIENNAS CAN 25¢	303 CAN VEG-ALL 29¢
TUNA DEL MONTE FLAT CAN 43¢	TERI TOWELS JUMBO ROLL 49¢
RAIDER SWEET POTATOES NO2 1/2 CAN 57¢	BOWL CLEANER 34 OZ CAN 69¢
DINNER KRAFT BOX 29¢	
ANGEL FLAKE COCONUT 3 1/2 OZ CAN 45¢	

POGUE GROCERY
—EXTRA PARKING BEHIND STORE. HOME OWNED AND OPERATED—
113 NORTH AVENUE E HASKELL, TEXAS PHONE 864-2015

Attic
THE NEW THE USED and THE OLD
Think Antiques ... Look to ... A Good Investment!
SHERMAN'S FLOORS AND INTERIOR
101 N. E. Upstairs

Saturday, May 31st! Big Citywide

SIDEWALK SALE

**SAVINGS UP
TO 50%**

And FLEA MARKET!

One Rack
SUITS
1/2 Price

One Rack
Sport Coats
1/2 Price

Lane Apparel
Next To M-System

One Rack
Odds & Ends
Dresses, Sportswear
and others
\$5⁰⁰
Winona's
Haskell

The Youth
of First Baptist Church
will have their
**Garage
Sale**
at
Johnson Pharmacy
Friday & Saturday

One Day Only
Choice of 2
**DINING ROOM
SUITE 30% off**

Sleepers
Choice of 5
25% off

**LIVING ROOM
SUITE \$189⁵⁰**
2 Pc Vinyl

Boggs & Johnson

Blankets
80% Polyester &
20% Acrylic
Reg. 6.99 & 7.99
Saturday Only **\$4⁹⁷**

Girl's Pants
Sizes 3-14
Val. to 8.00
Saturday Only **\$3⁰⁰**

Ladies and Girls **SHOES**
Val. to 16.99
Saturday Only **\$2 & \$3**
Tennis-Dress-Oxford

Heidenheimer's
Haskell, Texas

Men's 100%
**Dacron Double
Knit
SLACKS**
By Hagger
Values to \$20
Sizes 28 to 42
Prices Good
Thurs., Fri., and Sat.
HASSEN'S
HASKELL

Printed Jersey

SHOE SALE

One Group

SIDE WALK SALE

1/2 Price Sale
 4 Foot Artificial Plants
 Artificial Arrangements
 and Other miscellaneous
 Items
City Floral
 Haskell

Wamsutter
Twin Flat Sheets
 for 39X75 Mattress
 Reg. 3.99 **\$2.77**

Cape Cod
White Picket Fence
 Reg. 59c
 only **43¢**
Perry's
 Haskell

Side Walk Sale
 Table of odds
 and ends-such as
 Cardigan sweaters-slip
 over sweaters-novelty
 shells-skirts
 GRAB TABLE
\$5.00
 Lane-Felker

LARGE FLOOR PILLOWS \$2.00
 reg. 12.50 to 6.95

One Group
ANTIQUE SATIN PRINTS & SOLIDS
 2 yds. for
\$1.00

Black Spanish Style
OUTSIDE LIGHT \$3.00 ea.
 reg. 16.50 now

COMMODOE SEAT COVERS
 Several Colors
 reg. 4.50 now **50c** ea.

Round
BALL STRIPE CANDLES \$1.00
 reg. 3.00 now

2 Leather Covered
DECANTERS reg. 14.95 now
\$4.00

Sherman's Interiors

1 Group
MEN'S SUITS
 Reg. \$100 to \$120 **\$69.95**

100 Sport Coats **\$35.00**
 values to 80.00

One Rack odds and Ends

Suits-Sport Coats **\$10.00**
 Choice Each

100 Pair Pants **\$2.00**
 Size 29 to 34 Each

Dad'N Lad
 Haskell

**Be Sure and shop
 Perry Brothers
 Sidewalk Specials.**

Many items on sale at huge
 savings. New items will be
 moved outside hourly, so be
 sure to stop by several
 times, so you will not miss
 these bargains

Perry's
 Haskell, Texas

One Group
Ladies' Shoes
 Close Out
 Values to \$16
 only **\$4.00**

Close Out Men's
Dress Shoes
 Values to \$24
 By Rand **\$8.00**

HASSEN'S
 Haskell

LADIES'
 One Rack **sportswear**
 1/2 Price
 All 100% Polyester Knit

One Rack
Tank Tops
 By Red Eye & Alleen
 Reg. 7.00 & 13.00 **\$3.00**

Valued to 13.00 **Jr. Shorts**
\$3.00

Value to 16.00 **Jr. Pants**
\$5.00

Heidenheimer's
 Haskell, Texas

Double Knit
 Values to 4.98
\$1.98 yd.

Forma Press
COTTON
 Values to 1.98
79¢ yd.

**FABRIC
 BOUTIQUE**

Boy's
Dress Pants
\$5.00

Boy's *
Sport Coats
\$2.00

Boy's
Dress Shoe
\$3.00

*
Heidenheimer's
 HASKELL

**Sportswear
 Separates
 and
 Pant Suits**

Broken Styles and Sizes
 Pick up that extra piece
 you failed to get-
 While they last.

1/3 & 1/2 Off
**The
 PERSONALITY
 Shoppe**
 HASKELL

JERSEY KNITS
 100% Polyester
 Reg. 2.69 yd. **\$1.37** yd.

PANTY HOSE
 98c Value **3-\$1.00**

**BEN FRANKLIN
 STORE**
 HASKELL, TEXAS

Just Two of the many Bargains at The
 C&B Store's Sidewalk Sale:

Men's
**WALKING
 SHORTS**
 Sizes 27-36
\$2.99

All
 Women's & Girls
Swimwear
 1/3 Off

The C&B Store
 East Side of Square

BASSETT
 Extra Large Spanish
BEDROOM SUITE
 In Dark Pecan-7 Big Pieces
 Reg. 1199.95-Sale **\$599.95**

**DARK MHG Drop Leaf
 DINING TABLE**
 Duncan Phyle
 With one Leaf
 Reg. 199.95 For **\$89.95**

**BUTLER Frtwood Curio
 CABINETS**
 with Glass Top
 Reg. 89.95-Sale **\$49.95** Each

Jones-Cox

FREE
50 FREE S&H
GREEN STAMPS
With 7.50 or
More Purchase

M-System
Good only at M-System in
Haskell-May 31, only

COUPON

SAVE

Alberto VO5
Hair Spray
Reg. 99c **57¢**
2-\$1.00

**BEN FRANKLIN
STORE**
HASKELL, TEXAS

9 Piece Dinette Suite
Large Extra Leaf
15% Discount

Sleeper Sofa
100% Herculon
15% Discount

1/2
Price
A Special Group
\$5.00
Lane-Felker

1 Table Shoes
Values to \$34 **\$9.99**
Lane Apparel

Choice of 6 Recliners
\$69.50
All Love Seats
30% off
Boggs & Johnson

One Rack

**Famous
Name
Brands**

\$10.00

WINONA'S
Haskell

See Us For
Wolvirine & Cowtown

Shoes & Boots

Fouts' Dry Goods

We Give S&H Green Stamps
Haskell

Check Our
\$9.00
Sale Table

\$13.00 Purses

\$10.00

The Shoe Castle
Haskell

**Long Dresses,
Party Pants and
Long Skirts**
An Exciting Group
1/3 & 1/2 Off
Some styles LESS than 1/2 price

**The
PERSONALITY
Shoppe**
HASKELL

Super Fit
Panty Hose
Ultra Sheer
One Size
33¢ Pair

One Table
Cotton Material
Reg. 99c only
57¢ Yard
Perry's
Haskell, Texas

Men's Western
Straw Hat \$3.00

Men's Haggard
Double Knit
Saturday Only **Dress Pant
20% off** Reg. Price

Men's
Flair Leg
Reg. 9.99 **Wrangler Pants
\$7.88** Saturday Only

Men's
Val. to 49.95
Sidewalk Spec. **Sport Coats
\$25.00**

Heidenheimer's
HASKELL

STP
Oil Treatment
Ea. **89¢**

WD40
Ea. **\$1.30**

Smitty's In Haskell

Men's
Fashion Jeans
By Levi & Wrangler
Size 28 to 38
Values to 15 **\$6.99**
Prices Good
Thurs., Fri., and Sat.

Men's
Western Shirts
An Outstanding Selection
Never Needs Ironing
Values to \$14 **\$8.00**
Sizes 14 1/2 to 17 1/2
Prices Good
Thurs., Fri., and Sat.

HASSEN'S
Haskell

**Unclaimed
Cleaning**

The clothes have been left in the
cleaners over one year.

Priced From
50c to \$5.00

Baird Cleaners
Haskell

15% Discount
ON ANY
**RANGE-WASHER-DRYER
REFRIGERATOR or
DEEP FREEZE**

IN STOCK
No Trade Required Sat., May 31 Only

**Philpot Service
and Supply**
HASKELL

**Beginning of
45th Year
Anniversary Sale**

Come Inside Where It Is

COOL

**Whites Auto
Store**
West Side of Square

1-5 pc Living Room Group
New Herculon Plaid Couch
And Chair with Three
New Riverside Living Room Tables
Regular 659.80 Sale

\$459.95 w/T

See Us For Your
Father's Day Calculators
or other office Equipment
Texas Instrument, Corvus, & Bomar

Bynum's
Haskell

SHOES
1/3 to 1/2 off

See Our Fine Selection of Joyce, Fanfare and Footnotes Shoes.

The Shoe Castle
Haskell
●●●●●●

Poly Double Knits
Values to 3.99 yd.

\$1.37 yd.

BEN FRANKLIN STORE
HASKELL, TEXAS

On anything in the store not on sale to all persons 65 years or older.

Proof Required

Heidenheimers
Haskell

\$3.99

THE SLIPPER SHOPPE
HASKELL

Included are Jr-Misses and Half Sizes 1 Group

1/2 price
A Special Group
\$5.00
Lane-Felker

Selected Numbers

Ladies Dresses & Pant Suits
1/3 off & 1/2 Price
HASSEN'S
Haskell

10% off
ON ALL 1975
FEDDERS
AIR
CONDITIONERS
20,000 BTU
5,000-25,000 BTU's

Owens Radio & Electric
HASKELL

One Day Only
Bassett
BED ROOM SUITES
Your Choice

30% off

1 New Sofa **\$89.50**
Choice of 3
Rockers with Ottoman **\$79.50**

Boggs & Johnson
HASKELL

Haskell County Courthouse
ON
Commemorative Plate
Pewter Look

\$12.00

JONES COX & COMPANY
COUNTRY STORE

Entire Stock
TIMEX WATCHES
20% off

BEN FRANKLIN STORE
Haskell, Texas

DRESSES
Jrs., Jr. Petites, Regular & Half Sizes
A Select Group of Spring Fashions

1/3 & 1/2 off

The PERSONALITY Shoppe
HASKELL

La-Z-Boys For Fathers Day

2-Traditional recliners in Antique Gold. reg. 289.95 **\$199.95**

1-Traditional recliner in Heavy Nylon Rust Velvet reg. 319.95 for **\$199.95**

1-Mrs. La-Z-Boy in green vinyl reg. 259.95 for **\$199.95**

1-Mr. La-Z-Boy in green vinyl reg 279.95 for **\$219.95**

Jones-Cox

Bargain Table
Bras—Girdles—Blouses—Sandals
Panty Hose—Pant Liners

\$1.00 to \$15.00
Reg. 1.50 to 40.00 value

The PERSONALITY Shoppe
HASKELL

WEEKEND SPECIALS
●●●●

Orange Or Green, Reg. 9.95
Tweed Shag, Yd.4.95
Reg. 11.95

Lime Green Plush.....7.95

Remnants Marked At Cost

Bring Your Measurements And
SAVE-SAVE-SAVE

Sherman's Carpet Store
HASKELL

Weekend Specials

13 cu. ft.
Freezer \$249.95

24,000 BTU
Air Cond. \$395.00

Automatic Drive
Mower \$395.00

WESTERN AUTO
Haskell, Texas

On Side Walk
Rack of
Sportswear
Pants
Blouses
Shorts
Jackets
Skirts

Some pieces values to \$35 while They Last

\$5.00

Lane-Felker

FOLGER'S COFFEE

2 LB. CAN \$1.89

M-SYSTEM
HASKELL

Fraziers Appliance

RCA Stereo Consoles
15% Discount
Any Console In Stock
Stereo Music Systems the same Discount

RCA Color, XL 100, and Black & White T. V.
10% Discount

ALL THE APPLIANCES
15% Discount