

Mud Mania Saturday

The Haskell Free Press

VOL. 131-NO. 12, ©MARCH 23, 2017

"The People's Choice"

8 PAGES-ONE SECTION-75 CENTS

Softball

Maidens vs Hamlin
Fri., March 24, 5:00 p.m.
at Hamlin

Maidens vs Stamford
Tues., March 28, 5:00 p.m.
at Haskell

Baseball

Indians vs Hamlin
Fri., March 24, 7:00 p.m.
at Hamlin

Indians vs Stamford
Tues., March 28, 7:00 p.m.
at Haskell

Track

Maidens
Merkel Meet
Thurs., Mar. 23

Calendar

Mud Mania

The Second Annual Mud Mania will be held Sat., March 25. A Mini Rod Tractor Pull will be added to the event this year. For more information, contact Tim Judd at 940-256-2133 or 940-864-2900.

4-H meeting

The Haskell Co. 4-H Jr. and Sr. Clubs will meet Sun., March 26 at 4 p.m. at the Extension office for their monthly club meeting.

Chamber banquet

The annual Haskell Chamber of Commerce Banquet will be held Mon., March 27. Tickets are \$15.00. For more information, please call the Chamber at 940-864-2477.

Storm sirens

The City of Haskell will test the storm sirens Fridays between 11 a.m. and 2 p.m., weather permitting beginning Fri., March 10.

Fish fry

East Side Baptist Church, Haskell, will hold their annual fish fry, to benefit youth camp, Sun., April 9, from 11:30 a.m. to 1:30 p.m. Donations accepted.

Weekly story time

The Haskell County Library, 300 N. Ave. E, will host a weekly story time every Friday from 10 to 10:30 a.m. Any age children, with parental supervision, are invited to listen and participate in stories, songs, rhymes and activities. For more information call 940-864-2747 or visit <https://www.facebook.com/HaskellCountyLibrary/>.

Fourth Sunday

The public is invited to attend a fourth Sunday celebration at Hopewell Baptist Church, 908 N. Ave. A in Haskell, featuring a special speaker each fourth Sunday of the month.

AWANA

Cornerstone Fellowship Baptist Church will begin the AWANA program for children age 5 through fifth grade Mon., Jan. 9. AWANA meets each Monday from 5:30 to 7:00 p.m., through March, except on school holidays. Call 940-864-3004 for more information.

Support group

The Jones County Alzheimer's Association Support Group meets the second Monday of the month at 4 p.m. at Country Elegance, 1700 Columbia St., Stamford. For information, contact Patsy Richards at 325-773-5511.



Index

Out of the Past.... Page 4
Menus Page 6
Classifieds..... Page 7

Big Country Mud Mania to be held Saturday

The second annual Big Country Mud Mania is scheduled for this Saturday, March 25.

Sponsored by Big Country Chevrolet Dealers' Association, gates will open Saturday morning at

7:30 a.m. for registration. Entry fee will be \$55. The event kicks off with the modified garden tractor

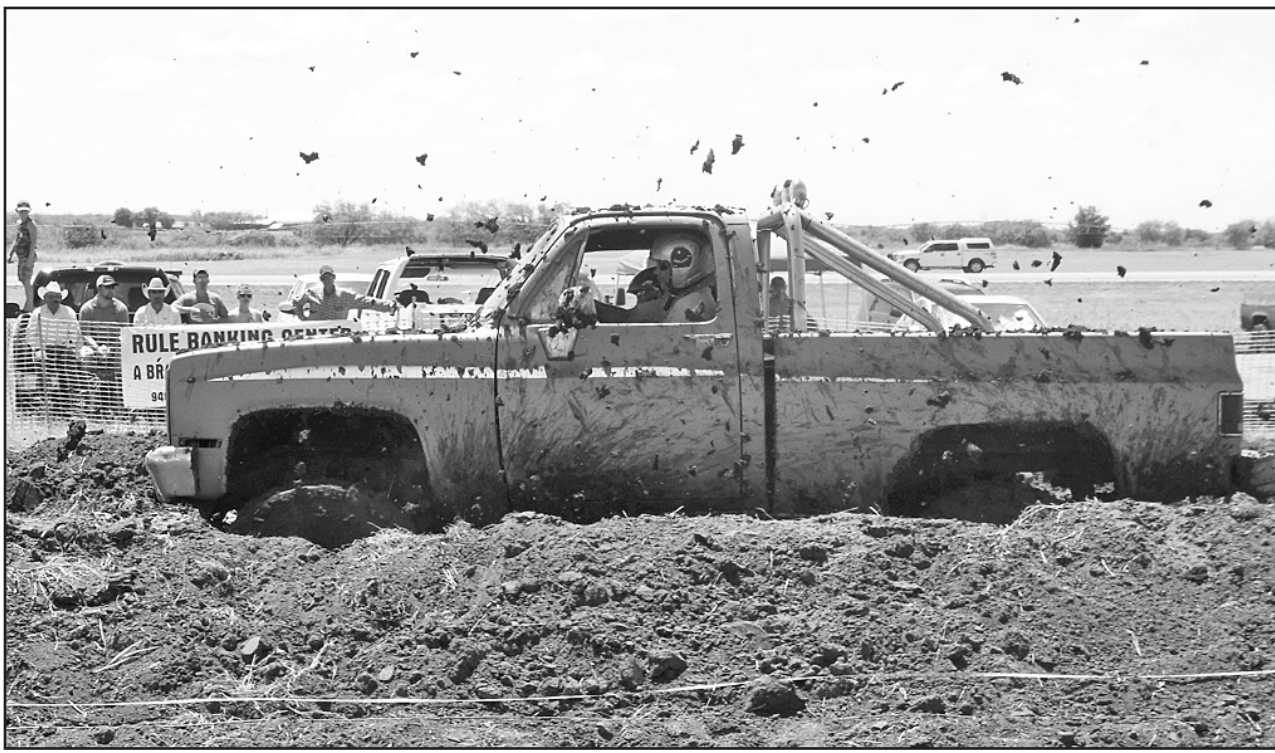
pull, beginning at 10 a.m. and races get underway at 11 a.m. The mud bog will take place on Hwy. 277 South,

next to Bailey Toliver Chevrolet in Haskell. Classes will include Street (tires up to 37"), Modified (tires 37"-40") and Open (40" and up, tractor tires are allowed). Cash prizes and trophies, donated by Steele Fire Apparatus, will be awarded to first, second and third place winners.

Monster Truck rides for kids will be available for a charge. A concession stand will also be available.

Cost to observe is \$10 for adults, \$5 for ages 6-12 and children under 6 are free. Proceeds will benefit Haskell Volunteer Fire Department, EMS, First Responders and Haskell 4-H Shooting Sports Club. For more information contact Tim Judd at (940) 256-2133.

Everyone is encouraged to come out Saturday and support this benefit effort, while watching these competitors "get down and dirty."



MUD MANIA—The mud will fly at the 2nd annual Big Country Mud Mania Sat., March 25 held on Hwy. 277 South, next to Bailey Toliver Chevrolet Inc. with gates opening at 7:30 a.m. The West Texas Modified Garden Tractor Pullers will begin at 10 a.m. followed by the races at 11 a.m.

Three vehicle wreck claims lives of two students

At approximately 6:15 p.m. Saturday, March 18, a wreck involving three vehicles occurred just north of Haskell.

According to Sgt. Brody Moore of the Texas Highway Patrol, a grey dually carrying four Vernon College students and towing a horse trailer was on Business 277 approaching the intersection of Highway 277. The driver of the dually disregarded the stop sign and

was struck in the left side by an RV, with a passenger car in tow, heading south on 277. A GMC pickup heading north steered right, into the east bar ditch to avoid the collision. The GMC was then sideswiped by the RV.

The grey dually held members of the Vernon College rodeo team. According to Vernon College president Dusty Johnson, the students had been

participating/attending a roping event in Haskell.

Occupants of the RV, Michael and Terri Moynihan of San Angelo, as well as the occupants in the dually had to be extricated by the Haskell Volunteer Fire Department.

The driver of the dually, Yancie McCuision, 20 of Sugar City, Colorado, was pronounced dead at the scene. Passenger Vinita Trevino, 19 of Petrolia, was flown to Hendrick Medical Center in Abilene, where she later died as a result of her injuries.

Two passengers in the dually, Jakob Plummer, 20 of Petrolia and Drew Hill, 20 of Canadian, along with the Moynihans were all eventually transported to Hendrick Medical Center and are currently listed in stable condition.

The five occupants in the

GMC pickup, reported no injuries.

Sgt. Moore said, "Multiple EMS crews, Haskell VFD and other area fire crews were extremely helpful in rescue operations and life-

saving techniques to prevent other casualties. TxDOT provided traffic direction, as evidence was obtained and collected. Sammy Larned took care of the horses from the crash."

Wild Horse Prairie Car Show set April 1 around the square

by Caron Yates

Whether you own a classic show car, enjoy looking at restored cars or just want something to do on a Saturday, downtown Haskell is the place to be.

The 6th annual Wild Horse Prairie Car Show is scheduled for Sat., April 1 around the square in Haskell.

Registration begins at 8 a.m. and will run through 11 a.m. Vehicles may be registered, for an entry fee of \$20 at the gazebo on the square.

There are some twenty-two different categories in which to enter your vehicle. They include Antique Car Pre '75, Car '76 and Up, Antique Truck Pre '75, Truck '76 and Up, Custom Car Pre '75, Custom Car '76 and Up, Custom Truck Pre '75, Custom Truck '76 and Up, Corvette '53-'83, Corvette '84 and Up, Mustang '64-'78, Mustang '79 and Up, Camaro/Firebird/Trans Am '67-'81, Camaro/Firebird/Trans Am '82 and Up, Tri 5's, Original Classic Chevy, Original Classic Ford, Original Classic Mopar,

Original Classic Other, Rust Bucket, Special Interest and Unfinished.

There will be a Poker Run Cruise through town beginning at 2 p.m., followed by the awards presentation at 3 p.m.

As you enjoy the vehicles, stop by for a hamburger. Keep Haskell Beautiful will be selling funnel cakes, popcorn and/or cotton candy at their booth.

Special room rates will be available at Ameristay Inn & Suites. A 10% discount voucher is available at check-in or at the Haskell Chamber of Commerce.

The event is sponsored by Keep Haskell Beautiful and the Haskell Chamber of Commerce. For more information on the car show call Ben at (940) 864-4555. Last year's car show drew approximately fifty entries, and organizers are hoping for that many and more this year.

This is a perfect opportunity to visit, shop the local merchants and catch a glimpse back in history through these beautifully restored cars.

Kevin Tutt to speak at Haskell Chamber banquet March 27

The Haskell Chamber of Commerce annual banquet has been set for Monday, March 27th, beginning at 6:30 p.m. at the Haskell Memorial Civic Center.

Guest speaker will be motivational speaker Kevin Tutt from Tutt and Dags in Abilene. Entertainment will be a musical entitled Tweet! provided by Pam Gibson's 3rd grade music class from

Haskell Elementary. Tickets are \$15 each for a steak dinner and all the trimmings. You may purchase tickets at the chamber or from any chamber director.

The Chamber of Commerce will present the Volunteer and Business of the Year awards.

For more information or questions call (940) 864-2477.

Bevel, Manske recognized for basketball accomplishments

Two Haskell Maidens have been recognized for their accomplishments on the basketball court this season.

Senior Ashlyn Bevel and sophomore Taylor Manske were named to the 2016-17 Class 2A Texas Girls' Coaches Association (TGCA) All-State Girls' Basketball Team.

In addition, Bevel was also named to the Class 2A-I Texas Association of Basketball Coaches (TABC) All-Region Girls Basketball Team. Coach Blake Eddleman said, "This is a nice honor due to the size of Region I and the strength of girls basketball in Region I."

Bevel was earlier named District 8-2A Co-Offensive MVP, while Manske was chosen Defensive MVP. The Maidens finished the

season as Area Champions, with a 29-6 overall record, undefeated in district play. Eddleman added, "The individual play of both Bevel and Manske, combined with outstanding teamwork and

great team success helped make this honor and recognition possible."

We add our congratulations to these Maidens on their achievements.



ASHLYN BEVEL



TAYLOR MANSKE

FOR NEWS ITEMS OR TO SUBSCRIBE, CALL 940-864-2686

DCOH to host USDA home loan meeting March 28

The Development Corporation of Haskell would like to invite residents, real estate agents, contractors and lenders to learn more about the USDA Direct and Guaranteed Home Loan Programs. The meeting will be held at the Haskell Jr. High building, room 96, (north end of the secondary campus) Tues., March 28 at 6:00 p.m.

The meeting will focus on opportunities available for families and individuals to achieve the dream of home ownership. Families that are interested in living in rural communities and owning their own home or existing home owners that need assistance with home repairs should plan to attend.

Representative Cheryl Reed with USDA Rural Development will be

available to discuss programs that offer up to 100% financing for a home purchase. Financing is available at a fixed interest rate currently at 3.25%. Very-low income households may qualify for payment assistance which brings their effective interest rate to as low as 1%. These affordable rates with no down payment make home ownership affordable and may be less than rent.

If you are wondering if your income meets the requirements, take a look. For Haskell County the direct loan program income requirements are as follows: 1 person, \$29,450; 2 persons, \$33,700; 3 persons, \$37,900; 4 persons, \$42,100; 5 persons, \$45,450; 6 persons, \$48,850. For the guaranteed loan program

the limits are as follows: 1-4 persons, \$75,650; 5-8 persons, \$99,850.

Rural Development also has home repair loans. For very-low income home owners, the interest rate is 1%. Grants are available for very-low income elderly home owners who are unable to repay a loan for health and safety hazard repairs and handicapped accessibility.

Discussion will also cover the basics of obtaining a loan, how repayment and credit affect loan qualifying, and requirement for purchasing an existing home or new construction.

For more information, please contact Jimi Coplen with the DCOH at 940-864-3424 or Cheryl Reed with USDA at 325-690-6162.

How to prevent elder financial abuse

Financial fraud continues to be the fastest growing form of elder abuse. As the senior population in this country increases, so do the financial crimes committed against these vulnerable and trusting individuals. Elder abuse is particularly hard to combat because it frequently goes unreported, as do financial scams—making elder financial scams a relatively “low-risk” crime. Elderly victims are often confused, afraid or embarrassed to report crimes against them so the best way to protect your older loved ones is to educate them about common scams.

Unfortunately, it’s not always strangers perpetrating these crimes. According to the National Council on Aging, the majority of reported elder abuse is committed by an older person’s own family members, most often the adult children, followed

by grandchildren, and nieces and nephews. Even within your own family, it’s important to be vigilant and aware of happenings with elderly loved ones. Below is additional information about common types of fraud against seniors as well as advice for seniors when approached by scammers.

Why seniors?

•Senior citizens are likely to have a strong credit standing, money put away and/or own their home, all of which make them attractive to con artists.

•People raised in the 1930s, 1940s and 1950s were generally taught to be polite and trusting. Scammers exploit these traits, knowing seniors are less likely than others to hang up on them or refuse their requests.

•The elderly are less likely to report fraud because they’re embarrassed, don’t know who to report it to or haven’t realized they’ve been scammed. They also might not report it because they don’t want family members to think they no longer have the capacity to take care of themselves, financially or otherwise.

•Even when they report a crime, elderly victims often make poor witnesses as they’re not able to supply enough detailed information due to the effect of age on memory.

Common scams

•Telemarketing, email and sweepstakes scams: A scammer calls seniors about a sweepstakes or a lottery they won that requires advance fees or upfront charges. Or, seniors receive an email asking them to wire money to a stranger as part of a financial windfall that will be split with them. Also, there is the fake governmental agency call to get access to seniors’ government benefits or social security numbers.

•The grandparent scam: A perpetrator pretends to be a grandchild, law enforcement officer or medical professional with a story that the grandchild is in legal or medical trouble and needs money immediately to resolve the issue.

•Medicare fraud: Con artists pose as Medicare representatives to solicit a senior’s personal information for the purpose of identity theft.

•Investment schemes: A scammer promises a senior massive returns on an investment or offers a once-in-a-lifetime opportunity.

•Repair fraud: A repair person contacts a senior about a necessary service and requires payment upfront—

often for services that are never provided or are not needed.

•Funeral and cemetery scams: A perpetrator scans obituaries and contacts the grieving widow or widower with a claim that the deceased had an outstanding debt. Or, a disreputable funeral home uses a senior’s unfamiliarity with funeral costs to add unnecessary charges.

How to handle

Fake sweepstakes and telemarketing scams are the most common forms of fraud that impact seniors. Following is senior fraud prevention guidance from the National Crime Prevention Council, outlining five ways to make unwanted telemarketers go away. It is advised to practice these with your elderly loved ones.

Remind seniors in your life that they can, and should, ask telemarketers to remove them from their call lists. If the telemarketers don’t, they’re breaking the law.

1. Never give personal information (bank account, social security number, etc.) to anyone over the phone, unless you initiated the call and know you’ve reached the right agency.

•Response: “I don’t give out personal information over the phone. I’ll contact the company directly.”

2. Don’t believe it if the caller tells you to send money to cover the “handling charge” or to pay taxes.

•Response: “I shouldn’t have to pay for something that’s free.”

3. “Limited-time offers” shouldn’t require you to make a decision on the spot.

•Response: “I’ll think about it and call you back. What’s your number?”

4. Be suspicious of anyone who tells you not to discuss the offer with someone else.

•Response: “I’ll discuss it with my family and friends and get back to you.”

5. If you don’t understand all the verbal details, ask for it in writing.

•Response: “I can’t make a decision until I receive written information.”

In addition to ensuring that seniors in your life know warning signs and scams to look out for, it’s important that they come to a loved one for advice before they take action when approached by someone asking for money or personal information. The best rule of thumb for seniors to avoid being victimized by a stranger is to never provide personal information, and don’t send money or provide a credit card number to “verify,” “guarantee” or “process” a prize.



HASKELL FUNERAL HOME
Offering Traditional Funeral Packages Starting at \$5,995
We honor and accept all prearrangements made at other funeral homes. We take pride in serving you.
2 Avenue D, Haskell, TX 79521 • 940-863-4620 • Fax: 940-863-4619

“Home Town Service You Deserve”

•Oxygen •Wheelchairs •Hospital Beds
•Trapeze Bars •Walkers •Canes
•Bedside Commodes •Lift Chairs
•Diabetic Supplies •Nebulizers
•Power Mobility • So Much More!

Seymour Medical Supply, Inc.

Hardeman • Foard • Wilbarger • Wichita • King
Knox • Baylor • Archer • Haskell • Throckmorton
Young • Jack • Cottle
110 W. Reiman, Seymour, TX 76380
940-889-6060 • 866-889-1076

SPONSORED BY BIG COUNTRY CHEVROLET DEALERS’ ASSOCIATION

MARCH 25, 2017

2ND ANNUAL MUD BOG • GET DOWN & DIRTY

BIG COUNTRY MUD MANIA

CASH PRIZES 1ST-3RD PLACE
Trophies donated by Steele Fire Apparatus

Bailey Toliver CHEVROLET
Haskell, Texas Start 10 a.m.

\$55 ENTRY FEE • HALF TIME MUD RUNS
CONTACT: TIM JUDD 940-256-2133
GATES OPEN 7:30 A.M. • RACE STARTS 11 A.M.
CONCESSION AVAILABLE
ADULTS \$10 • AGES 6-12: \$5 • UNDER 6 FREE
HWY. 277 SOUTH, HASKELL, TX
NEXT TO BAILEY TOLIVER CHEVROLET INC.
CLASSES: STREET (TIRES UP TO 37”), MODIFIED (TIRES 37”-40”), OPEN (40”) AND UP. TRACTOR TIRES ARE ALLOWED)
Tickets for Monster Truck rides available for kids
HOST HOTEL: AMERISTAY INN & SUITES, 940-864-2424 MENTION MUD BOGS FOR DISCOUNTED RATES
BENEFITTING HASKELL VOLUNTEER FIRE DEPARTMENT, EMS, FIRST RESPONDERS AND HASKELL 4-H SHOOTING SPORTS CLUB

Your contributions to Social Security make our nation stronger

By Ray Vigil
Social Security Public Affairs Specialist in El Pasos

At first, seeing taxes taken out of your paycheck can be a little disappointing. However, you can take pride in knowing you’re making an important impact each week when you contribute to Social Security. Understanding how important your contribution is takes some of the sting away because your taxes are helping millions of Americans—and protecting you and your family for life—as well as wounded warriors, the chronically ill, and disabled.

By law, employers must withhold Social Security taxes from a worker’s paycheck. While usually referred to as “Social Security taxes” on an employee’s pay statement, sometimes the deduction is labeled as “FICA” which stands for Federal Insurance Contributions Act, a reference to the original Social Security Act. In some cases, you will see “OASDI” which stands for Old Age Survivors Disability Insurance.

The taxes you pay now translate to a lifetime of protection—for retirement in old age or in the event of disability. And when you die, your family (or future family) may be able to receive survivors benefits based on your work as well.

Because you may be a long way from retirement, you might have a tough time seeing the value of benefit payments that could be many decades in the future. But keep in mind that the Social Security taxes you’re paying can provide valuable disability or survivors benefits now in the event the

unexpected happens. Studies show that of today’s 20-year-olds, about one in four will become disabled, and about one in eight will die, before reaching retirement.

Be warned: if an employer offers to pay you “under the table,” you should refuse. It’s against the law. They may try to sell it as a benefit to you since you get a few extra dollars in your pay. But you’re really only allowing the employer to cheat you out of your Social Security credits.

If you’d like to learn a little more about Social Security and exactly what you’re building up for yourself by paying Social Security taxes, take a look at our online booklet, How You Earn Credits, at www.socialsecurity.gov/pubs/10072.html.

If you have a friend who lost a parent when they were a child, they probably got Social Security survivors benefits. Social Security helps by providing income for the families of workers who die. In fact, 98 of every 100 children could get benefits if a working parent dies. And Social Security pays more benefits to children than any other federal program. You can learn more at www.socialsecurity.gov/survivors.

Do you prefer videos to reading? Check out webinar, “Social Security 101: What’s in it for me?”

The webinar explains what you need to know about Social Security. You can find it at www.socialsecurity.gov/multimedia/webinars/social_security_101.html as well as on YouTube at www.youtube.com/watch?v=5hkLaBiavqQ. You can also learn more at www.socialsecurity.gov.

Calendar

Vet office open

The Veterans Service office in Haskell is now open. The office, located on the first floor of the west wing of the courthouse, will be open on the first and third Thursdays of each month from 10 a.m. to noon. For information, call 940-256-1125 any time or email Haskell vaso@yahoo.com.

Music Jubilee

The Haskell Country Music Jubilee will be held the second Monday of the month from 6:30 to 9 p.m. at the American Legion Hall in Haskell. Those interested in playing and listening are encouraged to come and enjoy the fun. A practice session will be held the Thursday before the Jubilee.

Operation Recovery

Operation Recovery, a faith-based 12-step meeting, will be held Fridays at 7 p.m. at God Loves You Ministries on the west side of the square.

TeamKID

TeamKID, for children ages 4 years old to sixth grade, meets on Wednesdays from 5:30 to 6:45 p.m. at the First Baptist Church in Haskell. If your child needs a ride, call 864-2581.

Al-Anon

Al-Anon meets Thursday evenings at 8 p.m. at the AA building across from the RV park in Haskell.

Deadlines

All deadlines for issues of the Haskell Free Press are at noon on Mondays.

Need to make your Cash Register sing?

Let us help you ring up the big sales with our display or classified ads. Call us today, for results that are music to your ears!

The Haskell Free Press
940-864-2686
hfp@valornet.com or hfpnews@lycos.com

Jogging for Jillian, Sprinting for Spence event scheduled May 13

It's that time again and the families of Jillian Thomas and Spencer LaBrie are again honoring the memory of their children with the 5th Jogging for Jillian, Sprinting for Spence event, to be held Sat., May 13.

The 5K Run/Walk will be held at Red Bud Park in Abilene, beginning at 9 a.m. Proceeds will go towards scholarships established at Wylie ISD and Texas Tech ROTC in Spencer's name and at Haskell CISD and ACU Speech Pathology in Jillian's name. A donation will also be made to Mothers Against Drunk Driving or MADD.

Last year, 72 generous sponsors and 150 plus participants helped make the 4th Run/Walk a huge success, enabling them to award eight scholarships.

Both Spencer and Jillian had a strong love for running, working out and

living a healthy lifestyle.

Jillian, a Haskell High School honor graduate, was a cheerleader for four years, enjoyed cross country and track and was a member of the Fellowship of Christian Athletes. After high school, Thomas attended Angelo State University for two years, before transferring to Abilene Christian University. She earned a Bachelor's Degree in Speech Pathology, as well as a Master's Degree. She was a very determined young woman, who worked hard to obtain her goals.

LaBrie graduated from Wylie High School. He not only excelled in sports, but was also a strong student. A very disciplined young man, he competed in baseball, basketball and football. He began his college work at Lubbock Christian University, later transferring to Texas Tech University.

In addition to playing college baseball, he received a full scholarship from the ROTC and was working toward obtaining his pilot's license.

Sponsors, participants and volunteers are now being sought. Each sponsorship helps to ensure that 100% of the proceeds go to the scholarship funds. Sponsor forms need to be submitted by April 26th to guarantee inclusion on the shirt. T-shirts, with an encouraging scripture, will be given to participants. You may also purchase a t-shirt.

Medals for the winners in the under 17, 18-25, 26-35 and over 36 categories will be presented. There are also gifts and prizes to be given away.

Registration fee for adults is \$25, seventeen and under is \$20 and T-shirt only is

\$18.

For more information on sponsorship or to register to participate, go to www.active.com or find them on Facebook. Forms may also be obtained at local businesses or by contacting Eden by phone at (325) 721-3348 or online at eden.thomas@abileneisd.org. To ensure you receive a t-shirt, entries must be received by April 26.

You may pick up packets early on Friday, May 12 from 3-6 p.m. at Red Bud Park.

The families of Jillian and Spencer invite everyone to come out to Red Bud Park on Sat., May 13 and be a part of the "Jogging for Jillian, Sprinting for Spence." It will be a time to remember and celebrate the joy for life these two held, while helping to provide scholarships for others.

Sagerton Hee Haw show set March 30-April 1

Same Crew, New Show! The annual Sagerton Hee Haw is back at it again, making jokes and bringing laughter to the community.

The show dates are March 30-April 1. Tickets are \$5 each.

Dinner is available for purchase. The community center cafeteria opens at 5:30 p.m. and closes at 7.

Thursday's menu includes sandwiches, chips, pie and drink. Cost is \$5.

Menu items on Friday and Saturday include BBQ plate (or sandwich plate), pie and drink (about \$10).

The Hee Haw band will

begin the music around 7:00 p.m. The show starts at 8:00 p.m.

Come early to have a family dinner and to socialize with the community.

For tickets call or text Michelle at 1 (936)-662-4263. If she is unavailable, please leave a message with your contact information and she will get back with you at her earliest convenience.

For any questions or comments, please email us at SagertonHeeHaw@gmail.com. Please "Like" and "Follow" us on our Facebook page @SagertonHeeHaw.



**Texas A&M University
AgriLife Extension Service**
by Darlene Hopkins, CEA-FCS, Haskell Co.

Vegetables A to Z: Broccoli

Did you know?

Broccoli is available all year round! Broccoli is rich in vitamin C which helps to keep the immune system strong and healthy. Broccoli is an excellent source of folate to help keep your heart strong.

A fun fact is that broccoli has been around for more than 2000 years but it wasn't until the 1920's that Italian immigrants started growing this super vegetable in the United States.

What am I looking for?

Broccoli is freshest before the yellow buds open. So eat your broccoli when it's fresh and green! Fresh broccoli should be refrigerated in a plastic bag and eaten within 2-3 days. Be sure to wash

broccoli before eating. If left to grow, broccoli will turn into a bunch of yellow flowers.

Broccoli Salad

- 6 cups chopped broccoli
 - 1 cup raisins
 - 1 medium red onion, peeled and diced
 - 2 tablespoons sugar
 - 8 cooked and crumbled bacon slices
 - 2 tablespoons lemon juice
 - 3/4 cup low fat mayonnaise
- Combine all ingredients in a medium bowl. Mix well. Chill 1 to 2 hours.

Preparation time: 15 minutes
Cook time: 1-2 hours
Serves: 8

Nutrition Facts: Calories, 170; Total fat, 7g; Cholesterol, 10 mg; Sodium, 170 mg; Total carbohydrate, 26 g; Protein, 2 g.

Progressive Study Club 'Celebrates Texas Independence'

Members of the Haskell Progressive Study Club observed Texas Independence Day with "Celebrating Texas Independence" Sat., March 4, at 9 a.m. in the community room of First Bank Texas.

Members and guests were greeted and welcomed by club president Julia Harrell. Pledges to the American and Texas flags were led by Franciene Johnson. The tables and room were decorated in a Texas theme with brightly colored flags on the tables and serving table.

All were treated to an assortment of breakfast brunch foods following the prayer led by Dorothy Hartsfield. After brunch, all were treated to a medley of Texas songs performed by the Earthman Family

Musicians group. All present enjoyed the toe tapping music. Following the entertainment, Judy Burnett gave a brief history on Texas favorite songs, Yellow Rose of Texas, Eyes of Texas, Texas Our Texas and Deep In the Heart of Texas.

Following the entertainment, a short business meeting was held. The president reminded club members of the Mesquite District Spring Convention to be hosted by the Haskell Progressive Study Club Sat., March 25, at the Womens Space, 108 N. Ave. C in Haskell, beginning at 8 a.m. In the business meeting two new members were voted into the club, Jamie Kimbrough and Carmel Pace. Twenty-four members and guests attended, enjoying the meeting.

E-mail your news, photos and ads to The Haskell Free Press at hfpnews@lycos.com or hfp@valornet.com

The Drug Store has Gifts, Cards & Balloons For All Occasions!

Doctors' Day—March 30
We have a nice selection of gifts perfect for your favorite doctor.

Easter - April 16
Hop on down to **The Drug Store** to fill your **Easter Baskets** with Jewelry * Easter Cards * Crosses Angels * Easter Gift Items Russell Stover Candy

Kitchen Items & Kitchen Linens 25% off!
Excludes cookbooks, Watkins products and Splatterware. Some restrictions apply.

Bridal Registries
Kayce Wilcox and Chance Furr
Kerri Newton and Charlie Dayment
Amber Allen and Scott Kennedy


Baby Registry
Jordan and Daniel Earle

The Drug Store is your locally owned and operated Full Service Pharmacy Gift Store and Home Medical Equipment supplier. Call us or come by to experience our fast, friendly service!

Sale prices good through Saturday, March 25

THE DRUG STORE
100 South Avenue E
Haskell, TX 79521
Phone: (940) 864-2673 Fax: (940) 864-3731
www.haskelldrugstore.com
@haskelldrugstore
haskelldrugstore

Monday-Friday 8 a.m. to 6 p.m.
Saturday 8 a.m. to 2 p.m.
Closed Sunday and Holidays
We are your Pharmacy Compounding Specialists!



Pick up your copy of

The Haskell Free Press

for 75¢ per copy at one of these convenient locations:

**Allsup's
Dollar General
Modern Way
Star Stop
Wes-T-Go
Stripes**



From Out of the Past

From the files of The Haskell Free Press

10 Years Ago March 22, 2007

Kyle Kimbrough, son of Joey and Tammy Kimbrough of Haskell, exhibited the Reserve Champion Brangus at the Houston Livestock Show. He represented the Haskell County 4-H Club.

Rochester native, Dickie Greenwood, has been named President/CEO of Disability Resources, Inc. in Abilene. Greenwood was Senior Vice-President of Haskell National Bank from 1996-2005, and was a member of the Haskell Chamber and Rotary Club.

During a traffic stop about 7 miles north of Haskell on U.S. 277, Trooper Brody Moore suspected possible criminal activity which resulted in over one million dollars being found in vacuum-sealed bags. He was assisted in the arrest by Haskell County Chief

Deputy Winston Stephens.

20 Years Ago March 20, 1997

The Haskell boys' tennis team won the championship at the Electra Invitational Tennis Tournament. The doubles team of Philip Huff and Matthew McCord won first place by defeating three other teams. Chris McSmith won the singles division. Beau Klose and Kevin McSmith played in the consolation bracket.

Jodie Reel of Paint Creek High School and Megan Jones of Rule High School were chosen Best Actor and Best Actress in the South Zone One-Act Play competition.

30 Years Ago March 19, 1987

Scouts receiving the Arrow of Light Award at the Blue and Gold Banquet were Matt Perry, Blake Henshaw,

Matthew McFadden and Jonathan Tatum.

Larry Reid, son of Mr. and Mrs. James Reid of Rochester, has been selected to play in the Texas Six-Man Coaches Association Basketball All-Star game. He has been an All-District selection for four years and was named Co-MVP for District 19A this year.

Bill Blankenship of Haskell, switching technician for General Telephone Co., was honored at the annual GTE Service Awards dinner in Brownwood, for achieving 35 years of service with the company.

40 Years Ago March 24, 1977

The 9-10 year old Little Dribblers All-Stars are David Adams, Shawn Chambers, Keith Parrott, Randy Roewe, Lex Weatherly, Robert Ivey, Shane Hadaway, Steve Boyd, Shane Gilliam and Shawn Lane. Coaches are Jerry Hadaway and Larry Gilliam.

Eddie Brass of Rule High School has received an aerospace engineering scholarship to Texas A&M University during the annual Junior Engineering Technical Society meeting.

The Haskell Jaycees completed a very successful Rattlesnake Roundup, with almost 700 pounds of snakes brought in. Gwynn Butler and Joe Kretschmer caught 92 pounds for the largest total weight.

50 Years Ago March 23, 1967

Weinert High School juniors and seniors will present their one-act play, "Mooncalf Mugford," to the public. Members of the cast are Larry Sanders, Judy Boone, Patsy Miller and Rubye Rainey.

Chosen as cheerleaders at Haskell High School for the 1967-'68 season are Kathy Burson, Marijane McAdoo, Carolyn Rhoads, Judy Jeter, JoNell Anderson and Paula Mayfield.

Maye Bell Taylor, former Haskell resident, was honored in Recife, Brazil, when the dormitory of the Seminary for Christian Educators was named for her and another missionary, Mrs. Mildred Cox Mein.

90 Years Ago March 24, 1927

Bailey Toliver, son of Dr. and Mrs. L.F. Toliver and a student of Simmons University in Abilene, spent last weekend with his parents.

Much interest and speculation has been aroused by the unearthing of the skeleton of a pre-historic man in the gravel pit of Caudle & Son near Sagerton on the Double Mountain Fork of the Brazos River. The skeleton is in a fair state of preservation.

The names of J.B. Post and George B. Fields have been filed for re-election as aldermen for the City of Haskell.



Texas A&M University AgriLife Extension Service

by Darlene Hopkins, CEA-FCS, Haskell Co.

Wild Horse Prairie Days Project Fair General Rules CATEGORIES

- Food: Youth and Adult
 - Textile: Youth and Adult
 - Hobbies, Arts & Crafts: Youth and Adult
 - Ag Mechanics: Students only
- GRADE/AGE GROUPS**
- Youth: K-2, 3-5, 6-8, 9-12
 - Adult: 19 years of age and older

Open to Haskell County residents and/or school students and the employees/family members of participating ranch teams in the Wild Horse Prairie Days Ranch Rodeo, Haskell, June 1-4, 2017.

For more information, or questions, please call Darlene Hopkins, Texas A&M AgriLife Extension Service Haskell County Extension Agent-FCS, at 940-864-2658.

GENERAL RULES

1. All entries will be accepted at the Haskell Memorial Civic Center on Thurs., June 1 from 4:30 p.m. to 6:00 p.m., or on Fri., June 2 from 8:00 a.m. to 9:30 a.m. Judging will begin at 10:00 a.m. on Friday. Entries will be open for public viewing at 12:00 p.m. (noon) on Fri., June 2 until Sat., June 3 at 5:00 p.m.

2. Entries must be left on display from Fri., June 2 until 5:00 p.m. the afternoon of Sat., June 3

3. First, second and third place ribbons will be awarded to each class.

4. Rosettes will be awarded in Youth combined category and the Adult category. Blue rosette recipients are eligible for the Best of Show Youth Combined Award and Best of Show Adult Award, as determined by the judges. Each of the WHPD Project Fair "Best of Show" winners will be presented a championship belt buckle and two free WHPD Ranch Rodeo tickets for the Saturday night performance at 5:00 p.m. - Sat., June 3 at the Haskell Memorial Civic Center.

5. Entries must be picked up from 5:00 p.m. to 6:00 p.m. on Sat., June 3. We are not responsible for any articles left in the building after closing time of the Fair on Sat., June 3, at 5:30 p.m.

6. All entries must have been made by the exhibitor in the last 12 months.

7. Only one entry per person per class.

8. During the judging, the name will not be displayed. The name will be displayed after judging.

9. All canned foods must be properly sealed and labeled using standard canning jars with the name of the product and date of preservation.

10. All baked goods must be wrapped in plastic wrap and displayed on a disposable container. It is requested a copy of your recipe be exhibited with your project. We are not responsible for your dishes.

11. No refrigerator pies or cakes will be accepted.

12. All Textile entries must be clean; clothing must be on hangers.

13. Paintings must be finished for hanging display; framing and mounting will not be judged.

14. If rules are not followed, entry will not be placed.

15. Category superintendents will have the final say in all category interpretation.

16. Machine Division consists of items made using some type of machine, (i.e. sewing machine, embroidery machine, etc.)

17. Handwork Division—must be made by hand, no machine work.

18. Photography entries must be 8"x10" in picture size and must be inserted in a clear plastic sheet protector. No over mat, framing or writing on the front.

19. Grand Parent's Brag:

Photograph must be a recent picture of your grandchild or grandchildren, no other person should be in the photo. Minimum size is 5"x7," only one photograph may be used. A short composition of 100 words or less stating why you think your grandchild is the smartest, cutest and best entry. Composition must accompany the photograph. The name, address and age of each child, as well as the grandparent's name, address and phone number, should be on the back of each entry.

20. Ag Mechanics is open only to Haskell County students. Haskell CISD, Paint Creek ISD, Rochester VoTech Center, Rule ISD and Haskell County home schooled students are eligible for participation. Students defined as Kindergarten through recently graduated high school seniors. Students may enter as an individual or group project only in the Ag Mechanics Category. Judging will be based on workmanship, quality of work, design—including practicality, degree of difficulty, finish, safety of equipment, documentation is optional—but suggested—i.e. plans, bill of materials, photos, etc.

Categories and Divisions TEXTILE CATEGORY (PURPLE)

Machine division

1. Clothing
2. Home accessory
3. Quilts
4. Wardrobe accessory
5. Recycled projects
6. Machine embroidery
7. Baby items
8. Blankets
9. Pillows
10. Pillow cases
11. Other

Handwork division

(Items displayed in this division must use some form of textile i.e. fabric, yarn or fiber)

12. Home accessory
13. Quilts
14. Crocheted articles
15. Knitted articles
16. Needlepoint
17. Counted cross stitch
18. Embroidery
19. Applique
20. Latch hook
21. Decorated t-shirts, sweat shirts, caps and shoes
22. Holiday decorations
23. Tye dying
24. Puppets
25. Recycled projects
26. Jewelry
27. Wardrobe accessory
28. Weaving
29. Blankets
30. Fashion story board
31. Other

FOODS CATEGORY (GREEN)

Baked goods division

32. Cookies (1 dozen)
33. Cakes
34. Cupcakes (1 dozen)
35. Candy (1 dozen)
36. Yeast bread
37. Quick bread
38. Pies
39. Decorated cakes
40. Prepared mixes
41. Decorated foods (edible food art)
42. Specialty foods
43. Other

Canned, preserved or novelty goods division

44. Vegetables
45. Pickles
46. Jellies
47. Jams, preserves, butter and marmalades
48. Sauces
49. Salsa
50. Relishes
51. Mixes in a jar
52. Dehydrated meats
53. Dehydrated fruits and/or vegetables
54. Dehydrated herbs and spices
55. Fresh produce
56. Other

HOBBIES, ARTS & CRAFT CATEGORY (PINK)

Craft division

57. Beadwork
58. Small woodwork
59. Large woodwork
60. Decoupage

61. Ceramics
62. Braiding
63. Holiday decorations
64. Small leathercraft
65. Large leathercraft
66. Sculpting
67. Goldworks/silverworks
68. Models
69. Weaving
70. Tin punch
71. Small metal project
72. Large metal project
73. Plasters
74. Stenciling
75. String art
76. Paper picture art
77. Recycled projects
78. Scrap books
79. Home accessory
80. Duct tape item
81. Jewelry
82. Puppets
83. Collages
84. Foam art
85. Masks
86. Electrical
87. Wardrobe accessory
88. Science projects
89. Clay projects
90. Diorama
91. Popsicle stick art
92. Kitchen accessory
93. Mosaics (other than paper)
94. Paper mache
95. Mobiles
96. Puzzles
97. Collections
98. Bits
99. Spurs

100. Tack hardware (i.e. conchos, buckle, etc.)

101. Livestock equipment
102. Boy Scout derby cars
103. Horticulture
104. Other

Photography division

105. Nature & landscape/seascape
106. People
107. Domestic animals
108. Architecture
109. Wildlife, birds or insects
110. Plant/flora
111. Still life/ food, etc.
112. Collages/story board
113. Special effects/elements of design
114. Sports and rodeo/fair
115. Sunrise or sunset
116. Grandparent's brag
117. Other

Art division

118. Charcoal
119. Pen and ink
120. Water color
121. Pastels
122. Acrylic
123. Oil painting
124. Painting and fabric
125. Pencil
126. Crayon
127. Computer art—computer generated
128. Computer art—mouse drawn
129. Marker
130. Map colors
131. Tempera
132. Finger paint
133. Paint by number
134. Chalk
135. Mixed mediums
136. Posters
137. Educational exhibit/display poster
138. Preprinted coloring book page
139. Other

AG MECHANICS CATEGORY (BLUE) (STUDENTS ONLY)

140. Ag machinery and equipment (tractor mounted or pulled, shop tables and equipment, truck and tractor accessories)
141. Livestock equipment (gates, panels, livestock handling equipment, livestock feeding and watering equipment, livestock housing)
142. Outdoor recreational and convenience (smokers, cookers, fryers, fire pits. Outdoor furniture, picnic tables, other yard conveniences, dog houses and kennels)
143. Indoor recreational and convenience (furniture, beds, gun cabinets, etc.)
144. Wildlife equipment (feeding equipment, traps, stands, blinds, etc.)
145. Trailers (bumper pull and gooseneck)
146. Small metal and/or wood projects
147. Large projects (metal or wood buildings, etc.)



Texas A&M University AgriLife Extension Service

by Jason Westbrook, CEA-Ag, Haskell Co.

Forage Field Day

The Texas A&M AgriLife Extension Service of Haskell will host a two hour forage field day Tues., April 4 at 1:30 p.m. at Kenneth Baker Farms east of Weinert.

Thirty-three varieties of forage are being tested for forage weight yields, as well as grain varieties. Two CEU's will be given at this program, one IPM and one General.

Texas A&M Agrilife Extension wheat specialist, Dr. Clark Neely, will speak.

Jason Westbrook will be leaving the extension office at 1:00 p.m. for those who would like to follow him to the meeting site. The plots are located north of Brushy Cemetery on the right hand side of Hwy. 222.

Please take advantage of this time to ask the wheat specialist any questions you have related to your forage production needs. There is no cost for the meeting. If you have any further questions or need a map, contact Westbrook at 940-864-2658.

Clear Fork
Crime Stoppers
1-800-222-TIPS

The Haskell Free Press

Established January 1, 1886
PUBLISHED EVERY THURSDAY
420 North First Street • P. O. Box 555
HASKELL, TEXAS 79521
Phone 940-864-2686 • Fax 940-864-2687
hfp@valornet.com

John McDougalPublisher
Lisa ShawBusiness Manager
Doris McDougalProduction
Caron YatesEditor

Periodical Paid Haskell, Texas 79521
(USPS 237-040)

SUBSCRIPTION RATES:

Haskell County, one year, \$25.00.
Outside of Haskell County, one year, \$34.00.

NOTICE TO PUBLIC—Any erroneous reflection upon the character, reputation or standing of any firm, individual or corporation will be gladly corrected upon being called to the attention of the publisher.

POSTMASTER: Send address changes to The Haskell Free Press, P.O. Box 555, Haskell, TX. 79521-0555.

This issue mailed Wed., March 22, 2017





TRIPLE YOUR PROTECTION

NEW NEXGEN **B2XF** & **XF** cotton varieties – tolerant to **THREE** different herbicides: dicamba, glyphosate, & glufosinate.

NG 3406 B2XF



“ We farm in Northern Haskell county and chose to plant **NG 3406 B2XF** on many of our irrigated acres in 2016. We were extremely pleased with how well the variety emerged after planting and how good it stood up in some low irrigation conditions. We also enjoyed how clean **NG 3406 B2XF** stripped. We will definitely be planting **NexGen** seed again.”



LARRY & ROSS SHORT *Rochester, Texas*

NG 3306 B2RF

“ In 2016, I planted all of my dryland acres in **NG 3306 B2RF**. I was impressed with the seedling vigor of the **NG 3306 B2RF** and how well this variety handled the heat in the late summer months. **NG 3306 B2RF** was an easy variety to manage and I really appreciated the help the local **NexGen** Sales Rep provided throughout the year. I received an excellent loan price of 57.25 cents and averaged 893 pounds per acre. I look forward to planting more **NG 3306 B2RF** in 2017!”



BRYCE RODA *Anson, Texas*

Contact your local seed dealer or **Americot Rep** for details on **AMERICOT'S FINANCE, REPLANT, CROP LOSS & DROUGHT PROGRAMS!**

www.americot.com | 888.678.SEED | [facebook.com/AmericotNexGen](https://www.facebook.com/AmericotNexGen)



Before opening a bag of seed, be sure to read, understand and accept the stewardship requirements, including applicable refuge requirements for insect resistance management, for the biotechnology traits expressed in the seed as set forth in the Monsanto Technology/Stewardship Agreement that you sign. By opening and using a bag of seed, you are reaffirming your obligation to comply with the most recent stewardship requirements.

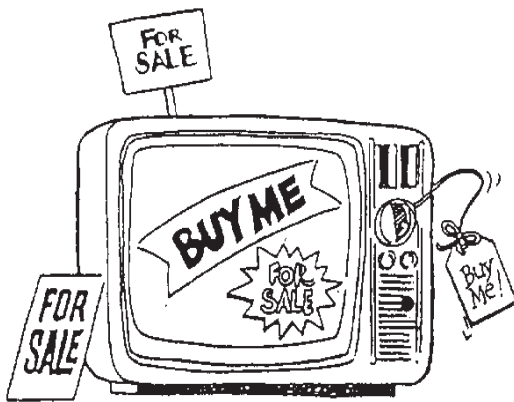


Monsanto Company is a member of Excellence Through Stewardship® (ETS). Monsanto products are commercialized in accordance with ETS Product Launch Stewardship Guidance, and in compliance with Monsanto's Policy for Commercialization of Biotechnology-Derived Plant Products in Commodity Crops. This product has been approved for import into key export markets with functioning regulatory systems. Any crop or material produced from this product can only be exported to, or used, processed or sold in countries where all necessary regulatory approvals have been granted. It is a violation of national and international law to move material containing biotech traits across boundaries into nations where import is not permitted. Growers should talk to their grain handler or product purchaser to confirm their buying position for this product. Excellence Through Stewardship® is a registered trademark of Excellence Through Stewardship.

ALWAYS READ AND FOLLOW PESTICIDE LABEL DIRECTIONS. Bollgard II® XtendFlex® cotton contains genes that confer tolerance to glyphosate, dicamba, and glufosinate, the active ingredient in Liberty® brand herbicides. Glyphosate will kill crops that are not tolerant to glyphosate. Dicamba will kill crops that are not tolerant to dicamba. Glufosinate will kill crops that are not tolerant to glufosinate. Contact your Monsanto dealer or refer to Monsanto's Technology Use Guide for recommended Roundup Ready® Xtend Crop System weed control programs. Acceleron®, Bollgard II®, Bollgard II and Design®, Respect the Refuge and Cotton Design®, Roundup®, Roundup Ready® and Bollgard II® XtendFlex® are registered trademarks of Monsanto Technology LLC. ©2014-2016 MONSANTO COMPANY

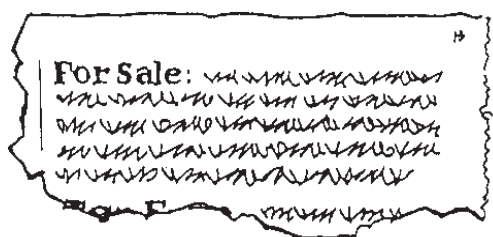
Liberty® and LibertyLink® and the Water Droplet Design® are registered trademarks of Bayer. Americot® and NexGen® are registered trademarks of Americot, Inc.

The Hard Way.



Sure, you can stand in the street in the middle of a major intersection every day for a week with an item you want to sell, put a couple of huge signs on it, and hope someone takes you up on the offer. It might just get the job done. Or you might just end up looking foolish.

The Easy Way.



Or, you can place a Classified Ad with us and have people from all over the area clamoring to take your unwanted items off your hands for a handsome profit. Quickly and easily. And for a very small investment. So what are you waiting for? Call or email now!

The Haskell Free Press

P. O. Box 555
420 N. First Street
Haskell, Texas 79521
hfp@valornet.com
hfpnews@lycos.com

Bright Horizons

Updates from the DCOH, Chamber and KHB

by Jimi Coplen, DCOH
Update on the Rolling Plains Detention Center

As many of you have heard, our detention center is set to close on March 24. The current employees have been put in limbo while management companies and the federal government

figure out what they are going to do next. This has been a frustrating situation for all concerned.

Part of our mission at the DCOH is business retention and expansion. We care about all jobs, especially those we already have in Haskell. And, we know how difficult it is to

come up with a business that creates 140 jobs in the community. That is why the DCOH and the county have been working diligently to find solutions to this problem.

We glean new information daily, but no one can give us a straight answer as to why this happened in the first place. Moving forward, here are some of the challenges we

are faced with:

- Management companies want a guarantee they will have detainees before they agree to take over.

- ICE (Immigration and Customs Enforcement) wants a guarantee they will have a facility fully staffed when they return.

- Employees are being laid off because there are no detainees at the facility now.

- And, the federal government has implemented a strenuous background check that makes it almost impossible to get a job at the facility.

One can easily see the predicament we are in. Our hope is that ICE will make a "deal" with a new management company this week to house their detainees in Haskell. Along with a new management company, we hope ICE will lift the strenuous hiring processes in order to get the facility staffed quickly.

We are cautiously optimistic this will be resolved, but we have no indication how long this process could take. We hope only a few weeks. On Friday, some good news came from one important ICE official in Washington D.C. He told us they have no problems utilizing Haskell, and he is working on getting us something in writing stating they will be bringing ICE detainees back. He is also working on an answer for us in relation to the long hiring process.

In the meantime, we want to brag on each person working at the Rolling Plains Detention Center (RPDC). They have done a fantastic job under very chaotic circumstances this past year. They all deserve to be applauded for their patience, long hours and tough working conditions. We can't begin to imagine the stress this has caused them. We want to thank them for all they have done to keep the RPDC open and running smoothly.

After the set closing date, you may notice the lights are still on, security is still in place, and the facility is still in operation. There will not be detainees on the property, but it will be kept operational in anticipation of detainees coming back soon and to deter any problems with equipment, etc.

Haskell School Menu

March 27-31
Breakfast

1% milk, fat-free flavored milk, 100% fruit juice variety and fruit are available at every meal.

Weekly: Cereal, toast, muffin, yogurt, PBJ, animal crackers, cheese stick

Monday: Biscuits, gravy, scrambled eggs, ham

Tuesday: Cinnamon roll, sausage

Wednesday: Sausage, egg and cheese pretzel sandwich

Thursday: Breakfast burrito

Friday: Waffles, bacon

Lunch

Milk variety is available

at every meal. Sandwich available daily at elementary.

Monday: Hot ham and cheese pretzel sandwich, tomato-cucumber cup, garden salad, snowball salad

Tuesday: Texas basket, carrot coins, apple slices, cookie

Wednesday: Fish strips, Texas toast, coleslaw, pinto beans, orange smiles

Thursday: Indian chicken bowl with gravy, savory green beans, roll, apple-pineapple d'lite

Friday: Deli sandwich, lettuce, tomato, baby carrots, cucumbers, fruit, graham snack

ECC Menu

Mon., March 27

Hamburgers, trimmings, ranch beans, chips, picante sauce, misc. dessert, tea or coffee

Wed., March 29

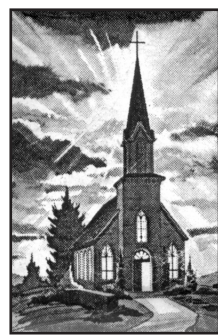
Ham and butter beans, carrot salad, sliced tomatoes, onions, cornbread, tea or coffee

Fri., March 31

Pulled pork sandwiches, KFC coleslaw, chips, pickles, onions, jello, cookie, tea or coffee

Announcements begin at 11:45 a.m. followed by lunch.

This Week's Devotional Message:



Faith will teach you how to pray

A prayer is intended to be a beautiful communion with the Almighty, but we sometimes turn it instead into a request for some material gain; often of doubtful benefit. To do so is to dishonor God by assuming that He is not already aware of your needs. So go to your

church this Sunday and pray for His guidance to help you become a better person. And, instead of attempting to give God information, just thank Him for what you already have and reaffirm your trust in His infinite wisdom in knowing what is really best for you.

ATTEND CHURCH THIS SUNDAY

—HASKELL—

East Side Baptist Church

Terry Bunch, pastor
Sun. 9:45 a., 11 a., 6 p.; Wed. 7 p.

600 N. 1st East, Haskell

Christian Church

Sun. 10:45 a.m.
107 N. Ave. F, Haskell

Church of God

Bruce Ray, pastor
Sun. 10:30 a.m. Thurs. 7:00 p.m.

714 North First East, Haskell

Trinity Lutheran Church

Rev. David White, pastor
Sunday 9:30 a., Worship 10:30

Hwy 380 East, Haskell

Iglesia Bautista

El Calvario
Sun. 9:45 a., 10:45 a., 5 p.; Wed. 7 p.

607 S. 7th, Haskell

First United

Methodist Church
Rev. David Johnson, pastor

Sun. 9:45 a., 10:50 a., 6 p. Wed. 6 p

201 N. Ave. F, Haskell

First Assembly of God

Rev. J.C. Amburn
Sun. 9:45 a., 10:45 a., 6 p.; Wed. 7 p

1500 N. Ave. E, Haskell

St. George

Catholic Church
Father Angelo Consemio

Sat. Mass 7 p.m.; Sun. 9:00 a.m.

901 N. 16th, Haskell

Church of Christ

Phillip Sims, minister
Sun. 9:30 a., 10:30 a., 6 p.; Wed. 7 p

510 N. Ave. E, Haskell

First Presbyterian Church

Kelly Pigott, interim pastor
Sun. Morn. 9:30 a.m.

306 N. Ave. E, Haskell

Trinity Baptist Church

Larry White, pastor
Sun. 10 a., 11 a., 6:30 p; Wed. 6:30 p

114 S. Ave. D, Haskell

Hopewell Baptist Church

Sun. 9:30 a., 11:00 a.; Wed. 7 p.

908 N. Ave. A, Haskell

Greater Independent

Baptist Church

Ollie Johnson, pastor
Sun. 9:30 a., 11:00 a., 6:30 p; Wed. 7 p

301 N. 3rd St., Haskell

940-863-4405

New Covenant Foursquare

Bill and Renee Glass, pastors
Sun. 10 a., 11 a., 6:30 p. Wed. 7 p.

200 S. Ave. F, Haskell

First Baptist Church

Ollie Pierson, pastor
Juddson Smith, Family Life Pastor

Sun. 9:45 a.m., 10:55 a.m., 6 p.m.;

Wed. 6:30 p.m.

301 N. Ave. E, Haskell

Cornerstone Fellowship

Baptist Church
Sun. 9:30 a., 10:45 a., 5 p., Wed. 6 p.

1600 N. First St., Haskell

God Loves You Ministries

Mark Wallace, pastor
Church Service 10 a.m.

West side of square, Haskell

—WEINERT—

First Baptist Church

Dan Bullock, pastor
Sun. 10 a., 11 a., 6 p., Wed. 7 p.

Weinert

Weinert

Foursquare Church
Rev. Robert Harrison

Sunday 11 a.m

—ROCHESTER—

Church of Christ

Mitchell Greer, minister
Sun. 10 a.m., 10:45 a.m.

West on Main Street, Rochester

First Baptist Church

Jim McCurley, pastor
Sun. 9:45 a.m., 11 a.m., 6 p.m.;

Prayer Time/Team Kids 5 p.m.;

Wed. Youth meeting 7 p.m.

500 Main, Rochester

Union Chapel Baptist Church

Clovis Dever
Sun. 9:45 a., 10:45 a., 6 p.; Wed. 7 p

Rochester

Faith Chapel of Rochester

Randy Hollingsworth, minister
Sun. 10 a.m., 11 a.m., Wed. 6 p.m.

Hwy. 6, Rochester

—SAGERTON—

Sagerton Methodist Church

Cory Graham, pastor
Sun. Morn. 9:45 a.m.

Sagerton

Faith Lutheran Church

Anna Robbins, pastor
Sun. 10:30 a.m.

Sagerton

—RULE—

First Baptist Church

Scott Hensley, pastor
Sun. 9:45 a., 11 a., 5 p.; Wed. 7 p.

1001 Union Ave., Rule

Primitive Baptist Church

Dale Turner Jr., pastor
First & Third Sundays 10 a.m.

Corner of 8th & Robins, Rule

Church of Christ

Paul Leonard, minister
Sun. 9:45 a., 10:40 a., 6 p.; Wed. 7 p

811 Union, Rule

Primera Iglesia Bautista

Alfa y Omegas
Manuel Marin, pastor

Sun. 10 a., 11:00 a., 5 p.; Wed. 6 p.

500 Elm Street, Rule

Sweet Home

Baptist Church
Russell Stanley, pastor

Sunday 10 a.m.

Gladstone Ave., Rule

940-997-2296

West Bethal

Baptist Church
Rev. Clovis Dever

Sun. 10 a., 11 a., 8 p.; Wed. 7:30 p.

300 Sunny Ave., Rule

—PAINT CREEK—

Paint Creek

Baptist Church
Sun. 10:00 a.m., 11 a.m., 6 p.m.

Paint Creek

—O'BRIEN—

O'Brien Baptist Church
Jim Reid, pastor

Sun. 9:45 a., 11 a., 5 p., 6 p., Wed. 6 p

O'Brien

Sonic Drive-In

1402 N. Ave. E
864-8533

Randy Phelps, Manager

Steele Fire Apparatus

Hwy. 380 East • 864-2208

Modern Way Food Store

1202 N. Ave. E • 864-3763

HANSON PAINT & BODY SHOP

207 S. 1st • 864-3631

Professional Auto Body Repair
Glass Installation • 24 Hour Wrecker Service

Rule Co-op Gin & Elevator

301 Adams • Rule • 996-2421

Smitty's Auto Parts

107 N. 1st East • 864-2607

Rule School Menu

March 27-31
Breakfast

Fruit, juice and milk are offered daily.

Monday: Sausage kolache, yogurt

Tuesday: Cheese omelet with toast

Wednesday: Breakfast pizza

Thursday: Waffles, sausage

Friday: Donuts, bacon

Lunch

Milk is served daily.

Monday: Country fried steak with gravy, roll, mashed potatoes, green beans, strawberries

Tuesday: Tostadas, rice, salsa, salad, cucumbers, refried beans, applesauce

Wednesday: Pizza, salad, vegetable medley, orange smiles

Thursday: Frito pie, baby carrots, corn, salsa, salad, peaches, cookie

Friday: Chicken strips, roll, gravy, green beans, tomato cups, apple



Shop The Haskell Free Press CLASSIFIEDS



940-864-2686

ALL DEADLINES MONDAY AT NOON • hfpnews@lycos.com

940-864-2686

For Sale

M U N G B E A N CONTRACTS available, seeds furnished. Caudill Seed Co., Granite, Oklahoma. 580-471-7276. 12-16c

For Rent

FOR RENT: 3 bedroom, 2 bath, CH/A, cook stove furnished. Water well. 1206 N. Ave. G. 940-864-3859. 8tfc

S&S STORAGE in Haskell has storage units for rent. Boat and RV storage available. Call 855-649-7656. 12c

Help Wanted

HELP WANTED: Hanson Paint and Body Shop in Haskell needs experienced employee. Apply in person. 1tfc

NURSES UNLIMITED, INC. is seeking attendants in the Haskell area to assist clients in the home with personal care, meal prep and light housekeeping. Part-time. EOE. Call 1-888-859-0640. 11-12c

Public Notices

NOTICE OF SHERIFF'S SALE THE STATE OF TEXAS & COUNTY OF HASKELL &

By virtue of an Order of Sale issued out of the Honorable 39th Judicial District Court of Haskell County, on the 2nd day of March, 2017, by the Clerk thereof, in the case(s) styled as follows:

Cause No. 11310. Styling: Haskell County Appraisal District v. Navarrette, Tony. Legal description: 1. Lots Seven (7) and the South Half (S/2) of Lot Eight (8), Block Fifty-two (52) of the Original Town Addition to the City of Rule, Haskell County, Texas.

Cause No. 12,001. Styling: Haskell County Appraisal District v. Evans, Linda Individually And As Heir Of Williamson, F.A., Deceased. Legal description: 2. A 1.5 acre tract of land out of Tract 4A, Richard Hall Survey No. Sixty-Six (66), Abstract A00156, Haskell County, Texas; being more particularly described by metes and bounds referred to in the Affidavit recorded in Volume 178, Page 3, incorporated herein by reference.

Cause No. 12,131. Styling: Haskell County Appraisal District v. Livingston, Stephen, Et Al. Legal description: 3. Lot Three (3), Block Thirteen (13), Original Town Addition to the City of Haskell, Haskell

Public Notices

County, Texas.

Cause No. 12,149. Styling: Haskell County Appraisal District v. Eaton, Jay Bob, Et Ux. Legal description: 4. A 9.55 acre tract of land located in the North Three Hundred Seventy-Eight Feet (N378') of the West 1,100.6 Feet of Section Eleven (11), Block Fourteen (14), Abstract One Hundred Eighty-One (181), Haskell County, Texas; being more particularly described by metes and bounds as referred to in a General Warranty Deed recorded in Volume 559, Page 709 of the Official Public Records of Haskell County, Texas, such description being incorporated herein by reference.

Cause No. 12,163. Styling: Haskell County Appraisal District v. Benavides, Mike. Legal description: 5. Lots Five (5), Six (6) and Seven (7), Block Four (4), Pinkerton Addition to the City of Haskell, Haskell County, Texas. 6. Lots Five (5), Six (6), Seven (7) and Eight (8) in Blocks One (1), Two (2) and Three (3); Lot Eight (8), Block Four (4); all of Lots One (1), Two (2), Three (3), Four (4), Five (5), Six (6), Seven (7) and Eight (8); all of lots One (1), Two (2), Three (3), Four

Public Notices

(4), Five (5) and Six (6), Block Ten (10), all located in Pinkerton Addition to the City of Haskell, Haskell County, Texas.

Cause No. 12,225. Styling: Haskell County Appraisal District v. Moseley, Jerry D., Et Al. Legal description: 7. A 0.2200 acre tract of land located in Lot Three (3), Abstract Two (2), Subdivision No. One Hundred Thirty (130) of the Peter Allen Survey, Haskell County, Texas; being more particularly described by metes and bounds in that certain Warranty Deed recorded in Volume 557, Page 91 of the Official Public Records of Haskell County, Texas; such description being incorporated herein by reference. 8. The North Twenty Feet of Lot One (1) and 43.5 Feet of Lot Two (2), Block One (1), J.L. Baldwin Addition No. Two (2) Original Town of Haskell, Haskell County, Texas.

and to me, as Sheriff, directed and delivered, I will proceed to sell, at 10:00 a.m. on the 4th day of April, 2017, which is

Public Notices

the first Tuesday of said month, at the South door of the Courthouse of Haskell County, in the City of Haskell, Texas.

Levied on the 2nd day of March, 2017, as the property of said defendants, to satisfy the judgment rendered in the above styled and numbered cause, together with interest, at 12 percent per annum, and all

Public Notices

costs of suit in favor of each jurisdiction.

"All bidders must now display proof of compliance with 34.015 of Texas Tax Code."

Given under my hand this 2nd day of March, 2017. Winston Stephens Sheriff Haskell County, Texas By: Chris Keith, Deputy 10-12c

Langford Real Estate
Scott Langford (940) 256-0535
Tim Pearson (940) 256-0874
Jason Langford (940) 256-1741

FULL TIME & PART TIME OPENINGS DAY AND NIGHT SHIFTS FOR MULTIPLE POSITIONS

Competitive Wages
Holiday & Vacation Pay
Flexible Schedules
Benefit Packages

APPLY ONLINE
www.richesondq.com

NOW HIRING CAREER LEVEL MANAGEMENT AND SUPERVISORY POSITIONS IN OVER 60 DQ LOCATIONS THROUGHOUT TEXAS. START YOUR NEW CAREER IN FOOD SERVICE WITH US TODAY

Dear Haskell family and friends,
There aren't enough words to express the amount of gratitude we have in our hearts for all of you.
Thank you for all the fund-raising, donations, time and outpouring of love you gave to us during this incredible time of loss.
We love you all and pray for God's blessings to flow back to you! You were God's miracle.
The family of
Gregg and Gena Pierce

RIKE REAL ESTATE LLC

Megan Cox, Owner/Broker • Melanie Grindstaff, Agent
415 S. First St. • Haskell • 940-864-2411 • 325-370-6572

VEDA'S CAMP, LAKE STAMFORD
1275 VEDA'S CAMP RD.-5/2 on 1.5 +/- Ac. Over 3,700 sq. ft. lake front home and multi-purpose shop. VEDA'S CAMP, LAKE STAMFORD-60 +/- Ac. of lake front, 160 leased lake lots, RV park w/hooks, boat slips, dock, ramp and fish cleaning facilities. 130 +/- AC. ACROSS FROM VEDA'S CAMP-Cultivated dryland perfect for expansion.-CONTACT FOR INFORMATION

FARM & RANCH
653 +/- AC. ON FM 617-All cultivated dryland, excellent bases and yields. \$1100/Ac.-REDUCED
461 +/- AC. ON CR130-Dryland. \$1100/Ac.-NEW
BARN ON HWY. 6, ROCHESTER-Over 24,000 sq. ft. of space with electricity and water. \$120,000-NEW
36 +/- AC. U.S. HWY. 380 E-\$2500/Ac.-NEW
37 +/- AC. ON 277 BYPASS IN HASKELL-A must see!
5 +/- AC.-Perfect homesite just outside Haskell city limits. Great views.-NEW
445.605 +/- AC.-On Loop Rd. \$950/Ac.-REDUCED
162.9 +/- AC. NW HASKELL CO.-Ideal dryland farm on CR 188. \$900/Ac.-REDUCED
219.5 +/- AC. WEST OF O'BRIEN-Dryland farm amongst pivots. \$900/Ac.-REDUCED
158.6 +/- AC.-Irrigated. \$1650/Ac.
30 AC. WEST OF O'BRIEN ON 2229-\$1500/Ac.

HASKELL RESIDENTIAL
8851 FM 2163-5/3 on 6 +/- Ac. with lined swimming tank.-CONTACT FOR INFORMATION
988 CR 208-3 or 4/3 on 20 Ac. \$214,000-NEW
1009 N. AVE. E-Well built 3/1. \$99,900-REDUCED
1507 N. AVE. E-4/3 on corner lot. \$225,000-NEW
911 N. AVE. L-3/1-1.5 on corner lot. \$79,900-NEW
1801 N. AVE. G-3 or 4/3. \$170,000-NEW
408 N. AVE. C-4/2 with fireplace. \$69,900-REDUCED
804 N. 9TH ST-2/2 on oversized lot. \$64,900-REDUCED
402 N. AVE. D-4/2. \$52,000-REDUCED
1206 N. 9TH-3/2. Large corner lot. \$67,000
800 N. 3RD E-3/2 on large shaded lot. \$89,900-REDUCED
1904 N. AVE. E-Large 3/3. \$159,900-REDUCED
1405 N. AVE. H-2 or 3/2. \$44,500-REDUCED
703 N. AVE. L-4 bdr., 3 baths, 2 half baths. Dual living room with basketball courts. \$329,000-REDUCED
1407 N. AVE. E-Historic 4/2. \$160,000-NEGOTIABLE
1507 N. AVE. E-4/2. \$137,500-REDUCED
703 N. AVE. E-Large 4/3.5 with a pool. \$212,500

COMMERCIAL
30 +/- AC. N OF HASKELL-Commercial land on the bypass of US 277. Contact for info.-NEW
419 S. 1ST ST. WILD HORSE TRADING POST-Prime Haskell real estate location. \$79,900.-REDUCED
551 US HWY 277, MACIAS BALLROOM-\$212,500
Visit www.rikerealestate.com for listings in Rule, Munday, Knox City and Stamford
Texas REALTORS®

Dodson Concrete Construction
Commercial - Residential
David Dodson
704 N. Ave. F • Haskell
940-864-2038
Over 30 Years in the Business
FREE ESTIMATES

EXPERT AUTO WORK
REASONABLE RATES

See us for all your auto mechanic needs. 20 years experience. We do it right the first time.
US 277 South • Haskell

Denny Tidrow
Remodeling - Painting
Room Additions - Roofing
New Construction
Commercial - Residential
FREE ESTIMATES
936-307-8251
Haskell
Since 1970

FOR RENT
45' Man Lift \$250 per day
Dump Trailer \$75 per day
Bobcat & Bucket \$150 per day
Forks \$25 per day
Digger 9" & Digger 12" \$75 per day
Tree Shear \$75 per day
Steele Fire
940-864-2208

SNAP UP EXTRA CASH WITH AN AD IN THE CLASSIFIEDS
Your ad in the Classifieds puts the bite on the right buyer for most anything you have to sell.
Call today and we'll help you put some real teeth into your message.
The Haskell Free Press
940-864-2686

HCR HASKELL COUNTY REALTY
Bridget Guess BROKER
Rhonda Lisle AGENT
Roger Roewe AGENT
Shelby Thomas AGENT

VIEW ALL OF OUR PROPERTIES AT
www.haskellcountyrealty.com
CALL US TODAY (940) 864-2665

Featured Farm & Ranch Land
154 +/- Acres - O'Brien - Native Grass - \$185,604
60 +/- Acres CR 451 - Haskell County - Dry land - \$53,700 - PENDING
Muddy Creek Ranch - 672 +/- Acres - Cultivated/Dry land - \$1,041,600
183 +/- Acres - Rochester - \$236,985 - SOLD
160 +/- Acres CR 324 - Throckmorton Co. - Pasture/CRP - \$1,950/acre
202 +/- Acres - Background Yard - \$1,400,000 - SOLD
60 +/- Acres CR 1213 - Knox City - \$90,000
102.25 +/- Acres - Haskell County - Dry land - UNDER CONTRACT
60 +/- Acres FM 618 - Haskell County - Dry land - \$96,300 - REDUCED

Like what you're reading?
We'll send it to you each week for just \$25 a year. (in Haskell County)
Yearly Subscription Rates
\$25 a year in county • \$34 out-of-county

Name _____
Address _____
City _____ State _____ Zip _____

Clip and Mail Coupon, Along with Check or Money Order to:
The Haskell Free Press
P. O. Box 555, 420 N. First, Haskell, TX 79521



INDIAN SCORE—Haskell Indian Peyton Smith is safe at home for the Indians.



PITCHING FOR THE INDIANS—Evan Green on the mound for the Indians.



GETS A HIT—Haskell Indian Kyler Hoover connects at bat for the Indians.



BATTING FOR THE INDIANS—Riley Sloan loaded before his base hit for the Indians.

Haskell Co. Arrest Report

The following arrests were reported by the Haskell County Sheriff's Office during the week of March 13-19:

Timothy Lyn Sanders, District Court commit.

Jenna Loraine Hart, failure to identify, Taylor Co. warrant and possession or delivery of drug paraphernalia.

Jessie Lee Webb, unauthorized use of vehicle and possession or delivery of drug paraphernalia.

Thirty-four calls were made to 911.

All Night Party needs donations

Haskell County parents are proud to announce the annual Haskell County All Night Party for Haskell, Paint Creek and Rule high school students.

The party will be held at the Haskell Civic Center Fri., May 26 following graduation. This will be a drug and alcohol free party designed to keep students safe on graduation night. Historically, over 80% of all Haskell County high school students have attended.

In order for this party to be a success, help is needed in the form of cash

donations. Donations pay for the use of the Haskell Civic Center, the disc jockey, food and refreshments, games and a \$50 cash gift for every senior who stays at the party the entire time. At this time donations of food, beverages or door prizes are not needed.

Please mail any donations to Haskell County Parent Organization, P.O. Box 163, Haskell, Texas 79521.

Donations are encouraged to be in by March 24 so that plans and activities can be finalized.

Haskell CISD to register Head Start, Pre-K, Kindergarten

Haskell Elementary School will have registration for Head Start, Prekindergarten and Kindergarten for the 2017-2018 school year on the following dates:

Mon. April 3, Head Start registration from 9:00 a.m. to 1:00 p.m. in the elementary library. If you want to enroll your child in Head Start, it is very important that you attend this registration.

Tues. April 18, 3 and 4 year old Prekindergarten registration from 9:00 a.m. to 1:00 p.m. in the elementary library.

Tuesday, May 2, Kindergarten registration and screening. New students not currently enrolled in Haskell Elementary School will be registered and screened from 9:00 a.m. to 10:00 a.m. or 1:00 p.m. to 2:00 p.m. in the elementary office.

To qualify for Head Start, a child must be 3 or 4 years old on Sept. 1, 2017 and meet income guidelines.

To be eligible for enrollment in Prekindergarten, a child must be 3 or 4 years old on Sept. 1, 2017 and must be unable to speak and comprehend the English language; or qualify for free or reduced lunches; or be homeless; or be the child of an active duty member of the armed forces of the United States; or be the child of a member of the armed forces of the United States who was injured or killed while serving on active duty; or has ever been in foster care. However, we are hoping to offer Prekindergarten for all 4 year olds. If you are interested in this program for your child, please be sure to register Tues., April 18.

To attend Kindergarten,

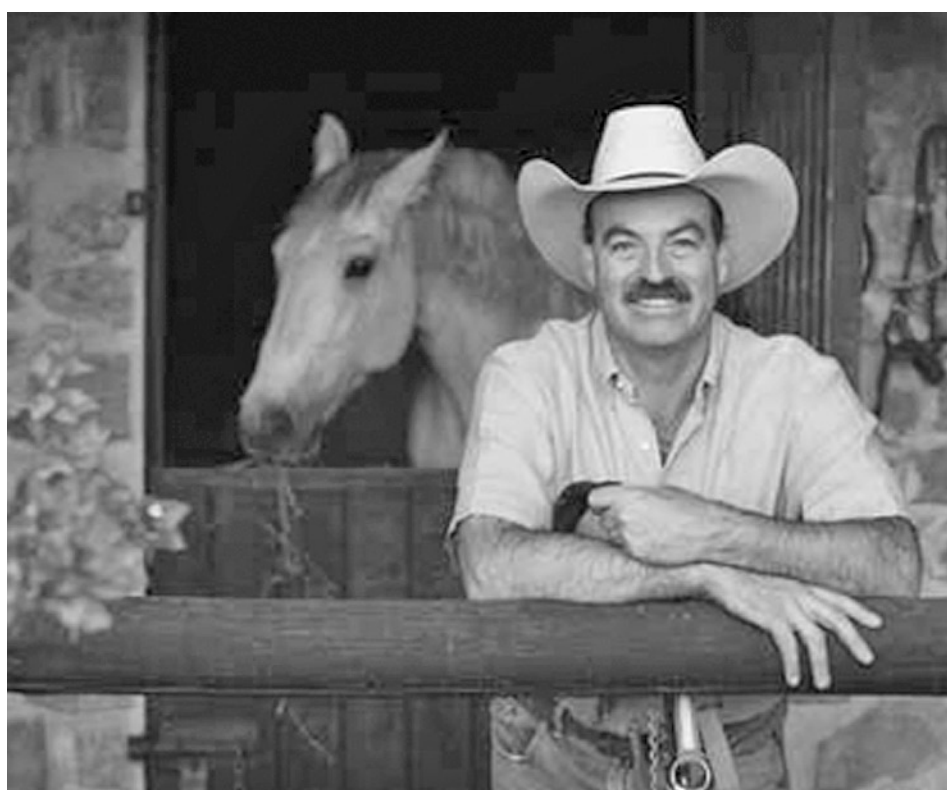
a child must be 5 years old on Sept. 1, 2017. Only students registering for Kindergarten who are not currently enrolled in Haskell Elementary School need to attend registration with their parents. All students currently enrolled in Haskell Elementary School will be pulled from their class to be screened. Their parents do not need to attend registration.

PPCD (Preschool Program for Children with Disabilities) is for children ages 3 to 5 that may be developmentally delayed in areas such as learning, speech and/or emotional skills. If your child turns 3 during the 2017-2018 school year, you can call the elementary office at 864-2654 at that time to schedule an appointment to have your child screened.

Parents should bring their driver license and income verification (for Head Start only) and their child's birth certificate, immunization record and social security card to registration. Your child will not be able to start school in the fall until we have all these items on file.

It is possible for some children to qualify for more than one of these programs. Call Peggy Adams at 864-2654 if you have any questions.

Shelby Thomas is now a licensed Real Estate Agent for Haskell County Realty. Shelby was born and raised in Haskell, a 2013 graduate from Haskell High School, and is married to local farmer, Micah Thomas. She plans to continue to reside in Haskell and be actively involved in the community and all aspects of real estate. Shelby specializes in residential and farm and ranch, contact her today for your real estate needs!



Our Ag Experts Know Your Business

It takes a lot of know-how to run an Ag business right. One of the most important things is choosing the right financial partner. That's why so many producers work with us. When it comes to Agriculture, you can count on our experience. For land appraisal and more, you can talk to us. We're local, and we're here to help you grow.

First Bank Texas

Munday 940-422-4522

Haskell 940-864-8555

Stamford 325-773-2122

www.go2fibt.com



Calendar

4-H meeting

The Haskell Co. 4-H Jr. and Sr. Clubs will meet Sun., March 26 at 4 p.m. at the Extension office for their monthly club meeting.

Chamber banquet

The annual Haskell Chamber of Commerce Banquet will be held Mon., March 27. Tickets are \$15.00. For more information, please call the Chamber at 940-864-2477.

Fish fry

East Side Baptist Church, Haskell, will hold their annual fish fry, to benefit youth camp, Sun., April 9, from 11:30 a.m. to 1:30 p.m. Donations accepted.

Storm sirens

The City of Haskell will test the storm sirens Fridays between 11 a.m. and 2 p.m., weather permitting beginning Fri., March 10.

Little League and Girls' Softball Season is here!

We have

Little League and Softball Supplies at Super Prices

Sliding Shorts • Knee Guards
Shoes • Gloves • Bats
Batting Gloves • Uniforms
Caps • Bat Bags
Pants • Equipment
T-Ball Supplies

"Where Winners Shop"
940-864-3891
402 N. 1st • Haskell