

Highway Body Cuts Load Limit On FM 617

The State Highway Commission at Austin has announced the load-limiting of a Haskell County farm-market road to limits less than those fixed by law, under authority of the 1951 legislature's load limit statute.

HERE FROM ABILENE

Mr. and Mrs. Ralph E. Duncan and little daughter, Jennifer, of Abilene were week end visitors in the home of Mrs. Duncan's mother, Mrs. W. E. Welsh and other relatives here.

Farmers of Area Study Irrigation Possibilities

Farmers, ranchers and agricultural workers of Haskell, Knox and Baylor Counties met at the Munday school auditorium last Thursday night to hear a report on irrigation possibilities of the three-county area as presented by W. L. Broadhurst, district geologist, U. S. Geological Survey of Austin, Texas.

According to Broadhurst, there is a water bed in Knox and Haskell Counties similar to that under the High Plains, but much smaller in size and quantity of water stored. This water is stored in sands above the red beds and the sand averages from a few inches to over 50 feet, with the deeper the water sand, the more water available for irrigation.

The underground water area starts near Rule on the west, and extends to Goree on the east, including areas around Rochester, O'Brien, Knox City and Munday. Broadhurst stated that it was in his opinion that this water was placed here by rains, and is the part of the water that was not used by roots of plants and moved on down in the soil until it hit the red bed, and then started to fill the underground reservoir of water sands and gravel from which this water is now being drawn. Farmers were advised to use this water, but to use it wisely, as only a limited amount is available.

By proper use of the water for irrigation, and spacing of wells, this water could be used for several years, and still not deprive the towns of this area of water for human consumption.

The program was under the direction of Roy Saunders of Munday, and was used to show the proposed operation of a Tri-County Agricultural Club consisting of members from Knox, Baylor and Haskell Counties which would meet once a month for a luncheon and program of interest to the people of this area.

A committee of Roy Saunders, Roy McClung, Frank Martin and Bill Palmeyer, agents of the three counties was appointed to set up the permanent organization of the club which will be formally put into operation at the April meeting scheduled for Thursday April 24th.

Ben D. Donnell, 70, Veteran Wichita Falls Editor, Dies

Ben D. Donnell, 70, veteran editor of the Wichita Falls Times and Record-News, died last Friday following a heart attack.

Donnell, who had been a leader in Wichita Falls and in the development of the Times Publishing Company since going to Wichita Falls in 1907, was stricken with a heart attack shortly after he had left his office.

Funeral services for Mr. Donnell were held from the First Presbyterian Church in Wichita Falls Sunday at 2:30 p. m. He is survived by his wife and six children.

HASKELL MARINE IN HOSPITAL IN JAPAN

Pfc. Bob Bettis became ill on the ship while going to Korea and is now in a hospital at Kobe, Japan. He is the son of Mrs. L. H. Cooper of this city.

RUPTURE SHIELD EXPERT HERE

H. M. Shevnan, widely known expert of Chicago, will personally be at the Wooten Hotel, Abilene, Sunday and Monday only, April 13 and 14 from 9 a. m. to 4 p. m.

Mr. Shevnan says: The Zoetic Shield is a tremendous improvement over all former methods, effecting immediate results. It will not only hold the rupture perfectly no matter the size or location but it will increase the circulation, strengthen the weakened parts, and thereby close the opening in ten days on the average case, regardless of heavy lifting, straining or any position the body may assume.

POWER FEEDS A Profit Punch in Every Pound
DON'T LOOK SIDEWAYS ON POULTRY AND LIVESTOCK FEEDING SWITCH TO NEW...
West Texas Utilities Company

Rites Held Tuesday At Rochester For Thos. M. Murphy

Funeral services for Thomas M. Murphy, 79, resident of Rochester for 30 years, were held at 10 a. m. Tuesday in the First Methodist Church in that city.

Mr. Murphy died Sunday morning in the Knox City Hospital. He had been ill since February.

He was born May 15, 1873, in Boston, Texas. He was married Nov. 27, 1896 to Miss Linner Lee

West Texas State College to Sponsor Amateur Show

CANYON—The Prairie, student newspaper at West Texas State College, has announced that it will sponsor its second annual amateur show Friday, April 4, on the college campus.

Starting at 8 o'clock in the college Administration Building auditorium, the show will feature contestants of all ages. Entries are being accepted from anyone living in the Panhandle area, Editor Sterling Holmesly of Haskell said, and they will be accepted from non-college contestants until Friday afternoon at 5 o'clock.

Cash prizes amounting to \$55 are being awarded. Competition will be divided into two age groups. A group of contestants above 16 will vie for a top prize of \$35. Winner of the 16 and below group will be awarded a cash prize of \$30.

All types of entertainment are acceptable, Holmesly said. Last year's entertainment included vocals, instrumentals, comedy acts and dances.

Anyone interested in participating should either write The Prairie or be present at the pre-show cast meeting Friday at 5 o'clock in the Administration Building auditorium.

Mailing address of The Prairie is Station 1, Box 397, Canyon.

ATTEND FUNERAL AT ALVORD

Mr. and Mrs. R. H. Freeman and Gene, Mr. and Mrs. Robert Freeman and Jerry, of Haskell, and Mr. and Mrs. John G. Freeman and Gayle of Rule attended the funeral of their mother and grandmother, Mrs. S. G. Leslie, 92, had been a resident of that vicinity for the past 70 years. The Freemans visited relatives in Decatur and Boyd before returning home.

Paul Revere was a silversmith.

Anderson of Vernon. Mr. Murphy had been a member of the Methodist Church since childhood. He was a steward in the church and had served on the Rochester City Council. He moved to Rochester from Fort Worth, in 1922. Survivors include the widow; three daughters, Mrs. John For-man, Abilene; Mrs. William Morrison, Tulsa; and Mrs. H. C. Leatherwood, Oklahoma City; two grandsons, Lt. Cmdr. William T. Morrison of Norfolk, Va., and Lt. Boyd Patton of Oklahoma City.

WE HATE HIGH PRICES TOO

Scott

- ICE CREAM Pint 19c
- CRISCO 3 lb. can 79c
- Fancy California Navel ORANGES doz. 49c
- Pure Peach or Apricot PRESERVES Quart Size 39c
- Quaker PUFFED WHEAT or RICE Box 10c
- White Swan, Fancy Seedless RAISINS 1 lb. box 17c
- Large Size IVORY SOAP 2 bars 25c
- FAB, CHEER, TIDE 24c
- White Swan, With Bacon BLACKEYE PEAS Can 10c
- Faultless HOMINY 3 No. 2 cans 29c
- California, Large Size LIMA BEANS 2 lbs. 37c
- Ballard's Oven Ready BISCUITS 3 cans for 29c
- Empson's Champion, or Sun Spun SUGAR PEAS 3 cans 29c

K. B.

- TISSUE 3 Rolls 33c
- FLOUR 25 lbs. \$1.59 No. 1 Cans
- TOMATOES 3 cans 29c Heart's Delight, Big 46 Oz. Can
- GRAPEFRUIT JUICE 19c Gold Medal or Gladiola
- FLOUR 10 lbs. 89c

Prime Meats

6-8 Lb. Average Size

- PICNIC HAMS lb. 35c
- Pure Pork, Store-Made SAUSAGE lb. 29c
- Skinless WEINERS lb. 39c

POGUE'S

Phone 17 We Deliver

WE RESERVE THE RIGHT TO LIMIT

Notice

Customers and Friends

My shop to a new location
115 South Avenue E

PHONE NO. 4

on your Refrigeration Troubles.

pure your Electric Wiring. Large or small jobs are appreciated. **Service First.**

(Monte) **FRIERSON**
Refrigeration & Electric Service
No. 4 Haskell, Texas

cost living + up

It's a Fact!

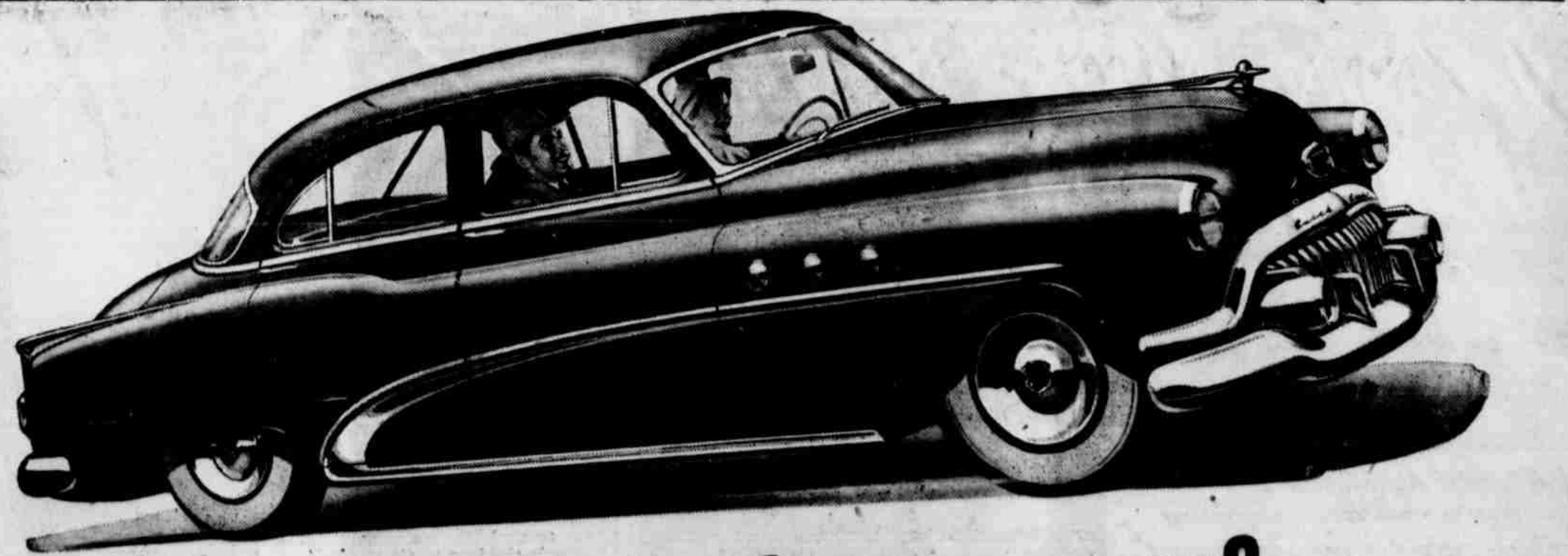
For the average West Texas family, a kilowatt-hour of electric service costs less today than it did 20, 15 - even 10 years ago!

Although the cost of materials, manpower, fuel, and everything else needed to provide electric service has gone up in price, your local rates have stayed low.

electric service is biggest bargain in family budget - dependable, economical, servant.

The price of electricity went down + down

West Texas Utilities Company



Want a lot of mileage for your money?

WE'LL admit that the price tags of automobiles—all automobiles—aren't what they used to be. But it's just as true today as ever before that some price tags are lower than others, and some cars cost less to own than others. So let's see how a Buick SPECIAL fits into the picture. Take first cost. If you put the price tag of this Buick against price tags of cars that have always been tagged as belonging in "the low-priced field"—you'll find that, in actual dollars, a Buick's surprisingly close to these cars of lesser size and horsepower. But that's just the beginning. What you're getting here is Buick quality—this SPECIAL comes down the same assembly line as SUPERS and ROADMASTERS. Its heft tells you it has extra sturdiness in frame and structure. Its Fireball Engine delivers extra power. It is an eight, a valve-in-head, with high compression, and the miles you can get from a gallon of gas make it a thrifty performer. You get Buick's Million Dollar Ride, which protects you—and the car—from jars and jolts. Even the tires are bigger—which, any tire man will tell you, lengthens their wear. And if you pay a bit extra for Dynaflo Drive* you're easing the strain on the engine, the rear end, the tires—and eliminating clutch repair bills.

So when we talk about "mileage for your money" we're talking about the miles you'll get from your car—including the unused miles that are what you have to sell when you trade it in. Maybe that's why Buick's doing so well in the present market. Why not come in and see what a great car this is for you? *Standard on ROADMASTER, optional at extra cost on other Series. Wheel Covers standard on ROADMASTER, optional at extra cost on other Series. White sidewalls optional at extra cost when available.

Sure is true for '52

When better automobiles are built

BUICK

will build them

Richey - Strain Co.
510 South First
Haskell, Texas

THANKS FOR THOSE GOOD REPORTS!

We always strive to please you most!



PIGGLY WIGGLY

4 Day Food Sale Fri., Sat., Mon., Tue.

MAXWELL HOUSE, FOLGER'S, ADMIRATION

Coffee

lb. 79c

Shortening 3 pound can **83c**

Shortening 3 pound carton **65c**

Large Box **24c**

MISSION PEAS 303 Can **15c**

DEL MONTE PEAS 303 Can **21c**

DEL MONTE 303 Can

WAT GREEN BEANS **22c**

MIRACLE WHIP Pint **35c**



LEMONS pound **15c**

PEPPERS each **19c**

BANANAS 2 pounds **29c**

CABBAGE pound **5c**

CARROTS 2 Bags **25c**

FRESH MEATS

CANNED BISCUITS	Can	10c
PORK CHOPS	Pound	49c
FRESH PORK SAUSAGE	2 lbs.	49c
MIDWEST SLICED BACON	lb.	39c
BEEF RIBS	Pound	55c

KRAFT'S MIRACLE WHIP Quart **63c**

DEL MONTE FRUIT COCKTAIL No. 303 Can **25c**

DEL MONTE ORANGE JUICE 46 oz. Can **29c**

DEL MONTE CREAM STYLE CORN 303 CAN **20c**

DEL MONTE WHOLE BEANS 303 CAN **25c**

DEL MONTE CRUSHED PINEAPPLE NO. 2 CAN **29c**

SNIDER'S PEACH OR APRICOT PRESERVES 24 Oz. Jar **39c**

WOLF BRAND CHILLI No. 2 Can **73c**

ARMOUR'S Pure Lard 3 LB. CARTON **49c**

SUNSHINE OR SALAD WAFER Crackers 1 LB. **20c** 2 LBS. **39c**

JERGEN'S LOTION—MILD Soap 6 bars **29c**

WOODBURY Soap 4 large bars **39c**



Painting for Future Needs Is Goal Paint Creek Rural High School

... of a fully ac-
... school with
... equal to the
... larger "city"
... of school
... High School,
... farming and
... southeast of
... in the main,
... the efficiency
... the school's en-
... Dan Mc-
... board of trust-

... and last and one of the most important factors—a loyal and interested body of school patrons and residents of the consolidated school district, which takes in a large area in the southeastern part of Haskell County.
... officially known as the "Paint Creek County Line Rural High School" the district serves an area of 239 square miles and was formed by the consolidation of several small common school districts. Most of these districts were in Haskell County, with at least one and possibly portions of other small districts taking a part of Jones County on the south. Property valuations on the district totalled \$2,286,670 this year. This total is expected to increase gradually each year with continuing oil development in the area, along with major industrial building located in connection with the Paint Creek water reservoir being built by Stamford and the power plant under construction by the West Texas Utilities Company.



SUPT. DAN McRAE

The physical plan of the Paint Creek School includes the modern main building with nine classrooms, superintendent's and faculty office, book storage, students lockers, etc.; combination gymnasium and auditorium connecting with the main building. Other buildings include agriculture and lunchroom buildings, Homemaking building, and farm workshop for the vocational agriculture department. Four teacherages adjacent to the school plant include the modernized residence occupied by Supt. McRae and family.

The school plant is served by REA electric transmission line, and running water for all buildings and playgrounds is furnished from a well on the grounds, completed last year to a water sand 60 feet below the surface where an inexhaustible supply of soft water was encountered.

All facilities in the classrooms and throughout the entire plant are the most modern obtainable. An inter-communication system with 14 speakers and boxes links all classrooms and building with the superintendent's office. This installation was completed last year, and additional outlets will be added as new structures are included in the school plant. All classrooms have standard seating and desk equipment, with specially designed combination desk-seats in the primary departments.

Long Range Program

"Our goal in every phase of school work is to meet the education needs of our community today, while building on a long-range program to meet the developing needs and growth of our section in the future," Supt. McRae said. He came to Paint Creek school as superintendent in 1939 from Dickens county. That this goal is kept constantly in sight is evidenced by the continuing program of improvement and additional equipment and facilities added from time to

time.
On the High School Library, approximately \$500 is being spent each year in adding new volumes and reference texts. For the primary and intermediate grades, by conservative estimate around \$240 is spent each year for library and reference books.

To meet the needs of pupils in the first six grades, between \$400 and \$500 has been spent for modern reference books during the past two years, and these are kept up to date. None of the reference books for this age group is retained longer than two years, and the volumes are constantly being replaced.

In the high school department most recent expenditure in the modernization program was the purchase of \$150 worth of science equipment. The Homemaking cottage has been completely refinished, including all walls and floors, and new floor covering laid in the kitchen. Also, the superintendent's home has been completely modernized in recent months.

"Our aim is to be in position to expand the facilities of our school plant as the need arises," Supt. McRae explained. Although no definite plans have been announced, any immediate building program would include a science laboratory department, more classrooms, new auditorium and an additional wing to the present building. This would conform to the school's long range building program.

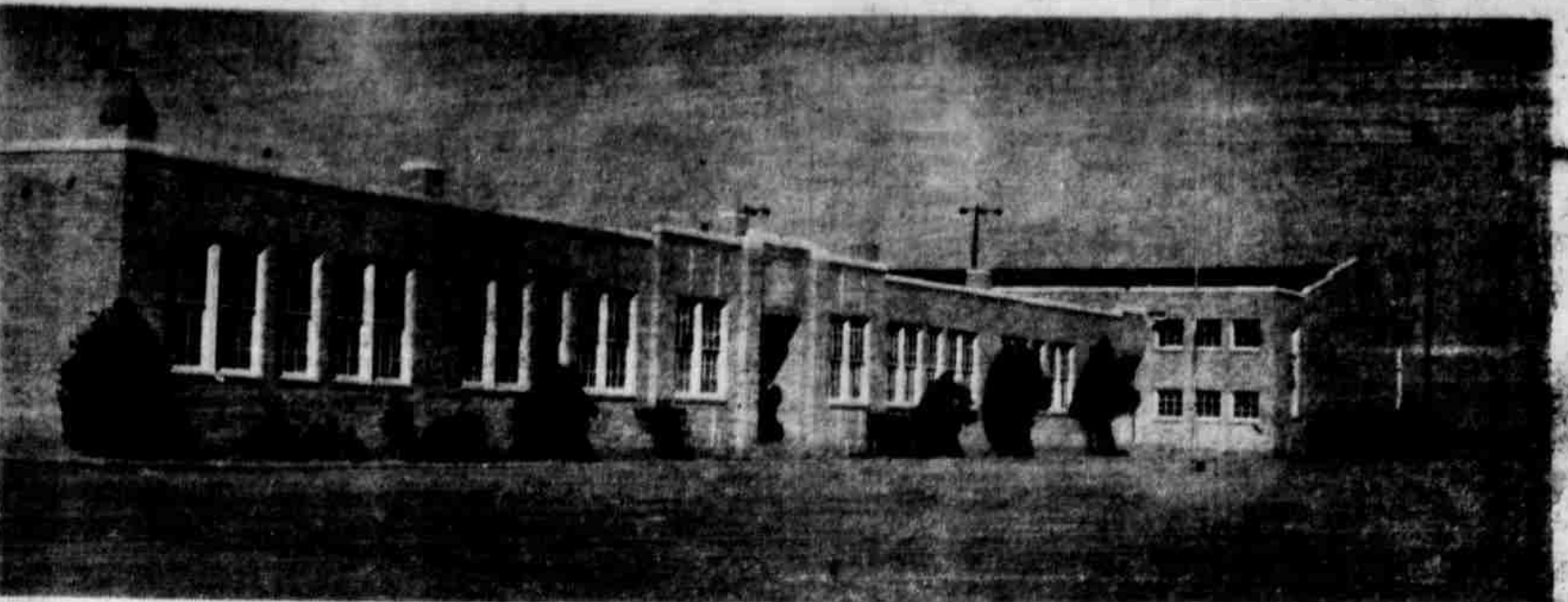
The School Board is on record as standing ready to build and expand to meet any change or emergency that may arise, Supt. McRae pointed out. Touching on his role as teacher, the veteran educator declared "Teaching is a simple matter when the central effort is toward gaining the child's interest in learning. When the child, no matter what age, is interested in a subject then step by step his progress in learning is assured. Necessarily, the teacher must also have an interest in the child, his ability to learn, and his progress."

"The school, in general education, is a process of elevating the child from where he is in proportion to his ability to learn," McRae explained. Of the methods used, Supt. McRae said that visual education had been found one of the most valuable aids to teaching developed in recent years. The Paint Creek school employs visual education and is equipped with a modern projection machine. New educational films are shown each week, and to date 48 films from the State library have been used. Radio programs are also used.

A reading program is also stressed by Supt. McRae, and he is personally teaching a remedial class in reading outlined by Miss Josephine Steuber, elementary school consultant.

A testing program or modified "IQ" test has been worked out, through which the progress of each student in the school is recorded. A permanent filing system of these records is kept permitting an almost instant progress check on any student for any given period.

Paint Creek High School has 24 credits for affiliation, with Commercial subjects being the most recent addition to the high school department. Bookkeeping is being taught now, with courses



PAINT CREEK RURAL HIGH SCHOOL. Shown is the main building containing nine classrooms, faculty offices and library, and the adjoining gymnasium and auditorium. The modern structures are of brick construction, and arrangement designed to permit additional wings to be added to the buildings when needed. The lighted football field is just east of the buildings (All photos by Blohm.)



HOMEMAKING COTTAGE at the Paint Creek school is one of the most attractive buildings on the campus. The interior has been refinished this year and much new equipment installed. Facilities of the homemaking department are also available to adult classes.



SUPERINTENDENT'S HOME. The modern dwelling occupied by Supt. Dan McRae and family was completely remodelled recently. Three other teacherages are included in the school plant.

bers carrying one or more subjects. A well equipped workshop is provided with power tools, wood lathe, electric saws, including hand and tilting arbor types, welding equipment, electric drills, and a variety of tools. Much of the equipment has only recently been added. With E. A. Howard, Jr., as VA teacher and FFA chapter advisor, Paint Creek Future Farmers have taken part in numerous area shows as exhibitors and judges with creditable success. In addition to workshop instruction and individual projects, field work includes terracing, doctoring livestock, culling poultry, and related subjects. Also working with adult advisory groups, grass programs and testing are currently underway.

Lunchroom Has All New Equipment

With an enrollment of approximately 225 students, a modern and efficiently managed lunchroom is maintained, in which all the equipment is practically new and none over two years old. Facilities include a large new gas range and deep freeze units installed this year. Also plastic plates have been placed in use to eliminate breakage and chipping. Maximum capacity of the lunchroom is 200 persons, and a majority of the students take their meals there. The well-balanced lunchroom menu includes meats and milk.

Student Body Active In Athletic Fields

In high school athletics, Paint Creek with a current enrollment of around 60 students in high school, has maintained an outstanding record among schools of this area. The Pirates won the district titles last school year in football, and in both boys and girls basketball. This season the Pirates have been strong in all groups, participating in basketball, football, volley ball and track, in both senior and junior teams. For the first time, the Junior Pirates will be suited out next year. Athletic coach at Paint Creek is Wayne Preston, 4-year letterman at H-SU in basketball. The school has a lighted football field which has been in use for several years. Paint Creek school operates five buses in transporting pupils to and from school daily. Most of the buses are new, with none having been in use more than two years. The buses travel a total of around 350 miles daily.

HERE FROM SEYMOUR

Mrs. Raymond Breslan and children, Jan and William Hugh of Seymour visited during the week end with Mrs. Breslan's parents, Mr. and Mrs. H. K. Thompson of this city.

TROPHIES. A fair idea of the achievements of the Paint Creek Rural High School can be gained from the school's trophy case showing the accumulation of scholastic and athletic events. The case does not have trophies and the photographer utilized a table to show.

We're so sure that once you've washed the **NEW NORGE** WAY you'll never go back to old-fashioned methods...

WE GUARANTEE SATISFACTION OR YOUR MONEY BACK!

THIS LIMITED-TIME OFFER IS MADE SOLELY TO ASSURE YOU WHAT THIS SENSATIONAL...

NORGE TIME-LINE AUTOMATIC WASHER

Priced at only \$279.90

NO STRINGS ATTACHED!

Just use and enjoy this new Norge washer all you want. If at the end of 30 days you don't agree that it's the finest, most efficient automatic washer on the market—regardless of price—we'll pick it up and return your full payment.

But wait! We'll even go farther than that! We'll give you a big, generous supply of ALL plus a new lightweight metal clothes carrier FREE of extra cost. And if you decide to return your Norge, you keep 'em... at no cost to you! Don't waste a minute. Come in today—we'll send your Norge out quick!

*This, of course, does not include any special plumbing charges.

FREE! of extra cost

1 Yr. Supply of all 100 Pounds

PLUS this new lightweight metal CLOTHES CARRIER

- FINISHED-METAL CONSTRUCTION
- BAKED ENAMEL CASING
- 85 POUND LOAD
- LOW, LOW PRICE!

CALLING BUTANE APPLIANCE COMPANY

"SERVICE FIRST"

Hamford Highway Box 476 Haskell, Texas Phone 409

Special Sale

BABY CHICK COCKERELS

From the Colonial Hatchery, Sweetwater

Specially Priced At \$3.90 per 100

TO BE DELIVERED APRIL 15

Only 3,000 available at this special price. Place your order today and take advantage of this special low price. Order from—

MARKET POULTRY & EGG CO.

Dealer for COLONIAL HATCHERY, Sweetwater

GOSPEL MEETING

Church of Christ

— WEINERT —

Beginning Sun. Apr. 6 through Apr. 13

PREACHING BY

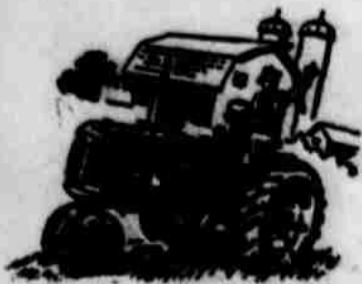
Grandol Forehand

OF LAS VEGAS, N.M.

EACH DAY AT 10 A. M. & 7:45 P. M.

EVERYONE CORDIALLY INVITED TO ATTEND EACH SERVICE

A PICTURE OF SUCCESS



Industriousness and planning make any man a success. Plan for your future by investing in insurance today. Call us.

IT CAN HAPPEN ANYTIME

Phone 169-J

John F. Ivy
Insurance Agency
Second Floor, Oates Bldg.

News From Sagerton

The Sagerton Home Demonstration Club met in the home of Mrs. A. L. Gibson Tuesday afternoon, March 25. After the business meeting, which was conducted by Mrs. A. C. Knipping, president, Miss Thelma Wirges, county home demonstration agent, gave a very interesting discussion of how to buy shoes and the care of the feet.

Three new members were welcomed into the club. They are: Mrs. Zenor Summers, Mrs. Buford Letz and Mrs. Melvin Thane. Others present were Mmes. A. C. Knipping, Cliff Gholson, O. K. Oelke, C. E. Stegemoeller, Delbert LeFevre, J. C. Kainer and Miss Wirges and the hostess. Refreshments of pink and white cake, canapés and punch and coffee were served.

The next meeting will be April 8 in the home of Mrs. F. A. Stegemoeller and on that day the ladies will make corsages under the direction of Mrs. John Clark.

The WSCS of the Sagerton Methodist Church met in the home of Mrs. G. W. LeFevre for their monthly social Monday afternoon, March 24. After the study a business meeting was held. The election of officers for the coming year was the main item of business. Mrs. Cliff LeFevre was elected president, Mrs. Carl Sims vice president, Mrs. F. A. Ulmer secretary-treasurer, Mrs. G. W. LeFevre spiritual leader, and Mrs. W. Z. Summers reporter. Mrs. Ulmer is the retiring president.

The ladies decided to raise funds to carpet the center aisle in the church. Refreshments were served by the hostess.

Mr. and Mrs. F. A. Ulmer and children spent Sunday in Hamlin visiting relatives.

Mr. and Mrs. G. W. LeFevre and children went to Carleton last week end to visit with Mr. and Mrs. Buddy LeFevre and family.

Pat Sellers has purchased the service station here in Sagerton that was operated by C. D. Swope and son.

The Luther League of St. Paul's Lutheran Church will present a 3-act comedy entitled "The Boarding House Reach" at the Sagerton school auditorium Friday evening April 4. The characters in the play are students from Old Glory, Rule and Stamford high schools, and it promises to be good entertainment.

August Stremmel, election chairman, has announced that a school trustee election will be held at the Sagerton school building Saturday, April 5. The term of B. Kupatt and Carl Hertel will expire. Mr. Stremmel urges every one to come out and vote.

Miss Irene Stewart, principal of the Sagerton school, accompanied Miss Palmer, County School Superintendent to Austin last week where they attended the State Supervisors and Principals meeting.

Mrs. B. Kupatt left last week for Atwater, Calif., to visit with her daughter, Mrs. Orville Elmore and daughter.

The Men's Club of the Zion Lutheran Church met in the parish hall Thursday evening March 26 for a regular meeting. Every one enjoyed a Bible quiz which was conducted like a baseball game where the players advance as they answer the questions.

Plans were made to improve the grounds around the church and parsonage. Bill Diers and Weldon Tredemeyer were hosts for the evening.

Mr. and Mrs. J. J. Thames celebrated their silver wedding anniversary Monday March 31 with a barbecue at their home three miles south of Sagerton. Approximately 100 guests were present.

Mr. and Mrs. M. Y. Benton visited Mrs. Benton's parents, Mr. and Mrs. L. E. Marr in Haskell Sunday afternoon.

Mr. and Mrs. Cleve Harwell and Mr. and Mrs. DeBusk of Tuxedo and Mr. Crouch and his sister from Haskell attended the singing at the Sagerton Methodist Church Sunday afternoon. Dinner was served at the church and everyone enjoyed being together.

A surprise house-warming party was held in the new home of Mr. and Mrs. Charles Clark and sons, Bob and Steve Tuesday night, April 1. The party was also in honor of Charles Clark, who celebrated his birthday on that day.

Mrs. A. C. Knipping, Mrs. Cliff Gholson, Mrs. J. C. Kainer and Mrs. F. A. Stegemoeller attended a training meeting in Haskell Friday for the officers of the Home Demonstration Clubs in Haskell County. Miss Bonnie Cox, Extension Organization Specialist from A&M conducted the meeting.

Mr. and Mrs. Alfred Hertel and children were guests of Mrs. Theodore Hertel on Benjamin Sunday. A dinner was given in honor of Mr. Hertel on his birthday.

Next Sunday, April 8, will be confirmation day for seven young people of St. Paul's Lutheran Church, Rev. O. K. Oelke, pastor, has announced. Services will be at 11:00 Sunday morning. The young people in the group are Hazel Klose, Sigurd Smith, Janis Bodeker, Kathleen Spitzer, Lamar Quade, Billy Baumbach and Wayne Baumbach.

A Christian Couples Club was organized at the St. Paul's Lutheran Church Thursday evening, March 27. This club is for young couples. Wallace Duesing was elected president of the organization. Eight couples joined the club at the first meeting.

Mrs. Larry Cornelison and her daughter, Kathy, who have been staying here with Mr. and Mrs. August Balzar, left Tuesday for Schulenburg where they will spend some time with Mr. and

Mrs. Gus Balzar.

Mr. and Mrs. B. Kupatt received word from their son, J. D., that he has been promoted to the rank of sergeant. Sgt. Kupatt is in Korea fighting with the U. S. Army. He has been there since last October.

Mrs. Mary Carter and daughter, Velda, attended a singing at Hawley Sunday.

Larry Quade, son of Mr. and Mrs. Glyn Quade, was honored with a birthday party Friday night, March 28 in his home. He was six years old. The children present included Larry, the honoree, and his brother, Lyndell, Linda and Ann Jennings, Linda and Larry LeFevre, Jerry Manske and Kenny and Judy Neinaast. Others present: Mr. and Mrs. Edgar Jennings, Mr. and Mrs. A. C. Knipping and daughters, Mr. and Mrs. F. A. Stegemoeller, Mr. and Mrs. Jack Quade, Mr. and Mrs. Delbert LeFevre and Mr. and Mrs. Edward Neinaast, Mr. and Mrs. C. E. Stegemoeller and Mr. and Mrs. Glyn Quade.

Mrs. L. H. Schroder is visiting with her son, Pvt. J. C. Schroder and his wife, Patsy, near Fort Leonard Wood, Mo.

Mr. and Mrs. Herman Neinaast have returned from a visit with their daughter, Mrs. Cecil Crow and Mr. Crow and children in Hillsboro.

The two worst cotton seedling spot and sores. Treating cotton planting seed will aid in controlling both.



State Senator George Moffett of Chillicothe has formally announced his candidacy for reelection to the State Senate from the 23rd Senatorial District, composed of Haskell and 11 other counties.

LOCAL FIREMEN AT DISTRICT MEET

Several members of the Haskell Fire Department are in Snyder today, attending the semi-annual meeting of the Midwest Texas Fireman's Association. Those attending from this city include J. B. Gibson, Floyd Lusk, George Neely, Marion Reeves, Jim Byrd, Emmet Starr, Walter Gresham and Chief Ray Lusk.

Confusion can be avoided by thinking through plans for settlement of property, real and personal, and its disposal by having a properly executed will.

Ants keep cows—and cows which yield a honey-like fluid.

Mati Hari, the famous German spy in World War I, was Dutch.

A violin maker is called a tuthier.

THE CORNER GULF
24 Hour Service
1/2 Block N. Square
Invites you to come in for Fast, Efficient and Courteous Service.
VELTON MOORE, Prop.
Phone 657-J

Avoid The R
Have Your Car Officially Inspected At Cox Motor Comp

Your car must pass the requirements of the State Highway Safety Law and is the time to have it checked. We fully equipped and certified by the State of Texas to make inspections and issue the official APPROVED sticker. We can make the necessary adjustments if needed.

Cox Motor Comp
2 North Ave D

Use The Free Press Want Ads For

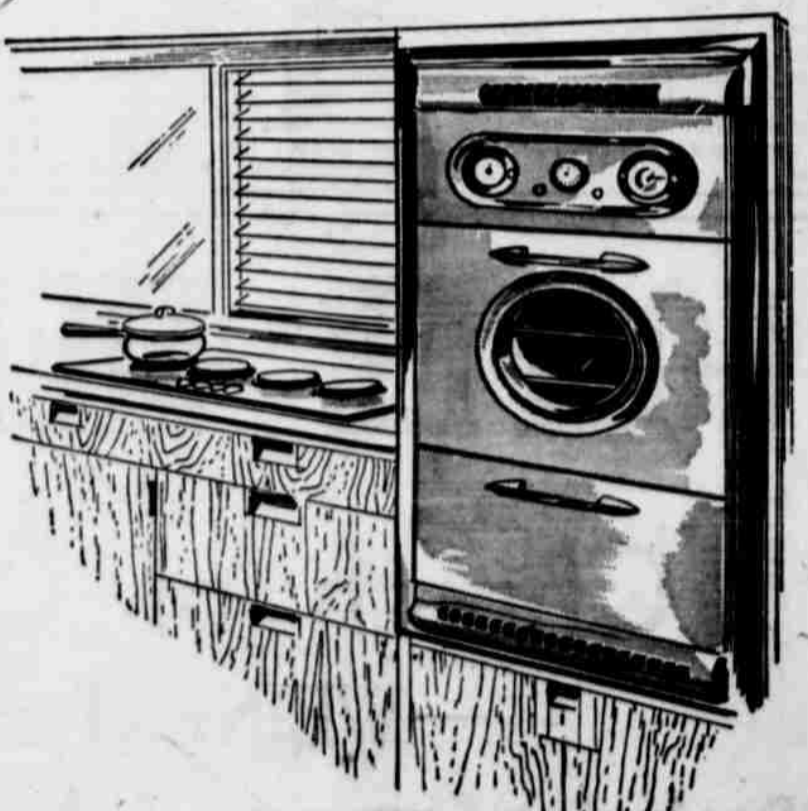
OPEN YOUR EARS TO THE FACTS ON CAR VALUE THE

DODGE "SHOW DOWN" WAY



PITMAN MOTOR CO.
2 North Avenue E
Haskell, Texas

the new things in cooking are GAS
WESTERN HOLLY BUILT-IN automatic GAS COOKING UNITS



- Place these automatic units together or apart. Install high or low... you plan for your own convenience with new automatic built-in gas cooking units. Plan for beauty—choose stainless steel, white or pastel colors, in porcelain enamel. Plan for modern automatic cooking—with fast, economical gas. Get full details at Lone Star today.
- Automatic Oven Control
 - Automatic Oven Lighting
 - Glides-Out Broiler
 - Wipe-Clean Oven Window
 - Automatic Minute-Master

For Cooking, Gas is best by every test and
CHEAPER 4 to 1
LONE STAR GAS COMPANY

Everything Automatic!

Never has cooking been so fast, so easy, so automatic as on the sensational new automatic gas ranges

YOU'RE FREE... to go shopping, to look after your children or to play. Simply put a meal in the oven and set the automatic clock. By choosing a sensational new automatic gas range you enjoy these important advantages, too:

1. Speed, flexibility and cooking efficiency approached by no other method.
2. America's easiest cooking appliance to keep clean.
3. Safest cooking possible. Exciting new gas ranges pass 502 American Gas Association Laboratory tests for safety, performance and durability.
4. A savings of \$15 to \$35 a year. Gas is cheaper to use 4 to 1.

See the Spring Style Show of sensational Automatic Gas Ranges now at Gas Range Dealers and Lone Star Gas Company

Automatic Gas Range
LONE STAR GAS COMPANY

Wichita Falls Union Officials Meet at Meeting of Local Carpenters

Officials of Abilene and Wichita carpenters met with Haskell Friday night for a meeting of Union affairs and matters affecting the building industry.

Members made by several of the Union officials, including L. Carlton, AFL staff member and member of Tampa, Fla., Jack Ahlens, representative of the Insurance Company and others.

Out-of-town visitors and included Claude Ritchie, business agent and first of Local 977 and first of the Texas State Carpenters; T. H. H. M. Watson, secretary of Wichita Falls Trade Council; Marshall T. Council; Stanley T. Council secretary, Stanley business representa-

Knox City School District Favored In Court Ruling

The 11th District Court of Appeals at Eastland Friday affirmed a decision by Judge Ben Charlie Chapman to set aside an injunction against the allocation of 16,000 acres in the old Sunset school district to the Knox City School District.

The injunction was filed last August in 50th District Court by the Munday School District to prevent the allocation of the land to Knox City schools. The lands include the old Sunset School District.

Sunset lies half way between Munday and Knox City.

Three petitions favoring the allocation were filed by Sunset patrons living near Knox City after an election to consolidate Sunset with Munday schools was overwhelmingly approved in Sunset and Munday last June 16.

The Knox City School Board approved the petitions and authorized the 16,000 acres of land to be allocated to Knox City schools. The board's action prompted Munday to file the injunction, urging that the decision be reversed.

Arguments were presented in a trial held Aug. 27 in 50th District Court. Judge Chapman, judge of the 39th District Court at Haskell, sat in for 50th District Judge Lewis Williams, who disqualified himself.

Judge Chapman took the injunction under advisement after the hearing and three weeks later rendered a verdict upholding the county school board's action. His decision was appealed to the court of civil appeals.

Opponents to the allocation have a choice of requesting a new hearing or appealing to the Supreme Court of Texas.

Kent County Voters Reject Proposal To Move Courthouse From Clairmont

By the narrow margin of two votes, Kent County voters Saturday elected to retain the county seat at Clairmont in defeating a proposal to move the capital site to Jayton, the county's largest town.

Tabulation of all votes cast in the county Saturday night showed 610 for moving the court house, 308 against. These totals were confirmed Monday when Kent County Commissioners Court made an official canvass of the election.

Since a two-thirds majority is required for the proposal to carry, it would have required 612 favorable votes.

Only the Jayton box favored the proposal, where the vote was 478 for and 15 against. In the county the majority was against the proposal.

It was the third time in the county's history that a proposal to move the county seat had been placed before the voters. Clairmont an early day ranch town, is situated almost in the center of the county. Jayton is north-east of Clairmont, several miles west of the Stonewall County line.

Saturday's election drew a heavy turnout of voters. There were 866 poll taxes paid in the county this year. The difference between this and the 918 who voted is attributed to those with exemptions.

Ladies You Will Be Happier

WITH A CULLIGAN WATER SOFTENER In Your Home

2 WEEKS FREE TRIAL

We will install this water softener in your home at our risk. After two weeks of operation if you are not satisfied there will be absolutely no charge to you. There are many advantages for only a small nominal fee.

- USE LESS SOAP
- CUTS YOUR COFFEE BILL
- SAVES YOUR CLOTHES
- PROLONGS THE LIFE OF YOUR HOT WATER HEATER

You Buy Absolutely Nothing, Just A Service We Offer You

CALL OR SEE US TODAY

Lanier - Mobley

701 North First Phone 690



SMART AS A FOX

Watch Mr. Reynaud eyeing his quarry to guard against the unexpected. The very same smartness that lies behind every insurance policy—protection for the future. You, too, can gain a greater security by planning a comprehensive insurance coverage. We suggest you call us now for experienced assistance.

INSURANCE IS THE BEST POLICY

W. I. (Scotch) COGGINS

390 Office PHONE: 551-J Home
South Side Square

RETURN FROM VISIT IN ALABAMA

Mr. and Mrs. A. Bartell of Weirnet have returned home after a three months visit with their daughter and family, Mr. and Mrs. Barney Miller and Terry Wynn at Auburn, Ala.

VISITS PARENTS

Mr. and Mrs. Virgil H. Wall and children spent several days last week visiting their parents, Mr. and Mrs. J. A. Wall and Mr. and Mrs. Theodore Williamson.

HASKELL SOLDIER NOW AT FORT KNOX, KY.

Word was received the first of this week by Mrs. Durwood Miller that her husband who recently entered the Army is now stationed at Fort Knox, Ky. Mrs. Miller is the former Miss Joyce Matthews.

Insurance Groups Set Up 'Disaster Teams' As Public Service Project

AUSTIN, Texas.—Come hail or high water—or a tornado like the one which raked Arkansas a few days ago—Texas will be ready to act.

Catastrophe Kits—blueprints of exactly what a community should do when disaster strikes—were distributed this week to 200 Texas cities and towns. In addition, special "disaster teams" of trained trouble-shooters have set up headquarters in Dallas, Houston, San Antonio, Amarillo, Lubbock, Abilene and Corpus Christi. They will be ready, at a moment's notice, to rush to any stricken area in Texas and help local community leaders organize to meet the problems that always follow a severe storm.

The Catastrophe Plan and the "disaster teams" are a public service project of the Texas Insurance Fieldmen's Association, an organization of 500 special agents representing capital stock insurance companies. J. F. Nowlin, of Houston, chairman of the Fieldmen's Loss Committee, said that the Catastrophe Plan was developed after four years of work by insurance agents, adjusters and engineers.

The plan is designed to restore a stricken community to normal activity as quickly as possible. It shows the citizens how to organize to speed up the task of cleaning up the debris and getting repairs made. It shows them how to prevent further damage to their property, how to file insurance claims, how to help speed the work of insurance adjusters and how to go about getting repairs completed in a hurry.

At least one working kit containing the Catastrophe Plan has been sent to every Texas community where there is a local insurance exchange, Mr. Nowlin said. In towns where no local exchange exists, the Catastrophe Plan has been sent to a leading local agent.

Members of the Texas local Fieldmen's Association will carry on their catastrophe work through the four division headquarters in the state. The North Texas Division at Dallas will serve north and east Texas, the West Texas Division at Lubbock will serve the Panhandle and Plains areas, the Alamo Division of San Antonio will serve Central and South Texas and the Rio Grande Valley, and the Houston Division at Houston will serve the Gulf Coast and southeast Texas.

Mr. Nowlin emphasized that the use of the Catastrophe Plan and the "disaster teams" is without cost to the community.

"Our disaster teams will even pay their own travel and incidental expenses," Mr. Nowlin said. "We ask nothing except an opportunity of helping the people of Texas if, and when, a catastrophe strikes in any area."

He said that the disaster teams may be contacted through local insurance agents or through the Texas Insurance Advisory Association at Austin.

Pressure of Work Frequent Cause of Heart Neglect

Pumping 2,500 gallons of blood every 24 hours is the astonishing work done by the heart, according to Dr. Geo. W. Cox, State Health Officer. The heart is about the size of a man's fist and is rated at 1/240th of a horse power; it never sleeps, loaf or takes a vacation from the beginning of life to the end. The only rest it gets is between beats. Yet with all the work the heart has to do it does not give out suddenly unless it has been injured or ill-treated.

Under pressure of work the average person neglects his heart and unwittingly abuses it. The chief causes of heart trouble, aside from the deterioration of age, are rheumatic fever, acute infectious diseases, chronic infections, syphilis, too abrupt return to activity after a serious illness, too strenuous exercise and overweight may be a factor.

Many of the signs which you may think mean heart trouble can be caused by some other disorder. Indigestion, lung trouble, or nervousness may cause pain near the heart, shortness of breath, fainting and irregularity of beat. If you have any of these symptoms, do not try to diagnose the condition yourself, but go to your doctor for an examination. He will be able to find out what is wrong and may tell you that your heart is sound. Have a regular periodic examination and follow your doctor's advice.

will be SINGING IN THE RAIN with these APRIL SHOWER SPECIALS!

White Swan PEACHES	2 1/2 Can	32c
Sweet POTATOES	Can	29c
Morton's Salad Dressing	Pint	25c
HEERIOS	Box	17c
Fruit Muffins	Pkg.	25c
Frozen TORTILLAS	Pkg.	25c
Frozen Cedar Green SPINACH	Pkg.	25c
Frozen Cedar Green CUT CORN	Pkg.	25c
Frozen Cedar Green ORANGE JUICE	Can	18c
Fresh SPINACH	Pkg.	25c
GRAPEFRUIT	Lb.	9c
ONIONS	bunch	9c
ANGES	Pkg.	7c
CARROTS	Pkg.	12c
KETCHUP	Pkg.	19c

WE RESERVE THE RIGHT TO LIMIT

O'Neal's Food Store

WE DELIVER

West Texas Electric Companies Payrolls, Fuel Costs Up

From 1946 to 1952, customers of electric power companies serving 90 per cent of West Texas increased a total of 66 per cent, while revenues rose 79 per cent, payrolls jumped 121 per cent and fuel costs went up 104 per cent, according to results of a survey published in the current issue of West Texas Today, monthly magazine of the West Texas Chamber of Commerce.

These companies are doing \$55 million of new construction, this year to bring to more than \$245 million their total investment in expanded facilities in seven years.

The 1952 goal for home gardens in Texas is 600,000. Where moisture conditions are favorable, home gardeners should begin to plant their attention to the planting of the warm season vegetables. Grow more, eat more and preserve more vegetables in 1952.

Dairy producers should plant enough hay and silage to store at least one ton of hay and three tons of silage for each cow in the herd.

Pre-Easter Sale Continues

The response to our Pre-Easter sale was much greater than we had expected for which we want to express our thanks. To those of you who have not already taken advantage of these many money savers we still have many unusual values throughout the store. Come see, buy and save.

CANNON TOWELS Heavy grade, good size 3 for \$1.00	SPUN RAYONS Solid color Broadcloth and Sheers. Regular 79c to 98c yard. Easter Sale Price— 47c - yard	39 Inch, Extra Heavy SHEETING 4 yards \$1.00
CHILDREN'S PANTIES Regular 59c value. Easter Sale Price— 3 Pairs for \$1.00	ONE RACK LADIES PRINT DRESSES Sizes 12 to 52. Regular \$3.95 value. Easter Sale Price— \$2.79	Men's SHORTS And Shirts. Regular 69c value. Easter Sale Price— 49c each
BEDSPREADS 92x105 Crinkle Regular \$2.98 value. Easter Sale Price— \$1.98	Men's Pool's Gabardine PANTS AND SHIRTS Easter Sale Price \$2.89 each	80 Square Print and Solid Color BROADCLOTH 3 yards \$1.00
		Men's DRESS SOX Regular 39c value, first quality. Easter Sale Price— 4 Pairs for \$1.00

The Fair Store

North Side Square The Thrifty Store Haskell, Texas

Court House News

Warrant D-eds
Stamford Builders Supply to Zearl L. Ezell, et ux. All of Lot 3 and the north 25 feet of Lot 2 in Block G of the Tandy & Pinkerton Addition to the town of Haskell.
George Banks, et ux, et al, to Olen Dotson. All of Lots 1, 2, 5, 6, 7 and 8 in Block 27 of the original town of Haskell.
Florence Darden, et vir, et al to James F. Cadenhead. All of Lots 3, 4, 5 and 6 in Block "C" of the Shook Addition to the town of Haskell.
Emmett Offil, et ux to R. Y. Mobley. 516 acres, being the northwest quarter of Section 23, Block 1, of the H&TC RR Survey.

George W. Burkett to A. A. Stiewert. All of Lot 3 in Block 6 of the original town of Haskell.
George W. Burkett, et ux to Courtney Hunt. Being all of lots 1 and 4 in Block 45 of the original town of Haskell.
John L. McGuire, et ux to Albert Arend, et ux. Being part of the I. Ramos League and Labor of Land Survey 109, Abst. 351.
Courtney Hunt, et ux to Buford Cox. All of Lots 1 and 4 in Block 45 of the original town of Haskell.
Courtney Hunt, et ux to Beauford Cox. All of Lot 5 in Block "O" of the S. H. Johnson Addition to the town of Haskell.

R. R. Clark, et ux to Charles Clark. 162 feet east and west by 120 feet north and south out of the southwest corner of a certain 44 1/2 acre tract out of the Thomas Early Survey 39, Abst. 126.
Clarice Rae Mitchell to W. R. Mitchell. Being a part of Section 136, Block 45, H&TC Survey and containing 146.7 acres.
Quit Claims D-ed
Dennis P. Ratliff, et al to Myra T. Ratliff. Being a part of the Peter Allen Survey 140, Abst. 2, and being Lots 1 and 2 in Block 2 of the J. L. Baldwin Addition to the town of Haskell.
Oil, Gas and Mineral Leases
Glennie Walker, et al to Rex L. McFall. 180 acres being Subdivision 3 of the Partition of the Robert G. Watson Survey, Abst. 406.
R. M. Walker, et ux to Rex L. McFall. Being 159.23 acres out of

the Robert G. Watson Survey and being share "C", Subdivision 4 in the partition between Samuel Hunter, Sr. vs. C. C. Cunningham, Cause 452.
J. C. Borden, et ux to Union Oil Co. of California. 350 acres being a part of the Hiram Riggs Survey 130, Abst. 354.
Mrs. Ada Norman, et al to Union Oil Co. of California. 160 acres being the southeast quarter of the H&TC Survey 69, Block 1.
Willie H. Diers, et al to Union Oil Co. of California. 237 acres being a part of the Coryell County School Land League 60.
John L. Clemmer to Union Oil Co. of California. 160 acres being an undivided one-half interest in the northwest one-fourth of Subdivision 35 of the Wise County School Land Survey 76, Abst. 405.
E. D. Weaver, et ux to Union Oil Co. of California. First Tract:

102 acres being a part of the southwest one-fourth of Subdivision 12 of the Wise County School Land Survey 76, Abst. 405. Second Tract: 54 acres being a part of said southwest one-quarter of Subdivision 12 of the Wise County School Land, League 76, Abst. 405.
Mrs. Floy McMeans, et al to Union Oil Co. of California. First Tract: 195 acres being a part of Section 82, Block 1 of the H&TC Land, Abst. 522. Second Tract: 200 acres being the west part of the H&TC Survey 81, Block 1, on the waters of the Brazos River, Abst. 226.
Tom Proctor Hughes to J. H. Free. 350 acres being a part of the Hiram Riggs Survey 1030.
W. P. Russell, et ux to Poe Oil Co. 160 acres being Block 19 of the Jane Wilson Survey, Abst. 413.
F. T. Sanders to M. R. Hemphill. 123.5 acres being all of Subdivision 1 of the H. O. Campbell Survey 110, Abst. 92.
Assignment of Oil and Gas Leases
Calvin Henson to Paul L. Miller. First Tract: Outlots of Blocks 60, 63, 64, 67, 68 and 71 of the Brown & Roberts Addition to the town of Haskell. Second Tract: 100 acres being a part of the H. O. Campbell Survey 110, Abst. 92.
F. G. Booth, et al to Robert G. Anderson, et al. The east half of the north half of Subdivision 7 of the A. Rodriguez Survey, Abst. 198.
Mack Hays to P. G. Booth. Being a part of the north 1917.5 acres of the A. Rodriguez Survey being the east half of Subdivision 3; the west half of Subdivision 4; all of Subdivision 5; the west half of the south half of Subdivision 7; the west half of Subdivision 11; all of Subdivision 12; and the west half of Subdivision 14 of the H. H. Adams Subdivisions of the A. Rodriguez Survey. Also the east part of the S. T. Blakeley Survey 1 and containing 97 3-5 acres.
F. P. Schwab to C. L. Wither- spoon, Jr. The north half of Section 25, Block 1, H&TC Survey; the south half of Section 25 in Block 1, H&TC Survey, Abst. 198; 80 acres being a part of Subdivision 1 of the Coryell County School Land Survey 72, Abst. 99; 80 acres, more or less, and being a part of Subdivision 1 of the Coryell County School Land Survey 72, Abst. 99; 331 acres in two tracts. The first being 231 acres and 51.7 acres of the E. McGary Survey, Abst. 327 and 179.3 acres of the B. F. Wood Survey, Abst. 424. The Second Tract being 100 acres, a part of the B. F. Wood Survey, Abst. 424.
Marriage Licenses Issued
George L. Clines and Naomi Lee Sparkman.
James Edward Huntsman and

Hamlin To Vote On \$625,000 Bond Issue For Water Line

Voters of Hamlin will ballot Tuesday, April 8, on a proposed bond issue of \$625,000 in revenue bonds to provide a water supply for that city by piping water from the Paint Creek lake in Haskell County.
 The proposal is to lay a large pipe line from Hamlin to Stamford where it would pick up water from the Paint Creek reservoir.

Order for the election calls for two bond issuing proposals; one for \$102,000 and the other for \$523,000. The \$102,000 issue is actually for liquidation of an outstanding issue. The \$523,000 issue would be principally for construction of the pipeline. All the bonds would mature in 35 years.

Alfred E. Perry Is Promoted To Staff Sergeant

Alfred E. Perry, son of Mr. and Mrs. Hoyt Perry of Haskell has recently been promoted to the grade of Staff Sergeant in the U. S. Air Force.
 Staff Sgt. Perry entered the Air Force in December, 1950, and has been stationed at Donaldson AFB, Greenville, S. C., since January, 1951. He is serving as administrative technician in the Legal and Claims Section of the 375th Troop Carrier Wing.
 S/Sgt. Perry is a 1947 graduate of the Paint Creek High School and prior to entering the Air Force was engaged in farming in that community.

HERE FROM SAN ANGELO
 Mr. and Mrs. Dude Mercer and Mr. and Mrs. Denton Atchison, who recently moved to San Angelo for a year's stay, spent the week end with relatives and friends here. Mercer and Atchison have taken jobs with the West Texas Utilities Company and will work in the San Angelo plant of the company for a year in learning various phases of plant operation and maintenance.
 Read the Want Ads.

Loyse Jean Coalis.
 Lloyd Taylor Davis and Shirley Yvonne Allred.
 Rochester William Kelley and Billie Joe Davis.
 Bob Elbert Mapes and Sally Ann Dean.
Other Records Filed
 Two Affidavits, 14 Releases and 29 Chattel Mortgages were filed in the County Clerk's office during the past week.

What to look for if you want a better 1 1/2- or 2-ton truck



"Our Dodge 2-ton models have done a remarkable job for us."

... says S. W. TANNER
 Veteran's Gas and Service Co., Pueblo, Colorado

"In all-round satisfactory performance, dependability and economy, our Dodge 'Job-Rated' 2-ton trucks have done a remarkable job for us."
 "In fact, one truck has 80,000 miles on it, and the only replacement has been a new jet in the carburetor. That's economical maintenance you just can't beat!"
 "My partner, Eric Samuelson, swears by Dodge, too ... says our 2-ton trucks handle just like a passenger car."

Look first for the truck that best fits your job! Look for strong, rugged load-carrying units—frame, springs, axles, wheels, and others—engineered to provide the strength and capacity you need. Look for load-moving units—engine, clutch, transmission, and others—engineered to meet the most severe operating conditions.
 Look, too, for a powerful engine, easy steering, short turning ability, and extra payload capacity. You'll get all these advantages when you choose a Dodge "Job-Rated" 1 1/2- or 2-ton truck.
 Yes, look for the best in a 1 1/2- or 2-ton truck, and you'll find it in a Dodge. Come in today.

Big Power at a Saving. Dodge "Job-Rated" 1 1/2- and 2-ton trucks feature a high-compression 109-h.p. engine. For outstanding economy, you get 4-ring pistons, chrome-plated top rings, and other advantages.

Exceptional Handling Ease. Champion Truck Rodeo contestants choose Dodge "Job-Rated" trucks because you can cut sharper, maneuver easier, park faster—thanks to wide front tread and short wheelbase.

Fast Delivery Work. There's a 5-speed transmission available on most models for higher road speeds—greater pulling power. And low loading height simplifies the job of loading and unloading.

See us today for the best buy in low-cost transportation...

DODGE "Job-Rated" TRUCKS

Pitman Motor Company

Avenue E and N. Second Haskell, Texas



MAKE EVERY PENNY COUNT

5 Day Food Sale

Friday, Saturday, Monday, Tuesday, and Wednesday

- Cherry Bell (With Cup and Saucer) FLOUR 25 lbs. \$1.89
- Powdered or Brown SUGAR 1 lb. box 13c
- 80 Count NAPKINS 13c

- Crystal Wedding OATS 16 oz. box 16c
- River Brand RICE 2 lb. box 27c
- Frozen CATFISH lb. 49c
- White Swan Whole No. 2 Can GREEN BEANS 27c

PRE-COOKED

Rolls

Large Package

19c

- Any Flavor JELLO 3 boxes 25c
- White Swan No. 303 Can PORK & BEANS 10c
- Old Bill, VIENNA SAUSAGE 3 cans 25c
- DRENE 3 Oz. Bottle SHAMPOO 49c
- DRENE 1 1/4 Oz. Bottle SHAMPOO 26c

Folger's or Admiration

Coffee

1 pound

78c

Bread

small loaf 14c large loaf 19c

We Reserve The Right To Limit

Gholson Grocery

ATTENTION

A Littlejohn

SPECIAL

This coupon is worth \$4.95 brought in to the Tonkawa Hotel Haskell, Texas, on Monday, April 7 from 11:00 a. m. to 7:00 p. m. One beautiful Silvertone 8x10 Photograph, regular \$4.95 value for 95c and this coupon.

FOR COLORFUL WASHABLE WALL PAINT

FLATLUX

THE WONDER ONE-COAT WALL PAINT MADE WITH BPS

Come in today and see the beautiful shades of Flatlux now ready to make rooms sparkle. Made with oil for easy application, so it's easy to apply, so it's easy to apply. For gorgeous colors at low cost, on Flatlux!

Economical to Buy! Easy to Apply!

BRAZELTON LUMBER COMPANY

Popular Brands

Cigarettes

Package	Carton
20c	1.95

MEATS

- Boneless HAM lb. 79c
- Wilson Certified, All Meat BOLOGNA lb. 49c
- Grayson OLEO lb. 19c

PHONE 79

Phone Your Orders Early
 All orders taken before 10:30 a. m. will be delivered before noon. Orders taken after 10:30 a. m. will be delivered in the afternoon.

