

News File
HC 65m, Box 201
Oark, AR 72852-9501

17

PAGE ONE

A QUICK READ OF THE NEWS

Cattle conference Aug. 6

The Texas Agricultural Extension Service is sponsoring a stocker cattle and forage conference Thursday, Aug. 6 at the Bailey County Coliseum.

Registration is at 8:30 a.m. and the conference will conclude with an afternoon meal.

Topics include Matua and other perennial grasses research conducted by Texas Tech University; managing wheat and forage production, supplementation during drought conditions and Texas A&M's Ranch-to-Rail program.

Anyone interested in attending should contact one of the following County Extension Service offices — Parmer, Bailey, Lamb or Castro — by 5 p.m., Tuesday, Aug. 4.

Red Raider Club outing

Longtime Texas Tech head football coach Spike Dykes will be the guest speaker at the Muleshoe Red Raider Club's second annual "Old Fashion Tailgate Party" at 6:30 p.m. Aug. 5 at the Heritage Center.

Tickets are \$25 per person for the "all-you-can-eat" steak dinner.

For more information, contact Kevin King at 965-5028 or 272-3138 or Max King at 272-4541 or 272-3918.

Atwood reaches 800 final

SEATTLE — Kyle Atwood qualified for the 800 meter finals Thursday at the U.S. Junior Olympic national track meet by placing second in his heat.

Atwood, a freshman at Muleshoe High, is one of 12 runners who qualified for Saturday's finals in the 13-14 year old division.

He ran a 2:06 in his heat, which is the eighth-best time in the finals, according to his father.

The skinny on fat tax

DENTON — The City Council has heard more than enough about fat in the past week.

After being inundated with jeers, council members unanimously voted to rescind a planned \$25 surcharge for anyone over 300 pounds needing ambulance service.

The money was supposed to help firefighters and emergency workers. But members of the council decided the extra revenue wouldn't be worth the attention and ridicule that followed approval of the fee last week.

LOCAL WEATHER

	High	low	Pre.
Tuesday	96	66	.18
Wednesday	99	65	—
Thursday	95	68	—
Total to date	4.06 inches		

EXTENDED FORECAST

Partly cloudy throughout the week. Highs in the upper 90s with lows in the upper 60s.

Two-a-days start Wednesday

Local coaches will see if their teams can take the heat Wednesday on the first day of high school football practice in Texas.

Muleshoe and Lazbuddie will conduct two-a-day sessions for the first week while Three Way will practice just once a day.

Muleshoe coach David

Wood expects 62 players for the start of practice and the number to swell to almost 100 when freshman report Monday.

"We're excited," said Wood, now in his third year at Muleshoe. "The numbers keep growing and I don't think we've reached the peak yet."

Boosted by a season-ending, three-game winning streak

Muleshoe finished 5-5 in 1997.

The Mules' first scrimmage is Aug. 21 at Seminole.

Muleshoe's two-a-days will start at 7:30 a.m., and after a break, continue until about 1:30 p.m.

"That way we can get done before the midday heat sets in,"

see MULES on page 3



Football helmets on a shelf in Muleshoe's new football locker room will be put to use Wednesday, the first day of high school football practice.



Standing tall
Sunflowers of all sizes stretch for a little early-morning sun Friday

Taxing districts worried about misleading ads

When is a tax rate increase not really a tax rate increase? When the Texas state government gets involved.

Hospital district and Muleshoe school officials are concerned about the reaction to mandatory public notices placed in this week's Bailey County Journal that announce property tax increases for both entities.

But in actuality, neither the Muleshoe Area Hospital District nor the Muleshoe Independent School District is increasing its tax rate.

The so-called tax increase results from an increase in property value on both district's tax rolls.

Under new legislation, government entities are required by law to hold public tax hearings if they generate more tax revenue than the previous year.

Because property values increased slightly in both taxing districts, both will collect more tax dollars during the 1998-99 fiscal year compared to last year

even though the tax rate will remain the same.

"My concern is that the notices are misleading," said Muleshoe hospital district administrator Jim Bone. "It implies that there is a tax rate increase. And that's not true."

Bone said the hospital's tax rate of 25¢ per \$100 of valuation would stay the same if it adopts a projected \$6.3 million budget during its Aug. 20 meeting.

Muleshoe school superintendent Bill Moore was on vacation this week, but previously stated that he anticipates no tax rate increase from the current rate of \$1.2704 per \$100 of valuation if the school district adopts a projected \$9.7 million budget during its Aug. 24 meeting.

Property values increased by 1.9 percent in the hospital district and by 2.4 percent in the school district, according to the appraisal district.

see TAX on page 3

MHS adds computer technology class

Muleshoe High School is offering a new elective course in building computer networks to juniors and seniors.

The class will be taught by Mike Richardson.

The Cisco Networking Academy is a program to teach and certify high school and college students to design, build and maintain computer networks capable of supporting national and global organizations.

Cisco Systems, the world leader in networking for the Internet, has formed a partnership with school districts around the world to implement a Networking Academies course.

The entire Cisco Networking Academy course will take two years to complete. For seniors who begin the program this year, opportunities will be available for them to complete the second year of the program at various college campuses throughout the state, according to Richardson.

Richardson has completed an intensive training session for the course and is excited about teaching the class.

"This class will be a challenging opportunity for all of us," Richardson said. "The curriculum is a fast-paced program that will keep everyone involved and on their toes."

A recent Information Technology Association of America study shows that there are approximately 346,000 unfilled Information Technology (IT) positions in this country alone. The Cisco Networking Academies program, officially launched in October, is designed to address the current shortage of IT field with an estimated starting salary of \$25,000 to \$45,000 annually.

Tentative plans are to offer the course as a part of the block schedule from 2-3:30 p.m. to a limited number of students.

Interested students should contact MHS principal David Jenkins at 272-7571.

Economic loss in Panhandle estimated at \$500 million

By BETH BARBEE

A&M Extension Service
AMARILLO — Drought and ranchers will cause the region's economy to lose nearly \$500 million, according to estimates by economists with the Texas Agricultural Extension Service.

Unless the rains start coming the situation will only worsen, said James D. Sartwelle III, risk manage-

ment economist with the Texas Agricultural Extension Service in Amarillo.

According to Sartwelle, the damage that has been done to date will cause an estimated \$137.5 million in direct losses to producers. In turn, losses in the Panhandle are projected to reach \$462.5 million. These figures include producer loss and resulting losses for industries associated with harvesting, transporting, processing and

marketing of agricultural and food products.

"The area's corn crop is being hit hardest by the drought," Sartwelle said. Damage done to irrigated corn crops has reached the 20 percent mark, while dryland corn crops received unlimited losses. The total direct loss to producers is an estimated \$79 million.

For other crops, direct

see PANHANDLE on page 5

DROUGHT '98

Legislators seek aid

■ Combest expects varied relief for farmers, ranchers

WASHINGTON, D.C. — U.S. Rep. Larry Combest (R-Texas) expects drought relief to take many different forms over the next many weeks, responding to the various, specific needs of farmers and ranchers.

As Vice Chairman of the U.S. House Agriculture Committee, Congressman Combest strongly encouraged U.S. Agriculture Secretary Dan Glickman to work with Congress on a variety of fronts, particularly addressing the critical needs of Texas Pan-

see COMBEST on page 5

■ Hutchison co-sponsors emergency farm relief act

WASHINGTON, D.C. — The U.S. Senate has passed emergency legislation that allows drought-stricken farmers to receive their transition subsidy payments earlier than scheduled. The measure was approved unanimously Thursday evening.

The bill was co-sponsored by Sen. Kay Bailey Hutchison of Texas.

"At this late hour, as we are leaving for a month, do not fail to let us have this relief," Senator Hutchison urged her Senate col-

see HUTCHISON on page 3

AROUND MULESHOE

Class of 1948 holding 50th reunion

The class of 1948 will be holding their 50th reunion August 8 in the First United Methodist Fellowship Hall. About 33 class members and their spouses will be gathering for this occasion. A breakfast will be held about 8 a.m. with a memorial service to those that have passed on, followed by awards, contests, interviews, picture taking and lots of visiting. Friends and relatives of the class are certainly welcome to come by the church about 10 a.m. for lots of visiting and helping this class celebrate their 50th. The group has a dinner planned for evening a later entertainment by attending the "Keepers of the Legend" at the Heritage Center.

Cemetery association hosting meeting

The Bailey County Cemetery Association will be having its annual meeting of members and friends of the association on August 15 at the Bailey County Coliseum at 10 a.m. in the west meeting hall. Reports and election of new directors and officers for the next term of office shall be part of the regular business that morning. A report on the maintenance and operation of the cemetery as well as projected concerns will be addressed. Also, we hope to have the new historical marker in by the time of the meeting. The marker is to be placed at the old cemetery.

ACU announces Dean's List

Two students from Muleshoe were named to the Dean's Honor Roll for the spring 1998 semester at Abilene Christian University.

Holly Ann Hutton is the daughter of Mr. and Mrs. William Hutton and a 1996 graduate of Muleshoe High School. She is a sophomore accounting major at ACU.

Mark Alan McGuire is the son of Mr. and Mrs. Gene McGuire and a 1997 graduate of Muleshoe High School. He is a freshman accounting major at ACU.

To make the Honor Roll, a student must complete at least 12 semester hours for grades and earn a 3.45 or higher grade point average.

Lazbuddie registration set for new year

Lazbuddie registration for new and returning students for grades 6-12 will be held at Lazbuddie ISD cafeteria using the following schedule:

Wednesday, Aug. 5, , grades 11 and 12.

Thursday, Aug. 6, grades 9 and 10.

Friday, Aug. 7, junior high students.

The schedule for all days is from 9 a.m. to noon and 1 p.m. to 4 p.m. Students may register on any of these dates if there is a conflict with the assigned time. Junior high school students are encouraged to register Friday.

Registration for new elementary students will be any time during the week of Aug. 3-7.

No students may register on Aug. 11 due to staff in-service. The first day of classes for Lazbuddie I.S.D. will be Aug. 14.

Deadline for Around Muleshoe items is 5 p.m. Monday for Thursday's edition and 5 p.m. Thursday for Sunday's edition.

Cable company offers school special

Classic Cable announced this week plans to donate money to local high schools with each new cable installation or upgrade.

Classic Cable the company has committed to donating \$5 to local high schools for each new installation or upgrade during the month of August, plus HBO will donate \$1 for each HBO sale, according to Jennifer Hauschild, Classic Cable marketing manager.

"We offered a similar campaign in 1997 and generated nearly \$15,000 for local high

schools", stated Ms. Hauschild. "We have been working very hard this year on being good neighbors in the communities we provide with cable and we firmly believe the education of our children is vitally important."

Classic Cable currently provides all schools with free cable television service and has established a college scholarship fund for graduating seniors. In addition, the company makes donations to many community events and donates a large number of

toys to needy children during the holidays.

Individuals wishing to install cable television during this month will not only have the \$5 donated to the local high school but will also receive 50% off the regular installation fee.

Customers upgrading their existing service to include any premium will also receive the same discount.

According to Ms. Hauschild, customers can either call 1-800-999-8876 or stop by their local office for more details.

PUBLIC AUCTION Special! Big! Two Day Consignment Sale!

3 MILES NORTH OF PORTALES ON U.S. HIGHWAY 70
FRIDAY, August 7th & SATURDAY, August 8th— 9:00 AM
If you wish to consign any equipment, vehicles, etc., please contact us as soon as possible so we will be able to properly advertise your merchandise.
WE APPRECIATE OUR CUSTOMERS! CALL DAY OR NIGHT!

Bill Johnston Auctioneers

Portales, NM
(505) 356-5982 Days
Nights - Mike (505) 760-6195 or Clint (505) 356-5368

Bailey County Journal USPS 040-200

Established March 31, 1963. Published by Triple S Publishing, Inc.
Every Sunday at 304 W. Second. Box 449, Muleshoe, TX 79347.

Second Class Postage paid at Muleshoe, TX.

POSTMASTER: Send address changes to the Bailey County Journal, P.O. Box 449, Muleshoe, TX 79347.

We are qualified members of:
Panhandle Press Association, National Newspaper Association,
West Texas Press Association and Texas Press Association

WEST TEXAS PRESS
ASSOCIATION



PPA

Panhandle Press Association

Scot Stinnett, Publisher
Lisa Stinnett, Vice-President/Comptroller
Rick White, Editor
Mary Ann Dominguez, Classifieds
Leah Bell, Advertising

© 1990

SUBSCRIPTIONS: Muleshoe Journal and Bailey County Journal
By Carrier Yearly - \$22.00
Bailey County — by mail - \$24.00
Elsewhere - \$26.00
Advertising Rate Cards on Application

Advertisers should check their ad the first day of insertion. The Journals will not be liable for failure to publish an ad or for a typographical error or errors in publications except to the extent of the cost of the ad for the first day of insertion. Adjustment for errors will be limited to the cost of that portion of the ad where the error occurred.

Letters to the Editor policy

The Muleshoe and Bailey County Journals welcome readers to write letters to the editor. Letters may be written on any subject and contain a person's comments or opinions on a particular issue they wish to address. Letters do not necessarily portray the opinions or standpoints of people at the Muleshoe and Bailey County Journal.

In order to be published, a letter must contain a person's signature and phone number. No anonymous letters will be published.

The Journal reserves the right to edit content which may be lengthy or contain potentially libellous material. Letters may be mailed or brought to the Muleshoe Journal.

Dont Miss An Issue!

We deliver twice a week,
52 weeks per year! To
subscribe to the Mule-
shoe Journal, cost is
\$22 by carrier in Mule-
shoe; \$24 by mail in Mule-
shoe County and \$26
by mail outside Bailey
County. Send your
check, name and ad-
dress to: Muleshoe
Journal P.O. Box 449,
Muleshoe, TX 79347

Home Folks Caring For Folks At Home. MULESHOE AREA HOME HEALTH Agency

Featured Patient

Imogene Tabor was born November 19, 1922. Born in the "middle of the pack," Imogene and her nine siblings grew up in Alma, Arkansas. Miss Tabor received her high school diploma from Alma and then chose to further her education by attending Hill Crest Hospital's School of Nursing. Imogene eventually became a Registered Nurse. She has practiced nursing in several different towns and states including: Alaska, Clovis and Amherst. But to many of us, Imogene is most remembered and loved for her many years as Muleshoe's elementary school nurse. She was the individual who could nurse your "boo-boos" and your moods with just her gentle hand and a warm smile. Imogene retired in 1984.

Imogene Tabor married Gordon Tiller who passed away in 1969. In December of 1984, she wed Homer Cole.

Mr. and Mrs. Cole live on Lake Eufaula in Oklahoma. While recovering from a stroke, Imogene is staying with her daughter Kay Swint of Muleshoe. Mrs. Cole also has another daughter, Brenda Dirks, of San Antonio. Imogene has 5 grandchildren and is hoping to someday have great-grandchildren to boast about. Her "fingers are crossed!"

Mrs. Cole enjoys crocheting, reading fictional novels and playing bridge. She jokes that her husband, Homer, is probably spending every minute fishing while she is gone. She looks forward to joining him soon.

Imogene is a member of the Oakridge Baptist Church of Lake Eufaula.

About M.A.H.H.A., Mrs. Cole smiles a very familiar smile and says that the staff has "treated me great, both at home and while working with the Speech Therapy department."



Imogene Cole

Home Care



Home is where the heart is

Affiliated with Lubbock Methodist Hospital Systems

Out-Of-Hospital Do Not Resuscitate Packets/
Bracelets Now Available. Call us at 272-3346
or come by 623 W. 2nd for information.

24 Hour # 272-3346
Local Nurse on call 24
hours a day to offer
prompt service.

We accept Medicare, Medi-
icaid and Private Insurance
It Is Your Right To Choose
The Home Health Agency
You Prefer.

To receive Home Health Ser-
vices, talk with your physician
or talk with hospital personnel
when you are hospitalized.

Fair Deals

Boots Special
Ostrich full gull
\$399⁹⁸
Ostrich smooth
\$199⁹⁸

Brighton
Sandals
40% Off

Ladies Lawman
Jeans
Sizes 00-15
30% Off

Children's
Felt Hats
\$29⁹⁸

Men's
and Boy's
Shirts
20% Off

One Group
of Men's & Children's
Hats
\$99⁸

We have
tack
and grooming
supplies

Carhart Available
in Toddler,
Children
and Adult Sizes

**Roosevelt
County Fair
August 3-8**

**Curry
County Fair
August 10-15**

Final Closeout!
Ladies Clothing **\$5 - \$10 - \$15 (one group)**
New Fall Clothing for Ladies Arriving Daily

Rip's

482-3363
FAX 482-9427
Open
9 a.m. - 6:30 p.m. cst
We Accept:

In Texico • 314 Wheeler

Marrying right is money in the bank



BAXTER BLACK
ON THE EDGE OF COMMON SENSE

Carl told me the other day that one of his team ropin' buddies boasted he'd gotten a platinum credit card! I was taken aback. It was like being told that a serial killer had been granted knighthood, or the starling had been named the state bird of Idaho.

My first thought was, "My gosh, he robbed a bank!" "No," said Carl, "And he was a real team roper, too. Not some land developer or football player who pulls a three horse slant trailer with a dressing room and has a sky box at the National Finals Rodeo every year.

"Well," I said, "We can eliminate getting a job, and he couldn't get a loan. Maybe he found a lotto ticket."

"No," said Carl.

"Let's see. He might've found a sack full of money in a 7-11 restroom. Or sold a good horse."

"Could have," nodded Carl.

"Sold a good horse, you mean?" I asked.

"Oh, I thought you said stole a good horse. No, neither one."

"Maybe he endorsed something.... like duct tape, or Butazolidin, or old innertubes. Or he could have patented a new way to hang the wiring so it looks like the trail actually has lights."

"No," said Carl, "But good things to consider."

"How about, he sold his used horseshoe collection? Or sparetires? Hey, I know! He could have donated blood or working body parts in a living will, or signed up to take experimental pharmaceuticals in some kind of test."

"All great guesses," said Carl, "But... no."

"Ok. It's a sure bet he didn't get it feeding cattle, investing in the stock market or by scrimping and saving. "He could have.. no, it's not possible."

"What?" asked Carl.

"It's a long shot but he could have won a roping."

"Ha, ha, ha, ho, ho, guffaw, snort, snicker, sigh..."

"No," I said, "I guess not. Well if he didn't rob a bank. How did he get it?"

"Easy," said Carl, "He married a banker."

HUTCHISON

From page 1

leagues before the vote to pass the measure.

After the measure passed she said, "I am vastly relieved this bill was enacted so swiftly. The Senate was about to recess and the situation on Texas farms and ranches is desperate."

"This bill is, literally, a mat-

ter of survival for many hard-pressed farmers and ranchers," the Senator said.

The bill, the Emergency Farm Financial Relief Act, gives farmers the opportunity to receive their Agricultural Market Transition Act subsidy payments for fiscal year 1999 after Oct. 1 of this year instead

of in January and September, 1999 as scheduled. Rather than receiving two payments in 1999, farmers who are already hurting could elect to get their entire subsidy anytime after Oct. 1.

"This allows farmers to use their payments as collateral for

loans, or to buy seed for next year, or to pay their living expenses because the drought killed this year's crops," the Senator said.

Similar legislation is pending in the House of Representatives, which is expected to pass it early next week.

TAXES

From page 1

"Ninety-five percent of the people aren't going to see a difference in their tax bills," said Kay Elliott, chief appraiser for the Bailey County Appraisal District.

Elliott said that most of the increase in property value is due to new property placed on the tax roll.

The exact wording of the

public notice is mandated by the Texas Property Tax Code and cannot be altered, according to Elliott.

The Muleshoe Independent School District tax hearing is set for 7 p.m. Monday, Aug. 10 at the school administration building. The Muleshoe Area Hospital District hearing is set for 6:30 p.m., Tuesday Aug. 11 in the MAMC dining room.

MULES

From page 1

Wood said. Wood said heat is always a concern this time of year and the players will be closely monitored.

The first four days of practice are limited by UIL rules to non-contact drills. Hitting starts Monday with two-a-days ending Wednesday, Wood said.

Freshman practices will start at 5 p.m.

Watson Junior High football practice starts the first day of school.

Equipment will be passed out from 8-10 p.m. Aug. 10-11 at WJHS gym.

Lazbuddie is coming off a 12-2 season which resulted in the team reaching the state six-man semifinals.

Longhorn coach Mark Scisson is expecting 25 players to report. Scisson said the biggest obstacle the Longhorns face is replacing 10 seniors.

LHS holds its first scrimmage Aug. 21 against Groom at Silverton.

At Three Way, coach Danny James expects 20-22 players.

The Eagles, who finished 5-5 last year, host a three-team scrimmage with Cotton Center and New Home at 5 p.m. Aug. 21.

What Should You Do When "User Resources Are Low"?

My computer just gave me a warning. A box with a big red light popped up at the bottom of the screen: "Warning! User Resources Are Low!" A few clicks of the "mouse" and a quick "re-boot" of the machine, and I'm back in good shape.

A few months ago, I installed a neat program that works in the background monitoring a number of different functions of my computer. I wanted a program that

car breaks. Again. The fender gets dented. The plumbing goes caput. Here's another bill to add to the stack. Here's one more form from one more bureaucrat. Here's one more task. Here's one more commitment. Your head aches. Your stomach aches. You are "sick and tired" even if you're not sick and shouldn't be all that tired.

Better listen to the message! "Warning! Your "User Resources Are Low."

What to do? The suggestions are endless, and easier given than applied, but here are a few...

Unplug for a day or two (or even an hour or two when a mini-vacation is all you're allowed). Take some time off. Take a vacation that's really a vacation—free of deadlines and schedules and busyness. Learn to prioritize. Not all busy-ness is all that important. Nor, for that matter, is all business. Take a walk. Take some time to remind yourself that who you are and what you do are not the same things.

Realize that your net worth and your real worth are not even distantly related. Learn to say, "No!" kindly but with conviction. Call a dear friend. (Phone calls are cheap compared to therapists!) Don't be too proud to call for help, professional and otherwise, when you need it. Count your blessings. Read the Psalms. (You'll recognize yourself in some of them!) Read a good book. Close your eyes and listen to beautiful music. Sing a song. Hug your little ones! Hug your not-so-little ones. Let God hug you. He doesn't need a reason to love you. He already does. Thank Him!

But don't ignore the "Warning!".

But don't ignore the "Warning!".

Curtis Shelburne is minister of the 16th & D Church of Christ in Muleshoe.



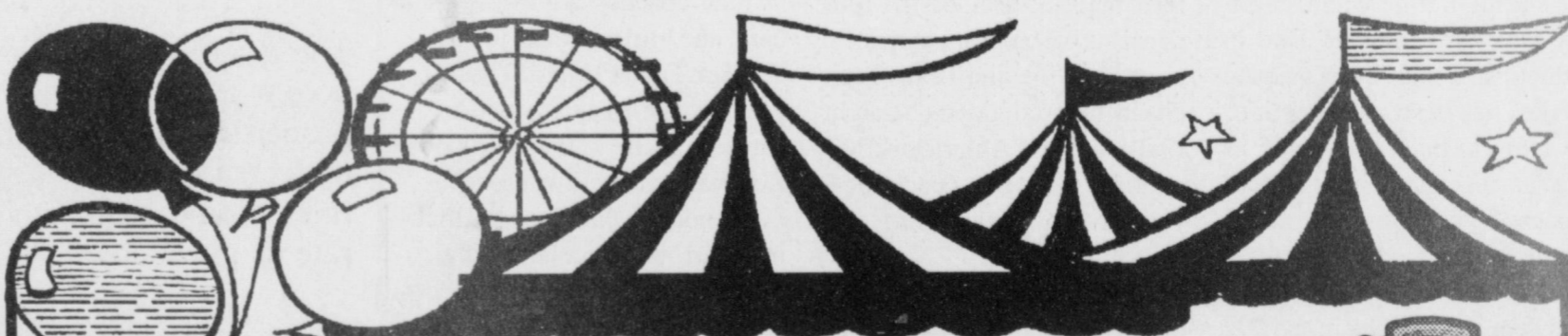
Focus On Faith
Curtis Shelburne

would warn me before my machine goes brain-dead and crashes because of some problem I fail to recognize. The program works really well!

"Warning! User Resources Are Low." It's important to pay attention to that message if it pops up on your computer. It's much more important to recognize it when it pops up in your life. It will.

Do you manage from time to time to get yourself overcommitted, overbooked, overdrawn, stressed out, distressed, and generally depressed by it all? Who doesn't?

And then the message begins popping up in any number of ways. You are snappy with your family. Even the dog isn't too excited to see you coming. You find finding fault becoming your default mode. Lots of normally minor irritants are in contention to become the "straw that broke it." And you're "it." The



You're Invited to the annual ROOSEVELT COUNTY FAIR



Entry Day — Monday, Aug. 3

August 4-8

Roosevelt County Fairgrounds, Portales, NM

TUESDAY, AUG. 4
6:30 pm Bull Riding
Special Events Arena
7-9 pm Gospel Singing
On the Slab
9 pm-1 am Dance to "Jo-Ga-Chu"
On the Slab

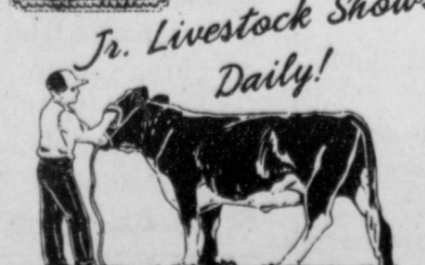
WEDNESDAY, AUG. 5
7 pm Square Dance
On the Slab
9 pm-1 am Dance to "Jo-Ga-Chu"
On the Slab

THURSDAY, AUG. 6
PIONEERS' DAY
6 pm CGRA Barrel Race
Special Events Arena
7-9 pm "Owsley"
Easy listening & rock on the Slab
9 pm-1 am Dance on the Slab
Music by the "Chaser"

FRIDAY, AUG. 7
10 am Fiddler's Contest
Armory
2 pm Resume Fiddler's Contest
Armory
6 pm Junior Livestock Sale
Show Arena
8 pm Ranch Rodeo
Special Events Arena
9 pm-1 am Country Dance
"Nuttin" Fancy Band On the Slab



SATURDAY, AUG. 8
6:30-8:30 am Pork Chop Breakfast
\$3 per plate
9 am Kids' Kiwanis Pet Show
10 am Kid's Stick Horse Race
10:30 am Kids' Roping Contest
7 pm Billy Cathey Rope Tricks
9 pm-1 am Country Dance
"Nuttin" Fancy Band On the Slab



FREE
Entertainment Nightly
With Purchase of Gate Ticket
ADMISSION
Adults \$4
Children 3-11 \$2
Season Passes Available!



For More Information Call The
Roosevelt County Extension Office
(505) 356-4417

Two local golfers headed for state junior PGA event

Whitt 2nd; Flores 4th at regional

LUBBOCK — Keisha Whitt finished second and Ariel Flores fourth Tuesday at the Wescott Tour North Texas/PGA Western Chapter Championship.

Both Muleshoe golfers qualified for the Wescott Tour Tournament of Champions/Maxfli PGA Section Championship Aug. 3-4 at Hyatt Bear Creek Golf Course in Dallas.

Whitt, a 1998 Muleshoe High School graduate, shot a 79 Tuesday at Meadow Brook Country Club and finished the 36-hole event at 157 in the 16-18 year old division. She finished two strokes back of medalist Heather Basford of Vega, who shot a 76-79 — 155.

Meredith Easley of Amarillo finished third at 78-80 — 158.

Whitt, who won two area

Wescott PGA events earlier this year to qualify for the regional championship, shot a 78 Monday at Hillcrest Country Club.

Flores shot a 49 at Meadow Brook Tuesday for an 18-hole total of 84 in the boys 10-11 year-old division. The 10-year-old shot a 35 at Hillcrest in the first round.

Mark Jones of Odessa was the medalist with a 70.

Flores qualified for the regional tournament by winning three area tournaments.

WESCOTT TOUR NORTH TEXAS PGA WESTERN CHAPTER CHAMPIONSHIP

Tuesday's final results
(First round at Hillcrest CC)
(Second round at Meadow Brook)
CO-ED

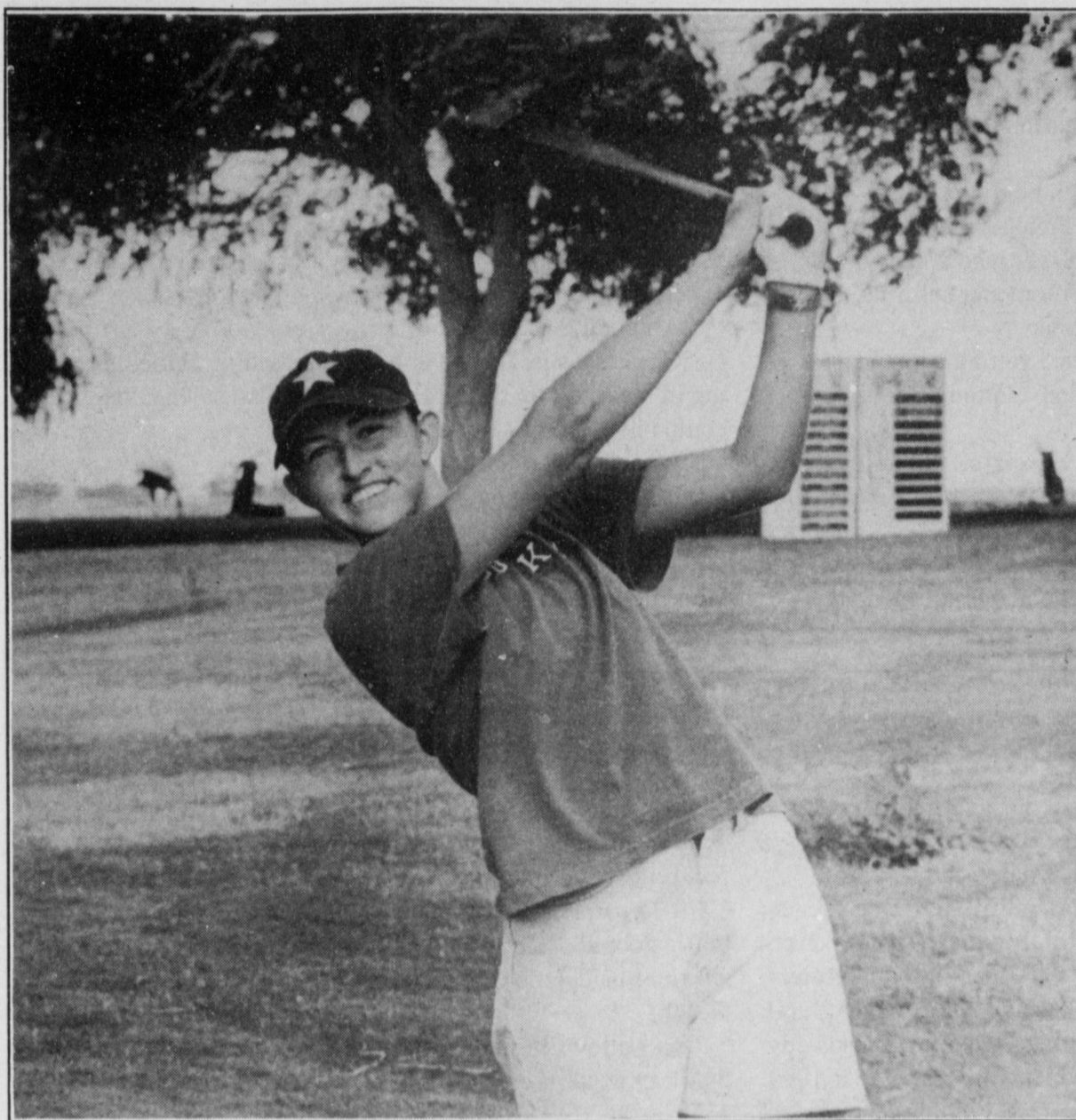
7-9 year olds (9 holes) — 1. Blake Johnson 33-39 — 72; 2. Daniel Wood 41-40 — 81; 3. Abraham Chiappone 41-44 — 85.

BOYS

10-11 years old (9 holes) — 1. Mark Jones 29-41 — 70; 2. Colton Williams 30-41 — 71; 3. Sean Eichorn 34-49 — 83; 4. Ariel Flores 35-49 — 84.

12-13 year olds — 1. Chase Cooper 78-74 — 152; 2. Ryan Manicom 75-78 — 153; 3. Ryan Eastman 76-78 — 154.

14-15 year olds — 1. Luke Varner 68-71 — 139; 2. Christopher Gage



State qualifier

Keisha Whitt was one of two local golfers who qualified for the Wescott Tour Tournament of Champions/Maxfli PGA Section Championship Aug. 3-4 in Dallas.

69-75 — 144 (won playoff); 3. Matt Tucker 69-75 — 144.

16-18 year olds — 1. Marcus Lucus 73-71 — 144; 2. Brad Gibson 75-74 — 149; 3. Brian Smith 76-74 — 150 (won playoff); 4. Andy Hawkins 77-73 — 150.

GIRLS

10-11 years old (9 holes) — 1. Audrey Stanley 34-37 — 71; 2. Britany Tomerlin 36-42 — 78; 3. — 198; 3. Linsey Boyd 102-102 — 204 (won playoff).

16-18 years old — 1. Heather Basford 76-79 — 155; 2. Keisha Whitt 78-79 — 157; 3. Meredith Easley 78-80 — 158.

Tech football tickets on sale

LUBBOCK — Texas Tech football season tickets went on sale July 20 at the Athletic Ticket Office.

Tickets are available from as low as \$80 with five different pricing structures in effect for the six home games of the season.

Reserved seat tickets between the goal lines are \$148 each, while economy tickets (sections 102, 108, 116) are available for just \$123 each. Groups of 20 or more are eligible to purchase season tickets for \$89 each and seating in the South end zone are on sale for \$80 each. Children's tickets in the Guns Up Club sections are available for just \$60 each.

Season tickets for all six Texas Tech home football games are on sale at the ticket office or through the telephone toll free at 1-888-Go-Big 12 or locally at 742-4412.

ALCO CUSTOMERS

Due to manufacturer shipping problems the Men's and Boys' Spalding Knit Activewear shown on pg. 4 of this week's ad will not be available. We are substituting Boys' Spalding Mesh Activewear or any Men's Or Boys' Wilson Knit Activewear we have on hand. We regret any inconvenience.

ALCO STORES, INC.

Dykes entering 12th season at Tech

During a time when stability is a hard thing to find in athletics, Texas Tech's Spike Dykes has been an exception.

Now in his 12th season as Texas Tech's head football coach, Dykes long ago put his stamp on the Red Raider football program. Dykes — now the dean of coaches in the Big 12 Conference — will pass legendary Peter Willis Cawthon this year for most seasons as Texas Tech's head football coach.

There have been 12 head coaches in Texas Tech's 72-year football history. Only Cawthon lasted more than a decade, serving 11 seasons from 1930-1940.

Serving as Texas Tech's head coach longer than anyone else is just one of a long line of unprecedented achievements by Dykes when it comes to Red Raider football.

■ Dykes is the first coach to

lead the Red Raiders to four consecutive bowl appearances.

■ He is the first Texas Tech coach to produce six-straight first-team All-Americans.

■ He is the first coach in 56 years to lead Texas Tech to the Cotton Bowl.

■ He was the first recipient of Big 12 Conference Coach of the Year honors.

■ He is the first coach in the nation to produce two Doak Walker Award winners.

Born in Lubbock and a West Texan through and through, Dykes has proven in his 11 years of guiding the Red Raider football fortunes that he is a true gem. He took over a program that had experienced only one winning season in the last eight years and he's made it so competitive that the Red Raiders have played in a school-record four consecutive bowls games and six overall with Dykes as head coach.

Few coaches anywhere fit hand and glove in their jobs as William Taylor Dykes. The 59-year-old West Texas native has carved a niche in the hearts of Red Raiders everywhere.

He not only has elevated the program into consistently challenging for conference championships, he's won admirers for his appreciation of old values and his genuine care for people.

He's just as much at home giving an acceptance speech for his induction into the Texas High School Coaches Association's Hall of Honor (a 1991 inductee) as he is sipping coffee and spinning yarns at some diner off the beaten path. His philosophies of life have proven successful in football arenas stretching from many different ends of the spectrum.

The son of a cotton ginner, Spike spent his early years in Oasis, near the New Mexico state line. After a number of new addresses, he went on to become an All-State center in the West Texas town of Ballinger, leading his team to the Class 2A state finals. Dykes attended Rice and San Angelo JC before graduating from Stephen F. Austin in 1959 with a bachelor's of social studies degree.

He began his coaching career at Eastland, and after five years at three schools (Eastland, Ballinger and San Angelo Central), he received his first head coaching opportunity at Coahoma in 1964. That opportunity quickly blossomed into success. Stints at Coahoma, Belton, Big Spring and Alice

see DYKES on page 5

Q & A with Tech coach Spike Dykes

Q. You've been to Muleshoe before, what do you think?

A. "Muleshoe is a great place with good people. It's a big Texas Tech town and I'm looking forward to going there."

Q. What kind of team can fans expect to see this year?

A. "We have a chance to be a pretty good football team. We've got a good nucleus back. If we can find some guys to replace the veterans we will be okay."

Q. What are Zebbie Lethridge's chances of making the Cowboys?

A. "It's awfully hard to change positions at that level. But I think he has a chance."

Q. Having been born and raised in West Texas, how does it feel to have what many people think is the ultimate coaching job in this area?

A. "It's great. I'm tickled to death and honored to have the job — I'd just like to do a little better job."



Notice of Public Hearing on Tax Increase

The Board of Trustees of the Muleshoe Independent School District will hold a public hearing on a proposal to increase total tax revenues from properties on the tax roll by 2.4 percent. Your individual taxes may increase or decrease, depending on the change in the taxable value of your property in relation to the change in taxable value of all other property and the tax rate that is adopted.

The public hearing will be held on
August 10, 1998 at 7:00 pm
at the Administration Building

514 W. Ave. G, Muleshoe, TX

FOR the proposal: Cindy Purdy, Frank Saldana, Thurman Myers, David Tipps, Nick Bamert, Arnold Price

AGAINST the proposal:
PRESENT and not voting:
ABSENT: Curtis Shelburne

The following table compares taxes on an average home in this taxing unit last year to taxes proposed on the average home this year. Again, your individual taxes may be higher or lower, depending on the taxable value of your property.

	Last Year	This Year
Average residence homestead value	\$50,000	\$50,000
General exemptions available (amount available on the average homestead, not including senior citizen's or disabled person's exemption)	\$ 15,000	\$15,000
Average taxable value	\$35,000	\$35,000
Tax rate	1.2704/\$100	1.2704/\$100
Tax	\$444.64	\$444.64

Under this proposal, taxes on the average homestead would remain the same compared with last year's taxes. Comparing tax rates without adjusting for changes in property value, the tax rate would remain the same per \$100 of taxable value compared to last year's tax rate. These tax rate figures are not adjusted for changes in the taxable value of property.



Future business owners

Entrepreneurs of the Future Camp '98 was recently held on the South Plains College campus in Levelland. The camp was presented by SPC, Texas Agricultural Extension Service, Wes-Tex Resource Conservation and Development Area, Northwest Texas Small Business Development Center, Tech Prep, Texas Rural Communities and Small Business Administration. Those attending from the Muleshoe area were (L to R) Tasha Norman, Ike Norman, Salvador DeLosAngeles, all of Muleshoe, Robin Tooley of Maple, and Anthony Anguiano of Muleshoe.

COMBEST

From page 1

handle-Plains producers. The House Agriculture hearing into current agriculture problems on Thursday brought Congressman Combest, Members of the House Agriculture Committee, USDA Secretary Glickman, and producer groups together regarding problems in the agricultural sector.

"Our producers are hit by a double-shovel load of drought, coupled with low prices for crops and livestock," said Combest. "Our highest priority is in working with USDA to provide farmers and ranchers workable means of getting through these tough times. The recent availability of emergency loans are only one of many steps, and one that I am working to see is not only made

available, but offered in a way that can be used effectively by producers."

In the 19th Congressional District of Texas represented by Combest, producers in the Panhandle-South Plains region would have as much as \$240 million available one year earlier, as only one of several efforts to help farmers cope

with the cash shortage they are now experiencing.

Under the Emergency Farm Financial Relief Act, co-sponsored by Combest, farmers have the option of early payments on the basis of personal circumstances. The U.S. House of Representatives will vote passage of the legislation Monday, Aug. 3.

PANHANDLE

From page 1

losses are projected at sorghum, \$24.2 million; cotton, \$28.8 million; soybeans, \$2.5 million, and peanuts, \$3 million.

Lack of moisture has affected range and pasture conditions to the point many cattle producers are faced with

finding additional pasture for their stock, supplemental feeding, or herd reductions.

According to the recent USDA crop condition report, 68 percent of area pasture and rangeland received a poor to very poor rating.

DYKES

From page 4

resulted in a 56-28-3 record in eight seasons. His teams advanced into the state playoffs three times and he endured a losing season only once.

Darrell Royal took notice of Dykes' talents and lured him to the University of Texas in 1972.

Dykes moved to the University of New Mexico in 1977, coaching the defensive line before becoming the defensive coordinator in 1978. Emory Bellard, whom Dykes had coached under at San Angelo, called him to Mississippi State in 1979, where he coached the offensive line for one season.

He missed West Texas, though, and he returned to take

over the high-octane high school program at Midland Lee in 1980. In his four years at Lee, Dykes assembled some powerhouse teams that ran over almost all competition with a well-drilled wishbone attack.

He amassed a 34-11-1 log, running his overall mark as a prep coach to 90-39-4. His Rebels defeated perennial state champion contender Odessa Permian twice in 1983 — the first time any coach had defeated Mojo twice in the same season. Lee wound up with a 13-3 log that year after dropping a narrow 25-21 decision to Converse Judson in the Class 5A state title game.

A week later, Dykes was

settled into his office at Texas Tech as defensive coordinator under, first, Jerry Moore (1984-85) and then, David McWilliams (1986).

When McWilliams left after the 1986 season, the administration wasted no time in awarding the head position to Dykes. On December 6, the day after McWilliams left, Dykes accepted the head coaching duties. His baptism was a short one. He had only two weeks to prepare Tech for its Independence Bowl tilt against Mississippi, a game which the Raiders narrowly lost 20-17.

Spike and his wife Sharon have three children and four grandchildren.

NOTICE TO HOSPITAL DISTRICT TAXPAYERS

The Hospital District is not increasing the tax rate.

The tax rate will be the same as it has been for the past 8 years, based on the budget being prepared for the Hospital Board.

The Hospital District is not increasing the tax rate.

The "Notice of Public Hearing on Tax Increase" - the adjoining ad - is a new requirement of state law when the total of property value in the District increases, but the tax rate remains the same.

The Hospital District is not increasing the tax rate.

The wording comes from the state and the District can only fill in the blanks.

The Hospital District is not increasing the tax rate.

A slight increase in tax revenue is expected from the increased appraised value of the District.

The Hospital District is not increasing the tax rate.

There will be a public hearing on keeping the same tax rate as last year (the same tax rate of the past 8 years) at the hospital at 6:30 P.M. on August 11, 1998

The Hospital District is not increasing the tax rate.

The budget being prepared for the Hospital Board does not intend a change in the tax rate.

Notice of Public Hearing on Tax Increase

The Board of Directors of Muleshoe Area Hospital District will hold a public hearing on a proposal to increase total tax revenues from properties on the tax roll by 1.9 percent. Your individual taxes may increase or decrease, depending on the change in the taxable value of your property in relation to the change in taxable value of all other property and the tax rate that is adopted.

The public hearing will be held on
August 11, 1998 at 6:30 pm
at the Dining Room of
Muleshoe Area Medical Center

708 S. First Street, Muleshoe, TX

FOR the proposal: Victor Leal, Phil Kent, Mike Miller
 AGAINST the proposal:
 PRESENT and not voting:
 ABSENT: Tim Campbell, L.T. Johnson

The following table compares taxes on an average home in this taxing unit last year to taxes proposed on the average home this year. Again, your individual taxes may be higher or lower, depending on the taxable value of your property.

	Last Year	This Year
Average residence homestead value	\$50,000	\$50,000
General exemptions available		
(amount available on the average homestead, not including senior citizen's or disabled person's exemption)	\$ -0-	\$ -0-
Average taxable value	\$50,000	\$50,000
Tax rate	.25/\$100	.25/\$100
Tax	\$125.00	\$125.00

Under this proposal, taxes on the average homestead would remain the same compared with last year's taxes. Comparing tax rates without adjusting for changes in property value, the tax rate would remain the same per \$100 of taxable value compared to last year's tax rate. These tax rate figures are not adjusted for changes in the taxable value of property.

1988 FORD BRONCO push button 4x4 \$6,900

1994 DODGE CUMMINS 4x4, regular cab \$18,000

1996 GMC E/C V-6 5 speed, low miles \$16,200

1986 OLDS DELTA 88 loaded, low miles \$5,500

1990 GMC SUBURBAN loaded \$8,900

When It Comes To Buying A Used Car... Get A Used Car You Can Really Count On!

Head "STRAIGHT" to Trader Horn Motor Company for your next automobile purchase!

1992 FORD EXPLORER 4x4, loaded \$10,500

1993 GMC V-6 automatic, clean \$9,900

1996 CHEVY CORSICA loaded \$7,000

1994 CHEVY E/C C-2500 4x4, loaded, 6.2 Diesel \$17,995

Come by and make us an offer!!

TRADER HORN MOTOR COMPANY
 Portales' Premier Pre-Owned Vehicle Headquarters
 620 S. Ave. C • Portales, NM • (505) 359-0947 or (505) 359-1775

BAILEY COUNTY DEVOTIONAL PAGE

1315 W. American Blvd.
272-3333
Muleshoe, TX 


Decorators Floral & Gifts
616 South First 272-4340
Muleshoe, TX

TINO'S
104 W. American Blvd.
272-7528 • Muleshoe, TX
Daily Specials Owners: Tino & Linda Campoya

MULESHOE AREA HEALTHCARE Center
"Committed to Caring"
106 W. Ave. H Muleshoe 272-7578

SHERLEY-ANDERSON LAZBUDDIE ELEVATOR
965-2922 Lazbuddie, TX

Leal's Tortilla Factory, Inc.
"Serving West Texas since 1957"
107 E. Ash 272-5772 Muleshoe, TX

TERRA DISTRIBUTION
Hwy. 84 • 272-4203
Muleshoe, Texas 
Bruce Bruns - Mgr.

MULESHOE FEED BARN
311 W. American Blvd.
Muleshoe, TX 272-5626 

Shipman's Body Shop
Auto Painting • Wrecker Service • Free Estimates
Tractor Glass & Windshields
410 N. 1st Muleshoe, TX
272-4408 FAX 272-3366

MAPLE COOP GIN
927-5501
Maple, Texas

Two locations to serve you
1900 W. American Blvd. 272-5337  107 E. American Blvd. 272-3978
Muleshoe, TX

Christian Center Church
Morton Hwy. South 272-3877
Senior Pastor Sun. 10:00 AM
Reydon Stanford Wed. 7:00 PM

WEST CAMP GIN, INC.
Better Ginning & Courteous Service
Route 2 Box 1000 • 925-6681
James Shepard / Phyllis Shepard Muleshoe, TX

PINNACLE THERAPY SERVICES
Speech/Language, Physical & Occupational Therapies
305 5th St. • Farwell, TX • (806) 481-CARE

BRUCE, INC.
AIR CONDITIONING
Hwy. 214 North 272-5114
Muleshoe, TX 
TAOL-B003350C, LP08638

BAILEY GIN COMPANY, INC.
946-3397
Sudan, TX
Peanut Hawkins, MGR

Henry Insurance Agency, Inc.
"Serving You Since 1964"
111 West Avenue B 272-4581
Muleshoe, TX

DALE OIL COMPANY, INC.
413 W. American Blvd.
272-5576 
Muleshoe, TX

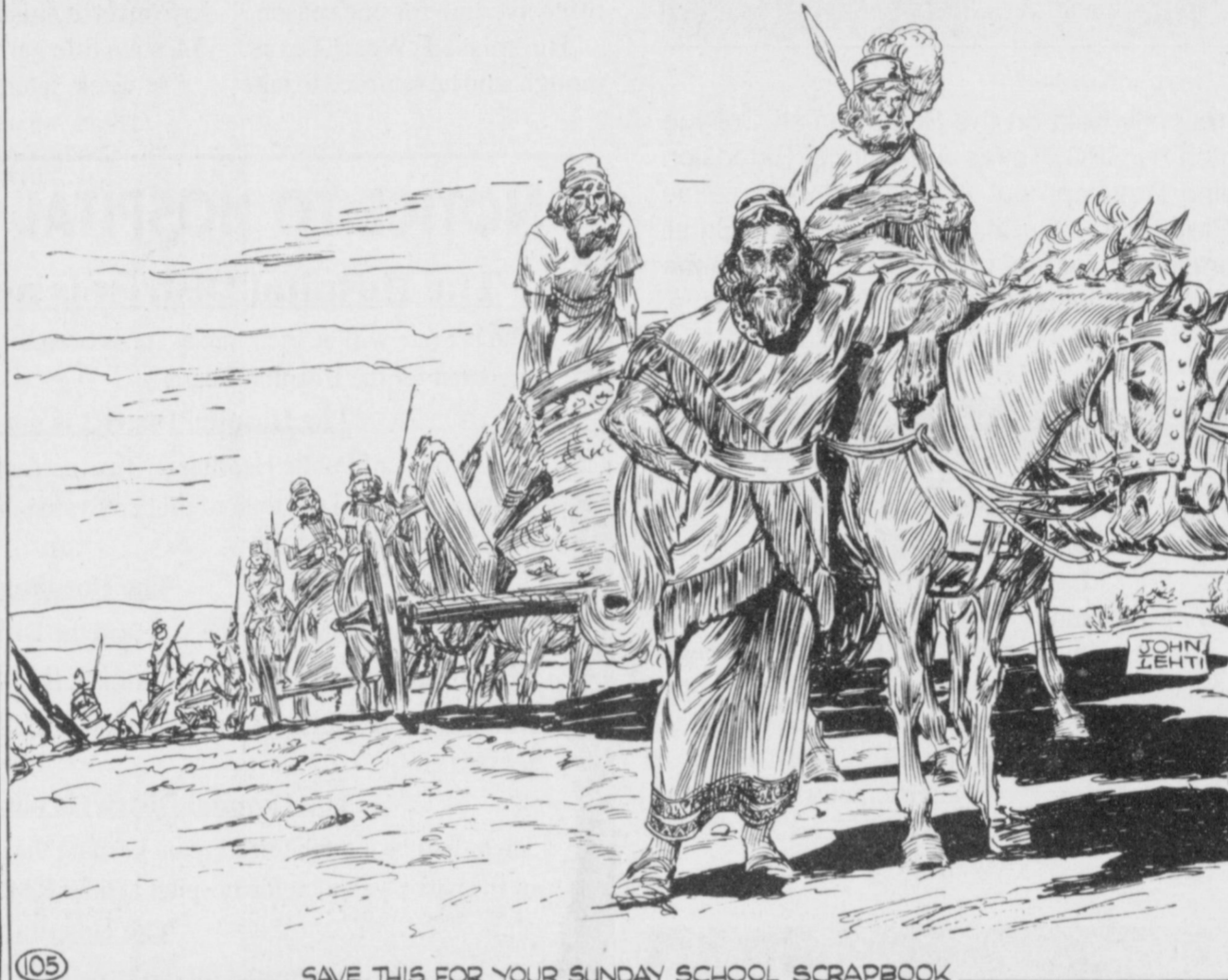
WINKLES TRUCKS, INC.
Box 757 (806) 247-2724
Friona, TX 

WESTERN DRUG
114 Main 272-3106 Muleshoe

Facts About The BIBLE BY JOHN LEHTI

THE DIFFICULTIES OF TRAVEL

TRAVEL IN BIBLICAL TIMES WAS AT LEAST A CHALLENGE. THE ROADS, IF THEY COULD BE CALLED THAT, WERE HIGH IMPASSABLE IN PLACES. ADDED TO THE DANGER OF ROVING BANDS OF BRIGANDS, THE SCARCITY OF PALATABLE DRINKING WATER OR WELLS TO DRAW FROM, MADE MANY A WEARY INDIVIDUAL WISH HE HAD FORGONE THE DUBIOUS PLEASURE OF THE TRAVEL THAT BROADENS AND EDUCATES. CARAVANS, THAT SLOWLY TRUDGED AWAY THE TIRESOME MILES, WERE THE MAIN EXPEDIENT BY WHICH THE PEOPLE WERE ENABLED TO REACH THEIR DESTINATIONS. AS A POINT IN FACT, YOU CAN SEE THE TEDIOUS DIFFICULTIES WHEN YOU REALIZE THAT BEFORE NEHEMIAH, WHO WAS TRAVELING BY SPEEDY CHARIOT, COULD SEE THE RUINS OF JERUSALEM, WHICH HE WAS GOING TO REBUILD, FOUR MONTHS WENT BY FROM THE TIME OF HIS SETTING OUT UNTIL HIS ARRIVAL AT THE RUINED CITY!



SAVE THIS FOR YOUR SUNDAY SCHOOL SCRAPBOOK
This devotional & directory is made possible by these businesses who encourage all of us to attend worship services.

ASSEMBLY OF GOD
FIRST ASSEMBLY OF GOD
521 South First Street • 272-3017
Jack Stone, Min. • 272-3984
S.S. 9:45 a.m., W.S. 11 a.m. & 6:30 p.m., Wed. 7:30 p.m.

BAPTIST
CALVARY BAPTIST
1733 W. Ave. C. Rev. Jeff Coffman
CIRCLE BACK BAPTIST
Intersection FM 3397 & FM 298
Jessie Shaver, Min • 946-3676

FIRST BAPTIST
220 West Ave. E.
Stacey Conner, Min.
FIRST BAPTIST
Lazbuddie • 965-2126
PRIMERA IGLESIA BAUTISTA
223 E. Ave. E, Rev. Greg Guzman

PRIMITIVE BAPTIST
621 South First
Elder Cleveland Bass, Min.
PROGRESS BAPTIST
Progress, TX
PROGRESS SECOND BAPTIST
Arthur Hays, Min.

1st & 3rd Sundays
RICHLAND HILLS BAPTIST
17th & West Ave. D
George Malis, Pastor
ST. MATTHEWS BAPTIST
Corner of W. Boston & W. Birch
Floyd R. Monroe, Min.

THREE WAY BAPTIST
927-5467
James Sinclair, Pastor
TRINITY BAPTIST
314 E. Ave. B
Robert Brown, Min.

CATHOLIC
IMMACULATE CONCEPTION
CATHOLIC
805 E. Hickory
Joseph Augustine, Min.
CHRISTIAN
THE CHRISTIAN CENTER
Morton Hwy. • 272-5105
Reydon Stanford, Min.

CHURCH OF CHRIST
LARIAT CHURCH OF CHRIST
Sam Billingsley, Min.
S.S. 10 a.m.; W.S. 11 a.m. & 6 p.m., Wed. 7 p.m.
LAZBUDDIE CHURCH OF CHRIST
Nathan Crawford, Min.
S.S. 9:30 a.m.; W.S. 10:20 a.m. & 5 p.m.; Wed. 7 p.m.

SAIN IRRIGATION & MACHINES
Complete Pump Service
W. American Blvd. 272-4397
Walt Sain Muleshoe, TX 272-4148

Springlake Potatoes, Inc.
P.O. Box 280 • Springlake, TX
262-5542

MULESHOE CHURCH OF CHRIST
22nd & W. American Blvd.
John Knox, Min.
S.S. 9:30 a.m.; W.S. 10:20 a.m. & 6 p.m.;
Wed. 7:30 p.m.
16th & AVE. D
CHURCH OF CHRIST
Curtis Shelburne, Min. • 272-4619
W.S. 10:30 a.m. & 1:30 p.m.;
Wed. 7:00 p.m.

LUTHERAN
ST. JOHN LUTHERAN
Lariat, TX
Richard Greenhaner, Min.
S.S. 10:30 a.m.; W.S. 9:30 a.m.

METHODIST
FIRST UNITED METHODIST
HISPANIC MINISTRIES
E. 5th and E. Ave. D
Pastor Benito Cavazos
FIRST UNITED METHODIST
507 W. 2nd St.
Pastor Brad Reeves
LAZBUDDIE METHODIST
965-2121
EL DEVINO SALVADOR
814 W. Ave. C, Muleshoe, TX
Guadalupe Ballinas, Min.

NAZARENE
NEW VISION CHURCH OF THE NAZARENE
814 W. Ave. C • 272-3622
David R. McIntire

PENTECOSTAL
UNITED PENTECOSTAL LIGHTHOUSE
207 East Ave. G • 1-800-454-6051
Pastor McKibben, 10 am Sunday Service
Thursday, 7 pm Bible study

INTER DENOMINATIONAL
NEW COVENANT
Plainview Hwy. Jimmy Low, Min.
Steve Claybrook, Assoc. Pastor
W.S. 10 a.m.; Wed. 7 p.m.

SIMNACHER NATIVE GRASSES
Darwin Simnacher Vince Simnacher
(505) 762-7817 (806) 946-3461
Thomas Simnacher
(806) 285-2491

MENDOZA IRRIGATION SERVICE
 272-5511
Sprinkler Erect, Repair & Move Muleshoe, TX

LEO'S BLACKSMITH & MACHINE SHOP
310 W. AMERICAN BLVD.
272-4418
MULESHOE, TX 

Lowe's 
MARKETPLACE 515 W. American Blvd.
401 W. American Blvd. Muleshoe
Muleshoe 272-4585 Muleshoe 272-4406

WES-TEX FEED YARDS, INC.
Custom Cattle Feeding
272-7555 Muleshoe, TX

Muleshoe Area Medical Center
"Your Hospital"
708 S. First St. • 272-4524
Muleshoe, TX

"THE FIVE AREA TELEPHONE COOPERATIVE ORGANIZATION"
West Plains Telecommunications Co.
Five Area Systems, Inc., Plateau Cellular Network
Five Area Long Distance - Five Area Internet
302 Uvalde Muleshoe, USA (806)272-5533

JAMES CRANE TIRE CO., INC.
107 Main 272-4594
Mike Hahn Muleshoe, TX 

IRRIGATION PUMPS & POWER
ZIMMATIC CENTER-PIVOTS
W. Hwy. 84 272-4483

O & C OSONS
Erection Sprinkler Ser. Welding & Repair
Repair & Assemble 909 W. American Blvd.
Lupe Olivarez 272-5018 272-3475

AMERICAN AVI ALLEY VALLEY INC. West Hwy 84 272-4266 Muleshoe 

1ST BANK MEMBER FDIC
202 South First 272-4515


BOBO INSURANCE AGENCY
108 E. Ave. C 272-4264

FIRST TEXAS FLBA MULESHOE
"Serving Farmer & Bailey Counties"
272-3010 • Fax 272-5388
316 Main • P.O. Box 424 • Muleshoe, TX 

PACO FEED YARD, INC.
Commercial Cattle Feeders
P.O. Box 956 265-3281
Friona, TX
Feller Hughes-Mgr. 

NEEDMORE Co-op Gin Company
946-3361 • Sudan, TX

Silver Screen Video VIDEO
VCR, PSX, N-64 & Camcorder Rentals
803 W. American Blvd. • 272-5540 • Muleshoe, TX

MULESHOE PEA & BEAN, INC.
RR 2 Box 297 272-5589
Muleshoe, TX 

DAMRON DRUG, INC.
308 Main St. 272-4210
Muleshoe, TX

MULESHOE LIVESTOCK AUCTION
Muleshoe, TX • Sale Every Saturday
Clayton Myers • 272-4201 

Risinger Plumbing
Serving Muleshoe Area
All Plumbing Repairs
272-6772

FARWELL CONVALESCENT CENTER
"In Christ's Love, Everyone Is Someone Special"
305 5th St.
481-9027 • FARWELL, TX 

MULESHOE MOTOR CO.
1225 W. American Blvd. 272-4251 

Davenport, Marion wed in Las Vegas ceremony

Misty Davenport and Cody Marion wed July 18 at a Special Memory Wedding Chapel in Las Vegas, Nevada. Rev. Duane Williams officiated at the ceremony.

Misty is the daughter of Raymond and Judy Davenport of Muleshoe. Cody is the son of Ron and Connie Marion of Denver City.

The bride's wedding dress was white Duchess satin with Tulle overlay, sleeveless and crowned with a high collar. The bodice was encrusted with pearls and jewels and had a princess waistline. The skirt was full and flowing satin and the back featured a runner with satin covered buttons.

The groom wore a black shawl full dress tuxedo accented with white vest, shirt and tie. The bride carried something old, pennies minted

in the birth years of the couple; something new, her wedding attire; something borrowed, a tennis bracelet from paternal grandmother, Gereta Meissner; and something blue, her garter.

The reception was held at Vincenzo's Restaurant, hosted by the bride's parents. The cake was served by aunts of the bride, Pam Davis and Kim Davenport.

The couple planned a trip to Ruidoso, NM following the wedding.

Misty is a 1994 graduate of Muleshoe High School and a 1996 graduate of Clarendon College. She is currently a senior elementary education major at West Texas A&M University in Canyon.

She is employed as a hostess at Abuelos in Amarillo.

Cody is a 1995 graduate of Hereford High School and at-



Misty (Davenport) Marion

tended South Plains College in Levelland.

He is employed at Big Stuff

in Amarillo as a graphic artist.

The couple will reside in Amarillo.

BRIDAL SHOWERS



Burcie — Brown

Jennifer Burcie of Dallas, bride elect of Russell Brown of Muleshoe, was honored with a bridal shower July 26 at the home of Rhonda Myers of Muleshoe. The couple will be married September 12 at the First Christian Church of Fort Worth. Russell is the son of Mac Brown and Sharon Gilbert. Special guests were Vicki Butler, mother of the bride; Pat Butler, grandmother of the bride; Sharon Gilbert, mother of the groom and Stephanie Brown, sister of the groom. Hostesses were Denise Dunham, Lisa Clayton, Rhonda Myers, Bobbie Dunham, Jamie Myers, Sue Bessire, Shelly Turnbow, Cindi Bessire, Shelly Turnbow, Donna Black, Alisa Graves, Sherri Harrison, Dani Heathington, Billy Graves and Terry Young. The hostesses' gift was a dining room table.



McAnarney-Elliott

Kim McAnarney, bride-elect of Dustin Elliott of Muleshoe, was honored with a wedding shower July 26 at the 16th and D Church of Christ. Kim is the daughter of Jimmy and Judy McAnarney of Amarillo. Dustin is the son of Gary and Kaye Elliott of Muleshoe. Special guests were Judy McAnarney, friend of the bride; Debbie and Lisa Gillespie, friends of the bride; Kaye Elliott, the groom's mother; Pat Beene, the groom's grandmother; Adora Scott, the groom's aunt and Rhonda Prater, the groom's cousin. Hostesses were Belinda Caswell, Sharon Dale, Ginger Damron, Ronnie Gail Hamilton, Diane Skipworth, Vicki Black, Sherry Barrett, Gereta Meissner, Rhonda Roberts, Louise Engelking, Virginia Barrett, Pam Atwood, June Gore and Kathryn Taylor. The hostesses' gift was a vacuum cleaner.

FARM SERVICE AGENCY NEWS

The closing date for the second funding window for the 1998 EQUIP program is Aug. 14.

All unfunded applications (deferred or not approved) from the first funding window, re-ranked applications (those where a producer improved offer of previously deferred/not approved CCC-1200s), and new applications accepted by the close of business on Aug. 14, will be considered for

funding.

The USDA has also announced that it has extended emergency grazing on land enrolled in the Conservation Reserve Program until Nov. 30.

The deadline for haying on CRP land was not extended. USDA officials ruled against allowing modification of the payment reduction rate of 25% of the annual rental rate for grazing CRP land.

HEADQUARTERS RESTAURANT

2400 W. American Blvd. • Take out orders 272-6740

All You Can Eat Lunch Buffet

MONDAY LUNCH

Chicken Fried Steak

Served with salad, mashed potatoes, fried potatoes, corn, cream gravy, brown gravy, dinner roll and choice of peach or cherry cobbler. **\$5.75**

THURSDAY LUNCH

Pork Roast or Liver & Onions

Served with fried potatoes, spinach, black eyed peas, corn bread, brown gravy and a choice of peach or cherry cobbler. **\$5.75**

TUESDAY LUNCH

Hamburger Steak and Meatloaf

Served with mashed potatoes, fried potatoes, green beans, sauteed onions, sauteed bell pepper, brown gravy, dinner roll and choice of peach or cherry cobbler. **\$5.75**

FRIDAY LUNCH

Lemon Pepper Baked Catfish & Pollock, Fried Catfish & Pollock, Popcorn Shrimp

Served with hush puppies, corn on the cob, rice pilaf, California blend vegetables, coleslaw, dinner roll and choice of peach or cherry cobbler. **\$5.75**

WEDNESDAY LUNCH

Smoked BBQ Brisket and Hot Wings

Served with salad, beans, corn bread, coleslaw, potato salad and choice of peach or cherry cobbler. **\$5.75**

NIGHTLY SPECIAL

16 oz. T-Bone Steak Dinner

Served with choice of potato, salad and dinner roll. **\$12.99** while supplies last!

OPEN: Mon. - Fri. - 11 am to 9 pm Sat. - 6 am to 9 pm BUFFET SERVED 11 AM - 2 PM

KIDS EAT FREE COUPON

Monday thru Thursday ☆ 5 pm to 8 pm

Limits: Must be 12 years old or under. Must order from Kiddie Menu. One child per adult food order. Maximum of four per coupon. **Must present coupon!**

Offer Ends August 13, 1998

POLICE NEWS

BAILEY COUNTY SO
July 21—Samual David Trivizo, 24, arrested on a warrant for violation of probation.

July 24—Amador Mendoza, 26, arrested for unauthorized use of a motor vehicle.

July 28—Ramiro Ramos Puentes, 25, arrested for falsifying government documents.

July 28—Martin Marcial Martinez, 24, arrested for driving with a suspended license.

July 28—Maria L. Garcia (A.K.A. Mary Jane Toscano), 40, arrested on a warrant for theft by check.

MULESHOE P.D.

July 23—Terry Lyn Villa, 20, arrested on a warrant for assault and terroristic threats.

July 23—Shannon Ben Wolfe, 30, arrested on a warrant from Ochiltree Co. for probation violation.

July 23—Sonnica Rank, 17, arrested on a warrant for failure to report an accident.

July 23—Juan Manuel Davila, 17, arrested for public

See POLICE, page 8



An Outdoor Musical presented by MulePlex Production Co.

Keepers of the Legend

August 7-10, 1998
8:30 p.m.

at the Muleshoe Heritage Center
West American Blvd. • Muleshoe, TX

Tickets \$10.00 at gate or \$8.00 in advance
\$5.00 Children Ages 10 and Under (GROUP RATES AVAILABLE)
For Information Call 806/272-5612

WHILE IN MULESHOE, ENJOY OUR FINE SHOPPING, DINING AND OVERNIGHT ACCOMMODATIONS

Beans & Cornbread Dinner each evening at 6:30 p.m. served by the Muleshoe Heritage Foundation
ADULTS \$4.00 • CHILDREN 10 & UNDER \$2.50 (per plate)

OBITUARIES

MARIA ESPINOSA

Maria Cornrada Espinosa, 75, of Muleshoe died July 28, 1998 at her residence.

Services were held Friday at the Christian Center of Muleshoe, with Rev. Reydon Stanford officiating. Burial was held in Bailey County Cemetery under the direction of Ellis Funeral Home.

Espinosa was born April 30, 1923 in Puerta DaLuna, N.M.

She married Al Espinosa in Borica, N.M. on Sept. 24, 1945. He preceded her in death on June 9, 1994. She moved to Muleshoe from Santa Rosa N.M. in the early 50s. She graduated from Santa Rosa High School and was a homemaker.

Survivors include two sons, Pedro Espinosa of Albuquerque, N.M. and David Espinosa of Garden City, Kan.; four

daughters, Gloria Andrade of Dodge City, Kan., Romona Handy of Portales, N.M., Christene Gonzales of Muleshoe and Janie Rodriguez of Muleshoe; one sister, Chris Silva of Albuquerque, N.M.; one brother, Ernesto Gallegos of Santa Rosa, N.M.; 15 grandchildren, three step-grandchildren, 10 great grandchildren and 4 step, great grandchildren.

ROBERT LUTTRELL, JR.

EDINBURG—Robert Earl Luttrell, Jr., 73, of Mission, Texas died July 25, 1998.

He was born Aug. 21, 1924 in Muleshoe to Robert and Artie Luttrell. His parents preceded

him in death.

Luttrell was raised in Muleshoe and later graduated from Muleshoe High School. He served in the U.S. Navy.

He is survived by his dearest friend, Fay E. Cordes of

Mission, a sister, Mattie Frances of Amarillo, and several nephews and nieces.

He will be remembered for his loving kindness and sense of humor. No memorial services were held.

NURSING HOME NEWS

Thursday morning Pastor/Chaplain David McIntire, Clara Lou Jones and Karen Cook directed our weekly devotional/reflection time.

Zona Gatewood sang and played the piano Thursday after lunch for music, exercise and therapy. This special therapy touches our spirits, minds and bodies. Dorena Proudfoot, Vanessa Williams and Karen Cook also assisted in implementing the activity.

Saturday morning Buster Kittrell came to cut the men's hair and shave them while he visited.

Harold and Mary Jo Burge directed the bingo party Saturday after lunch. They have up to twenty residents who participate.

Sunday the Progress Baptist Church came for afternoon church services.

Monday Clara Lou Jones directed the group reading.

Mr. and Mrs. Jerry Hutton visited the Care Center last week.

Tuesday morning Nettie Quesenberry, Grace Scarbrough and Aline Locke prepared fresh peaches and cream for all the residents. The

fresh peaches (which were ever so good) were a gift from Berta Combs.

Beverly Wagon, Claudine Embry, Mary Jo Burge and Joy Stancell shampooed and set the ladies hair Tuesday afternoon.

Gladys Wilson made and delivered rice krispie treats to the residents Monday.

Harold Burge, Joe Embry and Juanita White all brightened our day with their visits Tuesday.

Rev. and Mrs. Bobby Burris and Wanda and Jean Kemp came Friday and Wednesday afternoon for an old fashion gospel singing.

Nell Magby visited the Care Center Thursday. Among those she visited were Rosa Sneed and Pearl Helmer.

Kerry George gave the Care Center a special edition video entitled Jesus.

Wednesday morning Harold and Mary Jo Burge and Loyce Killingsworth served coffee, juice and donuts to the residents. Harold lead the groups in an "around the table" discussion. Following coffee and donuts time, Steve Claybrook and Loyce Killingsworth directed our singspiration.

Kerry and Toby George of

Vega, Hyrun Orcutt, Mr. and Mrs. Scott Orcutt, Mr. and Mrs. Danny Dickerson and Matthew visited Winnie Orcutt Tuesday.

Anna B. Lane, Michelle and Tiffany visited Nettie Quesenberry Wednesday.

Mr. and Mrs. J. C. Snitker and Mary Wiseman visited Altha Turner Wednesday.

Ruth Clements attended the gospel singing Wednesday afternoon with her husband Dee Clements.

Elzie Darland has had a host of company this week. Among those visiting her were Mr. and Mrs. Vernal Fanin and daughter Joyce and son Steven of Ill., Shawnie, Shaon and Carla Lee of Pharr, Texas and Berta Combs.

1998 Medicare Update

January 1st many Medicare Supplement Insurers increased their rates up to 30% on Medicare Supplement coverage.

There is now available a plan to supplement Medicare at lower rates for those over 65 years of age, policies A through F are available.

To find out how to qualify, call or come by Delton E. Wilhite and Associates.

Delton E. Wilhite & Associates

INSURANCE AND FINANCIAL SERVICES

1631 West American Blvd. • P.O. Box 567 • Muleshoe, TX
806/272-3652 806/272-5988

We are not affiliated with any government agency.

HOSPITAL ADMISSIONS

The Muleshoe Area Medical Center reported admitting the following patients:

July 23 — Cornelius Bradshaw, Corinne Burke, Ina Creamer, Dorothy Hood, Eula Howard, Geneva Lemons, Alberto Nicolas, Augustin Rodriguez, Carolyn Stancell

July 24 — Cornelius Bradshaw, Corinne Burke, Ina Creamer, Dorothy Hood, Geneva Lemons, Alberto Nicolas, Augustin Rodriguez

July 25 — Cornelius Bradshaw, Ina Creamer, Norma Hernandez, Dorothy Hood, Geneva Lemons, Manuel Mota

July 26 — Cornelius Bradshaw, Ina Creamer, Norma Hernandez, Dorothy Hood, Geneva Lemons, Manuel Mota, Rosa Munoz, William Taylor

July 27 — Cornelius Bradshaw, Rosa Castro, Ina Creamer, Norma Hernandez, Dorothy Hood, Geneva Lemons, Manuel Mota, Rosa Munoz, William Taylor

July 28 — Jose Castanosalazar, Ina Creamer, Dorothy Hood, Geneva Lemons, Manuel Mota

July 29 — Jose Castanosalazar, Ina Creamer, Raymond Gonzales, Dorothy Hood, Geneva Lemons, Mildred May, William Taylor, Baby Vasquez, Juanita Vasquez, Ira Kitchens

July 30 — Ina Creamer, Raymond Gonzales, Dorothy Hood, Ira Kitchens, Geneva Lemons, Karina Vasquez, Juanita Vasquez.

BIRTHS

ROSE MUNOZ

Norma G. Hernandez and Martin J. Munoz of Muleshoe, announce the birth of their daughter Rosa Munoz born July 26, 1998 at 2:47 a.m. at the Muleshoe Area Medical Cen-

ter. She weighed 7 lbs. and 1/2 oz.

She has two siblings, Ginger and Christina Garza. Grandparents are Tommy Rey and Rosa Hernandez of Muleshoe.

POLICE

From page 7

intoxication.

July 25—Kathy Lozano, 36, arrested on a warrant for theft by check.

July 25—Oscar Bolanas Velasques, 18, arrested for possession of a controlled substance with the intent to deliver and minor in consumption.


July 25—Wendy Solis, 17,

arrested for possession of a controlled substance with the intent to deliver and public intoxication.

July 26—Charles Bartholf, 31, arrested for disorderly conduct (language).

July 26—Dana Bartholf, 25, arrested for disorderly conduct.

BENDER



2 to Choose From

97 CHEVY CAVALIER

\$179
Down
\$179
Per Month

Sale price \$9,828. \$179 per mo @ 9.9% APR for 72 mo

<p>97 OLDS ACHIEVA</p> <p>Down \$199 Per Month \$199</p> <p><small>Sale price \$10,273. \$199 per mo @ 6.9% APR for 60 mo</small></p>	<p>95 PONTIAC TRANSPORT</p> <p>Down \$294 Per Month \$294</p> <p><small>Sale price \$13,595. \$294 per mo @ 10.5% for 60 mo #86316A</small></p>	<p>96 CHRY TOWN & COUNTRY</p> <p>Down \$399 Per Month \$399</p> <p><small>Sale price \$20,836. \$399 per mo @ 11.95% for 72 mo #5406</small></p>	<p>94 FORD AERO STAR</p> <p>Down \$220 Per Month \$220</p> <p><small>Sale price \$9,567. \$220 per mo @ 10.95% APR for 54 mo #5368</small></p>
<p>95 OLDS CUTLASS</p> <p>Down \$210 Per Month \$210</p> <p><small>Sale price \$9,891. \$210 per mo @ 10.9% for 60 mo #5789</small></p>	<p>95 FORD WINDSTAR</p> <p>Down \$295 Per Month \$295</p> <p><small>Sale price \$13,587. \$295 per mo @ 10.9% for 60 mo #82052A</small></p>	<p>94 OLDS BRAVADA</p> <p>Down \$299 Per Month \$299</p> <p><small>Sale price \$13,772. \$299 per mo @ 11.9% for 60 mo #5316A</small></p>	<p>95 NISSAN MAXIMA GLE</p> <p>Down \$349 Per Month \$349</p> <p><small>Sale price \$16,813. \$349 per mo @ 9.9% for 60 mo #76356A</small></p>
<p>97 BUICK PARK AVE</p> <p>Down \$21,995</p> <p><small>#5386</small></p>	<p>96 CHEVY CORSICA</p> <p>6 to Choose From Down \$179 Per Month \$179</p> <p><small>Sale price \$8,802. \$179 per mo @ 9.0% APR for 60 mo</small></p>	<p>97 BUICK LESABRE</p> <p>Down \$299 Per Month \$299</p> <p><small>Sale price \$16,995. \$299 per mo @ 9.9% for 72 mo #5360</small></p>	<p>93 CADILLAC SEDAN DEVILLE</p> <p>Down \$285 Per Month \$285</p> <p><small>Sale price \$11,995. \$285 per mo @ 12.5% APR for 54 mo #5286A</small></p>
<p>89 DODGE CARAVAN</p> <p>Down \$162 Per Month \$162</p> <p><small>Sale price \$4,995. \$162 per mo @ 12.5% APR for 36 mo #72450A</small></p>	<p>96 CHEVY LUMINA</p> <p>Down \$259 Per Month \$259</p> <p><small>Sale price \$12,199. \$259 per mo @ 10.9% for 60 mo #5179</small></p>	<p>95 OLDS AURORA</p> <p>Down \$359 Per Month \$359</p> <p><small>Sale price \$16,909. \$359 per mo @ 10.9% for 60 mo #5264</small></p>	<p>97 CHEVY 1500 EXT CAB</p> <p>Down \$21,995 Per Month \$20,685</p> <p><small>#66042A</small></p>
<p>97 CHEVY 1500 EXT CAB Z71</p> <p>Down \$22,995</p> <p><small>#68044A</small></p>	<p>90 OLDS CUTLASS</p> <p>Down \$129 Per Month \$129</p> <p><small>Sale price \$4,947. \$129 per mo @ 12.9% for 48 mo #5311A</small></p>	<p>97 DODGE GRAND CARAVAN</p> <p>Down \$369 Per Month \$369</p> <p><small>Sale price \$19,782. \$369 per mo @ 10.95% for 72 mo #82048A</small></p>	<p>96 CADILLAC ELDORADO</p> <p>Down \$31,995 Per Month \$30,995</p> <p><small>#5344</small></p>
<p>94 FORD PROBE</p> <p>Down \$176 Per Month \$176</p> <p><small>Sale price \$7,734. \$176 per mo @ 10.5% for 54 mo #5293A</small></p>	<p>95 GMC SUBURBAN 4X4</p> <p>Down \$25,995 Per Month \$22,700</p> <p><small>#76316A</small></p>	<p>94 MAZDA PICKUP</p> <p>Down \$159 Per Month \$159</p> <p><small>Sale price \$6,838. \$159 per mo @ 11.5% for 54 mo #5282A</small></p>	<p>90 MERCURY COUGAR</p> <p>Down \$144 Per Month \$144</p> <p><small>Sale price \$4,995. \$144 per mo @ 12.9% for 42 mo #82027A</small></p>



BENDER

You're going to like our family!

CHEVROLET • OLDSMOBILE • CADILLAC

2500 Mabry Drive • (505) 763-4465

Journal Classifieds

REAL ESTATE
AUTOMOBILES
HELP WANTED
GARAGE SALES

STOP & SHOP

Deadlines are 5 p.m. Monday and Thursday

Call 272-4536

Deadlines are 5 p.m. Monday and Thursday

LEGALS

Muleshoe I.S.D. is accepting bids for the leasing of twelve large copy machines and four small machines. Specifications may be picked up at 514 W. Ave. G., or by calling (806) 272-3911. Sealed bids must be received by 1:00 P.M. on August 11, 1998. Muleshoe I.S.D. reserves the right to accept or reject any and/or all bids in the best interest of the District. Published in the Bailey County Journal August 2, 1998 and in the Muleshoe Journal August 6, 1998.

On July 21, 1998, a public hearing was held before the City Council of the City of Muleshoe to determine whether the structures located at 319 West Avenue E, also known as the East 73' of Lots 16-24, Block 40, Original Town of Muleshoe, were in violation of the Structural Standards Code of the City of Muleshoe. Following the hearing, the structures were found to be substandard and the owners were ordered to repair, remove or demolish the structures within 45 days. A complete copy of the order of

LEGALS

the City Council is available at the City Secretary's office at City Hall, 215 South First, Muleshoe Texas. Published in the Bailey County Journal August 2, 1998.

FOR SALE

1991 Chevy S-10 Blazer, 4 wheel drive, Tahoe package, 1 owner-local, 52,000 miles, excellent condition, \$8500. (505) 356-5509

Good alfalfa hay, small bales. 272-4589. 29s-8tpd

LAZBUDDIE AREA, 640 acres, 4 sprinklers, 4 wells, 400-500 gallons of water with houses or without.

CATTLE PENS, 165 acres, 1 well, house and barn, cattle pens. (806) 965-2895. 31t-10tpd

For sale, 9 foot sliding patio door. Call 272-4869, 31t-2tch

93' Ford Escort, green, 137,000 miles. Good a/c, brakes and tires. Call 965-2485. 32s-3tpdsun

FOR SALE

For sale. 200-5 1/2 steel post, 200-Rebar post with Insulators, 4 miles barbed wire, P.T.O wire roller with wire, 2 steel water tanks, cattle panels of various sizes, three wheeler complete with tank and sprayer. Call 965-2742. 32s-2tpd

FRESH VEGETABLES

SWEET CORN, 1015 sweet onions, squash, cabbage and cucumbers. DVJ Farms, 202 7th st., Farwell, TX, (806) 481-9420. 28t-23tch

GARAGE SALE

Lazbuddie Senior Class of '99 is having a garage sale at Jarman Seed, 801 W. American Blvd. Friday, July 31 and Saturday, Aug. 1 from noon till 2:00!! 30t-4tch

Subscribe to the Muleshoe Journal today. Come by 304 W. 2nd St. or Call 272-4536.

Vehicles For Sale

1993 Chevy Silverado 2500, X-cab, (3/4 ton), 139,000 miles, white exterior, tan interior, automatic transmission, 4X4, 350 c.i. engine, power windows, power locks, tilt wheel, Am-Fm stereo cassette. \$11,750

1979 Corvette black exterior, white interior, 53,000 miles, numbers match, Goodyear Eagle GT's, L-82 engine, automatic transmission, A/C, tilt and telescope, alum. wheels, Am-Fm stereo cassette, cruise control, rear defogger, power windows, power locks. \$13,950

Call (806) 272-3157 or (806) 272-4832

HELP WANTED

Employment Specialist to provide on-the-job training for persons who secure supported employment. Must have valid TX driver's license and be eligible for Ctr auto insurance. High school diploma/GED required. Apply at: CPC, 2700 Yonkers, Plainview, 79072. EOE/AEE. 30t-4tch

Harvest Time Texas Sesame/ADM is now hiring for plant positions for Fall harvest. Openings in Muleshoe, Flagg, and Springlake. HURRY, these won't last long. Call S.O.S. at 1-800-242-5369 or apply directly at Texas Sesame, 107 W. Ithaca, Muleshoe, TX. 31t-2tch

NURSES UNLIMITED, INC. needs attendants for personal care and light housekeeping. Please call Jacque, Mon.-Fri. 8 a.m.-5 p.m. 1-888-892-8512 E.O.E. 31s4tch

Wanted-Night watchman with feedlot and/or cattle experience. **Cattlemen's Feedlot**, Olton, TX (806) 285-2616. 30t-4tch

Pizza Hut now hiring servers and cooks. Please apply 2-5 pm. 31t-2tch

Help Wanted! Apply in person KC Mufflers, 425 N. First St., Muleshoe, TX. 32s-4tch

Help Wanted

(1) Looking for experienced person to work in cafe on Saturdays.
(2) Looking for office help with some computer experience on Saturdays.
(3) Looking for man with livestock knowledge to unload and load cattle on Saturdays.
Apply in person at the

Muleshoe Livestock Auction

Fridays 9 a.m. to 5 p.m. Mondays 9 a.m. to Noon 32s-4tch

First United Methodist is looking for the following positions. (1) **Music Director**-This person would be in charge of three choirs, adult (Main worship choir), children's and handbells. There is the possibility of a youth choir and other creative music possibilities. (2) **Christian Education Director**-This person would be in charge of Sunday school, teacher development and establishment of small groups in the congregation. This person could also lend a hand in several ongoing studies, including Alpha Course, Beth Moore studies and (3) **Experiencing Youth Director**-This person would be in charge of Jr. High and Sr. High Youth Groups, annual mission trips, annual ski trip, oversight of the youth department of Sunday school and one-on-one contact with youth. Each of these positions would be 20 hours a week. The pay would depend on the amount of hours available. We would combine two of these into a fulltime position if someone is interested. The pay would be between \$10-12,000 for parttime and \$20-30,000 for fulltime. The pay would be dependent on qualifications and experience. Please call Brad Reeves at 272-5517 or 272-3543.

RENT

Mini Storage Units 8X10 or 10X12. Call (806) 227-2325 or (806) 933-4347. 30t-18tch

REAL ESTATE

For Sale, 3 bedroom, 2 bath, 2 car garage in Hite addition in Earth. Call 272-5080 nights, or (806) 986-4216 days or nights. 31s-4tch

MISCELLANEOUS

Round Up Applications Pipe-wick mounted on high-boy 30" or 40" rows. Cotton, Milo, Soy Beans and Corn. Call Roy O'Brian, (806) 265-3247. 23t-1tch

HAVE A NICE DAY!

REAL ESTATE

James F. Hayes & Co. AGRICULTURAL REAL ESTATE SERVICES

SOLD 4 Labors in Bailey County with feedlot and cotton base. Good dryland. Good government check. Immediate possession available.

SOLD 390 Acres with 3 bdrm Austin stonehouse. Stegall area. 70 acres of pasture. 30 Acres of CRP just renewed for 10 years. 30 acre. House and 70 acres can be sold separately.

SOLD 160 Acres just north of Muleshoe. 2 irrigation well with new pumps. New underground pipe and wire. Late model Valley Sprinkler. Good F.S.A. payment. Immediate possession possible.

SOLD 3 Labors - Circle of life. Wheat, and cotton base, 98 possession available.

SOLD 480 Acres northwest of Earth. 3 wells, 1-sprinkler nice farm.

SOLD 160 Grass Northeast of Muleshoe. Didn't get back in New C.R.P. Call for details

SOLD 480 acres in stegall area. 30 acres of grass, 380 acres of cultivated. Good soil and lays good.

Vic Coker, Agent
310 Main St. Suite 103 Muleshoe
Office 272-3100 Home 965-2468
WHEN LAND INVOLVES COWS AND PLOWS

SEED

Winter Wheat and Fall Forage Seeds For ALL varieties of Wheat, Rye * Barley * Triticale
Grazing Blends* Oats
Call 1-800/299-9273
Gayland Ward Seed Co., Inc.
Hereford, TX 79045
www.wrt.net/~gws1998
Your choice of Registered, Certified, or Select Seed. Bagged or Bulk. Delivery Available

SERVICE

Sewing and Alterations Letters on Jackets, Cheerleader suits, all sizes, prom dresses. Call 272-6764. 31t-4tch

REAL ESTATE

Price Reduced, Country Living at it's Best - 6 miles West of Muleshoe on Highway 1760.

Approx. 3500 sq. ft. Gorgeous 3-3-3 Brick home with lots of builtins, fireplace, central heat, ref. air, sunroom with hot tub, lots of storage, large family room and utility room, every woman's dream. All on 2 1/2 acres. Also 30x50 metal barn with corrals. If you want it! This place has it!

Just Listed- 32 acres with nice brick home and large steel barn. 6th irrigation well and domestic well. All highway frontage. Call for more details.

Just Listed- 20 prime lots for sale in Country Club addition. Priced to sell.
Great Investment Opportunity- 25 acres with 3 rent houses, 6 complete mobile home hook-ups with electricity, water and cable. Just west of Muleshoe. Reasonably Priced!! Call for more details!!

(806) 481-3846 • Toll Free: 1-888-999-3846

Ronald Byrd, GRI Licensed Broker
Home: (806) 481-9318
Crista Bass, Sales Associate • Home: (806) 925-6464

CLASSIFIED COUPON!!!!

BUY ONE CLASSIFIED AD (reg. price) GET YOUR SECOND CLASSIFIED AD

1/2 PRICE

Real Estate • Garage Sales • Moving Sales For Sale • Estate Sales • Miscellaneous!!!

Bring this coupon to the Journal office at 304 W. 2nd St.

Good August 2-16, 1998.

Subscribe to the Journal Today!!!

The following people have announced their candidacy for the **General Election** Tuesday, Nov. 3, 1998

DISTRICT 287TH JUDGE

- Gordon H. Green, Democrat
- Jack Bates, Democrat

BAILEY COUNTY CLERK

- Sherri Bessire Harrison, Republican
- Jan Pierce, Democrat

DISTRICT CLERK

- Elaine Parker, Democrat

BAILEY COUNTY COMMISSIONER PRECINCT 4

- Jerry Damron, Democrat

Paid political advertisement

LEGALS

Customer Notice
West Plains Telecommunications, Inc. (West Plains or the Company) has filed a request with the Public Utility Commission of Texas (Commission), assigned Tariff Control Number 19635, seeking approval to implement a minor rate increase for basic access line services. The proposed effective date for the minor rate change is November 1, 1998. The estimated annual revenue increase recognized by the Company is \$95,841.36 or 3.70% of total regulated interstate gross annual revenues. The affected services and the rates for the services are as follows:

SERVICE	RESIDENCE		BUSINESS	
	Current	Proposed	Current	Proposed
Access Line Service				
1-Party	\$7.10	\$7.81	\$18.35	\$20.18
1-Party EAS	\$1.10	\$1.21	\$2.95	\$3.24
1-Party Tel-Assistance	\$2.49	\$2.73	n/a	n/a
Tel-Assistance EAS	\$0.39	\$0.42	n/a	n/a
Manual Trunk	\$8.50	\$9.35	\$22.00	\$24.20
Manual Trunk EAS	\$1.35	\$1.48	\$3.50	\$3.85
PBX Trunk	n/a	n/a	\$29.40	\$32.34
PBX Trunk EAS	n/a	n/a	\$5.15	\$5.66
Rotary Line Service	n/a	n/a	\$3.00	\$3.30

If the Commission receives a complaint(s) relating to this application signed by the lessor of 5% or 1,500 of the affected local service customers to which this application applies by October 1, 1998, the application will be docketed. The 5% limitation will be calculated based upon the total number of customers of record as of the calendar month preceding the Commission's receipt of the complaint(s). As of June 1, 1998, the 5% limitation equals 210 customers. A request to intervene, participate, or for further information should be mailed to the Public Utility Commission of Texas, P.O. Box 13326, Austin, Texas 78711-3326. Further information may also be obtained by calling the Public Utility Commission's office of Customer Protection at (512) 936-7120 or in Texas (toll free) 1-888-782-8477. Hearing and speech-impaired individuals with text telephones (TTY) may contact the Commission at (512) 936-7136. For answers to any questions regarding these new services, or to obtain a copy of the proposed tariff relating to these service offerings, please contact your local business office at (806) 272-5533. Published in the Bailey County Journal August 2, 9, 16, 23, 1998.

Nieman Realty

116 E. Ave. C • George Nieman, Broker • 272-5285 or 272-5286

RICHLAND HILLS — PARK RIDGE

- Price Reduced, 3-3-1 Brick, cent. Heat, Evap. Air, built-ins, 2000' + lv. area, fenced yd., stor. bldg. MORE!! RH-2
- We have several single and multi-family lots in this area!!!
- NICE 3-2-2 Brick, Cent. A&H, built-ins, FP, cov. patio, fenced yd. \$50's!!

HIGHLAND AREA

- JUST LISTED -NICE 2-1-2 carpet Mobilehome, Cent. heat, evap. air, stove, 2 stor. bldgs., MORE!! \$10K!! HL-2
- 3-2-2 Brick, Cent. A&H, built-ins, gas log FP, fenced yd., stor. bldg., MORE!! Price Reduced!! HL-5
- Nicely Remodeled 3-2-1 Brick home, 2100' + lv. area, Cent. A&H, built-ins, large den w/FP, fenced yd., stor. bldg. \$50's!!! HL-3
- 2-1-1 carpet home, wall furnace heat, evap. air, DW, 5 fans, cov. patio, gas grill, fenced yd., MORE!!! \$25K!!!

LENAU - COUNTRY CLUB AREA

- 2-2-2 Brick Home, Cent. A&H, nice carpets, fenced yd. \$40's!!! L-4
- PRICE REDUCED 2-1-1 Carport Home, wall furnace, nice carpet, storm shelter, stor. bldg., fenced yd. \$19K!! CC-3
- 3-2-1+2 carport Brick, 2000'+Lv. area, DW, auto. sprinkler, MORE!!! L-2
- 2-1-1 Home, floor furnace, win. ref. air, fenced yd, stor. bldg., \$19,500 !!! L-1
- NICE 3-2-2 CP Mobile Home and lot, Cent. A & H, built-ins, nice yd. with large pecan & fruit trees!!! CC-1

COMMERCIAL

- Established Business: Land, Bldg. & Equip., \$75K!!
- 175' x 140' tract, approx. 8500' bldg. on Main. \$35K!!
- 56' x 140' tract, approx. 4700' bldg., \$35K!!
- NICE R.V. STORAGE, 14' X 40' metal bldg. 12' doors, 50X140 camer lot!
- SNACKSHACK - Lot, Buildings, furniture, and fixtures!!!!
- LARIAT- 240 acres, 3 wells, underground tile, good productive land!!!

HIGH SCHOOL

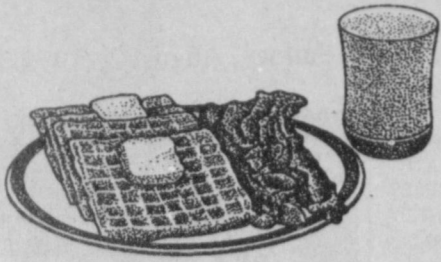
- NEWLY REMODELED 3-1-1 Home, cent. A & H, new carpet & vinyl, fenced yd., MORE !! \$30's !!! HS-2
- VERY NICE 3-1-1 Brick, Heat pump, DW, nice carpets, fenced yd., MORE!!! \$30's !!! HS-1
- NICE 2-1-1 Brick, Heat Pump, nice carpets, well insulated, storm windows & doors. \$30's!!! HS6
- VERY NICE 3 bdrm. 2 bath Brick, Cent. A&H, built-ins, nicely landscaped, fenced yd., stor. bldgs.!!! \$50's !!! HS-3
- VERY NICE 3-1-1 Home, nice carpets and vinyl, heat pump, fans, fenced yd., stor. bldgs., MORE!!! \$30's!!! HS-5
- 3-2-1 Brick, Heat Pump, built-ins, fans, screened porch!!! \$30's!!! HS-7

RURAL

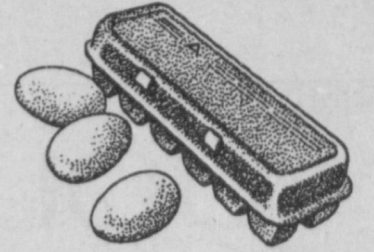
- 3-2-1 Home on 97 acres, 1100' flow Cent. Heat, evap. air, DW, storage shed, fenced yd., \$45K!!!
- PRICE REDUCED -NICE 3-2 home, 40 acre tract, Geo. Heat Pump, built-ins, 5" irrig. well, Hi-Pre. lines, sprinkler pipe, barn, pens, tractor & equip!!! \$69K!!!
- W. of SUDAN-NICE 3-3-2 Brick Home, 5 acre tract on Hwy. 298, Cent. Air & Heat, built-ins, large Quonset Barn, MORE!!!! \$95K!!!
- 5 Acre tract on pavement close to town!
- LAZBUDDIE-PRICE REDUCED-NICE 3-2-2 Brick Home on pavement, 2200' lv. area, Cent. A & H, built-ins. FP, large sunroom!! \$70's!!
- FOR BID: Approx. 4,870 acres (Bailey and Lamb Co.), water rights negotiable, 54 wells (only 2 pumps and motors), approx. 33 circles w/center pivot pads, 40' X 86' tile block barn, 40' X 100' quonset barn w/elec., 20' X 30' shop, 3 sets pipe corrals, 2 sets wire corrals!!
- Approx. 108 acres on Hwy. 70, approx. 2100' office area, 16,900' of commercial bldg. w/loading dock, 3,400 warehouse!! Great Commercial-Industrial Facility!!

IN CONTRACT

SUBSCRIBE TO THE MULESHOE JOURNAL TODAY! 272-4536



World's Greatest Breakfast Sale... This Week At **LOWE'S**



PRICES EFFECTIVE JULY 29-AUGUST 4, 1998

MEAT

BONE-IN	
COOK'S HAM STEAKLB	\$2³⁹
PILGRIM'S PRIDE-JUMBO PACK	
CHICKEN	
DRUMSTICKS OR THIGHSLB	69[¢]
PILGRIM'S PRIDE-SMALL PACK	
CHICKEN	
DRUMSTICKS OR THIGHSLB	89[¢]
GREAT FOR SALADS	
POPCORN SHRIMPLB	\$4⁹⁹
BEEF BONELESS-VALUE PACK	
CHARCOAL STEAKSLB	\$1⁵⁹
BONE-IN • VALUE PACK	
PORK STEAKSLB	\$1³⁹
BONE-IN • VALUE PACK	
COUNTRY STYLE	
PORK RIBSLB	\$1¹⁹
GREAT FOR ASADO	
PORK STEW MEATLB	\$1⁶⁹
BONE-IN	
PORK BUTT ROASTLB	\$1²⁹
GREAT ON THE GRILL	
BEEF BONELESS	
SHORT RIBSLB	\$1⁹⁹
ECKRICH ASSORTED	
SMOKED SAUSAGE14 TO 16 OZ.	\$1⁹⁹
HORMEL LINKS	
LITTLE SIZZLERS12 OZ.	\$1¹⁹
HORMEL	
SMOKED PORK CHOPSLB	\$2⁹⁹
ADVANCED CHICKEN FRIED	
BEEF PATTIES OR FINGERSLB	\$1³⁹
LOW SALT, REGULAR OR MESQUITE	
HORMEL	
BLACK LABEL BACON1 LB PKGS.	2/^{\$3}
BAR S	
MEAT BOLOGNA12 OZ.	99[¢]
BAR S	
CHOPPED HAM10 OZ.	\$1⁶⁹
BAR S BONELESS	
WHOLE HAMS5 LB	\$7⁹⁹
BAR S	
RED FRANKS2 LB	\$2⁷⁹
BAR S JUMBO	
MEAT FRANKS1 LB	99[¢]
BAR S	
COOKED HAM10 OZ.	\$2³⁹
BAR S EXTRA LEAN	
HONEY HAM2 LB	\$5⁴⁹
BAR S	
BEEF BOLOGNA12 OZ.	\$1²⁹
ASSORTED FRESH-REGULAR OR HOT	
JIMMY DEAN SAUSAGE12 TO 16 OZ. ROLL	\$1⁷⁹
ASSORTED FRESH-REGULAR OR HOT	
JIMMY DEAN SAUSAGE2 LB. ROLL	\$2⁹⁹
<hr/>	
REGULAR, HOT OR BURRITO	
FRITO LAY® BEAN DIP9 OZ. CAN	2/^{\$3}
ORIGINAL OR LITE	
MRS. BUTTERWORTH'S SYRUP24 OZ. BTL.	\$2⁸⁸
MRS. BUTTERWORTH'S COMPLETE	
PANCAKE MIX32 OZ.	2/^{\$3}
ASSORTED	
GERBER JUICE32 OZ.	\$1⁸⁹
CHILDREN'S	
GERBER GRADUATES6 OZ. CUP	99[¢]
ASSORTED WITHOUT FRUIT	
GERBER CEREAL8 OZ. BOX	\$1¹⁹
ALL TYPES	
COCA-COLA, SPRITE	
OR DR. PEPPER6 PACK-12 OZ. CANS	\$1⁵⁹
ALL TYPES	
COCA-COLA, SPRITE	
OR DR. PEPPER3 LITER BTL.	\$1⁷⁹

PRODUCE

RIPE	
BANANASLBS	3/^{\$1}
CELLO WRAPPED	
ICEBERG LETTUCEHEAD	69[¢]
MIX OR MATCH	
4 LB. BAG ORANGES/3 LB. BAG APPLES	
WASHINGTON EXTRA FANCY RED DELICIOUS	
APPLES OR	
VALENCIA ORANGESMIX OR MATCH	2/^{\$3}
FRESH	
ARTICHOKES	2/^{\$1}
FRESH	
CABBAGELBS	4/^{\$1}
FRESH	
CARROTS2 LB. BAG	2/^{\$1}
GARDEN FRESH	
SNO-WHITE CAULIFLOWEREA.	88[¢]

FROZEN & DAIRY

GLACIER GOLD	
HASH BROWN PATTIES10 CT.	\$1¹⁹
MINUTE MAID ASSORTED	
FROZEN	
ORANGE JUICE10 TO 12 OZ. CAN	99[¢]
HOMESTYLE OR BUTTERMILK	
EGGO WAFFLES11 OZ.	2/^{\$3}
ECKRICH TURKEY, HAM OR BOLOGNA	
MAX PAK LUNCH MAKERS9 OZ.	2/^{\$3}
FRENCH TOAST, EGG/BACON/FRIÉS, PANCAKE/SAUSAGE OR EGG/SAUSAGE/HASH BROWNS	
GREAT STARTS	
BREAKFAST5.25 TO 6.2 OZ. PKG.	3/^{\$4}
ORIGINAL OR BLUEBERRY	
AUNT JEMIMA WAFFLES10 OZ.	99[¢]
ASSORTED	
BANQUET CREAM PIES14 OZ. PKG.	99[¢]
REGULAR/SHREDDED HASH BROWNS OR O'BRIEN	
ORE-IDA POTATOES24 TO 32 OZ.	3/^{\$5}
ASSORTED REGULAR OR LIGHT	
YOPLAIT YOGURT6 OZ. CTN.	2/^{\$1}
LIGHT, ORIGINAL OR CHURN STYLE COUNTRY CROCK	
SHEDD'S SPREAD48 OZ.	2/^{\$3}
SHURFINE GRADE A	
MEDIUM EGGSDOZEN	2/^{\$1}

VAN CAMP'S	
PORK AND BEANS15 OZ. CAN	3/^{\$1}
ORIGINAL OR WITH JALAPENOS	
RANCH STYLE BEANS15 OZ.	2/⁷⁹¢
NABISCO DOUBLE STUF OR REGULAR/REDUCED FAT	
OREO COOKIES20 OZ. PKG.	2/^{\$5}
CLOVER SPUN	
SUE BEE HONEY16 OZ.	\$1⁹⁹
ASSORTED-REG. \$2.19	
FRITOS® CORN CHIPS10 OZ. PKG.	2/^{\$3}
FRITO LAY®	
FLAVOR OR	
LUNCH VARIETY PACK9.5 OZ.	2/^{\$4}
IMPERIAL	
CANE SUGAR4 LB. BAG	\$1⁵⁵

HEALTH & BEAUTY

WESTERN FAMILY	
BUY ONE, GET ONE FREE SPECIAL PKG.	
IBUPROFEN100 CT. PKG.	\$2⁹⁹
WESTERN FAMILY	
COSMETIC PUFFS100 CT. PKG.	69[¢]
ASSORTED	
SUAVE SHAMPOO	
OR CONDITIONER15 OZ. BTL.	88[¢]
ASSORTED	
COLGATE TOOTHPASTE ...6 TO 7 OZ. TUBE	\$1⁹⁹
<hr/>	
• 19 OZ. RICE KRISPIES	
• 12 OZ. SPECIAL K	
KELLOGG'S CEREAL	2/^{\$5}
• 18 OZ. CORN FLAKES	
• 15 OZ. COCOA KRISPIES	
• 16 OZ. FROSTED MINI WHEATS	
KELLOGG'S CEREAL	2/^{\$4}
WHITE	
SHURFINE BATH TISSUE ...9 ROLL PKG.	2/^{\$3}
ASSORTED SUGAR SWEETENED	
KOOL AID OR COUNTRY	
TIME LEMONADEMAKES 8 QTS.	\$1⁸⁸
CAMPBELL'S	
CHICKEN NOODLE SOUP ...10.7 OZ. CAN	59[¢]
CAMPBELL'S REGULAR OR VEGETARIAN	
VEGETABLE SOUP10 OZ. CAN	79[¢]
CAMPBELL'S ASSORTED	
FAMILY SIZE SOUP26 OZ. CAN	\$1³³
ASSORTED	
V8 SPLASH	
JUICE COCKTAIL64 OZ. BTL.	2/^{\$5}
PRE-PRICE \$5.99	
PURINA MAINSTAY	
DOG FOOD17.6 LB.	\$4⁵⁹
ASSORTED	
ALPO CAT FOOD5.5 OZ.	4/^{\$1}
REGULAR, LIVER OR BEEF	
BOLO DOG FOOD13.2 OZ. CAN	4/^{\$1}
HONEYSUCKLE, GARDENIA OR NEUTRAL	
CARPET FRESH14 OZ.	99[¢]
REGULAR, VINEGAR OR NO DRIP	
WINDEX	
GLASS CLEANER32 OZ. BONUS SIZE	\$1⁹⁹
REGULAR, HEAVY REGULAR OR LEMON	
FAULTLESS STARCH AEROSOL ...22 OZ.	99[¢]
COLOMBIAN SUPREME, PERK/ REGULAR, DRIP, FRENCH ROAST FAC OR GOURMET SUPREME	
FOLGERS COFFEE11.5 TO 13 OZ. CAN	\$2²⁹
ASSORTED NABISCO	
AIR CRISPS OR	
SWEET CRISPERS7 TO 8.5 OZ. PKGS.	3/^{\$5}
NABISCO ASSORTED HEARTY GRAIN OR SNACKWELL'S	
CEREAL BARS7.8 OZ. BOX	\$1⁹⁹
ASSORTED	
V8 100%	
VEGETABLE JUICE46 OZ. CAN	2/^{\$3}
FRANCO AMERICAN ASSORTED	
PASTA	
WITHOUT MEAT14.7 TO 15.2 OZ. CAN	5/^{\$3}
PREGO ASSORTED REGULAR, SUPREME OR CHUNKY	
SPAGHETTI SAUCE ...27.7 TO 28 OZ. JAR	2/^{\$3}
PACE HOT, MILD OR MEDIUM	
PICANTE SAUCE16 OZ. JAR	2/^{\$3}

At Lowe's...
we're
BIG on
breakfast!

WESTERN MONEY
UNION TRANSFERSM
"The fastest way to send money"

Lowe's

MARKETPLACE

401 W. American Blvd.
Muleshoe 272-4585

515 W.
American Blvd.
Muleshoe
272-4406

WE RESERVE THE RIGHT
TO LIMIT QUANTITIES
IN TEXAS