

# The Post Dispatch

Forty-Ninth Year

Post, Garza County, Texas

Thursday, March 31, 1977 Number 44

## Voters to decide Saturday if hospital remains open

### 8 offices to be filled

The future of 26-year-old Garza Memorial Hospital and the health care of this area will be determined Saturday when hospital district voters decide whether or not to raise the hospital tax limit from 25 to 75 cents.

The special hospital proposition far overshadows all the other regular spring elections which will be held that day to elect a mayor, Post, two city councilmen, three Post Independent School District trustees and two hospital district directors.

Forty-seven absentee ballots have been cast in the hospital district election indicating the mounting public interest on the hospital proposition. Absentee balloting ended Tuesday with a rush at the hospital.

### Election Returns

The Dispatch office will be open Saturday night to give spring election results. Outcome of the election on the hospital proposition is not expected until early 8 p. m. because of a heavy poll turnout is anticipated. Area residents may call The Dispatch until 9:30 p. m. for returns.

Voting on the hospital district tax limit proposition and on the two unopposed candidates for hospital directors, Jack Alexander and Bo Jackson, will be in the Post Public Library with Mrs. C. K. Pierce as the election judge.

The polls will open at 7 a. m. and close at 7 p. m. for all three local elections.

The only contests in the spring elections are for the two city council seats where the two top vote getters among four candidates will be the winners. The four include Don Ammons, Maxine Marks, Jack Ault, and incumbent Bill Pool.

Mayor Giles C. McCrary is unopposed for reelection to the County to pay one third cost.

The Garza County Commissioners Court Monday agreed to pay one third the cost or \$1,000 for the printing of 10,000 new Post Chamber of Commerce brochures.

Originally the county had agreed to pay one fourth of the cost. The city proposed that city, county and Chamber pay a third each for the brochures and the county court reconsidered and went along with the city's proposal.

Commissioner Mike Cisneros was appointed by the court as its voting delegate and representative to the South Plains Association of Governments.

The court agreed to leave \$1,750 budgeted for the summer youth recreation program after discussing 1977 summer plans with Recreation Director Joe Giddens.

Last year, the county paid the full cost of the program after the city took it out of its budget. Commissioners urged Giddens to contact the city and try to get it back into sharing the cost of the summer program.

The court decided against a county postage meter due to a lack of interest in various county offices for such a meter.

another two-year term. Voting in the municipal election will be in city hall.

The three unopposed candidates for school trustees are A. C. Cash and K. W. Kirkpatrick, both incumbents, and Royce Hari.

School district voting will be in the high school library.

The Volunteer Citizens Committee to Save the Hospital are now concentrating upon a massive "get out the vote drive" in the belief that the larger the vote the better chance the hospital proposition has of success at the polls.

The decision before the voters, the committee has

declared from the beginning of the campaign, has been simply whether the hospital remains open or is closed.

If the hospital closes, the committee adds, the county will not only lose its hospital facilities but its doctors.

The Dispatch this week has (See Voters, Page 10)

## Easter Art Show to open here Saturday

The annual Easter Art Show, sponsored by the Post Art Guild, will be held this weekend for the first time in the Post Community Center with an imposing \$1,450 in purchase and cash awards to the winners.

The show will be open to the public without charge from 2 to 6 p. m. Saturday and 1 to 5 p. m. Sunday.

Presentation of awards will be made at 4:30 p. m. Sunday.

Purchase awards include \$400 by Friends of the Museum for painting or sculpture typical of

area to be presented to the Garza County Museum; \$250 by Post Contractors and Sioux Lodge; \$150 by First National Bank; \$150 by Giles C. McCrary; \$150 by Dalby Cattle Co.; \$100 by Sentry Savings Association; \$75 by Texaco Wholesale; and \$75 by Dr. and Mrs. Charles McCook.

There also will be a \$100 jurors choice cash award presented by the Post Art Guild.

Ribbons also will be given in each division.

Ronald Thomason, Weatherford, Tex., artist who is a "regular" in the OS Ranch Art Exhibit here each fall, will judge the show.

The show is open to original paintings and drawings in all media and small sculpture work not previously shown in Post. There is no limit on the number of entries by any artist with a fee of \$3 per entry.

Entries will be received at the center from 9 a. m. to 5:30 p. m. Friday and from 8:30 a. m. to 11 a. m. Saturday.



MARVIN SARTIN Estate series opens Tuesday

A series of three estate planning meetings will be held on consecutive Tuesday evenings, April 5, 12 and 17, beginning at 7:30, in the Post Community Center.

The first program will feature personal financial management, introduction into estate planning concepts and family financial records.

The second program will be on wills and trusts, and the third will deal with the 1976 tax reform act and tax consequences of property transfers.

At the first meeting of the series Tuesday night, Marvin Sartin of Lubbock, area economist and management specialist for the Texas Extension Service, will introduce estate planning concepts, including why do estate planning, who needs it, types of property, federal and Texas laws and (See Estate planning, Page 10)

## Hosie Wynne is 'no billed' in shooting

Hosie Wynne was "no billed" here last Wednesday by a Garza grand jury in the fatal shooting of Robert Glenn Ashley of Spur, but the grand jury then indicted Wynne for gambling promotion in his operation of the Corner Cafe.

It was in front of Wynne's cafe at Oak and May streets about 4 a. m. March 9 that Ashley was fatally wounded in what Sheriff Jim Pippin called "a dispute over a crap game."

Officers, called to the scene, found Ashley badly wounded lying in front of the cafe. He died 20 minutes later in Garza Memorial Hospital where he was rushed by ambulance.

He had been shot twice by a .38 caliber pistol recovered at the scene. Officers questioned four men who were reportedly at the scene of the shooting and took statements from two of them.

Witnesses in their statements said Ashley had gone to his pickup and got his 300 Savage deer rifle following the argument and was shot by Wynne when he started back into the cafe with the rifle.

The new grand jury for the

March term, with Robert Cox as foreman, indicted W. C. Sapp, who is being held in custody for aggravated assault, serious bodily injury, in striking Evonne Sapp with a fire tool or jack handle March 10, and for attempted murder in the shooting of Doris Hughes with a hand gun Nov. 13, 1976.

Eugene H. Williams, former owner of the Pleasant Valley Gin, was indicted on two counts, one for theft by appropriation and the other for misapplication of fiduciary property.

On the first charge, Williams (See Grand jury, Page 10)

### Two hurt in car wreck

Two Lynn County young people were injured early Wednesday when the 1974 Datsun in which they were coming into Post on FM 409 went out of control and rolled three times.

Lee Ann Orr, 17, of route 5, Tahoka, was entered in Garza Memorial Hospital and was undergoing x-rays Wednesday morning. Barry Neil Bevers, 17, of route 4, Tahoka and driver of the vehicle, was treated and dismissed.

Third occupant of the vehicle, Randy Lee Peel, 21, 905 West Seventh, was not injured.

According to the investigating deputy Bevers lost control of the vehicle and it went 342 feet along the narrow ditch not far from the Third Street intersection before overturning three times and coming to rest back on its wheels.

### Budget workshops to be here today

Two sessions of the Money Management and Budgeting Workshop are scheduled today in the Post Community Center, the first at 2:30 p. m. with a repeat at 7:30 p. m. for those not free in the afternoon.

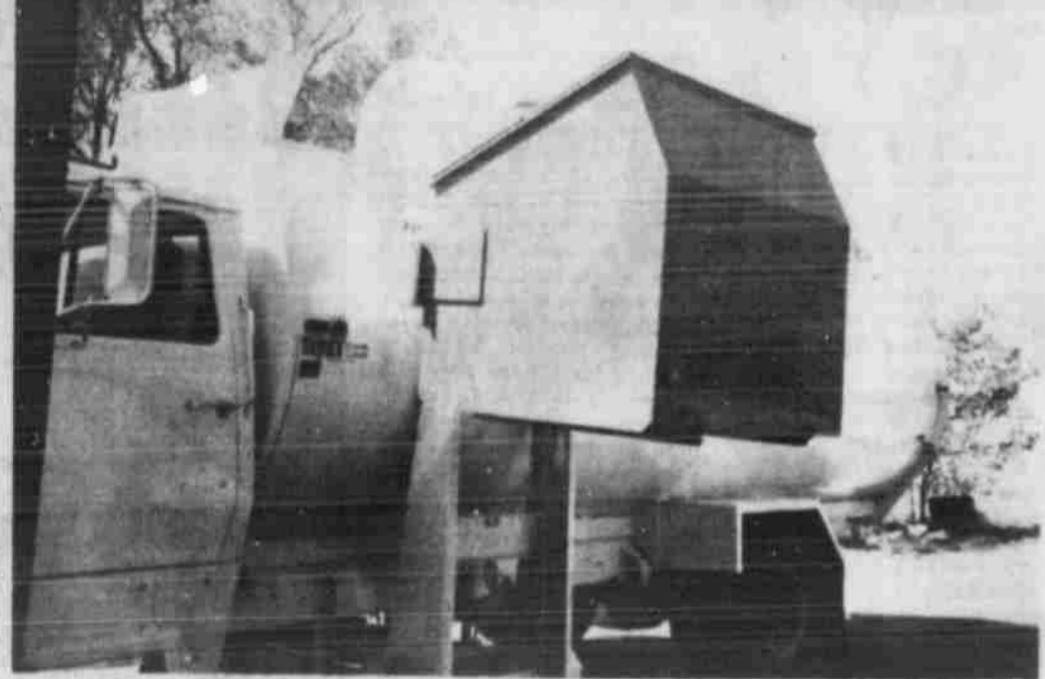
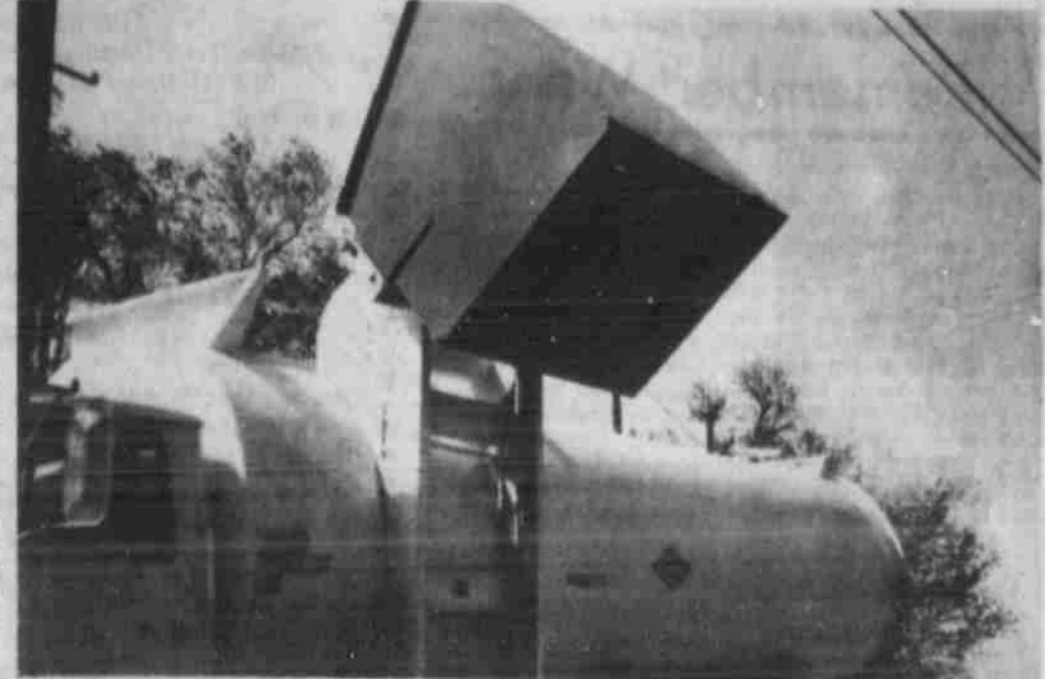
There is no charge for the workshops and everyone is invited to learn more about handling family finances.

The workshops are sponsored by the Garza County Family Living Committee and the Texas Agricultural Extension Service.

### Rush is on for auto stickers

The rush was expected to be "on" today at the county tax assessor-collector's office as motorists who have put off buying their 1977 validation stickers for their auto, truck or trailer license plates rushed to do so by the April 1 deadline.

T. H. Tipton reported that by mid-morning Wednesday his office had sold 3,117 such stickers.



**IN OPERATION** — In these two pictures, the city's new packer trash truck automatically lifts one of the big three cubic yard trash containers up rails at its side and prepares to dump the contents of the container into the top of the truck for compacting. Its push-button automation trash collection now for Post — or will be shortly. — (Staff Photo)

## Downtown pickup of trash is automated

Post's new "containerized" trash collection system went into "mini operation" here Tuesday, that is in the business area only.

City Manager Pete Maddox said the first 40 three cubic yard containers and the automatic loading packer truck were received here Friday.

On Tuesday, Franklin Ebeling, president of the Ebeling Manufacturing Corporation of Plainview, spent the day here instructing Malachi (Smokey) Mitchell in the operation of the packer truck.

### Judge Dalby is back from Austin

County Judge Giles Dalby returned to his desk in the courthouse here Wednesday morning after spending two days in Austin testifying and lobbying for various pieces of legislation affecting county government before the Texas Legislature.

His main concerns were a bill creating ordinance making powers for counties, a jail bill which would allow two or more counties to go together to build a jail, and a change on highway funding in which counties would pay only 10 percent of right-of-way costs for highways instead of the present 50 percent.

Dalby, who is the new president of the West Texas County Judges and Commissioners Association, also visited with Governor Dolph Briscoe.

He presented the governor with a belt buckle from the association and obtained the governor's acceptance of an invitation from the association to address its convention in El Paso next year.

He testified before one legislative committee concerning one of the county bills, and told The Dispatch he "lobbied against several bills which would adversely affect the counties."

### Rites held for Wesley Bullard

Funeral services for Wesley Bullard, 73, retired Postex Plant employee, were conducted at 3:30 p. m. Wednesday in the Hudman Funeral Home chapel by the Rev. Oscar Newdiger, pastor of the Church of God of Prophecy, assisted by the Rev. Steve Couch of the same church.

Bullard died about noon Tuesday in Garza Memorial Hospital following a lengthy illness.

He had been a resident of Post for 49 years. The family home was at 609 West 14th Street.

Survivors include his wife, Ayra; four sons, Wesley L. and Kenneth, both of Post, John of Fort Worth and Cecil of Hillsboro; one daughter, Alice Mitchell of Lubbock; one sister, Mrs. E. M. Golden of Slaton; one brother, Curtis of Post; 12 grandchildren; and four great-grandchildren.

Burial was in Terrace Cemetery under direction of the Hudman Funeral Home.

### Post actually gets some rain

A gentle, all-day rain Saturday produced an official 1.02 inches of moisture here to the delight of everybody, including gardeners and farmers.

The "wanted weather" didn't last long, however, with another rough duststorm blowing most of Monday and then kicking up some additional dirt and sand on Tuesday before departing.

The weekend moisture brought to 2.27 inches the total moisture for 1977 to date in the first quarter, usually always a dry one.

The weekend rain was the most moisture to be received in March here since 2.72 inches was recorded for the month in 1973.

In 1974, 7 of an inch was received, only a trace fell in 1975, and the total for the month in 1976 was 23. Back in 1972, Post received 80 of an inch of moisture in rain plus five and one-half inches of snow.

## Tiana Shiver named 1977 valedictorian

Tiana Shiver, daughter of Mr. and Mrs. W. F. Shiver, has been named valedictorian of the 1977 Post High School graduating class.

During her high school years, Tiana has participated in band, the Spanish club, the drama club, the National Honor Society and various other activities.

Following Tiana in class scholastic rank are Mark Kirkpatrick, salutatorian; Amy Cowdrey, historian; Carita Wood, class will; and Andrea Hope Johnson, class prophecy.

Also in the honor student category are Judine Tipton, Dan Sawyers, Kyle Duren, Kim Lott and Sandra Bostick. (See Valedictorian, Page 10)



TIANA SHIVER Valedictorian



MARK KIRKPATRICK Salutatorian



AMY COWDREY Historian



CARITA WOOD Class Will



HOPE JOHNSON Class Prophecy

# Dispatch Editorials

Page 2 The Post (Tex.) Dispatch Thursday, March 31, 1977

## Women united on hospital

It is hard to believe that this community would actually turn the key in the lock on our hospital after 26 years of battling to keep it open — and serving.

But it can happen Saturday. The most important point about this election as it comes down to the wire is that the issue will be decided only by those who go to the polls and vote.

No matter how strong your feelings are to keep the hospital, they will count for nothing really unless you vote that conviction Saturday. The choice is clear enough.

The ballot proposition is on approving or rejection of the raising of the hospital district's tax limit to 75 cents. Transformed into the realities of the current situation, this means voting YES to keep the hospital open, or NO to close it.

The hospital cannot survive until tax time rolls around again, but if the tax base is expanded it can borrow money to help it through the summer "off season."

Last year, the hospital had some reserve funds it could expend before turning to borrowing. This year it can't. The reserves are gone. The bills already are beginning to pile up.

There are many points for the thinking voter to consider in making his or her decision. We think most of them have been covered in recent weeks. We think most people have made up their minds. What remains to be decided is who gets out the vote Saturday.

There is one additional argument which those who oppose raising the tax limits and keeping the hospital open should consider.

If Garza Memorial Hospital is closed because of Saturday's vote, then Garza County with its big taxable valuations, caused basically by its rejuvenated oil industry, will be one of the South Plains counties which in future

years is almost sure to be forced into some new regional hospital district.

That fight already has begun in Lubbock where Methodist Hospital is pressing for regional hospital designation by March 31, and where an effort was begun and then aborted to convert the new teaching hospital into a regional hospital with taxpayers all over the South Plains paying taxes for its operations.

The day or regimented health care has arrived. Like it or not, the regional concept is being developed. Counties who depend upon others for hospital care soon are going to pay the price at taxpaying time.

Maybe not next year, but very soon we'd guess.

Garza County with its own hospital district and its own hospital has a much better chance of protecting itself while the regional hospital concept is painfully developed.

If we give up our own hospital Saturday we may be buying something far worse in the now foreseeable future by being forced into a regional hospital district. And we would guess the taxes of that district in total would be far greater than the proposed new taxing limits for Garza Memorial Hospital.

The reason for this is a regional concept for hospital would not be based on taxable valuation at only 25 percent of real value as it our hospital district because its taxes are collected by the county.

But that is the worrisome future. The present is worrisome enough.

The best political prediction we have heard on the hospital election Saturday came from a man who said the proposition would carry strongly "because Garza women are united in their determination not to give up our hospital."

We think he's right too.

## Other Saturday decisions

The "hospital decision" isn't the only matter local voters need to attend to Saturday. Eight will be named to the school trustees (3), hospital directors (2), and city council (2) "council-persons" and the mayor.

Unlike the last spring elections a year ago when Post had a record total number of candidates on the three ballots, the only contests this time around are for the two city council posts.

Voters will choose the high two from a four candidate field of Bill Pool, seeking reelection, Jack Ault, Mrs. Maxine Marks and Don

Ammons. The lack of candidate interest this year in the local boards indicates a general satisfaction with the way things are going.

It does behoove voters to select those candidates they want at the city council table, despite the fact no real issues and little campaigning has developed.

The Dispatch has a long established tradition of not editorially backing any candidates in local elections. We would urge voters not to forget the ten candidates who are seeking their support and vote Saturday.

## Letters to the Editor

A PHYSICIAN WRITES

Dear Editor: I wish to direct this letter to you voicing another opinion in favor of the upcoming vote for increasing the hospital tax rate. Hopefully, the voters of the district will consider the following when they mark their ballots.

One, the impossible task of practicing modern day medicine without a facility properly equipped, staffed and maintained.

Two, the community's need of the facility for our citizens use. Garza Memorial Hospital is not for the treatment of major injuries, but it's service as an initial stabilizing point for the injured patient whose life may depend on the stabilization before further transport the 40 miles to a major hospital is invaluable.

Three, most of the problems treated in Garza Memorial Hospital such as obstetrics, pneumonias, care of the various problems of our elderly citizens, evaluation of various physical problems, routine physical examinations, post-operative recuperation, etc., can and should be taken care of in our hospital. The major hospitals have no room for our type problems and most would be turned down as emergency admissions, because of the greater need by more emergent type patients referred to these facilities.

Without our hospital the family of the elderly patient, the pneumonia, the child whose fever won't go down, is going to have to bear the brunt of the worry, physical care, and not knowing with the patient at home. The days of a physician treating and making his calls at the patient's home without benefit of laboratory, x-rays, and nursing care are long past and will not return.

Four, the expense in time, travel and medical for the services which we have available with Garza Memorial Hospital functioning will be greatly increased if this is to be a community which is to depend on getting its medical services rendered out of town.

These are but a few of the reasons for voting in favor of a tax increase to maintain a properly equipped, staffed and maintained community hospital.

Thank you,  
W. C. Wilson M. D.

DR. TUBBS IN FAVOR

Dear Editor: The coming election for or against a tax increase in support of Garza County Hospital District concerns all.

Opposition seems to center around disappointment in the hospital's not making money recently. A few feel that since it is unprofitable, it should close. Many have forgotten that the District was voted to provide medical care for District residents who cannot afford to pay for.

I am in favor of the tax increase because I believe that it is needed to pay the soaring cost of supplies, salaries, equipment and services to meet the requirements imposed in order to qualify for Medicare and Medicaid payments to the hospital.

I am in favor of sound business practice in conduct of the hospital. But I do not expect and do not favor, the kind of operation which would produce large profits.

We can afford the tax increase. Can we afford the probable consequences of not putting more into the financing of the hospital?

First you save the farm. Then you pray for good weather and rain, and bumper crops.

Right now we had better save the hospital. We should not "throw the baby out with the bath water."

Harry Tubbs M.D.

ANOTHER POINT OF VIEW

Dear Editor: Due to the crucial results should the hospital tax increase be rejected, we feel that the public should be aware of the consequences from the doctors' office point of view.

No allergy injections.  
No hormone injections.  
No arthritis injections.  
No phone-in prescriptions.  
No emergencies seen in Post.  
Fee for all insurance and itemized statements.

We the staff of Dr. W. C. Wilson, Dr. H. S. Park, Dr. James Chua Tuan, and Dr. Ricardo Rodriguez 100 percent support our hospital tax increase.

Janet Justice  
Jeanie Hunsaker  
Phyllis Morris  
Deb McKee  
Juanita Pantaja  
Nelda Lenke  
Mozelle Rogers  
Marianne Hart

NEW MEXICO TRIP  
Mrs. R. V. Blackburn returned home last week following a trip to Albuquerque, N. M. where she spent a few days visiting her granddaughter.

## Remember When

16 YEARS AGO

Tommy Young is named Jaycee of the month; Mrs. Gilley hostess for Needlecraft Club; Sherry Josey elected president of the Xi Delta Rho chapter of Beta Sigma Phi sorority; Mrs. Bettie Carmichael celebrates 92nd birthday; Mrs. Morris Neff is hostess to the Priscillas; National FHA week to be observed here; Garza Sheriff's Possee in Lubbock parade; Mrs. Alma Sims is Merry-maker hostess;

Mrs. Vera Cusmes and Sonny spent Easter weekend fishing on Lake Brownwood; Jaycees honor Vietnam veteran Sp4 Elvin Allen; Harold Lucas challenged third time for mayor's seat by John Hopkins.

15 YEARS AGO

Bank advertises for "Any old kind of two inch rain"; Medal goes to creative writing winner Audry Snow; A. C. Cooke honored with surprise birthday dinner; Southland Junior-Senior Banquet held at Pioneer Hotel in Lubbock; Mrs. Voss is hostess for Needlecraft Club; Joyce Teaff elected president of Mu Alpha Chapter; Norm Cash's hat swings lustily in exhibition games; Southland area draws oil wildcat; Late rush seen for 62 auto registration; Lonnie Peel is honored with Close City Dinner.

26 YEARS AGO

Actress Helen Drew and husband visit Post; Ten year old Sharon Blackwell of Justiceburg is Garza County's spelling bee champ; Robert Koonce of Jayton and Avery Moore Jr. named judges for Post Stampede; School bus halted by sand near Justiceburg; Jimmy Charles Norman honored on 1st birthday; Antelope track team wins fifth place in relays at Lockney; Influenza, other ailments hit hard at residents of Graham Community; Post Golden Jubilee Committee named.

Post soldier has course

FT. BENNING, GA. — Army Private Ruben Ayala, son of Mr. and Mrs. Miguel Ayala, 506 South Ave. I, Post, Tex., recently completed seven weeks of advanced individual training at Ft. Benning, Ga.

The training included weapons qualifications, squad tactics, patrolling, landmine warfare, field communications and combat operations. This qualified him as a light weapons infantryman and as an indirect fire crewman.

He was taught to perform any of the duties in a rifle or mortar squad.

DIAL 3322

Hospital Election Center

9 A.M. TO 5 P.M. ALL NEXT WEEK BEGINNING MONDAY FOR ANSWERS TO ANY QUESTIONS YOU HAVE ON HOSPITAL TAX ISSUE.

THE POST DISPATCH  
Published Every Thursday by Dispatch Publishing Company  
123 East Main, Post, Garza County, Texas 79356

JIM CORNISH Editor and Publisher  
Entered at the Post Office at Post, Texas, for transmission through the mails as second class matter, according to an Act of Congress, March 3, 1879.

Any erroneous reflection upon the character of any person appearing in these columns will be gladly and promptly corrected upon being brought to the attention of the manager.

DISPATCH SUBSCRIPTION RATES

In Garza County  
Elsewhere in Texas, with State Tax  
Anywhere else in U. S.  
Overseas to service men with APO number



# BARGAIN of the MONTH



Your Choice

26 or 33 Gal. Size

NOW JUST **377** Pack

**Plastic TRASH BAGS**  
A strong, dependable sack of all trades that's ideal for spring cleaning chores indoors and out—including lawn cleanup, clothing storage, more. Choose 60 trash bags in 26 gallon size, or 40 bags in roomy 33 gallon size—all with strong side seals for more durability. Handy twist ties included. NF330/196

QUANTITIES LIMITED

OPEN 9-6 MONDAY-FRIDAY, 9-4 SAT. OIL FIELD SUPPLY OPEN 6 A.M.

**HANDY HARDWARE**  
& OIL FIELD SUPPLIES

213 E. Main Dial 3036

# WE'RE 100 PCT.

In Support of

## THE HOSPITAL PROPOSAL

at

Post Insurance Agency and Harold Lucas Motors

Harold Lucas  
Myra Cooper  
Joe Farmer  
Hugh T. Floyd  
Mike Krueger  
Jimmy Lott  
Jesse J. Young  
Robert Williams  
Trey W. Holton  
Jay Cook  
Hobbs Grayson  
Delaine Robinson  
Don Harton  
Lena Sims  
Kennis Dietrich

Pol. Adv. Paid for by Harold Lucas

# Floydada Livestock Sales Co.

DIAL 806-983-2153

Sale Every Wednesday—10 A.M.



John McCandless, Owner  
Call 806-347-2845, Matador

Don McCandless, Manager  
Call 806-983-2153, Floydada

All Buyers and Consigners Welcome!

# Your Hospital Support Means NOTHING ---Unless You Go To The Library and VOTE Saturday!

Pol. Adv. Paid for by



Bryan Williams & Son



# WE SUPPORT KEEPING OUR COMMUNITY HOSPITAL

## BY VOTING TO INCREASE TAX LIMIT FROM 25¢ TO 75¢

Pedro O. Torres  
Raquel Collazo  
Jack Alexander  
Boo Olson  
Julian Smith  
Carl Cedarholm  
Fred J. Perkins  
Curtis E. Hudman  
Jim Cornish  
G. C. McCrary  
Jimmie Bartlett  
Charles K. Odom  
Virgil Stone  
Mrs. Ethyl Feagin  
Myrtle Ashley  
Pearl Storie  
Doll Hair  
Charlene Nelson  
Estelle Davis  
Cathy Howell  
Joy Dickson  
Jimmy Matthias  
Raymond Young  
Mrs. Hap Perrin  
Mrs. J. W. Willis  
J. H. Bartlett  
Mrs. Edwin Lewis  
Chester Keeton  
Enid Gossett  
Vada Clary  
Agnes Welch  
Betty Boren  
Bernice Smith  
Helen Gerner  
G. C. Bruster  
Eva Browning  
Rev. Thomas E. Pass  
Suzanne S. Pass  
Wanda Mitchell  
Bryan Williams  
Mary Prather  
Rex Prather  
Lonnie Gene Peel  
Mr. & Mrs. Bob Terry  
Karl Hall  
Mr. & Mrs. Larry Waldrip  
Elton & Mary Lee  
Jane Odom  
Josie E. Ray  
Wilson D. Williams  
Lucile McBride  
Rosie Collins  
Tim Pettyjohn  
Robert Greathouse  
Annie V. Gilbert  
Kate Morrel  
Helen Blevens  
O. V. McMahon  
Mrs. Elizabeth Huffman  
Inez Capps  
Tom Middleton  
Bessie Boren  
Callie Harper  
Olin Looney  
Irene Mitchell  
Rev. Richard Harrison  
Jack Clinesmith  
Wilma Yarbro  
Sherril Riedel  
Maxine Cummings & J. O.  
Mrs. Keith Little  
Virgil Bilbo  
Tommy Hines  
Alma Bland  
W. B. Sanders  
Joe R. Medina  
Donna Lett  
Burton Yarbro  
Olivia Salinas  
Eleanor McCrary  
Blanche Stewart  
Della Carlton  
J. A. Smith  
Lee Chance  
E. Rodriguez  
J. R. Brincefield  
A. L. Warren  
Wilma Johnston  
Sue Trammell  
Jimmy Hodges  
Bonnie Tyler  
Johnny Kemp  
Emily Esparza  
Kenneth Williams  
Nancy Macy  
Christy Davis  
Pearl Polk  
Jerry J. Riedel  
Betty Striblin  
Ethel Bales  
June Kiker  
Mabel Dunlap

Mike Smith  
Jessie Collazo, Jr.  
Rev. & Mrs. Conrad Ryan  
Grant Lott  
Lewis Herron  
James W. Mitchell III  
Russel Bauer  
Maxine & Lou Marks  
James W. Mitchell  
Syd Conner  
Lee & Marsha Noman  
R. B. Perrin  
Esmer Stone  
Mrs. Z. E. Feagin  
Bill Bartlett  
Ruth Duckworth  
Nita Burress  
Violet Howell  
Linda Malouf  
Ann Altman  
Mrs. T. L. Jones  
Phyllis Maddox  
J. E. & Anna Sinclair  
Winnie Henderson  
Ted Williams  
Maudie Pettigrew  
Edwin Lewis  
Betty Posey  
Carolyn Strawn  
Hallie Caylor  
Tammie Woods  
Jewell B. Reed  
Billy Stovall  
Ella Bruster  
Nathan Little  
Eddie Capps  
Lester Josey  
Dan Greer  
Mike Mitchell  
Minnie Williams  
Kent Carlisle  
Dennis Hill  
Mr. & Mrs. Bob Macy  
Mr. & Mrs. Lloyd Mock  
Richard Dudley  
George Nelson  
Dennis Odom  
John M. Waldrip  
Felix Rosas  
Lorena Benham  
Mrs. Raymundo Lopez  
Jerry Morris  
Mrs. J. D. Pruitt  
Gloria Abraham  
Hettie Dudgeon  
Frances Benham  
Minnie Johnston  
Mrs. O. V. McMahon  
Adela Menchaca  
Bernice Whitehead  
Sue Maxey  
Mrs. Flavio Reyes  
Doris J. Hughes  
Mrs. Willie Goodgion  
Betty Looney  
Judy W. Seals  
Mrs. Bill Lentz  
Cruz Agueras  
Ricardo Gomez  
Beulah Eilenberger  
F. K. Keaton  
Mrs. Charles Tate  
Brenda Hines  
Sybil Cockrum  
Frances Williams  
Margaret Hart  
Jo Ann Guthrie  
Fannie Lou Richards  
Ida Jones  
Johannie Andrus  
Mary Baldree  
Ricky Bush  
Mrs. Mike Martinez  
Mary Gulton  
Rena Reed  
Marietta Pruitt  
Pauline Clinesmith  
Eula B. Smith  
Verna Harrison  
Robert Harvick  
Syon Nichols  
Daymon Statfs  
Glen Barley  
Isabel Soto  
Carolyn Williams  
Fr. Jim O'Connor  
Eula Stone  
Larry D. Johnson  
Cleatus Rhodes  
Essie Nelson  
Kelsie Nowell  
Daisy Britton

Mrs. Prudencia Basquez  
I. Morales  
L. C. McMinn  
Velma Warren  
Billie Jo Idell  
Thelma Thomas  
Ethel Redman  
Mrs. E. R. Moreland  
Tiny Bullock  
Delores F. Osby  
Willie Scarborough  
Eddie Jo Miller  
Helen Moore  
Consuelo Thuet  
Shirley McMeans  
Leatha Cedarholm  
Jimmie Hudman  
Mrs. D. H. Bartlett  
M. Hester  
Lola Pennington  
David Rogers  
Jesusa Veloz  
Mrs. Harold Voss  
D. O. Robinson  
B. L. Thomas  
Molly Conaly  
Patty Haldeberg  
Dan Hodges  
Jeri Lott  
B. F. Evans  
Clarence Williams, Jr.  
Bill Lentz  
Delwin Fluit  
Joy Bird  
Ruth Young  
W. D. Livingston  
W. W. Johnson  
Louis Martinez, Jr.  
Dianna Collier  
Ann Bratcher  
Royce Hart  
James Dye  
Ruby Williams  
Zoe Kirkpatrick  
Johnny Johnson  
Tommy Young  
Dan Payne  
M. R. Henry  
Thelma Mason  
John Kacurek  
VI Terry  
Theona E. Josey  
Mrs. Ira Farmer  
F. F. Keaton  
Harry A. Tubbs, M. D.  
Minnie Johnston  
Opal Montgomery  
Leona Mickey  
Kathie Rankin  
Sarah E. Shedd  
Betty Newberry  
Bonnie McMahon  
Madie Johnson  
Mike Beard  
Mr. & Mrs. Burney Francis  
Henry Wheatley  
Mrs. Fred Gossett  
Marilyn Williams  
Winnie Tuffing  
Pearl Nance  
Lillie Longshore  
Lloyd T. Boren  
R. A. Jackson  
Mr. & Mrs. Herbert Pantaja  
Dessie Duran  
Mrs. Dee Justice  
Mrs. W. C. Wilson  
Mrs. Joe McCowen  
Julia Hudman  
Nelda Leake  
Mrs. Sammie Palmer  
Mrs. Russell Bauer  
Lola Childs  
Bernice Hays  
Chris Horn  
Mrs. James Morris  
Winnie Horrell  
James Whitten  
Rene Mason  
Brenda Angerer  
Edna Trull  
Dr. & Mrs. A. C. Surman  
Tina Greene  
Mrs. David Newby  
Laura H. Holly  
Mrs. Lewis Ammons  
Patty Kirkpatrick  
Nancy Childers  
Glenda Morrow  
Garland Davies  
H. H. Hudman  
Lindford Roy Warren

Marilyn Williams  
Josefine Ramirez  
Ruth Ann Young  
Mrs. Roy Stewart  
William C. Wilson, M. D.  
Mary Nell Holly  
Mrs. Perry Husaker  
Sherry Compton  
Mrs. E. H. Grant  
Jewell King  
Mr. & Mrs. Royce Hart  
Sandra Martinez  
Mrs. Clyde Haynes  
Rickey Redman  
Mrs. Jim Parker & Jan  
Ralph Gregg  
W. W. Johnson  
Sara Whitley  
Mr. & Mrs. Ron Wharton  
Lewis O. Holly  
Laveta Norman  
Louise Pierce  
Edith Ramsey  
Stonewall Jefferson  
Jo Thomas  
Laura Mason  
Pauline & Ed Warren  
Tina McAllister  
Jay B. Parker  
John F. Lott, Jr.  
Jaynie Dickson  
Nadyne Morrow  
Maurine Hudman  
Allen Burns  
Lewis Mason  
Verle Brown  
Bessie Harton  
Sue Allison  
Rex Allison  
Linda Alaniz  
Henry Etta Cause, Jr.  
Mrs. Billy Williams  
Wayne Thomas  
Tony Harmon  
Johnny Johnson  
V. M. Stone  
Rosa Elva Gonzales  
Mrs. Elmer Hill  
Marion Lee Minor  
Mr. & Mrs. Joe W. Moore  
Nell Yates  
Yvonne Felix  
Lee Ann Ray  
Charles C. Murray  
Mrs. R. M. Thomas  
Mrs. Viva Davis  
Helen Richards  
Kathy Gilmore  
Malachi Mitchell, Sr.  
Verna Roberts  
Vera Burkes  
Mrs. & Mrs. Monroe Lane  
Gay Britton  
Jack Alexander  
Mrs. Stanley Butler  
Mrs. Fred Gossett  
Marilyn Williams  
Winnie Tuffing  
Pearl Nance  
Lillie Longshore  
Lloyd T. Boren  
R. A. Jackson  
Mr. & Mrs. Herbert Pantaja  
Dessie Duran  
Mrs. Dee Justice  
Mrs. W. C. Wilson  
Mrs. Joe McCowen  
Julia Hudman  
Nelda Leake  
Mrs. Sammie Palmer  
Mrs. Russell Bauer  
Lola Childs  
Bernice Hays  
Chris Horn  
Mrs. James Morris  
Winnie Horrell  
James Whitten  
Rene Mason  
Brenda Angerer  
Edna Trull  
Dr. & Mrs. A. C. Surman  
Tina Greene  
Mrs. David Newby  
Laura H. Holly  
Mrs. Lewis Ammons  
Patty Kirkpatrick  
Nancy Childers  
Glenda Morrow  
Garland Davies  
H. H. Hudman  
Lindford Roy Warren

Mrs. Thomas Lewis  
Larry Moore  
Bibb & Charles Benson  
Marvin Idell  
Brenda Farris  
Jo Ella Sparlin  
Melvin Williams  
Artie Baxter  
Mrs. Phil Boucher  
Bertha Printz  
Elmo Bush  
Jan Elliott  
Rena Ferguson  
Fisher Wynna  
Willie Mason  
Mr. & Mrs. E. J. Guber  
Marvin Hudman  
K. W. Kirkpatrick  
Mr. & Mrs. Wade Peppers  
Mrs. David Rogers  
Deborah B. Sneed  
Noma Soto  
Harold Voss  
Dennis Guichard  
A. C. Surman, M. D.  
Linda Waldrip  
Hoggy Heidelberg  
Lacey Lott  
Rabbi Guichard  
W. B. Sanders  
Rev. Gene Prevo  
Colleen Witt  
Jerry D. Osborne  
B. E. Young, D.D.S.  
Joy Greer  
Katherine Johnson  
Yvonne Hill  
R. B. Davidson  
Odessa Bell  
Mrs. Joe Abraham  
Albert Stone  
Charles Williams  
Jack Kirkpatrick  
James Dietrich  
Joyce Nelson  
Jim Pollard  
Carol Payne  
Mr. & Mrs. Gary Workman  
J. C. Steel  
Gladys Hendrix  
Valma Lee Lane  
G. H. Clanton  
Henry Key  
Willie Mae Dye  
Elberta Martin  
Charles Williams  
Mrs. J. W. Gray  
Lena Bland  
Drittha Shults  
Diann Guthrie  
Floyd Stanley  
Mrs. L. A. Presson  
Lucy Callis  
Glenn G. Voss  
Larry Harper  
Julia Mason  
M. Batts  
June Kiker  
A. L. Warren  
Ollie May Allen  
Bess Goffin  
Frank Soliz  
Charles & Debra Adams  
E. M. Woodard  
Ruby Woodard  
Edna Owen  
Lena Bland  
Ralph Welch  
Daniel Yarbro  
Jewell Long  
Sue Shyftles  
Cecilia Bosman  
Barbara Laws  
Maudie Pettigrew  
Melinda Krebs  
J. B. Mohler  
Mr. & Mrs. Garland Davies  
John C. Boren  
Bonnie Taylor  
Doyle Shumard  
Mrs. Pat Ayala  
Racy Robinson  
Mrs. Avery Moore, Jr.  
John D. McConless  
Josefine Ramirez  
E. E. Ford  
Ted Brannon  
Noah Stone  
William Bevins  
L. C. Brown  
Dorrie Howell

Mrs. Angelita Morales  
Mrs. Luis Trevino  
Ida Wheatley  
Valarie Zachary  
Joann Blacklock  
Esther Barlow  
Lola Knowles  
Mrs. Charles A. Morris  
H. S. Park  
Jim Wells  
C. N. Chandler  
Dwayne Capps  
Mary Richardson  
Mrs. J. B. Jones  
Paul Duren  
Mrs. W. W. Johnson  
Ray Gilmore  
Mr. & Mrs. Charles Morris  
Mrs. Henry E. Hunter  
Jacquelyn Lester  
Marita Jackson  
J. S. Pierce  
Clara Jefferson  
Faye Gregg  
Arlene Wyatt  
Laverne Jones  
Socorro Storie  
Pee Wee Pierce  
Gwen Boren  
Vivian Anderson  
H. A. Winkler  
Sam Sanders  
Don Ammons  
Buran Matthews  
Mrs. Verle Brown  
Della Horton  
Pate Allison  
Ruth Lawson Whitley  
Eva Gonzales  
Eric Allison  
Mr. & Mrs. John Redman  
Debra Bradford  
Mrs. Jimmy Jones  
Cara L. Smith  
Clarice Jackson  
Leroy Demming  
Hope Robinson  
Ernestine Wynne  
Mrs. Betty Steely  
Bud Yates  
Hardy Parker  
Shirley Williams  
Mrs. Howard Teaff  
Susie Sato  
Bobby & Carol Waters  
Levi Williams  
Fred Bobb  
Mozella Mitchell  
D. C. Roberts  
Mrs. Larry Willard  
Helen Hubble  
Steve Cooper  
Judy Broward  
Sandra Alexander  
Wanda Resendez  
Mrs. Larry Hadderton  
Mrs. J. W. Potts  
Gwen Boren  
Dale Nichols  
Kim Britton  
Ruth Ann Newby  
Bob & Mattie Callier  
Earl Rogers  
Sammie Palmer  
Sam Horton  
David Newby  
Jennifer Wilson  
Edna Oden  
Cleo Rogers  
Joe Barnes  
Charlene Hill  
Janet Peel  
Marvin Williams  
Dwayne Capps  
Mr. & Mrs. Delbert Ruff  
Billy Williams  
Joseph E. Yates  
Bessie Strawn  
Angelita Rosas  
Mrs. Elmo Bush  
Mrs. Cecil Johnson  
Richard Howarth  
B. F. Evans  
Nona Smith  
Rosa Boucher  
Mrs. Alford Martin  
Mrs. Joyce Odom  
Jeanette Bell  
Mrs. Tom Middleton  
Floyd Whitehead  
Donna Worley

Faye Horton  
Mr. Luis Trevino  
Lucia Pena  
Annie McMinn  
Clarence Warren  
Jessie Boren  
Selma Lovelass  
Mr. & Mrs. Jess Tyro  
E. R. Moreland  
Mrs. Bill Gandy  
R. Cruise  
Arville Ferguson  
Ruth Perkins  
Henry E. Hunter  
Mickey McMeans  
Irene Fry  
Barbara Ethridge  
Tom Gates  
Mrs. G. C. McCrary  
Munah J. Hester  
J. B. Robinson  
Bonnie McMahon  
Rickey Farris  
Larry Willard  
Kay Lamb  
Mozelle E. Rogers  
Terry Patterson  
Martha Compton  
Lee Ann Hodges  
Ray Bagby  
J. G. Stewart  
Cecil M. Foster, Jr.  
Carnie Lentz  
R. M. Gregg  
Sharon Morris  
Garland Davies  
Helen Livingston  
Jerry Johnson  
Doris Lucas  
Mrs. Louis Martinez  
Mrs. Pete Castillo  
J. W. Gray  
Linda Dye  
Louise Dietrich  
Troy Nielson  
T. D. Craft  
Giles and Nell Dalby  
Fay Henry  
Thomas Mason  
Joann Kouruk  
Nettie Boren  
Annie Laurie Francis  
Gracie Hodges  
Bobbie Tubbs  
Grace Keaton  
Evelyn Neff  
Leo Mott  
Estelle Samson  
Nona L. Smith  
Dan H. Rankin  
Elizabeth Duncan  
Billy Hahn  
Pearl Taylor  
Jane Mason  
Frank Mullings  
Della Tizer  
Mrs. Jack Kirkpatrick  
Ruth McAfee  
Matt Allison  
Wynette Smith  
Henrietta Cruise, Sr.  
Mrs. Dick Cravy  
Leta Davies  
Mrs. J. B. Cole  
Marcy Lee Demming  
Dave Iles  
Hubert Green  
John Stealy  
Joe C. Hackett  
Saffa Martinez  
Lorene Shepherd  
Vesta Reece  
Catalina Villa  
Mrs. Ralph Dean  
George Barker  
Rebecca Bobb  
George & Barbara Reece  
Mrs. B. E. Young  
Mrs. Rex Welch  
Evanne Sapp  
Wynelle F. Craft  
C. J. Brownlow  
Mrs. Lewis C. Herron  
Mrs. L. A. Barrow  
Mrs. John Tudbury III  
Shirley Hays  
Mr. Mason McClellan  
Willie B. Sullivan  
Carolyn Worley  
John & Mary Alexander  
O. V. McMahon  
Mrs. O. V. McMahon  
Ron Wharton

# Be Sure to Vote Saturday at Post Library

(Pol. Adv. Paid for by Volunteer Committee to Save Hospital, Giles McCrary and Larry Willard, co chairmen)

# PLACE A CLASSIFIED AD QUICKLY...EASILY...JUST PHONE 495-2816

**WANT AD RATES**  
 First Insertion per Word .....3c  
 Consecutive Insertions  
 per Word .....4c  
 Minimum Ad, 15 Words .....75c  
 Brief Card of Thanks .....1.25

## Garage Sales

**YARD SALE:** More merchandise added. All merchandise extremely low priced. Sunday, April 3, 12 - 4. J. W. Gray family, 811 West 12th St. ttp 3-31

**PORCH SALE:** Thursday 9 till 7 609 West 5th. ttp 3-31

**HOUSE AND YARD SALE:** Thursday, Friday, Saturday. Furniture, tires, two room house, one lot, 1972 Plymouth 4 dr. 714 West 10th St. Phone 495-2206. ttp 3-31

**GARAGE SALE:** Young people of Temple Baptist Church, 507 West 8th. Saturday 1-6. ttp 3-31

**YARD SALE:** Thursday 9 a. m. to 5 p. m., Friday 9 a. m. to 12 noon. Junior clothes, odds and ends. Two miles on Lubbock Highway, two story house. ttp 3-31

**PORCH SALE:** Miscellaneous, Thursday afternoon, all day Friday and Saturday, 515 West 13th. ttp 3-31

**GARAGE SALE:** Three family garage sale Saturday 9 a. m. to 5 p. m. 905 West 13th St. ttp 3-31

**PORCH SALE:** Friday and Saturday. Clothes, household items, 707 West 12th. ttp 3-31

## Real Estate

**FARM FOR SALE:** 81 1/2 acres in Gonzales County in south Texas, Gonzales, Tex., for more information call 495-3677 until noon. ttp 3-24

**HOUSE FOR SALE:** Two story, eight rooms, 1 1/2 baths, 314 West 10th. Call 2532 after 5 p. m. ttp 3-24

**FOR SALE:** Fay's Construction building, Sandpeg Craft Shop. Also land they are on, \$9,000. Call 3012 or 3037. ttp 2-10

24.68 acres 10 miles from Leakey in Hill Country \$350 per acre. \$200.00 down balance 15 years at 4% percent. Owner financing. Immediate possession for good hunting. Call Edgar Real Estate 232-5282. Night 232-6643. ttp 3-31

**Expert SHOE REPAIR**



**GEORGE'S BOOT & SHOE REPAIR**  
 In Rock House on FM 207 ttp 3-31

## For Sale

**FOR SALE:** Roadrunner, 24 foot motorhome with four sleeping compartments. Excellent condition. Jim Jackson. ttp 3-23

**FOR SALE:** 350 Honda, good condition, low mileage. Call 3245 days and 2682 nights. ttp 3-23

**HEATERS:** Good used furniture, refrigerators, cookstoves, new wood vanities, dog houses, bicycles, and antiques. Ted's Trading Post, 1205 S. 9th. Slaton, phone 828-6820. ttp 12-9

**MR. FARMER-RANCHER** Need Veterinary Supplies and Vaccines? See Bob, West Saddle Shop ttp 10-7

**FOR ALL:** Your lawnmower and bike sales and service, new or used, contact Wilkins Lawnmower & Bike Shop, 640 S. 9th, Slaton. ttp 3-24

**BUY NEW Poulin chain saw** and get year's saw chain sharpening free at Wilkins Lawnmower & Bike Shop, 640 S. 9th, Slaton. See us for chain saw sharpening. ttp 3-24

**FOR SALE:** 1973 Chevrolet 1/2 ton, Cheyenne Super. Call 3384 after 2 p. m. ttp 3-31

**FOR SALE:** 73 Chev. Custom Delux pickup. \$2,500 or best offer. Inquire at 514 West 14th between 3 p. m. and 6 p. m. Good condition. ttp 3-24

**FOR SALE:** Two pair of Barbadoe sheep, one year old. Call 495-2967. ttp 3-24

**FOR SALE:** AKC Registered female German Shepherd puppies, three months \$50. Call 495-2503 after 5 p. m. ttp 3-24

**FOR SALE:** 1975 Mobile home, take up payments \$122.03, unfurnished, skirted, anchored. See 502 West 13th or call 495-2503 after 5 p. m. ttp 3-24

**FOR SALE:** Glasstron 15' boat, 40 horse Johnson motor, little dude trailer, complete \$1000. Excellent condition. Call 327-5562. ttp 3-24

**FOR SALE:** Triumph Spitfire four 1972 model. Excellent condition. Call 327-5562. ttp 3-24

**FOR SALE:** Antique desk, wood dinette and buffet. Sears side by side copertone with ice maker, two gas heaters, two refrigerated air conditioners. 1976 Honda MR 175. Call 495-3260. ttp 3-31

**FOR SALE:** Pool table, baby high chair, play pen and coffee table. Call 495-2408. ttp 3-31

**FOR SALE:** 12 foot all aluminum boat, three seats. 495-2766. ttp 3-31

**FOR SALE:** Miniture dachshund pup and mini-bike. Dial 495-3390. ttp 3-31

## Card of Thanks

I would like to express my sincere thanks to everyone who has been so nice to me after my accident and while I was in the hospital. The telephone calls, the cards and letters and the beautiful flowers sent to me. Everyone has been so wonderful and you will always be remembered.  
 Wilma Stone

We want to take this opportunity to thank everyone for their gifts and cards while Amanda was in the hospital. A special thank you to Graham Methodist and Graham Church of Christ for their gifts. Knowing that the thoughts and prayers of friends were with us gave us much needed support and comfort. Thank you all again and God bless you.  
 Ricky and Billye Bush  
 Megan, Joshua and Amanda

We want to thank each and everyone who helped the Verbena Community with the Heart Fund Drive, especially the musicians and the demonstration Zoe Kirkpatrick and Kathi Rankin gave on Resuscitation. Your support was greatly appreciated.  
 The Verbena Community

## Wanted

**LET US COPY and restore** your valuable family portraits. See Edmund Finney, 1604 Main Street, Tahoka, Texas. Phone 806-998-4142. ttp 5-20

**DEALERS WANTED** for self-service gas station. Good location. Opportunity to run your own business. For details come by 504 South Broadway or call 495-9914. ttp 3-10

**Steam Carpet Cleaning.** For free estimates on carpet cleaning call 495-3213. Royal Carpet Cleaning. ttp 1-15

**INSURANCE SALES** People who want to make \$100.00 or better a day with an international company. Have good car. Opportunity and merit promotions. For interview send brief resume including telephone number to Box 10. Equal Opportunity Employer. ttp 3-24

**TOM AND JAY Fix-it shop.** We clean and repair air conditioners, lawn mowers, small appliances, keys made, locks repaired, complete sharpening service. Shop in alley 414 West 12th St. Telephone 3745. Tom Harmon - Jay Foster. ttp 3-24

## Miscellaneous

**HAVE AN EMPTY BASKET** hanging around the house? Get ole Bob to plant something in it for you and have it ready for spring. He's at the greenhouse every morning except in the event of a marrying or a burying or a chug-a-lug contest, or call Bob Hudman, 495-2377 evenings for appointments. ttp 3-10

**STANDARD and Parallel** terraces, diversion waterways. Call Glenn Phillips, 495-2985, Box 191, Post after 5 p. m. ttp 3-4

**BOOT & SADDLE REPAIRS** New and Used Saddles. Bob West Saddle Shop. 4 1/2 MI. SW of Post. 195-3143. ttp 10-7

**Post Lodge No. 1058 A. F. & A. M.** Regular Meeting on Second Thursday. Bob Dickson, W.M., Paul Jones, Sect. ttp 3-31

## Legal

**CITATION BY PUBLICATION THE STATE OF TEXAS TO:** Franklin Wayne Howerly GREETING:

You are commanded to appear by filing a written answer to the plaintiff's petition at or before 10 o'clock A.M. of the first Monday after the expiration of 42 days from the date of issuance of this Citation, the same being Monday the 2nd day of May, A.D., 1977, at or before 10 o'clock A.M. before the Honorable District Court of Garza County, at the Court House in Post, Texas. Said plaintiff's petition was filed on the 4 day of March, 1977. The file number of said suit being No. 3272.

The names of the parties in said suit are Alta Alvina Howerly as Petitioner, and Franklin Wayne Howerly as Respondent. The nature of said suit being substantially as follows, to wit: Suit for Divorce.

If this Citation is not served within 90 days after the date of its issuance, it shall be returned unserved. Issued this 17th day of March A.D. 1977.

Given under my hand and seal of said Court, at Office in Post Texas, this 17th day of March A.D., 1977.  
 Carl Cederholm, Clerk District Court, Garza County, Texas ttp 3-24

## For Rent

**FOUR VACANCIES** at Twin Cedar Nursing Home. ttp 3-17

**TRAILER SPACES** available at Five G's Trailer Park. Call 3379 or 3204. ttp 3-17

**FOR RENT:** Three trailer spaces. Inquire at Jackson's Cafeteria. ttp 5-1

## Public Notice

### WEIGHT REDUCTION PROGRAM

Record weight loss of 10-29 pounds, first month. Money back guarantee. No drugs, no fads. Doctor approved. This program satisfies the appetite and eliminates the nervousness and irritability which is a trademark of dieters. For information call Odella Bevers, 806-629-4247. ttp 3-10

**LAWN MOWER Repair,** lawn mowing, bicycle repair. Call 495-2739, 311 N. Ave. H. ttp 3-31

## Help Wanted

**TRUCK DRIVERS** and sand and gravel plant operators wanted. Apply A-Rock Materials, southeast of Slaton or call 745-6734. ttp 3-24

**HELP WANTED:** Male, 16 years old or older to help load truck full-time. Inquire at Cal-Maine Foods Inc. 996-5353 or 828-5601. ttp 3-31

## Lost and Found

**LOST:** Small, white wire-haired terrier with brown head and smoke marks on either side, wearing red collar. Missing since Sunday. Call 3409. ttp 3-31

**LOST:** A white with light red-blonde markings female Pomeranian dog near Holly's Drive-In and the City Park. She answers to the name of Sally and also has unusual and distinct markings. Reward offered. Owner, Charlene Nelson, Call Ollie Cooper 495-2307.

## Maintenance is vital in vegetable garden

**COLLEGE STATION** — Once you've started a vegetable garden, general maintenance practices should not be overlooked, says Sam Cotner, horticulturist with the Texas Agricultural Extension Service.

When your vegetable seedlings are established, they must compete with weeds and among themselves for survival. When you plant too many seeds, you may have to thin your seedlings to insure a proper stand.

"Don't be discouraged by having to destroy some of your vegetables. Some plants may be transplanted from spots which are too thick to fill in missing plants. Crops such as onions, peppers, eggplant and tomatoes are most successful when transplanted," points out Cotner.

When thinning crops like cucumbers, squash or okra, it's better to pinch or cut off the unwanted plants than to uproot them. Pulling them up may damage the roots of plants you wish to keep, notes the horticulturist.

"Also, give attention to fertilization," says Cotner. Root and leafy green crops require large amounts of nitrogen. Put sidedressings of nitrogen on these plants of one to two pounds of ammonium sulfate per 100 feet of row. Harvesting mustard and turnip greens signals the proper time for a sidedressing. By carefully applying nitrogen after harvesting these crops, you can get regrowth from the same plants. Crops like tomatoes and okra may require sidedressing with a complete fertilizer — one which supplies nitrogen, phosphorus and potash. Use two to three pounds of a fertilizer such as 10-10-10 per 100 feet of row.



**AT BIRTHDAY PARTY** — Mrs. G. W. (Granny) McAlister with a birthday corsage is pictured enjoying her 90th birthday party Sunday with friends.

## Granny Mac McAlister enjoys 90th birthday

Sunday was a special day for Mrs. G. W. "Granny Mac" McAlister as she was honored with a celebration on her 90th birthday by her children, relatives and friends.

Granny Mac, as she is commonly referred to, was born March 27, 1887 in Bonham, Tex., and has been a resident of Post since 1944.

Seven of her 11 children were present for the occasion. They were Mrs. Daisy Melton, Fort Worth; Clyde McAlister, San Angelo; Harrison McAlister, Electra; Paul McAlister, Clovis, N. M.; Verdie Slater, Post; A. J. McAlister, Post and Mrs. Fay Kuykendall, Lampasas.

Brothers and sisters joining the celebration were: Glover of Clovis, N. M.; Glover of Quanah and Flora Dunagin of Littlefield. Also 14 grandchildren, 20 great-grandchildren, one great-great-grandchild.

**Man to friend in restaurant,** the service here is so terrible, but the food is so bad, you don't mind the wait. **LENNO**

**Heating-Air-Conditioning-Sheet Metal**  
**The Weather Doctors**  
 Residential & Commercial  
 WILSON, TEXAS 828-2161  
 Message Service Slaton, Tex. 828-5265

**DIAL 3322**  
**Hospital Election Center**  
 9 A.M. TO 5 P.M. ALL NEXT WEEK BEGINNING MONDAY FOR ANSWERS TO ANY QUESTIONS YOU HAVE ON HOSPITAL TAX ISSUE.

**OPEN 24 HOURS**

# ALLSUP'S

**CONVENIENCE STORES**

**SHOP THE FRIENDLY, CONVENIENT ALLSUP'S STORE NEAR YOU!**

**FOX PIZZAS** FROZEN HAMBURGER OR SAUSAGE 1 1/2 OZ. PNB. **69c**

**B-B-Q BEEF SANDWICHES** EACH **49c**

**KRISPY Crackers** 1 LB. **59c**

**GOLD MEDAL FLOUR** 5 LBS. **49c**

**VAN CAMP 16 OZ. Pork & Beans**..... **5/\$1**

**MARYLAND CLUB COFFEE**..... LB. **\$2.39**

**ICE CREAM** BORDEN'S PREMIUM 1/2 GAL. HD. CTN. **\$1.09**

**BUTTERMILK** 2 BORDEN'S QUART CARTONS **79c**

**SHURFINE PITTED Cherries**..... 16 OZ. **49c**

**SHURFINE Sweet Peas**..... 16 OZ. **5/\$1**

**SHURFINE Peanut Butter** 18 OZ. **49c**

**WILSON BACON**..... LB. **\$1.29**

**Morton's Potato Chips** BORDEN'S - FLAV BARRICUE OR WAVES REG. 6 1/2" SIZE TWIN PACK **69c**

**CHOCOLATE OR GLAZED DONUTS**..... DOZ. **99c**

419 EAST MAIN 13TH & BROADWAY

**Save!** with Farm Bureau's **SAFEMARK TIRES**



**PASSENGER TIRE** Premium 4-ply Nylon low profile wrap-around tread design.

**FARM TRUCK SPECIAL** Mud & Snow premium tube type Nylon 6-ply rating.

**HIGHWAY TRUCK TIRE** First line nylon — available in all sizes and ply ratings.

TIRES ALSO AVAILABLE FOR FARM TRACTORS & IMPLEMENTS.

Exclusively for Farm Bureau Members  
 FOR ADDITIONAL INFORMATION CONTACT **TERRY TIRE SHOP**  
 110 N. Broadway Dial 3671

**Please Go VOTE Saturday On Hospital Issue**

**Lott's WHITE'S Auto**



MRS. RANDY FOOTE (Nedra Myers)

## Nedra Myers, Randy Foote wed in Phoenix

Nedra Myers and Randy Foote exchanged wedding vows recently in Phoenix, Ariz. Parents of the bride are Jerry Dan of Phoenix and Ned Myers of Southland. Presented in marriage by her father, the bride wore a formal gown of white jersey designed by empire lines. The bridal gown was of French illusion and she wore a Camelot cap of seed pearls and daisies. She carried a white prayer book belonging to her aunt, Kelly Jo Myers of El Paso and a bouquet of apricot and yellow flowers.

Attending the wedding from Post was Mrs. Jack Myers, grandmother of the bride, and Ned Myers of Southland. The couple are making their home in Phoenix.

### Shower honors Mrs. Mitchell

A layette shower honored Mrs. Randy Mitchell Tuesday, March 15 in the home of Mrs. Jack Gordon.

Approximately 30 guests registered between the hours of 7:30 and 9 p. m.

Special guest for the occasion was the honoree's mother, Mrs. Albert Stegall of Borger.

Yellow and green decorations were carried out on the serving table.

Hostesses were Meses. Jack Gordon, Charles McCook, Robert Feagin, Brad Lott, Jim Strawn, Theona Josey, Del Juan Wilson and Royce Hart. Hostess gift was a baby stroller.

### Priscilla Club meets with Mrs. Epley

Mrs. Lawrence Epley was hostess to the Priscilla Club which met at her home Friday, March 25.

A social hour was enjoyed by nine members attending.

Refreshments were served to Anna Laura Francis, Thelma Lee Lane, Odie Kemp, Vi Terry, Nettie Barrow, Lillian Nance, Gladys Hendrix, Evelyn Neff and hostess Thelma Epley.

## McDonald-Mason vows read in Grassland

A candlelight ceremony was the setting for wedding vows exchanged between Janice Kay McDonald and Steven Dean Mason Saturday, March 26 at 7 p. m. in the First Church of the Nazarene of Grassland.

Parents of the couple are Mr. and Mrs. Bert McDonald and Mr. and Mrs. Gene Mason, all of Post.

Rev. Ed Porter, pastor, performed the double ring ceremony before an archway with greenery and pink carnations entwined. Two floral arrangements of greenery, white gladiolas and pink carnations were on either side of the archway and two candelabras flanked the arrangements. Pews were marked with white bows.

Presented in marriage by her father, the bride wore a formal length gown of sheer ivory organza and chantilly type lace. The dress featured a pinafore bodice overlaid with lace and pearls with tiny self fabric ruffles and lantern sleeves. The highrise waist line flared to a full circular hemline with a semi-cathedral train. The hemline was double edged in hand clipped chantilly lace combined with a full gathered self fabric ruffle. The veil was a bandeau headpiece of chantilly lace and pearls. The bridal bouquet was of pink carnations, red roses, baby's breath and fern greenery forming a cascade atop a satin covered Bible.

Carrying out the tradition of something new, was her dress; something old, her mother's wedding Bible; something borrowed, a six-piece; and something blue, her garter.

Miss Carla McCleskey of Wilton was maid of honor. Cathy Howell and Carolyn Strawn were bridesmaids. They were attired in formal length gowns of soft crepe. The low necklines and cuffs on the sleeves were edged in white lace. The maid of honor wore burgundy with matching hat and a pink satin ribbon, and the bridesmaids wore pink and matching hats and burgundy satin ribbons. They carried pink long stemmed roses.

Flower girl was Stacy Sims of Slaton, niece of the bridegroom. She wore a long dress fashioned

of soft burgundy crepe and carried an arrangement of pink and burgundy carnations in a white basket. Ring bearer was Brent McDonald, nephew of the bride of Post. He wore a three piece suit with a ruffled shirt and bow tie.

Best man was Randy Peel. Groomsmen were Joe Blacklock and Ken Forbes.

Candles were lighted by Carlene Murry of Tahoka and Jay Murray of Lubbock, both cousins of the bride.

Acting as ushers were Butch Pierce and Wayne McDonald, brother of the bride.

Traditional wedding music was provided by Mrs. Queda Couchfield of Lubbock, organist, who accompanied Mrs. Brenda McCleskey of Grassland as she sang "If... Together Forever" and "Whither Thou Goest."

Guests were registered by Donna Ammons.

Following the ceremony, a reception was held at the McDonald home. The bride's cake was decorated with pink roses and a fountain with pink water flowing. The groom's cake was chocolate with brown icing. Miss Dana Murray of Lubbock, cousin of the bride, served.

The bride is a 1976 graduate of Post High School. The groom is a 1973 graduate of Post High and is employed at KPOS.

Following a short wedding trip, the couple are residing in the Graham community.

### Club endorses hospital tax

The El Tejas Club voted unanimously to endorse the hospital tax increase when it met March 24 in the Reddy Room for a regular meeting.

A discussion was held as to the importance of the hospital to the members as young mothers in this community.

Following the business meeting, members spent the remainder of the meeting quilting.

Those attending the meeting were Donna Caughron, D'Linda Evans, Julie Hudman, Jan Hunter, Donna Lott, Nancy Wallace and guest, Vera Wartes.



MRS. STEVEN MASON (Janice McDonald)

### Program is on tole painting

Mrs. Faye Payton presented a program on "Tole Painting" when the Gamma Mu Sorority held its regular March meeting Monday night, March 28 in the Graham Community Center.

Members were shown materials needed for tole art, some of the basic steps and finished plaques and baskets.

The business meeting was conducted by Jane Mason in the

absence of Johnnie Norman.

It was voted to have a bake sale on May 7, Saturday before Mother's Day. In other business, Kathy Fluit was put in charge of finding a subject list for the sorority's scholarship to be presented in late May to a deserving high school graduate.

Hostess Orabeth White served refreshments of a frozen fruit dessert, fruit bread, olives, pimiento cheese crackers, and iced tea from a table covered with a strawberry designed cloth and an arrangement of strawberries in a ceramic urn.

Members attending the meeting were Sherry Crownover, Sharlot Sparlin, Jana McCallister, Irene Fry, Kathy Fluit, Helen Mason, Jane Mason, Julie Hudman and guest, Faye Payton.

Kathy Fluit won the door prize and Mrs. Payton was presented with a gift from the sorority. Both received glass vases with tiny floral arrangements inside.

### Club discusses hospital tax

Hospital tax increase and an urgent need of keeping our hospital was the topic of discussion at the Womens Culture Club meeting Wednesday, March 23, Jack Alexander, a hospital director was guest speaker.

Program title was "We Continue to Honor Texas Today."

Roll call was given and answered with "Why I Love Texas." Opal Pennell gave selections of "Twice Told Tales of Texas." Geraldine Ryan gave "Texas Yesterday."

Pearl Storie and Estelle Davis were hostesses for the day and served refreshments to Mrs. Ryan, Mrs. Tom Boucher, Ruth Duckworth, Maxine Marks, Lois Williams, Opal Pennell, Loree Thaxton, Joy Dickson, Ruby Kirkpatrick and one guest, Jack Alexander.

The next meeting is set for April 13 at the Woman's Club House.

## Graham gives shower honoring Jodi Norman

Miss Jodi Norman, bride-elect of Jerry Lawrence of Aspermont, was honored with a wedding shower at the Graham Community Center.

The Tuesday evening event was attended by approximately 75 guests who were registered by Miss Judy Norman, sister of the honoree.

Miss Norman is the daughter of Mr. and Mrs. Gerald Norman of the Graham Community.

The guests were greeted by

Mrs. Jack Lott, the honoree, her mother, and her grandmother, Mrs. Pauline Stell of Brownfield. Other special guests included her aunts, Mrs. Mary Lou Webb of Brownfield, Mrs. Mary Etta Fleming of Meadow, Mrs. Jim Norman, and a sister-in-law of the prospective bridegroom, Mrs. Polly Lawrence of Aspermont.

The bride's chosen colors of yellow, green and white were carried out in the decor of the center.

Sherbert punch, cookies, nuts and mints were served from a table covered in a green cloth. The table was centered with a large silver epergne featuring four long yellow tapers and an arrangement of fresh daisies, baby's breath and fern. A yellow ribbon tied in love knots was lettered with "Jodi and Jerry." Crystal appointments were used.

Assisting with the serving were Misses Jan Hall and Cindy Bird.

The hostesses presented the honoree with a vacuum cleaner. The hostess list included:

Mmes. Eddie Allen, Laverne Allen, Ada Lou Bird, Mattie Collier, Jerry Lott, Helen Mason, Janet Hall, Bonnie Tyler, Betty Bilbo, Glenda McClellan, Tommie Williams, Nona Lusk, Rene Fluit, Sue Maxey, Jane Mason, Orabeth White, Myrtle Peel, Glenda Stevens and Mary K. McDonald.

### Cancer chapter holds social

The local chapter of the American Cancer Crusade held a coffee, dessert social Tuesday night in the home of Mrs. Giles Dalby.

The social was held in lieu of the upcoming crusade which begins April 2.

Mr. Steve Schaeffer, district coordinator showed a film to those attending.

Mary Prather, president conducted a business meeting.

Reports on special events was presented by Mrs. Nell Dalby and educational chairman, Ruby Williams presented a report on local programs for the county.

Approximately 20 people attended the social.

### Trail Blazers in egg hunt

The Garza Trail Blazers held their semi-monthly luncheon March 24 in the community center.

Mrs. Ruby Kirkpatrick, vice president conducted the meeting in the absence of Rev. S. J. Bruton.

Following the luncheon, Rev. F. W. Rogers conducted the group in singing hymns, and was accompanied on the piano by Mrs. Rogers.

The physical fitness class was not held for this meeting, but an Easter Egg hunt was held.

Several members of the group played dominoes following the meeting. As has been announced the public is invited to come to the center on Wednesday afternoons for domino games.

### District THDA meet April 7

The district THDA meeting will be held Thursday, April 7 in Levelland.

All home demonstration club members who are planning to attend should meet at the courthouse at 8 a. m.

Delegates to the meeting are Maxine Marks, Louelle Morris and Hooter Terry.

Registration fee for the meeting is 75 cents.

Keynote speakers and workshops will be featured.

If anyone has any questions concerning the meeting, contact Paula Cawthon, county extension agent at the courthouse.

### Invitation Extended

Friends and relatives are invited to attend a housewarming for Mr. and Mrs. Bill McBride, April 2 from 7 to 9 p. m., at their home in Cedar Hills.

## For Your New Easter Outfit



jeanne durrell

Bright stripes over a white skirt with the smart detail of a scarf ring belt. 100 Pct. polyester in sizes 10-18. Style 1841.

Jac's  
220 E. Main



**APPROACHING MARRIAGE** — Mr. and Mrs. Edgar R. Brown of Dumas announce the approaching marriage of their daughter, Alyse, to Gary Wayne Ross of Post. Gary is the son of Carl R. Ross of Artesia, N. M. The wedding date has been set for April 16 in Dumas. Alyse is a 1970 graduate of Dumas High School and a 1975 graduate of Lubbock Christian College. She is currently employed with a law firm in Lubbock. Gary is a 1971 graduate of Artesia High School and a 1975 graduate of Lubbock Christian College. Gary is currently employed with the First National Bank of Post. Following the wedding, the couple will reside in Lubbock.

### Shower honors Kellye Williams

A miscellaneous wedding shower honored Miss Kellye Williams, bride-elect of Steve Cooper, Friday, March 25 from 7 to 9 p. m. in the home of Mrs. Giles Dalby.

The approximately 50 guests attending were registered by Mrs. Billye Bush, sister of the honoree.

Coffee, punch, cookies, nuts and mints were served by Jerri Lynn Blacklock and Sandra Bostick from a table featuring lalique swans and apricot gladiolas. The honoree's chosen colors of apricot, natural and brown were also carried out in the decor.

Special guests for the occasion were Mrs. Ted Williams, mother of the honoree, Mrs. Charlie Cooper, mother of the prospective bridegroom and Mrs. Ollie Cooper, grandmother of the bridegroom.

Hostesses for the occasion were Meses. Neida Dalby, Ruby Williams, Margie Johnson, Liz Vest, Gaynell Workman, Ginger Phillips, JoAnn Reed, Marion Wheatley, and Sharrin Morris. Hostess gift was silver.

24 Years Operating My Own Business...

27 Years of Activity in Community and Civic Affairs...

Lifetime Resident of Post...

QUALIFIES ME TO ASK

Your Support In My Candidacy For Your City Council

In the Municipal Election Saturday in City Hall

MAXINE MARKS

(Pol. Adv. Paid for by Maxine Marks)

DIAL 3322

Hospital Election Center

8 A.M. TO 5 P.M. ALL NEXT WEEK BEGINNING MONDAY FOR ANSWERS TO ANY QUESTIONS YOU HAVE ON HOSPITAL TAX ISSUE.

## Specials for EASTER

- Frills for girls all ages —newborn through 14
- Pants, shirts, vests and jackets for boys, 0 through Size 7
- Junior Size Dresses, 7-13
- Junior Sportswear, 3-13
- Ladies' Dresses, 8 thru 16
- 2, 3, 4-Pc. Pant Suits
- Bags, Scarves, Hose Sandals and Jewelry
- Also, Keds and Sandals for the Children

TERRY'S TOGS

222 E. Main

Dial 2705

**ANNOUNCING . . .**

QUANTITY RIGHTS RESERVED



PRICES GOOD THRU' APRIL 2ND

**UNITED**

**SUPER MARKETS**

**PLAY United's**

Over 31,080,000 S&H Green Stamps being given away!  
240,900 chances of winning!

No Purchase Necessary.  
**\$13,000 IN CASH!**  
**26 CHANCES OF WINNING \$500!**

**SPOT CHECK**

Come on in to United and pick up your Spot Check game piece and collector card . . . today! Shopping at United makes you a winner every purchase, every time . . . with high quality, low prices . . . and your regular S&H Green Stamps, for fabulous extra gifts — at no extra cost! (over 2800 quality-brand choices). Easy redemption too. Only United gives you such Total Shopping Value. And then some! Because we think you deserve the nicest "Thank You," we can give you

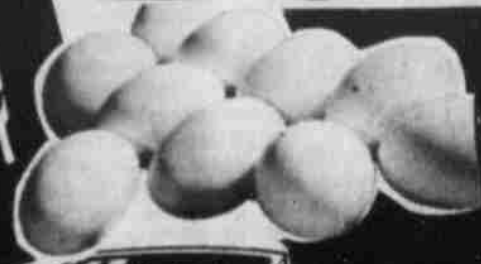


HUNT'S TOMATO  
**JUICE 49<sup>c</sup>**  
46 OZ. CAN

CASSEROLE PINTO BEANS  
No. 1 Colozardo  
**4 77<sup>c</sup>**  
LB. BAG

FINE FARE BATHROOM  
**TISSUE 59<sup>c</sup>**  
4 ROLL PACK

BETTY CROCKER LAYER  
**CAKE MIX 49<sup>c</sup>**  
ASSORTED FLAVORS  
BOX



<b>CORN</b>	FINE FARE WHOLE KERNEL OR CREAM STYLE	<b>4</b>	17 OZ. CANS
<b>BEANS</b>	FINE FARE	<b>4</b>	17 OZ. CANS
<b>BEANS</b>	PORK AND VAN CAMPS	<b>4</b>	15 OZ. CANS
<b>SPINACH</b>	FINE FARE	<b>4</b>	16 OZ. CANS

**UNITED GRADE A EXTRA LARGE EGGS 69<sup>c</sup>**  
DOZ

**GLADIOLA FLOUR 59<sup>c</sup>**  
5 LB. BAG

**"DAIRY CASE SPECIALS!"**  
**BELL WHIPPING CREAM 39<sup>c</sup>**  
8 OZ. CARTON

**BELL YOGURT 89<sup>c</sup>** 3 8 OZ. CTN  
**SOLID OLEO 28<sup>c</sup>** GOLD RIBBON 1 LB.

**POTATO CHIPS 59<sup>c</sup>**  
S&H GREEN STAMPS  
UNITED 9 OZ. PKG. REG. OR TWINS

**CUP-O NOODLES 49<sup>c</sup>**  
RICH 'N READY  
• SHRIMP • CHICKEN • BEEF 2.5 OZ. CRTN.

**DRINK 79<sup>c</sup>**  
GALLON JUG

**RUSSET ALL PURPOSE POTATOES 88<sup>c</sup>**  
10 LB. BAG



**FUERTE AVOCADOES 68<sup>c</sup>**  
3 FOR

**ARIZONA RUBY RED GRAPEFRUIT 25<sup>c</sup>**  
5 LB. BAG

**CABBAGE 59<sup>c</sup>**  
CRISP GREEN LB.

**CALIF. RED RIPE STRAWBERRIES 59<sup>c</sup>**  
PINT BASKET LB.

# BE A WINNER!

EXTRA S&H  
GREEN  
STAMPS  
ON-THE-  
SPOT!

## ON-THE-SPOT!

WIN 3 BIG WAYS! AT HOME!  
MILLIONS OF EXTRA STAMPS!  
\$500 IN CASH! 1 IN 10 TICKETS IS  
A WINNER!



GROUND  
**BEEF**  
FRESH FAMILY  
PACK  
LB. **68¢**

"USDA CHOICE OR UNITED'S TRU-TENDR!"

RANCH **STEAK** CENTER CUT 7-BONE CHUCK LB. **89¢**  
CUBED **STEAK** WASTE FREE BEEF LB. **\$1.69**  
SHOULDER **ROAST** BONELESS WASTE FREE LB. **98¢**

**1 ON-THE-SPOT**  
Scratch off the lucky numbers and win up to 500 Extra S&H Green Stamps!

**2 AT HOME**  
Match the attached letters to the spaces on your Play-at-Home collector card and win up to 100,000 Extra S&H Green Stamps!

**3 Easy! Exciting! Play-at-Home game!**  
**\$500 in cash**

ODDS ONLY EFFECTIVE MARCH 28, 1977

Prize Value	Instant Game	Spot Game	Total # Of Prizes	Odds 1 Visit	Odds 13 Visits
100,000 S&H Stamps	—	80	80	1 in 40,000	1 in 3,076
25,000 S&H Stamps	—	120	120	1 in 20,000	1 in 1,538
5,000 S&H Stamps	—	720	720	1 in 3,333	1 in 256
\$500	—	26	26	1 in 92,308	1 in 7,101
500 S&H Stamps	7,200	—	7,200	1 in 333	1 in 26
250 S&H Stamps	12,000	—	12,000	1 in 200	1 in 15
100 S&H Stamps	18,000	—	18,000	1 in 143	1 in 11
50 S&H Stamps	204,000	—	204,000	1 in 12	1 in 1
			240,026	1 in 10	1 in 1

\*These odds are in effect until one month after start. Updated odds will be printed in all participating stores and newspaper ads. When the total number of approved winners in any of the above 8 prize categories is achieved, then that specific prize category will be terminated without notice and any materials submitted for the specific prize category will be rejected.

DAK SLICED COOKED **HAM** 4 1/2 x 4 1/2 4 OZ. PKG. **89¢**



**CHUCK ROAST** BLADE CUT LB. **58¢**

EL-JEFE SHUCK WRAPPED **TAMALES** REGULAR OR JALAPENO 18 OZ. PKG. **\$1.09**



**TYSON CHICKEN WEINERS** 12 OZ. PKG. **39¢**

MUNCHER SUMMER **SAUSAGE** ARMOUR STAR LB. PKG. **\$1.49**  
MOORHEAD **SALAD** \*CHICKEN \*PIMENTO CHEESE \*JALAPENO CHEESE YOUR CHOICE 7 1/2 OZ. PKG. **79¢**

M & M's **CANDY** 16 OZ. BAG PEANUT OR PLAIN **\$1.29**  
"HEALTH AND BEAUTY AIDS!" **GLEEM** 7 OZ. TUBE **98¢**



ROSE MILK **LOTION** REG. \$1.88 12 OZ. **\$1.39**  
**SELSUN BLUE SHAMPOO** REG. \$3.99 12 OZ. **\$3.39**

**LYSOL SPRAY** 14 OZ. **\$1.39**  
**MOP & GLO BEACON FLOOR SHINE** 32 OZ. **\$1.49**

**FREE** JOHNSTONS FROZEN **PIES**  
26 OZ. CHERRY  
26 OZ. PEACH  
26 OZ. APPLE  
**BUY ONE AND GET ONE FREE!**

BIRDSEYE **CORN COB** ON THE 4 EAR PKG. **79¢**  
MORTON'S \*JELLY \*GLAZED \*CHOC. PKG. **DONUTS 49¢**

WE RESERVE THE RIGHT TO LIMIT QUANTITIES **U** PRICES GOOD THRU' APRIL 2ND

**UNITED SUPER MARKETS**  
WE GIVE S&H GREEN STAMPS

# Vote Saturday at Library to Keep Hospital Open!

(Pol. Adv. Paid for by Larry Willard)

## Wyatt, Davis shine in Lope track effort

Randall Wyatt in the half mile and Steve Davis in the 220 yard dash turned in the top performances for Coach Lane Tannehill's Post Antelopes in Division II of the Bulldog Relays at Plainview Saturday. Wyatt took second in the 880 in 2 minutes and 7.0 seconds, and Davis came up with a third in the 220 with a 23.5 second clocking.

Four other Lopes scored, but not over a point each. Mike Waldrip got a sixth in the 120 yard high hurdles and a tie for sixth in the high jump at five feet, seven inches. Cliff Kirkpatrick got a sixth

in the 330 yard intermediate hurdles in 43.9 seconds and Randy Baker a sixth in the long jump with a leap of 19 feet, 2 inches. Post scored a total of 17 1/2 points, placing eighth in a 12-team field. Slaton edged out Floydada for the team title 83 1/2 to 81.



BILL ROSE

### Grandson is schoolboy star in Wyoming

Bill Rose, son of Mr. and Mrs. Don Rose of Meeteetse, Wyo., and the grandson of Mr. and Mrs. Johnny Ray of Post, was recently selected "outstanding Athlete" in the Western Wyoming High School Conference.

This award is based on athletic ability, scholastic ability, sportsmanship, leadership, character and citizenship. The award is chosen by coaches all over candidates in Class B and C schools in the Big Horn Basin.

Some of Bill's qualifications were that he was all-tournament regional in basketball his sophomore, junior and senior years; was a two year letterman in football having competed in his junior and senior years and was selected all conference first team end his senior year; placed first in the mile and 880 yard run at district and placed second at state in the mile run his freshman year; placed first in two mile at district and first in mile and two mile at state his sophomore year and placed first in mile and two mile at both district and state and was a member of the first place team in the mile relay at state, his junior year. He was invited to the meet of champions at Cheyenne and ran in the mile event. He also holds the school records in the 880, mile and two mile.

### Hail study on cotton next

LUBBOCK—The Texas Agricultural Experiment Station at Lubbock and Halfway has received a \$5,000 grant to study the effects of simulated hail damage to cotton.

Dr. Bill Ott, Experiment Station resident director, said the Texas A&M University System Board of Regents accepted the grant last September from the National Crop Insurance Association (NCIA) and Crop Insurance Research Bureau, Inc.

The research project will ultimately furnish insurance companies with scientific information to improve claims procedures, he said.

Dr. Douglas Owens, research agronomist based at the Experiment Station at Halfway, will direct the on-station study. Owens recently assisted the NCIA with adjuster training programs at the Lubbock Experiment Station.

The cotton project is one of 15 similar studies underway this year at various U.S. universities. About 14 different crops will be observed under grants totaling \$49,300.

Each research site is furnished a hail machine by NCIA for use in research programs, educational workshops and field days. This machine is designed to simulate effects of hail by spraying particles of ice on plants at velocities similar to actual hailing. Data regarding plant damage levels and plant response are then assembled and correlated to determine effects on performance and yields.

For more information contact: Dr. Douglas Owens, Olton Route, Texas Agricultural Experiment Station, Plainview, Texas 79072



Page 8 The Post (Tex.) Dispatch Thursday, March 31, 1977

## Antelopes to San Angelo Relays this weekend

Coach Lane Tannehill will take a Post Antelope track squad of over 20 to the San Angelo Relays at San Angelo Friday for the big two-day track carnival.

Pole vaulter Jimmy Dorland has been scratched from the pole vault and due to a heel injury has yet to compete in the pole vault this spring.

Coach Tannehill's entry list includes:

440 relay: Kohen Josey, Randy Baker, Randall Wyatt and Steve Davis.

880 yard run: Wyatt, Jimmy Odum and Kelly Baker.

120 yard high hurdles: Mike Waldrip, Cliff Kirkpatrick and R. Baker.

100 yard dash: Josey, Brent Terry and Tim Morris.

440 yard dash: Steve Davis, Ronald Booth and Virgil Morris.

330 yard intermediate hurdles: Mike Waldrip, Cliff Kirkpatrick, Randy Baker, Steve Davis, Terry and Shawn Scott.

Mile: Steve Shedd, Jimmy Couch and Dale Redman.

Mile relay: Wyatt, Davis, Waldrip and Ronald Booth.

Long jump: R. Baker, Bryan Compton and Terry.

Discus: Mike Babb, V. Morris and Casey Zachary.

Shot: Babb, Rex Cash and Zachary.

High jump: Waldrip, Evans Heaton and Kirkpatrick.

Pole vault: Heaton and R. Baker.

Coach Lane Tannehill will take a Post Antelope track squad of over 20 to the San Angelo Relays at San Angelo Friday for the big two-day track carnival.

Pole vaulter Jimmy Dorland has been scratched from the pole vault and due to a heel injury has yet to compete in the pole vault this spring.

Coach Tannehill's entry list includes:

440 relay: Kohen Josey, Randy Baker, Randall Wyatt and Steve Davis.

880 yard run: Wyatt, Jimmy Odum and Kelly Baker.

120 yard high hurdles: Mike Waldrip, Cliff Kirkpatrick and R. Baker.

100 yard dash: Josey, Brent Terry and Tim Morris.

## Doe track team to Snyder meet

Coach John Morrow's Post Doe track team will compete Saturday in the girls track meet at Snyder with field events beginning at 9 a. m., prelims at 10, and finals at 2 p. m.

Post entries include:

440 and 880 yard relays — Linda Steel, Dana Bird, Jodine Tipton and Brenda Price; 440 sprint, Sylvia Curtis, Karla Kennedy and Karen Perkins; 220 dash, Price; 80 yard hurdles, Danna Giddens, Dana Babb and Robin Stewart.

Mile relay, Curtis, Perkins, Karla Duren and Kennedy; long jump, Babb and Kathryn Bullard; triple jump, Bird; shot, Hope Johnson and Deanne Bridgeman; and discus, Johnson and Jelena Bilberry.

## Scrambler net tourney planned on Saturday

Post tennis enthusiasts will hold a "scrambler tennis tournament" Saturday to raise money for the hospital. Entry fees to the tourney will be a donation to the hospital.

Play will begin at 9 a. m. Tally cards will be used to select mixed doubles partners and after round robin play the top man and top woman player will team together against the

## Brenda Price wins 220 sprint at Friona Relays

The only bright spot in the Post Does track showing at Friona last weekend in the Friona Girls Relays was Brenda Price's victory in the 220 yard dash.

Brenda, a state class sprinter, suffered a basketball knee injury and is just rounding into top form. Her winning time in the finals was 25.7 seconds after running a 25.8 in her preliminary heat.

Brenda also anchored the 440 relay team to a sixth place finish for the only other Post points. Other members of the relay team were Linda Steel,

Dana Bird, and Jodine Tipton. Post placed 11th among 13 teams in the meet scoring 12 points, tying with Roosevelt for that position.

Bovina won the meet by scoring 88 points.

Time will be taken out during the day to be sure all competing players go to the polls to vote.

All spectators are welcome. Time will be taken out during the day to be sure all competing players go to the polls to vote.

All spectators are welcome. Time will be taken out during the day to be sure all competing players go to the polls to vote.

All spectators are welcome. Time will be taken out during the day to be sure all competing players go to the polls to vote.

All spectators are welcome. Time will be taken out during the day to be sure all competing players go to the polls to vote.

All spectators are welcome. Time will be taken out during the day to be sure all competing players go to the polls to vote.

All spectators are welcome. Time will be taken out during the day to be sure all competing players go to the polls to vote.

All spectators are welcome. Time will be taken out during the day to be sure all competing players go to the polls to vote.

All spectators are welcome. Time will be taken out during the day to be sure all competing players go to the polls to vote.

All spectators are welcome. Time will be taken out during the day to be sure all competing players go to the polls to vote.

All spectators are welcome. Time will be taken out during the day to be sure all competing players go to the polls to vote.

All spectators are welcome. Time will be taken out during the day to be sure all competing players go to the polls to vote.

All spectators are welcome. Time will be taken out during the day to be sure all competing players go to the polls to vote.

All spectators are welcome. Time will be taken out during the day to be sure all competing players go to the polls to vote.

All spectators are welcome. Time will be taken out during the day to be sure all competing players go to the polls to vote.

All spectators are welcome. Time will be taken out during the day to be sure all competing players go to the polls to vote.

All spectators are welcome. Time will be taken out during the day to be sure all competing players go to the polls to vote.

All spectators are welcome. Time will be taken out during the day to be sure all competing players go to the polls to vote.

All spectators are welcome. Time will be taken out during the day to be sure all competing players go to the polls to vote.

## Turkey, eggs will be specials

COLLEGE STATION—Easter-related specials in some Texas grocery markets will focus on turkey and eggs. Mrs. Gwendolyn Ciyatt, consumer marketing information specialist, reports.

At meat counters, scattered specials are available on beef and pork items—and lamb is more prominent in some markets, she added.

Mrs. Ciyatt is with the Texas Agricultural Extension Service, The Texas A&M University System.

She advises consumers to look for best beef values on chuck roasts and steaks, round steaks, ground beef and liver.

Pork features include quarter loin sliced into chops, Boston butt roast, smoked picnics, ham portions, bacon, liver and roll sausage.

In fresh vegetable departments, economy appears on carrots, broccoli, head lettuce, collards and mustard greens, turnips, rutabagas and potatoes. Also, fresh asparagus is available at moderate price levels—and celery supplies are increasing.

At frozen food counters, items with most economical prices are grapefruit, oranges, small-size apples, bananas and pears. Pineapple supplies are increasing as the season progresses toward its peak in May, she said.

At frozen food counters, items with most economical prices are grapefruit, oranges, small-size apples, bananas and pears. Pineapple supplies are increasing as the season progresses toward its peak in May, she said.

At frozen food counters, items with most economical prices are grapefruit, oranges, small-size apples, bananas and pears. Pineapple supplies are increasing as the season progresses toward its peak in May, she said.

At frozen food counters, items with most economical prices are grapefruit, oranges, small-size apples, bananas and pears. Pineapple supplies are increasing as the season progresses toward its peak in May, she said.

At frozen food counters, items with most economical prices are grapefruit, oranges, small-size apples, bananas and pears. Pineapple supplies are increasing as the season progresses toward its peak in May, she said.

At frozen food counters, items with most economical prices are grapefruit, oranges, small-size apples, bananas and pears. Pineapple supplies are increasing as the season progresses toward its peak in May, she said.

At frozen food counters, items with most economical prices are grapefruit, oranges, small-size apples, bananas and pears. Pineapple supplies are increasing as the season progresses toward its peak in May, she said.

At frozen food counters, items with most economical prices are grapefruit, oranges, small-size apples, bananas and pears. Pineapple supplies are increasing as the season progresses toward its peak in May, she said.

At frozen food counters, items with most economical prices are grapefruit, oranges, small-size apples, bananas and pears. Pineapple supplies are increasing as the season progresses toward its peak in May, she said.

At frozen food counters, items with most economical prices are grapefruit, oranges, small-size apples, bananas and pears. Pineapple supplies are increasing as the season progresses toward its peak in May, she said.

At frozen food counters, items with most economical prices are grapefruit, oranges, small-size apples, bananas and pears. Pineapple supplies are increasing as the season progresses toward its peak in May, she said.

At frozen food counters, items with most economical prices are grapefruit, oranges, small-size apples, bananas and pears. Pineapple supplies are increasing as the season progresses toward its peak in May, she said.

At frozen food counters, items with most economical prices are grapefruit, oranges, small-size apples, bananas and pears. Pineapple supplies are increasing as the season progresses toward its peak in May, she said.

At frozen food counters, items with most economical prices are grapefruit, oranges, small-size apples, bananas and pears. Pineapple supplies are increasing as the season progresses toward its peak in May, she said.

At frozen food counters, items with most economical prices are grapefruit, oranges, small-size apples, bananas and pears. Pineapple supplies are increasing as the season progresses toward its peak in May, she said.

At frozen food counters, items with most economical prices are grapefruit, oranges, small-size apples, bananas and pears. Pineapple supplies are increasing as the season progresses toward its peak in May, she said.

At frozen food counters, items with most economical prices are grapefruit, oranges, small-size apples, bananas and pears. Pineapple supplies are increasing as the season progresses toward its peak in May, she said.

At frozen food counters, items with most economical prices are grapefruit, oranges, small-size apples, bananas and pears. Pineapple supplies are increasing as the season progresses toward its peak in May, she said.

At frozen food counters, items with most economical prices are grapefruit, oranges, small-size apples, bananas and pears. Pineapple supplies are increasing as the season progresses toward its peak in May, she said.

At frozen food counters, items with most economical prices are grapefruit, oranges, small-size apples, bananas and pears. Pineapple supplies are increasing as the season progresses toward its peak in May, she said.

At frozen food counters, items with most economical prices are grapefruit, oranges, small-size apples, bananas and pears. Pineapple supplies are increasing as the season progresses toward its peak in May, she said.

At frozen food counters, items with most economical prices are grapefruit, oranges, small-size apples, bananas and pears. Pineapple supplies are increasing as the season progresses toward its peak in May, she said.

At frozen food counters, items with most economical prices are grapefruit, oranges, small-size apples, bananas and pears. Pineapple supplies are increasing as the season progresses toward its peak in May, she said.

At frozen food counters, items with most economical prices are grapefruit, oranges, small-size apples, bananas and pears. Pineapple supplies are increasing as the season progresses toward its peak in May, she said.

At frozen food counters, items with most economical prices are grapefruit, oranges, small-size apples, bananas and pears. Pineapple supplies are increasing as the season progresses toward its peak in May, she said.

At frozen food counters, items with most economical prices are grapefruit, oranges, small-size apples, bananas and pears. Pineapple supplies are increasing as the season progresses toward its peak in May, she said.

At frozen food counters, items with most economical prices are grapefruit, oranges, small-size apples, bananas and pears. Pineapple supplies are increasing as the season progresses toward its peak in May, she said.

At frozen food counters, items with most economical prices are grapefruit, oranges, small-size apples, bananas and pears. Pineapple supplies are increasing as the season progresses toward its peak in May, she said.

At frozen food counters, items with most economical prices are grapefruit, oranges, small-size apples, bananas and pears. Pineapple supplies are increasing as the season progresses toward its peak in May, she said.

At frozen food counters, items with most economical prices are grapefruit, oranges, small-size apples, bananas and pears. Pineapple supplies are increasing as the season progresses toward its peak in May, she said.

At frozen food counters, items with most economical prices are grapefruit, oranges, small-size apples, bananas and pears. Pineapple supplies are increasing as the season progresses toward its peak in May, she said.

At frozen food counters, items with most economical prices are grapefruit, oranges, small-size apples, bananas and pears. Pineapple supplies are increasing as the season progresses toward its peak in May, she said.

At frozen food counters, items with most economical prices are grapefruit, oranges, small-size apples, bananas and pears. Pineapple supplies are increasing as the season progresses toward its peak in May, she said.

At frozen food counters, items with most economical prices are grapefruit, oranges, small-size apples, bananas and pears. Pineapple supplies are increasing as the season progresses toward its peak in May, she said.

At frozen food counters, items with most economical prices are grapefruit, oranges, small-size apples, bananas and pears. Pineapple supplies are increasing as the season progresses toward its peak in May, she said.

At frozen food counters, items with most economical prices are grapefruit, oranges, small-size apples, bananas and pears. Pineapple supplies are increasing as the season progresses toward its peak in May, she said.

At frozen food counters, items with most economical prices are grapefruit, oranges, small-size apples, bananas and pears. Pineapple supplies are increasing as the season progresses toward its peak in May, she said.

At frozen food counters, items with most economical prices are grapefruit, oranges, small-size apples, bananas and pears. Pineapple supplies are increasing as the season progresses toward its peak in May, she said.

At frozen food counters, items with most economical prices are grapefruit, oranges, small-size apples, bananas and pears. Pineapple supplies are increasing as the season progresses toward its peak in May, she said.

At frozen food counters, items with most economical prices are grapefruit, oranges, small-size apples, bananas and pears. Pineapple supplies are increasing as the season progresses toward its peak in May, she said.

At frozen food counters, items with most economical prices are grapefruit, oranges, small-size apples, bananas and pears. Pineapple supplies are increasing as the season progresses toward its peak in May, she said.

At frozen food counters, items with most economical prices are grapefruit, oranges, small-size apples, bananas and pears. Pineapple supplies are increasing as the season progresses toward its peak in May, she said.

At frozen food counters, items with most economical prices are grapefruit, oranges, small-size apples, bananas and pears. Pineapple supplies are increasing as the season progresses toward its peak in May, she said.

At frozen food counters, items with most economical prices are grapefruit, oranges, small-size apples, bananas and pears. Pineapple supplies are increasing as the season progresses toward its peak in May, she said.

At frozen food counters, items with most economical prices are grapefruit, oranges, small-size apples, bananas and pears. Pineapple supplies are increasing as the season progresses toward its peak in May, she said.

At frozen food counters, items with most economical prices are grapefruit, oranges, small-size apples, bananas and pears. Pineapple supplies are increasing as the season progresses toward its peak in May, she said.

At frozen food counters, items with most economical prices are grapefruit, oranges, small-size apples, bananas and pears. Pineapple supplies are increasing as the season progresses toward its peak in May, she said.

At frozen food counters, items with most economical prices are grapefruit, oranges, small-size apples, bananas and pears. Pineapple supplies are increasing as the season progresses toward its peak in May, she said.

At frozen food counters, items with most economical prices are grapefruit, oranges, small-size apples, bananas and pears. Pineapple supplies are increasing as the season progresses toward its peak in May, she said.

At frozen food counters, items with most economical prices are grapefruit, oranges, small-size apples, bananas and pears. Pineapple supplies are increasing as the season progresses toward its peak in May, she said.

At frozen food counters, items with most economical prices are grapefruit, oranges, small-size apples, bananas and pears. Pineapple supplies are increasing as the season progresses toward its peak in May, she said.

### Sorry, Tommy!

In an oversight, we left Tommy Young's name off the list of volunteer helpers for the Postex Junior Relays in our thank you ad in last week's Dispatch.

### Coach T

## Moving On Jeans By Levi Are In!

Colors are natural, tan and denim for Guys and Gals!

### SHIRTS GALORE

By Levi Arrived This Week —In knit stripes to plaid cottons, long and short sleeve

### Little Boys' Button Up KNIT SHIRTS

In navy, chocolate, yellow and pale blue, Sizes 8-16

Also...

Arrow Knits and Kent Collection Dress Shirts In Pastel Colors

For You Guys Wanting the KNIT PULLOVERS

They're Here!!

New Tony Lama Belts

Also...

Spittoons for Pickups —That won't spill. Also with a deodorizer

RENDS for MEN

215 East Main Phone 806-495-2976

**you** provide the problem

**we** supply the solution

Can't get out to make a deposit today? No problem. Now we're as close to you as your nearest mail box! You can do most transactions by mail for savings, checking and loan payments. It's that easy.

**Wilson State Bank**

For fast results, try a Dispatch classified.

**Gene's Coffee Shop**

FEATURING

- Chicken Fried Steaks
- Steaks
- Mexican Food

ALSO Full Breakfast and Plate Lunch Menu

OPEN 6 DAYS WEEKLY

6 A.M. TO 10 P.M. NOW CLOSING ON MONDAYS

DIAL 495-3621

**SMITH FORD—MERCURY**

DIAL 828-6291 SLATON 84 BYPASS

It only takes a minute to get a better deal

\*SM—© 1970 Leon Shaffer Goinick Adv. Inc.

No. 141 1974 Ford F-100 Pickup \$2,395	No. 196 1976 Elite 2-Dr. \$4995
No. 101 1974 Gran Torino 4-Dr. \$2995	No. 38 1969 Mustang 2-Dr. \$2195
No. 31 1974 Elite 2-Dr. HT \$3395	No. 24 1976 Bobcat 4-Speed Air \$3495
No. 118 1973 Monte Carlo Landau 2-Dr. \$3295	No. 139 1969 Chevrolet Pickup \$1595
No. 4 1974 LTD 4-Dr. \$3495	No. 7 1976 Explorer F-150 Pickup \$4995



## Expert advice given on flowering annuals

COLLEGE STATION — fertilizer such as 12-12-12. "Arrange annuals in an irregular pattern or a design to exhibit your originality," says the landscape specialist. "Place taller plants in back to keep them from overpowering smaller annuals unless the flower bed will be viewed from all sides — then place tall plants in the middle." Janne cautions against over-watering, so do not keep the soil saturated with water. "With proper care, annual flowers can make any landscape a showplace," contends the horticulturist.

### SERVE LIVER WEEKLY

A good nutrition rule-of-thumb is to serve liver once a week to help the family keep fit. Liver is rich in iron and supplies many necessary vitamins, explains Mrs. Gwendolyn Clyatt, consumer marketing information specialist with the Texas Agricultural Extension Service, The Texas A&M University System.

"The world is our school, experience is our teacher and life our lesson."



AUSTIN — In twin bursts of action, the House approved two major bills — dealing with medical malpractice and coal slurry pipelines.

The malpractice measure, billed as a compromise but not regarded as such by unhappy doctors, goes to the Senate where another round of debate is in store.

Authority for the coal slurry pipelines to condemn land for rights of way previously was approved by the Senate. House amendments send the bill back for additional consideration in the upper chamber.

The malpractice bill establishes a \$500,000 limit on total damages recoverable for pain and suffering or loss of future earnings.

It also provides for screening panels to hear malpractice claims, power to suspend incompetent doctors, authority for countersuits against patients in bad faith actions and a two year statute of limitations. Children under 12 would have until they are 14 years old to bring malpractice suits.

The coal slurry pipeline bill will clear the way for transportation of pulverized coal mixed with water 11000 miles from Colorado to the Texas Gulf Coast.

Doctors and trial lawyers clashed bitterly over the malpractice issue, with the lawyers winning the House rounds.

Coal-hauling railroads took a beating in opposing the pipeline bill.

### Courts Speak

The Court of Criminal Appeals reversed and sent back for new trial five driving while intoxicated convictions based on breath tests.

The State Supreme Court declined to alter a lower court decision permitting an electric rate raise in Arlington by Texas Electric Service Company.

A man who served more time in the Dallas County jail than his original sentence ordered finally got a release — through the Court of Criminal Appeals.

### AG Opinions

Occupation taxes may be used to support areas of public school finance other than the available school fund if they benefit "public free schools," Atty. Gen. John Hill held.

In other recent opinions, Hill concluded:

The state may claim matching federal funds under the social security act when the amount of the average monthly grant for the aid to families with dependent children program is greater than \$32 but less than \$37.72 per recipient.

Lists of civil service examination scores are not exempted from required public disclosure under the open records act.

A bill prohibiting persons from being licensed both as commercial fishermen and fish farmers is not constitutional.

There is no constitutional prohibition against establishment of a department on the status of women in the attorney general's office.

The community assistance funding formula of Texas Youth Council does not violate the state constitution.

Premiums on group insurance coverage for reserve deputy sheriffs may be paid by a county only if the insurance coverage is limited to the risk of loss for medical expenses voluntarily assumed by the county.

### Brown Choice

Gov. Dolph Briscoe caught most observers by surprise in naming an aide, Reagan V. Brown of Bryan, as new Texas Commissioner of Agriculture, succeeding John C. White.

Brown quickly won unanimous confirmation of the Texas Senate and moved into office only a couple of weeks after White was sworn in as deputy U.S. Secretary of Agriculture.

Disappointed aspirants to the office included Bill Pieratt of Giddings, White's deputy in Austin; Rep. Joe Hubenak of Rosenberg and Rep. James E. "Pete" Laney of Hale Center. Hubenak and Brown are expected to collide in the Democratic primary next year.

Brown, 55, is a veteran of 25 years service with the Texas A&M University agricultural extension service.

### "Optimistic"

Prospects of a compromise on highway funding legislation are looking up.

Gov. Briscoe said he is "very optimistic" the legislature can agree on a bill to avert a construction-maintenance crisis.

Lt. Gov. Bill Hobby has offered a substitute for Briscoe's \$674 million highway finance bill which cleared the House weeks ago and has been stalled in the Senate Finance Committee.

While Hobby's proposal would allot \$428 million in new money to highways during the next fiscal period, it actually would provide considerably more over a 20-year period.

Briscoe said he still likes his version better because funds will buy more now than they will in years to come as inflation continues, but he wouldn't rule out "some kind of merger" of the two proposals.

The board of landscape architects may promulgate regulations setting standards for connections to water supply systems applicable to its licensees.

### Short Snorts

Gov. Briscoe named Charles A. Dickerson of Fort Bend County judge of the new 240th district court, and the Senate promptly confirmed the nominee.

The commission ordered Lone Star Gas Co. to stop charging rates changed since last September for 5,985 residential and commercial customers in unincorporated environs surrounding 131 towns.

Atty. Gen. John Hill has hired a campaign media consultant (Bob Heller of Houston) and has "elect John Hill" bumper stickers on display. But he still hasn't officially announced as a candidate for governor.

History is like a wheel because it stands still unless someone pushes it.

## Lunch Menus

The following meals will be served in the Post schools' lunchroom next week:

Monday: Hamburger, cheese, pork and beans, lettuce, tomatoes, onions, pickles, homemade buns, chocolate pudding, milk.

Tuesday: Beef ravioli casserole, blackeye peas, cabbage slaw, lemon cake with icing, cornbread, milk, orange juice.

Wednesday: Chicken fried turkey with gravy, green beans, whipped potatoes, pear halves, hot rolls, milk.

Thursday: Barbecue on bun, lettuce salad, pinto beans, plum cobbler, cornbread, milk.

Friday: Burrito and sauce, turnip greens, sweet potatoes, fruit drop, milk.

The sandwich menu for the same period will be:

Monday: Peanut butter and jelly, carrot sticks, fruit cocktail, milk, cookies.

Tuesday: Chicken salad, lettuce wedge, half apple, milk, peanuts, orange juice, cookies.

Wednesday: Bologna, celery sticks, sliced peaches, milk, cookies.

Thursday: Turkey, lettuce wedge, half banana, milk, cookies.

Friday: Beef, lettuce wedge, applesauce, milk, potato chips, cookies.

## Tahoka group attends meet

TAHOKA — L. A. Forsythe of Tahoka, has just returned from Houston where he represented the Federal Land Bank Association of Tahoka at the annual stockholders meeting of the Federal Land Bank of Houston. The meeting, held at the Houston Oaks Hotel, was attended by members of the 66 Federal Land Bank Associations in Texas. There were about 600 persons in attendance.

George W. Cunningham, President, in his report to the stockholders, said that while the demand for new loans declined in 1976 from the historic high of the past three years, the growth of the bank in 1976 was considered satisfactory. He also said that the earnings of the bank were highly satisfactory.

The Federal Land Bank of Houston makes long-term loans on farms and ranches throughout Texas and currently has 34,000 loans for more than \$1.2 billion outstanding.

The Federal Land Bank Association of Tahoka makes and services loans in this area. Members of the board of directors are Fred McGinty, Avery Moore Jr., L. A. Forsythe, J. D. McCampbell, and Joe D. Unfred. Others attending the meeting were Manager Jay Dee House, and Mrs. House and Mr. and Mrs. Fred McGinty and Mrs. Forsythe.

**DIAL 3322**  
Hospital Election Center  
9 A.M. TO 5 P.M. ALL NEXT WEEK BEGINNING MONDAY FOR ANSWERS TO ANY QUESTIONS YOU HAVE ON HOSPITAL TAX ISSUE.

**8-Track Tapes**  
**Only \$2.98**  
**Buttermilk**  
**Borden's 69¢**  
**1/2 Gal. . . . .**  
**Ticer's Grocery**



Three Green Thumbers pictured cleaning up at ground after fair and show.

## Green Thumbers

Thank you for your help with the Garza County Fair. We appreciate you Green Thumbers.

Home Demonstration Council

**Sleepers**  
**Sleeper**  
**Sleep**

How many times have you had or wanted to have weekend guests and just did not have a place to sleep them?

We can take care of that problem today.

We have a variety of sleepers in several styles and covers, and for a limited time we are offering several at special prices.

We have two (2) 78-inch Queen Size Sleepers in traditional styling covered in an excellent grade of Herculon that are regularly priced at \$294.50. One is in linen color and one in olive. You can have either of these for only \$259.

Another featured sleeper is a full size bed in an Early American wingback in spice Herculon. It is 72" overall. Our special price is only \$277.

You will be proud to own this 82" Queen size sleeper in chestnut. It was \$419.50, and our price for this one is \$329. If space is a problem take this 48" love seat sleeper that sleeps one person for only \$58.

We invite you to look over our stock of sheets in all sizes.

**Hudman Furniture Co.**

301 E. Main Post, Texas

## Two charged, out on bond

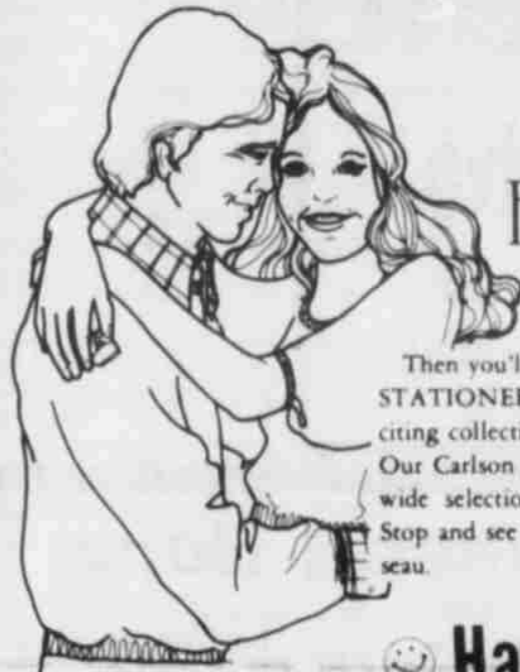
David Prince Toney, operator of the Hitching Post, has pleaded not guilty to a disorderly conduct charge before Justice of the Peace Racy Robinson and released on \$200 bond.

According to Sheriff Jim Pippin, Toney was arrested Monday night on the charge after the alleged disorderly conduct incident took place Friday night when Toney, according to Pippin, interfered with officers making an arrest across the highway from his tavern.

In another case here, G. H. Clanton was released on a \$200 cash bond after being charged with criminal mischief in the shooting at another's car last Thursday.

Sheriff Pippin said David Benham was held in jail for eight days after being arrested for revocation of probation, but was released when Benham made restitution of probation and court fees he owed.

The man who continually blows his own horn usually stays at the little end.



Engaged?

Then you'll be thinking about WEDDING STATIONERY. Let us show you the most exciting collection of wedding stationery in town! Our Carlson Craft line will provide you with a wide selection of styles in every price range. Stop and see us for your complete paper trouseau.

Happiness Is . . .

**Will the Hospital Close?**

**Will the Hospital Stay Open?**

**IT'S YOUR DECISION!**

**VOTE SATURDAY TO KEEP OUR HOSPITAL**

(Pol. Adv. Paid for by Volunteer Citizens Committee to Keep Garza Memorial Hospital, Giles McCrary and Larry Willard, co-chairmen)

**Valedictorian—**  
(Continued From Page One)

Those who are not honor students, but are in the top twenty are as follows in numerical order: Randall Wyatt, Steve White, Tracy McAlister, Rodney Traff, Perry Rogers, Mike Waldrip, Christie Conner, Donna Ammons, Darlene Gunn and Karen Williams. Congratulations Tiana on a job well done.

**USE ANCHOR STRAPS**

When purchasing a mobile home, look for factory-installed anchoring straps under the skin of the mobile home, advises Mrs. Jane Berry, housing and home furnishings specialist with the Texas Agricultural Extension Service, The Texas A&M University System.

**Focus**  
**on Home Economics**

By PAULA CAWTHON  
County Extension Agent

Luggage buying time may be 'now'—if you will need luggage this summer.

Before shopping consider the type of luggage that will best meet your needs—hard-sided molded luggage or soft-sided.

Generally, molded luggage is stronger and more durable, but the soft-sided is lighter, sometimes less expensive and allows room for 'just one more item'.

As you shop use the following guidelines—taking time to examine and compare several luggage styles, prices and features.

Test the latches or zippers.

Be sure they operate easily. Also, check for keys and locks, and be sure they are easy to use.

Examine the workmanship inside and out—look for straight, even stitching, staples, rivets and bolts that are firmly attached. Make sure there are no sharp edges.

Decide on the size according to the capacity needed and strength of the person who will carry it. It may be better to combine a small suitcase with a garment bag, instead of choosing one large suitcase.

Wheels are becoming more popular and are a great convenience on a heavy suitcase so consider them.

Check the feel of the handle—for comfort and even balance.

Be sure to examine the suitcase you buy, not a floor sample.

Also remember that some discount stores may offer an even lower price than the sale price at a luggage shop or department store.

**New trash—**

(Continued From Page One) completed here within a few weeks, a much cleaner city should result.

The new containers not only will prevent blowing in high winds but prevent dogs from tipping over trash cans and spreading the contents along the alleys.

The new system will see the present trash force reduced to but one man—the driver of the packer truck. Saving in labor costs alone is expected to pay for the new system within a few years.

**INSURANCE SUGGESTION**

If your car is over four years old, it may not be worth while to carry collision insurance, says Claudia Kerbel, consumer information specialist with the Texas Agricultural Extension Service, The Texas A&M University System.

**All cotton at SPD on April 7**

LUBBOCK—Agricultural credit, cotton outlook for 1977 and a review of cotton's progress over the last 20 years highlight the annual meeting of the South Plains Development Program (SPD) next Thursday, at Koko Palace.

Billy C. Gunter, district agent for the Texas Agricultural Extension Service, said this year's program will feature cotton exclusively, with morning activities devoted to SPD task force sessions and the afternoon set aside for public presentations. Cotton growers, agribusinessmen, cotton industry representatives and educators are expected to attend.

Uel Stockard, state agent for the Texas Agricultural Extension Service at College Station, is slated to address the gathering. His talks will be on the South Plains' contribution to Texas agriculture and Governor Dolph Briscoe's long range goal of making Texas number one in agricultural production.

Also scheduled for the one day event is an introductory presentation of a program for increasing cotton profits.

SPD is a voluntary organization of South Plains citizens interested in the social and economic improvement of the area. The Texas Agricultural Extension Service cooperates with SPD leaders in educational thrusts aimed at achieving these goals.

**Postings—**

(Continued From Page One) right to vote in the Saturday election on the hospital proposition.

We told Joy that The Dispatch had "covered" that one last week. Every qualified voter, who registers and meets age and residency requirements has the right to vote yes or no on the hospital proposition.

Leaving hand issues or anything else up to a decision of only the property owners went out the American window about the same time as the poll tax as we remember.

As a newspaper man we have always remained optimistic about things. This is why we support community betterment projects—always have, and always will.

It is true, unfortunately, that it is much easier to get people to vote against something or somebody than to get them to vote for something or somebody.

And that is true once again on the hospital proposition. The hospital is essential to the community. To keep it open we must have an increased tax, at least for two or three years, to permit the hospital's financial situation to stabilize. Those are the facts as we know them.

And we hope our readers recognize them as that when they go to vote Saturday.

You coffee drinkers haven't given up coffee have you?

**MANAGING YOUR MONEY**

Using Money And Credit Wisely And Well

A recent nation-wide report says that a four-person family with an income of \$13,000 in 1960 needs over \$25,000 today to maintain the same lifestyle, and in five years it'll probably need a lot more.

You have a "personal account" at over two million stores, restaurants, hotels, airlines, hospitals, law firms, colleges, dentists and other places offering a variety of goods and services when you use a Master Charge bank credit card.



Know where your money goes. You may be able to save on family expenditures if you use your Master Charge card and save the receipts. That way you'll have records that help make it clear where your money has gone, and help you plan purchases and payments ahead of time.

If you meet with an emergency while away from home, your bank credit card can help you obtain needed cash quickly at over 20,000 banking offices in the U.S. Wherever you go, your bank card shows that you are a reliable credit risk.

**Voters—**

(Continued From Page One) received the largest number of unsolicited letters to the editor it has ever gotten on one subject and has attempted to print all of them in today's Dispatch on pages 2 and 14.

Approximately 750 names of persons supporting the hospital proposition appear in a full page ad on page 3 of today's Dispatch. All of these people signed petitions supporting the hospital proposition.

Opposition to the hospital proposition is voiced in an advertisement placed by Donald Windham, former hospital administrator, under the title of Citizens Committee for the Hospital at an Economical Tax Rate. Donald Windham and Jack Kennedy, co-chairmen.

Much of the opposition appears to come from those who oppose any tax increase for any purpose.

Supporters of the increased tax limit argue that the actual tax boost will be a small one, but that without it the hospital has no means of continuing its operations.

The tax increase at the proposed new maximum for a \$10,000 house would be only \$12.50 per year.

**Grand jury—**

(Continued From Page One) is alleged to have taken 36 bales of ginned cotton worth \$8,840.69 from Dick Cade, a gin customer.

In the second count, the charge is taking \$2,491.20 in cash proceeds paid on fire insurance policies for losses to cotton products and cotton trailers owned by J. B. Robinson, J. W. Paton and B. L. Thompson.

Other indictments returned by the grand jury, together with charge and date of alleged offense:

Dennis Ray Bell, driving while intoxicated subsequent offense, Nov. 6, 1976.

Wilbert Harper, indecency with child, March 1, 1977.

Andrew Charles Douglas, driving while intoxicated subsequent offense, Nov. 3, 1976.

Oralio Bernal and Johnny A. Perez, sexual abuse of female, Oct. 31, 1976.

Marsalino Raymond Salas, deadly assault on peace officer, Nov. 29, 1976, in allegedly taking a shot at Deputy Williams Shankles while Shankles was patrolling in a patrol car. Shankles was not hit, but the car was.

**Estate planning—**

(Continued From Page One) estate taxes, alternatives for transfer, basic estate planning instruments and insurance.

His presentation will follow one by Lynn Bourland on personal financial management required by the family, its usual sources of resources and conservation through transfer.

There is no charge for the series. Everyone is invited.

**Follis Heating & Air Cond.**  
Sales - Installation Service  
PAYNE EQUIPMENT  
FREE ESTIMATES  
DIAL 628-3271  
WILSON, TEXAS

**Little Mr. & Miss Post Contest**

Sponsored by Xi Delta Rho of Beta Sigma Phi  
7:30 P.M. APRIL 16, PRIMARY AUDITORIUM  
ENTRY FEE \$5  
Entry Blanks Obtainable from Post Merchants  
Call Joy Orr after 5 p.m. 495-2685 or  
Janice Smith 495-2527

Mini Group Ages 2 and 3 Years  
Little Group - 4 Years thru First Grade  
ADMISSION \$2 ADULTS, \$1 CHILDREN

**Buenas Nuevas para Texas**  
**Cristo Salva**  
Venga le Invitamos  
A la Iglesia Bautista Bethel

**Mason Funeral Home and Mason & Company**  
Have Operated in Post for 62 Years!  
We'd like to stay another 62!  
LET'S ALL STAY by Voting Saturday FOR Our Hospital  
Pol. Adv. Paid for by Mason Funeral Home and Mason & Co.)

For Every Kind of  
**Quality Printing**  
at  
**Economical Prices**

- Statements
- Envelopes
- Letterheads
- NCR Forms
- Voucher Checks
- Work Sheets
- File Cards
- Snapouts
- Ledgers

CALL  
**DON AMMONS**  
**2816**  
Dispatch Publishing Company

**GIBSON'S DISCOUNT CENTER**  
WHERE YOU ALWAYS BUY THE BEST FOR LESS  
122 N. BROADWAY DIAL 2268  
Prices Good Thursday, March 31 thru Wed., April 6

**Ban Basic**  
Non-Aerosol Anti-Perspirant  
Regular or Unscented 3 Oz.  
REG. \$1.79 NOW **\$1.43**

**TWO QUART GRADUATED Pitchers**  
By Alladinware  
REG. 69c... **55c**

**EFFERGRIP**  
Extra Strength Denture Adhesive Cream, 2.5 Oz.  
REG. \$1.27 NOW **\$1.00**

**Alberto VO5 Creme Rinse**  
Herbal and Lemon Scent  
REGULAR 99c **79c**

**Vaseline Hair Tonic**  
And Scalp Conditioner  
Fights Dry Hair, Dry Scalp and Loose Dandruff  
5.5 Oz. Reg. \$1.25... **\$1.00**

**Country Spice 4-Pc. Canister Set**  
Regular \$4.99 NOW **\$3.99**

**COKE Goblets**  
Amber Color  
REG. 59c... **47c**

**Napkins**  
200, White, 162 Sq. In. by Westvaco  
REG. 69c... **55c**

**Desenex Spray On Foot Powder**  
Cooling, soothing, medicated foot care, 6 oz.  
Reg. \$1.79 **\$1.43**

**UNBREAKABLE Salt & Pepper Shakers**  
4 Different Designs  
REG. \$1.29 **\$1.03**

**WAFFLE WEAVE Dish Cloths**  
Four in Package  
REG. \$1.09... **87c**

**Saran Wrap**  
Jumbo Size, 50 Sq. Ft. By Dow  
REG. 85c... **68c**

**HEAVYWEIGHT Receiving Blankets**  
30" x 40"  
100 Pct. Cotton in Solids and Prints  
REG. \$1.59... **\$1.27**

**Ladies' Maverick Jeans & Jackets**  
Green and Yellow  
Pants Reg. \$11.99-\$12.99 **\$10.39**  
Jackets Reg. \$14.99 **\$11.99**

## OSHA cotton dust hearing for Lubbock May 10

A public hearing on proposed health standard for cotton dust will be held by the U.S. Department of Health, Occupational Safety and Health Administration in Lubbock on May 10 at the South Park Inn, 3201 20th St.

The new OSHA standard would reduce the present permissible exposure limit from 1,000 grains of total dust per cubic foot of air to 200 grains, based on an eight-hour time-weighted average.

Persons wishing to reserve time should file a notice of intention to appear, postmarked on or before April 1, with Tom Hall, OSHA Office of Committee Management, Docket No. H-052, Room N3633, U.S. Department of Labor, 3rd and Constitution Ave. N.W., Washington D.C. 20210.

Because similar hearings are scheduled in Greenville, Miss. on April 12, notices should indicate the hearing location at which the applicant wishes to testify. Notices should also contain the name, address, and telephone number of each person wishing to appear; the organization, if any, they represent; the issues they will address and a brief statement of each person's views; and complete copies of any studies, data, or other documentary material which will be submitted for the record at the hearing.

### Historical group meet Tuesday

The Garza County Historical Commission will meet Tuesday, April 4 at 10 a.m. in the First National Bank Community

### Invitation Extended

The public is cordially invited to attend the Maundy Thursday evening Lenten Service at Faith Lutheran Church on April 7 at 8:00 p.m.

### WORK FOR YOU

As an independent insurance agent in Post & Garza County, I don't work for a big company, I work for you. You can choose the best policy for your car, home, business, hospital or life from a number of companies. We get you the best prices from THE TRAVELERS, MARYLAND CASUALTY, AMERICAN GENERAL and others - Deviated (discounted) 20 Pct. Savings. SHOULD YOU HAVE A CLAIM I'll be here standing up for you. I am your neighbor.



**AZTEC RUINS** — Pictured above is the Kiva and restored Great Kiva at the Aztec Ruins National Monument, a 27-acre gem, on the banks of the Animas River in Northwest New Mexico.

## your National Parks Right Around Home by Ben Moffett

Aztec Ruins National Monument, on the banks of the Animas River on northwest New Mexico, is one of the National Park Service's smallest areas. But size rarely measures quality and this little gem wraps many of the appealing features of two large, related areas—Chaco Canyon and Mesa Verde—into a convenient, easy-to-see package. All three areas preserve major Indian ruins representing the highest level of Pueblo pre-Columbian civilization.

Chaco, 65 miles south, contains hundreds of ruins spread over 21,000 acres. Mesa Verde, to the north, has a multitude of ruins sprawling over 51,000 acres. By contrast Aztec Ruins is condensed into 27 acres. Its sites include the remains of a magnificent pueblo, an 'apartment' building of over 500 rooms, three stories high in places, surrounding a central plaza. Located on the outskirts of the town of Aztec just off U.S. 550, visitors can become acquainted with the ancient people who lived in this early day New Mexico village by spending a few pleasant hours wandering through the ruins which, conveniently, contain some of the flavor of both the Chaco and Mesa Verde civilizations.

The village deteriorated until about 1225 when a new group arrived, bringing with it the general style and culture of the Mesa Verde area to the north. The newcomers rehabilitated some rooms, built new ones, repaired the Great Kiva and irrigated fields that were once green with corn, beans and squash. Then after 25 or 30 years, the second group also vanished and by 1300 the entire area was virtually depopulated. Today, the Great Kiva has been restored to its Chacoan appearance. In the coolness of its deep interior, the visitor can sense the religious vitality of these early Americans. In addition, today's visitor can tour the ruins, taking in the principal features of these ancient structures that still have third story walls and original ceilings intact in some places. There is also a small museum and a modest picnic area. The city of Aztec maintains a campground within a mile of the ruins.

**Tom Power INSURANCE**  
YOUR Independent Insurance AGENT  
495-3050, 3051

Aztec Pueblo was built between 1111 and 1120 in an architectural style reminiscent of the distinctive Chaco culture to the south. And for years, the village boomed. Villagers built an irrigation system and grew corn, beans and squash. They molded and fired clay pots. They built kivas in which to worship, including a Great Kiva that is a central focus of the monument today. Then, mysteriously, the pueblo was abandoned prior to the end of the 12th century.

Today, you're bound to find librarians doing much more than checking out books—they're busy telling stories, arranging exhibits, educational programs and showing feature films. Pee Wee Pierce, librarian at Post Public Library says some of the most popular things at the library these days aren't found between the pages. For example, Mothers and day care centers are bringing children to the library for morning story hours. And some libraries even offer bedtime stories for youngsters brought to the library in their pajamas by parents who are then free to browse undisturbed. Programs ranging from plays, dances, art exhibits, adult education courses, how-to craft and cooking demonstrations to free films are just a few of the hundreds of activities available free at the public library. There are very few places a family can go for family entertainment, says Mrs. Pierce. Either programs are for adults only or for children, or there is a sizable admission charge. At the Post Public Library, we have something for everyone, and it's free.

**New Arrivals**  
Krista Beth Kemp announces the birth of her sister, Kembra Lea, born March 16 at 10:55 a.m. in West Texas Hospital in Lubbock, weighing 9 lbs., 1 oz. Parents are Mr. and Mrs. Johnny Kemp and grandparents are Mr. and Mrs. Boy Hart and Mr. and Mrs. Keith Kemp, all of Post.

**DIAL 3322**  
**Hospital Election Center**  
9 A.M. TO 5 P.M. ALL NEXT WEEK BEGINNING MONDAY FOR ANSWERS TO ANY QUESTIONS YOU HAVE ON HOSPITAL TAX ISSUE.

**PUT IT IN THE WACKER'S FOR RESULTS**

**WACKER'S**  
**Lawn Chairs**  
Multi-Color 5x4x4 Lawn Chairs  
REG. \$4.99  
SALE PRICE ..... **\$4.44**

**Matching Chaise**  
REGULAR \$12.99  
SALE PRICE ..... **\$11.88**

**Foam Chest**  
Foam Ice Chest with Molded Handle Grips  
REG. \$1.77  
SALE PRICE .... **\$1.44**

**Oscillating Lawn Sprinkler**  
This sprinkler covers a wide area of your lawn at one time. REG. \$3.99  
SALE PRICE .... **\$3.44**

**Plastic Fence**  
WITH COUPLERS  
33" long, wood-grained finish and "Butt-Lox" couplers  
REG. 69¢  
SALE PRICE ..... **2/99¢**

**Patio Tables**  
Your choice of decorated or solid white  
REGULAR \$2.88  
SALE PRICE ..... **\$2.44** EA.

**EASTER BASKETS**  
Beautiful baskets, gaily decorated, assorted styles, beautiful bow, wrapped in cellophane. Filled with candy goodies and novelties.  
REG. \$2.57  
SALE PRICE ..... **\$2.44**

**decoregger**  
EGG DECORATING MACHINE  
AS SEEN ON TV  
COLORS AND DECORATES EGGS FOR EASTER ..... **\$1.49**

# A vote AGAINST a tax increase is NOT a vote against the hospital!

It is a request for sound management of the tax dollar.

Garza Memorial Hospital can and has operated very soundly on the **PRESENT TAX RATE.**

Under the present tax rate the current assets climbed from \$66,000 in 1969 to \$259,000 in 1975.

To the public's knowledge the hospital board has not voted to close the hospital if the **TAX INCREASE** does not carry.

Pol. Adv. Paid for by  
**CITIZENS COMMITTEE FOR THE HOSPITAL AT AN ECONOMICAL TAX RATE.** Donald Windham and Jack Kennedy, Co-chairmen

**WelLine Pumps by Layne & Bowler**  
Meeting Tomorrow's Agricultural Needs Today. Since 1882

- Simplified design for ease of installation and service.
- Readily available standardized field replaceable parts.

**Distribution Centers**  
Alexandria, Minnesota (612) 763-3158  
Garden City, Kansas (316) 275-5971  
Kearney, Nebraska (308) 234-1914  
Lubbock, Texas (806) 797-3401  
Memphis, Tennessee (901) 278-3800  
Pasco, Washington (509) 545-0640  
Twin Falls, Idaho (208) 733-3284

Layne & Bowler, Inc. Memphis, Tenn. A MARLEY® CO. LBN-2



# As It Looks From Here

OMAR BURLESON, M.C., 17th District, Texas

WASHINGTON, D.C.—How long will it take to get off the market, the decision will likely be months away. Cyclamate was banned a few years ago, not because it was found to be injurious to health but because it failed to demonstrate its 'efficacy'. This forced drug manufacturers to reformulate and now, pill coatings, syrups, soft drinks and cosmetics among other products, use saccharin to replace sugar.

More serious, however, is the denial of this artificial sweetener to caloriewatchers and the estimated ten million diabetics across the country.

Many years ago, Mae West was supposed to have said it seemed that everything she did was either illegal, immoral or fattening. She likely could have more to say about some regulations of these times.

The tests in Canada found that at a dietary level of 5 percent saccharin produced malignant bladder tumors in 17 of 200 test animals. One malignant and one nonmalignant tumor showed up in another 100 under controls. The equivalent human consumption, according to scientific estimates, would be 800 cans of diet soda daily for a lifetime. Under the law, however, known as the Delaney Amendment, a 'safe level' of food additives is not recognized if there is demonstrated a cancer-producing potential.

There is a need for amending the so-called Delaney clause in the Food, Drug and Cosmetic Act. A number of us in the Congress have proposed modifications to put more reason into it.

## Youth probated on marijuana charge

Henry R. Samora, 18, of Post was given a six months probation of a 15-day jail sentence by County Judge Giles Dalby Wednesday morning and charged \$53 court costs for possession of one lid of marijuana, which is a misdemeanor.

Three juveniles who were with Samora when he was arrested by sheriff deputies Friday night, also were given six month probations by Dalby, acting as juvenile judge.

Hearings are scheduled before a Committee in the House of Representatives to review the provisions which now place a narrow and limited interpretation on food additives. Hopefully more clear and practical provisions can be devised and at the same time, give adequate protection against any product reliably linked with cancer.

## No large beef supply now

COLLEGE STATION — A noted livestock marketing specialist points out that sometimes certain marketing information gets misused, causing confusion to both producers and consumers.

So Dr. Ed Uvacek with the Texas Agricultural Extension Service attempts to set "the record" straight.

"Despite some claims about 'a large supply' of beef at the present time, actual figures show this is not the case," points out Uvacek.

"Federally inspected slaughter through March 5 was

running 3 percent below a year ago. This came despite 10 percent larger marketings of fed cattle in January and another increase in February. Obviously, a substantial drop has occurred in cow and nonfed cattle slaughter so far this year," explains the Texas A&M University System specialist.

All this adds up to the following: total beef production will be down the first half of 1977, fed cattle supplies will probably be light for March and April, and nonfed beef production will also be light, especially this spring.

**DIAL 3322**  
**Hospital Election Center**  
 9 A.M. TO 5 P.M. ALL NEXT WEEK BEGINNING MONDAY FOR ANSWERS TO ANY QUESTIONS YOU HAVE ON HOSPITAL TAX ISSUE.

# Income Tax Service

—Many changes were made in 1976 Income Tax Law  
 —Avoid overpayment of taxes by bringing your return to us.  
 Tax course recently completed to learn all details of new law.  
 — OFFICE IN MY HOME —  
 CALL 495-2627  
 For Directions to My Home  
**W-W INCOME TAX & BOOKKEEPING SERVICE**  
 Wanda Dooley Karron Rhodes



Prices good thru April 2, 1977. We reserve the right to limit quantities. None sold to dealers.

**PIGGLY WIGGLY ASSORTED FLAVORS CANNED POP 10 \$1**  
 12-Oz. Cans

**THIS WEEK'S FEATURED ITEM \$2.00 off WITH COUPON**

VALUABLE COUPON WORTH \$2.00 TOWARD THE PURCHASE OF THIS WEEK'S FEATURED ITEM

SET OF 4 SALAD PLATES  
 Our Reg. Discount Price \$4.99  
 Your Price with coupon: \$2.99

In the pattern of your choice  
 COUPON GOOD THRU 4-2-77

**McCall's Cookbooks On Sale Today! ON SALE THIS WEEK: Volume 10 "Coast to Coast" Ea. 99¢**

# SAVE MORE MONEY WITH THESE SUPER SPECIALS

Each of these advertised items is required to be readily available for sale at or below the advertised price in each store, except as specifically noted in this ad.

<p>WATER ADDED, WHOLE 6-8 LB. AVG.  <b>SMOKED PICNICS 68¢</b>                  LB.</p>	<p>CRY-O-VAC, WHOLE PACKER TRIM  <b>BEEF BRISKET 99¢</b>                  LB.</p>	<p>TEXASWEET  <b>RUBY RED GRAPEFRUIT 4 \$1</b>                  LBS.</p>	<p><b>PATIO Combination Dinner</b>                  ALL VARIETIES, FROZEN  <b>PATIO DINNERS 2 \$1</b>                  13-OZ. PKGS.</p>
--	---	--	---

DETERGENT  
**Tide 84-OZ. BOX \$1.89**  
 LIMIT ONE (1) WITH \$7.50 PURCHASE OR MORE

PIGGLY WIGGLY, SWEETMILK OR BUTTERMILK, CANNED  
**BISCUITS 8-OZ. CAN 5¢**  
 LIMIT FOUR (4) WITH \$7.50 OR MORE PURCHASE

<p>Piggly Wiggly, Regular Quarters  <b>Fresh Oleo 3 \$1</b>                  1-Lb. Pkgs.</p>	<p>Piggly Wiggly, Choice  <b>Fruit Cocktail 3 \$1</b>                  16-oz. Cans</p>	<p>Piggly Wiggly, Cut Green Beans or Fancy  <b>Golden Corn 4 \$1</b>                  16-oz. Cans</p>	<p>Treatwell  <b>Orange Juice 4 \$1</b>                  6-oz. Cans</p>
--	--	---	---

VALUABLE COUPON  
**SAVE 25¢**  
 When you buy One (1) 1-Lb. Can, 2-Lb. Can or One (1) 10-oz. Jar Instant  
**Folger's Coffee**  
 With this coupon  
 Coupon expires April 2, 1977

VALUABLE COUPON  
**SAVE 15¢**  
 When you buy One (1) 125-Ct. Roll of Piggly Wiggly  
**Paper Towels**  
 With this coupon  
 Coupon expires April 2, 1977

VALUABLE COUPON  
**SAVE 20¢**  
 When you buy One (1) 49-oz. Box of Piggly Wiggly Blue  
**Laundry Detergent**  
 With this coupon  
 Coupon expires April 2, 1977

VALUABLE COUPON  
**SAVE 10¢**  
 When you buy One (1) 20-oz. Pkg. of Pet Ritz, Frozen  
**Fruit Pies**  
 With this coupon  
 Coupon expires April 2, 1977

VALUABLE COUPON  
**SAVE 30¢**  
 When you buy one (1) 20-oz. Btl. of  
**Listerine Mouthwash**  
 With this coupon  
 Coupon expires April 2, 1977

VALUABLE COUPON  
**SAVE 30¢**  
 When you buy One (1) 24-Ct. Pkg. of  
**Triaminic**  
 With this coupon  
 Coupon expires April 2, 1977

VALUABLE COUPON  
**SAVE 10¢**  
 When you buy One (1) 15-oz. Can of Piggly Wiggly  
**Dog Food**  
 With this coupon  
 Coupon expires April 2, 1977

VALUABLE COUPON  
**SAVE 30¢**  
 When you buy One (1) 50-Ct. Btl. of  
**Dristan Tablets**  
 With this coupon  
 Coupon expires April 2, 1977

# Vote Saturday at Library to Keep Hospital Open!

(Pol. Adv. Paid for by Larry Willard)



JIM LATIMER  
Post's SS man

The new social security representative for Post is Jim Latimer, a native Texan who was born and reared at Matador. After military service in World War II, Latimer attended Texas Tech University and West Texas State University and graduated with a degree in management in January, 1960. Starting with the Social Security Administration in the 1960s, Latimer became a field representative in 1967, and now has 20 years experience in this field. Anyone who has a question about social security or supplemental security income should contact Latimer at the Garza County Courthouse, or call the Lubbock district office at 762-7373 or 762-7381.

**RECENT VISITORS**  
Visiting in the home of Mrs. R. V. Blacklock recently were Mr. and Mrs. Betty Burk of Miles, Tex., Mrs. Gladys Daniels of Belton, Tex., and Mrs. Jo Ann Blacklock and Janet of Post.

**FARM BUREAU INSURANCE**  
Insurance For All Your Needs  
**LIFE-AUTO-FIRE-FARM LIABILITY**  
**BLUE CROSS-BLUE SHIELD**  
BRAD LOTT, SPECIAL AGENT  
**Robert Harvick, Agency Mgr.**  
Phones 998-4320 & 998-4591 Res. Phone 998-4779  
TAHOKA, TEXAS

**POST ANTENNA CO., INC.**  
At  
**429 EAST MAIN**  
Hours: 9 to 12, 1 to 5 Mondays  
through Fridays  
Office Phone — 3127  
After Hours Call — 3603  
**Jimmy Evans, Manager**

When it's time to replace that old water heater here's a new idea. The Conservationist Electric saved! It saves energy... saves money. In fact the Conservationist Electric saves 15% of electric water heating cost. And because it's electric the Conservationist can be installed close to the point of use, giving you hot water instantly, saving hot water that would otherwise be transported along lengthy water pipes. The Conservationist Electric... It saves!

# ELECTRIC CONSERVATIONIST WATER HEATER

WE SELL 'EM... CALL US



## One-day program on early family change

LUBBOCK—How to deal with changes within a family's early years is the subject of a one-day community program April 21 at St. John's United Methodist Church. The public event is sponsored by the Texas Agricultural Extension Service in cooperation with the South Plains Development Program family living task force.

A noted psychologist, Dr. Frederick Mears from Texas Eastern University at Tyler, is a featured speaker for the program which is scheduled from 10 a.m. to 3 p.m. Five workshops will be offered, dealing with pre-marriage, marriage, pregnancy, in-law relationships and living with children.

"The day's discussions are intended to focus on changes within the family's early years and how to deal with the stress

situations that affect family stability," according to Mrs. Catherine B. Crawford, district agent for the Texas Agricultural Extension Service. The program is the first in a series of three on coping with changes within the family. All are being planned by the South Plains Development Program family living committee, says

Garza at 40 percent of bond sales goal

February sales of Series E and H United States Savings Bonds in Garza county were reported today by County Bond Chairman Lewis C. Herron. Sales for the second-month period totaled \$11,310 for 40 percent of the 1977 sales goal of \$28,000 so far. Texas sales during the month amounted to \$22,817,684, while sales for the first two months of 1977 totaled \$43,847,911 with 16 percent of the yearly sales goal of \$276.9 million achieved.

## LETTERS to the Editor

**ANOTHER HOSPITAL SIDE**  
Dear Editor:  
I realize that as editor of a small town weekly newspaper, you have certain privileges such as placing the items that you favor on the front page in big bold letters while you pledge you are "keeping the public informed." I also realize that if this letter is printed it will appear somewhere over on about page 6 in fairly small print, but certainly not small enough to be conspicuous. And of course, I will expect the inevitable "Editor's Note" at the end, or a snippy remark in your "Postings" column. First, I would like it clearly understood that I am FOR the hospital. After all, it was a great part of my life for many years and I still feel a sense of loyalty toward it. I also feel that the public, the taxpayers, should be aware of some other facts that you apparently do not feel worthy of mention while you are "keeping the public informed."

The following is a paragraph from my letter of resignation, which was written to the hospital board on May 4, 1976, after they had just fired the administrator who had finally succeeded in operating the hospital in the black with money in the bank; and the hospital board had decided to take over and went on a wild spending spree some miracle to save the hospital, but at this point it is difficult for me to foresee any such luck for the money to hold out at the rate you are spending it. I must admit that it breaks my heart to see you spending so lavishly the money that I have helped save for some nine years now, to satisfy the whims of a

couple of people."

Bear in mind that this was informed by Medicare that the computation procedure had been changed and that we would not be receiving the usual sizable medicare reimbursement. It seemed that we should be trying to cut expenses rather than purchasing expensive new equipment and raising salaries. It didn't take a crystal ball to foresee that this same hospital board would soon be whimpering to the public for help, as predicted in a letter which appeared in this same column a few weeks after my resignation. I would like to repeat an excerpt from that letter as follows:

"It now appears that we had been using the wrong approach in the past with our penny-pinching in order to have a little money in the bank O dear, I just had a thought! These things are going to have to be paid for somehow. You surely don't suppose, that with all this extravagance, they would have the audacity to request a tax increase?" I am not sure how well informed the public really is if they have been depending on your newspaper. For instance, the "well-informed public" probably did not know when a couple of the board members posted an "emergency" called meeting early on a day that the chairman of the board was to return from an out-of-town trip. They could not wait until he returned later that day to take care of their "emergency" for fear they would meet with some opposition.

The "well-informed public" who believes the hospital board has been so anxious all along to bring in and cooperate with new doctors, has not sat in a board meeting and heard a board member state, "as far as I am concerned, we only have one doctor," when there were three doctors on the staff. Is that cooperation and indiscriminate? Can this sort of action be in the best interest of the hospital? I think not. Again, I want to stress that I am definitely FOR keeping our hospital but I feel that, under proper management, the almost doubled rates should take up much of the slack of increased costs; and I see no reason to increase the tax rate only to furnish this board with extra tax dollars to embark on another spending frolic. I contend that a vote AGAINST the tax increase is not a vote against the hospital. June Peel 905 West 7th

**SEAGRAVES PATIENT WRITES**  
Dear Editor:  
Recently I was a patient in your Hospital. As a former resident, now living where we have NO Hospital, I can urge everyone to vote for the Hospital Taxation Issue. It is very inconvenient to have to go out of town for hospital service, and especially hard on the elderly people in the community. You have to be in a Lubbock Hospital to know just how lonely, and inconven-

ient it can be and a very extreme hardship on friends and relatives to come visit. If there is any way possible, the hospital should be kept open. After living in a community without a hospital, you will realize how much it's services will be missed. Now I had a very pleasant stay at your hospital. The doctors and staff are very nice. I sure hope it can be kept open, because if I need hospitalization again, that is where I want to come, and I would like to know it's there. I'm not a taxpayer. That is true, but I would gladly pay more than my share, to have kept our hospital open. So I once again urge everyone to VOTE 'For the Hospital'.

**TEENAGER'S VIEW**  
Dear Editor:  
I know that the hospital issue is a big one. I have heard my own parents discussing it for several weeks. I never gave it much thought until this week. Friday I was hospitalized with a blood clot in my leg. I have had to stay in bed constantly not even being able to hang my foot off the bed. I don't know how this would have affected me if we had not had our own "hometown" hospital. My friends have been able to drop in whenever they had a chance and my family has been able to stay with me all the time. It would have been very depressing for me if I had not been here so that I could see familiar faces very often. The nurses have treated me like one of their children and have been not only sweet and attentive but very personally involved in my feelings.

Dr. Wilson is my friend as well as my doctor and I know I could not feel at ease with a stranger or for that matter a hospital full of strangers in another town. As parents you might all want to think about your own child being in this situation. You can go home for awhile and be here in minutes if you are needed. You don't have to bear the expense of renting a room to be close to your child or of eating meals out or of driving back and forth spending more time on the road than at the hospital. As a teenager in Post let me say that I am proud of our hospital. Its nurses, doctors and staff. For all our sakes let's keep it. Sincerely, Kelly Mitchell

**TWO DOCTORS WRITE**  
Dear Editor:  
In a few short days the voters of Garza County will decide the fate of their hospital facility. In a larger sense, however, they will be expressing their interests and desires concerning the type of medical care to be available in their county. We feel the voters of Garza County should mandate a health facility which in every way will serve to promote their own health care. To do otherwise would be to invite considerable hardship on the patients that are served by the facility as well as their families. Furthermore, a vote against maintaining the hospital would deprive the physicians of Post of a tool vital to the execution of their responsibilities. It is our hope that the voters

## GARZA MEMORIAL HOSPITAL DISTRICT Statement of Income and Expense for Last Fiscal Year, Ending Sept. 30, 1976

Year Ended	9-30-76
<b>Revenue</b>	
Rooms	93,492.50
Labor Room	660.00
Emergency	5,374.00
Delivery Room	2,720.00
Anesthesia	2,896.30
Pharmacy	23,044.34
Laboratory	33,443.92
X-Ray	22,836.47
EKG	3,560.00
Housekeeping	849.55
Central Supply	10,650.30
Surgery	655.00
Physical Therapy	1,161.00
Inhalation Therapy	5,344.00
Dietary	984.60
Nursery	2,640.00
Blood	50.00
Confections	4.12
T.V.	873.00
Anti-Trust Suit	0-
Miscellaneous	0-
Guest Bed	555.00
Total Revenue	211,795.10
<b>Expenses</b>	
Administrative	40,111.09
Retirement Plan	8,179.37
Employee Insurance	4,163.76
T.V. Rentals & Confections	1,282.32
Loss on Bad Accounts	30,451.44
Discounts	87.49
Anesthesia	1,072.52
Nursing	113,373.08
Physical Plant	28,681.69
Janitorial	10,941.98
Utilities	11,769.02
Nursery	45.50
Pharmacy	15,416.97
Central Supply	19,819.51
Radiology	16,894.88
Delivery Room	0-
Physical Therapy	200.50
Inhalation Therapy	1,069.25
EKG - BMR	2,328.61
Laboratory	23,992.60
Emergency Room	305.50
Dietary	26,943.70
Surgery	174.00
Loss on Asset Removals	353.49
Labor Room	307.55
Doctors' Promotion	9,505.48
Laundry	7,793.06
Insurance	10,815.50
Interest	55.99
Blood	142.00
Miscellaneous	211.40
Depreciation	21,414.53
Total Expenses	407,910.18
Net Operating Loss Before Other Income	(196,115.08)
Cost Adjustments	
Other Income	70,861.13
Ad Valorem Taxes Assessed	134.34
Tax Penalty & Interest Received	(1,531.05)
Less: Tax Collector Commission	(1,861.76)
Tax Discounts Allowed	
Net Income from Ad Valorem Taxes	67,602.66
Interest Income	4,260.88
NET INCOME FOR YEAR	(124,151.54)

Yours sincerely,  
Melvin A. Golden, M.D.  
Robert H. Smalley, M.D.  
Editors Note: Dr. Golden and Dr. Smalley provide our hospital with Radiologic services through Plains Radiologic Services of Lubbock.

**ODD CHALKS**  
MORE THAN A FIFTH OF ALL LIGHT HOUSES IN THE U.S. ARE ON THE GREAT LAKES.  
More Complete Protection for all Tenants Renting Houses or Apartments, in the Packaged Insurance we write to help "Light the Way."

**POST INSURANCE AGENCY**  
121 E. MAIN ST. 79701 LUBBOCK, TEXAS

**Vote Saturday at Post Public Library To Keep Our Hospital Open!**

POL. ADV. PAID FOR BY VOLUNTEER CITIZENS COMMITTEE TO KEEP GARZA MEMORIAL HOSPITAL  
(Mayor Giles McCrory and Larry Willard, Co Chairmen)