



**BAND SWEETHEART** — Karen Davis, center, was named Band Sweetheart last Thursday during the homecoming pep rally. Other candidates shown are left, D'Linda Tyler, and Lana Dunn, right (Staff Photo)



**FOOTBALL QUEEN AND COURT** — Melissa Tatum, center, was crowned 1979 Football Queen during the Homecoming Pep Rally last Thursday, Oct. 25, in the high school gym. Other candidates for the honor were Tammy Reece, left, and Donna Baumann, right.

14 Pages

USPS 439-620

Price 15c

# The Post Dispatch

Fifty-Second Year Post, Garza County, Texas Thursday, Nov. 1, 1979 Number 22

Three constitutional amendments are on ballot—

## Election set Tuesday

Only 200 to 300 Garza voters are expected to turn out at the polls next Tuesday for the special state constitutional amend-

ment election. Polls will be open from 7 a.m. to 7 p.m. with voters voting at nine different voting boxes over the

county. Of the three amendments up for decision, the important one in this area is No. 3 on the ballot which would

authorize a program of guaranteed loans for Texas residents of modest means to purchase farmland. (See editorial on Page 2 for details.)

The first amendment on the ballot provides for state-wide appointment of notaries public, rather than appointment on a county-by-county basis.

The second amendment provides for review by the legislature of rule-making by government agencies.

Voting boxes in the county by precinct number are: Pct. 1, First Presbyterian Church here; Pct. 2, Southland school; Pct. 3, community room at bank; Pct. 4, Justiceburg school; Pct. 5, Close City Community Center; Pct. 6, Graham Community Center; Pct. 7, Post high school library; Pct. 8, Post junior high library; and Pct. 9, Lorenzo Alexander Community Center.

No absentee votes had been cast through Tuesday. Absentee voting will end Friday.

### \$1,250 raised for waterline

Justiceburg's Halloween Carnival and Western Dance was termed a "huge success" Saturday night with approximately \$1,250 raised toward the \$10,000 needed to complete the small community's badly needed water system.

The \$1,250 includes donations received from some who were unable to attend.

An estimated 200 folks turned out during the evening, including visitors from Post, Colorado City, Lubbock Snyder, Fluvanna, and Dermott.

Justiceburg residents are now hauling their own water from the Exxon camp.

### Man finds his stolen car

Here's a local believe-it-or-not story.

Santos Lopez of Levelland had his car stolen in Levelland about three weeks ago. He knew who stole the car but refused to file charges so the stolen car was not reported on the law enforcement network.

Lopez was driving through Post Sunday — and found his car.

It had been abandoned with the keys in the glove compartment on the north side of the Shamrock service station on the north edge of Post. Attendants said the car had been there several days.



All local "figure filberts" should enjoy themselves on page 3 of today's Dispatch. It contains four annual financial statements of the Post schools as prepared in the recent annual audit.

You'll find the schools ran the biggest lunch counter in town last year with 78,778 lunches served over a nine months period at a cost of \$1.08 per lunch. Oh yes, and that the schools lost a penny a meal on an \$85,547.20 lunchroom operation.

If you look closely you'll see that the Post school system — land, buildings, and equipment — was valued at \$3,695,515.71 a couple of months ago, that the district now has a total of \$113,741.92 in delinquent taxes, and very little bonded indebtedness still left on the books from the high school bond issue of the early '60s.

Down at the bottom of the page if you study it a bit you'll see that high school football receipts during a losing season last year dropped 20 percent from the year before (1977). Also that there is (See Postings, Page 14)

### Caylor rites here today

Funeral services for Mrs. Hallie Caylor, 70, will be held Thursday, Nov. 1 in the Calvary Baptist Church at 3 p.m. with the Rev. Morgan Ashworth, pastor, officiating.

Mrs. Caylor passed away Tuesday morning in Garza Memorial Hospital following a lengthy illness.

She was a vocational nurse and was one of the first nurses at Garza Memorial when it opened.

A resident of Post since 1925 she married Albert Caylor May 17, 1930, in Post.

Survivors include her husband, Albert; one daughter, Mrs. Gloria Jean (See Caylor rites, Page 14)

### Burr fire at Southland gin

Both Post and Slaton firemen were called to the Southland Gin Tuesday night to extinguish a fire of burning burrs blown in the high wind.

Bobby Terry, assistant fire chief, said the fire started in the dryer and spread to the burr catcher. The burrs were then dumped on the ground and were blown across the railroad right-of-way setting right-of-way weeds afire.

A Santa Fe freight train had to be halted for 15 minutes.

It took three hours to extinguish the blaze which began about 6:15 p.m. Post sent three trucks to the fire and Slaton two.

Actually there was no fire damage either to the gin or cotton, Terry reported.



**MEMORIAL GIFTS SHOWN** — A group at the Sunday afternoon open house of the Garza Museum are shown in front of a gift plaque noting the building is on the National Registry of Historical Places. Other gifts in the picture include grill work in front door and rail for front steps. In group, left to right, with youngsters in front and one woman unidentified, are Frank Runkles, Ruby Kirkpatrick, Gwen Boren, Winnie Tuffing, Mildred Boren Wood, Mrs. Frank Pickett, Mrs. Tom Bouchier, Tom Bouchier and Frank Pickett. (Staff Photo)

## Garza Museum seeks funding

Directors of the Garza Museum Association, meeting at the museum Saturday morning, voted to request in a letter to all association members not only their dues payment for 1980 but any additional contributions they might desire to make.

The organization needs to spend about \$800 to complete the security for the building so that valuable antiques will be donated or placed on exhibit in the museum, and for completion of a general overhaul of the building's plumbing already begun.

Frank Runkles outlined

these needs to directors as well as his proposal for a sales counter in the museum office to sell only items identifiable with Garza County and its history.

He pointed out that organizations might give the association such items as a contribution to be sold, or that other items might be commissionable. Directors voted to give authority to a three-member committee to supervise such a museum sales counter and to draw up a permanent policy for such sales.

Museum president Ruby (See Museum, Page 14)

### 4-H food show to be Nov. 10

Mrs. Shirley Bland, food show chairman, announces the Garza County 4-H Food Show will be held Saturday, Nov. 10 in the Post High School homemaking department.

4-H members have been working for several weeks in food and nutrition project groups. Those groups learn about nutrients, basic food groups, food preparation, meal planning, meal service, table settings and food safety.

Almost 75 boys and girls have been involved with nine adult leaders. The leaders and groups are:

Southland, Pam Warren and Sue Weaver; Close City, Delores Dunn and Ruby Jones; Post Girls, Shirley Bland, Sheila Melton and Betty Striblin; Post Boys, Winnie Harrell and Graham, Paula Cawthon.

### Police shoot Claude Willis

Claude Lee Willis, 32, out on \$10,000 bond here awaiting grand jury action on a charge of involuntary manslaughter, was killed by police last weekend in Oklahoma City.

According to the Associated Press wire story on the shooting, Willis allegedly pulled a gun on two officers who were looking for an escapee from a correction department community treatment center.

Willis' death was the third in Oklahoma City by police in the past ten days. The two officers were placed on routine suspension pending the outcome of the police investigation of the fatal shooting.

Willis was the driver of a truck which collided with a motorcycle at a local street intersection Sept. 26, fatally injuring Sandy Bell, 20, of Post, rider of the motorcycle.

The sheriff's department has confirmed that the man shot in Oklahoma City was the Willis out on bond here.

## No ruling yet in gun death

A Lubbock man was shot and killed by a 45 revolver bullet through his brain Friday afternoon on busy US-84 about five miles south of Post.

One motorist gave authorities here a statement according to Deputy Sheriff Donnie Walker, that he saw the man place the gun to his temple. When he looked back in his rear

view mirror he saw the man slumped to the ground.

Other motorists also gave statements as to the portions of the shooting they had witnessed.

Justice of the Peace Pat Kitchens, who pronounced Charles Eddie Whitfield of Lubbock dead at 2:15 p.m. at the scene, told The (See Hwy. shooting, Page 14)

## Forger busy with stolen checkbook

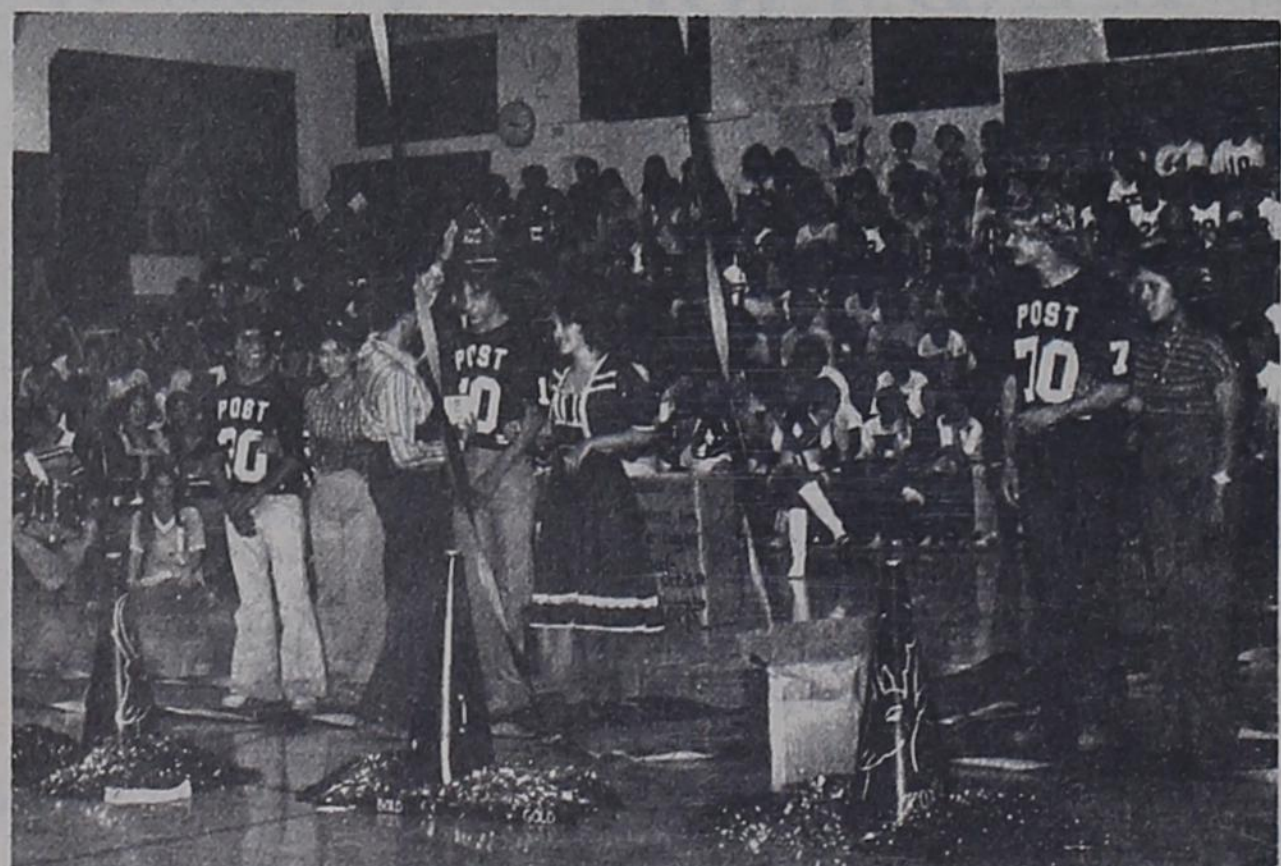
A checkbook stolen here several weeks ago has resulted in the passing of about a \$1,000 worth of forged checks.

Mrs. Duren told The Dispatch that the checkbook was stolen from her husband's print shop next to The Dispatch, apparently one Saturday morning when the door had been left unlocked. The

Durens live in an apartment above the shop.

Mrs. Duren said one of the family saw somebody leave the print shop that Saturday morning but they did not know the checkbook had been taken at the time.

The business account had been closed at the bank here. (See Forger busy, Page 14)



**PEP SQUAD BEAU** — Jackie Melvin, center, president of the Spirit Squad, is shown crowning Mike Macy pep squad beau during the homecoming pep rally held Thursday, Oct. 25. Macy's escort was Dana Stotts. Other nominees were left to right, Jackie Ayala with escort Sylvia Quintana and Brent Mason escorted by Cindy Basquez. (Staff Photo)











RICK'S



1<sup>ST</sup>

Thursday, Nov. 1  
thru Wed., Nov. 7

# BIRTHDAY SALE

<p>Golden Bake Sandwich</p> <p><b>BREAD</b></p> <p>1 1/2 lb. Loaves <b>2/99<sup>c</sup></b></p>	<p>Sprite, Tab &amp;</p> <p><b>COKES</b></p> <p>32 Oz. 6 Pk. <b>\$1.<sup>39</sup></b> Plus Deposit</p>	<p>Shurfresh 1 1/2% Low Fat</p> <p><b>MILK</b></p> <p>Gallon <b>\$1.<sup>69</sup></b></p>
---	--	---

## Register for Big Gold Bond Stamp & Prize Giveaway

thru Nov. 14  
Prizes Given Away  
Nov. 14

- |   |  |
|---|--|
| 1st Prize — 25,000 Gold Bond Stamps       | 7th Prize — Hamilton Beach Butterup          |
| 2nd Prize — 15,000 Gold Bond Stamps       | Popcorn Popper                               |
| 3rd Prize — 10,000 Gold Bond Stamps       | 8th Prize — Aladin Thermos                   |
| 4th Prize — Dynaware Ovenware Set         | Pump-a-Drink                                 |
| 5th Prize — \$25 Grocery Gift Certificate | 9th Prize — \$10 Worth of Meat               |
| 6th Prize — GE Electric Can Opener        | 10th Prize — \$10 Groceries Gift Certificate |

**TRIPLE GOLD BOND STAMPS**  
Saturday, Nov. 3

## Buy One! Get One FREE!

- Rainbo 24 Oz. Honey Grain Bread
- Shurfresh Chocolate Milk, Qt.
- Shurfresh Sour Cream, 1/2 Pt.
- New, Complete, 6 Oz.
- Gladiola Yellow Cornbread Mix

**Apples**

WASHINGTON RED OR GOLDEN DELICIOUS **3 \$1** LBS.

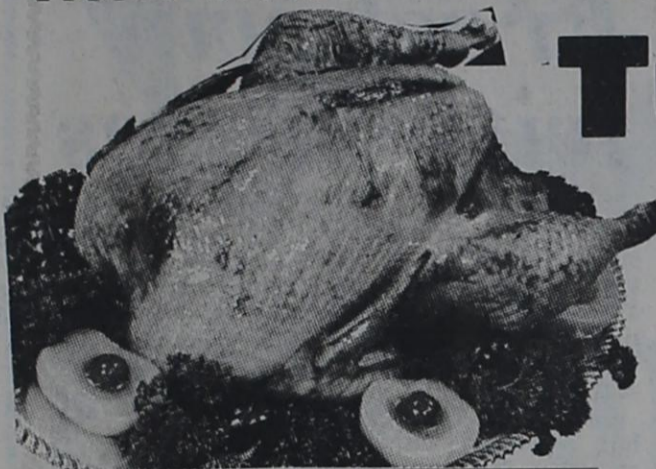
CALIFORNIA ROMAINE Lettuce LG. HEAD **39<sup>c</sup>**

WASHINGTON D'ANJOU Pears 3 LBS. <b>\$1</b>	CALIFORNIA Carrots LB. PKG. <b>25<sup>c</sup></b>
OCEAN SPRAY Cranberries LB. PKG. <b>59<sup>c</sup></b>	YELLOW SWEET Onions 2 LBS. <b>29<sup>c</sup></b>

## Super Saver Specials During Our First Birthday Week

<p>10 lb. Bag, Russett Potatoes</p> <p>Save 80'</p> <p><b>19<sup>c</sup></b></p> <p><small>With 1 Filled Discount Specials Booklet</small></p>	<p>3 lbs. Crisco</p> <p>Save 50'</p> <p><b>\$1.59</b></p> <p><small>With 1 Filled Discount Specials Booklet</small></p>	<p>2 Litre Coca Cola</p> <p>Save 50'</p> <p><b>59<sup>c</sup></b></p> <p><small>With 1 Filled Discount Specials Booklet</small></p>	<p>Charmin, 4 Roll Bath Tissue</p> <p>Save 50'</p> <p><b>59<sup>c</sup></b></p> <p><small>With 1 Filled Discount Specials Booklet</small></p>	<p>Gallon Jug Vit. D, Shurfresh Milk</p> <p>Save 56'</p> <p><b>\$1.59</b></p> <p><small>With 1 Filled Discount Specials Booklet</small></p>	<p>Giant Size Detergent Tide</p> <p>Save 50'</p> <p><b>\$1.39</b></p> <p><small>With 1 Filled Discount Specials Booklet</small></p>
--	---	---	---	---	---





# Turkeys

SHURFRESH SELF-BASTING  
18 - 22 LB. AVERAGE TENDER TIMER

**69¢**  
LB.

# Half Hams

SHURFRESH BONELESS FULLY COOKED

**\$2.19**  
LB.



SHURFRESH 4 - 6 LB. **Baking Hens** LB. **59¢**  
SHURFRESH SLICED **Bacon** LB. PKG. **99¢**

SHURFRESH **Meat Franks** 12 OZ. PKG. **89¢**  
SHURFRESH MEAT **Bologna** 12 OZ. PKG. **99¢**

SHURFRESH PORK **Sausage** LB. PKG. **99¢**  
SHURFRESH PORK **Sausage** 2 LB. PKG. **\$1.98**

SHURFRESH SLICED **Luncheon Meats** 8 OZ. PKG. **89¢**

SHURFINE ENRICHED **Flour** 5 LB. PAPER BAG **69¢**

*Whole*  
**FRYERS**  
lb. **39¢**

*Ground*  
**BEEF**  
lb. **\$1.<sup>09</sup>**

SHURFINE VEGETABLE **Shortening** 48 OZ. CAN **\$1.59**

### Grocery Specials

SHURFINE SALTINE **Crackers** 2 <sup>16 OZ.</sup> BOX **\$1**  
SHURFINE TALL **Kitchen Bags** 15 CT. BOX **99¢**  
SHURFINE TRASH **Can Liners** 30 GAL. SIZE 10 CT. BOX **\$1.09**  
SHURFINE 2 PLY ASSTD. **Bath Tissue** 8 RL. BAG **\$1.49**  
SHURFINE **Salt** FREE RUNNING OR IODIZED 2 <sup>26 OZ.</sup> BOXES **49¢**  
ROXEY RATION **Dog Food** 6 <sup>15 1/2 OZ.</sup> CANS **\$1**  
TASTY SHURFINE **Instant Tea** 3 OZ. JAR **\$1.49**  
SHURFINE EVAPORATED **Milk** 2 <sup>13 OZ.</sup> CANS **79¢**  
COLA/ROOT BEER STRAWBERRY **Shurfine Pop** 2 LITER BOTTLE **79¢**  
SHURFINE MEDIUM GRAIN **Rice** 32 OZ. BAG **69¢**  
SHURFINE MANDARIN **Oranges** 11 OZ. CAN **59¢**  
SHURFINE CRANBERRY **Sauce** WHOLE OR STRAINED 2 <sup>16 OZ.</sup> CANS **79¢**  
SHURFINE YELLOW CLING **Peaches** SLICES/HALVES 2 <sup>16 OZ.</sup> CANS **89¢**  
SHURFINE CRUSHED/CHUNK **Pineapple** SLICED 2 <sup>15 1/4 OZ.</sup> CANS **89¢**  
SHURFINE UNSWEETENED **Juice** GRAPEFRUIT 6 - 6 OZ. CANS **89¢**  
SHURFINE FANCY **Tomato Juice** 46 OZ. CAN **69¢**  
SHURFINE **Pork & Beans** 4 <sup>16 OZ.</sup> CANS **\$1**

SHURFRESH ASSORTED **Ice Cream** 1/2 GAL. SQ. CTN. **89¢**

SHURFINE GRANULATED **Sugar** 5 LB. BAG **\$1.09**

SHURFINE WHOLE KERNEL/CREAM STYLE **Golden 4 Corn** 17 OZ. CANS **\$1**

FOR HOUSEHOLD USE **Shurfine Bleach** GALLON JUG **59¢**

### Shelf Specials

SHURFINE CUT **Green Beans** 3 <sup>16 OZ.</sup> CANS **\$1**  
SHURFINE **Spinach** 3 <sup>15 OZ.</sup> CANS **\$1**  
SHURFINE FRESH SHELLED **Blackeyes** 3 <sup>15 OZ.</sup> CANS **\$1**  
SHURFINE EARLY HARVEST **Sweet Peas** 2 <sup>17 OZ.</sup> CANS **79¢**  
SHURFINE WHOLE IRISH **Potatoes** 3 <sup>16 OZ.</sup> CANS **89¢**  
SHURFINE WHOLE PEELLED **Tomatoes** 3 <sup>16 OZ.</sup> CANS **\$1**  
SHURFINE TOMATO **Sauce** 5 <sup>8 OZ.</sup> CANS **\$1**  
SHURFINE PINK **Salmon** 15 OZ. CAN **\$1.69**  
SHURFINE LIGHT **Chunk Tuna** 6 1/2 OZ. CAN **69¢**  
SHURFINE STRAWBERRY **Preserves** 18 OZ. JAR **89¢**  
SHURFINE **Grape Jelly** 18 OZ. JAR **69¢**  
SHURFINE CRUNCHY/CREAMY **Peanut Butter** 18 OZ. JAR **98¢**  
SHURFINE **Waffle Syrup** 32 OZ. BTL. **79¢**  
SHURFINE FRESH PAK CUCUMBER **Chips** 16 OZ. JAR **69¢**  
SHURFINE TOMATO **Catsup** 32 OZ. BTL. **69¢**  
SHURFINE SALAD **Dressing** 32 OZ. JAR **89¢**  
SHURFINE BLACK **Pepper** 4 OZ. CAN **79¢**

### Dairy Specials

SHURFRESH HALFMOON LONGHORN **Colby Cheese** 10 OZ. PKG. **99¢**  
SHURFRESH BUTTERMILK/SWEETMILK **Biscuits** 4 <sup>8 OZ.</sup> CANS **59¢**  
SHURFRESH SOFT **Margarine** 16 OZ. BOWL **59¢**  
SHURFRESH TASTY **Cinnamon Rolls** 9 1/2 OZ. CAN **69¢**

SHURFINE Macaroni & Cheese **Dinner** 5 <sup>7 1/2 OZ.</sup> BOX **\$1**

SHURFINE POWDERED **Detergent** 49 OZ. BOX **\$1.09**

### Frozen Food Specials

SHURFINE ORANGE **Concentrate** 12 OZ. CAN **69¢**  
SHURFINE NON-DAIRY WHIPPED **Topping** 2 <sup>9 OZ.</sup> BOWLS **\$1**

### Frozen Food Specials

SHURFINE FROZEN CAULIFLOWER SPEARS **Vegetables** 2 <sup>10 OZ.</sup> CTNS. **\$1**  
SHURFINE CRINKLE CUT **Potatoes** 32 OZ. BAG **89¢**



125 W. 8th

Dial 2716







# FOOTBALL!

## Post Antelopes Vs. Seminole

7:30 PM Friday, Nov. 2 at Seminole

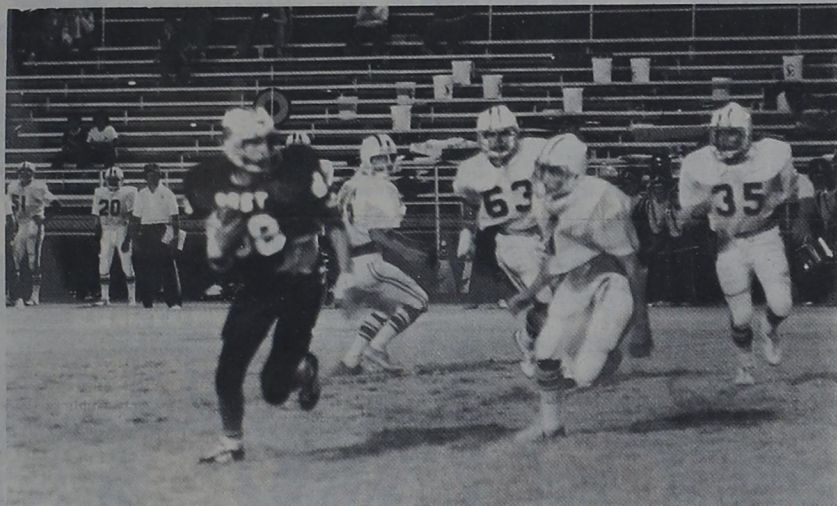
**Twin Bill in Antelope Stadium  
Thursday, Nov. 1**

**5:30 PM — Post Freshmen Vs. Seminole  
7:30 PM Post JVs Vs. Seminole**

**Also at Coahoma Thursday, Nov. 1**

**5:30 PM  
Post 7th Graders  
Vs. Coahoma**

**7:30 PM  
Post 8th Graders  
Vs. Coahoma**



**ADDING YARDS** — End Jackie Stelzer has just pulled in a pass from Quarterback Drew Kirkpatrick in the homecoming game with Roosevelt and is adding some extra yards to the gain as three Eagles try to run him down. (Staff Photo by Norma Baumann)



**ON END SWEEP** — Wingback Jackie Ayala picks up a badly needed first down as he sweeps left end in Post's homecoming loss to Roosevelt in Antelope Stadium Friday night. Fullback Barry Wyatt, No. 33, has just blocked one Eagle out of the way. (Staff Photo by Norma Baumann)

### These Post Firms and Business Folks are Backing the Lopes to Scalp the Indians

- Rick's Venture Foods
- Pequeno — Sons Phillips 66
- The Tire Shop
- Prairie Flower Shop
- Radio Shack
- Ammons Printing & Office Supplies
- Southside Barber Shop
- Prescription Shop
- Young Bookkeeping Service
- Dairy Queen
- Jackson Bros. Meat Packers
- Higginbotham-Bartlett
- Harold Lucas Motors
- Modern Beauty Shop
- Ince-Fina Service
- Sentry Savings Association
- Handy Hardware & Oil Field Supplies
- H & M Construction
- R. E. Cox Lumber Co., Inc.
- Justice-Mason Funeral Home
- Palmer Well Service, Inc.



- WellTech, Inc.
- B & B Liquor
- George R. Brown
- Western Auto
- Harmon's Hamburger Hut  
Arcade
- Hundley's Mens Wear
- Caprock TV
- Tom Power Insurance
- Wacker's
- Postex Plant
- Post Insurance Agency
- United Super Markets
- Mason's Garage
- Southland Butane, Post
- Charles McCook, DDS
- Wilson Bros. Chevron  
Station & Garage
- Double R Beauty Bar
- Lott's White Auto
- damon's Restaurant
- Jae's



- County Judge Giles Dalby
- Jay's Chemicals
- Hudman Furniture Co.
- First National Bank
- Strawn Transport & Acid
- Taylor Tractor & Equip.
- Mayor Giles McCrary
- Post Dispatch
- Guy's
- Lawrence Welding
- El Matamoroz Cafe
- D. C. Hill Butane
- Gandy's Caprock Gulf
- Starkey's Oil Field Services
- Hill & Hill Transport
- Syd B. Wyatt, Oil Properties
- Happiness Is
- Palmer Oil Field Construction
- Terry's Tire Shop
- Bob Collier Drug
- Frances L. Camp
- Texaco Wholesale

PRICES  
GOOD  
THRU  
NOV. 3RD

**U**  
**UNITED**  
Supermarkets

PLAY... **BLACK-OUT**

**BINGO**

QUANTITY RIGHTS RESERVED

WHITE CLOUD  
BATHROOM  
**TISSUE**  
4 ROLL  
PKG.  
**79c**



IVORY  
BOLD  
GAINES BURGERS  
REYNOLDS WRAP  
PAMPERS



IVORY BATH SOAP	5¢ OFF LABEL	3 PACK	<b>69c</b>
BOLD DETERGENT	84 OZ. 25¢ OFF LABEL	171 OZ. 50¢ OFF LABEL	<b>\$5.39</b>
GAINES BURGERS		72 OZ.	<b>\$2.49</b>
ALUMINUM FOIL REYNOLDS WRAP		37½ FT. ROLL	<b>79c</b>
PAMPERS	CONV. PAC.	48 CT. TODDLERS 60 CT. EXTRA ABSORBENT	<b>\$6.49</b>
BETTY CROCKER DINNER 4.5 OZ.		CHEESE SAUCE BEEF SAUCE BUTTER SAUCE CHICKEN SAUCE	<b>59c</b>

OUR DARLING  
**CORN**  
WHOLE KERNEL OR  
CREAM STYLE

**4**  
17 OZ. CANS FOR

A & W  
**ROOT BEER**

REG. OR SUGAR FREE  
**\$1.09**  
6 PK. CRTN. CANS



PUDDING OR LAYER  
18½ OZ. BOX

DUNCAN HINES  
**CAKE MIX**

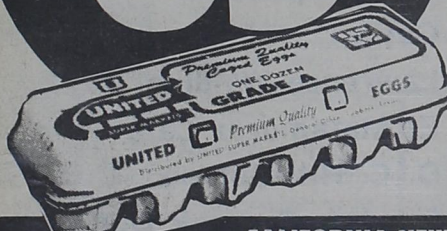
**69c**

HILLS BROTHERS  
**COFFEE**

**\$2.79**  
1 LB. CAN

SHOP! SAVE!

UNITED  
**EGGS**  
LARGE DOZEN  
**69c**



DREAM WHIP	6 OZ. PKG.	<b>\$1.09</b>
MRS. BAIRD'S VIENNA ROLLS	16 CT. PKG.	<b>79c</b>
HI-C FRUIT DRINKS	ASST. FLAVORS 64 OZ. BTL.	<b>89c</b>
SUGARY SAM CUT YAMS	30 OZ. CAN	<b>69c</b>
KEEBLER HONEY GRAHAMS	16 OZ. OR CINNAMON CRISP 14 OZ.	<b>79c</b>
PET EVAPORATED MILK	TALL CAN	<b>39c</b>

CALIFORNIA NEW CROP RUBY RED  
**GRAPEFRUIT**  
RUSSET ALL PURPOSE  
**POTATOES**

**3** LBS. **\$1**

**10** LB. BAG **79c**

WYLER'S  
**LEMONADE MIX**  
24 OZ. **98c**

D'ANJOU  
**PEARS**  
LB. **39c**

BELL  
**PEPPER**  
LGE. CRISP PODS  
**3** FOR **49c**

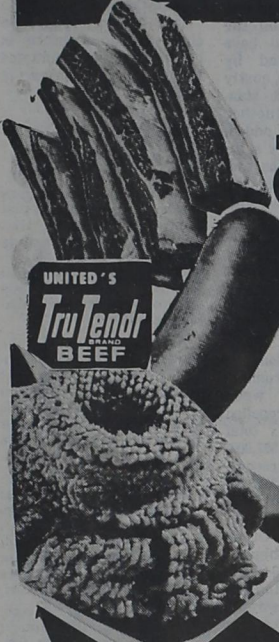
SNOWBALL  
**CAULIFLOWER**  
LARGE FLORETS  
LB. **49c**

CARNATION  
**TUNA**  
CHUNK LIGHT  
6¼ OZ. **69c**



# WIN 10000

## EXTRA S&H GREEN STAMPS

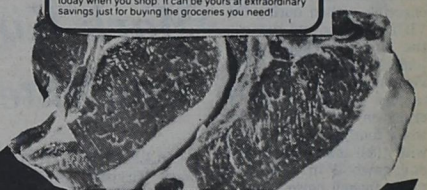


CUDAHY'S <b>PICNICS</b> .....	GOLD COIN FULLY COOKED	3	LB. CAN	\$3.98
BLADE CUT <b>CHUCK ROAST</b> .....	UNITED TRUTENDR BEEF		LB.	1.19
FINE FARE <b>CHEESE</b> .....	AMERICAN SINGLES	12 OZ.	PKG.	\$1.19
SWIFT'S <b>SPARE RIBS</b> .....	TENDER LEAN PORK		LB.	1.19
UNITED'S <b>SAUSAGE</b> .....	EXTRA LEAN COUNTRY STYLE		LB.	88¢
FRESH <b>GROUND BEEF</b> .....	FAMILY PACK		LB.	1.18



Beautiful **CAPRI** cookware at savings up to 60%!  
**1 1/2 QT. SAUCEPAN** with Cover  
**\$5.99** only with minimum \$10 purchase  
 REG. \$10.99

The ultimate in gourmet cookware can now be yours at incredible savings! This is the heavy gauge porcelain-on-steel cookware scientifically engineered to help you prepare the finest meals you've ever tasted! Natural flavors are preserved because the snug-fitting covers seal in moisture. And you can cook evenly and gently over lower heat settings with a minimum of water. Beautiful to look at, too, its lovely tan and gold floral motif will surely enhance your kitchen decor. So pick up this week's featured piece today when you shop. It can be yours at extraordinary savings just for buying the groceries you need!



SWIFT'S TENDER LEAN  
**PORK ROAST**

COUNTRY PRIDE  
 BAKING  
**HENS**  
 GRADE A  
 5 TO 7 LB. AVG.



KRAFT'S  
 PHILADELPHIA  
**CREAM CHEESE**

SWIFT'S TENDER LEAN  
**PORK CHOPS**  
 FAMILY PACK

BOSTON  
 BUTTS  
 LB.

**89¢**

**58¢**

LB.

8 OZ.  
 PKG.

**69¢**

LB.

**98¢**



DEL MONTE <b>ENCHILADA SAUCE</b> .....	10 1/2 OZ. CAN	3	FOR	\$1.19
ELLIS <b>TAMALES</b> .....	15 OZ. CAN	2	FOR	\$1.19
ELLIS <b>CHILI w BEANS</b> .....	15 OZ. CAN	2	FOR	\$1.19
SWIFT <b>VIENNA SAUSAGE</b> .....	5 OZ. CAN			39¢
RAGU <b>SPAGHETTI SAUCE</b> .....	PLAIN W/MEAT W/MUSHROOM	32 OZ.		\$1.29
GOLD MEDAL <b>FLOUR</b> .....	25 LB. BAG			\$4.39

5-DAY ROLL ON  
**DEODORANT**  
 1.5 OZ.  
 REGULAR **98¢**

BLUETTE  
**RUBBER GLOVES**  
 •SMALL  
 •MEDIUM  
 •LARGE **\$2.29**

AQUA FRESH  
**TOOTH PASTE**  
 10' OFF  
 2.7 OZ. **49¢**

"DAIRY"

MEADOWLAKE  
**OLEO**..... LB. IN QRTRS. **39¢**

FINE FARE CANNED  
**BISCUITS**..... 10 CT. **6 FOR \$1**

BELL  
**SOUR CREAM OR DIPS**..... 8 OZ. **2 FOR 89¢**

"FROZEN FOODS"

MRS. PAUL'S  
**SMORGASBORD**..... **\$1.49**  
 •FISH FILLETS 14 OZ. FISH STICKS 14 OZ.  
 BATTER FISH FILLETS 10 OZ. LIGHT BATTER  
 FISH KABOBS 10 OZ.

MORTON  
**DINNERS**..... **49¢**  
 •CHICKEN •TURKEY •SALS. STEAK  
 •BEANS & FRANKS •MAC. & CHEESE  
 •MEATLOAF •WESTERN

PATIO BOIL-N-BAG  
**REFRIED BEANS**..... 12 OZ. BAG **59¢**

PRICES GOOD THRU NOV. 3RD

**U**

**UNITED**

Supermarkets

QUANTITY RIGHTS RESERVED



### 8 nurses attend cancer workshop

Several nurses from Garza Memorial Hospital on Oct. 26 attended an eight hour workshop on cancer which was held in Lubbock, at the First Christian Church. The seminar was sponsored by the American Cancer Society and Texas Tech University School of Medicine.

Charles Kemp, R.N., M.S.N., Director of a Terminal Care project in a Visiting Nurses Association in Dallas emphasized the nurse's psychological well-being so she can be more effective in supporting the patient and family.

Joan Guntzelman, R.N., M.A., director of counseling and patient assistance, Presbyterian Hospital, Albuquerque, N.M., spent time talking on the quality of life and the many different values patients may have.

Tom McGovern, M.A., Counselor in the Department of Psychiatry at Texas Tech University School of Medicine demonstrated how to give psychological support to the dying and their families.

The comprehensive care of individuals with cancer demands special knowledge of nurses. The workshop

offered the nurses an opportunity to increase their understanding of cancer patients and to perfect their communication skills in dealing with terminally ill clients by understanding basic communication skills and practicing using them.

The terminally ill client presents a myriad of problems and concerns for anyone associated with him. The workshop was designed to assist the medical professional in helping the family and the client through a difficult time by giving emotional and technical support.

Nurses attending were Lorene Shepherd R.N., Laverne Jones R.N., Pauline Mathis L.V.N., Janie Ammons L.V.N., LaNell Warren, Elisa Villa N.A., Helen Taylor N.A., and Brenda Angerer N.A.

Barry Ford of Amarillo, spent the weekend with his aunt, Thelma Thomas and also attended the class reunion held at the community center.



**JUDGES ATTEND REGIONAL SEMINAR** — Eighty-eight justices of the peace attended a 20-hour Texas Justice of the Peace Training Center Seminar Oct. 9-12 in Amarillo. Among the judges attending were, left to right, Judge Pat Kitchens, Garza County, Precinct 4, Judge Ed Hamilton, Lynn County, Precinct 1; and Judge Zora Robinson, Garza County, Precinct 1.



In selecting a herd bull, the producer should search for one with a high weaning weight that hopefully will be transmitted to offspring.

That suggestion comes from Dr. Larry Boleman, area beef cattle specialist with the Texas Agricultural Extension Service.

"Since the weaning weight is about 30 percent heritable, this represents the estimated genetic difference that can be transmitted to offspring," says Boleman. Of course, each parent transmits only half of his genes to offspring. Therefore, a bull with a weaning weight of 100 pounds more than another bull would be expected to produce 15 additional pounds per calf.

"Even though this increase seems small, considerable herd and economical improvement can be realized from the weaning weight trait," contends the Texas A&M University System specialist.

For instance, the extra 15 pounds from a better performing bull on a 40-head herd can make a lot of difference, especially when the bull is kept four years or more. With 60-cent calves, this can add up to \$360 per year of \$1.44 over four years.

"Also, many producers are beginning to keep their cattle after weaning and are sending them to commercial feedlots. Improved bull performance should mean more dollars per head when feeding cattle to slaughter weight," notes Boleman.

Yearling weight of the herd bull will reflect the gaining ability of his offspring. This trait is 60 percent heritable. So a 100 pound superior bull would transmit 30 pounds (one-half of contribution) to each offspring.

A bull's worth when selling finished yearling cattle can be easily calculated. At a yearling price of 50 cents per pound, the 30 extra pounds in a 40-cow herd add up to \$600 more a year and \$2,400 over a four-year period.

"Sire selection is one of the most important decisions that cattle producers make because a herd bull affects the beef producer's income for many years," emphasizes Boleman. "Many feel that using top quality bulls or performance tested bulls is the cheapest improvement available today. Performance testing simply identifies genetically superior individuals for specific traits. This is the basis for the genetic improvement of the herd and ultimately increasing its profit potential."

Seed for next year's cotton crop on the South Plains will have to come largely from this year's yield, and handling of this seed will be crucial, area cotton specialists say. Since much of this crop will be modulated, particular attention should be given to modulating only dry cotton, the area cotton agronomist with the Texas Agricultural Extension Service cautioned.

If the moisture content of the plant components — lint, seed, burs, stems and other — going into the module exceeds 10 to 12 percent, excessive heating could occur, damaging the seed and even the lint, explained Dr. James R. Supak, the Extension specialist.

Similar damage can occur to "wet" cotton that is stored in ricks or trailers for two to three days before ginning, he said.

"The last good cotton seed crop we had was 1977," Supak said. Some good seed was produced in 1978, but with 4.6 million acres of cotton planted on the South Plains this year, the seed supply has been nearly depleted.

"Cotton farmers will depend heavily on 1979 seed for their 1980 planting," Supak said. Producers and delinters both will have to be careful how they handle this seed, he stressed.

Particular attention should be given to monitoring the temperature of cotton stored in modules, the Extension agronomist said. Temperature readings should be obtained and recorded daily until it is apparent that temperatures have stabilized.

The critical temperatures for cottonseed are around 110 to 120 degrees Fahrenheit, he noted. Seed from modules that reached these temperatures shouldn't be saved for planting seed.

"If the decision is made to 'risk' seed that were exposed to temperatures of

### 'The Galilean' coming Sunday

The Grassland Nazarene Church will feature a film, "The Galilean" at the services at 6 p.m. Sunday Nov. 4, at the church.

"The Galilean" is a thirty minute film in beautiful color covering the birth, ministry, death and resurrection of Christ in an unusual but revealing way that all age groups will understand.

Shot entirely in Israel, you will see the steps that the Savior took to redeem mankind. You will hear the voices of those spoken of in the gospels with new clarity and understanding. The film ends with music written by John W. Peterson with the promise that Jesus is coming again.

### HOSPITAL NOTES

Those admitted to Garza Memorial Hospital since Thursday of last week were:

Pat Scott, Medical; Johnny Collazo, Medical; Donna Nelson, Surgery; Gilbert Garcia, Medical; Juanita Hawkins, Medical; John Guthrie, Medical; Marvin Idell, Medical; Mack Porter, Medical; Edna Trull, Medical; Estella Harris, O.B. and T. V. Hampton, Medical.

Those dismissed were: Odie Tew, Rosie Ann Vance, Beulah Tew, Linda Rivera, Carolyn Hair, Tommie Brewer, Gilbert Garcia, Donna Nelson, Juanita Hawkins, John Guthrie and Johnny Collazo.

110 degrees or more, let your delinter know about the problems and show him the daily temperature readings obtained for that module," Supak urged.

"This will give him an indication of the extent of damage and enable him to make a more critical inspection of the seed."

In addition to the standard germination test, the delinter may suggest additional evaluations of such seed, such as cold germination, Tetrazolium (TZ) and fatty acid tests, the agronomist said.

"This extra effort will involve some time and money, and in the end the seed may still be sent to the oil mill," Supak said.

"This, however, is a much better alternative than ending up with a barn full of seed that fails to produce a stand."

### Wild driving in wrong place

Chief Deputy Donnie Walker says something like this never happened to him before in his law enforcement career.

He walked out of the law enforcement building behind the courthouse at 10 a.m. Sunday morning and there was a 20-year-old Californian "doing donuts" in the courthouse parking lot in his Luv pickup.

"Doing donuts" means driving wildly in a circle spinning gravel in all directions.

Deputy Walker got him stopped and gave him a breath test. It registered 19 percent alcohol in his blood. Which is pretty high.

Walker took him inside, charged him with driving while intoxicated and jailed him. The youth remained in jail until Wednesday morning when he was to have his "day in court."

"It seemed to me just like he was asking for it," Walker told The Dispatch.

**8x10 Natural Color Portrait - \$1.50**

Your choice of Family Group or Individual  
One special offer per family, one per person.

photographer will be at:  
**VFW Hall**  
Saturday, Nov. 10  
12 Noon to 8 PM

**BARGAIN OF THE MONTH**

**ELECTRIC CASSEROLE/GRILL**

WEST BEND®

While Supplies Last  
**now 12.99**

Bakes, slow simmers, grills, warms and serves. 2-qt. porcelain-on-aluminum pot, with non-stick interior, removes from non-stick adjustable grill base for range top, oven cooking. 1 1/2-qt. glass cover/casserole is microwave/conventional oven safe. 5268

Quantities Limited

**HANDY HARDWARE AND OILFIELD SUPPLIES**  
231 E. Main Dial 3036

**Home Coming Church of the Nazarene** Former Pstor Guest Speaker

202 West 10th Post, Tex.

- November 2-3-4
- 7:00 P. M. Each Week Night
- 10:45 a. m. Sunday
- 6:00 p. m. Sunday
- Special Invitation
- Former Members
- Friends

Philip Daniels, Pastor

Rev. Austin Moore

**The ULTIMATE FALL FOOD SALE**  
a new high in food savings!

WE RESERVE THE RIGHT TO LIMIT PRICES EFFECTIVE OCT. 29 - NOV. 10, 1979  
SPECIALS GOOD WHILE SUPPLY LASTS! LIMITED SUPPLY!

SELF-BASTING TENDER-TIMER 16-22 LB. AVG. SHURFRESH TURKEYS **69¢** LB.

GRANULATED SHURFINE SUGAR **\$1.09** 5 LB. BAG

HOT COOKED FOOD SPECIAL

BURRITOS **3/99¢**

SHURFRESH SLICED BACON 1 LB. PKG. <b>99¢</b>	SHURFRESH MEAT FRANKS 12 OZ. PKG. <b>89¢</b>
SHURFRESH MEAT BOLOGNA 12 OZ. PKG. <b>99¢</b>	SHURFRESH BAKED OR SM BISCUITS 8 OZ. CANS <b>4 59¢</b>
SHURFINE MAC. & CHEESE DINNERS 7 1/2 OZ. BOXES <b>5 \$1.00</b>	ROKEY RATION DOG FOOD 15 1/2 OZ. CANS <b>6 \$1.00</b>
SHURFINE BLEACH GAL. JUG <b>59¢</b>	SHURFINE YC SLICED PEACHES 16 OZ. CANS <b>2 89¢</b>
SHURFINE CRANBERRY SAUCE 16 OZ. CANS <b>2 79¢</b>	

ENRICHED SHURFINE FLOUR 5 LB. BAG **69¢**

SHURFINE CS OR WK GOLDEN CORN 17 OZ. CANS **4 \$1.00**

SHURFINE PINEAPPLE 15 1/2 OZ. CANS <b>2 89¢</b>	SHURFINE CUT GREEN BEANS 16 OZ. CANS <b>3 \$1.00</b>
SHURFINE WHOLE PEELED TOMATOES 16 OZ. CANS <b>3 \$1.00</b>	SHURFINE PINK SALMON 15 OZ. CAN <b>\$1.69</b>

BORDEN'S BUTTER MILK 1/2 GAL. CTN. <b>89¢</b>	BORDEN'S CHOCOLATE MILK 1/2 GAL. CTN. <b>59¢</b>
BORDEN'S PREM. ASSTD. ICE CREAM 1/2 GAL. RD. CTN. <b>\$1.39</b>	BORDEN'S NUTTY BUDDIES 8 CT. PKG. <b>79¢</b>

RATH'S HICKORY LEAN **\$1.19** 12 OZ. PKG.

FRESH RATH'S BOLOGNA **99¢** 12 OZ. PKG.

