

Miss Texas of 1982 to Entertain at Banquet

by Lonnie Welborn
Gloria Gilbert, Miss Texas of 1982, will be the featured entertainer at this year's Chamber of Commerce Banquet, Saturday, January 28 at 7 p.m. in the Post Community Center.

Known primarily for her ventriloquism act with her "partner" Homer, the entertainer, who was a talent winner in the 1982 Miss America Pageant, is also an outstanding comedy performer and singer and was named 1981 Female Vocalist of the Year by Country Music Review.

From 1983 to 1988, she has served as Mistress of Ceremonies for pageants in Texas, Minnesota, Illinois, Missouri and Wisconsin, as well as the Miss America Pageant of 1986, where she was also a preliminary night entertainer.

Miss Gilbert's special appearances include the Bob Hope Benefit, 1988-1989; the U.S. Speaker of the House Banquet; the Presidential Inaugural Ball; and the 1984 Olympics. She has appeared at Harrah's in Atlantic City and was a member of the Miss America Gillette Troupe in 1983 and 1986.

She has performed with such celebrities as Bob Hope, Willie Nelson, Marie Osmond, The Fifth Dimension, Roy Clark, Englebert Humperdink, Larry Gatlin, Lee Greenwood, Floyd Cramer, Johnny Lee, the Tommy Dorsey Orchestra, the Kingston Trio and Kenny Rogers.

Tickets are now available to see this talented performer at the annual Chamber banquet, and may be purchased from the Chamber of Commerce office or from any board member.

The tickets, which include a steak dinner, are \$10 per person.

Post Academy Awards Party, Saturday Jan 21

Letters were received recently in Post and surrounding towns asking recipients of the letters, as members of the Garza Theatre Academy of Dramatic Arts and Sciences, to help choose the top Garza Theatre performances and production of 1988.

If you received a letter and a ballot listing all the nominees, you are a "voting member of the Academy" for one of two reasons: either because of your dedication as being a participant in one of the theatre's productions or because of your attendance as a member of the audience at a majority of this year's plays at the Garza Theatre.

To celebrate the end of the theatre's third season, another annual Post Academy Awards party - better known as the Willy Awards - will be held at the Post Community Center, Saturday, January 21, 1989, with Nelda Dalby as the coordinator for this year's celebration.

Again, the theme for the Willy Awards is "Let's Dress Up and Go Hollywood." The evening will include a silent auction, a raffle, a Tex-Mex dinner, a special surprise guest and the 1987 winners.

Following the dinner at 6:30 p.m., the awards will be presented at 7:30 p.m.

The awards this year are designed by Post artist and Art Guild member Sarah Ault.

After the awards presentation, the evening will continue with a dance until midnight.

Everyone is invited to attend the awards party. Even if you are not a "voting member of the Academy," you are urged to join in the celebration and cheer on your favorite nominee.

The ticket price for dinner, the awards and the dance is \$7.50 per person. The event is by reservation only - no tickets will be sold at the door.

Tickets and reservations may be obtained at the Garza Theatre box office, 226 E. Main, from 10 a.m. to 2 p.m. Monday through Saturday.

Nominees for Willy Awards for 1988 are:

- Best Actor:**
1. Mike Bartlett as 'Leo Davis', the struggling young playwright in *Room Service*.
2. Lonnie Welborn as the rebel son 'Tom Wingfield' in *The Glass Menagerie*.

(Continued on Page 9)

The Post Dispatch

USPS 439-620

The Newspaper Serving all the people of Garza County

Sixtysecond Year Number 40

Newsstand Price 50 cents

Thursday, January 5, 1989

Garza County Farmers Do It Again! Another Bumper Crop Reported

by Lonnie Welborn

With most of the area cotton gins completing ginning operations for the 1988 season around the end of December, the final bale count for Garza County is running slightly less than the total for 1987's "near miracle" crop, but 1988 has produced another bumper crop for the area.

At Graham Gin, operations were halted temporarily to install new equipment, but another week of work should finish the 1988 crop. A total of 9,457 had been ginned by the first of January, with an additional 249 bales tagged in.

Graham would wind up the season with a total of 9,706 bales ginned, around the same number as in 1987.

Hackberry Gin reported another "great" season, with a total of 17,300 bales ginned - the gin's second largest year. Last year's total of 21,000 bales ginned still holds the Hackberry record. The average is around 13,000 bales.

Southland Gin completed operations for '88 with a total of 4,022 bales ginned - around the same as last year.

Elsewhere in the area, Texas High Plains cotton producers have hit the billion dollar mark again.

Last year produced the area's first billion dollar cotton crop, and this year will probably top that.

So says Plains Cotton Growers, Inc., Lubbock, the organization that represents producers in the 25-county area included in the calculation.

While the final 1988 bale count isn't in, virtually all responsible estimates range between 2.9 and 3.1 bales. In its estimate of crop value, PCG uses the more conservative figure. "I guess you could say we're counting on 2.9 million and hoping for 3.1," says Executive Vice President Donald Johnson.

The crop volume compares to an official 2,668,550 bales reported for 1987 by the Texas Agricultural Statistics Service and would rank as the area's third largest crop, behind 3.5 million in 1981 and 3.2 million in 1987.

Using an estimated 50 cents per pound average price, PCG puts lint value of the 2.9 million bales at \$696 million. Seed, at a season average of about \$108, is estimated at \$125 million. Target price deficiency payments, figured at a minimum 19 cents per pound of program payment yield on planted acres, are expected to add another

\$249 million. The total, \$1.07 billion, is \$64 million above the \$1.006 billion estimated on the 1987 crop.

Should the more optimistic 3.1 million bale 1988 estimate materialize, the value of the crop would rise to \$1.127 billion, PCG figures. "Either way, we're looking at a new record," Johnson states.

Until 1987, the previous high dollar mark for the High Plains'

number one cash crop was reached in 1973. PCG estimated the gross return from that year's million bale production at \$900 million.

That figure, at the time, meant much more to farmers and to the area economy than the billion dollar plus crops of 1987 and 1988, Johnson points out. He explains that according to Dr. Ron Gilbert, Chairman of the Economics Department at Texas Tech University,

it takes about \$2.60 in 1988 to equal the buying power of \$1 in 1973.

"While back-to-back billion dollar crops are a strong plus for our industry and the overall area economy," Johnson concludes, "our expectations have to be tempered by the fact that it would take a crop worth \$2.34 billion to have the same economic impact as the 1973 crop."



COTTON is flowing through the system in all area gins, as most ginning is near completion. This cotton at the Graham Coop will be baled and ready for sale or storage as farmers cap off another bumper crop this year.

Foreigners Buy Up Texas

by Texas Attorney General Jim Mattox

The State song "Texas Our Texas" may someday have to be changed to "Texas Their Texas" if we do not act soon to reverse the trend of foreign ownership of Texas businesses.

In the last 12 months, we have seen control of our major banks move from Texas to New York, Chicago and North Carolina.

MCorp, the last of Texas' large bank holding companies, is struggling to remain a Texas property. The other gigantic Texas bank holding companies, that faced massive loan defaults, fell to bailouts by out-of-state banking interests.

Now an even more ominous cloud is on our economic horizon.

Salute to Area Business and Industry Jan. 25

The Post Dispatch annual special edition Business and Industrial Salute will be published Wednesday, January 25, 1989, with a deadline of Friday, January 20 set for stories and photos.

Garza County businesses, government agencies and industries are encouraged to submit articles and photos to be included in the special salute.

Advertising to support the special edition will also be available, contact Rodney Marshall for details.

Those businesses which submitted information last year will be mailed copies of the 1988 stories for revisions.

"We want to be as inclusive as possible with this special edition, and if we missed you last year, please call us so that we can make this as complete a review as possible," publisher Wesley W. Burnett emphasizes.

Information forms to help in preparing the stories are available at the Dispatch.

Recently, the Antitrust Division of the Attorney General's Office received complaints regarding Texaco's sale to Saudi Arabia of half of its refinery operations, including its Port Arthur refinery.

This sale will adversely affect the ability of independent Texas businesses to compete in local markets and put thousands of em-

(Continued on Page 10)

Dispatch Announces New Service

In its continuing effort to offer better ways to serve its advertisers, The Post Dispatch will launch a special total market coverage monthly edition beginning Wednesday, January 11.

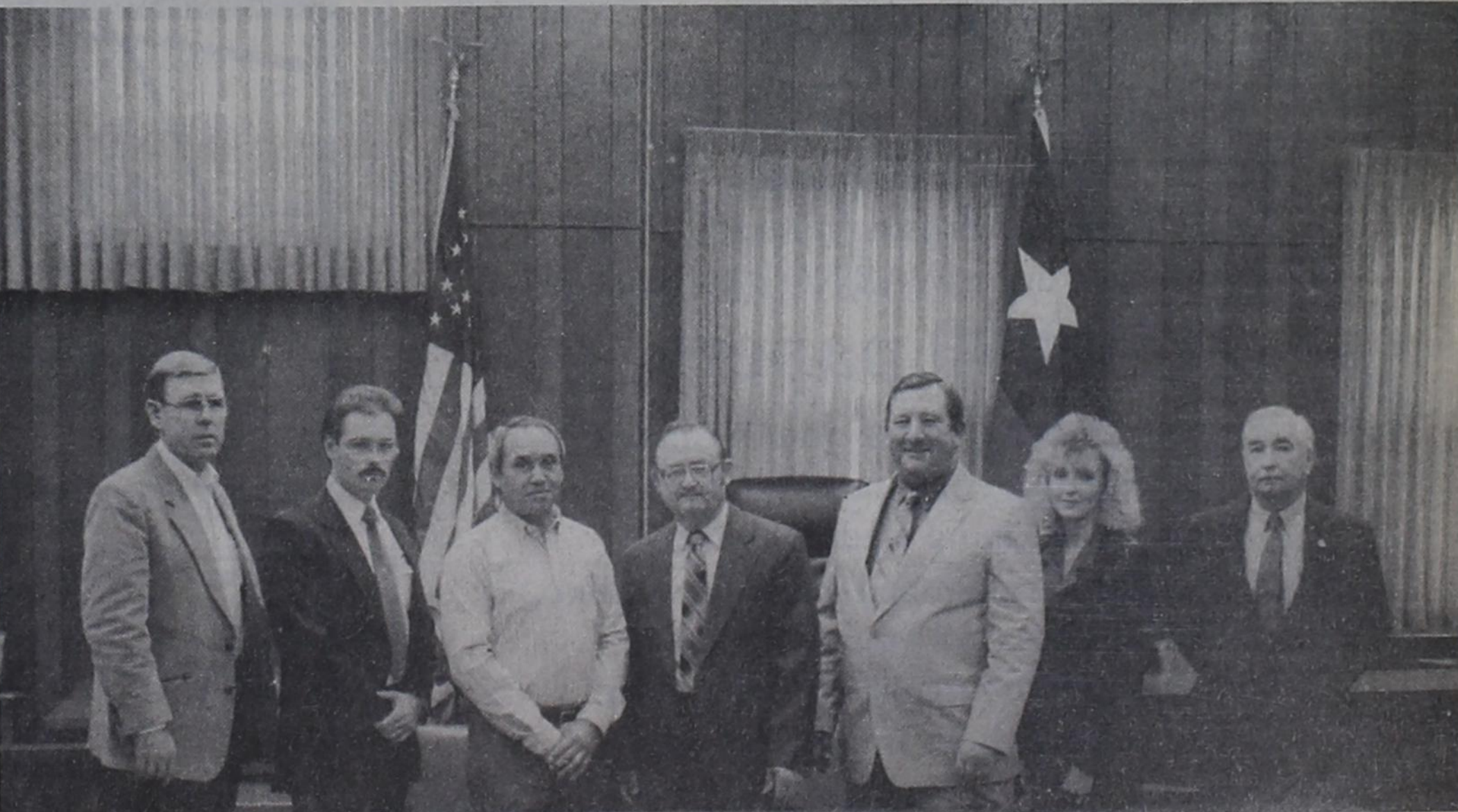
Patterned after the successful and popular special Sunday editions, the monthly TMC in Garza County will feature home delivery in the city limits and mailed delivery to rural routes on Wednesdays.

Subscribers outside of Garza County will continue to receive the weekly edition in the mail as usual.

More than 2,600 copies of The Post Dispatch will be distributed on the TMC days.

Advertisers may take advantage of this opportunity to reach every home in Garza County at no additional cost, with advertising rates remaining the same.

- Garza County Wednesday TMC Dates**
January 11
February 15
March 15
April 12
May 10
June 14
July 12
August 9
September 13
October 11
November 8
December 6



GARZA COUNTY ELECTED OFFICIALS accepting their oaths of office last Sunday morning were (left to right) sheriff Freddy Cockrell, constable Mike Harper, commissioner John Valdez, Judge E.A. Howard, commissioner Sammy Ellis, tax assessor Laura (Chita) Hataway and attorney Preston Poole.

'Disney Spectacular' Next Tuesday

The popular annual third grade music students will present two performances of a special "Disney Spectacular" program next Tuesday, January 10 at 10 a.m. and 2 p.m. in the Elementary School auditorium.

Under the direction of Marita Jackson, the 85 third grade students will offer the two 40 minute performances for the entire community.

"Everyone is invited," Mrs. Jackson emphasizes, "and especially children three years or older will really enjoy this program."

The performances are free.

Garza County News Briefs

Concert

Caprock Christian Fellowship will present Roger Bankson, internationally known songwriter, and radio and television entertainer, of Orlando, Florida, in concert Sunday, January 8 at 10:30 a.m. and 6:30 p.m.

Garza County

The Garza County Historical Commission is interested in expanding its membership and would like to offer you the opportunity to serve as a member of the local preservation movement.

The commission is chartered by the State of Texas, the Texas Historical Commission and the Garza County Commissioners to oversee the preservation and promotion of Garza County's rich history.

If you are interested in joining this most rewarding organization, please contact Jack Alexander at 495-2084 for more information.

Post C.A.R.E.S.

Post C.A.R.E.S. at 222 E. 8th Street is now open Monday through Friday from 1 p.m. to 3 p.m.

The organization appreciates your donations, but they ask that you please do not leave any food or clothing outside the building after 3 p.m. or on the weekend. Please bring donations by during regular working hours.

Obituaries

C.R. Wilson

Funeral services for C.R. Wilson, 70, were held Tuesday, January 3, 1989, at 2 p.m. in the First Baptist Church of Post with Reverend Steve McMeans, pastor, officiating. Burial was in Terrace Cemetery under the direction of Justice-Mason Funeral Home.

He died Sunday, January 1, 1989, in Lubbock's Methodist Hospital after a lengthy illness. He was born October 12, 1918 in Sherman, Texas. He attended school in Holiday and Iowa Park.

He married Dorace Howard December 15, 1938 in Graham. After their marriage they made their home in Bryson.

He served in the U.S. Navy during World War II and after returning from overseas they lived in Graham. They moved to Post in 1946 where he went to work for Charlie Hipp Drilling. In December 1948 they opened Wilson Brothers Service Station and Garage.

He was a member of the First Christian Church.

Survivors include his wife, Dorace of Post; a son, Butch Wilson of Post; a daughter, Nita Jackson of Easton, Connecticut; a brother, Gordon Wilson of Lubbock; and seven grandchildren.

Pallbearers were Sterman Young, Mason Justice, R.G. Wilkerson, Ben Sanchez, Bill Shiver and Tommy Rivera.

Lucian "Shine" Wilcox

Masonic graveside services were held Monday, January 2, 1989 at 4 p.m. in Terrace Cemetery for Lucian "Shine" Wilcox, 84, of Grandfalls, Texas. Morning services were at Union Church in Grandfalls.

He was born February 17, 1904 in Huntingdon, Tennessee. His parents, R.L. and Della Wilcox moved to Post in 1920 and lived here until their deaths in 1936 and 1958, respectively.

He was a retired heavy equipment operator in Ward County and belonged to Grandfalls Masonic Lodge Number 895, where he was a past master, 50 year member and life member.

He was a past patron of Grandfalls Easter Star Number 744, a member of Scottish Rite and the outstanding citizen of Grandfalls in 1982.

Survivors include two sisters, Ione (Sweet) Simpson of Brownfield and Ruby Puckett of Royalty. Paul Simpson and R.L. Simpson of Post are nephews of Mr. Wilcox.

Letter to the Editor

Dear Editor,

We moved to Post when I was 11. Our family moved away for a few years, and I returned with my husband and children to Post two years ago. I always thought that Post was just another ordinary small town, but I found out on

November 28, 1988 when we lost our home and our possessions in a fire just how extraordinary Post is. It is much more than that, the events that have occurred since the fire have transformed our tragedy into a miracle for our family.

School friends, friends of my mother and grandparents, and people we didn't even know held out their arms to share and care. To all our friends (old and new) you have made our new year a lot brighter than it looked to us that November night as we stood out in the cold watching our dreams go up in smoke. We have surely been blessed, and we are so very grateful to everyone for everything!

Within an hour after the fire, one of the firemen's wives brought boxes of their family's clothes for our family; people came with food and furniture and clothes, day after day. Our daughters' favorite toys were replaced, benefit funds were established, the National Honor Society at Post High School presented us with a check made up of their personal donations, a class at Post High School collected canned goods, churches collected clothes, local restaurants displayed containers in their businesses, and we were given a Christmas tree with ornaments and even a wreath for our door. These are just some of the things that the wonderful citizens of Post have done for us.

We feel so fortunate to live in a community that takes care of its own like Post has done for us. No, Post is not just another ordinary small town, but a community of people who saw our needs, felt our pain and responded with empathy and love, and that is definitely not ordinary.

We say with a great deal of pride that we make our home in the best place we could ever live - Post, Texas.

Sincerely,
Greg and Heidi Phillips



AT DECEMBER DRUG ABUSE WORKSHOP-Speakers and panel members at a December 1988 workshop in Post, "Update on Substance Abuse," a training project for drug abuse prevention sponsored by citizens for a drug-free community, were (left to right) Porfirio DeLeon of the Lubbock Police Department; Jesse Azua of Texas Tech University; Renee Coke, Lubbock Council on Alcoholism; Craig Koester, executive director, Lubbock Council on Alcoholism; and Dan Gomez, Texas Tech University.

Two Jobs On One Trip Can Help Farmers

South Plains growers starting land preparation for next year's crops can reduce the number of trips across the field and improve the efficiency of needed phosphorus fertilizer by combining their tilling and fertilizing operations, says a soil chemist with the Texas Agricultural Extension Service.

"Our long, open fall has allowed a timely cotton harvest and many growers are considering deep breaking, deep ripping or para-till operations," said Dr. Michael Hickey, the soil chemist who directs the Texas A&M University soils laboratory.

He urged producers to collect soil samples and base their fertilizer applications to soil test recommendations. "Many growers aren't sure of their particular cropping pattern this early in the season, so they should request recommendations for all possibilities," he said.

Fertilizers can be applied many ways, he noted. For deep breaking, dry or liquid materials can be broadcast on the soil surface, then incorporated through the deep breaking operation.

In the case of deep ripping or para-till systems, liquid fertilizers are the choice, Hickey said. "It is generally suggested that half of the fertilizer be injected near the bottom of the plow, and the remainder at a depth of four to six inches below the soil surface," he said.

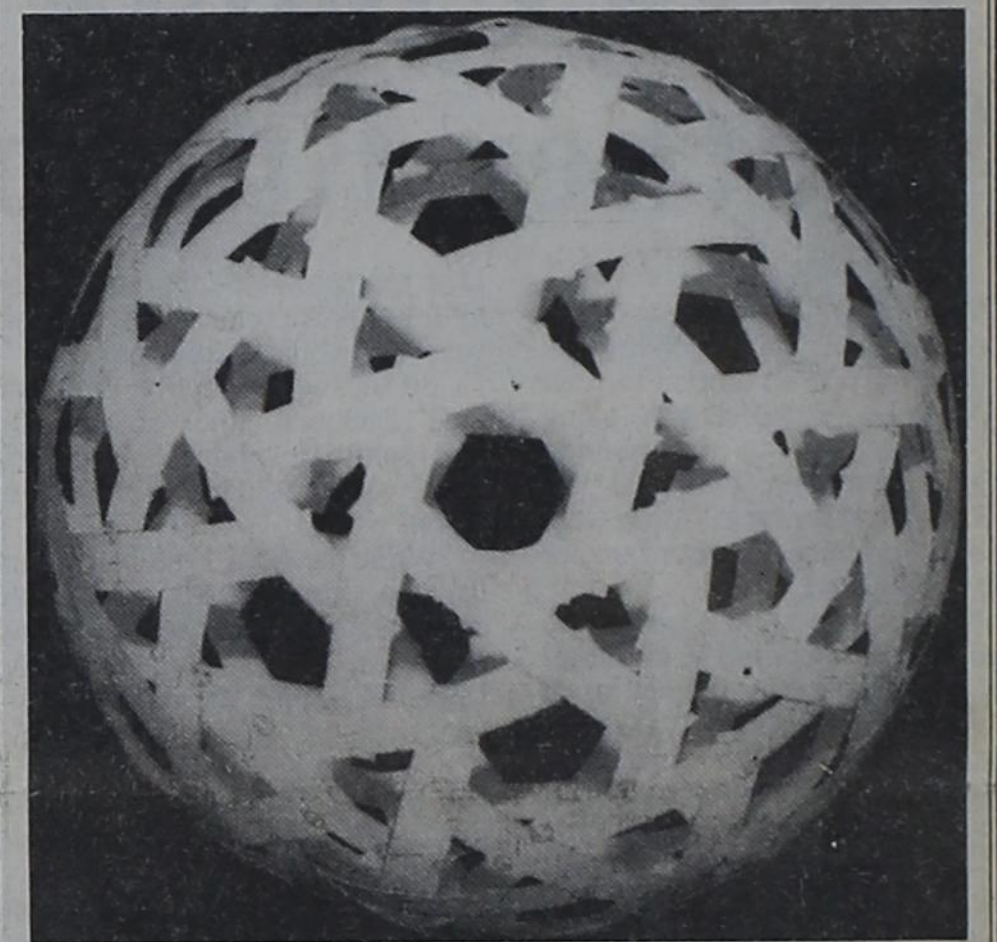
"Phosphorous, unlike inorganic nitrogen, is considered immobile in soil. Phosphorous will build up in the top three inches of soil when

simply broadcast and incorporated by disking."

If done consistently, this practice can lead to inefficient fertilizer use, the Extension specialist said. "In the case of a High Plains cotton crop, the top three inches of soil will dry out relatively early in the growing season, and feeder roots in the surface zone will die or become inactive."

Dr. Lewis Moore
OPTOMETRIST
Announces New Office
Hours for 1988
Complete Visual Care
Thursday 9:30 a.m. to 5 p.m.
206 West Main 495-3687

Geonetic™-100 Globe Kit



You've never seen anything like it before! A perfect gift for young and old, the Geonetic™-100 Globe Kit is the most fascinating item you'll have in your home or office. You'll be captivated by the fun and easy to assemble kit, as you see the Geonetic™-100 Globe take shape right before your very eyes!

Mail this coupon with check or money order to:
Littleberry Marketing Co.
P.O. Box 959
Post, Tx 79356

Introductory Offer 6⁹⁹
Limited Time Only

Special Satisfaction Money-Back Guarantee
If for any reason you are not completely satisfied, return this kit undamaged within 10 days for a full refund.

Yes! I want _____ sets of the Geonetic™-100 Globe Kit at \$6.99 each. (tax included) (Please Print Clearly)

Name _____

Address _____

City _____ State _____ Zip _____

Enclosed is my (check) (money order) for \$ _____ for _____ (number) of Geonetic™-100 Globe Kits.

Please allow three to six weeks for delivery.

The Littleberry Marketing Co. is the exclusive distributor for the (patented pending) Geonetic™ Globe Kit and no copy, facsimile or other reproduction of the product is authorized. "Geonetic" is a trademark of the Littleberry Marketing Co. All Rights Reserved.

The Post Dispatch
Published Wednesdays
123 East Main Street
Post, Texas 79356

Entered at U.S. Post Office, Post, Texas for transmission through the mails as Second Class matter, according to an Act of Congress, March 3, 1879.

Subscription Rates:
Garza, Lynn, Borden, Lubbock, Crosby, Kent and Scurry County: - \$15 per year
All others - \$26 per year

Wesley W. Burnett
Publisher
Rodney K. Marshall
General Manager
Lonnie Welborn
News - Features

Deadline:
Mondays at 5 p.m.
P.O. Box 10
Post, Texas 79356
806-495-2816
Member
Texas Press Association
West Texas Press Association

In the 12 month period
ending
JUNE 30
26,000
copies of
The Post Dispatch
were purchased from
Newsstands, Supermarkets
and
Convenience Stores.
An additional
124,800

were delivered in Post or mailed to subscribers in the trade territory.

We call it coverage and acceptance in the marketplace!

If your advertising message or preprint insert WAS NOT in these

150,800 papers

Your're not being fair to your business!
When something is being purchased to be read it simply has more credibility than a piece of junk mail crammed into your mailbox!

Direct mailers tell you of numbers - but they seldom mention readership!

We believe there is a difference!

The Post Dispatch
495-2816

Toyotathon 1989

MAKE YOUR BEST DEAL ON A TOYOTA

| | |
|---|--|
| 1989 TOYOTA TERCEL  \$6,995 <small>BEST ECONOMY CAR</small> | 1989 TOYOTA CELICA  \$11,989 <small>AUTO. A.C. CRUISE AND MORE</small> |
| 1989 TOYOTA COROLLA  \$9,989 <small>4 DR. SEDAN</small> | 1989 TOYOTA 4X4 P/U  \$10,989 <small>Toughest 4x4 Truck</small> |

BRUNKEN TOYOTA INC. 794-2222
LOOP 289 East of Slide Road
ALL PRICES + T.T.&L.

Summers, Thane Wed in Lewisville Ceremony

Kimberley Summers and Mason Thane were united in marriage November 19, 1988 in Lamb of God Lutheran Church of Lewisville with Norman Schwolert, minister, officiating.

Parents of the bride are Gary and Patricia Summers of Lewisville. The groom is the son of Katie Thane of Lewisville, and the late Raymond Thane.

The bride wore her mother's wedding dress of white satin featuring a jeweled neckline decorated with seed pearls. She also wore her mother-in-law's pearl necklace.

For her bridal bouquet, she chose a nosegay of blue carnations and white spider mums.

Ann Summers of Lewisville, sister of the bride, served as matron of honor. Bridesmaids were Donna

Duncan of Flower Mound, Margaret Reyna of Farmers Branch, and Amy Thane of Lewisville, sister of the groom.

All the attendants wore dresses of midnight blue satin, featuring low backs and peplums, with large bows at the waist.

Lewis Gibson of Euless was the groom's best man and serving as groomsmen were Michael Thane of Carrollton, brother of the groom, and Bart Jeter and Oliver Pettis, both of Lewisville.

Ushers were Kurt Burkhalter, Brian McCrary and Brian Shew, all of Lewisville.

Wedding music was provided by organist Liz Franz and vocalist Blaine Johnson of San Antonio, cousin of the groom.

Following the ceremony a reception was held in the church's Fellowship Hall.

After a skiing trip to Colorado, the couple is at home in Lewisville.

The bride is a 1984 graduate of Lewisville High School and attended Northlake Junior College. The groom graduated from Post High School in 1981 and is employed at DFW Airport and by Crowley Roofing.

Yesteryears.....

As gleaned from the pages of The Post Dispatch. Microfilm copies are available at the Post Public Library.

by Lonnie Welborn
10 years ago
January 4, 1979

Sleet and snow fell on Post, bringing the first real touch of winter, with temperatures falling to two degrees.

Garza County United Fund Chairman Jim Cornish announced that contributions stood at \$10,815.40, \$139.50 over the \$10,675 goal.

Pauline Coleman was honored with a farewell luncheon in the courthouse upon her retirement from the County Treasurers office.

The Post Antelopes won third place in a 12-team invitational tournament in Jayton. The girls' team finished fourth in the same meet.

Funeral services for Irby Metcalf, Jr., former president of the First National Bank of Post were held in Durant, Oklahoma.

20 years ago
January 2, 1969

A total of 885 Garza County residents have registered to vote since October 1, 1968. Voter registration is down due to 1969 being an "off" election year.

United SuperMarket has a three page ad spread in the Dispatch to announce the store's switch to S&H Green Stamps.

Don Collier, son of Mr. and Mrs. Bob Collier, broke his left leg while skiing in Cloudcroft, New Mexico.

Thirty-seven family members and four guests were present at the annual Christmas Eve gathering of the family of Mrs. Jim Hays. All but two sons and their families were there.

Jim Jackson was elected president of the Post Chamber of Commerce for 1969.

The First National Bank set a new record when total deposits at the close of 1968 business topped the \$11,000,000 mark for the first time.

30 years ago
January 1, 1959

New construction is up in Post as city building permits have gone well past the half-million dollar mark.

Cold wintry weather continues to hit Post as temperatures drop below ten degrees.

Mr. and Mrs. Buddy Davis of California were recent visitors in the home of his parents Mr. and Mrs. Lee Davis.

Speeding charges were filed against 25 people in Justice of the Peace Court as a result of the State Highway Department's radar crackdown during the Christmas holiday.

Harold Lucas has been appointed chairman for Garza County's 1959 March of Dimes.

Post Antelope cagers split two games with the Roscoe Plowboys. The "A" teams winning 62-53 and the "B" team losing 35-29.

40 years ago
January 6, 1949

The first baby to be born in Garza County was a six and one-fourth pound daughter born to Mr. and Mrs. Tommy Johnson at 3:45 a.m. on New Year's Day. She was named Evelyn Golden.

Further details were announced on the street lighting contract between the City of Post and Southwestern Public Service for a street lighting system consisting of 11 mercury vapor 16,000 lumen lights with steel poles and underground wiring; 43 incandescent 1,000 lumen lights on wooden poles and 14 incandescent 2,500 lumen lights on wooden poles.

Miss Mary Margaret Duckworth became the bride of Grady Glenn Norman in a formal wedding ceremony Saturday, January 1, 1949, in the First Baptist Church.

New Deal was victorious over the local girls' and boys' basketball teams, coached by N.R. King.

Andy and Maurice Stelzer and George Pierce attended the Cotton Bowl game on New Year's Day.

- Birth -

Ronald Wesley Mason

Ray and Celia Mason are happy to announce the birth of their son Ronald Wesley, who was born at 3:30 a.m., December 30, 1988 at Methodist Hospital in Lubbock. He weighed eight pounds, five ounces and was 21 and three-fourths inches long.

Maternal grandparents are Mr. and Mrs. Roy O'Brian of Friona and paternal grandparents are Mr. and Mrs. Charles Mason of Post.

Maternal great-grandparents are Tom O'Brian of Friona and Mr. and Mrs. Montie Phillips of Greenville. Paternal great-grandparents are Mr. and Mrs. T. B. Mason of Tahoka; Mr. and Mrs. Clifford Gandy of Tahoka; and Mr. and Mrs. L.E. McDonald of Grandview.

Paternal great-grandparents are Mrs. Buelah James of Lubbock and Mrs. Minnie Gandy of Tahoka.



Mr and Mrs Mason Thane

Crosby Cancer Unit to Host Celebrity Auction

Each year the Crosby County American Cancer Society Unit has one principal fund raising event, and this year, at 6 p.m. on Saturday, January 28 at Pioneer Memorial Auditorium in Crosbyton, the ACS Unit will sponsor a "Celebrity Auction," with Crosby County auctioneer Dwayne Moses conducting the sale and John Robison, director of the KCBDD-Channel 11 Weather Center as master of ceremonies.

Have you always wanted a personally autographed photo of "Patch" on "Days of our Lives"? How about an autographed photo of Bob Hope, Johnny Carson, Clint Eastwood, Van Halen or Ozzy Osbourne? A t-shirt from Frank Zappa? Or a genuine, personal coach's shirt from Spike Dykes? An auto-

graphed record album from John Denver or Barbara Mandrell?

These are just a few of the items in the impressive collection donated for the fund-raiser, and contributions continue to arrive daily in response to the more than 1000 letters mailed requesting donations.

"The response to our requests for auction items has been tremendous," a Crosby County ACS Unit representative said. "It is really heartwarming to know that so many are helping to conquer this dreaded disease."

All proceeds from the January 28 auction will go to help Crosby County cancer patients and their families by furnishing equipment or helping with cancer-related treatments and checkups.

Post School Menu

Monday, January 9
Breakfast - Assorted cereal, toast, peanut butter and honey, apple and milk.
Lunch - Sloppy Joe's, cabbage slaw, pinto beans, mixed fruit, home made bun and milk.

Tuesday, January 10
Breakfast - Cowboy Bread, Banana and milk.
Lunch - Burrito with sauce, mixed greens, glazed carrots, pudding and milk.

Wednesday, January 11
Breakfast - Oatmeal, sausage, toast, orange juice, and milk.
Lunch - Beef stew, cheese sandwich, fried okra, pears, cookies and milk.

Thursday, January 12
Breakfast - Malt-o-meal, bacon, toast, orange juice and milk.
Lunch - Corn dogs, french fries, broccoli, sliced peaches and milk.

Friday, January 13
Breakfast - Muffins, applesauce and milk.
Lunch - Ham and gravy, green beans, whipped potatoes, cherry cobbler, chesse rolls and milk.

Sneed, Oden Wedding Plans are Announced

Debbie Sneed wishes to announce the engagement and approaching marriage of her daughter, Marcie, to Rodney Oden, son of Alfred and Linda Oden.

The couple plans to wed June 23, 1989, upon completion of their home.



Rodney Oden and Marcie Sneed

Rodriquez With 4th Force Service Support Group

Marine Pvt. Guillerma B. Rodriquez, son of Guillermo T. and Julia B. Rodriquez of Post, recently reported for duty with the 4th Force Service Support Group in Lubbock.

A 1987 graduate of Post High School, he joined the Marine Corps Reserves in May 1988.

Bridal Registry

Mrs. Tim Tanner
(Susan Little)
Mrs. Kurt Williams
(Cynthia Salas)

Happiness Is...

128 E. Main 495-2438

Whirlpool
Consumer Rated #1
Neff Western Auto
212 E. Main Post, TX

Bridal Selections for:

Mrs. Tim Tanner
nee Susan Little

Mrs. Kurt Williams
nee Cynthia Salas

Handy Gifts

231 E. Main

495-3516

Tahoka Sentry Shopping Center

1928 & 1930 Lockwood Street Tahoka, Texas

Clearance Sale!
BIG SAVINGS!

Tahoka & Jennings Daisy of Tahoka

1- 10x13 (Wall Photo) 30 Color Photos 99¢ Deposit \$10.00 Due at Pick up (plus tax)
1- 8x10
2- 5x7
2- 3x5
16- King Size Wallets
8- Regular Size Wallets
\$10.99
WE USE KODAK PAPER

Handy Hardware & Gifts

231 East Main
Fri. & Sat.
Jan. 6 & 7
Fri. 8:30-5:00
Sat. 9:30-4:30



Shugart's inc.

Group charge 99¢ per person

We use **Kodak PAPER** for a Good Look
FOR CREATIVE COLOR PORTRAITS

DANISH IMPORTS GIFTS & COLLECTABLES

We Continue to Clean!
We Continue to Count!
Come in and Save!
25% - 60%

Bridal Selections
Lonna Diane Batey - Russel Graves
Mrs. Tim Tanner (nee Susan Little)

201 E. Main Mon-Sat 9:30 - 5:30 495-2314



JOIN FOR ONLY

\$8
You Save \$17.00

You'll take it off here.

We'll take it off here!

Take off Fast in 1989 with WEIGHT WATCHERS® New Quick Success® Program

- Last year, Weight Watchers members lost weight 20% faster than ever. This year, it's even easier.
- Our New Quick Success Program lets you enjoy the foods you like most so you'll never feel hungry.
- We've simplified our optional exercise plan and made our weekly meetings even more exciting.
- This is the weight loss program that you can really count on in 1989. Come discover it for yourself!



Sheila Falk, Area Director

JOIN NOW FOR ONLY... **\$8**

Registration Fee \$17.00
First Meeting Fee \$ 8.00
Regular Price \$25.00
YOU SAVE \$17.00
Offer Ends January 29, 1989

Come to the Weight Watchers meeting nearest you.

POST
1st Methodist Church
216 W. 10th Street
Tue: 5:00 pm



JOIN WEIGHT WATCHERS NOW!

Offer valid January 2 through January 29, 1989. Offer valid at locations listed (Areas 37, 96, 107) only. Offer valid for new and renewing members only. Offer not valid with any other offer or special rate.

Weight Watchers and Quick Success are trademarks of WEIGHT WATCHERS INTERNATIONAL, INC. ©WEIGHT WATCHERS INTERNATIONAL, INC. 1989

TOLL FREE
1-800-692-4329

D'Lane Runkles to Work with "Today Show" in NY

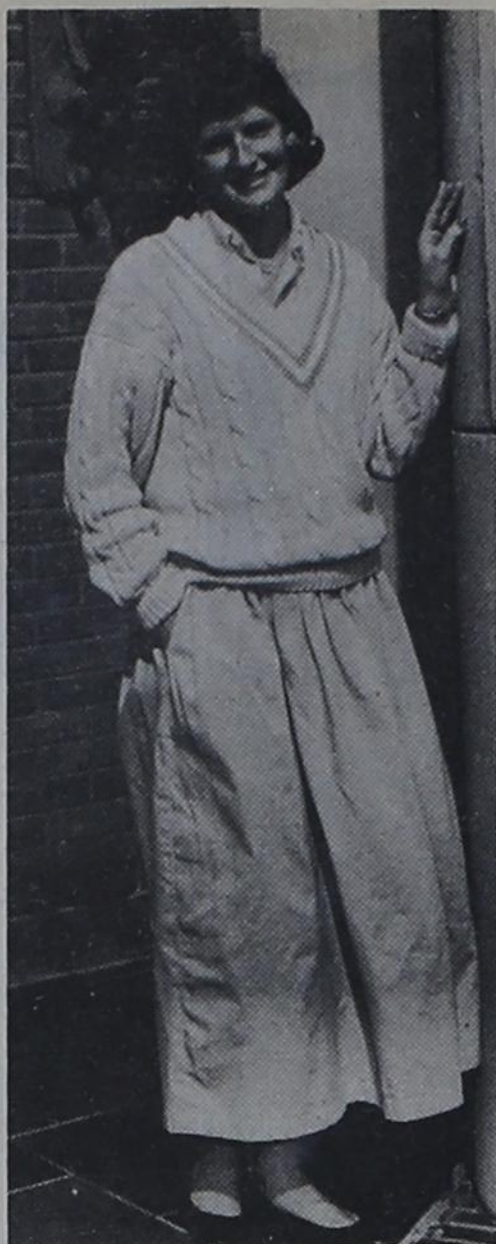
D'Lane Runkles, a junior majoring in Communications and Theatre at Southwestern University in Georgetown, Texas, has been selected to participate in the GLCA New York Arts Program for the spring semester.

She was selected by the program to go to New York City last month to interview for various internship positions. Following interviews with the MacNeil/Leher

News Hour at PBS and two departments at NBC, she elected to participate in an internship with NBC's "Today Show."

She will be living in New York from January 9 to the end of April, working with "Today's" writers and researchers helping to schedule daily guests for the show.

She is the daughter of Wayne and Linda Runkles of Midland, and the granddaughter of Mr. and Mrs. F.A. Runkles and Helen Livingston of Post.



D'Lane Runkles

Nomination For Post Outstanding Citizen Award

(Man or Woman)

NAME _____

for the following reason:

Clip and Mail by January 19

Post
Chamber of Commerce

#1 Santa Fe Plaza
Post, Texas 79356

Award to be presented at the annual
banquet January 28, 1989

REDI Training Program Held in Lubbock

Community representatives of Post attended the third session of the Rural Economic Development Initiatives Training Program held December 15 in Lubbock.

The Rural Economic Development Initiatives Training Program is designed to assist communities who are working with volunteers to establish local economic development efforts.

Co-sponsored by the South Plains Association of Governments and Southwestern Public Service Company, the 12 hour program consists of four training sessions which lead community representatives through the structuring and implementation of local programs which match each community's resources.

Participation in the pilot program was limited to ten cities. The communities of Brownfield, Earth, Floydada, Hale Center, Muleshoe, Olton, Post, Ralls, Slaton and Sundown comprise the membership of the first REDI class.

Graduation is scheduled for March 1 with communities who have completed diploma criteria being awarded certificates of completion. Criteria for the course requires that each community organize and formally adopt a structure that provides community economic development support.

Site development, marketing and the preparation of critical materials and skills are included in the training.

Farm Income Expected to Slow Next Year

Farm income in Texas is expected to slow somewhat in 1989, according to an economist with the Texas Agricultural Extension Service.

Dr. Carl G. Anderson said the brightest spot in 1989 for farmers and ranchers is expected to be beef cattle operations.

As much of the Texas economy is closely aligned with many facets of agribusiness, the general health of Texas farm and ranch industries is a major concern far beyond the farm gate, he said.

"Since cattle make up about 45 percent of Texas agriculture, the benefits from favorable cattle marketing should reach into most parts of the state," Anderson said.

He said the U.S. cattle herd has been downsized to the lowest level since 1961. "As a result, the stocker and feeder calf market should remain strong."

Anderson predicted that beef

will face stiff competition from large pork and poultry supplies, however.

"Lower hog prices and higher feed costs are expected to encourage producers to reduce production somewhat. Broiler firms continue to increase production, and dairy output is expected to show little change," Anderson said.

The economist said abundant supplies of poultry, pork, cotton, rice and larger acreages of grain sorghum, corn and wheat is likely to curtail sales from these commodities.

On the crop side, Anderson said that reduced wheat and corn supplies have pushed up prices. "But, with increased acreage next year, production in the second half of 1989 will likely bring lower prices by harvest."

In regard to cotton, Anderson said that abundant stocks and weak demand will likely hold prices low in the year ahead.

Global rice production is expected to expand in 1989 and soften the market for Texas growers, he said.

"Plentiful supplies of crops and total meats are expected to result in lower 1989 agricultural cash receipts than those received this year. Net income will be further squeezed by a moderate rise in production expenses and smaller governments payments," Anderson predicted.

Anderson said producers who strive to survive in the world agriculture markets of the future must develop a year-round marketing program.

"This is of extreme importance. Price uncertainty is tremendous in today's agricultural markets. Such things as changes in weather and government policies can cause unpredictable price swings," Anderson said.

He recommended that agricultural producers evaluate carefully the forward pricing alternatives such as cash contracts, futures and options hedging in order to manage prices received.

To remain cooperative, sharper management and marketing plans need to be designed and in place for 1989 and beyond, Anderson said.

In the Neighborhood

by Lonnie Welborn

The first of what will, hopefully, be a series of regular meetings to coordinate a community calendar and to discuss and plan opportunities for Post was held at Jackson's at 7:30 a.m. Wednesday, January 4.

The first meeting was sponsored by the Main Street Project, whose director Melissa Cunningham, invited chairpersons, presidents, etc., of civic clubs and community organizations to the Leadership Coffee.

For an early-morning meeting, the planning session was surprisingly well attended, with approximately 16 people representing local groups present.

Plans call for a new community calendar to appear in the Dispatch and also to be posted or available for handout in various locations in Post each quarter.

The Chamber of Commerce will keep the calendar current and any information you have on activities in your club or organization should be called in to them.

If you need further information, contact Melissa Cunningham at 495-4157, or if you have dates of meetings, etc., to add to the calendar, call the Chamber of Commerce at 495-3461.

U.S. Academy Nominee

Trevor Thuet, Post High School senior, has been named by Congressman Charles W. Stenholm as a nominee to the United States Service Academies for the classes entering in July of 1989.

Trevor, whose nomination is for the Air Force Academy, is one of 29 Texas students who will compete to fill a vacancy at the United States Naval Academy, Air Force Academy, Military Academy or Merchant Marine Academy.

The nominees will be contacted

by the academies with additional information and instructions, and will be scheduled for medical and physical examinations.

Each of the Military Academies will select one individual as principal for admission and offer an appointment. The remaining individuals will then be ranked with nominees from across the country to compete for the remaining vacancies in each class.

Congratulations to Trevor on this honor.

Youth Development Program

The students in the fifth grade at Post Elementary School will receive a gift-book entitled "The Way to Go," which is being presented to them through local Youth Development Program sponsors, Chaparral Steak House and Strawn Transport and Acid Company.

"The Way to Go," handsomely bound and illustrated in full-color is a collection of eight short stories. Written to appeal to young people in today's world, the stories reinforce traditional moral values. For instance, one of the stories emphasizes the importance of being a responsible person; another shows how highly honesty should be valued; and another focuses on the dangers of drugs and alcohol.

The Youth Development Program is described as a response to a growing concern felt by parents and others. Too often, it is maintained, young people are the innocent victims of harmful influences that undermine the sound values parents are trying to teach their children in the home.

National statistics on drug and alcohol related accidents involving teenagers, on missing children, teenage pregnancies, teenage suicides, are cause for alarm.

The great majority of parents do not have these problems, but they worry about them - peer pressure is a strong influence on young people.

The response of the local sponsors of this program, when asked why they are participating, can be summed up as follows: "This community means a lot to me. Our young people are our most precious resource. They are our future. This program is good for our young people, their parents and our community."

A copy of the book, mailed to the Dispatch, will be donated to the Post Public Library.

Holiday Visitors

Visitors at Pat and Wes Burnett's during the holidays included her, Mrs. Lorene Voyles of Post;

Pat's brother Rex Voyles and his wife Johnnie of Chickasha, Oklahoma; their son Don Voyles, his wife Veda and their daughter Donice of New Deal; and Rex and Johnnie's daughter Vickie Weaver and her son Justin of Hobbs, New Mexico;

Mrs. Voyles' granddaughter Paula and her husband Al Moncrief and their daughter Meahgann of Dublin;

And the Burnett Children, Timothy W., James W. and Kimberly.

29⁹⁹ Exch. GRP 24

Every Day

Neff Western Auto
212 E. Main Post, TX

Yes! Sign Me Up Right Now!

Start My Subscription
This Week

Name _____

Address _____

City _____ State _____ Zip _____

Enclosed is my check for \$ _____

ONLY \$15 PER YEAR

IN GARZA, LUBBOCK, LYNN, SCURRY,
BORDEN AND KENT COUNTIES

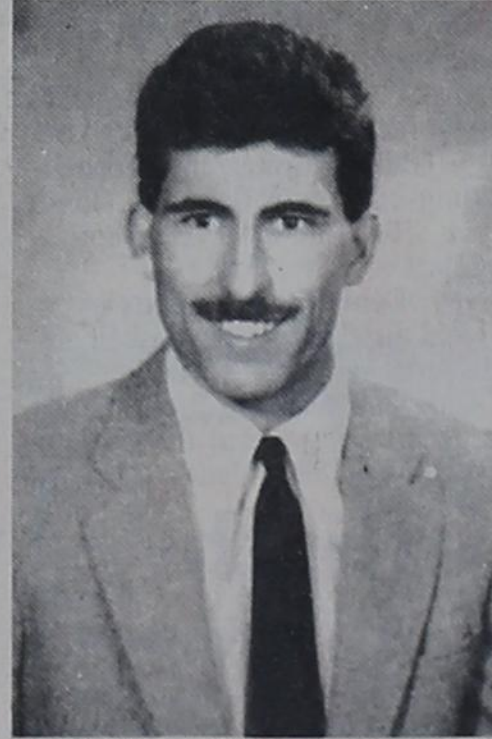
\$26 Per year all others

Clinesmith Receives B.S. Degree

Curtis Clinesmith received his Bachelor of Science degree in Secondary Education in graduation exercises at the University of North Texas in Denton, December 17, 1988.

He plans to teach history and coach.

He is a 1983 graduate of Post High School and is the son of Mr. and Mrs. Jack Clinesmith.



Curtis Clinesmith

Southland School Menu

Monday, January 9
Breakfast - sausage, eggs and toast.
Lunch - Hamburger and macaroni, green beans, salad, roll and cherry cobbler.

Tuesday, January 10
Breakfast - sweet roll, bacon and juice.
Lunch - Salisbury steak with gravy, mashed potatoes, fried okra, roll and peanut butter cookie.

Wednesday, January 11
Breakfast - toast, apple sauce and juice.
Lunch - hamburger, hamburger salad, french fries and chocolate pudding.

Thursday, January 12
Breakfast - donut, bacon and juice.
Lunch - chicken patty, gravy, mashed potatoes, blackeyed peas, roll and cake.

Friday, January 13
Breakfast - cereal, toast, jelly and juice.
Lunch - enchiladas, tossed salad, pinto beans and ice cream.

Winterization Specials

Chassis Lubrication
Oil Change
Filter Change **\$16⁹⁵**

Drain & Flush Radiator
Check Battery & Electrical System
Check Belts - Hoses & More

\$25⁰⁰ parts not included

FREE

Brake System and
Windshield Wiper Inspection



The McGinnis Service Team--Serving You

US 84 ByPass
828-6261



The Post Dispatch

P.O. Box 10

Post, Texas 79356

495-2816

HAPPY NEW YEAR



And have a Happy and Safe New Year's!

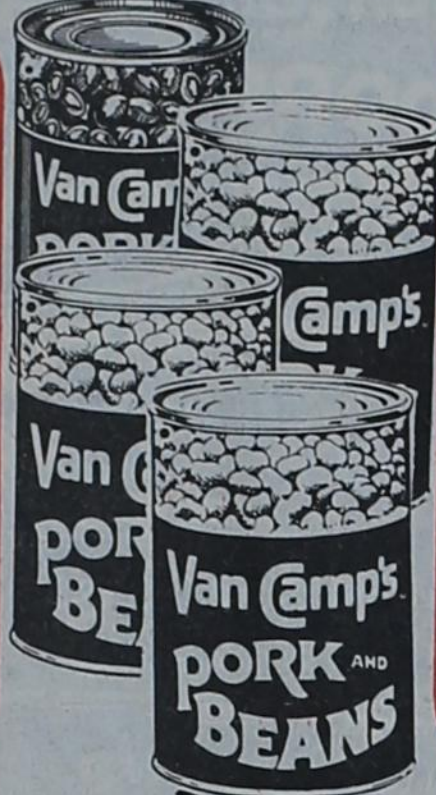
PRICES GOOD THRU JAN. 7TH IN POST STORE ONLY

United Supermarkets will be open New Year's Day!



SPAM
LUNCHEON MEAT ASST.
12 OZ.

\$1.39



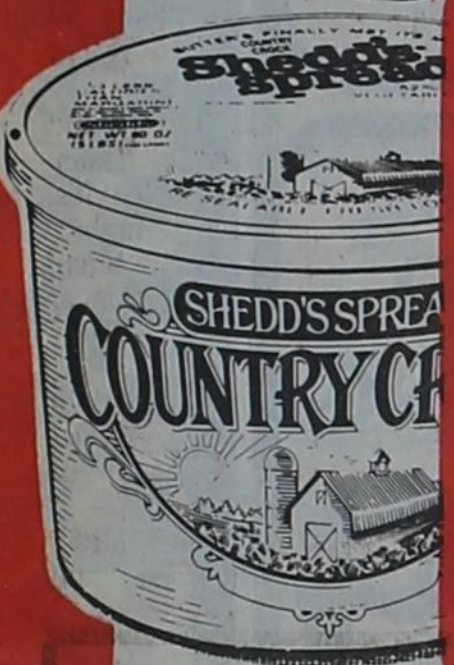
VAN CAMP'S **PORK & BEANS**
16 OZ.

3 \$1
FOR



HUNT'S KETCHUP
32 OZ.

.99



SHEDD'S **COUNTRY CROCK MARGARINE**
3 LB. TUB

\$1.69



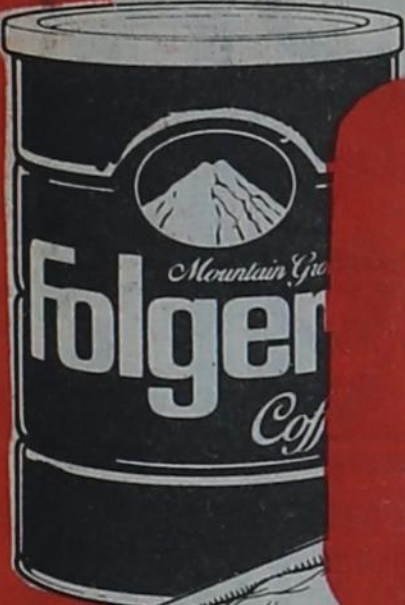
FINE FARE **ORANGE JUICE**
12 OZ.

.89



SURF DETERGENT
40¢ OFF LABEL
42 OZ.

\$1.49



FOLGER'S **COFFEE**
REG. ASST. GRINDS
13 OZ. CAN

\$2.19



FINE FARE **BISCUITS**
SWEET MILK OR BUTTERMILK
7.5 OZ.

6 \$1
FOR



JIF **PEANUT BUTTER**
SMOOTH OR CRUNCHY
18 OZ.

\$1.49



COUNTRY PRIDE **GRADE A FRYER THIGHS OR DRUMSTICKS**

LB. **.88**



VACUUM PAK **BRISKETS**
PACKER TRIM

LB. **\$1.09**

MARKET TRIMMED
LB. **\$1.78**



RUBY RED GRAPEFRUITS

3 \$1
LBS.



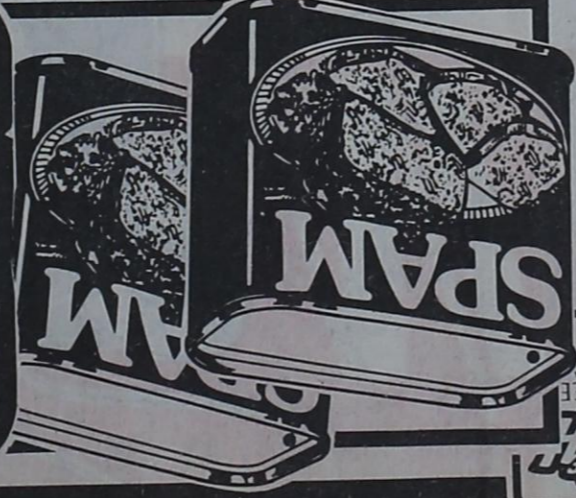
SWEET TEXAS ORANGES

3 \$1
LBS.

the personal touch

Walmart Grocery

SPAM LUNCHEON MEAT
ASST. 12 OZ.
\$1.39



VAN CAMP'S PORK AND BEANS
16 OZ.
FOR 3
\$1



CRISCO OIL
REG. OR CORN
48 OZ.
\$1.99



COKE'S
6-12 OZ. CANS
\$1.79



JIF PEANUT BUTTER
SMOOTH OR CRUNCHY
18 OZ.
\$1.49



FINE FARE SALAD DRESSING
32 OZ.
.89



FOLGERS COFFEE
REG. ASST. GRINDS
13 OZ. CAN
\$2.19



HUNT'S KETCHUP
32 OZ.
.99

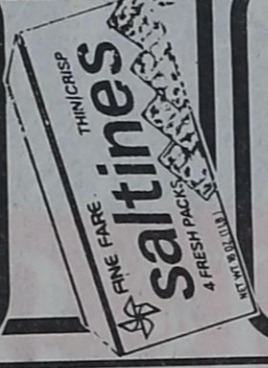
CLASSIC DILL PICKLES
• ZESTY • POLISH • KOSHER
32 OZ.
\$1.49

AUNT JEMIMA SYRUP
REG. OR LITE
36 OZ.
\$2.69

HORMEL CHILI
NO BEANS
REG. OR HOT
15 OZ.
.89



FINE FARE CRACKERS
16 OZ.
FOR 2
\$1



RUFFLES POTATO CHIPS
ASST. 7 TO 7.5 OZ.
.79



HUNT'S TOMATO JUICE
REG.
46 OZ.
.69



BOUNTY TOWELS
ASST. JUMBO ROLL
.79

The Personal Touch

SNUGGLE LIQUID SHEETS
96 OZ. 40-OFF LABEL
60 CT. 45-OFF LABEL
\$2.49

SURF DETERGENT
40-OFF LABEL
42 OZ.
\$1.49



DAWN LIQUID DISH SOAP
40-OFF LABEL
22 OZ.
.99

CHARMIN BATH TISSUE
ASST. 4 ROLL
.99



GRAVY TRAIN
BEEF OR LIVER 25 LB. BAG
OR KIBBLES AND BITS
20 LB. BAG
\$7.99



DURACELL BATTERIES
2 PAK C OR D
\$1.59

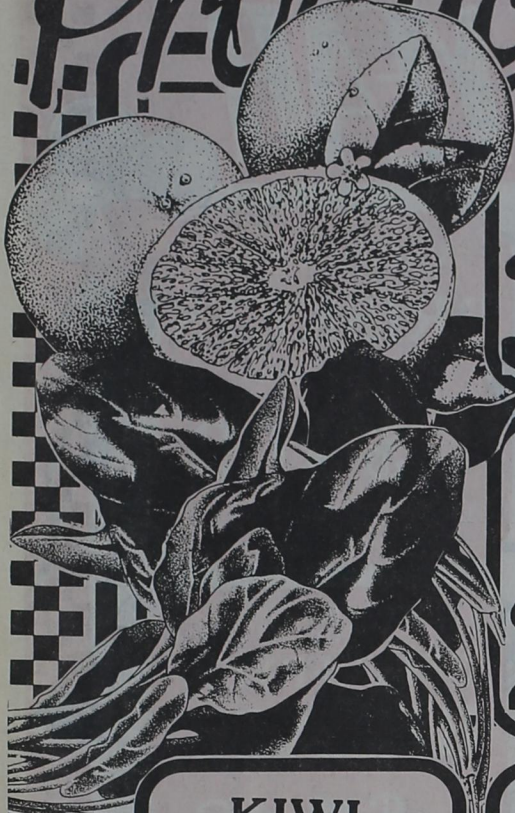
VOS HAIR SPRAY
NON AERO • AEROSOL
7 OZ.
\$1.49

Health & Beauty

QUANTITY RIGHTS RESERVED • NO SALES TO DEALERS

UNITED
Supermarket

Produce



RUBY RED
GRAPE
FRUIT
3 LBS. **\$1**

SWEET
TEXAS
ORANGES
3 LBS. **\$1**

LEAFY
SPINACH
2 BUNCHES **\$1**

D'ANJOU
PEARS
2 LBS. **\$1**

KIWI
FRUIT
3 FOR **\$1**

LONG
GREEN
CUCUMBERS
4 FOR **\$1**

CRISP
ICEBURG
LETTUCE
UNTRIMMED **2** LB. **\$1**
TRIMMED **.59** LB.

FRESH
CARROTS
1 LB. BAGS
3 FOR **\$1**

Dairy



SHEDD'S
COUNTRY CROCK
MARGARINE
3 LB. TUB
\$1.69

FINE FARE
CRESCENT ROLLS **.89**
8 OZ.

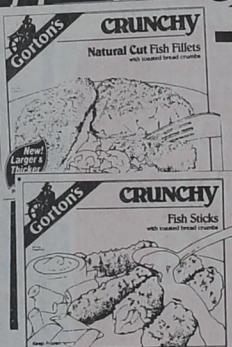
BELL
CHOC-O-RIFIC **\$1.29**
GAL. JUG

BELL
COTTAGE CHEESE **\$1.19**
REG. OR SLIM 'N TRIM 24 OZ.



FINE FARE
BISCUITS
SWEETMILK OR
BUTTERMILK
7.5 OZ.
6 FOR **\$1**

Frozen



GORTONS
CRUNCHY
FISH FILLETS
OR
STICKS
\$2.99
20 OZ.

AUNT JEMIMA
TOASTER
HASHBROWNS ASST.
7 OZ.
.99

FINE FARE
CUT
BROCCOLI
16 OZ.
.89



FINE FARE
ORANGE
JUICE
12 OZ.
.89

AUNT JEMIMA
WAFFLES
•REG. •BUTTERMILK
•BLUEBERRY
10 OZ.
.89



JIMI'S
BURRITOS
ASST.
5 OZ.
4 FOR **\$1**

MICROWAVE
MILKSHAKES
•CHOC •VANILLA
•STRAWBERRY
2 CT. PKG.
\$1.49

QUANTITY RIGHTS RESERVED • NO SALES TO DEALERS

the personal touch



HAPPY
NEW YEAR

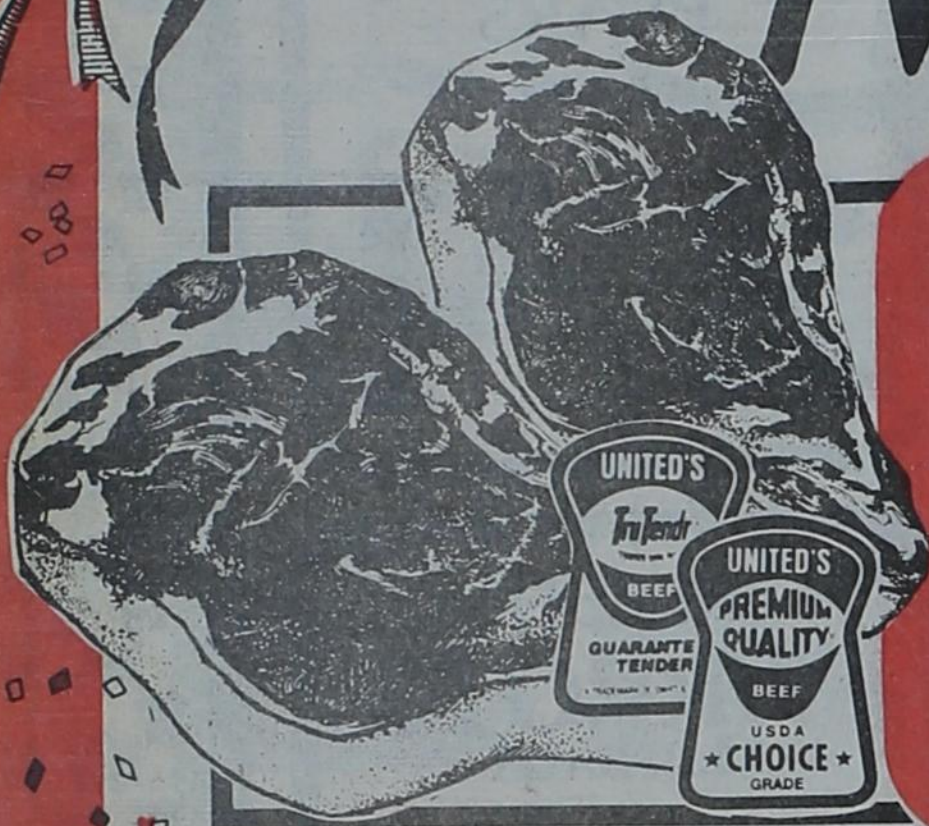


Quality Meat

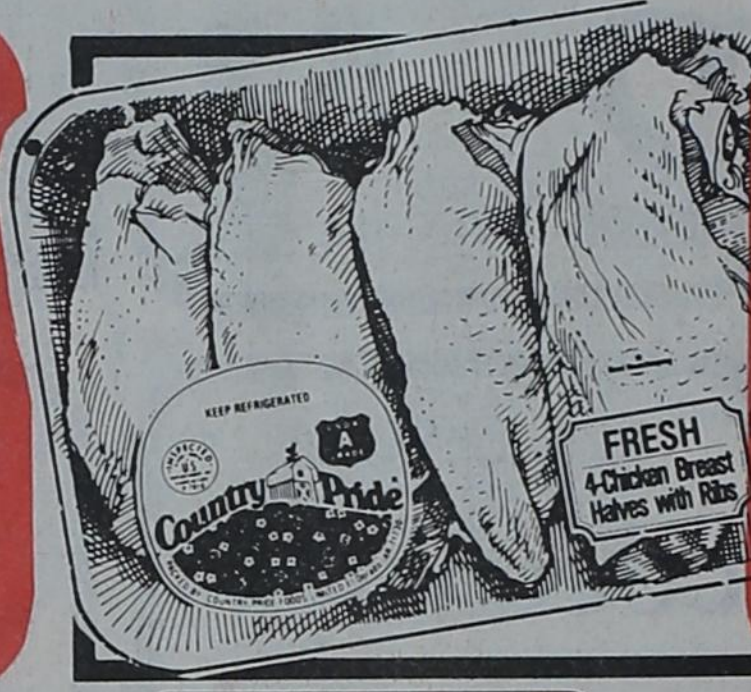
GOOD THRU JAN. 7 IN
 POST STORE ONLY



VACUUM PAK
BRISKETS
 PACKER TRIM
\$1.09
 LB.



UNITED TRU TENDR
 OR USDA CHOICE
**CLUB
 STEAK**
\$2.98
 LB.



COUNTRY PRIDE
 GRADE A
**SPLIT FRYER
 BREAST**
\$1.48
 LB.



COUNTRY PRIDE
 GRADE A
**FRYER
 DRUMSTICKS
 OR THIGHS**
.88
 LB.



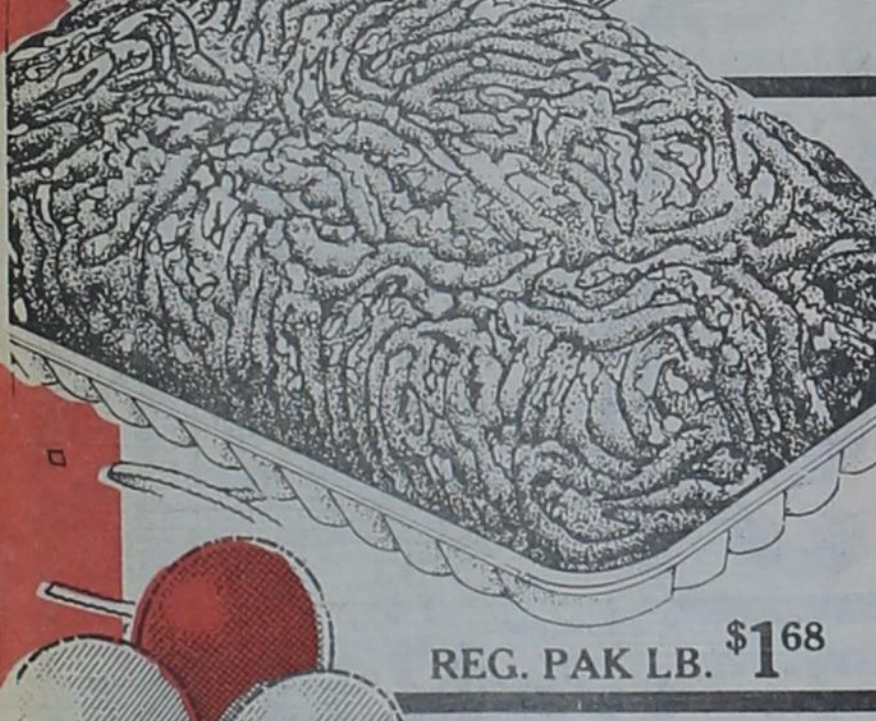
JIMMY DEAN
**PORK
 SAUSAGE**
 REG. •HOT•MILD•SAGE
\$2.98
 2 LB.



EXTRA LEAN
**CHOPPED
 SIRLOIN
 STEAK**
\$1.78
 LB.



UNITED TRU TENDR
 OR USDA CHOICE
**RIB
 STEAK**
\$2.48
 LB.



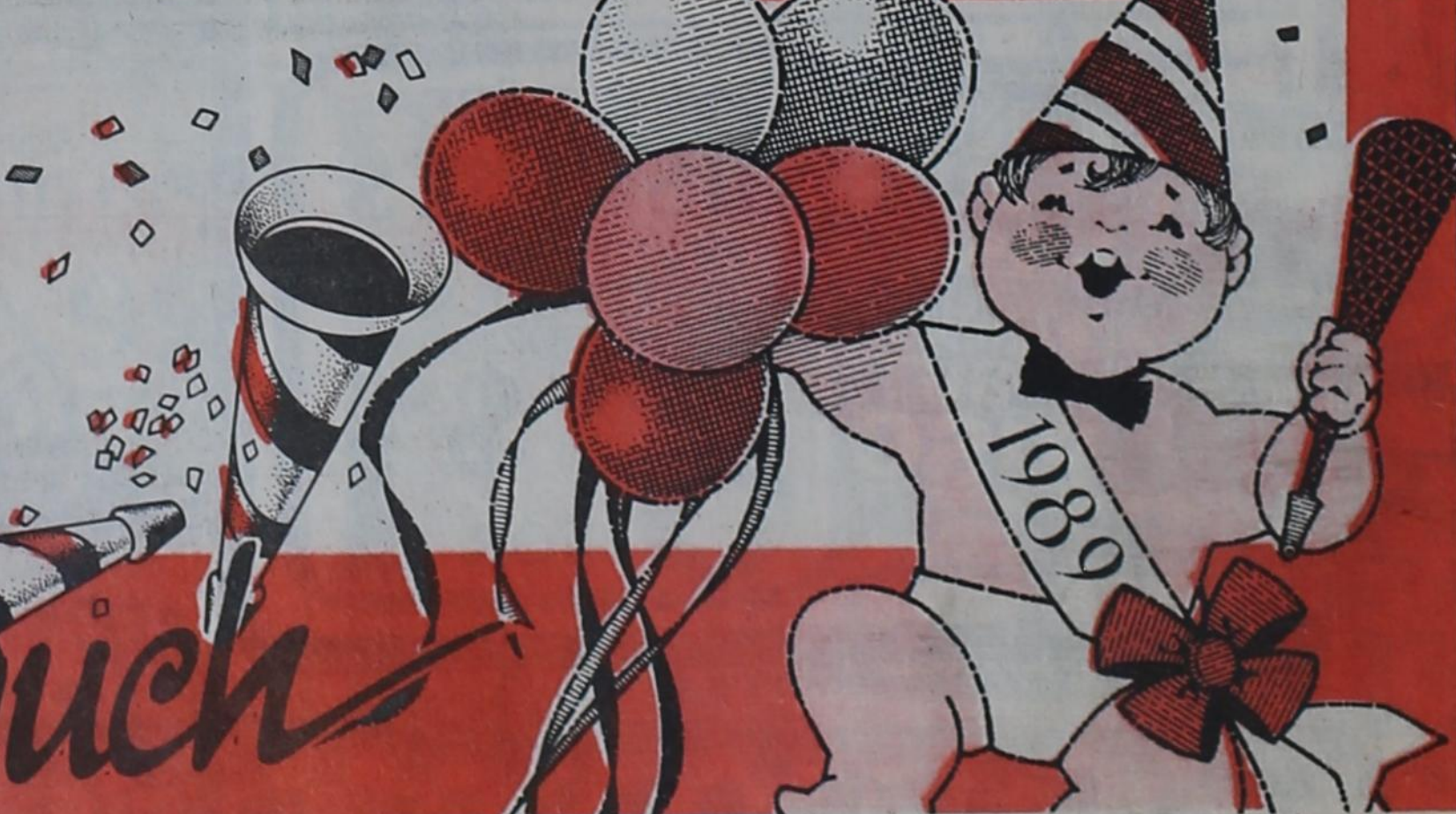
SUPER VALU PAK
 EXTRA LEAN
**GROUND
 BEEF**
\$1.58
 LB.



WILSON
BACON
\$1.28
 1 LB.
 PKG.



WISCONSIN
 RED RIND
**CHEDDAR
 CHEESE**
 MARKET CUT
\$2.18
 LB.



the personal touch

Classified Advertising

Private Party Classified Rates

PAYABLE IN ADVANCE
All private party classified ads must be paid in advance. Eulogies and card of thanks for a death in the family, up to 50 words free, limit one insertion per family death. Card of thanks for hospitalization or illness, first 50 words free. A 30 percent discount is allowed for all private party, non-commercial, non-profit paid in advance classified ads.

DEADLINE FOR COPY AND PAYMENT IS Mondays at 5 p.m.

| Classified Rates | |
|------------------|------------------------|
| Number of Times | Rate Per Word Per Time |
| 1 | .25 |
| 2 | .20 |
| 3 | .15 |
| 4 | .125 |

Legal Notices

Statement of Nondiscrimination
Lyntegar Electric Cooperative, Inc. has filed with the Federal Government a Compliance Assurance in which it assures the Rural Electrification Administration that it will comply fully with all requirements of Title VI of the Civil Rights Act of 1964 and the Rules and Regulations of the Department of Agriculture issued thereunder, to the end that no person in the United States shall, on the ground of race, color, or national origin, be excluded from participation in, be denied the benefits of, or be otherwise subjected to discrimination in the conduct of its program and the operation of its facilities. Under this Assurance, this organization is committed not to discriminate against any person on the ground of race, color or national origin in its policies and practices relating to applications for service or any other policies and practices relating to treatment of beneficiaries and participants including rates, conditions and extension of service, use of any of its facilities, attendance at and participation in any meetings of beneficiaries and participants or the exercise of any rights of such beneficiaries and participants in the conduct of the operations of this organization. Any person who believes himself, or any specific class of individuals, to be subjected by this organization to discrimination prohibited by Title VI of the Act and the Rules and Regulations issued thereunder may, by himself or a representative, file with the Secretary of Agriculture, Washington, D.C. 20250, or the Rural Electrification Administration, Washington, D.C. 20250, or this organization, or all, a written complaint. Such complaint must be filed not later than 180 days after the alleged discrimination, or by such later date to which the Secretary of Agriculture or the Rural Electrification Administration extends the time for filing. Identity of complainants will be kept confidential except to the extent necessary to carry out the purposes of the Rules and Regulations.

Card of Thanks

Let me say Thank You for the many prayers, the visits, the food and the many cards that I received while in the hospital and since I've been home. Thanks to the doctors and nurses while I was in the hospital. God bless each and everyone of you.
L.F. and Agnes Welch

We would like to thank everyone for their expressions of sympathy on the loss of our mother, Bernice Gallman.
The Dean Shipp family
The Bobo Odum family

We would like to take this means of expressing a big, heartfelt thanks to every person who helped in any way to make our 50th Anniversary Reception the lovely and memorable day that it was. For every card, gift, flowers and those who attended.
A special thanks to our children and grandchildren who made it all possible!
L. G. and Consuelo Thuet

Many thanks to all of my friends, family, doctors, nurses and pastors for the gifts, flowers, food, good care, and visits during the holidays and my stay in the hospital. I love you all and hope someday to be able to come home again.
Thanks,
Mary Sneed

I want to thank my friends for all the concern shown during my stay in Methodist Hospital and since I returned home.
Thanks for the calls, cards, visits, flowers, food, and especially your prayers.
Nona Lusk

Personals
The Post Group of Alcoholics Anonymous meets every Thursday night at the First Presbyterian Church, 910 W. 10th, at 8 p.m. Closed meetings are held, except on the last Thursday night, which is an open meeting. We have supper at 7 p.m. and the speaking starts at 8 p.m. Anyone who wishes to talk or ask about an alcohol problem call 495-3377 or 495-4173.

Services and Repairs
Chain saw service, including chain sharpening. Call 495-2455.

Special Cakes
Birthday, anniversary or weddings.
Call Jimella Simpson at 495-3318 after 5 p.m.

Alcohol-Drug Awareness Seminar Mondays - 8 p.m.
Postex Plant (east entrance)
Open Group Discussion and films, public invited.

City County Drug and Alcohol Abuse Program, South Ave. C, Postex Plant, 495-2818 or 495-3788 - 24 hours.
Glenda Baker, director; Lynette Massey, assistant.

Seals Furniture and Appliance
Washers, dryers, ranges and vacuum cleaners. Repair all major brands. Most parts in stock.
Seals Furniture & Appliance
495-3190 720 N. Broadway

Taylor Appliances
495-3330
201 S. Broadway
Southland - 996-5404
Servicing GE, Maytag and other brands.

COVERING WEST TEXAS
"Old Termite"
CITY AND STATE TERMITE CONTROL
R.J. RUSSELL
4509-45th Phone 792-5606 LUBBOCK, TEXAS 79414

Post Insurance
Serving Post Since 1911
• All Your Insurance Needs
Auto - Home - Commercial - Bonds
• Quotes available by phone
122 E. Main 495-2894

Licensed Insured Bonded
Free Estimates
Dotson's
Plumbing, Heating and Air Conditioning
Sam Dotson Owner 495-4062

Help Wanted

GET PAID for reading books!
\$100.00 per title. Write: PASE-J4017, 161 S. Lincolnway, N. Aurora, IL 60542

Experienced CRNA with broadscope experience including all general techniques, plus spinal, caudal, and epidural and pain control for West Texas Hospital. For further information please contact Terry R. Andris, CEO, Lamb Healthcare Center, 1500 Sunset, Littlefield, Tx 79339. 806-385-6411.

Homes for Rent

1/4 mile east of Pleasant Valley on pavement, 2 bedrooms, 2 baths, panelled, central air and heat, nat. gas, call 495-2549.

Mobile Homes for Sale

Attention first time buyers. Two and three bedroom mobile homes. No credit needed. We deliver. Call 806-894-7212.

Repo - two and three bedroom mobile homes. No credit needed, low down payment, low monthly payment. Call 806-894-8187.

2 bedroom mobile home, call 495-2013.

Homes for Sale

LOOK
No Money Down
House for Sale
* 312 N. Ave I
* Priced for Quick Sale
* Financing Available
* Buyer needs excellent credit
* Payments \$205.07 per month, three year payout.
* Just Move In!
* Call Jack King, 806-274-6361 or 273-9713.

Nice brick home. 510 W. 10th. Call 495-2338.

House for sale, 4 bedroom, needs repair, \$4,500 cash. 495-2515, ask for Margie.

2 bedroom, plus trailer space, \$700 down with \$230 net monthly payment. 495-2480.

Garage Sales

Furniture, baby items, and more. 402 Osage, from 9 a.m. 1-7-89.

Pets and Supplies

Free to good home, one year old black female Cocker Spaniel-has shots, papers available. Also 9 week old female half Cocker Spaniel puppy. Call 495-3056.

Feed and Seed

Alfalfa hay for sale - Tahoka - Lynn Cook - 998-4115.

Follis Heating & Air Conditioning
Sales, Installation & Service
TRANE EQUIPMENT
FREE Estimates
Dial 628-6371
Insured and Licensed

NEED STORAGE SPACE??
(Pest Control Used)
120 sq. ft of Storage Space (10' x 12')
Only \$35 Per Month
Plus \$15 Refundable Deposit
Stella or Cecil Martinez - Omega Properties
495-2450

G.H. (Jerry) Conoly Heating and Air Conditioning Co.
Sales-Service-Installation
Home Owned Authorized Heat Pump Contractor
Free Estimates
Licensed by the State of Texas - Fully Insured
495-2950 or 495-2332

R.J. RUSSELL INSULATING
4509 45th Street
Lubbock, Tx. 79414
Phone: (806) 792-5606

Germania Farm Mutual Members!!!
I am continuing to work for Germania Farm Mutual in Post, Local 230.
I have sold the automobile agency only.
Please call Doris Simmons
806-327-5356
for your home insurance needs.

Post Academy Awards Ballot

(Continued from Page 1)

- James Burnett as the blind musician 'Don Baker' in *Butterflies Are Free*.
- Russell Hart as 'Lysander', the young lover in *A Midsummer Night's Dream*.
- Greg Scott as 'Oberon', King of the Spirit World, in *A Midsummer Night's Dream*.
- Lonnie Welborn as 'Willie Clark', the old Vaudevillian in *The Sunshine Boys*.

Best Actress:

- Anne Leake as the domineering mother 'Amanda Wingfield' in *The Glass Menagerie*.
- Tatina Self as 'Jill Tanner', the eager young actress in *Butterflies Are Free*.
- Suzanne Pass, as 'Ruth', the second wife in *Blithe Spirit*.
- Linda Ellis as 'Elvira', the ghostly first wife in *Blithe Spirit*.
- Cheryl Thompson as 'The Girl Upstairs' in *The Seven Year Itch*.
- Linda Ellis as the wise-cracking wife, 'Mary' in *Mary, Mary*.

Best Supporting Actor:

- Lonnie Welborn as the hysterical assistant hotel manager 'Joseph Gribble' in *Room Service*.
- Wesley Burnett as the bombastic hotel manager 'Gregory Wagner' in *Room Service*.
- Roger McCurrin as the fast talking director 'Harry Binion' in *Room Service*.
- Rodney Marshall as the gentleman caller in *The Glass Menagerie*.
- Todd Glidewell as 'Puck' the mischievous spirit messenger in *A Midsummer Night's Dream*.
- James Burnett as 'Ben Silverman', the frustrated nephew in *The Sunshine Boys*.
- Steve Sever as movie star 'Dirk Winston' in *Mary, Mary*.

Best Supporting Actress:

- Christy Morris as 'Laura', the crippled daughter in *The Glass Menagerie*.
- Suzanne Pass as the protective mother 'Mrs Baker' in *Butterflies Are Free*.
- May Belle Kern as the wacky medium 'Madam Arcati' in *Blithe Spirit*.
- Tatina Self as the demure lover 'Hermia' in *A Midsummer Night's Dream*.
- Alison Crawford as the aggressive lover 'Helena' in *A Midsummer Night's Dream*.
- Cheryl Thompson as 'Titania', Queen of the Fairies, in *A Midsummer Night's Dream*.

Cook Bookkeeping and Tax Service
Bookkeeping - Payroll
RRC Reports - Typing
Income Tax Preparation
Mrs Lois Cook
Owner and Operator
218 W. 8th 495-2392

THE LOLLIPOP SHOP
Your Consignment Clothing Store
215 E. Main 495-3444
We need all types of clothes, especially children's clothes and jeans.
Now taking TOYS on consignment.

- Midsummer Nigh'ts Dream.**
- Kaye Smith as 'Helen Sherman', the wife in *The Seven Year Itch*.
 - Mandy Swafford as the fiancée 'Tiffany Richards' in *Mary, Mary*.
- Best Set Design**
- Room Service
 - The Glass Menagerie
 - Butterflies Are Free
 - Blithe Spirit
 - A Midsummer Night's Dream
 - The Seven Year Itch
 - The Sunshine Boys
 - Mary, Mary

Best Cameo Actor:

- Earl Chapman as 'Boris' the Russian waiter who wants to be an actor in *Room Service*.
- Ronnie Gradine as 'Faker England', the over-eager assistant in *Room Service*.
- Benny Jackson as 'Ralph Austin', the off-Broadway director in *Butterflies Are Free*.
- Travis Ellis as 'Dr Bradman', the good natured dinner guest in *Blithe Spirit*.
- Rodney Marshall as 'Flute', who also portrayed 'Thisby' in *A Midsummer Night's Dream*.
- Jerry Fogerson as 'Tom McKenzie' the family friend in *The Seven Year Itch*.
- Wesley Burnett as the jovial tax lawyer 'Oscar Nelson' in *Mary, Mary*.

Best Cameo Actress:

- Danielle Chapman as the producer's girl friend actress 'Christine Marlowe' in *Room Service*.
- Cheryl Thompson as the bumbling psychic maid 'Edith' in *Blithe Spirit*.
- Karla Alexander as the bubbly dinner guest 'Mrs Bradman' in *Blithe Spirit*.
- Rosa Gonzales as 'Queen Hippolyta' in *A Midsummer Night's Dream*.
- Pam Workman as the dream secretary 'Miss Morris' in *The Seven Year Itch*.
- Stacy Nolan as the dream 'Elaine' in *The Seven Year Itch*.
- Alison Crawford as the dream 'Girl On The Beach' in *The Seven Year Itch*.
- Trina Moore as registered nurse 'O'Neil' in *The Sunshine Boys*.
- Mandy Swafford as the curvy 'Vaudeville Sketch Nurse' in *The Sunshine Boys*.

Best Play:

- Room Service
- The Glass Menagerie
- Butterflies Are Free
- Blithe Spirit
- A Midsummer Night's Dream
- The Sunshine Boys
- Mary, Mary

SHOP POST FIRST

If you received a ballot, please complete it and return it by hand or by mail to the theatre box office by noon, Monday, January 16, 1989.

We're Just a Phone Call Away*



Mozelle Rogers 495-2159
Betty Curry 495-2761
Lois Cook 495-2392
Gladys Blair 495-2360
Betty Posey 495-2067

YOUR LOCAL UNIT OF THE AMERICAN CANCER SOCIETY OFFERS THESE ANOTHER PROGRAMS AT NO CHARGE. PROGRAMS MAY BE LIMITED TO VOLUNTEER AVAILABILITY IN SOME AREAS.

AMERICAN CANCER SOCIETY

Announcing Circle F Glass
(formerly Caprock Glass)
owners:
Delwin Fluitt - 495-2702
Lanny Fluitt - 495-3469
Steven Fluitt - 495-3069
132B W. Main
✓ New and Improved Service
✓ Friendly
✓ Dependable

Pizza Hut
PIZZA MANAGEMENT INC.
is now accepting applications for manager and assistant manager for our PIZZA HUT in Post, Tx. opening in April, 1989.
Interviews at the Multi-Services Building on the Snyder Highway (JTPA office) Thursday, January 5, 1989, from 1 p.m. to 6 p.m. or contact
Larry Hopp
Field District Manager
Pizza Management, Inc.
2332-19th St.
Lubbock, Texas 79401
806-762-8444

On Silk Stocking
3 BR - 2 bath - basement and lots of room. Also 2 car garage. Excellent location.

2 BR - 1 bath - recently remodeled.

Priced to Sell
2 BR - 1 bath - Carport

2 BR - 1 bath with screened in porch.

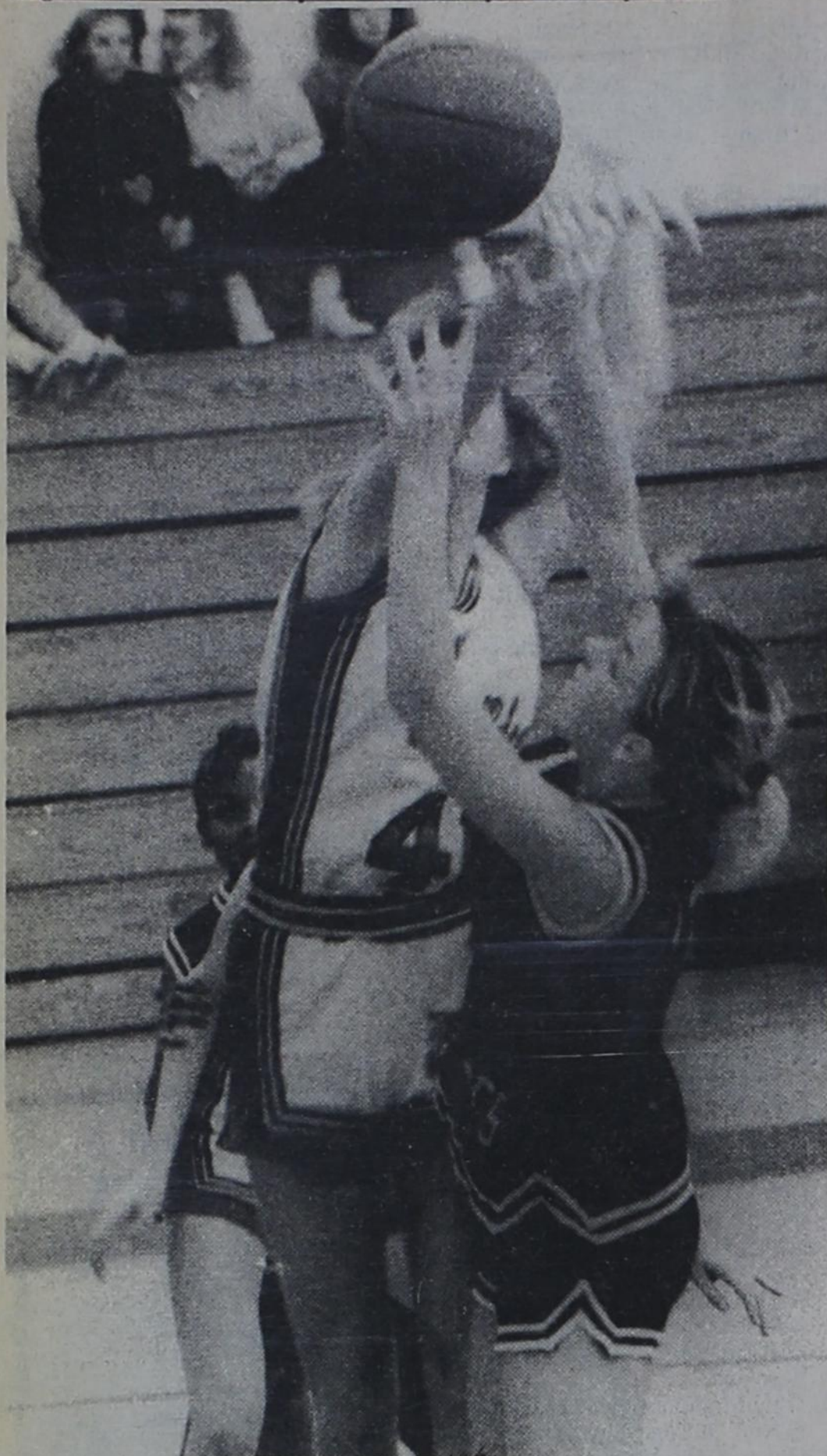
2 BR - 1 1/2 bath - 1 car garage also large attic area.

3 BR - 1 bath with carport. Good condition. Central heat and air.

2 Commercial buildings on U.S. Hwy 84

Perfect Family Home
3 BR - 2 bath with large country kitchen and fireplace in living room. 2 car garage and storage. Big backyard. Ceiling fans in every room.

Mitchell Real Estate
Kim 495-3719 Travis 495-2480
Mike and Wanda 495-3104 or 828-5878 Barbara 495-3987



KIM WULFJEN goes up for an inside-the-lane shot for the Post Lady Lopes during the contest with Plainview at the Slaton Tournament.

Lady Lopes at West Texas Invitational

The Post Lady Lopes, participating in the Slaton Tournament December 28 and 29, tying the game with Plainview with a little over two minutes to go, only to let it slip through their fingers and then losing to Pampa in the second game.

| | | | | |
|------------------------|----|---|---|----|
| December 28 | | | | |
| Post 41 - Plainview 49 | | | | |
| Scoring by Quarters | | | | |
| Post | 9 | 8 | 6 | 18 |
| Plainview | 18 | 8 | 6 | 17 |
| Individual Scoring | | | | |
| Kim Wulfjen | 10 | | | |
| Margaret Wynne | 9 | | | |
| Traci Tannehill | 7 | | | |
| Reshea Hair | 6 | | | |
| Dusti Cash | 3 | | | |

| | | | | |
|---------------------|----|----|----|----|
| December 29 | | | | |
| Post 42 - Pampa 62 | | | | |
| Scoring by Quarters | | | | |
| Post | 8 | 2 | 14 | 18 |
| Pampa | 16 | 19 | 14 | 13 |
| Individual Scoring | | | | |
| Dana Morris | 10 | | | |
| Margaret Wynne | 9 | | | |
| Crystal Clay | 9 | | | |
| Reshea Hair | 6 | | | |
| Traci Tannehill | 4 | | | |
| Angela Graves | 2 | | | |
| Kim Wulfjen | 1 | | | |
| Kenda Williams | 1 | | | |

Antelopes Participate in Seminole Tourney

The Seminole tournament was tough sledding for the Post Antelope varsity boys' basketball team as they lost to Kermit 75-64 December 28 and to Seminole 79-48 the next day.

| | | | | |
|----------------------|----|----|----|----|
| December 28 | | | | |
| Post 64 - Kermit 75 | | | | |
| Scoring by Quarters | | | | |
| Post | 20 | 13 | 6 | 25 |
| Kermit | 20 | 20 | 19 | 16 |
| Individual Scoring | | | | |
| Bill Rankin | 19 | | | |
| Darren Brown | 18 | | | |
| Rance Sappington | 11 | | | |
| Lee Wayne Greathouse | 8 | | | |
| Bobby Curtis | 4 | | | |
| Matt Holly | 2 | | | |
| Floyd Slay | 2 | | | |

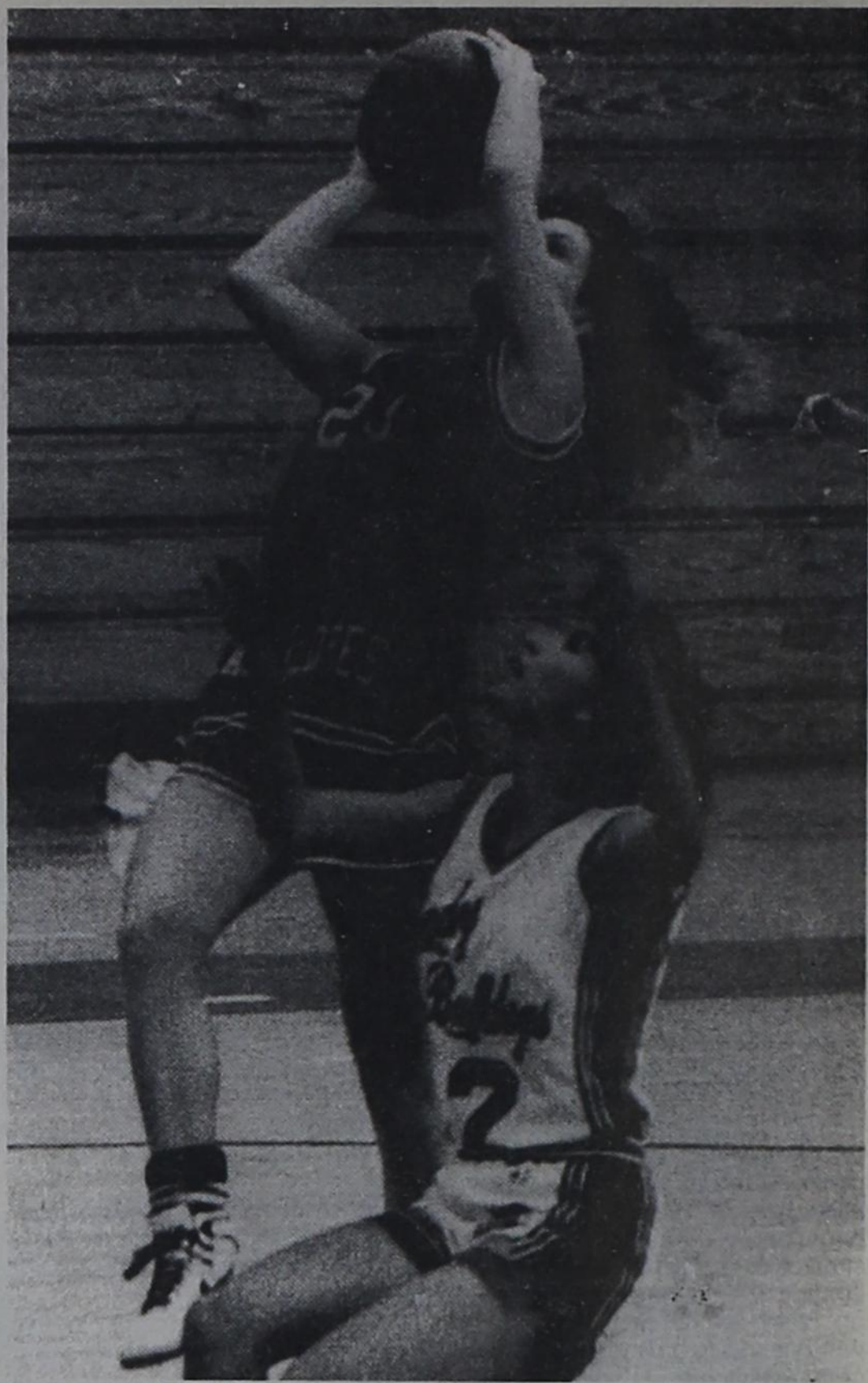
| | | | | |
|-----------------------|----|----|----|----|
| December 29 | | | | |
| Post 48 - Seminole 79 | | | | |
| Scoring by Quarters | | | | |
| Post | 4 | 19 | 10 | 15 |
| Seminole | 21 | 19 | 20 | 19 |
| Individual Scoring | | | | |
| Bill Rankin | 9 | | | |
| Kevin Williams | 7 | | | |
| Rance Sappington | 7 | | | |
| Floyd Slay | 7 | | | |
| Darren Brown | 6 | | | |
| Jamie Perez | 6 | | | |
| Bobby Curtis | 4 | | | |
| Lee Wayne Greathouse | 2 | | | |

| | | | | |
|----------------------|----|----|----|----|
| December 30 | | | | |
| Post 63 - McCamey 78 | | | | |
| Scoring by Quarters | | | | |
| Post | 23 | 11 | 15 | 14 |
| McCamey | 16 | 20 | 22 | 20 |
| Individual Scoring | | | | |
| Rance Sappington | 14 | | | |
| Bill Rankin | 13 | | | |
| Kevin Williams | 9 | | | |
| Lee Wayne Greathouse | 8 | | | |
| Jamie Perez | 8 | | | |
| Darren Brown | 5 | | | |
| Roger Adams | 4 | | | |
| Floyd Slay | 2 | | | |

PHS Varsity Boys Win 59-51

The Post varsity boys' basketball team clipped Plains 59-51 in a December 20 contest.

| | | | | |
|----------------------|----|----|----|----|
| December 20 | | | | |
| Post 59 - Plains 51 | | | | |
| Scoring by Quarters | | | | |
| Post | 10 | 13 | 15 | 21 |
| Plains | 13 | 17 | 8 | 13 |
| Individual Scoring | | | | |
| Bill Rankin | 20 | | | |
| Rance Sappington | 10 | | | |
| Darren Brown | 6 | | | |
| Bobby Curtis | 6 | | | |
| Kevin Williams | 4 | | | |
| Floyd Slay | 4 | | | |
| Lee Wayne Greathouse | 3 | | | |
| Dustin Ammons | 2 | | | |
| Roger Adams | 2 | | | |



KENDA WILLIAMS drives the lane for a two-pointer during the Post Lady Lope contest at Slaton against Plainview.

Eagles Edge Spade 49-46

The Southland Eagles took a 49-46 win from Spade in a game there December 16.

| | | | | |
|-------------------------|----|----|----|----|
| December 16 | | | | |
| Southland 49 - Spade 46 | | | | |
| Scoring by Quarters | | | | |
| Southland | 10 | 6 | 19 | 14 |
| Spade | 4 | 19 | 6 | 17 |
| Individual Scoring | | | | |
| John Beatty | 12 | | | |
| Fred Mendez | 7 | | | |
| Kelly Edwards | 7 | | | |
| D'Angelo Valderaz | 9 | | | |
| Jimmy Moreno | 6 | | | |
| Burt Anaya | 4 | | | |
| Sal Hernandez | 2 | | | |

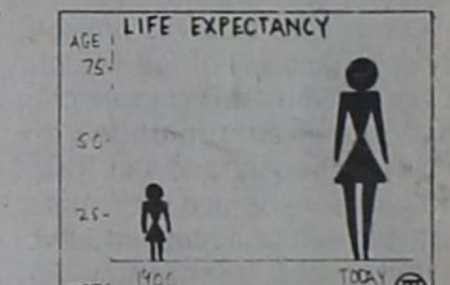
The young Lady Lopes fell behind 9-6 in the first quarter, and at halftime were behind 13-12. Brownfield got a 14-12 edge in the third period and Post scored 11 points to Brownfield's 10 in the final quarter.

| | | | | |
|--------------------|---|--|--|--|
| Individual Results | | | | |
| Arlene Price | 8 | | | |
| Lisa Haynes | 8 | | | |
| Lori Taylor | 6 | | | |
| Hillary Williams | 6 | | | |
| Tyra Hart | 2 | | | |
| Linda Rodriguez | 2 | | | |
| Denise Burks | 2 | | | |
| Krista Kemp | 1 | | | |

Lady Eagles Crush Spade

The Southland varsity girls' basketball team crushed Spade 60-17 in a game there December 16.

| | | | | |
|-------------------------|----|----|---|----|
| December 16 | | | | |
| Southland 60 - Spade 17 | | | | |
| Scoring by Quarters | | | | |
| Southland | 20 | 22 | 8 | 10 |
| Spade | 1 | 6 | 0 | 10 |
| Individual Scoring | | | | |
| Wendy Davenport | 16 | | | |
| Veronica Arguello | 8 | | | |
| Lisa Taylor | 8 | | | |
| Amy Ryan | 8 | | | |
| Reyes Anaya | 6 | | | |
| Tonya Purdy | 6 | | | |
| Cori Weaver | 6 | | | |
| Kim Burnett | 2 | | | |



A woman born in 1900 had a life expectancy of 35 years. One born today can expect to live to see 75 and more.

Slaton Runs Past Antelopes in 90-47 Rout Here

The Slaton Tigers visited Antelope Gym Tuesday night, January 3, and went home with a 90-47 victory over the Post Antelopes.

"Our half court defense was a lot better but our transition game needs to improve," stated coach Mitchell Rasbury.

Mitchell continued, "I'm proud of these kids for the way they hustled...they gave a great effort."

| | | | | |
|--------------------|----|----|----|----|
| Scoring by Quarter | | | | |
| Post | 7 | 14 | 11 | 15 |
| Slaton | 25 | 28 | 14 | 23 |
| Individual Scoring | | | | |
| Roger Adams | 12 | | | |
| Rance Sappington | 12 | | | |
| Bill Rankin | 6 | | | |
| Kevin Williams | 4 | | | |

SHOP POST FIRST

| | | | | |
|--------------------------|----|----|----|----|
| December 29 | | | | |
| Southland 38 - Meadow 57 | | | | |
| Scoring by Quarters | | | | |
| Southland | 7 | 8 | 14 | 7 |
| Meadow | 17 | 12 | 11 | 15 |
| Individual Scoring | | | | |
| Reyes Anaya | 15 | | | |
| Wendy Davenport | 10 | | | |
| Amy Ryan | 5 | | | |
| Tonya Purdy | 5 | | | |
| Lisa Taylor | 2 | | | |
| Cori Weaver | 2 | | | |

Lady Eagles Win Consolation at Meadow

The Southland Lady Eagle varsity basketball team won the consolation spot in the holiday tournament at Meadow.

| | | | | |
|--------------------------|----|----|----|----|
| December 29 | | | | |
| Southland 38 - Meadow 57 | | | | |
| Scoring by Quarters | | | | |
| Southland | 7 | 8 | 14 | 7 |
| Meadow | 17 | 12 | 11 | 15 |
| Individual Scoring | | | | |
| Reyes Anaya | 15 | | | |
| Wendy Davenport | 10 | | | |
| Amy Ryan | 5 | | | |
| Tonya Purdy | 5 | | | |
| Lisa Taylor | 2 | | | |
| Cori Weaver | 2 | | | |

| | | | | |
|-------------------------|----|----|----|----|
| December 30 | | | | |
| Southland 49 - Smyer 43 | | | | |
| Scoring by Quarters | | | | |
| Southland | 11 | 10 | 16 | 12 |
| Smyer | 8 | 6 | 13 | 13 |



LISA TAYLOR lets go for a two pointer during the Southland Lady Eagles contest at the Meadow Tournament. (Photo by Jerry Taylor)

Foreigners...

(Continued from Page 1) ployees at the mercy of foreign interests with no lasting ties to our state.

However terrible the results of such an acquisition, there are no state laws designed to stop or even detect such takeovers by foreign interests and the state's antitrust laws do not provide the answer to this problem.

This is just one of many significant acquisitions by foreign investors in our state. The economic downturn in the Texas economy has resulted in bargain-basement prices for our businesses and property, and has made them easy targets for anyone with money to invest.

Internationally, as the dollar becomes weaker and weaker, and our trade balance worsens, the result will be increased foreign ownership of the vital industries of our state.

The solution to the problem of foreign ownership of our vital industries will not be easy. A recent bill in the United States Congress by Rep. John Bryant would have required reporting of foreign ownership. Unfortunately, the bill died in the Senate.

State Representative Paul Colbert has announced that a similar bill will be introduced in the Texas Legislature. Other approaches are also possible. However, the time to act is now.

We must require the reporting of foreign ownership. It is not a solution in itself, but such information is necessary if the extent of the problem is to be understood and an immediate remedy is to be found.

Of course, the ultimate solution is a strong Texas economy built on a diversified industrial base. A strong economy will be disinclined and resistant to foreign ownership.

A cooperative effort by the citizenry, business, industry and government can keep Texas our Texas.

Post J.V. Girls Lose 35-37

The Post Junior Varsity girls' basketball team lost a close contest with Brownfield December 19, 37-35.

SHOP POST FIRST

1989 FORT WORTH STOCK SHOW

Rodeo

28 GREAT PERFORMANCES AT WILL ROGERS COLISEUM IN FORT WORTH, JANUARY 20-FEBRUARY 5.

\$10 FRI. NIGHTS AND ALL WEEKENDS \$8 MON.-THURS. NIGHTS \$6 MON.-FRI. MATINEES

To order tickets by mail, send cashier's check or money order, plus \$2 extra per order for postage and handling, to: P.O. Box 150, Fort Worth, TX 76101. Charge on MasterCard or VISA. Call (817) 877-2420. Tickets also available at all Rainbow-TicketMaster locations. Charge on MasterCard or VISA by calling 787-2000 or 787-1500, or call toll-free in Texas 1-800-992-8000.

Nomination For

Business of the Year Award

NAME _____

for the following reason:

Clip and Mail by January 19

Post Merchants Association

#1 Santa Fe Plaza
Post, Texas 79356

Award to be made at the annual banquet January 28, 1989

Hoover Bookkeeping and Tax Service

- Complete bookkeeping services
- Preparation of Income Tax returns

122 E. Main 495-2894

(WILSONMOTORSFORD - LINCOLN - MERCURY)

TRUCK TRADIN' DAYS!

We're Out To Sell 30 New Trucks In January, So We're Makin' Deals And Tradin' Fast On All Our 1989 Ford Trucks! NOW!

'89 Ford 3/4 Ton Pickup \$12,875

- 351 EFI Engine
- Air Conditioning
- Chrome Rear Bumper
- Super Gliding
- Chrome Grilles
- 5-Spd. Transmission
- Aux. Fuel Tank
- 4:10 Optional Axle
- Tilt & Cruise Control
- Cloth & Vinyl Bench Seat

Good Selection In Stock!

'89 Ford 4X4 Pickups \$12,979

Come In And Check Out Our Great Selection Of F-150 & F-250 4X4 Pickups!

From As Low As

Choose From Several In Stock!

'89 Mercury Grand Marquis \$17,499

- 4-Way Power Seat
- Power Locks & Windows
- Rear Window Defroster
- TR Steering & Cruise Control
- 3.0L EFI Engine
- Automatic Q/D Transmission
- Illuminated Entry
- Turbine Spoke Wheels
- Corner Lamps
- Dual Viper Mirrors
- Power Antenna
- AM/FM Cass.

Great Selections!

Open Mon.-Fri. 9-5:30; Sat. 10-5
East Hwy. Opposite The Coliseum
1-800-545-5019 (Out-Of-Town)

Wilson Motors SNYDER, TEXAS

573-6351

"Lower Overhead Means Lower Prices!"