

The Post Dispatch

USPS 439-620

If it's news to you...it's news to us!

Sixtythird Year Number 15

Newsstand Price 50 cents

Sunday, September 3, 1989

BAZE BOOKBINDING
514 W. 7TH ST
AMARILLO TX 79101

Order Your Subscription Now!

Call 495-2816

Only \$15 Per Year in Garza and
Adjacent Counties!

September is Nat'l Month for Library Sign-Up

A gift that won't break, won't wear out, won't be outgrown? Educational and fun for all ages? Free of charge at a location near you? A library card.

September is National Library Card Sign-up Month, sponsored by the American Library Association. With your child back in school this fall, be sure you've provided the most important "supply" of all - a library card.

When your child gets into the library habit at a young age, a pattern of reading and lifelong learning is set. Studies have shown that children who are exposed to reading at an early age do better in school, and that children who grow up using the library are more likely to continue using the library as adults.

In addition to making a wide variety of print and nonprint materials available, librarians provide advice, assistance and encouragement to young people to choose their own reading materials so they will become adults who can and do read and view the library as a valuable resource.

Health Rules Change for Show Animals

Some significant changes have occurred pertaining to animals entering shows, fairs and exhibitions, according to Larry Mills, DVM, and required health certificates will need to be issued within 10 days of the show.

Horses being entered will need to demonstrate a negative Coggins test within the last 12 months. This is a major change, because in the past, horses originating in Texas being entered in Texas shows, fairs or exhibitions were excluded from the Coggins test requirement. Exhibitors should plan ahead of time and see that their horses are tested prior to show season. Since it may take up to a week to get results confirmed at a laboratory, exhibitors should not wait until the last minute to get the blood test.

These changes have been made after several of the show catalogues have been printed, thus predisposing all exhibitors to misunderstand what the requirements really are. Any horse exhibitor going to the South Plains Fair or other such shows should plan to get Coggins tests done a week or so prior to leaving for the shows.

Post's Enrollment, 999; Southland Registers 148

Monday, August 28 was officially the first day of the 1989-90 school year in Post, and 999 students were present on that day for the school's opening.

In Southland, where students reported for school two days later, on August 30, 148 students were enrolled.

Post's 999 total is a slight drop from last year's total enrollment of 1,053 and includes 250 high school students, 232 middle school students and 517 elementary students.

'89 Borden County Field Crop Tours September 7

Extremely dry weather and occasional cool nights have taken their toll on the cotton crop, but the annual Borden County Field Crops Tour will still be held on Thursday, September 7, with tours of two variety plots, a herbicide and an irrigated Pima cotton test.

Those taking the tour will meet at the courthouse in Gail from 8:15 a.m. to 8:30 a.m. and travel by bus to the Plains Community Center for registration, doughnuts and coffee.

The group will depart on its tour of demonstration plots at 9:25 a.m. and will return for the Community Center by 11:30 a.m. for lunch. At noon a barbeque meal will be served, compliments of Upper Colorado Soil and Water Conservation District.

Dr. James Supak, Agronomist-Cotton and Dr. Wayne Keeling, Systems Agronomist will be on hand to share the most up-to-date and practical production practices to aid the producers with cotton crops and noxious weed problems. Supak and Keeling will also visit with the group during the tour and the meal.

Special Bargain Night on Bingo's Second Year

To celebrate the second anniversary of bingo in Post, the Chamber of Commerce has announced a special "Two-For-One" night on Tuesday, September 5 at the Post Community Center.

On this second anniversary, players will be able to purchase two bingo packets for the price of one - a \$20 value for \$10.

Doors will open at the Community Center at 6:30 p.m. and bingo will begin at 7:30 p.m.

For more information, contact the Chamber of Commerce at 495-3461.

'A Shot in the Dark' Sunday Matinee Today

The Garza Theatre will present a final matinee performance at 2 p.m. today of "A Shot in the Dark," a courtroom comedy adapted by Harry Kurnitz from the French play, "L'Idiotie" by Marcel Achard.

The Broadway play was eventually made into a movie of the same name, starring Peter Sellers in his first appearance as Inspector Cluzot.

Appearing in the Garza Theatre production are Laura Mack, Greg Wortham, Patrick Conner, Matthew, Thomas, Troy Timms, Christy Cade, Mandy Swafford and theatre director-designer Will McCrary.

Tickets for the matinee are \$6 for adults and \$3 for children under 12 and may be purchased at the theatre box office.



NEW AMBULANCE FOR EMT'S - Post EMT's are now answering calls and making runs in a new ambulance which was delivered recently. On hand to stock the new ambulance for service were (left to right) Melodie Yarbro, Jackie Gonzales, Bobby Reiter, Betty Posey, Debbie Reiter, Becky Warren and EMT trainee, Pam Hair. Debbie Reiter's son Bobby is not an EMT, but he did help with stocking the ambulance.

Lubbock Bicycle Club Rides Again in 'La Rueda De Post' Founder's Day

"La Rueda De Post," The Circle of Post, sponsored by the Lubbock Bicycle Club, the Post Chamber of Commerce and the Post Merchants Association, will get underway in Post at 8 a.m., October 14, with a rousing send-off as the bicycle riders are escorted through town while bag-pipes play and hot-air balloons begin their journey upward.

The Century-Plus bicycle ride is just one of the popular events scheduled in conjunction with the annual Post's Founder's Day Activities and this year's tour will mark the third ride by the Lubbock club.

La Rueda De Post consists of four different rides: the 25 mile quarter century for enthusiastic riders; the 50 mile half-century for the strong cyclists; the 70 metric-plus century for the serious cyclists; and the 102 century plus for only the best conditioned.

Throughout the ride, participants will be challenged by varying terrains and rewarded with breath-

taking views and restful descents. And if there are those riders who are interested in racing, there will be plenty of competition.

The staging will begin at 7 a.m., Saturday, October 14 on Main Street in front of Algerita Park and the ride will begin promptly at 8 a.m., rain or shine.

Aid stations will be placed at regular intervals and will supply fruit, water and assistance. Sag wagons will monitor the course for those with mechanical or physical difficulties.

The entry fee for the event is \$15 and early registration is encouraged. The first 100 to register will receive a commemorative T-shirt and all registrants will be eligible for a drawing for a lightweight helmet, bicycle computer, floor pump, Spenco gloves and Spenco seat cover.

(Continued on Page 2)

Time is Running Out for Design Assistance

Dem Jimenez, staff architect with the Texas Historical Commission and the Main Street Center, will be in Post on Tuesday, September 19, 1989 to meet with property owners and merchants interested in any type of design assistance.

Melissa Cunningham, local Main Street Manager, reminds anyone interested in assistance that there are only three and one-half months left during which property owners may take advantage of the low-interest loan program for use in financing building rehabilitation projects.

To learn more about the loan program and/or to set up an appointment with the architect, please contact the Main Street Office at 495-4157.

Also keep in mind that to qualify for the loan program, you must have a schematic rendering from the THC-Main Street staff.

Dispatch to Close Monday, for Labor Day

The Dispatch will be closed Monday, September 4 to observe Labor Day, and will open at 8:30 Tuesday morning to accept news and advertising until 5 p.m. for the Thursday, September 7 edition.

The regular Wednesday edition will be one day late this week in order that the Dispatch staff can take advantage of the long Labor Day weekend.

Unclaimed State Money Totals Over \$40 Million

State Treasurer Ann W. Richards turned over \$40 million recently in unclaimed money to state agencies to pay for schools, highways and other general state government services.

The money is from abandoned checking accounts, uncashed cashier's checks, unclaimed utility deposits and the like for which no owners could be found.

"This is one of the best sources of non-tax revenue for the state," Treasurer Richards said. "It has grown from virtually nothing in 1982 to \$40 million this year and each new dollar we collect is a dollar that we don't have to collect from our taxpayers."

The state received a large amount of unclaimed property earlier this week after the Treasury sold its unclaimed stock certificates for more than \$4 million.

In addition, auditors from the Treasury found \$11 million in heretofore unreported unclaimed property from various businesses in the state.

Based on their job performance, the Texas State Auditor has prepared a report that shows Treasury unclaimed property auditors had the highest per audit hour return of any revenue collecting agency in state government.

Richards said that while she was proud of the amount of unclaimed property collected and turned over

to the state, she was even more proud of the fact that the State Treasury had been able to find owners of \$30 million in lost property during the last year.

"So far this year we have written checks returning lost property to more than 16,000 Texans and we are finding more each day," Richards said.

The Richards Administration has collected \$273.5 million in unclaimed property in the past six years, or 86 percent of all unclaimed property collected since the unclaimed property law was passed in 1962.

In order to find owners of lost property, state law requires the Treasury to publish a statewide listing of those persons with \$50 or more of unclaimed property each March.

This year, the Treasury published a list of 110,000 names of persons with more than \$60 million in lost money.

The state can use any money that remains unclaimed for general state expenses and for education. This year \$20 million went to the General Revenue Fund and \$20 million to the Foundation School Fund.

While the state may use money while it remains unclaimed, the owners or the owners' heirs may claim their property at any time in the future.



EMT EXERCISES - Scott Murray takes his turn as the "injured party" as EMT members test their skills in recent extrication drills. Others who served as "patients" during the practice were Eva Troxell, Billy McKamie, Weaver McKamie, Betty Posey, Jackie Gonzales and Melodie Yarbro. Four cars for the work-out were provided by Joe Baker. H&M Construction was in charge of set-up.



POST VOLUNTEER FIREMEN Derek Walls, Dee Justice and Delbert Rudd check the activity as EMT member practice what they have learned in their many hours of qualifying for EMT positions. Also working the day long drills were Daniel Yarbro, Gerald Gerner, Pam Hair, Lynn Herridge, George Parker, Trudy Kitten, Pam Elrod, Brenda Norwood, Alicia Hancock, Michelle Reid, Lori Tipton-all of Tahoka and Sue Smallwood of Slaton.

NEWS BRIEFS

Offices to Close for Holiday

Both the Post City Hall and Garza County Courthouse will be closed Monday, September 4 in observance of Labor Day.

Head Start Open House

The public is invited to attend an open house hosted by Post Head Start on Friday, September 8 from 9 a.m. to 5 p.m. All parents and interested persons are urged to attend. Refreshments will be served.

Season Football Tickets

Season football tickets for Post Antelope football games are now on sale in the Post High School principal's office. Persons who held tickets previously have an option on those same until September 15. Tickets are \$15 per seat.

Rotary Club Golf Tourney

The Post Rotary Club will sponsor a golf tournament at the Caprock Golf Course, Saturday and Sunday, September 23 and 24. The fee to enter the two-man scramble is \$45 per person.

Interested players can sign up at the golf course or register by calling Charles Hardin at 495-2804 or Victor Ashley at 495-2801.

1988-89 Yearbooks Arrive

The Post High School 1988-89 yearbooks are now in and may be picked up in the high school Learning Center from 8:00-11:45 a.m. and 12:30-4:15 p.m., Monday through Friday.

Post CARES Needs Donations

Post CARES, located at 222 E. 8th, is in need of donations of food, but is in desperate need of canned meats.

If you would like to help out this worthwhile organization, Post CARES hours are from 1 p.m. to 3 p.m. Monday through Friday and would welcome your donations.

Fall Art Classes at Algerita

Fall art classes, sponsored by the Post Art Guild, will begin Monday, September 4 and Tuesday, September 5 at the Algerita Art Center with Marie Neff as instructor for the month of September. Classes will meet weekly on Monday and Tuesday at 3:30 p.m.

To register, or for more information, call 495-4000. If you are already registered for classes, come on your regular day at your regular time.

Founder's Day Booths

Sponsors for food and drink concession booths are needed for the 1989 C.W. Post Founder's Day Celebration in October. With an expected attendance of over 6,000, including students from West Texas area high school bands, help is needed to feed the visitors. If you, your group or organization are interested in a space during the activities, call the Main Street office at 495-4157 or Barbara Hardin at 495-3987.

Commodity Distribution

Commodities will be distributed Tuesday, September 19 from 9:30 a.m. to 12 noon and 1 p.m. to 3:30 p.m. at the 4-H Barn on the Lubbock Highway. Unless notice is received of a change, commodity distribution will continue on the third Tuesday of each month.



The 1989 Disaster Assistance Act promises badly needed financial help to weather-ravaged agricultural producers all across the U.S. The Act squeezed through just hours before Congress adjourned for its summer recess on August 5.

And, according to officials of Plains Cotton Growers, Inc., Lubbock, nowhere was its passage more welcome than among cotton producers on the Texas High Plains, thousands of whom have seen crops completely lost or severely damaged by hail, washing rains, blowing sand or drought. Producers who were prevented from planting because of adverse weather are eligi-

ble for the same disaster benefits as those who lost crops after planting.

The legislation provides for direct payments to partially offset weather-related losses that exceed a range of from 35 to 50 percent, depending on the crop, farm program participation and whether producers bought multi-peril crop insurance under the Federal Crop Insurance Corporation (FCIC) program. Producers of program crops who enrolled in the farm program and have FCIC coverage will be eligible for a payment on losses over 35 percent of normal production. The payment will be calculated at 65 percent of the commodity's target price. For

cotton, the rate will be 65 percent of 73.4 cents or 47.71 cents per pound.

Program crop producers without FCIC insurance will be eligible for a payment equaling 47.71 cents per pound times losses exceeding 40 percent of normal. Soybean and sunflower producers will get 65 percent of the average producer market price of the past five years for losses above 45 percent of normal.

For producers of program crops who did not participate in the farm program, called "wildcat" producers, and for all producers of non-program crops, payment eligibility will be limited to losses over 50 percent of the county average yield, paid at 65 percent of the applicable payment rate. For wildcat cotton producers, the rate is 65 percent of the 50-cent loan or 32.5 cents per pound.

On commodities with a target price, no deficiency payment will be made on that portion of the crop eligible for a disaster payment. Also, the disaster payment will be reduced by an amount equal to the value of any crop planted as a replacement for the crop on which a disaster payment is made.

Generally, the "normal" production used to calculate payment eligibility and the amount of payments for program participants will equal the farm's established payment yield times planted acreage plus prevented plantings within program-permitted acres.

However, program participants who purchased FCIC coverage may use either their insurance yield or payment yield, whichever is higher.

Payment yields have been frozen since 1985 while many insurance yields have been raised as a result of good crops in 1987 and 1988. So the option to substitute will be advantageous to some, PCG points out.

Other pertinent provisions of the Act include (1) the sum of disaster payment and net insurance indemnity may not exceed income expected from "normal yields," (2) total benefits per person are limited to \$100,000, (3) application for disaster assistance must be made by March 31, 1990 or later if prescribed by the Secretary, (4) payments may be made in cash, commodities or commodity certificates, and (5) a producer receiving disaster payments on 1989 crops must agree to purchase multi-peril crop insurance for 1990 unless insurance is not available, the 1990 premium rate increases as much as 25 percent from 1989, or the annual premium is greater than 25 percent of the 1989 disaster payment received.

Letter to the Editor

Dear Extension Program Council Committee Member:

In winding down my last week of employment with the Texas Agricultural Extension Service and working with each of you as your County Extension Agent-Agriculture, I want to express my sincere thanks to you for your support and friendship in our endeavors to promote better family education and improved life styles for residents of Garza County. We have had many rewarding experiences as well as some that issued further challenge.

I hope you will continue to call or stop by to see me, not as your County Extension Agent, but as your friend.

Syd Conner
CEA-Agriculture

TAES Field Day to Feature Cotton Advances

Ongoing efforts of scientists to improve the area's agricultural mainstay, cotton, will be presented at the 80th annual field day of the Texas Agricultural Experiment Station on Tuesday, September 12.

Trailers will transport visitors along research sites at the High Plains Research Foundation in tours that will be conducted from 1 p.m. to 4 p.m.

The facility is located 14 miles west of Plainview on U.S. Highway 70.

Enhancing cotton fiber quality is a major effort at the research facility, said Dr. John Gannaway, TAES cotton breeder. The development of F2 hybrids and glandless varieties will also be discussed on the tours. Other cotton research areas include Ascoshyta blight resistance and earliness. The public will be able to view performance trials of the latest commercial varieties, strains and hybrids under development by TAES, Gannaway said.

Other stops on the tour will feature corn quality research, farming systems for weed control and multi-use irrigation planting systems. The field day will also feature displays of equipment, farm supplies and information booths.

The program is a cooperative presentation of TAES, the Texas Agricultural Extension Service, the High Plains Research Foundation, the U.S. Department of Agriculture-Agricultural Research Service and the Texas Forest Service.

4-H Offers Many Things for Garza County Youth

by Katie Wolf
CEA-Home Economics

Youth in Garza County can take part in the 4-H program of the Texas Agricultural Extension Service in a number of ways.

Many youth are in community 4-H clubs that meet in neighborhoods with local volunteer leaders. They study various projects and carry out group activities in community service.

Some youngsters are in special interest groups or project groups that study one special subject, such as horsemanship, livestock, photography or leadership. Other youth enroll in a 4-H club at school, where they receive a monthly educational program and select a project for an outside-of-school group or an independent study.

School curriculum enrichment programs on health, safety, careers, embryology and energy reach many children in public and private schools each year.

All this means that any interest youth between the third grade and 19 years of age can be a 4-H'er. He or she can choose how to participate based on individual interests and desires. 4-H allows members to be whatever they want to be in a way best suited to their individual needs and desires.

4-H has many things to offer for today's youth, and the 4-H program can help shape the future of each member. More information on 4-H is available at the county Extension Office on the second floor of the Garza County Courthouse, or by calling 495-2050.

Educational programs conducted by the Texas Agricultural Extension Service serve people of all ages regardless of socioeconomic level, race, color, sex, religion, handicap or national origin.

Founder's Day Bicycle Tour For Lubbock Bicycle Club

(Continued from Page 1)

Lubbock Bicycle Club is a not for profit organization. The proceeds from this event will be used to help charitable organizations stage fundraising bicycle events and in the promotion of cycling in general.

TOUR "La Rueda De Post"

(The Circle of Post)

Fee: \$15.00

WAIVER OF CLAIM (must be signed and submitted with registration) In consideration of the acceptance of this registration, I, the Undersigned, assume full and complete responsibility for any injury or accident which may occur during my participation in this ride, or while I am on the premises of this event. I understand I must ride in a safe manner. I have been strongly recommended to use a helmet during my participation in this event; and I hereby release and hold harmless the sponsors, promoters and all other persons and entities associated with this event from any and all injury or damage, whether it be caused by negligence of the sponsors or promoters or other persons or entities associated with this event or their agents or employees, or otherwise.

NAME _____ First _____ Last _____

ADDRESS _____ Street _____

City _____ State _____ Zip _____

AGE ON 10-14-89 _____ SEX _____ SHIRT SIZE _____ MED _____ LAR _____ XLG _____ XXLG _____

I WILL BE RIDING IN _____ 25 MI _____ 50 MI _____ 70 MI _____ 102 MI _____

RIDER'S SIGNATURE _____ (or parent's signature if a minor)

Mail check or money order to: Post Ride
P.O. Box 6682
Lubbock, Texas 79423-6682

Country Carousel

Fresh bakery products daily.
Hamburgers, hotdogs
steak fingers
and lots,
lots more.



416 West 8th
(across from Junior High)

Monday thru Friday 6 a.m.-6 p.m.
495-2522

Post Chamber of Commerce BINGO

Two Year Anniversary
Tuesday, September 5
7:30 p.m.

Community Center
113 W. Main

Get Two Packets for the Price of One!!
a \$20.00 value for ONLY \$10!!

For more information contact the
Chamber of Commerce at 495-3461

Lic. 1-75-0786 720-2

Doors Open at 6:30 p.m.
No One Under 12 admitted

Entered at U.S. Post Office,
Post, Texas for transmission
through the mails as Second
Class matter, according to an
Act of Congress, March 3,
1879.

Subscription Rates:
Garza, Lynn, Borden, Lubbock,
Crosby, Kent and Scurry County:- \$15 per year
All others - \$26 per year

Wesley W. Burnett
Publisher
Lonnice Welborn
Editor
Gail Burnett
Advertising Sales

Deadline:
Mondays at 5 p.m.
P.O. Box 10
Post, Texas 79356
806-495-2816

Member
Texas Press Association
West Texas Press Association

When you support your Garza County United Way

These organizations are able to do the job that is expected of them:

- Summer Baseball
- Mental Health
- Boy Scouts
- Girl Scouts
- Child Welfare
- Red Cross
- Salvation Army
- Girls' Basketball
- Trailblazers
- Satellite School
- Meals on Weheels
- United Way

You can make a difference!

The goal this year is \$17,375

Mail your donation to:
Garza County United Way
P.O. Box 425
Post, Tex 79356

Southland ISD Lists School Lunch Guidelines

The Southland Independent School District serves nutritious meals every school day. Students may buy lunch for 75 cents and breakfast for 45 cents. Children from households that meet Federal Income guidelines are eligible for free meals or reduced-price meals at 40 cents for lunch and 30 cents for breakfast. To apply for free or reduced-price meals, you may pick up an application at the school principal's office.

If you currently receive Food Stamps or "aid to families with dependent children" for your child, you only have to list your child's name and food stamp or AFDC case number, print your name, and sign the application. Since you have already given income information to the welfare office, the school can confirm your eligibility. The information on the application may be checked by school officials at any time during the school year. Your foster child may be eligible for meal benefits. If you wish to apply for meal benefits for a foster child, contact the school for help with the application.

Income eligibility guidelines for 1989-90 are as follows:

Family Size	Annual:		Monthly:		Weekly:	
	Free	Reduced-Price	Free	Reduced Price	Free	Reduced Price
1	\$ 7,774	\$11,063	\$ 648	\$ 922	\$150	\$213
2	10,426	14,837	869	1,237	201	286
3	13,078	18,611	1,090	1,551	252	358
4	15,730	22,385	1,311	1,866	303	431
5	18,382	26,159	1,532	2,180	354	504
6	21,034	29,933	1,753	2,495	405	576
7	23,686	33,707	1,974	2,809	456	649
8	26,338	37,481	2,195	3,124	507	721

Each Additional Family Member:
\$ 2,652 \$ 3,774 \$ 221 \$ 315 \$ 51 \$ 73

If you do not agree with the school's decision on your application or the result of verification, you may wish to discuss it with the school. You also have the right to a fair hearing. This can be done by calling or writing the following official: L.D. Monroe, Superintendent at the Southland ISD, Rt 2 Box 103, Southland, Tx 79364, 996-5339.

The information you provide will be treated confidentially and will be used only for eligibility determination and verification of data.

Cattle Producers Should Present Unified Front

The animal rights and welfare movements will not go away and cannot be ignored. Therefore, livestock producers should present a unified front in educating consumers about their industry, Dr. Stan Curtis said recently.

Curtis, a professor of animal science-environment from the University of Illinois, said that livestock care practices such as branding, castration and dehorning are alien concepts to most consumers today and therefore a little frightening.

Curtis noted that the 100 producers attending the 1989 Texas A&M University Beef Industry Conference in College Station would understand the logic behind and the practicality of many of these practices. However, many consumers don't, he said.

The animal rights and welfare activists are a minority, but are very vocal and have demonstrated their ability to exert pressure on the media and consumers.

"They are a serious threat to all of animal agriculture," Curtis said. Livestock producers can take a proactive and a reactive stance when dealing with these activists. He urged livestock producers to make necessary changes themselves.

He quoted Winston Churchill as saying, "Be sure to take change by the hand before it takes you by the throat."

For example, instead of investigating only production and animal health, the industry should welcome research on animal welfare, he said.

"If the public is ethically offended...then it doesn't matter what scientists find," he said.

Livestock producers should assure agriculturists that the animal welfarists are serious. Over 1,000 letters addressing animal rights and welfare are sent to United States Congressmen each week and the legislature will take action, with or without advice from livestock producers, he said.

Additionally, each producer should point out instances of frank animal neglect and abuse, he said.

There are instances of such abuse by producers, feedlot and

market operators and employees, Curtis said.

"There are places we can pull up our own cinches," he said.

There are people in the industry who do not have a humane attitude toward animals. "That does not set well with the public. We have to watch what we do," he said.

Producers should encourage 99 percent brain and one percent brawn when working around animals and design working situations around the animal's psychology, if possible, Curtis said.

Instances of abuse or neglect should be addressed and solved by agriculturists before they appear on national television, he said.

Each producer also should play an active public relations role on the local level and support efforts made at the national level to educate and inform, he said.

Someone once referred to the next decade as the "Nervous '90s," he said.

"Americans are looking for something to worry about," he added. Producers need to assure consumers that beef production isn't one of them.

Amigos Club Receives Pins

by Erma Torres

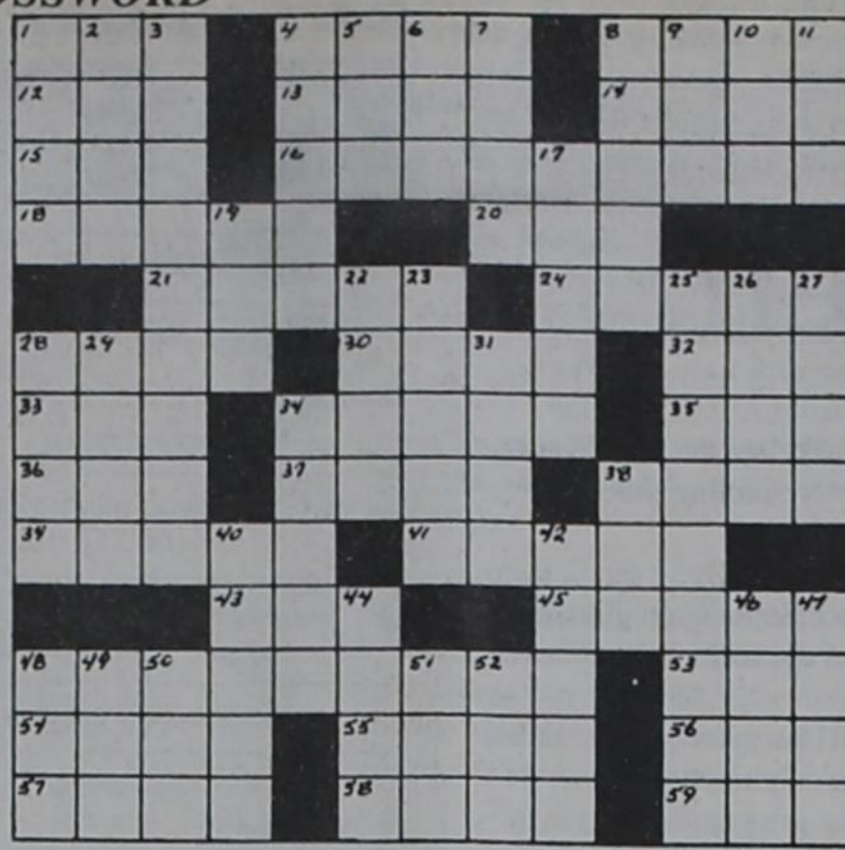
The Amigos 4-H Club met at the Reddy Room right after school on August 29. Attending the meeting were Amanda and Adrian Martinez; Chris and Jakob Sanchez; Erma and Olga Torres; Sharline Hymes; Javier Romos; Johnny Espitia; Mr. and Mrs. Bell; and Mrs. Vera Sanchez.

Olga, Amanda and Sharline set out the refreshments while Chris, Jakob and John set up the tables for the meeting.

Mrs. Katie Wolf, county agent, was also present and handed out the membership pins. She also gave a talk and made us feel good about what our club has been doing.

The meeting ended with a big applause for Mrs. Katie Wolf for being there. The next meeting will be on September 11, 1989, right after school.

CROSSWORD



ACROSS: 1-Base, of a sort; 4-Decant; 8-Sassy; 12-Arafat's gp.; 13-Joy's pet lioness; 14-Sale condition; 15-Gloaming; 16-Non-stop; 18-Surplus; 20-Prior beginning; 21-Atomic; 24-Stage whisper; 28-List; 30-New Mexico resort; 32-Pen point; 33-Grant or Costello; 34-Pick a sentence apart; 35-Cal-loway; 36-Three...match; 37-Soho brews; 38-Ohio team; 39-Valleys; 41-Fords; 43-Chewed; 45-Composition; 48-Unending; 53-Camelhair; 54-Amerind; 55-Raines; 56-Naught; 57-Comic Silvers; 58-Can't move; 59-Golf shot; DOWN: 1-Graf...; 2-Author Hailey; 3-Eternal; 4-Nut; 5-Pedro's cheer; 6-Olympic team; 7-File; 8-Bronchial noises; 9-Wield; 10-Reversing lead-in; 11-Curve; 17-Wipe away; 19-Balderdash; 22-Type type, briefly; 23-Noted Rod; 25-Everlasting; 26-Inert; 27-Abates; 28-Clump; 29-Tops; 31-Greek peak; 34-Glue; 38... judicata; 40-Jacket flap; 42-Hold-up; 44-Printemps follower; 46-He loved Irish roses; 47-Harvard rival; 48-Explode; 49-Number ending; 50-King of France; 51-Max.; 52-Axillary;

(Answers to crossword on page 5)

4-H Sponsors Octoberfest for Adults at Brownwood

by Katie Wolf
CEA-HE

The "Center" of attention! That's what mature adults 55 and over will be at the Texas 4-H Center of Lake Brownwood when hundreds will enthusiastically participate in the 9th Annual Octoberfest during October and November.

Sponsored by the Texas Agricultural Extension Service, five consecutive weeks are offered from which men and women may choose:

- Octoberfest I - October 3-6
- Octoberfest II - October 10-13
- Octoberfest III - October 17-20
- Octoberfest IV - October 24-27
- Octoberfest V - Oct 31-Nov 3.

Featured educational programs and activities offer a wide variety of topics to fulfill highest expectations of all who attend. Topics include exploring insurance options, cooking demonstrations, new tax laws, floriculture and more. Energizing and relaxing recreational opportunities will stimulate enthusiasm while all will welcome great fellowship and friends.

Learning Centers will offer "hands-on" experience in a variety of areas such as oil painting, wind chime making, needlecrafts, antique restoration, country crafts, collectibles and more.

Boat rides and fishing on Lake Brownwood add popularity to your stay. Swimming in the Olympic-sized pool, lighted tennis courts, horseshoes, billiards, volleyball, shuffleboard, dominoes, and card and table games round out the event.

Octoberfest! 55 or older? It's for you! Each weekly event is limited to the first 125 participants at the nominal cost of \$89 per person. Get away and learn to make the most of the best years of your life. Call your county Extension office today at 495-2050.

Fun Time Club Members Meet

The Fun Time Club met August 28 at the Senior Citizens' Center with the following members present:

Hooter Terry, Jewell White, Zillah Huddleston, Verna Roberts, Johnnie Francis, Fay Melton, Peggy Sallaway, Mary Tillman, Helen Jones, Doris Riddle, Hettie Dudgeon, Inez Huntly, Inez Ritchie, Mayeth Clarke, Nona Lusk, Ruth Martin, Evelyn Gurley and Ruby Carpenter.

The next Fun Time meeting will be at 7 p.m., September 25 in the Senior Citizens' Center.

SHOP POST

Dr. Lewis Moore
OPTOMETRIST
Announces New Office Hours for 1989
Complete Visual Care
Thursday 9:30 a.m. to 5 p.m.
206 West Main 495-3687



DOWE MAYFIELD, C.L.U.

The TAX-MAN is coming!
See us for your IRA or Keough!
3305-81st, Suite F, Lubbock
806-797-8089

Balloon Bokays for all occasions. Exciting new ideas in wedding or party decor. Birthday party package introducing "Rosie the Clown" with balloon delivery.

Featuring Coyote Country t-shirts and unique friendship bracelets.

The Balloon Post

495-2121
#5 Manna Square - Post, Tx Mon-Sat 9-5 Free Delivery

Great Expectations

113 W. Main Street

\$4.00 for 30 minutes
or \$8.00 for one hour.

Now through the month of September.
Call 495-3975 for appointment.
Great for stiff muscles and arthritis.
Open 8 a.m. til 6 p.m.

GARZA COUNTY TAX APPRAISAL DISTRICT

OFFICE: COURTHOUSE
TELEPHONE (806) 495-3518

DRAWER F
POST, TEXAS 79356

Notice of Public Hearing on Garza County Appraisal District Budget

The Garza County Appraisal District will hold a public hearing on a proposed budget for the 1989 fiscal year.

The public hearing will be held on Thursday, September 14, 1989 at the Appraisal Office, Courthouse, Post, Texas.

A summary of the appraisal district budget follows:

The total amount of the proposed budget is \$142,021.49.

Operating Expenses	\$39,556.20
Employee Salaries	\$49,965.29
Mineral-Industrial Contract	\$52,500.00

The total amount of increase over the current year's budget is \$609.49.

The number of employees compensated under the proposed budget will be 3.

The number of employees compensated under the current budget is 3.

The appraisal district is supported solely by payments from the local taxing units served by the appraisal district.

If approved by the appraisal district board of directors at the public hearing, this proposed budget will take effect automatically unless disapproved by the governing bodies of the county, school districts, cities, and towns served by the appraisal district.

A copy of the proposed budget is available for public inspection in the office of each of those governing bodies. The proposed budget may also be viewed at the appraised district office.

There must be 100 reasons or more to subscribe to The Post Dispatch

but these four should be enough:

Dollar Value	Free to Subscribers
17.50	1. FREE - Cards of Thanks (up to 100 words).
5.60	2. FREE - Lost or Found or give away (20 words, two times).
25.00 15.00 10.00	3. FREE - Wedding stories and photos Anniversary stories and photos Engagement announcements and photos. Birth announcements and photos.
5.00	
2.50	4. FREE - Extra copies of issues when something special to you is published. (up to 5 per issue).

\$80.60 Total Savings!

Now, since a subscription in Garza and adjacent counties is only \$15 per year...(that's about 25¢ a week)

Doesn't it make sense to order your subscription now?

The Post Dispatch

P.O. Box 10
Post, Texas 79356
495-2816

Antelopes Put it Together at Haskell

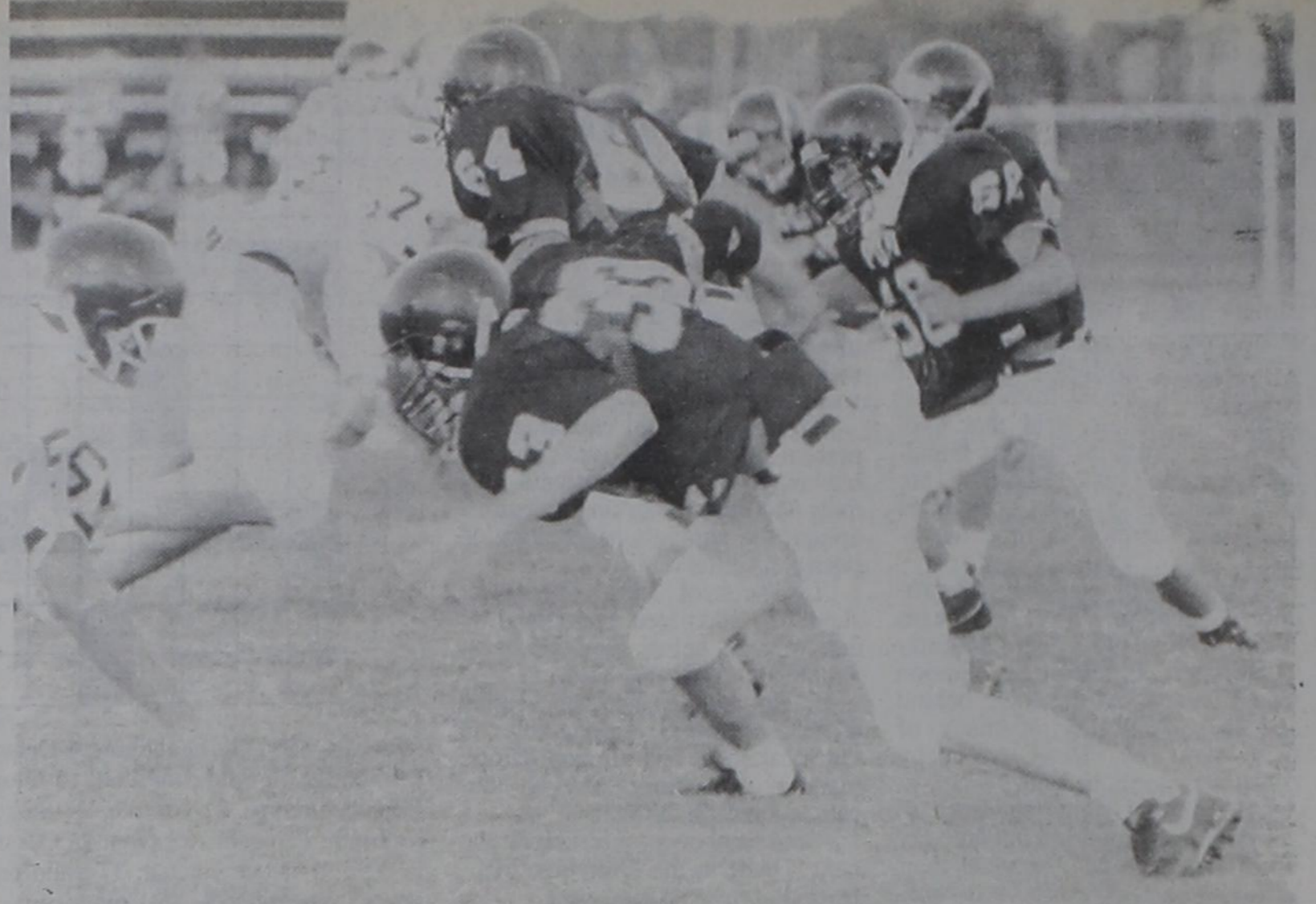
by Wes Burnett

The Post Antelope football teams put the whole program together Thursday evening at Haskell as the junior varsity and varsity controlled the line of scrimmage both on offense and defense. Antelope coaches were smiling and energetic in their praise of the players throughout the practice session against Henrietta.

The offensive line was smooth, although there were a few mistakes which, in an actual game would have set the team back a notch or two, were correctable and of minor significance. Varsity quarterback Rance Sappington guided the team to two touchdown drives, and reserve quarterback Matt Holly was impressive also as the second team moved efficiently around and through the Bearcat defenders.

Running backs performed well as the offensive linemen executed according to plan. Coach Dewayne Osborne called the signals and mixed up the attack with a variety of option plays with short and long pass combinations.

The team opens the season this Friday at Abernathy with an 8 p.m. kickoff. Watch for the pre-game details in this Thursday's Dispatch.



OFFENSIVE LINE IN ACTION - Bobby Blair (33), Trey Jones (64), and Robby Blair (60) move out in front as the varsity second team moves toward the goal line.



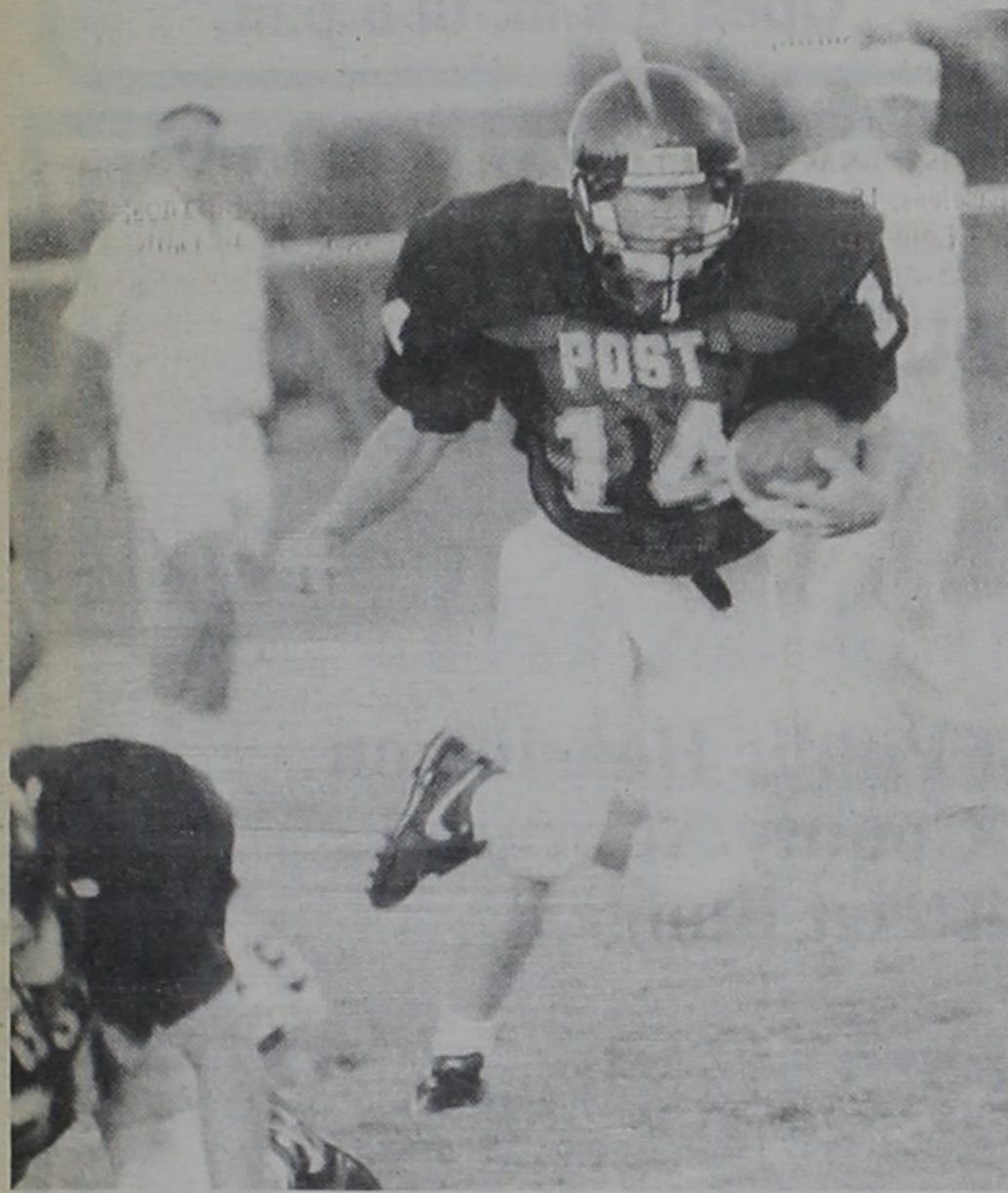
VARSITY BLOCKING - Bill Rankin (84), Keith Holly (75) and Jimmy Holleman (51) provide blocking for quarterback Rance Sappington (14) during the controlled scrimmage at Haskell last Thursday.



BOLD GOLD



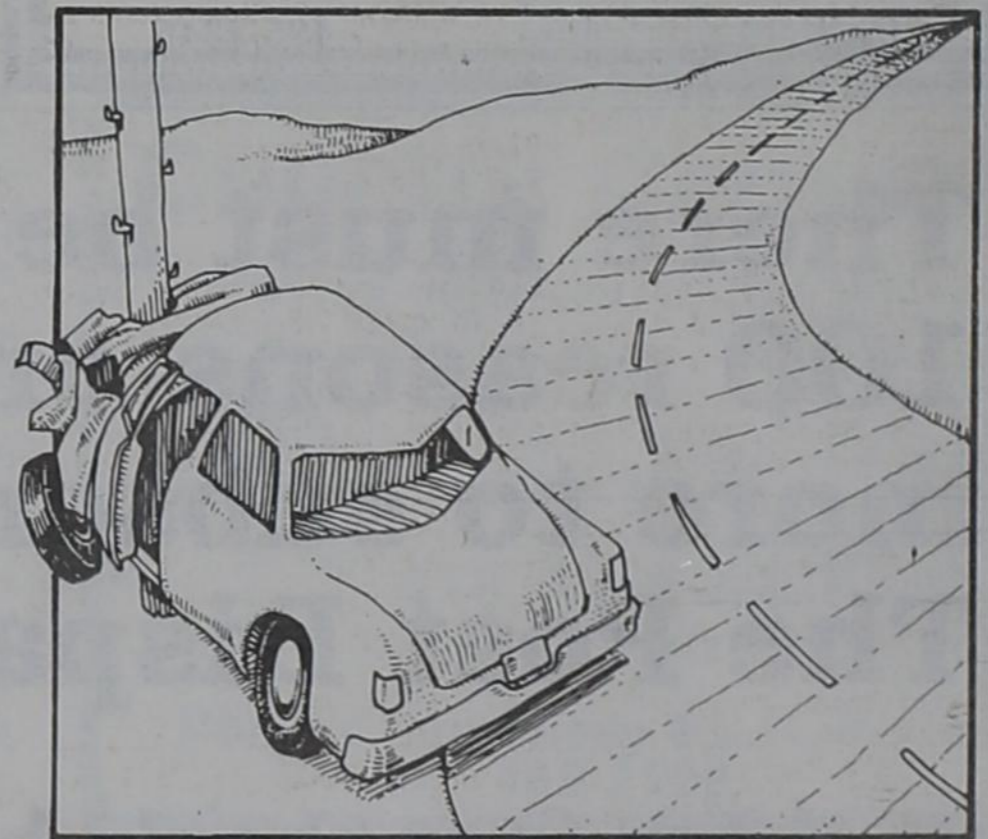
JAMIE PEREZ blasts through a gaping hole on his right side, taking the ball into Henrietta territory during the Thursday night scrimmage at Haskell.



QUARTERBACK RANCE SAPPINGTON used the option play effectively against the Henrietta defense at Haskell last Thursday.



ROGER ADAMS holds on to the football after catching a Matt Holly pass as the second team offense rolled down the field.



**DON'T LET DWI
DETOUR YOUR
PLANS!**

A holiday message from the
Texas Department of Public Safety

WELCOME TO THE POST CITY DINER 127 E. MAIN

OWNER: GLENDA MORROW
MGR: DEBBIE MORROW

FREE DELIVERY 495-4045
SPECIAL EVENTS

*****DAILY SPECIAL*****
SANDWICH & SOUP OF THE DAY
CHOICE OF SALAD & DRINK
\$3.75 (TAX INCLUDED)

SPECIALTIES

PASTRAMI & SWISS ON RYE.....	3.25
HAM SALAD ON FRENCH ROLL.....	3.25
CORNED BEEF & MOZZARELLA ON UNION ROLL.....	3.25
PATTY MELT-BURGER W/AMERICAN ON RYE.....	3.25
CLUB W/HAM, TURKEY, AMER., MOZZ., ON TOAST.....	3.25
CHICKEN SALAD ON CROISSANT.....	3.00
TUNA ON CROISSANT.....	3.00
ALL SANDWICHES SERVED W/LETTUCE & TOMATO	
SALAD PLATE (POTATO, TUNA, CHICKEN, HAM	
SERVED WITH HOMEMADE CRACKERS & RELISH.....	4.25
SALAD-ONE SERVING W/CRACKERS & RELISH.....	1.25

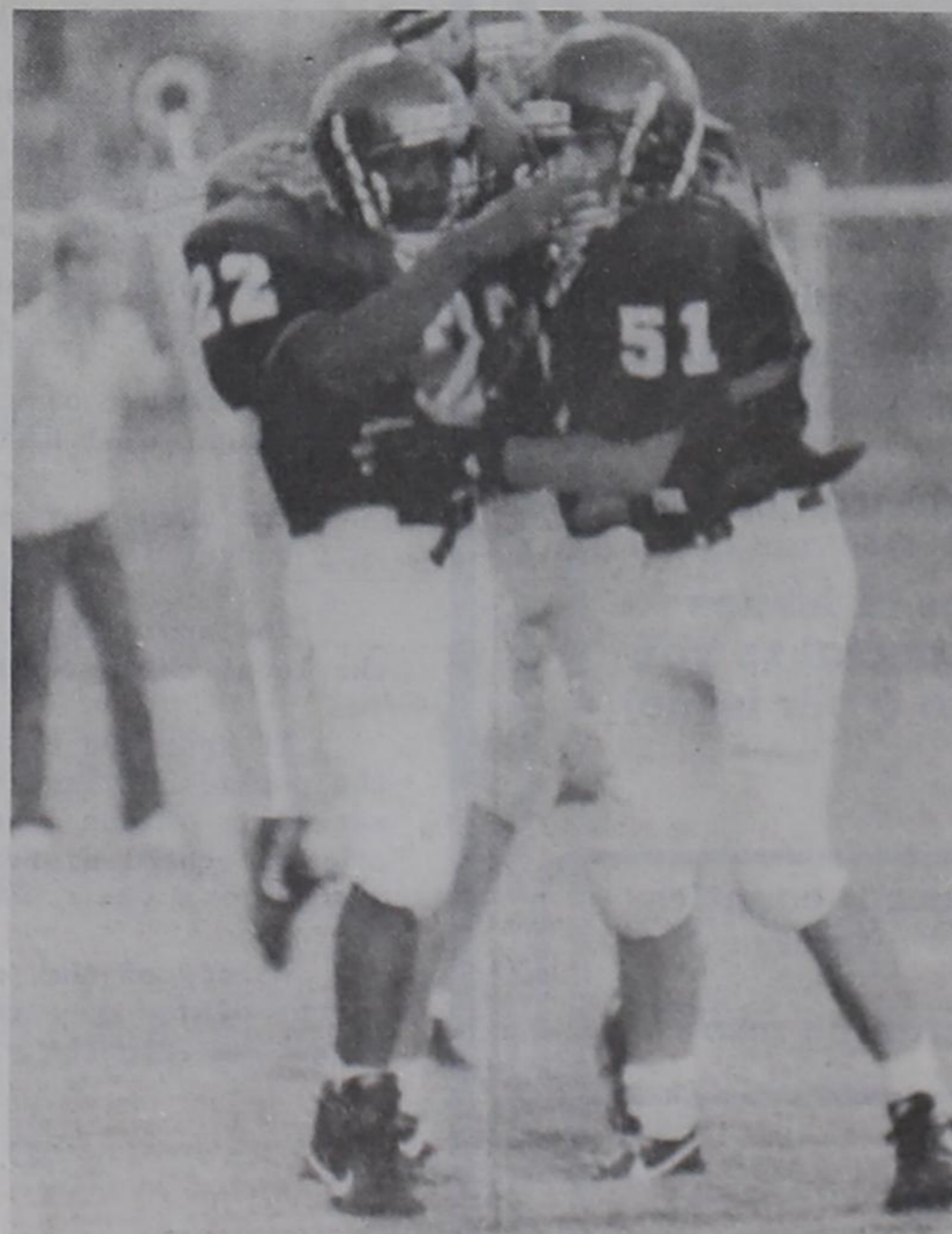
***** SANDWICHES *****

YOUR CHOICE * MIX * N * MATCH		
MEATS	CHEESES	BREADS
HAM	AMERICAN	ROTTERNILK WHITE
TURKEY	CHEDDAR	WHEAT
ROAST	SWISS	RYE
CHOPPED HAM	MOZZARELLA	POPPYSEED ROLL
	PIMENTO	ONION ROLL
		CROISSANT

DRESSINGS: MUSTARD, MAYO, HORSE RADISH, RANCH
SERVED WITH ASSORTED RELISHES..... 2.50

***** CHEF'S CHOICE SOUP *****
SMALL .75 LARGE 1.00

DESSERTS	DRINKS
CAKE.....75	COFFEE... 40
PIE.....1.00	TEA.....
COOKIES 3/.50	COKE, DIET COKE
MUFFINS...50	SPRITE, DR. PEPPER
 60



LANNIE LEE is congratulated by his teammate Jimmy Holleman after Lee rammed into the end zone for one of the three Antelope scores at Haskell Thursday against the Henrietta Bearcats.

* Lunch Specials *

- Monday**
Chicken fried steak or meatloaf, mashed potatoes, red beans, squash, blackeyed peas.
- Tuesday**
Smothered steak or fish sticks, macaroni and cheese, mixed greens, red beans, mashed potatoes.
- Wednesday**
Chicken and dumplings or chicken fried steak, fresh carrots, Au gratin potatoes, red beans, green beans.
- Thursday**
Hamburger steak or chicken nuggets, mashed potatoes, red beans, fried okra, corn.
- Friday**
Chopped BBQ beef or fish sticks, potato salad, cole slaw, red beans, green beans.
- Saturday**
Fried chicken or meat loaf, macaroni and tomato, mashed potatoes, red beans, mixed greens.
- Sunday**
Roast beef or chicken and dressing, mashed potatoes, red beans, green beans, corn.

Each Special **ONLY 3⁹⁵**
JACKSON'S CAFE
212 N. Broadway 495-2970

Classified Advertising

Private Party Classified Rates

PAYABLE IN ADVANCE

All private party classified ads must be paid in advance. Eulogies and card of thanks for a death in the family, up to 50 words free, limit one insertion per family death. Card of thanks for hospitalization or illness, first 50 words free. A 30 percent discount is allowed for all private party, non-commercial, non-profit paid in advance classified ads.

DEADLINE FOR COPY AND PAYMENT IS Mondays at 5 p.m.

Classified Rates

Number of Times	Per Word	Per Time
1	.25	
2	.20	
3	.15	
4	.125	

Legal Notices

NOTICE OF INTENTION TO BECOME INCORPORATED
THE CONNELL ESTATE, located at 130 E. Main, Post, Texas 79356, is incorporating, and will continue its business under the same management, as two separate corporations with the names "CONNELL ESTATE NORTH, INC." and "CONNELL ESTATE SOUTH, INC."

Notice of Application for Fluid Injection Well Permit
Graham Royalty, Ltd 5429 LBJ Freeway, Suite 550, Dallas, Tx. 75240 has applied to the Railroad Commission of Texas for a permit to inject fluid into a formation which is productive of oil or gas. The applicant proposes to inject fluid into the 3400' San Andres, North Huntley Unit, Well Number T207W. The proposed injection well is located 4 1/2 miles northwest from Post, Tx in the Huntley (3400) Field, in Garza County. Fluid will be injected into strata in the subsurface depth interval from 3338 to 3630 feet. LEGAL AUTHORITY: Chapter 27 of the Texas Water Code, as amended, Title 3 of the Natural Resources Code, as amended, and the Statewide Rules of the Oil and Gas Division of the Railroad Commission of Texas. Requests for a public hearing from persons who can show they are adversely affected, or requests for further information concerning any aspect of the application should be submitted in writing, within fifteen days of publication, to the Underground Injection Control Section, Oil and Gas Division, Railroad Commission of Texas, Drawer 12967, Capitol Station, Austin, Texas 78711 (Telephone 512/445-1373).

Wanted to Buy

WANTED LIVE - ALL SNAKES: Rattlesnakes, \$5 per lb. Bull Snakes, \$1.50 per ft. - (NO Water Snakes or Coach Whips). Dryland Turtles, \$1.50 ea. - Mountain Boomers, \$2.00 ea. CALL 806-495-2738 or 806-495-2774.

Personals

City County Drug and Alcohol Abuse
Glenda Baker - Director
Lynette Massey - Asst. Director
We Care
495-2818 495-3788

THE GREATEST GIFT
a child can have is opportunity. If you know of a child who is delayed in speech, language or physical ability, or one who is blind or deaf, please call your local school district. School services are provided free of charge for eligible children under the age of six.

Post Group of Alcoholics Anonymous meets every Thursday night at the First Presbyterian Church, 910 W. 10th at 8 p.m. Closed meetings are held except on the last Thursday night of the month, which is an open meeting. We have supper at 7 p.m. and the speaking starts at 8 p.m. Anyone who wishes to talk or ask about an alcohol problem, call 495-3377 or 495-4173.

Services and Repairs

Fall piano lessons will begin the week of August 28, high school students may receive credit for their piano studies. George Willson, 908 W. 12th, 495-2320.

Help Wanted

GOVERNMENT JOBS: Now hiring in your area, both skilled and unskilled. For a current list of jobs and application, call 1-615-383-2627 Ext. P903.

Homes for Rent

1 bedroom, unfurnished house. Call 495-2793.

2 bedroom, 1 bath house. 116 N. Ave. S. Call 495-3213.

Apartments for Rent

PLEASANT LODGE APARTMENTS: 109 N. Ave. N.

All furnished:
(2) 3 room apartment for rent.
(1) 2 room apartment for rent.
(1) 1 bedroom apartment for rent.
Call days 495-4061 or nights 495-2520.

Apartment coming up for rent. Tom Power, 495-3051.

Mobile Homes for Sale

Attention first time homebuyers, two and three bedroom mobile homes. No credit? No problem. Call 806-894-7212.

1978 Lancer mobile home. 3 bedroom/2 bath. Joe Mason. Call 495-2285.

Assume \$240 payments on extra nice 2 bedroom, 2 bath home with \$1,000 equity, 1984 model in excellent condition. Travis Ellis, Realtor. 495-2480.

Homes for Sale

Two bedroom with dining room and utility room. GREAT BUY. Call 495-4015.

Three bedroom, one bath, best offer. Call 495-4018.

3 bedroom, 1 bath house with 3 room rent house and 2 car garage. For appointment call Johnie. 495-3031.

2 bedroom, 1 bath house. 116 N. Ave. S. Call 915-573-6409.

House for sale: 107 E. 12th, \$22,000. For more information call #495-3833 days - Wayne

615 N. Ave. P. Call 495-3208.

Garage Sales

Monday from 8 a. m. til 7 114 N. Ave. O.

Pets and Supplies

LOST DOG. Small Bassett Hound. Approx. 4 mos. old. Female, light brown w/white. Call 495-2163 or take to 601 E. Main. Reward.

Feed and Seed

Clean hay for sale. W. C. Graves. 629-4239.

Vehicles for Sale

1984 Silverado. Loaded. \$3500. Call Elmo Bush 327-5613.

FOUR WHEELER. \$600. Call 327-5613. Elmo Bush.

Business Opportunities

Business For sale.
Dodson's Jewelry Store. \$35,000. Owner carry 25% down. Lynn Cox, Century 21 Big State 1. Call 797-6641 or 797-4381.



Festivals & Events, September 1989

The following events, selected by the Tourism Division of the Texas Department of Commerce, are but a few of the many excellent opportunities offered by communities across the state.

September 1-4, 3rd Annual Marfa Lights Festival, Marfa. The beautiful and unexplained lights that dance above the Chianti Mountains are the inspiration for this four-day festival. Roping events, golf, dances, parades, food booths, chuckwagon breakfasts, games and special events celebrate the lights and all that makes Marfa unique. Be sure to save enough energy for an evening drive to see the lights. Contact the Marfa Chamber of Commerce, P.O. Box 35, Marfa 79843 (915/729-4942).

September 2-3, Westfest, West. You can get to West from any direction! Centrally located in Texas, north of Waco, each Labor Day the folks in West have invited guests to experience their Czechoslovakian heritage. Cultural dances, polka bands, arts & crafts, foot race, baking contests and great sausage and kolaches! Friday preview party donates proceeds to Texas Special Olympics. Contact Westfest, Inc., P.O. Box 65, West 76691 (817/826-5058).

September 2-Oct. 22, "The First 150 Years of Photography," Laguna Gloria Art Museum, Austin. Take your "brownie" to lunch! Celebrate the sesquicentennial of photography. Early daguerreotypes, paper prints and contemporary photographs will be on view. Illustrated catalogue available. Gallery hours: Tuesday-Saturday, 10 a.m.-5 p.m.; Thursday, 10 a.m.-9 p.m.; Sunday, 1-5 p.m.; closed Mondays. Admission. Contact Laguna Gloria Art Museum, P.O. Box 5568, Austin 78763 (512/458-8191).

September 4, 29th Annual Alamo Village Labor Day Cowboy Horse Races, Alamo Village, Brackettville. If your horse can run, you can race. Old-time cowboy races down Main Street are recreated in Alamo Village. Winners of each race compete in a fifth and final grand trophy event. Musical entertainment, BBQ and gunfight melodramas, too! Races start at 1 p.m. Admission fee. Contact Alamo Village, P.O. Box 528, Brackettville 78832 (512/563-2580).

September 8-10, The 11th Annual German Texan Heritage Symposium, San Antonio. This year's topic is historic preservation and features several workshops and speakers. The three-day meeting at the Menger Hotel provides lunches, tours, dinners, dancing and entertainment mixed with educational ideas, all to celebrate and preserve one of the great cultures of the Lone Star State. Registration and admission varies. Contact the German Texas Heritage Society at P.O. Box 262, Manchaca 78652 (512/280-3351).

September 9, Kolache Festival, Caldwell. The city of Caldwell invites you to be "Czech" for a day at their annual Kolache Festival. Exhibitions of stenciling, basket weaving, egg decorating, quilting, carving, butter churning, sausage stuffing and more. Entertainment features dulcimer, accordion and traditional music. Bake show contest proves who's the Grand Champion Kolache Baker of Burleson County. "Czech It Out!" Contact the Caldwell Chamber of Commerce, P.O. Box 126, Caldwell 77836 (409/567-7979).

September 9-10, 16-17, 23-24, Fall Canalfest, Irving. Ride a Venetian water taxi to the shores of beautiful Mandalay Canal in Las Colinas. Music and dance performances include classical, country, bluegrass, marching bands, dixieland jazz, ballet and folk dancers. Artists, clowns, jugglers and magicians entertain all ages. A variety of food booths, restaurants and specialty shops line the canal. Contact the Mandalay Canal Merchants Association, 204 Mandalay Canal, Irving 75039 (214/869-1232).

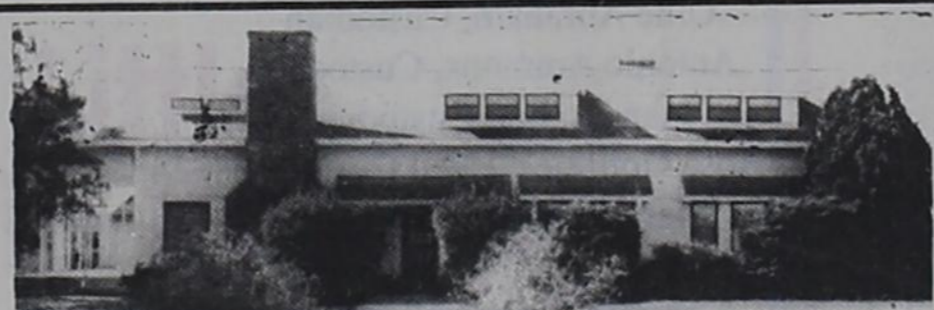
September 15-17, 20th Annual Republic of Texas Chilympiad, San Marcos. "Hot, Hotter and Hottest-Than-Heck!" describes the bowls of red you'll taste in San Marcos. More than 600 contestants are expected. Cookoff categories include collegiate, media, commercial and junior. Name musical entertainment and evening dances, along with bicycle races, *tae kwon do* exhibitions, parades and more! Admission prices vary; special patron prices are available.

Taylor Appliances

495-3330

201 S. Broadway
Southland - 996-5404
Servicing GE, Maytag
and other brands.

Will do Basic Sewing
Call 495-3626
714 W. Main, Post



HUDMAN FUNERAL HOME
615 West Main 495-2821

- Windshields • Residential Glass
- Industrial • Equipment Glass
- Mobile Service



132B W. Main
495-4117 495-3069 495-2702

G.H. (Jerry) Conoly
Heating and Air Conditioning Co.
Sales-Service-Installation
Home Owned Authorized Heat Pump Contractor
Free Estimates
Licensed by the State of Texas - Fully Insured
495-2950 or 495-2332

The Post Dispatch Sunday, September 3, 1989 Page 5

able for all events. Contact P.O. Box 188, San Marcos 78667 (512/396-5400).

September 16, Red River Valley Arts Fest, Sherman. Hay rides, trolley cars, petting zoo, dog show, fun run and more help celebrate the arts in Sherman. Over 180 artisans and craftsmen display and sell quality works on the grounds of the Sherman Municipal Building. The Friends of the Library host a used book sale, and the Sherman Art League presents their annual show and sale. A performance by Ballet Folklorico tops the day of continuous entertainment and great food. Contact the Sherman Area Chamber of Commerce, P.O. Box 7029, Sherman 75091 (214/893-1184).

September 16-17, Antique Show and Sale, Uvalde. This annual fundraiser presents fine antique dealers from across the nation and Texas. Proceeds support a "purrfectly" great cause, the Uvalde Humane Society. Glass, quilts, silver, furniture, and estate jewelry are some of the treasures for purchase. Handcrafted dollhouse furniture and homemade jams, jellies and baked goods will be available at the Humane Society's "Country Store" booth. The \$2 admission is good for both days. Contact P.O. Box 1115, Uvalde 78802 (512/278-7641).

September 16-24, Texas Forest Festival and Hushpuppy Cookoff, Lufkin. This East Texas celebration features lumberjacks and good cookin'! Week-long festivities culminate Saturday morning at the 18th Annual Southern Hushpuppy Olympics, with arts & crafts, fun run and plenty of good food. Sunday at 1 p.m., the official Texas Lumberjack Competition begins, for both professionals and amateurs. (Lumberjacks begin warm-up work at 9 a.m.) Contact the Lufkin Chamber of Commerce, P.O. Box 1606, Lufkin 75902 (409/634-6644).

September 22-24, 41st Annual Shrimperree, Aransas Pass. Lots of you guessed it - shrimp! Besides eat-

(Answers to page 2 crossword)

ACROSS: 1-SAC; 4-Pour; 8-Rude; 12-PLO; 13-Elsa; 14-As is; 15-Een; 16-Ceaseless; 18-Extra; 20-Pre; 21-Ionic; 24-Aside; 28-Cant; 30-Taos; 32-Neb; 33-Lou; 34-Parse; 35-Cab; 36-On a; 37-Ales; 38-Reds; 39-Dells; 41-Wades; 43-Ate; 45-Essay; 48-Perpetual; 53-Aba; 54-Otoe; 55-Ella; 56-Nil; 57-Phil; 58-Stay; 59-Tee; DOWN: 1-Spee; 2-Alex; 3-Continual; 4-Pecan; 5-Ole; 6-USA; 7-Rasp; 8-Rales; 9-Use; 10-Dis; 11-Ess; 17-Erase; 19-Rot; 22-Ital; 23-Carew; 35-Incessant; 26-Dead; 27-Ebbs; 28-Clod; 29-Aone; 31-Ossa; 34-Paste; 38-Res; 40-Lapel; 42-Delay; 44-Etes; 46-Abie; 47-Yale; 48-Pop; 49-Eth; 50-Roi; 51-Ult; 52-Ala.

Special Cakes

Birthday, anniversary or weddings.
Call Jimella Simpson at 495-3318 after 5 p.m.

Order your subscription today!
ONLY \$15 in Garza and adjacent counties!
Call 495-2816

Farm House Vegetables
Now Open in Southland
(Just off Hwy 84)
All types of fresh vegetables

Post Insurance
Serving Post Since 1911
• All Your Insurance Needs
Auto - Home - Commercial - Bonds
• Quotes available by phone
122 E. Main 495-2894

Follis Heating & Air Conditioning
Sales, Installation & Service
TRANE EQUIPMENT
FREE Estimates
Dial 628-6371
Insured and Licensed

Seals Furniture Sales and Service

720 N. Broadway
495-3190

We now have in stock television antennas made by WineGard - also t.v. wire - poles - guide wire.

Rebuilt Washers
90 day guarantee
start at \$169.95
Dryers start at \$89.95
Refrigerators start at \$159.95
New Glass Top Dinette Set - \$169.95
Rebuilt gas and electric Ranges start at \$169.95

Hoover
Bookkeeping and Tax Service
• Payroll, sales tax
Quarterly reports, P&L
• Income Tax Returns
495-2894
122 E. Main

New Listing

Three bedroom, 2 bath, brick, central heat and air.

Great Family Home

Three bedroom, two full baths, swimming pool, 2 car garage on corner lot.

Horseman's Dream

Large brick home on three acres. Located in Lynn County and in the Wilson School District. Additional acreage available.

First Home

We have several small homes for sale including a mobile home. Call for details.

Silk Stocking

Three bedroom, two bath, basement, 2 car garage, central heat and air.

Country living, three bedrooms, two bath, brick, central heating and air conditioning, fireplace, on one acre.

Mitchell Real Estate

Kim 495-3719 Travis 495-2480
Mike and Wanda 495-3104 or 828-5878 Barbara 495-3987

Welcome Teachers

Administrators and Staff of our Schools

We appreciate your dedication to our youth!!

Post Independent School District Central Office Staff

W.F. Shiver, Superintendent of Schools
 Kay Hays, Secretary to the Superintendent
 Tonya Rudd, Bookkeeper
 Linda Richardson, Assistant Bookkeeper
 Dewayne Osborne, Athletic Director
 Patricia Thompson, Counselor
 Lane Tannehill, Counselor
 Ben Sanchez, Bus Maintenance/Grounds Upkeep
 Amanda Alaniz, Student Office Worker

Athletic Department

Dewayne Osborne, Athletic Director
 Roy Acosta, Grounds/Custodian
 Alvin Hahn, Fieldhouse Custodian

High School Staff

Joe Giddens, Principal
 Sandra Alexander, English 3 & 4
 Jennifer Berg, Choir Director
 Carolyn Black, Business Education
 Crispin Bradsher, Band Director
 Lance Dunn, Vocational Agriculture
 James Easterling, Math & Sports
 Travis Ellis, Biology & Chemistry
 Susan Ferguson, Spanish
 Doris Giddens, Librarian
 Billy Gordon, Health & Sports
 Melinda Gunn, Algebra & Geometry
 Suzanne Hudman, Special Education
 Florene King, English 2 & 3
 Candace McConnell, Drama
 Bart McMeans, Government & Sports
 Kim Mills, Algebra & Calculus
 Melvena Moore, Business Education
 Christine Morris, History
 Pamela Owen, Special Education
 George Pierce, Science & Physics
 Joy Pool, English 1 & 3
 Fred Postell, PE & Sports
 Mitchel Rasberry, American Culture
 Aaron Rathbun, Assistant Band Director
 Perry Smith, Vocational Agriculture
 Sharla Wells, Homemaking
 Ruth Ann Young, Secretary
 Pat Cruse, Special Education Aide
 Jane Davis, Media Aide
 Barbara Reece, Typing Aide
 Kenith Bullard, Custodian
 Doroteo Collazo, Custodian
 Ignacio Varela, Custodian

Middle School Staff

Lee W. Davis Jr., Principal
 Dedra Adams, Social Studies & 8th History
 Lu Allen, Science & Sports
 Jennifer Berg, Choir Director
 Charles Black, Girls-Boys Sports
 Crispin Bradsher, Band Director
 Willa Didway, Reading Improvement
 Gregory Henry, 8th Science
 Julia Hudman, 8th Language Arts
 Tammy Maxfield, 7th Math
 Nancy McDonald, 6th Math
 Wanda Osborn, Special Education
 Darrell Radle, Life Sciences & Sports
 Kathie Rankin, 7th History, Social Studies
 Aaron Rathbun, Band Director
 Margaret Tannehill, Language Arts
 Nancy Vaughn, Librarian
 Robert Wilson, 6th & 7th Science
 Linda Wood, 8th Math
 Mary Lee Wristen, Language Arts
 Sue Cash, Secretary
 Shirley Bland, Typing Aide
 Frances Craig, Media Aide
 Joyce Howard, Special Education Aide
 Marion Cruse, Custodian
 Rosie Perez, Custodian
 Gabriel Saldivar, Custodian

Elementary School Staff

Dan Rankin, Principal
 Juanita Ammons, R.N.
 Peggy Ashley, 3rd Grade
 Donna Aten, 2nd Grade
 Martha Baker, 2nd Grade
 Mary Lynn Bell, 3rd Grade
 D'Anne Bishop, 3rd Grade
 Jennifer Berg, 4th & 5th Music
 Crispin Bradsher, Band Director
 Patsy Byrd, Dyslexia Program
 Cathy Courtney, 5th Grade
 Connie Flores, ESL
 Kathy Fluit, Kindergarten
 Norma Gafford, Pre-Kindergarten
 Crystal Greer, 3rd Grade
 Lu Nell Gribble, 5th Grade
 Patricia Hammonds, 4th Grade
 Rebecca Haney, 2nd Grade
 Marita Jackson, K-3 Music
 Mary Keith, ECIA Reading
 Carlene Kyle, 4th Grade
 Dorothy McCook, 1st Grade
 Carol McDonald, 1st Grade
 Cres Merrell, Special Education
 Paula Miller, 1st Grade
 Pamela Mueller, 5th Grade
 Karen Nichols, 1st Grade
 Nancy Norman, 2nd Grade
 Billie Osborne, PE
 Edna Owen, Kindergarten
 Debbie Palmer, 1st Grade
 Rowena Pierce, ECIA Reading
 Shari Poole, 4th Grade
 Susan Radle, Kindergarten
 Aaron Rathbun, Band Director
 Maury Shiver, Librarian
 Teresa Terry, Special Education
 Jo Anna Thomas, 5th Grade
 Brenda Thomason, 3rd Grade
 Leta Warren, 5th Grade
 Debra Webb, Kindergarten
 Louella Bilberry, Secretary
 Kay Postell, Computer
 Gloria Abraham, K-Aide
 Irene Abraham, Pre-K Aide
 Jody Ammons, Typing Aide
 Linda Collazo, 2nd Grade Aide
 Karen Conner, ECIA Aide
 Geneva Espitia, 1st Grade Aide
 Hope Garza, 1st Grade Aide
 Linda Gordon, PE Aide
 Kay Haworth, K-Aide
 Carol Payne, PE Aide
 Pearl Riley, Typing Aide
 Shirley Storie, Special Therapy
 Karla Schooler, Special Education Aide
 Jimella Simpson, ECIA Aide
 Joyce Tatum, Media Aide
 Paula Valdez, ESL Aide
 Ollie Abraham, Custodian
 Antonio Ammons, Custodian
 Juan Espitia, Custodian
 Rosa Gonzales, Head Custodian
 Mary Sanchez, Custodian

Lunchroom Staff

Johnnie Willson, Supervisor
 Ingrid Boteler
 Novaline Gordon
 Marie Odom
 Terry Osborn
 Jo Ann Reed
 Joyce Siewert
 Susan Soto
 Barbara Tennison
 Wilma Williams
 Mercy Sanchez, Custodian

Bus Drivers

Shirley Bland
 Ingrid Boteler
 Irvin Cross
 Hope Garza
 Linda Gordon
 John McCrary
 Barry Morris
 George Pierce
 J.S. "Sid" Pierce
 Jo Ann Reed

Parent Patrol

Jack Clinesmith, Supervisor
 Mary Baldree
 Lorene Gordon

Southland Independent School District L.D. Monroe, Superintendent

Mark Driskell, High School Principal
 Peggy Wheeler, Librarian & Elementary Principal

Jeanie Adamek, Library Aide
 Ron Anders, Social Studies & Coach
 Janet Burnett, High School English, Journalism & Counselor

Mary Ann Cardona, Aide
 Anne Chaffin, Bilingual, Migrant
 Rachel Cody, R.N.

Wynelle Craft, Secretary & Accounting
 Tonya Dunn, 4th Grade
 Regina Edwards, Custodian

David Farquhar, Vocational Agriculture
 Emma Flores, Cafeteria
 Ludie Flores, Cafeteria Manager

Dena Gamble, 1st Grade
 Mary Ellen Garza, Migrant Aide
 Kim Gober, 5th Grade

Anna Holman, Home Economics
 Barbara Johnston, Cafeteria
 Marilyn Jones, High School Math

Phillip Maldonado, Aide/Bus Driver
 Peggy McKee, Title I Aide
 Bill McKee, High School Sciences

Claudette McKee, Jr High Math
 Patti Monroe, 6th Grade
 Charles Prather, Social Studies & Coach

W.C. Sapp, Maintenance
 Teresa Smith, 2nd Grade
 Amy Thuett, Special Education

Pam Walter, Business Education
 Vela Wartes, Cafeteria
 Lynn Wilke, 3rd Grade

Jane Witt, Kindergarten



MEMBER FDIC



THE FIRST NATIONAL BANK

Higginbotham-Bartlett Co.
 110 S. Broadway
 495-2080