

# The Post Dispatch

USPS 439-620

The Newspaper Serving all the people of Garza County

Sixtyfourth Year Number 36

Newsstand Price 50 cents

Wednesday, February 6, 1991

## Phase I of West Main Street landscaping to begin soon

### funded by private contributions and locally contracted

by Wes Burnett

Post city manager Bob Turner informed city council members Monday night that work will begin in the near future on extending the landscaping project to West Main Street from Broadway to the courthouse. The project is funded by private contributions and will be contracted locally by Bo Jackson. Phase I includes framing and concrete work.

At the regular meeting, council members approved May 4 as the municipal election date. Positions filled by Mayor Giles McCrary and council members Larry Mills and Dan Lamb will be on the ballot. First day for filing will be February 18 and the final day for filing is March 20.

In other action, the council approved the lone bid by Bryan Williams and Son Insurance for vehicle coverage for an annual premium of \$12,017, a decrease in the rate from the previous year.

The second reading of an ordinance to establish an emergency fund for volunteer fire personnel was approved, with council members Jim Schooler, Irene Fry and Larry Waldrip abstaining from the vote due to their association

with the Post Volunteer Fire Department.

The council approved the recommended appointment of Cathy Courtney to serve on the Post Library board of directors.

The annual agreement with the engineering firm of Parkhill, Smith and Cooper was also approved.

Caprock Golf Course's Jimmy Bartlett explained to the council that the application for a permit from the Texas Water Commission to continue using recycled water from the city pond is expected to be completed soon. Bartlett emphasized that the golf course "will do everything in our power to satisfy all the requirements, and we assure you that we will never do anything that might jeopardize the city."

Turner added that the golf course has voluntarily discontinued using the water.

Mayor Giles McCrary emphasized the value of the cooperative agreement with the golf course, and complimented Bartlett for the excellent and professional manner of the installation of equipment and development of the use of the recycled water.

"I think this arrangement is good for the city and the golf course," McCrary.

Caprock Golf Course last year paid for a pipeline to be laid underground from the city sanitation pond, and installed equipment for pumping and a lagoon at the golf course. The recycled water is used for irrigating the golf course grounds. The entire project was funded from private sources.

Turner informed the council that emulsion work had begun on city streets and that a preliminary agreement has been concluded for the city to use a regional landfill when the city landfill becomes full or new rules require the closing of the landfill.

(Continued on Page 2)

## Weekly 'letter from home' offered by The Post Dispatch

More than 20 military personnel connected to Garza County families are serving in "Operation Desert Storm" and getting the 'letter from home' copy of The Post Dispatch.

In providing the free subscription during their tour of duty in the Persian Gulf, Dispatch publisher Wes Burnett said, "This is just one small way we can help bring a little joy to the lives of those so far away from home in a very uncertain situation."

Those interested in taking advantage of the "Desert Storm" free subscription offer should call the Dispatch office at 495-2816. The offer is limited to those military personnel from Garza County currently serving on duty in "Operation Desert Storm" in the Persian Gulf area.

## Friday deadline set for 'Grandma Brag' photos

Deadline for submitting photos for the annual "Grandma Brag" pages, to be published next Wednesday in The Post Dispatch, will be Friday at 5 p.m.

"It's been great fun visiting with grandparents and sharing their pride in their grandchildren," publisher Wes Burnett says, "and I wish we could extend the deadline, but if we're going to get all these photos in next week, we've got to get the work done this weekend, there are so many beautiful children's photos to process."

Burnett emphasized that the price for the individual "Valentines" are still \$5, which has not changed since 1985.

Wallet size photos are appropriate, either color or black and white.

Extra copies of the Valentine edition will be available for proud grandparents.

## Valentine promotion offers \$300 in prizes

The Post Dispatch and 10 Post businesses are offering \$300 in prizes, along with special bargains in the Post Valentine Shopping Spree.

Details about where to register for the drawing will be found on Page 12 of this edition.

Customers may register at any of the 10 participating merchants to be eligible for the drawing, which will be held Monday, February 18.

There is no purchase necessary and winners do not have to be present to win. Registration is limited to people 18 years old or older with a limit of one registration per person per visit.

The \$300 in "Post City Bucks" gift certificates will be awarded in five dollar denominations, redeemable at any of the 10 participating merchants. The certificates will be void after March 15, 1991 and must be redeemed no later than March 15, 1991.

There will be four winners of \$25, two winners of \$50 and one winner of \$100 in "Post City Bucks."

Participating merchants are A Touch of Texas, Chaparral Steak House, Danish Imports, Handy Gifts, Happiness Is..., Hudman Furniture, Jan's, La Posta, The Frame Shoppe and The Prairie Flower Shop.



SUSAN RADLE (LEFT) and KAY HAYS were among Garza County residents joining Saturday downtown in showing support for military personnel stationed in the Persian Gulf. Radle's daughter Christy and Kay's son Rodney are both in Saudi Arabia. Mayor Giles McCrary offered a brief salute, Jane Mason sang patriotic songs and Dr. James Bell offered a special prayer. Sponsored by the Women's Division of the Post Chamber of Commerce, the event opened and closed with remarks by Barbara Hardin.

## Wide range of emotions give audiences feel for 'Anne Frank'

by Wes Burnett

From the moment the lights come up on stage, it is obvious that something really special is about to happen at the Garza Theatre. The play continues this Thursday through Sunday, with evening performances at 7:45 p.m. and the Sunday matinee at 2 p.m.

"The Diary of Anne Frank" treats audiences with perhaps the best set design director Will McCrary and assistant Troy Timms have offered.

But, as great as the set looks and feels, it is the brilliant acting and timing that makes this production a must see for theatre patrons.

Even those of us who have never read the original work or seen the movie version can feel and understand the power of human drama unfolding as two Jewish families and a lonely old Jewish man share cramped quarters in an attempt to survive the Nazi death camps. The action takes place in a loft above the "Frank" business in Amsterdam during World War II.

McCrary offers us one of his best dramatic performances as 'Mr Frank', the devoutly religious and dedicated father, struggling to offer a bit of faith in difficult times.

Helping the 'Frank' family in their ordeal, Mandy Swafford sweeps the stage as 'Miep', delivering vital food and other essentials, as well as good news about the progress of the war against the Nazis.

A sterling new actress on the Garza stage is Karen Copple, who plays the part of the flirtatious 'Mrs Van Daan' with just the right touch of flair and emotion.

She is masterful especially in the Act I scene when she shows off her legs to the cautious look of 'Mr Frank'.

In what I consider his best acting on stage here, Charles Somerville gives a striking performance in his role as the selfish 'Mr Van Daan', demonstrating that had he not been a Jew, his character would have been the same.

Troy Timms gets better with every appearance on stage, and it is a delight to see him in action. This time he plays the young 'Peter Van Daan'. The playful romance that develops between him and young 'Anne' amidst such turmoil is overwhelming.

I think Emily Hataway is one of the brightest stars at the Garza Theatre, and her fans from Colorado City made it clear Saturday night that they agree. She is simply brilliant as the beleaguered 'Mrs Frank', balancing the duties of wife, mother and hostess. I can't imagine anyone playing this part any better.

We are really blessed here to attract so many talented volunteers, and one of the best of these is Slaton High School senior Michelle Smith, who is at her best as the older daughter, 'Margot Frank'. Her scene with McCrary near the end of Act I is a highlight that must be seen, as she pleads desperately in a loud whisper, "Father, no, father, don't go!"

"Where have you been all this time?" we might ask about the star of this show, Lisa Klenke. A student at Roosevelt High School, Lisa, playing the part of 'Anne Frank', is making her first appearance at the Garza. She delivers a level of emotion and energy, as she carries the audience directly into the tragedy.

You don't see everything that Rahdy Sutherland is doing, that's because he not only provides the glue on stage as 'Mr Kraler', but back stage he is a busy bee helping stage manager Christy Morris and Tricia Sims with the complicated prop sets and changes.

Milton Cox, making his first appearance here, is cast wonderfully as the elder 'Mr Dussel', a lonely and private man thrust by circumstances into complex relationships. I first saw Milton in the Lubbock Community Theatre's production of "I'm Herbert" in "You Know I Can't Hear You When The Water's Running." He brings the same personal presence to our stage.

Back stage a lot of action takes place that could be the subject of a play in itself. Such a complicated

## Middle School students demonstrate support

The Post Middle School Student Council and the Eighth Grade Class sponsored a special time to remember our troops stationed in the Middle East on Thursday.

Student Council members distributed yellow streamers to each student in Middle School after giv-

ing a short talk on what the yellow ribbons stood for. Each class went outside and tied their ribbons in the trees in front of the school. There are over 700 streamers on four trees - some making it all the way to the top of the trees.

The Student Council also handed out yellow bows to every student and faculty member to wear to show our support for our troops. They are wearing them everyday.

The Eighth grade class put yellow bows on all doors inside the school building and tied yellow

(Continued from Page 3)



THE ENTIRE STUDENT BODY at the Post Middle School participated last week in a show of support for military personnel serving in the Persian Gulf. Spearheading the effort were members of Dedra Adams' class. Students tied yellow ribbons onto the branches of the trees around the middle school building.

## NEWS BRIEFS

### Lions Club to sponsor blood drive

The Post Lions Club will sponsor a blood drive on Thursday, February 7, 1991, at the Church of Christ Fellowship Hall from 5 p.m. to 9 p.m. If you wish to make an appointment for a specific time, contact any Lions Club member.

### Amnesty/E.S.L. Classes

Amnesty and E.S.L. classes meet Monday and Wednesday from 7-9:30 p.m. in the Middle School Learning Center. There is no fee for these classes. Anyone wanting to improve their English language skills is welcome. For further information contact Lane Tannehill at 495-2770.

### EMT class starts March 5

An emergency medical technician (EMT) class will start March 5 and will be held Tuesdays and Thursdays from 6 to 10 p.m. in the EMT room above city hall. Those interested in attending the classes are asked to call Syan or Dr. Jeff Young at 495-2853. There is a \$250 fee for the class, with installment options available.

### Revival

The Church of God of Prophecy, located at 602 W. 14th, will hold a revival Friday and Saturday starting at 7:30 p.m. each evening. Special guests will be The Anchor Brothers. Everyone is invited.

### P.O.S.T. meeting Tuesday

The Lubbock State School and Garza County Mental Health Center are inviting interested citizens to attend the Preview Of Services & Treatment (P.O.S.T.) meeting Tuesday, February 12 at 7 p.m. in the SPS Reddy Room. The purpose of the meeting is to explain services available to families of disabled persons. Refreshments will be provided.

### 'Meistersingers' at Graham Sunday

The Lubbock Christian University "Meistersingers" will be at the Graham Church of Christ Sunday, Feb. 10 for a musical presentations beginning at 6 p.m. Members of the church are extending an invitation to the community to attend the special program.

### Middle East map available

A recent edition of The National Geographic magazine contains a revised and detailed map of the Middle East. Those interested in ordering a copy of the map from the society should call 202-857-7000. The cost of the map is \$2.50 plus shipping and handling.

### Caprock Christian Fellowship

The Anchor Bros. Band will be at the Caprock Christian Fellowship Church on Sunday, February 10, from 10:30 a.m. to 1 p.m. Everyone is welcome to come.

### EMTs to hold bake sale

The Post EMTs will have a bake sale on Saturday, February 9th. The event will be held at United Supermarket and Manna Square. The sale will start at noon and continue until sold out.

### Sweetheart Contest

The annual sweetheart contest will be held on Saturday, February 16, starting at 7 p.m. in the school auditorium. The Post PMA will give away a basket filled with wonderful goodies. You may register at any of the PMA participating merchants, but you must be 14 years or older. Admission is \$3 per person and you must be present to win.

### Ladies Auxiliary to collect donations

The V.F.W. and Ladies Auxiliary will be making a trip to the Big Spring V.A. Hospital on Thursday, February 28. If anyone has book, magazines, clothing or personal items they would like to donate please let us know. You may take the items to the VFW or call 495-3162 and someone will pick them up.

### Y.E.S. Project

The Y.E.S. Project is now underway. Senior Citizens who would like assistance with household chores and personal service are asked to call the High School at 495-2770. Leave your name and phone number and you will be contacted. There are 18 students willing to provide services.





THE POST ART GUILD is hosting the annual spring semester Western Texas College Extension Art Class at the Algerita Arts Center. Instruction is under the direction of John Gibson. Last week students were learning to sketch a live model at the center.

**Birth Announcements**

**Paula Maila Matsler**

Paul and Maryhelen Matsler of Pearl City, Hawaii, announce the birth of their daughter, Paula Maila (Hawaiian for Mary) on January 24, 1991.

Paula weighed seven pounds and five ounces and was 21 inches long at birth.

She has a big brother, Darron. Grandparents are Naomi and Herman McVay of Lubbock and Art Phillips and Mrs Phillips of Pearl City, Hawaii.

Great grandparents are Martin and Dale Nichols of Post.

Paul Matsler is currently serving in the Persian Gulf on the U.S.S. Worden.

**Sydney Danielle Pierce**

David and Penny Pierce are proud to announce the arrival of their daughter, Sydney Danielle, on December 29, 1990 at 3:50 p.m. in Methodist Hospital in Lubbock.

Sydney weighed seven pounds and four ounces and was 20 inches long at birth.

Maternal grandparents are Mr and Mrs James Bartlett of Meadow and Mr and Mrs Auvy McBride of Grand Prairie.

Paternal grandparents are Mr and Mrs J.S. Pierce of Post.

Maternal great-grandparents are Fay Bartlett of Brownfield and Wanda Goolsby of Austin.

Maternal great-great-grandparents are Alice Russell of Austin.

**Students show support for troops...**

(Continued from Page 1) bows on the teacher's car antennas. This class is also sending over 80 letters to our area troops stationed in the Middle East. There are approximately 30 in Middle School who have relatives stationed in the Middle East and are involved in Desert Storm.

The students and faculty at Middle School are using these yellow bows to say "thank-you" to our troops and to say we are behind them.

The ancient Egyptians cultivated the wild watermelon. Pictures of the fruit have been found in the older of the pyramids.

**Fun Time Club**

The Fun Time Club meet last week at the Senior Citizens for games and fun.

Those attending were Louzell Chandler, Zillah Huddleston, Mary Welborn, Elsie Mae Jackson, Verna Roberts, Jewel White, Edith Crispin, Ruth Hill, Nona Lusk, Inez Hundy;

Mayeth Clarke, Winona Ward, Hooter Terry, Ruth Martin, Claudene Bilberry, Tommie SoRelle, Fay Melton, Pansy Smith, Mary Gunn, Trannie Lea Ray; Marietta Pruitt, Cleao Sappington, Fannie Ballentine, Inez Norris, Inez Ritchie, Bernice Younger, Lela Huntley, Jeanette Hodges, Louise Hagins, Willie Scarborough;

Lorine Gerner, Ruby Carpenter, Beth Walker and Mildred Stewart.

The ladies extended an invitation to all to attend.

**Jim Rambo directs WTC play**

The Western Texas College theatre department will present Neil Simon's comedy/drama "Biloxi Blues" February 14-17 in the Fine Arts Theatre on campus.

Tickets are \$5 each, with proceeds going to the drama department scholarship fund. Tickets can be reserved by calling the box office at 915-573-8511, extension 234, after February 6. Performances will begin at 8 p.m. February 14-16 and at 2:30 p.m. on February 17.

Appearing in the cast will be Kenn Kern from Hurst, Frank Romco from Roby, Jerry Vizena from Thorndale, Jeff Hicks from Muleshoe, Jennifer Hatley from Vernon, Sherri Cribbs from Hawley, and Coy Berryman, Richard Lack and Amber Adams from Snyder. The play is under the direction of Jim Rambo.

"Biloxi Blues" is Chapter Two in the continuing saga of Eugene Morris Jerome, alter ego of the youthful Neil Simon. Jerome was introduced in "Brighton Beach Memoirs" as an adolescent in the 1930s. In "Biloxi Blues," he is a young army recruit during World War II, going through basic training at boot camp in Biloxi, Miss., in 1943. "Biloxi Blues" was named Best Play of 1985, receiving the Tony Award.

The first mailboxes were erected in Paris in 1653. However, messengers, fearful for their livelihood, put mice in the boxes to destroy the mail.

**Tobias accepted at Rice University**

Angela Tobias was notified Monday, February 4, 1991, that she has been accepted to attend Rice University in the fall.

Angela is currently a student at the Texas Academy of Math and Science at North Texas University in Denton.

She will graduate from the academy on the 10th of May.

She is the daughter of Frank and Carol Tobias of Post.

**DANCE**  
Sat., Feb. 9  
9 p.m. to 1 a.m.  
music by  
**The Sundowners**  
\$5 per person  
**V.F.W.**

**Public Notice**

Southwestern Bell Telephone Company has filed an application with the Public Utility Commission of Texas to introduce new optional services, Personalized Ring<sup>SM</sup> and ComCall<sup>SM</sup>, beginning March 18, 1991.\*

Personalized Ring<sup>SM</sup> is an optional service that provides single-line customers the ability to manage incoming calls by allowing up to three directory numbers to share the same line. One of the numbers is called the "master" number; the others are called the "dependent" numbers. A regular ring is provided for the master number and unique distinctive rings are provided for up to two dependents.

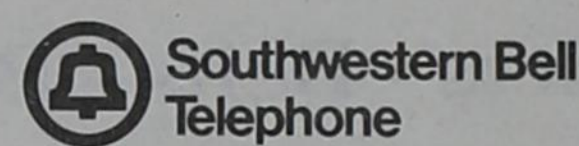
ComCall<sup>SM</sup> is an optional service that provides single-line customers the ability to set up internal intercom communications among multiple telephone extensions. A distinctive ring is heard to alert all extension users of an intercom call. Customers must subscribe to the optional service Three-way Calling for ComCall<sup>SM</sup> to function. (The monthly rate for Three-way Calling is \$2.10 for residence customers and \$2.65 for business customers.)

Personalized Ring<sup>SM</sup> and ComCall<sup>SM</sup> are intended for use by both residence and business customers. Personalized Ring<sup>SM</sup> is expected to generate first-year revenues of \$1.8 million. ComCall<sup>SM</sup> projects first-year revenues of \$53,000.

**Proposed Monthly Rates\*\***

	Residence	Business
*** Personalized Ring <sup>SM</sup>		
First dependent number	4.00	6.00
Second dependent number	2.00	2.00
*** ComCall <sup>SM</sup>	2.00	2.50

Persons who wish to comment on this application should notify the commission by March 7, 1991. Requests for further information should be mailed to the Public Utility Commission of Texas, 7800 Shoal Creek Boulevard, Suite 400N, Austin, Texas, 78757, or you may call the Public Utility Commission Public Information Office at (512) 458-0256, or (512) 458-0221, teletypewriter for the deaf.



\* These services may not be available in all areas.  
\*\* These rates are in addition to the rates for basic local exchange service.  
\*\*\* Some telephone equipment may not be compatible with Personalized Ring<sup>SM</sup> and ComCall<sup>SM</sup>.

I would like to thank Palmer Well Service and Gregory Rig Service for buying my Reserve Champion Steer.

I would like to thank Mayor Giles McCrary for buying my 4th place steer.

I would like to thank E and E Service and Supply and Palmer Well Service and the Jackpot for buying my 4th place quilt.

A very special "Thank You" goes to Danny Stone for the stand he built and add-on money.

I would like to thank all of those who added money on to the sale.

**Jim and Johnnie Norman  
Bill and Gwen Carlisle  
The 7 C's  
The Norman Agency  
Most of I Thank Steven Cooper, my Dad.  
Amber Cooper**

**Thank You!**

Palmer Construction and Haliburton for purchasing my Reserve Champion Duroc.

Caprock Golf Course, The Wash House, Clay Johnson, Ruby Carpenter and Wayne and Margie Carpenter for their Add-Ons.

Ryan Hart for showing my other pig.

Lynn-Garza County Farm Bureau for donating the buckles.

Lee Howard, Perry Smith and Lance Dunn for all their advice and hard work.

A special thank you to the directors for a successful show and for selecting me for the "Over-All Sportsmanship" belt buckle.

Randy McKee

**THANK YOU!**

The Borden County Junior Livestock Association extends its sincere appreciation to these for their support of our show and sale:

- 1991 Buyers' List
- Rocker A
- H&M Construction
- VOR
- Wallace Lumber
- Cox Feed Store
- Rosie's Restaurant
- Jackson Bros.
- Bryan Williams & Son
- Collier Drug
- John F. Lott, Jr.
- Wells Pharmacy
- Higginbotham-Bartlett Lumber
- BJB Co.
- Garza County Jr Livestock Association
- Macy Ranch

Your support is greatly appreciated!

**ALLSUP'S**

Allsup's #61 U.S. HWY 84 409 N. Broadway  
Allsup's #124 TAHOKA HWY 326 W. 8th

**SHOP OUR EVERYDAY LOW PRICES...**  
WE APPRECIATE YOU!  
PRICES EFFECTIVE Thru FEB. 9th

<p><b>ALLSUP'S BREAD</b> 2/99¢ 1 1/2 LOAF</p>	<p><b>ALLSUP'S HOMO MILK</b> \$1.09 1/2 GAL.</p>																																								
<p><b>STARKIST TUNA</b> 2 FOR 99¢ 6 1/8 OZ. CAN</p>	<p><b>SAUSAGE &amp; BISCUIT</b> 69¢</p>																																								
<p> <b>4X6 10 OZ.</b> \$1.99</p>	<p><b>ALLSUP'S "FAMOUS" BURRITOS</b> 2/99¢</p>																																								
<p><b>SHURFINE SLICED STRAWBERRIES</b> 2 FOR 99¢ 10 OZ. CAN</p>	<p><b>"ALL COKE FAMILY"</b> \$1.79 3 liter</p>																																								
<p><b>JELLO GELATIN DESSERT</b> 2 FOR 89¢ 3 OZ. BOX ORANGE STRAWBERRY CHERRY STRAWBERRY-BANANA SUGAR FREE LIME</p>	<p><b>HOT FOODS MENU</b> AVAILABLE AT ALL ALLSUP'S LOCATIONS</p> <table border="0" style="font-size: small;"> <tr> <td>BARBECUE BEEF SANDWICH.....</td> <td>99¢</td> <td>9 PIECE BOX CHICKEN.....</td> <td>4.99</td> </tr> <tr> <td>BARBECUE PORK RIBS (LB.).....</td> <td>3.99</td> <td>BEEF &amp; CHEESE CHIMICHANGA.....</td> <td>1.19</td> </tr> <tr> <td>BARBECUE WHOLE CHICKEN.....</td> <td>3.99</td> <td>(MEAD) CORN DOG.....</td> <td>69¢</td> </tr> <tr> <td>ALLSUP'S BURRITO.....</td> <td>79¢</td> <td>DELICIOUS HAMBURGER.....</td> <td>59¢</td> </tr> <tr> <td>BREAKFAST BURRITO.....</td> <td>99¢</td> <td>WILSON HOT LINKS.....</td> <td>99¢</td> </tr> <tr> <td>BEEF &amp; SALSA.....</td> <td>1.19</td> <td>SAUSAGE ON A STICK.....</td> <td>1.59</td> </tr> <tr> <td>DELICIOUS CHEESEBURGER.....</td> <td>79¢</td> <td>SAUSAGE &amp; BISCUIT.....</td> <td>79¢</td> </tr> <tr> <td>CHICKEN FRIED STEAK.....</td> <td>1.59</td> <td>SAUSAGE, EGG &amp; BISCUIT.....</td> <td>1.09</td> </tr> <tr> <td>3 COUNT CHICKEN STRIPS.....</td> <td>1.49</td> <td>SAUTEAYA SAUSAGE.....</td> <td>1.09</td> </tr> <tr> <td>W/POTATO WEDGES/CHICKEN (2 PCS) BISCUIT.....</td> <td>1.99</td> <td>4 COUNT STEAK FINGERS.....</td> <td>1.00</td> </tr> </table> <p>CALL-IN ORDERS WELCOME CHECK OUR WEEKLY SPECIALS</p>	BARBECUE BEEF SANDWICH.....	99¢	9 PIECE BOX CHICKEN.....	4.99	BARBECUE PORK RIBS (LB.).....	3.99	BEEF & CHEESE CHIMICHANGA.....	1.19	BARBECUE WHOLE CHICKEN.....	3.99	(MEAD) CORN DOG.....	69¢	ALLSUP'S BURRITO.....	79¢	DELICIOUS HAMBURGER.....	59¢	BREAKFAST BURRITO.....	99¢	WILSON HOT LINKS.....	99¢	BEEF & SALSA.....	1.19	SAUSAGE ON A STICK.....	1.59	DELICIOUS CHEESEBURGER.....	79¢	SAUSAGE & BISCUIT.....	79¢	CHICKEN FRIED STEAK.....	1.59	SAUSAGE, EGG & BISCUIT.....	1.09	3 COUNT CHICKEN STRIPS.....	1.49	SAUTEAYA SAUSAGE.....	1.09	W/POTATO WEDGES/CHICKEN (2 PCS) BISCUIT.....	1.99	4 COUNT STEAK FINGERS.....	1.00
BARBECUE BEEF SANDWICH.....	99¢	9 PIECE BOX CHICKEN.....	4.99																																						
BARBECUE PORK RIBS (LB.).....	3.99	BEEF & CHEESE CHIMICHANGA.....	1.19																																						
BARBECUE WHOLE CHICKEN.....	3.99	(MEAD) CORN DOG.....	69¢																																						
ALLSUP'S BURRITO.....	79¢	DELICIOUS HAMBURGER.....	59¢																																						
BREAKFAST BURRITO.....	99¢	WILSON HOT LINKS.....	99¢																																						
BEEF & SALSA.....	1.19	SAUSAGE ON A STICK.....	1.59																																						
DELICIOUS CHEESEBURGER.....	79¢	SAUSAGE & BISCUIT.....	79¢																																						
CHICKEN FRIED STEAK.....	1.59	SAUSAGE, EGG & BISCUIT.....	1.09																																						
3 COUNT CHICKEN STRIPS.....	1.49	SAUTEAYA SAUSAGE.....	1.09																																						
W/POTATO WEDGES/CHICKEN (2 PCS) BISCUIT.....	1.99	4 COUNT STEAK FINGERS.....	1.00																																						
<p> <b>\$2.19</b> "ALL GRINDS" 13 OZ. CAN</p>																																									

## High Rollers tumblers compete

High Rollers tumbling/trampoline Division I team from Post and Spur attended their first meet of the season January 19th in Spur. Twelve teams from the South Plains area attended. 500 competitors were present.

High Rollers won the team trophy for tumbling and placed fourth in the trampoline standings.

### Results (Post):

Ryan Babb - 1st tumbling; Michael Huff - 1st tumbling & 4th trampoline; Sean Leary - 3rd tumbling & 3rd trampoline; Chris Massey - 2nd tumbling & 7th trampoline; Mitchell Mills - 5th tumbling & 5th trampoline; Stace Norman - 2nd tumbling; Brent Riedel - 4th tumbling & 5th trampoline; K'leigh Babb - 6th tumbling & 3rd trampoline;

Meg Bohn - 1st tumbling & 3rd trampoline; Kelcee Bratcher - 9th tumbling; Tatum Gunn - 8th tumbling; Ashley Hair - 5th tumbling & 5th trampoline; Tiffany

Hair - 6th tumbling & 3rd trampoline; Meagan Hoover - 4th tumbling; Kayla Huff - 5th tumbling & 5th trampoline; Nicole Gray - 2nd tumbling & 6th trampoline;

Mandy Leary - 4th tumbling & 5th trampoline; Jence' Lott - 6th tumbling; Ashlynn Mannis - 5th tumbling; Ashley Mason - 2nd tumbling & 3rd trampoline; Dawn Massey - 5th tumbling & 6th trampoline; Heather Palmer - 8th tumbling & 3rd trampoline; Rachel Redman - 3rd tumbling; Rachel Reiter - 2nd tumbling & 7th trampoline;

Sierra Reiter - 4th tumbling & 8th trampoline; Lindsey Rudd - 1st tumbling & 6th trampoline; Laurel Tatum - 4th tumbling; Jerica Tyler - 7th tumbling & 7th trampoline.

The High Rollers advanced level Division II competitors attended the meet as practice for their first regular season meet February 16th in Snyder.

Division II competitors attending were Jennifer Josey, Penny Massey, Camie Payne, Macee Mills, Meagan Mills, Barrett Scrivner, Amy Line, Arimy Gradine, and Wendy Bivins.

High Rollers are coached by Amy Thuett and Cheryl Thompson.



**HIGH ROLLERS TUMBLERS** - Participating in a recent tumbling event were (back row, left to right) Chris Massey, K'leigh Babb, Ashley Hair, Mandy Leary, Rachel Reiter, Ashley Mason, Lindsey Rudd, Nicole Gray, Meg Bohn, Sean Leary, (middle row, left to right) Rachel Redman, Kelcee Bratcher, Meagan Hoover, Tiffany Hair, Jerica Tyler, Sierra Reiter, Dawn Massey, Mitchell Mills, Brent Riedel, (front row, left to right) Jence' Lott, Laurel Tatum, Tatum Gunn, Ashlyn Mannis, Ryan Babb and Stace Norman. Not available for photograph were Kayla Huff, Michael Huff and Heather Palmer. (Photo courtesy Amy Thuett)

**Travel Agency**

- Airlines •
- Cruise Ships •
- Vacation Packages •
- Auto Rentals •

Call Halley Fluitt  
495-3469

**Guess who's going to be 30 on February 10th?**

**Kidstuf**

213 E. Main 495-3872

**Valentine Special Sat., Feb. 9 ONLY**

Red Merchandise - **50% OFF**

Partially Red - **30% OFF**

Shirts - Belts - Bows

Dresses - Rompers - Purses  
Shoes - Socks - Pants

## Hosting opportunities available

Would you like to learn how Valentine's Day and other holidays are celebrated in different cultures? Have you always wanted to learn about foods from other countries? Would you like to brush up on a foreign language? By hosting an exchange student, you can do all these things while making an international friend for life!

ASSE International Student Exchange Programs needs local families to host boys and girls from Scandinavia, France, Italy, Canada, New Zealand, Spain, Germany, Holland, Great Britain, Japan and Switzerland for the 1991/92 school year. Students are well-screened, 15 to 18 years old, fluent in English and come fully insured.

Please call for details on how you can become an ASSE Host Family ... 1-800-333-3802 or call your ASSE Area Representative: Sheila Butterfield, 4708 88th St., Lubbock, Texas 79424, 806/794-9194.

## Cellular service active in Post

Digital Cellular of Texas, a division of Poka-Lambro Telecommunications, Inc., recently activated their cell site in Post, providing the city and surrounding area with cellular service. Digital Cellular of Texas previously activated cellular service in Lamesa, Seminole and Andrews.

"With an additional cell site yet to be activated in Tahoka, our system will eventually provide cellular coverage for the entire area between Lubbock and Midland/Odessa," said Mickey L. Sims, General Manager for Poka-Lambro. "We're very excited about bringing cellular service into these towns and areas where the service is probably needed most," added Sims.

The Digital Cellular of Texas system is being built with the same dedication to quality and care Poka-Lambro has shown its telephone cooperative members for more than 40 years. Several types of cellular phones are available to choose from. To find out more about this beneficial service and the pricing plans available, call 1-800-662-8805.



**Hoyt Wilhelm**, the first relief pitcher in the Hall of Fame, registered 143 wins and 227 saves.

## Double U buys prize bull

Double U Hereford Ranch, Post, Texas, purchased ABC Super Time 9253 for \$17,500 during the 81st annual Hereford sale at the National Western Stock Show in Denver. Three-fourths interest and full possession were sold by Adams Bros. & Co., Kilgore, Neb.

The previous day the Tex Prime Time son placed second in a strong senior bull calf class in the National Hereford show.

The bull weighed 1,712 pounds, had a 3.35 weight-per-day-of-age and frame score of 8.0.

**TEXAS PRESS ASSOCIATION**

MEMBER 1991

**Dr Lewis Moore**

**OPTOMETRIST**  
Complete Visual Care

Office Hours:  
Thursday 9:30 a.m. to 5 p.m.

206 West Main  
495-3687

**Defensive Driving Course**

Saturday  
Feb. 12 & 14  
Tues & Thurs  
6 to 10 p.m.

Post Senior Citizens Bldg.  
TSA Approved  
Call 983-3434  
or 983-3398  
to pre-register

I would like to say thanks to the Producers' Credit Association of Tahoka and Hackberry Coop Gin for purchasing my pigs in the premium sale.

Also, thanks to Mr and Mrs B.R. McDonald, Wayne and Carol McDonald and Graham Coop Gin for the Add-Ons.

Thanks, Brad McDonald

**Thank you very much!**

To the directors of the Garza County Junior Livestock Association for purchasing my second place pig.

Lori Hudman

I would like to thank Mayor McCrary for purchasing my lamb.

Thank you also to the GCJLA Jackpot and my add-ons, Peel's Texaco and Mr and Mrs Lee Norman.

Mr Howard, I really appreciate all your help throughout the year!

Danny Bilbo

**Thank You**

to  
GCJLA Directors  
and  
Jackpot Donors  
for buying my lambs and Graham Coop Gin  
for the Add-On.

also a special thanks goes out to Lee Howard, Randy McKee, Chris Redman, Shane Bevers and my brother for helping me with my lambs.

Sincerely, Sonja Gossett

**Post Dance Club Valentine Dance**  
Feb. 9, 1990  
8 p.m. to midnight  
Dance to music by  
Lubbock's  
"Midnight Cowboys"  
(Fiddle too!)  
Tickets at the door

**COUNTRY BASKETS\***

THREE GREAT CHOICES!

Three great Country Baskets from Dairy Queen. Golden-fried steak fingers. Juicy chicken strips made with whole white meat fillets. And fresh fillets of fish. Served with french fries, a big slice of Texas Toast, and thick, creamy country gravy or tasty tartar sauce. Try one today!

Sale Price February 4-24, 1991

**ON SALE IN DQ COUNTRY**

FISH FILLET STRIPS \$2.99

BEEF STEAK FINGERS \$1.99

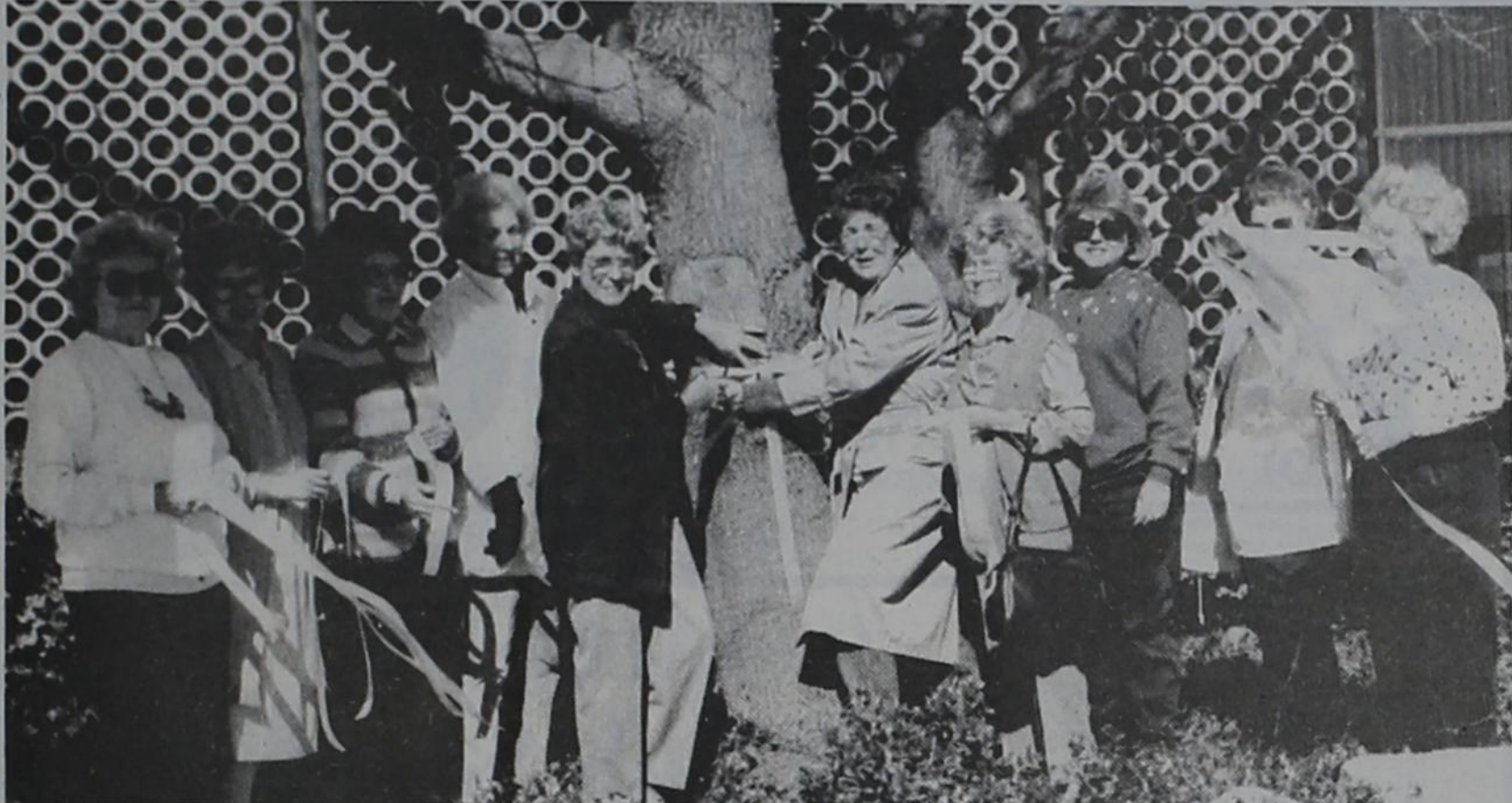
CHICKEN FILLET STRIPS \$2.99

**Twin Cedar Nursing Home Celebrates its 30th Anniversary!**

Dee and Billie Caylor have just completed a major remodeling and are proud to announce their 30th anniversary. "We look forward to our continued service to the community!"



**FIRE DESTROYS HOME** - A fire early Saturday morning completely destroyed the house and contents at 501 N. Broadway. Mr and Mrs Ricky Guerrero and their two children were at home at the time of the fire, although no one was injured. The Post Volunteer Fire Department responded at 12:13 a.m. with four trucks and 16 firemen. The cause of the blaze is still under investigation, according to fire chief Delbert Rudd. The firemen worked two and one half hours at the scene. The house is owned by J.B. Guthrie.



**PUTTING YELLOW RIBBONS ON TREES** downtown last week were members of the Women's Division of the Post Chamber of Commerce (left to right) Sara Ault, Donna Craig, Iva Hudman, Joyce Strubhart, Sue Cornell, Lois Cook, Nona Lusk, Barbara Hardin, Nell Mathews and Isabel Stelzer.

**Living on the edge of the cap**

by Lee Howard, County Agent-Agriculture  
Search starts for Texas' 1990 rural hero

Wanted: a few heroic people! Nominations are being sought for the state's annual rural heroism award, which honors an individual who saved the life of another during 1990 in Texas, preferable in circumstances related to farming and ranching.

February 8 is the deadline for submitting nominations for the award that is presented by the Texas Farm and Ranch Safety Council.

The nominations should include a written account of the heroism incident. Include the names, addresses and telephone numbers of all persons involved. When available, include newspaper clippings and photos. All nominations should be sent to the Texas Farm and Ranch Safety Council, Box 2689, Waco, Texas 76702-2689.

The 1990 rural heroism winner was Bill Penix of Garland, who res-

cued his stepfather, C.W. Hines of Quitman, from a tractor-posthole digger accident. Penix received his award during the council's annual safety exposition last March in Houston.

For more information contact the local Extension Service office at 495-2050.

**Spring Fling**

The "Center" of attention! That's what mature adults 55 and over will be at the Texas 4-H Center on Lake Brownwood when hundreds will enthusiastically participate in the 11th annual Spring Fling during April and May.

Sponsored by the Texas Agricultural Extension Service, five are offered from which men and women alike may choose:

- Spring Fling I - April 2-5;
- Spring Fling II - April 9-12;
- Spring Fling III - April 16-19;
- Spring Fling IV - April 23-26;
- Spring Fling V - April 30-May 3.

Featured educational programs and "hands-on" learning centers offer a wide variety of topics to fulfill the highest expectations of all who attend. Energizing and relaxing recreational opportunities will

stimulate enthusiasm while all will welcome great fellowship and new friends.

Spring Fling! 55 or older? It's for you! Each weekly event is limited to the first 165 participants at a nominal fee. Get away and learn to make the most of the best years of your life. Call your county Extension office today at 495-2050.



**PAT CRUSE** (second from right) and **CAROL TOBIAS** (right), present a special plaque of recognition to Garza County United Way board of directors members (left to right) Jerry Tyler, Debbie Macy and Carol Peppers. The plaque was presented to the United Way on behalf of the Caprock Girl Scout Council in recognition of the contributions to the Girl Scout program by the Garza County United Way.



**READING ALL 20 titles** in the recent "Bluebonnet Award" program at Post Elementary School were (left to right) Wendy McNeely, Sharla Cruse, Tomoe Garcia, Micaela Eagle, Derek Burchfield and Nathan Webb. Not in photo were Jay Childers and Kristen Webb.

**Southland Scoop**

On Thursday, February 7th, the Seniors will be involved in a College Day at South Plains College in Levelland from noon until 10 p.m.

Saturday, February 9th, there will be ACT testing for those who are college bound. By appointment only.

Monday, February 11th, all yearbook pictures are to be taken. This includes class favorites, officers, groups, etc.

Progress reports will be sent out also on Monday, February 11th.

Our last district Basketball game will be Friday, February 8th, at Petersburg beginning at 5 p.m.

Come out and support the Eagles!

The cast for the High School One-Act play contest has been selected. The play is titled "The Great Cross-Country Race." The cast members include: Cori Weaver - Hare; Chris Lopez - Tortoise; Dawnie Bilberry - Badger; Robert Elliot - Dog; Sharla Albright - Rabbit; Ladonna Childers - Rat; Tina McCarl - Squirrel; Dora Anaya - Rook; Jennifer Smith - Hedge Hop; Michael Valdez - Bush; Renee Saenz - Wall; Justin Haire - Tree; Beth Parnell - River Bank; Paula Amaya - Grassy Bank; Crew: Janie Anaya, Anita Martinez, Lisa Martinez, Mary Ann Guerra, Tonya Fields. Directors are Ms Mears and Ms Walter.



**Buckle Up for Love!**

**THANKS!**

To the First National Bank of Post and Double U Cattle Company for the purchase of my Grand Champion Steer.

Your continued support of our show is appreciated.

**Brandon Bird**

Palmer Construction of Post and J.B. Equipment of Hobbs, N.M. for the purchase of my steer.

**Russ Bird**

Jimmy Bird for the purchase of my hog.

**Talina Bird**

Also a special thanks for your Add-On contributions from the all of us to:

**RAFE FOREMAN, ATTORNEY-AT-LAW & LA POSTA**



**DOWE MAYFIELD, C.L.U. C.D. Maturing?**

How about **8.25%** tax deferred interest? 3305 81st, Suite F, Lubbock 1-800-658-6130 (toll free)

**OASIS**

**Thursday** - Shuffleboard Tournament 6 p.m. til ?? - entry fee \$5

**Saturday**

Dance to the music by Tommy and Weldon Reed and "The Texas Class" 9 p.m. to 1 a.m.

**Sunday afternoon** FREE Bar-B-Q

Horseshoe Pitch - weather permitting

**SATELLITE SYSTEMS**

**CELLULAR TELEPHONES**

**SAT-VIEW**

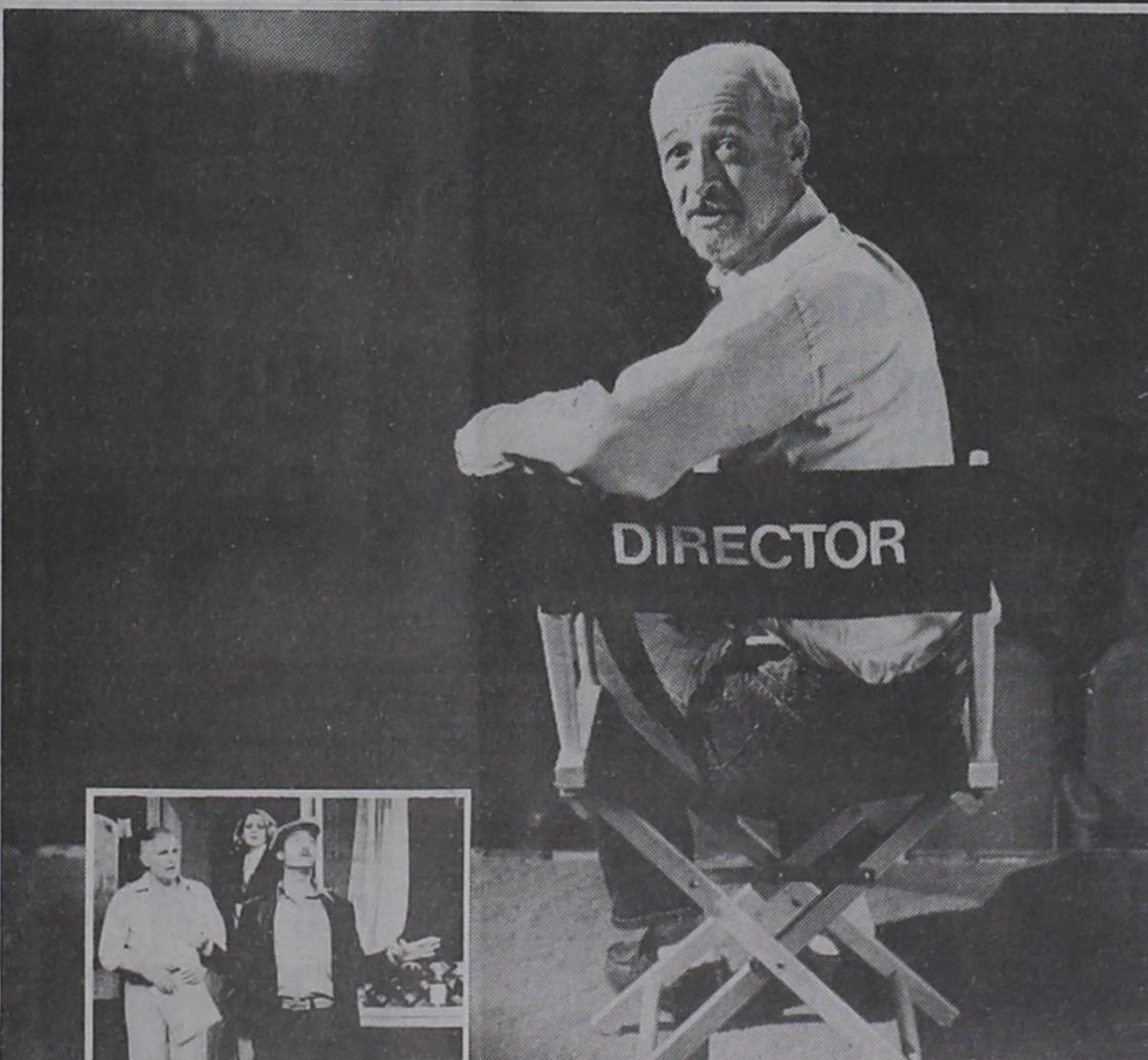
Satellite & T.v. Antenna Systems Complete Sales & Service on Satellite or T.V. Antennas **NO MONEY DOWN FINANCING**

- Houston Tracker, Toshiba, Uniden IRD's
- Unimesh, Winegard Dishes
- Motorola Cellular Telephones
- Toshiba, Murata, Nessi Facsimile Machines

**IN POST EVERY FRIDAY**

Tracy L. Moore  
806-872-3788,  
Home 872-6179  
CELLULAR  
1-759-7123  
1-759-7124  
TOLL FREE

1612 North Dallas  
Lamesa, Texas 79331  
201 S. Broadway  
Post, Texas 79356



*"This is where I want to be ... in Off-Broadway Theater. About 2000 miles off Broadway!"*

"I have spent most of my adult life in the theater. This includes 25 years in New York City as well as time in California and on tour across the United States. But, this is where I want to be. This is where my roots are. I was born here. Five years ago, I came back and started a regional theater."

"It has been very successful and a wonderful experience for me. In this area, I have found a refreshing approach to life. There is a great environment in which to pass on my knowledge of the theater. Thomas Wolfe, notwithstanding, you can 'go home again.'"

Will McCrary  
Director, Garza Theater Post

Talk up this area.

**TOGETHER LET'S MAKE IT GROW**



**SOUTHWESTERN PUBLIC SERVICE COMPANY**



# February is National Meat Month!

PRICES GOOD THRU TUES. FEB. 12TH  
 WED THUR FRI SAT SUN MON TUES  
 6 7 8 9 10 11 12

GOOD THRU FEB. 12 IN LUBBOCK, SLATON, POST, BROWNFIELD, LEVELLAND, LITTLEFIELD, LAMESA AND PLAINVIEW.

**Imperial Sugar**  
 5 lb. bag **\$1.69**

**Del Monte Pineapple Juice**  
 46 oz. **\$1.19**

**Fine Fare Cut Green Beans**  
 16 oz. **3 for \$1**

**Fine Fare Crackers**  
 16 oz. **.59**

**Betty Crocker Mashed Potato Buds**  
 15.5 oz. **\$1.39**

**Fine Fare Chili**  
 No Beans 19 oz. **.98**

**Honey Boy Pink Salmon**  
 15.5 oz. **\$1.99**

**Chef Boyardee Ravioli**  
 15 oz. **.89**

**Pepsi Cola**  
 6 pack 12 oz. can **\$1.59**  
 2 liter **\$1.19**

**Del Monte Pineapple In Juice or Syrup**  
 15 oz. **.59**

**Take Heart Dressing**  
 •Ranch •French •Blue Cheese •Italian •1000 Island  
 8 oz. **\$1.19**

**Cereal Trix or Wheat Total**  
 12 oz. **\$2.59**

**Gebhardt Chili Powder**  
 3 oz. **\$1.19**

**Fine Fare Apple Juice**  
 64 oz. **\$1.19**

**Keebler Bite Size Chips Deluxe or Pecan Sandies**  
 11 oz. **\$1.59**

**Pringles Chips Assorted**  
 6-7.5 oz. **\$1.09**

**Folgers Coffee**  
 Regular Grinds, ADC or Perk Regular  
 26 oz. can **\$3.99**

**Coffeemate**  
 Regular or Lite Bonus Pak  
 20 oz. **\$1.89**

**Mrs Bairds White Bread**  
 Thin or Large  
 24 oz. **.59**

## NONFOOD HEALTH & BEAUTY

**Scottowels Assorted**  
 Jumbo Roll **.69**

**Kleenex Bath Tissue**  
 Assorted 4 Roll **.89**

**Crest Toothpaste**  
 6.4 oz. tube **\$1.89**

**V05 Hairspray**  
 Aerosol or Non-Aerosol  
 10.5 oz. **\$1.69**

**Joy Dish Liquid**  
 22 oz. **\$1.19**

**Faultless Spray Starch**  
 Reg. or Lemon  
 22 oz. **.99**

**Always Basic 24 ct. & Ultra Plus 27 ct.**  
 Always Pantliners .79 **\$2.49**

**Clothes Hangers**  
 Reg. 10 for \$1  
 10 for **.89**

**Certs Breathmints Assorted**  
 Reg. 3 for .99  
 4 for **.99**

**V05 Shampoo or Conditioner**  
 15 oz. **.99**

**DOUBLE COUPONS! 7 DAYS A WEEK!**  
 SEE STORE FOR DETAILS



**Red Roma Tomatoes**



**2 lbs. \$1**

**FRESH PRODUCE**

QUANTITY RIGHTS RESERVED—NO SALES TO DEALERS

Red Bunch Radishes **2 for \$1**

New Crop Green Cabbage **lb. .19**

Dole Salad Mix **3 lb. pkg. \$2.59**

Washington Extra Fancy Golden Delicious Apples bag **3 lb. \$1.59**

Persian Limes **7 for \$1**

Sweet Fresh Cantaloupes **2 lbs. \$1**



**Golden Ripe Dole Bananas**

**3 lbs. \$1**

**California Fresh Broccoli**

**lb. .88**

**Bunny Luv Carrots**

1 lb. pkg.

**2 for \$1**

**Fresh Jalapeno Peppers**

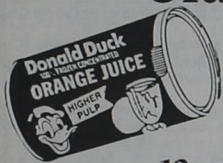
**lb. .79**

**Washington Extra Fancy Red Delicious Apples**

**Snack Size lb. .79**

**FROZEN**

**Donald Duck Orange Juice**



12 oz.

**.89**

**Bell Ice Cream Assorted Red, Gold Ring**



1/2 gallon

**3 for \$5**

**Van de Kamps Battered & Breaded Fillets or Sticks**

**\$2.69**

20.1 oz. to 21.2 oz.

**Mr. P's Pizza**

7.2 oz. **.69**

**Pet Ritz Frozen Cobbler**

26 oz. **\$1.98**

**DAIRY**

**Bell Homogenized Milk Half Gallon**

**.89**

**Fine Fare Texas Style Biscuits 6 oz.**

**4 for \$1**

**Shedd's Classic Quarters 1 lb. pkg.**

**2 for \$1**

**United Premium Quality Extra Large Eggs**

dozen **.79**

**United Extra Lean Super Valu Pak Arm Roast**

Round Bone Cut **lb. \$1.68**

Single Pak **lb. \$1.78**

**United Extra Lean Beef Ribs**

**lb. \$1.89**

**QUALITY MEAT**



**United Extra Lean Super Valu Pak Ranch Steak**

**7-cut lb. \$1.58**

Single Pak **lb. \$1.68**

**United Extra Lean Super Valu Pak Chuck Roast**

Blade Cut **lb. .99**

Single Pak **lb. \$1.19**



**Farmland Extra Tender Pork Roast**

**lb. \$1.29**

Boston Butt

**Super Valu Pak Lean Ground Beef**

**lb. \$1.78**

Regular Pak **lb. \$1.88**

**Extra Lean Boneless Stew Meat**



Lean cubes of beef

**lb. \$1.98**

**United Extra Lean T-Bone Steak**



**lb. \$3.98**

USDA Choice T-Bone Steak **lb. \$4.59**

**United Extra Lean Top Sirloin Steak**



**lb. \$2.38**

USDA Choice Top Sirloin **lb. \$2.68**

**United Extra Lean Porterhouse Steak**

**lb. \$4.19**

USDA Choice Porterhouse Steak **lb. \$4.69**

**United Extra Lean Super Valu Pak Boneless Swiss Steak**



**lb. \$1.78**

Single Pak Swiss Steak **lb. \$1.88**

**United Extra Lean Boneless New York Strip Steak**



**lb. \$3.98**

USDA Choice New York Strip Steak **lb. \$4.29**

**Country Pride Grade "A" Whole Fryers**



Limit 3 Please

**lb. .49**







Register **\$300.00** to win

in gift certificates, redeemable at any of these participating sponsors. Register to win at any of the same merchants. Please, one registration per person per visit. No purchase necessary, you do not have to be present to win. Drawing will be held Monday, February 18, 1991. A total of seven winners will be chosen, with four winners of \$25 each, two winners of \$50 and one winner of \$100.

Valentine's Day - Feb. 14<sup>th</sup>



Fresh cut  
Spring Flowers  
for that very  
special someone

**The Prairie Flower Shop**

232 E. Main

495-2658



**DANISH IMPORTS**

GIFTS & COLLECTIBLES

Valentine's Day,  
Say "I Love You" with flowers  
A Single Rose in box \$10.00  
Tulips, Potted Daffodils or  
A Mixed Sweetheart Bouquet



or  
Silver Heart Jewelry, Music Boxes  
Heart Note Pads, Potpourri  
Golf Balls with a

Complimentary Gift Wrap - Free Delivery  
201 E. Main Mon-Sat 9:00 to 6:00 495-2314

Valentine cards and gifts for KIDS!!



- ♥ note pads
- ♥ miniatures
- ♥ candy holders
- ♥ hair bows
- ♥ stuffed animals
- ♥ purses
- ♥ jewelry
- ♥ pencils
- ♥ candy
- ♥ packaged assortments

**Happiness Is...**

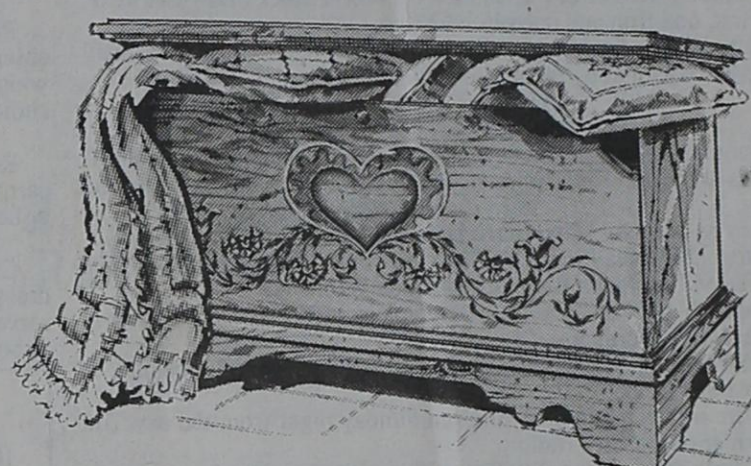
128 E. Main

495-2438

Open Monday thru Friday 9:30 to 5:30  
Saturday 9:30 to 5:00

"Your  
Heart's  
Desire"

Lane®  
Cedar Chests



starting at \$179<sup>00</sup>

Use our NO Interest  
Payment Plan

**Hudman Furniture Company**

301 E. Main

495-2615

Open Mon-Sat 9 a.m. to 6 p.m.

Any time is right  
to treat your  
sweetheart to a  
delicious meal at  
the Chaparral...

Open: 5 a.m. to 10 p.m. 7 days a week

Lubbock Hwy

495-3622



**CHAPARRAL**

Steak House & Bar-B-Que

**Monday nights - Family night,**  
Italian food served family  
style, all you can eat ....only 3<sup>95</sup>

**Tuesdays and Wednesdays nights -**  
Steak Specials:

K.C. Strip w/salad bar ..... only 6.95

T-Bone w/salad bar ..... only 7.95

Club w/salad bar ..... only 4.95

**Thursdays nights - Mexican food**  
buffet, all you can eat ....only 4<sup>95</sup>

**Friday nights - Fish and salad**  
bar, all you can eat ..... only 5<sup>95</sup>

**Daily Lunch Buffets •**

Biscuits and gravy...95¢

Catering for small or  
large parties!



Here it comes  
That special day  
To wish your sweetheart  
"Happy Valentine's Day".

But where to shop...  
Where to begin...  
That will help  
and cater to men.

Come to La Posta  
Your help is there  
We will show you what  
she'll love to wear.

Be it jewelry, be it clothes,  
Maybe a purse or a pair of hose.  
Come and see what we have to show,  
You're sure to find something before you go.

Monday, February 11th, is the date.  
Write it down, make no mistake.  
Open only for men, with cookies and coke.  
You'll find something special, that's no joke.

Monday, February 11th  
4:00 til 7:00 p.m.  
Come see us at La Posta

**LA POSTA**

412 N. Broadway



495-2648

Open Mon-Sat  
9 a.m. to 6 p.m.

**Love and Inspirational Mugs**

These mugs feature expressions of love and friendship, an ideal Valentine gift item...great for sweethearts, parents, teachers or friends.

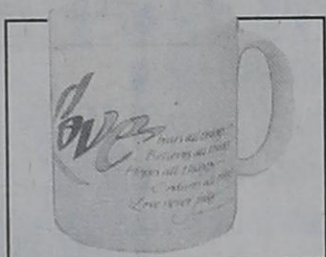
These lovely mugs will continue to remind your Valentine of your love and thoughtfulness long after Valentine's Day has passed.



Suggested Retail \$7.50

NOW ONLY

**\$6.75**



"A friend loves at all times." Proverbs 17:17



"Love is patient and kind; love is not jealous or boastful...Love never fails." I Corinthians 13:4-8

**The Frame Shoppe**

206 E. Main

495-4144

Open Mon. thru Sat.  
9 a.m. to 5 p.m.

See our selection of

Montana ♥ Pottery

Chili Bowls

Mugs

Platters

Valentine Balloon Centerpieces

(ready for assembly - compete)

"Friends For Life" by Dolls Unlimited

(pre-boxed - comes in 4 assorted colors)

**Handy Gifts**

Visa, Mastercard and American Express welcomed

231 E. Main

Lay-A-Way

Open Mon-Fri.  
9 a.m. to 5:30 p.m.  
Sat. 9 a.m. to 5 p.m.

495-3516

The way to a man's heart is with

Mary Alice Hadley...

7.50 to 29.00

Sweetheart Chocolate Roses 2.95

Lalique, Lladro, Sabino, Waterford, Antiques, M.A. Hadley, Estate Jewelry  
MasterCard, VISA, Lay-A-Way, Bridal Registry, FREE Gift Wrap,  
Calligraphy Service, Mail Out and Delivery

**Jan's**

Little Luxuries...Small Indulgences...

211 E. Main

495-3311

Something 'unique' for your Valentine



See our selection of custom-made

**BANDANA COLLARS**

come in today to make your selection!



**A Touch of Texas**

209 E. Main  
Manna Square

495-4126