

April 1	86	44
March 31	79	44
March 30	73	38
March 29	75	42
Rainfall to date:	2.92	



## NATIONAL LIBRARY WEEK

# Local Library Planning Full Week Of Activity

## Agriculturists Plan Lobby In Washington

A total of 14 local and area farmers were in Plainview Thursday night for an American Agriculture Movement area



Senator Kent Hance, who is seeking the soon to be vacated position of Congressman George Mahon, will be honored at a reception in Muleshoe Tuesday. He will be at the Muleshoe State Bank community room from 2-3 p.m. and all area residents are urged to come by to visit with Senator Hance.

A native of Dimmitt, he now makes his home in Lubbock. Named an outstanding student at Texas Tech University College of Agricultural Sciences was Janice Cannon, food technology, daughter of Mr. and Mrs. Jimmy Cannon, Bula. She was among students honored at a banquet Friday, March 31.

In Bailey and Lamb Counties, sign up for participation in the 1978 Federal Crop Insurance plan is April 30 for cotton and grain sorghum, and April 25 for corn.

Details can be obtained from FCIC, 1205 Texas Avenue, Room 214, Lubbock.

Members of the Muleshoe Independent School District Board of Trustees will meet in special session at 8 p.m. on Monday, April 3, to certify results of the Saturday, April 1, school board election.

## Civil Cases To Be Heard On April 10

Four civil cases are scheduled to be heard before the jury in Bailey County, beginning April 10.

Scheduled at 10 a.m. on April 10 before District Judge Pat Boone, are C.R. Anthony Co. vs Joe S. Damron, et al (Tenant's claim against landlord for rain damage to building contents); Jewel Dean Bruton vs Employees Mutual Liability Insurance Company of Wisconsin (Worker's Compensation) and St. Paul Fire & Marine Insurance Company vs. Minnie Sellers (Worker's Compensation).

meeting. Main speakers during the meeting were Gerald McCathern and Marvin Meeks.

Tentatively, following the meeting, four farmers from the Muleshoe area planned to leave for Washington D.C. Sunday morning.

McCathern told the group how great the farmer's influence in Washington had been, but that it was vitally important to continue to let the farmer's opinions be heard in Washington. He asked another large group to be Washington Monday morning when the Conference Committee will reconvene concerning the farm bill.

He also asked all area residents to send mailgrams to Congressman W.R. Poage at 2107 Rayburn Building and to E. DelaGarza at 1413 Longmont Building to urge them to retain and support the flexible parity concept.

Marvin Meeks explained how the farmers are attempting to set up a permanent lobby in Washington. He said there would probably be three lobbyists hired to represent the farmer in all agriculture matters.

Meeks added that in order to set up this lobby, the farmers must raise \$100,000 in the next two weeks. Each person who contributes \$100 will receive regular reports from Washington, he added.

Cont. on page 3 Col 1

## Salvation Army Plans Fund Drive

The kick off coffee meeting of the Muleshoe Salvation Army Service Unit's \$2,500 fund drive will be held at Corral Restaurant at 7:30 a.m. on April 6.

Campaign chairman Jeff Peeler said about 35 workers are ready to solicit gifts.

"We know that the people of Muleshoe will contribute to this emergency fund program as they have so generously in the past," Peeler said.

Funds will be used for local emergency aid to families in need and to stranded travelers during the fiscal year. Other Salvation Army services include sending boys to summer camp, caring for pre-delinquent girls and unwed mothers, helping families of prisoners and alcoholics, and providing relief in natural disasters.



CONDUCTING SEMINAR--Bob Prock, left, of the Small Business Administration, looks on as officers answer questions at the Hot Check and Shoplifting seminar in Muleshoe last Tuesday. Second from left, Monte Phipps, deputy sheriff; Wayne Holmes, city police;

James Williams, deputy sheriff and Tommy Black, executive director of the Muleshoe Chamber of Commerce and Agriculture. The officers answered businessmen's questions about methods to use to handle hot checks and suspected shoplifters.

## Miss Tri-County Deadline Thursday; Get Entries In

Entries continue to come in for the Miss Tri-County Beauty Pageant and with the deadline near, last minute potential candidates for the title of Miss Tri-County, Junior Miss Tri-County, Little Miss Tri-County and Miss La Petite Tri-County are asked to get those entries in to the Muleshoe Jaycees. Deadline for entry is 5 p.m. on Thursday, April 6.

Four age divisions are open and entries have been received in all divisions for the April 29 pageant to be sponsored by the Muleshoe Jaycees.

## Girls' Youth Basketball Tryout Set

Girls who are interested in playing on one of the Youth Basketball teams for girls, are asked to be at the Muleshoe Junior High School gym at 6 p.m. Tuesday, April 4 for tryouts.

Terry Gunter, chairman of the Youth Basketball program, said there will be no Youth Basketball for boys this year as no coaches were signed up.

Several scholarships, merchandise certificates and other prizes will be awarded the winners of the all-day pageant. It will get underway officially at 10:30 a.m. on Saturday, April 29, with judging of the sportswear. This will be followed at

## Circle Back Baptist To Host Revival

A revival has been scheduled at Circle Back Baptist Church, beginning Monday, April 3. Services will be conducted nightly beginning at 7:30 p.m. Monday through Saturday evening. Morning services will be Tuesday through Friday at 10 a.m.

Evangelist and song leader for the revival will be Bro. Eddie Carpenter of Stephenville. His wife, Carol, will be providing special music for the services. Bro. Carpenter is pastor of the Valley Grove Baptist Church of Stephenville. A native of Louisiana, he is a graduate of Tarleton State University and is attending Southwestern Baptist Theological Seminary in addition to pastoring his church. Services on Sunday, April 9, will be at 11 a.m. and 6 p.m. with a basket lunch served following the morning service.

Pastor of the Circle Back Baptist Church, Rev. Doug Gardner, said he and the church would personally like to extend an invitation to everyone in the area to attend any or all of the services.

## City Council To Consider Agreements

Muleshoe City Council members will meet in regular session on Tuesday, April 4, and canvass the results of the election for city council members on Saturday, April 1.

They will also consider the annexation of property to the city limits and consider an agreement with Bailey County concerning the dispatching, jail services and office space in the Bailey County Law Enforcement Center.

Mac Tubb will also be present to present a progress report on the sign up in the paving program.

noon by a luncheon for all pageant contestants and their mothers.

In the afternoon, personality judging for the Miss Tri-County contestants will be conducted, concluding with the evening staging of the annual pageant itself.

Theme of the pageant this year is from the Wizard of Oz and is "Follow the Yellow Brick Road." Entertaining will be a band from the area, and Tu-Tu's dancers, who proved to be so popular in the pageant last year. Immediately before intermission, Miss La Petite will be crowned, followed by the crowning of the other three winners after intermission.

## Boy Scout Fund Drive Will Begin

Robert Montgomery, chairman, has announced that a community-wide Boy Scout Fund Drive gets underway Wednesday, April 5. In the drive, the county will be attempting to acquire \$4,000 for use in Boy Scout activities. This area's \$4,000 goal is only a small portion of the \$277,997 being sought for the 20 county South Plains Council.

In the 20 counties, the population is 401,000, and of this number, some 10,101 Boy Scouts are registered and active. Also, 2,793 volunteer leaders work with the Boy Scouts in their activities.

For use of the local Scouts, the South Plains Council operates a service center designed to meet the needs of volunteers; they maintain a supply of literature, insignia, forms and certificates and provides training and monthly program meetings for volunteer Scouters.

Several sustaining memberships are available, and they range from a \$25 contributing member to \$25,000 for a Pacesetter member, however, contributions will be sought in any amount to help the program, stressed the local chairman.

Scouting ages range from Cub Scouts, who are 8-10 years of age; Boy Scouts, 11-15 years and Explorers, 15-21 years of age.

Montgomery asked the cooperation of all area residents to help keep the Boy Scout program going in this area.

## Annual Study Club Book Sale Scheduled

National Library Week will be observed at the Muleshoe Area Public Library April 2-9, with

## ASC Extends Final Date For Grazing

Bailey County ASC said they have been notified by the state office that Bailey County has been approved for grazing on set aside acres through May 31. The previous final date for set aside grazing had been Friday, March 31. Livestock on set aside acres can now remain until the final May 31 date.

## Shoplifting, Hot Check Seminar Held

Although several businesses were represented, Muleshoe Chamber of Commerce and Agriculture Executive Director Tommy Black was disappointed that more business people did not send representatives to a seminar last week. The seminar was sponsored jointly by the CoC, the Muleshoe City Police Department and the U.S. Small Business Administration.

Muleshoe City Police Safety Officer Wayne Holmes, and representatives of the Bailey County Sheriff's office answered questions following presentations by Bob Prock, SBA representative from Lubbock.

The seminars included What is Good Check Cashing Policy?; Legal Recourse on Bad Checks; What You Can Do to Prevent Shoplifting; Demonstration of Shoplifting Techniques and a film, "The Silent Crime," which dealt with typical methods used by shoplifters.

Five sessions were conducted throughout the day, and some seven or eight local retail merchants were represented.

Several of the salespeople and business representatives had many questions to ask, especially on how to approach a suspected shoplifter, and on legal recourse for hot checks, which has been termed a "major problem" in business.

several activities planned, according to Librarian Anne Camp. Theme of this year's special week is You Can Count On Your Library and the theme will be carried out in posters, bookmarkers, displays and balloons for the children.

Monday and Tuesday, library visitors may get a sneak preview of the book that Junior Historians are publishing on Early Bailey County History. A display will show the material used; the binding and paper used; and sources of material used. Arrangements may be made to purchase a copy of the book at the pre-publication price.

Wednesday morning, a special storyhour will be conducted at 10 a.m. for all pre-school age children of the area. The film "The Magic Book" will be shown the children and other activities are planned. Mothers of these children are invited to a coffee on the main floor of the library at the same time. This will give the mothers an opportunity to view the displays and to visit.

Mrs. Camp said, "these mothers have brought their children so faithfully, and many of them have helped the with

Cont. on page 3 col 1

## Hospital Dedication Set Today

With the completion of the long-awaited, and long sought new hospital and clinic facilities in Muleshoe, open house and dedication ceremonies are planned for 2 p.m. today (Sunday).

During the 2 p.m. ceremony, Mayor Ken Henry will conduct a ribbon cutting at the new clinic, and Rev. H.D. Hunter will give the short dedicatory address.

Dr. Frank Sayago, Dr. Martha Sayago and Dr. Bruce Purdy will be welcomed formally at a reception, followed by a tour of the new clinic, lab, x-ray rooms, hospital auxiliary room, officers and other new portions of the hospital just completed.

Members of the Muleshoe Hospital and Nursing Home Auxiliary will conduct the tours and serve refreshments.

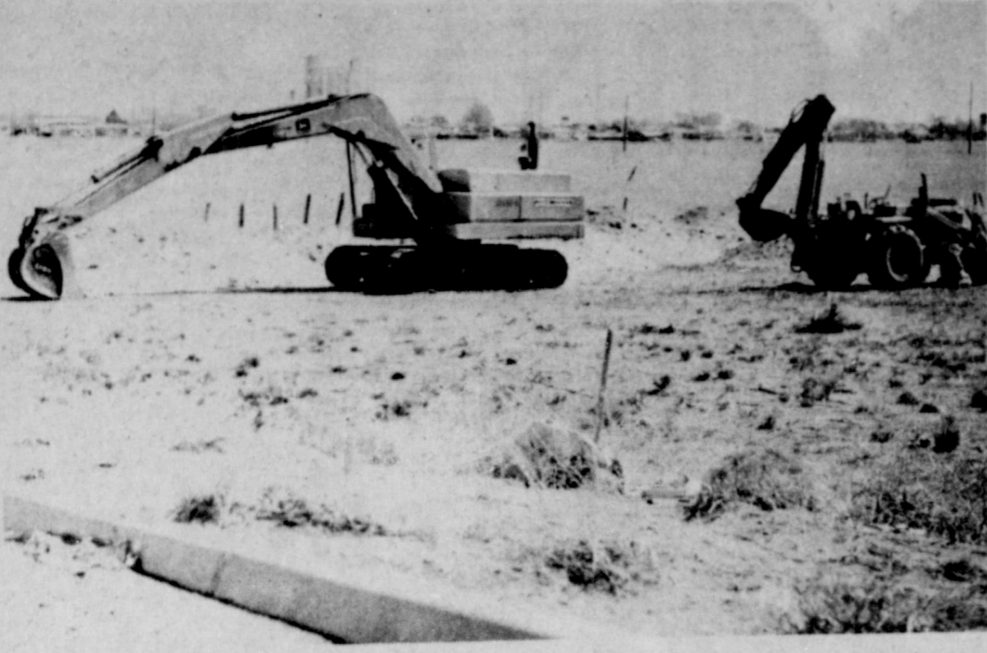


INSTALLING MANHOLES--This workman talks to a fellow workman at the bottom of a manhole under installation in the new Parkridge Addition in southwest Muleshoe. More than 20 lots will be available in the initial phase of the new addition for construction.



TREES BLOOMING--Blooming a little later this year, but if no more frost hits, the crop should be abundant for the local fruit crop. Apricot trees are blooming and other fruit trees are just beginning to come out to greet the warm sun.





**DIRT WORK UNDERWAY**--Heavy machinery is busy moving the sandhills at the location of the new Parkridge Addition. Workmen are preparing to cut and pave streets in the new addition just behind the park on West Avenue D. New home construction is expected to start in the area in the near future.

**View From The Plains**  
by J.D. Peer  
I & E Field Officer

**LUBBOCK**--Wildlife habitat is declining in Texas as it is in most states, but hunting often gets the blame when wildlife numbers decline due to man's overall use of land and its effect on the number of animals and birds.

This habitat reduction coupled with the burden of supplying a greater amount of game to an increasing number of hunters on fewer acres is placing an ever greater emphasis on wildlife management.

To counter the decline in habitat and improve the range quality, the Texas Parks and Wildlife Department is in its fifth year of a program called wildlife extension service. During the first four years, 916 land managers took advantage of the extension biologist service resulting in comprehensive wildlife programs being initiated on 3,250,000 acres of land.

Essentially, the program is designed to give direct assistance to landowners, land managers, and sportsmen in preserving habitat and enhancing wildlife resources on their property including recommendations for the proper harvest of surplus game species.

Game population are controlled by the quality and quantity of vegetation. In the natural order of things, this usually is controlled by soil moisture. However, few acres are now in their natural state and soil and moisture are only two of many factors controlling vegetative growth. Grazing, plowing, brush clearing, and industrial use have a marked effect on the wildlife habitat. The elimination of tree shelter belts for new residential areas are apparent in the Panhandle and South Plains including weed patches, old farm plots and even roadways used by the former landowner which had plenty of cover for wildlife.

Vegetation changes have a much quicker and more noticeable effect on high productive capacity species such as quail, dove, and pheasant than a large game species such as deer.

Observations have shown that brush clearing, overgrazing, and other game habitat destruction may deplete a deer herd slowly, whereas, the same factors can spell trouble overnight for smaller game. However, smaller game species recover with equal speed, thereby causing population to normally rise and fall from year to year according to habitat conditions.

Simply adding more game animals or birds to an area does not assure reproduction or more game this fall. The decline in suitable habitat that caused the original decline in game population will have the same effect on the newly stocked game species.

Where conditions are suitable

or are planned for high game populations, any animals or birds removed by hunters will be replaced by natural reproduction.

The Panhandle-South Plains region suffers from the lack of winter cover for all native species and the P&WD extension program is geared to remedy this situation.

New tree shelter belts for wind protection of the soil as well as protection for wildlife are returning in some areas. Plants

that furnish both cover and food for wildlife are being planted across Texas. Wildlife survival depends on food, cover, and weather, and through a good program of habitat improvement, the adverse winter storms will be minimized.

If you are a landowner, land manager or sportsman interested in preserving the quantity and quality of your wildlife, contact Richard DeArment, Extension Biologist, P&WD, P.O. Box 122, Wheeler, TX 79096.

**Farmer Due Fair Return**

U.S. farmers will depend on the Federal Crop Insurance Corporation (FCIC) to protect more than \$2 billion of 1978 crop investments, including a record number of Texas farmers.

"More farmers are participating in our program than ever before," noted Ben A. Jordan, Jr., Director of FCIC's Texas, New Mexico and Oklahoma region. "We expect a liability of some \$75 million in this region."

The Federal Crop Insurance program is designed to protect the money a grower has invested in a crop. In case his crop is destroyed, he will at least get back what he put into the crop. With production costs what they are, that's a management tool not many farmers can ignore," Jordan explained. "Also many financial institutions are emphasizing our program as a means of strengthening collateral needs since it gives cash value to a growing crop before the crop is harvested."

With this increased interest in Federal Crop Insurance we are doing all we can to make improvements in our program that will benefit the producer. Three Texas counties are participating in a pilot program involving ASCS. Results of this and other trials will be considered as we plan for the future. We have also expanded coverage in 17 counties and added 6 new counties for this year," he said. The new counties include Cim-

arron County in Oklahoma, Roosevelt County in New Mexico and Collingsworth, Gains, Stonewall and Yoakum Counties in Texas.

Federal Crop Insurance is now available in 136 counties in the three state region. Crops covered include cotton, corn, grain sorghum, wheat, peanuts, citrus, rice, and soybeans.

For Bailey and Lamb Counties, sign up for participation in the 1978 program ends April 30 for cotton and grain sorghum, and April 25 for corn. Details can be obtained for FCIC, 1205 Texas Avenue, Room 214, Lubbock, Texas 79401.

Carter seeks tuition aid for middle class.

**STATE CAPITAL Highlights AND Sidelights**  
by Lyndell Williams  
TEXAS PRESS ASSOCIATION

**AUSTIN**--There's a major crime a minute--or every 46 seconds, to be precise--in Texas.

Department of Public Safety records for 1977 show the crime rate decreased by 1.3 per cent, but violent crime is still on the rise.

Felony theft, the single most prevalent crime, decreased seven per cent, according to DPS Director Wilson E. Speir.

Ninety per cent of crimes were committed in cities and just 23 per cent were cleared by arrests.

Both Texas DPS statistics and those compiled by the Federal Bureau of Investigation were similar.

For the first time in five years, serious crime declined nationwide. Still, there was a sharp increase in the number of rapes and other crimes of violence against people.

The nationwide major crime rate dropped four per cent last year, the FBI concluded.

DPS statistics compiled by sheriffs and chiefs of police showed:

—There were 1,708 murders in the state last year—a nine per cent increase over 1976. Over the nation, murders increased one per cent.

—Rape increased in Texas by 15 per cent, nationally 10 per cent.

—Robbery increased by 9.5 per cent, aggravated assault 18.7 per cent, burglary 3.6 per cent and car theft 12.9 per cent in Texas.

**Ballots Held Up**

A district court ruling temporarily held up printing of May 6 Democratic ballots containing a referendum issue on whether consumer loan interest rates should be raised.

Texas Consumer Finance Association filed suit to block the referendum, contending it is the work of

Judge Herman Jones set a hearing Monday morning on the request for a temporary injunction, warning that he wanted to hear arguments on law only, not politics.

**Worst Year**

Last year was the most deadly in history for drivers on the state's highways.

Traffic accidents killed 3,698 persons, compared with 3,692 in the record year 1973 when the speed limit was still 70 miles an hour, according to DPS Director Speir.

Speir said speed is still the major problem in highway crashes, since 79 per cent of all drivers travel above the present statutory 55 mph limit.

The DPS chief called for these steps by the legislature: —Outlawing radar detectors or "fuzz busters" sold

on the open market to drivers to warn them of speed traps ahead.

—Strengthening driving while intoxicated laws to provide mandatory 90-day suspension of drivers' licenses on conviction.

—Doubling the 1,494-member DPS force to improve enforcement activities.

—Revision of the breath test law for suspected drunken drivers to allow other types of tests.

**Courts Speak**

The State Supreme Court upheld lower court rulings against former Texas Tech basketball star Greg Lowery who sued school personnel for \$783,000 claiming that playing while injured cost him a professional contract.

The high court in other actions: —Turned down an attack by Harris County on a law extending unemployment compensation benefits to most local government employees.

—Upheld demotion of a Carrollton fire department officer for failure to investigate a complaint concerning an animal inside the walls of a residence.

—Held Harris County was not liable for damages due to

an employee's loss of an eye in a shooting accident which occurred while he was not on county business.

—Ordered payment of workers compensation death benefits to survivors of a Haskell County drive-in grocery manager who was shot accidentally.

The Court of Criminal Appeals granted a new trial for a former Amarillo policeman who received a death sentence for slaying of an ex-legislator's 16-year old daughter.

The court also reversed a 45 year sentence given a Hunt County man for robbery.

**AG Opinions**

A one-year irrevocable union dues checkoff agreement between a union and a member is made valid by a state

law, as long as the employee has given written consent to his employer, Attorney General John Hill said in a recent opinion.

In another opinion, Hill said a lessor of mobile homes is not a dealer or salesperson under the law unless the lease contains a provision conferring an option to purchase the home.



Despite the shortcomings of the 1978 government farm program as announced last December, officials of Plains Cotton Growers, Inc., Lubbock, point out that farmers have "all to gain and nothing to lose" by signing up to participate in the program before the May 1 deadline.

Congress is attempting to pass amendments that would improve the program, but as of the Easter recess March 29 there was no clear indication of the outcome. Also there is a strong possibility that the Administration, through beleaguered Agriculture Secretary Bob Bergland, will announce some program changes before Congress returns to work April 3.

Meanwhile PCG is urging farmers not to jeopardize their right to benefits under existing or pending program provisions by failure to sign an "intention to participate" form in County Agricultural Stabilization and Conservation Service offices.

Although the sign-up before May 1 is little if anything more than a formality, says PCG Executive Vice President Donald Johnson, "it is an essential formality for producers who want to be eligible for price support loans, deficiency or disaster payments."

Farmers are asked to show the acreage of each crop they intend to plant and the acreage of set-aside if any is required on those crops. But the intentions indicated are not binding. They can be changed at planting time, with actual crops and acreages to be reported and certified later.

In addition to the sign-up, eligibility for prevented planting payments under the disaster provisions of the program is contingent on proper land preparation, the availability of equipment, seed and other things necessary to the production of a crop.

Legislative or administrative changes in program provisions announced last December will most likely come as amendments to the current law, Johnson adds. "So signing an intention to participate form before May 1 will probably be a prerequisite to eligibility for any program benefits, old or new."

1928 1978

In honor of the  
Fiftieth Wedding Anniversary of  
Mr. and Mrs. Henry Bass  
their children and grandchildren  
request the pleasure of your company  
at a Reception  
on Sunday, the ninth of April  
Nineteen hundred and seventy-eight  
two until five in the afternoon  
Muleshoe State Bank Community Room  
Muleshoe, Texas

**Willis James Your ORO**  
Hybrid Sorghum Dealer  
Of R.C. Young Seed & Grain Co. Lubbock

For Grain, Forage, Pasture,  
Sunflowers & Garden

**NOW BOOKING ORDERS**

Write Rt 2 Box 200 Muleshoe 79347  
Call 925-6716

**You Are Invited To Come Meet Senator Kent Hance**

"Candidate For U.S. Congress"

**Tuesday, April 4**

**2 to 3p.m.**

At The

**Muleshoe State Bank Community Room**

Authorized by the Kent Hance for Congress committee, Mike Higgins, treasurer, 1203 Metro Tower, 1220 Broadway, Lubbock, Texas, 79401

**Announcement**

**Winkler Meat Is Now Making German Sausage!**

Larry Says Bring Your Pork In To Winkler Meat & Let Them Make Your Sausage For You.

"We Do Custom Butchering"

**Winkler Meat Co.**

401 Main Muleshoe 272-4703

**RA 808 Grain Sorghum**

- Medium-late maturity
- Yellow endosperm
- High yields
- Good stalk quality
- Greenbug resistant
- Bred for High Plains

Dealerships Available  
Office Ph 806-293-2676  
Home Ph 806-293-5647

**Ring Around**  
P.O. Box 1629 Plainview, Texas









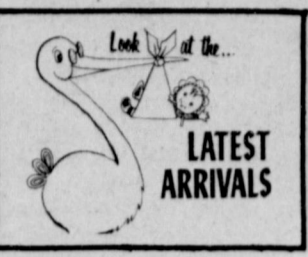
TOPS INSTALLATION OF OFFICERS...In the TOPS meeting, Thurs. night, the highlight of the evening was the installation of officers. Officers being installed were: Leader, Clara Lou Jones,

Co-Leader, Laurantette Mason, Treasurer, Ruth Clements, Secretary, Leta Hefner, Weight Recorder, Evelyn Harris, and Assistant Weight Recorder, Leonell Parker.

### Tops Has Weekly Meeting

Highlight of the March 30 TOPS meeting was the installation of new officers by Mrs. J.V. Peeler, installing officer. Her theme for the installation was "Wheels." She used a poster depicting a black "Jitney" with big yellow wheels. Seated in the car at the steering wheel was Mrs. Owen Jones, new leader. Standing at the fifth wheel was Mrs. Raleigh Mason, assistant leader. At the back wheel was Mrs. Dee Clements, treasurer and the Big Wheel was Mrs. J.M. Hefner, secretary. The two front wheels were Mrs. Wayland Harris, weight recorder and Mrs. J.O. Parker, assistant weight recorder. The body of the car represented the membership, who were admonished to take care of the body of the club. Queen of the week was Mrs. Wayland Harris, with Mrs. Les Glover as first runner-up and Mrs. Gary Mac Tombs as second runner up. Mrs. J.O. Parker was presented a money tree as she left the office of leader. The money tree was designed by

Mrs. Dan Vinson and Mrs. Bura Vinson and was loaded with green growth contributed by the membes. Charms were presented outgoing officers Mrs. J.O. Parker, Mrs. Dan Vinson, Mrs. J.M. Hefner, Mrs. Ronnie Garner and Mrs. Bura Vinson. A charm was also presented Mrs. Raleigh Mason for three consecutive weeks of weight loss. Members were reminded to bring fruit and a gift for the auction to the next meeting.



**Freddie Coleman**  
Mr. and Mrs. Thurman Coleman are the proud parents of a new baby boy born March 26, 1978, at 4:00 a.m. in the West Plains Medical Center, in Muleshoe. The baby weighed nine pounds and six ounces, and was named Freddie Coleman. The couple have five other children. Grandparents are Mr. and Mrs. Willie Brown, of Muleshoe, and Mr. and Mrs. Joe Brown, of Hubbard.



MONEY TREE PRESENTED...The TOPS club presented Leanel Parker with a money tree. She retired as leader of the local TOPS club.



MRS. JAMES WHITSON

### Wedding Shower Honors Mrs. James Whitson

A wedding shower was held March 25, in the home of Mrs. Clifford Buchner, for Mrs. James Whitson (nee Linda Ellis). The table was decorated with a bouquet of silk flowers carrying out the bride's color of apricot. Punch, cookies, mints, and nuts were served. Honoree wore a corsage of silk flowers. Mrs. Whitson received humorous gifts including the Hostess gift: a set of Village Stoneware Dishes. Hostesses for the occasion were: Mrs. Clifford Buchner, Mrs. Cleon Davis, Mrs. L.P. White, Mrs. Lester Baker, Mrs. Walter Bartholf, Mrs. William S. Pagach, Mrs. Joe Pat Wagon, Mrs. John L. Seaton, Mrs. Jimmy Johnson, Mrs. Laurence Blavlock, Mrs. Marv Williams, Mrs. Floyd Gafford, Mrs. Sthother Walker, Mrs. Woodrow Surratt, Mrs. Bob Copeland, Mrs. Carl Bamert, Mrs. Harold King, Miss Alice Lopez. Out of town guests were: Mrs. G.A. Cox, Shane and Joe, from Bedford, Sister of the groom, and Mrs. M.D. Bush, Littlefield. Honor guests were: Mrs. Mary Whitson, Mother of the groom, and Mrs. Margie Hawkins, Mother of the bride. Miss Edna Buckner registered and Mrs. Justin Long served refreshments.

### West Plains Medical Center Briefs

**ADMISSIONS**  
March 27-Sandra Canfield, Lola Cook  
March 28-Loretta Flores, Glenn A. Moody, Wayne Hardage, Maria D. Rodriguez, Debbie Richardson.  
March 29-Doris Palmer, Vickie Villarreal, Bonifico Beavers, Sharon Williams, Frank Hanes, Ruby Cox, Rosa Toscano, Fern Warren, Maudine Speck.  
**DISMISSALS**  
March 27-Shay Pena  
March 28-W.O. Williams, Sandra Canfield, Mary Johnson, Vivian White.  
March 29-Esther Lucero, Gronima Perez, Rafael Flores, Clarence McMahon, Debbie Richardson, Frank Parker.  
March 30-Maria Rodriguez, Sharon Williams and baby girl, Wayne Hardage, Chris Perez, Ruby Cox, Moises Rodriguez.

### Karen Barnes Honored With Shower

Karen Barnes, the former Miss Karen Cargile, of Lazbuddie, was the honoree at a bridal shower, Saturday afternoon, March 11, in the home of Mrs. Dud Winders, of the Lazbuddie Community. Special guests included the bride's mother, Mrs. Preston Cargile, the groom's mother, Mrs. Sam Barnes, both of Lazbuddie, and the bride's grandmother, Mrs. C.A. Watson, of Muleshoe. Cookies and punch were served from a table covered with white linen and holding a centerpiece of yellow daisies and white flowers in a basket. The hostess gift was a set of stainless steel cookware. Hostesses were: Mrs. Dud Winders, Mrs. Richard Engelking, Mrs. Jerry Don Glover, Mrs. Jack Smith, Mrs. R.L. Barber, Mrs. Doyle Weir, Mrs. Max Bush, Mrs. Billy Weir, Mrs. Raymond McGehee, Mrs. Ted Treider, Mrs. Dalton Mimms, Mrs. Tim Smith, Mrs. Valton Mooris, and Mrs. Eugene Redwine.

### 4-H Club Holds Meeting

The YL 4-H club met March 20, in the 16th and Ave. D Church of Christ. Tamara Gilliland called the meeting to order. Brenda Flowers called the roll and read the minutes of the previous meeting. Kim Wilson led the 4-H pledge and motto. Joe Bob Newman led the pledge of Allegiance. Brenda Flowers led the 4-H prayer. Tamara Gilliland reported on the 4-Her of the month rules that were being considered by the council. Melissa Wagon gave a report of the method demonstration workshop held by Martha Couch, area specialist. Brenda Flowers reported on the Nursing Home and announced the next trip to be April 14. Linda Mullins, new County Agent, presented a pro-

### Assembly Of God Holds Service

The WM's of the Assembly of God Church had their service at 10:30 a.m. instead of 1:30. There was special singing, and Linda Burris brought a message on Witnessing. After the service they went to the Pizza Hut.

gram on dog care. A discussion followed. Refreshments were served to the following members: Tamara Gilliland, Brenda Flowers, David Pruitt, Melissa Wagon, Glen Flowers, Kim Wilson, Joe Bob Newman, and John Tolley.

### Julie Fawne Williams

Mr. and Mrs. Billy Don Williams are the proud parents of a new baby girl born March 29, at 7:35 a.m. in the West Plains Medical Center in Muleshoe. The baby weighed seven pounds and 13 ounces, and was named Julie Fawne Williams. The couple have one other child, Justin. Grandparents are Mr. and Mrs. Wayland Harris, of Muleshoe, and Mr. and Mrs. Billy Williams, also of Muleshoe. Great Grandparents are Mr. and Mrs. Henry Scarborough, of Muleshoe, and Mrs. Bell Williams, of Muleshoe.

### Muleshoe PTA Sponsor Family Bingo Night

The Muleshoe PTA will sponsor a Family Night Bingo, Friday, April 7, at 7:30 p.m. at the Muleshoe High School Cafeteria. There will be no admission charge. Bingo cards will be available at the door for \$1.00 donation. Refreshments of hot dogs, frito pies, pickles, popcorn, cokes, and coffee will be available. So come for an evening of entertainment and eats. Local businesses have donated gifts for prizes. Come on out and bring the whole family, there will be special games for the children too!

### Hobby Club Holds Meeting

The Muleshoe Hobby Club met in an all day meeting on Thursday, March 30, at the Muleshoe State Bank Recreation room with 16 members and 11 visitors including Mrs. Robin Taylor who demonstrated making silk flowers. Several articles were on display including fuzzy owls, rag dolls, crochet flowers, carpet owl, Christmas decorations made of Christmas cards, cruel embroidery pillow. The Christmas cards and cruel embroidery were also demonstrated. Among the visitors was Era Dell Gibbs, who now lives at Roby, and was a member of the Hobby Club for many years. The next club meeting will be April 6, with Vickie Hendricks as hostess. Visitors present were: Debbie Hemp, Mattie Roye, of Idalou, Jewel Griffith, Verbie Griffith, Eva Dell Gillis, Jean Landers, Lucille Harper, Veta Self, Jewel Barry, of Friona, and Tina Davis, who joined the club, and Mrs. Robin Taylor. Club members were: Opal Robinson, Allie Barbour, Fiddle Shafer, Levina Pitts, Verna Dement, Sammie Ethridge, Mae Loyd, Myrtle Chambers, Ruth Bass, Ola Eppery, Hallie Briscoe, Ethel Julien, Bernice Amerson, Vickie Hendricks, Dora Phipps, and Mabel Caldwell. True Silence may be golden, but sometimes it is just guilt. -News, Shumaker, Ark.

## FARM SALE

TUESDAY, APRIL 4, 1978 10:30 A.M.  
OWNER: S. M. ETHRIDGE  
LOCATION: FROM MULESHOE, TEXAS 6 MILES SOUTH ON HIGHWAY 214 THEN 7 MILES WEST ON HIGHWAY 746. WATCH FOR SIGNS.

<b>TRACTORS &amp; COMBINES</b> -1968 Model 40 32 John Deere in good condition -1967 International 4 Row Planter - 8 Lister -1966 John Deere Combine, 14 ft. with Cab, good condition	<b>EQUIPMENT</b> -Like New John Deere 400 Rotary Hoe -Used for only 4 or 5 days -New Sled -Tool Bar -International Lifter -Tool Bar with Chains -John Deere 14 ft. Tandem Disc -John Deere 14 ft. Tandem Disc -New John Deere Side Rate Hoe -Used Tool Bar -New Tool Bar -John Deere Planter -John Deere Tractor -14 ft. Combine Lifter -New John Deere -International Lifter, belly type -International 484 Collector -New Over Breaking Plow -New Side Cutter on wheels -New Side Cutter on wheels -Tractor Lifter -4 ft. Tractor Lifter -John Deere 4 Row Working -Spreeder -New Cutter with hitch -Spreeder, 4 ft. x 16 in. -New Tractor -New Tractor -New Side Slide -Collector -New Section Harrow -Large Assortment of Barbs for John Deere & International	<b>EQUIPMENT (Continued)</b> -Boyle Front for John Deere -Triple Front for International -Tractor Weights -Prepaga Tires for Tractor -New Mount Spay Rig -Garden H -2 John Deere Backing Plow -3 New Sore Knives -Double Tool Bits/Sinks & Rod Wrenches -4 Row Cultivator -4 Row Cultivator Equip. -5 Home Couse -Shredder -J.D. Belle Fuller 600 Parts -John Deere Tractor #1020 -Buggy Top -Sentry Tank, Pump, Light -300 Gall. Tank, Pump -Filler Hose -300 Gall. Tank, Pump -8 Row Spud Fighter -9 Chisel Shanks -1 Inch Cutter -Equip. Jack -55 Gall. Barrels -35 Gall. Barrels -300 Gall. Fuel Tank -300 Gall. Butane Tank with Filler Hose
---	--	---

TERMS: CASH Other Items to Numerous to Mention ALL PURCHASES TO BE SETTLED DAY OF SALE

**KNOWLES AUCTION**  
-AUCTIONEERS-  
JACK KNOWLES 212 West 4th Street Muleshoe, Texas Phone 806 272-3282  
LANNY KNOWLES 914 Gm. Muleshoe, Texas Phone 806 272-4993  
HELVIS KNOWLES 8000 Street America, Texas  
License No. TX-CE-029-0969

## Albertson's Shop For Men

JEANS  
BELL \$17  
FLARE \$18

BELL OR FLARE LEG

DO-NOTHING... you deserve it!  
AMERICA'S FIRST 14 OZ. ALL COTTON BLUE DENIM JEANS

Never shrink out of size Resist shriveling, wrinkling and puckering Get softer sooner Stay stronger longer

Fit and fade beautifully Backed by a full one year warranty



**Special This Week!**

Jeans  
LE VI \$10.95  
WRANGLER \$9.95  
Stop & Browse

ee's WESTERN WEAR

Open Mon.-Sat. 9 a.m.-6 p.m.  
1910 W. Amer. Blvd. 272-4663

### News Page Fillers

The 1,250-foot-high Empire State Building in New York City was completed on May 1, 1931.

Although Rhode Island is the smallest of the 50 states, it has the longest official name - State of Rhode Island and Providence Plantations.

The scholastic philosopher St. Thomas Aquinas died in 1274.

Daniel D. Emmett, the composer of "Dixie," first performed the tune along with Bryant's Minstrels at Mechanics Hall in New York City on April 4, 1859.

The Austrian klafter is equivalent to 2.074 yards in the American system of measurement.

Norfolk Island, which has an area of 13.5 square miles and a population of about 1,500, was taken over by Australia in 1914.

Delaware, the second smallest of the states in area, is 96 miles long and from 9 to 35 miles wide.

The largest single use of buses registered in the United States was for school transportation, says the Motor Vehicle Manufacturers Association. During 1974-75, New York, Pennsylvania, Ohio and Michigan each transported one million or more students.

Of the nearly 20 million trucks in use in this country in 1972, upwards of 4 million or 22 percent were used in agriculture.

The Andes Mountains in Peru reach as high as 22,205 feet, and seven peaks of the chain tower above 19,000 feet.

A young hawk is called an eyas.

# perry's SALE

## APRIL

10 INCH PLASTIC HANGING BASKETS 77¢	COMFORT TOP NYLON KNEE HI STOCKING 3 PAIR IN BOX 88¢	SECOND HAND PRINTED VELOUR KITCHEN TOWELS 88¢ EACH
50 PC. STAINLESS STEEL TABLEWARE SET TWO PATTERNS TO CHOOSE FROM "REX" "VHEUX CARRIE" 13.88 SET	SAYELLE OR ODYSSEY YARN 4 OZ SKEINS 97¢ REG \$1.29	BATTERIES 2 FOR 47¢
JUTE MACRAME HANGERS 27¢	LIVE PLANTS IN 10" HANGING BASKET \$5.47	YOUR CHOICE 47¢
COLOR MATE IRONING COVER AND PAD 1.77	ASSORTMENT HANDY MAN SPONGES 44¢	TOILET BOWL BRUSH ASSORTED COLORS WITH HOLE IN HANDLE FOR HANGING 38¢

**Sedgefield**  
With the Built-in Edge.  
228 Main 272-3000





**ENGAGEMENT ANNOUNCED...**Mr. and Mrs. Ernest Ramm, of Muleshoe, are proud to announce the engagement and approaching marriage of their daughter, Nancy Louise to Lindel Ray Davis, son of Mr. and Mrs. Floyd Davis, also of Muleshoe. The prospective bride and groom are 1977 graduates of Muleshoe High School. Miss Ramm is attending West Texas State University, at Canyon, while Davis attends Wayland Baptist College, in Plainview. The couple plan an August 4th wedding in St. John Lutheran Church, at Lariat, at 7:00 p.m.

Big words don't always convey big thoughts. The greatest producer of real work is necessity.



*Special Occasion Styles*

Your Spring Prom...  
An Event You'll Treasure Forever.

Our January Clearance  
Continues... Buy  
3 Items For The Price  
Of 1!

*Lookin' Good*

206 Main

272-5052

## Junior-Senior Prom Planned For May 20

Plans were made for the Junior-Senior Prom, May 20, from 10:00 p.m. to 1:00 a.m., at the Catholic Center. 86 Seniors and 197 Juniors plan to attend the prom this year. The theme will be Las Vegas. Tickets will be \$15.00 for family fee, and \$5.00 for each extra guest.

Chairman were selected: General Chairman; Mrs. John Gunter, Co-Chairman; Mrs. Royce Turner, Decorations Chairman; Mrs. Jimmy Carpenter, Co-Chairman; Mrs. Jo Huckabee, Finance Chairman; Mrs. Harold Cowen, and Mrs. Odell Rasco, Invitation Chairman; Mrs. Roy Whitt, Band Chairman; Mrs. Royce Turner, and Mrs. Jack Dunham, Refreshment Chairman; Mrs. David Stovall, Clean-

up Chairman; Mrs. Odell Rasco, Photographer; Mrs. Ernest Ramm, Registration Chairman; Mrs. Curby Brantley, Co-Chairman; Mrs. Jack Dunham, Publicity Chairman; Mrs. Robert Hunt, Co-Chairman; Mrs. J.E. McVicker, Card Table; Mrs. Paul Poyner.

Juniors and Seniors may pay family fee to Mrs. Cowan, at Muleshoe Jr. High, or Mrs. Rasco, at Cobbs.

Announcement will be made as to when decoration preparations will begin.

## Courthouse News

Guy Edwards, Jr. to Joe L. Smallwood; NW 1/4 66', Lots 16 - 24, Block 40.

Ray E. Castleberry to Jim Berry; 130 acres, Section 81, Block Z, W.D. and F.W. Johnson's Subdivision.

W.I. Lancaster to Boone Allison; Lot 6, Block 2, Hillcrest Addition.

Roy E. Williams to W.J. Lancaster; Lots 43, 45, and 47, Block 4, Prune Street, Town of Progress.

Hartley Dairy to Tri-County



**WEDDING PLANS REVEALED...**Mr. and Mrs. Bill Johnson, Plainview, and former Muleshoe resident, announce the engagement and approaching marriage of their daughter, Cheryl Renee, to Armon Douglas Perrin, son of Mr. and Mrs. A.D. Perrin, Sr., Beaumont. The bride is a 1977 Plainview High School graduate and is employed at Place Around the Corner. The prospective groom is a 1976 Littlefield High School graduate and is employed at Furs in Plainview. Wedding vows for the couple will be repeated at 7:30 p.m. in the First Baptist Church Chapel, June 17.

## Lazbuddie Easter Egg Hunt

The home of Mr. and Mrs. Jim Collum was the gathering place for a group of boys and girls from Lazbuddie to hunt Easter Eggs. The excited children gathered around 2:30 p.m., Thur-

sday, March 23, and were divided into two groups. One group being 3 years old and under and the other group 4 years old and over. Rhonda Waddell, Todd Daniel, Joyce McGehee, Nellie Vise, and Paula Daniel hid eggs outside in the Collum yard for the older children. Billie Mason, Ella Jo Stroms, and Marsha Collum hid eggs inside for the little ones, due to chilly weather. The prize egg was found by Chad Waddell, boy finding the most eggs was Sheldon Mason, the girl finding the most eggs was Amy Daniel, the boy finding the least eggs was Andy Storms, and the girls finding the least tied being Jana Vise and Cristy Collum. Winners in the younger group were Belynda Waddell finding the most, and Britton Collum finding the least. Prizes were given to each of these.

After all the excitement of the egg hunt refreshments were served. Peter Rabbit and Daffy Duck sat in the center of the serving table on a pad of green grass nestled among Easter Eggs. Decorated Rabbit and Chicken cookies were served with fruit punch. Each child received a small cupcake basket filled with Easter candy.

Children attending were: Todd and Amy Daniel, Rhonda, Chad, and Belynda Waddell, Andy, Wayne, Darla, and John Stor-

Savings and Loan; Section 34, Block "Y", W.D. and F.W. Johnson Subdivision.

## MARRIAGES

Juan Gutierrez and Alice Arriazola Costilla. James Robert Robinson and Patti Melinda Poyner. Mark Alan Barnes and Karen Lee Cargile.

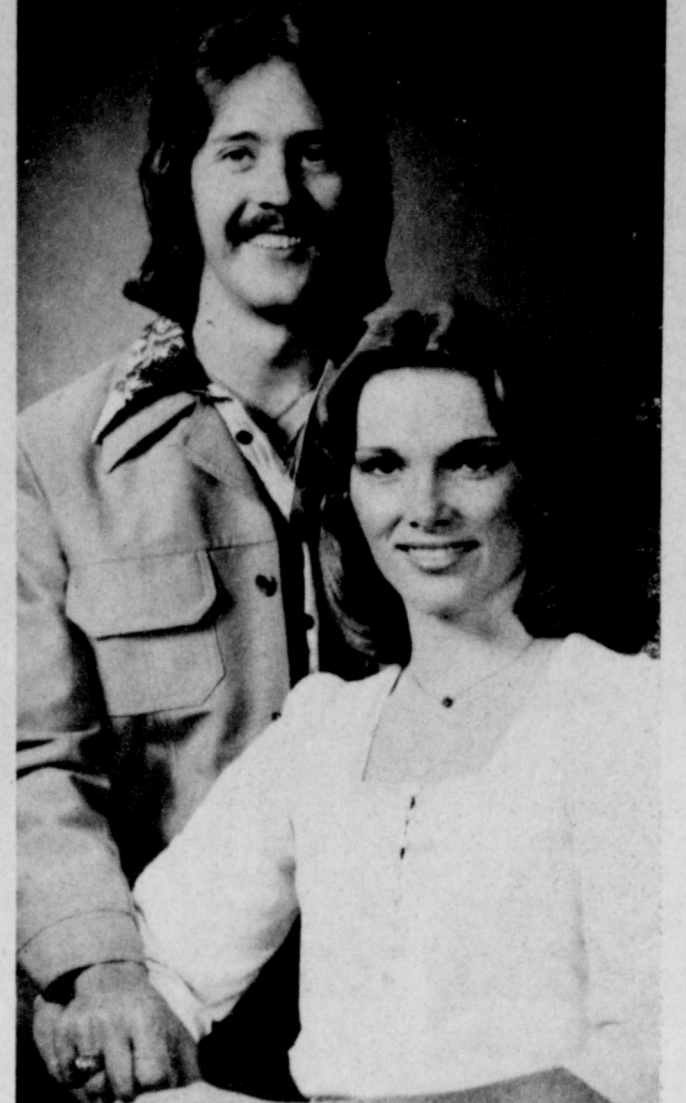
## American Heart Association

American Heart Association Radio Day was March 11, from 7:00 a.m. to 2:00 p.m. on KMUL Radio. Proceeds from the auction were \$740.00.

Items donated for the sale were greatly appreciated. The Board Members of the Bailey County Division want to thank the following people and businesses for their donations: Dot Shop, Damron Drug, Poyner's Whites Auto, Higginbotham-Bartlett, Harvey Bass Appliance, Anthony's, Cobbs, St. Clairs, Western Drug, Gordon Wilson's The Fair Store, Muleshoe Floral, Lindsey's Jewelry, Fry and Cox, Decorator 216, Beaver's Flowerland, Main Street Beauty Shop, Chubby's Beauty Shop, Whitt, Watts, and Rempe, The Art Loft, Janie Maraw, Mrs. Bub Shafer, Janie Baldares, Mrs. Mae Province, Pat Yeager, Mrs. D.O. Burlsmith, Mrs. Buford Hunt, Mrs. Owen Jones, Mr. and Mrs. Dale Robberson, Barbara Hall, Sue Espinoza, Traci Hutton, Sandy Chitwood, Rosie Sneed, Rheata White, Mrs. Fred Wilbanks, Mrs. Dee Chitwood, Larry Seales and Laura Seales.

Special thanks also go to Gil Lamb and the employees of KMUL who gave us the use of the radio station for this project, and helped us during the day. All the money raised through this project will go to the American Heart Association, Texas Affiliate, Inc., to be used for education purposes and research to help in the fight against heart disease.

Envy shooteth at others and woundeth herself. -Thomas Fuller.

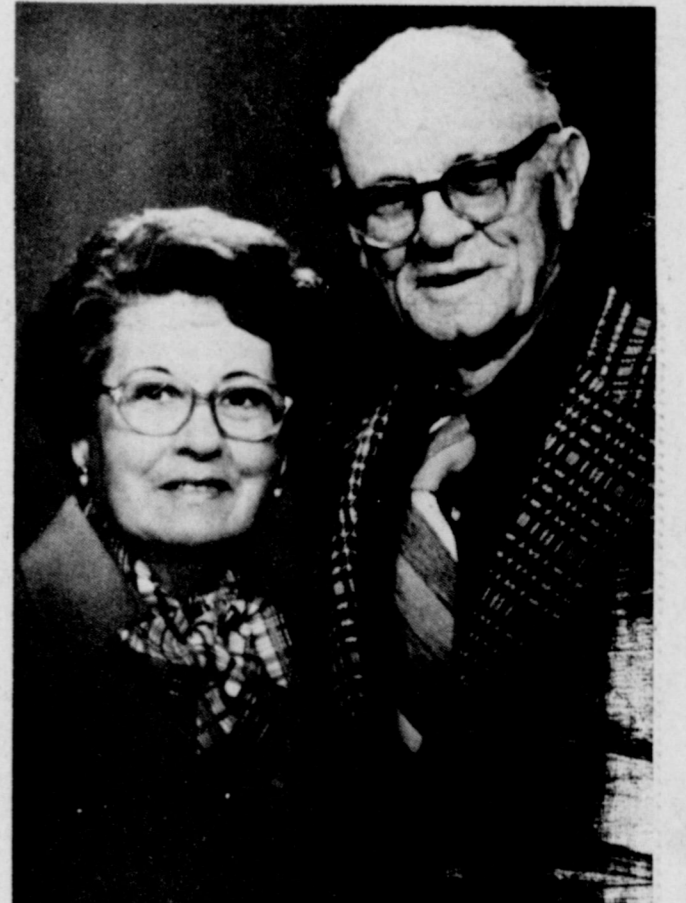


**JUNE WEDDING PLANNED...**Mr. and Mrs. Ervin Keolder would like to announce the engagement and approaching marriage of their daughter Karen Rance to Johnny Loyd Boyce, son of Mr. and Mrs. Jay Boyce, of Maple, Texas. Karen will be a Cotton Center graduate in May. Johnny is a 1974 graduate of Three Way Schools. The couple are planning a June 24th wedding.

## FFA Boosters Hold Meeting

FFA Boosters met Monday night, Eugene Hawkins presiding in the absence of the president, Wayne Crittenden, conducted a short business meeting. Mrs. Eugene Hawkins read the minutes and gave the treasurer report. Reports were given on the stock shows and plans were made for the chemical conference to be held Tues-

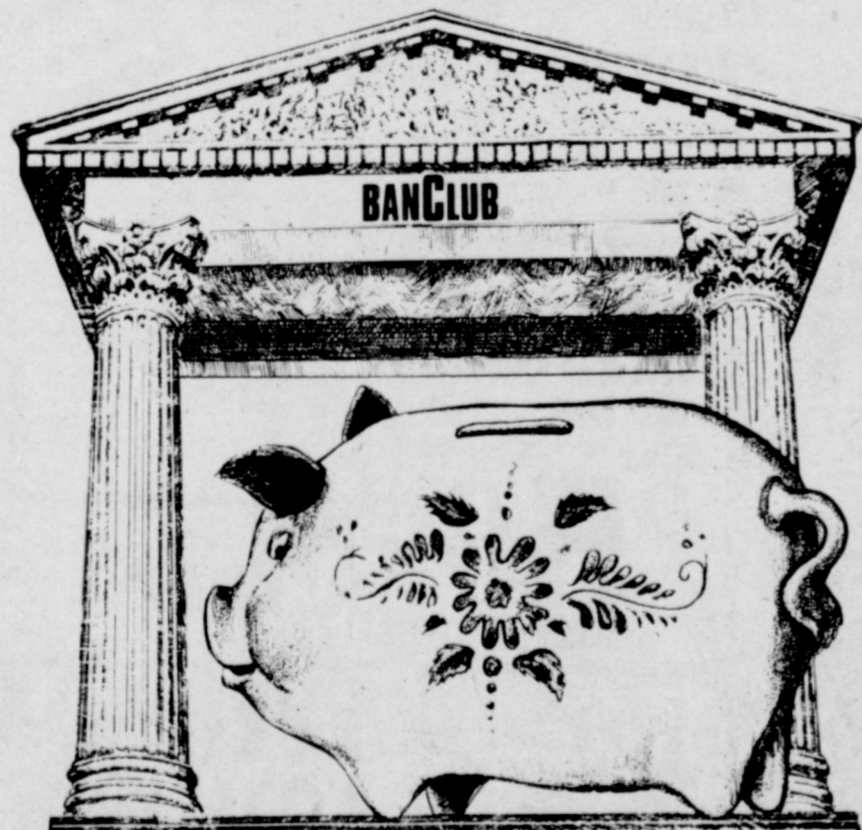
day night, April 4, at 8:00, in the High School Cafeteria. FFA Boosters will be serving a free meal at this conference. Attending were: Bill Bickel, Gentry Lyun, Mr. and Mrs. Eugene Hawkins, Mr. and Mrs. Leon Lewis, Ronnie Black, Mrs. Charles Farmer, and Mr. and Mrs. Robert Hunt.



**50TH ANNIVERSARY...**A reception honoring Mr. and Mrs. Henry Bass on their 50th Anniversary will be held Sunday, April 9, in the Community Room of the Muleshoe State Bank.

# ARE YOU AWARE

that your BANCLUB bank is the best place to save?



Variety of savings plans

Easy access to your funds

Maximum bank rates available

Accounts insured up to \$40,000 by the Federal Deposit Insurance Corporation

SAVE with the bank that provides you with all your banking needs!

## First National Bank



224 S. 1st

MEMBER FDIC

272-4515

## JIM SPANN

Your COUNTRY Entertainer  
AFTERNOONS  
1:00 P.M.-6:00 P.M.  
MON.-FRI.



MORE PRIZES... MORE WINNERS... ON THE K-DAVE COUNTRY MUSIC CLUB



A Terry Stretch Coverall, Little Me Embroided On Shell, Small-Medium

\$6.50

B Boy's Coverall With Top Stitching, Newborn-Small

\$5.50

C Girl's Lace Trimmed Coverall, Newborn-Small

\$5.50

D Natural Coverall, Top Stitch in Accent Colors, Newborn-Small

\$5.50

E Terry Bubble With Little Me Printed On Front, Medium-Large

\$5.00



BRUSHED POLYESTER  
All Snap Back And Crotch  
And Embroidered Yokes

## St. Clair's

110 Main

272-4453





HANDING OUT THE PRIZES—Jaycees were busy Saturday afternoon following the Easter Egg hunt on the baseball field. As the youngsters gathered around, they took home many prizes, including various merchandise, toys and savings bonds.

## HERO Banquet Said To Be 'Big' Success

The HERO chapter hosted the parent-employer banquet, "Stairway To The Stars" on March 20 at 7:30 p.m. in the Muleshoe High School Cafeter-

ia. The banquet was very successful with approximately one hundred seventy-five attending.

Cindy Harris, president of HERO and FHA, was Mistress of Ceremonies. The stage band, under the direction of Mr. Charles Faulkner, provided delightful entertainment.

Mrs. Keith Winters, the Curriculum Development Director from West Texas State University, spoke on how Aspects of Personality Development can be used as our "Stairway to the Stars."

Jane Green introduced the 1977-78 Honorary members. They are Mr. and Mrs. Wayland Harris, Mr. Wayland Ethridge, and Mr. Tommy Black.

Mr. Tommy Black presented the Chamber of Commerce award to Cindy Harris, the daughter of Mr. and Mrs. Wayland Harris.

Maria Pacheco presented the Senior girls with Student Training Certificates. They are Frances Brown, Lora Burris, Jane Green, Cindy Harris, Jolinda Hawkins, Anna Hernandez, Rhonda King, and Janie Posadas. Others were Loveta Black.

LaDene Dudley, Teri Durben, Melody Mauldin, Renae Rutherford, and Tana Webb.

The employers who have been working with the HECE program for two years or more were presented a certificate of appreciation. They are Dairy Queen, Blackwater Soil and Conservation, Black Insurance, Muleshoe Public Library, Decorator's Nursery, Beavers Flowerland, Cashway, Western Auto, Harvey Bass, St. Clair's Department Store, L.P. Gas, Methodist Child Care Nursery, William, Adair, Faver, and Sudduth, Buddie's Shoe Store, Piggy-Wiggly, and Leal's.

During a special recognition, the employees presented their student employees with HERO necklaces. The students also surprised Mrs. Gramling with an engraved silver tray in honor of her birthday and her last year at Muleshoe High.

The banquet was very successful, and the HERO girls would like to thank everyone who was helped support them in any way.

Few men have the strength of character to rejoice in a friend's success without a touch of envy. —Aeschylus.

## TOWER TALKS

by U.S. Senator for Texas  
**JOHN TOWER**

### Economic Justice for Farmers

WASHINGTON—Those unfamiliar with the economics of American agriculture raise a skeptical eyebrow when farmers protest about prices for farm products reaching rock-bottom lows.

They wonder if things are really that bad. Texas farmers and their families have a first-hand knowledge of the current cost-price squeeze. Things are indeed that bad.

For several years now, one of Texas' most important industries—certainly one of the country's most important—has experienced a deepening price recession. In fact, the prices for farm products have so withered in relation to the costs of production that farming nationwide may be years in recovering, even if government recognizes farmers have absorbed all the losses they can.

Action last week in the Senate is the first glimmer of hope that the farmers' plight may not have fallen on deaf ears in Washington after all. We will know more in the coming weeks, but the signs are encouraging.

The Senate, by a vote of 67-26, went on record in support of farm price equity by passing legislation for a flexible parity system which can finally give farmers some leverage in determining how much they can realize for the crops they plant.

The nation's wheat, feedgrain and cotton farmers under this legislation, would set their own target price levels through a formula raising prices in relation to the amount of land not used for production.

Particularly important to the farmers of north Texas are provisions relating to cotton production, which would allow these farmers to realize a just return on their investment.

In 1976, Texas farmers produced some 3.3 million bales of cotton, and nearly 70% of that production was sold on foreign markets. Under the provisions of this legislation, producers would be encouraged to set aside a higher percentage of their land to reduce oversupply and still would be able to anticipate a target price affording them the opportunity for a profit.

More importantly under this legislation, farmers would have the needed flexibility to adjust production, and better manage the crops so important to their livelihood, and to the strength of our agricultural economy.

For the first time, our nation's food and fiber producers finally could claim the same distinction as every other businessman in this country—the opportunity to market a product and then realize a reasonable rate of return for the substantial investment involved.

The legislation passed by the Senate is a responsible step in that direction.

\*\*\*\*  
The go-to-church movement can be given your personal support without any community-wide drive.

\*\*\*\*  
People who put off their work from day to day are always the ones who tell you how very busy they are.

\*\*\*\*  
Advertising is the art of persuading someone that what you have to sell is worth more to him than his money.

\*\*\*\*  
The person who drinks his first cocktail never sees himself as a probable alcoholic, but it has happened before.

## Lazbuddie School Menu

MONDAY  
Meatloaf  
Blackeyed Peas  
Spinach  
Cornbread  
Peanut Butter Cookies

Milk  
TUESDAY  
Fried Chicken  
Gravy  
Creamed Potatoes  
Green Beans  
Hot Rolls-Butter  
Peaches  
Orange Juice  
Milk  
WEDNESDAY  
Beef and Cheese Tacos  
Ranch Style Beans  
Cornbread  
Green Salad  
Jello  
Milk

THURSDAY  
Submarine Sandwiches  
French Fries  
Lettuce  
Pickles  
Onions  
Banana Pudding  
Orange Juice  
Milk  
FRIDAY  
Chicken Salad  
Pork'n Beans  
Carrots  
Yeast Biscuits  
Jelly  
Peanut Butter  
Milk



Mrs. Josie Koontz

Welcome To Muleshoe

This week Muleshoe would like to welcome Mr. Josie Koontz. Josie comes to us from Wichita Falls where she was a beautician, she is now employed at the Patio Beauty Shop. Mrs. Koontz has 3 children living in the Muleshoe area, they are, Mrs. Nicky Nickels, Mrs. Danny McNeil and Gary Glover. Josie attends the Richland Hills Baptist Church and as hobbies she enjoys writing poetry, tinting photos and fishing. She now resides at 920 E. Fir.

Henry Insurance Agency Box 563 Muleshoe

Damron Rexall Drug Co. 308 Main

James Crane Tire Co. GOOD YEAR



# April Shower

PRICES EFFECTIVE APRIL 2-5

STORE HOURS  
MON-SAT 9-7  
SUN 1-6

INFANT & TODDLERS TERRY CLOTH SUMMER WEAR

REG \$4.19 **\$3.09**

REG \$2.99 **\$2.19**

CORK BULLETIN BOARDS

REG \$4.59 **\$3.69**

SPRINGS SPRING Sale CHILDRENS SUMMER PAJAMA

REG \$5.39 **\$4.09**

MENS SHORT SL. KNT SHIRTS

REG \$5.59 **\$3.99**

SPRINGS SPRING Sale PLASTIC CLOTHES STORAGE BAGS

REG \$3.89 **\$2.39**

SPRINGS SPRING Sale LADIES DOUBLE KNT SHORTS

REG \$1.77 **\$1.39**

SPRINGS SPRING Sale PLASTIC 12 QT WASTEBASKET

REG \$1.59 **\$1.09**

DR. SCHOLLS FOOT POWDER

REG-77¢ **61¢**

SWEEP KEEP DUST PAN & BRUSH

REG \$2.09 **\$1.59**

ADORN FIRM & FREE

REG \$1.69 **\$1.29**

BOLD 3 WITH FAB SOFTENER

REG \$2.65 **\$2.49**

TAME CREME RINSE

16 OZ REG \$2.49 **\$1.39**

DEEP MAGIC MOISTURIZING CR.

REG \$1.19 **89¢**

APPLIANCE COVERS

CAN OPENERS OR TOASTERS REG \$1.09 **69¢**

MIXER COVERS REG \$1.87 **\$1.15**

ELECTRIC HEAT MASSAGERS REG \$9.97 **\$5.49**

GOODY HAIR PINS REG 71¢ **53¢**

SPRINGS SPRING Sale KEELER FRUIT CREME COOKIES **69¢**

NEW! BOLD 3

NEW! CLAIRELLE

NEW! MISS BRECK SHAMPOO

NEW! PLASTIC SUIT OR DRESS BAGS

REG \$1.79 **\$1.15**

NEW! TAME

REG \$1.47 **\$1.19**

SPRINGS SPRING Sale NEW! HAND UGR PRESS REG 93¢ **61¢**

WEST BEND & STIR CRAZY POPCORN POPPER REG \$37.97 **\$22.99**

EVERY DAY LOW PRICES

GAL HOMO MILK.....\$1.77

1/2 GAL HOMO MILK..... 93¢

GAL LOWFAT MILK.... \$1.53

1/2 GAL LOWFAT..... 83¢

1/2 GAL BUTTERMILK... 83¢

1 LB COTTAGE CHEESE....67¢

2 LB COTTAGE CHEESE.\$1.33

WHIPPING CREAM..... 53

SOUR CREAM..... 45¢





# CLASSIFIED ADS

## THE PLACE TO LOOK



**OPEN RATES**  
 1st column, per word - \$1.10  
 2nd column, per word - \$0.70  
**NATIONAL RATES**  
 1st column, per word - \$1.10  
 2nd column, per word - \$0.70  
 Minimum Charge - \$5.00  
 Classified Display - \$1.30 per column inch  
 Double Rate for Blind Ads -  
 Double Rate for Insertion  
 11:00 a.m. - 12:00 p.m. for Thursday  
 11:00 a.m. - 12:00 p.m. for Sunday  
 We reserve the right  
 to classify, revise or  
 remove any ad.  
 Not responsible for  
 answers to reader ads.

**PERSONALS**  
**FOR YOUR** Stanley Home Products, Jewel Broyles, call 965-2481.  
 1-16t-tfc

**FROM THIS DATE:** I will be responsible for no debts other than my own. Joe [Bank] Mayberry  
 1-13s-3tc

**HELP WANTED**  
 Need operators at Main Street Beauty Shop. Call 272-3448.  
 3-12t-tfc

**FEED LOT MILL HELP WANTED.** Inquire at PARMER COUNTY CATTLE CO., 4 miles west of Bovina, Texas and US 60. Call 806-255-4400 day nights Bill Bringham 806-481-3811.  
 3-14s-3tc

**SALES AGENTS:** Ag oriented people for expanding field force. College training beneficial. Company will train. Draw commissions and Bonuses. Leads furnished. Excellent income and advancement opportunities for qualified individuals. Phone 806-792-6351 for interview appointment.  
 3-14s-2tc

**HOUSES FOR RENT**  
**FOR RENT IN COUNTRY:** 3 bedroom house. Call 272-4642.  
 4-13t-tfc

**APTS. FOR RENT**  
 Trailer spaces to rent. Water furnished. Own meters. Apts. Kitchenettes. 272-4440.  
 5-19t-104tp

**APT FOR RENT,** well decorated and expensive. Call 272-4096.  
 5-12t-tfc

**REAL ESTATE**  
 3br. house for sale to be moved at Earth 257-3736.  
 8-11t-tfc

**FOR SALE:** 3 bedroom home-carpeted, 1 bath, utility, 1581 Sq. feet, call 272-4114 after 5.  
 8-13s-tfc

**FOR SALE BY OWNER:** 3 bedroom brick home; adaptable to 4 bedroom; 2 full baths; game room; separate dining room; 2450 sq. ft. Fenced back yard; storage building. Richland Hills area, near school. Call 272-4632.  
 8-9s-tfc

**FOR SALE BY OWNER:** 3 bedroom, brick 2 bath, double drive, garage, sidewalk and fence. Call for appointment after 5 p.m. 272-3183.  
 8-13t-tfc

**HOUSE FOR SALE:** 3 bedroom, brick front, bath and half, garage, celler, fenced back yard. 272-4919.  
 8-8t-tfc

**FOR SALE:** 3 bedroom home, 2 baths. Call 3501 before 8:30 a.m. or 5 p.m.  
 8-5t-tfc

**E.E. HOLLAND REAL ESTATE**  
 113 W. Ave. D  
 PHONE 272-3293  
 DAY OR NIGHT  
 Salesman

**FOR SALE:** 3 bedroom, 13/4 baths, carpeted throughout, 2 car garage, fenced yard. Call 272-4683 after 4:30.  
 8-12s-tfc

**FOR SALE:** 4 acres - 3 br-2 bath brick home 2064 sq. feet-40x60 Butler Barn-24x26 Barn-846 sq. feet frame house-1 mi. west of Goodland on highway #54. 927-5351.  
 8-12t-tfc

**GLAZE & GOFORTH**  
 112 Ave. e  
 272-4208

**E.H. Hall Real Estate**  
 505 Austin St.  
 Muleshoe, TX 272-4784  
 Three bedroom house on 75' lot  
 2 two bedroom houses  
 5 lots for sale  
 10 acres in country with 4 bedrooms.  
 11 acres out in country with 2 bedroom house  
 8-12t-tfc

**KREBBS REAL ESTATE**  
 112 Ave. C  
 See us for your real estate needs.  
 Appraisals.  
 8-13s-tfc

**FOR SALE:** Brick, 3 br., 2 full baths, living, dining, kitchen combination, double garage (will consider trade for larger home). 272-4544 - 272-4455.  
 8-13t-tfc

3 br, 1 1/2 bath and office.  
**GLAZE & GOFORTH**  
 112 E. Ave. C  
 8-13s-4tc

**AUTOMOBILES FOR SALE**  
**FOR SALE:** Good school car. 1971 DODGE DEMON, 318-V-8, 3 speed standard transmission. Call 272-4596 or see at 217 N 1st.  
 9-5s-tfc

**FARM EQUIP. FOR SALE**  
**STALKCUTTERS,** 8 row, bearings \$1160.00  
**BEDKNIFER,** 9 runners \$590.00  
**CHISLE,** 11 shank, 3-bars \$1495.00  
**CHISEL,** 9 shank, 3-bars \$1175.00  
**CULTIVATOR,** 8 row, 2-4x4's on bottom \$1650.00  
**LISTER,** 9 shanks, 4x7 bar \$1250.00  
**COUNTERS,** 28" BLADE, HEAVY DUTY \$126.00 each  
**GAGE WHEELS, HEAVY DUTY \$105.00 each**  
**TOOL BARS, ALL 8 ROW SIZES IN STOCK**  
**CLAMPS, all sizes**  
**SHANKS, HIGH CARBON C 1080 STEEL**  
**EXTENSION, all sizes**  
**KNIFING ATTACHMENTS**  
**ROD WEEDER ATTACHMENTS**  
**DEALER INQUIRIES INVITED**  
 Morton Manufacturing Co., Inc., Rt. 2 Box 40-A, Morton, TX 79346  
 10-12t-10tc

**TURBINE PUMPS FOR SALE:** 6" Western, 350 foot setting, 6" BJ, 260 foot setting. Phone 806-797-0019 between 7:00 and 8:00 a.m.  
 10-14s-2tc

**FOR SALE:** Used 6 row Litterton Lehman rowing cultivator, like new. Call 272-4872.  
 10-14s-2tc

**FOR SALE OR TRADE**  
**FOR SALE:** 1970 NOMAD 21' Tavel Trailer, self-contained. Days, 272-4511 nights 272-3553.  
 11-11t-tfc

**FOR SALE:** St. Bernard puppies. Can be registered. See at 124 Reno.  
 11-14s-2tc

**WE HAVE FOR SALE** a 4 month old repossessed cable spinet piano in this area. Big savings. To see this piano call or write CUMMINGS PIANO AND ORGAN SERVICE, 8205 Joliet Ave., Lubbock, 806-792-9580. We also do piano and organ tuning and repair.  
 11-14s-4tc

**BISON CAMPER SHELL** for sell, with long wheel base pickup, is insulated. Come by 222 W Ave. J or call 272-3227 or 272-3113.  
 11-14s-3tc

**HOUSEHOLD GOODS**  
**BURROWS Upholstering.** Reasonable rates. Also Furniture and Appliances bought and sold. Moved to 213 South 1st Street. Phone 272-4255.  
 12-12s-tfc

**GENERAL ELECTRIC STOVE** with self cleaning oven for sale. 4889 or 4726.  
 12-12s-tfc

**PROPERTY FOR LEASE**  
**FOR LEASE:** Texaco Service Station. Phone 272-4688.  
 13-50t-tfc

**MISCELLANEOUS**  
**ASPHALT ROOFING, COMPOSITION** singles, new roof and repairs. Free estimates. Call collect **RON FOSHEE 385-5680.**  
**LITTLEFIELD ROOFING**  
 15-42s-tfc

**\$100 REWARD** Offered for arrest and conviction of anyone doing damage to paper stands. Muleshoe Publishing Co. 272-4536.  
 -11t-15-tfc

**FOR RENT:** Trailer space and overnight parking. 1304 W. Ave. B. Call 272-3448.  
 15-6t-tfc

**WILL DO BABYSITTING** in my home. 272-4957.  
 15-13t-4tc

**SANDSTORMS** and Kirblys. They don't mix, but they do go together. Kirgby rebuilds. As low as \$79.95. LLOYD WHITE, LITTLEFIELD, Call 385-3357. KIRBY SALES & SERVICE.  
 15-12s-tfc

Custom Designed and Made-To-Order **RINGS-N-THINGS** BY JEROLLY 918 E Hickory  
 Phone 272-3163

**PHILLIPS HOUSE OF MUSIC**  
 118 MAIN CLOVIS, NEW MEXICO  
 Pianos, organs, band instruments, new and used. Professional repairs, sheet music, rentals, terms.  
 Phone: 505-763-5041.  
 15-30s-tfc

### Letters To The Editor

(Bucky Taylor, son of Mr. and Mrs. Bill Taylor, has been a coach at Mesquite for the past four years. He graduated from Muleshoe High School in 1970. The letter is from the Mesquite Daily Newspaper) Dear Editor:  
 As the mother of two athletes at Mesquite High School, I wanted to publicly express my

appreciation to Coach Bucky Taylor and the administration of Mesquite High School. We are most fortunate to have a man of his integrity and ability in the position that he holds. I feel sure that he is one of the best trainers in the entire nation and you can sense the genuine respect and concern that he feels for our youngsters.

While most coaches have their on individual season that demand most of their time for that particular period, Coach Taylor's season never ends. Beginning in August, when school starts and football is in

full swing, to basketball which even runs through the Christmas holidays, to track and baseball. Coach Taylor is always with our boys and girls. He even treats those that need

If you sleep till noon you have no right to complain that the days are short.  
 -Thomas Fuller.

The long sleep of death cures our scars and the short sleep of life our wounds.  
 -Jean Paul Richter.

Never brag about something you expect to do: Wait until it is accomplished and then let others pass judgment on it.

**REBUILT MATTRESS BOX SPRINGS**  
 2-Piece Set  
 \$69.00  
 Layaway Now!  
 Western Mattress

**CALL S.A. NEWSOM,** exclusive agent on 2,000 acres table top land, 6 irrigation wells, 6 room modern house. \$212.50 per acre. \$70,000.00 down and terms on balance. On paved road, east side of Curry County, New Mexico.  
 Chateau Real Estate Company  
 Phone (505) 763-3880 or (505) 762-2600

**CALL S.A. Newsome,** 1216 acre stock farm, 3 irrigation wells, 3,000 ft. underground tile. \$60,000 new brick home. 1,000 acres grama grass. 25 percent down and terms.  
 Chateau Real Estate Company  
 Phone (505) 763-3880 or (505) 762-2600

**PTA BINGO POSTER WINNER...**Muleshoe Elementary PTA is sponsoring a Family Night B ingo, on Friday, April 7. Bingo Poster Grand Prize Winner from Richland Hills Elementary was Greg Self. Greg is in the first grade.

him through the summer on a daily basis. What I am trying to say, I guess, is that Coach Taylor is truly a "Man of All Seasons."  
 Saturday in Fort Worth at the Southwest Relays, one of our young woman athletes had a great need for Coach Taylor, and, as usual, he was there. Had he not been with the track team on this sunny Saturday afternoon when most had already started their Spring Vacation, this young woman would have suffered serious, if not fatal, consequences. I was there and while those around reacted with confusion and panic, Coach Taylor calmly and quickly administered to her and revived her and then personally transported her back to Mesquite for further attention.  
 I feel that sometimes we take people for granted and don't let them know how much they are appreciated and I want Coach Taylor to know that he is not one of those unnoticed heroes. I also wanted to thank Mrs. Taylor for sharing her husband with our kids even though it limits the time available for his own family.  
 Patsy Marshall  
 515 Saffron Circle  
 Mesquite, Texas

**WHO KNOWS?**  
 1. Define synchronous.  
 2. What was the sixteenth amendment?  
 3. When was it ratified?  
 4. What American poet was born Feb. 27, 1807?  
 5. Translate the term "modus vivendi."  
 6. When did Florida join the Union?  
 7. What does "Mardi Gras" mean?  
 8. Who founded the Salvation Army?  
 9. What source of power has been called "white coal"?  
 10. When did the first U.S. orbit in space occur?  
**Answers To Who Knows**  
 1. Simultaneous occurrence; happening at the same time.  
 2. It provided for a federal income tax.  
 3. February 25, 1913.  
 4. Henry W. Longfellow.  
 5. Latin phrase meaning "way of living."  
 6. February 22, 1819.  
 7. Literal French for "fat Tuesday," when Lent begins.  
 8. William Booth.  
 9. Water-power.  
 10. February 20, 1962.



PTA BINGO POSTER WINNER...Muleshoe Elementary PTA is sponsoring a Family Night B ingo, on Friday, April 7. Bingo Poster Grand Prize Winner from Richland Hills Elementary was Greg Self. Greg is in the first grade.

**ACTION**  
 INSULATION CO.  
 Top quality insulation for free estimates call 806-986-3544 day or night.

**Yes I Am Interested**

Name .....

Phone .....

Mail to: Box 115 Springlake 79082

## MEET THE CANDIDATES

Rates for listing in the Journal's Political Column is: \$25 for all offices except those for City Council and School Board post which is \$10. This fee includes a front page announcement article and a one-column photograph at the time the announcement is made, in addition to the listing in the Political Column from the date of announcement until the final election.  
 Charges for announcements are cash in advance, and this same policy applies to all political advertising carried in the columns of this news paper.  
 Names for each office will be listed in the Political Column in the order they are received at the newspaper office.  
 The Journal has been authorized to announce the following candidates for public office:

**COUNTY JUDGE**  
 Glen Williams  
**COUNTY CLERK**  
 Hazel Gilbreath  
**DISTRICT CLERK**  
 Nelda Merriott  
**COUNTY TREASURER**  
 Edith Wilt  
**COMMISSIONER BAILEY COUNTY PRECINCT #2**  
 Loyd Stephens  
 Lewis Embry  
**PRECINCT #4**  
 Rudolph Moraw  
 Jerry Ray  
**COMMISSIONER PARMER COUNTY PRECINCT #4**  
 Raymond McGohee  
 Pete Jesko  
 Jimmy Briggs  
**JUSTICE OF PEACE PRECINCT #1**  
 K.B. Martin  
**MULESHOE INDEPENDENT SCHOOL DISTRICT**  
 Jama Maritt Brown  
 Marcia Henry  
**STATE REPRESENTATIVE**  
 Bill Clayton

## "Take a future, Miss Jones."

**And get those pretty hands on a Perpetual Money Wheel.**

Most working gals live on a budget. But here's a budget item you may have overlooked. Your future! Our free Perpetual Money Wheel shows how less than \$12 a week for 15 years in our Perpetual Money Plan can return \$59.89 a month for you . . . month after month . . . indefinitely! And you have over \$13,719 to call your own besides!

And that's only one of 296 fascinating ideas on our Perpetual Money Wheel. Where can you get it? Only in our lobby. How much will it cost you? Nothing. Come in and act'.

The Perpetual Money Plan is an exclusive copyrighted program. Figures are based on current interest rate of 5 1/2% compounded daily, which is subject to change.

**FIRST FEDERAL SAVINGS & LOAN ASSOCIATION of CLOVIS**

"Understanding A Growing Community"

801 Pile Street, Clovis, New Mexico 88101, (505) 762-4417  
 Prince and Parkland, Clovis, New Mexico 88101, (505) 762-4417  
 2nd and Abilene Streets, Portales, New Mexico 88130, (505) 356-4475

• SAVINGS • REAL ESTATE FINANCE





## The Speaker Reports

by Bill Clayton

AUSTIN--Although Texas ranks 10th as far as state taxes are concerned, when one looks at the property tax burden, Texas ranks in the top ten. Only the states of New York, California, Illinois, Pennsylvania, New Jersey, Ohio and Michigan surpass Texas in property tax burden.

This fact creates many problems when the Legislature attempts to form appropriate school finance policies. There are questions of how to best distribute state funds and how to allow local districts to properly fund their individual programs.

The latest information provided by the Texas Education Agency and the Legislative Budget Office indicate that interesting things have been happening in property tax levies. Since 1973, these levies have been increasing by about 15% per year until this year. As a result of the school finance bill passed during the special session, the total school levy increased by 9.2% and amounted to \$1,738,909,281. Of this amount, about \$338

million was for debt service and over \$1.4 billion was for maintenance and operations. This is a major reversal in a trend which was putting an ever-increasing burden on taxpayers.

The State took a larger share of financing the foundation school program, thus moving the average state-local share to about 83% - 15%. Many school districts were able to stabilize taxes for the first time in five years. Inflation and bonded indebtedness caused some districts to increase tax collections.

However, many districts were able to actually decrease their total tax levy--153 to be exact. Fifty-seven districts had no change and the other 836 districts had increases. In terms of tax rates, data indicates that many other districts decreased rates even though increased assessments of annexed property created increases in levies.

This information--although not as encouraging as I would have liked--does prove one thing. Senate Bill 1 stopped the trend

started by the previous school finance legislation, that being an over-reliance on local funding through property taxes.

Much must still be done in this area. Several important things have yet to be determined. The Leander/St. Augustine case is still under advisement in federal court in Austin. The Judge is considering the intangible property questions and the forthcoming opinion will spur the Legislature into making some decisions in this regard.

The School Tax Assessment Practices Board has begun its work and will provide reports on market values, agricultural use values, and intangible

wealth. It will also consider what property tax policies should be in regard to schools.

Committees in both the House and the Senate are investigating the issues in both general terms and in school district terms.

There must be a comprehensive view of the role ad valorem taxes play in Texas and how this tax can be most fairly administered. An individual's ability-to-pay, as well as what pressures will be placed on other taxes, are issues that we can expect to be addressed by the next Legislature.

### Short Course Has Something For Everyone

The annual Texas Animal Agriculture Conference will be held at the Rudder Center on the Texas A&M University campus, Apr. 3-4, and several additional features have been added this year, says Spencer Tanksley, county agent with the Texas Agricultural Extension Service.

The conference attracts large numbers of livestock industry groups to A&M for its short

courses dealing with beef cattle, dairy cattle, horses and swine, as well as programs on range, pastures and forage production.

The various short courses will be keyed to increasing producer profit, with a variety of subjects included in the individual short courses, notes Tanksley.

Held in conjunction with the conference will be the dedication of the new Robert J. Kleberg Animal and Food Sciences Center at 4 p.m. Apr. 3 at A&M's West Campus. The annual Agricultural Convocation of A&M's College of Agriculture will follow at 8 p.m. that evening.

Details on each of the short courses to be conducted during the conference are available at the county Extension office, adds Tanksley.

GNP predicted to go up only 4.2 per cent in 1978.



NEW FLAG FOR LIBRARY...A new flag was donated to the Muleshoe Public Library recently by the friends of the library. The flag was first raised Wednesday morning, March 29, as the children from the Muleshoe Methodist Children's Center said the Pledge of Allegiance. Owen Jones made it possible to raise the flag by getting a new chain for the flag pole.

# "Bonanza Special"

## Save On Chevy's

### Special Bonanza Pkg. Equipment

**\$1659<sup>00</sup>** Off Label Price

This Unit: Stock #252  
Is Special Priced For  
3 Days Only

"You Always Save When You  
Buy From Crow Chevrolet Co."

## Crow Chevrolet Co.

201 Main  
272-3100

W. Hwy. 84  
Muleshoe  
272-4449

**WE GIVE GREEN STAMPS**  
DOUBLE STAMPS  
Every Wednesday

**WE GLADLY REDEEM USDA FOOD STAMPS**

## PIGGLY WIGGLY SPRING HOUSE CLEANING SALE!

"Each of these advertised items is required to be readily available for sale at or below the advertised price in each store, except as specifically noted in this ad." Prices good thru April 5, 1978. We reserve the right to limit quantities. None sold to dealers.

USDA Grade A  
**BOX-O-CHICKEN**

3 Leg Quarters with Backs  
3 Breast Quarters with Backs  
3 Necks  
3 Wings  
3 Giblets

45¢

Lb.

Piggly Wiggly American  
**SLICED CHEESE**

16-oz. Pkg.

\$1.49

Chicken  
**THIGHS OR DRUMSTICKS**

Lb.

99¢

Western Heavy Grain  
Fed Beef, Chuck  
**BONELESS STEAK**

Lb.

\$1.38

**DOUBLE YOUR MONEY BACK MEAT & PRODUCE GUARANTEE**

If for any reason, the fresh meat and produce you buy at Piggly Wiggly does not completely satisfy you, please see your store manager, and the purchase price will be cheerfully refunded, DOUBLE!

SAVE 33¢

Tide's In...Dirt's Out  
**TIDE DETERGENT**

\$1.99

84-oz. Box

Limit one (1) 84-oz. Box with \$10.00 or more purchase

SAVE 37¢

Kraft  
**MIRACLE WHIP**

88¢

32-oz. Jar

Limit one (1) 32-oz. Jar with \$7.50 or more purchase

SAVE 18¢

Liquid  
**CLOROX BLEACH**

69¢

Gal. Btl.

SAVE 14¢

Bounty  
**PAPER TOWELS**

59¢

Jumbo Roll

All Purpose  
**RUSSET POTATOES**

\$1.39

15-Lb. Bag

California Fancy  
**NAVEL ORANGES**

6 \$1

For

Firm  
**VINE RIPE TOMATOES**

39¢

Lb.

U.S. No. 1  
**RUBY RED GRAPEFRUIT**

6 99¢

For





50¢ OFF  
PKG. OF 3  
HANES®  
RED LABEL

- Comfortable, soft, durable 100% cotton.
- Reinforced at stress points.
- Features Haneset®—which controls shrinkage.

**MEN'S**  
Crew neck T-Shirt, S-XL 3/5.69  
Briefs, 30-42 3/5.29  
V-neck T-Shirt, S-XL 3/5.99  
Athletic Shirts, S-XL 3/5.19

**BOYS'**  
T-Shirt sizes 5-8 3/3.59  
T-Shirt sizes 10-20 3/3.89  
Briefs sizes 3-8 3/3.39  
Briefs sizes 10-20 3/3.59



**Dress Shirts**  
7.99

**VISA**

Visa® finish to release soil and stains

100% textured polyester  
• Several colors  
• Sizes 14 1/2-37

**Anthony's**  
C.R. ANTHONY CO.

**HAGGAR**

TEXAS



**MEN'S SLACKS BY HAGGAR®**

\$15.

\$18.

A. 100% Fracron® polyester double knit slacks available in popular solid colors. Sizes 30-42.

B. Expand-O-Matic solid colored slacks with a deep inside elastic waistband that bends and stretches with you. 100% Dacron® polyester double-knit with Visa® finish for easy care. Sizes 30-42.



**MEN'S DRESS SHOE**

28.99

Contemporary classic patent slip-ons with "gator look" inserts. Finely crafted for the young executive. Comparison sole with rubber feel. Black or Brown. Sizes 6 1/2-12.

# TRY NEW Free Spirit

## Fanny Shaper & Fanny Smoother Briefs



**Fanny Shaper Briefs** are made with a special stretch fabric that's preshaped to hold you in a smooth and natural way. Tummy panel for extra smoothness—Cotton crotch for comfort—S/M/L/XL/XXL—in white or beige. \$9.95



**Fanny Smoother Briefs** made of a special stretch fabric that hugs you gently—makes you look smooth and neat, plus an extra little tummy panel for extra smoothness—Cotton crotch for comfort—S/M/L/XL/XXL—in white or beige. \$9.95

Save money too—buy one before May 28, 1978 and get a

**\$150 Refund**  
from Playtex.

**Anthony's**  
C.R. ANTHONY CO.

**Anthony's**  
C.R. ANTHONY CO.

## Soft Touch Terry Coordinates



Make this Spring a Terry Cloth Spring. Comfortable, easy-care polyester terry cloth group that makes a smart looking pant ensemble or a cool short outfit. Colors are Royal, Green or White.

- |  |  |
|--|--|
| A. Wide striped or multi-striped tunic top with spaghetti tie. Size S-M-L. \$9 | D. Wide striped or multi-striped blouson. Size S-M-L. \$12 |
| B. Wide striped tom jones tunic. Size S-M-L. \$12                              | E. Shorts. Size 8-16. \$6                                  |
| C. Multi-striped sahs tunic. Size S-M-L. \$12                                  | F. Pants. Size 8-18. \$9                                   |

# A FISTFUL OF SAVINGS DOLLAR DAYS

THREE DAYS ONLY MONDAY TUESDAY WEDNESDAY  
AMERICA'S FINEST

**MEN'S WESTERN SHIRTS**  
5.88 2 FOR \$10

- 65% polyester, 35% cotton
- Full western make long sleeve shirts
- Pouch snap front closure - 2 snap buttons
- 2 chest pockets
- Front and back yoke and collar
- Permanent press finish
- Sizes 14 1/2-37

**HOSE**  
FOR \$1

**KNEE HI'S**

**CHILDREN'S KNIT POLO SHIRTS**  
Reg. 1.99  
3 FOR \$4

- Short sleeve
- Collar
- Polyester and cotton knit
- Sizes 2-12

**LADIES NYLON BRIEFS**  
Reg. \$1  
SAVE \$2  
6 FOR \$4

- Cotton lined waist
- White and colors
- Sizes S-10

**WOMEN'S PULL-ON PANTS AND TOPS**  
REG. \$6. EACH

**SAVINGS OF VALUE**  
NOW ONLY \$5.  
SAVE \$1.00

Don't Miss This Low, Low Price

Fine first quality double knit polyester pull-on pant in solids and checks. Sizes 10-20. To coordinate with these stylish pants—beautiful printed, striped, and solid colored tops—all of 100% polyester. Sizes S-M-L.

**READY-TO-SEW T-SHIRT KNIT KITS**  
Reg. 2.99  
\$2. SAVE 99¢

- Quick and easy
- Use any T-shirt pattern
- Popular colors in stripes, solids and fashion prints
- Includes 1 1/2 yards of fabric and the rib trim for a total coordinated look

**MEN'S TUBE SOCKS**  
Reg. \$1.50  
SAVE 1/3  
6 FOR \$4

**HOLLANDER PILLOWERS**  
Reg. 1.99  
SAVE 1/3  
2 FOR \$5

- 100% Dacron® 22 polyester
- Filled
- One size stretches to fit comfortably
- All white or white with stripe tops

**45" DRESS & SPORT FABRIC**  
Reg. 1.29 yd.  
\$1. YARD

- Tremendous selection of fabrics in the season's most popular colors and prints. All first quality full bolts. Cottons and cotton blends.

**Anthony's**  
C.R. ANTHONY CO.





# MULE'S TALE

Editor, Cherylee Bryant

Official Publication of Muleshoe High School Written and Edited by Students of the Muleshoe Schools



Volume 13, Number 22

Sunday, April 2, 1978

## Eleven MHS Golf Team Members Saluted

★★

### Calendar For The Week

Monday, April 3  
UIL Journalism and Ready Writing-Morton.

Tuesday, April 4  
Leadership conference - Canyon

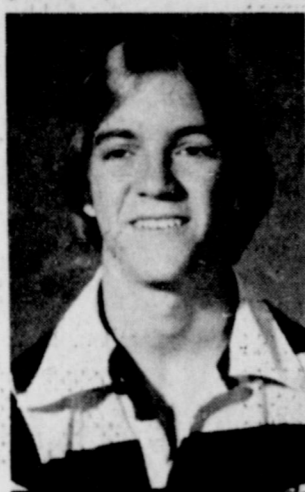
Friday, April 7  
Student Council Assembly/Tennis Meet - Canyon

Saturday, April 8  
UIL - Morton.

### LCC Students Entertain At High School

Wednesday, March 28, 1978 the students of Muleshoe High were entertained by the musical group, "The Hard Travelers." For the last several years the group has performed at the high school, and their performances are sponsored by Student Council.

The group comes from Lubbock Christian College. Each year a different trio of boys combine to form the Hard Travelers and this group travels approximately four hundred thousand miles across the United States each year to make Lubbock Christian College better known. Their performance was very much appreciated and enjoyed.



EDWIN WATSON



BILLY JAMES



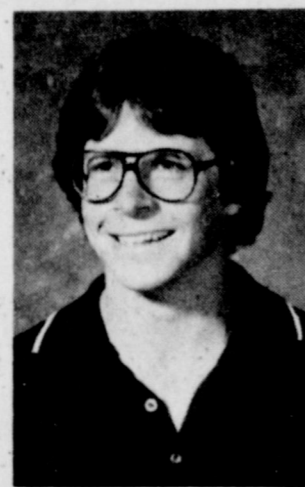
TRACI WALKER



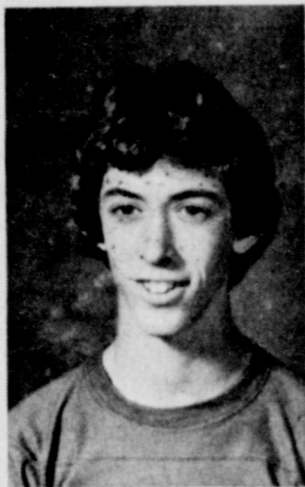
JERRIA BEASLEY



RANDY WATKINS



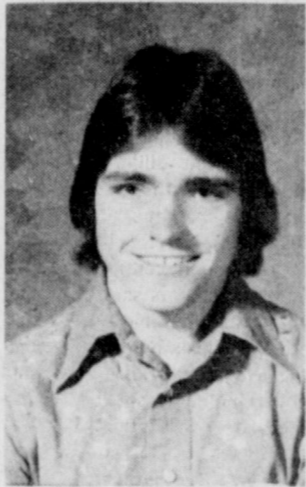
DAN McVICKER



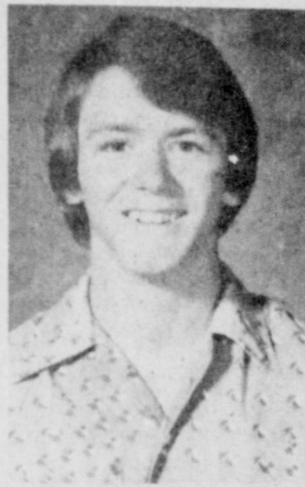
DICKEY SUDDUTH



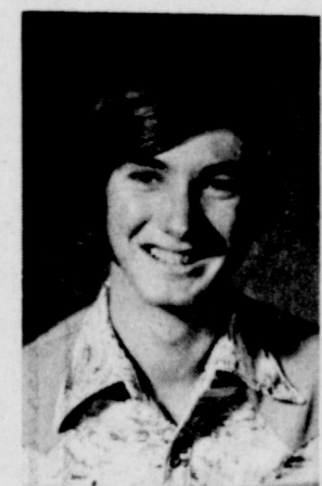
DOUG COWAN



WADE WILSON



LYNDAL STOVALL



KIRK LEWIS

### Thespian Of The Week

Kirk Lewis has been selected as this week's Thespian of the Week.

Kirk is one of the most active members of our Agriculture department. He is President of FFA, and participates in almost all their many activities. Kirk has also been recognized for state and national honors in the field of agriculture.

Kirk is Parliamentarian of the National Honor Society.

Congratulations, Kirk, on your fine dedication and hard work.

Computer to check federal employes vs student loans.

### MHS Girls Track Is 'Going Great'

The Muleshoe Mulette track team took a fourth place finish, overall, when they traveled to Hereford last Friday. There were fifteen teams entered and the Mullettes compiled a total of sixty-seven points.

Debra Washington finished fifth in the 80 yard hurdles with a time of 12.5. Lupe Pacheco turned in a time of 66.6 to take a seventh place finish in the 440 yard dash. Denice Reeder took sixth place in the 880 with a time of 2:43. In the mile run Sandra Hughes finished eighth with a clocking of 6:27.12.

The relay teams fared real well in this meet. Their worst finish was third, and the best was first. The 440 relay team, Frances Brown, Evelyn Grace, Debra Washington, and Shelly Dunham, finished first with an impressive time of 51.8. The 880 relay team, consisting of the same members mentioned above, took a number two spot with a time of 1:50.2. The mile relay finished with a time of 4:24.6, which was good enough to take a third place finish. Members of the team include Frances Brown, Lupe Pacheco, Shelly Dunham, and Evelyn Grace.

Shelly Dunham headed the field events for the Mullettes by throwing the shot 35' 7" for a second place finish. Shelly placed third by throwing the discus 92' 11". Glenda Rasco placed fifth behind Shelly with a throw of 84' 11".

The boys did real well on their trip to Stamford Relays. Only three boys attended this meet and they all placed. Doug Precure took a third in high jump with six feet. Charles Briscoe took sixth with a jump of 5' 8". Lee Elder posted his best time of the year and also set a meet record in the mile run with a time of 4:38.0.

### Tennis Team Loses By One Match Margin

The Muleshoe tennis team traveled to Littlefield on Wednesday and lost by a one match margin.

Stephanie Brantley and Jo Ronda Rhodes lost in their doubles match by a score of 6-0, 7-5. Dani Dunham lost her singles match by a score of 6-3, 6-3. Mike Griffin lost to Privett by a score of 6-3, 6-4. Mark Northcutt and Duane Franklin lost by a score of 6-3, 6-2. Marcus Beversdorf lost to Kevin Gardner by a score of 6-3, 6-4.

Gina Burden and Becky Turner won by a margin of 6-2, 6-4. Shelly Dunham beat the Littlefield number one by a score of 6-3, 7-6. Monti Vandiver won his match in split sets by a score of 6-1, 4-6, 6-3. Danny Wilson and Billy Vinson also won in split sets by a score of 6-7, 3-6, 6-4.

Congratulations to these tennis members!!!

### Happy Birthday

Happy Birthday to all you Spring Chickens!  
April 2-Shelley Splawn

### FFA Dairy Cattle Judges At Canyon

Dairy Cattle judging consists of qualities observed in selected cattle and their placing accordingly. The score card used is divided into general appearance, dairy character, and mammary system. The general appearance includes shoulder blades, back, rump, legs, and feet. Withers, neck, thighs, rump and pins belong to the animal's dairy character. They determine whether or not the cow calves easily, uses feed to maximum milk production, and holds a large amount of feed. The type of udder a cow has provides the subject for the

### DECA Sends Two Delegates To Convention

Two delegates from the Muleshoe Distributive Education Dept. recently attended the annual DECA Career Development, held this year in San Antonio, Texas. Those attending were Mr. and Mrs. Marcus Gist, Jana Jones (Chapter President) and Marvin Davenport (Chapter Vice-President).

Leaving Wednesday night at midnight they had plenty of time Thursday to visit the Alamo and walk along the San Antonio River, where they ate supper.

Friday they attended a fashion workshop, instructed by the fashion coordinator from Sear's and Roebuck Company. After visiting Windsor Park Mall, they ate supper in the "Tower of Americas" high above San Antonio in a revolving restaurant, followed by the movie "High Anxiety".

The Business Meeting was held Saturday morning in the Convention Center from 7:30 a.m. until noon. The meeting began with proposed changes in the DECA Constitution followed by the speaker and campaign speeches, with election of State Officers last.

Since Saturday was their last night, they ate at the "Magic Time Machine" where they were served the famous "Roman Orgy" with a Chinaman, Cookie Monster, and Madame Butterfly as their table attendants. They drove all day Sunday getting home late that evening.

April 3-Debbie Hall, Reynaldo Vasquez  
April 4-Birma Ranjel  
April 5-Sherri Knowlton  
April 6-Connie Harmon  
April 7-Donnie Long, Lola Martinez  
April 8-Tonya Magby, Linda Nowlin.

### Mammary System

The size of udder, udder attachment, teat size and placement, and blood circulation are the important factors to consider.

The Muleshoe FFA Chapter Dairy Cattle judging team traveled to Hender's Dairy Saturday for a round of competition. This contest is one of the top contests in the State. Team members include Keith Hawkins, Dwayne Shafer, Kenny Henderson, Dean Estep, Gina Angeley, Dennis Patterson, Tommy Edmondson, and David Patterson. Hender's Dairy is located east of Canyon.

Team members judged six sets of cattle consisting of three Holstein cow classes, two Heifer classes, one set of Brown Swiss cows. The official placings were made by James Santos, Holstein Association Field man.

### Muleshoe School Lunch

- MONDAY  
Milk  
Steaks Gravy  
Creamed Potatoes  
Eng. Peas  
Hot Rolls  
Fruit
- TUESDAY  
Milk  
Hamburgers  
Lettuce and Tomatoes  
Pickles and Onion  
Tater Tots  
Cobbler
- WEDNESDAY  
Milk  
Tamales  
Beans  
Cole Slaw  
Cornbread  
Fruit Jello
- THURSDAY  
Milk  
Corn Dogs  
Veg. Beef Soup  
Crackers  
Cinnamon Rolls
- FRIDAY  
Milk  
Fried Chicken gravy  
Creamed Potatoes  
Green Beans  
Hot Rolls  
Cobbler

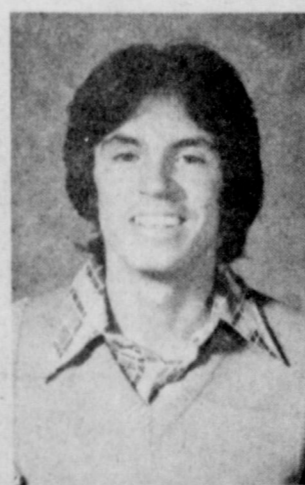


JEFF HYDE

### Evelyn Grace Outstanding In Performance

Evelyn Grace, Muleshoe High School Senior, played an outstanding game in the annual East-West All Star game at Amarillo Saturday night. Evelyn scored 10 points for the West team. The game was very exciting with the East winning in the last three seconds 57-56. Dani Dunham represented Muleshoe as a Queen candidate and Shae Penna was a cheerleader for the West team.

Radio City Music Hall to close in spring.



MARTIN LOPEZ

### High School Honor Students

The honor students for the month of April are: Freshman, Debbie Marth, Sphomore, Pam Young; Junior, Jeep Shanks;

This week we would like to salute the golf team at MHS. This year's golf team has done a very fine job so far and are expected to continue to do so. The team is composed of two girls and nine boys.

Jerria Beasley is the 15 year old daughter of Mr. and Mrs. Jerry D. Beasley. Jerria is one of the girl members of the team. Her other activities include Volleyball, 4-H, and Rainbow. Her comments were, "I think golf is fun. Traci and I are going to do our best to go to regional and then to state."

Traci Walker is a Freshman member of the golf team. Her parents are Mr. and Mrs. Curtis Walker. Traci is also in FHA and Athletics.

A senior member of the team is Billy James, son of Mr. and Mrs. Willie James. Billy's comments about the team were, "This year we have really been working hard in trying to better our game. If we continue to work hard we could easily win district and eventually make it to State." Billy is also active in FFA, DECA, and athletics.

Edwin Watson is a Senior and son of Mr. and Mrs. W.T. Watson. Besides golf, Edwin participates in FFA, athletics, and is a member of the Muletrain-Mule's Tale staff. Edwin commented, "I feel that this year our golf team is the best in the school's history. I feel that we will easily win district and do well in regional."

A 17 year old Junior on the golf team is Randy Watkins. Randy's parents are Glen and Mary Watkins. Randy commented, "I think we have a good chance to go all the way to State this year and next year."

A Junior member of the golf team is Dan McVicker. His parents are Mr. and Mrs. J.R. McVicker. Dan's other activities are FFA, and athletics. His comments were, "I think our golf team has the best chance ever of going all the way to state if we will just practice and work hard."

Dickey Sudduth is the 17 year old son of Mr. and Mrs. David Sudduth and is a Junior at Muleshoe High. Dickey also participates in FFA, Football, Basketball. He said, "I think if we'll get serious we will have a good year."

Doug Cowan, 17 year old son of Mr. and Mrs. Harold Cowan, is a Junior member of the golf team. Doug commented, "With much work we should have a shot at the State meet." Doug is also a member of the Muletrain-Mule's Tale Staff and Student Council.

Wade Wilson is the 17 year old son of Leon Wilson and Anita Allgood. Wade also participates in FFA and Football. Wade remarked, "I think we will have a very good year."

Lyndal Stovall, the 17 year old son of Mr. and Mrs. Bob Stovall, is another member of the golf team. Lyndal is active in football and FFA. He commented, "This is my first year on the

golf team, and I really do like it."

Jeff Hyde, the 15 year old son of Mr. and Mrs. Albert Martin, another member of the golf team, is active in athletics and FFA. He stated, "The golf team has done very well at the first two meets, and I feel we will continue to win."

So far this year, the golf team has competed in two meets. The first meet was the Hereford Invitational. On Thursday, March 9, the JV played in the meet. Those members make up the JV were Randy Watkins, Dan McVicker, Billy Vinson, Lyndal Stovall, and Jeff Hyde. The next two days, the varsity boys competed in the meet. Those playing on the Varsity were Wade Wilson, Edwin Watson, Billy James, Dicky Sudduth, and Doug Cowan. The team finished up in second place behind Tula. Wade Wilson was second runner-up for medalist. The team won a trophy.

The following Monday, the whole team competed in a dual meet at Olton. The Muleshoe team won the overall competition. Dicky Sudduth was medalist and Billy James was first runner-up. Tracy Walker competed in the girl's division, and she was first runner-up for medalist. Congratulations to the golf team, and best of luck the rest of the season.

### UIL Group To Compete In District

This year the UIL District meet will be held at Morton on Monday, April 3, and Saturday, April 8.

Monday, the Journalism and Ready Writing events will be held starting at 2:15. Those students entered in Journalism are Billy Vinson, Cherylee Bryant, Edwin Watson, Stephanie Brantley, and Benetta Roming. Ready Writing contestants are Jane Green, Mark Lovelady, Rhonda King, and Frances Brown.

Saturday, the Spelling, Number Sense, Science, and Typing events will be held. Spelling contestants are Vivian Brisco, Tommy Edmondson, and Julius Brisco. Number Sense entrants are Mark Northcutt, Tommy Wheeler, Julius Brisco, and Jesse Lackey. Those competing in the Science field are Julia Shain, Cindy Hamblen, and Mark Northcutt. Entries in typing are Keava Roming, Tena Landers, Brenda Clay, Minerva Martinez, Robert King, and alternate Dickey Sudduth.

The Mule's Tale staff wishes all these people good luck in their special events.

Holy Crown of St. Stephen returned to Hungary.

Syria blasts Sadats peace initiative.



PAM YOUNG



DEBBIE MARTH

Senior, Martin Lopez. These students are chosen by the faculty each month.

Debbie Marth is the 14 year old daughter of Mr. and Mrs. Bob Marth. She runs the 880 in track and is interested in gymnastics. She is also active in FFA.

Pam Young, the 15 year old daughter of Mr. and Mrs. Jack Young, is FFA President and also active in Rainbows.

Jeep Shanks is active in all athletics, FFA, and is on the Muletrain-Mule's Tale Staff. He is the son of Mr. and Mrs. Gerald Shanks.

Martin Roy Lopez, 18 year old son of Mr. and Mrs. Trinidad Lopez, is involved in athletics, FFA, and Art club.

Congratulations to these students for being chosen Students for the Month of April.

we are in a windy season  
so come to Decca  
mercantile  
and buy a  
windbreaker

call 372 3080





WOONING HIS LADY LOVE--Malvolio, played by Brad Baker, swoons over the thought of a letter from his lady love, much to the delight of one of the characters in the "Twelfth Night," presented Friday night by the Muleshoe Fine Arts Boosters.

## Cold Water Often Causes Heart Attack

People getting in the water in March know it will be cold but they may be in for the shock of their lives. In fact, the shock may be fatal if the water is cold enough, the Texas Medical Association (TMA) says. Accidents or over-enthusiasm could keep someone in cold water long enough to cause hypothermia, a condition where body temperature drops several degrees until the person has a heart attack.

A study in Britain estimates an average size, unprotected adult would be in danger of hypothermia after about two hours of staying in seawater that was 62 degrees Fahrenheit. A thin adult would be in trouble in about an

hour; a fat adult could survive much longer.

Major factors contributing to hypothermia risk include water temperature, length of time in the water and the person's physical condition, especially body fat. Children have the biggest risk of hypothermia because they have so little body fat. Considering the cold water risk along with the fact that drowning is the second biggest cause of death among children ages 4-14, children run increased risks until the water gets warm. (Traffic accidents are the leading cause of death in that age group.)

Getting someone out of the water and warming him or her as quickly as possible can save many victims. If the person is not breathing or has no pulse, mouth-to-mouth resuscitation and any other necessary techniques should be applied first.

People involved in boating

accidents run a great risk of hypothermia because they probably will be in the water awhile. But precautions can give them good survival chances.

It is a good idea to stay with an overturned boat even in the summer because rescuers can spot you more easily. In cold water, it is even more important not to move around excessively because it lowers body temperature faster.

Life jackets serve double protection in cold water. They not only keep you afloat easily but also provide some insulation against the cold. The British study reports that keeping on other clothing can decrease body heat loss by almost half. Of course burdensome clothing should be discarded if it makes you sink.

\*\*\*\*

If all the energy that is being directed at reforming other people could be self-directed, what a race we would have on this earth!

## More Texans Are Growing Gardens

More and more Texans are growing gardens or "growing their own groceries."

Gardening fever is again taking hold in Texas as spring approaches. Indications are that most 60 percent or all Texas households will engage in some type of gardening activity this year -- be it a full-fledged backyard garden, a window box or a few containers on the patio. In the U.S., some 51 percent of all households now take an active part in gardening.

What's so alluring about gardening and homeowners can now expect faster service in having soil, water and plant samples tested.

The Soil, Water and Plant Testing Laboratory operated by the Texas Agricultural Extension Service at Texas A&M University is now set up to provide more efficient service due to recently expanded facilities.

More space as well as a better arrangement in the new facility will make it possible to process samples promptly and efficiently. Also, modern instruments and methods are available for providing accurate and complete testing results on soils, irrigation water and plant tissue.

### Gubernatorial Candidate Cites Record

Republican Gubernatorial candidate Bill Clements believes his record of leadership and management qualifies him to best run the Governor's office in Austin.

Speaking at a luncheon Tuesday in Seguin, Clements said he will bring to the Governor's office a record of thirty years of management and leadership experience gained in building his own business, SEDCO, INC., and in running the Department of Defense. "In the Department's budgetary cycle", Clements said, "there were line item annual budgets exceeding one hundred billion dollars", and he was the person who managed that budget and was responsible for the liaison with the Democrat controlled legislature. Clements said he is the only candidate able to "separate the legislative branch from the executive branch of Texas government, as spelled out in the State Constitution."

Clements said he can put discipline, accountability, and responsibility into the Texas Governor's office for the very first time in history.

basics. Cotner lists these:

--Watering--Water enough to penetrate the soil to a depth of at least 6 inches. Water in the furrow between rows of crops when possible. When using a sprinkler, water in the morning to allow plant leaves to dry before night; this prevents disease problems.

--Weed Control--A hoe is the best way to get rid of undesir-

able plants. Chemical weed control is undesirable and unsatisfactory because of the wide range of crops grown in most gardens.

--Mulching--This involves applying a material such as straw, leaves, grass cuttings, bark, sawdust, compost or

newspapers on the soil and around growing plants. Mulching helps increase yields, conserves moisture, prevents weed growth, regulates soil temperature, and reduces fruit rot.

--Pest Control--Diseases and insects are usually a major problem in Texas gardens due to mild winters. Use chemical control measures only when necessary and be sure to follow

the manufacturer's directions on the label.

--Harvesting--Harvest vegetables at their peak of maturity for the best flavor. For maximum flavor and nutritional content, harvest the crop the same day it is to be canned, frozen or eaten.

"Keeping these few steps in mind, gardening can be fun and at the same time can provide tasty vegetables that can help cut your grocery bill," emphasizes Cotner.

### Soil Test Service Available

Bailey County farmers, ranchers and homeowners can now expect faster service in having soil, water and plant samples tested.

The Soil, Water and Plant Testing Laboratory operated by the Texas Agricultural Extension Service at Texas A&M University is now set up to provide more efficient service due to recently expanded facilities.

More space as well as a better arrangement in the new facility will make it possible to process samples promptly and efficiently. Also, modern instruments and methods are available for providing accurate and complete testing results on soils, irrigation water and plant tissue.

The lab performs a vital service because with results from soil tests, producers and homeowners know how much of which nutrients to apply to soil to grow particular crops, points out Spencer Tanksley. This is particularly important because of the current cost-price squeeze in

which producers find themselves. Everyone is interested in getting the most for his money, so making good use of soil tests in determining a fertilization program is vital.

Since fertilizer supplies are currently good and prices are reasonable, producers need to determine their fertilizer needs by soil testing. Then they should arrange for the amount of fertilizer needed to reach production goals for this year's crops. If operating capital is not sufficient for an adequate fertilization program, producers should lay aside some cropland rather than fertilize it at low levels.

Regarding irrigation water quality, it is particularly important to test water from all new wells.

Information on submitting soil, water or plant tissue samples for testing is available at any county Extension office, adds Tanksley.

It is no small art to sleep; to achieve it one must keep awake all day.

-F.W. Neitzsche.

**Re-Introductory Offer**

# PIZZA

**2 For 1**

**Buy A Pizza & Get The Next Smaller Size Free**

**Monday - Friday**  
**April 3-7**

**Orders To Go Welcome!**

## XIT

**STEAK HOUSE**

## MULESHOE STATE BANK Offers You an Extra Bonus



Your Choice of Any Pair of Stems or Tumblers of Beautiful Classic Pattern French Lead Crystal or A Four-Piece Place Setting of English Village English Ironstone Dinnerware **FREE!**

### WHEN YOU:

- Open a new Savings Account for \$25 or more
  - Add \$25 or more to your present Savings Account
  - Open a new Checking Account for \$100 or more
  - Add \$100 or more to your present Checking Account
- (One Free Gift Per Family, Please)

### THEN.....

With each additional deposit of \$25 or more to your Savings Account or \$100 or more to your Checking Account, you may purchase additional Place Settings or Accessory Units of English Ironstone Dinnerware for \$3.95 OR additional pairs of French Lead Crystal Stems or Tumblers for \$4.95.

### OR.....

With a deposit of \$1,000 or more to your Savings Plan, you may purchase the entire 61 pc. Set--Service for 8--for the English Ironstone Dinnerware for only--\$65.00 OR you may purchase any 24 Stems or Tumblers of the French Lead Crystal for only--\$40.00.

### OR.....

With a deposit of \$5,000 or more to any Savings Plan, you may purchase the entire 61 pc. Set--Service for 8--of the English Ironstone Dinnerware for only--\$59.95 OR you may purchase any 24 pieces of the Lead Crystal for only \$35.00.



### EXTRA BONUS

A beautiful oven-proof Covered Casserole and Electric Warming Stand is yours for only \$7.95 (a \$14.95 value) and eight Bonus Coupons from the No. Two Add-On setting.



**MULESHOE STATE BANK**

Member FDIC



**Inventory ALL SALES FINAL STOCK REDUCTION SALE**

• NO EXCHANGE • NO REFUNDS • NO RAINCHECKS

**March 30 - April 8**

Quantities Limited To Stock On Hand & Subject To Prior Sales

## Tremendous Savings On

Housewares Hardware Hand Tools  
Fireplace Accessories  
B&D Power Tools Recreational Vehicle Accessories  
Plumbing Dept.  
Electronic Calculators Electrical Dept.

**True Value**  
HARDWARE STORES

# Barry Hardware Co.

**TRUE VALUES EVERY DAY**

**5th & Mitchell Clovis, N.M. 762-2906**





SHOWING HER PRIZES—Lisa Silguero, eight, shows off her prizes at the Jaycee Easter Egg hunt last Saturday. She was presented a grand prize savings bond for her big prize.

## Texas Cheers Visitors Who Spend 'Big' Money

Texans have reason to cheer. During 1977, an unprecedented 23.2 million-plus out-of-state visitors chose Texas as the place in which no vacation, attend a convention, conduct business, or relax with relatives and friends.

According to the 1977 Texas Visitor Industry Report, just released by the State Department of Highways and Public Transportation, more folks came to Texas last year than ever before. Last drove, many flew, and thousands of them arrived by bus and train. A full million auto visitors like the Lone Star State so well they sojourned in Texas an average of three months.

Tom Taylor, director of the department's Travel and Information Division, noted that 1977 was "A record year for out-of-state visitors to Texas." Some 19.1 million came to the state by auto or recreational vehicle and an additional 4.1 million traveled by air, bus or rail, an impressive total increase of ten percent over 1976. Expenditures totaled a whopping \$4.3 billion, every dollar a benefit to Texans.

"These figures," said Taylor, "are the highest ever recorded

in the 30 years the department has been reporting on this vital industry.

"In 1947, we were proud to announce that 3.9 million auto visitors came to Texas and that they left behind some \$179 million. The state's tourism market has come a long way since then; it's almost quintupled in auto visitor volume alone. We have reason to be pleased, but should never become complacent.

"A large percentage of our 1977 visitors were influenced to come to Texas through our continuing programs of literature and motion picture distribution. A total of 6.8 million publication pieces, produced by the department and by private sources, were distributed in 1977, and over 15 million people viewed our travel films.

"Our Tourist Bureaus, located at key entry points into the state, hosted more than two million travelers. Professional travel counselors, who staff the bureaus, were instrumental in convincing our-of-state visitors to extend their stay in Texas just a little longer. The 1977 report on the visitor industry, which

incorporates direct responses from almost 30 thousand of those out-of-state travelers, confirms that their job has been well done."

The Texas Visitor Industry Report, produced annually, is based on a comprehensive survey of

out-of-state auto travelers to Texas, combined with statistics provided by commercial carriers. For the complete 1977 report, write 1977 V.I.R., SDHPT, Box 5064, Austin, Texas 78763, or call 512/475-7263.

In addition to the total visitor volumes and expenditures, the report details other interesting findings such as favored destinations in Texas, spending per person, percentages of repeat visits, and the states and regions from which auto visitors originate.

### AG Candidate Boosts Raise

Price Daniel, Jr., Democratic candidate for Attorney General of Texas, today advocated higher pay and improved retirement benefits for Texas Highway Patrolmen and said he would urge the next session of the Texas Legislature to increase salaries to levels at least competitive with those for law enforcement officers in major metropolitan areas.

"Our State troopers do not now receive pay commensurate with the risks they encounter each day, the emergency impositions on their off-duty hours and the fine job they do maintaining safety on our vast expanse of highways, protecting lives and property and enforcing the laws of this State," Daniel said. "Recruitment, training, per-

formance and tenure will benefit from increased salaries and better retirement benefits. Despite considerable improvement in recent years, officers in Houston, Dallas, and other metropolitan police departments earn noticeably more than Department of Public Safety law enforcement personnel with comparable experience. All those who risk their lives to protect the public deserve encouragement and adequate compensation for their tremendous public service."

Daniel's record as a member and as Speaker of the Texas House of Representatives reflects strong support for law enforcement at both the State and local levels.

### Debra Knowles Has Graduated As Specialist

Airman Debra P. Knowles, daughter of Jack Knowles of Muleshoe, has graduated at Sheppard AFB, Tex., from the U.S. Air Force technical training course for aircraft maintenance specialists.

Airman Knowles, who was trained to maintain, repair and service aircraft currently in use by the Air Force, is being assigned to Reese AFB, Tex., for duty with a unit of the Air Training Command. Completion of the course earned the individual credits towards an assoc-

iate in applied science degree through the Community College of the Air Force.

The airman attended Muleshoe High School. Her mother, Mrs. Lou Knowles, resides in Canyon, Tex.

#### BUDGET & VA

The chairman of the House Veterans Affairs Committee, Rep. Ray Roberts (D-Tex.), has complained that President Carter's budget request for Veterans Administration medical care is inadequate.

## '77 Texas Ag Sales Up, So Were Costs

COLLEGE STATION—Texas farmers and ranchers had an estimated sales volume of \$6.87 billion for 1977, up from the 1976 total of \$6.55 billion. However, their net income suffered due to low market prices and soaring production costs.

"With the increase in agricultural sales in Texas, the state is continuing to move toward the goal of becoming Number 1 in the nation in total cash receipts from agricultural products," points out Dr. Carl Anderson, marketing economist with the Texas Agricultural Extension Service.

"And, of course, the total agribusiness industry in Texas continues to grow. Currently, every agricultural dollar turns around about three-and-a-half times, generating more than \$25 billion in economic impact within the business community and benefitting the lives of many people. Thus, agricultural growth contributes substantially to the growth of the Texas economy."

Looking at last year's estimated cash receipts, meat animals led the way, contributing \$2.48 billion. Cotton was the top crop, with cash receipts of more than \$1.45 billion.

Other top contributors in cash receipts were feed crops, \$819 million; food grains, \$485 million; poultry and eggs, \$358 million; dairy products, \$336 million; vegetables, \$231 million; and oil crops, \$197 million. Cash receipts of \$286 million are estimated from agricultural re-

lated areas such as farm-based timber, horses, fish farming, hunting leases, farm pond leases and recreation.

The largest gain in cash receipts from meat animals were up \$91,000 from a year ago while oil crop receipts showed an increase of \$58,000. Substantial gains were also noted in cash receipts from fruits and nuts, vegetables, and agricultural related income. On the other hand, receipts were down for dairy products, poultry and eggs, food grains and feed crops.

Which agricultural commodities had the most economic impact for Texas in 1977?

Anderson lists the top 15 as cotton and cottonseed, beef, fed beef, sorghum, poultry, dairy, other feedgrains, rice, wheat, vegetables, swine, sheep and goats, forestry, recreation and soybeans.

### BIBLE VERSE

"... He that is without sin among you, let him first cast a stone at her."

1. Who spoke these words?
2. Unto whom were they addressed?
3. To whom does "her" refer?

#### Answers To Bible Verse

1. Jesus.
2. Certain scribes and Pharisees.
3. A woman taken in adultery.

# ATTEND THE CHURCH OF YOUR CHOICE

FIRST UNITED METHODIST CHURCH  
Rev. David Hamblin  
507 West Second, Muleshoe

UNITED PENTECOSTAL GOSPEL LIGHTHOUSE CHURCH  
George Green, Pastor

PRIMITIVE BAPTIST CHURCH  
Elder Bernard Gowens  
621 South First

FIRST ASSEMBLY OF GOD  
Rev. Joe Stone  
517 South First

JEHOVAH'S WITNESS  
Boyd Lowery, Minister  
Friona Highway

FIRST CHRISTIAN CHURCH  
Rev. Walter Bartholf  
Sunday School 10:00 a.m.  
Worship 11:00 a.m.  
130 West Avenue G.

LATIN AMERICAN METHODIST MISSION  
R.Q. Chavez, Pastor  
Fifth Street & Avenue D.

NORTHSIDE CHURCH OF CHRIST  
117 E. Birch Street

THE COMMUNITY CHURCH  
Rev. H.D. Hunter  
Morton Highway

CHURCH OF THE NAZARENE  
Pat Ridley, Pastor  
Ninth & Avenue C.

CALVARY BAPTIST CHURCH  
James Williams, Pastor  
1733 West Avenue C.

TRINITY BAPTIST CHURCH  
314 East Avenue B.

RICHLAND HILLS BAPTIST CHURCH  
Roy L. Sikes, Pastor  
17th and West Avenue D.

EMMANUEL BAPTIST CHURCH  
Iglesia Bautista Emmanuel  
1071 Third  
Isaias Cardenas, Pastor

SPANISH BAPTIST MISSION  
Rev. Ynes Aleman  
East Third and Ave. E.

MULESHOE BAPTIST CHURCH  
Bob Dodd, Pastor  
8th Street and Ave G.

PROGRESS SECOND BAPTIST CHURCH  
Clifford Slay, Pastor  
First and Third Sundays.

FIRST BAPTIST CHURCH  
Rev. J.E. Meeks  
220 W. Ave. E.

ST. JOHN LUTHERAN  
Lariat, Texas  
Herman J. Scheller-Pastor  
Sunday School  
Classes 9:30 a.m.  
Worship-Services 10:30 a.m.

ST. MATHEW BAPTIST CHURCH  
E. McFrazier, Pastor  
West Third

SPANISH ASSEMBLY OF GOD  
Rev. Hipolito Pecina  
East 6th and Ave. F.

PROGRESS BAPTIST CHURCH  
Progress, Texas  
Danny Curry, Pastor

SIXTEENTH & AVENUE D CHURCH OF CHRIST  
Terry Bouchelle, Minister  
Sunday-10:30 a.m.  
Evening-6 p.m.  
Wednesday-8 p.m.

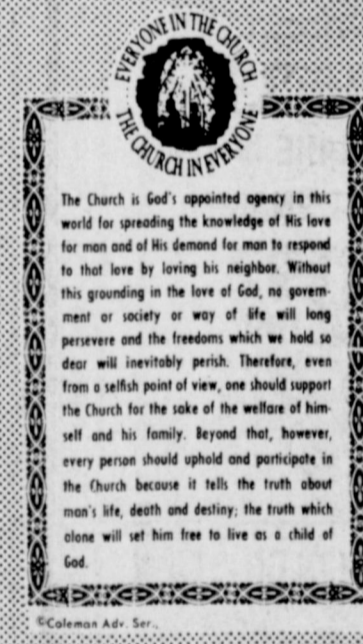
IMMACULATE CONCEPTION CATHOLIC CHURCH  
Father Timothy Schwertner  
Northeast of City in Morrison Edition

MULESHOE CHURCH OF CHRIST  
Royce Clay, Minister  
Clovis Highway

LONGVIEW BAPTIST CHURCH  
B.C. Stonecipher, Pastor  
Phone 946-3413



### AFTER THE PARTY IS OVER



The Church is God's appointed agency in this world for spreading the knowledge of His love for man and of His demand for man to respond to that love by loving his neighbor. Without this grounding in the love of God, no government or society or way of life will long persevere and the freedoms which we hold so dear will inevitably perish. Therefore, even from a selfish point of view, one should support the Church for the sake of the welfare of himself and his family. Beyond that, however, every person should uphold and participate in the Church because it tells the truth about man's life, death and destiny; the truth which alone will set him free to live as a child of God.

Have you ever felt like this little girl after a big, exciting day at the Fair, or a party? You know how you feel—excited, exhausted; but you feel good, too. Sometimes you just want to lie down and think about it. But like the little one in this picture you, also, are too tired to remove your party hat or your shoes.

Sometimes it is delightful just to lie down and think of something good and wonderful and happy. It is good just to be still and sort of day-dream about what has happened.

There are other times in our lives when we need to achieve a sense of quietness and think of God. The Psalmist says, "Commune with your own heart upon your bed and be still." Psalm 4:4. God says in Psalms 46:10 "Be still and know that I am God."

We invite you to attend church and sense the still, quiet holiness that is God's presence in the midst of the congregation.

## WEATHER MASTER

"THE KING OF THE CROWD"

Plant Weather Master EPX 1212 - the most exciting new hybrid on the market.

A good hybrid under normal planting & a Great Hybrid under high Fertility and adequate irrigation.

EPX 888 is the old stand by with strong straight stalks, erect dark green leaves. With plenty of water & fertilizer this corn has made over 11,000 lbs. dry weight per acre.

Your  
Weathermaster  
Seed Dealer  
Max Crim  
Muleshoe 465-27

<b>BEAVERS FLOWERLAND</b> "Flowers For All Occasions" 272-3024 Or 272-3116	Margie Hawkins, Manager 272-3412	<b>WESTERN DRUG</b> 114 Main	<b>MULESHOE MACHINE &amp; WELDING</b> Gear Head Repair, Sales & Service 272-3145 123 Fir St.
<b>WATSON ALFALFA</b> 272-3552 272-4038	<b>MULESHOE CO-OP GINS</b> 272-3552 272-4038	<b>WHITES CASHWAY GROCERY</b> 402 Main "Where Friends Meet And Prices Talk"	<b>WESTERN SPRINKLERS INC.</b> ZIMMATIC W. Hwy. 84 272-4544
<b>BRATCHER MOTOR SUPPLY</b> 107 E. Ave. B. 272-4288	<b>ST. CLAIRS</b> 110 Main	<b>WHITT-WATTS-REMPE IMPLEMENT CO.</b> John Deere Dealer Muleshoe 272-4297	<b>MAIN STREET BEAUTY SALON</b> 115 Main 272-3448
1723 W. American Blvd. 272-4306	Compliments Of <b>STATE LINE IRRIGATION</b> Littlefield-Muleshoe-Lvelland	<b>MULESHOE PUBLISHING CO.</b> Muleshoe 272-4536	



# TAES Warns Farmers On New Regulations

South Plains grain farmers need to think twice about the effects of new payment yield regulations before planting their acreage this spring, an economist with the Texas Agricultural Extension Service cautions.

"A circumstance involving the Agricultural Stabilization and Conservation Service calculation of feed grain and wheat yields for 1978 can adversely affect many farmers in this area," warned Marvin Sartin, Extension area economist-manager here.

Because of new regulations under which ASCS must operate this year, farmers should give careful consideration to planting sorghum, wheat, corn and cotton to protect their ability to prove yields in these crops in years ahead, Sartin said.

"Future payments yields may

hinge on what producers plant this year," he noted. He urged farmers to talk to their county ASCS office staff to get a thorough understanding of the yield payment situation.

The matter is urgent, Sartin stressed. "The spring-like weather of the past several days has encouraged farmers to get back on the tractors, and preplant herbicide is being applied very rapidly. Unfortunately, this might prevent some producers from planting a protective acreage of feed grains if they are not informed before herbicide application is completed."

County ASCS offices calculate county yield averages for each payment crop, explained Leonard Williams, state executive director of ASCS. In counties with both dryland and irrigated farms, the county average is a

composite of yields from both types of farm. The average payment yield in the county must balance with a composite figure compiled by Statistical Reporting Service of USDA.

In the past, because of allotments associated with each farm, the allotment and projected yield for each farm was considered in balancing to the county average, whether or not the crop was planted.

However, Williams said, the new farm program has suspended allotments, and the 1978 projections will be based on 1977 planting.

Because many dryland and limited irrigation farms on the South Plains planted all cotton in 1977, sorghum production was generally found on higher producing units, Sartin noted. "Thus, only those farms with the higher ASCS yields planted sorghum in 1977, but the average of these must be factored back to equal the composite county average yield," he said.

As an example, the economist said, a sorghum producer with 110-bushel yield last year might be in a county with a composite

average of only 60 bushels an acre, and a factor of around .63 might be required to adjust yields. That farmer's yield for 1978 would be projected at 69.3 bushels (110 x .63). This is the yield that would determine the amount of deficiency and disaster payments he could receive for sorghum in 1978, Sartin explained.

Local ASCS offices are now calculating the yields for their counties, and these calculations will be mailed to farmers soon, Williams said.

If a farmer feels the yield projections are too low, and he has records for 1974-76 on his feed grain and wheat production, he can prove his yields and use the average production for those three years as his payment yield for 1978, Williams said.

"The situation is serious in several South Plains counties as

individual producers' payment yields will be substantially reduced from previous levels," Sartin said. He encouraged such farmers to prove their yields with their 1974-76 records.

The procedure for proving yields makes it important that farmers give careful consideration to planting a small acreage of each payment crop they might wish to grow in the next two to four years, Sartin stressed.

"It is my understanding that yields must be proven each year, using production records of the three consecutive years immediately prior to the previous growing season," he said. Thus, 1977 production will be used in proving projected yields for 1979, 1980 and 1981, and plantings in 1978 will affect projections for 1980-82.

"With this in mind, producers who don't have a problem with NCA on their farms might be wise to consider planting each payment crop they might wish to grow in the next four years," Sartin said.

According to the ASCS handbook, Williams explained, farm requirements for proving the yield of a crop are that the farm must have acreage of the crop for harvest all three years of the base period and have actual production evidence for all the acreage harvested.

"If failure to harvest is due to a disaster," Williams said, "the county ASCS committee is empowered to make adjustments.

## Lionel Orozco Becomes Scout

### At Ft. Hood

Specialist Five Lionel Orozco, son of Dolores Orozco, Muleshoe, recently was assigned as a scout with the 1st Cavalry Division at Ft. Hood, Tex.

Spec. Orozco entered the Army in 1972.

## FLU NOW NATIONWIDE

ATLANTA -- The three-strain influenza assault on this country may be narrowing to just one strain—the Russian virus, which health officials said is spreading rapidly among young people. Outbreaks of Russian flu now have been reported in every major region of the nation.

# Save your pay where saving pays

Annual Rate	Savings Plan	Minimum	Annual Yield*
7.75%	6-Year Certificate	\$1,000	8.06%
7.50%	4-Year Certificate	1,000	7.79%
6.75%	2½-Year Certificate	1,000	6.98%
6.50%	1-Year Certificate	1,000	6.72%
5.25%	Regular Passbook	10	5.39%

\*When interest is accumulated and compounded. On certificate amounts withdrawn prematurely, federal regulations require interest reduction to passbook rate and forfeiture of up to 90 days' interest.



## Former Resident Don Williams Buried Saturday

Don Williams, 42, of Lubbock, died at 12:30 p.m. Wednesday in St. Mary's Hospital where he had been a patient for some time. He was a former resident of Muleshoe and moved to Lubbock nine years ago from Muleshoe.

He was born January 26, 1936 in Alanreed and moved to Muleshoe with his parents as a child. He was an operational manager for Yellow Freight System in Lubbock. Don Williams was a member of the First Baptist Church of Earth; the Lubbock Masonic Lodge Number 841 and the Scottish Rite. He was married to Alma Burge on January 5, 1957 in Clovis.

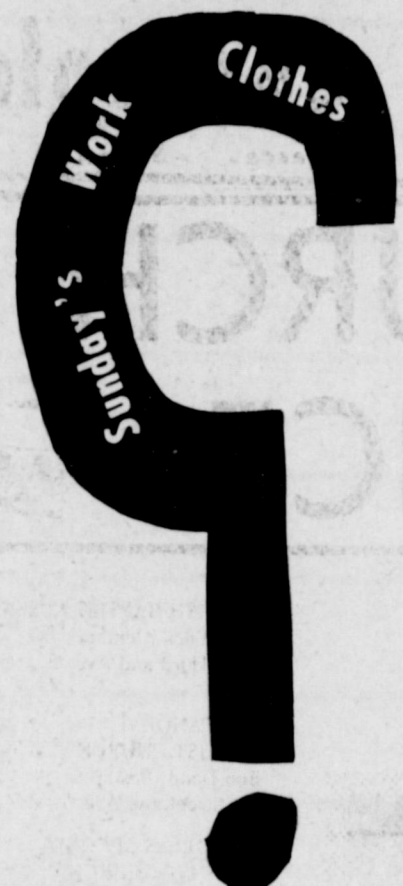
Funeral services were conducted at 2:30 p.m. Saturday in Singleton-Ellis Chapel of the Chimes with Bro. Charles Carman, pastor of University Christian Church of Lubbock, officiating. Burial was in Earth Cemetery under direction of Singleton-Ellis Funeral Home of Muleshoe.

Survivors include his wife, Alma; two sons, Calvin Williams, Big Spring and Farron Williams, Lubbock; a daughter,

Ava Williams, of the home; his mother, Mrs. Belle Williams, Muleshoe; two sisters, Mrs. Myrtle Scheller, Phoenix, Ariz. and Mrs. Wanda Pruitt, Altus, Okla.; five brothers, Cecil Williams, Levelland; Billy Williams, Muleshoe; Clinton Williams, Austin, Nev.; and Jessie Williams and Kenneth Williams, both of Amarillo; and three grandchildren.



DON WILLIAMS



Where?

272-4453

## Chester Fowler Funeral Rites Held Sunday

Funeral services for Chester Fowler, 71 of the Oklahoma Lane Community, will be conducted at 2:30 p.m. today (Sunday) in Singleton-Ellis Chapel of the Chimes. Officiating will be Capt. Michael Thorn, Salvation Army, Clovis, and Rev. Jimmy McGuire, baptist minister from New Deal. Burial will be in Oklahoma Lane Cemetery under direction of Singleton-Ellis Funeral Home of Muleshoe.

He was pronounced dead on arrival at Methodist Hospital in Lubbock on Wednesday while being transferred to a hospital there from Muleshoe.

He was born September 12, 1906 in Tillman County, Oklahoma and moved to Parmer County in 1916 from Tillman County. He was a farmer and real estate broker.

Survivors include two sisters, Mrs. Gladys Wingo and Mrs. Vashli Fowler, both of Farwell.



**44 COLORS**  
SAT-N-HUE FLAT INTERIOR LATEX  
**9.97 GAL.**  
Custom Colors Higher

Our finest finish for walls and ceilings. Easy to apply. Non-drip. High hiding. For plaster, wallboard, brick, concrete. Dries fast. Water cleanup. See our new colors! (P)

### LATEX TEXTURE PAINT



**5.97 GAL.**

Create dramatic texture effects over old walls, ceilings. Hides hairline cracks; tape joints. White & 8 new colors. (TP)

### SELECT FLOOR ENAMEL



**8.97 GAL.**

Tough, durable, high gloss finish for indoors and out: wood, concrete, etc. Resists weather, wear, washing. See our 5 popular colors! (UF)



## COLOR PICK 'N PAINT VALUES

MARCH 30 To APRIL 9



**35 COLORS**  
WEATHERALL LATEX HOUSE PAINT  
**9.97 GAL.**  
Custom Colors Higher

"Puts more years between you and your next paint job". Our finest acrylic latex, resists weathering, blistering, stains, fading. Easy to apply. Dries fast. (HPX)

### SELECT FLAT LATEX



**6.97 GAL.**  
Custom Colors Higher

One coat usually covers plaster, wallboard, most wallpaper. Ideal for walls, ceilings. Dries fast. Water cleanup. 6 Colors; White. (A)



**44 COLORS**  
E-Z KARE LATEX FLAT ENAMEL  
**9.97 GAL.**  
Custom Colors Higher

Super scrubbable! Resists stains, dirt, soiling. Perfect for walls, ceilings, woodwork in every room. Dries to a smooth, uniform flat in 30 minutes. Water cleanup. (EZ)

### SOLID COLOR STAIN



**22 COLORS!**  
**7.97 GAL.**  
Custom Colors Higher

Hides like paint; protects like a stain. For smooth or rough cut wood shingles, shakes, siding. Also for stucco; masonry. Easy to apply. (LS)

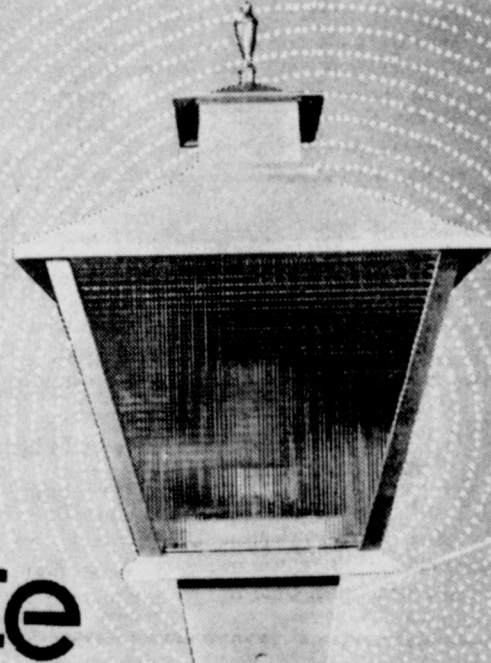
### X-O RUST ENAMEL



**3.97 QT.**

Tough, high-gloss, weather resistant enamel for wood, metal, concrete. Use indoors & out. Fights rust; decay. Popular colors. (XO)

# LAWN GLOW ready-lite



## Energy-Wise protection perfection

The Lawn Glow Ready-Lite is the perfect night light . . . made of heavy cast aluminum, with either a black or white durable finish, for longer life and lasting beauty. The Ready-Lite is the automatic electric yard light. A photo electric cell turns it on at night when you need it . . . turns it off in the daytime. And you can control the amount of energy used. The Ready-Lite may be used with a variety of bulb sizes to get just the degree of brightness you desire. No down payment and you may take as long as 24 months to pay.

the perfect way to light your night

You Can Put It On Your Electric Bill!



SOUTHWESTERN PUBLIC SERVICE

# Fry & Cox, Inc.

"Your True Value Store"

401 S. 1st

272-4511





# SPRING SPECIALS



WE RESERVE THE RIGHT TO LIMIT PRICES EFFECTIVE APRIL 2 - 8, 1978

HUNT'S Tomato Sauce	5 8 OZ. CANS	\$1
HUNT'S WHOLE PEELED Tomatoes	3 14 1/2 OZ. CANS	\$1
HUNT'S SANDWICH FAMILY SIZE 27 1/2 OZ. CAN Manwich Sauce		99c
HUNT'S Tomato Juice	46 OZ. CAN	59c
HUNT'S ASSTD. PUDDINGS Snack Pack	4-5 OZ. CANS	69c
HUNT'S FRUIT Cocktail	2 14 1/2 OZ. CANS	79c
HUNT'S Pear Halves	2 15 OZ. CANS	89c
EVAPORATED Pet Milk	TALL CANS	39c
ASSTD. BATHROOM TISSUE Marina	4 ROLL PKG.	79c
PRINTED OR ASSTD. Zee Towels	JUMBO ROLL	59c
SHURFINE FACIAL Tissue	2 200 CT. BOXES	89c
SHURFRESH DIP OR REG. Potato Chips	8 OZ. PKG.	59c
HEAVY DUTY DETERGENT Purex	42 OZ. BOX	99c
20" OFF LABEL Wisk	32 OZ. BTL.	98c
10" OFF LABEL Shout Prewash	12 OZ. CAN	89c
GLAD Trash Bags	10 CT. PKG.	99c
FAVOR Lemon Wax	12 OZ. CAN	\$1 19
DISINFECTANT Lysol Spray	12 OZ. CAN	\$1 49
CLEANER Lysol Liquid	28 OZ. BTL.	\$1 19
BEACON Mop & Glo	32 OZ. BTL.	\$1 59
SHURFINE HAMBURGER Sliced Dills	32 OZ. JAR	79c
SWIFT VIENNA Sausage	3 5 OZ. CANS	\$1

HUNT'S YC HALVES/SLICES  
**Peaches**  
2 29 OZ. CANS  
**\$1**

WESSON Oil  
48 OZ. BTL.  
**\$1 49**

SHURFINE ALL GRINDS Coffee  
1 LB. CAN  
**\$2 59**

SHURFINE Instant Tea  
3 OZ. JAR  
**\$1 29**

SHURFRESH COTTAGE Cheese  
24 OZ. CTN.  
**89c**

QUARTER PORK LOIN FAMILY PACK  
**Pork Chops**  
\$1 39 8-11 CHOPS  
EXTRA LEAN TRIM CENTER CUT LOIN Pork Chops \$1 69  
EXTRA LEAN TRIM CENTER CUT RIB Pork Chops \$1 59

WATER ADDED HICKORY SMOKED Picnics	6-8 LB. AVG.	68c
PORK LOIN END SIRLOIN CUT Pork Chops		\$1 49
COUNTRY STYLE PORK Spare Ribs		\$1 19
LEAN FRESH Pork Steak		\$1 19
OSCAR MAYER WIENERS OR BEEF Franks	1 LB. PKG.	\$1 39
HALF OR WHOLE HICKORY SMOKED WATER ADDED Sliced Picnics	LB.	78c
OSCAR MAYER Smokie Links	12 OZ. PKG.	\$1 39
OSCAR MAYER ASSTD. SLICED Bologna	12 OZ. PKG.	89c
OSCAR MAYER Cotto Salami	8 OZ. PKG.	89c
OSCAR MAYER PORK LINK Sausage	LB.	\$1 89

BUY AS MANY AS YOU WANT COUPON  
With this coupon you can buy as many 1 1/2 oz. Everything Jars as you want at only \$2.49 each.  
Coupon good through April 2nd, 1978.

WE GIVE DOUBLE GUNN BROS. STAMPS EVERY WED. & SAT.

Health And Beauty Aids

MOUTHWASH Signal	12 OZ. BTL.	89c
MINT OR REG. TOOTHPASTE Crest	5 OZ. TUBE	79c
30" OFF LABEL REG./UNSCENTED Secret Roll-On	1.5 OZ. BTL.	69c
25" OFF LABEL LIQUID SHAMPOO Prell	3.5 OZ. BTL.	39c
CHILD COLD MEDICINE Contac Jr.	4 OZ. BTL.	\$1 49

We Welcome USDA FOOD STAMP COUPONS  
COME TO PAY 'N' SAVE FOR YOUR WIC CARD PURCHASES

ALL PURPOSE RUSSET Potatoes  
10 LB. BAG  
**79c**

PICAM AMAZING Knife Duo  
PKG. OF 2 KNIVES  
**\$2 49**

NO - HANDS HINDSIGHT Mirror  
EACH  
**\$1 99**

SUNSHINE YOUR CHOICE Fig Bars  
16 OZ. PKG.  
**69c**

SUNSHINE Chip-A-Roos  
12 OZ. PKG.  
**69c**

PURE VEGETABLE SHORTENING Crisco  
3 LB. CAN  
**\$1 59**

HUNT'S TOMATO Ketchup  
32 OZ. BTL.  
**69c**

Dairy And Frozen Food

MORTON 12 CT. Glazed Donuts	12 OZ. PKG.	69c
SHURFINE Orange Juice	3 6 OZ. CANS	\$1
MINUTE MAID PINEAPPLE Juice	3 6 OZ. CANS	\$1
JENO'S ASSTD. Pizza	13 1/2 OZ. PKG.	79c
SHURFRESH IN QUARTERS Margarine	2 1 LB. PKGS.	79c
SHURFRESH TEXAS STYLE Biscuits	3 12 OZ. CANS	\$1
SHURFRESH IND. AMERICAN Sliced Cheese	12 OZ. PKG.	99c

MIX OR MATCH CALIFORNIA Sunkist Oranges OR WASHINGTON GOLDEN Delicious Apples	3 LBS.	\$1
VINE RIPENED Tomatoes	3 LBS.	\$1
GOLDEN CALIFORNIA Carrots	2 1 LB. CELLO PKGS.	39c
CALIFORNIA FUERTE Avocados	4 FOR	\$1