





# Antelopes Prove Costly To Post In 32-13 Win At Floydada

returning the kickoff 17 yards to the 27.

**POST**—Williams rambles for 14 yards, but fumbles and Floydada recovers on the Post 38.

**FLOYDADA**—Don Colley is caught at end by Noel White for 2-yard loss. Robert Stovall gains 3 at center, but Ronnie Downing's pass to end Buttons Beedy is no good. Gary Huckabay's punt rolls out of bounds on the Antelope 11.

**POST**—Williams gets only a yard at the line, and Jack Morris loses 3 in another try. Williams runs left end for 3 and Floydada declines an offside penalty. Colley fields Jackie Carpenter's punt on Whirlwind 48 and returns it to the Post 45.

**FLOYDADA**—Jack Morris knocks down Downing's long pass intended for Beedy. Andy Schmidt stops Colley for no gain, but Post draws a 5-yard offside penalty on the play. Stovall gets 2 at center, and a 5-yard penalty for backfield in motion wipes out a 5-yard gain on a pass. Downing to Huckabay. Another pass falls incomplete out of bounds, and Jack Morris is brought down after fielding Huckabay's punt on the Antelope 7.

**POST**—A line play gains a yard, and Williams gets 2 more. Another line play picks up only 2, and Downing makes a nice return of Carpenter's punt from the Post 40 to the 25, where he is forced out of bounds.

**FLOYDADA**—Stovall takes pitch-out and goes for 15 and a first down on the 10. A plunge at the right side of the line gains 3, but Gary Welch stops Stovall for no gain on another try. Downing's jump pass across the goal line is complete to Beedy for the game's first touchdown. Huckabay runs the extra point, 7-0, with seven minutes of the first quarter gone.

Williams runs kickoff back 14 yards to Post 24, but Floydada draws a 5-yard penalty on the play and kicks again from its 35. This time, Williams takes on the 15 and returns 16 yards to the 31.

**POST**—Jack Morris fails to gain in a try at the line, but Williams goes for 5. Ronnie Kennedy gets 2 more, and Carpenter's punt is taken by Downing on the Whirlwind 25 and returned 11 yards to the 36.

**FLOYDADA**—Huckabay can't go with a pitchout, but Stovall bores through the line for 5. Charles Morris intercepts Downing's pass

gains 10 after faking a pass. Williams fails to gain, but Norman quarterback sneaks for 3 and a first down on the Post 40. Morris gets 7 at the left side, and Williams adds one at the other side. Williams's pass to White is batted down by Downing on Floydada 30. Downing takes Carpenter's punt on 25, but gets back only 2 yards to the 27.

**FLOYDADA**—Colley fails to gain at the line, and Jack Morris submarines Huckabay after 9-yard pickup. Downing's quarterback sneak fails by inches to make a first down. Colley hits center, but the Antelope line won't budge and it's their ball on the Whirlwind 37.

**POST**—Jack Morris gains only one with Williams' flat zone pass. Williams, back to pass again from spread formation, can't find receiver and runs to 16 for 20-yard gain and a first down. Norman is injured on the play and after an extensive timeout is carried from the field in an ambulance. With play back in and Post still operating from spread, Williams goes for 15 and a first down on the 1. After one try fails, Williams rams center for touchdown. Charles Morris' kick is wide and the score is tied, 13-13, with three minutes to go in the third quarter.

Floydada draws 15-yard penalty for personal foul and Post's kickoff is from the Whirlwind 45. White's inside kick is fumbled and end Howard Jones recovers for Post on the Floydada 29.

**POST**—Running from spread, Williams goes for 22 and a first down on the 7. Williams runs for 5 more, but Post is penalized 5 on the play for backfield in motion. Williams passes to White in the end zone for a touchdown. Williams holds for Morris to kick, but successfully executes fake by running right end for extra point. The Antelopes lead, 20-13, with two minutes of the third quarter remaining.

Colley returns White's kickoff seven yards to the Floydada 22.

**FLOYDADA**—Colley goes for 8 straight through center, and Stovall makes 5 more for a first down on the 35. Huckabay gains one, and Colley goes for 16 and a first down on the Post 48 with a pitchout. Charles Morris intercepts Downing's pass on Post 25, makes nice return to Floydada 37, but fumbles and Whirlwinds recover. It's no go, however, as Post was detected clipping before fumble occurred, and it's the Antelopes' ball on their 45. Amidst all the confusion, the third quarter ended.

**FOURTH QUARTER**

**POST**—Williams' long pass to Jones is incomplete. A Floydada defender intercepts another pass on the Whirlwind 32, but the play is nullified with Post drawing a 15-yard penalty for offensive interference. It's Post's ball on their 30. Williams, back to pass, turns it into run and gains 5. Carpenter's punt is allowed to roll dead on the Floydada 27.

**FLOYDADA**—Downing goes for 3 on a keeper, and successive passes are batted down by Kennedy and Charles Morris. The Whirlwinds draw a 5-yard penalty for delay of the game, and Huckabay's punt rolls dead on the Post 30. The play is no go, however, with Post being penalized 15 yards for roughing the kicker, and it gives the Whirlwinds a first down on their 40. Colley fails to gain at the line, and Williams comes in fast to intercept flat zone pass and go 25 yards for a touchdown. Morris'

kick is no good, and the Antelopes lead, 26-13, with nine minutes to go.

Huckabay returns White's kickoff 9 yards to the Floydada 29.

**FLOYDADA**—Ammons stops Colley after pass completion to Floydada 46. Another pass is intercepted by Ammons on his 30 and he gets back to the 34.

**POST**—Jack Morris misses Williams' flat zone pass, as Post goes back to spread formation. Williams runs for 4, but is caught for 5-yard loss on another attempt. Carpenter's kick is fumbled on the Floydada 35, Welch recovering for Post.

**POST**—Williams gains 3 on right end sweep, then gains 6 at the left side of the line. Kennedy rams for 5 and a first down on the 15. Kennedy breaks through center for 9, and Ammons hits the line for another yard and a first down on the 5. Williams bucks to the 1, but Ammons is thrown for no gain on another try. Williams sneaks over for a touchdown, with three minutes to go. Morris' kick is blocked by Beedy, and it's 32-13.

Colley returns White's kickoff 10 yards to the Floydada 30.

**FLOYDADA**—A try at center fails to gain. Post draws 15-yard personal foul penalty on the play, and Carpenter, Post center, is ejected from the game. Leon Davis, Post tackle, intercepts screen pass on the Floydada 42.

**POST**—Williams gets 3 at center, but fumbles on next play and the Whirlwinds recover on their 40.

**FLOYDADA**—David Mount, in for Downing at quarterback, goes for 10 on a keeper and it's a first down on the midfield stripe. Huckabay takes lateral to Post 27 for 23 yards and another first down. Jerry Windham tackling. Ammons knocks down a goal line pass, and Williams recovers fumble on Post 27.

**POST**—Williams, tuning out the clock, rams center for 2, and the game ends before another play can get under way.

kick is no good, and the Antelopes lead, 26-13, with nine minutes to go.

Huckabay returns White's kickoff 9 yards to the Floydada 29.

**FLOYDADA**—Ammons stops Colley after pass completion to Floydada 46. Another pass is intercepted by Ammons on his 30 and he gets back to the 34.

**POST**—Jack Morris misses Williams' flat zone pass, as Post goes back to spread formation. Williams runs for 4, but is caught for 5-yard loss on another attempt. Carpenter's kick is fumbled on the Floydada 35, Welch recovering for Post.

**POST**—Williams gains 3 on right end sweep, then gains 6 at the left side of the line. Kennedy rams for 5 and a first down on the 15. Kennedy breaks through center for 9, and Ammons hits the line for another yard and a first down on the 5. Williams bucks to the 1, but Ammons is thrown for no gain on another try. Williams sneaks over for a touchdown, with three minutes to go. Morris' kick is blocked by Beedy, and it's 32-13.

Colley returns White's kickoff 10 yards to the Floydada 30.

**FLOYDADA**—A try at center fails to gain. Post draws 15-yard personal foul penalty on the play, and Carpenter, Post center, is ejected from the game. Leon Davis, Post tackle, intercepts screen pass on the Floydada 42.

**POST**—Williams gets 3 at center, but fumbles on next play and the Whirlwinds recover on their 40.

**FLOYDADA**—David Mount, in for Downing at quarterback, goes for 10 on a keeper and it's a first down on the midfield stripe. Huckabay takes lateral to Post 27 for 23 yards and another first down. Jerry Windham tackling. Ammons knocks down a goal line pass, and Williams recovers fumble on Post 27.

**POST**—Williams, tuning out the clock, rams center for 2, and the game ends before another play can get under way.

## Game Statistics

| FLOYDADA                 | POST     |
|--------------------------|----------|
| 13 First Downs           | 11       |
| 214 Net Yds. Rushing     | 180      |
| 3 of 17 Passes Completed | 3 of 6   |
| 7 Had Intercepted        | 0        |
| 43 Yds. Passing          | 33       |
| 31 Punting Avg.          | 38.3     |
| 4 for 30 Penalties       | 8 for 80 |
| 2 Lost Ball Fumbles      | 2        |

## Officers Chosen By PHS Spanish Club

Barbara Wheatley has been elected president of the newly-organized Spanish Club at Post High School. Raul Solis, Spanish teacher, is sponsor of the club.

Other officers elected at the organizational meeting were: Weidon Reed, vice president; Ruth Long, secretary-treasurer; Pat Crowley, Student Council representative, and Leslie Nichols, reporter.

Don Greer was elected sergeant-at-arms at the second meeting of the new club. Dues were set at \$1.

## TCU Homecoming

FORT WORTH (Spl.) — Hundreds of graduates and former students of Texas Christian University will return to the campus Friday and Saturday, Nov. 16-17, for the annual homecoming event. Highlight of the two-day celebration will be the football game with the University of Texas Longhorns in Amon Carter Stadium on Saturday afternoon.

Cologne, Germany gets its name (really Kolin) from the fact that Roman Emperor Claudius once built a colony there for his war veterans.

Hibernation by certain birds is merely a mechanism for conserving energy, reports a group of University of California zoologists.

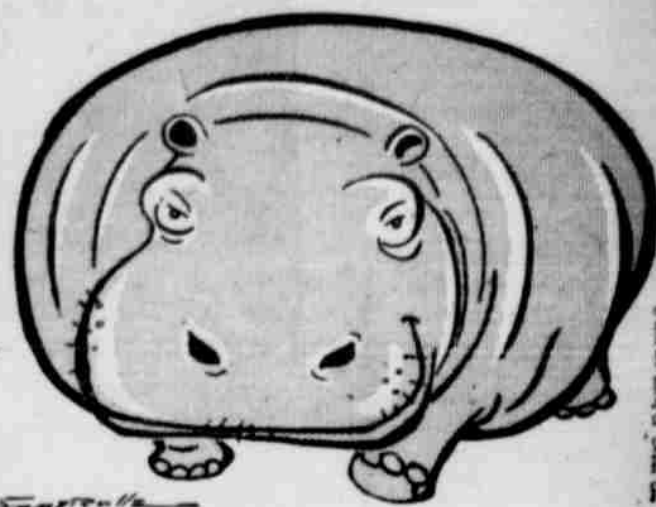
## JIMMIE HOLLEMAN PLUMBING COMPANY

LOCATED AT

R. E. Cox Lumber Co.

Phone 193

There's BIG THINGS coming your way...



BIG THINGS—like opportunities for advancement—come to the man who has carefully established his credit.

Good credit reflects good character. An A-1 record with local merchants is just as important in getting ahead as are ambition and the "right contacts." Your credit record follows you... so keep it good by paying EXACTLY as agreed.

## Credit Bureau Of Post

Phone 448-W

P. O. Box 218

## ATTENTION...

I HAVE PURCHASED A

## SERVICE STATION

112-25th St. — Ft. Worth Highway

IN SNYDER, TEXAS

Complete Stock Chevron Products

Specializing in Tune-Up And Brake Work

ALL APPRECIATE YOUR PATRONAGE

WHEN PASSING THROUGH SNYDER

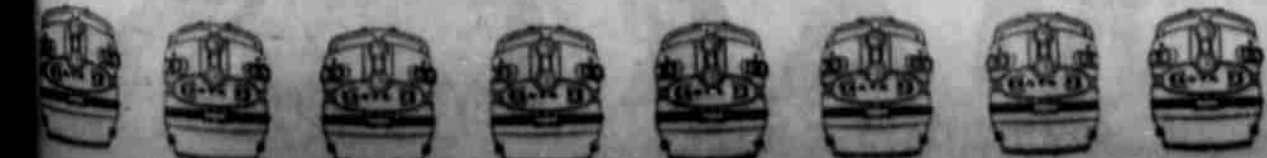
HENRY BOOTH

Formerly Of Post



Ship and Travel  
Santa Fe all the way

CALL your Santa Fe agent today for help with your transportation needs.



RILEY, MY BOY!  
HOW DO YOU GET SO MUCH  
GO FOR YOUR DOUGH  
IN YOUR CAR?

THAT CLEAN-BURNING  
NO-NOX, FRIEND. YOU KNOW  
GULF TAKES OUT THE GOO  
AND GIVES YOU MORE GO

I'LL BUY THAT. THE  
CLEANER YOUR ENGINE,  
THE MORE POWER FOR  
YOUR DOUGH



Get clean-burning  
**GULF NO-NOX**  
the "high-value" gasoline

## LESTER NICHOLS

GULF  
CONSIGNEE

W. O. Thaxton's Gulf Pride Station

Bob Willoughby's Gulf Station

J. I. Cook Station, Close City

G. W. Woodral Station, Justiceburg

W. C. Kiker's Gulf Station

C. R. Baldwin, Graham, Route 3

BARBARA CRAIG OF GARNOLIA WRITES

BUY SELL RENT HIRE WANT ADS

Call And Place Your Want Ads By Telephone

Telephone 111

CLASSIFIED ADVERTISING RATES
FIRST INSERTION, per word .6c
CONSECUTIVE INSERTIONS, per word .3c
MINIMUM AD, 12 words .50c
BRIEF CARDS OF THANKS \$1.00



A daughter, Terri Kay, was born to Mr. and Mrs. James Aten in Lubbock Methodist Hospital at 1:20 p. m., Oct. 25. She weighed seven pounds, 13 ounces. Mrs. Era Aten and Mr. and Mrs. Woodrow Furr are the grandparents.

BITS-OF-NEWS

Mr. and Mrs. Mitchell Bowen of Brownwood, and formerly of Post, are visiting friends and relatives here this week.
Mr. and Mrs. O. C. Garner spent a few days last week visiting her mother, Mrs. Frances Jurica, in Taylor.

Rentals

FOR RENT—Three-room furnished duplex apartment, telephone 71-J.
FOR RENT—Four and five-room houses with baths, unfurnished. Mattie Dunlap, call 67-W. tlc.
FOR RENT—Two room modern furnished house. 120 North H. ttp.



MOVABLE HOSPITALS—Emergency hospital 15-kilowatt generator for operating room lights and power equipment is loaded at a Federal Civil Defense Administration warehouse onto two trucks. In attack situations, an entire self-sufficient 13 1/2-ton hospital of 28 items in 50 containers could be moved by a single large truck to a school, church or other suitable building which was reasonably undamaged.

FOR RENT

Mrs. Nola Brister, Mgr. Two and three room apartments, bedrooms, furnished, private baths, air conditioning, television, garages.

COLONIAL APARTMENTS Telephone 52

FOR RENT—Furnished apartments, call 136-J. Earl Rogers tlc

Real Estate

HOUSES FOR SALE—Build to suit owners, G. I. and F. H. A. houses, see Forrest Lumber Co. tlc.
FOR SALE—Two lots; paving paid; close to schools, churches and town. Mrs. V. H. Anderson. tlc.
FOR SALE—Two room house, garage, lots 7 and 8, Block 139, Post. Priced \$1,750. Frank Buford. 2tp.

FOR SALE—Five good used window units, complete with weather stripping, bargain. Mrs. G. K. Cash. 2tc.
FOR SALE—Dry land feed, 9 miles south of Littlefield on Highway 51. Telephone Whitharal 3575. 2tp.
FOR SALE—Brant's Rooming house includes four apartments, one small house. Phone 275-W. 2tc.

FOR SALE—Six-room house, nice location and lots of floor space. Wool carpet, venetian blinds, also has rubber tile on kitchen and bath. Streets paved on both sides. This is a bargain. Dale Stone, phone 102. tlc.

FARM FOR SALE—5 miles west, 1 north of Tahoka Highway. F. B. Cearley. 4tp.

Employment

TRUCKING—Will haul anything. Prices reasonable. See Howard Freeman or call 65. 5-tp.
BABY SITTING IN MY HOME. Call 458-J. 4tc.

FINISH HIGH SCHOOL

Grade School at home. Spare time. Books furnished. Diploma awarded. Start where you left school. Write Columbia School, Box 5061 Lubbock. 52tc.

Miscellaneous

FOR SALE—I-H Permanent Anti-Freeze; \$2 per gallon. Dowe H. Mayfield Co., Inc. tlc.
FOR SALE—1955 Mercury Montclair Sport Coupe, clean and in excellent mechanical condition, family car with only 12,000 actual miles. If you want a fine automobile this is it, inquire at the Post Dispatch.
FOR SALE—Dressed turkeys, broad breasted, bronze type. See Mrs. C. N. Chandler or ph. 442. 2tc.
FOR SALE—12-gauge automatic Browning shotgun. Call 221-J. 3tp.

Card of Thanks

I wish to thank my friends and neighbors who have cared for and seen after me so graciously since I fell and sprained my arm and hand. May the Lord bless each of you in my prayer. Mrs. John O. Miller

Mr. and Mrs. N. A. Lushy and children spent Sunday visiting Mr. and Mrs. Gene Perziff, Mrs. Lena Meador and Eldridge Craig in Plainview.

Mr. and Mrs. Robert Cain and family visited Friday evening in the home of Mr. and Mrs. Holland Boring and family in Brownfield.

FARMERS TO VOTE ON QUOTAS DEC. 11

State Cotton Acreage Allotment, Marketing Quota Referendum Set

COLLEGE STATION (Spl.)—The U. S. Department of Agriculture has announced the 1957 state acreage allotments for upland cotton; the national allotment for extra long staple cotton and set Dec. 11 as the date for a referendum on marketing quotas for the 1957 cotton crop.

The total allotments available for distribution in the states were set by the USDA at 17,585,463 acres. The total allotment for Texas was set at 7,547,503 acres which includes 10,974 acres as Texas' share of the national reserve. The Agricultural Act of 1956 provides that a national acreage reserve of 100,000 acres be apportioned among States on the

basis of the estimated needs of each State for additional acreage to establish minimum farm allotments under the act.

The marketing quota for the 1957 crop upland cotton was announced on Aug. 31 as 11,014,493 bales of 500 pounds gross weight. The marketing quota for extra long staple cotton, just announced, is 76,565 bales, and the national acreage allotment was set at 89,357 acres for the 1957 crop.

At least two-thirds of the cotton producers voting in the Dec. 11 referendum must favor the marketing quotas if they are to be effective on the 1957 crops. Whether quotas are approved or disapproved, 1957 cotton acreage allotments will remain in effect as a condition of eligibility for price support.

The USDA announcement said that the state acreage allotments would be apportioned among counties and the county allotments among farms according to provisions of the law and regulations issued by the Secretary of Agriculture. Individual farm acreage allotments will be mailed to operators of cotton farms prior to the referendum.

Hospital Notes

Admitted to Garza Memorial Hospital since October 24 were: Glen Dale Wheatley, Post, medical. David Woods, Post, medical. Peggy Bocenegra, Post, medical. Ellie Price, Post, medical. John Boren, Justiceburg, medical. Thurman Morrow, Post, medical. Jo Ann Ringhoffer, Post, medical. Mrs. T. R. Greenfield, Post, medical. Mrs. Julius Steizer, Post, medical. Lana Haynie, Post, medical. Admitted to Garza Memorial Hospital since last Wednesday were: Orabeth Maxey, Post, medical. Mrs. Leroy Hawkins, Post, obstetrical. Thurman Morrow, Spur, medical. J. C. Howard, Post, medical. Noel Don Norman, Post, accident. Mrs. Robert Morales, Post, obstetrical. Mrs. N. L. Busby, Post, obstetrical. C. N. Henderson, Post, medical. Mrs. Gordon Wilson, Post, surgical. Jerry Wilka, Post, medical. John McQueen, Post, medical.

BITS-OF-NEWS

Weekend visitors in the home of Mr. and Mrs. J. T. Peddy were Mr. and Mrs. K. E. Young and boys of Seminole. Sunday dinner guests of Mr. and Mrs. W. C. Kiker were the Rev. and Mrs. Graydon Howell and children, Mr. and Mrs. George Willson and son, the Rev. and Mrs. Arliss Coward and son of Lubbock and Mrs. Mae Payne of Wichita Falls. Mr. and Mrs. Marshall Mason, Jr., and little daughter, Mary Ann, visited here last weekend in the homes of the Marshall Masons, Sr. and the James Minors. Jeton Denson left Monday for New York. He will sail soon for three years service loading and balancing aircraft in Nurnburg, Germany.

A-1 USED CARS

1953 FORD Fordor, 6 Cyl., Radio, Heater, New Paint, Good Tires. \$695.00
1949 FORD Tudor, V-8, Radio, Heater, Good Tires. \$295.00
1949 FORD PICKUP 1/2 Ton, Good Motor, Good Tires, Excellent Paint. \$325.00
ALSO SEVERAL CLEAN CARS, '54 THRU '56.
TOM POWER, INC. FORD DEALER

TOP QUALITY FOOD SHOPPER'S GUIDE THRIFTY PRICES

- KIM, TALL CAN—DOG FOOD 12 for 1:00
WELCH'S, 24 OZ.—GRAPE JUICE 3 for 1.00
MISSION, WHOLE, 303 TIN—GREEN BEANS 19c
CAKE MIX DROMEDARY, DEVIL'S FOOD, YELLOW, WHITE 4 for 1.00
HUNT'S, 46 OZ.—TOMATO JUICE 25c
FLOUR GOLD MEDAL, PRINT, 10 LB. BAG 87c

MEAT BUYS for Thrifty meals

- WILSON, CERTIFIED, 2 POUNDS—BACON 89c
U. S. GOOD, CHUCK, POUND—ROAST 35c
NO. 1, DRY, POUND—SALT BACON 29c
PORK, POUND—STEAK 39c
PINKNEY, PURE PORK, 2 POUND BAG—SAUSAGE 59c

Preserves ZESTEE, PEACH APRICOT, PINOCOT, RED PLUM, 20 OZ. GLASS 3 for 1.00

- QUART BOTTLE—CLOROX 18c
LIGHT CRUST, 5 POUND BAG—CORN MEAL 37c
ALCO, ALUMINUM, 25 FOOT ROLL—FOIL 27c
H. A., 60c SIZE—HAIR ARRANGER 36c
EGGS FRESH, GUARANTEED, PULLET 3 doz. 1.00

DOUBLE THRIFT STAMPS

- FRESH PRODUCE
NO. 1, 10 LB. BAG—POTATOES 5c
DEL. POUND—APPLES 1c
MARYLAND, SWEET, POUND—YAMS 1c
TEXAS JUICE, 5 POUND BAG—ORANGES 3c
VALENTINE, POUND—GREEN BEANS 12c

- SHORTENING MRS. TUCKER'S, 3 LB. CRT.
DEL MONTE, 303 TIN—FRUIT COCKTAIL
KIMBELL, 303 TIN—CHERRIES
ORANGE DRINK KRAFT, 46 OZ.
COFFEE MARYLAND CLUB, DRIP OR REGULAR, 1 POUND
OLEO SHURFRESH, QUARTERS, POUND

- FROZEN FOODS ALWAYS FRESH!
KEITH—FISH STICKS
ESSEX, 10 OZ.—STRAWBERRIES
UNDERWOOD'S, 1 POUND PACKAGE—BARBECUE BEEF
COASTAL PINK, 6 OZ.—LEMONADE 2 for
BIRD'S EYE, MIXED, 10 OZ.—GARDEN VEGETABLES

Get Extra Savings With Double Thrift Stamps . . . And They Are Double On Tuesdays.

K&K Food MART OPEN 7 DAYS A WEEK



BITS-OF-NEWS

Mr. and Mrs. Brownfield visited her parents, Mr. and Mrs. Key. Mrs. Key was home for the weekend.
Mr. and Mrs. Kenneth Hiltaker day afternoon.
Miss Jo Ann Lay Abilene over the they visited Verna is attending University.
Mrs. J. R. Derry day to visit her Ida Beauchamp, Roby.
night. Twenty-five songs, games and cookies candy and Mr. and Mrs. J. S. at Close City School. E. O. Young.

# Moreman Wedding Is Read Evening In Ed Sims Home

Moreman, daughter of Mrs. R. W. Moreman, the bride of Darwin Moreman, was married Friday evening, Nov. 7, at 8 o'clock in the bridegroom's brother-in-law, Mr. and Mrs. Roy Shahan, first pastor, officiating. The couple stood at the altar with the bride wearing a white gown with three-quarter-length sleeves. She wore white accessories and carried a white orchid on a white ribbon. Her something old was her mother's wedding band; something blue, a garter made by Mrs. Jack Kennedy; borrowed, Bible belonging to Miss Anne Porterfield, and for good luck she wore a penny, given by her matron of honor, in her shoe.

Mrs. Charles Nelson of Abernathy was her cousin's matron of honor. She wore a rose fallie dress, styled like the bride's, and matching accessories. She carried a nosegay of white gladioli and carnations.

Billy Guinn Jones attended the bridegroom as best man.

Mrs. Moreman chose for her daughter's wedding a blue grey gabardine suit with black and pink accessories. Mrs. Miller was attired in a grey checked suit, trimmed in black velvet, pink and black accessories. Both wore pink carnation corsages.

# Garza HD Council Meets Tuesday In J. Pearce Home

Miss Jessie Pearce's home was the scene of a meeting of the Garza Home Demonstration Council Tuesday afternoon.

All clubs gave annual reports; the finance committee told of the group's fair earnings, and SE and yearbook committee reports were heard. Other reports given were by Mrs. Frank Bostick, 4-H chairman and Mrs. W. H. Barton, council chairman.

It was announced that the Christmas party will be Dec. 4. Mrs. Homer Huddleston, a new member, Mrs. Percy Parsons and Mrs. Arthur Crockett were named to the planning and food committee for the event.

Miss Pearce announced that she will give a demonstration on easy preparation of Thanksgiving dinner for each club this month in her home.

Officers were elected. They are Mrs. W. H. Barton, re-elected chairman; Mrs. Parsons, vice chairman, and Mrs. Rufus Gerner, secretary.

Attending were Mrs. Barton, Mrs. Crockett, Mrs. Luther Bilberry, Mrs. Parsons, Mrs. Stanley Sims, Mrs. Robert Mock, Mrs. Charles Morrow, Mrs. N. C. Outlaw, Mrs. Jim Graves, Mrs. Bostick, Mrs. Glenn Davis, Mrs. J. W. Long, Mrs. Gerner, Miss Pearce, the new member and a former member, Mrs. Maud Thomas.

# Student VN's Are Here For Postex, GM Hospital Tour

Mrs. Dorothy Perdue, Mrs. Ivie Sanders and Mrs. Pauline Mathis, students at Lubbock Vocational Nurses School, were hostesses for a field trip to Post recently.

They are members of the ninth class to attend the school. Their group and several from the eighth class toured Postex Mills, Inc., and Garza Memorial Hospital, accompanied by Mrs. Corene Lattimore, instructor. Other field trips are planned.

Following the tour, Mrs. Patsy Sanderson, a graduate, was hostess for a barbecue at her ranch home northeast of Post.

The women will soon assume duty in West Texas and Methodist Hospitals, which are affiliated with the school. Following 12 months training, they will go to Austin for examinations before a state board. Their classes are presently held in George M. Hunt Elementary School, Lubbock.

# S. M. Pucketts Are Married 57 Years

Mr. and Mrs. S. M. Puckett, observed their 57th wedding anniversary Monday. Visiting them on Sunday were a niece and family, Mr. and Mrs. John Mullins and family of Lubbock; their daughters, Mrs. Lala Pennington and Mrs. G. K. Cash; Mr. Cash, Mr. and Mrs. Bob Short and Mike and Janet and Glenda Hutto.

The Pucketts moved here in 1932 from the Dry Lake Community, near Spur. They were married Nov. 5, 1899, at Fairlee and spent the first years of married life on a farm near Greenville. They moved to Hopkins County in 1917, where they resided for several years before moving to Dry Lake.

They have five children.

# NAMED CO-ORDINATOR

Miss Margaret Anne Welborn, daughter of Mr. and Mrs. W. L. Welborn, is the new co-ordinator of Valhalla Co-operative living unit at the University of Texas. She is a senior speech student.

# Miss Short Named To NTSC Senate

Miss Joyce Short has been elected a member of the student senate at North Texas State College, Denton, officials announced this week.

The student election board this week announced the names of 69 successful candidates for class officers, student senators, Women's Forum representatives and Homecoming Queen finalists chosen in a student election.

Miss Short, a senior business administration major, is a daughter of Mr. and Mrs. Lowell Short.

# New Girl Scout Troop Organized

A new Girl Scout Troop was organized recently with Mrs. Charles Mills and Mrs. Wiley Hill as leaders.

Officers are Barbara Mills president; Billye Ruth Hill, vice president; Elaine Wheatley, treasurer; Wanda Williams, secretary, and Gayle Heaton, reporter. Other members are Vonda Howell, Darlene Bratcher and Ann Long.

The leaders gave a Halloween party at Mrs. Hill's Oct. 31. The girls, dressed as hobos, enjoyed a series of games before doughnuts and hot chocolate were served. Favors were skystones made from marshmallows.

# Mrs. W. L. Mathis returned home Sunday from Elton Mercy Hospital.

# Clubs \* Personalities \* Churches

Please Send or Telephone News to GANELL BABB, Women's Editor, Telephone 11, Not Later Than Wednesday Morning.

# Miss Cornett, Fernie Reed Are Married In Hobbs, N. M., Vows

Miss Joan Cornett and Fernie Reed were married in a double ring ceremony at 2 o'clock Saturday afternoon in Hobbs, N. M., in the home of the officiating minister, the Rev. Bill Cornett, brother of the bride.

The bride wore a white sheath dress, styled with empire waistline, complemented by rhinestones. She wore a white hat with a small veil, matching shoes and gloves. Her corsage was pink.

Miss Patsy Rogers, maid of honor, was attired in a grey sheath dress, fashioned similarly to the bride's. She wore pink accessories.

Joe McCowen attended the bridegroom as best man.

After a trip to Carlsbad, N. M., the couple will be at home at Justiceburg, where he farms. Both attended Post High School.

Wedding guests were the bride's parents, Mr. and Mrs. Chris Cornett, Mrs. Lee Reed and Weldon, Linda Messer, Maritta Pennell, Jimmy Peede, Mr. and Mrs. Bruce Chilton of Lamesa, Mrs. Bill Cornett and Mr. and Mrs. Dick Cornett of Hobbs.

# Mrs. Webb Presides For B&PW Meeting At Noon Thursday

The Business and Professional Women's Club met in regular session at noon Thursday in Judy's Dining Room, with Mrs. L. E. Webb, vice president, in charge.

Mrs. B. E. Young, program chairman, introduced the speaker, John Lott, who talked to the group on the privilege and duty of each and every citizen to vote.

Mrs. Lew Baker arranged a centerpiece and made placecards to carry out the theme, "Vote—You Lucky American." Mrs. Winnie Tuffing led the group singing of "America the Beautiful" to close the program.

Those present were Misses Maxine Durrett, Agnes Windham, Nora Stevens and Wilma Pirtle, Mmes. Lester Nichols, Tuffing, Ernest Sparks, Ira Greenfield, Bob Willoughby, Katharine Trammell, Webb and Young and Lott.

The next meeting will be a dinner meeting, Nov. 15, at which time members of the Lubbock B&PW will be present to present the charter.

# Durrett Home Is Scene Of Sorority Meeting Monday

Xi Delta Rho Chapter, Beta Sigma Phi Sorority, met Monday evening at Miss Maxine Durrett's. Mrs. Max Gordon had charge of the program on "Furniture".

The group voted to sell sorority cookbooks and to prepare a Christmas box on Dec. 3 for the Latin American Kindergarten. This meeting will be in the home of Mrs. Jess Cornett.

Miss Durrett, president, asked that all members return their papers soon on "What Beta Sigma Phi Means to Me."

The group will meet Nov. 19 with Mu Alpha Chapter for pledge ritual and a tea honoring new pledges. The meeting is scheduled for 7:30 p. m., in the First Presbyterian Church annex.

Those present were Mrs. Gordon, Mrs. James Minor, Mrs. Jimmy Hundley, Mrs. Cornett and the hostess.

# Deanna Adams Is Birthday Honoree

Mrs. Keith Adams gave a birthday party for her eight-year-old daughter, Deanna, Halloween night. Games were played and guests enjoyed a fishing pond and fortune telling booth. Cake, punch and popcorn balls were served.

Attending were Jaynie Josey, Howard Hill, Brenda Holly, Donnie Windham, Sue Gilmore, Ronnie Pierce, Patricia Robinson, Paul Harmon, Sulinda Little, Ricky Little, Karen Sneed, Bobby Sneed, Robert Bocell, Harold Taylor, the honoree and her sister, Jan.

# Miss Short Named To NTSC Senate

Miss Joyce Short has been elected a member of the student senate at North Texas State College, Denton, officials announced this week.

The student election board this week announced the names of 69 successful candidates for class officers, student senators, Women's Forum representatives and Homecoming Queen finalists chosen in a student election.

Miss Short, a senior business administration major, is a daughter of Mr. and Mrs. Lowell Short.

# School Cafeteria Menus Are Listed

School cafeteria menus for Nov. 12-16 have been planned as follows:

Monday: Salmon croquets, green beans, buttered rice, bread, milk, cake squares with chocolate icing.

Tuesday: Luncheon meat salad on lettuce, cheese wedges, creamed potatoes, bread, milk, peaches.

Wednesday: Meat loaf, lima beans, cabbage, pepper, pinkie tomato salad, bread, milk, ginger bread.

Thursday: Pinto beans, sour greens, tomatoes, cornbread, milk, banana pudding.

Friday: Hot dogs, potato salad, milk, candy bars.



# Church News

The Mattie Williams Circle of the Presbyterian Women's organization will have charge of a family night supper at the church at 6:30 o'clock Sunday evening. Following the meal, a congregational meeting will be held to consider the 1957 budget and any other items needing congregational action.

The Rev. and Mrs. Graydon Howell are attending the Baptist State Convention in Corpus Christi this week.

Mrs. Clifford Parker of Lubbock, district secretary of the Christian Women's Fellowship, directed the program at the local CWF meeting Monday afternoon in the home of Mrs. K. Stoker.

Mrs. R. K. Green's home was the scene of Monday afternoon's meeting of the W. S. C. S. Mrs. J. R. Durrett was program chair.

The Rev. Clinton Edwards, Presbyterian pastor, has announced that his sermon subject for Sunday morning will be "What DOES the Bible say about Money?"

Approximately 45 Methodists were present for the fellowship supper at the church Monday evening. Reece Carter provided barbecued chicken and beans for the meal and women of the church brought salads and desserts. After supper, the group sang and a brief business meeting was conducted by Lee Ward.

There will be a joint meeting of the Presbyterian Women's organizations at 2 p. m., Nov. 12, at the home of Mrs. Clinton Edwards. This meeting will be the annual Praise Service, at which time the Thank Offering will be taken.

Roy Shahan, First Baptist pastor, reports: "Truth is truth and facts are facts. The truth is that our attendance in the morning services last Lord's Day was way below normal. The evening attendance was good. Honestly and truthfully, could it have been the fact that the temperature had dropped to near the freezing point? That a few drops of rain and sleet fell? That people heard a little rumble of thunder about the time they should be getting up? If the answer to these questions is 'yes', then it stands to logical reasoning that if the Lord should see fit to give us a real good rain and on a Sunday morning, we would also stay at home. It may be that God will have to keep the windows of heaven closed even more tightly for some years before many of us as God's people will enter the open doors of His house each Lord's Day. Think on these things. The pastor will speak Sunday morning on the subject, 'Glorifying God in the Church' (Eph. 3: 12-21). At the evening hour, 'Stewardship of Ability' (Matt. 25: 14-30). Each one is urged to be faithful in attendance in all the services each Lord's Day."

# Past Matrons Club Holds Meeting At Post Masonic Hall

Three new members were initiated and officers were installed at Monday night's meeting of the Past Matrons' Club at the Masonic Hall. Members are past matrons of Post and Southland Order of the Eastern Star chapters.

During the social hour, pecan pie and coffee were served by Mrs. Kenneth Davies and Mrs. F. W. Callaway.

Those present were Mrs. Jack Myers, Mrs. L. G. Thuet, Jr., Mrs. Don Pennell, Mrs. J. H. Haire, Mrs. J. A. Stallings, Mrs. C. R. Thaxton, Mrs. Callaway, Mrs. Davies, Mrs. G. N. Smallwood, Mrs. S. D. Martin, Mrs. J. A. Propst, Mrs. Will Wright, Mrs. F. A. Gilley, Mrs. Henrietta Nichols and Miss Thelma Clark.

Mrs. Haire and Miss Clark will be hostesses for the next meeting in the Ramsay home.

# MYSTIC CLUB PARTY

Members of the Mystic Sewing Club and their families will attend a Thanksgiving dinner at the city hall this evening.

Mrs. Jack Johnson and sons, who visited a few days with her mother and grandmother, Mrs. Mabel Martin and Mrs. Ida Nance, returned to their home in Levelland last Wednesday.

# Miss Delores Ann Dye To Wed Vernon A. Lobban, Jr., Nov. 25

Mr. and Mrs. Edd Dye are announcing the engagement and approaching marriage of their daughter, Delores Ann, to Vernon A. Lobban, Jr., son of Mr. and Mrs. Vernon A. Lobban.

The couple will exchange vows in the Dye home at 4 o'clock in the afternoon, Nov. 25, with the Rev. Roy Shahan, First Baptist pastor, officiating.

The prospective bridegroom is a freshman student in Texas Technological College, Lubbock.



**Florsheim QUALITY**

For 64 Years  
America's Standard  
of Fine Shoe Values!



You gain the benefits of tradition and quality—two words that have always occupied a most important position in the exacting production of Florsheim Shoes. Want proof? Simply slip into any one of the new Fall styles—you'll agree Florsheim is America's fine shoe value for style, comfort, and the economy of extra service.

18.95 to 20.95



**WILL HELP HARD-HIT FARMERS AND RANCHERS**

**Drastic Freight Rate Reductions Are In Effect On Cattle, Hay Shipments**

AUSTIN (Sp.)—Farmers and ranchers in the 233 drought-stricken counties of Texas will save several million dollars as the result of drastic freight rate reductions put into effect by the railroads on shipments of cattle and on carload lots of hay.

This is the third time in four years Texas railroads have slashed rates as their contribution to hard-hit ranchers and farmers. The two previous rate reductions resulted in a saving of more than \$22,000,000 to Texas agriculturists.

The freight rate reductions were made at the request of President Eisenhower. A 50 per cent cut in rates for hay in carload lots was immediately put into effect.

Rates were also established for outbound movement of livestock from the drought-stricken areas to western feeding grounds which will permit free return transportation to originating points.

President Eisenhower recognized the fast action by saying:

"I know that I speak for our people, especially those in the areas affected, in saying that all of us are deeply grateful to our

railways for this public spirited and prompt action."

Saving to farmers and ranchers in 1953 was \$20,000,000 when the railroads reduced freight rates on grains and dairy feeds. More than \$2,000,000 was contributed in 1954 by the various Texas railroads when they slashed rates on hay in half.

"The saving at this time will, of course, be governed by the length of the drought period," said Kenneth McCalla, general counsel for the Texas Railroad association. "I think it is significant to note that the railroads are the only carriers which have made drastic adjustments to freight rates to aid our hard-hit farmers and ranchers."

Mr. and Mrs. W. V. Taylor and daughter, Mrs. Spears and baby of Corpus Christi visited last week in the homes of Mr. and Mrs. Wade Terry and other relatives.

Curtis J. Sterling, publisher of The Brownfield News, visited briefly in Post last Friday.

**HAPPY BIRTHDAY**

Please Call Or Mail Your Family's Birthday Dates To The Post Dispatch.

**November 10**  
Jaynie Lea Josey  
Duane Hoover, Lubbock  
Norman Cash  
C. A. Batchelor  
Rickey Clary  
Bob Hoover, Littlefield  
Elmer Teal, Lubbock

**November 11**  
Nancy Rea Maddox  
Michael Lammert  
Phyllis Bernice Kemp  
Mrs. Glenn Davis  
J. W. Rogers  
Mrs. Al Norris  
Ronnie Lee Pierce  
Mrs. Ralph Carpenter, San Antonio

**November 12**  
Mrs. R. S. Boyd, Slaton  
Linda Lusby  
Hollie Dian Jones  
Mrs. Leona Clary, Slaton  
Merrel Ann Downs  
Alvin Davis, Brownfield

**November 13**  
John David Sullivan  
Ted Ray  
Wayland Hood  
Susan Bilberry

**November 14**  
Bobbie Lorraine Johnson  
Mitchell Malouf, Jr., Kermit  
Nolan Clary  
Weaver Moreman  
Mrs. Marshall Reno  
James Homer Mathis  
Verna Roberts  
Patsy Downs  
Bruce Tyler  
Larry Bilberry  
Ronald Huddleston

**November 15**  
Daria Baker  
Mrs. J. T. Brown  
Danny Tillman

**November 16**  
Olivia Denise Lewis  
Buddy Moreland  
Cecil Osborne, Jr. Hale Center  
Woodrow Furr  
Pat Wheatley

**Five More Winners Named In Program**

Five more merchandise certificates for \$20 each were awarded last Thursday afternoon at the weekly Hospitality Day program in front of the Chamber of Commerce office.

Winners and the firms which honored their merchandise certificates were: Mrs. M. S. Nichols, Malouf Dry Goods; Mrs. Mabel Solis, Windham Grocery & Market; Oles Odom, Hudman Service Station; Mrs. Nathan Little, Judy's Cafe; Mrs. Mattie Ratliff, K & K Food Mart.

The tenth in the series of programs will be held between 4:15 and 4:30 o'clock this afternoon.

On the \$100 million dollar suspension bridge connecting Michigan's upper and lower peninsulas, western cowbells are used to warn workmen when cable-spinning machinery is in motion.

**LONE STAR AGRICULTURE**

**Bur-Treated Soil Pays Dividends, Preliminary Studies Have Shown**

By JOHN C. WHITE  
Commissioner Of Agriculture

New research by the cotton industry indicates farmers should think twice before allowing that by-product of the harvest—cotton burs—go to waste.

Some areas of Texas cannot return burs to the soil without special treatment to kill pink bollworms. But once protective procedures are observed, the burs can be a real boon in stretching benefits of rain and maintaining fertilization.

Preliminary studies show that on bur-treated soil, wind erosion is lessened because of the better condition of the soil. It is also known that burs mellow the soil and make it spongy and easier to work. Water penetration from rainfall is greater and evaporation is minimized.

Crop yields and their relationship to burs is being studied. On one test farm, five tons of composted burs increased the yield of cotton lint per acre by 275 pounds.

Cost of bur usage varies but the general figure is about \$2.50 per ton. The burs themselves usually are free, with the farmers paying only for the spreading. When this spreading is done by the individual, the cost figure is less.

Effects of burs on the land remain for an extended period. Definite increased yields from one application of burs has been noted for a three or four-year period.

**VA Questions And Answers**

Q. I intend to go to college under the Korean GI Bill, but not for a degree. What should I put down in my application as my training program?

A. You should list the subjects that make up your program of education.

Q. I have just received a GI insurance dividend that I would like to apply to my GI home loan. Is there any minimum amount that I am supposed to pay?

A. Yes. You must at least pay the amount of one monthly installment. If your installments are over \$100 a month, you may pay \$100 instead.

Q. May a young man or woman attend school less than half time under the War Orphans Education program?

A. No. Schooling at less than half time is prohibited under the program by law.

The Statue of Liberty was designed and made by M. Bartholdi, a French architect and sculptor.

**Pete Perez Finishes Course At Camp Lee**

FORT LEE, Va.—Pvt. Pete Perez, son of Mrs. Blanche Perez of Post, Texas, recently was graduated from the supply handling course at the Quartermaster School here.

In the eight-week course, Perez was trained to load and unload supplies and equipment, to operate materials-handling equipment and to assist in the receipt, storage, issue, sale and salvage of technical or general materials.

Perez entered the Army last May. He attended Post High School and was employed for several months in the shop department of The Post Dispatch.

Albert Einstein, German refugee, arrived and settled in Princeton, N. J., on October 17, 1933. No nationalities in Sweden and Finland both countries are and go as they please.

**Dr. CARL L. DEAN**  
Optometrist  
with offices in the  
**GREENFIELD BUILDING**  
EVERY SATURDAY—2 to 5 P.

**It's A Mighty Good Time**



Quick  
Low Cost  
LOANS

**To Look Into Your BUILDING NEEDS!**

FORREST'S FINANCE PROVIDES A MEANS FOR ALL BUILDING REQUIREMENTS.

WE OFFER A LOAN FOR EVERY BUILDING PURPOSE

We also invite you to take advantage of FORREST'S FINANCE PLAN . . . We can, without delay, arrange a loan for any kind of building project . . . We have a special loan to cover all purchases made from For Lumber Company or affiliated stores. A loan plan to cover cost of all types of repairs, alteration, or improvement to your existing residence. The same type of loan to cover multi-family dwellings. A loan to cover buildings of commercial structures. A finance plan for new structures for agricultural purposes; and loans for new homes.

**LET US ACQUAINT YOU WITH SOME OF THE MANY TYPES OF LOANS OFFERED THROUGH FORREST'S FINANCE PLAN**

We have a loan designed so that you can finance any purchases made from this Forrest yard or any affiliated stores. Purchase any amount from \$65.00 to \$5,000. You can re-pay this loan in from 6 months to 60 months. Payments may be made monthly, quarterly, semi-annually, or annually. This type loan is designed to enable you to purchase new bath fixtures, floor coverings, home furnaces, paints, new fences, or any materials carried by our firm. An ideal loan for the man who likes to "Do It Himself."

We offer a loan plan, purpose of which is to enable a home-owner to repair, make alterations and improvements to his existing home. This loan will cover all costs of labor and materials. This loan offers borrower to secure to \$2,500.00 and may be re-paid in from 6 to thirty-six months.

A loan is provided, (F.H.A. Title) to enable borrower to make alterations, repairs and improvements, or construction of an existing structure, or to be used as an apartment house or dwelling for 2 or more families. This loan provides \$2,500.00 per dwelling unit and a total maximum of \$10,000.00. Repayment ranges from six months to seven years.

**BUILDING AND COMMERCIAL STRUCTURES**

If you are interested in building a new business structure we can arrange a small building loan. The maximum is \$3,000.00, exclusive of financing charge. Repayment extends from six months to three years.

**FARM BUILDINGS**

This loan is designed to enable farmers and ranchers to build structures for agricultural purposes, exclusive of residential purposes. The loan provides a maximum of \$3,000.00, repayable six months to seven years.

**NEW HOMES AND ADDITIONS**

We have a loan designed to enable you to add an extra room or two, build a new garage or make any kind of extensive addition and improvement to your home. You can borrow from \$2,000.00 to \$5,000.00. Repayment ranges from five to 15 years.

If you are interested in building a complete new home . . . we can fix you up with a GI or FHA to include purchase of real estate and completely build the structure. Complete cost for a 2-bedroom home will range from \$7,000 to \$10,000. Low monthly payments, including taxes and insurance, will retire the loan over a period of years. Come in and talk it over with us.

WE OFFER A NEW FINANCE PLAN For Repair Loans  
Come In And Discuss Our REVOLVING CREDIT PLAN  
It May Best Suit Your Needs!  
Telephone 80



Better to be safe than to be sorry!

**TO HAVE CASH WHEN YOU NEED IT, INSURE NOW**

Insurance supplies cash to replace farm buildings destroyed by fire . . . pays you for losses due to crop damage. Investigate!

For all types of farm insurance coverage, see us.

**POST INSURANCE AGENCY**

E. S. STEWART, Manager

*new Chevies by the score—*

all sweet, smooth and sassy!

(There are 16 more where these four came from)



"ONE-FIFTY" 4-DOOR SEDAN



"TWO-TEN" SPORT COUPE



BEL AIR CONVERTIBLE



CORVETTE

Look over the whole line-up of new Chevrolets for '57. Nineteen new passenger car models that are lower, longer and new right down to the wheels—plus the dashing new Corvette.

There's one that will fit into your life beautifully. Come in soon and see!

AIR CONDITIONING—TEMPERATURES MADE TO ORDER—AT NEW LOW COST. LET US DEMONSTRATE!

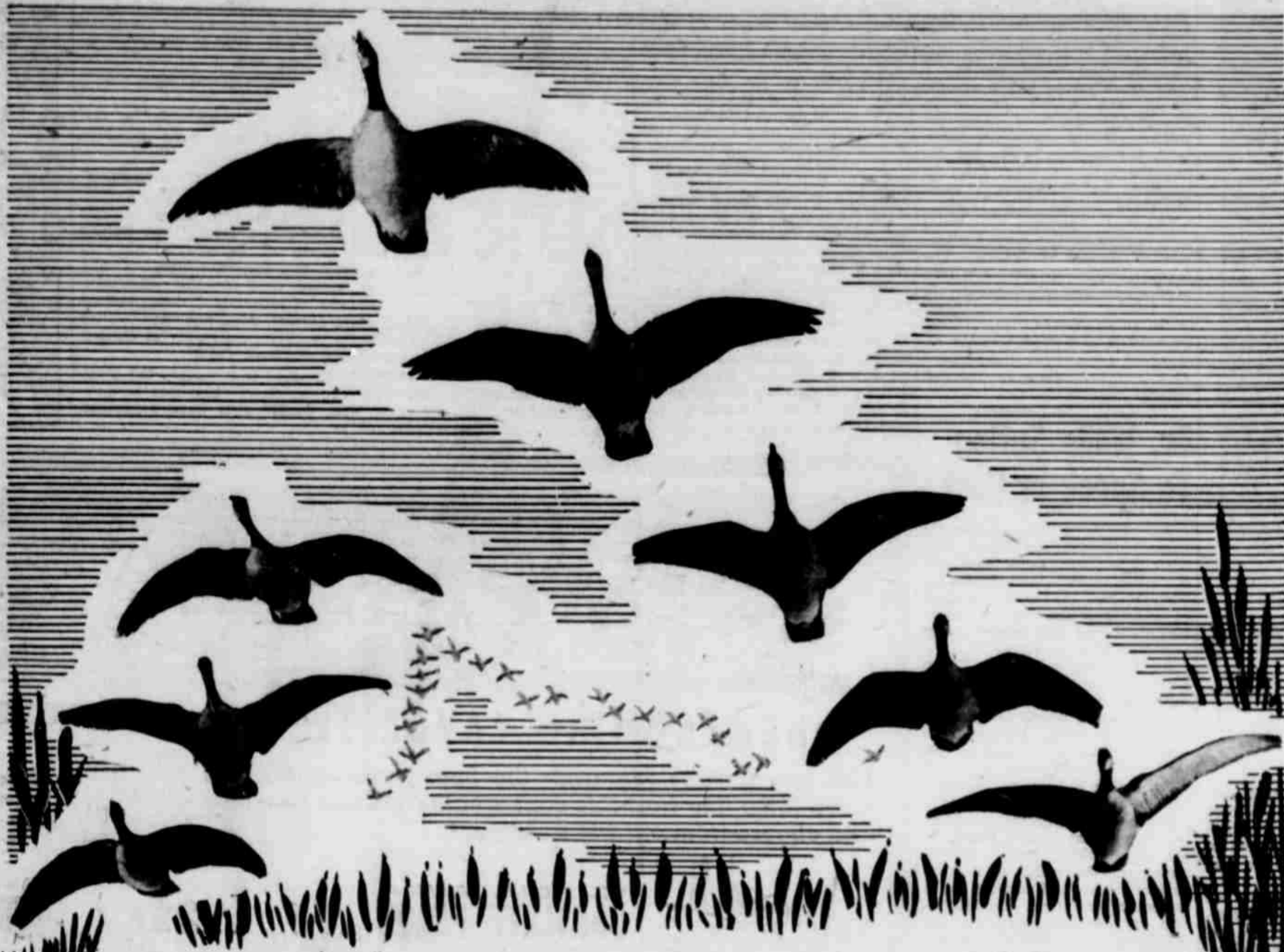
Only franchised Chevrolet dealers display this famous trademark



**Caprock Chevrolet, Inc.**

"A GOOD DEAL DEPENDS ON YOUR DEALER"

# FOR ALL WE HOLD SACRED... ATTEND CHURCH!



## Moving Together Toward a Common Goal

With the fowl of the air it is *instinct!* God has provided many of His simplest creatures with an innate sense of harmony, and of purpose.

But with man it is an *ideal* . . . still far from realization! Nations and individuals have usually sought their own ends, and little less than attack by a common enemy has ever brought them to united action.

Today, the challenge for harmony and brotherhood is stronger than ever. We know now that the very existence of civilization depends upon a peaceful world.

Our greatest hope is the Church, which throughout the ages, has unceasingly taught the need for *moving together toward a common goal*. And only the Church has pointed the Way toward that goal.

Join forces with the multitudes in every land who seek the highest goals. Worship with them the only Prince of Peace. And, believing with all Christians in the might of Right, work toward our God-promised destiny.

### THE CHURCH FOR ALL... ALL FOR THE CHURCH

The Church is the greatest factor on earth for the building of character and good citizenship. It is a storehouse of spiritual values. Without a strong Church, neither democracy nor civilization can survive. There are four sound reasons why every person should attend services regularly and support the Church. They are: (1) For his own sake. (2) For his children's sake. (3) For the sake of his community and nation. (4) For the sake of the Church itself, which needs his moral and material support. Plan to go to church regularly and read your Bible daily.

| Day       | Book   | Chapter | Verse |
|-----------|--------|---------|-------|
| Sunday    | Psalms | 91      | 1-16  |
| Monday    | Isaiah | 10      | 1-5   |
| Tuesday   | Luke   | 12      | 25-27 |
| Wednesday | Luke   | 12      | 25-27 |
| Thursday  | Luke   | 12      | 25-27 |
| Friday    | John   | 15      | 1-10  |
| Saturday  | John   | 15      | 1-10  |
|           | Psalms | 4       | 7-21  |
|           |        | 8       | 1-9   |

This Religious Feature Is Made Possible Through Cooperation of Garza County Ministers And Is Paid For By The Public Minded Individuals And Firms Listed Below:

- FIRST BAPTIST CHURCH**  
Rev. Shaham, pastor  
Sunday School 9:45 a.m.  
Morning Worship 10:50 a.m.  
Evening Broadcast 11:15 a.m.  
Bible Service 7:00 p.m.  
Evening Worship 8:00 p.m.
- WEDNESDAY**  
Teachers and Teachers 7:00 p.m.  
Prayer Service & Bible Study 7:30 p.m.  
Bible Rehearsal 8:15 p.m.
- FIRST PRESBYTERIAN CHURCH**  
Rev. Clinton Edwards  
Sunday School 10:00 a.m.  
Morning Worship 11:00 a.m.  
Women's Organization 3 p.m.  
2nd and 4th Mondays  
1st and 3rd Thursdays  
Williams Circle 9:30 a.m.
- FIRST CHRISTIAN CHURCH**  
Rev. Almon Martin  
Sunday School 10:00 a.m.  
Morning Worship 11:00 a.m.  
Evening Service 5:30 p.m.
- FIRST METHODIST CHURCH**  
Rev. W. L. Porterfield  
Sunday School 9:45 a.m.  
Morning Worship 11:00 a.m.  
Evening Service 6:45 p.m.  
Evening Worship 7:30 p.m.
- Second Monday**  
Methodist Men 7:30 p.m.  
**Second Wednesday**  
Prayer Meeting 7:30 p.m.
- CHURCH OF CHRIST**  
Otis Proffitt, Minister  
Bible Study 10:00 a.m.  
Morning Worship 11:00 a.m.  
Evening Classes 5:30 p.m.  
Evening Worship 6:30 p.m.
- Monday**  
Bible Study 2:30 p.m.  
**Wednesday**  
Bible Study 7:00 p.m.
- CHURCH OF THE NAZARENE**  
Rev. Cecil Stowe  
Sunday School 9:45 a.m.  
Bible Service 10:45 a.m.  
Bible Study 6:30 p.m.  
Bible Service 7:00 p.m.
- Wednesday**  
Prayer Meeting 7:30 p.m.
- CALVARY BAPTIST CHURCH**  
Graden Howell, Pastor  
Sunday  
Bible School 9:30 a.m.  
Sunday School 9:45 a.m.  
Morning Worship 10:50 a.m.  
Training Union 7:00 p.m.  
Evening Worship 8:00 p.m.
- Monday**  
Brotherhood and W.M.U. 7:30 p.m.  
**Wednesday**  
Prayer Service 7:30 p.m.
- ASSEMBLY OF GOD**  
J. R. Brincefield  
Sunday School 9:45 a.m.  
Morning Worship 11:00 a.m.  
Evening Worship 8:00 p.m.
- Wednesday**  
Prayer Meeting 7:30 p.m.  
**Friday**  
Service 7:30 p.m.
- HOLY CROSS CATHOLIC CHURCH**  
Rev. James Erickson  
Sunday  
Bible Study 5:00 p.m.  
Church located Northeast part of town)
- UNITED PENECOSTAL CHURCH**  
5th & Ave. H  
V. G. Ghormley, pastor  
Sunday School 9:45 a.m.  
Morning Worship 11:00 a.m.  
Evening Worship 7:30 p.m.
- Tuesday**  
Prayer Service 7:30 p.m.

- POST CHURCH OF GOD OF PROPHECY**  
A. W. West, Pastor  
Sunday School 10:00 a.m.  
Morning Worship 11:00 a.m.  
Evening Worship 7:30 p.m.  
1st Tuesday Missionary Service 7:30 p.m.  
2nd Tuesday Prayer Meeting 7:30 p.m.  
3rd Tuesday Bible Study 7:30 p.m.  
Last Tuesday C.F.M.A. Services 7:30 p.m.  
Thursday Victory Leaders 7:30 p.m.
- MEXICAN BAPTIST CHURCH**  
Raul Solis, Pastor. (Tel. 516J)  
Sunday School 9:45 a.m.  
Worship Service 11:00 a.m.  
W.M.S. 12:15 p.m.  
Brotherhood 12:15 p.m.  
Training Union 7:30 p.m.  
Worship Service 8:30 p.m.
- Wednesday**  
Bible Doctrine Studies 7:45 p.m.  
Prayer Meeting 8:15 p.m.
- "TODOS BIENVENIDOS"**  
(Church located on Northeast side of town on Spur highway)
- CHURCH OF GOD OF PROPHECY (Spanish)**  
Esteban Dela Cruz, Leader  
Sunday School 10:00 a.m.  
Worship 11:00 a.m.  
Evening Worship 7:30 p.m.  
Wed. Eve. Worship 7:30 p.m.  
Sat. Eve. Victory Leaders 7:30 p.m.
- PLEASANT HOME BAPTIST CHURCH**  
Rev. Emory McFrazier  
Sunday School 9:45 a.m.  
Training Service 6:30 p.m.  
**Second And Fourth Sundays**  
Morning Worship 11:00 a.m.  
Evening Worship 7:30 p.m.  
**Wednesday**  
Prayer Service 7:30 p.m.
- GRAHAM CHURCH OF CHRIST**  
Bible Study 10:00 a.m.  
Morning Worship 11:00 a.m.  
Evening Worship 8:00 p.m.
- METHODIST CHURCH**  
Sunday School 10:00 a.m.  
Morning Worship 11:05 a.m.  
Evening Worship 8:00 p.m.
- CLOSE CITY CHURCH OF CHRIST**  
Bible Study 10:00 a.m.  
Morning Worship 11:00 a.m.  
Evening Worship 8:00 p.m.
- FRIENDSHIP BAPTIST CHURCH**  
Rev. Charles Nowell, Pastor  
Sunday School 10:00 a.m.  
Morning Worship 11:00 a.m.  
Training Union 7:30 p.m.  
Evening Worship 8:30 p.m.
- Monday**  
W.M.U. 2:30 p.m.  
**Wednesday**  
Y.W.A. RA and GA 8:00 p.m.  
Prayer Meeting 8:00 p.m.
- PLEASANT VALLEY BAPTIST CHURCH**  
Rev. J. W. Rives, Pastor  
Sunday School 10:00 a.m.  
Morning Worship 11:00 a.m.  
Training Union 7:30 p.m.  
Evening Worship 8:30 p.m.
- Wednesday**  
Prayer Meeting and Bible Study 8:00 p.m.  
**2nd and 4th Thursdays**  
W.M.U. and Bible Study 8:00 p.m.
- JUSTICEBURG BAPTIST CHURCH**  
Sunday School 10:00 a.m.  
Morning Worship 11:00 a.m.  
Evening Worship 8:00 p.m.
- New Congregation**  
**CHURCH OF CHRIST**  
Located at 115 West 14th St.  
Sunday Morning Service 10:30 a.m.  
Sunday Evening Service 7:30 p.m.

- O. K. FOOD STORE**  
E. E. and ESTELLE PIERCE  
312 North Broadway
- CAPPOCK CHEVROLET, INC.**  
"A Good Deal Depends On Your Dealer"
- LEVI'S RANCH CAFE**  
"Where Good Food Is Never Accidental"
- SHYTLES' IMPLEMENT CO.**  
John Deere Quality Farm Machinery
- Compliments Of - - -  
**CARL CEDERHOLM**  
County and District Clerk
- G. F. WACKER STORES**  
"A City Store At Your Door"
- POST FEED & SEED**  
PURINA AND EVERLAY FEEDS  
Baby Chicks, Poultry and Livestock Remedies  
MR. AND MRS. W. A. LONG

- EARL ROGERS' FEED STORE**  
Feeds And Ford Tractors
- DUCKWORTH & WEAKLEY**
- PIGGLY - WIGGLY**  
S & H Green Stamps  
PAUL JONES, Mgr.
- GREENFIELD HARDWARE CO.**  
"We Buy Merchandise To Sell"
- POST AUTO SUPPLY**  
DeSoto-Plymouth - Dodge Trucks  
SALES AND SERVICE
- WESTERN AUTO ASSOCIATED STORES**  
Mr. and Mrs. Jess Michael

- POSTEX COTTON MILLS, INC.**  
"Sleepy Time Is Garza Time"
- BROWN BROTHERS, Et AL.**
- S. E. CAMP**  
Texaco Wholesale
- WILSON BROTHERS**  
"Bumper To Bumper Service"
- MASON FUNERAL HOME**  
"Dignified Service Since 1915"

- Compliments Of - - -  
**CARL RAINS**  
Sheriff, Tax Assessor-Collector  
Garza County
- GULF PRODUCTS**  
**LESTER NICHOLS**  
CONSIGNEE
- KIRKPATRICK AUTO ELECTRIC**  
"Exide Battery Headquarters"
- GRAEBER'S GROCERY & MARKET**  
"Serving This Community For 39 Years"
- FORREST LUMBER COMPANY**  
"Everything For The Builder"
- D. C. HILL BUTANE**  
Claremont Highway
- HIGGINBOTHAM BARTLETT CO.**  
"We Furnish Your Home From Plans To Paint"

This page is published in the hope that the church of your choice will grow stronger with your regular attendance and support.







### MRS. WILL TEAFF OF CLOSE CITY WRITES

## Mrs. Roy Maddox's Brother-In-Law, Sister Killed In Edinburg Wreck

Mr. and Mrs. C. J. Johnston and Mrs. Blasingame of Fort Worth visited last week with Miss Bera Wilson and her brother, R. B. The Johnstons returned home and Mrs. Blasingame remained for a longer visit.

Visiting in the Barnie Jones home Sunday were Mr. and Mrs. Dayton Engle and family of Tahoka and Mr. and Mrs. E. Z. Jones of Post.

Mrs. Roy Maddox was called to Edinburg Sunday because of the death of her brother-in-law and sister, who were killed in a car wreck near there Saturday night. Services for her brother-in-law were held at Edinburg and her sister's funeral was at Coleman Wednesday.

Roy Maddox, Thurman Maddox, Mr. and Mrs. Pete Maddox and Mrs. Will Teaff attended the services at Coleman.

The Rev. C. D. Nowell left Monday morning for Corpus Christi to attend the Baptist State Convention.

Visitors in the home of Mr. and Mrs. Ira Cook last week were Mrs. D. F. Smith and Mrs. Fred Melton of Slaton.

T-Sgt. and Mrs. N. B. Teaff and son of Lubbock and Mr. and Mrs. Will Teaff and Dennis Popbam visited at Gainesville over the weekend with Mr. and Mrs. Delbert Cockrell and Freddie.

Mr. and Mrs. Irvin Cross and children of Verbena were Sunday visitors in the Bon Longshore home.

The Rev. and Mrs. Nowell and family were Sunday guests in the home of their daughter and sister and family, the James Potts in Post.

Dalton Cottle of Post and Jake Bleeker of Plainview spent Sunday in the Guy Shults home.

John and Jim Bob Shults visited Glenn Dale Wheatley Sunday afternoon.

Guests in the Roy Maddox home Saturday night were Mr. and Mrs. Bill Achor and children of Abilene. Mr. and Mrs. Milton Bayer and children of Lubbock were Sunday guests in the Will and Howard Teaff homes.

Seven members were present for W. M. U. mission study of Japan at the church Monday afternoon.

Mrs. Minnie Collins of Comanche has been visiting in the G. C. Custer home. Mr. and Mrs. Custer took her home Tuesday.

## Post Man Elected By Photog Group

Norman Morgan, owner of Morgan's Studio and Camera Shop here, was elected secretary-treasurer of the Panhandle Professional Photographers Association at a recent meeting in Amarillo.

Others elected to serve in 1957 were Hella May Williams, Midland, president; John Blackstock, Stamford, first vice president, and Ray Wagner, Amarillo, second vice president.

The 78 members and guests heard Ernie Curtis of Oklahoma City explain glamour lighting technique; Irene Smith of Pampa on charm costuming, and Hester Williams of Midland on oil coloring technique.

President Tessie Dickeson of Lubbock presided at the meeting.

## Pontiac Introduces Its Three-Series 1957 Models Here Friday, Saturday

Two models of the 1957 Pontiac, a Star Chief custom Catalina sedan and a Chieftain two-door sedan, will be on display Friday and Saturday at Dowe H. Mayfield Co., Inc., dealers. Dowe H. Mayfield, owner, invites everyone to visit their showrooms this weekend to see the new models.

Pontiac introduces its 1957 models with three series, the Star Chief on a 124-inch wheelbase, the Super Chief and Chieftain on 122-inch wheelbase, in 16 new body styles, according to S. E. Knudsen, GM vice president and general manager of Pontiac Motor Division.

"The 1957 Pontiacs are the most exciting new cars we have ever offered", Knudsen said. "From the massive gleaming front to the smart, streamlined fins of the rear fenders, the 1957 Pontiacs are a triumph of modern design and safety engineering. The body design is new. The overall length has been increased 1.2 inches; however, the lower silhouette and the dramatic styling creates a much longer and sleeker appearance."

The wide, low front end of the 1957 Pontiac is high-lighted and protected by heavy wrap-around bumpers with integrated bomb-type bumper guards. Large oval parking lamps are set into the lower part of the bumpers. A semi-circular chrome grille and a full width air scoop direct airflow to the car radiator.

Hooded head lamps surmounted by sleek front-fender ornaments are prominent in the front-end styling. Greater vision is achieved by lowering the hood 1.6 inches and increasing the windshield area 75.4 square inches in the Catalinas, convertibles and custom station wagons and by 69 square inches in sedans and other station wagons.

The eye catching appeal of the 1957 Pontiac is not limited to styling for the new cars offer the most luxurious color-keyed interiors in Pontiac history. Star Chief series models are upholstered in the finest hand-buffed leather in "dream car" colors of Silver Beige, Kenya Ivory, Cordova Red, Limefire Green, Seacrest Green and Fontaine Blue. These top grain leathers can also be had in combination with "encore" patterned nylon fabrics.

Super Chief series models feature upholstery of colorful combination in "horizons" patterned nylon faced fabric and grained vinyl coated fabrics. Rich-piled carpeting is standard equipment for the Star Chief and Super Chief series, except in convertibles and station wagons. The economy priced Chieftain series models offer a new height of luxury with interiors of "contemporary tweed" patterns of nylon faced cloth and vinyl. Sixty-six interior trim combinations are offered in the 1957 line.

Pontiac's completely new instrument panel for 1957 offers the ultimate in safety, convenience, and modern styling.

American car buyers, who over the past few years have grown increasingly interested in "what's under the hood" of their new cars, will find that Pontiac engineers have developed the 1957 car to a new level of efficiency and smooth durable performance.

The Strato-Streak V-8 engine, with displacement increased to

347.04 cubic inches, has higher horsepower, 10:1 compression ratio, larger manifold, completely machined and contoured combustion chambers, larger, more efficient valves and newly designed carburetors. The 1957 line will offer engines with horsepower of 252 and 270, and an additional extra horsepower engine especially designed for law enforcement cars.

Pontiac offers a "first" in high-compression engines with its intake valve stems vented to atmospheric pressure to prevent oil being drawn into the combustion chamber under high vacuum operating conditions. The increased piston stroke, of 3 and 9-16 inches, gives quicker acceleration and more instantaneous power on demand.

Pontiac's Strato-Flight Hydra-Matic transmission, improved to match the increased torque of the new engines, features a new internal driving mechanism for unmatched smoothness, quietness and responsiveness. The transmission oil cooler is located in the lower part of the radiator for maximum cooling efficiency.

Pontiac's roadability, spectacularly proven by the endurance records it set at the Bonneville Salt Flats, has been notably improved. Contributing to safer ride and handling are the new 14-inch wheels, modified shock absorber valving, and new front and rear



PONTIAC CUSTOM CATALINA SEDAN—Longer, lower Star Flight styling of the luxurious 1957 custom Catalina sedan combines with the powerful new V-8 engine and the more responsive Strato-Flight Hydra-Matic transmission to make the new car the most exciting ever offered by Pon-

tiac. Body finish of Lucite lacquer in "dream car" colors and upholstery of fine hand-buffed leather are featured on the Star Chief series. The sleek Catalina four-door hard-top model is also offered in the Super Chief and Chieftain series in 1957.

## Former Post Man Hurt In Accident

M. W. Staniforth Jr., 43, Hale County winner who formerly lived in Post, was seriously injured in a collision between a pickup truck and a station wagon at 8:15 a. m. last Thursday five miles southwest of Plainview.

Two men, Rodrigo R. Zuniga and Esperio Fuentes, both of Alamo, were killed in the accident. Injured besides Staniforth were William Howard Steen, a farmer who lives near Hale Center, and Guadalupe Perez, an

Alamo laborer.

Staniforth received extensive bruises and lacerations and a shoulder injury. Highway patrolmen said he was driving the station wagon, accompanied by Zuniga, Fuentes and Perez, to look at a cotton field which the Latin Americans were considering harvesting.

Staniforth, whose wife is the former Mina Rose Nance, daughter of Mr. and Mrs. Elton Nance of Justiceburg, was employed by

## BITS-OF-NEWS

Miss El Wanda Davies of Snyder was a guest of her parents, the Curtis Davies, here over the weekend. She and a group of friends attended the Texas Tech homecoming activities in Lubbock Saturday.

Mr. and Mrs. Eulas Brown spent Sunday in Lubbock visiting his mother, Mrs. A. R. Brown, who is ill.

a drilling company while living here.

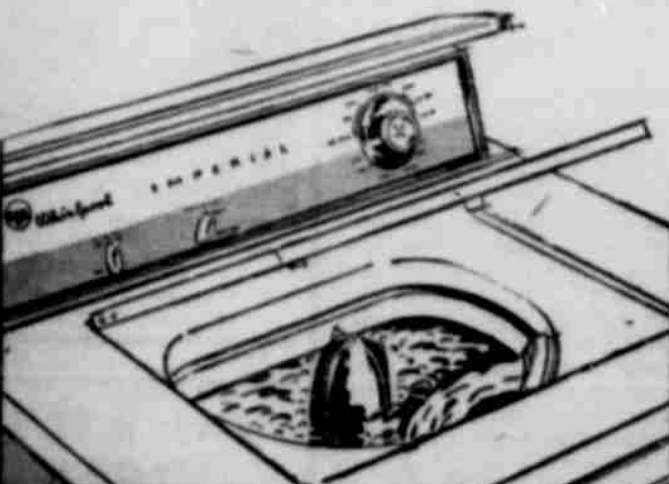
Advertisement for Gro's Insurance Agency. Text includes: "A railroad... about 65 days a year", "Gro's Insurance Agency", "SEXTANT INSURANCE AGENCY", "Between You and Us".

## Levi's Ranch Cafe

Where Good Food Is Never Accidental

Will Not Open On Tuesdays

no lint  
ON YOUR CLOTHES!  
no tray  
IN THE WAY!



## New '57 RCA WHIRLPOOL

—the automatic washer with built-in lint filter

Now a lint filter that's out of the way--no tray! Nothing to interfere with loading! Filters out lint full-time, automatically, even when water level is low. Two washing speeds, too--Normal for your regular wash, Gentle for your fine things. See it now. Choose from all-pearlina white or smart new Matchmaker colors.

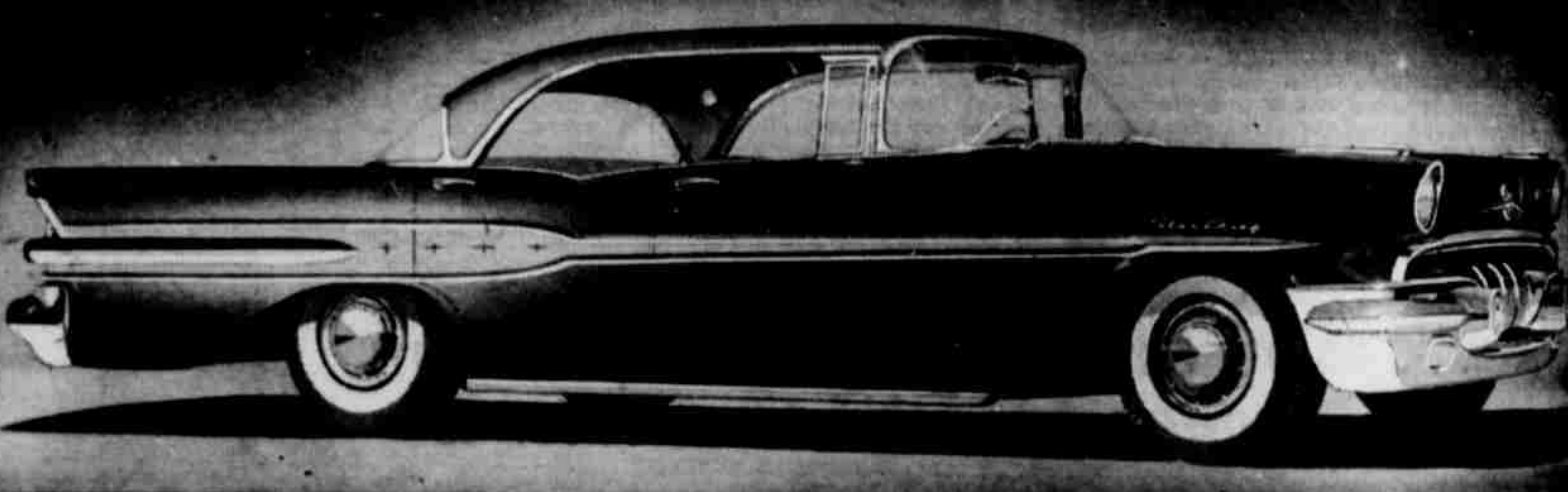
Yours for as little as

# \$3.00

a week (deposit method) your old washer makes the down payment

# Mason & Co.

## PRESENTING THE Surprise Package of '57!



## THE NEW Pontiac is Completely New from Power to Personality!

Fresh from 100,000 miles of testing, the '57 Pontiac is on display tomorrow! Even a brief once-over of Pontiac's sleek new lines tells you that you're in at the start of a styling revolution. And that glistening sheath conceals a carload of engineering "firsts"—all polished to watch-work perfection in the toughest test ever given a new car.

This '57 Pontiac pounded the road through 100,000 miles of tests... through it all Pontiac engineers refined and perfected every feature of this great car.

They made Pontiac's big, new power plant even more efficient than its predecessor, the engine that set over fifty new world records and led all eights in miles per gallon! They perfected the new suspension system, new controls and new Strato-Flight Hydra-Matic\* to give you the smoothest riding, easiest handling—and safest—new car ever to hit the road!

See and drive this new '57 Pontiac. Sample in a single mile all that's been proved by 100,000 miles of testing.

\*An extra-cost option.

AND THE FIRST CAR AT ANY PRICE WITH...

STAR FLIGHT BODY DESIGN—a Pontiac Exclusive—longer and lower than ever before—the year's most distinctive new automotive styling.

NEW INTERIOR STYLING—WITH THE "OFF-THE-SHOULDER" LOOK—a fashion "flair" for '57—perfectly color-matched with the exterior.

NEW STRATO-STREAK V-8—270 h.p. in Star Chief and Super Chief, 252 h.p. in the Chieftain—with excellent Strato-Flight Hydra-Matic.

LOUD-SOFT, LEVEL-LINE RIDE—the ride sensation of the year—a new suspension system based on a big 124- or 122-inch wheelbase.

THREE POPULAR-PRICED SERIES—Star Chief • Super Chief • Chieftain.

## See America's Number 1 Road Car—On Display Tomorrow!

# Dowe H. Mayfield Co., Inc.

205 West Main

It is estimated that small loan companies receive their largest single number of applications for medical loans...

**Publications Released By Service**

...series publica-  
...been releas-  
...Agricultural Ex-  
...and are available  
...of the Garza  
...agents, Miss  
...and Lewis C. Her-  
...L-300, The Story  
...A Soil, which in-  
...tells how soils  
...and protect them.  
...information on  
...for fitting and  
...should be of inter-  
...and others who  
...L-305, Annual  
...Read The Classified Ads!



**FIRST AID FIRST**—Prompt diagnosis and assignment for treatment of large numbers of attack casualties would be the function of the "triage," or admitting room in a Federal Civil Defense Administration 200-bed emergency hospital. Because first aid training programs have been expanded, it is expected that most victims—like this simulated casualty—would have received some first aid before they reached the hospital for actual professional treatment.

**MRS. R. J. KEY OF JUSTICEBURG WRITES**

**Cecil Oil Co. Employees Gather At Fred Bowen Home For Recent Barbecue**

Twenty-two were present for Sunday School at the First Baptist Church Sunday morning. Thirty attended the Primitive Baptist services.

Mr. and Mrs. V. L. Streety are deer hunting at Carrizozo, N. M., this week.

Mr. and Mrs. Billy Cantrell of Lubbock visited her mother, Mrs. John Reed, and other relatives here last week. Their son-in-law and daughter, Mr. and Mrs. Gene Caffey also of Lubbock were here Sunday and accompanied them home.

Mrs. Henry Key recently visited her son-in-law and daughter, Mr. and Mrs. Bobby Page in Brownfield.

Employees of Cecil Oil Co. met recently at the Fred Bowen home for a barbecue. Those attending were Mr. and Mrs. Sam Bevers, Jr., Mr. and Mrs. Harry Woods, Mr. and Mrs. Floyd Hodges, Mr. and Mrs. Clay Vaughn of Post and Red Bain of Snyder.

Mr. and Mrs. Milton Woodard and Mr. and Mrs. Bandy Cash were in Lubbock Monday.

Mr. and Mrs. W. C. Caffey, Jr., of Lubbock and Mr. and Mrs. Spence Bevers of Pleasant Valley visited Mrs. Elmer Pett-

grew Sunday afternoon. Dee Cecil Justice, son of Mr. and Mrs. Mason Justice, underwent a tonsillectomy in Lubbock this week.

Ott Nance was a recent guest of Mrs. L. N. Perriman in Snyder.

Mrs. Ott Nance and Mrs. Winnie Tuffing of Post visited at Jayton Sunday with members of the Pursley family. Mrs. Bertie Pursley died there last week.

**Brand New Appearance Feature Of '57 Oldsmobile, On Display Here Friday**

A Holiday coupe model of the 1957 Oldsmobile will be on display Friday and Saturday at Caprock Chevrolet, Inc., dealers Harold Lacas, manager, has announced. The public is invited to see this new Oldsmobile model at the firm's showroom.

Oldsmobile for 1957 has completed the most sweeping model change in the past 20 years, with distinctive styling innovations and mechanical improvements in every one of the 17 body styles in three series of cars. The body is completely new, creating a fashion-like new exterior appearance with deeper bumpers and a redesigned grille. Mechanical and structural advances include a new wider and heavier chassis, new "pivot-poise" front suspension of a design that resists dipping, improved rear suspension, a new 277-h. p. "Rocket" engine, known as the T-400 due to its high torque throughout the driving range, and new 14-inch wheels.

Outstanding styling note is the accent stripe, an Oldsmobile exclusive, that runs more than half the length of the car's side panels between narrow chrome moldings. This marks the first new style trend in exterior color application since Oldsmobile introduced two-tone color styling in the body in 1954. The accent stripe permits a new two-tone effect with the car painted one color and the accent stripe in a contrasting color. However, the conventional two-tone styling is still available as an optional extra.

"More new features and design changes have gone into the 1957 Oldsmobile than any of its predecessors in at least the past two decades. This has made it necessary for Oldsmobile to spend double the amount for the 1957 model change than any previous year," it was announced by J. F. Wolfram, general manager of Oldsmobile Division and vice president

of General Motors. Four new body styles have been added to the 1957 Oldsmobile line—three Fiesta station wagon models and an economy priced "88" convertible coupe. The division of body styles for 1957 includes seven in the Golden Rocket "88" series, six in the Super "88" series and four in the Starfire "98" series.

The Oldsmobile front end styling is entirely new, with a "bi-lo" bumper incorporating massive upper and lower bumper bars for double protection, closely spaced horizontal louvers to direct air into the engine compartment, chrome block letter spelling out the Oldsmobile name across the grille and unique parking lights adapted from Oldsmobile's 1956 "dream car". There is a new hood ornament, rocket fender emblems on each front fender and a "span-a-ramic" windshield that is deeper, wider and contains up to 18 per cent more glass area. The hooded headlamps have a wider visor.

Roadability and ride of the 1957 Oldsmobile have been improved through the new "wide-stance" chassis, incorporating a wider and heavier frame, and the improved front and rear suspension.

The 1957 "Rocket" engine has been boosted from 240 to 277 h. p. and the four-barrel quad-rijet carburetor is now standard on all series. Engine displacement has been increased from 324 to 371 cu. in. by lengthening the piston stroke and increasing the bore diameter. Compression ratio has been raised to 9.5 to 1.

Maximum torque is advanced from 340 or 350 to 400 ft.-lb. at 2,800 r. p. m. New closed skirt pistons, main bearings of aluminum and a snorkel type air cleaner are other new engine features for 1957.

Rear end design presents a new appearance, too, with oval tail-lights having wide chrome bands and a chrome spinner in the cen-

ter. Most marked interior change is the strut-mounted instrument panel adapted from Oldsmobile's experimental Delta. This strut panel, which extends from one side of the body to the other, is set back from the windshield base or cowl panel and leaves an air space back of the windshield for better air circulation and instrument accessibility. Twenty-two colors, 13 of which are brand new, are offered and six of these colors are in the high luster "lucite" finish which was pioneered by Oldsmobile last year.

**FEDERAL LAND BANK**  
FARM AND RANCH LOANS  
Interest: 4 Per Cent  
Available Through  
CAPROCK NATIONAL FARM LOAN ASS'N.  
Office In  
Duckworth-Weakley Bldg.  
Each Wednesday

**REPUBLICAN**  
**DEMOCRAT**  
**INDEPENDENT**  
**SOCIALIST**

never know just how you stand in your POLITICALLY but whether you are ONE OTHER you use the same items of hard- and house-hold goods SO when you need in HARDWARE we only HOPE YOU BUY FROM US.

our VERY BEST to have what you need you want it and if we ever NEEDED YOU TO YOU NOW.

FIRST for your every HARDWARE need.

port Hardware

Buy NOW and SAVE during...

**Triple Action WASHING MACHINE**  
*Anniversary Sale!*

**ALL NEW '56 MODELS BIG \$30.00 TRADE-IN on old washer!**

**Super Capacity Washer \$169.95**  
Exclusive Deep Power Rinse lets you rinse clothes right in the washer—no hand work—no extra tubs.  
Exclusive Triple-Action Agitator moves clothes up, down and around for fast, efficient washing.  
Washes clothes clean in 6 minutes.

**Large Deluxe Big 10 lb. Capacity Washer \$179.95**  
Exclusive Deep Power Rinse lets you rinse clothes right in the washer—no hand work—no extra tubs.  
Wonderful Triple Action Agitator washes with up, down and around motion...gets clothes cleaner, faster.  
Large Balloon Roll Wringer—fully adjustable, convenient and safe.  
3 widely spaced casters for easy rolling, non-tip stability.

Payment—Low Monthly Terms

**J's Furniture Co.**

Tomorrow's the day... they go on display!

**NEW 1957 OLDSMOBILES!**



NEW GOLDEN ROCKET 88 SERIES—the value-car of the year!

ALL that's NEW is OLDS!

3 NEW SERIES!  
17 ALL-NEW MODELS!  
See them now—in our showroom!



NEW STARFIRE 98 SERIES—there's nothing quite like it!



NEW SUPER 88 FIESTA—smart new model for the station wagon set!

SO MUCH THAT'S NEW—SO MUCH THAT'S EXCLUSIVELY OLDS! Come make your choice—from 17 glorious models in three great Oldsmobile Series... Golden Rocket 88, Super 88, Starfire 98. In every exciting model, you'll find new engineering values—new styling accents! Plus a great new 277-horsepower Rocket T-400 Engine—new Wide-Stance Chassis—a host of extra-value features! Here are big reasons why, for '57, the accent's on Oldsmobile... the car that puts the accent on you! Come choose your favorite right now!

SEE THE NEW 1957 ROCKET ENGINE OLDSMOBILES! NOW ON DISPLAY IN OUR SHOWROOM!

**CAPROCK CHEVROLET, INC.**

111 SOUTH BROADWAY

COME IN! YOU'LL LIKE OUR QUALITY WAY OF DOING BUSINESS!



# Come To Think Of It . . . . . IT'S TIME TO PAY UP MY NEWSPAPER SUBSCRIPTIONS . . . . .

*And despite advanced prices on almost everything else I buy - - - I can still subscribe to my newspapers at the same rate I have paid for them for the past three years.*

## Subscribe Now - - - During Bargain Days!

|  |      |
|--|------|
| THE POST DISPATCH, in Garza County Only .....    | 2.50 |
| THE POST DISPATCH, outside of Garza County ..... | 3.50 |

**FORT WORTH STAR TELEGRAM**

|                        |              |
|------------------------|--------------|
| Daily and Sunday ..... | <b>13.95</b> |
| Daily Only .....       | <b>12.60</b> |

**LUBBOCK AVALANCHE-JOURNAL**

|                        |              |
|------------------------|--------------|
| Daily and Sunday ..... | <b>12.95</b> |
| Daily Only .....       | <b>11.00</b> |

**FORT WORTH PRESS**

|                        |             |
|------------------------|-------------|
| Daily and Sunday ..... | <b>5.50</b> |
|------------------------|-------------|

The Above Rates May Be Withdrawn Without Notice

# Subscribe Today And Save Money!

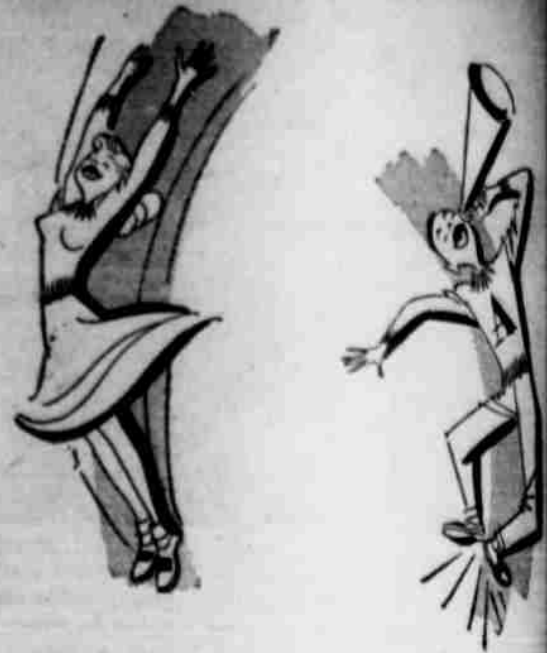




# FOURTH ANNUAL HOMECOMING

SPONSORED BY POST EX-STUDENTS ASSOCIATION

## Friday, November 9th



We're With The Antelopes All The Way  
 And Are Proud To Be Post High Exes  
**TOM POWER, INC.—FORD**  
 Tom Power—'37, Robt. Cato—'37  
 Imogene Roberts—'45, Roy Teaff—'49

It Is Always A Privilege For Us  
 To Cooperate In School Activities  
**WELCOME EXES**  
**BROWN BROTHERS, ET AL**

Welcome Back To Post High Former  
 Teachers And Students  
**T. L. JONES ICE & GRAIN CO.**  
 "We're With The Antelopes All The Way"

WELCOME POST HIGH EXES . . .  
 We're Proud To Have A Part In  
 POST HIGH SCHOOL ACTIVITIES  
**POSTEX COTTON MILLS, INC.**

WELCOME EXES . . .  
 We'll Be Happy To See You At Our  
 Annual Homecoming  
**HUDMAN FURNITURE COMPANY**  
 VICTOR MARVIN PERCY  
 Class 1925 Class 1924 Class 1946

WELCOME EXES TO P. H. S.  
 We're Looking Forward To Our  
**HUDMAN SERVICE STATION**  
 4th Annual Homecoming  
 Hans Hudman, Class 1937

We Consider It A Real Privilege  
 To Have A Part In Post High  
 School Activities  
**PIGGLY-WIGGLY**

May We Join In Welcoming  
 Post High School Exes  
 Back To The Annual  
 Homecoming  
**GENERAL TRANSPORT**  
 Bobby, Class '34 Jimmy, Class '36

WELCOME TO THE HOMECOMING  
 POST HIGH SCHOOL EXES  
 We Have A Mighty Fine School System  
 And Are Proud Of It  
**S. E. CAMP TEXACO**

WE'RE POST HIGH EXES, TOO . . .  
 and wish to welcome you to our  
 ANNUAL HOMECOMING  
**HUNDLEY'S MEN'S WEAR**  
 JIM JIMMY  
 Class 1915 Class 1937

WELCOME TO POST HIGH  
 4th ANNUAL HOMECOMING  
 We Hope To See All Post High Exes  
**TV-APPLIANCE CENTER**  
 "We Service What We Sell"  
 Phone 316

We Are Always Behind All  
 Post School Activities  
**WELCOME BACK HOME EXES**  
**LEVI'S RANCH CAFE**  
 "Where Good Food Is Never Accidental"

WELCOME BACK TO SCHOOL EXES!  
 It is with pride that we participate in  
 this our 4th ANNUAL HOMECOMING  
**DUCKWORTH & WEAKLEY**  
 OLLIE IRA LEE  
 Class - - - 1913 Class - - - 1914

BEST WISHES TO THE EXES . . .  
 May we join in wishing the greatest  
 Homecoming of Post High Exes ever  
 held here.  
**CAPROCK CHEVROLET, INC.**

WELCOME EXES . . .  
 It is a real pleasure for us to join in  
 extending a cordial invitation to all  
 POST HIGH EXES to attend the annual  
 HOMECOMING.  
**MASON & COMPANY**  
 Marshall Mason, Class 1913

IT'S HOMECOMING TIME  
 Welcome Back To School Post High  
 Exes . . . Let's Make It A Great Occasion.  
**HIGGINBOTHAM-BARTLETT CO.**  
 Tom Boucher - - - Class 1915

# Post Antelopes vs. Tahoka Bulldogs

Conference Grid Tilt

Antelope Stadium - - - - 8:00 P. M. Sharp

## All Ex-Students And Former Post Teachers Are Welcome To HOMECOMING

REGISTRATION OF EXES TO BEGIN AT 4:00 P. M.  
 IN HIGH SCHOOL AUDITORIUM

BANQUET AT 5:30 P. M.  
 IN HIGH SCHOOL GYM

## CROWNING OF QUEEN

WILL TAKE PLACE BETWEEN HALVES  
 OF POST-TAHOCA FOOTBALL GAME

Five Former Post Students Get Nominations:

**BILLIE WINDHAM**

**VADA McCAMPBELL**

**BARBARA BABB**

**TOMMIE COULTER**

**ROWENA PIERCE**

## BE SURE TO ATTEND HOMECOMING AND FOOTBALL GAME



We'll Be Looking For You!

WELCOME POST HIGH EXES  
 It is always a privilege for us to  
 participate in Post School Activities  
 - - - Make it a great HOMECOMING.  
**EARL ROGERS FEED STORE**

MAY WE JOIN IN WELCOMING  
 POST HIGH EXES BACK TO SCHOOL.  
 We wish you the finest homecoming  
 ever.  
**KIRKPATRICK AUTO ELECTRIC**

WELCOME BACK TO SCHOOL EXES  
 We are glad you'll be here to help  
 us root for the Antelopes over  
 Bulldogs.  
**LONE STAR SERVICE STATION**  
 Odean Cummings - - - Class 1921

If you lived in Post You'd Be Home  
 We Have One For You  
**BRYAN WILLIAMS & SON**  
 Bryan J. - - - Class 1926



HERE'S  
*Why*  
YOU

# SAM

at



**WE'RE FEEDING MILLIONS  
FOR A PENNY!**



Piggly Wiggly Supermarkets are in the business of selling foods . . . the most abundant, the most varied, the most healthful in history. Yet, Piggly Wiggly customers buy all this at such low prices that a penny represents the amount of profit made on your food dollar. After paying for merchandise, salaries, rent, utilities, equipment and other expenses, just one penny is left over. This is possible because of the large-volume, fast turn-over method of self-service. By "feeding millions for a penny," Piggly Wiggly and the entire grocery industry make their contributions to the strength of a greater America, and better eating for you and your family.

|                  |  |            |
|------------------|--|------------|
| <b>PRESERVES</b> | RED PLUM, PAR, 20 OZ. TUMBLER                  | 29c        |
| <b>FLOUR</b>     | GOLDEN WEST, 10 LB. BAG                        | 69c        |
| <b>CORN</b>      | COUNTY KIST, 12 OZ. WHOLE KERNEL               | 2 CANS 25c |
| <b>ORANGE</b>    | DRINK, KRAFT'S, 46 OZ. CAN                     | 25c        |
| <b>MIX</b>       | CAKE, SWANSDOWN, WHITE, YELLOW OR DEVIL'S FOOD | 25c        |

- Butter, Alma Speckled, No. 300 Can
- BEANS** 11c
- CORNED BEEF, ARMOUR'S, 16 OZ.—
- HASH** 33c
- Kraft's, Miniature, 6 1/2 Oz. Poly Bag
- MARSHMALLOWS** 19c
- DEEP BROWN, LIBBY'S, 14 OZ.—
- BEANS** 15c
- LIBBY'S, WHOLE SWEET, 22 OZ. JAR
- PICKLES** 49c
- Spears, Libby's, All Green, No. 300
- ASPARAGUS** 45c
- 8 Meat Balls, Libby's, 16 Oz. Can
- SPAGHETTI** 25c
- VANILLA, 7 MINUTE, 6 OZ.—
- FROSTING** 29c
- MACARONI, 14 OZ. CELLO BAG—
- SKINNERS** 25c
- CLOVERLEAF, LIGHT MEAT FLAKES—
- TUNA** No. 1/2 can 23c
- MEADOWLAKE, 1 LB. QUARTERS—
- OLEO** 29c
- TABBY, LARGE CAN—
- CAT FOOD** 13c
- RANCH STYLE, NO. 300 CAN—
- BEANS** 2 can 25c
- VELVEETA, KRAFT'S, 2 LB. BOX—

## PIES

PET RITZ, APPLE, PEACH OR CHERRY, 24 OZ. FROZEN **39c**

Beef, Chicken Or Turkey, Libby's Frozen—  
**PIES** 8 oz. 2 for 45c

UNDERWOOD'S, 16 OZ. PKG.—  
**BARBECUE** 79c

ORE-IDA, 12 OZ. PKG.—  
**POTATO PATTIES** 15c

LEAF OR CHOPPED, LIBBY'S, 10 OZ. PKG.—  
**SPINACH** 15c

COMPLETE, YOUR CHOICE—  
**PATIO DINNERS** 59c

ORANGE, LIBBY'S, 6 OZ. CAN—  
**JUICE** . . . . . 15c

## SHORTENING MIRACLE WHIP CRACKERS

- GREEN GIANT, NO. 300 CAN—  
**PEAS** . . . . . 19c
- INSTANT, MAXWELL HOUSE, 6 OZ.—  
**COFFEE** . . . . . 1.47
- MARSHALL, TALL CAN—  
**MILK** . . . . . 2 for 25c
- PARD, 16 OZ., 2c OFF CAN—  
**DOG FOOD** . . . 2 for 25c
- 400 COUNT BOX, WHITE OR COLORED—  
**25c**
- LISTERINE, 14 OZ. BOTTLE—  
**69c**

## KLEENEX ANTISEPTIC

HAIR ARRANGER  
BOYER'S, 6 OZ. **43c** PLUS TAX

### U. S. GOOD BABY BEEF:

- POUND—  
**T-BONE STEAK** . . . . . 79c
- POUND—  
**ROUND STEAK** . . . . . 79c
- PINBONE, LB.—  
**LOIN STEAK** . . . . . 69c
- POUND—  
**ARM ROAST** . . . . . 49c
- CENTER CUT, LB.—  
**CHUCK ROAST** . . . . . 39c

- SLICED, WILSON'S CORN KING—  
**BACON** . . . . . lb. 49c
- AUSTEX, 24 OZ. CAN—  
**BEEF STEW** . . . . . 39c
- AUSTEX, NO. 300 CAN—  
**TAMALES** . . . . . 20c
- CAMPFIRE, NO. 300 CAN—  
**BLACKEYED PEAS** . . . . . 10c
- CAMPFIRE, NO. 1/2 CAN—  
**VIENNAS** . . . . . 10c
- VAL VITA, NO. 2 1/2, CAN—  
**PEACHES** . . . . . 25c
- SANTA ROSA, 46 OZ. CAN—  
**PINEAPPLE JUICE** . . . . . 25c
- TREESWEET, 46 OZ. CAN—  
**ORANGE JUICE** . . . . . 35c
- ROSEDALE, BLUE LAKE, CUT, NO. 303 CAN—  
**GREEN BEANS** . . . . . 2 for 25c

## CHEESE . . . . . 74c

PORK, FRESH, SEMI-BONELESS, BOSTON BUTT, LB.—

## ROAST . . . . . 39c

- Prater's, Fresh Frosted, 8-12 Lb. Avg.—  
**TURKEY HENS** . . lb. 49c
- 4 FISHERMEN, 8 OZ. PKG.—  
**FISHSTICKS** . . . . . 33c

- KRAFT'S PHILADELPHIA, 8 OZ. PKG.—  
**CREAM CHEESE** . . . . 39c
- FRESH GROUND, LB.—  
**HAMBURGER** . . . . . 29c

- CALIFORNIA, NO. 1 LB.—  
**TOMATOES** . . . . . 15c
- TEXAS FULL OF JUICE, 5 LB. BAG—  
**ORANGES** . . . . . 39c
- JONATHAN, ALL PURPOSE, LB.—  
**APPLES** . . . . . 12 1/2c
- POUND—  
**RUTABAGAS** . . . . . 10c
- CALIFORNIA, GREEN, LARGE STALK—  
**CELERY** . . . . . 15c
- TEXAS WHITE SEEDLESS, LB.—  
**GRAPEFRUIT** . . . . . 10c

**3 1/2 GREEN STAMPS  
DOUBLE EVERY  
TUESDAY**  
(WITH 2.50 PURCHASE OR MORE)

