



RENEW YOUR SUBSCRIPTION

You Are Invited To Attend The

Vacation Bible School

Monday, June 10th thru Friday June 14th

O'Donnell Church of Christ

- ★ 9:00 a. m. Assembly
- ★ 9:15 a. m. First Class
- ★ 10:00 a. m. Recess
- ★ 10:15 a. m. Second Class
- ★ 11:00 a. m. Dismiss

"Classes For All Ages"

Lynn County Farm Bureau

Office In Thomas Bldg. 1608 Sweet - J Streets

Tahoka

Phone 528

Residence Phone 71 -JX

We Attend to Your Insurance Need.

Gas Exemption Forms Filled Out for any Farmer FREE!

FARM BUREAU INSURANCE SERVICES

Auto - Fire - Life - Polio - Blue Cross, Blue Shield Farm Liability

Office Hours: 9 to 5 Six Days a Week

9 until Noon on Saturdays

CHARLES REID, Agt.

See Our Line Of Gifts For

June Bride

PRESCRIPTIONS

Lott Pharmacy

Hugh Lott, Registered Pharmacist

Bone Banks Now Ready For Use in Most Cities

NEW YORK—Several hospitals in New York and elsewhere operate banks for human bone. At the New York hospital for special surgery, one of the first to establish a bone bank, successful grafts have been made with bone stored for as long as 22 months. Bank bone has been used in more than a thousand operations.

Bone banks have been able to obtain an adequate supply of bone from amputations and other operations in which bone is removed. Cut into chips or thin strips, the bone is given a careful cleaning, and stored in sterile jars in a deep-freeze at -18 degrees F. Bone grafts are employed primarily in fractures that refuse to knit, in replacing infected bone, in operations for fusing various joints of the spine, and in aiding children born with bones missing.

The grafted bone does not grow, but stimulates the growth of the patient's own bone.

Weather Affects Range Of Shotgun Pellets

BRIDGEPORT, Conn.—The pellets in a shot charge are not always perfect spheres when leaving the gun barrel and departures from sphericity result in shortened ranges. A wind may appreciably increase or decrease the maximum range. The maximum range is greater on hot days and less on cold days.

The calculations do not take into account interactions among the various pellets which may increase the range a few feet. Furthermore, no provision is made for the occasionally observed effect of "shot balling", that is, the sticking together of several pellets in the shot charge to form a cluster. Although with modern guns and loads this may be of relatively infrequent occurrence, it must be recognized that such a "ball" would travel considerably farther than the other pellets in the charge.

'Time for a Change'—U. S. Sides With Men

WASHINGTON — Women spend more money for clothes than do men—this old male argument has been proved by a government report.

In a brand-new report on American spending habits, the Bureau of Labor Statistics says "around 55 per cent of the family clothing budget was spent (in 1950) on women's and girls' clothing."

Men and boys? They got "a little over 40 per cent" of the clothing budget. The remainder went to the

TAKE IT EASY WITH "HAPPY PILLS" SAYS HEALTH DEPARTMENT

Austin — The big three in America today are reserpine, chlorpromazine and meprohamate. They are tranquilizing drugs — so called "happy pills." And as more and more people take them for real and imagined tensions, they are fast becoming household words.

Americans last year spent well over \$150 million for various types. A single drug company reported the sale of 30 billion tablets during the first ten months of 1956 and indicated that sales were expected to double in 1957.

Scientific studies indicate that the drugs have great value in the treatment of some types of mental illness but when people, for no other reason than that they had a bad day at the office or that the children have been unusually noisy,

begin eating them like popcorn, an insidious danger is in the making.

Like other valuable drugs, tranquilizers can be harmful physically and mentally. In some cases there is a tendency toward habit formation. In a few cases, unpleasant side reactions have occurred. Some users have been depressed rather than calmed. Calm users have become excited. Only time can tell whether prolonged use will permanently damage the nervous system.

All of us would do well to remember that a certain amount of tension and anxiety is a part of normal life. Peace of mind and restful living do not yet come in pills. It comes from facing our problems and working to solve them.

★Send Us Your NEWS

An accident like this ... could cost you ALL YOU OWN!

Enjoy your favorite sport without having to worry about losing all you own because of an unavoidable accident. For less than \$1 a month, you can be protected up to \$10,000 with an "American" Comprehensive Personal Liability Policy.



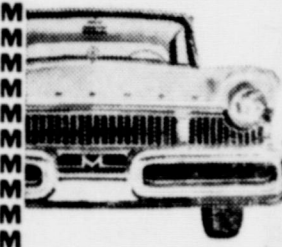
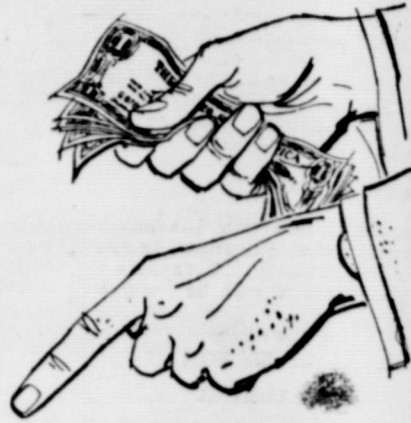
MOORE INSURANCE

AGENCY

Phone 220, O'Donnell

SAVE BIG MONEY! ACT NOW!

PICK and SAVE today!



Special orders for colors and equipment increase our selling expense. Buy from stock and we'll give you what we save!



PICK FROM STOCK!

- There is a wide selection of colors and models to choose from, now!
- No waiting. Pick yours out—drive it out, tonight!
- First come, first choice. Get The Big M you want while they last.

SAVE PLENTY NOW!

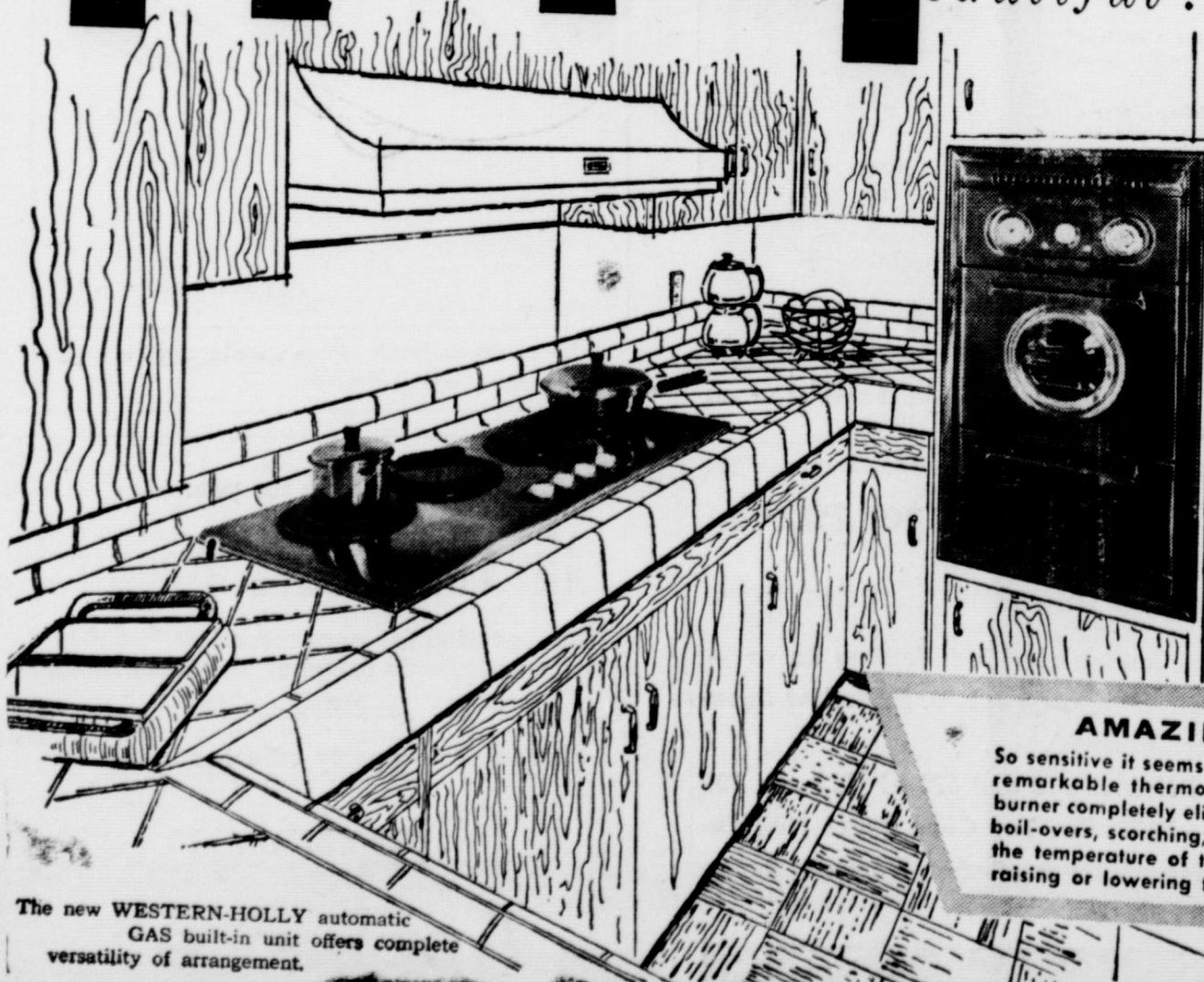
- Record-breaking sales permit largest allowances this year!
- Your present car has never been worth more!
- Easy terms arranged, fast. Come and get your Big M!

MERCURY '57 FORBES MOTOR CO.

Ford Sales and Service

Phone 92, O'Donnell, Tex.

Any Kitchen Becomes Beautiful... Every Cook Becomes Better



WITH A COMPLETELY AUTOMATIC GAS BUILT-IN RANGE

Regardless of the shape, size or decor of your kitchen, add a glamorous GAS built-in range and it becomes (like a woman with a new facial, coiffure and hat) simply scintillating! Because here is beauty beyond compare... efficiency unmatched... and economy far beyond all competition. And with every completely automatic feature—including thermostatically-controlled top burners—a GAS built-in range just naturally makes the most of any recipe a woman turns her hand to! For full details, consult your Gas Company... then see a builder or gas appliance dealer.

AMAZING "TOP BURNER with a BRAIN"

So sensitive it seems to think for itself, this remarkable thermostatically-controlled burner completely eliminates the danger of boil-overs, scorching, or burning. It "feels" the temperature of the cooking vessel... raising or lowering the flame as need be

to maintain the precise heat indicated by the dial. All your pots and pans actually become automatic utensils when you have the Burner with a Brain... and only GAS ranges have it!



The new WESTERN-HOLLY automatic GAS built-in unit offers complete versatility of arrangement.

M57-14 7 Col. x 7"

fuel for a growing empire Pioneer Natural Gas Company

**O'Donnell Index - Press**  
 Box B, O'Donnell, Texas  
 Published Every Wednesday  
 O. G. SMITH, JR.  
 Advertising Rate: 50c col. inch  
 Entered as second-class matter  
 September 23, 1923 at Post Office  
 at O'Donnell, Texas under Act of  
 Congress March 3, 1879.  
 (Rain Or Shine)

**SUBSCRIPTION RATES**  
 In Lynn, Dawson and Borden  
 Counties \$2 per year  
 Elsewhere in U. S. \$2.50

Card Of Thanks 50c Classified  
 Advertising 2c per word with mini-  
 mum charge 50c

Read label at top of paper to see  
 when your paper expires.



Amber, used for beads and orna-  
 ments, is a fossil resin. Over 800  
 species of insects and leaves of 163  
 plants have been found preserved  
 in it.

A chicken feater is handy for  
 brushing crumbs out of a pop up  
 toaster.

The female sea spider has six  
 pairs of appendages, the male, sev-  
 en, the extra pair to carry the eggs  
 until hatched.

**FIRST BAPTIST CHURCH**

**SUNDAY**  
 Sunday School 9:45 a. m.  
 Morning Worship 11:00 a. m.  
 Concord Choir 6:00 p. m.  
 Training Union 7:00 p. m.  
 Evening Worship 8:00 p. m.  
 Youth Fellowship 1st Sunday at  
 9:00 p. m.

**MONDAY**  
 W. M. U. 3:45 p. m.  
 G. A. Sunbeams 3:45 p. m.  
 Jr. G. A. 3:45 p. m.

**WEDNESDAY**  
 Intermediate G. A. 7:00 p. m.  
 Officers and teachers 7:30 p. m.  
 Prayer, Bible Study 8:00 p. m.  
 Church Choir 8:45 p. m.

For rent — 4 room furnished  
 duplex apt. See Index

**CHURCH OF THE NAZARENE**

Sunday School 10:00 a. m.  
 Morning worship 11:00 a. m.  
 N. Y. P. S. at 6:30 p. m.  
 Prayer service Wednes. 7 p. m.  
 Evangelistic Services 7 p. m.

**DON'T SCRATCH THAT ITCH  
 IN JUST 15 MINUTES.**

Your 40c back at any drug store  
 if not pleased. Easy to apply **ITCH  
 ME NOT** deadens itch in MINUTES  
 kills germs on contact. Fine for  
 eczema, ringworm, insect bites,  
 foot itch and other surface itches.  
 Guaranteed locally by Lott Phar-  
 macy.

**METHODIST CHURCH**

Sunday School 9:45  
 Morning Worship 10:55 a. m.  
 Evening Fellowship  
 Children Youth Adults 6:30 p. m.  
 Evening worship 7:30 p. m.  
 Woman's Society of Christian  
 Service — Faith Circle Mondays at  
 2:30 p. m.; Mary Martha Circle at  
 9:30 a. m. Tuesdays  
 Methodist Men meet each 4th  
 Monday at 8 p. m.

**Assembly of God**

Sunday School 9:45 a. m.  
 Worship Service 11:00 a. m.  
 Evening service: 7 p. m.

For sale — boy's bicycle, fair  
 shape \$12.50 Index

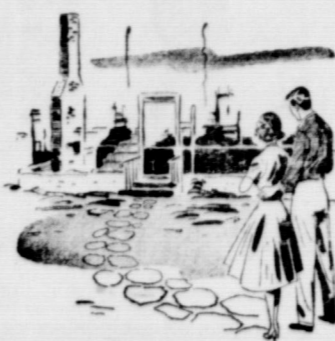
Cottonseed for sale — Both Lank-  
 art 611 Storm-proof and DPL Lot  
 15. High germination, ginned in  
 large lots, \$1.75 per bu or \$100  
 per ton, Bill Clayton, Aten 2248  
 5 1-2 miles N. E. O'Donnell 6-1

Add left over fruit juices to gel-  
 atine deserts.

To prevent peeled, raw sweet  
 potatoes from turning brown, keep  
 in cold water until ready to cook

More women marry at age 23 and  
 more men at ages 26 and 27.

See that your news gets  
 to your home town paper



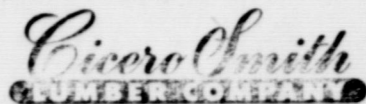
**THIS IS SCRATCH!**  
**YES, SCRATCH** — the place  
 from which you will have to start if  
 fire or other disaster destroys your  
 home and everything in it.  
 Would your present insurance  
 give you the help you would need  
 to rebuild "from scratch"? Let us  
 help you to make sure **NO W**

**CLAYTON'S**  
**Insurance Agency**  
**LOANS**  
 Phone 148 O'Donnell



No Money Down And 60  
 Months To Pay

Phone 18 O'Donnell  
 Joe Hromas, Mgr.



**REX**

Fri. and Sat.

June 7th and 8th  
 Gary Cooper and Ruth  
 Roman in

DALLAS

Sunday

June 9th  
 Audie Murphy in  
**The Guns Of Fort  
 Petticoat**

In Technicolor

**Real Estate**

— FARMS — RANCHES —  
 CITY PROPERTY  
 Leases and Royalties

B. M. Haymes

**VAN'S**

SOFT WATER  
 Help-Your - Self

**Laundry**

Noble L. Rumbo,  
 M. D.

Medicine and Surgery

RUMBO CLINIC  
 OFFICE TELEPHONE 61  
 RESIDENCE PHONE 180

Dr. O. H. NANCE  
 Optometrist

528 N. 1st Lamesa ph. 554

**STANLEY**

Funeral Home  
 And Burial Association  
 phone 233 Bx 185 Tahoka

**Gibson's**

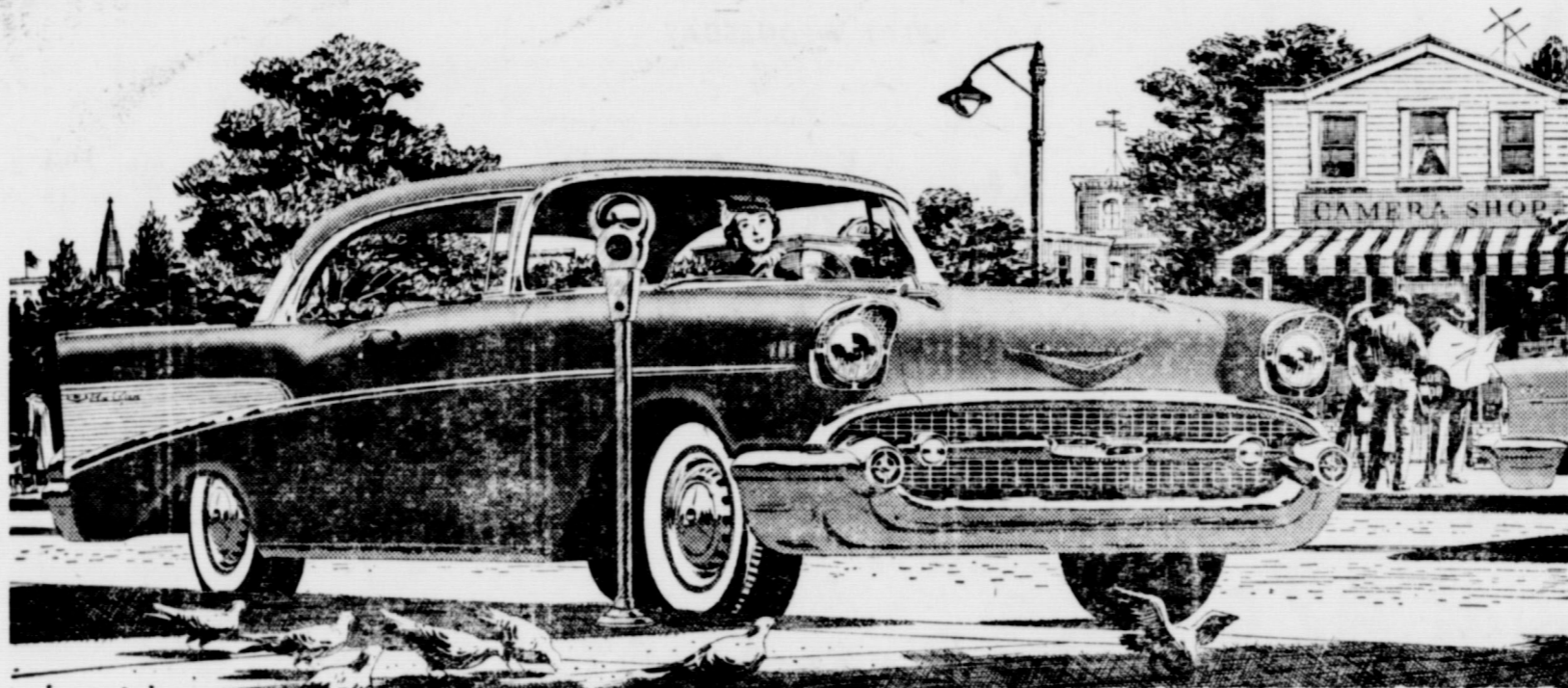
CLEANERS

CLEANING  
 PRESSING

Alterations

Ag't. For Lamesa Steam  
 Laundry

We Give S. and H.  
 Green Stamps



*Moves out in  
 a single sweep  
 of motion*

... Chevrolet with Turboglide!

Chevy's come up with the  
 newest, sweetest, smoothest  
 automatic drive—Turboglide.  
 It's the first and only triple-  
 turbine transmission!

Turboglide is something really new  
 and different in automatic drives.  
 In the first place, there's only one  
 forward-speed position on the con-  
 trol. There's no "Low" needed.

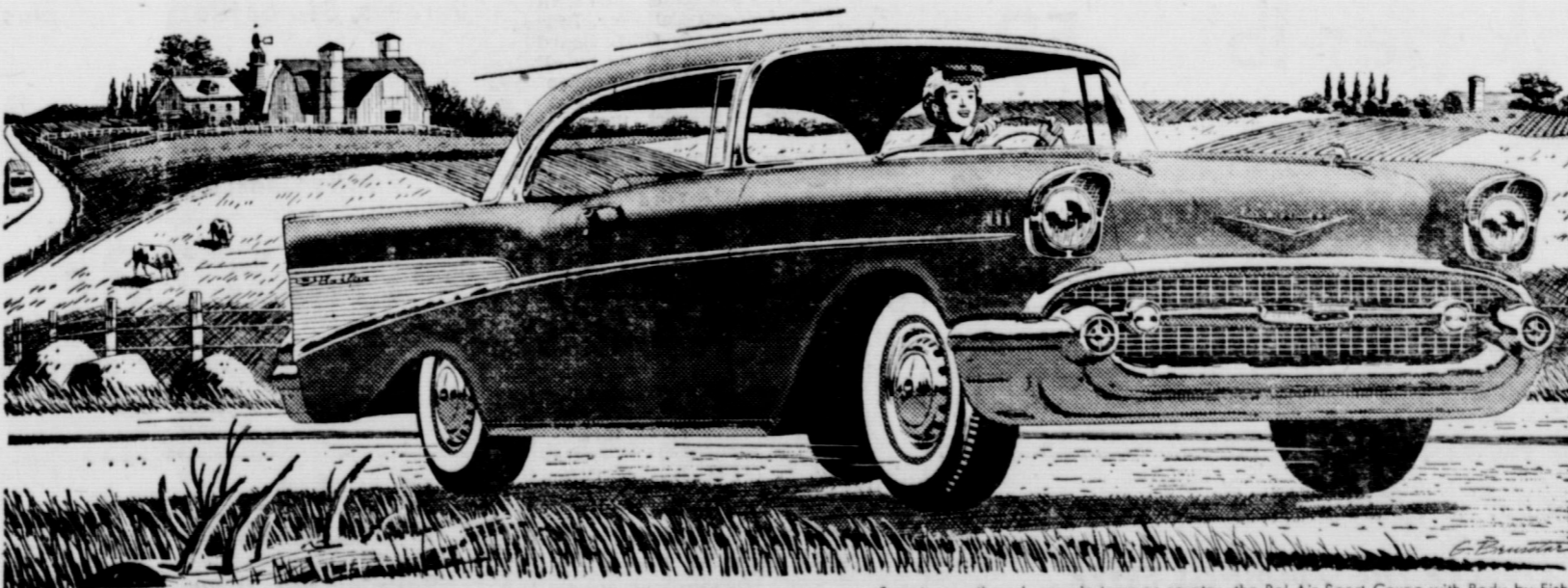
Turboglide handles everything  
 with the oil-smooth action of triple  
 turbines. You travel from a stand-  
 still to top cruising speeds with  
 never a lurch or lag to mar your  
 motion.

When you see a steep downhill  
 stretch ahead, you set the selector  
 at "GR" (Grade Retarder) and  
 Turboglide helps slow you down.

Try Chevy's new, nothing-like-it  
 automatic drive. It's optional at extra  
 cost—and worth every cent of it.



MORE PEOPLE DRIVE CHEVROLETS  
 THAN ANY OTHER CAR



AIR CONDITIONING—TEMPERATURES MADE TO ORDER—AT NEW LOW COST. GET A DEMONSTRATION!

Sweet, smooth and sassy in town or country—the Bel Air Sport Coupe with Body by Fisher.

Only franchised Chevrolet dealers  display this famous trademark

See Your Local Authorized Chevrolet Dealer

# BLOCKER GROCERY

Your S. & H. GREEN STAMP store  
SPECIALS For Friday and Saturday

**S. & H. GREEN STAMPS**  
Serving Since 1896

**GREEN STAMPS**  
Save as you spend

★ You can fill your books more rapidly by trading with O'Donnell Merchants who give S. and H. Green Stamps... they're valuable

Ask us for a free catalogue  
●● Yes, Sir, Double Stamps  
EVERY WEDNESDAY

- OLEO 19c**  
"Golden" 1 lb Colored quarters
- Coffee \$1.29**  
6 oz. Instant "Folgers"
- JELLO 2 for 15c**  
All Flavors
- Sugar 47c**  
5 lb bag Pure Cane
- CATSUP 19c**  
14 oz. Bottle "Del Monte"
- SALMON 49c**  
"Honey Boy" Tall can
- Peaches 25c**  
"Cal Top" No. 2 1-2can
- Orange Juice 2 for 25c**  
6 oz. can Frozen "Donald Duck"

- Strawberries 6 pkg. for \$1**  
10 oz. pkg. Frozen Sliced
  - sliced Bacon 55c**  
SAVORY, PER LB
  - beef roasts 47c**  
Choice cuts per lb
  - Bologna lb 39c**  
All Meat
  - beef ribs lb 25c**
- FRYERS**

- Week end Specials**
- FLOUR . . . 89c**  
10 lb GLADIOLA
  - Spiced Luncheon per lb . . . 39c
  - Steak per lb . 59c**  
T- Bone, very nice, per lb
  - Bologna per lb . . . 29c
  - Dr. Pepper 6 bottles for only . . . 19c
  - Sugar 5 lbs for . . . 49c
  - SPUDS 10 lb bag . . . 49c
  - Bananas per lb . . . 11c
  - Greens, nice, tender per bu. . . 10c
  - Coolade 6 for . . . 25c

FEATURING THE O'DONNELL FRYER  
**Palmer Gro. & Mkt.**  
ALWAYS OPEN 7 DAYS A WEEK -- WE DELIVER  
DOUBLE FRONTIER STAMPS ON WEDNESDAY  
THE NORTH "Y" Phone 150

PROCTOR SELLS BARBER SHOP  
To My Many Friends Of O'Donnell And Area —  
I wish to take this means of thanking our friends for the many years of your Barber and Beauty Shop Patronage. I have sold my shop to Mr. McDaniel. I hope you will remain a friend and customer of the shop and the new owner.  
Again, my sincere thanks to all.  
JOE PROCTOR

School bus for sale—two 1951 International bus chassis for sale. May be seen at bus barn. Body will be removed and placed on new buses on order. Leave sealed bids with School Tax Assessor-Collector. Bids to be opened June 6, 1957. Board reserves right to reject any or all bids. W. A. Skinner, Superintendent O'Donnell, Texas, Independent Consolidated School District, 2tc

For sale — lot on Lake Thomas, 28 ft. Trailer House, 1951 Plymouth coup, 1951 Ford 2 door Sedan, A A Allen at Wells Gin, Nelmis 3241 5-20 c

**O'Donnell Index - Press**  
Box B, O'Donnell, Texas  
Published Every Wednesday  
O. G. SMITH, JR.  
Advertising Rate: 50c col. inch  
Entered as second class matter September 23, 1923 at Post Office at O'Donnell, Texas under Act of Congress March 3, 1879.  
(Rain Or Shine)

**SUBSCRIPTION RATES**  
In Lynn, Dawson and Borden Counties . . . \$2 per year  
Elsewhere in U. S. . . \$2.50

Card Of Thanks 50c Classified Advertising 2c per word with minimum charge 50c  
Read label at top of paper to see when your paper expires.

For rent — one 4-room house and one 5-room house. Mrs. Marvin Herman 208 N. 18th Phone 3314 2p Lamesa

**CARD OF THANKS**  
I wish to express my deep appreciation to everyone who was nice enough to give me a graduation gift and card. Thanks.  
Tony Amaro, Jr.

**CARD OF THANKS**  
We wish to take this means of expressing our most sincere appreciation to our friends and neighbors for their many kindnesses extended to us at the time of the loss of our beloved mother. Our special thanks for the food, the flowers, the cards and all other thoughtful acts.  
The Lindly Family

Billy Ray Simpson and baby of Corona, Calif. visited his parents, Mr and Mrs. Dick Simpson last week.

Mr and Mrs. Carl Livingston of Amarillo visited in the Elmer Wright home over the week end.

Fatigue plays a most important part in farm accidents — do not drive yourself nor your farm workers to the point of exhaustion. It will pay to conserve your health and well being just as it does to conserve other resources. Just plain be careful.

FINEST QUALITY OF WATCH REPAIRS AND SERVICE AT  
★ **HALE VARIETY**  
All Work Guaranteed Prompt Service  
For sale — Cottonseed, 611 Lankart, 1st year from White Sack \$1.75 bu. Arol Moore.

## Specials For Friday and Saturday

- 2.5 lb Gladiola Flour
- LIGHT CRUST**  
The Finest of Fine Flours
- 18 oz. Peter Pan Peanut Butter
- Zee Toilet Tissue 3 pkg. 4 rolls for
- 303 can Libby's Fruit Cocktail . . . 4 for
- No. 2 Libby's Sliced Pineapple 3 cans for
- 303 can Our Daring Corn 2 cans for
- 303 can Libby's Garden Peas 2 cans for
- Libby's 46 Pineapple Juice 2 cans for
- 303 can Libby's Sliced or half Peaches 4 for
- 14 oz. Heinz Catsup 2 for
- 1 lb Hixson Coffee
- 1 lb Supreme Crackers
- All Meat Franks per lb
- Longhorn Cheese per lb
- Club Steak per lb
- 10 lb bag White Spuds
- Bananas, Golden, Yellow, per lb
- Large Size Fresh Pineapple
- ★ ★ **Double Frontier Stamps On Wednesday**  
WE GIVE FRONTIER SAVING STAMPS

**Line Grocery And Market**  
Plenty of parking behind the store; come in and with us WE DELIVER PHONE 110

**There's no one like DAD!**  
(TREAT HIM TO FATHERS DAY FAVORITES)

**OLEO 2 lb 41c**  
2 lbs Kimbells

- Peaches 4 for \$1**  
No. 2 1-2 can Mission, halves or Slices
- Sugar 5 lb 47c**  
5 lbs
- Crackers 25c**  
Supreme, Salad Wafers 1 lb

**Finest Quality MEATS**

- Cheese lb 49c**  
Longhorne lb
- Beef roasts 49c**  
Home Killed Beef from John Stephens Feed Lot

- Catsup 2 for 38c**  
Del Monte 14 oz. Bottle
- Hand Lotion 39c**  
Jergens, 54c bottle plus tax
- Toilet Tissue 4 for 31c**  
4 rolls Charmin
- Dash 33c**  
New suds Miracle for automatic washers, regular size
- Pickles 25c**  
Sour or dill, Diamond, quart

Banner Bacon 59c per lb  
Fresh dressed fryers, hens

\$\$\$\$\$\$\$\$\$\$\$\$  
**SILVER DOLLAR THRIFT STAMPS**

Mansell Bros. Co.  
O'Donnell, Texas  
\$\$\$\$\$\$\$\$\$\$\$\$  
★ ★ WE GIVE DOUBLE SILVER DOLLAR THRIFT STAMPS ON EVERY WEDNESDAY

**MANSELL BROS**  
SPECIALS FOR FRIDAY AND SATURDAY  
FREE DELIVERY  
PHONE 50 PHONE