

★ Try Index Advertising For Results
RENEW YOUR SUBSCRIPTION

UNTIL FURTHER NOTICE WE WILL
OPEN ALL DAY ON SATURDAYS
HIGGINBOTHAM - BARTLETT CO.
E. T. WELLS, MGR.

QUALITY WORK AT
REASONABLE PRICES
Kleenall
LAUNDRY AND CLEANERS
Also Automatic Coin Operated Dry Cleaning
Free Pickup and Delivery CALL 428-3744
(Across Street City Hall)



24 Hour AMBULANCE SERVICE
OXYGEN EQUIPPED AIR CONDITIONED
BRANON - PHILLIPS FUNERAL HOME
"DEDICATED TO HELPFULNESS"
403 N. Austin Ave., Lamesa, Texas, Phone 872-8835

EARLY START ON TAX PAYMENTS

Many property owners are taking advantage of the three percent discount during October by paying their state and county property taxes, states George McCracken,

Lynn county tax assessor and collector.

On the first day of October, tax payments totaled \$5,687.84, and others are making their payments daily. Last year, only \$1,291.05 in taxes was collected the first day,

Oct. 1. Mailing of tax statements was completed last week for a total of \$266,466.14 in taxes due in county and state taxes on a total value

tion of \$11,810,982.00. go for local county operation, improvements, etc., \$40,437.81 will go to the state, and \$1,596.24 will go to the High Plains Underground Water District.



pretty party-goer

Outrageously flattering with its triple contrast tie sash... and intriguing print in dazzling artist's palette colors. Choose predominating red with pinks, inca blue with greens or Spanish copper with slate. A wardrobe-wonder by Marcy Lee, in Enka's 50% Zentrel® rayon and 50% cotton. Sizes 8 to 18.



ELLIE'S

Moore Insurance
Complete Insurance Service
Phone 428-3335 O'Donnell, Tex

IF...
YOU...

Are A Member of
ELLIE'S Christmas Club
You Save Ellie's Fashion
Sales Slips

HERE...

...IS HOW THE CLUB WORKS

FOR EACH DOLLAR MARKED ON SALES SLIPS YOU PRESENT YOU WILL BE ALLOWED 5 PERCENT CREDIT TO APPLY ON MERCHANDISE OF YOUR CHOICE
An example: If you present \$100 in cash sales slips you have \$5.00 worth of merchandise due you free from ELLIE'S

YOU MAY CASH YOUR SALES SLIPS AT ANY TIME AND YOU MAY SAVE YOUR SALES SLIPS FOR

AS MANY MONTHS OR YEARS DESIRED

ELLIE'S SALES SLIPS may be transferred, swapped or given to a friend or relative

FARM AND RANCH

LOANS

IN ALL WEST TEXAS, NEW MEXICO, COLORADO
INTEREST RATE IN LINE WITH ANY AGENCY

C. J. BEACH

Phone 428-3767 or 428-3324

SAVE 3%

Pay Your State and County Taxes

NOW!... AND SAVE!

3 percent discount will be allowed on all 1965 State and County taxes if paid during the month of October.

Don't forget your poll taxes.

GEORGE McCracken
Tax Assessor and Collector
Lynn County, Texas

Now! New Chevelle

SUPER SPORT
396



New Chevelle SS 396 Sport Coupe—
with clean-sculpted all-new Body by Fisher.

by Chevrolet

Two new Super Sport beauties for '66—a hardtop and convertible—propelled by nothing less than the new Turbo-Jet 396 V8.

This remarkably efficient power plant, with aircraft-type valves, deep-breathing ports and other design advances, develops 325 hp in the standard version. And you're welcome to order more—in a 360-hp version—if you're so inclined.

Both Chevelle SS 396 models ride on a special flat-cornering chassis. A fully synchronized 3-speed transmission with floor-mounted stick shift is standard. Or you can order a 4-speed or Powerglide—also Strato-bucket front seats, center console and full SS instrumentation.

Your Chevrolet dealer's is the place to see how all this feels from behind the wheel. He's a great believer in letting the customers handle the merchandise.



See the new '66 Chevrolet, Chevelle, Chevy II, Corvair and Corvette at your dealer's

ELLIS CHEVROLET CO.

BOX 124, PHONE 83315 O'Donnell, Texas

JUNIOR FIRE MARSHALS LAUNCH CAMPAIGN

To thousands of school children across the nation "back to school" will also mean back to their roles as Junior Fire Marshals for another year of fire prevention and safety in the home, at school, and at play. Schools in O'Donnell are among 15,000 that are participating in the annual safety program sponsored by The Hartford Insurance Group. The Junior Fire Marshal Program here is coordinated through Elvin R. Moore of the Moore Ins. Agency, in cooperation with local school and fire department officials.

Among the Junior Fire Marshal's first projects will be a thorough inspection of fire and other safety hazards in their homes. With the aid of a check list, and under the guidance of their parents, the boys and girls will be looking for such common causes of fires and accidents as frayed electrical cords, overloaded electrical outlets, paints, varnishes and other flammable liquids in open containers or stored too close to furnaces, loose floor boards, faulty staircases and the like.

FIRST BAPTIST CHURCH

T. Partain, Pastor
Morning Worship 10:55 a. m.
Sunday School 9:45 a. m.
Praying Union 8:00 p. m.
Evening Worship 7:00 p. m.
Wednesday 7 P. M.

BUY YOUR DAILY PAPER (BY MAIL) AT INDEX OFFICE:
LUBBOCK AVALANCHE
ONE YEAR 16.00
SIX DAYS ONLY 14.65

When you have news please call Mrs. Jesse Lane 428-3310

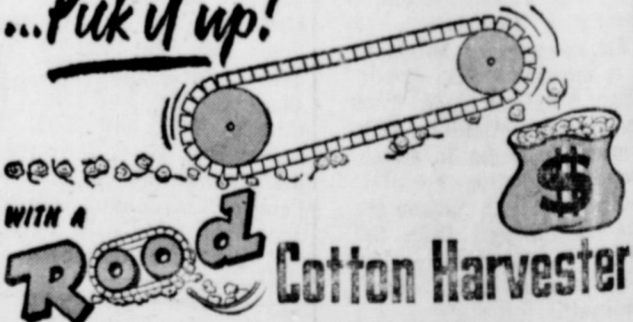
4-H NEEDS YOU
By Benny Barton

If you are between age 9 and 19 years, 4-H needs you as an active club member. If you are past 19, 4-H needs you as an adult leader.

4-H Club work can be as big or as little as you make it. There are many projects to choose from, whatever you are interested in 4-H has a program for you. Club members work individually and in groups to learn new skills and attitudes, leadership, citizenship, sportsmanship and responsibility. County agents, parents, adult leaders and sponsors and donors make 4-H Club work possible for all boys and girls. They give a lot of time and talent voluntarily. Take advantage of the opportunities 4-H offers you. Join a 4-H club during National 4-H Club week. Contact our county agent, or any adult leader or club member. They will be glad to help you.

COTTON ON THE GROUND?

...Pick it up!



WITH A **ROOD** Cotton Harvester
SALES SERVICE PARTS
NEW & USED MACHINES
Farm Proven Quality
TEXAS COTTON HARVESTER SALES CO.
5604 S. QUIRT SH 7-1261 LUBBOCK

Discount Offered on Tax Payments

Lynn county taxpayers may receive three percent on state and county taxes by paying these taxes in October, states George McQuary, Lynn county tax assessor and collector.

The deduction will be reduced two percent for November and one percent for December. In January, the full price will be paid.

FOR SALE — 3 bedroom brick home. Double garage, trees, fence, etc. Phone 428-3826.

applicable, and after January 31, penalty and interest must be added according to state law.

Texas citizens still pay poll taxes to vote in state, county, city and school district elections. Citizens are reminded that poll tax fees are not included in tax statements mailed out to property owners.

A person may vote in national elections by registering as a voter. Those who pay their taxes in October will receive a three percent discount, there is a two percent discount for November payment, and one percent for December.

The full amount becomes due on January 1, 1966, and if not paid by January 31, unpaid taxes will draw penalty and interest.

ASSEMBLY OF GOD

W. E. HAHN, Pastor
 Sunday School 10 a. m.
 Morning worship 11 a. m.
 Evening worship 7 p. m.
 Wednesday worship service — 7 p. m.

CHURCH OF THE NAZARENE
 Rev. R. A. McQuary, Pastor
 Sunday School: 10:00 a. m.
 Morning Worship: 11:00 a. m.
 Evening Worship: 7:00 p. m.
 Wednesday Nite Worship: 7:30 p. m.
 A cordial welcome awaits you

St. Pius X Catholic Church
 Sunday Masses: O'Donnell, 9:00
 Monday and Tuesday, 7 a. m.
 m. Tahoka, 11:00 A. M.
 Thursday, 7:30 P. M.
 Friday: 7 A. M., Sat. 8:30 A. M.

CAN YOU SPARE



That's all it takes to add ZIP Code to your address. ZIP Code is a time and money saver. It takes a short cut through the Postal System...and assures carrier deliveries.

**MODERN GAS COOKING IS SO
 EASY
 CLEAN
 COOL
 DEPENDABLE**



and... **5 TIMES
 MORE ECONOMICAL**

A modern Gas range can do anything any range can do... and a lot more, too.

Gas Makes The Big Difference, Costs Less, Too.

Pioneer Natural Gas Company

**IN CASE OF SUDDEN ILLNESS OR ACCIDENT
 "To Know What To Do Is Wisdom. To Know How
 To Do It Is Skill." To Do The Thing As It Should Be
 Done Is SERVICE.**

When You Call The White Funeral Home In Tahoka 998-4433 This Is The Service You Receive ---
 THE STATE DEPARTMENT OF HEALTH REQUIRES THAT A "LICENSED FIRST AIDER" BE ON EACH AMBULANCE CALL AND HAVE IN EACH AMBULANCE THE NECESSARY AND REQUIRED FIRST AID EQUIPMENT AND SUPPLIES FOR RENDERING AID.

IT IS GOOD TO KNOW THAT YOU DO NOT HAVE TO GO OUT OF LYNN COUNTY TO GET THIS TYPE OF PROTECTION AND SERVICE WHEN YOU CALL COLLECT — 998-4433 — WHITE FUNERAL HOME, TAHOKA, TEXAS
 WE ARE ON CALL 24 HOURS EACH DAY TO BE OF SERVICE TO YOU.

MARTIN WHITE --

28 Years Advanced First Aid; 6 years NAVY MEDICAL CORPS; LAB. AND X-RAY TECHNICIAN; LICENSED FUNERAL DIRECTOR AND EMBALMER

BILLIE WHITE --

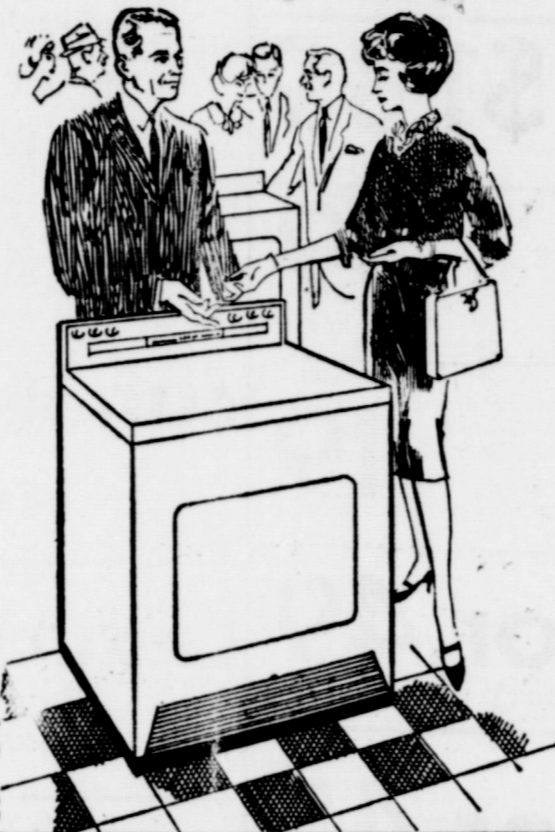
HOLDER OF ADVANCED FIRST AID CARD AND 16 YEARS IN FUNERAL SERVICE AND LICENSED FUNERAL DIRECTOR

BORDEN DAVIS --

ADVANCED FIRST AID CARD AND LICENSED FUNERAL DIRECTOR AND EMBALMER since 1929



See your dealer now about his special installation offer on a flameless ELECTRIC dryer



SAVE MONEY. Low in initial cost and economical to install, an electric clothes dryer will cost you even less now because of your dealer's special installation offer.

SAVE TIME. You'll save hours of time every week with fast, flameless electric drying. It takes only minutes to load and set your dryer. And you can dry clothes day or night in any kind of weather.

SAVE WORK. You're spared all the backbreaking work of hanging heavy wet clothes on the line when you dry electrically. There's less sprinkling to be done and many pieces come out of your dryer so fluffy-soft, they need little or no ironing.

SAVE CLOTHES. Your clothes will wear longer because the precision-controlled heat of an electric dryer is safe for even the daintiest fabrics. Clothes don't fade or deteriorate as when dried outdoors. And you actually need fewer clothes because they can be dried quickly and worn oftener.

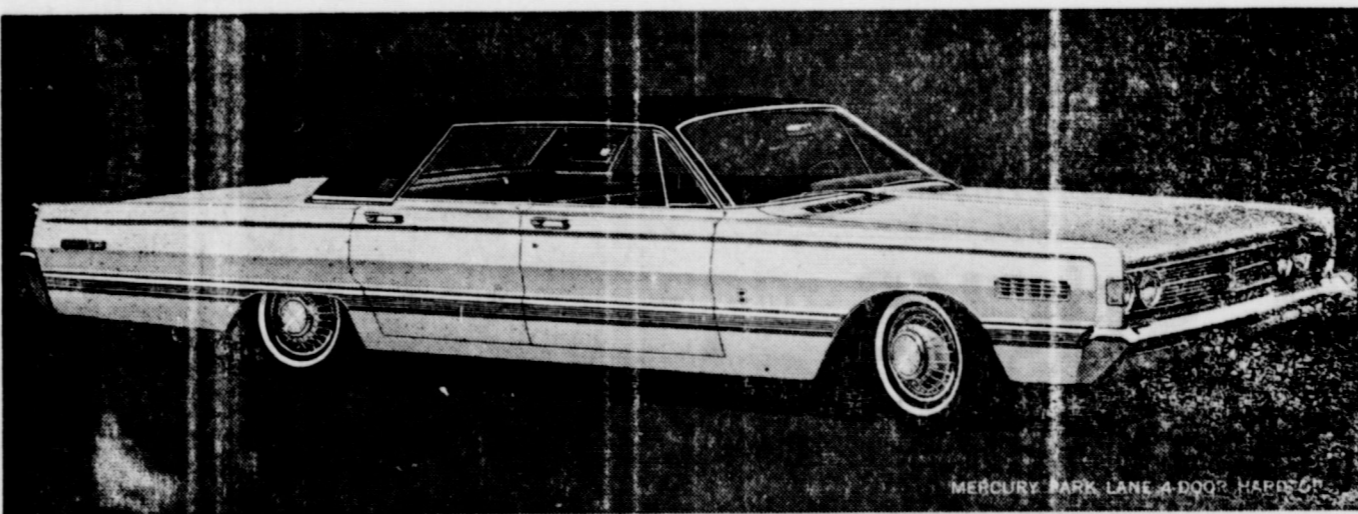
See the new flameless electric clothes dryers now on display at your dealer's. Ask about his special installation offer.

TEXAS ELECTRIC SERVICE COMPANY

W. B. MITCHEL, Manager 428-3322

**Announcing:
 Mercury
 for 1966**

a new
 definition of
 driving
 pleasure



**Moving
 ahead in the
 Lincoln
 Continental
 tradition**

This is the year to move ahead to the new Mercury year. Your year. And just look at all the news there is! Ride news: the way Mercury moves is unique. Smooth, substantial, hushed—the finest ride this side of the Lincoln Continental. Style news: clean, classic lines—the only car in its class with a look all its own. Power news: engines range up to a muscular 428 cu. in. V-8. Luxury news: options such as the Stereo-Sonic Tape System that uses plug-in cartridges. Safety news: helpful options such as cornering lights that show you the way when turning into dark driveways. Exclusive options such as rear doors that lock automatically at 8 miles per hour. And in every Mercury, without extra cost, you get 12 important safety features, including back-up lights, emergency flasher, padded dash and visors, four seat belts front and rear, and outside rear-view mirror. Model news: the widest choice of Mercurys ever. 17 models in 4 series—sedans, hardtops, convertibles, and 2 wagons with the new Dual-Action Tailgate that turns into a door. Now's the time to see your Mercury dealer—and move ahead with



Forbes Motor Co.

O'Donnell, Texas

LOCKER GROCERY

Your S. & H. GREEN Stamp store
SPECIALS For Friday and Saturday

chuck roast lb 49c | beef Ribs 39c lb
CHOICE BEEF | FINE TO BARBECUE
Arm Roast 1B 59c | Cheese lb 59c

DASH \$1.89
Jumbo Size — Detergent

Salad Dressing 39c
Morton's — Quart Jar

Cherries 19c
303 — Kimbell's — Red Sour Pitted

PEACHES 2 for 49c
No. 2 1/2 Can Kimbells, Sliced or Halves—In Heavy Syrup

Peas 2 for 45c
303 — Del Monte — Early Garden, Sweet

Tuna 29c
Flat Can — Del Monte — Green Label

Chili No. 2 can 55c
KIMBELLS PLAIN NO BEANS

PUMPKIN 2 for 25c
303 can Am. Beauty

FLOUR 98c
Everlite — 10 Lb. Print Bag — Every Sack Guaranteed

FISH STICKS 25c
8 oz breaded frozen READY TO COOK

O'DONNELL INDEPENDENT SCHOOL DISTRICT
STATEMENT OF CASH RECEIPTS AND DISBURSEMENTS
ALL FUNDS
FISCAL YEAR ENDED AUGUST 31, 1965

Opening Cash Balances, September 1, 1964	\$ 86,750.41
Receipts	
Local Sources	\$225,041.19
County Sources	769.01
State Sources	189,748.89
Sale of Bonds	158,448.78
Sale of Property	1,888.59
Total Receipts	555,319.34
Total Funds Available	\$642,072.75
Disbursements	
Administration	\$ 80,225.71
Instruction	807,207.91
Attendance Service	188.14
Health Service	4,764.56
Pupil Transportation	23,400.88
Operation of Plant	80,234.07
Maintenance of Plant	8,930.64
Insurance	2,834.80
Food Service	25,316.14
Student Body Activities	20,285.59
Capital Outlay	158,800.80
Debt Service	49,591.01
Prior Year Payable Liquidated	1,268.13
Total Disbursements	880,014.76
Closing Cash Balances, August 31, 1965	\$111,093.99
Memorandum — Accounts Payable, August 31, 1965	6,897.68
Unencumbered Balances, August 31, 1965	\$104,196.31

FOR THE BEST RADIO, TV and
RECORDING SERVICE CALL ---
VERNON COOK AT
428-8451

Machine for custom defolating 75c
see H L DAVIS Call collect Pump-
kin Center 4280 11-5

O'DONNELL INDEX - PRESS
O. G. SMYER, Owner

tended as second class matter at Post
Office, O'Donnell, Texas.

Any error will be corrected if
called to attention of newspaper.
Published each Thursday at O'Don-
nell, Texas — rain or shine

SUBSCRIPTION rates \$2 a year
in Lynn, Dawson and Borden coun-
ties — else where \$2.50 a year

ZIP CODE 75351



Mr. and Mrs. Marion W. Her-
man, former residents here, and
now of Clarksville, Ark. visited
here Monday. Mrs. Herman is the
former Miss Lila Austin. The Her-
mans lived here from 1906 to
1929. Lila lived in the old Plain-
view Community east of town.
When here Mr. Herman farmed in
the O. K. community. He is now
retired.

Palo Duro Sheep Shoot Scheduled

San Angelo—Approximately 50
acudad sheep hunting permits will
be issued to landowners in the
Palo Duro Canyon for the Decem-
ber 10, 11 and 12 season, accord-
ing to Richard DeArment, Pan-
handle wildlife biologist for the
Texas Parks and Wildlife Depart-
ment.

—O—
DR. O. H. NANCE
Optometrist
210 N. Houston Ph. 554
OFFICE PHONE 8016

**LINE GROCERY
& MARKET**
— LINE UP WITH LINE —
WE GIVE FRONTIER STAMPS
Wednesdays — Double Stamps
O'Donnell, Tex. Phone 428-3841

- 1 LB SUPREME CRACKERS29c
- 25 Lb Light Crust Flour with towel\$2.00
- 3 Lb Snowdrift Shortening 69c
- 303 Libby's Cut Beans 21c
- 303 Mission PEAS 2 for 33c
- No. 1 Honey Boy SALMON 49c
- No. 2 1/2 Jumbo Tamales 39c
- 1-2 GAL. Borden Buttermilk 35c
- PT. BORDEN COTTAGE CHEESE 19c
- KIM DOG FOOD 3 for 25c
- NO 1 Sweep Stakes MACKEREL 19c
- PICNIC HAMS LB 39c
- SALT PORK LB 49c
- Chuck ROAST LB 59c
- 8 LB BAG SPUDS 39c
- CABBAGE good And Firm Lb 7c
- 5 LB BAG ORANGES 49c

Money Savers

carrots 2 for 15
1 LB BAG

Lettuce ea. 15c
FRESH FIRM HEAD EA

Oranges lb 17c
SUNKIST LB

Green Beans 2 for 49c
303 CAN DEL MONTE CUT

Beans 2-19
9 OZ RANCH STYLE

Pineapple 2-49c
13 1-2 DEL MONTE chunk or tidbits

Oleo 2 lbs 35c
DIAMOND 2 LB 35c

Cake mix 3 - \$1
BETTY CROCKER

Mellorine 39c
1-2 GAL BORDEN

Toothpaste 45c
LARGE TUBE CREST

Soap 6 for 49c
6 BARS JERGENS

2 Roll Pkg. Kim
TISSUE 17c

Pies 29c
MORTON FROZEN CREAM or FRUIT

fish ticks 37
8 oz frozen Booth breaded precook

Paper Plates 39c
40 Dixie Paper PLATES

**Finest
Quality MEATS**

Franks lb 59c
CELLO PACK

PICNICS 39c
Whole 6 to 8 Lbs

Bacon lb 79c

Club steak lb 69c
Choice Beef

SILVER DOLLAR
THRIFT STAMPS

★★ WE GIVE DOUBLE SILVER
DOLLAR THRIFT STAMPS ON
EVERY WEDNESDAY

Mansell Bros.

MARY NE
The O'Don-
nell pres-
were J.
Olak o
tation of
in Hicks
W. Gardet
tation.
Misses of J
Misses P
am, and
to the
Senior S
Troop vi
amer. Al
om, youn
be better
air rightfu
in prepar
to a ghu
edge to: 1
als of wo
the Girl
ews; 2. Be
terate and
responsibil
y patrol as
citizen c
prepare mys
responsibil
ip in a
y deep cor
y services
er neede
hally and
als as I t
ew knowle
be it; 7. It
nd underst
of the worl
ence and
yself for
A letter
family of 1
the maple
orange and
beautiful et
write that
the big ind
ed.
A letter
resident e
etary Clu!
a cents
for the farm
Thought R
onor, I wi
God and
ther peopl
hey the G
Scout Prom
V. B. Ho
Oscar Purk
Harold Hoh
brado when
anted. The
brown, 2 1/2
Of the five
and one 11
LECT CLJ
The Junk
and elec
Dwight Cra
ta.
The class
has card sal
one to see
class.
The class
try entitle
on Decembe
pecting to
Mrs. Lena
ited her l
family Sund
1959 STUD
HAS MEET
The 1959
October 6,
H. C. Warr
The presid
presided for
ing Mrs. W
the Club col
The thoug
earer God's
an anywhe
Mrs. E. T.
eting and
in the Gard
en of Geth
tine Garde
Refreshme
coffee and t
thirteen club
The next
ember 3, 4,
ewship Hal
Church. The
charge of th
JUNIOR GHI
Troop 74
meeting Wed
Cook, our le
others help
Ratie. We p
action Ceret
—Reporter, J
WORKSHOP
The Young
aving a Tai
Nov. 8-12. Al
and may do
\$5.00 fee.
Mrs. Warr
ise.
Mrs. John
mesa hospi
Mrs. Harol
the hospital