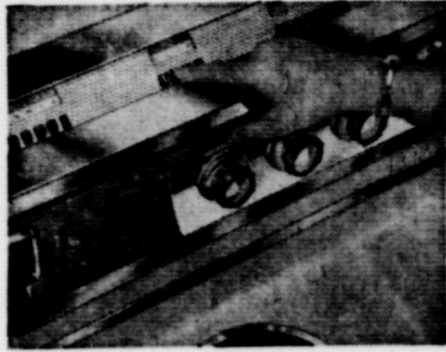




# Why Electric Cooking is ACCURATE



An electric range cooks with accurately controlled and measured heat. Whether you're cooking on surface units or in the oven, you just set the controls for the heat you want and you get exactly the same even heat every time. There's no guesswork... no need for constant oven peering and pot-watching.



Only an electric oven can be insulated all around, including the bottom, for economical operation and accurate heat control. Since electric heat needs no flow of air into and out of the oven while it is in operation, heat is retained inside the oven and the temperature remains constant throughout the cooking operation. This assures uniformly excellent results.



Electric cooking also is clean, fast, cool and economical. Select your new electric range now and enjoy all these benefits... at an average cost of only about 3c a meal for electricity.

See Your Electric Range Dealer

**TEXAS ELECTRIC SERVICE COMPANY**

C. R. REESE, Manager

Phone 60

O'Donnell Index - Press

Box B, O'Donnell, Texas  
Published Every Wednesday  
Advertising Rate: 50c col. inch  
classified as second class matter  
September 23, 1923 at Post Office  
at O'Donnell, Texas under Act of  
Congress March 3, 1879  
(Rain Or Shine)  
STANDARD RATES  
in Lynn, Dawson and Borden  
Counties \$2 per year  
Elsewhere in U. S. \$2.50  
Card of Thanks 50c Classified  
Advertising 2c per word with minimum  
charge 50c  
Read label at top of paper to see  
when your paper expires

METHODIST CHURCH

Sunday School 9:45  
Morning Worship 10:55 a. m.  
Evening Fellowship  
Children, Youth, Adults 6:30 p. m.  
Evening worship 7:30 p. m.  
Woman's Society of Christian  
Service - Faith Circle Mondays at  
2:30 p. m.; Mary Martha Circle at

Buy your daily paper

at home-- it's same price

at Index office

Lubbock Avalanche

7 days a week \$12.95

6 days a week \$11

WILL BUY, SELL OR TRADE  
RIFLES AND SHOT GUNS  
★ HALE VARIETY  
All Watch repairs Unconditionally  
Guaranteed.

For sale - cottonseed, delinted  
Northern Star and delinted and fuzzy  
Lankart No. 57, C A Moore ph  
902F2

Real Estate

- FARMS - RANCHES -  
CITY PROPERTY  
Leases and Royalties

B. M. Haymes



Ralph Knight, Mgr.

IT'S TIME TO REPAIR  
AND REPAIR OR REMODEL  
YOUR HOUSE OR BUILD  
GARAGE OR STORM CELLAR  
SEE OUR LINE OF -  
Inlaid Linoleum - Paint  
Wallpaper - Plumbing Fix  
THE HOUSE - TOYS -  
ITEMS - CONGOWALL  
CARPET - BUILDERS  
ware, etc.  
\*\* USE OUR EASY PAYMENT  
PLAN - \$8500.00 AND UP  
60 MONTHS PAYMENTS

Phone 18 O'Donnell

**Cicero Smith**  
LUMBER COMPANY

See Us For Your Spring--

## Cottonseed

This is a service organization and we are striving to serve you better.

**Wells Farmers**  
Co-operative Gins

DEALERS IN ---

COTTON, COTTON SEED AND COTTON SEED PRODUCTS

B. J. (Shorty) McLaurin, Mgr.

## "Why Ford Station Wagons are No.1 with the Ladies..."

"Our Ford cost us less than anything comparable."



"...and its savings on gas, oil and waxing do wonders for one's budget!"



"No wonder they call this Magic-Circle steering."



"All Ford's seats face forward."



"No facing into on-coming lights at night for my children!"



"Those foam-padded seats are nice and comfy!"



"...and only Ford offers them at no extra cost in the Squire and Country Sedans."



"They ride like limousines."



"Ford's wider, higher doors make getting in and out far more graceful!"



"One hand opens both liftgate and tailgate...no cranking in Fords!"



"Look at those sleek, beautifully proportioned lines! They're lovely!"



"Ford wagons are higher inside than most, too...wonderful for tall lamps!"



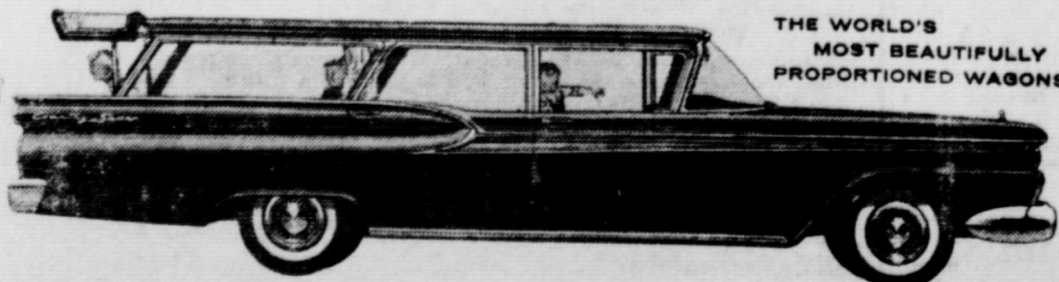
"Its seats stow easiest of all."



"Kiddies can't open the rear gates from inside."



"Bill says that Ford's wider liftgate makes it possible to load bulkier objects!"



THE WORLD'S MOST BEAUTIFULLY PROPORTIONED WAGONS

FAMILY TEST AMERICA'S NO.1 FAMILY CARS

**Forbes Motor Co.**

Phone 92, O'Donnell, Texas



**HIGGINBOTHAM FUNERAL HOME**

"Dedicated To Helpfulness" Phone 4585  
408 N. Austin St. Lamesa  
24 Hour Ambulance Service  
Burial Insurance "Bonded Protection"

**STANLEY FUNERAL HOME**

AND BURIAL ASSOCIATION

Day or Nite Call WY 84433 At Tahoka

"Thoughtful, Courteous Service"

We Accept Burial Policies Of All Companies

MOST SPECTACULAR OFFER IN WRITING!



SHEAFFER SPECIAL... STUDENTS ONLY \$3.44 VALUE NOW, LIMITED TIME ONLY...

**75c**

Includes \$2.95 Sheaffer Skripset Fountain Pen, 49c Package of 5 Skrip Cartridges, Handwriting Improvement Booklet!

Take advantage of this once-in-a-lifetime offer by the W. A. Sheaffer Pen Company. \$3.44 value for only 75c.

**SHEAFFER'S**  
Get yours today. Available only at

LOTT PHARMACY



**HOW ABOUT YOU?**

When you outgrow your clothes, you know it—but when you've outgrown your insurance program, you may not realize it until it's too late.

Don't wait until you have suffered a loss on your home or property to discover you haven't kept pace with your financial growth. Call on your Capital Stock insurance agent for a complete analysis of your property insurance needs.

If your property is insured at 1947 price levels, or if you have made additions or improvements, chances are you need the help and advice of an expert who represents only SOUND, RELIABLE Capital Stock companies.

**LOANS**

**MOORE INSURANCE AGENCY**

Phone 220, O'Donnell

**Opportunity Man or Woman** This Area to service and collect from cigarette machines. Car, references. \$628.50 to \$2695 cash investment required. Full or part time. We finance expansion. For local interview give phone number and particulars. Write Coast Wide Distributing Co., Inc. Box 1922, San Antonio, Texas. ooo

I am again your agent for the Fuller Brush Co. Phone 106 Mrs. Ben Moore, sr.

For sale 1951 Pontiac phone 118

If you have not rendered your property for school taxes, please do so. Thanks. T. J. Yandell, School Tax Assessor Collector

**REX**

Saturday April 25th

Randolph Scott and Karen Steele in

RIDE LONESOME

In color, Cinemascope

Sun. Mat. Monday nite

April 26, 27

James Stewart, Kim Novak in

BELL, BOOK AND CANDLE

Technicolor

**SAVE MONEY ★ SAVE TIME**

By Buying Your Printing At Home

**THE O'DONNELL INDEX-PRESS**

Bring Your Car To ----

**Oscar Veach Garage**

And take advantage of the special service he is giving now thru April

Brakes Adjusted now only ..... 95c  
Brakes Completely relined including parts and labor ..... \$19.95

Pontiac Sales and Service

For Free home demonstration on any Singer Sewing Machine or Vacuum Cleaner write to Carl Hixon Box 565, Singer Sales Representative, Lamesa. Free estimates on Trades or Repairs.

We have garden bulbs, Jiffy Planters and grass seed. Dale Thuren Farm Store.

**Mahurin**

SOFT WATER Help - Your - Self

**Laundry**

Wet Wash, Ruff Dry IRONING

See that your news gets to your home town paper

**CLAUDE'S**



All Kinds Cowboy and Wellington BOOTS — WESTERN SHIRTS MOCCASINS — LOAFERS — ALL KINDS FINE LEATHER GOODS EXPERT REPAIR ON ALL SHOES AND BOOTS

**NOW! FOR AS LITTLE AS \$2<sup>00</sup> MONTHLY**

you can enjoy the traditional charm of

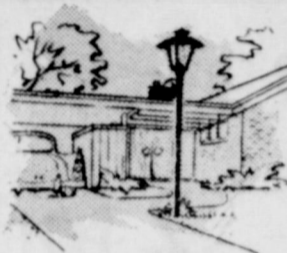
**GAS LIGHTS**



AROUND THE PATIO



BY THE STEPS



ALONG THE DRIVEWAY

This summer, enjoy sumptuous outdoor dinners with a GAS PATIO BROILER. Produces tantalizing charcoal flavor with none of the mess of charcoal! Cooks faster than charcoal, too, and is so simple to operate that even the children can be assistant chefs. Ask about it.

Time hallowed... timeless... timely! Gas Lights, sweeping the country with their mellow glow, are all of these. They bring back the charm of the vanished era that bore their name. Yet they reappear, not as period pieces, but as handsomely functional accessories for any home. And their versatility makes them timely, indeed, as people do more and more outdoor living, by night as well as by day. Gas Lights do not attract bugs... they welcome guests, warn away trespassers. Wherever the moon is not enough, a Gas Light belongs! Get details from Pioneer Natural Gas Company, tomorrow.

**With NO MONEY DOWN**



2 Full Years to Pay  
6 MODELS, PRICED FROM \$49.50 — INSTALLED!

\* UP TO 30 FEET OF GAS-LINE INCLUDED IN NORMAL INSTALLATION. WHERE BORING UNDER CONCRETE IS REQUIRED, THE COST IS \$1.00 PER FOOT. TYPING REQUIREMENTS IN EXCESS OF 30 FEET .25 PER FOOT.

fuel for a growing empire **Pioneer Natural Gas Company**



**Ship and Travel Santa Fe**

It's the only railroad under one management linking Chicago, California, Colorado, Texas and points in the busy southwest.



See your nearest Santa Fe agent

**Assembly of God**

Sunday School 9:45 a. m.  
Worship Service 11:00 a. m.  
Evening service: 7 p. m.

**CHURCH OF THE NAZARENE**

Sunday School ..... 10:00 a. m.  
Morning worship ..... 11:00 a. m.  
Prayer service Wednes. 7 p. m.  
Evangelistic Services 7 p. m.

**FIRST BAPTIST CHURCH SUNDAY**

Sunday School ..... 9:45 a. m.  
Morning Worship ..... 11:00 a. m.  
Concord Choir ..... 6:00 p. m.  
Training Union ..... 7:00 p. m.  
Evening Worship ..... 8:00 p. m.  
Youth Fellowship 1st Sunday at 9:00 p. m.

**MONDAY**  
W. M. U. .... 8:45 p. m.  
G. A. Sunbeams ..... 8:45 p. m.  
Jr. G. A. .... 8:45 p. m.

**WEDNESDAY**  
Intermediate G. A. 7:00 p. m.  
Officers and teachers 7:30 p. m.  
Prayer, Bible Study 8:00 p. m.  
Church Choir ..... 8:45 p. m.

**For The Best Farm ----**

**LOANS**

See ----

**Henry Norris Insurance Agency in Lamesa**

Box 657 -- Phone 4626

Representing ----

**Equitable Life Assurance**

**Society**

**Dr. O. H. NANCE**  
Optometrist

528 N. 1st Lamesa ph. 554

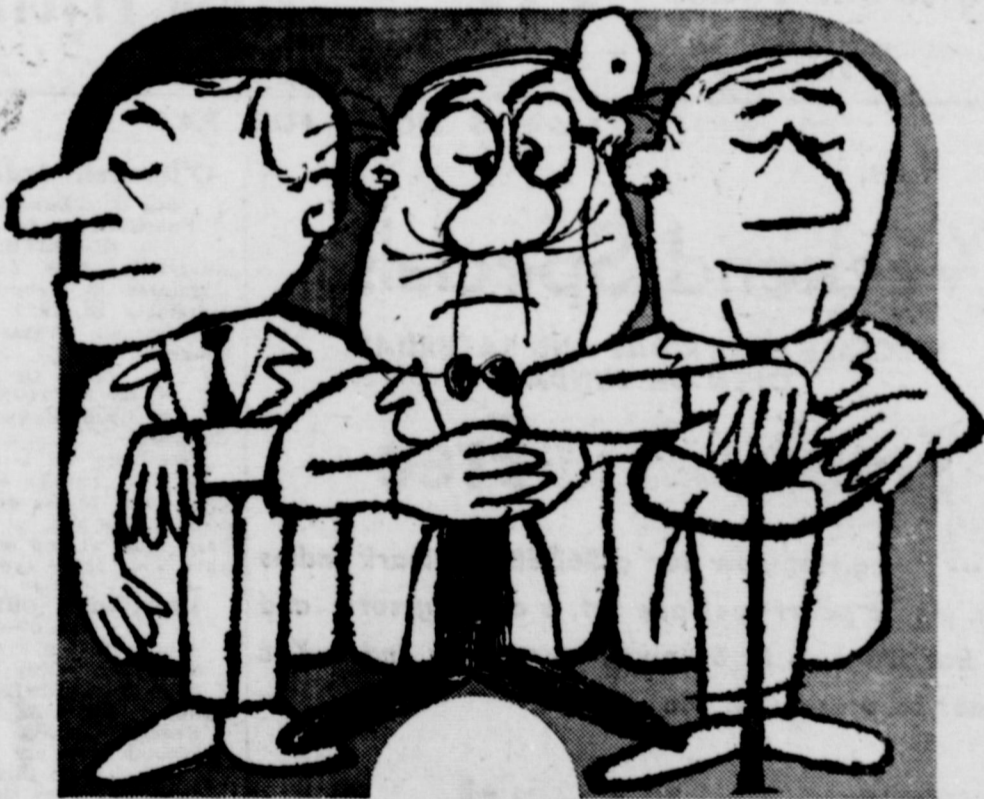
**Noble L. Rumbo, M. D.**

Medicine and Surgery

RUMBO CLINIC

OFFICE TELEPHONE 61

RESIDENCE PHONE 180



**HEAL HIP-A-TIGHTS**

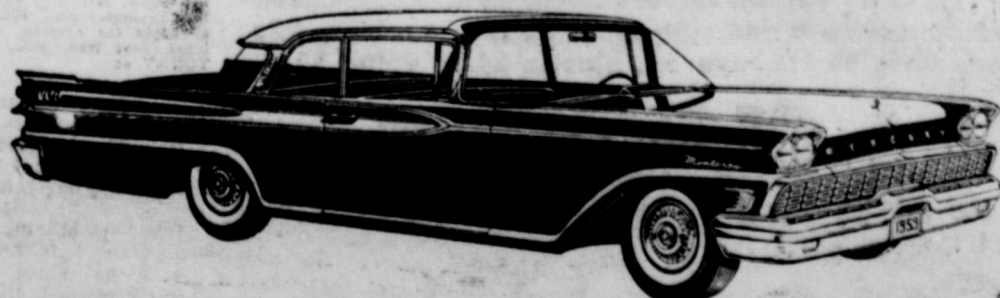
HIP-A-TIGHTS strikes when 3 people sit in a car seat that is 2½ people wide. It happens in 8 medium price cars out of 9.

'59 Mercury alone heals hip-a-tights with un-cramped interiors and deep, wide, fully-padded seats. Lower floor tunnel means stretchout leg comfort, even for the man in the middle!

Mercury reverses the trend toward diminishing doors; you can walk right in with your landing gear down—and never a case of knocked knees!

Mercury has other charms to end the bends, stamp out cramps, cure car-bunkles and squelch the squints. Come in for your treatment—and a turn at the wheel!

→ R<sub>x</sub> **MERCURY**



**FORBES MOTOR CO.**

Phone 92 --- O'Donnell, Texas

There's a real difference

with **DEKALB**

**SORGHUM**

HIGH YIELDS  
STIFF STALKS  
OPEN HEADS

The best way for YOU to discover the REAL difference in DEKALB HYBRID SORGHUM is to order and plant it. Only after you've grown DeKalb will you know the FULL VALUE OF DEKALB'S HIGH YIELDS, STIFF STALKS and OPEN HEADS.



# BLOCKER GROCERY

Your S. & H. GREEN STAMP store

SPECIALS For Friday and Saturday

**Mellorine - - - 35c**  
Gandy's 1/2 gal. ....

**COFFEE - - - 63c**  
"Blocker's" Special Blend ground fresh while you wait

**Pork and Beans 8 for \$1**  
300 size "Van Camp's"

**OLEO . . . 2 lbs 29c**  
Golden colored quarters

**Tomato Juice - - 2 for 49c**  
46 oz. "Hunt's"

**JELLO - 2 for - 15c**  
Assorted Flavors

**CRISCO 3 lb can - - 75c**

**CORN - - - 15c**  
10 oz "Bird's Eye Frozen, cream style"

**Cheese lb 49c** sliced **Bacon lb 53c**  
Wisconsin Longhorne TALL CORN

**Good Beef roast 59c** **Fresh Fryers**  
CHOICE CUTS PER LB .....

TRADE WHERE MA SAVES MONEY FOR PA

## Weekend Specials

SPECIALS FOR FRIDAY AND SATURDAY  
OPEN ON SUNDAYS

**Free Free**

FREE --- register now for a \$62.50 Hallmark ladies watch, also a pearl necklace set, a carving set and Pearl Ear Rings --- to be given away May 2nd. You need not be present to win

**Hams . . . lb 29c**  
Picnic, half or whole lb

- Round Steak, choice and tender lb ..... 89c
- Cheese Longhorn lb ..... 49c
- Coffee, Shillings 1 lb can ..... 49c
- Homo milk Three 1/2 gals. .... \$1
- Orange Drink 1/2 gal. jug ..... 39c
- Fruit Cocktail No. 2 1/2 can ..... 2 for 79c
- Luncheon Peas White Swan no. 303 can 5 cans for \$1
- Shortening Snowdrift 3 lb can ..... 69c
- Liquid Detergent large giant size W. P. .... 39c
- Frozen Strawberries 10 oz. pkg. .... 19c
- Cake Mix Gladiola all flavors ..... 25c
- Cantaloupes fresh and ripe lb ..... 12c
- Garden hose 50 ft. Imperial, plastic \$4.95 value \$3.50

# JACKSONS

## Grocery & Market

\* We give Double Thrift Stamps And Double, Double Thrift Stamps On Wednesdays  
AT THE NORTH "Y"

### School Menu

Wednesday — meat loaf, English peas, candied yams, apricot preserves, rolls, butter, milk, bread  
Thursday — barbecued franks, chilled tomatoes, ice cream, corn bread, butter, milk, bread  
Friday — salmon loaf, black eye peas, creamed potatoes, oat meal cookies, milk, bread  
Monday — roast beef and gravy, creamed peas, hominy, celery stick, pear half, milk, bread  
Tuesday — pork patties, navy beans, apple pie, vegetable salad, corn bread, butter, milk, bread

Mr and Mrs. Hollis Swinney and Clark spent week end in Big Spring with Mr and Mrs. Kellis Davis and Kay.

For Free home demonstration on any Singer Sewing Machine or Vacuum Cleaner write to Carl Hixon Box 565, Singer Sales Representative, Lamesa. Free estimates on Trades or Repairs.

I am again your agent for the Fuller Brush Co. Phone 166 Mrs. Ben Moore, sr.

If you have not rendered your property for school taxes, please do so. Thanks, T. J. Vandell, School Tax Assessor Collector

Now is the time to kill Johnson grass, see us — Dale Thuren Farm Store

For sale — 1st year Western Storm proof cottonseed, 885 ton, M. A. Bowles Aten 2317

For sale — cottonseed, delinted 1st yr. white sack, high germination Northern Star and delinted and fuzzy Lankart No. 57, C A Moore ph 902F2

Interested in killing bindweed or Possession Vine and Johnson Grass this spring? Find out how with the latest chemicals at a meeting Tuesday Nite 8 p m April 28 Dale Thuren Farm Store in Tahoka

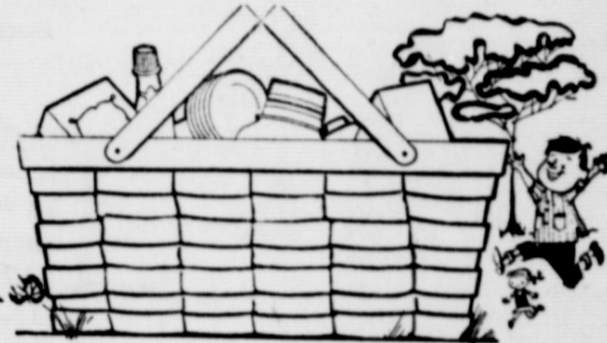
## Specials For Friday and Saturday

- 300 can Libby Apple Sauce ..... 2 for .....
- No. 2 1/2 can Sun Spun whole spiced peaches 4 for .....
- 303 can Kurer Cut Green Beans ..... 6 for .....
- 303 Steele Turnip or Mustard greens 10 for .....
- 303 Steele whole, and piece sweet potatoes 7 for .....
- 46 oz. Libby Tomato Juice ..... 4 for .....
- 14 oz. Heinz Catsup ..... 4 for .....
- Libby Stuffed or plain olives .....
- Libby Luncheon Meat ..... 2 cans for .....
- 16 oz. Alabama Girl sour or dill pickles..... 4 for .....
- 5 lbs Light Crust Meal, paper bag .....
- qt. Red and white salad oil .....
- 1 lb can Libby's Chili and spaghetti .....
- 3 lbs Our Value Shortening.....
- No. 2 can Libby's crushed pineapple 3 cans for .....
- Our Value Salt, Box .....
- Large pkg. Kleenex.....
- 1 lb can Libby corn beef hash .....
- Picnic hams half or whole lb .....
- All meat Boogna lb .....
- Longhorn Cheese lb .....
- Niue pink Grapefruit lb .....
- Large pkg. re'lo Carrots .....
- Nice Fresh Lemons lb.....

★ ★ Double Frontier Stamps On Wednesday  
WE GIVE FRONTIER SAVING STAMPS

## Line Grocery And Market

Plenty of parking behind the store come in and with us ..... WE DELIVER PHONE 19



GOOD PICKIN'S FOR PICNICS

**Coffee 69c**  
1 lb Maryland Club

**Hand Lotion 39c**  
Cashmere, Bouquet 60c bottle plus tax

**Biscuits 50c**  
Kimbells, per can

**Crisco 79c**  
3 lb can

**TIDE 26c**  
Large Box

**Toilet Tissue 31c**  
Charmin, 4 rolls

**Wax Paper 25c**  
Cut rite, 125 ft roll

**Shampoo 2 for 99c**  
New Luster Creme, 60c bottle

**Tooth Paste 2 for 89c**  
Colgate 53c size tubes

**Sauce 39c**

Barbecue Sauce, Frenches, 1 lb bottle  
★ We now have the original Mesquite barbecue chips

## Finest Quality MEATS

**sliced Bacon 49c**  
Matchless per lb

**Bologna lb 49c**  
ALL MEAT per lb

**beef roasts 59c**  
Fresh dressed Fryers and Hams

\$\$\$\$\$\$\$\$\$\$\$\$  
SILVER DOLLAR THRIFT STAMPS



Mansell Bros Co  
O'Donnell, Tex.

★ ★ WE GIVE DOUBLE SILVER DOLLAR THRIFT STAMPS EVERY WEDNESDAY

# MANSELL BROS

PHONE 50 SPECIALS FOR FRIDAY AND SATURDAY FREE DELIVERY

### O'Donnell Index - Press

Box B, O'Donnell, Texas  
Published Every Wednesday  
U. G. SMITH, JR.  
Advertising Rate: 50c col. inch  
Entered as second class matter September 23, 1923 at Post Office at O'Donnell, Texas under Act of Congress March 3, 1879 (Rain Or Shine)  
SUBSCRIPTION RATES  
In Lynn, Dawson and Borden Counties ..... \$2 per year  
Elsewhere in U. S. .... \$3.50  
Card Of Thanks 50c Classified Advertising 2c per word with minimum charge 50c  
Read label at top of paper to see when your paper expires.

METHODIST CHURCH  
— 0 —  
Sunday School 9:45  
Morning Worship 10:55 a. m.  
Evening Fellowship  
Children, Youth, Adults 6:30 p. m.  
Evening worship ..... 7:30 p. m.  
Woman's Society of Christian Service — Faith Circle Mondays at 2:30 p. m.; Mary Martha Circle at 7:30 p. m.

WILL BUY, SELL OR TRADE RIFLES AND SHOT GUNS

★ HALE VARIETY  
All Watch repairs Unconditionally Guaranteed.

Assembly of God  
— 0 —  
Sunday School 9:45 a. m.  
Worship Service 11:00 a. m.  
Evening service: 7 p. m.

STOP ITCHING!  
IN 15 MINUTES.  
After using ITCH-NE-NOT, set your hair by THE ITCH NEEDS SATISFIED. You feel the medication hold, rub and burning disappear! Use Itch-Ne-Not every day for relief from itching, ringworm, insect bites, hot rash, other serious rashes. 10c per bottle.

LOTT PHARMACY  
— 0 —  
Dale Thuren Farm Store has 16-20-0, 10-20-5 and Vertagreen fertilizer for your lawn and plants

Lost — blonde 4 mo. old female short hair French Back pup, 100 lb wt. black collar, name "Lady", reward, Harold Hall

Dale Thuren Farm Store here has a complete line of Ortho Lawn and Garden Supplies

For sale Started chicks, 7, 6, 5 weeks old. Dale Thuren Farm Store