



**RENEW YOUR SUBSCRIPTION**  
**THE O'DONNELL INDEX-PRESS**



**RE-MODEL OR REPAIR**  
 NOTHING DOWN AND UP TO  
 60 MONTHS TO PAY  
 MONTHLY PAYMENTS TO  
 MEET YOUR BUDGET  
 NEW KITCHEN — NEW ROOFS  
 INSULATED SIDING — PAINT  
 INSIDE AND OUTSIDE — STORM  
 CELLARS — ANYTHING YOU  
 WANT TO DO IN YOUR HOME  
 YOU CHOOSE YOUR OWN CAR-  
 PENTER OR DO IT YOURSELF.  
 WE PAY THE LABOR.  
 SEE US TODAY FOR FREE ES-  
 TIMATES.

Ralph Knight, Mgr. Phone 18 O'Donnell

**Cicero Smith**  
**LUMBER COMPANY**

**STANLEY FUNERAL HOME**

AND BURIAL ASSOCIATION

Day or Nite Call WY 84433 At Tahoka

"Thoughtful, Courteous Service"

We Accept Burial Policies Of All Companies

**Noble L. Rumbo, M. D.**  
**Medicine and Surgery**  
 RUMBO CLINIC  
 OFFICE TELEPHONE 61  
 RESIDENCE PHONE 180

**House Moving**

Wanted to buy — Junk Metal as  
 junk cars, etc. Bud Pugh, Box 241,  
 on Highway 87 (west lane) north  
 of town

**Saleh And Saleh**

ATTORNEYS AT LAW  
 GENERAL PRACTICE IN ALL  
 COURTS  
 502 N. 1st St. — Phone 2171  
 LAMESA, TEXAS

Nicely furn. apt. Index

**O'Donnell Barber S**

LATEST STYLES CUT BY

BEST METHOD

Specialize In Flat Top

Prompt Service

**CLAUDE'S**



All Kinds Cowboy and  
 BOOTS — WESTERN  
 MOCCASINS — LOAFERS  
 KINDS FINE LEATHER GOODS  
 EXPERT REPAIR ON ALL  
 SHOES AND BOOTS

**O'DONNELL INDEX - PRESS**

Established In 1923  
 Box 546, O'Donnell, Texas  
 Published Every Wednesday

O. G. SMITH, JR., Owner  
 Advertising Rate: 60¢ col. in.  
 Entered as second class matter  
 September 23, 1923 at Post Office  
 at O'Donnell, Texas under Act of  
 Congress on March 3, 1879.

**SUBSCRIPTION RATES**  
 In Lynn, Dawson and Borden  
 Counties \$2 per year. Elsewhere in  
 U. S. \$2.50 per year.  
 Card of Thanks \$1.00. Classified  
 advertising 4¢ per word, with mini-  
 mum charge of 50¢.  
 Your label at top of paper tells  
 date your subscription expires.

Ed Cooper, extension wildlife  
 specialist, says there is no sure way  
 to keep snakes from moving into  
 the yard or even on occasion the  
 home. The best solution is to make  
 the premises unattractive to snakes  
 by removing the food and cover they

How much of your food dollar  
 gets back to the farmer? Econom-  
 ists say it is about 33 cents. The  
 remaining 67 cents goes for the  
 costs of getting the food in the  
 form you want it, at the time and  
 place you want it. The cost of work  
 need to

for the  
 ted to  
 r than  
 ago.  
 tension

has  
 as for  
 July  
 endum  
 val or

minated  
 ate to  
 in the  
 is no  
 the most  
 Dis-

Travelers returning from foreign  
 countries are advised by the U. S.  
 Department of Agriculture not to  
 attempt to bring into the United  
 States plants, bulbs, fruits, meats  
 or any of a wide assortment of  
 other prohibited agricultural prod-  
 ucts. Imports of agricultural prod-  
 ucts are regulated to prevent  
 possible introduction into the na-  
 tion of destructive disease producing  
 agents and insect pests.

**BUY, SELL OR TRADE**  
**GUNS AND PISTOLS**  
**WATCHES CLEANED**  
**All Work Guaranteed**  
**★ Hale Variety**

For sale — 15 h. p. Buick  
 motor, used very little, 1955  
 drag box planter, C. A. 1955  
 902 1st

SEE US FOR YOUR  
 Air Conditioning Supplies  
 and labor, New Air Condition-  
 H. and S. Auto and Home

Always . . .

A Complete Stock of

**AUTO parts**

WE ALWAYS APPRECIATE YOUR TRADE

**O'Donnell**

**Auto Supply**

BUCK ELLIS, OWNER

NOW... you can  
 let your hair  
 wake up and  
 be lovely!



**NEW**  
**AWAKENING**  
 FOR THE HAIR

An amazing new triumph of science  
 that helps REVIVE the natural beauty  
 of your hair by actually PENETRAT-  
 ING the hair shaft itself!

We invite you to come in and  
 see this wondrous new concept  
 in hair care.

As announced in VOGUE  
 and LADIES' HOME JOURNAL

**Lott Pharmacy**



**HIGGINBOTHAM FUNERAL HOME**

"Dedicated To Helpfulness"  
 403 N. Austin St. Lamesa Phone 6585  
 24 Hour Ambulance Service  
 Burial Insurance "Bonded Protection"

SEE US FOR YOUR SPRING ---

**COTTONSEED**

This is a service organization and we are striv-  
 ing to serve you better.

**Wells Farmers**  
**Co-operative Gins**

DEALERS IN ---

COTTON, COTTON SEED AND COTTON SEED

PRODUCTS

B. J. (Shorty) McLaurin, Mgr.

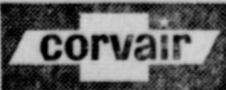
See the Chevy Mystery Show in color Sundays, NBC-TV—the Pat Boone Chevy Showroom weekly, ABC-TV.



**GAS STRETCHING ECONOMY**  
*mountain shrinking performance*  
**CORVAIR GIVES YOU BOTH!**

The same Corvair that rolled up a whopping 27.03 miles per gallon\* in the Mobilgas Economy Run turned around to scale snow-glazed Pikes Peak earlier in the season than any other car has ever dared to try. What better proof could you ask (official United States Automobile Club observers were aboard every mile of the way) of Corvair's rare combination of light-fingered steering, sure-footed traction and tight-fisted economy? Drop down to your dealer's and see for yourself what it took to make a gallon of gas look so big and 14,110 feet of mountain look so small!

\*Los Angeles to Minneapolis (over 2,000 miles) with professionals at the wheel.



BY CHEVROLET

See your local authorized Chevrolet dealer for economical transportation

**ELLIS CHEVROLET CO.**

PHONE 194, O'DONNELL, TEX.

**IS IMPORTANT IN**  
**INSURANCE, TOO!**

You buy insurance for only  
 one reason—to safeguard your  
 property. That's why it pays to  
 get the best protection possible.

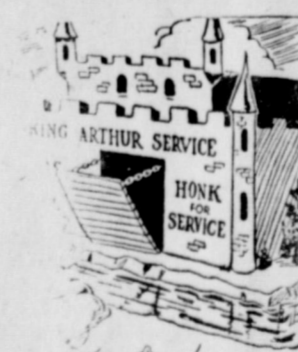
You get the best in protec-  
 tion and service when you in-  
 sure with us. Insurance is our  
 business, and we are trained to  
 give you expert advice on your  
 protection problems. And of  
 course, we represent only Capital  
 Stock Companies—the  
 "Standard of Protection"  
 wherever insurance is sold.

Be sure when you insure.  
 The best costs less in the long  
 run.

**MOORE INSURANCE**  
**AGENCY**  
 Phone 220, O'Donnell



By Andy Vulgamore



"He always read too many King Arthur stories."

**COME IN PLEASE**  
**DRIVE OUT PLEASE**

**QUICK SERVICE**

DEALER OF HUMBLE  
 PRODUCTS

Cottonseed for sale — Paymaster  
 101, Lankart 57 and 611, Northern  
 Star and Acala 1516BRL, all from  
 white sack seed, Arol Moore

BUY YOUR DAILY PAPERS AT  
 INDEX OFFICE —  
 LUBBOCK AVALANCHE  
 12 MONTHS ..... \$13.95  
 WITHOUT SUNDAY ..... \$12.00  
 EVENING with Sunday ..... \$12  
 EVENING without Sunday \$10.25

Dr. O. H. NANCE  
 Optometrist  
 528 N. 1st Lamesa ph. 554

**KNOW YOUR LAW —**

Perhaps you have been in a court room and heard an attorney argue forcefully to the court that such and such a case clearly governs the case at hand. But did you ever wonder about intricate processes that have been directed toward finding that case which is often referred to as "controlling precedent?"

The lawyer's training received in law school enables him to recognize and analyze problems. In most law schools he will have studied what is known as the "case method." In the standard three-year course usually following his graduation from a four year general college education, the law student

will read hundreds and sometimes thousands of cases especially selected to illustrate the various phases of the law.

The case method of study enables the lawyer to recognize and classify problems created by the relationship of real persons to each other. It also emphasizes that the outcome of each case depends upon the application of principles of law to its own peculiar facts.

When a client seeks legal advice from his lawyer, the lawyer's mind immediately classifies the problem. Sometimes the problem is such that he may be able to give an immediate specific answer. However, more often the problem will have ramifications that will cause resort, as the lawyer says, to "the books".

This means that research is in order.

**FREE Moth Proofing with Cleaning. FREE moth proof bag with \$2.50 in cleaning. HASH CLEANERS**

Summer temporary pastures are valuable for several reasons. Probably the most important is they offer one of the most dependable

Boys and girls wearing the green and white of 4H will assemble at Texas A and M college June 7 thru 9 for their annual State Roundup. Winners will be named in 25 different judging and demonstration contests. Participants in the state contests have already won county and district honors.

There is no profit in farm accidents. It is often hard to place a dollar value on a farm accident, points out the Texas Farm and Ranch Safety Council, because of the indirect as well as the direct costs which must be taken into account. But, they add, most accidents are preventable and farm profits can be increased by keeping accidents from happening.

**FREE Moth Proofing with Cleaning. FREE moth proof bag with \$2.50 in cleaning. HASH CLEANERS**

House for rent — 2 bedroom, modern, \$40 a month. L. B. Hohn 6-1cx

**FREE Moth Proofing with Cleaning. FREE moth proof bag with \$2.50 in cleaning. HASH CLEANERS**

what makes an 'Ugly Duckling' Wall SWAN-derful? Buy STIX at

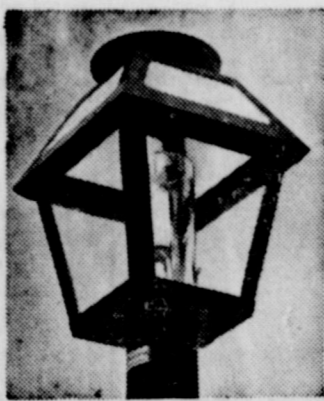


**STIX**  
the fabulous new way to give every room a beauty facial! For beauty's sake, get STIX, the new self-adhesive decorative material made of FIRESTONE VELON PLASTIC.

The Home Center

## Why Install a Gas Light?

If you are a home owner who takes justifiable pride in the appearance of his property... if you have a regard for the convenience and safety of folks who come to see you... and if you have a keen sense of economy as well as for things functional... then a Gas Light will be a satisfying addition to your yard.



Neighbors welcome its glareless illumination... insects give its soft, mellow glow a wide berth. And regardless of the architectural style of your home, gas lights provide an indefinable "something" that adds noticeably to the appeal of any residence, at an amazingly small cost of operation.

Why not call Pioneer tomorrow and find out all the details about Gas Lights? Special Budget Prices start at just \$49.50, installed.

*fuel for a growing empire*  
**Pioneer Natural Gas Company**

# Meals in minutes! so easy to serve when you need only to warm up frozen prepared foods stored in your Electric Freezer



With an Electric Freezer, you can freeze a wide variety of home-cooked and packaged prepared foods... have them ready to warm and serve for hurry-up meals when needed. And that's just one of many freezer advantages. See your favorite appliance dealer soon for an Electric Freezer or Freezer-Refrigerator that will save you time, work and money... help you Live Better... Electrically!

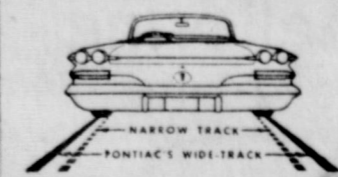
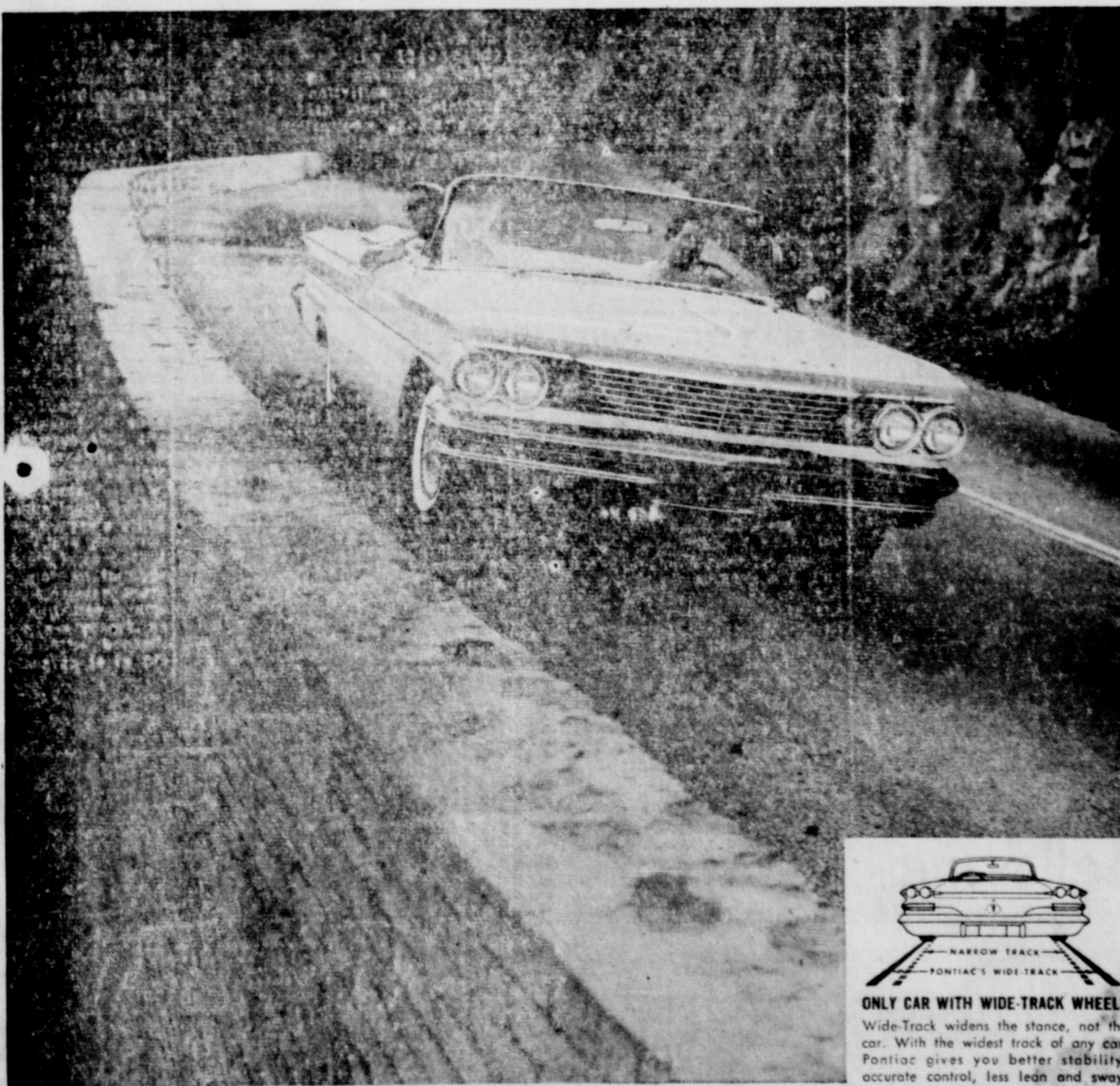


**TEXAS ELECTRIC SERVICE COMPANY**

W. B. MITCHEL, Manager

Phone 60

6-2A



**ONLY CAR WITH WIDE-TRACK WHEELS**  
Wide-Track widens the stance, not the car. With the widest track of any car, Pontiac gives you better stability, accurate control, less lean and sway.

JOIN THE CIRCLE OF SAFETY... CHECK YOUR CAR... CHECK YOUR DRIVING... CHECK ACCIDENTS!

Nothing straightens S-curves like a Wide-Track Pontiac. You come out of a curve scarcely aware you've been in one. You wind your way with feather-touch control. You feel a reassuring absence of lean and sway, better balance and stability. Narrow track cars can't compare.

**TRY THE EXTRA MEASURE OF A WIDE-TRACK DRIVE**

SEE YOUR LOCAL AUTHORIZED PONTIAC DEALER... WHO ALSO SELLS GOODWILL USED CARS WITH MORE BARGAIN MILES PER DOLLAR

**HARRIS PONTIAC**, 9th and Hohn St., O'Donnell, Texas

# BLOCKER GROCERY

Your S. & H. GREEN STAMP store

SPECIALS For Friday and Saturday

**Pork Roast lb 49c**  
Lean, Boston Butts lb

**Sausage 2 lb 79c**  
Sanders or Rath

**Chuck steak lb 69c**

Pressed Ham lb ..... 49c

★... HENS and FRESH FRYERS .....

**Bakerite . 3 lb can 59c**

Shortening

**TEA 1/2 lb box . . . 73c**  
"Lipton's"

**HOMINY . . . 3 cans for 29c**

No. 2 can "White Swan"

**Pickles . . . 25c**

"Kimbell's" FULL QUART, jar SOUR or DILL

**PEAS . . . 2 for 25c**  
303 can Mission

**COFFEE lb . . . 59c**  
Blocker's special blend ground fresh while you wait

**Luncheon Meat . . . 39c**  
12 oz. can "KIMBELL'S"

**Pot Pies . . . 19c**  
8 oz. Frozen, chunk style chicken, beef or turkey

**Orange Juice . . . 2 for 35c**  
6 oz. Frozen "Donald Duck"

TRADE WHERE MA SAVES MONEY FOR PA

## Weekend Specials

SPECIALS FOR FRIDAY AND SATURDAY

**BEEF ROAST Chuck lb . . . 49c**  
**BEEF RIBS lb . . . 29c**  
**Cured Boston Butts lb . . . 39c**  
**Preserves, Assorted 16 oz. jars 3 for . . . 79c**  
**TAMALES, Ellis No. 2 1/2 cans . . . 3 for . . . 89c**  
**Tomato Juice Kuners 46 oz. cans . . . 2 for . . . 49c**  
**Blackeye Peas Snaps and shells 303 cans 2 for . . . 25c**  
**Shortening 3 lb can White Swan . . . 59c**  
**Pears White Swan 303 cans . . . 2 for . . . 49c**

**Mellorine - 3 for \$1**

Swift's all flavors 1/2 GAL. . . . .  
Avacados, large California each . . . . . 5c



OPEN ON SUNDAYS

**JACKSON'S GROCERY & MARKET**  
We Give Double Trist Stamps  
FREE DELIVERY SERVICE ANYTIME  
Where Customers Send Their Friends  
AT THE NORTH Y PHONE 150

Travelers returning from foreign countries are advised by the U. S. Department of Agriculture not to attempt to bring into the United States plants, bulbs, fruits, meats or any of a wide assortment of other prohibited agricultural products. Imports of agricultural products are regulated to prevent possible introduction into the nation of destructive disease producing agents and insect pests.

WANTED — someone to make small payments on fine ELECTRIC ORGAN. NOTHING NOW. First payment in August. Write at once. McFARLAND MUSIC CO., 722 W. 3rd, Elk City, Okla.

For sale — 15 h. p. Evenrude motor, used very little, new 4 row drag box planter, C. A. Moore ph. 902 F2

Ed Cooper, extension wildlife specialist, says there is no sure way to keep snakes from moving into the yard or even on occasion the home. The best solution is to make the premises unattractive to snakes by removing the food and cover they

How much of your food dollar gets back to the farmer? Economists say it is about 38 cents. The remaining 62 cents goes for the costs of getting the food in the form you want it, at the time and place you want it. Food costs less now in terms of minutes of work necessary to buy what you need to eat than ever before in history.

Egg prices to producers for the last half of 1960 are expected to average considerably higher than for the same period a year ago, says John G. McHaney, extension economist.

Sec. of Agriculture Benson has proclaimed marketing quotas for 1961 wheat crop and has set July 21 as the date for a referendum to determine producer approval or disapproval of quotas.

The percentage of pigs vaccinated for hog cholera is not adequate to prevent widespread losses in the event of an epidemic. There is no cure for cholera which is the most serious of all swine infections. Dis-

BUY, SELL OR TRADE — GUNS AND PISTOLS — WATCHES CLEANED \$2.95 — All Work Guaranteed

★ Hale Variety

SEE US FOR YOUR — Air Conditioning Supplies, Parts and labor. New Air Conditioners — H. and S. Auto and Home Supply

House for rent — 2 . . . bedroom, modern, \$40 a month. L. B. Hohn 6-1c

FREE Moth Proofing with Cleaning. FREE moth proof bag with \$2.50 in cleaning. HASH CLEANERS

Continued from front page —

move an injured person in any way that could add to his injury.

3. Protect the scene from further damage. You may be liable for damages to approaching drivers unless they are properly warned.

4. Call an officer. Policemen, Highway Patrolmen, sheriffs and their deputies are trained accident investigators whose testimony may be invaluable in establishing your civil claim to damages.

5. Gather information — write it down. Don't guess — be specific.

6. Be careful what you say. Even if you feel you probably are to blame, it is best to make no admission.

7. See your doctor if there is the slightest chance you may be injured.

8. Consult your lawyer immediately. The sooner your lawyer is brought into the matter, the better he can advise you and protect your rights.

9. Inform your insurance company promptly. Failure to do so may void your policy.

10. Report the accident to the Department of Public Safety.

## Specials For Friday and Saturday

June 10, 11 . . . . .  
Our Value OLEO 2 lbs for . . . . .  
303 can Libby's Diced Beets 2 for . . . . .  
14 oz. Heinz Catsup . . . . .  
quart Fleecy Bleach . . . . .  
12 oz. Ocean Spray Cranberry Sauce 2 for . . . . .  
quart Mazola oil . . . . .  
Chicken of Sea Green Label Tuna . . . . . 3 for . . . . .  
Patio Beef Enchiladas . . . . .  
8 oz. Taste o sea frozen Fish Sticks 3 for . . . . .  
303 can Libby's Sliced Halves Peaches 5 for . . . . .  
24 oz. Our Value Grape Juice . . . . .  
Longhorn Cheese lb . . . . .  
All Meat Bologna Lb . . . . .  
Club or Chuck Steak lb . . . . .  
4 oz. Libby's Vienna Sausage 5 for . . . . .  
Bananas Golden Yellow Lb . . . . .  
Yellow Squash lb . . . . .  
Fresh Onions 2 for . . . . .



★ ★ Double Frontier Stamps On Wednesday WE GIVE FRONTIER SAVING STAMPS

## Line Grocery And Market

Creamy-sauce-makes CHICKEN NOODLE DINNER Super Special

### CHICKEN NOODLE DINNER

2 cups broken noodles  
two 5-oz. cans boned chicken  
1/4 cup cut-up almonds  
1 can cream of chicken soup  
3/4 cup PET Evaporated Milk  
1/2 tsp. thyme  
1/2 cup fresh bread crumbs  
1/2 cup finely cut green pepper  
2 Tablesp. melted butter or margarine



Cook noodles until tender. Drain and mix with chicken and almonds in greased 1 1/2-qt. baking dish. Add to noodles mixture of soup, PET Milk and thyme. Top with mixture of crumbs, green pepper and butter. Bake in 375 oven (high moderate) 20 min., until bubbly hot. Serves 4 to 6.

Breakfast will be served Friday morning from 7:30 to 9:30 at the store — also there will be entertainment You are invited

**Coffee 69c**

Maryland Club 1 lb can

**Biscuits 2 for 15c**

Kimbell's

**Pancake mix 3 for \$1**

Pillsberry 2 lb Box

**Shortening 49c**

3 lb KIMBELLS

**Dog chow 39c**

Purina, 2 1-4 lb box

**OLEO 15c**

Kimbell's 1 lb pkg

**Flour 10 lb 89c**

10 lb PILLSBERRY

**Napkins 2 for 25c**

CHARMIN, 80 count

**Biscuick 26c**

Betty Crocker 1 1-4 lb box

**Cake mix 3 for \$1**

PILLSBURRR, white, chocolate yellow

Finest Quality MEATS

**Bacon lb 59c**

Armour Star per lb

Fresh Fryers and Hens

**Good Beef roast 59c**

Choice, Chuck

**Cheese lb 49c**

Wisconsin Longhorne

\$\$\$\$\$\$\$\$\$\$\$\$\$\$\$\$  
SILVER DOLLAR THRIFT STAMPS



Mansell Bros Co  
O'Donnell, Tex 21

\$\$\$\$\$\$\$\$\$\$\$\$\$\$\$\$

★ ★ WE GIVE DOUBLE SILVER DOLLAR THRIFT STAMPS ON EVERY WEDNESDAY

# MANSELL BROS

PHONE 50

SPECIALS FOR FRIDAY And SATURDAY FREE DELIVERY

PHONE