



**Dr. O. H. NANCE**  
Optometrist  
528 N. 1st Lamesa ph. 554

**STANLEY**  
Funeral Home  
And Burial Association  
phone 233 Bx 185 Tahoka

For sale — Former M J Whitsett house, remodeled, refinished, 50 ft lot, on pavement, J T Forbes 9 25 x  
For prompt pickup and delivery of laundry and Dry Cleaning call Cleaners, Phone 284. Shirt finishing work our speciality. You must be satisfied or no charge. Your business will be appreciated. We give Frontier Stamps.  
Lost — 8 sheep, see James Reed

WATCHES CLEANED AND OILED. ONLY \$2.98 WATCHES ARE CHECKED FREE WITH OUR WATCHMASTER.  
★ **HALE VARIETY**  
All Work Guaranteed  
Wanted to rent 80 to 160 acres. Call 99

**CHURCH OF CHRIST SERVICES**  
Sunday  
Bible classes ..... 10 a. m.  
Worship, Communion 10:45 a. m.  
Evening services ..... 7:30 p. m.  
Wednesday  
Mid-week Bible Study 8 p. m.

For sale — 1947 Chrysler condition, radio, heater, other owner, see Mrs. Herdenhire, .....

For sale — our home ment. Beacher Brandon

**METHODIST CHURCH**  
Sunday School 9:45  
Morning Worship 10:55 a. m.  
Evening Fellowship  
Children, Youth, Adults 6:30 p. m.  
Evening worship ..... 7:30 p. m.  
Woman's Society of Christian Service — Faith Circle Mondays at 2:30 p. m.; Mary Martha Circle at 9:30 a. m. Tuesdays .....  
Methodist Men meet each 4th Monday at 8 p. m.

**REX**

Jan. 17th and 18th  
Friday and Saturday  
Lex Barker and Rita Moreno in  
The DEERSLAYER

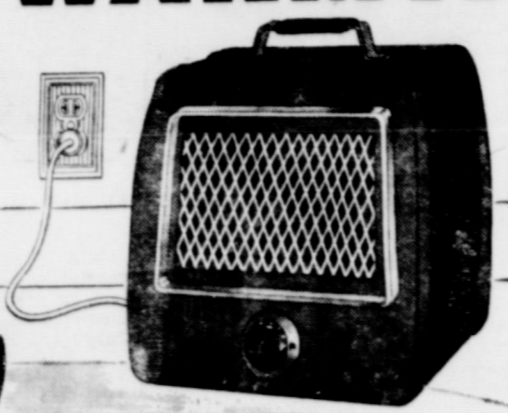
**Assembly of God**  
Sunday School 9:45 a. m.  
Worship Service 11:00 a. m.  
Evening service: 7 p. m.

Sunday, Jan. 10th  
Tyrone Power and Ava Gardner in  
THE SUN ALSO RISES  
Color, Cinemascope

**CHURCH OF THE NAZARENE**  
Sunday School ..... 10:00 a. m.  
Morning worship ..... 11:00 a. m.  
N. Y. P. S. at 6:30 p. m.  
Prayer service Wednes 7 p. m.  
Evangelistic Services 7 p. m.

# EXTRA WARMTH

as near as  
any electrical  
outlet



## with a Portable ELECTRIC Heater

When you need extra warmth for comfort, a portable electric heater gives it to you *instantly*. Just plug in, flip a switch and soothing electric heat quickly chases away the chill. Ideal for warming up those hard-to-heat areas around your home . . . and for providing supplemental heat when needed in the nursery, bathroom or sickroom. For quick comfort at the flip of a switch, get a portable plug-in electric heater now!

Your favorite electric appliance dealer has a variety of portable plug-in electric heaters from which to choose. See him soon!

**TEXAS ELECTRIC SERVICE COMPANY**  
J. H. LEMONS, Manager Phone 60



### CLAUDE'S



All Kinds Cowboy and Wellington BOOTS — WESTERN SHIRTS MOCCASINS — LOAFERS — ALL KINDS FINE LEATHER GOODS  
EXPERT REPAIR ON ALL SHOES AND BOOTS



#### Is THAT What You Wanted?

What looks attractive in the mail order catalogue isn't always what you want when you try it on.

The same can be true of insurance.

When it comes to buying one of the most important things in your life — your property insurance — KNOW what you are getting.

Make a mistake here and the consequences can be more than irritating — they could spell financial disaster.

To be sure your property insurance is tailor-made to fit your needs, call your local independent agent who is an expert on insurance coverages.

**LOANS**  
**MOORE INSURANCE AGENCY**  
Phone 220, O'Donnell

### Now we're raising pigs RIGHT IN OUR STORE



to show you  
how fast and cheap  
pork can be made  
on Purina

Yep, we've borrowed several pigs from one of our local hog men and set 'em up right in the store.

We are feeding our pigs Purina Pig Startena and water—that's all.

The pigs will be weighed every week and a record kept of every pound they eat.

We know how this demonstration will come out, because we know what Purina will do. But we want *you* to see for yourself the fast, low-cost gains our pigs make. That's the surest way to make you another of our satisfied Purina customers.

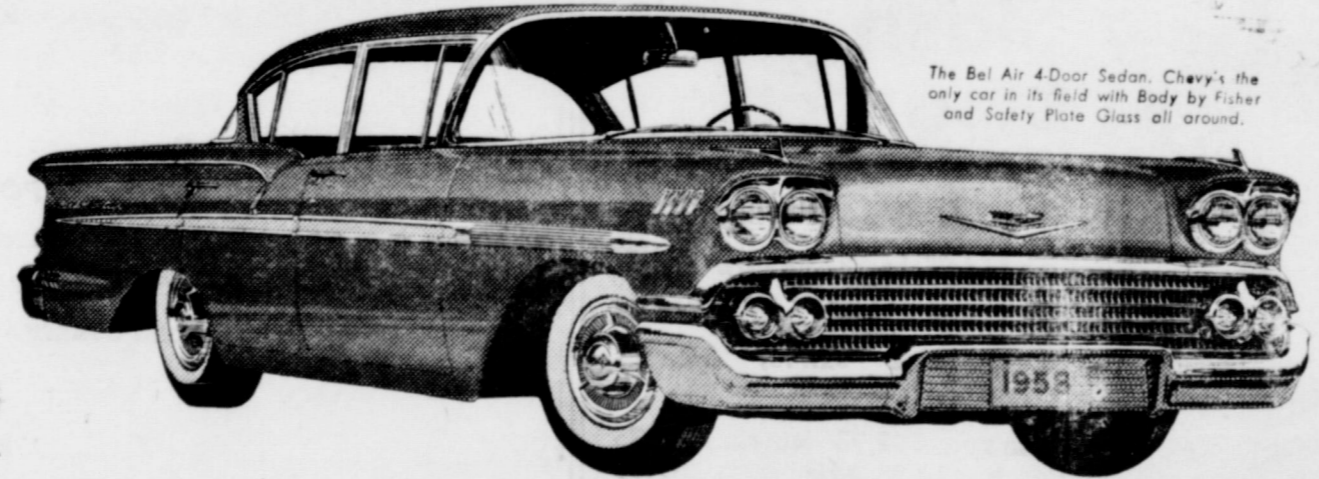
Come in and get acquainted with our pigs today . . . and come see them often.

**YOUR STORE WITH THE CHECKERBOARD SIGN**

Clary Poultry And Egg

Air Conditioning—temperatures made to order—for all-weather comfort. Get a demonstration!

# LOWEST PRICED of the LOW-PRICED THREE in the models most people buy\*



The Bel Air 4-Door Sedan, Chevy's the only car in its field with Body by Fisher and Safety Plate Glass all around.

In the models most people prefer, a new Chevrolet costs less than the other two low-priced cars\*. Yet Chevrolet is the only truly new car in its field. And every Chevy is lower, wider and nine lively inches longer.

Your dollars never had it so good! With all its startling new advances and stunning new style, Chevy is still priced right down at the bottom of the ladder. And look at what you get for the low price you pay! You get boldly sculptured new beauty with the quality craftsmanship of Body by Fisher. You get the year's big buy—even the lowest

priced models bring you full measure of Chevy's new length. You get Chevrolet's own special brand of performance and economy. In fact, you get the one car in the low-price field that performs in the high-price class! Stop by your Chevrolet dealer's and let him prove it. He's making quick appraisals and prompt deliveries!

Only franchised Chevrolet dealers



display this famous trademark

See your local authorized Chevrolet dealer for quick appraisal—prompt delivery!



\*BASED ON FACTORY LIST PRICES FOR COMPARABLE SEDAN AND HARDTOP MODELS.

DATE  
L. J. Jones  
1958  
117M  
415

**IT'S TIME TO Remodel and Repair**

FOR FREE ESTIMATES

FOR QUALITY WATER WELL REPAIRS SEE CICERO SMITH LUMBER CO. TODAY

Phone 18 O'Donnell

Joe Hromas, Mgr.

**Cicero Smith LUMBER COMPANY**

## Gibson's

**CLEANERS**  
CLEANING PRESSING  
Alterations

Agt. For Lamesa Steam Laundry

We Give S. and H. Green Stamps

PHONE 243 FOR FREE PICKUP AND DELIVERY

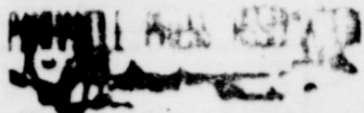
### Real Estate

— FARMS — RANCHES —  
CITY PROPERTY  
Leases and Royalties

B. M. Haymes

### O'Donnell Index - Press

Box B, O'Donnell, Texas  
Published Every Wednesday  
O. G. SMITH, JR.  
Advertising Rate: 50¢ col. inch  
Entered as second class matter  
September 23, 1923 at Post Office  
at O'Donnell, Texas under Act of  
Congress March 3, 1879.  
(Rain Or Shine)  
SUBSCRIPTION RATES  
In Lynn, Dawson and Borden  
Counties ..... \$2 per year  
... Elsewhere in U. S. .... \$2.50  
Card Of Thanks 50¢ Classified  
Advertising 2¢ per word with mini-  
mum charge 50¢  
Read label at top of paper to see  
when your paper expires.



Dressed rabbits for sale Index

### FIRST BAPTIST CHURCH

**SUNDAY**  
Sunday School ..... 9:45 a. m.  
Morning Worship ..... 11:00 a. m.  
Concord Choir ..... 6:00 p. m.  
Training Union ..... 7:00 p. m.  
Evening Worship ..... 8:00 p. m.  
Youth Fellowship 1st Sunday at  
9:00 p. m.  
**MONDAY**  
W. M. U. .... 3:45 p. m.  
G. A. Sunbeams ..... 3:45 p. m.  
Jr. G. A. .... 3:45 p. m.  
**WEDNESDAY**  
Intermediate G. A. .... 7:00 p. m.  
Officers and teachers 7:30 p. m.  
Prayer, Bible Study 8:00 p. m.  
Church Choir ..... 8:45 p. m.

Buy your daily paper  
at home-- it's same price  
at Index office

**Lubbock Avalanche**  
7 days a week \$12.95  
6 days a week \$11

The cooperation of American travelers and visitors from foreign countries to America is being sought by the USDA's Plant Quarantine Division in an effort to keep destructive insect pests and plant diseases out of this country. Inspectors last year at ports of entry intercepted 300,000 lots of unauthorized fruits, plants and other agricultural materials harboring some of the world's most destructive insects, plant diseases and nematodes. I have taken over the city delivery of Lubbock Avalanche and the Ft. Worth Star Telegram. Mrs. Joe Proctor

**Noble L. Rumbo, M. D.**

Medicine and Surgery  
RUMBO CLINIC  
OFFICE TELEPHONE 61  
RESIDENCE PHONE 180

## The First National Bank

O'Donnell, Texas

Condensed statement of condition  
at the close of business December 31, 1957

RESOURCES	
Loans and Discounts .....	\$ 570,311.58
Banking House, Furniture and Fixtures .....	47,000.00
Federal Reserve Bank Stock .....	3,900.00
Government Cotton and Grain Loans .....	434,560.46
Bonds .....	570,373.42
Cash and Due from Banks .....	1,047,974.17
<b>TOTAL .....</b>	<b>\$2,674,119.63</b>
LIABILITIES	
Capital .....	\$ 50,000.00
Surplus .....	80,000.00
Undivided Profits .....	36,086.73
Deposits .....	2,508,032.90
<b>TOTAL .....</b>	<b>\$2,674,119.63</b>

MEMBER FEDERAL DEPOSIT INSURANCE CORPORATION

★ WE HAVE ON HAND A GOOD SUPPLY OF

## Cotton Planting Seed

LET US KNOW YOUR NEEDS AND WE WILL TRY AND GET WHAT YOU WANT IF WE DO NOT HAVE IT

**Wells Farmers Co-operative Gins**

DEALERS IN ---

COTTON, COTTON SEED AND COTTON SEED PRODUCTS

JESS O. GOODE, Manager

Pay Your --  
**POLL TAX**  
By Jan. 31st

J. E. (Red) BROWN  
TAX ASSESSOR AND COLLECTOR  
LYNN COUNTY

# MORE POWER FROM LESS GAS MERCURY



Mercury Montclair Pinetop Sedan

The power news you never thought could happen has happened. Here are engines that give you more power, yet sip—never gulp—their gasoline.

The secret is the revolutionary new Cool-Power design of Mercury's new Marauder V-8's. They cut power-wasting heat and friction. And they are teamed with new high-economy rear axles.

You get a 312-hp Marauder in Montreys, 330 in Montclairs, 360 in Park Lanes.

Mercury makes more style news, too, with Clean Line Modern Styling. Mercury gives you more comfort—it's the biggest, roomiest car in its field. The Big M gentles you along with a ride so smooth you'll wonder why it doesn't cost a thousand dollars more.

Now stop in. Be amazed at how little it costs to own a Mercury!

**Forbes Motor Co.**

Mercury Sales And Service Ph. 92 O'Donnell, Texas

Compare... and you'll go **GAS** everytime!

The Best Cooks Choose Gas for Top-Burner Cooking  
Because It Assures Precision Control for Perfect Results

The added ingredient that puts magic into every recipe in your cookbook is the perfectly regulated Gas flame. Say you have a favorite recipe that requires an instant temperature change—from a quick, intense boil to a slow, gentle simmer. Only a Gas range can give you such drastic changes because only Gas permits such an infinite variety of heats. And only with Gas do you get such instant response when you turn it on...no Heat Hang-over when you turn it off! Not only that, your completely automatic Burner-with-a-Brain—the top burner that actually turns every pot and pan into an automatic utensil—puts an end forever to scorching, burning, and boil-overs. Let us give you all the facts to compare...then visit your gas appliance dealer, soon.

**BEST FOR  
BROILING  
and BAKING, too!**

Closed-door broiling is advisable only in a Gas Range where the clean gas flame actually consumes cooking vapors that otherwise would escape into the kitchen causing unpleasant heat and odor.



Perfect baking results are assured in a Gas Oven where the heat source is not subject to variation...and where the thermostatic control is the most accurate yet devised by mechanical science.



fuel for a growing empire **Pioneer Natural Gas Company**

# BLOCKER GROCERY

Your S. & H. GREEN STAMP store

SPECIALS For Friday and Saturday

**S. & H. GREEN STAMPS**  
Serving Since 1896

**GREEN STRIPS**  
Save as you spend

★ You can fill your books more rapidly by trading with O'Donnell Merchants who give S. and H. Green Stamps... they're valuable

Ask us for a free catalogue  
● Yes, Sir, Double Stamps  
EVERY WEDNESDAY

**Coffee 87c**  
1 lb "Folgers" Reg. or Drip

**Chili 49c**  
No. 2 can "Kimbells"

**CORN 14c**  
12 oz. can "Del Monte" Whole Kernel Vac. Pac.

**Coconut 15c**  
"Baker's" 4 oz. box

**Peaches 22c**  
No. 303 can Sliced, "Heart's Delight"

**APPLES 22c**  
No. 2 can "Comstock" Sliced for Pies

**Cake Mix 29c**  
"Betty Crocker" White, yellow or Devil Food

Finest Quality **MEATS**

**Bacon 1b 59c**  
Sliced, Corn King

**beef roasts 55c**  
Choice cuts per lb

**FRYERS**

TRADE WHERE MA SAVES MONEY FOR PA

## Farm Auction Sale Wednesday, Jan. 22 BOB LONG, Owner

3 Miles South and 1 Miles East Of O'Donnell Or 2 Miles North and 1 Mile East Of Rock Crusher

**Judge G. C. Grider & Son**

Auctioneer And Clerk

- 1 - Farmall "M" Tractor And Equipment
- 1 - A C Combine 1945 Model
- 1 - AC Combine 1942 Model
- 1 - Deep Breaking Plow for Farmall
- 1 - 4 Row Stalk Cutter
- 1 - 4 Row Knife Slide (Wilkins)
- 5 - Steel Drag Slides
- 1 - 3 row Bedder and Knifer
- 1 - Steel Tractor Shade For Farmall

- 1 - 335 Gal. Butane Tank on 4 Wheel Trailer
- 2 - Tractor Tires 11x38 and rims
- 110 Bu. Von Roder Storm Proof Cotton Seed Out Of White Sack
- 20 - Hens
- 1 - 1-3rd H. P. Electric Motor
- Some Posts And Wire
- ★ And many more items too numerous to list.
- ★ Anyone having anything to sell welcome to bring it.

**AUCTION STARTS PROMPTLY AT 12:30 P. M.**

Refreshments Will Be Served By The Harmony Good Neighbors Club At Noon

For sale — late 1952 Model Twin City Tractor, 1st class shape, Ellis Barnes, Rt. 3, O'Donnell

**RESPONSIBLE PERSON**  
male or female, from this area, wanted to service and collect from automatic vending machines. No selling. Age not essential. Car, references, and \$700 working capital necessary. 7 to 12 hours weekly full time work. For local interview give full particulars, phone, Write P. O. Box 4872, Dallas, 6, Texas

For sale — Former M J Whitsett house, remodeled, finished, 50 ft lot, on pavement, J T Forbes 9 25 x

For prompt pickup and delivery of Laundry and Dry Cleaning call 663-2 Cleaners, Phone 284. Shirt finishing work our specialty. You must be satisfied or no charge. Your business will be appreciated. We give Frontier Stamps

Lost — 3 sheep, see James Reed

The cooperation of American travelers and visitors from foreign countries to America is being sought by the USDA's Plant Quarantine Division in an effort to keep destructive insect pests and plant diseases out of this country. Inspectors last year at ports of entry intercepted 300,000 lots of unauthorized fruits, plants and other agricultural materials harboring some of the world's most destructive insects, plant diseases and nematodes.

**Mahurin**  
SOFT WATER  
Help - Your - Self  
**Laundry**  
Wet Wash, Ruff Dry

## Specials For Friday and Saturday

- 10 lb Gladiola Flour .....
  - Gladiola Cake Mix 3 for .....
  - 18 oz. Goldcraft Peanut Butter .....
  - 200 count Kleenex 2 for .....
  - 1-2 Gal. Blackburn Syrup .....
  - Libby Crushed Pineapple 2 for .....
  - Libby 303 can Garden Peas .....
  - 1-2 lb Hershey's Cocoa .....
  - Good Strand Broom .....
  - 1 lb Dutch Bacon .....
  - All meat Franks 1b .....
  - Spiced Luncheon Meat 1b .....
  - Lettuce, good, firm, 1b .....
  - Bananas, Golden, yellow, 1b .....
  - 10 lb mesh bag Spuds .....
- ★★ Double Frontier Stamps On Wednesday  
**WE GIVE FRONTIER SAVING STAMPS**

## Line Grocery And Market

Plenty of parking behind the store; come in and with us **WE DELIVER PHONE 110**

**Marshmallow Fudge**  
LIFE

**Sugar 5 lb 48c**

**ENCHELADOS 49c**  
With Chili Gravy and beef  
Patio

**Catsup 15c**  
Diamond Brand 12 oz. bottle

**Blue Cheer 26c**  
Large Size

**Peas 2 for 25c**  
303 can Trellis, Early Peas

**Coffee 89c**  
Folgers, 6 oz. Instant

**Cleanser 19c**  
Old Dutch

**Soap 3 for 25c**

Jergens Lotion, Mild, Bath size

FOR EXPERT ----

TV., Radio, Small Appliance Re-

pairs or Electrical Wiring call

**MANSELL BROS.**

Day Phone 50, Nite 133 or 27

2 1/4 cups sugar  
1/4 cup butter or margarine  
3/4 cup PET Evaporated MILK  
5-oz. jar marshmallow creme (1 cup)  
6-oz. pkg. semi-sweet chocolate pieces

Mix in a heavy 2-qt. saucepan all ingredients except chocolate pieces. Cook and stir to a full, all-boil. Boil and stir over medium heat 5 minutes. Take off heat. Add chocolate pieces and stir until chocolate is completely melted and blended into mixture. Pour into buttered 8 or 9-in. square pan. Cut thoroughly. Cut into about 3 doz. squares. Make 1 lbs.

Finest Quality **MEATS**

**Beef roasts 53c**

**Cheese 1b 49c**  
Longhorne 1b

**sliced Bacon 59c**  
Banner per lb

Fresh Dressed Fryers and Hens

\$\$\$\$\$\$\$\$\$\$\$\$\$\$  
**SILVER DOLLAR THRIFT STAMPS**



Manzell Bros Co  
O'Donnell, Texas

\$\$\$\$\$\$\$\$\$\$\$\$\$\$

★★ WE GIVE DOUBLE SILVER DOLLAR THRIFT STAMPS ON  
● EVERY WEDNESDAY ●

# MANSELL BROS

PHONE 50

SPECIALS FOR FRIDAY AND SATURDAY  
FREE DELIVERY

PHONE