



# BAILEY COUNTY JOURNAL

'The Community Of Opportunity-Where Water Makes the Difference'

## WEATHER

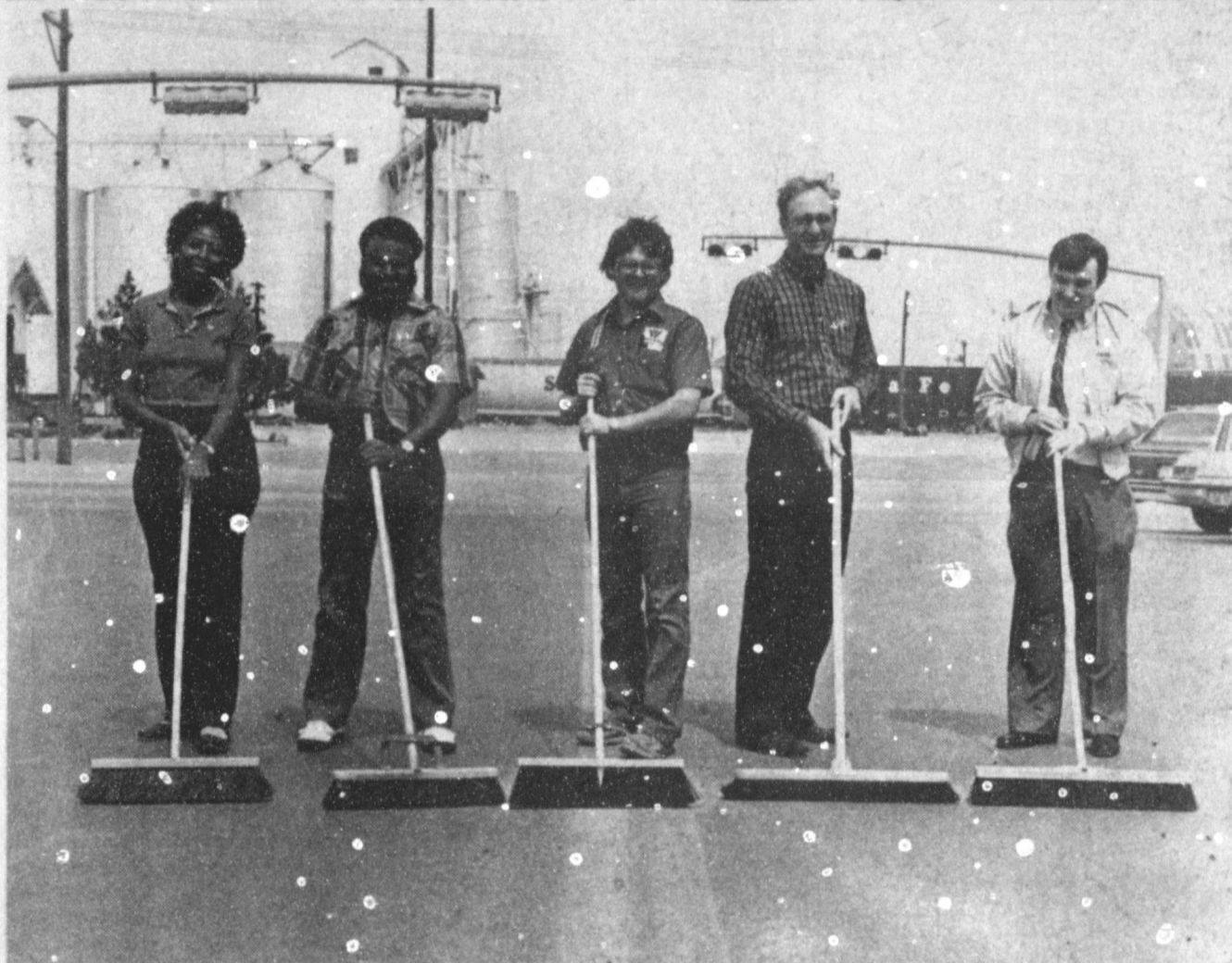
March 27	79	34	
March 28	79	43	
March 29	77	44	
March 30	66	29	.16
Year's Total Moisture 3.24			

Vol. 62, No. 15

16 Pages Today

Published Every Sunday at Muleshoe, Bailey County, Texas 79247

Sunday March 31, 1985



THEY'RE PUSHING FOR A CLEAN-UP--During the month of April, the Muleshoe Chamber of Commerce and Agriculture are spearheading a massive clean-up, fix-up campaign citywide. These Main Street business people are also boosting a clean-up. Pushing for a clean-up are from left, Jim Ella Clemmons, Terome Clemmons, Brad Poyner, Gordon Wilson and Leslie Hurst. Get your own broom, rake, hoe, shovel, ladder and paint brush and help make Muleshoe sparkle.

## New Athletic Director Is Contracted

Thursday morning, following a 6:30 a.m. meeting of the Board of Trustees of the Muleshoe Independent School District, H. John Fuller, superintendent of Muleshoe Schools, announced the employment of an athletic director and head football coach.

Dale Keeling, along with his

wife, Denise, and two and a half year old daughter will be moving to Muleshoe in the near future, as soon as he completes his obligations with the Spur, TX school system.

At this time, Keeling serves as Athletic Director for the Spur School system, and in 1983 took the 3AA school to district championship.

They spent two years at Dickinson High School, on the coast, where Keeling was assistant to Dub Farris; the next two years Keeling was offensive coordinator at Texas City, also on the coast. Both are 5A schools. He has spent the past two years at Spur.

"We were very happy in Spur," said Keeling. "The people there have been fantastic

to us. They have treated us better than we probably deserve. But my goal is to move up in classification. This is another step up for me."

Although Keeling was offered an extension on his contract at Spur, he opted for the position in Muleshoe and says, "It may take five to six years to reach our goals in Muleshoe, but we're in no hurry."

Goals for Keeling include the development of outstanding citizens and to develop the best program in the state. "That's our purpose for being here," said the new athletic director. His five priorities in Muleshoe will be to stress God, Family, Citizenship, Academics and

Cont. Page 6, Col. 4

## Around Muleshoe

Members of the Muleshoe Youth Center will meet at the Muleshoe State Bank meeting room on Wednesday, April 3 at 6:15 p.m. and invite all interested adults and teenagers to attend.

New officers will be elected during the meeting.

The Youth Department of the Calvary Baptist Church will host a bake sale on Friday, April 5. Orders can be placed by calling 272-5668 or 946-3603. Young people will deliver the baked items on Friday, April 5, and will have baked goods available from their van.

You are asked to place your orders by Tuesday, April 2.

Members of the board of directors of the Bailey County Farm Bureau will meet on Thursday, April 4, at 8 p.m. in the board room at the FB offices.

All board members are asked to be present.

Bailey County Commissioners Court will meet in special session at the Bailey County courthouse on Monday April 1 at 10 a.m. with several items on the agenda, according to Bailey County Judge Gordon H. Green.

Items include payment of routine county bills; meet with Jo Ann Head regarding the Department of Health; consider revised budget for the Aging Department; approve soil conservation work; consider budget amendment to the FY1985 budget; consider appointments to the Bailey County Historical Commission and miscellaneous items.

A retirement reception honoring Milton R. Oyler, is planned for Sunday, April 14, 2-4 p.m. in the Dillman Cafeteria.

Hosted by the Dillman Elementary, Oyler is retiring after more than 25 years with the Muleshoe School System.

Ruby Bruns was released from the hospital on March 23 after three weeks. Her surgery was deemed successful and she said she is happy to be home.

## 85 Garden Vegetable Seeds Now Available

It's time to gear up for that spring vegetable garden. And two major steps are getting the right varieties and planting at the right time.

Proper planting time is important if maximum quality and production are expected, points out Spencer Tanksley, County Agent with the Texas Agricultural Extension Service, the

### Jennyslippers

### Will Sponsor

### Easter Egg Hunt

Hey, Kids!!! The Easter Bunny will arrive in Muleshoe by helicopter at the New City Park at 3 p.m. on Saturday, April 6. The Easter Bunny will start the annual Jennyslipper-sponsored Easter Egg Hunt.

A Jennyslipper said the hunt will be divided into three age groups, with prize eggs placed in hunting areas for each of the age groups.

First group will be toddlers through pre-kindergarten; the second age group will be kindergarten through second grade and the third group will be third grade through fifth grade.

Prizes will include rides on the helicopter, money and various other items donated by Muleshoe merchants.

The Jennyslippers said they invite all parents of the surrounding area as well as Muleshoe, to bring their children for the annual Easter Egg Hunt, for an afternoon of excitement.

At the conclusion of the hunt, the Easter Bunny will be available for photographs with your children, so be sure to bring your camera.

Texas A&M University System. Since such warm-season crops as tomatoes, peppers, corn, eggplants, beans, squash, cucumbers, okra, watermelon, sweet potatoes, pumpkins, and cantaloupes are sensitive to cold temperatures and can be killed by even the lightest frost, gardeners must be aware of the average date of the last frost for their particular areas.

According to the National Weather Service, the average date of last frosts for our area is April 11 on the South Plains and April 22 for Panhandle. Remember, these dates are average which only means there is a 50 percent chance a frost may occur at a later date.

It's also wise to wait until the soil has warmed before planting seeds of warm-season crops, says Tanksley. Soil temperature at planting depth should be in the upper 60's or into the 70's to increase seed germination and insure a good stand.

Some vegetable crops are cold-hardy and can tolerate light frosts or freezes. These include beets, broccoli, cabbage, carrots, peas, lettuce, onion, parsley, radishes, spinach, cauliflower, collards, mustard, kale, and turnips. These can be planted in late winter or early spring.

Tanksley suggests planting some warm-season crops in late spring as they will produce more high-quality produce. During the hot summer such heat-tolerant crops as southern peas, okra, eggplant, sweet potatoes, squash and small fruited tomatoes do best.

Tanksley advised planting the best adapted varieties that are available as this can mean the difference between gardening success and failure. Some of the

Cont. Page 6, Col. 1

## Holy Week Services Scheduled This Week

\*\*\*\*

### Citywide Clean-up Planned

Spring has sprung, and along with the beginning of the growing season, is time to think of cleaning up, painting, repairing and in general-making Muleshoe sparkle.

With this in mind, the Muleshoe Chamber of Commerce and Agriculture manager, Tomi Eagle, has been visiting local businesses and encouraging them to put seeds, tools and implements, paint and paint brushes, and all other items to help clean up Muleshoe on sale.

Many of the merchants will be featuring these special items in their stores, and Mrs. Eagle said the Muleshoe Lions Club has already donated \$100 to help pay YES (Youth Employment Service) workers to help with the clean-up.

She has also contacted other civic and social clubs, and is asking them to 'adopt' a particular area, or location to be responsible for, to clean up, plant flowers and maintain.

"Let's start early and make Muleshoe beautiful," Urged Mrs. Eagle. "We want people driving through our city to remember it for being clean, beautiful and bright with colorful flowers."

The CofC is enthusiastically supporting the clean-up and said it will only work if everyone pitches in and helps.

### Mighty 'M' Band Wins Sweepstakes

Congratulations, Muleshoe Mighty 'M' Band. Under leadership of Anthony Gibson, the band has won its first sweepstakes in 12 years.

In competition Wednesday afternoon at Littlefield, the band brought home the sweepstakes by winning concert, marching and sightreading.

The band has proven to be a crowd pleaser anytime, and anywhere they perform.

The Journal joins all the congratulations due the band for being so very 'outstanding.'

This is Holy Week in Muleshoe, and special Holy Week Services are scheduled Monday through Friday at the First United Methodist Church under sponsorship of the Bailey County Ministerial Alliance.

Services will start at 12:05 each weekday, and will be concluded by 12:55 p.m. in order to allow working people time to attend the services, eat and return to their respective places of employment.

This year, theme for Holy Week is "Claims of Christ," and several ministers will be speaking for the services.

Each day, following the services, a meal will be served in the fellowship hall of the church at \$2.50 for adults and \$1 for pre-schoolers.

Starting off the week will be Rev. V.L. Huggins, who will speak on "I Am the Bread of

### Metal Shop

### Has Opened

### At Tradewinds

Jesse Anzaldua, who with his wife, Elva, recently purchased Tradewinds Plaza, has moved his business to Muleshoe from Lariat and has located at Tradewinds.

Formerly known as Lariat Sheet Metal, Anzaldua renamed his business Muleshoe Metal Products, and is located in the northwest portion of the Tradewinds Plaza.

He and his wife, Elva, have lived at Lariat for more than 23 years, where he operated the Lariat Gin for 23 years, and operated Lariat Sheet Metal for seven years.

He is engaged in general sheet metal work, including cotton gin fittings, grain elevator fittings, and heating and air conditioning ductwork. Some of his work is shipped as far away as Dallas.

Although he has moved Muleshoe Metal Products to Tradewinds, he hopes to expand his operation in the future. He and Mrs. Anzaldua purchased the Tradewinds Plaza complex some six weeks ago, and although some shops are now open, others are undergoing extensive remodeling and repair prior to being leased or rented.

Jesse Anzaldua and Elva Anzaldua are the parents of Letitia (Lety), Jesse Jr. Homer, Becky and Michael.

Life" from John 6:35. Special music will be presented by M.D. Gunstream and the meal is being sponsored by the First United Methodist Church.

On Tuesday, Rev. Les Burrus will be speaking on "I am the Light of the World," with John 8:12 at the scripture. Rev. and Mrs. Steve Davis will present special music and the meal will be served by the First Assembly of God.

"I am the Door" from John 10:7 will be the subject for Rev. Barry Bradley on Wednesday, April 3. Glenda Jennings will give the special music; and the meal will be prepared and served by the Lazbuddie United Methodist Church.

Rev. Steve Davis will be speaking on "I am the Vine, You are the Branches," from John 15:5 on Thursday. There will be special music and the meal is being prepared by Richland Hills Baptist Church.

Concluding services for the week will be "I am the Way, the Truth, the Life," from John 14:6 and will be by Rev. Bill M.

Cont. Page 6, Col. 1

### Pat Dodson

### Named Student

### Nurse Of Year

A student nurse from South Plains College, Levelland, Pat Dodson, has been named "Student Nurse of the Year" by the College. A resident of Muleshoe, Mrs. Dodson is having her clinical training at West Plains Medical Center in Muleshoe.

She started her training in August, 1984 at SP in Levelland, and after six months, started her clinical training at WPMC under supervision of Trina Wilson, Director of Nursing.

"We are proud of Pat for all she has accomplished," said her supervisor, Trina Wilson. "But, we are also proud of our other students from Muleshoe, Margaret Kimbrough and Debbie Farmer. They are also accomplishing very good records as they continue their studies."

Muleshoe's three student nurses are the only student nurses named to the president's roll at the college.

Mrs. Dodson said she hopes to become permanently employed at WPMC once her training is completed in August.



MULESHOE LANDMARK MOVED FRIDAY--On the way to a new historical complex located to the east of the Mule Putt Miniature Golf Course, the Santa Fe Railway depot, which stood at the north end of Main Street for more than 60 years, will become a senior citizen's center and a museum. Under auspices of the Bailey County Historical Commission, the depot is the first of three historical buildings to be moved to the new location. Renovation is expected to get underway in the near future.

### Check Local Resources For Nutrition Information

"How can I cut down on salt?" "Is it really cheaper to buy the larger size eggs?" For answers to these and other food and nutrition questions, you don't have to look any further than your own community.

Many people doubt what they read or hear about nutrition -- especially when it seems designed to sell health products, vitamins, foods or fad diet programs, says Texas A&M University Agricultural Extension Service nutritionist Dr. Alice Hunt.

Others have specific questions, such as how food interacts with a medication or whether a certain food is appropriate for a diabetic diet, that aren't answered by nutrition articles in popular magazines.

Whatever type of nutrition information consumers are seeking, it should be available from reliable community resources, she says. These local resources include:

The County Extension Office. The Extension office will have

free or low-cost publications and offer programs on nutrition, food preparation, purchasing, storage, handling and home canning. The county Extension home economist can answer specific questions about food and nutrition. The office should be listed under county government in your phone book.

Dietetic Associations. The American Dietetic Association operates a Dial-a-Dietitian service in many larger communities. It's staffed by volunteer certified nutritionists and dietitians to answer consumer's food related questions.

The American Dietetic Association and its local affiliates are observing National Nutrition Month during March. Check with your local Texas Dietetic Association group for information on special activities.

Local Health Department. This office may offer classes and health fairs on nutrition and other topics. It also handles food poisoning cases and monitors the sanitation of restaurants and food stores.

Food Stamp Offices. These offices may have free nutrition and food cost publications in English and Spanish for food stamp recipients. They are

designed to help low-income consumers in buying and preparing more nutritious, less expensive food.

Local Libraries. The reference librarian can direct you to a number of books and other materials written by authoritative sources on nutrition and food.

The resources are available for consumers to have their nutrition questions answered quickly and easily by professionals in their own community, concludes Hunt.

#### ABOUT YOUR HOME

Prune forsythia, quince, pussy willow and redbud in their dormant period. Bring trimmings inside and place in a vase in a warm room to enjoy "early" blooms which will appear in a week or ten days.

Labels will peel off plastic bowls or lids easily when placed in the freezer for about 15 minutes.

To prevent mildew on refrigerator or freezer gaskets, wipe with cloth dipped in pure vinegar.

Frozen meat and other food packages will thaw faster if you put them on a rack in front of an electric fan.



**HAPPY BIRTHDAY**--Two residents of Muleshoe Nursing Home celebrated their birthdays during the month of March and were honored with a birthday party Thursday afternoon at the nursing home. Hosting the event were members of the Needmore Community Club. Muleshoe Floral and gift provided corsages for the honorees. Opal Robinson, pianist, accompanied the Needmore Community Club members as they sang.

### RECIPE

By Sarah Ann Sheridan

Here are some more quick and very easy recipes.

#### Easy Dessert

Heat applesauce with a sprinkle of nutmeg and lemon peel. Serve on toasted pound cake slices.

Top with ice cream or frozen whip topping.

**Cranberry Chicken Salad**  
Arrange slices of jellied cranberry sauce on lettuce. Top with your favorite chicken salad.

#### Bacon Waffles

Sprinkle bits of bacon, either cooked crisp or uncooked, over your waffle batter in waffle iron before baking. Use 1 slice for each waffle.

### Bailey County Community Action To Hold Election

For 5 Area Representatives

April 9 & April 12, 1985

If Interested Contact

Local Office At 800 W. Amer. Blvd.

Filing Deadline

5 p.m. April 5

### Henry Insurance Agency



"Ask us about competitive sprinkler rates"

PROFESSIONAL INSURANCE AGENTS

KENNETH R. HENRY  
CERTIFIED INSURANCE COUNSELOR  
REAL ESTATE BROKER



RONNIE HOLT

PHONE 806/272-4581

111 W. AVENUE B -- MULESHOE, TEXAS -- 79347

### AN EXCITING CAREER?

### It's Possible!!

If you are a registered nurse, we can offer you an exciting challenge with excellent working conditions.

We are a growing hospital in a thriving community.

Contact, Trina Wilson, Director of Nursing,  
West Plains Medical Center,

708 South First St., Muleshoe, TX. 806/272-4524. EOE

Double S&H Green Stamps On Wednesday With A Minimum Purchase Of \$5<sup>00</sup>

This Week's Special Anniversary Porcelain Fine China Dessert Dish only 88¢

### Thrifty Easter Sale

ALL GRINDS **FOLGER'S COFFEE**  
\$2.49  
1 LB. CAN

CALIFORNIA RED RIPE **STRAWBERRIES**  
49¢  
PINT BASKET

CALIFORNIA GREEN MEDIUM **AVOCADOS**  
2 FOR 29¢

WASHINGTON EXTRA FANCY RED DELICIOUS APPLES 3 LB. BAG \$1.19  
CALIFORNIA MINOLA TANGERINES LB. 59¢  
TIGHT GREEN HEADS BROCCOLI! LB. 69¢  
NORTH CAROLINA GOLDEN SWEET YAMS LB. 59¢  
CALIFORNIA SWEET YELLOW ONIONS LB. 15¢

QUALITY SLICED **WILSON'S BACON**  
\$1.38  
1 LB. PKG.

KAHN'S HICKORY GROVE BONELESS FULLY COOKED 12-14 LBS. AVG. **WHOLE HAMS**  
HALF OR PORTION \$1.89 \$1.79  
4-7 LBS. AVG. LB.  
HEAVY GRAIN FED BEEF BONELESS **CHUCK ROAST** LB. \$1.69

81% LEAN CHUCK QUALITY FRESH **GROUND BEEF** LB. \$1.59  
WILSON'S SLICED MEAT **BOLOGNA** 12 OZ. PKG. \$1.19  
WILSON MEAT OR BEEF **FRANKS** 12 OZ. PKG. 99¢  
HILLSHIRE FARM REG. POLISH/SMOKED **SAUSAGE** LB. \$1.99  
OSCAR MAYER SLICED **COOKED HAM** 6 OZ. PKG. \$1.59  
CLAUSSEN'S "THE CHILI QUEEN" **DILL PICKLES** HALF OR WHOLE 32 OZ. JAR \$1.59

SHURFRESH **WHIPPING CREAM**  
39¢  
1/2 PINT CTN.

CHICKEN OF THE SEA WATER OR OIL PACK **CHUNK TUNA**  
69¢  
6 1/2 OZ. CAN

IMPERIAL EXTRA FINE GRANULATED **SUGAR**  
\$1.49  
5 LB. BAG

KITCHEN TESTED FLOUR **GOLD MEDAL**  
89¢  
5 LB. BAG

DEL MONTE **CATSUP**  
99¢  
32 OZ. BTL.

SWEETENED CONDENSED MILK **EAGLE BRAND**  
\$1.29

SHURFRESH GRADE A **LARGE EGGS**  
59¢  
DOZEN

LAUNDRY DETERGENT **LIQUID TIDE**  
\$5.99  
96 OZ. BTC.

COOL DAIRY BUYS

MARGARINE QUARTERS **PARKAY** 1 LB. PKG. 59¢  
KRAFT CHILLED **ORANGE JUICE** QT. JAR \$1.29  
SHURFRESH **CHEESE** 8 OZ. PKG. 79¢  
KRAFT LONGHORN CHEDDAR OR COLBY HALFMOON **CHEESE** 10 OZ. PKG. \$1.69  
BORDEN 24 OZ. **COTTAGE CHEESE** \$1.29

FROZEN FOOD SPECIALS

ASSORTED FLAVORS **ICE CREAM** 2 1/2 GAL. CTN. \$5.00  
BIRDSEYE REGULAR OR EXTRA CREAMY **COOL-WHIP** 8 OZ. BOP. 79¢  
STRAWBERRIES **STRAWBERRIES** 14 OZ. PKG. \$1.39  
GREEN GIANT CORN ON THE COB **NIBBLERS** 4 CT. PKG. \$1.19  
BIRDSEYE BROCCOLI, CHEESE & **RICE** 10 OZ. PKG. \$1.29  
DUNCAN HINES ANGEL FOOD **CASSEROLE** 10 OZ. PKG. \$1.29

DEL MONTE "H. KENNEL" CR. STYLE **GOLD CORN** 2 17 OZ. CAN \$1.00

SHURFRESH WHOLE **SWEET POTATOES** 23 OZ. CAN 79¢

CHARCOL **KINGSFORD** 10 LB. BAG \$2.99

BETTY CROCKER HAMBURGER **HELPERS** BOX \$1.19

DUNCAN HINES ANGEL FOOD **CAKE MIX** 15 OZ. BOX \$1.39

KRAFT REAL **MAYONNAISE** 32 OZ. JAR \$1.59

KRAFT TH. 1/2 TL. (5L. & 8 OZ.) BAC & TOM. **DRESSINGS** 8 OZ. BTL. 99¢

ASSORTED KRAFT **BARBECUE SAUCE** 18 OZ. BTL. 99¢

DEL MONTE SLU CRU (CNU) TIBBITS **PINEAPPLE** 15 OZ. CAN 59¢

25' OFF LABEL ANGEL FLAKE **COCONUT** 14 OZ. PKG. \$1.29

KRAFT MINIATURE **MARSHMALLOWS** 10 OZ. PKG. 59¢

IMPERIAL POWDERED OR BROWN **SUGAR** 2 LB. BAG 99¢

PARTYLAKE BROWN & SERVE **DINNER ROLLS** 3 12 CT. PKGS. \$1.00

ALMOST HOME FUDGE N NUT **BROWNIES** 10 1/2 OZ. PKG. \$1.49

30' OFF LABEL **MAZOLA OIL** 48 OZ. BTL. \$2.49

FRUITY PEBBLES OR **COCOA PEBBLES** 11 OZ. BOX \$1.69

CORN FLAKES **POST TOASTIES** 18 OZ. BOX \$1.29

ASSORTED FLAVORS REGULAR OR DIET **FAYGO DRINKS**  
4 \$1  
16 OZ. BTL.

DIET COKE, SPRITE OR **COKE**  
2 LITER 79¢

Come Home for Good!  
WE ACCEPT FOOD STAMPS  
WE RESERVE THE RIGHT TO LIMIT QUANTITIES  
**THRIFTWAY**

PRICES EFFECTIVE MARCH 31-APRIL 6, 1985  
Thrifty McSaver

**Letter  
To The  
Editor**

TO THE EDITOR:

The Muleshoe Youth Basketball League (Little Dribblers) has just completed its regular season and post-season tournament, with what everyone I'm sure would consider great success. There were two leagues, with the first being comprised of third and fourth graders and the second made up of fifth and sixth graders. About 100 kids participated. I was fortunate enough to have helped coach a team of third and fourth grade boys this year, and would at this time like to offer some thanks and observations.

First, I would like to thank the Muleshoe Lions Club for their sponsoring of the program. Without their support, youth basketball would have been just another good idea, instead of the reality it was.

Secondly, I believe that Lonnie Adrian may have set a record for doing the most things, an doing them well, in a basketball season. He was organizer, coordinator, sponsor, referee, and custodian. He is an

inspiration because he ran the program smoothly and professionally. Muleshoe is lucky to have him.

Thirdly, the sponsors of each team may not realize just how important they are to the kids who participated. I know for a fact that the team T-shirts, will get plenty of wear long after the season is over, because there is a certain pride associated with being a member of "your team". These T-shirts, simple as they may be, become important to the third through sixth graders who are too young to be members of an organized school athletic team. These kids are very excited by the feeling of being a part of something worthwhile. These little shirts become badges of honor for the kids helping to instill pride, confidence, friendship, and a sense of achievement. In short, the shirts MEAN something. In the day and age of fast food and fast living, youngsters surely benefit from this. The sponsors for the third and fourth grade league were Poyner's, Hurst Dept. Store, Wilson Appliance, Muleshoe State Bank, and Equitable Life Insurance Co.

Next, I wish to thank the five coaches in our league. Leroy Hurtado, Troy Stegemoller, Gary Freeman, Joe Lozano, and Tim McCormick are men who, after their regular jobs, gave of

their time to the program. Most importantly, however, they gave of themselves to a bunch of kids, many of whom were strangers when the season started. The kids are no longer strangers. They are friends.

The next group deserving thanks are the parents who allowed their children to participate. It is oftentimes troublesome to rush around, taking kids to practice and to games. In addition, these parents gave a tremendous amount of support to the kids by attending the games. The stands in the high

school gym were filled with people who know the importance of allowing children the opportunity to have fun. I'm sure many parents asked themselves and each other if all the trouble was worth the effort. As I viewed the faces of those little boys during the awards ceremony, I was struck with the obvious. It was worth it.

Last, and certainly not least, I want to thank the referees. The men in the "zebra suits" with the whistles around their necks, are the most maligned and abused members of any athletic event, and more often than not,

the abuse is unjustified. Although many men took part in the officiating, Brock Sanders and Lonnie Adrian were the primary ones. At this point, I would like to interject some feelings about sports. Athletics, especially team sports, teach all valuable lessons. Comradship, sportsmanship, fairness, structure, playing by the rules, and achieving goals are but a few of those lessons we learn by playing games. Unfortunately, we sometimes forget that it is just a game. There is one aspect of sports, however, that cannot be overlooked. In the striving for excellence, we often become frustrated or even angry. Emotions run high, and outbursts are common. This is simply the nature of competition. As long as these frustrations are confined to the time between the first quarter and the end of the game, and as long as our outbursts are voiced in a responsible manner, they are

acceptable. This is where I have failed. Like any coach, I became very attached and protective of the team of which I was a part. The boys on that team became "my kids". Any time a referee's call went against us, I reacted as though it was a direct attack on "my kids". I knew better. Furthermore, I used the basketball court as a place to release my frustrations, and I directed them at the officials. I knew better. Worse yet, Brock and Lonnie are my friends. I'm not happy about treating my friends that way. My reason for making these statements public is that my actions were public. I offer no excuses. I was wrong. In short, I apologize. Many people worked very hard to make the Muleshoe Youth Basketball Program a success, and I firmly believe that it was. I know I learned something.

Thank you,  
Keith Madole

Dear Friends,

We are inviting all the clubs, organizations and businesses to enter a team in our Walkathon - to help raise money for local community projects. Last year we were able to donate \$2,000 to help the Chamber pay for the 4th of July Fireworks. This year they will probably cost \$2,500.00. It is a local tradition that the whole countryside comes to see and enjoy. The Walkathon also helped fund the Easter Egg Hunt and other local projects. It was with the help and generosity of friends like you who made it all possible - and we are sincerely grateful! We have prizes for all ages!

We've learned, that in other towns - large numbers of people of all ages turn out and walk. We think that would be great fun! We've planned refreshment breaks along the way with lemonade, cookies and cokes. We'll even have a car patrolling the route to pick up stragglers - and those of us who find that 2 1/2 miles is a little farther than we remembered!

It would be nice to wear a badge representing your organization or business. Perhaps one club would challenge another... like the Lions and Rotary. I thoroughly enjoyed their basket-

ball game! We've already heard some scrying, "I'll walk if you will!" And we've heard that a couple of ladies plan to walk and push their babies in their strollers! Some Jennyslippers will be walking too.

Our clubs and organizations have really been the backbone of support for Muleshoe and we appreciate it. And now the Jennyslippers are really trying to help in every way we can - to make Muleshoe more fun for everyone. Some of our projects have 'sorta flopped', but others have gone over great - beyond our dreams! And those projects really excite us! then we girt up and go on to another one! We hope that this Walkathon is one that 'dreams are made of.'

So come on out and walk with us - we promise you'll enjoy this afternoon stroll (any you can even bring your golf club and ball and practice on the way around!) ha ha So get some sponsors and come on!

Whether walking - or supporting a walker - THANKS FOR SUPPORTING MULESHOE  
Sincerely,  
Vivian White  
President

Nelda Merriott  
Walkathon Chairman

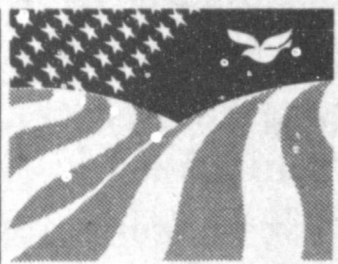
**PUBLIC NOTICE**

Article 4477-9a of the Texas Statutes provides in part:

Sec. 2.01. (a) A person commits an offense if that person disposes of trash, junk, garbage, refuse, unsightly matter, or other solid waste on a public highway or right-of-way.

(b) A person who commits an offense under this section is, on conviction, subject to a fine of not less than \$15 nor more than \$200.

Notice is hereby given that, effective immediately, Bailey County will vigorously enforce the foregoing statute.

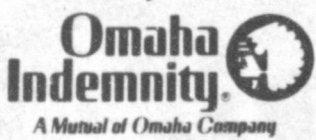


**We put  
Freedom back  
in Agriculture...**

by providing All Risk Crop Insurance protection you can count on!

- Provides crop investment protection.
- Assures family income and security.
- Allows maximum use of capital.
- Permits expansion.
- Increases borrowing and repayment power.
- Expands professional management capabilities.
- Backstops forward contracting and hedging.
- Promotes peace of mind.
- Helps manage risks.
- Produces cash flow during low crop yields.
- Protects your way of life.

Presented by:



Marketed and serviced by:



CALL:

Office: **Ronnie Holt**  
272-4581

Home: 965-2842

**Bailey County Journal** USPS 640-200  
Established March 31, 1963. Published by Muleshoe Publishing Co., Inc. Every Sunday at 304 W. Second, Box 449, Muleshoe, Texas, 79347. Second Class Postage paid at Muleshoe, Texas 79347.

**TA MEMBER 1985**  
**TEXAS PRESS ASSOCIATION**

L.B. Hall - President  
James Woods - Vice President  
Cleta Williams - News  
Evelene Harris - Society  
Holly Millsap - Advertising  
Lillie Nino - Circulation/Classified  
Sammye Hall - Bookkeeper

**SUBSCRIPTIONS:**  
Muleshoe Journal and Bailey County Journal \$11.95  
Bailey and surrounding counties  
Muleshoe Journal and Bailey County Journal \$12.95  
Elsewhere in Texas  
Muleshoe Journal and Bailey County Journal \$13.95  
Outside of Texas \$11.50  
Yearly by Carrier \$11.50  
Advertising rate card on application.

**Ben Franklin** **Better quality for less**  
2104 WEST AMERICAN BLVD. MULESHOE  
PH. 272-3855 OPEN 9 A.M. - 8 P.M.

**Easter Parade of Savings**

<b>Made up Baskets, with puppets, animals and candy.</b>	<b>Filled Baskets \$3.95</b>	<b>Made up Cowboy Hats \$2.95</b>
<b>Filled Brachs Buckets w/Shovel \$3.57</b>	<b>Filled Dumptruck \$3.95</b>	<b>Queen Anne Marshmallow Eggs (In carton) 69¢</b>
<b>Empty Baskets 87¢ &amp; up</b>	<b>2 oz. Bag Grass 49¢</b>	<b>Jelly Bird Eggs 1 lb pkg. 88¢</b>
<b>Filled Paddle Ball 99¢</b>	<b>Asst. Flavors Brachs Creme Eggs 3/\$1</b>	<b>Hollow Milk Chocolate Eggs 99¢ Name Written FREE</b>
<b>Paas Easter Egg Color Kits 97¢</b>	<b>Plush Rabbits \$2.48</b>	<b>Electronic Musical Bunny \$9.97</b>
<b>Hallow Milk Chocolate Jimmy the Jogger \$1.59</b>	<b>Solid Chocolate Rabbits \$1.89</b>	<b>Chocolate Covered Peanut Butter Eggs 77¢ 4 oz.</b>
<b>Bugs Bunny Superstar \$2.29</b>	<b>Peter Rabbit \$1.39</b>	<b>Fill your Own Plastic Magic Eggs \$1.67 18 ct.</b>
<b>Parsnip Pete \$3.29</b>	<b>Mr. McGregor \$1.99</b>	
<b>Chopper Hopper \$1.99</b>	<b>Large Foil Wrapped Hollow Chocolate Eggs \$2.29</b>	

**Home Furnishings Sale**

<b>Fur Throws</b> Reg. 18.99 <b>Only \$10.97</b>	<b>Standard 2 For \$13</b> <b>Queen 2 For \$15</b> <b>King 2 For \$17</b> <b>'Debut' Pillows</b> Standard reg. 7.99 each. Queen, reg. 8.99 each. King, reg. 10.99 each.
<b>Chintz Throw Pillows</b> Reg. 4.99 <b>3 For \$12</b>	<b>ANDREA BEDSPREADS MATCHING PRISCILLAS &amp; SHAMS</b> <b>25% Off</b> <b>Morning Glory Batting</b> Reg. 2.99 <b>2 For \$5</b>
<b>Cotton Kitchen Towels</b> <b>sale \$1.19 each</b> Reg. 2.79 each. A kitchen necessity in absorbent 100% cotton jacquard. Choose from an assortment of colorful kitchen prints.	<b>Irregular Bath Towels</b> Reg. 2.97 <b>10 For \$19.97</b>
<b>Teakwood Giftware</b> • 5 Piece Wine & Cheese Set Reg. 13.99 • Cheese Slicer Reg. 12.99 (All other Teakwood 20% Off) <b>\$9.97</b>	
<b>"RACHEL" Tie Curtain</b> Sale 20% Off Tier, Reg. 7.99 Valance 4.99 Swag 8.99 Colors: Toast Blue Peach	

Open Dailey 8-6  
321 Main 272-3478  
**ANTHONY'S**

### Study Club

The Muleshoe Study Club met Thursday afternoon, March 28 at 4 p.m. in K-Bob's Restaurant with Mrs. H.S. Sanders as hostess.

Those attending were Mrs. Joe Costen. Mrs. Wesley Glover, Mrs. Barry Lewis, Mrs. J.G. Arnn, Mrs. Charles Shain, Mrs. Wilson Witherspoon, Mrs. Betty Jo Carpenter, and two guests, Mrs. Joe Damron and Mrs. John Smith, and the hostess, Mrs. Sanders.

The meeting was called to order by Mrs. Shain and the Creed was read and a salute to the Texas Flag was given.

The usual business was conducted with correspondence read from Linda Mullins. She is the girl from Girlstown that the club sponsors.

Mrs. Shain reported on her trip to the convention in Lubbock on March 22 and 23. She reported that the club year book was chosen in the top five and will be sent to the state contest. This is quite an accomplishment as the Caprock District of General Federated Womens Clubs covers a large area.

After the business was completed, Mrs. Shain introduced the program for the day, speaker Mrs. Joe Costen. The program was on Country inns of Texas, of which there are only a few remaining. These have been made into national attractions.

Two of those reported on were the LaBorde House located at Rio Grande City and the Prince Solms Inn in New Braunfels.

The next meeting will be a workshop and will be in the library workroom on April 11. Each member is ask to take a sack lunch and work on table favors for the GFWC Convention to be held in Houston later this year. Meeting time will be at 10:30 a.m. Mrs. Wesley Glover will be the hostess for the day.



**HOBBY CLUB**--Mrs. Charles Shain presented the program at the Study Club meeting Thursday afternoon. (L-R) Mrs. Joe Damron, guest; Mrs. Shain; Mrs. John Smith, guest; (seated) Mrs. Jessie Sanders, guest.

### Miss Janet Shain Outstanding Junior

#### Woman Nominee

Janet Shain, daughter of Mr. and Mrs. Charles Shain of Muleshoe, has been nominated for the Outstanding Junior Woman award at Midwestern State University at Wichita Falls.

This award will be presented

### WMU Weekly Meeting Held

WMU of the Trinity Baptist Church met Tuesday, March 26 at the church for Bible study. Clara Coffman led the opening prayer.

The lesson for the day was a Missionaries Report, on not having enough churches and missionaries to teach the various nationalities. The group also studied Romans Chapter 8:12.

The six members attending included: Clara Coffman, Pearl Dunlap, Maxine Carter, Eva Ashford, Dora Barber and Wenona Spears.

Eva Ashford dismissed the group with a prayer.

### In Fashion

Sweaters made of soft Mohair are just what one needs to bundle up for cool, windy days and nights of spring.

These oversized cardigans are worn with pants, skirts and dresses.



JANET SHAIN

Life will be sweeter when you stop trying to remake your husband or wife.

## Country Basket SALE \$1.69

Crisp, tender, chicken-fried fingers of 100% beef, golden fries, Texas toast and creamy country gravy. That's the one and only Dairy Queen Country Basket. So come on by for the Texas taste that's just this side of heaven — now at a heavenly sale price!

**Monday, April 1 thru Sunday, April 7**

**Dairy Queen**

*"better than ever..."*

© Copyright 1985 Tex. D.Q. Council. All Rights Reserved. TM Trademarks of the Tex. D.Q. Council. \*Registered Trademark Am. D.Q. Corp.



### LATEST ARRIVALS

#### Krystal Rachelle Holmes

Mr. and Mrs. Bryce Holmes of Surfside, N.C. are the proud parents of a daughter born at 8:10 a.m. Wednesday, March 27 in a Surfside hospital.

The young lady weighed six pounds and 14 ounces, and has been named Krystal Rachelle. She has an older sister, Sarah, 16 months old.

Grandparents are Mr. and Mrs. Wayne Holmes of Muleshoe and Mr. and Mrs. Earl Burton of Lazbuddie.

Great grandparents are Mr. and Mrs. Fernando Kutzli of Liberty Center, Ohio.

#### Sarah Elizabeth Quisenberry

Mr. and Mrs. David Quisenberry are the proud parents of a daughter, Sarah Elizabeth, born at 6:14 p.m. Friday, March 15 in South Plains Hospital in Amherst.

Sarah Elizabeth weighed eight pounds and six ounces and was 21½ inches long. She is the first child for the couple.

Grandparents are Mr. and Mrs. Jerry McKibbin of Tahoka and Mr. and Mrs. Danny Quisenberry of Lockney.

Great grandparents are Mr. and Mrs. J.W. Gardenhire of Odonnell and Mr. and Mrs. E.A. Bonner of Lockney.

#### Jackelyn Annette Ford

Mr. and Mrs. Jay Ford of San Angelo are the proud parents of a daughter born at 1:05 p.m. March 20 in the Shannon

Hospital in San Angelo.

The young lady weighed seven pounds and five ounces and was 19½ inches long. She has been named Jackelyn Annette. She is the first child for the couple.

Grandparents are Mr. and Mrs. John Williams of Sudan and Mr. and Mrs. Robert Ford of San Angelo.

Great grandparents are Mrs. Estelle Lowe of Sudan, John A. Williams of Quanah, Mrs. Etta Ford and Mrs. Eunice Rayburn, both of San Angelo.

#### Jessica Estrada

Mr. and Mrs. Jesus Estrada of Friona are the proud parents of daughter born at 10:55 p.m. March 24 in West Plains Medical Center.

The young lady weighed seven pounds and six ounces and has been named Jessica. She has a brother, Jesus, Jr.

four years of age.

Grandparents are Mr. and Mrs. Joe Angel Guerra of Friona and Therisa Estrada of El Paso.

Great grandparents are Mrs. Mike Perez, Sr. of Muleshoe and Mr. and Mrs. Hyinio Guerra of San Benito.

### ONE MINUTE SPORTS QUIZ

1. Who won the Doral Open?
2. Who won the LPGA Tucson Open?
3. Julius Erving plays pro basketball for what team?
4. Who won the Richmond 400 stock car race?
5. When was Jack Dempsey heavyweight champion?

#### Answers To Sports Quiz

1. Mark McCormack.
2. Amy Alcott.
3. Philadelphia 76ers.
4. Dale Earnhardt in a Chevrolet.
5. From 1919-1926.

## Patio Beauty Shop

Is Now

Under New Management

Specializing In All Hair Care Needs For Men, Women, & Children.

We Welcome All Former Patronage

& New Customers As Well.



Annette Hodges Beauty Operator

## Patio Beauty Shop

110 W. 6th

272-4318

**NOCONA BOOTS**

Whites

TIRE KICKIN' SALE

**WIN A FREE PAIR OF NOCONA BOOTS during our Tire Kickin' Sale Days!**

One pair to be given away at each store! 6 styles to choose from—retail value up to \$150!

Just fill out this entry form and deposit it in the contest box at your neighborhood Whites store. No purchase necessary.

NAME \_\_\_\_\_  
ADDRESS \_\_\_\_\_  
CITY \_\_\_\_\_  
STATE \_\_\_\_\_ ZIP CODE \_\_\_\_\_  
TELEPHONE \_\_\_\_\_

Employees of Whites Stores, Inc. and their immediate families are not eligible. Each official entry (no facsimiles or reproductions) must be deposited in the contest entry box at your local Whites store. Entry deadline is April 27, 1985. Drawing to be held on or about May 4, 1985. You need not be present to win.

**DARE TO COMPARE! Whites tire warranty keeps you covered with ROAD HAZARD PROTECTION and MORE—coverage not offered by many major tire stores!**

Solution XTS Low As **\$29<sup>88</sup>** ea  
Premium Bias Belted Tire

Solution Radial A/S **\$42<sup>88</sup>** ea  
Steel Belted

Courser Radial LT **\$71<sup>88</sup>** ea  
As Low As  
Truck Tire Steel - Belted

**FULL RANGE OF SIZES TO CHOOSE FROM**

If you own a pickup, van, RV or 4-WD now's the time to buy new tires during our big

**TRUCK TIRE SALE!**

22" 3 1/2-Hp Lawn Mower, Briggs & Stratton engine with extended life start. Fingertip height adjustment, 14 gauge steel side-discharge deck, handle safety control for blade/engine brake, Remote throttle. 087211

Save \$30  
**169<sup>95</sup>**

944  
100-Ft. Extension Cord for outdoor use. Heavy-duty. 015817

Save \$15  
**49<sup>95</sup>** Reg. 64.95

Electric Edger. Ideal for most home lawn and garden edging. 5" Made with dynamic brace. Contoured handle with trigger switch. 087366

P O Y N O R ' S

103 Main Street

WHITE'S STORES, INC.

Muleshoe



**ANNIVERSARY RECEPTION**--Mr. and Mrs. Charles Long of Vernon will be honored with a 50th wedding anniversary reception at George and Scott Real Estate Building in Vernon from 2 until 4 p.m. Sunday, April 7. The event will be hosted by their children, Charlene Moore of Plainview, Justin and Peggy Long of Lubbock, Carlin and Freda Long of Muleshoe, Glen Long of Borger, and their eight grandchildren and two great grandchildren. The Longs are former Muleshoe residents, having moved to Vernon in 1976. Mr. and Mrs. Long were married April 6, 1935, in Eureka, Kansas.

### Organize Your Tax Records

Is this going to be another year of "burning the midnight oil" because you can't find the records to complete your tax return? Then maybe it's time to change, says family economics expert Nancy L. Granovsky.

"Better organized records can mean tax savings," says the Texas A&M University Agricultural Extension Service specialist. "Sometimes important deductions are simply overlooked in the mass of disorganized financial material."

Good records also make it possible to back up your claims in case you're audited by the Internal Revenue Service and can make the task of completing tax forms much easier, she says. organize financial records, the specialist says. Some people just dump all financial records into a box or grocery sack throughout the year. Then they sort the material in January or February. But the sorting can be time consuming and frustrating.

According to Granovsky, most tax advisors recommend organizing throughout the year. That way you don't have a huge task on your hands around income tax time.

One way simple form of

recording keeping is to review your canceled checks every month and mark in red those that are tax-deductible, says the specialist.

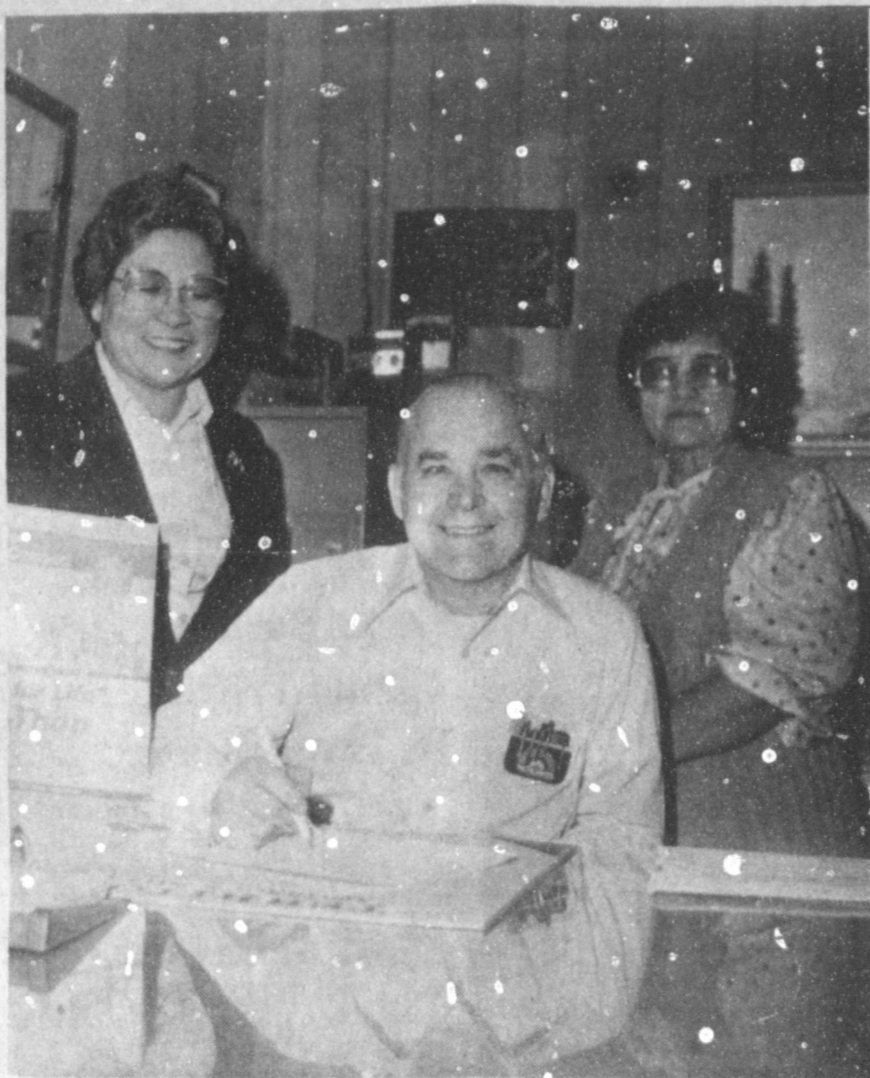
If you itemize deductions, you can take it a step further by filing canceled checks, receipts and statements into folders that correspond to the deduction categories on schedule A, such as medical expenses, interest expense and charitable deductions.

Some very well organized people add up their tax information every month so it never becomes unmanageable, says Granovsky.

Even if you don't have the time or patience for an elaborate system, almost any method of separating out tax-related financial records will help at income tax time, she maintains.



The earliest known set of dentures was dug up in a field in Switzerland and is believed to date from some time in the 15th century.



**PROCLAMATION SIGNED**--Mayor Charles Bratcher signed a proclamation from St. Jobe Children's Research Hospital Thursday morning announcing the selection of The Guadalupana Society for the Bike-a-Thon and Walk-a-Thon to be held in the near future in Muleshoe. Mrs. Armand Flores (left) will be chairman, assisted by Mrs. Aurora Mata (right) and Mrs. Betty Rejino.

### Wheels For Life Bike-A-Thon Planned

St. Jude Children's Research Hospital has announced the selection of the Guadalupana Society, with Ms. Armand Flores as chairman, for this year's Walk-a-Thon and Bike-a-Thon in Muleshoe.

According to Clifford Damstrom, Southwest Regional Director, the cost of treatment, equipment, drugs, and research is met primarily by contributions from private individuals through programs such as the walk-a-thon and bike-a-thons.

He also stated that the impact of St. Jude's research work is felt in every community where cancer and other killer diseases strike. Over 10,000 children will be stricken with cancer during this year alone.

Clifford Damstrom, Regional Director, stated "It is gratifying that every year in town all across the country, volunteer leaders organize bike-a-thons and walk-a-thons to benefit St. Jude Children's Research Hospital. This would not be possible without the help and support of dedicated chairmen."

Danny Thomas, founder of St. Jude Children's Research Hospital stated its purpose clearly, "To wipe catastrophic diseases of children from the face of the earth." Those interested in assisting with or participating in the bike-a-thon and walk-a-thon can get more information by contacting Ms. Flores at 272-4954, Mrs. Aurora Mata at 272-3519 or Mrs. Betty Rejino at 272-4971.

Details of the bike-a-thon and walk-a-thon will be announced at a later date.

Hosni Mubarak, Egyptian President, in meeting with Reagan about Middle East: "I believe that no leader is more equipped to play an historic role and fulfill a sacred mission in the Middle East..."

Ruth Clements received a gift from the white elephant box. She also received a hair set for six weeks consecutive weight loss. The meeting closed with the singing of the goodnight song.

**THE SANYO PLAIN PAPER COPIER. THE ONLY THING PLAIN ABOUT IT IS THE PRICE.**



**The 802E. A plain paper copier incorporating the most advanced technology in the world at a cost that's unbeatable.**

- Dry Plain Paper Copier
- First Copy 7 Seconds
- 13 Copies Per Minute
- 1-99 Digital Counter with "Interrupt/Memory" and "Repeat" Keys
- Edge to Edge Copying
- Fiber Optics
- Optional Voice Synthesizer (Model SFT-852E)
- Sheet By-pass
- Minimum Copy Size-4" x 6"
- Maximum Copy Size-10" x 14"
- Self Diagnostic System
- Microcomputer Control
- Auto-toning
- Shuttle Mechanism for Clearing Misfeeds
- SE/TE Photoconductor

**SANYO BUSINESS SYSTEMS CORP. YOU'LL FIND OUR NAME EVERYWHERE.** Call for free demonstration. **Williams Bros.** 322 Main 272-3113

### Sherri Dee Powell In This Week's Senior Spotlight

The Sudan Senior Spotlight shines this week on Sherri Dee Powell, 17 year old daughter of Dwayne and Mary Powell. She was born on June 21, 1967, in Littlefield.

She has brown hair and green eyes and is 5'7" tall. As a favorite subject at Sudan High School athletics is top; for Sherri. Basketball is her favorite singer. To her Huey Lewis and the News is the number one recording group.

Police Academy is her pick for movie and "Dynasty" is her favorite television show. Joan Collins and Peter Reckell are her selections for actress and actor. Twirling and riding around are her hobbies.

**Tolerance**  
To permit others to be happy in their own way is tolerance at its highest level.

-Grit.  
Reagan invites new Soviet leader Gorbachev to summit.

While at SHS she has been involved in student council, National Honor Society, band and basketball. Her comments of SHS are "It was fun while it lasted!"

Sherri lists summer and May as her favorite season and month. Mexican food is Sherri's food preference and purple is her choice for color.

She states that her goal in life is to be happy and successful in what she may choose to do.

Sherri plans to attend West Texas State University.

Her family is the most important thing to her. She has three sisters, Cindy Nichols, Kim Powell and Kathy Powell. She is a member of the First Baptist Church.

George Bush, Vice President, after meeting with new Soviet leader:

"If there ever was a time when we could move forward with progress in the last few years, I'd say that this is a good time for that."

\$7.2 billion interstate highway funds released.

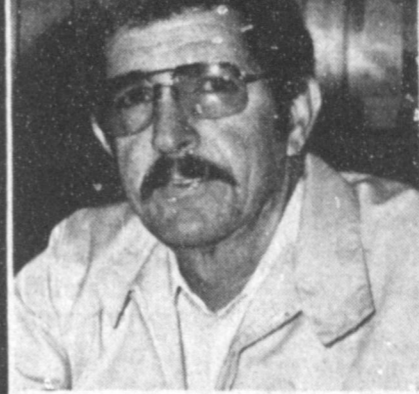
### Associate Degree Nursing Program South Plains College, Levelland Now Accepting Applications

Student applications for enrollment consideration in Associate Degree Nursing are now being accepted. *Application Deadline is 4:30 p.m., April 15, 1985.* The admission process requires aptitude testing. Contact the Counseling Office at South Plains College, Levelland, for a test appointment. (806) 894-9611, ext. 387.

**Test Dates: April 6, 1985, & April 10, 1985**

*It is the policy of South Plains College to offer all educational and employment opportunities without regard to race, color, national origin, sex or handicap.*

### "Thanks" Muleshoe From The Sales Staff Of Muleshoe Motor



**Tommy Sisemore**

Has 1 1/2 years Experience Selling Fords & Chryslers To Muleshoe And Area People

"Car Capital Of The South Plains"

### Muleshoe Motor Co.

1225 W. Amer. Blvd.

272-4251

## PRE-EASTER BARGAINS

<b>FREE</b> Barrel Bag with Each pair Ladies Wrangler Jeans	<b>ALL</b> Ladies Tops, Sweaters & Shorts <b>20% Off</b>	Men's Short Sleeve Shirts <b>20% Off</b>
Boys Shirts <b>\$300 Off</b>	Boy's Dress Jeans <b>\$300 Off</b>	Men's Dress Western Suits 2 or 3 Piece <b>15-30% Off</b>
Men's & Women's Dress Jackets Suede Look, Cord or Leather <b>25% Off</b>	Special Group Wrangler Jeans Boys Reg. 13.98 <b>\$9</b> Student Reg. 16.98 <b>\$11</b>	Men's Long Sleeve Shirts <b>\$500 Off</b>
<b>ALL</b> Men's - Women's - Children Boots At Reduced Prices	<b>NEW</b> Spring Fashions For Ladies, Girls Boys & Students	Group Men's Levi Denim Jeans Reg. 22.98 <b>\$15.98</b>
Come See Our Many New Items We Have Received	Rack Belts <b>1/2 Price</b>	<b>Lee's</b> WESTERN WEAR Inc. 1910 W. Amer. Blvd. 272-4663

### A Moment of Silence, Please

... In Memory of All Those Diets That Didn't Work

Wouldn't it be wonderful if there was one effective weight-loss program that worked quickly and easily without making you feel hungry? There is!

The Diet Center Program is based on sound nutrition for quick, safe weight loss. And with our unique, all-natural supplement, you won't feel hungry. What's more, you will receive daily, personal counseling from someone who has also lost weight on the program. But, best of all, Diet Center will be the last weight-loss program you'll ever need!

**CALL US TODAY**

302 W. 2nd 272-5487

Muleshoe, Texas

When you bring in this ad and a pay for a six weeks program of \$150.00 Receive an extra \$10.00 off.

April 1 - 10 Diet Center. Lite Years Ahead.™



© 1984 Diet Center, Inc.



**DEPOT PREPARED TO MOVE**--Monday, shortly after lunch, this was the scene as the former Santa Fe depot was jacked up and moved off its foundation, in the foreground, in preparation to move it to location east of the Mule Putt Miniature Golf Course. Privett Movers had the old landmark ready to start moving shortly before 9 a.m. on Friday, as SPS employees, along with workers from General Telephone prepared to move lines out of the way.

### Vegetable Seeds

Cont. from Page 1

current vegetable variety recommendations by the Extension service are as follows:

Bean, Bush--Contender, Bush Blue Lake, Greencrop, Tendercrop.

Bean, Pole--Stringless Blue Lake, Kentucky Wonder, Dade, Rorjano.

Bean, Lima Bush --Thoroughgreen, Jackson Wonder, Henderson Bush.

Beets--Ruby Queen, Warrior, Asgrow Wonder, Pacemaker.

Broccoli--Green Comet, Premium Crop, Green Duke, Green Valiant.

Cabbage--Early Jersey Wakefield, Stonehead Hybrid, Ruby Ball, Green Bag Hybrid.

Cantaloupe--Perlita, TAM Uvalde, Israeli, Ambrosia, Magnum 45, Resistant 45.

Carrot--Trophy Hybrid, Pioneer Hybrid, Nantes, Golden King.

Cauliflower--Snow Crown, Self Blanche.

Celery--Tender Crisp, Giant Pascal.

Corn, Sweet--Yellow: Calumet, Wonderful, Golden Rod,

**Holy Week...**

Cont. from Page 1

Kent. He will speak on Friday.

The meal will be served by the First United Methodist Church.

A nursery will be open to provide child care each day, but parents have been requested to feed their children before bringing them to the church, or pick them up immediately following the benediction and provide a meal for them.

As Holy Week services are designed to serve all denominations, and all persons, including working persons, the ministers encourage you to attend any or all of the services, and say "come just as you are."

Merit, Earli King, White: Silver Queen.

Cucumbers (Pickling)--Carolina, SMR-58, Liberty, TAMU Triple Cross.

Cucumber (Slicers)--Dasher, Gimmini 7, Sweet Success, Sweet Slice.

Lettuce (Leaf)--Prizehead, Salad Bowl, Ruby, Slobott.

Mustard--Green Wave, Tendergreen, Large Smooth Leaf.

Okra--Clemson Spineless, Emerald.

Peas, Southern--California, Pink Eye Purple Hull, Cream 40.

Pepper, Sweet--Yolo Wonder, Keystone Giant, Bell Boy Hybrid, TAM Bill II, Emerald Giant, Sweet Cherry, Sweet Banana.

Radish--Champion, Red Prince, Cherry Bell, White Icicle

Squash--Prolific Straightneck, Multipik, Dixie, Sundance, Gold Rush.

Sweet Potato--Centennial, Jewel.

Tomato--Spring Giant, Flor-america, Small Fry, Show Me, Quick Pick, Better Boy, Celebrity, Big set, Jack Pot.

Turnip--Purple Top White Globe, Royal Glove.

Watermelon--Sugar Baby, Petite Sweet, Crimson Sweet, Jubilee, Allsweet, Black Dia-

mond, Tendersweet.

For further information on growing a successful spring vegetable garden, contact the county Extension office, adds Tanksley. The phone number is 272-4583.

### Athletics...

Cont. from Page 1

Team, and in that order, says Keeling.

One of his future goals is to make Muleshoe the state champions for the 3A level, explained Keeling. "We hope to bring the best possible program to Muleshoe, and we want the kids to want to participate, and still have a lot of fun while doing it."

Superintendent Fuller said they received 50 applicants for the athletic director position prior to the deadline and another five past the deadline.

### Farm Bureau

#### Agents Travel To Hong Kong

Bailey County Farm Bureau manager James Lee is justifiably proud of accomplishments by his agents during the past year.

"This is the first time that all agents with Bailey County Farm Bureau have won a Round Table Trip," he said. "We think it's certainly a credit to each agent, his family, the office secretaries, adjusters, Board of Directors, Muleshoe and Bailey County."

James Lee, his wife, Pat; Gene Atkins, agent, and his wife, Janice; Durk Green, agent, his wife Sheryl and Rickey Barrett, agent, and his wife, Theresa, will be attending the Annual Southern Farm Bureau Insurance Company Round Table.

But, the major items of interest will be that the trip to attend the Round Table from March 30-April 6, is to Hong Kong, China.

The eight local residents departed for Hong Kong on Saturday morning.

In order to qualify for the all-expense paid trip, each agent had to be outstanding in servicing Farm Bureau members in the lines of auto, home and life insurance.

This was narrowed to ten applicants, he said, and interviewing was started.

After the initial interviews, more discussion was held, and the field was further narrowed to three, then to two, applicants.

Keeling, at 29, was the youngest applicant for the position, added Fuller, but his enthusiasm and his goals helped him become the finalist in the search for an athletic director.

"First, he likes kids," said Fuller. "We wanted someone who has high goals, not someone who will promise to be in Muleshoe from now on. Dale Keeling's past history shows he

dedicates his life to the school, and to the athletic programs, and especially to the kids.

"We believe we are fortunate in our choice."

Keeling's wife, who will graduate from Texas Tech University this year, has been offered a contract to teach English in Muleshoe High School, subject to approval of the Board of Trustees. Following interviews, she was offered the contract on recommendation of High School Principal Wayland Ethridge.

Toxic waste cleanup said to cost \$100 billion and will take 50 years.

**Ellis Funeral Home**  
Pre-Need Funeral Plans  
Supervised By Texas Department Of Banking  
Price Frozen At Time Of Purchase

**SMAR - TEE**  
The Original Balanced Twin Value Surge Tee For Low Amperage Draw & Low Hydraulic Shock.



- Row Gates On Tee
- Lightweight Approx. 40 lbs.
- Timer Easy To Set Cycle Lengths 15 min. to 12 Hours
- 6 Months Limited Warranty

Manufactured By  
**MMS INC**  
Plainview, Texas  
806-293-1304

Local Dealer:  
**Campbell & Wiedebush**  
1620 W. Amer. Blvd.  
806-272-4611  
Mobile 965-2221

mond, Tendersweet. For further information on growing a successful spring vegetable garden, contact the county Extension office, adds Tanksley. The phone number is 272-4583.

**TIME**  
Is Running Out  
If You Are Interested In Multi-Peril Crop Insurance  
We Must Have A Written Request From You To Attain Information From The ASCS Office.  
This Actual Production List Must Be Requested Before April 15.  
It Is Simple To Obtain - Call Our Office - Request A Form, And We Will Mail You One - 272-3614  
OR  
Write A Request As Following To The ASCS Office  
Please Figure My Actual Production History On \_\_\_\_\_ (Farm Serial Numbers) In \_\_\_\_\_ County. I Release This Information To Ronnie Holt Enabling Him To Figure Crop Insurance Coverage  
Signature \_\_\_\_\_  
Date \_\_\_\_\_  
OR  
Go By The ASCS Office Soon & Request Them To Send This Information To Ronnie Holt, Box 653 Muleshoe, Tx 79347  
Remember We Will Provide Your Coverage In Several Different Ways & I Assure You, You Will Know What Your Coverage Will Be.  
**Ronnie Holt Crop Insurance**  
272-3614  
24 Hour Weather - 272-KMUL

**Thank You**  
The Muleshoe Road Riders  
Would Like To Thank The  
Many Local & Area  
Merchants For Their  
Donations Which Helped  
Make Our Third Rally A  
Large Success.  
Members Of  
Muleshoe Road Riders



DR. ENRIQUE (HENRY) MUYSCHONDT

## Know Your Doctor--

He is tall, quiet and scholarly. He is in Muleshoe because he enjoys Muleshoe, as does his entire family--and he is your surgeon at West Plains Medical Center.

A native of El Salvador, Dr. Enrique (Henry) Muyschondt moved to Muleshoe with his family in 1982 from the University of Florida to make his home.

He and his wife, Berta, are the parents of J. Enrique, Gabriel Patrick, Arnold, Rodrigo, Richard and Berta Maria, with some of his children in college, some out of college and others still students in the Muleshoe School system.

Dr. Muyschondt is very proud of the exceptional record held by the surgical department at West Plains Medical Center, and says he feels comfortable doing any type of surgery that he can handle on a local basis.

Patients are referred to other hospitals or transferred from the local hospital when there are extenuating circumstances, or the capabilities of the hospital equipment, and availability of blood have to be considered, explained Dr. Muyschondt.

A general surgeon, Dr. Muyschondt has not quit learning since moving to Muleshoe. Each Wednesday, he attends a Surgical Review Conference at Texas Tech. The conference is to review and study area surgeries. He also attends other classes and continues his education. "This way, I can better serve the hospital," he said.

Doctors monitor themselves, and each other, said Dr. Muyschondt. Each month, the doctors complete a record for the medical staff monthly report and include any and all cases they have handled during the previous month.

They also receive a pathologist report, and according to the latest pathologist report received, the eight surgeries done locally were deemed to be necessary, according to the pathologist's study of tissue and samples of blood and other

matter. Dr. Muyschondt, who became a medical doctor in 1960, and a surgeon after studies at the University of Rochester in New York, in July 1973, is also a published writer of nearly 30 medical papers.

He has presented some of his papers before the American College of Surgeons in Dallas, such as his "Appendicitis in a Small Community Hospital" covering 48 cases in West Plains Medical Center in Muleshoe. It was presented for the American College of Surgeons in Dallas in February, 1984.

His first publication was in 1960, and was a paper on "Ovarian Tumors."

A graduate of La Universidad de El Salvador, Dr. Muyschondt has taught at the same university in the school of medicine. He is the former Chief of Department in the School of Medicine.

Dr. Muyschondt is a credit to the community and a credit to West Plains Medical Center.

## Ag Mechanics Win Fourth At Littlefield

Carl Wheeler, vo-ag teacher at Muleshoe High School, took the ag mechanics team to Texas Tech University in Lubbock last Wednesday for a preliminary competition prior to the state qualifying contest on April 13 at Tech.

Team members, including, Lee Copley, Mike Holt, Martin Pacheco and Gerald Benbow placed fourth in the Littlefield District. Mike Holt was second high individual in arc welding.

Wheeler said that between 25-30 teams competed and the competition was sponsored by all the electric cooperative on the South Plains, including Bailey County Electric Cooperative.

## Cub Scouts Win Awards For Month

Cub Scout Pack 620 and an annual uniform inspection in conjunction with their regular monthly meeting last Tuesday night. The uniform inspection covered 100 points, with 95 points earned by the following Scouts, Neil Watson, Jared Clarkson and Charles Villarreal.

As most of the Scouts work hard to earn other awards in Cub Scouting, the following monthly awards were presented to the Scouts by Jim Lutz, Cubmaster for Pack 620: Francisco Torres, Bobcat Badge; Ryan Wilson, Wolf badge; Earning the Bear badge were

Gilbert Renreis, Chase Bruns, Neal Watson, and Justin Williams.

Justin Williams also received his one year service star and David Ramirez earned a gold arrow point for his Bear badge.

The Webelos earned activity badges for their Webelos colors. Albert Garza earned his Scientist badge; John Hovland earned his Sportsman and his

Naturalist badges; Scott Miramontes earned his Athlete badge.

David Lutz, Filemon Olivarez, Chawn Pierce, Dustin Wilhite, Chris Wilson and Steve Wauson earned their Geologist badges and Jon Robin Watkins earned his Traveler badges.

President warns more defense cuts very risky.

## Muleshoe Boxers Bring Trophies From Tourneys

Members of the Muleshoe Boxing Club have started their spring tournaments and are proving to be highly successful under leadership of coaches Eliodoro Orozco and Beto Diaz, Sr.

About two weeks ago, the Muleshoe Boxing Club competed in Olton, and came home with the first place team trophy. They followed this up with a first place team trophy in the Crosbyton tournament.

Champions from Crosbyton included Jose Olivas, Hector

Reyes, Junior Jaramillo, Danny Bara, Anthony Orozco, Jimmy Medrano, Beto Diaz, Larry Jaramillo, Ricky Diaz and Sergio Garcia.

They won their age and weight divisions, as well as the first place team trophy.

From the Olton tournament winners included Anthony Orozco, Hector Reyes, Jimmy Medrano, Danny Bara, Ricky Diaz, Sergio Garcia and Beto Diaz, along with Jose Olivas, Junior Jaramillo and Larry Jaramillo.



1601 S. Ave. D. Portales  
2600 Main Dr. Clovis  
1302 W. American Blvd.

CLOVIS-PORTALES  
MULESHOE

OPEN Mon. thru Sat.  
7:30AM - 7:30 PM

## Rattlesnake Bite Treatment Program

To Be Held

April 2 - 7 p.m.

Dining Room Of Muleshoe

Nursing Home

By

Doyle Potter

Clovis High Plains Hospital

Sponsored By

West Plains Pharmacy

In Cooperation With

West Plains Medical Center

& Wyeth Labs

# True Value

HARDWARE STORES

Your local independently owned True Value® Hardware Store has national chain-buying power.

# spring & summer savings

 <p><b>LAWN CHIEF</b></p> <p>3.5-HP 21-Inch Rear-Bagging Mower with fully-baffled deck and high-lift blade that create a powerful vacuum action to clean the lawn as you mow. 5-position lever-action height adjusters, deluxe folding handles. Easy on/off bag. 807</p> <p><b>199.88</b></p> <p>MEETS CPSC MADE SAFETY REQUIREMENTS</p>	 <p><b>Sunbeam Grillmaster</b></p> <p>Dual-Burner Gas Grill has easy Lite-A-Matic ignition, post-mounted dual controls. Stay-cool handles, 20-lb. gas tank. 90417</p> <p><b>99.99</b></p>	 <p><b>Harvard CUTLERY</b></p> <p>2-Pc. Cutlery Set has a 3-in. paring/boning knife and a 6-in. utility/slicing knife. Stain-free blades, solid walnut handles. 640</p> <p><b>9.95</b></p>	
 <p><b>GREEN THUMB</b></p> <p>TIRE CORD REINFORCED VINYL HOSE 60' 5/8"</p> <p><b>9.99</b></p> <p>60-Ft. Nylon Reinforced Hose is built to stay flexible and stand up to cold weather year after year. 9/8-in. I.D. Brass coupling. 1156299/F51</p>	 <p><b>WEED EATER</b></p> <p>Electric Trimmer/Edger cuts a 14-in. path along walks, around trees and bushes. Ideal for use on average-size lawns. 807</p> <p><b>39.88</b></p>	 <p><b>TRUE TEMPER</b></p> <p>Floral Shovel features a convenient 36-in. wood handle and a 6x8 1/4-in. bronze steel head for years of tough garden jobs. 6C40</p> <p><b>4.66</b></p>	
 <p><b>SERVESS</b></p> <p>Dial 5" Sprinkler covers 5 watering patterns with a twist of a dial. Rugged housing and large, nonclog water openings. 531731</p> <p><b>3.44</b></p>	 <p><b>Master MECHANIC</b></p> <p>Ratcheting Screwdriver has 3 double-ended bits with both slotted and Phillips-head tips. Reversible tool; many uses. MM401</p> <p><b>5.99</b></p>	 <p><b>TRU-TEST SPECIAL</b></p> <p>HIGH-HIDING Flat Latex Wall Paint provides a high-hiding finish on all interior wall and ceiling surfaces. 7 decorator colors and white. YF</p> <p><b>4.99 Gal.</b></p>	
<p><b>Thank You</b></p> <p>It is with heartfelt thanks, deepest gratitude, that we, the family of Mrs. Fred (Vigil) Wilbanks, take this means of trying to show our appreciation to you, Wonderful, dear friends in the Muleshoe and Logbuddie area.</p> <p>In Mom's gentle quiet attitude to the of the Wonders of Life and God's Love-- She touched many lives-- In her teachings at Logbuddie and Marshall, Arkansas-- as attested by the many cards, letters and memorials we are receiving both here and afar.</p> <p>A special thanks to her pastor, Bro. Buster Huggins for special support to her in her last two weeks of life and to the Muleshoe Singers for their support and love of God's Music and in giving our Mother a will to live these last two years, since our father's death.</p> <p>It is in the Glory of God, that we can carry on her love and may you, special friends, receive His Blessings in abundance!!</p> <p>Marilyn &amp; Richard Engelking Paul, Judy and Shea Wilbanks Debbie, Doyle, Dawn and Dustin Weir Dave, Sheryl, Heather and Holly Engelking Johnny and Brittany Puckett.</p>			 <p><b>WAGNER</b></p> <p>Glass Mask™ Liquid Masker &amp; Scraper Kit prevents paint from sticking to glass, lets you remove it easily after painting. 0264001</p> <p><b>3.88</b></p>



Mon - Sat 8:00 - 6:00

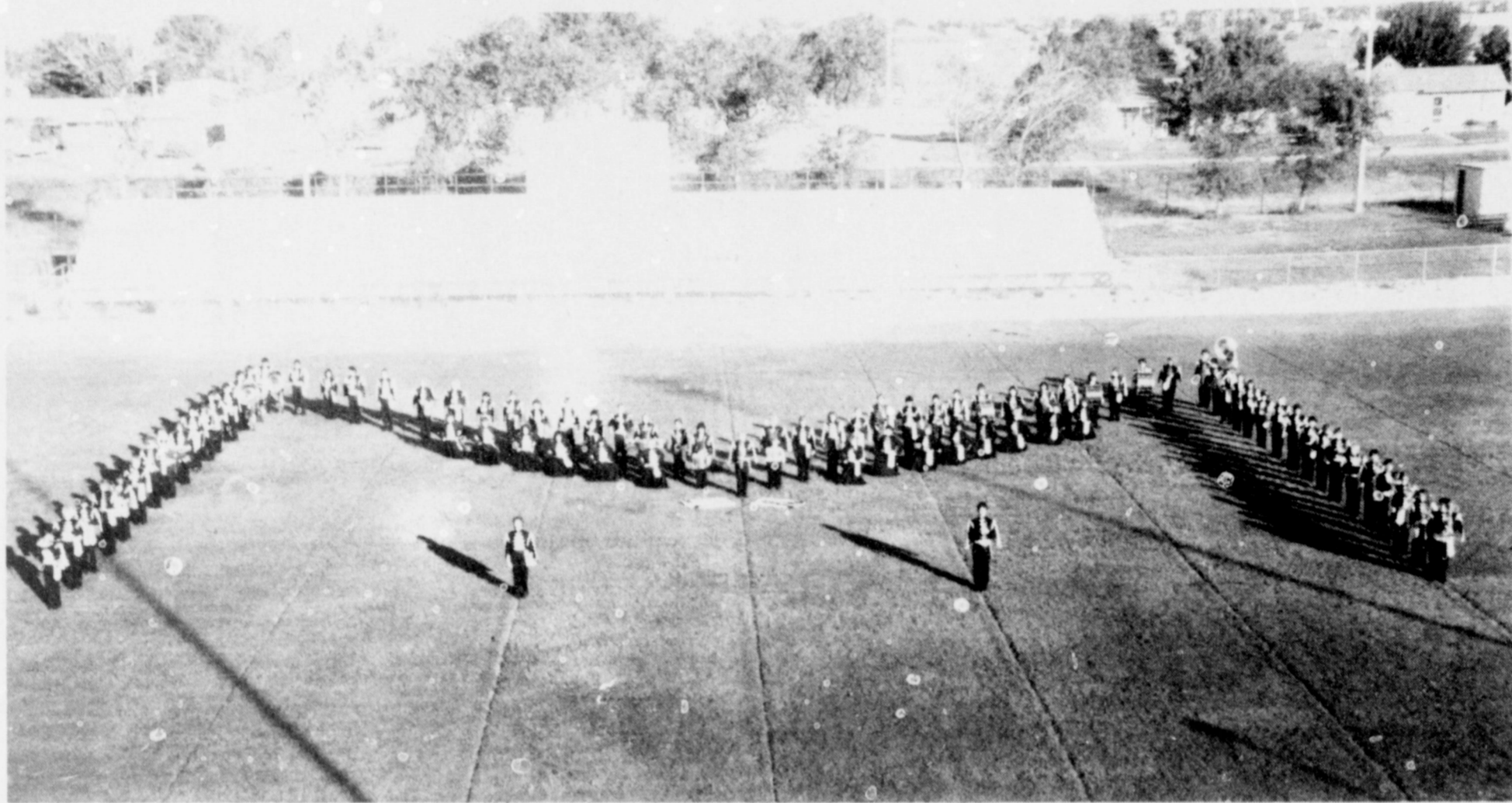
# Fry & Cox, Inc.

401 S. 1st

272-4511

# Congratulations

## Muleshoe Mighty "M" Band



On Winning

### Sweepstakes In UIL District 2AAA

Sponsored By The Following Civic Minded Merchants:

- |                                     |   |                                     |
|-------------------------------------|---|-------------------------------------|
| <b>Buddy's Shoes</b>                | <b>Pay-N-Save</b>                             | <b>Western Drug</b>                 |
| <b>Spurgeon's Motor Machine</b>     | <b>Texas Sesame</b>                           | <b>Williams Bros. Office Supply</b> |
| <b>Poynor's White Store, Inc.</b>   | <b>Stovall Printing</b>                       | <b>Southwestern Geothermal</b>      |
| <b>Lookin' Good Ladies Wear</b>     | <b>Serv-All Thriftway</b>                     | <b>McCormick Seeds, Inc.</b>        |
| <b>Albertson's Shop for Men</b>     | <b>Photography by Lonnie &amp; Sue Gibson</b> |                                     |
| <b>Bailey County Electric Co-op</b> | <b>C. R. Anthony's</b>                        | <b>Muleshoe Trade Center</b>        |
| <b>Bingham &amp; Nieman</b>         | <b>Baker Farm Supply</b>                      | <b>Ana's House of Beauty</b>        |
| <b>Main Street Beauty Salon</b>     | <b>Famous Fashions &amp; Fabrics</b>          | <b>Black Insurance</b>              |
| <b>Farmers Co-op Elevator</b>       | <b>Antiques &amp; Junk</b>                    | <b>Ellis Funeral Home</b>           |
| <b>Terry Field Insurance</b>        | <b>Farmer's Spraying Service</b>              | <b>Krebbs Real Estate</b>           |
| <b>Glenna's Beauty Retreat</b>      | <b>Five Area Telephone Co-Op</b>              | <b>Lee's Western Wear</b>           |
| <b>Henry Insurance</b>              | <b>Art Craft Printing</b>                     | <b>J.L.C. Company</b>               |
|                                     |   | <b>Muleshoe Publishing Co.</b>      |

DEPO  
Fe de  
locati  
start  
Telepl

curren  
commi  
sion si  
Bea  
Blue  
crop.  
Bea  
Lake,  
Roma  
Bea  
green,  
Hende  
Bee  
Asgro  
Bro  
mium  
Valian  
Cab  
field,  
Ball, (4  
Car  
Uvald  
Magn  
Car  
near  
King.  
Cat  
Self E  
Cel  
Pasca  
Coi  
met.

Ho

Cont

Kent  
The  
First

A

provi

pare

feed

ing

then

the

meal

At

desig

tion:

worl

enco

all

"coi



# There's Lots Going On In Muleshoe

## Coming Alive--In 85



**EMPLOYEE OF THE MONTH**--Betty Obenhaus, left, from the bookkeeping department at Poynor's White Stores, was recipient of the "Employee of the Month," trophy from Muleshoe Chamber of Commerce and Agriculture President Gerald Reid on Thursday morning. She will also receive a certificate. The trophy will be on display until the April "Employee of the Month" is chosen at the end of April.



**RIBBON CUTTING**--Thursday afternoon, the Muleshoe Chamber of Commerce and Agriculture conducted ribbon cuttings for new businesses located at Tradewinds Plaza. Cutting the ribbon was Gerald Reid, president of the CofC. New businesses honored were Julian and Connie Dominguez, The Video Movie Stop; David and Sylvia Dominguez, Inspirational Book Store; Loy and San Juanita Dominguez, L&S Game Room and Jesse and Elva Anzaldua, new owners of Tradewinds Plaza and Muleshoe Metal Works.



**FARM BUREAU**--Bailey County Farm Bureau agents and their wives left for Hong Kong, China early Saturday morning on an all-expense paid trip to that oriental city to a meeting. This was the first time, ever, for all agents to win the free trip. They are from left, Durk Green, Gene Atkins, James Lee and Rickey Barrett.



**ATHLETIC DIRECTOR NAMED**--Dale Keeling, right, was chosen as Athletic Director for the Muleshoe Schools Thursday morning. He will assume his duties in the near future. His wife, Denise, left, will be employed as an English teacher in the Muleshoe School system.



**NURSING STUDENT OF THE YEAR**--Pat Dodson, left, nursing student from South Plains College, Levelland, has been named "Nursing Student of the Year," by the university. She is shown being congratulated by Director of Nursing, Trina Wilson at West Plains Medical Center. Mrs. Dodson is doing her clinical training at WPMC in Muleshoe.



**AMATEUR BOXERS 'ON THE ROLL'**--Muleshoe Boxing Club amateur boxers are really 'on the roll' and bringing home first place trophies all over the place. Pictured are boxers from a recent tournament at Olton, including: back row, from left, Anthony Orozco, Hector Reyes, Jimmy Medrano and Danny Bara. Front row, from left, are Ricky Diaz, Sergio Garcia and Beto Diaz.

## Nursing Home News

by Joy Stancell

Our thanks to Channel 6 for showing the video film of the motorcycle Rally at the special time of Fri. for us. We enjoyed the interview of our resident Fred Peat, who was the first owner of a chain driven motorcycle in Dodge City Kans.

Clara Weaver's daughters Linda and Pat from out of town, flew in over the week end to help Clara celebrate her birthday. Clara went out to her house where she and her family enjoyed visiting and being together. Clara stated that she did have a happy birthday.

Thurs. afternoon Laverne James, Lynn Haralson, J.E. Embry came to play Skip-Bo and dominoes. Lois Ethridge and Lena Ruthardt made and served hot buttered pop corn.

Thurs. morning Clara Jones and Zora Mae Bellar came to share a Devotional with the residents. Fred Peat read some scripture, Lois Ethridge lead us in prayer.

Bro Buster Huggins and Mrs. Coffman from the Trinity Bapt. Church came for a Devotional Fri. We enjoyed the music and the reading of the Bible and Bro. Huggins

thoughts and feelings.

Lois Ethridge spent the morning Wed. at Chubby's Beauty Shop, visiting with Chubby and others that came by.

Fri. at noon Lois Ethridge and D.J. Gage attended the A.A.R.P. meeting at the Civic Center. Mon. Lena Haevkins took them to the Methodist Church for the Sr. Citizens Luncheon.

Margaret Beard returned to the nursing home Monday after having surgery in Lubbock Methodist Hospital. Welcome back Margaret.

B.B. Street was visited Tues. by his daughter-in-law Elizabeth and his grand daughter Ruth Locker and her children.

Cleo Bellar is in Methodist Hospital at this time. Remember her in your prayers.

Wed. afternoon Lois Ethridge and D.J. Gage attended the singing at the Sr. Citizen complex. We really had a good time and appreciate the opportunity to go. Our thanks to Rita Sour for providing transportation.

Sunday morning Earl Peterson came for Bible Study. Sunday afternoon the Muleshoe Church of Christ came for Gospel Singing. Monday morning Lena Hawkins came for Bible Study. Tues. afternoon the hospital and nursing Home

auxiliary came to Shampoo and set the ladies hair give manicures and play Skip-Bo. Tues. morning Louise Legg from Me Ma's Place (ceramics and crafts) in Sudan and June Gore came to help the residents paint a ceramic rabbit. Residents participating were Fred Peat, Ernest Kerr, Lois Ethridge, Rose Holland, Margaret Beard, Edith Goucher, Edith Bruns. Wed. morning Ruth Hall and Clara Lou Jones came to show us films. Wed. afternoon Glenda Jennings and Nancy Kidd came for a Sing-A-Long.

Ernest Kerr was visited by Ruby Lee, Lindy and children Wed. afternoon.

Beryl Hallis had out of town visitors Wed. Mr. and Mrs.

### Muleshoe School Menu

**BREAKFAST**  
**MONDAY**  
 Milk, Cereal, Toast, Fruit  
**TUESDAY**  
 Milk, Cheese Oast, Juice  
**WEDNESDAY**  
 Milk, Toast, Jelly, Fruit  
**THURSDAY**  
 Milk, Honey Buns, Juice  
**FRIDAY**  
 Milk, Biscuits, Gravy, Sausage, Fruit

**LUNCH**  
**MONDAY**  
 Milk, Pizza, Mixed Veg., Pickles, Fruit

**TUESDAY**  
 Milk, Hamburgers, Lettuce & Tomato, Pickles & Onions, Tater Tots, Cobbler  
**WEDNESDAY**  
 Milk, Taco's, Lettuce & Tomato, Cheese, Beans, Corn Bread, Fruit

**THURSDAY**  
 Milk, Corn Dogs, Veg. Beef Soup, Crackers, Cinnamon Rolls, Fruit

**FRIDAY**  
 Milk, Fish, Macroni & Cheese, Eng. Peas, Hot Rolls, Fruit Jello

**COMBO LINE**  
**MONDAY**  
 Milk Or Tea, Steak & Gravy, Creamed Potatoes, Green Beans, Hot Rolls, Fruit

**TUESDAY**  
 Milk Or Tea, Hamburgers, Lettuce & Tomato, Pickles & Onions, Tater Tots, Cobbler

**WEDNESDAY**  
 Milk Or Tea, Hot Ham & Cheese On Bun, Potato Salad, Pork & Beans, Fruit

**THURSDAY**  
 Milk Or Tea, Corn Dogs, Veg. Beef Soup, Crackers, Cinnamon Rolls, Fruit

**FRIDAY**  
 Milk Or Tea, Burritos, Cheese Stick, Corn, Crackers, Fruit Jello

Garland Wood, Mr. and Mrs. Phil Wood of Kermit, Tex. Among those visiting the Nursing Home this week were Mr. McCormick, Nancy Kidd, Ruby Garner, Winnie Berry and Joyce Terrill.

Our thanks to Nancy Kidd for the beautiful straw Easter wreath. We are really enjoying it.

We were so pleased to see Effie Jennings and Clara Weaver at the Sing-A-Long Wed.

Thank you Spudnut Shop for all the delicious Spudnuts. How we did enjoy them.

Grace Morris is visited everyday by her husband Arnold and daughter Barbara.

Josephine Wenner's son Ralph has been here visiting. Mrs. Wenner was visited this week by Lonnie and Nelda Merriott and Ruthie.

Never worry about what other people do; that's not your responsibility.

Fashions are not to be explained by the ordinary processes of the brain.

**"Have a TAX REFUND coming?"**

**Ask about our Guarantee**

We can't promise everyone a refund, but if you've got one coming, we'll guarantee to find you the biggest refund -- or your return is free.

**H&R BLOCK**  
 THE INCOME TAX PEOPLE  
 Weekdays 9-6  
 Saturdays 9-5

224 W. 2nd 272-3332

## Want Weather Report 24 Hours A Day? Got It!

Call **272-KMUL** (272-5685)

Sponsored By **KMUL & Ronnie Holt Crop Insurance**

**True Value HARDWARE STORES**

**BARGAIN OF THE MONTH**  
  
**Cortico 1.99** While Supplies Last  
 3 1/2-Gal. Deco-Pail in choice of black, red or blue plastic with geometric designs. 1620-BK/RO/BL. QUANTITIES LIMITED

**True Value HARDWARE STORES**  
**HARDWARE VALUE OF THE MONTH**  
  
**4.48** While Supplies Last  
 Heavy-Duty Drum Auger has spring steel wire to free up tough drain clogs fast. 15-ft. line, easy grip. 504365. QUANTITIES LIMITED


**True Value HARDWARE STORES**  
**TOOL VALUE OF THE MONTH**  
  
**5.99** While Supplies Last  
 Anvil Pruner w/Holster features Power-Link\* to draw branch into pivot area for easy cutting action 3/4-in. cut. 205971. QUANTITIES LIMITED

**Fry & Cox, Inc.**  
 401 S. 1st 272-4511

## Vote April 6

### Jim Crawford

School Board Trustee  
 Muleshoe Independent School District



**Responsible, Fair Minded, Common Sense Approach To Quality Education For Our Children**

Pd. Pol. Adv: Paid By Jim Crawford

## High Yields & Good Fiber Are In The Bag!

The seed is the most important investment you make in a crop...



**For You To Make The Bales**

This year... make a good crop...  
**IT'S IN THE BAG!**  
**G & P "EARLY BIRD" CERTIFIED COTTON SEED**

**\*GP 3774**  
 "A WINNER"—Early, high yielding, used by cotton producers from the Valley to Western Oklahoma. Can be picked or stripped.

**GP 3755**  
 Larger bolls, more glabrous (less hairy) than GP 3774. In some areas, generally the lighter sandy soils, may out produce 74. Plant and compare. It may be the cotton for you.

**GP 5479**  
 "THE FAST ONE"—Very early, excellent seedling disease resistance and very good seedling vigor. Compared to GP 3774 and GP 3755, it is more compact with a shorter stalk. Added storm resistance is another plus. GP 5479 is well adapted to irrigated and dryland production.

**GP 1005**  
 Early, semi-determinate with maturity comparable to GP 3774. It has a shorter stalk, larger bolls, and added storm resistance. Lint percentage turnouts have been excellent. This variety has shined the brightest when temperatures were high and rainfall was short.

**• HIGH GERMINATION**  
**• MORE VIGOROUS PLANTS THAT CAN BETTER RESIST SEEDLING DISEASES**  
**• HIGHER LINT YIELDS**  
**• MORE UNIFORM EMERGENCE UNDER ADVERSE CONDITIONS**  
**• FASTER DEVELOPMENT OF HEALTHY ROOT SYSTEMS**

All GP varieties adapt well to both conventional and narrow row production.

Call or write for specific information regarding comparison yield and field performance test for your area.

**Bill McDuff Rt. 3, Box 181 • Anson, Texas 79501 • Phone 915-823-3159**

**G&P SEED CO. INC.**  
 P.O. Box 245 • Aquila, Texas 76422 • AC 817-694-2275

\* Ranked #1 in 5 year average yield test at Halfway Experiment Station.

As part of terms and conditions of sale, please note the limitations of warranty and remedy attached to each bag of G & P Seed. Unauthorized propagation. To be sold by variety name only as a class of Certified Seed, U.S. Protected Variety.

## By Spencer Tanksley County Extension Agent

About this time of the year home lawns need a boost to get them in shape for the spring season just around the corner.

Spencer Tanksley, county agent with the Texas Agricultural Extension Service, The Texas A&M University System, suggests three operations that can get a lawn off to a good start—scalping, fertilizing and applying a week killer.

Scalping a lawn in early spring serves to revitalize it and promote early spring green-up, points out Tanksley.

Begin the operation by lowering the blade of your lawnmower 1/2-to 3/4-inch below the normal setting. Then mow the

### Franklin Bauer

### Funeral Services

### Held At Rhea

Funeral services for Franklin L. Bauer, 56, of Halltown, Mo. were held at 2:30 p.m. Friday, March 29 at Rhea's Immanuel Lutheran Church of Rhea with the Rev. Leonard Riddle, pastor, officiating.

Interment was in Rhea Lutheran Cemetery under the direction of Ellis-Blackwell Funeral Home of Friona. Bauer died Monday morning in an a Halltown hospital following a brief illness.

A native of Randall County, Bauer moved to Missouri in 1972, from Rhea. He married Goldie Coffey in September of 1981, in Sparta, Mo. He was a retired farmer and rancher and worked for Hostess Pastries in Halltown. He was a member of St. John's Lutheran Church in Monett, Mo.

Survivors include his wife, Goldie; his mother, Edna of Muleshoe; two sons, Dwayne and Steven, both of Halltown; two daughters, Rhonda Stalcup of Kansas City, Mo., Carla Fuller of Bolivar, Mo.; a stepdaughter, Marie Williams of Sparta, Mo.; three sisters, Una Walker of Las Vegas, Nev., Junell Blalack of Wichita, Kan., Mary Alice Ramm of Muleshoe; one brother, Lee Roy of Verona, Mo.; seven grandchildren; three stepgrandchildren; and a step great grandchild.

### Parham Infant

### Services Held

### At Lazbuddie

Funeral services for Seth Daniel Parham, infant son of Mr. and Mrs. Terry Parham of Lazbuddie, were held at 2 p.m. Friday in the First Baptist Church of Lazbuddie with the Rev. Gary Wilcox, pastor, officiating.

Interment was in the Lazbuddie Cemetery under the direction of Ellis Funeral Home of Muleshoe. Seth died at 1:37 p.m. in Lubbock General Hospital following a lengthy illness.

The infant was born March 6 in Lubbock.

Survivors in addition to his parents include two sisters, Tiffany Parham and Tina Parham, both of the home; one brother, Landon Parham of the home; and grandparents, Mr. and Mrs. E.A. Parham of Lazbuddie and Mr. and Mrs. H.L. Merrifield of Stephenville.

lawn in two directions that are at right angles to each other. Remove the clippings after each mowing.

Tanksley also recommends keeping the lawnmower blade lowered until mid-summer.

After scalping the lawn, apply a complete fertilizer (one containing nitrogen, phosphorus and potassium) to promote leaf and root growth, advises Tanksley. Use 1 pound of nitrogen per 1,000 square feet of lawn area. This is equal to 12 pounds of an 8-8-8 fertilizer or 8 pounds of a 12-4-8 fertilizer. Repeat the application in the early summer and fall.

For a dark green lawn, Tanksley suggests applying nitrogen every 50 days at the rate of one pound to 1,000 square feet. Monthly applications of iron chelate or iron sulfate during the spring and summer promote a healthy color in St. Augustine lawns.

To keep crabgrass or other unsightly weeds from becoming a problem, apply a preemergence herbicide (weed killer) containing benefin, dacthal or bensulide in early spring, after the grass has recovered from winter, says Tanksley. Applying a preemergence herbicide too early this year could further weaken turfgrasses injured by winter conditions. Combinations of herbicides with fertilizers are available and convenient to use but, as with all herbicides, should only be used according to instructions on the label.

Proper maintenance is essential for a healthy lawn, and these practices will give new life to a dormant, weedy lawn, notes Tanksley.

### Sudan

### News

by Evelyn Ritchie

To each of you, our readers, and to your families, we wish to take this means of saying we wish you the best on your birthday and/or anniversary and may God bless each of you on your special days.

March 24 - Jack Downs, Sheryl Ritchie, Stephanie West, Greg Humphreys, Matt Nix, Mr. and Mrs. Freddie Maxwell.

March 25 - Brenna Eicke, Joe Salem, Weldon Wiseman, Mr. and Mrs. G.C. Churchman.

March 26 - Thilda Dudgeon, Bill Gardner.

March 27 - Debra Bassett, Jerry Garza, Ken Williams, Kendra Whitten, Karin Whitten.

March 28 - Lula Burnett, Karyn Tollett, Patty Miller, Ede Black, Mr. and Mrs. Ted Walker.

March 29 - Mark Hanna, Dana Ray Dudgeon, Mr. and Mrs. David Quisenberry.

March 30 - Billy Chester.

April 2 - New Mexico Christian Childrens Home truck will be here to pick up groceries.

April 13 - Junior Youth Day at the Cactus Dr. congregation in Levelland 1st - 6th.

For Everyone

Notice in a loan office window: "For the person who has everything and hasn't paid for it."

Enterprise, Lisbon, Me.

# Experimental Ranch Day Highlighted

The merits of rotational grazing in the Rolling Plains of Texas will be examined here Thursday, April 25, at the field day of the Texas Experimental Ranch.

The program begins at 9:30 a.m., said Dr. Rod Heitschmidt, associate professor of range management with the Texas Agricultural Experiment Station, Texas A&M University System. The ranch is 11 sections on the Throckmorton Ranch of the Swen R. Swenson Catt Co. It is on U.S. Hwys. 183 and 283, 10 miles north of Throckmorton and 20 miles south of Seymour.

"Particular emphasis will be given to the do's and don'ts of managing a rotational grazing system," Heitschmidt said.

Speakers will include Dr. Earl C. Gilmore, resident director of research at the TAES center at Vernon; Dr. Bill Pinchak, TAES range animal nutritionist; Heitschmidt, and range management research associates, John Walker and Steve Dowhower. All are on the staff of experimental ranch.

Other speakers will include Dr. Mort Kothmann, professor of grazing management and range nutrition; Dr. Jerry Stuth, associate professor of range management, and Dr. Robert Knight, assistant professor of watershed management, all from Texas A&M.

Also on the program are Dr. Nelson Adams, livestock specialist with the Texas Agricultural Extension Service at Vernon; Dr. Richard Connor, professor of agricultural economics, and Dr. Wayne Green, department of animal science, Texas A&M.

A Dutch treat lunch will be served at noon, Heitschmidt said.

Since its inception in 1957, the Texas Experimental Ranch has conducted research on livestock responses to rates of stocking, types of grazing systems and levels of winter supplementation of feed; long-term vegetation response to grazing treatments; effects of stocking and grazing systems on rate of water infiltration and

sediment, production and calf growth and development.

The ranch is a cooperative venture of ranchers, businessmen and the Texas Agricultural Experiment Station, an arm of the Texas A&M University System. Pasture and livestock are provided by the Swenson

Land and Cattle Co., TAES provides personnel and funds for research, and citizens formed the Texas Experimental Ranch Committee to raise private funds for construction of facilities. The committee also serves as a lay advisory board.



**Whitten Dirt Service**  
"Custom Dirtwork is Our Business"

**Planning & leveling yards**  
**Dumptrucks - Custom Rototilling**

- Driveways - Hauling - Rock & Caliche

208 Boesen      Sudan      227-2435




Hi-Protein  
**Dog Food**

50 lb. Bag      \$9.75



## Courthouse News

**MARRIAGE LICENSE**  
Michael Shane Webb, Earth and Yrina Christine Seales, Muleshoe.

**WARRANTY DEEDS**  
Jerry E. Waltrip and wife, Mitzi Waltrip to Kent B. Cooper and wife, Doyce Cooper--A (5) acre tract of land located in the Northeast corner of Tract (93), League Number (182), Floyd County School Land, in Bailey County, Texas.

Kenneth Dale Wilhite and wife, Linda Kay Wilhite to A.C. Archer--An 0.66 acre tract of land out of the SE/4 of Section 21, Block Y, WD&FW Johnson's Subdivision No. 21, Bailey County, Texas.

**NEW VEHICLES**  
GMAC, 1985 Chev PU, Robert D. Green, Inc., Wayne L. Davis, 1985 Ford PU, Muleshoe Mtr. Co., Inc., First Bank of Muleshoe, 1985 Merc 4dr, Muleshoe Mtr. Co. Inc., Calvin C. Jackson, 1984 Chev Van, Robert D. Green Inc., Barrett Produce, 1985 Dodge PU, Mule-

shoe Mtr. Co., Inc. and Roy White, 1985 Chev FU, Robert D. Green, Inc.

## Sunflower Contracts Now Contracting At Top Prices Good Selection Of Seed Available



**TEXAS SESAME DIV.**

**Call or Come By**

272-4231

Muleshoe

272-3968

## If you haven't priced a John Deere lately, you should

Shop around. We want you to know how good our deals are on John Deere equipment right now. How very competitive. John Deere has made special

allowances and we're passing along savings worth up to thousands of dollars. We're ready to show you just how sweet a deal you can make — right now.

### DEAL 1. 4WD TRACTORS

Thousands of dollars in pass-along savings on every new John Deere 4WD tractor in stock. No interest until June 1, 1985, with John Deere financing.\* Or in lieu of the finance waiver take an extra discount worth thousands more!



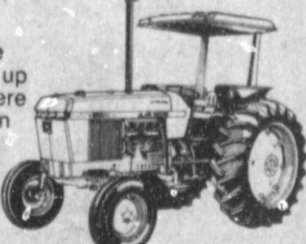
### DEAL 2. 100- TO 190-HP TRACTORS

Huge pass-along savings on new 100 to 190-hp tractors plus interest-free financing until June 1, 1985.\* If you prefer, take an additional discount in lieu of finance waiver. Save on used tractors, too, with the same Deere financing interest-free offer.



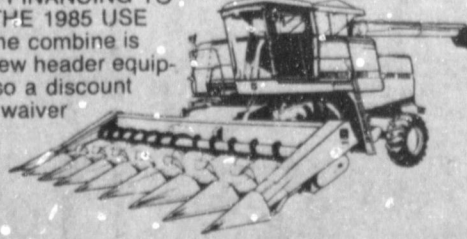
### DEAL 3. 40- TO 85-HP TRACTORS

Get unheard of savings — like factory-direct discounts worth up to \$2700 — on new John Deere 40 to 85-hp utility tractors. Then get interest-free John Deere financing until June 1, 1985.\* Or, take an additional discount in lieu of finance waiver.



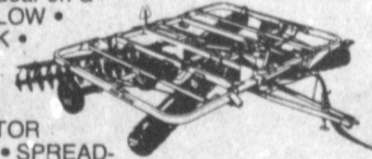
### DEAL 4. COMBINES

Take advantage now of fabulous off-season savings on all new Titan combines. Thousands of dollars off PLUS INTEREST-FREE FINANCING TO THE FIRST OF THE 1985 USE SEASON when the combine is purchased with new header equipment. There's also a discount in lieu of finance waiver available.



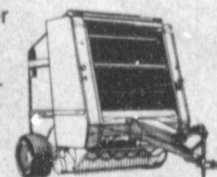
### DEAL 5. IMPLEMENTS

Make your best deal on a MOLDBOARD PLOW • STANDARD DISK • DuraCushion® DISK • ROLLER HARROW • FIELD CULTIVATOR • CHISEL PLOW • SPREADER. Then we'll add a pass-along discount allowed by the John Deere factories.



### DEAL 6. HAY AND FORAGE EQUIPMENT

Buy a new baler, mower-conditioner or PTO forage harvester and get pass-along discounts worth hundreds of dollars. Discounts on self-propelled windrowers are worth up to \$3000. Save even more with interest-free financing from John Deere until July 1, 1985, on new and used hay equipment, and until September 1, 1985, on new and used forage equipment.\* There are discounts in lieu of waivers on new equipment.



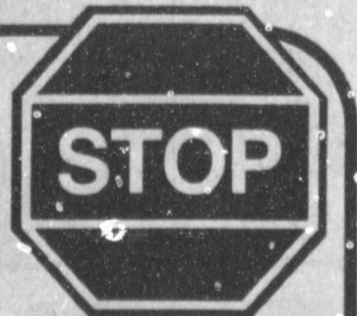
### DEAL 7. PLANTERS

Make your best deal on a new John Deere planter, and then get an additional discount worth as much as \$7500! Special finance waivers are available, too.

We're ready to write the most competitive deals around on any new John Deere equipment. Stop by today for all the details.



\*Availability of John Deere financing subject to approval of credit. These offers may be withdrawn at any time.



**WEEDS**

also feeds lawn for deep green growth

**ferti-lome**

**Baker Farm Supply**

1532 W. American

272-4613



806/272-4296

Muleshoe, Texas 79347

Tuffy & Ronnie Dent

## Dent - Rempe, Inc.

# CAFB Appreciation Day Is April 13

The jets roar past the crowd as they begin their steep climb. All at once, five F-16 "Fighting Falcons" roll and rocket toward earth. The U.S. Air Force Thunderbirds have just completed one of their most exciting aerial acts, the "Bomb Burst."

The U.S. Air Force Aerial Demonstration Squadron performed their first demonstration in 1953. Since then they have performed more than 2,600 times before nearly 182 million people.

Selection as a Thunderbird officer is an honor few receive. These "Ambassadors in Blue" have proven themselves to be dedicated professionals who have constantly employed their training, natural talents and desire to excel at their profession.

The Thunderbird squadron is also composed of highly skilled noncommissioned officers working in more than 35 career fields. These men and women are the technicians in aircraft maintenance, operations, supply, communications and administration.

It is their job to make sure the planes are ready to fly for each performance. In 32 years, the squadron has never had to cancel a show for maintenance reasons.

You can see the Thunderbirds perform their exciting show at Cannon Air Force Base's Community Appreciation Day, on April 13. Gates open at 11 a.m., so bring the family. Not only will the Thunderbirds perform, but there will also be all kinds of aircraft displayed.

Currently, 11 officers are assigned to the squadron. With the Air Force officer corps numbering more than 100,000, competition to become a Thunderbird officer is keen.

Thunderbird officers are in a position like no others in the Air Force. In addition to their primary duties, they must handle the obligations assigned to nearly all of which belong to larger units. Add to this nearly 60 additional duties—and it is apparent that a Thunderbird officer is one of a kind.

### BIBLE VERSE

*When I consider thy heavens, the work of thy fingers, the moon and the stars, which thou hast ordained, what is man that thou art mindful of him: And the son of man, that thou visiteth him?*

1. Can you locate this quotation in the Bible?  
2. Who is the author of it?  
3. Have you an idea of the answer to these questions?  
4. Where can the answer be found?

**Answers**  
1. Psalm 8:3-4.  
2. David, great king of the Jews, who died about 1016 B.C., according to Josephus, Jewish historian.  
3. & 4. Found in the verses following the quotation.

**How True?**  
During the campaign we call for men of vision; afterward we call them visionaries.  
-Evening News, Buffalo.

The fame of men ought always to be estimated by the means used to acquire it.  
-La Rochefoucauld.

### BRIEFS

- Five Mafia crime bosses indicted recently.
- Dollar falls, sharpest retreat in 3 1/2 years.
- Trade deficit soars as imports flood U.S. market.
- Edwards, Louisiana governor indicted on racketeering and fraud.

**Auction**  
1:00 P.M., TUESDAY  
**APRIL 2, 1985**  
DANIEL'S MOTEL  
Located at 7th Street & Brownlee  
LITTLEFIELD, TEXAS  
AUCTION TO BE HELD AT THE FRONT DOOR OF  
**Lamb County Courthouse**  
Littlefield, Texas

Real Estate and Chattels will be sold separately. Chattels will be sold BULK (All for one money).

LEGAL DESCRIPTION OF REAL ESTATE: All of Block No. Sixteen (16), Highway Addition, an Addition to the City of Littlefield, Lamb County, Texas, according to the map or plat of said Addition, as recorded in the Deed Records of Lamb County, Texas.  
Sold on substitute trustee's deed, Jack Faulks, Substitute Trustee.

This is an 18-Unit Motel with Living Quarters for Manager and Upstairs Apartments.

OPEN HOUSE:  
Real Estate and Furnishings Can Be Viewed from 9 A.M. to 12 Noon, Tuesday, April 2, 1985 (Day of Sale).

FOR FURTHER INFORMATION CALL:  
**Jack Faulks**  
Auctioneers  
(806) 763-4919 P.O. Box 5701  
TXE-016-0053 Lubbock, Texas 79417

**Multi-peril Crop Insurance**  
Guaranteed Pounds of Production  
Makes Sense  
Guaranteed Cash Flow

Hail?  
Drought?  
Insects?  
Disease?  
Blow Out?  
You name it!!

You must apply before April 15th  
See Roy Whitt 201 Main  
or Call 272-3611.

**J.B. SUDDERTH REALTY INC.**  
Drawer 887  
Farwell, TX 79325  
Ph. 806-481-3288

181 acres, one 6 in and one 8 in well, valley sprinkler, west of Progress on highway. Owner financing available. \*\*\*

472 acres, four wells with electric motors, two late model valley low-pressure sprinklers. Wheat crop included. Priced at \$650 per acre. Owner will finance. \*\*\*

477 acres, five wells, three circle sprinklers, beautiful wheat crop, east of Muleshoe. \$600 per acre. Excellent financing. \*\*\*

80 acres, 2 wells, 1 electric motor, West of Muleshoe on highway. Owner says Sell! \*\*\*

480 acres irrigated with circle sprinklers, lays good, on highway, West of Muleshoe. Owner says Sell! \*\*\*

160 acres, 8 in well with circle sprinkler, good water area, South East of Oklahoma Lane crossroads. \*\*\*

Good 155 acres, one 8 inch well, one 6 inch well, good water area on FM Hwy 303 NW of Earth. \*\*\*

40 acres irrigated, 1-8 in well, concrete pipe, excellent water area, 5 1/2 mi East of Lariat. \*\*\*

160 acres irrigated, 2-8 in wells, excellent water area, 5 1/2 miles East of Lariat. \*\*\*

665 acres irrigated, 5-8 in wells, 3 houses, 1 barn, and 1 shop. Excellent water area. 5 1/2 miles East of Lariat. \*\*\*

155 acres irrigated with circle sprinkler, excellent water area, North East of Muleshoe. \*\*\*

320 acres irrigated, 3-8 in wells, good water area. Lays very good. 4 mi North East of Oklahoma Lane crossroads. \*\*\*

320 a, 3-8 in wells, circle sprinkler, 3 mi SE Clays Corner. \*\*\*

158 a, 3 good wells, circle sprinkler, elevator and new office building on highway, Progress area. \*\*\*

320 acres, 2 8-inch wells and 1 6-inch well with excellent steel barn. Lays perfect of highway. \*\*\*

160 acres, one 8-inch well, excellent water area, southwest of Clays Corner. \*\*\*

### SMILES

**Good Substitute**  
"If you couldn't have wealth what would you choose?"  
"Credit."

**Good Reply**  
The wife of a handsome young business executive met her husband one afternoon. As they were going down on the elevator it stopped and a high octane secretary got on. Poking the business man in the ribs, she winked and said, "Hello, cutie pie." Unperturbed, the young man's wife leaned toward the secretary and smiled sweetly. "I'm Mrs. Pie," she said.

### The Amazing Magic of Natural Herbs

All natural Weight Control Program will help you **LOSE** from **10 TO 29** pounds in a month **WITHOUT** diet pills, exercise or hunger pains.

- ★ Lose Inches & Pounds
- ★ Gives You Vitality and Energy
- ★ 100% Guaranteed Or Your Money Back
- ★ Natural, No Drugs

For More Information Call:

Rex or Betty Steinbock  
965-2866

**PALM READER**  
BUSINESS  
MARRIAGE  
LOVE

Do You have Bad Luck-Family Problems-Alcohol Problems?  
Palm Reading by Sister Patricia  
She has helped many people  
She can help you too  
CURANDERA  
ADVINO TU PASADO, PRESENTE  
POR MEDIO DE BARAJAS O  
LECTURA DE T'J MANO

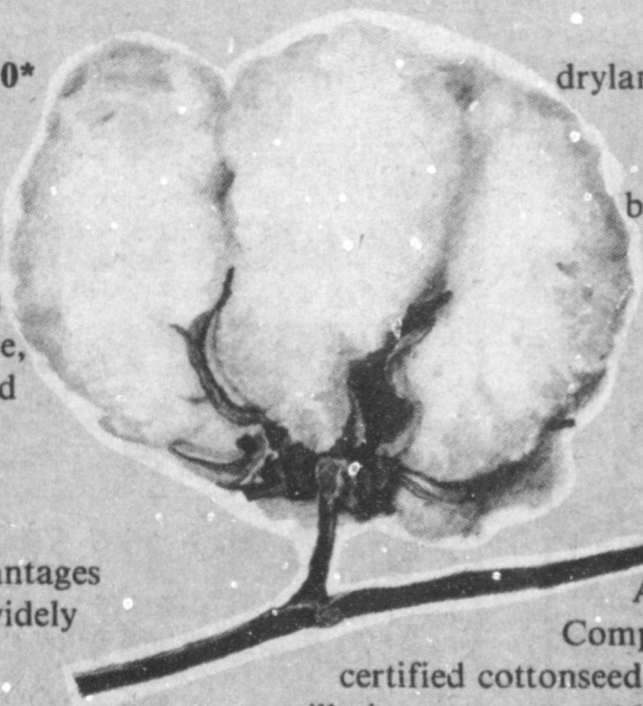
Garantiza Ayudar en amor, matrimonio darle suerte en sus empleos. Si no puede dormir y todo le va mal, desea ganar el amor que Ud. quiere yo garantizo ayudarlo. Quito el mal de su hogar y la sombra que lo persigue, el toque de mi mano lo sanara y le dara suerte por toda su vida, you quito la brujeria y todo lo malo que usted tenga en su cuerpo.  
MEDALLA MILAGROSA  
721 N. PRINCE, CLOVIS, NM 88101  
(505) 762-5543  
1/2 PRICE WITH THIS AD  
10 a.m. - 8 p.m. DAILY  
1-12t-4tp

# You'll Outgrow It.

With Terra SR 10\* certified cottonseed, you can outgrow your past yields and profit.

Terra SR 10 combines good drought tolerance, fiber strength and good storm resistance to give you a growing profit.

Just consider the advantages of Terra SR 10. It's widely adapted to both irrigated and



dryland production and is also resistant to bacterial blight and verticillium wilt.

Terra SR 10 features high strength and premium micronaire.

As Terra Seed Company's newest certified cottonseed, Terra SR 10 will give you new and higher profits. Choose Terra SR 10 this year and see how you grow.

Terra SR 10	
Maturity	Med. Early
Fruiting Type	Semi-determinate
Grade	31-42
Staple	33
Micronaire	Premium
Strength	24-26 Grams/Tex
Uniformity	80-82

\*A U.S. protected variety. Unauthorized propagation prohibited.

Outgrow Your Past Yields With Terra SR 10 From "Your Partner For Profit"

See Your Local Terra Seed Dealer



**TERRA SEED COMPANY**  
P.O. Box 10121 • Lubbock, Tx.  
806/744-4592

## Vote For Garry Shipman April 6 For Trustee Of Muleshoe Independent School Board



For Quality Education For Our Children

Pd. Pol. Ad. By Garry Shipman

# Bailey County Journal

# Classified

Call 272-4536

**DEADLINE FOR CLASSIFIED ADS IS TUESDAYS AND FRIDAYS 12:00 NOON**

**CLASSIFIED RATES**  
1st Insertion  
Per Word...\$.15  
Minimum Charge...\$2.30  
2nd Insertion  
Per Word...\$.13  
Minimum Charge...\$2.00  
CLASSIFIED DISPLAY  
\$1.70...  
per column inch  
BLIND AD RATES  
50% more  
DEADLINES  
12 Noon Tues.  
for Thursday paper  
12 Noon Fri.  
for Sunday paper  
WE RESERVE THE RIGHT TO CLASSIFY REVISE OR REJECT ANY AD NOT RESPONSIBLE FOR ANY ERROR AFTER AD HAS RUN ONCE

**1. Personals**

**TO GIVE AWAY:** Full grown full blood male Irish setter. Call nights: 925-6763. w1-12s-tfc

**TAX PREPARATION.** Experienced. Same day service in most cases. Reasonable rates. Call Jackie for an appointment. 272-4615.  
1-12t-9tp

**MARY KAY COSMETICS:** free facial with teaching of basic skin care and make up. Josie Flowers, licensed. 272-3865  
f1-12s-4tc

**BUSINESS FOR SALE:** Ann's T-Shirt shop. Established 5 years. Growing Business 806-272-5633 or 806-272-3715.  
a1-13s-3tc

**LUNSFORD PAINT AND BODY SHOP-** Farwell, Tx. Free estimates-everything except hail damage. All work guaranteed. 806-481-3287.  
l1-4s-2mc

**FURNITURE** Upholstering & Repairs. Burrows Upholstery Shop 209 W. 2nd Phone 272-4255 Home Phone 272-5722.  
b1-41t-tfc

**HELTON'S** Roofing and Exterior Painting, Mobil Home Roofs our speciality. Also the best in Ag. products. Call Jerry Helton 272-3836, 915 Gum, Muleshoe, Tx. hl-8t-tfc

**HOUSE** Painting Interior and Exterior Reasonable rates. Call 965-2388 or 965-2128.  
w1-4t-tfc

**LANDSCAPE** Oil painting 6:30 p.m. to 9 p.m. begins 1st of April for six weeks.

Creative drawing & prospective 7 p.m. to 9 p.m. for six weeks.

Creative gesture contour drawing from 7 p.m. to 9 p.m. Will be at Pleasant Valley Gin office begins April 4 for six weeks.

Oil & Water media from 9 a.m. to 12 a.m. begins April 5 for six weeks at Pleasant Valley Gin office. Call Rheata White Studio 272-3889 or 272-4696.  
w1-12s-3tc

**2. Lost & Found**

**LOST:** long haired white five month old kitten. Big blue eyes, orange rhinestone collar. Childrens net. Please call 272-5834 or 272-7517.  
t2-13s-2tc

**LOST:** Black Baldy 1/4 Brahman steer in vicinity of Protein Processors. Brand JJ on right hip. Reward. 257-3703

**3. Help Wanted**

**TEXAS REFINERY CORP.** needs mature person now in Muleshoe area. Regrdless of experience. Write A. F. Sears, Box 711, Fort Worth, Tx 76101.  
3-13s-1tpts

**EXCELLENT INCOME FOR HOME ASSEMBLY WORK.** FOR INFO CALL 504-646-0315 Ext. C-2109.  
3-12s-4tpts

**4. Houses For Rent**

**FOR RENT:** Small Unfurnished house 272-3107.  
m4-13t-tfc

**RUIDOSO CHALET:** 4 Bedroom for rent by day, weekend, or weekly. Call 505-257-2622 or 915-943-4261. Owner Dr. Albertson.  
a4-49t-tfc

**5. Apts. For Rent**

**NICE 1 Bedroom Unfurnished Apartment** for Rent Call 272-3107.  
m5-11s-tfc

**LARGE 3 ROOM** apartment for rent: furnished and all bills and T.V. cable paid. \$250.00 month plus \$100.00 deposit. Call Loyd Routon at Farwell. Ph. 1-806-825-3555  
r5-12s-4tcts

**8. Real Estate For Sale**

**FOR SALE BY OWNER:** 3 bdrm, 3 bath brick home large fenced yard-lots of storage and storm cellar. Call for appointment 272-3592 located 1810 W. Ave. C.  
d8-7t-tfc

**FOR SALE by Owner:** 2 Bedroom, 2 bath, brick home in Richland Hills addition. Den, utility room, built-ins, central heat & air., large fenced yard & carport. Call 806-253-2046.  
8-12s-9tp

**WANT TO SELL:** my 4 unit furnished duplexes in Muleshoe. Lease to buy contract with \$2000.00 down. Will pay themselves and all upkeep out in 5 years. I will pay Taxes, insurance and all closing costs until paid out. Call or write: Mrs. Maurine Rcuton. 1304 North Spencer Rd., Midwest Cith, Okla. 73110 Phone. 405-737-8425  
r8-12s-4tcts

**HOUSE** for sale by owner: 2 bedroom, fenced back yard, 60 x 140 ft. lot, good location call 272-4152.  
g8-12s-tfc

**NEW Mobile Home** 1,064 sq. ft., 3 bedroom, 2 bath, 1,100 down payment, \$310 per month, delivery & set up included this month only call month only call Sheiby collect 806-763-5319.  
a8-10s-7tc

**8. Real Estate For Sale**

**NEW 14x56 Mobile Home** \$700 down payment, \$210 per month delivered & anchored. 3 units only. Call Sheiby collect 806-763-5319.  
a8-10s-7tc

**SPRINGLAKE BRICK** home 2,000 sq. ft. plus basement. 3-2-2, fireplace, pavement, 9/10 acre. Kathy Hawkins, broker. 915-692-8346 after 6 and on weekends.  
w8-7t-tfc

3 Bedroom, 2 Bath, fireplace, storage building. Assume loan-low equity payments under \$400. Call 272-3884 after 5:00 all day on weekends.  
8-12s-10tp

**FOR SALE:** Very nice 3 bedroom home in the country. On paved road. Reasonably priced. Fenced yard. Call 965-2155.  
8-6s-8tsp

**FOR SALE:** 177 acres, immediate possession, circle sprinkler, 1 mile E. 1/2 S Lazbuddie. 965-2131 or 965-2959.  
f8-10t-8tc

**FOR SALE BY OWNER** 2-1-1 on 2 lots. All fenced yard, storage building, fruit trees. \$17,500. Call 965-2320.  
L8-41s-stfc

**8. Real Estate For Sale**

Smallwood Real Estate 232 Main 272-4838

4 Bedroom, 2 bath, Country Club Addition. Owner will finance \*\*\*

3 Bedroom, 2 Bath, Carpet, Central Heat, Evaporative Cooling on roof \*\*\*

3 Bedroom, 2 Bath, A&H Brick Venner, 2 car Garage, good location \*\*\*

Duplex-2 Bedroom, 2 Bath, 2 living Areas, fenced back yards \*\*\*  
s8-11s-stfc

**9. Automobiles For Sale**

**FOR SALE:** E-Z Go Golf Cart with charger \$350.00. Call R. Schroeder. Hereford, TX: 364-2413.  
s9-11s-6tc

24 ft. Coachmen Cadet, self contained real clean & nice. Phone 927-5423.  
k9-12s-tfc

**11. For Sale Or Trade**

**FOR SALE:** Square dance dresses size 10 and 12. Call 272-3659.  
11-13s-1tp

**FOR SALE:** Small stereo in wood cabinet, includes AM-FM Radio. \$50. Call 272-4536 9am-5 pm.

60 horse vertical electric motor with panel. 40 horse motor with booster for sale. Call 272-4642.  
t11-12s-tfc

Slight paint damage. flashing arrow lighted signs. New otherwise. \$249 complete, free letters. Bargain. Four left. Call immediately. 1-800-423-0163, anytime.  
11-13t-2tpts

**15. Misc.**

**TRAILER** space for rent call 272-3784 after 5:00.  
s15-11t-8tc

**DAVIS COMMERCIAL PUMPING SERVICE**  
Pumping of Cesspools and Cleaning of Septic tanks; grease pits and mud pits.  
We now handle Sewage treatment chemicals.  
Trap Clear - Cuts down on Cleaning grease traps and Sewage lines for Garbage disposables odor free and clean.  
Septic Clear-Helps in Maintaining Cesspools & Septic tanks to Maintain performance. Also for Recreational Vehicles.  
Pit Clear-Hog and Cow Confinement Pits, Lagoons, sewage Plants, Grease traps.  
Call 272-3467 Emer Davis or 272-5023 James Kemp or mail a post card with Name & address to Box 71 Muleshoe, Tex. 79347 for information on any of the above.  
Chemicals are stocked at James Kemp Discount Furniture 414 West American Blvd. Muleshoe Tex.

**15. Misc.**

**FREE PUPPIES:** Beautiful 1 half Chow. 272-5736 318 E. Fir u15-13t-tfc

**FOR SALE** Bailey County Diet Center Includes: Some furnishings, starting inventory, training & schooling Call: Greta Fick-Cormick 272-5487 c. 272-4477.  
15-11t-tfc

**15. Misc.**

**HOME REPAIRS.** F.M. Saldana Construction Licensed and bonded plumber. Specialized in cement carpenter work, remodeling, painting, acoustical ceilings. 272-4955  
15-16s-tfc

**How Deep?** The difference between being in a rut or in a groove is how hard you dig.  
-Champion, Whitmore.

**GOLDEN GLEAMS**

There's many witty men whose brains can't fill their bellies.  
-Benjamin Franklin.

Wit is not worldly wisdom.  
-Alexander Smith.

The true touchstone of wit is the impromptu.  
-J.B. Moliere.

Wit's as slow in growth as grace.  
-John Vanbrugh.

Wit's an unruly engine, wildly striking sometimes a friend, sometimes the engineer.  
-George Herbert.

**OPEN HOUSE**  
1-5 p.m. Sunday

**1103 Ave. J**

**New Brick Home**  
3B-1 1/2 Bth. 2 car garage

**Whitt-Reid Real Estate**  
Call 272-3611

**WHITT-REID REAL ESTATE**

201 Main Phone 272-3611

3-1-1 Brick. All electric, central heat, stove, storage house and fenced yard. 25-H12 \*\*\*

2-2 bedroom on one lot close to school. 25-H13 \*\*\*

3-1 1/4 Brick. Bar, fireplace, ceiling fan, paneled and textoned, fenced yard, close to Dillman School. 50-H9 \*\*\*

3-1 1/2-2 Brick. Some new carpet, storm windows and doors, fenced yard. Price has just been reduced for quick sale. 50-H2 \*\*\*

3-2-1 carport. 1 bedroom apt. basement, B-B-Q grill, patio, storage building. 50-H6

Thursie Reid  
Roy Whitt

**BINGHAM & NIEMAN REALTY**  
116 E. Ave. C  
272-5285\*\*\*272-5286

**WE HAVE 12.1% APR MONEY AVAILABLE FOR FIRST TIME HOME BUYERS!!!!!!!**

**SHOWN BY APPOINTMENT ONLY-COUNTRY CHARM WITH CITY CONVENIENCE-**Spacious 4 Bdrm., 2 3/4 Bath, 2 Car Garage Brick Home. Beautifully Landscaped. Approx. 3570 sq. ft. of Lv. area. Dual Cent. A&H units, Cathedral beamed Den with cozy fireplace, large Game Room with portable bar, separate Living, Dining, & Breakfast areas. Nice kitchen with built-ins including BBQ Grill, large Utility Area with pantry & storage. Interior of home is trimmed in pecan wood & paneling & has nice enclosed entry-garden area. Other amenities include thermal windows, large covered patio with gas grill, undrgrd. sprinkler sys., nice workshop with heating & elect., & numerous other extras.

**ENJOY COUNTRY LIVING** 3-1-1 home on 1 acre, close to town, nice workshop-storage bldg. & attached shed. \$30's....

**JUST LISTED-3-1 1/4** home, steel siding, wall furnace heat, Cent. Evap. air, ceiling fans, plus insulated & sheetrocked storage-workshop combination. \$30's!!!!!!

**JUST LISTED** 3-1 1/4-1 home, corner lot, Cent. A&H, 1800+ sq. ft. of lv. area, sprinkler sys., & also has a nice 2 room & bath rental unit. \$40's!!!!!!

8 Unit Complex (1-3 bdrm., 4-2 bdrm., & 3-1 bdrm. units, close to schools....

Nice 3-1 home, nice carpets, large utility, storage area, fenced yard. \$20's!!!!!!

2-1 1/4 Mobil Home +2 carports, covered porch, built-ins, cable TV, storage room, large barn & corrals on approx. 2 acres, on pavement close to town. \$30's....

**NICE OFFICE BLDG.**, excellent location across from courthouse. Assumable loan!!

**BUILDING ON 2 LOTS**, approx. 2350 sq. ft., paved parking....

**FARMS**

**ENOCHS** 354 acres, good productive dryland farm. \$250 per acre....

60 acres dryland, close to town....

80 acres, Stegall area. Good productive dryland farm....

2-1 home on 20 acres, 20 hp. sub. pump, domestic well, large barn & corrals, 1/4 mile sprinkler pipe, & more. \$42,500....

2-1 home on 32 acres, 6" well, close to town on pavement....

160 acres, well with 40 hp. Elec. motor. \$400 per acre.

**JUST LISTED-320** acres good cultivated land, near Stegall area in Roosevelt County, N.M. - \$250 per acre....

We have numerous other farms, commercial property, & lots listed. Contact us for details on these and other listings.

**"WE APPRECIATE YOUR BUSINESS"**  
GEORGE NIEMAN, BROKER  
DIANNE NIEMAN, BROKER

### Family Farmers Reject Homestead Repeal Attempts

The president of the Texas Farmers Union has condemned the efforts of Texans for Home Value Access, a group dedicated to the repeal of the Texas Constitutional provision which protects the family homestead from foreclosure.

"The only protection that many people have from forced foreclosure is the Texas Homestead provision. Both urban and rural families are protected by this century-old clause, and the large lenders nationally are poised to jump into Texas if the efforts of Texans for Home Value Access are successful. The Texas Farmers Union is opposed to any and all efforts to repeal this provision," says Mike Moeller, of Hays County.

The Texas Homestead protection provision of the constitution was adopted in 1876, but has been in effect since the days of the Republic of Texas. Written originally to protect the mostly rural population of the independent Republic, the provision was later expanded to include urban homes as well. Today both rural and urban home owners are protected from foreclosure on their homestead, except in the cases of failure to pay on a first mortgage on the home, failure to pay taxes, or failure to pay on home improvement loans.

"The last time that farmers

had to take full advantage of this important provision was during the Depression. The Homestead provision was the only thing that allowed many of these farmers to remain on the land, and probably prevented the Panhandle from turning into a Dust Bowl like Oklahoma. Farmers were protected from foreclosure on certain parts of their homestead, which kept many of them in business by allowing them to keep their house and some acreage," said Moeller.

"In the 1980's we are faced with as serious a farming

'depression' as has been seen since the 1930's. Low, low prices for farm products; high, high interest rates; tremendous surpluses of commodities; and an unsympathetic federal government."

"The time to repeal this basic protection of Texas borrowers is when leaders eliminate greed from their hearts. When the large, multi-national leading companies can convince the farmers, consumers, and elderly that it has been done, then we might think about supporting a change in the constitution."

To combat the efforts of the Home Value Access group, a loose alliance has been formed of Texas groups, including the Texas Farmers Union, Texas Consumer Association, Consumers Union, Texas Association of Realtors, American Association of Retired Persons, and the Gray Panthers.

### West Plains Hospital Report

#### PATIENTS IN WEST PLAINS MEDICAL CENTER

March 26 - Betta Lancaster, Samuel McIntosh, Murphy Berry, Polly Birdsong, Rachel Estrada-Baby Girl Estrada, Kent Gast, Ophelia Wommack, Trevor Gartin, Nina Glasscock, Paula Valenzuela, Cathy Gable and Elton Thatcher

March 27 - Samuel McIntosh, Polly Birdsong, Murphy Berry, Ophelia Wommack, Trevor Gartin, Nina Glasscock, Cecil Mardis, Cathy Gable, Elton Thatcher, Mattie Ring, Kent Gast and Paula Valenzuela

March 28 - Polly Birdsong, Ophelia Wommack, Trevor Gartin, Nina Glasscock, Paula Valenzuela, Terry Young, Cecil Mardis, Myrtle Pruitt, Mattie Ring and Kent Gast.

#### ONE M'NUTE SPORTS QUIZ

1. Who won the Carolina 500 stock car race?
2. Who won the Holda Classic golf tournament?
3. Name the winner of the LPGA Samaritan Turquoise classic.
4. Kevan McHale plays pro basketball for what team?
5. Bob Horner plays pro baseball for what team?

#### Answers To Sports Quiz

1. Neil Bonnett.
2. Curtis Strange.
3. Betsy King.
4. Boston Celtics.
5. Atlanta Braves.

### 10,000 Meter Road Race

#### Set At Clovis

America's largest circuit of organized road races, the Diet Pepsi 10,000 Meter Series, comes to Clovis on Saturday, April 20th. The 8:00 start will see runners on a 6.2 mile course which begins and ends at the Clovis Family YMCA.

The race, open to runners of all ages and abilities, awards medals to the top three male and female finishers in six age categories: 14 and under, 15-19, 20-29, 30-39, 40-49, and 50 and over.

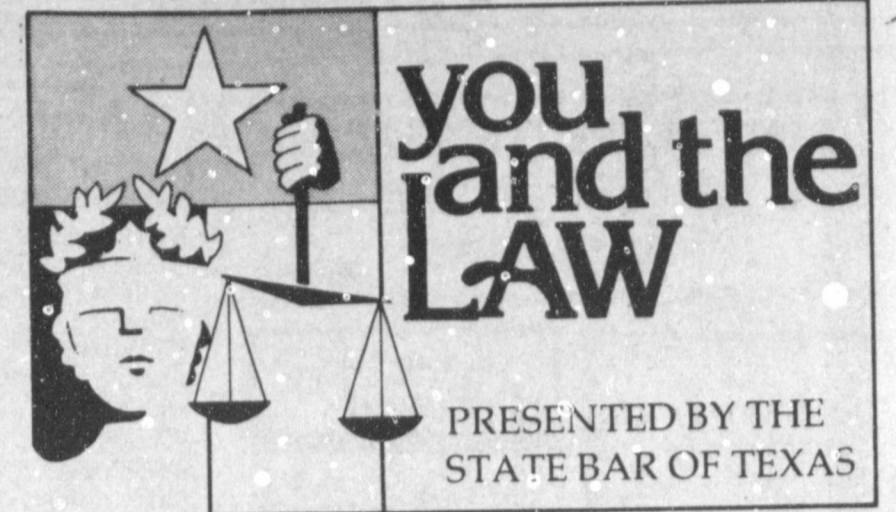
In addition, every finisher will receive a personalized Diet Pepsi pace card. The pace card, sent out to all finishers after the race, will include not only the runner's time and pace, but also the runner's ranking nationally and in their age group.

Prior to the National Championship, the top four fastest times in each age group, as compared nationally with runners from all other races in the Diet Pepsi 10,000 Meter Series, will win an expense-paid trip to the Diet Pepsi 10,000 Meter National Championship in New York.

The Diet Pepsi 10,000 Meter race is sponsored by the Pepsi-Cola Bottling Company of Clovis in cooperation with the Clovis Roadrunners Track Club and the Clovis Family YMCA. The \$5.00 entry fee entitles

each runner to a race T-shirt; a free four-month subscription to The Runner Magazine, a Diet Pepsi Pace Card, and free Pepsi and Diet Pepsi to drink.

Registration forms are available at the Clovis Family Y.M.C.A. from 9:30 to 5:30. For further information, call 762-3198.



**Q:** We are an unmarried couple with one child. We are certain we will never marry. Can our son bear his father's name instead of mine?

**A:** Your son can take his father's name in order to change the child's name from yours, however, you and the father must petition the court. If your son is 12 or older, his written consent must be attached to the petition.

You may also file a petition for voluntary legitimation, to have the man named the father of the child and making the child legitimate as to his father. This would clarify the questions later in case issues of support or inheritance were ever raised. A child is legitimate to his unwed mother, but not to the father, unless you obtain the court's order of voluntary legitimation.

**Q:** Several months ago, I injured myself when I fell into construction on a city street. To date, I have been out almost \$4,000 in hospital ex-

penses. I hired an attorney to sue the city, but so far he has done nothing. In fact, he has moved out-of-town. What can I do?

**A:** There are two things you should do immediately. First, you should report the lawyer to the local grievance committee of the State Bar of Texas. Any reputable local attorney can tell you how to do this or you can contact the General Counsel of the State Bar of Texas at P.O. Box 12487, Austin, Texas 78711. The second thing you should do is consult with another attorney about handling your case. It is important that a lawsuit of this type be filed within two years of the date of injury, or it will be barred by the statute of limitations.

#### A Sickness

Concise is an odd disease. It makes everyone sick except the fellow who has it.

-Grit.

**ROSS**

**Ross Root Feeder**  
12<sup>99</sup>

Delivers effective "First Aid" treatment directly to root zone.

**Tree & Shrub Starter, Evergreen Stakes, Fruit Tree Stakes.** Your Choice **29<sup>c</sup>** Ea.

**EarthWay**

**Garden Seeder**  
39<sup>99</sup>

Opens soil spaces and covers seed, marks next row. All in one simple operation! six seed plates included: corn, beans, peas, radish, carrot and beets. No. 1001B.

**Edger/Trimmer**  
199<sup>99</sup>

3 HP. Finger tip control. Model 245-604.

**OPEN 7:30 AM TO 7:30 PM**  
**Sunday 12:30-5:00 PM**

Prices Effective thru April 6

**Gas Grill**  
99<sup>99</sup>

Large cooking area. Dual control. G21311B.

**5 HP Tiller With Reverse**  
349<sup>99</sup>

No. 215-381 Hard working, yet easy to control.

**Dump Cart**  
99<sup>99</sup>

10 cubic foot heaped capacity. Heavy-gauge steel welded construction. Removable tailgate. Dump controlled from tractor seat.

**11 HP/5 Speed Riding Mower**  
899<sup>95</sup>

11 HP electric start, side discharge, 38" deck. 5 speed, position cutting height. Headlights and ammeter. No. 134-668.

**Rain Train® Sprinkler**  
44<sup>95</sup>

Covers up to 16,000 sq. ft. Features 2-forward speeds and a neutral for stationary use. Propels itself across the lawn following hose pattern. Adjustable arm gives coverage width from 15 to 55 ft.

**4 Cu. Ft. Wheelbarrow**  
39<sup>95</sup>

Jumbo seamless tray. Just right for the do-it-yourselfer. Deep tray with rounded front for easy dumping. 27" w tray. No. KB-4.

**Exterior Latex House Paint**  
18<sup>99</sup>

2 Gal. Pail

Low luster-finish. Dries in 30 minutes. Blister resistant. Soap and water clean-up.

**2 Pc. Brush Set**  
3<sup>99</sup>

2" and 4" brushes.

**9" Rough Roller Cover**  
1<sup>99</sup>

Muleshoe Store Closed Sunday

**\* UP TO \$600.00 OF INSTANT CREDIT**  
\* (Deduction in Store)  
\* 1000<sup>00</sup> Limit on Credit Card after issue. (Not \$500.00 like most cards)

Over 1000 Participating Members honor Cordova Credit Cards.

Any item from our large inventory available for purchase with your Cordova Credit Card.

**Super Lawn Food**  
6<sup>49</sup>

16-4-4 Plus Iron and Sulfur formulated especially for alkaline soils of the Southwest. A 40 Lb. bag covers up to 6,000 sq. ft.

**Weed & Feed**  
20 Lb. Bag 40 Lb. Bag  
6<sup>29</sup> 11<sup>99</sup>

25-3-3 fertilizer. 20 Lb. bag covers 5,000 sq. ft. Controls dandelions and over 40 other weeds plus gives a full feeding of fertilizer.

**CMS - CUPRUM ALUMINUM STEP LADDER**  
Type II Commercial Step Ladder  
Duty Rating 225 lbs.

\*Pinch Proof Lock  
\*Double Braced Bottom Step  
\*Integrated Shoe Pads

**29<sup>99</sup>**