

KCBD TV; Channel 11
 Wednesday, Jan. 13
 2:45 News, Market, Weather
 3:00 Ladies Matinee
 3:30 The Cook Book
 4:00 Welcome Travelers
 4:30 On Your Account
 5:00 Range Rider
 5:30 Interlude
 5:55 Showtime
 6:00 Channel 11 Revue
 6:25 Sports
 6:30 The World Today
 6:40 Weather
 6:45 Bernie Howell
 7:00 I Married Joan
 7:30 Strange Adventure

7:45 Interlude
 8:00 Notre Dame Football
 8:30 TV Theatre
 9:00 Greatest Fighters
 9:15 High School Chorus
 9:45 News of the Hour
 9:55 Weather
 10:00 Files of Jeffrey Jones
 Thursday, Jan. 14th
 2:45 News Market, Weather
 3:00 Ladies Matinee
 3:30 The Cook Book
 4:00 Welcome Travelers
 4:30 On Your Account
 5:00 6-Gun Theatre
 5:55 Showtime
 6:00 Channel 11 Revue

6:25 Sports
 6:30 The World Today
 6:40 Weather
 6:45 Bernie Howell
 7:00 Groucho Marx
 7:30 My Little Margie
 8:00 Dragnet
 8:30 I Led 3 Lives
 9:00 Martin Kane
 9:30 Eddie Fisher
 9:45 News of the Hour
 9:55 Weather
 10:00 Boston Blackie
 10:30 Norman Sper
 Friday, Jan. 15th
 2:45 News Market, Weather
 3:00 Ladies Matinee
 3:30 The Cook Book

4:00 Welcome Travelers
 4:30 On Your Account
 5:00 Cisco Kid
 5:55 Showtime
 6:00 Channel 11 Revue
 6:25 Sports
 6:30 The World Today
 6:40 Weather
 6:45 Bernie Howell
 7:00 Gas roway at Large
 7:30 Life of Riley
 8:00 Favorite Story
 8:30 Geo. Jessel
 9:00 Your Hit Parade
 9:30 News of the Hour
 9:45 Channel 11 Tune Shop
 10:00 Into the Night
 Saturday, January 16th
 2:45 News, Weather
 3:00 6-Gun Theatre
 4:00 Playtime
 4:30 Johnny Jupiter
 5:00 Farm Show RFD 11
 5:30 Showtime
 6:00 Sports

6:05 Channel 11 Revue
 6:30 The World Today
 6:40 Weather
 6:45 Channel 11 Melodies
 7:00 Victory At Sea
 7:30 Ted Mack's Amateur Hour
 8:00 Theatre Guild
 9:00 T Men in Action
 9:30 Eddie Fisher
 9:45 News of the Hour
 9:55 Weather
 10:00 Texas Rassin
 Sunday, Jan. 17th
 2:45 News, Weather
 3:00 Hopalong Cassidy
 4:00 Ask Your Doctor
 4:30 Royal Playhouse
 5:00 Know Your Bible
 5:30 Channel 11 Interlude
 5:45 Opportunity Knocks
 6:00 Winchell - Mahoney
 6:30 The World Today
 6:40 Weather
 6:45 Channel 11 Melodies
 7:00 Comedy Hour
 8:00 TV Playhouse
 9:00 Letter to Loretta
 9:30 News of the Hour
 9:45 Channel 11 Tune Shop
 10:00 Peter Potter Show

Rootin' Shootin' Gal



DAVENPORT, IOWA — Wide-eyed space girl Laurie Anders, star of the Ken Murray CBS TV program, was picked by the 2,000 Dairy Queen Frozen Dessert dealers from coast to coast as the "MISS DAIRY QUEEN" for 1954. Miss Anders and Ken Murray are also starred in United Artists' new hit "The Marshal's Daughter."



what warmth!
what comfort!
what... Z-Z-Z!

As quickly as *that* your electric blanket soothes you to sleep... because it has the gentle kind of steady, even warmth that makes for complete relaxation. And the cost? Only about 2 or 3 pennies a night... just another example of the way your low-cost electricity adds to your wintertime comfort. Spread a fleecy-light electric blanket on your bed these chilly nights, and adjust the automatic control to the exact temperature you want. You'll find that Reddy Kilowatt and your electric blanket keep you cozy all night through, and that you wake up feeling wonderful... ready for a good morning.

See your electric appliance dealer and select your electric blanket in any of several lovely decorator colors.



ELECTRICITY DOES SO MUCH — COSTS SO LITTLE

Texas Electric Service Company
 J. H. LEMONS, Manager

1-1A

Church Of Christ

Raymond L. Copening, Preacher
 Sunday Services:
 Bible School at 10:00 a. m.
 Communion : 11:00 a. m.
 Preaching at 11:15 a. m., 7:00 p. m.
 Young people's classes at 6:15 p. m.
 Monday: Men's Bible class at 7:00 p. m.
 Tuesday: Ladies' Bible class at 9:30 a. m.
 Wednesday: Bible classes for all ages at 7:00 p. m.
 Our services are open to all; you are encouraged to attend and feel at home in our meetings. Your comfort, pleasure and spiritual welfare is our deepest concern; if you are not attending church regularly, please visit us; you will be a stranger but once.

REX

Friday and Saturday Jan. 15th and 16th

A great hit from M. G. M.'s Hall of Fame

Trader Horn

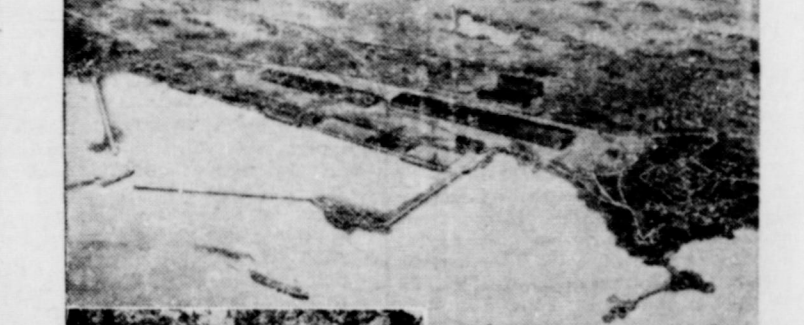
Sun. and Mon. Jan. 17, 18th

Betty Grable and Dale Robertson in

The Farmer Takes a Wife

New Life For Mesabi

TAICONITE is new giant of Minnesota's Mesabi range. Without it, the iron ore region's end was in sight. Now, new harbors, plants are rising on Lake Superior shore. It's steel's ace-in-the-hole. Industry will convert iron bearing rock into iron content pellets.



SUPERMAN DEVICE, below, burns oxygen and kerosene and pours out flaming gases, crumbles rock at deposit site.



TO CAPTURE iron dust, processors grind three tons of rocks, like that held by miner, to get iron of 60% iron.

NEW CITIES being hacked out of wilderness reflect size of taconite program. Trucks like this international work 24 hours a day; carpenters hammer at new houses. There's new life on Mesabi!



Four great NEW "Firsts" in Chevrolet for '54!

Count on Chevrolet to bring you the newest features first. Once again Chevrolet is first in its field with these four great advances for '54!

These other famous Chevrolet "Firsts" in the low-price field offer you more than ever today!

- FIRST OVERHEAD VALVE ENGINE** ... finest ones today
- FIRST AUTOMATIC TRANSMISSION*** ... most advanced one today
- FIRST POWER STEERING*** ... lower priced today
- FIRST "HARD-TOP" COUPE** ... most beautiful one today
- FIRST UNITIZED KNEE-ACTION** ... only one today
- FIRST IN OVER-ALL ECONOMY** ... lowest priced line today!

CHEVROLET
 SYMBOL OF SAVINGS
 EMBLEM OF EXCELLENCE

- 1 NEW HIGH-COMPRESSION POWER**
 Two more powerful high-compression engines in Chevrolet for '54! Both of these great valve-in-head engines deliver finer, smoother, more quiet performance with important gas savings!
- 2 NEW POWER BRAKES**
 You simply swing your foot from accelerator to brake pedal for a smooth, amazingly easy stop. Optional at extra cost on all models equipped with Powerglide automatic transmission.
- 3 NEW AUTOMATIC SEAT CONTROL**
 You just touch a button to move the front seat up and forward or down and back! Optional at extra cost on Bel Air and "Two-Ten" models in combination with Automatic Window Controls.
- 4 NEW AUTOMATIC WINDOW CONTROLS**
 Touch another button to adjust front windows to suit your liking! Optional at extra cost on Bel Air and "Two-Ten" models in combination with Automatic Seat Control.
 *Optional at extra cost.

FIRST AREA SHOWING

The Greatest Story of Love and Faith Ever Told!

20th Century-Fox presents **The Robe** Technicolor

Features 12:00-2:30-5:00 7:30-10:00

THE FIRST MOTION PICTURE IN **CINEMASCOPE**

STARTING THURSDAY JANUARY 14th

LINDSEY Dial 57122

Admission
 ADULTS 95c
 CHILDREN 30c

LUBBOCK, TEXAS

Ellis Chevrolet Co.
 Chevrolet Sales and Service:- O'Donnell, Texas

See America's Most Exciting New Car Today The Completely New *Star Chief Pontiac!*



World's Finest Union of Luxury and Low Cost

Here is the real news behind Pontiac's completely new Star Chief line—and the real reason why it is so important that you see and drive this magnificent car soon. At a cost just above the lowest, you can now acquire the biggest and most powerful Pontiac ever built. And with this dramatic size and performance comes distinction of contour and interior richness that make the Star Chief the peer of any car for beauty. Come in and drive it for plentiful proof that Pontiac represents the world's finest union of luxury and low cost.

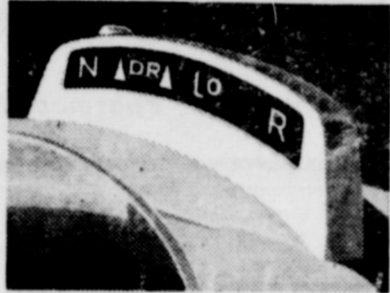
LOOK AT PONTIAC'S SCORE FOR 1954

- Biggest Pontiac Ever Built—214 Inches Long
- Magnificent New Beauty, Inside and Out
- New Custom-Styled Interiors—New Colors
- Most Powerful Pontiac Ever Built
- New Roadability and Driving Ease
- Increased Cross-Country Luggage Room

DUAL-RANGE HYDRA-MATIC DRIVE* and more powerful engines set new standards for thrifty performance. Extra-economical cruising or quick traffic response is yours at a finger-flick. *Optional at extra cost.

COMPLETE POWER CONTROLS—power steering, power brakes, electric window lifts, Comfort-Control driver's seat and Dual-Range Hydra-Matic are optional equipment for 1954 at extra cost.

THE PONTIAC CHIEFTAIN, General Motors lowest priced eight, is even mightier and more beautiful for 1954—far and away the finest car ever offered in Pontiac's low price range.



*Dollar for Dollar
you can't beat a*

PONTIAC

City Service and Appliance

7th and Doak St

O'Donnell, Texas

Missoula, Mont., Has Third Largest Cave

MISSOULA, Mont.—This small town offers a large attraction to tourists—a huge cave enclosed in six miles by New Mexico's Carlsbad Caverns and Kentucky's Mammoth Cave. Missoula's cave is the Lewis and Clark Cavern.

From the parking area, the entrance is half a mile away along the side of a slanting limestone cliff called Cave Mountain. A narrow-gauge jeep railway takes cave crawlers along a roadbed hewn out of rock to a point below the entry. Here they transfer to a cliff-side tramway, adapted from an electric mining hoist, which whisks them several hundred feet up to the cave door.

In addition to giving passengers a superb view of the snow-capped Tobacco Root, Bridger and Gallatin peaks to the south, all this hauling and hoisting makes the cave trip easier. The route through the cave is ingeniously laid out so that the tour begins at the top. Virtually all of the stairways inside lead down.

The developed trail leads through small passages that connect huge stalagmite and stalactite studded rooms. The largest of these is the Cathedral Room, with dimensions of 450 by 600 feet and a 100-foot ceiling. Here there is a switchboard contrived to give six separate sets of lighting effects. Along the cave way are formations resembling waterfalls, the Empire State Building, animals, battlefields and fallen idols, to mention a few. One room looks as if it had been papered with strips of bacon. When tapped with a hammer, a row of stalactites in another room gives off graduated musical tones.

Religious Leader Says He Saw Flying Saucer

GAINESVILLE, Tex. — When H. A. (Buster) Latham, Gainesville religious leader, grocer and former mayor, said he saw a flying saucer, local citizens placed more faith in reports of the mysterious missiles.

Latham's statements were backed up by his son, Jimmy, and his brother, Jack, both grown men. The three were fishing at a lake on Jack Latham's farm at Valley View.

"It was between 8:30 and 8:45 p.m.," the former mayor said. "I had been skeptical up to then of all these flying saucer stories, but all three of us saw it at the same time."

Latham described the object as cylindrical, but comparable in size to the fuselage of a large airplane, although not so long. It did not appear to be traveling at high speed.

The Index is agent for most daily newspapers popular in this area: renew with us please

Lubbock Morning Avalanche daily and Sunday \$12.95; daily only is \$11

Ft. Worth Star Telegram Daily and Sunday \$13.95

Abilene Reporter News daily and Sunday \$10.95; daily only \$9.95
Also all Magazines by mail

MR. FARMER

If you plan to lay a 2 to 4 inch gas line 100 feet to 100 miles, we can sell the pipe cheaper. We are also well stocked with Irrigation Pipe 8 in. to 16 in. at COMPETITIVE PRICES.

See us for your pipe needs

HILTON SUPPLY CO.
1819 East Broadway; Lubbock

Joe M. Lehman, M. D.

Medicine and Surgery

Hours 8 a m to 6 p m daily

Sunday: 9 a m to 11 a m

Office phone 134; Home

209

Vernon Cook

Expert Radio and T. V. Technician; Repairs of all Electrical Appliances; Wiring.

"No Job Too Large, Nor Too Small"

All Work Is Guaranteed



HIGGINBOTHAM FUNERAL HOME

"Dedicated to Helpfulness"

408 N. Austin St. Lamesa Phone 4585

24 Hour Ambulance Service

Burial INSURANCE "Bonded Protection"

CALL OR COME BY

Moore Insurance

"For All Your Insurance Needs"
Phone 220

LYNN COUNTY FARM BUREAU

Office at Tahoka Co-op gin on Post Highway; P. O. Box 287

Phone No. 220

We Attend to Your Insurance Needs
Gas Exemption Forms Filled Out for any
Farmer FREE!

Office hours: 1 to 5 P. M. and Saturday Mornings

Announcement

To Customers Of West Texas Gas Company

Effective January 1, 1954, West Texas Gas Company was combined with Amarillo Gas Company, Clayton Gas Company and Dalhart Gas Company to form a regional natural gas utility company named PIONEER NATURAL GAS COMPANY.

The properties will continue to be operated under the same ownership and management as heretofore.

All West Texas Gas Company employees are being retained.

Lubbock is headquarters for the West Texas Division, which consists of the area formerly served by West Texas Gas Company. Our General Offices are in Amarillo.

We thank you for your patronage and friendship throughout the years since 1927, and pledge our best efforts to render you an ever-better type of service.

'Pioneer Natural Gas Company

FUEL FOR A GROWING EMPIRE

J. Wall

J. WALL, Vice President

KCBD TV; Channel 11

Wednesday, Jan. 13
 2:45 News, Market, Weather
 3:00 Ladies Matinee
 3:30 The Cook Book
 4:00 Welcome Travelers
 4:30 On Your Account
 5:00 Range Rider
 5:30 Interlude
 5:55 Showtime
 6:00 Channel 11 Revue
 6:25 Sports
 6:30 The World Today
 6:40 Weather
 6:45 Bernie Howell
 7:00 I Married Joan
 7:30 Strange Adventure

7:45 Interlude
 8:00 Notre Dame Football
 8:30 TV Theatre
 9:00 Greatest Fighters
 9:15 High School Chorus
 9:45 News of the Hour
 9:55 Weather
 10:00 Files of Jeffrey Jones

Thursday, Jan. 14th
 2:45 News Market, Weather
 3:00 Ladies Matinee
 3:30 The Cook Book
 4:00 Welcome Travelers
 4:30 On Your Account
 5:00 6-Gun Theatre
 5:55 Showtime
 6:00 Channel 11 Revue

6:25 Sports
 6:30 The World Today
 6:40 Weather
 6:45 Bernie Howell
 7:00 Groucho Marx
 7:30 My Little Margie
 8:00 Dragnet
 8:30 I Led 3 Lives
 9:00 Martin Kane
 9:30 Eddie Fisher
 9:45 News of the Hour
 9:55 Weather
 10:00 Boston Blackie
 10:30 Norman Sper
Friday, Jan. 15th
 2:45 News Market, Weather
 3:00 Ladies Matinee
 3:30 The Cook Book

4:00 Welcome Travelers
 4:30 On Your Account
 5:00 Cisco Kid
 5:55 Showtime
 6:00 Channel 11 Revue
 6:25 Sports
 6:30 The World Today
 6:40 Weather
 6:45 Bernie Howell
 7:00 Gar-roway at Large
 7:30 Life of Riley
 8:00 Favorite Story
 8:30 Goo, Jessel
 9:00 Your Hit Parade
 9:30 News of the Hour
 9:45 Channel 11 Tune Shop
 10:00 Into the Night
Saturday, January 16th
 2:45 News, Weather
 3:00 6-Gun Theatre
 4:00 Playtime
 4:30 Johnny Jupiter
 5:00 Farm Show RFD 11
 5:30 Showtime
 6:00 Sports

6:05 Channel 11 Revue
 6:30 The World Today
 6:40 Weather
 6:45 Channel 11 Melodies
 7:00 Victory At Sea
 7:30 Ted Mack's Amateur Hour
 8:00 Theatre Guild
 9:00 T Men in Action
 9:30 Eddie Fisher
 9:45 News of the Hour
 9:55 Weather

10:00 Texas Rassin
Sunday, Jan. 17th
 2:45 News, Weather
 3:00 Hopalong Cassidy
 4:00 Ask Your Doctor
 4:30 Royal Playhouse
 5:00 Know Your Bible
 5:30 Channel 11 Interlude
 5:45 Opportunity Knocks
 6:00 Winchell - Mahoney
 6:30 The World Today
 6:40 Weather
 6:45 Channel 11 Melodies
 7:00 Comedy Hour
 8:00 TV Playhouse
 9:00 Letter to Loretta
 9:30 News of the Hour
 9:45 Channel 11 Tune Shop
 10:00 Peter Potter Show

Rootin' Shootin' Gal



DAVENPORT, IOWA — Wide open-space girl Laurie Anders, star of the Ken Murray CBS TV program, was picked by the 2,000 Dairy Queen Frozen Dessert dealers from coast to coast as the "MISS DAIRY QUEEN" for 1953. Miss Anders and Ken Murray are also starred in United Artists' new hit "The Marshal's Daughter."

Church Of Christ

Raymond L. Copening, Preacher
 Sunday Services:
 Bible School at 10:00 a. m.
 Communion : 11:00 a. m.
 Preaching at 11:15 a. m., 7:00 p. m.
 Young people's classes at 6:15 p. m.
 Monday: Men's Bible class at 7:00 p. m.
 Tuesday: Ladies' Bible class at 9:30 a. m.
 Wednesday: Bible classes for all ages at 7:00 p. m.
 Our services are open to all; you are encouraged to attend and feel at home in our meetings. Your comfort, pleasure and spiritual welfare is our deepest concern; if you are not attending church regularly, please visit us; you will be a stranger but once.

Every citizen of the State should include in their 1954 resolutions at least one on safety. Until safety becomes the number one business of everyone, accidents will continue to take an increasing toll.

We'd rather serve a lot of people than have a lot of servants.

Then there are girls who maintain that the greatest contribution made to mankind by science wasn't the atomic bomb but peroxide.

Our son is always ready for a swim but complains that washing dishes ruins his hands.



what warmth!



what comfort!



what... Z-Z-Z!

As quickly as *that* your electric blanket soothes you to sleep... because it has the gentle kind of steady, even warmth that makes for complete relaxation. And the cost? Only about 2 or 3 pennies a night... just another example of the way your low-cost electricity adds to your wintertime comfort. Spread a fleecy-light electric blanket on your bed these chilly nights, and adjust the automatic control to the exact temperature you want. You'll find that Reddy Kilowatt and your electric blanket keep you cozy all night through, and that you wake up feeling wonderful... ready for a good morning.

See your electric appliance dealer and select your electric blanket in any of several lovely decorator colors.



ELECTRICITY DOES SO MUCH - COSTS SO LITTLE

Texas Electric Service Company

J. H. LEMONS, Manager

1-1A

REX

Friday and Saturday Jan. 15th and 16th

A great hit from M. G. M.'s Hall of Fame

Trader Horn

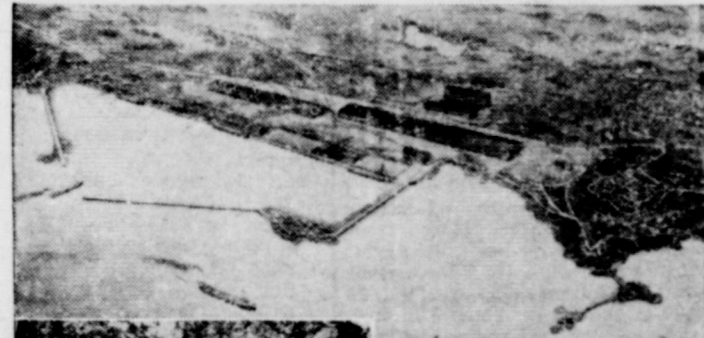
Sun. and Mon. Jan. 17, 18th

Betty Grable and Dale Robertson in

The Farmer Takes a Wife

New Life For Mesabi

TACONITE is new giant of Minnesota's Mesabi range. Without it, the iron ore region's end was in sight. Now, new harbors, plants are rising on Lake Superior shore. It's steel's ace-in-the-hole. Industry will convert iron bearing rock into iron content pellets.



SUPERMAN DEVICE, below, burns oxygen and kerosene and pours out flaming gases, crumbles rock at deposit site.



NEW CITIES being hacked out of wilderness reflect size of taconite program. Trucks like this International work 24 hours a day; carpenters hammer at new houses. There's new life on Mesabi!

Four great NEW "Firsts" in Chevrolet for '54!

Count on Chevrolet to bring you the newest features first. Once again Chevrolet is first in its field with these four great advances for '54!

These other famous Chevrolet "Firsts" in the low-price field offer you more than ever today!

FIRST OVERHEAD VALVE ENGINE ... finest ones today

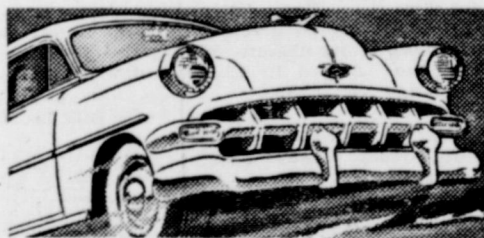
FIRST AUTOMATIC TRANSMISSION* ... most advanced one today

FIRST POWER STEERING* ... lower priced today

FIRST "HARD-TOP" COUPE ... most beautiful one today

FIRST UNITIZED KNEE-ACTION ... only one today

FIRST IN OVER-ALL ECONOMY ... lowest priced line today!



1 NEW HIGH-COMPRESSION POWER

Two more powerful high-compression engines in Chevrolet for '54! Both of these great valve-in-head engines deliver finer, smoother, more quiet performance with important gas savings!

2 NEW POWER BRAKES

You simply swing your foot from accelerator to brake pedal for a smooth, amazingly easy stop. Optional at extra cost on all models equipped with Powerglide automatic transmission.

3 NEW AUTOMATIC SEAT CONTROL

You just touch a button to move the front seat up and forward or down and back! Optional at extra cost on Bel Air and "Two-Ten" models in combination with Automatic Window Controls.

4 NEW AUTOMATIC WINDOW CONTROLS

Touch another button to adjust front windows to suit your liking! Optional at extra cost on Bel Air and "Two-Ten" models in combination with Automatic Seat Control. *Optional at extra cost.

FIRST AREA SHOWING

The Greatest Story of Love and Faith Ever Told!



20th Century-Fox presents **The Robe** Technicolor

Features 12:00-2:30-5:00 7:30-10:00

THE FIRST MOTION PICTURE IN **CINEMASCOPE**

STARTING THURSDAY

JANUARY 14th

LINDSEY Dial 5-7122

Admission ADULTS 95c CHILDREN 30c

LUBBOCK, TEXAS

Ellis Chevrolet Co.
 Chevrolet Sales and Service:-: O'Donnell, Texas

See America's Most Exciting New Car Today The Completely New *Star Chief Pontiac!*



World's Finest Union of Luxury and Low Cost

Here is the real news behind Pontiac's completely new Star Chief line—and the real reason why it is so important that you see and drive this magnificent car soon. At a cost just above the lowest, you can now acquire the biggest and most powerful Pontiac ever built. And with this dramatic size and performance comes distinction of contour and interior richness that make the Star Chief the peer of any car for beauty. Come in and drive it for plentiful proof that Pontiac represents the world's finest union of luxury and low cost.

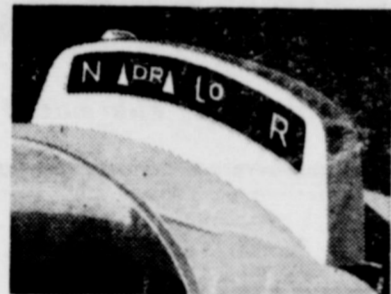
LOOK AT PONTIAC'S SCORE FOR 1954

- Biggest Pontiac Ever Built—214 Inches Long
- Magnificent New Beauty, Inside and Out
- New Custom-Styled Interiors—New Colors
- Most Powerful Pontiac Ever Built
- New Roadability and Driving Ease
- Increased Cross-Country Luggage Room

DUAL-RANGE HYDRA-MATIC DRIVE* and more powerful engines set new standards for thrifty performance. Extra-economical cruising or quick traffic response is yours at a finger-flick. *Optional at extra cost.

COMPLETE POWER CONTROLS—power steering, power brakes, electric window lifts, Comfort-Control driver's seat and Dual-Range Hydra-Matic are optional equipment for 1954 at extra cost.

THE PONTIAC CHIEFTAIN, General Motors lowest priced eight, is even mightier and more beautiful for 1954—far and away the finest car ever offered in Pontiac's low price range.



*Dollar for Dollar
you can't beat a*

PONTIAC

City Service and Appliance

7th and Doak St

O'Donnell, Texas

Announcement

To Customers Of West Texas Gas Company

Effective January 1, 1954, West Texas Gas Company was combined with Amarillo Gas Company, Clayton Gas Company and Dalhart Gas Company to form a regional natural gas utility company named **PIONEER NATURAL GAS COMPANY**.

The properties will continue to be operated under the same ownership and management as heretofore.

All West Texas Gas Company employees are being retained.

Lubbock is headquarters for the West Texas Division, which consists of the area formerly served by West Texas Gas Company. Our General Offices are in Amarillo.

We thank you for your patronage and friendship throughout the years since 1927, and pledge our best efforts to render you an ever-better type of service.

'Pioneer Natural Gas Company

FUEL FOR A GROWING EMPIRE

J. Wall
J. WALL, Vice President

Missoula, Mont., Has Third Largest Cave

MISSOULA, Mont.—This small town offers a large attraction to tourists—a huge cave embedded in its side only by New Mexico's Carlsbad Caverns and Kentucky's Mammoth Cave. Missoula's cave is the Lewis and Clark Cavern.

From the parking area, the entrance is half a mile away along the side of a slanting limestone cliff called Cave Mountain. A narrow-gauge jeep railway takes cave crawlers along a roadbed hewn out of rock to a point below the entry. Here they transfer to a cliff-side tramway, adapted from an electric mining hoist, which whisks them several hundred feet up to the cave door.

In addition to giving passengers a superb view of the snow-crested Tobacco Root, Bridger and Gallatin peaks to the south, all this hauling and hoisting makes the cave trip easier. The route through the cave is ingeniously laid out so that the tour begins at the top. Virtually all of the stairways inside lead down.

The developed trail leads through small passages that connect huge stalagmite and stalactite studded rooms. The largest of these is the Cathedral Room, with dimensions of 450 by 600 feet and a 100-foot ceiling. Here there is a switchboard contrived to give six separate sets of lighting effects. Along the caveaway are formations resembling waterfalls, the Empire State Building, animals, battlefields and fallen idols, to mention a few. One room looks as if it had been paped with strips of bacon. When tapped with a hammer, a row of stalactites in another room gives off graduated musical tones.

Religious Leader Says He Saw Flying Saucer

GAINESVILLE, Tex.—When H. A. (Buster) Latham, Gainesville religious leader, grocer and former mayor, said he saw a flying saucer, local citizens placed more faith in reports of the mysterious missiles.

Latham's statements were backed up by his son, Jimmy, and his brother, Jack, both grown men.

The three were fishing at a lake on Jack Latham's farm at Valley View.

"It was between 8:30 and 8:45 p.m.," the former mayor said. "I had been skeptical up to then of all these flying saucer stories, but all three of us saw it at the same time."

Latham described the object as cylindrical, but comparable in size to the fuselage of a large airplane, although not so long. It did not appear to be traveling at high speed.

Joe M. Lehman, M. D.

Medicine and Surgery

Hours 8 a m to 6 p m daily

Sunday: 9 a m to 11 a m

Office phone 134; Home

209

The Index is agent for most daily newspapers popular in this area; renew with us please

Lubbock Morning Avalanche daily and Sunday \$12.95; daily only is \$11

Ft. Worth Star Telegram Daily and Sunday \$13.95

Abilene Reporter News daily and Sunday \$10.95; daily only \$9.95
Also all Magazines by mail

MR. FARMER

If you plan to lay a 2 to 4 inch gas line 100 feet to 100 miles, we can sell the pipe cheaper. We are also well stocked with Irrigation Pipe 8 in. to 16 in. at COMPETITIVE PRICES.

See us for your pipe needs

HILTON SUPPLY CO.
1819 East Broadway; Lubbock

Vernon Cook

Expert Radio and T. V. Technician; Repairs of all Electrical Appliances; Wiring.

**"No Job Too Large, Nor Too Small"
All Work Is Guaranteed**



HIGGINBOTHAM FUNERAL HOME

"Dedicated to Helpfulness"

408 N. Austin St. Lamesa Phone 4585

24 Hour Ambulance Service

Burial INSURANCE "Bonded Protection"

CALL OR COME BY

Moore Insurance

**"For All Your Insurance Needs"
Phone 220**

LYNN COUNTY FARM BUREAU

Office at Tahoka Co-op gin on Post Highway; P. O. Box 287

Phone No. 228

**We Attend to Your Insurance Needs
Gas Exemption Forms Filled Out for any
Farmer FREE!**

Office hours: 1 to 5 P. M. and Saturday Mornings

Zipper can never take the place of buttons . . . in the collection plate.

Real Estate

FARMS - RANCHES - CITY PROPERTY
Leases and Royalties

B. M. Haymes

O'Donnell Index Press

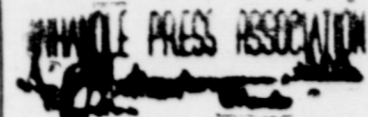
Published Every Thursday by

O. G. SMITH, OWNER

Box B, O'Donnell, Texas
Entered as second-class matter
Sept. 23, 1933 at post office at O'Donnell, Texas, under the Act of
NATIONAL 45C

4DV. RATES: 40C LOCAL

Subscription Rates
In first zone (Dawson, Lynn, and
Borden counties) \$1.50
Beyond first zone \$2.00



FIRST BAPTIST CHURCH

The Friendly Church With A Message

Otis O. Holladay, pastor

Sunday School 10:00
Morning Worship 11:00
Youth Choir 5 p. m.
Training Union 6:30 p. m.
Evening worship 7:30 p. m.
Youth Fellowship 8:30 p. m.
First and Second Tuesdays
Inter., G. A. Y. W. A. 7:30 p. m.
Brotherhood 7:30 p. m.
Wednesday
Lifeservice Band (Youth) 7 p. m.
Teachers meeting 7 p. m.
Prayer meeting 7:30 p. m.
356 acres good land to rent with
sale of tractor, price reasonable.
John Stephens 1 tp

CHURCH OF THE NAZARENE

Sunday School 10 a. m.
E. C. Pace, Supt.
Morning Worship 11 a. m.
N. Y. P. S. Service 7 p. m.
Evangelistic Service 7:45 p. m.
Mid Week Prayer Meeting
Wednesday 8 p. m.



FROM before birth until death, your heart is a hard-working machine. If the power exerted by it in a life-time could be concentrated into one moment, it would lift the Battleship Missouri 14 feet into the air!

Two Drugs Prove Useful For Heart Trouble

Contrary to popular belief, the heart is not delicate. It is one of the strongest and toughest organs in the body. It has to be to do its job, for each day it pumps the equivalent of 4,000 gallons of blood throughout the body.

Each beat of the heart sends five ounces of blood through 100,000 miles of blood vessels—25 times the length of the Mississippi River.

While this mighty machine is at work, red blood cells are being destroyed and replaced at the rate of 865 billion a day. You keep this going by breathing—24,000 times a day—to supply 20 cubic feet of oxygen, the fuel the heart needs to run.

Like all machines, your heart is subject to breakdowns and malfunctions. One of these malfunctions is angina pectoris, not a disease, but a complex condition in which the oxygen supply to the heart is cut below the required minimum.

Angina pectoris is characterized by the "attack," a sudden, sharp, constricting pain in the chest, said to be one of the most excruciating man can ever experience. This pain, plus the tense anxiety in-

involved, makes normal living impossible for the angina victim. Medical science has tried on one hand to prevent the attack, and on the other to reduce the pain of the attack when it does occur.

Recently 14 drugs were tested for their preventive and pain-relieving ability. Curiously, the two drugs that emerged as the best, are both derived from explosives, and both work to widen the blood vessels in the heart. One is the well-known, nitroglycerine, which appears to be the best agent available for easing the pain if taken immediately before or during the attack.

The second drug, peritrate tetranitrate, it is reported, also eases pain, but, more important, it prevents attacks and "for prolonged protection, appears to excel all other drugs tested, in the treatment of angina pectoris." Other tests have shown peritrate to prevent attacks in three of every four angina victims.

In these two drugs, then medicine has a strong two-pronged counter-attack against one of the most dangerous and painful bottlenecks to heart action.

METHODIST NEWS

Rev. H. A. Longino, pastor

Sunday school 10:00 a. m.
Morning worship 11:00 a. m.
Evening worship 7:30 p. m.
W. S. C. S. Faith Circle Mondays
at 9:30 a. m. and Martha Martha
Circle Tuesday 9:30 a. m.

Assembly of God

Sunday School 10 a. m.
Morning Worship 11:00 a. m.
Evening worship 7:30 p. m.

Houses for rent; for sale 6 in. pump and 110 feet pipe; J. L. Scholer or Clayton Ins. Agency, 4tp

NOTICE
EFFECTIVE THIS DATE WE
ARE DISCONTINUING THE
PICK-UP AND DELIVERY OF
LAUNDRY.

VAN'S

SOFT WATER

Laundry

Gibson's

CLEANERS

CLEANING

PRESSING

Alterations

Dr. O. H. NANCE

Optometrist

528 N. 1st Lamesa; ph 554

Stanley - Jones

Funeral Home

And Burial Association
phone 233 Bx 185 Tahoka

Dr. Celeste Schaal

CHIROPRACTOR

Lubbock Highway

Phone 30 :: Tahoka



FRAIDY CAT!

KING OF the beasts but he's just as scared of fire as we all are.

Fortunately, you can do something about it. First, you can eliminate the fire hazards in your home . . . and second, you can protect your home values with strong insurance. CALL ON US.

CLAYTON
INSURANCE AGENCY

— LOANS —
PHONE 148

Now Available . . .

Safety Deposit Boxes
\$3.60, \$7.20, \$18

Annually, Tax Included

FIRST NATIONAL BANK
Of O'Donnell

Less Than A Penny A Day
Keeps Your Valuable Safe

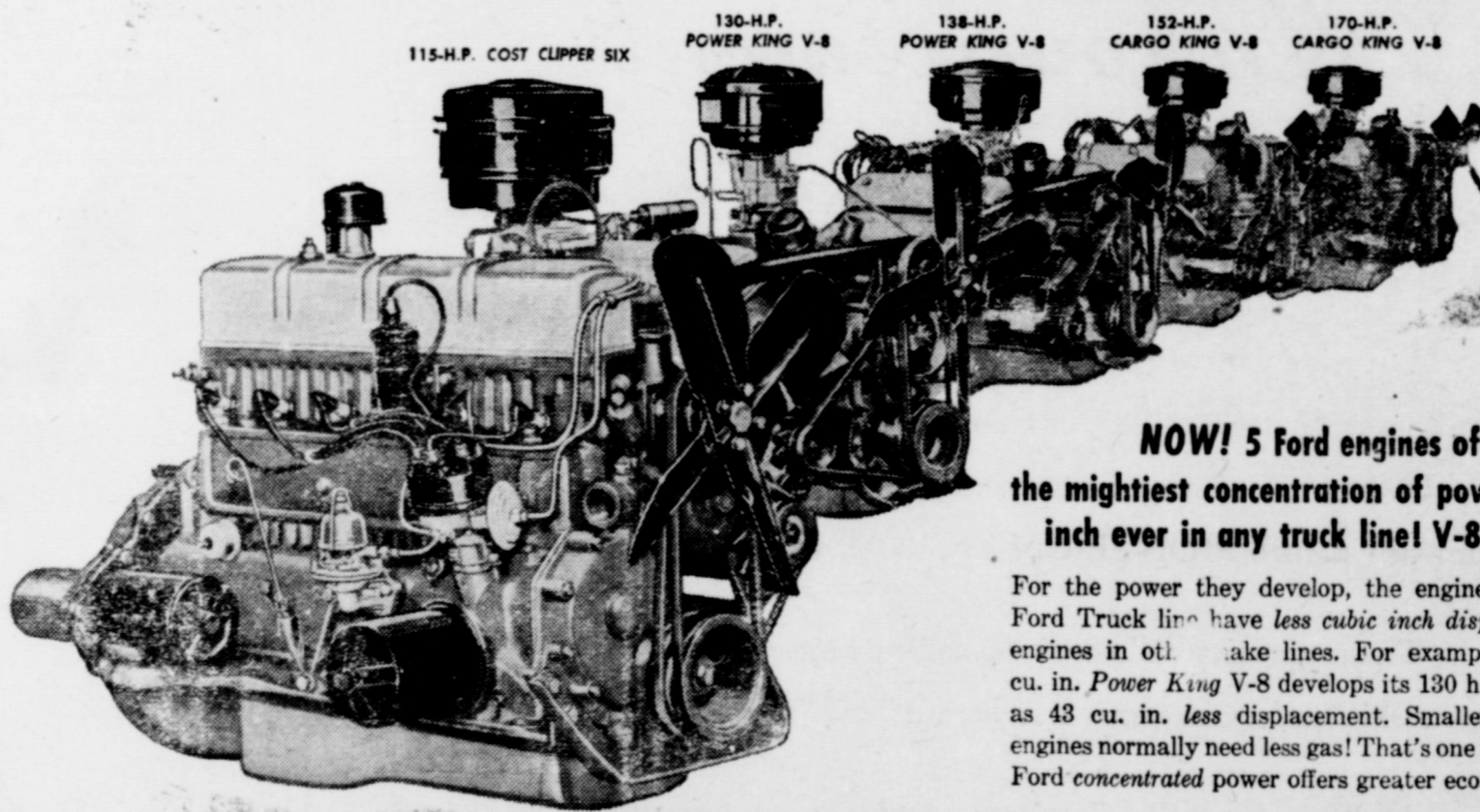
O'DONNELL UPHOLSTERY
Draperies, Belts, Buttons,
Buttonholes and Cornices
Next door north of Index
Mrs. H. L. Wood

Lowest Priced and
Finest Quality
PRINTING

In West Texas
(24 Hour Service)
All prices 25 to 40 per
cent less than elsewhere
INDEX

Announcing for '54 NEW FORD TRUCKS

With TRIPLE ECONOMY!



NOW! 5 Ford engines offer
the mightiest concentration of power per cubic
inch ever in any truck line! V-8 and SIX!

For the power they develop, the engines in the 1954 Ford Truck line have less cubic inch displacement than engines in other truck lines. For example, Ford's 230 cu. in. Power King V-8 develops its 130 h.p. on as much as 43 cu. in. less displacement. Smaller-displacement engines normally need less gas! That's one big reason why Ford concentrated power offers greater economy!

Ford takes the lead in ALL 3 vital factors that make for lower-cost trucking!

1. Now, only in Ford Trucks—gas-saving, LOW-FRICTION, high-compression, overhead-valve, deep-block engines in all truck models! 115- to 170-h.p.!
2. New Driverized Cabs, Master-Guide Power Steering, Power Brakes, Fordomatic Drive for faster control!
3. New greater capacity! New Factory-Built "6-wheelers," gross up to 48% more!

See them TODAY!

FORD TRIPLE ECONOMY TRUCKS

MORE TRUCK FOR YOUR MONEY!



New Ford F-900 Six Jos, G.V.W. 27,000 lbs., G.C.W. 55,000 lbs.

FORBES Motor Co.

FORD Sales and Service

Phone 92; O'Donnell, Texas

African Parrot Makes Music In Restaurant

SYOSSET, N.Y.—An African gray parrot named Coco sits atop an old nickelodeon in the bar of a country French restaurant near this small town and whistles away the time whistling snatches from operatic airs.

Learned To Whistle

He learned to whistle the C major scale (white keys) on his perch on a piano in a back room. The waiters unintentionally taught him music by running a finger over the keyboard as they passed between the kitchen and the dining room.

He came to live at the Villa Victor in 1930 when it was being converted from a farmhouse into a restaurant without changing the surrounding lawns and ponds and poultry. Rudolph, a son of Victor Zani, the founder, said Coco was obtained with a green, parrot named Tony from a Mr. Smith, who brought the parrots here from Africa.

Until Tony's death from pneumonia in 1942, the two of them used to whistle a sort of duet. The gray bird's age, 65 years, was estimated by the late animal collector, Frank Buck. Buck said that a parrot does not learn to talk until it is 45 years old and that after 70 it probably becomes senile and dodders irritably around its cage.

Taught Him Tunes

When Coco had mastered the scale, the waiters taught him tunes and persuaded the Zanis to move his cage into the restaurant where the public could enjoy his songs.

In Coco's repertoire there are 12 tunes. Although he never completes a song, he can whistle about a dozen bars of each one, including: "The Drinking Song" from "La Traviata," the "Funeral March" from "Aida," "Hall of the Mountain King" from "Peer Gynt," airs from "La Boheme" and "Carmen" and the songs, "Souvenir D'Amour," "Ciribiribin" and the Fascist "Giovinezza," which a waiter taught him in the Thirties, to everyone's subsequent regret.

"Ciribiribin" is the favorite. Whenever Coco is stumped in trying to repeat a new and unfamiliar tune, he pauses, gives an angry squawk, and swings into his favorite stand-by.

Bone Banks Now Ready For Use in Most Cities

NEW YORK—Several hospitals in New York and elsewhere operate banks for human bone. At the New York hospital for special surgery, one of the first to establish a bone bank, successful grafts have been made with bone stored for as long as 22 months. Bank bone has been used in more than a thousand operations.

Bone banks have been able to obtain an adequate supply of bone from amputations and other operations in which bone is removed. Cut into chips or thin strips, the bone is given a careful cleaning, and stored in sterile jars in a deep-freeze at -13 degrees F. Bone grafts are employed primarily in fractures that refuse to knit, in replacing infected bone, in operations for fusing various joints of the spine, and in aiding children born with bones missing.

The grafted bone does not grow, but stimulates the growth of the patient's own bone.

Weather Affects Range Of Shotgun Pellets

BRIDGEPORT, Conn.—The pellets in a shot charge are not always perfect spheres when leaving the gun barrel and departures from sphericity result in shortened ranges. A wind may appreciably increase or decrease the maximum range. The maximum range is greater on hot days and less on cold days.

The calculations do not take into account interactions among the various pellets which may increase the range a few feet. Furthermore, no provision is made for the occasionally observed effect of "shot balling", that is, the sticking together of several pellets in the shot charge to form a cluster. Although with modern guns and loads this may be of relatively infrequent occurrence, it must be recognized that such a "ball" would travel considerably farther than the other pellets in the charge.

'Time for a Change'—U. S. Sides With Men

WASHINGTON—Women spend more money for clothes than do men—this old male argument has been proved by a government report.

In a brand-new report on American spending habits, the Bureau of Labor Statistics says "around 55 per cent of the family clothing budget was spent (in 1950) on women's and girls' clothing."

Men and boys? They got "a little over 40 per cent" of the clothing budget. The remainder went to the

Well Equipped



HAVE PEN, WILL SIGN: Hollywood actress Sue England proves that she is brainy as well as beautiful by innovating a new practice in movietown. She takes her new Paper-Mate desk set with her on all interviews with producers. If she lands the role, she's well equipped—in more ways than one—to sign the film contract.

KUCB - TV; Channel 13

Wednesday, Jan. 13

- 2:00 Program previews
- 2:05 TV Sermonette
- 2:15 Shopping Bag
- 2:45 Love of Life (CBS)
- 3:00 Recipe Round - up
- 3:45 Gary Moore Show (CBS)
- 4:00 Doty On Duty
- 4:15 Children Theatre
- 4:45 Uncle Dirk
- 4:55 Children Theatre
- 5:30 Haunted Mine
- 6:00 Johnny On The Spot
- 6:30 Telenews
- 6:45 News, Weather, Sports
- 7:00 Godfrey & Friends (CBS)
- 8:00 Strike It Rich (CBS)
- 8:30 I've Got A Secret (CBS)
- 9:00 Life With Elizabeth
- 9:30 Regal Theatre
- 10:00 News, Weather, Sports
- 10:15 Doty on Duty
- 11:30 Sign off

Thursday, Jan. 14th

- 2:00 Program previews
- 2:05 TV Sermonette
- 2:15 Shopping Bag
- 2:45 Love of Life (CBS)
- 3:00 Recipe Round - up
- 3:45 Bandstand
- 4:00 Doty On Duty
- 4:15 Children's Theatre
- 5:30 Desert Trail
- 6:00 Johnny On The Spot
- 6:30 Telenews
- 6:45 News, Weather, Sports
- 7:00 Meet Mr. McNutley
- 7:30 Racket Squad
- 8:00 Wrestling from Hollywood
- 9:00 On Stage
- 9:30 Place The Face (CBS)
- 10:00 News, Weather, Sports
- 10:15 Doty on Duty

Fee-Splitting Racket Spreads Among Docs

NEW YORK—Fee-splitting among doctors "is a sinister and spreading medical racket that is a menace to our health," charges Dr. Arch J. Beatty, writing in Coronet Magazine.

"Many people today," Dr. Beatty claims, "are made poor by unnecessarily exorbitant surgical charges and even by unnecessary surgical operations through the dangerous practice of fee-splitting." This "racket" is an under-the-counter deal in which the surgeon buys his patients in order to perform surgery upon them, and in which fees from these operations are split between the surgeon and the referring physician without the patient's knowledge.

"Ghost surgery" is another form of this "evil racket" that is a menace to our health, claims Dr. Beatty. "Here, the patient is told by a general practitioner that an operation is necessary and is led to believe that the practitioner will perform it. Instead, without the patient's knowledge, a surgeon is hired to step in after the anesthesia is administered, perform the operation, then step out again.

"Today," continues Dr. Beatty, "surgery is a skill that goes beyond the use of a scalpel. . . . But the ghost surgeon has nothing to do with any of this. The patient gets very little of what he is paying for. All too commonly, this means double the price for the patient."

11:30 Sign Off

Friday, Jan. 15th

- 2:00 Program previews
- 2:05 TV Sermonette
- 2:15 Shopping Bag
- 2:45 Love of Life
- 3:00 Recipe Round - up
- 3:45 Bandstand
- 4:00 Doty On Duty
- 4:15 Children Theatre
- 4:45 Uncle Dirk
- 4:55 Children Theatre
- 5:15 Kit Carson
- 5:45 Childrens Theatre
- 6:00 Johnny On The Spot
- 6:30 Telenews
- 6:45 News, Weather, Sports
- 7:00 Abbott and Costello
- 7:30 Topper (CBS)
- 8:00 Wrestling from Chicago
- 9:00 My Friend Irma (CBS)
- 9:30 Greatest Drama
- 9:45 Music Box
- 10:00 News, Weather, Sports
- 10:15 Leave It To The Marines
- 11:30 Sign off

Saturday, January 16th

- 3:25 Sign On
- 3:40 TV Sermonette
- 3:45 Last 10 Feet
- 4:00 Heritage of the Plains
- 5:00 Facts Form
- 5:30 The Big Picture
- 6:00 Industry on Parade
- 6:15 News
- 6:30 Beat The Clock CBS
- 7:00 Jackie Gleason Show (CBS)
- 8:00 Herb Shriner (CBS)
- 8:30 Life Begins At 80 (CBS)
- 9:00 Medallion Theatre (CBS)
- 9:30 I'm The Law

- 10:00 Kousin Ken's Korner
- 10:30 Tread Softly
- 11:30 Sign off

Sunday, Jan. 17th

- 1:40 Sign On
- 1:45 Hour of Decision
- 2:00 This Is The Life
- 2:30 Student Silhouette
- 3:00 Ramar of the Jungle
- 3:30 Sunday Funnies
- 4:00 Omnibus (CBS)
- 5:30 You Are There (CBS)
- 6:00 Washington Spotlight
- 6:15 Sportsman Club
- 6:30 Private Secretary (CBS)
- 7:00 Toast of the Town (CBS)
- 8:30 Our Miss Brooks (CBS)
- 9:00 Amos and Andy
- 9:00 The Web (CBS)
- 9:30 Fulton Lewis, Jr
- 10:00 Music box
- 10:00 News
- 10:15 Hot ice

While we're ridding the country of radicalism, socialism, Bolshevism and Fascism, why not include rheumatism?

Renew Your Index

Housewives: Address advertising postcards. Must have good handwriting. LINDO, Watertown, Mass.

FOR RENT: 480 acres, 8 in. well, sell motor, new tractor, 1-8 1-2 rent. Clyde Edwards.

NOW OPEN

WANDA'S CAFE

Next door to Proctor's

Barber Shop

"Come To See Us"

Mrs. Wanda Lawhon,

owner

Resolve . . .

This New Year to save money on your printing by getting a FREE estimate from the Index job shop.

May we suggest you look over your supply of:

- Imprinted Checks
- Statements
- Letterheads
- Envelopes
- Tabulated and Registered Forms
- Poster Forms
- Rubber Stamps

"A dollar spent in O'Donnell CIRCULATES 7 times before going inactive. . . trade at home"

If we can't save you from 10 to 25 percent, we don't want your job!

The Index

ASK Singleton Appliance for FREE Home Trial!



PHILCO
21-inch TV
for 1954

at New Low Prices!

Phone us . . . without obligation. I'll bring this Philco 4002 X to your home. Even at new low price, picture is as much as 30 inches larger than other 21 inch sets.

YES, ONLY

\$289.95

Including Federal Tax and One Year Warranty on Picture Tube



Here's Value!

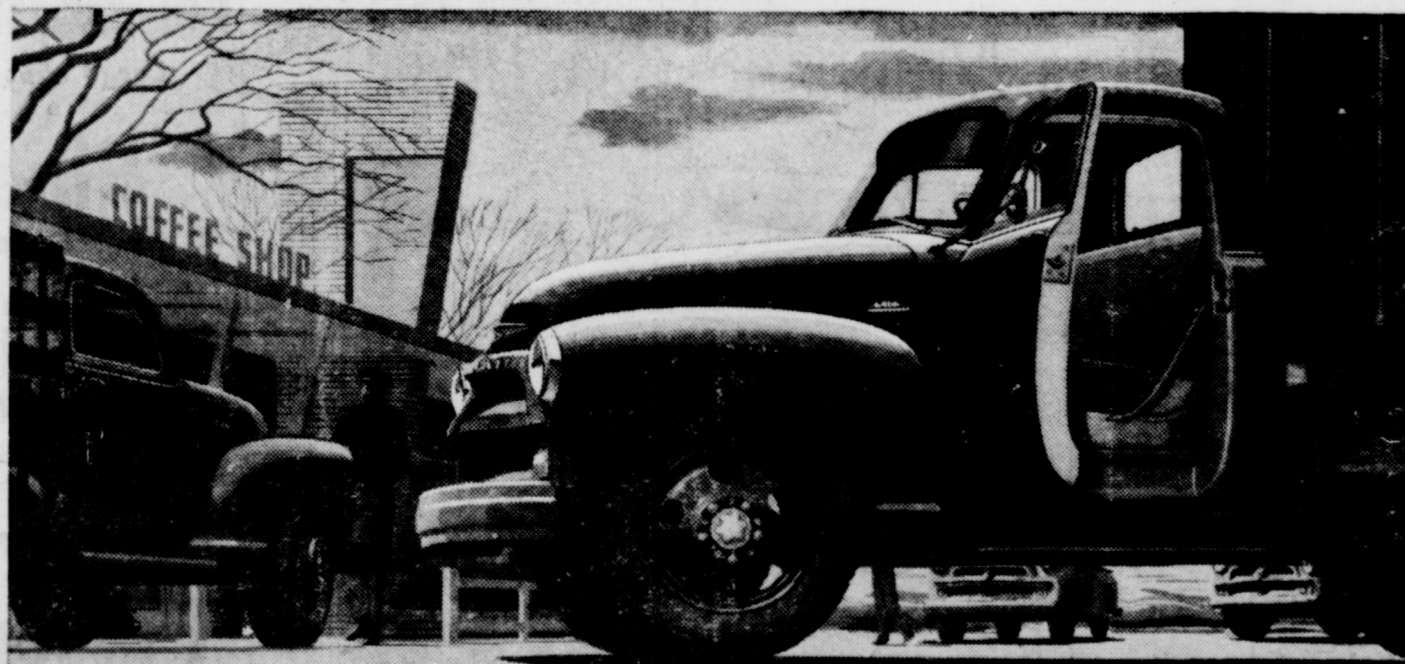
PHILCO
21-inch Console
\$349.95

Larger, brighter 21" picture! Super Colorado chassis! Rich Mahogany finish cabinet! It's the brand new Philco

OTHER PHILCO MODELS BEGIN AT

Singleton Appliance
O'DONNELL

New cab comfort, convenience, safety!



NEW CHEVROLET TRUCKS FOR '54

Completely new! The new Comfortmaster cab is only one of the many great new advances offered by the most powerful, finest performing, best-looking Advance-Design trucks ever built!

The new '54 Chevrolet truck Comfortmaster cab offers increased visibility with new one-piece curved windshield. Instruments are easier to read and controls are easier to reach. And the new Ride Control Seat* provides extra comfort for drivers.

Here are more new features you'll like—NEW ENGINE POWER AND ECONOMY. Bigger "Thriftmaster 235." Rugged "Loadmaster 235." All-new "Jobmaster 261" engine.* NEW AUTOMATIC TRANSMISSION.* Hydra-

Matic is available on 1/2-, 3/4- and 1-ton models. NEW, BIGGER LOAD SPACE. Roomier pickup and stake bodies.

NEW CHASSIS RUGGEDNESS. Heavier axle shafts on 2-ton models. Newly designed clutches and more rigid frames on all models.

NEW ADVANCE-DESIGN STYLING. New front-end is more massive in appearance.

*Optional at extra cost. Ride Control Seat is available on all cab models. "Jobmaster 261" engine on 2-ton models.

Most Trustworthy Trucks On Any Job!



ADVANCE-DESIGN TRUCKS

ELLIS CHEVROLET CO.

Chevrolet Sales and Service

O'Donnell, Texas

BLOCKER GROCERY

"Trade Goes Where Invited, Stays Where Treated Best"

SPECIALS For Friday and Saturday



Shortening 73c
3 lb carton "Kimbell's"

VEL 2 for 45c
Beauty Bars

CATSUP 16c
"Hunt's" 14 oz. bottle

COFFEE 86c
"Admiration" per lb

CHERRIES 23c
No. 2 can "Kimbell's" red sour pitted

Pineapple Juice 3 for 25c
12 oz. cans "Del Monte"

Carrots 10c
Fresh; cello bag; per lb

Baby Food 6 cans for 49c
"Gerber's"

Beef Roast 45c
Choice cuts lb

Beef Ribs 25c
PER LB

Bologna lb 39c
All Meat

Fryers

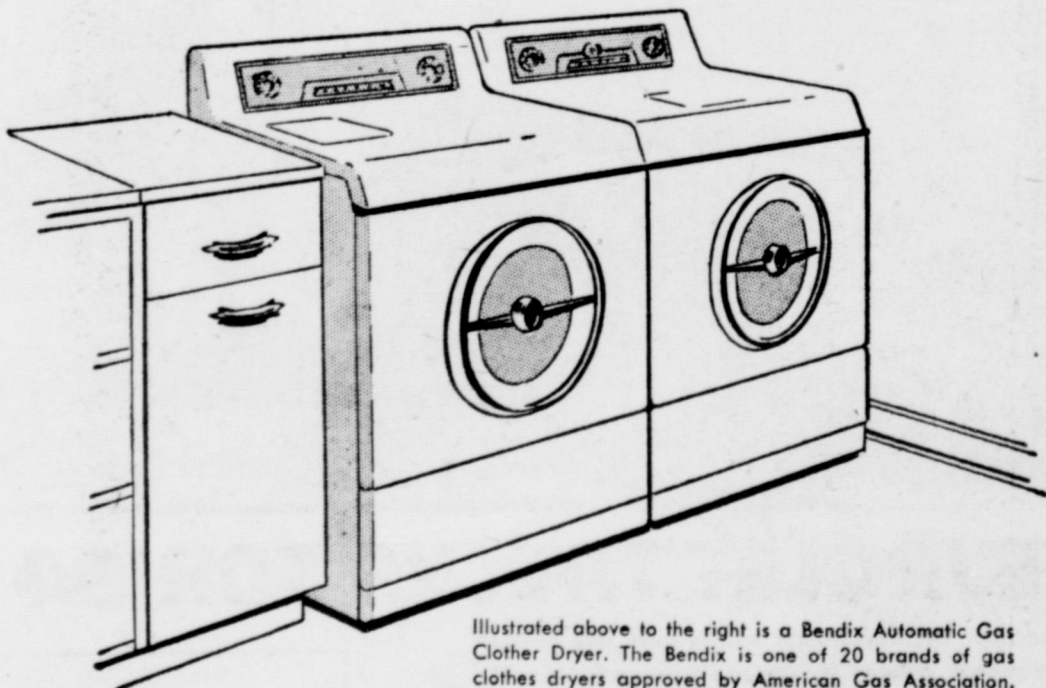
TRADE WHERE MA SAVES MONEY FOR PA
We Reserve The Right to Limit. Nothing Sold to Merchants to be re-sold

WHO'S CRAZY ?

A man called the lunatic asylum and asked if they were missing a male inmate. "No, why do you ask?" the warden said. "Well," said the man "someone has just run off with my wife."

RENEW YOUR SUBSCRIPTION

A planned home laundry will include an Automatic Gas Dryer



Illustrated above to the right is a Bendix Automatic Gas Clothes Dryer. The Bendix is one of 20 brands of gas clothes dryers approved by American Gas Association.

Your new home laundry will be not only beautiful... but, practical, too, if you include a new automatic Gas dryer. The modern dryer takes the work out of washday. Just toss the wet clothes from the washing machine into an automatic Gas Dryer. In a matter of minutes the clothes are dry. There are no weather worries when you dry your clothes in a modern automatic Gas dryer - and, the cost is less than one cent per load. See the automatic Gas dryers at your dealer's today.

Pioneer Natural Gas Company
FUEL FOR A GROWING EMPIRE

New Moore News

A little sleet, snow and rain fell over the weekend... just enough to make us wish and wonder.

Earl Crutcher has been in a Lamesa hospital.

The Wells gin ginned 46 bales the past season, all grown in the area, too.

Arvis Grogan moved to Muleshoe Monday and he will try irrigation this year.

L. A. Light, jr and Jude Taylor were in Muleshoe Wednesday on business.

A G Crutcher has moved back and will farm here this year.

The Virgil Adams and R. D. Moses are home again after working away during the fall.

Pink Magic



AT LAST... cosmetic scientists have developed a lotion that actually heals chapped hands! A delightfully feminine pink balm called Angel Skin, it also counteracts the drying effects of soaps and detergents to give m'lady the lovely soft hands of an angel.

Specials For Friday and Saturday

- 5 lb bag Florida Oranges
- Carton Fresh Tomatoes
- Large cello pkg. CARROTS
- 300 count Kleenex
- Northern Tissue 3 for
- Hunt's Tomato Sauce 3 for
- Large can Red and White Potted Meat
- No. 1 can Red and White Sliced Pineapple
- No. 303 Colorado English Peas
- 5 lbs pure cane sugar
- Rodeo Tray Pack BACON
- Banner Bacon lb
- Sun-Spun OLEO lb

Line Grocery And Market

Plenty of parking behind the store; come in and with us WE DELIVER PHONE 118



Sugar 5 lb 29c

WITH PURCHASE OF \$7.50 OR MORE OF MERCHANDISE

Pet Milk 2 for 25c
Large cans

Pineapple 14c

No. 1 flat cans, crushed, Del Monte

Toilet Tissue 4 for
Charmin

29c

With coupon from pkg.

Preserves 5 for 99c
12 oz. glasses; peach and Apricot

Fruit Cocktail 23c
No. 303 Del Monte

Jello 2 for 15c

Baby food 3 for 25c
Heinz

Toilet Soap 6 for 25c
Jergens Lotion; Mild

AJAX 2 for 25c
Cleanser

Finest Quality MEATS

Bacon 69c
BANNER

Beef roast 53c
U. S. Good lb

Beef ribs 29c
Lb

MANSELL BROS

PHONE 50 SPECIALS FOR FRIDAY AND SATURDAY FREE DELIVERY PHONE 118