



**ASSEMBLY OF GOD CHURCH**

A welcome and service for all  
 Sunday School 9:45 a. m.  
 Morning Worship 11 a. m.  
 Evangelistic service 7:30 p. m.  
 Young people service 6:30 p. m.  
 Midweek Service 7:30 p. m.  
 Large enough to know you — small  
 enough to serve you.  
 Rev. D. R. Kirkendall, pastor

**CHURCH OF THE NAZARENE**

A friendly Church serving a friendly  
 community in a needy world in-  
 vites you. Sunday school at 10 a. m.  
 Morning Worship at 11:00 a. m.  
 Evening Worship at 7:30 p. m. Pray-  
 er meeting each Wednesday at 8 p.  
 m.

**BUY YOUR DAILY PAPERS AT  
 INDEX OFFICE**

**LUBBOCK AVALANCHE**  
 Morning and Sunday — \$14.95  
 Morning without Sunday \$13.00  
**Abilene Reporter** —  
 Morning and Sunday \$13.75  
 Morning without Sunday \$12.75  
**Ft. Worth Star Telegram** —  
 Daily and Sunday \$15.75  
 Daily without Sunday \$12.95

Yard Work by job or hour, con-  
 tact J. L. We born, Lamesa, phone  
 5226., 1211 S 6th Lamesa 2tp

**BUY, SELL OR TRADE —  
 GUNS AND PISTOLS  
 WATCHES CLEANED \$2.95**  
 All Work Guaranteed  
**★ Hale Variety**

Americans ate well in 1960. The  
 U. S. Department of Agriculture  
 said food consumption in 1960 av-  
 eraged 1488 pounds per person.  
 Consumption of dairy products led  
 with 414 pounds per person. Fruits  
 and vegetables were second and  
 meats were third. Plentiful sup-  
 plies are forecast for 1961.

**INCOME TAX QUESTIONS AND  
 ANSWERS**

Tax questions are not new to the  
 employees of Internal Revenue Ser-  
 vice. The well trained tax employees  
 who answer the telephone and talk  
 to the taxpayers in person at the  
 IRS offices in this region answer  
 more than 100,000 questions every  
 year. Even thou the tax folks give  
 the same general answer to thou-  
 sands of questions, they point out  
 that each taxpayer has an individ-  
 ual problem that requires the ap-  
 plication of the law to his particular  
 circumstance.

The ten most common questions  
 being answered are —

1. Do I have to file a separate re-  
 turn Form 1040-A for each W-2 I  
 receive?
- A. — No. You file only one in-  
 come tax return. You combine all  
 the income reported on the W-2's  
 given you by the employers for  
 whom you worked during the year.
2. I am a housewife. What's this  
 community property business? Why  
 can't I file a separate income tax  
 return on the income I earned my-  
 self?

Answer — Texas is a community  
 property state. The income that the  
 husband earns, as well as the wife,  
 belongs one half to each the hus-  
 band and the wife. If the hus-  
 and and the wife both have income they  
 must either file a joint return in-  
 cluding all of the income or split all  
 of the community income and ex-  
 penses. When they file a separate  
 return, each must include one half  
 of the income and the expenses for  
 the community on his or her return.  
 3. I am having trouble taking my  
 medical expense deduction. I am  
 over 65. Can I deduct all of my  
 doctor bills and my drugs and medi-  
 cine expense?  
 A. — No. You must subtract 1  
 percent of your adjusted gross in-  
 come from the amount paid for  
 medicine and drugs before taking  
 the deduction. However since you  
 are over 65 you may deduct all of  
 your doctor bills without reducing  
 the total expense by 3 percent of  
 adjusted gross income. You are lim-  
 ited to a maximum deduction. The  
 amount varies, depending upon such  
 factors as number of dependents,  
 whether you file a separate return  
 or not and whether you are disabled.

Supply and demand are still the  
 major determining factors in egg  
 prices. The demand for eggs in  
 1961 should remain near the 1960  
 level and the price to consumers re-  
 latively low compared with other  
 foods.

**Your Lynn County Tax Collector  
 Will Be At MOORE INSURANCE AGENCY  
 January 26, 27th (Thursday and Friday) To  
 COLLECT**

# Taxes & Poll Taxes

★ The 1946 Study Club will write POLL TAXES  
 Jan.. 28th at LOTT PHARMACY

**Geo. D. McCracken**  
 Tax Assessor and Collector  
 Lynn County, Texas

## STANLEY FUNERAL HOME

**AND BURIAL ASSOCIATION**

Day or Nite Call WY 84433 At Tahoka

"Thoughtful, Courteous Service"

We Accept Burial Policies Of All Companies

# Your Magic Key to -- BIGGER AND BETTER CROPS

For control of seed-borne and soil -borne disease organisms to promote  
**BETTER Stands, Better Quality  
 Better Yields**

## Plant Acid Delinted Seed

\$35.00 Per ton

## Cottonseed Delinters, Inc.

On Post Highway, East Tahoka Phone WY 8-4115

**O'DONNELL INDEX - PRESS**  
 Established in 1933

Box 546, O'Donnell, Texas

Published Every Wednesday  
 O. G. SMITH, JR., Owner

Advertising Rate: 60c col. in.  
 Entered as second class matter  
 September 23, 1923 at Post Office  
 at O'Donnell, Texas under Act of  
 Congress on March 3, 1879.

**SUBSCRIPTION RATES**  
 In Lynn, Dawson and Borden  
 Counties \$2 per year. Elsewhere in  
 U. S. \$2.50 per year.  
 Card of Thanks \$1.00. Classified  
 advertising 4c per word, with mini-  
 mum charge of 50c.  
 Your label at top of paper tells  
 late your subscription expires.

Old timers of the Southwest called  
 a faint or pinto horse an "In-  
 dian pony" since he was the favor-  
 ite of the Indian because of the In-  
 dian's love of color.

Texas' population now includes  
 more than half a million persons  
 over 65 years of age. This according  
 to Reagan Brown, extension rural  
 sociologist, represents about 7 per-  
 cent of the total population or ap-  
 prox 1 out of 11. The ratio is high-  
 er in rural areas.

For sale — 1955 Model Moline  
 Tractor, reasonable, Dan Turner  
 Rt. 1 O'Donnell 2tp

In the cow country where ladies  
 were scarce, the cowboys flocked to  
 dances. Because there usually were  
 not enough ladies to go around,  
 some of the men were picked to  
 play the part of a female and dance  
 lady fashion. The man so designat-  
 ed wore a handkerchief tied to his  
 arms. This was called a "heifer  
 brand." His reward was being allow-  
 ed to sit with the ladies between  
 dances.

The "Oregon puddin' foot" was a  
 type of horse which was developed  
 when a riding horse was crossed  
 with a draft horse. This type was  
 developed in Oregon for mountain  
 work.

**Noble L. Rumbo, M.D.**  
**Medicine and Surgery**  
 RUMBO CLINIC  
 OFFICE TELEPHONE 61  
 RESIDENCE PHONE 136

We thank you for...

# THE BIGGEST YEAR IN CHEVROLET CAR HISTORY

featuring

## AMERICA'S POPULAR PAIR




The best selling

The "car of the year"

# CHEVROLET & CORVAIR!

Overwhelming acceptance of the new 1961 models introduced last fall—together with the tremendous success of the '60 Chevrolets—has sent Chevrolet passenger car sales to an all-time yearly high. More new Chevrolets and new Corvairs were delivered to more people during the past year than ever bought any make of car in a single year before. We and your Chevrolet dealer

thank you for your continuing confidence in, and preference for, Chevrolet. Your record-breaking purchases of Chevrolets have significance to everyone thinking of buying a new car this year, and—since sales of new 1961 Chevrolets and Corvairs continue at record-breaking levels—are a healthy indication of the inherent strength and vigor of our national economy.

See the new Chevrolet cars, Chevy Corvairs and the new Corvette at your local authorized Chevrolet dealer's

## ELLIS CHEVROLET CO.

PHONE 126, O'DONNELL, TEX.

# Real Estate


★ Listings Wanted

## Auto Loans

Fast service • Low cost  
 New or used cars.  
 Up to 36 months to pay.

**MOORE INSURANCE AGENCY**  
 Phone 220, O'Donnell

## CLAUDE'S



All Kinds Cowboy and Wellington  
 BOOTS — WESTERN SHIRTS  
 MOCCASINS — LOAFERS — ALL  
 KINDS FINE LEATHER GOODS  
 EXPERT REPAIR ON ALL  
 SHOES AND BOOTS

TO RELIEVE  
**SORE THROAT**  
 Due to a cold, try DURHAM'S  
 ANAESTHESIA-MOP and see how pleas-  
 ant and effective a mop can be. Gen-  
 erous bottle with applicators only 75c  
 at your Druggist.

**LOTT PHARMACY**  
**O'Donnell Barber Shop**  
 LATEST STYLES CUT BY THE  
 BEST METHOD  
 Specialize In Flat Tops  
 Prompt Service John

**Dr. O. H. NANCE**  
 Optometrist  
 528 N. 1st Lamesa ph. 554

**Saleh And Saleh**  
 ATTORNEYS AT LAW  
 GENERAL PRACTICE IN ALL  
 COURTS  
 502 N. 1st St. Phone 2171  
 LAMESA, TEXAS

**RENEW YOUR SUBSCRIPTION  
THE O'DONNELL INDEX-PRESS**

Charter No. 12831 Reserve District No. 11

**REPORT OF CONDITION OF THE  
FIRST NATIONAL BANK  
OF  
O'Donnell**

IN THE STATE OF TEXAS AT THE CLOSE OF BUSINESS ON DEC. 31, 1960 PUBLISHED IN RESPONSE TO CALL MADE BY COMPTROLLER OF THE CURRENCY, UNDER SECTION 5211, U. S. REVISED STATUTES

**ASSETS**

1. Cash, balances with other banks, including reserve balance and cash items in process of collection	\$670,571.76
2. United States Government obligations, direct and guaranteed	249,426.19
3. Obligations of States and political subdivisions	120,000.00
4. Other bonds, notes, debentures	1,100,000.00
5. Corporate stocks (including \$6,000.00 stock of Federal Reserve bank)	6,000.00
6. Loans and discounts (including \$14,412.80 overdrafts)	444,095.40
7. Bank premises owned \$30,250.00, furniture and fixtures \$10,620.00	40,870.00
(Bank premises owned are subject to \$ no liens not assumed by bank)	
11. Other assets	4,505.25
12. TOTAL ASSETS	2,635,648.00

**LIABILITIES**

13. Demand deposits of individuals, partnerships and corporations	2,163,423.83
15. Deposits of United States Government (including postal savings)	9,835.30
16. Deposits of States and political subdivisions	174,898.24
18. Other deposits (certified and cashier's checks, etc.)	55,549.56
19. TOTAL DEPOSITS	\$2,403,707.93
23. Other liabilities	8,000.00
24. TOTAL LIABILITIES	2,411,707.93

**CAPITAL ACCOUNTS**

25. Capital Stock: (a) Common stock, total par \$75,000.00	\$75,000.00
26. Surplus	125,000.00
27. Undivided profits	23,946.67
29. TOTAL CAPITAL ACCOUNTS	223,946.67
30. TOTAL LIABILITIES and CAPITAL ACCOUNTS	2,635,648.00

**MEMORANDA**

31. Assets pledged or assigned to secure liabilities and for other purposes 128,000.00  
I, Deen Davis, Cashier of the above-named bank, do solemnly swear that the above statement is true to the best of my knowledge and belief.  
DEEN DAVIS, Cashier

Correct - Attest: J. T. Forbes, John Saleh, W. L. Gilliam, Directors  
(Seal) STATE of Texas, County of Lynn, ss

Sworn to and subscribed before me this 9th day of January, 1961 and I hereby certify that I am not an officer or director of this bank.  
Roddy Doss, Notary Public, My commission expires June 1961

**CLEAN HANDS**

Our courts work with two sets of principles in meting out justice—those of "law" and those of "equity". Under "law" a court declares the parties' rights and duties and sets money damages for harm ALREADY done—as when someone goes back on his contract with you or injures you in an automobile crash. But under principles of "honesty,"

**EQUITY and conscience**, for example, a court seeing harm on the way, may forestall it and enforce its orders by fines or jail terms. England used to have two kinds of courts to hear cases under law and equity. But today both England and America use the same judge to hear both kinds of cases. How did these two systems arise?

Long ago the English king called upon the "chancery"—then largely made up of churchmen (the keepers of the king's conscience) to give "relief" where the older Common Law courts, grown rigid might fail. Unable to use the Common Law, the chancellors applied certain rules and maxims, sometimes borrowed from ancient Greece and Rome—

"He who comes into equity must come with clean hands." Sometimes this is stated: "No one can take advantage in a court of equity of his own wrongdoing."  
This maxim denied a suitor "relief" if he himself has done wrong in the transaction at issue.

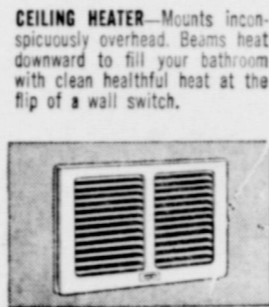
**Sunshine WARM and fresh-air clean**

**ELECTRIC  
BATHROOM  
HEATING**

You'll love the quick, radiant warmth of a flameless electric bathroom heater... the heater that warms like sunshine. And you'll love the safety and convenience of the heater that turns on and off like an electric light, and provides heat so wonderfully clean it will help keep your bathroom walls and tile spotless. See your electrical contractor soon about an electric heater for your bathroom. Start enjoying clean, modern, healthful electric heat.



**WALL HEATER**—Mounts flush with wall. Provides healthful warmth in seconds. Can be equipped with a thermostat for fully automatic heat control.



**CEILING HEATER**—Mounts inconspicuously overhead. Beams heat downward to fill your bathroom with clean healthful heat at the flip of a wall switch.

**TEXAS ELECTRIC SERVICE COMPANY**

W. B. MITCHELL, Manager

Phone 60



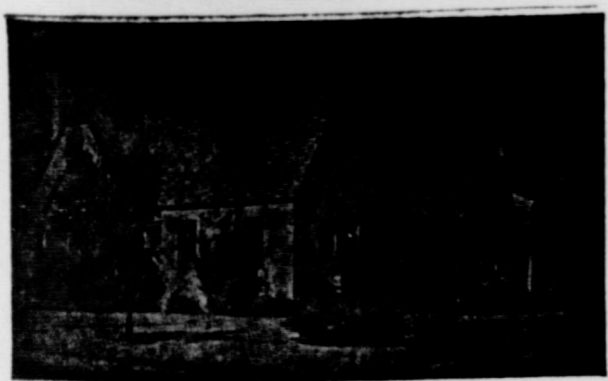
**Save With Safety**

By Buying Rexall Products



**Lott Pharmacy**

Hugh Lott, Registered Pharmacist



**HIGGINBOTHAM FUNERAL HOME**  
"Dedicated To Helpfulness"  
403 N. Austin St. Lamesa Phone 4585  
24 Hour Ambulance Service  
Burial Insurance "Bonded Protection"

**Quality Ginning**

Is Our Business -- Try Us

This is a service organization and we are striving to serve you better.

**Wells Farmers  
Co-operative Gins**

DEALERS IN --

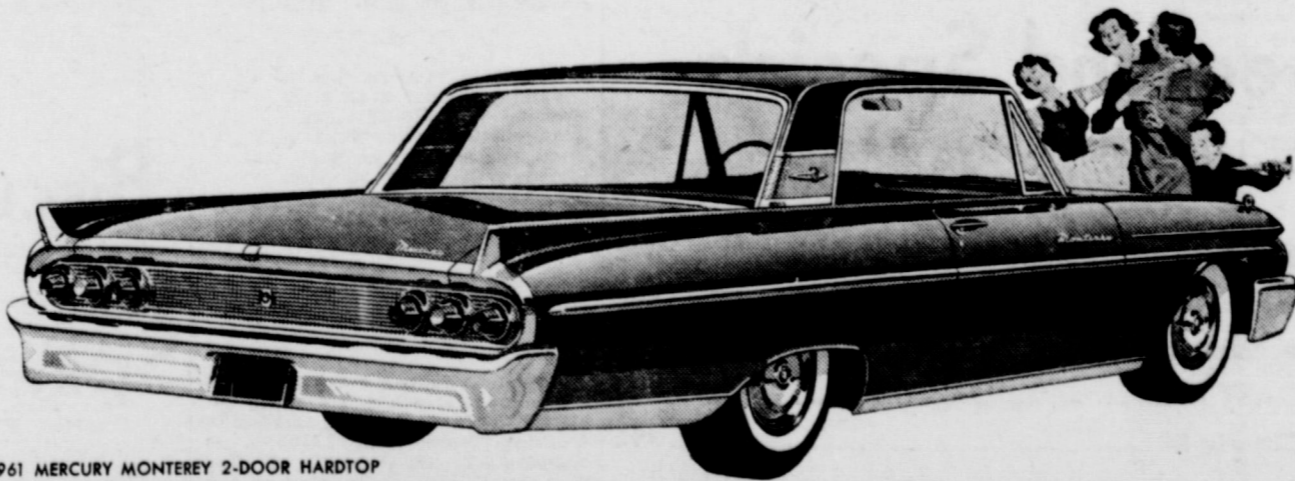
COTTON, COTTON SEED AND COTTON SEED

PRODUCTS

B. J. (Shorty) McLaurin, Mgr.

Now for the first time...

**Traditional  
Mercury values  
in the  
popular price range**



1961 MERCURY MONTEREY 2-DOOR HARDTOP

**TRADITIONAL MERCURY COMFORT** Only Mercury has Cushion-Link Ride (standard on Monterey and Meteor 800)—a unique suspension system that absorbs jolts and jars that come through to you in other cars. It "gives" backward and forward as well as up and down. And Mercury has a longer wheelbase (120 inches) and greater weight (up to 241 pounds heavier) than other cars in its price range. Result: you enjoy a smooth, solid, steady big-car ride you'd expect to pay much more for. There's plenty of stretch-out room in Mercury, too—even more rear seat hip, shoulder and head room than in last year's spacious Mercury. Wider doors and more trunk space, too.

**TRADITIONAL MERCURY VALUE** There's extra value in Mercury's engine choice—all the way from the Super-Economy "6" (Mercury's first "6") to the powerful Marauder V-8's. And even the top-performing V-8's deliver up to 15% better gas mileage. There's extra value in Mercury's seven self-servicing features. From self-lubricating chassis to self-adjusting brakes, they save you money every mile you drive. Everywhere you look, the 1961 Mercury offers you traditional Mercury values. Now, for the price most people pay for a new car, you can own a Mercury. Take your pick of Mercury's three great series and drive it today!

LINCOLN-MERCURY DIVISION, Ford Motor Company

1961 Mercurys—  
ALL IN THE POPULAR PRICE RANGE

1 MERCURY MONTEREY Finest, most luxurious of all 1961 Mercurys—America's lowest-priced luxury car.

2 MERCURY METEOR 800 Priced to compete with the top series in the low-price field.

3 MERCURY METEOR 600 Priced right in the heart of the low-price field.

**FORBES MOTOR CO.**

O'DONNELL, TEXAS

# BLOCKER GROCERY

Your S. & H. GREEN STAMP store

SPECIALS For Friday and Saturday

Beef roast lb 53c  
*chuck lb*

Bologna lb 39c  
*All meat lb*

Sausage 29c  
*Fresh, store made lb*

Bacon lb 25c  
*smoked jowl or dry salt*

Biscuits . 4 cans 25c  
*Kimbells*

APPLES . . . . . 19c lb.  
*Ex-fancy Red, Delicious*

Jell-o . . . . . 2 for 15c  
*Assorted Flavors*

PECANS . . . . . 98c  
*SHELLED 12 oz. pkg*

Coffee . . . . . \$ 1.39  
*2 LB Can FOLGERS*

Chili . . . . . 59c  
*NO. 2 CAN "WOLF"*

TIDE . . . . . 63c  
*GIANT SIZE*

Pot Pies - - - - - 19c  
*8 oz. Frozen chunk style, chicken, beef or turkey*

Mellorine . . . . . 25c  
*BORDEN'S 1-2 GALLON*

TRADE WHERE MA SAVES MONEY FOR PA

## Weekend Specials

SPECIALS FOR FRIDAY AND SATURDAY

OPEN ON SUNDAYS

- SIRLOIN STEAK lb . . . . . 89c
- T-Bone Steak lb . . . . . 89c
- Sausage, home made . . . . . 49c
- BEEF ROAST lb . . . . . 49c
- Round Cheese lb . . . . . 39c
- Van Camps Sardines 15 oz. can . . . . . 19c
- W. P. Bleach quart . . . . . 15c
- Jergens Lotion reg. 59c size . . . . . 39c
- Vanilla Waffers 1 Lb. . . . . 22c
- Morton Salad dressing quart . . . . . 39c
- Supreme Crackers 2 lbs . . . . . 49c
- Teanap Paper napkins 2 for . . . . . 21c
- Folgers Instant Coffee 6 oz. jar . . . . . 94c
- Keith's Frozen rolls 2 pkg. for . . . . . 49c
- Oranges 5 Lb bag . . . . . 29c

FREE -- Register now for 17 jewel Bolova Lady's wrist watch to be given away Jan. 21

**JACKSON'S GROCERY & MARKET**  
We Give Double Trist Stamps  
FREE DELIVERY SERVICE ANYTIME  
Where Customers Send Their Friends  
AT THE NORTH Y PHONE 150

### ASSEMBLY OF GOD CHURCH

A welcome and service for all Sunday School 9:45 a. m. Morning Worship 11 a. m. Evangelistic service 7:30 p. m. Young people service 6:30 p. m. Midweek Service 7:30 p. m. Large enough to know you — small enough to serve you.  
Rev. D. R. Kirkendall, pastor

### CHURCH OF THE NAZARENE

A friendly Church serving a friendly community in a needy world invites you, Sunday school at 10 a. m. Morning Worship at 11:00 a. m. Evening Worship at 7:30 p. m. Prayer meeting each Wednesday at 8 p. m.

### MOTORISTS TO SEE RED

Austin, Texas — The Texas Highway Department this week announced a highway safety measure designed to protect the motorist by making him see red — literally. The Department said it will require flagmen directing traffic at highway construction and maintenance projects to wear bright red vests and to use a flag of the same color.

The men in the red vests will be seen appearing on Texas Highway by mid-February when Highway Department employees working on maintenance jobs will don the eye-catching apparel. Made from fluorescent red nylon, the new vests are designed to make flagmen more easily visible and recognizable to motorists both day and night.

The January plentiful foods list just released by the U. S. Department of Agriculture features fryers, cranberries, onions, cabbage and canned ripe olives.

For sale — Mahogany drop leaf table, 2 upright vacuum and 1 gas heater. Mrs. James Reed

Good cane bundles for sale Roy Line 2tp

For sale — 1955 Chevrolet Pickup, V-8, with overdrive Mrs. W G Allen Rt. 3 O'Donnell 1tp

Public School Week has been set from March 6 thru 10. The local school system has begun plans to observe the week.

Please keep your dogs away from my home or I will kill them. Thanks ED ALLEN 2tp

For sale — 5 room house and bath, 2 lots on pavement, See Curtis Brandon 1tp

For sale — 1955 Model MoLine Tractor, reasonable, Dan Turner Rt. 1 O'Donnell 2tp

The Texas Farm and Ranch Safety Council offers this suggestion for a New Year's Resolution — "I will strive at all times to protect my family from accidents by setting a good example of safe living and by teaching all members of my family the principles of safety and see that accident hazards in the home and on the farm or ranch are removed or corrected." "Let's make 1961 the safest year ever so far as rural living is concerned," challenges the Council.

BUY, SELL OR TRADE — GUNS AND PISTOLS WATCHES CLEANED \$2.95 All Work Guaranteed

★ Hale Variety

## Specials For Friday and Saturday

- Spiced Luncheon Meat Lb . . . . .
- Chuck Roast Lb . . . . .
- ALL MEAT FRANKS LB . . . . .
- GIANT BOX TIDE . . . . .
- MELLORINE 1-2 GAL. . . . . 4 for
- 1 lb Supreme Crackers . . . . .
- 18 oz. Our Value Plum Preserves 4 for . . . . .
- No. 303 Wapco Cut Beans . . . . .
- no. 2 1/2 can White Swan Shoe string pot. 2 for
- Large can Pet or Carnation MILK . . . . .
- 3 lb ctn. Armour Pure Lard . . . . .
- Quart Mazola OIL . . . . .
- 1 lb Assorted NUTS or WALNUTS . . . . .
- 10 LB Bag White SPUDS . . . . .
- PINK GRAPEFRUITS LB . . . . .



★ ★ Double Frontier Stamps On Wednesday WE GIVE FRONTIER SAVING STAMPS

## Line Grocery And Market

## Money Savers

Biscuits 3 for 19c  
*Kimbell's*

VEL 27c  
*5c off box*

Toilet tissue 31c  
*Zee 4 roll pkg.*

Cherries 2 for 39  
*Pie, Our Value 303 can*

Coffee 59c  
*Kimbell's 1 Lb can*

Chili 59c  
*No. 2 can KIMBELLS*

Biscuit Mix 47c  
*Pioneer, 2 Lb Size*

Spinach 2 for 25  
*303 size, KIMBELLS*

Milk 99c  
*Instant, Pet 12 qt. nonfat*

Downy 41c  
*Fabric Softner reg. size*

Plan to attend MOD School here Friday Feb. 3rd

Visit Our Record Rack

★ 50 Top Hit Records  
1 day film developing

## Finest Quality MEATS

sliced Bacon lb 63c  
*Armour Star lb*

Good Beef roast 59c

Cheese lb 59c  
*Longhorn lb*

\$\$\$\$\$\$\$\$\$\$\$\$\$  
SILVER DOLLAR THRIFT STAMPS



\$\$\$\$\$\$\$\$\$\$\$\$\$

★ ★ WE GIVE DOUBLE SILVER DOLLAR THRIFT STAMPS ON EVERY WEDNESDAY

# MANSELL BROS

PHONE 50 SPECIALS FOR FRIDAY And SATURDAY FREE DELIVERY

School E  
At the las  
well School  
aturday, A  
he annual  
spiring are  
or, a local  
ynn Bird  
Deadline fo  
the ballot  
dition or  
School tr  
reported 91  
ax in and 1  
Tax Collect  
ent of tax  
paying sch  
taxes with  
business  
New att  
Washing  
payments  
S S New  
Your so  
than ever  
ment  
tended, per  
erty is ne  
fits, and a  
be at leas  
disability  
John G.  
of the L  
face said t  
large crow  
the law w  
no sign of  
everyone  
ly under  
emphasize  
see such  
word of  
round." I  
who are  
a represent  
try again  
Mr Hu  
who ans  
questions  
the near  
possible.  
1. Hav  
plication  
fits denie  
breadwin  
not worl  
social sec  
2. Hav  
disability  
cause yo  
3. If y  
ever tol  
ity for 1  
social se  
died bef  
ed long  
4. Ha  
receive  
account  
been ms  
years 7  
A reg  
Social S  
Donnell  
2 p. m  
and wil  
matters  
Jim 8  
unity 4-  
the ton  
Hybrid  
7,892.5  
ed HS  
Just  
America  
brilliers  
figure  
capita,  
at 23.6  
growth  
popular  
consum  
The  
duction  
the lar  
tory. b  
Consum  
meats  
pounds  
time.  
To W  
John  
attorne  
for the  
body a  
disput  
Court.