

THE O'DONNELL INDEX-PRESS
RENEW YOUR SUBSCRIPTION

See H. and S. Auto and Home
Supply for all your supplies, repairs
and parts on air conditioners 5-24

NOTICE TO BIDDERS

Sealed proposals addressed to the Honorable Mayor and City Commission of O'Donnell, Texas, will be received at the City Hall, O'Donnell, Texas until 8:00 p. m. August 24, 1961 for furnishing all necessary materials, machinery, equipment, superintendence and labor for seal coating approximately 60,000 square yards of asphalt street surfacing and other incidental items of work for the City of O'Donnell, Texas.

Bidders must submit a Cashier's or Certified Check issued by a bank satisfactory to the Owner, or a Proposal Bond from a reliable Surety Company, payable without recourse to the order of the City of O'Donnell, Texas in an amount not less than five percent (5 percent) of the largest possible bid submitted as a guaranty that the Bidder will enter into a contract and execute bonds and guaranty in the forms provided within ten (10) days after notice of award of contract to him. Bids without the required Check or proposal Bond will not be considered.

The Successful Bidder must furnish Performance and Payment Bonds on the forms provided in the amount of 100 percent of the total contract price from a Surety Company holding a permit from the State of Texas to act as Surety, or other Sureties acceptable to the Owner.

All lump sum and unit prices must be stated in both script and figures. In case of ambiguity or lack of clearness in stating the prices in the bids, the Owner reserves the right to consider the most advantageous construction thereof, or to reject the bid. Unreasonable (or "unbalanced") unit prices will authorize the Owner to reject the bid. The Owner reserves the right to reject any or all bids, to waive formalities and to accept the bid which seems most advantageous to the City's interest.

Bidders are expected to inspect the site of the work and to inform themselves regarding all local conditions under which the work is to be done.

Attention is called to the provisions of the Acts of the 43rd Legislature of the State of Texas, page 91, Chapter 45, (Article No. 5159A Civil Statutes 1925) concerning the wage scale and payment of prevailing rates of wages as established by the Owner. Said scale of prevailing minimum rates of wages is set forth in the specifications.

Information for bidders, proposal forms, plans and specifications are on file at the City Hall, O'Donnell, Texas and Parkhill, Smith and Cooper, Consulting Engineers, 291 Avenue R, Lubbock, Texas.

Copies of Plans and Specifications may be secured from Parkhill, Smith and Cooper, Consulting Engineers, 291 Ave. R, Lubbock, Texas City of O'Donnell, Texas, owner By L. J. Hash, Mayor

Valuable time may be saved during the harvest season by checking all on farm grain storage facilities well in advance of the day when they will be needed. Using leaky, run down and unclean storage buildings will increase hazards from insect and rodent damage, two factors usually responsible for the loss of quality in farm stored grain.

Careful planning before building a farm pond can help solve the weed problem. Large areas of shallow water should be avoided in pond construction because weed, nearly always become a problem where the water is less than about 3 feet deep.

LODGING IS IMPORTANT GRAIN SORGHUM DISEASE

Charcoal rot or lodging is a common disease of grain sorghum and corn in most areas of Texas. The fungus root rot causes more damage than head smut in many areas. Close to 100 percent infection may occur in susceptible selections or varieties. Losses are apt to be heaviest during years of little rainfall with dryland farming. Although lodging is caused by other things, in many cases it is charcoal rot disease.

The disease appears in West Texas during August and September. Damage is easiest to detect when the plants are approaching maturity. Charcoal rot damaged plants have poorly filled heads or ears with lightweight grain. Diseased stalks ripen and dry early.

Weakening of the stalks by the fungus, in many cases, causes them to lodge. Stalks are soft and discolored at the base with the pith disintegrated and shredded. Small pin point, blackish, seed bodies (sclerotia) may be among the shredded pith.

Other crops affected by the disease are alfalfa, cotton, lespedeza, sugar beets, sweetpotatoes, watermelons, sunflowers, peppers, cowpeas, beans and peas. Crops that have their seedling stages and those that mature in cool or rainy weather are not damaged seriously.

Abundant moisture from rain or irrigation water in the latter part of the growing season practically controls the stem rot form. Crops appear to resist the disease in their period of growth when they have high vigor. Work is under way in an effort to develop resistant hybrids. Contact your extension agent for additional information. Ask for a copy of B-912 "Grain Sorghum Production in Texas," B-210 "Growing Grain Sorghum"

Saleh And Saleh
ATTORNEYS AT LAW
GENERAL PRACTICE IN ALL COURTS
502 N. 1st St. — Phone 2174
LAMESA, TEXAS

CHURCH OF THE NAZARENE
A friendly Church serving a friendly community in a needy world invites you, Sunday school at 10 a. m. Morning Worship at 11:00 a. m. Evening Worship at 7:30 p. m. Prayer meeting each Wednesday at 8 p. m.

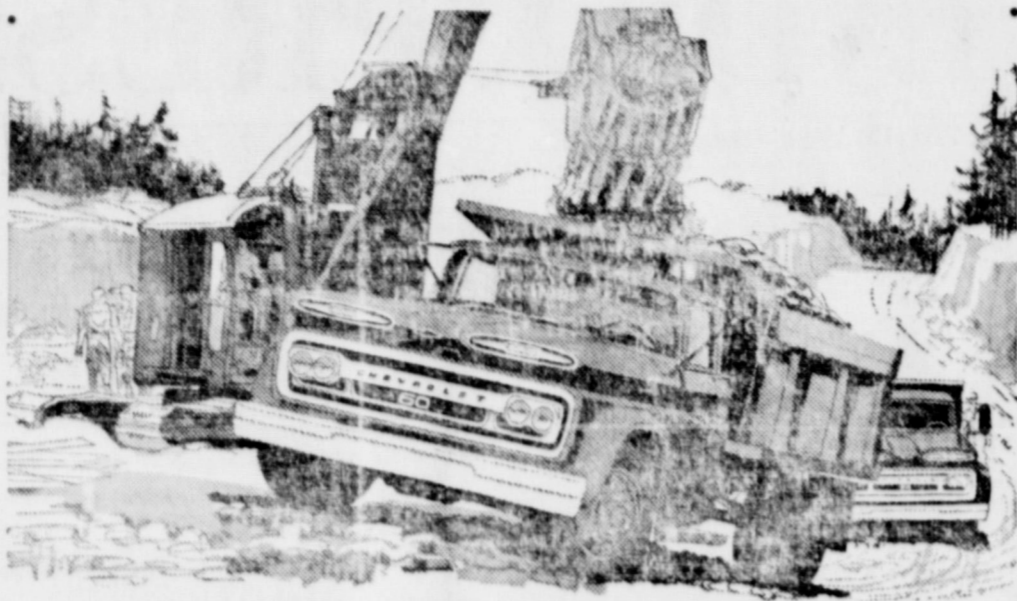
BUY YOUR DAILY PAPERS AT INDEX OFFICE —
LUBBOCK AVALANCHE
Morning and Sunday — \$14.95
Morning without Sunday \$13.00

O'DONNELL INDEX - PRESS
Established in 1938

Box 546, O'Donnell, Texas
Published Every Wednesday
O. G. SMITH, JR., Owner
Advertising Rate: 60c col. in.
Second class postage paid at O'Donnell, Texas.

SUBSCRIPTION RATES
In Lynn, Dawson and Borden Counties \$2 per year. Elsewhere in U. S. \$2.50 per year.
Card of Thanks \$1.00. Classified advertising 4c per word, with minimum charge of 50c.
Your label at top of paper tells date your subscription expires.

Poison oak or ivy can be successfully controlled and even eliminated thru the use of chemical sprays. Your local county agent can give you more detailed information.



It's the savingest time of the year on the trucks with the workingest ways

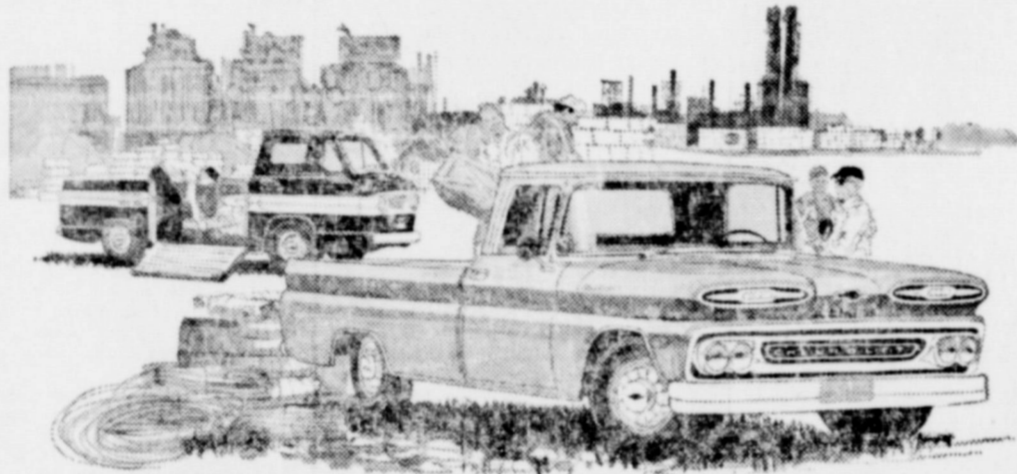
SAVE! You just can't beat August buys for saving. It's the time of year when Chevrolet dealers traditionally pull all the stops. You'll find sweeter-than-ever savings waiting for you on every '61 Chevy truck—from the nimble Corvair 95's, right up to the mighty medium- and heavy-duty jobs. Come in and save a bundle!

SAVE! You just can't beat Chevy trucks for working. With Chevy's easier riding Independent Front Suspension, loads ride easier, drivers stay fresher, the truck lasts longer. You get more work, more hauls, for your truck dollars!

SAVE! And for the frosting on the cake—you just can't beat Chevy trucks at trade-in time, either. Latest official industry reports prove that Chevrolet trucks lead in trade-in value, week after week, over every major competitor in Chevy's price range.*

*Based on official figures from Automotive Market Report.

CHEVROLET TRUCKS



See your local authorized Chevrolet dealer

ELLIS CHEVROLET CO.

BOX 124, O'DONNELL, TEXAS

Send us your NEWS



turns itself on at night automatically ... even when you're away!

Controlled by an electric eye, the Ready-Lite turns on at dusk and off at dawn . . . automatically. When you're away from home, it's comforting to know that your Ready-Lite provides protective light at night with no waste from needless daytime operation. And when you're at home, it's nice to know that your Ready-Lite automatically keeps a friendly light at your doorstep to welcome callers. Choose your Ready-Lite now from a wide variety of handsome styles at your Ready-Lite dealer's. If you wish, you can have your Ready-Lite charged to your electric service bill and you can have up to 24 months to pay.

TEXAS ELECTRIC SERVICE COMPANY
W. B. MITCHEL, Manager 428-3322



HIGGINBOTHAM FUNERAL HOME

"Dedicated To Helpfulness" Phone 4585
408 N. Austin St. Lamesa
24 Hour Ambulance Service
Burial Insurance "Bonded Protection"

SCHOOL OPENS AUG 28th
Shop Our Complete Line Of

School Supplies



Lott Pharmacy

Hugh Lott, Registered Pharmacist

Always . . .

A Complete Stock of

AUTO parts

WE ALWAYS APPRECIATE YOUR TRADE

O'Donnell Auto Supply

BUCK ELLIS, OWNER

Feed represents between a half and two thirds of the total cost of producing a dozen eggs. This makes it just plain good business to try to get the best possible feed conversion from the laying flock.

Turkeys top the USDA's plentiful foods list for August. Marketings during the month will be as large as around Thanksgiving in yester-years and prices make turkey a bargain meat. Eat them often. They are excellent barbecued.

COTTON BACTERIAL BLIGHT IS MOST SERIOUS PLANT DISEASE

Bacterial blight of cotton causes more damage than any other plant disease in Texas. It generally is most severe on the High Plains and the Coast Prairie, in the irrigated valleys of the Trans-Pecos area and in the sprinkler irrigated areas on the Rolling Plains.

Bacteria blight causes more than one fourth of the total cotton disease yield loss in Texas. Losses vary from \$35 million to \$40 million per year. Too, additional losses occur in the form of lower and spot grades of the harvested fiber. Losses in 1960 were slightly less than in former years.

Small, angular, brownish or blackish spots occur on the lower leaves. Later the disease may spread to the higher leaves. Only a few spots are necessary to drop the leaves. Yield reduction results from the premature loss of leaves. Small, circular dark-green spots occur on bolls. These spots enlarge, dry up, stain lint and prevent normal opening of the boll. Under severe conditions limbs or stems may die back.

The disease causing bacteria enter thru air breathing pores (stomata) in the leaves, bolls and stems. They also may enter the plant thru wounds.

The blight organism overwinters in the soil on old plant trash and on or in planting seed. Wind driven splashing rains, sprinkler irrigation or whirlwinds spread the bacteria from plant to plant in the fields.

The only known practical prevention is the growing of resistant varieties. Acala 1517BR, Acala 1517 B R 1, Blightmaster, Austin, Rex and Mebane B-1 have some resistance and are available for commercial production. New resistance varieties are being developed.

The planting of known disease free seed will give control if there is no soil carry over. Acid delinted seed, adequately treated with a seed protectant fungicide, will reduce early season infection. This practice does not necessarily prevent later epidemics. Correct amounts of nitrogen fertilizer will help make susceptible varieties more resistant.

THIS WEEK IN AUSTIN

Hottest debate of this special session erupted in the Senate last week with discussion of the Sunday closing bill. Exponents of the legislation to close businesses on Sundays, led by author of the bill, Sen. William Moore of Bryan, say the bill is an economic bill. "It is designed to close the discount houses that stay open on Sunday," Moore said.

Another supporter of the bill Sen. George Parkhouse said, "It is not fair for a group of Northerners to come down here and take business away from old and established businesses — to take it away from people who have been here a long time, who pay taxes and who support their churches."

The bill, which would permit religious groups who observe religious days other than Sunday, to stay open Sundays, was denounced as giving "an unfair economic advantage to groups which do not observe Sunday."

Stockmen over the state should be on the alert for a noncontagious livestock disease known as photosensitization. Conditions over the state are favorable for its spread. Contact a veterinarian or the local county agent for additional information.

The quality of the hay crop now being harvested may well depend says, Geo. McBee, extension pasture specialist, on the stage of growth of the plants when cut and the length of drying period. He suggests checking with the local county agent for information on improving the quality of hay.

Noble L. Rumbo, M.D.

Medicine and Surgery
RUMBO CLINIC
OFFICE TELEPHONE 61
RESIDENCE PHONE 180

For T V and Radio Repairs call Jim Burkett at Aten 2366 5-10

Dr. O. H. NANCE
Optometrist

528 N. 1st Lamesa ph. 554
ASSEMBLY OF GOD CHURCH

A welcome and service for all Sunday School 9:45 a. m. Morning Worship 11 a. m. Evangelistic service 7:30 p. m. Young people service 6:30 p. m. Midweek service 7:30 p. m. Large enough to know you — small enough to serve you.

O'Donnell Barber Shop
NOW AT NEW LOCATION JUST EAST OF REX THEATRE
LATEST STYLES CUT BY THE BEST METHOD
Specialize in Flat Tops
Prompt Service — John
BUY, SELL OR TRADE — GUNS AND PISTOLS
WATCHES CLEANED \$2.95
All Work Guaranteed
★ **Hale Variety**

Our Custom Made

DRAPES

Will Do Wonderful Things for your home. You will find just the right color and design in material at

Juanita's Draperies

Phone 3945 in Lamesa
605 South First

STANLEY FUNERAL HOME

AND BURIAL ASSOCIATION

Day or Nite Call WY 84433 At Tahoka

"Thoughtful, Courteous Service"

We Accept Burial Policies Of All Companies

CLAUDE'S

All Kinds Cowboy and Wellington BOOTS — WESTERN SHIRTS

MOCCASINS — LOAFERS — ALL KINDS FINE LEATHER GOODS
REPAIR REPAIR ON ALL

SHOES AND BOOTS
Phone 428 - 3416



This newest Goodyear gives you what you want!

ECONOMY!
IT'S THE **3-T NYLON All-Weather**



Pay a little, get a lot. That's economy... and you get it from road to rim with this newest Goodyear Nylon. You get it in 3-T triple-tempered Nylon Cord body that's tough, lasting. Get it, too, in a tread designed for really stretching mileage.

\$1288

TUBE TYPE	BLACK		WHITE	
	6.70x15	7.10x15	7.60x15	8.00x14
6.70x15	\$12.88	\$15.88	\$14.88	\$17.88
7.10x15	14.88	17.88	—	—
7.60x15	16.88	19.88	—	—
8.00x14	12.88	—	14.88	17.88

15 MONTH GUARANTEE!

Against normal road hazards — i.e., blowouts, fabric breaks, cuts — except repairable punctures. Limited to original owner for number of months specified. Any Goodyear tire dealer (over 60,000 in all 50 states) will repair tire without charge or make allowance on new tire based on original tread depth remaining and the current "Goodyear price."

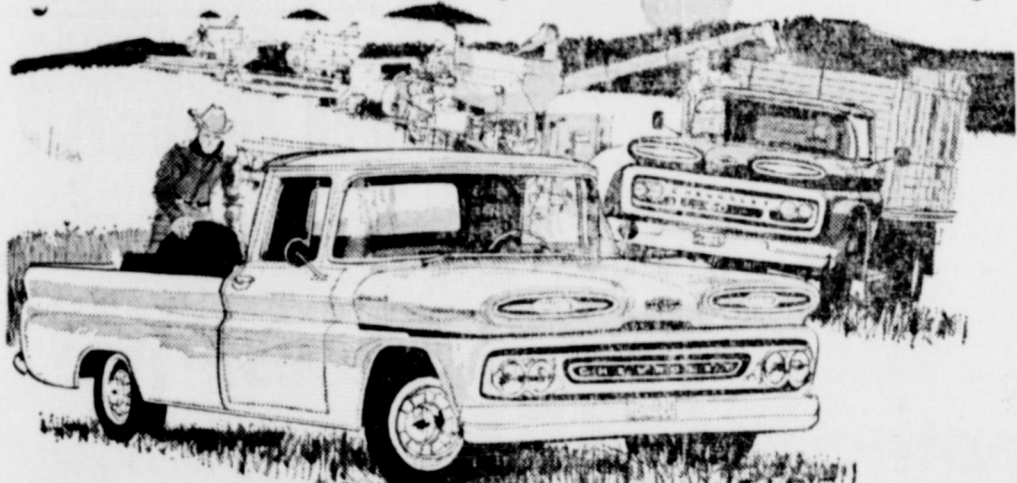
NO MONEY DOWN

As Low as \$1.25 Weekly for a full set

GOOD YEAR

MORE PEOPLE RIDE ON GOODYEAR TIRES THAN ANY OTHER KIND

HIGHWAY GARAGE
John Earles, Prop.



Fleetside Pickup and Series 60 with high rack

BUY NOW -- And SAVE

We have a large selection of new--

Pickups

That must be sold before September 1st. A wide choice of 6 and 8 cyls., long and short beds, Fleetsides and stepsides -- all at a big SAVINGS to you. Come in and see us now.

Buy Now -- And SAVE

Ellis Chevrolet Co.

REMEMBER HOW GREAT CIGARETTES USED TO TASTE? LUCKIES STILL DO

LUCKIES DON'T SKIMP

They're so round, so firm, so fully packed — so free and easy on the draw. They're fully packed with fine tobacco. They're firmer than any other regular cigarette. And Luckies smoke longer. **THAT'S WHY THEY TASTE SO GREAT.**



Get Texas-size taste ★ Get Luckies today!

THE AMERICAN TOBACCO CO.

BLOCKER GROCERY

Your S. & H. GREEN STAMP store

SPECIALS For Friday and Saturday

Pork Chops lb	59c	Bacon 2 lb	99c
		Tall Korn 2 lbs	
Bologna lb	39c	hams lb	27c
All Meat Lb.		Nuehoffs Picnic lb	

Coffee 1 Lb can . 59c
"White Swan"

CATSUP 29c
"Del Monte" 20 oz. large family size

Red Plum Jam 3 for \$1
18 oz. "Bama"

Luncheon Meat . 39c
12 oz. can "Kimbells"

APRICOTS 25c
No. 2 1/2 "Whole"

Tide 69c
"Giant Size"

Pineapple . 6 for \$1.
"Del Monte" Flat can Crushed

FISH STICKS 25c
Breaded 8 oz. "Keith's" Frozen

TRADE WHERE MA SAVES MONEY FOR PA

Weekend Specials

SPECIALS FOR FRIDAY AND SATURDAY
OPEN ON SUNDAYS

Round Steak lb	79c		
BEEF ROAST Lb	49c	Mustard 9 oz. Jar	2 for 25c
FRANKS 3 Lb Picnic bag	98c	Hominy, White 12 cans for	\$1
OLEO, Decker's 5 Lbs	\$1	Cake Mix	3 boxes 79c
Toilet Tissue, Scot 3 rolls for	25c	Frozen Fruit Pies 3 for	\$1
MELLORINE Borden's all		Frozen Strawberries 10 oz. pk	19c
flavors 1/2 gal	39c		
Tomatoes 303 can 6 cans for only	\$1		
Cheer Giant Size	69c		

JACKSON'S GROCERY & MARKET
We Give Double Trist Stamps
FREE DELIVERY SERVICE ANYTIME
Where Customers Send Their Friends
AT THE NORTH Y PHONE 150

SPECIAL ON 670 x 15 Nylon Tires only \$10.95 with Exchange
All Sizes in Recappable Tires a very Low \$8.95 plus exchange
★ Register at our station for a new Corvair Chevrolet to be given away

Jackson Bros. Station

ANNOUNCEMENT
Carl F Page, M. D. announces removal of his offices from High Plains Clinic, Dinmitt, to 3610 34th, Medical-Dental Bldg Lubbock, effective Aug. 15th for the practice of General Medicine and Surgery

DANCE CLASSES
Now forming in O'Donnell Tap, Ballet, Folk, Square Ballroom Also Speech and posture classes
VALERIA SHARP PRATT
Phone 4138 for further information in Lamesa

Cannibalism in poultry can take as much money out of the poultryman's pocket as a major disease outbreak. It can happen at any time and among birds of any age. Best preventive measures are adequate housing, a good feeding and watering program and careful management supplemented with debeaking.

REX THEATRE
O'DONNELL, TEXAS
SATURDAY
Starts at 7:30 p. m.
Las Tigers Del King
SUNDAY - MONDAY
Sun.: 1:30 p. m. Monday
7:30 p. m.
Glenn Ford in
CRY FOR HAPPY
SUN. NITE at 7 p. m.
La Verganza Del Teneto
Solitario

Specials For Friday and Saturday

White Swan Biscuits per can
Qt. West Texas Waffle Syrup
Chewing gum 3 pkg. for
5 oz. Borden's Instant Coffee
Wapco Green Beans
Giant Size Post Toasties
303 can, white or yellow White Swan
Hominy 3 cans for only
12 regular Kotex
5 Lb SUGAR pure cane
Can'taloupe nice and sweet Lb
Fresh Onions 2 bunches for only
10 Lb bag Spuds
Pace Sliced Bacon 2 lbs
E and R Franks Lb
Longhorn Cheese Lb



★ ★ Double Frontier Stamps On Wednesday
WE GIVE FRONTIER SAVING STAMPS

Line Grocery And Market

Money Savers

Strawberries 17c
10 oz. pk. Mity Nice, Frozen

Margarine 35c
Corn oil, Armour's 1 Lb

Frozen Pies 3 for \$1
Simple Simon, large, Chocolate, Apple, coconut, lemon

Crackers 25c
1 Lb. Sunshine

Buttermilk 39c
1/2 gal. Borden's

Finest Quality MEATS

TIDE 69c
Giant Size 5c off

sliced Bacon lb 59c
Decker's Iowana
Fries crisp without burning

Toothpaste 49c
Pepsodent, Economy Size

Cheese lb 49c
Longhorn lb

Tomato juice 29c
46 oz. can Hunt's

Chuck roast lb 49c

Pineapple 2 for 39c
300 size, crushed, in heavy syrup,
Diamond Brand

Bologna lb 49c
All Meat

Hominy 9c
Kimbells no. 2 can white or yellow

jam 29c
Red plum "Bama" 18 oz. glass



★ ★ WE GIVE DOUBLE SILVER DOLLAR THRIFT STAMPS ON EVERY WEDNESDAY

MANSELL BROS

SPECIALS FOR FRIDAY And SATURDAY
Phone 428-3413 FREE DELIVERY Phone 428-3413