









## Amazing Mileage!

Swift and tireless... that's Conoco N-tane Gasoline. Here's fleet-footed travelling, mile after effortless mile. And you'll go farther than you think on a tankful of this rugged gasoline! Get it, and go!

For Amazing Mileage, see your  
Conoco Mileage Merchant for  
**CONOCO N-tane GASOLINE**



Copyright 1951, Continental Oil Company

**INDEX--PRESS WANT ADS HAVE FARMER'S INTEREST  
COSTS BUT TWO CENTS A WORD**



### HIGGINBOTHAM FUNERAL HOME

"Dedicated to Helpfulness"  
Phone 2223 403 N. Austin St. Lamesa  
24 Hour Ambulance Service  
Burial INSURANCE "Bonded Protection"  
L. T. Brewer, Local Representative

### Dr. O. H. NANCE

Optometrist

528 N. 1st Lamesa; ph 554

### BOGGAN TRACTOR CO.

FERGUSON TRACTORS and

Ferguson System Implements

1015 North Lynn Lamesa

Paul Boggan, Owner

Elvin R. Moore

Representing The  
Southwestern Life  
Insurance Co.

### RABIES CITED BY COUNTIES

Texas farmers and ranchers in the Red River Valley region and in Southwest and Central Texas have been warned to begin killing skunks, lots of them, before cold weather brings an increase in rabies cases. The grim warning is contained in an animal morbidity report.

State Health Officer Dr. Cox said Texas had areas "bigger than most states" which are completely free of rabies.

"From now on we're going to call our shots by counties of occurrence. It isn't going to be 'Texas rabies' and more."

"Livestock owners should have active skunk killing programs, especially in the Red River Valley area, when winter approaches and skunks hole up with livestock in dilapidated barns," the report continued.

Current focal point of skunk rabies are in Harris, Matagorda, Fort Bend and Lavaca counties. Another focus exists in the region of Comal and Hays counties and in central Texas in Travis, Bell, Coryell, Lampasas and McLennan counties.

### Mrs. H. L. Wood

Makes Belts, Buckles, Buttons, Buttonholes and Drapery. See me at Swinney Flower Shop on South 12th St 52cxx

FOR SALE: 640 acres, one half minerals with crop rents for this year. Good oil possibilities and good farming land, with possibilities for irrigation. \$60 per acre if sold by first of October. Lays good, 600 acres in cultivation.

177 acres Northeast of Level land, all in cultivation, lays good, irrigation well on adjoining land; no imp. \$125. Cecil Eivens at State Bank in Levelland 2tc

Farmers who have supplies of small grain seed suitable for planting purposes are urged to save them. Supplies of such seed in many areas are short.

### FLIES CARRY MANY DISEASES

Thousands of children and adults die every year from diseases carried by the fly. Typhoid fever, tuberculosis, polio, summer complaint, intestinal diseases and frequently death follows closely in the trail of the common house fly.

"The control of the fly menace comes at the top of the list of necessary public health measures which should be applied by every city and community in the State," the State Department of Health said.

"The most effective measure for control is to prevent breeding," Dr. Cox said. "Flies breed in filth, and about 8 days are required to complete a life cycle. During her life of several months, one house fly lays from 600 to 1,000 eggs. Thus it can be seen that in a season which begins in the spring of the year, the descendants from one fly number countless thousands."

Fresh home made Better Corn Meal available from now on at George's Gas Sta. Line's Grocery Alva Billingsley and son; Lamesa

See Fuzzy Moore for Polio Insurance, Hospitalization and Life Insurance

## VAN'S SOFT WATER Laundry

WET WASH  
RUFF DRY  
FREE Pickup And  
Delivery

Stanley - Jones

Funeral Home  
And Burial Association  
phone 233 Bx 185 Tahoka

### FLOWERS

FOR ANY OCCASION  
Come and see us or order from our local agent: CORNER Drug THE HOUSE OF FLOWERS Mr. and Mrs. J. B. BILLMAN Phone 830 -- Tahoka

## Gibson's

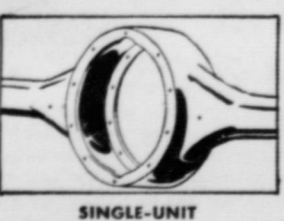
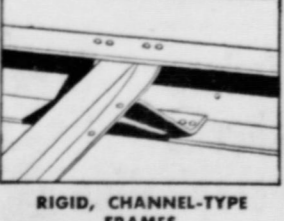
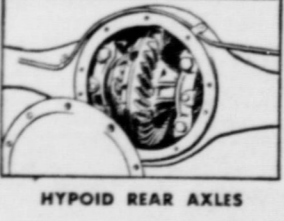
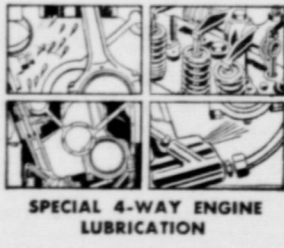
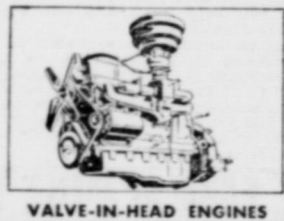
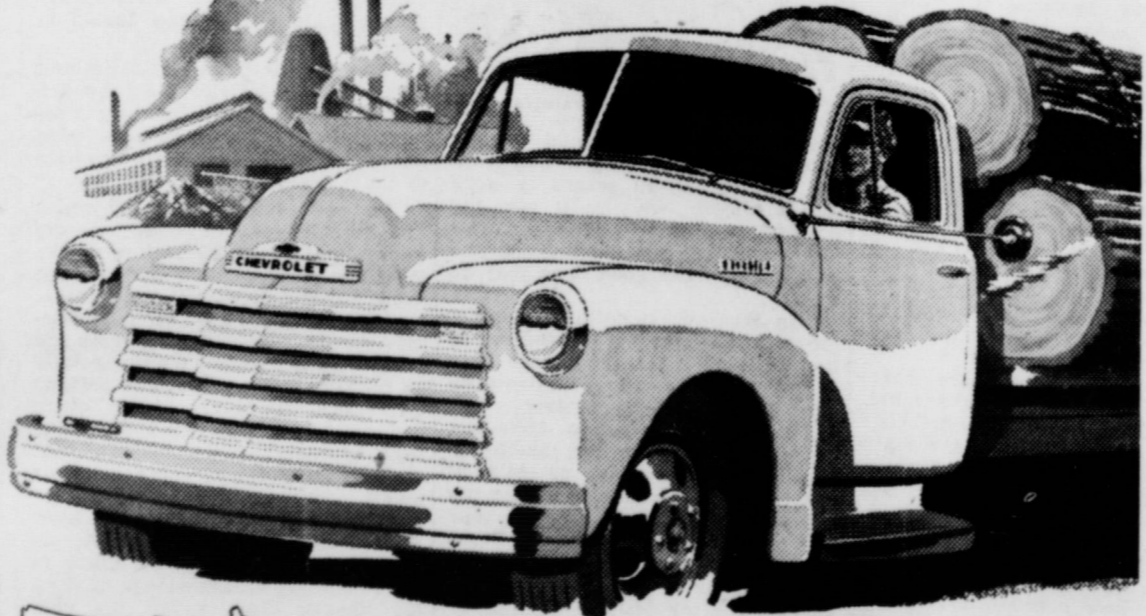
CLEANERS

CLEANING

PRESSING

Alterations

greater stamina  
*engineered in!*  
...to do more work for your money



First in demand  
First in value  
First in sales

More Chevrolet trucks in use than any other make!

From its very first day on the job right through its long and useful life, a Chevrolet Advance-Design truck gives you working proof of the greater stamina and sturdiness that's engineered in America's favorite trucks.

This is your kind of truck, rugged as they come and ready to work on your job. Priced to save. Built to last. Engineered to meet your needs. Come in and find out how much more you get in a Chevrolet truck, for how much less. You just can't buy a better truck -- to save your money!

(Continuation of standard equipment and trim illustrated is dependent on availability of material.)

ADVANCE-DESIGN **CHEVROLET** TRUCKS

**Ellis Chevrolet Co.**  
Chevrolet Sales and Service: O'Donnell, Texas

### O'Donnell Index Press Published Every Thursday by O. G. SMITH, OWNER

Box B, O'Donnell, Texas  
Entered as second-class matter  
Sept. 28, 1923 at post office at O'Donnell, Texas, under the Act of  
**NATIONAL 45C**  
ADV. RATES: 40C LOCAL



Subscription Rates  
in first zone (Dawson, Lynn, and  
Borden counties) \$1.00  
Beyond first zone \$1.50



For sale 326.5 acres 10 miles east of O'Donnell, 250 acres in cultivation, 4 room frame house, 2 room helpers house, 3 bin granary, gas age, small barn, well, windmill, EA, on pavement, mail route and chool bus. Price \$100 per acre with 1-2 minerals or \$85 with 1-4 minerals. B. M. Haynes, O'Donnell, Tex

### SHOEMAKER INS.

AGENCY  
Fire and Casualty Insurance  
A Representative of  
FLOYD WEST AND CO.  
General Agents  
LLOYD SHOEMAKER

### TOM GARRARD

ATTORNEY  
Tahoka, Texas  
Practice All State and Federal Courts. Land Title a specialty

### Dr. C. B. Bucy

Animal Hospital  
Veterinarian  
Lamesa; ph. 192 or 394W

### CHAS. CATHEY

LIFE INSURANCE  
REPRESENTING THE  
AMICABLE LIFE INS. CO.

### Joe M. Lehman, M. D.

Medicine and Surgery  
Hours 8 a m to 6 p m daily  
Sunday: 9 a m to 11 a m  
Office phone 134; Home 209

ALWAYS ...  
THE GREATEST OF CARE AND THE FRESHEST  
OF DRUGS GO INTO YOUR PRESCRIPTIONS  
Prompt Attention Given To Your Prescriptions

## Lott Pharmacy

Hugh Lott, Registered Pharmacist

## Vernon Cook

EXPERT RADIO REPAIRS

JUST RECEIVED:

MANY NEW ITEMS IN THE

BABy GIFT DEPT.

Come In And Let Us Show You The Gifts



W. E. Vermillion, Pharmacist

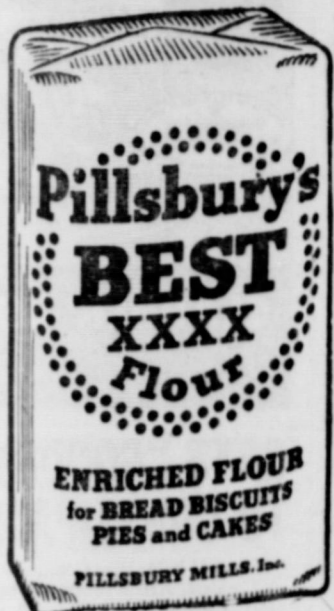
## Corner Drug



# Birthday Sale

**Mansell Bros. Super 3rd Birthday Party, Saturday Sept. 29th**  
**FREE \$450.00 in Groceries Given Away**

Baskets Will Be Given Away Starting at 10:00 A. M.; 2:00 P. M., 4:00 P. M. and 6:00 P. M. That Good Maryland Club Coffee will be served with a nice Big Slice of Our Birthday Cake, also Donuts.



25 lb \$2.05  
 10 lb 98c  
 5lbs 55c



1-4 lb. 29c



large box 21c



No 2 can  
 15c  
 46 oz 39



15c  
 No 2 can



3 for  
 44c  
 No 2 can

Kraft Dinner  
 Large Pk, 14c

## For Entertainment:

We are bringing back Lew Louellen, that famous piano artist to sing and play your favorite numbers with the help of Joe Burkett; Also Jack Snieder will be here with his many laughs for you. Jack is known to be the best M. C. in the business.



3 lb

93c

## FREE

Ctn. 6 Cokes plus

deposit with 3 lb

Vegetol 81c

Shortening

Sugar 5lb 49c



2 1/2 lbs 29c

1 1-4 lb pk. 20c



38c

Large Box



3 for 25c

NOW  
 "CHILL-BLENDED"  
 FOR GREATER  
 PIE CRUST FLAVOR!!

17c

Pillsbury  
 PIE CRUST MIX



37c  
 No. 2 1/2



34c  
 No 2 1/2  
 Can



27c  
 No. 2  
 Can



21c  
 303 Can



17c  
 303 Can



31c  
 No 2 can

## PRIME Meats

Bacon lb 49c

Slab; Armour Star

Sausage lb 39c

Cudahy 1 lb roll

Fryers lb 58c

Hams lb 47c

Picnic, Half or Whole per lb



Fresh Cucumber Pickles, Pt 28c

Tomato Soup 3 for 29c

BABY FOOD 13 for \$1.00

SPECIALS ON THIS PAGE GOOD FOR

FRIDAY AND SATURDAY Sept 28, 29

People are talking about..

## THESE VALUES

Tide large box 28c

Joy 31c

Instant Dish Washing

Ajax, large 12c

Karo 21c

1 1/2 lb jar White

Tuna 33c

Blue Label; Star Kist

## Vegetables

Grapes lb 15c

Celery Hearts 2 for 21c

Cabbage lb 5c

Mansell's Always  
 Appreciates Your  
 Business; Shop Here  
 Daily

# MANSELL BROS



for traction in action plus plenty of style... for Boys... for Girls

**Storybook cushion foundation shoes with HUSKY LUG SOLES**



Note these soft shock absorber cushions! CUSHIONS HEEL FROM JUMPS AND JOINTS GIVES ACTIVE ARCHES GENTLE SUPPORT

No wonder kids clamour for Lug Soles! Stunning to look at, super to wear... and STORYBOOK builds 'em with the Cushion Foundation... soft, springy foam rubber at both heel and arch. In brown, wine or green aniline leather with red or yellow lug soles. Guaranteed for wear and best buy for fast growing feet.

**THOMPSON'S TOGGERY**

"It costs no more at this store to buy the BEST"

For Rent: unfurnished Apt. see index

Suite for sale: Dark Blue with stripe, size coat 38, pants, 2 suits, 33 waist and 31 length, A-1 condition, priced for immediate sale \$25 for a \$57.50 suite Hash Chambers 21c

ATTENTION FARMERS IN LYNN, DAWSON, TERRY, AND BORDEN COUNTIES:

THE WELLS CO-OP FARM LABOR ASS'N IS NOW TAKING APPLICATIONS FOR MEXICAN NATIONALS FOR COTTON PICKING. Farmers interested in those counties contact B J BURNETT at THE WELLS CO-OP GEN 9 miles west of O'Donnell Texas 21c 27

Mr. Farmer...

FARMERS: SEE US BEFORE YOU BUY:

Wheat Seed sorophene and Cotton mists; a complete line of seeds.

Four row pick up slides SALK CUTTERS TRACTOR and CAR TIRES High compression rings for John Deers and Gas Manifolds NEW and USED 4 ROW tractors NEW Ford Tractors \$1425 "What you need, we have" Edwards Imp. Co.

**The New REX**

**THEATRE**

Evening Show Box Office Opens 6:45 Show starts 7:00 p. m. Box office closes 9:15 p. m.

All children 5 years old are required to buy tickets

Fri. nite - Sat. Mat. Sept 28 and 29th TIM HOLT in **Gunplay** with Richard Martin

Sat. nite Sept 29th Jean Porter and Tom Neal in **G. I. Jane**

Sun and Mon. Sep. 30 and Oct. 1st Randolph Scott in **Santa Fe** with Janis Carter

Tues. Oct. 2nd Tom Neal and Wendy Waldron in **Navy Bound**

Wed. and Thurs. Oct. 3. and 4th Red Skelton in **Excuse My Dust** with Sally Forrest In Technicolor

**RUPTURE Shield Expert Here**

H. M. Shevnan, widely known expert of Chicago will personally be at the Hilton Hotel Lubbock Friday and Saturday only Sept. 28, and 29th from 9 a. m. to 4 p. m. Mr. Shevnan says: The Zoetic Shield is a tremendous improvement over all former methods, effecting immediate results. It will not only hold the rupture perfect by no matter the size or location but it will increase the circulation, strengthen the weakened parts, and thereby close the opening in ten days on the average case, regardless of heavy lifting, straining or any position the body may assume. A nationally known scientific method. No under straps or cumbersome arrangements and absolutely no medicines or medical treatments.

Mr. Shevnan will be glad to demonstrate with out charge, 6509 N. Artesian Ave., Chicago, 45 Large incisional hernia or rupture following surgical operation especially solicited.

Next year's fruit crop may depend upon the care given the orchard during the late summer and early fall months. Weeds should be controlled and all trees checked for infestations of insects.



**Well Kept Buildings Add to Farm Value**

**New Materials Make Repair Jobs Easy**

The appearance and condition of its buildings will increase or decrease the value of any farm. But more than that, well-kept buildings are an indication of the farmer's efficiency and his standing in the community.

A number of new materials such as asbestos shingles or siding, masonite—a tempered hardboard, plywood and others are durable and inexpensive materials which the farmer who is handy with tools can use to increase the value of his property.



The building in the top picture is a discredit to any farm, while the one below, a remodeled version of the one above, will add to the farm's value.

Perhaps the old building will serve in its sorry-looking way, but maybe a wind storm will flatten it and any hope of salvage. It's smarter to fix up the old place and protect your investment.

If the framework has sagged, of course, it is a good policy to have the building straightened up before anything else is undertaken.

From there the farmer who is handy with tools could do the job of repairing.

**Russia Speeds Up Farm Program; On War Footing**

The U.S. department of agriculture reports the Communist program for agriculture is being changed to put the Soviet Union on a wartime basis.

Students of the Soviet farm system report Russia's collective farms are being arbitrarily cut in two. This means that instead of 252,000 farms, Russia will now have 123,000. The conclusion drawn from this move is that Russian farmers are being regimentated more. One hundred thousand very big collective farms are easier to manage from Moscow than twice that many.

Some experts believe there will be more systematic delivery of established farm production quotas under the new plan. Meeting production quotas on Russian farms has always been a problem in the Soviet economy.

There are a lot of reasons why everyone should help prevent grass and range fires two of which are: conservation of a short supply of livestock feed and soil and water conservation. Burned over areas without vegetative cover may suffer heavy soil losses if and when heavy, driving rains occur.



**TOO LATE THEN**

You cannot rush to your insurance agent while your home is in flames to ask him for insurance.

The only time you can get more insurance is BEFORE you have a fire.

Ask this agency to check over your policies

CLAYTON INSURANCE AGENCY - LOANS -

PHONE 148

SALESMAN WANTED:

Mr. FARMER would you like to make a change and supply the people in Dawson County... with Rawleigh Products. No lay... offs. Direct from factory service. Big profits. I know for I am a Rawleigh Dealer. Let me tell you about it. See Frank Bryan, Tahoka, Texas or for personal interview write Texas Sales Manager, J L King in care of Rawleigh's Dept EX-1-560-MF, Memphis, Tenn 4tp...

**Real Estate**

FARMS - RANCHES - CITY PROPERTY - Leases and Royalties

B.M. Haymes



**Sure I'm Going To College!**

"My Dad says I am going to college no matter what happens, because we own a Southwestern Life educational policy."

To assure a college education for that youngster of yours why not talk business with your friendly Southwestern Life Insurance Company representative. He'll welcome the opportunity of explaining how an educational policy works and of showing you how a few dollars a month can provide for your child's future. Southwestern Life, now in its forty-ninth year of service to Texans, has an agency force well qualified by training and experience to recommend a policy to fit your particular needs.

O'DONNELL REPRESENTATIVE:

**Elvin R. Moore**

**Southwestern Life Insurance Company**

JAMES RALPH WOOD, PRESIDENT HOME OFFICE • DALLAS

FAMILY PROTECTION • BUSINESS LIFE INSURANCE • ANNUITIES • PENSION PLANS • GROUP LIFE INSURANCE

**For Safety and Convenience. LIGHT-CONDITION YOUR YARD**



Greet friends with porch and door lights and illuminated house numbers. Avoid accidents by lighting the steps.

GET YOUR FREE COPY! 22 TESTED RECIPES FOR HOME LIGHTING! Phone, come in or write your Texas Electric Service Company office for your free copy of "See Your Home in a New Light."



A yard light under the eaves or on the garage will light the driveway, gardens or play areas to add protection and convenience.

**CHASE AWAY THE SHADOWS**

No home is completely light-conditioned until the walks, drive and yard can be bathed in cheerful protective light. Let your electric dealer help add this finishing touch to your home.

TEXAS ELECTRIC SERVICE COMPANY

JAMES CRUMLEY, Manager

**VIRGIL**

By Len Kleis



**SUNNYSIDE**

by Clark S. Hoas



**RIMIN' TIME**

By POSEN



**BESSIE**

By NICK PENN



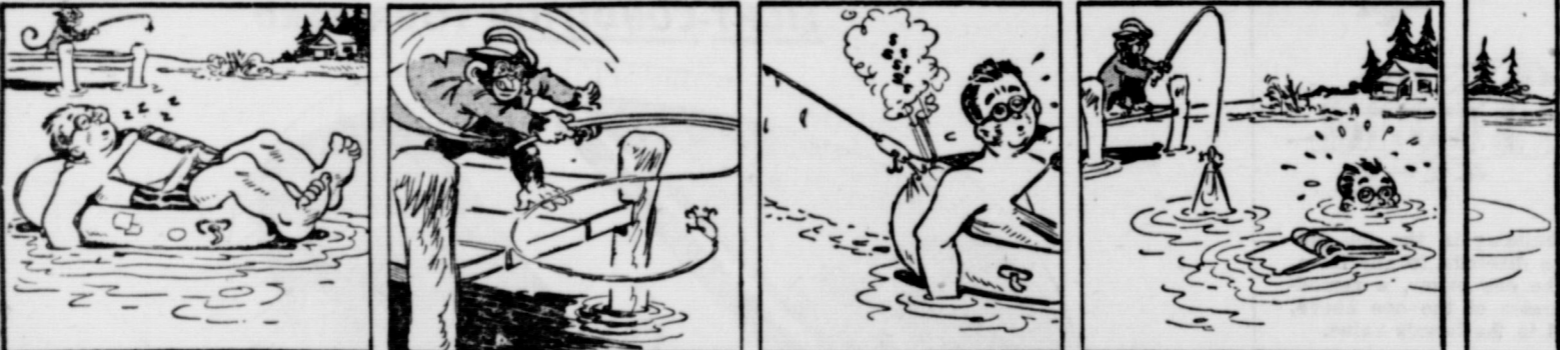
**MUTT AND JEFF**

By Bud Fisher



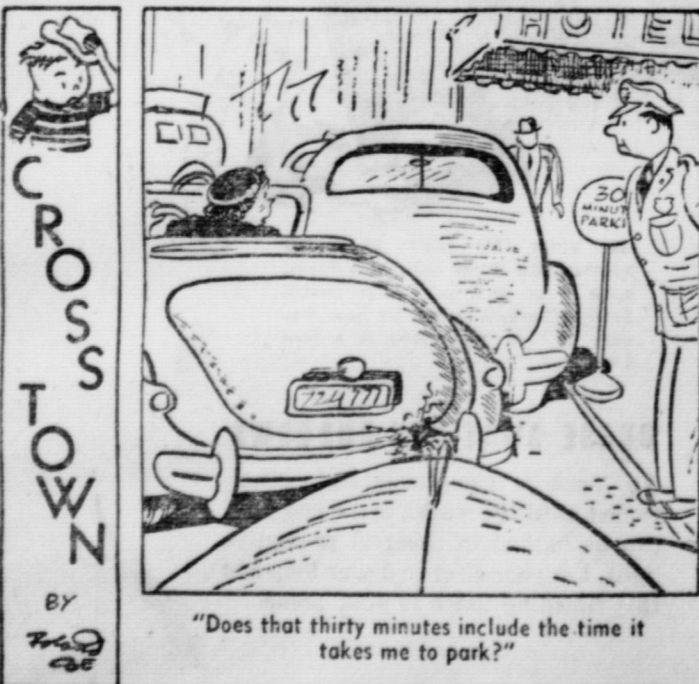
**JITTER**

By Arthur Pointer



**WYLDE AND WOOLY**

By Bert Thomas



**SEWING CIRCLE PATTERNS**

**Pretty Button Front for Girls Princess Style Has Slim Lines**



8743  
6-14 yrs.

**Button Front**

PERFECT for school or parties all season is this button front style for young girls. Narrow ruffing trims the rounded neck, puffed sleeves are as young as can be.

SLIM princess accent a wearable daytime dress that comes in a wide size range for the more mature figure. Note the scalloped detail, the pretty keyhole neckline.

Pattern No. 3222 is a new-style perforated pattern in sizes 36, 38, 40, 42, 44, 46, 48, 50, 52. Size 38, 3 1/4 yards of 38-inch.

Enclose 30c in coin for each pattern. Add 5c for 1st Class Mail if desired.

Pattern No. .... Size ....  
Name (Please Print) \_\_\_\_\_  
Street Address or P. O. Box No. \_\_\_\_\_  
City \_\_\_\_\_ State \_\_\_\_\_

**HOUSEHOLD HINTS**

**Tasty Polish**  
Beets can be pickled in a sugar-vinegar syrup and used as a tasty and nutritious relish with meals.

**Pickles**  
After eating fresh watermelon save the rinds, for they can be used to make tasty pickles.

**Peaches**  
Fresh peaches, when they are at the soft ripe stage, should be kept thoroughly refrigerated—either covered or uncovered.

**Summer Salad**  
Combine 2 cups of potato salad with 1/2 cup diced cooked ham and four quartered, hard-cooked eggs for a different summer salad.

**Cool Drink**  
Try mixing orange juice with gingerale, sherbet, or ice cream for cooling summertime drinks.

**Food Value**  
Slicing or dicing vegetables shortens the cooking period but also lowers the amount of food value you will receive from them.

**Tasty Sauce**  
Drop some lime juice in honey and mix them together to make a sauce for cakes, puddings, and ice cream.

**HIGH SCHOOL GRADUATES!!**  
Be a "TECHNICIAN NURSE"  
ENROLL NOW  
Admission—  
JUNE-OCTOBER-FEBRUARY  
WRITE OR PHONE  
Baylor University School of Nursing  
5415 Jenius Dallas TX 75204

**DRASTIC PRICE REDUCTION**  
**CRAZY WATER CRYSTALS**  
IN POWDERED FORM  
Old Price \$ .85 3-oz. Jar \$ .40  
1.25 6-oz. Jar .75  
Enjoy quick pleasant relief from constipation and excess gastric acidity, and ailments to which they are contributing factors.  
If Your Druggist Cannot Supply, Order Direct  
CRAZY WATER COMPANY, INC., Mineral Wells, TEXAS

**KIDNEYS MUST REMOVE EXCESS WASTE**  
When kidney function slows down, many folks complain of nagging backache, loss of pep and energy, headaches and dizziness. Don't suffer longer with these discomforts. If reduced kidney function is getting you down—due to such common causes as stress and strain, over-exertion or exposure to cold. Minor bladder irritations due to cold, dampness or wrong diet may cause getting up nights or frequent passages.  
Don't neglect your kidneys if these conditions bother you. Try Doan's Pills—a mild diuretic. Used successfully by millions for over 60 years. While often otherwise called happy relief from these discomforts—help the 18 miles of kidney tubes and filter flush out waste. Get Doan's Pills today!

**DOAN'S PILLS**

**INVALID WALKER**  
Adjustable—Encourages Activity  
Rental Per Month \$7.50  
Also Adult Size

**WHEEL CHAIRS**  
Rented and Sold Many Styles  
Hospital Style Rental Per Month \$7.00  
Folding Rental Per Month \$12.50

**ELTON HINNANT**  
Physical Aids—Prescriptions  
3830 Maple, Dallas, Texas LO-3885

**ARE YOU A HEAVY SMOKER?**  
Change to SANO—the distinctive cigarette with

**LESS THAN 1% NICOTINE**

Not a Substitute—Not Medicated  
Sano's scientific process cuts nicotine content to half that of ordinary cigarettes. Yet skillful blending makes every puff a pleasure.  
FLEMING-HALL TOBACCO CO., INC.  
ASK YOUR DOCTOR ABOUT SANO CIGARETTES





# BLOCKER GROCERY

"Trade Goes Where Invited, Stay Where Treated Best"

## Specials For Friday & Saturday

**Crisco 3 lb 91c**  
3 lb can

**Spinach 15c**  
No 2 can Del Monte

**JELLO 2 for 15c**  
ALL FLAVORS

**Oxydol 26c**  
Large Box

**Tomatoes 15c**  
No 2 Diamond

**Baby food 3 cans for 25c**  
Gerbers

**Delsey 2 for 25c**  
Toilet Tissue

**Milk 4 for 25c**  
Small cans; Carnation or Pet

TRADE WHERE MA SAVES MONEY FOR PA  
WE RESERVE THE RIGHT TO LIMIT Nothing Sold to Merchants to be re sold

**Vienna sausage 3 for 25c**  
"Hostess"

**Crackers 2 lb 49c**  
2 lb Krispy's

**Cheese 1b 59c**  
Wisconsin Longhorn

**Sausage 2 lb 95c**  
Pure Pork 2 lb bag

Fresh dressed  
**Battery Fryers**

**State Fair of Texas**  
BIGGEST and BEST Fair Yet!  
**16 FUNPACKED DAYS!**  
★ GUYS & DOLLS - ICE CYCLES  
★ COTTON BOWL FOOTBALL  
★ MIDWAY - THRILLCADE  
★ STORY BOOK OF TEXAS  
★ AGRICULTURE  
★ PAN-AMERICAN NATIONAL  
★ HEREFORD SHOW  
FREE Exhibits  
FREE Acts!  
**OCT. 6-21 DALLAS**  
DON'T MISS IT!

For Rent: unfurnished Apt. see Index  
Catsup 14 oz bottle 25c at LAMBERT GRO. and MKT.  
Mr and Mrs Oscar Young visited in Hobbs and have as their guest this week Jack Wallis of Tishomingo Okla.  
Chuck wagon beans 2 for 25c LAMBERT GROCERY & MKT.

**Forest Sites for Summer Homes Are Available**  
Many vacationists who visit the national forests make the wish that they might have a summer home in the forest. Many are not aware that the wish might come true. The possibility is worth investigating. More than 16,000 families already have such summer homes, and in many forests there is room for others who want what the forest service has to offer. The service recognizes summer home opportunities as one of the "multiple uses" for the national forests and provides sites for approved buildings.  
This may surprise many who have motored through national forests without ever noticing a colony of summer homes. That, in fact, is one of the features of the policy on summer home sites. Permits for summer home building are not now issued for areas within sight of highways or on lake shores, along fishing streams, or near scenic attractions. Such areas are preserved for general use of the public which, of course has first priority.

**STATEMENT REQUIRED BY THE ACT OF AUGUST 24, 1912 AS AMENDED BY THE ACTS OF MARCH 3, 1933 AND JULY 2, 1946 (Title 39, United States Code Section 233) SHOWING THE OWNERSHIP, MANAGEMENT AND CIRCULATION OF**  
O'Donnell Index-Press, published weekly at O'Donnell, Texas for September 27, 1951  
1. The names and addresses of the publisher, editor, managing editor and business managers are:  
Publisher, O. G. Smith, Jr., O'Donnell, Texas  
2. The Owner is: O. G. Smith, Jr. O'Donnell, Texas  
3. The known bondholders, mortgagees, and other security holders owning or holding 1 per cent or more of total amount of bonds, mortgages or other securities are: None.  
4. Paragraphs 2 and 3 include, in cases where the stockholder or security holder appears upon the books of the company as trustee or in any other fiduciary relation, the name of the person or corporation for whom such trustee is acting; also the statements in the two paragraphs show the affiant's full knowledge and belief as to the circumstances and conditions under which stockholders and security holders who do not appear upon the books of the company as trustees, hold stock and securities in a capacity other than that of a bona fide owner.  
5. The average number of copies of this publication sold or distributed, through the mails or other wise to paid subscribers during the 12 months preceding the date shown above was: 821  
O. G. Smith, Jr.  
Sworn to and subscribed before me this 24th day of September, 1951 Ben Moore, sr. (My Commission expires June, 1953)

**MAKE YOUR PLANS NOW**  
to attend the  
**GREATEST FAIR YET**  
it's the 34th Annual  
**PANHANDLE SOUTH PLAINS - FAIR -**  
At Lubbock, Texas  
**October 1-2-3-4-5-6**  
**SEE FREE OF CHARGE...**  
the **CIRCUS** of the AIR  
The greatest variety of aerial shows ever staged on the South Plains!! Thrill to the death-defying antics of the nation's top flight aerial artists!!  
**EVERY DAY AND NIGHT OF THE FAIR**  
**SEE FREE OF CHARGE**  
Giant **FIREWORKS DISPLAYS**  
**EVERY NIGHT ON THE MIDWAY**  
**MORE RIDES and SHOWS on New Completely PAVED CARNIVAL MIDWAY**  
**MORE FREE EXHIBITS THAN EVER!!**  
**School Children:**  
Watch For Your Day at the FAIR!  
Your **ADMISSION** is **FREE, ALSO!**  
**1/2 Prices On Rides for School Children Under 12**

Fall dress materials Arriving Daily  
There's Always Something New At  
**Boystun Variety Store**

**Bulletin Tells Methods Of House Preservation**  
A man's house was never any more his castle than these days when wood rots and wood-eating insects may be controlled by the means as are described in revised U. S. department of agriculture bulletin 1993. The bulletin discusses causes, general and special safeguards, the durability of new building materials, and care of houses to stop termites, decay and rot. It is recommended for all farmers.  
Duz large box 29c at LAMBERT GROCERY & MKT.

**Just Arrived; 6 lb Toxephine for Your Poison Needs: also 2-1**  
This is cheapest Poison we have had in 2 years

**Cotton Sprayers**  
We have in stock the **Universal Comfort Sprayer that will fit your Tractor**; Also have the **Ford and Ferguson Comfort Sprayer**. The sprayers are 6 or 8 row and we have extensions to make them 10 rows.  
We also have a 4 row **Comfort Sprayer to spray when you cultivate**  
Again this year we have the **10 row Speedy Sprayer that will fit the front or rear of most tractors**  
We have sprayer pumps, manifolds, drops, nozzles, tips or almost anything you want for your sprayer.

**Johnson 8 Row Duster**  
See us before you buy; we have some on the old price; we have the parts for your duster. Duster only \$295

If you need a good used "M" and equipment we have 2 priced to sell  
We have a new "M" with equipment; also have 4 row cultivators, Listers and Planters; let us fill your needs now.  
We have all sizes of International Heat Treated Hi Speed Sweeps

**O'Donnell Implement Co.**

**Specials For Friday and Saturday**  
CABBAGE, good green, firm heads lb ..... 9  
Large pkg. Celery Hearts ..... 23  
Fresh yellow Squash lb ..... 10  
1-4th lb Monarch Tea ..... 15  
Good 5 strand broom ..... 89  
1 lb box Salad Wafer Cracker ..... 25  
25 oz. Clabber Girl Baking Powder ..... 25  
3 lb Shortening Crustene ..... 74  
MILK Carnation or Pet ....Large 14c; small ..... 7  
46 oz Libbys Pineapple Juice ..... 39  
Sugar Cured Bacon Squares lb ..... 39  
Sweet Clover Sliced Bacon lb ..... 59  
**Line Cash Grocery and Market**  
Plenty of parking in back of store; come in and shop with us ..... **WE DELIVER PHONE 118**

**MANSELL BROS**  
**Turn To Our Full Page Ad**  
**Weekend Specials**  
PHONE 50 FREE DELIVERY