

1978
Dec 28

1978
1977
1976
1975
1974
1973
1972
1971
1970
1969
1968
1967
1966
1965
1964
1963
1962
1961
1960
1959
1958
1957
1956
1955
1954
1953
1952
1951
1950
1949
1948
1947
1946
1945
1944
1943
1942
1941
1940
1939
1938
1937
1936
1935
1934
1933
1932
1931
1930
1929
1928
1927
1926
1925
1924
1923
1922
1921
1920
1919
1918
1917
1916
1915
1914
1913
1912
1911
1910
1909
1908
1907
1906
1905
1904
1903
1902
1901
1900

IOWA PARK LEADER

THURSDAY, DECEMBER 28, 1978
VOL. X NO. 17
IOWA PARK, WICHITA COUNTY, TEXAS 76367
20 CENTS

THE BEST IS YET TO COME
Happy New Year

Businessman threatened in Saturday disturbance

A disturbance Saturday night at the Sonic Drive-In here resulted in \$400 worth of damage to the business after the manager reportedly used a pistol to chase away a man threatening him.

The latest incident occurred in the wake of a similar incident two weeks ago when the eating establishment's manager was allegedly assaulted.

Iowa Park police were dispatched to the scene at 719 W. Highway about 10:45 p.m. Saturday and filed their report as a terroristic threat.

Sonic manager John Weger filed the complaint and officers secured statements from employees present at the business when the incident occurred.

The police report said a male suspect pulled into the parking lot, screaming the vehicle's tires. The suspect accosted Weger inside the business building, police said.

The report said Weger produced a small caliber automatic pistol. The suspect left without any shots being fired, according to police.

While leaving the building, the suspect broke a window with his fist and broke two exterior menu holders causing an estimated \$400 worth of damage.

The suspect fled the scene before police arrived. Weger said he would file charges with the county attorney sometime Wednesday afternoon.

Weger's home was the target of attempted arson on the following night, Christmas Eve.

Police were called to his home at 506 W. Washington about 1:50 a.m.

A beer bottle filled with gasoline had been thrown into Weger's

backyard, but no damage occurred.

Police received a report Saturday from Mrs. R.R. McCullough, 301 S. Texowa, that her home had been burglarized. Police said five kitchen appliances valued at \$125.98 had been taken in the burglary.

On Christmas Day William Hoffman, 106 Hope Lane, reported to police that a window in his home had been shot out with an air gun.

15 MEMBERS ATTEND 50th class reunion

Fifteen members of W.F. George High School's Class of 1929 attended its 50th reunion Tuesday.

Co-chairman of the event were Loys D. Barbour of Iowa Park and Joe Cunningham of Wichita Falls.

Other hosts were Ruth Gard and Lorene Williams Lewis, both of Iowa Park, and Paulene Gladden James, Elma Finch Barker and Carol Thurber Freeman, all of Wichita Falls.

Also attending were Erel Lee Boone Young of Wichita Falls and California, Eula Davis Norwood of

Arlington, Walter Davis of Whitesboro, Jessie Kathryn May Nowlin of Lewisville, Mary Lea Smith Phipps of Dallas, James C. Thompson of Fort Worth, R.L. Sunday of Paducah, and Ernestine Towerton Tuck of Bellevue.

Special guests were L.B. Griffith of Silsbee and Frank W. Belker of Aransas Pass, both former teachers and coaches here.

A member of the Iowa Park school board who signed the original diploma, T.M. Clark and his wife, also attended.

Tuesday night's reunion included a dinner at Luby's in Wichita Falls followed by a reception highlighted by reminiscing and photography.

There were 31 persons graduated from high school here in 1929, and 27 are still living.

Class members set their next reunion for sometime in December 1983.

Classes Tuesday

Iowa Park schools will open their doors again Tuesday to resume classes after almost two weeks holidays for the Christmas holidays.



TWAS THE DAY after Christmas, and all through the town, all the containers were full, and spilled out on the ground. City workers scurried, to collect it very fast, to get it all buried, as they had in the past. This Christmas the containers were new; compared with the old metal cans,

their numbers are few. By Friday they'll all be empty, they say. Just in time for the New Year's holiday. And as the packer truck goes roaring down the street, you can hear the driver calling, "Don't our alleys look neat?" And they do.

Piggly Wiggly closes Saturday

When Piggly Wiggly closes its doors at the end of business Saturday, it will also close an era which has continued since fall of 1963.

The firm has been sold to JRB. The store has operated as Piggly Wiggly since it was merged with Parker Food, slightly over 15 years ago.

After closing Saturday, it will remain closed until Jan. 8, during which time it will be inventoried and new merchandise brought in, according to Troy Daniel, JRB vice

president.

JRB will continue to operate the same hours seven days a week as has Piggly Wiggly. They will also give S&H stamps. Personnel, including the new manager, have not yet been named.

The company, which earlier in the year purchased a store in Electra, recently purchased Piggly Wiggly stores here, Burkburnett and Olney. JRB now has 27 stores, and with the exception of Wichita Falls and Abilene, all are in smaller towns of north central Texas, Daniel said.

Mayor takes tough stand with railroad

Concerned about the amount of time railroad crossings in the city are held up by trains, Mayor Johnny Crawford has taken a get-tough attitude and has fired off certified letters both to the Fort Worth and Denver general manager and the state's attorney general to get some action.

In November, following a car-train accident, the council asked a representative of the railroad company to have barrier type equipment placed at each of the five crossings in the city. Informed the company could not afford the expense, the council passed an ordinance restricting train speed through the city at 15 miles per hour.

Crawford immediately heard from W.A. Thompson, general manager of operations for the FT&D, stating:

"I was surprised at the action taken by the Iowa Park City Council on November 13, 1978 wherein it imposed a 15 MPH speed restriction on FW&D trains operating within the City limits of Iowa Park.

"The reason for this action escapes me because I can find nothing in my file where the City ever indicated to the FW&D that it was unhappy with conditions as they existed.

"The Ordinance, as written, appears to be unreasonably restrictive. I understand your concern about the potential for accidents at the crossings, but I do not understand why the Ordinance extends beyond

the limits of the crossings or to the entire train instead of only until the train occupies the crossings. What possible advantage accrues to the City by unduly delaying the passage of trains through the community?"

"I would also call your attention to the fact that studies made by the Federal Railroad Administration in conjunction with the Association of American Railroads have indicated that freight cars are most susceptible to derailments between the speeds of 13 MPH and 21 MPH. This is brought about due to the length of cars, length of rail, and the inherent tendency of rail equipment to oscillate between these speeds. This oscillation generates a harmonic rocking action which can of its own produce a derailment.

"Because of this danger, our rules require trains which cannot maintain speeds of 21 MPH to slow to 10 MPH until they are able to increase speeds to 21 MPH or above. Thus, your Ordinance has in effect placed a 10 MPH restriction on our trains through Iowa Park.

"Adding to both our problems will be the congestion created by the slow passage of trains over the crossings. At 10 MPH the average 100-car train will take approximately 36 minutes from the time it occupies the first crossing in town until it clears the last crossing, and the time required to clear each individual crossing will be 14 minutes. Unfortunately, when

automobile traffic begins to encounter this type delays, they get reckless and attempt to race the trains for the crossings, causing more accidents.

"I would like to request that the City of Iowa Park consider modifying its Ordinance along the lines suggested below:

"RAILROAD TRAINS - SPEED LIMIT

"Trains approaching grade crossings within the City limits of Iowa Park will reduce their speed to a maximum of 23 MPH and will not increase their speed above 23 MPH until the crossing is fully occupied by the train.

"I truly believe the above would serve both our purposes and I would appreciate your earnest consideration."

MAYOR RESPONDS

The response from Crawford was dated Nov. 30. He stated:

"I have your correspondence of November 16, 1978, pertaining to recent action by the Iowa Park City Council concerning speed restrictions for trains operating within the City limits.

"While we do not wish to burden the Railway Company in any way, our first concern and consideration is for the safety of our citizens and others that use the crossings.

"Mr. Thompson, I take exception to the rather critical nature of your letter and terminology, such as "unreasonably restrictive," "unduly

delaying", etc. I have personal knowledge of five persons losing their lives on these crossings, and one young girl lying in a comatose state in the hospital presently as a result of accidents with trains within our City limits. It is our intention that this should never happen again. We feel that barrier type crossing guards in conjunction with crossing signal lights would eliminate the majority of the exposure at these crossings, and are requesting the Railway Company consider the installation of these devices.

"I would appreciate meeting with you the next time you are in the area, as I would also like to discuss the Railway Company's responsibilities insofar as repair and maintenance of crossings and maintenance and mowing of right-of-ways are concerned. Further, we have an existing Ordinance limiting the time a railway crossing can be occupied or blocked, to five minutes. It may be that the Railway Company would want to consider limiting the number of cars to each train in order to comply with the requirements of this Ordinance."

No further contact has been received from the railroad official, according to Crawford. But considerable contact has been received from citizens, complaining about the waiting time at crossings caused both by trains passing through town and holdups while cars are switched onto side rails.

A recent fire on the south edge of town brought attention to emergency vehicle traffic which could be held up by trains covering the crossings.

DEMAND MADE

So the day after Christmas, Crawford fired off his two certified mail messages, stating:

"This correspondence will serve to notify you that your trains are blocking railroad crossings within our City limits more than the time limit of five minutes as set out by Ordinance of the City of Iowa Park, and as prescribed by the Laws of the State of Texas. Numerous instances of crossings blocked for upwards of forty minutes and the resultant blocking of all five crossings within our corporate City limits simultaneously are occurring. Approximately one half of our community is located South of the railway trackage and our Fire Department and equipment is located on the North

side. I need not remind you of the seriousness of the consequences of the need for Fire Equipment, Ambulances, or Police personnel in this area of town, and their response to the need being delayed by your trains blocking these crossings, in particular, more than the time limitations as set forth by State Law and the Ordinance of our City.

"By copy of this letter we herewith demand that you comply with the Laws of the State of Texas and the Ordinances of the City of Iowa Park insofar as they apply to your trains operating within the Corporate limits of the City of Iowa Park, particular attention being directed to SPEEDS of trains and the time limitation of FIVE minutes being set forth for the blocking of Railway Crossings."

The subject is expected to be referred to when the city council meets Jan. 8, the next regular meeting date.

Laurie showing hopeful signs

The substantially improved condition of Laurie Tatum has roused new hope among her family and physicians as the 17-year-old train wreck victim apparently has begun to recover from her comatose state.

In October the Iowa Park teenager slipped into a coma after her car was struck by a train here.

Laurie, the daughter of Mr. and

Mrs. R.G. Tatum, has been transferred to a Wichita Falls nursing home after several weeks in a Wichita Falls hospital.

A relative said Laurie has begun to respond to some instructions. She sits in a chair four times daily, and opens her eyes, although there is no sign of recognition of the persons around her, the relative said.

Church group has dinner

Members of the Christian Workers Class of the First United Methodist Church held their annual Christmas dinner and party Thursday.

Tables were decorated with a Christmas theme, and Santa Claus visited each member with gifts, and also left gifts for the "golden age" who reside at the nursing home.

Four foreign military students training at Shepard AFB were introduced by Mrs. Ilene Swadley, secretary of the Foreign Student Office. Guests were

Maj. Grace Kwagho and Sgt. Ariwoola Amusat, of Nigeria, and Sgt. Izzeloin Ali and Sgt. Martin Massak of Sudan.

Taking part in the evening's program were Rev. Mike Jackson, Elgin Denny and Miss Ethyl Kidwell. Hosts were Mr. and Mrs. Gene Lowrey, Mr. and Mrs. Otis Gay, Mr. and Mrs. J.C. Ralston and Mrs. Carl Walsh.

Thirty one members and 12 guests attended.

Cook of the Week

Salads are a favorite of Mrs. Randy Heidrich, a conscientious member of the TOPS Club.

In fact, she and her husband enjoy them so much, they like to attend salad suppers as their evening socials. That is, when she's not taking part in her major vice, playing bingo.

The Heidrichs, with children Candace, 5, and Eric, 5 months, make their home at 1308 Emma. Randy works for Arcadia Refining Co. in Wichita Falls and Sherry works part time at the Lollypop Kids Stop day nursery.

She is a member of Sacred Heart Catholic Church in Wichita Falls.

Mrs. Heidrich moved to Iowa Park from Illinois in 1971 with her parents, Mr. and Mrs. David Brady. She was graduated from Iowa Park in 1973.

It was shortly after graduation she and Randy were married. He is a Kamay native, and attended school both at Valley View and Iowa Park.



Mrs. Randy Heidrich

or cream of celery soup, mixed with half can of milk. Fill one pie shell with tuna, peas, onions and green pepper. Cover with remaining pie shell. Bake 30-40 minutes at 350 degrees. Cut pie in wedges and serve heated soup over it.

FRESH APPLE CAKE

- 2 1/2 c flour
- 2 t baking powder
- 1 t each soda, cinnamon, salt and vanilla
- 2 c sugar
- 1 c salad oil
- 2 eggs
- 1 c nuts
- 1/2 c coconut
- 3 c peeled, diced fresh apples
- 16-oz. package butterscotch chips

Put oil in large bowl. Add sugar, eggs, dry ingredients all at once. Beat until smooth. Add vanilla. Fold in apples, nuts and coconut. Put in greased and floured loaf pan and sprinkle with butterscotch chips. Bake 55 minutes at 350 degrees.

Small engine course slated

A small engine maintenance and repair workshop is scheduled for 7:30 p.m. Jan. 9 at the High School Vocational Building in Iowa Park. The purpose of this event is to assist homeowners in maintaining lawn mowers, edgers, pump motors, etc.

Henry O'Neal, Extension Agricultural Engineer from Texas A&M University, will provide the instruction. Emphasis will be on maintenance of small engines, however, he will also show replacement of points and plugs, carburetor cleaning and carburetor adjustment.

This event is being sponsored by the County Landscape and Garden Committee headed by Alex Wootton in cooperation with the vocational agricultural department at Iowa Park.

Tops meeting canceled

Tomorrow's scheduled meeting of the TOPS Club has been canceled, and members will not meet until Jan. 2.

Thurs., Jan. 11

9 99¢

KING SIZE WALLET CREATIVE COLOR PORTRAITS FOR ONLY

Kodak paper. For a Good Look at the Times of Your Life.

GET 1 FREE WALLET WHEN YOU BUY 9 FOR 99¢

NO LIMIT

Extra Charge for GROUPS

WE USE KODAK PAPER

STUDIOS CREATIVE COLOR

GET PICTURES MADE OF GRANDPA, GRANDMA, DAD, MOM AND ALL THE LITTLE ONES AT THESE SAME LOW PRICES!

ASK About Our **FREE 8x10 OFFER**

SHUGART COLOR PHOTOS

Whites Auto

401 West Park

LOOK WHO'S NEW

Dell Blackwell's little sister, Darla Beth, was born at 7:41 a.m. Dec. 23 in Wichita General Hospital to Mr. and Mrs. Darryl Blackwell. She weighed six pounds, nine and a half ounces and was 19 1/2 inches long.

Grandparents are Mr. and Mrs. Odell Blackwell of Iowa Park and Mrs. Elizabeth Brannan of Clyde.

New Meter Connections

Charles E. Blackstone - 614 W. Louisa
Dale D. Beall - 809 W. Colorado
George V. Zakica - 404 E. Alameda
New Business: Bud Machine Shop - 600 E. Pasadena

Derrell M. Sauls - 1020 Foley
John Panther - 408 W. Washington
Buddy E. Jarnagin - 800 N. Jackson
Ray Helmeamp - 902 Foley
R.P. Herrington - 604 W. Texas
Randy Watreas - 504 W. Texas

Within the U.S., carrots are chiefly grown in California, Texas and Arizona.

APPLE-PINEAPPLE SLAW

- 3 c shredded cabbage
- 19-oz. can pineapple tidbits, drained
- 1 c diced unpared apples
- 1 c tiny marshmallows
- 1/2 c chopped celery
- 1/2 c salad dressing
- 1/2 c nuts (optional)

Combine all ingredients and toss until salad dressing coats all. Serve in lettuce-lined bowl. Trim with apple wedges sprinkled with lemon juice.

VEGETABLE BEAN SALAD

- 1 pkg. frozen green peas, thawed
- 1 c (15 or 16 oz.) red kidney beans, drained
- 1 c (16 oz.) cut green beans, drained
- 1 c (12 oz.) white whole kernel corn, drained
- 1 c diced celery
- 1 small onion, diced
- 1/2 c diced green pepper
- 1 jar (2 oz.) pimento, chopped
- 3/4 c white vinegar
- 1/2 c sugar
- 2 T salad oil
- 1/2 t salt
- 2 t water

KRAUT SALAD

- 3/4 c diced onion
- 1/2 c diced sweet peppers
- 1 1/2 c diced celery
- 1 small jar diced pimento
- 3/4 c sugar
- 1/4 c red wine vinegar
- 1 No. 2 can sauerkraut, chopped, washed and drained

In large bowl combine all vegetables and pimento. In small bowl combine remaining ingredients and stir until sugar is dissolved. Pour over vegetables and toss. Cover and refrigerate at least 24 hours, stirring occasionally. 105 calories per 16 servings.

COUNTER TOPPING

FORMICA WILSON-ART MICARTA

"BUY FROM THE OLD PRO"

T.S. THOMAS, CABINETMAKER

1516 Beverly Wichita Falls Ph. 723-6523

Joan's Beauty Shop

wishes you a Merry Christmas and Happy New Year

Joan Hankins Virginia Cowling
Jolene Lee Debbie McDonald

Appointments Monday thru Saturday

592-5131

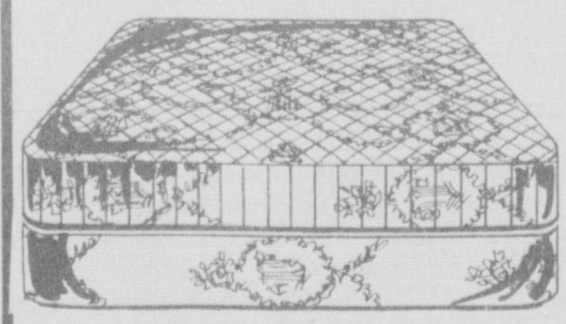
YEAR-END CLOSEOUT

We don't want to inventory these items

Christmas Decorations	Most TOYS
1/2 Price	25% off

Tension Ease **MATTRESS SALE**

Close Out On All Englander Tension Ease Mattresses and Box Springs



Regular Size **MATTRESS or BOX SPRINGS**

Reg. \$159.95 **\$129.95** In Sets

Similar Reductions on Queen and King Sizes

Reduced Prices on All Furniture

LAMPS - PICTURES - ACCESSORIES

PARKWAY

FURNITURE True Value HARDWARE

200-206 West Bank
592-5512 592-4681

Municipal Court Records

Results of municipal court held here last Thursday and yesterday were:

Jack Lynn Southerland, public intoxication, \$28.50;
James David Ervin, public intoxication, \$28.50;
Joe Bennet Willis, public intoxication, \$28.50;
Joseph Martin Tucker, speeding, \$46.50;
Kelly Erle Crush, speeding, \$31.50;
Beverly Sue Boren, speeding, \$39.50;
Christonto Cantu, excessive noise, \$28.50;
Barbour Trucking, illegal parking, \$28.50;
Doyle Wayne Uncel, disobey stop sign, \$28.50;
Robert Alen Blair, disobey stop sign, \$28.50;
Danny Louis Ainsworth, excessive noise, \$28.50;
Richard Allen Evans, disobey stop sign, \$38.50;
George H. Bushfield, speeding, \$51.50;
Kevin Langford Pierre, exhibition of acceleration, \$38.50;
Michael Edward Elwell, possible suspension of driver license, suspended 30 days.



Karl May, German author who became famous in the 19th century for his cowboy and Indian stories about the American Wild West, never traveled outside of Germany.

"We always love those who admire us, but we do not always love those whom we admire." La Rochefoucauld

SONIC

Happy Eating

719 W. Hwy.

Delicious Food at Bargain Prices All Day Saturday

Shrimp Basket..... \$1.89

Chicken Basket.... \$1.89

Tacos..... 39¢ Each or 3 for \$1

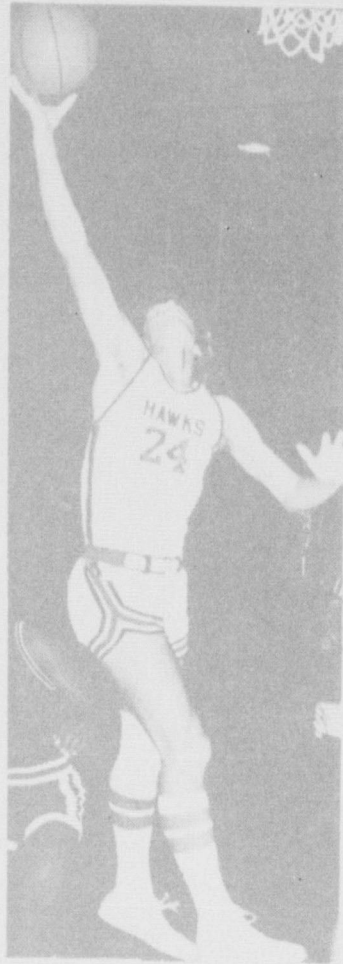
Cheese Nachos.... \$1.79

Dial 592-4221 for Take Out Orders

Disco dance

The Recreation Activity Center will host its last dance of the year Saturday night. "Mr. Disco" will provide music for the teenage dance slated from 9 p.m.-2 a.m. Saturday at the RAC.

Hawks to open district play Friday against Mineral Wells



RANDALL GRIFFITH
...18 in first half

The Hawks, fresh from taking third place at the Midwestern State tournament, will get their first taste of district play tomorrow night when they meet the talented Mineral Wells Rams.

The JV is slated to tip off at 6 p.m., with varsity following.

Iowa Park and Mineral Wells battled for the Dist. 4-AAA championship last season when they won their respective zones. Mineral Wells won the playoff, 52-44, and went on to finally lose in the state championship game with Huntsville.

After finishing last season with a gaudy 32-3 record, Mineral Wells returned six lettermen, including most of its starters, and have lost only two games this year, both to Bowie.

The Rams are ranked third among AAA teams in the state. They beat Rider 51-41 at Midwestern Saturday to win the big school bracket title.

Only one starter, Jim Richardson, returns from last year's Hawk team.

The Hawks bounced Midway 67-39 in the Maroon Division consolation finals Saturday.

After opening the first round with a 59-41 win over Crowell, Iowa Park was derailed from the championship finals 53-51 Friday by Brock.

The Hawks were down by eight points once in the first quarter against Crowell, when they couldn't buy a basket. But Randall Griffith got hot and ignited his team mates with an 18-point first half and the Hawks led 23-14 by halftime.

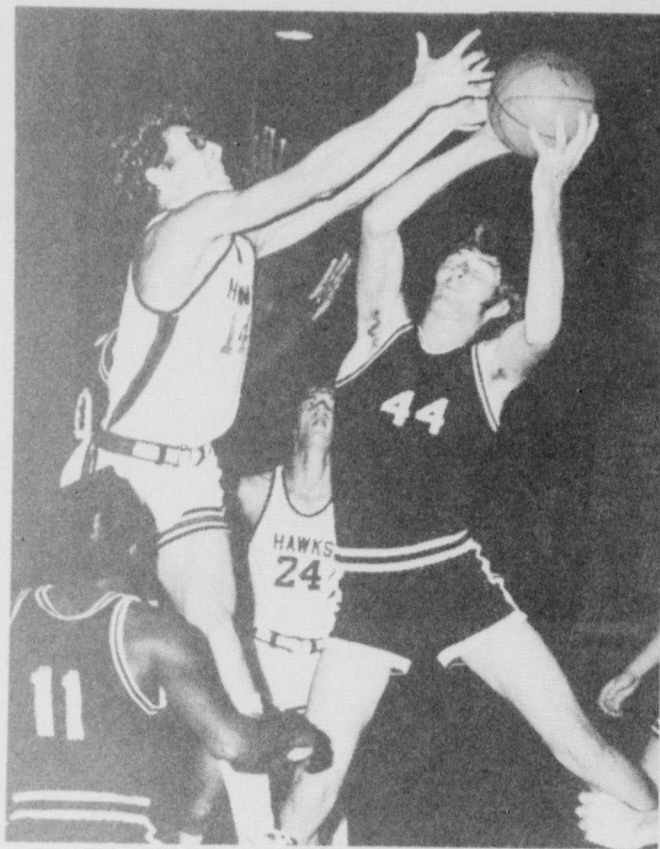
Griffith finished with 22, followed by Harry Hutchins, 12, and Travis Little, 10.

Brook had to fight for its life to hold off a determined fourth period rally by the Hawks. The Class B school, which has already beaten several AAA clubs this season, jumped to a 21-19 halftime lead, and extended the lead by outscoring the greensies 16-12 in the third period, to lead 37-31 when the Hawks started their rally.

Griffith again led scoring with 14 points. Hutchins had 11 and Dennis Dillard finished with 10.

Richardson had his best game of the tournament against Midway, scoring 16 points to lead Hawk scorers. Griffith had 12 and Little 10.

The Hawks took command early, leading 16-8 after the first period and 36-17 at halftime, and coasted the rest of the way. The Hawkettes are not scheduled to see action until Tuesday, when they travel to Weatherford with the boys' varsity and junior varsity teams for a triple header.



TRAVIS LITTLE BATTLES FOR REBOUND
...Hawks earn 59-41 in tourney opener.

Clip & Save

Iowa Park School Menu

TUESDAY, Jan. 2
Breakfast: Bacon, toast & butter, jelly, milk.
Lunch: Fish & tartar sauce, meat & cheese sandwich, soup, macaroni & tomatoes, blackeyed peas, corn bread & butter, chocolate & plain milk, lemon cake.

WEDNESDAY, Jan. 3
Breakfast: Cereal, 1/2 banana, milk.
Lunch: Hamburgers with cheese, meat & cheese sandwich, soup, pickles, lettuce, tomatoes, onions, beans, potato chips, chocolate & plain milk, ice cream bars.

THURSDAY, Jan. 4
Breakfast: Doughnut, apple juice, milk.
Lunch: Chicken fried steak, meat & cheese sandwich, soup, mashed potatoes & gravy, green beans, pickled beets, hot rolls & butter, chocolate & plain milk, chocolate cream pie.

Compliments

Barbour Insurance Agency

Charlene Barbour
Ph. 592-4173
900 West Highway

GOLFERS
Enjoy the beauty & excitement of Skyline Golf Course
GREEN FEES
\$3.00 WEEK DAYS
\$5.00 SATURDAYS
SUNDAYS AND HOLIDAYS
PUBLIC WELCOME
Complete Pro Shop
Facilities
RALPH MORROW
GOLF PROFESSIONAL
(Lessons By Appointment)
SKYLINE C.C.
N. BEVELLY PHONE 855-0771

Harrison hired on ACU staff

Don Harrison, line coach at Killeen High School the last two years, has been named an assistant football coach at Abilene Christian University.

ACU's new head football coach, Ted Sitton, said Don Smith will assume new coaching responsibilities for offensive backs and ends. Smith formerly coached the ACU offensive line.

Harrison, one of the top offensive linemen in ACU football history, fills a vacancy on the ACU football coaching staff created recently when Dewitt Jones resigned as head coach and Sitton was promoted from assistant to head coach.

Harrison helped Killeen to a 15-4-1 record in two years.

He is a 1976 graduate of ACU with a BSEd degree in biology education with a master's degree from ACU in 1977 in school administration.

A former all-state performer from Iowa Park, Harrison started all 44 games of his four-year career at ACU. Twice he received the ACU Best Blocker award and he played

on ACU's 1973 NAIA Division I national championship team. As a sophomore, junior and senior he was honorable mention all-Lone Star Conference, all-Dallas-Fort Worth and All-American.

Deer season nearing end

For hunters who haven't harvested their limit of Texas whitetail deer or turkeys, time is running short.

However, one more long holiday weekend remains for outdoorsmen looking for their limit and those shooters who found new rifles, shotguns or sporting gear under the tree Christmas morning.

The season on deer and turkey ends New Year's Day. The limits are two bucks and two gobblers or bearded hens.

HERE'S WHERE IT'S AT FOR
New Year's Eve!

Sand Beach Skating Rink

855-2711

New Year's Eve Party

Dec. 31
7 P.M. - 2 A.M.

Skate The New Year In With Us.

Old Iowa Park Road

Dine In... Or Out with us

Open 10 A.M. Daily



Close 10 p.m. Nightly

Expressway and Pacific Street



thru Friday

Ham & Cheese SANDWICH
99¢

We will CLOSE 6 P.M. Dec. 31 and re-open 3 p.m. Jan. 1

Phone 592-4811 for Take-Out Orders

Best Wishes for the New Year

We're in a spin with thoughts of our many faithful friends. You're tops with us... have a good year and thanks.

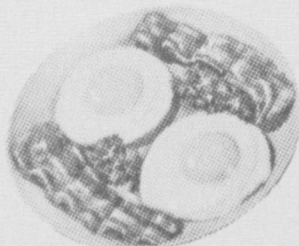
Grilled Cheese and Fries \$1.00

Specials good thru Sunday



805 West Highway

FOR TAKE OUT ORDERS CALL 592-4731



BREAKFAST \$1.99

Choice of Sausage, Bacon or Ham - Eggs any style

Special Good Today through Wednesday

Steak Sandwich

A meal in itself!
Regular \$1.80

\$1.59

Joyous New Year



MICHAEL D's PIZZA PARLOR ETC.

6 a.m. - 10 p.m.
Sunday - Thursday

6 a.m. - 11 p.m.
Friday - Saturday

920 W. Highway
Ph. 592-2392

Eagles unbeaten in district play

The Eagles remain unbeaten in District 13-A play with a 2-0 record while the Lady Eagles have 1-1 loop mark.

Coach Ralph Klinkerman's varsity red birds upended Boyd 71-50 last Thursday night.

Kirk Styles and Barry Lawson shared highpoint honors with 14 each and Kent Lemons trailed with 13

individual points.

On their first district outing the Eagles outgunned Petrolia 57-52 with Lemons leading the pack with 16 points followed by Lawson with 13 and Styles with 12.

The Lady Eagles suffered their only district loss when Boyd slipped past them 32-16. Kristi Lucy, Holliday's highpointer, was held to only six points.

Coach Cotton Davis and

crew took an easy decision on their first district outing as they outgunned Petrolia 43-28. Lucy paced the female red birds with 15 points.

The Eagles are scheduled to play in a tournament at Archer City today through Saturday, then both varsity teams will be back on the home court for a double-header against Electra slated for 6 p.m. Tuesday.

- ✓ We Live In Iowa Park
- ✓ We Promote Iowa Park
- ✓ We Believe In Iowa Park
- ✓ Our Office Is In Iowa Park



Full Time Professionals

WHISNAND REALTORS 592-2153

404 West Park

L.S. WHISNAND
Broker
592-2365

BOBBY WHISNAND
Manager
592-2413

SHIRLEY RAINS
Sales Associate
592-4248

RANDY HARRIS
Sales Representative
692-0878

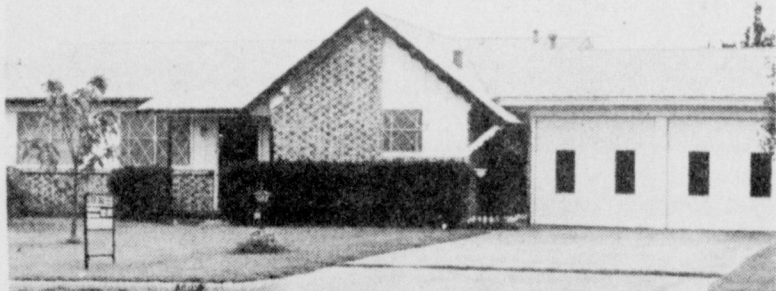
CLETYS STILES
Sales Representative
592-5785

PAT CARTER
Sales Representative
592-5417

1310 Emma

- 1474 Sq. Ft. Living Space
- 3 Bedrooms
- 1 1/2 Baths
- Large Lot
- Double Garage

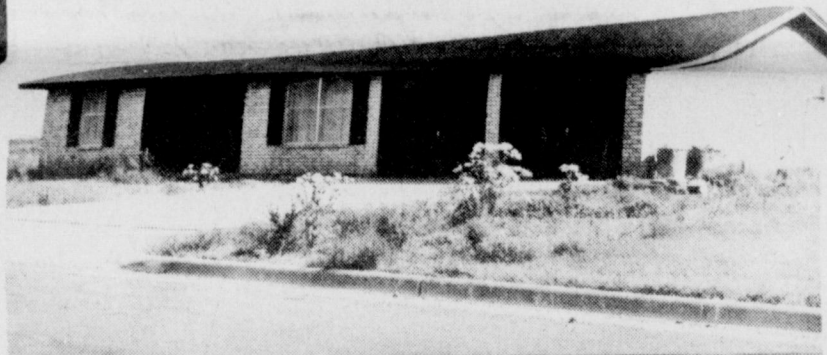
\$89,500 FHA Sales Price



No. 8 Surrey

- Brick, 3 Bedroom
- 2 Full Baths
- Den, fireplace
- All built-ins
- Privacy Fence

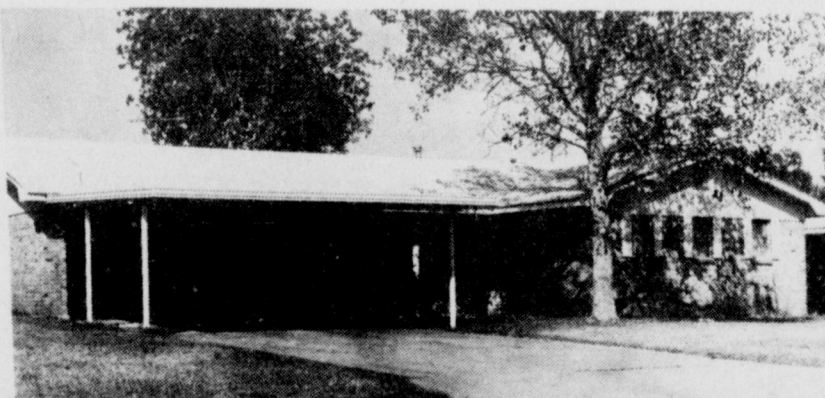
\$47,900 Sales Price



712 W. Rebecca

- Brick
- 4 Bedrooms
- Den
- Covered Patio
- Privacy Fence

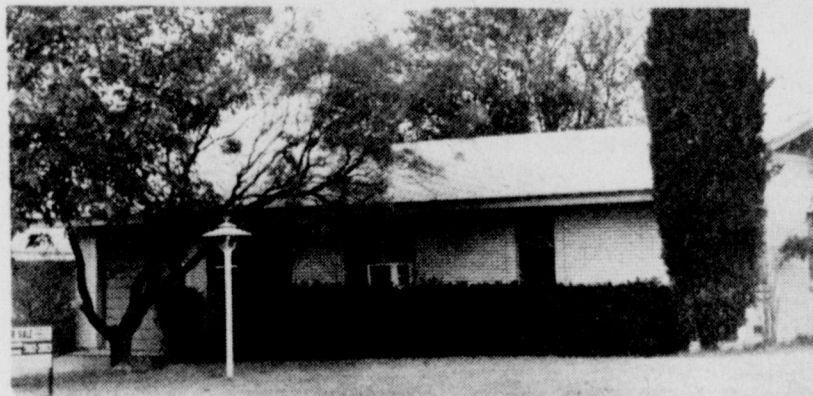
Sales Price \$34,500



504 Aldine

- 3 Bedrooms
- Brick
- Den w/ Fireplaces
- Large Kitchen
- Storm Cellar

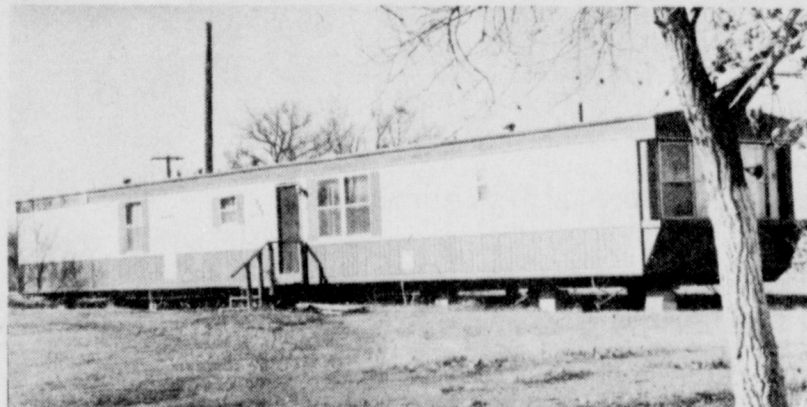
Sales Price \$28,900



600 E. Bank

- 14x84 Lancer
- Fire place
- 3 Bedrooms, 2 Baths
- Fully Furnished
- 2 Storage Buildings
- Located on 2 Lots

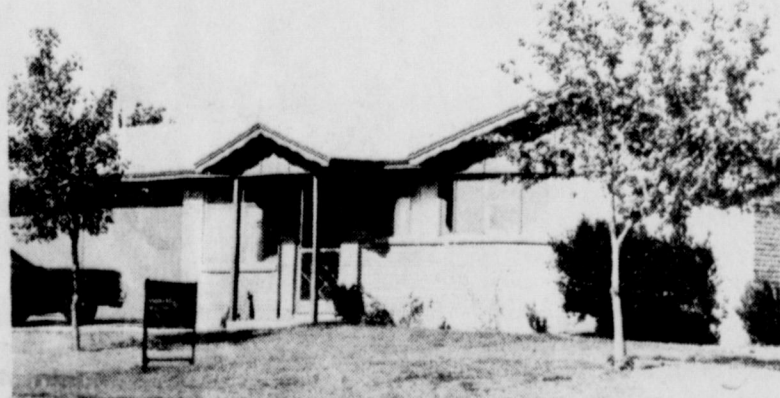
Sales Price \$26,750



902 Van Horn

- 1000' Living Area
- Brick
- 3 Bedrooms
- 1 1/2 Baths
- Fenced

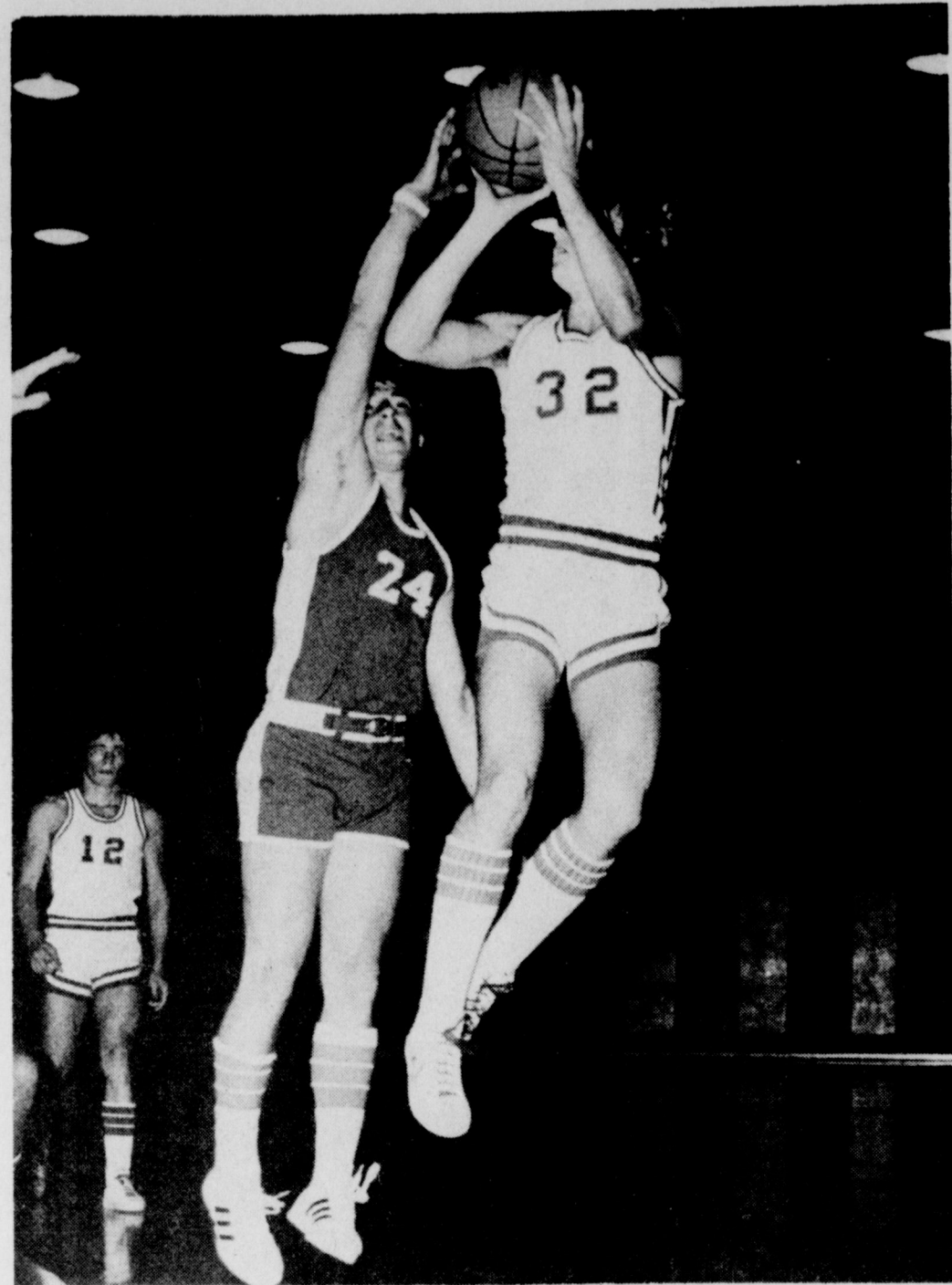
Sales Price \$28,500



Offices close

Holliday's city and school offices will be closed Monday in observance of New Year's Day.

School will resume here Tuesday.



EAGLES UNBEATEN IN DISTRICT ROUNDBALL
...Kirk Styles puts two in the hoop against Megargel

Cotton demonstration surprising

By DON D. DECKER
County Agent

Things often turn-out the opposite of what we expect. This is certainly true in the cotton plant spacing demonstration by Harrison and Terry McAlister at Punkin Center. In this dry year I would expect the thinner spaced cotton to yield more than the thick cotton. But, the results were just reversed.

This demonstration included two replications of two plants per foot, three plants per foot and four plants per foot. The seeding rate of the four plants per foot figured about 15 pounds of cottonseed per acre. Actually the two and three plants per foot was accomplished by thinning the thicker stands before the cotton began to square.

The four plants per foot made 570 pounds of lint per acre while three plants per foot made 548 pounds of lint and the two plants per foot made 531 pounds of lint.

This "blows" my whole theory on the need to plant less seed per acre. It looks like we need to continue

planting 12-15 pounds of seed per acre. This demonstration also proves the cotton plant has an amazing capability to compensate for stand thickness. That is to say, the thinner cotton puts on more fruit per stalk while the thicker plants put on less fruit per stalk. For example, Dan Glass of Iowa Park says, "I'm stripping some cotton which is making nearly a bale per acre. The stand is so poor many of the stalks are several feet apart. But, some of those thin plants have as many as 60 bolls per stalk."

wide go to the gin. The high moisture lint in these green bolls reduces the grade. Growers can delay harvest until those cracked green bolls have dried enough to obtain greater yields and better grades. I can appreciate the pressure growers are under to get their cotton harvested, particularly in view of the shortage of ginning facilities. However, giving the cotton another 7-14 more

days in the field might mean another 10-20 dollars per bale.

Cecil Jarvis of Friberg Cooper says, "My cotton is full of the green bolls in the top. Most of those have cracked since the last hard freeze. It will probably be another week before they are dry. Since my crop will be custom harvested, it will be more than a week before I can get someone with a stripper."

We are harvesting a lot of our cotton too green which is costing the producer money in both yield and grade. Most of the cotton had considerable green bolls at the time of our frost and freezes. For the most part, these bolls have cracked, but are too green for harvest.

These cracked bolls usually go into the green boll trap reducing the yield. Bolls which have cracked

SHUGART COUPON

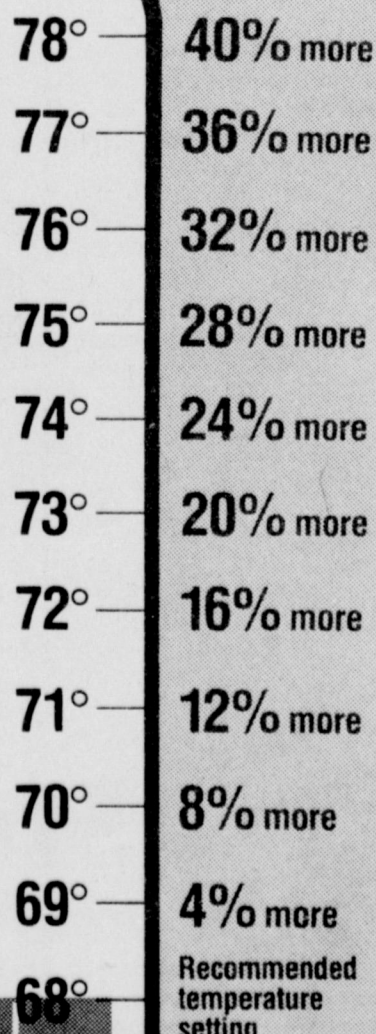
Thurs., Jan. 11

Whites Auto
401 West Park



9
WALLET SIZE
COLOR PORTRAITS
99¢

ASK About Our
FREE
8 x 10
OFFER
Extra charge for GROUPS



The higher you set your thermostat, the higher your energy consumption.

"Try lowering the temperature in your home to 68° this winter. You'll save on your heating bill!"

"A setting of 68° during the winter is the one Texas Electric recommends for both comfort and energy efficiency. For each degree above 68° the energy used for heating your house is increased by approximately 4% per degree.

As shown by the chart the difference between the recommended thermostat setting and 74° is 24%. At 78° the increase in energy usage is 40% or more.

Clearly, the lower you set your thermostat the lower your heating bill is going to be. And after last winter, one of the coldest on record, we think a lot of people are going to be trying their best to use less energy.

Remember to change the filter in your heating system regularly, too. A dirty filter causes your heating system to work longer and that costs you more. Check the filter at least once each month.

All forms of energy are costing more these days. If you're serious about saving energy and money, request a copy of our energy efficiency tips booklet on the comment portion of your electric service bill."



Lucy Dubois
TESCO Information Dept



Electricity. You count on it today. We're working to keep it that way.
W. N. HOUSE, Manager, Phone 592-4149

Bargain Hunter's Paradise THE WANT ADS

DEADLINES:

10 A.M. WEDNESDAY

[Word Ads Only]

4 P.M. TUESDAY, DISPLAY ADS

[With Borders]

DIAL 592-4431

— SAVE 5¢ FIRST INSERTION BY PAYING WITH COPY —

RATES:

10¢ PER WORD FIRST INSERTION

5¢ PER WORD EACH REPEAT

County agriculture produces \$15.6-million

Wichita County farmers and ranchers received \$15,649,000 in marketings and government payments during 1977, the Texas Department of Agriculture has announced.

The total included \$8,688,000 in cash receipts from all crops and \$5,934,000 from livestock and livestock products. Government payments made up \$1,027,000 of the total.

Across the state, agriculture added \$7.1 billion to the economy last year, Texas Crop and Livestock Reporting Service surveys showed, with receipts from all crops almost balancing those from livestock and livestock products. Livestock receipts totaled \$3.5 billion, followed by \$3.3 billion for crop receipts. Government payments made up \$206 million of the total, including over \$120 million through drought and flood assistance programs.

"With improved livestock prices this year, particularly cattle, we are optimistic that 1978 cash receipts will be higher," commented Agriculture Commissioner Rea-

gan V. Brown. "These figures only tell half of the story, however. In any discussion including agricultural statistics, the true picture is only presented when you can balance the cash receipts against the actual production costs. During last year, unfortunately, those production costs outstripped most of the profit margin for many farmers and ranchers.

Texas maintained its third place national ranking in cash receipts, despite problems throughout the year. Other first place rankings included: number of cattle and calves, 14.5 million head; Upland cotton production, 5.5 million bales; wool production, 21 million pounds; mohair production, 8 million pounds; number of farms and ranches, 197,000; and farm and ranch land, 199.8 million acres.

The state ranked second in the production of grain sorghum, grapefruit, cantaloupes, carrots, rice, green peppers, cabbage, onions, American-pima cotton, pecans, honeydew melons and cucumbers.

NOTICE

SITTER DESIRED for 6 year old - after school until 5:00 p.m. Near Kidwell. If Interested call 592-2446
12-28-1tp

WANTED Banjo and old-time fiddle teacher to teach by ear or music. Would prefer older person. 438-2367.
12-21-3tp

CARD OF THANKS
From The Friendly Door, we want to say Thank You to: Third Grace Class of Kidwell for making our decorations; Junior and Senior High Choirs for bringing up music; Seventh Grade Class for their play; American Legion Post 637 for the fruit they furnished for our shut-ins and at the Center; and to all our volunteers who have done so much all year.
Myrna Robinson
Director

CARD OF THANKS
Our sincere thanks and appreciation to our friends and relatives for food, contributions, flowers, cards and expressions of sympathy during our time of sorrow.
Mrs. Edward Leonardi
and Family

CARD OF THANKS
We wish to thank the Kamay Fire Department for the prompt response to the fire at Kamay. The Iowa Park Fire Department was very much appreciated for coming to aid us, and also all the people and tank trucks that came to help.
Mr. and Mrs. Ray Gholson

CARD OF THANKS
We shall always remember with deep gratitude your comforting expression of sympathy, prayers, floral offerings and food.
The Family of M. A. Erwin
Vernis Erwin
Marie Ancell
Geneva Cooper
Lola Pace
Billie Doris Ford
Barbara Good
Jack Erwin
Don Erwin

LEGAL NOTICE
The City of Holliday will hold a public hearing at 7 p.m. Jan. 18, 1979, to collect views from the public concerning an ordinance authorizing the issuance of revenue bonds totaling \$170,000 for the purpose of improving and extending the city's water system.
12-21-2tc

LEGAL NOTICE
The City of Holliday is accepting sealed bids for a boat found by the Holliday Police Department, owner unknown. Sealed bids for the 15-foot fiberglass ski boat with 40 horsepower outboard motor and trailer must be submitted by 10 a.m. Jan. 12 when bids will be opened at Holliday City Hall. Bids mailed should be marked clearly as such on the outside of the envelope. The boat may be inspected from 8 a.m.-5 p.m. weekdays at Holliday City Hall.
12-14-5tc

MISC. FOR SALE

AKC MINIATURE Schnauzer pups, male and female. 553-3893, Vernon
12-21-2tc

MIXED FIREWOOD \$35 rick, \$68 cord delivered. Danny 592-2374.
12-28-1tp

FIREWOOD - Mesquite, green and seasoned mixed: \$25 Rick; \$45 Cord. Short cut available for stoves. Delivery available Iowa Park. 592-2333.
12-14-tfc

PECAN SEEDLINGS, 592-2328, Mile South Bell Road. Baker's Greenhouse.
11-23-tfc

FOR RENT

NOW LEASING - Quail Run Apartments. For information, call 592-4749, Mrs. Beuna R. Brooks
12-21-tfc

HOUSE FOR RENT: 3 bedroom, brick, double garage, fenced yard, 1 1/4 baths, near Kidwell, \$260 plus deposit. 692-2116. Available Dec. 27.
12-21-2tc

FOR RENT or lease - excellent for business. Adjoining Jiffy, 610 East Highway. 592-5327.
12-7-4tp

HELP WANTED

ADULT HELP (25 or older) for nights and weekends. Apply in person. Iowa Park Dairy Queen.
4-27-tfc

Sell It With Classifieds

FREE ESTIMATES 438-2876
WOLFE CONST. CO.
*Painting *Roofing
*Remodeling *Additions

GOLD* Buyer and Sellers
Affiliated Supply, Inc.
#165 Mellie Esperson Bldg., Houston, Texas
77002, 713-225-4646
Write for Free Info.

BILL'S PLUMBING and ROTOROOTER SERVICE
All Work Guaranteed
New in Iowa Park
Phone 592-4557

Texas FB
Offering Coverage For

Life
Disability
Auto
Home
Business
Liability

We appreciate the opportunity to serve our neighbors & friends.
Raymond Cope
Business Ph. 592-2156
Home 592-4366

HOME SERVICES

REGISTERED CHILD CARE in my home all ages. Call 592-9309
11-30-5tp

MARY KAY COSMETICS, Allie Girard, consultant, 109 W. Poe, 592-4217.
4-5-tfc

WILL DO BABYSITTING in my home for working mothers. Willing to pick up after school. Dependable, hot lunches, nice and clean atmosphere. Call 592-5653 after 5:30.
12-28-1tp

RELIABLE PLUMBING and Heating Repair, Harry Skinner, Owner. 592-5674. Complete sewer cleaning and repair.
11-9-8tp

HOUSE PAINTING - Call for free estimate, John D. Fecher. Phone 592-4472.
12-30-tfc

PLOW GARDENS discing, mowing, level yards. O.S. McLemore. Ph. 592-4297 or 592-4517.
3-10-tfc

KOONCE LAWN MOWER, Small Engine Repairs, 202 No. Jackson. 592-4779.
12-20-tfc

MORAN MONUMENT Works, Vernon, Texas, Old Highway 287, near East View Cemetery. A good selection of granites, cemetery lettering, grass markers, vases of bronze and marble.
9-30-tfc

PRIVATE FENCE sales and installation. Charles Skelton, phone 592-5190.
6-22-tfc

ROOFING - Wolfe Roofing Co. Phone 438-2876.
5-5-tfc

TREE OR SHRUBBERY trimming or removal. Free estimates. Bob Harper 592-5060
9-28-10tp

POODLE GROOMING - Call 592-4766 for appointment. Tom Barnett, 520 W. Alameda.
3-3-tfc

NEED FILL SAND? - Call Donald Hallum. 592-4365. 804 N. Wall, Iowa Park.
11-25-tfc

HOUSE PLANS 592-9365
10-26-13tp

JERRY'S VINYL REPAIR, recoloring, auto, furniture, commercial. Free estimates. 438-2243.
2-23-tfc

BATTERIES for most
HEARING AIDS and
TIMEX WATCHES at
PARK PHARMACY
115 PARK

Custom PICTURE FRAMING
Finished and unfinished framing. Will do matting. New Supply of Molding
Ray Fortner
602 Rebecca (Rear)
Iowa Park, Tex.
Phone 592-4216

HOME FOR SALE

UNDER construction in Iowa Park, \$28,000. Farmers Home Financing. Low down payment; payments based on income. 3 bedrooms, 1 1/2 baths, garage, heat-air, built-in cook stove, carpeted. SWAN CONSTRUCTION, 692-8788.
9-14-tfc

BEAUTIFUL 4 or 5 bedroom brick, living, den, fenced, fruit and pecan trees. 713 West Coleman. Cagle Realtors, 767-2311.
12-21-6tp

1978 RIDGEMONT - 14x80. No equity, assume payments. 592-2485 or 592-4221.
12-28-1tp

BUSINESS

DEBBIE McDONALD formerly of Regis Hair Stylist, is now associated with Joan's Beauty Shop, specializing in young people's haircuts and styling. 592-5131.
11-30-5tc

SHOTGUN reloading components. Shot - \$11.25 bag. CCI Primers - \$9.75 thousand, Red Dot powder - \$4.95 lb., AA wads - \$2.45 bag, Black powder guns and accessories, powder - \$3.70 lb. Ye Ole Gun Shack, 409 W. Washington Ave., 592-5430.
7-27-tfc

AUTOS

1962 CHEVY Belair, \$350. Body in good shape & has rebuilt engine. 6 cylinder 392-5247
12-28-1tp

1961 GMC 2-ton flatbed truck. Good condition, 12 ply tires. Danny 592-2374.
12-28-1tp

1974 CHEVY Impala 46,000 miles, green with white vinyl top. In very good condition. 200 dollars & take over payments. 592-5247
12-28-1tp

Willie the Sweep
A No. 1 Chimney Sweep
592-9000

Dietrichson Construction Co.
"Remodeling - Alterations - Additions"
Dick Dietrichson
Iowa Park, Texas
592-2414
Free Estimates
Don Dietrichson
Iowa Park, Texas
592-2232

IOWA PARK AIR CONDITIONING & HEATING
Carrier SERVICE ON ALL MAKES ENGINEERING SALES 607 W. BANK FRANK GUYETTE
PHONE 592-5891

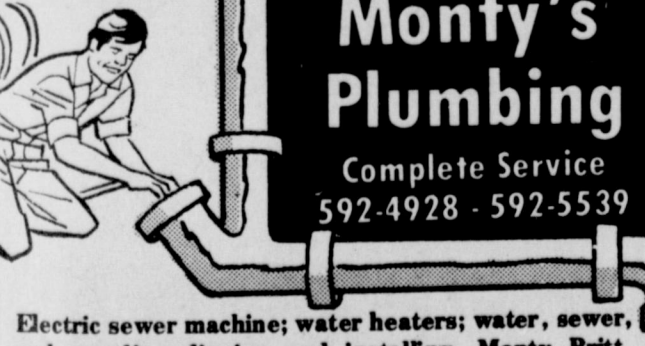
HAPPY NEW YEAR
Our relationship is one of special harmony. We cherish it and look forward to another year of your trust and friendship.

Leo Fields
FIRE - AUTO - LIFE - SICKNESS
Wichita County Farm Bureau
Estate Planning - Tax Sheltered Retirement Plans
OFFICE 817/592-2156 P.O. BOX 816
HOME 817/592-4408 IOWA PARK, TX 76367

THAT'S A FACT
FLEET FLEA!
THE COMMON FLEA (PULEX ERITARUS) HOLDS THE ALL TIME RECORD FOR FLEA-JUMPING. IN 1910 A FLEA'S HIGH JUMP WAS MEASURED AT 7 3/4 INCHES - OR 130 TIMES ITS OWN HEIGHT!

DON'T LOOK NOW... BUT YOUR DEFICIT IS SHOWING IT ALWAYS SEEMS THAT WE SPEND MORE THAN WE MAKE - NO MATTER HOW MUCH WE EARN. THE CURE? INVEST IN U.S. SAVINGS BONDS
RESEARCH SHOWS THAT YOUR PEAK EFFICIENCY OCCURS BETWEEN 8 P.M. AND 9 P.M. THE LOW POINT COMES AT 4 A.M.

E&S EXXON
Winterize **EXXON** Your Car
592-4897
612 W. Highway

Monty's Plumbing
Complete Service
592-4928 - 592-5539

Electric sewer machine; water heaters; water, sewer, and gas line digging and installing. Monty Britt, owner, operator.

Mary Kay Cosmetics
Let me show you what Mary Kay has to offer for a "more beautiful you." Call today for an appointment for a complimentary facial.
Kellie Brady
Beauty Consultant
691-0255 after 5 p.m.

We service all makes of washers, dryers, freezers, refrigerators and window air conditioners.
POSEY'S APPLIANCE SERVICE
208 James Ph. 592-5452 Iowa Park

EARN \$509.44
IN 182 DAYS
By depositing \$10,000 in a Parker Square Savings 6-Month Money Market Certificate at
9.830% PER ANNUM
Effective yield **10.328%** per annum
At the end of 182 days, your \$10,000 Money Market Certificate is worth \$10,509.44 FULLY INSURED DAILY COMPOUNDED
PARKER SQUARE Savings
and Loan Association
ESLIC ONE PARKER SQUARE WICHITA FALLS
111 S. Main, Henrietta 301 N. Wall, Iowa Park 315 S. Ave. D, Burkburnett Southwest Pkwy., Rhoad Rd.

Obituaries

Emma Thompson

Services for Emma Beavers Thompson, 82, were held Wednesday afternoon in Tanner-Aulds Funeral Home with Rev. Bill Campbell pastor of Faith Baptist Church, officiating. Burial was in Highland Cemetery.

Born Nov. 14, 1886 in Crockett, Mrs. Thompson had been a resident of Iowa Park 52 years. She was a former member of Rebekah Lodge of Iowa Park and a member of First Baptist Church.

Survivors include five sons, W.A. of Holliday, John of Hoisington, Kan., Marvin of New Orleans, La., and Lonnie and Lacy of Iowa Park; a brother, Tom L. Gossett of Stanton; a sister, Mrs. Jesse Davis of Crockett; 12 grandchildren; 20 great-grandchildren; and four great-great-grandchildren.

Harry Donald Hampton

Last rites for Harry Donald Hampton of Henrietta, father of Mrs. Eleanor Bell of Iowa Park, were held Tuesday afternoon at Blue Grove Baptist Church with Guy Estaves, pastor, officiating. Burial was in Blue Grove Cemetery.

Born Dec. 14, 1887 in Nebraska, he was a retired oil field worker.

Survivors include three sons, Donald of Odessa, Glen of California and David of Houston; two daughters, Mrs. Bell and Mrs. Faith Crump of Blue Grove; 13 grandchildren and 10 great-grandchildren.

William Cecil Starnes

Services were held Saturday for William Cecil Starnes, 71, at Sullivan Funeral Home. Rev. Ron Fox, pastor of Calvary Baptist Church, officiated.

Burial was in Thalia Cemetery.

A retired mechanic and trucker, Starnes died in a Vernon hospital Wednesday after a lengthy illness. He was born Oct. 10, 1907 in Fannin County, and moved to Wilbarger County from Foard County in 1933.

Survivors include two sons, G.W. of Iowa Park and William Louis of Oxnard, Calif.; two daughters, LaVerne Cooper of Vernon and Linda Pearl Eck of Tipton, Kan.; four

brothers, Horace of Denison, Wilson of Texarkana, James of Littlefield, Charles of Richardson; nine grandchildren and one great-grandchild.

Nancey Hicks

Funeral services for Mrs. Nancey Elizabeth Hicks, 82, of Poteet were held Saturday afternoon at Mission Park Funeral Chapel, officiated by Rev. Earl D. Willis, pastor of Ashley Road Baptist Church.

A member of the First Baptist Church of Somerset, she was a charter and life member and past matron of Somerset Chapter O.E.S. #730. Mrs. Hicks passed away Thursday in Jourdan.

She is survived by four daughters: Mrs. Jack Hensler Sr. of Poteet, Mrs. Billy Nixon of Sherman, Mrs. Melvin Schupp of Charlotte and Mrs. Glenn R. Miller of Poteet; seven sons, Carlton of Iowa Park, Edman of San Antonio, Arthur of Godley, Earl of Cloverdale, Calif., Harvey of Belleville, Ill., Wilbur of Mt. Home, Idaho, and Robert of Washington, D.C.; 30 grandchildren, 20 great-grandchildren and four great-great-grandchildren.

Ben Lewis Barker

Last rites for Ben Lewis Barker, 53, were held Saturday in James B. Totten and Son Funeral Home in Electra. Rev. Joe Ainsworth, pastor of First Baptist Church, officiated. Burial was in Eastview Cemetery in Vernon.

Barker died in his home Thursday.

Born Dec. 26, 1924 in Wilbarger County, he married Mary Davis in 1943 in Anadarko, Okla. He had resided in Electra most of his life.

Survivors include his wife; his mother, Janet Barker of Electra; two daughters, Janie Lee Black of Iowa Park and Mary Ann Van Pelt of Electra; three sons, Charles of Springdale, Ark., Frank Eugene of Strathmore, Calif., and Benjamin Alfred of Byers; two sisters, Pauline Mieier of Iowa Park and Doris Reid of Dean; two brothers, Buddy and Harold, both of Electra, and nine grandchildren.

Mrs. Loys (Matt) Barbour

Services were last Friday at the Tenth and Broad Church of Christ in Wichita Falls for Mrs. Loys D. (Matt) Barbour, 69, of Iowa Park. She died last Wednesday in a Wichita Falls hospital after a lengthy illness.

Lynn Rhodes, minister, officiated, and burial was in Highland Park Cemetery under direction of Hampton-Vaughan Funeral Home.

Born Oct. 10, 1909, at Stephenville, Mrs. Barbour was the last of five children of Mr. and Mrs. W.C. Kiker.

She was married to Loys D. Barbour Oct. 20, 1935, in Wichita Falls.

She was graduated from W.F. George High School here in 1928. In 1932 Mrs. Barbour entered Wichita Falls General Hospital School of Nursing and graduated two years later. She continued her profession as a registered nurse with the exception of five years following the birth of the couple's son in 1940.

A skilled surgical nurse, in 1957 she was one of two nurses employed by Dr. Gordon G. Clark. She continued her work here through the partnership of Dr. Erwin Soell and Dr. Earl Watson. Her duties continued to grow under the new partnership including giving telephone relief to the physicians and acting as purchasing agent for drugs and supplies.

Dedicated to the service of mankind, Mrs. Barbour often went to the homes of elderly and infirmed persons to administer care prescribed by their physicians. She often



drove many miles to rural homes to perform this service and became admired for never being too busy or tired to show concern and compassion for someone's health problems and to exceed her usual duties to be of help.

"She has endeared herself to all she has come in contact and lift their spirits by her joking and cheery manner," said one of her longtime friends, Ruth Gard. "She is truly the Florence Nightingale of Iowa Park."

Mrs. Barbour was a member of the Tenth and Broad Church of Christ.

She was a charter member of Wichita County Farm Bureau and was a member of the Wichita Falls Farm and Ranch Club.

Her memberships in professional organizations included the Private Duty Section of Registered Nurses, District Nurses Association, Texas Nursing Association, American Nursing Association and Alumni Association.

In addition to her profession and varied hobbies, Mrs. Barbour was a partner in her husband's farm operation.

Survivors include her husband; a son, Jim L. of Iowa Park; a sister, Mrs. Larue Erby of Tulsa; and a brother, Sam J. Kiker of Decatur.



Some say it's a sign of rain to see lightning bugs flying high.

TRINITY LUTHERAN CHURCH
8 1/2 miles north FM 365
1 1/2 miles west FM 1813
Sunday School: 9:45
Worship: 10:30
Welcome!

--WELCOME--
Assembly Of God
S. Yosemite
9:45 S.S./6 P.M.
Wed. 7 P.M. Service
Rev. Charles Hensley,
Pastor

FIRST CHRISTIAN CHURCH

[Disciples of Christ]



Rev. Clyde Markee
105 E. Cash 592-4513
You are cordially invited to worship with us each Sunday.
Church School 9:45 a.m.
Worship 10:55 a.m.
YOUTH PROGRAM 6:00 p.m.

YOU ARE ALWAYS WELCOME
SUNDAY BIBLE STUDY 9:30
PREACHING 10:30 & 6:00
WEDNESDAY EVENING 7:30

Keep In Touch
Phone 592-2541
...for information relative to members of the congregation. Bible reading suggestions. Short devotional. Information changed daily.

CHURCH of CHRIST
300 EAST PARK
IOWA PARK
(Call office - Ride one of our buses)
592-5415
STEVE BRACKEN PREACHER

Iowa Park's newest place of Worship
Iowa Park Missionary Baptist Chapel

410 Park West Shopping Center
(Next door to Louis Jewelry)
Sunday School ... 9:45 A.M. B.T.C. ... 6:00 P.M.
Worship ... 11:00 A.M. Evening Worship ... 6:00 P.M.
Wednesday Evening Worship 7:00 P.M.
Phone 592-4288 Larry Washburn, Pastor

You've heard of bonds to build a school, well here are some bonds to go to school. U.S. Savings Bonds. After all, Bonds are the safe, dependable way to save for just about anything. And when you sign up for the Payroll Savings Plan, they're a perfect way to save for college. Automatically. So buy U.S. Savings Bonds.



NEW YEAR'S EVE IS SOMETHING ELSE WITH HBO

This New Year's Eve start the year off with a bang. Make a New Year's resolution that will keep bringing you entertainment month after month. Give yourself something else—Home Box Office! HBO gives you the best seat in the house for Hollywood movies straight from the theaters. Always uncut and without commercial interruptions. HBO puts you right up front for exclusive "Standing Room Only" and "On Location" specials with famous

comedy and singing stars like Ray Charles, Gladys Knight, Paul Anka and Shekya Greene—just as they performed before audiences all over the world. HBO gives you the best seat for exclusive sports events—College Basketball, World Team Tennis, Wimbledon Tennis Championships, Boxing, Gymnastics and much more. HBO schedules exclusive features, like "Inside the NFL"—a weekly sports magazine that takes a look at major games with in-depth analysis. If you like sports,

you'll enjoy HBO! And HBO is a real bargain! Just consider the cost of going out to see a movie, a game, a nightclub performance or a superstar in concert. Getting HBO is easy. Just fill out the coupon and we'll do the rest. See why HBO is something else!

HBO
THE BEST SEAT IN THE HOUSE

SNB

Use the IRA Plan for Your Future

When you're ready to retire... make sure you're financially ready as well. Our Individual Retirement Account affords you the freedom of spending your retirement years the way you want... and that's something to look forward to! Start now and save up to 15% of your annual income... up to \$1500 a year! Come in!

SNB STATE NATIONAL BANK
IOWA PARK, TEXAS
Member F.D.I.C.

T.V. CABLE
Of Iowa Park
901 W. Highway 592-2164

IOWA PARK CONSOLIDATED INDEPENDENT SCHOOL DISTRICT

IOWA PARK, TEXAS

COMPARISON OF OFFICIAL BUDGET WITH REVENUE FOR THE FISCAL YEAR ENDED AUGUST 31, 1978

	GENERAL OPERATING FUND	DESIGNATED PURPOSE FUND	INTEREST AND BONDED DEBT FUND	TOTAL REVENUE	BUDGET 1977-78	OVER (UNDER) BUDGET
5700 REVENUE FROM LOCAL AND INTERMEDIATE SOURCES						
5710 Local Maintenance and Debt Service Tax	\$ 902,817.87	\$	\$180,477.18	\$1,083,295.05	\$1,079,870.00	\$ 3,425.05
5730 Tuition from Patrons	26,015.98			26,015.98	20,364.00	5,651.98
5750 Enterprise Funds	4,357.02			4,357.02	37,808.00	(33,450.98)
5760 Other Revenue from Local Sources	88,106.07		3,340.94	91,447.01	83,245.00	8,202.01
5700 Total Revenue-Local and Intermediate Sources	1,021,296.94		183,818.12	1,205,115.06	1,221,287.00	(16,171.94)
5800 REVENUE FROM STATE SOURCES						
5810 Per Capita and Foundation	1,756,362.00		15,768.00	1,772,130.00	1,753,435.00	18,695.00
5830 Transportation	47,441.00			47,441.00	48,558.00	(1,117.00)
5840 Vocational	8,405.00			8,405.00	12,791.00	(4,386.00)
5860 Elementary and Secondary Education Act		54,683.78		54,683.78	59,255.00	(4,571.22)
5880 Other State Distributed Revenues from Federal Sources		2,794.60		2,794.60		2,794.60
5890 Other State Revenues	15,741.00			15,741.00	15,768.00	(27.00)
5800 Total Revenue-State Sources	1,827,949.00	57,478.38	15,768.00	1,901,195.38	1,889,807.00	11,388.38
5900 REVENUE FROM FEDERAL SOURCES, TRANSFERS, NON-REVENUE RECEIPTS						
5910 Revenue from Federal Sources	54,771.19			54,771.19	54,335.00	436.19
5900 Total Revenue-Federal Sources, Transfers, Non-Revenue Receipts	54,771.19			54,771.19	54,335.00	436.19
5000 TOTAL REVENUE	\$2,904,017.13	\$57,478.38	\$199,586.12	\$3,161,081.63	\$3,165,429.00	\$(4,347.37)

COMPARISON OF OFFICIAL BUDGET WITH EXPENDITURES

FUNCTION	GENERAL OPERATING FUND	DESIGNATED PURPOSE FUND	INTEREST AND BONDED DEBT FUND	TOTAL EXPENDITURES	BUDGET 1977-78	(OVER) UNDER BUDGET
10 INSTRUCTION SERVICE						
11 Instruction						
6100 Payroll Costs	\$1,571,354.69	\$52,559.11	\$	\$1,623,913.80	\$1,685,892.00	\$ 61,978.20
6200 Purchased and Contracted Services	26,320.68			26,320.68	27,284.00	963.32
6300 Supplies and Materials	41,034.35	2,124.67		43,159.02	46,997.00	3,837.98
6400 Other Operating Expenses	11,306.77			11,306.77	13,679.00	2,372.23
6600 Capital Outlay	15,431.90			15,431.90	50,000.00	34,568.10
Total Instruction	1,665,448.39	54,683.78		1,720,132.17	1,823,852.00	103,719.83
0 INSTRUCTIONAL RELATED SERVICES						
21 Instructional Administration						
6100 Payroll Costs	83,961.64			83,961.64	86,504.00	2,542.36
6200 Purchased and Contracted Services	6,793.51			6,793.51	7,436.00	642.49
6300 Supplies and Materials	1,445.78			1,445.78	2,194.00	748.22
6400 Other Operating Expenses	3,696.06			3,696.06	4,040.00	343.94
6600 Capital Outlay	172.00			172.00	845.00	673.00
Total Instructional Administration	96,068.99			96,068.99	101,019.00	4,950.01
22 Instructional Resources and Media Services						
6100 Payroll Costs	42,105.67			42,105.67	44,102.00	1,996.33
6200 Purchased and Contracted Services	2,140.40			2,140.40	2,490.00	349.60
6300 Supplies and Materials	7,622.31	374.02		7,996.33	9,963.00	1,966.67
6400 Other Operating Expenses	75.00			75.00	75.00	-0-
6600 Capital Outlay	8,102.86	2,420.58		10,523.44	10,977.00	453.56
Total Instructional Resources and Media Services	60,046.24	2,794.60		62,840.84	67,607.00	4,766.16
23 School Administration						
6100 Payroll Costs	120,958.95			120,958.95	122,440.00	1,481.05
6200 Purchased and Contracted Services	2,006.82			2,006.82	2,995.00	988.18
6300 Supplies and Materials	1,150.50			1,150.50	1,545.00	394.50
6400 Other Operating Expenses	2,124.87			2,124.87	2,430.00	305.13
6600 Capital Outlay	1,594.50			1,594.50	1,350.00	(244.50)
Total School Administration	127,835.64			127,835.64	130,760.00	2,924.36
30 PUPIL SERVICES						
31 Guidance and Counseling Services						
6100 Payroll Costs	\$ 78,166.88	\$	\$	\$ 78,166.88	\$ 81,130.00	\$ 2,963.12
6200 Purchased and Contracted Services	369.24			369.24	569.00	199.76
6300 Supplies and Materials	3,718.32			3,718.32	5,324.00	1,605.68
6400 Other Operating Expenses	1,372.97			1,372.97	2,150.00	777.03
6600 Capital Outlay	393.76			393.76	635.00	241.24
Total Guidance and Counseling Services	84,021.17			84,021.17	89,808.00	5,786.83
33 Health Services						
6200 Purchased and Contracted Services	72.80			72.80	235.00	162.20
6300 Supplies and Materials	223.22			223.22	335.00	111.78
Total Health Services	296.02			296.02	570.00	273.98
34 Pupil Transportation - Regular						
6100 Payroll Costs	44,213.45			44,213.45	45,220.00	1,006.55
6200 Purchased and Contracted Services	1,608.18			1,608.18	2,250.00	641.82
6300 Supplies and Materials	25,478.18			25,478.18	26,000.00	521.82
6400 Other Operating Expenses	4,013.55			4,013.55	4,600.00	586.45
6600 Capital Outlay	36,917.43			36,917.43	39,500.00	2,582.57
Total Pupil Transportation - Regular	112,230.79			112,230.79	117,570.00	5,339.21
35 Pupil Transportation - Exceptional Children						
6200 Purchased and Contracted Services	1,566.12			1,566.12	1,600.00	33.88
Total Pupil Transportation - Exceptional Children	1,566.12			1,566.12	1,600.00	33.88
36 Co-curricular Activities						
6100 Payroll Costs	7,872.96			7,872.96	7,872.00	(.96)
6200 Purchased and Contracted Services	769.79			769.79	1,369.00	599.21
6300 Supplies and Materials	928.17			928.17	1,290.00	361.83
6400 Other Operating Expenses	44,561.79			44,561.79	47,737.00	3,175.21
6600 Capital Outlay	9,042.07			9,042.07	12,042.00	2,999.93
Total Co-curricular Activities	63,174.78			63,174.78	70,310.00	7,135.22
40 ADMINISTRATION						
41 General Administration						
6100 Payroll Costs	\$ 101,615.35	\$	\$	\$ 101,615.35	\$ 100,279.00	\$ (1,336.35)
6200 Purchased and Contracted Services	27,643.62			27,643.62	39,060.00	11,416.38
6300 Supplies and Materials	8,269.18			8,269.18	11,650.00	3,380.82
6400 Other Operating Expenses	27,050.89			27,050.89	30,470.00	3,419.11
6600 Capital Outlay	6,296.88			6,296.88	8,103.00	1,806.12
Total General Administration	170,875.92			170,875.92	189,562.00	18,686.08
42 Debt Service						
6511 Bond Principal			110,000.00	110,000.00	110,000.00	-0-
6521 Bond Interest			79,247.50	79,247.50	79,247.50	-0-
6590 Fees and Other Expenditures			295.39	295.39		457.11
Total Debt Service			189,542.89	189,542.89		457.11
50 PLANT SERVICES						
51 Plant Maintenance and Operation						
6100 Payroll Costs	91,803.21			91,803.21	93,767.00	1,963.79
6200 Purchased and Contracted Services	153,053.05			153,053.05	189,480.00	36,426.95
6300 Supplies and Materials	38,008.59			38,008.59	56,662.00	18,653.41
6400 Other Operating Expenses	85.00			85.00	1,500.00	1,415.00
6600 Capital Outlay	29,985.65			29,985.65	36,335.00	6,349.35
Total Plant Maintenance and Operation	312,935.50			312,935.50	377,744.00	64,808.50
EXPENDITURES	6000					
	\$2,694,499.56	\$57,478.38	\$189,542.89	\$2,941,520.83	\$3,160,402.00	\$218,881.17

Worth Quoting

Some people have a knack for getting into a conversation after a few opening remarks, but most of us have difficulty when it comes to offering a snappy opening ourselves. Well, help has arrived. After years of careful compilation, here are a few things you can say to get the conversation started, and maybe even make you the center of attention:

"I just got my electricity bill and it was only \$10.50."

"My 17-year-old son has been given a safe-driving award."

"I just got a notice from my insurance company that my rates for next year will be reduced."

"I voted for Richard Nixon."

"Farrah Fawcett-Majors needs to put on weight."

"I voted for Dolph Briscoe."

"You can make money on \$2 wheat."

"I like Jimmy Carter's smile."

"I went to the library yesterday instead of watching the Dallas Cowboys."

"I don't care whether my bathroom tissue is soft or not."

"I think Barbara Walters is worth \$1 million."

"I can't wait until I'm 40."

"My son in college came home for Christmas with money still in his bank account."

"My aunt in Chicago, Ill., mailed me a package two days ago and it arrived today."

"I like the smell of cigar smoke."

"I really love the winters in the Texas Panhandle."

"My cousin had a sex-change operation, and she's still a lousy

tennis player."

"I get paid for a 40-hour week, but I put in more hours because I like my job."

"I like to shop in Amarillo because you get to wait at so many red lights and can really see the sights."

"Sure we need a tax increase. They can add it right onto our house payments and that won't hurt anybody."

"The United Way didn't call on me, but I sent in a big contribution anyway."

SPEEDY NIEMAN
Hereford Brand



Humor 'n Whimsey

Joe Riordan

Tall Texas tales don't seem to be popular, anymore. I can remember when almost every issue of Readers' Digest would include at least one. They may have been replaced by Aggie jokes or one liners, or cute sayings by precocious children.

But I miss the tall tales like the one about the rich Texan who didn't want to wear glasses while he drove his Cadillac - so he had the windshield ground to his prescription.

Or the one about the Texan who was asked how much land he owned. "About 35 acres," he said. "You call that a ranch?" "Nope. I call it downtown Dallas."

My favorite Texas-type story was told to me by Cliff Clarke, who now lives in Dallas. He swears it actually happened.

According to him some wealthy West Texans wanted their town to have a college of its own. A committee was formed to look into the possibility. One of the members heard about a college in East Texas that was in financial trouble. He proposed inviting the college to relocate.

The committee contacted the school's president to discuss the possibility. After several invitations

to meet with the committee, he finally agreed to discuss the situation. From the outset, it was obvious the educator thought the committee was biting off more than it could chew.

After several negative remarks about the feasibility of moving the college, he ended his speech by saying, "I estimate it would take at least one million dollars - just to relocate the campus. And gentlemen, one million dollars is a lot of money. So, the board of trustees has authorized me to decline your offer."

The committee chairman stood up, looked at the school president and said: "On behalf of the committee I want to thank you for meeting with us. We're sorry your college won't consider moving to our city. But, as you say, one million dollars is a lot of money. We all know that. Why just recently my church had a capital fund drive for \$650,000. And do you know what? It took us the better part of a Sunday afternoon to raise the money. This meeting is adjourned."

Sell It With Classifieds



By **BOB HAMILTON**

But I choose to be optimistic. It's difficult to appreciate something when it happens. It takes time for significance to register. That's why the future always promises to be interesting, to me. All I have to do is look back over the years, view the changes, and I know there is much to look forward to. If you want to appreciate change, take something that is most insignificant to you now, something very common, and trace it back in your life.

I'll use the ballpoint pen, for an example.

There's hardly anything more common today than a ballpoint pen. They're so common, they are free from many, many sources. Businesses find them so inexpensive, they give them away for advertising. And you can buy one for less than a quarter.

For people like me, a ballpoint makes work considerably easier than, say using a pencil or fountain pen. You've got to use one as much as I

before you can realize how much the common ballpoint saves. I was a teenager before I saw my first one. You've got to have used a fountain pen, or had to carry a sharpener for a pencil, to fully appreciate the ballpoint.

There's nothing more frustrating than to be writing, and have a fountain pen run out of ink, or the lead in a pencil break.

Well, maybe there is. Like throwing a good dress shirt away because your fountain pen decided to leak indelible ink into the pocket.

One can name hundreds of things that are common place today, that weren't here only a few years ago. They're all around us.

What will become common place that we will see for the first time during 1979? What changes in our lives will the new year bring?

I can hardly wait to find out, because as an optimist, I know they will all be good.

Have a happy, happy 1979.

4-H CLUB



News

A 4-H project in beginning macrame skills will begin 1:00 p.m. Saturday, Jan. 6, at the County Extension Office located at 1626 Midwestern Parkway. This project is open to any youth 9-19 regardless of socio-economic level, race, color, sex, religion or national origin.

Registration fee will be for the supplies each youngster needs for the item they choose to make. There will be three meeting times: Saturday, Jan. 6, 1:00-2:00 p.m.; Monday, Jan. 8, 7:00-8:00 p.m.; Saturday, Jan. 13, 10:00 a.m.

For more information contact Anita Burchett, Assistant County Extension Agent, at 766-0131.

receive information for the District Food Show. Please bring all records turned in at the county food show.

4-H members are playing a new board game that is teaching them some of the secrets of growing up.

The Resource Game helps young people in the national 4-H home management program learn adult techniques for thinking their way through to major decisions. The aim of the game is to learn how to get to where you want to go by using the resources you have rather than dreaming of the ones you wish you had.

Players accumulate four types of resource cards representing skill, time, money and energy. Then they "spend" the cards one by one in order to reach a predetermined goal.

Wichita County food show winners will meet 7:30 p.m. Thursday, Jan. 4 at the County Extension Office, 10

IOWA PARK LEADER

766280

Bob Hamilton Editor - Publisher
Dolores Hamilton Assistant Publisher
Lewis Simmons News Editor
Oliver Blacklock Reporter

The IOWA PARK LEADER is published every Thursday. Offices are located at 112 W. Cash, Iowa Park, Texas, 76367. Telephone: 592-4431. Second class Postage Paid at Iowa Park, Texas, 76367. Subscription rates are \$6 in Wichita and Archer Counties; \$8 in Texas and Oklahoma; \$10 elsewhere, all payable in advance. Classified advertising rates are 10 cents per word first insertion, 5 cents per word thereafter. Any erroneous reflection upon the character, standing, or reputation of any person, firm, or corporation which may appear in the columns of this newspaper will be corrected upon being brought to the attention of the publisher.

MEMBER

TEXAS PRESS ASSOCIATION

Ring-up FOOD SAVINGS HERE

Hunt's

Tomato Sauce

5 8 Oz. Cans **\$1.00**

Mrs. Tucker's

Shortening

42 Oz. Can **\$1.39**

Shurfine

Corn

17 Oz. Can **3/\$1.00**

Aunt Jemima

Corn Meal

5 Lb. Bag **69¢**

Covered Wagon

Bacon

Lb. **69¢**

Pinto Beans

4 \$1

Lbs.

Sweet Potatoes

4 \$1.00

Lbs.

Double Luck

Green Beans

16 Oz. Can **4/\$1.00**

Oven Gold

Bread

2 1/2 Lb. Loaves **84¢**

Pork Past

\$1.23

Lb.

Bee Outlet

\$1.59

Lb.

Bee Iver

53¢

Lb.

Deep South Pancake & Waffle

Syrup

24 Oz. **69¢**

Heinz

Catsup

14 Oz. Btl. **3/\$1.00**

Kozy Kitten

Catfood

15 Oz. Cans **4/\$1.00**

Tide

\$1.39

Giant

Kleenex Dinner

Napkins

50 Ct. **2/\$1**

Northern Bathroom

Tissue

4 Roll Pkg. **99¢**

Pepsi Cola

6 for 75¢

or 7 Up 10 Oz.

DISCOUNT FOODS

107 WEST PARK

Thanks to Marilyn & Robin for the unusual Christmas present.

LAST CHANCE!

Friday, December 29, is the last day to sign up for a FREE INSTALLATION on Cable TV

Regular Monthly Rates

\$7⁵⁰ for One TV

\$2⁵⁰ Each Extra TV

\$10 for HBO

\$3 Each Extra Set

9 Channels To Pick From

CHANNEL		CABLE CHANNEL
2	Weather Station	2
3	Wichita Falls NBC	9
6	Wichita Falls CBS	10
7	Lawton ABC	12
IND.	San Francisco KTVU	8
IND.	Chicago WGN	11
24	Dallas PBS ED	13
17	Atlanta IND 24 hr	5
PTL	Religious 24 hr	4
HBO	Movie Sta	2

Installation Rates FREE Until December 29th

\$25 for First TV
\$12 for Each Extra TV

\$20 for HBO
\$20 for Each Extra TV

Call Today and Save

T. CABLE

Iowa Park

901 W. Highway

592-2164

To
50 PL
51