

1981
Sept 10

PARK CLINIC-DR. D.W. WATSON
310 W. ALAMEDA
IOWA PARK, TEXAS

IOWA PARK LEADER

25 Cents

Vol. 13, No. 1 IOWA PARK, WICHITA COUNTY, TEXAS 76367 THURSDAY, SEPTEMBER 10, 1981

Ray Hicks appointed new school trustee

Ray Hicks was appointed Tuesday night to serve the unexpired term of Bill Spruiell on the Iowa Park school board of trustees. Hicks, a farmer and area agricultural leader, received the unanimous vote of the board, following a 20-minute executive session which was closed to the general public. Spruiell tendered his resignation a month ago, prior to undergoing serious vascular surgery. A member and past president of the Wichita County Young Farmers, Hicks is also a member of the Wichita County Junior Livestock Committee and has served the school district on the vocational advisory committee. He is a recipient of the Honorary Chapter Farmer degree from the Iowa Park FFA Chapter. In other business, board members accepted a bid of \$6,601 from Shaw Motor Co. on a new pickup and approved advertising for sale two 66-passenger buses said to be in excess of school needs. One bus is a 1967 model and the other a 1970, both

Internationals. During a report on maintenance, Supt. Cowley told trustees the physical education building at the Bradford campus was 98 percent complete, and a suit has been filed against the bonding company to collect expenses for completion of the new gymnasium at the high school. Work is underway on that structure now. Reporting on the school's finances,

Bill Steger reported 98.5 percent of the 1980-81 school year taxes had been collected, amounting to \$1,356,344.15. In addition, \$31,581.43 in delinquent taxes and \$8,956 in penalty and interest had been collected. This, along with tax certificates, overpayments and refunds had amounted to \$1,411,523.14. Of the amount collected, \$1,200,230.50 was deposited to the

Continued on page 4

Aldermen face light agenda

Two public hearings and the ongoing discussion of a fire substation in the south part of the city are on Monday's agenda for the city council meeting. One hearing will be on revenue sharing budget, to receive input from citizens on how the money might be spent. The other will be on the proposed increase of property taxes. Aldermen will again discuss the proposed fire substation to be located

south of the railroad tracks, consider purchase of property where it might be built, and possibly approve advertising for construction bids. Also to be considered is a resolution authorizing city employees and equipment to dig graves at Highland Cemetery, a service which began last year and must be considered annually. The meeting is to begin at 7 p.m. Monday in council chambers.



MEET HAWKS FRIDAY

Trimble Tech stronger threat than in 1980

Tomorrow's meeting between Iowa Park and Trimble Tech of Fort Worth in Hawk Stadium is expected to be considerably closer than when the two clubs met for the first time last year. The Fort Worth club held its own in that initial meeting through the first half, but completely ran out of gas in the second half and lost to the Hawks 35-0. Score at halftime was 0-0. Going into that first game, both teams had lost their season openers. Trimble lost 38-8 to Carter Riverside and Iowa Park 20-6 to Breckenridge. But it's a different situation, going into tomorrow's 8 p.m. kickoff. Trimble Tech blasted Riverside 19-6 last week, while the Hawks were losing 19-0 to Breckenridge. The Fort Worth school, a member of Dist. 7-A-A-A-A-A, has five offensive and six defensive starters back from that club which finished the 1980 season without a victory. And that concerns the Hawk coaching staff. It was the speed of the Trimble bunch last year that kept the Hawk staff working late into the nights in preparation for the game. Nothing has changed.

The scouting report on last week's win over Riverside, a Dist. 5-A-A-A-A member, is almost a carbon copy of the previous year's: great quickness, a quarterback who likes to roll out around end and would rather run than throw, but does both, big linemen. Those returning starters will doubtless remember a little tailback named Jim Smith, who carried the ball 22 times against them last year, gaining 117 yards and scoring twice. Trimble also had a difficult time defending against the Hawk aerial game where seven of nine pass attempts were completed for an additional 112 yards and a touchdown. Similar to last year, when the coaching staff was moving personnel around following that loss to Breckenridge, observers may well see some different people in unfamiliar places tomorrow night. The changes last year made a big difference in the play of the Hawks, and that's what the coaching staff is looking for this year. Probably the biggest change that may take place tomorrow will be the

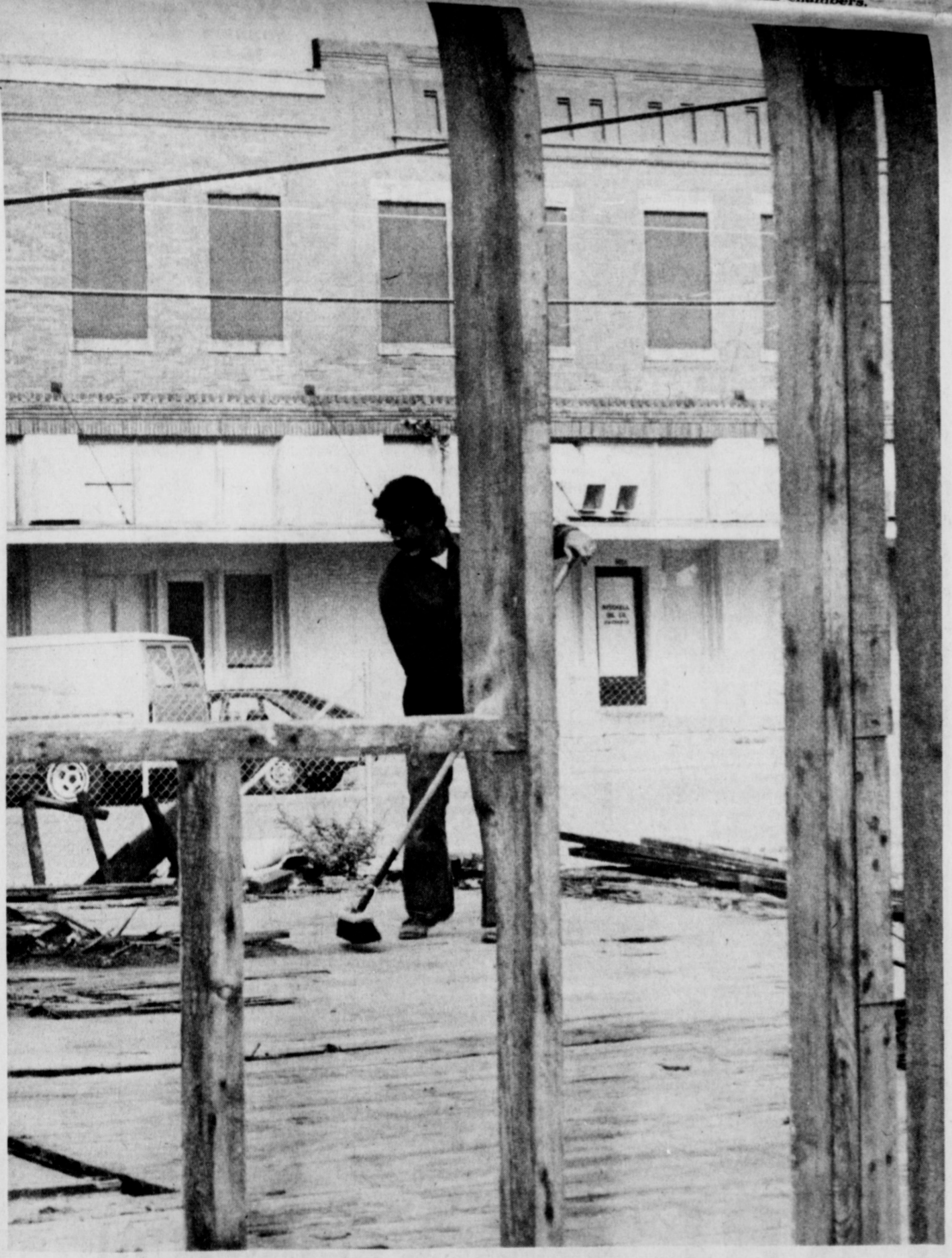
move of returning fullback Steve Stewart to the guard position. He started some of last year's games at that position, but the 206-pound junior may have found his calling at the offensive guard position. Chris Nethery, a 192-pound senior who has been alternating at tailback with the durable Jim Smith, will see action at the fullback slot. Nethery's strength and speed was obvious last week, when he shook off a tackler and broke for a 31-yarder against Breckenridge. Numerous minor ailments have slowed workouts for several Hawks, following last week's bruising game against the Buckaroos, but none is expected to be assigned to the sideline tomorrow. With the changes, Coach David Baugh, who is still looking for his first win as a head coach, is hoping to establish dominance early in the game. He'd rather not wait until the second half, as the Mean Green did against Trimble Tech last year. Tech, as well as Fort Worth North Side, will be playing in Hawk Stadium for the second consecutive year as part of an agreement between the schools. Iowa Park is paying the schools a bonus to travel here, saving on transportation by team and fans, as well as playing before home crowds.

Rail-crossing signal okayed

Iowa Park's third railroad crossing protection signal has been approved by the state highway commission, State Rep. Charles Finnell announced this week. A signal was approved at the crossing at FM 368, which is the Yosemite crossing, at an approximate cost of \$68,000, according to a news release by Finnell's office. The first crossing device was installed on Johnson Road, and the second at the Jackson Street crossing.

Finnell said the FM 368 crossing was one of two hazardous spots in his district receiving the signals, as part of an improvement program. The other crossing signal will be placed on FM 2393 at Jolly, and the estimated cost of the project was \$95,000. Rep. Finnell, who has served two terms as a ranking member of the House Transportation Committee, stated he was very pleased to hear of the coming work program on these vitally-needed rail crossing safety signals.

Weather Report	
Weather reports are officially compiled for Iowa Park at the Texas Experiment Station, southeast of town.	
Rainfall for week.....	.43
Total for month.....	.43
Total for year.....	20.51
Total last year.....	10.70



LANDMARK LEVELLED - The last of the walls of the old three-story Park Hotel went down yesterday afternoon. In the background is another of Iowa Park's oldest and best-known landmarks, the old bank building. The hotel property was donated for, and to benefit, the city library by the W.F. George Estate. Demolition has been carried on by Gilmore Inc.

Williams, Hensley vows recited Friday evening

Wearing her mother's wedding gown for both sentiment and the "something borrowed" bridal tradition, Miss Renee Diane Williams became the bride of Jeffrey LeRoy Hensley Friday evening.

Parents of the couple are Mr. and Mrs. Gene A. Williams and Rev. and Mrs. Charles Hensley.

The groom's father was the officiant for the double-ring nuptials performed at the First Assembly of God Church.

Escorted by her father who presented her in marriage for both parents, the bride's nostalgic white satin gown was designed with a scalloped lace neckline, long sleeves that terminated in points over the wrists, and a pointed fitted waistline. Self-covered buttons trimmed the back of the bodice and the sleeves above the wrists. The floor level hooped skirt was accented with beaded and sequined scalloped lace from the waistline to the floor.

The bride's veil of illusion drifted to the floor from a Juliet cap of lace and pearls. She carried a silk cascade-style bouquet of white and silver rosebuds, navy blue anemones and green English ivy accents.

She completed bridal traditions by wearing pearl ear rings and necklace, a gift from her parents for "something new"; carrying her mother's lace handkerchief for "something borrowed"; wearing the "something blue" garter and a penny in her shoe.

To enhance the sentiment of the occasion, the bride presented white silk roses to mothers of the couple during the service.

The altar decorations consisting of appointments that many of today's brides choose included a brass archway wrapped with boxwood flanked by seven-branched candelabra filled with glowing white candles, and the kneeling bench. The unity candlestick suggesting the permanency of marriage had a special place in the setting. For a bit of sentimentality, the piano and organ tops were centered with soft greenery nosegays upon which white doves rested. Church pews for family members were marked with navy blue and silver satin bows.

Kerry Johnston, organist, and Mrs. Billy Brasfield, vocalist, furnished the wedding music, the latter offering "The Rose" and "The Eyes of Love." The organist contributed the prelude selections and marches and provided accompaniment for the solo renditions.

Mrs. Dale Williams, cousin of the bride, served as matron of honor. She was attired in a navy blue floor length Qiana dress featuring a bodice overlaid with matching sheer. She carried a nosegay formed of the same flowers in the bride's bouquet with navy blue and silver silk streamers.

The groom wore a silver tuxedo, bow tie and a white rose boutonniere. Jimmy Banks, the best man, and Greg Williams, brother of the bride, the usher, wore ascots with their silver tuxedos.

Mothers of the bride and groom added sweetheart rose corsages to the dresses that they chose for the wedding to give them a special touch.



MRS. JEFFREY HENSLEY

Mrs. Williams wore a street-length plaid-figured gray sheer dress made in a fashionable mode with a pleated skirt, long sleeves and a tie at the collar. Mrs. Hensley was attired in a lime green sheer street-length dress designed with a V-collar, long sleeves and ruffled skirt.

Following the wedding, the newlyweds were honored at a reception given by the bride's parents at Texas Electric Reddy Room. Silver and navy blue, the colors observed in the wedding were noted in room decorations and especially highlighted in the refreshment table decor.

The bride was driven to the scene by her father in a Model A Ford, a vehicle that afforded ease for her hooped skirt wedding gown.

Covered with a floor length lustrous white cloth featuring a flounce at the top headed with a band

of navy blue silk ribbon touched with navy blue and silver bows with streamers, the center attraction of the table was a handsome silver punch bowl.

Also included in the decorative pattern were a tall four-branched silver candelabrum topped with an arrangement of white carnations mingled with navy blue and silver bows bordered by tall white burning tapers, the white napkins inscribed with names of the bridal couple and their wedding date, and the cake.

The white cake of three tiers was set off with exquisite detail in frosting decorations of pure sugar icing shells, garlands and fill-in roses of the chosen shades centered with silver beads. The top tier, lifted by lacy pillars was centered with a bride and groom standing in front of a filigree window arch lush with orange blossoms and white net clusters resting on a dais formed of overlapping hearts.

Mrs. Gene Gerstner, aunt of the bride, and Mrs. Gene Woolf served refreshments to the guests during the reception. Brenda Sigafus distributed the navy blue and silver satin rosebud-shaped rice bags from a wicker basket.

Several tables covered with white cloths and decorated with arrangements of votive cups and greenery were set up where guests could be seated for refreshments.

Mrs. Wally West, cousin of the groom, directed guests to register in the wedding book when they arrived at the church for the wedding. The appointments on the round table covered with a copy of the cloth on the refreshment table were a bud vase filled with white carnations

accented with navy blue and silver bows, the book and feather pen.

When the couple departed for a wedding trip to Montego Bay, the bride wore a blue skirt and blouse gathered at the waist with a wide belt. They will live in Wichita Falls. The bride was graduated from Iowa Park High School and works as a receptionist at Midwestern State University. The groom, who is a self-employed carpenter, was graduated from The American School.

The groom's parents gave the rehearsal dinner Thursday evening at Western Sizzlin Steak House in Wichita Falls.

Mr. and Mrs. E.A. Woolf of Vernon, grandparents of the bride, Mrs. Gracie Lee, Mr. and Mrs. E.J. Williams of Iowa Park, grandparents of the groom, were special wedding guests.



Mr. and Mrs. Ruppert Beebe announce the birth of their first child, Ruppert LaGrande, a six pound fourteen ounce son, born August 25. Mrs. Beebe is the former Brenda Johnson.

Grandparents are Mr. and Mrs. C.G. Johnson of Iowa Park and Mr. and Mrs. David Beebe of Spiro, Okla. The great-grandparents are Mr. and Mrs. J.L. Beebe of Vernon, Mrs. Paulina Schops of Germany, Mr. and Mrs. J.L. Johnson of Perrin, Texas and Mrs. Rosina Stanley of Vacaville, Calif.

Jeremy Robert, an eight pound, nine ounce son was born to Mr. and Mrs. Robert T. Pancoast September 1. He has one sister, Bonnie, three years old.

Grandparents are Mr. and Mrs. Joseph Mulhearn of Hopatcong, New Jersey and Mr. and Mrs. Robert Z. Pancoast of Landing, New Jersey. The great-grandparents are Mrs. Ceal J. Denion of Freeland, Penn. and Mrs. Lillian Gedicke of Landing, New Jersey.

Bake sale Saturday

The Iowa Park Police Explorers troop will sponsor a bake sale from 10 a.m. to 2 p.m. Saturday inside H&S Food Store.

All items sold will go to the Police Explorer's fund.

Series continues for WMU members

Mrs. S.B. Keeter presented the second in a series of four lectures on "Interior Life," basing her remarks on thoughts taken from "Mysticism - Its Meaning and Message" by Georgia Harkness for the United Methodist Women in their Tuesday morning meeting. She gave a meaningful interpretation of mysticism and science as related to the spiritual life.

Quoting the author, Mrs. Keeter stated "It cannot be denied that there is mystery in the relationship of the human to the divine in any level although mysticism has been applied to many other things."

Continuing to refer to the writer throughout the presentation, she mentioned that mysticism in the Eastern world is more prevalent than in the Western world; and that today there is a turning to the Oriental religions with their provision for mystical meditations that indicate the hunger of the heart that conventional churches do not provide. She stated that many younger groups of the western world have turned to gospel songs of an earlier day with their rhythm and emotional appeal for their spiritual uplift.

Mrs. Keeter stated "according to the author, mysticism means communion with God, understanding God, the world and ourselves which is the most important in life. The western world has become a scientific people which is on the outside. The U.S. is facing an ultimatum - interior life which is spiritual or the scientific life, and the western world has never really taken hold of Christianity." Twenty-two were present.

JOIN LADIES AEROBICS

This is an exercise program performed to music to improve your cardiovascular system that will strengthen and tone your muscles and help you shed pounds and inches when combined with a sensible diet/exercise effort.

Classes begin Monday, Sept. 14, registration at 6:00 p.m.
Class sessions are: 6:30 and 7:30 p.m. on Monday and Wednesday evenings.

Classes are held at the Iowa Park RAC
(located at the end of Texas Street)

Fees: \$12 total for one lesson a week
\$18 total for two lessons a week
\$2.00 RAC membership required, if not already a member.
Memberships are good for a year.

This is a six weeks course, then another will begin and classes continue each six weeks until summer.

INSTRUCTORS:

Judy Young, 592-5046 after 5:30
Joy Hedrick, 592-2000
RAC 592-4471

In, On & Around the House

Your local independently owned True Value Hardware Store has national chain-buying power.

8⁹⁸ GAL.

32 Colors & White

WOODSMAN[®] SOLID COLOR LATEX STAIN

Colors like paint, but shows rough wood texture. Resists blistering, fading. For smooth or rough-cut siding, shingles, etc. LS

49.99

Aluminum 16-FT.

LISTED WERNER

9⁹⁸ GAL.

44 Colors & White

SAT-N-HUE[®] LATEX FLAT WALL FINISH

Thick, creamy wall finish goes on without dripping. Sat-N-Hue[®] gives your walls a rich, velvety finish that's truly washable. P

10⁹⁸ GAL.

36 Colors & White

ACRYLIC LATEX HOUSE PAINT

Our finest acrylic latex exterior paint! Tough all-weather protection for concrete, brick, wood siding, etc. High hiding. HPX

28.99

5-FT. STEPLADDER

UL LISTED AND LABELED

Sturdy aluminum ladder features pail shelf, tool holder, slip-resistant steps, pinch proof spreaders. 365 6-Ft. Stepladder. 366 .33.99

PAINT ACCESSORIES

(A) Painting Pad. Easy to use 1/2 inch thick pad for lap sidings, fencing, trims, etc. 7 x 4 in. 604-7x4-09 . . . 2.88
(B) Clean Stroke[™]. Surface preparation pad is faster than a wire brush. Cleans, smooths. 604-SPP-09 . . . 2.99
(C) 2-Piece Brush Set. 4-inch polyester wall brush, 1 1/2-inch nylon angular sash. P415-TV-09 . . . 3.22

Dalton

Another fall favorite from Dalton . . . simply divine.

Solid color open front lined suit jacket. Sizes 6 to 18,

Solid color crepe-de-chine long sleeve bow blouse. Sizes 6 to 18,

Solid color back zip lined skirt with side seam pockets. Sizes 6 to 18,

We recommend washing in Woolite For the clothes you care about

"The Fashion Place"

701 W. Front -Electra

PARKWAY FURNITURE AND

200-206 West Bank 592-4681 592-5512

STORE

Locals pledge \$1,869

Of the \$153,235 pledged in the Wichita Falls area during last weekend's Muscular Dystrophy Association telethon, \$1,869 was pledged in Iowa Park.

Locally, pledges were received by members of the Epsilon Eta chapter of Epsilon Sigma Alpha sorority, to set up headquarters at Shaw Motor Co.

Nationally, \$31,498,176 was pledged during the 21.5-hour marathon benefiting MDA.

"This makes the 16th year that I've seen a fantastic final figure on the toteboard. It just goes to show the terrific compassion and generosity of the American people," Jerry Lewis, host personality of the telethon, said.

"They're out there in every part of this country, working and pulling for children and adults who are disabled by muscle diseases. Thanks to their love and support, we're going to wipe out these terrible diseases soon," he continued.

Farm Bureau meet slated

Wichita County Farm Bureau members planning to attend their annual meeting here Sept. 26 will need to make reservations for the free dinner.

Fred Dwyer, president, said reservations must be made prior to Sept. 18 for the brisket dinner, to be prepared by the Iowa Park MuleSkinners.

Though the meeting is open to all Farm Bureau members, only producer-members will be permitted to vote on policies and officers, or hold office, Dwyer explained.

"Our members will be deciding how they are going to tackle the problems facing agriculture through the policies of Farm Bureau," he said.

Birk Circle meets

Mrs. Norman Nettleton was hostess for the Tuesday morning meeting of the Lucy Birk Circle of First Presbyterian Church, and Mrs. L. Shelton was the moderator for the Bible lesson entitled "The Great Invitation."

Assisted by Misses Gale Lawrence, C.E. Birk and Miss Titia Belle Blanks, Mrs. Shelton introduced the study by stating that when God revealed his plans to the prophets in which he would operate with men in the New Covenant, he planned to produce righteousness himself and give it as a gift to all who believed his offer and came to him.

The discussions stressed how all who came to God would be dealt with in his grace and power which would be possible because the Messiah, Christ, would personally perform what was necessary to make the plan work.

Rev. Nettleton gave the invocation for the salad luncheon that followed.

Cook of the Week

Someone has said that the ability of the cook is as important as the quality of the raw materials and recipes, and that a good and experienced cook can overcome the limitations of poor materials while a bad cook can ruin the finest and best.

Darlene Gardner's recipes for this week seem to attest to her ability as a good cook. She has also proven her ability as a competent beautician and is currently serving her clientele at SOAP on Cash St. Her hobbies are water color and oil painting and ceramic butterflies and have earned numerous awards and honors for her in art shows.

The former Darlene Perry, daughter of Mr. and Mrs. Roy Perry, was graduated from Iowa Park High School and Aladdin Beauty College in Wichita Falls. She has also attended the V.O.E. classes sponsored by Wayland Baptist College at Sheppard Air Force Base working toward an instructor's degree in cosmetology. She is a member of the Church of



Darlene Gardner

Christ. She has three sons, Neal, a 10th grade student, Alan, a seventh grader and Robert, a fourth grade student.

One of Darlene's recipes today, Old-Fashioned Macaroni Salad, prompted a bit of digging into the history of pasta from which we learned that macaroni was the most common name for pasta in the latter Middle Ages.

The history of pasta is not easy to disentangle. Some have claimed that it existed during Etruscan times. The most popular story, however, is that it was introduced into Italy by Marco Polo, who is said to have brought the idea from China (Chinese noodle) at least 50 years before Marco Polo even left Venice on his travels to the East where both Indians and Arabs were already eating noodles. It is possible that the pasta may have been introduced to Italy from the Arab lands in the Middle Ages as early as the 11th century.

OLD-FAHIONED MACARONI SALAD

- 2 cups cooked macaroni
- 1 tsp salt
- 1/2 cup chopped onions
- 1/2 cup chopped celery
- 1/4 cup chopped green peppers
- 1/4 cup chow chow
- 1/2 cup salad dressing
- Pepper to taste

Cook and drain macaroni and rinse. Add all ingredients. Serve warm or chilled as desired.

BUTTERMILK PIE

- Soften and mix:
 - 1 stick butter
 - 2 cups sugar
 - Mix in:
 - 3 eggs, beaten
 - 2 T flour
 - Add:
 - 1 cup buttermilk
 - 1 tsp. vanilla
 - Dash nutmeg
- Pour into unbaked pie shell and bake at 350 degrees for 45 minutes, cooking 10 minutes on lower rack.

APPLE PIE

- Mix in a bowl:
 - 1 can sliced apples
 - 3/4 cup cream
 - 3 T flour
 - Dash salt
 - 1 cup sugar
 - Put in 1 unbaked pie shell, sprinkle on top:
 - 1 T sugar
 - 1 T cinnamon
- Cook one hour at 325 degrees.

LIME SURPRISE

- Boil:
 - 2 cups water
 - Add:
 - 1 large pkg. lime jello
 - 1 large pkg. miniature marshmallows
 - 1 large pkg. cream cheese, cut up
- When melted, cool and put in serving dish, then add:
- 1 8-oz. can crushed pineapple
 - 1 cup pecans
- Chill and serve.

Homecoming reservations deadline set for Sept. 25

Officers of the Iowa Park High School Alumni and Ex-Students Association, headed by Kenneth Via, president, have been meeting for several weeks to formulate plans for the 14th annual reunion and banquet, Oct. 3.

Jo Ellis Patterson, corresponding secretary, announced this week that she had addressed and mailed 1,125 invitations to ex-students and former teachers.

Other officers of the association are James Richter, first vice president; Eva Nell Clements Cook, second vice president; Ruth Dorris Gard, treasurer; Carolyn Mahler Richter, secretary.

African countries are WMU subject

The Night W.M.U. of First Baptist Church held the first meeting of the 1981-82 year Monday night at the church. Mrs. Roy B. Smith was hostess and introduced the study of the mission book, "The Way to Timbuktu" by Jim Newton.

She explained that the setting for the study was in the nine countries in Africa that have been dominated by France and gave a background of each country.

The interest center was backgrounded by a wall map of the countries and included plants, ropes, chains, masks, animal and human figurines, and other items suggestive of Africa. The title of the study for the meeting was "Nightmare of Death."

Mrs. E.T. Patterson presided during the business and Miss Helen Reed distributed the new yearbooks.

Registration booths for ex-students will be set up Oct. 2 at Hawk Stadium for the homecoming game between Iowa Park and Ft. Worth North Side. The Friendly Door will be open for coffee and tea from 11 a.m. to 3 p.m. on Oct. 3 during the annual Whoop-T-Do, sponsored by the Iowa Park Chamber of Commerce, to give the ex-students a place for visiting and reminiscing.

At 5:30 p.m. that day, a reception will be held in the high school library for ex-students and the annual banquet is scheduled at 7 p.m. in the high school cafeteria. The meal will be served by the MuleSkinners and the price of tickets will be \$5.

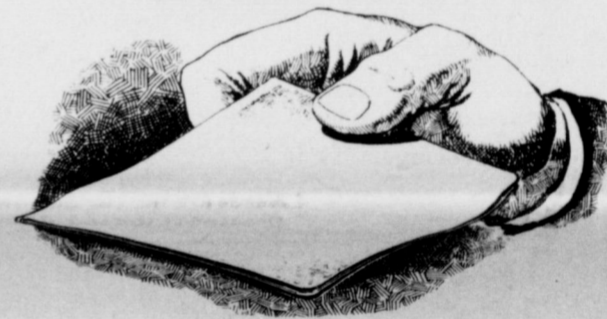
Barry Mahler, a graduate of the class of 1968, will serve as master of ceremonies. Special emphasis will be given this year to classes of 1911, 21, 31, 41, 51, 61, 71 and 81.

Reservations and checks for the banquet should be sent to the Chamber of Commerce, Box 416, by Sept. 25.

New Meter Connections

- T.A. Parish - 614 W. Louisa
- John Perry - 1012 N. 4th St.
- Marie Reid - 500 Pasadena
- Lila Sims - 109 W. Washington
- Pearl Hughes - 303 W. Crystal
- Monte P. Kerr - 707 E. Park
- Tim Turner - 307 W. Poe
- Paul Carner - 102 E. Alameda
- Tommy Johnson - 510 E. Alameda

SNB



We have a Savings Account or Certificate of Deposit to fit your specific need.

- 6-Month Money Market C.D.'s
- 30-Month C.D.'s
- IRS Accounts
- All Savers

We have the program you need, and size you can use ...if you want to put your savings to work!

See Roberta Hill

OFFICERS
 Stanley Williamson, Chairman of the Board & President
 H.M. Nipper, Senior Executive Vice President
 David Parkey, Senior Executive Vice President
 Bert Williamson, Vice President
 Roberta Hill, Vice President and Cashier
 Jean Hopkins, Vice President
 Janis Latimer, Vice President and Asst. Cashier
 Ruby Strickland, Asst. Vice President

DIRECTORS
 Fred Dwyer, Agri-Business
 O.N. Newman, Attorney
 Fred Parkey, Mgr. Red River Authority
 W.R. Steger, Tax Assessor & Collector
 Stanley Williamson, Banking, Investments & Ranching
 Bert Williamson, Banking & Oil Investments
 Joe Williamson, Farming & Ranching

SNB

STATE NATIONAL BANK
 IOWA PARK, TEXAS
 Member F.D.I.C.

Don't know how to find us?
 Drive east on Expressway 287 to Peterson Road; cross over, double back to service road at B&R gate.



Expw. 287 at Bell 592-5861

Send Teleflora's Grandparents' Day Bouquet In A Frame. Sunday, September 13.

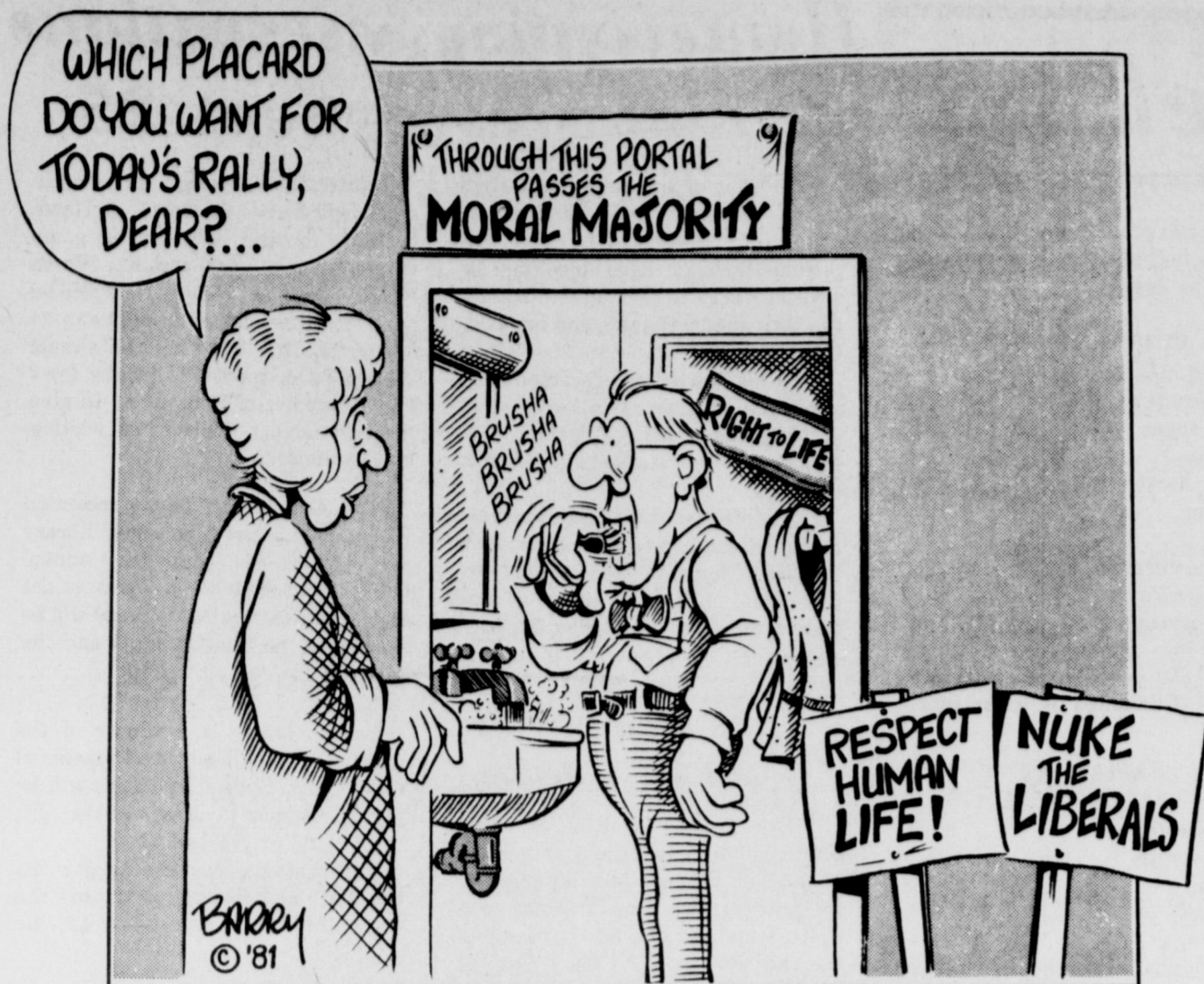


They spoiled you rotten. Now it's your turn. On Grandparents' Day, Sunday, September 13, send Teleflora's Bouquet In A Frame. A beautiful arrangement in a container with built-in frame that holds any 3 x 5 inch photograph. It has the look of real hand-carved wood. And it's finished in natural oak color.

Just visit or call your Teleflorist and you can send your Bouquet almost anywhere in the U.S. But do it early. And do some spoiling of your own.

Iowa Park Florist
 Frances Howell
 Owner-Operator 592-2141
 114 W. Park





Letter to the Editor

Open Letter to Johnny Crawford, Mayor of Iowa Park:
Dear Mr. Mayor,
I understand that you think Bill Gilmore is taking too much responsibility upon himself. I agree. What can we do about it?
The first time he ran for city council in 1971, Bill pledged that he would go to bat for the people, without allowing business, friendship or internal pressure to stand in the way. Anyone who knows him has no doubt about his dislike of red tape, and buck passing.
The result is our phone ringing at all hours, with a citizen needing help with a problem, be it streets, trash, sewer, police, or property disputes. You and I know that the proper

response is "That's not my department," or "You'll have to take that up with city hall." But Bill Gilmore just can't seem to respect the chain of command. He has the idea that he is a servant of the people. This seems to be the reason citizens call him and say "I was told to call you if I wanted to get something done."
Mr. Mayor, if you want Bill Gilmore to take a back seat, then may I suggest you begin putting people ahead of progress. If the citizens can get fair treatment from you - or Steve Morath - they won't have to call Bill Gilmore.
Thank you, respectively,
Maryanne Gilmore

you didn't want to "be involved." Over and over the phrases are used "it will hurt my business," or "I don't want my name brought up" or "I have kids (or grandkids) in school". . . . Others have said "You bet I'll tell it like it is, to the city council," you get Bill involved, then you suddenly become mute, leaving him in a position to be ridiculed.
I've never resented Bill helping anyone who appreciated his efforts enough to support him. But I do ask you, please, if you're going to send him into battle, at least have the decency and courtesy to stand with him until the issue is settled.
Thank you,
Maryanne Gilmore

Open Letter to the Citizens of Iowa Park:
Dear People,
Many times, over the past eleven years, some of you have called on Bill Gilmore to take up your cause. He has never refused.
Several times, you've asked him to stick his neck out in a serious dispute. Many of you have told him of situations that needed attention, but



Glass door broken
A criminal mischief incident cost a resident of West Garden at least \$150 last week.
Eddie French told city police that sometime between 4 and 5:15 p.m. Thursday someone threw a small piece of asphalt which cracked the sliding glass door on his home at 119 W. Garden.
In addition, French said it appeared someone attempted to enter onto his property, because the lock on the gate in his back yard had been pried open.

18 At Last!!
(FOR ALL THE GOOD IT DOES, HA, HA..)
LOVE YA!
Dad, Mom, Joe, & Leisa

Happy 16th Birthday,
Deana Galloway
Love, Mom and Dad

Happy Birthday
Alaina and Stan
Love, Mom and Dad

Happy Birthday To You!!!

As I See It....

By BOB HAMILTON



Wichita Falls can have its crepe myrtle, but as far as I'm concerned, the pecan tree should be named Iowa Park's official plant.
For this part of the country, I can't think of a more useful, beneficial, adorning nor regal plant than the pecan tree. They provide delicious food and nourishment, income, shade, yard beautification, wind protection, as well as housing for birds and squirrels. And they are fast-growing but allow good lawn growth under them.
There apparently isn't another plant so adaptable to this part of the country, other than maybe the sunflower. . . and Kansas already can have all those they want!
Virgil Woodfin is our "expert in residence" for the pecan tree. He has found his retirement from the experiment station to be a farce,

because I suspect he's able to work more hours now for the general public, in caring for pecan trees, than he used to work at the station.
Virgil likes his work with pecans. He'd have to, because he is called from all points in this part of the country to do grafting, spraying and other work on the trees, as well as serving as a judge and prize winner at contests.
You might say he's "nuts" about pecans.
Over the years, Virgil has grafted several improved varieties on a particular tree in his yard. At last count, he had five or six major limbs producing different nuts on it. I think that's the tree he says is so heavily laden with a nut crop this year, it's breaking limbs from the weight.
This has been an outstanding year for the pecan crop, if my trees are any indication. The nuts are large and plentiful, and I'm already looking forward to numerous evenings this winter, shelling them and bargaining

with my wife to cook me pies and candies.
County agent Don Decker came out with a new twist concerning pecan trees last week. At least it was new to me.
Decker says it's important to protect the pecan tree from losing foliage at this time of year. No, that's nothing new. All trees should keep their foliage throughout any growing season.
But the agent pointed out that the loss of leaves now would keep pecans from filling well. . . and it would keep the tree from setting a good crop next year.
"The amount of foliage on the tree in October determines the number of pecans set the following spring. About 35 leaves are required to set one pecan," Decker said.
I'm going to try to estimate the number of leaves on my trees this weekend, so I can determine how many pecans I can expect next year.
Sure hope Don's right.

August permits total \$65,917

No building permits for new homes or businesses were issued during August by the city hall, but permits still amounted to \$65,917.

Three permits were for moving in of mobile homes, while the other six were for additions, conversion or repairs.

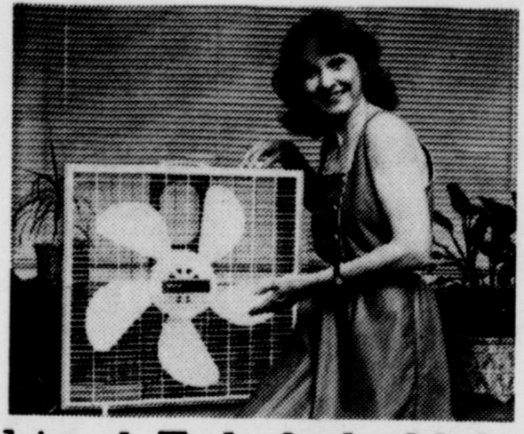
Permits issued during August included:

- Sammy Bates, 105 W. Emerald, mobile home, \$26,817;
- Glen A. Lambert, 108 W. Chestnut, mobile home, \$12,000;
- William Chandler, 202 N. Jackson, addition, \$5,000;
- Paul Carnes, 102 E. Alameda, repair, \$1,000;
- Charles Brown, 723 W. Texas, addition, \$3,000;
- Larry M. Latimir, 606 W. Washington, addition, \$1,500;
- Larry D. Thompson, 601 W. Texas, conversion, \$1,100;
- David C. Pace, Sr., 200 Hope Lane, alteration, \$1,500;
- H.R. McLain, 601 E. Lafayette, mobile home, \$14,000.

School

Continued from page 1
general operating fund, \$197,458.08 to the interest and sinking fund, \$11,805.27 paid in attorney fees and court costs and \$2,038.29 paid in overpayments and refunds.

Cool carefully and help hold down your bills.



In many homes, summer air conditioning uses more electricity than all other appliances combined. To help hold down electric bills, use it sparingly. Set your thermostat at 80 degrees or higher, and use a fan to circulate the air. A fan uses considerably less electricity than air conditioning. And when no one is going to be home, make sure your air conditioning is turned off. It pays to know how to cool carefully.



W. N. HOUSE, Manager, Phone 592-4149

SUPER FINE FOODS

**YOUR INDEPENDENT FOOD STORE
"WE CAN SELL FOR LESS"**

Quality Service

2700 IOWA PARK ROAD
WICHITA FALLS, TEXAS

300 WEST BANK STREET
IOWA PARK, TEXAS

601 WEST FRONT STREET
ELECTRA, TEXAS

WE RESERVE THE RIGHT TO LIMIT QUANTITIES

This ad good thru Sun.
Check newspaper for
Mon. ad &
save on our specials.

We Reserve The Right
To Limit Quantities

Silver Spur
Bacon
Lb. **98¢**

Family Pak Assorted
Pork Chops
Lb. **1.28**



Boneless
Stew Meat Lb. **1.88**

Family Pack
Round Steak Lb. **1.68**

Baking
Hens Lb. **58¢**

Tyson's
Chicken Franks
12 eg. Pkg. **68¢**

Old Shank Portion
Hams Lb. **98¢**

Little Sizzlers 12 eg. Pkg. **98¢**

Family Pack Blade Cut
Chuck Steak Lb. **1.28**

Round Bone
Swiss Steak Lb. **1.78**

Assorted
Chicken Fried Steak Patties Lb. **1.58**

Light Crust
Flour 5 lb. Bag **89¢**

Shasta Drinks Limit 10
12 eg. cans **\$1**

HuSum
Salad Olives 10 eg. **1.19**

Sunshine
Dressing 24 eg. **1.19**
• Thousand Island • Creamy Italian • Ranch

Duncan Hines
Cake Mixes **78¢**

Kraft
Miracle Whip 32 eg. **1.09** Limit 1

Wesson
Cooking Oil 24 eg. **1.19**

Del Monte
Tomato Sauce 4 8 eg. cans **\$1**

Sunshine E.9.
Sweet Peas **38¢**

Chicken of the Sea
Tuna 6 eg. **86¢**
Kraft Macaroni & Cheese Dinners 3 for **99¢**

New Crop School Boy
Red Delicious Apples 3 lb. Bag **69¢**

Dairy Specials
Shurfresh Soft Tub Margarine 1 lb. **58¢**

Pillsbury Biscuits 4 8 eg. **\$1**

Kraft 1/2 Moon Longhorn Cheese 10 eg. **1.69**

Coke • Sprite • Tab • Mr. Pibb
1 Liter 6 Pack **1.75** Plus Deposit

Best Produce Buys Around

Extra Fancy Calif. Driscoll Strawberries pt. **79¢**

Green Cabbage Lb. **12¢**

Tokay Red Grapes Lb. **69¢**

Yellow Onions 4 lbs. **\$1**

Small Vine Ripe Tomatoes **29¢** Lb.

Calif. Calava Avocados 5 for **\$1**

Sunshine Assorted
Pizza **99¢**

Sunshine
Orange Juice 3 6 eg. cans **\$1**

Palis
Mexican Dinners **99¢**

Kraft
Parkay Margarine 1 lb. **48¢**

COUPON
COLOR PRINT FILM DEVELOPING & PRINTING (C-41 process only)
12 exposure roll **\$1.97**
20 exposure roll **\$2.97**
24 exposure roll **\$3.47**
Limit one roll with this coupon. Offer expires 9-12-81 579

Mary's Haircutting

Next to Cabe's on West Highway

GILMORE INC.

Expy. 287 at Bell Rd., P. O. Box 118
Iowa Park, Texas 78367 — Phone 517-592-4945

complete service shop for trucks & trailers - complete parts & service on engines - transmissions - rear ends - pump & injector service - starter & alternator service - complete brake - axle & suspension service - air conditioning service - refrigeration service - paint & body shop equipped for complete wreck rebuild - frame straightening - steam cleaning - sandblasting - all types shop & field welding - specialty welding, including - aluminum, stainless, brass - trailer rebuilding & painting - 24 hour emergency road service for trucks & trailers - 24 hour wrecker & towing service - complete line of parts for trucks & trailers; Cummins - Rockwell Standard - Fuller - Roto Master - Isspro - Bower - Stemo - National - Perkins - Dietz - Signal Stat - Bendix Westinghouse - Batco - Budd - Webb - Neway - Spicer - Fram - Gates - Stratoflex - Euclid - AMC A/Cond - World Bestos - Backhoe & Maintainer Service - Commercial Mowing

AYRES

TIRE COMPANY
GOODYEAR/FINA

Expressway 287 & Johnson Road Phone 592-5621

Wrap'em Up Hawks!!!!

CRYOVAC

PACKAGING/MARKETING SYSTEMS

Iowa Park

We're Proud of the Hawks



Louis'

Distinctive jewelry

592-5942
Louis & Betty Sefcik
408 W. Park

E&S Exxon

WE BACK

592-4897 THE HAWKS
612 W. Highway

Styles Tank Truck Service

ST

Box 4017
W.F. 76308
Kamay
438-2344

Ratel 723-6991
unit 4903
Home 692-0804

FORD SHAW MOTOR CO.

Iowa Park 592-4106

WE BACK THE HAWKS!!!

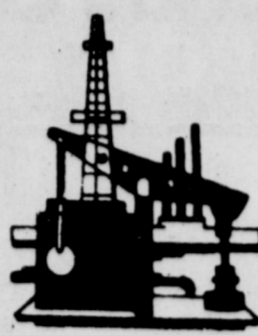
SCOBEE'S

Mini-Mart
Grocery Store

'Home Owned & Operated'

592-9102 322 W. Hwy.

BOBBY EVANS Sporting Goods INC.



Whisnand Enterprises Inc.

Oil Operators — Exploration

L.S. Whisnand

Bobby Whisnand



Ken's PIZZA

902 W. Highway
592-4184

Open after each Friday night's football game.

The Hawks are on a Sonic Boom!

Phone 592-4221

719 W. Hwy.



805 West Highway

LOSE OPENER 19-0

Lack of second scrimmage proves handicap for Hawks

Iowa Park's 19-0 season opener loss to Breckenridge here Friday proved one thing: a team needs both its two scrimmages to be ready for a season.

Improvement, both offensively and defensively, by the Hawks as the game progressed left little question in the minds of the coaching staff and most fans, that the scrimmage session the team missed played a big part in the loss.

The Hawks got in one scrimmage, against Jacksboro, but the Lawton team's cancellation, leaving Iowa Park with no one to practice with, left the Mean Green improperly prepared, despite the efforts of the coaching staff.

Iowa Park players made mistakes which would have been found and worked on by the coaches, had they been in action against more than one pre-season ball club, Coach David Baugh said.

But there is no question in the Hawk coaching staff's minds that Breckenridge is as good as the 1980 team which knocked off the Hawks 20-6 in that season opener.

Breckenridge totally dominated play in the first half of the game, going to the dressing room at halftime with a 13-0 lead, and having amassed 148 yards offense to the Hawks' 12 net yards.

The visiting Buckaroos drove 52 yards to score after taking the opening kickoff of the second half, but from there on, it was an even ball game. Iowa Park had two scoring drives to stall inside Breckenridge's 20 yard line in the final period, once on the 13 and the other on the 17.

Hawk linemen appeared unable to cope with Breck's rushers when Iowa Park was going to pass. Quarterback Wayne Hodges was sacked four times for a minus 51 yards. Hodges was able to complete three of seven pass attempts, however, accounting for 40 yards.

Hodges' being thrown for losses, and two drives killed by the only major penalties the Hawks drew, frustrated Iowa Park's offensive attempts. They had only one turnover when tailback Jim Smith fumbled on the second play of the game.



TAILBACK JIM SMITH PICKS UP A YARD TO THE BRECKENRIDGE 17 ... the senior runningback was called 17 times to carry the ball.

Breckenridge drove from Iowa Park's 35 yard line, after covering Smith's miscue, but the Mean Green defenders held their ground after the Bucks picked up a first at the nine, and took over the ball at the nine.

The visitors were also forced into only one turnover. It came late in the third quarter when Les Smith made a savage hit on a runningback, shaking the ball loose, and Keith Mowery covered.

Breckenridge scored its first touchdown on the third play of the second period, when Allen Pierce punched two yards over right guard. Doug Cavazos missed the first of two extra point kick attempts.

Some eight minutes later, quarterback Kyle Parker lofted a 37-yard scoring pass just over the outstretched hands of defender Rus

Hayley and into the arms of Mike Herrington. It was the only pass Parker completed that night.

Parker rolled out to his right and turned up field 11 yards to score the final TD of the evening, less than two minutes deep in the second half. The drive covered 52 yards.

Senior Tim Smith was the workhorse for the Hawk backs, carrying 17 times and gaining 59 yards. Chris Nethery finished with 60 yards on nine carries, including a 31-yarder in the fourth stanza.

A big surprise to the visiting defenders, and local fans as well, was

a reverse play run twice by Les Smith, good for 15 and 36 yards.

Mac Weaver handled the punting chores for the Hawks, averaging 34 yards on his five calls.

IP		Breck
9	First Downs	15
125	Yards Rushing	205
40	Yards Passing	37
165	Total Yards	242
3/7	Passes	1/4
0	Interceptions by	0
1	Fumbles Lost	1
2-30	Penalties	4-50
5/34	Punts	3/40

Players of the Week



Offense
Jim Smith

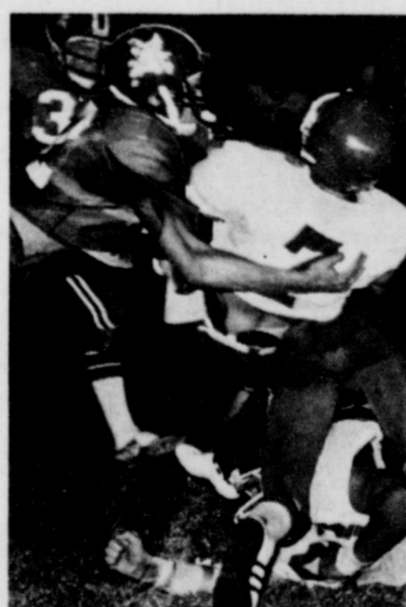


Defense
Steve Harris

BRECKENRIDGE QUARTERBACK

KYLE PARKER DOWNED

... host of Hawk tacklers cut run short.



Iowa Park Florists



114 W. Park

Phone 592-2141

LANE'S

NURSING HOMES, INC.
Wichita Falls

Nursing Home
ICF111
322-7582
608 Denver

Convalescent Home
ICF111
322-2193
1908 6th St.



T-SHIRT BUSH

700 E. Highway

Park Tank Truck Service
IOWA PARK, TEXAS 76367



RADIO EQUIPPED TRUCKS • OIL • MUD • WATER
FRAC TANKS • WINCH TRUCKS • SALT WATER DISPOSAL
592-4164

Radio Equipped




J and J Oil Well Services

Acidizing • Cementing • Fracturing
John Ray Res: 569-4319
John Stewart Res: 438-2389
806 E. HIGHWAY
(817) 592-2136

Park Pharmacy
and Thoughtfulness Shop
Phone 592-4116
24-Hour Prescription Service

GO...MEAN GREEN!
Pleasant Valley Grocery
and
Midway Fish Farm
Randy Jameson - Owner



IOWA PARK HAWKS

VS

TRIMBLE TECH (FW)

Here Friday

Season Schedule and Record

ALL GAMES START AT 8 P.M.

IOWA PARK	0	Breckenridge	19
IOWA PARK	September 11 Here	Trimble Tech (FW)	
IOWA PARK	September 18 Here	Burkburnett	
IOWA PARK	September 25 There	WF Rider	
IOWA PARK	October 2 Here Homecoming	Northside (FW)	
Open	October 9		
IOWA PARK	October 16 There	Mineral Wells	
IOWA PARK	October 23 Here	Graham	
IOWA PARK	October 30 There	Vernon	
IOWA PARK	November 6 Here	Hirschi	
IOWA PARK	November 13 There	Burkburnett	

JUNIOR VARSITY

Sept. 3	Breckenridge	T 7:30
Sept. 10	OPEN	
Sept. 17	Vernon	T 7:00
Sept. 24	Rider	H 7:30
Oct. 1	Wichita	H 7:30
Oct. 8	Burk	T 7:30
Oct. 15	Mineral Wells	H 7:30
Oct. 22	Graham	T 7:30
Oct. 29	Vernon	H 7:30
Nov. 5	Hirschi	T 7:30
Nov. 12	Burk	H 7:30

FRESHMEN

Sept. 17	Vernon	T 5:30
Sept. 24	Rider	H 5:30
Oct. 1	Wichita	H 5:30
Oct. 8	Henrietta JV	T 6:00
Oct. 15	Mineral Wells	H 5:30
Oct. 22	Graham	T 5:30
Oct. 29	Vernon	H 5:30
Nov. 5	Hirschi	T 5:30
Nov. 12	Burk	H 5:30

7th and 8th

Sept. 8 [4 games]	Burk H 7&8 3:30
Sept. 15 [4 games]	Vernon H 7&8 3:30
Sept. 22	Zundy T 7&8 5:30
Sept. 29	City View 7&8 H 4:00
Oct. 6	Graham [4 games] T 7&8 3:30
Oct. 13	City View 7&8 T 4:00
Oct. 20 [4 games]	Graham H 7&8 3:30
Oct. 27 [4 games]	Vernon T 7&8 3:30
Nov. 5	Holiday T 5:00

SUPER FINE FOODS

Quality Service

300 WEST BANK STREET
IOWA PARK, TEXAS

OPEN
8 til 9pm
SUNDAY 9
til 8:30

SPRUIELL DRILLING COMPANY INCORPORATED

Office — 307 N. Wall
592-5471
Shop — 107 E. Poe
592-5223



PARKWAY Furniture & True Value

complete line of hardware and plumbing

200-206 W. Bank



DISCOUNT FOODS

107 West Park



Sony & RCA TVs Whirlpool Appliances

WHITES Home & Auto

Park West Shopping Center 592-4186

Complete Furniture Store

401 West Park 592-4186

IOWA PARK Air Conditioning & Heating

Service On All Makes Engineering Sales

Carrier

607 W. Bank
FRANK GUYETTE

PHONE 592-5891

Settle Drug

120 W. Park Phone 592-4191



Petal Pushers Flower & Gift Shop

309 N. Wall 592-2641



102 S. Victoria 592-4171

SHAMBURGER BUILDING CENTERS

INCORPORATED


also electrical & plumbing needs

4 GOOD REASONS to see your good neighbor agent
CAR • HOME LIFE • HEALTH

Like a good neighbor, State Farm is there.

Philip Welch

100 W. Park
Phone 592-4155



BEALL Auto Parts, Inc.

Parts & Supplies for Autos, Trucks & Small Engines

Holliday 586-1211 Iowa Park 592-4181


GO HAWKS! **HEO**

T.V. CABLE of Iowa Park

901 W. Highway 592-2164

SAM'S BODY SHOP

Sam and Marye Lou



VIDEO CARE

Parkwest Shopping Center

Next to TG&Y

592-5552
Ken Via, Owner



The Place To Go After The Game!

Little Richard's LONE STAR WEST Restaurant

Expressway 287 at FM 369

855-4451 Open 24 Hours

MEAN GREEN STRENGTH Iowa Park Ready Mix

592-2052

SAND—ROCK—GRAVEL

GNB

STATE NATIONAL BANK

IOWA PARK, TEXAS

Member F.D.I.C.



IOWA PARK LEADER

Eagles overcome Panthers, penalties

When the Holliday Eagles meet Seymour's Panthers each year, there's one thing you can count on as inevitable as death and taxes - penalties.

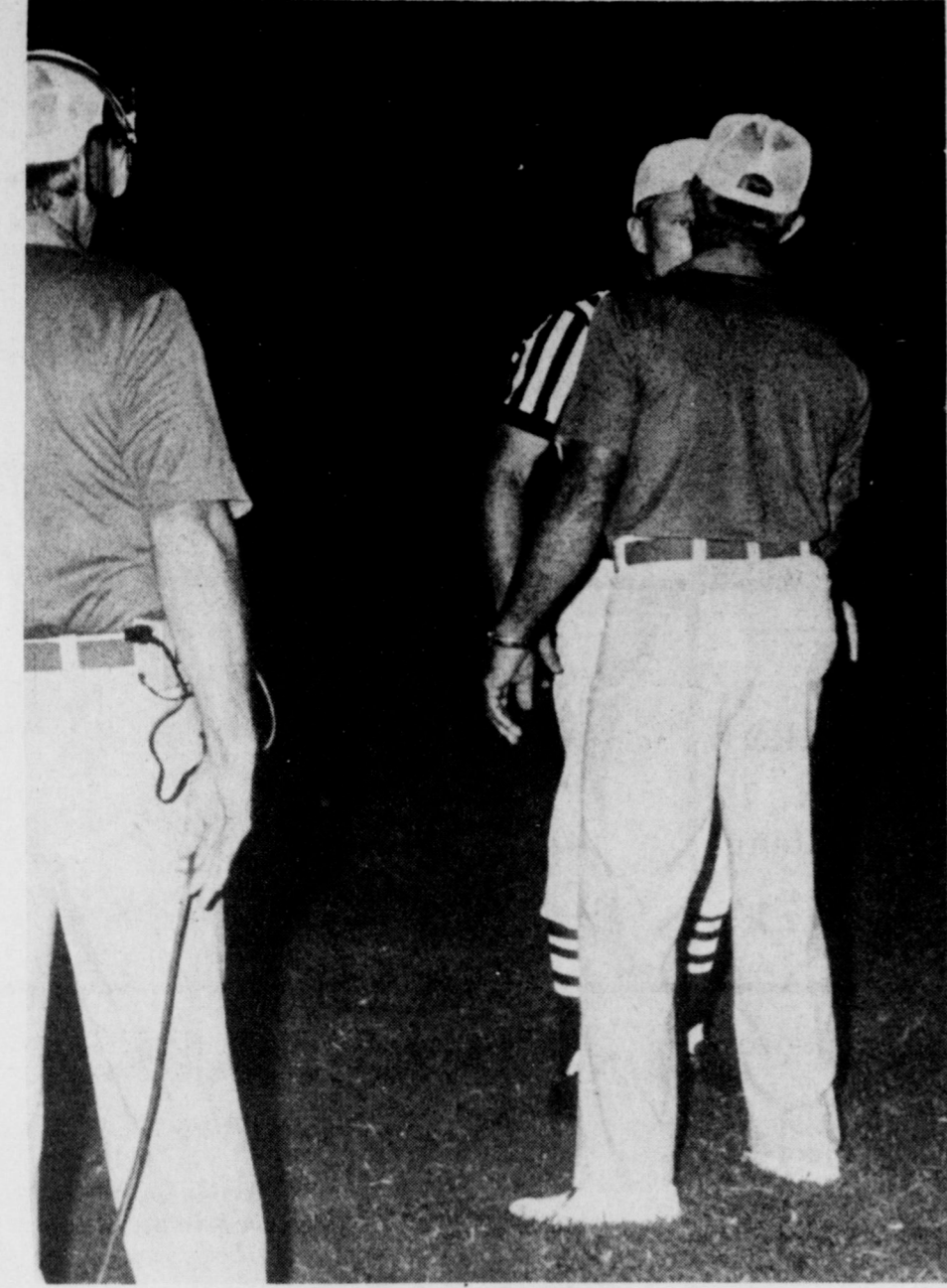
of infractions handed to the Big Red Friday night, the outcome was solely in the hands of the Eagle players as they dominated Seymour in every aspect of the game, winning 27-0. Senior tailback Ray Looney began

his bid for a third consecutive 1,000 yard-plus year with 101 yards in 19 carries. Looney scored once for the offense on a nine-yard scamper, and once for the defense on a 71-yard run after intercepting a Panther lateral.

history as the wildest two plays ever involving a Holliday football team. Seymour, facing fourth and 23 from their own 43, attempted to punt, but a swarm of Eagles converged on the kicker, and the punt was partially blocked. The ball sailed 16 yards to the Eagle 41, apparently giving Holliday good field position.

down in Eagle territory at the 29. Looney broke through the line on the next play and intercepted a lateral from the Panther quarterback just as he was passing off to his runningback. As Looney was racing for the goal line, ten yards ahead of his nearest opponent, another yellow flag was hurled to the ground, but the infraction was against Seymour and was happily declined. Parker's PAT was good, and Holliday led 20-0.

quarter. Harmon carried seven times in the game for 48 yards, Johnny Craig two for 18, and Jeff Belcher twice for 12.



"I THOUGHT I HAD SEEN THEM ALL" ... Eagle coach Don Lucy concerned with yellow flags.

"I felt the best part of our offense was the trap play," head coach Don Lucy said after the game. "The line's execution was good, and the backs hit the right holes."

Joe Chase led an inspired Eagle defense, which held the Panthers to a mere 45 yards rushing, and contributed 48 of his own from his fullback slot on offense.

Holliday received their first penalty, for holding, during its first offensive series of the game. Chase recovered a Seymour fumble on the Eagle's 34, but a major penalty two plays later set Holliday back on their 44 to face third and 19.

One play later, facing fourth and 15, the Panther defense set up for a punt return, with two backs at their own goal line. But Holliday had other things on their minds, and quarterback Joel Mankins hit end Kevin Blankenship for a 25-yard gain and an Eagle first down at the Panther 19.

Two plays later, junior back Brad Harmon broke to the left sideline and raced untouched into the endzone for Holliday's first touchdown of the 1981 season. The point-after try failed, leaving Holliday with a 6-0 lead four minutes into the contest.

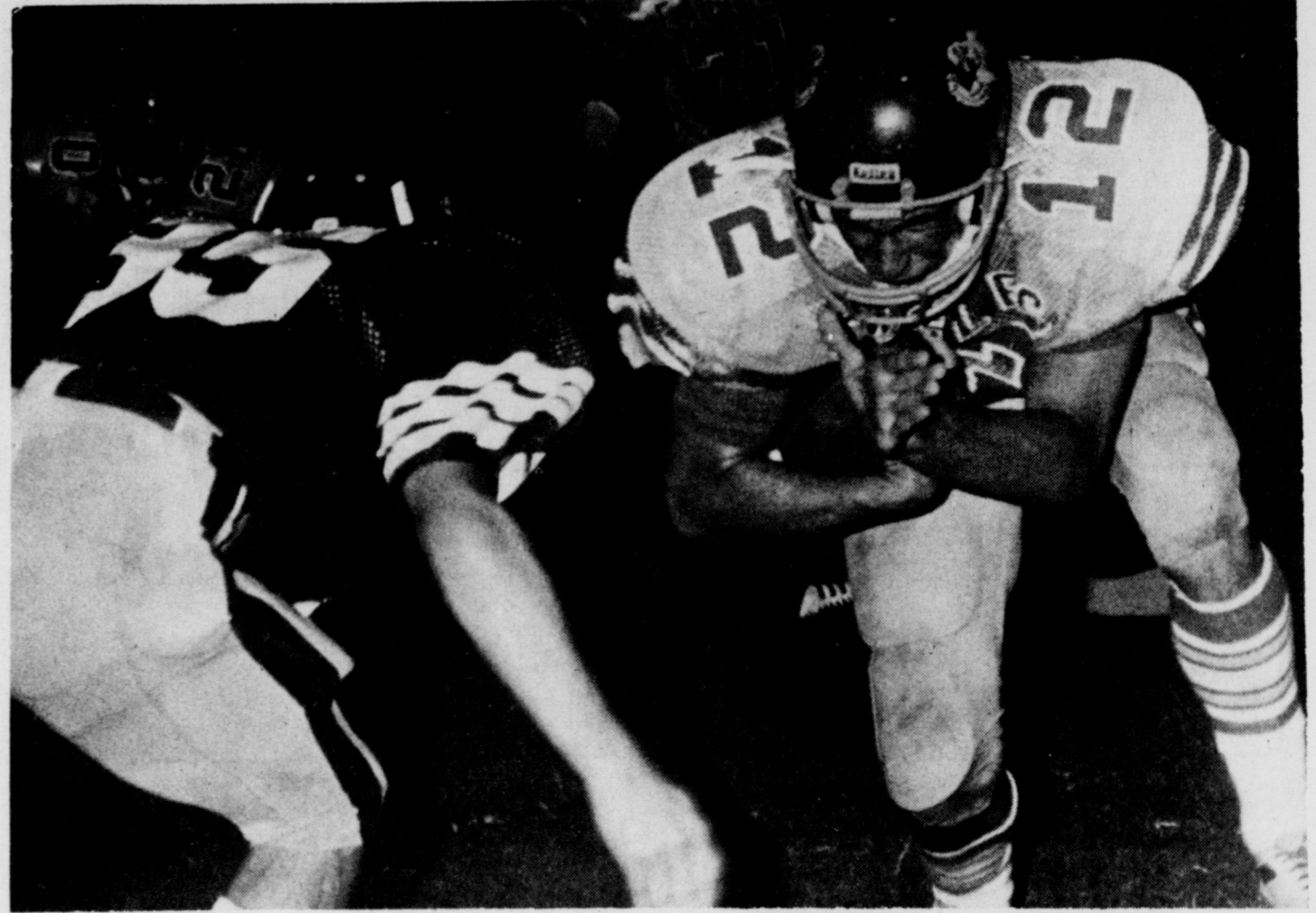
Harmon raced 55-yards for another apparent Eagle touchdown one minute into the second quarter, but a clipping penalty was charged to Holliday at the Panther 37, bringing the ball back to the Eagle's 47. 11 plays later, Looney ran unscathed around the right side nine yards for an Eagle touchdown. Mike Parker's PAT was good, giving Holliday a 13-0 lead with 5:35 left in the first half.

Two consecutive plays deep in the third period will probably go down in

But an official called Holliday with roughing the kicker, explaining to a fuming Lucy that another player besides the one blocking the punt had run into the Panther kicker, which he deemed illegal. Thus, Seymour now had a first

Chase scored the final touchdown of the evening on a five-yard run, set up by lineman Timmy Stubblefield's fumble recovery early in the fourth

HOLLIDAY	SEYMOUR
15	First Downs 6
245	Yards Rushing 45
46	Yards Passing 27
291	Total Yards 72
2-34	Punts 5-29
2-34	Punts 5-29.4
2	Fumbles 4
0	Interceptions By 2
14-170	Penalties 7-53



HEADED FOR COLLISION ... QB Joel Mankins readies for contact.

Talley
Insurance Agency
Insurance & Real Estate
BOX 389 - HOLLIDAY, TEXAS 76366
Phone: 586-1273

AYRES OIL INC.
● Gasoline ● Motor Oil
● Diesel ● Filters
● Propane ● Goodyear Tires
Jack Ayres 586-1208

HOLLI-TEX
Supply Company
New & Used Oil Field Supplies
Holliday 586-1271

STEVE'S
Repair Shop
Complete Automotive Repair
S. MAIN 586-1321

HOLLIDAY WHITE'S HOME & AUTO
and Flower Scenter
Carl & Sharon Nichols
West Main & Olive 586-1358

IOWA PARK LEADER

Season Schedule and Record

Holliday	27	Seymour	0
Holliday	September 11 Here	Electra	
Holliday	September 18 Here Homecoming	Jacksboro	
Open	September 25		
Holliday	October 2 Here	Boyd	
Holliday	October 9 There	Chico	
Holliday	October 16 Here	Windthorst	
Holliday	October 23 Here	Petrolia	
Holliday	October 30 There	Millsap	
Holliday	November 6 Here	Archer City	
Holliday	November 13 There	Nocona	

ALL GAMES START AT 8 P.M.

Holliday Eagles Roll On

1981 7, 8, 9, JV FOOTBALL SCHEDULE

Sept. 3	Seymour	H 6:00	9 - JV	Oct. 8	Burkburnett	H 6:00	9 - JV
Sept. 10	Electra	H 6:00	7 - 8	Oct. 15	Vernon	H 6:00	7 - 8
Sept. 10	Electra	T 6:00	9 - JV	Oct. 15	Windthorst	T 6:00	JV
Sept. 15	Jacksboro	H 6:00	7 - 8	Oct. 22	Petrolia	T 5:00	7 - 8 - JV
Sept. 17	Jacksboro	T 6:00	JV	Oct. 29	City View	T 3:00	7 - 8
Sept. 24	Nocona	H 5:00	7 - 8 - JV	Oct. 29	Burkburnett	H 6:00	9 - JV
Oct. 1	Boyd	T 5:00	7 - 8	Nov. 5	Iowa Park	H 5:00	7 - 8
Oct. 1	Boyd	H 5:00	JV	Nov. 5	Petrolia	H 7:30	JV
Oct. 1	Vernon	H 6:30	9				
Oct. 8	Burkburnett	T 5:00	7 - 8				

MIKE RATHMAN
Logging Company
● Induction Logging ● Micro Logging
● Radioactivity Logging ● Sonic Logging
Wichita Falls Phone 322-7311

TERRY'S WELDING SERVICE INC.
Construction Dozer Backhoes
Welding Oil Field Hauling Driller
Dump Trucks Chrt. Gravel
R.R.C. 5697 Kamay Texas
723-4470 817-438-2921 586-1342

NEWMAN'S FEED
EVERGREEN Full line of animal feed, animal health supplies, vaccine, garden tack.
S. MAIN 586-1472

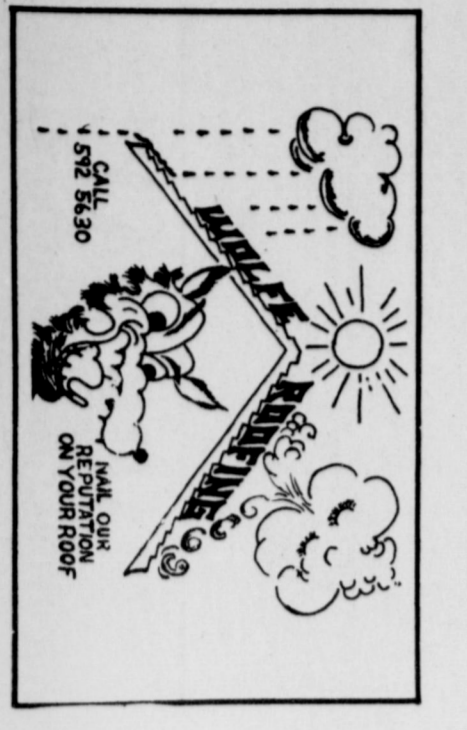
Beall Auto Parts, Inc.
Parts & Supplies for Autos, Trucks & Small Engines
Holliday 586-1211 Open 8-6 Iowa Park 592-4181

HOLLIDAY Foodworld
7 a.m. - 8 p.m. Phone 586-1384
Mon. - Sat. 586-1384
Sunday 9 a.m. to 6 p.m.

STATE NATIONAL BANK
IOWA PARK, TEXAS
EQUAL HOUSING OPPORTUNITY Member F.D.I.C.
Your Area Bank - Locally Owned

SATURDAY CONT.

- 830 (2) PRIDE ADVENTURES
- (3) COMPROMISED
- (4) SUPER POWER HOUR
- (5) MOVIE *** "Beverly Hills Cop" (1981)
- (6) BOWERY BOYS, Virginia Hamilton. The Boys decide to go to war, so they turn their own lighting unit.
- 900 (2) LITERATURE
- (3) ROSE TROCK
- (4) ROSE TROCK / SCORRY DOO
- (5) SCORRY DOO
- (6) SCORRY DOO (1981)
- (7) SCORRY DOO (1981)
- (8) SCORRY DOO (1981)
- (9) SCORRY DOO (1981)
- (10) SCORRY DOO (1981)
- (11) SCORRY DOO (1981)
- (12) SCORRY DOO (1981)
- (13) SCORRY DOO (1981)
- (14) SCORRY DOO (1981)
- (15) SCORRY DOO (1981)
- (16) SCORRY DOO (1981)
- (17) SCORRY DOO (1981)
- (18) SCORRY DOO (1981)
- (19) SCORRY DOO (1981)
- (20) SCORRY DOO (1981)
- (21) SCORRY DOO (1981)
- (22) SCORRY DOO (1981)
- (23) SCORRY DOO (1981)
- (24) SCORRY DOO (1981)
- (25) SCORRY DOO (1981)
- (26) SCORRY DOO (1981)
- (27) SCORRY DOO (1981)
- (28) SCORRY DOO (1981)
- (29) SCORRY DOO (1981)
- (30) SCORRY DOO (1981)
- (31) SCORRY DOO (1981)
- (32) SCORRY DOO (1981)
- (33) SCORRY DOO (1981)
- (34) SCORRY DOO (1981)
- (35) SCORRY DOO (1981)
- (36) SCORRY DOO (1981)
- (37) SCORRY DOO (1981)
- (38) SCORRY DOO (1981)
- (39) SCORRY DOO (1981)
- (40) SCORRY DOO (1981)
- (41) SCORRY DOO (1981)
- (42) SCORRY DOO (1981)
- (43) SCORRY DOO (1981)
- (44) SCORRY DOO (1981)
- (45) SCORRY DOO (1981)
- (46) SCORRY DOO (1981)
- (47) SCORRY DOO (1981)
- (48) SCORRY DOO (1981)
- (49) SCORRY DOO (1981)
- (50) SCORRY DOO (1981)
- (51) SCORRY DOO (1981)
- (52) SCORRY DOO (1981)
- (53) SCORRY DOO (1981)
- (54) SCORRY DOO (1981)
- (55) SCORRY DOO (1981)
- (56) SCORRY DOO (1981)
- (57) SCORRY DOO (1981)
- (58) SCORRY DOO (1981)
- (59) SCORRY DOO (1981)
- (60) SCORRY DOO (1981)
- (61) SCORRY DOO (1981)
- (62) SCORRY DOO (1981)
- (63) SCORRY DOO (1981)
- (64) SCORRY DOO (1981)
- (65) SCORRY DOO (1981)
- (66) SCORRY DOO (1981)
- (67) SCORRY DOO (1981)
- (68) SCORRY DOO (1981)
- (69) SCORRY DOO (1981)
- (70) SCORRY DOO (1981)
- (71) SCORRY DOO (1981)
- (72) SCORRY DOO (1981)
- (73) SCORRY DOO (1981)
- (74) SCORRY DOO (1981)
- (75) SCORRY DOO (1981)
- (76) SCORRY DOO (1981)
- (77) SCORRY DOO (1981)
- (78) SCORRY DOO (1981)
- (79) SCORRY DOO (1981)
- (80) SCORRY DOO (1981)
- (81) SCORRY DOO (1981)
- (82) SCORRY DOO (1981)
- (83) SCORRY DOO (1981)
- (84) SCORRY DOO (1981)
- (85) SCORRY DOO (1981)
- (86) SCORRY DOO (1981)
- (87) SCORRY DOO (1981)
- (88) SCORRY DOO (1981)
- (89) SCORRY DOO (1981)
- (90) SCORRY DOO (1981)
- (91) SCORRY DOO (1981)
- (92) SCORRY DOO (1981)
- (93) SCORRY DOO (1981)
- (94) SCORRY DOO (1981)
- (95) SCORRY DOO (1981)
- (96) SCORRY DOO (1981)
- (97) SCORRY DOO (1981)
- (98) SCORRY DOO (1981)
- (99) SCORRY DOO (1981)
- (100) SCORRY DOO (1981)



- 930 (2) BARBARA MANORELL AND THE MANORIAL SISTERS
- (3) ENOS
- (4) ENOS
- (5) ENOS
- (6) ENOS
- (7) ENOS
- (8) ENOS
- (9) ENOS
- (10) ENOS
- (11) ENOS
- (12) ENOS
- (13) ENOS
- (14) ENOS
- (15) ENOS
- (16) ENOS
- (17) ENOS
- (18) ENOS
- (19) ENOS
- (20) ENOS
- (21) ENOS
- (22) ENOS
- (23) ENOS
- (24) ENOS
- (25) ENOS
- (26) ENOS
- (27) ENOS
- (28) ENOS
- (29) ENOS
- (30) ENOS
- (31) ENOS
- (32) ENOS
- (33) ENOS
- (34) ENOS
- (35) ENOS
- (36) ENOS
- (37) ENOS
- (38) ENOS
- (39) ENOS
- (40) ENOS
- (41) ENOS
- (42) ENOS
- (43) ENOS
- (44) ENOS
- (45) ENOS
- (46) ENOS
- (47) ENOS
- (48) ENOS
- (49) ENOS
- (50) ENOS
- (51) ENOS
- (52) ENOS
- (53) ENOS
- (54) ENOS
- (55) ENOS
- (56) ENOS
- (57) ENOS
- (58) ENOS
- (59) ENOS
- (60) ENOS
- (61) ENOS
- (62) ENOS
- (63) ENOS
- (64) ENOS
- (65) ENOS
- (66) ENOS
- (67) ENOS
- (68) ENOS
- (69) ENOS
- (70) ENOS
- (71) ENOS
- (72) ENOS
- (73) ENOS
- (74) ENOS
- (75) ENOS
- (76) ENOS
- (77) ENOS
- (78) ENOS
- (79) ENOS
- (80) ENOS
- (81) ENOS
- (82) ENOS
- (83) ENOS
- (84) ENOS
- (85) ENOS
- (86) ENOS
- (87) ENOS
- (88) ENOS
- (89) ENOS
- (90) ENOS
- (91) ENOS
- (92) ENOS
- (93) ENOS
- (94) ENOS
- (95) ENOS
- (96) ENOS
- (97) ENOS
- (98) ENOS
- (99) ENOS
- (100) ENOS

SUNDAY

- 500 (2) YEP ELIS
- (3) YEP ELIS
- (4) YEP ELIS
- (5) YEP ELIS
- (6) YEP ELIS
- (7) YEP ELIS
- (8) YEP ELIS
- (9) YEP ELIS
- (10) YEP ELIS
- (11) YEP ELIS
- (12) YEP ELIS
- (13) YEP ELIS
- (14) YEP ELIS
- (15) YEP ELIS
- (16) YEP ELIS
- (17) YEP ELIS
- (18) YEP ELIS
- (19) YEP ELIS
- (20) YEP ELIS
- (21) YEP ELIS
- (22) YEP ELIS
- (23) YEP ELIS
- (24) YEP ELIS
- (25) YEP ELIS
- (26) YEP ELIS
- (27) YEP ELIS
- (28) YEP ELIS
- (29) YEP ELIS
- (30) YEP ELIS
- (31) YEP ELIS
- (32) YEP ELIS
- (33) YEP ELIS
- (34) YEP ELIS
- (35) YEP ELIS
- (36) YEP ELIS
- (37) YEP ELIS
- (38) YEP ELIS
- (39) YEP ELIS
- (40) YEP ELIS
- (41) YEP ELIS
- (42) YEP ELIS
- (43) YEP ELIS
- (44) YEP ELIS
- (45) YEP ELIS
- (46) YEP ELIS
- (47) YEP ELIS
- (48) YEP ELIS
- (49) YEP ELIS
- (50) YEP ELIS
- (51) YEP ELIS
- (52) YEP ELIS
- (53) YEP ELIS
- (54) YEP ELIS
- (55) YEP ELIS
- (56) YEP ELIS
- (57) YEP ELIS
- (58) YEP ELIS
- (59) YEP ELIS
- (60) YEP ELIS
- (61) YEP ELIS
- (62) YEP ELIS
- (63) YEP ELIS
- (64) YEP ELIS
- (65) YEP ELIS
- (66) YEP ELIS
- (67) YEP ELIS
- (68) YEP ELIS
- (69) YEP ELIS
- (70) YEP ELIS
- (71) YEP ELIS
- (72) YEP ELIS
- (73) YEP ELIS
- (74) YEP ELIS
- (75) YEP ELIS
- (76) YEP ELIS
- (77) YEP ELIS
- (78) YEP ELIS
- (79) YEP ELIS
- (80) YEP ELIS
- (81) YEP ELIS
- (82) YEP ELIS
- (83) YEP ELIS
- (84) YEP ELIS
- (85) YEP ELIS
- (86) YEP ELIS
- (87) YEP ELIS
- (88) YEP ELIS
- (89) YEP ELIS
- (90) YEP ELIS
- (91) YEP ELIS
- (92) YEP ELIS
- (93) YEP ELIS
- (94) YEP ELIS
- (95) YEP ELIS
- (96) YEP ELIS
- (97) YEP ELIS
- (98) YEP ELIS
- (99) YEP ELIS
- (100) YEP ELIS

MONDAY

- 600 (2) CAROL BURKETT AND FRIENDS
- (3) CAROL BURKETT AND FRIENDS
- (4) CAROL BURKETT AND FRIENDS
- (5) CAROL BURKETT AND FRIENDS
- (6) CAROL BURKETT AND FRIENDS
- (7) CAROL BURKETT AND FRIENDS
- (8) CAROL BURKETT AND FRIENDS
- (9) CAROL BURKETT AND FRIENDS
- (10) CAROL BURKETT AND FRIENDS
- (11) CAROL BURKETT AND FRIENDS
- (12) CAROL BURKETT AND FRIENDS
- (13) CAROL BURKETT AND FRIENDS
- (14) CAROL BURKETT AND FRIENDS
- (15) CAROL BURKETT AND FRIENDS
- (16) CAROL BURKETT AND FRIENDS
- (17) CAROL BURKETT AND FRIENDS
- (18) CAROL BURKETT AND FRIENDS
- (19) CAROL BURKETT AND FRIENDS
- (20) CAROL BURKETT AND FRIENDS
- (21) CAROL BURKETT AND FRIENDS
- (22) CAROL BURKETT AND FRIENDS
- (23) CAROL BURKETT AND FRIENDS
- (24) CAROL BURKETT AND FRIENDS
- (25) CAROL BURKETT AND FRIENDS
- (26) CAROL BURKETT AND FRIENDS
- (27) CAROL BURKETT AND FRIENDS
- (28) CAROL BURKETT AND FRIENDS
- (29) CAROL BURKETT AND FRIENDS
- (30) CAROL BURKETT AND FRIENDS
- (31) CAROL BURKETT AND FRIENDS
- (32) CAROL BURKETT AND FRIENDS
- (33) CAROL BURKETT AND FRIENDS
- (34) CAROL BURKETT AND FRIENDS
- (35) CAROL BURKETT AND FRIENDS
- (36) CAROL BURKETT AND FRIENDS
- (37) CAROL BURKETT AND FRIENDS
- (38) CAROL BURKETT AND FRIENDS
- (39) CAROL BURKETT AND FRIENDS
- (40) CAROL BURKETT AND FRIENDS
- (41) CAROL BURKETT AND FRIENDS
- (42) CAROL BURKETT AND FRIENDS
- (43) CAROL BURKETT AND FRIENDS
- (44) CAROL BURKETT AND FRIENDS
- (45) CAROL BURKETT AND FRIENDS
- (46) CAROL BURKETT AND FRIENDS
- (47) CAROL BURKETT AND FRIENDS
- (48) CAROL BURKETT AND FRIENDS
- (49) CAROL BURKETT AND FRIENDS
- (50) CAROL BURKETT AND FRIENDS
- (51) CAROL BURKETT AND FRIENDS
- (52) CAROL BURKETT AND FRIENDS
- (53) CAROL BURKETT AND FRIENDS
- (54) CAROL BURKETT AND FRIENDS
- (55) CAROL BURKETT AND FRIENDS
- (56) CAROL BURKETT AND FRIENDS
- (57) CAROL BURKETT AND FRIENDS
- (58) CAROL BURKETT AND FRIENDS
- (59) CAROL BURKETT AND FRIENDS
- (60) CAROL BURKETT AND FRIENDS
- (61) CAROL BURKETT AND FRIENDS
- (62) CAROL BURKETT AND FRIENDS
- (63) CAROL BURKETT AND FRIENDS
- (64) CAROL BURKETT AND FRIENDS
- (65) CAROL BURKETT AND FRIENDS
- (66) CAROL BURKETT AND FRIENDS
- (67) CAROL BURKETT AND FRIENDS
- (68) CAROL BURKETT AND FRIENDS
- (69) CAROL BURKETT AND FRIENDS
- (70) CAROL BURKETT AND FRIENDS
- (71) CAROL BURKETT AND FRIENDS
- (72) CAROL BURKETT AND FRIENDS
- (73) CAROL BURKETT AND FRIENDS
- (74) CAROL BURKETT AND FRIENDS
- (75) CAROL BURKETT AND FRIENDS
- (76) CAROL BURKETT AND FRIENDS
- (77) CAROL BURKETT AND FRIENDS
- (78) CAROL BURKETT AND FRIENDS
- (79) CAROL BURKETT AND FRIENDS
- (80) CAROL BURKETT AND FRIENDS
- (81) CAROL BURKETT AND FRIENDS
- (82) CAROL BURKETT AND FRIENDS
- (83) CAROL BURKETT AND FRIENDS
- (84) CAROL BURKETT AND FRIENDS
- (85) CAROL BURKETT AND FRIENDS
- (86) CAROL BURKETT AND FRIENDS
- (87) CAROL BURKETT AND FRIENDS
- (88) CAROL BURKETT AND FRIENDS
- (89) CAROL BURKETT AND FRIENDS
- (90) CAROL BURKETT AND FRIENDS
- (91) CAROL BURKETT AND FRIENDS
- (92) CAROL BURKETT AND FRIENDS
- (93) CAROL BURKETT AND FRIENDS
- (94) CAROL BURKETT AND FRIENDS
- (95) CAROL BURKETT AND FRIENDS
- (96) CAROL BURKETT AND FRIENDS
- (97) CAROL BURKETT AND FRIENDS
- (98) CAROL BURKETT AND FRIENDS
- (99) CAROL BURKETT AND FRIENDS
- (100) CAROL BURKETT AND FRIENDS

TUESDAY

- 600 (2) SONSHINE
- (3) SONSHINE
- (4) SONSHINE
- (5) SONSHINE
- (6) SONSHINE
- (7) SONSHINE
- (8) SONSHINE
- (9) SONSHINE
- (10) SONSHINE
- (11) SONSHINE
- (12) SONSHINE
- (13) SONSHINE
- (14) SONSHINE
- (15) SONSHINE
- (16) SONSHINE
- (17) SONSHINE
- (18) SONSHINE
- (19) SONSHINE
- (20) SONSHINE
- (21) SONSHINE
- (22) SONSHINE
- (23) SONSHINE
- (24) SONSHINE
- (25) SONSHINE
- (26) SONSHINE
- (27) SONSHINE
- (28) SONSHINE
- (29) SONSHINE
- (30) SONSHINE
- (31) SONSHINE
- (32) SONSHINE
- (33) SONSHINE
- (34) SONSHINE
- (35) SONSHINE
- (36) SONSHINE
- (37) SONSHINE
- (38) SONSHINE
- (39) SONSHINE
- (40) SONSHINE
- (41) SONSHINE
- (42) SONSHINE
- (43) SONSHINE
- (44) SONSHINE
- (45) SONSHINE
- (46) SONSHINE
- (47) SONSHINE
- (48) SONSHINE
- (49) SONSHINE
- (50) SONSHINE
- (51) SONSHINE
- (52) SONSHINE
- (53) SONSHINE
- (54) SONSHINE
- (55) SONSHINE
- (56) SONSHINE
- (57) SONSHINE
- (58) SONSHINE
- (59) SONSHINE
- (60) SONSHINE
- (61) SONSHINE
- (62) SONSHINE
- (63) SONSHINE
- (64) SONSHINE
- (65) SONSHINE
- (66) SONSHINE
- (67) SONSHINE
- (68) SONSHINE
- (69) SONSHINE
- (70) SONSHINE
- (71) SONSHINE
- (72) SONSHINE
- (73) SONSHINE
- (74) SONSHINE
- (75) SONSHINE
- (76) SONSHINE
- (77) SONSHINE
- (78) SONSHINE
- (79) SONSHINE
- (80) SONSHINE
- (81) SONSHINE
- (82) SONSHINE
- (83) SONSHINE
- (84) SONSHINE
- (85) SONSHINE
- (86) SONSHINE
- (87) SONSHINE
- (88) SONSHINE
- (89) SONSHINE
- (90) SONSHINE
- (91) SONSHINE
- (92) SONSHINE
- (93) SONSHINE
- (94) SONSHINE
- (95) SONSHINE
- (96) SONSHINE
- (97) SONSHINE
- (98) SONSHINE
- (99) SONSHINE
- (100) SONSHINE

Iowa Park Plumbing
Commercial - Residential
Remodel - Repair - Sewer Machines
Mitch Miller
592-4019

Land title problems as old as history of land trading

Even Abe Lincoln had land title problems.

Not everyone knows the story of how Abe's family lost title to three Kentucky farms while Abe was growing up. The property was lost through no fault of their own, rather, because of land title problems so serious that the family was finally forced to move from the state.

This legend warns 1980 home buyers that unresolved land title problems can still bring financial disaster.

The Lincolns' title problems began when Abe's father, Thomas Lincoln, tried to sell the family barn and found it 39 acres short. Then past indebtedness on their second farm was discovered to be much larger than the seller had told the Lincolns it was, and, worse, the title holder demanded cash payment instead of settling for payment in merchandise. The Lincolns lost their third Kentucky farm through a suit of ejectment to remove them from the property.

By this time Thomas Lincoln understandably felt very brow beaten, so, with "his back against the wall," he relocated his family in nearby Indiana where land title problems occurred less frequently. The state of Kentucky thus forever lost its chance to be known as the home of the future president.

Years later Abe Lincoln wrote of the move to Indiana, "Thus removal was partly on account of slavery, but chiefly on account of the difficulty in land titles."

Protection for the home buyer is crucial in 1980, according to Mike Ramsey, President of the Texas Land Title Association. He explained that land title problems arise from the enduring nature of land and claims against the land which may be filled by different parties.

Advance precautions to protect the buyer before purchase should always include a proper title search of public records to disclose any title problems. Ramsey advised the buyer to purchase title insurance to protect against all title hazards including

those a title search cannot reveal. Ramsey, who is vice president of Lawyers Title Insurance Corporation, Dallas, says home ownership is an excellent hedge against inflation as long as real estate transactions are properly conducted.

Texas Land Title Association recommends that all prospective home buyers review the following checklist:

- * Study the particular advantages and disadvantages of a single family dwelling, town house, condominium or other type of residence before deciding what to purchase.

- * Consider the neighborhood where the residence is located. What is its condition, and, more important, what are the future plans for the neighborhood?

- * Check the distance from the house for sale to your job, shopping centers, schools, and public transportation.

- * Carefully inspect the house's structural condition. You may want to get a structural expert's appraisal.

- * Check on the amount of insulation. How much fuel is required to heat the house?

- * Shop for the best deal you can find in mortgage financing. Ask about the interest rate, late payment penalty, amount of insurance required, refinancing requirements, and possible prepayment penalty. Will interest, taxes and insurance be included in the monthly payment?

- * Find out in advance how much closing costs run in your area, and get a "ballpark" estimate of how much you will have to pay in out-of-pocket expenses.

- * Before you close the real estate

CARD OF THANKS

We would like to thank the people of the area for their pledges of \$1869.00 for this year's Jerry Lewis Labor Day Telethon. This is one of our annual projects and we appreciate the support that you have given us each year.

Epsilon Sigma Alpha Sorority

transaction, arrange for owner's title insurance protection, available at minimal cost. The required lender's title insurance policy protects only the mortgage lender.

Warning of a definite need for buyer protection, TLTA President Mike Ramsey tells the story of what happened to an unfortunate home buyer in Illinois. They buyer thought he received clear title but, after moving in, received notice that a past year's property taxes were still unpaid. The discrepancy was not found by title search of public records because the county tax rolls had been posted incorrectly at the courthouse. Fortunately, the owner's title policy provided coverage which paid the tax claim, saving the owner financial loss and possible loss of his real estate.

J.P. Doodles

by Barry McWilliams



GRIMSTOPPERS TEXTBOOK

The Case of the KITCHEN KATASTROPHE OR Too Many Cooks Spoil the Cloth

The Solution: A quick trip to your cleaning experts. We have highly trained professionals who specialize in grime prevention. Case Closed.

City Cleaners
107 W. Cash 592-4241

FENOGLIO PRODUCE
Corner Beverly and Seymour Highway
Wichita Falls

Fresh Produce brought in daily, 7 days a week - 12 months a year

FEATURING:
Home-Grown TOMATOES
CANTALOUPEs CUCUMBERS
PEACHES PLUMS
SQUASH APPLES
OKRA NECTORINES

AND MANY OTHER Fruits & Vegetables

ALL HANGING PLANTS... \$5 ea.
Delicious WATERMELONS... \$1 ea.

NOTICE OF PUBLIC HEARING ON TAX INCREASE

The Wichita County Commissioners Court will hold a public hearing on a proposal to increase total tax revenues from properties on the tax roll in 1980 by 13.47% (percent). Your individual taxes may increase at a greater or lesser rate, or even decrease, depending on the change in the taxable value of your property in relation to the change in taxable value of all other property.

The public hearing will be held on September 21, 1981 at 10:00 A.M. in the Commissioners Courtroom, County Courthouse, Wichita Falls, Texas.

FOR the proposal:

- D.W. Wiley, Jr.
- Weldon Nix
- Gordon Griffith
- H.C. Greer

AGAINST the proposal:

NONE

ABSENT and not voting:

NONE

MORE SPECIALS MORE SAVINGS DAILY

Ground Beef
Lb. **\$1.09**

Round Steak

Club Steak
Lb. **\$1.89**

Chuck Roast
Lb. **\$1.39**

\$1.79
Lb.

Top Round Steak
Lb. **\$2.29**



Shurline **Cream Style Corn**

16 oz. **3/\$1.00**

Shurtine

Sweet Peas 16 oz. **3/\$1**



Shurtine **Pancake & Waffle Syrup** 32 oz. **99¢**

Shurtine **Catsup** 32 oz. **79¢**

Delsey Bathroom

Tissue

4 Roll Pkg. **99¢**

Best Maid **Sweet Relish**

12 oz. **79¢**

Best Maid Hamburger

Slices

16 oz. **79¢**

Discount Foods

107 West Park

Cotton-wheat rotation program controls weeds

By Don D. Decker
County Agent

It is important to plan ahead for the control of difficult to control weeds in wheat such as wild oats, cheat, wild mustard and henbit. The increase in cotton acreage in recent years is doing an excellent job in providing a permanent solution to the wild oat

problem. Rotating wheat land into cotton for a couple of years is really doing the job in dealing with the weed problems in wheat.

Some fields have not been rotated to cotton and the wild oat or cheat problems persist. These are the ones where herbicides can be used to

combat these two grass weeds. Lexone and Sencor look good for the control of both. Anyone planning to use either of these must plant TAM 101 or Newton, which are tolerant to the chemical. On the other hand, Vona wheat is heavily damaged by these chemicals. It is not labeled for use on sandy soils, however, we have been successful with demonstrations

on the farms of J.H. Musgrave and Jesse Flick with sandy soils.

A demonstration was conducted by Rex Wells west of Iowa Park on the 1981 crop using Lexone. The wheat was planted on Oct. 8, and the Lexone was sprayed on Oct. 22. In the past, we have been applying Sencor as a spring application. This was the first attempt at fall treatment. Incidentally,

Lexone and Sencor are the same chemical. The mode of action is through the roots. Rain is needed within 2 weeks of application for effective control. Our chances for rain are much better in October and November than in March.

The fall treatment did a good job in controlling the wild oats, however, there was no significant difference in

crop response. Lexone at the rate of 1/2 pound per acre made 54.6 bushels per acre compared to 54.5 bushels on the check plot. The treated area had virtually no wild oats which the check plot contained about 15 percent wild oats. Apparently there were other factors affecting the yield.

There may have been some chemical toxicity to the wheat or heavy rains at harvest may have affected the results.

Glean looks good for wild mustard and henbit control without damaging the wheat crop, however, it has not been labeled for general use. At present it has only an experimental label. Freddy Daume wiped out wild mustard and sunflowers with an early April spraying of Glean without hurting the crop. Applying 2, 4-D this late in the season would have ruined the wheat. Spraying is needed before the wild mustard or henbit began to compete with the crop.

Wheat and cotton compliment each other in weed control. Rotating the cotton acreage back to wheat helps to control many of the tough ones in cotton. Rotating to wheat gives cotton growers a chance to work on weeds such as silver leaf nightshade, purple nightshade (choke cherry), blueweed or lakeweed, and devil's claws. Summer following after harvest supplemented with herbicides can go a long way in dealing with these troublesome weeds in cotton.

Louis Sawyer of Iowa Park has a field which has been in cotton for three years. Blueweed and devil's claw have begun to invade his cotton. These are causing him little concern as the field will go into wheat for the next two years. Between summer plowing after wheat harvest and herbicide spraying, he expects to get both of these under control.

Some wheat growers just do not want to grow cotton, even for wild oat control. They either dislike cotton or do not want to invest in cotton production equipment. In this case, there are cotton producers who will work an arrangement with a wheat grower to grow the cotton. The wheat growers get the land ready to plant, then the cotton producer takes over until cotton harvest. Norman Roberts of Burkburnett grows cotton for several wheat producers on a custom basis. Some wheat growers are combating the weed problem with rotation without having to actually grow the cotton themselves.

Savings strategies in inflationary days

A penny saved used to be a penny earned back in Benjamin Franklin's day, but the American colonies didn't suffer from the economic conditions we have today. Does our modern, double-digit, spiralling inflation make saving

obsolete? No, says the Better Business Bureau, but it does make it necessary for consumers to create a savings strategy and make their money work as hard as possible for them.

Choosing the best places to save

and invest is a matter of trade-offs. Generally, the safer the investment, the smaller the return. The less "liquid" the investment (the ease that it can be converted into cash), the higher the dividends.

Potential savers must assess their

family needs and future goals in preparing to save. Financial planners usually suggest that a family save up to six months of income in a readily available account for emergencies. After that is amassed, then it's time to consider more complex savings options, of which there are many.

Passbook accounts are available through banks, savings and loans associations and credit unions. Historically, these institutions were very different, but recent legislation has narrowed the gaps between their interest limits and services offered.

There is more to choosing a passbook account than considering the stated interest rate alone. When evaluating where to place funds, inquire about the rate of compounding, when the money is credited, what minimum amount is required for earning interest and if there are any penalties and bonuses. Not all passbook accounts are created equal, and the differences can add up.

Passbook accounts (and certificates of deposit and money-market certificates) generally are insured up to \$100,000 by federal or state government agencies or by private insurers.

A Wide Range of Options

Beyond passbooks, the prudent saver may want to consider:

* Certificates of deposit-Depositing a specified amount over a certain time period in a bank, S&L or credit union earns more interest than a passbook. If the money is withdrawn before the time period is up, however, a severe penalty is imposed by federal law.

* U.S. savings bonds-These are conservative time deposits commonly known as Series EE (matures in 5 years) and Series HH (matures in 10 years). The interest is exempt from state and local income taxes and the federal taxes may be deferred until the bonds are cashed in.

* U.S. Treasury bills-For a minimum of \$10,000 invested from three months to a year, the saver gets a high interest rate, with earnings exempt from state and local tax. T-bills can be bought through a bank, a stockbroker or directly from a Federal Reserve Bank or branch.

Door-to-door sales: your rights under the law

Ever had second thoughts about something you bought through door to door sales? Did you keep the item or cancel the contract agreement? You have certain rights when it

comes to door-to-door sales, under both a federal regulation and Texas law, says Barbara Cornelius, Wichita County Extension Agent.

Federal Trade Commission regula-

tions and the Texas Home Solicitation Sales Act define the rights of consumers regarding door-to-door sales.

One right is a three-day "cooling off" period. According to law, you have an absolute right to cancel the sales agreement until midnight of the third business day after signing the contract - in cases involving door-to-door sales, lease or rental of goods or services costing \$25 or more, when both the sales promotion and your agreement to buy are made somewhere other than the seller's place of business. To cancel, simply mail a written notice of cancellation to the company within the three-day period.

There's another section of the law that allows you to cancel at any time.

Sales contracts you sign are required to tell you of your right to cancel under the three-day circumstances, and you must be given a separate "Notice of Cancellation" form for this purpose.

If you do not receive the required cancellation notice and form, you may cancel at any time, not just during the three-day "cooling off" period, according to Texas law. After you cancel a contract, you must return the goods if the seller requests you to.

If you are requested to return the goods within 20 days, you are under no further obligation.

The seller must refund all money you have paid within 10 days from the date of cancellation.

Of course consumers can take two steps to protect themselves from unsatisfactory situations in door-to-door sales in the first place.

Make sure you're dealing with a legitimate, authorized sales representative who conducts business fairly and ethically.

Also, decide whether purchasing the product meets a real need or is you are acting impulsively.

Obituaries

Jack E. Robertson

Jack E. Robertson, 76, of Mankins died Friday in an Archer City hospital.

Services were Sunday afternoon at the Aulds Funeral Home with the Rev. Bill McKee, pastor of Old Glory Baptist Church, officiating. He was assisted by the Rev. Louis Hill, pastor of the Mankins Baptist Church. Burial was in the Archer City Cemetery.

He was born Feb. 14, 1905, in Indian Territory, Okla. and came to Texas at age 10 and grew up in Denton. He moved to Mankins in 1925 and worked as a cowboy until establishing a business in the Mankins community. He owned a garage and welding shop and retired in 1974.

He was married to Ruby Lyles on Jan. 23, 1935, in Grandfield, Okla. He was a member of the Mankins Baptist Church.

He is survived by his wife; one daughter, Betty Robertson of Denton; one son Jack L. of Canyon; two sisters, Myrtle Pritchard of Fort Worth and Mrs. Louis Terry of Visalia, Calif.; and two grandchildren.

Evy May Whittingstall

Ivy May Whittingstall, 66, a resident of Washington, D.C., died Monday in a Wichita Falls hospital. Burial was in Arlington National Cemetery. Local arrangements were under direction of Tanner-Aulds Funeral Home.

Miss Whittingstall was born Aug. 23, 1915, in Pittsburg, Penn. She was a retired military master sergeant with the Army Medical Corps.

She is survived by two brothers, Charles A. of Iowa Park and William G. of Butler, Penn.; and two sisters, Rose Ripple of Austin, Penn. and Helen Gerheim of Wilksburg, Penn.

IRS Tax Tips

Estimated Tax Installment Due

The third installment of estimated Federal tax payments on 1981 individual income is due by Sept. 15, the Internal Revenue Service says.

This installment should be paid using declaration voucher No. 3 found in the Form 1040 ES-package, "Declaration of Estimated Tax for Individuals."

Taxpayers whose anticipated income changed during 1981 may have to file an amended declaration. Space is provided in the estimated tax package to compute an amended estimate.

For more detailed information, the IRS publication 505, "Tax Withholding and Estimated Tax," is available free by calling the IRS forms/tax information number in the local telephone directory.

TUTORING SERVICE

If you would like your child to receive individualized tutoring from a Certified Texas Teacher, please call. . .

592-2334 after 4:00 p.m.

COUNTER TOPPING

FORMICA WILSON-ART MICARTA

"BUY FROM THE OLD PRO"

T.S. THOMAS, CABINETMAKER

1516 Beverly Wichita Falls Ph. 723-6523

Marriage Counseling

Rev. Max Dowling

569-4296

Burkburnett

B.A. Degree - Psychology
23 years - pastoral counseling

Make the

Connection

Texas Department of Public Safety

Kamay Road Church of Christ

Corner of Colorado & Emerald

Seeking the

Old Paths'

Lord's Day
10:30 a.m. & 6 p.m.
Wednesday 7:00 p.m.

Grace Baptist Church

511 S. Colorado - 592-5632

Come Let Us Reason Together Saith The Lord

Sunday School...10:00 A.M.

Morning Worship...11:00 A.M.

Evening Worship...6:30 P.M.

Wednesday Service...7:30 P.M.

Jimmy Johnson, Pastor

FIRST CHRISTIAN CHURCH

[Disciples of Christ]



105 E. Cash 592-4513

You are cordially invited to worship with us each Sunday.

Church School 9:45 a.m.

Worship 10:55 a.m.

YOUTH PROGRAM

6:00 p.m.

Serving the Lord with Gladness

Faith Baptist Church

411 S. Wall

Sunday School 9:45

Worship 11:00

Training Union 6:00

Evening Worship 7:00

Prayer Service 7:30

Ken Cole, Pastor

Welcome To The Worship and Fellowship of

First Presbyterian Church

CHURCH SCHOOL - 9:45 A.M.

FELLOWSHIP Time - 10:40 A.M.

MORNING WORSHIP - 11:00 A.M.

Norman D. Nettleton, Pastor 211 So. Yosemite

Christ The King Catholic Church

8:15 A.M. Sundays 7:00 P.M. C.C.D. & Bible Study

Meetings held at Good Sheperd Lutheran Church

First and Magnolia



IOWA PARK CHURCH OF CHRIST

SCHEDULE OF SERVICES

Sunday	Wednesday
Bible Study 9:30 a.m.	Ladies Bible Study 10:00 a.m.
Worship 10:30 a.m.	Evening Study 7:30 p.m.
Evening Worship 6:00 p.m.	

* Study the Bible in the privacy of your own home. Write for a FREE Bible Correspondence Course and enrich your life: Church of Christ, P.O. Box 520, Iowa Park, Texas 76367

* Keep In Touch: 592-2541. . . a short devotional and information relative to members of the congregation. Information changed daily.

300 East Park, Iowa Park, Texas 76367, [817]592-5415
L. KEITH PARKER, PREACHER

Iowa Park School Menu

Friday, Sept. 11 - Taco w/ taco sauce, meat or cheese sandwich, soup, green salad, buttered corn, chocolate & plain milk, dessert.
Monday, Sept. 14 - Chili dog w/ shredded cheese, meat or cheese sandwich, soup, potato salad, pinto beans, sweet relish, chocolate & plain milk, dessert.
Tuesday, Sept. 15 - Ghoulish, meat or cheese sandwich, soup, fried okra, blackeyed peas, cole slaw, corn bread, butter, chocolate & plain milk, dessert.
Wednesday, Sept. 16 - Cheeseburger, meat or cheese sandwich, soup, hash brown potato patties, lettuce, pickles, onions, chocolate & plain milk, dessert.
Thursday, Sept. 17 - Chicken & noodles, meat or cheese sandwich, soup, green beans, applesauce, hot rolls & butter, chocolate & plain milk, dessert.

Young Farmers slate banquet

Members of the Wichita County Young Farmers will hold their annual awards banquet at 7 p.m. Tuesday in Iowa Park High School cafeteria. Featured speaker will be Larry Lambert, Wichita Falls attorney. A steak dinner will be prepared by the Iowa Park MuleSkinners, according to George Brandt, reporter.

Soccer fields dedication set

Dedication of the David Kinsey Soccer Fields will be held at 2:30 p.m. Saturday. The fields are located on Victoria Street, on the east side of Lake Gordon. Iowa Park players will hold two short scrimmages with parents and Wichita Falls players, following dedication services. Refreshments will be available.

New organization for educators conservative

Above the din of noise about teachers leaving their classrooms for higher paying jobs and students' scores falling, a new voice is gaining momentum with an organization of some 35,000 Texas educators who are supporting a resurgence of quality. "The crisis, commotion, and confusion that currently reign in many classrooms today must be replaced by commitment, confidence, and character," Mike Morrow, executive director of the Association of Texas Professional Educators (ATPE) told high school vocational counselors at a conference sponsored by the Texas Education Agency in

Austin recently. ATPE experienced a 50-percent increase in membership last year which he attributes to the fact that "teachers are sick and tired of the current union tactics and political overtones that some teacher groups have adopted." Thirty-eight members of the Iowa Park schools faculty have joined the ATPE this year, according to Linda Ayres, president of the local group. "While our members want and are entitled to a standard of living commensurate with their training and education, they are concerned with more than their paycheck and

beating the kids out the door when the bell rings at 3:30 p.m.," Morrow said. ATPE supports local control of public schools and is not affiliated with the National Education Association as is the Texas State Teachers Association (TSTA). "We believe that the direction of education in this state should be decided by Texans instead of bureaucrats in Washington," state president Charles Pickitt of Richardson said. Another major difference between the two associations is that ATPE vehemently opposes collective bar-

gaining for public school employees and was successful at stymieing TSTA's bid to get legislation passed by the 67th Legislature making it legal in Texas. "If it ever comes to the classroom teacher putting down the textbooks and chalk for the picket sign, the children of Texas will be the big losers," Molly Sanders, who recently formed a local unit of ATPE in Corpus Christi, said. "It is time that the taxpayers who are footing the bill for education in this state realize that there is a strong movement among organized labor and the TSTA to initiate collective bargaining for school teachers in this state," Morrow said. "On the other hand, it is also time for the public to realize that if quality education is to exist they must get priorities straight and bring salaries in line with those for other college graduates who are entering private industry. "While many young people are choosing other higher paying professions, and some veterans are leaving education for the same reason, many dedicated teachers are hanging in there working to improve quality and accountability without militancy. These are the teachers ATPE represents," Morrow said.

Worth Quoting

Taxpayers and responsible school administrators have reason to rejoice since guidelines for determining eligibility for free and reduced-price school cafeteria meals have been changed. Revised guidelines give local school officials authority to investigate the financial status of families to determine whether or not their children are eligible to be fed by us taxpayers. As you may recall, under the old regulations, any parent or guardian could apply for their children to receive school cafeteria meals for free or at reduced prices. School officials were prohibited from checking the family's finances. If a family claimed to fit into a financial category qualifying for free or reduced-price meals, school officials were obligated to grant the request with no questions asked. But now the rules have been changed. Revised application forms now require families to show proof of current income along with names and Social Security numbers of all adult family members. "Schools may verify

the source and amount of income as well as household composition," according to the revised application form. Applicants must give a complete list of the family's income including wages, Social Security, welfare, unemployment compensation, alimony and retirement benefits. Deliberate misrepresentation subjects applicants to prosecution under state and federal criminal statutes. Another welcomed addition to the application form is an income scale indicating how much a family may earn in order to qualify for free and reduced-price meals. The good part is that it does not indicate whether the family is eligible for free or whether they are eligible for reduced-price meals. Applicants do not know what they are eligible for until after school officials have evaluated the application. To give you an idea of the program, a family of three earning \$13,080 annually is eligible for children to receive school cafeteria meals for free or at reduced prices. Meals at reduced prices include lunch for forty cents and breakfast for thirty cents. In Henrietta Independent School District, students whose families do not qualify for the program must pay regular prices which were raised recently by school trustees. Elemen-

tary school pupils may buy lunch for \$1 while junior high and high school students may buy lunch for 1.05. Breakfast is available to all students for 70 cents, and extra milk costs fifteen cents, said Glen Mitchell, Henrietta ISD superintendent. Revision of application guidelines indicates one financial assistance program whereby taxpayers do not have to subsidize people until the need is determined. Our local school officials can now at least ask a few questions before opening the bread lines. It should make responsible school officials and taxpayers happy. If the same principle were applied to other types of welfare, we would save money by shedding additional social leeches. LEWIS SIMMONS Clay County News

Municipal Court Records

Results of municipal court held here Thursday were: Lita Gayle Kloefharn, speeding, \$29.50.

Schedule for: Recreational Activities Center

Winter hours are now in effect at the Iowa Park Recreational Activities Center, according to Mrs. Betty Merriman, director. The RAC will close at 8 p.m. Monday through Thursday, and at 10 p.m. Friday. It will be closed Saturday and Sunday except for special events. Activities on the RAC schedule: Friday-Sunday, softball tournament. Monday, aerobics, 6:00 and 7:30 p.m. Tuesday, ceramics, 7:30 p.m. Wednesday, painting, 1:30 p.m.; aerobics, 6:30 and 7:30 p.m. Thursday, North Texas School of Performing Arts; RAC board meeting, 7:30 p.m.

CARD OF THANKS
 We want to thank everyone of you for the prayers, phone calls, smiles, kind words of encouragement during the time of Gene Lee's sickness and open heart surgery. May God bless each of you. The Families of May and Curtis Simmons

GOLFERS
 Enjoy the beauty & excitement of Stylian Golf Course
GREEN FEES
 \$3.00 WEEK DAYS
 \$5.00 SATURDAYS
SUNDAYS AND HOLIDAYS
 Public Welcome
 Complete Pro Shop
 Facilities
RALPH MORROW
 Golf Professional
 (Lessons by Appointment)
SYLINE C.C.
 N. Beverly Ph. 855-0771

Final day here for registration

Today is the final day for youngsters to sign up for kid football, according to Gordon Griffith. Griffith can be contacted by telephoning 592-4840. Due to the interest of younger boys, a limited number of larger seven-year-olds will be permitted to play this season, Griffith added.

\$2.50 OR \$1.50

Ken's Pizza
 Get \$2.50 off the price of any large Ken's pizza or \$1.50 off the price of any Ken's medium (or small deep pan) pizza. One coupon per pizza. Offer not good with other promotions or coupons. OFFER EXPIRES SEPT. 16 1981. Good taste right at your fingertips 592-4184 902 W. Hiway



Call-In Orders, Phone **592-4811**
 505 W. Southwest Expressway

Open 10 a.m. - 9 p.m. Daily

Special Through Wednesday

THE DUDE
 (Steak Sandwich)

\$1.55

BEAN DAY EVERY WEDNESDAY

Compliments and Complaints Welcomed.

The Salt Lick



HOURS OPEN
 11:00 a.m. - 2:30 p.m.
 5:00 p.m. - 8:30 p.m.

Serving **Hot Lunches Daily**

Orders To Go **592-5252**
 510 E. Highway

TRY OUR BARBEQUE
 Beef, Ham or Susage Plates.
 For the Hungry Man, Try the Combo Plate.

JOHNSON ROAD TEXACO

NOW INCLUDES

ALL NEW QUICK PAK DELI

Texaco Self-Serv Gasoline



Convenience Foods
 Fountain Drinks

1500 JOHNSON ROAD AT 287 EXPRESSWAY

IOWA PARK 592-5871

GRAND OPENING WINNERS

Daren Swanson
 Benny Brookshire
 Scott Kiser
 Dave Johnson
 Susie Painter
 Darlene Taylor
 Brant Baugh
 Brian Moore
 Jimmy Moffet
 Jerrel Chennault
 Afton Pike
 Keith Dyer
 Dona Clark
 Randy Case
 Connie Krum
 Tana Boles
 Laura Meador
 Jim D. Cooper

CONGRATULATIONS

ELECTRONIC MACHINES

FOUNTAIN DRINKS

BOOTHS

FOUNTAIN DRINKS

IN-STORE SEATING

QUICK IN AND OUT

ALL CIGARETTES 69¢
 2-Carton Limit

FULL DELICATESSEN

Let Us Pack Your Lunch

SANDWICHES

TACOS .59	BAR-B-Q BEEF .99
EGG SALAD .69	HAM & AMERICAN 1.09
PAMINTO CHEESE .79	TUNA SALAD 1.19
POLISH SAUSAGE .89	



805 West Highway

FOR TAKE OUT ORDERS

CALL 592-4731

Holiday News

Tigers have offense that could be trouble

Don Lucy's Holiday Eagles host tomorrow night's tilt against Electra with the head honcho casting a wary eye at the potentially-lethal offensive attack of the Dist. 9-AAA Tigers.

"They have a team that could ruin you if you gave them too many chances," Lucy said. A speedy trio of running backs including Perry Dupree, Kenny Hobbs and Daryl Trotter are Lucy's main cause for concern.

Hobbs and Trotter combined for

292 yards on the ground against Archer City last Friday enroute to a 31-8 win over Holiday's arch rival. Hobbs scored three times on runs of two, five and 70 yards. Trotter added a score on a 11-yard rush.

Electra's defense has proven no slouch, either, holding the Wildcats to 76 yards rushing and 96 yards passing. Luett McMahon (6-2, 210) led in tackles, followed by tackle Kurt Adams (6-3, 238) and linebacker Curtis Parker.

In all, the Tigers return seven starters on both offense and defense from last year's 4-6 team. Electra coach Eddie Brister hopes those starters can stay healthy in their quest to better last season's record.

Healthy is one thing the Eagles are becoming accustomed to this year, after losing several starters in the first two games last year. Runningback Mark Rathman suffered an injury to his right eye in a shooting accident, and missed the Seymour game, but is expected to be in good shape in the next few days.

Gametime is 8 p.m. at the high school stadium.

Holiday city council last Wednesday night set the tax rate for the coming year, and adopted a resolution for the issuance of \$350,000 in industrial revenue bonds for Holiday T.V. Cable Co., during the council's regular bi-monthly meeting.

Council met Sept. 2 instead of their regular first Monday of each month due to Labor Day.

The city's tax rate was set at 55-cents per \$100 valuation. The rate remains the same as the previous year.

C.D. "Chick" Ayres, representing Holiday T.V. Cable Co., proposed that the council adopt a resolution for the issuance of industrial revenue bonds. If accepted by the state, Holiday T.V. Cable would be able to obtain a loan at a lower rate than conventional loans, using the city's credit.

In other business:
 * Randy Stone was approved as an ambulance driver;
 * council tabled a request by Gil Peters for a water meter on property

Volleyball team record now 3-0

The Lady Eagle volleyball team improved their season record to 3-0 recently after defeating Northwest Christian Academy in two matches, said girls' coach Steve McIlhane.

In the first match, Holiday won easily 15-4, 15-3. The second match was won in three games, 15-2, 0-15, and 15-5.

"The girls have worked hard since Aug. 11 in preparing for the season and have improved with each practice," McIlhane, in his first year at Holiday, said. "We have some weak spots to improve on, but the girls seem determined to get to the point where we can compete well when district play begins."

Three seniors, Donita Alley, Susan Parker and Vayla Schmidt, were elected team captains earlier in the season.

In the game against Northwest Christian Academy, Parker led the Lady Eagles in scoring serves with 27, followed by DeAnna Chase with 12 and Schmidt eight.

he is in process of buying;

* agreed to install telephone at waste water treatment plant;

* agreed to install two external speakers for two-way radios on city pickups, and;

* decided to seek other bids on air conditioner for waste water treatment plant.

Council met in executive session to discuss personnel, and returned to open session to extend raises to five city employees.

Raises were given to the following: Amos Teafattler, 50-cents to \$5.25 per hour; Jack Monroe, 50-cents to \$4.50; Joy Chambers, 25-cents to \$4.25; Lavern Slatton, 16-cents to \$5.00; and city administrator Jim Hamill, \$300 per month.

Vocal concert set Saturday benefits HVFD

Country music singer Dena Kaye Woods, formerly of Holiday, will perform in concert at 8 p.m. Saturday in the Holiday High School auditorium, with some of the proceeds to be given to the Holiday Volunteer Fire Department.

Woods, who now lives and performs in Dallas, will be accompanied by her family, the Woods' Family Gospel Singers. The performance will be the family's first in 10 years, since they began in the area 20 years ago.

Joining the Woods' Family Gospel Singers will be Debbie Stone of Holiday, who also performs country and western music.

IOWA PARK LODGE No. 713 A.F. & A.M.
 700 W. Washington 592-5506
 Stated Meeting 7:30 P.M. 2nd Thursday
 W.M. - Ronald Robinson ...592-2101
 Sec. - Bud Mercer. . . 592-5413

DAILY WELL SERVICE

Specializing in shallow oil service, 1200 ft. completion job, rods up to 5,000 feet, fully insured, self-owned and operated

378-2319

MISS BETTY
 PALM, CARD READINGS & ADVISOR TELLS PAST, PRESENT & FUTURE.

Open 8 a.m. to 10 p.m. & Sunday

766-0187

1006 Broad St.



NEW TEACHERS for Holiday High School are from left: Jim Bob Wallace, vo-ag I and vo-ag mechanics; Patty Shulte, elementary and high school librarian; Gordon Turner, junior and senior high math; Martha Higgins, English and journalism; Robert White, English and Spanish I; Duncan

Brown, assistant high school band director and junior high band director; Steve McIlhane, history, head girl's basketball and volleyball coach; and, Bill Higgins, health, boy's head basketball coach.

Holiday School

Menu

Friday, September 11

Breakfast: Pancakes, syrup, milk, fruit.

Lunch: Battered fish, macaroni and cheese, corn, tartar sauce, milk, cookies, bread.

Monday, September 14

Breakfast: Cereal, milk, fruit.

Lunch: Corn dogs, corn, Ranch Style beans, mustard, ketchup, cookies, milk.

Tuesday, September 15

Breakfast: Cinnamon rolls, milk, fruit.

Lunch: Chili beans, sliced cheese, cabbage, cornbread, milk, jello.

Wednesday, September 16

Breakfast: Oatmeal, buttered toast, milk, juice.

Lunch: Chili dogs, onions, cheese, beans, milk, cake.

Thursday, September 17

Breakfast: Cheese toast, milk, juice.

Lunch: Steak fingers, candied yams, cream gravy, green beans, bread, milk, fruit.



Mr. and Mrs. Bill Stone announce the birth of their first child, Amy Marie, a seven pound, three ounce daughter, born Sept. 1.

Grandparents are Mr. and Mrs. B.W. Stone of Holiday, Mrs. Virginia Giles of Wichita Falls and Cletus Giles of Prior Lake, Mich. The great-grandmothers are Mrs. Ola May Stone of Holiday and Mrs. Elizabeth Giles of Lakeville, Minn.

above the spending limit provided by Article VIII, Section 22, of the Texas Constitution would be placed in a Water Assistance Fund to be used as provided by law, including projects for water development and conservation, water quality enhancement, and flood control purposes or any combination of these purposes.

The amendment also provides \$500,000,000 of the general credit of the state to guarantee bonds issued in commercial markets by local political subdivisions, including cities, counties, and special districts. The amendment allows amounts to be established to decrease or retire state debt, which is defined as that debt secured by the full faith and credit of the state. The amendment would raise the interest that could be paid on authorized, but unissued, bonds guaranteed by the full faith and credit of the state from 6% to 12%.

The proposed amendment will appear on the ballot as follows: "The constitutional amendment authorizing the use of a portion of the excess revenues of the state for water development, water conservation, water quality enhancement, and flood control purposes; authorizing the use of the state's credit, not to exceed five hundred million dollars, to guarantee the bonds of cities, counties, towns, and other units of local government in the financing of projects for such purposes; increasing the interest rate that may be paid on previously approved, but unissued, state bonds; and authorizing a program to retire state bonds."

PROPOSITION NO. 5 ON THE BALLOT

House Joint Resolution 49 proposes a constitutional amendment that would exempt livestock and poultry from taxation. Currently, farm products in the hands of the producer and family supplies for home and farm use are exempt.

The proposed amendment will appear on the ballot as follows: "The constitutional amendment to provide for the inclusion of livestock and poultry with farm products as exempt from taxation."

PROPOSITION NO. 6 ON THE BALLOT

House Joint Resolution 81 authorizes the governing body of a county, city, school district or other political subdivisions to exempt from taxation a portion of the market value of a residence homestead. The portion exempted may be as much as 40% for 1982-1984; 30% for 1985-1987; and 20% for 1988 and after. The amount of an exemption may not be less than \$5,000 unless the legislature by general law prescribes other monetary restrictions on the amount of the exemption. An eligible adult is allowed to receive other applicable exemptions provided by law. An exception is made where ad valorem tax has previously been pledged for the payment of debt.

The amendment further directs the legislature to require that notice be given to property owners of a reasonable estimate of tax on their property in certain situations.

The proposed amendment will appear on the ballot as follows: "The constitutional amendment authorizing the use of a portion of the excess revenues of the state for water development, water conservation, water quality enhancement, and flood control purposes; authorizing the use of the state's credit, not to exceed five hundred million dollars, to guarantee the bonds of cities, counties, towns, and other units of local government in the financing of projects for such purposes; increasing the interest rate that may be paid on previously approved, but unissued, state bonds; and authorizing a program to retire state bonds."

PROPOSITION NO. 7 ON THE BALLOT

House Joint Resolution 4 proposes a constitutional amendment that would authorize the Veterans' Land Board to issue and sell an additional \$250,000,000 in bonds increasing the Veterans' Land Fund's total bond issuance authorization from \$700,000,000 to \$950,000,000. The amendment would increase the maximum interest payable by the state on these bonds from 6% to 10%, and permit an even higher rate, if specified by the legislature.

The proposed amendment will appear on the ballot as follows: "The constitutional amendment authorizing the issuance of additional bonds to finance the veterans' land program and to increase the maximum interest rate allowable on veterans' land fund bonds."

PUBLIC NOTICE

BRIEF EXPLANATORY STATEMENTS OF PROPOSED CONSTITUTIONAL AMENDMENTS

SPECIAL ELECTION NOVEMBER 3, 1981

PROPOSITION NO. 1 ON THE BALLOT

Senate Joint Resolution 8 proposes a constitutional amendment that would allow the legislature to authorize cities, towns and other taxing units to grant exemptions from ad valorem taxes on an unproductive, underdeveloped or blighted area in order to encourage its development. The amendment would also allow the legislature to authorize a city or town to issue bonds or notes to finance this development and to pledge future increases in ad valorem tax revenues from the property in such areas to repay these bonds or notes.

The proposed amendment will appear on the ballot as follows: "The constitutional amendment to authorize cities, towns, and other taxing units to encourage the improvement, development, or redevelopment of certain areas through property tax relief and the issuance of bonds and notes."

PROPOSITION NO. 2 ON THE BALLOT

House Joint Resolution 117 proposes a constitutional amendment that would authorize a person to receive a patent to land from the Commissioner of the General Land Office under certain conditions. Application for the patent must be made within five years from approval of the amendment. The land must be surveyed, public free school land not previously patentable. The person must have a properly recorded deed to the land, which he acquired without knowledge of the patent defect and which title he and his predecessors in interest have held for at least 50 years. The person and his predecessors in interest must have continuously claimed the land and paid the taxes for at least 50 years.

This amendment does not apply to beach land, submerged land, or islands. An applicant may not use this provision to

resolve a boundary dispute. This amendment will not apply to land which has been determined to be state-owned by a court of competent jurisdiction or that has a productive state mineral lease on the effective date of the amendment.

The proposed amendment will appear on the ballot as follows: "The constitutional amendment authorizing the commissioner of the General Land Office to issue patents for certain public free school fund land held in good faith under color of title for at least 50 years as of November 15, 1981."

PROPOSITION NO. 3 ON THE BALLOT

House Joint Resolution 38 proposes a constitutional amendment that would enable the legislature to grant to a state finance management committee the authority to manage state funds. Funds constitutionally dedicated to specific purposes would not be subject to committee management. The committee would be composed of the Governor, Lieutenant Governor, Speaker of the House of Representatives, Chairman of the Senate Finance Committee, Chairman of the House Appropriations Committee, Chairman of the Senate State Affairs Committee, and the Chairman of the House of Representatives Ways and Means Committee.

The proposed amendment will appear on the ballot as follows: "The constitutional amendment to allow the legislature to grant to a state finance management committee the power to manage the expenditure of certain appropriated funds."

PROPOSITION NO. 4 ON THE BALLOT

House Joint Resolution 6 proposes a constitutional amendment that would provide that one-half of the surplus tax revenues

YOUR KEY to Buy, Sell or Trade Anything ARE THE CLASSIFIEDS

DEADLINES

10 A.M. WEDNESDAY
(Word Ads Only)

4 P.M. TUESDAY, DISPLAY ADS

**SAVE 10¢ FIRST INSERTION
BY PAYING WITH COPY
DIAL 592-4431**

RATES:

20¢ PER WORD FIRST INSERTION
10¢ PER WORD EACH REPEAT

HOMES FOR SALE

FOR SALE by owner. 2 bedroom house on six lots. Call 592-4555.

9-10-1tp

**Once in A
Great While
An
Exceptionally
Rare
Opportunity
Becomes
Available**

**\$29,500
13 3/4% 33-Years
Camicondo, Inc.**

IOWA PARK
Invites your consideration regarding ownership in a Planned Duplex Condominium Community located at the corner of East Diamond and Texowa Streets.

Address Inquiries to:

Camicondo, Inc.

**IOWA PARK
592-5796
or
P.O. Box 18801
Oklahoma City, Okla.
73154
[405]843-9130**

BY OWNER 602 Manes, brick, near freeway & schools, 3 bedrooms, 2 baths, double garage with automatic door opener, covered patio, 30x30 steel building, 592-9468.

9-10-1tp

BY OWNER - Tri-level brick home overlooking lake. High corner lot, mature pecan trees, bomb or storm shelter. Energy efficient, quiet. Four bedrooms, 2 1/2 baths, library or downstairs den, game room. Beautiful fireplace, carpets, draperies, and more. 592-5745.

8-6-tfc

FOR SALE New brick veneer home. 3 bedroom, 1 1/2 baths, double garage. 1215 sq. ft. living area, 444 sq. ft. in garage. 710 W. Clara. \$43,000. Call Bill Steger, School Tax Office, 592-5921.

6-18-tfc

BY OWNER - Two bedrooms and large den or third bedroom, two baths, central heat and air. Beautifully carpeted and draped throughout. New kitchen cabinets, attached garage. Nice view of lake. 592-5745.

8-6-tfc

IOWA PARK. Do you make \$1,000 a month or less; would you like to live in a new 3 bedroom, 1 1/2 bath house. Full carpeted with central heat/air, with extremely low payments. SWAN CONSTRUCTION COMPANY, 692-8788.

7-16-tfc

FOR RENT

FOR RENT - Unfurnished mobile home; 3 bedrooms, 2 baths, lots of extras. Call 592-9669 after 5 p.m.

9-10-1tp

BEAUTIFUL - five-room penthouse apartment. Couple, no children, no pets. \$250, plus deposit. 438-2908.

9-10-1tp

2 BEDROOM house, 303 W. Ruby, 592-5635 or come by 205 S. Colorado.

9-10-1tp

FOR RENT - Trailer house, 3 bedroom, completely furnished and shop 26'x30'. Rent together or separate. Call 592-9088.

8-13-4tp

FOR RENT - Big metal building, 26'x30', with office space in front 610 W. Washington, call 592-9088.

8-20-3tp

BUSINESS

CASH for mobile home tires and axles. We do the labor. Free loanback on tires if moving. Call 855-5927.

9-10-2tp

LIGHT CARPENTER work and painting. References. 592-4216.

9-3-4tc

LET THE Patty Wagon take you away. East Hwy. Swap, Sell, Buy. Handmade gifts, ceramics made with love.

8-27-4tp

LAWN MOWING 592-4784. 9-3-5tp

TOLER Pioneer Pump Service. Dressing oil field pumps. 592-5862, 592-4013. 8-20-4tp

PHOTOGRAPHY by Chris. Weddings, family reunions, home portraiture, senior pictures, team pictures. 438-2367. 7-9-28tp

MR. STEVES Home Repair Service. All types carpentry work, roofing, cabinets. Experienced Christian carpenter. 855-8709. 8-27-5tp

BEAVERS Bookkeeping Service. Lonnie J. Beavers, 592-5967. 7-30-14tp

FOR ALL your Printing Needs, Young's Printing. Call collect 438-2980. Free pick up & delivery. 8-6-13tp

MARY KAY Cosmetics - Patsy Lawson, independent beauty consultant. Please call for complimentary facial, 592-9783. 8-13-7tc

REMODELING, ADD-ONS, New Construction, Paper Hanging, Storm Windows. References 592-9783, 592-2349. 3-26-12tp

REMODELING? Do you need another room added on? A garage? Walls removed or added? Free estimates. References. Jack Kerr, 215 S. Wall, 592-9040. 7-31-tfc

MORAN MONUMENT Works, Vernon, Texas, Old Highway 287, near East View Cemetery. A good selection of granites, cemetery lettering, brass markers, vases of bronze and marble. 9-30-tfc

PRIVATE FENCE sales and installation. Charles Skelton, phone 592-5190. 2-19-20tp

CONCRETE WORK - Any kind 592-9403 or 592-9555. 9-27-52tp

STORM WINDOWS - Machine-blown insulation. Roof turbines installed. Free estimates, Jack Kerr, 215 S. Wall, 592-9040. 7-31-tfc

SAVE with specialized buying service. You, too, may buy junior and missy apparel at wholesale prices or less. Dresses, pants, skirts, tops, sweaters. Call Shirley Watts, 592-4629. 8-27-4tp

EXPERIENCED tree trimming, 592-4784. 9-3-5tp

MARY KAY Cosmetics. Call 592-4546 after 5, Billye Shook. 8-13-7tp

BUILDING, remodeling or repair, additions, carpents, patios. Free estimates. Call day or night. Billy McDonald 592-4338, Phil McDonald 592-2363. 6-11-8tc

ROOFING - Wolfe Roofing Co. Phone 592-5630. 1-1-tfc

JERRY'S VINYL REPAIR, recoloring, auto, furniture, commercial. Free estimates, 438-2243. 2-23-tfc

NEED FILL SAND? Call Donald Hallum, 592-4365. 804 N. Wall, Iowa Park. 1-3-tfc

FASHION TWO TWENTY Cosmetics. Annetta Reusch, consultant. #42 Surrey, 592-9001. 7-3-tfc

MARY KAY COSMETICS Allie Girard, consultant, 109 W. Poe, 592-4217. 4-5-tfc

BLACK POWDER GUNS and accessories, revolvers \$50 and up. Powder \$4.80 lb. Will order modern guns for 10% over cost. Ye Ole Gun Shack, 413 W. Washington, 592-5430. 5-14-tfc

FOR TV REPAIRS, call Walt's TV, 592-2415. 6-18-15tp

MISC. FOR SALE

GARAGE SALE - 306 E. Washington. All day Sat. Doors, tires, furniture, mirrors, organ, misc. 9-10-1tp

CARPOR SALE Thurs., Friday, 8:00-5:00. Carpet, cabinet top, doors, sinks, furniture, household items and clothes. 303 E. Alameda. 9-10-1tp

MOVING Garage Sale - 2 triple dressers, end tables, king size bed, lamps, books, clothes (tall and big sizes) lots of misc. Friday, Saturday, Sunday. Open 10 a.m. 808 E. Bank. 9-10-1tc

FALL CLEANING - Patio Sale, if raining inside. Child-size desk, furniture, appliances, clothes, miscellaneous, rabbit coat. Saturday only, 701 N. Wall (corner Wall & Magnolia). 9-10-1tc

PATIO SALE 204 So. Yosemite. Nice clothing and misc. 9-10-1tp

GARAGE SALE Fm 1206 Valley View. Trombone, afghans, dishes, good kids clothes, toys, games, Harlequins. Pickup tool boxes, drapes, riding lawn mower. Lots of miscellaneous. 438-2336. Friday and Saturday. 9-10-1tp

GARAGE SALE - 1603 Karen, Thursday, Friday, Saturday. 3-wheel bike, 24 inch bike, nice nurses' uniforms, size 12-14, toys, miscellaneous. 9-10-1tc

MOVING SALE Washer, dryer, 2 air conditioners, bedroom furniture, dinette set, misc. items. 592-9366. 9-10-1tp

BUNDY Selmer clarinet, like new, \$90. 592-2097. 9-10-1tp

1963 RAMBLER Ambassador, four door, 327 engine needs repair. Fully loaded, good tires, body excellent condition. 75,455 miles. Good buy at \$400. 592-2536. 9-10-1tp

1976 HONDA Super Sport CB400F. Four-cylinder, 400 cc. 9255 miles. Pacifico Pathfinder fairing. Excellent condition. \$1000. 592-2536. 9-10-1tp

LAZY BOY brown vinyl recliner; matching coffee and two end tables; 1 extra end table, very good condition. 592-4892. 9-10-1tc

NEW, 10-INCH contractor's table saw. \$300 or make offer. 592-5039. 8-6-tfc

LARGE CORNER LOT with slabs for home and garage-workshop. 5127 Bahama, Wichita Falls. Assume 10% loan. Call 592-5444 or 691-0255, evenings. 3-19-tfc

HOME SERVICES

WEEKEND BABYSITTER Saturday and Sunday, hours flexible. 592-9034. 9-10-3tp

CHILD CARE in my home. Infants to pre-school. Drop ins welcome. 592-4413. 9-10-1tc

CHILD CARE - 0 - school age, hot meals and snacks, 2 minutes off expressway for Electra people working in Wichita Falls. Take and pick up Kidwell & Bradford. 592-9470 - 592-9773. 9-10-1tp

REGISTERED Child Care has full time opening, 6:30 a.m. - 5:30 p.m. 592-5444. 9-10-2tp

CHRISTIAN MOTHER would love to keep pre-school children in my home. Monday - Friday. Good meals & snacks. \$25 week. 592-9055. 9-10-2tp

BABYSITTING in my home. Hot lunches & snacks. T.L.C. Leave your child with confidence, 855-8685, 1031 Huntington Lane. 9-3-2tp

REGISTERED Child Care 592-4312. 8-6-8tp

King's Kids Christian Day Care & Preschool "Iowa Park's Finest For Parents Who Care" Ages 2 Yrs & Older Monday thru Friday 7 a.m. to 6 p.m. 202 N. Jackson 592-4242

JIMMY'S MOBILE HOME REPAIR No job too small or too large 607 E. Park 592-5776

NOTICE
FOUND men's prescription glasses. Claim at Iowa Park Leader. 9-10-nc

PUBLIC NOTICE
MARKS AND BRANDS: Article 6899j, Vernon's Texas Civil Statutes, requires that all marks and brands registered prior to August 30, 1981 must be re-registered between the dates of August 30, 1981 and February 28, 1982. To register or re-register marks and brands, the livestock owner may obtain blank forms from the county clerk's office. The completed form (except signature) must be delivered in person by the owner or his agent to the County Clerk's office - where it must be signed by either the County Clerk or one of his deputies. 9-10-4tc

LOST Small black dog. Approximately 10 inches tall, 1/2 Cocker Spaniel, 1/2 Poodle. No collar, answers to Daisy. Reward. Call 592-4676. 9-10-1tp

PUBLIC NOTICE
BIDS will be received until 3:30 p.m. Sept. 17, 1981 for the purchase of a gymnasium heating system, to be opened at 7:30 p.m. on the same date. Specifications and additional details are available at the administration building of the Iowa Park Consolidated Independent School District, 413 East Cash, Iowa Park, Texas. 9-10-1tc

SELL IT WITH CLASSIFIEDS

Gary Crawford
Backhoe and Maintainer Service
OIL FIELD - COMMERCIAL - RESIDENTIAL
Gary Crawford 592-4382 810 N. Yosemite
Owner/Operator Iowa Park, Tx. 76367

Gary's Backhoe and Dozer Service
Gary W. Loyd Box 110
Phone 817-438-2958 Kamay, Texas
Day or Night 76369

JIM'S MARKET
FINANCING AVAILABLE FOOD STAMPS ACCEPTED
113 W. Cash Store - 592-2051
Night - 592-4697

1/2 BEEF Heavy Grain Fed Cut, Wrapped, Frozen \$1.25/lb. U.S.D.A. Choice 1.32 lb.	HIND Quarter *1.55/lb. Cut, Wrapped, Frozen
PACK #1 10 lb. CHUCK ROAST 10 lb. CHOPPED SIRLOIN 10 lb. SEVEN STEAK 10 lb. PORK CHOPS 10 lb. GROUND BEEF 50 lb. \$79.95	PACK #2 10 lb. CHUCK ROAST 10 lb. PORK STEAK 10 lb. SEVEN STEAK 10 lb. GROUND BEEF 10 lb. FRYERS \$68.50
PACK #3 10 lb. PORK STEAK 10 lb. CHUCK ROAST 10 lb. SPARE RIBS 10 lb. GROUND BEEF 10 lb. FRYERS \$66.95	PACK #4 10 lb. SEVEN STEAK 10 lb. PORK STEAK 10 lb. GROUND BEEF 10 lb. PORK ROAST 10 lb. FRYERS \$68.50
PACK #5 10 lb. PORK STEAK 10 lb. BACON 10 lb. GROUND BEEF 10 lb. PORK ROAST 10 lb. FRYERS \$65.95	PACK #6 15 lb. ROAST 15 lb. STEAK 10 lb. CHOPPED SIRLOIN 10 lb. GROUND BEEF \$65.65
PACK #7 20 lb. BEEF RIBS 10 lb. PORK CHOPS 10 lb. GROUND BEEF 10 lb. FRYERS \$57.95	PACK #8 10 lb. PORK CHOPS 10 lb. PORK STEAK 10 lb. PORK SAUSAGE 10 lb. PORK SPARE RIBS 50 lb. \$65.50

AFFORDABLE Nice three bedroom, one bath, large kitchen and dining area, two large lots. \$25,200.

NEW LISTING - Three bedroom, 1 bath, corner lot, close to school and shopping. \$24,350.

DOLL HOUSE. That's what this two bedroom home looks like. Property not included, house must be moved. Range, refrigerator and air conditioners included. \$15,500.

VERY NICE upstairs home. Three bedrooms, livingroom, dining and kitchen combination, with built-in range. Bottom floor beautifully decorated for small business. Owner will finance. Low, low interest, up to 30 years.

BUSINESS Opportunity, Holliday, Texas. 6 Apts. for monthly rentals. Two one night rentals. Lovely home for manager or owner on the property. Books available to interested party. \$70,000.

3 ACRES of choice property. Ideal for country home. Could be divided into four nice large building sites.

SPACIOUS BRICK home on beautiful corner lot. Huge family room. Good assumption.

PAT CARTER
Sales Associate
592-5417

MEMBER
Multiple Listing Service

JOHNNY LEE REAL ESTATE

109 West Cash
592-2378

FOR SALE
NEW 3 BEDROOM
Brick veneer, 1 1/2 baths, double garage. 1215 sq. ft. living area, 444 sq. ft. in garage. 710 W. Clara, \$43,000. Call Bill Steger, School Tax Office, 592-5921.



DUPLIX LIVING
Own your own brand new 2 or 3 bedroom home featuring fireplace, heat pump, and all the extras. \$34,500. Must see to appreciate the built-in quality. Call Bob Aulds, 592-4151.

TENDER LOVING CARE
Radiates from this 3-bedroom home on Douglas Street. Large trees, fresh paint and new carpets, plus a detached 10x14 hobby building enhance the charm of this home. With almost 1700 sq. ft. of living area, this home deserves your consideration. Call Bob, 592-4151.

OVER 2400 SQ. FT. PROFESSIONAL BUILDING
Excellent location, ample parking, owner financed. Call Bob, 592-4151.

Beautiful 3-bedroom brick, low equity, assumable F.H.A. Priced Right - Call Bob, 592-4151.

Freshly Painted 2-bedroom home with storm windows, new roof and assumable loan. \$22,500. Call Bob, 592-4151.

WHY RENT?
When you can have your own 2-bedroom home, owner financed, with water well, in Iowa Park - for \$12,500! Call Bob, 592-4151.

Spacious Lot for sale - Tanglewood - Wichita Falls. Call Bob 592-4151.
DON CAMPBELL REAL ESTATE
1109 Brook Wichita Falls 723-0882

Our Gain Is Your Gain
Good Used Clothing
Extremely good condition. Women's size 16-18; teenage girls size 10; men's suits size 42 reg., very nice; men's shirts size 16-33 and large. Thursday and Friday after 5:30 p.m. All day Saturday.
1501 Rita

We service all makes of washers, dryers, freezers, refrigerators and window air conditioners.
POSEY'S APPLIANCE SERVICE
208 James Ph. 592-5452 Iowa Park