

1984  
Jan 12

EARL WATSON  
520 W. CLARK  
IOWA PARK, TX 75367 112

## SCHOOL BOARD MEETING

# Athletic building discussed; Cowley's contract renewed

Iowa Park Booster Club representatives were encouraged to launch their fund-raising project to build an athletic building on the high school campus, and Supt. Harold Cowley received a one-year contract for the 1984-85 year, during Tuesday's meeting of the school board.

The Booster Club members expressed shock, dismay and disappointment when they heard estimates on the building, and openly admitted they didn't know if they could raise the amount presented.

Cowley gave three figures he had received from a steel building contractor, emphasizing they were "ball park figures" and not bids. They ranged from \$109,000 to \$152,500.

Jim Duggins commented, "I don't understand how the price got so high. We were under the impression Vernon got their's two years ago for about \$70,000."

The building the group had proposed at the December meeting is 60 by 120 feet with 24-foot-high walls, and the flooring covered with Astroturf or similar covering.

Initially proposed as a facility in which the football teams could practice during inclement weather, the group expounded on its use to include an indoor area for physical education classes, band marching practice, baseball, track and any other school group in need of it. "Every organization in school could use it, not just football," Head Coach David Baugh suggested.

Lee Hale pointed out both Vernon and Graham have similar structures and they have been extremely helpful to athletic groups and bands when weather is too bad to be outside.

Baugh added that the building could also house equipment which is now being left outside, and the space could be used for weight training.

He pointed out the girls' track and basketball teams now use the weight room in the field house and said it posed some problems being in the same building with boys' dressing rooms, as well as competing for the time on the weights with the boys.

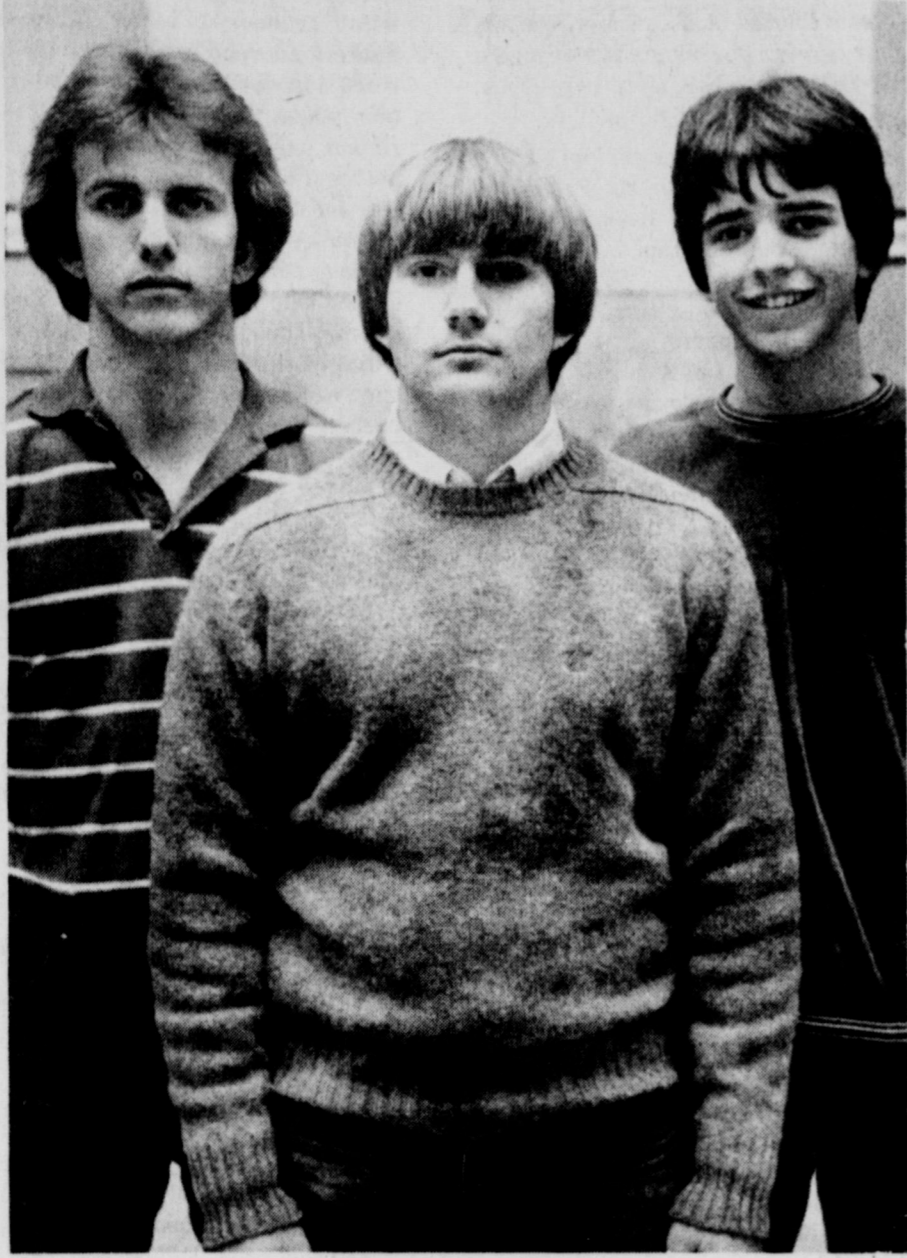
Cowley said the most expensive price included Astroturf. Floor coverings varied the prices. But Hale suggested the coverings could be used, but still good, materials which have been used in other similar structures.

There was some suggestion that the Boosters mount their fund-raising drive, see how much money they could collect, and the school pick up the balance. Though the door was not totally closed on that point, trustees said the balance was the important point and they could not agree to such a plan without first knowing how much money they were talking about.

It was also pointed out that if the school participates in the funding, various state requirements such as bidding procedures and architect fees would have to be met.

Board chairman Roy Boutwell suggested the Boosters go ahead with their fund-raising project, see what could be collected, put the plans out for bids, and then the trustees would know more about where they stood

Continued on page 4



ALL-STATE MUSICIANS - Tuba player Phil Clements, center, became the first Hawk Band musician to qualify for the All-State Band since 1968, following tryouts last weekend in Odessa. The other two are veterans. Bryan Fowler, left, and Jay Yeakley repeated their performance last year, and again made the All-State Choir. The vocal tryouts were held in Lubbock.

# IOWA PARK LEADER

25  
Cents

Vol. 15, No. 18    IOWA PARK, WICHITA COUNTY, TEXAS 75367    THURSDAY, JANUARY 12, 1984

## Vernon hands Hawkettes first district loss

Iowa Park's Hawkettes suffered their first setback in Dist. 3-AAAA play Tuesday night, losing to Vernon 56-47.

The same evening, the Hawks lost to the Lions, and that made them two consecutive losses by two points.

Host Vernon established their dominance early, leading 16-0 after the first quarter and 28-14 in the second. Iowa Park outscored the Lady Lions 33-28 in the second half, but couldn't overcome the first half deficit.

Lisa Holloway canned seven field goals and four free shots to lead Iowa Park scoring with 18 points. Lisa Sefcik scored 11 before fouling out in the fourth quarter with Michelle Smith.

Flow of the game was just the opposite for the Hawks, who led 33-27 at the half. A frigid third quarter, during which they scored only four points, saw the two teams go into the final period with the score knotted, 37-37.

The Lions finally edged out the Hawkettes 56-47.

Stephen Biddy and Robert Harper each had 10 points.

Commenting on that third period, Coach Earnie Reusch said "We kept putting them up (shots), but they wouldn't fall."

The Hawks lost another two-point Friday night, when they were edged by Boswell 65-63.

Robert Harper hit the bucket outside and under the goal and

accounted for 26 points, his season high. Lee Birk had 11.

Boswell led, 21-20, after the first quarter, but the Hawks took a 40-36 lead at the half, and held onto a 52-50 margin going into the final stanza.

The Hawkettes completely dominated their game after the first quarter, which ended 9-6. By the half,

they had doubled the visitors 30-15, and held a 40-21 lead at the end of the third period.

The girls won, 53-30, with Holloway scoring 17 points. Lisa Selby and Smith each contributed eight.

Tuesday's loss slipped the Hawkettes into a tie for third place with Azle, each with 3-1 district

records. Vernon and Gainesville are 4-1. The Hawks stand 0-3 in conference outings.

### MAKE-UP GAME

The Hawkettes will play Azle here Saturday, to make up the Dec. 20 game that was postponed due to icy road conditions. The JV game is slated to start at 9:00 p.m.

But tomorrow night, they will host Gainesville, as will the Hawks and both junior varsity teams. Tuesday Iowa Park travels to Burkburnett for a four-game meeting.

Burk's girls are 1-4 in district and 7-11 on the season, while the Bulldogs are 2-1 and 10-5.

## News in Brief

### \$2,547 in property taken from home

Burglary of a home at 404 W. Lafayette was reported to police by Ervin Clyde Smith, alleging the offense took place between Dec. 30 and Jan. 3.

Property valued at \$2,547 was

taken, including a portable color television, air conditioner, record player with albums and tapes, amplifier, HBO cable box, French style telephone, Polaroid camera, canned goods and meat, assorted tools and small kitchen appliances.

### Cheese distributing center moved

The center for distributing the USDA cheese has been moved from First Christian Church to the Fellowship Hall of First Baptist

Church, according to Mrs. Wm. Andersen, who is in charge.

The next cheese will be distributed between 9 a.m. and 6 p.m. Tuesday.

### Three complete work on degrees

Two students from Holliday and one from Iowa Park were among the 162 students completing degree requirements during December at Midwestern State Univ.

All three are accounting majors,

receiving Bachelor of Business degrees.

From Holliday are Marietta Lynn Hester and Bridget Michele Talley. The Iowa Parkan is Royal David Hoffman.

### Bloodmobile sets visit here Monday

The Red Cross Bloodmobile will be at Faith Baptist Church from 3:30 to 7 p.m. Monday.

Sponsored locally by the Optimist

Club, blood collected helps support 44 hospitals in a 34-county area of North Central Texas and Southern Oklahoma.

### Cemetery group slates election

The Highland Cemetery Association will meet Sunday at 2:30 p.m. at the First Christian Church. Robert

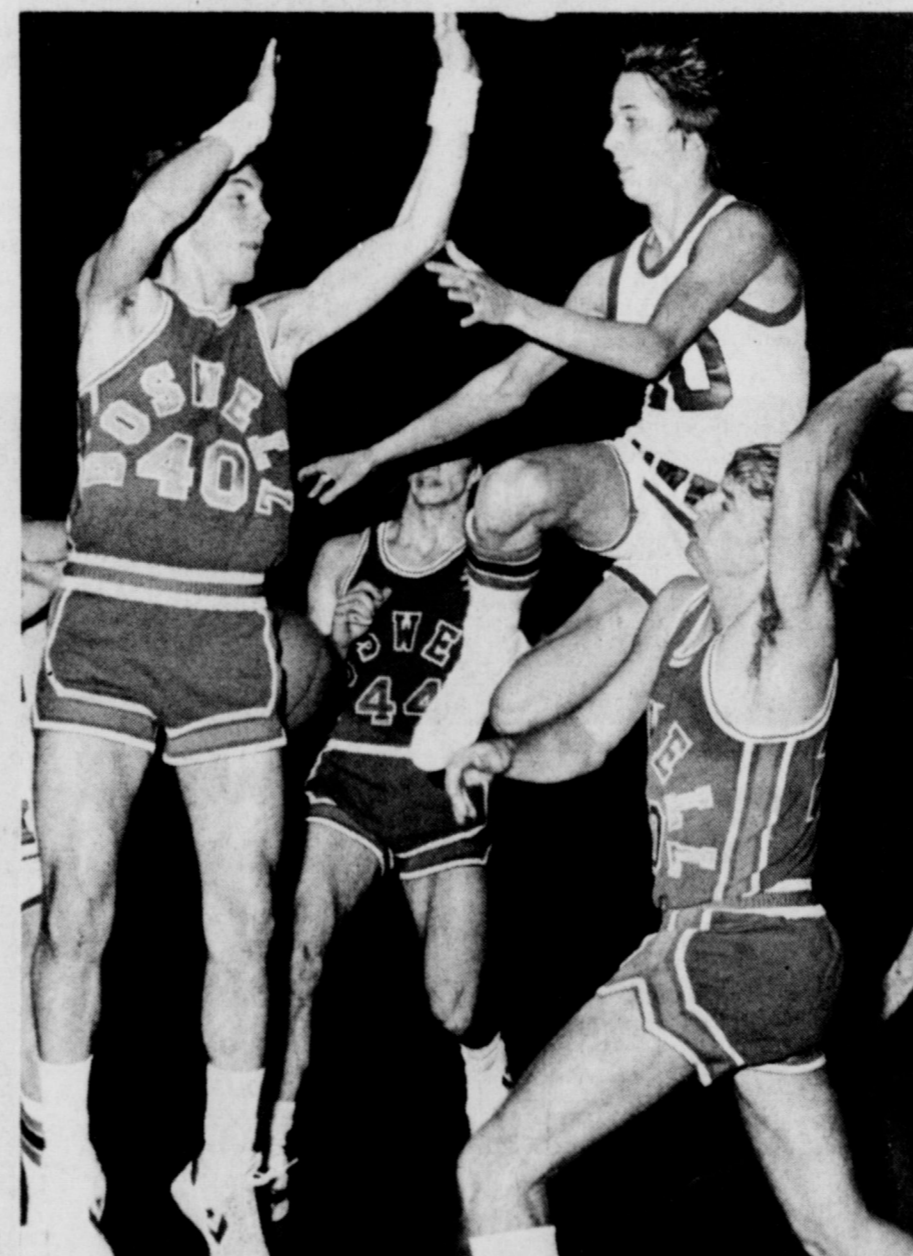
Wilcox will preside and new officers will be elected during the meeting.

### MuleSkinners to feed firemen

Members of all volunteer fire departments, as well as delegates from the Wichita Falls fire department, will be guests Friday night of the MuleSkinners for a chili feed.

The local organization wants to

show its appreciation to the firemen for their efforts in combating the Dec. 26 fire which destroyed Jim's Market and threatened the Mule Barn, on the east side of Jim's, according to Kenny Jones, project chairman.



STEPHEN BIDDY PENETRATES AND PASSES ... gets assist for basket against Boswell.

## Postponed council meeting reset for Monday night

Their meeting postponed last Monday, city aldermen will meet Jan. 16 at 7 p.m. in council chambers, according to administrator James Barrington.

This week's regular meeting was postponed due to a number of council members being out of town and unable to attend.

Added to the agenda have been a discussion of bids for the sale of the library's property where the old hotel was located, and also bids to sell the posting machines displaced by the

city's computer system.

Also on the agenda will be consideration of annexing a 72-acre tract of land northwest of the city, proposed by developer Rip Smith. This is to be the second required public hearing on the proposal.

Other items on the agenda include work on the front double doors of the Recreational Activities Center; speed zone changes; updating insurance on city hall and equipment, and additional funding for fire department equipment maintenance.

## Adult vocational courses enrollment close Friday

With one more day for registration, three adult vocational courses offered by the Iowa Park school system are completely full, four will be held but can still accept more participants, and six will not be offered unless several more enroll by noon Friday.

Vocational director Richard Davis said the full classes are "Using Computer Software," "Seminole Quilting" and "Decorative Baskets."

Those courses which have enough enrollment to be held, but still have room for more, include "Basics in

Autobody Repair and Painting," "Oxy-acetylene/arc Welding for Beginners," "Mexican Cooking" and "How to Save \$1,000 at the Supermarket."

Courses which have received little or no interest include "Tune-up and Emission Controls - Troubleshooting," "Keyboarding Skills for Beginning Typists," "35mm Photography for Beginners," "Making Terrariums," "How to Start and Care for an Early Garden," and

Continued on page 11

## Chamber banquet tickets on sale

Ticket sales were launched this week for the annual Chamber of Commerce banquet, to be held Jan. 28 in the high school auditorium.

Priced at \$7.50 each, tickets are available at the Chamber office, State National Bank, Parkway True Value, State Farm Insurance and the Iowa Park Leader.

As in the past, the meal will be prepared and served by the Iowa Park MuleSkinners.

Other highlights of the event will be recognition of citizens, including

the Outstanding Citizen of the Year, Outstanding Senior Citizen, Outstanding Educator and Outstanding Agriculturist, and entertainment by humorist Bob Cox, known as the "Fink Philosopher."

## Yule shopping increases here

Christmas shoppers accounted for a 15.6 percent increase in sales taxes for Iowa Park during December.

The city's sales tax for the month was \$8,866.17, as compared with \$7,669.81 the same month in 1982. Sales were up 18.27 percent in Wichita Falls, 8.83 percent in Burkburnett and 8.82 percent in Electra. Wichita Falls' sales tax for December was \$342,407.58; Burkburnett, \$15,332.09, and Electra, \$12,604.08.

Holiday's sales tax for December fell off less than one percent. The city's sales tax was \$6,111.50, down .65 percent from a year earlier.

### Weather Report

Weather reports are officially compiled for Iowa Park at the Texas Experiment Station, southeast of town.

Rainfall for week.....	.06
Total for month.....	.14
Total for year.....	.14
Total for last year.....	2.36

# Hamilton, Collins nuptial vows are solemnized Saturday evening

In an impressive candlelight setting, Kari Lynn Hamilton and Joe Tom Collins were united in marriage Saturday evening in the sanctuary of First Christian Church. Rev. Dale Walling, minister, officiated the double-ring ceremony. Parents of the couple are Mr. and Mrs. Bob Hamilton of Iowa Park and Mr. and Mrs. Tommy Collins of Kamay.

A brass archway entwined with boxwood greenery and accented with a large white satin bow at the top, stood before the altar on which two white candles were burning in brass candlesticks. The archway was flanked on each side by a magnificent tree candelabra and a seven-branch candelabra entwined with boxwood greenery and holding tall white burning candles. Two large Boston ferns, placed on the outer extremities of the platform, completed the altar setting. Brass aisle markers holding burning white candles in hurricane globes and entwined with boxwood and accented with white satin bows were alternated on the pews with fresh arrangements of white starburst spider mums, leatherleaf and emerald greenery, and burgundy satin streamers.

As guests assembled, Mrs. Marsha Brown, pianist, played prelude selections. She accompanied Kevin Hamilton, brother of the bride, when he sang "Your Song" and "Just the Way You Are," and Mrs. Paul Walker, sister of the groom, as she sang "Through the Eyes of Love." They sang a duet "Just You and I," and Mrs. Walker sang "The Lord's Prayer" after the benediction. The traditional wedding marches were used.

Escorted to the altar by her father who presented her in marriage for both parents, the bride was radiant in a formal gown of candlelight satin brocade. The basque waist bodice was fitted and featured a sweetheart neckline with a deep scoop back and a dropped back waist. The short puffed sleeves were accented with a small bow with fabric roses, embroidered with tiny seed pearls. The full skirt extended into a chapel train. Her fingertip veil of bridal illusion with pencil edging, drifted from a wreath of ivory lace with silk flowers and satin streamers sprinkled with seed pearls. For her bouquet, she carried a cascade of fresh burgundy sweetheart roses, white stephanotis, baby's breath and ming fern, accented with burgundy satin and white lace bows and streamers.

In keeping with bridal traditions, she wore the wedding ring that belonged to her late great-grandmother, Mrs. Susan Lovelady for "something old;" her wedding gown was "something new;" her mother's pearl necklace for "something borrowed;" and the "something blue" garter. She wore a toupée in her shoe, brought from England by the groom's sister, Mrs. George Huckaby III.

The bride's sisters served as her attendants. Miss Kay Hamilton, maid of honor, wore a platinum moire taffeta gown designed with a fitted basque waist bodice, sweetheart neckline and A-line skirt. The short sleeves were accented with large taffeta bows at the shoulder. In her hair, she wore a halo of baby's breath and burgundy and navy blue gypsophila with ivory and burgundy satin streamers. She carried a crystal brandy snifter holding a white candle burning in a votive cup, encircled with burgundy and navy blue silk



MRS. JOE TOM COLLINS

gypsophila, and finished with a burgundy bow and trailing burgundy and ivory satin streamers and gypsophila.

Mrs. Michial Brady of Lewisville, and Mrs. Wayne Schroeder, matrons of honor, wore gowns and headpieces and carried floral arrangements identical to the maid of honor. Miss D'Ann Schroeder, niece of the bride, wore a waltz length gown fashioned of the same fabric as the bride's gown. The bodice featured a square neckline, elbow length puffed sleeves with a full skirt tied at the waist with a burgundy velvet sash. She wore a headpiece similar to the honor attendants and carried a brown wicker basket filled with silk burgundy and navy blue gypsophila and burgundy pixie carnations, tied with an ivory and burgundy satin bow and streamers.

The groom was wearing a grey Lexington tuxedo with a full dress style tailcoat, white pleated shirt, matching vest and bow tie. He wore a boutonniere of fresh sweetheart roses, stephanotis and baby's breath accented with leatherleaf.

Justin Brady of Lewisville, nephew of the bride, was ringbearer. He carried a white satin, heart-shaped pillow and was dressed in a tuxedo with tails, identical to the groom's.

Male participants and fathers of the couple were attired in grey devon tuxedos, pleated white shirts and matching grey vests and bow ties. They wore boutonnières composed of a single rosebud with baby's breath and leatherleaf.

James Brixey of Kamay, served as best man, and groomsmen were Barry Tyler of Kamay and Jeff Crenshaw of Electra. George Huckaby III of England and Paul Walker, brothers-in-law of the groom were ushers.

Miss Irene Crum registered guests in the church foyer preceding the ceremony.

Mrs. Hamilton chose a street-length dress of ivory crepe for her daughter's wedding. The bodice featured a slight scoop neckline with long fitted sleeves and the tiered skirt was of crystal pleats trimmed in satin ribbon and belted with a velvet cummerbund.

The groom's mother wore a street-length suit fashioned of navy blue velvet and accented with the bride's parents, was held at the MuleBarn, headquarters of the Iowa Park MuleSkinners.

Because of damage caused by broken water pipes in the Fellowship Hall of the church during the cold weather, the reception, hosted by the bride's parents, was held at the MuleBarn, headquarters of the Iowa Park MuleSkinners.

The bride's table, draped with an ivory taffeta cloth featuring a two-tiered gathered skirt, was the focal point of the room. Highlighting the table decorations was the four-tiered ivory on ivory bridal cake with three sets of filigree posts. Roses, formed of icing in deeper shades of ivory adorned the top and formed cascades down the sides of each layer. Deep scroll and shell work formed the design in icing for the sides and between the layers. Ivory satin wedding bells adorned with seed pearls, white net and ivory gypsophila and encircled with gold leaves, white love birds and two gold wedding bands, formed the top ornament.

The floral centerpiece was a tiered arrangement of burgundy sweetheart roses, white starburst spider mums and baby's breath accented with ming fern and leatherleaf. The silver punch service and trays filled with spiced pecans, ivory napkins with "Kari and Joe Tom" imprinted in gold letters, gold rimmed toasting glasses and the bride's bouquet completed the appointments.

Misses Darla Flick and Diana Jones and Mrs. Brian Baugh presided at the table.

The groom's table was covered with a cloth of tan burlap featuring a pleated, floor-length skirt. The round German Chocolate cake was decorated with icing wheat and cotton bolls. Brown and ivory silk flowers were arranged with cattails, cinnamon sticks and dried wildflowers in a barbed wire basket, and the silver coffee service and tray of spiced pecans completed the setting. Mrs. George Huckaby III, sister of the groom and Mrs. Kevin Hamilton, sister-in-law of the bride, served guests at the groom's table.

Covered with an ivory cloth, the

gift table was decorated with two large burgundy candles burning in hurricane gloves encircled at the base with greenery. Large grapevine baskets adorned with burgundy silk roses and net held the tan and navy blue wheat bags tied with burgundy ribbon and the satin burgundy bookmarks that were handed out to the guests.

The groom's parents were hosts Friday evening for the rehearsal dinner held at Texas Electric Reddy Room. The tables were laid with white cloths and navy blue napkins and centered with brown wicker baskets filled with silk flowers in the colors chosen for the wedding, arranged by Mrs. Lester Stephens. Mr. and Mrs. Collins were assisted with the dinner by Mrs. F.D. Wolfe and Mrs. T.R. Brixey.

Female members of the wedding party and mothers of the bride and groom were entertained with a brunch Saturday morning in the home of Mrs. Robert Nolen. The tables were covered with blue linen cloths and burgundy place mats, and centered with oil candles burning in tall crystal cylinders arranged on a silver tray.

The bride is a graduate of Iowa Park High School where she was president of Ornamental Horticulture and a member of the annual staff. She is a student at Midwestern State Univ. and employed at City Hall in Iowa Park.

The groom is also a graduate of Iowa Park High School and was active in Vocational Agriculture. He is employed by Clear Lake Ranch.

After a brief honeymoon trip to Dallas, the couple will be at home in Kamay.

Mrs. Opal Collins of Chillicothe, grandmother of the groom, was a special wedding guest.

Relatives attending from out of town included: Mrs. Jim Karels, Michael, Tracy and Darren, Mrs. Gordon Rogers of Cleburne; Mrs. Cathy Dickerson and Heather, Mr. and Mrs. George Gatewood, and Mr. and Mrs. David Spears of Chillicothe; Mr. and Mrs. Wilson Collins and Mr. and Mrs. Buford Huff of Odell; Mr. and Mrs. Glen Collins of Vernon; Mr. and Mrs. Donald Collins of Electra; Mrs. Cliff Sutherland and Kelly of Burkburnett; Mr. and Mrs. Marcus Anderson of Wichita Falls; and Mr. and Mrs. Cecil Martin of Littlefield.

## Philia Club gains member

Twelve members of the Philia Study Club met in the home of Mrs. Jim Medlinger Monday evening for the January meeting. Mrs. Valer Mae Jones was co-hostess.

Mrs. Harold Cowley presented the meditation entitled "Recipe for a Happy New Year." Mrs. Vern Horsky led the pledge of allegiance and group singing of America.

During the business conducted by Mrs. Horsky, routine reports were given by officers and chairmen. Roll call was answered by members giving organizational tips. It was voted to bring cup towels and panty hose to the next meeting for Girls Town. Mrs. Cowley informed members of the Santa Rosa District Scholarship for \$500 and names were submitted for consideration.

Mrs. Don Decker was introduced as a new member of the club.

## Birk Circle meets

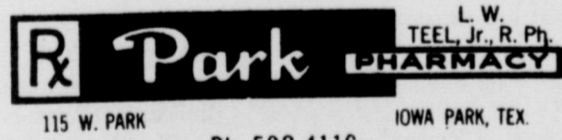
Miss Titia Belle Blanks continued the teaching of the parables of Jesus, directing special attention to the parable of The Good Samaritan at the Tuesday morning meeting of the Lucy Birk Circle of First Presbyterian Church. The group met with Mrs. Lois Holloway.

Miss Blanks said that the parable for study has been called the most practical because it answers the question, "who is my neighbor?" She stated that it has become a moral tale because it teaches the truth about men's attitudes.

During the study, she discussed and compared the attitudes of the thieves who beat the man unmercifully; the priest and the Levite who passed by refusing to render aid; and the Good Samaritan, who had compassion and tended the wounded man.

Miss Blanks commented commended the Good Samaritan for his attitude "what is mine is yours as long as you may need it" in contrast to the thieves who thought "what is yours is mine if I can get it," and the religious leaders who had the attitude "what is mine is mine own and I am going to keep it as long as I can."

A salad luncheon followed the Bible study. During the afternoon, members rolled bandages for overseas hospitals.



115 W. PARK IOWA PARK, TEX. Ph. 592-4116

### ANNOUNCEMENT

HERE, AT PARK PHARMACY, we have recently installed a modern Taxco Record System, to make available to you, at any time, a complete record of your original Prescriptions and Prescription refills for each year or for any given period.

Under this System your individual record of your Prescriptions will be so maintained as to qualify for Income Tax deduction, Insurance Requirements or for any other purpose under which you may need or desire such a record.

For instance, if you were to lose or misplace your Prescription and had no record of its original Prescription number with which to obtain a refill—it would be instantly available to you under your individual record.

Or, your Doctor may wish to review the medication you have had over a previous period of time; this, too, will be instantly available to him from your personal file.

A copy of your complete record will be available to you at any time or at the end of each year and your record for each succeeding year will become a permanent part of your personal file.

THERE IS NO CHARGE FOR THIS SERVICE—just a request from you to fill out the information below at your convenience and your file will be set up immediately.

PARK PHARMACY  
L. W. Teel, Jr., R. Ph.

LAST NAME	FIRST NAME	INITIAL	TO
ADDRESS	CITY	STATE	PHONE
PATIENT'S NAME	AGE	PATIENT'S NAME	ALLERGIES
2 WIFE	6		
3 CHILDREN	7		
	8		
	9		

## WE CARE ABOUT YOUR HEALTH WE CARE ABOUT YOUR HEALTH WE CARE ABOUT YOUR HEALTH

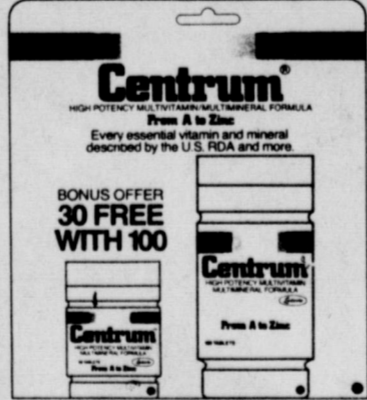
# WAL-MART PHARMACY

592-4157

DEBBI — CHRISTY

BONNIE — JEAN

500 West Highway



21 essential vitamins and minerals—more than any other leading brand.

\$6.88

### CALTRATE 600

...MORE CALCIUM THAN A HALF QUART OF MILK

60 tablets

Btl.

\$4.28

### New E.T. CHILDREN'S CHEWABLE VITAMINS

Available with or without iron

Btl.

\$3.48



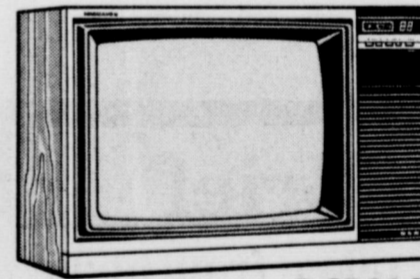
EQUAL LOW-CALORIE SWEETENER

200 Packets

\$5

## MAGNAVOX

The brightest ideas in the world are here today.



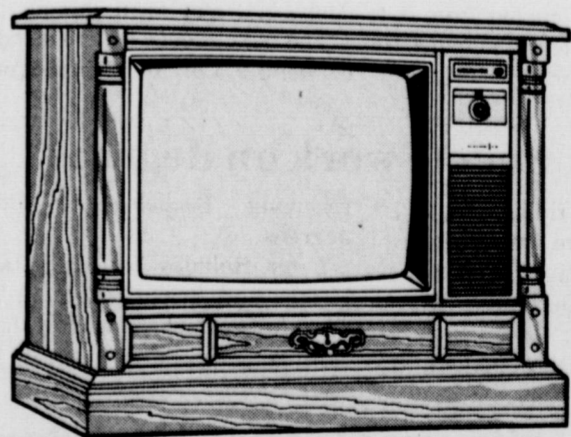
DCR312

### Magnavox 19" Remote

- Programmable scan remote
- Infrared remote control
- Automatic fine tuning
- Videomatic color system

Reg. \$599

Sale \$499



Reg. \$699.95

Sale

\$599.95

### Magnavox 25" Diagonal Automatic Fine Tuning Console Color TV

- MX/200 chassis •100% in-line matrix tube
- One-knob electronic tuning •Efficient 4" speaker •Mediterranean styling

CD4706PE

## PARKWAY

FURNITURE True Value HARDWARE

592-5512

200-206 West Bank

592-4681

### Three elected district posts

Three members of Epsilon Eta chapter of Epsilon Sigma Alpha were elected officers of District Six during a meeting held at Irving over the weekend.

Mrs. Bud Mercer was elected president, Mrs. Luther Shaw, coordinator, and Mrs. Darrell Gunderson, treasurer. They will be installed in April.

At the meeting, Epsilon Eta won first place educational award for October and third place for September.

Plans were completed for the St. Jude Children's Research Hospital Fun Run, which will be a 10-K Run at the River Bend Country Club in Fort Worth March 17. This annual affair is sponsored by District Six which includes chapters in nine towns.

Guest speakers at the meeting were Mr. and Mrs. Allen Tilley whose son has been a patient at St. Jude Hospital for three years and they gave first hand information about the work at the hospital.

### Registration set for GED class

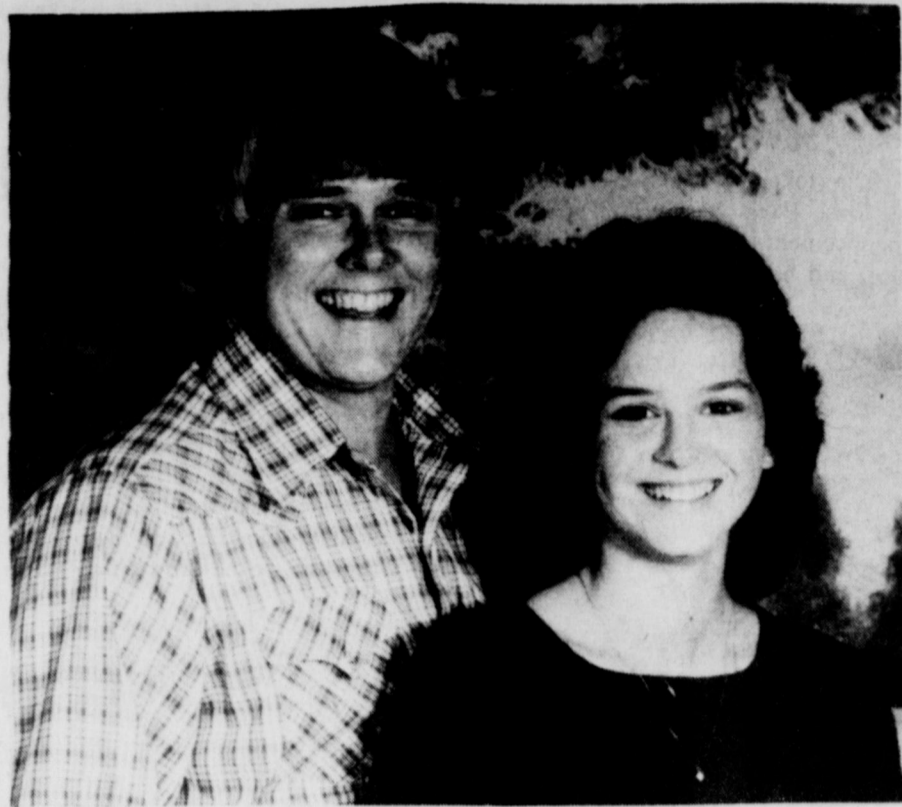
Registration for a free GED (high school equivalency) class to be held in Iowa Park Tuesday and Thursday evenings from 7 to 9 p.m. at the junior high school has been set for Tuesday, Jan. 17 at 7 p.m. At least 15 persons must register before the class will be declared as open.

Adults who are at least 17 years old and officially withdrawn from school may enroll. Instruction will be provided in math, writing (English grammar), reading, social studies, and science skills.

For more information call Adult Education, Region Nine Education Service Center, 322-6928.

### New Meter Connections

R.H. Robison - 1014 Louisa  
Andrew Arrington - 616 W. Louisa  
Bill Roden - 108 W. Chestnut



KEITH KARSTETTER and KELLY HOWARD

### Announce engagement

Mr. and Mrs. Gilbert Howard of Wichita Falls announce the engagement of their daughter, Kelly Ann, and Keith Ray Karstetter, son of Mr. and Mrs. Malcolm Karstetter of Iowa Park. The couple will exchange their vows March 3 at the Iowa Park First Baptist Church.

Miss Howard was graduated from Rider High School and received a B.S. degree in elementary education in December, from Midwestern State Univ. At the university, she was Sigma Mu Little Sis and a member of the Childhood Education Association.

### CARD OF THANKS

The family of the late Velma Vaughn would like to express thanks to friends who remembered us with food, cards, flowers and prayers during her death. Our special thanks to the nurses, office staff and girls who work on the floor at Heritage Manor for making it home for our loved one while she was there; to Dr. Watson and Rev. Larry Washburn for their concern and comfort. May God richly bless all of you.

The Family of Velma Vaughn

## Lace is topic of program Thursday

The 23 Study Club meeting Thursday afternoon featured an arts program presented by Mrs. Joe Singer on laces. The theme of the program was "Laced with Time: An Art As Old As Civilization."

"Lace is indeed an art as old as civilization and its history is a will-o-the-wisp running through many centuries," she began. She observed that people found ways to beautify their garments as soon as they started clothing themselves. She gave examples to show how lace figured in early civilization to include the Egyptian mummies that have been found wrapped in embroidered tunics trimmed in crude laces; Homer's mention of veils of net in his writings; and several references to lace in the Old Testament.

"Lace has adorned priestly vestments in the church, fashionable clothing and home furnishings since the 16th century when Venetian craftsmen devised two classic lace-making methods: needlepoint and bobbin," she continued.

Mrs. Singer explained that the first type lace is made with a needle by sewing a single, continuous thread into a pattern. She said that variations of the needle-made lace has evolved through the years with

different threads and needles which include knitting and crocheting. The fine and rare pieces of needlepoint lace she showed included a jacket over 100 years old that featured balls of the same intricate design at the end of the scallops, a collar, pillow decoration, handkerchief envelope, hot roll and drinking glass covers.

Bobbin lace, also known as pillow lace, according to Mrs. Singer, has its background in weaving, which consists of plaiting, twisting and interweaving a series of threads around a design of pins stuck in a pillow. She said that macrame, fine Belgium and Battenburg laces had evolved from the art. Her display of bobbin lace articles were doilies, a framed collar and various lace collections, lace curtains, drapes and valance.

To enhance interest in the program, Mrs. Singer showed samples of lace made by Elena Cola of Dallas, an Italian, who returns to her native country twice a year to study new stitches. She also said that in earlier days lace making was such a time-consuming process that when Napoleon finally received the bed linens ordered by his wife, Josephine, he was married to the Empress Marie Louise whose bed wore the

needle-made French lace intended for Josephine.

Regarding black lace, she said that it was in great demand in the 19th century when custom dictated that mourning clothes be worn for long periods. Fashion-conscious French found black to be dramatic and began producing coutre fashions using black lace.

"At one time only the wealthy had lace curtains on windows, scarves across back on couch and on the arms, a starched doily under the lamp.) Now thanks to machines it is available to everyone, and young people are starting to appreciate its beauty," she concluded.

The meeting was held in the home of Mrs. Charlie Lee, with Mrs. Travis Smith the co-hostess.

Mrs. Erwin F. Soell was program leader and Mrs. C.E. Birk gave the meditation on "Heaven's Grocery Store."

Following the program, Mrs. D.O. James directed the business and conducted an installation ceremony for Mrs. Howard Marlar and Mrs. N.D. Hodson. It was voted to make a monetary contribution to the renovation of the TFWC headquarters building at Austin.

Wal-Mart Sells for Less • Wal-Mart Sells for Less • Wal-Mart Sells for Less • Wal-Mart Sells for Less • Wal-Mart Sells for Less

# Wal-Mart & Procter & Gamble Join Together To Support Special Olympics

Procter & Gamble will contribute 10¢ for every coupon redeemed by January 20, 1984. Up to a total of \$750,000.

**2.12**  
Scope Mouthwash  
•24 Ounce •Limit 1

Save An Additional **20¢**  
When You Buy One Any Size  
Limit One Coupon Per Purchase

**2.78**  
Head & Shoulders Shampoo  
•15 Ounce •Regular or conditioning formula •Limit 1

Save An Additional **25¢**  
When You Buy One Any Size  
Limit One Coupon Per Purchase

**48¢**  
Zest Bar Soap  
•5.5 Ounce size •Limit 2

Save An Additional **20¢**  
When You Buy Two Any Size  
Limit One Coupon Per Purchase

**1.74**  
Bounce Fabric Softener  
•40 Count •Limit 1

Save An Additional **20¢**  
When You Buy One Any Size  
Limit One Coupon Per Purchase

Prices good thru Sat., Jan. 14  
500 W. Highway, Iowa Park  
9 a.m. - 9 p.m. Mon. - Sat.

**WAL-MART**  
Low Prices Everyday  
...That's "THE WAL-MART WAY"

WAL-MART'S ADVERTISED MERCHANDISE POLICY—It is our intention to have every advertised item in stock. However, if due to any unforeseen reason, an advertised item is not available for purchase, Wal-Mart will issue a Rain Check on request for the merchandise to be purchased at the sale price whenever available, or will sell you a similar item at a comparable reduction in price. We reserve the right to limit quantities. Limitations void in New Mexico.

Wal-Mart Sells for Less • Wal-Mart Sells for Less • Wal-Mart Sells for Less

## WAL-MART SAVE OVER 30%!

"MOM, HERE'S A GREAT NEW YEAR SPECIAL!"

**20**  
PROFESSIONAL  
COLOR PORTRAITS

NOW ONLY **\$9**  
OUR REG. 12.95

TWO 8x10 • THREE 5x7 • 15 WALLETS  
BABIES • CHILDREN • ADULTS • FAMILIES

Give all your special friends and relatives the most personal gift... a professional color portrait they will cherish forever!

\$1.00 Deposit - Balance \$8.00. Poses our selection. Special effects poses extra. Limit: One package per subject. \$1.00 each additional subject in portrait. Minors must be accompanied by an adult. Satisfaction guaranteed.

— ALSO AVAILABLE —  
**THE NEW NIMSLO® 3-D CUSTOM PROFESSIONAL PORTRAIT**

Imagine, portraits so real you feel as if you could walk into them. Look into a Nimslo® 3-D portrait and you'll see not only rich, brilliant color, but the extra dimension of depth. Nimslo® 3-D portraits are beautiful lasting portraits that require no special lenses or glasses...you view them with the naked eye.

Not sold separately  
Limit One per customer

**5 DAYS ONLY! SAVE THIS AD**  
**Tues., Wed., Thur., Fri., Sat;**  
**Jan. 10 11 12 13 14**

Daily & Saturday, 10 am - 8 pm  
500 West Highway, Iowa Park

Wal-Mart Sells for Less • Wal-Mart Sells for Less • Wal-Mart Sells for Less

# As I See It....

By BOB HAMILTON



How many of you have realized yet that this is 1984... enough to put it down the first time when you're making out a check or deposit slip? I was just getting the hang of writing 1983, and all of a sudden that's wrong.

The change of a year is especially confusing to me when I'm updating subscription expirations on the computer. Here I'm having trouble using 1984, and the subscriptions coming in this month won't expire until 1985.

Actually, it's not unusual for me, while writing, to use the year 1962 or 1972. Seems the older you get, the greater frequency of mental lapses when it comes to dates.

After I became 50, whatever year it was all of a sudden wasn't so important... other than appreciating each new year as it rolls around. You know you're getting up in years, when you have to subtract the year of your birth from the year of the present to determine your age.

While I'm not particularly interested in my age, nor what the present year is, and am always frustrated early in each year trying to remember to write the correct year,

there's one year and period of frustration to which I look forward... 2000.

I thing it will be great, to watch the turn of the century.

I've learned that the name in an article a few months back has caused some confusion and problems for a youngster in school here, and want to clear it up.

In our Oct. 27 issue, part of the police story had to do with an incident in the 500 block of West Washington, when a table was knocked over and some sports trophies damaged.

The name in the article was Danny Watson, which was correct, according to the police report. But this particular Danny Watson is an adult who lives in another Wichita County community. He is not to be confused with a Danny Watson student who lives in Iowa Park.

Those who became confused over the name shouldn't have, because the incident took place at 3:30 a.m., far past the youngster's bedtime. Also, the names of juveniles are not released by the police department to the news media.

To the youngster, we are sorry for the confusion. To those who were confused, we also apologize.

If you think that was confusing, just think of the poor kid who dropped his bubble gum in the hen house.

## Reed candidate for commissioner

Businessman/rancher J. "Bud" Reed has filed as a candidate in the Democratic Party primary for Wichita County Commissioner Precinct 3, which is currently held by Gordon Griffith.

A newcomer to politics, Reed said he filed with party chairman Prof Edwards Saturday, the first day of filing. Reed has never sought an elected office.

A native of Wichita County, Reed, 56, was graduated from Iowa Park High School and attended Texas A&M Univ. He married the former Evalene Farris in 1948, and they have three daughters, Connie, Jamie and Leslie; one son, Lige, and two grandsons.

Most of his life has been spent in agriculture, but he was employed 11 years by A.L. McAlister Trucking Co., working his way up to operations manager. He has been self-employed the past 17 years as a dirt contractor and farms his home place, northeast of town. He has turned over the dirt contractor operation to his son.

Reed is a 32nd degree Mason.

## Political Announcements

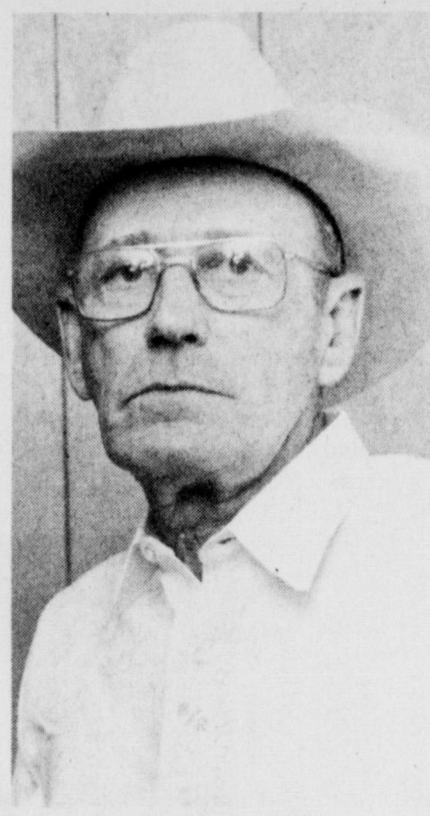
The following have authorized the Iowa Park Leader to publish announcement of their candidacies for office, and have paid for the space.

STATE SENATOR  
District 30

Ray Farabee

STATE REPRESENTATIVE  
District 80

Charles Finnell



J.R. "BUD" REED  
... Commissioner candidate

## Trustees

Continued from page 1

The Boosters' original plan was to refund money collected to the donors in case they couldn't complete the project.

Trustee Jimmy Howell told the Boosters the school has a five-year plan of improvements, and the building they were discussing wasn't on it because it wasn't proposed until last month.

Rusty Rusk pointed out that the board felt obligated to build a gymnasium at the Kidwell campus, similar to the one built at Bradford, and it held a higher priority than the athletic building.

### SUPERINTENDENT'S CONTRACT

As has been the board's policy, the superintendent's contract is always considered in January.

Following an hour-long executive meeting of the board, trustees approved a motion by Rusk to extend Cowley's contract one year, to be considered again in January of 1985, and included a \$1,200 "additional bonus."

The past two contracts have included a bonus of \$5,603 with the district's "resident bonus" of \$3,000, and a salary of \$1,000 above state base, which during the next year will be \$35,856, making his new contract \$43,959.

Resignations of two West Wichita Coop personnel in the Holliday system were accepted. They included Mary Slack and Patricia Parish. Replacements were not considered, awaiting action by the Holliday school board.

Tax collector Allen Shewmake reported 60 percent of the school's taxes, \$672,775, have been collected. That is 10 percent greater than was reported last month, he said.

## Municipal Court Records

Results of municipal court held here yesterday were:

Tracy Ann Lawson, speeding, \$31; Clarence Smith Jr., expired motor vehicle inspection, \$51; Clarence Smith Jr., no proof of vehicle liability insurance, \$101; Bobby Dean Greenroyd, speeding, \$55;

Rickie Dee Martin, no motor vehicle liability insurance, \$101; Michael Earl Sosebee, no motor vehicle liability insurance, \$101; Michael Earl Sosebee, speeding, \$54; Frank Baston Jr., speeding, \$53; Charles Malcom Screws, failed to yield right of way, \$51;

Daniel Albert Sadler, speeding, \$34; Bryan Lee Gray, speeding, taking defensive driving course; William Lee Gibbs, speeding, \$34; Bruce Jeffery Birdson, disobeyed stop sign, \$31;

Lisa Lynn Sefcik, failed to yield right of way after stop, \$31; Lisa Lynn Sefcik, no drivers license in possession, \$31; Ernest Calvin Merriman, speeding, \$32;

Shellie Renee Parish, speeding, \$34; Danny Ray Richardson, expired motor vehicle inspection, \$31; James Earl Hand, fail to comply with requirements on striking unattended vehicle, \$31;

Robert David Harper, disobeyed stop sign, taking defensive driving course; Marian Sue Cavinder, public intoxication (driving), \$112.50; Donald Eugene Vickers, public intoxication, \$112.50; Roy Eugene Williams, public intoxication, \$49; Pamela Rae Steininger, public intoxication, \$49.

## Alberto Banez, M.D.

is pleased to announce the opening of his office at 311 North Wall Street for the practice of General Surgery and Family Medicine.

Office hours will be 2 PM - 6 PM Monday through Friday beginning January 9, 1984. Appointments may be made after January 3 by calling 592-2707.

## TICKETS NOW ON SALE FOR THE ANNUAL

# Iowa Park Chamber of Commerce Banquet

## January 28

- ✓ ENTERTAINMENT  
Bob Cox, "The Fink Filosopher"
- ✓ OUTSTANDING CITIZENS AWARDS
- ✓ GREAT FOOD  
Cooked and Served by The MuleSkinners

TICKETS AVAILABLE AT Chamber Office, State National Bank, Parkway True Value, Iowa Park Leader

# IOWA PARK LEADER

766280

Bob Hamilton ..... Editor-Publisher  
Dolores Hamilton ..... Assistant Publisher  
Olive Blalock ..... Reporter  
Kevin Hamilton ..... Reporter

The IOWA PARK LEADER is published every Thursday. Offices are located at 112 W. Cash, Iowa Park, Texas, 76367. Telephone: 592-4431. Second class Postage Paid at Iowa Park, Texas, 76367. Subscription rates are \$7 per year in Wichita and Archer Counties; \$9 elsewhere in Texas and Oklahoma; \$11 anywhere else in the United States. Classified advertising rates are 16 cents per word first insertion, 8 cents per word thereafter. Any erroneous reflection upon the character, standing or reputation of any person, firm or corporation which may appear in the columns of this newspaper will be corrected upon being brought to the attention of the publisher.

MEMBER  
**TEXAS PRESS ASSOCIATION**

## NOTICE TO

# SUBSCRIBERS!

The Iowa Park Leader has suspended its practice of mailing individual renewal postcards to subscribers. Instead the Leader will publish a list of readers whose subscriptions are approaching expiration. Subscription prices are listed below, along with a convenient order form which may be clipped, filled out and mailed with payment to the Leader. Renewals and new subscribers must be paid in advance.

## Subscriptions due to expire

# January 15, 1984

PLEASE DISREGARD IF ALREADY PAID

A..... Donnie Atchley Iowa Park	K..... R.S. Karstetter Iowa Park Don Roy Klinkerman Iowa Park
B..... J.C. Bales Iowa Park J.L. Baker Kamay Roman Bartosh Iowa Park B.J. Biddy Electra Aubrey C. Bohannon Iowa Park Pauline Boutwell Wichita Falls M.J. Brandt Iowa Park Mrs. W.C. Brown Wichita Falls Troy Bryant Wichita Falls James W. Byrd Holliday	L..... Jim Lee Plano Vernon Lewis Iowa Park Dick Lowder Holliday Robert L. Lowry Iowa Park
C..... Camp Fire Girls Office Leslie Clapp Wichita Falls Royce Coats Iowa Park Bedford C. Cook Holliday John Cooke Wichita Falls Leon Costello Okla. City Iowa Park	M..... Mrs. H.G. Mann Iowa Park H. Gaines Maness Iowa Park Wm. L. Marston Iowa Park Phil McClendon Gainesville Manuel Moyer Iowa Park
D..... Don Daugherty Iowa Park Mrs. Herbert W. Davis Iowa Park Randy Davis Iowa Park Earle Denny Iowa Park Mrs. Elgin Denny Iowa Park Eldon Dowell Iowa Park Mrs. Lee Dowell Iowa Park Charles Dudley Iowa Park	N..... Norman Nettleton Whitesboro
E.....	O..... Jack Onstead Iowa Park Kame B. Oshiro Iowa Park Mrs. Johnnie Ozee Iowa Park
F..... Sen. Ray Farabee Austin James Ferguson Wichita Falls Kenneth Ferguson Holliday Jerry Fields Holliday Mrs. Roy Fortner Iowa Park Tommy Fulbright Iowa Park Roy Fullerton Iowa Park	P..... Troy Powell Iowa Park Mrs. Hallie Price Iowa Park
G..... Esther E. Gallop Ellenwood Ga. Dennis George Wichita Falls T.E. Gilbreath Dublin Leo Gilmore Holliday Allie Girard Iowa Park John A. Goforth Holliday Bill Green Iowa Park Bob Greenroyd Iowa Park Dan W. Griffith Gilmer	R..... Mrs. J.W. Raney Iowa Park John Rateliff Iowa Park Pat Richardson Iowa Park Don Richter Wichita Falls Terry Riley Kamay Charlene Roberson Colo. Springs Ida Robinson Iowa Park Dr. Jerry Rogers Starkville, Miss C.W. Rowell Wichita Falls
H..... Darrrel Hale Iowa Park Donald Hallum Iowa Park Charles Hensley Iowa Park Richard Hicks Iowa Park Carl Hoffman Iowa Park Lois Holloway Iowa Park John Hopkins Iowa Park Raymond Hulin Kamay	S..... Mrs. Elvy Sargent Iowa Park Tom Sargent Iowa Park Gary Schaefer Holliday Wayne Schroeder Iowa Park Richard Schroeder Iowa Park Ed Shown Wichita Falls Freddie Smith Iowa Park Mrs. F.B. Spencer Holliday Ben D. Steed Iowa Park Cletys Stiles Iowa Park James Swan Iowa Park
I.....	T..... Mrs. R.A. Tanner Iowa Park Leo Thames Iowa Park Thomason Service Station Ken Thornton Iowa Park John Timms Iowa Park Mrs. Myrtle Travis Iowa Park
J..... Deryl James Iowa Park Judy James Iowa Park Mrs. Grover Johnson Bowie	V..... Mrs. E.L. Via Iowa Park
W..... Mrs. Chauncey Weiler Iowa Park Mrs. R.E. White Iowa Park Mrs. Ruie Wilkerson Iowa Park John Williamson Wichita Falls Ronald A. Woods Iowa Park Ronald Wyatt Iowa Park Brad Wynn Iowa Park	

Wichita and Archer Counties.....	\$7.00
Elsewhere in Texas & Oklahoma.....	\$9.00
Elsewhere in the United States.....	\$11.00

To: Iowa Park Leader  
Box 430  
Iowa Park, Tex.  
76367

PLEASE CHECK ONE:  
 New  
 Renewal  
 Change of Address Only

\$ \_\_\_\_\_ Enclosed

(Name)

(Address, P. O. Box, or Route No.)

(City) (State) (Zip Code)

## CONGRATULATIONS —

Larry King, 705 Coleman

winner of our New Year's Eve drawing!

# Kuntry Klass

PACKAGE STORE  
(Formerly B.J.'s & Bob's)

4100 Old I.P. Road

855-6702

## Ronald H. Matsusaki, M.D.

University of Toronto School of Medicine, 1973

announces the opening of his office at

301 West Garrison, Electra.

Phone 495-2101

# Mobile home moves must be reported to county appraisal district

The State Property Tax Board (SPTB) reminds those who move mobile homes, both within the state and from out of the state, that they

are required to report all mobile home moves to the county appraisal districts in Texas in which the moves take place.

The reports are used to place mobile homes on the property tax rolls of local taxing jurisdictions. According to SPTB data, 285,743 mobile homes were on the tax rolls in 1982, with an appraised value of \$2,530,290,904.

Requirements for reporting movement of mobile homes are spelled out in the Texas Property Tax Code in Chapter 21. The law requires that any person moving a mobile home in Texas file a report of the movement and pay a \$10 filing fee.

Mobile home movers are liable for a

penalty of up to \$200 for knowingly failing or refusing to report the movement of a mobile home.

The report and filing fee must be turned in to the chief appraiser of the county appraisal district in which the move begins, as well as to the chief appraiser of the district in which the move ends.

If the move originates out of state, the report and filing fee must be turned in to the chief appraiser of the district in which the move ends. The report must be filed before the day on which the move begins.

Filing fees are deposited in the general funds of the counties.

Some mobile home transporters based outside the state may face a delay if shipment is held up until a report can be filed in the Texas county for which a mobile home is destined.

Out-of-state transporters seeking to comply with Texas law, yet avoid such a delay may write the local chief appraiser to request extension of the reporting deadline. Under the law, the chief appraiser may extend the

deadline for a single period of up to 15 days, "for good cause shown."

Alternatively, the out-of-state mover may authorize drivers to file the required reports on behalf of the company upon arrival at their destinations in Texas at least a day before the mobile home is moved onto its site.

Report forms and lists of appraisal district mailing addresses are available from chief appraisers or at district offices of the Texas Department of Highways and Public Transportation.

## Banquet slated Monday night

The Wichita County Extension Service and the Wichita Soil and Water Conservation District will hold their annual awards banquet Monday night. It is designed to honor different individuals across the county that have made significant contributions to agriculture over the past year.

This year several individuals, result demonstrators, and cooperators of the Extension Service and the Soil and Water Conservation District will be honored. Moderator for the program will be Fred Dwyer of Iowa Park, who is chairman of the Wichita County Soil and Water Conservation District and is also chairman of the Extension Program Building Committee for Wichita County.

The program will be presented by Barry Mahler of Iowa Park. He visited Europe and took a close look at their agriculture situation. He will show slides about his trip. This will be followed by the awards presentations.

The banquet will begin at 7 p.m.

## Fellowships meet

The United Methodist Women met in fellowship sessions Tuesday morning. The Ruth Fellowship met in the home of Mrs. Gene Owens and Mrs. C.L. Thompson led the lesson on "The Lives of John and Charles Wesley." Nine members and two visitors, Mrs. Fern Sanders and Mrs. George Topper, were present.

The Rebecca Fellowship met with Mrs. David Springer. Mrs. Miles Thompson gave the program taken from Response entitled "Family Life among the Poverty Stricken." Nine members attended.

Mrs. James Owens was hostess for the Mary Fellowship meeting when Mrs. Hazel Trammell led the discussion on Books of the Bible for the program. Eleven members and one visitor, Mrs. Larry Parks, UMW president, were in attendance.

## Beef elimination show Saturday

The Wichita County Beef Show Elimination will be held on Saturday at the 4-H Barns in Wichita Falls.

Weigh-in will begin at 8 a.m. Judging will begin at 9 a.m. with the heifers. They will be followed immediately by the steer judging and finally the selection of the 15 steers and 5 alternates to represent Wichita County at the District Beef Show.

Judge for the show is Richard Spencer, County Extension Agent from Roby, Fisher County.

Top 15 entries will be eligible to show at the District Beef Show on Feb. 8-10.

The sponsor for the 1984 beef show elimination is the Wichita Falls Rotary Club.



Brides-to-Be is your name in our Bridal Registry

TERRI ROWELL and JEFF SMYERS

JAMIE GILMORE and DANNY ANDREWS

KARI (HAMILTON) and JOE TOM COLLINS

DONNA (COOK) and CURTIS WILLIAMS

Park Pharmacy & Thoughtfulness Shop  
115 W. Park 592-4116

# We're on your side!

...TRYING TO KEEP FOOD PRICES DOWN!

<p><b>DOUBLE GREEN STAMPS WEDNESDAY</b></p>	<p>ASSORTED CHARMIN BATHROOM TISSUE <b>99¢</b> 4 ROLL PKG</p>	<p>LAUNDRY DETERGENT GIANT BOLD-3 <b>\$1.99</b> 49 OZ. PKG</p>	<p>ALL GRINDS COFFEE MARYLAND CLUB <b>\$1.99</b> 1 LB. CAN</p>	<p>WHITE/ASST./DECOR. BOUNTY TOWELS <b>69¢</b> JUMBO ROLL</p>
<p>WHIPPED SHORTENING BAKE-RITE <b>\$1.29</b> 42 OZ. CAN</p>	<p>ASSORTED VARIETIES JENO'S PIZZA <b>99¢</b> 10 OZ. PKG.</p>	<p>LIQUID DETERGENT DAWN <b>\$1.39</b> 22 OZ. BTL.</p>	<p>NABISCO SALTINE CRACKERS <b>89¢</b> Box</p>	
<p><b>Ready-to-Eat Meals</b> are here in</p>	<p>HEAVY GRAIN FED BEEF BONELESS CHUCK ROAST <b>\$1.48</b> LB.</p>		<p>COKE - SPRITE - TAB MR. PIBB <b>6</b> 32 oz. Btls.</p>	
<p><b>White's Delicatessen</b></p> <p>We'll do the work, just order in advance for a complete meal from our Deli</p> <p>Call 592-4186 for orders</p>		<p>FAMILY PACK GROUND BEEF Lb. <b>98¢</b></p>	<p><b>\$2.09</b></p> <p>Enjoy Coke</p>	
<p>FRESH DAIRY SPECIALS</p> <p>SHEDD'S COUNTRY CROCK SOFT MARGARINE 3 LB. TUB <b>\$1.59</b></p>		<p>TENDERIZED ROUND STEAK Lb. <b>\$1.98</b></p>	<p>FROZEN FOOD SPECIALS</p> <p>CITRUS HILL FROZEN ORANGE JUICE 12 OZ. CAN <b>99¢</b></p>	
<p>KRAFT HALFMOON LONGHORN COLBY OR CHEDDAR CHEESE 16 OZ. PKG. <b>\$2.49</b></p>		<p>EXTRA LEAN CHUCK QUALITY GUARANTEED 81% LEAN GROUND CHUCK Lb. <b>\$1.48</b></p>	<p>BREAKFAST STEAK SIRLOIN TIPS Lb. <b>\$2.99</b></p>	
<p>COUNTRY/BTRMLK PILLSBURY BISCUITS 7 1/4 OZ. CANS <b>4 \$1</b></p>		<p>CALIFORNIA ZIPPER SKIN TANGERINES Lb. <b>59¢</b></p> <p>CALIFORNIA RED EMPEROR GRAPES Lb. <b>69¢</b></p> <p>US NO. 1 RUSSET POTATOES Lb. <b>79¢</b></p> <p>LONG GREEN SLICERS CUCUMBERS Lb. <b>39¢</b></p> <p>YELLOW SWEET ONIONS Lb. <b>35¢</b></p>		
		<p>CALIFORNIA LARGE SIZE AVOCADOS <b>2 39¢</b> FOR</p>		
		<p>MIX OR MATCH WASHINGTON RED OR GOLDEN DELICIOUS APPLES EXTRA FANCY Lb. <b>49¢</b></p>		

**AT** AFFILIATED FOODS INC. MEMBER STORE

We're proud to give you more!

# THRIFTWAY

PRICES EFFECTIVE THRU SUN., JAN. 15  
WE RESERVE THE RIGHT TO LIMIT QUANTITIES  
WE ACCEPT FOOD STAMPS

# WHITE'S SUPER STORE

ParkWest Shopping Center Phone 592-4186  
Store Hours: 8 a.m. - 8 p.m. Monday - Saturday; 9 a.m. - 6 p.m. Sunday

DOUBLE COUPONS EVERY TUESDAY

DOUBLE GREEN STAMPS EVERY WEDNESDAY

Our store family-owned and operated 20 years.

# Obituaries

## Lillian Alberta Coffee

Graveside services were held Friday for Lillian Alberta Coffee, 79, of Fort Worth at Rose Hill with John Bizzell, minister, officiating. Arrangements were under direction of Meissner-Brown. Her husband died eight days before she did.

The daughter of the late Mr. and Mrs. Bob Beasley, longtime residents of Iowa Park, she was graduated from Iowa Park High School and taught school here for one year. She later taught in Wilbarger County for four years. She was a member of the Church of Christ.

Survivors include two sons, Robert D. of Denver, Colo. and James R. of Dallas; a daughter, Mrs. Virginia Gidley of Arlington; a sister, Mrs. Virginia Sears of Fort Worth; six grandchildren; and two great-grandchildren.

## J.C. Smith

Services for J.C. Smith, 65-year-old native of Electra, and brother of Mrs. Letha Mae Hail of Iowa Park, who died in Lexington, Conn., were held Dec. 29. He was born Dec. 7, 1918.

Survivors include his wife, Ovena; three sons, Virgil of Lexington, Conn., Jerry R. of Freeport, Fla. and Ron J. of Lexington; two daughters, Mrs. Dana Crawford, of Millbrook, Ala. and Mrs. John McCord, Paris; three brothers, Floyd of Wichita Falls, Virgil W. of Knoxville, Tenn. and Lee Roy of Nashville, Tenn.; two sisters, Mrs. Letha Mae Hail of Iowa Park and Mrs. Floyd L. Watson of Lexington, Conn. 16 grandchildren; and two great-grandchildren.

## E.C. Crow

Graveside services for E.C. "Corky" Crow, 67, were held Tuesday at Wizard Wells Cemetery with Rev. Dick Crow of New Mexico officiating. Arrangements were under direction of Hawkins Funeral Home.

He was born April 1, 1916, in Johnson County and had lived in Jacksboro 18 years. He was a retired heavy equipment operator.

Survivors include his wife, Ethelynn; a son, Lester of Englewood, Colo.; two daughters, Jolynda McDonald of Bryson and Carol Seale of Andrews; four brothers, Bob of Wichita Falls, Jack of Kadane Corner, Dewey of

Cathedral City, Colo., and Billy Ray of Santa Fe, N.M.; three sisters, Mrs. Eula White of Iowa Park, Alma Thatcher of Roswell, N.M. and Pat McDonald of Wichita Falls; 11 grandchildren and 16 great-grandchildren.

## Dale McClure

Funeral services for Dale McClure, 58, were held Wednesday at Owens and Brumley Funeral Home in Wichita Falls with Rev. Jim McCurley, pastor of Westside Baptist Church, officiating. Burial was in Crestview Memorial Park.

He was born Sept. 1, 1925, in Charlie. He was a farmer and rancher and had lived in Wichita Falls before moving to Bowie seven years ago. He was a member of Westside Baptist Church.

He is survived by his wife, Martha Loraine; a daughter, Sandra of Wichita Falls; three stepdaughters, Luellen Mitchell of McKinney, Margaret King of Andrews and Frances Lambeth of Oklahoma City; a son, Mike of Wichita Falls; his mother, Eunice McClure of Wichita Falls; a sister, Mary Sue Miller of Wichita Falls; three brothers, Jackie of Iowa Park, Arnold and Randy, both of Wichita Falls; and six grandchildren.

## Lela Arlene Newsom

Services for Lela Arlene Newsom, 62, who died Monday in a Wichita Falls hospital, were Wednesday at Tanner-Aulds Funeral Home. The officiants were Rev. Nettie Fuller of Hillcrest Pentecostal Church of God and Rev. Ron Redding, pastor of Allendale Baptist Church. Burial was in Highland Cemetery.

She was born April 15, 1921, in Lamesa and had lived in Iowa Park since 1964. She was a 10-year employee of Sprague Electric Co.

Survivors include two sons, Dickie Lucas and Tony Lucas, both of Iowa Park; three daughters, Deena Woods and Lee Ann Lucas, both of Wichita Falls, and Tony Lynn Gary of Iowa Park; two brothers, Clarence McKinney of Arlington and T.O. McKinney of Kountze; 13 grandchildren; and a great-grandchild.

Pallbearers were Timothy, Eddie and Ronnie Ewing, Bill Gary, Garland Lucas and Terry Wakefield.



MR. AND MRS. LEE VAUGHAN

## Vaughans to observe 65th anniversary

Friends and relatives of Mr. and Mrs. Lee Vaughan are invited to attend a reception honoring them on their 65th wedding anniversary Saturday, Jan. 21. The function will take place at their home, 907 North Colorado between 1 and 5 p.m. They request no gifts.

Hosting the reception will be their son and daughter-in-law, Mr. and Mrs. Weldon Vaughan of Belton, their grandchildren, Mrs. Jerry Boland of Mesquite and Mr. and Mrs. Foster Duncan of St. Louis, Mo., and a great-granddaughter, Miss Tammy Boland of Mesquite.

The former Martha Berry and Lee Vaughan were married Jan. 22, 1919, at Winstboro where she was born and reared. He was born at Josephine in Collins County and moved to Winstboro at the age of 15.

After their marriage, they farmed, then later went into the

mercantile business. He also drove a school bus and worked on the police force.

The Vaughans have lived in Iowa Park since 1960. They are members of First Baptist Church where he is a deacon. He worked at White's Store, Western Auto and Kidwell school, then as custodian of First Baptist Church prior to his retirement. Through the years, Mrs. Vaughan has been a homemaker, and being an excellent seamstress, she did some sewing for the public. They now live quietly at their home and enjoy and welcome visits from their friends.

**-WELCOME-**  
**ASSEMBLY OF GOD**  
 S. Yosemite  
 9:45 S.S./7 P.M.  
 Wed. 7 P.M. Service  
 Rev. Charles Hensley,  
 Pastor

## ETSU students recognized

Two Iowa Parkans were recognized for academic achievement during the fall semester at East Texas State Univ.

Brian Cockburn was named to the president's honor roll and James Cowley to the dean's list.

To be eligible for the president's honor roll, a student must score a straight A or 4.00 grade point average on a minimum of 12 semester hours. Deans' list students must post a minimum of a 3.25 grade point average on a minimum of 12 semester hours.

## Alathean Class holds luncheon

The Alathean Sunday school class of First Baptist Church held the monthly covered-dish luncheon and business meeting Tuesday at the church.

Mrs. Page Morgan brought a devotion on the 23rd Psalm and Mrs. Earle Denny was in charge of business when it was voted to purchase a new heater for the class room.

Eighteen members and three visitors, Mrs. George Burkett of Altus, Okla., Kaye Dickenson and Wesley Brewer were present.

## Grace declares 185th dividend

The board of directors of W.R. Grace & Co. last week declared a quarterly cash dividend of 70-cents per share on its common stock. The dividend is payable on March 10, to shareholders of record as of February 2.

This will be the 185th consecutive dividend paid by W.R. Grace & Co., an international company with interests in chemicals, natural resources and consumer services.

The Grace Board also declared dividends for the year 1984 of \$6 per share on the preferred stock and \$8 per share on each of the Class A preferred and Class B preferred stocks, which will be paid quarterly at the rates of \$1.50 and \$2 respectively.



## Friendly Door News

Twenty-three members of the Friendly Door have, or will, observe their birthdays in January. Included in the group are: Hazel Rogers, Eula White, Ola McLaurin, Ida Parker, Betty Lowe, Lloyd Lowe, Nellie Rumble, Lois Holloway, Florence Stokus, Leota Weseman, Daphne Breazeale, Bert Caddell.

Others are Esther Love, Nancy Henderson, Flora Skinner, Earl Logan, Tom Barnett, Harold McCord, Ed Reece, Eva Coats, Buck Voyles, Juanita Martin and Geraldine Steger. Tom Stephens of the Iowa Park Police Department will speak and show a film at 11 A.M. Jan. 20.

### FRIENDLY DOOR MENU

- Fri., Jan. 13** - Hot dog on bun, carrot & raisin salad, potato chips, ice cream.
- Mon., Jan. 16** - Chicken fried steak & gravy, sliced potato, broccoli, applesauce.
- Tues., Jan. 17** - Liver & onions, rice, English peas, cherry cake.
- Wed., Jan. 18** - Roast beef, whipped potatoes, green beans, banana pudding.
- Thurs., Jan. 19** - Bar-B-Que chicken, turnips & tops, white hominy, peach pie.

### CARD OF THANKS

To each one of the Volunteer Fire Department and the EMTs, also the Iowa Park Police, we want to thank all of you for the help that we received from you on the night of our mothers death.

Thank you again  
 The family of  
 Ruby Ervin

## Grace Baptist Church

511 S. Colorado - 592-5632

Come Let Us Reason Together Saith The Lord  
 Sunday School . . . 10:00 A.M.  
 Morning Worship . . . 11:00 A.M.  
 Children's Worship . . . 11:00 A.M.  
 Evening Worship . . . 6:30 P.M.  
 Wednesday Service . . . 7:30 P.M.  
 Jimmy Johnson, Pastor

## Church of God

601 E. Cash

Pastor, Ole Olds

Sun. Morning Worship 11:00  
 Sun. Night Celebration Service 7:00 p.m.  
 Tues. Ladies Prayer Service 10 a.m.  
 Wed. Night Bible Study 7:30  
 Sat. Family Night 7:30  
 "Catch the Vision"

Par.  
 592-5316

Office  
 592-4348

## Christ The King Catholic Church

First and Clara

8:45 a.m. C.C.D. — 10 a.m. Mass

## First United Methodist Church

201 E. Bank

Church School 9:40 Youth Meetings 5:00  
 Morning Worship 10:40 Evening Worship 6:00

GEORGE TOPPER, PASTOR

## Pacific Avenue Missionary Baptist Church

1400 North Pacific Avenue

Larry Washburn  
 Pastor  
 Church - 592-9711  
 Pastor 592-4288



Sunday School 9:45 a.m.  
 Morning Worship 11:00 a.m.  
 Evening Worship 6:00 p.m.  
 Wednesday 7:00 p.m.

Everybody Welcome

Welcome To The Worship and Fellowship of

## First Presbyterian Church

CHURCH SCHOOL - 9:45 A.M.  
 FELLOWSHIP Time - 10:40 A.M.  
 MORNING WORSHIP - 11:00 A.M.

## First Christian Church

105 E. Cash

Sunday School - 9:45 a.m.  
 Worship - 10:55 a.m.  
 Corner, Cash & Bond St.

We encourage each of you to worship Jesus Christ in the church of your choice. If you do not have a church home, we invite you to come worship with our church family.

## Kamay Road Church of Christ

Corner of Colorado & Emerald

Seeking the Old Paths

Lord's Day  
 10:30 a.m. & 6 p.m.  
 Wednesday 7:00 p.m.

## GOOD SHEPHERD LUTHERAN CHURCH

1st & Magnolia Iowa Park

Sunday School: 9:45 a.m.  
 Worship Service: 10:30 a.m.

## First Baptist Church of Iowa Park

Yosemite at Park

SUNDAY SERVICES

Mornings

Sunday School 9:45

Worship 11:00

Evenings

Church Training 6:00

Worship 7:00

WEDNESDAY

Prayer Meeting 7:00

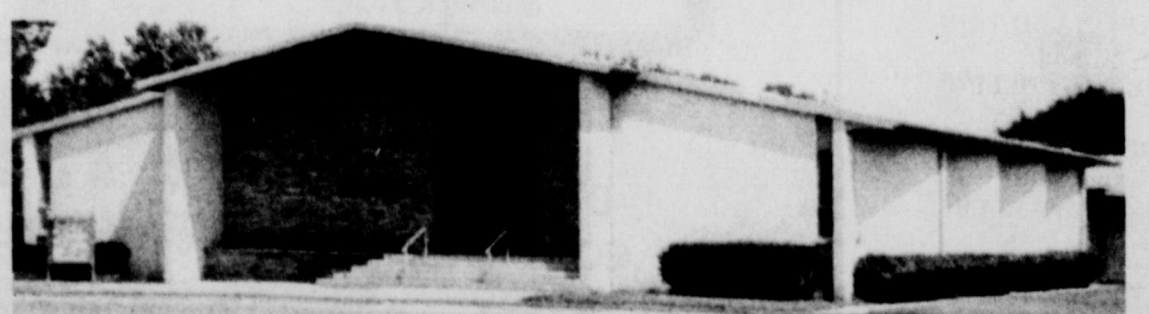
Choir Rehearsal 7:45



## IOWA PARK CHURCH OF CHRIST

SCHEDULE OF SERVICES

Sunday			Wednesday	
Bible Study	9:30 a.m.		Ladies Bible Study	10:00 a.m.
Worship	10:30 a.m.		Evening Study	7:30 p.m.
Evening Worship	6:00 p.m.			



300 East Park, Iowa Park, Texas 76367, (817) 592-5415

# Cook of the Week

Cheryl (Mrs. Alan) House, says that cooking is one of her favorite hobbies, and she thinks that taking pride with not only the taste, but also the way the finished product looks has a lot to do with the dish being inviting and appetizing.

She likes gourmet foods and gives some advice to young cooks to assure success in cooking gourmet foods which includes: know your cooking terms, follow recipes carefully, don't be afraid to try something new, and put your heart into it.

Cheryl says that she likes for her family and guests to reach for seconds because she feels that her dishes are a success. The daughter of Mr. and Mrs. Kendall Hill, she was graduated from Lawton, Okla. High School. She has worked as a top helper electrician four years. She and Alan, who is employed by Iowa Park Air Conditioning as a technician, have one daughter, Deanna, who is a student at Iowa Park Junior High School. They attend the First Presbyterian Church.

Cheryl is a Girl Scout co-leader and her hobbies are cooking, sewing, bicycling, ceramics, plants and gardening.

## WAIKIKI MEATBALLS

1 1/2 lbs. ground beef  
3/4 cup cracker crumbs  
1/2 cup minced onion  
1 egg  
1 1/2 tsp salt (optional)  
1/4 tsp ginger  
1/4 cup milk  
1 tbsp shortening  
2 tsp cornstarch  
1/2 cup brown sugar, packed  
1 can (13 1/2 oz.) pineapple tidbits, drained (reserve syrup)  
1/2 cup vinegar  
1 tbsp soy sauce  
1/2 cup chopped green pepper

Mix shortening in large skillet, brown and cook meatballs, keep warm. Pour fat from skillet.

In bowl, mix cornstarch and sugar. Stir in pineapple syrup, vinegar and soy sauce until smooth. Pour into skillet; cook over medium heat, stirring constantly until mixture



Mrs. Alan House

thickens and boils; boil and stir one minute. Add meatballs, pineapple tidbits and green pepper. Heat through. Serve over buttered white rice. Serves 6.

## GARDEN CHICKEN

1 tbsp oil  
1 1/2 lbs chicken parts  
1 medium potato, sliced  
3/4 cup sliced carrots  
1/2 cup green beans  
2 envelopes cream of chicken soup  
3/4 cup water  
In medium skillet, heat oil and brown chicken; drain. Add vegetables. Mix soup and mix with water; pour in. Simmer covered 45 minutes or until tender. Serves 2.

## SPECIAL SWISS STEAK

1/4 cup all-purpose flour  
1/2 tsp salt, optional  
1/4 tsp pepper  
2 lbs. round steak, 1-inch thick  
2 tsp shortening  
1 8-oz. can tomatoes  
1/2 cup minced onion  
1/2 cup minced green pepper  
Stir together flour, salt and pepper. Sprinkle over the meat and pound into both sides.  
Melt shortening in large skillet, brown meat over medium heat about

10 minutes. Cover very tightly and simmer one hour. Add small amount of water if necessary. Mix remaining ingredients, pour over meat. Cover tightly and simmer 30 minutes or until tender. Serves 6.

## RICH AND CREAMY COLESLAW

4 cups finely shredded cabbage  
1/4 cup chopped onion  
1/2 cup sour cream  
1/4 cup mayonnaise or dressing  
1/2 tsp seasoned salt  
1/2 tsp dry mustard  
Dash pepper  
Toss cabbage and onion in large salad bowl. Blend remaining ingredients; pour over cabbage and toss. If desired, sprinkle with paprika.

## TROPICAL TIGER DRINK

1 medium banana, cut up  
1 1/2 cup chilled pineapple juice  
Pour in blender; whirl 45 seconds on high speed.

## STEWED TOMATOES CORN RELISH

1-16 oz. can tomatoes (coarsely chopped, drained)  
1-16 oz. can corn (well drained)  
1 large green pepper, diced  
1/2 cup Italian dressing  
1 tsp dried basil or  
1 tsp fresh basil  
Mix all ingredients; chill. Makes 3 cups.

## GUACAMOLE DIP ALA MEXICANA STYLE

6 ripe avocados  
2 tbsp finely minced onion  
1/4 tsp black pepper  
3 tbsp lemon juice  
1/4 tsp salt  
2 medium chopped green chili peppers  
1 tomato, coarsely chopped  
Peel and remove seed from avocados; save one seed. Mash avocados with fork or whirl in blender until smooth. Add next four ingredients and mix well; stir in tomatoes. Pour in serving dish. Place reserved seed in center of dip. (This helps to keep dip from turning dark.)  
Serve with corn chips.

# Check to see if shrubs froze

By DAVID FINLEY  
County Agent

There are black shrubs all across the area. The reason for this is the recent two-week blast of cold weather. Many have called the office wondering what to do about their shrubs. The most common question is, "Are they dead?"

In most cases, they are not completely dead. They may be

severely damaged, though, and only by checking them now can you tell about the amount of damage.

Most noticeable damage is on wax leaf ligustrum. Almost all the leaves have turned from a green to a dull brown. If you take off a limb about the size of your finger and cut through it with a knife, you'll be able to tell if it's alive or dead.

If that portion of the shrub is alive, the cambium layer will be green. If it is dead, the cambium layer will be a smoky brown to black in color. The cambium layer is the area next to the bark.

For those that do not check their shrubs, it may be next spring before you know for sure how much damage you have. Some shrubs may be killed all the way back to the ground. If so, you may see sprouts from the roots later this spring.

In some other cases, your shrubs may not show any signs of being dead until the hot weather in June or July.

In this instance, the plant may die very suddenly in a matter of a week or so.

Make sure your shrubs don't suffer due to a lack of water this spring. They have already been subjected to a stressful situation, and if you water stress it any more, it will more than likely die immediately. A little extra water this spring and summer may pay off in the long run.

A final note on roses that were unprotected from the weather. If you did not protect them before the cold snap, they may be dead. Roses are very susceptible to cold temperatures and will freeze back easily. Cut through some of the canes and if they are mushy green inside, you have problems.

Remember next time to protect the bud union of the rose bush. About six inches of soil piled up around the base of the rose bush will do this. If the bush dies back, it will only die back to where it is protected.

## Schedule for:

# Recreational Activities Center

A new series of Aerobisthenics will begin Jan. 19. Evening classes will be at 7:15 for advanced and 8:20 for beginners on Mondays and Thursdays. Morning classes will be at 9 Tuesdays and Fridays beginning Jan. 20. Each course runs eight weeks, two classes per week. Charge will be \$25 plus RAC membership. Instructor is Beverly Bohannon.

Margie Boylan will instruct tile painting classes to be held at 9 a.m. or 6 p.m. beginning Jan. 27. A six-week course, first class will be four hours in length and the other five classes three hours each. Cost will be \$30 plus RAC membership.

An antique craft, Chicken Scratch, will be instructed by Linda Ayres. Also known as Tenneriffe lace, Snowflaking or Amish embroidery, the course will be held at 7 p.m. beginning Jan. 24.

Karate classes continue at 6:30 p.m. Wednesdays and 10 a.m. Saturdays, with Wayne Goodman instructing.

Ceramics classes are held at 7 p.m. Tuesdays.



DON DECKER

## "Short Rows" with

FARMERS' GRAIN & FERTILIZER, INC.

## EARLY PREPARATION

Early soil preparation is one of the main keys to successful gardening. Good seedbed preparation includes tillage to a depth of at least 4 inches, an application of a balance fertilizer such as 13-13-13, and the addition of gypsum to heavy clay soils.

The gypsum tends to loosen tight soils. The recommended fertilizer rate is 1 to 1 1/2 pounds per 100 square feet of 13-13-13 and 6 to 8 pounds per 100 square feet of gypsum.

We have a good supply of 13-13-13 fertilizer as well as gypsum. The gypsum comes as a pellet in bags or as a powder in the bulk. Gardeners with a pickup or trailer can get bulk gypsum at a very nominal cost of \$3.00 per hundred weight.

Philip Welch of Iowa Park has started getting his garden soil ready for mid February planting. He took a soil test aimed at determining fertilizer needs. To his surprise, no fertilizer was recommended as a result of fertilizer carry-OVER FROM PREVIOUS YEARS. However, the use of gypsum is being considered.

211 S. Victoria

592-4118

Iowa Park

WANT ADS  
GET RESULTS

# SNB

# Thanks

We want to take this opportunity to express our sincere appreciation to you, our customers, for your loyal patronage. This past year has been outstanding, and we know it is because of your confidence in our banking practices. We invite your continued support.



## OFFICERS

Stanley Williamson, Chairman of the Board and President  
H.M. Nipper, Executive Vice President  
David Parkey, Executive Vice President  
Bert Williamson, Vice President  
Jimmy Tate, Vice President  
Roberta Hill, Vice President and Cashier  
Janis Latimer, Vice President & Asst. Cashier  
Shirley Reaves, Asst. Vice President

## DIRECTORS

Fred Dwyer, Agri-Business  
O.N. Newman, Attorney  
Fred Parkey, Mgr. Red River Authority  
Stanley Williamson, Banking, Investments & Ranching  
Bert Williamson, Banking & Oil Investments  
Joe Williamson, Farming and Ranching  
Jay Cantrell, Attorney, Advisory

# SNB

STATE NATIONAL BANK  
IOWA PARK, TEXAS  
Member F.D.I.C.

**SOCIAL SECURITY TIPS**

**BEWARE THE "EASY-OUT" FOR PAYING INCOME TAX**

Like to stop paying taxes? That's a very tempting idea, and proponents of this notion are making speeches and offering seminars around the country on the "how-to's" of tax evasion. The Internal Revenue Service, however, has some words of advice on the subject, too.

Working toward tax reform certainly is not illegal, the IRS points out. For example, urging changes in the tax laws is the right of every individual, as is arranging one's affairs to pay the lowest possible tax within the law. Also, if you hold securities so as to have a long-term instead of a short-term capital gain, the law supports your move.

However, illegal tax protest, such as advocating or participating in a scheme that results in the unallowed underpayment or nonpayment of taxes, or not filing required tax returns, is illegal, the IRS states. The IRS has the duty and tools, given by congress, to enforce the Federal tax laws. When some individuals remove themselves from the law, the burden of taxes is greater for those who willingly comply. In the interest of fairness for all taxpayers, the IRS says it will continue to enforce all Federal tax laws, including laws governing those who attempt to place themselves above the law by illegally refusing to pay their just share of tax.

**FARMERS MUST PAY ESTIMATED TAX SOON**

If you are one of the individuals who earned at least two-thirds of your 1983 gross income from farming, you have until Monday, January 16, to make a 1983 declaration of estimated tax and to pay any taxes due.

However, according to the IRS, farmers who plan to file their 1983 income tax return and to pay the total tax balance by March 1, are not required to make an estimated tax declaration.

Additional information is available in the free IRS Publication 225, "Farmer's Tax Guide," and Publication 505, "Tax Withholding and Estimated Tax." These publications can be obtained by calling the IRS number listed in the telephone directory.

**NEW LAWS EXTEND IRS INFORMATION REPORTING**

Information reports, similar to those required of financial institutions on interest and dividend income, are now required for certain transactions involving direct sellers, barter exchange members, and brokers. The new information reporting requirements, enacted under the Tax Equity and Fiscal Responsibility Act of 1982 (TEFRA), cover transactions taking place after December 31, 1982.

Nonemployee compensation payments totalling \$600 or more during a calendar year must be reported on Form 1099-MISC, "Statement for Recipients of Miscellaneous Income," by trades or businesses that do business with nonemployees such as freelancers or independent contractors. These reports must contain the income recipient's name, address, identification number, and the total amount of payments made to the individual during the year.

Reporting is now also required on Form 1099-MISC from any business that sells \$5,000 or more worth of consumer products to a direct seller on a "buy-sell basis" if the buyer's compensation includes part or all of the difference between the cost to him or her and the sales price. A sale is on the "deposit-commission basis" if the buyer retains all or part of the consumer's purchase deposit as compensation.

Finally, brokers - including barter exchanges, dealers, stock brokers and other intermediaries - are required to furnish Form 1099-B, "Statement for Recipient of Proceeds from Broker and Barter Exchange Transactions," on all gross proceeds on transactions occurring after June 30, 1983. However, brokers may report on all 1983 transactions.

In all cases, the information reports must be furnished to the IRS by February 28, and to the person receiving the payments by January 31. IRS will use the reports to ascertain whether taxpayers have been accurately reporting all taxable income.

More information on these new reporting requirements may be found in the instructions for Form 1096.



**Area oil, gas report**

At a location ten miles southwest of Electra, Shillelagh Corp. of Wichita Falls has finaled a new oil producer in Wichita County's KMA Field.

The well is designated at the No. 3 Ansell Barnes, pumping oil at the rate of 20 barrels per day.

Location is in a 200-acre lease in the H&TC Survey, Sec. 10, Blk. 7. Bottomed at 4,500 feet, the well will produce from perforations 4,110 to 4,120 feet into the hole. The well is 230 feet from the west line and 530 feet from the north line of the lease and the survey.

A 6,100-ft. wildcat well is planned by Bill Minor of Wichita Falls at a drillsite 1.5 miles northwest of Wichita Falls, Wichita County. The location is in an 80-acre lease in the J. Pike Survey, A-509. Well's designation is the No. 2 Hausler Brothers Lease. The well is 448 feet from the west line and 2,745 feet from the north line of the lease and 330 feet from the west line and 2,745 feet from the north line of the survey.

W.C. Winfrey of Wichita Falls has filed first production figures on three new oil wells in the Wichita Regular Field. The Nos. 47, 48, & 49 E. Douglas showed potential to each pump 12 barrels of oil per day.

The operator has 222 acres leased, with drillsite in Wichita County's H&TB Survey, A-136, one mile east of Electra.

Bottomed at 956, 970, & 946 feet respectively, the wells will produce from intervals ranging from 924 to 940 feet into the wellbore.

The No. 47 is 1,625 feet from the north line and 600 feet from the east line of the lease and the survey. The No. 48 is 1,925 feet from the north line and 900 feet from the east line of the lease and the survey.

Louis F. Kent of Wichita Falls has revealed plans to drill two 1,600-ft. developmental wells in the Wichita Regular Field. The operator has designated the ventures as the Nos. 1

& 2 Perkins. Drillsite is four miles southwest of Burkburnett in Wichita County's William Kepler Survey, A-170. The No. 1 well is 200 feet from the north line and 300 feet from the east line of the lease and 2,749 feet from the south line and 300 feet from the east line of the survey. The No. 2 well is 800 feet from the west line and 536 feet from the south line of the lease and 2,421 feet from the south line and 1,860 feet from the east line of the survey.

Joe D. Ayres of Holliday has filed first production figures on a new oil well in the Wichita Regular Field. The No. 31 Kempner "B" showed potential to make eight barrels of oil per day.

The operator has 125 acres leased, with drillsite in Wichita County's KWFVL Survey, A-472, three miles northwest of Holliday.

The well will produce from an interval 860 to 865 feet into the wellbore. Total drilling depth was 903 feet. The well is 300 feet from the north line and 880 feet from the east line of the lease and the survey.

An Electra-based operator has staked location for the No. 64 Burnett "C", a developmental well to be located eight miles southeast of Electra. With projected total depth of 2,000 feet, the well is in a 100-acre lease in the Wichita Regular Field, N&NORR Survey, A-506. The operator is Tom Swanson. The well is 150 feet from the north line and 1,650 feet from the east line of the lease and 4,110 feet from the north line and 4,290 feet from the east line of the survey.

World Oil Corp. of Dallas has revealed plans to drill two 1,770-ft. developmental wells in the Wichita Regular Field. The operator has ten acres leased, with drillsite in Wichita County's Elizabeth Stanley Survey, A-259 and has designated the ventures as the Nos. 5 & 6 Mary Ella Goins. Drillsite is four miles

northwest of Burkburnett. The No. 5 well is 150 feet from the west line and 238 feet from the north line of the lease and 150 feet from the west line and 947 feet from the north line of the survey. The No. 6 well is 150 feet from the west line and 714 feet from the north line of the lease and 150 feet from the west line and 1,422 feet from the north line of the survey.

Paul DeClava of Wichita Falls has revealed plans to drill an 8,500-ft. developmental well in the Piarist Field. The operator has 160 acres leased, with drillsite in Wilbarger County's H&TCRR Survey, A-426 and has designated the venture as the No. 1-A McMichael. Drillsite is one mile west of Farmers Valley. The well is 467 feet from the south line and 1,190 feet from the east line of the lease and the survey.

Plug-and-abandon orders have been issued for the No. 1 Mock, a wildcat venture of Paul DeClava of Wichita Falls in Wilbarger County. Spudded Nov. 19, the well had reached 5,501 feet total depth. Drillsite was four miles northeast of Odell. The well was 2,500 feet from the south line and 730 feet from the east line of the lease and the survey.

Shell Oil Co. of Houston has filed for permit to drill the No. 5 Mulkey, a 9,350-ft. developmental well ten miles northwest of Chillicothe. Location is in a 2,646-acre lease in Hardeman County's W&NWRR Survey, A-1512. The well is in the Thrash Field. The well is 1,625 feet from the south line and 660 feet from the east line of the lease and 660 feet from the south line and 660 feet from the east line of the survey.

A 6,000-ft. developmental well is planned by Madison Oil Co. of Wichita Falls at a drillsite three miles north of Quanah, Hardeman County. The location is in an 80-acre lease in the W&NWRR Survey, Sec. 147, Blk. H. Wells designation is the No. 1 Bethel-Swint Unit.



Reading hour for youngsters four and five years of age will be held each Thursday, beginning Jan. 19, at the Iowa Park Library. Each session will last from 2 to 2:45 p.m.

The new books presented to the Iowa Park Library recently are "Destiny and 102 Other Real-Life Mysteries" by Paul Aurandt, given in honor of Mrs. Eunice Sewell by the Philia Study Club, and "The Best of Will Rogers" by Bryan Sterling given in honor of the Twenty Three Study Club by the Philia and Amity Study Clubs.

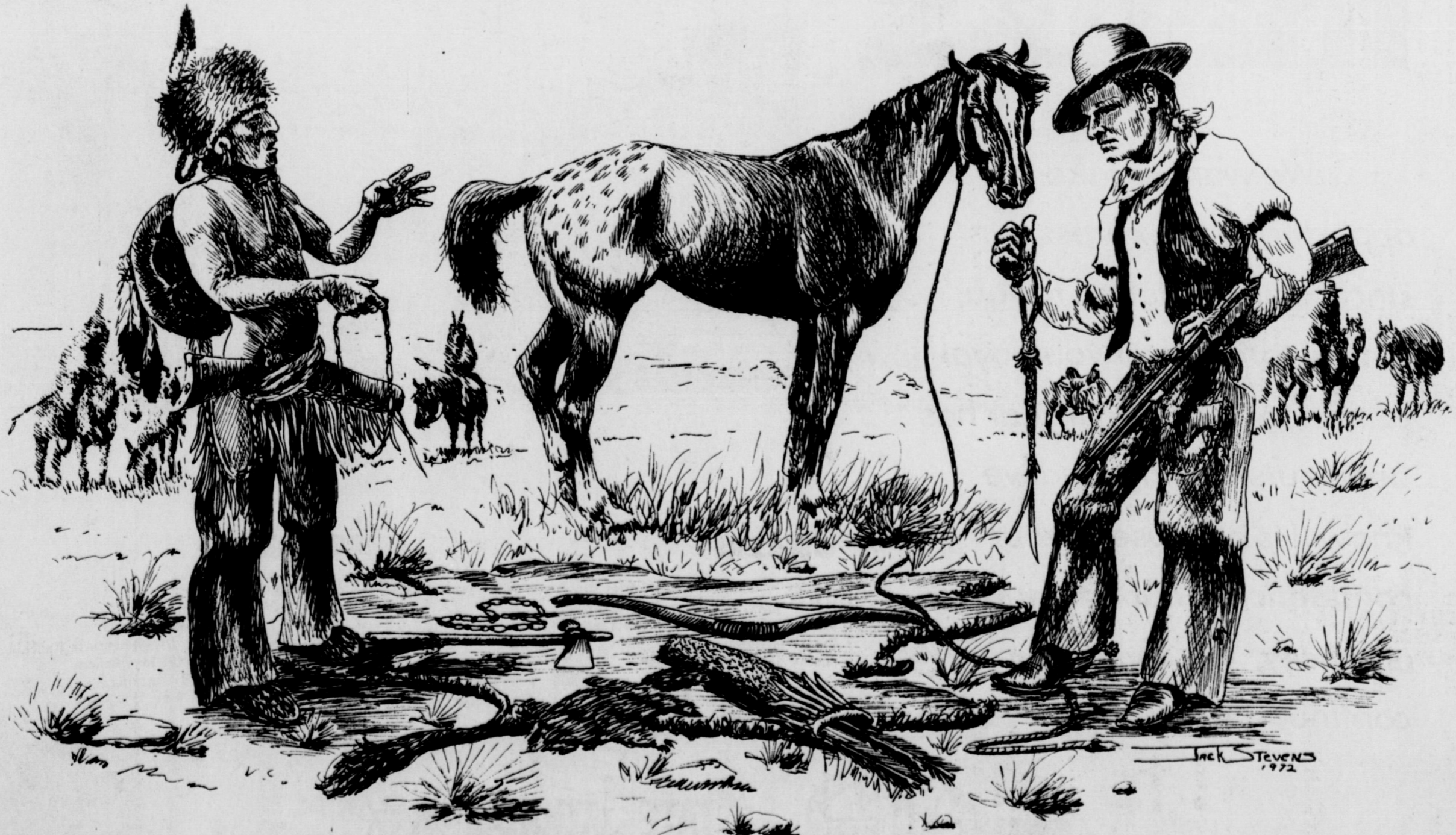
Memorials given for Shannon and Scott Berry have been received from Marie D. Callon, Mrs. O.E. Lochridge, Mr. and Mrs. Earle Denny, Mr. and Mrs. Buster Reaves, Mr. and Mrs. Wilburn Bedford, Mr. and Mrs. Lyndell Glenn, Mr. and Mrs. W.A. George, Mr. and Mrs. Rollin Roberts, Helen Clark, Mrs. Carl Robertson, Mrs. Leota Weseman, Mr. and Mrs. Luther Shaw, Mrs. D.O. Jamps, Mrs. Leta Bedford, Mrs. Emma Bell and Mrs. R.F. Bartosh.

A memorial for Billie McCullough was given by Mr. and Mrs. O.N. Newman, and one for Leslie "Pinky" Denny was given by Mr. and Mrs. Warren C. McDonald.

The video packet from North Texas Library System for Jan. and Feb. includes: All That Jazz, Bedknobs and Broomsticks, Blazing Saddles, Brief Encounters, Cabaret, Dr. Doolittle, Dracula, Hooper, Hot Lead and Cold Feet, King Kong, A Man for All Seasons, Mash, 9 to 5, Norma Rae, Rebel Without a Cause.

Others are Sinbad and the Eye of the Tiger, The Stuntman, Those Magnificent Men in Their Flying Machines, 20,000 Leagues Under the Sea, 2,001: A Space Odyssey, Look in a Book #10, Dead Men Don't Wear Plaid, Hawmps. The Atari games are: Outlaw and Dragster and intellivision is Astrosmash.

*No skins, nor beads, nor trinkets  
I will make the trade you see  
Tis the classified ads of the "Leader"  
"Who can locate you AN App", says he  
-T.S.*









# Football players honored

Football players at Iowa Park High School were honored at a banquet Saturday night, sponsored by the Iowa Park Booster Club.

Three varsity players were singled out for special recognition. They were: Charles Perry, Outstanding Hawk; Brian Fulfer, Best Hustler; and Bobby Halady, Ball Hawker.

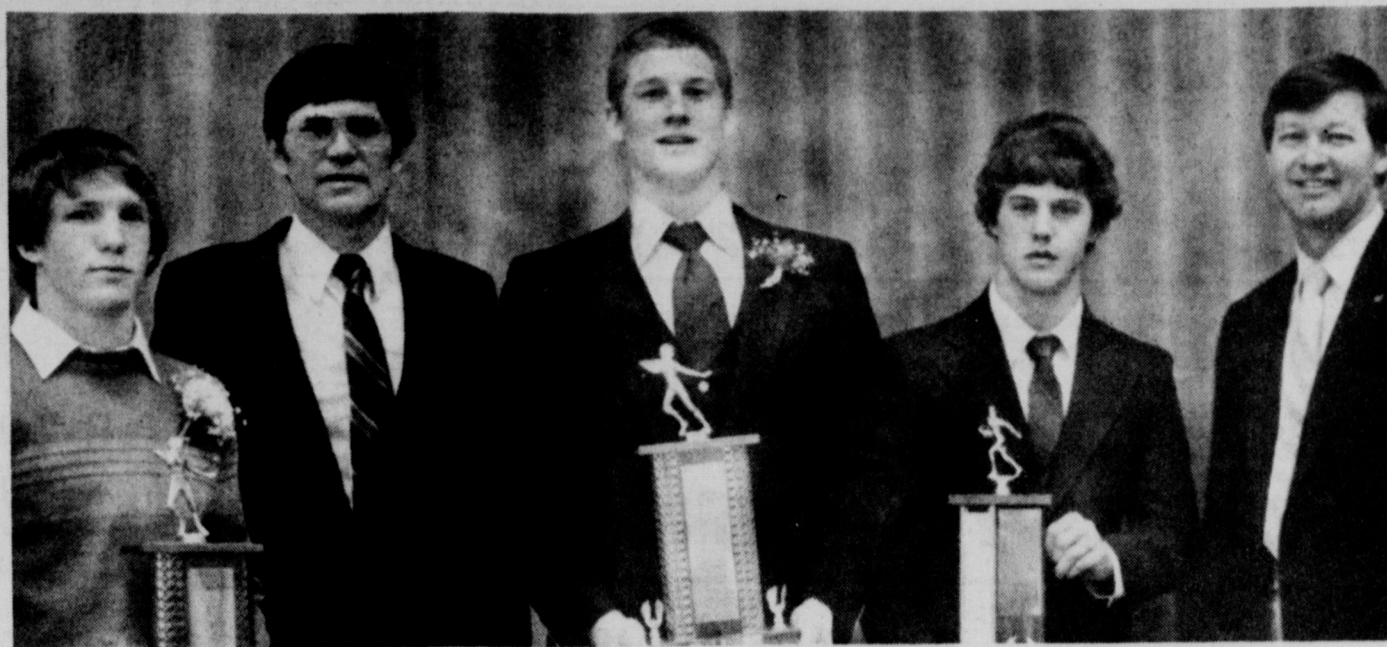
Their names are now on permanent trophies which are displayed in the school's trophy case.

The Booster Club also paid special recognition to three adults who have for years helped operate equipment at local games. They were Robert Wilcox, Mac Reeves and Carlton Hicks.

Guest speaker for the banquet was Tom Mueller, assistant coach at Texas Christian Univ.

He quoted the late professional coach, Vince Lombardi, by telling the athletes "Winning isn't everything, but making the effort to win is."

Important characteristics, Mueller told the athletes, are: "use abilities to



FOOTBALL BANQUET AWARD RECIPIENTS AND COACHES

... from left, Bryan Fulfer, Coach David Baugh, Charles Perry, Bobby Halady and Coach Tom Mueller, the speaker.

the fullest; learn importance of teamwork; have emotional and mental readiness; take the opportunity; be mentally tough, disciplined, and be positive - believe in yourself."

In challenging the athletes, Mueller said: "do the things you know to be right, refuse the things you know to be wrong; be a good example, many younger people look up to you; and have a belief in a higher power than yourself - put God in your life."

## Program for horse producers Sunday in Wichita Falls

A special program for horse producers will be held Sunday at the 4-H Barns at 1626 Midwestern Parkway in Wichita Falls. It will cover feet and leg problems of young and growing horses and solutions to those problems.

The program will be presented by Dr. Jorg Auer, veterinarian from Texas A&M Univ. To begin at 1 p.m., registration will start at 10 p.m. It will cost \$10 at the door.

Feet and legs of horses cause more problems to the owner than any other area.

Many a good horse has been ruined because proper care of the legs was not done.



### Courses

Continued from page 1

"Propagating House Plants."

Davis said anyone who wants to join one of the classes that still have openings can do so by going to the vocational building, just east of the main high school building, or by telephoning him at 592-2371.

Those wanting to enroll, however, must do so by noon Friday. Davis explained there is considerable contacting of instructors and others enrolled which must be made prior to class start.

A complete list of courses and other information about them is in an advertisement on one of this issue's pages.

Fri., Jan. 13 - Fish with tartar sauce, meat or cheese sandwich, soup, macaroni & cheese, blackeyed peas, fruit, cornbread, chocolate & plain milk, cookies.

Mon., Jan. 16 - SCHOOL HOLIDAY

Tues., Jan. 17 - SCHOOL HOLIDAY

Wed., Jan. 18 - Cheeseburgers, meat or cheese sandwich, soup, French fries, pork & beans, lettuce, tomatoes, pickles, onions, chocolate & plain milk, ice cream bars.

Thurs., Jan. 19 - Salisbury steak, meat or cheese sandwich, soup, mashed potatoes, green beans, hot rolls, butter, honey, chocolate & plain milk, chocolate pie.

**JANUARY SALE — 25% to 50% OFF**  
**ALL PLANTS AT**  
*Plants Etcetera*  
 2951 Elliott, W.F. Open 10 a.m. - Dusk, Mon.-Sat.

**Cheeseburger, Medium Drink Fries,** REG. \$2.90  
**\$2.59**

Enjoy Coke

**Harvey's**  
 FAMILY RESTAURANT  
**HAMBURGERS**

**805 West Highway**  
**FOR TAKE OUT ORDERS**  
**CALL 592-4731**

**ken's PIZZA**

**SUNDAY SPECIAL**  
 Buy 2 pizzas, get a 3rd one FREE!

Every Sunday you can get more of what you love to eat. Come to Ken's for delicious piping hot pizza. Because when you order any 2 pizzas you get a 3rd one free. It's a great deal on a great meal. So stop by your nearby Ken's Pizza Restaurant and start your week off right. And make every Sunday a family treat with Ken's Sunday Special.

**592-4184**

## ENROLL NOW ADULT VOCATIONAL COURSES

The Iowa Park High School Vocational Departments will be offering the following non-credit vocational courses beginning the week of January 16, 1984, on a first come, first serve basis.

- TUNE-UP AND EMISSION CONTROLS - TROUBLESHOOTING** [Limited to first 15]  
 Tuesday & Thursday January 17 - February 9 7-9 p.m.  
 \$15.00 8 Sessions IPHS  
 Robert Sumner, Instructor Auto Mech. Depart
- BASICS IN AUTOBODY REPAIR & PAINTING - No major body work** [limited to first 12]  
 Tuesday & Thursday January 17 - March 22 6:30 - 9:30 p.m.  
 \$50.00 20 Sessions IPHS  
 Wendell Allen, Instructor Auto Body Depart
- KEYBOARDING SKILLS FOR BEGINNING TYPISTS** [Limited to first 20]  
 Tuesday & Thursday January 17 - March 8 6:30 - 8:30 p.m.  
 \$15.00 16 Sessions IPHS  
 JoAnn Davis, Instructor Typing Room "A" Building
- USING COMPUTER SOFTWARE - [Personal Finance Management, Word Processing, Quick File, and Inventory]** [limited to first 18]  
 Thursday January 17 - February 28 6:30 - 8:30 p.m.  
 \$15.00 7 Sessions IPHS  
 Bonnie Medlinger, Instructor "A" Building VOE Room
- 35mm PHOTOGRAPHY FOR BEGINNERS** [Limited to first 20]  
 Tuesday January 17 - February 7 6:30 - 8:30 p.m.  
 \$3.00 4 sessions IPHS  
 Susie Ickles, Instructor "A" Building Room A-2  
 Students will need to spend an additional \$30.00 for supplies. [film and developing, etc.]
- OXY-ACETYLENE/ARC WELDING FOR THE BEGINNER** [Limited to first 12]  
 Tuesday & Thursday January 17 - February 23 6:30 - 9:30 p.m.  
 \$25.00 12 Sessions IPHS  
 George Brandt, Instructor VO. AG. Depart
- MAKING TERRARIUMS AND TOTEM POLES** [Limited to first 15]  
 Tuesday & Thursday January 17 & 19 7-9 p.m.  
 \$2.00 IPHS  
 H.J. Cannon, Instructor Horticulture Department
- HOW TO START AND CARE FOR AN EARLY GARDEN** [Limited to first 15]  
 Monday & Thursday February 13 and 16 7-9 p.m.  
 \$2.00 IPHS  
 H.J. Cannon, Instructor Horticulture Department
- PROPAGATING HOUSE PLANTS** [Limited to first 15]  
 Monday and Thursday January 30 and 7-9 p.m.  
 \$2.00 February 2 IPHS  
 H.J. Cannon, Instructor Horticulture Department
- MEXICAN COOKING - Mexican dishes will be prepared with customs of Mexico intermingled in the presentation.** [No limit]  
 Monday January 23rd 7-9 p.m.  
 \$2.00 IPHS  
 Ms. Febe Garcia, Instructor Homemaking Department
- SEMINOLE QUILTING - "OLD CRAFT FOR A NEW LOOK"** Learn how to do the craft and actually apply it. [Limit to first 15]  
 Monday January 30 7-9 p.m.  
 \$2.00 IPHS  
 Linda Ayres and Janet Walker from "Under Construction" Homemaking Depart  
 Supply list furnished upon registration
- HOW TO SAVE \$1,000.00 AT THE SUPERMARKET** Topics will include coupon clipping, refunding and "Counfunds" [No limit]  
 Monday February 6 7:00 - 9:00 p.m.  
 \$2.00 IPHS  
 Judy Spring, Instructor Homemaking Department
- DECORATIVE BASKETS - Various methods of lining and topping baskets will be demonstrated. Supply list furnished upon registration. Sewing skills are required.** [Limit to first 15]  
 Monday February 13, 20, and 27 7:00 - 9:00 p.m.  
 \$2.00 3 Sessions IPHS  
 Carey Roberts, Instructor Homemaking Depart

### REGISTRATION FORM FOR ADULT VOCATIONAL CLASSES

Name.....  
 Mailing Address.....  
 City.....State.....  
 Zip.....Telephone.....  
 Courses:  
 .....

Total Enclosed \$.....

**HOW TO REGISTER: NO TELEPHONE REGISTRATION ACCEPTED**

**By Mail:** Make check payable to Iowa Park C.I.S.D. and mail to:  
**In Person:** At the Iowa Park High School "A" Building Vocational Office  
 Iowa Park Adult Vocational Classes c/o Richard Davis  
 Iowa Park High School  
 Iowa Park, Texas 76367  
 Monday - Friday, 8:00 a.m. - 3:45 p.m.

**REFUND OF FEES:** Will be made in full if class is cancelled because of insufficient enrollment or if a class is closed because of enrollment limitations.

**FOR FURTHER INFORMATION:** Call 592-2371 [Day] or 592-2030 [Night]

# Put Yourself in the Marketplace, in the Classifieds

## DEADLINES

10 A.M. WEDNESDAY (Word Ads Only)  
4 P.M. TUESDAY, DISPLAY ADS

**SAVE 10¢ PER WORD FIRST  
INSERTION BY PAYING  
WITH COPY AT OFFICE**

## RATES:

20¢ PER WORD FIRST INSERTION  
10¢ PER WORD EACH REPEAT

### FOR RENT

**BEDROOM** with kitchen privileges, 504 N. Pacific 592-9822.

1-12-4tp

**REBECCA**, 3 bedrooms, 1 1/4 baths, fireplace, built-ins, fenced. \$485 monthly, \$400 deposit. Century 21 Charles Chandler Real Estate, 691-1420.

1-5-2tc

**FOR LEASE** 3 bedroom, new carpet, central heat/air. \$400 monthly, \$150 deposit. 592-5524 or 592-4394.

1-5-2tp

### REAL ESTATE

**10 ACRES**, southwest of Iowa Park. Fenced, stock tank, picnic area, 5 acres cleared for farming or home site. Call 586-1866.

1-12-1tp

**HAVE THE FAMILY** over for dinner in this large kitchen, 3-bedroom, brick home. Freshly painted plus \$2,000 redecorating allowance. Call for details.

**FOUR-BEDROOM**, 2-bath brick home, ready to move into. Central heat and air, close to high school. Just \$38,500. Must see.

**JOAN SHIERRY**  
592-5540  
**HIRSCHI REALTORS**  
692-8120 691-1212

### MISC. FOR SALE

**GARAGE SALE** - Saturday, 9-5, Coleman Park Road. Sofa hide-a-bed, sewing machine, furniture, kitchen items, clothes, large wood stove.

1-12-1tp

**ODYSSEY** 2 game cartridges for sale, \$5.00 each. 592-9342.

1-12-1tp

**CASE TRACTOR**, drag type, just overhauled, new paint; also Graham Hoeme plow and various other sweeps. 322-5772 or 761-1454

1-5-4tc

**BASSETT** baby bed with mattress \$65, 592-9460.

1-12-1tc

**1971 MAVERICK** 170 six standard, 2-door, very dependable, \$650. 592-2619.

1-12-3tp

**LONGHORN BULLS** for sale. Call 592-4155 or 592-9662.

12-29-tfc

### Great Starter Home

For young couple. 3 bedroom, 1 and 1/2 bath house for sale near Cryovac Plant.

**Call 691-2500  
or 691-7607**

**PECANS** - paper shell \$1.00 lb. for 10-lb. bag; 75 cents lb. for 100 lb. bags. Free delivery 20 lbs. or more. Iowa Park Florist 592-5221 or Jimmy Howell 438-2336. 12-15-tfc

### BUSINESS

**REGISTERED** Child Care. Have openings 6:30 a.m. - 5:30 p.m. 592-4412. 1-12-2tp

**REGISTERED** Child Care. Monday thru Friday. 592-9055. 1-5-4tp

**REGISTERED** Child Care in my home in Kidwell area. 5:30 a.m. - 5:30 p.m. 592-9561. 1-5-4tp

**CHILD CARE** 6 a.m. - 5:30 p.m. Planned activities in home atmosphere. Ages 2 thru 5. Reasonable rates. 592-5538. 12-8-5tp

**REGISTERED** Child Care. Have openings for 1 or 2, 5:30 a.m. - 5:30 p.m. 592-9561. 12-1-6tp

**LOOKING** for houses to clean. Call Judy at 1-438-2368. 1-12-2tp

**CARPENTER** - Room additions, add-ons, carpents, sheetrock, tape & bedding, paneling, roofing, weather stripping, painting inside and out. 592-4810. 1-12-1tp

**FOR YOUR COPY NEEDS** including reduction and enlargement, call Iowa Park Air Conditioning, 592-5891, or come by 609 W. Bank. Charges 20 cents a copy (less for quantities). 10-6-tfc

### Quail Run Apartments

1-2 Bdrm. Ground Floor, Central Heat & A/C, Appliances, Laundry. Close to school & public park. Starting at \$180 per month to qualified tenants. Gas & water paid. Call 592-5813.

### SUNSET TERRACE

One bath, nice den, large livingroom, kitchen & dining area. \$29,500.

### WEST ALAMEDA

Lovely brick 1 1/2 baths, three bedrooms, with fireplace, built-in kitchen. \$42,500. New VA appraisal.

### CORNELIA

Three bedrooms, 1 1/2 baths, brick home with new carpet and water heater. Two car garage. \$39,500.

### EAST ALAMEDA

Two bedrooms, one bath, lovely paneling, single garage. \$27,500.

### SUNSET

Four bedrooms, 1 1/2 baths, nice garage, large lot, fenced yard. \$42,250.

Try The Action Co. I Think You Will Like Us

MEMBER  
MULTIPLE LISTING  
SERVICE

**JOHNNY LEE  
REAL ESTATE**

592-2378  
109 W. Cash

**REMODELING** Concrete - Additions, driveways. 592-9555. 1-12-52tp

**REMODELING?** Do you need another room added on? A garage? Walls removed or added? Free estimates. References. Jack Kerr, 215 S. Wall, 592-9040, 438-2941. 7-7-tfc

**JERRY'S VINYL REPAIR** recoloring, auto, furniture, commercial. Free estimates, 438-2243. 7-7-tfc

**PRIVATE FENCE** sales and installation. Charles Skelton, phone 592-5190. 1-6-tfc

**BURK SAND**, Yards, Clean Up. Don Hallum, 804 N. Wall. 592-4365. 1-7-tfc

**LADY FINELLE** natural cosmetics at reasonable prices. Call Annetta Reusch, 592-9001 for a free facial. 1-6-tfc

**MARY KAY** Cosmetics, Ann Moore, 592-4752. 8-19-26tp

**TOLER'S FOLK ART**, 810 S. Yosemite, Iowa Park. 592-5862. 1-5-13tp

**SATELLITE TV** Antenna, \$748 complete. Dealers wanted. 913-782-7879 any time. 1-5-2tp

**BUZBEE ROOFING** & Painting. 592-4846 or 569-3493. All work guaranteed. 1-5-17tp

**CARPENTER WORK** remodeling, repairing, interior-exterior painting. Cabinet work, roof repairing. Joe Blizard 592-4704, Iowa Park. 1-5-4tp

**NOW RENTING  
PRESTIGE  
APARTMENTS**

Starts \$325  
1100 sq. ft.  
Fireplace  
2 1/2 Bath  
Microwave  
Dishwasher  
Refrigerator  
Full size Washer  
Dryer Hook-ups

**592-2989 or  
592-5434**

**Colonial Heights  
Apartments**  
Magnolia St. at Johnson Rd.  
IOWA PARK

One and two-bedroom apartments, energy efficient, central heat/air, total electric appliances, fully carpeted and draped. Children's play area. Off-street parking. Fully equipped laundry room. Month to month rent starting at \$181.00 for one bedroom, and \$220.00 for two bedroom apartment (to qualified persons). Water paid.

CALL  
**592-2705**

**EQUAL HOUSING**

**STORM WINDOWS** - Machine-blown insulation. Roof turbines installed. Free estimates. Jack Kerr, 215 S. Wall, 592-9040, 438-2941. 7-7-tfc

**ROOFING** - Wolfe Roofing Co. Phone 855-5657. 10-6-tfc

**BUILDING**, remodeling, or repair, additions, carpents, patios. Free estimates. Call day or night Billy McDonald 592-4338, Phil McDonald, 592-2363. 11-17-tfc

**MONOGRAMMING** service 592-9850. 1-5-10tp

**CORRELL'S** Tree Service, trimming, cabling, shrubbery work. Free estimate. 592-2200. 1-5-4tp

**MARY KAY COSMETICS** Allie Girard, consultant, 109 W. Poe, 592-4217. 1-6-tfc

**BLACK POWDER GUNS** and accessories, revolvers \$50 and up. Powder \$4.80 lb. Will order modern guns for 10% over cost. Ye Ole Gun Shack, 413 W. Washington, 592-5430. 1-6-tfc

### HELP WANTED

**SECRETARY** for Iowa Park Chamber of Commerce. 25 hours a week. Applications being taken now in Chamber Office, 592-5441. 1-12-1tc

**WANTED** - Medication aide and LVN. Competitive employee salary and benefits. Contact Oneta Gregg or Elaine Northcutt at Electra Nursing Center, 511 S. Bailey, 817-495-2184. 1-5-2tc

**"MONEY WHEN YOU NEED IT"**  
Loans on most anything of value  
**SOUTHWEST SALES & LOANS**  
4423 Rhoe Rd. 692-1371

**NEW AT  
NEW NEARLY  
NEW  
STANLEY  
HOME PRODUCTS**  
410 Park  
West Center  
Ph. 592-9563

## SCHEMATIC OF TEXAS CLASSIFIED LICENSING PLAN

CLASS	DESCRIPTION
A	Any vehicle or combination of vehicles including all vehicles in Classes B and C, but excluding motorcycles or mopeds.
B	Any single vehicle with a gross vehicle weight exceeding 24,000 pounds or any such vehicle towing a vehicle not in excess of 10,000 pounds gross vehicle weight or any bus, including all vehicles in Class C but excluding motorcycles or mopeds.
C	Any two-axle single vehicle not in excess of 24,000 pounds gross vehicle weight or any such vehicle towing a vehicle not in excess of 10,000 pounds gross weight or a bus with a seating capacity of less than 24 passengers, but excluding motorcycles or mopeds.
M	Any motorcycle or moped.

## HINTS FOR HOMEOWNERS

Preparing For The Worst: Ol' Man Winter Can Be Rough On Your Roof

Northeast winters take a heavy toll on the roofs of homes, but much of that damage can be avoided if homeowners make some basic checks before the weather gets too severe. Most homes have roofs that are covered with some type of asphalt shingles. The first thing to do if you have an asphalt roof is check for wear. Also, look for missing shingles or shingle tabs and unsealed flashings—the sheet metal that surrounds chimneys, vents, exhaust fans and skylights.

If you detect a problem, it's wise to contact a professional roofing contractor now. Neglecting to repair damaged shingles and flashings can lead to more serious damage and costly repairs over the coming winter. If you delay, inclement weather may make it impossible for a contractor to work on your roof until next spring.

If your roof is 15 to 20 years or older, you may need an entirely new roof. A professional roofing contractor will be able to give you a free replacement cost estimate. "Homeowners who do need a new roof or have to replace shingles should consider fiber glass-based asphalt shingles," said James Jackson, Product Development Manager at Bird Incorporated, one of the largest building materials manufacturers in the Northeast. "Fiber glass-based asphalt shingles resist many of the problems associated with paper-based shingles—expansion, contraction and rotting—and they also have longer warranties and offer the best fire protection," he explained.

If you do not need a new roof, there are a few simple procedures that you or your professional roofing contractor can carry out to ensure that your roof keeps you safe and dry throughout the coming winter:

1) Be sure to sweep all debris from the valleys and edges where the roof meets the gutters. Leaves, pine needles and twigs are moisture collectors and they can wreak havoc on your roof

**King's Kids Christian**  
Day Care & Preschool  
"Iowa Park's Finest For Parents Who Care"  
Ages 2 Yrs & Older  
Monday thru Friday  
7 a.m. to 6 p.m.  
202 N. Jackson 592-4242

**E&S Exxon**  
•Tune-ups •Brakes  
•Front-end alignment  
•Pipe bender & computer balance  
**592-4897**  
612 W. Highway

**IOWA PARK**  
Air Conditioning & Heating  
Service On All Makes Engineering Sales  
607 W. Bank  
FRANK GUYETTE  
**PHONE 592-5891**

**Bud Mercer Electric Co.**  
Residential & Commercial  
BUD MERCER, Owner Phone 592-5413  
HARDIN HILL Phone 592-2666

We service all makes of washers, dryers, freezers, refrigerators and window air conditioners.  
**POSEY'S APPLIANCE SERVICE**  
208 James Ph. 592-5452 Iowa Park

**Shirley Rains**  
Real Estate  
HOMETOWN REALTOR  
SHIRLEY RAINS Broker  
Member Multiple Listing  
119 W. Park 592-4248  
IOWA PARK, TEXAS 76367  
Vincent Rains 855-3698

**LOTS**  
In Garden Valley. Some curb & gutter.  
Established local realtors  
Member Multiple Listing  
**Sam D. Hunter**  
Real Estate  
107 E. Cash Ph. 592-4661

# Holliday News

## Lady Eagles flying high

Holliday's Lady Eagles are flying high in the standings of District 9-AA basketball with recent wins over Henrietta and Archer City.

A 33-13 drubbing of the Lady Bearcats Friday night matched by an important 32-25 win over the Lady Wildcats have placed coach Steve McIlhane's squad near the top of conference standings with a 2-1 ledger. Holliday's only loss came in the first district game at Nocona.

Friday, Cheryl Lowder had the hot hand for the Lady Eagles, canning 13 points. The senior standout tallied 11

more against Archer City, and received help from L. Mankins, who scored 10 for the game.

The Lady Eagles take an 8-10 record into tomorrow night's rematch with Nocona, with the junior varsity girls' game preceding the varsity contests at 5 p.m.

The Eagles, idle since the first of the year, entertain the Indians in the nightcap tomorrow, and all varsity and junior varsity teams will be in action at home Tuesday against Petrolia.

# Owen receives three-year extension

Holliday School Board Monday night extended a vote of confidence for superintendent Dan Owen by granting a three-year continuance of his contract, and, in addition, accepted the resignations of four personnel at the group's January meeting.

Owen, now in his second year as superintendent at Holliday I.S.D., said that, to his knowledge, no other contract for an administrator has been passed previously for more than two years.

"I'm happy about it," remarked Owen, adding that his personal feeling was that the board recognized his efforts to date, and indicated that current plans for an increase in students and buildings were projected to take much of the next three years, needing his guidance.

Owen will have his position

re-evaluated after two years of his new contract have expired, or with one year left. His salary was tabled until a future board meeting.

### RESIGNATIONS

Four personnel, two from the special education department, resigned during Monday's meeting, and all positions were filled.

Mary Slack, speech teacher in the special education department, and Gayle Parish, special ed aide, both resigned. The board moved to hire Velva Porter to fill the special ed aide position, and Barbara Hill of Lawton, Okla., was hired as speech teacher in the department, subject to approval from City View School District and West Wichita Co-op, who would share Hill's services.

Middle school English teacher Martha Higgins resigned to enter another career, and trustees hired Steve Ransom, who has previous

teaching experience in the Bowie School District, to replace her. Ransom will also teach one high school speech class.

And, Mary Boyce, bus driver, resigned with Pam Rushing, a driver with previous experience in the Holliday Schools, to replace her.

### ELECTION CALLED

The Board called for a school election Saturday, April 7 to fill two positions.

Trustees Durhl Caussey and Alice Bishop Carver both have terms to expire this year. Neither has indicated whether or not they will seek an additional term, but Caussey,

who is currently seeking the State Rep. seat held by fellow Holliday citizen Charles Finnell, most likely will not in abidance with state law.

In other business, the building committee revealed preliminary plans to possibly negotiate with Snoopy's owner for the purchase of his building for school use. Owen reported that he will attend the mid-winter Texas Superintendent's convention in Austin Tuesday, and a shortage of baseball players was discussed, but the board moved to keep the program and honor its scheduling commitments through this year.



Friday, January 13  
SCHOOL'S OUT  
TEACHER'S WORK DAY

Monday, January 16  
Breakfast: Cinnamon rolls, milk, fruit.

Lunch: Barbecue on a bun, relish, French fries, apple crunch, milk, spinach.

Tuesday, January 17  
Breakfast: Biscuits, gravy, milk, juice.

Lunch: Spaghetti and meat sauce, blackeyed peas, milk, French fries, cornbread, milk.

Wednesday, January 18  
Breakfast: Jelly, toast, milk, butter, juice.

Lunch: Fish, macaroni and cheese, tartar sauce, milk, bread, jello.

Thursday, January 19  
Breakfast: Pancakes, syrup, bacon, milk.

Lunch: Nachos, green salad, macaroni and tomatoes, pinto beans, milk, fruit.

Friday, January 20  
Breakfast: Waffles, milk, juice, syrup.

Lunch: Cheeseburger, lettuce, tomato, onions, pickles, chips, milk.

## DAR award is presented

Leslie Lynne Mankins, senior at Holliday High School, has been named the DAR (Daughters of the American Revolution) Good Citizen recipient for Holliday.

Miss Mankins, daughter of Holliday School Board President and Mrs. Tommy Mankins, is currently serving as Senior Class President, also president of the National Honor Society, and is co-editor and photographer of the annual staff, active in varsity basketball, and in University Interscholastic League (U.I.L.) calculator application.

In her second trip to the state literary meet last year in calculator application, Miss Mankins finished



LESLIE LYNNE MANKINS third.

An active member of the Dundee Baptist Church, Miss Mankins plans to enroll at Texas Tech University in Lubbock upon graduation and majoring in accounting.

## Scholarship for Laura Holt

Hardin-Simmons Univ. junior Laura Lea Holt, daughter of Mr. and Mrs. G.W. Holt of Holliday, was listed on the President's Honor Roll for the fall semester with a 4.0 GPA (Grade Point Average).

In addition, the 1982 Holliday High School valedictorian was awarded a \$900 Ben O. Grant history scholarship for her academic accomplishments.

## Homemakers set meeting

The Holliday chapter of Young Homemakers of Texas will meet at 7 p.m. Tuesday in the home economics department at Holliday High School, according to Donna Reynolds.

Sharon Klinkerman, color analyst, will present "Color for All Seasons" emphasizing color analysis and coordination of clothes and makeup.



Mr. and Mrs. Mark Mankins of Lubbock announce the birth of their first child, Lynsey Ann. She was born Dec. 29 and weighed six pounds, 13 ounces.

The grandparents are Mr. and Mrs. Tommy Mankins of Dundee and Mr. and Mrs. Charles Haire of Lubbock. The great-grandmothers are Mrs. Effie Lester of Holliday, Mrs. Lois Haire of O'Donnell and Mrs. G.A. Henry of Tahoka.

BRING IN THIS AD AND RECEIVE COFFEE, TEA OR COKE ON THE HOUSE!!

## Highway 25

### Package Store & Cafe

Helen & "Dip" Dipperey, owners

**CAFE**  
Specializing in home-cooked meals, Hwy. 25  
Cafe is open from 6 a.m. until 3 p.m. Monday thru Friday. Homemade pies, chili  
"Little place with the big hospitality"

**PACKAGE STORE**  
Open 7 days a week, from 10 a.m. until 9 p.m. Monday through Saturday, and noon until 8 p.m. Sundays. Everything here.  
"We keep you in good spirits"

FAST N' HOT OWENS SAUSAGE, SCRAMBLE EGGS, THICK TEXAS TOAST.

## BREAKFAST SANDWICH SPECIAL 99¢

REG. \$1.00 NOW

ALLSUP'S NEW HOT CHOCOLATE 8 OZ. CUP 30¢

COME IN AND ENJOY FRESH HOT COFFEE ANY TIME

COOK FOOD SPECIAL AS FEATURED ON TV.

## BURRITOS 2 99¢

FRESH-HOT & READY TO GO! FOR

32 OZ. FOUNTAIN DRINK 39¢

ALLSUP'S REUSABLE PLASTIC CUP

BORDEN'S ASST. FLAVORS ICE CREAM 1/2 GAL. CTN. \$1.69

BORDEN'S ORANGE JUICE QT. CTN. 99¢

FREEZE BEE WHILE SUPPLIES LAST ICE CREAM CONES TRIAL SIZE 10¢

BRISKET SANDWICHES Reg. \$1.99 \$1.09

NORTHERN 4-Rolls BATHROOM TISSUE 88¢

COKE 6 Pack \$1.69 12 oz. Cans

RATH BOLOGNA, SALAMI, P & P LOAF, LUNCHEON LOAF

## LUNCHEON MEATS 69¢

6 OZ. PKG.

## ALLSUP'S MONEY ORDERS 29¢

EACH UP TO \$299.99

ALLSUP'S CONVENIENCE STORES

- WHILE SUPPLIES LAST
- SELF SERV GAS
- OPEN 24 HOURS FOR YOUR CONVENIENCE
- PRICES EFFECTIVE JANUARY 12-14, 1984

PRICES GOOD BOTH HOLLIDAY & IOWA PARK STORE

# We're selling out...

everything from front to back

Starting at noon today, through 5 p.m. Saturday, everything must go!

Due to the illness of Paul Calloway, owner, the business must be closed. All new and used merchandise is priced to clear. All sales must be final. Cash only, no credit. No refunds.

### New merchandise

Cost plus 5%

- Televisions
- Grandmother Clock
- 8-track Stereos
- Musical Instruments
- Kerosene Heater
- Hand Tools
- Etc., Etc., Etc.

### Used merchandise

Make an offer!

- Tables
- Sofas
- Glassware
- Records, Tapes
- Books
- Appliances
- Etc., Etc., Etc.

# PAUL'S Stop & Shop

104 West Cash - Iowa Park