

1984
Jan 19

IOWA PARK LEADER

25 Cents

Vol. 15, No. 18 IOWA PARK, WICHITA COUNTY, TEXAS 76367 THURSDAY, JANUARY 19, 1984

Chamber banquet speaker uses background for talks

To hear Bob Cox's talk is worth the price of admission for the annual Chamber of Commerce banquet, according to Dr. James Edwards, chairman.

But he adds the \$7.50 admission also includes a barbecue dinner served by the MuleSkinners, as well as being on hand to see who the year's outstanding award recipients are.

Tickets are being sold at the Chamber office, State National Bank, Parkway True Value, State Farm Insurance, Iowa Park Leader, as well as Dr. Edwards' office.

Cox, from Denison, is one of the most versatile speakers in this part of the country. He uses his experiences of the past to create his programs. And from his past experiences, he apparently could speak for hours, which he won't at the Jan. 28 event.

Cox says he is a career student, preacher, salesman, humorist, rancher/farmer/cowboy, referee, lumberjack, teacher/coach, actor and family man.

He is a graduate of Baylor Univ. and Golden Gate Seminary, having also attended West Texas State Univ.

He has served in various pastorates in California, and stays busy "filling in" when called on by churches in his area.

His efforts for one of the nation's

largest security companies resulted in his becoming a national sales leader. His reason for listing rancher/farmer/cowboy as background comes from being raised on a peanut farm and ranch in central Texas.

His teaching and coaching career includes "moonlighting" at refereeing. He often helps out at area games. He taught and coached at a number of Texas public schools, is a former member of the Grayson County Junior College faculty and is currently teaching vocational education at Pottsboro High School.

A couple of years between Baylor and Golden Gate were spent in logging camps in Humboldt County, Calif. While serving as chaplain to a

California fire department, he earned an engineer's rating as a fireman.

For the past five years, he and his wife have been active in theater groups. He has also been involved in television commercials and character parts in TV and movies, with TV credits including Mulberry Square, Orson Wells' Speak Up America, Datsun, Buick, Bank of Texas, Dallas Cowboy Cheerleaders, The Xerox Monks, TV show Dallas and the Roy Clark Christmas special.

Listing his qualifications as a family man, Cox includes his wife, three sons, a daughter-in-law, and a "menagerie of dogs, horses, rabbits, ducks, pigeons and a parrot" are a never ending source of material when viewed through his humorist's eyes."

Crash kills two pilots

A plane crash Wednesday of last week near Throckmorton took the lives of two pilots, one of whom was a native Iowa Parkan.

The burned wreckage was not found until the following day, almost three miles northeast of Throckmorton.

Dead were Glenn L. Stout, 61, of Iowa Park and owner of Glenn Stout Aerial Photography and Patrol, and Bobby Sunday, 44, of Paducah and an

employee of Stout's.

The two men were checking a crashed plane. Stout had been a resident since his home in Wichita Falls had been destroyed by a tornado.

Sunday, who had been commuting to Iowa Park to work and reportedly had planned to move here in the near future, is the son of Mr. and Mrs. R.L. Sunday who reside in Paducah. The father is a native Iowa Parkan.



BOB COX ... banquet speaker



IN APPRECIATION - Members of every fire department in Wichita County, such as this delegation from Kamay, were treated to a chili and bean feast Friday night by the MuleSkinners in their MuleBarn. The local organization

wanted to use their food to thank the firemen for helping save their building during a recent fire. Approximately 200 attended.

City election date set Home rule charter issue on ballot

Iowa Park city council Monday night set its annual election for April 7 to elect a mayor, two aldermen, and also put on the ballot the issue of home rule charter.

While the election is not yet officially called, requiring an ordinance which will be passed at the next meeting, the home rule issue the past several months.

Terms of Mayor Charlie Lee and Aldermen George Hammonds and Bud Thompson expire this spring.

The addition to the election ballot will state "Shall a commission be chosen to frame a charter. . . and below it will be a list of between 15 and 18 commission members who will be voted on to draft the charter if it passes.

Approval of the charter commission does not close the issue, however. Once the charter has been written, copies must be provided all citizens of the city, and after their study an election will be held to determine if the citizens want to change from a state charter, under which the city now operates, or to accept the new charter.

Names for the charter commission will be accepted from the council and public, but the council must hold the number to 15-18.

The ordinance calling the election will be considered at the next council

meeting, which will be Feb. 13. Because last week's regularly-scheduled meeting was postponed to this week, Mayor Lee felt all normal business for this month had been taken care of and set the next meeting date. He added, however, that any business requiring immediate attention could be brought up.

OTHER BUSINESS
The council held the second and final required public hearing on the proposed annexation of 72.38 acres northwest of the city, proposed by developer Rip Smith, but tabled action on the ordinance annexing the property until the legal description could be checked.

Administrator James Barrington said Tuesday the engineer had made one mistake, using the word "southwest" instead of "southeast," and that will be corrected for council action at the next meeting.

The tract fronts US 287 on the north, extending from Park Tank to the Lake Iowa Park road, and is 750 feet deep. It does not include Quail Valley.

A list of traffic speed zone changes was considered by the council, but action was tabled until the proposals affecting state controlled right of way could be cleared with the Highway Department. Zones affected are on the old highway and farm roads.

Some zones included on the list are 20 MPH zones around school campuses, oversights of past administrations.

No action was taken on additional funding of the fire department, though discussions led to changes in some procedures, such as better

gasoline pumps at night instead of calling out a commercial station operator.

One proposal which received favorable comment was to put department vehicles on a regular replacement schedule, replacing one of the five trucks each six years.

It was also noted that the county has pledged \$15,000 from revenue sharing to be used toward purchase of a replacement truck.

Because only one bid for the library's property north of Cash from the city hall was received, and it was not submitted by the specified date, the council voted to rebid the property. Park Hotel was once located on the corner site and was donated "for the use of the library." Revenue from the sale will be used to finance the Burnett Memorial Library.

Council members also voted to readvertise for bids on one of the two posting machines it has for sale, displaced by the new computer.

A bid of \$2,150 for one machine, Burroughs L9000, was accepted from the Mineral Wells school district. That leaves a model L6000, Barrington told the council.

In other business, the council:
* approved increasing the city hall building insurance coverage from \$120,000 to \$170,000, and an additional insurance policy of \$40,000 for the computer equipment.

* approved a bid received earlier from the McDonald Brothers to change the exterior front door of the Recreational Activities Center to conform with city fire code, the cost being \$1,340.

* approved using water department improvement bond money left over from previous construction to make bulk purchases of water pipe, saving as much as 50 percent over current purchase procedures.

Matching grant contract signed

A contract with the state for a \$100,000 matching grant to be used on renovation of Burnett Memorial Library was received at city hall Friday, signed and returned Monday, Administrator James Barrington told city aldermen.

The signed contract now assures the donations and pledges made locally toward the library will be matched by the state.

Country club, director get Chamber attention

Prospects for a golf course for Iowa Park, a new director naming, plans for next week's annual banquet and "swansong" comments were highlights of Monday's monthly meeting of the Chamber of Commerce board of directors.

Chris Hansen, manager of Wal-Mart, was named to succeed Mark Reed on the board of directors, following Reed's move from the community.

Rip Smith showed a layout of his proposed Quail Valley Country Club golf course, announced who the club professional would be, and answered questions from the directors.

Smith also said he would hold a meeting open to the public Monday evening in the county agriculture

building.

Dave Bisbee, assistant professional golfer at Wichita Falls Country Club who has 13 years experience eventhough he is only 29 years of age, has contracted to serve as club pro here five years, Smith said.

Memberships in the club will be \$650 initiation and \$55 monthly. The two-story club house entrance will be off Johnson Road, just north of Shiloh Addition, and will include two racketball courts and weight rooms to go along with the nine-hole course and driving range.

Smith said he has already received considerable interest from residents of Iowa Park, Holliday and Wichita Falls, in joining the new club.

The nine-hole course will also have between 50 and 60 lots for private homes, he added. Land has also been set aside for tennis courts in the future.

"It's been fun," commented Linda Merrick, who pointed out the meeting would be her last as president of the Chamber since incoming president Dr. James Edwards would take over at the banquet next week.

"I've enjoyed every minute of it and wish Dr. Edwards lots of success during his year as president," she said.

Station's money taken from register

Someone reportedly took \$245 in bills from the cash register Wednesday afternoon from Ken's Gulf Station, 801 E. Highway.

Kenneth Watson said someone took the cash about 4:19 p.m. while he was out of the station office. The area was immediately searched by police, but no arrests have yet been made.

Shower fetes Mrs. Hicks

A teddy bear theme was carried out in a stork shower given Saturday for Mrs. Richard Hicks at Texas Electric Reddy Room. Hostesses were Mrs. Ralph McShan and Mrs. Murray Shook.

Special guests were Mrs. Robert Withrow of Burkburnett and Mrs. Carlton Hicks of Iowa Park, mother and mother-in-law, respectively, of the honoree. The three were presented with corsages formed of baby socks.

Miss Alisa Hicks registered guests and invited them to suggest names for the prospective baby.

The refreshment table decorations were highlighted with a handmade booster chair picturing a teddy bear. The same motif was emphasized in the sheet cake and napkins. A tray of pastel mints in the shapes of storks, rattlers, strollers, storks and babies added interest to the decor. Balls were suspended from the ceiling around the table where the gifts were displayed and at vantage points in the room.

Sorority pins pledges Tuesday

The Tuesday evening meeting of Epsilon Eta chapter of Epsilon Sigma Alpha was highlighted by the pledge pin ceremony and model meeting program. The meeting was held in the home of Mrs. Bud Mercer with Mrs. Bud Newton sharing hostess duties.

Mrs. Bill Hrncirik, president, conducted the pledge pin ceremony for Mmes. Al Denton, Jack Britt, Joni Whitis, Tex Burns, Marvin Robertson, and Jo Bumgardner. The ceremony was conducted around a candlelit table appointed with a bouquet of jonquils and the ESA banner. Each pledge received a blue candle in a holder accented with a jonquil.

The model meeting program was presented by the rush captains, Mrs. Darrell Gunderson and Mrs. Steve Turner.

The pledges were honored at a tea Sunday afternoon held in the home of Mrs. Bud Mercer. Refreshments, boulogies and yearbooks were on display for the honored guests to view.

New Meter Connections

Jimmy Farr - 415 W. Valley Drive
Bobby Logan - 102 James Drive
Kathy Myers - 613 W. Washington
William Scott Sanders - 205 E. Garcen



BRENDA COOK

Brenda Cook is recognized

Brenda Cook, daughter of Mr. and Mrs. Forest G. Cook, has been selected by the Opti-Mrs. Club as the Iowa Park High School Student-of-the-Month for Jan.

Her activities in school have included: seven-year member of the band, where she served as secretary when she was an 8th grader and she has served as representative for four years; six-year member of the choir, currently serving as treasurer and she was second soprano section leader during her junior year. She has been a member of the Chamber Choir for two years, a twirler for three years, and is a Flag Corps lieutenant this year.

Brenda has been the recipient of numerous awards. Included in these are: outstanding band student and recipient of the choir director award in the 7th grade; outstanding choir student in the 8th grade; 7th and 8th grade scholastic achievement award winner. She was also honored by the Optimist Club during Youth Appreciation Week her last year in junior high school.

She made the all-region band and won the ESA award when she was in the 8th grade. In high school, she made the All-District band during her freshman year, the All-Region band three years and the All-Region band one year. She has made Div. One rating in UIL solo and ensemble and girls quartet; division one rating in UIL twirling solos for four years. She has been a Double A honor roll student two years and an A honor roll student four years.

Brenda belongs to the Church of Christ. Her hobbies are playing the piano, swimming and tennis. She plans to attend Midwestern State Univ. to take secretarial courses to become a secretary.

England program topic

The life and customs of England were presented by Mrs. James Edwards for members of the Amity Study Club Tuesday evening in the home of Mrs. Lee Hale. Mrs. Joe Vickers was co-hostess.

Mrs. Edwards, who lived in England when she taught for the United States Dept. of Defense and again after she married, gave first-hand recollections of the life and characteristics of the British people.

She said the most fascinating thing to her was the realization that this small country, 73rd in land size in the world, has had such great effect on international affairs, and in the 1700s was the most powerful nation in the world.

The people are well disciplined with good manners, respect for the law, literate, and their language and colors they wear are low-key. They cling to the past, preferring the old lifestyle and ceremony.

Mrs. Edwards described the countryside, saying it was the greenest green she has ever seen, huge trees - hundreds of years old,

Members urged to feed birds

Twelve members and one guest, Mrs. Don Owens, attended a business meeting held by the Iowa Park Garden Club Friday morning at Texas Electric Reddy Room. Hostesses were Mmes. W.A. George, Frank Harlin and Kathleen Hatten.

Mrs. R.L. Good was in charge of business. She stressed that Iowa Park was a bird sanctuary due to the efforts expended by the club several years ago, and that it behooved members to try to save the lives of birds by keeping out plenty of food for them during the cold weather.

Members answered roll by giving their peevies.

narrow winding roads, cottages with thatched roofs, the vicarage where she and Dr. Edwards lived, London, the restaurants where most dining is formal, the pubs, and almost an absence of fast-food places.

Mrs. Philip Welch conducted the business meeting in which she reported on the nominating committee's selection of a slate of officers for the coming year. They will be voted on at the next meeting. Members discussed plans for the annual spring luncheon and set a tentative date of May 5.

Mrs. David Baugh gave the meditation.

Following the meeting, members were served refreshments. Thirteen were present.

Candy sale starts Feb. 3

The annual Camp Fire Council of North Texas candy sale will begin Feb. 3. The council includes Bowie, Burkburnett, Electra, Henrietta, Iowa Park, Olney and Wichita Falls. Blue Bird and Adventure members will be selling candy in all their neighborhoods and in business establishments.

Customers will be offered four kinds of Green Mill Candy - Peanut Clusters, Mint Creams, Chocolate Snorkles with pecans and Chocolate Turkeys with peanuts. Each box sells for \$2. Funds from the sale are used to operate and improve Camp Fire camping facilities.

Each group will receive 10-cents per box sold for their own group treasury. Five cents per box sold is returned to the District area town.

Council candy chairmen include: Bowie: Jean Angove, Burkburnett: Joyce Barton, Electra: Wanda Wooten, Henrietta: Sug McKee, Iowa Park: Marsha Solomon, Olney: Rosalee Myers.



Friendly Door News

Fri., Jan. 20 - Corned beef hash, cabbage, corn, lime jello & whipped topping.

Mon., Jan. 23 - Swiss steak, rice, spinach, plums & graham crackers.

Tue., Jan. 24 - Sliced ham, blackeyed peas, cabbage, chocolate cake.

Wed., Jan. 25 - Oven fried chicken, scalloped potatoes, green beans, peach cobbler.

Thurs., Jan. 26 - Hungarian goulash on noodles, mixed vegetables, beets, pineapple.

Girl Scout cookies on sale

Brownie and Girl Scout troops are currently taking orders for Girl Scout Cookies. Orders will be taken until Jan. 22, and the cookies will be delivered between March 2 and 18.

There will be seven varieties of cookies for sale: Medallions, Samoas, Thin Mints, DoSidos, Tagalongs, Trefoils and Chocolate Chunks. All cookies will sell for \$2 per box. Proceeds from the sale will benefit the NorCenTex Girl Scout Council and the Girl Scout troops locally.

Those interested in ordering cookies can call Mary Loving at 592-2549 and she will give the names to the Girl Scouts who will be responsible for taking the orders.

Night WMU to carry meals

Eleven members of the Night W.M.U. of First Baptist Church met at the home of Mrs. Homer Black Monday for the first meeting in 1984. Mrs. J.T. Parker was co-hostess.

Mrs. E.T. Patterson directed the prayer period for missionaries on the birthday calendar for the day.

Mrs. V.I. Woodfin was in charge of the period devoted to business. Plans were made to distribute Meals on Wheels the first week in February, and to assist in providing refreshments for approximately 90 young people of the church following their weekly meetings.

Mrs. D.O. James reviewed two chapters of the foreign mission study book, "Imperative Impulse" by John Cheyne. The titles of the chapters that dealt with the work of missionaries in the countries of Rwanda, Burundi and Mauritius were "Beyond the Barriers" and "A Pattern for Probing."

Mrs. H.E. Cummings directed the monthly program taken from Royal Service on "Refugees in Search of Refuge." She was assisted by Mmes. Parker, J.A. Berg, Roy Smith, Elmer Singleton and Woodfin who gave topics describing the work of the Home Mission Board Resettlement office in cooperation with the state conventions and local churches in the United States and Puerto Rico in helping refugees find refuge in new surroundings.

ABOUT TOWN

Iowa Park city hall received its quarterly federal revenue sharing check Tuesday. The \$15,639 was about \$1,000 greater than had been anticipated, Administrator James Barrington said.

Ronald H. Matsusaki, M.D.

University of Toronto School of Medicine, 1973
announces the opening of his office at
301 West Garrison, Electra.
Phone 495-2101

Alberto Banez, M.D.

is pleased to announce the opening of his office at 311 North Wall Street for the practice of General Surgery and Family Medicine.

Office hours will be 2 PM - 6 PM Monday through Friday beginning January 9, 1984. Appointments may be made after January 3 by calling 592-2707.

True Value

HARDWARE STORES

Your local independently owned True Value® Hardware Store has national chain-buying power.

Stop in and pick up your FREE copy of our True Value Days circular

'84 TRUE VALUE DAYS



EQUAL LOW-CALORIE SWEETENER

100 Packets \$3.28

WATCH YOUR SALT™

Sodium Free® Riopan Plus®



Antacid Anti-Gas Fast Relief

\$2.38

12 fl oz

*Considered dietetically sodium free.



METAMUCIL Orange, Strawberry or Regular

14 oz. Btl. \$5



VITAMINS for children

60 tablets

\$3.48



8.98 Gal.

16 Colors & White Select Latex Flat Wall Finish

You'll get a high-quality finish at a thrifty price. Gives walls and ceilings a soft, flat look. A



4.98 Qt.

Woodman® Polyurethane Varnish

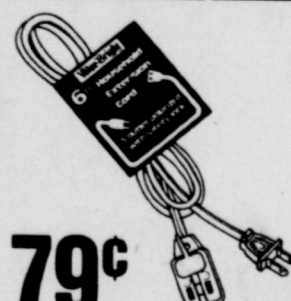
A waterproof, chip-resistant varnish available in gloss, flat or satin finish. 012/39/55



48¢

3/4 in. x 20 Ft. Electrical Tape

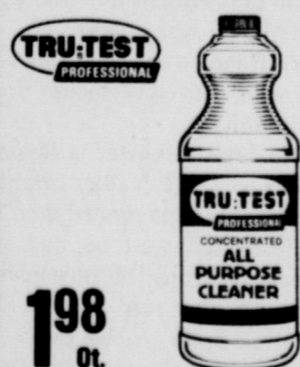
Vinyl tape is flame retardant and weather resistant. 468249 66-Ft. Roll. 468256 78¢



79¢

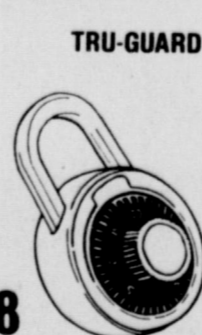
6-Ft. Cube Tap Extension Cord

Features polarized 3-outlet cube tap and SafeGrip™ plug. White, brown. 300194/265264



1.98 qt.

All-Purpose Cleaner Concentrated formula for washable surfaces. CC-11



1.38

Combination Padlock 3-digit combination lock with hardened shackle. 317-14-8X



79¢

4-Pack C or D Batteries

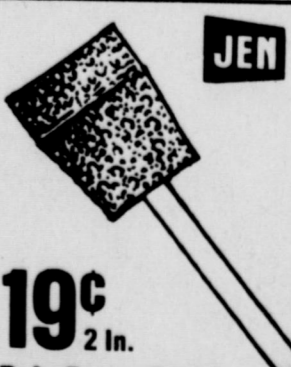
General-purpose power cells for tape recorders, radios, flashlights, toys, games. 1C/2D-4N



3 for 1.88

Furnace Filters

10x20, 14x20, 14x25, 15x20, 16x20, 15x25, 20x20 and 20x25-in. sizes. All 1 in. thick.



19¢

2 in. Poly Foam Brush

For smooth paint application without brush marks. 397158 4-in. Brush. 399360 29¢

PARKWAY

200-206 West Bank

FURNITURE True Value HARDWARE

592-4681 592-5512

TEXAS GARDENER TIPS

Tips For Transplanting Trees With Success

Winter and early spring are the best times to plant trees in Texas. The first step is to make sure you purchase a high quality tree, whether it be balled-and-burlapped, bare-rooted, or container-grown. Don't let the tree dry out between the time you buy it and plant it.

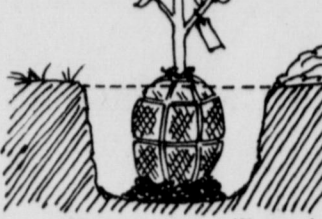
Dig the planting hole only as deep as the root ball or slightly shallower (by 1 to 2 inches) and about two times as wide as the root ball. If the soil dug out of the planting hole is a sandy loam, you can put it back around the root ball without changing it. But if you have large clay clods or a blow sand, mix the existing soil with organic matter, like peat moss or compost,

in the ratio of 2 parts existing soil to 1 part organic matter.

Always use the existing or native soil. Do not replace it with a foreign soil, since this can cause root-bound problems later. If the foreign soil is better than the existing native soil, the roots will look for this better soil by circling in the planting hole, causing a root-bound tree.

Prune off any broken or damaged roots, especially on bare-rooted trees. Set the tree in the hole at the same depth at which it grew in the nursery. Backfill the hole one-third full of soil and soil mix, and water. Put another third of the soil in the hole and water again. Then finish filling the hole.

Water the tree following planting and then water deeply as needed when the soil becomes dry, making sure to check at least once a week. It is also a good idea to apply a root-stimulating fertilizer to encourage root growth.



If your tree will need extra support, drive two 2x2-inch stakes 2 to 3 feet deep in the ground, one to the north side and one to the south, before you plant the tree. Position two pieces of old garden hose around

the trunk at different heights. Run wire through each hose and tie one wire to each stake.

To protect against borers and sunscald, spray the trunk at planting time with Lindane and wrap the trunk with burlap or a tree-wrap material. Balled-and-burlapped trees should be pruned to remove 25 to 35 percent of the top growth and bare-rooted trees should be cut back 40 to 60 percent to make up for root loss and damage. Container-grown trees should be pruned only as needed for shaping.

TEXAS GARDENER™

P.O. Box 9005 Dept. BR
Waco, TX. 76710
© 1983 TEXAS GARDENER MAGAZINE

Worth Quoting

There was a time in American politics when a candidate's personal life had to be pretty well able to stand the test of morality but those days are gone forever. There was a time when a divorce was a black mark against a candidate and many would-be candidates never got into the race for fear the divorce would ruin too much against them. Nowadays, with divorce as common as marriage, voters are not likely to know or care if a candidate has been divorced. Candidates can overcome other details of their personal lives that in another era would have been hard to live down. Our state Commissioner of Agriculture Jim Hightower is a case in point.

Jim Hightower, a liberal Democrat making his first political race, ran well, unseating Reagan Brown for that office. During the campaign it came out that Jim Hightower is not married but has been living with a Ms. Susan DeMarco from New Jersey for several years. Thus it was no surprise after Jim Hightower won election and became our Commissioner of Agriculture that he installed Ms. Susan DeMarco as his top assistant in charge of developing market programs, hiring his staff and generally acting as his top assistant. Yet Hightower, citing nepotism laws, pays Ms. DeMarco only \$1 per year.

This seems like a bargain and no doubt Ms. Susan DeMarco is a top notch agricultural marketing expert who is giving Texas taxpayers a wealth of production for only \$1 a year. But the fact that she is paid this measly pittance has sparked fire from her friends in Austin who point out, and rightly so, that she is not married to Jim Hightower thus does not come under any nepotism laws because she is not related to him. Apparently she does not yet choose to claim a common-law wife relationship. One of the critics suggests that at least she should get Hightower's salary one year and he could get it the next.

It really gives a pretty cheap picture of our Commissioner of

Agriculture to deal his close friend such a miserable deck. The furor has become so great in Austin that Hightower has reportedly said that he might even marry his top marketing assistant in order to quell the rumor mills. Then he could no doubt get away with paying her \$1 a year but as his legal wife, is she anything like the wives we know, she won't stand for anything like that.

Our triumphant liberal Democrat office holders who swept the state two years ago continue to make news. Jim Mattox, our Attorney General, has been indicted on criminal charges dealing with misconduct in office and during the campaign but he seems to be weathering the storm well by constantly digging up more newsworthy cases to turn the spotlight off him and on to somebody else. Mattox's attorney put out the word that the Attorney General needed around \$300,000 for legal expenses and sure enough lawyers from over the state chipped in and have raised most of it. The lawyers figure that it is worth something to say on the good side of an incumbent Attorney General and thus a donation to the cause is a good investment.

HAROLD HUDSON
Perryton Herald



SEEKS RE-ELECTION - A.L. Bohannon reported last week he had filed for a place on the Democratic Party primary ballot, seeking a third term as constable of Precinct 3. Bohannon, a former deputy sheriff, resides at 520 W. Magnolia.

Municipal Court Records

Results of municipal court held here yesterday were:

- Thomas Steve Baker, disobeyed stop sign, \$51;
- Oscar Luis Vasquez, speeding, \$55;
- Curtis Alan England, negligent collision, \$31;
- Pamela June Ray, disobeyed stop sign, \$31;
- Jeffery Doyle Posey, speeding, \$53;
- John West Rusk, speeding, \$45;
- John West Rusk, no motor vehicle liability insurance, \$94;
- John West Rusk, no operators license, \$40;
- Thomas Marvin Johnson Jr., wrong way on one way street, \$40;
- Gayle Hulet Todd, speeding, \$45;
- Elbert Daniel Cullers, speeding, \$48;
- Roger Mike Kingcade, expired motor vehicle inspection, \$40;
- James Andrew Lagunas, no operators license, \$40;
- James Wayne Gadenhuber Jr., speeding, \$46;
- Laveta Easterly Kaiser, speeding, taking defensive driving course (DDC);
- James Thomas Elms, speeding, \$45;
- Carol Correll, no operators license, \$40;
- Lester Lee Rose, displayed expired registration, \$73.50;
- Joni Ladeana Land, speeding, taking DDC;
- James Allen Gregg, speeding, taking DDC;
- Marshall Leroy Yoder, expired chauffers license, \$40;
- William Christopher Webb, speeding, taking DDC;
- Jo Williams Farb, speeding, \$41;
- James Lishel Beebe, displayed expired registration, \$49;
- Steven Wayne Fulfer, public intoxication, \$49.

The following were charged by the Department of Public Safety for possible suspension of license:

- Jerry Don Allen Jr., suspended four months, probated six months;
- Gregory Steven Cleghorn, suspended six months;
- Sammy Ray Lee, suspended four months beginning Feb. 18, 1984;
- Dan Spruiell, suspended three months, probated six months;
- Kevin Dale Wells, suspended three months, probated six months.

As I See It....

By BOB HAMILTON



During all this cold weather, I've mentioned from time to time to people that it might get too cold to snow. They look at me like I've said a person can live without breathing, and I guess I don't blame them.

I don't recall of ever having discussed the issue with an authority, and it may not be true. But I've had experiences in weather that makes this winter feel like summer, on which I made the assumption.

I spent two years in Alaska while in the Air Force, and what I observed there tells me that it can get too cold to snow.

How cold did it get up there? Well, I don't remember the date, but in February of 1951, a record low for Anchorage was established: 64-below zero.

It didn't snow then, nor do I remember snowing whenever the temperature was much below minus 10. There's precipitation of a sort, but not what I called snow.

During that exceptionally cold spell, what fell was called ice crystals. They are tiny particles of ice which

collect on anything they touch, and are very light in weight.

I remember a small, copper wire used for personal radio antenna that was strung between two barracks that became some two inches around, with its collection of ice crystals. Vehicles left standing out of doors grew into huge white monsters.

They have a term in the north for that kind of situation: ice fog.

You don't go jogging or lick the pump handle when ice crystals are out.

I knew there was something about the people of Andrews that I liked, but couldn't put my finger on it until I read a recent article in the Andrews County News.

They're independent, mostly law-abiding, and stick to their guns when they feel they are right.

The Postal Service was recently granted a building permit by the city to construct a new post office, but it was pointed out that the location was in an area where city ordinances

required the owner would have to pay for paving half the street on one side.

Well, construction got underway, but a problem developed. They needed to hook up the building to the water and sewer systems.

The government was told the city would gladly hook them up, but that street would have to be paved first.

It was a standoff. At least until the city of Andrews received a letter from the general manager of the Postal Service's Field Real Estate and Buildings Office in Dallas, agreeing to fund the federal government's share of the paving once it was completed.

Andrews city attorney gave city crews the green light. He said that document was just like a check.

Maybe you can't fight city hall, after all.

Political Announcements

The following have authorized the Iowa Park Leader to publish announcement of their candidacies for office, and have paid for the space.

STATE SENATOR
District 30

Ray Farabee

STATE REPRESENTATIVE
District 80

Charles Finnell

Letter to the Editor

Letter to the Editor:

As a taxpayer and citizen of Iowa Park, I am very proud that we, as a community, suffered very few delays in public service during the recent "deep freeze." With the larger cities doing without water and other services, I feel that we are very fortunate to have the many men and women who worked over and above the call of duty to see that citizens were taken care of during the cold weather.

On one cold night while my family and I were secure in the comforts of our home, we heard several workers out in below zero weather working on sewer lines. Also, many other city workers helped keep water service available and streets passable. And certainly our police and fire during this time of stress.

We are always eager to criticize when things are not perfect, but never take the time to say something

positive. I feel that we are very fortunate and want to say "Thank you" for a job well done.

Sincerely,
Allen T. Shewmake

IOWA PARK LEADER

Dolores Hamilton Editor-Publisher
Olive Blalock Assistant Publisher
Kevin Hamilton Reporter

The IOWA PARK LEADER is published every Thursday. Offices are located at 112 W. Cash, Iowa Park, Texas, 76367. Telephone: 592-4431. Second class Postage Paid at Iowa Park, Texas, 76367. Subscription rates are \$7 per year in Wichita and Archer Counties; \$9 elsewhere in Texas and Oklahoma; \$11 anywhere else in the United States. Classified advertising rates are 16 cents per word first insertion, 8 cents per word thereafter. Any erroneous reflection upon the character, standing or reputation of any person, firm or corporation which may appear in the columns of this newspaper will be corrected upon being brought to the attention of the publisher.

MEMBER
TEXAS PRESS ASSOCIATION

LOOK WHO'S NEW

Amber Michelle Brandt would like to announce the arrival of her sister, Ashley Rae. She was born Jan. 12 and weighed eight pounds and four ounces. Parents of the girls are Mr. and Mrs. George Brandt.

The grandparents are Mr. and Mrs. Ray Henderson of Iowa Park and Mr. and Mrs. Leo Brandt of Coleman.

IRS Tax Tips

FORM 1040A CHANGES-GOOD NEWS FOR MANY TAXPAYERS

The short Form 1040A is a little longer, and Internal Revenue Service officials say that will be good news for many taxpayers.

The 1983 version of the 1040A has added five lines and a schedule which may be attached if needed. According to the IRS, the new short form becomes a more versatile tax return that will save time and reduce errors for the taxpayers who can use it.

For example, taxpayers claiming the child care credit can now use the 1040A instead of filing the longer Form 1040 and separate schedule that were previously required. Likewise, taxpayers claiming Individual Retirement Arrangement (IRA) deductions can use the short form.

According to IRS officials, the new 1040A should reduce refund delays caused by errors as well as save time for those who use it. One reason for this is that many taxpayers who previously had to use the 68-line long form can now do the same job with the 1040A. This not only saves the time of reading through the nonapplicable lines of the 1040 but also reduces the chance of errors caused by wrong line entries.

Taxpayers who filed Form 1040A or 1040EZ last year will automatically receive the same forms in the mail. Other taxpayers can request the 1040A or 1040EZ.

Learn all about Quail Valley Country Club

...at a meeting in Iowa Park
7 p.m. Monday Jan. 23
in the County
Agriculture Building
220 West Park

See course plans drawings and get answers to your questions.

We offer memberships at \$650, with payout program available. Besides the golf course, we will have two racketball courts and weight room in the two-story club house. Also at the meeting, meet Dave Bisbee, a teaching golf pro 13 years, who will operate the facility.

JOIN US and HAVE FUN



GNB

IRA

A Personal Retirement Plan That Will Save You Tax Dollars Every Year

EVERY WAGE EARNER IS NOW ELIGIBLE

As of January 1, 1982, every wage earner, even though they are active participants in an employer sponsored pension plan, can make tax-sheltered contributions to an individual retirement account (IRA). IRA contributions will accumulate tax-deferred with compounded interest until retirement.

MAXIMUM CONTRIBUTIONS

The maximum contribution to an individual retirement account has been increased from \$1,500 to \$2,000; spousal IRA from \$1,750 to \$2,250. (Spousal IRA's are for married couples where only one spouse is employed.)

Whether or not you are covered by an employer sponsored pension plan	Contributory IRA \$2,000	Spousal IRA \$2,250
--	--------------------------	---------------------

100% CONTRIBUTION

Contributions are no longer limited to 15% of your annual earnings. You may now contribute up to 100% of your earnings up to the maximum limitation.

GNB

STATE NATIONAL BANK
IOWA PARK, TEXAS



Locally Owned

Cook of the Week

Food is a language we all speak and a subject in which we are all interested, according to David Wade's Magic Kitchen. He stated further of all the subjects that have tempted writers from all walks of life, none have been more prolific from their pens than the subject of food.

Bread is one of the foods that figure prominently in the history of civilization. It was man's first manufactured food industry, and is still the largest food processing business in the U.S.

The bread of primitive man was unleavened-flat hard sheets made by mixing pulverized grain with water and spread on hot stones. All indications are that the Egyptians were the first to have unleavened bread. Breadmaking first became an art in the Fertile Crescent which encompassed the Tigris-Euphrates Valley to the Persian Gulf and around to Egypt. There is evidence that the Egyptian bakers in early times saved a part of each day's dough for use later, a method of saving a starter for our sourdough breads today.

One of the recipes shared this week by Karen (Mrs. Dale) Brooks is Sour Dough Biscuits which doesn't call for a starter.



Mrs. Dale Brooks

Karen is bookkeeper at Shamburger Building Center where her husband is manager. She was graduated from Vernon High School. She and Dale moved to Iowa Park recently from Oklahoma and are both working in the children's church there. Her hobbies are ceramics and sewing. They have two children, Scott, nine years old, and Shane, 23 months of age.

SOUR DOUGH BISCUITS

- 1 pkg. yeast
- 2 cups buttermilk
- 1/4 cup sugar
- 2 tsps salt
- 6 cups flour
- 1 cup warm water
- 3/4 cup corn oil
- 4 tsps baking powder
- 1/4 tsp soda

Dissolve yeast in warm water. Combine all the rest of ingredients.

Place dough in a covered dish in the refrigerator until ready to use. No need to let rise before baking. Take out amount needed and roll out in flour and cut out biscuits. Bake at 450 degrees until brown.

CHOCOLATE SHEET CAKE

- 2 sticks butter (or 1 stick butter and 1/2 cup shortening)
- 4 tablespoons cocoa

- 1 cup water
- 2 cups sugar
- 2 cups flour
- 1 tsp soda
- 1/2 cup buttermilk
- 2 eggs, beaten
- 1 tsp vanilla

Bring to boil butter, cocoa, water, sugar and flour. Add soda, buttermilk, eggs and vanilla; mix well. Grease and put cocoa in bottom

of 9x13 pan. Pour batter in pan and bake at 350 degrees.

ICING

- 1 stick butter
- 4 tablespoons cocoa
- 6 tablespoons milk
- 1 box powdered sugar
- 1 tsp vanilla
- 1 cup chopped nuts

Stir to spreading consistency. If necessary, add 1 tsp milk at a time to thin.

LASAGNE

- 1/4 cup butter
- 1 lb. ground beef
- 1 cup chopped onion
- 1 clove garlic, minced
- 1 (1 lb. 12 oz.) can tomatoes

- 3 - 6 oz. cans tomato paste
- 1 1/2 cups water
- 2 1/2 tsps. salt
- 1 tsp pepper
- 1 tsp oregano
- 2 lbs. broad lasagne noodles
- 1 lb. cottage cheese
- 6 cups (1 1/2 lb.) Mozzarella cheese
- 1/2 cup Parmesan cheese
- Paprika

In a large skillet melt butter; slowly brown meat. Add onion and garlic; saute until tender. Stir in tomatoes, tomato paste, water, salt, pepper and oregano. In a large baking dish, layer noodles, meat sauce and cheeses. Sprinkle top with paprika. Bake in oven 45-60 minutes at 375

degrees.

BROCCOLI CASSEROLE

Cook the following ingredients in a skillet until tender:

- 1 stick butter
 - 1 cup chopped onion
 - 1 cup chopped bell pepper
 - 1 cup chopped celery
- Add the following ingredients:
- 2 boxes frozen broccoli
 - 2 cups cooked rice
 - 1 can cream of mushroom soup
 - 1 can cream of chicken soup
 - 1-16 oz. Cheese Whiz or Velveeta Cheese

Bake in a baking dish at 350 degrees until it bubbles.

Storewide Winter SALE

COKE - SPRITE
TAB - MR. PIBB
6 \$2.09
32 oz. Btls.

PURE GRANULATED SHURFINE SUGAR
\$1.49
5 LB. BAG

ALL VEGETABLE SHURFINE SHORTENING
\$1.89
3 LB. CAN

ALL PURPOSE SHURFINE FLOUR
69¢
5 LB. BAG

SHURFINE VEGETABLES
3 \$1
CANS

SHURFINE RICE
69¢
2 LB. BAG

SHURFINE SAUCE
\$1
8 OZ. CANS

SHURFINE CHUNK TUNA
69¢
6 1/2 OZ. CAN

SHURFRESH PURE PORK SAUSAGE 1 LB. ROLL **99¢**

SHURFRESH FULLY COOKED CANNED HAMS 3 LB. CAN **\$6.39**

SHURFRESH ASSORTED SLICED LUNCH MEATS 6 OZ. PKG. **69¢**

SHURFRESH SLICED COOKED HAM 6 OZ. PKG. **\$1.39**

SHURFRESH THIN SLICED SMOKED BEEF-HAM-TURKEY-CORNERED BEEF 2 1/2 OZ. PKG. **39¢**

SHURFRESH PIMIENTO/JALA. CHEESE SPREAD 7 1/2 OZ. CTN. **99¢**

SHURFRESH MEAT FRANKS 12 OZ. PKG. **89¢**

SHURFRESH SLICED MEAT BOLOGNA 12 OZ. PKG. **99¢**

"THE SUNDAY BACON" HORMEL BLACK LABEL SLICED BACON
\$1.49
1 LB. PKG.

BONELESS CHUCK ROAST Lb. **\$1.48**

GROUND CHUCK Lb. **\$1.48**

FRYER BREASTS Lb. **\$1.59**

FAMILY PACK PORK CHOPS Lb. **\$1.49**

FAMILY PACK GROUND BEEF Lb. **98¢**

SHURFINE SALTINE CRACKERS 16 OZ. BOXES **2 89¢**

SHURFINE COFFEE 1 LB. CAN **\$1.89**

SHURFRESH QUARTERS MARGARINE 2 1 LB. PKGS. **89¢**

SHURFRESH BTRMLK/SWTMLK BISCUITS 6 8 OZ. CANS **\$1.00**

SHURFRESH CINNAMON ROLLS 9 1/2 OZ. CAN **89¢**

SHURFRESH HALFMOON CHEDDAR CHEESE 8 OZ. PKG. **\$1.19**

SHURFINE FRUIT COCKTAIL 16 OZ. CAN **69¢**

SHURFINE HALVED BARTLETT PEARS 16 OZ. CAN **59¢**

SHURFINE APPLE JUICE 64 OZ. BTL. **\$1.49**

SHURFINE FANCY TOMATO JUICE 46 OZ. CAN **79¢**

SHURFINE WHITE OR GOLDEN HOMINY 4 15 OZ. CANS **\$1.00**

SHURFINE WHOLE PEELED TOMATOES 2 16 OZ. CANS **89¢**

SHURFINE RED PLUM PRESERVES 18 OZ. JAR **79¢**

SHURFINE GRAPE JAM OR JELLY 18 OZ. JAR **79¢**

SHURFINE WAFFLE SYRUP 32 OZ. BTL. **99¢**

SHURFINE FRESH PACK CUCUMBER PICKLE CHIPS 16 OZ. JAR **79¢**

SHURFINE SALAD DRESSING 32 OZ. JAR **\$1.19**

ASSORTED SHURFINE BAG CANDIES 2 BAGS **\$1.00**

SHURFINE IMITATION VANILLA 2 6 OZ. BTL. **\$1.00**

SHURFINE TEA BAGS 100 CT **\$1.59**

SHURFINE FLOUR 25 LB. BAG **\$3.99**

SHURFINE APPLESAUCE 2 16 OZ. CANS **89¢**

SHURFRESH ASSORTED PIZZA ICE CREAM TOPPING 1/2 GAL. ON CTN. **\$1.39**

SHURFRESH FROZEN WHIPPED SPROUTS 8 OZ. BOWL **59¢**

SHURFRESH FROZEN BRUSSEL SPROUTS 10 OZ. PKG. **59¢**

SHURFINE FROZEN STEW VEGETABLES 20 OZ. BAG **89¢**

SHURFINE FROZEN MINI CORN ON THE COB 8 EAR. PKG. **\$1.19**

SHURFINE FROZEN DEEP DISH PIE SHELLS 2 CT. PKG. **79¢**

CENTRAL AMERICAN BANANAS 3 LBS. **\$1.00**

ALL PURPOSE RUSSET POTATOES 10 LB. BAG **\$1.39**

CALIFORNIA GREEN SKIN LARGE AVOCADOS 3 FOR **59¢**

CALIFORNIA PURPLE TOP TURNIPS LB. **39¢**

CALIFORNIA CRISP CARROTS 1 LB. PKG. **35¢**

EXTRA FANCY RED OR GOLDEN DELICIOUS APPLES LB. **49¢**



Brides-to-Be IS YOUR NAME IN OUR Bridal Registry

- TERRI ROWELL and JEFF SMYERS
- KELLY HOWARD and KEITH KARSTETTER
- JAMIE GILMORE and DANNY ANDREWS
- DONNA [COOK] and CURTIS WILLIAMS
- KARI [HAMILTON] and JOE TOM COLLINS

Park Pharmacy & Thoughtfulness Shop
115 W. Park 592-4116

We're proud to give you more!

AT AFFILIATED FOODS INC.
MEMBER STORE

THRIFTWAY

PRICES EFFECTIVE JAN. 15-20, 1984
WE RESERVE THE RIGHT TO LIMIT QUANTITIES
WE ACCEPT FOOD STAMPS

WHITE'S SUPER STORE

ParkWest Shopping Center Phone 592-4186

Store Hours: 8 a.m. - 8 p.m. Monday - Saturday; 9 a.m. - 6 p.m. Sunday

Our store family-owned and operated 20 years.

DOUBLE COUPONS EVERY TUESDAY

DOUBLE EVERY WEDNESDAY

Scholarships available to journalism students

Two high school seniors have an opportunity to win a \$500 college

scholarship, it was announced this week by Bob Hamilton, publisher of

the Iowa Park Leader.

The Leader is a member of the West Texas Press Assoc., and that organization is seeking out two future community journalists to receive stipends of \$500 each.

Through the "Bob Craig Memorial Scholarship" program, named in honor of long-time Hamlin Herald publisher Bob Craig who died in 1981, the West Texas Press Association is sponsoring an essay contest based on the theme "My Future and Career Plans in Community Journalism." High school seniors interested in pursuing a career in community journalism may submit their essays to WTPA Scholarship Committee, Marshall Day, Chairman, Drawer

1200, Seminole, Texas 79360.

The essays must be postmarked no later than April 15.

The essay is limited to a maximum of 400 words and no letters of reference will be accepted for consideration in the contest.

In addition to being a senior in high school, they must maintain a "B" average or better and plan to continue studies at a school of journalism. Once the winners are selected they must be enrolled in at least three hours of journalism each semester he or she receives assistance.

The scholarships will be divided into payments of \$250 per semester for two semesters for two students.

The essay's will be judged by the Texas Press Association.

Seven donors reach plateaus

Seven donors reached gallon plateaus when the Red Cross Bloodmobile visited Faith Baptist Church Monday afternoon. They were among 46 donors that day.

Tim Hunter, James Barrington and Elaine Hoye each completed their second gallons. First gallons were completed by Bill Kaufhold Jr., Karin King, Jim Cockrum and Carl Flatt.

Asked to comment on their reasons for donating, Hunter said "It gives me

an opportunity to serve someone in need. I also feel a little more spring in my step after giving blood."

Mrs. Hoy commented "I'm busy taking care of my home and family and this is one way I can help others without being away from my family any length of time."

The others were a little more terse in their responses: Barrington, "Habit;" Flatt, "Just a good ole boy! Save a life;" Cockrum, "Save a life;" King, "I like it;" and Kaufhold, "To help."

The Bloodmobile's visit to Iowa Park is sponsored by the Optimist Club. Volunteers who assisted Red Cross workers Monday included Suzanne Shewmake, Paul Shea and Optimists and their wives.



Friday, Jan. 20 - Bar-B-Q on bun, meat or cheese sandwich, soup, tater tots, pinto beans, sweet relish, chocolate & plain milk, cake.

Mon., Jan. 23 - Chili dogs with cheese, meat or cheese sandwich, soup, French fries, chilled fruit, sweet relish, chocolate & plain milk, cookies.

Tues., Jan. 24 - Pizza, meat or cheese sandwich, soup, buttered corn, combination salad, chocolate & plain milk, applesauce cake.

Wed., Jan. 25 - Char-burgers, meat or cheese sandwich, soup, tater rounds, pinto beans, lettuce, tomatoes, onions, pickles, chocolate & plain milk, ice cream bars.

Thurs., Jan. 26 - Turkey spaghetti, meat or cheese sandwich, soup, English peas, jello salad, hot rolls, butter, honey, chocolate & plain milk, chocolate pudding.



COMPUTER FOR KIDS

A computer program for youth age 9-13 will be held in the 4-H Auditorium in Wichita Falls from 7:30 to 8:30 Monday. The program is entitled, "Computers - More Than A Game."

The program will highlight the various uses of computers in everyday life. Scott Webb, a Valley View 4-H member, will demonstrate a computer game and lead a group activity.

All youth ages 9-13 are encouraged to attend.

MSU students are recognized

Almost ten percent of the Midwestern State Univ. students named to the Dean's List for the fall semester are from Iowa Park, according to a release from the school.

And of the 132 students named to the University Honor Roll, nine are from Iowa Park and two from Holliday.

Named to the Dean's List were Laura Ann Bowerman, Connie Kay Heard, David James Kirk and Stuart Kent Strickland. To be named, a student has made no grade below an "A" for at least 15 semester hours.

Iowa Parkans on the University Honor Roll included Lori Ann Barr, Jayna Barbara Evans, Jill Koonce Guthrie, Tim Darrell Harris, Michael

Anthony Lunney, Risa Joy Roberts, Lori Merrill Shierry, Tina Mitchell Vicklund and Carla Kay Wolf. Holiday students on the honor roll were Cynthia Carol Davis and Suzan Renee Dillard.

These students made a minimum grade point of 3.5 on a 4.0 scale, none below a "C", for at least 15 semester hours.

**-WELCOME-
ASSEMBLY OF GOD
S. Yosemite
9:45 S.S./7 P.M.
Wed. 7 P.M. Service
Rev. Charles Hensley,
Pastor**

Christ The King Catholic Church

First and Clara

8:45 a.m. C.C.D. — 10 a.m. Mass

Grace Baptist Church

511 S. Colorado - 592-5632

Come Let Us Reason Together Saith The Lord
Sunday School . . . 10:00 A.M.
Morning Worship . . . 11:00 A.M.
Children's Worship . . . 11:00 A.M.
Evening Worship . . . 6:30 P.M.
Wednesday Service . . . 7:30 P.M.
Jimmy Johnson, Pastor

First Baptist Church of Iowa Park



Yosemite at Park

SUNDAY SERVICES

Mornings
Sunday School 9:45
Worship 11:00

Evenings
Church Training 6:00
Worship 7:00

WEDNESDAY

Prayer Meeting 7:00
Choir Rehearsal 7:45

Obituaries

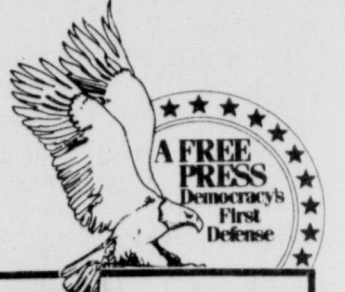
Maye Alambar

Graveside service for Maye Alambar, 87, who died Friday at Clifton, was Monday in Sacred Heart Cemetery in Wichita Falls. Deacon Pat Burk officiated.

He is survived by three sons, Maye Jr. of Valley Mills, Andrew of Wichita Falls and Roman of Iowa Park; three daughters, Frida Zamora of Calif., Jaunita Flores of Odessa and Louise Paz of Minnesota; two brothers, Elano of Stamford and Tranklino of Winters; 33 grandchildren; and 34 great-grandchildren.

He was born Dec. 16, 1922, in Shawnee, Okla. and was employed as an aerial photographer and patrol.

He is survived by his wife, Emma; four daughters, Marsha Jones and Wanda Adams, both of Dallas, Dixie Stout of Arlington and Janet Stout of Oakland, Calif.; two sons, Steve of Fort Worth and Lloyd of College Station; a sister, Lillian Lund of Mercer Island, Wash.; two brothers, R.B. of Canadian and Dean of Manson, Wash.



MEMBER 1983
TEXAS PRESS ASSOCIATION

Glenn Stout

Services for Glenn Stout, 61, who died Thursday in a plane crash near Throckmorton which also took the life of Bobby Sunday of Padueah, were held Monday at the University Methodist Church in Wichita Falls. Rev. Gene Gordon officiated and burial was in Crestview Memorial Park under direction of Hampton-Vaughan Funeral Home.

Church of God

601 E. Cash

Pastor, Ole Olds
Sun. Morning Worship 11:00
Sun. Night Celebration Service 7:00 p.m.
Tues. Ladies Prayer Service 10 a.m.
Wed. Night Bible Study 7:30
Sat. Family Night 7:30
"Catch the Vision"

Par. 592-5316

Office 592-4348

First Christian Church

105 E. Cash

Sunday School - 9:45 a.m.
Worship - 10:55 a.m.
Corner, Cash & Bond St.

We encourage each of you to worship Jesus Christ in the church of your choice. If you do not have a church home, we invite you to come worship with our church family.

Pacific Avenue Missionary Baptist Church

1400 North Pacific Avenue

Larry Washburn
Pastor
Church - 592-9711
Pastor 592-4288



Sunday School 9:45 a.m.
Morning Worship 11:00 a.m.
Evening Worship 6:00 p.m.
Wednesday 7:00 p.m.

Everybody Welcome

First United Methodist Church

201 E. Bank

Church School 9:40 Youth Meetings 5:00
Morning Worship 10:40 Evening Worship 6:00

GEORGE TOPPER, PASTOR

Welcome To The Worship and Fellowship of

First Presbyterian Church

CHURCH SCHOOL - 9:45 A.M.
FELLOWSHIP Time - 10:40 A.M.
MORNING WORSHIP - 11:00 A.M.

GOOD SHEPHERD LUTHERAN CHURCH

1st & Magnolia
Iowa Park

Sunday School: 9:45 a.m.
Worship Service: 10:30 a.m.

Kamay Road Church of Christ

Corner of Colorado & Emerald

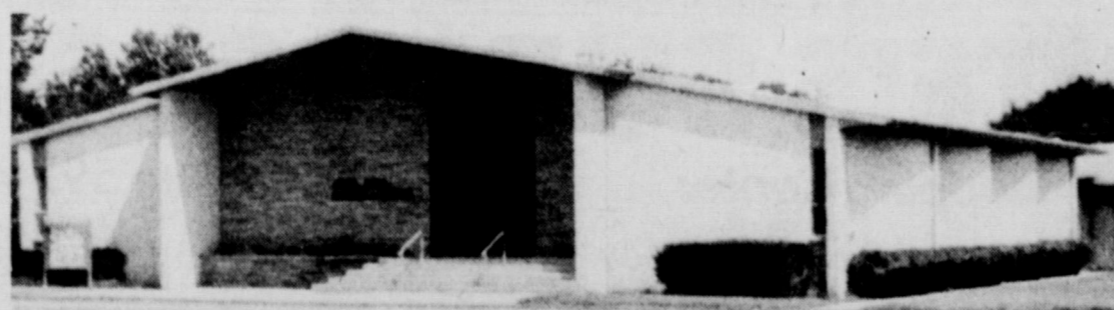
Seeking the Old Paths

Lord's Day 10:30 a.m. & 6 p.m.
Wednesday 7:00 p.m.

IOWA PARK CHURCH OF CHRIST

SCHEDULE OF SERVICES

Bible Study	Sunday	9:30 a.m.	Wednesday	10:00 a.m.
Worship		10:30 a.m.	Ladies Bible Study	7:30 p.m.
Evening Worship		6:00 p.m.	Evening Study	



300 East Park, Iowa Park, Texas 76367, [817] 592-5415

YOUTH SERVICE

7 p.m.
Friday

with Rev. Jimmy Banks preaching

First Assembly of God

200 S. Yosemite

EVERYONE IS INVITED TO ATTEND

GOSPEL SINGING

WOOLF FAMILY SINGERS

JAN. 21-22

SAT. — 7:30 p.m.
SUN. — 11:00 a.m.
& 7:00 p.m.

Church of God

Ph. 592-5316

NURSERY PROVIDED

VIDEO CARE
Parkwest Shopping Center
592-5552
Television Repairs
Guaranteed service on most major brands.

- 1130 (2) AMERICA'S TOP TEN
(3) FOCUS ON SOCIETY
(4) CAROL SQUAD
(5) THE WORLD CUP: Women's
(6) WRESTLING: USA Update
(7) THE SUPER BOWL TODAY
(8) THE SUPER BOWL: A Preview
(9) THE SUPER BOWL: A Preview
(10) THE SUPER BOWL: A Preview

- 1130 (2) AMERICA'S TOP TEN
(3) FOCUS ON SOCIETY
(4) CAROL SQUAD
(5) THE WORLD CUP: Women's
(6) WRESTLING: USA Update
(7) THE SUPER BOWL TODAY
(8) THE SUPER BOWL: A Preview
(9) THE SUPER BOWL: A Preview
(10) THE SUPER BOWL: A Preview

- 1130 (2) AMERICA'S TOP TEN
(3) FOCUS ON SOCIETY
(4) CAROL SQUAD
(5) THE WORLD CUP: Women's
(6) WRESTLING: USA Update
(7) THE SUPER BOWL TODAY
(8) THE SUPER BOWL: A Preview
(9) THE SUPER BOWL: A Preview
(10) THE SUPER BOWL: A Preview

- 1130 (2) AMERICA'S TOP TEN
(3) FOCUS ON SOCIETY
(4) CAROL SQUAD
(5) THE WORLD CUP: Women's
(6) WRESTLING: USA Update
(7) THE SUPER BOWL TODAY
(8) THE SUPER BOWL: A Preview
(9) THE SUPER BOWL: A Preview
(10) THE SUPER BOWL: A Preview

- 1130 (2) AMERICA'S TOP TEN
(3) FOCUS ON SOCIETY
(4) CAROL SQUAD
(5) THE WORLD CUP: Women's
(6) WRESTLING: USA Update
(7) THE SUPER BOWL TODAY
(8) THE SUPER BOWL: A Preview
(9) THE SUPER BOWL: A Preview
(10) THE SUPER BOWL: A Preview

COUNTER TOPPING
FORMICA WILSON-ART MICARTA
T.S. THOMAS, CABINETMAKER
1516 Beverly Wichita Falls
Ph. 723-6523

Burk sweeps four

"Don't worry, don't you worry, we got 'em in a four-game sweep!" That was the rhythmic chant of the Burk Burnett student section as the scoreboard clock wound down during the varsity boys' game Tuesday in Burk gymnasium.

It was true, too. The host Bulldogs teams won both junior varsity and varsity games from the visiting Hawks.

Though it was not entirely unexpected in the varsity boys' game, the Dogs standing 11-5 and 3-1 going into the contest, it was a surprise to the varsity girls. Iowa Park went into the game with a 17-4 season and 5-1 conference record while Burk was 8-11 and 2-4.

The outcome: varsity boys, Burk 74, Iowa Park 62; varsity girls, Burk 58, Iowa Park 55; boys' JV, Burk 54, Iowa Park 45; girls' JV, Burk 31, Iowa Park 28.

It was the only four-game sweep of Iowa Park this season.

In the Hawks' game, Iowa Park kept the game tight through the first half, with the score tied at 32-32 at the half. But the Bulldogs outscored their visitors 20-11 in the third frame, and never looked back. Three Hawks, Donnie Cavinder, Robert Harper and Joey Bates, scored 10 points each.

Though they outscored Burk Burnett in the second half, the Hawkettes hit a cold spell in the final three minutes of their game. They had trailed 30-21 at the half, but tied the score at 53-53 with 3:01 remaining in the game.

But from that point, Iowa Park sank only one of nine field goal attempts, and that came with 12 seconds remaining. Burk tried to give it up by missing five of nine free shots.

Four Hawkettes wound up in double figures: Lisa Sefcik 12, Lisa Holloway, Dana Trantham and Michelle Smith 10 each.

BEAT GAINESVILLE, AZLE

It was a different score Friday and Saturday.

Iowa Park posted a four-game sweep of Gainesville here Friday, with the Hawks winning 45-58, Hawkettes 64-55, Hawk JV 60-49 and Hawkettes JV 57-23.

The Hawks outscored their guests 25-10 in the final period.

Leading the Hawks to their first district win of the season were Cavinder, who scored 12 points, and Brian Gray, with 11.

Holloway canned 19 points in the Hawkettes victory, followed by Lisa Selby's 15 and 13 by Sefcik.

Saturday, the Hawkettes played a make-up game with Azle, which had been postponed from Dec. 20 because of bad weather.

Despite a second half that was as cold as the day the game was postponed, the Hawkettes still managed a 34-33 win. Leading 25-18 at the half, Iowa Park scored only

nine points in the second half, four in the third quarter and marching Azle's five in the fourth.

"We took plenty of good shots, but nothing would fall," commented Coach Ray Sefcik.

Holloway was the only Hawkettes in double digits, with 15.

GAMES TOMORROW

Iowa Park hosts Mineral Wells Friday. Four games are scheduled, with girls' junior varsity slated to start at 8:30 p.m. This will be the first meeting with Mineral Wells this season.

Tuesday, the teams travel to Azle, and the following Friday they are on the road again, to Saginaw Boswell.

Michelle Smith draws crowd under basket.



MICHELLE SMITH DRAWS CROWD UNDER BASKET



RAY SEPCIK DRIVES FOR BALL DURING TUESDAY'S GAME

HAPPY BIRTHDAY
Skinny Mennie
Love, Mom, Dad, Judy,
Ricky & Carl

Little League meeting set

Elections for board of directors and officers for the 1984 Little League season are scheduled to commence at 6:30 p.m. Sunday in the Texas Electric Ready Room, signaling the start of yet another round of baseball action in Iowa Park.

Coaches, parents and all other interested persons are encouraged to attend the meeting, with past officials and participants likewise encouraged to help plan the upcoming season.

Immediately following the elections will be a short discussion of the 1984 season, with the main topics concerning starting dates and need of volunteer help.

ACTIVITIES in Neighboring Communities

GARDEN SEMINAR TODAY

The Wichita Falls Farmers Market, in conjunction with the County Extension Agent, are again this year presenting a growing and marketing seminar.

The seminar will be held at the Wichita County Agents Office at 1626 Midwestern Pkwy. from 6 to 9 p.m. today. A hamburger supper will be served at 6:30 p.m.

WALLACE TO SPEAK

Texas Railroad Commissioner Chairman Mack Wallace will address the North Texas Oil and Gas Association's sixth annual regional membership meeting in Graham. The luncheon meetings is scheduled for Jan. 25 at noon at the Graham Country Club.

NEW — NEW —
NEW — NEW —

ROAST BEEF SANDWICH \$1.69
Reg. \$1.99

803 West Highway
FORTAKE OUT ORDERS
CALL 592-4731

SUPERBOWL SALE!
STOCK UP FOR YOUR SUPERBOWL PARTY AT ALLSUP'S

AS FEATURED ON TV.
R.R.O. SANDWICH 99¢
FRESH / HOT!

FRITOS CORN CHIPS \$1.39
REG. \$1.69
REGULAR 10 OZ. BAG / 1/2 GAL. CTR.

BORDERS HI PRO MILK \$1.19
1/2 GAL. CTR.

ALLSUP'S CONVENIENCE STORES
OPEN 24 HOURS FOR YOUR CONVENIENCE WE ACCEPT FOOD STAMPS

PRICES EFFECTIVE JAN. 19-21, 1984 WHILE SUPPLIES LAST!

PRICES GOOD BOTH HOLIDAY & IOWA PARK STORE

32 OZ. YOUR FAVORITE FOUNTAIN DRINK 39¢
1 LITER / 1/2 GAL. CTR. / RESEALABLE / REUSABLE / DISPOSABLE / CUP

BORDERS ICE CREAM \$1.69
1/2 GAL. CTR.

COKE or SPRITE 2-Liter 95¢
Each

HORNET BLACK LABEL BACON \$1.49
1 LB. PKG.

GRANULATED SUGAR \$1.49
5 LB. BAG

KLEENEX FACIAL TISSUE 79¢
250 CT. BOX

ALLSUP'S MONEY ORDERS 29¢
EACH UP TO \$200

FAST 'N HOT SAUSAGE-EGG-TOAST BREAKFAST SANDWICH 99¢
REG. \$1.19

...ENJOY FRESH HOT COFFEE ANYTIME...

SPORTS SHOW SET

The 1984 Northwest Texas Field and Stream Association sports show opens Tuesday, Jan. 24, for five full days at Sikes Center Shopping Mall in Wichita Falls. Free admission to all exhibits will be regular Mall hours of 10 a.m. to 9 p.m. thru Jan. 28.

Cut out for Ken's Pizza!
592-4184
902 W. Hiway

LARGE SINGLE TOPPING PIZZA
PITCHER
SOFT DRINK
and
TWO SALADS
\$10 ^{\$15} VALUE

Coupon expires Jan. 25, 1984



Moore, Camp & Company audit approved by city

Friday, January 20
Breakfast: Waffles, milk, juice, syrup.
Lunch: Cheeseburger, lettuce, tomato, onions, chips, pickles, milk.

Monday, January 23
Breakfast: Frosted flakes, milk, fruit.
Lunch: Burrito with chili and cheese, salad, mixed vegetables, cookies, milk.

Tuesday, January 24
Breakfast: Donuts, juice, milk.
Lunch: Tacos, lettuce, cheese, corn, cobbler, milk.

Wednesday, January 25
Breakfast: Biscuits, milk, gravy, fruit.
Lunch: Ranch steak, creamed potatoes, green beans, bread, milk, ice cream.

Thursday, January 26
Breakfast: Cheese toast, milk, juice.
Lunch: Lasagna, green beans, salad, milk, butter, bread, fruit.

Holliday City Council Monday night accepted the presentation of Garland Ray's final plat for annexation of approximately 28 acres of land into the city, and, in other action, approved the FY-83 audit compiled by Moore, Camp and Company.

The action, taken during the council's regular bi-monthly meeting, was accompanied by a call for an annexation ordinance concerning the Garland Addition Section II proposal, to be prepared by the city attorney, Gary Southard.

Approval of the final plat must also come from the county level before final acceptance. The 28 acres of land is situated on the northwest edge of the current city limits, just west of FM 368.

Danny Moore, Camp and Company presented the FY-83 city audit showing the city in sound financial

condition. City administrator Jim Hamill, during the council's last meeting held earlier this month, indicated from conversations with Moore that the city could jog certain funds to create an additional \$9,000 towards the purchase of a new city dump truck, when added to the

anticipated-revenue sharing fund for the coming fiscal year.

In other business, Fire Chief Rod Dolberry approached the council requesting funds for the purchase of a walkie-talkie, and merit pay raises were discussed.

Eagles, Lady Eagles continue winning ways

Holliday High School's varsity basketball teams continued their winning ways over the week, taking wins over Nocona and Petrolia at home.

Coach Steve McIlhenny's Lady Eagles went 2-1 in District 11-AA play with a 43-31 revenge-filled win over the Lady Indians Friday night, and a 47-40 win over Petrolia Tuesday in Eagle Gym.

Buffie Broyles led the Lady Eagles against Nocona with 14 points while Cheryl Lowder matched the same point total against the Lady Pirates. In the junior varsity girls' game against Nocona, the local girls prevailed 28-18, while against Petrolia the junior varsity squad played a stout defense to go ahead 30-7.

Coach Bill Higgins' Eagles earned two tough wins to up their record to 14-5 for the year, 1-0 in zone play. Against Nocona Friday night, Les Dolberry canned 18 and Pat Capps 12 to outlast last year's defending district champs 47-42. And, Tuesday, Dolberry again led the Eagles with 12 points, followed closely by 11-point totals from Guy Gilmore and Gradlin Franks to beat back the Pirates 43-24.

The loss dropped Petrolia's district record to 1-1.

Both varsity squads hit the road the next two games, with Olney hosting them Friday night, then to Henrietta Tuesday for another pair of important conference tilts.

Other scores from District 11-AA Friday and Tuesday are: **BOYS** - Petrolia 56, Archer City 54; Olney 51, Henrietta 34; Olney 60, Archer City 49; Nocona 41, Henrietta 40. **GIRLS** - Olney 61, Henrietta 45; Petrolia 43, Archer City 40; Olney 60, Archer City 49; Nocona 44, Henrietta 41.

Finnell attends Washington meet

State Rep. Charles Finnell is one of 200 state legislative leaders, selected nationwide, to participate in a Washington D.C. briefing of administration cabinet members in Washington, D.C., this week.

The meeting with the U.S. President and cabinet, and selected state legislative leaders is a task of the American Legislative Council (ALEC).

The exchange of information between state and federal leaders is designed to provide for a greater communication of concerns at the

state and national levels by government decision-makers.

ALEC is a non-partisan public affairs and research organization made up of moderate-to-conservative state legislators, both Democratic and Republican.

"I am pleased to have the opportunity to be a part of this briefing because I feel it is vital to have a broad understanding of national problems that impact us on a state and local level," stated Finnell.

State legislators attending are personally responsible for their expenses.

SOCIAL SECURITY TIPS

NEW EMPLOYEE/EMPLOYER TAX RATES

On April 20, 1983, the president signed into law a revised Employer-Employee Tax Rate Schedule, which accelerates the current tax rate schedule.

Beginning Jan. 1, 1984, The FICA Employer/Employee tax rate will increase to seven percent. It will again increase to 7.05 percent in 1985.

In 1986 and 1987, the tax rate will advance to 7.15 percent.

A significant increase takes place in 1988 and 1989, when the tax rate will increase to 7.51 percent. Beginning 1990 and thereafter, the tax is proposed at 7.65 percent.

The new law also provides a credit for employees, for 1984 only, of 0.3 percent of their wages. In actuality, the employees will pay 6.7.

Holliday News

Child abuse P-TA topic

Holliday P-TA will hold its regular monthly meeting at 7:30 p.m. Monday, Jan. 23 in the Holliday High School Library, at which time a local broadcast media personality will discuss her viewpoint concerning child abuse, according to Landis Hogue.

Kay Shannon, co-anchorman for

KAUZ-TV Channel 6 in Wichita Falls will be the speaker, and will center her comments around child abuse from the broadcast media's point of view.

Hogue said all persons interested in either the P-TA or the subject of child abuse are encouraged to attend.



DON DECKER

"Short Rows" with

FARMERS' GRAIN & FERTILIZER, INC.

FERTILIZER FEATURED

Protection of stored wheat during the winter is important yet easy to overlook. The best treatment for small amounts of grain is a mixture of carbon tetrachloride and carbon disulfide.

Fred Dwyer on Bacon Switch treated 2000 bushels of wheat last week using our chemical. He applied the grain fumigant at the rate of 1 gallon per 500 bushels.

Garden fertilizer at field fertilizer prices is a feature at our store in preparation for the spring gardening season. T.M. Hail of Iowa Park applied 13-13-13 fertilizer and gypsum before tilling his garden last week. He used 13-13-13 at the rate of 1 1/2 lbs. per 100 sq. ft. and gypsum at 10 lbs. per 100 sq. ft. He chose to buy our bulk gypsum which is only \$3.00 per 100 weight.

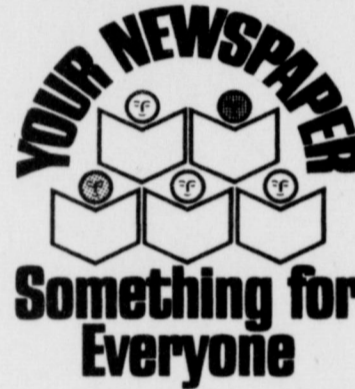
Virgil Woodfin also tilled and fertilized his garden last week. He said, "the soil had just the right amount of moisture and worked-up very well."

Bob Carlton of Thornberry also took advantage of our 13-13-13 fertilizer feature. He obtained enough material to treat his 600 tree peach orchard late in February. His trees will be in their 3rd leaf this year and he is applying 2 pounds of 13-13-13 per inch diameter of the tree trunk. The fertilizer will be applied under the dripline of the trees.

211 S. Victoria

592-4118

Iowa Park



Something for Everyone

JANUARY SALE — 25% to 50% OFF

ALL PLANTS AT

Plants Etcetera

2951 Elliott, W.F.

Open 10 a.m. - Dusk, Mon.-Sat.



ask for our
"Full Meal Deal"



\$2.59
Only at participating stores.

If you're looking for a great meal and a great deal, look at all you get for just \$2.59

- Quarter-pound; 100% pure beef Hungr-buster® made to order.
- French Fries.
- Medium soft drink.
- 5-oz. D.Q. Sundae, your choice of topping.

At \$2.59 it's not just a deal, it's a steal!



1984 brings a new corporation

With the coming of the new year, Southwestern Bell has a new beginning. The operating company that was once part of the Bell System has become a stand-alone entity, **Southwestern Bell Corporation**, or **SBC** as it appears on the New York Stock Exchange.

Southwestern Bell Telephone is just one of four companies within Southwestern Bell Corporation. Southwestern Bell Telephone will continue to provide:

- Installation, maintenance and repair of local telephone lines
 - Local telephone service
 - White Pages directories
 - Custom Calling Services
 - Monthly billing statements, which will include invoices for SWBell Telephone, AT&T Communications long distance, AT&T Information Systems and possibly other companies
 - Long distance within Service Areas
 - Public telephones
 - Directory Assistance
 - CO Centrex and ESSX-30
- Southwestern Bell Telephone will provide terminal equipment and modems for business customers and also sell residence telephone sets.

Southwestern Bell Publishing will handle Yellow Pages directories and other services.

And, Southwestern Bell Mobile Systems will handle cellular mobile phone service.

Each of the four companies of Southwestern Bell Corporation will exist separately and apart from each other. In fact, one or more of the subsidiaries will form their own subsidiaries to enter other competitive fields.

Directory deliveries

You may have wondered how you will receive telephone directories during 1984.

If you are a new customer, or a customer transferring service from one area code to another, your directory will be delivered to you once you order your telephone service from Southwestern Bell Telephone.

You will be provided with the directory in which your name is listed. If you want copies of other city directories, you may order these for a fee through your local telephone business office.

Modular jacks

Today, most houses and apartments are equipped with modular phone jacks. When you move, there is usually no need to take your modular jacks with you. Removing these jacks can damage telephone wires connected to the jacks.

For more information

To help customers better understand telephone industry changes, Southwestern Bell Telephone is offering a free series of "Keeping in touch with change" booklets.

To order, just complete the coupon below and return to the address shown.

Please send me the following "Keeping in touch with change" booklets:

- An overview of divestiture (for Residence customers)
- An overview of divestiture (for Business customers)
- Long distance
- Telephone equipment and repair
- Billing

(Please print)

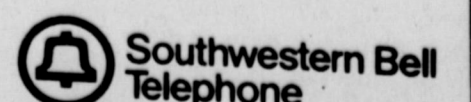
NAME _____
ADDRESS _____
CITY _____
STATE _____ ZIP _____
PHONE _____

Return this coupon to:
"Keeping in touch with change"
% Southwestern Bell Telephone
Drawer 8, Dept. M
St. Louis, MO 63188

(Do not enclose your coupon in the envelope with your monthly bill payment.)

Remember, if you have something to talk about, don't hesitate to drop me a line. Here's my address:

Dan Adams
SW Bell Telephone
2121 Paradise
Vernon, TX 76384



Put Yourself in the Marketplace, in the Classifieds

DEADLINES

10 A.M. WEDNESDAY (Word Ads Only)
4 P.M. TUESDAY, DISPLAY ADS

**SAVE 10¢ PER WORD FIRST
INSERTION BY PAYING
WITH COPY AT OFFICE**

RATES:

20¢ PER WORD FIRST INSERTION
10¢ PER WORD EACH REPEAT

\$18,000 for this two-bedroom home. Carpeted, paneled, large dining room on two lots. Century 21 Gold Coat Realtors, 762-1311 or 855-5089.

1-19-12c

DOWA PARK Do you make \$14,800 a year or less, would you like to live in a new 3 bedroom, 1 1/2 bath house. Full carpeted with central heat/air, with extremely low payments.
SWAN CONSTRUCTION COMPANY, 692-8788.

1-4-12c

ASSUME and owner will carry second on this low interest VA loan. 3-bedrooms, 1 1/2 baths, corner lot, large shop or game room. Call Rosemary, Century 21 Gold Coat Realtors, 762-1311 or 855-5089.

1-19-12c

REDUCED Corner lot across from Kidwell. 3 bedroom, 1 1/2 baths, family kitchen. Owner says sell it.

CLOSE TO CRYOVAC Priced to sell. 4-bedroom, 2 bath, brick home. Central heat, air. Very nice for the price.

JOAN SHERRY
592-5540
HIRSCH REALTORS
692-4120 691-1112

3 BEDROOM brick close to elementary schools. Well-kept home. \$45,000.

3 BEDROOM BRICK Double garage, fenced. Ready to move in. \$36,000.

COMPLETELY remodeled. Mint condition. 2 bedroom. Nice area. \$20,000.

LOVELY LARGE older home. Close to downtown. 3 bedroom, formal dining and living, nice den, all built-ins. \$45,000.

18.8 ACRES - 2 stock tanks, good fishing, large barn. Double-wide trailer 1 mile north expressway on Huntington Lane. \$60,000.

7 - 50 FT. LOTS \$10,000. Good home sites.

LOT WITH TRAILER house hook-ups. Ready for your trailer. \$7,000.

3 BEDROOM brick - 2 bedroom separate unit, great for rental. Extra large lot. Allowance allowed for painting. \$60,000.

2 BEDROOM home on 3 lots. Storm cellar, extra buildings. \$25,000.

CORNER LOT - 3 bedroom, 2 bath, formal living, fireplace in den. Landscaped & privacy fence. \$66,000.

Shirley Rains
Real Estate

HOMETOWN REALTOR
SHIRLEY RAINS Broker
Member Multiple Listing
119 W. Park 592-4248
IOWA PARK, TEXAS 76367
Vincent Rains 855-3698

REBECCA, 3 bedrooms, 1 1/4 baths, fireplace, built-ins, fenced. \$485 monthly. \$400 deposit. Century 21 Charles Chandler Real Estate, 692-1420.

1-5-12c

FOR RENT
BEDROOM with kitchen privileges, 504 N. Pacific 592-9822.

1-12-12p

REAL ESTATE
10 ACRES, southwest of Iowa Park. Fenced, stock tank, picnic area. 5 acres cleared for farming or home site. Call 586-1886.

1-19-12p

MISC. FOR SALE
FOR SALE - G.E. refrigerator, harvest gold, \$200. 1825 Sunset, 592-5453.

1-19-12p

KENMORE WASHER, \$40; platinum rocker, \$25. 592-9814.

1-19-12c

FOOSEBALL TABLE for sale. 592-9877.

1-19-12c

Great Starter Home

For young couple. 3 bedroom, 1 and 1/2 bath house for sale near Cryovac Plant.

Call 691-2500 or 691-7607

SOON BE SPRING
Ideal home site, 8 acres. Hard surface road, close in. Water meter. Owner finance \$20,000.

800 N. JACKSON
Extra clean two bedroom home. Paneling and nice carpet throughout. Good corner location. \$25,000. Price may be negotiated. Owner Realtor.

511 E. RUBY
Two large corner lots, 14x80 Town & Country Mobile Home. \$20,000. Look and make offer. Owner Broker.

QUICK POSSESSION
Extra clean 3 bdrm. brick. Almost new. Cent. heat/air. \$40,000. VA

CLEAN & BRIGHT
3 bdrms., den, new built-ins, cent. heat/air, carpet. Good Buy. \$5,000 below VA appraisal or make offer.

MOVE IN
New 3 bdrm. brick, 2 baths, good floor plan. \$500 below VA appraisal or make offer.

MOVE IN & FINISH
1296' living area. Unfinished 3 bdrm. 1 1/4 baths, 2 lots, well & garden. \$20,000, or make offer.

MOBILE HOME
2 bdrm. on 2 lots. Double garage with upstairs storage. Corner. \$14,000.

LOTS
In Garden Valley. Some curb & gutter.

Established local realtors

Member Multiple Listing

Sam D. Hunter
Real Estate

107 E. Cash Ph. 592-4661

PECANS - paper shell \$1.00 lb. for 10-lb. bag; 75 cents lb. for 100 lb. bags. Free delivery 20 lbs. or more. Iowa Park Florist 592-2326 or Jimmy Howell 438-2386.

12-15-12c

1970 FORD Ranger, excellent running condition \$1800. 592-9453.

1-19-12p

CASE TRACTOR, drag type, just overhauled, new paint; also Graham Home plow and various other sweeps. 592-5772 or 762-1454

1-5-12c

1971 MAVERICK 170 six standard, 2-door, very dependable. \$650. 592-2618.

1-12-12p

LONGHORN BULLS for sale. Call 592-4155 or 592-9882.

12-29-12c

FIREWOOD - Oak. 592-5586 or 592-4814.

1-19-12p

BUSINESS

CHILD CARE Monday - Friday, 7 a.m. - 5 p.m. Any age. Also after school. 592-4090.

1-19-12p

REGISTERED HOME, infants to toddlers, loving care. 592-5368.

1-19-12p

REGISTERED Child Care. Have openings 6:30 a.m. - 5:30 p.m. 592-4412.

1-12-12p

REGISTERED Child Care. Have openings for 1 or 2. 5:30 a.m. - 5:30 p.m. 592-9561.

12-14-12p

Quail Run Apartments

1-2 Bdrm. Ground Floor, Central Heat & A/C. Appliances. Laundry. Close to school & public park. Starting at \$180 per month to qualified tenants. Gas & water paid. Call 592-5813.

SUNSET TERRACE
One bath, nice den, large livingroom, kitchen & dining area. \$29,500.

WEST ALAMEDA
Lovely brick 1 1/2 baths, three bedrooms, with fireplace, built-in kitchen. \$42,500. New VA appraisal.

THREE BEDROOM
one bath, living room, dining room, large kitchen, central heat & air. \$29,900.

EAST ALAMEDA
Two bedrooms, one bath, lovely paneling, single garage. \$27,500.

SUNSET
Four bedrooms, 1 1/2 baths, nice garage, large lot, fenced yard. \$42,250.

Try The Action Co. I Think You Will Like Us

MEMBER MULTIPLE LISTING SERVICE

JOHNNY LEE REAL ESTATE

592-2378
109 W. Cash

REGISTERED Child Care. Monday thru Friday. 592-9055.

1-5-12p

REGISTERED Child Care in my home in Kidwell area. 5:30 a.m. - 5:30 p.m. 592-9561.

1-5-12p

IRONING - Pick up and deliver in Iowa Park. \$7 down. Substituting in the evening and some weekends. Call Judy. 1-438-2368.

1-19-12p

LOOKING for houses to clean. Call Judy at 1-438-2368.

1-12-12p

REMODELING? Do you need another room added on? A garage? Walls removed or added? Free estimates. References. Jack Kerr, 215 S. Wall, 592-9040, 438-2941.

1-7-12c

FOR YOUR COPY NEEDS including reduction and enlargement, call Iowa Park Air Conditioning, 592-5891, or come by 609 W. Bank. Charges 20 cents a copy (less for quantities).

10-6-12c

TOLER'S FOLK ART, \$10 S. Yosemite, Iowa Park. 592-5862.

1-5-12p

REMODELING Concrete - Additions, driveways. 592-8555.

1-12-12p

BURZEE ROOFING & Painting, 592-4846 or 592-3493. All work guaranteed.

1-5-17p

CARPENTER WORK - remodeling, repairing, interior-exterior painting. Cabinet work, roof repairing. Joe Blizard 592-4704, Iowa Park.

1-5-12p

NOW RENTING PRESTIGE APARTMENTS

Starts \$325
1100 sq. ft.
Fireplace
2 1/2 Bath
Microwave
Dishwasher
Refrigerator
Full size Washer
Dryer Hook-ups

592-2989 or 592-5434

Colonial Heights Apartments

Magnolia St. at Johnson Rd. IOWA PARK
One and two-bedroom apartments, energy efficient, central heat/air, total electric appliances, fully carpeted and draped. Children's play area. Off-street parking. Fully equipped laundry room. Month to month rent starting at \$181.00 for one bedroom, and \$220.00 for two bedroom apartment (to qualified persons). Water paid.

CALL 592-2705

STORM WINDOWS - Machine-blown insulation. Roof turbines installed. Free estimates. Jack Kerr, 215 S. Wall, 592-9040, 438-2941.

1-7-12c

ROOFING - Waite Roofing Co. Phone 855-3657.

10-6-12c

BUILDING, remodeling, or repair, additions, carpentry, putouts. Free estimates. Call day or night Billy McDonald 592-4338, Phil McDonald, 592-2363.

11-17-12c

MONOGRAMMING service 592-9850.

1-5-10p

CORRELL'S Tree Service, trimming, cabling, shrubbery work. Free estimate. 592-2200.

1-5-12p

MARY KAY COSMETICS Allie Girard, consultant, 109 W. Poe, 592-4217.

1-6-12c

BLACK POWDER GUNS and accessories, revolvers \$50 and up. Powder \$4.80 lb. Will order modern guns for 10% over cost. Ye Ole Gun Shack, 413 W. Washington, 592-5430.

1-6-12c

PRIVATE FENCE sales and installation. Charles Skelton, phone 592-5190.

1-6-12c

BURK SAND, Yards, Clean Up, Don Hallum, 804 N. Wall, 592-4365.

1-7-12c

LADY FINELLE natural cosmetics at reasonable prices. Call Annetta Reusch, 592-9001 for a free facial.

1-6-12c

MARY KAY Cosmetics, Ann Moore, 592-4752.

6-19-26p

JERRY'S VINYL REPAIR recoloring, auto, furniture, commercial. Free estimates. 438-2243.

1-7-12c

NEW AT NEW NEARLY NEW STANLEY HOME PRODUCTS

410 Park West Center Ph. 592-9563

AUTO DETAIL WORK - Compound, wax, \$30 by appointment. Minor body work. 855-2089. 592-9021. Pickup and delivery. 1016 N. Beverly.

1-19-12p

HELP WANTED

NEED HELP 2 hours in evening, 5 to 10, 3 days \$50 per week. Baithe invalid, light housework 592-5260.

1-19-12p

NOTICE

LOST - Masonic ring Saturday. \$25 reward. 592-4594.

1-19-12p

LOST - Bluebird cockatoo, 70 lbs. in Iowa Park, in December. Reward. Call 592-5048.

1-19-12p

PUBLIC NOTICE
The City of Iowa Park, Texas is accepting sealed bids on a Burroughs L6000 posting machine until 10:00 A.M. on Thursday, February 23, 1984. Questions may be directed to James Barrington at (817) 592-2131 or the machine may be viewed at City Hall, 103 North Wall, P.O. Box 190, Iowa Park, Texas, 76367.

1-19-12c

Southwest Bail Bonds City, County & Credit Bonds 24-Hour Service Confidential Assistance 692-1391

SHAW SPECIALS

'79 Dodge Aspen 6-cylinder, 4-door, automatic, air, power. Extra clean. Was \$8870 Now \$2790

'81 V.W. Pickup 4-cylinder, 4-speed, air, local one owner. Was \$4570 Now \$3975

'80 Chevy Monza 2 plus 2 V-6, automatic, air, power, low mileage. Local owner. Was \$4550 Now \$3450

'79 Ford F 700 2 1/2-ton truck. Good workhorse. Was \$6950 Now \$3995

'79 Ford Courier Pickup Power, air, local one owner. Was \$3850 Now \$2995

Two '79 Ford LTDs 2-door hardtops, all power, air. Were \$3950 Your choice \$2750

'79 Ford T Bird Red and white. Loaded with equipment. Was \$3870 Now \$2960

30 OTHER CARS & PICKUPS TO CHOOSE FROM AT:

Shaw Motor Co.
Iowa Park 592-4106

PUBLIC NOTICE
The Planning and Zoning Commission of the City of Iowa Park, Texas, will conduct a Public Hearing at its regular meeting on February 6, 1984, at 7:00 P.M. in the City Council Chamber. The purpose of the Public Hearing is to consider a request for a replat of Lots 22, 23, and 24 of Block 8, Garden Valley Addition into a single lot to be designated 22A with the removal of easements (1119) South Texawal.

1-19-12c

PUBLIC NOTICE
The City of Iowa Park, Texas is accepting sealed bids for Lot 49 of Block 2, the Original Townsite of Iowa Park, Texas, being the tract of land North of the City Hall (site of the old hotel). A legal description may be obtained at City Hall. Sealed bids will be received until 10:00 A.M. on February 7, 1984, at which time they will be publicly opened. Proceeds from the sale of this property are to be used for the benefit of the Burnet Memorial Library. The City reserves the right to reject any or all bids.

1-19-12c

King's Kids Christian Day Care & Preschool
"Iowa Park's Finest For Parents Who Care"
Ages 2 Yrs & Older Monday thru Friday 7 a.m. to 6 p.m.
202 N. Jackson 592-4242

"MONEY WHEN YOU NEED IT"
Loans on most anything of value
SOUTHWEST SALES & LOANS
4025 Fifth St. 592-1571

Patty Cake Nursery School
...is now taking applications
592-2926 or 592-2398
DIRECTIONS - North on Bell Rd. across U.S. 287, turn right (east) on Rogers Rd. just past Gilmore's yard, 1/4-mile to house, look for sign.
Lajuana Vanek, owner/operator

Kuntry Klass
PACKAGE STORE
(Formerly B.J.'s & Bob's)
4100 Old I.P. Road 855-6702
Betty Guyette, Owner

E&S Exxon
EXON • Tune-ups • Brakes
• Front-end alignment
592-4897 • Pipe bender & computer balance
612 W. Highway

IOWA PARK
Air Conditioning & Heating
Service On All Makes Engineering Sales
807 W. Bank FRANK GUYETTE
PHONE 592-5891

Bud Mercer Electric Co.
Residential & Commercial
BUD MERCER, Owner Phone 592-5413
HARDIN HILL Phone 592-2666

We service all makes of washers, dryers, freezers, refrigerators and window air conditioners.
POSEY'S APPLIANCE SERVICE
208 James Ph. 592-5452 Iowa Park