

1984  
Mar 29

EARL WATSON  
520 W. CLARA  
IOWA PARK TX 76367 112

# Library receives \$200,000 grant

## Foundation's gift assures renovation project

Iowa Park will have the fine library residents have long sought. The Tom L. Burnett Memorial Library was virtually assured recently by a \$200,000 grant from the Ann Burnett and Charles Tandy Foundation, headquartered in Fort Worth.

Library, a non-profit group organized to undertake the project. Iowa Park received \$100,000 earlier from the state to match money raised locally through donations and pledges. An architect, Don Daugherty, has already been commissioned to draft the plans for the renovation project. Monday, the library group approved contracting with a master librarian to serve as a consultant with

Daugherty. The use of the librarian was stipulated when the state grant was accepted. Linda Allmand, director of Fort Worth Public Library, was named consultant to the project. She and another librarian from Oklahoma City applied for the position. Allmand's fee is two percent of the renovation cost, according to Linda Escue, secretary of the Friends of the Library. Her services will include

working with the architect, assisting in the bidding process for equipment, and moving from the present library into the new facility, as well as other helpful acts of assistance. She has served as consultant on 10 similar projects. Through her years as a librarian, she has also taught the subject at North Texas State Univ. Though consulting assistance was offered by the two librarians at Midwestern State Univ., at no cost,

the majority of the library board voted to hire Allmand because of her experience and availability. A contract is still to be drafted and agreed upon by both the consultant and local board, it was noted. The next meeting of the board will be at 7 p.m. April 5, in the council chambers. The Burnett home, which occupies the entire block of West Alameda, was donated in December of 1981 to

the city for use as a library by Anne Sowell, granddaughter of the late Tom L. Burnett. Built by Tom Burnett about 1922, it was his home until his death in 1938. In 1941 it was purchased by his cousin, Will, and remained the home of his widow, Maggie, who died in October of 1981. The donor purchased the property

Continued on page 11

**IOWA PARK**

**LEADER** 25 Cents

Vol. 15, No. 28 IOWA PARK, WICHITA COUNTY, TEXAS 76367 THURSDAY, MARCH 29, 1984

### CITY, SCHOOL ELECTIONS

## Tuesday deadline for absentee voting

Interest in the April 7 city and school elections is beginning to build, according to absentee votes being cast.

Absentee voting will continue in both elections until the close of business Tuesday. Absentee voting polls are the city hall and school administration building, for the respective elections.

Six votes had been received at city hall early yesterday morning, and three more had been requested by mail but had not been received. Five votes had been received at the administration building, but none were in the mails.

At issue in the two elections are the offices of city mayor and two aldermen, and two school trustees.

Two candidates for mayor are on the ballot, but a write-in campaign has begun for a third man.

Seeking to succeed Charlie Lee, who declined to run for a second term as mayor, are Tim Hunter and Freddie Simmons. A group is pushing to have former county commissioner Buck Voyles elected as a write-in candidate.

Four candidates are running for the two alderman seats, which will be decided on an at-large basis, with the two receiving the most votes winning.

Two candidates, Bud Thompson and George Hammonds, are incumbents. They are being challenged by Bud Mercer and Don Decker.

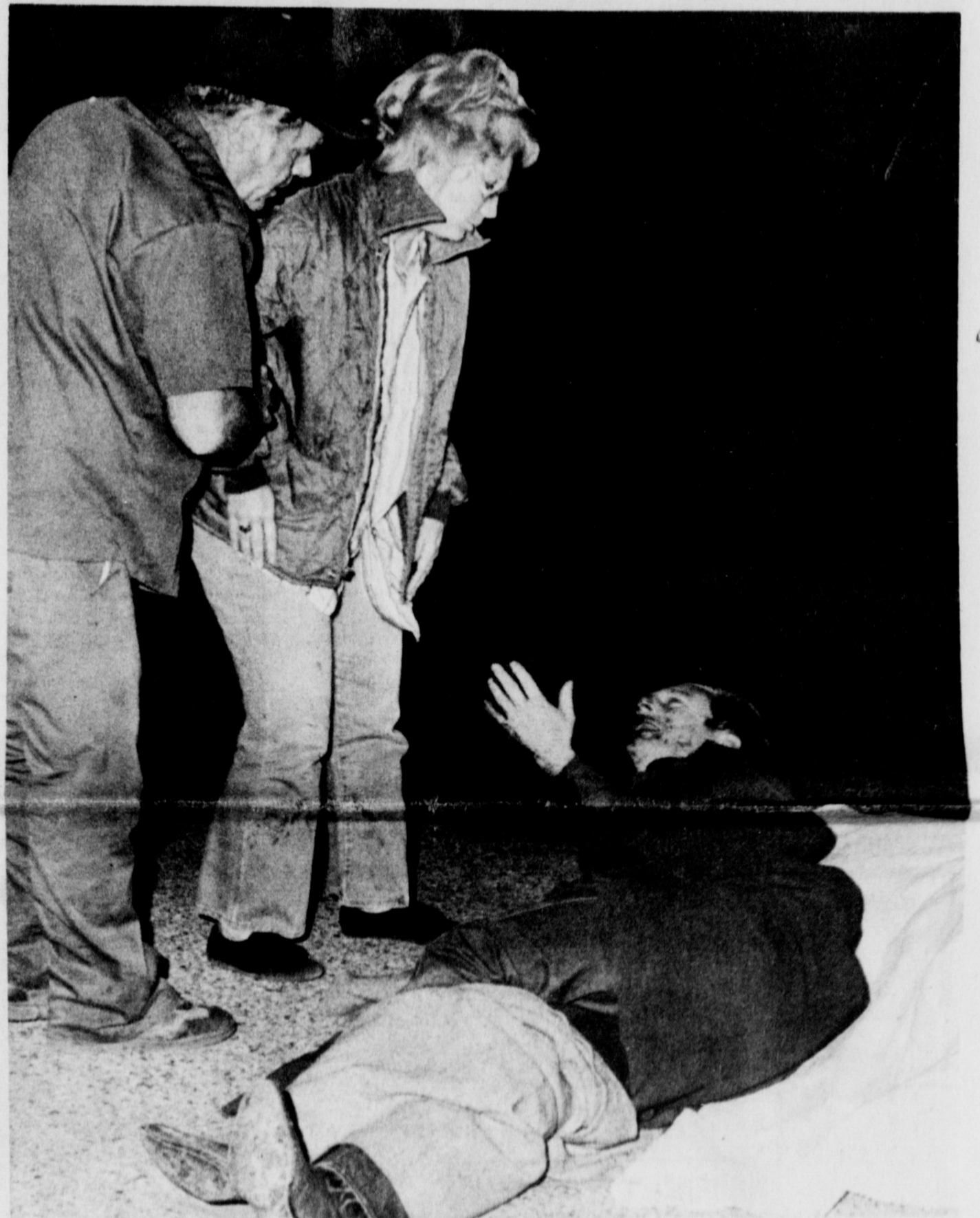
Candidates for the two school trustee positions, which also will be decided at-large, are incumbents Jerald Brown and Rex Wells, and Virginia Klinkerman and Marilyn Hale.

Also on the city ballot is a referendum asking voters if they desire "a commission... to frame a charter."

Voters will mark "Yes" or "No" to that question. Below is a list of 15 charter commission candidates who were nominated by the city council.

Charter candidates are Dolores Hamilton, Susan Streich, Faye McAllister, Jerry Williams, James Edwards, Don Decker, Terry Davis, Margaret Soell, John Brown, Donald Hill, L.W. Teel, Virgil Woodfin, Annetta Reusch, Johnny Crawford and Buck Voyles.

Should the majority vote approval of having a new charter drafted, the commission would then begin to function. Its final draft would at a later date be submitted to the voters for approval or disapproval in another election.



RICKY ALEXANDER EXPLAINS TO A.D. MILLER HOW ACCIDENT OCCURED ... while lying in roadway next to his dead brother.

## City council denies TESCO rate request

The city council Monday evening rejected a rate increase request by Texas Electric Service Co.

Wayne House, local TESCO manager, explained his company is requesting an across-the-board eight-percent rate increase.

An indication of the company's need was reflected in the recent downgrading of the firm's credit rating from triple-A, which means the cost of borrowing money will be greater and thus the cost of doing business will be higher, House said.

A resolution to deny the request was passed by the council, in order for the city to be represented along with others by the Texas Municipal League when TESCO appeals to the Public Utilities Commission.

Aldermen approved an application to the Texas Criminal Justice Division for a grant to assist in funding a criminal investigator for the police department.

If approved, the grant would fund 100 percent of the additional officer's salary the first year, 80 percent the second year, and continue a 20-percent decrease over a five-year period after which the complete salary would be paid by the city.

One stipulation was put on the council's vote of approval, however. Alderman Bud Thompson injected he was voting for the proposal if the city is not locked into a full-period

contract. He explained the city might not be able to complete the full period, or any period after the five years, and did not want to obligate future budgets.

An ordinance was approved, abandoning 25 feet on the west side of South Park, between Emerald and Crystal.

Also approved was a resolution sought by Eddie Richardson to replat three lots in Garden Valley into one, and moving a water line easement on his property so it would not interfere

with building of his home.

Two reports were made by Administrator James Barrington. One on an engineer's recommendation of a method to remove sludge from the sewer treatment plant, and the other concerning what he and the chief of police learned from a seminar last week in Austin on police liability.

Barrington said the cost of removing sludge from the treatment plant could be cut tremendously if a

Continued on page 4

## Man jailed on morals charge

Jerry Paul Hatcher remained in Wichita County jail at presstime under a \$10,000 bond after being charged with "indecent with a child."

Police were notified of Hatcher's alleged assault on a 13-year-old girl,

according to Chief Tom Fenley. The matter was turned over to a juvenile welfare investigator the following day and instructions for charges to be filed were made Wednesday by the district attorney's office.

In an unrelated incident Mar. 16,

### Pre-registration underway for 1984-85

Pre-registering of children three to five years of age is underway for the 1984-85 school year, according to James Ward, Kidwell Elementary principal.

Forms have been sent home by

students attending school, and are requested to be returned by April 17. Those not receiving forms can call Kidwell School, 592-4322.

Children who are five years of age on or before Sept. 1 are eligible to attend Kindergarten, Ward said.

A young Iowa Park man was struck and killed by an automobile shortly before 10 p.m. Monday near Pleasant Valley Estates.

Tony Alexander, 26, stepped into the path of a car driven by Gordon Bohannon, also of Iowa Park. He was declared dead at the scene at 10:41 by Robert Marsh of the Wichita Falls Police Dept.

According to the investigating officer, Ronnie Miller of the

Department of Public Safety, Tony and his brother Ricky, 28, were driving west on the old highway when an argument began between them.

Just east of the east entrance to Pleasant Valley Estates, their car ran almost head-on into the ditch and stopped. The two men got out of the car and began fighting.

The fight was reported by a woman driving west, who reported to Iowa Park Police that she had narrowly missed them while they were scuffling in the roadway.

Ricky later told officers that Tony had broken away and stood for a while on the grassed median. And when he started back to his original side of the road, he stepped into the path of Bohannon's car.

Tony was struck by the left front fender, and knocked over the hood into the windshield on the driver's side, caving it in.

Bohannon stopped his car approximately 170 feet beyond the point of impact, and went to the man's assistance.

A nearby resident notified the county sheriff's office at approximately 9:56, at which time an ambulance was summoned. The Department of Public Safety received its notification by telephone at 9:59, Miller said.

## Iowa Park man killed when struck by auto

The Plumlee Ambulance arrived at 10:19, but did not transport Tony's body until Marsh arrived and pronounced his official finding.

As the ambulance drove away, Marsh told Ricky he would take him to the same hospital where they were taking Tony's body. However, Ricky began cursing, and he was taken to Wichita Falls Police Department for tests.

An autopsy was ordered to be performed on Tony's body.

Tony was a 1977 graduate of Iowa Park High School. For details of his funeral and survivors, his complete obituary is on page six of this issue.

Miller said no charges would be filed on Bohannon.

Miller said no charges would be filed on Bohannon.

Miller said no charges would be filed on Bohannon.

Miller said no charges would be filed on Bohannon.

Miller said no charges would be filed on Bohannon.

Miller said no charges would be filed on Bohannon.

Weather Report	
Weather reports are officially compiled for Iowa Park at the Texas Experiment Station, southeast of town.	
Rainfall for week.....	.96
Total for month.....	1.42
Total for year.....	2.65
Total for last year.....	7.33

# Cook of the Week

Chess Pie - According to Great Recipes of the World, no other dish is as quintessentially Southern as chess pie. It is incredibly rich, with a lingering, almost mysterious sweetness.

How the pie got its rather curious name reveals its checkered history. Though it is now a staunchly Southern dish, it originated in England, making its way first to New England and then on to Virginia before finding its home in the Deep South.

The early version was called cheese cake though it never contained any real cheese. When the dessert finally settled in America before the days of refrigeration, the pies were stored in cold rooms in lovely pie cupboards to keep them fresh; they soon became known as "chest" pies in New England homes. As the pie moved, local dialect changed chest to chess. Eventually, it became known everywhere by its current name.

The recipes for the dessert today have changed considerably from the ones used by housewives in earlier days. Nancy (Mrs.) Larry Thompson found a recipe for chess pie in her grandmother's cookbook that was published in the 1920s, and we asked her to share it with the Leader readers this week. It sounds like a Blue Ribbon winner in the 1980s.

The former Nancy Cashion was graduated from Irving High School. She attended West Texas State Univ. at Canyon for three years and received a bachelor of music degree from Midwestern State Univ. She is now in her fourth year the music teacher in the Iowa Park elementary schools. She and Larry, who is a designer for Ciba-Geigy, are active members of First Baptist Church. They have one son, Andrew Michael, one year old. Nancy is a member of the Modern Music Study Club. Her hobbies are reading and ceramics.

### CHESS PIE

[Recipe taken from Mrs. Thompson's grandmother's cookbook]

- 1 cupful butter
- 1 cupful sugar
- 3 eggs
- One-half lemon



Mrs. Larry Thompson and Andy

One half teaspoon grated nutmeg  
2 tablespoons fruit juice or jelly

Cream butter and sugar. Beat in egg yolks, nutmeg, grated lemon rind and strained lemon juice. Beat the whites of eggs to stiff froth. Mix all lightly and add a little baking powder. Bake in light pastry.

### OLD-FASHIONED COOKIES

- 1 cup shortening
- 2 cups sugar
- 2 eggs, separated
- 4 cups sifted flour
- 1 tsp. salt
- 1 tsp. soda
- 1 tsp. lemon juice
- 1 cup evaporated milk
- 1 tsp. vanilla extract
- 1 cup chopped walnuts (optional)
- 1 cup drained pineapple (optional)

Preheat oven to 375 degrees. Cream shortening, sugar and egg yolks in large bowl of electric mixer until light and fluffy. Sift flour, salt and soda together. Add lemon juice to milk. Add dry and liquid mixtures alternately to creamed mixture. Beat in vanilla. Stir in walnuts and pineapple. Beat egg whites until stiff but not dry. Fold into batter.

Drop batter by rounded tablespoons 3 inches apart on a greased baking sheet. Flatten each cookie

with back of spoon. Sprinkle each cookie with small amount of sugar lightly spiced with cinnamon or nutmeg, if desired. Bake 10-12 minutes or until lightly brown around edges. Lift from cookie sheets with spatula; cool on cake racks. Store lightly covered. Yield: 4 dozen.

### CHICKEN-WILD RICE CASSEROLE

- 1 (6 oz.) pkg. long grain wild rice mix
- 1/4 cup margarine
- 1/4 cup flour
- 1 can evaporated milk
- 1 1/2 cups chicken broth
- 2 1/2 cups diced cooked chicken
- 1 can sliced mushrooms, drained
- 1/2 cup chopped green pepper
- 1/4 cup chopped pimiento
- Salt and pepper
- 1/4 cup toasted slivered almonds

Prepare rice, using seasoning packet. Melt margarine in a heavy saucepan, stir in flour until well blended. Gradually stir in milk and broth; cook, stirring constantly over medium heat until mixture is smooth and thickened.

Add sauce to rice, mix in chicken, mushrooms, pimiento and salt. Spoon into greased 2-quart casserole. Sprinkle with toasted almonds. Bake at 350 degrees 30 to 40 minutes.

### CHEESE BREAD

- 2 pkgs. Bisquick mix (approximately 2 cups)
- 1/4 cup water
- 2 eggs beaten
- 2 tps. dry mustard
- 1 1/2 cups grated cheese
- 2 tbs. butter or margarine

Heat oven to 350 degrees. Stir water in Bisquick mix and beat with spoon until smooth. Mix thoroughly everything else except 1/2 cup cheese and butter. Pour into pan. Sprinkle with remaining cheese, butter and sesame seeds. Bake 40-50 minutes. Cool 10 minutes in pan. Cool before slicing.

### PEANUT PATTIES

- 2 cups sugar
- 1/4 cup water
- 1 1/2 cups raw peanuts
- 1/2 cup white syrup
- Dash salt

## Students travel to D.C.

Seventeen junior high and high school students, accompanied by Myrna Sharpe, history teacher, Jewel Wilson, Beverly Brown and Pat Cravens, made a trip to Washington D.C. during the spring break.

Students who made the trip were Kristen Sharpe, Jana Thompson, Roseanne Stubbs, Jerri Brown, Keva Gunter, Lisa Hodges, Sherri Cravens, Suzanne Gunderson, Markita Savage, Toby Brown, Daniel Lightsey, Joel Galloway, Casey Rains, Marc Johnson, Jeff Huff, Kevin Rowe and Glen Hopkins.

During the trip, the group had an appointment at the FBI building where they were given a guided tour; they visited the Supreme Court and met with Rep. Jack Hightower at the House of Representatives.

Other places of interest they visited included Old Colonial Williamsburg and Jamestown, Va. In Washington, D.C., they toured the Capitol, White House, Smithsonian Institute, Washington and Jefferson Monuments, Kennedy Center, Mt. Vernon, Arlington National Cemetery where they saw the changing of the guards, and the Bureau of Printing and Engraving.



Brides-to-Be is YOUR NAME  
IN OUR Bridal Registry

DELAYNE DAVIS  
and  
LARRY BEUTEL

VALERIE WARD  
and  
DENNIS DILLARD

Park Pharmacy &  
Thoughtfulness Shop

115 W. Park 592-4116

### New Meter Connections

John W. Lawrence - 511 Coleman  
Billy Freeman - 311 E. Aldine  
Larry McLemore - 207 N. Penn  
Terry Baker - 1305 Sunset



## TRAINLOAD SALE!

'100 U.S. Savings Bond  
direct from G.E.  
with the purchase of either  
Range (JB600GD) or  
Refrigerator (TFF24RC)

Only GE delivers crushed  
ice, cubes and cold water!



Save \$200

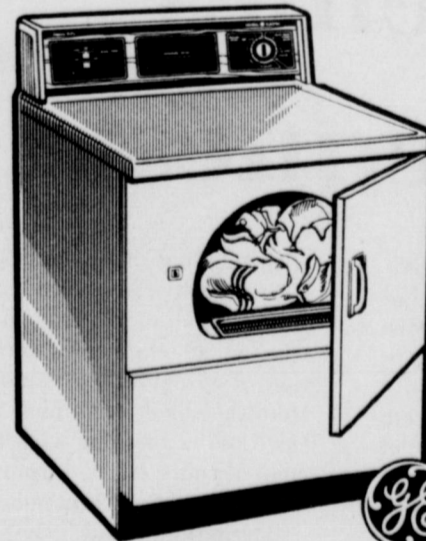
Model TFF24RC

- 23.5 cu. ft. no-frost refrigerator-freezer.
- Stores 10 lbs., about 260 cubes; factory-installed automatic ice maker.
- 8.57 cu. ft. freezer with adjustable shelves.
- Automatic energy saver system helps cut operating cost.
- Removable wine rack.
- Convertible meat pan.
- Sealed snack pack.
- Porta Bin door shelves.
- Adjustable glass shelves.
- Rolls out on wheels.
- Helps keep foods fresh up to 15 days with two high-humidity sealed pans.
- Lower-humidity pan.
- 35 1/4" wide, 66 1/2" high.



Model JB600GD

GE RANGE WITH SOLID-STATE OVEN TOUCH CONTROLS  
Temperature controlled roasting or broiling with the temperature probe. Rotary infinite control dials. Plug-in Calrod® surface units.



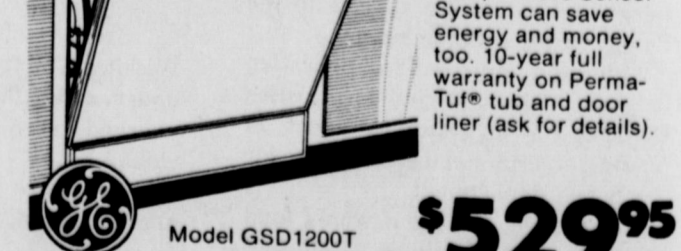
Model DDE5300B

AUTOMATIC DRYER WITH PERMANENT PRESS CYCLE \$329<sup>95</sup>  
4 cycles including permanent press/knits. 3 drying selections. Durable porcelain enamel finish drum. Removable up-front lint filter.



Model WWA8350B

DELUXE 2-IN-1 AUTOMATIC WASHER \$499<sup>95</sup>  
Large basket for family-sized loads. Mini-Basket™ tub for delicates. 6 cycles, including permanent press. 3 wash/spin speeds. 4 wash/rinse temperature combinations.



Model GSD1200T

\$529<sup>95</sup>

No Monthly Payments  
and No Finance  
Charges Before  
August, 1984

For qualified applicants making minimum purchases of \$300 under participating dealers revolving charge plan through General Electric Credit Corporation. The revolving charge plan calls for a finance charge determined at an Annual Percentage Rate as high as 24% with a minimum finance charge as high as 75c.

## PARKWAY

True Value HARDWARE  
FURNITURE HARDWARE  
200-206 W. Bank

**BORDEN'S PUDDING BARS**  
\$1.59  
FAMILY PACK.  
12 CT. BOX

**BORDEN'S ORANGE JUICE**  
99¢  
QT. CTN

**ALLSUP'S COOKED FOOD SPECIAL**  
AS FEATURED ON TV!  
**BURRITOS**  
2.99¢  
FOR AN ALLSUP'S TRADITION

**NEW WISE COTTAGE FRIED POTATO CHIPS**  
99¢  
ASST. FLAVORS  
REG. \$1.39 BAG

**DR. PEPPER**  
6-Pack \$2.19  
12 oz. Cans

**SUN SHADES**  
\$6.90 to \$10.00  
SPECIAL \$4.95

**ALLSUP'S CONVENIENCE STORES**

\*PRICES EFFECTIVE MARCH 29-31, 1984  
\* SELF SERV GAS - GROCERIES  
\* OPEN 24 HOURS - EVERYDAY  
\* THERE'S ONE NEAR YOU



# Letter to the Editor

Mr. Hamilton:  
 Could we put the following T.Y. letter in the Leader:  
 To Tom Fenley, Chief of Police and Officers of the I.P. Police Dept.  
 We just returned from a week's vacation & everything in our home was intact. We would like to personally thank Mr. Fenley & the I.P.P.D. for the excellent surveillance of our home while we were gone.  
 We were delighted at the intricate details that the officer noted before our departure of emergency numbers, persons allowed on our property, etc. And, upon our return, we received a detailed report showing three daily surveillances.  
 We are so proud to be a part of the I.P. community & we sincerely appreciate the superb work done by the Police of I.P. Being a law enforcement officer, I can assure you that this is not the "norm" in many cities. Thank you Chief Fenley & fellow officers for your fine work. You are a great asset to I.P.  
 Mr. & Mrs. Mike Negri & Brandon

Dear Mr. Hamilton,  
 I would like to take this opportunity to thank the citizens of Iowa Park for their support in our Girl Scout Cookie Sale. I would especially like to thank Wal-Mart, King's Food and Whites for allowing our troops to sell their cookies in their stores. A special thanks also goes to the other local merchants who allowed us to put our promotion posters in their store windows. It is with this great support that our five troops were able to sell 4,092 boxes of Girl Scout Cookies.  
 Besides the great support that the local citizens and merchants gave us I would also like to thank the parents and the girls themselves. Without the parents support behind our troops, we wouldn't be as successful. Again a big thank you to all of the people here in Iowa Park.  
 Marsha S. Binion  
 Service Unit Director  
 Iowa Park Girl Scouts

**HISTORICAL SOCIETY**  
 Kerry Kelley will discuss the history of Kell House and early day settlers when the North Texas Genealogical and Historical Association meets at 7:30 p.m. April 5 in First Christian Church, 3701 Taft, Wichita Falls.

# As I See It....

By BOB HAMILTON



You can't read a newspaper or magazine, listen to the radio or watch television without knowing this is a major election year.  
 We'll elect a president in November, and at the same time vote on most of the other federal, state, district and county elective offices.  
 Maybe there should be as much coverage and emphasis on local elections, like the one we are facing April 7. That's when we'll name a mayor, two aldermen and two school trustees.  
 Frankly, I'd get sick of it all, if there was as much to write about for the local elections as we are bombarded with in the national races.  
 Maybe there should be that kind of coverage, though. Certainly we have a greater turnout at the ballot boxes for the national elections than we do for the local positions. That sounds silly to me.  
 One of the most common reasons people don't vote is because they don't feel like their individual vote counts. That one ballot among all the others wouldn't make any difference.  
 Well, the odds are that in a national election that one vote doesn't count much. After all, there are millions upon millions who vote in the general elections. And all that publicity apparently whips up their interest.  
 But if a voter wants his ballot to count, it's obvious that his odds of making a difference are greater in

local elections. There are only hundreds, instead of millions, of ballots cast and so the odds are better for that one vote.  
 Some might not remember it, but we had a dead-even vote count for a city election here a few years ago. You should have heard all the people who said "I should have voted, and it wouldn't have tied."  
 They weren't thinking about the cost to their tax dollars, because a special runoff election was held to finally determine a winner.  
 It seems like there's got to be a big problem for people to turn out in large numbers for local elections. Whenever there are people upset with the way things are going, by golly they will mark those ballots.  
 But let things run smoothly, and

they don't turn out.  
 Problem is, after one or two elections when few voters do turn out, all of a sudden something comes up to get them upset. And usually their lack of attention at the ballot boxes on those smooth years has created the problem in the first place.  
 Elected officials like to know they have the public's attention and support. They have a real excuse to get careless or sloppy with business, if they feel like the public isn't too concerned with what and how they are doing.  
 Coffee talk these days is primarily about who will be the next president.  
 I'd suggest we start turning our attention to the local offices, for the next few days. Talk about the issues and what we think about our city and school.  
 And vote intelligently April 7.

## City

Continued from page 1

program currently in use by the city of Denison were initiated.  
 The process consists of pumping the sludge onto open pasture, rather than in drying beds, allowing for faster handling and drying. The process is considered safe by the state and odor is hardly more than exclusive use of drying beds, he said.  
 The prime emphasis of the Austin seminar was to "make sure your people are well trained and to be well insured," Barrington said.  
 During an open discussion, held after the formal end of the meeting, problems of people dumping trash, trimmings and furniture at undesignated places and slowness of cleaning the burnt remains of Jim's Market were topics.

## POLITICAL ANNOUNCEMENTS

The following have authorized the Iowa Park Leader to publish announcement of their candidacies for office, and have paid for the space.

- STATE SENATOR  
 District 30  
 Ray Farabee
- STATE REPRESENTATIVE  
 District 80  
 Charles Finnell  
 Durhl Caussey
- WICHITA COUNTY SHERIFF  
 Howard Davis



Tommy Craig, a five pound, eleven ounce son, was born to Mr. and Mrs. Craig Johnson March 24. The new baby has one sister, Sommer Lyn.  
 The grandparents are Mr. and Mrs. Charles Sells of Iowa Park, Mr. and Mrs. Don Turner of Moore, Okla. and Mr. and Mrs. L.E. Cook of Oklahoma City. The great-grandparents are Mr. and Mrs. M.L. Turner of Marietta, Okla. and Mr. and Mrs. O.P. Collins of Haskell.

—ELECT—  
**J.R. "Bud" Reed**  
 COMMISSIONER  
 Precinct 3 Wichita County  
 Your Support Appreciated  
 Pd. Pol. Adv., Mrs. Bud Reed, Treas., Box 10, Iowa Park, TX 76367

—ELECT—  
**Barry L. Macha**  
 District Attorney  
 Wichita County, Texas  
 Democratic Primary May 5, 1984  
 Pol. Adv. by Barry L. Macha  
 411 E. Rogers, Wichita Falls, Texas

ELECT  
**DON DECKER**  
 for  
 City Alderman  
 ✓ Responsive City Gov.  
 ✓ Fiscal Responsibility  
 ✓ Objective Decision Making  
 Pd. Pol. Adv. by Don Decker

—ELECT—  
**BUD MERCER**  
 to the  
 CITY COUNCIL  
 Pd. Pol. Adv. by Bud Mercer

Re-elect  
**Bud Thompson**  
 to his 4th term  
 City Alderman  
 Pd. Pol. Adv. by Bud Thompson

RE-ELECT  
**George Hammonds**  
 ★ ★ ★ ★ ★ ★ ★ ★ ★ ★  
 "I ask for the opportunity to remain a member of the Iowa Park City Council"  
 Pd. Pol. Adv. by George Hammonds

**IOWA PARK LEADER**  
 766280

Bob Hamilton ..... Editor-Publisher  
 Dolores Hamilton ..... Assistant Publisher  
 Olive Blalock ..... Reporter  
 Kevin Hamilton ..... Reporter

The IOWA PARK LEADER is published every Thursday. Offices are located at 112 W. Cash, Iowa Park, Texas, 76367. Telephone: 592-4431. Second class Postage Paid at Iowa Park, Texas, 76367. Subscription rates are \$7 per year in Wichita and Archer Counties; \$9 elsewhere in Texas and Oklahoma; \$11 anywhere else in the United States. Classified advertising rates are 16 cents per word first insertion, 8 cents per word thereafter. Any erroneous reflection upon the character, standing or reputation of any person, firm or corporation which may appear in the columns of this newspaper will be corrected upon being brought to the attention of the publisher.

MEMBER  
**TEXAS PRESS ASSOCIATION**

# A Free Press

293 Years of Democracy In Action

## NOTICE TO SUBSCRIBERS!

The Iowa Park Leader has suspended its practice of mailing individual renewal postcards to subscribers. Instead the Leader will publish a list of readers whose subscriptions are approaching expiration. Subscription prices are listed below, along with a convenient order form which may be clipped, filled out and mailed with payment to the Leader. Renewals and new subscribers must be paid in advance.

## Subscriptions due to expire April 15, 1984

PLEASE DISREGARD IF ALREADY PAID

- |        |                      |               |                       |                  |           |
|--------|----------------------|---------------|-----------------------|------------------|-----------|
| A..... | Randy Alsop          | Iowa Park     | M.....                | Howard Marlar    | Iowa Park |
| B..... | Edna M. Bankhead     | Wichita Falls | Sandy Matthews        | Pampa            |           |
| C..... | M.D. Cogdell         | Iowa Park     | Joe McDonald          | Iowa Park        |           |
| D..... | Burt F. Colley       | Henrietta     | Bud Mercer            | Iowa Park        |           |
| E..... | Mrs. Joe R. Cope     | Iowa Park     | Steve Ming            | Iowa Park        |           |
| F..... | Ronny W. Cravens     | Iowa Park     | N.....                | Mrs. C.A. Nipper | Iowa Park |
| G..... | Chuck Crow           | Electra       | P.....                | Frances Park     | Iowa Park |
| H..... | Robby Crownover      | Munday        | David Parkham         | Iowa Park        |           |
| I..... | Leonard Davis        | Iowa Park     | Herman Parnell        | Kamay            |           |
| J..... | Richard Davis        | Iowa Park     | Lew Perez             | Holiday          |           |
| K..... | Beula Denton         | Iowa Park     | Ann Phillips          | Wichita Falls    |           |
| L..... | Orlin Dickerson      | Iowa Park     | R.....                | Gerard Raymond   | Iowa Park |
| M..... | Bob Doan             | Iowa Park     | S.B. Reaves           | Iowa Park        |           |
| N..... | Marlin Drury         | Iowa Park     | James Richter         | Iowa Park        |           |
| O..... | Troy Edenfield       | Iowa Park     | Rollin Roberts        | Iowa Park        |           |
| P..... | Bobby Evans          | Iowa Park     | B.E. Rogers           | Kamay            |           |
| Q..... | Mrs. Joe Fischer     | Iowa Park     | Norman Russell        | Iowa Park        |           |
| R..... | Gaye Fitzgerald      | Wichita Falls | S.....                | Mrs. T.C. Scott  | Iowa Park |
| S..... | Dennis Fox           | Iowa Park     | Mrs. Ross Sears       | Fort Worth       |           |
| T..... | Charles Gant         | Iowa Park     | David Seigler         | Electra          |           |
| U..... | Larry Givens         | Iowa Park     | Dean Simmons          | Henrietta        |           |
| V..... | Sp-4 Argie K Gould   | APO           | Joe Singer            | Iowa Park        |           |
| W..... | Larry Green          | Fort Polk     | E.E. Skinner          | Wichita Falls    |           |
| X..... | Mrs. Bill Guest      | Arlington     | Dr. Elsie Smith       | Iowa Park        |           |
| Y..... | H.....               |               | Max Solomon           | Iowa Park        |           |
| Z..... | T.M. Hail            | Iowa Park     | Spruiell Drilling Co. | Iowa Park        |           |
|        | Kathleen Hatten      | Iowa Park     | Glen Spruiell         | Iowa Park        |           |
|        | Mrs. Glenn Hickey    | Iowa Park     | Lester Stevens        | Kamay            |           |
|        | Pete Hughes          | Iowa Park     | Pauline Stubbs        | Iowa Park        |           |
|        | J.....               |               | L.S. Swanson          | Iowa Park        |           |
|        | Bernice Jackson      | Iowa Park     | T.....                | Darrell Taylor   | Iowa Park |
|        | Billy D. James       | Iowa Park     | Floyd Thompson        | Holiday          |           |
|        | Douglas K. Johnson   | Iowa Park     | Miles Thompson        | Iowa Park        |           |
|        | K.....               |               | Peggy Thompson        | Iowa Park        |           |
|        | J.S. Keith           | Holiday       | Delbert Todd          | Iowa Park        |           |
|        | Gail Kienitz         | Iowa Park     | U.....                | James Upton      | Iowa Park |
|        | Jim Kirkhart         | Iowa Park     | V.....                | Kenneth Via      | Iowa Park |
|        | Mrs. H.B. Klinkerman | Iowa Park     | W.....                | Bill Walker      | Iowa Park |
|        | L.....               |               | Mrs. Carl Walsh       | Iowa Park        |           |
|        | Bobby Lawson         | Iowa Park     | James G. Ward         | Iowa Park        |           |
|        | Peggy Price Luna     | Iowa Park     | Pat Watkins           | Wichita Falls    |           |
|        |                      |               | Larry Whitaker        | Kamay            |           |
|        |                      |               | Chuck Whitman         | Iowa Park        |           |
|        |                      |               | Terry Wirmel          | Wichita Falls    |           |
|        |                      |               | George H. Wood        | Iowa Park        |           |
|        |                      |               | Hugh Wood             | Iowa Park        |           |
|        |                      |               | Mrs. Lila Wynn        | Iowa Park        |           |

Wichita and Archer Counties..... \$7.00  
 Elsewhere in Texas & Oklahoma..... \$9.00  
 Elsewhere in the United States..... \$11.00

To: Iowa Park Leader  
 Box 430  
 Iowa Park, Tex.  
 76367

PLEASE CHECK ONE:  
 New  
 Renewal  
 Change of Address Only

\$ \_\_\_\_\_ Enclosed

(Name) \_\_\_\_\_  
 (Address, P. O. Box, or Route No.) \_\_\_\_\_  
 (City) \_\_\_\_\_ (State) \_\_\_\_\_ (Zip Code) \_\_\_\_\_



PAULA MASHBURN

### Paula Mashburn is recognized

The Opti-Mrs. Club has selected Paula Mashburn, daughter of Mr. and Mrs. Billy Mashburn for the Iowa Park High School Student-of-the-Month.

A senior, Paula would like to attend Texas Women's Univ. or McMurray College to major in elementary education in preparation for teaching.

A seven-year member of the band, she is senior representative, librarian and section leader this year. She is soprano section leader of the choir this year of which she has been a member for three years. She is a two-year member of the Chamber Singers, three-year member of the jazz ensemble and Thespians.

Paula has made the honor roll consistently six years and is a member of the National Honor Society. During her high school career, she made the District Band one year; District Choir and Region Choir two years; won first place in poetry interpretation when she was a sophomore, second place in her junior year and fourth place this year.

She won honorable mention award for All-Star cast for the one-act play this year; made Division I rating in UIL vocal solo when she was a junior; named Thespian Best Novice Girl when she was a sophomore. She was among the top ten graduates and named to Who's Who in science and English in the eighth grade.

Paula is a member of First United Methodist Church. She is a member of the choir, Sunday school teacher, active in United Methodist Youth Fellowship. She has served on the Council of Ministries and as a youth representative on the district level.

Her hobbies include tennis, swimming, acting and participating in the summer youth musicals at the Backdoor Theater.

### AEO elects new officers

Officers of Alpha Epsilon Omicron chapter of Beta Sigma Phi were elected during a meeting held Monday evening in the home of Mrs. James Owens.

Those elected to serve during 1984-85 were Betty Allen, president; Karen Fullerton, vice president; Gayle Cleghorn, corresponding secretary; Julie Clayton, recording secretary; Gloria Bond, treasurer; Betty Allen and Gayle Cleghorn, city council representatives.

During the business directed by Janna Leek, plans were finalized for

making Easter baskets for the expectant mothers at Maternity Cottage, and furnishing Faith City Mission with a couple of cases of canned foods.

For the program, the president led a group discussion on schools.



The credit for thinking up bifocal eyeglasses goes to Benjamin Franklin, who devised the idea around 1785.



### Library News

Memorials to the Iowa Park Library for the late Mr. and Mrs. John Clapp Sr. have been given by Mrs. Eula Shelton and Jimmy Shelton, Mr. and Mrs. John Clapp Jr., and Mr. and Mrs. Leslie Clapp.

### Norseworthys honored on 50th anniversary

Mr. and Mrs. D.E. Norseworthy were honored at a surprise luncheon Sunday in observance of their 50th wedding anniversary. The luncheon was hosted by the couple's children and held in the home of Mr. and Mrs. Larry Norseworthy. Co-hosts were Mr. and Mrs. Bill Ruckman and Mr. and Mrs. Harold Norseworthy.

Pasadena, Calif. as a special surprise and treat for the honored couple.

Approximately 50 children, grandchildren, great-grandchildren and friends gathered to help the couple celebrate their anniversary.

Mr. and Mrs. J.W. Hathaway, brother-in-law and sister of Mrs. D.E. Norseworthy, were flown in from



PRICES EFFECTIVE MARCH 29 THRU APRIL 1

	SHURFRESH SLICED	<b>BACON</b>	Lb. Pkg.	<b>\$1.39</b>
	FAMILY PACK	<b>PORK CHOPS</b>	Lb.	<b>\$1.48</b>
	TENDERIZED	<b>ROUND STEAK</b>	Lb.	<b>\$1.99</b>
		<b>CUBE STEAK</b>	Lb.	<b>\$2.99</b>
		<b>SIRLOIN STEAK</b>	Lb.	<b>\$1.99</b>
		<b>RIB EYE STEAK</b>	Lb.	<b>\$4.99</b>
	FAMILY PACK	<b>GROUND BEEF</b>	Lb.	<b>89¢</b>
	SHURFRESH	<b>ICE CREAM</b>	1/2 Gal. Square Carton	<b>\$1.29</b>
	SHURFINE ALL-PURPOSE	<b>FLOUR</b>	5 Lb. Bag	<b>69¢</b>
	SHURFINE	<b>VEGETABLE OIL</b>	48 oz. Btl.	<b>\$1.89</b>
	SHURFINE	<b>TOMATO JUICE</b>	46 oz. Can	<b>69¢</b>
	SHURFINE FACIAL	<b>TISSUE</b>	200 Ct.	<b>39¢</b>
	SHURFINE HAMBURGER	<b>DILL SLICES</b>	32 oz. Jar	<b>99¢</b>
	SHURFRESH	<b>COTTAGE CHEESE</b>	24 oz. Ctn.	<b>\$1.19</b>
	SHURFINE	<b>DEVIL'S FOOD, WHITE, YELLOW CAKE MIXES</b>	18.5 oz. Box	<b>59¢</b>
	CALIFORNIA SNOW WHITE	<b>CAULIFLOWER</b>	EACH	<b>59¢</b>
	CALIFORNIA SUNBURST	<b>NAVEL ORANGES</b>	3 LBS.	<b>\$1.00</b>
	WASHINGTON GOLDEN OR RED DELICIOUS	<b>APPLES</b>	Lb.	<b>49¢</b>
	WASHINGTON D'ANJOU	<b>PEARS</b>	Lb.	<b>49¢</b>
	U.S. NO. 1 RUSSET	<b>POTATOES</b>	5 Lb. Bag	<b>89¢</b>
	LONG GREEN SLICERS	<b>CUCUMBERS</b>	Lb.	<b>59¢</b>
	NEW CROP LARGE TE	<b>GREEN ONIONS</b>	2 BUNCH	<b>49¢</b>
	Coke - SPRITE TAB - MR. PIBB		32 oz. Btl.	<b>\$2.19</b>
	SHURFINE	<b>Macaroni &amp; Cheese Dinners</b>	3 7.25 oz. PKGS.	<b>89¢</b>
	SHURFINE 3 SV. CUT	<b>Green Beans</b>	3 16 oz. CANS	<b>\$1.00</b>
	SHURFRESH — "Ready To Bake"	<b>BISCUITS</b>	6 8 oz. CANS	<b>\$1.00</b>
	SHURFRESH	<b>Margarine</b>	2 1 LB. CTNS.	<b>89¢</b>
	DEL MONTE — CREAM OR FAMILY STYLE	<b>Golden Corn</b>	2 17 oz. CANS	<b>79¢</b>

**19**

WALLET SIZE COLOR PHOTOS ONLY

**99¢** NO LIMIT ON THIS OFFER

WE USE KODAK PAPER

Monday, April 9

AT

**Discount Foods**

107 West Park

ASK About Our FREE 8x10 OFFER

HAVE YOUR EASTER PICTURES TAKEN NOW

GROUP CHARGE COLOR PHOTOS 99¢ per person per 19 wallets

Kodak paper For a Good Look at the Times of Your Life

**MIKE'S Delicatessen**

**FRIED CHICKEN**

10-Piece Box	2-Piece Snack Box	15-Piece Box
<b>\$6.49</b>	<b>\$1.89</b>	<b>\$8.49</b>

ASK ABOUT OUR DAILY LUNCHEON SPECIALS.

CALL AHEAD YOUR ORDER BY PHONING 592-4186

ALSO — A WIDE SELECTION OF COLD CUTS, AND CHEESES.

**AAFFILIATED FOODS INC. THRIFTWAY**

**MIKE'S THRIFTWAY FOODS**

ParkWest Shopping Center Phone 592-4186

Store Hours: 8 a.m. - 8 p.m. Monday - Saturday; 9 a.m. - 6 p.m. Sunday

DOUBLE COUPONS EVERY TUESDAY

DOUBLE EVERY WEDNESDAY

Our store family-owned and operated 20 years.

# Holiday News

## Absentee voting to end Tuesday

Absentee voting in the Holiday city and school elections continues until Tuesday afternoon, with the city election displaying a number of aldermen candidates, but no

## Immunization clinic slated

The Texas Department of Health will conduct an Immunization Clinic from 2 to 4 p.m. April 9 at the Archer Service Center in Archer City, according to Zandra Underwood.

Underwood, public health nurse for the Archer Service Center, said immunizations against DTP, polio, measles, mumps and rubella will be offered. Persons utilizing this service are asked to bring their current records with them to the center.

candidate for mayor.

Incumbent alderman Elizabeth Gorman will be challenged by Holiday businessman Rudy Molina for Place 2 on the city council, while incumbent Leon Addison has two challengers for Place 4, Ricky Sternabel and J.R. Franklin.

The mayor's position, to be vacated after the commendable service of attorney James Cook, has no candidate, and Holiday voters will be asked to write-in their choice on the ballot.

In the school election, local businessman Mike Birdwell and incumbent Alice Bishop Carver are the only two names on the ballot for the at-large race with only two positions to fill. Incumbent Durhl Caussey is challenging Rep. Charles Finnell for state representative.

# Obituaries

### Tony Eric Alexander

Funeral services for Tony Eric Alexander, 26, will be held at 1 p.m. today in Hampton-Vaughan Funeral Home in Wichita Falls. Rev. Jerry Kay, minister of New Life Cathedral Church, will officiate. Burial will be in the Iowa Park Highland Cemetery.

He was born Jan. 8, 1958, in Wichita Falls and was a longtime resident of Iowa Park. He was a member of the New Life Cathedral Church and an oil field truck driver. Survivors include his wife, Robin; a daughter, Crystal; his parents, Mr. and Mrs. S.R. Alexander of Iowa Park; a sister, Tanya Fulfer of Wichita Falls; and a brother, Ricky Dean of Iowa Park.

### Maggie Collier

Mrs. Maggie Collier, 78, of Holiday, died Tuesday at her home. Services will be at 2 p.m. Friday at the Holiday First Baptist Church with Rev. Mike Gresham, pastor, officiating. Burial will be at Archer City under direction of Owens and Brumley Funeral Home.

She was born Nov. 11, 1905, in Levita. She was a member of the First Baptist Church.

She is survived by her husband, Clarence; two daughters, Patsy Liggett and Wanda Sue Kilgo, both of Wichita Falls; and three grandchildren.

-WELCOME-  
ASSEMBLY OF GOD  
S. Yosemite  
9:45 S.S./7 P.M.  
Wed. 7 P.M. Service  
Rev. Charles Hensley,  
Pastor

"You never know what is enough unless you know what is more than enough."  
-William Blake

## Shower fetes bride elect

A bridal shower honoring Miss Kimberlie Kelly, bride-elect of Michael Ayres, was held March 17 in the fellowship hall of First Baptist Church of Holiday.

The party room was decorated in the honoree's chosen colors of lavender and white. Miss Kelly and Ayres were married Sunday at the

First Baptist Church of Holiday. Special guests at the party were Mrs. Dell Ayres, mother of the groom; Mrs. J.O. Ayres, grandmother of the groom; and, the groom's sister, Miss Linda Ayres. A special guest was Mrs. Regina Blankenship. Approximately 40 people called during the party hours.

## Capps wins again

Senior Eagle trackster Pat Capps kept his winning streak alive Saturday at the Tiger Relays in Electra, placing first in the high jump with a leap of 6-6.

The jump was below Capps' best this season of 6-8, but was good enough for the win, with Goodner of Henrietta placing second with a jump of 6-3.

Aside from Capps' performance, both the Eagle and Lady Eagle track teams found scant offerings in the

Tiger Relays.

Out of the top six finishers in each event, John Smyers was able to capture third in the 110-meter high hurdles with a decent clocking of 15.85, while Cheryl McMasters was the only Lady Eagle to be awarded points, placing third in the 100-meter low hurdles with a time of 16.99.

### CARD OF THANKS

My wife and I would like to say thank you to all of our friends. All of you have been so nice to us since I had my heart attack in Illinois and heart surgery in Indiana. Then when we were home a week I had to go into the Bethania Hospital for a week. Now I'm doing better. Your prayers, phone calls, concern and flowers have helped so much. We are very fortunate to have so many friends. We say thank you again and may God bless you all.

Tom, Pat and Jake Fulbright

### CARD OF THANKS

The MuleSkinners have been so kind to us on numerous occasions and we have certainly grown to appreciate them for their courtesies, not only to us but to other groups. We would like to express appreciation to them for the delicious meal that they served for us Saturday. It is nice to know that they care and want to generate happiness in the lives of older people in the community.

The Friendly Door



FIFTH ARSON CASE in as many months was found Wednesday of last week at 314 E. Pecan. One of two fires ignited at the same time is shown above, with burnt paper piled in middle, and a new gasoline can left standing by the wall. An investigation continues in the case. The house was unoccupied and being renovated.

## Arts, Crafts group meets

The Arts and Crafts Association held a membership tea Sunday afternoon at Texas Electric Reddy Room.

The registry table was decorated with small hand painted pictures which were given as favors.

The refreshment table, where Mmes. Jack Britt, Craig Medlinger, F.E. Schmidt and Roy Smith, served, featured a spring motif in the floral and candle arrangement and white

sheet cake decorated with yellow roses.

The organization held its first regular meeting of the new year Tuesday evening in the Reddy Room. New members recognized were Mmes. R.L. Good, Ray Fortner, Alvin Jeter and J.D. Parker.

Mrs. F.E. Schmidt conducted a workshop of painting small birds or animals with pastels.



Monday, April 2

Breakfast: Cinnamon rolls, milk, juice.

Lunch: Steak fingers, gravy, potatoes, English peas, bread, applesauce.

Tuesday, April 3

Breakfast: Gravy, milk, biscuits, fruit, sausage.

Lunch: Turkey and noodles, creamed potatoes, green beans, hot rolls, honey, milk.

Wednesday, April 4

Breakfast: Cheese toast, milk, juice.

Lunch: Barbecue beef on a bun, French fries, spinach, cake, relish, milk.

Thursday, April 5

Breakfast: Donuts, milk, juice.

Lunch: Nachos, cheese, beans, potato salad, milk, apple crunch.

## Grace Baptist Church

511 S. Colorado - 592-5632

Come Let Us Reason Together Saith The Lord  
Sunday School . . . 10:00 A.M.  
Morning Worship . . . 11:00 A.M.  
Children's Worship . . . 11:00 A.M.  
Evening Worship . . . 6:30 P.M.  
Wednesday Service . . . 7:30 P.M.  
Jimmy Johnson, Pastor

## First Presbyterian Church

DR. EARLE W. CRAWFORD, INTERIM PASTOR  
CHURCH SCHOOL - 9:45 A.M.  
WORSHIP - 11:00 A.M.  
A Caring Congregation of  
Palo Duro Presbytery - Presbyterian Church [USA]

## Pacific Avenue Missionary Baptist Church

1400 North Pacific Avenue

Larry Washburn  
Pastor  
Church - 592-9711  
Pastor 592-4288



Sunday School 9:45 a.m.  
Morning Worship 11:00 a.m.  
Evening Worship 6:00 p.m.  
Wednesday 7:00 p.m.

Everybody Welcome

## Christ The King Catholic Church

First and Clara Phone 592-2802

8:45 a.m. C.C.D. — 10 a.m. Mass

## First Christian Church

105 E. Cash  
Sunday School - 9:45 a.m.  
Worship - 10:55 a.m.  
Corner, Cash & Bond St.

We encourage each of you to worship Jesus Christ in the church of your choice. If you do not have a church home, we invite you to come worship with our church family.

## First United Methodist Church

201 E. Bank

Church School 9:40 Youth Meetings 5:00  
Morning Worship 10:40 Evening Worship 6:00

GEORGE TOPPER, PASTOR

## Church of God

601 E. Cash

Pastor, Ole Olds  
Sun. Morning Worship 11:00  
Sun. Night Celebration Service 7:00 p.m.  
Tues. Ladies Prayer Service 10 a.m.  
Wed. Night Bible Study 7:30  
Sat. Family Night 7:30  
"Catch the Vision"

Par.  
592-5316

Office  
592-4348

## First United Pentecostal Church

802 First Street 592-4275  
Rev. Grover Milner, Pastor

Sunday Services  
Sunday School - 10 a.m.  
Special Singing - 11 a.m. - 12 Noon  
Evangelistic Service - 7 p.m.  
Wednesday - Prayer Meeting and Bible Study - 7:30 p.m.



## Kamay Road Church of Christ

Corner of Colorado & Emerald

'Seeking the Old Paths'

Lord's Day  
10:30 a.m. & 6 p.m.  
Wednesday 7:00 p.m.

## First Baptist Church of Iowa Park



Yosemite at Park

SUNDAY SERVICES

Mornings  
Sunday School 9:45  
Worship 11:00

Evenings  
Church Training 6:00  
Worship 7:00

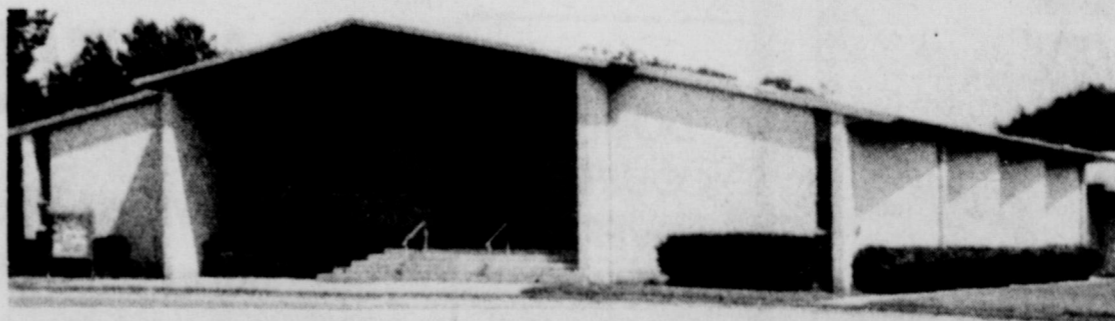
WEDNESDAY  
Prayer Meeting 7:00  
Choir Rehearsal 7:45

## IOWA PARK CHURCH OF CHRIST

SCHEDULE OF SERVICES

Sunday  
Bible Study 9:30 a.m.  
Worship 10:30 a.m.  
Evening Worship 6:00 p.m.

Wednesday  
Ladies Bible Study 10:00 a.m.  
Evening Study 7:30 p.m.



300 East Park, Iowa Park, Texas 76367, (817) 592-5415

## GOOD SHEPHERD LUTHERAN CHURCH

1st & Magnolia  
Iowa Park

Sunday School: 9:45 a.m.  
Worship Service: 10:30 a.m.

# Hawkettes 2nd, Hawks 4th at Electra

The Hawkettes placed second, Hawks fourth and Hawk JV sixth in their respective divisions Saturday at the Electra Tiger Relays. Seymour won the girls' division with 100 points, followed by the

Hawkettes, 81. Graham, 79. Henrietta, 71, Olney, 64, and Bowie, 44. Other teams entered included Archer City, Childress, Chillicothe, Electra, Holliday (6) North Side and Quanah. The Hawkettes will compete

Friday in Vernon's Lady Lion Relays, and the following week take their shot at the Dist. 3-AAAA championship, also to be held at Vernon. Saturday, the Hawks will be competing at Olney, where most of next year's district members are also registered.

**HAWKETTE RESULTS**  
 Long Jump - 1) Roberts, 15-2 1/4.  
 High Jump - 3-way tie for second) Clanton, 4-10.  
 Triple Jump - 2) Sefcik, 33-8; 3) Clanton, 31-7; 5) Roberts, 31-6.

3200 Meters - 1) Schweiss, 13:27.37; 3) Espinoza, 14:01.39; 5) Pool, 14:04.09.  
 800 Meters - 3) Selby, 2:45.24.  
 Hurdles - 1) Sefcik, 15.88.  
 400 Meters - 3) Sefcik, 1:05.50; 6) Farnsworth, 1:09.69.  
 1600 Meters - 5) Iowa Park, 4:38.09.

**HAWK VARSITY**  
 Discus - 2) Perry, 144-4.  
 High Jump - 6) Birk, 5-8.  
 Shot Put - 1) Perry, 51-2 1/2.  
 Pole Vault - 5) Hill, 10-6.  
 3200 Meters - 2) Hale, 10:51.59.  
 High Hurdles - 6) Davis, 16.94.

400 Meters - 5) Hill, 54.71.  
 Intermediate Hurdles - 3) Birk, 43.05.  
 200 Meters - 5) Elder, 24.22.  
 1600 Meters - 3) Hale, 5:03.39.  
 1600 Meter Relay - 3) Iowa Park, 3:38.47.

**HAWK JUNIOR VARSITY**  
 Long Jump - 1) Weaver, 18-5.  
 Discus - 6) Loggins, 97-7.  
 High Jump - 6 tie) Meissner, 5-6.  
 3200 Meters - 1) Huff, 11:20.07.  
 100 Meters - 4) Davis, 12.13.  
 Intermediate Hurdles - 2) Meissner 44.84.  
 1600 Meters - 4) Huff, 5:22.89.  
 1600 Meter Relay - 6) Iowa Park, 3:55.93.



## SOCCER RESULTS

Following are scores through the fourth week of play in the Greater Wichita Falls Soccer Association for Iowa Park teams.  
**Iowa Park Hawks '76** 5, **Stingers** 3  
**Iowa Park Jets** 1, **Eagles** '77 0  
**Iowa Park Rustlers** 3, **Tornado** 0  
**Iowa Park Wildcats** 4, **Rockets** '75 0  
**Iowa Park Hawks** '79 0, **Firebirds** 3  
**Iowa Park Warriors** 3, **Magic** 3  
**Iowa Park Chiefs** 1, **Colts** 2  
**Iowa Park Thunderbirds** 0, **Rowdies** 3



CHARLES PERRY LETS LOOSE FIRST PLACE HEAVE

## Little League sign-up slated

The final sign-up day for prospective Little League baseball players is from 10 a.m. to 4 p.m. Saturday at the W.F. George Field on West Magnolia.

Players between the ages of eight and 12 that weren't members of a major league team last year will begin practice Monday. Minor league coaches should come to the W.F. George Field at 5 p.m. Saturday to pick up their rosters.

Local Little League officials are hoping to have five divisions instead of the usual four this season, introducing a Connie Mac division for players ages 16 to 18.

Other divisions include: T-ball, ages six and seven; Minor, ages eight to 12; Major, ages nine to 12; and Senior, ages 13 to 15.

## White on Dean's List

David White, son of Mr. and Mrs. Harold White, a freshman student at Vernon Regional Junior College majoring in building technology, has been notified that he was named to the Dean's Honor List for the fall semester 1983. He is a 1983 graduate of Iowa Park High School.



Drop in for a-

**CHEESEBURGER with FRIES**

**\$1.99** Reg. \$2.35



**Country Basket**  
**SALE**  
**\$1.69**

Crisp, tender, chicken-fried fingers of 100% beef, golden fries, Texas toast and creamy country gravy. That's the one and only Dairy Queen Country Basket. So come on by for the Texas taste that's just this side of heaven — now at a heavenly sale price!

Monday, March 26 thru Sunday, April 1



"Just keeps on getting better."



© Copyright 1984, The D. Q. Corp. Council. All Rights Reserved. TM Trademarks of the The D. Q. Corp. Council. \*Registered Trademark Am. D. Q. Corp.



805 West Highway

FOR TAKE OUT ORDERS

**CALL 592-4731**

"It's a steal, alright, but you'll have to carry it out."  
 — Sheriff Lick

Purchase one of our jumbo hamburgers, or jumbo cheeseburgers, and the fries and drink are **FREE!**

For carry-out orders only at

Little Richard's **Salt Lick**  
 510 E. Highway 592-5252

**We don't start cookin' til we hear from you.**

**WEEKEND SPECIAL**  
 Thursday thru Sunday

**SONIC BURGER . . . 99¢**  
 No Limit-No Coupon Necessary

Iowa Park Only - 719 W. Highway  
 Call In Orders Welcome 592-4221

© SONIC INDUSTRIES INC. 1981 ALL RIGHTS RESERVED

**COUPON**

GET A **LARGE PIZZA** FOR A **MEDIUM PIZZA PRICE**

From now until April 19, bring this coupon in to Ken's Pizza restaurant, where you can get a large pizza for the price of a medium pizza. So, the whole family can enjoy a Ken's pizza at a price that'll please you.

Remember, this coupon expires April 19!

**ken's PIZZA**  
 902 W. Highway 592-4184



**Friendly Door News**

The Rhythmeers from Petrolia will present a program at Friendly Door today between 7 and 9 p.m. Anita Chaney, Lone Star Gas economist, will speak to members Friday at 11 a.m. on "Is Your Home Safe and Sound?"

**Tops meets**

Fifteen weighed in at the TOPS Club meeting Monday night. Trena Reck was a new member.

Mrs. E.L. French was the best loser and Mrs. E.T. Wells the best KOPS for the week. An Easter egg contest was started during the meeting.

**Connie Mac league proposed**

In a move to give local high school baseball players an opportunity to play during the summer months, the Iowa Park Little League is hoping to field a team this season to

compete in the Connie Mac League of the Wichita Falls Little League Association.

Open for players ages 16 to 18, the Connie Mac League consists presently of seven teams in the area, with local officials anticipating half of the games on Iowa Park's schedule to be played at home.

Persons wishing to participate in the Connie Mac program are asked to call Mike Price at 592-9747.

**Youthful runner is again winner**

At the risk of being redundant, Michelle Sellers, a fifth-grade student from Iowa Park who has burned up the area marathon circuit in recent years, placed first in the 14-and-under division at the Dallas Azalea 10-kilometer run Saturday.

Sellers' time of 39:47.0 was her personal best in the 6.2 mile run, and not far off the American record for the same age group of 38:21.0. Her time was also good for fifth overall among the women runners, with 3,800 total participants.

According to her father and coach, Mike Sellers, the young girl will return to defend her first place finish at the Abilene Marathon Saturday, which is a 26.2-mile run. The following week, she will run in the St. Paul Marathon in Dallas.

**Opening day plan underway**

Iowa Park Little League officials are gearing up for the Opening Day Parade April 28th to kick off the 1984 season, and groups and organizations are being sought to participate in this annual affair.

Any group or organization that hasn't indicated an interest to march in the parade, but would like to, can contact Cindy Edwards at 592-2433 or Elaine Huff at 592-2456.

The parade will begin at 9:30 a.m. Saturday, April 28, starting at the junior high and ending at ParkWest Shopping Center.

**Trio attends district meeting**

Three Iowa Parkans attended the annual district meeting of Federation of the Texas A&M Mothers' Club Saturday at Rockwall.

Mrs. Joe McDonald, president of the Wichita County Area Club, and Mrs. Maxine Hoffman were on hand to hear Sherry McDonald speak on therapeutic horseback riding for the handicapped.



**Fri., March 30** - Frito chili pie, meat or cheese sandwich, soup, buttered corn, tossed salad, cornbread, chocolate & plain milk, pineapple upside down cake.

**Mon., April 2** - Corny dogs, meat or cheese sandwich, soup, macaroni & cheese, blackeyed peas, chocolate & plain milk, banana pudding.

**Tues., April 3** - Submarine sandwiches, meat or cheese sandwich, soup, vegetarian beans, chilled fruit, lettuce, tomatoes, pickles, onions, potato chips, chocolate & plain milk, cookies.

**Wed., April 4** - Cheeseburgers, meat or cheese sandwich, soup, French fries, pinto beans, lettuce, tomatoes, pickles, onions, chocolate & plain milk, ice cream bars.

**Thurs., April 5** - Sliced turkey roast, meat or cheese sandwich, soup, mashed potatoes & gravy, English peas, hot rolls, butter, & honey, chocolate & plain milk, fruit cobbler.

**A Free Press Democracy's First Defense**

**Marilyn Hale**

**The Most Qualified Candidate**



**Iowa Park School Trustee**

- Responsible Management
- Quality Education

Pd. Pol. Adv. by Marilyn Hale Rt. 2, Box 43A, Iowa Park, Texas

**RE-ELECT REX WELLS**

**TO SECOND TERM IOWA PARK SCHOOL TRUSTEE**

Pd. Pol. Adv. by Rex Wells



**RE-ELECT JERALD BROWN**

**to the Iowa Park School Board**

Dear Parent and Taxpayer:  
Thank you for the privilege and opportunity of serving you as a member of the Iowa Park School Board the past 6 years. I again ask for your continued support and vote for re-election on April 7.

As your representative on the Board, I have always had the primary goal in mind: quality education for our children at the lowest possible cost to you, the taxpayer. I feel that my record on the Board will reflect my sincerity in seeking to accomplish this goal.

I am a life-long resident of Iowa Park and was graduated in 1950. I feel my 25 years in business qualify me to serve you as a Board Member.

I would like the opportunity to continue to serve you and our children. Thank You.

**JERALD BROWN**



Pd. Pol. Adv. by Jerald Brown

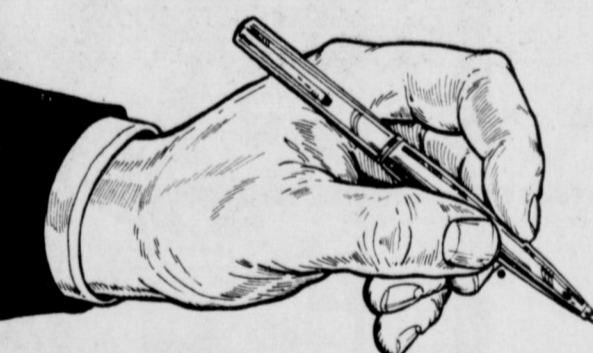
**ELECT VIRGINIA KLINKERMAN SCHOOL TRUSTEE**

**CONCERNED MOTHER, GRANDMOTHER & TAXPAYER  
20 YEARS EXPERIENCE IN ACCOUNTING & TAXATION  
LIFETIME COUNTY RESIDENT**

**I WOULD APPRECIATE THE OPPORTUNITY TO WORK FOR THE CHILDREN, PARENTS, TEACHERS & TAXPAYERS OF THE IOWA PARK SCHOOL DISTRICT**

Pd. Pol. Adv. by Virginia Klinkerman

**WRITE IN**



**BUCK VOYLES**  
**When you vote For MAYOR**

**April 7**

- ★ Almost 30 years in public service
- ★ Lifetime resident of Iowa Park
- ★ Cares about Iowa Park, it's people and their future.

Pd. Pol. Adv. by Marie Callon, 503 W. Texas, Iowa Park

**Elect Timothy W. Hunter**  
**Your Candidate for Mayor**



**VOTE FOR CONTINUED:**

- Honest representation of your city government.
- Responsible management of your tax money.
- Ability and willingness to work with the City Council for the good of the Community.

**Vote April 7 For Timothy W. Hunter Mayor**

Pd. Pol. Adv. by Timothy W. Hunter





VIDEO CARE Parkwest Shopping Center 592-5552 Television Repairs Guaranteed service on most major brands.

11:30 (3) AMERICAN GOVERNMENT (1982) Robert Duval, Tess Harper. A former country and western singer who is trying to make a comeback falls in love with a model owner after his marriage ends. PG

12:00 (3) MR. MISTAKE AND COMPANY (1982) Robert Duval, Tess Harper. A former country and western singer who is trying to make a comeback falls in love with a model owner after his marriage ends. PG

12:30 (3) THE REAL MOCOS (1982) John Wayne, Paul Kelly. An American flier with a bad performance record tries to redeem himself with one final heroic act.

1:00 (3) THE REAL MOCOS (1982) John Wayne, Paul Kelly. An American flier with a bad performance record tries to redeem himself with one final heroic act.

1:30 (3) THE REAL MOCOS (1982) John Wayne, Paul Kelly. An American flier with a bad performance record tries to redeem himself with one final heroic act.

2:00 (3) THE REAL MOCOS (1982) John Wayne, Paul Kelly. An American flier with a bad performance record tries to redeem himself with one final heroic act.

2:30 (3) THE REAL MOCOS (1982) John Wayne, Paul Kelly. An American flier with a bad performance record tries to redeem himself with one final heroic act.

3:00 (3) THE REAL MOCOS (1982) John Wayne, Paul Kelly. An American flier with a bad performance record tries to redeem himself with one final heroic act.

3:30 (3) THE REAL MOCOS (1982) John Wayne, Paul Kelly. An American flier with a bad performance record tries to redeem himself with one final heroic act.

4:00 (3) THE REAL MOCOS (1982) John Wayne, Paul Kelly. An American flier with a bad performance record tries to redeem himself with one final heroic act.

4:30 (3) THE REAL MOCOS (1982) John Wayne, Paul Kelly. An American flier with a bad performance record tries to redeem himself with one final heroic act.

5:00 (3) THE REAL MOCOS (1982) John Wayne, Paul Kelly. An American flier with a bad performance record tries to redeem himself with one final heroic act.

—SUNDAY—

12:30 (3) 1984 SUNDAY COMPETITION (9) (1984) John Wayne, Paul Kelly. An American flier with a bad performance record tries to redeem himself with one final heroic act.

1:00 (3) THE REAL MOCOS (1982) John Wayne, Paul Kelly. An American flier with a bad performance record tries to redeem himself with one final heroic act.

1:30 (3) THE REAL MOCOS (1982) John Wayne, Paul Kelly. An American flier with a bad performance record tries to redeem himself with one final heroic act.

2:00 (3) THE REAL MOCOS (1982) John Wayne, Paul Kelly. An American flier with a bad performance record tries to redeem himself with one final heroic act.

2:30 (3) THE REAL MOCOS (1982) John Wayne, Paul Kelly. An American flier with a bad performance record tries to redeem himself with one final heroic act.

3:00 (3) THE REAL MOCOS (1982) John Wayne, Paul Kelly. An American flier with a bad performance record tries to redeem himself with one final heroic act.

3:30 (3) THE REAL MOCOS (1982) John Wayne, Paul Kelly. An American flier with a bad performance record tries to redeem himself with one final heroic act.

4:00 (3) THE REAL MOCOS (1982) John Wayne, Paul Kelly. An American flier with a bad performance record tries to redeem himself with one final heroic act.

COUNTER TOPPING FORMICA WILSON-ART MICARTA "WE NOW SELL CUT SIZES" T.S. THOMAS, CABINETMAKER 1516 Beverly Wichita Falls Ph. 723-6523

—MONDAY—

12:30 (3) THE REAL MOCOS (1982) John Wayne, Paul Kelly. An American flier with a bad performance record tries to redeem himself with one final heroic act.

1:00 (3) THE REAL MOCOS (1982) John Wayne, Paul Kelly. An American flier with a bad performance record tries to redeem himself with one final heroic act.

1:30 (3) THE REAL MOCOS (1982) John Wayne, Paul Kelly. An American flier with a bad performance record tries to redeem himself with one final heroic act.

2:00 (3) THE REAL MOCOS (1982) John Wayne, Paul Kelly. An American flier with a bad performance record tries to redeem himself with one final heroic act.

—TUESDAY—

12:30 (3) THE REAL MOCOS (1982) John Wayne, Paul Kelly. An American flier with a bad performance record tries to redeem himself with one final heroic act.

1:00 (3) THE REAL MOCOS (1982) John Wayne, Paul Kelly. An American flier with a bad performance record tries to redeem himself with one final heroic act.

# Library

Continued from page 1

from Marie Callon in order to give it to the city for a library.

A landmark since its construction, the two-story brick structure with its distinguishable green roof contains approximately 5,116 square feet. In the rear are two structures of matching materials, one a 773-square-foot servant's quarter and garage. There is also a storm cellar next to the house.

Almost the entire second story of the main structure was built for a ballroom.

In order to cut through red tape, as well as coordinating fund-raising activities, the Friends of the Library was given authority to undertake the renovation project. Last year, some \$9,000 was spent to repair deteriorated woodwork around windows, install storm windows and cover all exposed exterior wood with metal siding material.

For the past 13 years, the Iowa Park Library has been housed in the old high school home economics building at 331 E. Park. That wooden converted home remains the property of the school district but is loaned to the city for the library.

Iowa Park Library got its start March 12, 1962, by action of Wichita County commissioners' court. It was located in the southeast corner of the Chamber of Commerce office.



FUTURE TOM L. BURNETT MEMORIAL LIBRARY

remaining there until the present facility was made available in February of 1970.

From the humble beginning, library boards have sought a permanent housing for the library.

Friends of the Library kicked off their fund-raising campaign in April of 1983 with an open house of the Burnett home. During ceremonies, a state historical marker was dedicated to Tom L. Burnett, the individual. Another marker is in the making for the structure itself.

Last December, the Friends of the Library exceeded a \$100,000 goal in donations and pledges to qualify for a

matching \$100,000 grant from the Library Services and Construction

Act, Title II, Public Library Construction program.

## Municipal Court Records

Results of municipal court held here yesterday were:

- James Allen Gregg, speeding, \$40;
- Kevin Wayne Mills, displayed expired motor vehicle inspection (MVI), \$90;
- Kevin Wayne Mills, no operators license, \$60;
- Richard Marshall Neil Jr., displayed expired MVI, \$40;
- Randy Lee Gregory, no drivers license, \$60;
- Deborah Elaine Sargent, expired drivers license, \$40;
- Kerry Jane Nault, disobeyed stop sign, \$60;
- Marshall Scott Sattler, disobeyed stop sign, \$40;
- Lonnie Gene Kinneth, permit unlicensed operator to drive, \$40;
- Melissa Lee Shaffer, no motor vehicle liability insurance, \$94;
- Melissa Lee Shaffer, no operators license, \$40;
- Gwendolyn P. Ramos, speeding, \$47;
- William Daniel Moffett, expired motor vehicle registration, \$40;
- James Allen Hodgkins, displayed expired MVI, \$40;
- James Lee McElrath, displayed expired motor vehicle registration, taking defensive driving course;
- Monte R. Mitchell, displayed expired MVI, \$40;
- Vivian Haynes Haney, speeding, taking defensive driving course.

**READY FOR PLANTING**  
Cabbage, Broccoli, Iris, Day Lilies, Hardy Herbs, Miniature Roses, Lots More!  
2951 Elliott, W.P.  
Open 10-4 Every Day!

**Happy Birthday**  
**Sissy**  
From All of Us

WE CARE ABOUT YOUR HEALTH WE CARE ABOUT YOUR HEALTH WE CARE ABOUT YOUR HEALTH WE CARE ABOUT YOUR HEALTH WE CARE ABOUT YOUR HEALTH WE CARE ABOUT YOUR HEALTH WE CARE ABOUT YOUR HEALTH WE CARE ABOUT YOUR HEALTH WE CARE ABOUT YOUR HEALTH WE CARE ABOUT YOUR HEALTH

**WAL-MART PHARMACY**  
592-4157  
500 West Highway

DEBBI — CHRISTY  
BONNIE — PATTY  
& VESTA

**GNB**

# IRA

**A Personal Retirement Plan That Will Save You Tax Dollars Every Year**

EVERY WAGE EARNER IS NOW ELIGIBLE

As of January 1, 1982, every wage earner, even though they are active participants in an employer sponsored pension plan, can make tax-sheltered contributions to an individual retirement account (IRA). IRA contributions will accumulate tax-deferred with compounded interest until retirement.

**MAXIMUM CONTRIBUTIONS**  
The maximum contribution to an individual retirement account has been increased from \$1,500 to \$2,000; spousal IRA from \$1,750 to \$2,250. (Spousal IRAs are for married couples where only one spouse is employed.)

Whether or not you are covered by an employer sponsored pension plan	Contributory IRA \$2,000	Spousal IRA \$2,250
--	--------------------------	---------------------

**100% CONTRIBUTION**  
Contributions are no longer limited to 15% of your annual earnings. You may now contribute up to 100% of your earnings up to the maximum limitation.

**GNB** STATE NATIONAL BANK  
IOWA PARK, TEXAS  
Locally Owned

# It's Fantastic! It's Super!

**"Short Rows" with FARMERS' GRAIN & FERTILIZER, INC.**

**TREE SALE FEATURED**

Time passed our last average killing frost on March 25th. This is the cue for the start of many spring activities.

Time is short for getting trees transplanted. We are featuring a **giant tree sale** during the week of April 2-7. All of our trees will be marked down 25%.

We have a new shipment of the two best adapted trees for this area - Red Oak and Cedar Elm. Our fast growing trees are Arizona Ash and Fruitless Mulberry. The stock of fruit trees includes only the very best adapted varieties. See us for your tree needs during our close out sale.

As soon as soils dry, livestock and farm producers will be **busy planting their hay and grazing crops.** Hay supplies have been depleted and a large hay acreage is expected.

James Ludeke and William Morton of Burkhardt's have already arranged for their sudan/sorghum seed. Ludeke is trying a few acres of Sweet Sioux IV while Morton is splitting his hay acreage between ROX-Redtop and Trifan. They are planting about 50 pounds of seed per acre which produces a small stalk with a lot of leaves.

**Pasture clearing and seeding** is in progress by Dan Spruiell on his farm east of Iowa Park. He is seeding Kinggrass 75, side oats grama, and KR Bluestem. His seeding rate is slightly more than one pound of pure live seed per acre.

Warm season vegetables which can be planted now include beans, cucumbers, squash, cantaloupe, watermelon, tomato, peppers, egg plant, sweet corn, and all of the cabbage type plants. Soils are still too cool for blackeye peas and okra. We have an excellent selection in bulk seed of the top varieties.

211 S. Victoria 592-4118 Iowa Park

**IOWA PARK RECREATIONAL ACTIVITIES CENTER SCHEDULE FOR APRIL, 1984**

MONDAY	TUESDAY	WEDNESDAY	THURSDAY	FRIDAY	SATURDAY
Karate 3 p.m. Weight Watchers 6 p.m. Cumbatennis 7:15 p.m.	Karate 9 a.m. Basketball 1 p.m. Cumbatennis 7 p.m.	Karate 6:30 p.m. Rotary Club 12 Noon Karate 6:30 p.m.	Karate 3 p.m. Cumbatennis 7:15 p.m.	Karate 9 a.m. Tide Painting 9 a.m. Men's Softball Tournament	Karate 10 a.m. Tennis Court
Karate 3 p.m. Weight Watchers 6 p.m. Cumbatennis 7:15 p.m.	Karate 9 a.m. Basketball 1 p.m. Cumbatennis 7 p.m.	Karate 6:30 p.m. Rotary Club 12 Noon Karate 6:30 p.m.	Karate 3 p.m. Karate 7:15 p.m.	Karate 9 a.m. Tide Painting 9 a.m. Men's Ball Tournament	NO LEGALTY TODAY!! Tennis Court
Karate 3 p.m. Weight Watchers 6 p.m. Cumbatennis 7:15 p.m.	Karate 9 a.m. Basketball 1 p.m. Cumbatennis 7 p.m.	Karate 6:30 p.m. Rotary Club 12 Noon Karate 6:30 p.m.	Karate 3 p.m. Karate 7:15 p.m. R.C. Board Meeting 7:30 p.m.	Karate 9 a.m. Tide Painting 9 a.m. Softball Tournament	Karate 10 a.m. Tennis Court
Karate 3 p.m. Weight Watchers 6 p.m. Cumbatennis 7:15 p.m.	Karate 9 a.m. Basketball 1 p.m. Cumbatennis 7 p.m. (Linda Ayres)	Karate 6:30 p.m. Rotary Club 12 Noon Karate 6:30 p.m.	Karate 3 p.m. Karate 7:15 p.m.	Karate 9 a.m. Tide Painting 9 a.m.	Karate 10 a.m. LITTLE LEAGUE KICK-OFF
Karate 3 p.m. Weight Watchers 6 p.m. Cumbatennis 7:15 p.m.	Linda Ayres will instruct a class in the art of "Decorating Baskets"				

# B & B Car Wash

**NEW OWNERS — BUDDY DAVIS and BUDDY TRANTHAM**

**More soap and time for the same**

# 50¢ fee

Give us a try today - you'll like our facilities.

**Across West Hiway from Sonic**



**BUSINESS**

**WHEELER OF IOWA** will be holding a sale of its assets. The sale will include all assets of the company. Call 392-2222. 3/29/88

**WHEELER OF IOWA** will be holding a sale of its assets. The sale will include all assets of the company. Call 392-2222. 3/29/88

**WHEELER OF IOWA** will be holding a sale of its assets. The sale will include all assets of the company. Call 392-2222. 3/29/88

**WHEELER OF IOWA** will be holding a sale of its assets. The sale will include all assets of the company. Call 392-2222. 3/29/88


**WHEELER OF IOWA** will be holding a sale of its assets. The sale will include all assets of the company. Call 392-2222. 3/29/88

**WHEELER OF IOWA** will be holding a sale of its assets. The sale will include all assets of the company. Call 392-2222. 3/29/88





**WHEELER OF IOWA** will be holding a sale of its assets. The sale will include all assets of the company. Call 392-2222. 3/29/88

### TEEN GARDENER TIPS

## How To Protect Your Plants From Cutworms



When you plant your plants, you must protect them from cutworms. These are small, caterpillar-like creatures that can cut through the stems of young plants. To protect your plants, you can use a variety of methods. One is to use a cutworm collar, which is a ring of material that fits around the stem of the plant. Another is to use a cutworm bait, which is a substance that attracts the cutworms and kills them. You can also use a cutworm trap, which is a device that catches the cutworms and kills them. Finally, you can use a cutworm repellent, which is a substance that repels the cutworms and prevents them from eating your plants.

### DEVILS BACKHOE

Excavation & Demolition  
271-1111

### B&B PAINT & HOUSE MAINTENANCE

Specializing in House Painting  
392-1111

### Family Boot & Shoe Repair

706 E. Highway  
392-1891

### DON DIETRICHSON

Plumbing & Heating  
392-1111

### E&S Exxon

Exxon  
392-1111

### Richard S. Seng

Interior Design  
392-1111

### Patty Cakes Nursery School

392-1111

### Carpet Installation

392-1111

### Bud Mercer Electric Co.

Residential & Commercial  
392-1111

### YOUR OLD AIR CONDITIONER PROBABLY USES TWICE AS MUCH ELECTRICITY AS IT SHOULD.

WE'LL BUY IT ANYWAY!

Carrier

### AYRES TIRE

392-5621  
Sagessway & Johnson Rd  
Cooper, B.F. Goodrich, Propane, Used Tires, Diesel, Mechanical Work

Total best Carrier air conditioners are:

- TWICE AS EFFICIENT as your old model air conditioner
- QUALITY ENGINEERED - you can't buy better
- the BEST SELECTION of conditioner brand

Even our lowest priced Carrier units are True High Efficiency air conditioning. And will save you 50% on your conditioner when you buy Carrier. Get a great deal now!

### GREENING MONTH

PLANTS AND BULK SEED  
Robert and standard varieties  
- We grow our own plants

GARDEN MARKET AND COMMERCIAL

**Baker's Greenhouse**  
392-1111

### IOWA PARK AIR CONDITIONING & HEATING

557 W. South Iowa Park  
PHONE 392-2891

Thank you for your business  
Chuck Allen, Paul Frank and Russell

**WHEELER OF IOWA** will be holding a sale of its assets. The sale will include all assets of the company. Call 392-2222. 3/29/88

### Let's talk.



**WHEELER OF IOWA** will be holding a sale of its assets. The sale will include all assets of the company. Call 392-2222. 3/29/88

This month of the calendar from our award-winning column...  
This month of the calendar from our award-winning column...  
This month of the calendar from our award-winning column...

**WHEELER OF IOWA** will be holding a sale of its assets. The sale will include all assets of the company. Call 392-2222. 3/29/88

### A new company strategy

Our new company strategy...  
Our new company strategy...  
Our new company strategy...

**WHEELER OF IOWA** will be holding a sale of its assets. The sale will include all assets of the company. Call 392-2222. 3/29/88

### You are our satisfaction

Your satisfaction is our goal...  
Your satisfaction is our goal...  
Your satisfaction is our goal...

**WHEELER OF IOWA** will be holding a sale of its assets. The sale will include all assets of the company. Call 392-2222. 3/29/88

### Your financial health

Your financial health is our concern...  
Your financial health is our concern...  
Your financial health is our concern...

**WHEELER OF IOWA** will be holding a sale of its assets. The sale will include all assets of the company. Call 392-2222. 3/29/88

### Southwestern Bell Telephone

392-1111

### ALL IN THE WHITE AD