

1984
May 31

Mrs. Lita Watson
520 W. Clara
Iowa Park, TX. C-2

IOWA PARK LEADER

25 Cents

Vol. 15, No. 37

IOWA PARK, WICHITA COUNTY, TEXAS 76367

THURSDAY, MAY 31, 1984

SATURDAY

Light vote expected

Voting in Saturday's Democratic Party primary runoff is anticipated to be so light, the 60 voting precincts in Wichita County have been consolidated into 23 boxes.

Only three positions are to be decided. Two are candidates for criminal appeals court judges and the third, which is anticipated to have the most appeal to voters, will decide the party's candidate for U.S. Senator.

Precincts 32, 33, 34 and 60 have all been consolidated into one box, which will be located at the County Agricultural Building here in Iowa Park.

Voters of five precincts, 36, 37, 38, 39 and 49, will all cast their ballots at O.A. Lee Motor Co. in Electra.

Five other precincts, 18, 42, 44, 53 and 55, will vote in the box at City View School.

The race that probably will steal

the day's showing is the one to select which of two candidates will represent the party to vie for Sen. John Tower's seat in Washington.

Contesting for that position are Lubbock's Kent Hance and Lloyd Doggett of Austin. The victor will face Republican Phil Gramm in the general election next November.

In the runoff for Place Two on the criminal appeals court are W.C. Davis and Roy E. Greenwood, while Bill White and Thomas B. Thorpe are vying as candidates for Place Three.

Polls will open at 7 a.m. and close at 7 p.m.

Voters who did not cast ballots in the first primary are eligible to vote in the runoff, according to Vernon Cannon, county clerk. However, anyone who voted in the Republican Primary cannot vote Saturday in the Democratic Party Primary, Cannon

said. Republicans are not having a runoff primary this year.

Only in the general election can one vote for one party in a primary and then vote for a candidate from another party, cross-over voting.

Aldermen table action on golf course proposal

City council members Monday night tabled action on a golf course proposal, but approved bids offered for surplus equipment and hiring of summer help and also held the first of two public hearings needed to apply for grant funds.

At its May 14 meeting, council members agreed to discuss city participation with developer Rip Smith in the construction of a golf course.

Results of those discussions were that the city might pay approximately \$56,000 for a water line to the course site. Smith personally borrow the \$250,000 required to build the course, and the city be reimbursed for the water line from part of the green fees.

During open discussion on the proposal, Mayor Tim Hunter said the "presentation we have, I don't like." He explained, in effect, the city would be loaning money toward the project, but has no time frame for repayment.

Hunter then offered a solution. He said if the city were to put in the line, own and maintain it, the affluent from the sewer treatment plant could be sold to the course, insuring

repayment. Also, if the course should ever close and the city owned the line, it could be used as a sewer line from the northwest housing area, where the course would be located.

At Hunter's suggestion, the issue was tabled for more consideration and possible action at the June 11 meeting.

Prior to the tabling, Wayne House, a member of a committee named to study the proposal, told the council, "Here's a man holding out a golf course to our community, and I'd hate to hear you people turn this thing down."

Another hearing will be held at the next meeting concerning an application to the Department of Housing and Urban Development for a grant to replace water lines in the older parts of town.

Administrator James Barrington told the council he intended to ask for a grant of \$100,000 to replace the lines and also add valves so the entire city's water supply would not be interrupted when repairing a break.

A "plus" in hopes for the grant's approval is the city's intent to pledge a matching amount of money, which is

excess in the water and sewer fund, he told aldermen.

Nortex Regional Planning Commission has \$900,000 in federal funds available during the coming fiscal year, from which this grant would be south.

Nine bidders offered to purchase some of the excess equipment offered for sale by the city. All highest bidders were accepted except one for a 1978 F800 working garbage truck.

The truck and other equipment will be submitted again for bids at a later date, Barrington said.

Council members approved a budget amendment which would permit the hiring of three part-time workers for the street department during the summer.

Electra native hired

Robert Lee Palmer, 39, principal of Electra Junior High School, has been hired by Iowa Park school trustees as assistant superintendent.

Action was taken by the board in a called meeting Friday morning. Board chairman Roy Boutwell was absent, but all members voted to hire Palmer except one; trustee Marilyn Hale abstained.

The board's action was in response to Supt. Harold Cowley's recent request to hire an assistant superintendent. Cowley explained the work he was doing of several people who were no longer with the district and had never been replaced. "It's just getting too big for me," he said.

A native of Electra, Palmer entered Midwestern State Univ. after graduation from high school. He received his bachelor's degree with a major in English and minor in history. His master's in secondary education and principal's certificate also were earned at MSU. He received his superintendent certificate in 1979 at Texas Women's Univ. Palmer lists only four references of

employment. He worked in the MSU maintenance department 1963-65; MSU student services, 1965-67; U.S. Army, 1967-69, and has been in the Electra school system since 1969.

His stint in the army was as an officer, after having been commissioned in the ROTC at MSU.

Palmer was named Electra Citizen of the Year in 1982 by that community's Chamber of Commerce. He was also this district's ASCS Teacher of the Year and runner-up on the regional level.

Among his professional organization memberships, he is past president of the local Texas State Teachers Association, current president of the Region Nine Schoolmasters and current secretary of Region Nine Elementary Principals.

Palmer has also paid his dues as a member of his community, as a member of the Chamber, past president of United Way Fund, past president of the Lions Club, and member of Little League, Jaycees, Farm Bureau and Kiwanis Club.

His wife, Dorothy, is an elementary teacher. They have a son, Bruce.

Police investigate early morning wrecks

Iowa Park Police were kept busy during the early morning hours Saturday answering calls to the scenes where vehicles had struck immobile objects.

The first, at 1:28, involved a pickup driven by Wendell Bruce Meador, 29, striking a Texas Electric pole in the 300 block of North Bond.

Meador was not injured, but during the investigation it was learned Meador was wanted for tickets issued by officers of the Department of Public Safety at Sherman.

He was taken into custody and held until he paid \$135 in fines and penalty.

The second accident occurred at 3:14 in the 500 block of N. Yosemite. A citizen took Ricky McClanahan, 18, of Holliday, to the police station suffering head injuries. McClanahan's car had struck a tree.

After an ambulance took the driver to Bethania, officers launched a search for Tracy Woods, also of Holliday, who was reportedly a passenger in McClanahan's car but was uninjured. He was not located.

Two young Iowa Park men were arrested and jailed on charges of criminal mischief Monday evening at 11:55.

After a citizen reported to police that someone was tearing up mail boxes on West Smith Street, officers



CONCERN SHOWS ON RESCUERS' FACES AS THEY ADMINISTER TO YOUTH ... and work frantically to save life of Jimmy Reeves, 4.

Buried youth rescued

gravel into the hopper when the older of his two sons told him the younger boy had disappeared in the gravel pit.

There are two pits which dump into a hopper, from which a conveyer loads the cement mixer. Four-year-old Jimmy had been atop the stack of one-inch gravel when Reeves began dumping it.

Reeves explained, when the bottom gate is opened and contents spill "in a hurry" into the bottom hopper, a cone is created and sucks anything to the bottom.

Young Jimmy had disappeared to the bottom of the pit with Rusty, 10, watching. He yelled to his father, who was about 40 feet away, and the equipment was shut down immediately.

Reeves summoned the help of three young men who work at the plant. Two began digging with the father while the other alerted the police dispatcher, at 8:47.

Emergency personnel from the fire department were dispatched and they, with the help of the others, dug the youngster out.

He was unconscious, scratched and bruised, but breathing.

A hush fell over the small crowd of about a dozen men while David King, Emergency Medical Technician, checked for vital signs. A few seconds later, Jimmy uttered a faint cry and a simultaneous sigh of relief and broad grins broke out on the previously worried faces of the rescuers.

Standing a few feet away was Jimmy's worried brother. He was still shivering with concern.

King checked to see if any gravel was in the youth's mouth, and about the same time the Plumlee Ambulance arrived to transport the youth to Sheppard AFB hospital, leaving here at 9:19 a.m. There, he was checked by physicians and released.

"He was running around the hospital even before they had finished with him," commented his father.

There were between five and six yards of gravel in the five-foot-deep pit in which young Jimmy fell captive.

Continued on page 4



SAFE BUT SHAKEN JIMMY COMFORTED IN ARMS ... of father, Jim Reeves.

News in Brief

Class of '74 reunion set Saturday

Iowa Park graduation class of 1974 will hold a reunion Saturday in two phases.

A reception for families will begin at 10:30 that morning in the high school cafeteria, and at 8 that evening

a social hour and dance will be held in the Wichita Falls Activity Center, with a fee of \$10 per adult.

Members not yet making reservations can do so by calling Sherry Kennedy, 592-5134, or Carlette Kelly, 855-1853.

Fund to help former resident

A fund has been opened to assist a former resident with medical expenses.

medical bills incurred by surgery and post surgery care.

Mrs. Norman (Linda) Deason, 34, underwent surgery in March and for reasons yet unexplained has become totally blind. The Linda Deason Fund was established at United Savings this week by Iowa Park Garden Club, which Mrs. Deason was a member.

A resident here some 10 years before moving last year to Henrietta, Mrs. Deason has two young sons. According to friends, the fund was initiated because the family's insurance did not cover all the

Weather Report

Weather reports are officially compiled for Iowa Park at the Texas Experiment Station, southeast of town.

Rainfall for week.....	.21
Total for month.....	1.16
Total for year.....	4.51
Total for last year.....	12.98

Sitgreaves, Bozeman marriage vows exchanged Friday evening

A double-ring ceremony was officiated Friday evening at Faith Baptist Church by the bride's brother-in-law, Rev. Val Fowler minister of the Trinity Presbyterian Church at Denton, to unite Miss Aimi Carol Sitgreaves, daughter of Mr. and Mrs. Robert J. Sitgreaves, and Charles Allen Bozeman, son of Mr. and Mrs. Durham R. Bozeman.

Andy Sitgreaves, brother of the bride, escorted her to the altar and presented her in marriage for her parents. She chose a youthful bouffant gown of white silk organza fashioned with an appealing band of Rachel lace forming a capelet effect around the on or off-the-shoulder scoop neckline, modified ruffled and cuffed bishop sleeves and cummerbund. The flowing A-line skirt was delicately accented with a deep flounce of ruffles that swirled into a chapel train.

Her two-tiered lace-edged sheer veil fell from a cap of lace and pearls closely fitted to the back of her head, and she carried a striking silk bouquet of peach and baby blue silk roses, white gypsophila, lace and ribbon streamers in the bride's colors

complemented with a white lace background.

The beauty of soft candlelight and basket arrangements of flowers were the favoring factors in decorations arranged at the altar where the couple repeated their matrimonial vows. A brass arch traced with the couple repeated their matrimonial vows. A brass arch traced with the couple repeated their matrimonial vows. A brass arch traced with the couple repeated their matrimonial vows.

The wedding musicians were Mrs. Billy Hacker, organist, and Mrs. Russell Guyette, soloist. The former began the music with pre-nuptial selections including "Oh Perfect Love," "Calm As the Night," "The Lord Bless You," and "Theme from Water Music." She accompanied Mrs. Guyette who sang "There Is Love" before the ceremony and "The Lord's Prayer" at the close. Mrs. Hacker included the so frequently used marches by Wagner and Mendelssohn for the entrance and exit of the wedding party.

Miss Kara Johnson, the maid of honor, was attired in a peach satin gown accented with ruffles around the off-the-shoulder neckline and puffed sleeves, and a self sash that tied in a bow at the back. She wore a lace peach picture hat with a brim covered with matching silk flowers and raised at one side. She carried an open white lace fan to hold her refreshing bouquet of liatris, apple blossoms, forget-me-nots in the bride's colors.

The groom was attired in a white tuxedo with tails, white shirt with wing-tipped collar, bow tie and cummerbund. His boutonniere was formed with a peach silk rose, blue silk forget-me-nots and baby's breath.

Sam Bozeman served as best man for his brother. He and the other male participants in the wedding wore baby blue tuxedos. John Sitgreaves and Marty Sitgreaves, brothers of the bride, were the ushers.

Mothers of the couple wore corsages of peach apple blossoms, roses and lace and baby blue gypsophila with the dresses that they chose for the wedding. Mrs. Sitgreaves wore a long sleeveless gown of peach satin with a round



MRS. CHARLES ALLEN BOZEMAN

neckline and matching lace ruffles on the bodice and skirt. Mrs. Bozeman wore a blue knit street-length dress complemented with a white lace jacket.

The bride's parents were hosts for the wedding reception held in the Fellowship Hall where decorations and appointments were governed by the colors of peach and baby blue.

The round table where guests registered was laid with apricot lace over white satin ruffled at floor level. The attention of the guests was directed to the couple's wedding invitation resting on a border of white silk orange blossoms, roses and baby's breath and framed in gold. The table also held the wedding book, a baby blue feather pen and the bride's

bouquet. Mrs. Andy Sitgreaves, sister-in-law of the bride, presided at the table.

The bride's table was draped with white Chantilly lace, the skirt falling to the floor from garlands of blue ribbon caught to matching bows around the top. The novel centerpiece featured a tower of votive candles decorated with springer fern, white gerbera daisies and baby's breath on a reflector.

The three-tiered white cake with two sets of Grecian pillars was especially designed with deep scallops intermixed with baby blue rosebuds and teardrops of peach rosebuds. The kissing bride and groom, so popular with the younger set, was the top ornament, and their picture added interest to the peach napkins inscribed with "Aimi and Charlie, May 25, 1984." The crystal punch service, trays of pink mints added bits of interest to the table. The groom's table was covered

with white Chantilly lace and headed with a band of blue ribbon secured with pearl-topped pins. It held a devil's food cake iced with chocolate, an ice tea service, floral bouquet in the chosen colors, trays of nuts and peanuts.

Mrs. Val Fowler, sister of the bride, and Mrs. Donnie Watford served refreshments during the reception.

Kandy Sitgreaves, Brittany Fowler and Erin Fowler, nieces of the bride, handed out the peach net bird seed bags tied with blue ribbon from a silver tray on a white wrought iron stand to guests as they were leaving the reception room.

The bride was graduated from Iowa Park High School. The groom was graduated from Red Level, Ala. High School and is employed by Galaxy Oil Co. When they return from a wedding trip to Alabama and Pensacola Beach, Florida, they will live in Iowa Park.

Morris family reunion held

Mrs. Nannie Greer Morris was honored Saturday night at a family reunion held at the Recreational Activities Center, marking the first reunion held since 1964 when all of her 10 children were present. Eighty-four relatives representing four generations were present.

Mrs. Morris, a native of the area, now living in Iowa Park, and the late C.C. Morris were married in Wichita Falls July 14, 1923. They had seven sons and three daughters. They are: Calvin H. Morris, Summerset, Eloise Holder, Eulless, Patsy Clark, Alvord, Geanita Lewis, Anchorage, Alaska, Wanda Mattingly, Moody, Mo., Doris Evans, Iowa Park, Virgil Morris, Fort Worth, Shirley Carroll, Alvord, Linda Beard and Jerry Morris of Wichita Falls.

Others attending were Tiny Fitzgerald of Henrietta, the honoree's youngest sister; 19 grandchildren; 16 great-grandchildren; and family friends.

LOSE WEIGHT

the safe way with Health and Nutrition Products



Call Lil Smith

Your Herbalife Supervisor
592-4332 or 691-1259



We're Moving Sale

We're moving to an incredible new location so now's the time to take advantage of low prices on items throughout the store as well as our now famous double option terms, still in effect. Buy anything in the store for \$400 or more, and take 90 days to pay with no interest. Or get up to \$1500 instant credit (subject to approval), put 10% down and take up to 24 months to pay.
3100 Ninth; 322-5495 3907 Wayne; 691-1112



Let's talk.

Information about your changing telephone service from Dan Adams, Manager-Community Relations

Strength is vital

A strong Bell is good for Texas. It has a nice ring, and it's true.

When I meet with many of you at meetings and on the street, I usually talk about how important it is for Texas to have a strong and financially sound Southwestern Bell Telephone Co.

My message is simple: The strength of Southwestern Bell Telephone is vital to the strength of a growing Texas.

Texas always has been a leader in telecommunications — and Texas must remain a leader. Top quality telecommunications service is imperative to attract and hold the high technology, "clean" industry which is an integral part of the state's economic future.

And Texas must have a strong framework to assure that the state draws those high-tech firms. Education and transportation, for instance, are essential aspects. Telecommunications, a must in that framework, cannot be a second-class partner in the future of the Lone Star State.

Our state's high-tech companies thrive on communications. We know we must be able to meet their needs, and the needs of every Texas customer, efficiently and quickly. However, our ability to take care of the needs of every Texan we serve is in direct relationship to the revenues we have available.

Our partnership

We are in partnership with this state, and all Texans. We must have the dollars necessary to keep up and keep Texas in the forefront of telecommunications.

The demands of Texas as a high-growth area put intense pressures on our resources. That's why every one of the company's employees has to

take on the personal responsibility of assuring that our revenues stretch as far as possible.

Why am I telling you all this? Because we feel our message of service and financial strength is one for all Texans.

Texans for Texans. It's what Southwestern Bell Telephone is all about.

A good value

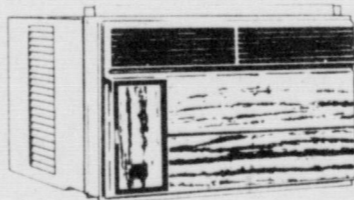
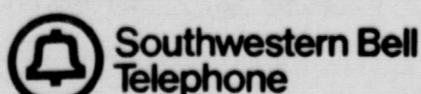
Your service. Take a closer look — it's a value!

Even though your rates for local telephone service will be going up a few cents, compare your monthly bill in relation to many other items. I think you'll find that it's a bargain.

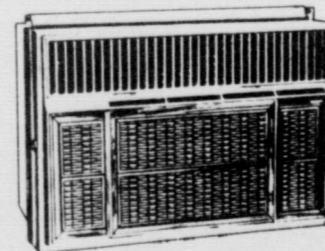
Just think about some of the items you buy every month. The average cost of cable television is about \$33 (basic package and two movie channels) and the cost of a fast-food meal for a family of four once a week for a month is about \$40. Even a carton of cigarettes a week will run you about \$32. And if you are like most Texans, you probably purchase about 800 gallons of gas a year. That's about \$75 a month — just for one car.

Residential customers in Texas with basic, one-party service now pay an average of \$10.35 per month for telephone service. When you think about it — and compare — it's so little for 24-hour, 7-day-a-week service that gives you access to your friends across town, across Texas and to any of the world's 450 million telephones.

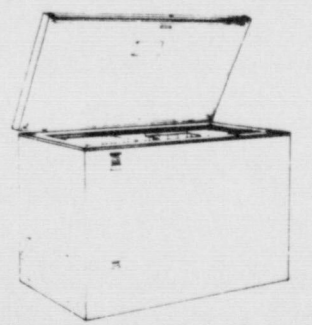
Dan Adams
SW Bell Telephone
2121 Paradise
Vernon, TX 76384



\$199.95 Save \$100
Reg. \$299.95
5,000 B.T.U. Air Conditioner
110V, EER 9.0, L0510K1N



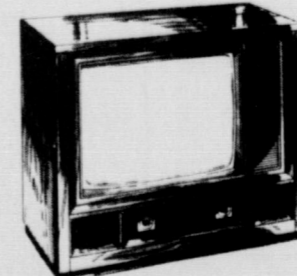
Our Special Price
Less Tesco Rebate*
\$549.95
\$100.00
Your Price
\$449.95
Fedders 13,500 BTU Air Conditioner
110V, EER 9.2, ASL14E2H
*Rebate for qualified Texas Electric customers only



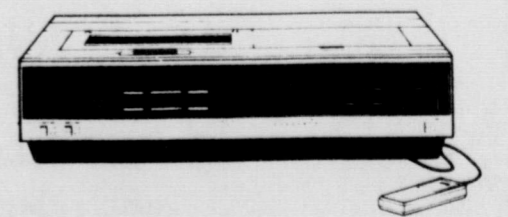
\$419.95 Save \$180
Reg. \$599.95
22 Cu. Ft. Chest Freezer
G22W



\$228 Save over \$120
Reg. \$349.95
Toshiba 13" Diagonal Portable Color TV
Automatic fine tuning control. CE320



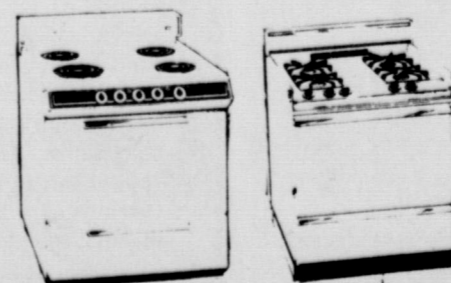
\$598 Save \$250
Reg. \$849.95
Zenith 25" Diagonal Remote Control Color TV
Quartz-controlled electronic tuning - precise, accurate. Electronic power sentry protects chassis, controls energy usage. S27605K



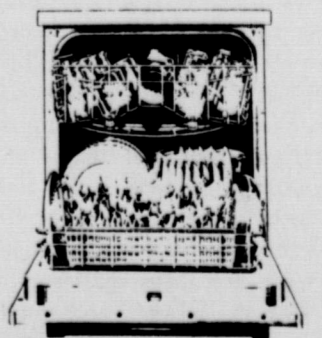
\$478 Save \$250
Reg. \$699.95
Fisher VHS Cable Ready Video Recorder
1-time, 9-day programmability, speed search and wired remote. FVH815



\$288 Save over \$160
Reg. \$449.95
Sharp Carousel Microwave with Variable Cooking
Carousel turns food automatically so you don't have to. 7-year warranty on magnetron tube, 2-year in-home service warranty on parts and labor. H4624



\$299.95 Save \$150
Reg. \$449.95
Your Choice Gas or Electric Caloric Range
30" electric range has bottom storage tray. EHD312
30" gas range has conventional oven. RL0312



\$398 Save over \$250
Reg. \$649.95
KitchenAid Dishwasher
4-way hydro-sweep wash arm. 2-way upper level power wash with china guard. K22-01

Thompson, Holland wed in United Methodist Church Friday

The chapel of First United Methodist Church was the setting for a wedding ceremony characterized by beautiful simplicity officiated Friday evening by Rev. George Topper to unite Miss Theresa Kay Thompson and Ernest Paul Holland.

The bride is the daughter of Mr. and Mrs. C.L. Thompson of Iowa Park and the groom is the son of Mr. and Mrs. Kenneth W. Holland of Wichita Falls.

The couple stood before an altar table centered with a long silk arrangement of lavender mums and white daisies banked around three clear hurricane globes holding white candles. The chapel pews were marked with white silk bows.

Don Owens, organist, presented a prelude of traditional wedding music and played the familiar marches. He accompanied Paula Mashburn and Jay Yeakley for a duet number, "Endless Love."



MRS. ERNEST PAUL HOLLAND

The bride was given in marriage by her father. She wore a dainty floor length gown befitting a spring wedding of white sheer and Chantilly lace over white satin. The gown featured a natural waist bodice with a high neckline and a yoke bordered with a deep lace ruffle, long sleeves cuffed at the wrists, and a satin waistline sash. The skirt was especially attractive with its wide lace hemline flounce.

She wore a waistlength illusion veil edged in lace and seed pearls with a blusher, both caught to a headpiece of white silk flowers dotted with seed pearls. She carried a silk bouquet of lavender roses and white daisies accented with lavender and white lace streamers. For "something old" and "something borrowed," the bride wore her mother's white wedding gloves. Her dress was "something new," and she used a penny covered with blue satin for the "good luck" and "something blue" sentimental accessories.

Miss Lori Ann Barr attended the



RONDA WHEELER and MICHAEL HULSE

Announce engagement

Mr. and Mrs. Robert Wheeler are announcing the forthcoming marriage of their daughter, Ronda Kay, and Michael Alden Hulse, son of Mr. and Mrs. Raymond Hulse of Thornberry. The wedding ceremony will be performed July 28 at the First United Methodist Church.

Miss Wheeler was graduated from Iowa Park High School in 1983 and is employed at Patterson-Olds Toyota Inc. The groom-elect was graduated from Petrolia High School in 1982 and is employed at Nell's Quick Stop.

VBS begins Monday

The First Baptist Church will hold Vacation Bible School June 4-8 for children three years of age through the sixth grade from 8:30 - 11:30 a.m.

Rusty Stowe, minister of music and education, will serve as director of the school.

bride as maid of honor. She wore a modish waltz length lavender Qiana dress with spaghetti straps, off-the-shoulder ruffles and cummerbund. She carried a nosegay of lavender roses and baby's breath with matching ribbons.

The groom wore a satin-labeled gray tuxedo with bow tie and cummerbund. He was attended by his father as best man who wore a light blue western suit. Charles L. Thompson of Austin, brother of the bride, served as usher.

The mothers of the bride and

groom wore white rose corsages and white accessories with their dresses of street-length. Mrs. Thompson wore a rose polyester dress with pleated skirt and Mrs. Holland wore a pastel floral print polyester dress.

The reception following the wedding was hosted by the bride's parents in the Fellowship Hall of the church. The fine distinction of the setting was noted in the refreshment table draped to the floor with a pleated skirt. Silk ivy accented with lavender bows and streamers extended around the top of the cloth

to accentuate its beauty.

The graceful centerpiece was a four-branched silver candelabrum adorned modestly for the occasion with an arrangement of white snapdragons and leatherleaf and white candles. A silver compote filled with lavender double wedding bell mints and the lavender napkins lettered in silver with "Ernest and Theresa, May 25, 1984" appointed the foreground of the table, and the extremities were marked with the silver punch bowl and cake.

The bride's chosen colors of

lavender and white were detailed to excellent advantage in the cake of three tiers. The deep sculptured garlands were accented with tiny pale lavender roses at intervals. Grecian posts lifted the top tier to give extra height to the confection and to afford a better view of the second tier decorated with lavender roses and white lilies of the valley. A formally dressed bridal couple stood in front of a trellis covered with stephanotis and lilies of the valley for the top ornamentation.

Miss Susan Piatt presided at the

table which was backgrounded with tall white wicker baskets of fern.

Guests registered at a round table covered with white satin encircled with English ivy at the top, holding a candle encased in a hurricane globe, the book and plume pen. Mrs. Vance Walek directed their signatures.

The bride and groom were both graduated from Iowa Park High School and are students at Midwestern State Univ. He is employed at Cryovac. They went to Dallas for a short wedding trip and will live in Wichita Falls.

Everything's coming up

SAVINGS

<p>COKE - SPRITE TAB - MR. PIBB</p> <p>6 32 oz. Btls. \$2.19 plus deposit</p>	<p>PURE GRANULATED SHURFINE SUGAR</p> <p>5 LB. BAG \$1.49</p>	<p>HEAVY GRAIN FED BEEF BONELESS CHUCK ROAST LB. \$1.49</p> <p>HEAVY GRAIN FED BEEF BONELESS CHUCK STEAK LB. \$1.69</p> <p>HEAVY GRAIN FED BEEF BONELESS ARM OR ARM SWISS ROAST LB. \$1.89</p>	<p>FRESH 81% LEAN GROUND CHUCK LB. \$1.59</p> <p>SHURFRESH QUALITY SLICED BOLOGNA 12 OZ. PKG. \$1.19</p> <p>HORMEL LITTLE SIZZLERS PORK LINK 12 OZ. PKG. \$1.19</p>	<p>CHUNK LIGHT STARKIST TUNA OIL OR WATER PACK</p> <p>6 1/2 OZ. CAN 69¢</p>
<p>ASSORTED FLAVORS SHURFINE CANNED SODA</p> <p>6 12 OZ. CANS \$1</p>	<p>WRIGHT'S HICKORY SMOKED SLICED SLAB BACON LB. \$1.19</p>	<p>WRIGHT'S HICKORY SMOKED FULLY COOKED BONELESS HALF HAMS 2 TO 4 LBS. AVERAGE \$1.69</p>	<p>WHITE, ASST. COLORS, PRINTS BATHROOM TISSUE</p> <p>DELSEY 89¢ 4 ROLL PKG.</p>	<p>EARTHTONE OR WHITE HI-DRI TOWELS</p> <p>JUMBO ROLL 49¢</p>
<p>THE CHEESE MOTHER USED KRAFT VELVEETA</p> <p>2 LB. BOX \$2.99</p>	<p>CALIFORNIA LONG WHITE U.S. NO. 1 POTATOES 10 LB. BAG \$1.59</p>	<p>RED BEAUTY CALIFORNIA PLUMS LB. 59¢</p>	<p>RED ONIONS LB. 39¢</p> <p>NEW CROP TEXAS RIB OKRA LB. 79¢</p> <p>LONG GREEN SLICERS CUCUMBERS LB. 29¢</p> <p>ORCHARD SWEET CALIFORNIA PEACHES LB. 59¢</p> <p>LARGE PERSIAN LIMES LB. 79¢</p>	<p>LAUNDRY DETERGENT</p> <p>SUP SUPER SUDS 99¢ GIANT BOX</p>
<p>ALL GRINDS COFFEE HILLS BROS. 1 LB. CAN \$2.09</p>				

Ideal for Working Housewives

MIKE'S Delicatessen FRIED CHICKEN

10-Piece Box \$6.49 2-Piece Snack Box \$1.89 15-Piece Box \$8.49



Ready-to-Eat Meals

We have the finest sandwiches, salads and desserts ready for you. We'll do the work, just order in advance for a complete meal from our Deli.

Call 592-4186 for orders

AT AFFILIATED FOODS INC. MEMBER STORE

We're proud to give you more!

THRIFTWAY

PRICES EFFECTIVE MAY 31 THRU JUNE 3 WE RESERVE THE RIGHT TO LIMIT QUANTITIES WE ACCEPT FOOD STAMPS

MIKE'S THRIFTWAY FOODS

ParkWest Shopping Center Phone 592-4186
STORE HOURS: 8 a.m. - 9 p.m. Monday - Saturday; 9 a.m. - 7 p.m. Sunday

Our store family-owned and operated 20 years.

DOUBLE COUPONS EVERY TUESDAY

DOUBLE EVERY WEDNESDAY

Cook of the Week



Mrs. Al Denton

Cakes play an important part in the most significant moments of people's lives, whether they are towering wedding cakes, children's birthday cakes blazing with many candles, anniversary or just cakes for special occasions.

The cake that Connie (Mrs. Al) Denton is pictured with today is one of her own creations, and made the family reunion given to honor Mrs. Nannie G. Morris a more festive and special occasion. The reunion was held Saturday at the Recreational Activities Center and attended by 84 relatives, including her 10 children,

and all declared Connie a "master cake artist."

The three-tiered white cake with two sets of columns featured delicate pipe and scroll icing around each tier, cascades and clusters of roses tinted blue at the sides and on top of the layers.

The cake decorations held special appeal for the Morris children because Mrs. Cornell Evans, one of the children, had placed figurines representing the work or profession of each of them on the cake. These included construction, oil field,

needlework, poodle grooming, nurse, book worm, grocery clerk, farmer's wife, teacher and babysitter. The top piece depicted Mrs. Morris and her late husband, C.C. Morris in the garden, an important place in their lives when they were rearing their children. He had a hoe in his hand and she had laid her implements aside and sat down to rest.

Connie is the daughter of Mr. and Mrs. Chester Morrison, and she gives her mother, who is truly a cake artist, credit for the talent that she has. In fact, she says that she learned all the tricks that she knows from just watching her mother decorate cakes through the years.

The "like mother, like daughter" pattern is true not only in the lives of Dema and Connie in cake baking and decorating but also in their social lives. For years, Mrs. Morrison was an active member of Epsilon Sigma Alpha sorority, and Connie has just completed her year as a pledge and is now a full fledged member of the sorority.

Connie was graduated from Iowa Park High School. She is a member of New Life Cathedral and active in Little League baseball. She and Al, who is employed at Cryovac, have three children, Robert, 10, Timothy, eight, and Kristi, three. Her hobbies are sports and cake decorating.

1 can cream of mushroom soup
1/2 can water
1 onion
Flour and sear round steak in 3 tbsps. oil. Slice onion and layer on top. Pour soup and water over and simmer 30 minutes to 1 hour.

PAPA'S GOOD CHILI
2 lbs. chili meat or ground beef
1 chopped onion
2 tbsps. chili powder
1 tsp. onion salt
1 tsp. garlic salt
Dash red pepper
1 small can tomato sauce
1 cup catsup
1 cup water
Brown meat and add rest of ingredients. Simmer 1 hour or cook several hours in the crock pot.

CHERRY CRUNCH
1 box graham crackers
1-6 oz. box Instant Vanilla Pudding
1 small carton Cool Whip
1 can cherry pie filling
Mix pudding as directed; stir in Cool Whip. Layer 9x13 inch glass pan with crackers and pudding (about

three layers). Top with pie filling and refrigerate 30 minutes.

PARTY PUNCH
1-3 oz. pkg. Jello, any flavor
1 cup boiling water
1 cup sugar
1/2 can pineapple juice
3 cups cold water
1 qt. ginger ale
Dissolve Jello in boiling water, add sugar and stir. Add juice and cold water; blend thoroughly and freeze. Add ginger ale and serve. Serves 15 to 20. Ingredients can be doubled for a large party.

PARTY COOKIES
Cream together:
1/2 cup butter

1 cup sugar
Add 1 egg
Sift together, and add to creamed mixture:
2 cups flour
1/2 tsp salt
2 tps baking powder
1/2 tsp vanilla
Form in desired size and bake at 350 degrees 7 to 10 minutes.

FROSTING
1 box sifted powdered sugar
Dash salt
2 egg whites
1/2 cup Crisco
1 tsp. vanilla
2 drops almond flavoring
Beat 4 minutes. Use to frost cookies or cakes.

Rummage Sale
(To benefit Teens For Christ)
9 A.M. to 4 P.M. Saturday
Christ the King Catholic Church
1st & Clara

Christ The King Catholic Church
First and Clara Phone 592-2802
8:45 a.m. C.C.D. — 10 a.m. Mass

Church of God
601 E. Cash
Pastor, Ole Olds
Sun. Morning Worship 11:00
Sun. Night Celebration Service 7:00 p.m.
Tues. Ladies Prayer Service 10 a.m.
Wed. Night Bible Study 7:30
Sat. Family Night 7:30
"Catch the Vision"

Par. 592-5316 Office 592-4348

First Presbyterian Church
DR. EARLE W. CRAWFORD, INTERIM PASTOR
CHURCH SCHOOL - 9:45 A.M.
WORSHIP - 11:00 A.M.
A Caring Congregation of
Palo Duro Presbytery - Presbyterian Church [USA]

FREE CONCERT

DD D CHRISTIAN SINGERS LIVE
7:30 p.m. Saturday
Danny Donny & the Diamonds

First United Pentecostal Church
802 1st St. Iowa Park
— PUBLIC WELCOME —

-WELCOME-
ASSEMBLY OF GOD
S. Yosemite
9:45 S.S./7 P.M.
Wed. 7 P.M. Service
Rev. Charles Hensley,
Pastor

QUICK SMOTHERED STEAK
1 round steak

Grace Baptist Church
511 S. Colorado - 592-5632
Come Let Us Reason Together Saith The Lord
Sunday School . . . 10:00 A.M.
Morning Worship . . . 11:00 A.M.
Children's Worship . . . 11:00 A.M.
Evening Worship . . . 6:30 P.M.
Wednesday Service . . . 7:30 P.M.
Jimmy Johnson, Pastor

Northside Baptist Church
800 N. Wall

- Sunday School - 10 a.m.
- Sunday Worship - 11 a.m.
- Sunday Evening Worship - 6:30 p.m.
- Wednesday Worship - 7:30 p.m.

EARL CORRELL - Pastor Ph. 592-2200

First Baptist Church of Iowa Park
Yosemite at Park

SUNDAY SERVICES

— Mornings —	
Sunday School	9:45
Worship	11:00
— Evenings —	
Church Training	6:00
Worship	7:00
WEDNESDAY	
Prayer Meeting	7:00
Choir Rehearsal	7:45

Pacific Avenue Missionary Baptist Church
1400 North Pacific Avenue

Larry Washburn
Pastor
Church - 592-9711
Pastor 592-4288

Sunday School 9:45 a.m.
Morning Worship 11:00 a.m.
Evening Worship 6:00 p.m.
Wednesday 7:00 p.m.

Everybody Welcome

First United Methodist Church
201 E. Bank

Church School 9:40 Youth Meetings 5:00
Morning Worship 10:40 Evening Worship 6:00

GEORGE TOPPER, PASTOR

First Christian Church
105 E. Cash
Sunday School - 9:45 a.m.
Worship - 10:55 a.m.
Corner, Cash & Bond St.

We encourage each of you to worship Jesus Christ in the church of your choice. If you do not have a church home, we invite you to come worship with our church family.

Kamay Road Church of Christ
Corner of Colorado & Emerald
'Seeking the Old Paths'
Lord's Day
10:30 a.m. & 6 p.m.
Wednesday 7:00 p.m.

GOOD SHEPHERD LUTHERAN CHURCH
1st & Magnolia
Iowa Park
Sunday School: 9:45 a.m.
Worship Service: 10:30 a.m.

IOWA PARK CHURCH OF CHRIST

SCHEDULE OF SERVICES

Sunday		Wednesday	
Bible Study	9:30 a.m.	Ladies Bible Study	10:00 a.m.
Worship	10:30 a.m.	Evening Study	7:30 p.m.
Evening Worship	6:00 p.m.		

300 East Park, Iowa Park, Texas 76367, [817] 592-5415



Area oil, gas report

Joe McDonald of Burkburnett has filed for permit to drill the No. 17 Hodges "B", a 1,500-ft. developmental well four miles southwest of Iowa Park. Location is in a 155-acre lease in the Wichita Regular Field, H. Balch Survey.

Location is 800 feet from the west line and 1,500 feet from the south line of the lease and 3,721 feet from the south line and 800 feet from the east line of the survey.

A 9,600-ft. wildcat well is planned by James D. Dobos Corp. of Dime Box at a drillsite 1.3 miles west of Chillicothe, Hardeman County. The location is in a 160-acre lease in the H&TCRR Survey. Well's designation is the No. 2 Nuckles.

The well is 540 feet from the east line and 1,665 feet from the south line of the lease and survey.

Paul De Clava of Wichita Falls has filed for permit to drill the No. 1 Jones Unit, an 8,800-ft. wildcat well 6.5 miles southeast of Quanah. Location is in a 40-acre lease in Hardeman County's W&NWRR Survey.

The well is 550 feet from the south line and 643 feet from the east line of the lease and 110 feet from the north line and 942 feet from the west line of the survey.

A Dallas-based operator has staked location for the No. 1 McNabb "87", a wildcat well to be located eight miles southwest of Chillicothe. With projected total depth of 8,850 feet, the well is in a 270-acre lease in Hardeman County's W&NWRR Survey. The operator is Enserch Exploration Inc.

Location is 812 feet from the west line and 2,318 feet from the north line of the lease and 1,777 feet from the east line and 2,318 feet from the north line of the survey.

Burk Royalty Co. of Wichita Falls has filed first production figures on a new oil well in the Wilbarger Regular Field. The No. 2 Dockery "A" showed potential to flow 70 barrels of oil and 80,000 CF gas per day on a 4/64 choke.

The operator has 280 acres leased, with drillsite in the H&TCRR Survey, six miles southeast of Vernon.

The well will produce from an interval 6,196 to 6,209 feet into the wellbore. Total drilling depth was 6,420 feet.

The well is 467 feet from the east line and 1,907 feet from the south line of the lease.

A 6,500-ft. developmental well is planned by the same operator at a drillsite six miles southwest of Vernon. The location is in a 280-acre lease in the H&TCRR Survey. Well's designation is the No. 3 Dockery "A". It is in the Wilbarger Regular Field.

Location is 467 feet from the east line and 707 feet from the south line of the lease and the survey.

Mobil Producing TX & NM Inc. of Houston has filed first production figures on two new oil wells in the Wichita Regular Field. The operator has 100 acres leased, with drillsite in the Richard Meade Survey, A-185, 3.5 miles northeast of Electra. The wells are designated as the Nos. 23 & 24 Corsicana Honaker.

The No. 23 indicated ability to pump at the rate of 92 barrels per day. Bottomed at 2,050 feet, the well will produce from perforations 510 to 1,900 feet into the wellbore. Location is 400 feet from the south line and 950 feet from the west line of the lease.

The No. 24 well showed potential to pump 110 barrels of oil per day. It was taken to a 2,127-ft. bottom and will produce from perforations 590 to 1,226 feet into the hole. The well is 500 feet from the east line and 850 feet from the south line of the lease.

At a location four miles southwest of Iowa Park, Joe McDonald of Burkburnett has finaled a new oil producer in the Wichita Regular Field.

The well is designated as the No. 1 Love, pumping at the rate of 16 barrels per day.

Location is in a 50-acre lease in the W.S. Kennard Survey, A-171. Bottomed at 1,860 feet, the well will produce from perforations 1,805 to 1,807 feet into the hole.

The well is 150 feet from the south line and 450 feet from the west line of the lease.

Two new producers have been brought on line in the Wichita Regular Field, with A.T. Hunter of Wichita Falls as the operator.

Located five miles north of Kamay, the wells are in a 140-acre lease in the GC&SFRR Survey, A-772 and the H. George Survey, A-454. They are designated as the Nos. 3 & 4 J&J Waggoner.

The wells indicated ability to each pump 16 barrels of oil per day. They will produce from perforations ranging from 1,684 to 1,876 feet into the wellbore. Total depths were 1,914 and 1,922 feet, respectively.

The Wichita Regular Field gained a new producer when Loc Mac Co. of Ft. Worth completed the No. 12 Lochridge "B" five miles south-southwest of Iowa Park.

The well indicated ability to pump at the rate of 16 barrels per day. It was taken to a 762-ft. bottom and will produce from perforations 688 to 692 feet into the wellbore.

The operation is in a 217-acre lease in the L. Netherly Survey, A-240.

The well is 3,226 feet from the south line and 1,665 feet from the east line of the lease.

The No. 4 J&J Waggoner "B" has been finaled by Hull Oil Co. of Wichita Falls.

It is a developmental well in the Wichita Regular Field, six miles southeast of Electra. Drillsite is in a 132-acre lease in the GC&SFRR Survey, A-722.

Clinic set June 7

The Texas Department of Health will conduct an Immunization Clinic from 9:30 a.m. to 11:30 a.m. Thursday, June 7, at the First United Methodist Church in Archer City, according to Zandra Underwood, public health nurse.

Underwood added that immunizations against DTP, polio, mumps and rubella will be offered, and that persons should bring their health records with them.

Annual Arts, Crafts Show set June 21

The second annual Archer County Rodeo Arts and Crafts Show is slated for June 21 at the Archer County Courthouse lawn for sellable crafts, and the American Legion Hall one-half block east of the courthouse for judging.

Cash awards for first and second place and ribbons for first through fourth will be given in each category. Those categories include oils and

acrylics, portraits, watercolor, pastels, novice and copies, drawings (pencil, ink, charcoal), photography, sculpture (bronze), tole painting, stained glass, metal sculpture, woodwork, ceramics, china painting (dolls, plates, etc.) crochet and knitting, quilts, pillows, handiwork (stitch, needlepoint, embroidery, candlewicking), soft sculpture (dolls, animals, etc.), and miscellaneous for categories with less than four participants.

Display tables for crafts and racks for paintings will be provided, but participants can bring their own.

Sales will be handled by the artist only, and no commission is requested.

In addition to concessions on the lawn and bake sales by local organizations, a barbecue will be held following the parade and rodeo at 8 p.m. at the Legion Hall. Entry fee to the show is \$4, and \$1 for each additional entry up to four entries per category. Persons may enter as many categories as they wish, and no charge will be requested for use of the booths on the courthouse lawn.

Persons wishing to enter may write the Rodeo Arts and Crafts Show, P.O. Box 1043, Archer City, Texas 76351.

Holiday girl seeks Teen title

Rebecca Cox, daughter of Mr. and Mrs. Richard L. Cox of Holliday, will be among the candidates competing for the title of Miss Teen of Texas in Austin June 15-17.

The winner will receive a \$1,000 scholarship in addition to other awards, and will advance to the Miss Teen of America Pageant.



REBECCA COX

Candidates are judged on scholastic record, service and achievement to school and community, and personal development.

In addition, the candidates work with the American Heart Association raising pledges and donations for the organization. Miss Cox will be sponsored locally by Lloyd James of James Well Service, Jimmy Pautsky of PK Well Service, Fred Daume of Daume and Son Farms, Doug Lindemann of Lindemann Drilling and Production Co., Elden Johnson of Foodworld, Jim Hull and Paul Beighley.

TONY LAMA BOOTS
Reg. \$154 Now **\$105**

ABILENE
Fine Western Boots

ACME BOOTS Starting at **\$41.95**

ABILENE BOOTS Reg. \$125 Now **\$105**



STRAW HAT SALE
Reg. \$40
3 1/2 to 4" Now **\$27.95**
Reg. \$30
3 1/2 to 4" Quarter Horse Crease Now **\$18.95**

COOLEY'S
WESTERN WEAR
COWBOY BOOT HEADQUARTERS

Corner Kemp & Southwest Pkwy. Across from K-Mart

REPORT OIL FIELD THIEVES
1-800-OIL-COPS
TOLL FREE • REWARD

People Who Care About People

Caring for people you love is at the very heart of all we do.

We are constantly striving to improve the quality of life for our residents by providing only the best of everything.

That's why our facility has recently been remodeled. It's the reason behind the new whirlpool bath and the new chair lift.

It's why we offer our residents the best physical therapists and physical speech consultants. And it's the reason why our food is prepared by some of the county's best cooks under the supervision of professional dieticians.

Our health care costs are among the lowest. Here, they are based on specific individual needs and may be financed privately or by Medicaid.

We're the people who care about people because it's the best way we know to enhance the lives, health and happiness of those we serve and love. Come by soon for a visit with administrator, **Oneta Gregg** and tour our beautiful facility.

ELECTRA NURSING CENTER
511 South Bailey • Electra, Texas 76360
(817) 495-2184

(Another quality facility operated by Beverly Enterprises)

ALLSUP'S
CONVENIENCE STORES
THERE'S ONE NEAR YOU®

PRICES EFFECTIVE
MAY 31-JUNE 2
OPEN 24 HOURS-EVERYDAY-ICE-MONEY
ORDERS GROCERIES-COOKED FOODS
WHILE SUPPLIES LAST
THERE'S ALWAYS SOMETHING GOOD COOKING FOR YOU AT ALLSUPS

BORDEN'S FRUIT DRINKS
GAL. **99¢**
PEPSI
6-Pack
12 oz. Cans
\$2.19

ASSTD. FLAVORS ALLSUPS ICE CREAM
\$1.69
1/2 GAL. CTN.

TRY OUR NEW MENU ITEMS!

BARBEQUED CHICKEN SANDWICH
ON A BUN
\$1.29
EACH
NEW!
REAL SOUTHWESTERN BARBEQUE FLAVOR

SAUSAGE AND BISCUIT
49¢
EACH
NEW!
COUNTRY FLAVOR SAUSAGE AND HOME STYLE BISCUITS

O'GRADY'S POTATO CHIPS
EXTRA THICK & CRUNCHY
\$1.09
REG. \$1.49 BAG
REGULAR AND AU GRATIN POTATO CHIPS

THERE'S ONE NEAR YOU®

Neely, Wilson wedding held in Wichita Falls

A double-ring ceremony was performed Friday evening in the Kiva Inn Ballroom by Rev. Doyle Henderson, a Methodist minister, to unite Laura Lynn Neely and Ronald Wayne Wilson.

The bride is the daughter of Eunice Neely of Vernon and Tom Neely of Wichita Falls, and the groom is the son of Mr. and Mrs. Jack Wilson of Dallas.

For her wedding, the bride, who was presented in marriage by her father, chose a formal ivory gown of summer satin and embroidered lace and pearls.

The natural waist bodice was covered in lace and designed with a high neck and sheer yoke of English net accented with embroidery and pearls and encircled with a two-tier flounce of satin. The full skirt featured panels of lace all over forming a ruffle flounce in front that draped up one side and continued in the back. A hemline flounce swept into a chapel train.

She wore a hat of matching lace with silk flowers and bridal illusion flowing to waltz length in the back. She carried a cascade of ivory roses and baby orchids, mauve phlox with rose and ivory ribbons. For her jewelry, the bride wore pearl earrings and her mother's cross necklace with diamonds. She carried her grandmother's blue antique handkerchief for sentimental interest.

The nuptial space was decorated with votive crescent candelabra traced with boxwood greenery flanked by spiral candelabra. Brass stands on either side held arrangements of gladioli, carnations and fern. An arrangement of the same flowers centered with a candle was used on the piano top.



MRS. RONALD WAYNE WILSON

For prelude musical numbers, Noni Dressler, pianist, presented "Wrapped Around Your Finger," "My Love and You Are," "Faithfully," "Leather and Lace," and "Beast of Burden." As the wedding party and bride walked to the nuptial area, Glen and Claudia Veteto sang "Love Lift Me Up," theme song from "Officer and a Gentleman."

Lindley Neely of College Station, sister of the bride, served as maid of honor. Teresa Micucci of Wichita Falls and Daniele Edwards of San Francisco, Calif. were bridesmaids. They wore identical gowns of rose taffeta fashioned with fitted bodices, low cut backs, three quarter length sleeves and intermezzo length skirts. They carried hurricane globes accented with rose ribbons and filled with ivory roses, and baby orchids, mauve phlox and shell fern.

The groom wore a pearl grey tuxedo, white shirt, grey vest and cravat with studs. The male members

of the wedding party were dressed the same except for wearing grey bow ties instead of cravats.

Glen Veteto served as best man, and the groomsmen were Tommy Neely of Vernon, brother of the bride, and Glen Wilson of Dallas, brother of the groom. Kevin and Mark Schiwart of Vernon were the ushers.

The bride's mother wore a formal miramist gown styled with a natural waist bodice, square neck of Schiffli embroidery, three quarter length sleeves, waistline sash, A-line skirt with a deep hem border of the embroidery. The groom's mother wore an A-line dress of rose chiffon designed with a high neck and long sleeves. Their corsages were composed of ivory roses, mauve phlox with touches of rose ribbon.

Sunny Schiwart was seated at the round registry table covered with ivory taffeta holding the wedding book, plume pen and a brass candle.

A reception hosted by the bride's father followed the wedding. The

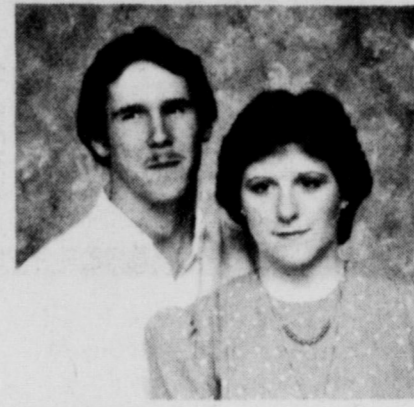
bride's table was covered with ivory satin draped around the top with English ivy caught to ivory bows. The centerpiece was a brass candelabrum arrayed with silk gladioli, carnations, mums and roses in her colors and fern.

A brass punch bowl, brass mint dish filled with pink mint hearts, gray napkins engraved with names of the bride and groom and their wedding date completed the table decor. The names of the couple were also lettered on the rose-colored match holders given for favors. Brenda Underwood and Cheryl Hall of Carbondale, Ill. served refreshments during the reception.

Following a wedding trip to San Antonio, the couple will live in Wichita Falls.

The bride was graduated from Iowa Park High School and summa cum laude from Midwestern State Univ. where she received the bachelor's in theater arts. She was president of Alpha Psi Omega. She also earned the master's in theater directing from Southern Illinois Univ. She is employed by Tom Neely's law office.

The groom was graduated from Brian Adams High School in Dallas and earned the degree in theater arts from MSU. He was a member of Alpha Psi Omega and was the recipient of the Moran scholarship. He is manager of O'Phelan's Restaurant. This summer he will be resident actor with the Oklahoma Shakespeare Festival.



STEVEN PAGE and LISA SMITH

Couple sets July date

Mr. and Mrs. Ervin Andrew Smith of Windthorst are announcing the engagement of their daughter, Lisa Michelle, and Steven Jeffrey Page, son of Mr. and Mrs. Alfred R. Page of Wichita Falls.

Miss Smith was graduated from Windthorst High School and is a student at Midwestern State Univ. The prospective groom was graduated from Iowa Park High School in 1982 and attended Mary-Hardin Baylor at Belton.

The couple will be married July 6 at St. Mary's Catholic Church in Windthorst.

CARD OF THANKS

We are home now and Glen is doing just great. We want to take this way to thank each one of you for your prayers, telephone calls, cards, flowers, visits and for each display of concern. We were so humbled by the knowledge of so many prayers and prayer lines being offered in his behalf during his surgery and hospitalization. We knew that he had a multitude of friends and this outpouring of love and concern reaffirmed that. Thanks for caring.
The Glen Spruiell Families

CARD OF THANKS

We wish to extend a heartfelt thank you to all who made our sorrow and grief a little easier to bear during the loss of our dear and beloved father, James D. Brown. A friend during a time like this is like a flicker of light in the darkness.

Jimmy and Judy Brown
Marcus, Karen and Rachael Jordan
Venisa and Chris Will'ams

CARD OF THANKS

We would like to thank everyone who helped rescue our son, Jimmy, last Saturday at Iowa Park Ready Mix.

Mr. & Mrs. Jim Reeves



Plants Etcetera

Herbs, Bedding Plants, Periwinks, Vegetables, Figs, House Plants, Lots More

2951 Elliott, W.F.
Open 10-6 Every Day!

Cowley, Cockburn are recognized

Two Iowa Park students attending East Texas State Univ. have been recognized for their studies during the spring semester.

James Cowley was named to the President's Honor Roll and Brian Cockburn to the Dean's List.

To be eligible for the President's Honor Roll, a student must score a straight A or 4.00 grade point average on a minimum of 12 semester hours. Dean's List students must post a minimum of a 3.25 grade point average on a minimum of 12 hours.

Whisnand receives President's Award

Craig Whisnand has been named a recipient of the President's Leadership Award for 1984-85 academic year at Abilene Christian Univ., according to Bitsy Roberts, admissions counselor.

"This is a significant honor and represents our confidence in Craig's abilities and character," Roberts said of the son of Mr. and Mrs. L.S. Whisnand.

From one of America's largest health insurers...

GOOD NEWS FOR SENIOR CITIZENS

Now you can get the flexible new 75R—the insurance protection you need for the bills Medicare can't cover.

- **100% Hospital Benefit Coverage Available**
Pays ALL your Deductibles, Co-Payments, Usual and Customary costs not covered by Medicare Part A.
- **100% Medical Benefit Coverage Available**
Pays ALL Usual and Customary expenses for doctor services, out-patient hospital, supplies and other services not fully paid for by Medicare. Goes beyond ordinary restrictive definitions of "Medicare Eligible" expenses.
- **Lifetime Benefit Coverage**

No lifetime dollar or time limits to how much money you can collect.

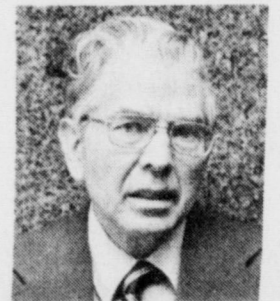
- **Guaranteed Renewable**
Your protection can never be cancelled or your premiums raised because of poor health, or amount of benefits you collect.
- **No Medical Exams, No Health Questions Asked**
- **No Groups to Join, No Dues to Pay**
- **Quick Claim Service**

BANKERS LIFE AND CASUALTY COMPANY
Chicago, Illinois 60630

GET THE FREE FACTS TODAY...NO OBLIGATION

Neither Bankers nor its agents are connected with Medicare. Call or write for the full details on benefits, costs, and benefit reductions, limitations and exclusions.

Talk To Me



Robert L. Livingston
3227 Northwest Drive
Wichita Falls, TX 76305
(817) 723-1159

• Wal-Mart Sells for Less • Wal-Mart Sells for Less • Wal-Mart Sells for Less • Wal-Mart Sells for Less •

WAL-MART PHARMACY

592-4157

500 West Highway

DEBBI — CHRISTY
BONNIE — PATTY
& VESTA

• Wal-Mart Sells for Less • Wal-Mart Sells for Less • Wal-Mart Sells for Less • Wal-Mart Sells for Less •

Some people don't know their electric bills can be about the same all year round.

Some do.



The Average Payment Plan will put you in the know; and just in time to take the heat off your hot weather bills. You'll still pay for all the electricity you use. But under the Average Payment Plan, your bills will be more even all year round.

The plan is based on a 12-month average that's refigured each month. So you can pay less during the months you use the most electricity, by paying more during the months you use less.

The Average Payment Plan is available to Texas Electric residential customers. So look into it today. It's definitely worth knowing about.



A Division of Texas Utilities Electric Company

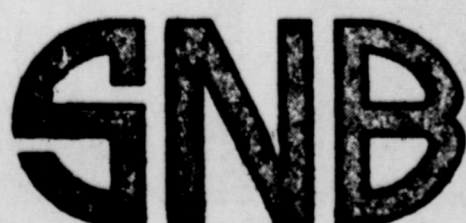


— We invite you to shop and compare our

INTEREST RATES FOR SAVINGS

(Applicable May 30 thru June 5)

Account	Interest (compounded daily)	Yield
91 Days	9.50%	9.965%
182 Days	10.25%	10.792%
7-31 Days	8.25%	8.59%
New Money Market Accounts	8.75% (simple interest)	
Super NOW Accounts	7.30% (simple interest)	
1½ Years, less than 2½ Years	10.45%	11.014%
2½ Years, less than 3½ Years	10.45%	11.014%
I.R.A.	10.65%	11.24%
1 Year Certificate of Deposit	10.50%	11.069%



STATE NATIONAL BANK

IOWA PARK, TEXAS



Locally Owned

4-H CLUB



The Iowa Park 4-H Club will have a family picnic June 9 at the Baptist Assembly.

A SUPER SITTING

A babysitting seminar, "Be a Super Sitter," will be held in the 4-H auditorium in Wichita Falls June 11, 12 and 14. The seminar will be offered from 10 a.m. to noon each day and a evening session will be held 6:30-8:30. You may choose to enroll in either session.

The seminar is sponsored by Wichita County 4-H and the Wichita Falls Department of Parks and Recreation and is open to all youth ages 9-16. There will be no registration fee.

Cheryl Mapston, County Extension Agent-Home Economics, will be instructing the sessions which will include the care of babies and small children, job arrangements, feeding, diapering, bathing, first aid, safety and games.

MuleSkinner tourney dates are announced

Entries for the Fifth Annual MuleSkinner Open Slow Pitch Softball Tournament, June 14-17, are now being accepted, according to Bill Hrncirik.

Once again to be played at Burnett Field, a maximum of 24 teams can play in the tourney. Entry fee is \$90.

Trophies will be awarded to the first, second and third place teams, as well as individuals on the first and second place teams.

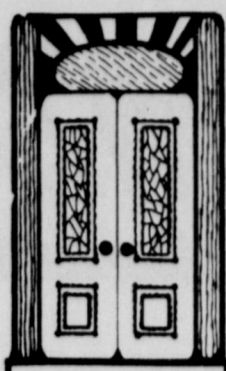
Members of the all-tournament teams will receive trophies, as will the player chosen Most Valuable

Player and the recipient of the Golden Glove award.

Besides their concession stand, which features the well-known MuleSkinner brisket sandwich, the sponsors this year will have T-shirts for sale.

Play will be held the evenings of June 14 and 15, all day the 16th and until the champion is determined on the 17th.

Teams wanting to enter can contact Hrncirik, 696-1408, Marvin Robertson 592-2681, or Phil McDonald, 592-2363.



Friendly Door News

The monthly covered dish and birthday party for Friendly Door members who will observe their birthdays in June will be held Friday. Those who will be honored are: Vida Albright, Cleo Hines, Taylor George, Brownie Tanner, Jimmie Stewart, Margarette Archer, Evie Teal, Emma Stone, Mary Lee, Virgie Conway, Beulah Denton, Verona White.

Others are: E.P. Evans, Kittie Smith, Ike Mishoe, Fern Sanders, Francine Lingle, Jodie Gillis, Mildred Drury, Grace Cook, Jimmie Kearsey and Patsy Burns.

Special events during the month will include a singsong led by Rusty Stowe and Gena Via June 13 and ragtime music by Doug Eastman June 28. Roberta Cole will check blood pressure June 6. Band practice is held each Monday and ceramics classes are conducted each Tuesday. Bible study is held the second and fourth Tuesdays of each month.

Girls League sets big day

The Iowa Park Girls Softball League will have a big day Saturday with three games slated to be played at both 10 a.m. and noon at the Gary Compton Softball Fields on the corner of Bell Rd. and Bank St.

The concession stand is under new supervision this year by Wanda Beavers. Nachos, hot dogs and Frito-chili pie will be offered in addition to drinks.

IOWA PARK GIRLS' SOFTBALL LEAGUE RESULTS
NOTE: Next week the Leader will publish a game schedule for the league's three divisions in girl's softball. The following is a summary of games played over the week.
BEGINNER'S DIVISION
Mermaids 11, Butterflies 4
INTERMEDIATE DIVISION
Sparks 23, Good News Bears 20
SENIOR DIVISION
Sizzlers 28, T.N.T. 20

Local junior high teacher selected for Oil Institute

Mrs. Karen Whisnand, Iowa Park Junior High School teacher, has been selected as the North Texas Oil Information Committee area teacher to attend the 27th Annual Petroleum Institute for Educators to be held June 4-22 at the University of Houston.

Announcement of this selection was made by B.J. Frantom, Mobil Producing Texas and New Mexico Inc., Wichita Falls, who is the area Institute chairman for the committee of the Texas Mid-Continent Oil and Gas Association.

The Petroleum Institute, designed particularly for science, social studies and mathematics teachers, will be coordinated this year by Dr. Jack M. Sheridan, professor of education, University of Houston. Lectures, provided by experts from the oil industry will include transportation, exploration, production, manufacturing, marketing and research. Three hours of graduate credit in the field of education are granted upon successful completion of assignments.

Mrs. Whisnand's fellowship was provided by the oil and gas industry in Texas.

New Meter Connections

Robert Doan - 129 Wood Circle
Mike Norton - 315 E. Cash, Apt. #2
Dean Trautman - 305 W. Jefferson
L.D. Short #2 - 407 N. Park
Lucille Clifton - 508 Texowa
Ann Adams - 1306 Blue Jay
John McKay - 611 W. Manes
Stanley Ferree - 1311 Sunset
Ira Evans - 918 Van Horn
Kathy Keiper - 719 E. Park
Louis Sawyer - 1503 W. Smith
Larry Marshall - 906 S. Park

Time to spray trees

By DAVID FINLEY
County Agent

The next few days will be critical to this year's pecan crop. Why? Because it is time to spray for the pecan nut casebearer.

The pecan nut casebearer is the most devastating pest of pecans in Texas. It can literally destroy an entire crop of young nuts if not controlled.

The casebearer has been monitored closely over the past few weeks at the Jim Kuehler orchard just west of Wichita Falls. Emory Boring, Extension area entomologist from Lockett, has also been watching it's progress.

From what we know now, the spray date for the casebearer in Wichita County will be sometime between May 30 to June 5. What this means is that at some time during that period, home owners and commercial growers as well will need to spray their trees. These dates may vary from orchard to orchard and variety to variety. Since this is the case, growers will need to check the nutlets closely for eggs.

There are several ways to detect the presence of pecan nut casebearer in pecan trees. The earliest way is to find terminal growth and shoot damage. In the spring when larvae emerge, they will feed for a short time on the buds and later tunnel into the shoots. These damaged shoots can be detected by the dead larvae near the tips. Upon closer observation, the young stems will be hollow and a larvae may be found inside.

These larvae will make adult moths that can lay as many as 150 eggs on the tips of the nutlets. The eggs are

just visible to the naked eye and are greenish-white in color when deposited. They can also be laid on the side of the nutlets in the groove just under the tips. The eggs will turn reddish just before they hatch, and after they hatch, will turn opaque white.

The young larvae will then feed on the buds just below the nuts for about two days. They finally migrate to the young nuts and will enter them near the base. Before this entry is the time that control must be achieved. After the casebearer larvae enter the nuts, control is unattainable.

A second application for the pecan nut casebearer may be needed 45 days after the first one.

There are several chemicals on the market for casebearer control. Most commercial growers and applicators use Pydrin or Zolone on the trees. Home owners can use Malathion 50% EC, Diazinon 25% EC or Zolone 34% EC on their trees. The label has the rates on them. Be sure and read and follow all the label directions when mixing.

FFA News

The officers of Iowa Park FFA held a meeting Wednesday to discuss summer activities, which included the state convention, tractor pull, Bobby Holder Leadership, and several fund-raising projects.



Happy 20th Birthday,

Paul

Love,
Mom, Dad and Kevin

Reusch is commissioned

Ronald L. Reusch is now the second Iowa Parkan to have graduated the U.S. Military Academy at West Point, N.Y.

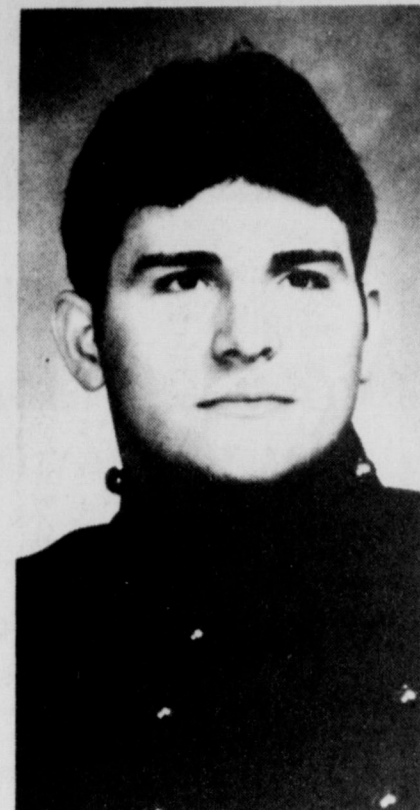
The son of Mr. and Mrs. Earnie Reusch, 42 Surrey, Reusch was commissioned a second lieutenant and awarded a bachelor's degree in engineering May 23. He is a 1980 graduate of Iowa Park High School.

Iowa Park's first graduate of the Academy was Richard Blair, who received his commission about eight years ago.

Reusch is scheduled to attend an officer basic course at Ft. Sill and eventually receive training in the aviation branch, helicopters.

Both his parents, his mother teaches journalism at Wichita Falls High and his father teaches math and coaches at Iowa Park High, flew to New York to attend graduation ceremonies.

The Military Academy is a four-year educational institution with the task of training young Americans to become professional Army officers. In addition to the military training, the academy stresses academics, intramural and intercollegiate athletics and other extracurricular activities.



LT. RONALD L. REUSCH

Reusch started two years as an offensive guard on the Academy's football team.

Little Richard's Salt Lick Restaurant

510 E. Highway 592-5252

Friday & Saturday Special
ALL YOU CAN EAT FISH & SHRIMP
YOU EAT BETTER...
FOR LESS!



Richard has lost
37 pounds in 43 days!!!

ASK HIM HOW.

Cut out for Ken's Pizza!

592-4184

902 W. Hiway

LARGE SINGLE TOPPING PIZZA



PITCHER SOFT DRINK and TWO SALADS

\$10 ^{\$15} VALUE

OFFER EXPIRES JUNE 14, 1984

ANNOUNCING THE CORVETTE CLASSIC GIVEAWAY APRIL 15 - JUNE 15



NATIONAL GRAND PRIZE - A Beautifully Restored 1959 CORVETTE
LOCAL GRAND PRIZES - A 1959 Corvette Replica GO-CART
WEEKLY LOCAL PRIZES - Magnavox AM-FM Stereo Headset Radio
SONIC WINNER WAYNE ROACH, IOWA PARK

Entry Forms and Contest Rules Available at Participating Stores (One per visit. No purchase necessary.)

WEEKEND SPECIAL Thursday thru Sunday SONIC BURGER... 99¢ No Limit-No Coupon Necessary

SONIC Iowa Park Only - 719 W. Highway Call In Orders Welcome 592-4221



STEAK SANDWICH

\$1.69 REG. \$1.95



805 West Highway

FOR TAKE OUT ORDERS

CALL 592-4731

BUYING? SELLING? RENTING? HIRING? WANT ADS PAY OFF

DEADLINES

10 A.M. WEDNESDAY (Word Ads Only)
4 P.M. TUESDAY, DISPLAY ADS

SAVE 10¢ PER WORD FIRST INSERTION BY PAYING WITH COPY AT OFFICE

RATES:

20¢ PER WORD FIRST INSERTION
10¢ PER WORD EACH REPEAT



\$38,000—Johnson Rd. VA appraised. #143.
\$38,500—Park Plaza Great starter home. #190
\$49,900—Douglas Excellent condition. #199
\$52,000—Karen. Assumable loan. #186
\$72,500—Surrey. Just for the fun of it! Pool! #211
\$122,500—Holiday. TX Large home on 6 acres.

Kay or Lynn Dozier 766-3000
Charlotte Marteney 691-5104
Mary Lou Polson 538-5903
Charles Seigler 855-1888
Colleen Evans 692-6983

NEW LISTING - 4 bedrooms, corner lot, 2 full baths, fenced, immediate possession. \$61,500.

5 ACRES \$20,000, with peach orchard, marked well, new fence, restricted for home over 1800 sq. ft.

2 ACRES Large barn, 2 Bdrm. brick, 1 1/2 bath, den, formal living. \$76,500.

5 ACRES Over 2000 sq. ft. extra nice home. 3 Bdrm., 2 baths, utility room, lovely family room with fireplace. \$105,000.

GREAT BUILDING site. 5 acres, Iowa Park schools. \$20,000.

3 BEDROOM brick. Den with fireplace. New appliances. Storm cellar, fenced yard. Have appraisal \$50,000.

CORNER LOT - 3 bedrooms, fireplace, 1 1/2 baths. Separate 2 bdrm. apt. Owner says sell \$60,000.

PE-DONE - Immaculate. New custom cabinets, 2 1/2 baths, game room, den - fireplace, 3 bdrm. \$47,500

COUNTRY PARADISE 4 years old. 5 acres. Beautiful 3 bdrm. ranch home, garden room, jacuzzi. Large shop in back. \$110,000.

2 BEDROOM - Possible owner finance. Attached garage. \$14,500.

7 GOOD building lots. \$10,000.

EXTRA NICE - Central heat and air, new carpet. 2 extra large bedrooms, storm cellar, fenced yard. Assumption only. \$32,500 \$5500 equity.

Member Multiple Listing



119 W. Park Iowa Park
592-4248 Office 592-4584 Vincent

HOMES FOR SALE

THREE BEDROOM brick, 1 1/2 bath, large kitchen. Will consider work for down payment, and owner financing. 592-5785. 5-24-4tp

BRICK, OLDER home, 1750 sq. ft. 2 bedroom, den, 1 1/2 baths, double garage, cellar, pecan trees, large lot. \$35,000. 592-5240 or 592-4405. 5-24-3tp

FOR RENT

FOR LEASE brick, 3 bedroom, 1 1/2 bath, oven and cook top, garage, fenced, new carpet and paint. Rip Smith Realtor, 691-1259, after 7 592-4332. 5-31-1tc

REAL ESTATE

THREE LOTS - Nice home site. 610 E. Alameda, 592-2346. 5-24-2tp

902 E. HIGHWAY Over 2,000 SFL area, storm windows, doors, 9" insulation, 5 air conditioners, 2 ceiling fans, fenced yard, corner lot. \$47,500.

529 S. WALL 2 bedroom, corner location. For sell to settle estate. \$10,500.

309 W. CRYSTAL Nice 2 bedroom mobile, large fenced lot, garden & trees. \$15,000.

707 E. JEFFERSON Three bedroom, two large lots. Look & make offer.

7 1/2 ACRES of land on 367. \$22,500, owner finance.

46 ACRES fronting of Hwy. 258 - \$30,000.

EAST GARDEN Clean 2 bedroom brick. Cent. heat-air. Fenced yard. \$35,000.

MANES 4 bedroom brick only 6 years old. Fireplace, new privacy fence, 5 ceiling fans, fruit trees, good garden. Near Kidwell. \$69,500.

EMMA Good buy on brick home near high school. Privacy fence, immediate possession. \$39,500.

WESTRIDGE Clean 3 bedroom. New paint, nice carpet, extras. Pretty yard. \$42,500.

MUST SEE Comfortable, older, spacious 3 bdrm., 2 baths, huge living room. Much more! Make offer for equity.

UNDER CONSTRUCTION 3 bdrm., 1 1/2 baths. All extras. \$47,000. FHA.

LOOK NOW 3 bdrm., 2 baths, insul. glass windows. More! Go by 611 W. Smith & check construction in progress. \$40,000.

STARTER HOME 2 bdrm. mobile with garage & upstairs storage. \$14,000.

Member Multiple Listing
Sam D. Hunter Real Estate
107 E. Cash Ph. 592-4661

MISC. FOR SALE

GARAGE SALE - Miscellaneous items. 711 W. Coleman, 8 a.m. - 6 p.m. Friday, Saturday. 5-31-1tp

TWO-FAMILY Yard Sale, Friday only, 8 to 4. Sewing machine, sewing machine cabinet, men's sport shirts, 15x15 1/2, bedspread, curtains, many misc. items. 305 E. Jefferson. 5-31-1tp

GARAGE SALE Thursday, Friday and Saturday, 411 N. Texowa. 5-31-1tp

GARAGE SALE 1503 Rita, 9-5, Friday & Saturday. Stereo equipment, baby items, miscellaneous. 5-31-1tp

BIG YARD SALE Thursday Friday, 405 S. Victoria. 5-31-1tp

VERY NICE 3-bedroom brick, central heat/air, kitchen built-ins, 1 1/2 baths, well cared for home, close to high school. Low \$40s.

PARK PLAZA AREA - 4-bedroom, 2 bath home, central heat/air. A great buy at \$38,500.

JOAN SHIRRY Rowland & Donnell Realtors
592-5540 - 692-1903

THREE FOR ONE PRICE

Very lovely home with upstairs garage apartment and ground level beauty shop. Also extra fenced lot with mobile home hookups. \$46,500.

THREE BEDROOM Brick, 1 1/2 baths, lovely carpet, single garage. \$36,600.

TWO STORY Four bedrooms, two baths, large family room with fireplace. Jenair range, garage & privacy fence. \$73,000.

EXCELLENT BUY Three bedroom, 1 1/2 baths, large garage, central heat & air. New FHA appraisal. \$40,000.

YES YOU CAN Own this large three bedroom, livingroom, den diningroom. Over 1900 sq. ft. of floor space. \$59,500.

BEST BUY Two bedroom, 1 bath, kitchen & diningroom. Large corner lot. \$18,600.

PRICE REDUCED Two bedrooms, one bath, lovely paneling, single garage. \$26,500.

SUNSET Four bedrooms, 1 1/2 baths, nice garage, large lot, fenced yard. \$41,250.

Try The Action Co. I Think You Will Like Us

MEMBER MULTIPLE LISTING SERVICE

JOHNNY LEE REAL ESTATE
592-2378
109 W. Cash

GARAGE SALE - Miscellaneous items, clothing, 508 W. Aldine, Thursday, Friday, Saturday. 5-31-1tc

KAMAY, TEXAS Porch Sale. Small girls clothes, what nots, lots of misc., ladies & mens clothing. House in middle of Kamay on main road. Look for signs. 438-2971 or 723-4071. 5-31-1tp

GARAGE SALE - 8-foot pool table, all accessories, many more items too numerous to mention. Thursday through Saturday, Peterson Road, south of Old Iowa Park Road, south of FM 367. 855-4248. 5-31-1tc

GARAGE SALE Friday & Saturday, 1130 W. Louisa. Books, records, tools, doors, tires, twin alum. window, jewelry, nice men's - women's clothes. Lots misc. 5-31-1tp

GARAGE SALE, Sat. only. 708 Mockingbird - across from Cryovac. 8:00 - 5:00. Mens, womens, teens clothing, tapes, books, glassware, some collectibles, lots of misc. 5-31-1tp

3 FAMILIES Garage Sale. Baby clothes, toys, clothes, lots of miscellaneous. 9 a.m. - 6 p.m., Thursday, Friday and until noon Saturday, 215 S. Wall. 5-31-1tp

GARAGE SALE 704 E. Cash, Thursday and Friday, 9:00 til 5:00. Furniture, stereos, and misc. items. 5-31-1tp

3-FAMILY Patio Sale - 823 N. Wall, Thursday and Friday. 5-31-1tp

CARPOR SALE 404 W. Texas, Thursday - Friday, 9 to 5. Two new roof vents, screens, stereo cabinet, cassettes and albums, books, girls, boys, ladies clothes - size 14, child and rollaway beds, plants, pots, bedspreads, curtains, tires, dishes, pans. Lots more! 5-31-1tp

RE-BUILT FORD '22' 6-cylinder motor, approximately 25,000 miles. \$200, 3-speed standard transmission with hurst shifter \$100. 592-2654. 5-31-1tp

FISHING BOAT motor & trailer. Excellent condition. 592-2579. 5-31-1tp

78 THUNDERBIRD Aluminum wheels, new tires, AM/FM cassette, cruise, power seats, windows, door locks, loaded. \$2300. 592-2958. 5-31-1tp

BUNDY TROMBONE - very good condition. \$175. Large stamp collection, \$30. Underwood typewriter \$40. 592-2351. 5-31-1tp

AKC REGISTERED Cocker Spaniel puppies - only 2 left! Adorable - 7 weeks old, cream buff color, 1 male, 1 female. \$75 each. Daytime, call 761-8241 and ask for Kim. After 5 p.m. 592-9826. Anytime weekends. 5-31-tfc

1971 FORD GALAXIE 500. good rubber, clean. \$495. 210 W. Jefferson, 592-5979. 5-31-1tp

BUSINESS

BABY SITTING in my home, Monday through Friday from noon until 7 a.m. 592-2820. 5-31-1tp

REGISTERED Child Care weekdays, all ages. 592-5406 5-24-2tp

CHILD CARE Days and nights, Monday through Friday, 592-9545. 5-24-2tc

REGISTERED child care, Monday-Friday, 592-9055. 5-17-4tp

HANDYMAN SERVICES. Painting, carpenter, repairs, renovations, wallpapering, paneling, etc. Reasonable and work guaranteed. No job too small. References. Herb 592-5560. 5-10-tfc

AUTO, BOAT and furniture upholstery repair. Vinyl repair. Call Kamay, 1-438-2243. 2-23-tfc

NOW RENTING PRESTIGE APARTMENTS

Starts \$325
1100 sq. ft.
Fireplace
2 1/2 Baths
Microwave
Dishwasher
Refrigerator
Full size Washer
Dryer Hook-ups
Available June 1
592-2989 or 592-5434

Quail Run Apartments

1-2 Bdrm, Ground Floor, Central Heat & A/C, Appliances, Laundry. Close to school & public park. Starting at \$180 per month to qualified tenants. Gas & water paid.
Call 592-2933

WOODBRIAR APARTMENTS

592-2121 1000 Mary Drive

* Luxurious Living in Suburban Area
* 1-2-3 Bedroom Apartments * Swimming Pool
* cable TV * School Bus Pickup * Equal Housing

Ask about our move-in allowance

Colonial Heights Apartments

Magnolia St. at Johnson Rd. IOWA PARK

One and two-bedroom apartments, energy efficient, central heat/air, total electric appliances, fully carpeted and draped. Children's play area. Off-street parking. Fully equipped laundry room. Month to month rent starting at \$181.00 for one bedroom, and \$220.00 for two bedroom apartment (to qualified persons). Water paid.

CALL **592-2705** EQUAL HOUSING

BURK SAND, Yards, Clean Up. Don Hallum, 804 N. Wall. 592-4365. 1-7-tfc

LADY FINELLE natural cosmetics at reasonable prices. Call Annetta Reusch, 592-9001 for a free facial. 1-6-tfc

MARY KAY Cosmetics, Ann Moore, 592-4752. 8-19-26tp

COPIES MADE at Video Care, 25c each. 2-23-tfc

REMODELING? Do you need another room added on? A garage? Walls removed or added? Free estimates. References. Jack Kerr, 215 S. Wall, 592-9040 495-3411. 5-10-tfc

MONOGRAM SERVICE - 592-9850. 4-12-10tp

LAWN MOWER blades sharpened, garages cleaned out, light hauling. 592-4335. 5-24-3tp

BUILDING, Remodeling, Repairing, Roofing, Painting and Cabinet Work. Joe Blizard, 592-4704. 5-31-4tp

PRIVATE FENCE sales and installation. Charles Skelton, phone 592-5190. 1-6-tfc

PARK SERVICE CENTER, residential, commercial, most major appliances, air conditioning, refrigeration, restaurant equipment. You will like our service and price. Call 592-2515 or 592-9467. 5-31-1tp

"MONEY WHEN YOU NEED IT" Loans on most anything of value **SOUTHWEST SALES & LOANS**
4423 Rhoad Rd. 692-1371

SHAW SPECIALS

'81 CHEVY 3/4 TON Single rear wheels, 350, 4-speed, power, service body, 32,000 miles. Ready to work.

'81 LYNX WAGIN 4-cycle, 4-speed, air conditioner, low mileage. Local owner, extra nice.

'79 FORD F100 PICKUP Long wide bed, 302, automatic, air, power, camper shell, 3 gas tanks, 40,000 miles. One local owner. We sold it new.

'78 LTD LANDAU 4-door, 400, automatic, air, power, vinyl top. Local Owner. Extra nice!

'76 BLAZER 350, automatic, air, power, bucket seats, rear tire carrier. Looks and runs great.

'74 GRAN TORINO 2-door, 351, automatic, air, power, vinyl top. Local owner. A good, clean, solid, low-priced automobile.

See or call O.L. Tucker or Bill Wilson
Shaw Motor Co.
Iowa Park 592-4106

OPEN HOUSE

38 Surrey

Make a splash in this beautiful home in Shiloh Estates. Open Sunday from 2 to 5 p.m. Come out and see the beautiful in-ground pool in this large and lovely backyard.

HOST - LYNN DOZIER

2951 Southwest Pkwy. 691-7855

OPEN HOUSE

1115 Cornelia
Saturday & Sunday
12-Noon until 4 p.m.

Owner transferred, has reduced lovely 3-bedroom, 1 1/4 bath home to **'43,500** for quick sale.

Features central air/heat, ceiling fans, two-car garage, covered patio, fenced, and other extras. Flexible terms, must see to appreciate real value.

HOST - LEE SHOFFNER
DON CAMPBELL REAL ESTATE
1109 Brook 723-0882

Colonial Heights
Apartments

Magnolia St. at Johnson Rd. IOWA PARK

One and two-bedroom apartments, energy efficient, central heat/air, total electric appliances, fully carpeted and draped. Children's play area. Off-street parking. Fully equipped laundry room. Month to month rent starting at \$181.00 for one bedroom, and \$220.00 for two bedroom apartment (to qualified persons). Water paid.

CALL **592-2705** EQUAL HOUSING

SHAW SPECIALS

'81 CHEVY 3/4 TON Single rear wheels, 350, 4-speed, power, service body, 32,000 miles. Ready to work.

'81 LYNX WAGIN 4-cycle, 4-speed, air conditioner, low mileage. Local owner, extra nice.

'79 FORD F100 PICKUP Long wide bed, 302, automatic, air, power, camper shell, 3 gas tanks, 40,000 miles. One local owner. We sold it new.

'78 LTD LANDAU 4-door, 400, automatic, air, power, vinyl top. Local Owner. Extra nice!

'76 BLAZER 350, automatic, air, power, bucket seats, rear tire carrier. Looks and runs great.

'74 GRAN TORINO 2-door, 351, automatic, air, power, vinyl top. Local owner. A good, clean, solid, low-priced automobile.

See or call O.L. Tucker or Bill Wilson
Shaw Motor Co.
Iowa Park 592-4106

