

Nov 28, 1985

MRS. LITA WATSON
528 W. CLARA
IOWA PARK TX 76367 112



SANTA LETTER MAILING - Iowa-Park Postmaster Ken Turman this week dusted off the special Letters To Santa mail box and placed it in the post office lobby. All Letters to Santa will be published in the Leader through December, and in the annual Christmas edition.

IOWA PARK LEADER

25 Cents

Vol. 17, No. 11 IOWA PARK, WICHITA COUNTY, TEXAS 76367 THURSDAY, NOVEMBER 28, 1985

Council bends little on waivers requests

Waivers from building requirements were hard to come by at Monday's city council meeting, and aldermen took another step toward alleviating a flooding problem in Country Hills Addition.

Back before the council for a second time, seeking waivers from dumping fees and street construction requirements on property he owns in the area of Magnolia and Third Street, Verris Wardell got little concession.

Wardell owns a block and half of land, most of which is known to old timers as "The Red Hill Place," which he had cleared of trees and the remains of a home.

He sought to have the city waive charges for dumping 218 loads at the sanitary landfill. He acknowledged debt to the city of \$15 per load, a sum of \$3,270.

The Vernon resident explained he was unaware of the dumping fee until after he had contracted for the clearing work and the contractor was

Wardell based his appeal for the waiver on the basis he had improved a building site that would contribute to the taxes of the city, cleared a hazardous eyesore, and also cleared land that is dedicated to the city, i.e. street and alleys, which he contended was about one-sixth the total area.

The council approved unanimously a motion made by Alderman George Hammonds to waive one-sixth the dumping fee charge, \$545, and cut Wardell's debt to the city to \$2,725.

The property owner also asked that the city grant a waiver to its requirements to pave with concrete, saving the 700 block of West Aldine

would not require more than asphalt because it would be a dead-end street off Third Street. He pointed out Second Street is a drainage ditch and could not be opened.

He alleged the city's concrete paving requirement would make the lots too expensive to sell, and also that the ordinance requiring concrete paving was so confusing his contractor couldn't give him an accurate cost projection.

"It appears there's no way I can recover my investment in the land, just by selling lots to contractors," Wardell said, if he had to pave with concrete, which he estimated would cost \$41,000.

Should he decide to proceed and pave Aldine with concrete, Wardell asked a waiver to the curb requirement, explaining portions would be knocked out when owners determined where they wanted driveways. The expense was useless, he said.

Hammonds moved that the property owner "must meet all requirements" in paving the street, and the vote was unanimous.

Kerry Maroney, city engineer, explained his proposal to relieve flooding in Country Hills Addition by installing a storm drain system in the area.

Estimated cost of "phase one" of the proposal was \$182,900. No

estimations were given for two other phases, but Maroney said the first phase would relieve 50 to 60 percent of flooding during a "25-year rain."

The engineer explained runoff from a 114-acre watershed eventually winds up at Douglas and Rita Streets. When the state engineered the expressway, a three-barrel drainage was put under the four lanes, between Douglas and Rita, in recognition of the water the area would be handling.

Phase One of the project would include installing a 48-inch storm sewer under Douglas, and repaving the street with concrete. Phase Two would do the same thing on Rita.

Maroney explained a larger pipe on Douglas would have eliminated a need for a second pipe on Rita, but the slope of the land dictated the smaller pipe.

Phase Three would be the repaving of Johnson Road and installing a larger culvert to carry the water from

Aldermen approved advertising for bids on the project, as soon as Maroney can have the plans drawn and ready for contractors to get specifications. Bid letting could take place in January.

Aldermen agreed to work with the Lakeview Church of God building committee so building progress on

Continued on page 4

Wichita Falls couple found guilty in court

Two Wichita Falls residents were fined a total of \$800 in special municipal court held Friday.

Timothy Kevin May, 29, and Cheryl Lynn Brown, 24, pled guilty to charges of possession of drug paraphernalia and attempted theft and their bonds of \$200 on each charge was forfeited by Judge G.H. Benesh.

Cynthia Lynn Bills, 26, faces the same charges, but her case will not be heard until December.

The trio was charged Oct. 9 after one tried to take a television from Wal-Mart, using a sales slip received from another purchase.

Officers were alerted after they left the store, and May was taken into custody when found hiding in bushes next to the front entrance of First Baptist Church.

Another case heard Friday involved two charges brought by the city against Clyde Fowler, of 822 E. Park. One charge was for violation of Ord. 470 (old vehicles) and the other was violation of Sec. 9-33 of the Code of Ordinances (allowing rubbish to collect in unsightly manner).

Judge Benesh "found true" the charges and gave Fowler until Jan. 2 to put his place into compliance.

Ceremony Monday night to light decorations

Iowa Park residents will have the opportunity to see the results of their donations Monday evening, when the first set of Christmas lights are turned on in the 100 block of West Park.

A short program will be held for the occasion, and a group of Camp Fire members will sing carols. Mayor Tim Hunter will

serve as master of ceremonies for the event, expected to last about 30 minutes.

City residents began this year a voluntary program of donating 10-cents monthly toward the decorations purchase. The donations are added onto the monthly water bills. Numerous residents and businesses have had the monthly donation increased, by making requests at city hall.

The first set of decorations cost approximately \$2,800, according to Mrs. Phil Welch.

It was Mrs. Welch's suggestion to the city council that the voluntary donation program be put into action. She explained she saw the result of a similar plan at Dumas, and learned of the voluntary donations.

"Dumas was the most

beautifully decorated city I'd ever seen," Mrs. Welch told the council.

Annual purchases will be made, using the accumulated fund of donations, to expand the decorations over the business district. The fund will also be used in the future to systematically replace the decorations.



ALL AMERICANS HAVE REASON TO
GIVE-THANKS

News in Brief

Leader is printed early this week

Though this issue of the Leader carries the dateline of Nov. 28, it was printed Tuesday evening for distribution Wednesday.

The early publication is a long-standing policy of the paper, when a holiday falls on a Thursday, because there is no mail distribution

on a holiday.

"We want our readers to have their papers for a holiday, rather than after," said Bob Hamilton, publisher.

The office will close at noon Wednesday, and re-open at 7:30 a.m. Friday.

Optimists to recognize youth

Iowa Park Optimist Club will honor a number of students at a banquet Saturday night, climaxing Youth Appreciation Week.

Activities Center. Parents of the students are also to attend.

Post office to open Saturdays

A boy and girl representing each of the four grades at Iowa Park High School will receive plaques and citations, based on achievement, community service and grades.

To begin at 7:30 p.m., the event will be held at Iowa Park Recreational

Effective Dec. 7, Iowa Park's post office will resume offering window service from 9 a.m. to 12-noon on Saturdays, according to Postmaster Ken Turman.

Hughes, Martin vows are solemnized Saturday evening

The organist swelled the strains of Wagner's Lohengrin to signal the entrance of Miss Penny Lynn Hughes into the sanctuary of First Baptist Church Saturday evening. She was escorted to the altar by her father to exchange marital vows with David Alan Martin.

Presented in marriage by her parents, Mr. and Mrs. Pete Hughes, she became the bride of the son of Mr. and Mrs. Rocky Washburn in a double-ring ceremony performed by Rev. James McCurley, pastor of the West Side Baptist Church in Wichita Falls.

Beautiful simplicity that emphasized the excellence of the blue and white color combination chosen by the bride was noted in altar, pew, foyer and reception area decorations.

The couple recited their vows before a brass arch entwined with boxwood in the upper altar where a tall cross hanging above the baptistry in the background created a hushed reverence. Two tall brass stands on a lower level held bouquets of fresh white gladioli, baby's breath and leatherleaf with complementary white satin bows.

The church pews were marked with votive candles in crystal cups from which blue satin and white lace streamers cascaded.

The first hint of the colors that dominated the wedding decorations was observed at a table in the church foyer where guests registered under the direction of Miss Rebecca Fullbright. The wedding book was placed on a table covered to the floor with white lace which also held a tall white wedding candle trimmed with simulated wedding bands and lilies of the valley, and a white plume pen.

Tall palm trees stood by the entrances and another table in the foyer held a white pillar candle atop a tall brass candlestick.

Mrs. Glenn Schell set the mood for the wedding with her prelude organ selections which included "Angelicus," "Jesu, Joy of Man's Desiring," "Savior, Like A Shepherd Lead Us," "Wedding Prayer," "Whither Thou Goest," and "Hand in Hand." She included the traditional marches in her offerings.

The bride glowed with happiness in her designer gown of white chiffon over taffeta featuring a bodice decorated with delicate lace appliques. A dropped v-neckline bordered with ruffles trimmed with satin ribbon and bishop-style sleeves adorned with the appliques enhanced the bodice decor.

Delicate appliques of the lace were scattered over the A-line skirt that flowed gracefully into a semi-cathedral train trimmed with satin ribbon and edged with baby ruffles.

She wore a Juliet cap of lace and pearls to secure her waistlength tiered illusion veil and carried a cascade bouquet of blue and white carnations, roses, rosebuds intermingled with baby's breath, stephanotis and green ivy leaves and finished with streamers to match, a creation of Mrs. Howard Marlar.

Keeping traditions of the occasion, the bride wore her mother's gold band for "something old;" a "something borrowed" pearl necklace from her sister, Mrs. Scott Sanders; her wedding gown for "something new;" and a garter for "something blue." A pocket on the garter held three pennies, one dated the year of her birth, another dated the year of the groom's birth, and the third dated 1985, the year in which they were married.

The bridal attendants wore formal blue matte taffeta gowns designed with bodices that dipped at the waistlines, sweetheart necklines and short puffed sleeves, and carried long stem blue carnations. The flower girl



MRS. DAVID ALAN MARTIN

wore a blue matte taffeta frock styled like the attendants' gowns with a little miss waistline sash added. She carried a white wicker basket lined with blue taffeta trimmed with blue lace that held miniature baby blue and white carnations.

Mrs. Scott Sanders, sister of the bride, was the matron of honor. The bridesmaids were Mrs. Randy Hughes of Childress, the bride's sister-in-law, and Miss Julie Van Pelt of Wichita Falls, niece of the groom. Little Miss Tiffany Hughes of Childress, niece of the bride, was the flower girl.

Rusty Sanders, nephew of the bride, carried the white satin ring pillow.

The groom wore a white tuxedo with white pleated shirt, blue tie, cummerbund and carnation boutonniere. The ring bearer, best man, groomsmen, ushers and father of the bride wore black tuxedos with white pleated shirts and black bow ties.

Rocky Washburn, father of the groom, was the best man. Harold Van Pelt the groom's brother-in-law, and Brett Martin, the groom's son were the groomsmen. The ushers were Randy Hughes, brother of the bride,

and Scott Sanders, her brother-in-law.

Mrs. Hughes, mother of the bride, chose a striped mauve polyester dress and Mrs. Washburn, mother of the groom, selected a blue and grey polyester dress for the wedding. Both wore blue carnation corsages.

The bride's colors were coordinated tastefully to present beauty in a most gracious fashion at the postnuptial reception hosted by the bride's parents in the Fellowship Hall of the church.

The special appeal of the bride's table was captured in the cloth, centerpiece, cake, napkins and crystal punch service.

Draped to the floor with delicate white lace, the table decorations were highlighted with a centerpiece formed with eight baby blue candles uprising from a bank of white and blue roses, rosebuds, carnations mingled with greenery. The baby blue napkins were imprinted with "David and Penny" in silver, and silver compote held blue and white mints.

The bride's "Cake of cakes" was a petite three-tiered white confection with two sets of Grecian posts for dividers. The layers were based with fancy scrollwork and garlands, each centered with a baby blue drop flower and the sides were strewn with the flowers and fancy heart designs in white. Bouquets of the frosting flowers added color on top of the separated tiers. The top was adorned with blue satin bells filled with matching silk flowers and complemented with touches of net, stephanotis and pearls.

The groom's table was laid with an elegant white crocheted cloth. The focal point of interest was the two-tiered chocolate sheet cake iced in white and blue featuring a book opened to a page that read "The way to a man's heart." The opposite page

was decorated with a bouquet of frosting drop flowers.

The table also held a bronze candelabrum supporting staggered blue and white carnations and stephanotis, the silver coffee service and silver trays of nuts.

During the reception, refreshments were served by Mrs. Harold Van Pelt, Mrs. Mae Smith, Mrs. Jackie Gibbs and Miss Tena Van Pelt.

Members of the houseparty were Mmes. Glen Miller, Jack Railshack, Wayne Williams, Gilbert Mueller, Robert Mellroy, Clyde Patterson, Vern Horsky, Ken Hines, Howard Marlar, Vida Roberts and Roy Smith.

Two small round tables in the room, one covered with white lace over white, the other with white lace over a blue ruffled cloth, held two white wicker baskets lined with blue silk decorated with tiny blue flowers. These held the white net rice bags tied with blue that were handed out by Tiffany Hughes and Rusty Sanders.

The groom hosted the rehearsal dinner Friday evening at K-Bob's Steak House.

The bride and groom were graduated from Iowa Park High School. She is employed at Gibson's Kell Store and he works for United Electric. Following a trip to San Antonio, they will live in Wichita Falls.

Mrs. Neta Shaekelford of Tucson, Ariz. was a special wedding guest.

New Meter Connections

Michael Jensen - 100 E. Diamond



Shannon Lynn, a five pound, 12 ounce daughter, was born to Mr. and Mrs. Brad Costello Nov. 7. She has a sister, Jessica Leann, 14 months of age. Mrs. Costello is the former Patricia Cummings.

The grandparents are Mr. and Mrs. John Cummings and Mr. and Mrs. Leon Costello, all of Iowa Park. The great-grandmothers are Mrs. Ora Mae Cummings of Iowa Park and Mrs. Jonnie Knowles of Bedford.

SALE



Louis' DISTINCTIVE JEWELRY

Clip this ad & bring to our store by Dec. 31, 1985

You Need 'em uniden Parkway Got 'em

18-Channel Scanner
BC210XL
•6 band
•Deluxe keyboard
•AC-DC programmable
•Much more
Reg. \$299.99 **\$244**

16-Channel, 9-Band Scanner
Bearcat by uniden
•Instant weather
•Programmable
•AC only
Was \$199.95 **\$155** BC201

Hand-held Scanner
•16 Channels •8 Bands
•Programmable with search
•Rechargeable batteries, case.
Was \$319.99 **\$249**

CB Radio
BC100
•Compact size
•40 channels
Was \$61.95 **\$48⁸⁸**

Radar Detector
RD35
•Compact size Was \$119.95
•Covers both X and K bands
•Dual warning **\$93³³**

PARKWAY
APPLIANCES ELECTRONICS FURNITURE
292-5512 200-206 W. Bank 592-4681

The La-Z-Boy Holiday Sale

Perfect timing! The genuine La-Z-Boy® chairs that can add so much comfort to your holiday home are sale priced right when your budget needs a break. Smart Santas note; there's not a better gift to give or to receive.

\$449 Reg. \$619
"THE COMFORTER" RECLINA-ROCKER® RECLINER
Button-tufted comfort, as soft as a cloud. Extra padding in the gently curved back, extra thick seat and generous rolled arms puts a person in deep luxury. Relaxation is tops; it rocks as well as reclines.

Reg. \$439 **\$299**
Bentwood style arms and double-gathered back are big features on this Reclina-Rocker® chair.

Reg. \$469 **\$339**
Classic Reclina-Rocker® chair has plush seat, deeply tufted back and Lawson style arms.

Reg. \$579 **\$399**
Reclina-Rocker® chair with man-gathered back from triple pillow back and thickly padded arms.

Convenient Credit Terms.
10% Down holds purchase until Dec. 20

PARKWAY
FURNITURE ELECTRONICS APPLIANCES
200-206 West Bank 592-5512 592-4681

SHOWER SELECTIONS FOR SUZY BROWN and WADE DISHMAN

SHELLY and LARRY BRITT

PARKWAY True Value HARDWARE & FURNITURE
200-206 W. Bank 592-4681 592-5512



MR. AND MRS. MAURICE BOYLAN

Maurice Boylans observe silver anniversary

Mr. and Mrs. Maurice L. Boylan were honored Sunday at a reception at their home in Wichita Valley Farms to commemorate their 25th wedding anniversary. The affair was hosted by their two sons and their spouses, Mr. and Mrs. Lonnie Boylan, Mr. and Mrs. Cooper Boylan, Mrs. Deana Custis and Mrs. Sharon Wilbourne.

Maurice and Margie Boylan were married November 27, 1960, at the First Methodist Church in Archer City and have lived in Wichita Valley Farms since that time.

Now semi-retired, he has worked for Longhorn Music Company and was a partner in Service Printing Co. He bowled for a number of years and participated in numerous tournaments and had 2-3 "200" games.

Margie lived on 6666 Ranch where her father worked when she was a small child. She has been involved in arts and crafts for a long time. The crafts consist of making holiday decorations, ceramics, porcelain doll-china painting, acrylic painting, etc.

She is owner and operator of the Mosquito Patch, which she began in 1984. She taught art classes a year before opening her studio. She is a certified Priscilla House Tole instructor and a member of the National Tole and Decorative Art Association. She attends workshops and seminars all across the country and presently teaches five classes each week.

He was born in Eldora, Iowa and came to Texas in 1939. He was a pilot in the Army Air Corps from 1940 until 1945 where he flew heavy aircraft and earned the rank of lieutenant. He is a World War II veteran and was with the first group of men stationed at Sheppard Field.

Area girls in contest

Young ladies 16-22 years old from Archer, Baylor, Clay or Wichita Counties will vie Dec. 6 for Wichita County Pecan Queen. The pageant will be held in conjunction with the Wichita County Pecan Show at Sikes Center Mall in Wichita Falls.

Entries received thus far include Lynn Ewert, Wichita Falls; Shannon Hawkins, Wichita Falls; Lisa Hodges, Valley View; Heather Hoover, Wichita Falls and Sharon Wynn, Iowa Park.

Contestants competition will include evening gown, demonstration highlighting pecans, personal interview and beauty and poise.

Entry forms will be available through Wednesday, Nov. 27. They may be obtained by calling or visiting Bethann Oswald at the Wichita

County Extension Office, 1626 Midwestern Parkway, phone 766-0131.



LaDonna Chandler was elected Chapter Sweetheart of the Future Farmers of America at a meeting held Nov. 11.

Other nominees included Lorre Moser and Dana Gray.



Amity Study Club presents

Breakfast with Santa

Saturday Dec. 7

Recreational Activity Center

2 servings: 9 a.m.

10:30 a.m.

Tickets: \$3 per seat

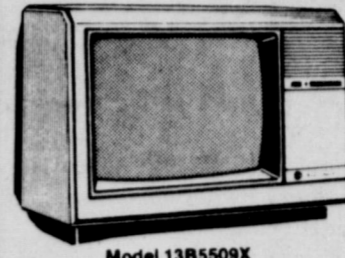
Limited to first 100 per serving. Children must be accompanied by an adult. Tickets available from members, or at State Farm Insurance Office - 592-4155.

BRING YOUR CAMERA



PARKWAY

HARDWARE STORES



Model 13B5509X

HOT!

REGULAR RETAIL \$399.99

SAVE \$200.00



13" Diagonal PORTABLE COLOR TV

Sharper. Because its "color stripes" are more densely packed than those of most monitors.

Brighter. Thanks to its patented "Neo-Vision" (Blue Tube) screen which keeps room light from dulling your picture.

More Detail. Because a high-definition Comb Filter refines the image and increases resolution by nearly 30%.

If you ever have a question, professional assistance is as close as your telephone. Just dial GE's toll-free Answer Center, 24 hours a day! 1-800-626-2000.

NOW ONLY \$199.99



FROM SHARP MINDS COME SHARP PRODUCTS™

REGULAR RETAIL \$159.99

SAVE \$60.00

NOW ONLY \$99.99



Half Pint™ COMPACT MICROWAVE OVEN

- New Compact-Cube Design facilitates use in small spaces
- Oven Capacity of 0.43 cubic feet is large enough for a 10-inch dinner plate
- 15-Minute Dial Timer
- Cooking Time Guide
- Oven Light to view foods as they cook
- Acrylic interior for no-stick, easy clean-ups every time you cook
- Removable Glass Tray
- Almond Colored Contemporary Styling enhances your kitchen

PARKWAY

HARDWARE FURNITURE

200-206 W. Bank



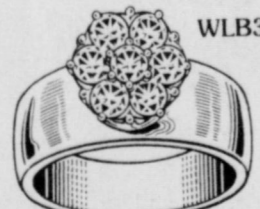
592-5512 592-4681

Very Special!
1/4 Carat* DIAMOND CLUSTERS



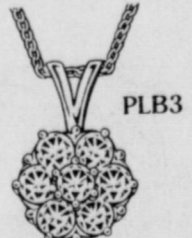
1/4 CT. total weight. Ladies' 7-diamond cluster, classic band.

\$259⁹⁵



1/4 CT. total weight. Ladies' 7-diamond cluster on wide, tapered band.

\$309⁹⁵



1/4 CT. total weight. 7-diamond cluster pendant, complete with chain.

\$249⁹⁵

*Total Weight

FREE GIFT WRAPPING

Christmas SPECIAL

SUPER VALUE!



Rings enlarged

SUPER VALUE!

1 CARAT T.W. \$995

Reg. \$1500

1/2 CARAT (As Shown) \$695

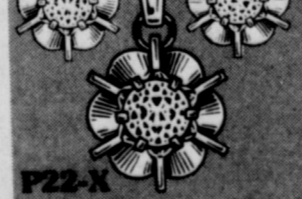
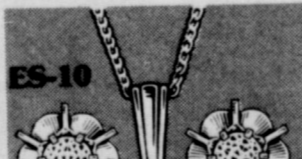
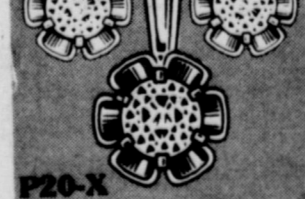
Reg. \$995

1/4 CARAT T.W. \$450

Reg. \$650

Exceptional beauty, value!

DIAMOND EARRINGS with matching diamond pendant



Your Choice \$119.95

Total weight, 8 to 9 points

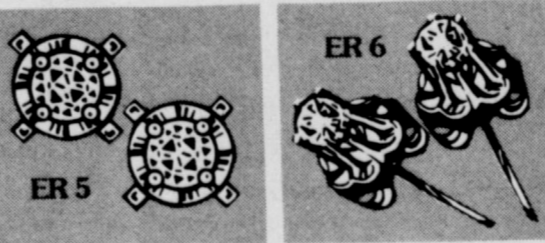
The 3-Pc. Set, only

Choice of 14kt white or yellow gold!

All Sets complete with chain!

DIAMOND EARRINGS

Your Choice - 14 kt. white or yellow gold.



Reg. 24.95 Now 19.95

Cultured Pearl SPECIALS!

Your Choice \$19.95 each

Reg. \$39.95 each

Pendant and Earrings in 14 Karat Gold



Ladies' 16-Diamond fancy ring. 1/2 Carat total.

\$599⁹⁵

(Also available in 1/4 Carat and 1 Carat total)



Reg. 250.00 Now 175.00



Ladies' fashion ring, 1/2 Carat total weight, diamonds and rubies, or diamonds and sapphires.

Reg. 999.00

Now 799.00



1/4 ct. T.W. Reg. 675.00 Now 575.00

LORUS FOR THE HOLIDAYS. Practical. Affordable. Beautiful!



Reg. 24.95 Now 22.45

Available in Red, Blue, Gray, Black



10% OFF

Reg. 44.95 Now 49.45



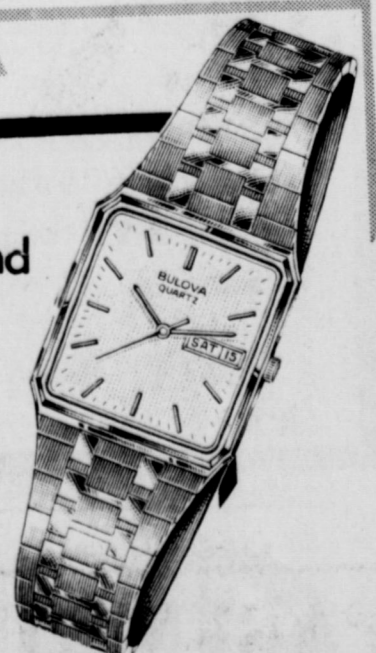
Reg. 9.95 Now 8.95



BULOVA



All Bulova, Caravelle and Accutron Watches 1/2 Price 2-year warranty



Louis' Distinctive Jewelry



408 W. Park 592-5942

As I See It....

By BOB HAMILTON



Congratulations to the Hawk football team, for an exciting and excellent season.

And special thanks to the players for showing their character by fighting back from a 21-0 deficit Friday against Ballinger, and almost pulling the game out of the fire.

When you're down by three touchdowns, and almost everything you do is wrong, you've got to have strong character and strong leadership to not only continue playing, but to continue to try to win.

I think we also saw a lot of character and leadership shown last week when a delegation of local men went to Dallas to fight for the experiment station.

Jimmy Banks and Rep. Charles Fennell led a group that let the "authorities" know we don't particularly like what they're doing, and told them so.

Robert Palmer, introducing Fennell at an informal report Tuesday for the

Lions Club, commented the Holiday politician "... really represented us well" at the meeting.

"I feel the (A&M regents) have a moral responsibility to leave the land in local ownership," he said. "I'm hopeful it'll not be sold."

He told the Lions that when the area residents put up the money for the experiment station back in 1924, they never considered A&M might ever close the facility, and consequently did not include a clause that would have reverted ownership back locally.

Indications are that the "authorities" are leaning toward selling the property, once it is closed Feb. 1. But Fennell pointed out land sale prices are extremely poor at the time, and thus A&M would not benefit from selling.

The legislator said he questioned the "authorities" about their timing, when he spoke in Dallas. "Everyone wonders what the rush is to close the farm, since it was funded through the 1986-87 fiscal year."

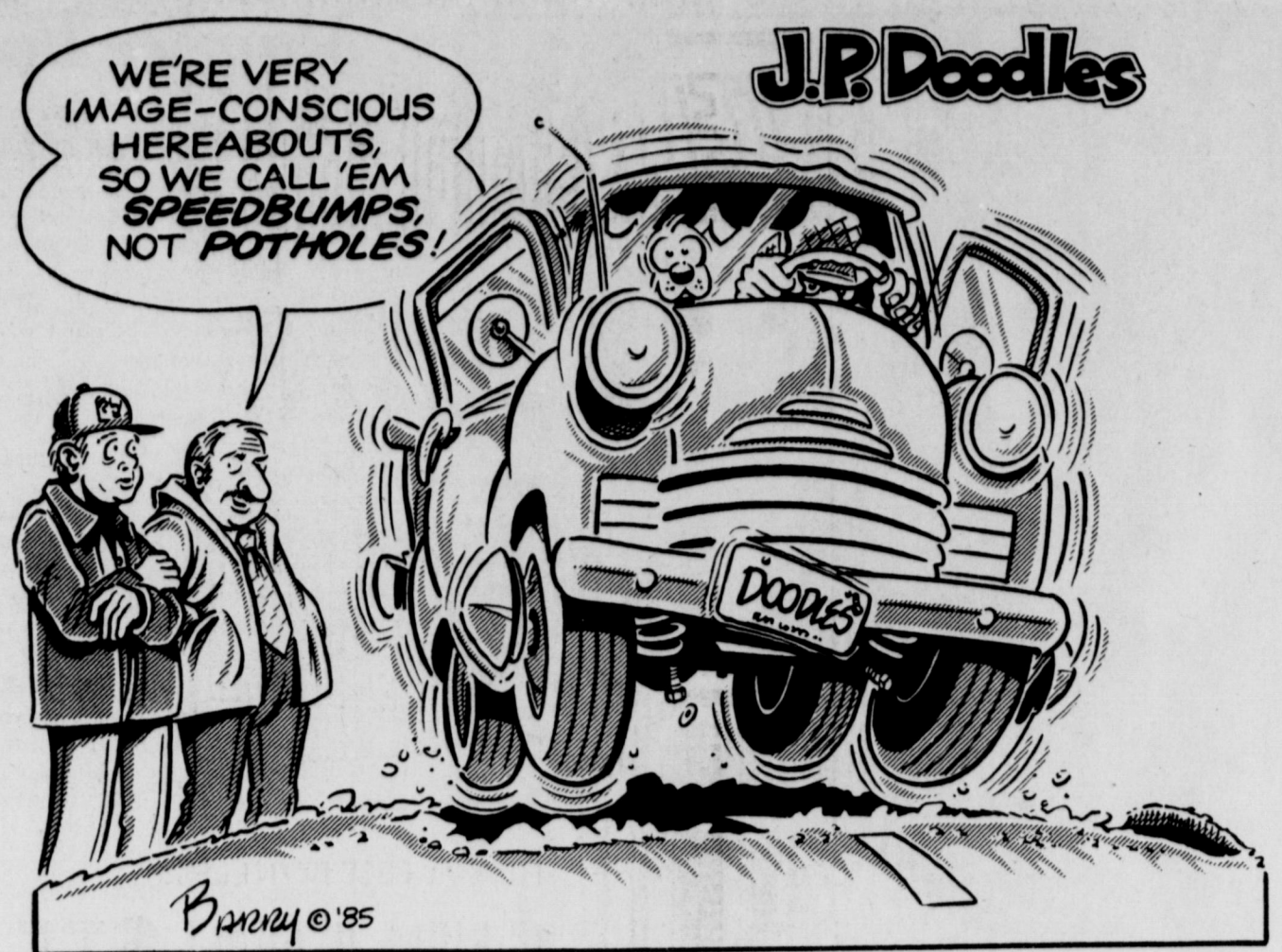
It was his opinion that the "authorities" chose the timing to come right after the regular legislative meeting, when it would be two more years before the next. He also felt the closing at a holiday season was suspicious.

Fennell did predict, however, the farm would wind up with public ownership, maybe through the Wichita County Water Improvement District or even the county.

If it is to wind up as a community garden plot, as suggested as a possible use by Judge Tom Bacus, quoted in a recent article, I think it might as well be sold. That's like using a champion quarterhorse to pull a plow.

Anyway, I don't think the final disposition of the farm has been set. But I expect, since this is written before the A&M regents' meeting, the station will be closed.

I've already said that was planned years ago, when they gave the go-ahead for a similar, but much more expensive facility up near Vernon.



Worth Quoting

HOW TO RUIN A TOWN WITHOUT EVEN TRYING

Here's how to ruin any town, especially your town:

- * Never attend any meeting. Just sit around and criticize the way "they" are doing things.
- * Vote against any kind of tax levied, whether the purpose is good or not. "They" just want your money.
- * Make fun of the fire and police departments. They are just out for the glory and pay.
- * Don't ever go to the school concert, ball game, benefit program or exhibit. Sit in a half-trance in front of that "idiot box."
- * Knock the city council. This is a must. Every one of the councilmen is just on the council to get a little kickback.
- * Stay out of church. You might go Easter and Christmas just to prove to yourself that the clergyman does not know what he's talking about and that everyone there is a hypocrite.
- * Buy everything you can out of a discount catalog. These firms are the first to come through with the donations and service to the community.
- * Don't support the hometown newspaper. The out-of-town papers and TV are a lot better and contribute much more to the town than the local bugle.
- * Spread any story or rumor that is defamatory or uncomplimentary about the town. Never say anything nice about anybody. All kids are delinquents. All businessmen are crooks.

* Above all, always be cynical about anything that is supposed to be good for the community. Your motto should be, "If it's good, it can't happen here."

- Author Unknown

Plant care in winter

By DAVID FINLEY
County Agent

Looks like winter time is here, and with it comes problems with landscape plants. It is during this time of year that we begin thinking about helping those outdoor plants get through the cold of winter.

These were the thoughts of Joseph Mainelli of Wichita Falls when he called me this week. He wanted to know what steps to follow to winterize and prune his roses.

Roses must be protected not only against low winter temperatures but also against fluctuating ones. Occasionally, rose varieties that are hardy in the Northern U.S., where winters are constantly low, are injured during the winter in areas farther south where the temperature fluctuates considerably.

The first step in avoiding winter damage to roses is to keep them healthy during the growing season. Roses that have been sprayed to control diseases and have been properly nourished are more likely to escape winter injury than plants that have lost their leaves because of diseases or deficiencies.

Different types of roses need to be treated differently in the winter. For example, bush roses need to have soil piled eight to 10 inches high around the canes. This should be done now to protect the bud union from freezing. It's best to bring this soil from another location rather than digging under the plants themselves because digging underneath plants can damage root systems.

After mounding the soil, tie the canes together to keep them from being blown about and loosening the root system.

Tree roses should be treated differently than this. In this area of the state, wrap the heads of the plants in straw and cover with burlap. This keeps cold, blowing winds off the canes and also insulates them from the low temperatures.

Climbing roses need protection as well. To properly protect them from temperatures below freezing, lay the canes on the ground, hold them down with wire pins or notched stakes, and cover them with several inches of soil. Remove the soil in the spring after danger of severe frost is past.

Pruning for these types of roses is also different. Prune bush roses in the

early spring just before growth starts. Removal of dead wood is the first step. Be sure to cut an inch or so below the dark colored areas. Also, cut out all weak canes and branches growing towards the center of the plant. Finally, cut the healthy canes to a uniform height of 26 to 30 inches.

Tree roses require heavy pruning in the spring and some pruning during the growing season to keep the tops from becoming too large for the stem. After removing the dead wood, cut back the live canes to a length of 8 to 12 inches.

Climbing roses need to be pruned just after they have flowered.

Council

Continued from page 1

the new structure can resume construction.

Carl Catlin, representing the church, acknowledged his group had no plans drawn by an architect which are needed by the city's code enforcement officer, Larry Ashford, for his inspections.

Plans drawn by an architect or engineer are required for structures of the church's size, in accordance with the Standard Building Code that is included in the city's building ordinance.

Ashford told the council of numerous problems with the construction, including no fire sprinkler system, stairway capacity for the upstairs, exterior fire escape, etc.

"The problem is, there's nothing for us to really go by" without plans, Ashford said.

Catlin said his group would secure the needed plans.

To permit construction to continue, the council waived a requirement for metal wall studs and the use of wood.

Also approved was a proposal to give city employees a holiday both Dec. 24 and 25, and a present of a turkey to each employee.

Council members voted to rebate \$783 to D.A. Hill, for his lease payment and clearing of land on East Jefferson, and at the same time cancel his lease.

Hill told the council he was upset because he was not permitted to start an auto salvage business on the land, even with an eight-foot fence around it. He had said he either wanted permission to proceed, or his money back.

The council also approved annexation of Shiloh Four.



— We invite you to shop and compare our **INTEREST RATES FOR SAVINGS** (Applicable November 27 through December 3)

Account	Interest (compounded daily)	Yield
91 Days	7.70%	8.003%
182 Days	8.10%	8.436%
7-31 Days	6.90%	7.143%
New Money Market Accounts	6.80% (simple interest)	
Super NOW Accounts	5.80% (simple interest)	
1 Year	8.30%	8.653%
2 Years	8.50%	8.871%
3-5 Years	9.00%	9.416%
I.R.A.	9.00%	9.416%



If you want to save energy, you need to take control.



Over the years, the electric company has helped you conserve energy in lots of ways. We've helped with tips on things you could do yourself — all the way from caulking and weatherstripping, to installing just the right amount of insulation for your home.

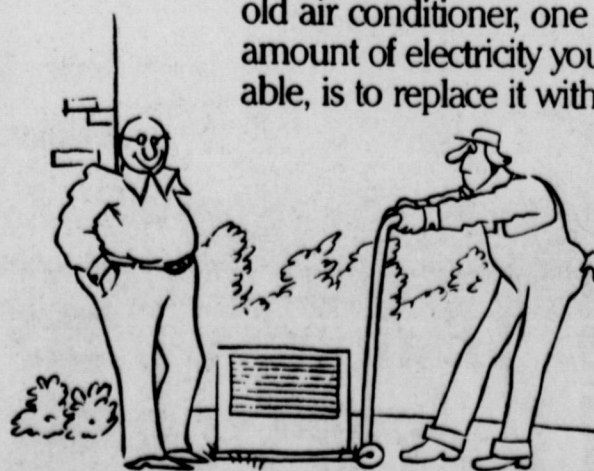
Now you can take even more control. The electric company has information

that shows you the cost of operating your electric appliances. And knowing what electricity costs makes it easy for you to decide how much to use. There are also tips on many other ways to use energy wisely, like maintaining the most economical setting for your thermostat.



And remember, when it comes time to replace your old air conditioner, one of the best ways to control the amount of electricity you use, and still stay cool and comfortable, is to replace it with one that's more energy efficient.

Your electric company has lots of helpful information available. Take control and get things running your way.



Obituaries

Millie L. Jones

Graveside services for Millie L. Jones, 82, were held Monday afternoon in the Electra Cemetery with Rev. Mike Linder, associate pastor of Fairway Baptist Church in Wichita Falls, officiating.

Services were under direction of Tanner-Aulds Funeral Home.

She was born May 26, 1903 in Edna. She was a retired nurse and a member of the Fairway Baptist Church.

She is survived by a son, Norman; five sisters, Gertie Wheeler of Belle Palms, Kan., Mauriece Roseburg and Margaret Slay, both of Wichita Falls, Noral Stoker and Loraine Via, both of Iowa Park; and three grandchildren.

Clara Krahanbuhl

Graveside service for Clara Krahanbuhl, 80, who died Thursday at her home in Baltimore, Md., was held Saturday in the Archer City Cemetery with Rev. Floyd Heard of Iowa Park officiating. Burial was under the direction of Tanner-Aulds Funeral Home.

Mrs. Krahanbuhl was born Dec. 23, 1904, in Blackwell, Texas and was a former Archer County resident. She was a member of the Baptist Church.

She is survived by two sons, John Miller of Iowa Park and Ray Miller of Baltimore; two sisters, Mrs. W.E. Muldrow of Monahans and Mrs. Leonard Montalban of Bellport, N.Y.; four brothers, R.C. Kirkland of Throckmorton, John Kirkland of Haxtun, Colo., Joy Kirkland of Irving and Luke Kirkland of Archer City; two grandchildren and two great-grandchildren.

Jerry Wayne Newman

Services for Jerry Wayne Newman, 50, were held Monday morning at Owens and Brumley Funeral Home in Wichita Falls with Rev. Jerry Miller, pastor of the Iowa Park Faith Baptist Church, officiating. Burial was that afternoon at the Briar Creek Cemetery in Bowie.

He was born Jan. 13, 1935, in Iowa Park and had lived here all of his life. He worked as backhoe operator for the water improvement district.

Survivors include his wife, Mary; a son, Jerry Wayne Jr. of Wichita Falls; a daughter, Kristy of Wichita Falls; three stepsons, Danny Bell of Dallas, Johnny Bell and Kenneth Bell of Wichita Falls; two stepdaughters, Carol Melman and Donna Minnon of Wichita Falls; a sister, Dean Hodge of Iowa Park; one grandchild and six stepgrandchildren.



FOOD FOR THE NEEDY - Members of Girl Scout Cadet-Senior 34 pose with a truck full of foods they collected for the Ministerial Alliance Emergency Food Pantry. The load was delivered Saturday, and members were so elated, they decided to go out and work some more.

ACTIVITIES in Neighboring Communities

The Wichita West Volunteer Fire Department will hold its Third Annual Arts and Crafts Show Dec. 7 and 8 at the 4-H Complex in Wichita Falls, according to member Ray L. Turlington.

Over 50 artists from Texas and Oklahoma have entered the show, which will be held from 10 a.m. to 6 p.m. next Saturday, and from 12:30 to 5 p.m. the following day.

These artists will offer a variety of arts and crafts ranging from eggery, Christmas decorations, woodwork, oil paintings, ceramics, china painting, porcelain dolls, soft sculpture dolls, stuffed animals, baskets, silk flowers, and lapidary.

A concession stand will be open during show hours featuring barbecue, chili, beans and cornbread.

A bake sale will also be held in conjunction with the arts and crafts show, which is open free of charge to the public.

Proceeds of the event will benefit the building fund for the fire department.



Church of God

601 E. Cash

Pastor, S.A. Luke
 Sunday School - 9:45 a.m.
 Sunday Morning Worship - 11:00
 Sunday Night Worship Service - 7:00 p.m.
 Wednesday Night Service - 7:30 p.m.

Par. 592-5316

Office 592-4348

First United Methodist Church

201 E. Bank

Church School 9:40 Youth Meetings 5:00
 Morning Worship 10:40 Evening Worship 6:00

JACK MEYERS, PASTOR

Cornerstone Pentecostal Church of God

Jesus is the Cornerstone

SS - 9:45 a.m. - SERVICES - Sun. Evening - 7:00
 Sun. Morn - 10:50 a.m. Wed. Evening - 7:00

Jesus said, upon this rock I'll build my church and the gates of hell shall not prevail against it. - Matthew 16:18

504 E. Hwy.

Pastor: Duffy Terry

592-5520

Kamay Road Church of Christ

Corner of Colorado & Emerald

'Seeking the Old Paths'

Lord's Day 10:30 a.m. & 6 p.m.
 Wednesday 7:00 p.m.

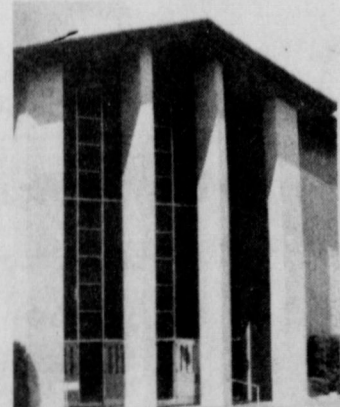
GOOD SHEPHERD LUTHERAN CHURCH

1st & Magnolia Iowa Park

Sunday School: 9:45 a.m.
 Worship service: 10:45 a.m.

First Baptist Church

A Southern Baptist Church of Iowa Park Yosemite at Park



SUNDAY SERVICES
 —Mornings—
 Sunday School 9:45
 Worship 11:00
 —Evenings—
 Church Training 6:00
 Worship 7:00

WEDNESDAY
 Prayer Meeting 7:00
 Choir Rehearsal 7:45

First Christian Church

105 E. Cash

Sunday School - 9:45 a.m.
 Worship - 10:55 a.m.
 Corner, Cash & Bond St.

We encourage each of you to worship Jesus Christ in the church of your choice. If you do not have a church home, we invite you to come worship with our church family.

Northside Baptist Church

800 N. Wall

• Sunday School - 10 a.m.
 • Sunday Worship - 11 a.m.
 • Sunday Evening Worship - 6:30 p.m.
 • Wednesday Worship - 7:30 p.m.

EARL CORRELL - Pastor

Ph. 592-2200

THE END OF YOUR SEARCH FOR A FRIENDLY CHURCH ASSEMBLY OF GOD

200 S. Yosemite

9:45 a.m. S.S./ 7 p.m. Charles Hensley, Pastor
 Wednesday Service, 7 p.m.

First Presbyterian Church

REV. BETTY L. MEADOWS Pastor

CHURCH SCHOOL - 9:30 A.M.
 WORSHIP - 11:00 A.M.

A Caring Congregation of Palo Duro Presbytery - Presbyterian Church [USA]

Lakeview Church of God

WEDNESDAY EVENING (FTH-Bible Study)
 SUNDAY SCHOOL
 SUNDAY MORNING WORSHIP
 SUNDAY EVENING WORSHIP

7:30 P.M.
 9:45 A.M.
 11:00 A.M.
 7:00 P.M.

Meeting temporarily at Peppy's old store bldg. 4th and Access Road
 Rev. Ole Olds, Pastor 592-9555

Christ The King Catholic Church

First and Clara Phone 592-2802
 REV. MR. PATRICK BURKE PASTOR
 8:45 a.m. C.C.D. — 10 a.m. Mass

Faith Baptist Church

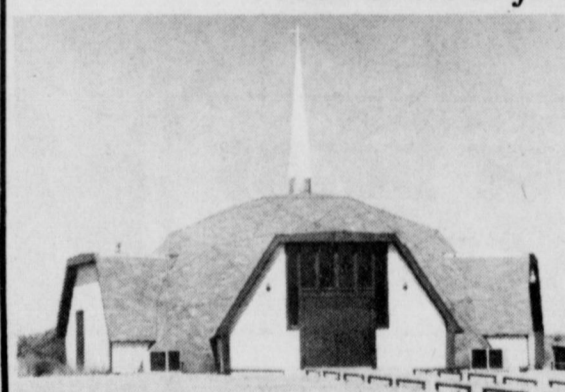
411 S. Wall S.B.C. 592-4894

Sunday School - 9:45 a.m. Wednesday Morning Prayer - 9:30 a.m.
 Morning Worship - 11:00 a.m. Wednesday Evening Prayer - 7:00 p.m.
 Church Training - 6:00 p.m.
 Evening Worship - 7:00 p.m.

Nursery Care Provided
 Full Range of Missions' and Childrens' Ministries
 Pastor, Jerry Miller

Pacific Avenue Missionary Baptist Church

1400 North Pacific Avenue



Larry Washburn
 Pastor
 Church - 592-9711
 Pastor 592-4288

— INFORMAL, CHRIST-CENTERED WORSHIP FOR ALL AGES —

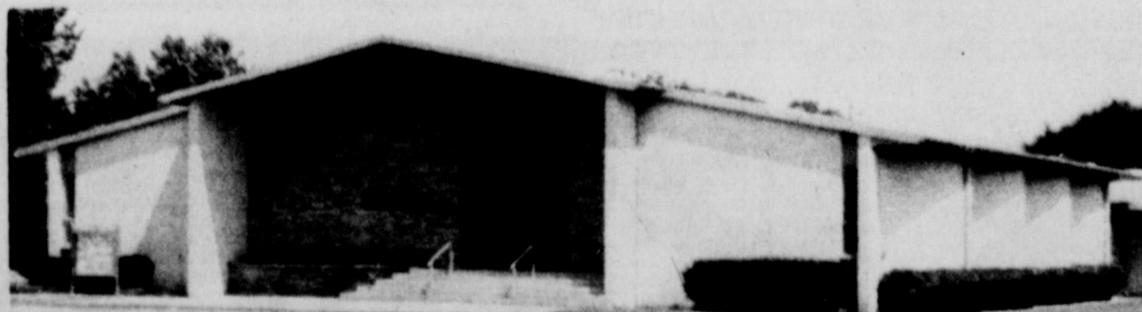
Sunday School 9:45 a.m.
 Morning Worship 11:00 a.m.
 Evening Worship 6:00 p.m.
 Wednesday 7:00 p.m.

IOWA PARK CHURCH OF CHRIST

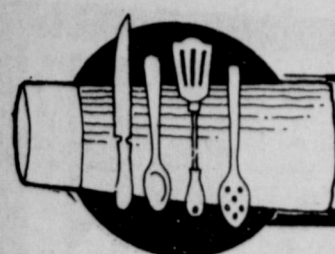
300 East Park, Iowa Park, Texas 76367, (817) 592-5415

SCHEDULE OF SERVICES

Sunday	Bible Study 9:30 a.m.	Worship 10:30 a.m.	Evening Worship 6:00 p.m.	Wednesday Evening Study 7:30 p.m.
				Thursday Ladies Bible Class 7:30 p.m.
				Call office for information.



We offer a Free Bible Correspondance Course. Call for details.



Cook of the Week

Today is Thanksgiving Day. Celebrating the day has been an American custom for such a long time that we seem to think that it has an American origin. However, history tells us that it doesn't.

It started in America after Governor Bradford's first Thanksgiving proclamation in 1621 to the little colony in Massachusetts just a year after the brave little band of Pilgrims landed.

After a hard and bitter winter, the spring and summer had been kind to the colonists, and in the fall they gathered a bountiful harvest and held the first Thanksgiving, a period of prayer and feasting. Chief Massasoit and other Indian friends joined in with them and helped the celebration by bringing several deer and turkeys.

Today, in planning the Thanksgiving dinner, one almost always complies with tradition. Turkey with dressing reigns supreme as the choice of meat. Of all the cooked meats, turkey is highest in protein, lowest in fat, and yields more meat per pound than any of the meat-producing animals.

To go with the turkey and dressing, there is gravy enriched with giblets and there are many extras according to preference, including pumpkin pie, cranberries, fruit salad, candied yams, favorite vegetables and hot rolls.

Tamara (Mrs. Monty) Roehr, our cook for the Thanksgiving edition will not be preparing dinner at home this year. Instead, she and her family will go to Fort Worth to eat a dinner prepared by her grandfather, Bill Langdon, who is an exceptional cook to a mark degree, according to the touchstone of relatives and friends. His menu will include the traditional foods appropriate for the day.



Mrs. Monty Roehr

Mrs. Roehr shares two desserts that sound good for holiday meals and just every day eating. These are Cherry-O-Cream Pie with vanilla wafer crust and Pecan Pie, a traditional Thanksgiving dessert at the home of her parents-in-law.

The former Tamara Langdon attended high school at Seymour and was graduated from Cisco High School. She has lived in Iowa Park one year and is a member of the Faith Baptist Church where she was baptized Sunday night. Her hobbies are reading and collecting books.

She and her husband, Monty, who works for Stanley-Proto Industrial Tools, have one daughter, Tawny, 13 months old.

CHERRY-O-CREAM PIE

- 1 pkg. cream cheese, softened
- 1 can Eagle Brand Milk
- 1/2 cup lemon juice
- 1 tsp. vanilla
- 1 can chilled cherry pie filling

Vanilla Wafer crust (recipe below)
Beat cream cheese and Eagle Brand Milk until smooth. Stir in lemon juice and vanilla. Pour into crust; refrigerate 1 hour, then pour filling on top. Keep refrigerated.

VANILLA WAFER CRUST

- 1/2 box vanilla wafers
- 6 tsp. softened butter (margarine)
- 3 tsp. sugar

Place wafers in plastic bag, roll out until fine crumbs; add butter and sugar; mix well. Press into pie plate. Either chill or bake at 375 degrees 8 minutes.

CORNBREAD DRESSING

- 2 pkgs. cornbread crumbs
- 1 small onion, diced
- 2 celery stalks, diced
- 2 boiled eggs, diced
- 1 can chicken broth
- 2 cups water (may need more or less)
- Sage, poultry seasoning
- Salt and pepper

Heat oven to 375 degrees.
Combine 1 pkg. cornbread, onion and celery, pour in chicken broth. Then alternate cornbread and water until right consistency. Add eggs and seasonings to taste. Pour into greased 13x9x3 inch pan; dot with butter and bake 45 minutes.

HOT ROLLS

- 1 cup lukewarm water
- 1 pkg. active dry yeast
- 1 1/2 tsp. salt
- 1 T sugar
- 2 T Crisco
- 2 1/2 cups flour (more or less)

Dissolve yeast in water, add sugar and let set for a few seconds for yeast to start growing. Add Crisco and 2 cups flour, mix well, and add flour until spongy. Pour out on floured board and knead until it feels right.

Put in greased bowl, cover top and set in warm place to rise until doubled, about 30 minutes.

Put back on board and knead. Pinch off pieces and roll in melted Crisco. Let stand in warm place till risen well. Bake in 450 degree oven till lightly browned.

PECAN PIE

- 1 cup pecan halves
- 3 eggs
- 1 T melted butter
- 1 cup white Karo syrup
- 1/2 tsp. vanilla
- 1 cup sugar
- 1 T flour
- 1 8 inch pie crust

Heat oven to 350 degrees.
Arrange pecan halves in bottom of pie crust. Beat eggs, butter, syrup and vanilla. Combine flour and sugar and add to egg mixture; mix well. Pour over pecans and let stand until they rise to the surface. Bake 45 minutes.



4-H CLUB NEWS

Forty-five 4-Hers and parents attended the November meeting held at the ASCS building.

During the meeting, owner verification cards were distributed to those who plan to show animals in the local and county shows in March. It was stressed that the deadline for returning the cards was nearing and that the sheep and hog registrations are due Dec. 1.

Sharon Wynn was recognized for her win at the recent county food show and her blue ribbon at the district food show. Two large bags of food were brought to the meeting for the area food bank, the project for the month.

4-H members who have not been receiving the county news letter were urged to notify the county office or the adult leader. A Christmas party is being planned for Dec. 7 at the RAC building and the next regular meeting will be held Dec. 17 at the ASCS building.

Fashion Sale '85



JORDACHE

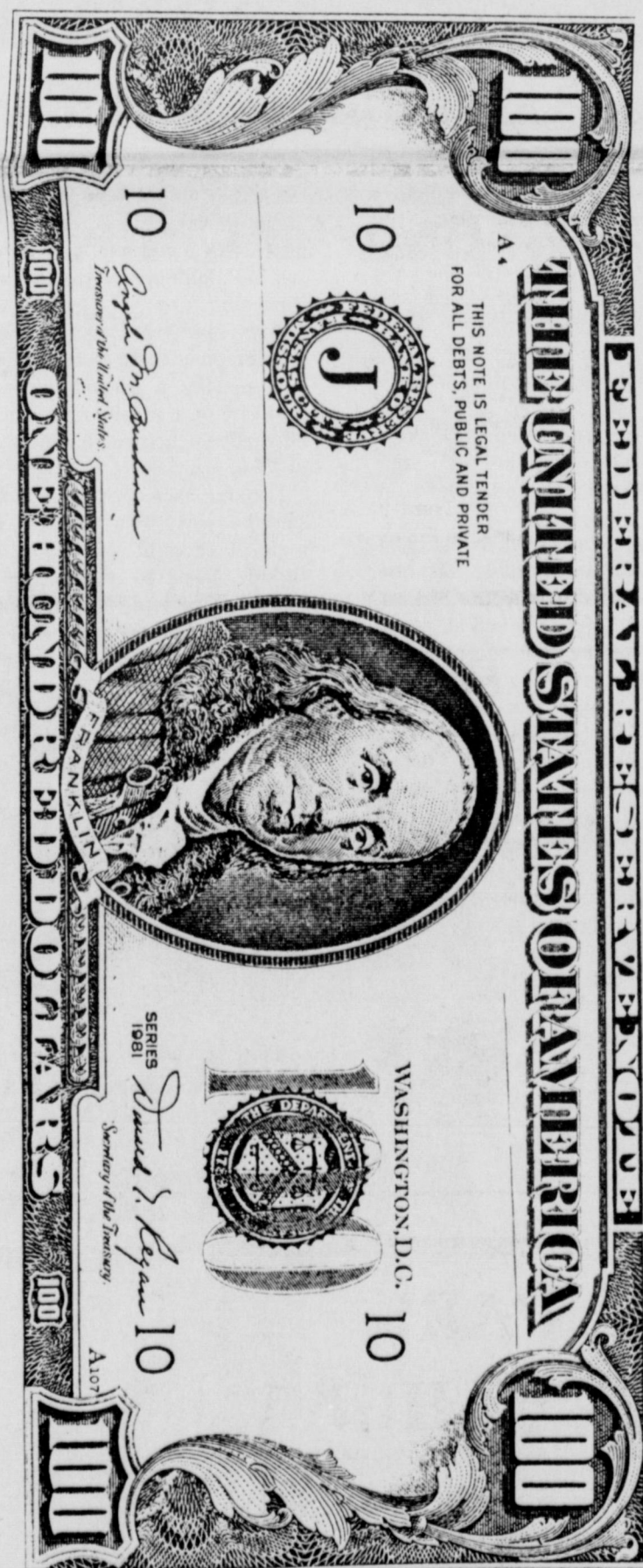
OVERSIZED!!!
VALUES \$26-32
\$16.95

Fashion Outlet

Corner of W. Park & N. Yosemite

SUPPORT YOUR LOCAL POLICE DEPT.

Need an Extra \$100 for Christmas?



Compare your Social Security number with the Serial Number of the \$100 BILL we have on display in our store. If the last four digits match, the bill is Yours!
Different Bill Posted Each Thursday

PARKWAY

APPLIANCES ELECTRONICS FURNITURE

592-5512

592-4681

200-206 W. Bank



Coming Soon . . . To Your Local Cable System

Proposed Channel Lineup TV CABLE of IOWA PARK

Channel	Station
2	KJTL of Wichita Falls
4	KFDX - TV 3 of Wichita Falls
5	KAUZ - TV 6 of Wichita Falls
7	Local Weather and Announcements
8	KSWO-TV 7 of Lawton, Okla.
9	PTL
10	WTBS
11	WGN
12	C-SPAN
13	KIDZ-TV 24PBS of Wichita Falls
15	CBN
17	ESPN
18	Nickelodeon
19	The Nashville Network
20	MTV
21	HBO
22	The Disney Channel
23	CNN



TV CABLE of IOWA PARK

696-0664

SALES OFFICE 569-1451

Mary's Haircutting
Next to Cabe's on West Highway

**B & R
THRIFTWAY**

401 W. Park 592-9831
Open 7 days a week

WE SUPPORT OUR HAWKS
CRYOVAC

PACKAGING/MARKETING SYSTEMS

Iowa Park

AYRES TIRE

592-5621

Expressway & Johnson Rd.

Cooper B.F. Goodrich Propane
Used Tires Michelin Diesel
Mechanical Work

KAMAY ELECTRIC SERVICE

P.O. Box 144 Kamay, Texas

Kamay 438-2844 Electra 495-4391
W.F. 723-9126 W.F. 723-4602

Electric Motor Repair and
Pole Line Construction

EARL CRAVENS RONNY
438-2844 Kamay 438-2901

We're Proud of the Hawks



Louis'
Distinctive jewelry

592-5942 Louis & Betty Sefcik
408 W. Park George Bushfield

WE BACK THE HAWKS!

Jim's Conoco

(formerly E&S)

592-4897

612 W. Highway



**TANNER-AULDS
FUNERAL HOME**

Since 1908

300 E. Cash 592-4151
"Our family serving your family"



Shaw Motor Co.

IOWA PARK 592-4106

**Bud Mercer
Electric Co.**

Residential & Commercial



BUD MERCER, Owner
Phone 592-5413

HARDIN HILL
Phone 592-2666



**BOBBY EVANS
Sporting Goods
INC.**

Mike Birdwell



Home Ph.
596-1887

Birdwell Well Service, Inc.

BOX 145 KAMAY, TEXAS 76369

Ph. 438-2971 or 723-4071

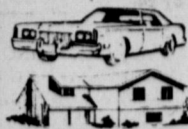
IOWA PARK
LEADER

JERRY GHOLSON

Doing Business As

R.W. Hill Insurance

208 N. Yosemite 592-4159



Auto Insurance
Homeowners Insurance
Competitive Rates



Hawk rally falls short, lose to Bearcats 21-14

Iowa Park's second-half rally fell short Friday at Weatherford, as Ballinger won the Area championship 21-14.

The Hawks had handed the Bearcats a 21-0 lead, by virtue of five turnovers in the initial 22 minutes of play. But a dramatic touchdown with only 10 seconds remaining in the first half, and another midway in the fourth period gave the huge following of fans hope the Mean Green might advance further in the state playoffs.

This was Iowa Park's first venture into the playoffs in 15 years, but it was the fourth consecutive season beyond district for Ballinger.

The Hawks wound up a year that had figured to be one for rebuilding, after losing 17 seniors to graduation, with a 7-4-1 record which included a share in the Dist. 5-AAA title and Bi-District championship.

Not until the fading seconds of the opening half was quarterback Ray Sefcik able to complete a pass to one of his own players. Three of four pass attempts in the first quarter were interceptions, and his second attempt in the second quarter also was stolen. Added to those turnovers was a fumble by Eric Whitman, at the Bearcat one, in the second period.

Sefcik, however, did find the range and threw for both Iowa Park touchdowns, one to Scott Weaver and the other to Stephen Biddy.

By contrast, Ballinger's quarterback was hot from the start. He completed five of eight attempts in the first quarter, gaining 102 yards. In the second quarter, he threw for a

touchdown and a two-point conversion. Sefcik intercepted one of Ballinger's passes in the second quarter, halting a scoring drive.

Iowa Park's first touchdown was a five-play, 50-second drive just before the end of the half. It came soon after Whitman's fumble, which was caused by his second-effort attempt to score after bulling his way 12 yards.

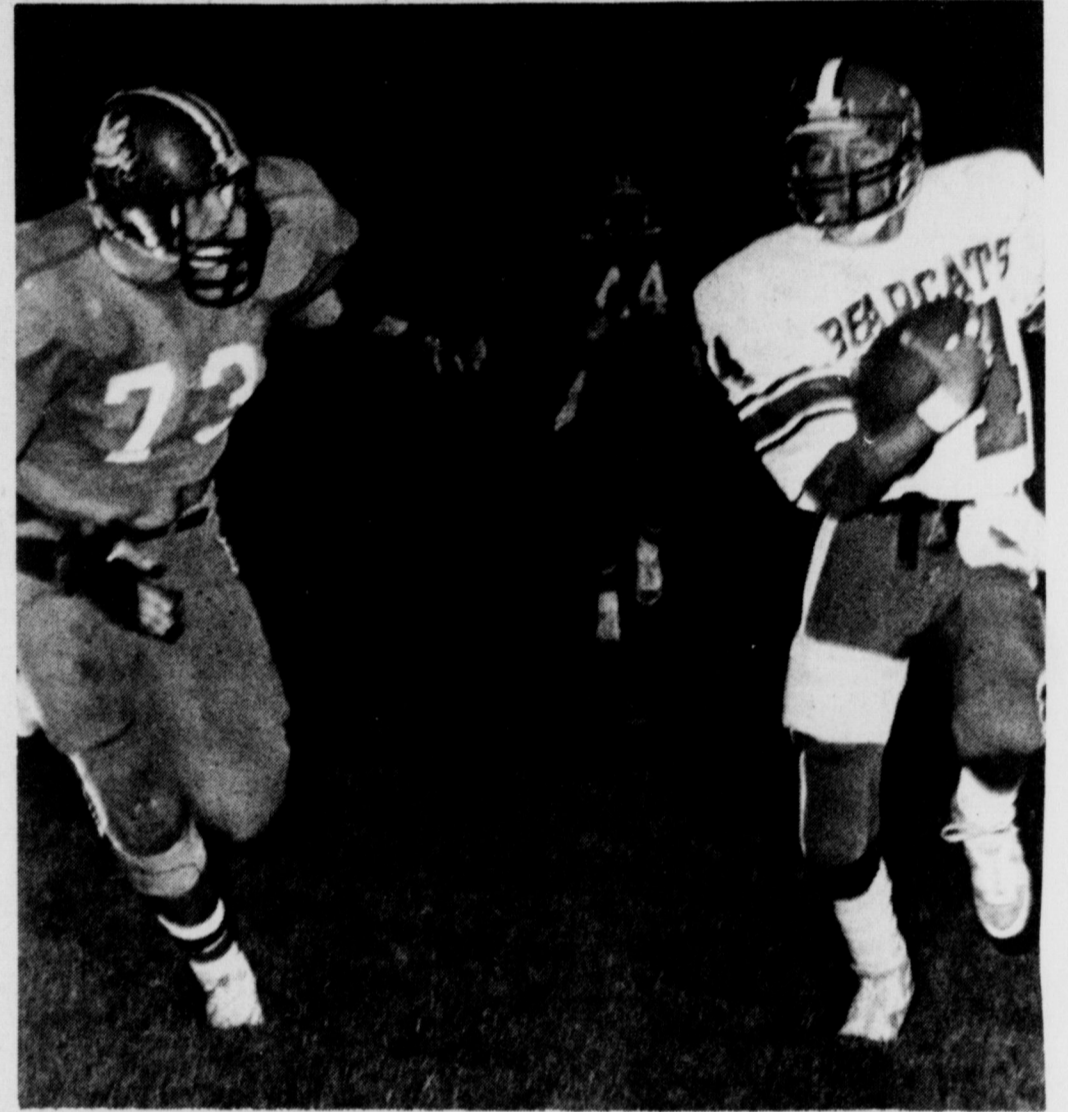
Ballinger was unable to pick up a first down, and punted from the 10 to the Bearcat 34. Biddy returned the ball to the 29.

After an incomplete pass, Sefcik hit Biddy nine yards downfield, followed by a five-yard run by fullback Randy Boutwell.

Another incomplete pass stopped the clock at 14 seconds. Then Sefcik hit Weaver for the 15 yards needed to score, and Robert Adams' kick for the extra point narrowed Ballinger's lead to 21-7.

Shortly after the halftime break, and the Hawks punting to Ballinger's 18, the Hawks had a chance to narrow the margin even more when Robbie Wilson covered a Bearcat Fumble at the 15. But, after three plays that all lost yardage and a five-yard penalty, Wilson punted from the Bearcat 35.

The Mean Green defense returned the favor late in the same period. Ballinger had driven to the Hawk 19. Wilson made a tackle that cost Ballinger five yards. On the next play, Shawn Price sacked the quarterback nine more yards. And on third down, Adams tackled a receiver on a screen pass play for a three-yard loss, and Ballinger had to punt.



KEVIN HANEY, 73, CUTS OFF BEARCAT QUARTERBACK ERIC LUGO

Early in the final period, Ballinger drove to Iowa Park's 26, and failed to pick up a first down. From there, the Hawks drove to the Bearcat 17 from where Sefcik hit Biddy on the one yard line and the senior receiver dived over a tackler to score.

Danny Forman's two-point run appeared good, but a motion penalty nullified the play. After a five-yard penalty, Adams was called on to kick the extra point, and he split the uprights to take the Hawks with seven points.

But Ballinger controlled the ball the remaining 5:01 by staying on the ground and picking up four first downs.

The Bearcat defense keeled all night on Weaver, holding him to only nine yards net the entire evening. He caught two passes for 17 yards. Weaver left the field in the third quarter after apparently being knocked unconscious.

Boutwell led Hawk runners with 58 yards. Biddy had three catches for 39 yards.

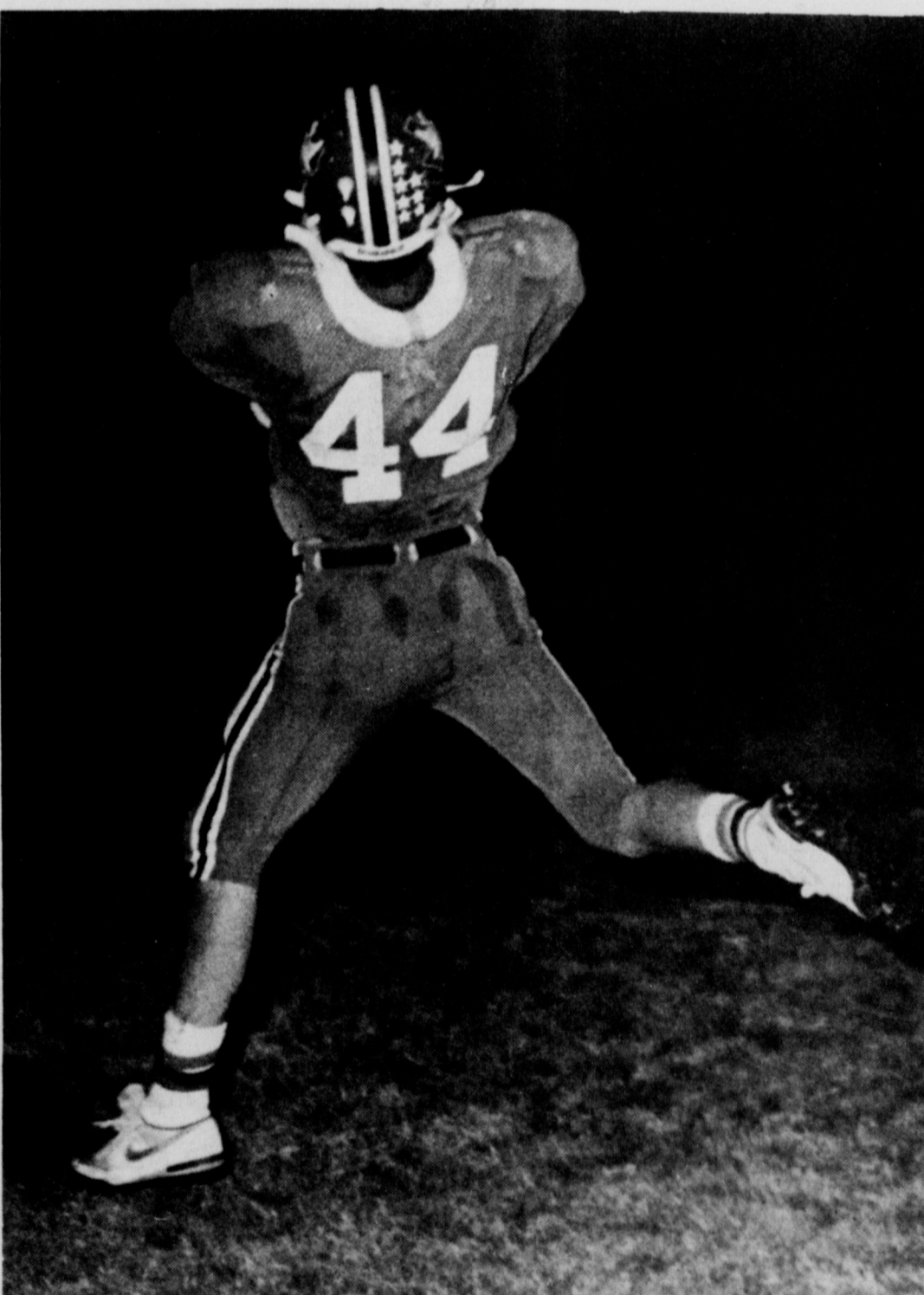
Coach David Baugh felt the three main errors committed by Iowa Park were:

- * a motion penalty on Wilson's quick kick that would have put the Bearcats deep in their own territory; instead after the penalty a pass interception set up Ballinger on Iowa Park's two yard line;

- * the fumble at the one yard line; not scoring on that drive hurt momentum;
- * missing a secondary assignment and giving a receiver an uncontested 30-yard touchdown that put the score at 21-0.

Looking back over the season, Baugh said he was "real pleased with the team. I thought we might have an outside chance to get into the playoffs. The kids worked hard, improved and wanted it. And they made it," he said.

IP	Ballinger
11	First Downs 14
102	Yards Rushing 115
55	Yards Passing 183
157	Total Yards 298
6/17	Passes 12/22
1	Interceptions by 4
1	Fumbles Lost 1
6-35	Penalties 8-60
6/32	Punts 5/24



SCOTT WEAVER CATCHES 15-YARD TOUCHDOWN PASS

"Since 1951"

Iowa Park Florist

114 West Park • 592-2141

Iowa Park, Texas 76367

Send your thoughts with special care.

Supporting Our Hawks

...Compliments

Dr. James Edwards

Optometrist

103 W. Park



592-4992

Cheers from across the street!

Dr. Carter Pirkle

General Dentistry

Ruth, Betsy, Rhonda & Sheryl

Park Tank Truck Service
IOWA PARK, TEXAS 76367



- RADIO EQUIPPED TRUCKS • OIL, MUD, & WATER HAULING
- WINCH TRUCKS • VACUUM TRUCKS FOR ROTARY • KILL TRUCKS
- ACID & FRAC SERVICE • SALT WATER DISPOSAL
- ACID SALES & SERVICES • POWER SWIVEL UNITS

Like a good neighbor, State Farm is there.



State Farm Insurance Companies
Home Offices
Bloomington, Illinois

Philip Welch 118 W. Park

See me for car, home, life and health insurance.

PARKWAY
FURNITURE - ELECTRONICS - APPLIANCES



200-206 W. Bank 592-5512 592-4681


IOWA PARK HAWKS

1985
5-AAA Co-Champs
Bi-District Champs

IOWA PARK 14	BRECKENRIDGE 28
IOWA PARK 9	BURKBURNETT 3
IOWA PARK 9	HOLLIDAY 0
IOWA PARK 7	STAMFORD 21
IOWA PARK 48	HASKELL 6
IOWA PARK 35	BOWIE 14
IOWA PARK 17	DECATUR 7
IOWA PARK 17	VERNON 7
IOWA PARK 13	SPRINGTOWN 16
IOWA PARK 24	BRIDGEPORT 0
IOWA PARK 34	GRAHAM 34
IOWA PARK 14	BALLINGER 21

EASY SHOP FOOD STORE
OPEN 7 DAYS A WEEK
1309 Johnson Road 592-5937

GO...MEAN GREEN!
Pleasant Valley Grocery and Midway Fish Farm
Randy Jameson - Owner




Well Completion Cleanout Service
ASHTON WELL SERVICE



RICHARD ASHTON JR.
700 Mockingbird Iowa Park, TX 76367
817-592-5910
817-592-5240

SPRUIELL DRILLING COMPANY INCORPORATED
Office — 307 N. Wall 592-5471
Shop — 107 E. Poe 592-5223



Settle Drug
592-4191
120 W. Park



Raymond's WELDING & MACHINE SHOP INC.
Box 148 Kamay, Texas
Johnny Ray Crenshaw, owner
Bus. 438-2961 or 766-3825
Res. 438-2910
FULLY INSURED • 2-WAY RADIO

KINGS FOOD
300 W. Bank 592-2861

Wal-Mart Pharmacy
592-4157
500 West Highway, Iowa Park
JEREL KERBY — Pharmacist

Supporting the Hawks

OPEN MON.-FRI. 7 A.M. - 6 P.M.
OPEN SATURDAYS 8 A.M. - 5 P.M.

DC Auto Parts
211 N. Wall 592-4181 Iowa Park
DANNY COFFMAN — owner
BOB WHATLEY - Mgr.

Doctors & Staff of
Park Clinic
Support the Hawks —

KING'S KIDS
CHRISTIAN DAYCARE & PRESCHOOL
"Iowa Park's finest for Parents who care."
202 N. Jackson 592-4242


HEO TV CABLE OF IOWA PARK
696-0664

Scobee's I & II
I - 322 W. Highway 592-5961
II - 900 W. Highway 592-2663
HOME-OWNED & OPERATED

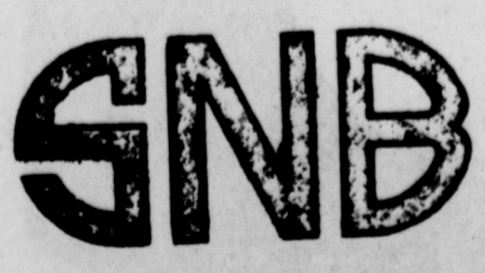
CATLIN Car Wash
No. 1 & No. 2



SAM'S BODY SHOP
Sam and Marye Lou



MEAN GREEN STRENGTH Iowa Park Ready Mix
592-2052
SAND—ROCK—GRAVEL



STATE NATIONAL BANK
IOWA PARK, TEXAS
Member F.D.I.C.

ken's PIZZA
902 W. Highway 592-4184
Open after each Friday night's football game.



Harvey's FAMILY RESTAURANT HAMBURGERS
805 West Highway



Thanksgiving

**Thanks for the good that is,
and always has been ours...**

Our Thanksgiving stems from a harvest festival held by the Pilgrims to give thanks for God's bounty.

They invited their Indian friends who arrived, 90 strong, carrying five deer. The food was welcome, the feast lasted for three days. That sense of sharing and of giving, continues to this day. It is called Thanksgiving.

We remember the courage, bravery and determination of our forefathers who settled on the rockbound

coast of the Atlantic and pushed across the new country, regardless of dangers. We honor their memory at Thanksgiving time.

We have been blessed far beyond any dreams our forebearers may have had. For us, Thanksgiving Day is an expression of an ultimate attainment — the giving of thanks for the good that is and always has been ours.

A Happy and Blessed Thanksgiving to all.

**IOWA PARK
LEADER**

