

April  
May 10, 1986  
April 17, 1986 (?)

## SWEEPSTAKES

### Third year in row for bands

Band directors Greg Miller and Ed Hefli are quite pleased with the Iowa Park High School band after they won sweepstakes for the third year in a row at the University Scholastic League Concert and Sightreading Contest held Tuesday in Vernon.

The group received straight ones at the competition, which was attended by Class A, AA and AAA schools.

Miller, head band director, said, "We're pleased. When you get three

ones, there's no doubt in the judges' mind that you deserve it."

The comments from the judges were complimentary, stating that the band was a quality group and it was obvious that the school and community supported them. It was also reported that the Hawk band had done the best job of sightreading done all day.

The junior high band went to U.I.L. Concert and Sightreading Contest Wednesday afternoon, and results were not available by presstime.

## Parents urged to attend drug awareness program

A parent awareness program concerning drug abuse will be sponsored April 29 at the Iowa Park Recreational Activities Center by the Optimist Club, according to Allen Shewmake.

Three experts on drug abuse will be on hand to make a presentation on the subject, especially on how it concerns juveniles.

One of the experts is with the Department of Public Safety narcotics department and another is Gene Edwards, director of the chemical

abuse program at Red River Hospital.

The experts will answer questions from the audience.

An additional purpose of the meeting is to form an organization, "Parent Awareness Council," which will continue to function as an informational group in the community.

"We're hoping for a big turnout and active participation from our people," stated Shewmake, who is chairman of the Optimist Club's "Just Say No" committee.



**OLD BUILDING COMING DOWN** - One of Iowa Park's oldest business building will no longer be, as workers began Tuesday tearing it to the ground. The 105 W. Park structure was condemned by the city because of its condition, and owner Stanley Williamson was instructed to repair it or tear it down. City inspectors discovered its old rock walls crumbling after Discount Food burned.

# IOWA PARK LEADER <sup>25</sup> CENTS

Vol. 17, No. 29 IOWA PARK, WICHITA COUNTY, TEXAS 76367 Thursday, April 10, 1986

## Monday was rough day here for little boys

Monday was a rough day for little boys, according to the police blotter. ~~When a five-year-old boy was struck by a vehicle while riding a bicycle, and another had a fish hook removed from his eye lid.~~

Cary Loomis, three, was taken to the police station at 12:44 p.m., seeking help from an emergency medical technician to remove the hook.

The youngster, who lives at 924 W. Highway, was taken to Park Clinic where it was removed.

The bicycle incident took place at 5:13 p.m. at Pacific and Bank. His father, Marvin A. Beyers, said the youth was not injured, however, and took him and the bicycle to their 505 N. Yosemite home.

For the second week in a row, a sexual abuse case was reported to police.

A child welfare worker notified

police Thursday afternoon of a possible sexual assault. The next morning, the alleged victim, and the blotter, to file "indecent with child" information.

No arrest had been made at press time.

Early Saturday morning, police were notified of two males in a vehicle parked on Johnson Road near the high school were throwing beer cans onto the road.

When police investigated, they arrested both men, one for public intoxication and the other on an outstanding warrant from Colorado Springs, Col.

Gene Lee Kennedy, 22, was confirmed by Colorado Springs authorities as being wanted for violation of probation and to be held without bond until extradition.

Kennedy was turned over to Wichita County Sheriff's Department

officers later that day.

His companion, Troy Herman Edensfield, Jr., was released after intoxication charge.

Two other persons were held temporarily over the weekend after they were found to have outstanding warrants on them.

Kelly Eugene Stevens, 33, was released Saturday evening after posting a \$66.50 bond on a speeding and failure to appear warrant issued by the Wichita Falls Police Department.

About midnight Saturday, officers detained Deanna Harral Langford, 39, after determining an outstanding warrant for her had been issued by the Department of Public Safety in Wichita Falls, for speeding and failure to appear. She was released after posting a \$82 bond, according to the blotter.



IOWA PARK TENNIS PLAYERS QUALIFIED TO ADVANCE TO REGIONAL TOURNAMENT

## TENNIS

### Boys win district, girls place second

Iowa Park High School has another Dist. 5-AAA championship to add to its sports trophy case.

This time it's tennis, earned by the boys' team. And the girls tied for second.

Competing in the district tournament last weekend at Vernon, the boys out-pointed Vernon and Bridgeport by 10 points, finishing with 25 points to 15 for the other two.

Vernon garnered 20 points to keep the district trophy at home, while Iowa Park and Springtown each collected 15.

Coach Dick Wineinger praised the play of his doubles team, Bill Chandler and Mark Cooke, for win-

ning first place, and Casey Rains, who pulled a major upset and placed second.

Additional valuable points were earned by the boys' doubles team of Matt Gerstner and Jeff Bartow, who took fourth, as did Darrell Franklin in singles.

### Monday holiday for schools, city

Iowa Park students will have a holiday from school they hadn't counted on.

By state mandate, all schools in the state will observe San Jacinto Day this coming Monday, and be

Jenny Bowerman placed second in singles; Cindy Lunney and Peni Lee were third in doubles, and Sheila Staffs earned fourth place points.

Those placing first or second will advance to the regional tournament.

closed, according to Supt. Glen Mitchell.

The day will also be a holiday for city employees, who were given the day off by the city council in its last meeting.

## Iowa Park tops in sales gain

Iowa Park continues to lead all cities in Wichita County in sales tax increases over last year, according to a report issued by the state comptroller's office.

The city's check for March was \$9,352.95, making the year's total \$51,688.59.

That is a 10.19 percent increase over the \$46,908.57 reported for the first quarter of 1985. The March check last year was \$7,770.11.

According to the report, Wichita Falls has an increase of 6.54 percent, Burkburnett 5.42, and Electra is a minus 6.44 percent.

Holiday's March sales tax check was \$5,956.11. While that was well above the \$4,928.54 for the same month last year, the city is still a minus 1.23 percent below the same period in 1985.

Through the first quarter of last year, Holiday had received \$28,493.49. This year's sum is \$28,142.33, according to the report.

## Little League baseball season opens Saturday

Following a tradition established several years ago, Little League base-

ball season will be kicked off with a downtown parade and a full day of games.

And it will happen Saturday.

A parade will start at 9 a.m. from the junior high, travel west on Cash to Yosemite, turn north to Park where it will snake its way back to Cash and then head west to the shopping center to disband.

Twenty three teams will see action that day.

The first game at the parks on West Magnolia is to begin at 11

a.m., and the last at 7 p.m.

Playing there during the day will be four T-Ball teams, three 5-Pitch teams, seven in the Minor League and five in the Major League.

All four Senior League teams will play Saturday, as well. The first game at Burnett Park will begin at 2:30 p.m., and the second game at 5 p.m.

Volunteers are confident they will have the third field completed at the Magnolia site for Saturday. On it will be played the T-Ball and 5-Pitch games.

## News in Brief

### Annual plant sale set Saturday

The annual plant sale at the high school horticulture department will be held from 9 a.m. to 3 p.m. Saturday, according to George Brandt, instructor.

"We have a good crop of geraniums this year," Brandt said, but

added quantities of other plants were less than in previous years.

Bedding plants of several varieties, as well as hanging baskets, are offered for sale to the public. They are projects nurtured through the year by students in the department.

# Moore, Valdez marry here Saturday

Miss Kelli Eae Moore became the bride of Danny Valdez Saturday afternoon in a double-ring ceremony performed by Vernon Lewis, an ordained Baptist minister, at Faith Baptist Church.

The bride is the granddaughter of Mr. and Mrs. Thos. K. Moore of Iowa Park, the daughter of James E. Moore of Roanoke and Nancy Rosenquist of Evergreen, Colo. The groom is the son of Mr. and Mrs. Ignacio Valdez of Wichita Falls.

The couple repeated their vows before a white wrought iron arch entwined with wedding greenery studded with white roses, yellow and pink carnations and daisies. The altar decorations were completed with arrangements of white gladioli, yellow mums and baby's breath supported by tall white pedestals on either side of the arch. The church pews were marked with white, pink and yellow bows.

Mrs. John Rentschler, organist, created the mood for the wedding with pre-nuptial selections which included "Liebestraum," "Because God Made Thee Mine," "Love Divine, All Love Excelling," "The Voice That Breathed O'er Eden," and "Oh Perfect Love." She played the traditional marches by Wagner and Mendelssohn.

The bride's father escorted her to the altar and presented her in marriage. For her wedding, she chose a lovely gown of white chiffon and Chantilly lace. The elongated bodice was enhanced with a Queen Anne neckline and the lace richly embroidered with pearls. The full bishop sleeves were cuffed with the lace, and self-covered buttons down the back of the bodice and on the cuffs lent extra attraction to the gown.

Her imported bridal illusion veil was edged in lace and strewn with lace appliques and drifted from a Juliet cap of lace beyond the chapel train.

The bride chose a silk colonial bouquet that will be a lasting memory of her wedding day composed of white mums, pink and yellow daisies and narrow pink, yellow and white ribbons that cascaded and tied in love knots centered with tiny flowers in the chosen colors.

The bride's wedding gown with bright traditions. These included a pearl and diamond necklace the "something borrowed" from her mother; an embroidered handkerchief that had belonged to her late great-grandmother, now in possession of her grandmother for "something old"; her wedding gown for "something new"; and the traditional garter for "something blue."

The bride was attended by Miss Nancy Black of Austin and Miss Gisele Farmer of Wichita Falls as maids of honor, who wore pink brocaded street length dresses. Miss Black's dress was styled with a V-neck, long sleeves that tapered from the elbows and wrap around skirt trimmed with buttons at the waistline. Miss Farmer's dress was designed with a round neckline, short flared sleeves and a skirt that draped at one side.

They carried silk bouquets in colonial style composed of pink roses, white daisies, yellow carnations, phlox and stephanotis from which yellow and pink ribbons tied in love knots fell floorward.

The groom wore a black tuxedo with white pleated shirt, pale yellow tie and cummerbund and yellow carnations boutonniere. Danny

Gentry, the best man, Wayne Tekell, the groomsmen, father of the bride, and minister wore black tuxedos, white shirts, black ties and cummerbunds. The ushers were Frank Barboza, Glyn Halford and Daniel Pedroza.

Mrs. Moore, the bride's grandmother, wore a street length dress of lavender, black and white striped crepe designed with blouson bodice and long sleeves. Mrs. Valdez, mother of the groom, wore a candlelight lace street length dress styled with a V-neck, lace tie and long sleeves. Their corsages were formed with yellow and white roses, daisies and lilies.

The bride's grandparents hosted a breakfast Saturday morning in connection with the wedding rehearsal.

Following the wedding, families of the bride and groom hosted a traditional Spanish dinner and reception in the Fellowship Hall of the church.

Members of the wedding party sat at a table covered with yellow and appointed with a crystal vase of yellow and white baby mums and pink and yellow streamers.

The bride's table was covered with an heirloom crocheted cloth over yellow. The three-tiered white cake was a spectacular creation decorated in a Victorian design with ornate detail scalloped borders accented with piped bows. Yellow sweetpeas were featured in cascades around the layers and sprays of the flowers were arranged in a splash of yellow above the scalloped borders. The Grecian posts that divided the tiers were complemented with ceramic cherubs. The top was adorned with double wedding rings supporting white doves in an arch of white garlands centered with a wedding bell.

The table also held the crystal punch bowl, white bridal napkins marked in silver with "Kelli-Danny, April 12, 1986."

The groom's chocolate sheet cake was trimmed with detailed scrollwork, yellow accents which included the names of the bride and groom. His table also held the tea service and napkins to match those on the bride's table. Mrs. Jimmy Green assisted at the refreshment tables.

Mrs. Lewis officiated at the church foyer before the wedding at a table covered with a tailored yellow cloth and again at the reception at a table covered with a ruffled yellow satin cloth.

The bride attended Iowa Park High School and was graduated from Evergreen, Colo. High School. She attended Vernon Regional Junior College and plans to attend Texas Women's Univ. The groom was graduated from Wichita Falls High School. He attended Vernon Regional Junior College. He is an officer with the Plano Police Department. They will live in The Colony.

The bride's going away ensemble



MRS. DANNY VALDEZ

was white-striped linen texture dress topped with a solid yellow coat with raglan sleeves.

Special wedding guests were the bride's mother of Evergreen, Colo., Mrs. James Moore of Roanoke, Mrs.

Daisy McHaffie of Orlando, Fla., Mr. and Mrs. Jesus Valdez of Abilene, grandparents of the groom, and relatives and friends from Seymour, Munday, Dallas and Abilene.



## Library News

By STACIA BROWN

"We Can Fly" is one of our new books in the library. It tells of the women who have made great achievements in their careers. The book has a special section which focuses on women who were a part of the Women's Air Service Pilots of World War II and America's first women astronauts.

### New officers are installed

Epsilon Eta chapter of Epsilon Sigma Alpha held the annual salad supper Tuesday evening at the First Christian Church. Eleven members and 25 guests were present.


Mrs. Bill Hrcirik of Delta Nu chapter in Wichita Falls installed new officers. These were Mmes. Howard McDowell, president; Bud Mercer, first vice president; Marvin Robertson, second vice president; Lonnie Fischer, treasurer; Paul Walker, recording/corresponding secretary; David Parkey, parliamentarian.

Mrs. McDowell gave the president's address following the installation.

being added. Many people are using this section of the library to work on family histories and we hope more will choose to use it in the future. With the interest in genealogy in mind, the library would like to offer a beginners workshop in genealogy at the library over a four week period. The classes would meet once a week for two hours each time during the four week period. Registration fee will be \$2.00 to cover the cost of handout material provided by the instructor, Alma Francis. Any person interested in being a part of this course should contact me at the library as soon as possible at 592-4981. The dates of the workshop will be released at a later time.

There is also still time to become an active part of the Adult Tutoring Program provided through the Wichita Adult Literacy Council. Many have volunteered to help, but it is sometimes hard to locate non-reading adults. This problem is usually a very sensitive one with adults who cannot, but there is almost always someone who knows their secret. If you know a non-reader please let them about our program and encourage them to call 322-6928. The program is on a one to one basis, it is confidential, and free of charge.

**Still have a headache after paying your IRS taxes?**



**BUFFERIN TABLETS**

Bottle of 125 **\$4.56**

**APAP CAPLETS**  
(Generic Tylenol Caplets)

100 Ct. **\$3.75**  
500 mg.



## Settle Drug

Joe Hughes Pharmacist  
592-4191 120 W. Park  
Hours: 7:30 a.m. - 6 p.m. Mon.-Fri.  
7:30 a.m. - 5 p.m. Saturdays

We give S&H Green Stamps

P.C.S. Medimet Medicare

FREE Delivery of Prescriptions



New Shipment

## Sterling Silver and Gold for Mother's Day

# Louis'

Distinctive Jewelry

408 W. Park 592-5942

## Free Options WORTH UP TO \$69

Bring this ad and get your choice of Gold Lance class ring options FREE!



**GOLD LANCE CLASS RINGS**  
2-4 WEEK DELIVERY  
FULL LIFETIME WARRANTY

**Louis' Distinctive Jewelry**

408 W. Park 592-5942

Clip this ad and bring to our store by May 31, 1986 to qualify. Ask for details. © Gold Lance Corp.



\*Attractive  
\*Functional  
\*Bridal Shower Selections

\*Decorative  
\*Inexpensive

Now Available  
Gifts for friends ...or yourself



**Home Place Gifts & Crafts**  
Come See Us & Browse

Hours: Monday-Saturday 9:30 a.m. - 5:30 p.m.

401 W. Park 592-5671

### Two students are winners

Two Iowa Park Junior High members of Camp Fire were blue ribbon winners in the organization's recent art contest.

They were Kathy Smith, sixth grade, and Tim Hidrich, eighth grade.

The 90 entries were judged by representatives of the Wichita Falls Museum and Art Center, on the basis of theme, general excellence, originality of design, quality and how well the artist has used the materials and techniques to carry out the creative expression and theme.

The art was done primarily in Camp Fire meetings held in leaders' homes.

All entries are on display this week at the Camp Fire office in Wichita Falls.

## Indians program topic

Mrs. Gerry Thurlo, vice president of the United Methodist Women, presided during the meeting held Tuesday morning.

Mrs. Eldon Thompson was program leader. She gave an informative compilation of conversations with the North American natives, "The Indians of Today," edited by Emmett and Kathleen Hummelen.

The speaker gave a comprehensive account of Indians' stories as they presented the facts of the survival of their forefathers and the existing condition of the native North Americans today.

Mrs. Thompson said that "the Indians are proud people, proud of their heritage and they stand firmly on their belief and their cultures." She continued by stating that they have had the inner strength to hold together in spite of the gross injustices inflicted upon them by their white brothers, the taking of

their lands, treaties broken or ignored, and the unfairness of the Indian Affairs program.

The speaker remarked that the Indians are speaking out today and it is well that they should because we are living in a nation where most people are enjoying unprecedented affluence with more wealth, goods, services, automation and technology. "It is paradoxical, however, that the American Indian, the once proud owner of the lands, is now reduced to develop strategies for survival, and it is unfortunate that American Indian youth and children are the most to lose in American Society," she concluded.

Following the program, a social hour was held when Mrs. Kathleen Hatten, who is moving in the near future, was honored and presented with a gift of appreciation for her many years of service to UMW.

Twenty-nine members were present.



MR. AND MRS. WILEY G. FRANCIS

### Observe 50th anniversary

Mr. and Mrs. Wiley C. Francis, who were married March 29, 1936, at Altus, Okla., celebrated their 50th wedding anniversary April 5 at a reception held at Texas Electric Reddy Room. The hostesses were their two daughters, Marilyn Francis Chumley of San Marcos, Carolyn Francis Ragland of Iowa Park, and a friend, Patti Gose of Wichita Falls.

The refreshment table was covered with a white lace cloth over gold and centered with a bouquet of extra large gold mums. The three-tiered white anniversary cake with pillar columns was decorated with white roses with gold leaves, and set off with a bridal couple standing before a heart topped with "50" in gold.

Mr. and Mrs. Francis have one son, Ronald of Wichita Falls, and the two daughters, and four grandchildren, Christy and Matt Rumelhart of Houston, Tim Chumley of Austin and Cynthia Chumley of San Marcos.

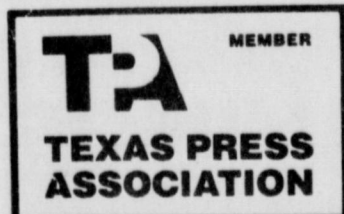
Out-of-town relatives who attended the reception were Mrs. H.A. Hodges of Oklahoma City, Mrs. Georgia Spears of Vernon. Others were Gerald Likely of Wichita Falls, Mr. and Mrs. David W. Likely of Van Alstyne, and Patti, Tad and Hollie Gose of Wichita Falls.

### TOPS officers are installed

Mrs. A.E. Young installed new officers of the TOPS Club in a meeting held Monday evening at Texas Electric Reddy room. She used "Measures of Life" for a theme emphasizing how lives are controlled by measurements of time, distance, etc.

Those installed were Mmes. Jimmy Adolphus, leader; E.T. Wells, co-leader; Charlie Helms, secretary; Pete Putman, treasurer; Carol Rainsburg, weight recorder.

TOPS Club was organized March 2, 1965 in Iowa Park. There are three charter members who have attained their weight goal 20 years, Mmes. A.O. Beall, Lloyd Lowe and E.T. Wells. They were presented with a heart necklace inset with a diamond.



## WAL-MART Pharmacy

500 W. Highway 592-4157  
9 a.m. - 7 p.m. Monday-Friday  
9 a.m. - 6 p.m. Saturdays



Jerel Kerby

### ALZHEIMER'S STRIKES 15-20% OF PERSONS OVER 65 YEARS OLD

The symptoms of Alzheimer's disease can be diagnosed in 15-20% of persons over the age of 65, according to Dr. Barry Reisberg of the New York University Medical Center.

About 5% of 25 million Americans over 65 have the severe form of the disease, while 10-15% of this group have mild to moderate form of the disease.

Although symptoms of Alzheimer's overlap the normal symptoms of aging, according to Dr. Reisberg, normal aging is not complicated by the slowing of the metabolism that occurs in Alzheimer's disease.

Many victims of the disease are not diagnosed and treated until they develop moderate to severe symptoms - such as when they are no longer able to select appropriate clothing, he said.



MICHELLE TANNER AND HOMER BROWN

## Announce engagement

Mr. and Mrs. David A. Tanner of Wichita Falls announce the engagement and forthcoming marriage of their daughter, Michelle Renee, and Homer Abe Brown, son of Mr. and Mrs. James B. Brown of Iowa Park.

Miss Tanner was graduated from Rider High School and is employed by Vernon R. Nesmith D.D.S. Her fiancé was graduated from Iowa Park High School and is employed by Texoma Ag Products.

The couple will be married June

28 at the Sunnyside Baptist Church in Wichita Falls.

### New Meter Connections

Garry Holmes - 503 East Bank Farmer's Grain - 211 S. Victoria  
Roger A. Hoffman - 1106 Cornelia  
ERA Dennis Realtors - 703 W. Manes  
Robert A. Lee - 1128 Louisa

## Garden Club plans show

The Iowa Park Garden Club met Friday morning in the home of Mrs. Joe Kennedy, with Mrs. Bobby Illingworth, the co-hostess.

Mrs. Charlie Lee was the presiding officer. Mrs. Frank Harlin read "A Gardener's Prayer" by Mrs. H.B. Horn, taken from the Lone Star Gardener. Members named their favorite annuals when they answered roll call.

Mrs. Jimmy Gilmore, flower show chairman, discussed the annual flower show that will be held April 25 at Texas Electric Reddy Room. The theme of this year's show will be "Waltz Across Texas." Members were requested to help set up for the show the afternoon before, and furnish a flower arrangement, horticulture specimen, and small cuttings from their yards for the show.

Mrs. Gilmore gave a report on the state convention in Ennis recently when the Iowa Park Garden Club won second place on scrapbook and honorable mention on the president's report.

She read an invitation from Benson Iris Society to visit or display specimens at their show April 26 at the Methodist Church.

Mrs. Michael Hodson brought a "voodoo lily" an unusual horticulture plant for members to see.

During the business, Mrs. Lee presented Mrs. Kathleen Hatten, who is moving to Houston, with a gift. It was voted to serve sandwiches for workers on the city's Clean-Up Day April 26, and members were assigned work hours for the flower show.

For the program, Mrs. Kennedy showed slides of landscaped gardens in different parts of the world which were taken during the time that she and Mr. Kennedy lived in England, Holland and Turkey. These included the Bushart Gardens of British Columbia-Canada, Trivoli Gardens in

Denmark and Kuekenhoft Gardens in Holland. Some of the most interesting slides were the fields and fields of tulips in bloom, beautiful azaleas and unbelievable green houses.

Following the program, members toured the Kennedy's beautifully landscaped yard and greenhouse where they raise almost every variety of orchid.

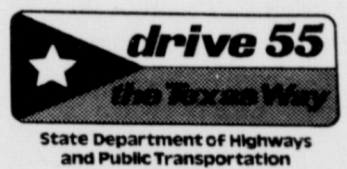
### Members perform at club meeting

The Modern Music Study Club met in the home of Mrs. Larry Thompson Thursday evening, with Mrs. H.J. Cannon serving as co-hostess.

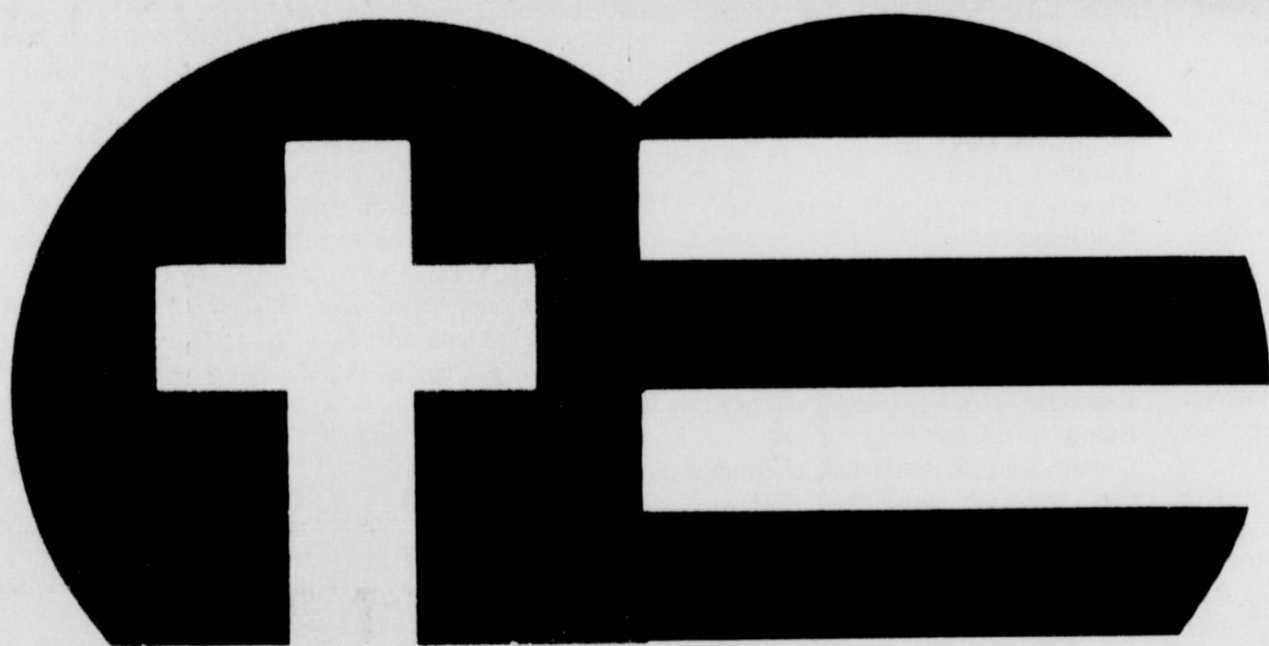
Mrs. Thompson directed the members in singing the hymn of the month, "O Lord and God" by Elizer Gerovitch. Mrs. Michael Sargent provided piano accompaniment.

The musical program featured Mrs. James Sewell performing a very different and lively arrangement of "Turkey in the Straw" by David Guion, and three novel tunes from the Broadway show "Annie" by Mrs. Delbert Todd, vocalist, with Mrs. Cecilia House furnishing accompaniment.

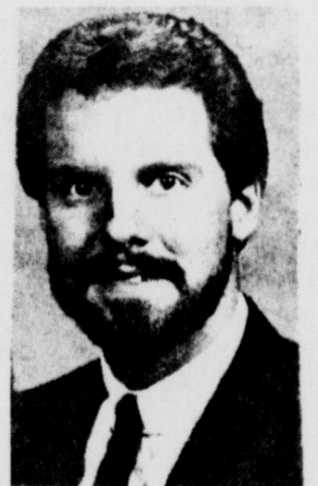
The business meeting was conducted by Mrs. Kenneth Davis. It was announced that awards will be presented at the May meeting to two outstanding music students in the senior class. Officers for the next two years will also be installed at the meeting which will be held at the Tom Burnett Memorial Library.



# GOOD NEWS AMERICA GOD LOVES YOU



Dr. Jackie Kay  
Evangelist



Bro. Harold Brooks  
Music

Begins Sunday at 8:20 & 10:40  
Nightly thru Friday at 7:00 P.M.

Special Breakfast Bible  
Study Each Weekday  
6:45 A.M.

April 20-25

## Faith Baptist Church

Nursery Available 411 S. Wall 592-4894

# As I See It....

By BOB HAMILTON



The beak of the American eagle was tweaked once too often.

President Reagan has my complete support for his ordering the strike on Libya, and as far as I'm concerned, it was justified.

Oh, there are those who say we should have done this and that, but not resorted to force.

Well, I feel "this and that" was tried, and to no avail. I also feel the people in that part of the country just don't recognize anything other than

force. I think they got the message.

It also appears our government needs to take a second look at which countries are our friends and which aren't, as demonstrated by their responses to news of the American attack.

There's a nurseryman in Fort Worth who's putting his advertising dollar where his mouth is.

In a recent addition of the Fort

Worth Star Telegram was an advertisement for Mike's Garden Centers.

In a prominent section of the ad was the following copy:

"Cow Poo Poo  
"Who the poo does Mark White think he's kidding when he says he hasn't raised taxes since he was elected governor! We won't forget when we go to vote in November. And that ain't no poo, Markey baby."

The business' owner, Mike Cook, is a man after my own heart. He likes to advertise in the newspaper, and he doesn't like Mark White.

Any man who likes to mix cow manure with his politics can't be all bad.

For anyone who likes Texas history, and the old west, I've got a place for you to visit.

Dolores and I were in Waco over the weekend, attending the annual meeting of the North and East Texas Press Association.

One of the planned activities of the meeting was a tour of the Texas Ranger Museum, which is right off Highway 35 at the river.

I had passed up stopping there all these years, and didn't realize what I was missing.

It is a must, if you're passing that way and have an hour or a day in which to enjoy walking back into the history of our state, and its famed Texas Rangers.

# Baseball Hawks among 5-AAA title seekers

The Hawks remain in the thick of the Dist. 5-AAA title hunt with a record of two wins and one tie, as they prepare to travel Tuesday to Bowie to wind up the first half of round robin play.

After being tied 4-4 Friday when the game was called due to darkness at Springtown, the Hawks pounded Bridgeport here Tuesday to the tune of 8-3.

Coach Daryl Frazier said the Springtown game likely will not be completed, and will stand at a half win, half loss.

Billy Kenyon had his problems in the second inning, and was relieved by Robert Adams with two runners on base and no outs.

The one Bull run that frame was charged to Kenyon, who made up for his day's pitching by collecting two hits in three official trips to the plate.

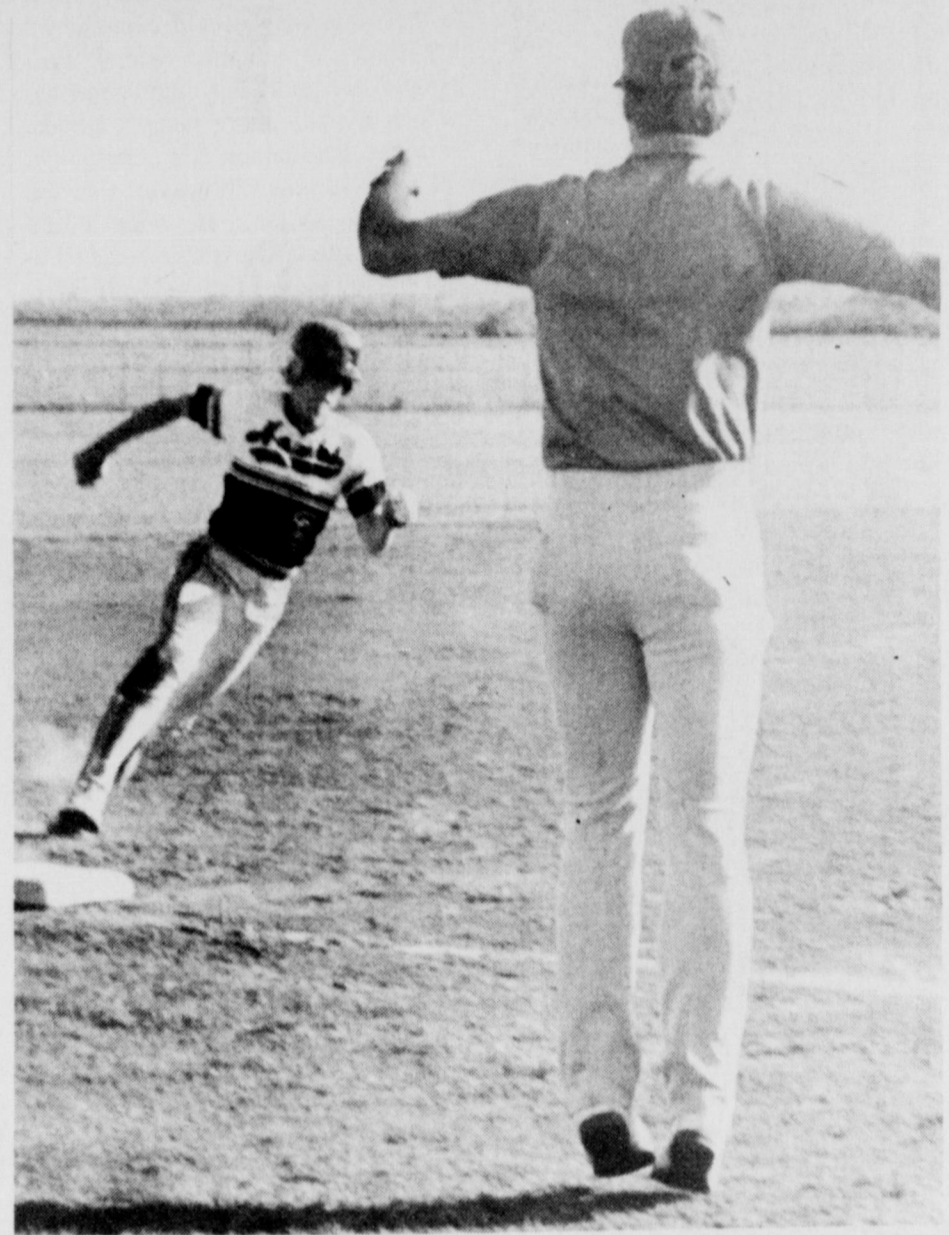
Adams completed the game. Craig Rickman worked four and a third innings against Springtown, giving up four walks and striking out six batters.

He was relieved by Shawn Price, who walked two and struck out three.

Price hit a two-run homer out of the park.

Errors in the third inning were costly for the Hawks, when three unearned runs crossed home plate.

After traveling to Bowie Tuesday, the Hawks will travel the next Friday to Bridgeport, and host Springtown May 2.



COACH DARYL FRAZIER WAVES BILLY KENYON HOME ... during Bridgeport game here Tuesday.

## AREA OIL & GAS NEWS

L&J Oil has posted first production figures on two new oil wells in the Wichita Regular Field. The No. 4 McCarty "E" and the No. 4 McCarty "G" indicated potential to pump oil at the combined rate of 11 barrels per day.

The wells are located three miles north & three miles northwest of Kamay, respectively. The "E" well is in the W.R. Eaves Survey, A-447, while the "G" well is in the S.O. Fowler Survey, A-78.

The "E" well will produce from perforations in the Delmar Formation, 1,334 to 1,376 feet into the wellbore. Total drilling depth was 1,410 feet.

The "G" well will produce from a perforated interval in the Pennsylvania Formation, 505 to 511 feet into the hole. It bottomed at 1,735 feet.

The "E" well is located 150 feet from the north line and 1,200 feet from the east line of the lease, while the "G" well is located 2,300 feet from the northwest line and 1,800 feet from the northeast line of the lease.

The No. 13 O.J. Cooper, a 1,999-ft. developmental well, is scheduled to be drilled in the Wichita Regular Field. Asher Production of Ft. Worth is the operator. The well will be spudded in a 100-acre lease 8.5 miles east-southeast of Burkburnett in the Henry Hastie Survey, A-92.

The well will be located 700 feet from the south line and 1,637 feet from the east line of the lease.

At a location ten miles east-southeast of Burkburnett, Moore Drilling has finished a new oil producer in the Wichita Regular Field.

The well is designated as the No. 17 W.P. Rogers, pumping ten barrels of oil per day.

Location is in a lease in the DL&C Survey, A-785. Bottomed at 1,288 feet, the well will produce from perforations in the Thomas Sand Formation, 1,206 to 1,210 feet into the wellbore.

Location is 6,610 feet from the south line and 670 feet from the east line of the lease.

Moore Drilling has hung the "dry hole" tag on the No. 16 W.P. Rogers, a developmental venture in the Wichita Regular Field. Spudded Jan. 29, the well had reached 1,246-ft. total depth. Drillsite was eight miles southeast of Wichita Falls.

Drillsite was 7,095 feet from the south line and 520 feet from the east line of the lease.

A Wichita Falls-based operator has staked location for the No. 1 Monroe Well Inc. - Bickley, a developmental well to be located three miles northeast of Electra. With projected total depth of 2,200 feet, the well will be drilled in a 120-acre lease in the C7MRR Survey, A-594, Wichita Regular Field. The operator is Monroe Well Service.

The Wichita Regular Field gained a new producer when 4-B completed the No. 120 Waggoner Brothers five miles south-southwest of Fowlkes.



**Friday, April 18**  
Breakfast: Cinnamon roll, bacon, fruit juice, milk.

Lunch: Soup & sandwich, goulash, fried okra, blackeyed peas, fruit, cornbread, applesauce cake, plain or choc. milk.

**Monday, April 21**  
San Jacinto Day

**Tuesday, April 22**  
Breakfast: Scrambled eggs, toast, fruit juice, milk.

Lunch: Soup & sandwich, pizza, combination salad, corn, fruit, plain or choc. milk.

**Wednesday, April 23**  
Breakfast: Biscuit, honey, sausage, fruit juice, milk.

Lunch: Soup & sandwich, charburgers, tater tots, fresh fruit, lettuce, tomatoes, pickles, onions, ice cream, plain or choc. milk.

**Thursday, April 24**  
Breakfast: Oatmeal, toast, fruit, milk.

Lunch: Soup & sandwich, submarine sandwich, potato chips, pork & beans, lettuce & tomatoes, peaches, plain or choc. milk.

## May 19 set for planting

At a recent crops committee meeting, the uniform planting date for cotton in Wichita County was set. The date for cotton planting is Monday, May 19. This is set at the recommendation of the TAEX and the Wichita County Field Crops Committee to aid in combating the dreaded boll weevil.

With winter being warmer than usual, these same adults survived the winter and will be emerging in peak numbers the last week of May and first week of June.

Planting cotton after May 19 will insure producers of less problems with the boll weevil.

The Wichita County Field Crops Committee is headed by Larry McAlister of Electra. Other committee members include: Freddie Daume, Rex Wells, Fred Dwyer, Jim Barbour, James Brockriede, Cecil Jarvis, W.H. McAlister, Dan Glass, Ralph Harvey, Clarence Mahler and Otto Malone.

## Herschman yard is recognized

The Iowa Park Garden Club has placed the Yard of the Month sign at the home of Mr. and Mrs. Walter Herschman at 104 E. Garden.

The yard will be considered for the Yard of the Year when the choice is made.

## Finnell makes formal announcement

State Rep. Charles Finnell has announced for re-election to the Texas House of Representatives, 80th District, subject to the May 3, Archer and Wichita County Democratic primaries and the Nov. 4 general election. Accompanied by his wife Kay, Finnell expressed appreciation for support from friends through the years.

"The opportunity for meaningful public service in state government is today, greater than ever before. Much of the real decision making goes on in the Legislature, as governmental decisions are shifting away from Washington and toward your state capitol, bringing more power to your State Legislature" the conservative legislator stated.

"Mastering the complex system of a state government which relates to 14-million people is something that cannot be taught in textbooks. Practical experience is a quality for which there is no substitute. By acquiring that experience, I feel that I have become a valuable asset. Knowing how to get the job done" said Finnell "and being very familiar with the process, together with being fourth in seniority in the House of

Representatives, is a significant asset."

Finnell, an elected director of the 132-county West Texas Chamber of Commerce, listed the largest single issue facing the next Legislature as, "the state budget, due in large part to the current nature of our Texas economy."

As a Representative, the Archer County businessman has been instrumental in the passage of many legislative landmarks and in the defeat of hostile or unnecessary proposals. Much of his time and attention, however, has been aimed at securing the best possible services for constituents and for existing state facilities. Still closer to home, his legislative agenda has contained locally requested proposals to make state government more responsive to citizens of the area.

Throughout his career, the 42-year-old Finnell has served the counties he represents on a regular basis by working with commissioner's courts, Chambers of Commerce, school and city officials, civic organizations and youth programs, responding to the local needs of each community.

The 80th House District consists of 97,915 people covering almost five-million acres of Texas. In the last election, Rep. Finnell received more votes than any other State Representative involved in a contested race.

Repeating his promise to stay in close contact with the vast nine-county district, he urged everyone to take full advantage of our freedoms and opportunities as citizens of this great state by participating in the political process.

"I am thankful that I can face each decision with confidence that you are behind me," Rep Finnell stated. "I believe that my past years of experience in the Legislature make it possible for me to serve the 80th District and our state in a better way than ever before."

Finnell observed, "I enjoy working and being a problem solver, rather than being one who makes problems worse. I look forward to continued service, by providing responsible representation, and to seeing that our 80th District gets a fair shake in the Texas Legislature." Finnell concluded "I respectfully ask for your vote and support."

### Municipal Court

#### Records

Results of municipal court held here yesterday were:

- Curtis Doyle Sparks, speeding, \$51;
- Curtis Doyle Sparks, drivers license not valid for motorcycle, \$43;
- Jeffrey Craig Nolen, speeding, \$45;
- Julie Anne Burk, speeding, taking defensive driving course (DDC);
- Kisako Kakebayashi Potter, speeding, taking DDC;
- Amy Elizabeth Gately, speeding, \$45;
- Deborah Cook Herder, speeding, \$44;
- Charles Alan Gilstrap, speeding, \$46;
- Randy Samuel Clark, speeding, taking DDC;
- Troy Herman Edenfield Jr., public intoxication, \$49.

# IOWA PARK LEADER

Bob Hamilton..... Editor/Publisher  
Dolores Hamilton..... Co-publisher  
Olive Blalock..... Reporter  
Kari Collins..... Reporter  
Kim Schroeder..... Composition

The IOWA PARK LEADER is published every Thursday. Offices are located at 112 W. Cash, Iowa Park, Texas 76367 (766280). Telephone: 592-4431. Second Class Postage Paid at Iowa Park, Texas, 76367. Annual subscription rates are \$8.41 in Wichita and Archer Counties; \$10.51 elsewhere in Texas; \$12.00 anywhere in the United States. Any erroneous reflection upon the character, standing or reputation of any person, firm or corporation which may appear in the columns of this newspaper will be corrected upon being brought to the attention of the publisher.



# SNB

— We invite you to shop and compare our

## INTEREST RATES FOR SAVINGS

(Applicable April 17 through April 23)

Account	Interest (compounded daily)	Yield
7-31 Days	6.00%	6.183%
91 Days	6.80%	7.036%
182 Days	6.85%	7.089%
New Money Market Accounts	6.50%	(Simple interest)
Super Now Accounts	5.50%	(Simple interest)
1 Year	7.00%	7.25%
2 Year	7.20%	7.465%
3-5 Years	7.30%	7.572%
I.R.A.	8.00%	8.328%

(Substantial interest penalty required for early withdrawal. Rates Subject to change without notice.)



IOWA PARK, TEXAS  
Locally Owned



# SPECIAL BUYS!

Coca-Cola

\$1.69

6-12 oz. Cans

We give S&H Green Stamps Everyday

Double S&H Green Stamps every Wednesday

CITRUS HILL FROZEN ORANGE JUICE

**79¢**

16 OZ. CAN

PRICE SAVER GRANULATED SUGAR

**\$1.28**

5 LB. BAG

PAPER TOWELS BRAWNY

**69¢**

JUMBO ROLL

COOL DAIRY BUYS

KRAFT HALFMOON CHEDDAR OR COLBY CHEESE

**\$1.69**

10 OZ. PKG.

KRAFT SLICES VELVEETA

**\$2.29**

16 OZ. PKG.

FROZEN FOOD SPECIALS

BANQUET CHICKEN/MEAT/TURKEY MEAT PIES

**3 \$1**

8 OZ. BOXES

SHURFRESH LOWFAT MILK

**\$1.79**

GAL.

OAK FARMS ICE CREAM

**\$1.59**

1/2 GAL.

BETTY CROCKER ASST. FROSTING

**\$1.49**

16 OZ. CAN

BETTY CROCKER SUPERMOIST LAYER CAKE MIXES

**79¢**

18 OZ. BOX

BETTY CROCKER POTATO BUDS

**\$1.19**

13.75 OZ. BOX

GENERAL MILLS CHEERIOS CEREAL

**\$1.99**

15 OZ. BOX

"SPECIAL ROAST FLAKED" FOLGER'S COFFEE

**\$2.49**

11 1/2 OZ. CAN

SOFT PARKAY MARGARINE

**99¢**

2/8 OZ. BOWLS

PET RITZ APPLE PIES

**\$1.59**

26 OZ. PKG.

FRESH YELLOW ONIONS

**5 \$1**

5 LBS.

CALIFORNIA GREEN ONIONS

**5 \$1.00**

5 BUNCHES

CRISP CARROTS

**4 \$1.00**

1 LB. BAGS

SUNKIST ORANGES

**39¢**

LB.

FRESH MUSHROOMS

**99¢**

8 OZ. CTN.

US NO. 1 RUSSET POTATOES

**69¢**

5 LB. BAG

CALIFORNIA RED RIPE STRAWBERRIES

**59¢**

PINT BASKET

OSCAR MAYER MEAT WIENERS

**99¢**

1 LB. PKG.

FRESH LEAN GROUND CHUCK

**\$1.37**

LB.

LEAN-TENDER FAMILY PACK CUBE STEAK **\$2.19**

SUPER-LEAN BONELESS SIRLOIN TIP STEAKS **\$2.39**

SUPER-LEAN BONELESS SQUARE-CUT ROUND ROAST **\$1.89**

SUPER-LEAN FAMILY PACK EYE OF ROUND STEAK **\$2.19**

OSCAR MAYER ALL BEEF FRANKS **\$1.69**

WRIGHTS SLICED SLAB BACON **\$1.29**

FOR WHITER CLOTHES TIDE DETERGENT

**\$2.99**

72 OZ. BOX

60% OFF LABEL FABRIC SOFTENER DOWNY

**\$2.89**

96 OZ. BTL.

GOLD MEDAL FLOUR

**89¢**

5 LB. BAG

FOR GREAT COOKING WESSON OIL

**\$2.39**

48 OZ. BTL.

KRAFT B-B-Q SAUCE

**89¢**

18 OZ. Btl.

AMERICAN BEAUTY SPAGHETTINI

**59¢**

12 OZ. PKG.

PRE-SWEETENED KOOL-AID

**\$2.59**

10 Qt. Size

BEAUTIFUL SAVINGS

GILLETTE MICRO TRAC DISPOSABLE RAZOR

**79¢**

5 CT. PKG.

CREST TOOTHPASTE

**\$1.59**

6.4 oz. Tube

FOAMY SHAVE CREAM

**\$1.59**

6 1/4 oz. Can

VO-5 SHAMPOO

**\$1.39**

15 oz. Size

TOTAL GROCERY SAVINGS

LAY'S POTATO CHIPS

**89¢**

REG. \$1.39

PEANUT BUTTER PETER PAN

**\$1.49**

18 OZ. JAR

FOR THE BATHROOM NORTHERN TISSUE

**99¢**

4 ROLL PKG.

S&H BONUS BOOKLET SPECIALS

NORTHERN BATH TISSUE	BETTY CROCKER CAKE MIX	NO. 1 RUSSET POTATOES	GOLD MEDAL FLOUR
4 ROLL <b>54¢</b>	18 OZ. <b>34¢</b>	5 LB. BAG <b>24¢</b>	5 LB. BAG <b>44¢</b>
WITH ONE FILLED S&H BONUS BOOKLET	WITH ONE FILLED S&H BONUS BOOKLET	WITH ONE FILLED S&H BONUS BOOKLET	WITH ONE FILLED S&H BONUS BOOKLET

**B&R**

Come Home for Good!

WE ACCEPT FOOD STAMPS AND W.I.C. CARDS

WE RESERVE THE RIGHT TO LIMIT QUANTITIES

**THRIFTWAY**

Prices Effective April 17-23

401 W. Park 592-9831

OPEN 7 DAYS 8 a.m. - 9 p.m. Mon. - Sat.

A WEEK 8 a.m. - 8 p.m. Sunday

# Obituaries

## Elvie Gee

Services for Elvie Gee, 72, were held Monday at Dill-Eisenhour Funeral Home in Del City, Okla. He was born June 20, 1913, in Sunset, Tex. and was a retired oil field worker.

Survivors include his wife, Virginia; two daughters, Clarice Hollman of Hobbs, N.M. and Jenny Dawsey of Oklahoma City; three sons, Jackie of Iowa Park, Mike of Littlefield and Elmer of Oklahoma City; two stepdaughters, Della Pitman and Priscilla Freed, both of Oklahoma City; two stepsons, Ronnie Cavin and Lemuel Cavin, both of Oklahoma City; two sisters, Stella North and Dovie Morris, both of Iowa Park; a brother, Eldon of Pampa; and several grandchildren.

## Ruby Lee Wallace

Graveside services for Ruby Lee Wallace, 74, will be at 2 p.m. today in the Hillcrest Cemetery in Wichita Falls with Rev. Larry Washburn, pastor of the Pacific Avenue Baptist Church of Iowa Park, officiating.

Mrs. Wallace was born Nov. 16, 1911, in Colorado City and had lived in Wichita Falls since 1912. She was a member of First Baptist Church.

She is survived by two sons, Paul R. Vines of Lancaster and Donald L. Vines of Iowa Park; a daughter, Virginia N. Sprague of Colorado; a brother, Clinton R. Seymour of Wichita Falls; seven grandchildren; and eight great-grandchildren.

## Ernest Jones

Services for Ernest "Pete" Jones, 76, a former resident of Iowa Park and employee of the Texas A&M Univ. Agricultural Research Station, were held Tuesday morning at the Lamar Baptist Church in Wichita Falls with Rev. Robert Norsworthy, pastor, officiating.

Burial was in the Iowa Park Highland Cemetery.

He was born Aug. 7, 1909, in Runnels County and had lived in Wichita Falls since 1945. He was a screens and windows fabricator. He was a member of Lamar Baptist Church where he was a deacon and had taught the Junior Boys Class 38 years. He was a member of the Masonic Lodge No. 1158.

He is survived by his wife, Bessie; and a sister, Estelle Head of Fort Worth.

## Mrs. Alonzo Wigley

Services for Mrs. Alonzo Wigley, 77, were held April 8 at the Huff Funeral Home in Whitesboro with Rev. Fairchild, pastor of the United Methodist Church, officiating. Burial was in the Whitesboro Cemetery.

She was born Jan. 1, 1909, in Whitesboro, graduated from high school there and attended College of Industrial Arts. She and her husband, a native Iowa Parkan, were married Oct. 29, 1929.

She is survived by her husband. Relatives from Iowa Park who attended funeral services were Mrs. Leota Weseman, Mrs. Ruth Mulhauser and Mr. and Mrs. Glen Spruiell. Other relatives who attended were Micky Robertson of Wichita Falls and Mr. and Mrs. Jerry Robertson of Borger.

## CARD OF THANKS

We wish to express our gratitude to those who gave so graciously and willingly the food, flowers, cards, help and offers of help during the illness and death of our mother, Martha Vaughan. The family truly appreciated your visits and prayers during her illness. May God bless each and every one of you.

Weldon and Wanda Vaughan

## Church group meets

The monthly meeting of the friendship Class of First Baptist Church was hosted Monday evening by Mrs. Roy Smith and Miss Helen Reed at the church. Thirteen members were in attendance.

During the business directed by Mrs. O.S. McLemore, it was voted to contribute grocery items to the food pantry for the April outreach project.

Mrs. E.T. Patterson presented a devotion on "Happiness" and Mrs. D.O. James directed a period of recreation.

During the social hour, refreshments were served from a table decorated with miniature bouquets of spring flowers and umbrellas.

## 4-H CLUB NEWS

### FISHING PROJECT TO BEGIN

A youth fishing project will begin 5:30 p.m., Wednesday, April 23, at the Community Resource Center at 1000 Irene Road. Youth will be taught sportsmanship, water safety, Texas game laws, types of equipment and baits, fish species identification, fishing techniques and fish preparation. Participants should be under 19 years of age.

### 4-H'ERS TO COMPLETE TWIRLING PROJECT

Twelve 4-H members will complete the annual twirling project taught by Lisa Hodges, Senior 4-H member of Valley View, Friday.

## CARD OF THANKS

Kidwell PTA would like to thank everyone for the help with the Spring Carnival. A special thank you to the Fund Raising Committee, Room Mothers, Booth Workers and the fathers for their special help. The carnival was a success and it could not have been done without the parents and children of Kidwell. Thank you for your continuing support.

Kidwell PTA Executive Board



**Northside Baptist Church**  
800 N. Wall

- Sunday School - 10 a.m.
- Sunday Worship - 11 a.m.
- Sunday Evening Worship - 6:30 p.m.
- Wednesday Worship - 7:30 p.m.

**EARL CORRELL - Pastor** Ph. 592-2200

**Church of God**  
601 E. Cash

Pastor, S. A. Luke

Sunday School - 9:45 a.m.  
Sunday Morning Worship - 11:00  
Sunday Night Worship Service - 7:00 p.m.  
Wednesday Night Service - 7:30 p.m.

Parish 592-5316 Office 592-4348

**Christ The King Catholic Church**

First and Clara Phone 592-2802  
Rev. Mr. Patrick Burke, Pastor  
8:45 a.m. C.C.D. -- 10 a.m. Mass

**Faith Baptist Church**  
411 S. Wall S.B.C. 592-4894

Sunday School 9:30 a.m. Wednesday Morning Prayer - 9:30 a.m.  
Morning Worship 8:20 & 10:40 a.m. Wednesday Evening Prayer - 7:00 p.m.  
Church Training 6:00 p.m.  
Evening Worship 7:00 p.m.

Nursery Care Provided  
Full Range of Mission's and Childrens' Ministries  
Pastor, Jerry Miller

**Pacific Avenue Missionary Baptist Church**  
1400 North Pacific Avenue

Larry Washburn  
Pastor - 592-9711  
Church - 592-4288  
Pastor - 592-4288

--Informal,  
Christ-Centered  
Worship for  
all ages--

Sunday School 9:45 a.m.  
Morning Worship 11:00 a.m.  
Evening Worship 6:00 p.m.  
Wednesday 7:00 p.m.

**Cornerstone Pentecostal Church of God**

Jesus is the Cornerstone

SS - 9:45 a.m. Sun. Morn. - 10:50 a.m. -SERVICES- Sun. Evening - 7:00 Wed. Evening - 7:00

Jesus said, upon this rock I'll build my church and the gates of hell shall not prevail against it. - Matthew 16:18

W. Smith Rd. Pastor: Duffy Terry 592-5520

**First Christian Church**  
105 E. Cash

Sunday School - 9:45 a.m.  
Worship - 10:55 a.m.  
Corner, Cash & Bond St.

We encourage each of you to worship Jesus Christ in the church of your choice. If you do not have a church home, we invite you to come worship with our church family.

**Lakeview Church of God**

WEDNESDAY EVENING (FTH-Bible Study) 7:30 p.m.  
SUNDAY SCHOOL 9:45 a.m.  
SUNDAY MORNING WORSHIP 11:00 a.m.  
SUNDAY EVENING WORSHIP 7:00 p.m.

Meeting temporarily at Peppy's old store bldg. 4th and Access Road  
Rev. Ole Olds, Pastor 592-9555

**REVIVAL**  
**Evangelist**  
**M.H. KENNEDY**

APRIL 20-23  
Starts Sunday 7:00 p.m.  
Mon.-Wed. 7:30 p.m.

**Lakeview Church of God**

Rev. Ole Olds, Pastor 592-9555  
Temporary located  
4th & Expressway

**First Presbyterian Church**

REV. BETTY L. MEADOWS Pastor  
CHURCH SCHOOL - 9:30 A.M.  
WORSHIP - 11:00 A.M.

A Caring Congregation of  
Palo Duro Presbytery - Presbyterian Church [USA]

**First United Methodist Church**  
201 E. Bank

Church School 9:40 Youth Meetings 5:00  
Morning Worship 10:40 Evening Worship 6:00

JACK MEYERS, PASTOR

THE END OF YOUR SEARCH  
FOR A FRIENDLY CHURCH  
**ASSEMBLY OF GOD**

SUNDAY:  
9:45 a.m. Sunday School  
11:00 a.m. Morning Worship  
5-6:30 p.m. Missionettes & Royal Ranger  
7 p.m. Evangelistic Service  
Wednesday Service 7 p.m.

200 S. YOSEMITE  
Charles Hensley,  
Pastor

**Kamay Road Church of Christ**  
Corner of Colorado & Emerald

"Seeking the Old Paths"

Lord's Day  
10:30 a.m. & 6 p.m.  
Wednesday 7:00 p.m.

**Good Shepherd Lutheran Church**  
1st & Magnolia Iowa Park

Sunday School: 9:45 a.m.  
Worship Service: 10:45 a.m.

**First Baptist Church**  
A Southern Baptist Church  
of Iowa Park Yosemite at Park

**SUNDAY SERVICES**  
Mornings

Sunday School 9:45  
Worship 11:00

Evenings

Church Training 6:00  
Worship 7:00

**WEDNESDAY**

Prayer Meeting 7:00  
Choir Rehearsal 7:45

**IOWA PARK CHURCH OF CHRIST**  
300 East Park, Iowa Park, Texas 76367, (817) 592-5415

**SCHEDULE OF SERVICES**

<p style="text-align: center;">Sunday</p> <p>Bible Study 9:30a.m. Worship 10:30a.m. Evening Worship 6:00p.m.</p>	<p style="text-align: center;">Wednesday</p> <p>Evening Study 7:30p.m.</p> <p style="text-align: center;">Thursday</p> <p>Ladies bible Class 7:30 p.m. Call office for information</p>
--	--

We offer a Free Bible Correspondance Course, Call for details.

9:00 A. Miami Vice (1985 Drama) Don  
 9:45 A. News (1985) News  
 10:00 A. News (1985) News  
 10:30 A. News (1985) News  
 11:00 A. News (1985) News  
 11:30 A. News (1985) News  
 12:00 P. News (1985) News  
 12:30 P. News (1985) News  
 1:00 P. News (1985) News  
 1:30 P. News (1985) News  
 2:00 P. News (1985) News  
 2:30 P. News (1985) News  
 3:00 P. News (1985) News  
 3:30 P. News (1985) News  
 4:00 P. News (1985) News  
 4:30 P. News (1985) News  
 5:00 P. News (1985) News  
 5:30 P. News (1985) News  
 6:00 P. News (1985) News  
 6:30 P. News (1985) News  
 7:00 P. News (1985) News  
 7:30 P. News (1985) News  
 8:00 P. News (1985) News  
 8:30 P. News (1985) News  
 9:00 P. News (1985) News  
 9:30 P. News (1985) News  
 10:00 P. News (1985) News  
 10:30 P. News (1985) News  
 11:00 P. News (1985) News  
 11:30 P. News (1985) News  
 12:00 A. News (1985) News  
 12:30 A. News (1985) News  
 1:00 A. News (1985) News  
 1:30 A. News (1985) News  
 2:00 A. News (1985) News  
 2:30 A. News (1985) News  
 3:00 A. News (1985) News  
 3:30 A. News (1985) News  
 4:00 A. News (1985) News  
 4:30 A. News (1985) News  
 5:00 A. News (1985) News  
 5:30 A. News (1985) News  
 6:00 A. News (1985) News  
 6:30 A. News (1985) News  
 7:00 A. News (1985) News  
 7:30 A. News (1985) News  
 8:00 A. News (1985) News  
 8:30 A. News (1985) News  
 9:00 A. News (1985) News  
 9:30 A. News (1985) News  
 10:00 A. News (1985) News  
 10:30 A. News (1985) News  
 11:00 A. News (1985) News  
 11:30 A. News (1985) News  
 12:00 A. News (1985) News  
 12:30 A. News (1985) News  
 1:00 A. News (1985) News  
 1:30 A. News (1985) News  
 2:00 A. News (1985) News  
 2:30 A. News (1985) News  
 3:00 A. News (1985) News  
 3:30 A. News (1985) News  
 4:00 A. News (1985) News  
 4:30 A. News (1985) News  
 5:00 A. News (1985) News  
 5:30 A. News (1985) News  
 6:00 A. News (1985) News  
 6:30 A. News (1985) News  
 7:00 A. News (1985) News  
 7:30 A. News (1985) News  
 8:00 A. News (1985) News  
 8:30 A. News (1985) News  
 9:00 A. News (1985) News  
 9:30 A. News (1985) News  
 10:00 A. News (1985) News  
 10:30 A. News (1985) News  
 11:00 A. News (1985) News  
 11:30 A. News (1985) News  
 12:00 A. News (1985) News  
 12:30 A. News (1985) News  
 1:00 A. News (1985) News  
 1:30 A. News (1985) News  
 2:00 A. News (1985) News  
 2:30 A. News (1985) News  
 3:00 A. News (1985) News  
 3:30 A. News (1985) News  
 4:00 A. News (1985) News  
 4:30 A. News (1985) News  
 5:00 A. News (1985) News  
 5:30 A. News (1985) News  
 6:00 A. News (1985) News  
 6:30 A. News (1985) News  
 7:00 A. News (1985) News  
 7:30 A. News (1985) News  
 8:00 A. News (1985) News  
 8:30 A. News (1985) News  
 9:00 A. News (1985) News  
 9:30 A. News (1985) News  
 10:00 A. News (1985) News  
 10:30 A. News (1985) News  
 11:00 A. News (1985) News  
 11:30 A. News (1985) News  
 12:00 A. News (1985) News  
 12:30 A. News (1985) News  
 1:00 A. News (1985) News  
 1:30 A. News (1985) News  
 2:00 A. News (1985) News  
 2:30 A. News (1985) News  
 3:00 A. News (1985) News  
 3:30 A. News (1985) News  
 4:00 A. News (1985) News  
 4:30 A. News (1985) News  
 5:00 A. News (1985) News  
 5:30 A. News (1985) News  
 6:00 A. News (1985) News  
 6:30 A. News (1985) News  
 7:00 A. News (1985) News  
 7:30 A. News (1985) News  
 8:00 A. News (1985) News  
 8:30 A. News (1985) News  
 9:00 A. News (1985) News  
 9:30 A. News (1985) News  
 10:00 A. News (1985) News  
 10:30 A. News (1985) News  
 11:00 A. News (1985) News  
 11:30 A. News (1985) News  
 12:00 A. News (1985) News  
 12:30 A. News (1985) News  
 1:00 A. News (1985) News  
 1:30 A. News (1985) News  
 2:00 A. News (1985) News  
 2:30 A. News (1985) News  
 3:00 A. News (1985) News  
 3:30 A. News (1985) News  
 4:00 A. News (1985) News  
 4:30 A. News (1985) News  
 5:00 A. News (1985) News  
 5:30 A. News (1985) News  
 6:00 A. News (1985) News  
 6:30 A. News (1985) News  
 7:00 A. News (1985) News  
 7:30 A. News (1985) News  
 8:00 A. News (1985) News  
 8:30 A. News (1985) News  
 9:00 A. News (1985) News  
 9:30 A. News (1985) News  
 10:00 A. News (1985) News  
 10:30 A. News (1985) News  
 11:00 A. News (1985) News  
 11:30 A. News (1985) News  
 12:00 A. News (1985) News  
 12:30 A. News (1985) News  
 1:00 A. News (1985) News  
 1:30 A. News (1985) News  
 2:00 A. News (1985) News  
 2:30 A. News (1985) News  
 3:00 A. News (1985) News  
 3:30 A. News (1985) News  
 4:00 A. News (1985) News  
 4:30 A. News (1985) News  
 5:00 A. News (1985) News  
 5:30 A. News (1985) News  
 6:00 A. News (1985) News  
 6:30 A. News (1985) News  
 7:00 A. News (1985) News  
 7:30 A. News (1985) News  
 8:00 A. News (1985) News  
 8:30 A. News (1985) News  
 9:00 A. News (1985) News  
 9:30 A. News (1985) News  
 10:00 A. News (1985) News  
 10:30 A. News (1985) News  
 11:00 A. News (1985) News  
 11:30 A. News (1985) News  
 12:00 A. News (1985) News  
 12:30 A. News (1985) News  
 1:00 A. News (1985) News  
 1:30 A. News (1985) News  
 2:00 A. News (1985) News  
 2:30 A. News (1985) News  
 3:00 A. News (1985) News  
 3:30 A. News (1985) News  
 4:00 A. News (1985) News  
 4:30 A. News (1985) News  
 5:00 A. News (1985) News  
 5:30 A. News (1985) News  
 6:00 A. News (1985) News  
 6:30 A. News (1985) News  
 7:00 A. News (1985) News  
 7:30 A. News (1985) News  
 8:00 A. News (1985) News  
 8:30 A. News (1985) News  
 9:00 A. News (1985) News  
 9:30 A. News (1985) News  
 10:00 A. News (1985) News  
 10:30 A. News (1985) News  
 11:00 A. News (1985) News  
 11:30 A. News (1985) News  
 12:00 A. News (1985) News  
 12:30 A. News (1985) News  
 1:00 A. News (1985) News  
 1:30 A. News (1985) News  
 2:00 A. News (1985) News  
 2:30 A. News (1985) News  
 3:00 A. News (1985) News  
 3:30 A. News (1985) News  
 4:00 A. News (1985) News  
 4:30 A. News (1985) News  
 5:00 A. News (1985) News  
 5:30 A. News (1985) News  
 6:00 A. News (1985) News  
 6:30 A. News (1985) News  
 7:00 A. News (1985) News  
 7:30 A. News (1985) News  
 8:00 A. News (1985) News  
 8:30 A. News (1985) News  
 9:00 A. News (1985) News  
 9:30 A. News (1985) News  
 10:00 A. News (1985) News  
 10:30 A. News (1985) News  
 11:00 A. News (1985) News  
 11:30 A. News (1985) News  
 12:00 A. News (1985) News  
 12:30 A. News (1985) News  
 1:00 A. News (1985) News  
 1:30 A. News (1985) News  
 2:00 A. News (1985) News  
 2:30 A. News (1985) News  
 3:00 A. News (1985) News  
 3:30 A. News (1985) News  
 4:00 A. News (1985) News  
 4:30 A. News (1985) News  
 5:00 A. News (1985) News  
 5:30 A. News (1985) News  
 6:00 A. News (1985) News  
 6:30 A. News (1985) News  
 7:00 A. News (1985) News  
 7:30 A. News (1985) News  
 8:00 A. News (1985) News  
 8:30 A. News (1985) News  
 9:00 A. News (1985) News  
 9:30 A. News (1985) News  
 10:00 A. News (1985) News  
 10:30 A. News (1985) News  
 11:00 A. News (1985) News  
 11:30 A. News (1985) News  
 12:00 A. News (1985) News  
 12:30 A. News (1985) News  
 1:00 A. News (1985) News  
 1:30 A. News (1985) News  
 2:00 A. News (1985) News  
 2:30 A. News (1985) News  
 3:00 A. News (1985) News  
 3:30 A. News (1985) News  
 4:00 A. News (1985) News  
 4:30 A. News (1985) News  
 5:00 A. News (1985) News  
 5:30 A. News (1985) News  
 6:00 A. News (1985) News  
 6:30 A. News (1985) News  
 7:00 A. News (1985) News  
 7:30 A. News (1985) News  
 8:00 A. News (1985) News  
 8:30 A. News (1985) News  
 9:00 A. News (1985) News  
 9:30 A. News (1985) News  
 10:00 A. News (1985) News  
 10:30 A. News (1985) News  
 11:00 A. News (1985) News  
 11:30 A. News (1985) News  
 12:00 A. News (1985) News  
 12:30 A. News (1985) News  
 1:00 A. News (1985) News  
 1:30 A. News (1985) News  
 2:00 A. News (1985) News  
 2:30 A. News (1985) News  
 3:00 A. News (1985) News  
 3:30 A. News (1985) News  
 4:00 A. News (1985) News  
 4:30 A. News (1985) News  
 5:00 A. News (1985) News  
 5:30 A. News (1985) News  
 6:00 A. News (1985) News  
 6:30 A. News (1985) News  
 7:00 A. News (1985) News  
 7:30 A. News (1985) News  
 8:00 A. News (1985) News  
 8:30 A. News (1985) News  
 9:00 A. News (1985) News  
 9:30 A. News (1985) News  
 10:00 A. News (1985) News  
 10:30 A. News (1985) News  
 11:00 A. News (1985) News  
 11:30 A. News (1985) News  
 12:00 A. News (1985) News  
 12:30 A. News (1985) News  
 1:00 A. News (1985) News  
 1:30 A. News (1985) News  
 2:00 A. News (1985) News  
 2:30 A. News (1985) News  
 3:00 A. News (1985) News  
 3:30 A. News (1985) News  
 4:00 A. News (1985) News  
 4:30 A. News (1985) News  
 5:00 A. News (1985) News  
 5:30 A. News (1985) News  
 6:00 A. News (1985) News  
 6:30 A. News (1985) News  
 7:00 A. News (1985) News  
 7:30 A. News (1985) News  
 8:00 A. News (1985) News  
 8:30 A. News (1985) News  
 9:00 A. News (1985) News  
 9:30 A. News (1985) News  
 10:00 A. News (1985) News  
 10:30 A. News (1985) News  
 11:00 A. News (1985) News  
 11:30 A. News (1985) News  
 12:00 A. News (1985) News  
 12:30 A. News (1985) News  
 1:00 A. News (1985) News  
 1:30 A. News (1985) News  
 2:00 A. News (1985) News  
 2:30 A. News (1985) News  
 3:00 A. News (1985) News  
 3:30 A. News (1985) News  
 4:00 A. News (1985) News  
 4:30 A. News (1985) News  
 5:00 A. News (1985) News  
 5:30 A. News (1985) News  
 6:00 A. News (1985) News  
 6:30 A. News (1985) News  
 7:00 A. News (1985) News  
 7:30 A. News (1985) News  
 8:00 A. News (1985) News  
 8:30 A. News (1985) News  
 9:00 A. News (1985) News  
 9:30 A. News (1985) News  
 10:00 A. News (1985) News  
 10:30 A. News (1985) News  
 11:00 A. News (1985) News  
 11:30 A. News (1985) News  
 12:00 A. News (1985) News  
 12:30 A. News (1985) News  
 1:00 A. News (1985) News  
 1:30 A. News (1985) News  
 2:00 A. News (1985) News  
 2:30 A. News (1985) News  
 3:00 A. News (1985) News  
 3:30 A. News (1985) News  
 4:00 A. News (1985) News  
 4:30 A. News (1985) News  
 5:00 A. News (1985) News  
 5:30 A. News (1985) News  
 6:00 A. News (1985) News  
 6:30 A. News (1985) News  
 7:00 A. News (1985) News  
 7:30 A. News (1985) News  
 8:00 A. News (1985) News  
 8:30 A. News (1985) News  
 9:00 A. News (1985) News  
 9:30 A. News (1985) News  
 10:00 A. News (1985) News  
 10:30 A. News (1985) News  
 11:00 A. News (1985) News  
 11:30 A. News (1985) News  
 12:00 A. News (1985) News  
 12:30 A. News (1985) News  
 1:00 A. News (19

10:45 (3) Business Morning (Informational)
11:00 (3) A.M. Weather
11:05 (3) Cover to Cover II
11:10 (3) Young and the Restless
11:15 (3) Special Presentation
11:20 (3) News at 11
11:25 (3) Bill Cosby
11:30 (3) The Tonight Show
11:35 (3) The Tonight Show
11:40 (3) The Tonight Show
11:45 (3) The Tonight Show
11:50 (3) The Tonight Show
11:55 (3) The Tonight Show
12:00 (3) The Tonight Show

12:05 (3) News
12:10 (3) News
12:15 (3) News
12:20 (3) News
12:25 (3) News
12:30 (3) News
12:35 (3) News
12:40 (3) News
12:45 (3) News
12:50 (3) News
12:55 (3) News
1:00 (3) News

1:05 (3) News
1:10 (3) News
1:15 (3) News
1:20 (3) News
1:25 (3) News
1:30 (3) News
1:35 (3) News
1:40 (3) News
1:45 (3) News
1:50 (3) News
1:55 (3) News
2:00 (3) News

2:05 (3) News
2:10 (3) News
2:15 (3) News
2:20 (3) News
2:25 (3) News
2:30 (3) News
2:35 (3) News
2:40 (3) News
2:45 (3) News
2:50 (3) News
2:55 (3) News
3:00 (3) News

3:05 (3) News
3:10 (3) News
3:15 (3) News
3:20 (3) News
3:25 (3) News
3:30 (3) News
3:35 (3) News
3:40 (3) News
3:45 (3) News
3:50 (3) News
3:55 (3) News
4:00 (3) News

4:05 (3) News
4:10 (3) News
4:15 (3) News
4:20 (3) News
4:25 (3) News
4:30 (3) News
4:35 (3) News
4:40 (3) News
4:45 (3) News
4:50 (3) News
4:55 (3) News
5:00 (3) News

5:05 (3) News
5:10 (3) News
5:15 (3) News
5:20 (3) News
5:25 (3) News
5:30 (3) News
5:35 (3) News
5:40 (3) News
5:45 (3) News
5:50 (3) News
5:55 (3) News
6:00 (3) News

6:05 (3) News
6:10 (3) News
6:15 (3) News
6:20 (3) News
6:25 (3) News
6:30 (3) News
6:35 (3) News
6:40 (3) News
6:45 (3) News
6:50 (3) News
6:55 (3) News
7:00 (3) News

T.V. tab
Saturday, April 19
through Friday, April 25
Channel Station City
KJTL Wichita Falls
KDX Wichita Falls
KSWO Lawton
PTL Religious
WTBS Atlanta
HISN Chicago
CSPAN Congress

11:00 (3) Wrestling
11:05 (3) Wrestling
11:10 (3) Wrestling
11:15 (3) Wrestling
11:20 (3) Wrestling
11:25 (3) Wrestling
11:30 (3) Wrestling
11:35 (3) Wrestling
11:40 (3) Wrestling
11:45 (3) Wrestling
11:50 (3) Wrestling
11:55 (3) Wrestling

12:00 (3) Wrestling
12:05 (3) Wrestling
12:10 (3) Wrestling
12:15 (3) Wrestling
12:20 (3) Wrestling
12:25 (3) Wrestling
12:30 (3) Wrestling
12:35 (3) Wrestling
12:40 (3) Wrestling
12:45 (3) Wrestling
12:50 (3) Wrestling
12:55 (3) Wrestling

1:00 (3) Wrestling
1:05 (3) Wrestling
1:10 (3) Wrestling
1:15 (3) Wrestling
1:20 (3) Wrestling
1:25 (3) Wrestling
1:30 (3) Wrestling
1:35 (3) Wrestling
1:40 (3) Wrestling
1:45 (3) Wrestling
1:50 (3) Wrestling
1:55 (3) Wrestling

2:00 (3) Wrestling
2:05 (3) Wrestling
2:10 (3) Wrestling
2:15 (3) Wrestling
2:20 (3) Wrestling
2:25 (3) Wrestling
2:30 (3) Wrestling
2:35 (3) Wrestling
2:40 (3) Wrestling
2:45 (3) Wrestling
2:50 (3) Wrestling
2:55 (3) Wrestling

3:00 (3) Wrestling
3:05 (3) Wrestling
3:10 (3) Wrestling
3:15 (3) Wrestling
3:20 (3) Wrestling
3:25 (3) Wrestling
3:30 (3) Wrestling
3:35 (3) Wrestling
3:40 (3) Wrestling
3:45 (3) Wrestling
3:50 (3) Wrestling
3:55 (3) Wrestling

4:00 (3) Wrestling
4:05 (3) Wrestling
4:10 (3) Wrestling
4:15 (3) Wrestling
4:20 (3) Wrestling
4:25 (3) Wrestling
4:30 (3) Wrestling
4:35 (3) Wrestling
4:40 (3) Wrestling
4:45 (3) Wrestling
4:50 (3) Wrestling
4:55 (3) Wrestling

5:00 (3) Wrestling
5:05 (3) Wrestling
5:10 (3) Wrestling
5:15 (3) Wrestling
5:20 (3) Wrestling
5:25 (3) Wrestling
5:30 (3) Wrestling
5:35 (3) Wrestling
5:40 (3) Wrestling
5:45 (3) Wrestling
5:50 (3) Wrestling
5:55 (3) Wrestling

6:00 (3) Wrestling
6:05 (3) Wrestling
6:10 (3) Wrestling
6:15 (3) Wrestling
6:20 (3) Wrestling
6:25 (3) Wrestling
6:30 (3) Wrestling
6:35 (3) Wrestling
6:40 (3) Wrestling
6:45 (3) Wrestling
6:50 (3) Wrestling
6:55 (3) Wrestling

7:00 (3) Wrestling
7:05 (3) Wrestling
7:10 (3) Wrestling
7:15 (3) Wrestling
7:20 (3) Wrestling
7:25 (3) Wrestling
7:30 (3) Wrestling
7:35 (3) Wrestling
7:40 (3) Wrestling
7:45 (3) Wrestling
7:50 (3) Wrestling
7:55 (3) Wrestling

8:00 (3) Wrestling
8:05 (3) Wrestling
8:10 (3) Wrestling
8:15 (3) Wrestling
8:20 (3) Wrestling
8:25 (3) Wrestling
8:30 (3) Wrestling
8:35 (3) Wrestling
8:40 (3) Wrestling
8:45 (3) Wrestling
8:50 (3) Wrestling
8:55 (3) Wrestling

9:00 (3) Wrestling
9:05 (3) Wrestling
9:10 (3) Wrestling
9:15 (3) Wrestling
9:20 (3) Wrestling
9:25 (3) Wrestling
9:30 (3) Wrestling
9:35 (3) Wrestling
9:40 (3) Wrestling
9:45 (3) Wrestling
9:50 (3) Wrestling
9:55 (3) Wrestling

10:00 (3) Wrestling
10:05 (3) Wrestling
10:10 (3) Wrestling
10:15 (3) Wrestling
10:20 (3) Wrestling
10:25 (3) Wrestling
10:30 (3) Wrestling
10:35 (3) Wrestling
10:40 (3) Wrestling
10:45 (3) Wrestling
10:50 (3) Wrestling
10:55 (3) Wrestling

11:00 (3) Wrestling
11:05 (3) Wrestling
11:10 (3) Wrestling
11:15 (3) Wrestling
11:20 (3) Wrestling
11:25 (3) Wrestling
11:30 (3) Wrestling
11:35 (3) Wrestling
11:40 (3) Wrestling
11:45 (3) Wrestling
11:50 (3) Wrestling
11:55 (3) Wrestling

JIM'S CONOCO
592-4897
\*Front end alignment
\*Custom exhaust
\*Tune-ups
\*Minor repair
\*State inspection station

COUNTERTOPPING Formica Wilson Art Micarta T.S. THOMAS 1516 Beverly Wichita Falls Ph. 817-723-6523

12:05 (3) \*\*MOVIE: Police Academy (1984, Comedy) Steve Guttenberg, G.W. Bailey. When a metropolitan police academy drops its admission requirements, it opens its doors to misfits and punks. R

12:30 (3) \*\*MOVIE: The Great Lawn Experiment (1986, Family Drama) Tracy Padua A.S.V. An unusual experiment at school and in life. R

1:00 (3) \*\*MOVIE: Middy Move (1985, Comedy) Laine. A woman's life is turned upside down when she meets a man who is a woman. R

1:30 (3) \*\*MOVIE: The Boy from Dead Man's Bay (1971, Adventure) Mitch Vogel. A young man's life is turned upside down when he meets a woman who is a man. R

1:55 (3) \*\*MOVIE: The Boy from Dead Man's Bay (1971, Adventure) Mitch Vogel. A young man's life is turned upside down when he meets a woman who is a man. R

1:55 (3) \*\*MOVIE: The Boy from Dead Man's Bay (1971, Adventure) Mitch Vogel. A young man's life is turned upside down when he meets a woman who is a man. R

2:00 (3) \*\*MOVIE: The Boy from Dead Man's Bay (1971, Adventure) Mitch Vogel. A young man's life is turned upside down when he meets a woman who is a man. R

2:30 (3) \*\*MOVIE: The Boy from Dead Man's Bay (1971, Adventure) Mitch Vogel. A young man's life is turned upside down when he meets a woman who is a man. R

3:00 (3) \*\*MOVIE: The Boy from Dead Man's Bay (1971, Adventure) Mitch Vogel. A young man's life is turned upside down when he meets a woman who is a man. R

3:30 (3) \*\*MOVIE: The Boy from Dead Man's Bay (1971, Adventure) Mitch Vogel. A young man's life is turned upside down when he meets a woman who is a man. R

4:00 (3) \*\*MOVIE: The Boy from Dead Man's Bay (1971, Adventure) Mitch Vogel. A young man's life is turned upside down when he meets a woman who is a man. R

4:30 (3) \*\*MOVIE: The Boy from Dead Man's Bay (1971, Adventure) Mitch Vogel. A young man's life is turned upside down when he meets a woman who is a man. R

5:00 (3) \*\*MOVIE: The Boy from Dead Man's Bay (1971, Adventure) Mitch Vogel. A young man's life is turned upside down when he meets a woman who is a man. R

5:30 (3) \*\*MOVIE: The Boy from Dead Man's Bay (1971, Adventure) Mitch Vogel. A young man's life is turned upside down when he meets a woman who is a man. R

6:00 (3) \*\*MOVIE: The Boy from Dead Man's Bay (1971, Adventure) Mitch Vogel. A young man's life is turned upside down when he meets a woman who is a man. R

6:30 (3) \*\*MOVIE: The Boy from Dead Man's Bay (1971, Adventure) Mitch Vogel. A young man's life is turned upside down when he meets a woman who is a man. R

7:00 (3) \*\*MOVIE: The Boy from Dead Man's Bay (1971, Adventure) Mitch Vogel. A young man's life is turned upside down when he meets a woman who is a man. R







# Hawks win Bowie meet aim for 5-AAA title

For the first time in more than a decade, the Hawks appear to be a threat to unseat Vernon for the Dist. 5-AAA track championship, which will be determined this weekend.

Though the Lions are still considered the favorite, Iowa Park made a loud announcement the Hawks are capable of winning the title, by taking first last week at Bowie.

And they did it without one of their main point-earners, distance runner Brett Hale.

With the meet title on the line, the Hawks assured their victory by

winning the final event of the day, the 1600-meter relay, for double points.

Turning in their best time of the season, Stephen Biddy, David Meissner, Danny Foreman and Scott Weaver won the relay, and the meet, with a clocking of 3:29.88.

That gave the Hawks a total of 88 points, while Springtown had to settle for second with 79, edging the host Jackrabbits by a point.

Other boys' teams and their points were: Olney, 60; Castleberry, 52; Paradise, 46; Quannah, 39;

Decatur, 38; Henrietta, 30; Bridgeport, 11, and Gunter, 16.

Weaver won the long jump, 6-0, placed third in the high jump, 6-0, won the 100-meter dash, 11.09, and was second in the 200 meters, 22.97, to lead the Hawks in their point parade.

Biddy cleared 6-6 in the high jump to win that event, placed second in the long jump, 19-10, ran a 52.49 in the 400-meter dash for fourth place, and was also on the sprint relay team that finished fifth.

Meissner finished third in the intermediate hurdles, 40.10, and was fifth in the high hurdles, 16.34.

Running with Biddy on the sprint relay team were Richard Morath, Eric Whitman and Jeff Huff. Their time was 45.3.

Hale was ill and did not compete in his specialties, the 1600 and 3200 meter runs. He said Tuesday, however, that he would be ready for the district meet.

Cindy Clanton returned to her regular form in the high jump, taking that event by clearing 5-6.

She had been suffering with a sore muscle and had problems the previous week. She is shooting for her second trip to the state meet.

Also contributing to Iowa Park's 19 points and eighth place finish were: Laurie Espinoza, fourth in the

800 meters, 2:33; Stacy Boren, fourth in the 400 meters, 63.02; Amy Payton, sixth in the 800 meters, 2:40, and the 1600-meter relay team's sixth place with 4:22.

The girls' junior varsity team placed fifth with 38 points.

## DISTRICT MEET

The district meet will begin Friday afternoon, with all field events and continue with running event preliminaries Saturday morning.

The meet will be run in four divisions, boys' and girls' varsities and junior varsities.

Starting at 1 p.m. Friday will be the varsity boys long jump and discus, varsity girls triple jump, high jump and shot put, and girls JV triple jump and discus and boys JV shot put.

At 2:30 will be the varsity girls long jump and discus, varsity boys high jump, shot put and pole vault, boys JV pole vault and discus, and girls JV shot put.

Winding up the afternoon, starting at 4 p.m. will be the girls JV long jump and high jump, and boys JV high jump and long jump.

Preliminaries, starting at 10 a.m. Saturday, will be held in the hurdles, 100-meter dash, 400-meter dash and 200-meter dash.

Finals will commence at 1:30

p.m. in the order of girls JV, followed by boys JV, girls varsity and boys varsity in each event.

The schedule calls for the final race, the boys' 1600-meter relay, to get underway at 5:50.

## Tournament to benefit local junior program

The 1986 Adult Spring Benefit Tennis Tournament will be held May 3-4, according to Pan Bowerman, chairman.

Events will include men's and women's A and B singles and doubles, mixed doubles and a consolation bracket for first-round losers.

Best two of three sets with the 12-point tie-breaker in each set will govern play, which will be at the high school courts.

All school players must play in "A" division, unless the tournament director is familiar with player's ability.

A minimum of four entries per event will be observed. Should the minimum not be reached, entrants will be moved to another event.

Entry fee will be \$6 for singles and \$12 for doubles. All fees are tax deductible donations, according to Mrs. Bowerman.

All proceeds will go to the Iowa Park Tennis Association Junior De-

velopment Program.

Entries can be submitted to the tournament director, 1615 Karen. Deadline is 10 p.m. April 29.

Schedule for:  
**Recreational Activities Center**

The RAC will host a "pageant sale" from 8:30 a.m. until noon Saturday, with offerings of used clothes for children and teens of all sizes.

Included will be prom dresses and some bridal wear.

Those wishing to reserve space to sell clothing can do so by calling 592-4471 in the afternoon, or 592-5358.



**FREE**  
Coffee or Tea  
with your Steak Special  
and copy of this coupon

---

16 oz. Saddle Blanket  
**Sirloin Steak \$6.50**  
w/ french fries, tossed salad and Texas toast

**Friday & Saturday Nights**



**LONE STAR RESTAURANT**  
855-1981  
FM 369 & US 287

**open 24 hours**

### GOLDEN FRIED CHICKEN

Loop 370 & Pacific Ave. - Iowa Park

---

#### Dinners

<b>3 pieces of Golden Fried Chicken, Corn on the Cob, Cole Slaw or Potato Salad, French Fries, and a Biscuit.</b> <b>3.39</b>	<b>2 pieces of Golden Fried Chicken, Corn on the Cob, Cole Slaw, or Potato Salad French Fries, and a Biscuit.</b> <b>2.79</b>
--	--

---

#### Chicken 'N Biscuit

<b>3 Pieces - 1 Biscuit</b> All Dark 1.99 Mixed 2.19 All White 2.79	<b>2 Pieces - 1 Biscuit</b> All Dark 1.49 Mixed 1.59 All White 1.89
--	--

---

<b>10 Pieces</b> <b>15 Pieces</b> <b>20 Pieces</b>	<b>FAMILY PAK</b> 4 Biscuits 6.89 5 Biscuits 9.99 6 Biscuits 12.79
--	---

---

<b>4 Pieces</b> <b>7 Pieces</b> <b>15 Pieces</b>	<b>TENDERS</b> Biscuit and Gravy 2.39 Biscuit and Gravy 3.59 Biscuit and Gravy 6.39
--	--

---

<b>FIXING'S</b> French Fries .75 Corn on the Cob .49 Cole Slaw or Potato Salad .49 Mashed Potato .49 Jalapenos .19 Apple Pie each .49 Biscuits .39 each Country Gravy .39 each Cookies .59 each Pepper Puppies .59 each	<b>REGULAR</b> .75 .49 .49 .49 .19 .49 .29 .29 .75	<b>FAMILY</b> 1.85 1.69 1.69 1.69 1.09 1.09 3.09 3.09
---	---	---

---

#### Drinks

Coke	Dr. Pepper	Sprite
Lemonade .55	Fresh Brewed Iced Tea .70	Diet Coke .85
Coffee - .35		

---

**SNACK PAK** 1 Piece Golden Fried Chicken, French Fries, Biscuit **1.29**  
 .45 extra for Breast  
**592-2811**

## DINE OUT

*When in Wichita Falls dine at Dickie's!*

Serving breakfast, too!

**Every Monday and Tuesday night enjoy all-you-can-eat Fried Catfish and Boiled or Fried Shrimp with all the trimmings. Also, whole catfish is available. Dickie's fries their food in cholesterol-free shortening.**



**Dickie's FAMILY RESTAURANT**  
4517 Southwest Pkwy. • Wichita Falls • 691-1798

### B&R DELI MENU

<b>Thursday, April 17</b> BBQ Meatloaf Pinto Beans Fried Okra Cauliflower Blend Cornbread	<b>Monday, April 21</b> Steak w/Mushroom Gravy Blackeyed Peas Cooked Carrots Broccoli w/Cheese Sauce Rolls
<b>Friday, April 18</b> Popcorn Shrimp Country Rice French Fries Corn Rolls	<b>Tuesday, April 22</b> Glazed Ham Fried Sweet Potatoes English Peas Hominy Rolls
<b>Saturday, April 19</b> Burritos w/Chili & Cheese Spanish Rice Pinto Beans Potatoes	<b>Wednesday, April 23</b> Chicken -N- Rice Bake Pinto Beans Corn Fried Potatoes Rolls
<b>Sunday, April 20</b> BBQ Smoked Sausage Mixed Vegetables Pork -N- Beans Fried Squash Rolls	

All plate lunches include your choice of meats, 2 vegetables and/or salads, and fruit cobbler.

**B&R THRIFTWAY 592-9831 401 W. PARK**

## Hamburger

REG. \$1.40 **\$1.10**






**Harvey's FAMILY RESTAURANT HAMBURGERS**

**805 West Highway**

FOR TAKE OUT ORDERS

**CALL 592-4731**

## Cut out for Ken's Pizza!

**902 W. Hiway**  
**592-4184**



---

**Free Salad(s)**

With a purchase of any small deep pan pizza or medium Ken's pizza get one free trip to the salad bar . . . or . . . two free trips to the salad bar with any large pizza purchase. Offer not good with other promotions or coupons. OFFER GOOD UNTIL April 30, 1986

COUPON VALUE 1/20 OF A CENT **Ken's PIZZA**

**\$2.50 & \$1.50 off.**

Get \$2.50 off the price of any large Ken's pizza or \$1.50 off the price of any Ken's medium pizza or Ken's small deep pan pizza. One coupon per pizza. Offer not good with other promotions or coupons. OFFER GOOD UNTIL April 30, 1986

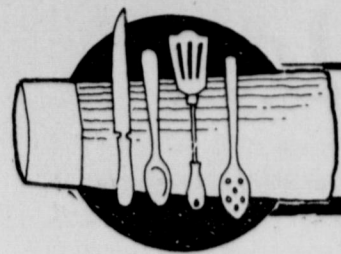
COUPON CASH VALUE 1/20 OF A CENT **Ken's PIZZA**

**\$2 & \$1 off.**

Get \$2.00 off the price of any large Ken's pizza or \$1.00 off the price of any Ken's medium pizza or Ken's small deep pan pizza. One coupon per pizza. Offer not good with other promotions or coupons. OFFER GOOD UNTIL April 30, 1986

COUPON CASH VALUE 1/20 OF A CENT **Ken's PIZZA**

(Video) (13) The Adventures of Ozzy and Harriet (Comedy) (14) The Adventures of Ozzy and Harriet (Comedy) (15) The Adventures of Ozzy and Harriet (Comedy) (16) The Adventures of Ozzy and Harriet (Comedy) (17) The Adventures of Ozzy and Harriet (Comedy) (18) The Adventures of Ozzy and Harriet (Comedy) (19) The Adventures of Ozzy and Harriet (Comedy) (20) The Adventures of Ozzy and Harriet (Comedy) (21) The Adventures of Ozzy and Harriet (Comedy) (22) The Adventures of Ozzy and Harriet (Comedy) (23) The Adventures of Ozzy and Harriet (Comedy) (24) The Adventures of Ozzy and Harriet (Comedy) (25) The Adventures of Ozzy and Harriet (Comedy) (26) The Adventures of Ozzy and Harriet (Comedy) (27) The Adventures of Ozzy and Harriet (Comedy) (28) The Adventures of Ozzy and Harriet (Comedy) (29) The Adventures of Ozzy and Harriet (Comedy) (30) The Adventures of Ozzy and Harriet (Comedy) (31) The Adventures of Ozzy and Harriet (Comedy) (32) The Adventures of Ozzy and Harriet (Comedy) (33) The Adventures of Ozzy and Harriet (Comedy) (34) The Adventures of Ozzy and Harriet (Comedy) (35) The Adventures of Ozzy and Harriet (Comedy) (36) The Adventures of Ozzy and Harriet (Comedy) (37) The Adventures of Ozzy and Harriet (Comedy) (38) The Adventures of Ozzy and Harriet (Comedy) (39) The Adventures of Ozzy and Harriet (Comedy) (40) The Adventures of Ozzy and Harriet (Comedy) (41) The Adventures of Ozzy and Harriet (Comedy) (42) The Adventures of Ozzy and Harriet (Comedy) (43) The Adventures of Ozzy and Harriet (Comedy) (44) The Adventures of Ozzy and Harriet (Comedy) (45) The Adventures of Ozzy and Harriet (Comedy) (46) The Adventures of Ozzy and Harriet (Comedy) (47) The Adventures of Ozzy and Harriet (Comedy) (48) The Adventures of Ozzy and Harriet (Comedy) (49) The Adventures of Ozzy and Harriet (Comedy) (50) The Adventures of Ozzy and Harriet (Comedy) (51) The Adventures of Ozzy and Harriet (Comedy) (52) The Adventures of Ozzy and Harriet (Comedy) (53) The Adventures of Ozzy and Harriet (Comedy) (54) The Adventures of Ozzy and Harriet (Comedy) (55) The Adventures of Ozzy and Harriet (Comedy) (56) The Adventures of Ozzy and Harriet (Comedy) (57) The Adventures of Ozzy and Harriet (Comedy) (58) The Adventures of Ozzy and Harriet (Comedy) (59) The Adventures of Ozzy and Harriet (Comedy) (60) The Adventures of Ozzy and Harriet (Comedy) (61) The Adventures of Ozzy and Harriet (Comedy) (62) The Adventures of Ozzy and Harriet (Comedy) (63) The Adventures of Ozzy and Harriet (Comedy) (64) The Adventures of Ozzy and Harriet (Comedy) (65) The Adventures of Ozzy and Harriet (Comedy) (66) The Adventures of Ozzy and Harriet (Comedy) (67) The Adventures of Ozzy and Harriet (Comedy) (68) The Adventures of Ozzy and Harriet (Comedy) (69) The Adventures of Ozzy and Harriet (Comedy) (70) The Adventures of Ozzy and Harriet (Comedy) (71) The Adventures of Ozzy and Harriet (Comedy) (72) The Adventures of Ozzy and Harriet (Comedy) (73) The Adventures of Ozzy and Harriet (Comedy) (74) The Adventures of Ozzy and Harriet (Comedy) (75) The Adventures of Ozzy and Harriet (Comedy) (76) The Adventures of Ozzy and Harriet (Comedy) (77) The Adventures of Ozzy and Harriet (Comedy) (78) The Adventures of Ozzy and Harriet (Comedy) (79) The Adventures of Ozzy and Harriet (Comedy) (80) The Adventures of Ozzy and Harriet (Comedy) (81) The Adventures of Ozzy and Harriet (Comedy) (82) The Adventures of Ozzy and Harriet (Comedy) (83) The Adventures of Ozzy and Harriet (Comedy) (84) The Adventures of Ozzy and Harriet (Comedy) (85) The Adventures of Ozzy and Harriet (Comedy) (86) The Adventures of Ozzy and Harriet (Comedy) (87) The Adventures of Ozzy and Harriet (Comedy) (88) The Adventures of Ozzy and Harriet (Comedy) (89) The Adventures of Ozzy and Harriet (Comedy) (90) The Adventures of Ozzy and Harriet (Comedy) (91) The Adventures of Ozzy and Harriet (Comedy) (92) The Adventures of Ozzy and Harriet (Comedy) (93) The Adventures of Ozzy and Harriet (Comedy) (94) The Adventures of Ozzy and Harriet (Comedy) (95) The Adventures of Ozzy and Harriet (Comedy) (96) The Adventures of Ozzy and Harriet (Comedy) (97) The Adventures of Ozzy and Harriet (Comedy) (98) The Adventures of Ozzy and Harriet (Comedy) (99) The Adventures of Ozzy and Harriet (Comedy) (100) The Adventures of Ozzy and Harriet (Comedy)



## Cook of the Week

A rewarding experience is to glance through a recipe book of Mrs. Beatrice Todd's where many of them excite nostalgia with cooks who remember the recipes that were so popular a few years ago but just as up to date today.

Mrs. Todd requested us to use her Meringue Pecan Pie and Skillet Meat Loaf recipes this week and left the others to our preference and taste. We have selected Cabbage Rolls, Chiffon Cake, Salmon Loaf and Frozen Salad.

Cabbage is one of man's oldest and most versatile vegetables. It is still an important part of man's diet as is its related plants, cauliflower, broccoli and Brussels sprouts.

The Greeks ate a good deal of cabbage because it was filling and easy to come by. It was a profitable vegetable for Roman farmers who succeeded in producing cabbages weighing as much as 20 pounds, and they seemed to have developed some of the variations on the theme of cabbage as we know it today.

Cato and Pliny were complimentary to the vegetable and so were the emperors Tiberius and Claudius. The latter once convoked the Senate to vote on the question of whether any dish was better than cabbage and corned beef. The Senate, knowing what was expected of them, decided that none was. In the 14th century, the chef to Charles IV of France served a banquet in which he chose cabbage as the vegetable in the first course.

Mrs. Todd, a native of Ryan, Okla., is a longtime resident of Vernon. She has lived in Iowa Park 18 months and attends the Church of God. Her hobbies are cooking and sewing.

She has one daughter, Mary (Mrs. Dale) Thompson of Iowa Park; two sons, James of Vernon and Glenn of San Francisco, Calif.; four grandchildren; and four great-grandchildren.



Mrs. Beatrice Todd

### SKILLET MEAT LOAF

- 1 1/2 lbs. ground meat
- 1 can tomato soup
- 1 egg
- 1/2 cup bread crumbs
- 1/4 cup chopped onion
- 1 tsp. salt, black pepper

Mix ingredients and make into two loaves, brown in 1 tablespoon shortening. Spoon off grease, add soup and 14 cup water. Cover and cook slowly 25 minutes. Cover with cheese and cook 10 minutes longer uncovered.

### CABBAGE ROLLS

- 1 lb. chopped beef
- 1 tsp. salt
- 1/4 tsp. pepper
- 2 tablespoons chopped onion
- 1 cup rice (cooked)
- 1 egg
- 8 large cabbage leaves
- 1 can tomato soup
- 1 cup water

Pour boiling water over cabbage leaves. Let stand 5 minutes. Season meat, add onion, rice and egg. Roll a portion of filling into each leaf, fasten ends with toothpicks. Place cabbage rolls in mirror pressure pan, pour tomato soup and water over rolls, cover. Set control at 10 and cook 8 minutes - after control jiggles. Let pressure go down normally. Serves 4.

### CHIFFON CAKE

- Preheat oven to 325 degrees.
- Sift together:
- 2 1/4 cups sifted Softasilk cake flour
- 1 1/2 cups sugar
- 3 tsp. baking powder
- 1 tsp. salt
- Make a well and add in order:
- 1/2 cup Wesson oil
- 5 unbeaten egg yolks
- 3/4 cup cold water
- 2 tsp. vanilla
- 2 tsp. grated lemon peel

### MERINGUE PECAN PIE

- 2 egg yolks
- 1 cup granulated sugar
- 2 Tbsp. flour
- 1 cup sour cream
- 1/2 tsp. lemon extract
- 1/8 tsp. salt
- 2 egg whites
- 1 cup brown sugar
- 1 cup pecans
- Baked 9 inch pie crust

Combine egg yolks, sugar, flour, sour cream, lemon extract and salt in top of double boiler. Cook over boiling water until thickened, stirring constantly. Cool and spoon into crust.

Beat egg whites until stiff, gradually beat in the brown sugar, stir in pecans and spread over filling. Bake at 325 degrees 15 minutes to brown meringue.

Beat with spoon until smooth or mixer on low speed 1 minute.

Then measure into another large bowl:

- 1 cup egg whites (7 or 8)
- 1/2 tsp. cream of tartar

Beat until eggs form very stiff peaks by hand or 3 to 5 minutes with mixer on high speed. Do not overbeat. Whites are stiff enough when rubber scraper drawn through leaves clean path.

Pour egg yolk mixture gradually over beaten whites, gently folding with rubber scraper just until blended. Do not stir. Immediately pour into ungreased tube pan. Bake 55 minutes at 325 degrees, then at 350 degrees 10 to 15 minutes longer. Cake is done if top springs back when lightly touched. Remove from oven and turn upside down (Mrs. Todd puts hers on two green bean cans). Loosen from sides and tube with spatula. Turn pan over and hit edge sharply on table to loosen.

### FROZEN SALAD

- Juice of 2 oranges and 1 lemon
- 14 oz. pkg. marshmallows (melt in juice and cool) Add:
- 1 large can fruit cocktail (No. 2 1/2)
- 1 small can crushed pineapple
- 1 No. 2 can boysenberries or blackberries, syrup packed
- 1/2 pint whipping cream, whipped
- Freeze.

### SALMON LOAF

- 2 cups flaked canned salmon
- 3 tbsp fat
- 3 tbsp flour
- 1 cup milk plus salmon liquid
- Salt and pepper
- 2 tsp minced parsley
- 2 cups bread crumbs
- 1 egg, beaten

Drain canned salmon, saving the liquid. Make a sauce by blending fat, flour together, add milk to salmon liquid to make 1 cup and stir slowly into fat and flour. Cook until thick, stirring constantly. Add seasonings. Mix sauce with other ingredients, form into a loaf. Bake in uncovered pan in moderate oven about 1 1/2 hour or until brown.

To give extra flavor to salmon loaf, add 1/2 cup chopped sweet pickle, 1 tsp. onion and lemon juice before baking.

## Grill cooking is program

A slide program provided by the Lone Star Gas Co. and shown by Mrs. Don Decker, showing how gas appliances can turn a backyard into "a resort at home" highlighted the Monday evening meeting of the Philia Study Club held in the club room of the Tom Burnett Memorial Library. Mrs. Decker and Mrs. Vern Horsky were hostesses.

The slides focused attention upon the gas grill which provides ways to cook limited only by the imagination, and stressed that the grill can now be equipped with many accessories which include rotisseries and griddles, and are often used for baking.

Members learned from the program that excessive heat and flare ups can cause cooking disasters, and that the common causes of flaring are pre-heating too long at too high temperature, meats with high fat content, and dirty briquettes. Another point stressed was that the smoke flavor comes from the juices dripping onto the briquettes causing smoke to enhance the flavor of the meat.

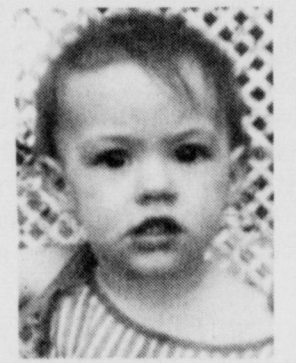
Hints given for cooking and checking the meat included the use of flame and oven proof dishes or heavy duty aluminum wrapped pans, and the use of tongs and spatulas instead of forks.

Mrs. Leon Bidy was in charge of business. Seventeen members were present.



HELP FOR ANIMALS - Dawna Bradford, left, presents a check for \$104 to Wichita County Humane Society volunteer Jo Ann Davis. The money was earned by cosmetology students Saturday, during their Hair-Cut-A-Thon.

## Happy Birthday



Love, Mom, Dad,  
Scott & Justin

## I'm Back! Homestead Ceramics

OPEN: 12-5 p.m. Mon.-Fri.

592-2631

116 W. Cash

Make your Choice \$26<sup>00</sup> Up

**Mister Doyce Tuxedo**

Parker Square - Wichita Falls

Rental \$26<sup>00</sup> Up!

LIMITED TIME ONLY!

Reserve your Prom or Wedding Tux Today!

Open:

Mon.-Fri. 10 a.m.-6 p.m. Thurs. - 10 a.m.-8 p.m.  
Saturday - 10 a.m.-4 p.m.

Call 817-767-9333

**DOUBLE "M" BEAUTY SHOP**

PERMS HAIRCUTS STYLES SCULPTURED NAILS

592-5815

TUESDAY - SATURDAY

TRUDY CULLERS - owner/operator

OPERATORS: Darlene Gardner-Shelia Potter

**Sure-Kill Pest Control**

"Preventive Pest Maintenance"

is offering a

**10% Discount**

through the

**month of April!**

Residential & Commercial

Serving Iowa Park & surrounding area

Jerry Bradshaw 592-2021 Vicki Taylor

**D.D. is 48 and still looking great!**

Love, Bob, the five K's, Mike, Joe Tom, Cathy and the 5 1/2 grand'uns

**Thank You -**

for your support and show of confidence demonstrated for me in the recent city election. I promise to continue working hard for the people of Iowa Park.

**Tim Hunter**

**From 6 to 16**

Love, Mom, Dad  
Justin & Shelley

Remember when?

**Happy Birthday Lovie!**

Bubba, LeeLee, Suger, Booger

**Ladies Exercise Class**

Instructor - Karen Gauthier

Monday & Thursday

7:15 to 8:15 p.m.

Mixture - calisthenics, jazzercise, aerobics

**New session starting soon**

Pay for only those classes you attend

For more information:

766-1258 or 592-4471

Shampoo Set \$8.00

Haircut \$8.00

Perms \$8.00

Frost \$25.00

Bleach \$25.00

Color \$25.00

Tues.-Sat. 9:00 - 6:30

Pat Harmon

10 Years Experience Working with Lavelle Turman at...

**PERM SPECIAL** to get acquainted \$22.50 from April 18-22

**Family Hairstyles**

592-2017 331 E. Park

## Holiday News

### Play to region

The Holliday One-Act Play cast and crew will advance to Regional competition after winning Area competition Saturday. Boyd will also advance to Regionals.

Debra Battles was named best actress and Robert Parkey was named to the All-Star Cast.

Honorable mentions went to Rhonda Rasmussen, Lad Cole and Darren Carlton.

# City to seek grant for drainage project

The Holliday City Council convened Monday night at the Holliday Community Center for the first regular meeting conducted by the new city mayor, Elizabeth Gorman, and new alderman, Linda Willis.

Among the topics discussed, a public hearing was held to discuss the use and necessity of a community development grant and it was passed to utilize the Governmental Service Agency, Inc., to provide planning assistance in the preparation of an application for a grant under the 1986 Texas Community Development Program.

After input by citizens and aldermen, it was recommended that

the city apply for a grant to improve the drainage situation in north and south parts of Holliday, where major problems exist.

Aldermen agreed to pay a fixed price fee with local funds in the amount of \$1,750 to the Governmental Service Agency, Inc. as consultants in the preparation of applications for Community Development Grants.

In other business, it was agreed to enforce an ordinance prohibiting unsightly or unsanitary matter on any lot or parcel within the original townsite.

The ordinance requires the mayor

to notify the owner requiring removal within 10 days of notification. Otherwise, removal will be by the city at the owners expense.

The enforcement of the ordinance stems from a complaint by Charles Chandler, owner of Chandler Properties, Inc., who claims he is unable to market properties located in the Judy Ray Estates because of clutter on one of the properties in the area.

This clutter consists of numerous and poorly kept vehicles and debris along both sides of Cedar Elm Street.

A written garbage service purchase contract with a business was agreed upon between the city and Foodworld, the first of its kind.

This contract for the purchase of garbage service is the first of many with businesses, according to Brown Hudson, city administrator.

The contract serves the purpose of getting in writing how each business' refuse is to be handled, both by the city and the user.

The user will pay the city the amount billed in accordance with the city's current billing policies, which is \$30 per hour.

J.L. Stone petitioned the city proposing the annexation of land east of FM Hwy. 368, into the city.

The council set a public hearing date of May 12, 7 p.m. in the City Council Chambers.

Aldermen authorized Inter First Bank in Austin as an appointed agent to handle the disposition of Sales Tax Allocation Warrants issued to Holliday.

The council decided that direct deposit would be beneficial to the city, since it would be deposited in the bank sooner, thus accruing a great deal more interest.

There was some heated discussion when the subject of appointing a City Fire Marshall was brought up.

When Bob Bryant resigned as City Fire Marshall, assistant fire marshal, Dickie Kreidler, was considered for the position, having two and one half years experience.

When discussion on the appointment of Kriedler began to get heated, he informally resigned his position of assistant fire marshal and left the meeting.

Members of the council then requested that Hudson supply a list of appointed positions of the city for review at the next council meeting.

Aldermen considered all councilmembers attending the Elected Official's Workshop at the end of the month in Dallas, with a fee of \$145 per person. It would be the responsibility of the individual to pay for accommodations. It was decided not to attend, as a tight budget would not allow it.

## Board okays budgets

The band, athletic and vocational agriculture budget were reviewed and accepted for the 1986-87 school year during the Monday night meeting of the Holliday School Board.

Also at the meeting, trustees approved the purchase of a new school bus, the 1986-87 school calendar, and discussed the proposed scoring system for the career ladder.

Head coach Don Lucy presented the largest budget of the three, at \$63,137.

The athletic budget consists of a football budget of \$30,954; basketball, \$12,531; track, \$8,467; tennis, \$2,744; volleyball, \$3,151 and baseball, \$5,290.

H.K. Petty, band director, submitted a band budget of \$23,538, \$2,000 over last year's budget.

The major expenditure on the band budget is for new equipment, including a tuba, stands, a set of field percussion and a trombone, for a total of \$8,040.

The next major expenditure is for instrument repair, which totals \$4,800.

The vocational agriculture budget, submitted by Jim Bob Wallace, was \$14,700, \$482.30 over last year's budget of \$15,182.30.

\$30,000 was approved by the board to purchase a new 71-passenger diesel engine school bus to replace one of the school's older buses that had 88,000 miles on it.

The decision to purchase the new bus came after Bill Lee told the board that the buses presently in use had many miles on them and some were in need of an overhaul.

He also asked to have money set aside for two overhauls. That request was tabled until the next meeting.

The 1986-87 school calendar was approved by trustees.

The first day of school has been set for September 2. Thanksgiving holidays will be the first break for students on November 27 and 28.

Christmas holidays are scheduled for December 22 through January 2. Spring break has been set for March 9 through 13. April 17 will mark the Easter holiday.

Also after an executive session, trustees announced the rehiring of personnel.

Rehired were seven maintenance workers, four full-time cafeteria workers, five part-time cafeteria workers and eight bus drivers.

Trustees held a lengthy discussion on the career ladder scoring system, this being the last year this system will be used.

A teacher must be above average in each of the scoring categories in order to get on or stay on the career ladder.

Building principals will evaluate teachers on the basis of classroom management, teacher/student relations, technique of instruction, preparation of planning, professional attitude and conduct, professional competence and public relations.

The mother of a six-year-old elementary student addressed the board, asking that no corporal punishment be administered to her daughter, stating that the child has a bladder problem aggravated by such punishment.

She supplied to trustees copies of a letter from a urologist backing up her statement.

After executive session, trustees announced that no decision would be made until further information was obtained.

A reorganization of the school board for 1986-87 was held, with Tommy Mankins being re-elected as president, Mike Birdwell elected as vice president, a position previously held by Gene Harmon, and Alice Carver being re-elected as secretary.

Supt. Dan Owen gave the tax report, showing an 88 per cent tax collections. "I'm a little concerned about the percentage of collections. This time last year we had around 93 per cent collection," Owen said, "We've been setting our budget on a 96 per cent collection. 88 per cent is way low."

### Band given division 2

Although Holliday High School Band didn't do as well as expected at UIL Concert and Sightreading Contest in Vernon Tuesday, receiving a two in both events, Director H.K. Petty, is pleased with their performance.

"I've listened to the tapes, they've listened to the tapes, and we played very well. I know it and they know it," he said.

The Holliday Junior High Band competed Wednesday afternoon, but results were not available by presstime.

### Parker is champ

Pat Parker won first place honors in the finals of the District tennis competition in Jacksboro last weekend.

He won straight sets of 6-3, 6-3. Parker will advance to Regionals, April 28 at Stephenville.

## HOLLIDAY SCHOOL LUNCH MENU

- Friday, April 18**  
Breakfast: Donuts, milk, juice.  
Lunch: Hamburgers, lettuce & tomato, French fries, onions, ice cream, pickles, milk.
- Monday, April 21**  
Sesquicentennial Day
- Tuesday, April 22**  
Lunch: Pizza, corn, potato, milk, cookie.
- Wednesday, April 23**  
Breakfast: Pancakes, syrup, bacon, milk.  
Lunch: Hot dogs, chili, mixed vegetables, French fries, milk, ice cream.
- Thursday, April 24**  
Breakfast: Biscuits, juice, gravy, milk.  
Lunch: Chicken nuggets, gravy, potatoes, green beans, cobbler, milk.

### Playday Sunday

The Wichita County Mounted Patrol is holding a playday to begin at 12 noon Sunday at the Wichita County Mounted Patrol Arena on FM 369.

Registration will begin at 12 noon, with events begin at 1 p.m. Five events will be offered to five age groups.

Entry fee for each event will be 75¢.

Ribbons will be given through fifth place as well as a high point trophy in each age group. All Peanuts participants (ages six and under) will receive a ribbon.

Playdays will be held the third Sunday of each month through September.

For more information, contact Ray Turlington at 692-7570 or 692-7130.

## Sweepstakes for FFA?

The Holliday chapter of Future Farmers of America judging teams have possibly clinched the Area FFA Sweepstakes after a good showing at contests held Saturday at Tarleton State Univ. in Stephenville.

The judging teams advancing to State competition are land, meats, farm business management, milk foods dairy quality and agriculture mechanics.

State competition for the land judging team will be Saturday at Tarleton, and April 26 at Texas A&M Univ. for the rest of the teams.

The land judging team placed first in District and first in Area. Richard Evans came in first high individual, Jerry Wise, third high individual and Joe Loyd, eighth.

The meats judging team came in first in District and second in Area. Shane Daniels place as second high individual, David Parkey, fourth and Jason Loftiss, seventh. Dana Evans was also on the team.

The farm business management team, consisting of David Carr, Robert Parkey, Chuck Bearden and Kevin Rogers, came in first in District and Area.

Carr was first high individual,

Parkey, second, Bearden, fifth and Rogers, sixth.

The milk foods dairy quality judging team placed first in District and second in Area. Members of the team are David Williams, Tommy Berend, Klonie Berend and Stacie Terry.

Williams was first high individual and Berend was tenth.

The agriculture mechanics team of Doug Harrigal, Brandon Rogers and Kerry Wise place first in District and third in Area. Harrigal was second high individual.

Also participating in contest Saturday were the poultry, livestock and dairy cattle teams, who placed in District, but not Area competition.

The poultry judging team, consisting of Lynn Nessel, Barry Dyer, Jamie Martin and John Fields placed second in District.

Despite Lynn Nessel scoring the highest in poultry judging of any Holliday competitor in history, the score failed to make the top ten required to advance to State.

The livestock judging team placed third in District. Members are Brian Still, Lana Parish, Roy Dyer and Shannon Shores.

The dairy judging team of Jeff Dormier, Stevie Tucker and Bud Coates came in fifth in District.



## TANNER-AULDS FUNERAL HOME

300 E. Cash -Since 1908- 592-4151

"Our family serving your family"

We have all your field seeds!  
- FORAGE - COTTON - MILO -

**SPECIAL Saturday only**

Arizona Bermuda Grass Seed \$4.25 Lb.

**REED FEED & SUPPLY**

209 S. Victoria  
Iowa Park, Texas 76367

Garden Seed & Fertilizers

Phone 592-4118

REGULAR, BARBECUE, SOUR CREAM & ONION, UNSALTED OR JALAPENO & CHEDDAR LAY'S®  
**POTATO CHIPS**  
**\$1.09**  
REG. \$1.39

**ALLSUP'S**  
CONVENIENCE STORES

PRICES EFFECTIVE APRIL 17-18-19, 1986  
WHILE SUPPLIES LAST

FRESH **HOT LINKS**  
**2 FOR 99¢**

ALLSUP'S **ICE CREAM**  
**\$1.69**  
HALF GALLON ROUND CARTON

TV SPECIAL CITRUS HILL FROZEN **ORANGE JUICE**  
**79¢**  
16 OZ. CAN

TV SPECIAL OSCAR MAYER **MEAT WIENERS**  
**99¢**  
1 LB. PKG.

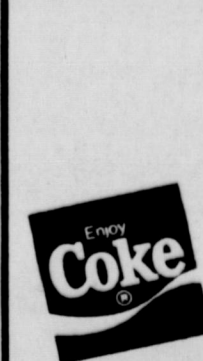
USE OUR **MONEY ORDERS**  
**19¢** ONLY

TV SPECIAL PRICE SAVER **GRANULATED SUGAR**  
**\$1.29**  
5 LB. BAG

ALLSUP'S **TALLSUP**  
**49¢** EACH  
PRICE Saver Sugar

BORDEN'S ASSORTED **DIPS**  
**59¢**  
8 OZ. CTN.

**Hot Dogs**  
**3/99¢**



Coke-Classic Coke-Diet Coke-Sprite  
**\$1.99**  
6-12 oz. Cans

# BUYING? SELLING? RENTING? HIRING? WANT ADS PAY OFF

**DEADLINES**  
 10 A.M. WEDNESDAY (Word Ads Only)  
 4 P.M. TUESDAY, DISPLAY ADS

**SAVE 8¢ PER WORD FIRST  
 INSERTION BY PAYING  
 WITH COPY AT OFFICE**

**RATES:**  
 23¢ PER WORD FIRST INSERTION  
 15¢ PER WORD EACH REPEAT

**REALTY WORLD**  
 Key Realty  
 Dale Thompson  
 592-4747  
**OPEN HOUSE**  
 714 Rebecca  
 Sunday, 2 - 5

Rochelle Eller  
 696-1457  
 or  
 691-0321  
 Breault Realtors  
**Need Iowa Park Listings**

Rochelle Eller  
 696-1457  
 Breault Realtors

**THREE BEDROOMS**  
 1 1/2 bath, two car garage, fenced yard, central heat & air. \$41,500.

**3 BEDROOM BRICK**  
 1 1/2 baths, lovely family room with fireplace. \$56,000.

**JUST RIGHT**  
 Two bedrooms, one bath, livingroom. Single Garage. Corner lot, extra nice. \$16,300.

**PRICE REDUCED**  
 Gordon Clark home. Over 2,000 feet of living space. Large corner lots with sprinkler system. Owner financing available.

**LOUISA**  
 Three bedroom, 1 1/2 baths, lovely fireplace, single garage, fenced yard, lovely carpet and more.

**HOLLIDAY TX.**  
 Large sales floor, good work shop, Best location in Holliday Texas. Priced to sell.

**HOLLIDAY TX.**  
 Just right for small family. Central heat & air. Good location, close to shopping.

**FOR SALE**  
 All buildings formerly owned by Shamburger Lumber Co. Good display floor and plenty of large storage buildings. Call for information. \$26,900.

**THREE BEDROOMS**  
 1 1/2 baths, central heat/air. Lovely den with fireplace, & much more. \$41,500.

**CORNER LOT**  
 Choice location, close to shopping. 71x142. \$4,500.

**CORNER LOT**  
 Three bedroom, one bath, large living room, spacious kitchen & dining. \$43,000.

**CHOICE HOME**  
 Large older home on five lots. Large family room, living room, dining room, 2 car garage. \$47,500.

**WILL TRADE**  
 Four acres of country living, close to town, two beautiful baths, large family room. \$10,000 below appraisal.

**510 N. JACKSON**  
 Indoor swimming pool. Over three thousand square feet of living space. Priced below appraisal.

For information on these and other properties, call now.

**JOHNNY LEE REAL ESTATE**  
 592-2378  
 109 W. Cash

MEMBER  
 MULTIPLE LISTING SERVICE

**REAL ESTATE**  
 1/4 LOT or 3 spaces for sale. Northwest area, Highland Cemetery. Call 723-5054.  
 4-10-tfc

**HOMES FOR SALE**  
**IOWA PARK** - 3 bdrm., 1.5 bath, family room, fireplace, CH&A, large fenced yard. Close to Kidwell Elementary. \$48,000. 592-2547.  
 4-17-1tp

**FOR RENT**  
**FOR RENT** 2 bedroom, 2 bath, unfurnished. \$250 month, deposit required. 592-5977 after 6:00 p.m.  
 4-17-1tp

**MISC. FOR SALE**  
**GARAGE SALE** Two families, Friday, Saturday, 8-6, 118 Westview. Recliner, pictures, two vacuums, miscellaneous clothes, women's shoes, more.  
 4-17-1tc

**INSIDE SALE** Fri. only. 7:00 - 5:00, 109 W. Washington. Linens, bedspread, curtains, kitchen items, clothes, shoes, handbags, glassware, knick-knacks, hand-push lawn mower, 3-speed bicycle, old rope bottom chairs, lots more. No junk. 592-5828.  
 4-17-1tp

**ROADMASTER** 3-wheel bicycle \$150. 592-2440 after 3 p.m.  
 4-17-1tc

**CREEK TOPSOIL** 592-4686.  
 4-17-2tp

**2 CATALINA** 24,000 BTU; 1-12,000 BTU; smaller GE BTU. 592-5213.  
 4-17-1tp

**12 FT. John**, 6 HP Johnson motor; roll top desk. 592-4341.  
 4-17-1tc

**MOTOR HOME** 1978 model. 32 ft. dual air. Onan power plant. Power brakes and steering. Dash air, icemaker, microwave, 18,000 miles. Johnny D. Lee. 592-2378.  
 4-17-1tc

**GREAT HOME** for first timers or empty nesters on Park Plaza. 3 bedrooms, 1 1/2 baths, brick. Call for details. \$38,500.

**12x55 2 BEDROOM.** Nice sized bedrooms. Partially furnished. Possible financing. Consider trade. \$54,500. Call 592-5219.  
 4-17-1tp

**FOR RENT** Unfurnished, 2 bedroom house. 706 E. Bank. 592-4537.  
 4-17-1tp

**GARAGE SALE** Recliner (like new), queen size bedspread, lamps, clothes, pictures, entertainment stand, stereo & speakers. Lots of bargains. 307 Valley Drive, Friday, Saturday.  
 4-17-1tp

**GARAGE SALE** Thursday noon to 6:00. Linens, misc. clothing, TV stand. 1610 Karen Lane.  
 4-17-1tp

**THREE FAMILY** Garage Sale, Thursday & Friday, 8 to 5. 501 W. Texas. Sofa, mixer, sewing machine, clothes, books, bedspreads, household items.  
 4-17-1tp

**BEST BUY** on a 4 bedroom brick. Convenient to schools. Owner being transferred. Call for details, must see. \$42,000.

**TWO BEDROOM,** two baths, large living area. 592-4329, 592-4830.  
 4-3-tfc

**FURNISHED** two bedroom mobile home. Quiet neighborhood, nice yard. Air conditioned. No pets. \$190 month, plus deposit. 304 S. Wall. 592-4521.  
 4-17-1tp

**YARD SALE** Saturday, 4-19. 8 a.m. - on. Pop-up camper; '69 3/4 ton pickup with side tool boxes. All kinds of goodies. 1600 Karen.  
 4-17-1tp

**CUSTOM MADE** 5 pc. livingroom sectional, storage ottoman, oak frame, neutral tone upholstery - \$150; Zenith 19" black & white portable television - \$60, works super! Call after 6:00 p.m. daily, 855-4363.  
 4-17-1tp

**MINI-CON Self-storage**  
 1. Variety of sizes.  
 2. Competitive prices.  
 3. Locally owned and operated.  
 4. Monthly rates.  
**805 W. Hwy. 592-2761**

**JOAN SHERRY**  
 592-5540  
 Rowland & Donnell  
 692-1903

**REALTY WORLD**  
 Key Realty  
 692-8461 855-3626

**Quail Run Apartments**  
 1-2 Bdrm., Ground Floor, Central Heat & A/C. Appliances, Laundry. Close to school & public park. Starting at \$205 per month to qualified tenants. Gas & water paid.  
 Call 592-2933

**TEXAS PRESS ASSOCIATION**  
 MEMBER

**SMITH'S BACK PORCH** Sale, 702 E. Alameda, 8 - ? Thurs. & Fri. Lots of good misc. Some new large clothes, furniture, dishes.  
 4-17-1tp

**Darlene Price (Mrs. Roy Price)**  
 Home: 592-5073  
 Office: 696-5561  
 Quiet neighborhood - lots of storage, priced in 30's. Valley View Area.  
 Townhouse living - 1200 sq. ft. in Iowa Park. Immaculate condition. Priced in low 40's.  
 Older home - lots of space. Great condition. Priced right. In Wichita Falls.  
**Call me today**

**Ask for Donna Chambers**  
 592-5428  
 Breault Real Estate  
 691-0321

**Darrell Jolly**  
 592-4926  
 or  
 691-7855

**HALLMARK Better Homes and Gardens**  
 Possible VA Land Bank Loan on 10.5 acres. Large trees. Cleared for possible homesite.

**Energy efficient** 3 bedroom home. Quiet nice neighborhood. Large rooms. Double car garage and large shop area. Two extra lots. Priced right.

**COMMERCIAL PROPERTY** 117-21 W. Cash. 4 ground floor buildings, 2 bdrm. apt and extra rooms over. Partially rented.

**GORGEOUS LUXURY** Hollywood bath - Picture panels, beamed kitchen, dining and living room. 3 bdrm., 2 baths. 3 years old.

**THROW AWAY THE LAWN MOWER** 1217 N. Pacific. 2 story - 3 bdrm. condo. Best location, special financing.

**TWO LIVING AREAS** 1019 Van Horn. Priced below appraisal. Cen. H/A, 3 bdrm., 1 1/2 baths, carpets and mini-blinds.

**GREAT STARTER HOME** 107 W. Garden. 2 bdrm., 1 bath, 1 car garage, roomy kitchen-dining combo. Vinyl siding.

**Look What's New In Iowa Park**



Rear entry garage, city sidewalks, underground utilities, restricted, choice lots available.

**Model Open Daily**  
**Shiloh III Addition**  
 7/10 Mile North of 287 on Johnson Rd.  
 Ask about our trade-in policy

**Rip Smith Building Corp.**  
 592-2701 592-4332

**OPEN HOUSE**  
 1608 Wagon Wheel  
 Elvin Dudley Realtors  
 Host  
 Lee McQuerry  
 Sunday, April 27  
 2-5 p.m.

**SALT LICK - \$30,000**  
 EXTRA NICE 3 bedroom home. All the amenities. Immaculate - Cathedral ceilings - Extra large master bedroom - Oversize shower - 1 3/4 bath. \$76,900.  
 1500 SQ. FT. Den with fireplace, covered patio, fenced. 3 Bdrm. 1 1/2 bath, formal living room. Nice! Owner is moving. \$53,000.  
 LARGE DEN Rock fireplace. Formal dining, formal living, 2 1/2 baths. Lots of cabinets - All built-ins. Boat storage, 2 car garage. \$66,500.  
 CORNER LOT - 2 large bdrms, living & dining comb., utility room, work area in garage. \$39,500.  
 OVER 2800 SQ. FT. on 6 acres. 4 Bdrm., wet bar, all amenities. Barn, detached garage. \$127,500.  
 OWNER ANXIOUS TO SELL! 3 Bdrm., den, formal living, nice shop. Possible owner finance. \$47,500.  
 BUILDING SITES FOR SALE! Good area - \$8,500 and up. Has sewer and water.  
 LOTS OF ROOM - Big corner lot. To settle estate. 3 bdrm., formal dining, new carpet. Ready to move in. \$41,000.  
 STARTER HOME 3 bdrm., 2 lots. \$21,500. Ready to move in.

SHIRLEY RAINS, Broker 592-4248  
 VINCENT RAINS, Salesman 592-4584  
 LISA YORK, Salesman 592-2500

**Shirley Rains Real Estate**  
 HOMETOWN REALTOR  
 121 W. Park Iowa Park, Tx. 76367 592-5191-Office  
 "Serving All Your Real Estate Needs"

THE SIGN OF THE LEADER  
**Century 21**  
 GOLD COAT REALTORS  
 CINDY WITHERSPOON Home: 592-4964 Office: 761-1311

**GARDEN ROOM** with jacuzzi, 3 bdrm., 2 bath, on 5 acres. Owner offering creative financing.

**FRESHLY REDECORATED** 3 bdrm., 1 1/2 bath. Priced to sell, will not last long. Call today for appointment.

**CORNER LOT**, lovely area near Kidwell. 4 bdrm., 2 bath, custom decorated, rock fireplace.

**OWNER ANXIOUS.** Lovely home with country-like privacy. 3 bdrm., 2 3/4 bath, custom-build & decorated. Considering any offers.

**ENJOY RELAXED** evenings in shaded yard with redwood deck. Freshly redecorated 3 bdrm. Excellent buy at 9 1/2% interest. Priced in the low 40's.

**NEED A TASTE** of country living with convenience of town? Come see this 3,000 sq. ft. living. Open plan, 3 possible bedrooms, on approximately 1 acre. Priced to sell at \$11,300.  
**IN CONTRACT**

**Colonial Heights Apartments**  
 Magnolia St. at Johnson Rd.  
 IOWA PARK

One and two-bedroom apartments, energy efficient, central heat/air, total electric appliances, fully carpeted and draped. Children's play area. Off-street parking. Fully equipped laundry room. Month to month rent starting at \$189.00 for one bedroom, and \$229 for two bedroom apartment (to qualified persons). Water paid.

**CALL 592-2705** 

BUS  
 ABYSITT  
 2-9459.  
 3-6c  
 HILDCAR  
 open at 5:30  
 and pick up  
 accepting  
 summer care  
 4-10-2tp  
 REGISTER  
 will keep  
 hours. Every  
 day. Will ta  
 9619.  
 4-17-2tc  
 YARD WO  
 with grass  
 trimming.  
 ask for Joe.  
 4-17-1tp  
 LAWN M  
 engine repa  
 592-5749.  
 4-10-4tp  
 LAWN M  
 5791.  
 4-3-4tp  
 LAWN M  
 592-5259,  
 Jimmy.  
 4-10-2tp  
 LAWNS  
 sonable rate  
 senior citi  
 -you'll be  
 592-5226.  
 4-10-4tp  
 TREE &  
 trimming  
 mowing 592  
 4-10-2tp  
 RICK'S  
 vice. Tracti  
 ing, plowin  
 2418, 438-2  
 4-3-4tp  
 OU  
 AFFO  
 M  
 Quality  
 Workman  
 Special  
 If you're  
 water hea  
 price. call  
 FEA  
 \* Dense  
 insulating  
 \* Porc  
 tank  
 \* Anode  
 protectio  
 \* Five-  
 warrant  
 \* Two  
 ranty and  
 fea  
 model  
 \* 30-ga  
 \$1  
 Include  
 town  
 Pa  
 H  
 &  
 200  
 592-  
 Mas  
 PLU  
 Le  
 FO

# Junior girls place second at Electra

The girls teams placed higher than the boys Saturday in a junior high meet at Electra.

Iowa Park's seventh and eighth grade teams both placed second behind Vernon, while the eighth grade boys finished third and the seventh graders placed fourth.

Results of the seventh grade girls division were:  
400 meter relay - Hagemann, J. Short, E. Short and Dorner, 2nd, 58.56.

800 meters - Sellers, 1st, 2:36.68; Winter, 2nd, 2:49.63.  
800 meter relay - Hagemann, J. Short, E. Short, Dorner, 2nd, 2:06.34.

Hurdles - J. Short, 3rd, 19.61; Brooks, 4th, 20.27.  
100 meters - Dorner, 5th, 14.84.  
400 meters - Peeler, 4th, 77.38.

200 meters - E. Short, 4th, 31.92; Hagemann, 6th, 32.60.  
1600 meters - Sellers, 1st, 5:37.26; Winter, 2nd, 6:22.56.  
1600 meter relay - Winter, Cannedy, Peeler, Sellers, 5:11.75.

Shot put - Gray, 3rd, 22-5; Cravens, 5th, 21-0.  
Discus - Cravens, 2nd, 70-1; Cannedy, 4th, 61-4.

Long jump - Dorner, 3rd, 13-4; J. Short, 5th, 13-1; Roberts, 6th, 12-10.  
Triple jump - Dorner, 3rd, 25-11.  
Team Standings - Burkburnett, 146.5; Iowa Park, 134; Vernon, 130.5; Olney, 45; Electra, 44.

Seventh grade boys results were:  
400 meter relay - P. Birk, Luney, Sparlin, Edwards, 4th, 53.73.  
100 meters - Edwards, 3rd, 13.36.  
200 meters - Edwards, 2nd, 27.09; Sparlin, 6th, 28.22.  
1600 meters - Witherspoon, 3rd, 5:45.38.

1600 meter relay - Birk, Luney, Witherspoon, Edwards, 5th, 4:29.07.  
Discus - Green, 1st, 92-1; Sparlin, 2nd, 90-7.  
Shot put - Sparlin, 4th, 32-3; Green, 5th, 31-9.

Pole vault - Witherspoon, 4th, 7-0.  
Team Results - Vernon, 168; Burkburnett, 150; Olney, 64; Iowa Park, 60; Electra, 49.

Eighth grade boys results were:  
400 meter relay - Reasor, Patterson, Nicholson, Cruz, 3rd, 50.03.  
800 meters - Nicholson, 3rd, 2:23.04; Palmer, 5th, 2:26.68; McClure, 6th, 2:29.10.  
High hurdles - Patterson, 2nd, 18.18.  
100 meters - Cruz, 4th, 12.78.

400 meters - Reasor, 2nd, 57.57.  
Low hurdles - Cruz, 2nd, 46.31.  
200 meters - Duggins, 6th, 26.81.  
1600 meters - Bata, 3rd, 5:30.56; McClure, 6th, 5:35.69.  
1600 meter relay - Reasor, Palmer, Nicholson, Cruz, 3rd, 4:00.02.  
Long jump - Patterson, 5th, 17-4.  
Discus - Marcum, 2nd, 110-0.  
High jump - Duggins, 6th, 5-2.  
Pole vault - Blevins, 4th, 8-0; Palmer, 6th, 8-0.

Team Standings - Vernon, 152; Burkburnett, 139.5; Iowa Park, 84; Olney, 74.5; Electra, 42.

Eighth grade girls results were:  
400 meter relay - Weaver, Grider, Beavers, Turner, 3rd, 56.92.  
800 meters - Meisel, 2nd, 2:45.46.  
800 meter relay - Toler, Weaver, Ketchum, Turner, 3rd, 2:00.51.  
Hurdles - Grider, 3rd, 19.56; Ketchum, 5th, 21.09.

400 meters - Ketchum, 3rd, 70.63; Toler, 5th, 74.40.  
200 meters - Slack, 4th, 31.34; 1600 meters - Meisel, 2nd, 6:19.15.  
1600 meter relay - Ketchum, Hatcher, Beavers, Meisel, 2nd, 4:55.41.  
100 meters - Turner, 1st, 14.25;

By DAVID FINLEY  
The wheat crop is in a critical stage right now, and in some locations across the area, things do not look good. Wheat growth ranges from pre-boot to fields that are fully headed. We are at least two weeks earlier than last year, and if we stay on schedule, there will be a lot of wheat cut in May.

Some wheat has already been cut, not for grain, but for hay. We found out over the past two years that wheat hay is an excellent source of protein and makes superior feed if harvested in the right stage.

As Donnie Peters and I harvested the forage off our variety tests last week, we noticed that the wheat at both William Lalk's and Freddie Daume's was in the boot stage. Research has shown that when wheat is in the boot stage, protein is the highest.

A test was established on this in 1984 with Barry Mahler. Wheat was harvested at various stages ranging from boot to full head. Crude protein in the wheat at boot stage was almost 13 percent while the wheat in the head stage was eight percent. More drastic results have been seen in other areas of the state. Wheat in some locations has continued as high

Weaver, 6th, 14.74.  
Shot put - Hatcher, 3rd, 25-5.  
Discus - Weaver, 1st, 78-6; Stewart, 2nd, 76-11; Martin, 5th, 68-10.  
Long jump - Toler, 3rd, 14-2; Beavers, 4th, 14-0; Sosebee, 6th, 13-8.  
Triple jump - Toler, 2nd, 26-10; Turner, 5th, 25-4.  
High jump - Echols, 1st, 4-8.  
Team Standings - Vernon, 146; Iowa Park, 144; Olney, 102; Electra, 75; Burkburnett, 42.

Seventh grade boys results were:  
400 meter relay - P. Birk, Luney, Sparlin, Edwards, 4th, 53.73.  
100 meters - Edwards, 3rd, 13.36.  
200 meters - Edwards, 2nd, 27.09; Sparlin, 6th, 28.22.  
1600 meters - Witherspoon, 3rd, 5:45.38.

1600 meter relay - Birk, Luney, Witherspoon, Edwards, 5th, 4:29.07.  
Discus - Green, 1st, 92-1; Sparlin, 2nd, 90-7.  
Shot put - Sparlin, 4th, 32-3; Green, 5th, 31-9.

Pole vault - Witherspoon, 4th, 7-0.  
Team Results - Vernon, 168; Burkburnett, 150; Olney, 64; Iowa Park, 60; Electra, 49.

Eighth grade boys results were:  
400 meter relay - Reasor, Patterson, Nicholson, Cruz, 3rd, 50.03.  
800 meters - Nicholson, 3rd, 2:23.04; Palmer, 5th, 2:26.68; McClure, 6th, 2:29.10.

High hurdles - Patterson, 2nd, 18.18.  
100 meters - Cruz, 4th, 12.78.  
400 meters - Reasor, 2nd, 57.57.  
Low hurdles - Cruz, 2nd, 46.31.  
200 meters - Duggins, 6th, 26.81.

1600 meters - Bata, 3rd, 5:30.56; McClure, 6th, 5:35.69.  
1600 meter relay - Reasor, Palmer, Nicholson, Cruz, 3rd, 4:00.02.  
Long jump - Patterson, 5th, 17-4.  
Discus - Marcum, 2nd, 110-0.

High jump - Duggins, 6th, 5-2.  
Pole vault - Blevins, 4th, 8-0; Palmer, 6th, 8-0.  
Team Standings - Vernon, 152; Burkburnett, 139.5; Iowa Park, 84; Olney, 74.5; Electra, 42.

As 19 percent crude protein in the boot stage and as low as six percent in the head stage.

There are two schools of thought concerning curing of the hay after cutting. Hay that is cut in the boot stage takes four to seven days longer to cure than wheat that has been cut in the early head. During this time of year, rainy weather is another factor that will make a producers decision on when to cut his hay.

One other side note. In talking with David Robnett at the ASCS Office in Iowa Park, harvesting hay on acreage in the ACR or Acreage Conservation Reserve Program is allowable this year. This should add some "extra" money to the pockets of farmers that are participating in this land layout program.

Even though we are dry at the present time, there are some alternatives for wheat producers to look at and cutting hay is one of them. The key, however, is to cut it at the proper stage of growth and that is the boot stage. remember, though, that only a few days makes a lot of difference in the amount of protein that the hay will contain.

Even though we are dry at the present time, there are some alternatives for wheat producers to look at and cutting hay is one of them. The key, however, is to cut it at the proper stage of growth and that is the boot stage. remember, though, that only a few days makes a lot of difference in the amount of protein that the hay will contain.

Even though we are dry at the present time, there are some alternatives for wheat producers to look at and cutting hay is one of them. The key, however, is to cut it at the proper stage of growth and that is the boot stage. remember, though, that only a few days makes a lot of difference in the amount of protein that the hay will contain.

Even though we are dry at the present time, there are some alternatives for wheat producers to look at and cutting hay is one of them. The key, however, is to cut it at the proper stage of growth and that is the boot stage. remember, though, that only a few days makes a lot of difference in the amount of protein that the hay will contain.

Even though we are dry at the present time, there are some alternatives for wheat producers to look at and cutting hay is one of them. The key, however, is to cut it at the proper stage of growth and that is the boot stage. remember, though, that only a few days makes a lot of difference in the amount of protein that the hay will contain.

Even though we are dry at the present time, there are some alternatives for wheat producers to look at and cutting hay is one of them. The key, however, is to cut it at the proper stage of growth and that is the boot stage. remember, though, that only a few days makes a lot of difference in the amount of protein that the hay will contain.

Even though we are dry at the present time, there are some alternatives for wheat producers to look at and cutting hay is one of them. The key, however, is to cut it at the proper stage of growth and that is the boot stage. remember, though, that only a few days makes a lot of difference in the amount of protein that the hay will contain.

Even though we are dry at the present time, there are some alternatives for wheat producers to look at and cutting hay is one of them. The key, however, is to cut it at the proper stage of growth and that is the boot stage. remember, though, that only a few days makes a lot of difference in the amount of protein that the hay will contain.

Even though we are dry at the present time, there are some alternatives for wheat producers to look at and cutting hay is one of them. The key, however, is to cut it at the proper stage of growth and that is the boot stage. remember, though, that only a few days makes a lot of difference in the amount of protein that the hay will contain.

Even though we are dry at the present time, there are some alternatives for wheat producers to look at and cutting hay is one of them. The key, however, is to cut it at the proper stage of growth and that is the boot stage. remember, though, that only a few days makes a lot of difference in the amount of protein that the hay will contain.

Even though we are dry at the present time, there are some alternatives for wheat producers to look at and cutting hay is one of them. The key, however, is to cut it at the proper stage of growth and that is the boot stage. remember, though, that only a few days makes a lot of difference in the amount of protein that the hay will contain.

Even though we are dry at the present time, there are some alternatives for wheat producers to look at and cutting hay is one of them. The key, however, is to cut it at the proper stage of growth and that is the boot stage. remember, though, that only a few days makes a lot of difference in the amount of protein that the hay will contain.

Even though we are dry at the present time, there are some alternatives for wheat producers to look at and cutting hay is one of them. The key, however, is to cut it at the proper stage of growth and that is the boot stage. remember, though, that only a few days makes a lot of difference in the amount of protein that the hay will contain.



### NOTICE

LOST my Siamese kitten, and would like to have another any sex and even part Siamese with coloring. 592-9380. 4-17-1p

### PUBLIC NOTICE

The Board of Adjustment of the City of Iowa Park, Texas, will conduct a public hearing at 5:30 p.m. on Tuesday, May 6, 1986, in the City Council Chambers to consider the issuance of a variance at Lot 15A, Block 3, Park Plaza Addition (727 Park Plaza), to allow less than the five (5) feet side yard setback that is required. Any comments for or against may be presented orally at the hearing or in writing to the City Administrator prior to the meeting. All meetings are open to the public. 4-17-2c

### PUBLIC NOTICE

The Board of Adjustment of the City of Iowa Park, Texas, will conduct a public hearing at 5:30 p.m. on Tuesday, April 29, 1986, in the City Council Chambers to consider the issuance of a special exception to allow a mobile home in a R-2 zone on Lots 19-23, Block 17, Texas Addition (613 West Washington). Any comments for or against may be presented orally at the hearing or in writing to the City Administrator prior to the meeting. All meetings are open to the public. 4-10-2c

### PUBLIC NOTICE

The Board of Adjustment of the City of Iowa Park, Texas, will conduct a public hearing at 5:30 p.m. on Tuesday, April 29, 1986, in the City Council Chambers to consider the issuance of a variance at Lots 3&4, 9&10, Block 167, Original Townsite, to allow less than five (5) feet side yard setback that is required. Any comments for or against may be presented orally at the hearing or in writing to the City Administrator prior to the meeting. All meetings are open to the public. 4-10-2c

### PUBLIC NOTICE

The City of Iowa Park is accepting sealed bids until Thursday, April 24, 1986, at 10:30 a.m. for surplus property including lawn-mowers, weed-eaters, and edgers. Bid forms may be obtained at City Hall and the items may be viewed at the Public Works Building. The City has the right to reject any and all bids. 4-10-2c

### Reliable Plumbing & Repair Service

HARRY L. SKINNER, SR.  
Call before 7 a.m. and after 7 p.m.  
108 E. Jefferson Iowa Park Phone 592-2954

### Pam's Upholstery

High Quality Work  
Low Quality Prices  
592-2205 or 592-4839

### KING'S KIDS

CHRISTIAN DAYCARE & PRESCHOOL  
"Iowa Park's finest for Parents who care."  
202 N. Jackson 592-4242

### Monty & Son's SEPTIC TANK SERVICE

592-4928

### BUSINESS

**BABYSITTING** my home 592-9459. 4-3-6c

**CHILDCARE** - Any age. Open at 5:30 a.m. Will take and pick up at Kidwell - also accepting children for summer care. 592-9561. 4-10-2ip

**REGISTERED Child Care** will keep any ages, any hours. Everyday except Sunday. Will take drop-ins. 592-9619. 4-17-2ic

**YARD WORK** Will mow with grass catcher and trimming. Call 592-4085, ask for Joe. 4-17-1ip

**LAWN MOWING**, small engine repairs, call Harold, 592-5749. 4-10-4ip

**LAWN MOWING** 592-5791. 4-3-4ip

**LAWN MOWING** - Call 592-5259, ask for James or Jimmy. 4-10-2ip

**LAWNS MOWED.** Reasonable rates. Discounts for senior citizens. Call us - you'll be glad that you did. 592-5226. 4-10-4ip

**TREE & SHRUBBERY** trimming and removal, lawn mowing 592-5060. 4-10-2ip

**TRACTOR SERVICE** Tractor mowing, leveling, plowing, etc. Call 438-2418, 438-2863. 4-3-4ip

**OUR MOST AFFORDABLE MODEL**  
Quality and Workmanship At a Special Value Price  
If you're looking for a new water heater at an affordable price, call us today.

**FEATURES**  
\* Dense fiberglass insulation  
\* Porcelain glass-lined tank  
\* Anode rod for corrosion protection  
\* Five-year tank warranty  
\* Two-year parts warranty (Best warranties and features for standard model of the business)  
\* 30-gallon, gas or electric

**\$124<sup>95</sup>**  
Includes free delivery in town  
**Parkway True Value**  
HARDWARE & FURNITURE  
200-206 W. Bank  
592-5512 592-4681  
Master PLUMBER

**Shaw Motor Co.**  
600 W. Highway 592-4106  
Iowa Park

Let us fix your TV, VCR or 2-Way Radio  
**FOR LESS MONEY!**  
**ALLSTAR COMMUNICATIONS**  
Sales and Service

**NEW LOCATION**  
1502 JOHNSON RD.  
592-5321 766-11380 after 5 p.m.  
Mention this add and receive an additional 10% discount off your bill.

**QUAL HOUSING**

**GIANT GARAGE** Sale at Ern's Place, Thursday through Sunday, 9-6. Everything you can think of to choose from, buy, sell or trade. Come by and take a look, you'll be surprised. 14 ft. flat bottom aluminum boat, 1951 original Willys jeepster, antiques, chests, vanity, dinette suits, coffee table, stereo, kitchen cabinets, lamps, mirrors, pictures, frames, paintings, good clothes, sewing machine, lots of glassware, pots, pans, dishes, knick-knacks, whatnots, books, records, tapes, linens, small appliances, lots of baby items, good used reworked mowers, gas and electric, gumball machine, roll 3/4 copper, bumper for RV or camper, and much, much more. 702 S. Colorado Kamay Hwy. 4-17-1ip

**HATE TO IRON?** I'll do it. Pick up and deliver. 592-4930. 4-10-3ic

**WILL DO IRONING**, \$6 dozen. 592-4389. 4-10-2ip

**VINYL & STEEL Siding.** Saves energy, never needs painting. 100% financing available. Jerry Matthews, 592-9829, 761-2126. 4-17-1ic

**MONOGRAMMING** 592-9850. 4-10-10ip

**WATKINS PRODUCTS** 592-2000. 4-10-3ip

**MAIN SHOOTING** Supplies - Will order firearms at wholesale plus 6%. Save 10-30%. 592-5564. 1-16-1ic

**ALCOA VINYL SIDING.** Average house, \$2495. Average overhang, \$1495. 100% financing. Davidson's Discount Siding, 696-5525. 3-27-1ic

**SHAW SPECIALS**

**'85 FORD CROWN VICTORIA**  
4-door, fully loaded, low mileage. Local one owner. Still in factory warranty.

**'85 FORD F150 PICKUP**  
Long wide bed, XLT, 351, 4-barrel, fully loaded. Local one owner. Still in factory warranty.

**'83 BUICK Century Unlimited**  
4-door, V-6, fully loaded. Local one owner. Extra nice.

**'83 MERCURY ZEPHYR**  
4-door, 6-cylinder, automatic, air, power, low mileage. Extra clean.

**'82 DODGE CUSTOMIZED VAN**  
318, automatic, air, power, captain's chairs, rear couch, lots of other extras. Super clean.  
See or Call Bill Wilson, O.L. Tucker or Ronnie Berry  
**Shaw Motor Co.**  
600 W. Highway 592-4106  
Iowa Park

**MARY KAY Cosmetics,** Ann Moore, 592-4752. 10-3-52ip

**ROOFING** - Buzbee Roofing. Phone 592-4846. All work guaranteed. 1-30-52ip

**ROOFING** Wolfe Roofing Co. Phone 855-5657. 1-1-1ic

**CONCRETE** - Remodeling. For all concrete and remodeling needs, call 855-6100. 4-18-52ip

**BUILDING**, Remodeling, or repair, additions, carports, patios. Free estimates. Call day or night, Phil McDonald, 592-9437. 10-24-1ic

**PARK HOBBY SHOP** - Tropical Fish, Aquariums & supplies, paperback books. Birds, cages & supplies. Fire wood, white woods, mesquite & oak. Handmade goods, bulk food for your fish. Come by and visit. 700 E. Highway, 592-5242 or 438-2321. 11-7-1ic

**POODLE GROOMING** by appointment only. Reasonable rates. 592-4766. 2-13-15ip

**FOR YOUR COPY** needs including reduction and enlargement, call Iowa Park Air Conditioning, 592-2761, or come by 609 W. Bank. Charges 20 cents a copy (less for quantities). 1-1-1ic

**PRIVATE FENCE** sales and installation. Charles Skelton, phone 696-0839. 12-5-1ic

**AUTO, BOAT** and furniture repair. Vinyl repair. Call Kamay, 1-438-2243. 12-5-1ic

**BLACK POWDER** Guns and accessories, revolvers \$50 and up. Powder \$4.80 lb. Will order modern guns for 10% over cost. Ye Ole Gun Shack. 413 W. Washington, 592-5430. 12-5-1ic

**HOME IMPROVEMENTS** from additions to remodeling. Patios and carports, acoustic ceiling, ceramic tile, general carpentry. Gary Williams, 592-2480. 12-5-1ic

**COPIES MADE** at Parkway True Value, 25c each. 1-1-1ic

**PJ's Janitorial Service**  
Through the month of April  
Special rates on spring cleaning. Also discounts for Senior Citizens.  
592-9380 - free estimates

**H & MC Appliance Service**  
PARTS & SERVICE  
MOST MAJOR APPLIANCES  
**ADMIRAL MAGIC CHEF NORGE** **KELVINATOR CATALINA TAPPAN**  
102 S. ATLANTIC (BELL RD.) IOWA PARK, TEXAS 76367 (817) 592-5211  
BOB MCFARLAND Owner

**Automobile Insurance**  
Cancelled? Refused? Too High? Too many tickets? Too many accidents?  
Small Down Payment  
Instant coverage  
**Crawford Insurance Agency**  
Phone 592-4873

**Sister Mary Reader & Advisor**  
Cards Reader Palm Reader  
Reader and Advisor, Card Reader and Palm Reader. Tells past, present and future. Advice on love, business and marriage. Do you feel lonely, unwanted? Is the romance slipping out of your life? Do you have husband, wife or sweetheart problems? Are you sick? Are you suffering? Do you need help? There is no pity for those who need help and don't come to see Sister Mary. One visit will convince you. No matter how big or small your problem may be. I guarantee to help you with all problems in life.  
OPEN 8 a.m. - 11 p.m. OPEN 7 DAYS A WEEK  
3309 Kemp, Wichita Falls, Tx. 691-0762  
Watch for Palm sign in front of the house

**QUALITY Craftsmanship,** specializing in Formica tops and cabinet work. Will also do carpentry work. References available. Call 592-2827 for free estimate. 2-13-1ic

**INSULATION** for walls, attics, & metal buildings. Storm windows and doors. For free estimates call Jerry Matthews at 761-2126 or 592-9829. 12-5-1ic

### HELP WANTED

**HELP WANTED** Our 9 year old daughter needs a loving, Christian person to pick her up at Bradford Elem. and care for her 3-4 days a week after school, 3:30 - 5:00 p.m. Please call after 6:00 p.m. weekdays or 9:00 a.m. - 5:00 p.m. Sat. & Sun. 855-4363. 4-17-1ip

**HELP WANTED** Someone to care for infant in my home. 8-4:30, Mon. - Fri. Non-smoker preferred. Call 592-2966. 4-10-3ic

**NURSES AIDES** needed, all shifts. Heritage Manor 1109 N. Thirg. 10-3-1ic

**Buzbee Roofing**  
Phone 592-4846  
ALL WORK GUARANTEED

**Baker's Greenhouse**  
1 mile south on Bell Road  
Tomato, Vegetable and Bedding Plants  
Bulk Garden Seed  
Drip Irrigation

**\$1000 REWARD**  
For information leading to the arrest and conviction of any person or persons involved in theft, vandalism, arson, fishing or hunting on any of our properties in Wichita, Archer, Wilbarger, Clay, Wise or any other county in which we may have equipment located. Tom Swanson Oil Co., TS&T Drilling Inc. Ph. 817-495-3971. 8-8-1ic

**PUBLIC NOTICE**  
The Board of Adjustment of the City of Iowa Park, Texas, will conduct a public hearing at 5:30 p.m. on Tuesday, April 29, 1986, in the City Council Chambers to consider the issuance of a variance at Lots 3&4, 9&10, Block 167, Original Townsite, to allow less than five (5) feet side yard setback that is required. Any comments for or against may be presented orally at the hearing or in writing to the City Administrator prior to the meeting. All meetings are open to the public. 4-10-2c

**PUBLIC NOTICE**  
The City of Iowa Park is accepting sealed bids until Thursday, April 24, 1986, at 10:30 a.m. for surplus property including lawn-mowers, weed-eaters, and edgers. Bid forms may be obtained at City Hall and the items may be viewed at the Public Works Building. The City has the right to reject any and all bids. 4-10-2c

**Reliable Plumbing & Repair Service**  
HARRY L. SKINNER, SR.  
Call before 7 a.m. and after 7 p.m.  
108 E. Jefferson Iowa Park Phone 592-2954

**Pam's Upholstery**  
High Quality Work  
Low Quality Prices  
592-2205 or 5