

Sept 4, 1986

MRS. LITA WATSON  
528 W. CLARA  
IOWA PARK TX 76367 112

# Hawks to open season Friday at Burkburnett

The two-a-days, the scrimmages, the planning are all over now, and the 1986 football season gets underway at 8 p.m. Friday when the Hawks travel to Burkburnett.

It'll be a fitting opener for Iowa Park, for several reasons.

First, Burkburnett is the oldest rivalry on the Hawks' schedule, as the two schools have been competing since both started athletics.

Secondly, the Bulldogs represent a larger school, being in Dist. 3-AAA, and promise to give the Hawks a true test of their abilities.

Thirdly, Burkburnett has been frustrated the past two years by the Hawks, and hasn't won since 1983.

The season opener will be a test of a larger school's team made up mainly of inexperienced players, against a smaller school with lots of returning experience.

Burk was hit hard by graduation last spring, and returns only 10 lettermen, one offensive starter and six from its defense.

But that inexperience could be overcome by the new players, according to Head Coach David Baugh.

He points out that the Bulldogs this year are better than the teams of the past two seasons, with more speed and quickness in the backfield and a more aggressive defense.

Coach Pat Smiley has installed the Wishbone offense, which puts a lot of pressure on defensive ends and corners.

Made up mostly of sophomores and juniors, Burkburnett "looks like a revived spirit over the past couple of years," Baugh commented.

"I'm impressed" with the team, he said.

Even though the Dogs are younger than teams of the past, they don't make many mistakes, according to scouts who watched them scrimmage this fall.

Iowa Park handed the Bulldogs one of their early season losses in the second game of last year, 9-3. But the Dogs still developed as the year progressed, and made it into the area playoffs.

The year before, Iowa Park blasted the Bulldogs 35-6, to make up for the 9-20 loss in 1983 and 0-24 the year before.



### 1986 Hawks

Coach Smiley says his middle linebacker, John Etheredge, is the best he's ever had at that position. The senior weighs 214 pounds and has 4.6 speed.

Coach Baugh counters with his outstanding noseguard, Robert Adams, the senior who has started

since he was a sophomore, and has twice been named All-District.

Defensive safety Jeff Huff, a junior who saw considerable action in the playoffs last year, might not see action in the opener.

Huff, who is also one of three quarterbacks this season, suffered a

cut on his foot last week in an accident involving a blocking sled, which required several stitches.

Baugh said he was pleased with the progress of returning tailback Scott Weaver, who was injured in an accident involving a three-wheel vehicle during the summer.

### GAMES TONIGHT

Two games will be played in Hawk Stadium tonight against teams from Burkburnett.

The Freshman game is slated to begin at 5:30 and the Junior Varsity at 7:30.

# IOWA PARK LEADER 25 Cents

Vol. 17, No. 51 IOWA PARK, WICHITA COUNTY, TEXAS 76367 Thursday, September 4, 1986

## NEXT WEEK

# Trustees may set tax rate Tuesday

The city council will be asked to waive a church building requirement and the school board will consider setting its 1986-87 tax rate, when the two groups meet next week.

The city meeting is to begin at 7 p.m. Monday in council chambers, and the board of trustees will convene at 7:30 p.m. Tuesday in the administration building.

Aldermen will consider granting a waiver to the Pacific Avenue Baptist Church from the requirement of an architect's seal on an expansion plan proposed on the original building.

Aldermen will also be asked to consider a proposal authorizing the city administrator to pay the matching portion of a grant for a fitness center for Oscar Park.

The center is partially provided by a grant through Bethania Hospital. Similar equipment has already been installed at Lucy Park in Wichita Falls.

Council approval will also be

asked for advertising for bids to purchase three new vehicles, and to accept bids for sale of surplus items.

### SCHOOL BOARD

Because it appears the legislature will enter a second special session, and state funding information will be coming so late in the year, Supt. Glen Mitchell said yesterday he will ask the board to go ahead and set the tax rate Tuesday.

When the special session was first announced, all school districts were advised to wait and see what funding from the state would be decided at the session.

Iowa Park, as have most other districts around the state, went ahead last week and passed its expenditure portion of the budget, but took no

action on the rate.

The budget of \$5,464,620 was set.

In his revenue portion of the budget, Supt. Mitchell proposed raising the previous year's tax rate of 71-cents to 75-cents per \$100 valuation.

Some opposition was voiced by board members, while others supported the increase.

Based on assessed values of the district, each cent in the tax rate generates \$23,894, trustees were told.

When the special session was first announced, all school districts were advised to wait and see what funding from the state would be decided at the session.

# City, school benefit from franchise taxes

The City of Iowa Park and the school district have received more than \$20,000 so far this year in bank franchise taxes, according to a report from the state comptroller's office.

The school has received \$9,759, an increase of 47.08 percent over last year, and the city's portion has been \$11,092, an increase of 16.85 percent over this same period in 1985.

Banks are taxes at the same rate as other Texas corporations.

Previously, bank stocks were subject to local property taxes. The legislature exempted the stocks from property taxes, substituting the new bank franchise tax.

Collections are prorated among local taxing units based on their tax rates, according to the comptroller's office.

# Special medallions ordered for prizes at Whoop-T-Do

Observation of the state's 150th anniversary will play a big part in this year's Whoop-T-Do, which is slated Sept. 27.

Special medallions have been commissioned by the Iowa Park Sesquicentennial Committee which will be presented to winners of various events, ranging from the annual homecoming parade to numerous contests which have been scheduled.

This year's Whoop-T-Do will initiate the first annual World Championship Fried Okra Cook-Off, according to Mayor Tim Hunter, who is chairman of the Sesquicentennial Committee.

Other events planned which will be part of the Sesquicentennial observance, include a food fair, old-time clothes contest, beard-judging contest and old-time games.

The food fair will feature jelly, jams and home-baked and home-canned goods. A fee of 25-cents will

be assessed per entry.

The clothes contest judging will be to decide the best-dressed woman, man, boy and girl, and the judging will be based on clothes worn by early-day settlers.

Games will include an egg-toss, sack race, and several others, including hiding money in a pile of hay and letting the youngsters, by age brackets, keep what they find.

Half the medallions ordered will be on a paper weight base and the other half hung on ribbons, olympic-style.

Deadline for organizations and individuals to reserve booth space is Sept. 19.

Organizations will be assessed a fee of \$20 for spaces, while individuals will be charged \$10. The fees must be paid to the Chamber of Commerce, which annually sponsors the Whoop-T-Do.

Whoop-T-Do is held in conjunction with Iowa Park High's homecoming each year.

# Kidwell enrollment largest gain

Iowa Park schools had 11 more students Monday than on the first day of school last year, but all the increase was on one campus, Kidwell Elementary.

The first-day report indicated

# Weekend rains measure 2.25

Iowa Park received 2.25 inches of rain over the weekend, according to measurements by Virgil Woodgin, 201 S. Park.

While dove hunters may not have been particularly pleased with the precipitation coming in advance and on the first day of hunting season, most other residents are beaming.

Farmers say the rain will allow volunteer wheat to grow, so they can clean the fields in preparation for the fall wheat planting.

Homeowners, who have suffered through more than a month of outdoor watering restrictions, will have greener yards the balance of the season.

It was the first significant rain in several weeks.

1,761 pupils had reported for class, up from the 1,750 last year, and 12 less than the first day in 1984.

Kidwell leaped from 401 last year to 441 Monday, with the largest increase counted in the first grade.

There were only 150 kindergarten students when school started last year, and 173 first graders were reported Tuesday.

Other classes at Kidwell included 12 in special education and early childhood, 131 kindergarten and 125 second grade.

Bradford Elementary reported a decline of seven students, when first day reports were compared, 397 as compared with 404.

There were 130 in the third grade, 144 in the fourth and 123 in the fifth.

The junior high had the largest decrease in numbers of students, 14. The first-day report last year had 407 students attending junior high, but 393 were counted Tuesday.

There were 138 in the sixth grade, 132 in the seventh and 123 in the eighth.

High school first-day enrollment dropped eight, from 538 to 530.

Reporting for class Tuesday were

141 freshmen, 152 sophomores, 137 juniors and 100 seniors.

### FIGURES UPDATED

Late yesterday afternoon, Supt. Mitchell announced a gain of 21 students in the system, and said his principals were each indicating more were expected as the week progressed.

He said 11 more students were enrolled at Kidwell, with increases in the kindergarten, up six to 137; two more in the first grade, 175; and three in the second, 128.

Bradford enrollment remained unchanged, but there was one less than the first day in the fourth grade and one more in the fifth.

Junior high figures changed: 136 in the sixth grade, 133 in the seventh and 126 in the eighth.

Eight more students reported to the high school campus. Enrollment Tuesday was 143 freshmen, 154 sophomores, 138 juniors and 103 in the senior class.

# Items taken from vehicles

Thefts from three vehicles were reported during the past week to Iowa Park Police Department.

Two of the reports were made Friday morning, and both were in the same neighborhood.

Gregory Hicks told police Friday someone had broken into his pickup parked overnight at his 103 Wood Circle home, and took 15 cassettes, a tape box, two-man inflatable rubber boat and two books of blank checks.

Also Friday morning police were told a purse was taken during the previous evening from a vehicle parked at 923 Van Horn.

Several items, including a can of hair spray that had been in the purse, were found strewn in the street a few houses away.

Jimmy Smith told police Tuesday that fishing equipment had been taken from his vehicle while it was parked at 300 E. Magnolia.

# News in Brief

## City hall work causes problem

Persons planning to pay their utility bills at city hall Monday or Tuesday will have to go inside the building.

City Administrator James Barrington said renovation work on the outside will require the closing of the drive through window those two days.

## Man arrested

James Randall Brookshire, 31, was arrested at 504 E. Pasadena just after noon yesterday, when his attorney withdrew from his bond after an earlier charge of possession of marijuana.

He was arrested by Det. Tommy Adams and Officer Tom Stevens, and turned over to a county deputy.

The charge is a misdemeanor.

Does your subscription to the Leader expire this month? check the list on page 4.



## Molina, Shawver vows are recited recently

The altar of First Baptist Church at Holliday was impressively decorated for a recent wedding where Miss Terah Kay Molina and Russell Steven Shawver exchanged double-ring vows that they had memorized. Rev. David Hardage, pastor, and Stan Todd were the officiants.

The bride is the daughter of Mr. and Mrs. Rudy Molina Sr. of Holliday and the groom is the son of Mr. and Mrs. Gene Shawver of Iowa Park.

The nuptial setting featured an arch decorated with white roses, lavender gladioli, white stephanotis and grape ivy centered with a lavender silk bow. On either side were fifteen-branched candelabra, ornamented with the same flowers, greenery and bows, holding tall white candles.

To signify the oneness in marriage, the couple lighted a single candle held in a brass candlestick in the outer altar trimmed in keeping with the holders in the upper altar. The church pews were marked with votive candles, lavender roses and leatherleaf.

The wedding music was provided by Clay Morgan, organist, Mike Lunney, trumpeter, Rudy Molina Jr. and Miss Karen Molina, vocalists.

Before the ceremony, the organist played a selection of favorite wedding music and accompanied the vocalists who sang "The Wedding Hymn." He and Lunney played "Trumpet Voluntary" for members of the wedding party to take their places at the altar, then changed to the traditional processional for the bride to walk to the altar.

During the ceremony, the vocalists sang "The Wedding Song" and Miss Molina sang "Evergreen" at the close. The organist played the time honored recessional to conclude his offerings.

The bride's father escorted her to the altar and gave her in marriage. She wore a lovely formal gown of



MRS. RUSSELL STEVEN SHAWVER

white Alencon lace over peau de soie designed with a bodice adorned with scattered pearls, featuring a scalloped square neckline and leg-o-mutton sleeves that tapered to points accented with beaded hearts at the wrists. The skirt of multiple tiers of the lace sparkled with pearls and flowed into a cathedral train.

The pearl ornamentation was repeated on the bride's three-tiered illusion veil that fell to waltz length from a beaded headpiece. She carried a cascade bouquet of white gardenias, lavender roses, English ivy and white satin streamers accented with stephanotis. She wore white lace slippers.

Her jewelry provided two of the bridal traditions. She wore a gold chain bracelet for "something old" and her mother's pearl and diamond ring for "something borrowed." She wore the "something new" dress and kept the "something blue" tradition.

Mrs. Mike McVicker was matron of honor. She wore a lavender flowered tea length lace dress over satin styled with a round neckline that dipped in the back, short puffed sleeves and full skirt. She wore a head wreath of lavender roses and baby's breath and carried a colonial nosegay of lavender roses and English ivy with lavender ribbon streamers.

Wearing identical gowns, head wreaths and carrying identical nosegays were Miss Karen Molina, the maid of honor, Miss Gwyn Beaver, Miss Terri Wilson, and Miss Tanya McKee, the bridesmaids.

Erma Garcia and Nicole Garcia, the flower girls, were attired in pink dotted swiss dresses with short puffed sleeves and white satin sashes. The wore white rose wreaths in their hair and carried white baskets filled with lavender and white roses.

Robert Kirkland carried the rings that the bride and groom exchanged on a white satin pillow centered with a bow. He was dressed like the groom's attendants.

The groom's tuxedo featured a solid grey coat with tails, white shirt, striped ascot and pants. The men who took part in the service wore grey tuxedos with regular coats, lavender cummerbunds and bow ties.

Mike Lunney was the best man. Groomsmen and ushers were Tim McWhorter, Rick Kirkland, Randel Shawver and Rudy Molina Jr.

Following the wedding, parents of the couple were hosts for a dinner at the church.

The serving tables were covered with white linen. The cloth on the table where the bride and groom sat with members of the wedding party was complemented with wide lace runners at intervals. The centerpiece was a bouquet of fresh lavender and white gladioli and mums centered with tall white candles.

The table which held the three tiered white iced cake that abounded in novelty and fantastic designs was draped with white lace. Divided by two sets of posts surrounded by white bells, it was decorated with deep scrollwork and lavender and purple frosting roses. When the cake was cut it held a surprise in that the second tier was the groom's chocolate cake. The top tier completed the fascinating design in two white doves holding wedding bands in their bills as they sat on wedding bells under an arch of white flowers.

Those who presided at the cake table were Mrs. Randy Molina, Mrs. Johnny Garcia, Mrs. Randel Shawver and Kim, and Miss Denise Garcia.

Miss Lana Molina was in charge of registering wedding guests at a white linen-covered table that held the lace-covered wedding book, white plume pen in a brass S-shaped holder, an arrangement of fresh lavender and white roses, and a brass bowl that held the lavender net rice bags.

The bride was graduated from Holliday High School and attends Midwestern State Univ. The groom was graduated from Iowa Park High School, MSU and is employed at MBank. The will live in Wichita Falls.

### CARD OF THANKS

We would like to thank everyone who sent cards, flowers and food after the death of our loved one, Wayland Walls. It was all sincerely appreciated. We also want to extend a special thanks to Rev. Jerry Miller for performing the services and the Faith Baptist Church for the lunch served following the services.

The Wayland Wall Family



MR. AND MRS. ROBERT WALKER

## Hamilton, Walker wed in ceremony

Elizabeth Ann Hamilton, daughter of Inez and Monte Deatherage of Wichita Falls, and Robert Ray Walker, son of Mr. and Mrs. Bobby Ray Walker of Iowa Park, were married Aug. 23 at the Lakeview Church of God with Rev. Ole Olds, pastor, officiating. The bride wore a white eyelet dress trimmed with tiny pink rosebuds.

Valerie Brooks of Wichita Falls was the matron of honor and Kathy Walker of Iowa Park, sister of the groom, was the bridesmaid. Emily Hamilton, daughter of the bride, was junior bridesmaid and Bo Hamilton, her son, was the ring bearer.

The groom was attended by Douglas Broyles of Wichita Falls as best man, and David Potter of Iowa Park as groomsmen. John Grantham of Iowa Park was usher.

The bride's mother was hostess for the wedding reception held at the

church, and the groom's parents hosted the rehearsal dinner at K. Bob's.

The bride and groom are students at Midwestern State Univ. and will live in Wichita Falls.

### New churches are planned

Mrs. E.T. Patterson led the 1986 Week of Prayer for State Missions program Monday during a meeting of the Night BW of First Baptist Church. The theme of the program was "So They, Too, Can Believe."

The topics discussed by Mmes. D.O. James, Sam Hill, S.B. Reeves, Roy Smith and the leader emphasized the efforts that Texas Baptists are expending to reach the state with the gospel by establishing 2,000 new churches by 1990.

The efforts to start new churches began by strengthening old churches, telling the story to rapid growth areas, ethnic groups, the deaf, poor, working people and tripling the Mary Hill Davis offering.

A salad supper and business meeting directed by Mrs. Smith preceded the program. Announcement was made of the State Missions banquet at Chaparral Baptist Assembly Sept. 9. Twelve members were present.



## Library News

by Tony Lutz

Coney, the clown, was a big hit with the 65 children who attended the "grand finale" picnic on August 29. I want to thank all of you who participated in this event. Several pictures were taken of this exciting afternoon and will be displayed in our library scrapbook.

Exciting activities are coming up this fall. Those who would like to take part in the planning of the Christmas play or participate in any way are invited to attend the initial meeting on Tuesday, September 9, at 7:00 p.m. On Wednesday, September 10, the first toddler storytime session will occur at 10:30 a.m. until 11:00 a.m. Activities for two and three year

olds will be lead by Patricia Costello, who has a Master's Degree in Reading.

The library has received five new Walt Disney books. The new arrivals are: Pinocchio, Sleeping Beauty, Winnie The Pooh, Snow White & The Seven Dwarfs, Lady And The Tramp.

Memorials: John and Louise Clapp made a donation to the library in memory of Bill Spruiell.

Are you searching for an attractive place to have your party or meeting for that special occasion? The conference room at the library might be the perfect place for you. For more information concerning the rental arrangements call 592-4981.

*It's A Girl!*



*It's A Boy!*



**Celebrate Special Occasions with our 4' X 4' Yard Signs.**

Announcing the newest arrival to your family or neighborhood, birthdays and anniversaries.

**Rented by the Day or Week**

**Iowa Park Florists**  
Your friendly hometown florist since 1951.  
Owned and operated by Linda Hicks.  
114 W. Park 592-2141

# SLEEPERS

**New Shipment Just Arrived!**


Two pieces of furniture: great-looking sofa by day, comfortable bed at night

Prices Starting at..... **\$299** for loveseat size

See them at

**PARKWAY**  
HARDWARE & FURNITURE  
200-206 W. Bank True Value 592-5512 592-4681

## Congratulations



to Mrs. Elvy Sargent who was the winner of the beautiful Swiss Acutron Watch we gave away as part of our 31st Anniversary

**Louis' Distinctive Jewelry**  
408 W. Park 592-5942

Ho  
par  
get  
Plan  
parade  
Carole  
sponsor.  
"Hav  
the them  
which is a  
Sept. 26 a  
Atten  
contact a  
State Cha  
to ride in  
have been  
who has r  
call Missy  
at 592-421  
Organ  
the parade  
before Sep  
listed abov  
assigned a  
sent a map  
entries mu  
to line up.

LOOK  
V

Joshua B  
14 ounce  
Mrs. Tim N  
19. Mrs. No  
Featherston.  
The gra  
Mrs. Ray Fe  
and Mr. and  
of Wichita Fa

Mr. and  
Stephenville  
daughter, 36  
August 29, 4  
and one ounc  
brother, Jerro  
Grandpa  
Herbert Elliot  
Mrs. Jerry No  
Jackie Nolea  
grandparents  
Jackson of  
Mrs. J.W.  
Myrtle Lewis  
Wolf of Iowa  
of Fort Wo  
grandmother.

Joseph B  
ounce son, v  
Mr. and  
Cockrum. H  
Dawn, four y  
The gra  
Mrs. James  
Mrs. Ronnie  
The great-gr  
Mrs. E.C. C  
Mrs. Roy T  
Mrs. Ava L  
Falls, Mrs.  
Burkburnett,  
Dean, Mr. a  
of Hayworth  
The great  
Pearlie Blak  
Vivie Benn

CR  
Epsalk  
in vite  
compe  
queen  
cast b  
who h  
the W  
EPSILO  
St. Jud  
fingerp  
Clara S  
PLE  
SUN  
Candie  
Electri  
Tama  
Lela t  
Cont  
Addr  
Pare



## Homecoming parade plans get underway

Plans for the 1986 homecoming parade are underway, according to Carole Venhaus, student council sponsor.

"Hawks - A Texas Tradition" is the theme for this year's parade, which is scheduled to begin at 4:30 Sept. 26 at the junior high.

Attempts are being made to contact all members of the 1969 State Champion Hawk football team to ride in the parade. Although letters have been sent, any team member who has not been contacted should call Missy Logan, parade chairman, at 592-4215 or 592-2144.

Organizations wishing to enter the parade should contact Miss Logan before Sept. 23 at the phone numbers listed above. All entries will be assigned a position in the parade and sent a map of the parade line-up. All entries must present a map in order to line up.



MR. AND MRS. NORMAN HODGES

## 25th anniversary observation planned

Friends of Mr. and Mrs. Norman Hodges are invited to attend a reception Sunday between 2 and 4 p.m. in the upstairs of Tom L. Burnett Memorial Library to join them in celebrating their 25th wedding anniversary. The hosts will be their sons, Jim and Wayne.

The former Janice Miller and Hodges were married Sept. 1, 1961 at the Faith Baptist Church in Iowa Park where they are active members and members of the Building Block Witness group.

He is director of the Adult III Sunday School department, a member of the Brotherhood and mission study teacher. He works for Mills Motor Co. in Wichita Falls as office manager and salesman.

She is a teacher of first grade students at City View where she is starting her 16th year. At church, she teaches the first and second grade students at Sunday school. She is a

former director of the Woman's Missionary Union and currently serving as mission study chairman.

The assistants at the reception will include Mmes. Leon Biddy, Jerry Reed, Jack Hodges, Bob Perkins, Jim Miller and Grover Hodges.

Mrs. Kenneth Via will provide piano music.

### Church group meets

The United Methodist Women held the first fall meeting Tuesday at a covered-dish luncheon at the church. Twenty four members attended.

Mrs. S.B. Keeter directed the business meeting preceding the luncheon. Mrs. R.E. Waters read the 23rd Psalm and a poem, "Moments of Awareness" by Helen Lowrie Marshall, for the devotion.



Joshua Brandon, a nine pound, 14 ounce son, was born to Rev. and Mrs. Tim Norris of Vernon August 19. Mrs. Norris is the former Tina Featherston.

The grandparents are Mr. and Mrs. Ray Featherston of Iowa Park and Mr. and Mrs. Charles Rutledge of Wichita Falls.

Mr. and Mrs. Dick Elliott of Stephenville are the parents of a daughter, Jennifer Michelle, born August 29, weighing eight pounds, and one ounce. The new baby has a brother, Jerrod Wayne.

Grandparents are Mr. and Mrs. Herbert Elliott of Iowa Park, Mr. and Mrs. Jerry Noles of Laguna Park, and Jackie Noles of Gatesville. Great-grandparents are Mr. and Mrs. Tab Jackson of Stephenville, Mr. and Mrs. J.W. Appleton of Abilene, Myrtle Lewis of Gatesville, and Leo Wolf of Iowa Park. Minnie Springer of Fort Worth is the great-great-grandmother.

Joseph Binkley, a six pound, 15 ounce son, was born August 18 to Mr. and Mrs. James Binkley Cockrum. He has a sister, Jessica Dawn, four years old.

The grandparents are Mr. and Mrs. James Cockrum and Mr. and Mrs. Ronnie Morris of Iowa Park. The great-grandparents are Mr. and Mrs. E.C. Cockrum and Mr. and Mrs. Roy Thompson of Iowa Park, Mrs. Ava Lee Alexander of Wichita Falls, Mrs. Pauline Morris of Burkburnett, Wallace Duckett of Dean, Mr. and Mrs. Harold Garrison of Hayworth, Okla.

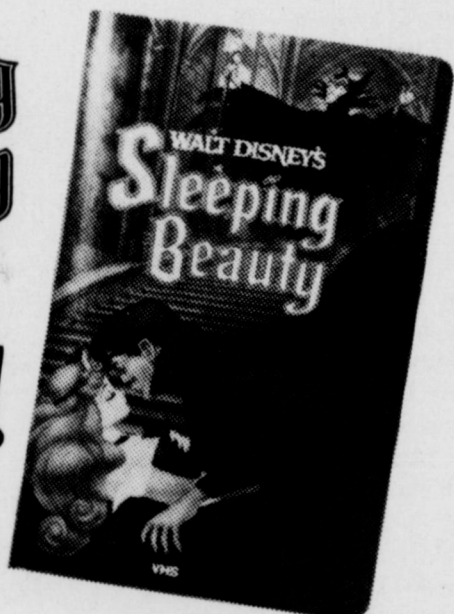
The great-great-grandmothers are Pearl Blakeney of Wichita Falls and Vivie Bennett of Burkburnett.

### ANNOUNCING WALT DISNEY'S ANIMATED CLASSIC

WALT DISNEY'S **Sleeping Beauty**

NEW ON VIDEO ONLY \$29.95\*

WALT DISNEY HOME VIDEO



VIDEO LIBRARY

## CROWN 'EM KING 'N QUEEN OF WHOOP-T-DO!!

Epsilon Eta Chapter of Epsilon Sigma Alpha International in vites all boys and girls in the age groups of 0 to 3, 4 to 7 and 8 to 12 to compete for teh title of WHOOP-T-DO-KING or QUEEN! A king and queen winner will be named in each of the three age groups. Votes are cast by a penny per vote. The winners will be determined by the child who has collected the most money for votes. Winners will be crowned at the WHOOP-T-DO on SATURDAY, SEPTEMBER 27, 1986.

EPSILON ETA (ESA) is a non-profit service organization which supports many worthwhile projects such as St. Jude Children's Research Hospital, Muscular Dystrophy Association, Birth Defects Centers of Texas fingerprinting, Iowa Park Library and has been solely responsible for teh development of Pace Park at First and Clara Streets.

PLEASE RETURN THE COMPLETED FORM TO JUDY MITCHELL 1317 SUNSET, IOWA PARK.

Candidates and parents are invited to a Special Tea on Sunday afternoon, September 14th at Texas Electric Reddy Room, 2:30 to 4 p.m. You may call one of the following persons for more information:

Tama McDowell 592-2475 Judy Mitchell 592-5189  
Lela Mercer 592-5189 Stacie Fischer 592-4443

Contestant's Name \_\_\_\_\_ Age \_\_\_\_\_ Boy or Girl \_\_\_\_\_

Address \_\_\_\_\_ Phone \_\_\_\_\_

Parent's Signature \_\_\_\_\_

# All Occasions Flower and Gift Shop



We will open our door for business **Saturday, Sept. 6**

520 W. Highway

(Former Farm Bureau office next to Sam's Body Shop)

Ph. 592-2323

Open 7 a.m. to 7 p.m. Monday thru Saturday

Dorothy Cates - Owner

Deliveries in Iowa Park, Holliday & Wichita Falls

## Complete Floral Service

from a single rose to your most elaborate Floral Needs

We're A New Shop, With New Ideas We Know You'll Like The Difference

Fresh and Silk Floral Designs  
Green and Blooming Plants  
Balloons (Single and Bouquets)  
Leaning Tree Greeting Cards (5 lines)

## Homecoming Sweetheart Mums

Quality Designs & Workmanship At Moderate Prices

Full display of Decorated Mums and Optional Accessories to Assist Your Selection

Single - Double - Triple Crescent - Triple Two and One Swag & Heart Shapes  
Mums Corsages for Moms, Teachers, Etc.  
Baby Mums for Children - Garters for the Guys  
Spirit Sticks & Cow Bells to Cheer Our Teams

## Introducing the Original YARD CARDS

Greeting Card Signs for All Occasions. Make Someone Happy. Call today for Rental for Delivery for Birthdays, Anniversaries, Birth Announcements for Child & Grandchild.



# As I See It....

By BOB HAMILTON



If members of the Texas Legislature think things are tough, trying to find ways of covering the state's \$3-billion budget deficit, they should be on one of the local school boards.

In case you haven't been keeping up, the state commissioner of education advised all local boards to hold off setting the tax portion of their annual budgets, until it was determined how much money they would be getting from state this year.

The advice was forwarded just about the time the special session was called.

Well, all the districts have set their budgets, and are waiting to set their tax rates.

But the 30-session ends tonight for the legislature, and everyone has said there'll be another, including the governor.

Okay, so there's another 30 days for the legislature to meet. So what?

Well, schools usually get their first check from the state late in October, and, if they've gotten their tax notices out by Oct. 1, they also start getting local money about the same time as state money.

And schools usually have enough money carried over from the

previous year to pay salaries and other costs of operation until state and local tax money comes in.

You still with me? Schools have to know how much money they're going to get from state, and make up the difference to fund the expenditures by setting the local tax rate.

If the legislators operate during the second session as they have the first, it could well be the third or fourth week of September before they come to a decision, if even then.

So, should some decision come Sept. 26, say. Those school districts that have waited until then to set their tax rates must still do all the calculations, have the tax bills printed, put in the mails, and then sit back and wait for some patrons to make out their checks. All this before they get a dime to pay bills.

Well, that's late. Very late. Especially for those unfortunate districts that don't have much money left over from the previous year.

And if a district sets its tax rate before the state funds are allocated, and doesn't have enough money to cover the expenditures, the tax rate cannot, by law, be changed until the

next year.

It appears there's going to be a lot of school districts around the state that will have to either borrow money to pay bills during the early part of the year, or during the latter part of the year if their rate was set too low.

And here, I'll remind you what I reported earlier, that districts in areas where oil production is a significant part of the local tax base, I feel there will be a shortfall in collections this year.

You'll recall, I said the values are set at the first of the year, and oil values then were about \$22 per barrel. It's just barely over half that today, but no adjustments can be made in the values already set and the tax rolls certified.

If ever the local school boards of Texas needed support of their people, it's now. They've got the toughest job any group of volunteers could ever face.

Yep, I said volunteers. Trustees don't get anything but a free cup of coffee at meetings, and telephone calls at night.

That's not much more than a roughneck gets today.

# Worth Quoting

Once upon a time the Worthwhile Club decided to hold a fund raiser to raise money for the local town. The members wanted to put up a sign at the edge of town that proclaimed it "Countyside, U.S.A., the friendliest little town in these here parts."

They decided they would hold a dinner and play some games and give away some prizes. Now they wanted to raise lots of money, so they decided to mimeograph their tickets at the school instead of at the local newspaper-print shop, and asked for a free story to tell who had won what. The newspaperman looked a little bit disgruntled, but he said he would agree to that.

Then they discovered they could buy the chickens they were serving at the supper for 10 cents a pound less in a town 45 miles down the road. One of the Worthwhile Club members was going there anyway to do her Christmas shopping, so she agreed to pick them up for the club at no travel cost to them. She bought the prizes out of town, too, while she was at it.

Of course, they used napkins and cups from the local bank, and the other paper products they needed they bought at a discount store just 25 miles up the highway.

The wives of the local grocer, local hardware store man and the local banker all worked on the supper with the other Worthwhile Club members so there were no labor costs.

Well, the event was a huge success and the club raised \$500 for the sign.

But it never got put up. Why? Three of the town's local businesses went under that year shortly before Christmas. It was thought by many that perhaps the fellows hadn't run their businesses as well as they should have. Of course, without any businesses to serve, the newspaper and bank soon followed suit.

The Worthwhile Club has decided not to hold its dinner again this year, even though last year's was such a barnstormer.

With the bank gone they would have to purchase all the paper products. The club membership had dropped about one third, and the ladies feel there aren't enough of them to do the work.

And the grocer, and the banker, and the candlestick maker? Well, they're all members of the Jolly Good Time Club in that town 45 miles down the road now. That's where they pay taxes, and contribute to the Boy Scouts, and work on church suppers. Their business planning seems to be going a lot better nowadays, too.

Well, it's not for me to say, but I wonder what would have happened to Countyside, U.S.A. if the Worthwhile Club and other organizations in the town had decided they would not only raise money for worthwhile causes, but would also consider keeping the local businesses healthy as

one of their causes.

What if they had made \$200 in the fund raiser and had given the newspaper some money for ads and bought those chickens at the higher price locally? Maybe they should even have given a gentle nudge to the lady who was going down the road to do her Christmas shopping to look in at the local stores to see if she could find anything to fill the bill. What if they had given script money at the local stores as prizes?

It might have taken them two years to raise the money for the sign, but maybe then there would have been a town to put the sign up for. And maybe the best work that the club could have done would have been to patronize the local merchants and keep the town alive and healthy.

By FERN WOODALL  
Grand Saline Sun

The Hudson clan has returned from the traditional summer family vacation. In ten days we covered 2,000 miles of Texas highways and visited at least as many bathrooms along the way. I am fully expecting a call from the Texas Filling Station Association. They probably want to present us the Golden Key award for inspecting the restroom facilities of most of them members.

As those that have done it know, traveling with two children is one of those events that test the metal of the family unit. Everything started out well. Loree had provided the little dears with snacks and games to keep them occupied during the journey. But, the best laid plans do go astray.

By the time we had reached Canadian, all the provisions were gone and the game pieces were scattered all over the van. The kids then resorted

to the time honored game of "Question the Parents." This game is easy to play. The children take turns asking questions of the adults in the car. There are no points for originality, only for endurance.

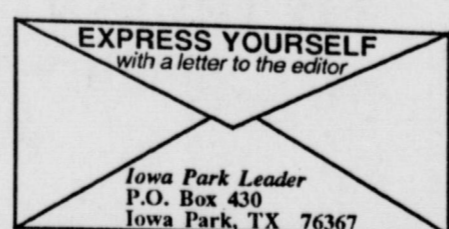
"How long till we get there?", "I'm hungry!" and "Make her stop looking at me!" are the classical moves in the game. More recent innovations are -- "She's cheating at Uno!", "Why can't we stop and ride the water slide?" and "Erin is sitting in my seat!"

The object of the game is of course to drive the parents to the point of threatening to stop the car and administer corporal punishment. The kid that can accomplish this in the least amount of time is the winner of the game.

The child can score extra points when the vehicle is stopped. If they beg for mercy and promise never to do anything bad again for the rest of their lives and the parents buy the act. That is that there is no road side beating administered, the child earns bonus points.

This game can go on for hours and hours. To the children it is a marvelous way to pass the time on a long road trip. They feel that they are doing something beneficial. The constant questions that are answered by the parents and the resulting threats help keep the driver awake and functioning at top form.

By JIM HUDSON  
Perryton Herald



## IOWA PARK LEADER

766280

Bob Hamilton	Editor/Publisher
Dolores Hamilton	Co-publisher
Olive Blalock	Reporter
Kari Collins	Reporter
Kim Schroeder	Composition

The IOWA PARK LEADER is published every Thursday. Offices are located at 112 W. Cash, Iowa Park, Texas 76367 (766280). Telephone: 592-4431. Second Class Postage Paid at Iowa Park, Texas, 76367. Annual subscription rates are \$8.41 in Wichita and Archer Counties; \$10.51 elsewhere in Texas; \$12.00 anywhere in the United States. Any erroneous reflection upon the character, standing or reputation of any person, firm or corporation which may appear in the columns of this newspaper will be corrected upon being brought to the attention of the publisher.

MEMBER

### TEXAS PRESS ASSOCIATION

# Shop Iowa Park First

NO OTHER NEWSPAPER IN THE WORLD WOULD MAKE THAT STATEMENT

## NOTICE TO SUBSCRIBERS

This is only a notice to those listed below that their subscriptions will expire on the published date. You don't owe us a thing if your name is on the list. It only means that what you've paid for is running out. To renew your subscription, please fill out the form below, as it appears on your paper's mailing label, please. Indicate whether this is a renewal or new subscription. Enclose your check or money order, as all subscriptions must be paid in advance.

## SUBSCRIPTIONS DUE TO EXPIRE September 15, 1986

Please Disregard If Already Paid

- |  |  |  |
|--|--|--|
| <p><b>A.</b> Benny Adams - IP<br/>R.A. Ashton - IP<br/>Judy Aulds - WF</p> <p><b>B.</b> D.W. Baca - IP<br/>C.B. Banks - IP<br/>Bobby Bates - Irving<br/>Nancy Bauer - IP<br/>L.B. Beavers - IP<br/>A.W. Bedford - IP<br/>Darryl Blackwell - IP<br/>Odell Blackwell - IP<br/>B. Boles - IP<br/>Roy Boutwell - IP<br/>S. M. Bradberry - Pampa<br/>Linda Bridges - Holliday<br/>Hattie Brown - IP<br/>Henry Brown - IP<br/>Jerald Brown - IP<br/>J. Ralph Brown - IP<br/>Lindsey Brown - IP</p> <p><b>C.</b> Kenneth Carter - IP<br/>Kinda Castles - IP<br/>Jon Catron - IP<br/>Ola R. Coats - Holliday<br/>James Cockrum - IP<br/>Jim Cockrum - IP<br/>Wade E. Coffee - IP<br/>Genevieve Cook - IP</p> <p><b>D.</b> Bobby Davenport - IP<br/>Mike Davenport-Houston<br/>Mrs. Lee Ora Davis - IP<br/>Rodney Davis - Dallas<br/>Lindy Dolberry - WF<br/>Glenn Duffey - IP<br/>Paul Duffey - IP<br/>Paul Duffey Jr. - IP</p> <p><b>E.</b> Wayne Edwards - IP<br/>Sally Escamilla-Del Valle</p> <p><b>F.</b> Rep. Charles Finnell-Hol.<br/>Clara Forbes - Ft. Worth<br/>Glen Fox - WF<br/>Greg Frazier - Midland</p> <p><b>G.</b> Doreen Gaston - IP<br/>Karen Gauthier - WF<br/>Oscar Goetze - IP<br/>Madge Graham - Hol.<br/>Paul Guyette - IP<br/>Jerrv Guvton - IP</p> <p><b>H.</b> G.O. Haswell Jr. - IP<br/>Alvin Heidrich - IP<br/>Randy Heidrich - IP<br/>Larry Helwig - IP<br/>Nancy Henderson - IP<br/>Ray Hicks - IP<br/>Steve Hines - Columbus<br/>Charmagne Hodges - IP<br/>Tina Hohfeld YH Chapter-WF<br/>Diane Hornbeck - WF<br/>Mrs. B. G. House - IP<br/>Thomas V. Huff - WF</p> <p><b>I.</b> Don Ickles - IP</p> | <p><b>J.</b> Nina Jacobson - IP<br/>Jesse Johnson - IP<br/>George Jones - IP<br/>Johnny Jones - IP</p> <p><b>K.</b> Steve Kelly - IP<br/>Mark Kyle - IP</p> <p><b>L.</b> Lynn Landrum - Burk<br/>L.J. Lane-IP<br/>Howard Lane II - WF<br/>Jim Lindsey - Cedar Park<br/>Leon Little - IP<br/>Rev. S.A. Luke - IP<br/>Robert Luney - IP<br/>Danny Lynn-Grnd. Prairie<br/>Harold Lynn-Grnd. Prairie<br/>Richard Lynn-Grnd. Prairie</p> <p><b>M.</b> Mrs. F.D. Martin - WF<br/>Yvonne Martin - WF<br/>Charles Mattis - Corp. Christi<br/>Katha McAllister - Holl.<br/>Paula McClure-Mansfield<br/>Joe McDonald - IP<br/>Tama McDowell - IP<br/>Robert McGarry - WF<br/>Robert G. McIlroy - IP<br/>Thomas McKee - IP<br/>H.P. McLeland - IP<br/>Craig Medlinger - IP<br/>Betty Melchiori - IP<br/>Ken Miller - Belton<br/>James Moer - IP<br/>Ann Moore - IP<br/>Dale Moore - IP<br/>W.K. Morris - WF</p> <p><b>N.</b> Joe Neskorik - Seymour<br/>Gary Neves - IP</p> <p><b>O.</b> Gerald O'Brien - WF<br/>Bea O'Hara - WF</p> <p><b>P.</b> Debbie Booher Pace - Olney<br/>Robert Palmer - IP<br/>Etta Payton - WF<br/>Deena Perry - Waukomis<br/>John Picciano-Euclid<br/>Lena Powell - IP<br/>Elgin Pressler - IP<br/>Janice Putman - IP<br/>Dorothy Pybus - IP</p> | <p><b>R.</b> J.C. Ralston - IP<br/>Joe Raines - IP<br/>Frances Reasor - IP<br/>Helen Reed - IP<br/>David Ross - IP<br/>Richardson Dairy Queen - Holliday<br/>Ricky Ricks - IP<br/>Harold Rinehart - IP<br/>Kevin Rubnett - Abilene<br/>G.R. Rusk - IP</p> <p><b>S.</b> Louis Sawyer - IP<br/>Earl Scheffe - IP<br/>Robert Sefcik - IP<br/>Howard Shannon-Bonham<br/>Jeff Shierry - IP<br/>E.J. Shook - IP<br/>Orpha Sidlauskas - IP<br/>David Simmons - WF<br/>Dean Simmons-Henrietta<br/>Oscar Singleton - IP<br/>Bruce Smith - IP<br/>Mrs. Travis Smith - WF<br/>Wayne Snyder - IP<br/>Judy Spring - IP<br/>Jeff Spruiell - WF<br/>B.L. Starnes - IP<br/>David Steele - Arlington<br/>Sharon Stewart - IP<br/>Henry Sullivan - IP</p> <p><b>T.</b> Robin Taylor - WF<br/>Dale Thompson - IP<br/>Dr. Gene Todd - Ponchatoula<br/>Linda Tokoi - Houston<br/>Randy Trantham - IP<br/>Frank Trotter - IP<br/>Ken Turman - IP</p> <p><b>U.</b> Jackie Underwood - IP<br/>United Way - WF</p> <p><b>W.</b> Mary Walls - IP<br/>E.L. Watts - IP<br/>Sherry Weaver - Lone Oak<br/>Richard Wheeler - IP<br/>W.F. Williams - Oklahoma City<br/>Thomas Wilson - WF<br/>Carey Wright-Lake Worth<br/>Mrs. W.W. Wright - IP</p> <p><b>Y.</b> Michael Young - IP<br/>Scott Young - IP</p> |
|--|--|--|

Wichita and Archer Counties.....\$8.41  
Elsewhere in Texas .....\$10.51  
Elsewhere in the United States.....\$12.00

To: Iowa Park Leader  
Box 430  
Iowa Park, Tex.  
76367

PLEASE CHECK ONE:  
 New  
 Renewal  
 Change of Address Only

\$ \_\_\_\_\_ Enclosed

\_\_\_\_\_  
(Name)  
\_\_\_\_\_  
(Address, P. O. Box, or Route No.)  
\_\_\_\_\_  
(City) (State) (Zip Code)



Take a look at this...

**DUNCAN HINES RTS FROSTINGS**  
 76 1/2 OZ. CAN **\$1.39**

**DUNCAN HINES LAYER CAKE MIXES**  
 18 1/2 OZ. BOX **79¢**

**TV SPECIAL**

**FAMILY SCOTT BATHROOM TISSUE**  
 4 ROLL PKG. **79¢**

**SUNNYFRESH GRADE A LARGE EGGS**  
 18 CT. CTN. **\$1.09**

**75¢ OFF LABEL TIDE DETERGENT**  
 72 OZ. BOX **\$2.99**

**TV SPECIAL**

**REG./DIET ASST. SODA POP FAYGO**  
 16 OZ. BTL. **4 \$1**

**BIG ROLL SCOTT TOWELS**  
 JUMBO ROLL **69¢**

**REYNOLD'S ALUMINUM FOIL**  
 12"x25' ROLL **49¢**

**30¢ OFF LABEL CORN OIL MAZOLA**  
 48 OZ. BTL. **\$1.99**

**SHELF SPECIALS**

**HELLMANN'S MAYONNAISE**  
 32 OZ. JAR **\$1.89**

**PEANUT BUTTER SKIPPY**  
 18 OZ. JAR **\$1.79**

**DUNCAN HINES RTS COOKIES**  
 12 OZ. PKG. **\$1.29**

**U.S. NO. 1 RUSSET POTATOES**  
 5 LB. BAG **69¢**

**CALIFORNIA VINE RIPENED CANTALOUPE**  
 25¢ LB.

**JONATHAN APPLES** 3 LB. BAG **\$1.69**  
**BELL PEPPERS** 5 FOR **\$1.00**  
**JALAPENO PEPPERS** 49¢ LB.  
**CRISP CELLO CARROTS** 3 1 LB. PKGS. **\$1.00**

**COOL DAIRY BUYS**

**SHURFRESH BUTTERMILK** 1/2 GAL. CTN. **\$1.19**  
**SHURFRESH COTTAGE CHEESE** 24 OZ. CTN. **\$1.49**  
**FISHER'S SANDWICH MATE CHEESE SLICES** 12 OZ. PKG. **99¢**

**TV SPECIAL**  
**KRAFT CHILLED ORANGE JUICE** 1/2 GAL. BTL. **\$1.59**

**FROZEN FOOD SPECIALS**

**SHURFINE APPLE JUICE** 12 OZ. CAN **69¢**  
**SHURFINE GRAPE JUICE** 12 OZ. CAN **69¢**  
**BANQUET ASSORTED CREAM PIES** 14 OZ. PKG. **99¢**  
**BANQUET HOT AND SPICY OR REGULAR FRIED CHICKEN** 32 OZ. PKG. **\$2.99**

**AUNT JEMIMA FROZEN WAFFLES** 10 OZ. PKG. **89¢**

**GLADIOLA FLOUR** 5 LB. BAG **88¢**

**RANCH STYLE BEANS** 3 16 OZ. CANS **\$1.19**

**CAMPBELL'S CHICKEN NOODLE SOUP** 3 10.5 OZ. CANS **\$1.19**

**STARKIST TUNA** 6.5 OZ. CAN **49¢**

**LIBBY VIENNA SAUSAGE** 2 5 OZ. CANS **89¢**

**SOLO 16 OZ. PARTY CUPS** 20 CT. PKG. **99¢**  
**SOLO 9" PARTY PLATES** 15 CT. PKG. **99¢**

**HEALTH & BEAUTY AIDS**

**1/2 OZ. SINAREST 12 HOUR NASAL SPRAY / 20 CT. TABLETS** EACH BTL. **\$1.99**

**WIDE SOLID STICK SURE DEODORANT** 2 OZ. SIZE **\$2.49**

**SUPER TRIMMED BONELESS CHUCK ROAST**  
 LB. **\$1.27**

**FRESH LEAN GROUND CHUCK**  
 LB. **\$1.37**

**BONELESS CHUCK STEAK** LB. **\$1.37**  
**BONELESS ARM CUT CHARCOAL STEAK** LB. **\$1.57**  
**LEAN CUBES BONELESS STEW MEAT** LB. **\$1.67**  
**OSCAR MAYER ALL MEAT FRANKS** LB. **\$1.37**  
**OSCAR MAYER CHEESE FRANKS** LB. **\$1.67**  
**WIGHTS SMOKED SLICED SLICED BACON** LB. **\$1.77**

**S&H Bonus Booklet Specials**

**Duncan Hines Cake Mix** 18.5 oz. **34¢** With one Filled S&H Bonus Booklet

**Family Scott Bath Tissue** 4 Roll **34¢** With one Filled S&H Bonus Booklet

**Sunny Fresh Grade A Large Eggs** 18 ct. **64¢** With one Filled S&H Bonus Booklet

**Reynolds Aluminum Foil** 12"x25' Roll **4¢** With one Filled S&H Bonus Booklet

**B&R** **AF AFFILIATED FOODS INC.** **Come Home for Good!**

**WE ACCEPT FOOD STAMPS**  
**WE RESERVE THE RIGHT TO LIMIT QUANTITIES**

**THRIFTWAY**

**PRICES EFFECTIVE**  
**Sept. 3-10, 1986**  
 Thrifty McSever



# Highway work slated

**HOLLIDAY** - One of Holliday's traffic problems on the highway through town will be corrected with work announced this week by the State Highway Department.

A project to widen a 4.3-mile section of US 82 west of Wichita Falls will soon be underway, at a cost of \$1,041,986.

"The work will be a continuation of our effort to widen US 82 to four lanes," said Ralph Self, highway department resident in Wichita Falls.

"This particular project will widen US 82 from its junction with Texas 258 south of Wichita Falls to just west of Holliday. In addition to widening the highway, the work will

provide a continous left-turn lane on US 82 in Holliday," Self said.

Zack Burkett Co. of Graham was low bidder. Construction should begin in early fall and is expected to take 230 working days to complete.

## Screening clinic set

**HOLLIDAY** - The Texas Department of Health will conduct a screening clinic from 10 a.m. to 3 p.m. Monday at Holliday Elementary School.

Screening tests offered include blood pressure, diabetes, anemia, height, weight, and skin disorders.



## FFA News

The Iowa Park FFA Chapter will hold its first meeting of the year Monday at the FFA farm. All chapter members and parents are invited to attend.

Dana Gray, chapter advisor, will be in charge of the program, which will be a show clinic and cover seven fields of supervised occupational experience programs which are: lambs, steers, hogs, goats, horses, rabbits and turkeys.

# 10 file for place on ballot

**HOLLIDAY** - Ten Holliday residents are on the ballot to fill three vacant positions on the city council in elections to be held Sept. 22.

Eleven candidates were originally on the ballot, but one, Paul Alan Craig, whose name will still be on the ballot, had to resign from the race due to ineligibility.

The first meeting of the new council will be called for Sept. 22 to canvass votes.

Oct. 6 has been set for the first regular meeting in which the council faces the grim task of preparing the budget for this fiscal year, which began Aug. 1. Since the city council didn't have a quorum to either prepare or approve a budget, the city has been operating along the same lines as last year's budget until a new budget could be set, according to Brown Hudson, city administrator.

The possibility of a tax increase of over three percent, which requires a public hearing, is great. "We need it to continue to provide the services that we have," said Hudson, "Three per cent only brings in about \$2,000."



## Friday, Sept. 5

Breakfast: Pancake, syrup, milk, bacon.

Lunch: Eagle burger, potato salad, lettuce, tomatoes, onions, pickles, milk, ice cream.

## Monday, Sept. 8

Breakfast: Donuts, milk, juice.  
Lunch: Fish nuggets, macaroni & cheese, tartar sauce, catsup, french fries, cobbler, milk.

## Tuesday, Sept. 9

Breakfast: Oatmeal, toast, milk, fruit.

Lunch: Salisbury steak, creamy potatoes, broccoli & cheese, gravy, applesauce, cake, milk, bread.

## Wednesday, Sept. 10

Breakfast: Biscuits & gravy, sausage, milk, juice.

Lunch: Spaghetti & meat sauce, blackeyed peas, French fries, catsup, cake, milk.

## Thursday, Sept. 11

Breakfast: Juice, milk, toast (cheese)

Lunch: Corn dogs, tator tots, salad, catsup, milk, banana.

## Young Homemakers to seek members

**HOLLIDAY** - The Holliday chapter of Young Homemakers of Texas will have a member drive and salad supper at 7 p.m. Sept. 16 in the home economics room of Holliday High School.

Anyone wishing to join the chapter is welcome to attend.

Officers for 1986-87 were elected at the May meeting. These include Sharon Barker, president; Vicki Wilson, vice president; Noma Campbell, secretary; Paula Hall, treasurer; and Julie Looper, historian.

## CHRISTIAN CHURCH DISCIPLES OF CHRIST



We approach faith with reason and by faith go beyond reason

Christian Church (Disciples of Christ) where Christians of many denominations are uniting in Christ

## First Christian Church

Sunday School 9:45 a.m.  
Worship 10:55 a.m.  
Youth 5:30 p.m.  
Evening Service 6:30 p.m.  
Wednesday 7:00 p.m.

105 E. Cash at Bond  
Michael D. Grubbs, Minister

## TEXAS GARDENER TIPS

To begin a successful gardening season you must properly prepare your soil before planting time.

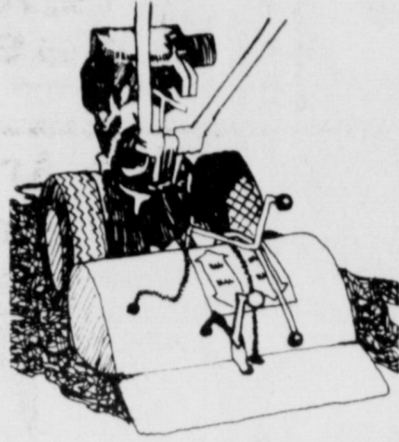
If your soil has never been "worked" or if you have had a garden but never paid attention to soil improvement, the following guidelines should be of help.

1. **Get an early start.** For ideal results, start to prepare your soil four to six weeks before planting time.

2. **Do a soil test.** This is one of the most basic—and most ignored—steps to successful gardening. How well your crops do hinge on whether your soil is acceptable. For most crops the range of 6.5 to 7.5.

3. **Treat with a soil fumigant.** If the area has never been worked before, or if you have a continual problem with grass, weeds or nematodes, you may want to treat the area with a soil fumigant such as Vapam. Be sure to follow the label instructions.

## Prepare Gardens Ahead of Time



Most gardens will perform better if you add proper amounts of commercial fertilizer. Though these requirements vary somewhat depending on your soil and the crops you plan to grow, it is generally advisable to use moderate amounts of a complete fertilizer. The equivalent of 1 to 2 pounds per feet of row should be adequate.

6. **Till your garden deeply.** After adding the organic matter and fertilizers, your soil should be tilled to a depth of at least 8 to 10 inches, the deeper the better.

7. **Keep your soil healthy and productive.** Now that you have developed healthy, fertile garden soil, be sure to maintain it by regular applications of fertilizer and organic matter.

TEXAS GARDENER  
P.O. Box 9005 Dept. RM  
Waco, TX 76714



Iowa Park Leader  
P.O. Box 430  
Iowa Park, TX 76367

**First United Pentecostal Church**

"And it shall come to pass in the last days, saith God, I will pur out of my Spirit upon all flesh"...

Sunday morning 10:00 a.m. Wed. Bible Study 7:30 p.m.  
Sunday evening 6:30 p.m. Fri. Youth Service 7:30 p.m.

A friendly & caring church.  
Pastor: Greg K. Hardin Phone 592-4275 802 N. First

**Lakeview Church of God**

WEDNESDAY EVENING (FTH-Bible Study) 7:30 p.m.  
SUNDAY SCHOOL 9:45 a.m.  
SUNDAY MORNING WORSHIP 11:00 a.m.  
SUNDAY NIGHT WORSHIP IS NOW 6:00 p.m.

Pastor — Rev. Ole Olds, Pastor Church 592-9555  
N. Victoria & Expressway 592-2776

**First United Methodist Church**

201 E. Bank

Church School 9:40 Youth Meetings 5:00  
Morning Worship 10:40 Evening Worship 6:00

LUCK MEYERS, PASTOR

**Christ The King Catholic Church**

First and Clara Phone 592-2802  
Rev. Mr. Patrick Burke, Pastor  
8:45 a.m. C.C.D. -- 10 a.m. Mass

**First Presbyterian Church**

REV. BETTY L. MEADOWS Pastor  
CHURCH SCHOOL - 9:30 A.M.  
WORSHIP - 11:00 A.M.

A Caring Congregation of  
Palo Duro Presbytery - Presbyterian Church [USA]

THE END OF YOUR SEARCH FOR A FRIENDLY CHURCH

**ASSEMBLY OF GOD**

SUNDAY:  
9:45 a.m. Sunday School  
11:00 a.m. Morning Worship  
5-6:30 p.m. Missionettes & Royal Ranger  
7 p.m. Evangelistic Service  
Wednesday Service 7 p.m.

200 S. YOSEMITE  
Charles Hensley, Pastor

**Faith Baptist Church**

"Where the Bible is taught, the family is emphasized, and where everybody is somebody."

411 S. Wall S.B.C. 592-4894

SUNDAY  
Sunday School 9:30 a.m.  
Morning Worship 8:20 & 10:40 a.m.  
Church Training 6:00 p.m.  
Evening Worship 7:00 p.m.

WEDNESDAY  
Wednesday Evening Prayer 7 p.m.  
Choir Rehearsal 8:00 p.m.

Nursery Care Provided - Full Range of Mission's and Children's Ministries

Pastor, Jerry L. Miller

**Pacific Avenue Missionary Baptist Church**

1400 North Pacific Avenue

Larry Washburn Pastor  
Church - 592-9711  
Pastor - 592-4288

-- Informal, Christ-Centered Worship for all ages --

Sunday School 9:45 a.m.  
Morning Worship 11:00 a.m.  
Evening Worship 6:00 p.m.  
Wednesday 7:00 p.m.

**Church of God**

601 E. Cash

Pastor, S. A. Luke  
Sunday School - 9:45 a.m.  
Sunday Morning Worship - 11:00  
Sunday Night Worship Service - 7:00 p.m.  
Wednesday Night Service - 7:30 p.m.

Parish 592-5316 Office 592-4348

Jesus is the Cornerstone

**Cornerstone Pentecostal Church of God**

SS - 9:45 a.m. Sun. Morn. - 10:50 a.m. -SERVICES- Sun. Evening - 7:00 Wed. Evening - 7:00

Jesus said, upon this rock I'll build my church and the gates of hell shall not prevail against it. - Matthew 16:18

W. Smith Rd. Pastor: Duffy Terry 592-5520

**Kamay Road Church of Christ**

Corner of Colorado & Emerald

Seeking the Old Paths

Lord's Day 10:30 a.m. & 6 p.m.  
Wednesday 7:00 p.m.

**Good Shepherd Lutheran Church**

1st & Magnolia Iowa Park

Sunday School: 9:45 a.m.  
Worship Service: 10:45 a.m.

**First Baptist Church**

A Southern Baptist Church of Iowa Park Yosemite at Park

SUNDAY SERVICES Mornings

Sunday School 9:45  
Worship 11:00

Evenings  
Church Training 6:00  
Worship 7:00

WEDNESDAY  
Prayer Meeting 7:00  
Choir Rehearsal 7:45

**IOWA PARK CHURCH OF CHRIST**

300 East Park, Iowa Park, Texas 76367, (817) 592-5415

SCHEDULE OF SERVICES

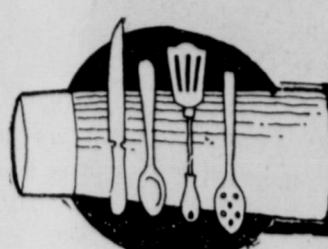
Sunday  
Bible Study 9:30 a.m.  
Worship 10:30 a.m.  
Evening Worship 6:00 p.m.

Wednesday  
Evening Study 7:30 p.m.

Thursday  
Ladies bible Class 7:30 p.m.  
Call office for information

We offer a Free Bible Correspondance Course, Call for details.





## Cook of the Week

Spinach, a vegetable that is both liked and disliked. Many young people have been coaxed to eat it so that they would be strong like Popeye. It can be eaten raw, boiled and seasoned with butter, used in salads, and one of the most popular uses of it today is an ingredient for dips. One way that Barbara (Mrs. Patrick) Hunter uses it is in her Spinach Dip, one of her recipes for this week.

The affirmation of the existence of spinach in very early days is subject to suspicion, according to one authority on the history of foods and vegetables. As early as 1353 it did appear in a list of vegetables recommended for monks on fast days. A manuscript dated 1440 states that the chief vegetables eaten in England were cabbage, leeks, radishes and spinach.

Perhaps the earliest record we have of it comes from China, where we hear that the king of Nepal sent some plants to the Chinese in A.D. 647.

Spinach seems to have slipped surreptitiously into America. We do not know who brought it, when or where, but in 1866 three varieties were growing in American gardens. Thomas Jefferson planted one variety of it. Zavala County of Texas calls itself "the spinach capital of the world," but California produces fifty percent of all American spinach.

Mrs. Hunter was graduated from Electra High School and from Midwestern State Univ. with a BSE degree. She began work Tuesday as a teachers' aide at Sheppard Elementary School.

Barbara and Patrick Hunter have a daughter, Casey, 10 years old, and a son, Kevin, six years old. They are members of First Baptist Church, and have lived in Iowa Park five years. He works for Baylor Medical Leasing Co. Barbara is a member of Kidwell



Mrs. Patrick Hunter

PTA, secretary of the Red River Square Dance Association, assistant Camp Fire leader, and secretary of the district committee of Camp Fire. She likes to cross stitch, bowl, square dance and do ceramics. She is a member of the ceramics class at First Baptist Church.

**SPINACH DIP**  
1 box frozen chopped spinach, thawed and drained well  
8 oz. cin. sour cream  
8 oz. Hellman's mayonnaise  
Onion flakes to taste  
Mix well refrigerate for several hours. Serve with carrot and celery sticks.

**POPPY SEED DRESSING**  
1/3 cup sugar  
3/4 T salt  
1/3 cup vinegar  
2 T grated onion  
1 1/2 T poppy seed  
1 cup oil  
1/2 tsp. dry mustard  
Mix all ingredients and refrigerate for several hours. Serve over: cantaloupe, peaches, bananas, seedless white grapes.

**UGLY DUCKLING PUDDING CAKE**  
1 pkg. yellow cake mix  
1 pkg. (4 serving size) lemon instant pudding  
1-16 oz. can fruit cocktail in syrup  
1 cup coconut  
4 eggs  
1/4 cup oil  
1/2 cup packed brown sugar  
1/2 cup chopped pecans  
Blend all ingredients except brown sugar and nuts in large mixing bowl; beat 4 minutes at medium speed. Pour into greased and floured 13x9 pan. Sprinkle with brown sugar and nuts.  
Bake at 325 degrees 45 minutes or until cake springs back when lightly pressed and pulls away from side of pan. Do not underbake. Cool in pan 15 minutes. Spoon Hot Butter Glaze over cake.

**BUTTER GLAZE**  
1/2 cup butter  
1/2 cup sugar  
1/2 cup evaporated milk  
Combine in saucepan and boil 2 minutes. Stir in 1 1/3 cup coconut.

**DELICIOUS YAMS**  
1 large can yams, drained and mashed  
1/2 stick oleo, melted  
1/2 cup sugar  
1/2 cup evaporated milk  
2 eggs, slightly beaten  
1 tsp. vanilla

Mix above ingredients and top with:  
1/2 stick oleo  
1 cup brown sugar  
1 cup chopped pecans  
Bake in buttered casserole at 350 degrees 1 hour.

**CREAMED TACOS**  
2 cups red beans  
1 large can chili  
1/2-1 can Ro-tel tomatoes and chilies

Mix and let come to a boil very slowly. Add: 1 cup whipping cream, mix. Add 2 cups grated cheese. Serve over Fritos.

## Farm Bureau annual meet set Sept. 13

Annual meeting of Wichita County Farm Bureau will be held at 6:30 p.m. Sept. 13 in Iowa Park High School cafeteria.

Reservations for the meal, which is free to members, should be made at the Farm Bureau office, according to Fred Dwyer, president, by Sept. 10.

Entertainment will be furnished by The Imitation Stats, a group of Knox County farmers who imitate the Statler Brothers.

During the business session, resolutions made on the local level will be discussed, voted on, and those approved forwarded to the state level.

Recognitions, gifts and election of 1987 officers will complete the meeting.



### CREATIVE AWARDS

Announces the partnership of Sharon Tigrett and Bobby Whisnand in business and marriage. Join us in celebration with sale prices on all merchandise through September.

Call -- We will come to you for all your business's and organization's shirt, cap, and jacket needs.

We also have the most affordable selection of trophies and awards in the area. All printing and engraving is done in-house.

Call Bobby or Sharon at 691-5541

### New Arrivals Just in Time for FOOTBALL!

-Special-  
**\$19.95**  
Reg. \$23.95

### FASHION OUTLET

Corner of W. Park and N. Yosemite  
HOURS: 10-6, Monday - Saturday

# THANKS

Iowa Park Booster Club wants to say THANKS to The School System, Community and Workers for their support in making our Barbecue Supper a Huge Success!

We encourage you to support the teams by attending every game.

Remember to buy your Booster Club Membership

Booster Club meetings are held at 7:15 each Monday evening in the Field House.

# GRAND OPENING

## Flowers by Reba

(Formerly Petal Pushers)  
309 N. Wall  
Ph. 592-2641  
Steve and Reba Catlin - Owners

Free Carnations for Everyone  
Free Cookies and Punch

We invite you to drop by and visit.  
We've made a lot of changes you'll like!

### Visit The Hawk Shop

### FULL-LINE FLORIST

- Weddings • Funerals • Hospitals
- Live and Silk Flowers •
- Homecoming Mums • Baskets •

Free delivery in Iowa Park, Holliday, Wichita Falls, Valley View and Sheppard Air Force Base



# Tree leaves turning color early

By David Finley  
County Agent

I heard this question last week. "Trees all over my landscape are showing brown leaves on several large limbs and some of them have brilliant yellow leaves still attached to the limbs. It does not seem to be an insect or leaf disease problem. What is it?"

Those that have trees with leaves showing these and the following symptoms, can suspect leaf scorch. It is first noticed as yellowing or bronzing of tissue between the vein

or along the margin of leaves. This symptom usually follows drying winds and bright sunshine of extremely hot days. Later, these leaves appear dry and scorched and may even drop off. However, the tree does not die. They usually appear on single limbs or on one side of the tree (usually the south side but can occur on any side).

Leaf scorch is a non-infectious disease of shade trees, especially red maple, cottonwood, silver maple, Catalpa, ash and occasionally oak. Trees are more susceptible if they

have low vigor, have been damaged by machinery or are surrounded by sidewalks or driveways.

In most cases all leaves on the same branch are affected more or less uniformly. Frequently only one side of the tree is affected—the side exposed to the sun or drying winds. Occasionally, individual trees are severely damaged, while those of the same species in the immediate vicinity are unaffected. This can be due to seedling variation or more probably due to variations in soil conditions.

Leaf scorch is caused by failure of the tree roots to supply enough water to the leaves at a critical time, usually in July and August. A great amount of water evaporates from the leaf surface during hot, windy, dry weather. If soil water is deficient, the exposed leaves actually dry out and scorch.

Trees with defective root systems are particularly subject to leaf scorch. The same holds true for trees whose roots have been partly removed or covered with impervious material like asphalt or concrete paving. Soil that drains excessively or that has a low water table as well as attack by leaf sucking insects can also contribute to the scorch problem.

Leaf scorch cannot be corrected once it appears, but injury can be kept to a minimum by improving the tree's general condition.

If the tree has a permanently suppressed or injured root system, prune some of the branches to maintain an even balance between top and roots. This practice will not injure the tree

and may actually improve its appearance. For prized trees, mulch to improve the soil's water holding capacity, and water liberally to the subsurface during hot weather. Since insect feeding reduces tree vigor, a suitable insect control program is also worthwhile. If the root system has been injured by excavation, you can expect leaf scorch to recur during drought until the tree is able to re-establish a vigorous root system. Usually this can take place only if the top growth is thinned sufficiently to compensate for the root damage.

Leaf scorch is a perennial problem that I really get a lot of questions on each year. Don't despair because the affected tree probably won't die, but it will sure make you think it is.

## Worth Quoting

What if you owned a business that all of a sudden began to rake in the money at a rapid rate, providing profits that you never dreamed of and which came in an unending stream? You would be disposed to spend some of this money on perhaps a new house, a new car, some trips, some clothes, perhaps some gifts to relatives and charities.

And then what if business dropped off and you had to reduce your standard of living by cutting down on various expenditures such as trips and cars and comforts of life? You would try to maintain your standard of living as long as you could and would resist greatly the need to economize.

This, in a nutshell, is what has happened to the state of Texas. During the 1970s, the Texas economy experienced unprecedented expansion, due to the skyrocketing oil and gas prices. From 1972 to 1982 tax collections on oil and gas rose from just over \$300 million to almost \$2.4 billion, an annual growth rate of more than 20 percent.

As this money rolled in, did our state government consider dropping the tax rates and cutting down on the income? This is an absurd question because we all know that happened. Our state budget expanded to meet its income. There were some years in there that the state couldn't spend it all, and ended the year with a surplus.

This was taken care of promptly with the new budget year, of course.

Why was it necessary for Texas to spend ten times as much as it did before the price of oil went up? The state experienced some population growth, to be sure, but this can't account for the huge increase in spending. Let's face it. The state spent more money simply because it was there.

Move to a local level. Our county government has experienced an un-

precedented growth in its tax base. Year after year the mineral valuations have grown and grown, providing the county with a lot of money available for spending. When the county revalued its property in 1980, the immediate result was an outpouring of money which meant about three times as much cash on hand as before the revaluation.

When no expected taxpayer protest resulted, the logical next step was to spend this money on good works and on good projects. Because it had plenty of money, our county has been able to invest in a log of good and worthwhile projects. Now that the bloom is off the rose and the need for tightening down is quite apparent, it is hard to cut back and do on less.

Our school district has also been blessed with plenty of money because of oil and gas income, along with a generous state government which has distributed money for public education. Now the schools are hit with a double whammy, losing tax base and getting cut by the state education budget.

This has caused the school to cut down, and while admittedly most of the cuts in spending have been cosmetic, the school board and administration have had to face the fact that they will have to get along on less.

Tax supported entities are different from individuals and business in that they have a source of revenue not available to others. Taxes can be levied on property for local governments and upon many other things for state governments.

Those who levy the taxes will resist as long as they can the unpleasant task of getting by on less money because the people who pay the taxes complain about paying them but at the same time expect the same level of services as before.

There is a law of gravity which says everything that goes up must come down. Maybe this doesn't apply to taxes. We are evidently going to find out whether or not it is true in the very near future.  
By HAROLD HUDSON  
Perryton Herald

### New Meter Connections

Bertha L. Sharp - 301 E. Pecan  
Terry & Stephen Hudson - 304 S. Wall  
Janice Kinnard - 418 E. Diamond  
Donald Molsbee - 801 N. Park  
Tammy Lyons - 515 W. Aldine  
Charlie Bartee - 305 W. Crystal  
Bruce Hoover - 123 James  
Joy Moser - 129 Jfames  
W.E. Hicks - 203 Glenda


### Municipal Court Records

Results of municipal court held here yesterday were:  
Timothy Roe Talley, displayed fictitious license plate, \$49;  
Ronnie Lynn Wagner, speeding, taking defensive driving course (DDC);  
Nancy Louise Bauer, speeding, DDC;  
Derek David Thayer, speeding, \$47;  
Danny Louis Ainsworth, disorderly conduct, \$49.

Allstate Update: Homeowners Insurance

**"Before you write another check for homeowners insurance, compare. It could save you money!"**

**Robbin Crawford**  
Agent  
311 North Wall  
Iowa Park  
Bus. 592-2726  
Res. 592-4873



Paying that homeowners premium gets to be a habit. But now, lots of folks are comparing rates and finding out they may be paying too much.

Our office is right nearby, so it's easy to call or come in and compare your homeowners policy with Allstate. I'll not only go over price, but coverage too—so you get a fair and complete value comparison. That way, you'll know if you're getting the most for your home

insurance dollar. Let me try to help you save some money. You're in good hands with Allstate!

**Allstate**  
Allstate Insurance Company

**ARE YOU PUTTING ME ON?**



**MAKE THE CONNECTION FOR SAFETY!**

A MESSAGE FROM THIS NEWSPAPER AND THE DPS TROOPERS

**Nursing Home Insurance**  
For Folks Age 60-79

**Can pay up to \$100 a day for 5 full years**

Send coupon or call today for FREE FACTS including costs, exceptions, limitations, and renewal provisions.

322-6322  
Carolyn Kock  
104 Fre-Mar  
Wichita Falls, Tx.  
76301

**BANKERS LIFE AND CASUALTY**  
an ECH company

3179 detach along dotted line and mail

To: Bankers Life and Casualty  
104 Fre-Mar  
Wichita Falls, Tx. 76301

Yes, I want the facts about nursing home insurance. I understand there's no risk or obligation.

Name \_\_\_\_\_  
Address \_\_\_\_\_  
City \_\_\_\_\_  
State \_\_\_\_\_ Zip \_\_\_\_\_  
Year of Birth \_\_\_\_\_

**Got a zillion kids to clothe?  
Don't know which place is right?  
Then we're the ones you need to see,  
Our place is out of sight!**

**"PLAY IT AGAIN"**  
An infant thru  
junior resale boutique  
126 James Dr. 592-9604

**We need quality clothes for consignment**



**SNB**

**— We invite you to shop and compare our INTEREST RATES FOR SAVINGS**  
(Applicable September 3 through September 9)

Account	Interest (compounded daily)	Yield
7-31 Days	5.70%	5.865%
91 Days	6.05%	6.236%
182 Days	6.10%	6.289%
New Money Market Accounts	6.15%	(Simple interest)
Super Now Accounts	5.10%	(Simple interest)
1 Year	6.30%	6.502%
2 Year	6.70%	6.929%
3-5 Years	6.85%	7.089%
I.R.A.	7.35%	7.626%

(Substantial interest penalty required for early withdrawal. Rates subject to change without notice.)

**SNB STATE NATIONAL BANK**  
IOWA PARK, TEXAS  
Locally Owned FDIC

**Free Tickets To The Movies!**

TV Cable of Iowa Park presents the HBO/Cinemax **FALL KNOCKOUT Preview** for four full days, September 11-14.

Previews also include:  
Rambo, First Blood Part II (R)  
Inside The NFL #2  
Sesame Street Presents: Follow That Bird (G)  
Ghostbusters (PG)  
Gremlins (PG)  
Mad Max Beyond Thunderdome (PG-13)  
St. Elmo's Fire (R)

So join HBO/Cinemax for an entertainment lineup that really packs a punch.

**HBO Cinemax Combo**

All cable subscribers are eligible. Simply turn to Cinemax, Channel 12, Sept. 11 & 12, and HBO, Channel 12, Sept. 13 & 14.

**Limited-time Offer:  
1/2 Price Installation**

TV Cable of Iowa Park  
100 Williams Drive  
Burkburnett, Texas  
1-800-772-0915  
A Division of Tele-Communications, Inc.



AGENTS: A young woman leads a rebellion of...  
 10:00 \*\*\* MOVIE: CBS Saturday Night...  
 11:00 \*\*\* MOVIE: CBS Saturday Night...  
 12:00 \*\*\* MOVIE: CBS Saturday Night...  
 1:00 \*\*\* MOVIE: CBS Saturday Night...  
 2:00 \*\*\* MOVIE: CBS Saturday Night...  
 3:00 \*\*\* MOVIE: CBS Saturday Night...  
 4:00 \*\*\* MOVIE: CBS Saturday Night...  
 5:00 \*\*\* MOVIE: CBS Saturday Night...  
 6:00 \*\*\* MOVIE: CBS Saturday Night...  
 7:00 \*\*\* MOVIE: CBS Saturday Night...  
 8:00 \*\*\* MOVIE: CBS Saturday Night...  
 9:00 \*\*\* MOVIE: CBS Saturday Night...  
 10:00 \*\*\* MOVIE: CBS Saturday Night...  
 11:00 \*\*\* MOVIE: CBS Saturday Night...  
 12:00 \*\*\* MOVIE: CBS Saturday Night...  
 1:00 \*\*\* MOVIE: CBS Saturday Night...  
 2:00 \*\*\* MOVIE: CBS Saturday Night...  
 3:00 \*\*\* MOVIE: CBS Saturday Night...  
 4:00 \*\*\* MOVIE: CBS Saturday Night...  
 5:00 \*\*\* MOVIE: CBS Saturday Night...  
 6:00 \*\*\* MOVIE: CBS Saturday Night...  
 7:00 \*\*\* MOVIE: CBS Saturday Night...  
 8:00 \*\*\* MOVIE: CBS Saturday Night...  
 9:00 \*\*\* MOVIE: CBS Saturday Night...  
 10:00 \*\*\* MOVIE: CBS Saturday Night...  
 11:00 \*\*\* MOVIE: CBS Saturday Night...  
 12:00 \*\*\* MOVIE: CBS Saturday Night...  
 1:00 \*\*\* MOVIE: CBS Saturday Night...  
 2:00 \*\*\* MOVIE: CBS Saturday Night...  
 3:00 \*\*\* MOVIE: CBS Saturday Night...  
 4:00 \*\*\* MOVIE: CBS Saturday Night...  
 5:00 \*\*\* MOVIE: CBS Saturday Night...  
 6:00 \*\*\* MOVIE: CBS Saturday Night...  
 7:00 \*\*\* MOVIE: CBS Saturday Night...  
 8:00 \*\*\* MOVIE: CBS Saturday Night...  
 9:00 \*\*\* MOVIE: CBS Saturday Night...  
 10:00 \*\*\* MOVIE: CBS Saturday Night...  
 11:00 \*\*\* MOVIE: CBS Saturday Night...  
 12:00 \*\*\* MOVIE: CBS Saturday Night...







**11:30 (3) Evening Stocker (1987) (Drama) PG**  
**12:00 (3) Sports**  
**12:05 (3) World Cup of Suborbital (R)**  
**12:10 (3) World Cup of Suborbital (R)**  
**12:15 (3) World Cup of Suborbital (R)**  
**12:20 (3) World Cup of Suborbital (R)**  
**12:25 (3) World Cup of Suborbital (R)**  
**12:30 (3) World Cup of Suborbital (R)**  
**12:35 (3) World Cup of Suborbital (R)**  
**12:40 (3) World Cup of Suborbital (R)**  
**12:45 (3) World Cup of Suborbital (R)**  
**12:50 (3) World Cup of Suborbital (R)**  
**12:55 (3) World Cup of Suborbital (R)**  
**1:00 (3) World Cup of Suborbital (R)**  
**1:05 (3) World Cup of Suborbital (R)**  
**1:10 (3) World Cup of Suborbital (R)**  
**1:15 (3) World Cup of Suborbital (R)**  
**1:20 (3) World Cup of Suborbital (R)**  
**1:25 (3) World Cup of Suborbital (R)**  
**1:30 (3) World Cup of Suborbital (R)**  
**1:35 (3) World Cup of Suborbital (R)**  
**1:40 (3) World Cup of Suborbital (R)**  
**1:45 (3) World Cup of Suborbital (R)**  
**1:50 (3) World Cup of Suborbital (R)**  
**1:55 (3) World Cup of Suborbital (R)**  
**2:00 (3) World Cup of Suborbital (R)**  
**2:05 (3) World Cup of Suborbital (R)**  
**2:10 (3) World Cup of Suborbital (R)**  
**2:15 (3) World Cup of Suborbital (R)**  
**2:20 (3) World Cup of Suborbital (R)**  
**2:25 (3) World Cup of Suborbital (R)**  
**2:30 (3) World Cup of Suborbital (R)**  
**2:35 (3) World Cup of Suborbital (R)**  
**2:40 (3) World Cup of Suborbital (R)**  
**2:45 (3) World Cup of Suborbital (R)**  
**2:50 (3) World Cup of Suborbital (R)**  
**2:55 (3) World Cup of Suborbital (R)**  
**3:00 (3) World Cup of Suborbital (R)**

**3:05 (3) World Cup of Suborbital (R)**  
**3:10 (3) World Cup of Suborbital (R)**  
**3:15 (3) World Cup of Suborbital (R)**  
**3:20 (3) World Cup of Suborbital (R)**  
**3:25 (3) World Cup of Suborbital (R)**  
**3:30 (3) World Cup of Suborbital (R)**  
**3:35 (3) World Cup of Suborbital (R)**  
**3:40 (3) World Cup of Suborbital (R)**  
**3:45 (3) World Cup of Suborbital (R)**  
**3:50 (3) World Cup of Suborbital (R)**  
**3:55 (3) World Cup of Suborbital (R)**  
**4:00 (3) World Cup of Suborbital (R)**  
**4:05 (3) World Cup of Suborbital (R)**  
**4:10 (3) World Cup of Suborbital (R)**  
**4:15 (3) World Cup of Suborbital (R)**  
**4:20 (3) World Cup of Suborbital (R)**  
**4:25 (3) World Cup of Suborbital (R)**  
**4:30 (3) World Cup of Suborbital (R)**  
**4:35 (3) World Cup of Suborbital (R)**  
**4:40 (3) World Cup of Suborbital (R)**  
**4:45 (3) World Cup of Suborbital (R)**  
**4:50 (3) World Cup of Suborbital (R)**  
**4:55 (3) World Cup of Suborbital (R)**  
**5:00 (3) World Cup of Suborbital (R)**

**5:05 (3) World Cup of Suborbital (R)**  
**5:10 (3) World Cup of Suborbital (R)**  
**5:15 (3) World Cup of Suborbital (R)**  
**5:20 (3) World Cup of Suborbital (R)**  
**5:25 (3) World Cup of Suborbital (R)**  
**5:30 (3) World Cup of Suborbital (R)**  
**5:35 (3) World Cup of Suborbital (R)**  
**5:40 (3) World Cup of Suborbital (R)**  
**5:45 (3) World Cup of Suborbital (R)**  
**5:50 (3) World Cup of Suborbital (R)**  
**5:55 (3) World Cup of Suborbital (R)**  
**6:00 (3) World Cup of Suborbital (R)**  
**6:05 (3) World Cup of Suborbital (R)**  
**6:10 (3) World Cup of Suborbital (R)**  
**6:15 (3) World Cup of Suborbital (R)**  
**6:20 (3) World Cup of Suborbital (R)**  
**6:25 (3) World Cup of Suborbital (R)**  
**6:30 (3) World Cup of Suborbital (R)**  
**6:35 (3) World Cup of Suborbital (R)**  
**6:40 (3) World Cup of Suborbital (R)**  
**6:45 (3) World Cup of Suborbital (R)**  
**6:50 (3) World Cup of Suborbital (R)**  
**6:55 (3) World Cup of Suborbital (R)**  
**7:00 (3) World Cup of Suborbital (R)**

**7:05 (3) World Cup of Suborbital (R)**  
**7:10 (3) World Cup of Suborbital (R)**  
**7:15 (3) World Cup of Suborbital (R)**  
**7:20 (3) World Cup of Suborbital (R)**  
**7:25 (3) World Cup of Suborbital (R)**  
**7:30 (3) World Cup of Suborbital (R)**  
**7:35 (3) World Cup of Suborbital (R)**  
**7:40 (3) World Cup of Suborbital (R)**  
**7:45 (3) World Cup of Suborbital (R)**  
**7:50 (3) World Cup of Suborbital (R)**  
**7:55 (3) World Cup of Suborbital (R)**  
**8:00 (3) World Cup of Suborbital (R)**  
**8:05 (3) World Cup of Suborbital (R)**  
**8:10 (3) World Cup of Suborbital (R)**  
**8:15 (3) World Cup of Suborbital (R)**  
**8:20 (3) World Cup of Suborbital (R)**  
**8:25 (3) World Cup of Suborbital (R)**  
**8:30 (3) World Cup of Suborbital (R)**  
**8:35 (3) World Cup of Suborbital (R)**  
**8:40 (3) World Cup of Suborbital (R)**  
**8:45 (3) World Cup of Suborbital (R)**  
**8:50 (3) World Cup of Suborbital (R)**  
**8:55 (3) World Cup of Suborbital (R)**  
**9:00 (3) World Cup of Suborbital (R)**

**9:05 (3) World Cup of Suborbital (R)**  
**9:10 (3) World Cup of Suborbital (R)**  
**9:15 (3) World Cup of Suborbital (R)**  
**9:20 (3) World Cup of Suborbital (R)**  
**9:25 (3) World Cup of Suborbital (R)**  
**9:30 (3) World Cup of Suborbital (R)**  
**9:35 (3) World Cup of Suborbital (R)**  
**9:40 (3) World Cup of Suborbital (R)**  
**9:45 (3) World Cup of Suborbital (R)**  
**9:50 (3) World Cup of Suborbital (R)**  
**9:55 (3) World Cup of Suborbital (R)**  
**10:00 (3) World Cup of Suborbital (R)**

**Remodels, Additions, Carports, Patio Enclosures**  
**Free Estimates**  
**Phil McDonald**  
**592-9437**

**CABLE TELEVISION Information or Service**  
**CALL TOLL-FREE 696-0664**

**Remodels, Additions, Carports, Patio Enclosures**  
**Free Estimates**  
**Jim Clapp**  
**592-9467**













JUDY AULDS

### Judy Aulds recognized

Judy Aulds, daughter of Mr. and Mrs. Keith Aulds, was recently named "Manager of the Year" by Auburn Management Corporation of Dallas. The award was presented at a seminar in Dallas. Auburn Management owns various properties throughout Texas and Oklahoma.

Miss Aulds was graduated from Iowa Park High School in 1980. She received a BA degree from Midwestern State Univ. where she was nominated Junior and Senior Woman of the Year.

She has been associated with Auburn over two years and is currently residential manager of Park Place Apartments in Wichita Falls.

#### CARD OF THANKS

To the Neighbors of Arma V. Francis:

Thank you so much for the flowers you sent to our loved one's funeral. The florist inadvertently failed to give us a complete list of names we have found out & thus we failed to send you a card.

The Family of Arma V. Francis

#### CARD OF THANKS

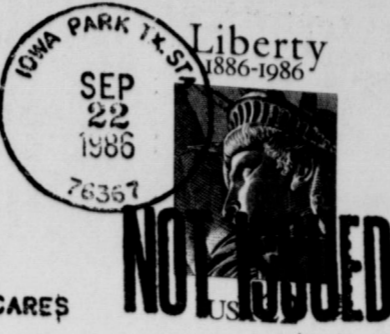
Thanks for your love, concern and prayers during my stay in the hospital.

Clyde Robertson

ANNUAL HOMECOMING WHOOP-T-DO CELEBRATION



A COMMUNITY THAT CARES



### Special cancellation stamp is approved by Post Office

Iowa Park's annual Whoop-T-Do will be getting a lot more publicity starting this year, thanks to the effort of Postmaster Ken Turman.

A special cancellation stamp was requested by Turman, and approved.

One restriction has been placed on its use, however. It can only be used on Whoop-T-Do date each year, Turman said. The stamp must be returned to Fort Worth for keeping until next year.

The post office is open between 9 a.m. and 12-noon each Saturday, which traditionally is Whoop-T-Do Day.

Turman said the special cancellation stamp must be requested at the Post Office window, if it is desired.

This year, a special commemorative Liberty stamp, featuring the Statue of Liberty, is being offered for special cancellation.

Turman said he has already received two requests from out of town, one from Dallas and one from Ohio, for postmarks on Whoop-T-Do Day this year.



#### FOOD SHOW

Anyone interested in participating in the 4-H Food Show and cooking class should contact Judy Webb, 438-2878, or Donna Hodges, 438-2847, before Sept. 17.

#### LEADERS TO MEET

Wichita County 4-H Adult Leaders and 4-H Council members will meet at 7:30 p.m. Tuesday at the Iowa Park Chamber of Commerce.

Organizational leaders will meet at 7 p.m., at the same location.



### Peoples Choice Art & Craft Show and Judging

\*\*\*\*\*

In connection with the Whoop-T-Do September 27, 1986

Plan now to enter

**Flowers & Gifts**  
406 W. Park  
in Park West Shopping Center

## Order your Homecoming Mum NOW!

(They're Different!)  
Prices range from \$10 up

And be sure to register whenever you're in the store for a **FREE \$100 Homecoming Mum**

No Purchase Necessary

Delivery to Iowa Park, Holliday and Wichita Falls

Phone **592-2736**  
Answered 24 hours

Owners  
**Mark & Judy (Rusk) Burgess**

## Shop Iowa Park First

# True Value. IT'S NEW! Disc Grinder

Heavy duty, hand-held Professional quality at discount prices

SIZE	REGULAR	SPECIAL
4 1/2 inch	53.99	39.99
5 inch	66.99	45.00
7 inch	122.95	70.00
9 inch	127.95	75.00

## PARKWAY

HARDWARE FURNITURE  
200-206 W. Bank 592-5512 592-4681

**PRICES EFFECTIVE SEPT. 4, 5, 6, 1986**

ALLSUP'S 30 YEAR COMMEMORATIVE

WHILE SUPPLIES LAST **Mug 99¢** REFILLS ONLY 49¢

FILLED WITH YOUR FAVORITE FOUNTAIN DRINK

SCOTT ASST. COLORS & PRINTS **Bathroom Tissue 79¢** 4 ROLL PKG.

ASST. FLAVORS BORDEN'S **Ice Cream \$1.69** 1/2 GAL. RND. CTN.

BORDEN'S ASST. FLAVORS **Yogurt 2.69¢** 8 OZ. CTNS.

DELICIOUS **Chimachanga 69¢** EACH

FRESH HOT **Burritos 85¢** 5 OZ. PKG.

OSCAR MAYER **Wieners \$1.18** 16 OZ. PKG.

STORE SPECIAL ALLSUP'S **Tallup 39¢** 32 OZ. CUP

MADE WITH 99% PURE WATER ALLSUP'S **Ice \$1.09** LARGE BAG

SHURFINE ALUMINUM FOIL 2 1/2 1

KLEENEX FACIAL TISSUE 175 CT. 69¢

SHURFINE SALTINE CRACKERS 1 LB. **2/\$1**

**Pepsi-Cola \$1.99** 12 oz. cans 6-pack

1 Mitchell/Labour Newsletter  
2 Best of America  
3 Frontiers  
4 MOVIE: Circus Angel (1985; Concert)  
5 MOVIE: Circus Angel (1985; Concert)  
6 MOVIE: Circus Angel (1985; Concert)  
7 MOVIE: Circus Angel (1985; Concert)  
8 MOVIE: Circus Angel (1985; Concert)  
9 MOVIE: Circus Angel (1985; Concert)  
10 MOVIE: Circus Angel (1985; Concert)  
11 MOVIE: Circus Angel (1985; Concert)  
12 MOVIE: Circus Angel (1985; Concert)  
13 MOVIE: Circus Angel (1985; Concert)  
14 MOVIE: Circus Angel (1985; Concert)  
15 MOVIE: Circus Angel (1985; Concert)  
16 MOVIE: Circus Angel (1985; Concert)  
17 MOVIE: Circus Angel (1985; Concert)  
18 MOVIE: Circus Angel (1985; Concert)  
19 MOVIE: Circus Angel (1985; Concert)  
20 MOVIE: Circus Angel (1985; Concert)  
21 MOVIE: Circus Angel (1985; Concert)  
22 MOVIE: Circus Angel (1985; Concert)  
23 MOVIE: Circus Angel (1985; Concert)  
24 MOVIE: Circus Angel (1985; Concert)  
25 MOVIE: Circus Angel (1985; Concert)  
26 MOVIE: Circus Angel (1985; Concert)  
27 MOVIE: Circus Angel (1985; Concert)  
28 MOVIE: Circus Angel (1985; Concert)  
29 MOVIE: Circus Angel (1985; Concert)  
30 MOVIE: Circus Angel (1985; Concert)  
31 MOVIE: Circus Angel (1985; Concert)  
32 MOVIE: Circus Angel (1985; Concert)  
33 MOVIE: Circus Angel (1985; Concert)  
34 MOVIE: Circus Angel (1985; Concert)  
35 MOVIE: Circus Angel (1985; Concert)  
36 MOVIE: Circus Angel (1985; Concert)  
37 MOVIE: Circus Angel (1985; Concert)  
38 MOVIE: Circus Angel (1985; Concert)  
39 MOVIE: Circus Angel (1985; Concert)  
40 MOVIE: Circus Angel (1985; Concert)  
41 MOVIE: Circus Angel (1985; Concert)  
42 MOVIE: Circus Angel (1985; Concert)  
43 MOVIE: Circus Angel (1985; Concert)  
44 MOVIE: Circus Angel (1985; Concert)  
45 MOVIE: Circus Angel (1985; Concert)  
46 MOVIE: Circus Angel (1985; Concert)  
47 MOVIE: Circus Angel (1985; Concert)  
48 MOVIE: Circus Angel (1985; Concert)  
49 MOVIE: Circus Angel (1985; Concert)  
50 MOVIE: Circus Angel (1985; Concert)  
51 MOVIE: Circus Angel (1985; Concert)  
52 MOVIE: Circus Angel (1985; Concert)  
53 MOVIE: Circus Angel (1985; Concert)  
54 MOVIE: Circus Angel (1985; Concert)  
55 MOVIE: Circus Angel (1985; Concert)  
56 MOVIE: Circus Angel (1985; Concert)  
57 MOVIE: Circus Angel (1985; Concert)  
58 MOVIE: Circus Angel (1985; Concert)  
59 MOVIE: Circus Angel (1985; Concert)  
60 MOVIE: Circus Angel (1985; Concert)  
61 MOVIE: Circus Angel (1985; Concert)  
62 MOVIE: Circus Angel (1985; Concert)  
63 MOVIE: Circus Angel (1985; Concert)  
64 MOVIE: Circus Angel (1985; Concert)  
65 MOVIE: Circus Angel (1985; Concert)  
66 MOVIE: Circus Angel (1985; Concert)  
67 MOVIE: Circus Angel (1985; Concert)  
68 MOVIE: Circus Angel (1985; Concert)  
69 MOVIE: Circus Angel (1985; Concert)  
70 MOVIE: Circus Angel (1985; Concert)  
71 MOVIE: Circus Angel (1985; Concert)  
72 MOVIE: Circus Angel (1985; Concert)  
73 MOVIE: Circus Angel (1985; Concert)  
74 MOVIE: Circus Angel (1985; Concert)  
75 MOVIE: Circus Angel (1985; Concert)  
76 MOVIE: Circus Angel (1985; Concert)  
77 MOVIE: Circus Angel (1985; Concert)  
78 MOVIE: Circus Angel (1985; Concert)  
79 MOVIE: Circus Angel (1985; Concert)  
80 MOVIE: Circus Angel (1985; Concert)  
81 MOVIE: Circus Angel (1985; Concert)  
82 MOVIE: Circus Angel (1985; Concert)  
83 MOVIE: Circus Angel (1985; Concert)  
84 MOVIE: Circus Angel (1985; Concert)  
85 MOVIE: Circus Angel (1985; Concert)  
86 MOVIE: Circus Angel (1985; Concert)  
87 MOVIE: Circus Angel (1985; Concert)  
88 MOVIE: Circus Angel (1985; Concert)  
89 MOVIE: Circus Angel (1985; Concert)  
90 MOVIE: Circus Angel (1985; Concert)  
91 MOVIE: Circus Angel (1985; Concert)  
92 MOVIE: Circus Angel (1985; Concert)  
93 MOVIE: Circus Angel (1985; Concert)  
94 MOVIE: Circus Angel (1985; Concert)  
95 MOVIE: Circus Angel (1985; Concert)  
96 MOVIE: Circus Angel (1985; Concert)  
97 MOVIE: Circus Angel (1985; Concert)  
98 MOVIE: Circus Angel (1985; Concert)  
99 MOVIE: Circus Angel (1985; Concert)  
100 MOVIE: Circus Angel (1985; Concert)



**Mary's Haircutting**  
Next to Cabe's on West Highway

**B&R Thriftway**  
401 W. Park 592-9831  
Open 7 days a week

WE SUPPORT OUR HAWKS  
**CRYOVAC**  
PACKAGING/MARKETING SYSTEMS

Iowa Park

**City Cleaners**

107 W. Cash 592-4241

**KAMAY ELECTRIC SERVICE**  
P.O. Box 144 Kamay, Texas  
Kamay 438-2844 Electra 495-4391  
W.F. 723-9126 W.F. 723-4602  
Electric Motor Repair and Pole Line Construction  
**EARL CRAVENS RONNY**  
438-2844 Kamay 438-2901

We're Proud of the Hawks

**Louis'**  
Distinctive jewelry  
592-5942 Louis & Betty Sefcik  
408 W. Park George Bushfield

WE BACK THE HAWKS!

**Jim's Conoco**  
592-4897  
612 W. Highway



**TANNER-AULDS FUNERAL HOME**  
-Since 1908-

300 E. Cash 592-4151  
"Our family serving your family"



**Park Ford**  
IOWA PARK 592-4106

**Bud Mercer Electric Co.**  
Residential & Commercial

BUD MERCER, Owner HARDIN HILL  
Phone 592-5413 Phone 592-2666

**BOBBY EVANS Sporting Goods INC.**

**Monty & Son's SEPTIC TANK SERVICE**  
592-4928

**Home Place Gifts & Crafts**  
Come See Us & Browse  
410 W. Park 592-5671



Hours:  
Closed Mondays  
Tues. 9:30 - 8 p.m.  
Wed. - Sat. 9:30 - 5:30

**video library Backs the Hawks!**  
901 WEST HIGHWAY  
IOWA PARK, TX. 76367  
Carmen & Eddy Lambert  
Melissa Horne, Joni Whitis  
Barbara Dumas

# Hawks show improvements in scrimmage with Olney

In their second and final pre-season scrimmage here Friday against Olney, the Hawk varsity showed considerable improvement over the previous week's scrimmage with Holliday.

Comparing running yardage, passing, first downs and touchdowns, the Hawks outgained the Cubs 243-104 rushing, were behind passing, 120-142, had more first downs, 16-10, and outscored the visitors 3-1.

In the first 20-play session, Iowa Park's offense sputtered, gaining only 37 yards rushing and 27 passing, with two first downs. Olney gained 78 rushing and 13 passing, and had three first downs.

The first session was first unit offenses against first unit defenses.

The second session, which gave coaches an opportunity to see their reserves in action, Iowa Park rushed 158 yards and passed 35 more, gaining nine first downs and scoring

twice.

Olney was held to 21 yards rushing and none passing, but gained three firsts.

The Hawk first-unit offense in the third session ran 48 net yards, passed 58 more, had five first downs and scored once, a one-yard plunge by Danny Forman.

Olney gained only five yards rushing in the third session, but gained 129 passing, thanks to a breakdown in the Hawk secondary that gave the Cubs an 80-yard TD. Olney also had four first downs.

The 58 yards passing for the Hawks came on two plays, both aeriels from quarterback Brad Huff to tailback Scott Weaver, 22 and 36 yards.

In their first session defensive play, Olney's passing game was thwarted by two interceptions, one by Steve Allen and the other by Richard Morath.

At the conclusion of the three sessions, each team got the ball five plays at the five-yard line to practice goal line offenses and defenses.

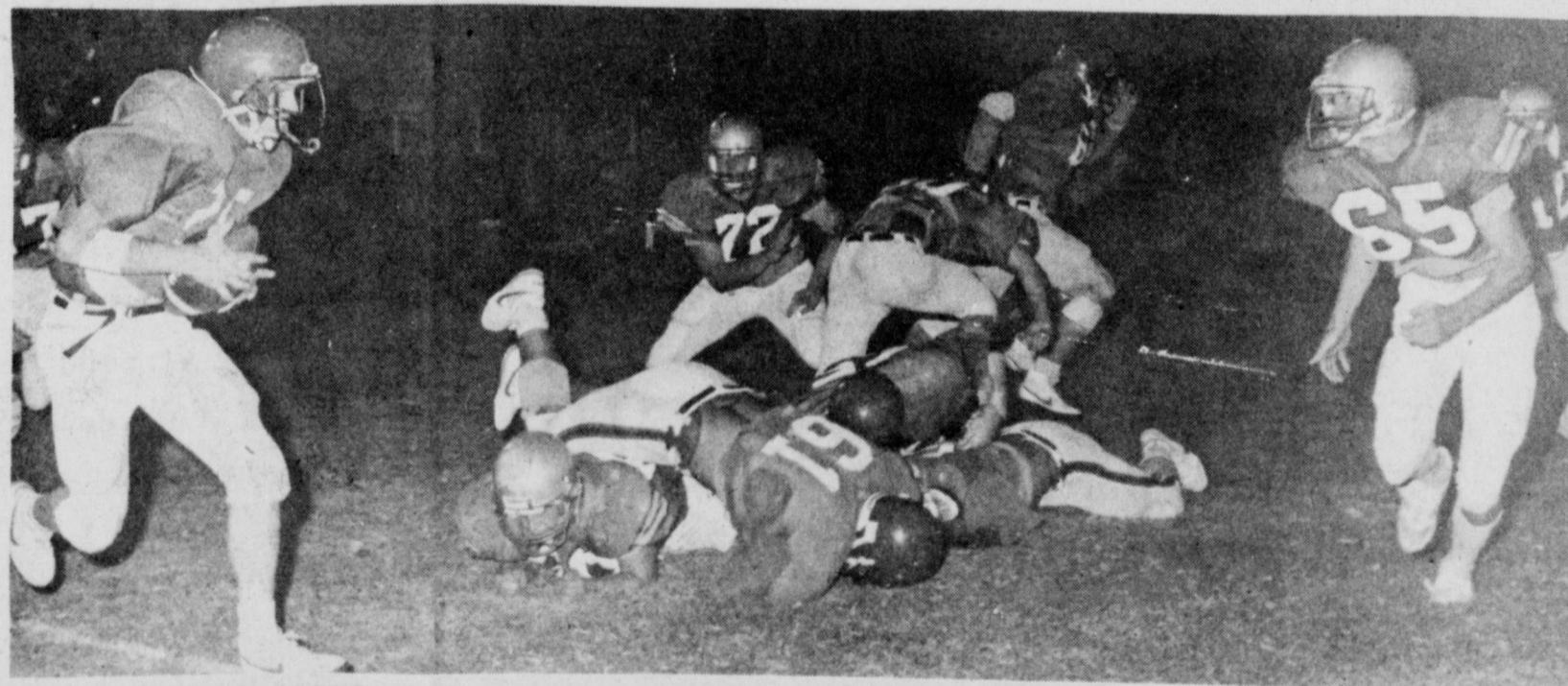
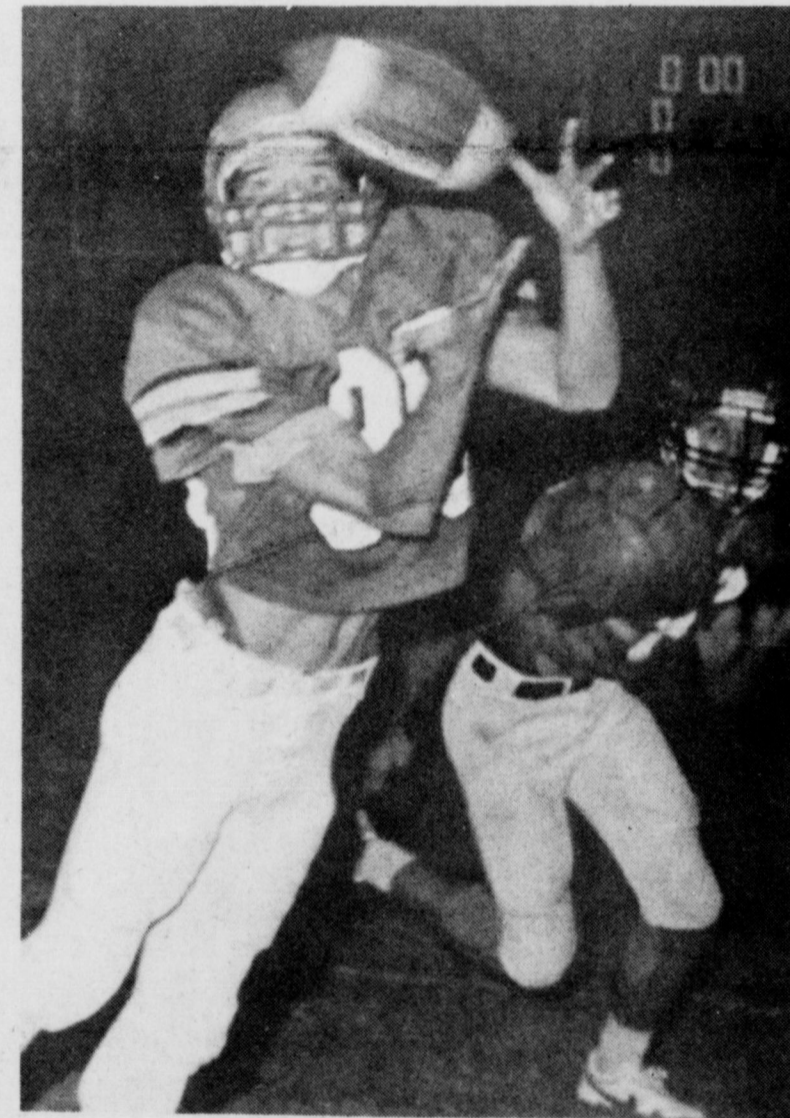
Each scored twice, Olney on a five-yard pass and a one-yard run; Iowa Park on a pair of five-yarders, one a pass and the other a run.

Commenting later on what he saw in the scrimmage, Coach David Baugh said, "We went in trying to get better defensively, which was our main weak point at Holliday. We wanted to improve on reading our keys.

"We were pleased, except for one play, the long pass, but we improved overall," Baugh said.

Offensively, Baugh said his team didn't look "all that sharp," but admitted he was assigning a lot of different plays to see how they would work.

"I think we've accomplished what we wanted to in two-a-days. We got the people in the right positions," said the Head Hawk.



**Iowa Park Florist**  
592-2141  
Your friendly hometown florist since 1951

Teleflora



Supporting Our Hawks  
...Compliments

**Dr. James Edwards**  
Optometrist  
103 W. Park 592-4992



Cheers from across the street!

**Dr. Carter Pirkle**  
General Dentistry  
Ruth, Betsy, Rhonda & Sheryl

1986

IOWA

IOWA

IOWA

IOWA

IOWA

IOWA

IOWA

IOWA

IOWA

IOWA

IOWA

IOWA

IOWA

IOWA

IOWA

IOWA

IOWA

IOWA

IOWA

IOWA

IOWA

IOWA



**Park Tank Truck Service**  
IOWA PARK, TEXAS 76367



• RADIO EQUIPPED TRUCKS • OIL, MUD, & WATER HAULING  
• BENCH TRUCKS • VACUUM TRUCKS FOR ROTARY • KILL TRUCKS  
• ACID & FRAC SERVICE • SALT WATER DISPOSAL  
• ACID SALES & SERVICES • POWER SWIVEL UNITS

Like a good neighbor,  
**State Farm** is there.



Philip Welch  
118 W. Park

State Farm Insurance Companies  
Home Offices  
Bloomington, Illinois

See me for car, home, life and health insurance

**R.W. Hill Insurance**  
Complete Insurance Service  
Glena Via, Agent  
592-4159

**PARKWAY**  
FURNITURE-ELECTRONICS-APPLIANCES

200-206 W. BANK  
592-4681 592-5512



**IOWA PARK HAWKS**

VS

**BURKBURNETT**

**THERE FRIDAY**

**1986 SEASON SCHEDULE AND RECORD**  
ALL GAMES START AT 8 P.M.


IOWA PARK	Sept. 5 There	BURKBURNETT
IOWA PARK	Sept. 12 Here	GRAHAM
IOWA PARK	Sept. 19 There	SEYMOUR
IOWA PARK**	Sept. 26 Here	SPRINGTOWN
IOWA PARK	Oct. 3 Here	VERNON
IOWA PARK*	Oct. 10 There	DECATUR
IOWA PARK*	Oct. 17 There	BOWIE
IOWA PARK*	Oct. 24 Here	BRECKENRIDGE
IOWA PARK*	Oct. 31 Here	JACKSBORO
IOWA PARK*	Nov. 7 There	BRIDGEPORT

\*\* Homecoming  
\* District Games

JUNIOR VARSITY		FRESHMEN		7TH & 8TH GRADE	
Sept. 4	Burkburnett H 7:30	Sept. 4	Burkburnett H 5:30	Sept. 9	Burkburnett H 5:00
Sept. 11	Graham T 7:30	Sept. 11	Graham T 5:30	Sept. 16	Vernon H 5:00
Sept. 18	Vernon H 7:30	Sept. 18	Vernon H 5:30	Sept. 23	City View T 4:00
Sept. 25	Hirschi T 7:30	Sept. 25	Holliday H 5:30	Sept. 30	Vernon T 5:00
Oct. 2	Wichita Falls H 7:30	Oct. 2	Wichita Falls H 5:00	Oct. 7	Open
Oct. 9	Decatur H 7:30	Oct. 9	Decatur H 5:00	Oct. 14	City View H 5:00
Oct. 16	Bowie H 7:00	Oct. 16	Bowie H 5:30	Oct. 21	WF Zundy H 5:00
Oct. 23	Breckenridge T 6:30	Oct. 23	Breckenridge T 7:30	Oct. 28	Burkburnett T 5:00
Oct. 30	Jacksboro T 7:30	Oct. 30	Jacksboro T 5:30	Nov. 4	Vernon T 5:00
Nov. 6	Bridgeport H 7:30	Nov. 6	Bridgeport H 5:30		

**K&K Quick Stop**  
Open 7 days a week  
1307 Johnson Road 592-5931

**GO...MEAN GREEN!**  
Pleasant Valley Grocery  
and Midway Fish Farm  
Randy Jameson - Owner



**Flowers & Gifts**  
406 West Park  
Iowa Park, Tx 76367  
(817) 592-2736  
Answered 24-hours a day

Judy Rusk Burgess  
Owner-Designer

**Posey's Appliance Service**  
We service all makes of washers, dryers, freezers, refrigerator and window air conditioners.  
208 James Ph. 592-5452

**Settle Drug**  
Joe Hughes Pharmacist  
592-4191 120 W. Park  
24-hour service

P.C.S. FREE delivery  
Medimet of prescriptions  
Medicare

**Wal-Mart Pharmacy**  
592-4157  
500 West Highway, Iowa Park  
JEREL KERBY — Pharmacist

**KINGS FOOD**  
300 W. Bank 592-2861

**Doctors & Staff of Park Clinic**  
Support the Hawks —

**SUPPORTING THE HAWKS**

**DC Auto Parts**  
211 N. Wall 592-4181 Iowa Park  
DANNY COFFMAN -owner  
BOB WHATLEY - Mgr.

**HEO TELI TV CABLE OF IOWA PARK**  
696-0664

**KING'S KIDS**  
CHRISTIAN DAYCARE & PRESCHOOL  
"Iowa Park's finest for Parents who care."  
202 N. Jackson 592-4242

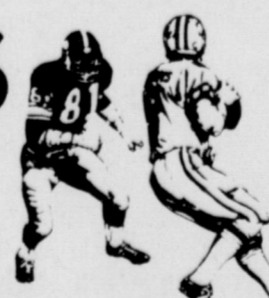
**CATLIN Car Wash**  
No. 1 & No. 2



**Scobee's Mini Mart**  
322 W. Highway 592-5961  
Home-Owned & Operated

**MEAN GREEN STRENGTH Iowa Park Ready Mix**  
592-2052  
SAND—ROCK—GRAVEL

**SAM'S BODY SHOP**  
Sam and Marye Lou



**ken's PIZZA**  
902 W. Highway 592-4184  
Open after each Friday night's football game.

**GNB STATE NATIONAL BANK**  
IOWA PARK, TEXAS  
Member F.D.I.C.

**Harvey's HAMBURGERS**  
805 West Highway





# 1986 SUMMER BUSINESS REVIEW

Compiled by  
**Consumer Media Services, Inc.**

## The Great Plains Insulation & Siding Company

Jerry Matthews - Owner

Amazingly, there are SOME reasons why it ISN'T a good idea to insulate your home...

...If you don't mind paying huge heating bills in the winter, then DON'T insulate!

...If you don't mind shelling out your hard-earned cash each summer for equally high air-conditioning bills, then DON'T insulate!

...If you WOULDN'T want to increase the value of your home, then DON'T insulate!

However, if you're sick and tired of continually skyrocketing utility bills, then you had better give the area's insulation specialists at **THE GREAT PLAINS INSULATION & SIDING COMPANY** a call at 761-2124 or 592-9829.

Located at 4226 Jacksboro Highway, in Wichita Falls, this professional insulation firm has a wide variety of ideas which in the long run will result in keeping more of your paycheck in your bank account and less paid to the gas or electric companies.

With its unique properties of insulation and outstanding protection, vinyl or steel siding is also a sure bet for rejuvenating the exterior of the older home. The desire to eliminate house painting forever has also made it quite popular with folks who are building their first home and want it to be as maintenance-free as possible.

Featuring a full guarantee, vinyl and steel siding is your best choice for exterior application. Call 761-2124, or Jerry at home, 592-9829, for the complete story on total insulation, custom storm windows, storm doors and how vinyl or steel siding can enhance the beauty of your home today.

Properly installed insulation will lower your heating and air-conditioning bills by many dollars each year. With this in mind, it won't take long for your insulation or siding to completely pay for itself, and meanwhile, it's springtime yer around.

The owner, Jerry Matthews, specializes in both small and large jobs. So give these experts a call and let them show you how to keep your cash in your pocket! Remember: Insulation and Siding doesn't cost...it pays!

## M & F Litteken Co.

For your next structure...build with metal for lasting beauty! **M & F LITTEKEN CO.** is located at 1804 East Scott, in Wichita Falls, phone 766-4442, and they're ready to show you the very latest advancements in distinctive, lasting metal structures.

Plans can be provided to suit nearly every application...from a modern retail store to a roomy, weather-proof barn to a giant warehouse. Regardless of what you need in buildings, this is one contractor who can do JUST WHAT YOU WANT!

**M & F LITTEKEN CO.** handles the TOTAL job from site preparation to building design to complete construction and finishing to landscaping. This is your COMPLETE SERVICE steel building contractor!

Anyone contemplating a new building should get in touch with this reliable firm. Their reputation in this area is unparalleled!

## Jabeau Roofing

Jay R. Lavender - Owner

Roofs are very important in the preservation, the beauty and the durability of your home or business. Don't delay having your roof repaired, **JABEAU ROOFING**, located at 4308 Jacksboro Highway, in Wichita Falls, phone 723-1183, can repair or re-roof your home or business at prices to suit your pocketbook.

**JABEAU ROOFING** is the area's "Wood Shingle" specialist and are known for their quality application to give "wood shingles" the elegance they deserve. They also apply composition and composition concrete tile with pride. They offer a Senior Citizen Discount.

Many people do not know just what type of roof they should have on their home to add to its beauty and durability. **JABEAU ROOFING** will explain the various roofing materials and their advantages to you. They have a varied selection of materials and color from which you may choose.

These workmen have had years of experience and they give personal attention to every job. If you are in need of services of this kind, call them or stop by their office and they will gladly give you estimates.

When you want quality at reasonable prices in roofing, the best people to call is **JABEAU ROOFING** in Wichita Falls.

PLEASE CLIP THIS AD FOR FUTURE REFERENCE

## Nan's Reusable Maternity Fashions

NAN LAMBERT - OWNER

**NAN'S REUSABLE MATERNITY FASHIONS** at 2600 Buchanan (at the intersection of Avenue Q and Buchanan), in Wichita Falls, phone 723-9651, welcomes you to the delightful world of the mother-to-be...a world on which you'll find yourself among the happiest women in the world! This respected shop hopes to become a part of your happiness by offering some of the most beautiful new and used brand-name clothing created just for the expectant mother! They also feature clothing for babies and small children...which are MARKED DOWN NOW, due to the closing out of these lines. **NAN'S REUSABLE MATERNITY FASHIONS** is open Tuesday thru Saturday, 10 a.m. to 5 p.m.

If you haven't seen their outstanding selection, you'll be pleasantly surprised at the kind of fashion that maternity wear has to offer these days. Each garment is designed for maximum comfort, as well as fashionable beauty, and whether you need blouses, pants, dresses or swimwear, you will find it all here...from the economical to the exclusive!

**NAN'S REUSABLE MATERNITY FASHIONS** invites all mothers-to-be into their world of fashion. They know that you'll find everything you need to make your pregnancy a fashionable occasion!

## A To Z Bail Bonding

Bobby Green - Owner

10 Years Experience Free Bonding Information  
Call 322-8366 for 24-hour bail bond service.

If you've ever been in jail, regardless of the circumstances, and have had the experience of not knowing if you would be available to post bail...then you probably know how invaluable a good bondsman is.

**A TO Z BAIL BONDING** is conveniently located at 1501 Bluff Avenue, in Wichita Falls, and they offer the fastest possible service for all types of bail bonds. When you're in need of their services, you can always count on a speedy posting of the bond and a quick release.

Being in jail is certainly no fun but it still happens to the best of us. EVERYONE should be aware of their in these matters and the phone number of a competent bondsman such as **A TO Z BAIL BONDING** close by.

We urge ALL area residents to remember the name and phone number of this reputable bondsman: **A TO Z BAIL BONDING, 322-8366.**

## Hebert's Furniture Stores

"Your Affordable Furniture Stores"

A leading community member and one of the most reliable places in our area to shop for quality AND value is **HEBERT'S FURNITURE STORES**, at 500 Indiana, phone 322-1665, and 4221 Seymour Highway, phone 691-4131, both in Wichita Falls, and in Burkburnett at 301 North Avenue D, phone 569-3621. They lead the way in fine furniture for your home.

Specializing in brand-name products for every room in your home, this reliable merchant features tremendous buys in new sofas, chairs, dining room sets, bedroom suites and other pieces of quality furniture.

This distinguished store is proud to stand behind the goods they sell. Their reputation for providing the residents of the area with first-rate furniture and first-rate service has won them the praises of many leading interior decorators and homeowners throughout the region. See them first for furniture. The other dealers are measured by the standards set by **HEBERT'S FURNITURE STORES!**

We would simply like to add that you won't find better quality, service and merchandise anywhere!

## River Creek Park Golf Course

"Best Greens in North Texas"

Golf is one of America's favorite participant sports, with men and women in all age groups playing more and more every day! In the Wichita Falls area, better golfers prefer the smooth greens and beautiful fairways of the **RIVER CREEK PARK GOLF COURSE** at Farm Road 1177, phone 855-3361. This is truly a "golfer's course" and it's specifically designed to be both challenging AND tremendous fun!

Tee off with your friends and discover just how great a game of golf can be. You'll find that your score will improve when you play on a course that's well cared for...like this one...AND you'll enjoy your game a lot more at this beautifully-landscaped facility.

Your game will improve and you'll enjoy yourself a lot more when you play the outstanding golf course at **RIVER CREEK PARK**. Be sure to call for weekend tee times.

## W.F. Trade Center & Flea Market

Roy Parish & Jim Parish - Owners

Real quality and superior service is what you'll always find when you shop the **W.F. TRADE CENTER & FLEA MARKET** for merchandise both large and small. This well-known retail outlet is located at 2820 Holiday, in Wichita Falls, phone 692-0305, and it features one of the area's finest assortments of this type of merchandise.

Stop in today and look over the outstanding selection of values available. The **W.F. TRADE CENTER & FLEA MARKET** is open every Saturday and Sunday, regardless of the weather, from daylight to dusk...buying, selling and trading all types of merchandise.

A community leader in every respect, the **W.F. TRADE CENTER & FLEA MARKET** has been a cornerstone of the business community for 18 years. Their honest and forthright business practices have won them the respect and admiration of their customers...and even their competitors! It's the kind of quality that stands behind their name.

If you are interested in starting in the flea market business, stop by anytime and let Roy show you how you can have a profitable business.

## Randy's Paint & Body

Randy McDonnell - Owner

With the prices of both new and used automobiles continuing to rise, it makes good sense to take the best possible care of your present car. One way of insuring that your car will look its finest is to trust it to the experts at **RANDY'S PAINT & BODY** for all of your body repair and painting needs. This outstanding shop, located on Highway 79 North (at the Goodman Road Exit), in Wichita Falls, phone 767-4050, is widely known for their fast, courteous service and their excellent work.

If you're considering selling or trading your car, you should know that an automobile with flawless lines and sparkling paint will command top dollar in today's tough, critical market. If the car has been involved in an accident, you can do no better than to consult the experienced pros at **RANDY'S PAINT & BODY**. They're preferred by many insurance adjusters.

We think you'll appreciate the quality AND the reasonable cost of **RANDY'S PAINT & BODY's** work! Keep their number handy!

## Kamay Electric Service, Inc.

24-Hour Service

Serving the oil field industry's need for quality electric service is the full-time job of **KAMAY ELECTRIC SERVICE, INC.** This is the recommended electrical company in the local area and they'll do a better job for you. Call them whenever you need help...the **KAMAY** number is 723-9126 and the **ELECTRA** number is 723-4602.

This established firm has two locations. They are located on Highway 258 in Kamay, and on Highway 287 in Electra. **KAMAY ELECTRIC SERVICE, INC.** is ready to come to your site ANYTIME with their modern equipment and trained personnel. They'll take care of all of your electrical problems...quickly and easily. After all, it's their only job! They also offer pole line construction and ditching service. They have electric motors for sale, naturally, and their facilities enable them also to rewind and repair electrical motors.

**KAMAY ELECTRIC SERVICE INC.** suggests you call them whether in an emergency or scheduled work. They welcome the opportunity to work with you.

## John's Tractor & Gas Company

John Staber - Owner

It's a fact! **JOHN'S TRACTOR & GAS COMPANY**, located at 4216 Iowa Park Road in Wichita Falls, phone 855-1421, stands ready to serve you with the very latest in top performance farm machinery, construction equipment and dependable L.P. gas. They're your Massey Ferguson dealer.

**JOHN'S TRACTOR & GAS COMPANY** is your authorized distributor for L.P. gas in the local area. This fine company will see that all your needs are met in both bottled and bulk forms of L.P. gas.

Their reputation as one of the area's most reliable dealers is just one of the reasons that they've enjoyed an extensive patronage from the area's agriculturists and contractors. With the kind of quality that Massey Ferguson builds into EVERY machine and the KIND of service that this dealer has to offer, the farmer and contractor can put his machinery problems in their hands and use his own time and energy to further his personal goals. Harvesting becomes a more simplified chore with fine equipment from **JOHN'S TRACTOR COMPANY!**

This reputable firm also offers the farmers and contractors of this area the ultimate in parts and service for their equipment! Call them today!

## Midwest Showcase Inc.

Jay Tepe - Manager

An unparalleled selection of fine furniture and interior decoration items from around the world...that's what you'll find at **MIDWEST SHOWCASE INC.** Located in Wichita Falls at 3909 Kell Boulevard, next to Gibson's, phone 691-2256, this well-known and respected furniture outlet features fine merchandise for every room in your home for the ultimate in unique and beautiful interior decor.

Whether it's a new living room set, a bedroom ensemble, dining room furniture, or whatever, you're sure to find more of what you want at this well-stocked store. There are many famous brand names to choose from so you know quality is built into every piece. Select from vast assortments of "period" pieces to match or compliment your existing furniture. Whether you need a single chair or an entire houseful... **MIDWEST SHOWCASE INC.** has more to offer.

This quality-conscious furniture dealer is to be complimented for their outstanding selection AND their fine service to the residents of the local area.

## Houston's Restaurant

Margaret McClain - Owner

Noted for the quality of food and some of the fastest service anywhere, **HUTSON'S RESTAURANT** has won an enviable reputation as being the area's favorite restaurant!

Conveniently located at 1308 East Wise, in Bowie, phone 872-8100, this outstanding restaurant serves breakfast, lunch and dinner.

Their menu is "completely complete" and features such well-liked dishes as chicken, seafood, plate lunches and a huge variety of fine sandwiches. For better breakfasts, they specialize in fast, short-order service with all your "day-starting" favorites like bacon and eggs, hotcakes and french toast. The whole family will like dining in the pleasant atmosphere and clean surroundings that this fine restaurant has to offer.

We urge you to make **HOUSTON'S RESTAURANT** a part of your day. Breakfast, lunch or dinner...you won't find better food anywhere!

## Betty's Upholstery Shop

We Do Furniture, Cars & Boats  
Low Prices - Easy Terms  
Pick Up & Delivery  
Free Estimates  
1307 North 10th St. Wichita Falls  
Phone (817) 723 5798



## Area oil, gas report

The W.T. Waggoner Estate has revealed production figures for a re-entry operation in the Wichita Regular Field. The well is known as the No. 7 W.T. Waggoner "ZZ", and is located two miles southwest of Electra in a 120-acre lease in the GC7SF Survey, A-738.

The well indicated potential to pump 40 barrels of oil per day. It will produce from perforations in the Cisco Sand Formation, 1,521 to 1,525 feet into the wellbore.

The W.T. Waggoner Estate originally completed the well September 11, 1950, and it produced from an interval 966 to 973 feet into the wellbore.

Bottomhole was at 2,000 feet, and the operator plugged the well back to 1,695 feet.

Drillsite is 1,010 feet from the south line and 150 feet from the west line of the lease.

The same operator has completed the No. 46 W.T. Waggoner Estate "AA" two miles south of Electra.

The well showed ability to pump six barrels of oil daily from perforations in the Cisco Formation, 1,992 to 1,998 feet into the hole. Total drilling depth was 2,060 feet.

Location is in a 20-acre lease in the H&TC Survey, A-784.

The well is situated 2,600 feet from the north line and 550 feet from the east line of the lease.

Three 1,999-ft. developmental wells are planned by Tri Core Oil & Gas of Irving at drillsites five miles southwest of Burkburnett. The locations are in a 143-acre lease in the DR&K Survey, A-714. Wells' designations are the Nos. 8, 9 & 10

Warren "C". Drillsites are in the Wichita Regular Field.

The No. 8 well will be located 2,730 feet from the north line and 1,650 feet from the east line of the survey.

Drillsite for the No. 9 well is 3,030 feet from the north line and 1,650 feet from the east line of the survey.

Location of the No. 10 well will be 2,607 feet from the north line and 1,650 feet from the east line of the survey.

A Wichita Falls-based operator has staked location for the No. 1 Martin Properties, a developmental well to be located three miles southwest of Burkburnett. With projected total depth of 1,750 feet, the well will be drilled in a 65-acre lease in the Wichita Regular Field, William Kepler Survey, A-170. The operator is Joe B. Hood & Co.

Drillsite is 1,500 feet from the north line and 2,400 feet from the east line of the survey.

Curtis R. Inman of Midland has filed for permit to drill the No. 7 J&J Waggoner "A", a 1,975-ft. developmental well 4.5 miles north of Kamay. Location is in a 40-acre lease in the Wichita Regular Field, H. George Survey, A-454.

The well will be located 3,252 feet from the north line and 1,524 feet from the east line of the survey.

Ronkaran Oil has filed first production figures on an oil well in the Wichita Regular Field. The No. 2 James Cullum showed potential to pump ten barrels of oil, plus 20 barrels of water.

The operator has 20 acres leased, with drillsite in the Denton CSL Survey, A-417. Location is eight miles east of Kamay.

The well will produce from a perforated interval in the Cisco Sand Formation, 688 to 692 feet into the wellbore. Total drilling depth was 1,245 feet, and the well was plugged back to 767 feet.

Location is 150 feet from the south line and 150 feet from the east line of the lease.

The No. 27 Tidewater, a 1,999-ft. developmental well, is scheduled to be drilled in the Wichita Regular Field. Williams Petroleum of Burkburnett is the operator. The well will be spudded in a 158-acre lease two miles south-southeast of Fowlkes in the SA&MG Survey, A-430.

Location will be 2,070 feet from the north line and 150 feet from the west line of the survey.

Landrum West of Burkburnett has revealed plans to drill two 1,999-ft. developmental wells in the Wichita Regular Field. The operator has 120 acres leased, with drillsites in the W.H. Spillers Survey, A-257. The ventures have been designated as the Nos. 1-L and 2-L Fred Thom. Drillsites are three miles southwest of Kamay.

The No. 1-L well will be drilled 2,560 feet from the south line and 840 feet from the east line of the survey.

The No. 2-L well will be located 3,020 feet from the south line and 2,890 feet from the east line of the survey.

At a location three miles west of Harrold, Beasley Oil has finalized a new producer in Wilbarger County's Times Field.

The well is designated as the No. 1 Robb. It showed potential to pump 48 barrels of oil per day, plus 60 barrels of water.

Location is in a 60-acre lease in the H&TC Survey, A-872. Bottomed at 5,173 feet, and plugged back to 5,000 feet, the well will produce from perforations in the Mississippi Formation at 4,794 to 4,820 feet into the wellbore.

The well is located 700 feet from the south line and 467 feet from the west line of the lease.

Flowing 1,684,000 CF gas per

day, the No. 1 Forbes was completed in Hardeman County by Jones Co.

The wildcat operation is located one mile northwest of Chillicothe in a 200-acre lease in the H&TC Survey, A-42.

The well was drilled to 8,682 feet and plugged back to 8,420 feet. It will produce from a perforated interval in the Basal Pennsylvanian Conglomerate Formation, 7,292 to 7,298 feet into the wellbore. Production tests were run on an 18/64-in. choke, and the absolute open flow rating was 6,010,000 CFD.

Drillsite is 467 feet from the south line and 972 feet from the east line of the lease.

A new producer has been brought on line in Hardeman County's Quannah Field, with Gibson royalty as the operator.

Located four miles north of Quannah, the well is in an 80-acre lease in the W&NW Survey, A-779. It is designated as the No. 1 McGowan.

The well showed potential to pump 118 barrels of oil per day, plus 41 barrels of water. It bottomed at 5,925 feet, and will produce from perforations in the Palo Pinto Formation, 5,822 to 5,837 feet into the hole.

Location is 467 feet from the south line and 750 feet from the west line of the lease.

Ben J. Fortson of Ft. Worth has filed for permit to drill the No. 1 Grange, a 3,000-ft. wildcat well 4.3 miles north-northwest of Chillicothe. Location is in an 80-acre lease in

Hardeman County's EL&RR Survey, A-638.

Drillsite is 1,228 feet from the north line and 482 feet from the most easterly west line of the lease.

The No. 1 Johnson "H" has been plugged and abandoned by Burk Royalty. It was a developmental well in the Quannah Field, three miles northeast of Quannah. The well was completed as a dry hole June 28.

The well was located 2,023 feet from the north line and 2,132 feet from the west line of the lease.

Burk Royalty has executed plug-and-abandon orders at the No. 2 Johnson "H", a developmental well in the Quannah Field, Hardeman County. The well was located four miles northeast of Quannah, and bottomed with no commercial show at 6,000 feet.

Drilling operations had commenced May 1.

The well was located 467 feet from the north line and 467 feet from the west line of the lease.

Mobil Producing has completed the No. 152 S.M.A. Unit "B" in the Wichita Regular Field. Location is 7.5 miles southwest of Burkburnett in a 1,747-acre lease in the HT&B Survey, A-127.

The well potentialed at two barrels of oil daily. Production will be from Gunsight Formation perforations, 1,675 to 1,736 feet into the wellbore. Total drilling depth was 2,000 feet.

The No. 2 Kirkpatrick, an 8,600-ft. wildcat well, is scheduled to be drilled in Hardeman County. The operator is Export Petroleum of Ft. Worth.

The well will be spudded in a 160-acre lease 3.5 miles southeast of Medicine Mounds in Hardeman County's H&TC Survey, A-1000.

### B&R DELI MENU

<b>Thursday, Sept. 4</b> Smoked BBQ Sausage Blackeyed Peas Creamed Style Corn French Fries Rolls	<b>Monday, Sept. 8</b> Lasagna Zucchini Italian Vegetables Onion Rings Garlic Toast
<b>Friday, Sept. 5</b> Chicken Fried Steak Mashed Potatoes w/gravy Corn on the Cob Okra Rolls	<b>Tuesday, Sept. 9</b> Beef Fajitas Beans Pico De Gallo Spanish
<b>Saturday, Sept. 6</b> Enchilada Casserole Pinto Beans English Peas Mexican Cornbread	<b>Wednesday, Sept. 10</b> Shrimp Tator Tots Corn Rice Pilaf Hush Puppies
<b>Sunday, Sept. 7</b> Meatloaf Mixed Vegetables Hominy Ranch Bens Rolls	<b>Big Home-made Hamburgers</b> this week <b>\$1.29</b> call-ins welcome

**B&R THRIFTWAY** 592-9831  
401 W. PARK

**Coke**  
**Diet Coke**  
**Cherry Coke**  
**Sprite**

**\$1.59**

**Settle Drug**

Joe Hughes - Pharmacist  
592-4191 120 W. Park

We Give S&H Green Stamps PCS Medmet & Medicare FREE Delivery of Prescriptions

## GOLDEN FRIED CHICKEN

Loop 370 & Pacific Ave. - Iowa Park

**Dinners**

3 pieces of Golden Fried Chicken, Corn on the Cob, Cole Slaw or Potato Salad, French Fries, and a Biscuit. <b>3.39</b>	2 pieces of Golden Fried Chicken, Corn on the Cob, Cole Slaw, or Potato Salad French Fries, and a Biscuit. <b>2.79</b>
---	---

**Chicken 'N Biscuit**

<b>3 Pieces - 1 Biscuit</b>	<b>2 Pieces - 1 Biscuit</b>
All Dark 1.99	All Dark 1.49
Mixed 2.19	Mixed 1.59
All White 2.79	All White 1.89

**FAMILY PAK**

10 Pieces	4 Biscuits	6.89
15 Pieces	5 Biscuits	9.99
20 Pieces	6 Biscuits	12.79

**TENDERS**

4 Pieces	Biscuit and Gravy	2.39
7 Pieces	Biscuit and Gravy	3.59
15 Pieces	Biscuit and Gravy	6.39

**FIXING'S**

French Fries	.75	1.85
Corn on the Cob	.49	1.69
Cole Slaw or Potato Salad	.49	1.69
Mashed Potato	.49	1.69
Jalapenos	each .15	
Apple Pie	.49	
Biscuits	.39 each	1/2 dozen 1.79 1 dozen 3.09
Country Gravy	.29	1.09
Cookies	.39 each	1/2 dozen 1.79 1 dozen 3.09
Pepper Puppies	.39 each	

**Drinks**

Coke	Dr. Pepper	Sprite
Lemonade	Fresh Brewed Iced Tea	Diet Coke
.55	.70	.85
	Coffee	.35

**SNACK PAK** 1 Piece Golden Fried Chicken, French Fries, Biscuit  
.45 extra for Breast  
**592-2811**

## Steak Finger Basket

Enjoy Coca-Cola Trade-mark ®

**\$2.59**

Reg. \$2.95

**Harvey's**  
FAMILY RESTAURANT  
HAMBURGERS

805 West Highway  
FOR TAKE OUT ORDERS  
**CALL 592-4731**

**I support the HAWKS**

...eventhough I live in Burkburnett!

**It Works This Way:**

**I don't live in Dallas anymore,  
BUT I ROOT FOR THE COWBOYS.**

**I don't live in Austin anymore,  
BUT I ROOT FOR THE LONGHORNS.**

**And I don't live in Iowa Park anymore,  
BUT I ROOT FOR THE HAWKS!**

**GO HAWKS**

**BEAT BURK!**

Jerel Kirby, Pharmacist

**WAL-MART Pharmacy**

500 W. Highway 592-4157  
9 a.m. - 7 p.m. Monday-Friday  
9 a.m. - 6 p.m. Saturdays

knowing if they offer can always of their in by. man: A TO

or any

OR 7 GAS Road in Wichita machinery, con- gas. They're

PANY is your local area. This are met in both

s most reliable ve enjoyed an riculculturists and that Massey and the KIND of armer and con- their hands and r his personal ed chore with TRACTOR

mers and con- and service for

C. furniture and world...that's CASE INC. ullevard, next ll-known and merchandise ate in unique

bedroom en- tever, you're well-stocked nes to choose every piece. ed" pieces to ure. Whether housefull ... o offer. aler is to be ection AND al area.

urant rner o of the fastest URANT has area's favorite

ise, in Bowie, urant serves

and features eafood, plate ndwiches. For hort-order ser- ke bacon and ole family will re and clean offer. HOUSTON'S fast, lunch or

Shop coats ns Falls



# BUYING? SELLING? RENTING? HIRING? WANT ADS PAY OFF

**DEADLINES**  
**10 A.M. WEDNESDAY (Word Ads Only)**  
**4 P.M. TUESDAY, DISPLAY ADS**

**SAVE 8¢ PER WORD FIRST INSERTION BY PAYING WITH COPY AT OFFICE**

**RATES:**  
**23¢ PER WORD FIRST INSERTION**  
**15¢ PER WORD EACH REPEAT**

**For Rent**

**FOR RENT:** Two bedroom house. Partly furnished. \$200 a month, \$50 deposit. 309 E. Cash. 592-2597 after 5 p.m. 9-4-1tp

**FOR RENT - extra nice** 3 bedroom, 1 3/4 bath, 2-car garage, CH&A Brick home. Nice yard, nice neighborhood. 592-5931 or 592-4892. 8-28-tfc

**FURNISHED** Apartment, \$150 plus deposit. 592-2919 after 7 p.m. 8-28-tfc

**ONE BEDROOM** house, unfurnished, \$200. Single adults preferred. No pets. 592-5277 after 1. 8-28-2tp

**FURNISHED** one-bedroom apartment, \$150 deposit, \$150 month. No pets. 592-9473. 8-28-2tp

**FOR LEASE**  
 1003 Louise - 3 bdrm, 1 1/2 baths, garage, fence, \$365 monthly, deposit \$250. Owner agent - 592-1934 or 569-5266.

**SHILOH ADDITION**  
 Large lot on Johnson Rd. Approx. 200x249. Deed restricted for your protection.

**PRICE REDUCED**  
 Gordon Clark home. Over 2,400 feet of living space. Large corner lots with sprinkler system. Owner financing available.

**NEED A CHURCH**  
 This place is ready to worship in. Will seat approximately 125 people. Good parking. Space close to expressway. Possible owner financing.

**CORNER LOT**  
 Choice location, close to shopping, 71x142. \$4,500.

**THREE BEDROOM**  
 Nice bath, large kitchen & dining, large living-room, heat & air, fenced yard, lovely carpet. \$24,500.

**THREE BEDROOM**  
 Livingroom, den, central heat, kitchen & dining, fenced yard, storage bldg., carpet & paneling. \$28,500.

**THREE BEDROOMS**  
 1 1/2 baths, lovely kitchen, large livingroom, single garage. Extra nice. \$39,900.

**SUNSET TERRACE**  
 Two bedrooms, one bath, large living room, large dining room & kitchen. New carpet, fresh paint, single garage. \$35,500.

**510 N. JACKSON**  
 Indoor swimming pool. Over three thousand square feet of living space. Priced below appraisal.

For information on these and other properties, call now.

**JOHNNY LEE REAL ESTATE**  
 592-2378  
 109 W. Cash

MEMBER  
 MULTIPLE LISTING SERVICE

**ONE BEDROOM** home, Iowa Park. Fenced, carpeted, stove, refrigerator, air conditioner. \$175. Deposit. 855-3062. 9-4-1tp

**CLEAN** 3 room apartment, unfurnished. 592-5364. 9-4-1tp

**WOODBRIAR APTS.** 1-2-3 bedrooms available. All bills paid including cable. Offering \$100 off 1st full month's rent. For more information call 592-2121. 5-1-20tp

**Homes For Sale**

**LOST MY JOB** must sacrifice this beautiful new 2 bdrm, 2 bath, manufactured home. \$550 equity, take up payments. Call David at 723-9721 or 723-5382. 9-4-4tc

**OIL DID ME IN.** I must sacrifice this beautiful new 2 bdrm, 2 bath manufactured home. \$500 equity, take up payments. Call Jeff at 767-1738 or 767-5386. 9-4-4tc

**ABOUT TO** get repossessed. Don't want to ruin my credit. Buy my equity at 25¢ on the dollar. Affordable monthly payments. Call Jo at 767-1738 or 767-5386. 9-4-4tc

**TRANSFERRED,** must sell fast. 2 bdrm. manufactured home. \$500 equity, take up payments. Please hurry. Call Bruce 723-9721 or 723-5382. 9-4-4tc

**616 W. TEXAS** \$700 down, \$350 per month buys ownership interest. For details call Henry Dvorken, 322-5291. 7-24-tfc

**OPEN HOUSE - Sun. 7th** 2-5. Luxurious bargain, \$13 Coleman, 3 bedroom, 2 1/2 baths, 2 car garage, ash kitchen, picture frame paneling & vaulted ceiling in L.R., professionally decorated & landscaped. M/bath has separate shower. Extras-Extras. Priced \$2600 below appraisal. See to believe! 9-4-1tp

**1505 JOHNSON ROAD,** 2 bedroom, 2 bath, brick. Owner financed. Inquire at 1507 Johnson Road. 8-14-4tp

**NEW THREE BEDROOM** brick homes with central heat and air, energy efficient, and fully carpeted. Low monthly payments if you qualify. Swan Construction Co. 692-8788. 3-14-tfc

**LARGE 4 BDRM.,** 1603 Wagonwheel, 3/4 acre, price reduced. 908 LOUISA, 1364' liv. Area, 3 bdrm., den. Make offer. 2166' LIV. AREA, 4 bdrm., den, fireplace, corner lot, \$50,000. TWO BDRM. Church bldg., barracks duplex, sell all or part. TWO ACRES, Mobile home, shop & storage, all utilities, make offer. ONE DOLLAR MOVE IN, VA, Clean 3 bdrm. brick, fenced, \$35,800. 26 ACRES near Iowa Park, good pasture, creek boundary. MOBILE HOME & Shop, W. Washington, asking \$22,500. NEW LISTING: Large, older 2 or 3 bdrm., dining, 2 full baths. Corner, lots of trees, near downtown. \$39,500. price \$16,000.

Sam Hunter Real Estate  
 107 E. Cash 592-4661

**2 BEDROOM, fenced,** 1 car garage - \$29,000. 2 BEDROOM, Extra large lot. Lots of cabinets. New paint. Ready to move in. \$25,000. DOLL HOUSE - New cabinets & built-ins, all new appliances, 2 1/2 lots. \$49,700. ASSUME \$244 payments. 3 Bdrm., shop, ceiling fans. Owner anxious. \$28,000. OVER 1600 SQ. FT. Den with fireplace, corner lot, 3 bdrm. Can be assumed. Close to elementary school. \$57,500. 10% DOWN - 10% INTEREST - Built-in financing. Extra nice 3 bdrm., 2 1/2 baths, 2000 sq. ft., corner lot. \$58,500. BEAUTIFUL NEW 3 bdrm., almond appliances, earthenware decor. Needs a family. \$45,000. 1 3/4 LOT - FENCED 2 bdrm. mobile home. \$14,500. BEAUTIFUL ROCK fireplace, formal living & dining, 2,000 sq. ft. L.A., 2 1/2 bath, boat storage. \$66,500. 3 BEDROOM 1 1/2 bath. Nice home. Immediate occupancy. \$38,500. LARGE DEN or 4th bdrm., 1 1/2 bath, shop in back. Owner says sell! \$45,000. CORNER LOT - Extra large rooms, basement, draped, fenced. \$72,500. CORNER LOT 4 bdrm., formal dining, huge den, 1 3/4 bath. \$38,000. BUILT-IN FINANCING - 3 bdrm., fireplace, large living area. \$37,500.

SHIRLEY RAINS, Broker 592-4248  
 VINCENT RAINS, Salesman 592-4584  
 LISA YORK, Salesman 592-2500

Shirley Rains Real Estate  
 HOMETOWN REALTOR  
 121 W. Park Iowa Park, Tx. 76367 592-5191-Office  
 "Serving All Your Real Estate Needs"

**Colonial Heights Apartments**  
 Magnolia St. at Johnson Rd.  
 IOWA PARK

One and two-bedroom apartments, energy efficient, central heat/air, total electric appliances, fully carpeted and draped. Children's play area. Off-street parking. Fully equipped laundry room. Month to month rent starting at \$189.00 for one bedroom, and \$229 for two bedroom apartment (to qualified persons). Water paid.

CALL 592-2705

**NEW 3-BEDROOM** brick homes with central heat/air. Energy efficient. Hamilton Construction, 855-6100. 7-10-52tp

**Real Estate**

**2 ACRES** with water meter just outside Iowa Park city limits. 592-2633. 9-4-2tp

**Misc. For Sale**

**MOVING SALE - 1981** Suzuki 400 GN motorcycle \$300; 25-inch color TV entertainment center; box springs, dinette table, miscellaneous. See anytime or all day Saturday at 410 W. Clara. 592-9801. 9-4-1tp

**CARPOR SALE - Lots** of junk. Corner of So. Yosemite & Crystal, Thursday. 9-4-1tp

**GARAGE SALE 1332** Sunset, Thursday-Saturday. Lots of miscellaneous, brass and glass. 8 til? 9-4-1tp

**2-FAMILY** Garage Sale - Lots of school clothes in great shape. Adult clothes. Lots of miscellaneous, all priced to sell. Saturday only 410 W. Pecan. 9-4-1tp

**GARAGE SALE Friday,** Saturday. Furniture, miscellaneous. 902 E. Highway. 9-4-1tc

**GARAGE SALE** Some things old, some new. Too much to list. Friday-Saturday, 8-4, 1213 Emma. 9-4-1tp

**GARAGE SALE** Many good items and many bargains. 1505 Johnson Rd. 8:00 to 6:00, Friday & Saturday. 9-4-1tp

**72 CADILLAC,** one owner. 592-4810. 9-4-1tp

**BUNDY CLARINET** great for beginner band student. \$200 or best offer. 592-5819. 9-4-1tp

**Quail Run Apartments**  
 1-2 Bdrm., Ground Floor, Central Heat & A/C. Appliances, Laundry. Close to school & public park. Starting at \$205 per month to qualified tenants. Gas & water paid.  
 Call 592-2933

**WANTED!**  
 Family who needs home listed in mid 30's. This seller has 3 bedrooms, 1 1/2 bath, 2 car garage, redwood deck, large trees. Price reduced to \$35,000. For more information call Cindy Witherspoon 592-4964 696-5561

**The sign of the leader.**  
 More people recognize the CENTURY 21 sign than any other sign in real estate. So give our CENTURY 21 office a call. And put all the power of Number 1 to work for you.  
 BETTY GUYETTE 592-2761  
 Put Number 1 to work for you.  
 CENTURY 21 GOLD COAT REALTY 4706 BROOKDALE 696-5561  
 (Equal Housing Opportunity) INDEPENDENTLY OWNED AND OPERATED

**Realty World**  
 Elvin Dudley  
 4001 Callfield  
 Wichita Falls  
 691-7101

**SHILOH ESTATES**  
 1613 YUCCA - The perfect family home: 4 bedrooms, 2 1/2 baths, formal living room and dining room, family room, game room plus 1.72 acre lot. Connie Rowell, 767-0321.

**1983 VW Rabbit LS,** one owner, like new, 46,000 miles, \$4750, after 5 322-2765. 9-4-1tp

**ATT 6300** computer, 1-disk drive, 10MGB hard disk, monochrome monitor, 256K memory, Okidata dot matrix printer, CYMA general ledger and Petro solutions software, O'Sullivan oak computer furniture. Used four months. 322-1572. 8-28-2tc

**CAFE HELP** 5 days week. Call 8 a.m. - 2 p.m. 592-4721; 3-9 p.m. 592-4917. Ask for Jim McClendon. 9-4-tfc

**Help Wanted**

**HELP WANTED.** Must be able to work day or night as needed. Prefer reliable, mature lady. No phone calls accepted. Apply in person Iowa Park Dairy Queen. 8-21-tfc

**ATTENTION LADIES!** Need part-time work at full-time pay? Now thru November average \$7 to \$10 hourly. Show toys and gifts. No collecting, delivering, or investment. Free kit and supplies. House of Lloyd, 766-1258. 8-21-4tc

**Pam's Upholstery**  
 High Quality Work  
 Low Quality Prices  
 592-2205 or 592-4839

**Custom Building Mataska Homes, Inc.**  
 Free Estimates  
 Custom Designing  
 HOW 10 year warranty  
 Help arrange financing - FHA, VA, conventional, and Farmer's Home Administration (lower payments)  
 Mataska Homes, Inc.  
 691-5722, 538-6127, 322-9192

**2.9% APR FINANCING**  
 ... or up to \$1,000 Rebate on most New Ford Car and Trucks  
 10.4 % APR Financing on most used cars & trucks.

See or Call  
 O.L. Tucker  
 Ronnie Berry  
 or  
 Bobby Morgan  
**Park Ford**  
 600 W. Hwy  
 592-4106

**MINI-CON Self-storage**  
 1. Variety of sizes.  
 2. Competitive prices.  
 3. Locally owned and operated.  
 4. Monthly rates.  
 805 W. Hwy.  
 592-2761

**Buzbee Roofing**  
 Phone 592-4846  
 ALL WORK GUARANTEED

**Help somebody back to life!**  
 Be a Red Cross blood donor

REGIST  
 2 openi  
 Will tak  
 Mrs. Bro  
 Miller, 59  
 9-4-1tp

REGIST  
 Two fu  
 Eight ye  
 5444.  
 9-4-5tp

WOULD  
 or care  
 noons &  
 able rate  
 9-4-4tp

CHILD  
 (any a  
 meals an  
 up from  
 9-4-2tp

REGIST  
 Monday  
 summer  
 school. 5  
 7-17-8tc

REGIST  
 care. M  
 9055.  
 8-14-4tp

HOUSE  
 Reliable,  
 sonable.  
 9-4-4tc

RETIRO  
 home, 59  
 9-4-1tp

BILL'S  
 Edging,  
 eating,  
 able, 1  
 4923, 59  
 9-4-4tc

O  
 AF

Qualit  
 Work  
 Specia  
 If you  
 water  
 price.

FE  
 De  
 insul  
 P  
 tank  
 An  
 prot  
 P  
 war  
 T  
 rant  
 and  
 mod  
 30  
 In  
 towe  
 P

A  
 S  
 TE  
 O

TH  
 •

14  
 W



**BUSINESS**

**REGISTERED Child Care** 2 openings for full time. Will take and pick up at Mrs. Brown's school, Duinnis Miller, 592-6561. 9-4-86

**REGISTERED Day Care** Two full time openings. Eight years experience. 592-6466. 9-4-86

**WOULD LIKE to babysit** or care for the elderly after-school & weekends. Reasonable rates. Joy, 592-9472. 9-4-86

**CHILD CARE in my home** (any age) Provide good meals and will pick children up from school. 592-2333. 9-4-86

**REGISTERED Child Care** Monday through Friday, summer and before and after school 592-2823. 7-17-86

**REGISTERED CHILD** care Monday - Friday. 592-9355. 8-14-86

**HOUSEKEEPING Services** Reliable, References, Reasonable Call 592-5368. 9-4-86

**RETIREE** will clean your home, honest, thorough \$4 hour 592-5058. 9-4-86

**BILL'S MOWING Service** Edging, trimming, weed eating, grass catching available, light hauling. 592-9273, 592-2287. 9-4-86

**COLLEGE STUDENT** will tutor elementary through junior high students. Call for more information, 592-2466. 9-4-86

**WIFE CLEAN houses** dependable, reasonable, references. 592-6936, 691-3288. 9-4-86

**MONOGRAMMING** 592-9856. 9-4-166

**BLACK POWDER** Guns and accessories. revolvers \$50 and up. Powder \$4.80 lb. Will order modern guns for 10% over cost. Ye Ole Gun Shack, 413 W. Washington, 592-5430. 12-5-86

**ALCOA VINYL SIDING** Average house, \$2404. Average overhang, \$1495. 100% financing. Davidson's Discount Siding, 696-5425. 3-27-86

**FOODLE GROOMING** by appointment only. Reasonable rates. 592-4766. 8-7-86

**ROOFING** - Buzbee Roofing. Phone 592-4848. All work guaranteed. 1-30-82ip

**MARY RAY Cosmetics**, Ann Moore, 592-4752. 10-3-82ip

**FIREWOOD** custom cutting to fit any size wood heater or wood burning stove. Delivered and stacked now or anytime. 592-5654. 7-31-86

**PAINTING** - exterior or interior. Reasonably priced. References. 592-5654. 7-31-86

**PRIVATE FENCE** sales and installation. Charles Skelton, phone 696-0839. 12-5-86

**AUTO, BOAT and furniture** repair. Vinyl repair. Call Karney, 1-438-2243. 12-5-86

**INSULATION** for walls, attic, & metal buildings. Storm windows and doors. For free estimates call Jerry Matthews at Great Plains Siding and Insulation, 761-2124 or 592-9829. 6-5-86

**REMODELING/Concrete** For all your home remodeling and concrete, additions, driveways, etc. Hamilton Construction, 855-6100. 7-10-82ip

**ROOFING** Wolfe Roofing Co. Phone 855-5657. 1-1-86

**PIANO LESSONS** - Call Angie Covington, 592-2648. 6-26-86

**BUILDING**, Remodeling, or repair, additions, carports, patios. Free estimates. Call day or night Phil McDonald, 592-9457. 6-26-86

**FOR YOUR COPY** needs including reduction and enlargement, call Iowa Park Air Conditioning, 592-2761, or come by 609 W. Bank. Charges 20 cents a copy (less for quantities). 1-1-86

**VINYL & STEEL Siding**. Saves energy, never needs painting. 100% financing available. Call Jerry Matthews at Great Plains Siding and Insulation, 592-9829 or 761-2124. 6-5-86

**ALCOA SIDING!** Vinyl! Steel! Aluminum! Call Davidson's Discount Siding, 817-696-5525. Free estimates given anytime, anywhere. 6-26-86

**HOME IMPROVEMENTS** from additions to remodeling. Patios and carports, acoustic ceiling, ceramic tile, general carpentry. Gary Williams, 592-2480. 12-5-86

**COPIES MADE** at Parkway Time Value, 25c each. 1-1-86

**CLASSIFIEDS SELL**

**Notice**

**PUBLIC NOTICE**

Sealed bids will be received at the office of the City of Iowa Park, P.O. Box 190, Iowa Park, Texas, until September 19, 1986, at 10:00 A.M., then publicly opened and read aloud immediately thereafter for the following work: The furnishing of all labor, equipment, and materials to perform all the work necessary for the smoke testing of the sanitary sewer services within the City of Iowa Park.

The sewer system has been divided into basins for the purpose of bidding as well as areas of need. The base bid will be on basin one with the alternate one bid being on basin one and two, while alternate two will cover basins one, two, and three.

All other specifications are noted in the contract portion of this bid sheet. The City of Iowa Park reserves the right to accept the best and/or lowest bid, or reject all bids if in the best interest of the city. 9-4-86

**PUBLIC NOTICE**

The Board of Adjustment of the City of Iowa Park, Texas, will conduct a public hearing at 5:30 p.m. on Tuesday, September 16, 1986, for the issuance of a variance at Lot 18, Block 19, Redin Heights (1009 Foley), to allow less than the five (5) feet side yard setback. Any comments for or against may be presented orally at the hearing or in writing to the City Administrator prior to the meeting. All meetings are open to the public. 9-4-86



**FREE PUPPIES 8 WKS.** old. See at 1704 Quail Valley Rd. or call 592-2923. 9-4-86

**FREE PUPPIES** - 592-4906. 9-4-86

**PUBLIC NOTICE**

The Board of Adjustment of the City of Iowa Park, Texas, has rescheduled a public hearing at 5:30 p.m. on Tuesday, September 16, 1986, for the issuance of a variance at Lot 1, Block 162, Original Townsite (804 South Colorado), to allow a business in an R-3 zone. Any comments for or against may be presented orally at the hearing or in writing to the City Administrator prior to the meeting. All meetings are open to the public. 9-4-86

**LADY LOVER**

We shared our lovely Lady for several years. I hold no grudge against you, so let's get together and share some of the fond memories of her wonderful love. My phone number is the same as hers.

CALL ME.

**\$1000 REWARD**

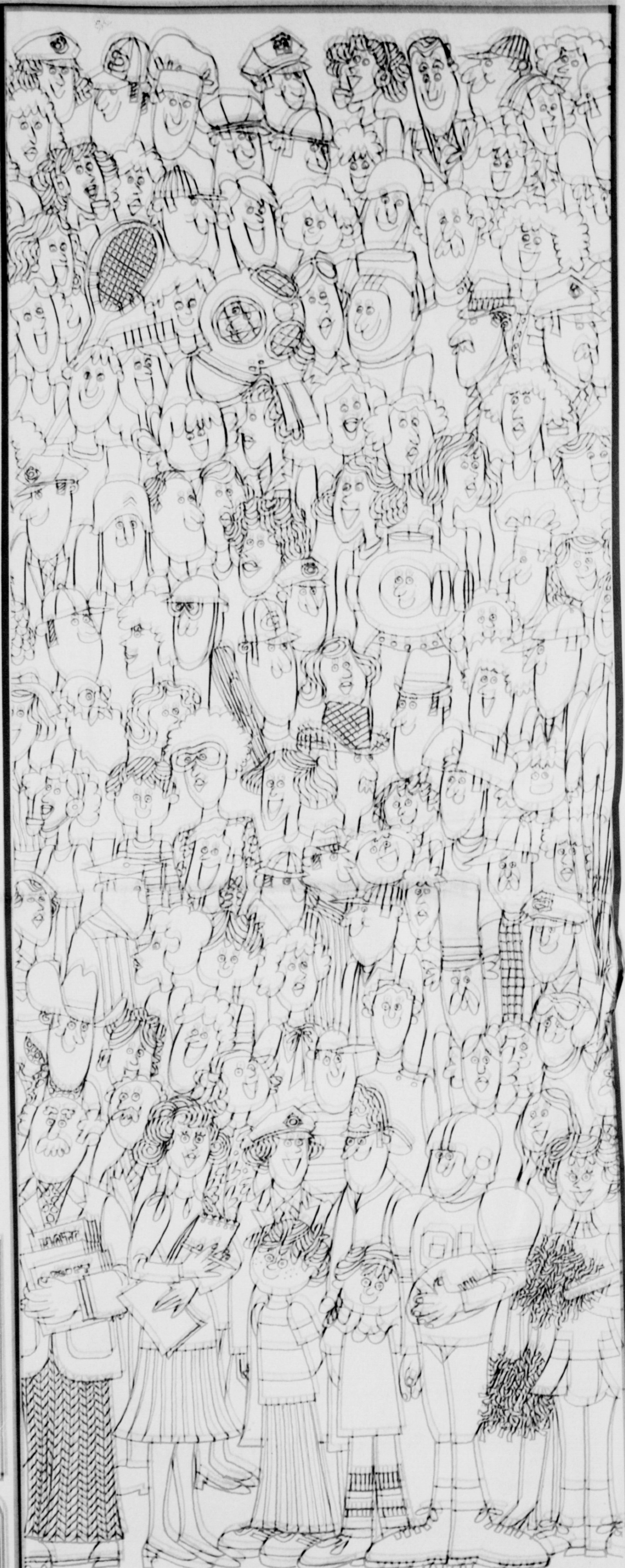
For information leading to the arrest and conviction of any person or persons involved in theft, vandalism, arson, fishing or hunting on any of our properties in Wichita, Archer, Wilbarger, Clay, Wise or any other county in which we may have equipment located. Tom Swanson Off Co., TS&T Drilling Inc. Ph. 817-495-3971.

**Defensive Driving Course**

Classes held at Region XI Education Service Center every 2nd & 4th Saturday of each month. For More information CALL 322-6928

Before you buy a student or computer desk... This Iowa Park Office anticipates permission to sell the following items within 30 days:

- 7- City/Carrier Cases and tables - perfect for student desk with bookcase or computer desk - \$45 each
  - 1- antique Rural Carrier wooden case - \$50
- Acquire at the Post Office. All sales final. Postal Employees & families are not eligible to purchase.



**See Yourself in this Picture**

You're probably in it, because most of the folks in this area have something in common... They are Leader Readers

If you're one of the few who are not come by 112 W. Cash, Iowa Park, and we'll start your subscription.

**OUR MOST AFFORDABLE MODEL**

Quality and Workmanship At a Special Value Price

If you're looking for a new water heater at an affordable price, call us today.

**FEATURES**

- Dense fiberglass insulation
- Porcelain glass-lined tank
- Anode rod for corrosion protection
- Five-year tank warranty
- Two-year parts warranty (Best warranty and features for standard model of the business)
- 30-gallon, gas or electric

**\$124<sup>95</sup>**

Includes free delivery in town

**Parkway**

**Tom's Value Hardware**

**HARDWARE & FURNITURE**

506-506 W. Bank  
595-5512 595-1681

**Master PLUMBER**

**A GOOD SIGN THAT TELLS YOU ONE THING...**

**THE LENNOX WORKS WONDERS!**

97% Efficient

26-Year Limited Warranty On Heating Assembly

**LENNOX**

**SANDERS SERVICE CO.**

Since 1987

- PLUMBING
- REMODELING
- REPAIR
- COVER SERVICE
- WATER HEATERS

**SALES**

- Conditioning
- Heating
- SALES
- SERVICE
- INSTALLATION

1477 34th W. Wichita, EB88, Texas (817) 767-9714

**Good Housekeeping**

WARRANTY TO CONSUMER

1 YEAR OR 90 DAYS TO TAKE FULL REFUND OR 10% RESTITUTION