

MRS. LITA WATSON  
528 W. CLARA  
IOWA PARK TX 76367  
111



# IOWA PARK LEADER

50¢

Vol. 30, No. 39

IOWA PARK, WICHITA COUNTY, TEXAS 76367

Thursday, June 3, 1999



**NEARING THE END** - Despite how enjoyable Project Graduation activities can be for participants, the energy begins to wane about 4:30 a.m., as is indicated by the faces of these young people Saturday morning.

## Arrest nets components of Nazi lab in Iowa Park

When Iowa Park police arrested Larry Don Tepfer on outstanding warrants Sunday evening, they confiscated numerous narcotic related items from his vehicle.

Tepfer, 39, was wanted on charges of exhibiting an expired motor vehicle inspection sticker and having no liability insurance, with a total fine of \$399.50.

The arrest was made at a residence in the 500 block of East Pasadena.

After receiving permission to search his vehicle, the department's drug-sniffing dog was called to the scene, and alerted on the vehicle's trunk.

Most of the items removed, all of which were later sent to a laboratory for analysis, were those commonly related to methamphetamine cooking equipment, according to police.

Tepfer was released four hours later, after signing a promise to appear in municipal court relating to the outstanding warrants. No other charges have yet been filed.

Officers were called Thursday morning to a residence in the 200 block of East Washington, where two men were reportedly fighting.

They arrested Joseph Wayne Butler, 18, on a Class C assault charge.

After being taken to the police station, emergency medical personnel were called in to treat dog bites on Butler, reportedly inflicted by the

family's own dog.

Butler was later released after signing a promise to appear in municipal court.

Thursday evening, officers picked up two 16-year-old brothers on warrants issued by the Wichita County sheriff's department. They were transported by a deputy to Wichita Falls, where they reportedly were turned over to their probation officer.

Police were summoned Saturday afternoon to Wal-Mart, where two females were being held for shoplifting.

Rachel Perez, 40, and Diana Enriquez, 41, were charged with theft over \$50, and transported to the county jail.

It was also determined by computer check that Enriquez was the subject of an outstanding warrant issued by the sheriff's office, for driving while license was suspended.

A fight between two other men was the reason police were called to Woodbriar Apartments at 3:59 a.m. Saturday, according to the police blotter.

Arrested on charges of disorderly conduct were John Paul Houston, 24, and James Austin Crowell, 21. Both were later released on personal recognizance bonds.

Police were informed of three criminal mischief offenses this week. Owners of property in the 600 block of West Washington and 500 block of West Alameda showed officers Monday the results of graffiti on structures, where spray paint was used.

Police are contacting Wichita Falls police who work with gang-related incidents concerning that case.

The other criminal mischief case reported, also on Monday, was a home in the 600 block of East Alameda that had been the target of an egg thrower.

## Trustees meet on personnel

Iowa Park school trustees accepted the resignation of five teachers, hired five teachers and reassigned another during a called meeting Tuesday night at the school administration office.

After meeting in closed session, which lasted slightly over three hours, the resignations of Willa Mitchell, Beverly Bohannon, Joyce Smith, Don Dudley, and Brooks Cain were accepted.

Mitchell, a third grade teacher at Bradford Elementary, and Smith, a teacher/coach at W.F. George Middle

School, are both retiring. Bohannon, who taught math at high school, has accepted a position at Sheppard Air

Force Base, and Cain, who taught at Bradford, is expecting her third child

Continued on page 4

## NEWS BRIEFS

### Frequent rains deposit 1.30

Iowa Park received slightly more than 1.30 precipitation during the past week, according to Virgil Woodfin's measurements.

He reported measuring .66 Thursday, .31 Saturday and .33 Monday, and an additional trace that

evening.

Some residents reported observing hail Monday evening. The stones apparently were smaller in the city than at Kamay, where they were described as being about an inch in size. No damage was reported.

### Council to study new budget

The city council will hold a called meeting at 7 p.m. Monday in council chambers, primarily to begin study on the 1999-2000 budget.

The only item on which action will be taken is to accept the 1998-99 audit, according to Mike Price, City Administrator.

## Tournament draws 45 participants

The largest number of participants, 45, to have ever signed up to play in the annual All-Iowa Park Golf Tournament will tee off at 1 p.m. Friday at River Creek Golf Course.

Contestants have been informed to be at the course by 12:30, in order to load their carts and be as their designated shotgun starting placed on time.

Not only are more players signed up for this, the ninth-annual event, but coordinators have collected more prizes that will be awarded.

Providing the prizes have been Cryovac, Robert Palmer, Louis Jewelry, Hughes Pharmacy, Parkway True Value, Ken's Pizza, Texas Realty, Play It Again Sports, and Second Hand Sports.

Additional prizes will consist of IP Bucks, which are redeemable at any Iowa Park place of business.

Prizes will be awarded to the male contestants based on low scratch score and low handicap score, as well as closest to the hole on all four par three holes, as well as longest drive on four holes.

The low women's scratch score will receive a crystal clock.

Two other types of competition also have been arranged this year, including a skins game, which is optional for entries, and a blind teams competition, which will be announced after players have completed the day.

The tournament, which is open to anyone who lives within the Iowa Park school district or works full-time in the district, is coordinated each year by the Iowa Park Chamber of Commerce.

The deadline to have signed up for this year's event was Tuesday afternoon.



**SHOWING THEIR RESPECT** - Iowa Park Boy Scouts set out American flags at the grave of every military veteran who is buried at Highland Cemetery. The activity took place Friday afternoon, in preparation for Memorial Day.



**GOOD ENOUGH TO EAT** - Buster Reaves, left, and Carlton Hicks attend to griddles full of pancakes, which were served Saturday morning to all who attended Project Graduation at the high school. The two are members of the Iowa Park MuleSkinners, who have served the breakfasts for every Project Graduation since it was initiated here.

Shop  
**IOWA PARK**  
First  
No other newspaper  
in the world  
would make that statement!





## Cool Summer Recipes

### Banana Split Cake

24 chocolate wafers or 30 vanilla wafers  
2 medium bananas, thinly sliced  
1-13 oz. jar creamy glaze for bananas  
1-8 oz. frozen whipped topping, thawed  
2 Tbsp. chocolate syrup  
1/4 cup chopped peanuts  
In a 2-quart casserole dish, arrange in a single layer: half the cookies, half of the bananas, half of the glaze and half of the whipped topping. Repeat layers.  
Drizzle chocolate syrup over topping. Refrigerate at least four hours or overnight before serving. Just before serving, sprinkle with peanuts.

### Mini Monte Cristo Sandwiches

2 Tbsp. butter or margarine, softened  
2 Tbsp. prepared mustard  
8 slices white bread  
4 slices Swiss cheese  
4 slices cooked ham  
3 eggs  
1/2 cup milk  
1 envelope golden onion soup mix  
1/4 cup butter or margarine  
Blend 2 tablespoons butter with mustard; evenly spread on each bread slice. Equally top 4 bread slices with cheese and ham; top with remaining bread, buttered side down. Cut each sandwich into 4 triangles.  
Beat eggs, milk and golden onion soup mix until well blended. Dip sandwiches in egg mixture, coating well.  
In large skillet, melt 1/4 cup butter and cook sandwiches over medium heat, turning once, until golden.

### Cobb Salad

4 skinless boneless chicken breast halves, cooked, cooled  
2/3 cup vegetable oil  
1/3 cup distilled white or apple cider vinegar  
1 clove garlic, minced  
2 tsp. dried dill weed  
1 1/2 tsp. granulated sugar  
1/2 tsp. salt  
1/4 tsp. pepper  
8 cups torn salad greens, chilled  
1 large tomato, diced  
1 med. green bell pepper, diced  
1 small red onion, chopped  
3/4 cup crumbled blue cheese  
6 slices bacon, cooked, crumbled  
1 hard-cooked egg, chopped  
Shred chicken into bite-size pieces. For dressing in a jar, combine oil, vinegar, garlic, dill, sugar, salt and pepper; cover and shake vigorously. Pour 1/2 cup dressing over chicken; toss well to coat. Toss greens with remaining dressing. Line each of four large individual salad bowls with greens; mound chicken mixture in center. Arrange mounds of tomato, green pepper, onion, cheese, bacon and egg around chicken.

### Pasta Salad

1-20 oz. can pineapple chunks in juice  
3 cups cooked spiral pasta  
2 cups sugar peas  
1 cup sliced carrots  
1 cup sliced cucumbers  
1/2 cup bottled reduced-calorie Italian salad dressing  
1/4 cup chopped cilantro or parsley  
Drain pineapple; reserve 1/4 cup juice. Combine pineapple, reserved juice and remaining ingredients in large bowl. Toss to coat.

### Lemon Ice Cubes

1 quart cold water  
1/2 cup lemon juice from concentrate  
Mint leaves or fruit pieces, optional  
Combine water and lemon juice.  
Pour into ice cube trays. Place mint leaf or fruit piece in each cube if desired; freeze. Serve with iced tea, lemonade or soft drink.

### Buried Treasures

"Treasures" - such as broken cookies, miniature marshmallows, peanut butter, fruit, chocolate chips, nuts  
2 cups cold milk  
1 pkg. (4 serving size) instant pudding, any flavor

Choose four different "treasures" to "bury." Your will need about 2 tablespoons of each treasure. Put a treasure in the bottom of each dessert dish. You may put more than one treasure in each dish, if desired.

Pour 2 cups of cold milk into a shaker. Add pudding mix. Put lid on shaker very tightly, and shake hard for at least 45 seconds.

Open shaker. Gently spoon or pour pudding from shaker over the treasures. Pudding will thicken quickly and be ready to eat in 5 minutes or put dishes into refrigerator to chill until serving time.

### Yard of the year recipients named

It was announced during last Friday's meeting of the Iowa Park Garden Club that Patricia Wyatt and her brother George Wright, 209 East Alameda St., were recipients of the group's Yard of the Year award.

A plaque will be presented to the pair at a later date.

After a short business meeting, club members went to the Harrison House in Wichita Falls for lunch.

Officers were installed for the coming year, and include the following: Freddy Skinner, president; Evelyn Skinner, vice president; Evelyn Thompson, recording secretary; Joyce Short, corresponding secretary; Aretas Spruiell, treasurer; Nina Robinson, historian; and Louise Clapp, parliamentarian.

## FRIENDLY DOOR NEWS

by LINDA PERRY

We had a wonderful month in May. Please, accept our friendly welcome to all our new members we received not only as congregating clients but also to all of our new members on the home delivered meal list. Our center is seeing an increase in membership and we welcome any senior citizen, 60 years of age and older, to come join us.

Our dinner and game night was a lot of fun. We all enjoyed a delicious meal in Electra at B.G.'s Restaurant and the birthday cake for Curtis Smith that we all helped him eat and celebrate his 80th birthday. We had our van packed to max and three more cars full that night - total of 25.

All of us at the Friendly Door would like to express our appreciation to the 8th Grade Class and Mrs. Sheila Gholson from W.F. George Middle School and everyone who had a part in the Good Ol' Days. Also, a big thank you to the boys who scanned all the old pictures our seniors wanted copied and enlarged.

We would like to say goodbye to Barbara Johnston and Lori Sanders. We will all miss you both but we wish you the best. Thanks for all your dedication and work you did so well.

I would like to introduce our newly appointed assistant director, Tracy Belvin. Tracy and her husband, Richard, have been residents of Iowa Park 12 years. They have three children, Ryan, 16, Rex, 11, and Kara 10. Welcome to the Friendly Door, Tracy.

Again, our appreciation to the many volunteers who did a great job getting the home delivered meals out during the month of May. Thanks to the following: Christ the King Catholic Church and Presbyterian Church, Leola Elliott, Betty Copas, Randy and Sheri Heidrich, Pat and Linda Burke, Angela Clark, Harry Hildebrand, Emma York, Kathy Mills, Bonnie and Jim Medlinger, Louise and John Clapp, Ina Settle, Louise Berry.

Also, Vivian Medlinger, Gertrude Krajcik, Jim and Dot

Frazier, Francis Park, Dora Alexander, Bob Birk, Kenneth Young, Joyce and Lowell Short, Cecilia House, Gene and LeVerne Owens, Johnnie Brown, Myrna Robinson, Alvin and Dottie Jeter.

I am in need of people who are available to take our senior clients to their doctors appointments, etc. Please, call me at 592-9311 if you can help in this area.

Come join us on the second Thursday of this month, June 10, at noon as we celebrate birthdays of clients and staff. Our cake is provided by Park Home Health and Kathy's Kakes. The Iowa Park Florist donates a fresh arrangement or plant to be drawn for and given to one of our clients celebrating a birthday in June.

Birthdays for the month of June: Paul Haynes, Eleanor Gilmore, Earnest Evans, Ruth Bowman, Otis Waldrop, Mary Lee, Virgie Conway, Margaret Sheets, Jake Watson, Patsy Cope, Voris Brooks, Taylor George and Edna Christian. Happy Birthday to all!

### Calendar of Events for June, 1999

Each Monday - North Texas Home Health provides blood pressure and blood sugar screenings at 10 a.m.

Each Tuesday the Friendly Door provides transportation for seniors to shop at Wal-Mart at 9:30 a.m.

Each Wednesday the center will provide toe nail trimming by Etoy Chapman. Appointments begin at 9 a.m. Call the center for an appointment.

Also on Wednesdays the center will provide transportation for our seniors to go grocery shopping. Morning and afternoon trips.

Each Thursday we have a Bible Study taught by Eleanor Caddell at 11 a.m.

The third Thursday and last Friday of each month, Park Home Health Nursing Service provides blood sugar and blood pressure screenings.

Special Events for June, 1999  
Bingo, Wednesday, June 2, June 16, and June 30.

Thursday, June 3, the van will take seniors to hear the North Texas Men's Chorus present a musical escape. We will leave the center at 6:45 p.m.

Friday, June 4, will be our Dinner and Game Night. We will be leaving the center at 5 p.m. and eat at Luby's Cafeteria. We will return to the center around 7:15 p.m. to play games.

Thursday, June 10 - Birthday Party at noon.

I will be taking vacation June 7 - 11 to Colorado with my husband. We will be thinking of you on those cool days and nights.

Friday, June 18 we will take the van to the Archer City Senior Citizen Social and Dance. The van will leave the center at 6 p.m. Price of admission to the dance is \$3.

Wednesday, June 23, Jimmy Via will be singing for us at 11:15 a.m.

June 24 Sheryl Martin with Better Living for Texans will be speaking to our seniors at 11:30 a.m.

Have a great month and come join in on our activities here at the Friendly Door.

### MENU

Thursday, June 3 -  
Parmesan chicken, mashed potatoes, tossed salad, Brussels sprouts, wheat bread, strawberry shortcake.

Friday, June 4 -  
Oven fried fish, cole slaw, corn salad, cornbread, lemon cake.

Monday, June 7 -  
Goulash, summer squash, green beans, wheat bread, vanilla pudding, peaches.

Tuesday, June 8  
Oven fried chicken, large lima beans, tossed salad, cornbread, pear halves.

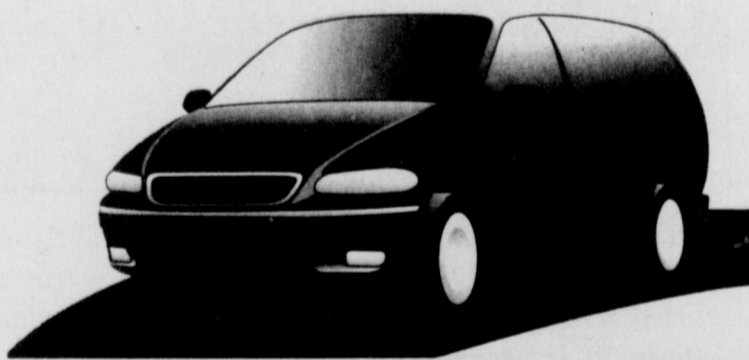
Wednesday, June 9  
Meat loaf, peas & carrots, whole new potatoes, hot roll, gelatin salad and fruit.

Thursday, June 10  
Roast beef au jus, cubed potatoes, steamed cabbage, cornbread, plum cobbler.

"For good value in car insurance with invaluable good neighbor service, see me."



PHILIP WELCH  
118 W. PARK  
592-4155



Like a good neighbor, State Farm is there.

State Farm Mutual Automobile Insurance Company • Home Office: Bloomington, Illinois

Our Favorite Things

3302 Kell West  
696-5777

Located Inside the Balloon Studio

Come see me to get rid of the summertime blahs!

Fresh Flowers  
Gift Items  
Delivery

Linda Ayres, Owner

## FRIENDSHIP CABLE TV

Call Today For  
A Special No Risk Offer

99¢ INSTALLATION  
AND  
30-DAY MONEY BACK  
GUARANTEE

NO QUESTIONS ASKED!  
800-999-6845

## Hughes Pharmacy

Texas Medicaid  
Workman's Comp  
Home IV's

Low Prices on Prescriptions Guaranteed!!!!

Insurance Cards  
Compounding  
Credit Cards

120 W. Park

(940) 592-4191 Fax: (940) 592-5613 Toll Free: 1-800-585-4191  
Joe Hughes - Pharmacist

## IPAC

AIR CONDITIONING & PLUMBING

NOW IS THE TIME

Replace your old air conditioning and heating system with a new HIGH EFFICIENT system.

Call now and enjoy more comfort and also lower energy bills. Call for a FREE estimate.

24-Hour Service  
592-2761

TACLB010194E



# Williams, Ferguson wed May 1

Miss Kimberlie Erin Williams and John Wyatt Ferguson exchanged nuptial vows May 1 at Faith Baptist Church. Vernon Lewis officiated the double ring ceremony.

Miss Williams is the daughter of Linda Rowe of Iowa Park and Michael Williams of Hunington, Ark., and Ferguson is the son of Vonetta and Michael Ferguson of Wichita Falls.

Given in marriage by her parents, the bride wore an elegant formal gown of white satin and beaded Alencon lace.

The bodice was fitted and featured a sweetheart neckline with a Queen Anne collar, all trimmed in beaded lace. The long sleeves were puffed at the shoulder and sheer with lace medallion accents.

The skirt was gathered at the fitted waist, and flowed to a cathedral length. Lace medallions trimmed the hemline of the skirt.

She carried a bouquet formed of pink roses, accented with blue alstermeria, baby's breath, white netting and pink and white streamers.

The groom was attired in a formal black tuxedo with a bowtie.

The bride was attended by Amanda Walder of Wichita Falls and Janelle Edwards of Kamay as maids of honor, and Chevon Perez of Wichita Falls, sister of the groom, and Kalee Williams of Iowa Park, sister of the bride, bridesmaids.

The maids of honor wore identical light blue dresses and carried bouquets of pink roses. The bridesmaids wore matching dark blue dresses and carried pink roses.

Kyla Clark of Hunington, Ark., was flower girl. She wore a white lace dress.

Denver Ferguson of Wichita Falls, brother of the groom, was best man. Groomsmen were Michael Scalf of Nashville, Tenn., Matt Poirot and Richard Fish, both of Wichita Falls.

Wyatt Ferguson, son of the couple, was ring bearer.



Mr. and Mrs. John Wyatt Ferguson  
(Kimberlie Erin Williams)

Skippy Woods offered "Unchained Melody" and "I'm That Man" during the ceremony.

A reception was held following the ceremony in the Fellowship Hall of the church.

The bride's cake was a three-tiered confection separated with cherub pillars.

Zig-zag garland with string rope and navy flowers decorated the sides, and clusters of pink and blue roses centered each tier. A cherub topped the cake.

The bride is a 1997 graduate of Iowa Park High School and the groom is a 1995 graduate of Rider High School.

Following a honeymoon trip to Nashville, Tenn., the couple are at home in Wichita Falls.

**Does your subscription to the Leader expire this month?**  
Check the list on page 4.

## RAC News

### Dance Recital

Showstoppers by Michelle, dance and acrobatics students from the RAC, will present their annual Spring Recital this Saturday at 6:30 p.m. at the Iowa Park High School auditorium. The show is titled "Dance -- One World," and admission is free. All choreography and instruction for these students has been provided by Michelle Hall.

Students participating will be Kennedy Adams, Melissa Ashton, Taylor Berry, Morgan Bradberry, Leslie Butler, Natalie Case, Victoria Cook, and Stephanie Cusey. Also, Ruthie Davis, Britani Eaves, Renee' Espinoza, Ashley Farr, Alyssa Garcia, Kimberly Garza, Bethany Hale, Holden Hall, and Emma Huff.

Other students performing are Jeana Jones, Melissa Kwas, Clare Carrillo-Miranda, Bethany Mitchell, Jessica Osborn, Brittany Panter, China Pruitt, Tiffany Smith, Rachel Whisnand, and Anny York. Sarah Franklin will be the special guest performer.

### Attention Nonprofit Groups

Leaders of all nonprofit groups who meet at the RAC will need to notify the RAC office if they are

planning to have summer meetings at our facility. Please do not assume that you will maintain the same meeting schedule... we don't want anyone to be disappointed!

### Summer Hours

Summer hours for the RAC office are now in effect (7:30 a.m. to 6:30 p.m., Monday through Friday). If you meet at the RAC in the evenings during the summer months, please contact the office for key reservations.

### Summer Classes

Classes being held at the RAC this summer include dance, acrobatics, toddler tumbling, aerobics, taekwondo, tennis camps, and kickboxing. There are currently openings in all classes. To enroll, or for more

information, please call the RAC office at 592-4471.

### RAC PAC KIDS News

The summer session of RAC PAC KIDS is now underway, but there are still a few openings. If you would like to register your child to participate in all the fun, please stop by the RAC office at 806 N. Third to complete the necessary forms.

Next week's field trip will be to the Wichita Falls Museum and Art Center. All field trips will be on Wednesdays, and prior reservations are required. Students planning to go on the field trips need to arrive at the RAC by 8 a.m. Also, parents are reminded that all July field trips require reservations by June 16.



**Father's Day is Sunday, June 20**

**Hallmark Greeting Cards**

**Jack's PARK PHARMACY**  
115 W. Park 592-2731 FREE DELIVERY SERVICE

*Make it a perfect wedding beginning with your invitation!*

Select years from Regency's fine collection of Wedding Invitations and Accessories.

Jack's Park Pharmacy  
115 WEST PARK IOWA PARK 592-2731

## KEEP IT GOING! WITH QUALITY AUTO & TRUCK PARTS

# D.C. AUTO PARTS

"Your Hometown Parts Store"

211 North Wall • Iowa Park, Texas  
940-582-4181

VISA MasterCard OPEN Monday - Friday 7:00 a.m. to 6:00 p.m. Saturday 8:00 a.m. to 2:00 p.m.

**Roberk All Weather Refills**  
•15" to 20" blades

#2216  
**\$1.64**  
Starting at

**Shocks and Struts**

• Variety of Strengths  
• Insist on Monroe Quality

Starting at **\$12.98**  
#31069

**Windshield Washer Cleaner**

Cleans windshields for better visibility. Contains ammonia

#2942  
12 oz.  
**95¢**

**ACDelco Batteries**

**Batteries For:**

- Automobiles
- Pickups
- Trucks
- Motorcycles / ATV
- Agriculture
- Lawn & Garden

We have the AC Delco Battery for your needs

## STATE NATIONAL BANK OF TEXAS Presents

**TEXAS CROSSWORD**  
by Charley & Guy Orbison  
Copyright 1999 by Orbison Bros.

**ACROSS**

- early European in TX: Cabeza de \_\_\_\_\_
- TX Vikki Carr's "\_\_\_\_\_ Hombres"
- Austin's "Flora \_\_\_\_\_" in Zilker Botanical Garden
- western "High \_\_\_\_\_"
- TXism: "\_\_\_\_\_horse town"
- trivial talk
- TXism: "stirred up a hornet's \_\_\_\_\_"
- TXism: "got Romeo blood in his veins"
- TX electronics co. (abbr.)
- TXism: "spinning like a weather \_\_\_\_\_ in a whirlwind"
- Spurs organ. (abbr.)
- a brandy
- Country Music
- TXism: "let '\_\_\_\_ rip!"
- TXism: "it'll take \_\_\_\_\_ healer to fix it"
- TXism: "don't get your shorts in a \_\_\_\_\_"
- TX Mac Davis film: "North Dallas \_\_\_\_\_"
- TX Leon Jaworski replaced this Watergate prosecutor
- worry
- TXism: "use it \_\_\_\_\_ it!"
- Rice won the \_\_\_\_\_ College Bowl in '66
- TXism: "\_\_\_\_\_ in with the tumbleweeds" (arrived)
- Fort Worth millionaire
- TX Gilley's "A Headache Tomorrow \_\_\_\_\_"
- \_\_\_\_\_ache Tonight"
- Texans chose Hoover over this Alfred in '28 (init.)
- \_\_\_\_\_ Vernon, TX
- barbed-wire king Ellwood \_\_\_\_\_
- terrier type
- lobster claw
- teacher organ. (abbr.)
- Buffalo \_\_\_\_\_, TX
- lyric poem

**DOWN**

- in Wilbarger Co. on 287
- TXism: "busy \_\_\_\_\_armed paper hanger"
- TXism for "How are you?"
- TXism: "mean \_\_\_\_\_ old range cow"
- Cloris of "The Last Picture Show" (init.)
- TX Jim Reeves hit: "He'll \_\_\_\_\_"
- the first man
- TXism: "teen ninety"
- start the golf match (2 wds.)
- Cowboy Emmitt (init.)
- the man who fired 39-across (init.)
- TXism: "that \_\_\_\_\_ fancy"
- TX Clint Black's "\_\_\_\_\_ Man"
- TXism: "\_\_\_\_\_ a soul"
- Gov. \_\_\_\_\_ Culberson
- TXism: "couldn't fight his way out \_\_\_\_\_ spider's web"
- long fish
- Rockets drafted this Marcelo in '93
- TXism: "\_\_\_\_\_ loop roper" (poor cowboy)
- TX "Moonraker" actress Lois \_\_\_\_\_
- TXism: "a buckner \_\_\_\_\_ a snorter" (mean)
- \_\_\_\_\_ Holiday
- TXism: "loaded \_\_\_\_\_" (equipped)
- tie the sneakers again
- TX "western swing" pioneer Willis \_\_\_\_\_
- TXism: "fat \_\_\_\_\_ boardinghouse cat"
- low-water-use garden or landscape
- Alamo commander Travis (init.)
- TXism: "if he bought a cemetery, people would \_\_\_\_\_ dying" (unlucky)
- Davis Cup winner in Dallas in '65
- TXism: "he's got a \_\_\_\_\_trigger temper"
- TX Dennis Quaid starred with this Starr in "Caveman"
- work bread dough

**BETTER DEAL!**

Everyone advertises that they have a better deal when it comes to auto loans. At State National Bank of Texas, we offer automobile loans that have competitive rates and terms which are truly a better deal. Your hometown bank, no matter where you call home.

**STATE NATIONAL BANK of Texas**

104 W. PARK 592-4131

65 Years of Continuous Service

Equal Housing Lender

FDIC

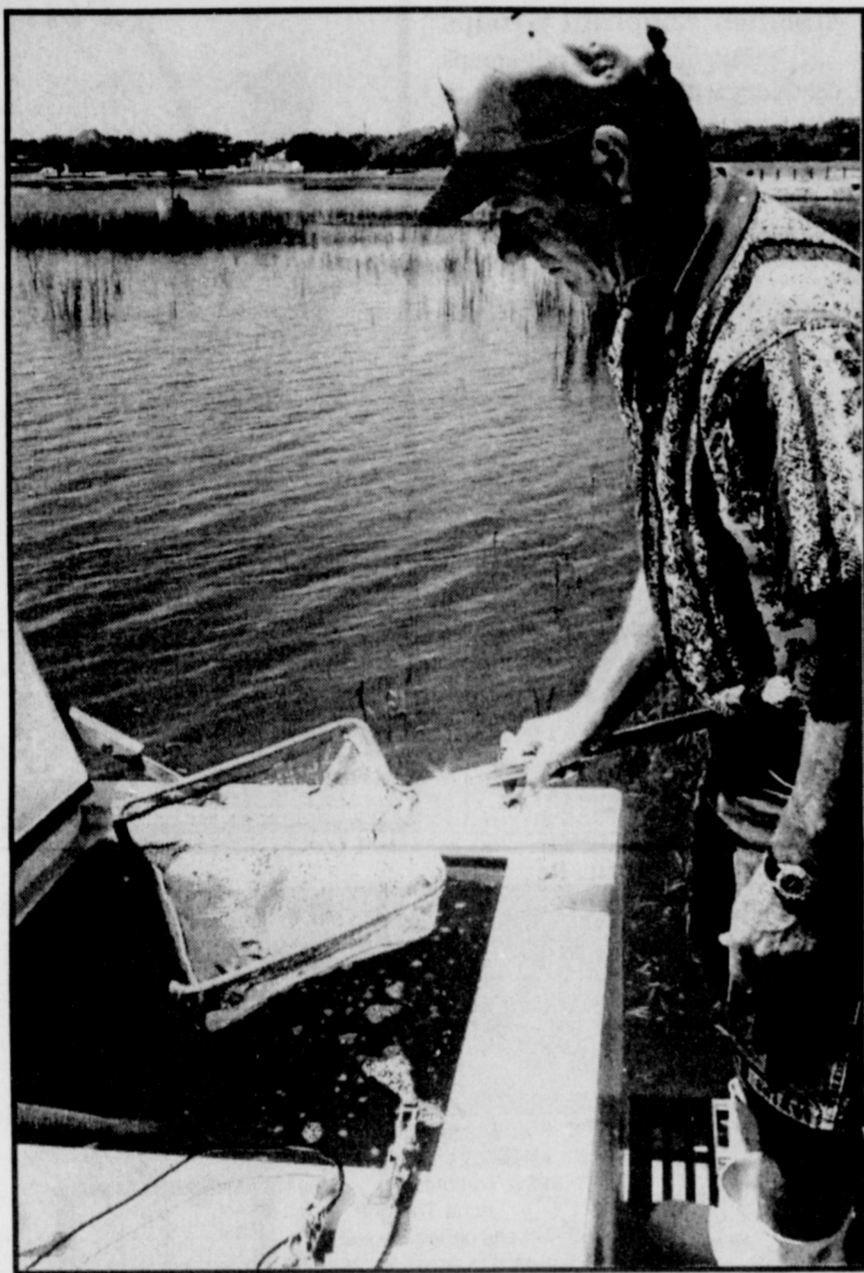
Each Depositor insured to \$100,000

**Last Puzzle Solution**





**SAUGEYE FOR LAKE GORDON**  
Lake Gordon was recently stocked with 950 more Saugeye from the Texas Parks and Wildlife by Mark Howell, District Fisheries biologist in white shirt, and Glen Alexander, Manager Possum Kingdom Fish Hatcheries. The state has been doing this since 1993, and Lake Gordon is one of five lakes in the state receiving that variety of fish.



## Trustees

Continued from page 1

and wants to stay at home to raise her family. Dudley, who taught science and coached at the middle school, is leaving to teach in another school district.

Teachers who were hired include: Kim Jordan, math teacher; Lee Anderson and Gary Waitman, agriculture science teachers; Mickey Hughes, junior high science teacher and coach; and Dusty Robinson, world geography teacher and coach.

Rob Leopold, who has been employed as a computer science teacher at the high school, was reassigned to Technology Coordinator for the district.

During the open portion of the meeting, Superintendent Mike Caplinger reported that 510 surveys on the use of school uniforms had been sent to parents of middle school students. So far, 229 (44%) have been returned with the following results: support uniforms - 63.7%; unsure - 14.4%; and do not support - 21.8%. It is hoped that parents who have not done so will fill out the survey card and return it, so school board members will know how they feel on this issue.

Trustees went over a schedule from Mike Marrs, the schools' architect, which estimates construction on new buildings to begin the first part of November.

## May large for permits

A total of \$37,127 in building permits were issued during the month of May by city hall, bringing the year's total to \$607,755.

Permits issued during May included:  
Bud McDonald, 911 W. Louisa, storage building, \$1,100;  
Bruce Hoover, 607 S. Park, carport, \$800;  
John Lee, 106 E. Magnolia, carport, \$628;  
Wichita County Water, 509 E. Jefferson, demolition, \$10;  
Clarence McClurg, 1300 Emma, carport, \$2,500;  
Bob Reams, 9 Park Place, storage building, \$400;  
Bob McFarland, 102 S. Bell, carport, \$650;  
Mike Caplinger, 29 Surrey, storage building, \$1,109;  
Christine, Wilson, 408 S. Texowa, roofing, \$3,800;  
Turner Andersen, 1509 Douglas, carport, \$1,480;  
Jamie Dixon, 1215 Richland, patio, \$200;  
James Bevers, 102 W. Bank, addition, \$15,000;  
Jerry Robertson, 201 W. Ruby, storage building, \$8,500;  
Nancy Keep, 716 Mockingbird, carport, \$250;  
Marvin Cogdell, 301 W. Lafayette, addition, \$700.

**All Seasons**  
Termite & Pest Control  
Tree Spraying  
Roaches • Fleas  
Ticks • Rodent Control  
Danny Frazier • 817-592-0239  
800 E. Pasadena • Iowa Park, Texas 76367

**LAWNMOWER & WEDEATER REPAIR**  
Overhauls, blades sharpened and balanced. Also edgers and riding mowers. Yard work. Real reasonable.  
592-5402.

**Paul Starr Construction**  
Winter Interior Paint Specials.  
All phases remodeling, construction.  
Licensed and Bonded. 592-5550

## NOTICE TO SUBSCRIBERS

This is only a notice to those listed below that their subscriptions will expire on the published date. You don't owe us a thing if your name is on the list. It only means that what you've paid for is running out. To renew your subscription, please fill out the form below, as it appears on your paper's mailing label. Indicate whether this is a renewal or a new subscription. Enclose your check or money order, as all subscriptions must be paid in advance.

### Subscriptions due to expire JUNE 15, 1999

Please disregard this notice if already paid.

A	J
Denny Anderson	Tomball
Kenneth L. Battle	Gene Jordan
Amber Beason	Tracy Justus
Chondra Bills	Mabel Karstetter
Bobbie Birdett	Don Roy Klinkerman
E. M. Boone	
Laura Bowerman	Mary Harris Langford
Mike Brown	
J. C. Canada	Mary Helen Marine
Sid Carlson	B. C. Mashburn
Jim Cash	Tom Mills
Betty Clements	Leona Moore
Bill Cobb	Thomas K. Moore
Margaret Cole	Stacy Morgan
Troy Collins	J. D. Morrison
Scotty Cook	Donna Myers
Steve Copening	Mc
Danny Cravens	Mrs. F. L. McCoy
Don Daugherty	N
Greg Deatherage	Weldon Nelms
Eldon Dowell	P
James Dudley	Paul Panter
Tom Duncan	Brent Patterson
	Steve Privitera
	R
Pat Ehlert	Dennis Raschke
Richard Eland	Judy Reams
Allen D. Esparza	Monty Reaves
Jerry Flesner	Paula Reid
Robert Fletcher	Carolyn Richter
David Fuhrman	Bonnie Rovera
Bob Fulfer	Larry R. Roberts
Stephanie Galliton	S
Jane Gauntt	Clyde Skinner
Dan Geil	Luther Skinner
Jim Gilmore	Armon Smith
Judy Gilmore	Harold Smith
Edd Glasgow	Evelyn Stewart
Jerry Guyton	Gilbert Stogsdill
	Charley Strickland
	James Swan
	Beth Sweet
	T
Lee Hale	Roy Thompson
Patti Hambright	Jerry Tidwell
Sam Henderson	John E. Timms
Charles Hickey	V
Carlton Hicks	Tom Venhaus
Ronda Kuehler-Holler	W
Holliday Middle School	Deanna Whitman
Michelle Horak	Chris Wiese
George Howell	Teresa Wiese
James Howell	Bernice Williams
Jimmy Howell	Gay Williams
Susan Howell	Stephanie Wood
Pat Hunter	Y
	Billie Young
	Craig

# As I See It... By Bob Hamilton

The Iowa Park city council will soon be imposing a new restriction on fishermen at Lake Gordon.

I'm sure some will complain about it, but frankly, that's just tough.

People will no longer be allowed to drive their vehicles down to the water's edge, once the restriction is put into place.

Why? When?

As you likely know, the city is having a fine concrete walking track laid entirely around the lake. The track is not being built to withstand the weight of vehicles on it.

And it appears that the track's construction will be completed within

the next couple of weeks. At least, all but the area on the north side, which will take a little longer, and will not be of concrete.

Vehicles weighing more than a mowing machine would begin to cause deterioration of the concrete, if allowed to drive on or across it.

Oh, fishing will continue to be allowed at Lake Gordon. In fact, the city encourages it by participating with the state parks department to stock it with additional fish.

But the days of pulling your vehicle down to water's edge, unloading your folding chairs and equipment only a few steps from where you plan to set up are all but over.

As it appears, you'll be allowed to park a whopping 100 feet or so from the water.

I know. I know. It's a real hassle! But if you want to continue that

practice, there are still the two other city-owned lakes where you can save all that energy.

Lake Buffalo and Lake Iowa Park are also outstanding bodies of water with loads of good fish populations. You'll just have to drive a couple extra miles, that's all.

**Shop IOWA PARK First**

## IOWA PARK LEADER

Bob Hamilton ..... Editor/Publisher  
Dolores Hamilton ..... Co-Publisher  
Karl Collins ..... Advertising Director  
Don Young ..... Sports Writer  
Sherrie Williams ..... Reporter

The IOWA PARK LEADER is published every Thursday. Offices are located at 112 W. Cash, Iowa Park, Texas, 76367 (766280). Telephone: 592-4431. Second Class Postage Paid at Iowa Park, Texas 76367. Annual Subscription rates are \$15 in Wichita County; \$17 elsewhere in Texas; \$20 anywhere in the United States. Any erroneous reflection upon the character, standing or reputation of any person, firm or corporation which may appear in the columns of this newspaper will be corrected upon being brought to the attention of the publisher. The entire content of each issue of the Iowa Park Leader is protected under the Federal Copyright Act. Reproduction of any portion of any issue will not be permitted without the express permission of the Iowa Park Leader.

MEMBER  
**TEXAS PRESS ASSOCIATION**

### PEOPLE WHO READ NEWSPAPERS ARE

**MORE SUCCESSFUL BUSINESS OWNERS**

### Weather Report for May

High Temperature	93
Low Temperature	47
Average high temp.	79.5
Average low temp.	65.3
Clear Days	19
Cloudy Days	12
Precipitation	2.25
Dates of precipitation:	1st, .55; 23rd, .08; 25th, .32; 27th, .66; 29th, .31; 31st, .33.

Sell it with **CLASSifieds!**



# Obituaries



**Steve Brown**  
1906 - 1999

Steve Brown, 93, died Saturday in Iowa Park.

Services were Tuesday at Iowa Park Church of God with Rev. Raymond Pettitt of Douglasville, Ga., and Rev. Clifford McFadden, pastor, officiating. Entombment was at Crestview Mausoleum under the direction of Dutton Funeral Home.

Mr. Brown was born Jan. 21, 1906, in what is now Durant, Okla. He and Lottie Walker were married Aug. 28, 1926, in Walters Okla. He was involved in Iowa Park Church of God since Jan. 7, 1932, and was a charter member. He was a trustee for the church and was involved in music ministry. He was in the grocery business from 1933 to 1940 and was supportive in building church buildings for the Church of God organization. He was an independent oil producer and had lived in Iowa Park 59 years, moving from Electra.

Survivors include his wife; a son, Jerald of Iowa Park; two daughters, Norma Jean Fox of Iowa Park and Sue Goforth of Cleveland, Tenn.; eight grandchildren; 11 great-grandchildren; and a great-great-grandchild.

Memorials may be made to Iowa Park Church of God, 601 E. Cash St., Iowa Park, Texas, 76367.

**Johnie M. Stevens**  
1920 - 1999

Johnie M. Stevens, 79, died Saturday in a Wichita Falls hospital.

Services were Tuesday at Owens and Brumley Funeral Home with Rev. William Carnley of Maurine Street Church of God officiating. Burial was in Crestview Memorial Park.

Mr. Stevens was born Feb. 25, 1920, in Buffalo. He served in the Army as a medic during World War II. He played musical instruments for Grace Care Center. He was a member of the Disabled American Veterans and had lived in Wichita Falls for 65 years.

Survivors include his wife, Flossie of Wichita Falls; three sons, Johnie of Wichita Falls, Billy Jack of Megargel, and Jimmie Joe of Antelope; four daughters, Brenda Hallums

of Kaufman, Marilyn Garcia and Beverly Spain, both of Wichita Falls, and Carolyn Esparza of San Antonio; two brothers, J. C. of Liberal, Kan. and Jack of Kamay; three sisters, Minnieola Williamson of Jacksboro, Sarah Richmond of Garland and Audrey Bridges of Wichita Falls; 13 grandchildren; three step-grandchildren; and three great-grandchildren.



**Theresa Genola Likin**  
1941 - 1999

Services for Theresa Genola Likin, 58, will be at 2 p.m. today at First United Pentecostal Church with Greg K. Hardin, pastor, officiating. Burial will be in Highland Cemetery under the direction of Dutton Funeral Home.

She died Tuesday, June 1, in Iowa Park.

Mrs. Likin was born Feb. 3, 1941, in Chickasha, Okla. She and Dwain Likin were married May 27, 1961. She was employed by the Clinics of North Texas as a Licensed Vocational Nurse. She had also worked at the nursing home in Iowa Park, and as a private duty nurse for UpJohn. She had lived in Iowa Park 58 years and was a member of First United Pentecostal Church.

She was preceded in death by her father, Wade Bowman, in 1984, and her mother, Opal Bowman, in 1988.

Survivors include her husband; two daughters, Rhonda Wilson and Karen Painter, both of Iowa Park; a sister, Rosie Skinner of Iowa Park; four grandchildren; and one great-grandchild.

**Ollie G. Whitehead**  
1904 - 1999

Ollie G. Whitehead, 94, died Saturday in a Wichita Falls nursing home.

Graveside services were Tuesday in Crestview Memorial Park.

Mrs. Whitehead was born Oct. 18, 1904, in Bowie. Her husband, Robert, died in 1968. She was a homemaker. She was a former Wichita Falls resident before moving to Iowa Park 10 years ago.

Survivors include a daughter; and two nieces, Peggy Collins and Jan Robertson, both of Iowa Park.

**Eva Marie Huchton**  
1923 - 1999

Eva Marie Murphy Huchton, 76, of San Angelo, died Thursday in San Angelo.

Services were Monday, at Sacred Heart Church of Muenster with Rev. Thomas Craig, pastor, officiating. Burial was in Sacred Heart Cemetery in Muenster.

Mrs. Huchton was born May 3, 1923, in Wapanucka, Okla. She and S.F. Huchton were married June 17, 1946, in Denison. She was a Catholic and a homemaker after retiring from nursing. She obtained her registered nurse's license at Wilson N. Jones in Sherman, and worked as an RN mostly at the Clinic Hospital of San Angelo. She was a former resident of Muenster.

Survivors include her husband; three sons, Donald F. of Iowa Park, Joseph M. of San Angelo and Kenneth A. of Tyler; a sister, Geanne Couch of Sioux City, Iowa; a brother, Bill Murphy of Oklahoma City; six grandchildren; and nine great-grandchildren.



**Hazel E. Inman**  
1917 - 1999

Hazel E. Cleary Inman, 81, died Saturday in Wichita Falls.

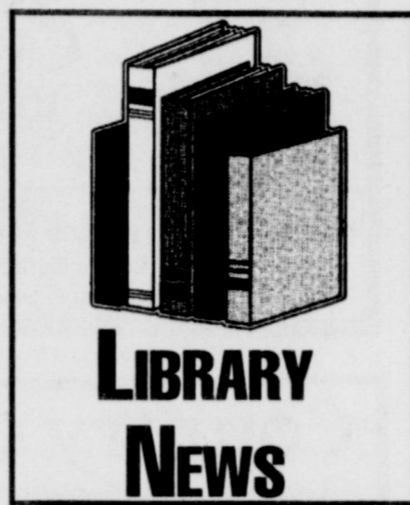
Graveside services were Tuesday in Highland Cemetery with Jeff Ratliff, minister of the Iowa Park Church of Christ officiating. Arrangements were under the direction of Dutton Funeral Home.

Mrs. Inman was born Oct. 23, 1917, in Matador. Her husband, Wallace, died in 1955. She was a

volunteer caregiver and a seamstress for Levi Strauss Company. She was a resident of Iowa Park 81 years and was retired from Gulf Theaters as assistant manager. Her daughter, Walleen Estell, died in 1936.

Survivors include two daughters, Colleen Vernon of Iowa Park and Barbara A. Veasey of Wichita Falls; a sister, Ruby L. Hoepfner of Anchorage, Alaska; six grandchildren; and 10 great-grandchildren.

Memorials may be made to Texhoma Christian Care Center, 300 Loop 11, Wichita Falls.



## Summer Reading Calendar

Thursday - (June 10) storyteller, Phyllis Tucker - 1 p.m.  
Wednesday - (June 16) storyteller, ventriloquist, Rose Anderson - 1 p.m.  
Tuesday - (June 22) storyteller, Betty Jane Rafuse - 1 p.m.  
Thursday - (July 1) Logan The Juggler, Closing Picnic Begins at 11:30 p.m.

## New Children's Books

*Save Brave Ted* by Heather Maisner  
*Monster Brother* by Mary Jane Auch  
*Waking Upside Down* by Philip Heckman  
*Halloween Party* by Linda Shute  
*What's Heaven* by Maria Shriver  
*Mud Flat Spring* by James Stevenson  
*Francine, believe it or not* by Marc Brown  
*D. W. go to your Room* by Marc Brown  
*Our Stars* by Anne Rockwell  
*Sweet Strawberries* by Phyllis Reynolds Naylor  
*Exploring the Deep Dark Sea* by Gail Gibbons  
*Pet Detectives* by Betty Ren Wright  
*The Hare and the Tortoise* by Helen Ward  
*Pollution? No Problem* by David Morichon  
*My Brother Sammy* by Becky Edwards  
**New Adult Books**  
*Worst Fears Realized* by Stuart Woods  
*Balancing Act* by Martin Gottfried  
*Sister of my Heart* by Chitra Divakaruni

## Area Methodists to meet June 6-9 in Wichita Falls

More than 1,000 United Methodists will be in Wichita Falls June 6-9 for a reunion.

The North Texas Annual Conference, made up of approximately 500 ordained clergy men and women and an equal number of non-ordained lay people, will meet in the host city's First United Methodist Church and the Multi-Purpose Event Center.

The main item on their business agenda is to begin the next step in the largest financial campaign in the conference's 133-year history. Members a year ago approved the campaign to raise \$12 million in three to five years. Funds raised in the campaign, known as Vision 2020, will be divided equally, \$4 million each, to:

\*Creating at least 100 new congregations by the years 2020.

\*Creating new forms of urban ministry not only in Dallas but also in other major cities within the United Methodist 20-county North Texas region.

\*Upgrading facilities at conference-owned camp, conference and retreat centers on Lake Bridgeport and Lake Texoma.

Major gifts to the campaign made during the intervening year will be announced June 7. These include pledges from local church pastors, conference staff, "leadership" churches and corporations and individuals. More than one single gift in excess of \$1 million is expected to be announced.

The campaign's next step, which begins as of the Wichita Falls meeting, moves to all 323 local congregations within the annual conference. Pastors are expected to take the lead in explaining why these area-wide priorities deserve support alongside congregational expenses such as salaries, mission outreach, property maintenance and Christian education.

In other business, North Texas Conference leaders will report membership at an all time high of 153,773.

This is a net gain of 2,559 from two years ago. The North Texas Conference has been one of only a handful of regional units within The United Methodist Church to report

membership growth from year to year. Appreciable credit has been given to two special emphases, one called *Bring A Friend Sunday*, typically observed in the spring, the other tested in a pilot project last December in the Wichita Falls district titled *Home for Christmas*. The latter program is expected to be offered to all United Methodist churches throughout the 20-county area this December.

Voting members in Wichita Falls will also elect delegates to two major United Methodist gatherings scheduled for 2000. Six clergy and six lay people will be elected to make up North Texas's 24-member delegation to the eight-state South Central Jurisdiction Conference July 18-21, 2000, in Albuquerque.

Bishop William B. Oden will preside over business sessions, his third in this annual conference since being assigned here in 1996 from Louisiana. Bishop Oden was recently named president-elect of the denomination's Council of Bishops, made up of 100 plus episcopal leaders of the church in the United States, Europe, Africa and the Philippines. He will take office in May 2000.

The current president of the Council of Bishops will preach three sermons during this year's North Texas sessions. He is Bishop Robert C. Morgan, who heads the church's Louisville area.

Twenty candidates will be ordained to ministerial standings during sessions in Wichita Falls.

Members of the annual body have been invited to bring buckets filled with cleaning supplies and health kits they have assembled to replenish the depleted United Methodist relief center in Baldwin, La., plus raise \$5,000 to purchase rice for shipment to Sierra Leone, Africa.

The four day reunion carries the theme "With a Vision, the People Flourish." It will end with Bishop Oden's reading of pastoral appointments for the coming year.

For more information call 940-766-4231 or 940-716-5500.

IF YOU can read this, so can your customers!

**We were here before the storm....**  
**JUSTUS & CO. ROOFING**  
All Types Roofing • Windows • Screens • Siding • All Storm-Related Repairs  
Free Estimates  
We work with insurance claims  
**(940) 592-4237**  
Licensed Tracy Justus Bonded  
**We will be here AFTER the storm.**

**Roger's AUTOMOTIVE**  
Car and Truck Repair with the Latest Diagnostic Equipment Available  
\*Trailer Repair - Golf Cart Trailer Repair to Semi-Trailer Repair or, will custom-build your new trailer.  
\*Welding - Mig & Tig from mild steel to aluminum  
\*Race Car Chassis Repair - Chromolly and Mild Steel  
1877 Peterson Rd. N. Hours:  
940-592-9987 Monday thru Friday  
940-592-1017 After Hours 8 a.m. - 5 p.m.  
Roger Liggett, Owner

**DUTTON FUNERAL HOME**  
\*FUNERAL DIRECTORS SINCE 1908\*  
Larry Dutton  
Providing Funeral Services and Pre-Arranged Funeral Plans  
Honoring all insurance policies and major credit cards  
Funeral Financing available  
592-4151  
300 E. Cash Street Iowa Park

**BRENT PATTERSON, DVM**  
SMALL ANIMAL CLINIC  
805 SW ACCESS RD.  
IOWA PARK  
592-VETS (8387)  
Hours:  
MONDAY - FRIDAY:  
8:30 - 12-NOON AND 1 - 5:30 PM.  
SATURDAY: 8:30 - 12-NOON

**Schram & Cluley**  
FURNITURE & MATTRESS CO.  
Randall Schram  
Eddie Cluley  
IOWA PARK  
592-4186  
204 W. Bank  
All Major Credit Cards Accepted  
In-store financing ~ 3 months-No Interest

**Computer Related, Inc.**  
If it's not Computer Related, we don't have it!  
1321 N. 4th St.  
Iowa Park, TX 76367  
Phone: (888) 851-6137  
• Computer Sales & Service  
• Networking  
• Laser Printer Service  
• Recycled Toner Cartridges  
• Systems Analysis & Design  
• Y2K Solutions  
• Major Credit Cards Accepted  
Spring Special  
PII 400 Mhz  
64MB RAM  
17" Monitor  
Loaded  
\$1179

**On Your Side...**  
**The Law Office of Brett W. Hale**  
\* Divorce  
\* Modifications  
\* Adoption  
\* Personal Injury  
\* Criminal  
318 W. Park Avenue, Iowa Park 592-5099  
Not Certified by the Texas Board of Legal Specialization



## Habitat for Humanity is Rotary Club program

Pat Osoinach, executive director of Habitat For Humanity, presented the program last Wednesday for the Iowa Park Rotary Club.

He explained that Habitat for Humanity works through volunteer labor and tax-deductible donations of money and materials. Habitat builds and renovates simple, decent houses with the help of the homeowner families. Habitat houses are sold to partner families at no profit, financed with affordable, no-interest loans.

The homeowners' monthly mortgage payments go into a revolving Fund for Humanity that is used to build more houses.

In addition to a down payment and the monthly mortgage payments, homeowners invest about 500 hours of their own labor (sweat equity) into building their houses and the houses of others.

He added that the current local program builds four homes a year, all in the Wichita Falls city limits. Their resources is limited and they are not equipped to expand outside of the city at this time, he said.

Iowa Park does have volunteer participants in the program. The First Presbyterian Church of Iowa Park and the youth program of First

Christian Church are active volunteers.

He explained to the Rotary members how they could volunteer for a half day, full day or any amount of time they might want to donate.

Anyone who wants to explore the possibility of eliminating poverty housing in his or her community is encouraged to contact HFHI headquarters for information, 1-800-Habitat. To donate time, call 940-692-3043.

In other business during the rotary meeting member discussed sending two youths to Camp Riley.

### Kamay Road Church of Christ

Corner of Colorado & Emerald

#### Sunday Services

9:30 a.m.  
6:00 p.m.

For Information Call:  
592-2082  
592-5076

SHOP IOWA PARK FIRST

### First Assembly of God

200 South Yosemite  
Rev. Rickey Rasco, Pastor  
592-5087

Sunday School	9:45	Wednesday Worship	7:00
Sunday Morning	10:45	Royal Rangers	7:00
Sunday Evening	6:00	Missionettes	7:00

Come experience the Power of God

### CHURCH OF GOD

of Iowa Park  
801 E. Cash

"Where Love is More Than Just A Word"

**SUNDAY**  
Sunday School ..... 8:45 a.m.  
Sunday Morning ..... 10:45 a.m.  
Children's Church ..... 10:45 a.m.  
Evening Worship ..... 6:00 p.m.  
Wed. Family Training ..... 7:30 p.m.

Pastor  
Clifton McFadden

Church 592-4848 Parsonage 592-5818 Bus & Nursery Available



## Lakeview Church of God

N. Victoria and Expressway

### Opportunities for Services

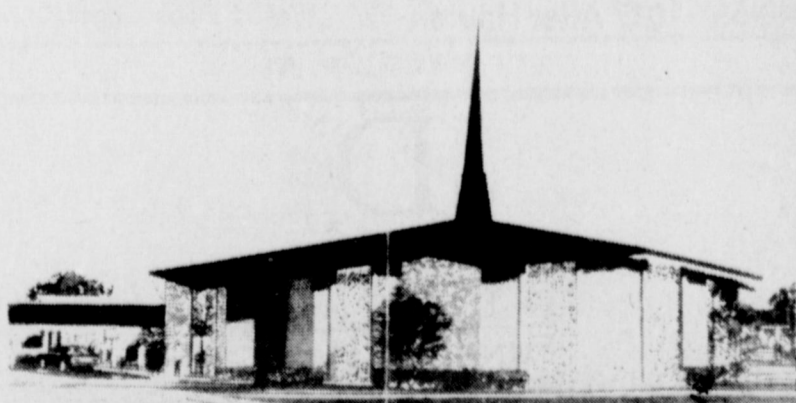
Children's Church	Ladies Ministry
Choir (youth & adult)	Men's Fellowship
Nursing Home	Boys' Club, ages 6 - 17
Visitation	Girls' Club, ages 6 - 17
Puppet Ministry	Nursery Provided

Sunday School.....9:45 a.m. Wednesday:  
Morning Worship...10:45 a.m. Boys & Girls Classes...7:00 p.m.  
Sunday Night.....6:00 p.m. Adult Bible Study.....7:30 p.m.

Phone - Church: 592-2776, Parsonage: 592-9555  
Pastor Ole Olds

Discover The Joy

## FAITH BAPTIST CHURCH



Live Broadcast on KOLI-FM (94.9) 10:30 a.m. Sundays  
WEBSITE - <http://www.uf.net/~faithbbap>

<b>SUNDAY</b>		<b>WEDNESDAY</b>	
Morning Worship	8:00 a.m.	Adult Bible Study	6:30 p.m.
Sunday School	9:15 a.m.	Children's Mission Programs	6:30 p.m.
Morning Worship	10:30 a.m.	Youth Worship	6:30 p.m.
Discipleship Training	6:00 p.m.	Choir Rehearsal	7:30 p.m.
Evening Worship	7:00 p.m.		

411 S. Wall  
592-2716

Dr. Greg Ammons, Pastor  
A Southern Baptist Church

## Revival slated here June 7-11

Rev. Larry Washburn, pastor of Pacific Avenue Missionary Baptist Church, announced an upcoming revival June 7 - 11, with services at 7 p.m. each evening.

The church is located at 1400 Pacific.

Rev. David Phillips, pastor of Northside Baptist Church in Snyder, will be guest evangelist for the revival. Special gospel music is also planned.

Rev. Phillips and family are former members of the Pacific Avenue Church.

The public is invited to attend the services.

A nursery will be provided.

**ATTEND CHURCH SUNDAY**



## CHRIST THE KING CATHOLIC CHURCH

1008 N. First 592-2802

Rev. Patrick Burke, Pastor

#### Sunday Schedule

8:45 a.m. Children's Religious formation 10:00 a.m. Sunday Eucharist (Mass)

~ Reconciliation (Confession) before Mass

WEB PAGE: [www.catholic-church.org/king/](http://www.catholic-church.org/king/)

## Country Chapel

A Family Church teaching people to reach their world.

Sunday School ~ 9:30 a.m.  
Sunday Worship ~ 10:30 a.m. and 6 p.m.  
Sunday Children's Church ~ 10:45 a.m.  
Wednesday evening ~ 7 p.m.

Pastor Garry Tippit

855-8811 287 N at Wellington Rd.



## IOWA PARK CHURCH OF CHRIST

301 E. PARK + 592-5415

<b>Sunday Morning</b>	<b>Sunday</b>	<b>Wednesday Evening</b>
<b>Bible Study</b>	<b>Worship</b>	<b>Worship</b>
9:30 a.m.	10:30 a.m. & 6 p.m.	7:00 p.m.

MINISTER - JEFF RATLIFF



## VALLEY VIEW

## COUNTRY CHURCH

Sunday School 9:45 a.m.  
Sunday Worship Services  
11:00 a.m. and 6:00 p.m.

Rev. Ricky Allen, Pastor

Non-Denominational ~ Dress Comfortably

5690 FM 1206

## COWBOY CHURCH

2635 HAWS ROAD, IOWA PARK  
855-3494



Take FM 367 to Bridwell Road.

Turn South to hear the best of God's Word.

### SERVICES

#### SUNDAY

9:45 a.m. Sunday School  
11 a.m. Worship  
6 p.m. Worship

#### WEDNESDAY

7 pm. Bible Study  
Special events year-round  
for the young & young at heart. Plan to attend!

### OLD-TIME CHURCH ATMOSPHERE

### CASUAL DRESS PLEASE

"A FAMILY-ORIENTED CHURCH WHERE VISITORS COME...AND STAY."

Tearing Down Denominational Barriers and Building on the Word of God and the Teachings of Jesus Christ.

## First

## Presbyterian Church



Rev. Carol Phillips, Pastor

We welcome all to our friendly, family atmosphere  
at the First Presbyterian Church

Sunday School 9:30  
Worship 11:00

211 S. Yosemite

592-4220

## Good Shepherd Lutheran Church

Corner of  
1st & W. Magnolia  
592-5605

Sunday School  
9 a.m.  
Worship Service  
10 a.m.

Rev. Orville Horn, pastor  
569-4085

## NORTHSIDE BAPTIST CHURCH

800 N. WALL

### SERVICES

SUNDAY  
10 A.M. AND 6:30 P.M.  
WEDNESDAY  
7:30 P.M.

PASTOR EARL CORRELL  
592-2200

## Our Mission is to Make Disciples for Jesus Christ

## First United Methodist Church

201 East Bank Street (592-4116)

Worship at 8:30 and 10:40 a.m.  
Sunday School at 9:30 a.m.



John Besse, Pastor  
Parsonage 592-4969

Be a part of the Family at First Church

## First Baptist Church



A Place to Worship - A Place to Grow

### SUNDAY WORSHIP

9:30 a.m. .... Bible Study  
10:45 a.m. .... Morning Worship  
5:00 p.m. .... Discipleship Training  
6:00 p.m. .... Evening Worship

### WEDNESDAY ACTIVITIES

6:00 p.m. .... Acteens  
A Missions Learning and Doing Organization for Girls 7th-12th Grades  
7:00 p.m. .... G.A.s & R.A.s  
Missions Learning and Doing Organizations for Girls 1st-6th Grades and Boys 1st-6th Grades  
7:00 p.m. .... Jam  
Youth Jesus and Me Praise Service & Bible Study  
7:00 p.m. .... Church Prayer Meeting  
7:45 p.m. .... Sanctuary Choir Rehearsal

300 N. Yosemite - Iowa Park, Texas - 592-2151

Steve Beckwith, Pastor

NURSERY PROVIDED FOR ALL SERVICES

Using our Talents to Serve the King



## Son Castle + Faire +

## Vacation Bible School



Bible Stories

Games

Crafts

Songs

Snacks

First Baptist Church  
300 Yosemite  
June 7-11

9:00a.m.-12:30p.m.

Ages 3 years to 6<sup>th</sup> Grade

Need a ride:  
Call 592-2151  
or 592-9795



## Musicians rank high at state

Iowa Park musicians showed how good they are when they competed Monday at the Texas State Solo and Ensemble Contest - and came home winners.

Soloists earning a superior rating were Summer Banks, piano; Jason Pelz, clarinet; Zac Miller, mallet; Karen Schell, mallet; Amber Ralston, vocal; and Jenny Sikes, vocal.

Soloists who earned an excellent rating were Karen Schell, piano; Kevin Winter, baritone; Kelly Williamson, vocal; and Erin Murphy, vocal.

All ensembles earned excellent ratings. They included flute trio - Corky Adams, Summer Banks and Kelly Boylan; clarinet trio - Lindey Blackney, Lisa Nichols and Jason Pelz; saxophone trio - Ricky Ashton, David Neubert and Amber Ralston; baritone trio - Robert Antones, Freddie Simmons and Kevin Winter; and the percussion ensemble of Justin Dudley, Kristen Green, Blythe Esterline, Sara Trotter, Danielle Grant, Dane Minderman, Zac Miller and Karen Schell.

## MSU graduates are announced

At least six more Iowa Parkans were graduated from Midwestern State Univ. this spring than were listed in last week's edition of the Leader.

They include:  
Jennifer Eiben, Bachelor of Science in Interdisciplinary Studies;  
Tracy Hale, Dental Hygiene;  
Barbara Ann Allison Beals, Interdisciplinary Studies;  
Brandi Catlin; Bachelor of Science in Interdisciplinary Studies;  
Renee Fuselier, Bachelor of Science in Nursing; and,  
Lori Kasperek, Bachelor of Business Administration.

## Little League

5-PITCH	W	L	T
Cardinals	11	2	1
Tigers	10	4	1
Blue Jays	6	5	3
Padres	6	7	1
Expos	0	14	0

MINOR LEAGUE	W	L	T
Reds	8	2	0
White Sox	6	2	2
Braves	6	3	1
Cubs	6	4	0
Pirates	5	4	1
Phillies	3	6	1
Mariners	2	8	0
Diamondbacks	1	7	1

MAJOR LEAGUE	W	L	T
Yankees	9	3	2
Astros	7	4	2
Rockies	9	6	0
Rangers	5	5	2
Giants	1	12	0

JUNIOR LEAGUE	W	L	T
Red Sox	6	1	0
Dodgers	6	2	0
Angels	4	2	0
Marlins	4	3	0
Orioles	4	4	0
Rangers (SAFB)	1	6	0
Cubs (SAFB)	0	7	0

SENIOR LEAGUE	W	L	T
A's	8	2	0
Royals	6	3	0
A's (SAFB)	3	4	0
Yankees (SAFB)	0	8	0



Iowa Park Little League is looking for youth to play in a fall baseball league. Those interested should be five to 14 years of age as of July 31, 2000, and can contact Allen Bernstein at 592-2678.

## 1998-99

# A good year for IPHS sports

By DON YOUNG

For the most part, the 1998-99 sports season for Iowa Park athletes was a huge success.

From the opening game of the football season to the final pitch against China Springs, both the Hawks and Lady Hawks battled to the very end.

Here's a look back at the 1998-99 season for the Hawks and Lady Hawks.

Despite losing its opening game of the season in double overtime to Holliday in the first-ever Kickoff Classic in Wichita Falls, the Iowa Park Hawks rebounded nicely to finish third in a very tough District 5-3A, advancing to the playoffs for a fourth straight year.

But this year, things were different in the playoffs. The Hawks picked up their first playoff victory in over 10 seasons with a 29-24 Bi-District win over 13th ranked Brady. Iowa Park followed that with an even bigger win over an even higher rated opponent the next week in the Area Championship, by beating fourth-ranked Waco LaVega 51-35.

Iowa Park saw its string of playoff victories snapped the following week against third-ranked Crane, as the Hawks fell 16-7, to finish the season at 9-4.

While the Hawks were winning on the field, the Lady Hawks were doing likewise on the volleyball court, as Iowa Park had its finest season in several years by finishing as the second-place team in District 5-3A.

In the Bi-district round of the playoffs, the Lady Hawks wasted little time in disposing of Dublin, winning in straight sets to move on to the Area round of the playoffs.

Iowa Park's season came to an end with a hard-fought 15-9, 17-15 loss to Clifton, ending the Lady Hawks' season.

Even though the Hawks and Lady Hawks didn't advance to the playoffs in basketball, both teams

had fine seasons with athletes from both teams being named as First Team All-District selections.

And while the basketballs were bouncing in the gym, five athletes, including Lisa Nichols, Saige Hamilton, Christi Goin, Valerie Carrier and James Williams, headed to State in Powerlifting, where they all did exceptionally well.

As the seasons started to change, the Hawks and Lady Hawks took to the track where both teams enjoyed much success. Several Hawks and Lady Hawks advanced to the Regional Meet in Odessa, and four members, including Jeff Duerson, Malcolm Wise, Dustin Shierry and Tommy Duerson, made it all the way to Austin in the 1600M Relay.

In Austin, the foursome ran their best time of the season, finishing third with a time of 3:19.92, earning each a bronze medal.

In softball, Iowa Park started the season off slowly, then picked up the pace to qualify for the State playoffs. Iowa Park opened the playoffs with a 7-2 Area win over Colorado City, before falling in the Regional Quarterfinals to another team from District 5-3A, Graham.

If there could be any down side to the 98-99 season, it had to be for the Hawk baseball team.

### Card of Thanks

We would like to thank the Iowa Park varsity baseball team and coaches for the honor bestowed on our grandson Jesse Trevino. Since we found out about Jesse's bone problem, everyone at the high school has been so considerate of him. We're also very proud of Jesse for the way he has handled not being able to play sports that he's always loved. The young people of Iowa Park are very special and we wish the best for all of them.

Pat & Orville Sosebee

After making it all the way to Austin last year, the talk around town was this is our year.

Iowa Park rolled through the regular season with a 21-7 record, which included wins over several playoff teams along the way. The Hawks captured the District 5-3A title with a 9-1 record and looked to be on a roll heading into the playoffs.

In the Area round of the playoffs, Iowa Park was matched against China Springs, and had a lead heading into the fifth inning only to see the Cougars come back to take the win,

ending Iowa Park's plans for a return trip to Austin.

But anytime you can go out and win 20-plus games in a season, how can you call it a bad year? That's what expectations will do for you.

So in all, it was a very good year for Iowa Park athletes from the start of the school year to the last days.

Several teams captured playoff wins and nine athletes made it all the way to Austin to compete for State Titles.

And the good thing is, it all starts over in less than three months.

*Nobody gets tired of home cooking... they just get tired of cooking at home.*

## Best steaks in Towns!

Every day...  
T-Bones, Sirloins, and Ribeyes - cooked to order - served with all the trimmings

*We make you feel at home at*

# City Cafe

114 W. Cash 592-4721

SHOP IOWA PARK FIRST

ss ss ss ss ss

# Ken's PIZZA

## DAW BIG LEAGUE BARGAINS

<p><b>Any Two!</b></p> <p>Any two medium pizzas \$12.99 up to 3 toppings...</p> <p>Any two large pizzas \$16.99 up to 3 toppings...</p> <p>Excluding PricePleaser Pizzas</p>	<p><b>PRICEPLEASERS</b></p> <p>KEN'S FAMOUS PIZZAS! - Choice of CheesePleaser, PepperoniPleaser, MeatPleaser, or ComboPleaser - Medium on your choice of crust.</p> <p>One for \$6.99 Two for \$12.99</p>
<p><b>DINNER FOR FOUR</b></p> <p>2 PricePleaser Pizzas, 1 appetizer, and 1 pitcher of soft drinks.</p> <p><b>\$13.99</b></p>	<p><b>TEAM PLEASER</b></p> <p>3 PricePleaser Pizzas, 2 orders appetizers, and 2 pitchers of soft drinks.</p> <p><b>\$19.99</b></p>
<p><b>\$2 OFF</b> any medium pizza*</p> <p><b>\$3 OFF</b> any large pizza</p> <p>Excluding PricePleaser Pizzas</p>	<p><b>20% OFF</b></p> <p>ALL DINE-IN ORDERS to any family with a baseball or softball player in uniform.</p>

**Ken's PIZZA**

902 W. Highway 592-9999

## Beat the Heat

Strawberry or Banana Hawaiian Julep

# \$1.29

1 LITER

## Dr. Pepper and Pepsi Products

# 99¢

### THURSDAY SPECIAL

BUY ONE HAMBURGER, GET ONE FREE\*

\*Equal or lesser value. Cheese extra.

## CIGARETTES

BASICS \$1.99	VIRGINIA SLIMS \$2.65	MARLBORO \$2.60
---------------	-----------------------	-----------------

# SCOBEE'S

## MINI MART

322 W. HIGHWAY 592-5961



# The Classifieds

Does Your Subscription to the Leader Expire this Month?  
Check the list on page 4.

## KEY REALTY



Cindy Witherspoon  
592-4583



Michelle Archer  
592-5189

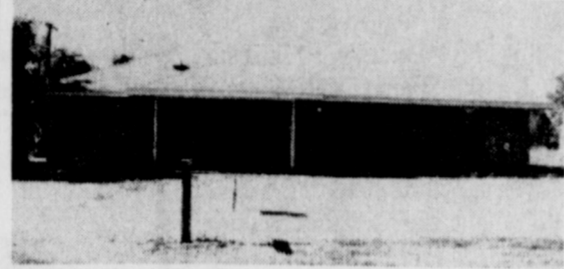
900 W. Highway  
592-2718

### AREA HOMES

**ISN'T IT TIME?**  
To own your own home? Three bedroom home on W. Garden has unbelievable price of only \$23,000. Your payments could be cheaper than rent! #I-879.  
**TOTALLY UPDATED!**  
Like new 3 bedroom, 2 bath permanent double-wide home on East FM 367 features 2 living areas. Large covered entry, double carport. Outside city limits and convenient to both Wichita Falls and Iowa Park. See #I-813.

### FEATURE HOME

402 W. Clara



**WONDERFUL CORNER**  
location has lots of tall trees. Three bedroom, 2 bath home has large living with fireplace, separate dining. New carpeting and vinyl. Wet bar. Home is near Gordon Lake. Call for #I-871.

#### WHY PAY RENT?

With payments on \$19,000 single-wide 3 bedroom, 2 bath home on W. Smith, you'll have money left over! New carpet and vinyl. For details, call Cindy for #I-827.

#### CORNER ONE AND HALF STORY

Three bedroom home on W. Rebecca has wood-burning fireplace in one of 2 large living areas. Separate dining room. Upstairs master bedroom and bath. Lots of trees. Above ground pool. #I-890

#### COUNTRY LIFE

with city amenities right around the corner! Three bedroom home on S. FM 369 has 1.5 baths and 2 living areas. Large mature trees in front. Central Heat and Air. \$63,000. Call for #I-887

### FOR RENT

2 BEDROOM mobile home. Furnished, bills paid. \$350 month. Deposit and references required. 692-6767. 3-18-tfc

LEASE OR Lease to own. 2 bdrm. mobile home. \$350, bills paid, furnished. Deposit/ references required. 692-6767. 5-20-tfc

OFFICE SPACE (formerly Edward D. Jones office) offered by Texas Realty, 592-2728. 2-19-tfc.

### REAL ESTATE

4 SPACES in Highland Cemetery - Block 110, Lot 4, 767-4896. 5-20-4tpp

### MINI-CON Self-storage

- 1. Variety of sizes.
- 2. Competitive prices.
- 3. Locally owned and operated.
- 4. Monthly rates.

805 W. Hwy.  
592-2761

### RDS REAL ESTATE

322-2270

713 WEST ALDINE COURT - New construction just completed. 4 bedroom, 2 bath. 1,588 sq. ft. \$96,000.  
714 W. MAGNOLIA - New construction just completed. 3 bedroom, 2 bath. \$1,365 sq. ft. \$85,000.  
*Call Now to See!*

Additions and Remodeling  
Complete Home Care Cabinets  
Carpentry Plantation Shutters Coupter Tops  
Roofing Painting Call for Free Estimate Flooring  
592-2480 - Home 720-8755- Pager

### Gary Williams Construction

Want A Break From The Hectic Pace! Relax. We Can Help!  
Federal Land Bank Association  
Land Loans Small Town & Country Home Loans Ag-Business Loans  
www.agmoney.com Red River Land Bank 940-855-8801

### CARPORTS BY SCOTT

Custom-built metal constructed carports and patio covers to meet your needs. Your choice of colors. Protect your cars from mother nature and harmful rays of the sun. Free estimates. 592-4317

Wallpaper Lacquer Acoustic Ceiling  
GENE A. WILLIAMS  
Paint • Tape & Bed  
(817) 592-5494  
121 S. Wall Iowa Park, Texas 76367

Regency One REALTORS  
Residential • Commercial • Farm • Ranch  
Don't just dream! Live the dream!  
592-2133  
1-800-870-2133



Darrell Jolly  
592-4926



Winnie Holmes  
592-5730



Mary Taber  
495-3325



Julie Ressel  
766-5919

### RESIDENTIAL - IOWA PARK

307E. PECAN, I.P. - Small 2 bedroom, 1 bath mobile home on corner lot. Lot size is 50X142. Cyclone fence. Window unit. Wall unit for heating. Call Winnie. \$12,000.  
304 E. ALAMEDA, I.P. - Very cute and clean One bedroom home. New linoleum, berber carpet, windows and vinyl siding. Great starter home or retirement. Lot size 75X142. Call Winnie.  
NEW LISTING - 305 W. CRYSTAL, I.P. 3 BR, 1 bath home. Fenced back yard. Lot size is 75X142. \$20,500.  
NEW LISTING - 404 W. LOUISA, I.P. - 3 BR, 1 bath, 1-car garage. Ceiling fans, rain gutters, fenced yard. \$24,000.  
NEW LISTING - 709 N. YOSEMITE, I.P. - 2 BR, 1 bath, 1-car garage. Siding, fenced yard. Ceiling fans. \$25,000.  
NEW LISTING - **IN CONTRACT** \$25,500.  
7705 SH 258, KAMAY - 3 bedroom, 1 bath, 1-car carport. New metal roof - summer of 1995. Trim Painted Jan., '99. New plumbing Feb. '99, more renovations underway. \$34,500. Call Darrell.  
107 E. GARDEN, I.P. - Very well-maintained 3 bedroom, 1 bath home. Great covered patio. Nice yard. \$36,000.  
321 E. BANK, I.P. **SOLD** \$38,500.  
702 E. BANK, I.P. - 3 bedroom, 1 1/2 bath, 2 plus carport. Great curb appeal. Nicely landscaped. Fenced yard workshop and storage building. Corner lot. \$39,500.  
308 W. CRYSTAL, I.P. - 2 or 3 BR, 2 bath, mobile home. Nice size living area with fireplace. Breakfast bar. Formal dining, workshop (31X20.6) Home is partially brick and vinyl siding. Double carport plus. Lot size is 100X142. \$42,500.  
503 S. COLORADO, I.P. - Nice home on corner lot. House is in great condition. Storage building. Sidewalk surrounds house. \$49,500.  
1316 MOCKINGBIRD, I.P. - Great location: OPEN living/dining. 2 bedroom, 1 1/2, 1 car garage. Lot size (115X214) fenced. Renovations being completed. New Price, \$47,500.  
1314 NORTH FOURTH, I.P. - OPEN • BRIGHT • 3 bedrooms, 2 baths, 2-car garage. New shingles, new carpet, freshly painted in garage. Like new garage doors. Has patio and fenced backyard. Vinyl siding (no painting) on eaves. Double pane windows. NEW PRICE - \$52,900.  
1313 MOCKINGBIRD, I.P. - Lots of unique features. 3 Bedroom, 1 1/2 bath, 1-car garage. Crown molding, chair railing, ceramic tile entrance and in kitchen. Storm windows. nice property. \$52,900  
706 MOCKINGBIRD, I.P. - Great location, 3 BR, 1 1/2 bath, storage building, fenced yard, new carpet in living area, down hall and in Master BR. New linoleum in kitchen, both bathrooms. 2 living areas. \$54,500.  
1400 MARY DRIVE, I.P. - Super location. Completely remodeled corner lot. Great curb appeal. Fenced back yard, 3 BR, 1 bath, 2-car garage. Could be 2 living areas, 2 dining areas. Has fireplace. Laundry room. Dishwasher-vent-a-hood-stove, approx. one year old. Storm shelter. Fenced back. NEW PRICE - \$62,000.  
NEW LISTING **SOLD** \$64,500.

110 S. COLORADO - Very nice 4 or 5 bedrooms or could have office or computer room. Big trees. Corner lot. Fish pond. 10X8.5 storage building. Has nice deck in backyard. \$65,000.  
1102 W. CORNELIA, I.P. - Has approx. 1712 sq. ft. of living area. 3 or 4 BR or 2 living areas. 1 1/2 baths, laundry room, 441 sq. ft. carport (24.2X10), storage/workshop. Carpet approx. 2 year old. Freshly painted. \$67,000. Seller may lease \$650 monthly; \$650 deposit. Seller wishes to leave on the market.  
1017 LANELLE, I.P. - 4 bedrooms, 2 baths, Approx. 1816 sq. ft. Formal dining area, large living area, breakfast area off of kitchen. Storage building, fenced yard. Security system. \$69,500.  
920 FOLEY, I.P. **SOLD** \$69,500  
1615 KAREN, I.P. - Perfect condition: Look at this first. Pretty kitchen. Open/Bright! Approx. 1955 sq. ft. Nice size bedrooms. Nice carpet. Large sunroom. Pool, Barbecue deck. Terraced Landscape. Much more. \$98,500.  
2233 FM 368, I.P. - Has approx. 1885 sq. ft. living area, 3 BR, 2 1/2 bath, central H/A replaced in 1996. Carpet, 1996; floor, 1996; has security system installed 1996. 26.42 acres, 8 oil wells and working. Entire property fenced. NEW PRICE - \$150,000. Will look at offers.

### RESIDENTIAL - AREA

419 N. Illinois	2 bedroom	\$11,500
405 N. Bailey, Elec.		\$12,000
301 Garrison, Elec.	2-1-1 REDUCED!	\$18,000
411 W. Harrison, Elec.	3-2	\$49,000
4403 E. Summitt, Elec.	3-2-2	\$52,000
5209 Sunshine Hill,	<b>SOLD</b>	\$,000

### COMMERCIAL PROPERTY

509 E. Front St., Elec. Plus Income Price Reduced \$39,500

### LOTS AND ACREAGE

FM 369 SOUTH - Approx. 2.08 Acres. Has water well. \$19,500.  
50X142. Corner lot. Had mobile home at one time. Put mobile home or move house in. \$5,500.  
E. VALLEY DRIVE - Will build to suit. Several lots available. Restrictions. Call for information.  
1404 N. 3RD, I.P. Corner lot, 104X80 \$7,280  
801 S.W. Access Rd., I.P. 90X202 Lot \$8,500  
803 S.W. Access Rd., I.P. 90X202 Lot \$8,500  
S. FM 369, I.P. 15 Acres \$61,720  
Tracts of land on Coleman Park Road. Restriction do exist on tracts 8 through 13. Restrictions include at least 90% brick, two-car garage with minimal sq. ft. set. No mobile homes. Tracts 2 and 4 are for sale. Call for pricing and size of tracts.  
HIGHWAY 2384, SOUTH OF ELECTRA - 30 acres of land. Fenced. Has pond that is stocked with Bass, Channel Cat and BlueGill. \$45,000.

★ ★ ★ ★ ★ TEXAS REALTY ★ ★ ★ ★ ★  
Selling Iowa Park®  
109 W. Cash  
592-2728  
Res. 592-4660  
Mobile Phone  
781-1996 781-3949  
www.REALTOR.COM/WichitaFalls/TexasRealty  
Tommy & Glenda Key  
Owners/Brokers

NEW LISTING - SUBURBAN  
1749A SOUTH BELL ROAD  
Attractive, total electric, two-bedroom home outside the city limits, but close enough to be convenient. This property features ceiling fans, eating bar, double-paned windows, large utility room with storage, fenced yard, covered carport/patio, and detached garage/shop building - all on .57 acres.  
**50's**  
1315 Mockingbird MLS#66784 3-BR home on corner lot is nicely updated, has walk-in closet in master, new roof shingles, and new garage door. Reduced \$54,500.  
1500 Douglas MLS#67160 3-BR, home includes an extra room and also has updated appliances and replacement windows.  
702 W. Cornelia **SOLD by Texas Realty**  
1320 Edgehill MLS#67854 3-BR home features spacious living room and master bedroom and includes storm windows and doors, privacy fence, and storm cellar. Reduced \$59,500.  
**60's**  
1316 Edgehill **SOLD by Texas Realty**  
110 W. Washington **SOLD by Texas Realty**  
**70's**  
1027 Foley MLS#68647 4-BR, 2.5 bath home is total electric and has ample storage; other features include a large lot with covered RV storage, covered patio, and 2-car garage.  
**90's**  
1703 Johnson Rd. N 3-BR, new construction, energy-efficient home in Park Place subdivision features concrete insulated exterior wall construction and steel interior beams for stability. MLS#68208  
**100's**  
1607 Wagonwheel MLS#68348 Spacious 3-BR home on large lot features walk-in closets, isolated master suite, two heat pumps, circle driveway & much more!  
**Suburban**  
6427 Johnson Rd. N Spacious 3-BR home has ample storage plus 1-BR guest house also with 2-car attached garage - all on 2 acres. MLS #65464  
1704 Quail Valley **SOLD by Texas Realty**  
145 Huntington Lane Custom-built, 4-bedroom home on 15.89 acres includes pool, gazebo, storm cellar, large workshop, barn & RV storage. MLS #68156  
**Land**  
Highland Park Subdivision Lots now available at special low prices.  
Park Place Only Three lots left on Brady Court.  
Subdivision  
612 W. Louisa Two lots measuring 100X142 in quiet neighborhood.  
Lot 31, Blk 1 Country Meadows Drive. 100X255'.  
Johnson Rd. North Five, 5-acre tracts restricted residential homesites. with approximately 290' frontage.  
Huntington Lane Approximately 40 acres river bottom; barn, wheat & pecan orchard.  
Johnson Rd. North 53 acres of farmland.



**TIDWELL PLUMBING**  
**940-592-9814**  
24-Hour Emergency Service  
Specializing in:  
Repairs - Remodels - Gastite Piping  
Sewer and Drain Cleaning - L.P. Gas  
Backflow Prevention Assembly Tester  
Licensed & Bonded M-35521 Jerry Tidwell Owner

**MISC. FOR SALE**

**BACKYARD SALE** - Magic Chef stove, small lavatory, commode, lots of clothes, lawnmowers, miscellaneous. 523 W. Aldine. 6-3-1tp

**GARAGE SALE** - Saturday, 8-12, 1104 Cornelia. Adult & nice children's clothes - girl's size 10, shoes, wall hangings, crafts, games, toys, household items, TV, and microwave. 6-3-1tp

**GARAGE SALE** - 309 W. Clara, Friday, 7:30. Dresser, Cardio trainer, odds & ends. 6-3-1tp

**YARD SALE**, Saturday only, 8 a.m. - ? A little of everything. 610 S. Bond St. 6-3-1tp

**MOVING SALE** - Saturday, 9-7, 110 W. Washington. Records. 6-3-1tp

**MISC. FOR SALE**

**CARPORT SALE** - Saturday, 8 to 4, 404 W. Texas. Color 25" console TV, bathtub spa, coffee table, odds and ends. 6-3-1tp

**GARAGE SALE** - Saturday only, 8 til 7, 804 N. Jackson. 6-3-1tp

**GARAGE SALE** - 208 S. Yosemite, Friday, 8-7. Second time around. New items added. 6-3-1tp

**GARAGE SALE** - Friday, 8-2. Kid's clothes 8-10, twin comforters, balloon window shade, and more. 1/2 mile west of FM 369 on FM 367. 6-3-1tp

**HUGE SALE** - Saturday, 8-7, 112 W. Cash. Camcorder, woman's softball bat, comforter, curtains, curtain rods, craft supplies, craft books, magazines & videos; nice clothes - children, junior & adult, shoes, purses, jewelry, toys, games, seasonal decorations, books, videos, and many miscellaneous items. 6-3-1tp

**MYRNA'S MEMORIES** - Friday - Saturday, 8-12. Appliances and other small items. 210 E. Poe. 6-3-1tp

**HEAVY DUTY** washer and dryer, \$25 each and 16 1/2 cu. ft. Crosley refrigerator, \$150. Call 592-1937. 6-3-1tp

**1987 24 FT. Tioga Arrow** motor home. Low mileage. Reduced price. And 1981 VW pickup rigged for towing. 855-5365. 6-3-2tp

**'84 CHEV. CAPRICE** - 4-door, nice car. New paint. 592-5951. 6-3-1tp

**QUEENSIZESLEEPER** sofa. Good condition. 592-4265. 6-3-1tp

**4 CHROME RIMS** and tires, P235/60R-15. Almost new. Call 592-1480. 6-3-1tp

**PIANO** - Melville Clark - Wurliitzer, 5 yrs. old. Spinnet. \$800 or best offer. 592-0487. a5-27-2tp

**eTower 333cs Bundle** with 14" monitor, 3 year warranty and support and on-line training. \$675. Free delivery, free system and internet setup. Call James 592-5640. 5-20-3tp

**BUSINESS**

**EIBEN Home Repair and Remodeling**. Additions, roofing, painting, sheetrock, doors, carports, patio covers, and more. Small jobs welcome. Reasonable rates. Licensed and bonded. 592-2053. 10-24-tfc

**DALE'S HOME REPAIRS** Water and storm damage service (including trees). Pay for experience, not on the job training. 20 years experience in all building trades. Free estimates or advice. 592-9455. 7-30-tfc

**UPHOLSTERY** - auto, boat, home & commercial. 438-2243. 5-28-tfc

**ROOFING - IOWA PARK** for 27 years. Jimmy Wolfe Roofing, 855-5657. 6-18-tfc

**CARPET & TILE** installation. 592-4844, ask for Mike Salvi. 8-20-tfc

**GIFTS**, new and used clothing. Open afternoons. 302 S. Colorado. 592-5012. 3-4-tfc

**MARY KAY Cosmetics** - Norma Young, Independent Sales Director. 692-1454, 495-3480. 10-24-tfc

**INTERNET-BASED** Computer training, 190 courses, no books - no classes - no schedule. Microsoft approved courses. \$59.99 up to \$159.99. Call James 592-5640. 5-20-3tp

**DECKS, PLAYHOUSES**, sheds & handicap ramps. Reliable work. Integrity Building Co. 592-9861. 5-20-4tp

**SEWING - HEMMING** - Applique. Call Stacia, 592-5227. 5-27-6tp

**COMPUTER Assistance** - Need help setting up a computer, using windows, getting acquainted with the internet and computers? Personalized computer instruction for \$10 per hour. Compare and save. Call 592-5910. 6-3-1tp

**YARD WORK**

**REASONABLE** lawn and garden service. 592-0489. 5-2-tfc

**DALE'S TREE/YARD** Service. Trees trimmed or removed. Shrubs shaped or removed. Mowing, top soil, hauling of any kind. 592-9455. 2-11-tfc

**HOMETOWN Lawn Care** & Hauling. Mowing, edging, leaf mulching, tree trimming & removal. Kris 592-0051. 4-22-12tp

**YARD WORK & odd jobs** done at affordable rates, 592-9861. 5-20-4tp

**SHOOK'S LAWN** Service, reasonable rates. Call Ricky after 5:30 p.m. 592-9068. 5-20-4tp

**DOMESTICS**

**HOUSEKEEPING** - Honest & reliable. References available. Call 592-1061. 6-3-2tc

**REGISTERED** family home has 2 openings for children age 6 and over. Summer activities planned. Call Kathy at 592-2304. 6-3-1tp

**REGISTERED** day care has openings, 6 weeks - 5 years. Call Cheryl, 592-2020. 6-3-2tp

**REGISTERED** Child Care now has openings. Reasonable rates. 592-0453. 6-3-1tp

**NOTICE**

**NOTICE OF PUBLIC HEARING**  
The Texas Department of Transportation (TxDOT) will conduct a public hearing on Thursday, July 1, 1999 from 1:00 p.m. to 3:30 p.m. at the District Office Assembly Room located at 1601 Southwest Parkway in Wichita Falls, Texas.

The purpose of the public hearing is to allow public input into the Unified Transportation Program (UTP), and the Statewide Transportation Improvement Program (STIP) preparation process. A list will be provided of projects selected in the UTP and the STIP. Maps and drawings will be on display.

Mr. John Barton, P.E. Director of Transportation Planning and Development with the Texas Department of Transportation in Wichita Falls, will be in charge of the hearing.

The hearing will be informal, and all interested citizens are invited to attend and express their views on the programs. Utility companies are also invited so that we may inform them of the upcoming state projects in the Wichita Falls District.

Persons with disabilities who plan to attend this hearing and who may need auxiliary aides or services such as interpreters for persons who are deaf or hearing impaired, readers, large print or Braille are requested to contact Tammy Marlow at (940) 720-7711 two (2) weeks prior to the hearing so that appropriate arrangements can be made.

Written comments may be submitted to the Texas Department of Transportation, 1601 Southwest Parkway, Wichita Falls, Texas 76302-4906, but must be received no later than 10 days after the public hearing. 6-3 & 17 - 2tc

One bedroom apartment \$257 to \$372  
Two bedroom apartment \$315 to \$455  
• Energy efficient • Off-street parking  
• Central Heat/Air • Water Paid  
• Children's Play Area • Total Electric  
• Fully carpeted and draped • Fully-equipped laundry room  
**COLONIAL HEIGHTS APARTMENTS**  
592-2705

One Bedroom Apartment: \$297 - \$343  
Two Bedroom Apartment: \$393 - \$454  
• Energy Efficient • Off-street Parking  
• Central Heat/Air • Water and Gas Paid  
• Fully Carpeted • Mini Blinds  
• Rental Assistance for Qualified Applicants  
**QUAIL RUN APARTMENTS**  
301 E. Diamond 592-4646

**TEXOMA REALTY INC.**  
723-7471 592-9622  
//www.wf.net/~txrealty/ email: txrealty@wf.net  
Thomas Johnson CRS, GRI 592-2399  
Patty McLemore GRI 592-9622  
Wichita Falls Sales Associate Edwina Wight 723-7471  
**Your personal realtors.**

517 W. ALDINE - Superb location! 2 bedroom, 1 bath, living area, garage. Central heat/air, fresh interior paint, numerous updates. Call Patty. Price Reduced.  
801 PARK PLAZA - Outstanding 3 bedroom, 1 1/2 baths, recent updates. This home is near Cryovac and High School. A must see! Motivated seller! Reduced-\$55,500. Call Patty.  
505 N. YOSEMITE - **IN CONTRACT** fireplaces, two bedrooms, two baths, formal dining room and a sewing room. Call Patty. Priced at \$65,000.  
300 KATHLEEN - 3 BR, 2 baths, 2 living areas. Fireplace, very comfortable home for family. Privacy fence, corner lot. Excellent neighborhood. Priced at only \$64,900  
506 W. CORNELIA - 100'X150. Call Thomas.  
**LAND**  
FM 369, south of FM 367 - 26 1/2 acres. Trade will be considered. Call Thomas.  
**COMMERCIAL - Business Opportunities**  
**NEW LISTINGS -**  
305 W. BANK - ARCADE - Can be other businesses. What a deal! \$25,000. Call Patty.  
315 W. BANK - LARGE LAUNDRYMAT - Priced to sell - \$85,000. Call Patty.  
1500 JOHNSON ROAD - Call Thomas.  
501 SW ACCESS - Vacant corner lot. Call Thomas.  
**We Work For You!**

**COLDWELL BANKER** 940-692-1903 1-800-692-1960  
An independently owned and operated member of Coldwell Banker Residential Affiliates, Inc.  
**ROWLAND AND DONNELL** Tami Witherspoon 696-1962 704-2216  
www.coldwellbanker.com

**Feature Home**  
**#13 PARK PLACE**  
Beautiful 3 bedroom home in Park Place subdivision. Open floor plan with split master bedroom and bath. Fabulous black marble fireplace in living room. Must see!  
503 E. ALAMEDA Sold 1 bath.  
506 W. MAGNOLIA  
Victorian cottage home would be a perfect starter home. BEAUTIFULLY LANDSCAPED on 2 lots. Within a block from Tom Burnett Memorial Library.  
1310 WESTRIDGE  
Very well-kept and clean 3 bedroom, 1 1/2 bath home. Newly painted inside and out. A/C and heating, dishwasher under a year old. Absolutely move-in condition!  
705 W. COLEMAN - PRICE REDUCED!  
4 bedroom, 2 bath, 2-car garage. Over 1,600 sq. ft. 2 story, beautiful neighborhood. Walking distance to Kidwell Elementary. Call Tami. Priced \$5,000 below appraisal at \$62,500.  
301 W. PARK  
Property would be a great commercial site. Sits on corner lot across from Norwest Bank. Has separate 3 car garage that's also in need of repairs. Owner will look at any offer.

**1200 EMMA**  
Spacious 4 bedroom, 2 bath home on large corner lot. Large rooms with plenty of storage. In the \$70's. Call Tami.  
**1213 EMMA**  
3 bedroom, 2 bath, home in wonderful neighborhood. Has alley access, vinyl siding and outbuildings. In the \$50's. Call Tami.  
**1011 LINCOLN**  
3 bedroom, 2 bath, with fabulous shop out back. Approx. sq. ft. of house is 1,637. One block from Kidwell Elementary School. \$62,500.  
**102 W. CHESTNUT**  
Rental investment possibility. 3 bedroom mobile home on one lot, ready for occupancy, other lot could have another mobile moved in. Has all utilities in place.

**Suburban**  
3027 FM 368 SOUTH  
One mile West of Texoma Fertilizer Plant  
Suburban home on 10 acres. 4-3-2, approx. 3,400 sq. ft. Large family room, gameroom c/ 2nd living area. Many built-ins. Beautiful kitchen with lots of cabinets and breakfast bar. Also has metal insulated workshop and cattle pens. Owner is agent.  
**1573 RIFLE RANGE RD**  
10 Acres, suburban home. Five bedroom, 3 baths, 2-car garage. Completely remodeled and updated. Workshop in back. Must See Inside.  
**12.5 ACRES SUBURBAN LAND**  
Excellent for new construction. Secluded and private on paved road. Five miles out of city limits.

**PRIME COMMERCIAL LOCATION!**  
**WEST HIGHWAY 287**  
20 acres commercial (Old Barbour Trucking Pipe Yard), all utilities available. Call Peggy for more information.  
Peggy Morgan Home: 691-0478

**JOWER'S HOME REPAIRS**  
Ceramic Tile  
Counter Tops  
Custom Cabinets  
Cement Work  
Door & Window Etc.  
Phone 940-592-5116

**Monty's Plumbing**  
Owner - Monty Britt  
New Installation • Repairs • Remodeling  
FREE ESTIMATES  
705 N. BELL  
P.O. BOX 458  
IOWA PARK  
PHONE - 592-4928  
MOBILE - 720-5998

**KAMAY ELECTRIC SERVICE INC.**  
EARL CRAVENS  
Serving Oil Field since 1964  
8561 S.H. 258 W. Kamay  
OIL FIELD CONTRACTORS • POLE LINE CONSTRUCTION  
ELECTRIC MOTOR REWINDING AND REPAIRS  
SELL REBUILT MOTORS AND NEW MOTORS  
KAMAY 438-2844 WICHITA FALLS 723-9126  
Earl 940-438-2844 Barry 940-438-2483

**IT'S SPRING TOPSOIL TIME!**  
**BUFFALO CREEK SAND & GRAVEL, INC.**  
Foundation Sand • Sugar Sand • Top Soil • Gravel  
Excavating & Removal • Contract Hauling • Backhoe Work  
PO Box 4285 • Wichita Falls, TX 76308  
Office  
Chuck Heydrick  
Pager: (940) 761-7078 (940) 855-1253  
Mobile: (940) 733-4055  
Mobile: (940) 720-5908  
Home: (940) 692-8516  
Bruce Smith  
Pager: (940) 761-7323  
Mobile: (940) 720-4545  
Home: (940) 592-2653

**LET'S DEAL**  
When you're ready to make a new or pre-owned vehicle purchase, please come and see  
**JOHN STEWART**  
at  
**LANDRUM CHEVROLET**  
Great Deals - Great Selection  
Burkburnett, Tex  
940-569-5271 • 800-787-7337

**Adult Caring Childcare** in your home. Infant to 10 years old. If it be an appointment, shopping or a party. Will do light house-keeping. Reasonable. Call 592-5402.

**FAX Messages**  
Ph. 592-5613  
Copies made - 15¢  
UPs Packages  
**Hughes Pharmacy**

**AT YOUR SERVICE!**  
Copy Machine and Fax  
**Jack's PARK PHARMACY**  
115 W. Park 592-2731

**Over 20 years in all building trades**  
**DALE'S**  
ALL YOUR HOME REPAIR NEEDS  
• All Storm Damage including Roofs and Trees  
• Water and Termite Damage  
• Door and Wall Repairs (including showers)  
• Yards and Garden Service  
• Mowing, Tree and Hedge Trim or Removal  
• Top Soil and General Hauling  
**(940) 592-9455**

**KENDELL J. HILL**  
ELECTRICAL CONTRACTOR  
Wichita Falls - Iowa Park  
Residential - Commercial - Industrial  
CLARENCE HILL (940) 592-4773  
Pager: 851-3162

Heating & Cooling  
Residential • Commercial  
**ALAN HOUSE**  
AIR CONDITIONING  
Sales • Service • Installation  
LICENSE #TACLBO17054E  
19 years experience **592-0336**

**MINOR ELECTRICAL INSTALLATION & REPAIRS**  
**GENERAL CARPENTRY WORK**  
Residential Calls Only  
**35 Years Experience - Retired Military**  
**940-733-8898**  
for same day or next day service



# AG AGENT'S REPORT

By JOE RAFF, Wichita County Agriculture Agent

## Wheat Harvest

The rain we received this week was great, unless you had a combine in the field waiting to cut wheat.

Luckily, we didn't get the large hail like our neighbors to the north in Altus and south around Haskell. Brandon Anderson, the agent at Haskell, told me they lost close to 20,000 acres of wheat.

If you haven't noticed, we have had large machinery driving down the country roads, and the once-green fields of wheat have turned into amber waves of grain.

Yes, it's harvest time again. Accompanying harvest comes long hours, and days in the field, in hopes of harvesting 40 or more bushels of wheat to the acre.

If you see these combines running down the road, you need to be cautious.

First, they don't travel very fast down the road, top speed may be 20 mph. Second, they take up most all the road.

These are huge pieces of equipment and will take up their side of the road plus most of your's.

And third, they make wide turns, and they turn at places where there may or may not be roads (into fields, turn rows, etc.).

In addition to the harvesters, there will be lots and lots of grain trucks. These trucks are also slow moving and may turn into places that you don't expect. They will also take up much of the road and sometimes part of your side. So be careful.

The biggest thing to remember is that these men and women are doing their jobs. They are going to

the office and conducting business just like everyone else in this great nation of our's.

Now their office is the field, and their business is harvesting wheat, and they need to be treated with the same respect as anyone else. Just keep in mind that combine that is taking up most of the road, or the truck turning into the field is carrying wheat that will be your loaf of bread tomorrow.

I always think back to those wine commercials, "We will sell no wine before it's time."

Keep that in mind as you travel down the road. It takes time to harvest these amber waves of grain. And these business people are traveling as fast as they can. Most may have been up all night harvesting wheat and they are in-a-hurry just like you.

Here's some tips that will help everyone.

Another thing to consider as you are driving around the countryside and meet one of these businessmen or women, is the cost of that equipment.

One of those combines cost about what you paid for your house. Most of these harvesters cost upwards of \$100,000 to \$150,000 each. Something that you probably do not want to pay for.

If you travel one of these roads that these harvesters travel, give yourself an extra five or 10 minutes each day. Don't try to pass them until they pull over. If you've been behind one of these before, nine out of 10 times, they do pull over and let you pass.

And the last thing, be patient. They are in as big of a hurry as you are, and they're traveling as fast as they can.

## GARDENING HINTS

BY MARK TERNG

Q. I have several large papershell pecan trees in my yard in Wichita Falls. Is this the time to apply sprays for casebearer control? We have a pretty good crop on our trees so far.

A. We have been monitoring orchards and lawn trees in the area and have found casebearer eggs as of Tuesday. This means control applications should begin now through early next week.

Homeowners can use control products such as Malathion, Dursban, Diazinon, that are labeled for use on producing pecan trees.

Large trees may require hiring a professional pest control company, tree care company, or lawn care operator. Smaller trees could be sprayed with a hose-end sprayer.

Commercial pecan orchard managers can use Lorsban, Ammo, Cymbush, Asana, Confirm, Javelin, among other control products.

Local pecan trees have an excellent pecan crop this year with each terminal having numerous pecans. Natives and papershells are loaded.

Remember, that 42 days following your first control application for casebearer you need to apply a second treatment for the second generation of this pest.

Q. Enclosed are several leaves off of my tomato plants in my Iowa Park garden. The leaves are yellowed and brown with spots. What type of insect is causing the damage? What can be done to stop this?

A. The target like spots and yellowing is due to a fungal disease and not an insect. The disease is a very common tomato infection called Early Blight.

You need to apply the fungicide called Daconil for control. Apply Daconil now and at 14-day intervals while we have wet and humid weather conditions. Your local garden center will have Daconil fungicide in stock.

Q. My tomato plants are blooming well, but they are not setting any fruit. What is causing the problem? I don't have any bees around. Could this be the main reason?

A. Tomato plants are self-pollinated, therefore, you do not have to rely on bees for pollination. Squash, cucumber, watermelon, and other cucurbits on the other hand do require insect pollination from a separate male to female flower.

The main reason for tomato flowers not setting fruit has to do with temperature. Temperatures have been cool at night and hot during the day which has inhibited fruit setting. Later on we will have to combat high daytime temperatures and night time temperatures which also inhibit fruit set.

Hopefully, we will get some cooperative weather prior to the heat of summer. We certainly cannot control the weather, but there are bloom set sprays you can purchase at garden centers that contain hormones which can help tomato flowers set fruit.

**Ahoy there Mateys**  
There's a treasure waiting for you when you use any of the ATM's!

Yes, Mateys, for a limited time you could win extra cash! Everytime you use a Union Square ATM, check your receipt. If it says "You're a winner" - You are! Take your receipt to any Lobby Teller at any of the three Union Square locations and redeem it for \$5<sup>00</sup> cash!

14 locations all over the area, including Burk Burnett and Sheppard AFB! Let Union Square Federal Credit Union map your way for quick cash and convenient financial transactions!

USFCU Downtown Branch, 1401 Holliday  
USFCU SFAFB Drive Up, Building 212  
USFCU SFAFB Student Center, Building 649  
Sheppard Inn, Building 1600  
SFAFB Hospital, Building 1200  
SFAFB Officer's Club, Building 340  
SFAFB Enlisted Club, Building 1108  
USFCU Kemp Branch, 2903 Kemp Blvd  
Food Barn, 3707 Sheppard Access Rd.  
Southwest Plaza, 4711 Southwest Dwyg  
Sprint 24, 6642 Kell at FM 369  
K & K Foods, 1409 Johnson Rd. Iowa Park  
Burk Burnett, Braums, 1004 Red River Expressway  
SFAFB Community Center, Building 430

**UNION SQUARE**  
Federal Credit Union  
Member NCUA  
"We Belong to You."  
(940) 726-8080  
www.unionsqfcu.com  
All ATM Locations

**Burk Burnett**  
Building Supply  
211 N. AVE. B  
569-2242 • (888) 569-2242

**LARSON**  
Larson Storm Doors.  
Craftsmanship in every detail.™

**MAGNA-CORE™**  
Model 237-CF  
Colonial Full-Lite (seamless aluminum clad)  
• Magnetic Weatherstripping  
• Keyed Deadbolt  
• Antique Brass Knob  
• LIFETIME Hinges  
• Limited Lifetime Warranty  
SD 36237CFW  
REG. \$249  
NOW \$229

**LIFE-CORE™**  
Model 271-TT  
Triple Track Traditional View (aluminum clad)  
• Solid Wood Core  
• Full Screen  
• Simultaneous Top and/or Bottom Ventilation  
• Limited Lifetime Warranty  
SD 36271TTW  
REG. \$187  
NOW \$167

**VINYL-CLAD**  
Model 298-SS  
Self-Storing (vinyl clad)  
• Solid Wood Core  
• Heavy Duty Weatherstripping  
• Maintenance-Free Exterior  
• LIFETIME Hinges  
• 5-Year Warranty  
SD 298SSW  
REG. \$122  
NOW \$102

**VALUE-CORE™**  
Model 284-FL  
Full-Lite (aluminum clad)  
• Interchangeable Glass and Screen  
• Solid Wood Core  
• Heavy Duty Weatherstripping  
• LIFETIME Hinges  
• Limited Lifetime Warranty  
SD 36284FLB  
REG. \$175  
NOW \$155

LUMBER • BUILDING MATERIALS • SUPPLIES  
TOOLS • FREE CONSULTATION  
HOURS M-F 7:30AM-5PM • SAT. 7:30AM-NOON • CLOSED SUNDAY  
MASTERCARD • VISA • AMERICAN EXPRESS • DISCOVER • CHECKS  
SPECIALS GOOD THROUGH JUNE 10, 1999

**ALLSUP'S**  
STORE NO. 295  
200 W. HIGHWAY  
IOWA PARK, TEXAS  
592-2900

**SMART BUY**  
NOW THAT'S A BRIGHT IDEA!

**ALLSUP'S MINI CORNDOGS 5 for \$1.00**

**SPARKLETS WATER 1 LTR. BTL. 87¢ EA.**

BRAND NAME	PACK
MARLBORO	\$2.79
DORAL	\$2.09
WINSTON	\$2.84
CAMEL	\$2.84
BASIC	\$2.49
VIRGINIA SLIMS	\$2.79

**SAVE**

**Basic** FULL FLAVOR 100's  
**Winston**  
**CAMEL FILTERS**  
**Marlboro** FILTER CIGARETTES

SURGEON GENERAL'S WARNING: Quitting Smoking Now Greatly Reduces Serious Risks to Your Health.

**Does your subscription to the Leader expire this month?**

**Check the list on page 4.**