

HEAVY SNOW FALLS ON AREA



The traffic began to move Wednesday morning as tractors and trucks cleared streets.



Janis Brown, Bonnie Sullins, Day Williams and Larese George enjoyed the snow



A view of the back yard of Mrs. Homer Cluck.



One of the many stalled cars, below, looked out through snow covered eyes waiting for the sun to thaw out its winter coat. Traffic in town was almost at a standstill Tuesday and Wednesday.

...and, if you don't think the snow was deep, just ask this deer who wandered into town.

Roads were blocked, stores ran short on groceries, cattle walked over fences and strayed, business came to a standstill, but no one complained.

The Gruver area, along with the entire section of the country has been blessed with a marvelous snow—one of the biggest in recent years.

It was customary white in color, but looked green like dollar bills to the people here. A wheat crop was revived.

The exact amount of snow in Gruver has been estimated between one and two feet deep on the level ground. The moisture content was heavy and estimates ranged from three to six inches.

The snow started falling here Monday morning about 8:00 a.m. and continued steadily until mid-afternoon on Tuesday. High winds caused drifts up to five feet in town.

Motorists were stranded all around the city of Gruver. Many cars were left parked out in the streets where they stuck in the snow. Only those vehicles with chains or good snow-grip tires were able to move at all and many of them had trouble.

The damages of the snow were hard to determine at press time. They won't be known until all the stray-cattle have been rounded up and other ill effects of the storm analyzed.

But the damage won't begin to measure up to the good expected from the moisture. Wheat was in bad shape and much of it couldn't last much longer. This was Gruver's first real good moisture since last summer.

School in Gruver turned out early Monday afternoon and was closed Tuesday and Wednesday. Gruver's basketball game with Texhoma was cancelled Tuesday night as were all other Monday and Tuesday activities.

Only a few businesses were open in Gruver Tuesday. Such items as milk and bread were soon gone from the shelves of the grocery stores, chains became an important asset as did over shoes.

BOYS WIN, GIRLS LOSE

By Lyn McClellan

The Gruver girls lost their first district game in five outings, as they lost to Sunray 40-37 Friday night. This was Gruver's second loss of the year, against 21 victories. The girls, despite their loss, still are the district leaders with a 4-1 record, because the Panhandle girls beat the Stratford girls Friday.

The Gruver boys won their second district game in five outings, as they whipped Sunray 64-42.

Gruver and Sunray Girls were tied 5-5, behind the shooting of States. Then, Sunray scored three consecutive

field goals for a 11-5 lead. Then LaNetta scored a free throw, as Sunray sank a field goal for a 13-9 first quarter lead over Gruver.

Darlene Odom scored a free throw as did Sunray, as Gruver pulled within four points of Sunray, 14-10. Anita scored 5 straight points as Sunray scored on a field goal and a free throw. Sunray still held the lead 17-15. Then Blankenship scored four straight points for a 19-17 lead, but Sunray scored with seconds left, to tie the game at the half 19-19.

Blankenship scored a field goal, and States sank two field goals, as Sunray made three field goals to tie the game again 25-25. Sunray sank a field goal and a free throw, as States made a field goal, and Sunray took the lead again 28-27. Sunray scored two field goals, and Blankenship sank two free throws, as Sunray held a 32-29 third quarter lead.

In the fourth quarter States scored a field goal, and LaNetta sank a free throw, as Sunray made a field goal and kept the lead 34-32. Sunray scored on a field goal and two free throws as Gruver pulled within 1 point of Sunray, as Blankenship scored on a free throw, and States sank two field goals. Sunray was leading 38-37 with less than a minute to play. LaNetta fouled out

with less than :20 left to play, sunray sank the free throw, and won the game 40-37.

Anita States scored 25 points against sunray to lead Gruver. LaNetta Blankenship scored 11 points.

The Gruver boys ran away with the Sunray Bobcats 64-42, after playing a close first half. This was one of Gruver's highest scoring games. Sam Tipton scored 22 points for Gruver, as Bob Gillispie was close behind with 18 points.

Gruver and Sunray played to a 9-9 tie midway in the first quarter, behind Sam who scored five points. Gruver scored on three free throws and three field goals, as Sunray was held to three field goals, and Gruver had a 18-15 first quarter lead.

Gruver and Sunray exchanged field goals, as Gruver still held a three point lead 28-25. Joe Cluck added a field goal as Gruver moved ahead 30-25. Gruver still held the 30-25 lead at half time.

Gruver began to move out in the third quarter. Rice scored 3 points on free throws and Sam scored 4 on field goals, as Sunray sank 4 field goals and a free throw. Gruver still held a three point margin 37-34.

Gruver scored 6 points before the third quarter came to an end, and Gruver held a

THE GRUVER

INDEPENDENT

Volume 11 Number 24

Gruver Texas

Wednesday February 5, 1964

IN THE GRUVE

No one seems sure how much snow fell around Gruver this week but most people estimate between 15 and 20 inches and some many more. The official gauge here was broken.

We don't know how much it snowed, but it was the wettest we ever remembered. With Witnesses each time, we took four samplings of snow (unpacked) and each time, came up with an inch and a half of moisture for every five inches of snow.

This sounds unbelievable and may not be accurate, but it points out the fact that the snow was very wet. The fact that the snow didn't drift as much as expected is proof of how heavy it was.

Most people we talked with feel that this will insure some sort of dryland wheat crop this year. It could be a real good one if more moisture falls in the next few weeks. It should also leave enough moisture for pastures until the customary spring rains come.

Someone mentioned that this moisture may slow down the irrigation well permits. We think it will actually increase irrigation activities. Many farmers with dryland wheat could get wells down in the next few weeks and use them at least once on their wheat and come out with a crop. This could go a long way toward helping pay for the well.

We have never seen the attitude of a town change so much in such a short time. Many ranchers were out Wednesday morning with the worrisome task of rounding up cattle that had strayed. All of them were smiling.

Many times we talk to people who live around Amarillo and few of them have ever been to Gruver. This is natural since Gruver has not been on a State or National Highway. Unless someone has business in Gruver they seldom come through here.

All this is due to start changing. Carl Brown, head of the Highway Department here, informed us the other day that the road running north and south through Gruver has been designated State Highway 136. He said the signs wouldn't be changed until the official maps are printed showing the road as a state highway.

This should help tremendously to bring more traffic through here, especially when the Sanford Dam is completed and Stinnett is linked with Fritch by way of the dam.

Most people living north of here around Guymon, Liberal and on up in Kansas, will probably use this highway on their way to the dam or to anywhere south.

There has also been some talk about highway 15 which runs now through Fertyton, Spearman, Borger and on down to Conway changing and coming through Gruver, Stratford, Dalhart and on to New Mexico.

Also, there are groups working to bring a state highway from Post Texas to the Oklahoma line.



Mr. T.C. Harvey Sr.

FUNERAL HELD FOR T. C. HARVEY, SR.

Funeral Services were held Sunday February 2nd at 2:30 p.m. for Mr. Thomas C. Harvey, a pioneer of the Gruver area. Mr. Harvey died at 2:30 p.m. January 31.

The services were held in the Gruver Methodist Church. Officiating were Reverend R.L. Kirk pastor of the Gruver Methodist Church and Reverend Bill Burton, pastor of the First Baptist Church of Friona.

A mixed choir under the direction of J.C. Harris sang "Abide With Me" and was accompanied by the organist Mrs. Gene Wood. The service closed with a quartet number by Buddy Murrell, Doyle Barkley, Del Cluck and Charlie Knight accompanied by Mrs. Del Cluck.

Pallbearers were Ed Rafferty Jr., Gene Wood, Pike Cluck, Marvin Shapley, Dick Hefley, Warren Hart, Kenneth Irwin and Charlie Casdorff. The honorary pallbearers were C.A. Gibner, Price Miller, Andy Gorman.

MRS. MCCLELLAN HOSTS PARTY

An all-day quilting party was held Thursday January 30th in the home of Mrs. Jewel McClellan.

The ladies gathered and enjoyed a noon luncheon and a day of visiting and quilting.

Enjoying the afternoon were Alice Walker, Margie Barkley, Agatha Rafferty, Polly Jones, Alice Hawkins, Leo Frazier, Ruth Lee, Ora Lee Weidner, Henreitta Andrews, Edna Bayless, Jay Mathews, Devona McClellan, Judy Stevens and the hostess Mrs. Jewel McClellan.

43-34 third quarter lead.

Gruver broke loose in the last quarter, and held Sunray to the bare essentials.

Gruver scored 21 points, with Bob Gillispie leading with nine. Sunray was held to 8 points in the fourth quarter. When the flurry ended and the final whistle blew, Gruver had a 64-43 victory, and a second district win.

Gruver's game with Texhoma was postponed. But the teams will play Sanford-Fritch at Fritch Friday night.

man, Bill Etling, R.D. Tomlinson, Ed Vernon, Charles Cooke and Mart Hart.

Interment was in the Hansford Cemetery under the direction of Boxwell Brothers Funeral Home of Spearman.

Thomas Clement Harvey was born February 12, 1879 in Ellis County Texas. He later moved to Oklahoma where he met Miss Essie Mae Gordon and married her July 14, 1907.

Two sons and five daughters were born to the couple being Hoyt, and T.C. and Helen, Louise, Mattie Rhea Alteena and Margaret while they made their home in Oklahoma.

Mr. Harvey came to Hansford County in the early 1920's in search for a farm. He found what he wanted and traded moving his family to the county in 1922. His farm was located in the Kimbell Community northeast of Gruver.

In 1925 Hoyt Harvey was killed while working in the field. On August 3, 1956, Mrs. T.C. Harvey Sr. passed away. After the death of his wife, Mr. Harvey later made his home with his son and family, T.C. Harvey Jr.

Still interested in farming and ranching yet retired, Mr. Harvey remained a quite active man until only a month before his death on January 31, 1964 in the home of his daughter in Spearman.

Mr. Harvey was a member of the Methodist Church. The friends of Mr. Harvey expressed their remembrances and memorials in this form of donations to the American Cancer Society or to their favorite charity rather than through flowers.

A loyal civic worker and a devout family man, Mr. Harvey will always be remembered as an outstanding resident of Gruver as well as Hansford County.

Survivors include one son, T.C. Jr. of Gruver; five daughters, Mrs. Clyde Yeary, Mrs. Ernest Archer and Mrs. Elmon Jacobs all of Spearman, Mrs. H.S. Ayres of Pampa, and Mrs. R.L. Martin of Visalia, California; two sisters, Mrs. Joe Zelisko of Haskell, Texas and Mrs. W.D. Arden of Ennis, Texas; seventeen grandchildren and five great-grandchildren.



Reverend and Mrs. A.E. Copener, who have been missionaries to the Eskimo of northern Alaska since 1944, will minister to the Assembly of God Church February 6, at 8:00 p.m. As a part of the service, colored slides will be shown representing the Eskimo way of life. Included in this showing are pictures of whale hunting, and walrus, seal, caribou and polar bear in their native habitat, upon which the Eskimo largely depend for their sustenance. The pictures will also represent the ministry of the Copeners who have been instrumental in opening 5 mission stations among these northern people. Pastor Robert G. Slaton extends a cordial invitation to you to attend this service.

Bridal Shower Honors Mrs. Jerry Duncan

Mrs. Jerry Duncan was honored Saturday February 1st with a bridal shower. The event was held in the fellowship hall from 3:00-4:30.

Greeting and registering the guests was Mrs. Loyd Bryant at a decorated register table.

The hostesses presented the honoree, Ruby, with a corsage of pink rosebuds. Mrs. Joyce Duncan was also given a corsage, it being of white carnations.

The serving table was overlaid with green net from which punch and cake were served. The cake was white and adorned with pink and green rosebuds and leaves. A bouquet of white cut flowers centered the table arrangement. Serving were Mrs. Ted Collier of

Spearman, Mrs. Kenneth Knight of Stratford and Mrs. Gene Duncan of Canyon.

Hostesses for the occasion were Mesdames Mary Fletcher, Edna Marie Williams, Gay Fletcher, Bob Greene, Roy Thomas, Chester Mitts, E.A. Williams, Kermit Boone, Marvin Shapley, Harold Saltzman, J.R. Morris, Ed Vernon, Helen Wood, Vance Morris, Grover Taylor, P.H. Westerfield, E.G. Garrett, Marvin States, A.H. Frazier, Chester Heath, Darrel Wright, Darrell Cooper, Lee Roy Mitchell, J.C. Cluck, Don Gross, I.W. Ayres Jr., LeRoy Murrah, C.F. Kauffman, Arnold Bayless, Merle Delano, Harry Barkley, True Leatherman, Leon Chapman, Oliver Wallin, Butch Hale and Miss Elizabeth Spivey.

into industrial sites; streets paved; and the city built a water tank, dug wells and ran in electricity, natural gas, and sewage lines. Then the Corporation made a loan to a mobile home builder. This 20-year loan in being repaid in monthly installments.

The Corporation put up its lease on the mobile home company in borrowing \$100,000 from a memorial fund. Two local banks added \$35,000 so the Development Corporation could load \$135,000 to a company that would manufacture mobile home furniture.

The Corporation also deeded a 20 acre tract to local citizens who built a second mobile home plant, costing \$200,000. Two years later, with \$75,000 raised by selling 5% debentures, the Corporation helped build a hardware manufacturing plant. All this adds up to 884 new jobs created since 1960 and 20 new or expanded businesses in the area.

Here's what the Sumter County Building Program is doing in other fields:

Community Improvements: New schools, expanded library services, a new expressway, a \$1.6 million urban renewal project, expansion of airport runways, a new \$4 million home for the aged, and two new churches.

Redeation: A new 160 acre lake for water skiing and three hunting and fishing preserves head the list.

Public Facilities: a \$289,000 Cops of Engineers' flood control project provided temporary construction jobs. The city expanded its water supply and sewage systems.

Housing: 100 new rental homes and apartments were built by the Americus Housing Authority and another 31 new rural homes were built with the help of \$191,180 in Farmers Home Administration loans.

Farm Credit: F.H.A. is supplying credit not otherwise available. Farmers have substantially increased their income by including livestock in their operations. Through both the Farm Ownership and Rural Housing program, rural people are building new homes and essential farm service buildings.

Proper Grasses

Grasses, like all green plants, live and grow on food manufactured primarily in their own green leaves. Range grasses cannot retain vigor if the individual plants do not have the opportunity to make food for their own growth.

Deferred grazing is known as a management type practice. It is defined as, "Grazing under a system where one or more pastures are rested at planned intervals throughout the growing season or at the same stage of growth two years in succession."

Deferred grazing is well adapted to a range rotation program. A two, three or four pasture rotation system does a good job of deferring your pastures at different times during the growing season.

The purpose of deferred grazing is to increase the more desirable grasses found in your pasture. The forage yield of your rangeland may increase significantly due to this increase of the more desirable grasses. Better grasses and increased forage produced can spell only one thing—more pounds of beef produced per acre. This, in turn, means more profits to the farmer or rancher.

Contact your local Soil Conservation office and ask one of the technicians to assist you in working up a rotational grazing system for your rangeland.

4-H County Council Met

The County 4-H Council met in Spearman recently to discuss new rules for the club to be adopted, as a part of the program.

Officers elected were Chairman, Sylvia Parks, Girls Vice-Chairman, Patricia Henderson; Boys Vice-Chairman, Delbert McCloy; and Secretary and Treasurer positions are held by Janice Trindle and Rebecca Hutchinson. District delegates to District Council are Allen Dixon and Patricia Henderson.

Also discussed at the meeting was the County Camp for this summer and a place for the eliminations come Spring. The group talked about the coming County Bake Sale and Stock Show.

To Whom Shall We Go

by Alfred White

Subject: The Sacred Union

"Let marriage be held in honor among all, and let the marriage bed be undefiled; for God will judge the immoral and adulterous" (Heb. 13:4). In Exodus 20:14 the commandment is "Thou shalt not commit adultery," and in Matthew 5:28 Jesus goes even further by saying, "Whosoever looketh on a woman to lust after her hath committed adultery with her already in his heart."

"Nevertheless, to avoid fornication, let every man have his own wife, and let every woman have her own husband. The husband must render to his wife the obligations that are due her, and similarly the wife to the husband. The wife has no exclusive control over her own body, due to the husband, and just so has the husband no exclusive control over his own body, due to the wife. (1Cor. 7:2-4).

We see then that faithfulness in marriage is not only a manner of "doing" but a manner of "thinking" as well. Every person must be ever diligent in protecting their chastity in both thought and deed.

We know that the strength of a nation is dependent upon the strength of the homes within it, and the strength of a home is dependent upon the love and faithfulness of a husband and wife toward God, toward each other and toward their children. Self respect and honesty are the bulwarks of the home.

It is impossible to estimate the advantage which a Christian has over a non-Christian in the matter of faithfulness in marriage. Without the stabilizing power of divine love, human love cannot flourish or be constant. Love which has only the human element is the kind which breaks out of the bounds of matrimony and seeks sensual fulfillment. But this kind of love can never bring happiness which is real and lasting because it is not

of God. Any love worthy of the name can bring in perfection only as we dwell in God and let Him dwell in us.

If God's spirit truly dwells within us, then we are always striving to add to our faith virtue, and to our virtue knowledge, to our knowledge temperance, to our temperance patience, to our patience godliness, to our godliness brotherly kindness, and to our brotherly kindness love (2 Peter 1:5-7.) So long as men and women abound in these graces, they cannot be unfaithful to their mates.

Oftentimes we say that when people marry they are embarking upon the sea of matrimony. If winds of doubt and fear and unfaithfulness threaten your marriage, remember how it was once when Christ rebuked the wink and the sea by saying only three words, "Peace, be still" And then He asked, "Why are ye so fearful? How is it that ye have no faith?" (Mk. 4:40). He still can say these same words with the same power today if you will earnestly seek Him in prayer, believing.

Aside from the fact that God commands it, everyman and woman should be faithful in marriage for the sake of the happiness of their mate, their children and themselves. No soul can be happy that sins against another. Happiness in life is acquired by giving to others. Marriage is giving. Never enter the married state thinking that you are going to receive more than you give. Selfishness destroys love.

Marriage is indeed a beautiful union, and if within this union both partners can be made to feel that they are needed and treasured and prized, chances are excellent that there will never be any unfaithfulness on the part of either party.

"What therefore God hath joined together, let not man put assunder." (Mk. 10:9).

LOCALS

Mr. and Mrs. Will Noble of Springer, New Mexico were recent guests in the home of their daughter and family Mr. and Mrs. Carl Cooper and Chris.

Mr. and Mrs. Sanford Felterly of Souix Look Out, Ontario, Canada were recent guests in the home of a friend Mrs. Myrtle Bernstein while enroute to Phoenix, Arizona.

Mr. and Mrs. Fred Cooper enjoyed several days in Hot Springs New Mexico fishing.

Guests in the home of Tommie Dewees were her children and friends from North Texas State University in Denton, Buzzy Davis and Mike Floyd, Karon Davis and Alice Elbert.

Mrs. Perry Hawkins, Mrs. Merle Delano and Mrs. Ed Rafferty Sr. journeyed to Liberal Kansas where they met with the Liberal Hobby Club in the home of Mrs. Charles Black one day last week.

Welcome to Gruver Mr. and Mrs. J.B. Walker Jr. who will be working on the John Arnes Farm. Mr. Walker is the son of the Gruver Farm Supply manager.

Guests for the weekend in the home of Mr. and Mrs. Lee Roy Murrah was their son and family, Mr. and Mrs. David Murrah and son of Abilene.

Mr. and Mrs. Gary Osborne and daughter were home for the weekend from Lubbock to attend the funeral of her grandfather.

Mr. and Mrs. Guy Cooper visited over the weekend in Tulia with Mr. and Mrs. Jim Owens and Jed.

Mr. Oscar Gross entered the Borger hospital Sunday quite ill with pneumonia.

Mrs. L.R. Gamertsfelder, Mrs. Blanche Taber and Mrs. Agatha Rafferty visited in Amarillo last Tuesday in the Susie Dacus Rest home with Mrs. Hays, Mrs. Jarvis and Mrs. Dowdy.

Mr. and Mrs. Jimmy Harvey of Dallas were home for the Funeral of his grandfather over the weekend.

Van Etling, the son of Mr. and Mrs. Buddy Etling spent several days in the hospital last week where he was recovering from an attack of asthma.

Clark Winkler was honored recently with a birthday dinner in his home as the Turner Hoys, Charlie Knights and the J.C. Harris' gathered for the evening.

Enjoying Sunday Dinner in the home of Mrs. Agatha Rafferty were her children Mr. Ed Rafferty, Jr., Sandy, Molly, and Barney and Mr. and Mrs. Warren Jeffries and her roommate Janie Dillinger of Walsh Colorado. Janie and Janie were home from Goodwell for the weekend.

Mr. and Mrs. Johnny Cagle of Dumas spent a recent week end in the home of her parents Mr. and Mrs. Dave McClellan.

Mr. Charlie Davis is home and recovering nicely from eye surgery which he has had recently in an Amarillo hospital.

A recent college visitor home for the semester break from Abilene Christian College in Abilene was Euline Green visiting in the home of his parents Mr. and Mrs. R.C. Green.

Mr. and Mrs. Kermit Boone and boys and Mr. and Mrs. Pumpkin Edwards attended the Fat Stock Show, Rodeo, and Quarter Horse Sale in Fort Worth.

Mr. and Mrs. Otho Gammill have recently purchased the home of Ray Carr which will be made into the future home of the Beauty Box.

Building Program Suggestions

Hansford County has a County Program Building Committee such as mentioned below. Mrs. Frank Davis is Chairman and Robert Novak is Vice-Chairman. Over 50 members are on the committee representing each phase of our agriculture, industry, organization etc.

A County Program Building Handbook outlining some of our opportunities and suggesting projects has been developed. Contact a member of the committee or your County Agent if you would like to see this book. You are urged to get behind this committee. If you have been asked to serve on this committee give your full support. Help Hansford County to go forward.

The projects listed in this example will not fit our needs, but will give you an idea what can be done.

Closed Cooperation Brings Success in Sumpter County, Georgia

There was no stopping a team of 29 business and agricultural leaders once they decided to carry out local projects in their area. These men, members of the

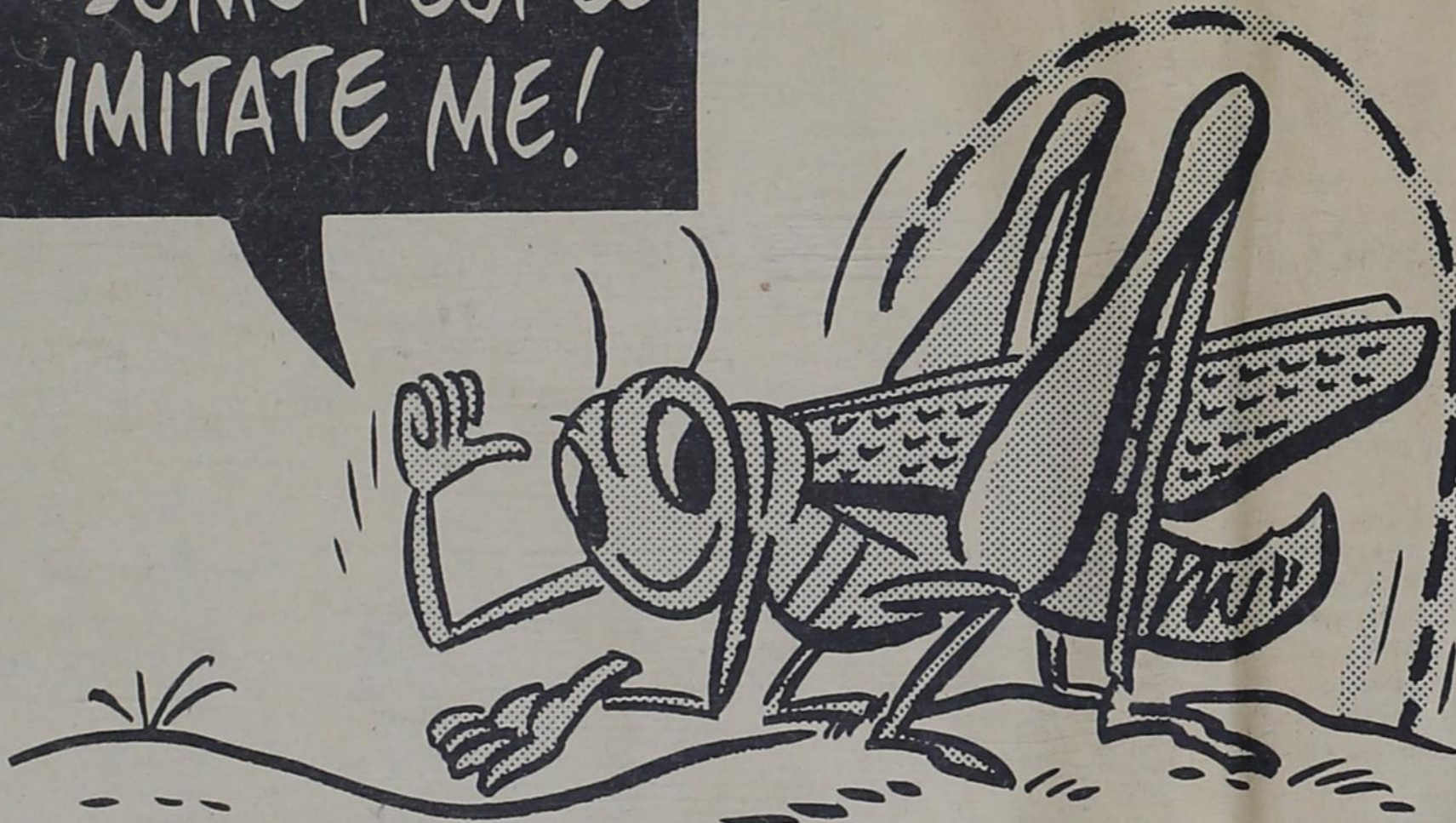
local County Program Building Committee, rolled up their sleeves and went to work in 1961, joining forces with the Americus and Sumter County Development Corporation, which has been working on area economic problems since 1955.

The results: A fully equipped 400 acre industrial park creating 884 new jobs, lakes for fishing, water skiing, improved community services, and F.H.A. credit to diversify farming and build new rural homes.

Faced with a serious exodus of its rural citizens, people in Sumter County, Georgia, decided to do something rather than just talk about their problems. In 1955 they formed the Americus and Sumter County Development Corporation and raised a \$650,000 revolving fund to develop new industry. Here's how it worked:

By issuing 3% debentures, the Corporation raised \$35,000 to help build a refrigerated body plant. This money, repaid within a year, was then used to purchase about 400 acres at the edge of town. The tract was subdivided

SOME PEOPLE IMITATE ME!



Hopping from place to place to pay bills with cash takes time, energy and patience.

Why be a "grasshopper" when you can pay bills with checks — conveniently, safely and with step-saving speed — by mail?

Gruver State Bank

Gruver, Texas

MEMBER OF F.D.I.C.

WE ARE SELLING IRRIGATION TUBES AND TARPS AT COST

FERTILIZING TIME IS NEAR

Two new rigs available for custom application of Anhydrous Ammonia

APPLY ANHYDROUS AMMONIA

NO INTEREST

WE CUSTOM APPLY YOUR AMMONIA

IRRIGATION SUPPLIES

NORTH PLAINS CHEMICAL CO.



Estelle Martin

ESTELLE MARTIN HONORED

A one time Gruver resident, Estelle Harman Martin, of Amarillo was honored with a retirement party by the Bell Telephone Company of Amarillo recently.

Mrs. Martin was a telephone operator in Gruver for thirteen years. She moved to Gruver in July of 1929 when the town was beginning to show progress, from Lubbock.

At the time Mrs. Martin began work she was employed under the agent for the Bell Telephone Company in Gruver, Mrs. Jack Tomlinson. As time progressed Mrs. Harmon held the position of agent herself.

After serving her thirteen

years in Gruver she moved to Borger where she worked for the telephone company for another thirteen years. Her final move was to Amarillo where she retired as of January 1 after thirty three years and five months of service.

Mrs. Martin will continue to make her home in Amarillo.

Verna Walker is spending the week in Albuquerque doing special study in wig care and styling technique. Verna is a co-worker with Florene Gammill at the Beauty Box.

OSLO NEWS

Sunday School and Church again next Sunday at the usual time. Everyone is welcome. The Lutheran Church in Spearman, where services are conducted by Robert Cordes. Services are held at 9:00 a.m. followed by the Bible Class. These services are temporarily being held in the new Farm Bureau Room. There were 60 persons present on Sunday. Adult instruction class will be started in the future for those wishing to know more about the Lutheran faith.

Mr. and Mrs. Robert Mauldin and Robbin were weekend guests in the Clifford Stedje home.

Mr. and Mrs. Bob Strothers and family were Friday evening guests at the Ted TeBeest home.

Sam Tipton visited Saturday night and Sunday in the home of Mack Hoel.

Wednesday evening Diane Stedje was surprised with a birthday party and supper at Nancy's Cafe in Gruver. Birthday cake by Josephine Gruver was topic of comment and enjoyed by a group of girls of the eighth grade.

A large group of leaguers and their parents enjoyed a Banquet held Sunday evening in the Parish Hall of Oslo Lutheran Church. The Banquet was presented by the parents of the leaguers. Those in charge of the Food's committee were Mrs. Henry Moen of Guymon, Mrs. Clifford Hill, and Mrs. Ray Schibler. The program committee was composed of Mrs. Kenneth Hill of Guymon, Mrs. Asa Thompson and Mrs. James Stedje. There were about seventy people present.

Mr. and Mrs. Paul Smith of Texhoma visited last Sunday in the James and Gordon Stedje homes.

Sunday dinner guests in the Emil Knutson home were Mr. and Mrs. Lewis Henderson of Pampa.

The work of replacing the ceiling in the Church at Oslo continues. It is believed the acoustics were much better on Sunday. The work is being done by Tomlinson and Jones of Gruver.

Harmony Club Met Recently

On January 20th, 1964 the Gruver Harmony Club met at the Baptist Church at 7:30 p.m. The Club presented "Hootenanny of Folk Songs." The meeting began with the Junior Hymn and Junior Pledge. Order of Business was directed by the president, Day Nell Williams.

Hymn of the month was given by Sherry Weant. Glenda Hoel presented a talk on the Origin of Folk Songs which developed into Negro Spirituals. Several spirituals were presented by Arlene Barkley, Kathy Fletcher and Jane Hoy. They were known as the "Three Lizas" which everybody found quite amusing. Highlights added color when the "Three Lizas" led the group in the Hootenanny of Folk Songs.

The Hostesses were Glenda Hoel, Kathy Fletcher, Barbara Pitts, and Janet Bebb.

The Junior Collect was given in unison and the meeting was dismissed.

FRED COOPERS' HONORED

Mr. and Mrs. Fred Cooper were honored recently on their 25th Wedding Anniversary in the home of their son Mr. and Mrs. Carl Cooper and Chris.

Not only were the group gathered for the anniversary but it was also Fred Cooper's birthday. Refreshments were served to the group and games of forty-two were played throughout the evening.

Attending for the evening were Mr. and Mrs. Darrell Cooper, Mr. and Mrs. Guy Cooper, Mr. and Mrs. Charles Erickson and Carman, Mr. and Mrs. Fred Cooper and the host and hostess Mr. and Mrs. Carl Cooper and son.

Thank You

To everyone who helped in any way to comfort us in the loss of our father, and to Dr. D.E. Hackley for his understanding, kindness and patience, we are deeply grateful.

The Family of T.C. Harvey Sr.

THE WAY I SEE IT

Robert Cordes, pastor Oslo Lutheran Church

"Send For Me"

A young man began his first day working in a large factory. Everything went well until shortly after noon, when the machine he was operating began to make an unusual sound.

Eager to demonstrate his mechanical ability, he began to tinker with the machine-- with the result it came to a complete stop. Nothing he could do would start the machine.

The foreman walked up. The young man, embarrassed, tried to explain and defend his actions. He told all he had done, then added: "After all, I did my best."

The foreman replied, "Young man, around here, doing your best is to send for me."

What a lesson in life.

tension Service.

The beef cattle specialist says that increased gains have resulted from the use of hormones during the nursing, grazing and feedlot stage.

However, he points out that there are some disadvantages if the animals are not owned during the whole period by the same person. Calves on test in Texas have shown higher weaning weights when implanted with stilbestrol but this extra weight might be undesirable from a price per pound standpoint if the animals were sold as stocker or feeder calves.

According to Texas research hormone implanting of animals that were implanted during the nursing, grazing and feeding periods gained 663 pounds during a 461-day period. Those receiving only two implants gained 657 pounds, those with only one implant gained 616 lbs. and animals with no implants gained 595 pounds during the period, says Thompson.

It, therefore, appears advantageous to implant steers during all three phases if the animals are under the same ownership, concludes Thompson.

"Doing your best is to send for me!" How often our Heavenly Father has to remind us of that fact. In our foolish pride we think we are doing our best when we apply our puny wisdom to the difficult problems of daily living; and we forget that in the trials of life "doing our best is to send for Him"

"Call upon Me" is still God's command and invitation to all His children "I will deliver you" is still His promise. "And you shall glorify Me" is still His holy expectation.

How often each day do we reply "send for" Him who has so graciously promised to help us? "Pray without ceasing" means to be constantly dependent upon God in Christ through the Holy Spirit.

Our Lord in Heaven would have us not being satisfied with doing our best. And doing our best is not our best unless we send for His help. And those who do call upon Him will do their best-- as God measures "best".

"Send for me," cried the foreman. Alone man stumbles and falters. God asks us to "Send for Him" Do you? Why not right now!

When you awoke this morning, there were 45,000 more people in the world than when you went to bed last night. Each day about 120,000 people are added to the population of the world and each year about 44,000,000.

What is going to happen to all these people? Some will live close to God. Others will have much hardship, sorrow and suffering. But in the end all of them must die.

And what will happen to these people after death? We may know many Christians. But the great majority of the people in the world are not Christians. They do not believe in or reject Christ as Savior.

Jesus doesn't want anyone to be lost. He died for all, and He wants everyone to

believe in or reject Christ as Savior.

Jesus doesn't want anyone to be lost. He died for all, and He wants everyone to believe in Him. That's why He tells us: "Pray that the Lord may send out laborers into His harvest." (Luke 10:2).

God is just God. He has prepared a way for salvation in His Son. But also God will have respect for our choice.

If we reject this Son Jesus, God has no choice but to cause eternal death to become a reality. Eternal death means dying without our sins forgiven in Christ. Thus this Eternal death means dying without our sins forgiven in Christ. Thus this person would be eternally separated from God. This is Hell. It is an eternal place. It is a terrible place from which there is no second chance. Think lightly of this? Never! It will be a place without the presence of God's love.

God wants us to pray for laborers (that is, Christian missionaries, teachers, pastors) to tell the Good News of Jesus' love. We can do this by our offerings of money. We can show by our lives how much Jesus counts for us.

These are some things we can do for the thousands of people in the world who do not know Jesus. Without Jesus none can know "what God has prepared for those who love Him." (1 Corinthians 2:9)

It is Christ and salvation or eternal hell. Which shall it be for you? There is no gray in the Christian life. Either you are the Lords, or the devil's. It is time now to let the Holy Spirit help you decide.

County Agents Report

by Robert Adamson

There may be splinters in the ladder of success, but you won't notice them unless you are sliding down.

INCOME TAX MEETING

There will be an income tax management meeting on Tuesday, February 4, 1964, at 2:00 p.m. in the Farm Bureau Meeting room in Spearman. Mrs. James Murphy, Area Farm Management Specialist from Amarillo will be here to present the program. Mr. Murphy can give you some helpful hints in managing your farm in preparation for income tax filing.

Mr. Murphy presented a similar program in December but there were several conflicts so this meeting was set in order to present this useful information to Hansford County farmers.

CHEMICAL CONFERENCE

The eleventh Annual Agricultural Chemicals Conference will be held February 12, 13, and 14, 1964 in the ballroom of the Tech Union Building, on the campus of Texas Tech College, Lubbock, Texas. If you would

like a program, you may request one from W.H. Jones District Agent, Room 104 Agriculture Building, Texas Tech, Lubbock, Texas.

FIELD DAY AND BULL SALE

The fourteenth Annual Field-Day and Bull Sale will be held on March 12, 1964, at Texas Tech College Research Farm, Pantex, Texas. The program will include a dedication of the new Killgore Beef Cattle Center. I will give you more detailed information later.

USE OF STILBESTROL

Treating feeder cattle with stilbestrol from birth until they are slaughtered may be practical if the animals belong to the same owner during the entire period, says Uel D. Thompson, animal husbandman with the Texas Agricultural Ex-

GRUVER MOTOR CO. offers you these three services:

CHEVROLET

NEW CARS

COMPLETE MECHANIC SERVICE



JOHN DEERE



THE BEST TRACTOR ON THE MARKET

Denny's Fashion Center

517 N. MAIN BOX 1070 BORGER, TEXAS

MEN'S & LADIES' FASHIONS

WHY NOT?

YES, WHY NOT OPEN A CHARGE ACCOUNT AT DENNY'S. SIMPLY FILL OUT THE CREDIT APPLICATION BELOW THEN MAIL TO OR BRING IT BY

DENNY'S

WE HAVE A CREDIT PLAN TO SUIT YOU

- 30 DAY BALANCE IN 30 DAYS
- 60 DAY BALANCE IN 60 DAYS 1/2 EACH MONTH
- 90 DAY BALANCE IN 90 DAYS 1/3 EACH MONTH

USE OUR 10 MONTH REVOLVING PLAN HERE'S HOW IT WORKS

IF YOUR BALANCE IS	\$10.00 to \$100.00	\$100.01 to \$150.00	\$150.01 to \$200.00	\$200.01 to \$250.00	\$250.01 to \$300.00
YOUR PAYMENT IS	\$10.00	\$15.00	\$20.00	\$25.00	\$30.00

FULL NAME _____ AGE _____
 ADDRESS _____ HOW LONG _____
 WIFE'S NAME _____
 EMPLOYER _____ HOW LONG _____
 OCCUPATION _____

CREDIT REFERENCE:

- 1.....
- 2.....
- 3.....

Clip This Credit Application, mail or Bring to DENNY'S 517 N. Main Box 1070 Borger, Texas

WANT ADS

FOR SALE

2 bedroom stucco house, plus basement, good location. Gruver Agency, FI-7-2422.

FOR SALE

Automatic Laundry, nearly new equipment, small equity. Gruver Agency, FI-7-2422

FOR SALE

3 bedroom stucco, double garage, ready for occupancy. Gruver Agency, FI-7-2422

FOR SALE

800 acre Farm near Goodwell: extra good 8" well: some minerals. Gruver Agency, FI-7-2422.

FOR SALE OR RENT

30' x 100' ware house heavy floor, truck bed height, 10 ft. walls, on Rock Island right of way. Gruver Agency FI 7-2422.

Dr. H.B. Rinker Animal Hospital and Clinic 1215 1/2 W. 7th Spearman Texas Office hours.....8:30-5:00 Telephone.....659-2100

Male/Female Help Wanted Now available Dealership for Spearman, Perryton & Gruver Vacuum Cleaner Sales-Service-Supplies. Write Box 3097, Borger Texas.



A.C. Hallmark State Representative 92nd District

Max W. Boyer democrat Judge of the 84th Judicial District

B.W. Renner Precinct Number 3 County Commissioner

EVERYTHING AT DISCOUNT PRICES

- Military Supplies
- Fishing Needs
- Sporting Goods
- Cold Weather Clothing
- Re-Loading Equipment
- Guns and Amunition

We Appreciate Your Business **SURPLUS CITY**

700 Florida Borger, Texas

PANGBURN'S FRENCH LARGE HEARTS



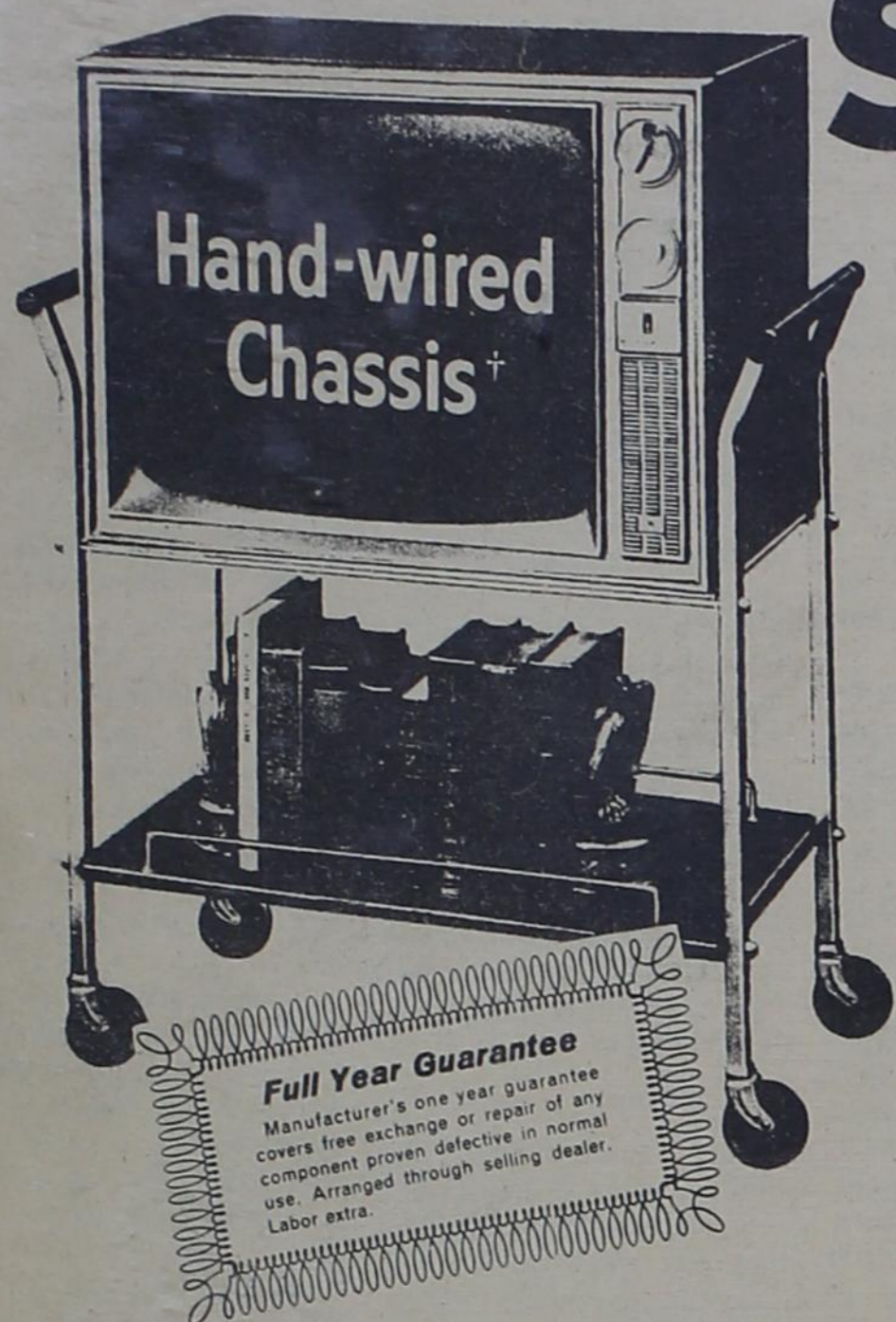
Glamour Gift for your Valentine Made with Milk and Honey

Gruver Drug

FARM LOANS LOWEST RATES For FARM and RANCH LOANS See GENE CLUCK

for the New BEAUTY BOX to be Open soon

Check with Riley Bros. for your Motorola Radios, Stereos, & Televisions



MOTOROLA 23" ROLL ABOUT TV

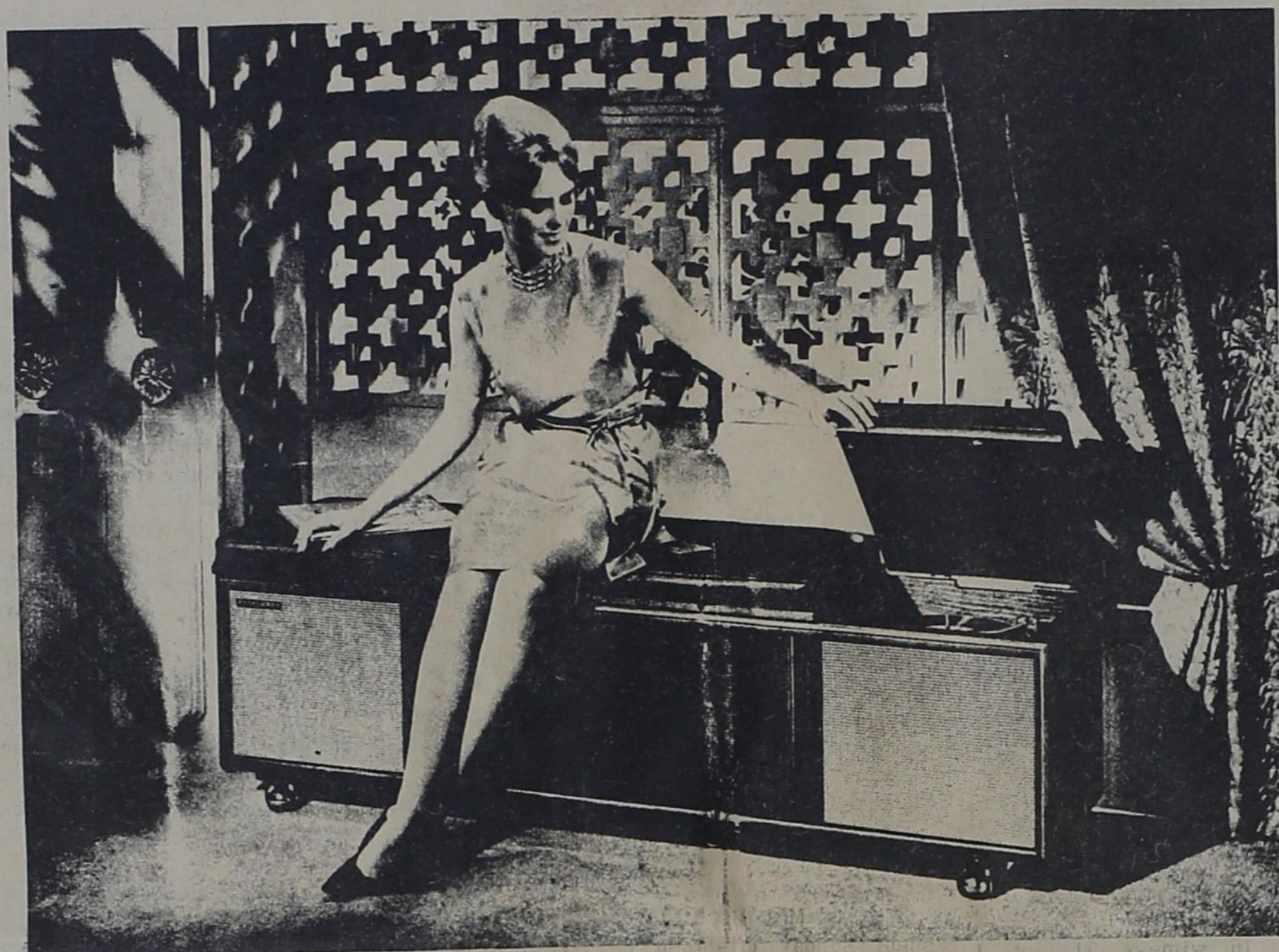
- †Hand-Wired Chassis is precision crafted with modern hand and dip soldering.
- Smartly fashioned roll-about cart has beautiful plated finish, 3" casters to bring portable convenience to big-screen TV. Handles and shelving are genuine hardwood finished in Ebony color.

Brings big-screen TV to every room



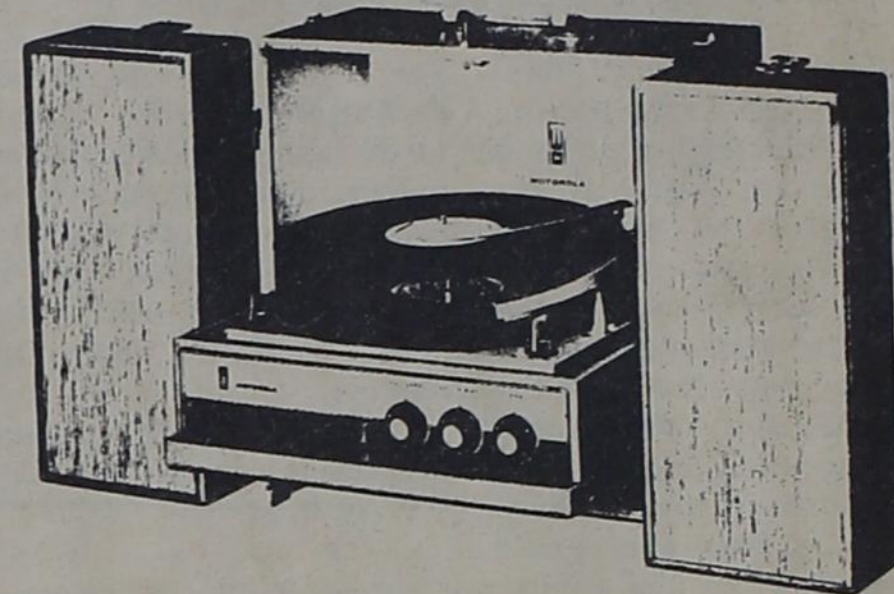
kitchen... living room... bedroom... den

You SAVE



MODEL SK154
TEN SPEAKER SOUND SYSTEM • Wide Spectrum Stereo Sound System with Compression Bass, Vibrasonic System. Ten Speakers: two 10" woofers, four 5" mid-range, two 4" Vibrasonic, two 3 1/2" tweeters. Feather Trac Tone Arm with DIAMOND and Sapphire Stylus. Stereo Tape Input Jacks. 3 External Speaker Jacks. Custom-tailored Cushions of thick foam rubber covered with luxurious black vinyl are attached. Genuine Walnut veneers and select hardwood solids. 21 1/2" high, 66 1/2" wide, 17 1/2" deep.

MODEL SP51
Stereo Phonograph. Dual Channel Amplifier. Two 5" Speakers. Detachable Speaker Wings. "SWING DOWN" 4 Speed Automatic Record Changer. Feather Touch Tone Arm. Dual Sapphire Stylus. Volume and Tone Controls. Wood Cabinet covered in scuff-resistant fabric. Aqua Blue or Saddle Tan colors. 17" high, 23 1/2" wide, 9" deep.



MODEL CX2
Tandem Clock radio can be separated. Radio operates on AC or batteries. Clock operates on AC power. Colors Brown and Tan.

COMPLETE LINE OF MOTOROLA MERCHANDISE TO CHOOSE FROM



MODEL SP511
Stereo High Fidelity Phonograph. Dual Channel Amplifier. Two 6" Speakers. Detachable Speaker Wings. "SWING DOWN" 4 Speed Automatic Record Changer. Dual Sapphire Stylus. Balance, Loudness, Tone Controls. Wood Cabinet covered in scuff-resistant fabric. Metallic Midnight Blue color. 17" high, 23 1/2" wide, 9 1/2" deep.



MAN THIS IS IT!

COME IN AND SEE THE NEW MOTOROLA COLOR TELEVISION



Lets You Tell Time in the Dark!

MOTOROLA CLOCK RADIO WITH VISILITE

No straining to see 'luminous' hands... no harsh glare—the whole face is soft-lighted from behind, electrically.

Model CX28
In two-tone Blue; White and Brown.

- Wake-A-Matic**—an automatic alarm you set just once. It resets itself every 24 hours. "Holiday" setting postpones alarm for 24 hours to let you sleep on Sundays or holidays.
- Lazalarm***—lets you sneak an extra "40 winks" then wakes you again.
- Sleep Switch**—lets you fall asleep to radio. The radio turns itself off.
- Appliance Outlet**—turns on lights or starts coffee at the time preset.
- All-Transistor Chassis**—for long life and reliability.

*Trademark of Motorola, Inc.

FRESH FROM MOTOROLA

NEW 23" SWIVEL TV

Hand-wired Chassis

BUY NOW AND SAVE!

IT SWIVELS

BIG TRADES! EASY TERMS!

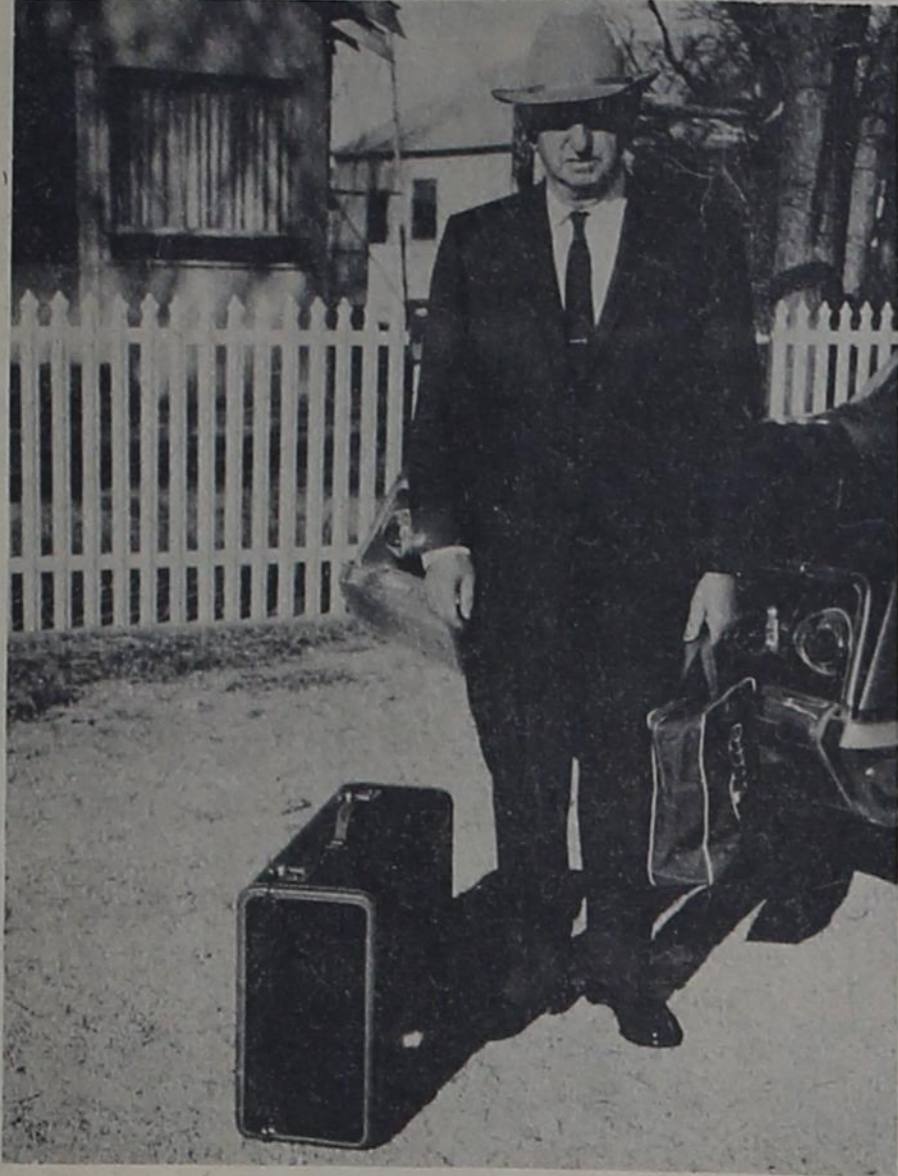
Special selling for limited time only!

HEADQUARTERS FOR MOTOROLA TELEVISION, STEREO HI-FI AND RADIO VALUES!

- †Precision crafted with modern hand and dip soldering for long life
 - Frame Grid Tuner and Frame Grid I.F. Signal amplifying system for brilliant sound and picture clarity
 - Mahogany or Walnut finishes on moisture- and mar-resistant tempered hardboard and select hardwood solids
 - All-Channel adaptable—Front tuning.
- Plus manufacturer's one year guarantee that covers free exchange or repair of any component proven defective in normal use. Arranged through selling dealer. Labor extra.

Gruver, Texas

RILEY BROTHERS RADIO AND TELEVISION SERVICE



Pete Barnes

PETE BARNES MAKES AROUND WORLD TOUR

Following the steps of Nellie Bly is Pete Barnes, but Pete will be making the trip in forty-seven days rather than seventy-two days. Pete left Friday from Amarillo by plane on the "Around the World" tour with Cotton John's touring group.

Exciting is the trip planned and excited was Mr. Barnes as he boarded his plane for destinations of Hawaii, Japan, Taiwan, Hong Kong, Philippines, Singapore, Thailand, Burma, India, Kenya, Tanganyika, Egypt, Lebanon, Jordan, Israel, Turkey, Greece, and England.

A scenic and interesting trip by plane is in store for Pete and the others in the group during their month and a half trip.

Thursday night Mr. Barnes was the honoree of a "Farewell Party" for which his family gathered to tell him good-bye and wish him a happy trip.

Cookies and punch were served to Mr. Barnes' guests at his home Thursday evening as the farewell wishes included Mr. and Mrs. Guy Cooper, Mr. and Mrs. Dick Hintersgardt, Guy Paul and

Scott, Mrs. Alma Gruver, Mr. Val Winger David and Darin all of Gruver and Mr. and Mrs. George Dietrich of Perryton.

Taken to the plane on Friday morning in Amarillo by Mr. and Mrs. Val Winger and sons and Mrs. Alma Gruver, Pete was also greeted at the airport with good-byes from Mr. and Mrs. George Dietrich of Perryton and Mr. and Mrs. Don Gurley and girls of Stratford.

February is Music Month

Proclamation by the Mayor
Whereas, Music, long an universal language, is one of the great arts and an outstanding feature of our culture; and

Whereas, The National Federation of Music Clubs, having a foremost objective the promotion of American Music, will stage its ninth annual "Parade of American Music" throughout the month of February; and

Whereas, The Texas Federation of Music Clubs

CODES FROM MORSE

Mrs. Desmond Kelly

LIONS CLUB MEETS

Ladies Night was held on Thursday for the Lions Club in the School Cafeteria with Sutphens of Borger catering the meal. Paul Biggs of Phillips entertained the group for the evening with vocal and string music. The group indicated that he was as especially good entertainer.

Gene Kurnt of Pampa inducted the new members into the club. New members were Johnny Brumley, Frank Lewis, Truman Commons, Don and Dale Jones, Don McCammond, Gerald Scribner and Stanley Mohr.

Other guests for the meeting were Mrs. Mohr, mother of Stanley Mohr, who is visiting her son here and Mr. and Mrs. Joe Reisinger. Mrs. Reisinger has been preparing the meals for the group. Numerous awards were given to individual members during

(and organization) of our city join in encouraging and stimulating interest in American Music and the enjoyment and appreciation thereof; and

Whereas, "The Parade of American Music" is designed to give our own worthy United States composers recognition, encouragement and support to effect a more extensive hearing of their works and pay them tribute through their living art, and to impress upon the public of the United States that it has creative as well as performing musical artists and a culture equal to that of other countries; Now

Therefore, I, Don Hudson, Mayor of Gruver, in recognition of the American composer and in order to encourage native creative musical art, do hereby proclaim February, 1964, as American Music Month and urge all of our citizens to join in the observance and share the joy of music.

In witness whereof, I have hereunto set my hand and caused the Seal of the City of Gruver to be affixed, this, the 1st day of February, 1964.

Signed Don Hudson, Mayor of the City of Gruver.

the evening.

4-H NEWS

Evelyn Kelly met with her Foods 11 group on Wednesday afternoon in her home to show her class how to prepare breakfast muffins. Attending were Maria Escamilla and Cheryl McCloy.

Alan McCloy and Alan Dixon met with a group of 4-H boys on Monday night in the school science room. This meeting concerned Beef Cattle and how to feed them. Adult Leader was Wilson McCloy. The boys present were Doug McCloy, Rex McCloy, Don Kelly, Phillip Fleming and Bob Womble.

BIRTHDAY DINNER

Mrs. Wilson McCloy and Mrs. Thane McCloy had friends in last Tuesday in Mrs. M.W. McCloy's home to help her celebrate her birthday. The daughters-in-law served a delicious lunch to the old friends; Mesdames Mack Dortch, H.H. Jones, Ella Parks, Roscoe Parks, Mary Gillispie, A.E. Henderson, Roberta Kelly, Annie Clifton, Lex Board, Jack Johnson all of Morse and Mesdames Dulin, Lloyd Henderson and Ernest Lieb of Pringle Community, and Mrs. Mohr who is visiting in Morse, Diane and Bonnie Gayle, little granddaughters were also there.

The afternoon was spent singing old songs and visiting.

Mr. and Mrs. Wayne Kelly and children of Lubbock spent the weekend in the Deemond Kelly home and Roberta Kelly home. This is Wayne Kelly's mother and brother.

Mr. and Mrs. Dick Spradlin and family of Gruver had Saturday night supper with the Tom Dortchs.

Mr. and Mrs. Joe Reisinger and family went to Perryton on Sunday to visit relatives.

Mr. and Mrs. Mack Dortch spent Sunday afternoon in Sunray visiting Mr. and Mrs. Guy Sweeney, who is a sister of Mr. Dortch. While in Sunray they attended the fiftieth wedding anniversary of Mr. and Mrs. Walt Freeman, Old time residents of Sunray.

The reception was held in the Sunray Community building.

We offer our sympathy to L.M. Womble and Mrs. Henry Reed of our community in the loss of their mother, Mrs. Edgar Womble of Spearman. Mrs. Womble had been ill for several months and passed away last Tuesday. Services were held on Thursday.

PINKAND BLUE SHOWER

Mrs. Harold Fleming was honored with a pink and blue shower on Thursday afternoon in the Morse Community Building. Several games were played and refreshments of punch and cake were served from a lace covered table with centerpiece of flowers and candles.

Hostesses for the affair were Mesdames H.B. Parks, Pete Cator, R.C. Womble, Tom Dortch, Annie Clifton, John Thompson, and Desmond Kelly.

Those attending other than the hostesses and honoree were: Mesdames Ella Parks, Joe Reisinger, Lynn Davis, Besse Henderson, M.W. McCloy, A.C. Womble, Dorsey Schad, Roberta Kelly and Eris Pittman.

Mr. and Mrs. Desmond Kelly visited in Sunray in the home of Mr. and Mrs. Kelly's aunt, Mr. and Mrs. Guy Sweeney.

The Morse Grade School played Bivins school here on Thursday night. The girls lost their game and the boys won theirs. Pat Blankenship is coach of the

basketball teams of Bivins school.

The Seniors served a chili supper before and after the game to raise money for their senior trip, which will be to points of interest in California including Disneyland. Mr. and Mrs. James Lanier are the sponsors.

Mrs. Annie Clifton and Mrs. Desmond Kelly were in Borger shopping on Wednesday.

Mrs. Pete Cator left Sunday to go to Denver to visit her daughter Vian and family. She will help them move to Colorado Springs while she is there, since Vian's husband has been transferred there.

The dancing classes are continuing each Saturday night in the community building with an instructor from Borger. About twenty are enrolled including several adult couples.

Elaine Kelly met on Wednesday with the Clothing 11 girls to study Care of the Hands and Nails and other grooming tips. Those attending were Maria and Blanche Escamilla, Gayle Brothers, and Kay Johnson.

BOYER SEEKS RE-ELECTION

Judge Max W. Boyer has authorized the Gruver Independent, to announce his candidacy for nomination of the Democratic Party for a second full term as Judge of the 84th Judicial District of Texas. Judge Boyer was appointed by Governor Daniel in December, 1957 to serve until the General Election in 1958. He was nominated in the Democratic Primary in 1958 and elected in the General Election the same year

for the unexpired term ending January 1, 1961. He was elected to his first full term in 1960.

Judge Boyer, his wife, Addye and their son, Don, now in his first year at Texas Christian University, are members of the Methodist Church at Perryton. Judge Boyer has served as County Attorney of Ochiltree County and as City Attorney of Perryton and was a member of the Texas House of Representatives for four years. Long active in legal circles before his appointment as District Judge, he was the first President of the Northeast Panhandle Bar Association, is a member of the State Bar of Texas, where he is active in the Judicial Section, and at the time of his appointment was Chairman of the 18th Congressional District Grievance Committee of the State Bar.

In announcing for election to the second full term to this important judicial office Judge Boyer issued the following statement: "Many times since assuming office as District Judge, I have given consideration to a return to the more lucrative field of law practice. I have enjoyed the work and look back over the period I have been privileged to be on the bench with much gratification. Although I gave up an established and profitable law practice and have been urged to return to such practice by many former clients, the satisfaction of attempting to see that all citizens are afforded equal justice, under law, as to their personal and property rights is a reward to me, exceeding any compensation that can be measured in a monetary sense. I am proud to state, that, notwithstanding the increased popu-

lation and industrial development, causing a substantial increase in the court dockets of both civil and criminal cases, the dockets in the three counties of the district and current. The co-operation of the officers, attorneys, litigants and jurors, is, in a large measure responsible for the status of the court, for which I am very grateful. If on the basis of the record, my candidacy for a second full term merits the support of the citizens of the 84th Judicial District, I shall be pleased and appreciative, and if I am elected, I shall continue, with the help of our citizens, to administer justice throughout the three counties of the District."

Grace Bennett Holds Recital

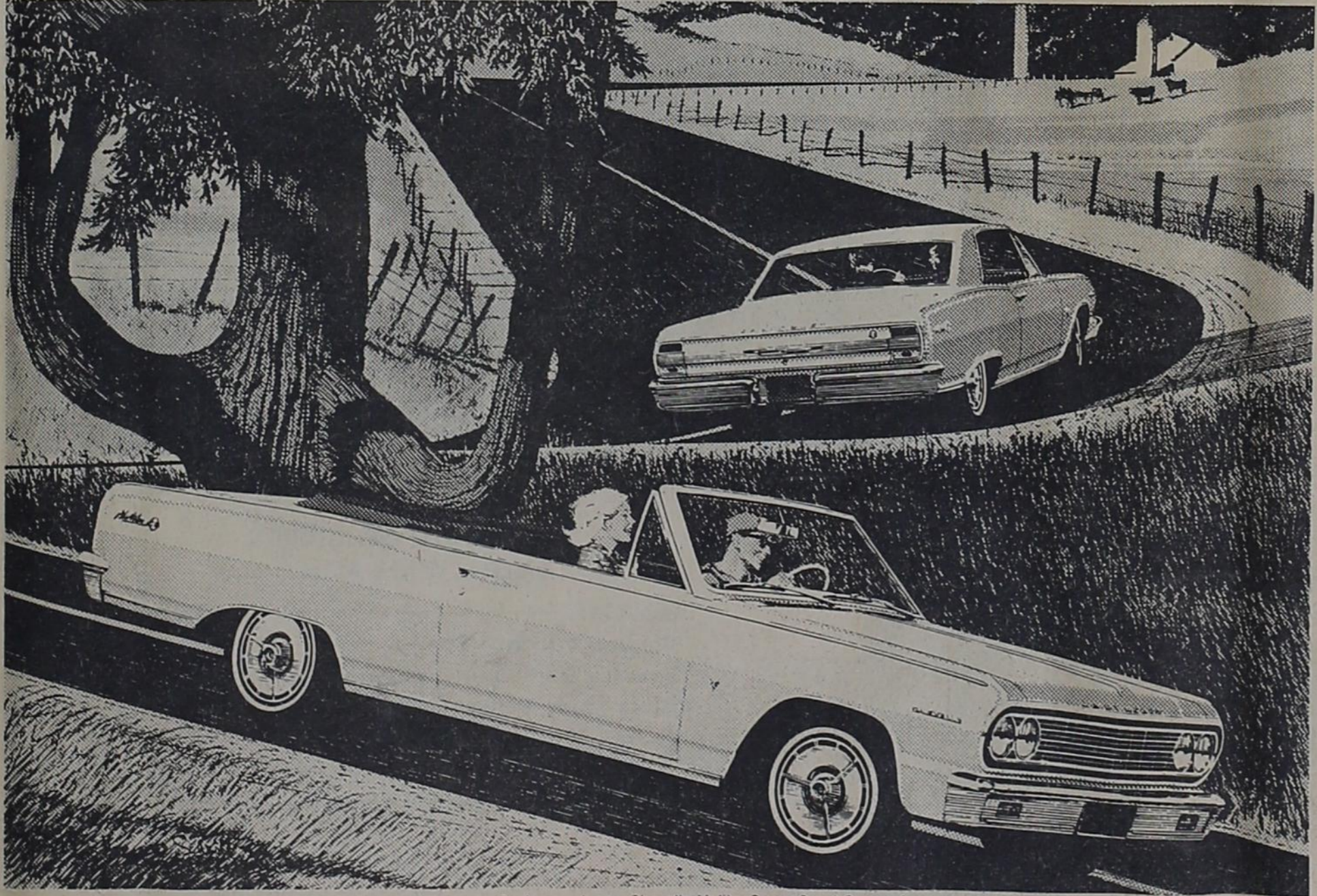
Mrs. Grace Bennett's Allegro Piano Class presented a piano recital Sunday afternoon February 2nd in the Fellowship Hall of the Methodist Church.

Included on the program were Robert Kirk and Paul Langley with a piano duet, followed by a piano solo by Robert Kirk. Other piano solos were Joyce Wood, Mindy Murrell, Carla Langley, Glenna Harris, Paul Langley, Debbie Irwin and Day Nell Williams.

Closing the presentation was a piano duet by Miss Maelynn Cator and Miss Karen Wright. A wonderful display of talent was shown, in the work of the students of Mrs. Bennett.

About sixty were present for the Sunday afternoon program.

CHEVELLE! MALIBU SUPER SPORTS by CHEVROLET



Background, new Chevelle Malibu Super Sport Coupe; foreground, Chevelle Malibu Super Sport Convertible.

What's so super about the Chevelle Malibu Super Sports?

Inside? Front bucket seats. All-vinyl interior. Ammeter, oil pressure and water temp gauges. Floor-mounted straight-line shift lever for Powerglide* or sporty 4-Speed* stick shift.

Under the hood? Lots of choice. Two Sixes—standard 120-hp and optional 155-hp*. Three V8's, from standard 283-cu.-in. up to (you're reading it right!) 327-cu.-in.* Try this one to flatten out hills!

Options*? Electric tachometer, Positraction



rear axle, sintered-metallic brake linings and sports-styled simulated walnut steering wheel, to name just a few of them.

Outside? Special moldings and wheel covers, SS identification. Actually, about all that's not super about these Malibu SS Coupes and Convertibles is their price.

And the best way to find out what everything else is that makes them so super is to drive one. Your Chevrolet dealer can take care of that.

*Optional at extra cost.

THE GREAT HIGHWAY PERFORMERS Chevrolet • Chevelle • Chevy II • Corvair • Corvette

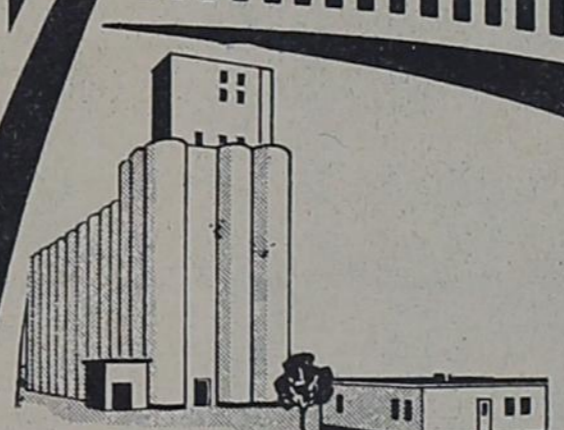
See them at your Chevrolet Showroom

GRUVER MOTOR COMPANY

433 MAIN STREET

FIRESIDE 7-2432

MERCHANDISERS OF ALL TYPES OF GRAIN

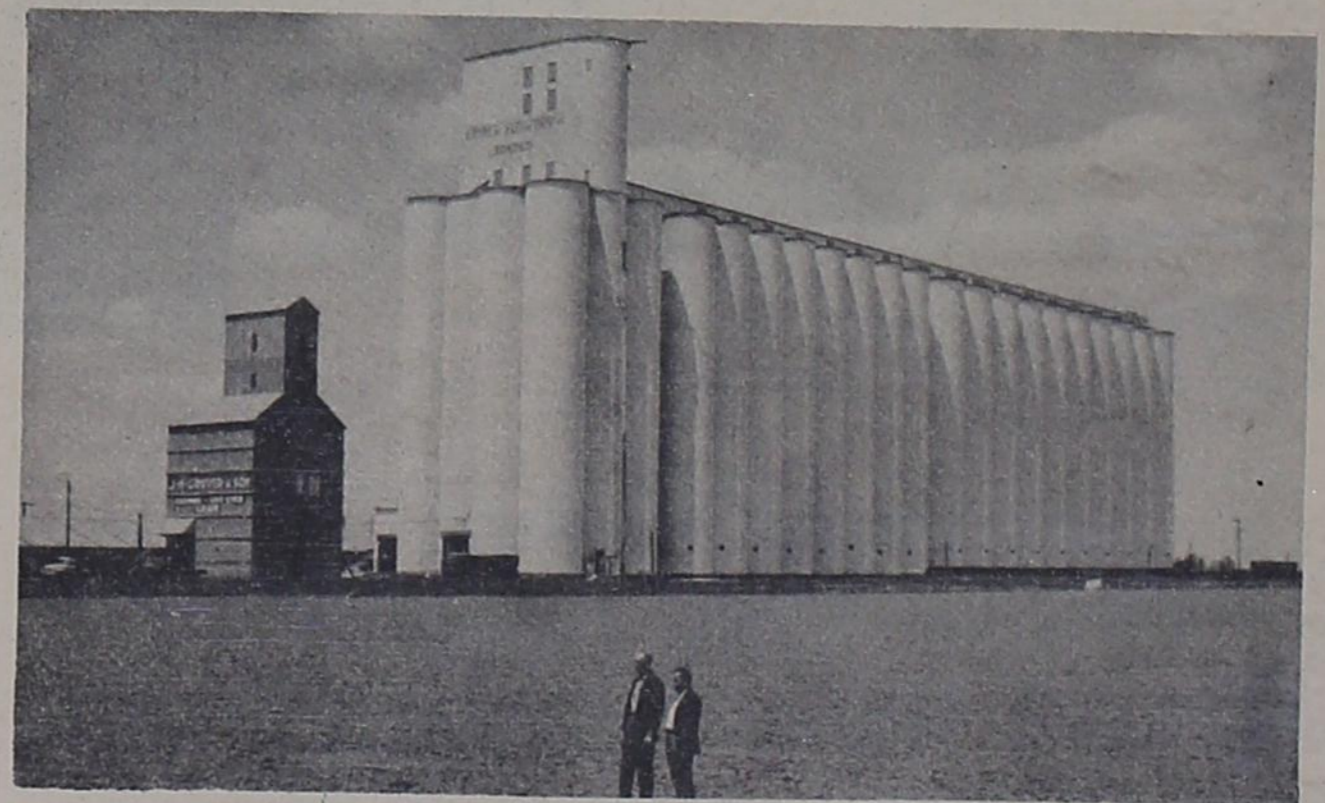


DAN SHRADER - Manager
P. O. BOX NO. 207
207 N. McCREE GRUVER, TEXAS

Gruver Elevators Inc.
Gruver Texas

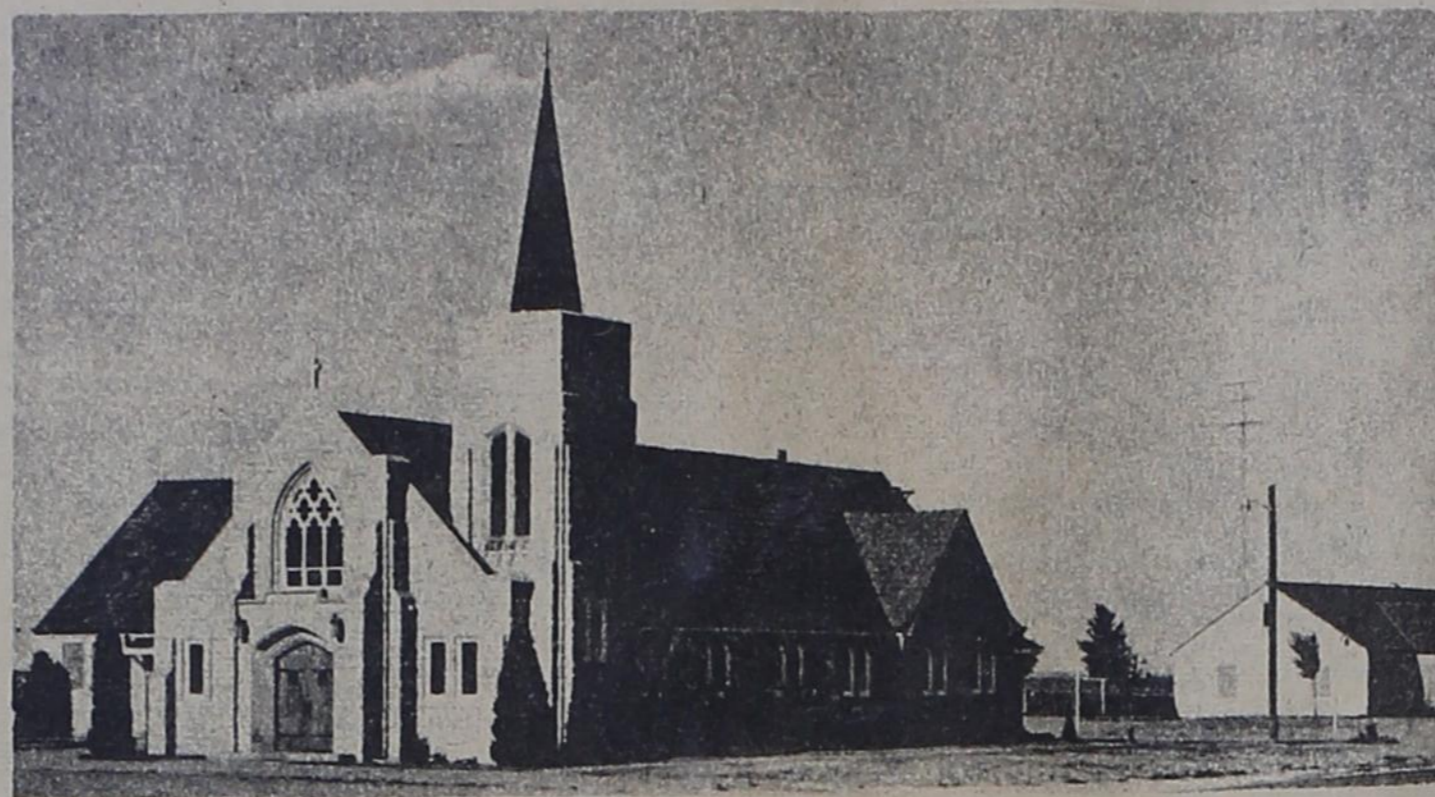
Serving the Farmers & Ranchers

Throughout the Area



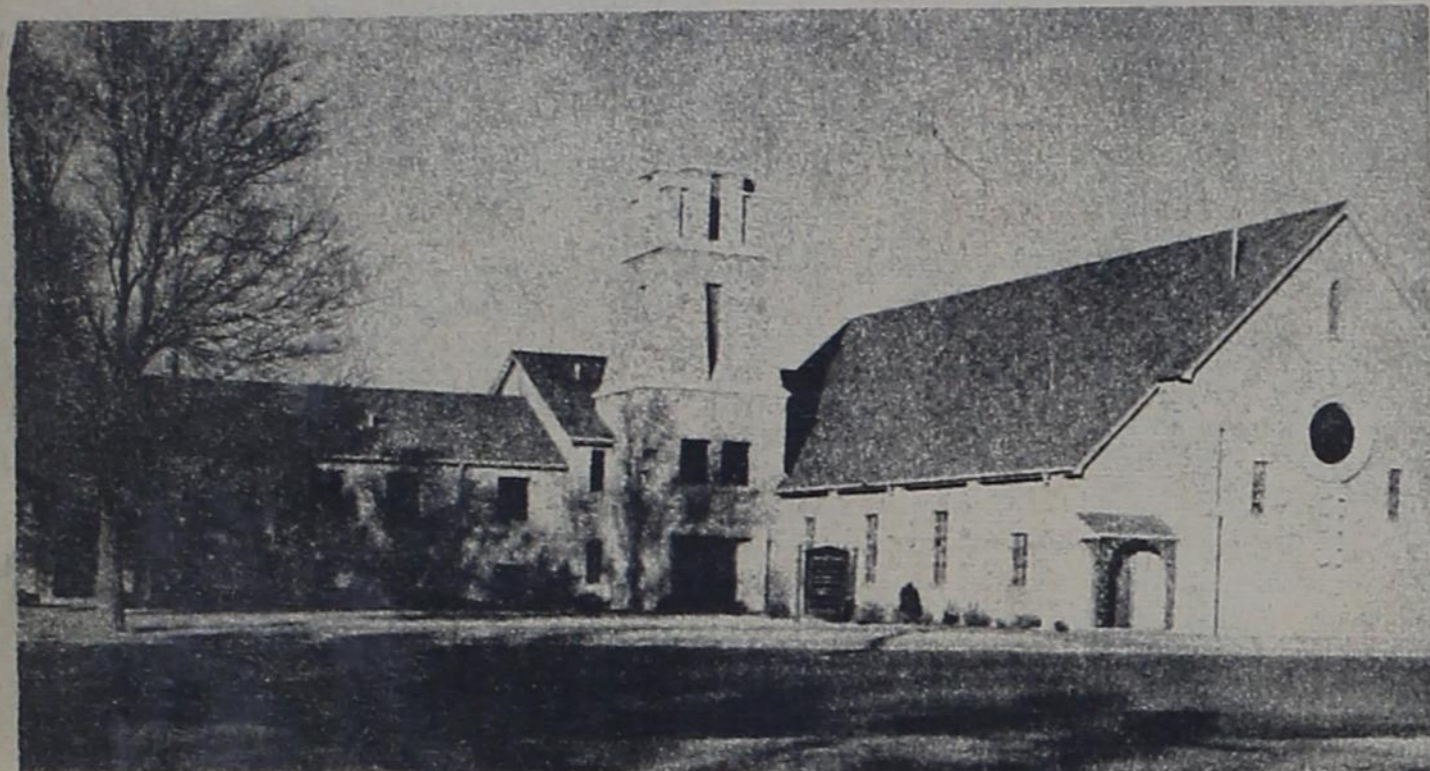
Attend Church

SUNDAY



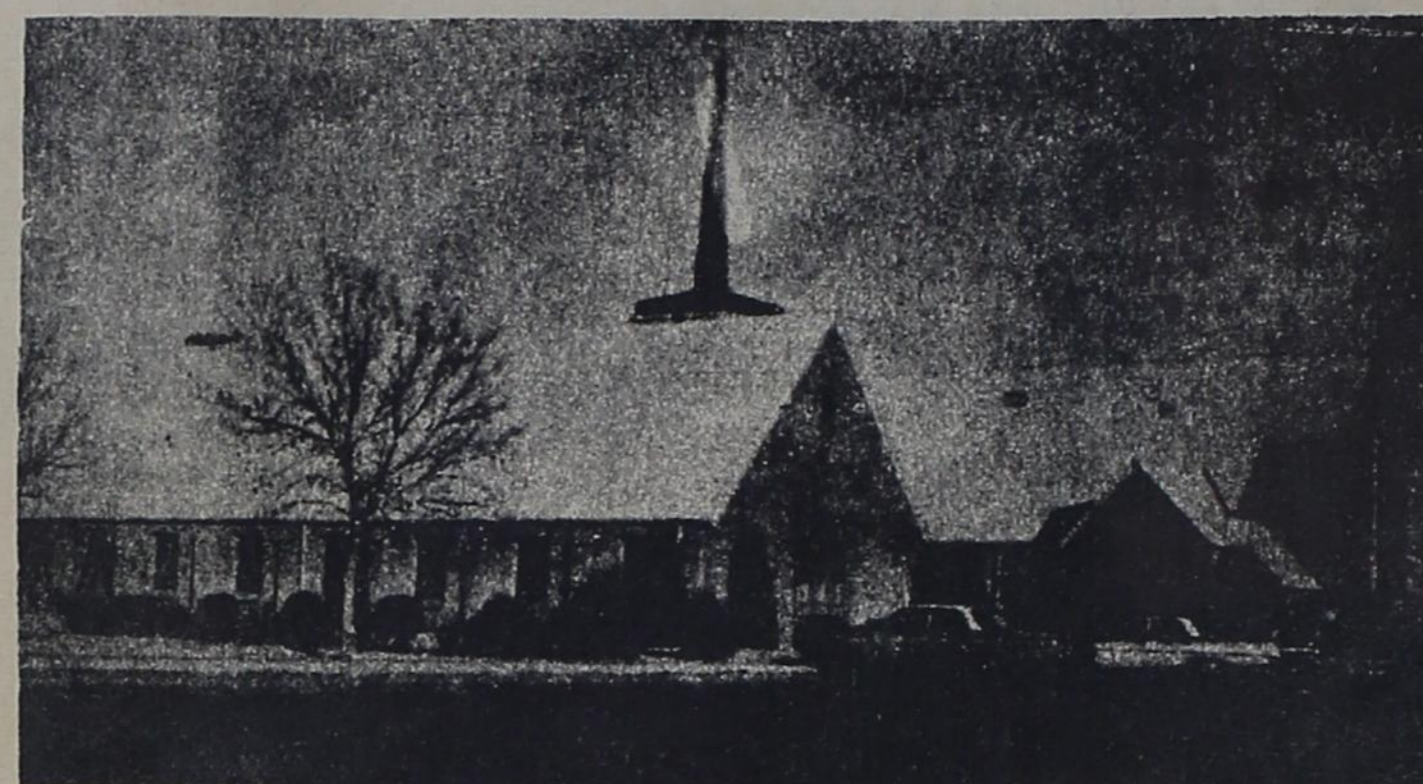
THE OSLO LUTHERAN CHURCH
pastor, Robert Cordes

Sunday School	9:45
Adult Bible Class	9:45
Morning Worship	11:00



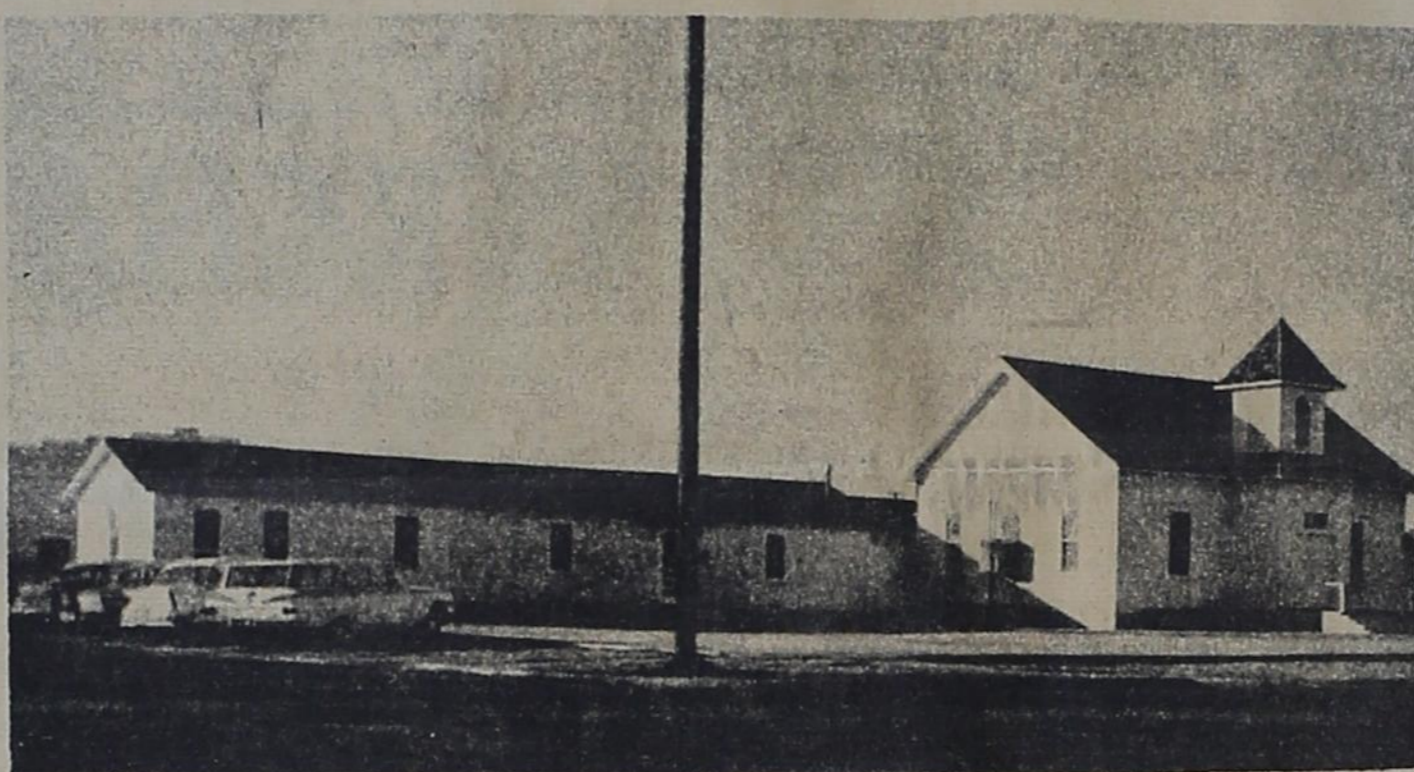
THE FIRST BAPTIST CHURCH
pastor Reverend, A.G. Purvis

Sunday School	9:45
Morning Worship	11:00
Training Union	7:00
Evening Worship	8:00
Junior & Intermediate Choirs, Sunday	3:00
Adult Choir Practice Tuesday	7:00
Wednesday Prayer Service	8:00
Wednesday Evening Lesson Study	6:45
Y.W.A., Wednesday	5:30
R.A.'s Wednesday	5:30
G.A.'s Thursday	4:00
W.M.U., Thursday	3:00
Sunbeams, Thursday Beginner & Pri. 1	3:00
Primary 2	3:30
Primary Choir, Thursday	4:30
Beginner Choir, Thursday	4:00



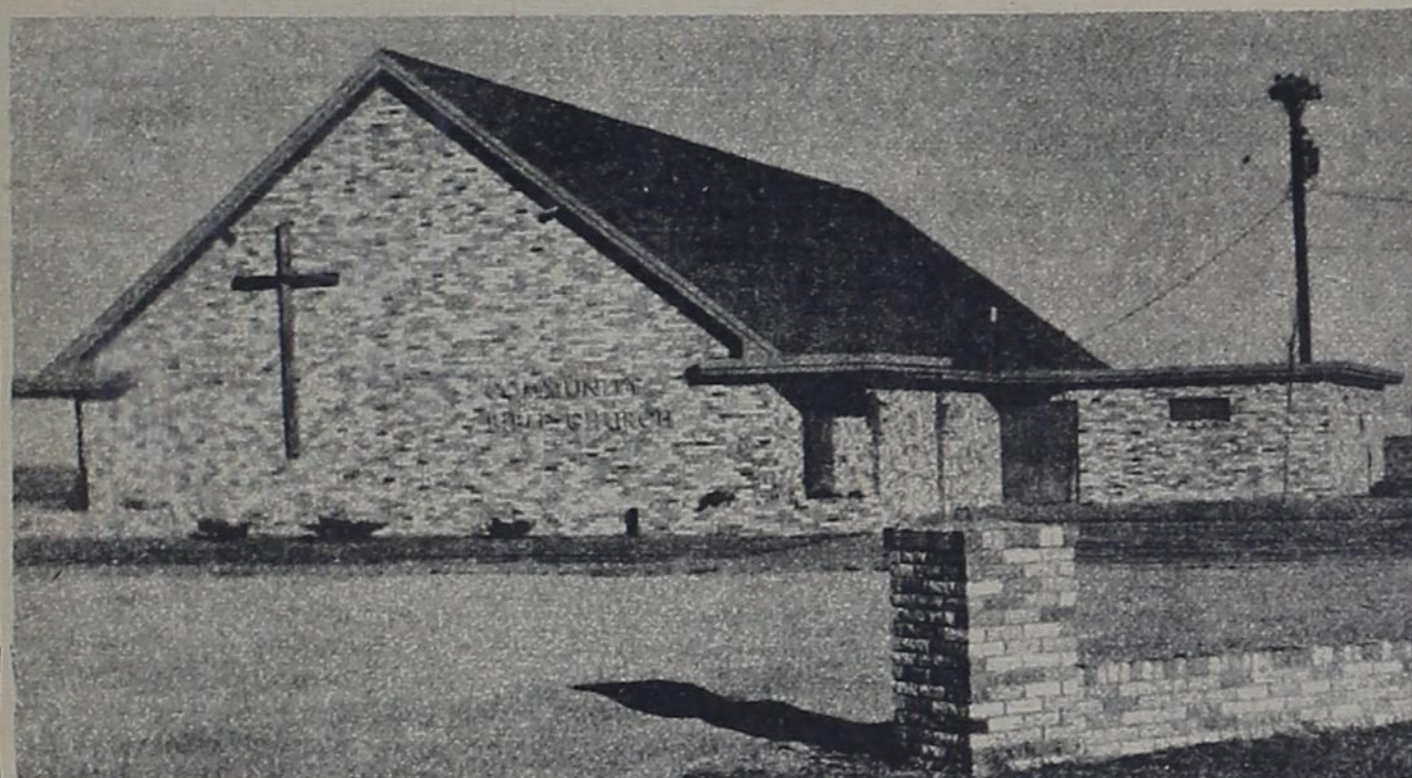
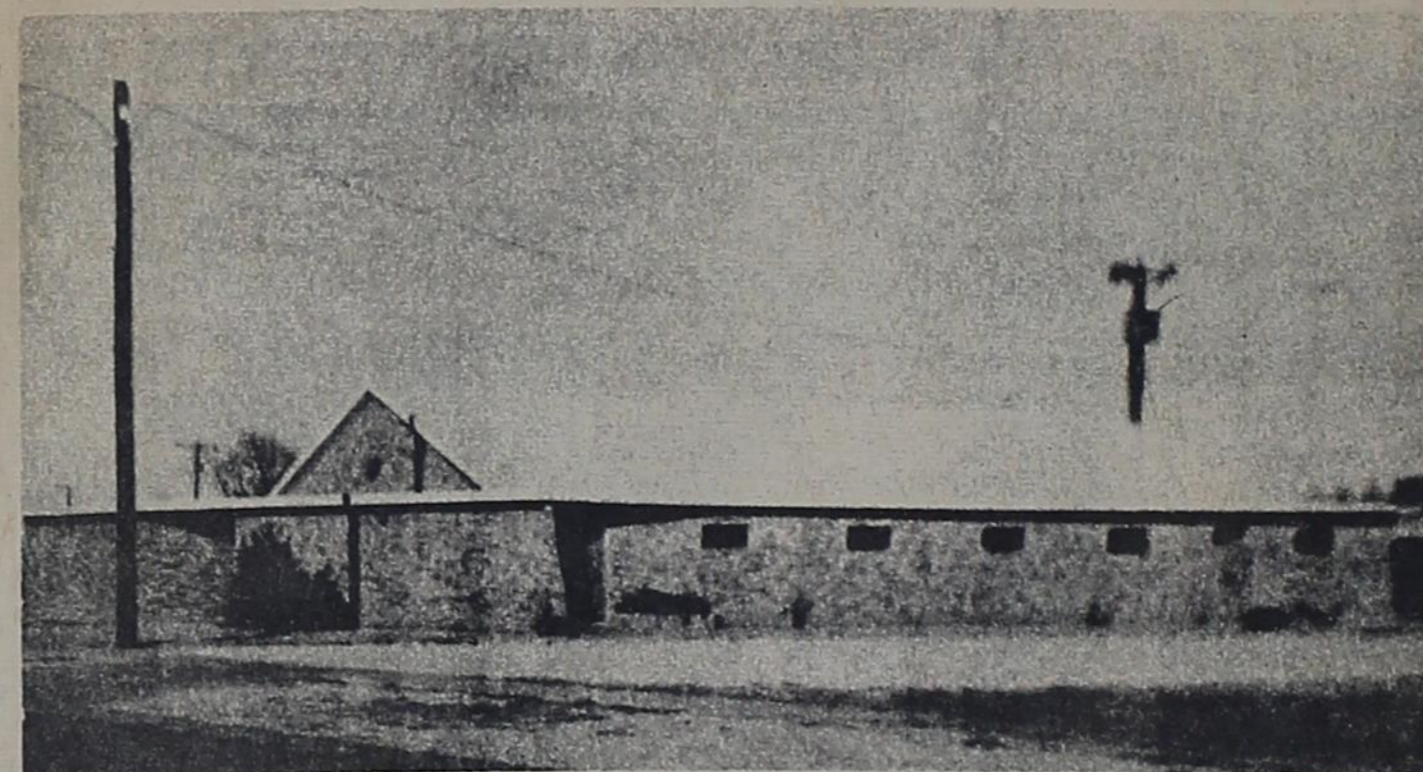
THE GRUVER METHODIST CHURCH
pastor, Reverend R.L. Kirk

Sunday School	9:45
Morning Worship	11:00
M.Y.F.	7:00
Evening Worship	6:00
Wednesday Bible Study	7:00
Wednesday Choir Practice	8:00
Thursday W.S.C.S. monthly	3:00
Dorcas Circle Thursday	9:30
Mary Martha Circle Thursday	3:00



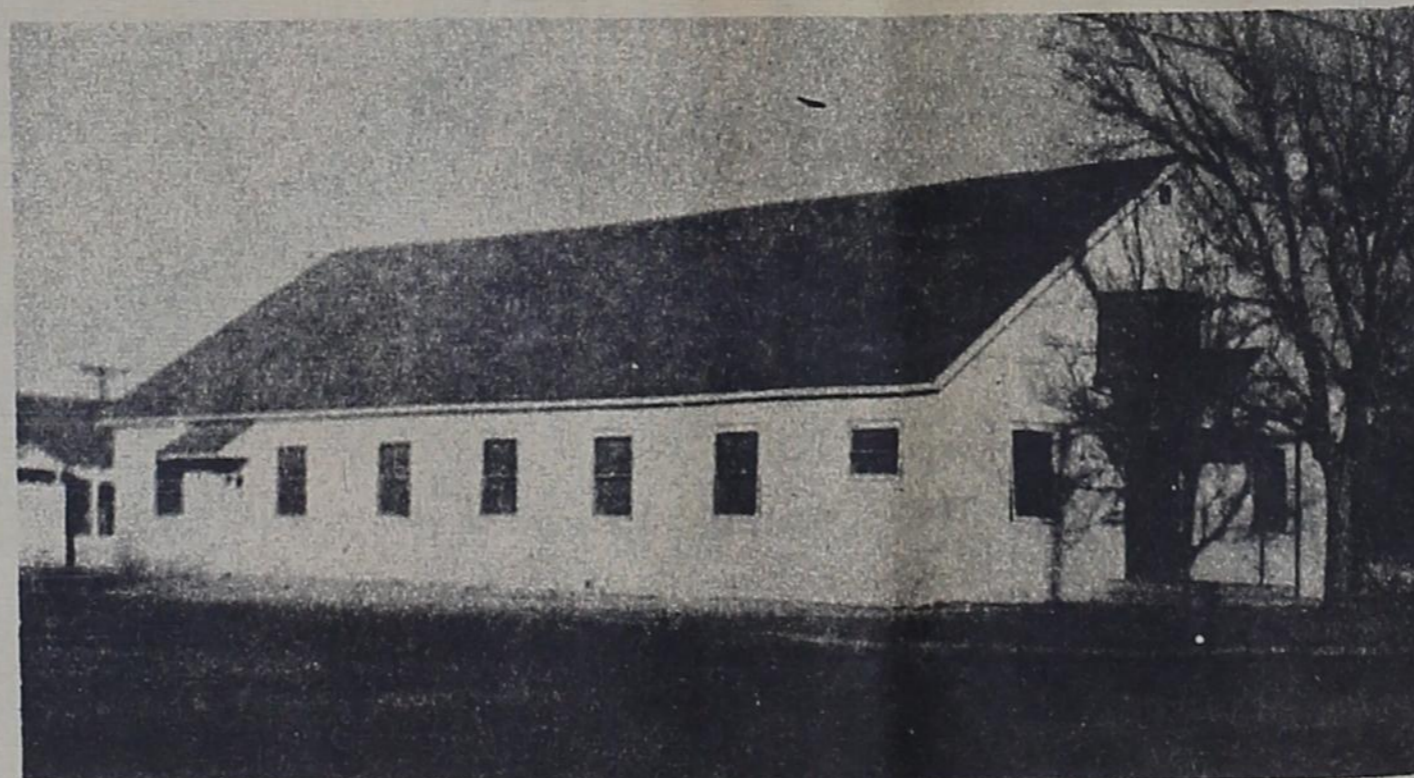
THE FIRST CHRISTIAN CHURCH
pastor, Reverend Robert Lamson

Sunday School	10:00
Morning Worship	11:00
Chi-Rho	7:00
Adult Bible Study	8:00
Wednesday--Juniors	4:00
Prayer Meeting	8:00



THE COMMUNITY BIBLE CHURCH
pastor, W.L. Porterfield

Sunday School	9:45
Morning Worship	11:00
Youth Meeting	6:30
Evening Worship	7:30
Wednesday--Bible Study	8:00



THE ASSEMBLY OF GOD
pastor, Robert G. Slaton

Sunday School	9:45
Morning Worship	11:00
Sunday Evening Worship	7:30

THE CHURCH OF CHRIST
minister, Alfred White

Bible Study	10:00
Morning Worship	11:00
Evening Worship	6:00
Bible Study Wednesday	8:00
Ladies Class Thursday Juniors	
Children Cared for	2:00
Ladies Class Thursday Senior	2:45

Universal Motors
Gruver State Bank
Gruver Motor Company
RILEY BROTHERS T.V.
UNIVERSAL OIL CO.

This Church Page is sponsored by these merchants

GRUVER LUMBER CO.
PEDDY BUTANE
TEXACO SERVICE STATION
GRUVER ELEVATOR



THE GREYHOUND GROWL IS A SERVICE PROJECT OF THE GRUVER FUTURE TEACHERS OF AMERICA
Editor.....Dean Lee
Photographer.....Jeff Roper
Sponsor.....L.J. Sparks

Space for this project is donated by the Gruver Independent as a public service.

Presenting The 1964 Seniors



Glenda Purvis



Bill Pittman

by Elaine Kelly

Glenda Faye Purvis was born on September 25, 1945 at Ranger, Texas. Her parents are Reverend and Mrs. A.G. Purvis, and she has one brother, Randall who is the music and youth director at the First Baptist Church in Pumas, Texas.

by Elaine Kelly

Bill Don Pittman was born on January 11, 1946 at Borger, Texas. His parents are Mr. and Mrs. Eris Pittman, and he has one brother, Frank who is 20 years old and is a student at Oklahoma A & M at Goodwell.

B TEAM OUTCOME

by Lyn McClellan

The Gruver boys won the consolation championship in the Gruver "B" tournament last week. The boys won three consecutive games before dropping the finals to Fritch.

girls then advanced to the Consolation championship.

Sunray vs. Gruver

The Gruver girls met the Sunray girls for the consolation championship. Gruver took a 8-3 first quarter lead, as Roper scored 8 consecutive points.

Gruvers scored only 2 points in the second quarter by Wright. Fritch scored three field goals for 6 points, but Gruver still led 10-8.

With only 4 minutes left in the third quarter Gruver made its first score. Gruver then scored 6 points, as Sunray netted only 3. Gruver led at the end of the third quarter 16-11.

Gruver outscored Sunray 8-7 in the final stanza to take a 24-18 win over Sunray and the Consolation Championship. This was the second win over Sunray in the tournament.

The third place girl's trophy was won by the White Deer girls. They won the third place championship by beating Dalhart 45-13. White Deer was beaten in the finals by Stratford 39-33.

BOYS GAMES

Sunray vs. Gruver

The Gruver boys met the Sunray boys for their first game. It was a nip and tuck game all the way. The game was tied 10-10 at the end of the first quarter. Mathews scored 6 of the first ten points.

Mathews scored 3 points, Hart 2, and Etter 2, as Gruver scored 7 points in the second quarter. At the end of the first half the score was again notted 17-17.

Sunray took the lead in the third quarter and kept it. Gruver scored 6 points, as Sunray netted 9 points, and had the lead 26-21 at the end of the third quarter.

Gruver vs. Spearman

Gruver advanced to meet Spearman Thursday night. They were tied 4-4 before Gruver broke lose to get a 12-6 first quarter lead. Mart Hart scored 10 of the 12 points.

Gruver didn't score until there were only 5 minutes left in the second quarter. Gruver scored 7 points, as Spearman scored 9. Gruver led at half time 18-15.

Gruver increased its lead as they scored 9 points in the third quarter. Spearman netted 9 points, also. Gruver led after the third quarter 27-23.

Gruver put up a tough defense the last quarter, as they held Spearman to 3 points. The first point was scored with 5 minutes left, and the other with 1 minute left. Gruver ripped the nets with 9 points to lead 36-26, which was the final score. Hart scored 15 for Gruver, as Mathews got 9, Riley 9, and Etter 6.

Dalhart vs. Gruver

Gruver advanced to the semi-finals against Dalhart. Gruver held Dalhart to two points in the first quarter.

to lead 13-2. Gruver built up a 20-7 lead in the second quarter. Dalhart scored 12 points in the second quarter, as Gruver scored 12 points, also. Gruver held a halftime lead 25-14.

The scoring was more conservative in the third quarter. Gruver netted only 5 points, while Dalhart scored 8 points. Gruver still held a 30-22 lead at the end of the third quarter.

Gruver held Dalhart to 3 points in the last quarter, as they netted 11 points. Gruver won the game 41-25 to advance to the finals.

Fritch vs. Gruver

Gruver met Fritch in the finals of the boys bracket. Fritch beat White Deer 47-44 and Stinnett 31-29 to reach the finals. Gruver and Fritch were tied 8-8 before Fritch made a field goal with 5 seconds left in the first quarter to take a 10-8 lead

at the first quarter. The game was notted 16-16 as the second quarter came to an end, but Fritch made a field goal with little time left, to lead at the half 18-16.

Fritch held Gruver to 4 points in the third quarter, as they scored 7 points. Going into the last quarter Gruver was behind 25-20.

Gruver and Fritch scored six points to leave the score 32-24 in the closing minutes of the game. Fritch scored on a tree snout, before Gruver scored a field goal and one point on a technical. Gumbury scored a field goal, and was fouled. This left the score 33-29. Gumbury missed his shot and the clock ran out.

Fritch won first place with its 33-29 victory over Gruver. Gruver got second place in the tourney, Stinnett won third by beating Dalhart 35-29. Stratford won the Consolation championship by beating Sunray 31-21.

WHAT TO WEAR

by Arlene Barkley

All normal high school girls pay quite a bit of attention to their clothes. Some girls worry because they don't have enough clothes, and those who have enough are concerned with the styles that change so rapidly.

Recently the Homemaking I girls have been working to solve some of their clothing problems. Each year every freshman girl is required to make two garments. One is made at school with the assistance of the teacher, Mrs. O'Keefe, and the other is made in the student's spare time, and a record is written as a home project.

Each girl picks her pattern in a style which is becoming to her. She buys all her own materials and keeps an account of the prices of all her purchases. This teaches her how to budget her wardrobe. The actual experience of sewing is valuable to the girls in the future.

SCHOOL MENU

Monday February 10th

Chicken pie, green peas, candied yams, fruit cup, hot rolls, milk and butter.

Tuesday February 11th

Pinto Beans and Ham, buttered corn, spinach, gingerbread, hot rolls, milk and butter.

Wednesday February 12th

Fried Steak and gravy, mashed potatoes, combination salad, ice cream, cookies, hot rolls milk and butter.

Thursday January 13th

Grilled cheese sandwiches, beef vegetable soup, apple sauce, unbaked cookies, crackers and milk.

Friday February 14th

Oven Fried Fish, Potato salad, green beans, valentine jello, hot rolls milk and butter.

BAND CONCERT MONDAY NIGHT

The P.T.A. Program which included the Band Concert was postponed from last Monday night till February, 10 at 7:30 p.m. Plan to attend this Valentine Concert.

ANNUAL STAFF MET FRIDAY

by Mary Cluck

The annual staff met on the 30th of January to work on the annual, which is nearing completion.

Much of the evening was spent in working on the ad section of the annual. Due to the large number of ads sold in Gruver and other surrounding towns, many pages of the annual were devoted to advertising. Under the capable leadership of Kenneth Bateman and Bill Pittman, \$1200 worth of advertising space has been sold.

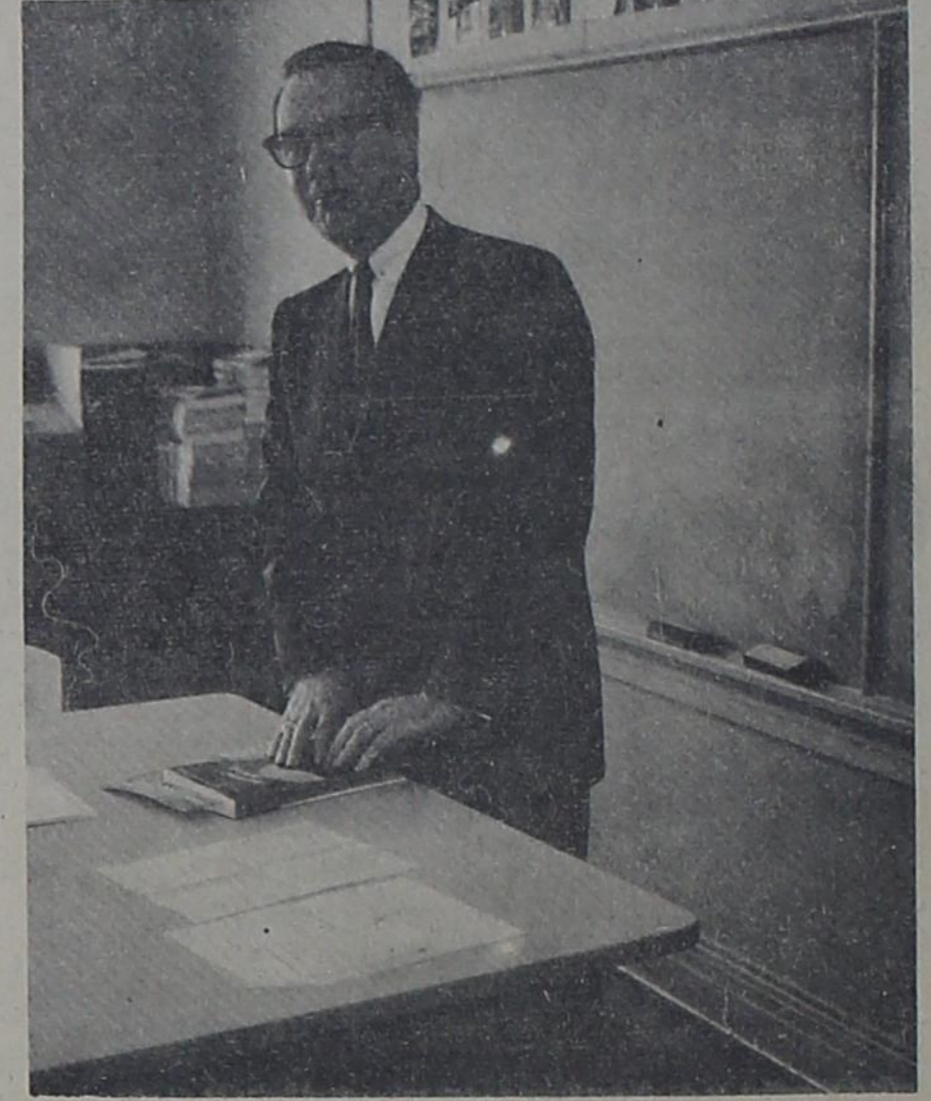
Jimmy Cooksey, sports editor, and Joe Cluck, assistant sports editor, worked on

the sports section of the annual.

All of the pictures that were taken at school have been received. A few additional pictures will be made very soon.

Many snapshots have been turned in by students, but all have not been received. A section of snapshot pages will be completed as soon as enough snapshots have been turned in.

The completed annual must be sent to the Taylor Publishing Company in Dallas by the 10th of February. The students will receive their annuals on May 10th.



Wayland Bennett of the Agriculture Department of Texas Tech spoke Monday morning during the Career Day Program to the students interested in the field of agriculture. The snows of Monday caused several of the speakers to not be able to come, but the students found the day quite interesting and informative. The day was sponsored by the Gruver F.T.A. and was under the direction of Larry Sparks, sponsor of the organization.

Advertisement for Lee Roy Mitchell, DIRT CONTRACTOR, listing services like bulldozers, carry-alls, motor graders, and winch trucks. Contact info: P.O. Box 103, Gruver, Texas, Phone Fire Side 7-2384.

BEAUTIFUL PRACTICAL

SET OF SIX THERMO SERV GLASSES

YOU CAN GET THEM FREE!



Any residential home-owner customer of Southwestern Public Service Company can get this beautiful Sea Mist green and white set of Thermo Serv insulated glasses just for listening. That's right! Just for listening as our electric heating representative unfolds the comforting story of electric heating and how it can be applied to your home. Call your Public Service Company this week to arrange appointment.



This sign on a heating dealer's door is your assurance of a qualified electric heating installation covering the complete job and including financing, if that is your wish.

Electric Comfort Heating ...for the comfort of your life!



Taking advantage of the holiday from school are Steve Gross, Larry Don Mitchell, Gary Wilson and Don Mathews who ventured out on Tuesday afternoon to see the amount of snow which had fallen and to throw a few snow balls. Schools were dismissed both Tues. day and Wednesday due to the heavy snow.

SERVING UP SAVINGS...

Boneless

STEAK lb. **98^c** **BEEF BUYS**

USDA Good

CHUCK ROAST

USDA Good

ARM ROAST lb. **59^c**

lb. **39^c**



GROUND BEEF

fresh

lb. **39^c**



PRODUCE VALUES

RED POTATOES 10 lb. **39^c**



Campbells
TOMATO SOUP can **10^c**

Purple Top
TURNIPS lb. **10^c**

poly bag
CARROTS pkg **10^c**

Sunkist Navel
ORANGES 3 lbs for **45^c**

Asst. Flavors
JELLO

3 for **29^c**

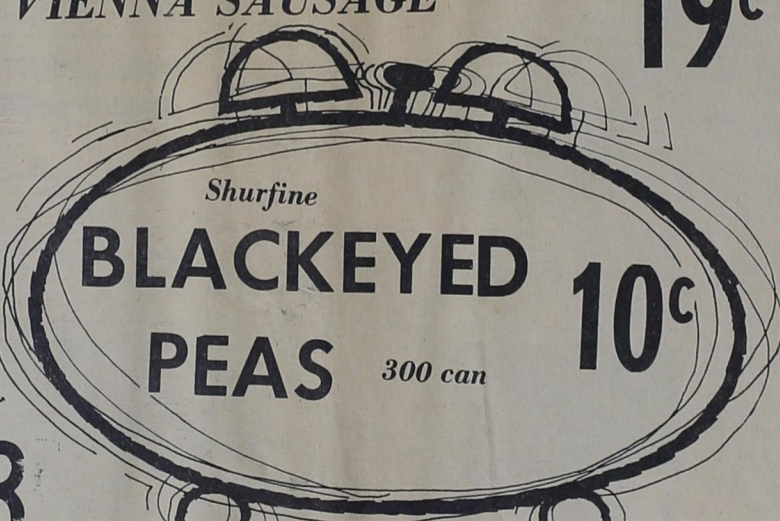
Tender Crust
HAMBURGER BUNS pkg. **23^c**

Shurfine
EVAP. MILK tall can **39^c**

Van Camp
VIENNA SAUSAGE **19^c**

Arrow dried
PINTO BEANS 4 # bag **44^c**

Giant size
CHIFFON Liquid Detergent reg. 49c value **43^c**



Shurfine
BLACKEYED PEAS 300 can **10^c**

Del Monte crushed
PINEAPPLE can **15^c**



Shurfine reg. or drip
COFFEE lb. **63**

Renoun Whole
GREEN BEANS no. 303 **19^c**

KLEENEX Twin pack
PAPER TOWELS **39^c**

Specials for: Thursday, Friday, Saturday February 6-7-8, 1964

Save Valuable Buccaneer Stamps: Double Stamps Every Wednesday

Macleans
TOOTH PASTE king size **59^c**

G&G FOODLINER
GRUVER TEXAS

Large size reg. 59c
ALKA-SELTZER only **49^c**

