

HANSFORD COUNTY L.B.A.
SPEARMAN, TEXAS 79081

Beef for the 4th

THE GRUYER STATESMAN

Volume 15 No 39

The Gruver Statesman, Gruver, Texas 79040

Thursday July 3, 1986

Gruver Lions Club Barbecue July 4th!!

July 4th Celebration at the City Park. This Years Activities will start out with the Following.

A Bike Race and Parade,
Turtle Race and Boot Scramble
The Big Barbeque Luncheon,
With Entertainment provided by
Timberline, a Gruver Band.

Second session of activities will be kicked off by
The Dunking Board,
Stick Horse Races,
Watermelon Seed Spitting Contest,
Balloon Toss,
Men's Tug of War and
Three Legged Race.

Some of the events will last all day such as the
Liberty Train,
Water Polo,
Horse Shoes and Washers,

Jail House,
and Pillow Roll.

Along with all the activities there will be an assortment of Booths:
Baked Goods - Calico Homemakers
Cokes - Senior Class
Icecream - Flag Girls,
Snowcones - Jr. High Cheerleaders and
Popcorn - Alpha Mu Psi.

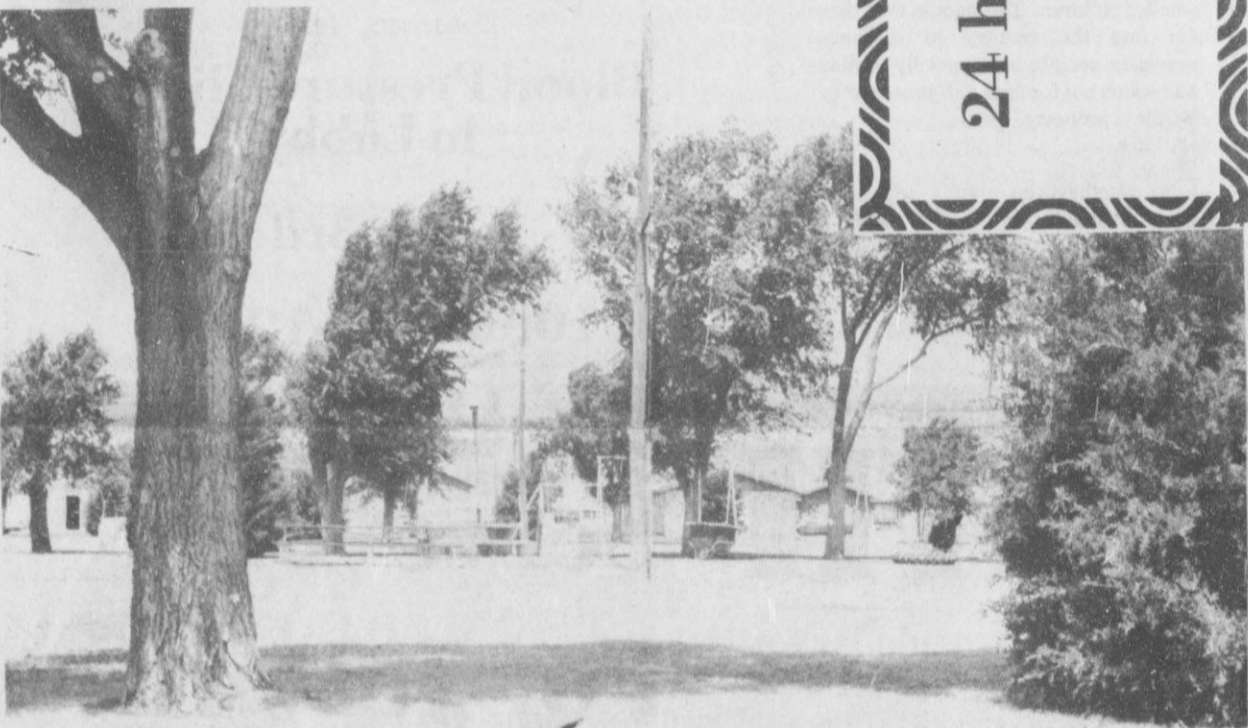
Sometime during the day, Alpha Mu Psi will be raffeling off a cloudscape donated by Doris Armes and a trip to Six Flags. Tickets are \$2:00 and can be purchased from any member or call Marsha Lowe 733-2986 or Jody Irwin 659-3965

A Nighttime display of Fireworks will be presented by the Gruver Fire Department at the Football Field. XI SI KAPPA will be sponsoring the evening activities.

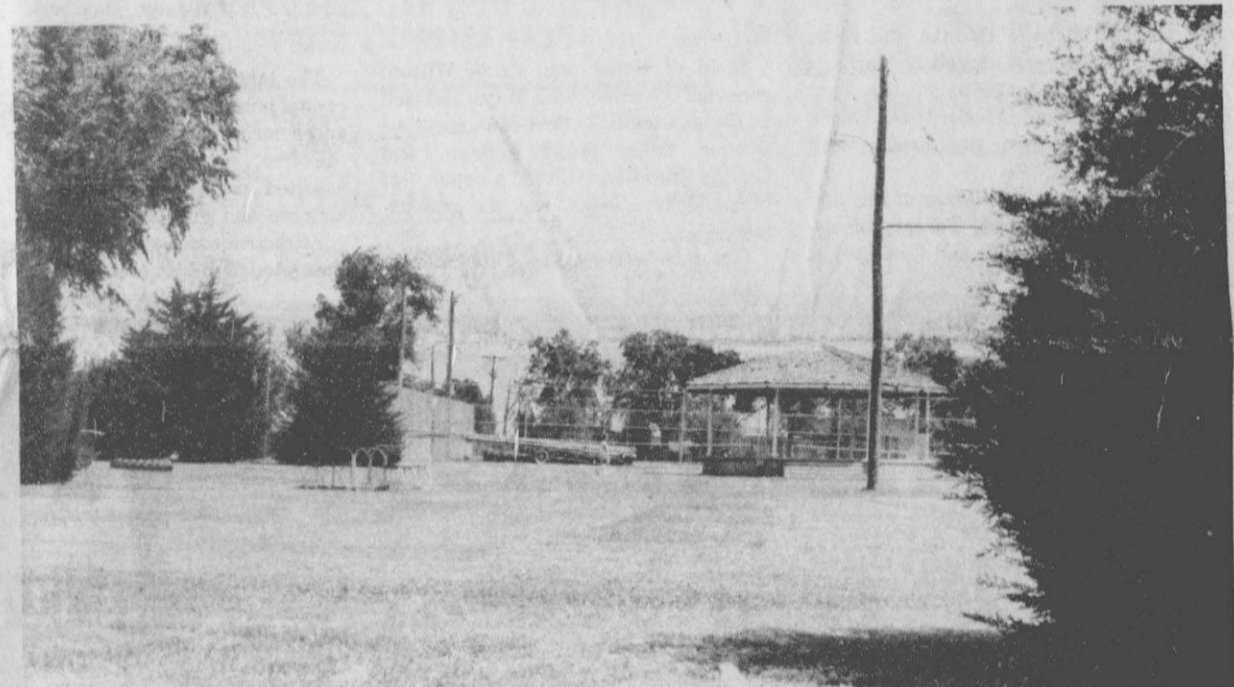
24 hr. prayer service
659-2911



See you at the 4th of July Celebration!



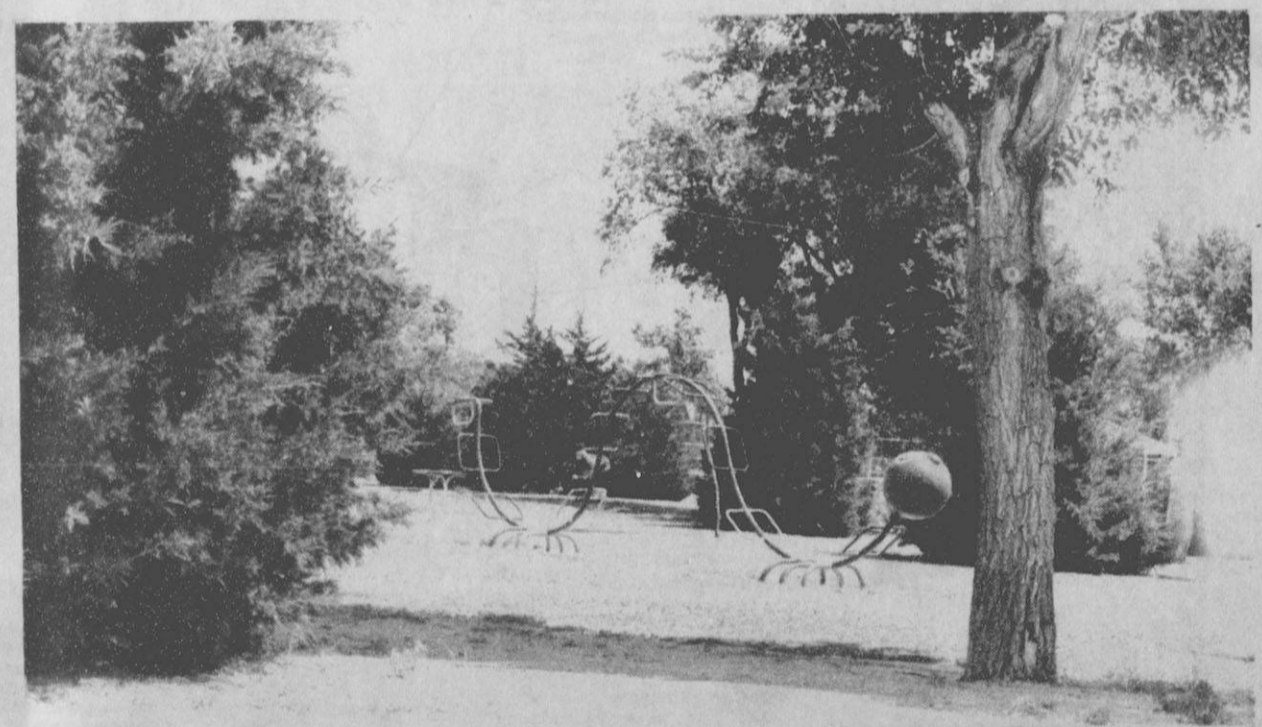
A Scene at the City Park in Gruver



See you in Gruver at the 4th of July Celebration!



Gruver Swimming Pool will be open on the 4th of July!



The beautiful girls team pictured is known as the Bobby Sox. The team's colors are maroon and white and their coaches are Harold and Thelma Sneed.

Members of this team are; Jennifer Anderson, Kim Boone, Traci Crawford, Crystal French, Amy Gumfory, Gina Hoel, Gretchen Lowder, Lisa Payne, Misty Payne, Anissa Ryan, Jill Schell, Marguit Viola and Stacy Williams.

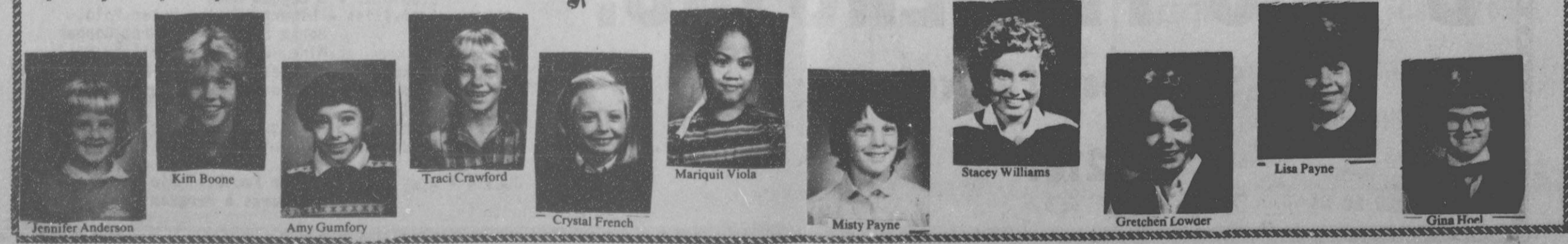
See you in Gruver July the 4th!!

Anissa Ryan
Pic not available

The Bobby Sox Team

The 4th of July is baseball, hotdogs and apple pie.

Jill Schell
Pic not available



Jennifer Anderson

Kim Boone

Amy Gumfory

Traci Crawford

Crystal French

Mariquit Viola

Misty Payne

Stacey Williams

Gretchen Lowder

Lisa Payne

Gina Hoel

Wedding Vows Exchanged



Christy Michelle Pettman & Craig Noble Cooper

Christy Michelle Pettman and Craig Noble Cooper were united in marriage Sunday, June 1, 1986, in the First Baptist Church of Stratford. Dr. Genoa Goad officiated in the double ring ceremony.

The bride is the daughter of Mr. and Mrs. Duane Pittman. Parents of the groom are Sue Cooper and Carl Cooper

of Gruver.

Maid of Honor was Tania Wilson, cousin of the bride, with Mayle Heiskell as bridal attendant. Best Man was Carl Cooper, father of the groom, and Craig's brother, Chris Cooper, of Nacogdoches, Texas, was the groomsman.

Guests were seated by Cliff Barkley,

of Gruver and Brad Monzingo, of Memphis, Texas. Doug and Darren Pittman brothers of the bride were the candlelighters, and Tamara Neeper, cousin of the bride, presided at the bridal register.

The bride wore a floor length gown of white tissue taffeta, with off the shoulder puffed sleeves, portrait neckline trimmed with lace roses and seed pearls. She carried a cascade bouquet of butterfly orchids and roses trailing with ivy and stephanotis.

The bridesmaid's wore dresses of red taffeta accented with red embroidered flowers, and wore side-sweep combs of pearls and white flowers accented in red in their hair.

The groom wore a white tuxedo with a white rose boutonniere. All the male attendants wore black tuxedos with red cummerbunds and red ties.

Music was provided by organist, Doris Pleyer and pianist, Ineta Chesher. Cheryl Reese and Martha Willard sang "More" "Just You and I" "Whither Thou Goest," and "Theme from Ice Castles."

Misses Deana Lane and Krisanne Reese served guests at the reception following the ceremony.

Craig and Christy are residing in Lubbock where they will both attend Texas Tech University.

Baby Shower

A baby shower was given June 28 honoring Mrs. Neal Williams in the home of Mrs. Hix Spivey.

The serving table was laid with a white lace cloth over yellow, centered with a lovely ivory color basket filled with baby items. The basket was adorned with a large pink bow.

The table was complimented with a crystal punch bowl, silver coffee service and colorful yellow and white napkins. Coffee, punch, nuts, mints and assorted cookies was served to the honoree and guests.

Attractive corsages of baby sox were presented to the honoree, Joyce Sparks,

and Farena Williams. A Corsage of pacifiers was given to the Grandmother Mrs. Charmian Lyle.

Hostesses for the Occasion were; Ann Dorman, Georgia Davidson, Fran Maupin, Reatta Gammon, Charlotte Bergin, Violet Lee, Marie Bell, Nell Thoreson, Marlene Winger, Kay Robinson, Mindy Davis, Janice Harvey, Jolene Thompson, Verna Barkley, Sandy TeBeest, Mary Jo Robinson, Norma Red, Mary Wright, Fran Duncan, Lil Fletcher, Alma Ross, Joyce Duncan, Marguerite Nelson, Angie Rimmel, Shirley Lowe, Deidra Deakin, Pat Burnam, Jana Spivey, Charlene Spivey, Judy Virden, Gyene Spivey and Joy Henderson.

TDPS News

Major V. J. Cawthon, Regional Commander of the Texas Department Public Safety said, "Everyone should know the most dangerous time to drive is on weekends, during the summer, and on holidays. This July 4th holiday is going to combine all three."

The Texas Department of Public Safety will be conducting "Operation Motorcade" from Thursday, July 3 at 6:00 p.m. until Sunday, July 6 at midnight. During this time all available troopers will be working to assist motorists, so they might have a more safe and enjoyable holiday. But Major Cawthon also stated these same troopers will also be on the alert for the motorists who continue to be traffic hazards for everyone and that will be the drinking and the speeding driver.

Major Cawthon warned, "Motorist also need to be on the lookout for people that are using the back road areas to discharge fireworks, especially the smaller children. The people that drive out into the country to discharge fireworks need to be especially cautious and watch out for fires and protect other peoples' property."

So whether you plan a trip across town or maybe across the state, by observing all traffic laws, not drinking and driving and driving as if your life depends on it, you can make this July 4th holiday safe and more enjoyable for everyone.

Management for profit seminar

A two day MANAGEMENT FOR PROFIT SEMINAR will be held on July 10th and 11th at the county EXPO Center in Perryton, Texas, from 8:00 A.M. to 5:00 P.M.

The seminar will be taught by ranch and farm management specialists Blake L. (Skipper) Duncan and Gary R. Briggs. It is designed specifically for agricultural producers and will expose the participants to many management principles which they can use in their own businesses.

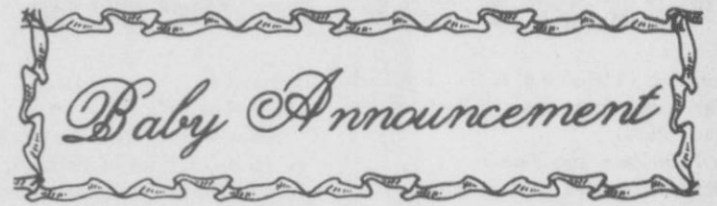
"Because agriculture has emphasized increased production and technology over basic management, many producers have little understanding of how to analyze their business practices or to project where they are going," said Duncan. "They are losing money

and overlooking significant profit opportunities."

"This seminar will help the producer to achieve control over his business," said Duncan.

Instructor Skipper Duncan owns and Operates Ducan Ranch near San Angelo, Texas. He is also a professional ranch management consultant, specializing in improving business management in agriculture. Gary Briggs is a former agriculture lender with broad experience in both agriculture credit and range and resource management.

Pre-registration will be held at First National Bank, Perryton National Bank or the Production Credit Association office. Cost for the course is \$150 for the sixteen hour seminar.



Mr. and Mrs. Danny Hufmann of Amarillo announce the arrival of a baby girl, Lacey Dawn on June 28, 1986. She weighed 7 lbs. 3 oz.

Maternal grandparents are Mr. and

Mrs. Eugene Sadler of Gruver. Paternal grandparents are Mr. & Mrs. Arnie Hufmann of Stratford.

Great grandparents are Mr. & Mrs. Jim Webb of Stratford.

Beef for the 4th

First State Bank

Spearman, Texas

Blood Pressure Clinic in Lobby

July 3rd

10:00 a.m.-12:00

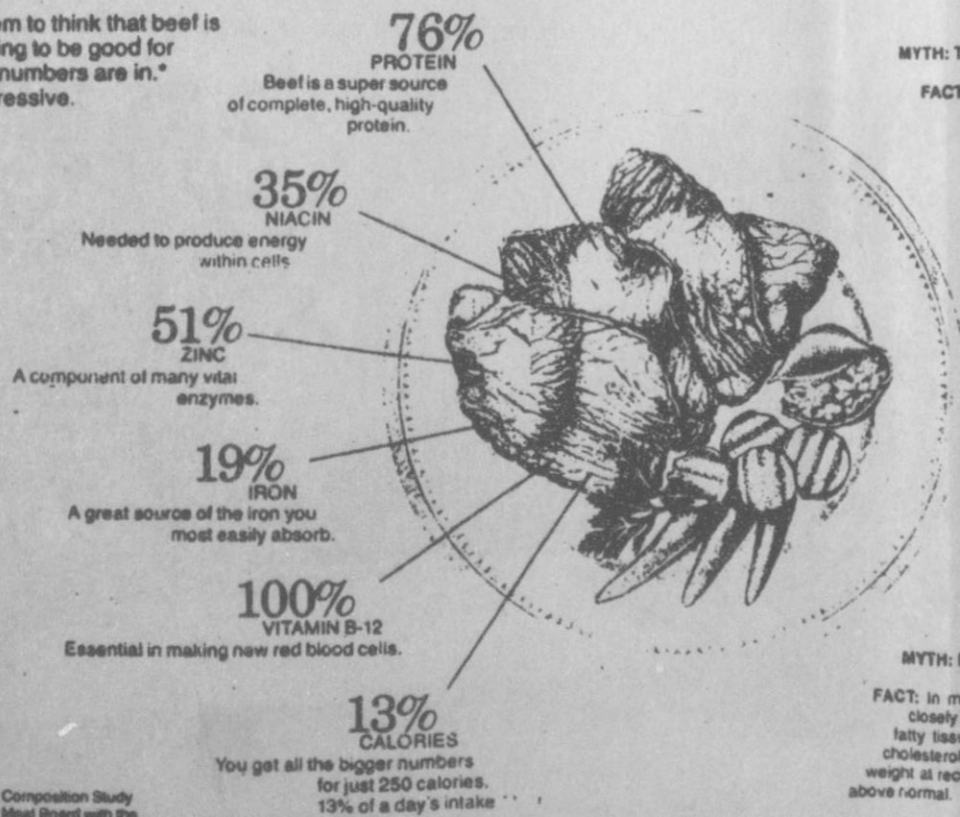
THERE'S STRENGTH

in numbers...

in facts.

Serve Beef For July 4th

Some people seem to think that beef is just too good tasting to be good for you. But the new numbers are in. And they are impressive.



MYTH: The fat in beef is saturated fat.

FACT: Beef fat contains only about 47-49% saturated fatty acids. The rest is unsaturated fatty acids, including significant amounts of polyunsaturated fatty acids.

MYTH: Beef contains more cholesterol than most other animal-source proteins.

FACT: Three ounces of cooked lean beef contain 73 mg. of cholesterol; 3 ounces of roast chicken, 76 mg.; 3 ounces of flounder 82 mg.; 3 ounces of shrimp, 128 mg.; 3 ounces of pork, 79 mg.; 3 ounces of turkey, dark 72 mg.; light 59 mg.

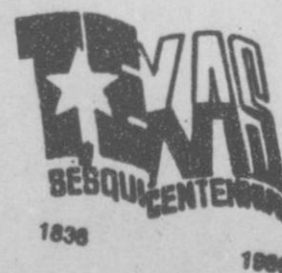
MYTH: Heart disease risk can be reduced by reducing intake of saturated fat and cholesterol.

FACT: The current trend in the scientific literature is away from thinking that reducing heart disease risk is simply a matter of cutting down on foods high in saturated fatty acids and cholesterol. More scientists are now saying that more scientific answers are needed before marked changes in diets can be recommended for the general population.

MYTH: Dietary cholesterol has a direct effect on blood cholesterol level.

FACT: In most persons, dietary cholesterol and blood cholesterol are not closely related. In fact, in most persons, heredity and weight or amount of fatty tissue in the body are more important than diet, including dietary cholesterol, in determining blood cholesterol level. If a person keeps his weight at recommended levels, odds are that his blood cholesterol will not be above normal.

See You In Gruver Friday July 4th



*1983 Beef Nutrient Composition Study conducted by the Meat Board with the USDA, Michigan State University, and University of Kentucky

**All percentages are based on a 4 oz. serving and recommended dietary allowances, women 25 to 50 years.

BEEF GIVES STRENGTH.

D G C FEEDERS INC.

Southwest of Gruver

733-2101

- JULY 4 - 9:30 a.m. - Gruver City Park Bicycle Parade & Race
 11:00 a.m. - Turtle Race
 11:30 a.m. - Boot Scramble
 11:30 - 1:30 p.m. - Barbeque - \$5.00
 12 & under - \$3.00
 11:00 - 3:00 p.m. - Dunking Board
 1:30 p.m. - Stick Horse Race
 2:00 p.m. - Watermelon Seed Spitting Contest
 2:30 p.m. - Balloon Toss
 2:30 p.m. - Men's Tug O War
 3:00 p.m. - 3 Legged Race
 All Day Activities - Liberty Train, Water Polo, Horse Shoes & Washers, Copper Mine, Jail House, Pillow Roll
 Booths - Baked Goods, Cokes, Ice Cream & Face Painting
 Pop Corn, Snow Cones, Texas Sesquicentennial Balloons
 Raffles - Trip to Six Flags, Cloudscape Painting & Jacob's Ladder Quilt
 JULY 4 - 8:45 p.m. - Gruver Football Field
 Fireworks & Program

WANT ADS

CLASSIFIED RATES

Regular.....Per Word-\$0.13
 Display.....Per Col. Inch-\$4.20
 Double rate for blind ads
 Minimum charges
 Cash:.....\$4.00
 Charge:.....\$4.50

CASH IN ADVANCE ADS
 Work Wanted*Trailers For Sale*
 Business Opportunities*No Longer
 Responsible*Political Advertising*
 Child Care*Babysitting*
 Garage Sales*Out-Of-County Ads-
 unless advertiser has
 established credit with
 The Gruver Statesman

DEADLINES
 To place or cancel ads
 Fri., 12:00 p.m.....Sun. edition
 Tues., 12:00 p.m.....Thurs. edition

The Gruver Statesman reserves
 the right to reject, edit, revise and
 properly classify all advertising
 submitted for publication. The
 Gruver Statesman also reserves
 the right to cancel any advertise-
 ment at any time.

The Gruver Statesman,
 Box 796
 Gruver, Texas 79040

Real Estate

OLDER 3 bedroom Perma
 Stone Home. All re-decorated, 2 car
 garage. Nice!

DELANO REALTY
 733-5000

for Sale: 3 bedroom, 2 bath frame
 home with inclosed patio. Real
 Nice! We have other selections
 also.

Delano Realty
 733-5000

WHY PAY RENT! Move into a beautiful
 home for less than you are paying in
 rent.

Alliance Homes of Amarillo
 Qualify by Phone
 806-381-1352
 Call Collect

**TAKE UP PAYMENTS ON TWO AND
 THREE BEDROOM HOMES.**

Alliance Homes of Amarillo
 Qualify by Phone
 806-381-1352
 Call Collect

Gruver City Library

When Thomas Thompson was editor
 of the Amarillo Globe-Times and writing
 his "Turnstile" column, he some-
 times wrote "Memoirs" that turned out
 to be among the most popular features
 in the paper.

NORTH OF PALO DURO is an
 extension of the memoirs, with original
 items rewritten and much new material
 added to present a picture of a man's
 life and times, mostly in Amarillo, the
 city north of the Palo Duro, but with
 excursions to other places and insights
 into a wide variety of subjects and
 people.

Readers familiar with the times will
 find their memories pleasantly or
 poignantly jogged.

All readers will learn here what it was
 like for an urchin growing up in
 Amarillo in the 1920's, how an NMMI
 cadet discovered a talent for writing,
 how he pursued a literary career
 (against the wishes of a strong-minded
 mother), and how he eventually joined
 the staff of the Globe-News, took time
 out for Navy duty in World War II, and
 returned to Amarillo and success in the
 newspaper business.

Beginning reporters are told they will
 meet interesting people in the news-
 paper business. What they are not told
 is that many-perhaps most-of these
 people will be fellow reporters and
 editors.

Thompson writes with understanding
 about some interesting people who
 contributed to journalism in Amarillo
 and the area.

He writes about big stories, the kind
 that win Pulitzer Prizes, and about some
 of the day-to-day routine that never gets
 quite so "daily" as to be dull.

But the book is not just about the
 newspaper business. It deals with
 university life, the author's experience
 as a graduate student at Louisiana State
 University in the 1930's and as distin-
 guished professor of journalism at
 Wichita State University in the 1970's.

Other topics include business leaders
 and some of the businesses at the heart
 of the Panhandle economy. And the
 author offers some amusing glimpses of
 famous people in unguarded moments.
 Good reading and good writing in
NORHT OF PALO DURO available in
 your library.

Gruver City Library will be closed on
 Friday, July 4th! Happy Holiday!

Gruver City Library
 2:00-6:00

Monday through Friday
 "Check It Out!"

ANTI-SMOKING

PHILADELPHIA - The American
 Cancer Society launched a campaign to
 eliminate smoking among American
 youths by the year 2000, saying it wants to
 "change the health habits of an entire
 generation."

NOTICE OF PUBLIC HEARING

The Board of Adjustment of the City
 of Gruver will hold a public hearing to
 discuss a zoning variance which has
 been applied for by Triangle Land
 Development.

The variance applies to property
 located in Block 1 Lots 5-7 in Frazier
 Addition of Gruver. The public hearing
 will be held on July 16, 1986 at 2:00 pm
 at the City Hall.

A. J. Ratliff, City Manager

Hansford 1985 Gross Sales \$74,558,008

Despite the recent downturn in the oil
 and gas economy, Hansford County
 received some very welcome positive
 news recently from a report released by
 Texas Comptroller Bob Bullock. The
 report showed the county's gross sales
 for 1985 increased by 9.32 percent over
 1984.

Though the percent of increase was
 not substantial in terms of sheer volume,
 it did indicate a far more stable
 economy than many believed. 1986
 figures however, are not included in the
 report.

Hansford County fared better than all
 area counties. The only area county
 showing a net increase was Hansford
 County.

The only other area county showing a
 net increase was Ochiltree County,
 which included the town of Perryton,
 with an increase of 1 percent.

All other area counties showed a
 decline in gross sales. The most severe
 decline came in Hemphill County,
 which included Canadian, with a drop in
 gross sales of 10.1 percent.

Other area counties experiencing
 declines in gross sales in 1985 compared
 to 1984 included; Lipscomb County with
 a drop of 8.31 percent, Moore County
 (which included Dumas) with a 5.64
 decline, and Hutchinson (Borger) which
 was down 4.15 percent.

The State of Texas also fared better
 than its neighboring oil and gas states
 in gross sales for 1985. Texas had an
 increase of 1.02 percent over 1984.

The State of Texas also experienced a
 good year in gross sales for 1985 with an
 increase of 1.02 percent over 1984.

Neighboring Louisiana, despite major
 problems in the oil and gas field, had an
 outstanding increase in gross sales of
 16.18 percent, but Oklahoma was
 feeling the effects of the slumping
 energy field with a 12.23 percent
 decrease in gross sales. New Mexico,
 which depends heavily on gas sales,
 was down 12.25 percent.

Hansford County's gross sales by
 quarters are as follows: 1st qtr \$12,268,
 201

2nd qtr \$18,226,863

3rd qtr \$16,183,625

4th qtr \$27,879,319

1985 Total \$74,558,008

1984 Total \$67,612,902

Accident Reports

Capt Bob Russell, District Supervisor
 of the Amarillo Highway Patrol District
 Comprising of 31 counties said, "For
 the month of May, our troopers investi-
 gated 4 fatal accidents, 73 personal
 injury accidents, and 137 property
 damage accidents. There were 4 per-
 sons killed and 110 persons injured in
 these accidents."

Sgt. Charles Henderson of Borger
 stated, "In Hansford county, our troop-
 ers investigated 0 fatal accident(s), 0
 personal injury accident(s), and 0
 property damage accident(s) was/were
 killed and 0 person(s) was/were injured
 in these accidents."

For additional accident information,
 contact the Amarillo Highway Patrol
 Office (Phone #806-359-4751)

Prepared and distributed by the
 Safety Education Service, Region 5,
 Lubbock.

To generate electricity why not use... Wind? Solar? Nuclear?

The technology is not yet available to economically harness
 the wind... or the sun to generate electricity. And, you're well
 aware of the problems with nuclear. So, we're glad we chose coal.
 It saved you, our customers, over \$215 million last year. But our
 research into other energy sources has not stopped.

We're dedicated to keeping
 the cost of electricity
 as low as possible.



Have a Happy Fourth and Don't Drink and Drive!
 See you at the Gruver Fourth of July Celebration!



Bert Ballengee
 Chairman and CEO

The Gruver Statesman

PUBLICATION (USPS 9598-0000)
 GRUVER, TEXAS 79040
 BOX 796
 659-3434

OWNER-PUBLISHER
 William M. Miller
EDITOR
 Joy Henderson
 Gruver, Tx.

Second Class postage paid at
 Gruver, Texas 79040.

Any erroneous reflection
 upon the character of any
 person or firm appearing in
 these columns will be gladly
 and promptly corrected upon
 being brought to the attention
 of the management.

POSTMASTER: Send address
 changes to the Gruver States-
 man, Box 796, Gruver, Texas
 79040.

SUBSCRIPTION RATE: The
 Gruver Statesman, adjoining
 counties, \$20.00 per year.



Here's a hint for cooks:
 there are three teaspoons
 in a tablespoon.

NOTICE

Wallace Monument Co.
 Monuments, Curbing,
 Grave Covers
 Local Representative
LEONARD JAMESON
 Spearman, Texas
 40-rtn

Hansford County
 Planned Parenthood
 412 Davis
 659-2483
 Spearman
 Mon. - Fri.
 8:30 - 12:30

OSGOOD MONUMENT CO.

Amarillo, Texas
 Dealers of Rock of Ages
 Granite, as well as all
 colored granites, marble
 and bronze memorials.

represented by
BOXWELL BROS.
FUNERAL HOME
 519 S. EVANS
 659-3802

Hay Swathing and Baling done -
 Call 733-2517 or Dennis at 733-5214
 31-rtn-nc

Sewing wanted, alterations etc.
 Baking and decorating cakes. I now
 have the He-Man Pan for birthday
 cakes. Call Joy at 733-2517.
 52-rtn-nc

For information and supplies for
 Tri Chem Liquid Embroidery, Con-
 tact Joy Henderson at 733-2517 in
 Gruver.
 8-rtn-nc

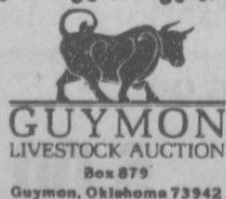
Announcements

POLITICAL ANNOUNCEMENT

This newspaper is authorized to
 announce the candidacy of the following
 candidates for public office subject to
 the action of the voters in the MAY
 PRIMARY ELECTIONS:

DEMOCRAT
FOR COUNTY TREASURER
 Je
 Norma Jean Mackie
FOR COUNTY AND DISTRICT
CLERK
 Amelia C. Johnson
FOR STATE REPRESENTATIVE
 J.W. Buchanan
REPUBLICAN
FOR COUNTY TREASURER
 Eschol Blankenship
FOR STATE REPRESENTATIVE
 Dick Waterfield

Out of State
 1-800-338-5871



Office
 1-405-338-3378

Home Owned and Home Operated

SALE EVERY THURSDAY

BEGINNING AT 12:00pm

Celebrate the Fourth with

PRICES EFFECTIVE JULY 3-4-5, 1986
 WHILE SUPPLIES LAST



Decker Sliced \$1.29
 1 lb pkg Bacon
 Decker Franks 89¢
 or sliced Bologna



SUPPORT
 SPECIAL OLYMPICS
 BY PURCHASING
 DECKER PRODUCTS
 AT ALLSUP'S

SAUSAGE ON A STICK
 EACH 99¢

CHICKEN FRIED STEAK SANDWICH
 each \$1.09

SANDWICH
 WHITE OR RYE BREAD
 EACH \$1.39

FAST-N-HOT HAM AND CHEESE SANDWICH
 EACH \$1.39

DECKER LUNCH MEAT
 8 OZ. PKG. 69¢

ALLSUP'S 30 YEAR COMMEMORATIVE MUG
 FILLED WITH YOUR FAVORITE FOUNTAIN DRINK
 ONLY 99¢
 REFILLS 49¢

ALLSUP'S ICE
 8 LB. BAG \$1.09

BORDEN BUTTER-MILK 1/2 GAL. 99¢

ALL VARIETIES ALLSUP'S ICE CREAM 1/2 GAL. RND. CTN. \$1.49

RUFFLES BRAND
 REGULAR, SOUR CREAM & ONION,
 BARBECUE, CHEDDAR AND SOUR CREAM
POTATO CHIPS REG. \$1.39 **99¢**

Hot Links Each or Hot Link Sandwich Each 59¢ or 69¢

CAFFEINE FREE COKE **CHERRY COKE**
COCA COLA CLASSIC OR **DIET COKE** 6 PACK 12 OZ. CANS **\$1.89**

**We will be open
Friday July 4th
10 A.M. Til 6 P.M.**

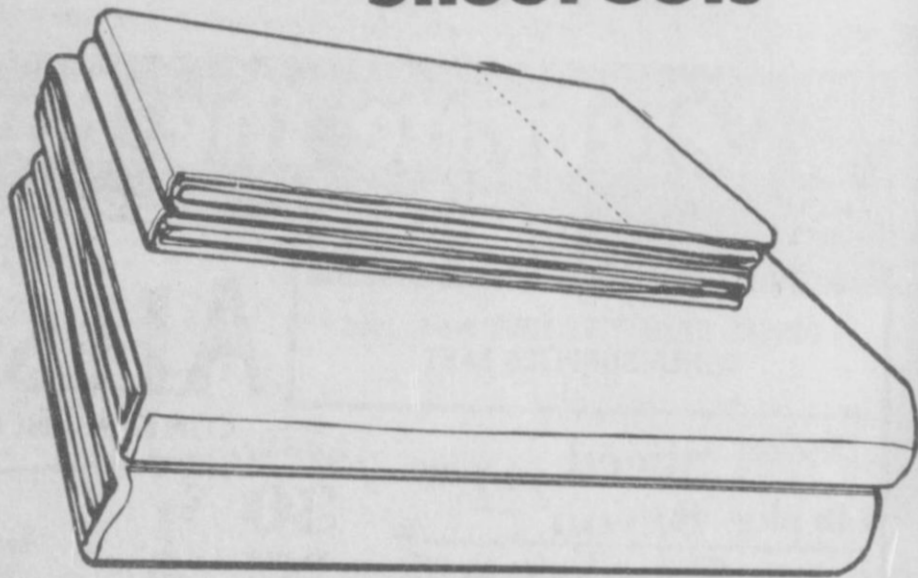
TGIY
Family Centers

**Happy 4th
of July**

STORE HOURS:
Open 9 a. m. 'til 9 p. m.
Monday through Saturday

MONTH-END
Clearance

**Flannel
Sheet Sets**



Twin	Reg. 8.99	5.00
Full	Reg. 10.99	6.00
Queen	Reg. 13.99	7.00

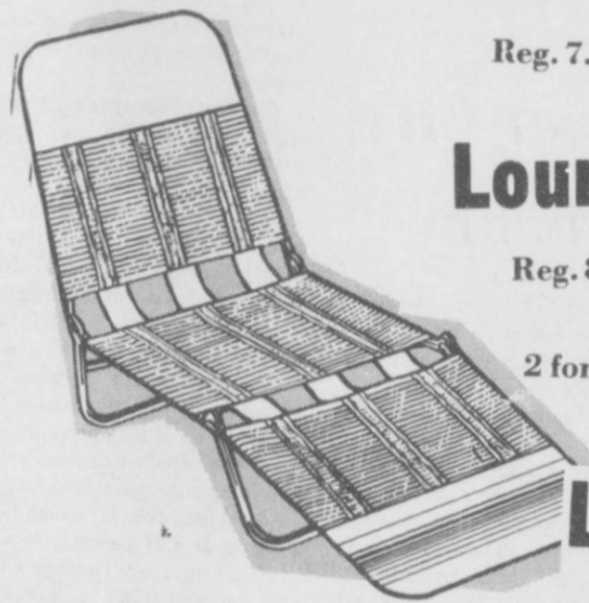
White Stack Tables

Reg. 7.99 now **2.00**

Loungers

Reg. 8.99 now

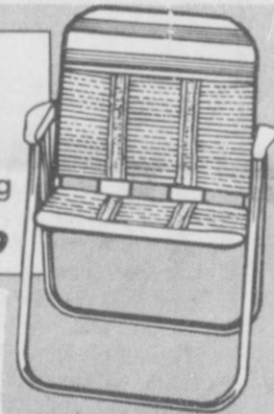
2 for **8.00**



Lawn Chairs

2 for **6.00**

Lawn Chair, PVC strapping on tubular steel frame. Assorted colors. **Orig. 7.99**



**Entire Stock
Of
McCalls
and
Simplicity Patterns**

values up to 6.00

now **50¢**

**Entire Stock
of
Paperback
Books**

50% OFF

Leaf Rakes

Reg. 3.99

\$1.50

**ALL
Swimwear**

1/3 Off

**Selected
Men's and
Women's
Shorts**

2 for **3.00**

**Ladies Knit
Shorts
and
Tops**

was 6.99

now **5.00**

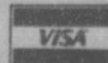
**X Size Ladies
Knit Shorts
and
Tops**

was 8.99

now **7.00**

Spearman, Texas

659-3741



Wedding Vows Exchanged



Jana Beth Wright

Mr. and Mrs. Hix Spivey of Gruver, Texas, announce the engagement and approaching marriage of their daughter, Jana Beth to Christopher Loren Wright, son of Mr. and Mrs. Carroll

Wright of Tulia.

The couple will exchange vows Saturday, August 23, at 5:30 p.m. in the First Baptist Church, Gruver, Tx. The bride-elect is a 1982 graduate of

Gruver High School and attended West Texas State University. She graduated from Metro Barber College in 1984 and is self-employed as a barber-stylist at Classic Cuts in Canyon.

The prospective bridegroom is a 1980 graduate of Tulia High School and graduated in 1985 from W.T.S.U. in a Bachelor of Science degree in Ag. Business and Economics. He was a member of Lambda Chi Alpha Fraternity while attending W.T.S.U. He is currently employed with Tulia Wheat Growers.

Weather

Monday, the Spearman area fell victim to one of the worst storms of the season. The storm caused much damage northeast of Spearman. A small tornado struck Spearman Cattle Feeders Mobil Yard.

Ten cattle were struck dead by lightning and 38,000 more were without water.

Jimmy Greene's farm suffered damages including a blown over tree and haystack of 3,000 bales, and irrigation pip which blew "all over the place".

While Spearman received 1/2" rain, else where in the county 4" of rain were received.

Scott Duncan on the Dean's List

Scott E. Duncan of Gruver was among the 1,649 students whose 1986 spring semester grades earned them places on the Dean's List at Southwest Texas State University.

To qualify for the academic honors listing, an undergraduate student must have earned a grade point average of at least 3.5 during the semester while taking at least 12 semester hours of course work.

Duncan's address is listed as Box 635, Gruver.

Alpha Mu Psi News

July 4th Activities will begin with the Bike Race and Parade. There will be awards given for the best decorated bike, 1st thru 3rd places. Following the morning activities will be the Lion's Club bbq. Tickets are 3.00 - 12 and under, \$5.00 Adults.

Entertainment will be provided by "Timberline".

The Booths this year will be:

Let's Celebrate Balloons
Calico Homemakers Baked Goods
Senior Class Cokes
Flag Girls Ice Cream
Jr. High Cheerleaders Snow ones

Jr. High Cheerleaders Snow Cones
Alpha Mu Psi Popcorn

Afternoon Activities will last until 4:00pm. The Fire Department is in charge of the Fireworks Display at the Football Field. Xi Psi Kappa will be sponsoring the evening events.

9:30 am Bike Race & Parade
11:00am Turtle Race
11:00am-3:00pm "Timberline"
11:30 Boot Scramble
11:30 am - 1:30 pm. Lion's Club BBQ
11:30 am-3:00 pm. Dunking board
1:30 pm Stick Horse Race
2:00 pm. Watermelon Seed Spitting
2:30 pm. Balloon Toss, Men's Tug-of-War

3:00 Three Legged Race
All Day Events:
Liberty Train
Water Polo
Horseshoes & Washers
Coppermine
Jail House

Pillow Roll
Raffles to be held:
Lions Club-\$5.00-VCR and TV
Alpha Mu Psi-\$2.00- painting and Six
Flags Trip
Xi Psi Kappa - \$1.00 QUILT

WITCHES IMAGE
SALEM, MASS. - Self-proclaimed witches here have announced the formation of an anti-defamation league to counter what they say is "false and malicious propaganda" about themselves and to "protect our religious rights."

Hansford county 1 percent local tax is up 6.49%

State Comptroller Bob Bullock Friday sent checks totaling \$54.5 million in local tax payments to the 1,017 cities that levy the one percent local sales tax.

Houston received the largest check-\$8.5 million-bringing 1986 payments to 73.4 million, down 4 percent from last year. Dallas' payment of \$6.8 million, down 5 percent from 1985, brought the yearly total for the city to \$53 million.

San Antonio's check for \$3.3 million brought payments this year to \$28.5 million, up 3 percent. Austin received \$2.6 million, pushing total payments for 1986 to \$21.2 million, down 3 percent from last year.

Fort Worth's payment was \$2.2 million bringing the 1986 total to \$17.7 million, up 7 percent over last year. El Paso received a check for \$1.5 million, bringing total checks this year to \$11.2 million, up 8 percent.

Bullock also sent checks totaling \$25.1 million to the state's six Metro-

litan Transit Authorities. Dallas' DART check was \$9.9 million, bringing total payments this year to \$80.8 million. Houston's MTA payment was \$9.6 million for a 1986 total of \$85.1 million. Austin's Capitol Metro received a \$2.7 million check for a yearly total of \$21.1 million. VIA in San Antonio received \$1.8 million, increasing payments this year to \$15.6 million. Fort Worth's MTA check was for \$521,808 for a total of \$4.2 million this year. Corpus Christi's MTA received a check for \$489,553 bringing total payments for the year to \$2.1 million.

June checks represent taxes collected on sales made in April and reported to the comptroller by May 20.

Hansford County's 1986 payments to date total \$121,859.93. By comparison, 1985 payments to date equal \$114,434.61. This is a 6.49 percent change.

State Franchise Tax For County

State Comptroller Bob Bullock said Friday checks totaling \$1.1 million were sent in a special allocation of the state franchise tax on banks to 245 cities, school districts and other special districts.

Bullock said the special allocation reflected final adjustments of the new tax as it involved some 1,976 banks and 2,119 local taxing jurisdictions.

The first allocation from the new tax on banks was made in August, and checks totaling \$61.6 million were sent to 1,996 local taxing units.

Most of the taxing units-1,715-were unaffected by the special allocation. Of the remaining jurisdictions affected, money was shifted from some taxing units and reallocated to others.

The Legislature in 1984 brought banks under the franchise tax for the

first time and allocated receipts from the tax to cities, counties, school districts and other local taxing units where the banks are located.

Banks are taxed at the same rate as other Texas corporations. Previously, bank stocks were subject to local property taxes. The Legislature exempted the stocks from property taxes, substituting the new bank franchise tax. Collections are prorated among local taxing units based on their tax rates.

Hansford County's Franchise tax for 1985 total to date \$13,524.88

Hansford County Hospital District's 1985 payments to date total \$5,561.23.

Spearman ISD payments total 15,890.82.

Gruver ISD payments equal \$5,068.97

For July 4th

**GIVE HIM A BIG KISS
...AND A DELICIOUS
STEAK DINNER!**



It's traditional to serve beef on July 4th

- JULY 4 - 9:30 a.m. - Gruver City Park Bicycle Parade & Race
- 11:00 a.m. - Turtle Race
- 11:30 a.m. - Boot Scramble
- 11:30 - 1:30 p.m. - Barbeque - \$5.00
12 & under - \$3.00
- 11:00 - 3:00 p.m. - Dunking Board
- 1:30 p.m. - Stick Horse Race
- 2:00 p.m. - Watermelon Seed Spitting Contest
- 2:30 p.m. - Balloon Toss
- 2:30 p.m. - Men's Tug O War
- 3:00 p.m. - 3 Legged Race
- All Day Activities - Liberty Train, Water Polo, Horse Shoes & Washers, Copper Mine, Jail House, Pillow Roll
- Booths - Baked Goods, Cokes, Ice Cream & Face Painting
Pop Corn, Snow Cones, Texas Sesquicentennial Balloons
- Raffles - Trip to Six Flags, Cloudscape Painting & Jacob's Ladder Quilt

JULY 4 - 8:45 p.m. - Gruver Football Field Fireworks & Program

- SIZZLING STEAK
- ROAST WITH ALL THE TRIMMINGS
- BARBEQUE BEEF
- HAMBURGER COOKOUT

Beef is the right meat for so many sound reasons and good taste is but one... besides being a versatile food, beef is also one of the most complete nutrition packages in Nature. It includes high quality protein, essential minerals and vitamins like Iron and Vitamin B-12. It tastes good and it's good for you.

Caprock Industries Inc.

414 Main Gruver

733-2483

Need Volunteers Obituary

I'd intended telling you that a couple of us little old ladies at the Panhandle Crisis Center would be glad to mow the yard at the Shelter, but it's hard to do with out teeth. Could anyone see that we get a good lawnmower?

Then the Executive Board said they didn't want to let us run any such risk as playing with a lawnmower, so they decided to hire that little job.

But there is another major problem: **WE NEED MORE VOLUNTEERS!** Recently four of us were visiting together about the work of the PCC, and one after another of us admitted that we hadn't really wanted to get involved with it, but one thing or another led us into it. And now we wouldn't trade out for anything!

This could happen to you!

The work isn't all that hard, and its rewards are tremendous. A recent resident of the Shelter typed a page-long, single-spaced letter thanking us for her experiences with us. She enclosed a two-page-long, single-spaced story of her progress to and in our Shelter, which she gave full permission to us to use in any way we thought best. So here it is, condensed of course:

When the volunteer picked her up at the police station, one of her first comments was, "This is the fifth time I've gone back to him. Why do I do that?" You want so much to believe him when he says he has changed. That he will change further, and that he really wants you to come back.

Other reasons showed up in the course of her story: she felt she had no skills, that she had no value either in the eyes of herself or of anyone else, so she could not ever be self-sufficient; that there was no place for her to go.

She'd even had a stay in a shelter in another state, but it offered nothing more than a temporary safehouse. On another occasion in that same state, she turned to the police after her husband had threatened her with a butcher knife (she had the prick of it on

her skin under her dress), and ~~had~~ threatened more to come to herself and to their little daughter. The police said that they had not seen him attack her, so there was nothing they could do.

"Could she please go to jail? Being out on the street in the early morning was terrifying. He might find her."

No, you can't go to jail. You haven't broken the law.

"Do you mean that if I broke a store window, you would take me to jail?" Yes, you could go to jail then.

So she sneaked back home to the same old situation.

Then she encountered the Police Department her in Perryton. At once they told her about the PCC here, and got her permission to call us. Once in the shelter, she received help with lawyers, etc., who were patient with her inability to absorb it all in one sitting, because, as she said, "When you're upset you can't take it all in." She received medical and dental care from sympathetic doctors. And she received copetent counseling, both as an individual and in support groups, that helped her to know, for the first time, that she CAN learn to hold a job; that she CAN become self-sufficient; that she IS a person of worth.

A whole new world opened to her.

I wish there were room here to give her entire letter and story in her own words, rather than this condensed version of it.

We are most excited over the male clients who have come to us for help in overcoming their tendency to violence. Remember when we first began to tell you that we view the batterers not as villains but as themselves victims?

Anyone who really wants to, can learn to change his/her patterns of repressing expressing anger. And his/her attitude toward him/herself.

And we are here to help.

By the way, does anyone have a four-drawer locked file he/she wants to unload on us? We have just the spot for it!

Remember our telephone number: 435-5008.

Robyn Rachele Renner

SPEARMAN-Robyn Rachele Renner, infant daughter of Mr. and Mrs. Phillip Renner, died Saturday, June 28. Graveside services were held at 10:00 a.m. Monday June 30 in Hansford Cemetery with the Rev. Bob Gonzales officiating.

Other survivors include two sisters, Randie and Ronda, both of the home; a brother, Reagan of the home; her grandparents, Mr. & Mrs. Clarence J. Renner and Glen and Norma Jean Mackie, all of Spearman; and her great-grandmother, Viola Hutton of Spearman.

Public Service

Persons age 16-up from low-income families may apply for the Job Training Program July 3, 9:30 AM - 12:00 noon at the Hansford County Court House, Spearman.

Applicants should bring their Social Security card and provide a photo copy of their birth certificate to be kept in applicant's file. For more information call Panhandle Community Services at 274-3518, Borger.

Hospital Report

Patients who were admitted in the Hansford Hospital are:

Robert Crawford Bonnie Patterson

Patients who were dismissed from the Hansford Hospital are:

Robert Stayton Shiela Stevens

Robbie McFarlin Theodore Bayless

SOVIETS & SPACE

MOSCOW - The Soviet Union proposed recently creating a world space organization under U.N. auspices and offered to launch foreign satellites with Soviet rockets as part of an international space cooperation project.

LAND VALUE DECLINES

WASHINGTON -- Farmland values, which showed back-to-back annual declines of 12 percent the last two years, probably will keep sliding the remainder of 1986 but at a slower rate, the Agriculture Department said recently.

S.S. Rep. to be in Spearman

A representative of the Pampa Social Security Office will be in Spearman at the Spearman Courthouse on Thursday from 10:00 until 11:30 a.m. at the County Commissioners Court Room. On the second and fourth Thursday of each month. For the Month of July they will be in Spearman on July 10th and 24th. For the Month of August - August 14th and 28th and for the month of September - September 11th and 25th.

This Person will be glad to assist you in filing an application for Social Security Retirement, Survivors, Disability, Medicare or Supplemental Security Income Benefits. If you are unable to visit personally, you may call 669-1018 to conduct any Social Security Business. The Pampa Social Security Office is open Monday thru Friday, except National Holidays, between the hours of 9:00 a.m. and 4:45 p.m.

Texas Expansion

Farm Plan Corporation, an independent financial subsidiary of Deere & Company, has announced the rollout of its credit service to the entire southern states region.

Already available in 29 states, Farm Plan allows customers to make credit purchases of supplies, parts and services from local, participating merchants. Similar to a consumer credit card, Farm Plan compiles a monthly statement of purchases from all participating merchants, then allows Customers the option of immediate or extended payment. Participating merchants benefit by being able to eliminate accounts receivable and associated bookkeeping chores.

Farm Plan expansion into the southern area is part of a national rollout including Texas and Oklahoma.

The most common types of dealerships that offer Farm Plan credit to customers are: co-ops, implement dealers, feed mills, veterinarians, bulk fuel jobbers and building material dealers.

Markets

Corn \$2.60
Wheat \$2.15
Milo \$4.05

VALUES INTACT

NEW YORK -- Broken homes, battered spouses and abused children notwithstanding, the U.S. family is weathering major changes in structure with its basic values intact, according to a report released recently.

TO SHARE

LOS ANGELES - Television's battle for Liberty was resolved when ABC agreed that its rival networks could share all news portions of the Liberty Weekend opening ceremonies.

JAM SESSION & DANCE
July 12, 1986
7:00 p.m. - 7
Allsup's Parking Lot
Gruver, Texas
All Ages
All Musicians welcome
No Charge to Anyone
If interested in joining the jam - call 733-2232

ACTION TAKEN
MOSCOW - The Chernobyl power plant director and other senior officials were fired for acting irresponsibly during the April 26 nuclear accident, and some plant workers who fled are still "on the run," the Communist Party daily Pravda said recently.

"Daddy, can I have \$40,000 for college?"

What will your answer be...
The time to start planning is now!



If you are looking for ways to finance your child's college education, then you need to talk to the Integrated Resources Equity Corporation specialists. We have the knowledge and expertise to help you choose the most suitable investments toward achieving your financial goals.

Integrated Resources Equity Corporation offers a wide range of income-producing opportunities in real estate, equipment leasing, and cable television, as well as a complete portfolio of stocks and bonds, money market and mutual funds.

Stop by or call:
Integrated Resources Equity Corporation
MARCIA SHIELDKNIGHT & DEBBIE STOPPER
P. O. BOX 516
SPEARMAN, TEXAS 79081
(806) 659-3880 OR
(806) 358-7133
Member SIPC

Integrated Resources

Weather

Date	Hi	Lo
28	96	67
29	96	67
30	101	74

There was one inch of rain during the week.



HOWDY PARTNER
PALO DURO FEEDERS, Inc.
PHONE 806-733-2416 GRUVER, TEXAS 79040 POST OFFICE BOX 666
Craig Clyburn

BEEF FOR THE 4th OF JULY

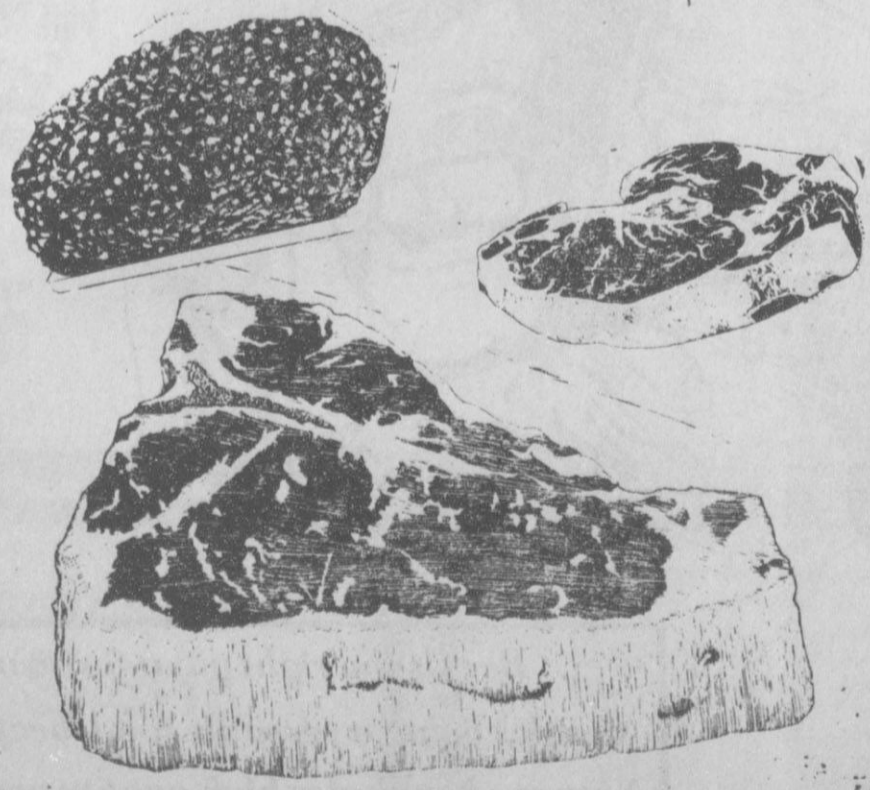


Cook a steak on the
4th of July----

733-2416

Hwy. 136 S. of Gruver

Celebrate with a steak this 4th!



PALO DURO FEEDERS, Inc.

PHONE 806-733-2416 GRUVER, TEXAS 79040 POST OFFICE BOX 666

Craig Clyburn



Go With Joy

This past week, I learned a new story about the Fairy Princess and Prince Charming. It is called "The Saga of a Garage Sale at the Castle." It goes like this. "Once upon a time there lived a Fairy Princess from Texas who met and married Prince Charming from Arkansas, and he carried her off to his little three room castle in the Ozarks. They were very happy and soon there was a little daughter born who was the Joy of their life. But hard times fell on them and when they heard of work in the Texas oil fields, Prince Charming packed his family and possessions and migrated to the Texas Panhandle.

Shortly after getting settled in their new castle, a little Prince was added to the family and he also was very handsome and charming. The Panhandle became their home for many years and several times, they moved to a larger castle and added more possessions. The depression era disappeared and times became more prosperous after a war that engulfed the whole world and the demand for more food and war weapons caused the Texas oilfields to "boom" again.

In the course of time, the Joy of their life married and added four children to her family and later the Handsome Prince married and soon there were four children in his family. The accumulation of more possessions, odds and ends, trinkets and also just plain old junk began to clutter up the castle. So, a larger castle had to be found to hold all the valuable paraphernalia that they had bought and the gifts from the children and grandchildren.

Finally, it was time for the Prince Charming and his Fairy Princess to retire, so they packed up all the U-Hall would hold and migrated back to Arkansas where the Prince Charming was involved in preaching God's Word. It came time for the Prince Charming family to celebrate the 50th Wedding Anniversary and the couple received many more wonderful gifts from the friends and family which now had grown to several sons - in - laws and some great-grandchildren.

After Prince Charming and Fairy Princess made their decision to settle in a town in Oklahoma, they purchased a brand new castle. But alas! The castle was too small to hold all the possessions so...someone suggested "Why don't you have a Garage Sale?" Plans were finalized, permits bought and the advertizing arranged, and as the 2 day event neared, some of the children arrived to help out. Disaster struck a day early, when people showed up to start browsing and the garage sale doors were not opened yet. Prince Charming went ahead and sold some of the treasure to them and quickly went to the bank with a check.

One of the helpers was the Joy of their life who was warned not to take any money with her because they were afraid she would buy some treasure, but she already had a garage full to sell and didn't need any more. Anyhow she started breakfast shortly after 6:00 a.m. on Friday so everyone would be ready for business at 8:00 a.m. sharp. The Joy of their life even looked out and up and down the street to see if a line of cars was forming, but everything was quiet and peaceful. So everyone was relaxing with a second cup of coffee but at 7:15 as she was preparing to cook the last egg for Prince Charming, the door-bell rang, (the garage door was still down) and everyone jumped a foot high and knocked over the chairs and each other trying to get to the garage. Everything was so hectic after that for 5 hours that no-one is sure what happened. That afternoon and the next morning went about the same, especially after one of the granddaughters arrived with some more treasure to sell. But the second afternoon, things became so slow and hot only about 75 cents worth of merchandise was sold, so 2 of the great grandchildren opened up a lemonade stand so the people could cool off.

Well, their cost was approximately \$4.00 to go into business but after having to lower the price of a cup of lemonade from 25 cents to 20 cents, the had about 4 or 5 customers and the rest was sold to Prince Charming's family for 20 cents a cup with free re-fills. The lemonade drew flies instead of customers and closed down.

So with about four hours left on the advertized time, the sale closed down, the kids scattered to play, the adults collapsed on the sofas and beds. Plans were made to re-locate at a later date and have a "1/2 of 1/2 price" sale.

Anyhow Prince Charming and Fairy Princess hope to enjoy their new castle and live happily ever after, with less treasure, but richer.

Well, that is the end of the story about the garage sale at the Castle.

Authorities urge caution when using fireworks

Gruver and Hansford County law enforcement officials want to have a safe and joyous Fourth of July.

That is why they are issuing this warning: when shooting fireworks use extreme caution, don't be reckless, play under the supervision of a responsible adult, and stay within the law.

It is illegal to use fireworks within the City Limits of Gruver which are more than 2 inches long, a Roman Candle with more than 15 balls, or Sky Rockets containing more than 6 ounces of filler.

While it is not illegal to use fireworks within the confines of the county, celebrators must stay within the law. No longer permissible in the State of Texas are Cherry bombs or M-80s because of their destructive power.

Fireworks are also dangerous. Just a couple of years ago a young lady got a Roman Candle ball down her blouse. There have also been split fingers, minor burns, the whole range of injuries.

Also, destruction to property is a major concern. Some years are worse than others, but a number of fires are always caused by fireworks.

When property damage occurs, the responsible party may face legal charges of criminal mischief, or reckless conduct if personal injury results. Both are felonies, punishable with \$5,000 fines and two year prison terms.

The probability of Civil Suit also exist to the extent of damage. Should a building, home, or producing field be

involved, the damages could be quite extensive, perhaps more than \$100,000.

Should death result, depending on the recklessness or intent of the actor,

the change could be manslaughter.

It is unlawful for anyone to sell fireworks to children under 10 years of age, or to intoxicated or irresponsible persons.

It is also illegal to discharge fireworks within a car, or to throw them from a car. Violations of the State fireworks of law can result in a fine of not more than \$1,000 or imprisonment of not more than one year or both.

Fireworks may not be sold before June 24 or after July 4.

Permissible fireworks in the state of Texas include:

Ten ball Roman Candles, not to exceed 20 grams.

Helicopter tupe rockets, not to exceed 20 grams.

Cylindrical fountains, not to exceed 75 grams.

Cone fountains, not to exceed 50 grams

Wheels, not to exceed 60 grams with any number of divers.

illuminating torches and colored fire in any form, not to exceed 100 grams.

Sparklers and dipped sticks, not to exceed 100 grams.

Mines and shells of which the motor is an integral part, except those designed to produce a noise, not to exceed 40 grams.

Whistles without report, not to exceed 40 grams.

CONFERENCE

MAYORS MAKE APPEAL

SAN JUAN, PUERTO RICO - A. U.S. Conference of Mayors committee urged Congress to retain the income tax deduction for local sales taxes and called for a constitutional amendment to protect local tax sources.



Let's talk.

Information about your changing telephone service from Gary Stevens, Manager-Community Relations

SWBT sponsors wagon train

Southwestern Bell Telephone is committed to preserving our state's rich history, because we're proud of Texas' distinctive roots. They're our roots, too.

Wagon trains, like telephones, have played a key role in Texas' development. And in keeping with our Texas commitments, we recently joined in the sponsorship of the Sesquicentennial Wagon Train, through proceeds from the sale of Sesquicentennial calendars.

While we enjoy helping bring the past to life, we never lose sight of our most important job: providing Texans the best telephone service possible — advanced, futuristic telecommunications systems — today.

You might say we do just that on the wagon train. While today's wagon train riders are living a lifestyle reminiscent of the 1800's, they do have at least one edge over the pioneers who settled Texas. We've made sure today's adventurers enjoy the best of two worlds, if they want to, by providing portable payphones at campsites during their 6-month, 3,000-mile journey.

As the wagon train — longest and largest in American history — blazes a new trail across Texas, it's making modern-day history. The wagon train not only commemorates our state's 150th birthday and ancestors, but is a symbol of Texas to the world.

A festive journey's end

On July 3 the 4-mile-long convoy of 150 wagons, 800 horses and 300 horseback riders will roll into their final campsite, Fort Worth. Not only will the "eyes of Texas" be upon them, but millions of people from around the world will also be watching.

Reporters, newsmen and camera crews from across the U.S. and world will be on-hand to cover the Texas-sized celebration planned at the end of the trail.

And we're happy to be a partner in this historic event, sharing in Texas' past, present and future.

Teaching good phone usage

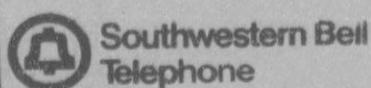
With the kids out of school for the summer, it's a good time to teach or review good phone usage, both for good manners and for security. Some of your personal emergency numbers for the youngsters during the school year will be changing now that school's out.

And we're here to help. We've got a free booklet, "Phone Use for Children," for youngsters and their parents. With a little help from Mom and Dad, this booklet can help even a pre-schooler understand the proper way to use the telephone.

The booklet shows children how to answer the telephone, what to say to callers and what to do in an emergency. It also talks about "calls that cost extra money" — like long distance or other toll calls. And it describes in words and pictures good phone manners to learn and remember.

Having good phone manners, well that's just one more thing about your children you can be proud of. But knowing they understand how to use the phone in an emergency will make your summer relaxation a lot more relaxing.

To order your free booklet, write to:
Southwestern Bell Telephone,
Tele-Help, P.O. Box 225265,
Dallas, Texas 75222.
Or call toll-free 1-800-325-2686,
ask for ext. 80. Please allow 3 weeks for delivery.



Texans providing telecommunications for a growing state.

Gary Stevens
SW Bell Telephone
714 S. Tyler
Amarillo, TX 79101

MEAT NUTRI-FACTS

Beef Rib Roast

217 calories

PER 3 OUNCE ROASTED, TRIMMED SERVING

NUTRITION INFORMATION PER COOKED SERVING
TOTAL RECOMMENDED DIETARY INTAKE

		%	0%	50%	100%
•CALORIES	217	11	[Progress bar]		
•TOTAL FAT	12.9g	19	[Progress bar]		
Saturated Fat 5.6. Monounsaturated Fat 5.8. Polyunsaturated Fat .4					
•CHOLESTEROL	68mg	23	[Progress bar]		
•SODIUM	62mg	2	[Progress bar]		
*PROTEIN	24g	52	[Progress bar]		
*IRON	2.4mg	13	[Progress bar]		
*ZINC	6.3mg	42	[Progress bar]		
*THIAMIN	.08mg	6	[Progress bar]		
*NIACIN	3.5mg	18	[Progress bar]		
*B-12	2.4mcg	40	[Progress bar]		

*Based on standards of comparison.

2000 calories per day is the midpoint of the recommendation by the National Academy of Sciences for women ages 23-51. National Academy of Sciences also recommends a maximum of 3300 mg of sodium per day.

The American Heart Association recommends not more than 30% of calories from fat and no more than 300 mg of cholesterol per day.

*Based on % U.S. Recommended Daily Allowances.

Data based on USDA research.

AUTO PARTS STORES

CARQUEST 10W40 or 10W30 Motor Oil
Our premium grade multi-accuracy oils at a savings. Limit one case per customer.
#09640 or #05150
Your Choice

79¢ qt.

CARQUEST HD30 MOTOR OIL
Quality HD30 motor oil at a low price. Limit one case per customer.
#05150

69¢ qt.

Heavy Duty MOTOR OIL (15W-40) (10.56 LITRE)

Heavy Duty MOTOR OIL (15W-30) (10.56 LITRE)

All Season MOTOR OIL 10W-40 (10.56 LITRE)

All Season MOTOR OIL SAE 10W-30 (10.56 LITRE)

Week End SALE

turtle wax
Turtle Wax® Super Hard Shell® Silicone Car Wax

A few minutes this weekend will provide lasting protection for your car or truck. 18 oz. liquid. #150

Reg. \$4.84
2.69

WD-40
Lubricates, loosens stuck parts, protects. 9 oz. #40011

Reg. \$2.53
1.29

PV Quality Products

Thermostats
For most applications. #30206, #30208, #30209, #30236, #30238, #30239.
Reg. \$5.94
1.49

PV Disc Brake Pads
Organic friction material. For most domestic cars and light trucks.
Reg. \$10.14
5.95 per axle (Excluding metallic)

COAST-TO-COAST CARQUEST GUARANTEE
Now CARQUEST Auto Parts Stores at across the United States will promptly replace any part bought at a CARQUEST Store under the manufacturer's warranty. Another convenient service from CARQUEST is to make your life a little bit easier.

Parts for Imports At Low American Prices
CARQUEST carries a wide variety of parts for imports including Toyota, Datsun and Honda. Quality you trust at low prices you expect from CARQUEST.

Turtle Wax® Power Brite Wire & Mag Wheel Cleaner
18 oz. #285 Reg. \$5.70 value
1.99

Turtle Wax® Power Brite Whitewall Tire Cleaner
18 oz. #684 Reg. \$5.19 value
1.99

CARQUEST

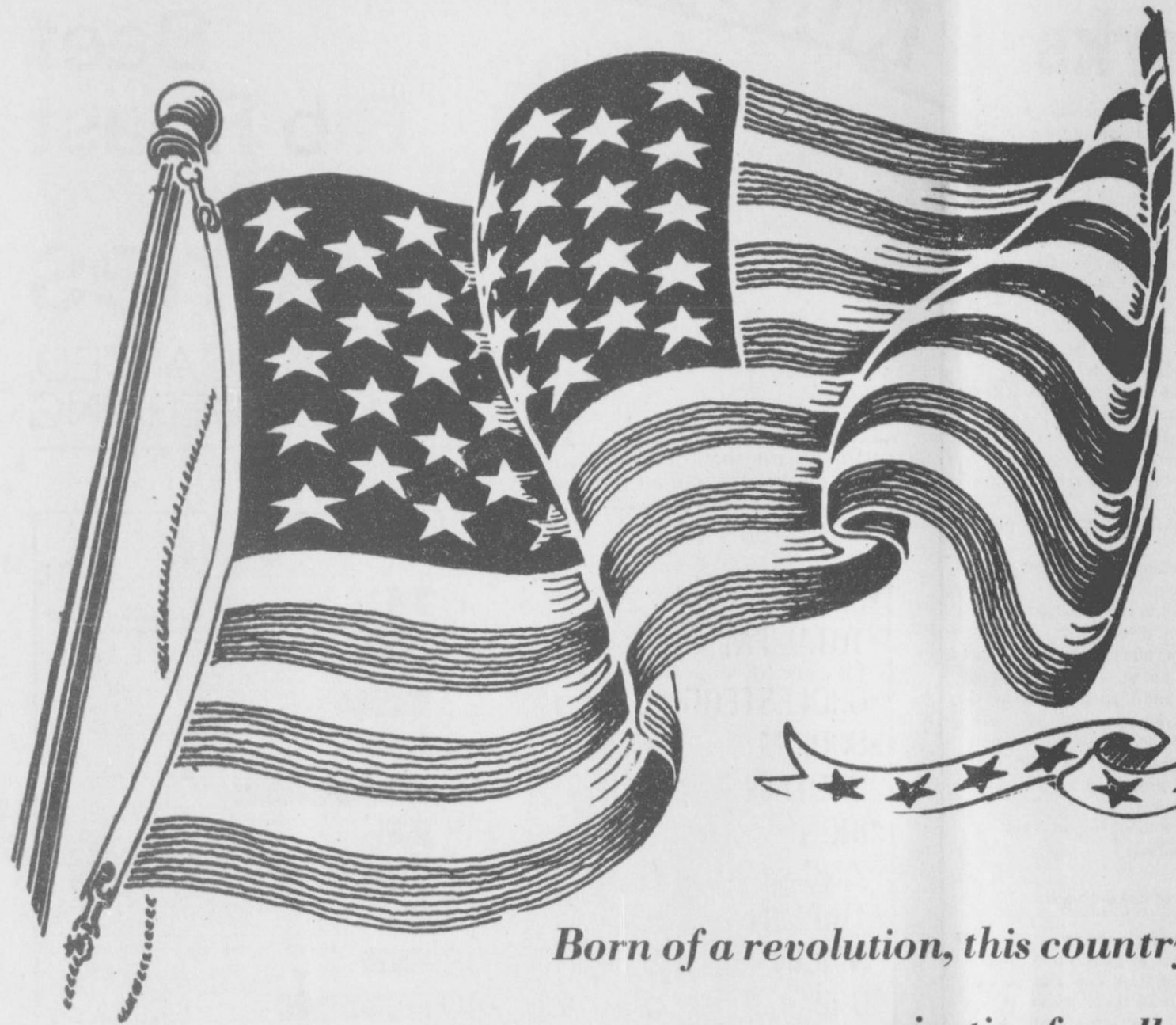
Your Choice

Prices good at participating CARQUEST Auto Parts Stores thru July 6, 1986.

GRUVER FARM SUPPLY

515 Main Gruver - 733-2427

CARQUEST: the Right Place to buy Auto Parts



JULY 4th

A Time to Repledge

Ourselves...



Born of a revolution, this country began with a pledge: liberty and justice for all. Now...we, the

American people, are still striving for these goals. it's easy to find fault...but it takes dedication and unity to bring about change, as our forefathers did. We have the freedom now to do it peacefully. Let's celebrate that freedom...and honor our nation for what's been achieved...let's join together ...with a renewed sense of purpose...to reach our goals.

The Gruver State Bank invites you to join in the 4th of July Celebration in Gruver.



Gruver State Bank

3 Main Plaza
Gruver, Texas

733-5061



- JULY 4 - 9:30 a.m. - Gruver City Park Bicycle Parade & Race
- 11:00 a.m. - Turtle Race
- 11:30 a.m. - Boot Scramble
- 11:30 - 1:30 p.m. - Barbeque - \$5.00
12 & under - \$3.00
- 11:00 - 3:00 p.m. - Dunking Board
- 1:30 p.m. - Stick Horse Race
- 2:00 p.m. - Watermelon Seed Spitting Contest
- 2:30 p.m. - Balloon Toss
- 2:30 p.m. - Men's Tug O War
- 3:00 p.m. - 3 Legged Race
- All Day Activities - Liberty Train, Water Polo, Horse Shoes & Washers, Copper Mine, Jail House, Pillow Roll
- Booths - Baked Goods, Cokes, Ice Cream & Face Painting
Pop Corn, Snow Cones, Texas Sesquicentennial Balloons
- Raffles - Trip to Six Flags, Cloudscape Painting & Jacob's Ladder Quilt
- JULY 4 - 8:45 p.m. - Gruver Football Field
Fireworks & Program