

Absentee Voting Underway...  
See Sample Ballot... Page 6-9

Ban on haying and grazing  
to be lifted... See Page 8

Lutheran Choir to  
perform at Oslo... See Page 6

24 hr. prayer  
service, 659-2911

# THE GRUVER STATESMAN

VOLUME 14, NUMBER 24

THE GRUVER STATESMAN, GRUVER, TEXAS 79040

THURSDAY, MARCH 21, 1985

And It Is ~~No~~ B.S.! Million-Dollar plant for Gruver

## Gruver will be site of manure plant

By Jove! We Think They've Got It!

### Electrical Stimulation in Reverse

Story compliments of "CALF" News, and Carl Cooper of Gruver, Texas.

by Orville Howard  
Southwest Editor

Construction of two \$80 million generating plants - designed to turn feedlot manure into electricity - is scheduled to begin this year in the heart of the Texas Panhandle cattle feeding industry.

Valley View Corp. of Dallas, a diversified agricultural corporation, said initial groundwork and grading has been completed for one plant at a site 5 miles northeast of Hereford and land has been acquired for a second plant at a site just north of Gruver.

"We're ready to go once we have the transmission arrangements completed between Hereford and Austin," said B.R. Farris of Dallas, manager of operations for Valley View.

These manure-fired electrical plants will be the first such commercial units ever to be built in the world, and each will consume about 65 percent of animal waste from feedlots within a 25-mile radius of each plant, or about half of the large commercial feedlots in the Texas-Oklahoma Panhandle area.

Farris said it will take about two years to build a plant once construction has started, "with the one near Hereford scheduled to begin in mid-summer and the one near Gruver about four months later."

In elaborate ceremonies last November, the City of Austin announced plans to purchase electricity from Valley View, with Texas Gov. Mark White on hand to praise the Austin officials for contracting the new source of energy.

"This contract will contribute substantially to creation of a competitive electric generating industry for Texas, a goal of the state and its leaders, resulting in lower costs for consumers in Austin and around the state," said White during ceremonies at the state capitol.

"Texas agriculture has energy to burn and that's no B.S.," said Texas Agriculture Commissioner Jim Hightower, who gave Gov. White a bag of manure from a cattle feedlot.

Austin Mayor Ron Mullen and Dallas businessman Ed Cox, owner of Valley View Corp., signed a contract for Austin to buy 100 megawatts of power annually produced by the biomass electric generating plant near Hereford.

Hightower said the energy contained in a 1-pound bag of manure more than equalled the energy in a bag of lignite (coal) of the same weight.

"There is certainly no end to the fuel supply," said Hightower. "We have over 2 million tons of manure coming from Texas feedlots every year."

In January, the Texas Cattle Feeders Assn. revealed that the Lone Star state was again the #1 cattle feeding state, finishing out 5.2 million head in 1984. The majority of this production is centralized in the Texas Panhandle.

Initial operation of the Hereford plant calls for a daily intake of 1,500 tons of livestock manure, 325 days a year - or an annual waste consumption of about a half million tons. It is projected to have an 80-person operational labor force, with an annual

payroll of more than \$2.5 million to the Deaf Smith County area.

"This will mean several hundred thousand dollars going directly to the feedlots for the manure annually and an annual operating expenditure of between \$7 and \$9 million," Farris said.

Mike Carr, executive vice president of the Deaf Smith Chamber of Commerce, said the new plant would pump more than \$60 million a year into the South Plains economy.

In complying with all federal regulations, Farris said the generating plant would be very similar to the coal-fueled plants being built by Southwestern Public Service Co. (SPS) of Amarillo.

He pointed out that the environmental quality control of the new plant is in an intricate circulating fluid bed boiler that was first designed by the Alstrom Corp. of Finland to handle waste material from forestry products.

There are now about 12 such commercial plants in operation across Europe, with similar technology being employed in an experimental plant under the jurisdiction of Texas A&M University.

The manure will be fed into the boiler in a way similar to that used to crush coal into local SPS generating plants.

"Because of advanced technology, our environmental control is in the unique combustion process rather than in emission controls," Farris said.

He said Valley View has already contracted enough waste from feedlots in a 25-mile radius of Hereford and Gruver to run the plants. They

will be designed to have an electrical output of 40 megawatts each or about 40,000 kilowatt hours per hour. Each plant will furnish enough electricity for about 35,000 residential homes.

"We will be able to produce electricity as economically as the new SPS plants, and probably a little cheaper," Farris said.

Once under full operation, Valley View will operate a fleet of 20 to 25 trucks for each plant. These 18-wheelers will each have a 25-ton load capacity, with the dump-beds fully covered to eliminate any travel waste.

Farris said that the waste would be stockpiled adjacent to the plants in a tightly controlled manner similar to the way crushed coal is stockpiled by SPS.

"The material will be packed on a hard-surfaced area having positive drainage control in all directions," Farris said.

He said the stockpile will be compacted with steel-tracked dozers as the fuel is brought in. Moisture will be maintained at between 25 and 30 percent.

"At this moisture ratio, there will be no significant dust or odor," said Farris, who pointed out that manure loses most odor emissions at about 50 percent moisture content. Manure contains 88 to 90 percent moisture when it comes from an animal.

Carr called the proposed plant a "giant step" in putting livestock waste to use in energy production.

"We have already built an all-weather road into the Hereford site, fenced the area and completed the initial grading," Farris said. "The plant will be maintained at the high-

est levels of all environmental regulations."

Carr said there are 17 major feedyards in a 25-mile radius of Hereford feeding about a million head of cattle a year. He pointed out that there is one firm processing manure from the Hereford area for organic fertilizer for greenhouses and gardeners in a statewide distributorship. "But this doesn't even take care of one feedlot."

Farris said contracts with the local feedlots call for Valley View to take the waste material directly from the yards and to handle all loading and hauling.

Many feedlots now give away the livestock waste just for the taking, with some even paying to have it removed.

Charles Hoover, manager of the Southwest Feedyard near Hereford, said the new plant "would be the greatest thing that ever happened to the Panhandle cattle feeders."

"We've been spending between \$80,000 and \$100,000 a year to get the manure removed, and now we're going to get about that much for the waste and have it cleaned out for us,"

said Hoover. "And, another thing, we haul our manure off in open trucks, but this new company will be hauling it in covered beds."

"This is what we've been looking for... this is the answer to one of our biggest problems."

Farris said the Deaf Smith County Industrial Development Board has already approved \$100 million in revenue bonds but that the plant would only cost about \$80 to \$85 million to build.

"The plant at Gruver will cost a little more than the one at Hereford," Farris said.

The Hansford County unit near Gruver will also take manure from feedlots in the central Oklahoma Panhandle area near Guymon. ▼

## LAFF!!

Two kids were playing in a manure pile. Someone asked them what they were doing. They said they were making a Texan. They were then asked why they didn't make an Okie. The kids replied they didn't have enough manure!

## HOSPITAL

Patients in Hansford Hospital are Opal Scroggs, Raby Lieb, Thelma Tindell, Elwara Eaton, Kate Farris, and Ora Vanlaningham.

Patients dismissed were Dora Womble, Ruth Garrard, Vernon Morris, Anita Sumner, Clinton Sims, Cassandra Margrave, Herbert Miller, Mildred Daily, Cristina Castro and daughter, Tommie Dorman, Mammie Dry, Kayla Taylor, Edwina Saldivar, and Mark Hardick.

## Keep your dogs up

The City would like to remind residents that during this time of year, the City receives numerous complaints about dogs running at large. The City is already receiving complaints in the South part of town.

If you own a dog, the dog must be kept on your property and must have a city dog tag. The tags can be purchased at the City Hall. State Law provides that all animals must be vaccinated against rabies.

Please see that your animal is complying with the law. This will save you fines which will be the result of your dog running at large.

## Gruver competes at Track Meet



Mark Garcia, left of Spearman, and Brian Hoel, right of Gruver

sprint in competition last weekend at the Stinnett Track Meet.

## Free Mini Health Fair

FREE  
MINI HEALTH FAIR  
GRUVER GOLDEN AGE CENTER  
FRIDAY, MARCH 29, 1985  
9 a.m. - 4 p.m.  
Gruver, Texas

## Gruver child succumbs to burns

A 9-year-old Gruver boy who apparently ignited his clothes while pouring gasoline on a trash fire died Sunday at Parkland Hospital's burn center in Dallas.

Billy Tobin Cantrell was taken by a Life Watch medical plane from Amarillo on March 15 after Gruver Ambulance Service responded to an 11:25 a.m. call from the boy's house about 14 miles southwest of town, according to Police Chief Stephen Gaines.

Gaines said the boy was transferred to a Spearman advanced life support ambulance en route to Spearman before he was flown to Dallas.

Services were held at 11 a.m. Wednesday in First Baptist Church with the Rev. Larry Miller, pastor, and the Rev. Ronnie Travis, pastor of Lee Street Baptist Church in Dimmitt, officiating. Graveside services were at 3:30 p.m. in Castro Memorial Cemetery in Dimmitt. Burial was by Boxwell Brothers Funeral Home in Spearman.

He was born in Hereford and had lived in Gruver 3½ years. He was a member of the First Baptist Church and a third-grade student at Gruver Elementary School.

Survivors include his mother and stepfather, Andy and Kathy Lindsey of Gruver; his father, Ronnie Joe Cantrell of Springlake; a sister, Stacy Jo Cantrell of the home; a stepbrother, Andy Lindsey, Jr., of Sundan, N.M.; two stepsisters, Gay Lee Lindsey and Rainey Beth Lindsey, both of Sudan; grandparents, E. P. and Hazel Calhoun of Dimmitt and Claudie Cantrell of Earth; great-grandmother, Dovie Coleman of Humansville, Mo.; and great-grandfather Andy McAfee of Dimmitt.

## Morley is All-State



Kelon Morley was named to the first team all region and second team all state for his outstanding play during the basketball season.

Gruver boys placed 3rd at the Stinnett track meet over the weekend with 94 points. In the 400 relay, Gruver was 1st with 44.52. Tout placed 1st in the 100. Fry was 1st in the 400 with 51.13. In the 300 hurdles, Rodman was 1st with 41.19. In the 200 Cator was 1st with 23.5. Gruver placed 1st in the 1600 relay with 331.37.

Gruver girls were 6th with 34.5 points. Gruver girls were first in the 1600 relay with 423.93. Gruver JV boys were 7th with 3 points. 8th grade boys were 7th with 33. Gruver 8th grade girls were 3rd with 95 points. Gruver 7th grade boys were 5th with 42 points and the 7th grade girls were 5th with 45 points.

## Annual golf meeting set

The annual meeting of Hansford Golf Club will be held Monday night, April 1 at the Spearman High School. Anyone needing more information should call Ray Gressett, 659-2823.

## MARKETS

WHEAT	\$3.11
MILO	\$4.25
CORN	\$2.95

## Services Pending

Services are pending with Boxwell Brothers in Spearman for Alvin (Speck) Cator, of Gruver, who was dead on arrival at Ochiltree General Hospital in Perryton late Tuesday night. He was en route to the hospital in a Gruver Ambulance.

Details were not available at press time.

Mr. Cator was a longtime Gruver resident.

**Local people attend meet**

A meeting of the Public Responsibility Committee of the panhandle Mental Health/Mental Retardation Regional Center was held in Perryton on Tuesday, March 19th at the Perryton Family Service Center. This committee functions as a review board for all family service centers within the Panhandle Region. Any complaints or other input concerning services at a family service center is reviewed by this committee. This committee also serves as a public forum for new ideas and input from the public concerning local family service centers. Sharon Ellzey is the local appointed member serving on this committee held in Perryton, the local advisory board of the Perryton Family Service Center was also invited to attend and share ideas. Local advisory board members in attendance included Judge Roy McClellan from Hansford County and Judge Jim Shearer from Lipscomb County. Representatives from Hansford County included Mrs. Velma Sanders and Mrs. Myrt Bohannon. Jack Webster represented Lipscomb County and Ochiltree County representatives in attendance were Evelyn Close, Roy Lee and Mary Francis Ellzey.

**Wrestling Club competes**

March 23rd was another great tournament for the Gruver Wrestling club. Ten boys went to wrestle and ten medals were carted home. After a "long" day at Walsh, Colo. the results were as follows:  
6 and under- 50 lb.: Wylee Maupin - 1st. Jason Ward - 4th.  
8 and under- 60 lbs: Ryon Atwood - 1st. Bailey Barkley-3rd.  
8 and under- 65 lbs: Jace Dawson - 1st.  
8 and under- 55 lbs.: Skeeter

French - 4th.  
10 and under- 90 lbs.: Clint Bell - 2nd. Trent Seagler - 1st.  
10 and under 70 lbs.: J.J. Boese - 1st.  
12 and under- 70 lbs.: Chad Brown - 2nd.  
Congratulations boys! Keep up the good work.  
If you would like to watch these wrestlers in action, some of our next tournaments are: Holly, Colo. - April 6. Lamar, Colo. - April 13. Springfield, Colo. - April 20.

**Alpha Mu Psi Meets**

Members of Alpha Mu Psi Chapter met Tuesday, March 19, 1985 in the home of Mrs. Tommy Henson.

The meeting was called to order by President Mrs. Mark Irwin. The minutes of the previous meeting were read by Mrs. Lyle Koons and the Treasurer's report was given by Mrs. Steve Bevell.

The topic for the program given by Mrs. Gregg Breland was election of sorority officers. Following the program, the members elected new Chapter officers for the 1985-86 year. The new officers are President, Mrs. Jerry Hunt, First Vice-President, Mrs. Gregg Breland; Second Vice-President, Mrs. Tommy Henson; Recording Secretary, Mrs. Brad Hart; Corresponding Secretary, Mrs.

Steve Bevell; Treasurer, Mrs. Buddy Lowe; and Chapter Adviser, Mrs. George B. Odom.

Alpha Mu Psi will be sponsoring a Bike-a-thon on Sunday, March 31, 1985 from 2:00 to 4:30 p.m. Proceeds will be given to the Billy Cantrell family.

Members adjourned for refreshments served by the hostess to Mmes: Rick Barkley, Steve Bevell, Gregg Breland, Ray Etheredge, David Grogg, Brad Hart, Jerry Hunt, Tommy Henson, Mark Irwin, Ken Jones, Lyle Koons, Buddy Lowe, George B. Odom, Jim Taliaferro, Benny Wilson, David Armes, Andy Hoel, J.P. TeBeest, and Bob Zimmer.

The next meeting will be April 2, 1985 with Mrs. Jim Taliaferro as hostess.

**LUNCH MENU**

LUNCH MENU  
Week of April 1 - 5  
Monday

Fish  
Mac. Cheese  
Green Beans  
Pudding  
Corn Bread  
Milk

Tuesday

Chili w/ beans  
Crackers  
Cole Slaw  
Donuts  
Milk

Wednesday

Corn Dogs  
Tater Tots  
Tossed Salad  
Cookies  
Milk

Thursday

NO SCHOOL!!

Friday

NO SCHOOL!!

Before the 19th century, British soldiers saluted by tipping their hats. Hand raising as a formal greeting originated among cave dwellers to prove they carried no weapons. In feudal times, an armored knight raised his right arm to lift his helmet visor and to show his friendship by keeping his hand away from weapons. The gesture developed into the military salute.

Give an on-going memorial in memory of your loved one to Stationmaster's House Museum. Tax deductible. Card will be sent to the family.

**CARD OF THANKS**

We want to thank everyone who has helped and supported us in our fund raising project. We especially want to thank the hospital auxiliary for their generous donation of \$2500.00. We want to thank the merchants for their donations for our dance and raffle. So many people have helped us. We sincerely thank every one of you.

Carol Stavlo, R.N.  
Carol Fletcher, R.N.

We feel our dance and raffle to raise money for the birthing bed was a success. Albums were given away during the dance. The following is the list of winners:

Charlie Little - Mixer from Anthony Electric; Kevin Slaton - Cassette Player with Earphones and one tape from T G & Y; Norman Gillmore - \$2500 Gift Certificate from Bunkhouse; Terry Latham - Steak dinner for two from Cattleman's Restaurant; Linda Beeson - Hair Cut and Blow Dry from the Hair Loft; Gary Morrison - Hair Cut and Blow Dry from Vouge; Kari Schneider - 3 Albums from Sound Trax; Sue White - \$25.00 Gift Certificate from J.G.'s; Travis Davis and Debra Russell - Matchabelli for men and Yves Saint Laurent for Women from Gordon's Drug; Tammy Nollner - 1 Free Pizza

from Pizza Hut; Andy Hager - \$25.00 Gift Certificate from Kids' Stuff; Carolyn Winter - Watch, Longines Wittnauer from Hickerson's Jewelers; Dr. Dave Muthali - Meal for Two from Dairy Queen; Charla Roberts - Rack of Ribs from IV's Hungry Cowboy; Rebecca Dillow - Candle Holders from Sacks Third Ave.; Sharon Austin - Spice Rack from Gift Box; Tammy Hart - Vibrating Pillow from Beedy Furniture; Laura Dahl - Estee Lauder Gift Set from Lady Fair; Joann Lee - \$15.00 Gift Certificate from Callaway Flowers; Bart Shapley - 2 Mens Shirts from Cate's Men & Boys Wear; Diana Arjona, Ken Freeman and Vicky Juarez - 3 Cases of Pop from Ideal; Tony Tarango - Cassette Case from Riley Brothers; Larry Dunn - Silk Flower Arrangement from TeBeest Floral; Andy Hoel - 3 Stuffed Rocking Horses from Rexall Drug; Robert Diffie - \$25.00 Gift Certificate from Main Street; Martha Latham - 20' Strand Sterling Silver Beads from Little Tiffany's; Russ Gibbs - 100% Native Cotton Blanket from Cha Lora; Yvone Rios - \$25.00 Gift Certificate from Prairie Chalet; and Rosetta Tindell - \$15.00 Gift Certificate from G & L Candles.

Light travels two-and-a-half times as fast in the air as it does in a diamond.  
© 1985 Suburban Features

**CARQUEST**  
The Right Place to buy auto parts.

**AUTO PARTS STORES**  
TEXAS' largest chain of independently owned and operated auto parts stores is proud to announce America's newest full line of shock absorbers from **PROVEN VALU** manufactured by **MONROE** Auto Equipment Co.

 <p><b>GOOD Heavy Duty XD</b> \$7.99 ea. A 55% increase in ride control area over standard 1" bore shocks.</p>	 <p><b>BETTER Radial XD</b> \$10.99 ea. For the drivers who want longer life and smoother operation out of their radial or bias-ply tires.</p>
 <p><b>BEST Gas Charged XD</b> \$15.99 ea. Providing the ultimate in riding comfort and control, the "Gas Charged XD" is a low pressure gas charged shock absorber which adds a "cushion of air" feeling in your car.</p>	 <p><b>Air Adjustable XD</b> \$59.95 ea. Inflates up to 150psi with vehicle loaded, and deflates to match normal driving conditions.</p>
 <p><b>PV Bruiser XD</b> \$24.95 ea. The Bruiser XD is an extra-duty truck shock absorber that provides a smoother operation by automatically adjusting to road extremes for light trucks, vans, and 4-wheel drive vehicles.</p>	<p><b>SPRAY ON A TUNE UP!</b></p>  <p><b>GUMOUT CARBURETOR AND CHOKE CLEANER</b> \$1.39 13 OZ. Cleans the inside and outside of carburetors, fixes sticking automatic chokes, cleans carb linkage and PCV valves, frees stuck manifold heat controls. Works instantly.</p>
 <p><b>Quaker State Motor Oil Heavy Duty 30wt.</b> 88¢ quart</p>  <p><b>OSX Turbo Motor Oil 10W-30</b> 99¢ quart</p>	 <p><b>ADD TO GAS... STOPS DIESELING FUEL MIX GAS TREATMENT</b> 99¢ 8 OZ. Treats your car as you drive. Works fast in dirty combustion chambers where dieseling is caused. For new and used cars. Disperses water in fuel system.</p>

Check and compare special announcement pricing.

Sale prices good thru Sunday, March 31st.

**GRUVER FARM SUPPLY**

733-2427 515 Main St. Gruver, Texas

**ALLSUP'S CONVENIENCE STORES**

PRICES EFFECTIVE MARCH 28-30, 1985  
GROCERIES, SOFT DRINKS, SNACKS, HOT COOKED FOODS, SELF SERVE GAS-MONEY ORDERS, WHILE SUPPLIES LAST

 <p><b>LARGE SELECTION EASTER BASKETS</b> FILLED WITH EASTER CANDY AND TOYS</p>	<p><b>SMALL SIZE \$5.99</b> <b>MED. SIZE \$6.99</b> <b>LARGE SIZE \$7.99</b> <b>EX. LARGE SIZE \$9.99</b></p>
<p><b>COOKED FOOD SPECIAL AS FEATURED ON TV ALLSUP'S SOUTHWESTERN STYLE</b></p> <p><b>BARBEQUE SANDWICH ON A BUN</b> EACH</p>	<p><b>99¢</b></p>
 <p><b>ASSORTED STYLES GRANDMA'S COOKIES</b> 10 1/2 OZ. BAG</p>	<p><b>\$1.69</b></p>
 <p><b>REGULAR OR ASST. FLAVORS DORITOS TORTILLA CHIPS</b> REG. \$1.49 SIZE BAG</p>	<p><b>\$1.19</b></p>
 <p><b>DECKER ALL MEAT OR BEEF BOLOGNA, SALAMI, P &amp; P LOAF, LIVER LOAF</b></p> <p><b>LUNCH MEATS</b> 6 OZ. PKG.</p>	<p><b>59¢</b></p>
 <p><b>6 OZ. CHOPPED 4 OZ. COOKED</b></p> <p><b>DECKER HAM</b> PKG.</p>	<p><b>89¢</b></p>
 <p><b>BORDEN'S HI-PRO MILK</b> 1/2 GAL. CTN.</p>	<p><b>\$1.09</b></p>
 <p><b>BORDEN'S ICE CREAM SANDWICHES ON DRUMSTICKS</b> 6 PAK</p>	<p><b>\$1.09</b></p>
<p><b>ALLSUP'S FAST AND SAFE MONEY ORDERS</b> UP TO \$299.99 EACH</p>	<p><b>19¢</b></p>
 <p><b>DIET, CAFFEINE FREE, REG. COCA-COLA</b> 2 LITER PLASTIC BOTTLE</p>	<p><b>\$1.19</b></p>
 <p><b>GANDY EASTER EGGS</b> 7 OZ. BAGS</p>	<p><b>99¢</b></p>

# WANT ADS

## SERVICES

New to Area  
Give Us A Try  
Call Your Local  
**USED COW DEALER**  
As Soon As Possible  
659-3544  
659-3545  
1-800-692-4043  
22-rtm

**NOTICE**  
Wallace Monument Co.  
Monuments, Curbing,  
Grave Covers  
Local Representative  
**LEONARD JAMESON**  
Spearman, Texas  
40-rtm

**OSGOOD MONUMENT CO.**  
Amarillo, Texas  
Dealers of Rock of Ages  
Granite, as well as all  
colored granites, marble  
and bronze memorials.  
**represented by**  
**BOXWELL BROS.**  
**FUNERAL HOME**  
**519 S. EVANS**  
**659-3802**

Hansford County  
Planned Parenthood  
412 Davis  
659-2483  
Spearman  
Mon. - Fri.  
8:30 - 12:30

Sewing done—little darling and  
Cinderella dress types a special-  
ity. Call Joy 733-2517.  
nc

Need to oil your wood shake or  
shingle roof? Give it extra life and  
beauty.

Whatever your painting needs  
may be - from taping and textures  
to custom finishes with any coating  
on any surface. We also feature  
energywave insulating paints. Call  
today for a free estimate.

**BEASLEY PAINTING**  
ALLAN 733-2858 JIM 733-2012  
19-rtm

SEARS BLOWN IN ATTIC  
INSULATION. Now 10% off.  
Completely installed. For  
FREE ESTIMATE at your con-  
venience dial 659-2573. Sears  
Roebuck and Co. 517 S. Hwy.  
207.  
50-rtm

WILL CLEAN TAILWATER PITS.  
Reasonable rates 733-2628  
23-4tp

## REAL ESTATE

FOR SALE: New, just finished, 3  
bedroom home with 2 baths,  
double car garage. Roy Edwards  
733-2178. 114 Cooper Ave.  
16-rtm

FOR SALE: 3 bedroom house, 1  
bath on 2 lots. Detached garage.  
On corner, 322 S. Hazelwood.  
\$40,000. Call 659-3873 or 5046.  
19-11tc

FOR SALE: 3 bdrm. house, DR,  
Franklin Fireplace, Utility Room,  
Carport & Shed. 906 King St. Call  
733-2739.  
24-2tc

## LEGALS

The City is accepting sealed bids  
for an Apple II Plus Computer,  
Printer, and accessories. The Com-  
puter can be inspected at the City Hall  
in Gruver. Bids should be clearly  
marked "Computer Bid" on the  
outside of the envelope. Bids will be  
accepted until 10:00 A.M. April 11,  
1985.  
25-2tc

## AUTOMOBILES FOR SALE

FOR SALE: 1981 Cadillac DeVille  
De Elegance. Excellent Condition.  
\$7,500. After 6, call 9-3466.  
23-rtm

FOR SALE: 1978 Ford Fairlane 4 door  
sedan. Reasonable. Contact T.D.  
Sansing or Johnny P. Vernon.  
25-1tp

## SERVICES

Breaking and training horses.  
Jeff Chase 435-5239.  
15-10tc

## BUSINESS OPPORTUNITIES

OWN YOUR OWN JEAN-  
SPORTSWEAR, LADIES AP-  
PAREL, CHILDRENS, LARGE  
SIZE, COMBINATION, WESTERN  
STORE, ACCESSORIES. JORD-  
ACHE, CHIC, LEE, LEVI, EASY  
STREET, IZOD, ESPRIT, TOM-  
BOY, CALVIN KLEIN, SERGIO  
VALENTE, EVAN PICONE, LIZ  
CLAIBORNE, MEMBERS ONLY,  
ORGANICALLY GROWN,  
HEALTHTEX, OVER 1000  
OTHERS. \$7900 TO \$24,900 IN-  
VENTORY, TRAINING, FIX-  
TURES, GRAND OPENING ETC.  
CAN OPEN 15 DAYS. MR.  
KAISER (612) 888-6555.  
25-1tp

Own a beautiful Children's Shop.  
Offering the latest in fashions.  
\*Health Tex \*Izod \*Levi \*Lee \*Chic  
\*Jordache \*Buster Brown and many  
more. Furniture-accessories and toys  
by Gerber and Nod-A-Way.  
\$14,900.00 to \$17,900.00 includes  
beginning inventory-training-fix-  
tures-grand opening promotions and  
two round trip air fares. Prestige  
Fashions 501-329-8327.  
25-1tp

## MOBILE HOMES FOR SALE

**DEALER REPO!**  
3 bdrm. mobile home. 2 baths,  
wood siding, storm windows,  
garden tub, etc. Assume payments  
of \$267.66 with approved credit.  
Includes delivery and installation.  
WE TAKE TRADE - ANYTHING  
OF VALUE!! Quality Affordable  
Mobile Homes, Hwy 60 W.,  
Pampa, 665-0714.  
25-4tc

## TO GIVE AWAY

FREE: Small dwelling located West of  
Moose Lodge Hall to be moved, or  
may be torn down for lumber. Contact  
T.D. Sansing or Johnny P. Vernon.  
25-1tc

## WANTED

NEED GRAZE OUT wheat pasture.  
By the gain or pound. 9-3800 or  
9-3248.  
22-rtm

## FOR SALE

CONCERT QUALITY piano tuning  
and repair. Free estimates. Write  
Elson Clark, Box 1016, Dalhart, Tx.  
79022 or call collect 806-249-2783.  
6-4tp-rtm

FOR SALE: Cakes, pies, bread,  
rolls or cookies. Will take orders  
for Valentines. Birthday Cakes for  
children with novelty characters.  
Call 733-2517.  
16-rtm-nc

FOR SALE: black labrador puppies.  
With shots, \$40.00. 9-2787 evenings.  
25-2tc

Reposessed Baldwin Piano-med-  
ium brown Finish-will show locally-  
low monthly payments can be assum-  
ed with good credit. Ask for Piano  
Credit Manager-Ph. 316-624-8421.  
Brier and Hale Music Co. Liberal, KS.  
25-2tc

FOR SALE: 5 large round, extra  
heavy guage steel grain bins. Located  
West of Moose Lodge Hall. To be  
moved. Contact T.D. Sansing or  
Johnny P. Vernon.  
25-1tc

## NOTICE

**ATTENTION FARMERS**  
If you would like future contract  
on your 1985 wheat or if you have  
any farm-stored grain to sell,  
contact Oles Grain Co., Perryton,  
Texas. 806-435-5449.  
24-rtm

## PUBLIC NOTICE

Guymon Elks Supper Club is  
open to the public. Our hours are  
Wednesday-Thursday 6-10 p.m.  
Friday-Saturday 6-10:30 p.m. We  
have a prime rib special every  
Friday.  
51-rtm

A Molotov cocktail is a homemade  
bomb, consisting of a bottle filled  
with an alcohol mixture, and usual-  
ly with a rag wick. Originally devised  
by Russian civilians for use  
against the invading Nazi army dur-  
ing World War II, the bomb was  
named for Soviet Foreign Minister V.  
M. Molotov.

## CARD OF THANKS

We would like to thank all our  
friends in Spearman and Gruver for  
the prayers, food, flowers, cards,  
visits, memorials and everything that  
was done for us at the loss of  
Bobbi Borunda, who was killed last  
week in an auto accident.

Jesse Borunda & Little Bobbi  
Jim Hutchinson and family

Lo a gradesemos que ustedes  
piencie todos mis amigo Spearman  
and Gruvir por las despensa que  
nos alludaron y flores y tarjetas y  
las visitas memorial y por todo lla  
se acavo por nosotros perdimos  
Bobbi Borunda.

Jesse Borunda & little Bobbi  
Jim Hutchinson & family

The family of A.L. Blankenship  
wishes to express their appreciation  
for all the cards, flowers, memorials,  
prayers, food and other expressions of  
sympathy shown during our recent  
loss.

A special thanks to those who  
prepared and served the noon meal  
for the family.

Pat Blankenship & family  
W.L. Blankenship Family  
Eschol Blankenship Family  
John Blankenship Family  
Tom Dortch Family  
Lynn Davis Family

Our words again seem empty when  
trying to express our appreciation for  
all the kind and generous things you  
do for us each time we lose a loved  
one.

The food, cards, flowers and  
memorials have been overwhelming.  
Gwenfred would have felt as honored  
as we do to be remembered by so  
many of you.

The memorial services, your at-  
tendance and the newspaper articles  
were a lovely tribute to her life and  
memory.

Thank you so much.  
Joel Lee & Joyce and Jeff Lackey  
Janyth, Charles & Chandler Bowers

To everyone who remembered  
the Stationmaster's House  
Museum by their recent memorials  
we say "Thank You". We appreci-  
ate it very much.

Museum Board Members

## The Gruver Statesman

PUBLICATION (USPS 9598-6000)  
GRUVER, TEXAS 79040  
Box 796 659-3434  
Owner-Publisher.....William M. Miller  
Editor.....Joy Henderson, Gruver, Tx.  
Second Class postage paid at Gruver,  
Texas 79040

Any erroneous reflection upon the charac-  
ter of any person or firm appearing in these  
columns will be gladly and promptly  
corrected upon being brought to the  
attention of the management.

POSTMASTER: Send address changes to  
Gruver Statesman, Box 796, Gruver, Tx.  
79040.

SUBSCRIPTION RATE: Hansford, adjoining  
counties, \$13.14 per year.

## MEMBER

## Texas Press Association

Farmers Union is taking con-  
signments for their Annual Farm  
Sale April 2. Consignments must  
be in by March 18 to be on Sale  
Bill. Call: Joe Morris - 733-2132;  
Burton Schubert - 659-2667; Glen  
Lesly - 659-2928; or R. C. Porter -  
659-2035.

Out of State 1-800-338-5871



Office 1-406-338-3378

**GUYMON**  
LIVESTOCK AUCTION  
Box 871 • Guymon, Oklahoma 73742

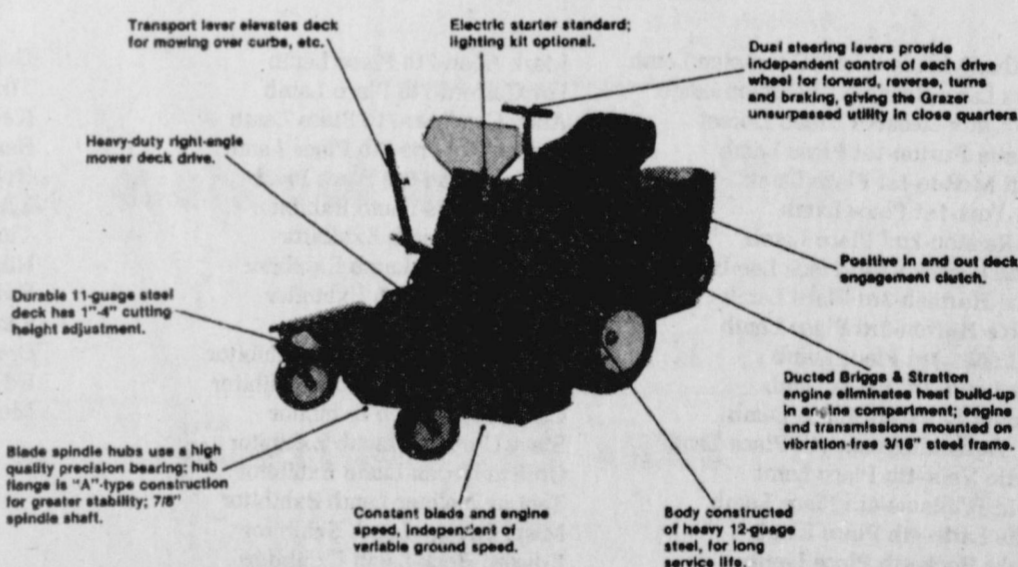
Home Owned and Home Operated

SALE EVERY THURSDAY  
AT 10:00 AM

## Cut Grass and Mowing Time with a

# GRAZER

Model Illustrated:  
G-1142, 11 hp, 42" deck

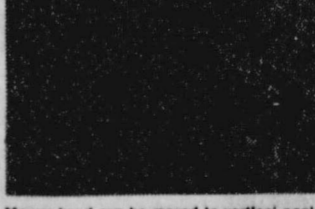


Trims around trees, shrubs and posts in one easy movement.

Mower Deck Sizes Available:  
42-inch; 52-inch; 62-inch  
Briggs & Stratton Engines Available:  
11 hp; 16 hp; 18 hp

For More Information Call

Make your lawn mowing chores a pleasure with a GRAZER mower, scaled down in price and powered for general utility use. The control levers activate twin hydro static transmissions for positive speed, direction and braking control of each drive wheel. Zero radius turns and infinitely variable forward and reverse speeds up to 5 1/2 mph mean easy operation and exceptional maneuverability.



Mower head can be moved to vertical position for easy cleaning and maintenance.



Reach under shrubs and back out of hard-to-reach places.

Zero Radius Turning

"Have Mower Fun"

# GRAZER MOWERS

HERSHEY SALES AND SERVICE  
Phone.....405-487-3402

JIM HERSHEY  
Wichita Falls & First Street

Box 375  
Forgan, OK 73938

# Country Basket

# SALE \$1.69

Crisp, tender, chicken-fried fingers of 100% beef, golden fries,  
Texas toast and creamy country gravy. That's the one and only  
Dairy Queen Country Basket. So come on by for the Texas taste  
that's just this side of heaven - now at a heavenly sale price!

Monday, April 1 thru  
Sunday, April 7



## Property owners need to be familiar with tax process

AUSTIN -- A statewide effort is underway to inform Texas property owners of their rights, remedies and responsibilities as taxpayers, according to Ron Patterson, executive director of the State Property Tax Board (SPTB).

Patterson says SPTB is working with appraisal districts and local news media to help make taxpayers aware of rendition and exemption filing deadlines and methods to obtain exemptions or other forms of tax relief.

"The first priority for property owners is to file renditions and apply for tax relief before May 1 this year," Patterson said. Taxpayers should file all exemption applications and property rendition forms with the central appraisal district office.

A rendition is a report a property owner makes which lists the taxable property he owned or managed on January 1, 1985. A rendition also gives a taxpayer the opportunity to record his own opinion of his property's value. "By rendering a value for his property, the owner makes the appraisal district responsible for notifying him if the district places a higher value on the property," Patterson pointed out.

Certain property owners must render their property. "Anyone who owns or manages income-producing personal property on January 1 is required by state law to file a rendition statement with the appropriate appraisal district," Patterson said.

Special rendition procedures exist for property on which an exemption applicable on January 1 ends during the tax year. In such a case, the person who owns or acquires the property when the exemption ends must render the property for taxation within 30 days.

The chief appraiser may also require rendition of other taxable property upon notice to the prop-

erty owner or manager. Rendition forms are available from appraisal district offices.

For homeowners, tax relief is usually in the form of exemptions. "An exemption lowers tax payments by deducting part of a property's value from taxation," Patterson explained. Homestead exemptions are available for all qualified homeowners, and additional exemptions are available for disabled veterans and for those aged 65 or over. Elderly homeowners who apply for the over-65 homestead exemption also get a cap, or ceiling, on taxes they pay to the school district.

"Likewise," Patterson continued, "farmers and ranchers who qualify may have their land taxed

on its productive value instead of its market value, which also results in a lower tax bill." Productivity valuation comes in two forms, often referred to by the section of the Texas Constitution that provides them: open-space or "1-d-1" valuation and agricultural or "1-d" valuation.

Property owners who last year received homestead exemptions, disabled veterans' exemptions and open-space land (1-d-1) valuation need not reapply in 1985, unless the chief appraiser requests a new application to confirm the owner's current qualification.

Applications must be filed in 1985, Patterson said, by property owners who have not previously received tax relief on their present homesteads or land.

State law also requires farmers and ranchers to apply each year in all appraisal districts for agricultural use (1-d) valuation.

Patterson noted that people whose property is in more than one county appraisal district have an additional responsibility. These property owners may have to file for exemptions and productivity

valuation in each appraisal district in which their property is located. Failure to do so could result in one or more taxing units taxing the property on its full market value.

An example is where a city or school district in two counties has joined only one appraisal district.

Complete information on tax exemptions and rendition requirements is in a pamphlet produced by SPTB. "Taxpayers' Rights, Remedies, Responsibilities!" also tells how a taxpayer can challenge the value placed on his property by making an appeal to the appraisal review board. The pamphlet is available free from appraisal district offices or from SPTB in Austin.

"The property tax is the primary source of local government revenue in Texas," Patterson said. "It will generate about \$9 billion this year to help fund public schools, cities, counties and special districts like hospitals, local colleges, fire protection, water and utilities."

"We urge all property owners to become familiar with the tax process, to file renditions and to apply for all exemptions or other tax relief to which they are entitled," Patterson concluded.

## Local ACS Services Available

The American Cancer Society in Hansford County announced today that it has a variety of services available to cancer patients without charge.

"Many people are unaware of all the services we can provide right here in this town," said Mrs. N. F. Renner, rehabilitation Chairman. "And all that is required in most cases is written permission from the patient's physician."

Loan equipment such as hospital beds, wheel chairs, commode chairs and walkers are available as well as expendable items including dressings, hospital gowns, bed pads, pillows and other items.

"These are all in addition to our basic information and referral services," said Mrs. Renner. "And, depending on location, we also have several rehabilitation programs including Reach to Recovery for mastectomies, esophageal speech lessons for laryngectomies, ostomy rehabilitation and related patient and family support groups."

The concept for these rehabilitation programs is the volunteer-to-patient relationship," added Mrs. Renner. "We have many volunteers who are themselves former patients and who are specifically trained by the Society to help other patients and even their families adjust to living with cancer."

Mrs. Renner cited that when most people think of the American Cancer Society, they relate the name to cancer research. "While it is true the ACS funds millions of dollars for cancer research, we are also a community-based organization providing many local services. These patient services as well as education materials of all types are just a few of the ways we can help."

"Since September, an estimated \$1329.00 worth of services to patients has been utilized in this county already this year, but even more could be done if more patients were referred to us," added Mrs. Renner.

Anyone needing more information on these services may call Mrs. N. F. Renner at 659-2335.

## Moose Lodge sponsors

### Easter Egg Hunt

The Moose Lodge will sponsor their 4th annual Easter Egg Hunt on Saturday, April 6th, at 10:00 a.m.. In case of rain, it will be held Sunday at 2:00 p.m.. There will be 3 prizes in each of two age groups, 6 and under, and 7 and over.

The Easter Egg Hunt will be held east of the High School in Spearman.

All children in Hansford County are welcome.

### Our Heritage of Faith

Before a Christian takes part in the Lord's Supper, the heart is searched so that one approaches the Lord's Table with a sense of repentance (a sorrow for sin, an eagerness to turn). When the celebrant comes to the communion rail, the bread and the wine are then distributed. In most cases, the people come forward to the communion rail or altar reverently but not necessarily somberly, since they are going to a banquet, a feast of new life.

NEXT TOPIC: The Elements.  
Bill Schardin, Pastor  
Faith Lutheran Church

### Xi Psi Kappa meets

Xi Psi Kappa members met March 19, 1985 at the United Methodist Church with Mandy Derrington as their hostess. President Mary Jane Henson presided over the meeting and new officers for the year were elected, they are: President - Linda Venneman, Second Vice-President - Alexa Thoreson, Recording Secretary - Kathy Stedje, Corresponding Secretary - Regina Barkley, and Treasurer - Mary Jo Cluck.

The famed heather honey of Europe is so thick it will not flow out of a jar turned upside down. If the jar is shaken, however, the honey will pour out easily. The phenomenon has a name - thixotropy - and is common in certain jellylike substances.

After the meeting members were served refreshments, which everyone enjoyed.

The hostess gift was won by Mary Jane Henson.

Members present were Mrs. Terry Eling, Kathy Stedje, Alexa Thoreson, Linda Venneman, Diane McLain, Amy Babbs, Mary Jane Henson, Mary Jo Cluck, Lee Harper, Regina Barkley and Kathy Logsdon.

A colleague hit with a bad case of the influenza says that the closest he'll get to the mountains this year is the August view on the travel calendar.

The motto of the state of Maine is "Dirigo," I direct!

## Miss Hansford County Contest May 4

This year's Miss Hansford Contest will be held on Saturday, May 4, in the Spearman High School Auditorium. Any girls who will be sixteen by that date, but who have not yet turned twenty-one is eligible to compete. There will be a Coke Party held for all those interested in participating, and the date will be announced shortly.

The Miss Hansford Escort Contest will again be held in conjunction with this year's pageant. This contest is open to any girls and boys, but will be limited to ten couples. The first ten couples to

have their entry blanks turned in to Jackie Pearson at Kid's Stuff will be accepted. These entry blanks may be picked up from Kid's Stuff anytime during business hours beginning Monday, March 25. The age limits on the contest are that the children be at least four by the date of the contest, but not yet six.

Anyone interested in participating in either of these contests should contact either Jackie Pearson at 659-2608 or Judy Nelson at 659-3424 or 659-3608 for more information.

AGCO of Spearman, Inc. would like to congratulate once again, all the exhibitors who fed AGCO Feed for their stock show projects. Our "\$1.00 a Bag" rebate was just one way of showing our appreciation for your patronage.

### LAMBS

Heather McRee-Grand Champion Lamb  
Karla Latta-Reserve Champion Lamb  
Tina Cator-Reserve Breed Dorset  
Christie Burton-1st Place Lamb  
Heidi McRee-1st Place Lamb  
Kris York-1st Place Lamb  
Rex Ralston-2nd Place Lamb  
Shane Hamish-2nd Place Lamb  
Lance Hamish-3rd Place Lamb  
Debbie Burton-3rd Place Lamb  
Joe Lopez-3rd Place Lamb  
Julie Latta-3rd Place Lamb  
Tommie Latta-3rd Place Lamb  
Jeff Vanlandingham-4th Place Lamb  
Martin Vela-4th Place Lamb  
Kevin Williams-4th Place Lamb  
Leslie Latta-4th Place Lamb  
Brooks Beck-4th Place Lamb  
Brent Wagner-4th Place Lamb  
Chad Gardiner-5th Place Lamb  
Kyla Nelson-5th Place Lamb  
Carla Greene-5th Place Lamb  
Ryan Mathews-5th Place Lamb  
Randie Renner-6th Place Lamb  
Barry Beck-6th Place Lamb  
Kevin Nelson-6th Place Lamb  
Raquel Mathews-6th Place Lamb

Mark Allen-7th Place Lamb  
Joy Gafford-7th Place Lamb  
Allen Gardiner-7th Place Lamb  
Brooke Roberts-8th Place Lamb  
Dean Greene-8th Place Lamb  
Trey Roberts-Lamb Exhibitor  
Gina Hoel-Lamb Exhibitor  
Terry Phillips-Lamb Exhibitor  
Larry Dunn-Lamb Exhibitor  
Jay York-Lamb Exhibitor  
Lynette Williams-Lamb Exhibitor  
Norman Scroggs-Lamb Exhibitor  
Carl Urban-Lamb Exhibitor  
Stacy Gardiner-Lamb Exhibitor  
Christa Urban-Lamb Exhibitor  
Tammy Nollner-Lamb Exhibitor  
Misty Savage-Lamb Exhibitor  
Edward Beck-Lamb Exhibitor  
Marci Roberts-Lamb Exhibitor  
Brady Pool-Lamb Exhibitor  
Bart Baker-Lamb Exhibitor  
Jill Schell-Lamb Exhibitor  
Alan Barnes-Lamb Exhibitor  
Tim Woolley-Lamb Exhibitor  
Brian Hoel-Lamb Exhibitor  
Mathew Hoel-Lamb Exhibitor  
Michele Savage-Lamb Exhibitor

### STEERS

Deana Turner-1st Place Steer  
Tiki Jackson-2nd Place Steer  
Kevin Nelson-2nd Place Steer  
Barry Beck-3rd Place Steer  
Holly Venneman-3rd Place Steer  
Lynette Williams-4th Place Steer  
Chris Strawn-4th Place Steer  
Nikki Strawn-5th Place Steer  
Kyla Nelson-5th Place Steer  
Klint Venneman-5th Place Steer  
Brooks Beck-Exhibitor  
Ed Beck-Exhibitor  
Monte Beck-Exhibitor

### HOUSTON EXHIBITORS

Heather McRee-3rd Place Duroc  
June Hudson-(Dalhart) 3rd Place York  
Karla Latta-14th Place Spot  
Mark Allen-11th Place Spot  
Kris York-15th Place Hampshire  
Karla Latta-10th Place Steer

### SWINE

Randie Renner-Grand Champion Barrow  
Justin Ooley-Breed Champ Duroc  
Carl Urban-Breed Champ-Other P.B.  
Karla Latta-Breed Champion York  
Stacy Gardiner-Reserve Breed OPB  
Chris Brooks-Reserve Breed Cross  
Cody Pipkin-2nd Place Duroc  
Lance Hamish-2nd Place Duroc  
Lance Sparks-2nd Place Hampshire  
Heidi McRee-2nd Place Hampshire  
Kevin Williams-2nd Place OPB  
Jay York-2nd Place York  
Heather McRee-2nd Place Cross  
Clint DeArmond-2nd Place Cross  
Bart Baker-3rd Place Duroc  
Slavin Sparks-3rd Place Hampshire  
Terry Phillips-3rd Place York  
Shane Hamish-3rd Place Cross  
Alan Barnes-3rd Place Hampshire  
Christa Urban-3rd Place Cross  
Bryan Caison-3rd Place Cross  
Carrie Pearson-4th Place Duroc  
Dean Greene-4th Place Hampshire  
Laura Pearson-4th Place York  
Christie Burton-4th Place York  
Kris York-5th Place Duroc  
John Lieb-5th Place Duroc  
Tammy Nollner-5th Place Cross  
Tiki Jackson-6th Place Duroc  
Holly Venneman-6th Place Duroc  
Paul Trospen-6th Place Hampshire  
Shanna DeArmond-6th Place Hampshire  
Monte Beck-6th Place Cross

Trey Roberts-6th Place Cross  
Tina Cator-7th Place Hampshire  
Allen Gardiner-7th Place Hampshire  
Brandi Schneider-8th Place Hampshire  
Martin Lopez-Exhibitor  
Cinda Turner-Exhibitor  
Larry Dunn-Exhibitor  
Marci Roberts-Exhibitor  
Willie Vera-Exhibitor  
Kirby Taylor-Exhibitor  
Mark Pearson-Exhibitor  
Dallas Trospen-Exhibitor  
Brooke Roberts-Exhibitor  
Carla Greene-Exhibitor  
Brady Pool-Exhibitor  
Dusty Hill-Exhibitor  
Todd Martin-Exhibitor  
Mark Allen-Exhibitor  
August Vargas-Exhibitor  
Scott Swan-Exhibitor  
Gina Hoel-Exhibitor  
Carla Burton-Exhibitor  
Beverly Burton-Exhibitor  
Debbie Burton-Exhibitor  
Mike Pearson-Exhibitor  
Rex Ralston-Exhibitor  
Trey Roberts-Exhibitor  
Shannon Pool-Exhibitor  
Jeff Vanlandingham-exhibitor  
Trevor Williams-Exhibitor  
Tim Woolley-Exhibitor  
Ty Martin-Exhibitor

### CONGRATULATIONS

#### ALL EXHIBITORS!!

Jimmy Shieldknight-President  
George Jackson-Secretary-Treasurer  
Randy Coombs-Manager Agco "Buzzard"  
Cecilia Hill-Office Manager

Lloyd Buzzard-Vice-President  
Brice McRee-Vice-Pres. & Gen. Man.  
Bruce Eberhardt-Agco "A"  
Sharion Cook-Secretary



## AGCO OF SPEARMAN, INC.

P. O. BOX 566 • 511 WEST ELEVENTH • 806-659-3751 • SPEARMAN, TEXAS 79081

### OCHILTREE COUNTY EXHIBITORS

#### SWINE

Adrian Garza-1st Place Hampshire  
Jenny Burger-1st Place Cross  
Teresa Blan-2nd Place Hampshire

Jenny Burger-3rd Place Cross  
John Rodgers-4th Place Cross  
Jerold Blan-6th Place Cross

#### LAMBS

Wanda Burton-1st Place Lamb  
Ruby Ochoa-2nd Place Lamb  
Darrell Burton-3rd Place Lamb  
Victor Ochoa-4th Place Lamb

Cindy Burger-4th Place Lamb  
Amy Blan-5th Place Lamb  
John Rodgers-6th Place Lamb  
Scotty Thornton-7th Place Lamb

### Bell announces merger



Gov. Mark White and Jim Adams, president of Southwestern Bell Telephone -- Texas Division, study plans for Bell Communications Research [Bellcore] participation in Microelectronics and Computer Technology Corp. [MCC]. MCC is an Austin-based consortium of companies conducting advanced research in microelec-

tronics and computer science. Bellcore's mission is to provide centralized technical support for the seven regional operating companies formed upon divestiture of the Bell System, including Southwestern Bell. Adams said that benefits from the advanced research will flow directly to all telephone customers.

Southwestern Bell Telephone and the state of Texas have much to gain from the shareholder agreement announced between Austin-based Micro-electronics and Computer Technology Corporation and Bell Communications Research.

"We're excited about the MCC/Bellcore partnership and what it will mean to Southwestern Bell Telephone and its 4-1/2 million customers in Texas," said James R. Adams, president-Texas Division. "We are anxious to apply the knowledge gained from the partnership to further improve our statewide telecommunications network."

Adams' comments were made during Austin ceremonies marking the agreement. Bellcore becomes the twenty-first shareholder in MCC, an Austin-based consortium which conducts long-range research aimed at advances in micro-

electronics and computer science. MCC's shareholders will independently use the results of MCC's research in conducting their own business.

Announcement of the signing was made by Governor Mark White, along with Rocco Marano, Bellcore president, and Adams.

Bellcore, headquartered in Livingston, New Jersey, was established January 1, 1984, upon divestiture of the Bell System. It provides centralized technical support for the operating telephone companies of the seven regions, which include Southwestern Bell, Ameritech, Bell Atlantic, Bell-South, NYNEX, Pacific Telesis and U.S. West.

Bellcore will participate in two of MCC's research projects: Advanced Computer Architecture and Software Technology.

"Benefits from this advanced

research will flow directly to all customers, both business and residence," Adams said. "Besides making available options which customers desire, new technology also helps us operate more efficiently and keep down the cost of providing telephone service."

"Increased efficiency along with revenue generated by new customer services more than pays for the new technology required. Certainly, too, Texans will benefit from the kind of telecommunications system which can support an economic environment necessary to attract new business growth," Adams added.

"In short, we welcome this dynamic new technology-sharing venture. With some of the country's great minds combining to provide knowledge that we can translate into new cost-effective products and services, our ability to provide all Texas customers with quality telephone service is greatly enhanced."

The Hansford Hospital is excited about the recent addition of a birthing bed.

The birthing bed cost \$6500 and is located in this room in Hansford Hospital.

The money was raised thru the Operation-Christmas Greeting headed by Helen Etter.

A benefit dance is scheduled for March 23 from 8 p.m. to midnight at the YMCA. This will be a fund raiser for the birthing bed. Music will be by Ken Freeman's P.M.E.

Everyone is welcome.

At press time there have been five mothers who have used the birthing bed. Deanne Latham delivered their son Anthony; Beth Swink delivered Lori Nicole; Mitzie Medley delivered a daughter Sara Drucilla Mae; and Magdalena Estrada delivered a son, Carlos. Christine Castro delivered a baby Thursday named Annabel Loe.

Proud fathers are Terry Latham, Anthony Swink, Douglas Medley, Dionicio Estrada and Vincent Loe.



Lindee Bradley, Marci Roberts, Debbie Hathaway, Brooke Roberts, and Manda Winger were

served refreshments during Open House by Joanna Reynolds. These girls will be F.H.A. students in a

few years and are finding out what to expect in the Home Ec department taught by Cathy Potts.



Several mothers and fathers check out their childrens work in Mrs. Hobbs' kindergarten room.

## As long as stock lasts

Michelin	Blems
P205x14	\$64 <sup>62</sup>
P205x15	\$66 <sup>28</sup>
P185x14	\$56 <sup>58</sup>
P175x13	\$54 <sup>60</sup>
P185x13	\$58 <sup>06</sup>
P170x13	\$58 <sup>06</sup>

P235x15xH	Michelin	\$84 <sup>10</sup>
P225x15xH	Michelin	\$79 <sup>90</sup>
P215x15xH	Michelin	\$77 <sup>10</sup>

2-18.4x38 8RJ Kelly  
Tractor \$350<sup>00</sup> Each

### Firestone has an overstock on tractor tires

18.4x38	FR 6 RJ	\$326 <sup>00</sup>	18.4x38	ATFR 6 RJ	\$410 <sup>00</sup>
18.4x38	FR 8 RJ	\$360 <sup>00</sup>	18.4x38	ATFR 8 RJ	\$445 <sup>00</sup>

### Firestone Triumph Passenger Tires

P235x15	\$56 <sup>59</sup>
P225x15	\$52 <sup>88</sup>

### Firestone 721 Tires

P235x15	721	\$76 <sup>95</sup>
P225x15	721	\$73 <sup>10</sup>
P205x15		\$66 <sup>05</sup>
P225x15	DLC RAD	\$47 <sup>50</sup>

coming at you with  
**MICHELIN**  
Tires In Stock

Call  
**Roy Byrd**  
733-2427 or 733-2882

**MICHELIN**  
WE PUT AMERICA ON RADIALS!

Automotive, Tractor-Parts & Supplies Firestone Tires-Irrigation Supplies

## GRUVER FARM SUPPLY

Gruver, Texas

Owner: Roy Byrd

## Lutheran Choir to perform at Oslo



There will be an appearance of the Texas Lutheran College Concert Choir as Oslo Lutheran Church, Star Route 3, on Tuesday, April 2. The choir is scheduled to begin the performance at 7:30 p.m.

The 47-voice choir, under the direction of Dr. Sigurd O. Christensen, presents a concert of choral music from the great heritage of the Church.

Now in its 56th year, the TLC

Concert Choir has appeared in hundreds of cities in the United States and Mexico, and has presented concerts in seven European countries from Norway to Switzerland. It has earned an enviable reputation among both lay and professional musicians.

The famed choir will perform works from a variety of styles, covering several periods of music

ranging from contemporary works to Renaissance composers. Hymn arrangements, motets, spirituals and folk songs are also part of the repertoire. Membership in the choir includes students from seven states as well as overseas.

The public is cordially invited to hear this choir when it sings at Oslo Lutheran Church, (6 miles west and 12 miles north of Gruver.)

## Elderly may file affidavit on delinquent taxes

A taxpayer aged 65 or older may take advantage of a special type of property tax relief—deferred payment of delinquent taxes on his homestead—by filing a sworn affidavit at the Hansford County Appraisal District office.

According to Alice Peddy, chief appraiser of the district, after the "over-65 tax deferral" affidavit has been properly filed, taxing units may not press or initiate delinquent tax suits on the homestead involved as long as the elderly taxpayer owns and resides at that property.

If a lawsuit has already been initiated to collect delinquent taxes on the homestead, an affidavit asserting age and ownership of the property must be filed with the court in which the suit is pending, Mrs. Peddy said.

Mrs. Peddy said that forms for the deferral are available from the Hansford Appraisal District office. The form should be completed and signed by the applicant and his signature witnessed by a notary public or other official authorized to take oaths, she added. The appli-

cant will be required to present proof of age before completing the form.

For the elderly homeowner considering application for tax deferral, Mrs. Peddy stressed that it allows postponing payment, but that a lien remains on the property for delinquent taxes, penalties and interest. "Those amounts continue to accrue during the deferral period," she said. "Once the applicant no longer qualifies for deferral—that is, if he no longer owns or resides at the homestead—all those accrued amounts become due and payable. Taxing units at that time may sue and foreclose on the accrued delinquencies, penalties and interest."

The over-65 taxpayer may pay, or fail to pay, any taxes due on the homestead without altering the protection of the deferral, Mrs. Peddy said.

More information is available by contacting the Hansford County Appraisal District at 709 West 7th Street, Spearman, Tex. 659-5575 or 733-5139.

## Songwriter & singer to perform in Guymon

Victory Center Church, 5th & Quinn, Guymon, Ok. will be sponsoring two special meetings with Janny Grein and Dr. Hilton Sutton next week.

Contemporary Christian songwriter and singer, Janny Grein, will be holding a concert at Victory Center on Thursday, March 21, at 7:30 p.m. Janny has recorded several albums on the Sparrow Record label. Many of the songs she has written have been recorded by other artists, including Kenneth Copeland.

Dr. Hilton Sutton will be speaking at Victory Center on Sunday, March 24, at 10:30 a.m. Dr. Sutton is considered by many to be the nation's leading expert on the relation of current events to the prophetic Scriptures. He teaches a positive approach to the Scriptures concerning end-time events. Hilton has written several books, among them "The Middle East Peace Puzzle", "World War III", "The Pre-Tribulation Rapture of the Church", and a recent study guide to the Book of Revelation.

Pastor Charles Mendenhall extends a welcome invitation to everyone to attend these two special meetings. For more information, you may contact Victory Center Church's office at (405) 338-5616.

## Scholarship Deadline

Junior and senior class high school students who are interested in applying for \$1,000 college scholarships should request applications by May 15, 1985 from the Educational Communications Scholarship Foundation, 721 N. McKinley Road, Lake Forest, Illinois 60045. To receive an application, students should send a note stating their name, address, city, state and zip code, approximate grade point average and year of graduation. Fifty award winners will be selected on the basis of academic performance, involvement in extracurricular activities and need for financial aid.

## Special day for ladies

A SPECIAL DAY FOR LADIES

Luncheon, Style Show,

Color Analysis

March 30, 1985

9 a.m. - 3 p.m.

UNION CHURCH

FAMILY LIFE CENTER

31 S. Endicott

Sherry Phillips will be the guest speaker at Spearman Union Church Saturday, March 30th. Jerry and Sherry Phillips are the pastors of Trinity Church in Tulia, Texas. Sherry will be speaking on the

subject "Bloom Where You are Planted." There will be special music by Heidi Allen, former Miss Top of Texas. Heidi is the daughter of Rev. and Mrs. Gene Allen of

Lamar Full Gospel Assembly Inn, Pampa, Texas. Sherry will be speaking in the morning, followed by a style show by J.G.'s. There will be a noon luncheon and then a color analysis.

Nursery provided for pre-school age children.

No 000

SAMPLE

TRUSTEE ELECTION  
GRUVER INDEPENDENT SCHOOL DISTRICT  
(ELICCION DE REGENTES)  
(DISTRITO ESCOLAR INDEPENDIENTE DE GRUVER)

April 6, 1985

(6 de Abril de 1985)

## OFFICIAL BALLOT (BOLETA OFICIAL)

INSTRUCTION NOTE (Nota de instruccion): Vote for the candidate of your choice in each race by placing an "x" in the square beside the candidate's name. (Vote por el candidato de su preferencia en cada candidatura poniendo una "x" en el cuadro al lado del nombre del candidato).

For TRUSTEE — Vote for two (2):

(Para REGENTE — Vote por dos (2):

Billy Logsdon Jr.

Tony Shapley

## Museum Needs

1. Money
2. Pioneer dresses
3. Old children's clothes
4. Rope bottom chairs
5. Old pine table (small) for Kitchen. May be a home-made one.
6. Wall blackboard from old school.

## Tee Vee Laffs



OKAY, OKAY, LADY! I'LL PULL HIM OUT AS SOON AS THIS INNING'S OVER!

**STIHL...  
The Cutting Edge**

The FS-61E Trimmer. Light, tough, durable. A powerhouse against weeds and brush. Special low prices on Stihl's accessory kits help give you the edge in the battle. And keep it.

FS-61E

Complete Small Engine Repair  
5th St. and Dressen  
Spearman, Tx.  
(806) 659-3826

**STIHL**  
THE WORLD'S LARGEST SELLING CHAIN SAW

SS

## representative schedule

A representative of the Guymon Social Security Office will be in the towns and at the places listed below. This individual will be glad to assist you in filing an application for Social Security Retirement, Survivors, Disability, Medicare, or Supplemental Security Income benefits. If you are unable to visit personally, you may call 338-6527 Monday thru Friday between 9:00 a.m. and 4:45 p.m. except for national holidays.

A representative is available to meet with your club or group for a talk or to answer questions. If desired, write or phone the Social Security Office.

The representative will be in Spearman in the County Commissioners Court Room of the Hansford County Courthouse from 10:00 a.m. Tuesday until 11:30 a.m. on April 2 and 23, May 7 and 28 and June 4 and 25.

Call us for a speaker at your next club or group meeting.

Spring is here and it's time for a  
**Sale at Cross Stitch Corner**  
Everything in the store will be **20% off** next Tuesday, Thursday and Saturday only! March 26, 28, and 30.  
Some items will be up to **50% off**. New items arriving daily. 1 mile east of Spearman High School. Open 10-6  
**659-2480**

Marilyn Cline, owner

**PERFORMANCE TINT™**  
gives you more  
sun control, more driving  
comfort.

A professionally-installed vehicle window film by Madico. Our BEST Performance Tint does more than just tint your windows — it gives you all this — and more!

- KEEPS YOU COOL — Rejects heat better than other tints
- REDUCES EYE STAIN — Cuts glare
- PROTECTS UPHOLSTERY — Reduces sun-fading
- MORE DURABLE — Scratch-resistant and longer-lasting color
- SAFER — Lighter than many traditional tints
- VERSATILE — For automobiles, station wagons, trucks and recreational vehicles
- COLOR-COORDINATED — Gray or bronze to match your vehicle

Other Performance Tint vehicle window films available.  
ASK FOR THE BEST.

**SAFETY GLASS CO.**  
Phone 659-2090  
316 W. Kenneth  
Spearman, Texas

## Let's talk.

Information about your changing telephone service from Gary Stevens, Manager-Community Relations

## Contest set for Texas directory cover

How would you like to see your painting on nine million telephone books in Texas? Now's your chance. Southwestern Bell Telephone is sponsoring a statewide contest to select a painting for use on its directory covers during 1986.

The painting should depict in some way the Texas Sesquicentennial. It might portray significant events or sites in the state's history. It may even include faces of Texas heroes. You are only limited by your imagination.

In announcing the contest, our Texas Division president, Jim Adams, summed it up this way: "Southwestern Bell has played an active role in the state's history and its growth. It just seemed like a natural for us to be involved in celebrating the Sesquicentennial."

### Texas roots go back to 1820s

"We're a Texas company with roots going back to the 1820s. You might say we have grown up together. That partnership continues today. Our 34,000 employees are involved on-and-off-the-job in serving 4½ million Texans in more than 450 communities."

A purchase award of \$5,000 will be paid to the artist whose painting is selected. In addition, the artist will be identified in every phone book which carries the covers. That's about 160 directories with a distribution of almost nine million copies.

Deadline for contest entries is July 1, 1985. No actual paintings are to be submitted. All initial judging will be done from color slides of the artwork.

The contest is open to all Texas residents with the exception of employees and families of Southwestern Bell Corporation and its subsidiaries. School children, college-age students, professional artists and amateurs alike are encouraged to enter.

### No restrictions on artist's medium

There's no restriction on the medium the artists uses — it can be oils, acrylics, water colors, tempera, even crayon. That should make it easy for anyone to enter.

An entry form and contest rules may be obtained by writing to:

Art Contest  
One Bell Plaza  
Post Office Box 225521  
Dallas, Texas 75265.

Send today for all the information. And remember, the contest ends July 1. Good luck!

Look for information in your local newspaper about our Tele-Help booklets. There are five new booklets available at no charge by calling this toll free number: 800-325-2686, extension 86.

Topics for the new booklets were suggested by customers and employees. They include information on: establishing local telephone service... using the telephone to make your home more secure... handling annoying phone calls... choosing among local service options... and, installing home telephone wiring.

The company's Tele-Help program was launched last year to help customers cope with the changes caused by divestiture. To date, almost 2 million booklets have been distributed to Texas customers.

Mostly we've heard positive comments about the program. Customers tell us they want as much information as possible about the changes, especially those which touch their service. That's the reason we're extending the program through the end of this year.

If you're confused about our services or some of the industry changes, chances are we have a booklet that will help. Call today and find out.

Southwestern Bell Telephone  
Texans providing telecommunications for a growing state.

Gary Stevens  
SW Bell Telephone  
714 S. Tyler  
Amarillo, TX 79101

## Taxpayers pamphlet available

Alice Peddy, chief appraiser for the Hansford County Appraisal District, offers district residents a tip to help them save on their property taxes.

According to Mrs. Peddy, a pamphlet available from the district office explains how the property tax system operates in Texas and highlights possible tax savings for property owners.

The State Property Tax Board in Austin publishes "Taxpayers' Rights, Remedies, Responsibilities!" under provisions of the Texas Property Tax Code, Mrs. Peddy said. She noted that the information in "Remedies" applies to property taxes collected by all types of local government - counties, cities, school districts and special districts such as hospitals and municipal utility districts.

Homeowners may qualify for a variety of property tax exemptions offered by taxing units on residence homesteads, Mrs. Peddy said. In Texas, a residence homestead is essentially the house and yard used as the owner's principal residence. The taxpayers' pamphlet explains the exemptions and tells how to qualify and apply for them.

For example, all home owners in a school district are eligible for a \$5,000 general residence homestead exemption. Also, certain disabled taxpayers and those aged 65 or over may qualify for an additional \$10,000 exemption from the value of their homesteads.

"A taxpayer who was 65 or older on January 1 of this year is also entitled to a tax freeze, or ceiling, on the tax bill from the school district on his house and yard," Mrs. Peddy added. "This ceiling is based on the taxes assessed when a taxpayer receives the over-65 school homestead exemption for the first time. The ceiling remains the same as long as the elderly taxpayer owns the homestead, or unless he makes an improvement like a swimming pool or an addition

to the house."

The chief appraiser pointed out, though, that elderly homeowners need not apply again this year if they obtained the exemption and tax freeze from the school district last year. Only those who became 65 during 1984 and those who have never had the exemption and freeze must apply for 1985.

Homeowners may also be eligible for a \$3,000 general homestead exemption from the county if the market roads and/or flood control.

Mrs. Peddy said that any taxing unit may also decide to offer a general "percentage" homestead exemption which can be granted this year for any percentage up to 30 percent off the appraised value of residence homesteads.

The taxpayers' pamphlet also describes other exemptions which are available in this district, upon application, to disabled veterans and to other disabled citizens or those aged 65 and older.

Another type of tax relief explained in the pamphlet is the special productivity valuation available to landowners. If the owner and the land qualify, agricultural "1-d" and open-space "1-d-1" acreage may be taxed on its value based on what the land produces rather than on what it would sell for in the open market.

Owners of land taxed last year on its productivity value under 1-d-1 open-space provisions do not have to reapply, unless requested in writing by the appraisal office to do so. However, landowners must apply before May 1 this year for 1-d agricultural-use valuation, or if they have not previously received either kind of productivity valuation.

"More complete information on special land valuation, tax renditions and exemptions is available from appraisal district personnel as well as in the pamphlet," Mrs. Peddy said.

She said that the "Remedies" pamphlet also contains information

about the appraisal review board (ARB) which examines appraisal records and hears appeals to be sure property values in the district are equal and uniform. This section of the pamphlet outlines the steps for making an appeal to the ARB and ways to prepare and present the protest.

"We urge our residents to read the pamphlet and make any applications they need to get all the tax relief to which they are entitled," the chief appraiser said. "Remember, applications must be filed with the appraisal office before May 1."

Mrs. Peddy encourages the taxpayers to obtain any of the above mentioned information from the appraisal district. The office is located at 709 West 7th Street in Spearman, Texas. The office is open Monday through Friday from 8:30 to 5:00 or you may call 659-5576 or 733-5139 and request the information to be mailed.

## Junior High

### Calendar

#### April

1985

Thursday, April 4, 1985: In-Service-No School.

April 5 - 8: Easter Holidays.

Friday, April 12, 1985: 6 Weeks Test: English/L.A.

April 12 - 13: Spearman Junior High Track.

Monday, April 15, 1985: 6 Weeks Test: Math, S.S., Computer Science, Computer.

Tuesday, April 16, 1985: End of 6 weeks.

Monday, April 22, 1985: Junior High District Tennis-Booker.

Tuesday, April 23, 1985: Finals-Jr. High District Tennis-Canadian.

April 24 - 25, 1985: S.R.A. Test.

Monday, April 27, 1985: Junior High District Track-Booker. Boys and Girls.

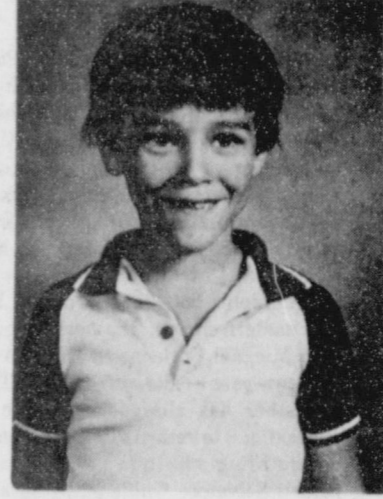
...

The fact that marriage can survive the breakfast table is due either to true love or to not putting on one's glasses until later.

## Twins summer Style Show on March 30



JERRY DON MULLINS



TERRY DEAN MULLINS



DAVID & DANIEL COTTER, 2 1/2 month old twins from Gruver.

Tristate Twosomes, Mother of Twins Club, will be hosting their SECOND ANNUAL TWIN SUMMER STYLE SHOW on March 30 at the 6th grade auditorium at 8th and Academy, Guymon.

Twenty-eight sets of twins will be modeling spring fashions from Brystrs Young Fashions in Guymon and Main Street Store in Gruver. The models are from eight different towns in the tristate area.

Terry and Jerry Mullins, 8 1/2

years old and David and Daniel Cotter (the youngest set of twins) are two out of five sets of twins from Gruver participating in the 2nd Annual Twins Summer Style Show held in Guymon Saturday, March 30 at 7:00 p.m. at 8th & Academy. Proceeds go to the Sandy Price Scholarship Fund. Tickets can be bought from parents of twins and from the Allsup Store in Gruver.

Tickets are on sale by Tristate Twosomes members or can be bought at the door. Buy a ticket early so you can be sure to have a seat! The cost is \$2.00 for adults, \$1.50 for students and \$.50 for 2-5 year olds.

Half of the proceeds will be donated to the Sandy Price Scholarship Fund. This is a scholarship that will be given to a Senior or Seniors from Hugoton High School.

Danny and Sandy Price had a set of boy/girl twins on May 15, 1984. Drew weighed 1 lb. 11 ozs. and Heather weighed 2 lbs. 2 ozs. They were approximately 2 1/2 months premature. The twins weighed just over 12 pounds at age 10 months and are doing fine.

Danny set up the Sandy Price Scholarship fund after Sandy died on Jan. 3, 1985 of Hodgkins disease.

If you would like more information or tickets reserved, contact Melyn Johnson at 405-339-7109 in Guymon.

JEAN E. SHOTTS

ROBERT E. HOLLMANN

The Law firm of  
**SHOTTS & HOLLMANN**  
Attorneys & Counselors

wishes to announce

the opening of a new office

at 410 Davis Street

Spearman, Texas 79081

Office Hours:  
9:00 a.m. to 5:00 p.m.

Telephone  
(806) 659-2939

### NOTICE

On page 40 of this week's TG&Y Family Center catalog, the jewelry copy and price was inadvertently transposed. 40% off Entire Stock Gold filled, Sterling Silver or Cubic Zirconia refers to the bottom photo and 50% off Entire Stock 14k Gold refers to the top photo. We regret this error and any inconvenience caused.



# "We can help you retire with a lot of money"

"If you're trying to build yourself a comfortable retirement fund, you should know that you don't have to play the stock market or risk your money on speculative investments anymore. Now, you can retire with a lot of money by betting on a sure thing...an I.R.A. at The First State Bank!

"We just can't give you enough encouragement when it comes to capitalizing on the tax-deferred benefits of this great retirement opportunity!"

"Call us or come see us, and we'll sit down and design an I.R.A. to fit your needs."

## IRA Personalized Computer Profile

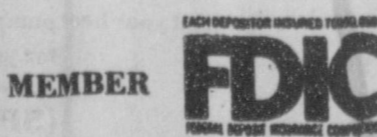
CUSTOMER'S NAME: JOHN D. DOE	AGE 60	VALUE	\$ 480,759.29
CUSTOMER'S AGE: 30	INVESTMENT		60,000.00
TAX BRACKET: 25%	REGULAR ACCOUNT		179,483.24
INTEREST RATE: (.365)	TAX SAVINGS		221,276.05
DEPOSITS PER YEAR: 1	AGE 65	VALUE	674,239.99
COMPOUNDINGS/YEAR: 2	INVESTMENT		70,000.00
FIRST DEPOSIT AMT: \$ 2,000.00	REGULAR ACCOUNT		271,784.40
REGULAR DEPOSIT AMT: \$ 2,000.00	TAX SAVINGS		402,455.59
YEAR	AGE 70	VALUE	1,125,042.96
1	INVESTMENT		80,000.00
2	REGULAR ACCOUNT		406,681.39
3	TAX SAVINGS		718,361.57
4			
5			
10			
20			

IF YOU BEGAN WITHDRAWALS AT AGE 65 YOUR INCOME WOULD BE: \$7,200.77 PER MONTH FOR 15 YEARS



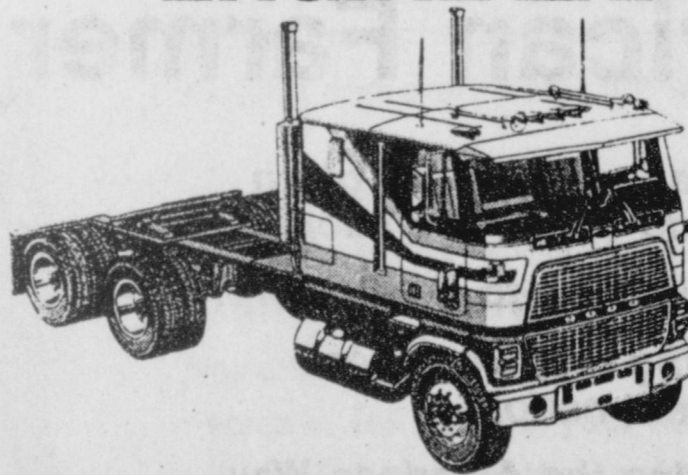
SPEARMAN, TEXAS 79081

1 NE Court

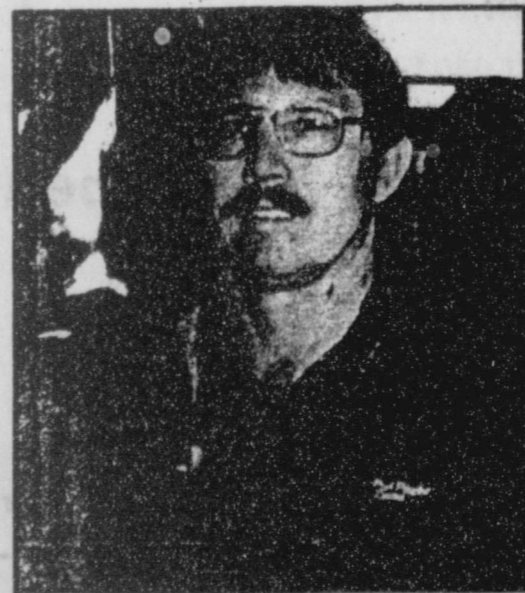
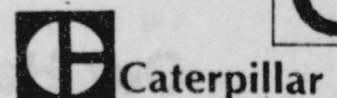


## BOB JOHNSON MOTOR CO. YOUR COMPLETE TRUCK SERVICE CENTER

### DIESEL AND GAS ENGINE EXPERTS



- FACTORY-TRAINED MECHANICS
- CONVENIENT HOURS
- BIG PARTS STOCK
- LATEST DIAGNOSTIC EQUIPMENT
- EXCLUSIVE TRUCK BAYS



Rodney Vaughn

FOR EMERGENCY SERVICE CALL:  
RODNEY VAUGHN  
274-3106

Big trucks are our business.

## BOB JOHNSON MOTOR CO.

106 S. Main

Borger

273-7541

**Karen's Kozy Korner**

Hard-cooked eggs and ham are familiar foods that get special treatment at Easter. It's this "special treatment" of decorating and hiding Easter eggs or serving a fresh ham for a large family gathering that raises questions about food safety.

Consumers commonly have the following questions about food safety for these Easter treats:

**Q:** Is it safe to eat the hard-cooked eggs used in an Easter egg hunt?

**A:** Yes, but they must be handled properly. First, cook hard-cooked eggs in cold water immediately after cooking and then refrigerate until they cool all the way through. If any eggs crack while cooking, don't use them for the hunt since bacteria can easily get through the openings and contaminate the eggs.

When you plan the hiding and hunting of Easter eggs, remember that they should not be out of the refrigerator for more than two hours.

**Q:** How long will hard-cooked eggs keep in the refrigerator?

**A:** Hard-cooked eggs in the shell should be used within one week. Use eggs with cracked shells or those with the shell removed within one day.

**Q:** Is there any danger of trichinosis from hams?

**A:** If you choose a fully cooked ham, there is no danger. They are specially processed according to USDA guidelines to kill trichinae organisms. These hams are ready to eat without further cooking.

If you choose a fresh ham, take extra care in preparation. Cook the fresh ham until the center reaches a temperature of 170 degrees F. To make sure this temperature is reached, insert a meat thermometer in the thickest part of the cut, not touching the bone or fat.

**Q:** How long can ham be safely refrigerated?

**A:** Uncured ham will keep in the refrigerator from 3 to 5 days. It will keep in the freezer from 4 to 8 months.

Cured ham will keep in the refrigerator for one week. Leftover cooked ham that is tightly wrapped and refrigerated 1 to 2 hours after cooking will keep 4 to 6 days. Both uncooked and leftover ham can be kept in the freezer up to two months before losing flavor and texture.

**LIBRARY NEWS**

Library Hours: 2:00-6:00 p.m. Monday thru Friday

Book Review: **THE SICILIAN**  
Fifteen years ago, Mario Puzo wrote a new chapter in publishing history. The Godfather sold more than 15 million copies in the U.S. million copies in the United States alone; the world it depicted won a permanent place in our idiom. Now, with "The Sicilian," Mario Puzo has forged out of history, myth and imagination a book that surpasses his own modern classic. The novel begins with Michael Corleone at the end of his two-year exile in Sicily. The Godfather has charged him with a mission: not to return to America until he can bring with him a young man named Salvatore Guiliano...if he can find him. The story opens out from here into new territory, new dimensions of character, explored with Puzo's familiar power.

Guiliano, like Don Corleone, is a legend in his own time: a bandit, in fact, who at only twenty years of age began his effective rule over most of Western Sicily. A latter-day Robin Hood, he raids from the mountains surrounding Palermo, fighting with his band for the rights of his peasant countrymen against the corrupt government of Rome. With him, sharing the mantle of legend, is his cousin and dearest friend, Aspanu Pisciotta. In a land normally ruled by terror, it is these two who speak and if necessary, kill - in the name of justice.

But Guiliano enters into his deadliest battle not with the police, not with the vast army sent against him by Rome, but with Don Croce Malo, of the Mafia. In Sicily, where the Mafia has its roots, it is the "Friends of the Friends" who are Guiliano's most lethal enemies. In challenging Don Croce's iron grip over the island,

Guiliano sets in motion a war of cross and double-cross in which the loser surely must die. "The Sicilian" is a novel of explosive suspense, heroic action and evil on an epic scale. Here the reader knows again the terrible magic of the Mafia, and the Mr. Puzo's brilliantly sinister talent.

**ATTENTION ELEMENTARY AND JR. HIGH STUDENTS:**

Gruver City Library has received on loan from Amarillo Public Library approximately 50 books for your reading pleasure. Feel free to come in and browse around, and make a selection you will enjoy. These are to be checked out by normal library procedures-two weeks before they are due back in the library.

**Interlibrary Loan Books:**

We will assist you in trying to locate any book you need. Just make your request by author or title, or even on a particular subject if you do not know author or title. Chances of finding the book or books you need are very good, and this service is available for your use at any time. The only fee to you, the patron, is the postage to return the book when you have finished it.

**MICROWAVE LOVERS:**

All you need to know about microwaving is available in this set of books by Barbara Methven:

- 1.) Basic Microwaving; 2.) Microwave Baking and Desserts; 3.) Microwave and the Freezer; 4.) Microwaving Convenience Foods; 5.) Microwaving For One and Two; 6.) Microwaving For Holidays and Parties; 7.) Microwaving Fruits and Vegetables; 8.) Meals in 30 Minutes; 9.) Microwaving Meats; 10.) Microwaving on a Diet; 11.) 101 Microwaving Secrets; 12.) Recipe Conversion for Microwave.

**Union Church presents "The Last Supper"**

The Union Church Choir is sponsoring a living dramatization taken from the famous artist's, Leonardo Da Vinci, picture entitled "The Last Supper," the inner thoughts of the disciples the last night they were with Jesus before Jesus was crucified. The presentation involves thirteen men portraying Jesus and His twelve disciples. There are also numerous people

involved in special music. Full costume will be utilized and special lighting effects will enhance the production.

This special presentation will be at the Spearman Union Church at 31 S. Endicott on March 31st. Palm Sunday at 6:30 p.m.

Public is invited to attend. Nursery provided.

**Ban on haying and grazing to be lifted**

WASHINGTON- Congressman Beau Boulter (R13) announced today that he has received word from the U.S. Department of Agriculture that farmers in areas where severe weather conditions have led to a critical lack of hay supplies will be permitted to hay and graze 1985 acreage conservation reserve (ACR) acres.

"This is a real break for farmers in the 13th," Boulter said. "A lot of our farmers have been hit with a drought, then a freeze, that ruined crops, and they just don't have the money to pay for feed. This exemption will let them hay and graze, and hopefully make it through next winter a little more easily."

Boulter said that he had spoken with Secretary of Agriculture John Block about the possibility of such an exception, and as a result had several other conversations with USDA officials. "In those conversations," Boulter explained, "I have gotten a pretty strong indication that counties in the 13th District will be okayed for the needed permits."

State officials of the USDA's Agricultural Stabilization and Conservation Service will determine which counties are eligible to participate under the special ACR provision. Farmers in the eligible counties need to apply to their local

ASCS county office for permission to hay and graze their ACR acres:

In addition to haying and grazing their ACR acres for their own livestock, Boulter reported, today's ruling permits farmers to allow haying and grazing of their ACR acres by another producer. However, participants using the provision cannot charge for the value of the hay.

"This important decision, made at a time when farmers are in real trouble and need our help, will hopefully alleviate current hay shortages and let producers replenish stocks that are depleted," Boulter said.

**Miss Hansford Pageant set for May 4**

The 1985 Miss Hansford County Beauty Pageant, which will be sponsored jointly by the Women's Division of the Chamber of Commerce and the Chamber of Commerce, will be held May 4, 1985, at the Spearman High School Auditorium. Each Hansford County Merchant and businessman is encouraged to select a girl of their choice to sponsor in the pageant, and to contact her and offer their support in recruiting her to enter the pageant. The success of the pageant depends very much on the participation of the area girls and the merchants and businessmen who support them. Each contestant should be between the ages of 16 and 21 and a resident of Hansford County. The winner of the Miss Hansford Pageant will then be eligible for the Miss Wheatheart contest in Perryton and will be

sponsored by the Chamber of Commerce and Women's Division of the Chamber of Commerce. In conjunction with this pageant, we will be sponsoring a "Miss Hansford County Escort" contest. This will be comprised of boy-girl couples ages 4 and 5. These couples will also have sponsors and the winning couple will serve as the

escort for Miss Hansford County. The sponsor fee for the Miss Hansford County contestant and also the Miss Hansford County Escort contestants will be \$25.00.

As in the past, if you do not wish to participate as a full sponsor, we will gladly accept donations which will be used for flowers and trophies. Printed acknowledgements of the donations will be made in our program.

If, at this time, you have a girl

that you would be interested in sponsoring, you may contact Judy Nelson at 659-3608 or 659-3424 or contact Jackie Pearson at 659-3369

or 659-2608. Your response will be very helpful and greatly appreciated.

We thank you for the support that you have given to the pageant in the past and encourage your continued support in making this pageant a success.



**We put Freedom back in Agriculture...**

*by providing All Risk Crop Insurance protection you can count on!*

- Provides crop investment protection.
- Assures family income and security.
- Allows maximum use of capital.
- Permits expansion.
- Increases borrowing and repayment power.
- Expands professional management capabilities.
- Backstops forward contracting and hedging.
- Promotes peace of mind.
- Helps manage risks.
- Produces cash flow during low crop yields.
- Protects your way of life.

Presented by:



A Mutual of Omaha Company

Marketed and serviced by:



**THE HANSFORD AGENCY**

16 S.W. COURT  
SPEARMAN, TX. 79081

P.O. BOX 608

[806] 659-3888

**A Tribute to the American Farmer**

*"For the many long hours given to feed and clothe the people —  
For the dedication to Free Enterprise —  
For upholding the allegiance to this great nation —  
For preserving the American Way of Life — Freedom"*

**Our Hats are off to you, the Kind of People We Remember!**

**GEBO'S**

... the kind of store you remember.



**Home, Farm & Ranch Stores in**

- AMARILLO BROWNFIELD CLOVIS, N.M. DALHART DUMAS  
ENNIS HEREFORD HILLSBORO LAMESA LEVELLAND  
LITTLEFIELD LUBBOCK MCKINNEY PLAINVIEW

**Those who know best**



Lee Shaver  
Hansford Co. Electric

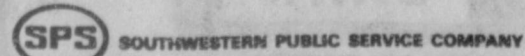
**recommend the heat pump**

**for modern, energy-efficient heating and cooling.**

The top heating and air conditioning contractors in this area recommend the heat pump for its clean, quiet, economical operation. They agree it's the system to bring you comfort now and for a long time to come.

Look to those who know heating and cooling best. They'll recommend the best heat pump system for you.

Contact your heat pump contractor. Or call Southwestern Public Service Company for your free *Heat Pump Buyer's Guide*.





### On the go with Joy

It looks and feels like old times lately. You see, we have a new hobby and we make 3 or 4 trips a day out to the barn and just sit and watch about 100 baby chicks running around. Now I know most of you would think we are a little "tetched" in the head for spending hours at a time with such a dumb hobby. Well, you just ask our 12 year old grandson if it is dumb to waste your time watching them fight over boiled eggs and biscuits etc.

Anyhow, the earliest memories of the animal or bird kingdom was with baby chickens when I would sit for hours catching and hugging the cute little critters and then later on as they grew larger, the afternoon sessions at the feed barrel and rattlesnakes. Then, as I got older, I had the exciting Saturdays with the rake, cleaning out the nests and finding a few rattlesnakes curled up there also. There was also the days we got to watch as Dad chopped the heads off and Mom dipped the chickens in boiling water then handed them to me to "pick the feathers." Really thrilling. Right now I can't remember if I enjoyed eating fried chicken or not, but you don't dare mention to my grandkids, that in a few short weeks, we can start having homegrown fried chicken on the table. Not from our baby chicks we won't. Guess we will stock up on peanut butter and jelly.

Two or three weeks ago, on a beautiful balmy night, parents and grandparents had a chance to visit our public schools for Open House. Sometimes we have the feeling that this is not one of our favorite pastimes and we would rather stay at home than see what goes on with our kids learning experiences. But most of us aren't bothered when we get out in the worst kind of weather to see them in action at sports events. However, there was a good crowd for Open House and everyone was enjoying the evening of visiting with friends and "remembering." I especially enjoyed visiting with Mrs. Maude Alexander who was visiting the Jr. Hi building one more time before re-modeling begins. She stated that one of her children graduated in 1937 and now she had 3 great granddaughters in school. (It has been several weeks since I filed this information away in my brain so I hope I get all these facts straight.)

There weren't as many visitors touring the high school building but several found the computer room at one end of the hall and the refreshments at the other end, and it was easier to chat with the teachers about some of the changes going on in Texas education. We may not agree

#### What is 4-H?

4-H is a unique youth development program, says Karen Harruff, county 4-H program coordinate with the Texas Agricultural Extension Service, The Texas A&M University System.

Here are a few reasons why:

--4-H is real-life experiences: It is learning how to do jobs and make decisions that are important in life.

--4-H is a family affair: There is a place for all members in the family to participate. 4-H reaches and influences others (friends, parents, brothers and sisters) through the boys and girls that participate.

--4-H is flexible: Programs are adopted to fit any individual, any home, and any community. That is part of the fun.

--4-H is working with others: Learning to stand up for what you believe and learning to work with others are important to each person. Early practice in making both personal and group decisions builds for the future.

--4-H encourages members to explore and decide on possible steps which they will follow.

--4-H provides for ownership: Growing, making, caring for, buying and selling are included. Each project "belongs" to the 4-H members.

--4-H is based on science and fact: The resources of Texas A&M University, business, industry and your community are used in developing and carrying out projects and activities.

--4-H is a part of the community: 4-H groups become involved with improving economic and social conditions where members live. They learn how to be good citizens by carrying out community responsibilities.

--4-H is "learning by doing." It is an action program. Participants watch others. They study and experiment, but they also practice and do things themselves. People remember 20 percent of what they are told, 30 percent of what they see, 50 percent of what they hear, 70 percent of what they say, and 90 percent of what they do and think. 4-H offers much thinking and doing.

For more information on 4-H, contact the County Extension office, says Harruff.

with all the changes but hopefully the future promises to keep Gruver at the top.

### Tee Vee Laffs



A cyclone is an atmospheric circulation of winds rotating counterclockwise in the southern hemisphere. Tornadoes, hurricanes and the lows shown on weather maps are all examples of cyclones, with various sizes and intensities. Cyclones are usually accompanied by precipitation or stormy weather.

Most of the benefits of a fad diet go to the sharpie selling the low-calorie come-on.

### Need dust bowl stories

April 14 is the 50th anniversary of "Black Sunday" - the beginning of Dust Bowl days.

We would appreciate any photographs or stories from area residents that pertain to "Black Sunday" or Dust Bowl days.

We hope to use them in the April 13 edition.

### Absentee voting

School absentee and city voting is now underway.

Absentee voting for Spearman and Gruver school trustees will be in the business offices of Spearman, Gruver schools and at the superintendent's office in Pringle-Morse.

The Gruver and Spearman school business offices close at 4:30 and the city halls are open until 5 each week day.

Absentee voting ends April 2 by personal appearance.

Absentee voting for city offices will be at Spearman and Gruver city hall.

The elections will be held April 6 at Spearman High School, Gruver High School and Pringle Morse School.

# "Chariots of Fire"



Lloyd Cator jumps in competition at the Stinnett Track Meet last weekend.

Lance Sparks runs during relay competition at the Stinnett Track Meet last weekend.

## Take Advantage of Our Real Estate Loans, When You're Ready to Improve Your Home



See Roy Lynn Stollings or Roxie Stewart About Home Improvement Loans.

How long have you put that project on the back burner? You've been needing a work room for years. A place where you can work on home repairs and build things that you've always wanted to build. But you keep having to put it off because of braces and school clothes and every other bill in between.

At the First National Bank of Perryton, we know what it's like to make sacrifices. We have a solution: a home improvement loan. Not only will it increase the value of your home, but it will also improve the quality of your life. We think it's time that you finally put some of those pet projects on the front burner. It's time to get more living out of life.

Take advantage of home improvement loans at First Place.



**First National Bank**  
Perryton, Texas  
806/435-3676  
Member FDIC

Sale Ends March 30

# TG&Y

## Family Centers

Copyright 1985, TG&Y Stores Co.



Items Available At TG&Y Family Centers Only.

Hurry in today for super values during our Spring Sale!

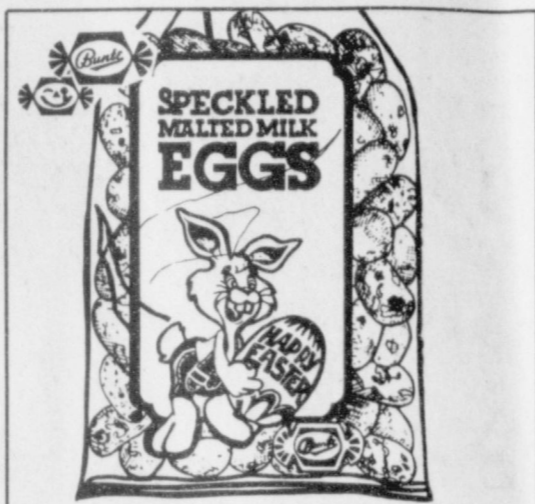
A HOUSEHOLD INTERNATIONAL COMPANY

### Discover 22 more ways to start your spring right!



**1.44** 6 per package  
Reg. 1.66

Reese's Peanut Butter Eggs are a treasure at any egg hunt. Peanut butter and milk chocolate individually wrapped in foil. 7.2 oz. pkg.



**.66** 8 ounce bag

Fill your Easter baskets with Bunte Malted Milk Speckled Eggs. Delicious malted milk covered with a hard candy shell.



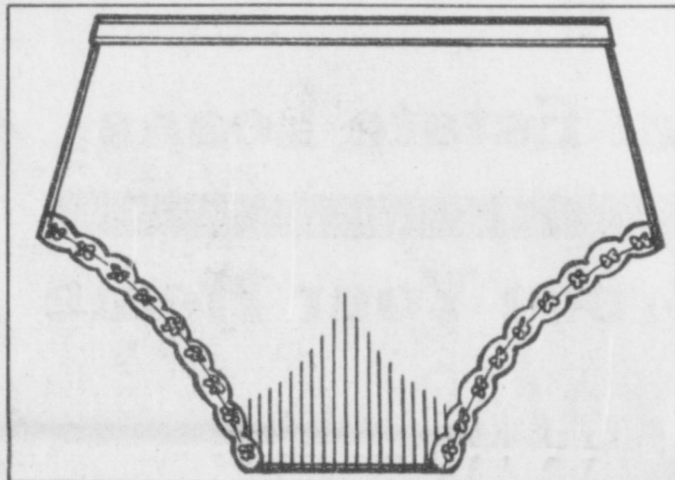
**9.44** Reg. 9.99

Peaches 'n Cream Barbie® is as pretty as a peach blossom in her gown and change-around stole. Accessories included.

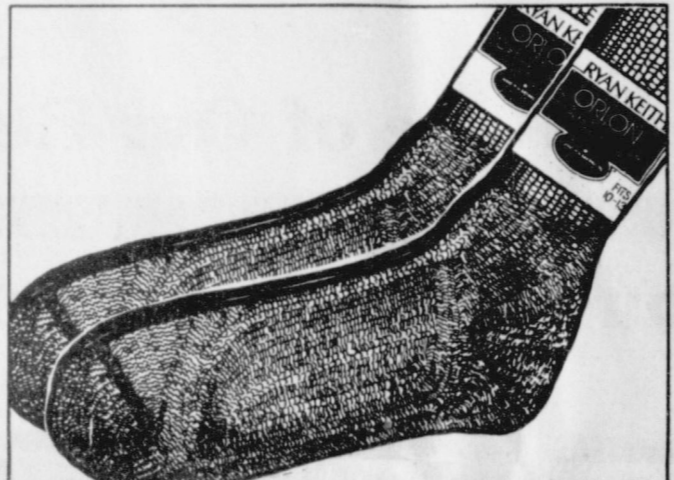


**.99**

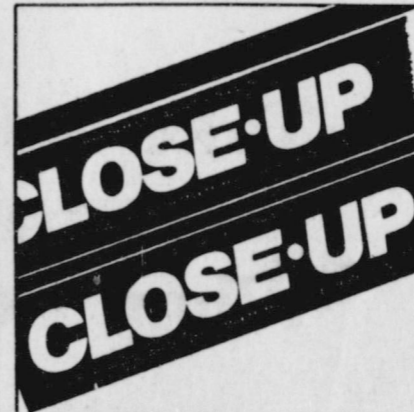
Make a lovely centerpiece with polystyrene Easter Lilies. Choose several clusters to enhance any room in your home.



**.99** each  
Ladies' "Love Pot" Briefs have DuPont Stretch Nylon with Lycra® spandex for 2-way stretch. Assorted colors. Fits sizes 4-7.



**.99** pair  
Men's Crew Socks, hi-bulk Orlon® and stretch nylon in navy, black or dark brown. Fits sizes 10-13. Reg. 1.57



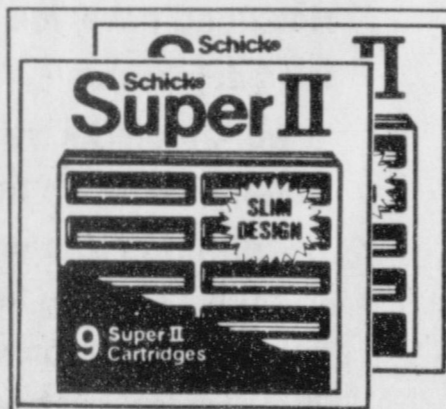
**1.00** 8.2 ounces  
Advanced Formula Close-Up is a super-whitening fluoride toothpaste and mouthwash in one.



**2.29** 32 ounces  
Listerine Dental Rinse with Fluoride for cleaner, fresher breath. Fights cavities, too.



**1.77** Twin Pack  
15 ounces each  
Ivory Shampoo is gentle on your hair. Buy now and get the Conditioner free! Oily, dry or normal formulas.



**2 \$5** 9 per pkg.  
Stock up on Schick Super II Cartridges for a smooth, close shave. The slim design also fits Altra II razors.



**.99** 22 ounces  
Niagara Spray Starch for crisper, fresher clothes. No clogging, flaking or scorching.



**3.22** 4 ounces  
Era Plus Laundry Detergent is concentrated to tackle even the toughest stains.



**3 FOR \$1** 32 ounces each  
Bo Peep Cloudy Ammonia is an all-purpose household cleaner to take on stubborn stains.



**4.99** Reg. 6.99  
Save \$2 on a Disc Print Photo Album designed for disc camera prints. Holds up to 104 photos.



**.99** each  
Storage Containers of corrugated fiberboard. 30x16 1/2 x 6" underbed box or 24x13x10 1/2" utility chest.

Large Assortment of Candles  
**50%** off  
Reg. Price

Mead Envelopes  
100 ct.  
Letter or Legal Size  
**2/\$1.00**

Norelco  
Dial A Brew  
Coffee Maker  
**\$17.99**  
Reg. \$23.99

Westbend  
Free Style  
Cordless Iron  
**\$25.99**  
Reg. \$34.99

Dial  
Deodorant Soap  
**3/\$1.00**  
3.5 oz. Reg. 49¢

Hirsh  
Storage Tower  
**\$10.00**  
Reg. \$18.99

Emerson  
FM/AM  
Digital Clock  
Radio  
**\$13.99**  
Reg. \$19.99

521 Hwy. 207 S. Spearman, Texas 659-3741

TG&Y stands upon your satisfaction. If you are not happy with what you purchase, return it with your sales receipt. We will cheerfully exchange it or fully refund your money. If for unforeseen reasons advertised merchandise is not available, we will be glad to offer you a like item of comparable quality and value when possible. Most advertised items are reduced from our everyday low prices. Some merchandise is in limited quantities and available only while supply lasts. We reserve the right to limit quantities. We will be happy to accept your personal check, MasterCard, Visa or cash. We want you to be glad you shopped TG&Y.





Lions Club Pancake Supper...  
Saturday Night...page 3

Sample Ballots...City  
Page 2

Truck Pick-up fatality  
pictures... Page 10

24 hr. prayer  
service, 659-2911

# THE GRUVER STATESMAN

VOLUME 14, NUMBER 24

THE GRUVER STATESMAN, GRUVER, TEXAS 79040

THURSDAY, MARCH 21, 1985

## Gruver entries sweep livestock show



Trevor Williams of Gruver showed the grand champion steer. Richard Holton of H & H Water Well Service purchased the animal.

### Record crowds from Gruver attend show



Lee Bob Harper with the Gruver 4-H showed the Reserve Grand Champion steer at the Hansford County Livestock Show. The steer was purchased by Bob Cluck of Gruver.



The grand champion barrow was shown by Randie Renner. Mike Cudd, representing Hansford Implement, bought the barrow.



Heather McRee showed the grand champion lamb, Jim Shirley, representing the First State Bank of Spearman, purchased the lamb.



Kim Boone is shown with reserve grand champion barrow.



The reserve grand champion lamb was shown by Karla Latta. The lamb was purchased by Melvin Bradley.

The 1985 Hansford County Livestock Show brought in a total of \$89,239.70 for 4-H and FFA exhibitors. The show was held in Spearman last weekend.

Caprock Feeders set the steer floor price at \$59.25. Davis Livestock of Canyon set the swine floor price at \$41.50 and Estacado Feeders of Dimmitt set the lamb floor price at \$67.50.

The Grand Champion Lamb was shown by Heather McRee. It weighed 128 lbs. and sold for \$5.50 per lb., for a total of \$704.00 to 1st State Bank of Spearman.

Randie Renner showed the Grand Champion Barrow. It weighed 219 lbs. and sold at \$5.50 per lb. Hansford Implement purchased it for \$1,204.50.

Trevor Williams showed the Grand Champion Steer. It weighed 1,270 lbs. and sold for \$2.25 per lb. for a total of \$2,857.50 to H & H Water Well.

The Reserve Grand Champion Lamb was shown by Karla Latta. It

weighed 130 lbs. and sold for \$4.00 per lb. for a total of \$520.00. It was purchased by Melvin Bradley.

Reserve Grand Barrow was shown by Kim Boone. It weighed 224 lbs. and was purchased at \$3.25 per lb. for a total of \$728 by H & M Hot Oil Service.

Lee Bob Harper showed the Reserve Grand Champion Steer. It weighed 1,295 lbs. and was purchased for \$4.00 per lb. for a total of \$5180.00 by Bob Cluck, who donated it to the Childrens Home.

Showmanship awards in the steer category were awarded to: 1st Place - Stephanie Friemel; 2nd Place - Trevor Williams; and 3rd Place - Edward Beck.

Showmanship Awards in barrow category were awarded to: 1st Place - Karla Latta; 2nd Place - Chris Brooks; and 3rd Place - Laneida Burnham.

Lamb Showmanship Awards went to: 1st Place - Lynnette Williams, 2nd Place - Davonna Cator; and 3rd Place

Loyd Cator.

The Farm Bureau Animal Husbandry Award was presented to Joe Lopez, Tim Woolley and Stephanie Friemel.

Breed Champion Dorset was shown by Davonna Cator. It weighed 103 lbs. and was sold for \$5.00 per lb. for a

total of \$515.00. It was purchased by Preston Smith.

Reserve Breed Dorset was shown by Tina Cator. It weighed 91 lbs. and was purchased for \$3.00 per lb. for a total of \$273.00 by Dutch Clawson.

Breed Champ Duroc was shown by Justin Ooley. It weighed 238 lbs

and was purchased for \$1.75 for a total of \$416.50 by Spearman Super Service.

Breed Champ York was shown by Karla Latta. It weighed 218 lbs. and was purchased for \$2.25 per lb. for a total of \$490.50 by Gene Cudd.

Reserve Breed Duroc was shown by Monty Ross. It weighed 244 lbs. and was purchased at \$2.25 per lb. for a total of \$549.00 by Sparks Brothers Drilling.

Shawn Bratton showed the Reserve Breed Hamp. It weighed 242 lbs. and was purchased by Dutch Clawson for \$2.75 per lb. for a total of \$665.50.

Reserve Breed OPB was shown by Stacy Gardiner. It weighed 240 lbs. and was purchased for \$1.90 per lb. for a total of \$456.00 by Ralph McCune.

Reserve Breed York was shown by Brandon White. It weighed 247 lbs. It was purchased for \$2.25 per lb. for a total of \$555.75 by G & S Drilling.

Chris Brooks showed the Reserve Breed Cross. It weighed 234 lbs. and was purchased for \$1.75 per lb. for a total of \$409.50 by Monte Cluck.

1st Lt. Wt. Steer was shown by Marlon Mitchell. It weighed 970 lbs. and was purchased for \$1.10 per lb. for a total of \$1,067 by Continental Grain.

Breed Champ Other Pure Breeds was shown by Carl Urban. It weighed 226 lbs. and was purchased for \$1.25 per lb. for a total of \$282.50 by Hansford Implement.

1st Med. Wt. Steer was shown by Deana Turner. It weighed 1,116 lbs. and was purchased for \$1.40 per lb. for a total of \$1,562.40 by Berry Grain.

Christie Burton showed 1st MW - I Lamb. It weighed 95 lbs. and was purchased for \$3.50 per lb. for a total of \$332.50 by Gruver State Bank.

See Livestock Show

Page 5

**A BIG THANKS TO ALL WHO PURCHASED LIVESTOCK AT THE SHOW LAST WEEKEND**

## Southwestern Bell continues high quality service

Even in the midst of questions and difficulties stemming from the breakup of the Bell System, Southwestern Bell Telephone provided continued high quality service to the company's 4.6 million customers in Texas during 1984.

"Based on standards set by the Public Utility Commission, on our own measurements, and on assessments from others, we provided service at a very high level last year," said Jim Adams, president of the company's Texas Division.

"However," Adams said, "we recognize that the true measure of service is customer satisfaction. We understand that while overall service is good, individual customers still have problems. Therefore, we won't be satisfied until every individual customer is pleased."

Southwestern Bell Telephone added more than 244,000 telephone access lines to serve customers in Texas last year.

Adams said there were many challenges to meet during the company's first year following the largest corporate breakup in history.

"Divestiture was a traumatic experience," he noted. "But our 35,000 Texas employees kept the

level of service in Texas on a steady course during this period of transition."

Adams pointed out that keeping service at high levels, and meeting customer needs, requires substantial investment. In 1985, Southwestern Bell Telephone will invest \$1.2 billion in Texas, the eighth consecutive year the company has invested more than \$1 billion in the state. In 1984, the figure was \$1.05 billion.

"We want to be responsive to the growth needs of the state we serve," Adams said. "Just as people in the Industrial Age settled near waterways and railway hubs, people in the Information Age will flock to the area with the most efficient, up-to-date telecommunications systems. Texas is proving to be that area. We plan to meet these needs."

Southwestern Bell Telephone is responding to the growth in Texas with an increased line of local digital transmission services, improved switching systems and a massive fiber-optic cable installation program.

"These state-of-the-art services and facilities help serve every Texas customer more efficiently,"

Adams said. "At a time when our state is increasing its reputation as a high-tech leader, it takes some Texas two-stepping to meet demands for advanced telecommunications and to hold the line on expenses."

Adams emphasized that Southwestern Bell Telephone's aggressive expense-cutting program will continue into 1985. "In fact," he said, "our expense budgets for 1985 are no longer than 1984 budgets--and the 1984 budgets were very tight."

Texas employees of Southwestern Bell Telephone met the challenge of reducing operating costs last year in many ways, including lowering overtime expense by 33 percent and inventing equipment that allows technicians to restore some service outages about 16 times faster.

Other belt-tightening measures included a reduction of employee force by 1,600 through attrition during 1984 and the use of new technology--such as an audio response system for directory assistance operators--that enables people and equipment to work more efficiently.

"We're proud of the telephone

service we provide in Texas, but we also know that even a single service problem is one too many," said Adams. "That's why we place an emphasis on improving our service and responding to our customers' needs."

During 1984, Southwestern Bell Telephone responded to another important challenge: helping customers deal with the new world of telecommunications after the Bell System breakup by launching Tele-Help, one of the biggest corporate information programs ever.

About 1.6 million Tele-Help booklets have been distributed to Texas customers. The booklets are written in an easy-to-understand, question-and-answer format and are available by calling 1-800-325-2686.

"One very positive aspect of the Bell System breakup has been the explosion of interest in telecommunications," Adams said. "Customers are more interested in what their phones can do for them. That's one major reason why we view the future of Southwestern Bell Telephone as an exciting one. In Texas, we'll do our part to keep on providing high-quality communications service."

## Cancer Center volunteer orientation

The Don and Sybil Harrington Cancer Center is sponsoring a Spring Orientation for individuals wishing to become a volunteer. Sessions will be held at the Cancer Center on April 16, 17 and 23.

Program leaders will discuss the function of a volunteer -- from direct patient care to clinical and office duties. Participants will also

receive an extensive tour of the facility.

For registration information, please call the Don and Sybil Harrington Cancer Center at 378-4697.

Can't wait for our vacation treat. The boss is going away for three weeks.

No 000

SAMPLE BALLOT

CITY ELECTION  
CITY OF GRUVER, TEXAS  
(ELECCION DE LA CIUDAD)  
(CIUDAD DE GRUVER, TEXAS)

April 6, 1985  
(6 de Abril de 1985)

## OFFICIAL BALLOT (BOLETA OFICIAL)

INSTRUCTION NOTE (Nota de instruccion): Vote for the candidate of your choice in each race by placing an "x" in the square beside the candidate's name. (Vote por el candidato de su preferencia en cada candidatura poniendo una "x" en el cuadro al lado del nombre del candidato).

For MAYOR -- Vote for one (1):

Para ALCALDE -- Vote for uno (1):

J. C. Harris

For COMMISSIONER -- Vote for one (1):

Para COMISIONADO -- Vote for uno (1):

Roy Byrd

Give an on-going memorial in memory of your loved one to Stationmaster's House Museum. Tax deductible. Card will be sent to the family.

The sale of sliced bread was prohibited in the United States from 1943 to the end of World War II.

The final episode of "M\*A\*S\*H," on Feb. 28, 1983, drew the largest TV audience in history.

© 1985 Suburban Features

## Benefit dance & raffle

There will be a benefit dance and raffle to help raise money for the birthing bed for Hansford Hospital. It will be on Saturday, March 23, 1985 from 8-12 p.m. at the YMCA Music will be provided by Ken Freeman, PME. The raffle will be during the dance and you do not need to be present to win. For ticket information call Carol Stavio, R.N. at 659-2535 or 882-4476, or Carol Fletcher, R.N. at 659-3761 or 659-3172, or you can purchase tickets at the door. Tickets are \$4.00. The following prizes have been donated by merchants from Gruver and Spearman: ANTHONY ELECTRIC, mixer; DESK SET, 2 reams of paper for printing of

tickets; TG&Y, cassette player with earphones & one tape; BUNK-HOUSE, \$25.00 gift certificate; CATTLEMANS, steak dinner for two; HAIR LOFT, hair cut and blow dry; VOGUE, hair cut and blow dry; SOUND TRAX, 3 albums; J.C.'s, \$25.00 gift certificate; LA CHULA MULA MEXICAN GOODS of Perryton, albums; GORDON'S DRUG, Matchabelli for men and Yves Saint Laurent for women; PIZZA HUT, 1 free pizza; KIDS STUFF, \$25.00 gift certificate; HICKERSON'S, watch, Longines Wittnauer; DAIRY QUEEN, meal for two; HUNGRY COWBOY, rack of ribs; SACKS THIRD AVE., candle holders; GIFT BOX, spice

rack; BEEDY FURNITURE, vibrating pillow; LADY FAIR, Estee Lauder gift set; CALLAWAY FLOWERS, \$15.00 gift certificate; CATES' MEN AND BOYS WEAR, 2 mens shirts; IDEAL, 3 cases of pop; RILEY BROTHERS, cassette case; TEBEEST FLORAL, silk flower arrangement; REXALL

DRUG, 3 stuffed rocking horses; MAIN STREET, \$25.00 gift certificate; LITTLE TIFFANYS, 20' strand sterling silver beads; CHA LORS 100% native cotton blanket; PRIARIE CHALET, \$25.00 gift certificate; JUAN AVILA, 11 albums.



**ALLSUP'S**  
CONVENIENCE STORES

**PRICES EFFECTIVE**  
**MARCH 21-23, 1985**

**BROCCERIES-ICE- MILK- CHIPS & DIPS-  
SOFT DRINKS- SNACKS- HOT COOKED  
FOODS- SELF SERVE GAS-MONEY ORDERS  
WHILE SUPPLIES LAST**

*Spring Opening*

<p><b>ALLSUP'S MONEY ORDERS</b></p> <p style="font-size: 2em; text-align: center;"><b>19¢</b></p> <p><b>WE HAVE MONEY ORDERS SAFE &amp; CONVENIENT UP TO '299"</b></p>	<p><b>HILLS BROS. OR MARYLAND CLUB</b></p> <p style="font-size: 2em; text-align: center;"><b>COFFEE \$2.19</b></p> <p style="text-align: center;">1 LB. CAN</p>
--	---



**POTATO CHIPS**

**99¢**

REG. \$1.39 SIZE BAG

**BARBEQUE, SOUR CREAM & ONION,  
BACON & SOUR CREAM OR REG.**

**RUFFLES**

<p><b>BORDEN'S CHOC. MILK</b></p> <p style="font-size: 2em; text-align: center;"><b>69¢</b></p> <p style="font-size: 0.8em;">QT. CTN.</p>	<p><b>BORDEN'S ASST. FLAVORS ICE CREAM</b></p> <p style="font-size: 2em; text-align: center;"><b>\$1.69</b></p> <p style="font-size: 0.8em;">½ GAL. RND. CTN.</p>
---	---

**COOKED FOOD SPECIAL AS FEATURED ON TV FRESH**

**COOKED BURRITOS 2.99¢**

FOR

<p><b>DIET OR REG. PEPSI-COLA</b></p> <p style="font-size: 2em; text-align: center;"><b>\$1.89</b></p> <p style="font-size: 0.8em;">REG. \$3.44 6 PK. CANS</p>	<p><b>ZEE OR BRAUNY PAPER TOWELS</b></p> <p style="font-size: 2em; text-align: center;"><b>79¢</b></p> <p style="font-size: 0.8em;">(LARGE ROLL)</p>
--	--

# "Tele-Help has the answers to questions about your phone service."

With all the changes going on, it's easy to have questions about your phone service. But where do you go for answers?

Southwestern Bell Telephone wants to help. That's why folks like James Viers have created Tele-Help.

Tele-Help is our way of helping you get the answers you need. It's a program that includes a series of useful booklets about everything from choosing a long distance service to home repair.



James Viers  
Service Representative

They're easy to read and simple to understand. And best of all, they're free.

Just send in the coupon and we'll send you the Tele-Help booklets of your choice. It's that simple. So start getting the answers. Get Tele-Help.

To get your TELE-HELP booklets call 1-800-325-2686, extension 81, Monday-Friday, 8 a.m.-5 p.m. Or, fill out and mail this form to the address on the coupon.

**TELE-HELP--Southwestern Bell Telephone--Drawer 8 Wheeler Station-- St Louis, MO 63188**

To order your free Tele-Help booklets, check here: EXT. 81

<p><input type="checkbox"/> SET I</p> <ul style="list-style-type: none"> <li>A Guide to Your Phone Service</li> <li>A Guide to Your Phone Bill</li> <li>A Guide to Home Phone Repair</li> <li>A Guide to Telephone Equipment</li> <li>A Guide to Long Distance Service</li> <li>A Guide to Saving Money on Phone Service</li> </ul>	<p><input type="checkbox"/> SET II</p> <ul style="list-style-type: none"> <li>A Guide to Home Security</li> <li>A Guide to Establishing New Service</li> <li>A Guide to Inside Wiring in Your Home</li> <li>A Guide to Local Service Options</li> <li>A Guide to Handling Annoying Telephone Calls</li> </ul>
---	---

NAME \_\_\_\_\_

ADDRESS \_\_\_\_\_

CITY \_\_\_\_\_

STATE \_\_\_\_\_ ZIP \_\_\_\_\_

(AREA CODE) \_\_\_\_\_ PHONE \_\_\_\_\_

Check here for Spanish version. Please allow two to three weeks for delivery.



Texans providing telecommunications for a growing state.

# WANT ADS

## SERVICES

New to Area  
Give Us A Try  
Call Your Local  
**USED COW DEALER**  
As Soon As Possible  
659-3544  
659-3545  
1-800-692-4043  
22-rtn

## NOTICE

**Wallace Monument Co.**  
Monuments, Curbing,  
Grave Covers  
Local Representative  
**LEONARD JAMESON**  
Spearman, Texas  
40-rtn

## OSGOOD MONUMENT CO.

Amarillo, Texas  
Dealers of Rock of Ages  
Granite, as well as all  
colored granites, marble  
and bronze memorials.  
represented by  
**BOXWELL BROS.**  
**FUNERAL HOME**  
519 S. EVANS  
659-3802

## Hansford County Planned Parenthood

412 Davis  
659-2483  
Spearman  
Mon. - Fri.  
8:30 - 12:30

Sewing done—little darling  
and Cinderella dress types a speciality. Call Joy 733-2517.  
nc

Need to oil your wood shake or shingle roof? Give it extra life and beauty.  
Whatever your painting needs may be - from taping and textures to custom finishes with any coating on any surface. We also feature energywave insulating paints. Call today for a free estimate.

**BEASLEY PAINTING**  
ALLAN 733-2858 JIM 733-2012  
19-rtn

**SEARS BLOWN IN ATTIC INSULATION.** Now 10% off. Completely installed. For FREE ESTIMATE at your convenience dial 659-2573. Sears Roebuck and Co. 517 S. Hwy. 207.  
50-rtn

**WILL CLEAN TAILWATER PITS.** Reasonable rates 733-2628  
23-4tp

## REAL ESTATE

**FOR SALE:** New, just finished, 3 bedroom home with 2 baths, double car garage. Roy Edwards 733-2178. 114 Cooper Ave. 16-rtn

**FOR SALE:** 3 bedroom house, 1 bath on 2 lots. Detached garage. On corner, 322 S. Hazelwood. \$40,000. Call 659-3873 or 5046. 19-11tc

**FOR SALE:** 3 bdrm. house, DR, Franklin Fireplace, Utility Room, Carport & Shed. 906 King St. Call 733-2739.  
24-2tc

## FOR SALE

**CONCERT QUALITY** piano tuning and repair. Free estimates. Write Elson Clark, Box 1016, Dalhart, Tx. 79022 or call collect 806-249-2783. 6-4tp-rtn

**FOR SALE:** Cakes, pies, bread, rolls or cookies. Will take orders for Valentines. Birthday Cakes for children with novelty characters. Call 733-2517.  
16-rtn-nc

## AUTOMOBILES FOR SALE

**FOR SALE:** 1981 Cadillac DeVille De Elegance. Excellent Condition. \$7,500. After 6, call 9-3466. 23-rtn

## WANTED

**NEED GRAZE OUT** wheat pasture. By the gain or pound. 9-3800 or 9-3248.  
22-rtn

## SERVICES

Breaking and training horses. Jeff Chase 435-5239.  
15-10tc

## BUSINESS OPPORTUNITIES

Own your own jean-sportswear, ladies apparel, childrens, large size, combination, western store, accessories. Jordache, Chic, Lee, Levi, Easy Street, Izod, Esprit, Tomboy, Calvin Klein, Sergio Valente, Evan Picone, Liz Claiborne, Members Only, Organically Grown, Healthtex, over 900 others. \$7,900 to \$24,900 inventory, training, fixtures, grand opening etc. Can open 15 days. Mr. Loughlin (612) 888-6555.  
23-2tp

## PUBLIC NOTICE

Guymon Elks Supper Club is open to the public. Our hours are Wednesday-Thursday 6-10 p.m. Friday-Saturday 6-10:30 p.m. We have a prime rib special every Friday.  
51-rtn

## NOTICE

**ATTENTION FARMERS**  
If you would like future contract on your 1985 wheat or if you have any farm-stored grain to sell, contact Oles Grain Co., Perryton, Texas. 806-435-5449.  
24-rtn

## Zig Ziglar to teach "Goals Seminar"

The Guymon Chapter of the Success-N-Life Club will be sponsoring a "Goals Seminar" taught by nationally known motivational speaker Zig Ziglar on Saturday, March 23, from 9:30 a.m. to 5:30 p.m.

Topics to be covered in the seminar include "Why You Must Have Goals", "How to Set Goals", and "How to Reach Your Goals."

Ziglar's presentation will be presented via satellite in the main auditorium of Victory Center Church, 5th & Quinn, in Guymon. A registration fee of \$60.00 covers the cost of the seminar and materials. For more information, you may contact Karl Kimsey at (405) 338-2637 or 338-5616.

## Lions to host pancake supper

The Lion's Club will host a Pancake Supper at the School Cafeteria on March 23, 1985 from 5:30 - 7:30 p.m.

The purpose of this supper is to raise funds to help build a Softball Park near the Little League field. Cost of tickets are \$4 in advance, or \$5 at the door. Tickets for children 12 and under are \$3 and \$4. Any Lion's Club member will have tickets or you may contact Scot Dahl or Harley Murrell.

Ask any father - no one will ever successfully harness son power.

Some people get so tired from placing the blame that they can't muster strength to accomplish anything themselves.

# Services held for Mrs. Archer



**Gertrude L. Archer**

Gertrude L. Archer, 88 died Wednesday.

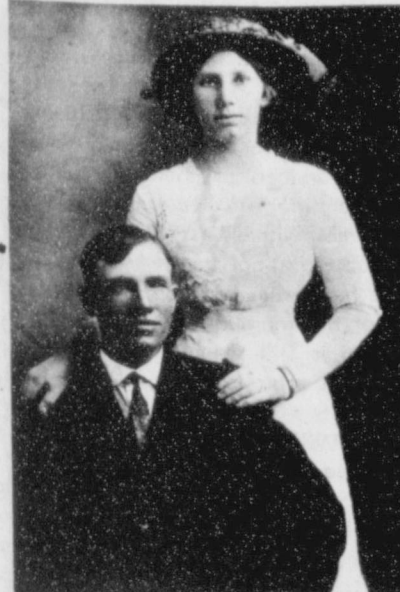
Services were at 2 p.m. Saturday in Church of Christ with Bill Osborne of Altus, Okla., and Gaylord Cook of Spearman officiating. Burial was in Holt Cemetery by Boxwell Brothers Funeral Home.

Mrs. Archer was born near Granite, Okla., and moved to Hutchinson County in 1904. She was a lifetime member of the PTA and was named Citizen of the Year in 1956. She was a member of Hansford County Historical Commission and Spearman Church of Christ. She married Bob Archer in 1913 in Hutchinson County. He died in 1939. Three sons also preceded her in death, Charles Patten in 1944, R. B. in 1947 and Oscar in 1955.

Mrs. Archer donated the land and helped build the Children's Home in Spearman.

Survivors include two sons, Dan of Perryton and Carl of Spearman; two brothers, Dassel Sheets of Dalhart and Riley Sheets of Oklahoma City; two sisters, Opal Cator of Sunray and Ruby Bynum of Fort Worth; nine grandchildren; 24 great-grandchildren; and five great-great-grandchildren.

The family requests memorials be to Stationmaster House Museum or Spearman Children's Home or Holt Cemetery.



**R.B. (Bob), Sr., and Gertrude Archer**

## BOB AND GERTIE ARCHER

R.B. "Bob" Archer, Sr. and Gertrude Lucille Sheets were married on April 6, 1913, and lived on the old Archer homestead for several years. After her mother married the second time, she decided to sell the old Sheets homestead. We bought it and lived there, where we did extensive farming and ranching. We still own and operate this farm, which my father bought in 1904.

We had six sons—R.B., Jr., Dan, Oscar, Carl, Charles Patten, and one son died a few hours after birth.

R.B., Jr. married Gertrude Barkley, and they had two daughters—Sue and Patten Ann. R.B., Jr. died of burns from an accident in the home. Gertrude still lives in Spearman.

Dan married Opal Thomas and they had one son, Scott and one daughter, Danna Kay. Dan is an attorney in Perryton and also does a lot of farming and ranching.

Oscar married Effie Pearl Cluck and they had a son Bobby and a daughter Catherine Patterson. Oscar was killed in a highway accident in 1955. Effie later married Dr. D.E. Hackley, who died in 1975. Effie died June 26, 1979.

Carl married Peggy Garrett and they have two daughters, Mary Frances Dixon and Carla Lee Gumtroy. Carl and Peggy live in Spearman where he owns and operates the Speartex Grain Company and does farming and ranching.

Charles Patten married Estelle Barkley and they had a daughter, Mattie Lou, whose husband is in the Air Force, and they have lived in Spain for three years. Charles Patten was killed in France in 1944 during

# The Gruver Statesman

PUBLICATION (USPS 9598-6000)  
GRUVER, TEXAS 79040  
Box 796 659-3434  
Owner-Publisher..... William M. Miller  
Editor..... Joy Henderson, Gruver, Tx.  
Second Class postage paid at Gruver, Texas 79040

Any erroneous reflection upon the character of any person or firm appearing in these columns will be gladly and promptly corrected upon being brought to the attention of the management.

POSTMASTER: Send address changes to Gruver Statesman, Box 796, Gruver, Tx. 79040.

SUBSCRIPTION RATE: Hansford, adjoining counties, \$13.14 per year.

## MEMBER

# Texas Press Association

## Albert Blankenship

Funeral services for Albert Luther Blankenship were held at 2 p.m. Thursday, March 14, 1985 in the Church of Christ in Gruver with Harold Sued and Elmer R. Adcock, ministers, officiating. Burial was in Lieb Cemetery in Morse by Minton-Chatwell Funeral Directors of Borger.

Mr. Blankenship died Tuesday. He was a native of Marquez. He had lived in the area about 30 years. He was a retired grocer and a member of Gruver Church of Christ. He married Lou Vest Houge in 1933. She died in 1983.

Survivors include four sons, Pat of Adrian, Sonny of Morse, Eschol of Spearman and John of Amarillo; two daughters, Martha Davis and Beth Dortch, both of Morse; three sisters, Bessie Tucker and Ellie Brom, both of Seymour, and Minnie Bench of Plainview; 13 grandchildren; and eight great-grandchildren.

Unheeded diet plans almost always go to waist.

World War II. He was with Patton's Third Army. Estelle married Olin Chambers, who has since died. She resides in Dalhart.  
Bob was killed in a highway accident on February 18, 1939. I still reside in Spearman.  
We had nine grandchildren, twenty-one great grandchildren, and one great-great grandchild. By Gertrude L. Sheets Archer



**Mrs. R.B., Sr., (Gertrude Lucille Sheets) Archer, Dan, R.B., Jr., Carl, Charles Patten, R.B., "Bob," Sr., Oscar.**

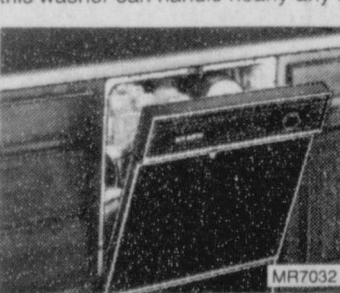
Pictures and story courtesy of Hansford County Historical Society.

# SEARS KENMORE DAYS SALE

MOST ITEMS AT REDUCED PRICES



**Extra-capacity 2-speed Kenmore washer**  
With 8 cycles, 5 water temperature combinations, and variable water level settings, this washer can handle nearly any load.  
**\$369<sup>99</sup>** white



**Built-in 24-in. dishwasher with 3 wash levels**  
SAVE \$160.00 **\$359<sup>99</sup>**



**Tabletop color TV with remote control**  
SAVE \$110 **\$329<sup>99</sup>**



**Extra-capacity 2-temp. Kenmore dryer**  
NOW ONLY **\$289<sup>99</sup>** white



**1.4-cu. ft. capacity microwave with probe**  
SAVE \$170.00 **\$319<sup>99</sup>**



**Console color TV with remote control**  
SAVE \$40 **\$479<sup>99</sup>**

A Special Purchase, though not reduced, is an exceptional value. Each of these advertised items is readily available for sale as advertised. Shipping, installation extra. Many Kenmore models available in colors at an additional cost. Kenmore dryers require connectors not included in prices shown. Sears has a credit plan to fit most any need.

517 S. Hwy. 207  
Spearman, Texas  
Phone 659-2573  
Most merchandise available for pick-up within a few days

STORE HOURS  
9:00 a.m. - 5:30 p.m.  
Mon.-Sat.

Satisfaction guaranteed or your money back ©Sears, Roebuck and Co., 1985  
*There's more for your life at SEARS*

**SUGAR SOFT** — Make your own powdered sugar, especially if you run short in the middle of a recipe. Blend a cup of granulated sugar with a tablespoon of cornstarch and whirl until powdery. If it's superfine sugar you lack, omit cornstarch and pulverize granulated sugar alone.

# Services held for Mrs. Lackey



MRS. GWENFRED JONES LACKEY

Gwenfred Lackey, 90, died Wednesday.

Services were held at 2 p.m. Friday in First United Methodist Church with the Rev. Lane Boyd and Frank Buzzard officiating. Burial was in Gruver Cemetery by Boxwell Brothers Funeral Home of Spearman.

Mrs. Lackey was born on the X Cross X Ranch south of Gruver and was a lifetime resident of Hansford County. She was a retired rancher and banker. She served as director of First National Bank of Guymon, Okla., more than 60 years. She was a member of Hansford County Historical Commission, Blue Monday Bridge Club and First United

Methodist Church. She was a 1969 Guymon Pioneer Day Queen. She was graduated from Guymon schools and Liberty Ladies College in Liberty, Mo. She owned and operated the X Cross X Ranch for more than 50 years. She married Max Lackey in 1924. He died in 1969.

Survivors include a son, Joel Lee of Gruver; a granddaughter, Janyth Bowers of Pampa; a grandson, Jeff of Spearman; and a great-grandchild.

The family requests memorials be to Stationmaster's House Museum or Hansford Manor Auxiliary.

## Flake Wilbanks Reed

Flake Wilbanks Reed, 79, of 1001 N. Spring, died Wednesday.

Services were held at 2 p.m. Friday in Schooler-Gordon Colonial Chapel with Tommy Anderson, of North Seminole Church of Christ, officiating. Burial was in Llano Cemetery.

Mrs. Reed was a native of Johnson County and had lived in Amarillo since 1926. She married Harry F. Reed in 1928 in Amarillo.

She was a member of North Seminole Church of Christ.

Survivors include her husband; two sons, George A. of Eufalla, Okla., and Carl E. of Hereford; two daughters, Tommie Ruth Turner of Lubbock and Carolyn Wright of Amarillo; a brother, J.D. Wilbanks of Spearman; nine grandchildren; and four great-grandchildren.

The family requests memorials be to High Plains Children's Home.

## The Pioneer Day Queen of 1969

### Gwenfred Lackey

Mrs. Gwenfred Jones Lackey was born December 31, 1894 at her father's ranch south of Gruver, Texas. Her parents were Joseph and Bena Jones, prominent ranchers in the Gruver area. In 1906 her family moved to Guymon where Mrs. Lackey attended public school until 1911. The house her father built on Sixth Street east of the main business district of Guymon is still standing. Gwenfred Jones was married to Max Lackey in 1924. One son, Joel Lee Lackey was born in 1932 and still resides on the ranch near Gruver. Joel Lee Lackey and his wife Joyce have two children, Janyth Lee, 11 years old, and Jeffrey Dean, 5½ years old.

Gwenfred Jones Lackey was living in Guymon when Oklahoma became a state. She can still recall the many festivities that took place on that historic occasion. Also Mrs. Lackey vividly recalls a celebration that took place in May of 1910. She explains that her father had shipped some cattle and horses to Guymon that month and a big rodeo and horse race was staged as a cowboys reunion. Mrs. Lackey rode one of her father's horses and won the ladies' horse race that year.

Gwenfred Jones Lackey's father died in 1919. At that time he was serving as president of the First National Bank of Guymon. Upon his death Mrs. Lackey was elected to the Board of Directors of the First National Bank of Guymon and has served on the Board for fifty (50) years.

Mrs. Lackey's hobbies include painting and playing bridge. She also enjoys dancing and until recent years was an avid golfer.

In 1870 her paternal grandmother, who had been widowed in Wales, brought her eight children to Topeka, Kansas, where she believed they would have better opportunities.

That same year, 1870, her maternal grandparents left Germany and arrived in Pittsburgh, Pennsylvania; from there they moved west and finally settled in Topeka, Kansas.

In 1885 Joseph Jones and Bena Bauman were married in Topeka, Kansas, and moved to Mobeetie, Texas. In 1889 Joe and Bena Jones purchased a ranch in Hansford County, Texas, between Gruver and Spearman, Texas, and on this ranch Gwenfred Jones Lackey and her brother, the late Dr. Joseph C. Jones, were born.

Ranching in those early days was a family operation and all members of the family did their share. Mrs. Lackey can recall many times that she assisted in the ranching operations by driving a team, helping to load hay, and other tasks.

Gwenfred Jones Lackey took over the operation of her father's ranch

upon his death in 1919. She now operates the ranch with her son, Joel Lackey.

Gwenfred Jones Lackey is active in church work and belongs to bridge clubs and also is active in the Hansford County Historical Society. She enjoys babysitting with her grandchildren when the need arises.

Nothing goes to seed quite as fast as a crop of beauty contestants.

## Absentee voting

Absentee voting for Gruver Independent School District trustees began Monday, March 18, and will continue through Tuesday, April 2. Anyone needing to vote absentee may do so by stopping by the School Business Office at 600 Garrett on a weekday between 8:00 a.m. and 4:30 p.m. The terms of Billy Logsdon, Jr. and Tony Shapley expire this year. Each of them has filed for re-election.

## Tim Woolley receives FB Award

Spearman FFA member Tim Woolley has been selected to receive the Farm Bureau Herdsman Award. Tim was nominated for the award by FFA advisors David Scott and Gary York. He received a plaque recognizing him as having done an outstanding job

raising his livestock projects and caring for them while enrolled in Vocational Agriculture & FFA at Spearman for 1984-85. Tim is a freshman this year and has raised sheep and swine as his livestock projects. He is the son of Mr. and Mrs. Paul Woolley.

Out of State  
1-800-338-5871
Office  
405-338-3378

Home Owned and Home Operated

SALE EVERY THURSDAY  
AT 10:00 AM

## We'll Help Keep Your Future Safe.



Bruce Julian, Thalua Garner and Debbie Smith  
Trust Officers at First National Bank

### Protect What You Own

You spend most of your life working and putting together important assets. An estate includes your home, farm and ranch property, investments, life insurance and some cherished personal belongings. Have you prepared to pass on those hard-earned assets to people important to you?

### How Does a Trust Protect Your Estate?

A Trust is a special legal way to protect your assets from certain taxes. It can help prevent your property from being tied up in court. It even guards you estate from being mishandled by well-meaning, but inexperienced friends or family members.

### We Offer Twenty-Five Years of Experience To You

Our Trust Department has been helping people take hold of their future for twenty-five years. Bruce Julian, Thalua Garner, and Debbie Smith are Trust Officers who can meet with you at the bank or in your home. There's no cost to talk with them about your needs ... whether you're hard at work today, or ready to retire. Call us.

### We'll Help You Take Hold of Your Financial Future



### Special Occasions

Bridal, formal, tuxedo service.

\*10<sup>00</sup> off all prom dresses with this ad.

715 N. Main                      274-5515  
Borger, Tx.

Farmers Union is taking consignments for their Annual Farm Sale April 2. Consignments must be in by March 18 to be on Sale Bill. Call: Joe Morris - 733-2132; Burton Schubert - 659-2667; Glen Lesly - 659-2928; or R. C. Porter - 659-2035.

### The Cutting Edge

The FS-61E Trimmer. Light, tough, durable. A powerhouse against weeds and brush. Special low prices on Stihl's accessory kits help give you the edge in the battle. And keep it.

Complete Small Engine Repair  
 5th St. and Drossen  
 Spearman, Tx.  
 [806] 659-3826

**STIHL**  
 THE WORLD'S LARGEST SELLING CHAIN SAW

**LIVESTOCK SHOW**

(From Page 1)

Stephanie Friemel showed 1st MH Wt. Steer. It weighed 1245 lbs. and was purchased for \$1.20 per lb. for a total of \$1,494.00 by First State Bank of Spearman.

1st MW - II Lamb was shown by Heidi McRee. It weighed 105 lbs. and was purchased for \$3.50 per lb. for a total of \$367.50 by Luke Pittman.

Tiki Jackson showed the 2nd Lt. Wt. Steer. It weighed 1027 lbs. and was purchased for \$1.30 per lb. for a total of \$1,335.10 by McClay Feedlot.

Kris York showed the 1st MW - III Lamb, weighing 115 lbs. It was purchased by 1st National Bank of Spearman for \$2.75 per lb. for a total of \$316.25.

JoAnne Odegaard showed the 2nd MW Steer, weighing 1104 lbs. It was purchased by Spearman Equity for \$1.20 per lb. for a total of \$1,324.80.

Gary Murry showed the 1st MW - IV Lamb, weighing 118 lbs. It was purchased for \$4.00 per lb. for a total of \$472.00 by Dutch Clawson.

2nd MH Steer was shown by Kevin Nelson. It weighed 1225 lbs. It was purchased for 1.20 per lb. for a total of \$1,470.00. It was purchased by Hansford Implement.

Kalee D. Shook showed the MW - V Lamb. It weighed 126 lbs. and was purchased by Wayne Shook for \$5.25 per lb. for a total of \$661.50.

Clint Sasser showed the 3rd Lt. Wt. Steer, weighing 1030 lbs. It was purchased by Busters Dusters for \$1.20 per lb. for a total of \$1,236.00.

2nd Dorsett Lamb was shown by Kevin Spivey. It weighed 90 lbs. and was purchased for \$8.00 per lb. for a total of \$720.00 by Cluck Straying.

Barry Beck showed the 3rd MW Steer, weighing 1134 lbs. It was purchased by Hansford Implement for \$1.10 per lb. for a total of \$1247.40.

2nd Dorsett Lamb was shown by Michelle Cook. It weighed 122 lbs. and was purchased by Berry Grain Co. for \$5.25 per lb. for a total of \$640.50.

Mark Brown showed the 1st Lt. Hamp Barrow, weighing 244 lbs. It was purchased for \$4.25 per lb. for a total of \$1,037.00 by John Brown, who donated it to Girlstown.

Holly Venneman showed the 3rd MH Steer, weighing 1260 lbs. It was purchased by 1st National Bank of Perryton for \$1.40 per lb. for a total of \$1,764.00.

2nd MW - I Lamb was shown by Rex Ralston. It weighed 102 lbs. and was purchased at \$8.00 per lb. for a total of \$816.00 by Rex Sanders.

Davonna Cator showed the 1st Heavy Cross, weighing 250 lbs. It was purchased by Caprock for \$2.25 per lb. for a total of \$562.50.

Gregg Haight showed the 3rd Heavy Steer, weighing 1292 lbs. It was purchased by Gruver Farm Supply for \$1.40 per lb. for a total of \$1,808.80. Gruver Farm then donated it to the Childrens Home.

Shane Harnish showed the 2nd MW - II Lamb, weighing 107 lbs. It was purchased for \$3.50 per lb. for a total of \$374.50 by Clark Spraying, who donated it to Girlstown.

Cody Pipkin showed the 2nd Lt. Wt. Duroc, weighing 241 lbs. It was purchased for \$2.75 per lb. for a total of \$662.75 by Beedy Furniture, who donated it to the Childrens Home.

Brandon White showed the 4th Lt. Wt. Steer, weighing 1034 lbs. It was purchased for \$1.10 per lb. for a total of \$1,137.40 by Jimmy Greene, who donated it to the Childrens Home.

Bart Baker showed the 3rd Heavy Duroc, weighing 244 lbs. It was purchased by Spearman Super Service for \$2.40 per lb. for a total of \$585.60.

Jason Haefner showed the 2nd MW - III Lamb, weighing 113 lbs. Frontier Feeders purchased the lamb for \$4.25 per lb. for a total purchase price of \$480.25.

Lance Harnish showed the 2nd HW Duroc, weighing 248 lbs. It was purchased for \$2.25 per lb. for a total of \$558.00 by Sparks Brothers Drilling.

Lynette Williams showed the 4th MW Steer, weighing 1070 lbs. Tom Latta purchased it for \$1.20 per lb. for a total of \$1,284.00.

2nd MW - IV Lamb was shown by Brian Payne. It weighed 117 lbs. and was purchased for \$3.25 per lb. for a total of \$380.25 by Continental Grain.

The 2nd Lt. Wt. Hamp was shown by Lance Sparks. It weighed 214 lbs. and was purchased by Dutch Clawson for \$3.00 per lb. for a total of \$642.00.

4th MH Steer was shown by Ginger Sasser. It weighed 1261 lbs. and was purchased by Consumer Sales for \$1.10 per lb. for a total of \$1,387.10.

Chris Morris showed the 2nd MW - V Lamb, weighing 125 lbs. Morris Feedlot purchased it for \$6.25 per lb. for a total of \$781.25.

Rod Karlin showed the 2nd MW Hamp, weighing 241 lbs. It was purchased by Pittman and Sons for \$3.50 per lb. for a total of \$843.50.

Chris Strawn showed the 4th Heavy Steer, weighing 1278 lbs. It was purchased by Gene Cudd for \$1.10 per lb. for a total of \$1,406.80.

Lance Harnish showed the 3rd Dorsett, weighing 86 lbs. It was purchased for \$3.00 per lb. for a total

of \$258.00 by the Spearman Jaycees, who donated it to the Childrens Home.

2nd Heavy Hamp was shown by Heidi McRee. It weighed 246 lbs. and was purchased by Pittman & Sons for \$2.00 per lb. for a total of \$492.00.

Nikki Strawn showed the 5th Lt. Wt. Steer, weighing 940 lbs. It was purchased by the Spearman First State Bank for \$1.20 per lb. for a total of \$1,128.00.

Theron Park showed the 3rd Dorsett, weighing 103 lbs. It was purchased by Gruver Ford for \$3.50 per lb. for a total of \$360.50.

2nd Other Pure Breed was shown by Kevin Williams. It weighed 216 lbs. and was purchased by Spearman Bi-Products for \$1.50 per lb. for a total of \$324.00.

Kyla Nelson showed the 5th MW Steer, weighing 1145 lbs. It was purchased by Frontier Feedyards for \$1.10 per lb. for a total of \$1,259.50.

Debbie Burton showed the 3rd MW - I Lamb, weighing 92 lbs. It was purchased for \$4.50 per lb. for a total of \$414.00 by Cecil Ralston, who donated it to Girlstown.

Will Black showed the 2nd Other Pure Breeds, weighing 247 lbs. It was purchased by Berry Grain Co. for \$1.50 per lb. for a total of \$370.50.

Klint Venneman showed the 5th HW Steer, weighing 1290 lbs. It was purchased for \$1.40 per lb. for a total of \$1,806.00 by Bob Cluck.

3rd MW - II Lamb was shown by Krista Stedje. It weighed 106 lbs. and was purchased for \$5.50 per lb. for a total of \$583.00 by Cluck Feedlots, who then donated it to the Childrens Home.

Travis Patterson showed the 2nd Lt. Wt. York, weighing 220 lbs. It was purchased by First National Bank of Perryton for \$4.25 per lb. for a total of \$935.00.

Loyd Cator showed the 3rd MW - III Lamb, weighing 116 lbs. It was purchased by Bort Ins. for \$3.75 per lb. for a total of \$435.00.

2nd HW York was shown by Jay York. It weighed 231 lbs. and was purchased by Hergert GMC for \$1.75 per lb. for a total of \$404.25.

Joe Lopez showed the 3rd MW - IV Lamb, weighing 120 lbs. It was purchased by Cluck Feedlots for \$4.75 per lb. and a total of \$570.00.

Heather McRee showed the 2nd Lt. Wt. Cross, weighing 206 lbs. Pittman & Sons purchased it for \$4.00 per lb. for a total of \$824.00.

Julie Latta showed the 3rd MW - V Lamb, weighing 121 lbs. Frontier Feedyards purchased it for \$6.00 for a total of \$726.00.

Laneida Burnam showed the 2nd MW Cross, weighing 243 lbs. Mike Burnam purchased it for \$1.50 per lb. for a total of \$364.50.

Tommi Latta showed the 3rd MW - VI Lamb, weighing 130 lbs. It was purchased by Billy Logsdon for \$6.10 per lb. for a total of \$793.00.

Clint DeArmond showed the 2nd Heavy Cross, weighing 250 lbs. It was purchased by D.G.C. Feeders for \$2.00 per lb. for a total of \$500.00.

Mary Catherine Cook showed the 4th Dorsett, weighing 87 lbs. It was purchased by Bunkhouse for \$4.50 per lb. for a total of \$391.50.

Matt Jones showed the 3rd Lt. Duroc, weighing 228 lbs. It was purchased by Alan Shields for \$2.10 per lb. for a total of \$478.80.

4th Dorsett was shown by Jeff Vanlandingham. It weighed 104 lbs. and was purchased for \$3.25 per lb., for a total of \$338.00 by Mrs. Jimmy Greene, who donated it to the Childrens Home.

Bart Baker showed the 3rd Heavy Duroc, weighing 244 lbs. It was purchased by Spearman Super Service for \$2.40 per lb. for a total of \$585.60.

Martin Vela showed the 4th MW - I Lamb, weighing 101 lbs. It was purchased by Pat Patterson for \$2.25 per lb. for a total of \$227.25.

Alan Barnes showed the 3rd Lt. Wt. Hamp, weighing 217 lbs. It was purchased by James Cunningham for \$1.50 per lb. for a total of \$325.50.

The 4th MW - II Lamb was shown by Kevin Williams. It weighed 105 lbs. and was purchased for \$4.00 per lb. by First State Bank of Spearman for a total of \$420.00.

Temp Sheppard showed the 3rd MW Hamp, weighing 237 lbs. It was purchased by Rex Sanders for \$2.00 per lb. for a total of \$474.00.

4th MW - III Lamb was shown by Leslie Latta. It weighed 116 lbs. and was purchased for \$5.50 per lb. for a total of \$638.00 by Bob Cluck.

Slavin Sparks showed the 3rd HW Hamp, weighing 246 lbs. Gruver Farm Supply purchased it for \$2.30 per lb. for a total of \$565.80.

Brent Wagner showed the 4th MW - IV Lamb, weighing 119 lbs. It was purchased by Logsdon Cattle Co. for \$6.00 per lb. for a total of \$714.00.

Terry Phillips showed the 3rd Lt. Wt. York, weighing 213 lbs. It was purchased by Unusual Collections for \$1.70 per lb. for a total of \$362.10.

4th MW - V Lamb was shown by Danny Close. It was purchased by Spearman Auto for \$3.00 per lb. It weighed 121 lbs. and total purchase

price was \$363.00.

Scott Wilkerson showed the 3rd HW York, weighing 250 lbs. It was purchased by First State Bank of Spearman for \$1.70 per lb. for a total of \$425.00.

Brooks Beck showed the 4th MW - VI Lamb, weighing 130 lbs. It was purchased for \$2.50 per lb. for a total of \$325.00 by Spearman Seven.

3rd Lt. Wt. Cross was shown by Shane Harnish. It weighed 214 lbs. and was purchased by B & R Custom for \$1.70 per lb. for a total of \$363.80.

Tek Douglas Ferguson showed the 5th Dorsett. It weighed 102 lbs. and was purchased by George C. Lowe for \$4.75 per lb. for a total \$484.50.

Crista Urban showed the 3rd MW Cross, weighing 236 lbs. It was purchased by White House Lumber for \$2.10 per lb. for a total of \$495.60.

Crystal French showed the 5th Dorsett weighing 121 lbs. It was purchased by Caprock for \$5.50 per lb. for a total of \$665.50.

3rd HW Cross was shown by Bryan Caison. It weighed 248 lbs. and was purchased by First National Bank of Perryton for \$1.80 per lb. for a total of \$446.40.

Chad Gardiner showed the 5th MW - I Lamb, weighing 101 lbs. It was purchased by Sparks Brothers Spraying for \$3.25 per lb. for a total of \$328.25.

4th Lt. Wt. Duroc was shown by Carrie Pearson. It weighed 241 lbs. and was purchased for \$2.10 per lb. for a total of \$506.10 by Lady Fair.

JoAnne Odegaard showed the 5th MW - II Lamb, weighing 109 lbs. It was purchased by Bob's Antennas for \$3.50 per lb. for a total of \$381.50.

Clint Patterson showed the 4th Heavy Duroc, weighing 242 lbs. It was purchased by Cluck Feedlot for \$2.00 per lb. for a total of \$484.00.

5th MW - III Lamb was shown by Carla Greene. It weighed 112 lbs. and was purchased by R. L. Uptergrove for \$3.00 per lb. for a total of \$336.00.

Clay Hobbs showed the 4th Lt. Wt. Hamp, weighing 221 lbs. It was purchased by Sparks Brothers for \$1.90 per lb. for a total of \$419.90.

Chris Kauffman showed the 5th MW - IV Lamb, weighing 120 lbs. It was purchased by Dutch Clawson for \$4.00 per lb. for a total of 480.00.

4th MW Hamp was shown by Charlie Parrish. It weighed 238 lbs. and was purchased by Hergert's for \$1.90 per lb. for a total of \$452.20.

Kyla Nelson showed the 5th MW - V Lamb, weighing 121 lbs. It was purchased by Hitchland Grain Co. for \$3.75 per lb. for a total of \$453.75.

4th Heavy Hamp was shown by Dean Greene. It weighed 249 lbs. and was purchased for \$1.40 per lb. Spearman Equity purchased it for \$348.60.

Ryan Mathews showed the 5th MW - VI Lamb, weighing 128 lbs. It was purchased by Gruver State Bank for \$4.25 per lb. for a total of \$544.00.

Laura Pearson showed the 4th Lt. Wt. York, weighing 213 lbs. It was purchased by Bill Pittman for \$2.40 per lb. for a total of \$511.20.

Randie Renner showed the 6th MW - I Lamb, weighing 98 lbs. It was purchased by Joe T. Venneman for \$5.00 per lb. for a total of \$490.00.

4th Heavy York was shown by Christie Burton. It weighed 237 lbs. and was purchased for \$2.10 per lb. for a total of \$497.70 by Tim Weldon and Monty Cluck, who donated it to the Childrens Home.

Greg Reeves showed the 6th MW - II Lamb, weighing 104 lbs. It was

purchased by Caprock for \$3.25 per lb. for a total \$338.00.

Dee Mayfield showed the 4th Lt. Wt. Cross, weighing 214 lbs. It was purchased by Harland Gerardy for \$2.00 per lb. for a total of \$428.00.

6th MW - III Lamb was shown by Barry Beck. It weighed 116 lbs. and was purchased by A. D. Reed for \$4.75 per lb. for a total of \$551.00.

Brandon Close showed the 4th MW Cross, weighing 243 lbs. It was purchased by Don Hergert Motors of Perryton for \$2.10 per lb. for a total of \$510.30.

6th MW - IV Lamb was shown by Chris Spivey. It weighed 117 lbs. and was purchased by Hix Spivey for \$5.25 per lb. for a total of \$614.25.

Jason Turner showed the 4th Heavy Cross, weighing 247 lbs. It was purchased by First State Bank of Spearman for \$1.80 per lb. for a total of 444.60.

Kevin Nelson showed the 6th MW - V Lamb, weighing 121 lbs. It was purchased by Gruver State Bank for \$4.00 per lb. and a total of 484.00.

Kris York showed the 5th Lt. Wt. Duroc, weighing 229 lbs. It was purchased by Gruver Redi Mix for \$2.10 per lb. for a total of \$480.90.

Raquel Mathews showed the 6th MW - VI Lamb, weighing 128 lbs. It was purchased by Stedje Brothers for \$4.25 per lb. for a total of \$544.00.

5th Heavy Duroc was shown by John Lieb. It weighed 246 lbs. and was purchased by Pringle-Morse National Bank for \$1.70 per lb. for a total of \$418.20.

Mark Allen showed the 7th MW - I Lamb, weighing 102 lbs. It was purchased by R. E. Sanders for \$3.75 per lb. for a total of \$382.50.

Tek Douglas Ferguson showed the 5th Lt. Wt. Hamp, weighing 215 lbs. It was purchased by George C. Lowe for \$2.30 per lb. for a total of \$494.50.

7th MW - II Lamb was shown by Allen Gardiner. It weighed 105 lbs. and was purchased for \$4.00 per lb. for a total of \$420.00 by Ralph McCune.

Tim Stedje showed the 5th MW Hamp, weighing 238 lbs. It was purchased by Jack Gillispie for \$2.20 per lb. for a total of \$523.60.

Joy Gafford showed the 7th MW - III Lamb weighing 114 lbs. It was purchased by Pat Patterson for \$3.00 per lb. for a total of \$342.00.

5th Heavy Hamp was shown by Joy Gafford. It weighed 243 lbs. and was purchased for \$2.30 per lb. for a total of \$558.90 by John Wilde, who donated it to Girlstown.

Brooke Roberts showed the 8th MW - II Lamb, weighing 104 lbs. It was purchased for \$3.75 per lb. for a total of \$390.00 by Security Insurance, Perryton.

Rhonda Ross showed the 5th Lt. Wt. Cross, weighing 214 lbs. It was purchased by Pittman and Sons for \$2.00 per lb. for a total of \$428.00.

Dean Greene showed the 8th MW - III Lamb, weighing 113 lbs. It was purchased by Seven Super Supporting Moms for \$3.75 per lb. for a total of \$423.75.

Brian DeCamp showed the 5th MW Cross, weighing 239 lbs. It was purchased for \$2.50 per lb. for a total of \$597.50 by Billy Logsdon.

Tammy Nollner showed the 5th Heavy Cross, weighing 244 lbs. It was purchased by Zay Gilbreath for \$2.10 per lb. for a total of \$512.40.

Tiki Jackson showed 6th Lt. Wt. Duroc, weighing 212 lbs. It was purchased by John Armes for \$1.80 per lb. for a total of \$381.60.

Mussman, Guymon FFA, 287; 8. Robin Woolman, Randall 4-H, 287; 9. Trevor Williams, Hansford 4-H, 287; 10. Loyd Cator, Hansford 4-H, 286.

High Team Steer Placings were 1. Hansford 4-H-Lynette Williams, Loyd Cator, Christie Burton, Tina Cator-296; 2. Hansford 4-H-Trevor Williams, Debbie Burton, Gregg Haight, Heather McRee-295; 3. Spearman FFA-Alan Gardiner, Monte Beck, Kevin Nelson, Carl Urban-292; 4. Randall 4-H-Dusty Tittle, Robyn Woolman, Jess Smith, Mary Jon McNeill-287; 5. Hutchinson 4-H-Jason Huff, Ray Blackwell, Curtin Morrison-284; 6. Guymon FFA-Pat Rippenberger, Justin Collins, James Mussman, Janice

Mussman-283; 7. Dallam 4-H-Brett Barber, Bart McClesky, Terri Barber-273; 8. Moore 4-H-Jeff Ammons, Randy Cross, Ruston Bray, Brian Smith-272; 9. Potter 4-H-Monte Mangum, Ron Smith, Randall Hoens-270; 10. Hansford 4-H-Jay York, Heidi McRee, Holly Venneman, Beverly Burton-265.

High Individual Steers were as follows-1. Debbie Burton, Hansford 4-H, 100; 2. Gregg Haight, Hansford 4-H, 100; 3. Ron Smith, Potter 4-H, 100; 4. Lynette Williams, Hansford 4-H, 100; 5. Dusty Tittle, Randall 4-H, 98; 6. Kevin Nelson, Spearman FFA, 98; 7. Mary Jon McNeill, Randall 4-H, 98; 8. Loyd Cator, Hansford 4-H, 98;

High Individual Lamb placings were as follows: 1. Gregg Haight, Hansford 4-H-100; 2. Robbie Kirkland, Oldham 4-H, 100; 3. Debbie Burton, Hansford 4-H, 98; 4. Dusty Tittle, Randall 4-H, 98; 5. Mary Jon McNeill, Randall 4-H, 98; 6. Lacy Walker, Oldham 4-H, 98; 7. Monte Beck, Spearman FFA, 98; 8. Curtiss Morrison, Hutchinson 4-H, 98; 9. Shawn Vance, Randall 4-H, 98; 10. Heidi McRee, Hansford 4-H, 98.

High Team Lamb placings were 1. Hansford 4-H-Trevor Williams, Debbie Burton, Gregg Haight, Heather McRee-296; 2. Randall 4-H-Dusty Tittle, Robyn Woolman, Jeff Smith, Mary Jon McNeill-292; 3. Hutchinson 4-H-Jason Huff, Curtis Morrison, Ray Blackwell-282; 4. Guymon FFA-Pat Rippenberger, Justin Collins, James Mussman, Janice Mussman-281; 5. Moore 4-H-Jeff Ammons, Randy Cross, Ruston Bray, Brian Smith-278; 6. Dallam 4-H-Brett Barber, Bart McClesky, Terri Barber-275; 7. Oldham 4-H-Cody Walker, Rusty Ayress, Lacy Walker, Cody Gabel-272; 8. Randall 4-H-Shawn Vance, Scott McNeill, Ty Tueck, Justin Wise-271; 9. Oldham 4-H-Natalie Artha, Dusty Walker, Robbie Kirkland, Kelly Kirkland-270; 10. Spearman FFA-Alan Gardiner, Carl Urban, Kevin Nelson, Monte Beck-263.

High Individual Lamb placings were as follows: 1. Gregg Haight, Hansford 4-H-100; 2. Robbie Kirkland, Oldham 4-H, 100; 3. Debbie Burton, Hansford 4-H, 98; 4. Dusty Tittle, Randall 4-H, 98; 5. Mary Jon McNeill, Randall 4-H, 98; 6. Lacy Walker, Oldham 4-H, 98; 7. Monte Beck, Spearman FFA, 98; 8. Curtiss Morrison, Hutchinson 4-H, 98; 9. Shawn Vance, Randall 4-H, 98; 10. Heidi McRee, Hansford 4-H, 98.

High Team Lamb placings were 1. Hansford 4-H-Trevor Williams, Debbie Burton, Gregg Haight, Heather McRee-296; 2. Randall 4-H-Dusty Tittle, Robyn Woolman, Jeff Smith, Mary Jon McNeill-292; 3. Hutchinson 4-H-Jason Huff, Curtis Morrison, Ray Blackwell-282; 4. Guymon FFA-Pat Rippenberger, Justin Collins, James Mussman, Janice Mussman-281; 5. Moore 4-H-Jeff Ammons, Randy Cross, Ruston Bray, Brian Smith-278; 6. Dallam 4-H-Brett Barber, Bart McClesky, Terri Barber-275; 7. Oldham 4-H-Cody Walker, Rusty Ayress, Lacy Walker, Cody Gabel-272; 8. Randall 4-H-Shawn Vance, Scott McNeill, Ty Tueck, Justin Wise-271; 9. Oldham 4-H-Natalie Artha, Dusty Walker, Robbie Kirkland, Kelly Kirkland-270; 10. Spearman FFA-Alan Gardiner, Carl Urban, Kevin Nelson, Monte Beck-263.

High Individual Lamb placings were as follows: 1. Gregg Haight, Hansford 4-H-100; 2. Robbie Kirkland, Oldham 4-H, 100; 3. Debbie Burton, Hansford 4-H, 98; 4. Dusty Tittle, Randall 4-H, 98; 5. Mary Jon McNeill, Randall 4-H, 98; 6. Lacy Walker, Oldham 4-H, 98; 7. Monte Beck, Spearman FFA, 98; 8. Curtiss Morrison, Hutchinson 4-H, 98; 9. Shawn Vance, Randall 4-H, 98; 10. Heidi McRee, Hansford 4-H, 98.

High Team Lamb placings were 1. Hansford 4-H-Trevor Williams, Debbie Burton, Gregg Haight, Heather McRee-296; 2. Randall 4-H-Dusty Tittle, Robyn Woolman, Jeff Smith, Mary Jon McNeill-292; 3. Hutchinson 4-H-Jason Huff, Curtis Morrison, Ray Blackwell-282; 4. Guymon FFA-Pat Rippenberger, Justin Collins, James Mussman, Janice Mussman-281; 5. Moore 4-H-Jeff Ammons, Randy Cross, Ruston Bray, Brian Smith-278; 6. Dallam 4-H-Brett Barber, Bart McClesky, Terri Barber-275; 7. Oldham 4-H-Cody Walker, Rusty Ayress, Lacy Walker, Cody Gabel-272; 8. Randall 4-H-Shawn Vance, Scott McNeill, Ty Tueck, Justin Wise-271; 9. Oldham 4-H-Natalie Artha, Dusty Walker, Robbie Kirkland, Kelly Kirkland-270; 10. Spearman FFA-Alan Gardiner, Carl Urban, Kevin Nelson, Monte Beck-263.

High Individual Lamb placings were as follows: 1. Gregg Haight, Hansford 4-H-100; 2. Robbie Kirkland, Oldham 4-H, 100; 3. Debbie Burton, Hansford 4-H, 98; 4. Dusty Tittle, Randall 4-H, 98; 5. Mary Jon McNeill, Randall 4-H, 98; 6. Lacy Walker, Oldham 4-H, 98; 7. Monte Beck, Spearman FFA, 98; 8. Curtiss Morrison, Hutchinson 4-H, 98; 9. Shawn Vance, Randall 4-H, 98; 10. Heidi McRee, Hansford 4-H, 98.

High Team Lamb placings were 1. Hansford 4-H-Trevor Williams, Debbie Burton, Gregg Haight, Heather McRee-296; 2. Randall 4-H-Dusty Tittle, Robyn Woolman, Jeff Smith, Mary Jon McNeill-292; 3. Hutchinson 4-H-Jason Huff, Curtis Morrison, Ray Blackwell-282; 4. Guymon FFA-Pat Rippenberger, Justin Collins, James Mussman, Janice Mussman-281; 5. Moore 4-H-Jeff Ammons, Randy Cross, Ruston Bray, Brian Smith-278; 6. Dallam 4-H-Brett Barber, Bart McClesky, Terri Barber-275; 7. Oldham 4-H-Cody Walker, Rusty Ayress, Lacy Walker, Cody Gabel-272; 8. Randall 4-H-Shawn Vance, Scott McNeill, Ty Tueck, Justin Wise-271; 9. Oldham 4-H-Natalie Artha, Dusty Walker, Robbie Kirkland, Kelly Kirkland-270; 10. Spearman FFA-Alan Gardiner, Carl Urban, Kevin Nelson, Monte Beck-263.

High Individual Lamb placings were as follows: 1. Gregg Haight, Hansford 4-H-100; 2. Robbie Kirkland, Oldham 4-H, 100; 3. Debbie Burton, Hansford 4-H, 98; 4. Dusty Tittle, Randall 4-H, 98; 5. Mary Jon McNeill, Randall 4-H, 98; 6. Lacy Walker, Oldham 4-H, 98; 7. Monte Beck, Spearman FFA, 98; 8. Curtiss Morrison, Hutchinson 4-H, 98; 9. Shawn Vance, Randall 4-H, 98; 10. Heidi McRee, Hansford 4-H, 98.

High Team Lamb placings were 1. Hansford 4-H-Trevor Williams, Debbie Burton, Gregg Haight, Heather McRee-296; 2.

# Homestead Exemptions can reduce the amount of your tax bill

Taxpayers can reduce the burden of property taxes for 1985 in Hansford County Appraisal District if they take advantage of various partial exemptions available on Texas homes.

According to Alice Peddy, chief appraiser for the district, Texas property tax laws now allow a homeowner to apply only once, instead of annually, for residence homestead exemptions.

However, taxpayers who have never received a residence homestead exemption on the homes they were living in on January 1, and those who became 65 years old or disabled during 1984, must apply this year in order to receive exemptions for 1985.

A residence homestead is the structure, together with land up to 20 acres and any improvements like a swimming pool or greenhouse, used as the owner's principal residence. Mrs. Peddy said that, to qualify as a homestead, a property must meet four tests.

It must be owned by the person or persons claiming the exemption; it must be designed or adapted for human residence; it must actually

be used as a residence, and it must be occupied as the principal residence of an owner who qualifies for the exemption.

A mobile home, if it meets the tests, can be claimed as a homestead, even if it is on leased land. Mrs. Peddy noted. She added, "A taxpayer can still qualify for the homestead exemptions if part of his residence is used for other purposes, such as a business in the home. And the home will not lose the exemption if the owner moves away temporarily, provided he intends to return and doesn't claim a homestead anywhere else."

Among the various types of homestead exemptions provided by Texas tax law are two which a school district must give to taxpayers who apply and qualify. School districts offer a \$5,000 general homestead exemption to all homeowners and an additional \$10,000 exemption to those who are 65 years of age or older who are disabled.

An advantage of the over-65 school exemption is that, along with it, elderly homeowners obtain a "ceiling" on their school taxes.

Although the appraised value of these homesteads may fluctuate with the market, taxes due the school district will not increase. The ceiling would be raised, however, in the instance of adding an improvement other than repairs and general maintenance. In that case, the value of the new improvement is taxed at current market value and tax rate, and the taxes due are added to the previous tax ceiling to create a new ceiling.

Mrs. Peddy stressed, though, that the elderly homeowner has to apply for the over-65 school tax exemption in order to get the ceiling. The homeowner must be 65 years old or more on January 1, 1985, to qualify for the elderly exemption and tax ceiling.

Counties must offer a \$3,000 general homestead exemption to all taxpayers, given only on the portion of the county tax levied for farm-to-market roads and/or flood control.

Any taxing unit's governing body may vote to offer an exemption for a minimum of \$3,000 on the homesteads of disabled and/or elderly residents. Only in school

districts, however, is the ceiling established for taxes on over-65 homesteads.

In addition, taxing units may decide to offer a local-option homestead exemption based on a percentage of a home's appraised value. This year, any taxing unit may exempt up to 30 percent of the value of all homesteads in the unit. No matter what the percentage, the dollar amount exempted on any homestead must be at least \$5,000. The taxing unit's governing body has to take official action to offer this exemption.

Percentage exemptions are granted by City of Spearman at 30 percent; Gruver I.S.D., 30 percent; Spearman I.S.D., 30 percent; Hansford County, 30 percent, North Plains Water District 30 percent, and Palo Duro River Authority 30 percent.

For more information about any of the homestead exemptions, homeowners may contact the Hansford County Appraisal District at 709 West 7th, 659-5575 and 733-5139.

## Miss Hansford County Contest May 4

This year's Miss Hansford Contest will be held on Saturday, May 4, in the Spearman High School Auditorium. Any girls who will be sixteen by that date, but who has not yet turned twenty-one is eligible to compete. There will be a Coke Party held for all those interested in participating, and the date will be announced shortly.

The Miss Hansford Contest will again be held in conjunction with this year's pageant. This contest is open to any girls and boys, but will be limited to ten couples. The first ten couples to

have their entry blanks turned in to Jackie Pearson at Kid's Stuff will be accepted. These entry blanks may be picked up from Kid's Stuff anytime during business hours beginning Monday, March 25. The age limits on the contest are that the children be at least four by the date of the contest, but not yet six.

Anyone interested in participating in either of these contests should contact either Jackie Pearson at 659-2608 or Judy Nelson at 659-3424 or 659-3608 for more information.

## Family Counselor here on Tuesdays

Paula Sinise, Family Counselor, will be at the Home Extension Building Tuesdays from 9-5.

Call 659-2030 for individual and marriage counseling.

Charges are on a sliding scale. If you can't reach Paula at the above number here you can get in touch with her in Perryton at 435-3671.

## Eaton's nephew succumbs to MD

Kevin Garvin, 14, great-nephew of Mr. and Mrs. Charles Eaton of Spearman, died Saturday. He was a victim of muscular dystrophy.

If desired, memorials may be sent to Muscular Dystrophy Association of America, 1713 Avondale Dr., Amarillo, Texas 79106. Lee Banks president.

## Collins services pending

Eva Mae Collins, 87, died Saturday. Services are pending with Carmichael-Whately Funeral Directors.

Mrs. Collins was born in Grayson County. She had been a resident of Carson County since 1917, she was a Presbyterian. She married Collins in 1921. He died in 1961.

Survivors include three sons, Robert Dumas, Gordon of Spearman and Billy of Des Moines, Iowa. Two sisters, Jewell Overstreet of White Deer and Rayma Christopher of Denver; 12 grandchildren; 21 great-grandchildren; and a great-great-grandchild.

## Sluder Rites Held Tuesday

Ernest Sluder, 89, died Friday. Services were held at 2 p.m. Tuesday in Union Church in Spearman with the Rev. Steve Rogers, pastor, officiating. Burial was in Hansford Cemetery by Boxwell Brothers Funeral home.

Mr. Sluder, born in Floydada, had lived around Gruver most of his life. He was an U. S. Army veteran of World War I, a retired Phillips Petroleum wholesaler jobber and a member of Union Church. He married Nellie Fullbright in 1929. She died in January of this year.

Survivors include a daughter, Janelle Banks of Hardesty, Okla.; a brother, Tom of Olton; two sisters, Winnie Flynt and Nettie Mae Jester, both of Lubbock; three grandchildren; and three great-grandchildren.

## Absentee voting underway

School absentee and city voting is now underway.

Absentee voting for Spearman and Gruver school trustees will be in the business offices of Spearman, Gruver schools and at the superintendent's office in Pringle-Morse.

The Gruver and Spearman school business offices close at 4:30 and the city halls are open until 5 each week day.

Absentee voting ends April 2 by personal appearance.

Absentee voting for city offices

will be at Spearman and Gruver city hall.

The elections will be held April 6 at Spearman High School, Gruver High School and Pringle Morse School.

MARKETS	
WHEAT	\$3.08
MILO	\$4.25
CORN	\$2.95

## HOSPITAL

Patients in Hansford Hospital are Caroline Murphy, Alice Fry, Reba Bennett, Ruth Garrard, Kelly Crawford, Kelley Trout, Willard Davis, Ruby Lair, Virginia Sparks, Anita Sumner, Dorothy McElroy, Ora Vanlaningham, Dee Haskins, Ruby Lieb, Kate Gidley, Leo Cummings, Vernon Morris, Michael Cook and James Cummings.

Patients dismissed were Florence Kruse, Anthony Peters, Mitzi Medley and daughter, Donna Sheets, Jesus Borunda, and Terry Hall.

## Our Heritage of Faith

How do Lutherans connect bread and wine with Christ's body and blood? Faithfully. That is, in faithfulness to Jesus' own words as recorded in the Gospel. And in faith, since we do not believe that human reason can fully grasp what God does and how He does it in the Lord's Supper. Faith comes from hearing the Scriptures; from the Holy Spirit.

NEXT TOPIC: More about the elements with Christ.

Bill Schardin, Pastor  
Faith Lutheran Church  
Spearman, Texas

# WHAT ARE HOMESTEAD EXEMPTIONS?

A homestead exemption reduces the taxable value of your residence homestead. Various types of homestead exemptions are available in Texas and, if you qualify, they can lower your total property tax bill. Read on for details.

## What Exemptions Are Available?

School districts offer a residence homestead exemption to all homeowners and additional exemptions to people who are disabled or over 65.

Counties offer homestead exemptions on their farm-to-market or flood control tax rates and may offer exemptions to the disabled and elderly.

Cities and other taxing units may offer exemptions for the disabled and elderly.

All taxing units offer an exemption for certain disabled veterans on one designated property.

Some taxing units offer an additional local-option percentage homestead exemption to resident homeowners.

## How Do I Apply?

If you received a residence homestead exemption on your present home in 1984, you will not need to apply again for 1985, unless the chief appraiser requires you to file.

If you were 65 or disabled on January 1 and have not previously applied for the over-65 or disability homestead exemption, you will need to apply this year.

Or, if you have never had a homestead exemption on your present home, you should file your original application in 1985.

Apply for all exemptions to the county appraisal district at the address below. Forms are available from the appraisal office.

## Is There a Deadline?

You should apply before May 1 for 1985 exemptions. While late applications for exemptions may be accepted in certain instances, you can fully protect your rights by applying before May 1.

The State Property Tax Board has a pamphlet, *Taxpayers' Rights, Remedies, Responsibilities*, to help you understand your local property taxes. Get a free copy at the appraisal district office or contact the State Property Tax Board in Austin.

HANSFORD COUNTY APPRAISAL DISTRICT

Alice Peddy

709 WEST 7th Street

Phone 659-5575

733-5139



State Property Tax Board  
Box 15900  
Austin 78761-5900

# ¿QUE SON LAS EXENCIONES DE RESIDENCIA?

La exención de residencia es una reducción en el valor sujeta a los impuestos de su residencia hogar. Varios tipos de exenciones de residencia se encuentran disponibles en Texas y, si usted califica, pueden reducir su cuenta de impuestos sobre la propiedad. Los detalles incluyen los siguientes.

## ¿Cuáles exenciones están disponibles?

Los distritos escolares ofrecen una exención de residencia a todos los dueños de hogar y exenciones adicionales para personas incapacitadas o personas de 65 años de edad o más.

Los condados ofrecen exenciones de residencia de los impuestos dedicados a las carreteras de granja a mercado y al control de inundaciones. Algunos condados también ofrecen exenciones adicionales a ancianos y personas incapacitadas.

Las ciudades y otros gobiernos locales pueden ofrecer exenciones adicionales a ancianos y personas incapacitadas.

Todos los gobiernos locales ofrecen una exención a veteranos incapacitados que cumplan con los requisitos a cierta propiedad designada.

Además, los gobiernos locales pueden conceder un tanto por ciento en las exenciones de residencia a los dueños de residencias hogares.

## ¿Cómo puede solicitarse?

Si usted recibió una exención de residencia para su residencia actual en 1984, no es necesario hacer una solicitud nueva para 1985 en este distrito de valuación.

Si usted tenía 65 años de edad o

fue incapacitado el 1º de enero y no había solicitado previamente para exenciones de incapacidad o de 65 años, necesita llenar un formulario nuevo este año.

O, si usted nunca ha recibido exención de residencia en su hogar actual, necesita hacer una solicitud original en 1985.

Solicitudes para estas exenciones deberían hacerse en la oficina del distrito de valuación de su condado, la cual se ubica en la dirección escrita abajo. También, formularios de exenciones en español se encuentran disponibles en la oficina del distrito de valuación.

## ¿Hay un límite de tiempo?

Para el año 1985, debería solicitarse antes del 1º de mayo. Aunque se aceptan solicitudes tardes en ciertas instancias, al solicitarlas antes del 1º de mayo usted podrá proteger sus derechos.

La Oficina Estatal de Impuestos sobre la Propiedad (State Property Tax Board) ahora tiene un folleto en español, *Los Derechos, los Remedios y las Responsabilidades del Contribuyente a los Impuestos*, que puede ayudarle a comprender sus impuestos locales sobre la propiedad. Puede obtenerse una copia gratuita en la oficina de su distrito de valuación o por medio de la Oficina Estatal de Impuestos sobre la Propiedad en Austin.

HANSFORD COUNTY APPRAISAL DISTRICT

Alice Peddy

709 West 7th Street

Phone 659-5575

733-5139



State Property Tax Board  
P.O. Box 15900  
Austin 78761-5900



Sale Ends March 23

Items Available At  
TG&Y Family Centers Only.

# TG&Y

## Family Centers

Copyright 1985, TG&Y Stores Co.

A HOUSEHOLD  
INTERNATIONAL COMPANY

# Sale of Sales



**2 ROLLS .99**

HI-DRI Paper Towels are 2-ply for extra absorbency. 75 total square feet per roll. Assorted colors. Limit 6 rolls.



**.99** each

Refreshing Soft Drinks in thirst-quenching 2-liter bottles. Choose your favorite: Coke, Diet Coke, Tab or Sprite. Limit 4. Sprite not available in some markets.



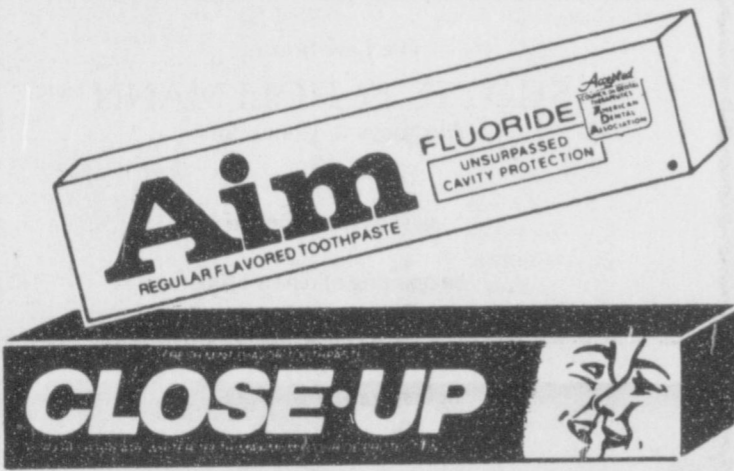
**2.99** per gallon after Rebate\*

**7.98** -2.00 = **5.98**

TG&Y's Low Price on 2 gallons Less Mail-in Rebate\*

Your Final Cost on 2 gallons

Prestone II Antifreeze protects your car year round. Silicone Silicate formula locks out rust and corrosion. \*Rebate Coupon in Customer Service.



**.88** 6.4 ounces each

Aim or Close-Up Toothpaste for cleaner, whiter teeth. Both have fluoride to fight cavities. Price reflects 30¢ off label. Regular flavor.



**.99** 22 ounces

Easy trigger-spray applicator.

New Lemon Fresh Windex! That same great Windex shine now with a fresh lemon scent. Cleans and shines glass, chrome and appliances.



**2 PKGS. .78**

Wilkinson 5-Pack Twin Razors, twin blade disposable razors for closer, cleaner shaves. No rainchecks.

Ivory Liquid Dishwashing Detergent

22 oz.

Reg. \$1.55

**\$1.00**

Jumbo Storage Chest or Underbed Chest

Reg. \$1.99

**77¢**

E-Z Foil Cake Pans 8 Pack

Reg. \$2.11

**2/\$3.00**

DuroFlame Fire Logs

Reg. \$1.33 ea.

\$7.98 Case

Now **50¢** Ea. **\$3.00** Case

Maxi Thin Panty Shields

26 CT. Box

Reg. \$1.88

**77¢**

Large Assortment of Auto Cleaners and Chemicals

**50% Off**

All Comforters and Bed Skirts

**75% Off Reg. Price**

Large Assortment of Tennis Shoes Various Styles & Sizes

**50% Off**

Doubleknit Fabric Solids and Prints 60" Widths

Reg. \$1.88

**\$1.33**

Large Assortment of Flat Fold Fabric Fleece, Woven, Denim or Corduroy

**2/\$1.00** Reg. 99¢

521 Hwy. 207 S., Spearman, Texas, 659-3741

TG&Y insists upon your satisfaction. If you are not happy with what you purchase, return it with your sales receipt. We will cheerfully exchange it or fully refund your money. If for unforeseen reasons advertised merchandise is not available, we will be glad to offer you a like item of comparable quality and value when possible. Most advertised items are reduced from our everyday low prices. Some merchandise is in limited quantities and available only while supply lasts. We reserve the right to limit quantities. We will be happy to accept your personal check, MasterCard, Visa or cash. We want you to be glad you shopped TG&Y.



## Gruver City Library News

### GRUVER CITY LIBRARY NEWS

#### First Among Equals by Jeffrey Archer

First Among Equals is the novel Jeffrey Archer was born to write. Like his Kane & Abel, it is a story of titanic rivalry. Like the Prodigal Daughter, it is an explosive mixture of passion and politics. And like any novel destined to be a major best seller, it is a story so inventive, so compelling, that it is ultimately unlike any other.

The actors are three fiercely ambitious young men - utterly different from one another, but bound together by their singleminded pursuit of the same goal. The field of battle is Britain's Parliament, where competition is waged with an exquisite politeness that only masks its ferocity. And the ultimate prize is the highest office in the land. From the time the men enter Parliament, it is a three-way race to the day - three decades later - when one will be called to Buckingham Palace to accept the office of Prime Minister. Through all the permutations of mutual affection and enmity, honor and deceit, these three men are joined by the women in their lives. As all these lives cross (and double-cross) in the race for power, the reader comes to care about all three men. But only one can win. First Among Equals presents a cast of indelible characters in a tale of

headlong tension, played out against the dazzling backdrop of the only country in the world where power and pageantry are inextricably linked. With this new novel, the author confirms what millions of readers already know: that Jeffrey Archer is first among storytellers.

Also available for your reading pleasure are some selections in the fantasy section of Gruver City Library. One of the strangest epic fantasies ever written begins with Stephen R. Donaldson's:

#### The Chronicles of Thomas Covenant

Book One: Lord Foul's Bane  
Book Two: The Ilsearth War  
Book Three: The Power that Preserves

#### The Second Chronicles of Thomas Covenant

Book One: The Wounded Land  
Book Two: The One Tree  
Book Three: White Gold Welder

Arriving this week will be 100 selections on loan to Gruver City Library from Amarillo Public Library. Included in these will be fiction, children's books, etc. This is a service provided to our library, and will add some variety to your book selection. Come by and see what this special selection has to offer you. Looking forward to seeing you at Gruver City Library...for your reading pleasure!

## One-Act Play to district

The Gruver One Act Play cast and crew traveled to Follett Saturday, March 16 to perform in District 2-A North Zone competition. The Gruver play, "Breaking Up is Hard To do" by Dennis Snee, was declared one of the winning plays. The other winning play was Darrouzett's production of "Antic Spring".

Gruver students won several individual honors at the contest. Andrea Whitaker was named Best Actress; Mark Gilbreath-Best Actor; Kip Pittman and Chris Tomlinson were named to the All-Star Cast. Honorable Mention All-Star

Cast went to Julie Deakin and Jerry Martin. Rounding out the cast are Carrie Hart and Clay Smith. Crew members are Cheryl TeBeest and Pam Doty. E. Don Williams of Lubbock Christian College was Critic Judge.

Gruver OAP members will now travel to Miami for the District Contest on Thursday, March 21. There, they will be meeting Darrouzett and the two winners of the South Zone for the right to represent the district in area competition. Two winning plays will be chosen at District. Director for the Gruver play is Russ Chisum.

## CYO plans summer program

The Catholic Youth met March 17, 1985 at the parish hall for their regular meeting. The meeting was called to order by President Ted Vela. Opening prayer was led by Anna Pacheco. Minutes of the last meeting were read by secretary Mary Lou Baker. Treasurer's report was given by Leticia Vela. Business discussed was to have a softball team and volleyball team this summer. A devotional was

given by their youth sponsor Ray Ortega. The closing prayer was led by Mark Allen. Sponsor Bob Farr spoke to the youth on things that are special to us. For the next meeting each youth was asked to show or tell about something that is special in their life. The meeting was adjourned. Games were enjoyed and refreshments were served. The next meeting will be April 14, 1985.

## Renovation of kitchen at Museum underway

In November, work began in earnest at the Stationmaster's House Museum, and since that time much progress has been made.

Thanks to cooperation from interested citizens, the parlor and the bedroom are furnished, and most of the items came from families of Hansford County pioneers.

Items in the bedroom include: iron bed given by Idella Randall; mattress and springs by Rubyjo Willbanks; feather-tick pillows belonging to Joe Dan Bryan's mother, donated by Ruth Bryan.

Hand embroidered and appliqued bedspread and pillow sham belonged to Mrs. A. F. Barkley. She used this while living at Old Hansford. The set was made by her mother, Mrs. H. R. Lyon in 1860. Hand-made scarves in the trunk also belonged to Mrs. A. F. Barkley. These were donated by her daughter, Virginia Renfro.

The trunk belonged to "Uncle Lou" L. G. Andrews. He had it when he married in 1900. It was given by Dora womble.

A granite "thunder mug" sits by the bed. This is from Joe Dan Bryan family.

The rag rug by the bed is hand loomed and made from material scraps, which never went to waste. Donated by Sybil Miller.

The old shoes came from the Fred W. Brandt store.

Rocking chair - Idella Randall.

Wash stand, used in the farm home of Mr. and Mrs. W. A. Simmons came here in a covered wagon. They bought it in Guymon, Okla, Indian Territory when they moved here in 1905. Refinished

and used until recently by Mr. and Mrs. Edwin Simmons, they decided to give it to the museum.

Atop this is a reproduction of a pitcher and bowl made and given by Ivan Vernon Allen.

The dresser tray and set belonged to Mrs. Frank Davis, as did the button hooks in the shoes. These were donated by her daughter, Mrs. Marjorie Curtis. Marjorie made the window curtains from some sheets saved from the 1930-years. The material of that era is matchless.

The beautiful hand-made quilt in 1880 by Rachel Elizabeth Cares.

The child socks in a frame on the wall are from old Brandt store.

The mother and child picture is one of Mrs. Fannie Richardson and son Alvino (he later became Sheriff of Hansford County). She came to Hansford in 1902. The child's dress is the one worn in the picture by Alvino. It is 90-plus years of age.

These were donated by Mrs. and Mrs. P. A. Lyon.

If you visit the museum soon, you will find much dust covering things.

This means work is going on in the kitchen, which is the next room to be furnished.

Workmen are repairing walls, floors and closets.

#### MUSEUM NEEDS

1. Money
2. Pioneer dresses
3. Old children's clothes
4. Rope bottom chairs
5. Old pine table (small) for Kitchen. May be a home-made one.
6. Wall blackboard from old school.

## SS representative schedule

A representative of the Guymon Social Security Office will be in the towns and at the places listed below. This individual will be glad to assist you in filing an application for Social Security Retirement, Survivors, Disability, Medicare, or Supplemental Security Income benefits. If you are unable to visit personally, you may call 338-6527 Monday thru Friday between 9:00 a.m. and 4:45 p.m. except for national holidays.

A representative is available to meet with your club or group for a talk or to answer questions. If desired, write or phone the Social Security Office.

The representative will be in Spearman in the County Commissioners Court Room of the Hansford County Courthouse from 10:00 a.m. Tuesday until 11:30 a.m. on April 2 and 23, May 7 and 28 and June 4 and 25.

Call us for a speaker at your next club or group meeting.

## Mexican Dinner Planned

The Sacred Heart Church will have its Mexican Dinner Sunday, March 24th from 11:30 - 2:30 at the Parish Hall at 901 S. Roland.

The menu will consist of enchiladas, beans, Spanish rice, salad, home-made salad dressing, tostadas, sopapillas, hot sauce, honey, tea or coffee, pie or cake.

The meal tickets will be Adults - \$5.50, Children - \$3.75, Under 6 will be free.

Take out orders will be available beginning at 11:30. Please call 9-2166.

If they'd hold the nominating conventions in winter, they could heat whole cities with all the hot air that's generated.

## THE CUPBOARD

502 DAVIS  
SPEARMAN, TEXAS  
659-2767

FOR MARCH 18-22

MONDAY

Stuffed Potatoes  
AuGratin Carrots  
Hot Rolls  
Eclair Cake

TUESDAY

Stuffed Potatoes or Quiche  
Pineapple Upside Down Cake

WEDNESDAY

Chicken Devon  
Baked Potatoes  
Sour Cream Raisin Pie

THURSDAY

Meatloaf Wellington  
Scalloped Potatoes  
Rolls  
Apple Cobbler

6 TO 8 P.M.

Fried Chicken  
served family style  
Mashed Potatoes  
Cream Gravy  
Corn-on-cob

FRIDAY

Spaghetti & Meatballs  
French Bread  
Cherry Torte

FOR MARCH 25 - 29

MONDAY

Roast Beef  
Potatoes and Carrots  
Brown Gravy  
Rolls

TUESDAY

Chicken Crepes or Quiche  
Sweet Peas  
Hummingbird Cake

WEDNESDAY

Lasaguna  
French Bread  
Lemon Meringue Pie

THURSDAY

Salisbury Steak  
Mashed Potatoes  
Rolls  
Chocolate Sheet Cake

6 TO 8 P.M.

Fried Chicken  
Mashed Potatoes  
Cream Gravy  
Rolls

FRIDAY

Texas Style Chili  
Cornbread  
Chocolate Delight

CLIP AND SAVE

Menu is only printed every two weeks.

## CARD OF THANKS

We can never thank you enough and words can never express the love and concern you showed for us in Johnny's death but we really appreciate every act of kindness, all the food, flowers, memorials, cards, phone calls, prayers, visits to the house they all meant so much to us. Also a special thanks to Dr. McClellan and the nurses at the hospital and manor. May God's richest blessing be bestowed back to each and every one of you. God bless you.

Alice Lackey

Mr. and Mrs. S. B.

(Donna) Sheets

Mr. and Mrs. Wayne

(Karen) Woodward

Mr. and Mrs. Ken

(Sharon) McClellan

Mr. and Mrs. Randall

(Sue) Felder

and relatives

Thank you so much for all of your love and care shown to our Mother and Grandmother, Gertie Archer, these years while she was ill at home and in the Manor. We also appreciate so much all your thoughtful deeds at her death. Your cards, calls, visits, food, flowers, memorials, and prayers have helped to ease our burden.

The family of Gertie Archer

Special Thank You's are in order to our friends in Spearman for the prayers, food and thoughts associated with the recent addition to our family. We wish to thank the area churches, and home Bible studies for holding us up in prayer through the critical times. Also, Thank You to my patients who were understanding when I had to change their appointments in order to visit the hospital. We are and were grateful for your concern about our family.

The Cobbs

## Short Takes

By the time opportunity knocks, you're too feeble to get up and answer the door.

## Youth Burned

Billy Cantrell, a 9 year old boy from Gruver, was burned severely at 11:30 a.m. Friday.

Details are sketchy, but apparently, he received burns over 89% of his body, according to unofficial medical reports.

A life-line airplane, which is a large twin engine plane, lifted off at the Spearman airport at 3:10 p.m. Friday to take the boy to Amarillo.

## Defensive driving course

A defensive driving course will be held March 26 & 27 from 6 to 10 p.m. both nights.

John R. Collard, Jr. will be the instructor, and on successful completion of the course you will be allowed a 10% deduction on your car insurance.

The course is sponsored by the Hansford Association of Insurance Agents. Cost is \$20.00 per person.

## Eta Alpha Chapter met

Eta Alpha Chapter of Delta Kappa Gamma held its March meeting Saturday at the Senior Citizens Building in Perryton. Ruby Unruh opened the meeting with a thoughtful devotional. Fern Webster introduced Mr. Dean Foshee, principal of Darrouzett, who spoke with a refreshingly positive attitude about the new legislation concerning education.

The World Fellowship Committee auctioned a lovely Mexican pinata to raise \$10 for our contribution.

Hostesses were Shirley Cooper, Nadine Crum and Juanita Brownlee. Others attending from Perryton were Karen Bennett, Flora Champion, Donita Fiskin, Drucilla Fleming, Ruth Hannon, Alice Anne Knox, Wanda Scott, Jeanelle Street and Violet Igou. Also attending were Bernice Beck, Vesta Newman, Charmaine Robertson and Ruth Schoenhals of Darrouzett; Harriet Goodwin, Margaret Parsons and Leona Bechtold of Booker; Wilma Clark of Spearman and Barbara Burrus of Lipscomb.

Blair House, the president's guest house, fronts on Pennsylvania Avenue northwest of the White House grounds. Supervised by the Department of State, it is the official residence of the heads of state who visit Washington.

Give an on-going memorial in memory of your loved one to Stationmaster's House Museum. Tax deductible. Card will be sent to the family.

JEAN E. SHOTTS

ROBERT E. HOLLMANN

The Law firm of  
**SHOTTS & HOLLMANN**  
Attorneys & Counselors

wishes to announce

the opening of a new office

at 410 Davis Street

Spearman, Texas 79081

Office Hours:  
9:00 a.m. to 5:00 p.m.

Telephone  
(806) 659-2939

# Those who know best



Lee Shever  
Hansford Co. Electric

## recommend the heat pump

### for modern, energy-efficient heating and cooling.

The top heating and air conditioning contractors in this area recommend the heat pump for its clean, quiet, economical operation. They agree it's the system to bring you comfort now and for a long time to come.

Look to those who know heating and cooling best. They'll recommend the best heat pump system for you.

Contact your heat pump contractor. Or call Southwestern Public Service Company for your free Heat Pump Buyer's Guide.

**SPS** SOUTHWESTERN PUBLIC SERVICE COMPANY

**Twins will model in style show**



Luke and Missy Johnson, 4 year old twins of Chris and Melyn Johnson, Gruver, will be modeling in the Twin Summer Style Show.

March 30th, in Guymon, Ok. at the 6th grade auditorium, 8th & Academy.

**Twins summer Style Show on March 30**

Tristate Twosomes, Mother of Twins Club, will be hosting their SECOND ANNUAL TWIN SUMMER STYLE SHOW on March 30 at the 6th grade auditorium at 8th and Academy, Guymon.

Twenty-eight sets of twins will be modeling spring fashions from Brystrs Young Fashions in Guymon and Main Street Store in Gruver. The models are from eight different towns in the tristate area.

Tickets are on sale by Tristate Twosome members or can be bought at the door. Buy a ticket early so you can be sure to have a seat! The cost is \$2.00 for adults, \$1.50 for students and \$.50 for 2-5 year olds.

Half of the proceeds will be donated

to the Sandy Price Scholarship Fund. This is a scholarship that will be given to a Senior or Seniors from Hugoton High School.

Danny and Sandy Price had a set of boy/girl twins on May 15, 1984. Drew weighed 1 lb. 11 ozs. and Heather weighed 2 lbs. 2 ozs. They were approximately 2 1/2 months premature. The twins weighed just over 12 pounds at age 10 months and are doing fine.

Danny set up the Sandy Price Scholarship fund after Sandy died on Jan. 3, 1985 of Hodgkins disease.

If you would like more information or tickets reserved, contact Melyn Johnson at 405-339-7109 in Guymon.

**Dentist checked students teeth**

Dr. Stan Cobb, D.D.S. from Spearman visited our Junior High School Wednesday, March 13, 1985. He talked to the students on the importance of daily preventative dentistry. The students teeth were checked for cavities and advise was given on how to take better care of their teeth.

**Roundup Hansford Meeting**

TO: All Clubs & Organizations FROM: Spearman Chamber of Commerce

REGARDING: Hansford Roundup Due to circumstances beyond our control, the carnival, that we have had for many years, will not be able to come back for our Roundup. As you know this is how the Roundup makes its money for prizes, etc. No carnival, no money. We have found one that will come on May 29 thru June 1. We have booked him and hope that this change of dates will not inconvenience anyone. We just moved it one week and the Hansford Roundup dates are May 29 and June 1.

The Miss Hansford County Pageant will be held Saturday, May 4, 1985 at the High School Auditorium.

We will be having an organizational meeting Monday, March 18 at 7:00 p.m. in the Chamber of Commerce office. Marilyn Cline is the new chairman.

Give an on-going memorial in memory of your loved one to Stationmaster's House Museum. Tax deductible. Card will be sent to the family.

**"The Prodigal" to open March 22**

The film, THE PRODIGAL, which is due to open at the Ellis Theatre on March 22-28, was previewed to Perryton community leaders at a special showing last Tuesday, Feb. 12 at 2:30 p.m.

THE PRODIGAL, produced by World Wide Pictures, Billy Graham's film organization, is a modern-day allegory of the biblical story that intimately probes the interactions of one American family. Set in a contemporary urban framework, writer-director James F. Collier's screenplay examines the gradual spiritual and emotional breakdown of the Stuart family as each member searches for his identity in a world of conflicting values and changing life-styles.

Outstanding actors and actresses make up the cast of THE PRODIGAL. John Hammond, who plays the prodigal, starred in the television mini-series "The Blue and the Gray." His mother is played by noted actress Hope Lange, who won two consecutive Emmy Awards as Best Actress for her television series, "The Ghost and Mrs. Muir." The father is played by Broadway award-winning actor John Cullum. The other brother in

the family is played by Arliss Howard, who makes his motion picture debut in THE PRODIGAL.

Those attending this special preview of THE PRODIGAL have been asked to organize groups from their churches, clubs and schools.

Harrol Waterbury, Eddie Neel from the Full Gospel Church serve on the local committee which is involved in bringing the film to Perryton and the surrounding area.

**CPR course planned at Pringle-Morse School**

A CPR course will be offered at Pringle-Morse School on March 24 and 26. Paramedic, Michele Davis of Spearman will teach the course which will be held at 2 p.m. on March 24 and at 6 p.m. March 26th.

There will be no charge and anyone interested in the course should call the school office 733-2507.

The course is sponsored by the Pringle-Morse PTA.

**Alcohol & Drug Abuse Workshop**

The Gruver PTA is sponsoring an alcohol and drug abuse workshop for parents on Thursday, March 28, 7:00 to 10:00 p.m. in the school cafeteria. The workshop, presented by "Chemical People" of Spearman, is to help educate parents on these problems. Betty Womble will head the panel that will bring us a lecture, films, and an open discussion. The PTA wants to urge all parents to attend this workshop in hope to stop or prevent problems before they start. It's important for you to be there! Thursday, March 28, 7:00 to 10:00 School Cafeteria.

**Benefit Barn**

**Dance March 23**

There will be a Barn Dance March 23 at Sparks Hanger. Dance to the music of "Shotgun Kelly". All proceeds will go to the Swimming Pool. The cost will be \$8.00 per person and \$15.00 couple. you must be 19 yrs. and older.

**LUNCH MENU**

**MONDAY, MARCH 25**

- Frito Pie/Cheese
- Tossed Salad
- Fruit Cocktail
- Milk

**TUESDAY, MARCH 26**

- Pig-in-Blanket
- Beans
- Tater Tots
- Chocolate Chip Cookies
- Milk

**WEDNESDAY, MARCH 27**

- Chicken Patties
- Mashed Potatoes/Gravy
- Mixed Vegetables
- Hot Rolls
- Cake
- Milk

**THURSDAY, MARCH 28**

- B.-B.-Q. Beef
- Pinto Beans
- Cole Slaw
- Peaches
- Corn Bread
- Milk

**FRIDAY, MARCH 29**

- Hamburgers
- French Fries
- Lettuce-Cheese-Pickles
- Cookies
- Milk

**WEATHER**

Hansford County received an unofficial 1.50 inches of moisture by 9:30 a.m. Wednesday, March 30. A heavy rain continues to fall in the area.

**Benefit dance set for YMCA**

There will be a Benefit Dance March 23 from 8 p.m. to midnight at the YMCA. This will be a fund raiser for the birthing bed for Hansford Hospital.

Music will be by Ken Freeman's P.M.E.

Everyone is welcome.

**Helen Fisher retires**

Helen Fisher has retired after 25 years with the Hat-4 Cattle Co.

A dinner was given in her honor at the El Vaquero Thursday evening.



Tommy Leathers, driver and Yolanda McAtee, center coordinator are shown with the vehicle assigned to Moore and Hansford counties.

Panhandle Transit, a rural transportation program providing door-to-door transportation to the 26 counties of the Texas Panhandle, is now in operation, according to Ms. Nancy Harvey, Special Projects Director for the Texas Panhandle Community Action Corporation. It is being contracted through the State Department of Highways and Public Transportation with funding through the Urban Mass Transit Administration, and will operate as a non-profit transit system through T.P.C.A.C.

Routine service will be open to the general public and especially suitable for senior citizens and handicapped persons, and will have flexible schedules in order to meet passenger needs.

Regular service will include trips for medical, shopping or essential business purposes, and to visit senior citizens centers and nutrition sites.

A Panhandle Transit vehicle will pick up and return passengers to their homes.

Various purchase-of-service contracts will make possible a cost free service to persons who are eligible for other programs such as: A.F.D.C., Food Stamps, S.S.I., Medic-aide, J.T.P.A., Head Start, housing and butter and cheese.

All other passengers will be charged 50¢ for a one-way, in-town service; and 25¢ per mile, one-way, outside of the city limits.

Drivers have been professionally trained in defensive driving, passenger assistance techniques, first-aid, and C.P.R. Drivers will assist passengers in and out of the vehicle, and with packages and groceries.

Scheduling for Moore and Hansford counties must be made 24-hours in advance through Moore County Community Action.

To request further information, or to schedule Panhandle Transit, please call 935-5551 or 935-2342.

**Ambassador INN**

is proud to welcome our  
**NEW EXECUTIVE CHEF  
BILL HICKS  
to Perryton**

**Stop by & See Some of Our Changes!**

<b>Breakfast Buffet Daily</b>	<b>6-10 A.M.</b>	<b>\$1.99</b>
<small>(Scrambled Eggs, Bacon, Hash Browns, French Toast, Biscuits &amp; Gravy)</small>		
<b>Monday — Western BBQ Buffet</b>	<b>11-2 P.M.</b>	
	<b>5-9 P.M.</b>	
<b>Tuesday — Mexican Buffet</b>	<b>11-2 P.M.</b>	
	<b>5-9 P.M.</b>	<b>\$4.95</b>
<b>Wednesday — Italian Buffet</b>	<b>11-2 P.M.</b>	
	<b>5-9 P.M.</b>	
<b>Thursday — German Buffet</b>	<b>11-2 P.M.</b>	
	<b>5-9 P.M.</b>	
<b>Friday — Breakfast &amp; Lunch Buffet Only</b>		
<b>Saturday — Breakfast Buffet Only</b>		
<b>Sunday — Breakfast &amp; Special Sunday Lunch Buffet</b>		

**March Special**

Bring the top portion of this ad and receive 10% off any steak on the menu Friday, Saturday or Sunday night after 4 p.m.

**Satisfaction Guaranteed!**

## "Rumpelstiltskin" to be presented here



Penguin Productions is a professional touring company that deals exclusively with quality theatre for children. The company was founded in 1979 by husband and wife team, Bryan Lake and Rena Newton, and is based in Dallas. "Rumpelstiltskin" is the 13th show produced by the company and will run through April 13th.

Actors chosen to tour with Penguin Productions go through an extensive audition and interview session conducted before each production. The actors must not only be qualified as performers, but also as technicians, for they all share the responsibility of setting up the sound, lights, and scenery at each new location. Before leaving Dallas, there is a grueling 3 week rehearsal period, during which the show is polished and much of the scenery is constructed and painted.

"Rumpelstiltskin" is the story about a poor miller's daughter who is locked in the castle dungeon and expected to spin straw into gold. The miller, her father, has told the King that she can perform this magic in order to impress him, but the King grows very greedy about the prospect of having "instant" gold and throws the girl into a cell with straw and a spinning wheel. The girl is afraid of what will happen to her when the King finds out that her father was lying about her talents. Just at her moment of despair, a little magic man pops into her cell and agrees to spin the gold for her in exchange for a gift.

Toby Green of Tennessee will be playing the part of Rumpelstiltskin, the magic little man who spins straw into gold. Toby graduated from East Tennessee State University where he received Best Actor Award for his portrayal of Alan in "Equis." One of his many professional roles was Stanley Kowalski in "Streetcar Named Desire", which he performed in the Kingsport Fine Arts Center in Tennessee. He recently worked in an ABC TV movie as a Russian immigrant. The movie, "Johnny

Bull" will air sometime this Spring.

Shelley Mail of India will be playing three challenging roles in this production; the Miller, the wicked Lord Chancellor, and the kitchen boy, Emile. Shelley moved to Texas from India where he was born. He has been actively pursuing a career as an actor for the last four of his 20 years. Shelley has worked as a disc jockey for a radio station, toured children's theatre, and most recently, worked at the Grandbury Opera House, where he performed in "Annie Get Your Gun" and "Showboat."

Nia Schooler of Colorado will be playing the part of Cecile, the Miller's daughter. Nia is not only an actress, but also an excellent musician and song-writer and has toured Texas, New Mexico, and Louisiana as lead singer and guitarist for a group called Heiress. As an actress, Nia has worked for Ft. Worth Theatre, Casa Manana Playhouse, Lone Star Drama, and Imperial Players of Cripple Creek, Colo. She also adds the role of Nancy in "Oliver", which she performed in the Strand Street Theatre in Galveston, to her list of credits.

Beverly Jacob of Rockdale, Texas will be playing the part of Nanny, the castle servant who raised the King. Beverly has degrees from U.T. Austin and Lamar University. She has nine years of teaching experience in English, Speech and Drama and has worked with Imagination Concepts Unlimited, Inc. in Beaumont where she performed several leading roles. Among them are leads in "Last of the Red Hot Lovers" and "Same Time, Next Year". Beverly is returning to Penguin Productions after touring as Baby Bear in "Goldilocks and the Three Bears."

Bryan Lake, who is originally from Crockett and is producer of the company, will be playing the part of King Leon. Bryan was seen as Clyde Bumford in "Goldilocks and the Three Bears" and as the Giant in "Jack and the Beanstalk".

## Truck-vehicle collision kills one

Gruver residents were stunned Friday night at 9:30 when Roberta Borunda was fatally injured in a pickup in front of Allsup's store.

Several head of cattle were killed when a truck turned over after hitting the Borunda pickup. Pictures on this page illustrate as well as possible the results of Friday night's collision.

Two wreckers from Perryton were called to upright the cattle truck.

Mrs. Borunda was taken to Hansford Hospital and was en route to Amarillo in Hansford ambulance at the time of her death at 2:17 a.m. Saturday morning.

Her husband who was driving the pickup was slightly injured.

## Services held for wreck victim

Services for Roberta Elaine Borunda, 27, were held at 2 p.m. Wednesday in Gruver First Baptist Church with the Rev. Larry Christy of Stratford officiating. Burial was in Gruver Cemetery by Boxwell Brothers Funeral Directors.

Mrs. Borunda was killed Saturday in an automobile collision on Highway 15.

She was born in San Francisco. She had lived in Gruver 3 1/2 years. She was employed at Caprock Feedlot #2. She married Jesse Borunda in 1984. Survivors include her husband; a daughter, Bobbie of Gruver; her parents, Mr. and Mrs. Jim Hutchinson; five brothers; and two sisters, including Sharon Hutchinson of Gruver.

Anyone wishing to contribute to the memory of Bobbi may contact the First Baptist Church in Gruver any time.

## Jolly Green Thumb

BY MARY FUREY CRYMES

In a season of verdant green, one looked-for shade is that of the tender, fresh Asparagus. Those first, succulent vegetables are either in the supermarket near you, or they will be shortly. Asparagus is a delight — and a challenge to the vegetable grower.

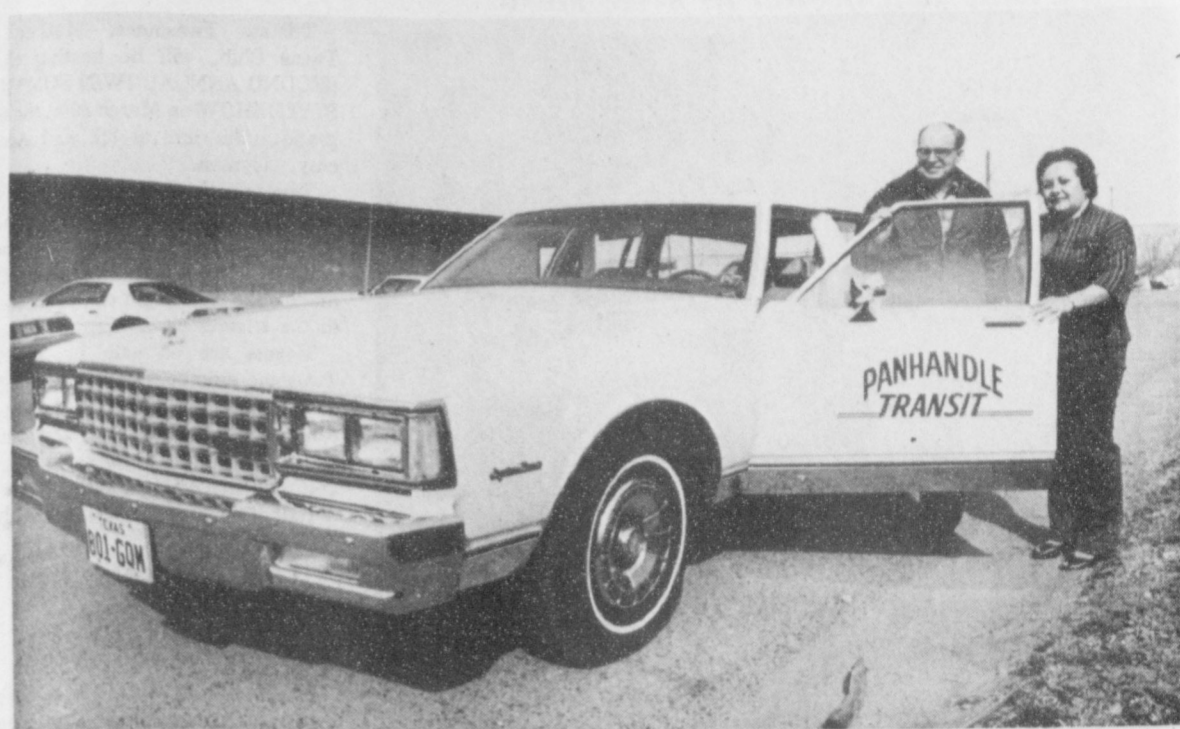
If you're interested, you need space in the garden plot, or close to it, where Asparagus can get five hours of sun daily. Good drainage is vital to successful Asparagus growing, so look to loose and loamy soil through which water passes readily. Another essential ingredient is patience. It sometimes takes years to get a productive bed going, but when you do, it can be set for decades. From time to time, you hear reports of astronomical production — like 30 years or more. Can a rutabaga do that?

Beds should be located to remain unaffected by tilling or digging of other crops. Consider it a semi-permanent fixture. Plant height is a factor, too — locate Asparagus on the north or east sides so smaller plants won't be shaded. Begin with older plants, at nurseries and garden centers now. Plant them about 8 inches deep, and a foot and a half apart. Spread roots with outstretched fingers and cover with a couple of inches of soil as you hold plant. Gradually finish trench by adding topsoil until it's level. Fertilize before Asparagus shows its leafy greenery with any good 5-10-10 plant food. A soaking every other week when soil appears dry handles moisture requirements and today's plants are healthy and relatively disease free. Harvesting is in the third year when roots are strong enough for production.

Did you know that Asparagus is one of the oldest recorded plants? In ruins, most likely at Pompeii, were found detailed instructions for preparing and harvesting the tender stalks. It's thought they date back to 200 B.C. The rules for planting are still applicable, though it's not known the ancient equivalent of lime, an element essential in the soil's correct acid balance.

© 1985 Suburban Features

Three million acres of U.S. farmland are still being lost each year to urbanization or flooding. On productive farmland, 4 billion tons of topsoil are lost yearly to wind and water erosion — from which only half of the nation's cropland is adequately protected.



Tommy Leathers, driver and Yolanda McAtee, center coordinator are shown with the vehicle assigned to Moore and Hansford

Counties. Transportation is now available to sites in the 26-county Panhandle area. Interested parties are requested to call 935-5551 or

935-2342 for further information concerning the Panhandle Transit Service.

## Non-profit transit system

Panhandle Transit, a rural transportation program providing door-to-door transportation to the 26 counties of the Texas Panhandle is now in operation, according to Ms. Nancy Harvey, Special Projects Director for the Texas Panhandle Community Action Corporation. It is being contracted through the State Department of Highways and Public Transportation with funding through the Urban Mass Transit Administration, and will operate as a non-profit transit system through T.P.C.A.C.

Routine service will be open to the general public and especially suitable for senior citizens and handicapped persons, and will have flexible schedules in order to meet passenger needs.

Regular service will include trips for medical, shopping or essential business purposes, and to visit senior citizens centers and nutrition sites.

A Panhandle Transit vehicle will pick up and return passengers to their

homes.

Various purchase-of-service contracts will make possible a cost free service to persons who are eligible for other programs such as: A.F.D.C., Food Stamps, S.S.I., Medic-aid, J.T.P.A., Head Start, housing and butter and cheese.

All other passengers will be charged 50 cents for a one-way, in-town service; and 25 cents per mile, one way, outside of the city limits.

Drivers have been professionally trained in defensive driving, passenger assistance techniques, first-aid, and C.P.R. Drivers will assist passengers in and out of the vehicle, and with packages and groceries.

Scheduling for Hansford and Moore counties must be made 24 hours in advance through Moore County Community Action.

To request further information, or to schedule Panhandle Transit, please call 935-5551 or 935-2342.

## Attention future TAC members

The West Texas Association of The Athletics Congress covers some 80 counties in west Texas. We serve as the registration vehicle for Masters, Youth, and Open divisions for TAC/USA. TAC/USA is the governing body for athletics (track and field, long distance running and race walking) in the United States. In order for us to make contact with athletes who desire to become members of TAC, it is necessary that we have press coverage of our registration. We would appreciate it very much if you could run information concerning this in your paper. Individuals

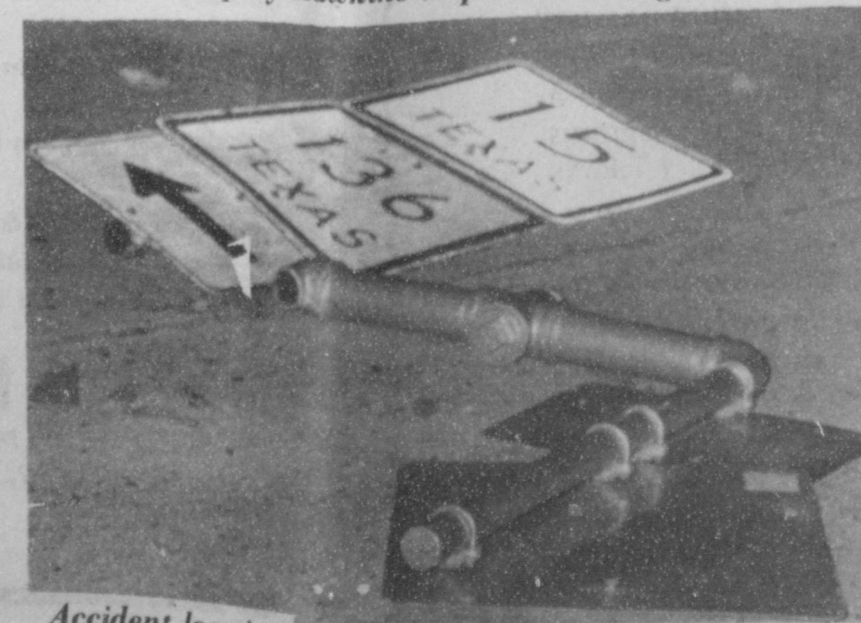
and track clubs who wish to register should contact Jerry Moody, West Texas TAC, P.O. Box 7705, Amarillo, TX 79114-7705.



Scene of fatal accident.



Deputy Hawkins inspects wreckage.



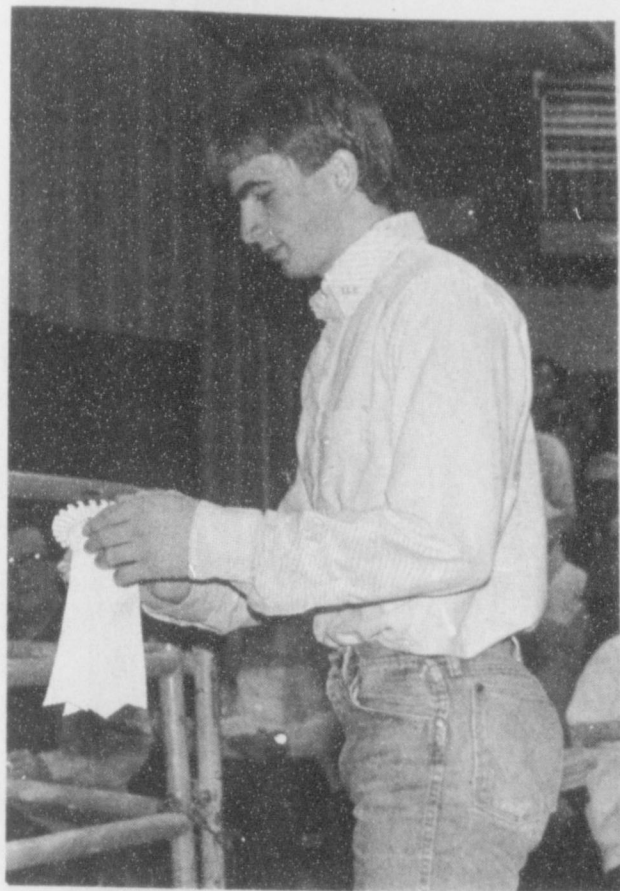
Accident location.



Dead calf inside truck.



Rear view of pick-up.



Lloyd Cator is shown here receiving his showmanship award in lambs at the livestock show over the weekend.



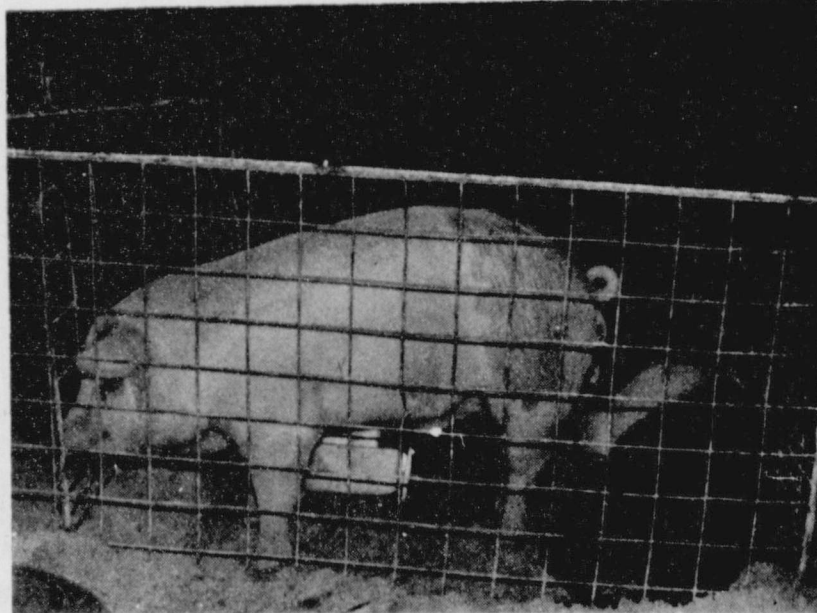
Trevor Williams is shown receiving his second place in steer showmanship by Gruver FFA Sweetheart Lori Fletcher, and Spearman FFA Sweetheart Tiki Jackson.



Laneida Burnham placed 3rd in barrow showmanship.



Chris Brooks placed 2nd in barrow showmanship.



These two pigs await their turn in the showring. The swine floor price was \$41.60 and was set by Davis Livestock of Canyon.

### Texas Lutheran choir to perform at Oslo



Dr. Sigurd Christiansen directs the concert choir from Texas Lutheran College. The choir will perform at the Oslo Lutheran Church Tuesday, April 2 at 7:30 p.m. The public is invited.

The forty-seven voice concert choir from Texas Lutheran College, Seguin, Texas, under the direction of Dr. Sigurd Christiansen will appear in concert on Tuesday, April 2, at 7:30 p.m. at Oslo Lutheran Church.

The singers from Texas will present a program ranging from recent secular works to Renaissance motets. The choir will also perform folk songs, spirituals and hymn arrangements, including "Lift High the Cross" and others.

The choir has earned wide acclaim on tours since they began travel in 1929. Known as the oldest touring choir in the Southwest, the 1985 tour will take them into West Texas, Oklahoma, and the Rio Grande Valley.

Dr. Christiansen, director of the choir since 1972, has developed one of the region's leading choirs. His choral training was thoroughly instilled by both his formal education and the family tradition. His grandfather, who was founder of the St. Olaf choir, F. Melius Christiansen, immigrated to this country from Norway and brought with him from there his education in Germany a thorough training in music and a sense of great European choral tradition. His father, Paul J. Christiansen, has maintained and enhanced this tradition at Concordia College, Moorhead, Minnesota.

The public is invited to hear the continuation of this tradition as manifested in the Texas Lutheran College Concert Choir when it appears Tuesday, April 2, 7:30 p.m. at the Oslo Lutheran Church, located 6 miles West and 12 Miles North of Gruver.

### To God: a note of thanks

By Mrs. E.A. Greever

Friends, truly I have found God's commandments are not grievous, I John 5:3. So perhaps before thanking God for his many precious promises that are given by keeping his commandments, this article should be water baptism, for by the words of Jesus, it seems this should next follow a life who has repented and has been pardoned.

First, we will speak of John's baptism in the wilderness of Judea. His preaching was, repent ye for the kingdom of heaven is at hand. I indeed baptise you with water unto repentance, but he that cometh after me is mightier than I, whose shoes I am not worthy to bear, (and the one of whom he was speaking was Jesus). Many were coming from Jerusalem and all Judea and all the region round about Jordan and were baptised of him in Jordan, confessing their sins, and some he called a generation of vipers, telling them to bring forth, therefore, fruits meet for repentance, (in other words, they had not repented of sins), and Jesus our great example, came from Galilee to Jordan unto John to be baptised of him. John, feeling so unworthy, saying, I have need to be baptised of thee, and Jesus answering said, It becometh us to fulfill all righteousness.

And Jesus, when he was baptised went up straight way out of the water (I'm sure by this statement, his entire body went under water (immersed)). Lo, the heavens were opened unto him and he saw the Spirit of God descending like a dove and lighting upon him. And lo, a voice from heaven saying,

"This is my beloved Son, in whom I am well pleased." This recorded in Matt., the third chapter. Thank you God, our heavenly Father, for Jesus that your holy word tells us is the same yesterday and today and

forever, and the next line tells us not to be carried about with divers and strange doctrines. For it is a good thing that the heart be established with grace. Heb. 13: 8-9.

And God's word tells us the grace shown through Jesus will enable us to live a holy life, not just sins forgiven, but a sin nature cleansed to one of righteousness. Thank you God. Jesus died for our offenses and rose again for our justification. Now we go to the teaching of Jesus concerning baptism in water. Matt 28:18-20. Jesus spoke unto his disciples after his resurrection saying, All power is given unto me in heaven and in earth. Go ye therefore, and teach all nations, baptising them in the name of the Father, and of the Son,

and of the Holy Ghost, teaching them to observe all things whatsoever I have commanded you, and lo, I am with you always, even to the end of the world. In Mark 16:15-16, we read, Go ye into all the world and preach the gospel to every creature. He that believeth and is baptised shall be saved, but he that believeth not shall be damned. Now let us be reminded here, the word says, with the heart, man believeth (not head knowledge) unto righteousness and with the mouth confession is made unto salvation. You will find this written in Rom. 10:10. Without the shedding of blood is no remission for sin. So, it is not the water that saves, but to be baptised following the answer of a good conscience toward God. In Acts, we find the Apostles baptised and an interesting story of the baptism of the Eunuch by Philip is found in Acts, chapter 8, beginning with the 26th verse. Thank you God, for happy are we if we believe and obey.



Sport and physical education are popular activities in our society. Exercise has become a national craze for millions of Americans. They are jogging, swimming, dancing and cycling themselves into shape. As a nation, we are much more physically fit than we were 20 or even 10 years ago. But what about America's youth? Has the fitness revolution passed them by? And if this is the case, how can we motivate and encourage young people to take advantage of regular exercise and its many benefits?

Patterns of physical activity are set early in life. Yet, a study prepared by the Department of Health and Human Services in 1984 showed most young Americans do not pursue exercise activity patterns carrying over into adulthood. The study also found that schoolchildren have more body fat than they did 20 years ago, and that only half of them are getting enough exercise to build healthy hearts and lungs. These findings probably apply to residents of other nations and cultures, too.

Games and exercises, along with a program of calisthenics, can provide a good start toward establishing basic fitness. An exercise program should be varied and fun, not regimented. Adults should encourage exercise but should not push their children into sports or activities they dislike. Caring parents, coaches, and other adults often have a very positive effect on a young person's lifetime views toward exercise and fitness. Values such as health, fitness, nutrition and healthy competition should be stressed. The pushy "Little League" parent and the "win at all costs" coach have no place in youth sports and fitness programs.

Negative feelings about sport and exercise will carry over into adulthood. The best way to help a beginner is to be supportive and positive. As young athletes grow and develop, they may encounter problems because they still are in their formative years. Young athletes must be wary of training too much too soon, and be careful to avoid bone fractures and growth plate disturbances. Weight training programs should be sensible, concentrating on lighter weights and more repetitions. One condition commonly seen in young people is a knee problem called Osgood-Schlatter disease. The only effective treatment for it involves reduced activity. Although these are potential injuries related to youth, their treatments are the same as for older athletes. Most injuries can be avoided and remedied by a sensible approach to an exercise program.

An important consideration when starting a youth sport and exercise program should be the concept of lifetime fitness. Youngsters should be introduced to various activities they can pursue on a long-term basis. Early exposure to varied athletic activities will enable each young person to choose activities which could be maintained for life in any culture or society.

Why does the dog NEVER have to go out during a commercial?  
© 1985 Suburban Features

#### THURSDAY 3/21/85

CABLE	[3]	[4]	[5]	[7]	[8]	[9]	[10]	[11]
PM	ESPN	KAMR	HBO	KVII	WTBS	OETA	KFDA	WGN
	Sports Network	CH.4	Home Box Office	CH.7	CH.17	Oklahoma Cty.	CH.10	CH.9
	Amarillo	Amarillo		Amarillo	Atlanta		Amarillo	Chicago
6:00	Prog Cont'd	News	Prog Cont'd	News	Little House on the Prairie	Nightly Business Report Oklahoma	News	Barney Miller
6:30	"	M*A*S*H	Warning: May Be Hazardous	Wheel of Fortune	"	"	Three's Company	Benson
7:00	"	Cosby Show	Movie: 'All the Rivers Run' (CC) Part 4	Wildside (PREMIERE)	World of Audubon II	Nova (CC)	Magnum, P.I.	Movie: 'Bye, Bye Braverman'
7:30	USFL Football	Family Ties	"	"	"	"	"	"
8:00	Orlando vs. Jacksonville	Cheers	"	Eye to Eye (PREMIERE) (CC)	NBA Basketball: Portland at Phoenix	Woody Herman's Big Band Celebration	NCAA Basketball Championship Regional	"
8:30	"	"	"	"	"	"	"	"
9:00	"	Hill Street Blues	Movie: 'Hot Dog, The Movie'	20/20 (CC)	"	"	Semifinals: East Region or Midwest Region	News
9:30	"	"	"	"	"	"	"	"
10:00	"	News	"	News	Movie: 'Magic'	Dr. Who	News	WKRP in Cincinnati Love Boat
10:30	SportsCenter	Tonight Show	Movie: 'Max Dugan'	Hart to Hart	"	"	NCAA Basketball	"
11:00	ESPN's Speedweek	"	Returns	"	"	New Literacy	Championship Regional Semifinals: East Region	"
11:30	ESPN's Horse Racing Weekly	Late Night with David	"	ABC News Nightline	"	Sign Off	"	Movie: 'The Rains'
12:00	Fitness Magazine	Letterman	Movie: 'Cujo'	Charlie's Angels	"	"	or Midwest Region	of Ranchipur'
12:30	1985 NCAA Basketball	Muppet Show	"	"	Movie: 'THX 1138'	"	"	"

#### FRIDAY 3/22/85


CABLE	[3]	[4]	[5]	[7]	[8]	[9]	[10]	[11]
PM	ESPN	KAMR	HBO	KVII	WTBS	OETA	KFDA	WGN
	Sports Network	CH.4	Home Box Office	CH.7	CH.17	Oklahoma Cty.	CH.10	CH.9
	Amarillo	Amarillo		Amarillo	Atlanta		Amarillo	Chicago
6:00	SportsCenter	News	Prog Cont'd	News	Little House on the Prairie	Nightly Business Report Oklahoma	News	Barney Miller
6:30	1985 NCAA Basketball	M*A*S*H	"	Wheel of Fortune	"	"	Three's Company	Benson
7:00	Championship Regional Semifinal Game	Codename: Foxfire	Movie: 'Surf II'	Webster (CC)	Movie: 'Apache'	Washington Week/Review Wall Street Week	Detective in the House	Movie: 'Time Machine'
7:30	"	"	"	Mr. Belvedere (CC)	"	"	"	"
8:00	"	V	"	Benson (CC)	"	In Search of Excellence	Knob's Landing (CC)	"
8:30	ESPN's Speedweek	"	Not Necessarily/Movies	Off the Rack (CC)	"	"	"	"
9:00	World Cup Skiing: Women's Slalom from Waterville Valley, NH	Miami Vice	Movie: 'Videodrome'	Matt Houston (CC)	Movie: 'Fantastic Invasion of Planet'	"	NCAA Basketball Championship Regional	News
9:30	"	"	"	"	"	"	"	"
10:00	Waterville Valley, NH SportsCenter	News	"	News	Earth'	"	Semifinals: Southeast Region or West Region	WKRP in Cincinnati Love Boat
10:30	"	Tonight Show	Hitchhiker: Man at the	Hart to Hart	"	Dr. Who	"	"
11:00	Top Rank Boxing from Atlantic City, NJ	"	Movie: 'Sahara'	ABC News Nightline	Night Tracks	New Literacy	News	"
11:30	"	Friday Night Videos	"	"	"	Sign Off	NCAA Basketball	Movie: 'Major Dundee'
12:00	"	"	"	Special	"	"	Championship Regional Semifinals: Southeast	"
12:30	"	"	"	Charlie's Angels	"	"	"	"

**KITCHEN CLUTTER** — Have one or more Lazy Susans installed in your kitchen. You'll be taking a giant step towards a more efficient kitchen. "Susans" put spices, canned goods, even cookware at your fingertips with a spin of your fingers. Next in popularity are the shallow "file" drawers for trays, baking equipment and other bulky kitchen objects. If you're planning to remodel the kitchen, do try for one or both of these time savers. And check out the new, under the cabinet, space-saving appliances, too.

**KID SEAT** — Need seating in your child's room? Use foam mattresses — either standard or baby size. Cover these with bright, homemade slipcovers — removable for washing. To make a chair, fold mattress in thirds so that two thicknesses form the bottom "seat." Sew tapes halfway down the top piece and at the middle of the double thickness. When tapes are stretched, top piece forms chair back. And, mattresses can double as beds for kids' stayover guests.

**FLOWER FIXER** — Keep Spring bouquets and fresh arrangements lovelier longer by working with them. When blossoms begin to droop, remove ribbon and wrapping paper and rearrange flowers. Remove dead blossoms and add a half cup of club soda per container. This — not aspirin, nor vitamin E, nor any other form of human medication, will help preserve the beauty. Check woody stems. If they're not moist, crush ends slightly with a meat mallet or hammer to spread moisture upward.

# Why Should ClayDesta Communications Be Your Long Distance Company?

 Years ago, the Pony Express introduced new standards for communicating over long distances — simple, direct and reliable.

Today, ClayDesta Communications' goal is to provide you with long distance service that is clear and simple. Whether it's a long distance call to Dallas or a critical data transmission, ClayDesta Communications can handle all your long distance needs.

#### Sign-up charges

We don't charge to connect you to ClayDesta Communications.

#### Minimum monthly billing

We don't charge a service charge or penalize low volume long distance users.

#### Simple billing

You receive one detailed monthly statement for all of your long distance charges with ClayDesta Communications.

#### Long Distance Credit Card service

Wherever you travel, there's no reason to remember different phone numbers for different cities, like with other long distance companies. Simply call a single ClayDesta Communications 800 number for credit card calls (the call will appear on your next statement).

#### Operator Assistance

With ClayDesta Communications, you save money but still have the opportunity to use AT&T Operators when necessary.

#### Information service

Information service is provided to all customers by the local operating company (Southwestern Bell, GTE or Continental Telephone) as a part of your local telephone service.

#### Discounted rates

You can call anytime, anywhere in the Continental United States and your charge on ClayDesta Communications will always be at least 15% less than the charge for an AT&T direct dialed station-to-station call.

#### 1+ dialing

When you select ClayDesta Communications as your primary long distance company, all of your long distance calls will be made by dialing 1 + area code and number — regardless of whether you live in an equal access exchange or not. (There are small long distance volume restrictions that apply to users in non-equal access exchanges. Please call us for details.)

#### Quality service


Our new digital network will be our own — offering higher quality than MCI, Sprint, U.S. Tel or even AT&T — and you will still receive our discount.

That's good business for you!

#### Home based

As a West Texas-based long distance company, we plan to employ hundreds of area residents (and mean a substantial boost to our area's economy — not someone else's).

Most important, our commitment to West Texas will always be to quality, reliability and simplicity — at a competitive price.

 If we haven't answered your questions about saving money while you benefit from better long distance service... please give us a call, **1-800-441-0987**.

ClayDesta Communications, we want to be your clear and simple choice for long distance communications.

©1985 ClayDesta Communications, Inc. 05/SM

# ClayDesta Communications

**LONG DISTANCE QUALITY... CLEAR AND SIMPLE.**

