

24 hr. prayer
service, 659-2911

THE GRUVER STATESMAN

Volume 14, Number 36

THE GRUVER STATESMAN, GRUVER, TEXAS 79040

Thursday, June 13, 1985

Gruver Men Win Bankers' Tournament

Fifty teams entered the Hansford County Bankers Annual Golf Tournament, which was held Saturday and Sunday, June 8 and 9, at the Hansford County Golf Course.

A play-off between the top three teams entered in the Championship Flight of the two-man scramble ended at the second hole. Rod Been and Chuck Morgan, both of Gruver, captured first place following stiff competition.

Jerry Pat Davis of Spearman and Tony Harper of Gruver received second place in the Championship Flight. Third place went to Juan Macias of Spearman and Russell McClure of Gruver. Following in fourth were Dale Wofford of Spearman and Alex Dugan of Farnsworth.

First place in the First Flight competition went to Randy Brown of Gruver and Sam Goodnight of Levelland. Second place winners were Don Smith and Garland Head, both of Spearman. Spearman's Cliff and Melvin Bradley received third place, followed by James and Mark Cunningham of Spearman in fourth.

First place in Second Flight competition went to Bob Hardy and Del Hendricks, both of Spearman. Second place went to Kenneth Irwin and Bill Duncan, both of Gruver.

Danny Henson and Carl Cooper, both of Gruver, received third place, followed by Mark Irwin and Robert Meyer, both of Gruver, in fourth.

First place in Third Flight competition went to Buddy Lowe and J.W. Ward of Gruver. Jack Lamb of Spearman and Bill Nowell of Dumas received second place. Mark Guthrie and Pat Tucker, both of Spearman, received third place, followed by Mike Cudd and Tindell Ramon, both of Spearman, in fourth.

Alex Dugan of Farnsworth received a very nice out-door cooker for coming closest to the pin on the fourth hole.

The tournament was sponsored by Gruver State Bank, First National Bank of Spearman and First State Bank of Spearman.

The Hansford County Banks would like to express their appreciation to all those who participated and helped make the 1985 tournament another success.

A special thanks is extended to Brian Noel, the golf professional of the Hansford County Golf Club, for his time spent as director of the tournament.

The banks would like to express appreciation to Nick Gray of Taylor Petroleum for donating ice used during the two-day tournament.

Thanks goes to Max Baggerly, with B&B Sales Company, for providing the tank used to ice down the watermelon, along with Dorothy Karns of Frida Mart, who also donated ice and storage.

This year's meal of fried catfish was catered by Ivey's Hungry Cowboy of Spearman. Almost 200 people were served Saturday night.

Wheat Harvest underway

Gruver City Pool Open

Just in time for summer, the new Gruver City Pool was officially opened June 1.

Mayor J.C. Harris took the first plunge into the pool, following its dedication.

Roy Mayhew is managing the pool, which has a concession stand for break-time. Dennetta Booth, Missy Britt, Brian McClenagan, assistant manager, Ron Riley, Rhonda Ward and Dee Dee Womack are lifeguards for the pool.

The pool is open to the public Monday through Saturday, 2:00-6:00, and 2:00-5:00, on Sundays.

Teen night is 7:00-9:00, on Thursday. Ladies hours are 1:00-2:00, Monday through Friday. Beginning June 17, Women's night will be Mondays from 7:00-9:00.

A year of fund-raising, planning and construction were involved in the completion of the pool.

10 Days Early

Hansford County Wheat Producers, who have some 150,000 acres of grain in fields, started the 1985 harvest this week—a harvest that is 10 days to two weeks ahead of normal.

Prospects for the crops have dimmed some in the last 30 days.

Forecasts earlier this spring had grain producers anticipating a wheat crop that would approach 1983 production -- a year which saw Hansford County ranked as the #1 Wheat Producer in the State of Texas.

This year's forecast was based on ample winter rains across Hansford County and ideal spring growing conditions for the crop.

Since May 1, the wheat crop in Hansford County has been hit with a fungus leaf rust, and stressed by hot, dry winds and temperatures approaching 100 degrees.

Most grain elevator managers anticipate that Hansford County will have three different wheat harvests.

Wheat growers began cutting dry land this week. Harvest of the "semi-irrigated" wheat will begin in mid-June, and irrigated wheat, the latter part of the month.

Most farmers plan to harvest dry land this week if the weather remains dry. This is good drying temperatures with temperatures in the high 90s. Farmers say that the dry land crop "looks good where it caught the spring showers" and yields may be 20 bushel an acre or higher.

"You never know how good the crop is until you cut it, however,"

declares the Hansford County Farmers. Much of the irrigated wheat will not be ready for the combines for another 10 days to two weeks.

Farmers who sprayed their wheat for rust early figure it was worth the expense. The leaf fungus developed rapidly in Hansford County in mid-May when humidities were high and temperatures were below normal. The latter part of May turned hot and dry, stressing the fungus-damaged crop.

"The prospect for the crop is not the same as it was two weeks ago," declares elevator managers and farmers. Many believe that yields will be 20 percent less than what we expected. Wheat harvest in Hansford County generally begins in the middle of June and is completed in three to four weeks. This year, however, the crop has matured early.

Harvest plans were delayed by heavy rains, from two to four inches, across the county the first half of the week. Fields need a week to 10 days of sunshine to dry.

"Overall the wheat crop looks good." "We really won't know the extent of the rust damage until it is cut. No one has a good barometer to estimate damage." "We are going to have three harvests this year—dryland, semi-irrigated, and full irrigated."

The dryland harvest is underway, followed by grain which has had an irrigation or two, and then the fully-irrigated.

Rainfall interrupts harvest

Heavy cumulus clouds dropped 1" of rain in Spearman Monday evening. The rain started at 6 p.m. with rain reports of .25 in the Gruver area up to extremely heavy rains east of Spearman.

Most of all combines were stopped from Spearman east Tuesday but the wheat harvest is expected to resume in the Gruver area by Tuesday after possibly.

There wasn't any hail reported Monday & Hansford County residents were enjoying 55-degree temperature Tuesday.

Surplus cheese & butter distributed June 19

Surplus cheese and butter will be distributed June 19 from 1 to 5 p.m. at the county courthouse.

HOSPITAL

Patients in Hansford Hospital are Q.D. Beddle, Mary Sullens, Virgil Floyd, Danny Moyer, Kristin Evans, Otis Dry, Chris Goodson, Daniel Lance Baker, K lifton Jaques and Alam Remy.

Dismissed were Gretchen Cotter, Rita Underwood, Jimmy Bynum, L.T. Right, Alice Fry and Audrey Tucks.

Gruver Lions Club Accepting Donation

The Gruver Lion's Club is accepting 300 donations of \$100 each from area people to purchase lights for the new Gruver ballpark currently under construction.

The Lion's Club will sponsor a drawing on the Fourth of July, and award a new 1985 Ford F-150 pickup to the holder of the matching donation stub. Those who would like to make a donation and be included in the drawing may contact any Gruver Lion's Club Member.

The winner need not be present to accept the pickup, which the Lion's Club is purchasing from Mark "Sid"

Irwin of Gruver Ford. Some of the features the white 1985 pickup has are power windows, combination AM/FM/cassette stereo, air conditioning, an auxiliary fuel tank and radial tires.

Rick Harbison and Steve Ellis have spent a great deal of time planting grass on the new ballpark field located across from the school tennis courts. Fence for the field is expected to arrive some time next week.

The ballpark will be a combination softball, pony league and T-ball field. The men's softball team plan to use the ballpark following its completion later this summer.

Sandy Spivey winner of art competition



SANDY SPIVEY

petition is held annually throughout the United States. Winning entries from participating congressional districts are displayed in the U.S. Capitol for one year.

Sandy Spivey is a senior at Gruver High School. The winning entry depicts agriculture, cattle ranching and oil and gas as the main industries in the State. "Sandy put much thought into her entry, as is evidenced by the Six Flags Over Texas, the State Seal, the bluebonnet, which is the State Flower, the Capitol Building and the verdent land in the southern part of the State. Her entry is representative of the spirit which makes Texas the great State it is", Boulter commented.

Judging the competition was Jack Sorenson, an Amarillo artist. The competition was open to high school students and was run at no expense to the federal government. Boulter said that he had received entries from many counties in the 13th District.

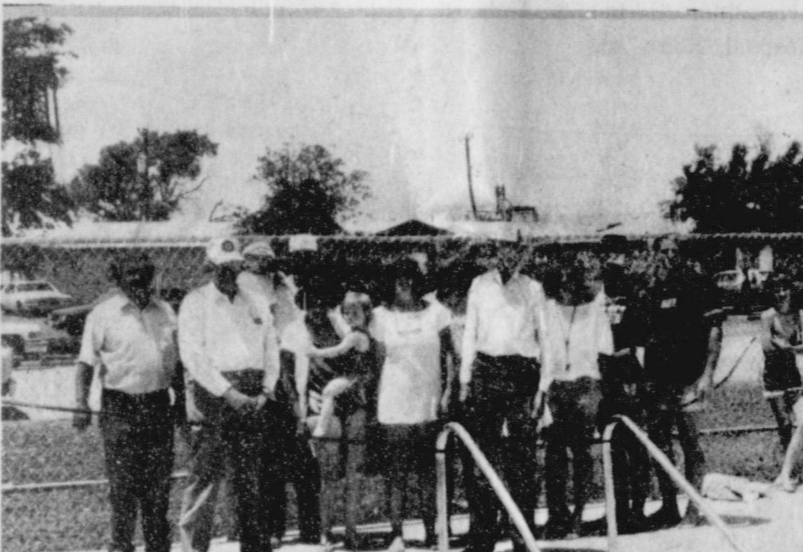
"This type of competition", Boulter said, "fosters interest in, and enthusiasm for, the arts. It is a perfect example of a program that encourages young artists nationwide. I hope to be involved again next year."

July 4th Fireworks

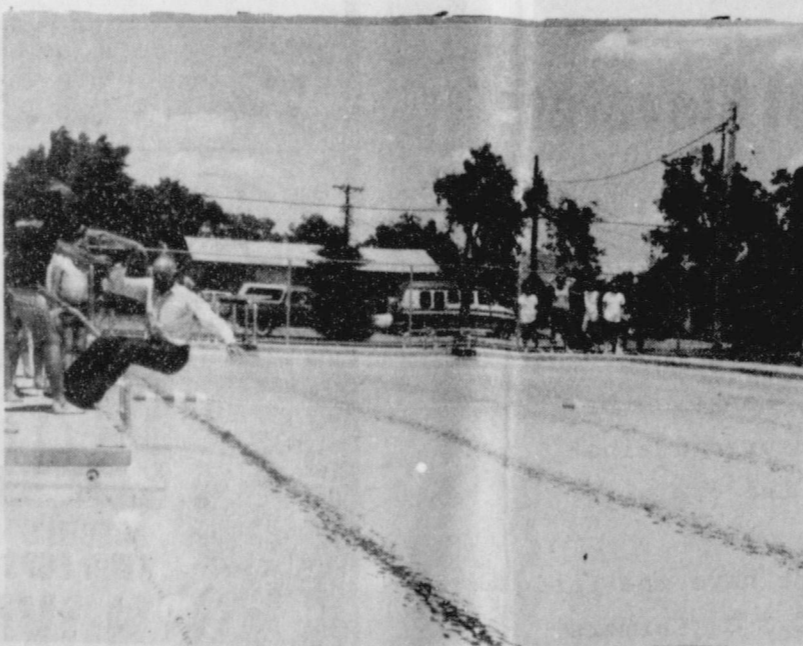
Make plans now to be in Spearman on July 4th. The Fireworks Display will be at the Lynx Stadium at the Spearman High School. More details later.

MARKETS

CORN:	\$3.00
MILK:	\$4.55
WHEAT:	\$2.90



Jim Ratliff, Roy Byrd, Ila Jo Hart, Mayor J.C. Harris, Roy Mayhew and lifeguards smile as the new Gruver pool is dedicated.



With a little push from Roy Mayhew, Mayor J.C. Harris is the first person to plunge into the pool.



To beat the heat, approximately 150 swimmers came out for the opening of the pool.

Autograph Party At First National Bank Thur.



Two Spearman teenagers badly injured in one car rollover

Two Spearman teenage girls were severely injured in a one car rollover 8 miles southwest of Spearman at 5 p.m. Friday, June 7, 1985. The girls, Rhonda Gibson and Vicki Elbert were ejected from their late model Ford Escort.

The girls were coming home

from Morse heading east, apparently.

The accident happened near the Hutchison farm on Hwy. 520, 8 miles from Spearman.

Vicki remains in intensive care at Northwest Texas Hospital. She is in a semi-conscious condition with

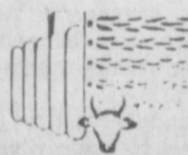
head injuries and a broken pelvis

Rhonda received back and leg injuries. She is reported in improved condition. She is in St. Anthony Hospital, Room 468.

GRAIN DEPOSITS IN THIS ELEVATOR
INSURED BY

F. G. I. C.

FARMERS GRAIN
INSURANCE COVERAGE
BY



AGRI*RISK

SPEARTEX GRAIN COMPANY
P. O. BOX 248
SPEARMAN, TEXAS 79081

Farmers Worry About Bankrupt Elevators

SPEARTEX GRAIN COMPANY is Proud to be covered by F G I C (Farmers Grain Insurance Coverage) at no cost to the farmer.

F G I C coverage guarantees that Warehouse Receipts and open stored grain which is held by farmers, companies involved in Farming, Feedyards, Cattle Feeders, Investors, Banks, Other lending institutions or anybody else, is 100% insured against loss caused by bankruptcy of the elevator where the grain is stored.

If the front door of the elevator does not have the insignia "Grain deposited in this elevator insured by F G I C (Farmers Grain Insurance Coverage) by Agri*Risk", then the elevator is NOT covered to fully protect their customers.

We have our 1985-86 License & Bond approved from Texas Department of Agriculture & are ready to receive your grain.

We would like to take this opportunity to wish each farmer much success with the upcoming wheat harvest and we stand ready to be of service to each of you.

SPEARTEX GRAIN COMPANY
P. O. BOX 248
PHONE (806) 659-3711
SPEARMAN, TEXAS 79081

*Carl Archer
Gen. Mgr.*

<p>WHILE SUPPLIES LAST</p> <p>PEPSI-COLA 12 OZ. CAN 6 PK. CTN. POP SPECIAL PEPSI-DIET PEPSI- PEPSI FREE-PEPSI LIGHT</p> <p>\$1.69</p>		<p>MOVIE & VCR RENTALS The Very Best in Home Video Entertainment! ALL YOU NEED IS YOUR TV!</p>	
<p>ALLSUP'S SANDWICH ON A BUN RIB-B-Q</p> <p>COOKED FOOD SPECIAL EACH 99¢</p>		<p>HOT DOGS</p> <p>39¢ EA.</p>	<p>CHILI DOGS</p> <p>49¢ EA.</p>
<p><i>June is</i> Borden Dairy Month</p>			
<p>BORDEN'S ASSORTED FRUIT DRINK GALLON</p> <p>89¢</p>		<p>BORDEN'S TWIN POPS OR FUDGE BARS NOVELTIES 12 CT. PACK</p> <p>\$1.39</p>	
<p>BORDEN'S REAL ORANGE JUICE QUART</p> <p>99¢</p>		<p>Fast 'n' Hot CHICKEN SALAD SANDWICH REG. \$1.39 \$1.09</p>	
<p>ALLSUP'S CONVENIENCE STORES</p>		<p>KRAFT GRAPE JAM OR JELLY 2 LB. JAR 99¢</p> <p>PRICES EFFECTIVE JUNE 13-15, 1985 OPEN 24 HOURS A DAY GROCERIES-SOFT DRINKS-SNACKS-HOT COOKED FOODS-SELF SERVE GAS-MONEY ORDERS.</p>	

WANT ADS

SERVICES

New to Area
Give Us A Try
Call Your Local
USED COW DEALER
As Soon As Possible
659-3544
659-3545
1-800-692-4043
22-rtm

NOTICE

Wallace Monument Co.
Monuments, Curbing,
Grave Covers
Local Representative
LEONARD JAMESON
Spearman, Texas
40-rtm

OSGOOD MONUMENT CO.

Amarillo, Texas
Dealers of Rock of Ages
Granite, as well as all
colored granites, marble
and bronze memorials.

represented by
BOXWELL BROS.
FUNERAL HOME
519 S. EVANS
659-3802

Hansford County
Planned Parenthood
412 Davis
659-2483
Spearman
Mon. - Fri.
8:30 - 12:30

Sewing done—little darling and
Cinderella dress types a special-
ity. Call Joy 733-2517.
nc

Need to oil your wood shake or
shingle roof? Give it extra life and
beauty.
Whatever your painting needs
may be - from taping and textures
to custom finishes with any coating
on any surface. We also feature
energywave insulating paints. Call
today for a free estimate.

BEASLEY PAINTING
ALLAN 733-2858 JIM 733-2012
19-rtm

SEARS BLOWN IN ATTIC
INSULATION. Now 10% off.
Completely installed. For
FREE ESTIMATE at your con-
venience dial 659-2573. Sears
Roebuck and Co. 517 S. Hwy.
207.
50-rtm

Graduation, Mothers Day, Fathers
Day cakes, novelty and birthday
cakes. Made to order. Call Joy,
733-2517.

Hay Swathing & Baling done - Call
733-2517 or Dennis at 733-5214.
31-rtm nc
PAINTING, ROOFING, additions,
remodel, general repairs, ga-
rages, fences, patios and decks.
Call Terry, 659-3232.
34-4tc

REAL ESTATE

FOR SALE: New, just finished, 3
bedroom home with 2 baths,
double car garage. Roy Edwards
733-2178. 114 Cooper Ave.
16-rtm

PUBLIC NOTICE

Guymon Elks Supper Club is
open to the public. Our hours are
Wednesday-Thursday 6-10 p.m.
Friday-Saturday 6-10:30 p.m. We
have a prime rib special every
Friday.
51-rtm.

BUSINESS

OPPORTUNITIES

OWN YOUR OWN JEAN-
SPORTSWEAR, LADIES AP-
PAREL, CHILDRENS, LARGE
SIZE, COMBINATION STORE,
ACCESSORIES. JORDACHE,
CHIC, LEE, LEVI, EASY STREET,
IZOD, ESPRIT, TOMBOY, CAL-
VIN KLEIN, SERGIO VALENTE,
EVAN PICONE, LIZ CLABORNE,
MEMBERS ONLY, ORGANICAL-
LY GROWN, GASOLINE,
HEALTHTEX, OVER 1000 OTH-
ERS. \$13,300 to \$24,900 INVEN-
TORY, TRAINING, FIXTURES,
GRAND OPENING, ETC. CAN
OPEN 15 DAYS. MR. LOUGHLIN
(612) 888-6555.

36-1tp

FOR SALE

Have 3 excellent used pianos. Tuned
and delivered. Call 1-355-2656
36-1tc

FOR SALE: Kingsize waterbed
w/headboard \$200. call 733-5207 or
733-2255.

ALFALFA HAY FOR SALE. Call
Lewis Henderson 733-2517.
31-rtm nc

FOR SALE: Texas Longhorn -
cows, bulls, heifers, and roping
steers. 806-826-5877 or 5718.
35-4tp

REPOSSESSED PIANO--Medium
brown finish-like new-will show
locally. Low monthly payments
can be assumed with good credit.
Ask for Piano Credit Manger-Ph.
316-624-8422. Brier and Hale
Music Co. Liberal, Ks.
35-2tc

FOR SALE: Brand new RCA Seleco-
tvision VCR, with remote control
\$350.00. Call 659-3812.
35-2tc

FOR SALE: 18 ft. W.W. Horse
trailer excellent condition Call
Dean McClenagan 733-2569, Gru-
ver, Tex.

35-2tp

AUTOS FOR SALE

FOR SALE: 1984 extended van
with raised top. Electric lift for
handicapped. Custom made. Front
and rear air. CB, Tilt and Power.
Call 659-3605 or 659-3566.
28-rtm

FOR SALE: Clean 1981 Silver
Datsun 210 automatic with air in
excellent condition 733-2060 nights
& weekend.
36-rtm

FOR SALE: 81 Citation, 4 door,
air, power steering. Excellent con-
dition. 659-3629.
36-2tp

REAL ESTATE

TO MOVE: Lubbock Home 16
miles SW of Spearman. 3 bdrm., 2
bath, large kitchen and dining
area, large living room. About 1700
sq. ft. 659-2794.
27-rtm

HELP WANTED

THERE IS NO PLACE LIKE
HOME SO GUARD IT!
Texas Army National guard has
several openings in Pampa. Good
pay and other benefits while you
learn. A part-time job (one week-
end a month), \$35,000 life insuran-
ce and a retirement plan. The GI
Bill is now available for education.
32-19tc

Start Anywhere

If there are no new worlds for
this year's crop of graduates to
conquer, there is a lot of repair
work needed on this one.

-Democrat, St. Louis.

Three?

Sam says: "There are three
women in the world for every
man—one to marry him, one to
understand him, and one to ruin
him."

-Herald, Boston.

A blanket of snow on the
ground can help protect it
from frost damage.

MOBILE HOMES FOR SALE

INVOICE SALE
Special purchase of bankrupt dealer
inventory will be sold at dealer's
whole sale cost. Large selection of
14' and 16' wide mobile homes.
Dealers welcome—save\$\$
**WE TAKE TRADES—ANYTHING OF
VALUE**

6325 Canyon Dr.
Amarillo, Tx.
806-358-3257

36-4tc

DEALERS REPO

3 bdrm. mobile home, 2 baths, wood
siding, storm windows, garden tub,
etc. Assume payments of \$248.00
with approved credit. Includes deliv-
ery and insurance. **WE TAKE
TRADES—ANYTHING OF VALUE**

6325 Canyon Dr.
Amarillo, Tx.
806-358-3257

36-4tc

10 elevators closed by TDA

[AUSTIN]—Due to a combination
of circumstances, the 10 Oles Grain
Company elevators in the Texas
Panhandle have been closed by the
Texas Department of Agriculture,
and no grain will be moved into or
out of those facilities without
agency permission. TDA was re-
quired to take this action because
owner David Oles has not obtained
the required licensing bond, and
two of the facilities were short of
their stated grain inventory.

"We closed two of the facilities,
at Perryton and Spearman, when
TDA inspectors found each of the
elevators to be between 8-10 per-
cent short of the grain reportedly in
storage," said Darrell Ketchum,
director of TDA's Grain Warehouse
Licensing Division. "The other
eight facilities were shut down, and
the elevator doors sealed, because
Mr. Oles did not obtain a new
Grain Warehouse Bond by the June
1 licensing date, as required by
state law."

According to Ketchum, Oles
Grain Company needs a \$500,000
bond, the maximum which TDA
can, by state law, require to cover
any grain losses for the licensing
year which begins June 1, 1985 and
continues through May 31, 1986.

In addition, three of Oles Grain
Company's creditors on Wednes-
day filed an involuntary bankruptcy
petition against the firm at federal
court in Lubbock. Filing that law-
suit were Republic Bank of Dallas,

To God: A note of thanks

by Mrs. E.A. Greever

Friends we read in Gen. 12th
chapter God spoke to Abraham and
told him to leave that place and go
to a place he would show him and
in him would all nations of the
world be blessed. Abraham obeyed
God.

In Heb. chapter 11 we read he
journeyed to the place he would
afterward receive for an inheritan-
ce looking for a city which hath
foundations whose builder and
maker is God and in Rev. chapter
21 John saw the holy city new
Jerusalem coming down from God
out of heaven prepared as a bride
adorned for her husband. Read the
entire chapter again my friends and
I'm sure you will be blessed. He
was carried away in the Spirit and
was shown that great heavenly city
the Holy Jerusalem descending out
of heaven from God. It had twelve
gates each one of one great pearl
the foundation was garnished with
precious stones, the walls were of
japer and the city was pure gold
with Jesus the light.

One day after hearing about the
parade here in Spearman June 1st
my thought was of the greater
number of its people that would be
along the streets on that day. Here
my thought was how wonderful it
would be if every one at Gods
appointed time could pass through
the gates of pearl into that city
where the street is of pure gold as
of transparent glass. But since we
are now in a mortal body and are
here at the longest a very short
time I would love to meditate with
you on the scripture found in Rom.
14 verses 7, 8 and 9. For none of us
liveth to himself and no man dieth
to himself. We are all of the Lord
and every one of us shall give an
account of himself to God. There
are different lines of thought in
these verses but the one that now
stands out to me is how much we
need one another and how much we
need God.

We are not in a city of great streets
but in our town we need the ones



WHO KNOWS

1. Name the flower and birthstone representing the month of June.
2. When does summer begin?
3. Name the 37th President of the United States.
4. Which meridian is used as the International Date Line?
5. Who said, "A loving heart is the beginning of all knowledge"?

Answers to Who Knows

1. The rose is the flower and the pearl is the stone.
2. June 21.
3. Richard Milhouse Nixon.
4. The 180th meridian.
5. Thomas Carlyle.

The Gruver Statesman

PUBLICATION (USPS 9598-6000)
GRUVER, TEXAS 79040
Box 796 659-3434

Owner-Publisher..... William M. Miller
Editor..... Joy Henderson, Gruver, Tx.
Second Class postage paid at Gruver,
Texas 79040

Any erroneous reflection upon the charac-
ter of any person or firm appearing in these
columns will be gladly and promptly
corrected upon being brought to the
attention of the management.

POSTMASTER: Send address changes to
Gruver Statesman, Box 796, Gruver, Tx.
79040.

SUBSCRIPTION RATE: Hansford, adjoining
counties, \$13.14 per year.

MEMBER

Texas Press Association

George Shultz, Secretary of State,
on King Hussein's Mideast
effort:

"I think what the king has
done is move the process in a very
significant way."

Mikhail Gorbachev, Soviet
Leader:

"Our thoughts are turning
back to the experience ac-
cumulated during the 1970s..."

We would like to Thank each of
you that had part in our 1985
Cancer Crusade. The many volun-
teers who gave of their time and to
those who contributed so generou-
sly to make a total of \$9,027.54 for
Hansford County.

Only One

I am only one
But still I am one
I cannot do everything
And because I cannot do every-
thing
I will not refuse to do the some-
thing that I can do.

By Edward Evertt Hole
Thanks for being those special
ones for our Cancer Crusade.
Cancer Crusade Chairmen
Georgia Holt-Gruver
Betty Jean Davis-Spearman

SEARS

KENMORE COOLING SALE

Special prices on selected models now through
June 22, 1985 only. All refrigerators and freezers on our
sales floor reduced. Shop early for best selection.



SAVE \$160 on a Kenmore
17.7-cu. ft. frostless refrigerator
with ice maker

- Porcelain interior
- Textured-steel doors
- Adjustable shelves

was 809⁹⁹

649⁹⁹ white



17.7-cu. ft. frostless
Refrigerator
save \$120 589⁹⁹ white

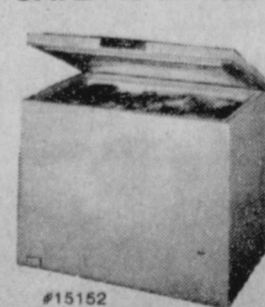


19.6-cu. ft. frostless
Refrigerator
with ice maker
save \$150 749⁹⁹ white



22.2-cu. ft. Kenmore
Side By Side with
ice and water in door
save \$250 1059⁹⁹ white

SAVE \$40 on 15.1-cu. ft. Freezers



#15152



#25152



#29313

Your Choice 324⁹⁹ white only

31.1-cu. ft. Kenmore
Upright Freezer
619⁹⁹ white only

Each of these advertised items is readily available for sale as advertised
Prices include shipping, delivery and normal installation. Many Kenmore
models available in colors at extra cost. Ask about Sears credit plans.

Phone 659-2573
Most merchandise available
for pick-up within a few days

517 Hwy. 207

Satisfaction guaranteed
or your money back
Sears, Roebuck and Co., 1985

There's more for your life at
SEARS

Amen

Artists vie for Sesquicentennial directory cover

Texas artists are keeping Southwestern Bell Telephone's mail room busier than usual these days.

Requests for entry forms in the company's Sesquicentennial directory cover art contest are pouring in from all over the state.

"It started as a trickle, but we're now averaging over one hundred requests a day," said Gayle Hatchel, contest coordinator. "As word of the contest spreads, I'm sure we'll see that number increase rapidly."

The contest is to select artwork for a special Sesquicentennial cover to be used on 1986 Texas phone books. The winning artist will receive \$5,000 and have his or her work featured on some 158 Southwestern Bell directories with distribution of almost nine million copies in Texas.

Deadline for entries is July 1, 1985.

"I think it's a positive sign that almost 2,000 people have asked for entry forms," said Hatchel. "We want to involve as many people as possible in an exciting Sesquicentennial activity -- we're just proud to be a part of the excitement."

Requests for contest entry forms have come from all sections of the state.

"They're coming from professional artists, weekend painters and from teachers using the contest as a class project," said Hatchel. "We've also had one request from a prison inmate -- if he wins, it should be quite a story."

No actual paintings are to be submitted, since initial judging will be done from color slides of the

artwork. An entry from and contest rules may be obtained by writing to Art Contest, One Bell Plaza, P.O. Box 225521, Dallas, Texas 75265.

According to Hatchel, the artwork should be appropriate to the Sesquicentennial, and there is only one restriction on subject matter.

"The painting must have a Texas theme," she said. "A montage depicting 150 years of proud Texas history would be particularly appropriate -- or it could be a single subject that's especially identified with Texas."

Any complaints from the mail room?

"None at all," said Hatchel. "Everyone's happy to be involved in such a positive project."

Autograph Party At First National Bank

John R. Erickson author of Hank the Cowdog, will be at the First National Bank of Spearman on June

13th to autograph his two new latest adventure books "Faded Love" and "Murder in the Middle Pasture".

Hank the Cowdog

Hank the Cowdog is a delightful new book by writer/cowboy, John Erickson. I read the first sentence of this book and I knew I wasn't going to be able to put it down. It begins, "It's me again, Hank the cowdog. I just got some terrible news. There's been a murder on the ranch." After an opening like that, you know you aren't going anywhere for a while. I sure didn't.

If you haven't already guessed, the book centers around the life of Hank, the cowdog. Hank is an honest, hardworking sort who describes himself as simply "four legs, a tail, a couple of ears, a pretty nice kind of nose that the women really go for, two bushels of hair and another half-bushel of Mexican sandbars." However, Hank's

life is anything but girl-watching and siestas. Hank is the head of ranch security and is responsible for handling all kinds of touch jobs that only a good cowdog can handle. You know, things like keeping the coyotes in their place, helping the cowboys out, and just generally keeping one eye open at all times for anything that looks

suspicious. And if that isn't enough to keep a guy busy, there's been this murder on the ranch and Hank is the only one who can track down the guilty culprits and bring them to justice. The book takes you through the case, right alongside detective Hank and introduces you to some pretty comical characters along the way. You get to meet Drover, Hank's not-so-helpful sidekick; a mean old boxer named Bruno;

Pete, the barncat; and Sally May, a cowboy's wife -- just to name a few.

I don't want to tell you 'whodunnit', but I will tell you that not a page gets turned that you don't find yourself chuckling (or at least grinning pretty big). Hank the Cowdog is a book that can be enjoyed by every age and one that you will want to share with your friends and neighbors. Just be sure to get your copy back, because you're sure to want to read about Hank again.

Hank the Cowdog and other of John R. Erickson's works are available from Maverick Books, Perryton, Texas.

Ideal?

After all, perhaps an old maid is just a woman who didn't know any better than to look for an ideal man for a husband. -Post, Washington.

Thanks

The Hansford Roundup Committee of the Spearman Chamber of Commerce for a very successful celebration. A Special Thanks to: Jim Murray, City of Spearman Employees, Spearman PTA - McGruff, D.J. Alberts, Chief of Police, City Policemen, R.L. McFarlin & Hansford County Deputies.

Raymond Gillay, J.C. Harris, J.D. Wilbanks, Spearman Rotary Club, JayCee's, Lions Club, Spearman Fire Department, K R D F - FM, Crawford Motor Company, Helen & Irvin Boyd, County Judge, R.L. McClellan, Spearman Reporter, County Commissioners; Joe T.

Venneman, Garland Head, B.J. Renner, Val Winger, JayCee wives, Servitor's Club, Whitehouse Lumber, Hansford Implement, Thriftway, Chuck LaGrone, Dee Carper, Hagerman Services, Xi-Zeta, Perceptor Epsilon, Hergert Pontiac, Buick & GMC, Dwight Sumner & Boy Scouts, Businesses that had a Commercial Float.

All Locals that had an antique auto in the parade Clubs and/or organizations that had a booth and/or float Mr. and Mrs. Tittle.



For ye know the grace of our Lord Jesus Christ, that, though He was rich, yet for your sakes He became poor, that ye through His poverty might be rich.

1. Who wrote the above statement?
2. To whom was he writing?
3. What was the purpose of this writing?
4. Where may this verse be found?

Answers to Bible Verse

1. Paul the Apostle.
2. The church at Corinth.
3. To exhort them to liberality in giving.
4. II Corinthians 8:9.

Jan Stedje to attend

Summer Leadership Seminar



Jan Stedje

AUSTIN--Jan Stedje of Gruver, newly elected president of Texas PTA District 8, will be among 700 PTA leaders expected for the 1985 Summer Leadership Seminar July 14-16 in Austin.

Mrs. Stedje, of Star Route 3, recently attended an orientation program for new district presidents at the PTA state office in Austin.

She was elected to a two-year term as district president at the recent spring conference in Panhandle. District 8 includes Hansford and 22 other counties.

Mrs. Stedje succeeds Pat Lewis of Amarillo as president.

An active member of PTA state office in Austin.

She was elected to a two-year term as district president at the recent spring conference in Panhandle. District 8 includes Hansford and 22 other counties.

Mrs. Stedje succeeds Pat Lewis of Amarillo as president.

An active member of PTA for seven years and a Texas life member, Mrs. Stedje served as president of Gruver PTA for two years. She also has been historian, publicity chairman, and his chaired

the volunteer program (VIPS).

The volunteer program, initiated by Jan Stedje, won a state award, at the PTA state convention in Houston in 1984.

In District PTA, Mrs. Stedje has been vice-president and recording secretary.

As special projects chairman, she incorporated several PTA programs into children's health studies and presented a seat belt safety program and child abuse film to all elementary children. She acquired McGruff, the crime-fighting dog, for use in the Gruver schools.

An Amarillo native, Mrs. Stedje attended the Gruver public schools. She received the bachelor of sciences degree in speech and home economics from Panhandle State University, Goodwell, Oklahoma.

She has been bible school coordinator for seven years and taught Sunday School several years at the Lutheran Church in Gruver.

She is married to rancher Lynn Stedje and they have three children -- Kristi, 13; Jill, 11; and Lee, 9.

Mrs. Stedje is the daughter of Mr. and Mrs. Roy Roper of Dallas.

IF YOU DON'T WATCH YOUR COOKING YOU COULD BURN MORE THAN YOUR FOOD.



A FIRE PREVENTION MESSAGE FROM YOUR LOCAL FIRE DEPARTMENT.



They're Here.

The two latest "Hank" adventures...

Hank the Cowdog & Faded Love and Hank the Cowdog & Murder in the Middle Pasture

Great For Father's Day Gifts

Hank the Cowdog and MURDER IN THE MIDDLE PASTURE

The Fourth Exciting Adventure in The "Hank the Cowdog" Series

by John R. Erickson
Illustrated by Gerald L. Holmes



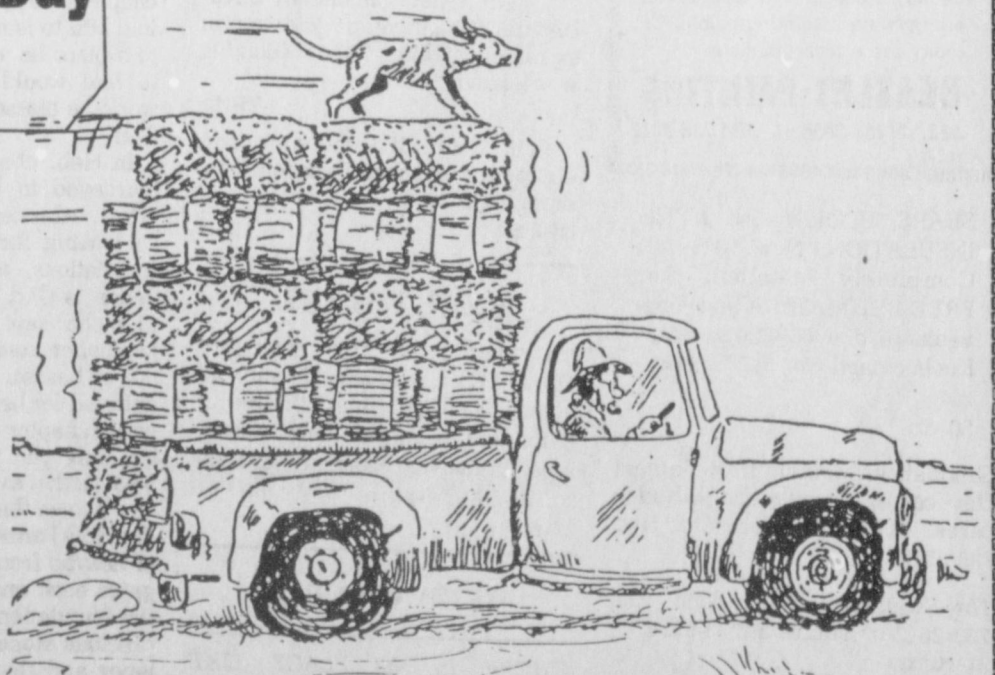
John R. Erickson

Hank the Cowdog and Faded Love

The Fifth Exciting Adventure in The "Hank the Cowdog" Series

by John R. Erickson

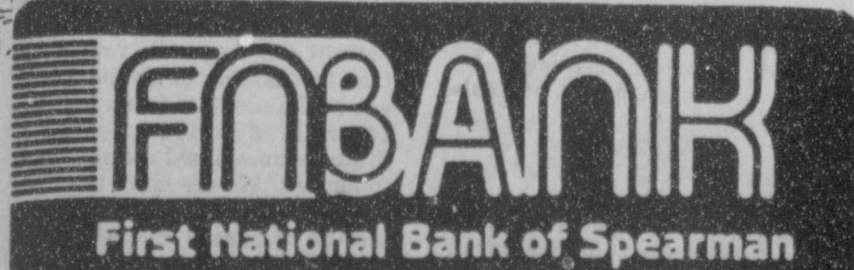
Illustrated by Gerald L. Holmes



Personal Autographing by the author at...

Thursday, June 13, 1985
10:00 a.m. to 1:00 p.m.

THE PUBLIC IS CORDIALLY INVITED!



729 W. 7th St. Phone 659-5544 Spearman, Texas

Listen to Coffee Break 9:45 to 10:00



**Keenagers
enjoy meeting**

Keenagers met Tuesday, June 4, with 33 present.

A delicious pot luck meal was enjoyed by Rebecca Westerfield, Bill and Ida Hendrick, Elvira Dominguez, Eva Boyd, Leona Harris, Faye Cluck, Frankie Leatherman, Verna Finley, Winnie Vernon, Maude McClellan, Herb McClellan, Stan TeBeest, Beulah Bort, Velma and Henry Wyatt, Dan Schrader, Maude Alexander, Lillian Murrall, Don Gross, Kelly Garrett, Jim Kate, Garrett, Ralph Bort, Steve, Brenda, Lori and David Ellis, Larry and Luke Miller, Shorty and Norma Edens, Ben and Beulah Harris and Gary Gumphory.

Happy Birthday was sung to Cleo Gross, Chairman Lyle, Tru Leatheman, Jessie Spivey, Harvey Johnson and Mickey Delano.

Larry Miller led in special prayer for the sick and bereaved.

Winner announced a one day Keenager trip to a cowboy camp meeting at Canadian June 27, 28, 29 or 30th.

Stan TeBeest gave a demonstration and talk on floral arrangements which was very interesting.

Larry Miller led in Closing Prayer.

**Whitaker on FPS
Honor Roll**

Frank Phillips College announces that the President's Honor Roll for Spring 1985. To be placed on the President's Honor Roll a student must complete 12 semester hours with a grade-point average of 4.00. Renee Whitaker of Gruver.

Answers to Who Knows

1. Ulysses S. Grant and the U.S. Capitol.
2. June 21.
3. The Chesapeake Bay.
4. Hoover (beginning in 1930) and Roosevelt.
5. The Cardinal ending in 1935.

Cindy Virden on WBU Honor Roll

PLAINVIEW, TX (Special) The spring 1985 Dean's Honor Roll at Wayland Baptist University includes Cindy Ann Virden of Gruver.

Virden, a junior, posted a 3.66 grade point average for the recently-completed term.

The Dean's Honor Roll is announced at the end of each semester by Dr. Fred A. Teagus,

academic vice president and Dean of the University, and lists the names of students who posted a 3.50 GPA or above on a 4.00 scale while carrying at least 12 semester hours.

A total of 112 students from 13 states and one foreign country were named to the Dean's Honor Roll at Wayland for the spring semester.

Hartranft on TSTI Honor Roll

AMARILLO—Donald Hartranft was recently named to the President's Honor Roll at the Amarillo Campus of Texas State Technical Institute, according to Mr. Ron DeSpain, Campus President. Membership to the President's Honor

Roll is attained by maintaining a 4.0 grade average.

Donald is the son of Mr. and Mrs. Donald Eugene Hartranft, Sr., of Box 364 Gruver, Texas. He is majoring in Welding and Fabrication and is a graduate of Gruver High School.

Spirit Wind performs here



Spirit Wind 1985

SPIRIT WIND 1985, the Northwest Texas Conference Youth Choir will be performing at First United Methodist Church, 407 South Haney, on Friday, June 14. The concert begins at 7:30 p.m.

This choir is a select group of United Methodist Church young people from churches all over the Panhandle and West Texas area. They have been selected from all size churches in the Northwest Texas United Methodist Conference.

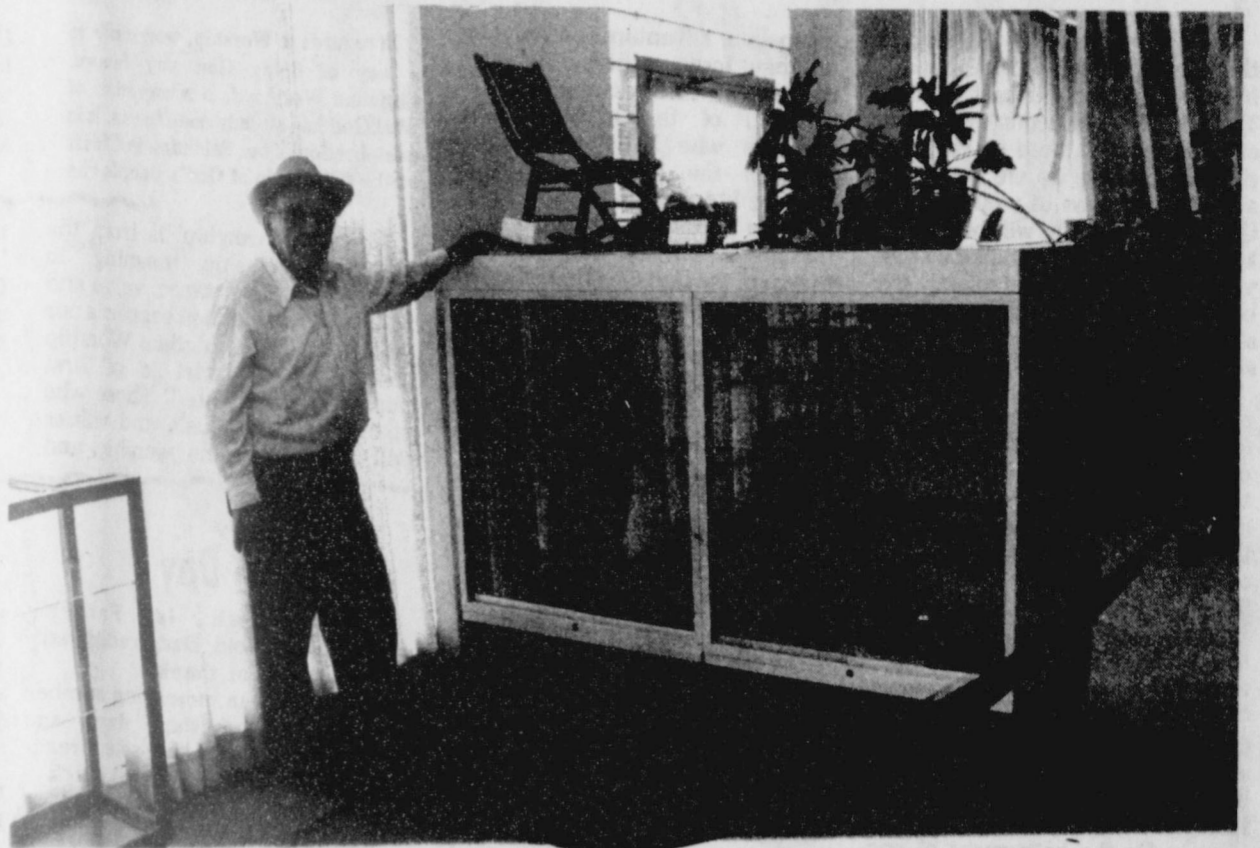
Members of the choir representing Spearman's First United Methodist Church are Sheila

Schneider, Connie Woolley, Jeff Gressett, and Alan Mires.

Their program of music includes selections from different periods of church history as well as a variety of musical styles. The overall theme of the program is music for the church year, including anthems which would be used from Advent through Pentecost. Several Psalm settings will be sung and the program will close with a group of Spirituals.

The Concert is free to the public, and all interested persons are invited.

John Bishop has display



The Display of the Month at the library is John Bishop's old tools and articles.

Many of the articles have been in John's family since before the turn of the century. Several of the items were from Old Hansford.

Among the items on display are a wooden folding child's rocker (circa 1895) that belonged to John's sister and was restored by him; an old

structured around 1890. The boot jack belonged to John's father and was built by his brother who was a wainwright and a blacksmith. There is a hitch weight (circa 1890's) that was carried in the buggy to tie the horse to when there was no hitching post available; a pottery canning jar using sealing wax and used by John's

mother; a butane gas clothes iron (circa 1930's). Some of the articles from the hardware store in Old Hansford include a stove lid lifter and a stove poker.

This is very interesting display or everyday items from the good old days. John is married to Sammy, and he has resided in Hansford County since 1929.

WHO KNOWS

1. Whose portrait and what building adorn the fifty dollar bill?
2. When does summer begin?
3. What body of water divides the state of Maryland into two parts?
4. Under which presidents did General MacArthur serve as Army Chief of Staff?
5. Name Indiana's state bird.

NUMBER INCREASES

ATLANTA -- The number of reported AIDS cases doubled last year in Europe, where the death toll has now reached 376, U.S. health researchers said recently. In the U.S., 4,300 people have died of AIDS.

WIPE OUT POLIO

WASHINGTON -- Encouraged by the recent eradication of smallpox, international health officials said recently they want to wipe out polio in the Western Hemisphere by 1990, and use that as "a springboard for the rest of the world."

WEREWOLVES

LOS ANGELES -- People who once were shunned as vampires or werewolves may have been afflicted by a rare disease called porphyria that is aggravated by sunlight and garlic, and leaves its victims with prominent teeth, hairy faces and pain, a chemist said recently.

MAJOR OFFENSIVE

ISLAMABAD, PAKISTAN -- At least 10,000 Soviet troops backed by tanks, jets and helicopter gunships have launched one of the biggest offensives of the Afghan war to cut off guerrilla supply lines at the Pakistan border. Western sources said recently.

FOOD BARGAINS

For Father's Day

give him the best,
a delicious
steak dinner.

**FRONTIER
FEEDYARDS, INC.**

Bronc May

Phone 806-882-4251

FIX HIM A STEAK!

Book Sale Successful

Thank you citizens of Gruver and the surrounding area for supporting our Book Sale this past Sunday. The sale and the auction were a big success, and to those of you who purchased books we are especially grateful. Because of your support Gruver City Library will be able to keep our collection up-to-date so that you will be able to find exactly the books you want. Because of the sale we were able to "weed" out some of the books no longer

circulated, and with the monies from the sale we will be able to continue buying new reading material. Our goal is to serve the community of Gruver with a library that is meeting the reading needs of the public. We also want you to feel free to come in and browse and

see what the library has to offer with the hope that you will want to come back as a regular patron. Our sincere appreciation to our auctioneer, Carroll Bostick, who handled the auction in "grand" fashion. To you, the public, your support for the betterment of our community is encouragement to

the library board that you want Gruver to be "second-to-none" in the reading field. Thanks to all, and also to those who spent much time and effort preparing for the sale.

In what has quickly become a welcome tradition, Louis L'Amour has written one of the most popular hardcover novels in each of the last two years.

Cumulatively *The Lonesome Gods* and *The Walking Drum* have spent nearly nine months high on the New York Times hardcover bestseller lists and have more than 450,000 copies in print. Now Louis L'Amour has created a wonderful new historical saga, *Jubal Sackett*. Among the most popular of L'Amour's 91 books have been those novels featuring the generations of a single family, the Sacketts. For 25 years, in 17 books which have more than 30 million copies in print, the Sacketts have become America's "first family of fiction." Each Sackett novel stands alone as a

compelling adventure, and together they form a heroic tapestry celebrating the courage and strength of the explorers and pioneers who built a nation. Through the Sackett men and women, L'Amour has created memorable portraits of the American frontier experience, from the patriarch of the clan who first escaped British tyranny to seek the freedom of the new world, to the early Carolina and Tennessee mountain pioneers, to the Sackett brothers who withstood all challenges to help settle the untamed West.

Now in the longest and most powerful Sackett novel to date, L'Amour tells the eagerly awaited tale of Jubal Sackett, a restless explorer who dared to go "over the mountain," across the vast continent of North America, to gain intimate knowledge of a world few seventeenth-century white men dare to challenge. *Jubal Sackett* is a

story of danger and discovery, of savage wars, strange customs and a rugged frontier. It is a masterful tale spun within the framework of the kind of authentically detailed adventure L'Amour's readers have come to swear by. *Jubal Sackett* is a riveting evocation of an earlier time, of the beginnings of the "American spirit," of life amongst the Indians, and most particularly,

of Jubal's fierce appreciation for the unspoiled wilderness and of his equally bold love for a proud, beautiful Natchez Indian princess. Louis L'Amour is the world's fourth bestselling living novelist with more than 140 million copies of his books in print. He is the first novelist ever to be awarded a special National Gold Medal by Congress for his life's work.

Please remember our inter-library loan service. If there is a book or an article you need, your chances of finding it through ILL are extremely good. We will be more than happy to help you with this service.

Library hours 2:00 - 6:00 Monday through Friday.

Our Heritage of Faith

In regards to Worship, worship is to a way of doing God any favors. Christian Worship is a recognition of what God has already done for us. It is a celebration of our Salvation in Christ by the fellowship of God's people the

Church, the Communion of Saints, the Body of Christ - where we belong through God's grace by Baptism and the Forgiveness of Sins!
NEXT TOPIC: The word "Worship."

The word 'worship' is from the English 'worthship' meaning: to show worth, importance, value and respect. Worship then concerns our values in life. Christian Worship say "God in Christ is of first importance in my life." Those who share the same ideals and values will share the same worship and

therefore the same basic identity. Worship as an expression of our faith-principles, also serves to tell us who we are as God's people.

NEXT TOPIC: Liturgy.
Bill Schardin, Pastor
Faith Lutheran Church
Spearman, Texas

Father's Day

The 16th is Father's Day--when old Dad traditionally gets a day of thanks.

Though an increasing number of wives work these days, and Dad often isn't the sole breadwinner, any dog deserves his day, once a year.

American fathers are unique. They have generally accepted theories about making family decisions. Modernists think this is democratic and beneficial.

Critics believe it's often

abdication of the father's responsibility as an authority, which has contributed to a breakdown of discipline, and to juvenile crime.

However, children who enjoy the blessing of loving, well-providing fathers, of character and standing, begin life with a major advantage.

And the example set by fathers, lives with sons and daughters all their lives.

ABOUT YOUR HOME

By April Rhodes

With school out, the demand on a well filled cookie jar will increase. A plain cookie recipe can be dressed up with a pecan half, candied cherry, raisins or sprinkled with a sugar and cinnamon mixture.

Use a spring-type clothes pin to reclose partially used bags of frozen vegetables. It also works well on bread bags.

Rambler roses can be pruned immediately after blooming unless you need the foliage for shade or screening.

Add sour cream and shredded cheese to hot mashed potatoes for a delicious different taste.

Garden plants and shrubs should be mulched in areas where plants are well established.

Stagnant water is a breeding place for mosquitoes to lay their eggs. Clean bird baths once a week during mosquito breeding time.

99¢ Split Sale

This Monday, June 10, thru Sunday, June 16th.



Dairy Queen
"better than ever"


Dairy Queen brings you a Split Sale you can't afford to miss. Our 99¢ Split starts with a fresh whole banana, mountains of creamy rich Dairy Queen topped with luscious strawberries, tropical pineapple, rich chocolate, and finished off with heaps of whipped topping.



GO BANANAS

© Copyright 1985 Tex. D. Q. Op. Council. All Rights Reserved. TM Trademarks of the Tex. D. Q. Op. Council. * Trademark Am. D. Q. Corp.

Out of State 1-800-338-5871



Office 405-338-3372

GUYMON LIVESTOCK AUCTION
Box 875 • Guyton, Oklahoma 73242

Home Owned and Home Operated

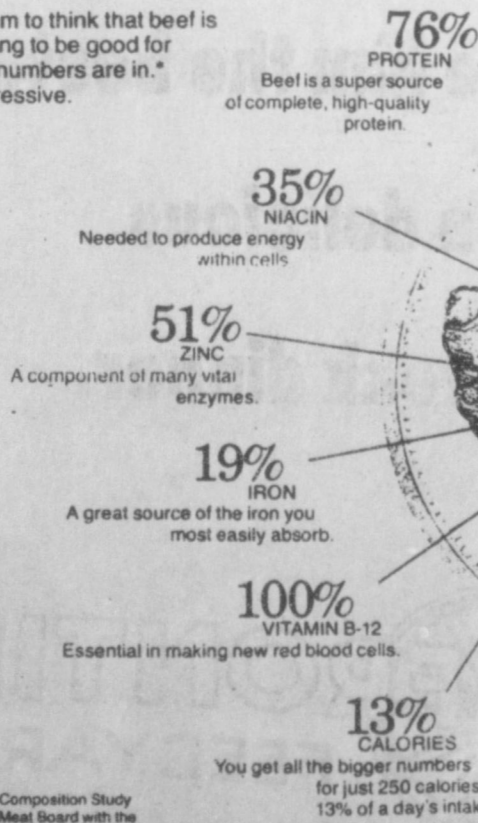
SALE EVERY THURSDAY AT 10:00 AM

THERE'S STRENGTH

in numbers...

in facts.

Some people seem to think that beef is just too good tasting to be good for you. But the new numbers are in. And they are impressive.



MYTH: The fat in beef is saturated fat.

FACT: Beef fat contains only about 47-49% saturated fatty acids. The rest is unsaturated fatty acids, including significant amounts of polyunsaturated fatty acids.

MYTH: Beef contains more cholesterol than most other animal-source proteins.

FACT: Three ounces of cooked lean beef contain 73 mg. of cholesterol; 3 ounces of roast chicken, 76 mg.; 3 ounces of flounder 52 mg.; 3 ounces of shrimp, 128 mg.; 3 ounces of pork, 79 mg.; 3 ounces of turkey, dark 72 mg.; light 59 mg.

MYTH: Heart disease risk can be reduced by reducing intake of saturated fat and cholesterol.

FACT: The current trend in the scientific literature is away from thinking that reducing heart disease risk is simply a matter of cutting down on foods high in saturated fatty acids and cholesterol. More scientists are now saying that more scientific answers are needed before marked changes in diets can be recommended for the general population.

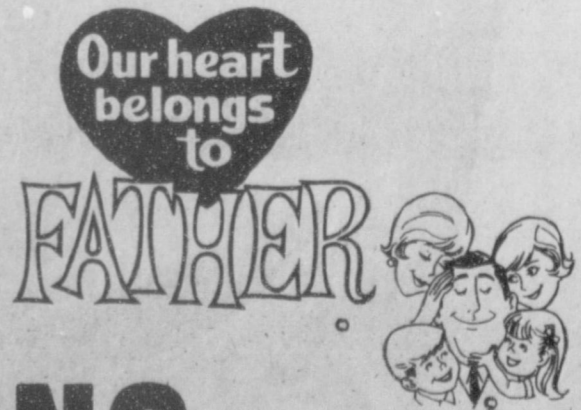
MYTH: Dietary cholesterol has a direct effect on blood cholesterol level.

FACT: In most persons, dietary cholesterol and blood cholesterol are not closely related. In fact, in most persons, heredity and weight or amount of fatty tissue in the body are more important than diet, including dietary cholesterol, in determining blood cholesterol level. If a person keeps his weight at recommended levels, odds are that his blood cholesterol will not be above normal.

Extra Special for Dad!

It's Traditional To Serve Beef To Father On

His Day-- June 16th



BEEF GIVES STRENGTH.

PERRYTON FEEDERS, INC.

Virl LaMunyon, Owner

Perryton, Texas 806-435-5466

Lonnie Winterrowd, Manager 435-4130

Parkinsonism Society to meet

The West Texas Parkinsonism Society will meet Thursday, June 20th, 1985, Texas Tech University Health Science Center, fifth floor, room 148, Lubbock, Texas, at 7:00 p.m. Dr. Tom Hutton, Neurologist, information and referral center, Texas Tech University health science center, will discuss the latest research in

neurological problems including Parkinson's disease and Alzheimers disease. This will be a most informative discussion. The public is encouraged to attend. This will be a combined meeting of the Parkinson's support group and the Alzheimer's support group.

Methodist pastors get new assignments

Fifty-six churches and the main office of the Northwest Texas Annual Conference of the United Methodist Church will receive new pastors, in appointments announced Tuesday in the opening of the group's annual meeting at First United Methodist Church in Midland.

The largest number of changes with the Conference occurred in the Amarillo District, one of seven districts in the Conference. There were 14 new assignments in the Amarillo District, including new superintendent. Eight of the changes are within the city.

Clifford B. Trotter, pastor of Polk Street UMC in Amarillo for the past 10 years, and Ira E. Williams, Jr., who was the District Superintendent, will switch positions.

Other major churches receiving new pastors include Lubbock's St. Luke's, Plainview and Abilene's Aldergate, R.K. Kirk, the pastor of Plainview for the past 11 years, is the new pastor at St. Luke's. He is being succeeded by Wesley N. Daniel in Plainview. Daniel was the pastor at Littlefield for the past years, and was also pastor at Spearman for about 8 years.

Scott Latham, son of Mr. and Mrs. Orville Latham of Spearman, is the new pastor at Sunray UMC. He comes from the Happy/Wayside UMC charge, where he served three years. He succeeds Elroy Wisian, who served the past few months as an interim pastor.

Florence Dahl services held

Florence A. Dahl, 78, died Friday. The pioneer Oslo community resident, died Friday morning in an Amarillo hospital, following a lengthy illness.

Mrs. Dahl was born Sept. 3, 1907 at Elgin, Ill. She was the daughter of Mr. and Mrs. Jens Jensen.

She came to the Oslo community with her parents in 1911. She was married to Peter A. Dahl on Nov. 18, 1925. Mr. and Mrs. Dahl farmed northwest of Gruver. Mr. Dahl died in 1969. She was a member of the Oslo Lutheran Church.

Survivors include four daughters, Mrs. Alma Walker of Gruver, Mrs. Pauline Fischer of Optima, Okla., Viola Monroe of Springfield, Colo., and Adeline Berkenkamp of Amarillo, a son, Elmo of Gruver; two sisters, Jessie Sparie of Yakima, Wash. and Jennie Hill of Guymon, 13 grandchildren; and 14 great grandchildren.

Services were held at 10 a.m. Monday in Oslo Lutheran Church. Burial was in Oslo Cemetery by Henson Funeral Home. Rev. Gary Bruns, pastor officiating.

New Arrival

Beverly & Dennis Bennett of Bowie are happy to announce the arrival of their new daughter Carly Ann. Carly Ann was born May 12 weighing 7 lbs. even.

Proud grandparents are James and Ann Dorman of Gruver and Earlene Bennett of Bowie and Mrs. Mamie Blockard of Clarksville, Arkansas and Beulah Dorman of Hartford, Arkansas. Mrs. H.P. Show of Bowie, Texas.

Pvt. Sparks completes course

Army and Air Force hometown news—Pvt. Marvin J. Sparks, son of Jack and Joyce Sparks of Gruver, Texas, has completed the Army automotive repair course at Aberdeen Proving Ground, Md.

The course included troubleshooting, repair, replacing, adjusting, and maintaining the mechanical, electrical, air and hydraulic systems plus other major components and assemblies of wheeled and tracked vehicles.

Instruction was also given on the performance of maintenance operations in a field environment.

Sparks is scheduled to serve at Ford Drd, Calif.

He is a 1984 graduate of Gruver High School.

ON EXERCISE

BOSTON -- A new study suggests that strenuous exercise may cause a wide variety of changes in the menstrual cycle, ranging from subtle disruptions of abnormalities that may result in temporary infertility, researchers said.

SOVIET & TRADE

MOSCOW -- The United States and the Soviet Union have agreed to measures that comprise a good start toward more trade between the two nations, Commerce Secretary Malcolm Baldrige said recently.

"WHO WOULD HAVE THOUGHT YOU COULD GET A ZOOM COPIER IN SUCH A NEAT LITTLE PACKAGE? AT SUCH A NEAT LITTLE PRICE?"

—Tony Randall

THE BETA 350Z FROM MINOLTA.

Get copies from almost 50% smaller than the original up to almost 50% larger. And any size in between. Come in for a demonstration

SPC STANFIELD PRINTING CO.

119 W. 4th • Guymon, OK 73942 (405) 338-8418

TOLL FREE OUT-OF-STATE WATS 1-800-233-1247



Fire Insurance

on wheat

Rate .25 cents per \$100⁰⁰

Coverage for 30 days.

BROCK

BROCK INSURANCE AGENCY
121 MAIN • SPEARMAN, TEXAS 79081 • 806-659-2514

PICKUP YOUR LIFE!

We Got Carried Away Ordering New GMC's!

You'll Get Carried Away With Our Great Selection and Terrific Prices!



CUSTOMER PROVEN
GMC



Sierra Pickup



Sierra Classic

Sierras & Sierra Classics!
Two-Wheel & Four Wheel Drive!
Free Air Cond. on Sierra Classics!



Crew Cab

¾ Tons and Crew Cabs with 454 Engine!

Special Prices on Diesel Engines!

NOW AVAILABLE

8.8%

APR FINANCING FOR QUALIFIED BUYERS

ON ½ TON & ¾ TON 2WD PICKUPS & CREW CABS LIMITED TIME — SEE DEALER FOR DETAILS!

HERGERT GM
SPEARMAN — PERRYTON

HERGERT
PONTIAC-BUICK-GMC
S. HWY. 207 — SPEARMAN

DON HERGERT
MOTORS
(TRUCK LOT 1110 S. MAIN)
420 S. MAIN — PERRYTON



OVERLOADING YOUR ELECTRICAL OUTLETS CAN BE A BURNING PROBLEM.



A FIRE PREVENTION MESSAGE FROM YOUR LOCAL FIRE DEPARTMENT.

In Fashion

In a recent swimwear fashion show, the one-piece shirt shows increased popularity. These attractively designed suits feature the high cut at the leg, but no body cutouts.

All models appeared wearing the big shirt over her swimsuit which would give protection from the sun's hot rays at the beach.

Direct federal spending declines

Direct federal spending in Hansford County declined by 15.7% from \$16,568,000. in fiscal 1983 to \$13,970,000. during fiscal 1984 according to a report recently issued by the Department of Commerce. The federal government's fiscal 1984 began on October 1, 1983 and ended on September 30, 1984. Direct federal spending nationally increased by 4.2% while direct federal spending in Texas increased by 5.8%.

Per capita (per person) direct federal expenditures in Hansford County were \$2,174. during fiscal 1984 having fallen from \$2,668. or by 18.5% since fiscal 1983. Direct per capita federal expenditures in Texas during fiscal 1984 were \$2,606. or 1.5% less than in fiscal 1983. National per capita federal expenditures in fiscal 1984 amounted to \$3,108. or 1.9% greater than during fiscal 1983.

Direct payments to individuals were the largest single source of federal spending in Hansford County during fiscal 1984. These amounted to \$6,743,000. during that year. Of this total, \$5,087,000. consisted of retirement and disability benefits for individuals. These include Social Security retirement and disability pension payments, retired civil service and military pensions, veterans' benefits and allowances, expenditures for Medicare, as well as most of the other forms of federal assistance for individuals which are usually termed "transfer payments" or "entitlements".

Direct payments to individuals have been the largest single item in the federal budget since 1971. These accounted for 44.6% of all direct federal spending during fiscal 1984. Direct payments to individuals were 43.8% of federal expenditures in Texas during in fiscal 1984 and 48.3% of direct federal spending in Hansford County during that period.

There has been and continues to be considerable controversy regarding increases in defense spending by the federal government. Total federal defense expenditures were \$209.7 billion during fiscal 1984 or 7.2% greater than those of fiscal 1983. Defense spending in Texas had increased by 13.8% from \$12.3 billion in fiscal 1983 to \$14.3 billion during fiscal 1984. Defense spending in Hansford County had declined to \$68,000. in fiscal 1984 or by 4.2%.

Not including grant funds which account for a substantial portion of total federal spending, other departments and agencies of the federal government including the Departments of Agriculture, Commerce, Housing and Urban Development, Interior, and Transportation and the Environmental Protection Agency disbursed \$6,455,000. in Hansford County during fiscal 1984. While the federal government does not provide a breakdown of these figures in Hansford County, other sources indicate that the Department of Agriculture was one of the largest sources of these funds in Hansford County during fiscal 1984.

Other federal spending in Hansford County during the fiscal year included \$294,000. in grant awards. Specific details on all local grants were not provided. However, besides general revenue sharing grants, the largest sources for grant funds in most counties are the Departments of Agriculture, Education, Health and Human Services, Housing and Urban Development, Labor, and Transportation.

While the total of direct federal spending in Hansford County is substantial, as noted, it does not include another extremely important

source of federal money in the county federal loans and federally guaranteed loans. These are not included in direct federal spending figures because, as loans, it is presumed that these funds will eventually be repaid to the federal government.

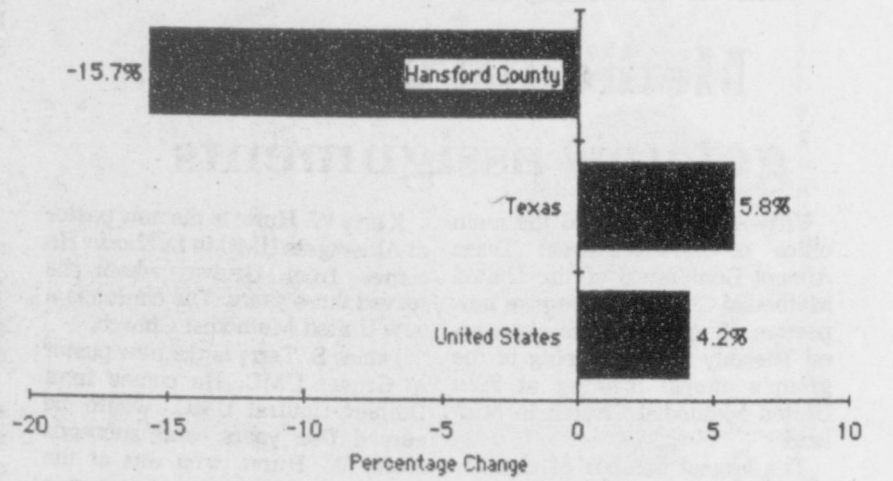
Federal loans and federally guaranteed loans encompass a variety of programs. These include emergency farm disaster loans, rural electric loans and loan guarantees, Small Business Administration loans, student loans for higher education, community development loans, many of the various housing loan programs, as well as others.

Direct federal loans in Hansford County were only \$4,416,000. during fiscal 1984; however, federally guaranteed loans in the county amounted to \$2,892,000. The Department of Agriculture's loan programs were among the larger sources of federally guaranteed loans in Hansford County during that year. The Department of Agriculture's loan programs include a number of low and moderate income housing loan programs as well as various farm loan programs.

None of the federal spending totals in Hansford County include expenditures made through the United States Postal Service in Hansford County. The Postal Service's expenditures are no longer considered a part of the federal budget since the Postal Service is considered a separate corporation. Postal Service expenditures in Hansford County for fiscal 1984 are not presently available.

The total of direct and indirect federal spending in Hansford County was \$21,278,000. during fiscal 1984. It is apparent that federal spending provided one of the largest sources of funds for the economy of Hansford County during that time.

Changes in Direct Federal Spending—Fiscal 1983 to Fiscal 1984



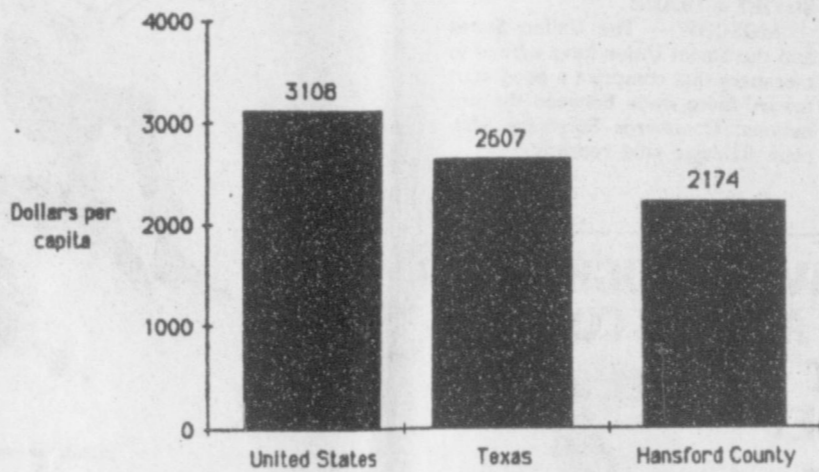
Choose thy friends like thy books, few but choice.
-James Howell.

I have loved my friends as I do virtue, my soul, my God.
-Thomas Browne.

If you want enemies, excel others; if you want friends, let others excel you.
-C.C. Colton.

No deduction for state and local taxes hot issue in new tax plan.

Per Capita Federal Spending—Fiscal 1984



I find as I grow older that I love those most whom I loved first.
-Thomas Jefferson.

There are three faithful friends--an old wife, an old dog, and ready money.
-Benjamin Franklin.

SALE

Mobile Home
Central Air Conditioning

Terms Available
Call 624-1981

Liberal Mobile Homes, Inc.
E. Hwy. 54
Liberal, Kansas

A Land Bank Loan

Prepay any amount, anytime, from any source with no penalty.

See us:



High Plains Federal Land Bank Association
505 South Main, Pecos, Texas
908-435-4119
Serving Hansford, Ochiltree and Lipscomb Counties.



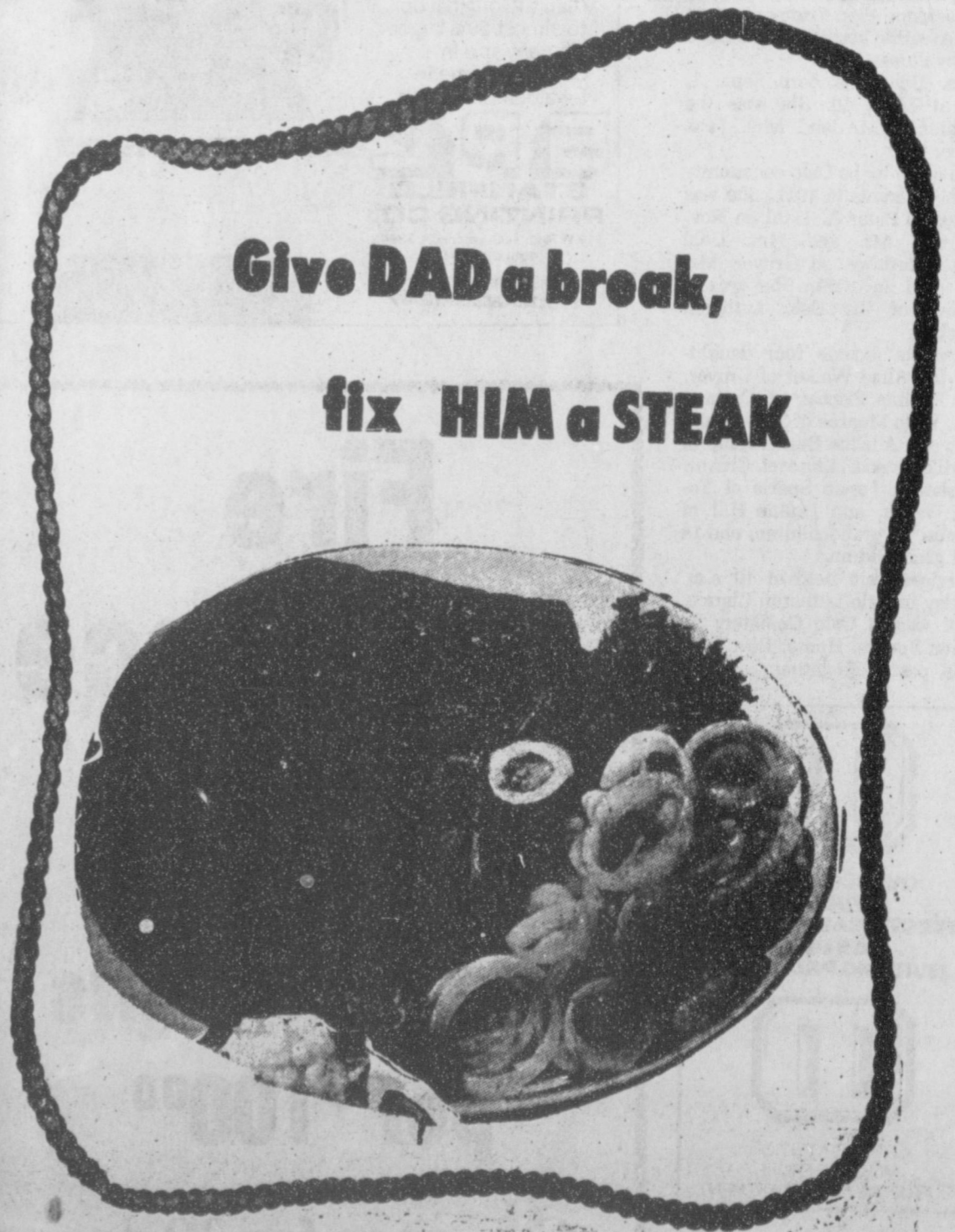
Special GIFTS for a Special DAD



Fix DAD a steak for Fathers Day

733-2416

Hwy. 136 S. of Gruver



Give DAD a break, fix HIM a STEAK



PALO DURO FEEDERS, Inc.

PHONE 806-733-2416 GRUVER, TEXAS 79040 POST OFFICE Box 666



Karen's Kozy Korner

Rich, premium ice creams with sophisticated names are making their way into supermarkets to compete with familiar store brands and local dairy products. Premium ice creams cost more so consumers can justifiably wonder what they're getting for the higher price.

The taste and texture of the premium ice creams are usually judged to be superior. And this smooth, rich taste is achieved with increased butterfat and less air in the product.

According to the Food and Drug Administration Standards of Identity, the bufferfat content must be greater than 10 percent to qualify as ice cream. Supermarkets brands are around 10.5 percent fat by weight. But many gourmet ice creams are more than 16 percent fat.

The extra butter fat gives premium ice cream its creamy texture and additional calories. Calories

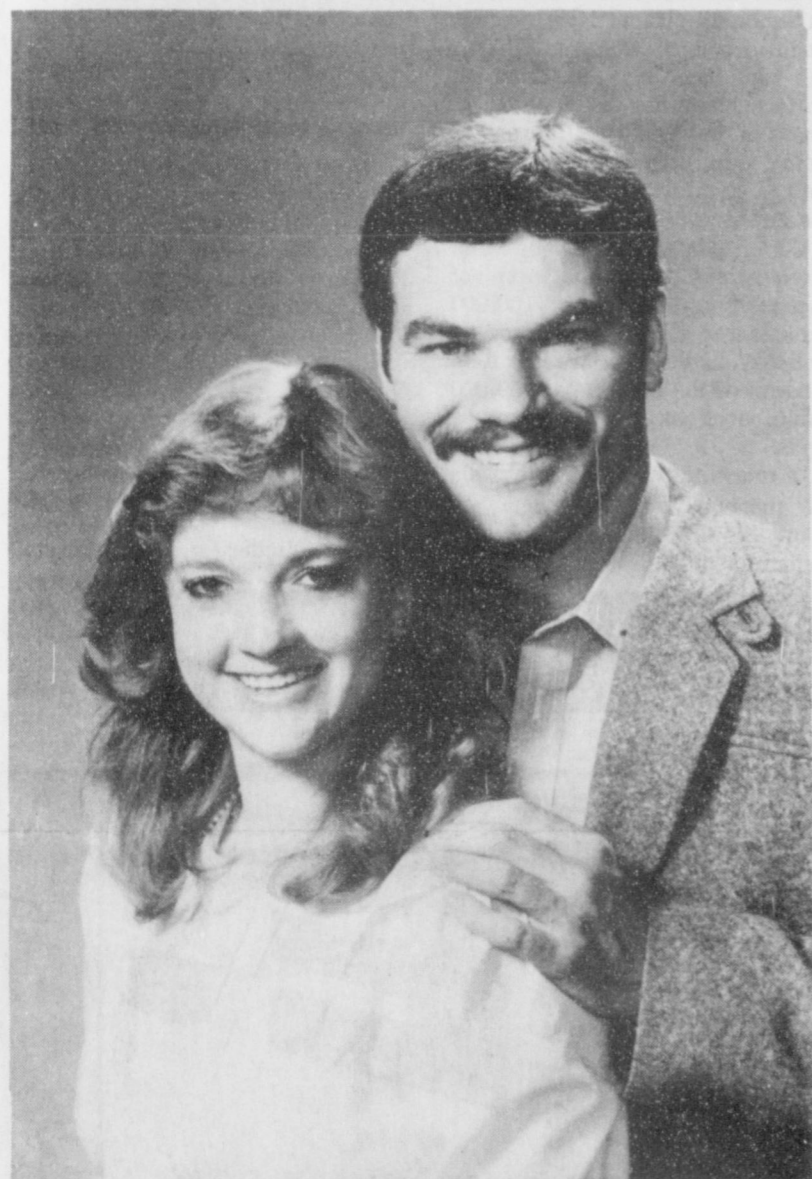
are also more concentrated in premium ice creams because of the amount of air in the product. Regular ice cream has about 50 percent air, while the premium brands drop the air content to as little as 25 percent.

Some people claim that because of its richness, they can eat only small portions of premium ice creams. But others say that the taste is so good they wind up eating more than they would of the lower-calorie supermarket varieties.

Most ice creams, including many of the premium brands, contain stabilizers and emulsifiers. These prevent ice crystallization which makes for a gritty-tasting product. Most stabilizers and emulsifiers are derived from natural sources, are safe and long-tested. But some premium ice creams do not contain them, and may claim to be a more natural product.

Whether you buy premium or regular ice cream may depend on how you feel about the taste, calories and cost of one product versus another. Luckily, any type of ice cream is a taste treat.

July wedding planned



Mr. and Mrs. Carl Cooper of Gruver announces the engagement of their daughter, Cappi, to Terry Davis, son of Mrs. Penny Davis of Dallas.

The bride-elect is a Junior at West Texas State University, ma-

joring in Elementary Education and a member of Chi Omega Sorority.

Mr. Davis is currently employed at Sun City Energy Systems in Amarillo.

The couple is planning a July 27th wedding in Gruver.

Museum News

Eighty-Four persons have visited the Stationmaster's House Museum since June 1.

On display for a few weeks has been an assortment of old toys which has proved to be an interesting exhibit.

The next exhibit will be early school items. Auxiliary members are asking people to lend their old school pictures, books, slates, mementos, etc. for this exhibit. Bring items to the museum in paper sacks with name and phone number attached by June 24 which is the deadline. Items will be returned.

This "Old School" display will be ready for Spearman's All-school reunion set for July 4 week-end, and will remain in place till schools open for the fall term.

The pot bellied stove, wall black boards desks, the school marm. - McGuffey readers, all will be

exhibited. Please search your old trunk for interesting mementos from yester-year. (Pictures please.)

The Museum is open every afternoon except Monday.

MUSEUM NEEDS

- * Old pine kitchen table. Have you looked in your barn?
- * Old jars canned meat. Search the cellar.
- * Old-time fly swatter.
- * Pictures for walls. Farm scenes. End of trail, Coyote baying at moon, etc.
- * Thanks to W.E. Sparks for the jar of sand hill plums canned in 1955 by Mrs. Jess Womble.
- * Thanks to Allen Pierce for the bit which was hand made and used on King Ranch.

Auxiliary members include: Ruth Bryan, Bobby Novak, Buena Lyon, Sybil Miller, Margery Curtis. They appreciate your interest & help.

You are invited to a coffee Monday, June 17, 9:30 a.m. at the

Station Masters House Museum to honor the ladies of the Museum Auxiliary the Stationmasters House Museum Board Members

NOTICE

On this weeks sales circular #24-B Kodak Disk Film is in a single pack rather than twin pack as stated.

We apologize for any inconvenience this may have caused.



2 MILLION NEW JOBS
NEW YORK -- More than a third of the nation's businesses expect to hire additional employees this year, creating 2 million jobs, according to an annual Dun & Bradstreet Corp. survey released recently.

I Just Couldn't Help Myself

"It's not my fault, I've always had a terrible temper." "I was so angry, I couldn't control myself." "You make me so mad!"

These seemingly innocent comments usually follow anything from an argument with raised voices to a brutal beating, broken furniture or large, hand-size holes in walls or doors. They raise some interesting questions.

What is the source of anger? Is anger wrong? Can we control our anger or are we helpless victims of this most violent emotion? In the following paragraphs, I'd like to propose some answers and suggest some ways to control anger.

Anger is an emotional response to any situation that is frustrating, threatening or a denial of basic needs. Most parents know that a child who is hungry or tired is more likely to anger quickly. Does a person inherit a quick temper with red hair or a Roman nose? Yes and no. Everybody feels anger, just as everybody experiences the other

emotions. Anger is an emotion, a feeling, nothing more, nothing less. The way we respond to that emotion is NOT inherited through the genes. It is, however, learned. A person who has a temper just like her mother didn't inherit it, she learned it.

That learned behavior, the response to anger, is where most of us have our problems with the emotion of anger. Let's pause for a moment and take a look at exactly what happens when we experience anger.

Not being very cheery in the morning, I get angry if I have to get out of bed before I'm ready. My heart beats faster, adrenaline is dumped into my bloodstream, muscles tense, breathing quickens, blood concentrates in the torso, legs and shoulders and withdraws from the extremities, hands, feet, and for many of us, brain. Picture, if you will, the body's response to an emotion, primed for action. This physical response, to some degree, happens every time you experience anger.

Now back to our questions. Is anger wrong? Absolutely not! As I said before, anger is an emotion. Emotions, by themselves, are neither right or wrong. What we do with the emotion, our behavior, can be right or wrong. Dealing with anger in a negative, destructive manner is wrong. The right way to handle anger is by using that emotional energy to bring about positive change.

What does that mean? That we can control our anger? Yes, as

surely as a dancer can, with practice, control his body. We can, with practice, control our behavior, the response to anger.

Step 1: Recognize when you get angry. Right before eating, the crack of dawn, around your ex-wife's future husband, who talks down to you. Be aware of the people or situations that set you off.

Step 2: Accept the responsibility for your own behavior. Please pay attention: No one can FORCE you to be angry. You GET angry. It is YOUR decision.

Step 3: If you know beforehand what situation or people push your button, plan how to behave in that given circumstance. Try not to REACT blindly. Plan your behavior.

Step 4: Reprogram what you think to yourself. Instead of thinking "#!*&#, that makes me mad," think "That's not a problem with me." or "I can handle this."

Step 5: Decide if the situation needs to be changed and plan positive steps to effect a change, if you think it's necessary or even possible.

Step 6: Practice, practice, practice. You've had from the day you

were born till now to develop your emotional habits. They will not change instantly or without effort on your part.

Nobody likes to be out of control. With practice, we can learn to use the energy that anger generates to benefit our selves and those around us. We need not be helpless victims of our own emotions. As in any other venture, awareness, responsibility, planning and action will give each of us more control of our emotions and of ourselves.

Paula Sinise, MED
Family Services

Dance Tonight

The Boots and Slippers Square Dance Club will be dancing tonight June 13th, 8:00 PM at the Golden Age Center with Murry Beasley calling, come join the fun!!!

FPC Honor Roll

Frank Phillips College announce the Dean's Honor Roll for Spring 1985. To be placed on the Dean's Honor Roll a student must com-

plete 12 semester hours with a grade-point average of 3.00. Jerry Crowl of Morse.

CARQUEST
The Right Place to buy auto parts™

11th ANNIVERSARY CELEBRATION

Armor All® Protectant
Cleaner and protectant. Perfect for cleaning your car interior. 8 oz. #10080

1.66

Turtle Wax® Minute Wax
A revolutionary new car wax. Wax any size car in less than 15 minutes. Simply spray and wipe off to get a Turtle Wax® finish. #115

3.49

PV Heavy Duty Shock
Rugged 1/2" dia. piston rod, 1 7/8" bore dia. for a smoother, more stable ride under a variety of road conditions. Made by Monroe Auto Equipment Co.

7.95 ea.

Simple Green® All-Purpose Cleaner
Concentrated automotive & household degreaser. Removes grease, grime and tough stains instantly. 16 oz. #15002

2.99

WD-40
Lubricates, loosens stuck parts, protects. 9 oz. aerosol. #A0011

1.49

USA Emergency Tow Rope
13' braided polypropylene. 2 forged steel hooks. 6800 lb. tensile strength. #HY115

7.88

3-Ft. Genuine Chamois
Ideal for cleaning interior, seat, automobile, boat and windows. Made in USA. #D40

4.88

Auto Air-Conditioner Recharge Kit
For all auto air conditioners. Contains one piece valve hose assembly with locking clamp & complete instructions. #AC600M

2.99

One Gallon Gas Can
Rugged, heavy duty construction. 1 gallon. #1-6510

1.88

Tuff-Stuff® Multi-Purpose Cleaner
Multi-purpose foam cleaner. Ideal for car and home use. Cleans vinyl, plastic, chrome, carpet and more. 22 oz. #AS192

1.98

Ray-O-Vac Battery
Ray-O-Vac batteries have up to twice the life of ordinary batteries. Buy now for that unexpected emergency. Size D Twin Pack. 9 Volt.

1.89

Got A Parts Problem?
Ask a Qualified Counterman. Only CARQUEST has them.

I CAN HELP

Good at all participating CARQUEST Auto Parts Stores thru June 16, 1985.

Gruver Farm Supply
515 Main Gruver, Tx. 733-2427

Lone Star Service Center
Rt. 3 Gruver, Tx. 733-5263

CARQUEST
the Right Place to buy auto parts.
Right Parts • Right Price • Right Advice™



Jr. & Intermediate entries in the recent "Fashions in Focus" were 4-H members are left to right Pre 4-H Kristin Evans, Eva Babbs,

Bonnie Jarvis, Cinda Turner, Karla Kunselman and Carla Greene. All these are eligible for District in Canyon on June 18th.



The Seniors of Hansford County eligible for District Clothing Project are left to right Davonna Cator-Non tailored Daytime wear, Anne Marie Jarvis- Tailored Day-

time wear and Alicia Thomas - Specialty & Evening wear. Also pictured are K Kristin Evans and Eva Babbs.



Davonna Cator & Lynnette Williams were contestants of the "Fashion in Focus" style show, the annual 4-H clothing project. The category entry was non-tailored Daytime Wear. Devonna will be unable to attend District so Lynette Williams as alternate will go in Davonna's place.

Smarts
Education: What you have left over even after you have forgotten the facts.
-Herald, El Paso.

Ample Supply
Talk is cheap because the supply is greater than the demand.
-Courier, Ottumwa, Ia.

Nothing can be gained listening to rumors.

Golden Gleams

A friend is a person with whom I may be sincere. Before him I may think aloud.
-R.W. Emerson.

RR Commission request retesting of wells

AUSTIN, Texas, May 14--The Railroad Commission Monday signed an order requiring retesting of all wells in 11 Panhandle oil and gas fields that are now equipped with low temperature or high pressure separating equipment.

The tests would be used to determine whether the wells should be classified as oil or gas wells, a matter of dispute between various oil operators in the Panhandle region.

The Commission order, which becomes final in 15 days unless a request for rehearing is filed, requires operators of wells using the separators to retest the wells within 75 days of the date the order becomes final. Tests must be scheduled with the director of the Commission's district office in Pampa and must be witnessed by Commission personnel.

A key finding in the Commission order is that the Commission's Rule 79(7), which defines gas wells and oil wells, applies to the Panhandle fields. The order says "hydrocarbon liquids which are not in the liquid phase in the reservoir under current conditions, liquid in the well bore, and liquid at the surface shall not be counted as crude oil in calculating the gas-oil ratio for purposes of classifying a well as an oil well or a gas well in the Panhandle fields."

Under state law, wells that produce one barrel or more of hydrocarbon liquids per 100,000 cubic feet of gas are considered oil wells. Wells that produce less than a barrel of the liquids per 100,000 cubic feet of gas are considered gas wells.

In retesting the Panhandle wells in question, operators may not count liquids produced by the separators in measuring the gas-oil

ratio unless they can prove the liquids were liquid in the formation, in the well bore, and at the surface.

Any wells reclassified as gas wells after the mandatory classification tests will not be allowed to produce until operators prove they meet spacing and other requirements of Panhandle gas field rules.

Parties in the case have up to 15 days to file a motion for rehearing asking the Commission to reconsider its order. Unless a motion is filed within that period, the order becomes final. The Commission has 45 days to consider a motion for rehearing once it is filed. It may extend that time an additional 45 days on its own motion. If rehearing is denied, the order becomes final and parties may appeal the Commission decision to state district court.

Phillips Petroleum brought the case to the Commission in Sept. 1981, asking that Panhandle field rules be changed to prohibit natural gas liquids recovered from casinghead gas (oil well gas) from being classified as crude oil production. Monday's order says current Commission rules do this already and changes to the field rules aren't necessary.

Fields involved in the case include the Panhandle oil fields in Carson, Collingsworth, Gray, Hutchinson, Moore, Wheeler, and Potter counties. Also involved are the Panhandle East, Panhandle West, and Albany-Dolomite gas fields.

When
Anyone could get rich if he could judge the exact moment at which a piece of junk becomes an antique.
-Vindicator, Youngstown.

3 DAYS ONLY

AN INCREDIBLE SPECIAL PURCHASE OFFER!

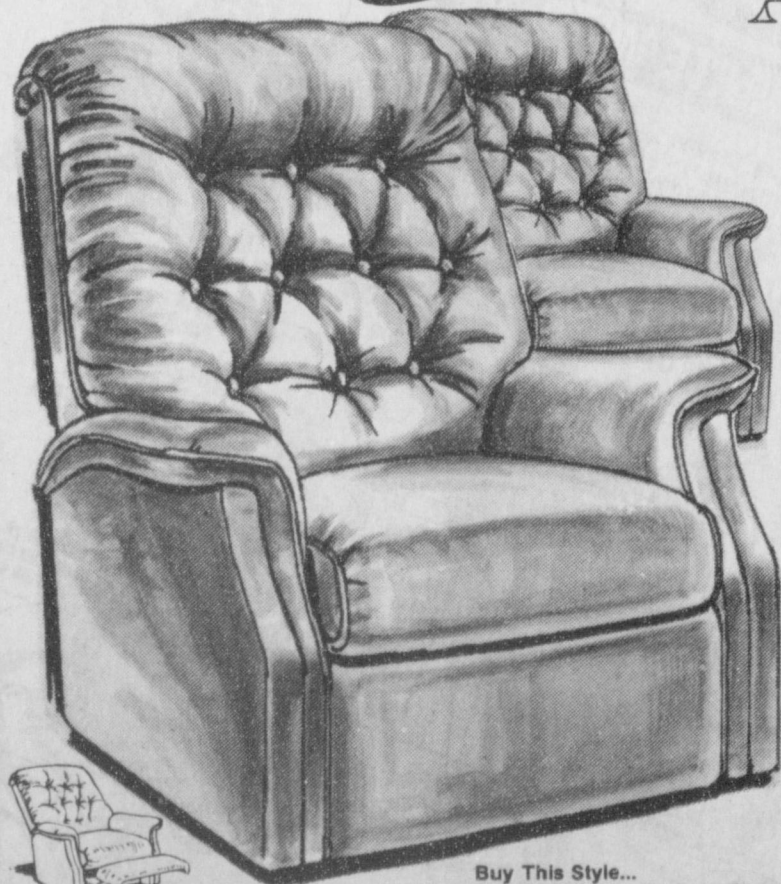
BUY ONE GET ONE FREE!

Action
RECLINERS BY
Lane

GENUINE ACTION RECLINERS BY LANE AUTHORIZED SALE!

If you don't need 2 of these famous Action Recliners...bring a friend and share the cost!

It's a great idea! Buy one famous Action Wall-Saver®, Rocker Recliner or recliner at the regular price...get the second of equal value FREE! Choose from any of these styles in a variety of colors. We have them all! Buy one, get one FREE!



FEATURED EXAMPLE:

Ruster
Bold styling with button tufted back and flared arms make this handsome rest recliner an ideal choice. All the Action luxury features, and deep seated comfort equal lasting enjoyment!

Buy This Style...
Get A Matching Recliner FREE!
NOW ONLY!

\$299⁰⁰

Choice Of Colors. Terms--90 days, no finance charge
Bank rate financing with approved credit



Buy This Style...
Get A Matching Wall-Saver® FREE!

NOW ONLY!
\$499⁰⁰

The Topper
Sit back and relax in a Wall-Saver® with tufted back and soft roll arms in a velvet cord look.
Choice Of Colors.



The Sabre
Super cushioned luxury in a full size Wall-Saver®. Button tufted and deep padded vertical puff head cushion.
Choice Of Colors.

NOW ONLY!
\$599⁰⁰

Bees Furniture Co.
plains shopping center

723 W. 7th Phone 806-659-3701

Spearman, Texas