

Post Office closed
for Veteran's Day

Post Office will be
closed Monday, November 11, in
observance of Veterans Day.

24 hr. prayer
service, 659-2911

THE GRUVER STATESMAN

VOLUME 14, NUMBER 5

THE GRUVER STATESMAN, GRUVER, TEXAS 79040

THURSDAY, NOVEMBER 7, 1985

Gruver Playoff Hopes Alive

The Gruver Greyhounds are back in the chase! Gruver kept its playoff hopes alive in District 1-A by virtue of a 47-3 victory over Lefors Friday night at Greyhound stadium.

Kip Pittman led the Greyhound attack with 148 yards on 11 carries and scored two touchdowns. Pittman's first TD came in the second quarter with the hosts leading 7-0. He escaped on a 22 yard dash with less than 12 minutes left in the first half. Trevor Williams PAT gave Gruver a 14-0 lead.

Mark Gilbreath hauled in two Tim Stedje passes of 23 and 28 yards for TD's. Pittman then scored his second TD on a 20 yard run. Gregg Haight added the game's final two scores on runs of 25 and 3 yards.

Gruver now stands 4-1-1 in the league and needs victories over Claude and Wheeler in its final two games along with one loss apiece by Phillips and Groom to get into the playoffs. The Greyhounds are 5-2-1 overall.

This Friday night the Greyhounds will travel to Claude for their most important game of the year. Plan to follow the Hounds and enjoy the 7:30 game.

	LEFORS	GRUVER
0	0	3
0	0	0
3	0	33
0	0	47

G - Loyd Cator 1 run (Trevor Williams kick)
G - Kip Pittman 22 run (Williams kick)
L - 25 FG (name not reported)
G - Mark Gilbreath 23 pass from Tim Stedje (kick failed)
G - Gilbreath 28 pass from Stedje (Williams kick)
G - Pittman 20 run (kick failed)
G - Gregg Haight 25 run (Haight run)
G - Haight 3 run (run failed)

	GRUVER	LEFORS
First Downs	21	10
Yards Rushing	258	21
Yards Passing	121	53
Total Yards Gained	379	74
Passes Attempted	27	8
Passes Completed	9	3
Passes Intercepted By	3	2
Number of Punts	1	4
Punt Average	31.5	33.0
Opp. Fumbles Recovered	5	2
Number of Penalties	10	14
Yards Penalized	104	106

- A. TOP TEN AND HOW THEY FARED
1. Munday beat Archer City, 60-0.
 2. Irwin beat Grandfalls-Royalty, 55-0.
 3. Wheeler beat Claude, 49-14.
 4. City beat Midway, 41-14.
 5. City beat Midway, 37-14.
 6. Foran beat Roscoe, 29-6.
 7. Grainger beat Kral, 27-0.
 8. Union Hill beat Tenaha, 33-7.
 9. High Island beat Sabine Pass, 14-0.
 10. Rankin was open.
- District 1A2
Groom PHILLIPS
vs. COLLIER
LEFORS vs. CLAUDE
vs. MOLEND
Munday (open)

Students donate for statue repair

The students of Gruver Elementary and Jr. High showed their support for the statue atop the Texas State Capitol on Wednesday, October 30, "Bring a Quarter for the Goddess Day."

The Goddess after 97 years of exposure to the elements, is in bad need of repair. The Texas PTA Board of Directors chose this as their Sesquicentennial project in hopes that it would give the children of Texas a chance to have a part in this historical event, celebrating 150 years of Texas statehood by helping in the restoration of the "Goddess of Liberty."

In all the student turned in 321 quarters totaling \$80.25 toward the "Goddess" project. This was an exceptional effort on the part of the students which meant over 80% participated in this special project. Thanks to the students who

participated. We hope that someday you will get to go to Austin to see the "new Goddess" atop the State Capital, and know that you had a part in her restoration.

OPERATION FINGERPRINT

On Wednesday, October 3, PTA volunteers fingerprinted 83 pre-school, kindergarten, and new students to the Gruver School System.

The service was optional to those who felt a need to have a permanent set of fingerprints of their children. If one of our children became one of the two million missing children in the nation today, we would have a starting point in identification and recovery.

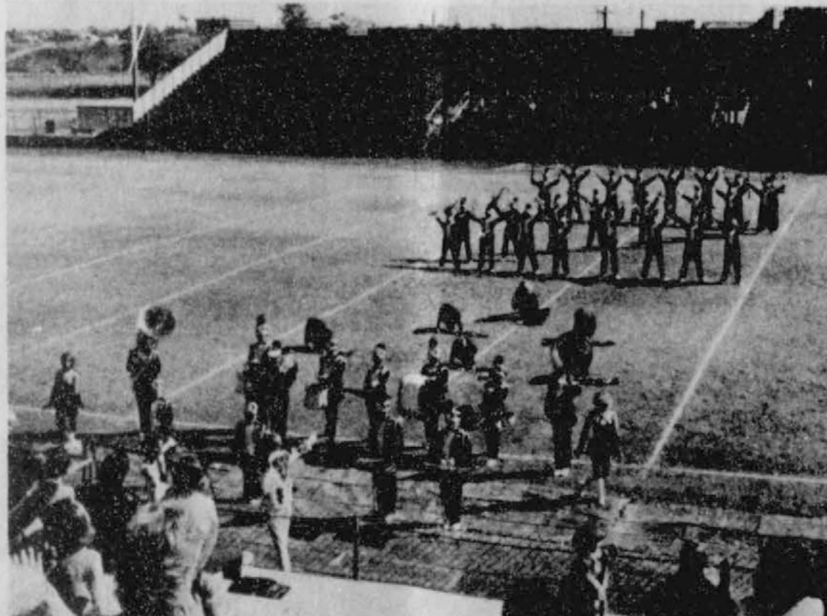
The fingerprinting service is one of several special projects of the Gruver PTA.

Gruver Spooks at Halloween



Lady Vampire from the Gruver State Bank.

Band Wins Division 1



The Gruver Greyhound Marching Band, under the direction of Mr. Bruce Collins, guaranteed their opportunity to compete in the U.I.L. State Marching Contest in Austin, by gleaning Division I honors at Regional Marching Contest held in Vernon last Saturday.

Competing in Regional from Class 1A were bands from Archer City, Booker, Munday, and Gruver. Bands from the panhandle prevailed as both Gruver and Booker advanced to State Finals slated in Austin on November 11, outranking their counterparts from the state's north central area.

On a beautiful, balmy day in Vernon, the Greyhound musicians proudly entered their performance from both sides of Westlake Stadium to the theme from "Dallas". Led into their show confidently by drum majors Pam Doty and Jerry Martin, the band and flag corps performed meticulous execution of drills to the tunes of "Ghost Riders in the Sky" and jazzy Nashville Brass rendition of "I saw the Light," which elicited handclapping and intermittent applause from

500 plus marching band enthusiasts from across north Texas. The interlude, which featured the percussion section chiming through "Zip-A-Dee-Do-Dah" while the wind section and flag corps executed precision line drills, drew a hearty round of applause from onlookers. The finale, which featured a unique band arrangement of two patriotic favorites, "Dixie" and "Battle Hymn of the Republic," brought the crowd to its feet in a standing ovation as the band faced the stands in its final musical strains, accompanied by the flag corps' dramatic display of "Old Glory."

The Class 1A bands provided a fitting introduction to a full after noon's performances by bands representing Classes 2A through 5A in Regional competition.

The Division I rating insured Gruver marchers a slot in the U. I. L. State Marching Contest in Austin, November 11. Congratulations and best wishes to the band and director Bruce Collins as they advance to State!



Three spooks from Gruver.



Checking the headlines during Halloween.

Turkey Walk Is Big Success

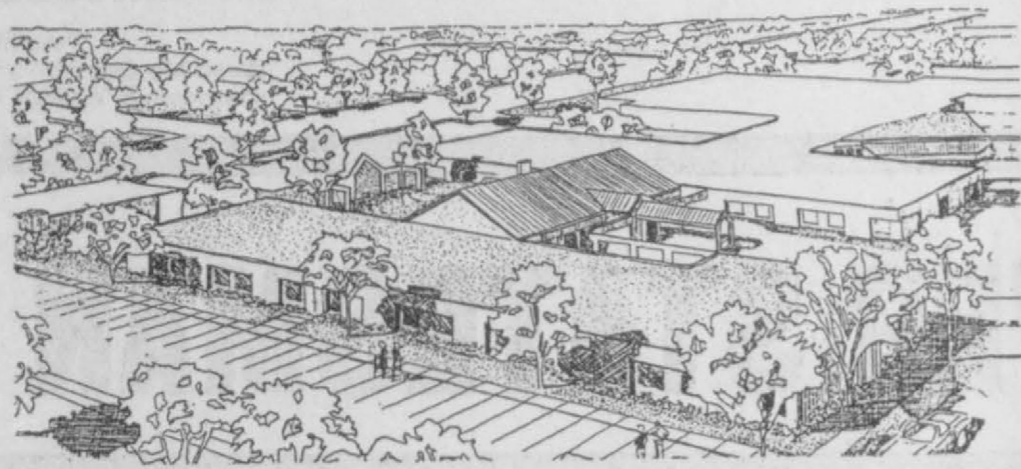
The Turkey Walk held for the Heart Fund in Gruver, was a big success---that is everything except the news pictures. Two photographers for the Gruver Statesman seemed to have all kinds of trouble, as all pictures of the Turkey Walk seemed to have been ruined. Anyway, we want to thank Pat Irwin, and everyone who helped in any way with this project. Especially do we want to thank Frances Murrel, Marilyn Hart, Janet Irwin and Neil Thoreson for walking to Spearman. Such dedication to this fine cause is outstanding. Once again we regret that all of our pictures were ruined in the dark room.

The sponsors for this outstanding program included the Gruver State Bank and we do thank the Bank for setting up headquarters at the bank for the Saturday walk!

Blood Drive

The Gruver Chapter FHA will be sponsoring their annual Blood Drive Tuesday, November 12, 1985 the Gruver High School Library. From 9 a.m. to 1 p.m. anyone wishing to donate is welcome to come. Refreshments will be served after your donations.

Proposed additon to Hansford Manor



Pictured above is an overall view of the existing facility and the proposed expansion.

The new building will contain 15,312 square feet and 2,171 square feet in the remodeling of the existing facility.

Hopefully, at the November 14, Board meeting, the architect will have available a scale model of the complete facility. This model will be placed in various locations for the citizens of Spearman and Gruver to view. At this time a bond issue is tentatively scheduled for December 17.

It will take approximately one

year to complete the project. At the completion, we feel that Hansford Manor will be an outstanding asset to our community and to the residents of Hansford County.

In many ways our facility will be a pace setter for this area. We will be capable of offering "suites" to our residents who request such. The suites are designed primarily to accomodate residents that need only minimal supervision, assistance with medications or diets, or only the assurance that licensed medical personnel is available, if needed, 24 hours per day.

Faye Cluck attends granddaughter's class

Faye Cluck attended the presentation of the 1985 Fall Pledge Class of Alpha Delta Pi, Epsilon Epsilon Chapter, at the Lubbock Plaza Hotel in Lubbock October, 19.

Her granddaughter, Kristy Hurt was a member of the pledge class. Kristy is the daughter of Mr. and Mrs. Mike Hurt of Amarillo. Mrs.

Hurt is the former Sammie Kaye Cluck of Gruver. Who was a member of the FIRST PLEDGE CLASS of Alpha Delta Pi on the Texas Tech Campus in 1965.

Kristy was presented in a lovely ceremony by her Father.

Library News

Gruver Library has had a very busy month in October. Besides furnishing our patrons with good reading material available from our shelves (including many best-sellers), we have kept interlibrary loan in Amarillo "hopping" with requests. Hopefully, you are aware of this service available to all of our patrons, and will take advantage of this when the need arises. Even seemingly small requests like an address, or even lyrics to a particular song, etc. are just a phone call away. Please call on us and we will be happy to at least "give it a try."

Madge Swindell's **Summer Harvest** captured a worldwide audience, garnering critical acclaim coast to coast. A new book in our library, **Song of the Wind**, by Swindells fulfills the promise of her first novel to create a sweeping saga international in scope and timeless in its appeal. It begins in 1940 when Marika Magosk, a beautiful young Catholic girl, is deported from Nazi-occupied Poland and sent to live with foster parents in South Africa. Confused by the passions and violence of a war stricken world, Marika tries to adjust to her harsh new life in the rugged African desert. In time, she meets and falls in love with handsome U-boat commander Gunter Grieff. Shortly before giving birth to his child, she learns that he is not Swiss-born, as he's told her, but German. Betrayed by his lie, Marika flees to London where, amid the glamour of the fashion world, she finds wealth and fame, marriage, and, eventually, reconciliation with Gunter. But despite the passing of the years and the softening of her heart, Marika is haunted by the brutal wartime murders of her parents.

When shocking news brought by a Nazi hunter threatens her chance at happiness, she must confront her past one final time - in a climactic courtroom drama that will reveal the truth at last, and free Marika forever from her lifelong struggle. Poignant and powerful, **Song of the Wind** has all the elements of a classic page-turning fiction that carry the reader on a journey of romance, adventure, and intrigue, and establish Madge Swindells as one of the outstanding storytellers of our time.

Some current titles included at Gruver City Library; **Texas** by Michener; **Skeleton Crew**, by Stephen King; **Elvis and Me** by Priscilla Presley; **Yeager** by Yeager; **Iacocca** by Iacocca; **Thinner** by Stephen King; **PASSIN' Through** by Louis L'Amour. Let us be a service to you.

"Check It Out"
Gruver City Library
2:00-6:00
Monday through Friday

Raise the Drinking Age

The Spearman Police Department would like to clarify and answer the many questions that have been asked about the Drinking Law being raised from 19 years of age to 21 years of age. Texas Senate Bill #21 "Raise Drinking Age" amends The Alcoholic Beverage Code to increase from 19 years of age to 21 years of age, the minimum age of persons allowed to purchase or sell alcoholic beverages. This Law becomes effective September 1, 1986.

D. J. Alberto
Chief of Police

Library Board reappointed

The Gruver City Commission met in regular session at 2:00 p.m. in the City Hall with the following members present: J.C. Harris, mayor; Roy Byrd, Commissioner; Ila Jo Hart, Commissioner; A.J. Ratliff, City Manager. J.C. Harris opened the meeting with prayer.

The minutes of the September 13, 1985 and September 26, 1985 meetings were read and approved as read.

The terms of five (5) members on the Library Board are expiring. Roy Byrd made a motion to re-appoint Carla Gumfory, Rita Williams, Mack Hoel, Melba Rasor and Evelyn Thiele to the Library Board. Ila Jo Hart seconded the motion; motion carried.

Ila Jo Hart made a motion to nominate Randy Brown to the Hansford County Tax Appraisal District Board of Directors. Roy Byrd seconded the motion; motion carried.

Randy Overbeck with West Texas Gas Co. was present to present a gas sales contract to the city. No action was taken until an attorney can be contacted about the contract.

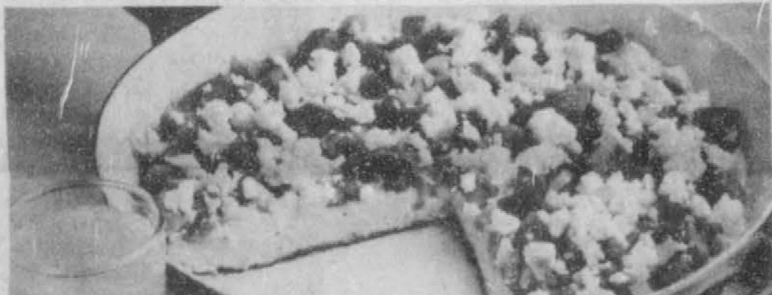
A Resolution supporting the Texas Water Plan was tabled until further study can be done.

Ordinance 191 amending the Ambulance Rates was read. Ila Jo Hart made a motion that the ordinance be approved. Roy Byrd seconded the motion; motion carried.

Ila Jo Hart made a motion that the bills for the month of September, 1985 be approved. Roy Byrd seconded the motion; motion carried.

With no further business to come before the commission, the meeting was adjourned.

Add Greek Flair To Autumn Breakfast Fare



This fall, feature a unique combination of harvest vegetables, eggs and all-natural Churny feta cheese at your breakfast table.

Feta is a fresh, soft-textured white cheese that is a centuries old tradition in Greece, where it originated. In recent years it has become increasingly popular here in the United States. Its versatility, its piquant and refreshing taste and its ethnic aura adds flair to many recipes calling for cheese.

Feta Vegetable Frittata is an easy yet delicious innovation on scrambled eggs and omelets. Serve with sausage links or bacon and orange juice for a complete breakfast to start your day off right.

Feta Vegetable Frittata

3/4 cup chopped tomato	1/4 cup margarine
1/4 cup chopped onion	6 eggs
1/4 cup chopped green pepper	1 cup (6 ozs.) crumbled Churny feta cheese

Saute vegetables in 2 tablespoons margarine until vegetables are tender. Beat eggs until foamy; stir in 3/4 cup cheese. Melt 2 tablespoons margarine in 10-inch skillet over medium heat. Add egg mixture. Cook, stirring occasionally, until eggs are set. Top with vegetable mixture and remaining cheese. Continue cooking until cheese begins to melt.

4 servings

For a free booklet of additional Churny feta cheese recipes, send a postcard with your name and address to: Feta Cheese Recipes, P.O. Box 810, South Holland, IL 60473.

The Dude



99¢ sale

For Texas Taste, DQ's the place for a Golden Chicken: Fried, 100% Pure Beef Sandwich Served on a toasted bun with crisp lettuce and red, ripe tomatoes. So come on by ...



Monday thru Sunday, November 4 thru November 10.

"Just keeps on getting better."™™

© Copyright 1985 by D. Q. Co. All Rights Reserved. TM Trademark of the D. Q. Co. Co. Registered Trademark of D. Q. Co.

Hospital News

Hospital patients are; Aubrey Sparks, Viola Graves, Adolfo Franko.

Dismissals; Alma Cazzar, Keith Lamb, Hershel Ooley, Donna Coates, Billy Close, Ruth Garrard, Carrie Presley, Francis Loftin, Ruby Lair, Cindy Peters, Elmer Adcock, Everet Sullins and Lesly Crane.

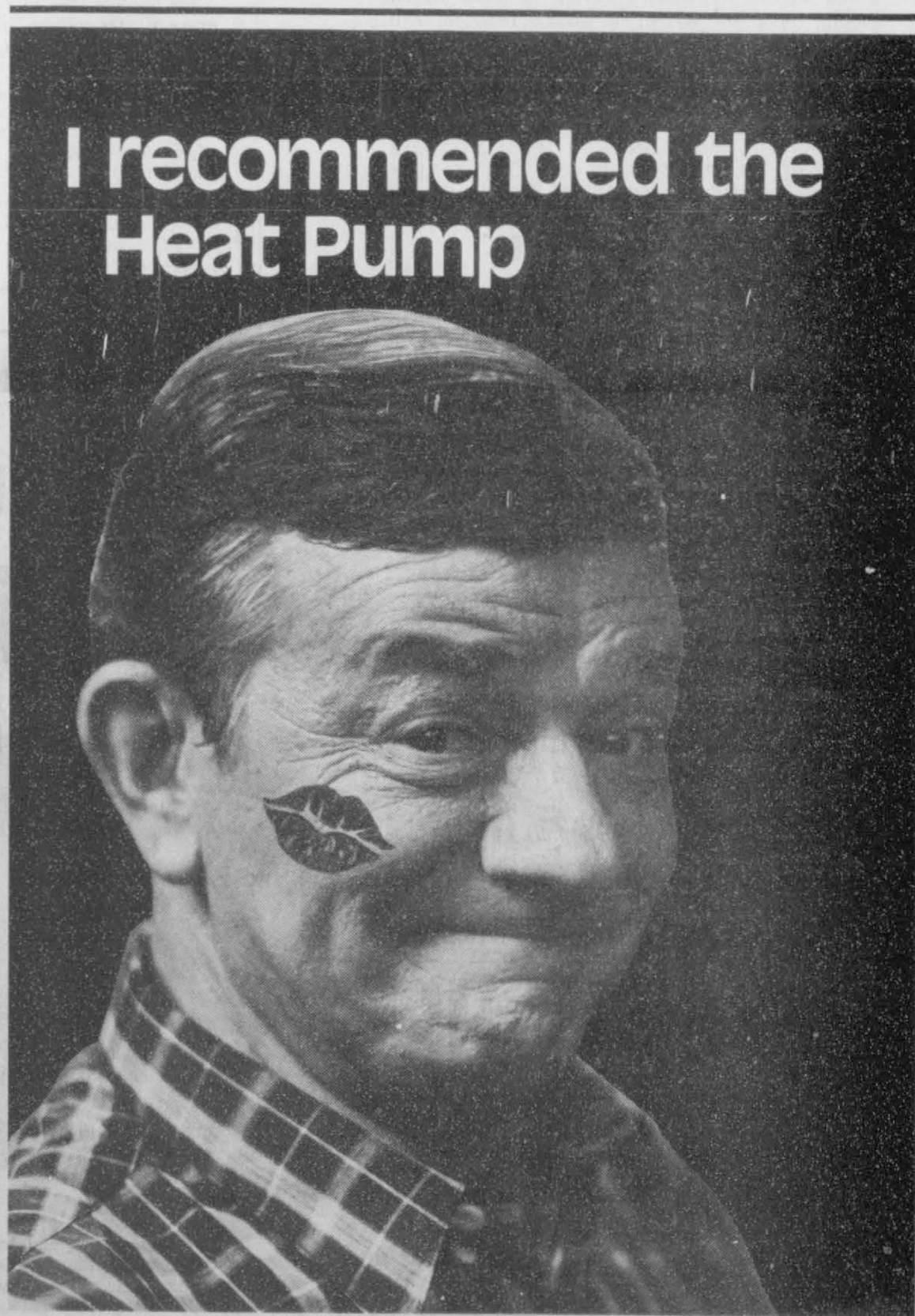
In the early 1800s, half a Washington stamp (10¢) was often used for 5¢ postage.

Keyes plan

Holiday Show

Holiday Arts, Crafts, Gifts, and Collectible Show to be held in Keyes Lunch Room and Wonder Shop in Keyes, Okla. on Nov. 16 and 17 from 9 to 6. Sponsored by the Scholarship Fund. Dinner served both days. Call 405-546-7286 for reservations.

"An intelligent man never snubs anybody."
Vauvenargues



I recommended the Heat Pump

...and this is the kind of thanks I get

Air conditioning and heating contractors are making a lot of friends by recommending a heat pump. People who take their advice appreciate the heat pump's economy, comfort, and cleanliness. And, considering the heat pump's long life and low maintenance, the contractor's and the customer's friendship will be a lasting one.

Contact your heating and air conditioning dealer or call

378-6448

in Amarillo for a FREE HEAT PUMP BUYER'S GUIDE

WANT ADS

SERVICES

New to Area
Give Us A Try
Call Your Local
USED COW DEALER
As Soon As Possible
659-3544
659-3545
1-800-692-4043
22-rtm

NOTICE
Wallace Monument Co.
Monuments, Curbing,
Grave Covers
Local Representative
LEONARD JAMESON
Spearman, Texas
40-rtm

OSGOOD MONUMENT CO.

Amarillo, Texas
Dealers of Rock of Ages
Granite, as well as all
colored granites, marble
and bronze memorials.

represented by
BOXWELL BROS.
FUNERAL HOME
519 S. EVANS
659-3802

Hansford County
Planned Parenthood
412 Davis
659-2483
Spearman
Mon. - Fri.
8:30 - 12:30

Sewing done-little darling and
Cinderella dress types a spec-
ialty. Call Joy 733-2517.
nc

Hay Swathing & Baling done - Call
733-2517 or Dennis at 733-5214.
31-rtm-nc

Sewing wanted, alterations etc.
Baking and decorating cakes. I now
have the He-Man Pan for birthday
cakes. Call Joy at 733-2517.
52-rtm-nc

PUBLIC NOTICE

Guymon Elks Supper Club is
open to the public. Our hours are
Wednesday-Thursday 6-10 p.m.
Friday-Saturday 6-10:30 p.m. We
have a prime rib special every
Friday.
51-rtm

COMPUTE-A-DATE

For singles of all ages.
Serving surrounding areas.

For more information
Call 806-435-4145 or
write P.O. Box 239
Perryton, Tx. 79070

52-2tc 4-1tc

MORE HARM
WASHINGTON -- The Reagan
administration's \$2 billion program
to rescue sagging U.S. farm exports
may instead have damaged overseas
sales because it has angered
America's best customers, grain
industry spokesmen told Congress
recently.

DRINKING DOWN?
NEW YORK -- Campus drinking
has dropped sharply in the past
several years, according to two
surveys released recently, but college
officials credit better-informed
students and not higher legal drink-
ing ages for the sobering-up trend.

MISC. FOR SALE

For Sale: RCA 19" Color T.V. with
Time of Day, Chanel display, 3
years old. Brand new remote
control. \$300. call 733-2517
45-rtm

FOR SALE: Good quality ground
alfalfa. Delivered 100 tons-5,000 tons,
contact J.O. Talbert, Ulysses, Kansas.
Phone 316-356-3268.
48-12tc

FOR SALE: Registered red heeler
cowdog. 659-2121 or 659-2081.
49-rtm

FOR SALE: SMALL GREEN DIVAN.
Call 733-5024.
3-rtm

FOR SALE: 500 barrel horizontal
storage tank with pedestal. Suit-
able for anything. \$1500.00 Call
435-9384, 435-5002 or 435-6164.
5-2tp

PIANO FOR SALE
Wanted: Responsible party to
assume small monthly payments on
piano. See locally. Call credit
manager 1-800-447-4266.
5-3tc

Firewood for sale. Phone 659-2080
or 659-5289.
2-4tc

WANTED

Would like to lease approx. 1
section of farmland in Gruver area.
Contact 733-2070
5-2tc

"Wallpaper hanging, interior-
exterior painting, ceiling and wall
repair and texturing, wood finish-
ing and refinishing. Joe Potts,
733-2329."
1-rtm

REAL ESTATE

FOR SALE IN GRUVER - Brick
home, 3 bdrm., 2 bath, double car
garage, large denoed back yard, 1
blk. from school. Mid \$50's. Call
733-2964.
1-rtm

FOR SALE: Well improved acre-
age. 9 acres or 20 acres with 4
bedroom house in excellent condi-
tion. Good well, 40x80 Behlen
Building, steel cattle working pens.
Near Gruver. Delano Realty. Phone
733-5000. Home phone 733-2291.
52-8tp

FOR SALE: Remodeled country home,
white stucco, great location, 1/4 miles
west of Gruver on Stratford highway.
10 acres, lots of trees, corrals living
area, office, formal dining room,
kitchen with ceiling fan, dishwasher,
disposal, electric stove and breakfast
area. 3 bedrooms, 1 large full bath,
drapes stay, walk in closets, utility,
basement, central air and heat, double
car garage with storage apartment.
Call 733-2815.
49-rtm

FOR SALE IN SUNRAY AREA-

160 acres, Barn, One - 8 inch
irrigation well - Underground Pipe.

160 Acres, 8 inch well, T.W.P. and
U.G.P.

320 Acres, Two - 8 inch wells,
TWP, and U.G.P.

These Farms are on the highway-
Excellent water - good soil.

East Moore County - 640 Acres - 3
wells - 2 tail water pits - UGP - Lays
perfect - Has highway on 2 sides.

We have buyers and need listings
in this area.

Call Joe Bomar and Associates -
Amarillo, Tx. - 806-359-5416.

4-4tc

**HOUSE OR OFFICE SPACE FOR
SALE:** - 720 S. Roland - 3 bedroom,
Central heat and air, Call 659-2820
or After 6 p.m. call 659-2283
5-3tc Reasonably priced!

AUTOMOBILES

FOR SALE

FOR SALE- 75 Buick Riviera
runs good 659-3327.
4-2tc

BUSINESS OPPORTUNITIES

**OWN YOUR OWN JEAN-SPORTS-
WEAR, LADIES APPAREL, CHILD-
RENS, LARGE SIZE, COMBINA-
TION STORE, PETITES, MATER-
NITY, ACCESSORIES, JORDACHE,
CHICK, LEE, LEVI, E Z STREET,
IZOD, ESPRIT, TOMBOY, CALVIN,
KLEIN, SERGIO VALENTE, EVAN
PICONE, LIZ CLAIBORNE, MEM-
BERS ONLY, GASOLINE, HEALTH-
TEX, OVER 1000 OTHERS. \$13,900
TO \$24,900 INVENTORY, TRAIN-
ING, FIXTURES, GRAND OPENING
ETC. CAN OPEN 15 DAYS. MR.
LOUGHLIN (612)888-6555.
4-2tc**

WORK FROM HOME: \$60 per 100
inserting envelopes information
send stamp to K.S. Enterprises
P.O. Box 1501-D Bloomfield NJ
07003
2-4tc

CARD OF THANKS

Our sincere appreciation goes to
so many during Larry's recent
illness.

Gruver is so fortunate to have the
dedicated ambulance crew who so
unselfishly give of their time and
expertise to serve our community.
Thank you: Steve Gaines, Jim
Ratliff, Sam Gruver, Virginia Tay-
lor and Fran Duncan for the fast,
efficient attention each of you gave.

Thanks also for the phone calls,
cards, visits, flowers, food and
especially the prayers, all were
deeply appreciated. May God Bless
you all.

Sincerely,
Larry, Rhonda, Branda and
Chelsie Hicks
Bob and Carolyn Hicks

At The Land Bank...

your farm records
can be as
convincing
as your collateral.



High Plains Federal Land Bank Association
506 South Main, Perryton, Texas 79070;
806-435-4319;
Serving Ochiltree, Lipscomb and
Hansford Counties.

Marinated Spanish Onion Burgers



Thick slices of Idaho-Oregon Sweet Spanish Onions and beef patties are marinated in a sprightly oil-catsup-lemon mixture, well laced with garlic, Worcestershire sauce and dry mustard. After being grilled or broiled to perfection, the sizzling beef patties and onion slices are served in toasted hamburger buns or over thick slices of French bread.

If Sweet Spanish Onions are new to you, you're in for a real flavor treat! These quality onions grown in eastern Oregon and southwestern Idaho are mild and sweet, and especially large in size. One slice will fit a hamburger bun perfectly.

You'll find the bronze-skinned Idaho-Oregon Sweet Spanish Onions in a cool, dark, dry place with good ventilation. Or, they may be chopped and frozen for year 'round use.

For a free copy of an exciting new Sweet Spanish Onion Recipe Booklet, send a stamped, self-addressed envelope to: IDAHO-OREGON ONION RECIPES, P.O. Box 307, Parma, ID 83660.

Grilled Onion-Beef Burgers

6 thick slices Idaho-Oregon Sweet Spanish Onion	1/2 teaspoon salt
6 beef patties (1-1/2 pounds ground beef)	1/8 teaspoon pepper
1/3 cup vegetable oil	1 clove garlic, minced
2 tablespoons catsup	1/4 teaspoon Worcestershire sauce
1 tablespoon lemon juice	1/4 teaspoon dry mustard
	6 hamburger buns, toasted

Place onion slices and beef patties in shallow glass dish. Combine oil, catsup, lemon juice and seasonings. Pour over onion slices and beef patties. Marinate 1 hour or more. Grill or broil onion slices and beef patties about 2 minutes per side to desired doneness, brushing occasionally with marinade. Serve grilled onion slices and beef patties in toasted hamburger buns or, if desired, on toasted French bread. Serves 6.

Menu

Nov. -8

FRIDAY

B-B-Q on a bun
Tossed salad, french fries
cookies, milk

NOV. 11th TO NOV. 15th

MONDAY

Spag w/ Meat
Applesauce, Tossed Salad
Homemade Bread, Milk

TUESDAY

Cheese Sandwich
French Fries, Beans
Cake, Milk

WEDNESDAY

Chicken over Rice
Mix Vegetables
Peachcobbler, Hot Rolls, Milk

THURSDAY

Chili w/ Beans and Crackers
Fruit Cocktail
Donuts, Milk

FRIDAY

Hamburgers
French Fries
Lettuce, Pickles, Cheese
Cookies, Milk

FELONS & GUNS

WASHINGTON -- Only about one in five convicted felons surveyed by the government said they obtained their guns through legitimate channels but stole their guns or got them from relatives or friends, the department's National Institute of Justice said recently.

SHI'S BACK UP

THOROLD, ONTARIO -- Ships carrying grain, steel and military equipment backed up recently on the St. Lawrence Seaway, and one official predicted it would be weeks before a collapsed lock wall would be repaired and traffic allowed to resume.

PROTECTION

WASHINGTON -- Spurred by terrorist attacks on three continents, the U.S. armed forces are putting new emphasis on advising their personnel how to avoid making themselves inviting targets for attack.

WINS NOBEL PRIZE

STOCKHOLEM, SWEDEN -- Two Americans, Herbert Hauptman and Jerome Karle whose work in determining molecular structure has been used to develop hundreds of modern drugs won the 1985 Nobel Prize for chemistry recently.

The Gruver Statesman

PUBLICATION (USPS 9598-6000)
GRUVER, TEXAS 79040
Box 796 659-3434

Owner-Publisher..... William M. Miller
Editor..... Joy Henderson, Gruver, Tx.
Second Class postage paid at Gruver,
Texas 79040

Any erroneous reflection upon the charac-
ter of any person or firm appearing in these
columns will be gladly and promptly
corrected upon being brought to the
attention of the management.

POSTMASTER: Send address changes to
Gruver Statesman, Box 796, Gruver, Tx.
79040.

SUBSCRIPTION RATE: Hansford, adjoining
counties, \$13.14 per year.

MEMBER

Texas Press Association



YOU DESERVE TO KNOW!

Good News For Patients...and Taxpayers

By Vice Admiral Thor Hanson (ret.)
President of the National
Multiple Sclerosis Society

Research continues to seek
a solution to the mysteries of
multiple sclerosis (MS)—
what causes it, what will cure
it and how to prevent it. More
and more Americans agree
that funding such research
makes good economic sense.

Studies have shown that
each dollar invested in re-
search results in an esti-
mated \$13 in savings from
such benefits as reduced ill-
ness and medical costs and in-
creased productivity. If we
find a cure for MS soon, we
will be able to save, in the
years to come, millions of dol-
lars that are now spent on re-
search and for care and treat-
ment.

Some of the research cur-
rently being done relating to
multiple sclerosis includes:

- Studies on myelin, the fatty substance which aids



Each dollar invested in
health research is estimated
to produce \$13 in savings
from such benefits as re-
duced incidence of illness.

the flow of messages by in-
sulating nerve fibers in the
brain and spinal cord. Myelin
is destroyed by MS. Research
is focused on how it's formed
and how it changes with MS.

- Diagnostic tests de-
signed to detect MS in its
early stages.

- Tests on specific drugs
that might prove effective in
the treatment of MS.

- Studies of immuno-
therapy and of those drugs
used to alter the body's im-
mune processes and stimu-
late disease-fighting cells.

Federal Express

Is now serving Spearman,
and All of Hansford County.

For Pickups before 2 p.m. call:

1-800-238-5355 Toll Free, or
806-235-1645, Amarillo.

Monday thru Friday

Note of Thanks

Thank you to the people of Hansford
County and surrounding areas. This
month marks the end of our first year of
serving you. We appreciate our patients
support and look forward to helping
others in the years to come.

Stanton W. Cobb D.D.S.

Phil 2:4

Family Practice of Dentistry

802 S. Roland
Spearman, Tx. 79081

659-5515

Engagement announced



The parents of Teresa Jo Shore and Scot Dahl wish to announce the engagement and approaching marriage of their children. Teresa is the daughter of Eugene and Janet Shore of Johnson, Kansas and Scot is the son of Robert and Suelen Dahl of Gruver. Teresa is a graduate of Stanton County High

School and Panhandle State University. She is employed by Jim Bostiek, C.P.A. in Hooker, Okla. Scot is a graduate of Gruver High School and is engaged in farming and ranching. A December 7 wedding is planned at Gruver United Methodist Church.

Karen's Kozy Korner

A poor credit report can make it difficult for you to buy a house or car, or get certain jobs. Yet, until recently consumers had little protection against credit reports containing erroneous, incomplete or dated information.

The federal Trade Commission's Fair Credit Reporting Act now gives consumers some rights that can help them clear a poor credit report.

For example, if you have been denied credit or employment because of information in a credit report, you have the right to be told the name and address of the reporting agency.

Then that agency must tell you the nature, content, and source of all the information in your credit file, except medical information.

The agency must also reveal who has received a consumer report on you within the last six months, or the last two years if the report was for employment purposes.

You should get this information free of charge if you request it within 30 days of being denied credit. After that, you may be charged a fee for the disclosure.

You can also request in writing a

telephone interview or visit the agency in person. The agency may require some information for identification purposes, but you are not required to furnish any information other than to establish who you are.

Most importantly, you can challenge incorrect, unverified or incomplete information in your files, and it must be removed.

If the issue is not resolved, you may explain your side of the story in 100 words to be included in future reports.

The agency must also inform

those who have recently received the report of any item which the agency deletes, without any charge to you.

The best policy is to maintain a good credit record and when there is a problem, exercising your consumer rights may help you

resolve it. EDUCATIONAL PROGRAMS CONDUCTED BY THE TEXAS AGRICULTURAL EXTENSION SERVICE SERVE PEOPLE OF ALL AGES REGARDLESS OF SOCIO-ECONOMIC LEVEL, RACE, COLOR, SEX, RELIGION, HANDICAP, HANDICAP OR NATIONAL ORIGIN.

Shapley - Been vows read

Mica Shapley and Rod Been, both of Gruver, exchanged wedding vows Saturday, October 26, in a 10:30 a.m. ceremony at the Gruver United Methodist Church. Reverend Kerry Hurst of Lubbock officiated.

Parents of the bride are Mr. and Mrs. Tony Shapley of Gruver. The groom is the son of Mr. and Mrs. T.J. Been also of Gruver.

Vows were exchanged between intertwined heart candelabras and a floral bouquet both decorated with candlelike flowers and accented with gold beading and teal satin bows.

Escorted to the altar by her father the bride wore a candlelike tea-length gown and carried a bouquet of white roses on a Bible given to her by her Great grandfather, L.H. Gruver.

Cami Shapley, sister of the bride, was maid of honor. She wore a tea-length gown of teal satin.

Steven Been, brother of the groom, served as best man, and both wore black tuxedos.

Music was provided by Hayley Hatton, cousin of the bride, on the piano. Debbie Blackshear sang "Truly" and was accompanied by Hayley Hatton.

Following the ceremony, a reception was held in the church fellowship hall. The table was covered with a white satin floor length cloth with lace overlay. The table was set with silver appointments and centered with

the 3-tiered wedding cake, the silver tea service is a Gruver family heirloom. Servers were Celesta Cartwright, Dala Shapley, Shelley Lanners, and Lisa Wiley.

The bride attends Texas Tech University and is a 1984 graduate of Gruver High School.

The groom attends South Plains College and is a 1985 graduate of Gruver High School.

The couple are making their home in Lubbock, Texas.

School progress reports Mailed

Progress reports mailed Monday to parents of elementary students whose grades were below 70 for the first three weeks of the second six-week grading period.

Parents are reminded that tutorials are available from 8:00 to

8:20 daily in grades K-4 to provide extra help to students experiencing difficulty. The second six weeks ends on November 22, giving ample time for students to improve their grades, especially if they attend tutorials.

FCIC set up Hearings

Responding to the need for farmer input, the Federal Crop Insurance Corporation (FCIC) has set up a series of producer hearings across the U.S.

The action was taken as a result of Board of Directors resolution delaying a change in unit definitions for insurance purposes, and comes after similar sessions held in Washington to hear insurance industry and agricultural interest representatives.

FCIC Manager Merritt W. Sprague commented that, "These sessions will give producers an opportunity to tell us how the Crop Insurance program meets their needs and what they would do to improve the program."

Two teams of FCIC representatives, one headed by Manager Sprague and the other led by Deputy

Manager, Edward D. Hews, will begin conducting public forums November 7, in twelve cities across the country. The sites were chosen to geographically represent the insurance now available. The scheduled local site is the Community Center, Nazareth, Texas, on November 14 at 1:30 p.m.

"During our public forum in Washington," FCIC Manager Sprague noted, "the needs of the producer, the reactions of the producer, the willingness of the producer, and the problems of the producer as they relate to Crop Insurance were all represented by others in response to FCIC proposals. We hope that these listening sessions will give the producer the opportunity to speak for

himself."

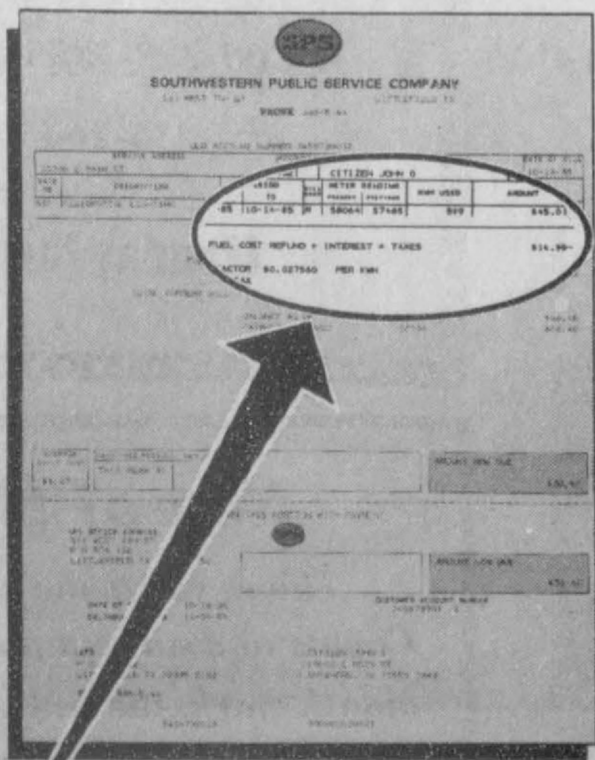
Deputy FCIC Manager Hews commented that the sessions would also, "Provide us, Board members and managers, who have responsibility for the program a chance to exchange ideas with producers. We look to sharing views which will contribute to a stronger and more effective crop insurance program."

Markets

Milo	\$3.75
Wheat	\$2.85
Corn	\$2.60

Texas Customers of SPS:*

Check your electric bill carefully this month.



Your share of our fuel-cost savings.**

You will find a credit on your electric bill this month. It's your share of savings resulting from our management's decision to use coal fuel instead of gas for generating electricity. We also saved by working out cheaper fuel and fuel transportation contracts.

At SPS, we work to keep the cost of electricity as low as possible.



SOUTHWESTERN PUBLIC SERVICE COMPANY

*SPS customers in New Mexico, Oklahoma and Kansas have already been enjoying reduced fuel costs through their automatic fuel-cost adjustments.

**This is a one-time credit. It reconciles an over-recovery of fuel revenue resulting in Texas from a fixed fuel factor set in October 1983. The credit you find on this month's bill was figured exactly on your actual electricity usage, on a per kilowatt-hour basis. We're returning this savings to you with interest at 11.50%.

WHILE SUPPLIES LAST



PRICES EFFECTIVE NOV. 7-9, 1985

ICE-SOFT DRINKS-SELF SERVE GAS-SNACKS-PICNIC SUPPLIES-GROCERIES-FRESH COOKED FOODS-BREAD-MILK

FALL WAREHOUSE SALE



ASSORTED FROZEN BANQUET DINNERS

11 OZ. PKG. **69¢**



COMPARTMENT OR DINNER CHINET PLATES

15 CT. PKG. **\$1.29**



CARNATION HOT COCOA MIX

12 CT. BOX **\$1.19**



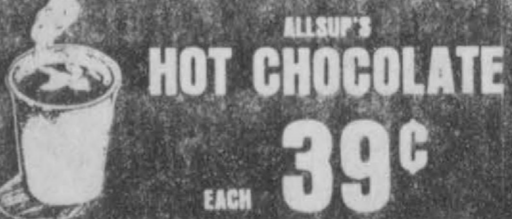
FILLED WITH YOUR FAVORITE SOFT DRINK TALLSUP

EACH **49¢**



ALLSUP'S BURRITOS

2 FOR **99¢**



ALLSUP'S HOT CHOCOLATE

EACH **39¢**



FAST & HOT JUMBO CHEESEBURGER

REG. \$1.99 **\$1.49**



BORDEN'S HOMO MILK

GAL. JUG **\$1.99**



BORDEN'S ICE CREAM SANDWICH

6 CT. PKG. **\$1.19**



CONOCO ANTI-FREEZE

GAL. JUG **\$2.99**



SHURFINE GREEN BEANS

4 16 OZ. CANS **\$1**

MOVIE & VCR RENTALS
The Very Best in Home Video Entertainment!
ALL YOU NEED IS YOUR TV!

DIET PEPSI, PEPSI-COLA
PEPSI FREE, MOUNTAIN DEW



\$2.19

16 oz. BOTTLES 6 PAK.

Troy Sloan receives award



Troy Sloan was selected to receive the 1985 Outstanding Achievement Award. This award was presented by the North Plains Chapter of Texas Association of Assessing Officers. 1985 is the first year that this award has been presented making Troy Sloan the first recipient.

Mr. Sloan has been involved in tax appraisal work since 1953 at which time he joined TAAO. He has been an active member for the past thirty-two years. His employment has included 30 years with the Spearman I.S.D. and contracting with numerous taxing jurisdictions and appraisal districts as Troy Sloan, Inc. He is presently employed as the chief appraiser of Hartly County Appraisal District, the contract appraiser for Oldham County Appraisal District, the education director for Pritchard and Abbott

Valuation Engineers, has a private fee appraisal service and also continues to be involved in the farm and ranching business.

Adding to his credibility as a tax professional, he has served TAAO as president of Region I in 1979, has been a member of the Institute of Certified Tax Assessors since 1978, is a member of the Texas Society of Farm and Ranch appraisers, became a member of TAAO in 1984 and is currently the president of North Plains Chapter of TAAO as well as the trustee for Region I.

To promote professionalism in the tax profession, he has shared his knowledge through published articles, seminars and speeches to various organizations which include the 1983 TAAO conference in Austin, the 1980 TACA conference in San Antonio, the 1979 Southern Weed Conference in Memphis, Tennessee, the 1983 Panhandle Producers & Royalty Owners Assn. The 1983 North Texas Oil & Gas Assn., the 1980 Texas Cattle Feeders Assn., the 1982 TASA, the Panhandle School Boards & Administrators and numerous presentations to the North Plains Chapter of TAAO.

Mr. Sloan graduated from high school in 1947. He has attended every TAAO appraisal course and received his CTA designation in 1977. He has to his credit, also, appraisal courses from Clarendon Junior College and West Texas State University. He also has a basic cost accounting course from the International Accounting Society to his credit. He is an instructor for TAAO, TAAO and SPTB. He has taught at the Amarillo College, McClennen Community College in Waco, Ver-

Burress new pastor at Community Bible Church



Jeff Burress

The Gruver Community would like to welcome the new pastor and his family, Rev. and Mrs. Jeff Burress, at the Community Bible Church. Jeff is the son of Rev. and Mrs. Archie Burress, former pastor of the Spearman Union Church and Rhonda is the daughter of Mr. and Mrs. Roscoe Nelson of Spearman, Texas.

Jeff has been licensed to preach with the Assembly of God. He has

worked as a youth pastor at Hugoton and Liberal, Kansas and at Dodge City, Jeff was the associate pastor working with youth music, bus ministry, Sunday school outreach, and all aspects of the church. This past year, Jeff and Rhonda have served as youth and music directors at the Spearman Union Church.

Jeff and Rhonda have 2 children, Amanda, 8 years olds and will be in

the 3rd grade and Randy, 4 years old.

Jeff and Rhonda are very excited about their ministry in Gruver. They will be moving into the parsonage, hopefully, in another week. The parsonage is located at 407 Chuck. Stop by and meet them.

The people in Gruver extend a hearty welcome to our newcomers.

Oplatek wafers available

Founded in Poland in 1898, the Mariavite Old Catholic Church, plans to preserve a centuries-old tradition by making available traditional Polish Christmas Eve Wafers (Oplatki). The Oplatek, a treasured link between Poland and her children who have settled in various parts of the world, is a thin unleavened wafer similar to communion wafers. The Oplatek wafers are embossed with figures of the Christ Child, or other Nativity scenes.

The Church's purpose is to make these often unobtainable and much sought-after wafers available, to area readers for the preservation of this tradition.

To explain this Christmas Eve

tradition - as the first star appears in the eastern skies the family gathers for the Vigil (Wilia) Supper, a feast of lenten-like foods, to commemorate the Nativity of Christ. Before sitting at the table, where a thin layer of straw has been placed under a white tablecloth as a reminder of Christ's birth in the manger, the family breaks the Oplatek and each in turn exchanges wishes of happiness for the coming year. No longer restricted to individuals of Polish descent, use of the wafers have become a part of the holiday customs and traditions of others as well.

The Oplatek wafers, baked by the Mariavite Nuns at their Mother-

house in Poland, are available in envelopes of three each by writing to the: Mariavite Old Catholic Church, 2803 10th Street, Wyandotte, Michigan 48192-4994. A voluntary offering of \$3.50 is requested for each envelope to assist in defraying costs and mailing.

Requests for the Oplatki Wafers will be honored now to December 15th. The Mariavite Monthly, a publication containing articles concerning Polish Christmas Eve customs and selected traditional Polish recipes for the Vigil Supper is available upon request at \$2.25 a copy. A brief catalog of other Polish-oriented Christmas items is also available from the Church. All offerings are tax-deductible and proceeds are used to assist needy and orphaned children in Poland.

George P. Shultz, Secretary of State, on trip to USSR before summit:

"I would have to say there are major differences that need to be resolved and we hope that some of them may get resolved before the meeting in Geneva."

Outstanding Farmer--A man who's outstanding in his own field. -Bulletin, Great Lakes.

Social Security news

Jim Talbot, District Manager of the Amarillo Social Security Office, has announced a change in the days a Social Security representative will visit Spearman.

"Because of personnel changes, we find it necessary to reschedule our visits to assist the residents in Spearman and the surrounding communities," said Talbot. Talbot went on to say that Spearman is now being visited by a representative from the Guymon office, but beginning in December the Pampa Social Security Office will service the Spearman contact station.

Currently, Spearman visits are on the first and fourth Tuesdays of each month, except for national holidays. Beginning in December, the days will be changed to the second and fourth Thursdays of each month, except for legal holi-

days. SSA will continue to use the County Commissioners Court room in the Hansford County Courthouse from 10:00 a.m. to 11:30 a.m. This new schedule will be in effect for an indefinite period of time according to Talbot.

The smartest man in every community is the one who knows how to relax.

You can usually judge your friends by what they do rather than what they say.

Human nature is what encourages individuals to find an excuse for what they happen to desire.

On tap ...

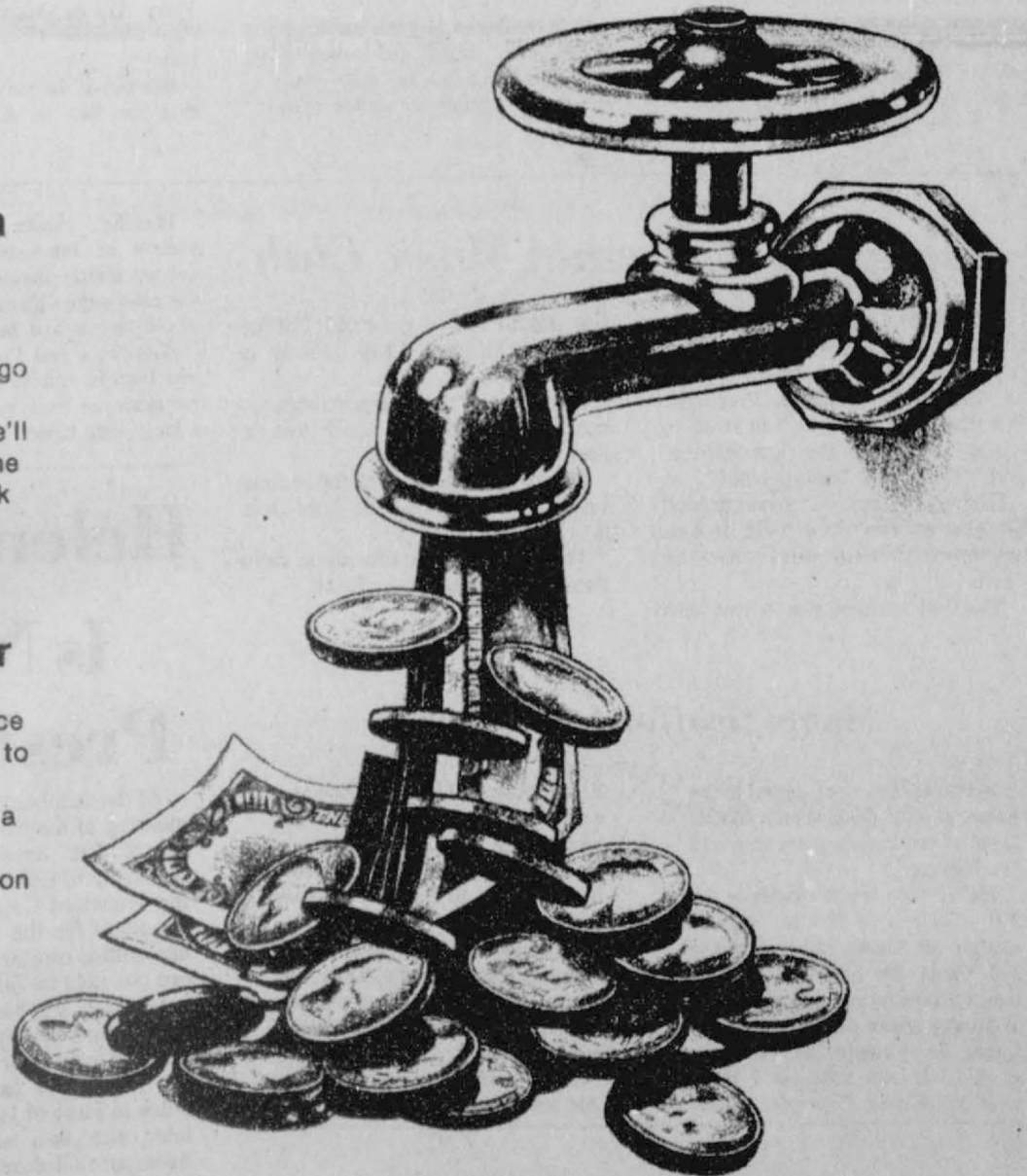
MONEY FOR THE THINGS YOU WANT

Everybody Needs Extra Money

It takes more money to buy that new car or pickup truck, to add furniture, go on vacation, or send a graduate to college. That's when we can help. We'll loan the extra money you want, for the things you really want. And we'll work with you on terms you can handle.

We Loan Money Faster

You often need money in a hurry, once you've made that important decision to buy or to add-on or to invest. That's when it is to your advantage to have a personal banker who knows you and your family, understands your situation and is ready to move quickly.



First National Bank invites you to talk with our personal loan officers before you go to buy. That way you'll have your financing arranged in advance. Come by or call loan officers Roger Monzingo, Quentin Rizley, or Leiby Crane. In the main lobby. Open 9:00 to 3:00, Monday through Friday.



Out of State
1-500-338-5871



Office
406-531-2172

Home Owned and Home Operated

SALE EVERY THURSDAY
AT 10:00 AM

Farm & Ranch Protection Pac

AN INSURANCE POLICY DESIGNED FOR YOUR OPERATION... BECAUSE YOU DESIGN IT YOURSELF.

PROTECTION PAC is a new concept that allows you to select from a series of coverages and limits to match your own needs.

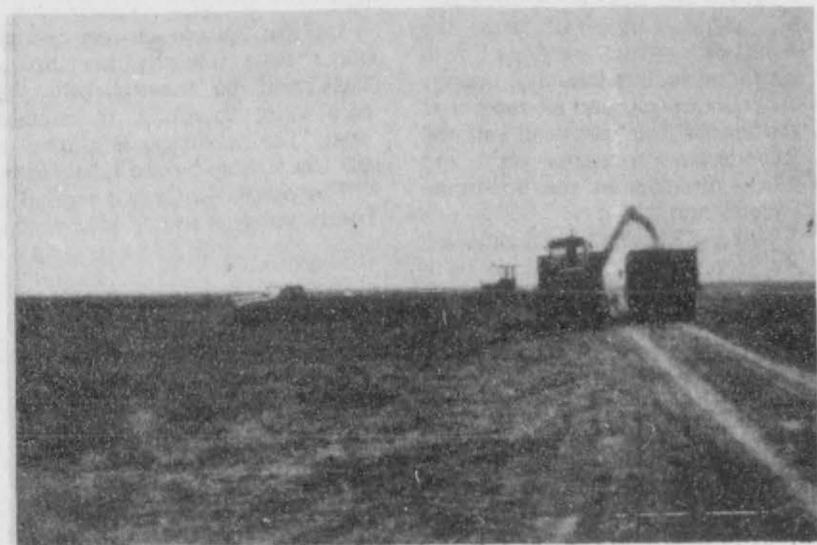
Coverage in one compact package for your home and its contents... your livestock, hay and grain... farm machinery and equipment... plus liability and property damage coverage, including payment of medical costs.

Frank Miller
Life-Home-Business-Crop Hal

511 D Plains Shopping Center
P.O. Box 191
Spearman, Texas 79081 Phone: (806) 659-3875

National Farmers Union Insurance Company

Neighbors help ailing Farmers



Grain being Harvested by Neighbors - 1985 Milo Harvest



During this past month, Gruver had two local farmers suffer heart attacks. There is never a good time for anything like this to happen but during harvest this just doubles the anxieties he is already facing. Both Robert Meyer and Keith Lamb were having chest pains while attempting to get their milo crops out. Robert was almost finished while Keith was just beginning. Within a matter of hours, after the news had reached the community, neighbors and friends put aside their busy schedules and

began to complete the job the men had yet to finish. Loyll Turner, Buck Tidwell, Mike McLain, Martin Renteria, Carlos Torres, and Clarence Zabel, moved their machinery over and finished cutting Roberts. Many others were with them in thought while completing their own crops. While Keith was being stabilized at the Spearman Hospital, 20 men, 6 combines, 4 grain carts, 10 trucks and 1 semi-truck, moved in about noon and by 5:30 had completed cutting his entire milo

crop in which Perry Lamb, Keiths son, estimated it would have taken him 10 days to cut. Keith and Thelma would like to say a special thanks to Clint Boyd, Brad and Hix Spivey, David and John Armes, Dewayne, Rueben, Steve TeBeest, Buck Tidwell, Mike McLain, Wayne Shook, B.J. Renner, Roy Byrd, Johnny Pat TeBeest, Jim and Perry Lamb, Martin Renteria, Raul Gonzales, Chun, and Matius Soto. We can all be very appreciative that we live in such a caring

community as Gruver. Keith made mention that papers are always filled with bad news and he wanted to share with the people the special gift his friends and neighbors had given to him.

On The Go With Joy

I made another New Year's resolution the other day. Just because I made it 2 months early, doesn't have to mean I will break it 2 months early. Anyhow, after viewing the Turkey Walk last week-end, I became so enthused that I committed myself to getting in shape for next year's Turkey Walk. Now notice, I did not say, I would participate in the Turkey Walk, just getting in shape is all I'm promising. But S.D. said -- "Let's walk to Spearman with them next year."

Well S.D. is in shape enough to walk to Spearman and back, but I declined her invitation. But then, Psalms 81:10 got me in trouble... I opened my mouth wide and God filled it and first thing I knew, I had said I would Turkey Walk next year. Now, I am really praying that they decrease the mileage instead of increasing it from the 3 mile route.

I was a little worried that I couldn't exercise I'm famous for is walking from my chair to the table, stuffing and puffing and then walk back to the chair. Later on, after resting awhile, I'd take a short walk to the bed. So, about the only exercise I'm used to is my mouth and my hands while I'm crocheting or hobbing.

Naturally, this brings up being fat or moderately obese if that term sounds better. But my friend Joy Doane and I agree that "we're not too FAT, we're just too short." Stopping our overeating is just like Mart Twain said "It's east to quit smoking - I've done it a thousand times." Well, not overeating is easy - I've stopped a thousand times. Every Monday I go on a diet and by Friday, I've lost 4-6 pounds. That means in one year alone, I have lost 250-300 pounds.

The problem is, on Saturday and Sunday I put it back on, and pass the point of no return, (two candy bars, four cokes, and a jar of olives) and since I come to the conclusion that there is no point in trying anymore this week, I celebrate by having one good meal before beginning the diet again on

Monday.

So, I create a noodle and sour cream casserole for Sunday supper and top it off with a hot fudge and pecan sundae. Then while watching the late night news, I indulge in a salt cracker and cheese dip. Perfect ingredients for my first heart attack. Then while I clear the table and clean up the kitchen mess, I don't want to waste, so I lick fingers and finish off the last tablespoon of the left-overs. After all, it will probably be my last binge for awhile. Probably!

Since my problem is universal and every woman is convinced that we would have more S.A. and life would really be beautiful if we were only a little thinner (about 50-100 lbs. more or less), we purchase every magazine for any article on miracle diets that we can try. The articles are usually tucked away between the colored lay outs of Danish pastries being devoured by skinny models. Well, that is a sure-fire way of selling copies.

I've tried them all, doctors diets and the pills that make you too nervous to eat the one where you can eat anything and all you want, as long as you eat half a grapefruit first, or hard-boiled eggs, or fish five days a week, or diet supplements or the snacks. Joy Doane and I spread the wafers with jam and butter and put a big scoop of ice cream in the liquid to make it go down tastier.

Since I've lost no weight on the diets we have worked out some rationalizations that allow us to live with ourselves. I tell myself no woman has to have a certain shoe size or wear a size 10 or 12 dress and be a blond to have more fun. Who says everybody has to have cheekbones and only one chin?

And when my doctor weighed me and skeptical asked "How tall are you?" Reply to him "Seven feet nine inches." He looked it up on his chart and said my weight is perfect.

I told him my measurements are perfect too -- when I stand on my head.

Cochran's Entertain Music Club

The Gruver Music Club met Oct. 29 at the Methodist Church for a very enjoyable program presented by Danny & Earlene Cochran. Together they sang "Give It all to Jesus", "Jesus is the Cornerstone" and "For Those Tears I Died". Danny then accompanied Earlene as she sang "He looked beyond my faults and saw my need."

The last number was a trio with

the addition of 3 year old Tiffany Cochran singing "My House is Full". The music club appreciates so much their sharing their talents and time with us. It was announced that the annual bazaar & dinner will be held Dec. 9. Hostesses for the afternoon were Patsy Bevell and Mary Hart.

Mable Swafford visits here

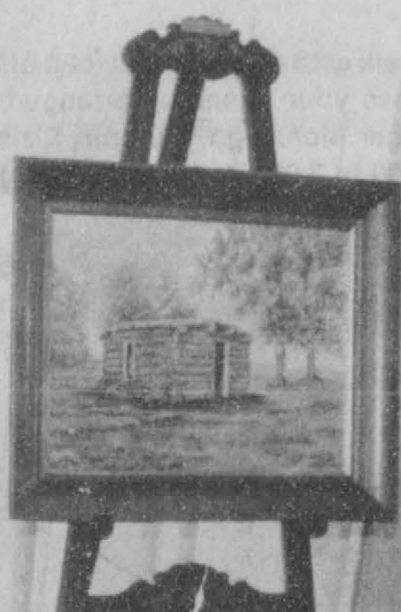
Mable M. Swafford visited in the home of her dear friend Mattie Layton from Saturday evening until Wednesday. Mabel was the bookkeeper for J.H. Gruver and Son for approximately 15 years. After Lawrence and Uncle Joe Gruver sold their elevator business Mable went back to Lamar where she attended the Lamar Jr. College. In 1959 she started her own business 7 miles west of Greeley, Colorado, calling

it Treasure Island; her business consisted of motel, cafe, and gas; however, in the last few years she closed the cafe and added mobile home rentals to her now existing business. Etta Beck, a very dear friend drove up from Amarillo, Texas and stayed in Mattie Layton's home also during this wonderful time of reminiscence. Many friends stopped by during this reunion.

Blanche's paintings depict a wide variety of interests, moods, and subject matter; however, she claims she most enjoys painting local scenes of old houses and barns. Blanche, a real Panhandle native, was born in Hutchinson County and has made her home in Spearman "for a long, long time."

Helen Dry Is New President

At the October 25, 1985 quarterly meeting of the North Plains Chapter of Tax Assessors Collectors Association, Helen Dry, representing Hansford County was elected president for the 1986 term. This association consists of the 27 northern counties in Texas. Mrs. Dry has been an active part of Hansford County for a number of years. Having moved here in 1954, she began her career at the tax office in June of 1970. Three years later she was appointed Tax Assessor Collector and has been re-elected to that position each election year since that time. The main objective of TACA is to keep an interested membership who will stay knowledgeable in legislative affairs and in turn, will inform the county tax payers. This organization also plays an important role in making aware the duties of the county tax office. Thru this organization the taxpayers are allowed a voice in government affairs as TACA shares local opinions with senators and representatives. It is a means of assistance to the county tax office as well as the tax payers. As the Hansford County Tax Assessor Collector, Mrs. Dry's main duties are to collect property taxes and register motor vehicles, this office is also responsible for state and county motor division tax and the registration of voters. Hansford County is proud to be represented so well in this important position.



Blanche Fuller of Spearman is the Hansford County Library Artist of the Month for November. Blanche is displaying a beautiful selection of her oils, acrylics, and china paintings. When she was a young girl a grade school teacher encouraged Blanche to pursue her interest in painting. Blanche studied painting at WTSU and later took art courses from several artists, including Dord Fitz, Stefan Krainar, Ben Konis, Elaine DeKooning, and Dr. Cahaliero. She has

shown her work in shows in Perryton, Amarillo, Gruver, Stratford, Lival, and New York.

VETERAN'S DAY

NOVEMBER 11

We will be closed Monday,
November 11th,
Veterans Day.

EACH DEPOSITOR INSURED TO \$100,000

FDIC

FEDERAL DEPOSIT INSURANCE CORPORATION

GRUVER STATE BANK

3 Main Plaza

733-5061 Gruver, Texas