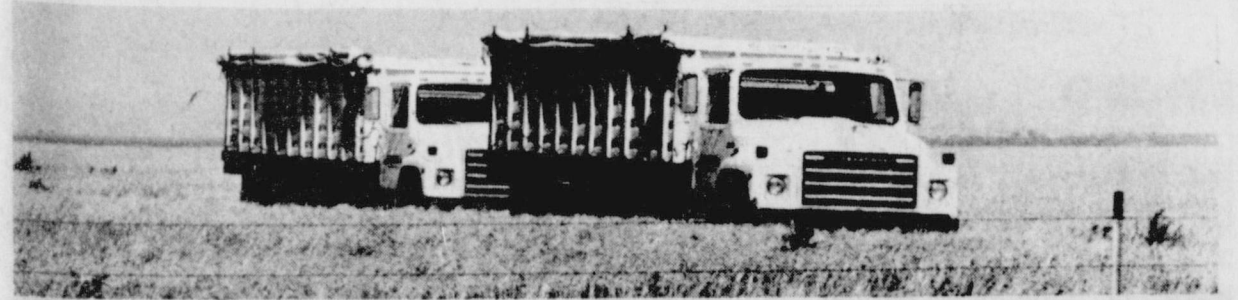


1985 harvest winding down. Wheat this year has been varied, most of it hurt somewhat by rust, a factor we usually do not have to deal with.



Trucks waiting in wheat field for a load to take to the elevator. Dryland wheat averaged about 35 bushels and irrigated 40 to 50 bushels per acre.

## Harvest winding down

Harvest is winding down in the county with almost everyone through with the harvest that came relatively early this year. The wheat this year was hurt some

by rust. Some farmers thought that the rust had hurt their wheat yield about 25%. This was an unusual year for wheat, some of the dryland wheat made more

than irrigated. Dryland wheat averaged about 30 bushels and irrigated wheat made about 45 to 60 bushels. Some wheat east of town received

some hail in a thunderstorm Monday night. The price of the wheat was still below the \$3.00 mark and was registered at the \$2.90 price earlier.

24 hr. prayer  
service, 659-2911

# THE GRUVER STATESMAN

Volume 14, Number 39 ★ ★ ★

THE GRUVER STATESMAN, GRUVER, TEXAS 79040

★ ★ ★ Thursday, July 4, 1985

## Gruver Lions Club barbecue July 4

The Gruver Lions Club will be serving barbecue at the city park July 4th from 11:30 a.m. to 2 p.m.

Cost of the meal will be \$5 for adults, children \$3 and senior citizens \$3.

The drawing for the pickup that the club has been accepting donations will be held at this time.

All proceeds will go to purchase lights for the new Gruver ball park field.

Much time has been spent planting grass on the new ball park field located across from the school tennis courts. A fence for the field has also been completed.

The ballpark will be a combination softball, pony league and T-ball field. The men's softball team plan to use the ballpark following its completion later this summer.

### Ya'll come to the fireworks

The Board of Directors of the Spearman Chamber of Commerce and the Citizens of Spearman would like to invite all Gruver, Morse and Pringle residents to the 1985 Fireworks Display which will begin at 8:30 P.M. on July 4, 1985 at the Spearman High School Football Stadium. The agenda is as follows:

- 8:30 p.m. Invocation: Rev. Steve Rogers.
- 8:35 p.m. Boy Scouts will Present the Colors.
- 8:45 p.m. Candy Boxwell will sing "God Bless America."
- 8:55 p.m. Servants of the Faith will sing "National Anthem."
- 9:05 p.m. Boy Scouts take down flag.
- 9:10 p.m. Fireworks!
- Benediction.

The United States of America is the greatest country in the world. Our citizenship in some other country would make us less fortunate. During these times, when the world's problems so directly affect us, it is



important that we celebrate our country's birthday with fireworks and a show of patriotism. See you there!

Bob Pearson



### Herman Dozier rites held

Servicios were held Saturday, June 29 at 2:30 p.m. for Herman N. Dozier, 81, of 1902 S. Roosevelt, Amarillo, who died Friday.

The services were in the Church of Christ in Gruver with Harold Sneed, minister, and Lorne Harper, minister of Lawndale Church of Christ, officiating. Burial was in the Gruver Cemetery by Boxwell Brothers Funeral Directors.

Mr. Dozier was born in Callisburg and had lived in Amarillo since 1957. He was a retired carpenter. He married Isla Fae Odum in 1926.

Survivors include his wife; two daughters, Doris Pinkerton and Wilma Byrd, both of Gruver; a brother, Roger of Vernon; a sister, Virgie Wood of Vernon; two grandchildren and three great-grandchildren.

## Commissioners discuss budget

County Commissioners met Monday in regular session, hearing minutes of last meeting, ordering bills paid etc.

They set the salary for Judge McClellan's new secretary, Donna Yarbrough.

Discussion was held on the Fair Labor Standards Act which the county now comes under. They have been exempt since 1976 from this wage and hour law. They ordered employees to keep time sheets during July so they

can tell how much overtime is used. Judge McClellan stated that he thought that the overtime which is mainly in the sheriff's office could be kept to a minimum.

They also discussed budget items. McClellan also stated that the new chair lift is ready to use by anyone disabled or unable to climb stairs.

This was installed in order to comply with Federal law so that the county could continue to get revenue sharing money.

## All Stars

One of the highlights of a young Little League player's career, is the moment they are chosen to play on the Gruver All Stars, and last Friday night the All-Star team was announced. After a long hot month of games, sore muscles, loss of sleep etc., the boys were faced with the most intense practice sessions with a new set of team mates because the first game was scheduled for Monday night at 9:00 p.m.

Even though, the rain and hail was falling here in Gruver at the time of departure for the Guymon tournament, the boys were confident that playing conditions would be perfect once they reached their destination. And they were. After a brief work-out, Gruver settled down looking over the competition in the form of the Hooker All-Star and possible competition later on with Dalhart or Stratford.

Seems like the boys are larger and the teams have more players than we do but our players are packed with dynamite as one mother put it.

Well, the Dalhart-Stratford game just went into overtime, so that gives us a few more minutes to get over the butterflies. Or does it? Coaches are trying to think of some forgotten instructions or words of wisdom that might help. Parents are saying a silent prayer that the boys will perform well and not be hurt. At last - here we go!

The first inning passes uneventfully as the boys test the other team but the second inning finds the boys beginning to loosen up and the bats hitting their target. Chad Brown scores on a single by Matt Hoel and Hoel then scores on a double by Jeff Price. There is a single by Luke Miller and then Price gets a run after Lee Bort gets a base run. Miller is unable to score

as the inning is ended when he is put out at home plate.

During the 4th inning several of the boys got a piece of the action as Hoel and Price had a double and single but Wayne Thomas was left on base after getting a base hit. However, the moment was in our favor as we were ahead scorewise and it looked as if we could possibly win the game.

5th inning scoring came from base hits of Lee Bort, Matt Etheredge and Crockett Tidwell. But Hocker had pulled ahead of us after getting an over-the fence home run with several already on bases and the score was 10 - 5.

Excitement in the 6th inning even had the announcers cheering when Gruver completed a triple play to retire the Hooker team. The ball was drilled back and forth from third to first 1, 2, 3 with such a precision that would make the pros sit up and take notice. Our chance came when Miller walked and then scored on a hit by Bort who also stole home on a single by Etheredge. Gruver couldn't quite finish putting their act together to win the game, but the game ended with a score of 10 - 7.

The next game will be Friday evening at 7:00 p.m. Gruver All-Stars will be facing the loser of game 4 which is between Guymon Red and Spearman played Tuesday evening at 5:00 p.m. If Spearman loses, then arch-rivals of Hansford County will be playing against each other Friday evening.

Congratulations to the Gruver All-Star which include Matt Etheredge, Luke Miller, Matt Hoel and Wayne Thomas from the Pirates team. Trent Seagler, Jeff Price,

Brady and Shannon Pool were chosen from the Cubs. From the #1 winners, the A's were Chad Brown, Crockett Tidwell, and Brice Goldsmith and Lee Bort was picked from the Giants.

Everyone make plans to travel to Guymon, Friday evening and support these boys and their coaches.

### New Arrival

Mr. and Mrs. Rodney McDowell of Gruver are the parents of a baby girl, Christie Michelle, born June 10, 1985 at Northwest Texas hospital. She weighed 5 lbs. 8 1/4 oz. and was 19 inches long.

Proud grandparents are Mr. and Mrs. Darrel Harvey of Gruver, Mr. and Mrs. Carl Mayberry, Broadus, Tx., and great grandparents are Mr. and Mrs. Ralph Grant, Brownsdale, Minn.

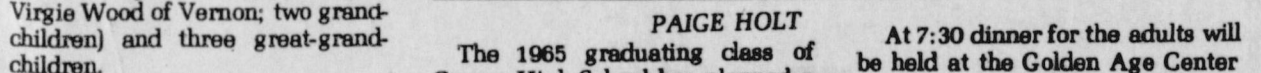
### MARKETS

|       |        |
|-------|--------|
| WHEAT | \$2.90 |
| MILO  | \$4.65 |
| CORN  | \$3.00 |

### HOSPITAL

Patients in Hansford Hospital are Mary Gillespie, Vera James, Ramona Garcia and L.J. Hornsby.

Dismissed were Minnie Close, Tracy Kincannon, Harold King, Mildred Dailey, Clayton Henson and Denise Meadows.



### SPORTS BULLETIN: The Gruver All Stars will meet the Spearman All Stars at 7 p.m. Friday night at the Guymon All Star Tourney.





# The A's

#1 Team of Gruber the A's coached by Dave Barkley and Rany Brown. Little League players with 7 wins and 3 losses. Pictured are Cody Barkley, Tracy Taylor, Paul Grace,

Chad Brown, Kenny Slough, Crockett Tidwell, Kyle Haenisch, Brice Goldsmith, Tek Ferguson, Kenton Odom, Raymond Lewallen and P.D. Swink. Not pictured Bryan Boyd.



# Seminar

Those taking part in a Southwestern Oklahoma State University School of education summer seminar entitled "Techniques of Observing Instruction", held on the campus of Southwestern in Weath-

erford June 24-28 include: (from left) Dr. Don Wilson, course instructor; Candy Cook, Hobart; Russ Chisum, Gruber, Texas; Bud Lamke, Weatherford and Doyle Patterson, Geary.

In memory of athlete . . .

## Scholarship tourney set

Entries are being sought throughout the Texas Panhandle area for the first annual Benton Ray Memorial softball tournament to be played July 12-14 in Dumas. Proceeds from the 3-day sporting event will go to the Benton Ray college scholarship fund.

Three Dumas high school students have been awarded scholarships from the fund since its creation in 1983. The first recipient was Myron Bruce who received \$1,000.

In 1984, Donnie Traylor was awarded \$3,000, and this May a \$4,000 award was made to John Scott Buerger. The scholarships have been funded by private donations through this year, but the softball tourney is expected to raise awards.

"We would like to increase the scholarship by \$1,000 each year until it is a full scholarship," says Glen Ray of Dumas tournament committee member. The scholarship was found-

ed originally by the Dumas D's softball team and has been administered by Mrs. Ginger Porter.

The scholarship and softball tourney are named in memory of Benton Ray, a DHS athletic standout and 1981 graduate who died in 1983 from Hodgkins Disease.

His senior year, Ray, the son of Mr. and Mrs. Troy Ray of Dumas, played offensive guard for the Dumas Demons football team and was selected to the All-District

and All-South Plains squads. He also was a member of the track team, competing in shot put and discus.

Invited to play in the 1981 Greenbelt Bowl at Childress, Ray was unable to participate and shortly afterwards his illness was diagnosed.

He attended Midwestern State University at Wichita Falls and Texas Tech University before his death, at age 20, on May 20, 1983.

The double-elimination, Class "B" softball tourney will be played under USSSA rules and is a sanctioned event.

Team trophies and individual trophies will be awarded the top four tourney teams

and players.

Special prizes are designated for the best fielder, highest batting average, most home runs, most valuable player and all-tourney team members.

Winner of the "golden glove" award will receive a Wilson A-2000 glove and the player with the highest batting average will be awarded a portable cassette tape player-recorder.

A home run hitting contest can be entered for a \$5 fee with the winner receiving a video cassette recorder valued at \$599.

The player designated "most valuable" during the tourney will receive a 19-

inch, remote-control, color television valued at \$899.

Members of the all-tourney team will receive Casio sport wristwatches.

The 3-day tourney will be played at the Phillips Park softball fields located at Twichell Avenue and Fourteenth Street.

Entry fee is \$100 per team with deadline for entries set for Tuesday, July 9, at 6 p.m.

Teams may sign up by contacting Clark Ray, 935-9090; Danny Bilbrey, 935-7513; or Mike Artho, 935-7507.

There is no limit on entries.

# Summer Savings

## Now in Progress

# 30 - 70%

off

# JG's



659-3424

Spearman, Texas

306 Hancock

## Clinic to be opened 17 of July, 1985

### Dr. Romeo B. Sangalang

General Practice & Surgery

Office at 721 S. Evans

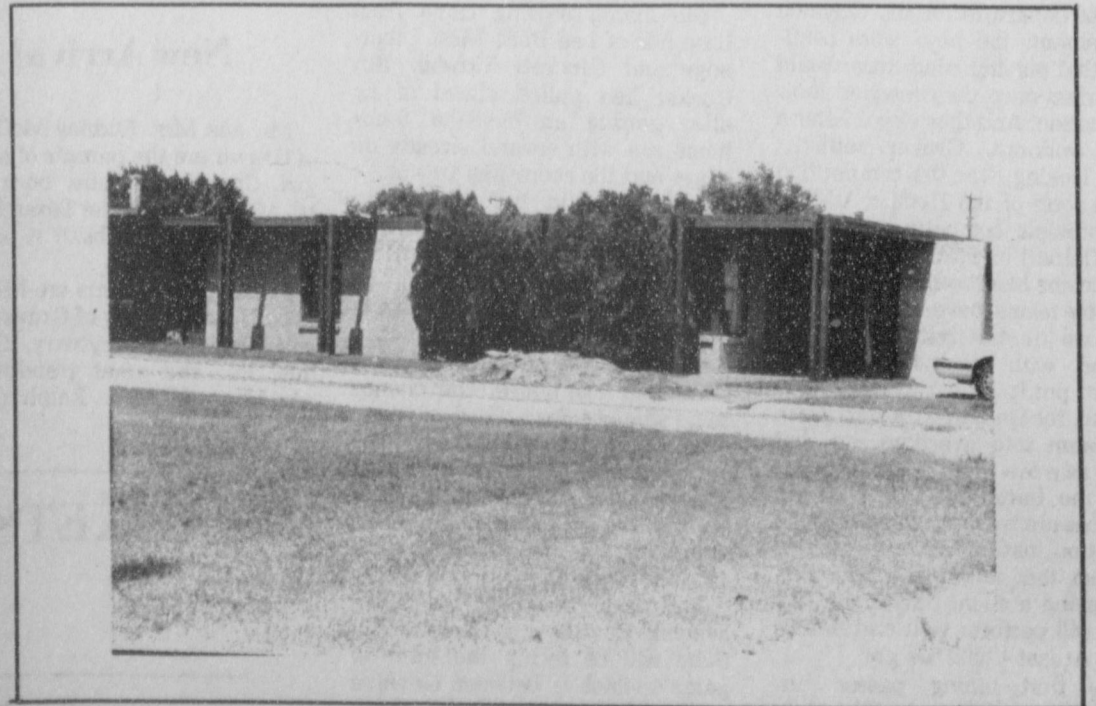
### Office Hours:

10:00 a.m. - 12:00 Noon

Monday thru Friday

1:00 p.m. to 5:00 p.m.

Monday thru Friday



## Office Phone 659-5551

Spearman, Texas

# WANT ADS

## SERVICES

New to Area  
Give Us A Try  
Call Your Local  
**USED COW DEALER**  
As Soon As Possible  
659-3544  
659-3545  
1-800-692-4043  
22-rtn

**NOTICE**  
Wallace Monument Co.  
Monuments, Curbings,  
Grave Covers  
Local Representative  
**LEONARD JAMESON**  
Spearman, Texas  
40-rtn

**OSGOOD MONUMENT CO.**  
Amarillo, Texas  
Dealers of Rock of Ages  
Granite, as well as all  
colored granites, marble  
and bronze memorials.  
represented by  
**BOXWELL BROS.**  
**FUNERAL HOME**  
519 S. EVANS  
659-3802

Hansford County  
Planned Parenthood  
412 Davis  
659-2483  
Spearman  
Mon. - Fri.  
8:30 - 12:30

Sewing done—little darling and  
Cinderella dress types a special-  
ity. Call Joy 733-2517.  
nc

Need to oil your wood shake or  
shingle roof? Give it extra life and  
beauty.  
Whatever your painting needs  
may be - from taping and textures  
to custom finishes with any coating  
on any surface. We also feature  
energywave insulating paints. Call  
today for a free estimate.  
**BEASLEY PAINTING**  
ALLAN 733-2858 JIM 733-2012  
19-rtn

SEARS BLOWN IN ATTIC  
INSULATION. Now 10% off.  
Completely installed. For  
FREE ESTIMATE at your con-  
venience dial 659-2573. Sears  
Roebuck and Co. 517 S. Hwy.  
207.  
50-rtn

Hay Swathing & Baling done - Call  
733-2517 or Dennis at 733-5214.  
31-rtn nc

## PUBLIC NOTICE

Guymon Elks Supper Club is  
open to the public. Our hours are  
Wednesday-Thursday 6-10 p.m.  
Friday-Saturday 6-10:30 p.m. We  
have a prime rib special every  
Friday.  
51-rtn

**PUBLIC NOTICE**  
THE HOUSING DEPARTMENT  
OF TEXAS PANHANDLE COM-  
MUNITY ACTION CORPORATION  
HEREBY GIVES NOTICE  
THAT NO NEW CONTRACTS  
WILL BE INITIATED FOR THE  
HUD SECTION 8 RENTAL AS-  
SISTANCE PAYMENTS PROGRAM.  
APPLICATIONS WILL CON-  
TINUE TO BE TAKEN IN THE  
AREA OFFICES THROUGHOUT  
THE TEXAS PANHANDLE WITH  
A WAITING LIST OF AT LEAST  
120 DAYS UNTIL FURTHER NO-  
TICE.  
37-3tc

WILL DIP and bath dogs for fleas  
and ticks. Call Hansford County  
Veterinary Hospital for Julie for  
appointment. 9-2100.  
39-rtn

## REAL ESTATE

TO MOVE: Lubbock Home 16  
miles SW of Spearman. 3 bdrm., 2  
bath, large kitchen and dining  
area, large living room. About 1700  
sq. ft. 659-2794.  
27-rtn

FOR SALE: New, just finished. 3  
bedroom home with 2 baths,  
double car garage. Roy Edwards  
733-2178. 114 Cooper Ave.  
16-rtn

1 section of irrigated farmland in  
Sherman County. It has 3 irrigation  
wells and underground pipe. This  
land is priced to sell. Call (806)659-  
2028 or (806)435-5444.  
37-4tc

FOR SALE: 3 bedroom, 2 full  
baths, finished basement, enclosed  
patio. Approximately 2800 sq. ft.  
Call 733-2356.  
39-3tc

## FOR SALE

ALFALFA HAY for sale.  
Phone 659-3327 or 9-2758.  
38-2tc

ALFALFA HAY FOR SALE. Call  
Lewis Henderson 733-2517.  
31-rtn nc

FOR SALE: 1980 model 1500  
Ditch - Witch walk behind trench-  
er. Cuts 3 foot by 5 inch ditch, only  
\$2750.00. Call Ray Converse, 659-  
5229; or Gus McLain at 659-2274.  
39-1tc

## AUTOS FOR SALE

FOR SALE: 1984 extended van  
with raised top. Electric lift for  
handicapped. Custom made. Front  
and rear air. CB, Tilt and Power.  
Call 659-3605 or 659-3566.  
28-rtn

## MISC. FOR SALE

**INVOICE SALE**  
Special purchase of bankrupt dealer  
inventory will be sold at dealer's  
whole sale cost. Large selection of  
14" and 16" wide mobile homes.  
Dealers welcome—save\$\$  
**WE TAKE TRADES—ANYTHING OF  
VALUE!**

6325 Canyon Dr.  
Amarillo, Tx.  
806-358-3257  
36-4tc

**DEALERS REPO**  
3 bdrm. mobile home, 2 baths, wood  
siding, storm windows, garden tub,  
etc. Assume payments of \$248.00  
with approved credit. Includes deliv-  
ery and insurance. **WE TAKE  
TRADES—ANYTHING OF VALUE!**  
6325 Canyon Dr.  
Amarillo, Tx.  
806-358-3257  
36-4tc

## WANTED

Need typing? call 733-2139.  
37-rtn nc

**Laborers wanted:** Apply in per-  
son Cornerstone Builders, Inc. 405  
Garrett, Gruver, Jr. High minimum  
age 18.  
38-2tc

Selfish individuals  
contribute very little  
toward a better world.

## Goodson rites held Thursday

Bill Goodson, 75, died Wed-  
nesday.  
Graveside services were  
held at 2 p.m. Thursday in  
Hansford Cemetery with the  
Rev. Steve Rogers officiating.  
Burial was by Boxwell Brothers  
Funeral Home.  
Mr. Goodson was born in  
Childress and had lived in  
Spearman 40 years. He was a  
retired farmer.  
Survivors include his brother,  
Noah Goodson of Calif-  
ornia; and a sister, Mettie  
Richesin of Childress.

# Gruver Lions Club Accepting Donation



PAIGE HOLT

The Gruver Lion's Club is accepting  
300 donations of \$100 each from area  
people to purchase lights for the new  
Gruver ballpark currently under con-  
struction.

The Lion's Club will sponsor a  
drawing on the Fourth of July, and  
award a new 1985 Ford F-150 pickup  
to the holder of the matching donation  
stub. Those who would like to make a  
donation and be included in the  
drawing may contact any Gruver  
Lion's Club Member.

The winner need not be present to  
accept the pickup, which the Lion's  
Club is purchasing from Mark "Sid"  
Irwin of Gruver Ford. Some of the

features the white 1985 pickup has are  
a 302 EFI V-8, sport wheel covers, tilt  
steering, speed control, digital clock,  
power windows, combination AM/  
FM/cassette stereo, air conditioning,  
auxiliary fuel tank, radial tires and  
XLT trim.

Rick Harbison and Steve Ellis have  
spent a great deal of time planting  
grass on the new ballpark field  
located across from the school tennis  
courts. Fence for the field has been  
completed.

The ballpark will be a combination  
softball, pony league and T-ball field.  
The men's softball team plan to use  
the ballpark following its completion  
later this summer.

Delano Realty  
**COUNTRY LIVING**  
close to town  
**2N & 2W of Gruver**  
Beautiful 3 bedroom, 2 1/2  
bath, with family room with  
fire place large basement  
and a fenced yard.  
Steel working pens with barn  
and a 40x80 Behlen grain  
storage building. Large water  
storage tank with good sub-  
mersible well.  
All this and approximately 11  
acres of land.  
Contact Bob Ferguson  
Home 806-733-2288  
Office 806-733-5000

Ronald Reagan, Presi-  
dent:  
"America will never  
make concessions to  
terrorism...to do so will  
only invite more ter-  
rorism."

Sandra Shaher, Chase  
Econometrics:  
"The second-quarter  
growth may not be suf-  
ficient to create sus-  
tained growth and bring  
down the unemployment  
rate."

# The Gruver Statesman

PUBLICATION (USPS 9598-6000)  
GRUVER, TEXAS 79040  
Box 796 659-3434

Owner-Publisher.....William M. Miller  
Editor.....Joy Henderson, Gruver, Tx.  
Second Class postage paid at Gruver,  
Texas 79040

Any erroneous reflection upon the charac-  
ter of any person or firm appearing in these  
columns will be gladly and promptly  
corrected upon being brought to the  
attention of the management.

POSTMASTER: Send address changes to  
Gruver Statesman, Box 796, Gruver, Tx.  
79040.

SUBSCRIPTION RATE: Hansford, adjoining  
counties, \$13.14 per year.

## MEMBER

# Texas Press Association

# Gene Jones rites

Graveside services were  
held at 10:30 a.m. Friday in  
Hansford Cemetery for Gene  
Jones, 53, who died Tuesday.  
The Rev. Russ Gibb, pastor of  
First Baptist Church, officiat-  
ed. Burial was by Boxwell

Brothers Funeral Directors.

Mr. Jones was born in  
Colorado and had lived in  
Spearman for three years.  
Survivors include his wife,  
Terri.

## First Christian Church activities

The First Christian Church an-  
nounces their hours of worship,  
etc. Sunday School begins at 10  
a.m. and the Sunday evening  
services is at 7 p.m. Bible study is  
Tuesday at 5:30 and choir practice

is at 8 p.m. on Wednesday even-  
ings.  
Jamie Clack and Katrina Britton  
of the congregation will be attend-  
ing Chi-Rho camp soon.

### Sample, Please

Irate woman (at dry-  
goods counter)--"If I were  
trying to match politeness  
I'd have a hard time finding  
it here."

Salesgirl (sweetly)--  
"May I see your sample,  
please?"

To save time when  
marking darts, etc., fold  
material with right sides  
together before placing  
your pattern on the  
material.

There's no way to ac-  
curately predict what  
people will do.

Never induce a  
person to make a  
promise that you know  
will not be kept.

To keep that lasting and  
even suntan, begin with  
short periods of exposure to  
the sun.

# AUCTION

HOUSEFUL FURNITURE, SHOP EQUIP. & FARM MACHINERY

WED., JULY 10, 1985 — SALE TIME: 10:30 A.M.

LOCATION: 5 MI. S.W. Spearman, Tex. on Hwy 207 To Jct. 520 Then 8 MI. W. & 1/4 MI. S. —OR—  
10 MI. S. of Gruver, Tex. on Hwy 136 To Jct. 520 Then 1 1/4 MI. E. & 1/4 MI. S.

## HOWARD NASH & OTHERS — OWNERS

### FURNITURE

- 1- Lowrey 2 Key-Board Electric Organ W/  
Stool - Nice
- 1- Round Game Table W/4 Chairs, Padded  
Seat & Back, Wicker Sides - Nice
- 1- 1977 Zenith 25" Color TV - Stereo  
Remote, Good Shape
- 1- Entry Table, 1- Ottoman
- 1- Lawson Sofa, Multi Color
- 1- Lawson Style Velvet Chair
- 2- Swivel Rocking Chairs
- 1- Nice Cocktail Table W/Divided Beveled  
Glass Top & Wicker Shelf
- 1- Lot End Tables
- 1- Queen Bedroom Suite W/Double Dresser &  
Mirror, Desk Vanity & Stool
- 1- White 4 Poster Bedroom Suite, Chest,  
Dresser, Stool & Large Night Stand
- 1- Twin Bedroom Suite W/Chest & Night  
Stand
- 2- Roll-Away Beds, (1-New)
- 1- Metal Clothes Rack
- 1- Bedroom Slipper Chair
- 1- Sewing Center (Folding, W/Portable Sing-  
er Machine)
- 1- Lot Sewing Supplies, Trim, Zippers, Etc.
- 1- Lot Lamps, Picture Frames, Whatnots &  
Easel
- 1- Lot Christmas Lights & Decorations
- 1- Collection Wicker Baskets
- 1- Baby Bed, Complete
- 2- Baby Play Pens
- 1- Frigidaire Washer
- 1- Frigidaire Dryer
- 1- Small Silver & Linen Chest W/Mirror
- 4- Wooden Bar Stools

### ANTIQUES & COLLECTABLES

- 1- Small Stenciled Chair, Padded, Original  
Paint & Cover, Owner Says It's Over 100  
Yrs. Old
- 1- Youth Cain-Bottom Chair
- 1- Wicker Chair
- 4- High Back Ladder Chairs, Cain Bottom,  
Like New
- 1- Lot China, Glassware & Dishes
- 1- Small Pot Belly Stove

### PATIO—YARD

- 1- J.D. Gas Bar-B-Q Grill
- 1- Dinner Bell on Stand
- 1- Metal Firewood Rack
- 1- Large Trampoline, 2-Swings
- 1- 1982 Murray 11 HP Riding Lawn Mower,  
B & S Eng, 5 Sp, 36" Cut
- 1- Mozall Lawn Mower, 5 HP, B & S Eng.
- 1- J.D. Elec. 90 Riding Mower, Needs  
Batteries
- 1- 26" Fertilizer Spreader
- 1- 5 HP Rotary Tiller, Chain Dr. Like New
- 1- Lot Garden Hose, Yard Tools,  
Bicycle & more

### FARM MACHINERY & MISC.

- 1- 1962 JD 4010 LP Tractor, Cab, Good Tires,  
W/#48 JD Frontend Loader, 7' Bucket,  
Good Shape
- 1- JD 730 LP Tractor, Good Tires, Runs Good
- 1- JD #506 3 Pnt. 2 Row Shredder
- 1- Little Rhino Blade
- 1- Portable Sprayer, 55g F.G. Tank, 2 HP,  
B & S Eng, 70' Hose
- 1- IHC 20 Hole 8" Drill W/Press Wheels
- 1- JD 16-10" Van Brunt Drill
- 1- 16" Graham Hoeme
- 1- Case Drag Rotary Hoe
- 1- Krause Model H54 15' Oneway
- 1- Bell Mt. 6 Row Spray Rig W/2 Tanks
- 4- New Case Planters
- 5- 36" Sweeps W/Shanks
- 1- Chev. 292 Irrig. Eng.
- 1- 2 Whl. Pickup Bed Trailer
- 1- 500g. LP Tank
- 1- 15' LP Hose
- 1- 300g. Fuel Tank On Stand
- 1- 150g. Fuel Tank W/Pump

### LIVESTOCK EQUIP. & SADDLE

- 1- Portable Loading Chute on Whis W/20 15'  
Panels
- 3- Stock Tanks, 2-10', 1-8'
- 1- Int. Super 98 Fence Charger
- 82-New 5 1/2' T-Iron Post

### 4- Rolls New Barbwire

- 120-Elec. Fence Post W/Insulators
- 2- Miles #14 Galvanized Wire
- 1- Maddox Flower Stamped Saddle, 15" S  
SHOP
- 1- Elec. Portable Air Compressor W/75' H
- 1- Hyd. Boom Lift On Casters
- 1- Chicago 5/8" Bench Drill Press
- 1- Forney 180 Amp. Welder
- 1- Harris LP Torch & Hose
- 1- 20g. LP Bottle
- 1- Portable Sand Blaster
- 1- Craftsman 1/2 HP Bench Grinder
- 1- Makita Portable Hand Grinder
- 1- B&D Hand Disc Sander
- 1- Set Pipe Threaders, 3/8" to 1 1/2"
- 1- 1 Ton Chain Hoist
- 1- Skill 6 1/2" Portable Saw
- 1- Space-Ray Shop Htr.
- 1- Behlen 110V. Aerator Fan
- 1- 5'x30" Steel Table W/Vise

- 1- Lot - 30' Welder Extent. Cord, 5  
Ton Hyd. Jack, Creeper, 1-Pipe Vise,  
Jumper Cables, Metal 7' x 8' 72  
Comp. Parts Bin, 16' Alum. Ext.  
Ladder, Set Car Ramps, Set Drill Bits,  
Adjustable Stands, Log Chains, 100'  
Tape, Hand Tools

### PICKUPS

- 1- 1978 Chev. 5/8 T. Pickup, 350 V-8, Aut  
P/A
- 1- 1973 Chev. 1/2 T. Pickup, 350 V-8, Aut  
NON CLASSIFIED
- 100' 1/4" Plastic Pipe
- 2- 36' Hi-Line Poles
- 1- Lot Used Brick, Pickup Towbar,  
Ratchet Turnbuckle, Land Measure  
Whl, Wire Stretcher, 7.50-20 Tire &  
Whl, 15" Tire & Whl. & Much More  
Wire Stretcher,  
7.50-20 Tire & Whl,  
15" Tire & Whl. & Much More

## TERMS: Cash Day of Sale



For Brochures Or Any Type Auction —  
Call: **LEE FREEMAN** Tx 5016-0193  
P.O. BOX 453  
DUMAS, TEXAS 79029  
Phone: (806) 935-2419

THE DESCRIPTION AND  
CONDITIONS AS SET FORTH ON  
EACH ITEM IS IN NOWAY A  
WARRANTY OR GUARANTEE.  
WE ACT AS AGENTS ONLY.

State funds sought . . .

# PDRA cuts cost of lake project

Amount of a proposed water revenue bond election for construction of a dam by the Palo Duro River Authority may be reduced by \$3 million because of lower construction estimates and a possible \$15 million state grant.

Original estimates placed the cost of the dam, water treatment plant and pipeline system at \$56 million, but the engineering firm working on the plans now believes the project can be built for \$53 million.

Johnnie Lee, general manager of PDRA, reports the Freeze and Nichols estimates for the project to supply six cities with water have been lowered since Perryton and Ochiltree county declined to join the district.

The district hopes to obtain \$15 million in Texas water development funds to reduce the amount of a revenue bond election. The election will be called later this year to build the dam and construct a treatment plant and water supply system.

The system would supply water to the cities of Dumas, Sunray and Cactus in Moore county, Gruver and Spearman in Hansford county and Stinnett in Hutchinson county from a 60,000 acre-foot lake northwest of Spearman.

Lee explains that the original cost of \$56 million was

estimated early this year before Perryton and Ochiltree residents voted against annexation by the PDRA.

Both Moore county and the City of Stinnett in Jan. 19 elections approved annexation by the river authority. Hansford county was already nearing firm last fall when the PDRA was promoting the annexation elections in Moore county and Stinnett.

The cost of treated water from the lake to member cities was estimated at \$2.14 per 1,000 gallons - a cost that "would build everything without any taxes," Lee says.

"The cost of water because of lower construction estimates and the state funds has not been projected," the PDRA manager notes. "But the \$2.14 price can be lowered."

The PDRA executive believes. "If we can get the state funds before the revenue bond election, it will lower our money needs considerably."

Revenue bonds will be necessary to construct the dam at the junction of the Palo Duro and Horse creeks in northwestern Hansford county and build the water supply system to member cities.

The project costs had been placed at approximately \$56 million by Fort Worth engineering firm.

"The new estimate elim-

inates the supply pipeline to Perryton, but keeps the 7.8 million gallon per day treatment plant," Lee points out. "Also the treatment plant has been relocated on the south side of the lake."

The new site is on the same side of the lake as the current district members, eliminating the expense of a pipeline crossing on the Palo Duro Creek.

The PDRA general manager notes that the project estimate from the engineering firm "is as high as it can possibly be," and notes that the board of directors may do some additional trimming to get costs down.

For example, Lee points out, each of the four pumping stations along the water supply line to member cities are designed with dual sets of pumps - a primary and a backup system.

"Since the cities still have underground water supplies, the PDRA may not need to install the second set of pumps, which could save another \$2 million," Lee declares. "PDRA directors are going to have to make some hard decisions on where to cut."

PDRA directors at the July 10 board meeting will consider a resolution asking the Texas Water Commission for a \$5 million low-interest loan and requesting the state to buy \$10 million in water storage.

Lee and Bob Davis of Austin, bond advisor, will meet this week in Austin with water commission representatives.

"It is just a matter of completing the red tape necessary on the project,"



## Phillies

Girls T-Ball, The Phillies coached by Jessie Ryan. Pictured are Kelly Boons, Crystal Christian, Cara Hathaway, Rose Spence, Kilae Ryan, Kiki

Carthel, Myriam Alvarez, Monica Lara, Lacy Barkley, Janyth Hart, Kayce Haenisch and Anissa Ryan.

### July 4

Richard Henry Lee of Virginia offered a resolution in the Continental Congress in 1776 which was to have worldwide repercussions for centuries. The resolution stated that, "these United Colonies are, and of right ought to be, free and independent." This resolution was adopted by The Congress on July 2, 1776.

Interestingly, Congress adopted another resolution on the 4th explaining its reasons for declaring independence, and justifying the action. This is the resolution we now celebrate on the 4th.

This resolution was drafted by Thomas Jefferson, chairman of

the committee, and Benjamin Franklin, John Adams, Roger Sherman and Robert Livingston.

A mass meeting in Philadelphia in Independence Square celebrated the declarations on July 8, 1776-and heard them read by John Nixon. General George Washington, on the 9th, included the declaration in general orders to the army, stating:

"The several brigades are to be drawn up this evening on their respective parades at six o'clock, when the declaration of Congress, showing the grounds and reasons for this measure, is to be read in an audible voice."

"The general hopes this important event will serve as fresh incentive to every officer

and soldier to act with fidelity and courage, as knowing now that the peace and safety of his country depends, under God, solely on the success of our arm..."

Sandra Shahr, Chase Economics:

"The second-quarter growth may not be sufficient to create sustained growth and bring down the unemployment rate."

No Place

There are thousands of hidden taxes these days, but, alas, no place where the taxpayer can hide.

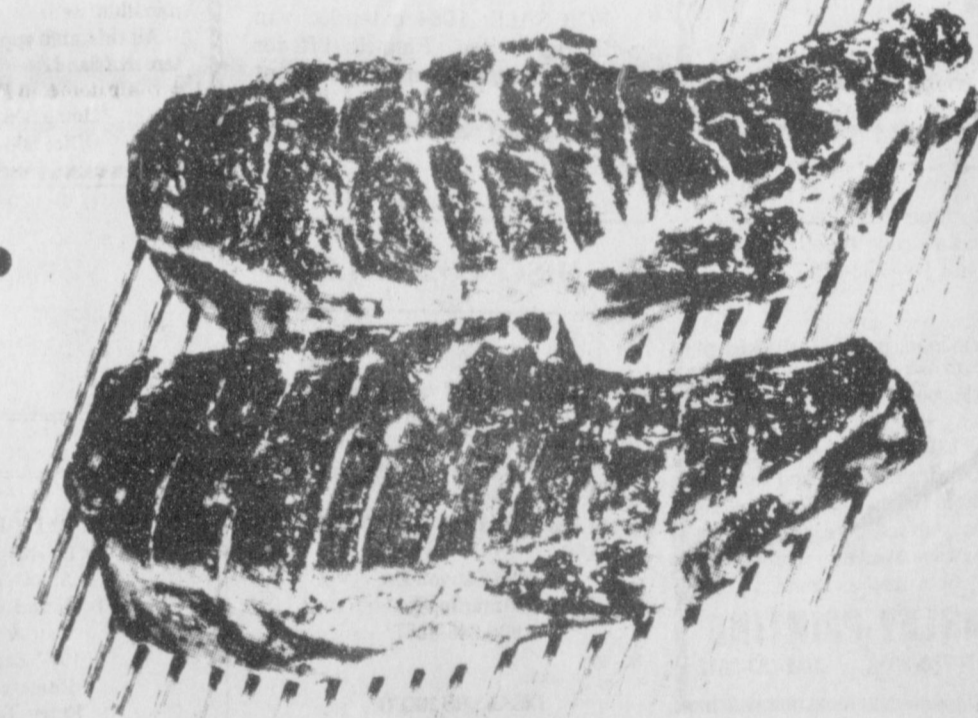
## Gruver Lions Club Barbecue Gruver City Park July 4th

11:30 a.m. to 2:00 p.m.

|                 |        |
|-----------------|--------|
| Adults          | \$5.00 |
| Children        | \$3.00 |
| Senior Citizens | \$3.00 |

Drawing for New Pickup will be held at this time

All Proceeds go to New Gruver Ball Park



It's traditional to serve beef on

## July 4th

- SIZZLING STEAK
- ROAST WITH ALL THE TRIMMINGS
- BARBEQUE BEEF
- HAMBURGER COOKOUT

# CAPROCK INDUSTRIES, INC.

Feed Lot 1, 733-2461

Feed Lot 2, 733-2429

General Office,  
414 Main, Gruver  
733-2483

Beef is the right meat for so many sound reasons and good taste is but one.... besides being a versatile food, beef is also one of the most complete nutrition packages in Nature. It includes high quality protein, essential minerals and vitamins like Iron and Vitamin B-12. It tastes good and it's good for you.



## Karen's Kozy Korner

It's been said that the sign of a good marriage is that it can always get better. Having a close relationship with someone and having a good family life were two of the most sought after goals of 86-96% of the respondents in a recent Gallup Poll.

Marriage and family are still a vital element in America's daily life, yet few adults recognize the time and effort needed to maintain a strong married relationship. Noted family specialists identify three essential elements for a successful marriage: commitment, communication and conflict management.

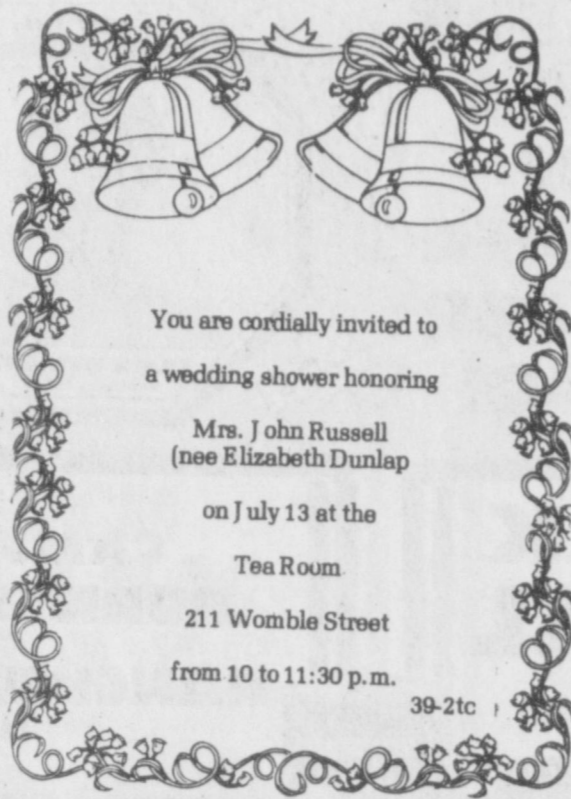
A commitment to ongoing growth is the first essential. It's a recognition that marriage is not a static state, that people change and so will their marriage relationship. The concept of "marrying and settling down" is a rigid concept promising eternal happiness just because you've gone through a wedding ceremony. A wedding is not a marriage. It's only the beginning of an undertaking in which it takes years before a strong marriage relationship can evolve.

The second essential for a good marriage is communication. Research studies indicate that about 87 percent of all couples experience difficulties with communication. Not only could they not communicate with each other, they could not seem to get through to their partner, nor could they hear what the other was saying.

Good communication between husband and wife is based on self-understanding, knowledge of one's own personality, a readiness to show and a willingness to support and encourage love and affection for each other.

Conflict is a part of every relationship. It can range from a minor disagreement to a major confrontation. It is impossible, though, for two adults - no matter how much they love each other - to agree on absolutely everything.

Conflict provides a couple material for significant growth. When a couple runs away from conflict, they run away from vita growth which any couple needs for close-



You are cordially invited to a wedding shower honoring

Mrs. John Russell  
(nee Elizabeth Dunlap)

on July 13 at the

Tea Room

211 Womble Street

from 10 to 11:30 p.m.

39-2tc

### Our Heritage of Faith...

Historical Christian Worship is in terms of 'Liturgy' and 'community'. Liturgy is from a Greek word meaning "Work of the People" in the sense of doing a public service. The early Christian writers joined this word for public work with another community word, 'ecclesia', which came to mean 'the church'. Ecclesia was a community

gathering called for all citizens to take part in some official function. After this community function, everyone went his way to go about his business as a citizen.

NEXT TOPIC: The idea of participation.

Bill Schardin, Pastor of Faith Lutheran Church in Spearman, Texas.

The Church picked up the idea of participation in the business of the community and public work and applied it to Christian worship and daily living. Christian Worship then is not for spectators but for participants. This is not new, for this was found in

the Old Testament where the repentant sinner participated in the sacrifice of Worship and often ate some of the emat of the offering with the priest.

NEXT TOPIC: The Priesthood of All Believers.

### Marriage announced

Mr. & Mrs Mario Allala of Ralls, Tx. are proud to announce the marriage of their daughter Angie to Anselmo Vela, son of Mr. & Mrs Eusebio Vela Sr. of Gruver, one time residents of Spearman.

They were married on June 15, 1985, in Ralls, Tx. and will be making their home in Perryton, Tx.



## Rangers

The Rangers coached by Rick Barkley and Doug Frick, pictured are Matthew Overby, Max Frick, Aaron Frick, Bailey Barkley, Nolen Wal-

ters, Doug Gumfory, Clint Williams, Robert Casas, Jr. Munoz, Kevin McNett, and not pictured Scott Stedje.

### 4th of July

True!  
As a matter of fact, the man who lives within his income never gets as much credit as the man who doesn't.  
-Times, Louisville.

Let not the sun go down upon your wrath.  
-Ephesians 4:26.

He who curbs his wrath merits forgiveness for his sins.  
-Hebrew Proverb.

## OPEN JULY 4TH

PRICES EFFECTIVE  
JULY 4-6, 1985

ICE-SOFT DRINKS-SELF SERVE GAS-SNACKS-PICNIC SUPPLIES-GROCERIES-FRESH COOKED FOODS-BREAD-MILK WHILE SUPPLIES LAST



SHOP ALLSUP'S FOR ALL YOUR HOLIDAY NEEDS

|  |   |
|--|---|
| FRESH CUT<br>10-22 LB. AVG.<br>RIPE & JUICY<br><b>WATERMELONS</b><br>EACH<br><b>\$2.99</b> | JUST ARRIVED-LARGE SHIPMENT<br><b>FRESH FRUIT</b><br>STRAWBERRIES-PLUMS-NECTARINES-PEACHES-APRICOTS-CANTALOUPES |
|--|---|

|                          |                           |   |
|--------------------------|---------------------------|---|
| <b>BURRITOS</b><br>2/99¢ | <b>CORN DOGS</b><br>2/89¢ | PEPSI FREE, PEPSI LIGHT, DIET PEPSI PEPSI COLA<br><b>\$1.49</b><br>12 OZ. CANS 6 PK |
|--------------------------|---------------------------|---|

|   |  |  |
|---|--|--|
| <b>PAPA-DION'S</b><br>DELUXE COMBO-PEPPERONI<br>EACH<br><b>\$3.99</b> | NEW! PAPA-DION'S LARGE 12"<br><b>PIZZA</b><br>REG. \$1.75<br><b>\$1.39</b><br>ONLY | WHITE OR RYE BREAD<br>HAM & CHEESE<br><b>SANDWICH</b><br><b>\$1.39</b><br>ONLY |
|---|--|--|

|  |  |   |   |   |   |
|--|--|---|---|---|---|
| DECKER CHOPPED<br><b>HAM</b><br>6 OZ. PKG.<br><b>99¢</b> | DECKER DASH<br><b>HAM</b><br>6 OZ. PKG.<br><b>\$1.19</b> | BORDEN ASSTD. FRUIT<br><b>DRINK</b><br>GAL. JUG<br><b>89¢</b> | DECKER ASSTD. LUNCH<br><b>MEATS</b><br>8 OZ. PKG.<br><b>99¢</b> | DECKER ALL MEAT<br><b>FRANKS</b><br>12 OZ. PKG.<br><b>99¢</b> | BORDEN ASSTD. ICE<br><b>ICE CREAM</b><br>1/2 GAL. CTN.<br><b>\$1.69</b> |
|--|--|---|---|---|---|

DARK TANNING LOTION OR OIL  
**HAWAIIAN TROPIC**  
**\$4.99**  
8 OZ. BTL.

COME HOME FOR GOOD  
CHEESE FOOD **KRAFT VELVEETA** 2 LB. LOAF **\$2.99**  
OSCAR MAYER **MEAT WIENERS** 1 LB. PKG. **\$1.28**

ASSORTED FLAVORS POTATO CHIPS  
**RUFFLES**  
REGULAR **\$1.09**  
REGULAR \$1.39

**ALLSUP'S** CONVENIENCE STORES

## RENT-A-MOVIE SPECIAL OFFER

### MOVIE PASS SPECIAL

REG. \$10.00  
YOU SAVE \$9.00  
**\$1.00**  
ONLY

AND ENJOY THESE BENEFITS:  
• PLASTIC MOVIE PASS CARD  
• NO SECURITY DEPOSIT ON MOVIES OR PLAYERS  
• NEW MOVIES EVERY WEEK  
• NO RENTAL CONTRACTS TO SIGN  
• FAST CHECK-OUT & RETURN  
• PLAYERS AVAILABLE, EASY TO HOOK UP, EASY TO OPERATE

**PLUS**  
EVERY MON., TUES. & WED.  
RENT ONE MOVIE  
GET ONE RENTAL  
**FREE**

ALL YOU NEED IS YOUR T.V.I  
THE VERY BEST IN HOME VIDEO ENTERTAINMENT

COME BY TODAY & TAKE HOME SOME FUN!

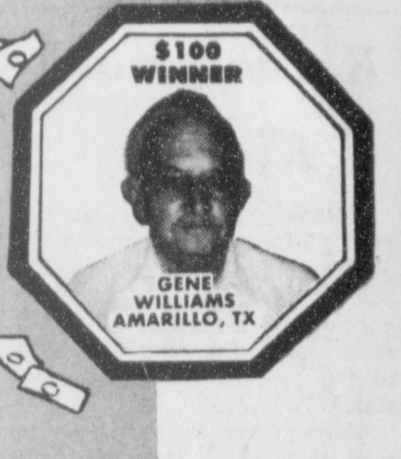
**ALLSUP'S** CONVENIENCE STORES

THIS SPECIAL OFFER AND PROMOTION ARE FOR A LIMITED TIME ONLY!!!



**4th OF JULY Sale**  
PRICES GOOD JULY 3 THRU JULY 6

**HAVE FUN  
PLAY &  
WIN  
SHOPPER  
STOPPER  
BINGO!**



**HUNT'S PREMIUM BARBECUE SAUCE**  
ALL VARIETIES  
18 OZ.



**78c**

**ROYAL OAK CHARCOAL**  
REG. "PLUS"  
10 LB. BAG



**\$1.78**

**CAMPBELL'S PORK 'N BEANS OR RANCHERO BEANS**  
16 OZ.



**4.88c** FOR

**FOLGER'S COFFEE**  
1 LB. CAN



12 OZ. INSTANT \$5.48  
**\$2.38**  
13 OZ. DECAFFEINATED \$3.48

**BEST MAID DILLS**... **\$1.18** HAMBURGER SLICE QT.

**FINE FARE MUSTARD**... **58c** SQUEEZE 16 OZ.

**WISHBONE SALAD DRESSING**... **78c** "LOW CALORIE" FRENCH-THOUSAND ISLAND-ITALIAN "LITE" BUTTERMILK-THOUSAND ISLAND WITH BACON 8 OZ.

**HUNT'S KETCHUP**  
32 OZ.



**88c**

QUANTITY RIGHTS RESERVED

**COKE**  
REG. DIET COKE •  
CAFFEINE FREE COKE  
6 PK 12 OZ. CANS



**\$1.28**

**UNITED HAMBURGER BUNS OR CONEYS**  
8 CT. PKG.



**3 FOR \$1**

**UNITED POTATO CHIPS**  
REG. DIP STYLE  
8 OZ.



**78c**

**HEFTY FOAM PLATES**  
50 CT. PKG.



**98c**

**REYNOLDS WRAP**... 25 SQ. FEET... **2 for \$1**

**GULFLITE CHARCOAL STARTER**... 64 OZ. ... **\$2.68**

**FINE FARE PLASTIC CUPS**... 20 CT. ... **58c** 16 OZ.


**FINE FARE NAPKINS**  
140 CT.



**68c**

NO SALES TO DEALERS

**JOHNSON'S SWABS**  
400 CT.



**\$1.99**

**WHITE RAIN SHAMPOO OR CONDITIONER**  
REG. EXTRA BODY  
18 OZ.



**\$1.19**

**WHITE RAIN HAIR SPRAY**  
AEROSOL 7.5 OZ.  
NON-AEROSOL 8 OZ.



**\$1.49**

**UNITED**  
Supermarket



\$50 WINNER

HAZEL HENSLEY  
WICHITA FALLS, TEXAS

OVER \$348,000 IN CASH AND PRIZES!  
WEEKLY DRAWING FOR \$5,000  
PLAY BINGO AND WIN UP TO \$1,000!  
WIN INSTANTLY \$5 OR \$10 OFF YOUR NEXT GROCERY PURCHASE!

The winningest game  
you've ever played!

WIN \$500  
WIN \$100  
WIN \$50

**ODDS CHART**  
Odds vary depending upon the number of Game Tickets you obtain. The more Tickets you collect, the better your chances of winning.  
\*ODDS CHART EFFECTIVE JUNE 2, 1985.

| PRIZE VALUE | NUMBER OF PRIZES | ODDS FOR 1 GAME TICKET | ODDS FOR 13 GAME TICKETS | ODDS FOR 26 GAME TICKETS |
|-------------|------------------|------------------------|--------------------------|--------------------------|
| \$1,000     | 38               | 1 in 123,685           | 1 in 9,515               | 1 in 4,758               |
| \$500       | 38               | 1 in 123,685           | 1 in 9,515               | 1 in 4,758               |
| \$100       | 78               | 1 in 61,843            | 1 in 4,758               | 1 in 2,379               |
| \$50        | 78               | 1 in 61,843            | 1 in 4,758               | 1 in 2,379               |
| \$10 OFF    | 8,000            | 1 in 588               | 1 in 46                  | 1 in 23                  |
| \$5 OFF     | 12,000           | 1 in 392               | 1 in 31                  | 1 in 16                  |
| \$1         | 75,000           | 1 in 73                | 1 in 5.4                 | 1 in 3                   |
| TOTAL       | 85,224           | 1 in 80                | 1 in 4.4                 | 1 in 2.2                 |

\*Odds to obtain drawing quarter and enter the bonus Drawing(s) are 1 in 28. Odds to win the drawing(s) will depend on the number of entries received.  
SHOPPER STOPPER BINGO Series TD15 is being played in 38 participating United Supermarkets in the Texas counties of Childress, Garza, Hale, Hardeman, Haskell, Lubbock, Ochiltree, Potter, Terry, Wichita, Wilbarger, Young, Lamb, Hartley, Hutchinson, and Dawson. Scheduled termination date of this promotion is August 31, 1985, however, game officially ends when all Game Tickets have been distributed.  
\*The odds of winning collect prizes are based upon obtaining the one rare game marker of the applicable number of game markers needed to complete a straight row across, down or in either diagonal.

Diana Larkin Skellytown, TX \$100  
Janie Alvarado Brownfield, TX \$50  
E.W. Davis Brownfield, TX \$50

PRICES GOOD IN TEXAS UNITED STORES ONLY

**GOOCH GERMAN SAUSAGE**  
12 OZ. PKG.  
**98¢**

**WILSON MEAT OR BEEF FRANKS**  
12 OZ. PKG.  
**58¢**

**HORMEL BACON**  
BLACK LABEL  
1 LB. PKG.  
**\$1.48**

**LEAN GROUND BEEF**  
**\$1.18**  
LB.

**WILSON MEAT OR BEEF BOLOGNA** 1 LB. PKG. **\$1.28**  
**FINE FARE AMERICAN SINGLES** 12 OZ. PKG. **\$1.28**  
**SWIFT Tend'r Lean BONELESS EXCELLENT FOR COOKOUT PORK STRIPS** LB. **\$1.58**

**VACUUM PAK USDA CHOICE BONELESS BRISKETS**  
PACKER TRIM  
LB. **88¢**

**FINE FARE OLEO**  
1 LB. QTRS.  
**3 FOR \$1**

**UNITED EGGS**  
GRADE "A" EXTRA LARGE  
18 CT. **\$1.08**

**UNITED WHIPPING CREAM**  
8 OZ.  
**2 FOR 88¢**

**PLAINS SOUR CREAM OR DIPS**  
8 OZ.  
**2 FOR 88¢**

**FINE FARE EVAPORATED MILK** 12 OZ. **2 FOR 88¢**  
**MORTON ICE CREAM SALT** 10 LB. BAG **98¢**  
**LIPTON FAMILY SIZE TEA BAGS** 24 CT. **\$1.98**

**PLAINS SHERBET**  
ALL VARIETIES  
1/2 GAL. **\$1.18**

**RED RIPE WATERMELONS**  
**\$1.98**  
EA. **2 FOR \$3.00**

**CALIFORNIA PEACHES**  
LB. **59¢**  
CALIFORNIA NECTARINES 79¢ LB.

**ICEBERG HEAD LETTUCE**  
BULK  
**3 FOR \$1**  
TRIMMED ICEBERG LETTUCE 2 FOR \$1



# Giants

The Giants coached by Orville Boese, Jim Caswell and Robert Bort. Little League players are Michael Foster, Justin Carthel, Jake Boese, Phil Rios, Clint Bell, Steven

Foster, Lee Bort, Clay Gillespie, Max Davis, Rex Ralston, Dereck Mack and Bryan Mack. Not pictured are Jim Caswell, Clint Bell and Garrett Guffy.



# Tigers

The Tigers #1 coached by Roy Etheredge and Gary Murray and their team Quentin Harper, Keith Cassady, Wes-

ley Babbs, Wyler Maupin, Daniel Bort, Will Etheredge, Garnt Odom, Jose Bravo Jr., Ricardo Soto and Kyle Deeds.

# Dr. Romeo Sangalang Opens Offices July 17

Hansford Clinic, 721 S. Evans, Spearman



Hospital officials announced this week that Dr. Romeo B. Sangalang will begin general practice and surgery, 721 S. Evans, Spearman, Texas on July 17.

Hansford citizens were thrilled to learn that his new surgeon has opened his offices at the Hansford Clinic which is located next to Hansford Manor.

Other doctors in the county include Dr. Dave Muthali of Spearman and Dr. Viola who has an office in Gruver.

The addition of a new surgeon to the hospital staff will make Hansford Hospital one of the finest facilities in the state. Dr. Muthali and Dr. Viola are well thought of in Hansford County and the three should put Hansford Hospital in an excellent position to serve the medical needs of our area.

We understand that Dr. Sangalang is married and has four children. This newspaper joins in welcoming this fine family to Hansford County.

## Burkhalter Chevrolet Company

of Dalhart has Suburbans

in stock, 2 wheel and 4 wheel.

Call 249-4596



*If ye will obey my voice indeed, and keep my covenant, then ye shall be a peculiar treasure unto me above all people: for all the earth is mine.*

1. To whom was the above promise made?
2. Through whom was it given to these people?
3. Where were the Children of Israel at this time?
4. Where may this promise be found?

Answers to Bible Verse

1. The Children of Israel.
2. Moses.
1. At the foot of Mt. Sinai.
- Exodus 19:5.

Luckily for the human race, adults who grow cynical are replaced by youngsters with enthusiasm, hope and faith.

### GET THE PERFECT TAN



tanning salon

★ July Special ★ Gentler than the sun

5-sessions \$30

Sun-40% harsh rays

10-sessions \$50

Tanning Bed-0.1%

25% savings

430 A Main St.,

Gruver, Tx.

733-5233

### Beefa Thon TV Auction July 7

THE ANNUAL MULTIPLE SCLEROSIS BEEFATHON TELEVISION AUCTION will be aired from noon to 5:30 p.m. July 7th on Channel 10, KFDA. "We've got the Beef" is the theme of this year's event.

Proceeds from the annual auction make up one-third of the Panhandle Chapter of the National Sclerosis Society's budget. The name BEEFATHON originated from the large number of donations from beef producers throughout the Golden Spread area. Today, fine jewelry, sporting goods, painting, appliances and trips join the list of auction items in addition

to beef.

The merchants of Amarillo and the Texas and Oklahoma Panhandle have donated over 200 items and the beef producers from the golden spread have donated 23 head of beef. Items range from a mink coat to a talking alarm clock, to a Seiko watch that had a tape recorder in it, to a microwave oven,

a recliner, fine paintings, a sapphire and diamond ring, an Elvis Presley collector's doll to a Blue Heeler puppy.

Interspersed throughout the auction will be patient interviews and interviews with physicians who deal with the MS patient. Drs who will be interviewed are; Loralu Raburn, Joe Batson, Michael Ryan, Rush Snyder, Jan Werner, Gary Rose and Robert Gerald. Bob (Pappy) Watson will conduct the patient interviews.

Barbara and Wade West will co-host the Auction. Assisting them will be Bill Sexton, Bob Izzard, Royce Bodiford, Bedford Forrest and Cpl. Dianne Bosch.

By making a purchase, the viewer will enable the National Multiple Sclerosis Society and the Panhandle Chapter to continue its participation in the worldwide battle against MS, the mysterious crippler of young adults.

# Down on the FARM WATCH UP FOR POWER LINES

Power lines can be dangerous.

Touching irrigation pipe to a power line can divert the electricity through the pipe . . . and to anyone in contact with it. In this part of the country, this is the leading cause of farm injuries and deaths in electricity-related accidents. Any equipment of unusual height represents a potential danger. Lift arms on field equipment, combine auger spouts and even radio antennas can cause serious injury or death if they, and you, make contact with a power line.

Keep an eye up for power lines. Watch up, for safety's sake.



SOUTHWESTERN PUBLIC SERVICE COMPANY

©SPS 1985

## LOST OUR LEASE

After 20 years in one location

The Boutique

GOT THE



... our loss your gain blouses, pants, jackets and accessories, dresses & suits



Petite Sizes 2-16

Regular Sizes 4-20

All merchandise sale price

505 E. 1st.

Dumas, Texas

935-4219

BIG, BIG, BIG, SAVINGS



# Old school room exhibit at museum

The teacher's desk from the old Blodgett school, blackboards from the early-day, Olso school; a McGuffey Reader used in Old Hansford school by the late Carrie Wells Cotter — these are but a few items included in a special school room created at Station Masters House Museum.

"Finis Maize" is the name in the McGuffey reader.

Winnie Dacus Allen was kind enough to display her school annual "The Wild Rose" - first one printed and contains many pictures of 1920 - 23 Spearman students.

Histories from all the early Hansford Schools are on display some pictures, report cards and an interesting assembly of memorabilia dating back to the 1800's is there!

One special case holds early school books: the old Blue Back Speller, 1857 McGuffey's - and a New England Primer printed in 1800. This shirt - pocket sized book is backed with thin oak wood over which was pasted blue cloth. The New England Primer is full of moral aims, rhymes and stories. The purpose of Puritan education was to teach children the principles of religion and the laws of their country and to train them for useful labor.

These rare school books are very interesting relics.

Mrs. Sada Hoskins, who has been a teacher since the early 1920s - helped in supplying materials for the special school display. She furnished many items used by "Miss Tuttle" in the 1930s.

The public - especially Ex-Students here for the All - School reunion July 5 and 6 are invited to visit the Museum in the afternoon till 5:00 p.m. Tuesday thru Saturday.

The old school room exhibit will occupy the main room at the Museum through out the summer months.



Old Blodgett school room scene.



## Padres

Pictured are The Padres coached by Phil Atwood and his team Jeff Gilbert, Tucker Henson, Skeeter Kuriyama, Travis Ferguson, Jose Manual

Tarango, Ryan Atwood, Jace Dawson, Rama Tombinson, Brady Tidwell and J. D. Christian.



# GEBO'S

... the kind of store you remember.

501 N. Dumas 935-7403

## DURALON TIRES

# 20-MILLIONTH TIRE SALE!

Over 20 million sold!



**AS LOW AS \$36.29**

A long wearing, gas saving\*, steel belted all season radial.

### Our latest, greatest tire for your car

## Duralon DS Radial IV

| Our No. | Size       | Reg.  | Special |
|---------|------------|-------|---------|
| 260-028 | P155/80R13 | 46.98 | 36.29   |
| 260-029 | P165/80R13 | 49.69 | 38.49   |
| 260-031 | P185/80R13 | 52.99 | 41.48   |
| 260-032 | P184/75R14 | 55.45 | 42.98   |
| 260-033 | P195/75R14 | 57.99 | 45.29   |
| 260-034 | P205/75R14 | 59.95 | 46.75   |
| 260-035 | P215/75R14 | 63.79 | 49.99   |
| 260-036 | P205/75R15 | 61.59 | 47.79   |
| 260-037 | P215/75R15 | 65.69 | 51.15   |
| 260-038 | P225/75R15 | 67.35 | 52.49   |
| 260-039 | P235/75R15 | 72.59 | 56.99   |

\*Texas Test 962 TT. Details on request. Inflation pressure, vehicle weight and driving conditions affect the mileage and safety of any car.

### Limited Road Hazard Warranty • No Trade-in • Free Mounting

LONG WEARING...SMOOTH RIDING

## DURALON D.S. PREMIUM

AS LOW AS \$27.99

260-111



Prices good through July 31, 1985.

- POLYESTER CORD BODY PLIES—For a smooth, comfortable ride.
- WIDE, WHITE AND HANDSOME—Stylish good looks and bold white stripe for the best appearance.
- DEEP, DEEP TREAD—Extra depth tread for long mileage and comfort.
- QUALITY CRAFTSMANSHIP—Duralon uses only the highest quality materials—the best for you!

| Our No. | Size                  | Reg.  | Special |
|---------|-----------------------|-------|---------|
| 260-111 | A78-13                | 34.99 | 27.99   |
| 260-112 | B78-13                | 35.89 | 28.44   |
| 260-115 | C78-14                | 38.69 | 29.99   |
| 260-117 | E78-14                | 40.49 | 31.55   |
| 260-118 | F78-14                | 42.25 | 32.99   |
| 260-119 | G78-14                | 44.25 | 34.79   |
| 260-126 | G78-15                | 49.39 | 36.55   |
| 260-127 | H78-15                | 49.79 | 39.44   |
| 260-129 | L78-15                | 52.25 | 41.49   |
| 260-123 | Sport Premium 6.00-15 | 29.19 | 24.75   |



Mrs. Stumpf puts an old time bonnett on Julie Kim during a visit to the Station masters House Museum.

## Chisum attends seminar

The Southwestern Oklahoma University School of Education recently sponsored a week-long summer seminar entitled "Techniques of Observing Instruction".

According to Dr. Don Wilson, Assistant Professor of Education, the course was designed for both teachers and administrators. "In this course, Wilson said, we discussed and analyzed methods and practices that can be put into use while observing teachers in the classroom". Wilson added that administrators and teachers often have to critique in-service or practice teachers.

Those participating in the class were required to make up lessons, while the others put into practice the observation techniques taught throughout the week.

Students in the course included: Doyle Patterson, GEARY; Bud Lemke, WEATHERFORD; Russ Chisum, GRUVER, TEXAS and Candy Cook, HOBART.

## Post Office closed July 4

The Spearman Post Office will be closed July 4 in observance of Independence Day. As this is a widely observed holiday there will be no incoming or outgoing mail service.

## To God-A note of thanks

Mrs. E.A. Greever

Friends in Romans Chapter 13 and verses 11 and 12 we read: And that knowing the time it is high time to wake out of sleep for now is our salvation nearer than when we believed. The night is far spent the day is at hand: let us therefore cast off the works of darkness, and let us put on the armour of light. This scripture is reminding us we are living in a time of light or day for the love of God and his beloved Son was the fulfilling of the law given Moses. We can now be made a new creature with sin forever banished living a holy life in this present world, certainly not of any good we have done but because of God's mercy and grace we are washed in the blood shed at Calvary. In Eph. 5:14-18 we are told to arise from the dead (lost and without hope in God) which means repentance, then to walk circumspectly and understanding what the will of the Lord is (And this is the will of God even your sanctification. (The love Jesus had for the church (and then it tells us to be filled with the Spirit. The work of divine gifts by Father, Son and Holy Ghost. The gospel dispensation of time and the good news for whosoever will.

We are warned as believers to stay wide awake and not to sleep as others. In Matt chapter 25, we read at midnight (a dark time spiritually) a cry the Bridegroom cometh go out to meet him we read they all slumbered and slept but fore were wise while five had not made all necessary preparation and the door was closed against them

1Cor.15:34, Awake to righteousness and sin not for some have not the knowledge of God. Behold today is the day of salvation if ye hear his voice harden not your heart. Another scripture. Now is the accepted time. Let us ever remember God is at all and anytime ready to pour out his blessings upon us and we are told no one can come to Jesus except he draw him. St. John 6:44, And certainly the Father can't draw us unless we sincerely want his blessings. Come unto me all ye that labor and are heavy laden and I will give you rest the words of Jesus. The spirit and the Bride say come and let him that heareth say come, whosoever will

may come. Rev. 22:17, And Jesus said, suffer the little children to come unto me and forbid them not for of such is the kingdom of heaven. This scripture plainly tells us no matter our age we must become as a little child believing God just as small children believe their parents with a perfect confidence. So Lord please help every one of us to remember our life is in your hand for a short time at the longest and be as the writer of Psalms 39:4-5, Lord make me to know mine end and the measure of my days what it is that I may know how frail I am. May the like that is now and that to come be ours through Jesus Christ our Lord, for in him is like and without him there is no like we are told. Hope comes from God. Thanks be unto his holy name.

### Its Time to Pray

It's time to pray the world is rushing on,  
To utter darkness gloom and great despair

But Jesus calls in tones of love and mercy,  
Remember I have borne your every care,

Its time to pray bend low before the Saviour,

He prayed alone in dark Gethsemane,  
In agony cried may this cup pass from me,

Yet not my will Lord but thine be done,

It's time to pray and cast your sins away.

The precious blood shed at dark Calvary,

Will make you clean your heart glad and free,

And want you leave your sins at Calvary,

It's time to pray times clock points to the hour,

When Christ will come in glory and great power,

Awake from sleep and gird thyself with strength,

That you may go to meet the Prince of Peace,

It's time to pray and bend your knee,  
And do not close your ear to his great call,

It's not God's will that anyone should perish,

The come to me goes out to one yes All.

### Ray Charles to perform

On Tuesday night, September 17, the Amarillo Tri State Fair will present the Ray Charles Show in the fair coliseum. Appearing with Ray Charles for his one-show performance at 8:00 p.m. will be The Rayettes and the Ray Charles Orchestra. This will be the first performance of Ray Charles in Amarillo since 1972. Fair officials believe that Ray Charles will bring a different type of entertainment to the fair-one that crosses the country music sound and will appeal to all ethnic and age groups.

Tickets go on sale across the counter at Western Plaza Mall in Amarillo on August 26th. Send mail orders to Tri State Fair, P.O. Box 31087, Amarillo, Texas 79120. Please add \$1.00 for postage and handling.

Any Legal-Tender  
Patient--How can I ever  
repay you for your kindness  
to me?

Doctor--By check,  
postal order, or cash.

### Don't Hear A Thing

"All this talk about  
back seat drivers is bunk.  
I've driven a car for ten  
years and I've never had a  
word from behind."

"What sort of a car?"  
"A hearse."

### NOTICE

On Page 1 of this week's sale  
circular the photograph for  
Kodacolor VR Film is incorrect.  
However, the price and copy is  
correct.

On page 7, the copy and  
photograph for Right Guard  
Anti-Perspirant, scented, un-  
scented or powder, 6 oz. and  
the 10 oz. Right Guard Bronze  
deodorant should reflect 75 off  
label. Your choice is on sale for  
only \$1.77. We regret any  
inconvenience this may have  
caused.

**TGIY**  
Family Centers

Out of State  
1-800-338-5871



Office  
405-330-3375

**GUYMON**  
LIVESTOCK AUCTION  
Box 878 • Guymon, Oklahoma 73342

Home Owned and Home Operated

SALE EVERY THURSDAY  
AT 10:00 AM

### Hair Loft "2100"

310 Main Spearman, Texas 659-5161

Is proud to announce the opening of

"The Tanning Room."

Call or come by for your appointment.

We will be here early or late for your convenience.



## Multiple Sclerosis

# BEEFaTHON SUNDAY, JULY 7 CHANNEL 10

THE ANNUAL MULTIPLE SCLEROSIS BEEFaTHON TELEVISION AUCTION will be aired from noon to 5:30 p.m. July 7th on Channel 10, KFDA. "We've got the Beef" is the theme of this year's event. Proceeds from the annual auction make up one-third of the Panhandle Chapter of the National Multiple Sclerosis Society's budget. The name BEEFaTHON originated from the large number of donations from beef producers throughout the Golden Spread area. Today, fine jewelery, sporting goods, paintings, appliances and trips join the list of auction items in addition to beef.

The merchants of Amarillo and the Texas and Oklahoma Panhandle have donated over 200 items and the beef producers from the golden spread have donated 23 head of beef. Items range from a mink coat to a talking alarm clock, to a Seiko watch that has a tape recorder in it, to a microwave oven, a recliner, fine paintings, a sapphire and diamond ring, an Elvis Presley collector's doll to a Blue Heeler puppy.

Intersperced throughout the auction will be patient interviews and interviews with physicians who deal with the MS patient. Drs who will be interviewed are: Loralu Raburn, Joe Batson, Michael Ryan, Rush Snyder, Jan Werner, Gary Rose and Robert Gerald. Bob (Pappy) Watson will conduct the patient interviews.

Barbara and Wade West will co-host the Auction. Assisting them will be Bill Sexton, Bob Izzard, Royce Bodiford, Bedford Forrest and Cpl. Dianne Bosch.

By making a purchase, the viewer will enable the National Multiple Sclerosis Society and the Panhandle Chapter to continue its participation in the world-wide battle against MS, the mysteriouscrippler of young adults.

# PERRYTON FEEDERS, INC.

Virl LaMunyon, Owner

Perryton, Texas 806-435-5466

Lonnie Winterrowd, Manager 435-4130



## Angels

Girls T-Ball Angels #1, coached by Micky Maupin. Pictured are Jessica Barkley, Amber Murrell, Kristi Harris, Mary Dawn Henson, Cori

Lowe, Yuki Bort, Kaisi Foster, Julie Myer, Angela Overby, Sara Jones, Wynn Maupin, and Kalee Shook.



## T-Ball

Boys T-Ball coached by Eddy Shook and Roy Mayhew pictured with Curt Shook, Josh Mayhew, Sammy Renteria, Jason Ward, Luke Ayers,

Corey Rosar, Ryan Mestas, Galen Slough, Rosalio Arreola and not pictured Jerry and Terry Williams.

### High-Voltage 'Back-up' line strengthens SPS reliability

Southwestern Public Service Company (SPS), to buttress the reliability of its electric utility system, put a new, 345-kilovolt transmission line into service June 22, 1985.

The 162-mile line, the highest-voltage transmission line ever in the SPS system, connects the utility with other utilities in the Southwest Power Pool.

The Southwest Power Pool is a group of 38 utilities that have interconnected to "pool" their electric resources, to help ensure a reliable and continued supply of electric service to customers.

The new SPS line could be used by the Southwest Power Pool utilities to back up energy supplies in case of an emergency. Supply emergencies can occur because of storms or mechanical or electrical

problems. Utilities also share power supplies on a back-up basis during routine maintenance of power plants, and to lower costs of service to customers.

"This new line will improve the reliability of our service, and will help us hold down the cost of service to our customers," said Roy Thomas, SPS vice president of corporate services.

The line runs easterly from near Abernathy, Texas, to near Vernon, Texas. It connects SPS with high-voltage supply lines near Vernon at a coal-fueled power plant under construction by Public Service Company of Oklahoma.

The 345-kilovolt line is Southwestern's fourth interconnection with the Southwest Power Pool group. It can carry enough power to temporarily substitute during an

emergency for the largest of the Company's power generation units.

The line is supported by 100-foot-tall, tubular steel structures. It was designed by Southwestern's in-house Transmission and Distribution Design staff. Southwestern's Construction Services Department oversaw construction of the line and related equipment.

The project was completed at a cost of approximately \$25 million.

Southwestern Public Service Company primarily provides electric service to a population of one million in eastern and southeastern New Mexico, the south plains and Panhandle of Texas, the Panhandle of Oklahoma, and southwestern Kansas.



### July 4 highway death estimate

AUSTIN—The Texas Department of Public Safety estimates that as many as 17 people will die in traffic accidents in the state during the 30-hour July 4 holiday period.

"Though this year's estimate is lower than last year's death toll, the final figure could be even lower if Texans refrained from drinking and driving, stayed within the speed limit and buckled their safety belts," said Colonel Jim Adams, director of the DPS.

Last year, 20 persons died in crashes on Texas streets and highways during the July 4 holiday period. Three additional fatalities resulting from serious injuries during the period pushed the final toll to 23.

"This year's estimate of 17 deaths compared to the higher number of fatalities last year is in keeping with a downward trend in

Texas traffic fatalities," said Adams.

In 1984, 48 per cent of the fatalities reported during the July 4 period resulted from accidents in which speed or DWI was listed as a contributing factor.

"In an effort to limit the number of deaths, additional DPS troopers will again be patrolling rural roads and highways during the holiday period," Adams said.

The Department's "Operation Motorcade," in which the number of fatalities will be reported at intervals through the period to remind Texas drivers of holiday driving dangers, begins at 6 p.m. Wednesday, July 3 and continues through midnight Thursday, July 4.



### Social Security Rep Schedule

A representative of the Guyton Social Security office will be in the towns and at the places listed below. This individual will be glad to assist you in filing an application for Social Security Retirement, Survivors, Disability, Medicare or Supplemental Security Income benefits. If you are unable to visit personally, you may call 338-6527 Monday thru Friday between 9:00 a.m. and 4:45 p.m. except for national holidays.

The representative will be in Spearman at 10:00 a.m. until 11:30 a.m. Tuesday, July 2, 23, August 6, 27, September 3, 24 at the Courthouse County Commissioners Court Room.

# Beef on July 4

## THERE'S STRENGTH in numbers... in facts.

**Gruver Lions Club  
BARBECUE  
City Park  
July 4th**

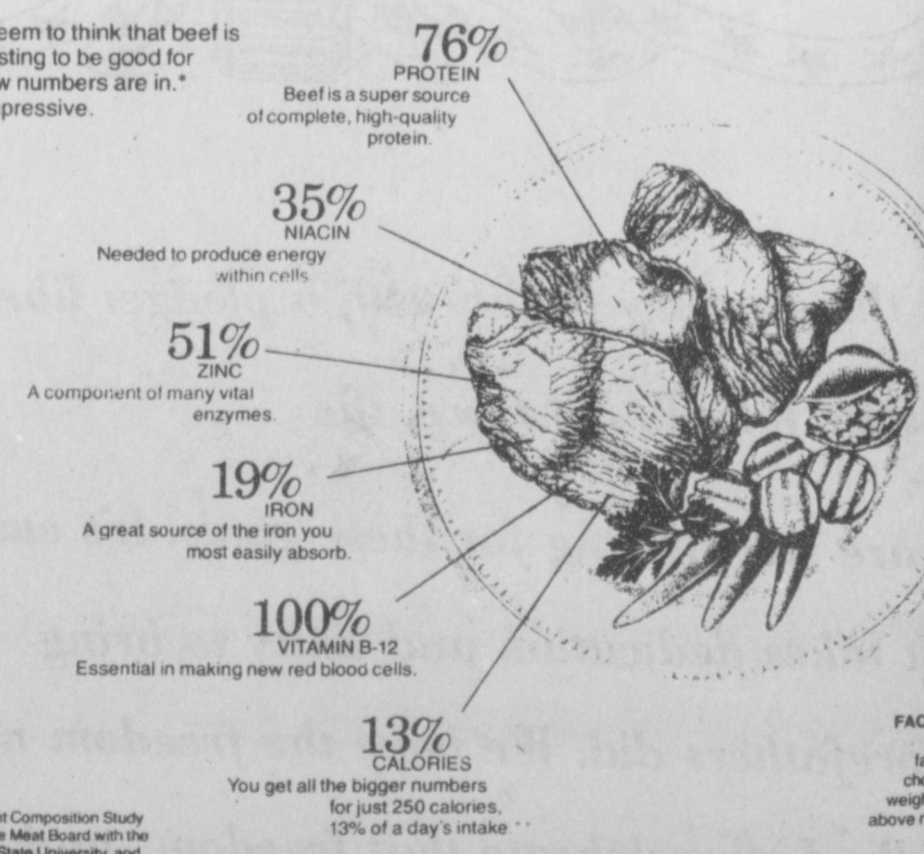
**11:30 a.m. to 2 p.m.**

|                 |        |
|-----------------|--------|
| Adults          | \$5.00 |
| Children        | \$3.00 |
| Senior Citizens | \$3.00 |

**Drawing for new pickup will be held at this time**

**All proceeds go to new Gruver Ball Park.**

Some people seem to think that beef is just too good tasting to be good for you. But the new numbers are in. And they are impressive.



**MYTH:** The fat in beef is saturated fat.  
**FACT:** Beef fat contains only about 47-49% saturated fatty acids. The rest is unsaturated fatty acids, including significant amounts of polyunsaturated fatty acids.

**MYTH:** Beef contains more cholesterol than most other animal-source proteins.  
**FACT:** Three ounces of cooked lean beef contain 73 mg. of cholesterol; 3 ounces of roast chicken, 76 mg.; 3 ounces of flounder 52 mg.; 3 ounces of shrimp, 128 mg.; 3 ounces of pork, 79 mg.; 3 ounces of turkey, dark 72 mg.; light 59 mg.

**MYTH:** Heart disease risk can be reduced by reducing intake of saturated fat and cholesterol.  
**FACT:** The current trend in the scientific literature is away from thinking that reducing heart disease risk is simply a matter of cutting down on foods high in saturated fatty acids and cholesterol. More scientists are now saying that more scientific answers are needed before marked changes in diets can be recommended for the general population.

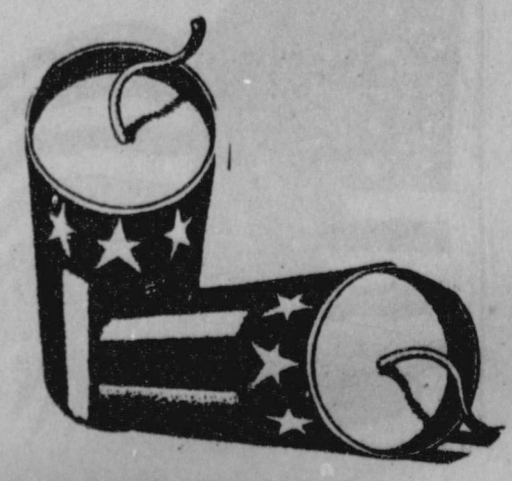
**MYTH:** Dietary cholesterol has a direct effect on blood cholesterol level.  
**FACT:** In most persons, dietary cholesterol and blood cholesterol are not closely related. In fact, in most persons, heredity and weight or amount of fatty tissue in the body are more important than diet, including dietary cholesterol, in determining blood cholesterol level. If a person keeps his weight at recommended levels, odds are that his blood cholesterol will not be above normal.

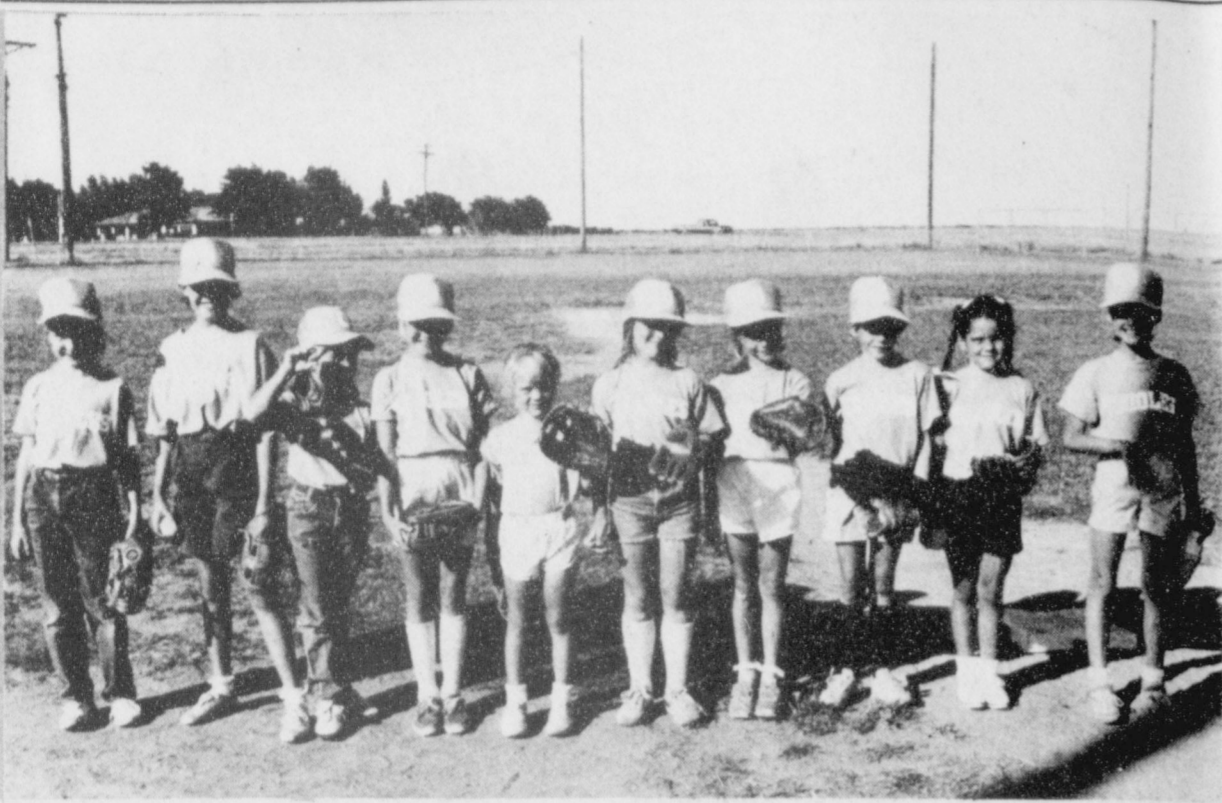
\*1983 Beef Nutrient Composition Study coordinated by the Meat Board with the USDA, Michigan State University, and University of Kentucky  
\*\*All percentages are based on a 4 oz. serving and recommended dietary allowances, women 23 to 50 years.

**BEEF GIVES STRENGTH.**

# Frontier Feed Yards, Inc.

**Bronc May  
Phone 806-882-4251**





# Orioles

Girls T-Ball. The Orioles coached by Mandy Derrington. Pictured are Tracy Bates, Macee Casdorff, Erin Derrington, Kaisha, Bridgett Griff

fin, Memory Ross, Josie Pool, Molly McLain, Joni Hart, Kimberly Wayner, Denise Hennessee, Kim Venneman and Mika McLain.

## Fireworks related injuries

Parades, picnics and fireworks displays are all July Fourth traditions enjoyed by most Americans. Another, often overlooked tradition, comes in the aftermath of the holiday—those news reports about people blinded, maimed, or killed by fireworks related injuries.

The Texas Society to Prevent Blindness, reports that in 1984, fireworks related injuries rose 19 percent over the previous year. An estimated 9,857 people required hospital emergency room treatment last year, 1,255 of them having sustained eye injuries.

"Fireworks are not toys," cautions Dr. J. Franklin Howell, Medical Advisor of the Amarillo Branch. "Yet, 74 percent of all those people injured last year were under age 24. Without doubt, we need to keep fireworks out of the hands of young people."

In a recent study conducted by Arkansas ophthalmologists, bottle rockets were found to be a leading cause of fireworks-related injuries there.

The study revealed that nearly three-fourths of all injuries resulting in permanent vision loss were sustained by people harmed by bottle rockets.

"Small, but lethal, a bottle rocket is a single firecracker attached to a stick, and shot from a stationary object. Usually, the suggested object is a pipe. However, more often than not, people use soda-pop bottles," says Dr. Howell.

According to the National Society to Prevent Blindness, these bottles can explode. Glass shrapnel thrown during the explosion can strike the face and eyes of bystanders, often causing severe, painful and irrever-

sibly blinding injuries.

Among the other commonly available fireworks involved in injuries are firecrackers, M-80s, Roman candles, salutes and

snakes. Even sparklers are unsafe. The Society says that a blinding burn can result if the sparkler makes contact with the eye.

"We recommend that people enjoy fireworks the one safe and sane way this July Fourth," Dr. Howell adds. "That is, view them at a licensed public display. Not on a street corner or in the backyard."

Established in 1908, the National Society to Prevent Blindness is the oldest voluntary health agency nationally engaged in preventing blinding through a comprehensive program of community services, public and professional education and research.

## Boulter against COLA adjustments

WASHINGTON - In response to a breakdown in Budget Conference Committee negotiations, Congressman Beau Boulter (R 13th) has obtained seventy (70) signatures on a letter asking Conference Chairman Pete Domenici to take Social Security Cost of Living Adjustments (COLAs) out of the budget negotiations completely.

The letter co-signed by Boulter and Jim Lightfoot (R -1A) stated that the signers "believe that Social Security is not part of the deficit problem and are opposed to eliminating, reducing or postponing Social Security Cost of Living adjustments."

"This letter was a direct result of the gridlock we had reached, and of the need we saw for Republicans to stand up and make clear the fact that there are plenty of us who are against a COLA freeze", said Boulter, the only freshman member of the Budget Conference Committee.

The budget Conference Committee, made up of twenty-six Representatives and Senators, began meeting in early June but made no significant progress toward a compromise budget resolution. "We were not getting anywhere", Boulter said, "and while I think the Social Security issue was a problem, I believe the real reason no progress was made is because the Democrats on the House side were unwilling to agree to any of the thirteen terminations proposed by the Senate."

The Boulter/Lightfoot letter was circulated on Thursday morning, requesting in addition to the Social Security provision, that the budget Conference go back to the table and try again to work toward a deficit reducing package. "When I called Senator Domenici to tell him about the letter he told me that he was reconvening the Conference that afternoon."

During the afternoon meeting the Senate offered a proposal to House Members, which is being considered and will be discussed when the Conference reconvenes on July 9. "We aren't sure what will happen with the Social Security issue", Boulter admitted, "but we

are now on record against a freeze, and are hopeful that the seventy House Republican signatures will weigh heavily in any further negotiations.

## Self defense course at YMCA

Self Defense Course in karate to be taught at Y.M.C.A.

Instructor will be Lisa Woodward. She will be teaching from 6 yr. olds to adults.

There will be an organizational meeting: July 3 at 4:00 p.m.

Fee: Y.M.C.A. members - no charge. Non member youths - \$10.00. Non members adults - \$20.00.

Sessions will begin July 5 and last through Aug. 13, Tuesday and Friday at 7:30 - 8:30 at Y.M.C.A.



## WHO KNOWS

1. Name the Transportation Secretary.
2. Name the Pelican State.
3. What is the Roman numeral for 800?
4. Give another name for the Battle of Little Big Horn.
5. Which was the 39th state to ratify the 18-year-old voting right?

Answers to Who Knows

1. Elizabeth Dole.
2. Louisiana.
3. DCCC.
4. Custer's Last Stand.
5. Ohio, in 1971.

## Summer Clearance Sale

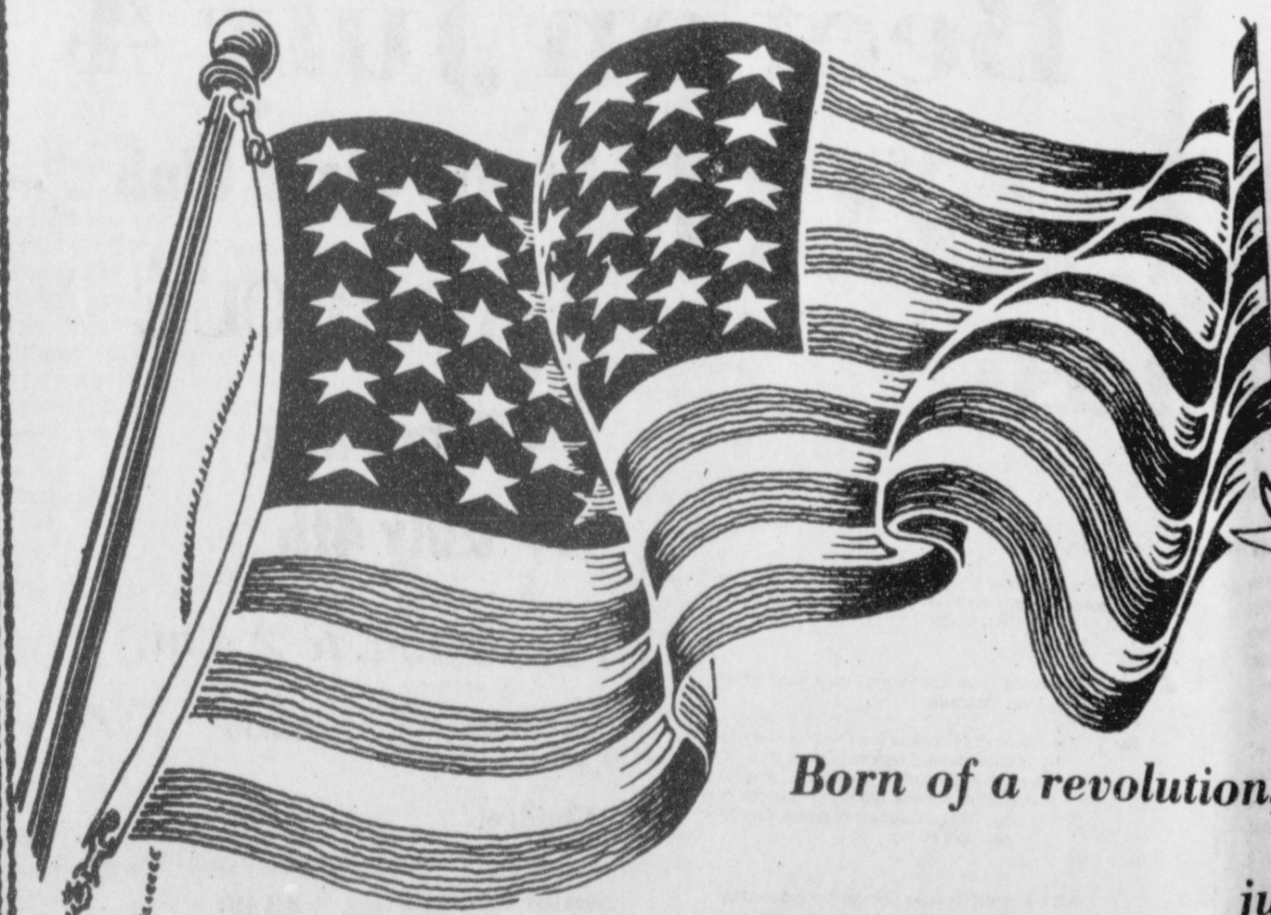
# 30% off

Ladies shoes and handbags.

Close out on mens shoes \$20 a pair.

Boyd's Family Shoes

209 Main  
Spearman, Texas



# JULY 4<sup>th</sup>

## A Time to Repledge Ourselves...

*Born of a revolution, this country began with a pledge: liberty and justice for all. Now...we, the*

*American people, are still striving for these goals. It's easy to find fault...but it takes dedication and unity to bring about change, as our forefathers did. We have the freedom now to do it peacefully. Let's celebrate that freedom...and honor our nation for what's been achieved...let's join together ...with a renewed sense of purpose...to reach our goals.*



**1ST** First National Bank  
Perryton, Texas  
806/435-3676  
Member FDIC