

HANSFORD COUNTY L B A
 120 MAIN
 SPEARMAN, TEXAS 79081

24 hr. prayer
 service, 659-2911

THE GRUVER STATESMAN

VOLUME 14, NUMBER 51

THE GRUVER STATESMAN, GRUVER, TEXAS 79040

THURSDAY, SEPTEMBER 26, 1985

Greyhounds host McLean Friday

The Gruver Greyhounds will host the McLean Tigers this Friday night, at home in a game that heavily favors the high flying Gruver Greyhounds. Fans are wanting to see their Hounds back in action, after the big victory over Spearman at HHomecoming.

In other football for the home folks, the JV goes to Dalhart to play the Dalhart 9th grade at 7:30, on Thursday. The 7th and 8th grade teams host Phillips at home, in Gruver, at 5:30 p. m.

Fans are already comparing this great team this year, with one of Gruver's best football teams. But, coaches remind the fanst that a few key injuries could wreck the entire season for the Hounds.

Harris picks the Hounds over McLean by 37 points. Complete district results by Harris are as follows for the coming Friday night games:

A TOP TEN AND HOW THEY FARED

1. Munday beat Rotan, 59-6.
2. Iraan beat Sterling City, 28-0.
3. Union Hill beat Detroit, 40-14.
4. Wheeler beat McLean, 53-0.
5. Italy beat Grandview, 43-0.
6. Goldthwaite beat Dublin, 17-0.
7. Granger beat Giddings State School, 50-0.
8. Forsan beat Robert Lee, 40-0.
9. Knox City beat Anson, 9-7.
10. Valley was idle.

District 142

| | | |
|--------------|---------------|------|
| WHEELER | vs. Booker | (39) |
| PHILLIPS | vs. Claude | (13) |
| FOLLETT | vs. LeFors | (34) |
| Groom (open) | | |
| GRUVER | vs. McLean | (37) |
| Anton | vs. ROPES | (16) |
| HAPPY | vs. Amberst | (13) |
| SUDAN | vs. Lazbuddie | (29) |
| VALLEY | vs. Nazareth | (6) |
| Sundown | vs. MEADOW | (31) |
| Wilson | vs. WHITEFACE | (24) |

Vivian Bayless

rites held

Vivian Bayless, a Gruver resident for 33 years died Sept. 22, 1985 in Pryor, Okla. She had lived in Pryor, Okla. since 1970.

Funeral services were held Tuesday, Sept. 24 at the Lane Chapel Church northwest of Pryor at 2:30 p.m. Burial was at Pryor at Graham Memorial Cemetery. She was born July 21, 1902 in Tyler, Texas. She was 83 years old.

Survivors include Lewie Bayless of the home, two daughters; Maureen Rutz of Mt. Juliet, Tenn.; Patricia McGuffin of Pryor, five grandchildren, 11 great grandchildren, one brother, Barney Davidson of Chula Vista, Calif.; four sisters, Leona Davis, Chillicothe, Mabel Mills, Arp, Vera Hamm, Dallas, and Jean Bates of Ventura, Calif.

Greyhound mothers

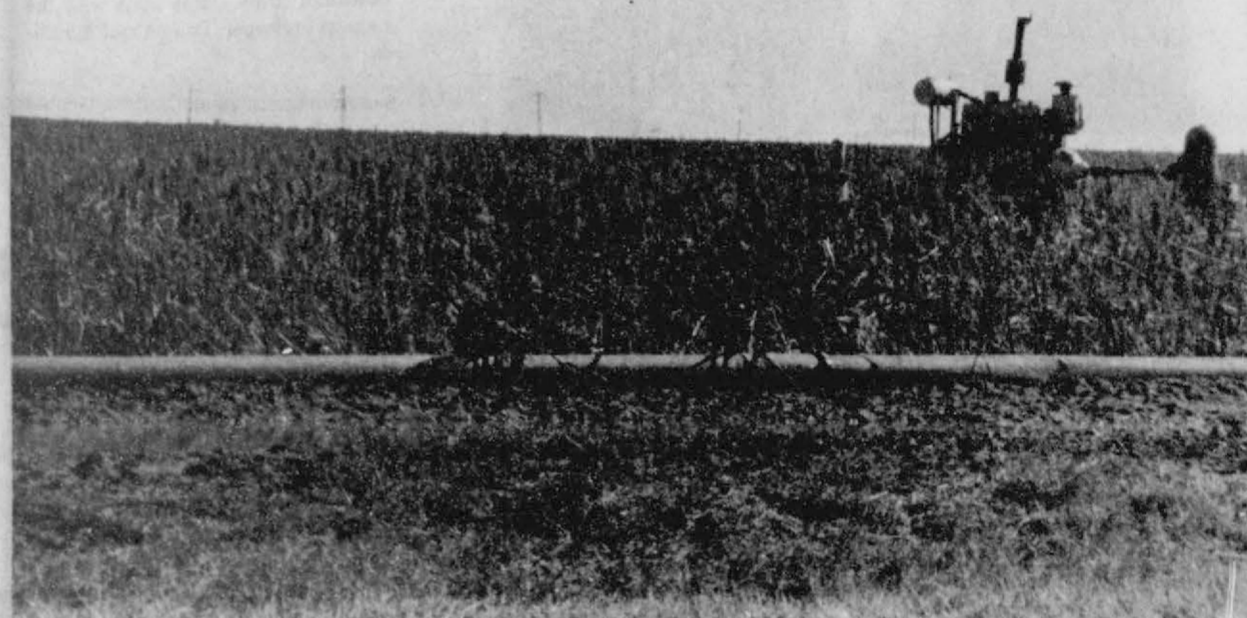
selling chances

on 2 1/2 beef

Gruver Greyhound mothers are selling chances on two 1/2 beefs. The drawing will be held Sept. 27 at the football game.

Proceeds will go for Greyhound yard Markers & the Athletic Banquet.

The mothers would like to thank Caprock Industry for donating the beef.



"Hail on Milo"

This milo crop was hailed out. It is located next to the Ned Turner farm between Spearman and Gruver.



"Busted Windshield"

This broken windshield was a grim reminder of the Sunday hailstorm at old Hansford. This pickup belongs to Bill Hutton. He also lost the windshield out of his car.

PTA Completes Membership Drive



Linda Haight's first grade class PTA membership Drive.

The PTA has completed their membership drive for the 1985-86 school year. Winners have been determined for each grade in the elementary building. The over-all

winner was Clint Williams for enrolling the most people for PTA He was presented a radio for his good work by Marilyn Hart.

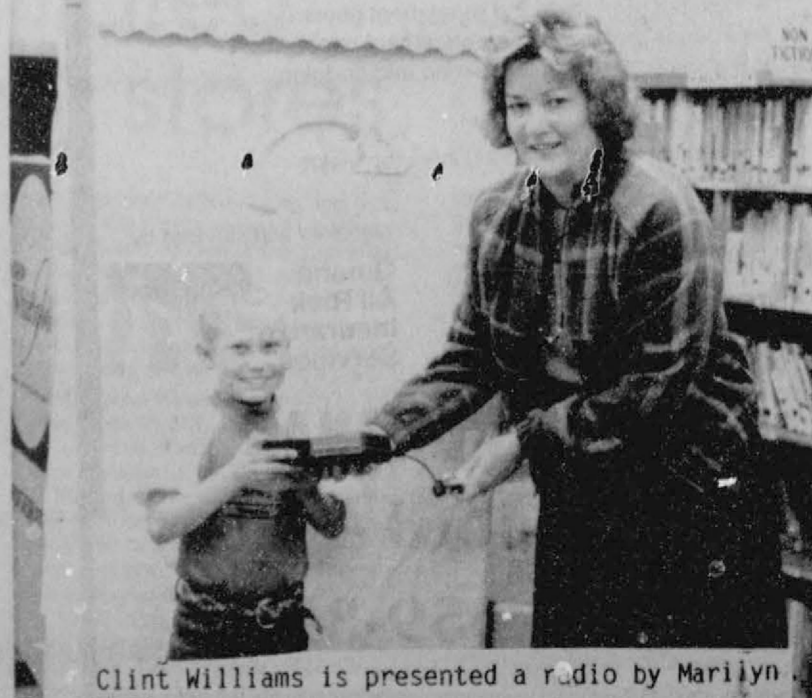
Other winners were - First grade-Linda Haight's class; second grade-Betty Chisum; Third grade-Dixie Karlin; Fourth grade-Judy Solomon.

Sunday storm damages crops, cars, homes!

A heavy rain and hail storm struck Sunday about 5:30 p.m. in Gruver with water flooding streets, breaking out windows and hailing out feed crops about 1 1/2 miles east of Gruver and also west of Gruver.

The same storm with hail and winds up to 35 mph hit Spearman about 30 minutes later, where cars, trees and homes suffered minor damages. The hail lasted for about 15 to 20 minutes and then moved on.

The National Weather Service also reported heavy thunderstorms Sunday in Southern Ochiltree and Lipscomb Counties.



Clint Williams is presented a radio by Marilyn Hart....

MARKETS

| | |
|-------|--------|
| WHEAT | \$2.70 |
| MILO | \$3.85 |
| CORN | \$2.50 |

Purpose & Program of Salvation Army



George Odom, treasurer of the Gruver Salvation Army Service Unit receives certificate of recognition from area representative of Salvation Army, Doug Rains.

George Odom, treasurer of the Gruver Salvation Army Service Unit receives certificate of recognition from area representative of Salvation Army, Doug Rains.

What makes The Salvation Army Service Unit Committee in Gruver unique from other agencies is that none of our committee members and officers on the committees are salaried people. The Salvation Army Service Unit Committees are among the army of Americans who share the

concern of the United Way for the less fortunate in their community. All are volunteers who give unstintingly of their time and compassion to provide the services of The Salvation Army.

Help is given immediately when it is needed. There is no red tape. When problems arise and people are in desperate situations, or in need of temporary assistance, they know they can count on us. Helping them instantly, especially in some situations, has a tremendous impact on their lives, as well as loved ones.

CYSTIC FIBROSIS BIKE A THON

Cystic Fibrosis Bike-A-Thon will be held Saturday, September 28th at 1:00 p.m. at the City Park of Gruver. Children old enough to ride a bike for several miles can participate in the A-Thon and pick up sponsor sheets at the Elementary building from Debbie Blackshear.

Cystic Fibrosis is the number one genetic killer of American's youth. CF primarily attacks the lungs and digestive system, causing acute diffi-

culties in breathing and digestion. Half of those afflicted with CF will die before they reach the age of 21.

Money raised through the fall program helps support our research and patient care centers here in Texas, as well throughout the United States.

Research is hope and we thank you for making a CHILD TOMORROW JUST A BREATH AWAY.

There will be prizes and refreshments for all bikers so please come make our A-Thon a success.

If there are any questions please feel free to call Glenna Hunt at 733-2283 or 733-2456.

PURPOSE AND PROGRAM

The Salvation Army will work cooperatively with other agencies to meet the human needs of the community. Services include emer-

gency aid for stranded travelers; aid to prisoners and their families; disaster relief; camping program for underprivileged boys; alcoholic rehabilitation programs; assistance for

the needy at Christmas; help for the elderly. In general representing The Salvation Army to the people of Gruver through our local committee, providing the community with access

to the programs and services of The Salvation Army. All state services are available including the counsel and advice of experienced Salvation Army personnel.

The Gruver Service Unit is one of 360 in Texas. The nearest ones are Stratford, Spearman and Perryton. It is an out reach program of The Salvation Army Corps units with the nearest in Borger, Pampa and Amarillo.

Its purpose is to serve with local or transient one time emergency needs.

Local Committee members include: Gruver Salvation Army Service Unit Jerry Hunt-Chairman, George B. Odom-Treasurer, Jim Ratiiff-Welfare Secretary

Committee Members: Bill Duncan, Kenneth Irwin, Roy W. Riley, Mrs. Faye Gillispie, Mrs. Beula Ben Bort, Elmo McClellan, Mrs. Fran Maupin, Mrs. Robin Giblin, Mrs. R.C. Womble, Merle Delano, Larry Miller and Jim Terry.

HOSPITAL

Patients in Hansford Hospital are Gladys Gibson, Everett Sullins, Fred Chase, Jewel Renner, Michelle Sumner, Edith Roper, Viola Fickling, Viola Graves and Mamie Dry.

Dismissed were Rita Underwood, Cecilia Randall, Phill Martin, Joyce Noble, C. W. Perk, Leslie Goodson and Barbara Scroggs.

Home

Home is the place where we're treated the best and grumble the most.

-Advertiser, Sioux City.

No Clouds

Keep your face to the sun and the shadows will fall behind.

-Grit.

Rioting erupts in Britain's 2nd largest city.

Treasury asks line of credit above \$2 trillion.

Barris Ayres in WBU musical group



Barris Ayres

With a repertoire ranging from popular and jazz to gospel and contemporary Christian, "Spirit of

America" has been one of Wayland's most visible performing groups since being formed in the mid-1970's.

Having performed all around the world during the past decade, "Spirit" has shared the concert

spotlight with some of the country's leading Christian artists and was featured at the 1984 World's Fair in New Orleans.

"Spirit" is under the direction of Danny White, a former member of the group who is in his first year as a member of the Wayland music faculty.

A 1983 graduate of Gruver High School, Ayres is the son of former Gruver resident Mr. and Mrs. Bruce Ayres, now of Plainview.

PLAINVIEW (Special) -- Gruver native Barris Ayres has been named to the 1985-86 edition of the popular music group, "Spirit of America," at Wayland Baptist University.

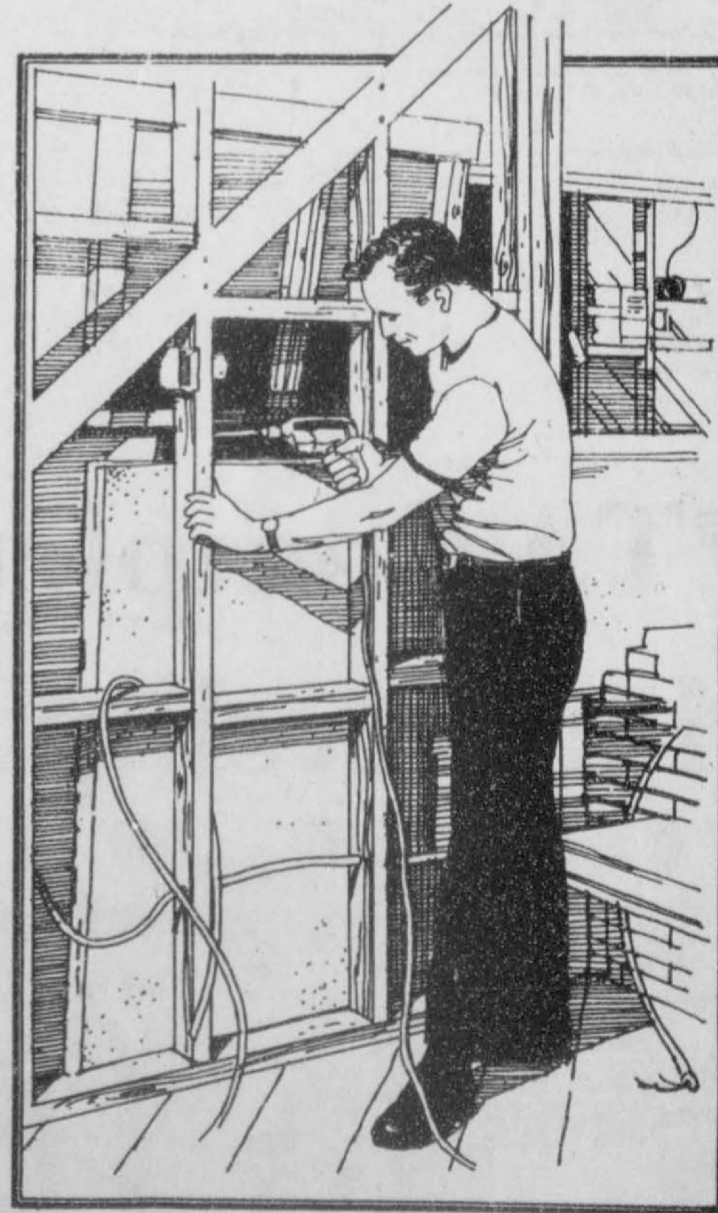
Ayres, a junior Bible major, was among six vocalists and five instrumentalists chosen for this year's group following auditions last week. Ayres plays the bass guitar.

The smartest investment you can make is right under your roof.

Home improvements are very good investments. What's your home improvement idea? A remodeled family room, a new fireplace or heating system...? Why wait to make needed improvements when a Home Improvement Loan from First National Bank can make it happen this fall.

We can help finance your big idea right from the beginning. Just put together your plans, select a building contractor and talk with us right away. Before you begin actual construction work. We'll show you some ways to make your home more enjoyable to live in while getting financing you can live with.

Home Improvement Loans from First National Bank. See Roy Lynn Stollings.



We're the bank you call First.



We put Freedom back in Agriculture...

by providing

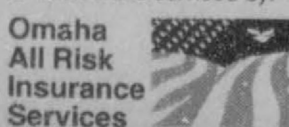
All Risk Crop Insurance protection you can count on!

- Provides crop insurance protection.
- Assures family income and security.
- Allows maximum use of capital.
- Permits expansion.
- Increase borrowing and repayment power.
- Expands professional management capabilities.
- Backstops forward contracting and hedging.
- Promotes peace of mind.
- Helps manage risks.
- Produces cash flow during low crop yields.
- Protects your way of life.

Presented by:



Marketed and serviced by:



BURL BUCHANAN

The Hansford Agency

Phone: 659-3914

Spearman, Texas

WANT ADS

SERVICES

New to Area
Give Us A Try
Call Your Local
USED COW DEALER
As Soon As Possible
659-3544
659-3545
1-800-692-4043
22-rtn

NOTICE

Wallace Monument Co.
Monuments, Curbing,
Grave Covers
Local Representative
LEONARD JAMESON
Spearman, Texas
40-rtn

OSGOOD MONUMENT CO.

Amarillo, Texas
Dealers of Rock of Ages
Granite, as well as all
colored granites, marble
and bronze memorials.

represented by

BOXWELL BROS. FUNERAL HOME

519 S. EVANS
659-3802

Hansford County
Planned Parenthood
412 Davis
659-2483
Spearman
Mon. - Fri.
8:30 - 12:30

Sewing done—little darling and
Cinderella dress types a special-
ty. Call Joy 733-2517.
nc

Need to oil your wood shake or
shingle roof? Give it extra life and
beauty.

Whatever your painting needs
may be - from taping and textures
to custom finishes with any coating
on any surface. We also feature
energywave insulating paints. Call
today for a free estimate.

BEASLEY PAINTING

ALLAN 733-2558 JIM 733-2012
19-rtn

SEARS BLOWN IN ATTIC
INSULATION. Now 10% off.
Completely installed. For
FREE ESTIMATE at your con-
venience dial 659-2573. Sears
Roebuck and Co. 517 S. Hwy.
207.
50-rtn

Hay Swathing & Baling done - Call
733-2517 or Dennis at 733-5214.
31-rtn nc

PUBLIC NOTICE

Guymon Elks Supper Club is
open to the public. Our hours are
Wednesday-Thursday 6-10 p.m.
Friday-Saturday 6-10:30 p.m. We
have a prime rib special every
Friday.
51-rtn

MISC. FOR SALE

For Sale: RCA 19" Color T.V. with
Time of Day, Chanel display, 3
years old. Brand new remote
control. \$300. call 733-2517
45-rtn

School Menu

Sept. 30th to Oct. 4th

MONDAY

Salisbury Steak w/ gravy
Mashed potatoes
Carrots
Vanilla Pudding
Hot Rolls
Milk

TUESDAY

Tacos w/ lettuce & cheese
Pinto Beans
Fruit
Crustoes
Milk

WEDNESDAY

Ham and Cheese Sandwich
Tater tots
Cole Slaw
Apple Cobbler
Milk

THURSDAY

Beef w/ gravy
Mashed Potatoes
Corn
Cake
Hot Rolls
Milk

FRIDAY

Sloppy Joes
French Fries
Tossed Salad
Oatmeal Cookies
Milk

FACTS & FIGURES

Forty-seven out of 50 states
currently have women serv-
ing in their state legislatures.

Nationwide, the total num-
ber of all state legislative
seats has decreased by 142
since 1971 when figures were
first gathered. However, the
number of women occupying
state legislative posts has
more than tripled in the same
14 years. Today, 1,102 women
hold state legislative posts
compared to 362 in 1971.

Mayoral races are another
area in which women are in-
creasingly taking part. In the
fourteen years from 1971 to
1985, the number of women
mayors increased more than
11 times—from seven to 80.

These figures, and other
pertinent information relat-
ing to women in government,
are part of a directory pub-
lished by Philip Morris Com-
panies Inc. in conjunction
with the National Women's
Political Caucus.

The Gruver Statesman

PUBLICATION (USPS 9598-6000)
GRUVER, TEXAS 79040
Box 796 659-3434

Owner-Publisher.....William M. Miller
Editor.....Joy Henderson, Gruver, Tx.
Second Class postage paid at Gruver,
Texas 79040

Any erroneous reflection upon the charac-
ter of any person or firm appearing in these
columns will be gladly and promptly
corrected upon being brought to the
attention of the management.

POSTMASTER: Send address changes to
Gruver Statesman, Box 796, Gruver, Tx.
79040.

SUBSCRIPTION RATE: Hansford, adjoining
counties, \$13.14 per year.

MEMBER

Texas Press Association

Future homemakers planning cookbook

Future Homemakers of Gruver
High School is preparing an out-
standing cookbook of unusual
value and content. The book will
contain at least 250 favorite re-
cipes. In addition to the recipes,
the cookbook will also contain

the book. The form below is for
your convenience.

If the recipe below continues on
the reverse side, be certain to mark
"over." Because all recipes have to
be separated into categories, write
all additional recipes on separate

and Salads, Vegetables, Desserts,
Breads and Rolls, and Miscell-
aneous). The books are plastic
spiral bound and lay open in use.

The completed book will cost
\$4.00. We are anticipating a great
demand and it may well be that you
will want to order one or more for

Commissioners to update telephone system

Hansford County Commissioners
met in regular session Monday
morning at the courthouse.

Reading of the minutes of the
previous meeting were read and
approved, and bills were ordered
paid.

Charlene Bryan was appointed
Election Judge of Precinct 1. She
replaces her father-in-law Joe Dan
Bryan, who passed away recently.

Commissioners voted to install an
updated telephone system in the
courthouse.

They also allowed an easement for
Phillips Petroleum Co.

specially selected up-to-date "Kit-
chen Handbook" material filled
with charts and cooking informa-
tion together with an "easy-to-
use" thumb index. The cover
shows a beautiful scene and is
printed in full four color process
and can be cleaned with a damp
cloth.

Because we want our book to be
truly representative, we want YOU
to give us at least one - or more of
your favorite recipes to feature in

sheets of your paper or on photo-
copies of this sheet so that the
Committee can put them into
categories. Please mail or turn in to
Cathy Potts, Gruver High School,

Box 747, Gruver, Texas 79040. The
book will have 10 different food
categories (e.g. Appetizers, Main
Dishes, Casseroles, Cakes and
Cookies, Jellies and Jams, Soups

yourself, as well as for gifts and
special occasions. Advance orders
will enable us to determine how
many books to be printed. Please

indicate at the bottom of this letter
the number of copies you would
like to reserve so that you will not
be disappointed when the books
are received.

Dear Friends:

Future Homemakers of Gruver High School is preparing an outstanding cookbook of unusual value and content. The book will contain at least 250 favorite recipes. In addition to the recipes, the cookbook will also contain specially selected up-to-date "Kitchen Handbook" material filled with charts and cooking information together with an "easy-to-use" thumb index. The cover shows a beautiful scene and is printed in full four color process and can be cleaned with a damp cloth.

Because we want our book to be truly representative, we want YOU to give us at least one - or more - of your favorite recipes to feature in the book. The form below is for your convenience.

If the recipe below continues on the reverse side, be certain to mark "OVER." Because all recipes have to be separated into categories, write all additional recipes on separate sheets of your paper or on photocopies of this sheet so that the Committee can put them into categories. Please mail or turn in to Cathy Potts, Gruver High School, Box 747, Gruver, Texas 79040. The book will have 10 different food categories (e.g. Appetizers, Main Dishes, Casseroles, Cakes and Cookies, Jellies and Jams, Soups and Salads, Vegetables, Desserts, Breads and Rolls, and Miscellaneous). The books are plastic spiral bound and lay open in use.

The completed book will cost \$4.00. We are anticipating a great demand and it may well be that you will want to order one or more for yourself, as well as for gifts and special occasions. Advance orders will enable us to determine how many books to be printed. Please indicate at the bottom of this letter the number of copies you would like to reserve so that you will not be disappointed when the books are received.

My Name _____ Sincerely,

My Telephone # _____ Mrs. Cathy Potts
Advisor

No. of Reserve Copies Requested _____

Committee Can Cut On Line To Send In To Publisher

Category _____

Recipe Title _____ Contributor's Name _____ (Please Print)

| Measurement | Ingredients | Measurement | Ingredients |
|-------------|-------------|-------------|-------------|
| | | | |
| | | | |
| | | | |
| | | | |
| | | | |
| | | | |
| | | | |
| | | | |
| | | | |

Directions: _____

IF THIS RECIPE IS CONTINUED, MARK "OVER" AND WRITE ON BOTTOM HALF OF PAGE ONLY.

REAL ESTATE

FOR SALE: Remodeled country home,
white stucco, great location, 1 1/4 miles
west of Gruver on Stratford highway.
10 acres, lots of trees, corral living
area, office, formal dining room,
kitchen with ceiling fan, dishwasher,
disposal, electric stove and breakfast
area. 3 bedrooms, 1 large full bath,
drapes stay, walk in closets, utility,
basement, central air and heat, double
car garage with storage apartment.
Call 733-2815.
49-rtn

TO MOVE: 1700 sq. ft. Lubbock
Ready Built - 17 mile S.W. of
Spearman. 3 bdrm. - 2 bath,
\$35,000. Call 659-2794.
50-4tc

FOR SALE

DEALER REPOS

Finance company has several 2 and
3 bedroom mobilehomes to liquidate
immediately. Example: 2 bedroom, 2
bath, shingle roof, garden tub, etc.
Assume payments of \$269.93 with
approved credit. Includes delivery
and insurance. Several 16ft. wides
available.

WE TAKE TRADES -
ANYTHING OF VALUE!
Mobilehome Liquidators, 6325
Canyon Dr., Amarillo, Texas, 806-358
-3257.
48-4tc

BUSINESS OPPORTUNITIES

OWN YOUR OWN JEAN-
SPORTSWEAR, LADIES APPAREL,
CHILDRENS, LARGE SIZE COM-
BINATION STORE, PETITES,
MATERNITY, ACCESSORIES, JOR-
DACHE, CHIC, LEE, LEVI, E Z
STREET, IZOD, ESPRIT, TOMBOY,
CALVIN KLEIN, SERGIO,
VALENTE, EVAN PICONE, LIZ
CLAIBORNE, MEMBERS ONLY,
GASOLINE, HEALTHTEX, OVER
1000 OTHERS. \$13,300 to \$24,900
INVENTORY, TRAINING, FIX-
TURES, GRAND OPENING ETC.
CAN OPEN 15 DAYS. MR. LOUGH-
LIN (612) 888-6555
51-1tp

WANTED

Need typing? call 733-2139.
37-rtn nc

DALLAS COWBOYS 1985 Football Schedule

| | |
|--|-------|
| Mon, Sept. 9 - WASHINGTON | 8:00 |
| Sun, Sept. 15 - at Detroit | 12:00 |
| Sun, Sept. 22 - CLEVELAND | 12:00 |
| Sun, Sept. 29 - at Houston | 12:00 |
| Sun, Oct. 6 - at New York Giants | 8:00 |
| Sat, Oct. 13 - PITTSBURGH | 12:00 |
| Sun, Oct. 20 - at Philadelphia | 12:00 |
| Sun, Oct. 27 - ATLANTA | 12:00 |
| Mon, Nov 4 - at St. Louis | 8:00 |
| Sun, Nov 10 - at Washington | 3:00 |
| Sun, Nov 17 - CHICAGO | 12:00 |
| Sun, Nov 24 - PHILADELPHIA | 3:00 |
| Thurs, Nov 28 - ST. LOUIS | 3:00 |
| Sun, Dec 8 - at Cincinnati | 12:00 |
| Sun, Dec. 15 - NEW YORK GIANTS | 12:00 |
| Sun, Dec. 22 - at San Francisco | 3:00 |
| Sat./Sun, Dec. 28/29 - Wild Card Games | |
| Sat./Sun, Jan. 4/5 - Divisional Playoffs | |
| Sun, Jan. 12 - Conference Championships | |
| Sun, Jan. 26 - Super Bowl XX (New Orleans) | |
| Sun, Feb. 2 - Pro Bowl (Honolulu) | |

NOTICE

On page 4 of this week's sale
circular the photograph of the
rake is incorrect. However,
price and copy are correct. The
rake pictured is a deluxe
model available for 8.99. We
apologize for this error and
any inconvenience it may have
caused.



4-H-FFA students place

Several 4-H and FFA students
from Hansford County exhibited
Swine at the South Plains Fair in
Lubbock September 20-22. The
following placed pigs in the fair:
Kris York - 1st Med. Wt. Duroc
Shane Hamish - 2nd Heavy wt.
Hampshire
Laneida Burnham - 3rd Heavy Wt.
Cross
Troy Brown - 3rd Med. Wt. Cross
Lance Hamish - 4th Med. Wt. Cross
Larry Dunn - 5th Lt. Wt. Duroc
Jay York - 7th Lt. Wt. Cross
Tessa Knudson - 10th Hvy Wt Cross
Rod Karlin - 13th Heavy Wt. Cross
Mark Brown - Exhibitor Heavy Wt.
Hampshire.

Others from Spearman and
Gruver in attendance at the South
Plains Fair were Mr. & Mrs. Larry
Dunn, Mr. & Mrs. Mike Burnham,
Mr. & Mrs. Mike Burnham, Jr.,
Mr. & Mrs. Bill Hamish & Jason,
Mr. & Mrs. Darrell West & Ty,
Lynell Williams, Lynette Williams,
Kevin Williams, Connie York, Burt
Williams, Hansford County Exten-
sion Agent, and Gary York, Spear-
man Voc. Ag. Teacher.

Beef promotion initiated by TDA and grocery stores

(AUSTIN)—Three of the state's
largest retail grocery chains have joined
with the Texas Department of Agriculture
to launch a special promotion of
Texas-grown beef, that began over the
Labor Day weekend and continues
through mid-October. "This Taste-of-
Texas promotion is an extra effort by
TDA's Marketing Division and the
supermarkets to increase the sales of
Texas beef," said TDA's Assistant Com-
missioner for Marketing and Agriculture
Development Susan DeMarco. "There
is a massive surplus of beef that has
been built up in Texas feedlots this year,
causing cattle prices to plummet to the
lowest level in seven years and threaten-
ing many ranchers with bankruptcy. To
cut into this price-depressing surplus,
and to help Texas consumers benefit
from cheaper beef prices, we're asking
Texas supermarket chains to join in a

statewide September beef sale," said
DeMarco.

Food chains that already have agreed
to participate in the month-long promo-
tion of Texas beef are the Houston
Division of Safeway, all Kroger food
stores in Texas, and the HEB Stores of
Texas. The HEB and Safeway promo-
tions got underway over Labor Day
and the Kroger participation began
September 15. These three chains will
put the unique Texas beef promotion in
over 430 Texas grocery stores. In addi-
tion, TDA is inviting all other Texas
grocery chains to participate in this
Texas beef promotion.

Texas ranchers have been losing as
much as \$150-a-head in recent months
on the animals they've sent to slaughter.
Producers are being paid an average of
53 cents-a-pound for their choice steers,
the lowest since 1978. Nationwide, the

beef industry's deficit during the first
half of 1985 is estimated at \$1 billion.

"If we don't do something, that kind
of loss will inflict deep and lasting
economic wounds in Texas, which is the
nation's number one beef-producing
state, where rancher-sales of beef have
traditionally totaled \$5 billion a year,"

"shelf talkers" available to stores to help
consumers identify Texas-grown beef.
Likewise, Pam Morris, public rela-
tions manager for the Houston Division
of Safeway, says promotions of Texas
beef have been successful for her com-
pany. "We expect this special promotion
in cooperation with TDA to increase
our beef sales even further."

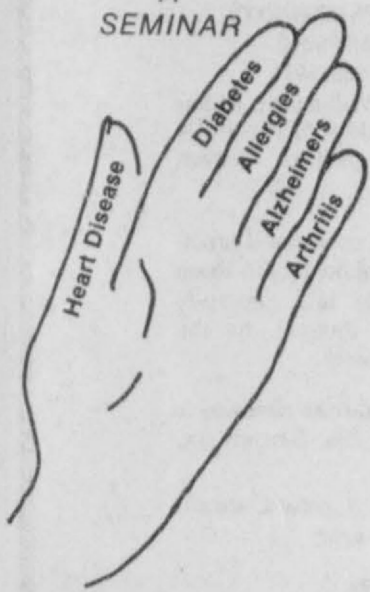
"This kind of cooperation helps
both Texas consumers and Texas ranch-
ers," said Peter Larkin, director of
public affairs for Kroger in Dallas.
"When TDA asked Kroger to assist, we

eagerly jumped at the promotion."
Paulette Schwartz, director of com-
modity promotion at the Agriculture
Department, says there are several con-
current steps TDA will take. "TDA will
make its Taste of Texas price cards and
the surplus off the backs of ranchers, so
the Texas Department of Agriculture
initiated talks with Safeway, Kroger
and HEB to discuss the plight of our
cattle raisers. The retailers responded
quickly and positively by agreeing to
work with TDA on special in-store
promotions that will sell more Texas
beef."

According to company officials, the
September-October promotion of Texas
beef will consist of price reductions on
different cuts of meat, special utilization
of the Taste of Texas logo, developed
by TDA to help consumers select Texas-
grown beef, along with special in-store,
printed circular and media advertising.

"HEB has always been aggressive in
promoting Texas beef," said Chuck
Hendryx, vice president of meat market-
ing for HEB, of San Antonio. "Beef is
the number one-selling commodity in
our chain. We are especially proud to
support the Texas cattle industry and
TDA's campaign to promote the sale of
more Texas beef."

"HANDLING HEALTH"
A
SEMINAR



THURSDAY
October 17, 1985
10:00 a.m. - 3:30 p.m.
VILLA INN
AMARILLO, TEXAS

When hungry kids rush home from school, they'll head straight for the chips, soft drinks and sugared treats unless some nutritious snacks are ready.

The key to getting youngsters to snack wisely is having the right snacks on hand. Having nutritious foods handy for youngsters may be especially important to working parents who are not at home to supervise after school snacking.

Have the following on hand as quick, nutritious after-school snacks:
Fresh fruits of any kind
Fresh vegetable pieces, such as carrot or celery sticks.
Unsweetened fruit juices.
Wholegrain crackers or bread with cheese
Nuts and Popcorn.
Boiled eggs.
Leftovers.

Parents can teach their children about nutrition and get some ideas and recipes for nutritious snacks and treats from "Be Super Snacker: Snacker Tells You How," and Extension publication especially for children.

Alpha Mu Psi Meets

The lovely, country home of Kelly Hart was the setting for the September 17th meeting of Alpha Mu Psi. Glenna Hunt, president, conducted the business meeting. A program about "Matchmaking" was given by Phyllis Hoel. Upcoming events, including the annual coffee break and the Over Seventies Night Out were discussed. Melanie Zimmer was the winner of the hostess gift. After the meeting, refreshments were enjoyed by all.

Those attending included Kelly Ames and her new daughter, Teal; Gail Etheredge and Molly; Kelly Hart, Phyllis Hoel, Cynthia Henson, Debbie Breland, Ginny Grottegut, Marsha Lowe, Tracy Beville, Nancy Koons and Gary; Amy TeBeest, Melanie Zimmer, and Glenna Hunt.

All those who can attend the "Over Seventies Night Out" need to mark your calendars for October 8th. More details will be published soon.

Catholic Youth

Organization meets

The Catholic youth met September 22, 1985 for their regular meeting. Open with prayer by Pete Ochoa. Mintues were read by Mark Allen. Treasurers report given by Jennifer Sintas. Discussion was held on having a booth at the Halloween Carnival. A decision will be made next meeting. New members were welcomed by Mr. Farr.

Devotional was given by Teresa Vela. Meeting was closed with prayer led by Cory Brown. Next meeting will be October 6, 1985 at 5:00 p.m. Games were enjoyed by all members and refreshments were served.

Super Scramble

Saturday

There will be a Super Scramble on Saturday at 1:30 p.m. at Hansford Golf Club. This is for those who played in the Tuesday Night Scramble. Cost will be \$1.00 for every scramble not attended during the summer.

The Scramble is also open to everyone.

- 10:00 - Registration and Coffee
Presiding - Mrs. Jean Everett, Chairman of Task Force
- 10:30 - Welcome - Amarillo Mayor R. P. Klein
Invocation - Reverend Bobby McMillian, Pastor, St. Paul United Methodist Church
- 10:45 - "HANDLING HEALTH" - Stephanie Hrycyk, Ph.D., Director for the Center for Community Health, Northwest Texas Hospital
- 11:45 - Announcements
- 12:00 - Lunch
- 1:00 - WORKSHOPS
 - "LIVING WITH ARTHRITIS" - Dr. Robert McNutt, Rheumatologist
Latest Research, Diagnosis, Symptoms, Treatment
 - "LIVING WELL WITH DIABETES" - Northwest Texas Hospital Teaching Team
Management - Sandra Hutchens, R.S., B.S.N., Patient Educator
Medications - Kevin Wilson, R.Ph., Pharmacist
Dietary Management - Myra Little, R.D., Clinical Dietitian
 - "HANDLING ALZHEIMERS DISEASE" -
Research - Dr. R. M. Nugent, Pathologist
Symptoms & Diagnosis - Dr. Rush Snyder, Neurologist
Legal Aspects - J. R. Hollingsworth, Attorney
 - "HANDLING ALLERGIES" - Dr. Malouf Abraham, Jr., Allergy Specialist
 - "EATING FOR A HEALTHY HEART" - Irene Keating, County Extension Agent (home economics), Potter County
 - Living Positively - Steve & Judy Gregoris
- 2:40 - Workshop Summaries
- 3:00 - HANDLING WELLNESS: THE CHALLENGE - Dr. Max Cox, Chairman of Behavioral Studies, Amarillo College, Member of Governor's Committee on Physical Fitness
- Evaluation
- 3:30 - Adjourn

Contact Karen Babitzke at the Extension offices. 659-2030 by Oct. 11. Program and Luncheon \$10.00.

The Snacker publication is number B-1416, and a companion piece on snacking for adults is Number B-1415. Both are available from the county Extension office.

This is the time of year when all those who are alive should get out into the great outdoors.

Library News

Perhaps with fall fast approaching, reading will occupy some of your spare time. A new book at Gruver City Library is YEAGER, by General Chuck Yeager. This book continues to be on the bestseller's list, and is an exciting, entertaining and immensely revealing book about a true American Hero. General Chuck Yeager, the greatest test pilot of them all...the first man to fly faster than the speed of sound...the World War II fighting ace who shot down a Messerschmitt jet with a prop-driven P-51 Mustang...the hero who defined a certain quality that all the hot-shot flyboys of the post-war era aimed to achieve...Chuck Yeager is the right stuff.

Now Chuck Yeager tells his whole incredible life story with the same "wide-open, full throttle" approach that has marked his career as a flier. He joined the Air Force at eighteen, fresh out of high school. By twenty-two he had risen through the ranks on the wings of his heroic exploits: his dogfighting over the flak-filled skies of Nazi Europe; his escape with the help of the French resistance after he was shot down over occupied France; his determination to stay in the war and bring down as many German planes as he could, despite orders to send him home. But it was after the war in 1947 that Yeager captured world-wide recognition as the first test pilot to smash the sound barrier - flying the super-

secret Bell X-1 despite cracked ribs from a riding accident a few days before. This was truly the Golden Age of Aviation, the exciting leap into the supersonic era, and Chuck Yeager was there every step of the way. Through him we can relive those daredevil days when pilots either set records or drilled a hole in the desert. By the time he left Edwards Air Force Base in 1954 he was already a legend. But Chuck Yeager kept on setting new standards of excellence, whether commanding a fighter squadron in Europe, flying tactical bombers in Southeast Asia, or supervising military defense in the Pakistan-India War.

The story is all here, in Yeager's own words, and in wonderful reminiscences from his wife, Glennis, and those friends and colleagues who have known him best. Glennis's contributions to the book, as indeed to Yeager's life, are especially important for what they tell us about the day-by-day strain of living with a man who daily

braved death in the skies...about the special kind of heroism it takes for a young woman to raise a family of four in the bleak Mojave desert in primitive makeshift lodgings. YEAGER by General Chuck Yeager - truly a one-of-a-kind portrait.
Gruver City Library
2:00-6:00p.m.
Monday through Friday

**RV HAIL
DAMAGE REPAIRED**

Call Plains Chevrolet RV Center for repair. Skilled personnell, fast service, materials in stock. Free Estimates.

806-374-4611, ext. 272

Memorial Hospital in Dumas
is now accepting patients for participation in its

hemodialysis program.

For information call
806-935-7171, ext. 301.

**40 bed addition to
Manor proposed**

On 12 September 1985, the County Commissioners and the Board of Directors of Hansford County heard a presentation by Mr. Bob Cox, Croslin, & Assoc., an architectural firm from Austin, Texas, on the various plans for the expansion of Hansford Manor. Cost for the project is being projected at \$75.00 to \$80.00 per square foot for construction only. Mr. Cox noted this figure is higher than is actually expected to be.

Mr. Cox presented 4 plans with square footage and cost as follows, remembering this is construction cost only and does not include furniture, architect fees and financing fees: 15 bed, 3,925 square feet running in cost from \$295,000.00 to \$314,000.00; 25 bed, 16,725 square

feet at \$1,254,000.00 to \$1,338,000.00; 40 bed, 17,550 square feet at \$1,316,000.00 to \$1,404,000.00; and a plan called Development Plan containing 40 beds and all the additions needed with 22,910 square feet at \$1,718,000.00 to \$1,832,000.00 with construction time placed at 6 months on 15 beds, 9 months on 25 beds, and 12 months on both the 40 bed and the Development Plan. The commissioners were requested to comment on this project. After great consideration by all, a motion was made to accept the Development plan. Several Commissioners were noted to say there is a real need to expand our present facility. On a personal note, I, as the

administrator of both facilities, feel quite proud of the support the community gives to their hospital and manor. We have a fine facility, well equipped and can and do provide quality care. This expansion project will allow us the opportunity to share with more citizens of Hansford County. I would like to encourage the citizens of Spearman and Gruver to visit our facilities at their convenience.

Respectfully,
Dennis Robertson
Hospital/Manor Administrator
Editor's Note: We will carry complete details from time to time on the proposed expansion of Hansford Manor. A bond issue will decide whether the addition to the present manor will be constructed.



The "Child Abuse" workshop held at Hansford County Hospital Sept. 16 was well attended. The workshop was presented by West Texas State University School of Nursing Continuing Education Program

Hansford Hospital sponsored a continuing education workshop entitled "Child Abuse: Assessment and Intervention. It was held in the Hansford Manor dining room on Monday September 16, 1985, from 6 p.m. to 9 p.m.

Camille Davis RN, MSN, in association with the West Texas State University School of Nursing Department

gave an excellent program. The program included a slide presentation along with types of abuse, method of assessment, characteristics of victims and abusers, and various social and legal interventions.

We had an excellent turnout of 57 people from various places such as Spearman, Gruver, Perryton, Wheeler, and Miami. These people were

nurses, hospital and manor employees, EMS personnel, teachers, day care center employees, police department employees, deputy sheriff, school principle, counselors, and some interested citizens. Thank you all for your interest in this very real and important topic.

Gillaspie Chevrolet, Olds, Inc.

Highway 207 South, Spearman, Texas

659-2541 800-692-4657

Bye Bye '85

**ALL 1985 MODELS
NOW CLOSEOUT PRICED!**

GMAC Financing Available
on many in-stock vehicles

7.7%

**2 WD and 4WD Pickups
Priced to Move**

**98 Regency
Priced to Move**

Hurry - supply dwindling

MR. FARMER - Chevrolet Medium-Duty Trucks in stock now!

★ With approved credit
Good until Oct. 2nd, 1985

Ladies golf tourney held here

The Hansford County Ladies Golf Assn. held its annual Ladies Tournament on Tuesday, Sept. 10. There were 27 teams from Gruver, Stratford, Dalhart, Perryton, Guymon, Liberal, Pampa, Tucumcari, Dumas, Borger, Stinnett, Panhandle and Spearman.

In the Championship Flight, First place - Pat Tomason (Dalhart) and Valerie Runyon (Tucumcari), Second place - Donna Cummins and Betty Sturdy (Guymon), Third place - Zoe Brown and Norma Luck (Dalhart), Fourth place - Pat Peckenpaugh and Nancy Cook (Perryton).

In the First Flight, there was a tie for First and Second between Elaine Riddle and Joyce Epperson (Pampa) and Fay Cunningham (Spearman) and Bonnie Crofford (Panhandle). There was also a tie for Third and Fourth between

Barbara Cluck and Juanita Logsdon (Gruver) and Carolyn Gressett and Glenda Guthrie (Spearman).

In the Second Flight, First place went to Janet Dudley and Allred (Perryton), Second place - Mona Beth Windom and Carolyn Collier (Spearman), Third place (tie) - Gay Houser and Fern Hacker (Guymon) and Dot Allen and Mary Fair (Pampa).

Longest Drive awards went to Championship - Valerie Runyon, First Flight - Glenda Guthrie, Third Flight - Carol Hergert, Closest to the pin on #7 was Judy O'Quinn.

The ladies of the Golf Assn. would like to thank the following people for sponsoring the tournament: Gillaspie Chev.-Olds, First National Bank, Hergert Pontiac-Buick, Mayor Ralph Blodgett, Spearman Super Service, Brown, Graham & Co., Hansford Imple-

ment, H & H Water Well Service, The Bunkhouse, Berry Cleaners, Busters Aerial Dusters, Speartex Grain, Gruver State Bank, Gruver insurance Agency, Sparks Bros. Spraying, Agco, Tico, First State Bank, and J.L. Brock. Without these people, our tournament could not have been such a huge success.

A special "Thank You" also goes to the following businesses who donated door prizes: J.G.'s, Gordon's Drug, ChaLors, Thriftway, Blackburns Flowers, Beedy Furniture, Prairie Chalet, Callaway's Flowers, Lady Fair, Boyd's Shoes, Jenny Lynn's, Sacks, and Hotel Royal.

We feel fortunate to live where everyone is always so willing to donate in order that Hansford County can host a tournament such as this.

THANKS.



Championship flight first place at the recent Hansford

Golf Club ladies tournament winners were left to right, Pat

Tomason of Dalhart and Valerie Runyan of Tucumcari.



Championship flight-4th place winners in the recent

Hansford Golf Club ladies tournament were left to right,

Pat Peckenpaugh and Nancy Cook of Perryton.



Third place winners in the championship flight at the

recent Hansford Golf Club ladies tournament were left to

right, Norma Luck and Zoe Brown, both of Dalhart.

Postmaster attends National Meeting

Gruver Tx. Postmaster, Doris Pinkerton, attended the 81st Annual Convention of the National Association of Postmasters of the United States (NAPUS) held September 9 through 12 at Las Vegas, NV. Postmaster Pinkerton said the city that boasts of sun and fun was also a city of work and training for more than 5,000 Postmaster who attended.

The Private Express Statutes which allows the Postal Service to deliver a first-class letter anywhere in the United States for the same cost, and the threat of closing small Post Offices were among the important issues discussed during the four day meeting held at the Las Vegas Hilton.

NAPUS National President Thomas P. Costin, Jr., Lynn, MA, said that postage rates could jump as high as \$1.50 a letter "or more" if Congress passes bills to allow private businesses to deliver the first class mail. The Postal Service would have to raise the rates to break even and continue delivery in rural areas while the

private businesses would deliver only to the profitable areas such as the large cities.

Costin urged the Postmasters to make their customers aware of the critical issues on Capitol Hill. He stressed that it is Congress who is making these decisions, not the Postal Service.

Also attending the convention were Postal and Congressional Officials who included Postmaster General Paul Carlin, Deputy Postmaster General Jackie Strange, Congresswoman Mary Rose Oaker and members of the Board of Governor of the Postal Service.

Hugh Bates, Clanton, Alabama, was elected during the convention to succeed Costin as head of the NAPUS Organization in 1986-87.

Autumn is marching on: even the scarecrows are wearing dead leaves.

Otsuyu Nakagawa.

BIBLE VERSE

Man looketh on the outward appearance, but the Lord looketh on the heart.

1. Who was the author of this statement?
2. To whom was it spoken?
3. What is the interpretation of it?
4. Where may it be found?

Answers

1. The Lord.
2. To the prophet Samuel, at the time of the selection of Saul as Israel's first King.
3. The human tendency to judge by looks, but the divine estimate of a man is based upon his character.
4. I Samuel 16:7b.

PRICES EFFECTIVE
SEPT. 26-28, 1985

OPEN 24 HOURS A DAY
GROCERIES, SOFT DRINKS,
SNACKS, HOT COOKED FOODS,
SELF SERVE GAS-MONEY ORDERS,
WHILE SUPPLIES LAST



ALL GRINDS FOLGER'S
COFFEE
\$2.19
1 LB. CAN

PAPER TOWELS
BRAWNY
59¢
JUMBO ROLL

HEFTY LAWN & LEAF
BAGS
\$1.59
10 CT. BOX

SUPER IN-STORE SPECIALS FROM ALLSUP'S

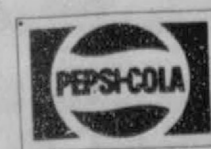
DELSEY BATHROOM
TISSUE 99¢
4 ROLL PKG.

KLEENEX
FACIAL TISSUE 79¢
175 CT. BOX

FAYGO ASSORTED FLAVORS
DRINKS 30¢
16 oz. BOTTLES EACH

SHURFINE ALUMINUM
FOIL 2/99¢
12x25 ROLL

COOKED FOOD SPECIAL AS FEATURED ON TV
GOLDEN BROWN
ALLSUP'S BURRITOS
2 99¢
FOR



DIET-PEPSI FREE-PEPSI LIGHT
PEPSI COLA
\$1.79
12 oz. CAN 6 PAK.

DELICIOUS
ALLSUP'S MILK 99¢
1/2 GAL. CTN.

BORDEN'S ASSORTED
ICE CREAM \$1.69
1/2 GAL. CTN.

NURSANICKEL MOTEL

Hwy. 207 South

Spearman, Texas

Now under NEW Management

Locally owned and operated

Managers: Willis & Idella Randall
Spearman, Texas

The cattle industry pursues an "All out effort" to increase demand

Consumer publicity highlights for Nutri-Facts thus far include four stories run by Associated Press and released to hundreds of newspapers nationwide, stories in USA Today, the New York Times, US News and World Report, Business Week and the front page of the Detroit Free Press.

Television coverage included a segment on the Cable News Network carried by 89 stations, use of the video news release by 34 stations, and appearances by Meat Board staffer John Francis on "CBS Morning News" and "Good Morning America."

The Meat Nutri-Facts program was developed by the National Live Stock and Meat Board in conjunction with the American Meat Institute and the Food Marketing Institute. "This is the first time that I can ever remember the producers, packers, and retailers working side by side on a project that each one felt was in their best interest," said John Huston, President of the National Live Stock and Meat Board.

E. J. Husky of Fleming Foods (one of the largest wholesale food distributors in the U.S.) in conference with the Beef Industry Council said, "This is the best thing the beef industry's done in years!"

Exactly what is Nutri-Facts... nutrition information for 31 specific retail cuts of meat, stickers indicating less than 200 calories or 250 calories per serving, recipes, lots of

focus and features, and brightly-colored bar graph used to communicate the low calorie, low cholesterol nutrient profile of each on a three-ounce, cooked, trimmed serving of beef, pork, and lamb.

In conjunction with Nutri-Facts, the beef industry is in the midst of one of the largest promotional campaigns ever, which includes a new television commercial, "Beef. Good News for People Who Eat," combining Beethoven and 16 beef meals in 22 seconds, new radio spots with the "Beef. Good News" theme, a print campaign, "Middle Management" (attached) in 9 magazines (Bon Appetit, Country Living, Feeling Great, Glamour, New Woman, Parents, Red Book, Self, and Newsweek.) Combined with Nutri-Facts and TV commercials to create a consumer awareness rarely seen by the beef industry. The circulation for nine magazines totals 15.9 million and the impressions for our target audience of women will total 36.9 million for all six insertions in each magazine during the 12-month period. Adding to this never-before-seen exposure for the beef industry is an effort by a total of 1689 supermarkets in Texas to display the Beef Industry Council's point-of-purchase materials encouraging the consumer to "Take it Along. It's Nutritious." This information is calculated to reach 75% of all Texas consumers. More than 26,000 retail outlets across the country

will receive the promotion kits—which include case headers, rail banners, mobiles, and product use cards all trying to persuade those two out of every three consumers who have no supper plans—to try beef tonight.

Cooperative promotions are also on the schedule this fall. Preliminary results about the Kingsford Charcoal Sunday newspaper supplement coupon that offered \$1 off on beef: so far 64,000 coupons have been redeemed. Significant increases in this number are expected. Kingsford Charcoal was joined by Royal Oak Plus charcoal who had a similar offer good toward \$1.50 off on a meat purchase. Joint promotions are proving to be quite a catchy concept. Minute Rice is offering a \$1.00 off beef coupon in a national insert in Sunday papers. Thomas' English Muffins offered similar coupons and Heinz and Velveeta offered \$2.50 worth of free beef this past month.

Keeping in mind that beef is the largest agricultural commodity in Texas as well as the fact that Texas is the largest beef producing state, Roy Wheeler, cattleman from Texas, said, "We still believe in old-fashioned capitalism. Thus we as cattlemen believe it is our responsibility to help ourselves. The 25 cent checkoff program is providing us the necessary funds to help us reestablish beef as a part of every well-balanced diet."

Anne Anderson of the Beef

Industry Council states that "We know our job with the consumer is just beginning—but we've recognized what we have to do, made our plans, and 'got going.' Beef's got a lot to offer Texans, and we're going to convince them."

For the beef industry, 1985 should go down in history, not because prices were low, but because the industry accepted the challenge of changing an eroding market for its product. Nutri-Facts... the consumer information campaign pioneering this change is establishing its place in supermarkets throughout Texas. "One of the advantages of this new program is the fact that the busy shopper can see at a glance the nutrients contained in a serving of the meats. Meat Nutri-Facts takes the principle of cost-per-serving and transforms it into nutrition-per-serving," explained Byron Crain, director of merchandising for Kroger's Dallas marketing area.

Safeway, H.E.B., Tom Thumb, and Affiliated assure us that Nutri-Facts is "on a front burner with us," and they will soon be using it in all their stores. Albertson's a large Texas chain, has taken a giant step in the right direction by instituting a four-page advertising with beef as the feature attraction. This is a sharp contrast to beef-less features just a short time ago.

Come By The ANNUAL Blind Made Broom & Mop SALE!

REMEMBER... Your purchase creates JOBS for the BLIND AND... Proceeds from this sale will enable our local LIONS CLUB to sponsor... EYEGLASSES for the needy LIONS Crippled Children's Camp Neighborhood Watch Local Civic Projects

Top Quality Brooms, Mops, Ironing Board Covers and Pads, Durable Door Mats, and Other Household Items

ONE DAY ONLY!
WEDNESDAY
OCTOBER 2, 1985

All products will be on display and for sale at the TRUCK from the LIGHTHOUSE for the BLIND Between the Gruver State Bank and Post Office on Main Street



MEAT NUTRI-FACTS

Beef Sirloin Steak

185 calories

PER 3 OUNCE BROILED, TRIMMED SERVING

NUTRITION INFORMATION PER COOKED SERVING
TOTAL RECOMMENDED DIETARY INTAKE

| | | % | 0% | 50% | 100% |
|--|--------|----|----------------|-----|------|
| •CALORIES | 185 | 9 | [Progress bar] | | |
| •TOTAL FAT | 8.3g | 12 | [Progress bar] | | |
| <small>Saturated Fat, 3.3. Monounsaturated Fat, 3.6. Polyunsaturated Fat, .4</small> | | | | | |
| •CHOLESTEROL | 75mg | 25 | [Progress bar] | | |
| •SODIUM | 56mg | 2 | [Progress bar] | | |
| *PROTEIN | 26g | 57 | [Progress bar] | | |
| *IRON | 2.9mg | 16 | [Progress bar] | | |
| *ZINC | 5.5mg | 37 | [Progress bar] | | |
| *THIAMIN | .11mg | 7 | [Progress bar] | | |
| *NIACIN | 3.6mg | 18 | [Progress bar] | | |
| *B-12 | 2.4mcg | 40 | [Progress bar] | | |

*Based on standards of comparison. 2000 calories per day is the midpoint of the recommendation by the National Academy of Sciences for women ages 23-51. National Academy of Sciences also recommends a maximum of 3300 mg of sodium per day. The American Heart Association recommends not more than 30% of calories from fat and no more than 300 mg of cholesterol per day. *Based on % U.S. Recommended Daily Allowances. Data based on USDA research.

**Support the Gruver Lions Broom and mop sale -
Wednesday, October 2.**

Caprock Industries, Inc.

733-2483 Gruver, Tx.

On the Go with Joy

After my article last week, I got to thinking about what would I do if I got concerned in the pea patch with a neaky rattlesnake. If he (or she) gave me a chance, I'd probably start trying to talk my way out of the situations and begin negotiations or offer the compromise. It reminded me of an article that appeared recently in the Leaders Digest and additional comments from Don Truex via "For a Better Understanding."

"A hunter raised his rifle and took careful aim at a large bear. When about to pull the trigger, the bear spoke in a soft soothing voice. 'Isn't it better to talk than to shoot? What do you want? Let us negotiate the matter?'"

Lowering the rifle, the hunter replied 'I want a Fur Coat.' 'Good' said the bear, 'That is a negotiable question. I only want a full stomach, so let us negotiate a compromise.'

They sat down to negotiate, and after a time, the bear walked away

alone. The negotiations had been successful. The Bear had a full stomach, and the Hunter had his fur coat!"

"Let us negotiate," Satan is never so subtle, so deceptive as when using this play! He knows we will not disavow our faith or run headlong into moral impurity; thus we are encouraged to negotiate. "Let's talk." "One sin is of no real consequence." My friend just remember: "he is a liar and the father of it" (John 8:44). You can never emerge victorious in negotiations with him. Your soul is far too precious to be lost in the bargain (Mark 8:36).

One of the most memorable sermons I have ever heard was given by Ben Merenes called "Sin is a Serpent and if you think the sound of a rattlesnake is deadly, you should of heard this sermon."

Well, so much for my preaching this week, but I've got a lot more thoughts on the subject.

Support the Gruver

Broom and mop sale -

Wed. Oct. 2.



All Manufactured by Blind Workmen in Blind Shops or Lighthouses, which are nonprofit organizations

Delight Meal Deal

Taco Salad & Diet Drink

\$2.99

We start with a crispy, golden tortilla shell, fried up fresh. Then we fill it with fresh lettuce, spicy taco beef, chopped tomato and shredded cheese. Top it with tangy sour cream and tender black olives. Serve it with piquante sauce. And add your favorite diet soft drink. All for only \$2.99.

The new Delight Meal Deal. Every bite is pure delight!

Monday Sept. 23 thru Sunday Oct. 6

Dairy Queen

"Better than ever"

Gruver Lions Club Broom Sale-----Wednesday, October 2, 1985



ANNUAL Blind Made Broom & Mop SALE!

Summer & Fall 1985 price list - All prices subject to applicable sales taxes

| | | | | | | | | | | | |
|---------------|--|-------------------------------------|------------------------------------|---|--|---|-----------------------------------|---|----------------------------------|--|--|
| Mops | COTTON WAREHOUSE MOP #101 24 oz. \$5.50 | COTTON HOUSE MOP #102 12 oz. \$3.75 | RAYON HOUSE MOP #103 12 oz. \$3.75 | TOY MOP Excellent Utility & BBQ Mop #104 \$2.00 | SPONGE MOP with Scrubber #106 \$6.50 | INDUSTRIAL MOP HANDLE Zinc Plated #110 \$6.00 | REFILL #107 \$2.75 | 16 oz. RAYON MOP HEAD #116 \$4.50 | BUG-MUGGER SQUEEGEE #142 \$3.00 | "Magnetic Action" LAMB'S WOOL DUSTER #199 \$6.75 | |
| | WAREHOUSE BROOM #201 \$7.25 | HOUSE BROOM #205 \$6.00 | DAINTY BROOM #206 \$5.50 | RAINBOW BROOM #207 \$5.25 | FLOR-ADORA "soft-tipped" plastic bristle BROOM #211 \$5.50 | WHISK BROOM #208 \$2.25 | TOY BROOM #209 \$2.50 | LAWN RAKE & CARPET BROOM "no-sag" Spring Steel Construction #210 \$6.25 | toilet BOWL BRUSH #730 \$1.50 | soft tampico COUNTER BRUSH #740 \$5.50 | |
| Brooms | Garage/Patio BRUSHES stiff plastic fiber resists OIL | TAMPICO FLOOR BRUSHES | GONG BRUSHES | "soft-tip" PLASTIC FLOOR BRUSHES | brass bristle BAR-B-Q GRILL BRUSH with steel scraper #768 \$5.50 | EXTRA Metal Tip HANDLES 60" #660 \$3.00 | EXTRA handle SUPPORTS #670 \$2.00 | 8 1/2" handle 20" #708 \$2.75 | "Quilted" POT HOLDER #824 \$1.00 | two pack "Quilted" OVEN MITTS #825 \$3.50 | "Zippered" MESH WASHING MACHINE BAG #827 \$3.00 |
| | SCRUB BRUSH #770 \$1.25 | two pack DISH TOWELS #820 \$3.25 | four pack DISH CLOTHS #821 \$3.00 | DUST CLOTH #822 \$1.00 | three pack SPONGE/SCOUR #829 \$1.25 | three pack SCOURING PADS #828 \$3.00 | two pack SCRUB-EZ #830 \$2.00 | UTILITY SPONGE #828 \$1.75 | "clip-on" DUST PAN #841 \$1.25 | PET DISH #842 \$1.00 | "TeFlo" IRONING BOARD COVER & PAD set #892 \$5.50 |
| Brushes | WAREHOUSE BROOM #201 \$7.25 | HOUSE BROOM #205 \$6.00 | DAINTY BROOM #206 \$5.50 | RAINBOW BROOM #207 \$5.25 | FLOR-ADORA "soft-tipped" plastic bristle BROOM #211 \$5.50 | WHISK BROOM #208 \$2.25 | TOY BROOM #209 \$2.50 | LAWN RAKE & CARPET BROOM "no-sag" Spring Steel Construction #210 \$6.25 | toilet BOWL BRUSH #730 \$1.50 | soft tampico COUNTER BRUSH #740 \$5.50 | brass bristle BAR-B-Q GRILL BRUSH with steel scraper #768 \$5.50 |
| | Garage/Patio BRUSHES stiff plastic fiber resists OIL | TAMPICO FLOOR BRUSHES | GONG BRUSHES | "soft-tip" PLASTIC FLOOR BRUSHES | brass bristle BAR-B-Q GRILL BRUSH with steel scraper #768 \$5.50 | EXTRA Metal Tip HANDLES 60" #660 \$3.00 | EXTRA handle SUPPORTS #670 \$2.00 | 8 1/2" handle 20" #708 \$2.75 | "Quilted" POT HOLDER #824 \$1.00 | two pack "Quilted" OVEN MITTS #825 \$3.50 | "Zippered" MESH WASHING MACHINE BAG #827 \$3.00 |
| Miscellaneous | WAREHOUSE BROOM #201 \$7.25 | HOUSE BROOM #205 \$6.00 | DAINTY BROOM #206 \$5.50 | RAINBOW BROOM #207 \$5.25 | FLOR-ADORA "soft-tipped" plastic bristle BROOM #211 \$5.50 | WHISK BROOM #208 \$2.25 | TOY BROOM #209 \$2.50 | LAWN RAKE & CARPET BROOM "no-sag" Spring Steel Construction #210 \$6.25 | toilet BOWL BRUSH #730 \$1.50 | soft tampico COUNTER BRUSH #740 \$5.50 | brass bristle BAR-B-Q GRILL BRUSH with steel scraper #768 \$5.50 |
| | Garage/Patio BRUSHES stiff plastic fiber resists OIL | TAMPICO FLOOR BRUSHES | GONG BRUSHES | "soft-tip" PLASTIC FLOOR BRUSHES | brass bristle BAR-B-Q GRILL BRUSH with steel scraper #768 \$5.50 | EXTRA Metal Tip HANDLES 60" #660 \$3.00 | EXTRA handle SUPPORTS #670 \$2.00 | 8 1/2" handle 20" #708 \$2.75 | "Quilted" POT HOLDER #824 \$1.00 | two pack "Quilted" OVEN MITTS #825 \$3.50 | "Zippered" MESH WASHING MACHINE BAG #827 \$3.00 |
| Mats | WAREHOUSE BROOM #201 \$7.25 | HOUSE BROOM #205 \$6.00 | DAINTY BROOM #206 \$5.50 | RAINBOW BROOM #207 \$5.25 | FLOR-ADORA "soft-tipped" plastic bristle BROOM #211 \$5.50 | WHISK BROOM #208 \$2.25 | TOY BROOM #209 \$2.50 | LAWN RAKE & CARPET BROOM "no-sag" Spring Steel Construction #210 \$6.25 | toilet BOWL BRUSH #730 \$1.50 | soft tampico COUNTER BRUSH #740 \$5.50 | brass bristle BAR-B-Q GRILL BRUSH with steel scraper #768 \$5.50 |
| | Garage/Patio BRUSHES stiff plastic fiber resists OIL | TAMPICO FLOOR BRUSHES | GONG BRUSHES | "soft-tip" PLASTIC FLOOR BRUSHES | brass bristle BAR-B-Q GRILL BRUSH with steel scraper #768 \$5.50 | EXTRA Metal Tip HANDLES 60" #660 \$3.00 | EXTRA handle SUPPORTS #670 \$2.00 | 8 1/2" handle 20" #708 \$2.75 | "Quilted" POT HOLDER #824 \$1.00 | two pack "Quilted" OVEN MITTS #825 \$3.50 | "Zippered" MESH WASHING MACHINE BAG #827 \$3.00 |
| Industrial | WAREHOUSE BROOM #201 \$7.25 | HOUSE BROOM #205 \$6.00 | DAINTY BROOM #206 \$5.50 | RAINBOW BROOM #207 \$5.25 | FLOR-ADORA "soft-tipped" plastic bristle BROOM #211 \$5.50 | WHISK BROOM #208 \$2.25 | TOY BROOM #209 \$2.50 | LAWN RAKE & CARPET BROOM "no-sag" Spring Steel Construction #210 \$6.25 | toilet BOWL BRUSH #730 \$1.50 | soft tampico COUNTER BRUSH #740 \$5.50 | brass bristle BAR-B-Q GRILL BRUSH with steel scraper #768 \$5.50 |
| | Garage/Patio BRUSHES stiff plastic fiber resists OIL | TAMPICO FLOOR BRUSHES | GONG BRUSHES | "soft-tip" PLASTIC FLOOR BRUSHES | brass bristle BAR-B-Q GRILL BRUSH with steel scraper #768 \$5.50 | EXTRA Metal Tip HANDLES 60" #660 \$3.00 | EXTRA handle SUPPORTS #670 \$2.00 | 8 1/2" handle 20" #708 \$2.75 | "Quilted" POT HOLDER #824 \$1.00 | two pack "Quilted" OVEN MITTS #825 \$3.50 | "Zippered" MESH WASHING MACHINE BAG #827 \$3.00 |

VETERINARY-SUPPLY CLOSE-OUT

All Franklin, Farnum, Cyanamid, Globe Laboratories veterinary supply at 1/2 price. Also, miscellaneous animal care products, and instruments.

Limited quantities on hand -

Spearman Drug Company

The **Jexell** Store
Prescription Specialist

220 Main SPEARMAN, TEXAS 79081 Phone 659-2226

This advertisement sponsored by

GEBO'S

... the kind of store you remember.

Notice of meeting

NOTICE OF MEETING OF THE GOVERNING BODY OF City of Gruver

Notice is hereby given that a special meeting of the governing body of the above named City or Town will be held on the 26th day of September, 1985, at 2:00 P.M., in the City Hall at 108 East Broadway Street, Gruver, Hansford County, Texas, at which time the following subjects will be discussed, to-wit:

1. Consider a rate increase request from Southwestern Public Service Company and approve a resolution delaying the increase.
2. Consider the salaries of the City employees.
3. Approve a zoning change which has been recommended by the Planning and Zoning Commission.
4. Approve a 25 cent Natural gas rate increase and a \$1.00 sewer rate increase.
5. Approve a City Personnel Policy.

Dated this 23rd day of September, 1985.

City of Gruver
A. J. Ratliff
City Manager

I, the undersigned authority, do hereby certify that the above Notice of Meeting of the governing body of the above named City or Town Gruver is a true and correct copy of said Notice and that I posted a true and correct copy of said Notice on the bulletin board, in the City Hall of said City or Town in Gruver, Texas, a place convenient and readily accessible to the general public at all times, and said Notice

was posted on September 23, 1985, at 8:00 o'clock A.M., and remained so posted continuously for at least 72 hours preceding the scheduled time of said Meeting.

Dated this 23 day of September, 1985.

City of Gruver
A. J. Ratliff
City Clerk

COME SQUARE DANCE TONIGHT!
The Boots and Slippers Square Dance Club will be dancing tonight, September 26th, 8:00 PM, at the Golden Age Center with Steve Donnell calling, come join the fun!!!

Proceeds From This Sale Will Be Used For
Cripple Children's Camp **Glasses For Underprivileged**
Little League
Only Businesses Will Be Called On Door To Door
Deliveries Will Be Made To Homes
Without Transportation

ANNUAL LIONS BROOM SALE

Prices in effect Wednesday, September 25 through Saturday, September 28

*Rebate Coupons at Customer Service. Manufacturer's limits may apply.

TG&Y Family Centers

Items Available At The TG&Y Family Centers Listed Below Only

Save money this week during our DOLLAR DAYS SALE

Anchor Hocking

3 for \$10

Anchor Hocking Microwave® for today's cook. Choice of racks for bacon, roasting or all-purpose use, muffin pan, covered versatility pan, divided dish, baking sheet or ring.

4 for \$1 Your Choice

Hershey's Candy Bars: plain milk chocolate or with almonds, Kit Kat, Mr. Goodbar or Reese's Peanut Butter Cups.

Antique Brass 52" Ceiling Fan

Reg. \$69.99

3 speed reversable motor **\$42.99**

Soft Scotties Tissues

3 boxes \$2

Scotties Tissues are 2-ply strong, 2-ply soft, 200 white tissues in a pretty decorator box. Stock up now during TG&Y's Dollar Days.

Camay Beauty Soap

5 for \$2

Camay with normal skin formula. The soap of beautiful women. 4.75 oz. each.

Hair care with Finesse

\$2 each

Finesse Shampoo or Conditioner with regular or extra body formula. 15 oz. each.

Massengill

\$1 Twin Pack

Massengill Disposable Douche, country flowers, mountain herbs or vinegar and water.

2 for \$3 Mixed Nuts are always a treat. 12 ounces.

15.99 Sale Price
-5.00 Mail-in Rebate*
-2.00 Bonus Rebate*

8.99 Final Cost

Proctor-Silex Automatic Drip Coffeemaker brews up to 10 cups. Reg. 18.99

#4-15AL

Windex Glass Cleaner Refill

\$1

Big, 32-ounce Refill for your non-breakable Windex bottle with trigger sprayer. Special Ammonia-D formula.

\$6 Ladies' Big Sweep Gown in solids or prints. 100% nylon or brushed acetate/nylon. One size fits all. Reg. 8.99

3 for \$2 Girls' Elderion® Knit Panties in assorted prints. Sizes 2-10.

\$2 Low Price each
-\$1 Mail-in Rebate*

\$1 Final Cost each

G.E. 3-way Miser Light Bulb, 50-135-185 watts.
G.E. Miser 4-pack Light Bulbs, 55, 70 or 95 watts.

Hefty Cinch Sak

.88 Hefty Cinch Sak Tall Kitchen Bags with 13 gallon capacity, 10 per package.

Boys' 5-pack Tube Socks

\$4

Long-wearing Orion® blend Tubes with assorted color striped tops. Sizes 6-8 or 8-11.

\$1 Rebate* on 4 bulbs

Low Price \$3 for 2 pkgs.
-\$1 Mail-in Rebate*

\$2 Final Cost for 2 pkgs.

G.E. Decorative Light Bulbs, assorted sizes and shapes.

Windshield Washer Pre-mix

4 for \$3

4 for Windshield Washer Pre-mix, anti-freeze solvent with detergent. 1 gallon.

Men's Insulated Leather Boots

19.88

Men's Leather Boots with Goodyear welt construction, oil-resistant sole and thick insulation. Sizes 7½-12. Reg. 28.99

Men's 3-pair Dress Socks

\$2 ORLON

Men's Orion® Dress Socks in black, navy, brown or grey. 3 per package. Sizes 10-13.

521 S. HWY. 207

Spearman, Texas

659-3741

TG&Y stands upon your satisfaction. If you are not happy with what you purchase, return it with your sales receipt. We will cheerfully exchange it or fully refund your money. If for unforeseen reasons advertised merchandise is not available, we will be glad to offer you a like item of comparable quality and value when possible. Most advertised items are reduced from our everyday low prices. Some merchandise is in limited quantities and available only while supply lasts. We reserve the right to limit quantities. We will be happy to accept your personal check, MasterCard, Visa or cash. We want you to be glad you shopped TG&Y.

