

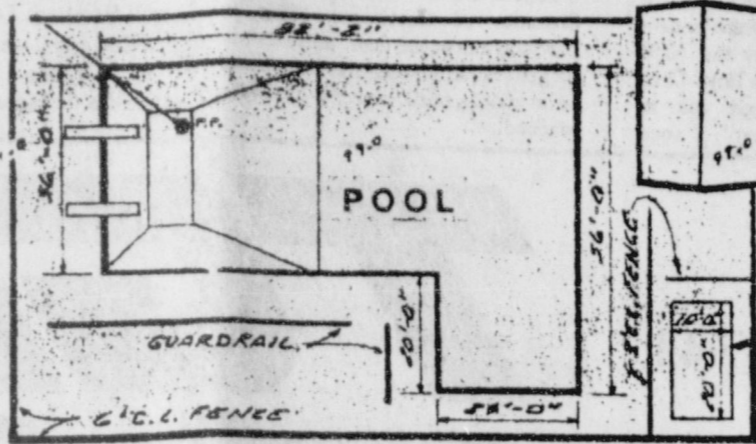
BENCHMARK RR. Spike
in P.P. 100.00

SWIMMING POOL PROJECT

4TH

FILTERS

BATH HOUSE & CONCESSIONS



WADING POOL

400.0'

KING

24 hr. prayer
service, 659-2911

THE GRUVER STATESMAN

Volume 14 Number 18

THE GRUVER STATESMAN, GRUVER, TEXAS 79040

Thursday, February 7, 1985

Four Bids Received on Swimming Pool Project

The City received four bids for the construction of an outdoor swimming pool to be constructed in the City Park. Bids are expected to be let to a contractor tomorrow.

The lowest bid was submitted by Wiley Hicks, Jr., Inc. of Amarillo, Texas in the amount of \$220,216.00. The construction cost plus the engineering fees makes the project cost \$240,155.69. Grants, donations, and pledges to the swimming pool fund total \$211,029.66. Additional funds of \$29,126.00 are needed before construction can begin on the project. The City needs the additional funds in order that a construction contract can be signed and the pool will be ready to open on June 1, 1984.

Anyone wishing to donate can bring their donation or mail their donation to the City Hall.

Greyhounds Win District

The Gruver Girls went into overtime to defeat Pollett 56 - 46. The pretty Lady Greyhounds scored 10 points in the overtime, to earn a play-off berth. The Lady Greyhounds will play Wheeler in a Bi-district game, probably Friday, Feb. 15, and maybe at Borger?

The Gruver Boys squeaked by the Pollett Panthers 38-35 in a real barn burner, to win the district outright. The Gruver boys will play the runners-up of District 4, which will be Allison or Miami. This game must be decided on Feb. 21, 22, or 23.

Details are sketchy on all of

these play-off games, but the Gruver teams are both in the play-offs and fans are excited about their possibilities of winning their play-off games.

Fans are reminded that they can see the Gruver Girls and Boys in action at Gruver Friday night, Feb. 8, beginning at 7:00 p.m. The Championship Gruver Teams will host the Darrouzett Longhorns.

GRUVER (G)	7	21	27	46	56
FOLLETT	12	29	36	46	46
G-White 25, Morris 14, F-Tyson 11, Terrell 31,					
GRUVER	4	17	24	38	35
FOLLETT	7	15	26	35	35
G-Morley 14, Pittman 11, F-McGhee 10, Laubhan 9.					

ics, along with our participation in Future Homemakers of America, prepares us for our future.

We observe National FHA/HERO Week because we are proud of our organization and wish to develop a public awareness of its value to young people. As part of the home economics education program, Future Homemakers of America makes learning tangible and affords us opportunities to make direct contributions to society. Our chapter's projects focus on a variety of societal concerns, such as nutrition and fitness, drunk driving, drug abuse, CPR courses, and the Secret Grandmother projects.

Our chapter's success is due to the combined efforts of many people. As we celebrate this 40th Anniversary year of Future Homemakers of America and the years of "real learning" that have taken place in our community, we invite those special people who have so willingly lent us their time, expertise and support to share the spotlight. Our appreciative thanks to the community for all their support in our various projects. We would also like to remind everyone that the Daddy-Daughter Banquet is coming up on February 14.

Thank you
The Gruver FHA Chapter

Obituary

Ruth Orrill, Perryton

Funeral services were held Tuesday at 2 p.m. at the First United Methodist Church for Ruth Orrill, 83. Rev. Al Lindley, pastor, officiated. Burial was in Ochiltree Cemetery by Boxwell Brothers Funeral Directors.

Mrs. Orrill was born in Clarendon. She lived most of her life in Perryton. She had lived in Ochiltree County 55 years.

She was a retired school teacher and a Methodist.

Survivors include a daughter, Mrs. L.M. Womble of Spearman; a brother, Andrew Jordan of Hereford; three grandchildren;

and two great-grandchildren.

The family requests memorials be made to Ochiltree County Senior Citizens Association.

Jimmie Lee Collier, Spearman

Funeral services were held Monday at 2 p.m. in Oslo Lutheran Church for Jimmie Lee Collier, 75, who died Friday.

Rev. Gary Bruns, pastor, officiated. Burial was in Oslo Cemetery by Boxwell Brothers Funeral Home.

Mrs. Collier was born in Texas County, Okla. She married Harold J. Collier in 1935 at Oslo Lutheran

New Business To Have Open House

Panhandle Agri-Supply will have an open house February 19 from 10:00 a.m. until 2:00 p.m. Details will be in next week's paper.

Church. He died in 1955. She was a member of Oslo Lutheran Church.

Survivors include three sons, Ted of Spearman, Tom of San Diego, Calif., and Vance of Durant, Okla.; two sisters, Lil McDonald of Guymon, Okla., and Cora Ollinger of Hasty, Colo.; eight grandchildren; and one great-grandchild.

HOSPITAL

Dismissals from Hansford Hospital include Billie Zinck, Tony Henry, Glen A. Mackie and Pete Bayless.

Patients in the hospital are Leonard Jameson, Lemmie Russell, Gertrude Archer and Thelma Wright.

FHA/HERO Week Feb. 10-16



Linda Vasquez, Stephanie TeBeest and Cheryl TeBeest work on the Gruver High FHA scrapbook

This year, Future Homemakers of America members will observe FHA/HERO Week from February 10-16, 1985. Members of the Gruver chapter are planning events around the week's theme:

they plan to enter in a contest at the Area Meeting in Lubbock Feb. 22 and 23.

Future Homemakers of America: 40 Years of Real Learning." Our chapter, one of over 12,000 nationwide, is organizing several activities that will showcase how our background in home econom-

By Moore voters . . .

PDRA annexation approved

Palo Duro River Authority officials expect a new and larger water district will be formed in March or early April, after Moore county and City of Stinnett voters approved annexation by the water authority in Saturday elections.

In a light election turnout in Moore county, unofficial returns list 518 votes for annexation by the PDRA to 112 votes against.

Annexation was the first proposition on the ballot. The second was to give the PDRA the authority to levy a property tax up to six cents per \$100 of value for operations and maintenance of future facilities.

The second proposition

passed by 465 votes for to 142 votes against.

In Stinnett, the unofficial returns listed 326 votes for annexation to 22 against while the taxation provision carried by 298 votes for to 32 against, reports Johnnie Lee of Spearman, PDRA manager.

"I am very pleased with the way the elections went in Moore county and Stinnett," he declares. "We found out Saturday who our water customers will be. Now we can go to work and design a system to take care of them."

The Palo Duro authority proposes to build a \$56 million reservoir and water treatment-supply system which will serve Dumas, Cactus and Sunray in Moore

county; the City of Stinnett, and its present member cities, Gruver and Spearman, in Hansford county.

The reservoir would be impounded by a dam, northwest of Spearman, at the junction of the Palo Duro and Horse creeks. The lake created would store some 69,000 acre feet of water.

Included in the supply system is a central water treatment plant, near the dam, and pipelines to transmit the water to customer cities.

The project would be financed by revenue bonds. An election to approve the issue will be called later this year by the PDRA.

Lee explains that organization of the new Palo Duro

(See P.D.R.A., Page 2)

[P.D.R.A., from Page 1]

authority will be delayed until March or early April because of a 30-day period, required by Texas law, to allow for any election contests.

Palo Duro authority directors will canvass the votes from the two elections on Thursday and declare the returns official.

"After the period elapses, Moore commissioners can appoint four representatives to the board," the PDRA manager says. "Two of them will be appointed for 2-year terms and the other two for 4-year terms."

Stinnett will have one director on the new board, he adds.

The new board will consist of nine members, including the four which currently represent Hansford county.

"The present board is waiting on the formation of the new Palo Duro River Authority before calling any additional annexation elections," Lee reports.

Currently two other North Plains counties -- Sherman and Ochiltree -- are being considered as prospective members. However, the size of the water project and the capacity of the delivery system may limit membership to one additional county.

Designation of Federal Action Economic Injury Area Announced

Designation of Federal Action Economic Injury Loan Area Andrews, Archer, Armstrong, Bailey, Baylor, Brisco, Calhoun, Cameron, Carson, Castro, Cochran, Crosby, Dallam, Dawson, Dear Smith, Floyd, Foard, Gaines, Gray, Hale, Hansford, Hardeman, Hartley, Haskell, Hockley, Hutchinson, Jones, Kleberg, Lamb, Lipscomb, Lubbock, Lynn, Moore, Nueces, Ochiltree, Oldham, Parmer, Potter, Randall, Refugio, Roberts, Runnell, San Patricio, Schleicher, Sherman, Swisher, Terry, Wharton, Wichita, Yoakum and Young Counties in the State of Texas constitute an economic injury area as a result of the following Federal Action pursuant to Section 7(b) (3), as amended, of the Small Business Act:

1983 Payment-in-Kind Land Diversion Program. The date of said Federal Action is: 1983 crop season. Eligible small businesses without credit elsewhere may file applications for economic injury until the close of business on October 10, 1985, at the address listed below:

Disaster Area 3 Office, Small Business Administration, 2306 Oak Lane, Suite 110, Grand Prairie, Texas 75051. 1-800-442-7206, or other locally announced locations. The interest rate for eligible small business applicants is 8%.

(Catalog of Federal Domestic Assistance Program Nos. 59002 and 59006).

Date 1/10/85 Robert A. Turnbull Acting Administrator

Sacred Heart

Church bake sale

The ladies of the Sacred Heart Church is sponsoring a bake sale on Wednesday, February 13th, at Gordon's Drug and Thriftway Grocery from 8:00 am until sold out.

There will be cakes, pies and bread--and just in time to buy for Valentine's day.

NOTICE

An error was made on a manufacturer's rebate offer in this week's sale circular. Oral-B offers a \$2 mail-in rebate on the purchase of three Oral-B toothbrushes. We apologize for any inconvenience this may have caused.

TG&Y
Family Centers

Texas Boys Choir to perform

A choir known around the world, which has performed in more than 3,000 appearances throughout the United States, Canada, Mexico and Europe during the past forty years, has scheduled an appearance in the Tri-State area. The Texas Boys Choir will perform in the Perryton High School Auditorium on Thursday, February 14.

Receiving acclaim from world music leaders such as "the best boys' choir in the world" and press notices such as "irresistible" by the NEW YORK TIMES, the Texas Boys Choir is consistently acclaimed for its "finesse and versatility," "vocal

refinement" and "professional exuberance".

The 7:00 P.M. Concert has been priced to allow everyone to attend, with tickets for \$2.50 for students and \$5.00 for adults. The program will range from classical and Broadway show tunes, to exuberant western folk songs, all performed in fully costumed, lighted and choreographed extravaganzas.

Tickets are on sale in the Ochiltree Chamber of Commerce office in Perryton and at the door. All seats will be general admission and tickets will be available until capacity has been reached.

Opal Beck Services

Mrs. Opal Beck, 90, a longtime resident of Spearman, died Sunday, January 27, 1985.

Services were held at 11 a.m. Tuesday in the First Baptist Church with the Rev. Russ Gibbs, pastor, officiating. Burial was in the Hansford Cemetery by Boxwell Brothers Funeral Directors.

Mrs. Beck was born in Pleasant Grove, Texas. She was married in 1929 to Mearl Beck at Sulphur

Springs and they then moved to Spearman. Mearl died in 1980.

Opal was a baptist and a member of a Spearman Home Demonstration Club.

Survivors include two sisters-in-law, Velma Beck of Spearman and Faye Beck of Sulphur Springs, and numerous nieces and nephews.

Jon Willingham

reports for duty

Marine Lance Col. Jon E. Willingham, son of Don Willingham of Stinnett, Tx., recently reported for duty at Marine Corps Air Ground Combat Center, Twenty-nine Palms, CA.

He joined the Marine Corps in April 1983.

Nothing makes one's halo spin faster than not listening to a racy story -- especially if the fellow telling it is a poor storyteller.

MARKETS

WHEAT	\$3.22
MILO	4.25
CORN	2.95

Items Available At TG&Y Family Centers Only. Sale Ends February 9

TG&Y

659-3741 521 Hwy. 207 S.
Spearman, Texas

Family Centers

A HOUSEHOLD INTERNATIONAL COMPANY

Stock-up Sale



2 ROLLS \$1

Gayety Jumbo Paper Towels are super soft and absorbent. Your choice of white or assorted colors. 100, two-ply sheets per roll.



.66

32 ounces each
Brookside Beauty Aids: Baby Shampoo; Wheat Germ Oil & Honey Shampoo or Conditioner; Fun Time Kids Bubble Bath; and more.



2 BOXES \$1

Mead Envelopes: 100 all purpose white envelopes or 80 security envelopes, 3 1/2 x 6 1/2 inches each. Or 50 legal size envelopes.



9.99 TG&Y's Sale Price -2.00 Less Mail-In Rebate* 7.99 Your Final Cost

The Igloo Lunchmate is designed with a lockable lid with push button release, sure grip handle, plus an easy to clean liner. Reg. 12.99



.77 6.5 ounces
Pepsodent Family Size Toothpaste to get teeth their whitest. Price reflects 50% off label.



.77 each Your Choice
Vaseline Petroleum Jelly soothes chapped skin. 3.75 oz. Q-tips Cotton Swabs, 170 ct.

2 cans \$1

Scotch Pine
28 oz.
Reg. 77

5.99

TG&Y Acrylic Latex Wall Paint
Reg. \$9.99

.88 22 ounces
Prestige Glass Cleaner has a special formula with ammonia that won't leave streaks.

1.99 14 ounces
Lemon Pledge Furniture Polish for waxed beauty every time you dust.

3 PACKAGES \$1

Vacuum Cleaner Bags in sizes to fit most Hoover and Eureka models. Assorted counts.

.99 200 feet
Glad Cling Wrap is ideal for storing leftovers. Microwave safe, too.

1.99 Reg. 2.99

Diversified Products Jump Rope. Heavyweight braided rope. 8 feet 6 inches.

\$4 Final Cost on 2 Packs
Twin Pack Super Glue bonds metal, rubber, ceramics and plastics. 2 grams each.

.77 5 pounds
Pretty Boy Wild Bird Food contains millets grain sorghums, sunflower seeds and wheat.

2 Drawer Steel Filing Cabinet
Reg. \$43.99
\$27.99

1.33 20 pounds
Hyponex Potting Soil is naturally pH balanced. Enhances plant growth.

TG&Y insists upon your satisfaction. If you are not happy with what you purchase, return it with your sales receipt. We will cheerfully exchange it or fully refund your money. If for unforeseen reasons advertised merchandise is not available, we will be glad to offer you a like item of comparable quality and value when possible. Most advertised items are reduced from our everyday low prices. Some merchandise is in limited quantities and available only while supply lasts. We reserve the right to limit quantities. We will be happy to accept your personal check, MasterCard, Visa or cash. We want you to be glad you shopped TG&Y. *Pick up coupons in Customer Service.

VISA MasterCard

SE/
SUI
plet
TIM
659-
517
50-r
Sew
Cinc
ialty
nc

CONC
and r
Elson
79022
6-4tp-r
FOR S
rolls o
for Val
childre
Call 73
16-rtn-
82 CM
Red/W
miles,
733-29
17-2tp

FOR S/
good hc
733-251
16-rtn-n
FOR SA
& Round
17-4tc
SPECIA
Quality
reasonable
tem star
18-2tp

FOR SAI
headboa
springs. ;
18-1tc

FOR SAI
Sagen Es
tion 139,
ty, Herr
Fairview I
61107.
18-1tc

S

Breaking
Jeff Chase
15-10tc

WANT ADS

SERVICES

New to Area?
Give Us a Try
Call Your Local
USED COW DEALER
As Soon as Possible
659-3544
659-3545
1-800-692-4043
22-rtm

NOTICE
Wallace Monument Co.
Monuments, Curbing,
Grave Covers
Local Representative
LEONARD JAMESON
Spearman, Texas
40-rtm

**OSGOOD
MONUMENT CO.**
Amarillo, Texas
Dealers of Rock of Ages
Granite, as well as all
colored granites, marble
and bronze memorials.
represented by
BOXWELL BROS.
FUNERAL HOME
519 S. EVANS
659-3802

Hansford County
Planned Parenthood
412 Davis
659-2483
Spearman
Mon.-Fri.
8:30-12:30

SEARS BLOWN IN ATTIC INSULATION. Now 10% off. Completely installed. For FREE ESTIMATE at your convenience dial 659-2573. Sears Roebuck and Co. 517 S. Hwy. 207. 50-rtm

Sewing done—little darling and Cinderella dress types a specialty. Call Joy 733-2517. nc

FOR SALE

CONCERT QUALITY piano tuning and repair. Free estimates. Write Elson Clark, Box 1016, Dalhart, Tx. 79022 or call collect 806-249-2783. 6-4tp-rtm

FOR SALE: Cakes, pies, bread, rolls or cookies. Will take orders for Valentines. Birthday Cakes for children with novelty characters. Call 733-2517. 16-rtm-nc

82 GMC 1/2 ton Sierra Classic Red/White 5 liter V-8. 23,000 miles. excellent condition. Call 733-2990. 17-2tp

FOR SALE: Gray horse—make a good horse for kids to ride. Call 733-2517. 16-rtm-nc

FOR SALE: Round Bale Feeders & Round Bale Carriers. 659-2276. 17-4tc

SPECIAL SALE 15 DAYS ONLY! Quality satellite systems at reasonable prices. Complete system starting \$1225. 435-5653. 18-2tp

FOR SALE: 2 twin, white, wicker headboards, frames and box springs. 733-2908. 18-1tc

FOR SALE: Interest in Christian Sagen Estate. AB70 Blk. 2, Section 139, TH&H, Hansford County. Herman J. Webereg 606 Fairview Boulevard, Rockford, Ill. 61107. 18-1tc

SERVICES

Breaking and training horses. Jeff Chase 435-5239. 15-10tc

HELP WANTED

HELP WANTED: Taking applications for a full time secretary. Apply at Gruver Equity, 101 S. McCree, Gruver, Texas. 18-1tc

Work from home. \$60 per 100 inserting envelopes. Information, send stamp to K.S. Enterprises, P.O. Box 1501-B, Bloomfield, N.J. 07003. 18-4tc

Frontier Feedyard, division of Cactus Feeders. Computer operator. Salary & Fuel allowance. Excellent benefits. Call for appt. 806-882-4251. 18-1tc

NOTICE

If you have not received your South Western Bell phone book in Gruver, or need additional copies, please call 1-800-443-6200. 18-1tc

REAL ESTATE

FOR SALE: New, just finished, 3 bedroom home with 2 baths, double car garage. Roy Edwards 733-2178. 114 Cooper Ave. 16-rtm

FOR SALE: New, just finished 3 bdrm. house. 2 bath, double car garage. Roy Edwards 733-2178. 114 Cooper Ave. 17-rtm

PUBLIC NOTICE

Guymon Elks Supper Club is open to the public. Our hours are Wednesday-Thursday 6-10 p.m. Friday-Saturday 6-10:30 p.m. We have a prime rib special every Friday. 51-rtm

MOBILE HOMES FOR SALE

DEALER REPO! 2 bdrm. name brand mobile home. Wood siding, storm windows, carpeted, etc. Assume payments of \$163.67 with approved credit. Includes delivery and insurance. WE TAKE TRADES. ANYTHING OF VALUE. QUALITY AFFORDABLE MOBILE HOMES. Hwy 60 West, Pampa, Tex. Phone 665-0714. 18-4tc

Twin Style Show

Tri-state Twosomes is planning their 1985 Twin Style Show. The date is set for March 30 in Guymon. Any twins may model, whether members of the club or not. If you would like more information, contact Melyn Johnson, 806-339-7109. This will be discussed further at their February meeting.

The February meeting will be held on Thursday the 7th at 7:30 p.m. in the Reddy Room, 501 N. Ellison, Guymon. Opal Canurina, Director of Nurses at Guymon Memorial Hospital will have the program at this meeting. She will talk on twin births, o-section and normal. Mrs. Canurina specializes in ob. Anyone interested is urged to come to the meeting.

Sharon Dodd

RONALD HOUSE PRESIDENT'S LETTER

Looking back on nearly a year of operation, I can confidently and comfortably say that the Ronald McDonald House* of Amarillo is living up to its name, "the house that love built." And representing the board of directors for the facility, I make that statement with a great deal of gratitude -- to the resident manager and to the volunteers, to each and every friend and contributor to the Ronald House -- and with no little pride, our pride in you as concerned citizens for caring enough for your fellow beings to give something of yourself to help those less fortunate.

That love and concern became evident as the Ronald House opened to its first residents: an outpouring of generosity of time and talent, as well as continued donations, brought the facility to full operation in very little time. And that love and concern is more in evidence each day.

The speedy completion of the physical structure last year was something of a dream come true -- the direct result of the tireless dedication and hard work of many. And now, the hard work and dedication continues to sustain that dream as a reality. The ongoing financial and volunteer support of many wonderful people is what maintains not only the physical operation, but also the spirit of love that is so necessary to make the Ronald House truly successful!

Again, we of the Ronald House board express our deepest appreciation to all of you for your support during the first year of operation. And, we ask you to remember that your continued assistance will keep open the doors to "the house that love built."™

Don Judd

RONALD HOUSE RESIDENT MANAGER MESSAGE

As we fast approach our First Year Anniversary, I have found myself thinking about all the special families that have entered our doors.

We have had families from all over the United States and several South American countries, and many times I have wished that I spoke Spanish more fluently (however, I am finding that hugs are a universal language in themselves).

The continual generosity of the people in the Texas Panhandle has been incredibly heartwarming to me, and I have been so impressed with the willingness of people to volunteer their time, talents and means.

With pride I can say that we have one of the best volunteer programs around. I think much of that credit goes to our Volunteer Chairmen who inspire us all to reach out and touch each family's life.

I can't imagine anyone having a more satisfying career than myself -- for my job is to care and to love.

Granted, there are some sad, painful moments when I want to reach out and erase all the suffering that a family goes through when a child is ill, but there are also wonderful, happy moments when a family gets to go home and their child has a clean bill of health.

Many people ask me what they can do to help . . . and our needs are still many. I welcome your telephone calls and letters. We can always use your friendship.

Diplomates: The condition is "fluid" when the ship of state is about to casize by taking on water through all the leaks.

New Postage Rates

Effective Sunday, February 17, 1985

First-Class:

Letters (non-preserved)
1st ounce 22¢
Each additional ounce 17¢
Postal (Post) Cards 14¢

Additional information concerning rate changes for other classes of mail is available at the service window.

A grazing ostrich will watch for small, shiny smooth stones -- and swallow them. The stones will remain in the bird's muscular stomach and help to grind up its food, which is always swallowed whole.

The Gruver Statesman

PUBLICATION (USPS 9598-6000)
GRUVER, TEXAS 79040
Box 796 659-3434
Owner-Publisher.....William M. Miller
Editor.....Joy Henderson, Gruver, Tx.
Second Class postage paid at Gruver, Texas 79040

Any erroneous reflection upon the character of any person or firm appearing in these columns will be gladly and promptly corrected upon being brought to the attention of the management.

POSTMASTER: Send address changes to Gruver Statesman, Box 796, Gruver, Tx. 79040.

SUBSCRIPTION RATE: Hansford, adjoining counties, \$13.14 per year.

MEMBER

Texas Press Association



The Junior Varsity boys team includes, back row left to right: Stedje, Shawn Bratton, Trevor Williams, Steve Duncan, and Coach Garland. Front row, left to right: Clay Smith, Tim Fletcher, Slavin Sparks, Ty Seagler and Brian Gillespie.



Members of the Junior Varsity girls team are left to right: Coach Anderson, Cami Shapley, Joanna Reynolds, Cissy Smith, Tracy Garrett, Robin Karlin and Tracy Logsdon.

You are invited to a Lay-Renewal Week-end

at the First Baptist Church in Gruver, Texas

Beginning: Friday evening February 15,

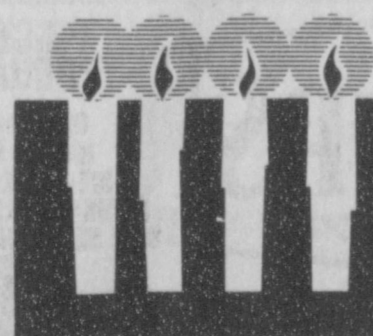
thru Sunday February 17.

Services begin Friday, February 15

at 6:30 P.M. with an evening meal in the

Activity Building

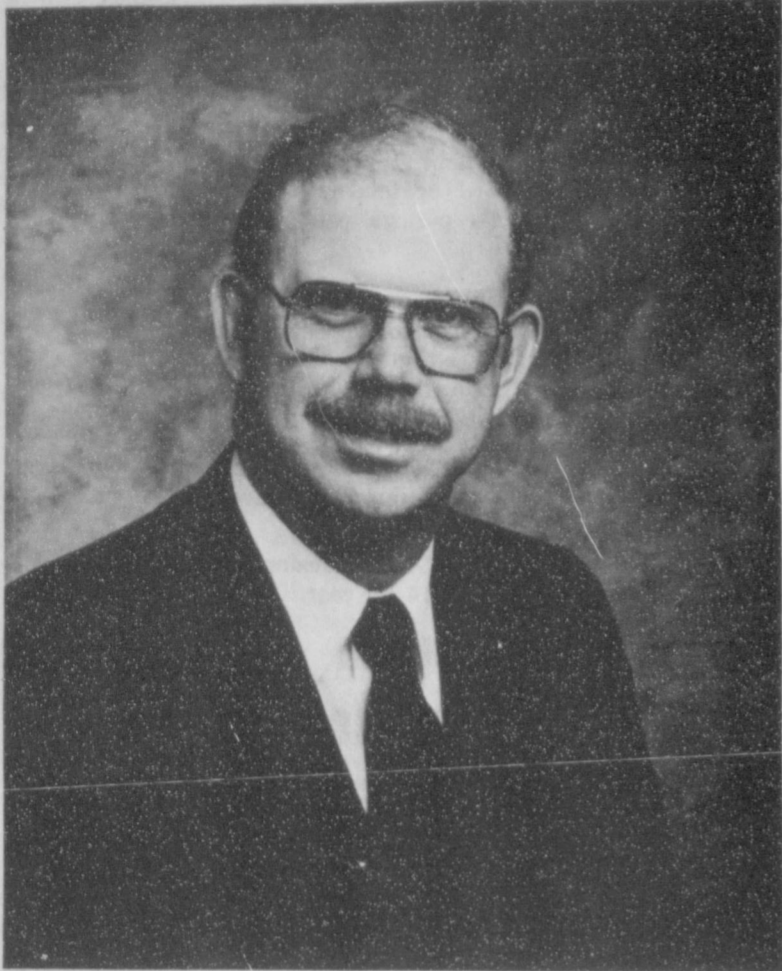
FUTURE HOMEMAKERS OF AMERICA . . .



Touching the lives of members for 40 years.

Join Us. Glow With Us!

First National Bank of Spearman (in organization) announces hiring of new president



DON TOWNSEN, new president



Texas industries must compete with Japanese technology and now Texas meat consumers must also compete with Japanese appetites—for beef skirt steak.

The beef skirt steak now so popular for fajitas used to be thrown away by meat wholesalers or ground into hamburger.

The demand for beef skirts in Japan has also risen sharply in the last decade, driving up the prices. The Japanese buy about 90 percent of America's production of beef skirts, which do not fall under the beef quotas set by Japan on American beef because they are classified as variety cuts.

"Inside" beef skirts from the hindquarter and "outside" skirts from the forequarter of the animal are distinguished in the wholesale meat trade. However, at the meat counter the cut is usually labeled simply as "skirt steak," and most sold in retail stores are inside skirts.

The outside skirt is usually the more palatable of the two cuts. Research at Texas A&M University

indicates that the outside skirts are more tender and have higher overall ratings for flavor and tenderness than the inside beef skirts.

Given the foreign and domestic demand for this cut of beef, consumers aren't likely to find more outside skirt steak in the super-markets soon.

Compensate for a less tender inside skirt steak by cutting diagonally across the grain of the meat first in one direction and then the other, pounding it to break down the connective tissue.

Marinating the skirt steak in a food acid such as lime juice, lemon juice or vinegar for several hours or overnight also increases tenderness and enhances the flavor.

EDUCATIONAL PROGRAMS CONDUCTED BY THE TEXAS AGRICULTURAL EXTENSION SERVICE SERVE PEOPLE OF ALL AGES REGARDLESS OF SOCIO-ECONOMIC LEVEL, RACE, COLOR, SEX, RELIGION, HANDICAP, OR NATIONAL ORIGIN.

The organizing directors of the First National Bank of Spearman are pleased to announce the election of Don Townsen as President and Chief Executive Officer of the bank in organization. Don is currently Vice President and head of the Agricultural Department for the Bank of Oklahoma. He will assume his new position in Spearman April 1, 1985.

Don, his wife Barbara, and their five children live at Perryton and plan on moving to Spearman as soon as housing arrangements have been made.

Don and Barbara are both natives of the high plains of Texas. They moved to Perryton from Lubbock, Texas in 1974, where Don had been employed with the First National Bank of Lubbock and was a 1970 graduate of Texas Tech University with a degree in Agricultural Economics. Don was then elected an officer of the First National Bank of Perryton and served as a commercial loan officer until 1979. In early 1979, he accepted a Vice President position with the Bank of Oklahoma, Tulsa, Oklahoma and began managing their agricultural lending office in Guyton, Oklahoma. The next year, Don was named Ag. Department manager of the large Oklahoma Bank and has been serving in that capacity for the last five years.

The Townsen's lived in Guyton for two years but have been in Perryton for the last four years. The children in the family are Tamri age 11, Kimbre and Clint 9 year old twins, Kara age 7 and Jamie age 5.

When asked about the move to Spearman, Don commented, "We are very excited about moving into the Spearman community. We have a lot of friends in Spearman and Hansford County and are looking forward to meeting new friends and making Spearman our home."

The Matterhorn, at 14,689 feet, is not the highest mountain in Switzerland as most people think. The Monte Rosa tops it at 15,204 feet.

Principal gases in the earth's atmosphere are nitrogen (78 percent), oxygen (21 percent) and argon (1 percent).

The first recorded dynasty of China was that of Hsia, from about 2000 B.C. to about 1500 B.C.

Vatican City is an independent state under terms of a 1929 treaty with Italy.

He further commented about the new bank and his new position: "Spearman and Hansford County are fortunate to have strong leadership and the type of people who are willing to invest their time and money to improve the economic stability and the quality of life for this area. The organizers of the First National Bank of Spearman have exhibited tremendous confidence in the support for this community and its future. I am proud to be joining with the organizing directors to establish a new bank that will become a very important asset to the community."

The directors are not allowed to announce an opening date until all

pre-opening duties have been completed and the Comptroller of the Currency has completed a pre-opening examination a few weeks prior to granting final approval for opening. It is anticipated by the directors, however, that final approval will be granted in late March or early April and the new bank will be approved to open for business in mid-April.

The new First National Bank will be located at 729 West 7th.

The organizing directors include: Bill Pittman, Chairman; Max Baggerly; Ralph Blodgett; J. L. Brock; Lloyd Buzzard; Gene Cudd; Kent Guthrie; Ila Jo Hart;

Richard Holton; Britt Jarvis; Bob Pearson; Jimmy Shieldknight; and Joe Venneman.

Felma Evans is one of the organizers and will be Vice President and Cashier of the new bank. She has been a well known banker in the community for many years.

Initial Capital of the Bank is planned at \$2 million. The organizing group will contribute most of the capital, but some stock will be offered to investors in the community. Interested individuals are invited to pick up the First National Bank stock Prospectus at the Bank's temporary office in the Pittman-Shieldknight building or contact one of the directors for information.

Danna Ralston named National Award winner



The United States Achievement Academy announced today that Danna Ralston has been named a 1984 United States National Award winner in English.

This award is a prestigious

honor very few students can ever hope to attain. In fact, the Academy recognizes less than 10% of all American students.

Danna Ralston, who attends Dimmitt Middle School was nominated for this National Award by Zeldia Ellison, an English teacher at the school. Danna will appear in the United States Achievement Academy Official Yearbook, published nationally.

"Recognizing and supporting our youth is more important than ever before in America's history. Certainly United States Achievement Academy award winners should be congratulated and appreciated for their dedication to excellence and achievement," said Dr. George Stevens, Executive Director of the United States Achievement Academy.

The Academy selects USAA winners upon the exclusive recom-

mendation of teachers, coaches, counselors or other school sponsors and upon the Standards of Selection set forth by the Academy. The criteria for selection are a student's academic performance, interest and aptitude, leadership qualities, responsibility, enthusiasm, motivation to learn and improve, citizenship, attitude and cooperative spirit, dependability, and recommendation from a teacher or director.

Danna Ralston is the daughter of Seth and Anita Ralston. The grandparents are Mr. and Mrs. Preston Smith of Spearman, Texas and Mr. and Mrs. Bill Hunter of Gruver, Texas.

Faith is what it takes to believe that your shoes will be ready to pick up on the day the shoemaker tells you they'll be ready.

People who wish they'd never grown up haven't.

When you were 20, you knew it all; after 40, can't for the life of you recall any of it.

Veterans Job Training Act Deadlines Extended

The Veterans Administration announced today that the Emergency Veterans Job Training Act has been extended and that eligible Korea and Vietnam era veterans have until February 28th to make initial application for placement under the program.

Stephen Lemons, Director of the Waco VA Regional Office, said that employers now have until September 1 to place veterans in on-the-job training positions under the program. He said applications for renewal of eligibility from veterans already certified to participate would be accepted beyond the February 28th date.

Lemons said the program provides a "unique incentive" to employers to hire and train unemployed veterans. "It's particularly attractive to small businessmen," he said "because it reimburses them immediately rather than through traditional end-of-year tax credits."

More than 20,000 veterans went to work in new jobs last year under the program; 1,676 in Texas. The VA pays their employers 50 percent of their starting hourly rate of

pay for up to nine months, 15 for disabled veterans, to a maximum

reimbursement of \$10,000 per veteran.

Musings

A corner-stone is any stone from the foundation to the roof at an angle between two walls and helping to bind them together, but is especially the foundation stone. Peter called Christ the corner-stone, which is also a stone of stumbling to the disobedient. "Wherefore also it is contained in the scripture, Behold, I lay in Zion a chief corner stone, elect, precious; and he that believeth on him shall not be confounded." — 1 Peter 2:6

57th Annual Stockholders Meeting

The 57th annual stockholders meeting of Consumers Sales Co. will be held Thursday, Feb. 21 at the Catholic Parish Hall in Spearman. The meeting will begin at 7:30 and the meal will be catered. The meeting will be held after the meal. MEMBERS AND THEIR WIVES ARE URGED TO ATTEND. Purpose of the meeting is to hear the report of business to date, and to elect two members to the board of directors for a three year term. Terms will expire for Larry Holt and C.J. Renner.

The Board of Directors of Consumers include C.J. Renner, president; Larry Holt, vice president; Mike Garnett, Secretary; Monte Harbour; and Don Allen, board members.

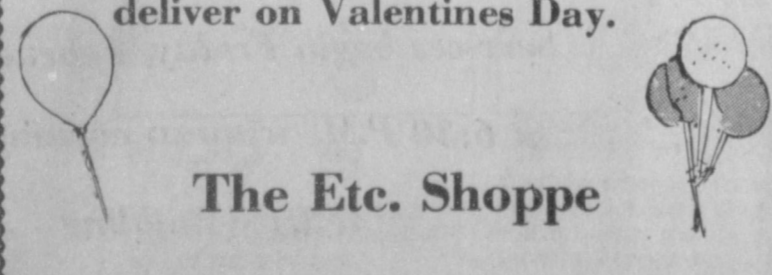
Those who plan to attend are requested to return their cards that were mailed to them by February 15!

Gene Harris is manager of Consumers Sales Co.

The Ukraine is the most densely populated of the Soviet republics.

People who just don't shape up are always welcome at one of the fitness spas.

Send your Valentine a balloon bouquet. Call 733-2156 and we'll deliver on Valentines Day.



The Etc. Shoppe

QUALITY ASSORTED CHOCOLATES

VALENTINES CANDY GIFT BOXED LARGE SELECTION **\$2.95 TO \$9.95**

COOKED FOOD SPECIAL AS FEATURED ON TV CHOPPED EACH

BORDEN'S CHOC. MILK 69¢ QT. CTN.

B.B.Q. ON A BUN SANDWICH 99¢

WE HAVE MONEY ORDERS ALLSUP'S UP TO \$299.99 FAST & CONVENIENT MONEY ORDERS EACH 19¢

Fast Hit BORDEN'S ASSORTED FLAVORS ICE CREAM \$1.69 1/2 GAL. CTN.

TEXAS TOAST SANDWICH EGG, OWEN'S SAUSAGE ON THICK TEXAS TOAST REG. \$1.89 NOW \$1.49

DECKER JUMBO MEAT FRANKS \$1.19 1 LB. PKG.

DIET OR PEPSI-COLA 3 Liters \$1.69

Now rent VHS Movies & VCR Machines! Enjoy the new entertainment at Allsup's

PRICES EFFECTIVE FEBRUARY 7-9, 1985

OPEN 24 HOURS EVERYDAY MONEY ORDERS- GROCERIES ICE- MILK- CHIPS & DIPS- SOFT DRINKS- SNACKS- HOT COOKED FOODS SELF SERVE GAS WHILE SUPPLIES LAST

WE ♥ YOUR BUSINESS

CONGRATULATIONS...

To All Of The Greyhound Teams

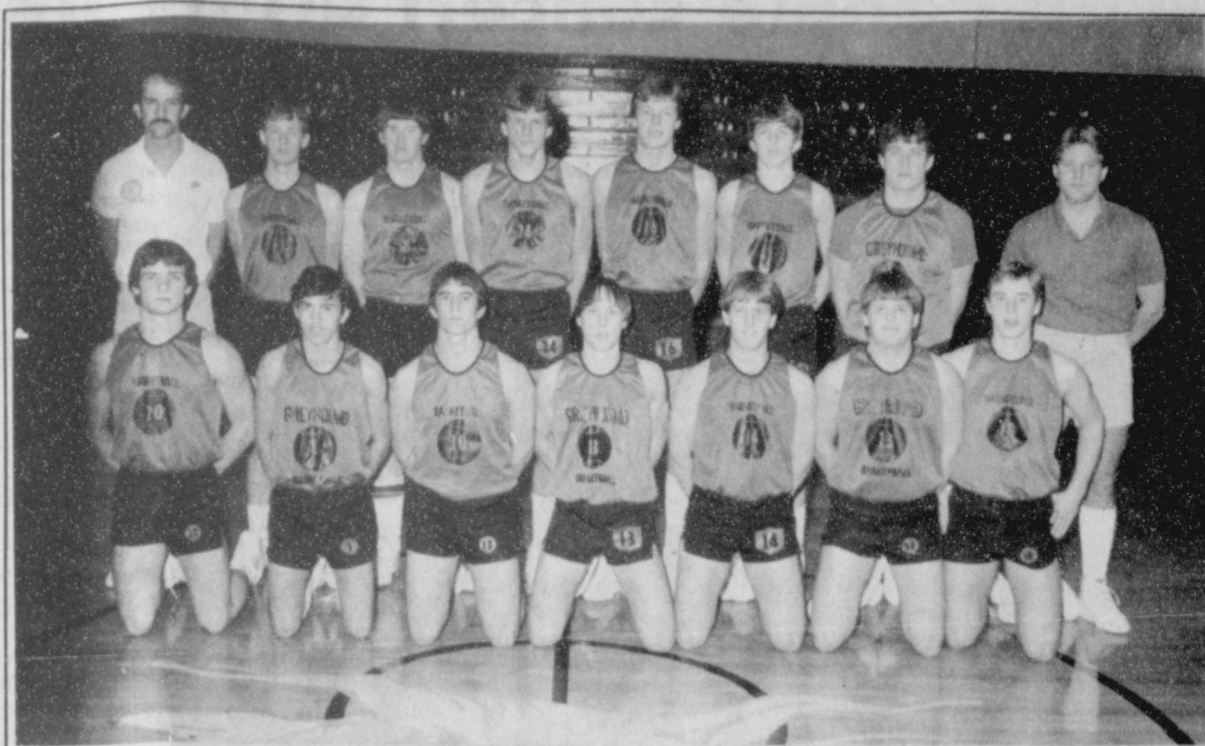
Win

★ **Bi-District**

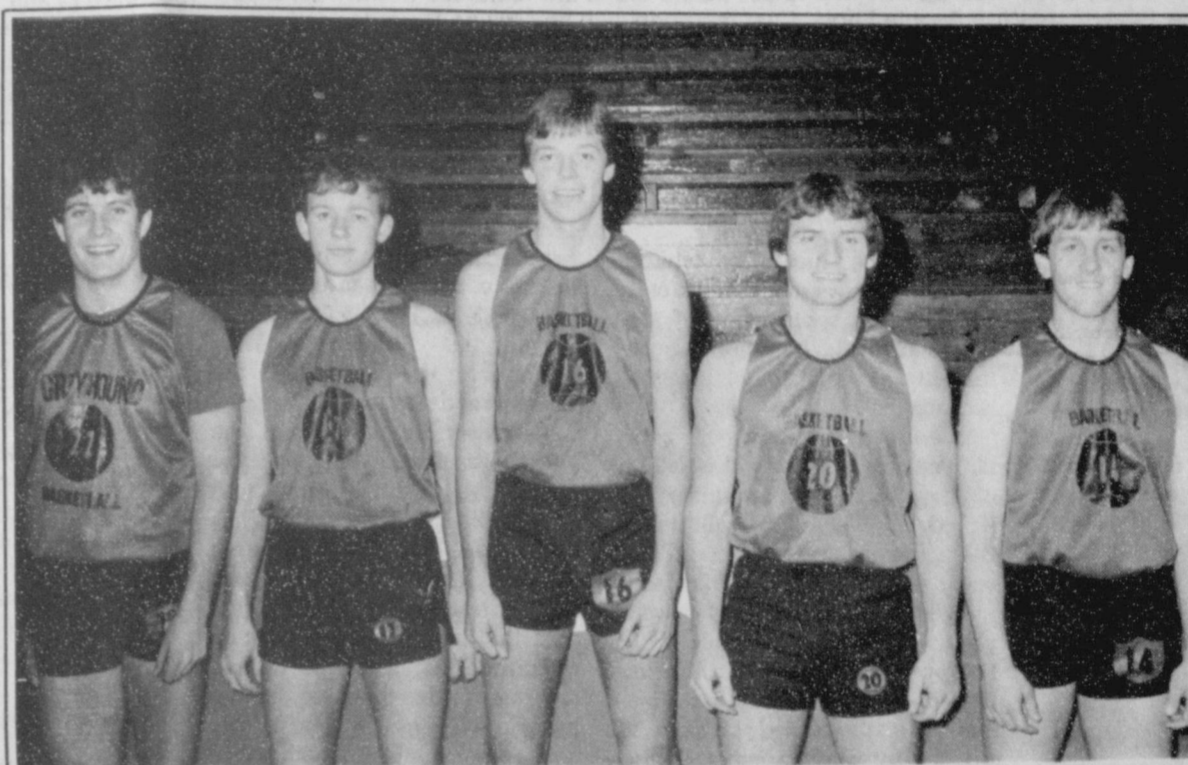
★ **Area**

★ **Regional**

Oles Grain
Appreciates
Your Business



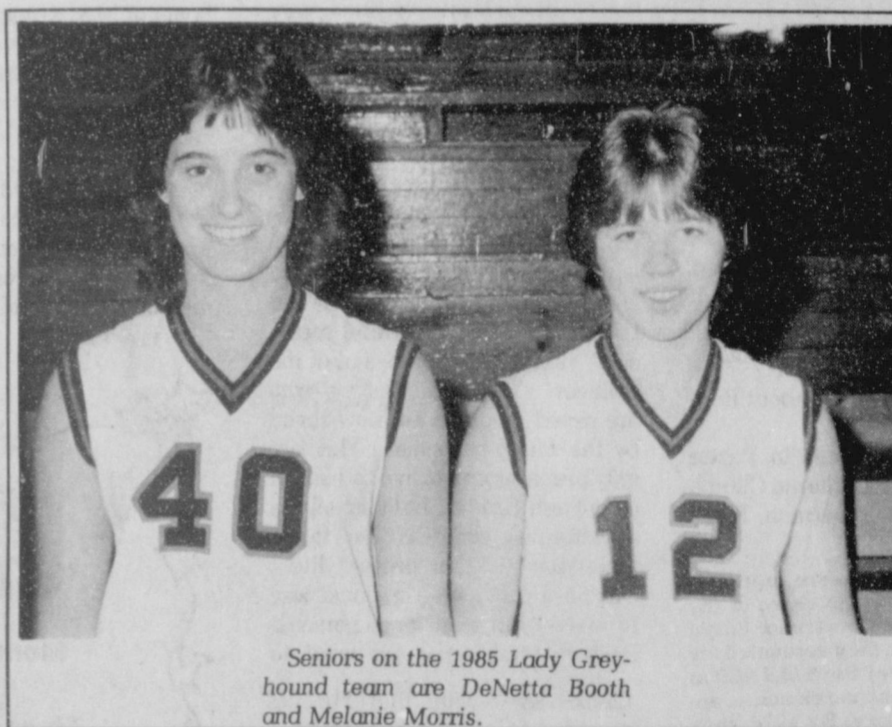
The 1985 Varsity Greyhound team includes, back row, left to right: Coach Blackshear, Luke Pittman, Shawn Bratton, Steve Fry, Kelon Morley, Tim Stedje, Rod Been and Coach Garland. Front row, left to right: Jack Rodman, Adam Salazar, Clay Smith, Steve Duncan, Chad Logsdon, Trevor Williams and Kip Pittman.



Senior members of the Greyhound team are Rod Been, Luke Pittman, Kelon Morley, Jack Rodman and and Chad Logsdon.



Members of the 1985 Varsity girls team include back row left to right: Coach Brownlee, Cissy Smith, Sally Holt, DeNetta Booth, Sherrie Lamb and Coach Anderson. Front row, left to right: Melanie Morris, Ann Potts, Cami Shapley, Dala Shapley, and Lori Fletcher.



Seniors on the 1985 Lady Greyhound team are DeNetta Booth and Melanie Morris.

1984-85 District Champs

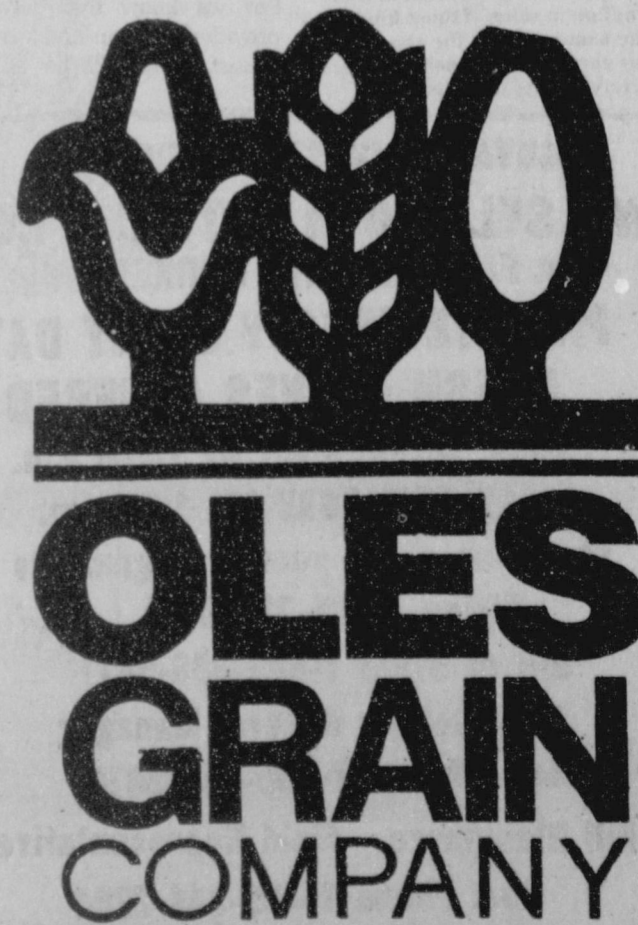
compliments of Oles Grain Co.

Perryton -435-5449

Spearman - 659-3990

Spearman, Texas

228 Collard



Up With People concert draws near



SONG AND DANCE — Today's top musical hits and latest dance steps are featured in the "Let's Go Dancin'" medley in the 1984-85 Up With People Show. Cast members will be arriving Thursday and have various community involvement projects lined up before their big concert Saturday night. Host families have already been lined up, with all cast members having secured families. Tickets for the concert are on sale at the Chamber of Commerce office and First National Bank. The bank is sponsoring their trip to Perryton.

The Up With People Show, seen by 8 million people in 47 countries, is coming to Perryton, live in concert this coming Saturday, February 9 at 7 p.m. in the Perryton high school auditorium.

First National Bank is sponsoring this highly acclaimed two-hour musical experience performed by a cast of 130 young men and women from 17 countries.

Millions more have seen Up With People's energetic casts on television including three Super Bowls as well as the 1982 World's Fair, Sea World in San Diego and with the Boston Pops.

Recent world tours have taken casts to such diverse locations as the St. Peter's Square in Rome, Italy; Poland; Corn Market Square in Belfast, Northern Ireland; Venezuela; the bullrings of Valencia, Spain and the Peking Conservatory of Music in the People's Republic of China.

The performers are actually students between the ages of 18 and 25 who participate for one year in a multifaceted program of experiential learning.

Each year these students travel an average 35,000 miles living with between 80 and 100 host families in several countries experiencing different lifestyles, sharing in their

interests and culture and often learning new languages.

In specially arranged community involvement programs, local high school and college students accompany the Up With People cast members in visits to nursing homes, hospitals and other institutions. Developed under a grant from the W.K. Kellogg Foundation, the goal of this program is to provide these young with an insight into the community's needs.

Each cast member assists in the day-to-day logistics of operating the cast including show promotion and stage work. College credit can be earned in a variety of subjects through the University of Arizona.

Seven thousand students have taken part in Up With People since it was founded in 1968 by its president, J. Blanton Belk, as a non-profit, apolitical, non-sectarian, educational program.

As many as 1,000 young people apply each month for the 550 openings available annually. Although musical talent and technical knowledge are assets, students are accepted on the basis of their motivation, maturity and potential to participate fully in a demanding program.

Up With People has a distinguished board of directors and international advisory board which provide independent direction for the organization's growth and development.

The worldwide activities of Up With People are financed from ticket and product sales, show sponsors, student tuition fees, individual and corporate gifts, as well as foundation grants. Gifts for scholarships, endowment funds and operating expenses are tax deductible.

"Our purpose is to give young men and women a learning experience which prepares them for a swiftly changing world," explained Belk.

"The show is their statement of hope and enthusiasm for the future," he added.

"Think what might happen if students from the People's Republic of China, the Soviet Union, the United States and the other countries of the world had a

year together in Up With People," Belk said. "Maybe it would sow a seed for future understanding and harmony in the world."

EMT course begins Feb. 28

An Emergency Medical Technician Course will be offered in Spearman beginning Feb. 28, 1985.

The purpose of the course is to teach Basic Life Saving Techniques to those who wish to serve their community with their local ambulance services, or for those who would just like to know what to do in an emergency situation before the ambulance does arrive.

Upon successful completion of the course, participants will receive accreditation from Frank Phillips College, as well as being registered with the Texas Department of Health as an Emergency Medical Technician.

Cost will be \$30 registration fee plus approximately \$18 for text. All interested persons must pre-register by no later than Feb. 19, 1985. Class space is limited, so please register as soon as possible.

For information, contact Ed Williamson at 659-5108, or call the Spearman Police Department at 659-3707 and leave your name and phone number, and your call will be returned.

The United Church of Canada is the largest Protestant denomination in Canada. Total membership is more than 950,000.

West Point, the military academy, was founded in 1802. It awards a B.S. degree and an Army commission for a five-year service obligation.

Once considered a "fossil" like the moon with a surface little changed over millions of years, Mars now is regarded as a planet still "under construction." Like Earth, it may have a molten core, a crust that shifts and cracks and mountains that sometimes blow their tops.

Land Board holds interest rates

The Texas Veterans Land Board this week announced it has been able to hold interest rates for the Veterans Land Program below 10 percent, despite earlier action by the board to raise the rate above the 10 percent level.

The VLB staff said falling market interest rates made it possible to set the new interest rate at 9.97 percent.

The old rate for Veterans Land Program loans was 9.25 percent, but that rate has been adjusted to 9.97 percent effective January 29, 1985—identical to the rate now offered under the Veterans Housing Assistance Program. This rate increase will mean a \$10 per month increase in payments for Veterans land loans made after this date, but the increase does not apply to Veterans with loan applications already being processed.

Our Heritage of Faith

BAPTISM & IMMERSION:

Immersion does not have important symbolic significance in Paul's discussion of Baptism (Romans 6). Our sins were buried with Christ by Baptism, and as Christ was raised from the dead, we also may live a new life in Christ. Luther refers to this as the "daily living" of our Baptism.

NEXT TOPIC: More about Baptism & Immersion.

Bill Schardin, Pastor
Faith Lutheran Church
Spearman, Texas

Department stores are capturing an increasingly large share of the retail dollar. The Conference Board reports. In 1956, they accounted for only 26 percent of the \$43.5 billion in sales of general merchandise, apparel and furniture. By 1976, they earned more than 44 percent of the \$154.3 billion in sales of those kinds. Over the same period, the share of business earned by specialty shops and variety stores declined.

When one speaks of biblical resurrections we many times only think of the resurrection of the dead. Although this is the main teaching, it is not the only resurrection.

The first resurrection will be a national Resurrection. The Nation of Israel has been promised a Kingdom, Hosea 6:4, Ezekiel 36: 24-38, and Ezekiel 37:1-14 all speak of this time. This promised Kingdom will come after the seven year tribulation period taught by Daniel. During this time Jesus will himself sit on the throne of his father David in Literal Jerusalem. Another resurrection is that found in II Chronicles 7:14. There is promised to any nation that all turn and look to the God of Heaven a revival for that nation. We need today to begin to examine both of these national resurrections very closely. I believe that the Bible teaches that Jesus is very soon to return. While if you look at our country we need a revival.

There is also found in the scriptures to be a spiritual resurrection. This resurrection takes place in the life of an individual when he is saved. Ephesians 2:1-6, Col. 3:1, Rom. 6:11, and John 5:24. This "spiritual recession" takes place in the soul of the believer. This tells that we who are saved by grace are now saved by the blood of Jesus. This not only prepares one to live in heaven as in John 10:1-10, but also allows a victorious christian life to be maintained in this present life. Our Lord provided a national way to revival but also for a personal revival. Each day we need to

thank our Savior that He has provided for us this opportunity. For we know that salvation is provided by Jesus and not by man.

Last there will be a physical

resurrection. II Cor. 5:1-13 teaches of this occurrence. Also in Job 19:25-27, John 5:28-29, and Romans 14:11-12 teach a resurrection from the dead this is the victory over death that was won by Christ when He arose from the grave. Jesus rose in a physical body. We shall also rise in a physical body. Scripture teaches that we shall be like him. Paul exhorted early christians to look for this coming. He wrote that both the dead and live christian will meet Christ in the air. Today I am thankful for the hope that we have in our Saviors grace. My hope and prayer is that each one of you know this hope also.

Alpha Mu Psi enjoys program

Alpha Mu Psi chapter met Tuesday, Jan. 29, 1985 in the home of Mrs. Gregg Breland.

The meeting was called to order by president Mrs. Mark Irwin. The minutes of the previous meeting were read by Mrs. Lyle Koons and the treasurer's report was given by Mrs. Steve Beville.

Mrs. David Grotegut gave a program on children and growing up. Following the regular business meeting, the members were ad-

Ben Upchurch retires

Ben Upchurch, conservation technician at the Spearman field office of the Soil and Water Conservation Service retired in January, after 42 years of Federal Service. Ben served in Hutchinson County on a part-time basis for 12 years. He is one of the "Deans" of conservation in our area and he will be greatly missed.

Ben was honored with a retirement dinner in January. Ben and Marian plan to remain in Spearman after his retirement.

Special Occasions

Bridal, Formal, and Tuxedo service

Wedding Consultations

715 N. Main

Borger

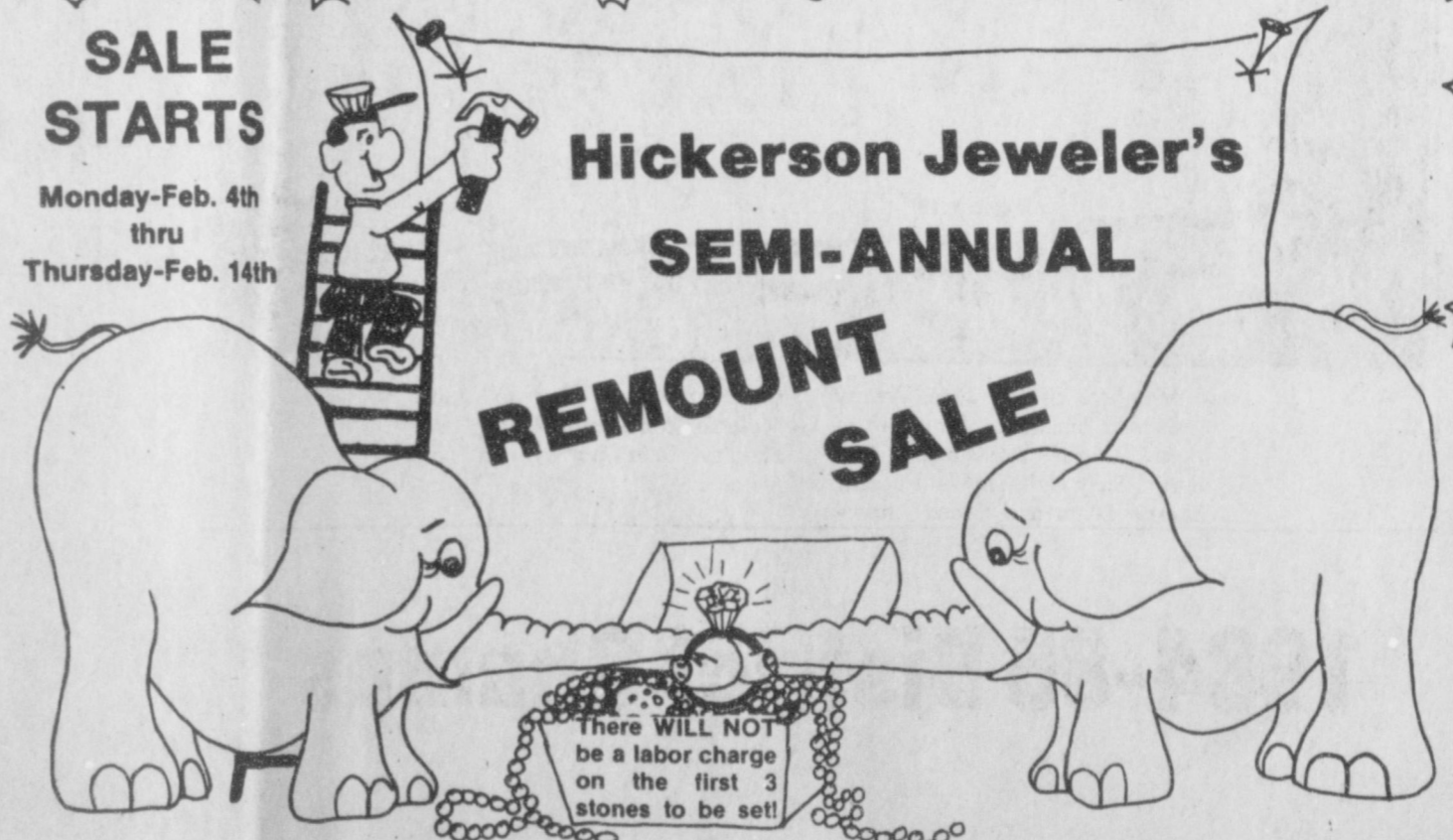
Phone 274-5515

SALE STARTS

Monday-Feb. 4th
thru
Thursday-Feb. 14th

Hickerson Jeweler's SEMI-ANNUAL

REMOUNT SALE



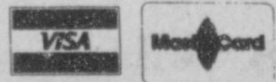
Yes ...

We will have our Loose Diamonds on SALE!



721 W. 7th • Spearman

All Mountings SALE PRICED!



GUYMON LIVESTOCK AUCTION
WE SELL BOTH CATTLE & HOGS
"A FAST GROWING MARKET"
PRIVATE TREATY EVERY DAY
FRESH CALVES OFFERED
SALE WEDNESDAY AT 10:00 a.m.
SALE THURSDAY AT 1:00 p.m.
Phone us about your consignments
Office 1-405-338-3378
Out of State 1-800-338-5871
Gary Cobb - General Manager
Res. Phone 1-405-545-3470
Bill Blackmore - Field Representative
Res. Phone 1-405-349-2254

MENU

LUNCH MENU
FEB. 11-15

- MONDAY**
Pig-in-blanket
Tater tots
Tossed salad
Cake
Milk
- TUESDAY**
Ham & beans
Potato salad
Peaches
Corn bread
Milk
- WEDNESDAY**
Fried chicken
Mashed potatoes
Gravy
Corn
Jello
Biscuits
Milk
- THURSDAY**
Chili w/crackers
Fruit
Donuts
Milk
- FRIDAY**
Hamburgers
Lettuce, cheese, pickles
Tater tots
Cookies
Milk

Calendar of Events

FEBRUARY CALENDAR OF EVENTS

- FEB. 8--Varsity vs. Darrouzett, 7:00 here
- FEB. 12--4-H County Barn 7:00 p.m.
- FEB. 14--Valentine's Day, FHA Daddy-Daughter Banquet
- FEB. 14-16--Girls Bi-District basketball
- FEB. 16--Vocal solo/ensemble, Amarillo College. Band solo/ensemble at WT
- FEB. 18-19--Girls Area basketball
- FEB. 19--Choir clinic at 7:00 p.m. in the H.S. Aud.
Ag showmanship at 7:00 p.m.
- FEB. 21-23--Girls Regional basketball, Boys Bi-District basketball, Houston Stock Show
- FEB. 22--End 4th 6 weeks
- FEB. 25-26--Boys Area basketball
- FEB. 25-MARCH 2--Spring Break
- FEB. 28--Girls State basketball
- MARCH 2--Boys Regional basketball

Songs for New Year Cheer

Mrs. Royce Blackshear had the program for the January 17 New Year Cheer Harmony Club meeting. Mrs. Blackshear sang four songs accompanied by Viva Renner on the piano. Mrs. Russ Chisum and Robin Karlin joined Mrs. Blackshear on a fifth song. Refreshments were served afterwards in the Fellowship Hall of the Gruver United Methodist Church.

Cheese and watches are Switzerland's best-known exports. However, the manufacture of machinery is its major industry. Switzerland's industrial output is so extensive that it holds an annual fair -- well-attended by industrialists all over the world -- at Basel.

The Land Bank

Dependable long-term credit through good times and bad...

See us:



High Plains Federal Land Bank Association, 506 S. Main, Perryton, Perryton, Texas 79070; 906-435-4319. Serving Ochiltree, Lipscomb and Hansford Counties.



The Greyhound Freshman boys team includes, left to right, Coach Blackshear, Slavin Sparks, Tim Fletcher, Juergen Zapata, Ron Green, Ty Seagler and Brian Gillespie.

On the go with Joy

One of the best things that happened last month was when a group of women got together and had a lot of fun learning machine embroidery. Since then a dozen more women have expressed the desire for S.B. to repeat the class. Now me, I must express the need to take it over again but my biggest hang-up is that every time I see someone doing something new to me, is that I always come down with a disease that is often hard and expensive to cure. Well, it has happened again. The disease is called "want-itus." It usually causes a terrible itch and I scratch until some other consuming passion takes over.

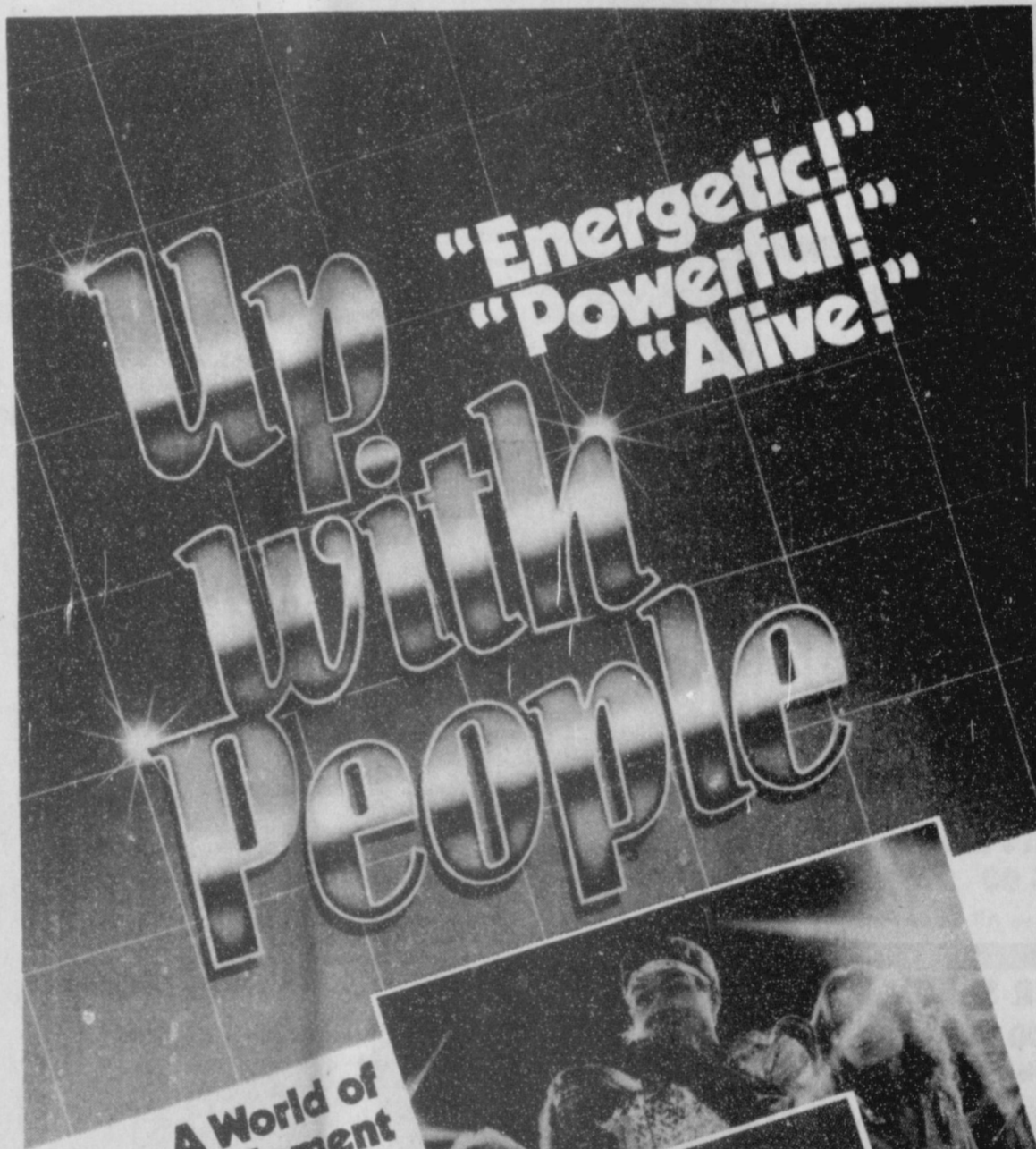
For several years now I have been eyeing those gorgeous sweaters and flannel sweatshirts with names, flowers etc., monogrammed or embroidered on them and was I surprised to find out that there are home versions and anyone with a couple of "grand" or more could have a lot of fun earning(?) money with one. Yep!

sure enough the light bulb above my head lit up and blinked furiously and I started searching through my stack of magazines until I found the advertisement saying for only \$149.95 a month and the business could be mine. Then I thought, yeah! I'll bet I'd get the business. Anyhow I've still got want-itus.

Six years ago, I invested in an electronic "brain" sewing machine that cost quite a bit and I figured they couldn't come up with anything fancier than it was, unless it could cut the material to fit, etc. But then I remembered 30 years ago that I popped off about machines that would never be able to sew a button on. I was sure wrong on that idea.

All of this is to say--electronic sewing machines cost as much now, as one of our cars did a few years back. But now, cars cost as much and more as my house did a few years back. On was, what do you go back to the good old days?

Up With People show premieres in Perryton



A World of Entertainment for the Entire Family

Two unforgettable hours of non-stop entertainment performed by an international cast of 100 young people. Featuring dazzling choreography, spectacular costumes, and a contagious energy that will leave you feeling great. Find yourself on a musical journey around the world, back in time and into the future. From Bach to Rock, there's something for everyone. Up With People! A world of entertainment for the entire family.

ENJOY THE UP WITH PEOPLE SHOW
SATURDAY, FEBRUARY 9 AT 7 P.M.
PERRYTON HIGH SCHOOL AUDITORIUM

TICKETS ON SALE AT FIRST NATIONAL BANK IN PERRYTON
RESERVED SEATS FOR \$5.50
GENERAL ADMISSION SEATS FOR \$5.00
DISCOUNTS TO STUDENTS AND SENIOR CITIZENS

Sponsored by



First National Bank

Member FDIC

THE FINAL OF BEEDY'S WINTER 2-DAYS & SAT. Clearance FRI... FEB. 8 & 9 OF QUALITY FURNITURE

**STORE CLOSED ALL DAY
THURS., FEB. 7TH
FOR FINAL MARKDOWNS**



SAVINGS UP TO ... 80%

OPENING HOUR SPECIAL
Friday at 9:00 A.M.
3 Shelf Corner Eterge
\$98.50 NOW \$40.00 SAVE!!!
One Only - Cash & Carry - All Sales Final

OPENING HOUR SPECIAL
Friday at 9:00 A.M.
Blue Velvet Occasional Chair
\$349.50 NOW \$150.00 SAVE!!!
One Only - Cash & Carry - All Sales Final

OPENING HOUR SPECIAL
Friday at 9:00 A.M.
Pine Commode by Thomasville
\$350.00 NOW \$100.00 SAVE!!!
One Only - Cash & Carry - All Sales Final

OPENING HOUR SPECIAL
Friday at 9:00 A.M.
Smoking Table
\$98.50 NOW \$40.00 SAVE!!!
One Only - Cash & Carry - All Sales Final

OPENING HOUR SPECIAL
Friday at 9:00 A.M.
2-Piece Blue Print Sofa & Loveseat
\$1550.00 NOW \$695.00 SAVE!!!
One Only - Cash & Carry - All Sales Final

OPENING HOUR SPECIAL
Friday at 9:00 A.M.
2-Piece Rust Velvet Sofa & Loveseat
\$1350.00 NOW \$695.00 SAVE!!!
One Only - Cash & Carry - All Sales Final

OPENING HOUR SPECIAL
Friday at 9:00 A.M.
Walnut Cellarette (Portable Bar)
\$895.00 NOW \$395.00 SAVE!!!
One Only - Cash & Carry - All Sales Final

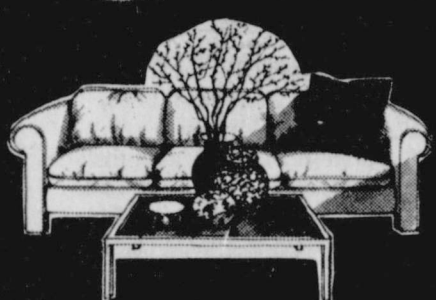
OPENING HOUR SPECIAL
Friday at 9:00 A.M.
Dark Oak Sofa Table
\$379.50 NOW \$150.00 SAVE!!!
One Only - Cash & Carry - All Sales Final

OPENING HOUR SPECIAL
Friday at 9:00 A.M.
2-Piece Dark Brown Velvet Sofa & Loveseat
\$1195.00 NOW \$595.00 SAVE!!!
One Only - Cash & Carry - All Sales Final

OPENING HOUR SPECIAL
Friday at 9:00 A.M.
Cherry Wood Silver Chest
\$498.50 NOW \$250.00 SAVE!!!
One Only - Cash & Carry - All Sales Final



**STORE HOURS: FRIDAY & SATURDAY
9:00 A.M. - 5:30 P.M.**



• ALL SALES FINAL
• NO HOLDS • NO LAY-A-WAYS • NO PHONE ORDERS • NO REFUNDS • NO SPECIAL ORDERS

- 4 Groups of Bedroom Furniture **50%**
- 1 Group of Table Lamps Reduced **80%**
- 1 Group of Table & Wall Accessories Reduced **80%**
- All Simmons Mattress & Boxsprings Reduced up to **50%**
- All Sofas & Loveseats, Chairs & Rockers Reduced **50%** or More
- All La-Z-Boys & Lane Action Chairs Reduced **30%**
- All Dining Room, Dinettes & Game Sets Reduced **30%** or More
- All Merchandise Reduced **25%** or More

ALL ITEMS SUBJECT TO PRIOR SALE



723 W. 7th

• Spearman •

Phone 659-3701

FURNITURE CO.
plains shopping center

BANK RATE FINANCING AVAILABLE