

24 hour prayer
service 659-2911

Hansford Fair Starts Today!!

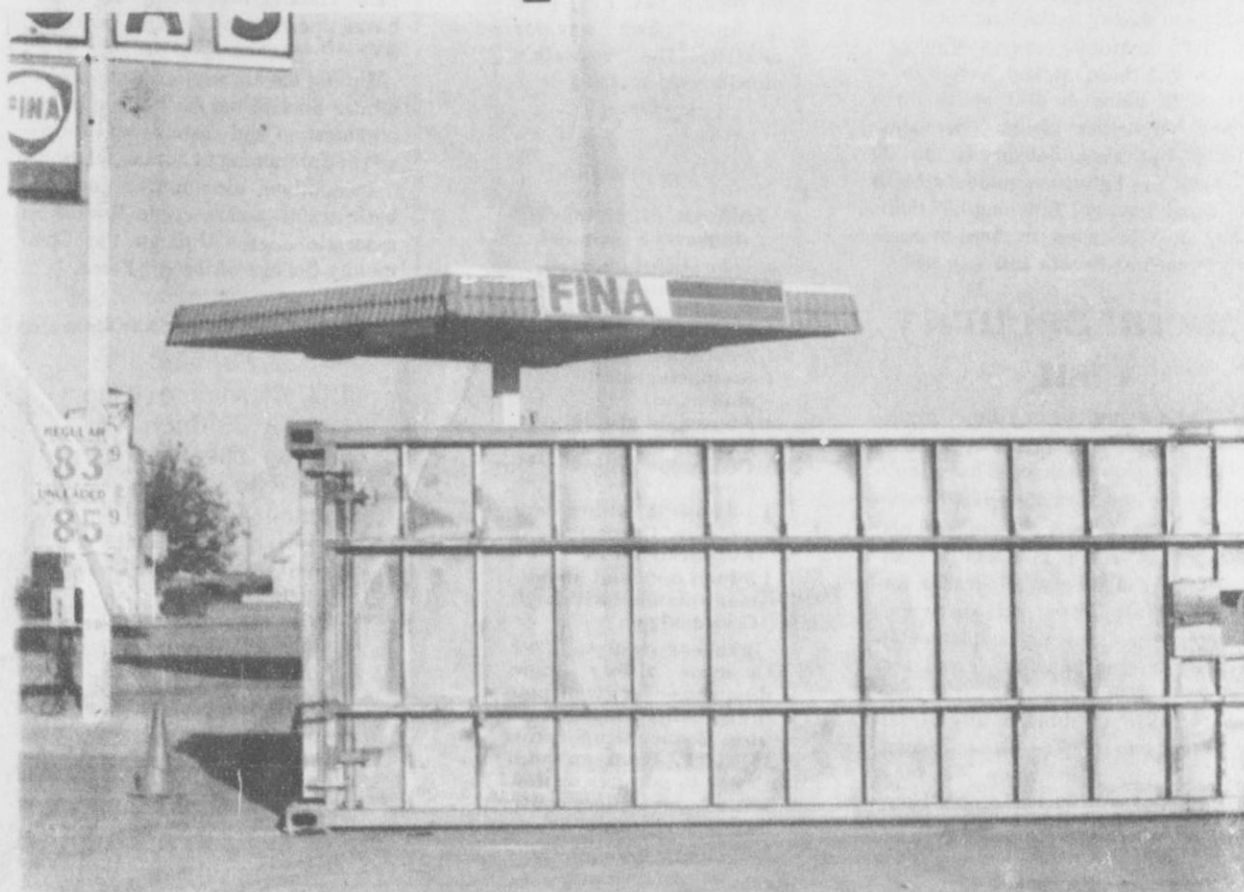
THE GRUYER STATESMAN

Volume 15 No 52

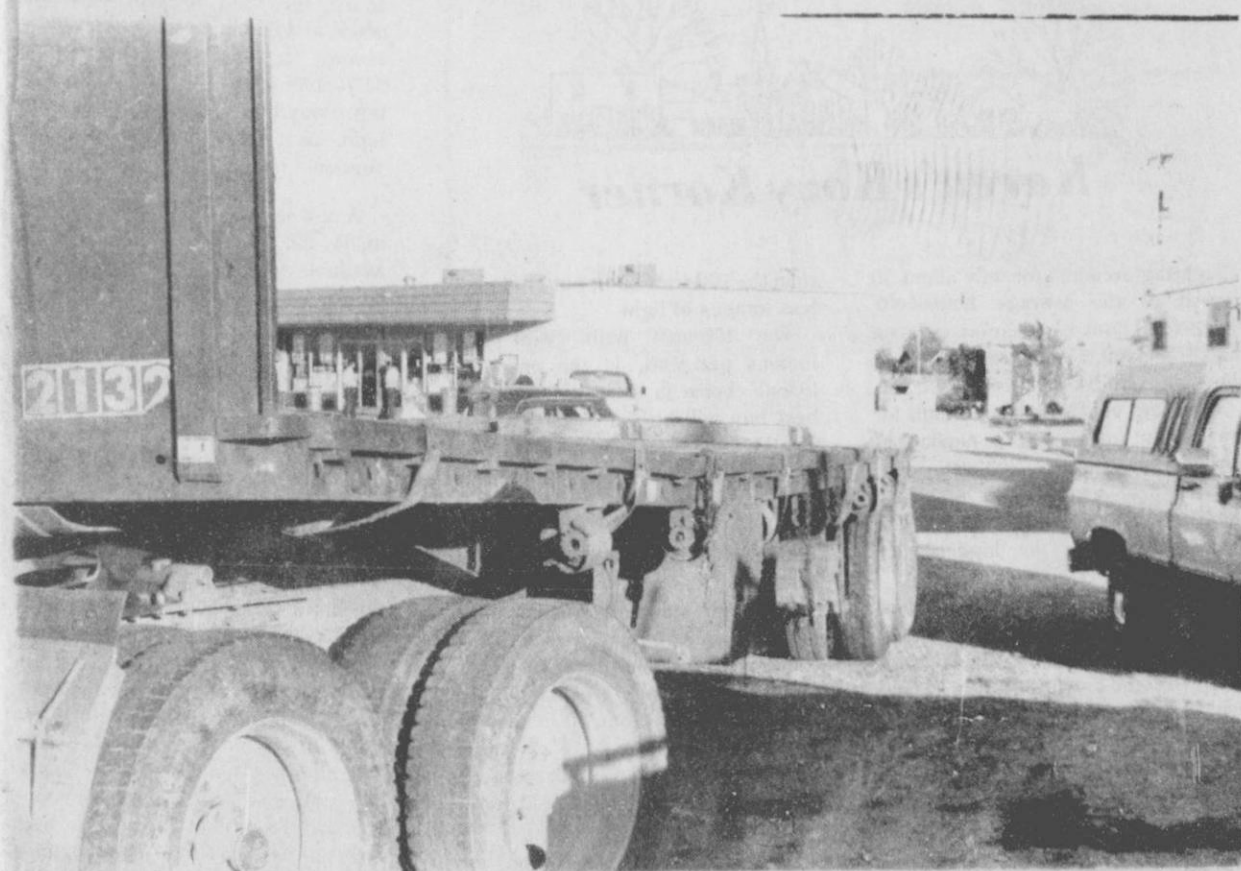
The Gruyer Statesman, Gruyer, Texas 79040

Thursday October 2, 1986

PCB spills off truck on main street



THIS PCB CONTAINER actually slid off of a truck, and fell to the pavement in front of the Allsup's, down-town Gruyer, Friday afternoon at 4 p. m. No-one was injured, and none of the PCB spilled from the container.



Chains holding the large PCB container on this semi-truck gave-away Friday in Gruyer, and the PCB container slid to the pavement. None of the PCB leaked from the large steel container according to local officials.

Linda White will be here Thursday!

Hounds head for Elk country Friday nite!

The Gruyer Greyhounds open their district I-AA action at Stratford Friday night in a game that will start at 8:00 p.m. In the past, district games started at 7:30 but they have been changed to 8:00 p.m. through Oct.

The Gruyer-Stratford game should be rated as a toss-up with the Hounds actually rated as a 1 point favorite. The Hounds blasted Alamo Catholic 50-0 at Gruyer Saturday night in a game they could have easily won 100-0. Thanks to the Hounds they did not try to score in the second half of the game.

Be sure and plan to follow the Hounds to Stratford! This game should be a thriller for sports fans. Both teams are fairly healthy as we go to press, and barring some injuries since press time, each team should be ready for the big game at Stratford!

Plan to watch the 7th, 8th, and JV teams in action this Thursday! These kids are doing an excellent job!



ANR men prepare to sweep up PCB that might have been deposited on Gruyer main street. The Texas Water Board warned to not put water on a PCB spill, Use only brooms.

Obituary

James Perry Davis
GRUYER-James Perry Davis, 55, of Soldotna, Alaska, died Friday. Graveside services were at 2:30 p.m. Wednesday in Gruyer Cemetery with the Rev. Ed Seale, pastor of First Christian Church, officiating. Arrangements were by Henson Funeral Home of Guyton, Okla.

Mr. Davis, born in Gruyer, had lived in Alaska 12 years where he was a welder.

Survivors include his wife, Joan; three sons, Tommy Gene of Soldotna, Jamie of Anchorage, Alaska, and Chuck of the home; two sisters, Rosalee Cator of Gruyer and Vera Mae Hays of Spearman; a brother, C.A. Jr. of Gruyer and a granddaughter.

Reception at Gruyer State Bank, 12:15



Tune Up - Tune In, Join PTA!

Welcome to the Gruyer PTA!!! Thank you for joining us as we set out to promote the welfare of our children. It is good to know that we can work together for your child and all young people. We know you will enjoy the satisfaction of being a part of the perpetual challenge of PTA work.

If you have a "brainstorm" of ideas, or one tiny suggestion, let your PTA know. Your officers can always use a new idea. Feel free to call upon the room representative for your child's room. She will be happy to help you become acquainted with other parents in your school. Thank you for joining!

Rhonda Ward
Your Membership Chairman

The committee to re-elect Mark White announced today in Austin that Linda Gale White, the First Lady of Texas, will visit Hansford County on Thursday, October 2nd. Carl Archer, local Mark White co-ordinator will escort her on a 10:45 a.m. tour of Spearman and on to Gruyer where she will be honored with a reception at the

Gruyer State Bank, 3 Main Plaza. The reception will begin at 12:15 p.m. The public is cordially invited. Democrats, Republicans and Independents are all welcome. Mrs. White looks forward to discussing her husband's record and bid for re-election with all voters of Hansford County.

Rain

Heavy rain fell in the Gruyer area this week. The rainfall varied from .25 in Spearman, to up to 3 or 4 inches in the Vance Morris area, Southwest of Gruyer. Also, heavy rains fell North of the Steele Ranch, near the Palo Duro Dam site. The road was blocked from mud-slides just North of the Palo Duro Dam site. The Palo Duro Creek was on a rise as result of the heavy rains in the area.

Markets

WHEAT \$2.08
MILK \$2.90
CORN \$1.75

Blood Pressure Clinic

Blood Pressure Clinic
FSB
10 a.m. - 12:00 p.m.
Oct. 3, 1986

Weather

DATE	HI	LO
25	82	53
26	85	58
27	86	50
28	85	69
29	77	58

Date 29, Precip. .35

Precipitation for the month of September was 1.17. Precipitation for the year up to date is 14.03.

Hospital

Patients who were admitted in the Hansford hospital are:
Frances Williams Shawn Tanner
Nelda Cook Lena McCroy

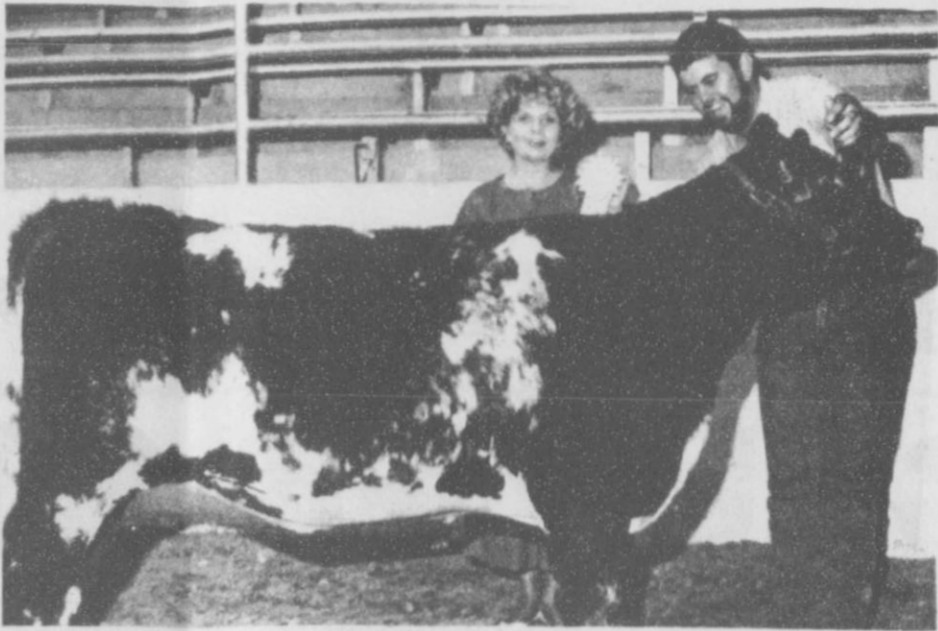
Patients who were dismissed from the Hansford Hospital were:
John Wilde Sarah Miser
Belle Dyer

Thanks

All of the Gruyer Lions want to thank everyone who helped with the Gruyer Lions Club sale this year!



Palo Acre Farms of Gruver, Tex. captured prize for Shorthorn Bulls (left picture) and the Grand Champion



Champion prize for position. the Reserve Grand the Panhandle Ex-

Graduates



Shawn English

Airman Robert S. English, son of Carolyn S. English of 1206 S. Grinnell, Perryton and Robert English of Tyrone, Ok., has graduated from Air Force basic training at Lackland Air Force Base, San Antonio, TX.

Airman English graduated from Basic Training with honors. He will be based permanently in Charleston, S.C.

During the six weeks of training the airman studied the Air Force mission, organization and customs and received special training in human relations. In addition, airmen who complete basic training earn credit toward an associate degree through the Community College of the Air Force.

SUCCESSFUL

The secret "Star Wars" experiment conducted recently provided information that one day will make it possible for small interceptor rockets based in space to hunt down nuclear missiles, the program's director said recently.

FAMOUS PUMPKIN PIE (Makes 1 9-inch pie)

- 2 eggs, slightly beaten
- 1 can (16 ounces) Libby's Solid Pack Pumpkin
- 3/4 cup sugar
- 1/2 teaspoon salt
- 1 teaspoon ground cinnamon
- 1/2 teaspoon ground ginger
- 1/4 teaspoon ground cloves
- 1 1/2 cups (12-ounce can) undiluted Carnation Evaporated Milk
- 1 9-inch unbaked homemade pie shell with high fluted edge

Preheat oven to 425°F. Combine filling ingredients in order given; pour into pie shell. Bake 15 minutes. Reduce temperature to 350°F. Bake an additional 45 minutes or until knife inserted near center comes out clean.

THE YMCA is giving away a 25 inch TV during the fair this week-end. Buy a chance for \$5.00 and win this TV!

Fall is one of nature's greatest shows; you can enjoy the next few months immensely if you take time to observe what is all around you.



Karen's Kozy Korner

Lighting accounts for only about 10 percent of the average household electric bill, but it's easy to save on that 10 percent if you know something about light bulbs.

Watts are units of measurement for the amount of electricity needed to power a light bulb. A 200-watt bulb, for instance, uses twice as much electricity as a 100-watt bulb. The more watts used, the higher your electric bill.

Most of us buy light bulbs according to watts, without ever paying attention to the lumens listed on the package label. But the lumens will help you pick the most energy efficient bulb.

The lumen is a measure of the amount of light given off by a bulb. A bulb giving off 2,000 lumens is twice as bright as one that produces 1,000 lumens.

Now, consider both watts and lumens on different bulbs. For example, compare one 100-watt 1,750 lumen bulb to two 60-watt 870-lumen bulbs. Together, the two 60-watt bulbs consume 20 percent more electricity

than the 100-watt bulb, but produce 10 less lumens of light.

The 100-watt bulb, with more lumens per watt, is the energy-efficient choice in this situation. Your best buy will be the bulb that gives you the most lumens per watt, has the longest life and will cost the least over its life.

Illuminating Facts on Incandescent Bulbs

Although standard frosted incandescent light bulbs are the most commonly used household bulbs, they are the least energy efficient since they produce less than 20 lumens per watt.

However, there are several ways to use incandescents more efficiently.

With these facts in mind, you should be ready to "lighten" your energy load, rather than simply grabbing the least expensive bulbs of the store shelf.

With three-way bulbs, you can adjust the light to your particular needs and eliminate waste. For added savings, try the new energy-saving 30-70-100 watt and 15-35-150 watt three-way bulbs. They produce more light per watt than the standard version.

A new family of incandescent bulbs in 34, 52, 76, 90 and 135 watts are available to replace the standard 40, 60, 75, 100, and 150-watt bulbs. These new bulbs also have higher lumens per watt than the bulbs they replace.

Educational programs presented by the Texas Agricultural Extension Service serve people of all ages, regardless of socio-economic level, race, color, sex, religion, handicap or national origin.

Wherever you can, use a single high wattage bulb instead of several low wattage ones. High wattage bulbs don't last as long as low wattage bulbs, but the money saved in electricity will more than compensate for the price of a new bulb. Check to make sure your fixture can accommodate high wattage bulbs before installing them.

In fixtures with two or more bulb sockets, use just one high wattage bulb. Place burned out bulbs in the empty sockets to guard against someone sticking a finger in the socket. Also, moisture can penetrate an empty socket and cause a short circuit.

Look for bulbs marked "energy efficient." Although they may be

more expensive than standard bulbs, the energy-efficient models should save you money in the long run.

Don't confuse "energy-efficient" bulbs with those marked "long-life." Long-life bulbs do last about three times longer than ordinary incandescents, but they deliver up to 20 percent less light than standard bulbs of equal wattage. But long-life bulbs may best be used in hard-to-reach spots such as closets and stair-wells.

Social Security Visit

A representative of the Pampa Social Security office will be in the Spearman Courthouse, Thursday, October 9th and 23rd from 10:00 until 11:30 in the County Commissioners Court Room. This person will be glad to assist you in filing an application for Social Security Retirement, survivors, disability, medicare or Supplemental Security Income benefits. If you are unable to visit personally, you may call 669-1018 to conduct any social security business. The Pampa Social Security office is open Monday through Friday, except National Holidays, between the hours of 9:00 and 4:45 P.M.

CARQUEST

We're Celebrating the **GRAND OPENING** of 4 CARQUEST stores in Waco...

• 1210 N. Loop 340 • 1309 S. Valley Mills
• 1818 Franklin • 803 Hewitt Dr., Hewitt, TX.

Help us celebrate with tremendous savings at all CARQUEST locations!

Jack Stands
High quality steel
3000 lb. capacity
12"-16" height
range. #2-2102

9.99 pr.

Grand Opening SPECIAL Pennzoil Motor Oil

Now get dependable Pennzoil protection in convenient easy-pour resealable quart jugs.

30 wt. **79¢** qt.
10W40 and 10W30 **89¢** qt.

Limit 24 qts. per customer.

PV Shocks Gas Charged XD Shock
Low pressure, nitrogen gas charged. Limited lifetime warranty. Limit 4

11.99 ea.

Bruiser XD
A firmer, more stable ride regardless of terrain. Limit 4

17.99 ea.

Radial XD
Improves handling for a safer ride. Limit 4

8.99 ea.

Made by Monroe Auto Equipment Co.

USA Products 14 ft. Tow Rope
6,800 lbs. tensile strength with forged steel hooks. With storage box. #101113

7.99

Westley "Bleche-Wite" Whitewall Cleaner
20 oz. pump spray. #500

1.59

Gumout Air Supply Inflator/Sealer
Seals and inflates flat tires in seconds. Non-flammable. Combats rim rust and corrosion. Will not freeze. Reusable. #7343

5.99

Plews Heavy Duty Grease Gun
Uses bulk grease or cartridge. #30-116

6.29

Grease Cartridges 1.69

Prices good at participating CARQUEST Auto Parts Stores thru Oct. 5, 1986.

GRUVER FARM SUPPLY

515 Main
Gruver - 733-2427

CARQUEST: the Right Place to buy auto parts.

FARM BUREAU

County convention

ANNUAL MEETING

Golden Age Center
Gruver, Texas

October 13, 1986 • 7:00 p.m.

RESOLUTIONS

ELECTION OF DIRECTORS

REFRESHMENTS

ENTERTAINMENT

DRAWING

Drawing will be held at meeting.

Hansford County Farm Bureau

806-659-3133

MELVIN BRADLEY

BOX 578
307 W. DAVIS
SPEARMAN, TEXAS 79081

Hansford County Farm Bureau

Box 578 307 W. DAVIS
SPEARMAN, TEXAS 79081

WANT ADS

CLASSIFIED RATES

Regular.....Per Word-\$0.13
 Display.....Per Col. Inch-\$4.20
 Double rate for blind ads
 Minimum charges
 Cash.....\$4.00
 Charge.....\$4.50

CASH IN ADVANCE ADS

Work Wanted*Trailers For Sale*
 Business Opportunities*No Longer
 Responsible*Political Advertis-
 ing*Child Care*Babysitting*
 Garage Sales*Out-Of-County Ads-
 unless advertiser has
 established credit with
 The Gruver Statesman

DEADLINES

To place or cancel ads
 Fri., 12:00 p.m.....Sun. edition
 Tues., 12:00 p.m.....Thurs. edition

The Gruver Statesman reserves
 the right to reject, edit, revise and
 properly classify all advertising
 submitted for publication. The
 Gruver Statesman also reserves
 the right to cancel any advertise-
 ment at any time.

The Gruver Statesman,
 Box 796
 Gruver, Texas 79040

OSGOOD MONUMENT CO.

Amarillo, Texas
 Dealers of Rock of Ages
 Granite, as well as all
 colored granites, marble
 and bronze memorials.

represented by
**BOXWELL BROS.
 FUNERAL HOME**
 519 S. EVANS
 659-3802

NOTICE

Wallace Monument Co.
 Monuments, Curbing,
 Grave Covers
 Local Representative
LEONARD JAMESON
 Spearman, Texas
 40-rtn

Real Estate

WHY PAY RENT! Move into a beautiful
 home for less than you are paying in
 rent.

Alliance Homes of Amarillo
 Qualify by Phone
 806-381-1352
 Call Collect

**TAKE UP PAYMENTS ON TWO AND
 THREE BEDROOM HOMES.**

Alliance Homes of Amarillo
 Qualify by Phone
 806-381-1352
 Call Collect

Farm Items

Hay Swathing and Baling done
 German Millet, Alfalfa, Wheat, Hay
 Grazer(Cow Kandy) - Call 733-2517

For Sale

FOR SALE: Fertile eggs pullet size 50
 cents per dozen hen size 75 cents per
 dozen. Call Joy at 733-2517.
 NC

FOR SALE: 1981 Olds \$3150.00 very
 clean - 733-2817

Duran's Disc-Rolling
 405-423-7012 Texhoma
 405-262-1121 El Reno
 47-4tc
 51-2tc

FOR SALE: Hogs ready to be butcher-
 ed. Call 733-2517.

Special Item

Just Arrived - 1986 Tri-Chem
 Christmas catalogue. See the new
 Sun-glo, Sticker Art & Liquid Em-
 broidery items. Get a head start on
 your gift list or craft projects. Call Joy
 at 733-2517.

Sewing wanted, alterations etc.
 Baking and decorating cakes. I now
 have the Wuzzles cake pan "EleRo".
 Call Joy at 733-2517.
 52-rtn-nc

An ill deed cannot bring
 honor.
 -George Herbert.

No man can justly aspire
 to honor but at the
 hazard of disgrace.
 -Samuel Johnson.

Nothing is lost except
 our honor.
 -Byron.

ONLY 3 PERCENT

Wholesale prices
 jumped 0.3 percent last
 month, only the second in-
 crease this year, as higher
 food costs swamped a
 further decline in gasoline
 prices, the Labor Depart-
 ment reported recently.

GRUVER MENU

MONDAY
 PIG-IN-A-BLANKET
 CORN
 TOSSED SALAD
 CAKE
 MILK

TUESDAY
 CHILI W/BEANS AND CRACKERS
 PINEAPPLE
 DONUTS
 MILK

WEDNESDAY
 TUNA NOODLE BAKE
 VEGETABLES
 PEARS, PEANUTBUTTER COOKIES
 CORN BREAD
 MILK

THURSDAY
 CHICKEN PATTIES
 MASHED POTATOES W/GRAVY
 VANILLA PUDDING
 W/VANILLA WAFFERS
 HOT ROLLS
 MILK

FRIDAY
 B-B-Q ON A BUN
 TOSSED SALAD
 FRENCH FRIES
 JELLO
 MILK

POLITICAL ANNOUNCEMENT

This newspaper is authorized to
 announce the candidacy of the following
 candidates for public office subject to
 the action of the voters in the MAY
 PRIMARY ELECTIONS:

DEMOCRAT
FOR COUNTY TREASURER
 Jean
 Norma Jean Mackie
**FOR COUNTY AND DISTRICT
 CLERK**
 Amelia C. Johnson
FOR STATE REPRESENTATIVE
 J.W. Buchanan
REPUBLICAN
FOR COUNTY TREASURER
 Eschol Blankenship
FOR STATE REPRESENTATIVE
 Dick Waterfield

Dennis L. Knudsen, M.D.
 Announces the Association
 of
 Robert C. Henderson II,
 D.O., M.D.
 in the practice of
 Obstetrics and Gynecology
 including
 Gynecologic Oncology and
 Premenstrual Syndrome

OFFICE:
 222 W. 15th
 Liberal, Ks.
 316-624-3811
 For Appointment
 pd

The Gruver Statesman

PUBLICATION (USPS 9596-0000)
 GRUVER, TEXAS 79040
 BOX 796
 659-3434

OWNER-PUBLISHER
 William M. Miller
EDITOR
 Joy Henderson
 Gruver, Tx.

Second Class postage paid at
 Gruver, Texas 79040.

Any erroneous reflection
 upon the character of any
 person or firm appearing in
 these columns will be gladly
 and promptly corrected upon
 being brought to the attention
 of the management.

POSTMASTER: Send address
 changes to the Gruver States-
 man, Box 796, Gruver, Texas
 79040.

SUBSCRIPTION RATE: The
 Gruver Statesman, adjoining
 counties, \$20.00 per year.

Leaf lettuce can be
 grown in the fall in warmer
 areas. Sow seeds in full sun
 in flower beds. Thin when 3
 to 4 inches tall. Water well.

Hansford County -Planned Parenthood

412 Davis
 659-2483
 Spearman
 Mon. - Fri.
 8:30 - 12:30

Situations Wanted

WANTED: Cake baking & decorating
 done. I now have the "Ele-roo pan."
 Also sewing and alterations. Call Joy
 at 733-2517.

Public Service Announcement

Persons age 16-up may apply for the
 Job Training Program October 2, 9:30
 AM - 12:00 at the Hansford County
 Court House, Spearman. Qualifica-
 tions for enrollment in JTPA is based
 on your or your family's income for the
 last 6 months.

Applicants should bring their Social
 Security card and provide a photo copy
 of their birth certificate to be kept in
 applicant's file. For more information
 call Panhandle Community Service at
 274-3518, Borger.

ONE MINUTE SPORTS QUIZ

1. Scott Hamilton is known in what sport?
2. What sport does the words jerk, curling and barbells refer?
3. How many strike outs did Steve Carlton have in 1982?
4. Who became the first player in NHL history to score 200 points in a season?
5. Althea Gibson was known in what sport?

1. Figure skating.
2. Weightlifting.
3. 286 strikeouts.
4. Wayne Gretzky.
5. Tennis.

Answers



WHO KNOWS

1. Any loser in a race.
2. September 24, 1789.
3. George Gerstwin.
4. Arizona.
5. A male donkey and a female horse.

1. Any loser in a race.
2. September 24, 1789.
3. George Gerstwin.
4. Arizona.
5. A male donkey and a female horse.

ALLSUP'S NEWS RELEASE

Allsup's Convenience Stores, Inc. has announced projected opening
 dates of October 15th for Store #143 located at Hwy 82 and Curlew
 Place in Cloudcroft, NM and November 1st for Store #132 located
 at Hwy 54 and Hwy 380 in Carrizozo, NM.

According to Tolle Jones, Allsup's Director of Construction,
 "All preparation work is complete and construction is well under
 way. If the weather cooperates the stores should be ready for
 final inspections and opening by these dates."

Each store represents an investment of almost \$450,000 to the
 communities of Cloudcroft and Carrizozo. They will operate 24
 hours a day, every day and will create approximately seven new
 jobs at each location.

Serving the residents of New Mexico, Texas and Oklahoma for 30
 years, Lonnie D. Allsup, founder, attributes the company's
 success to the philosophy of providing convenience, service, and
 variety to their customers. The company was founded in 1956 and
 currently operates 289 stores. The Allsup's Home Office is
 located in Clovis, NH.

\$200 SAVINGS BOND FROM TRANE.



FREE WITH AN XL 90 GAS FURNACE.

Buy and install an XL 90 gas furnace (LU-K or LD-K models)
 between September 1 and October 31, 1986, and you'll receive a
 free \$200 U.S. Savings Bond from Trane. Plus you'll save
 even more by controlling your heating bills. The XL 90
 features super efficiency...up to 95% AFUE...to help you save
 all winter, every winter.

SUMMER SAVINGS, TOO! You can also get a \$200 U.S.
 Savings Bond...and save on energy costs every summer...if
 you buy and install a qualifying energy efficient Trane air
 conditioner. Call us for all the details.

Offer available from participating dealers. Offer not available to contractors and builders.

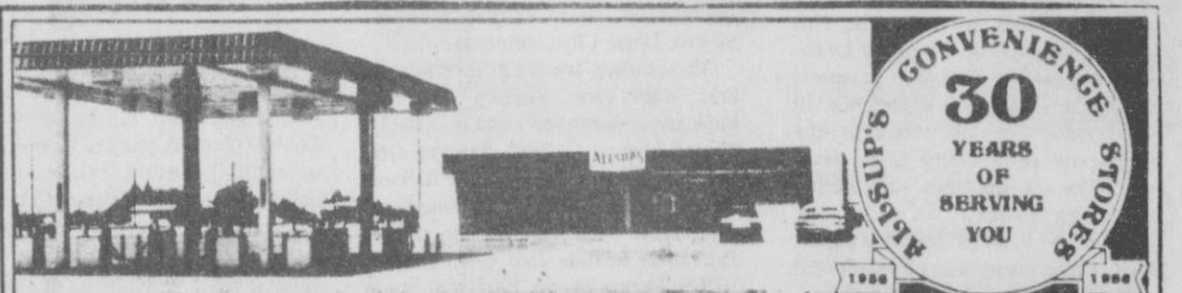
Hansford County Electric

733-5224

Gruver, Tx. 79040



30 million people take comfort in it



REGULAR/TACO/NACHO CHEESE FLAVORED **NOW ONLY**
DORITOS CHIPS **\$1.09**
 REGULAR \$1.59

BORDEN'S HOMO MILK 1/2 GAL. CTN. **\$1.09**
BORDEN'S ICE MILK OR DREAM BARS 8 BARS **\$1**
FRESH AND DELICIOUS ALLSUP'S CORN DOGS 2 FOR **89c**
Allsup's TALLSUP 39c
 Each 32 oz cup
DECKER **79c** 8 OZ. PKG.
 SUPPORT SPECIAL OLYMPICS BY BUYING DECKER PRODUCTS AT ALL ALLSUP'S STORES

ALLSUP'S CONVENIENCE STORES
DECKER SLICED BACON 1 LB. PKG. **\$1.89**
DECKER DANISH HAMS 8 OZ. PKG. **\$1.29**
DECKER CHOPPED HAM 8 OZ. PKG. **\$1.09**

AFFILIATED FOODS T.V. SPECIALS
BONUS PAK KRAFT DINNERS
MAC & CHEESE 3 \$1 8.4 OZ. BOXES
REGULAR "JUST FOR US" WILSON'S HAMS 2 LB. PKG. **\$5.88**

DECKER Bologne 12 oz. Pkg. **1.09**
DECKER Franks 12 oz. Pkg. **89c**
Diet Dr. Pepper, Dr. Pepper or Sugar Free Pepper Free 6 Pak 12 oz. cans **\$1.89**

Panhandle State University News



Pictured above are PSU students who began their student teaching in the Texas Panhandle on September 29. They are, [seated] left to right: Joni Cox, Gruver; Donna Ewing and

Connie Morris, Perryton; and Dr. James Satterfield, Director of Teacher Education and Placement at Panhandle State University Goodwell,

Okla. Standing, left to right are: Douglas Loomis, Dalhart; Daria Mutschler, Muleshoe; Sharon Molins, Dumas; and Randy Roberts, Stratford.

Twenty-seven Panhandle State University teacher education students began their student teaching assignments September 29 in grade schools and high schools in five states. This directed observation in student teaching is designed to give each prospective teacher practical experience in actual classroom instruction at the appropriate subject and grade level and under the guidance of a skilled supervising teacher.

In addition to actual teaching experience, conferences will be conducted each week for the student teachers. Practical problems arising in the student teaching situation are discussed at the conferences as well as the general problems relating to the teaching profession.

The student teachers, their teaching assignment, and their subject area are as follows. Those students teaching in Guyton, Okla. include Steve Baird, mathematics; Tammy Van Buskirk, business education; Tim Vessels, agriculture education; and Randy Williams, mathematics.

Other students who will do practice teaching in Oklahoma are: Kathryn Brown, Hardesty, business education;

David Caffey, Goodwell, health, physical education, and recreation (HPER); Carlos Souza, Texhoma, business administration; Mary McDaniel, Felt, social studies; and Lisa Moore, Boise City, elementary.

Also student teaching in Oklahoma are: Mary Jane Bentley, Laverne, business education; Jerald Custar, Sharon-Mutual, HPER; Tamyra Orr, Ponca City, elementary; and Richard Royal, Turpin, vocal music education.

Students teaching in the Texas Panhandle include Joni Cox, Gruver, HPER; Donna Ewing, Perryton, home economics; Carmelita Gage, Gruver, business education; Douglas Loomis, Dalhart, elementary; and Sharon Molina, Dumas, elementary.

Also assigned to the Texas Panhandle are: Connie Morris, Perryton, elementary; Daria Mutschler, Muleshoe, HPER; and Randy Roberts, Stratford, HPER.

All twenty-seven practice teachers will return to the PSU campus Monday, November 3, for a one-day seminar. Other than that one day, these student teachers will be in the public schools for the next twelve weeks.

Xi Psi Kappa Meeting

Xi Psi Kappa sorority kicked off the new year on Tuesday, Sept. 16th with a luncheon in the home of Debby Odom. A country theme was used on the eating tables and a delicious menu consisting of Henny Penny Salad, asparagus casserole, tossed salad, homemade rolls, and apple pie and homemade ice cream was served. A business meeting to plan out the year's activities followed. Marian Shapley presented the program on Friendship. The hostess gift was won by Peggy Barkley.

Those members in attendance were: Judy Stedje, Judy Park, Regina Barkley, Kathy Logsdon, Fran Duncan, Mary Jo Cluck, Kathy Stedje, Marian Shapley, Peggy Barkley, Sally Jones, Diane McLain, Linda Venneman, Alexa Thoreson, Mandy Derrington, Lee Harper and hostess Debby Odom.



Queen Attendant Jill Garrett, Queen Dala Shapley, and Queen Attendant Cami Shapley. Homecoming 1986, Sept 19, 1986

SEE YOU AT STRATFORD FRIDAY

JUAN F. VIOLA, M.D., P.A.

General Practice

Announces the Incorporation of the Following Services

ALLERGY TESTING / TREATMENT

MEDICAL ACUPUNCTURE /ACUPRESSURE

for

PAIN CONTROL

SMOKING CESSATION

Gruver

Spearman

733-5011

Call:

659-3733

U.S. POST SERVICE
 STATEMENT OF OWNERSHIP, MANAGEMENT AND CIRCULATION
 Required by 39 U.S.C. 3685

1. TITLE OF PUBLICATION
 The Gruver Statesman

2. PUBLICATION NO.
 9 5 9 8 6 U U 9-22-86

3. FREQUENCY OF ISSUE
 Weekly

4. COMPLETE MAILING ADDRESS OF KNOWN OFFICE OF PUBLICATION (Street, City, County, State and ZIP Code) (Not printer)
 Box 796 Gruver Mansford, Texas 79040-0796

5. COMPLETE MAILING ADDRESS OF THE HEADQUARTERS OF GENERAL BUSINESS OFFICES OF THE PUBLISHER (Not printer)
 Box 796 Gruver Texas, 79040-0796

6. FULL NAMES AND COMPLETE MAILING ADDRESS OF PUBLISHER, EDITOR, AND MANAGING EDITOR (This item MUST NOT be blank)

PUBLISHER (Name and Complete Mailing Address)
 William M. Miller 810 S. Bernice, Spearman, Tx, 79081

EDITOR (Name and Complete Mailing Address)
 Joy Henderson, Gruver, Tx, 79340

MANAGING EDITOR (Name and Complete Mailing Address)
 William M. Miller 810 S. Bernice, Spearman, Tx, 79081

7. OWNER (If owned by a corporation, its name and address must be stated and also immediately thereunder the names and addresses of stockholders owning or holding 1 percent or more of total amount of stock. If not owned by a corporation, the names and addresses of the individual owners must be given. If owned by a partnership or other unincorporated firm, its name and address, as well as that of each individual must be given. If the publication is published by a nonprofit organization, its name and address must be stated. (Item must be completed.)

8. KNOWN BONDHOLDERS, MORTGAGEES, AND OTHER SECURITY HOLDERS OWNING OR HOLDING 1 PERCENT OR MORE OF TOTAL AMOUNT OF BONDS, MORTGAGES OR OTHER SECURITIES (If there are none, so state)

9. FOR COMPLETION BY NONPROFIT ORGANIZATIONS AUTHORIZED TO MAIL AT SPECIAL RATES (Section 433.2, GMM only)
 The purpose, function, and nonprofit status of the organization and the exempt status for Federal income tax purposes (Check one)
 HAS NOT CHANGED DURING PRECEDING 12 MONTHS HAS CHANGED DURING PRECEDING 12 MONTHS (If changed, publisher must submit explanation of change with this statement.)

10. EXTENT AND NATURE OF CIRCULATION (See instructions on reverse side)

	AVERAGE NO. COPIES EACH ISSUE DURING PRECEDING 12 MONTHS	ACTUAL NO. COPIES OF SINGLE ISSUE PUBLISHED NEAREST TO FILING DATE
A. TOTAL NO. COPIES (Net Press Run)	550	550
B. PAID AND/OR REQUESTED CIRCULATION (Sum of 1, 2, 3, 4, 5, 6, 7, 8, 9, 10, 11, 12, 13, 14, 15, 16, 17, 18, 19, 20, 21, 22, 23, 24, 25, 26, 27, 28, 29, 30, 31, 32, 33, 34, 35, 36, 37, 38, 39, 40, 41, 42, 43, 44, 45, 46, 47, 48, 49, 50, 51, 52, 53, 54, 55, 56, 57, 58, 59, 60, 61, 62, 63, 64, 65, 66, 67, 68, 69, 70, 71, 72, 73, 74, 75, 76, 77, 78, 79, 80, 81, 82, 83, 84, 85, 86, 87, 88, 89, 90, 91, 92, 93, 94, 95, 96, 97, 98, 99, 100)	162	157
C. MAIL SUBSCRIPTIONS (Paid and/or requested)	301	318
D. TOTAL PAID AND/OR REQUESTED CIRCULATION (Sum of B, C, and D)	463	475
E. FREE DISTRIBUTION BY MAIL, CARRIER OR OTHER MEANS (Samples, complimentary, and other free copies)	13	16
F. TOTAL DISTRIBUTION (Sum of D and E)	476	491
G. COPIES NOT DISTRIBUTED (Office use, left over, unaccounted, spoiled after printing)	74	59
H. RETURN FROM NEWS AGENTS	---	---
I. TOTAL (Sum of F, G, and H; should equal net press run shown in A)	550	550

11. I certify that the statements made by me above are correct and complete

SIGNATURE AND TITLE OF EDITOR, PUBLISHER, BUSINESS MANAGER, OR OWNER
 William M. Miller, Editor

PS Form 3526, July 1984 (See instructions on reverse)

New York Rep. Bella Abzug wins democratic runoff.

Stock market experiences biggest daily loss of 86.61 points.

Soviets free Daniloff but he is not allowed to leave country.

Irwin gives up search for Noah's Ark in Turkey.

Egyptian, Israeli leaders hold summit.

N.C. picked for new nuclear waste site.

CBS names new head, William Paley.

Another American kidnaped in Beirut.

U.S. ANNUAL PAY
 Annual pay of workers in the United States, including part-timers, rose an average \$833 or 4.5 percent last year to slightly over \$19,000, the government reported recently.

Country Stitches

715 W. 7th Spearman, Tx.

Formerly Cross Stitch Corner and Cochran's Fabrics-will be open for business.

October 6, 1986
 9:00 a.m.-5:30 p.m.

Closed the week of
 September 29th to move
 and re-arrange.

A complete fabric and
 counted cross
 stitch shop.

Marilyn Cline, Owner 659-2080



County Men are finalist



Richard Wagner and Joe T. Venneman

Two Hansford County men, Richard Wagner and Joe T. Venneman, have been selected as two of 20 finalists who will compete in the Texas Championship Cook-Out to be held at the Texas State Fair in Dallas on October 3 & 4th. There are five finalists in each of the four categories of Beef, Poultry, Lamb and seafood. Richard will be competing in the Poultry category with his superb recipe of Mesquite Grilled Chicken

Halves and Joe T. will compete in the Beef category with his delicious Mesquite Grilled Steaks with Green Chilies. There will be first place winners selected in each category. The four first prizes are round-trip airfare for two to anywhere Southwest Airlines flies, plus \$500 cash. The two men will load their grills and ingredients and head out for Dallas on Friday morning. Good luck fellows!!!

New Doctor



Dr. Robert C. Henderson II

Bob Henderson, D.O., M.D. opened a medical practice in Obstetrics & Gynecology Sept. 2 in Liberal, Kansas. He is in association with Dr. Dennis Knudsen.

The son of former Perryton residents Robert and Rita Henderson, he is married to the former Genette Cudd, daughter of Gene and Frances Cudd of Spearman. The Hendersons have two children, Ryan 8, and Diane, 4.

He received a Doctor of Osteopathy degree from Texas College of Osteopathic Medicine, and a Doctor of Medicine degree from Texas Tech University School of Medicine. After completing an internship in Family Practice, he went on to complete a residency in Obstetrics and gynecology at Texas Tech. He then served on the medical school faculty as an assistant professor.

In addition to his teaching responsibilities, Henderson worked at Harrington Cancer Center in Amarillo, with emphasis in the area of cancer of the female reproductive organs. Research areas included premenstrual syndrome treatment.

Prior to earning his medical degrees Henderson received a BA from McMurry College and a Master's degree of theology from Perkins School of Theology at SMU.

Successful living, which few of us acquire, depends upon simple things.

There are some things more important than getting rich--a fact that many people learn too late in life.

An overlooked important piece of garden equipment is gloves. Cotton gloves are the cheapest but heavy work calls for leather gloves to protect the hands.

CALL FOR BIDS

The Board of Directors of the Hansford County Appraisal District will receive bids for a copy machine on a lease/purchase plan. Bid specifications may be obtained at the appraisal district office located at 709 West 7th, Spearman, TX. Office hours are 8:30 - 5:00 Monday - Friday. Bids will be opened and read aloud Wednesday, October 8, 1986, at 9:00 A.M. Deadline for submitting bids is Tuesday, October 7, 1986, at 5:00 P.M.

A hardworking woman needs a hardworking investment plan.

Your career keeps you busy. That's why you've gained in responsibilities and income. And it's why you now need sound investment counsel to help make more of all you make.

Chances are you have neither the time nor the special skills necessary to develop a financial program in these uncertain economic times. We can help with a wide range of capital appreciation opportunities from real estate to cable television, leasing to oil and gas, from \$1000 up. For every working woman who wants to put her money to work. Call or write us soon.

Shicknight, Wilson, Slapper, Wood & Associates, Inc.
3014 W. 25th, #4000
AMARILLO, TX 79109 358-7131
P.O. BOX 516
SPEARMAN, TX 79081 659-3880

Integrated Resources
Equity Corporation

Marcia Shicknight
Debra Slapper

Member SIPC

SPS proposes CLEAN COAL

Southwestern Public Service Company (SPS) announced today it is proposing to convert a natural gas-fueled power plant unit near Amarillo, Texas, to a coal-fueled unit that would save millions of dollars for its customers, while demonstrating for the nation an environmentally superior way to burn the most economical coals.

It is expected the repowering of Nichols Station unit 3 could save SPS customers \$178 million during the 20-year life of the converted unit, through reduced fuel costs, said W.R. "Bill" Esler, SPS president the chief operating officer.

SPS today filed an Application for Project Endorsement with the Public Utility Commission of Texas (PUCT) for the \$99.7 million project. Construction could begin in late summer 1987; operation would begin in 1990. Several hundred construction workers would be employed during the conversion.

"Even in the short term, the boiler replacement will be a help to our area," Esler said. "And our project will prove that utilities can burn the least-expensive coals in boilers that are in a sense 'coal-cleaners.' The boiler we will demonstrate will not require installation of expensive, high maintenance, sulfur scrubbers. But it will do a superior job of helping keep our air clean."

The U.S. Department of Energy (DOE) is considering the SPS project for possible inclusion in its Clean Coal Technology Program. The program will provide interest-free loans to partially finance projects that contribute to the nation's expertise of burning coal more cleanly.

"We believe that quick PUCT endorsement will enhance the chances of DOE participation, which would mean even greater savings for our customers," Esler said. "However, even without DOE financing, the project could serve as an example of American productivity applied to the benefit of ratepayers and the environment."

SPS proposes repowering the 18-year-old, 256,000-kilowatt Nichols unit 3 with a "Circulating fluidized bed" (CFB) boiler. The project will demon-

strate the effectiveness of a CFB boiler with more than twice the steam output of any CFB boiler in operation or under construction, said SPS project spokesman Dave Fairbanks.

"Circulating fluidized bed boilers are designed both to burn a variety of coals and to reduce nitrogen and sulfur oxide (NOx and SOx) emissions," explained Fairbanks, a senior mechanical engineer in SPS' generation plant design group. "Current federal law, relating to new or modified power plants, requires at least 70% of the potential sulfur emission be removed, regardless of how low the sulfur content is to begin with."

"The CFB boiler SPS is proposing would operate at only 1600 F, which is below the temperature at which significant amounts of NOx are formed," Fairbanks explained. "And limestone injected into the CFB boiler captures the SOx. The limestone and SOx form inert gypsum, which is easily removed from the boiler in a dry powder form."

Southwestern's proposed plant would test-burn coals from New Mexico mines, and from Wyoming and Oklahoma. The principal coal for the boiler is expected to be from the Raton Basin in New Mexico. CFBs also are capable of burning coal cullm ("waste" coal).

SPS said the CFB boiler could use Texas coals some day, should those coals become economical for SPS.

Fairbanks said CFB boilers have several advantages, compared to conventional boiler-scrubber combinations. "CFBs remove sulfur oxides more economically than do scrubbers," he said. "They do not use water in the process--which is important in this region. And they do not create the messy, hard-to-dispose-of sludges produced by traditional wet scrubbers."

Southwestern Public Service Company primarily provides electric service to a population of about one million in a 52,000-square-mile area of eastern and southeastern New Mexico, the south plains and Panhandle of Texas, the Oklahoma Panhandle and southwestern Kansas.

Wedding Vows Exchanged



Mrs. Erin Bergin

Erin Marie Colwell and David Walter Bergin were united in marriage Thursday afternoon with the Rev. Dean of Devolhouse officiating. The ceremony was held at St. Thomas the Apostle Catholic Church.

The bride is the daughter of Mr. and Mrs. James R. Colwell of Amarillo. Parents of the groom are Mr. and Mrs. T.J. Bergin of Gruver.

Maid of honor was Kathie M. Colwell.

Best man was Dr. Clint Irwin of Spearman.

Guests were seated by Michael P. Colwell.

The bride is a graduate of Kansas State University in Manhattan. She is employed by the Texas Department of Human Service as a social worker.

The groom is a graduate of Texas A&M University in College Station. He is employed by Caprock Industries.

Card of Thanks

Our family wishes to express it's deepest thank you for the many kindnesses and expressions of sympathy extended to us at the loss of our beloved brother and uncle. Everything would have meant so very much to Spanky and means no less to us. May God bless each and everyone of you.

The Bill Shrader Family
Thank you,
Sincerely
Bill & Millie Shrader

Hansford County Farm Bureau Annual County Meeting

Golden Age Center
Gruver, Texas

October 13, 1986 7:00 P.M.

Visit our Booth at the Hansford County Fair this week-end!

Standing together. Standing strong.

Equity Exchange

SERVING THE HANSFORD COUNTY AREA

On the Go with Joy

Boyl if I felt any better or happier today, I'd bust a gussett. (whatever that is! Just the same I feel good! As a rule on Tuesdays, my blood pressure has gone sky high after my sessions of being criticized by my devoted readers and mostly un-devoted who not only don't subscribe or pay for their papers, (just read them when some one of the family is featured). Anyhow Mondays and Tuesdays must be "gripe to the editor" day, but my Doctor has informed me to grin and bear it or lash out and fight back. So, this morning I woke up and did some meditating on the problem and since the rain washed most of the Cobwebs and "stinking thinkin'" out of my head. I decided you guys could kick me around all you want to & I'll just pretend I'm a football or the family cat-for awhile anyhow.

See what a change in attitude will do for you? If you don't believe it try it. We got some good pointers from a series of lessons at church recently so I thought they would be good to pass along.

"What Shall I do With This Day?" I How to Avoid Failure Each Day

1. Failure - inability to reach goals (priorities).
A. some unobtainable because wrong priority. James 4:2-3
2. Determine to succeed. Phil 4:11-14; John 15:1-5; II Cor., 12:9; I John 5:2-5
3. Good habits - Key to Success Phil. 4:4-8

4. I will persist until I succeed. Luke 18:1-8; I Cor. 15:58; II Tim. 1:12

II How To Greet Each Day

1. With love in my heart. II Cor. 13:1-8, 13

2. "I am God's greatest miracle. "Psalm 139:13 Ff; Gen. 1:27

3. Today I will be master of my emotions. Prov. 23:7, 4:23.

4. I will laugh at the world (and at myself when necessary).

A. "This too shall pass...."Theme of Ecclesiastes.

III How to Live Each Day

1. God's mercy - new every morning Lamentations 3:22-27

2. I will live this day as if it is my last. James 4:13-15, Job 7:6-7; Psalm 78:99; Eccl. 12:1.

a. Remember my worth. Matt. 6:24-34; 16:26.

b. Our appointment. Heb. 9:27; 1 Thess. 5:1,2; Matt. 24:42.

3. If this day is not my last I shall fall to my knees and give thanks.

a. I will thank God for added opportunity and privilege to serve Him.

To sum this whole thing up, some people can criticize me and I will still love them to pieces. Others can say

"one word the wrong way to me and I'll mentally "kick the cat" every time I think of them. So, I guess we need to change our attitudes - Huh?

Thought for the day - "Most of us know how to say nothing. Few of us know when."(?)

Gruver City Library

Marion Bond West, who has written for GUIDEPOSTS magazine for fourteen years, has written her fifth book titled **THE NEVERTHELESS PRINCIPLE**. The fears inside Marion Bond West would never give her a moment's peace. See how confusing everything is? This is how it's going to be for the rest of your life. Things will never be normal again. Why don't you just give up? Your life is over. Taunting, always mocking. The fears inside Marion West would never give her a moment's peace. She had always accepted their presence; all her life she had been plagued by fear and there seemed to be no hope of relief. And now, with the devastating news of her husband's incurable illness, the voices of fear grew to unthinkable proportions.

Then suddenly, in the midst of despair, Marion stumbled onto Nevertheless living. It was a surprising transition, a golden moment, and it changed her life forever. Anything could happen; NEVER-THELESS God was in control.

"What's happening?" she asked God when she realized a change was taking place. And He answered, unfolding for her the way to safety

in Him. A haven of rock-solid trust in which she could never be shaken by fear again.

This is a joyous story of triumphant faith - but not just for Marion. The wonder behind the Nevertheless Principle is for everyone in every situation. It's a way of life. You can adapt the Nevertheless Principle and watch the mocking fears lose their hold. A story of tremendous practical application for large and small crises alike.

Donations continue to come in at the Library for the Spanky Shrader Memorial Fund. Each of these is treasured, and will be used for the ongoing of Gruver City Library. Spanky was our #1 supporter, and he is definitely missed. Not only was he a avid reader, but he was interested in seeing that there was something here for every interest. For those of you who have given, and for those of you who will give in the future, Spanky would have been most pleased to be honored in this way. Gruver Library, as well as the City of Gruver will miss his friendship and support.

Gruver City Library
2:00 to 6:00
Monday through Friday

By Popular Demand

The White Deer Sesquicentennial Committee is going to have a Fajitas supper before the White Deer-Spearman football game. We invite you to try our famous Fajitas to be served from 5:00 p.m. to 7:30 p.m. on October 3rd. The supper will be held at the White Deer Community Center just one block east of Main on 5th Street. Tickets may be purchased at the door. \$4.25 for adults and \$2.75 for children under 12. The supper includes Fajitas, beans, green salad, cookies, tea and coffee.

Harmony Club

attends
**Music Club
Dinner**

On September 9, 1986, the Harmony Club members were invited to, and attended the Music Club Reassembly Dinner at the Gruver United Methodist Church. The meal was catered by the United Methodist Women. The entertainment consisted of Robin Karlin singing while Brenda Dahl played the guitar and Chuck Sparkman played the bass guitar. The Harmony Club would like to thank the Music Club for inviting us to attend their Reassembly Dinner.

If it be a sin to covet honor,
I am the most offending soul alive.
-Shakespeare.

Clinics Offering Vaccines

Immunization Clinics offering vaccines that give protection against several childhood diseases are scheduled for October. Protection is against Polio, Diphtheria, Lock Jaw (Tetanus), Whooping Cough (Pertussis), Measles, Rubella, and Mumps.

The Texas Department of Health is beginning (approximately October 1, 1986) to charge money to help with the cost of keeping the clinic open. The amount of money charged will be based on family income and size, and the ability to pay.

The Clinic will be in Spearman October 6, 1986 in the Spearman Elementary School, Foyer of Varsity Gym from 11:00-1:00 P.M.

Any housewife interested in going to college or is going to college now, may apply for the Ella Garnett Extended Homemaker Scholarships.

You must live in Hansford County and have graduated from high school or have GED.

If interested, the information and applications are in the Extension office

GARN GIVES KIDNEY

Sen. Jake Garn donated his left kidney to daughter Susan Rhae Garn Horne in what doctors called "an extremely successful" operation that left the senator "proud and happy."

He who has lost honor can lose nothing more.
-Publius Syrus.

FHA Chapter sponsor 9th Annual Arts and Crafts Festival

The Hooker High School FHA Chapter will sponsor their 9th Annual Arts and Crafts Festival. It will be held Saturday, November 8th, 1986 at the Hooker Grade School All-Purpose Room.

The hours will be 9:00 a.m. to 5:00 p.m. on Saturday. Setup time will be

from 7:30 a.m. to 9:00 a.m. on Saturday morning. The festival will be open to all artists and craftsmen with no restrictions as to amateur or professional standing

For further information on the show, please contact Anita Witt, Phone(405) 652-2836, or 652-2754.

Busy Hands Hobby Club

The Busy Hands Hobby Club met in the home of Mary Jo Robinson on Thurs. Sept. 25th for an afternoon full of work, food, and fun as we worked on wood painted geese.

Seven members and two visitors were present. They were: Imogene Williams, Alma Ross, Frankie Leatherman, Joyce Duncan, Mickey Delano, Edith Wright, and the hos-

tes, Mary Jo Robinson. The visitors present were: Juanita Taylor and Edna Marie Walkers.

Delicious refreshments of stuffed tomatoes, crackers, chips, fruit salad, angel food cake, pear crunch, watermelon, canteloupe and cakes were enjoyed by all.

The next meeting is planned for Oct. 9th at the home of Bessie Mitts.

Round-Up Sunday

October 5th. has been designated as "Round-Up Sunday" at Union Church. The manner of dress will be western or old fashion, if you so desire. The goal for the day will be rounding up 160 for Sunday School beginning at 9:45 a.m.. Monty Matthews will be our special guest in both the morning and evening services. There will be a noon covered dish luncheon and fellowship following the morning service. All are welcome!

Monty Matthews, at the age of eleven began singing in his father's church with his brothers. From then on, singing led to a recording contract on the Decca label and national recognition for him and his group, the Jordanares, as they entered a new career on the Grand Ole Opry with Red Foley. Monty's excellence in musical arrangement gained him a well-deserved national following. Later Monty became one of the original Foggy River Boys, the internationally acclaimed gospel group. Monty sang with that group for six years, and to this day does their

musical arranging.

At this time, Monty recognized that his work was keeping him away from his family too much. Knowing the importance of the family unit to God, Monty, in a strong show of faith, put his family before his career despite many attempts to lure him out of his temporary semi-retirement.

To the delight of many, Monty Matthews is back! With the children grown, Monty and his lovely wife Betty Mae are reaching out hand in hand to fulfill their commission from God. As a devoted Christian Communicator, Monty communicates the "Good News" of Jesus Christ in his musical performance as well as his day to day living.

Pastor Steve Rogers extends to all a warm welcome to come join us as we worship our Lord Jesus Christ and fellowship together with other of like precious faith.

MORNING SERVICE.....10:45
EVENING SERVICES.....6:30
Nursery provided

INTRODUCTORY SALE

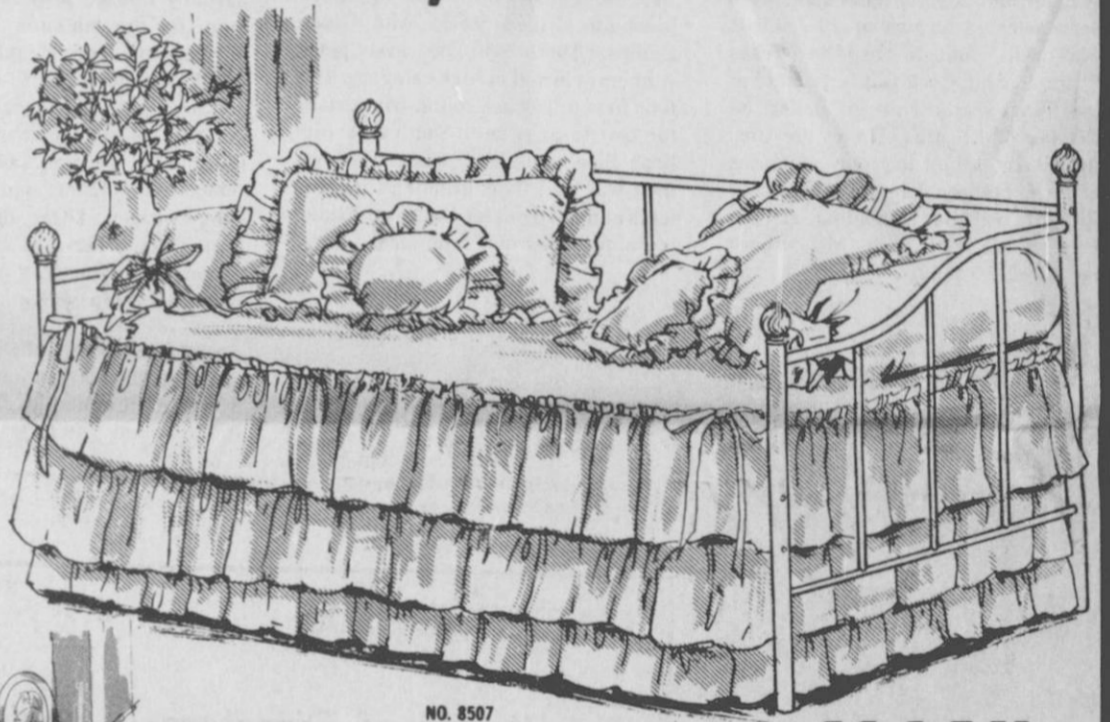
STARTS THURSDAY, OCTOBER 2

Dresher White & Brass Daybeds

Reduced up to

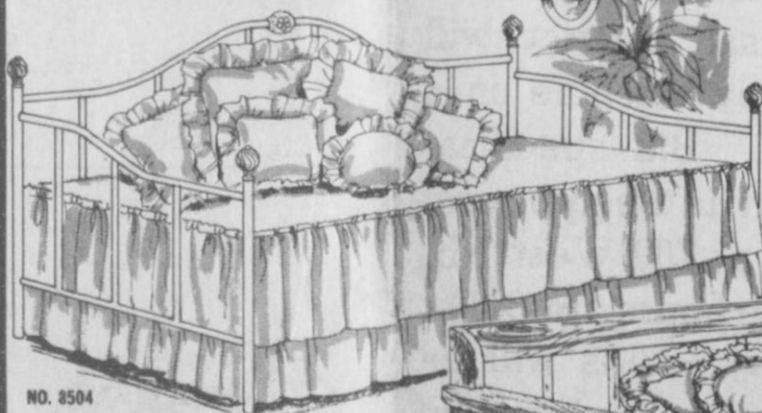
40%

(Trundle Riser & Mattress Optional)



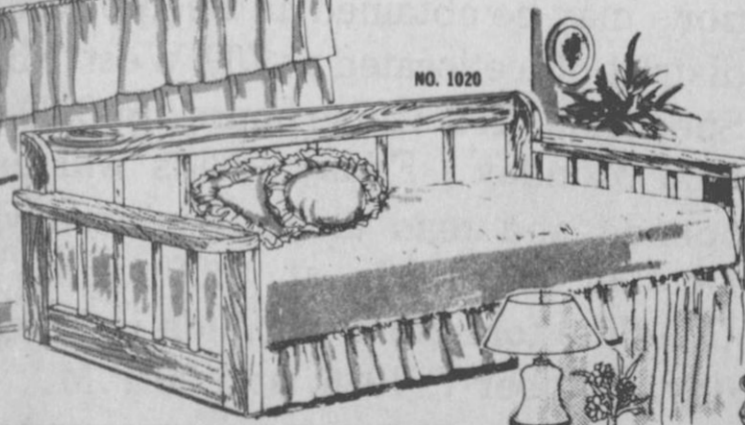
NO. 8507

SALE **\$119⁵⁰**
Reg. \$198.50



NO. 8504

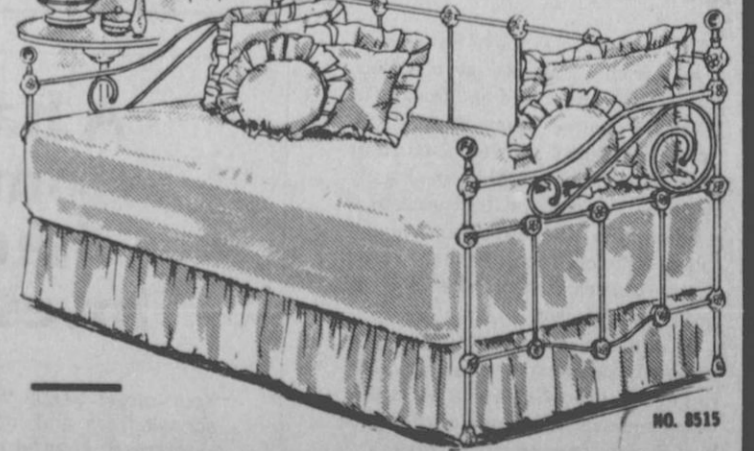
SALE **\$169⁹⁵**
Reg. \$239.50



NO. 1020

SALE **\$219⁵⁰**
Reg. \$319.50

Trundle Risers
\$79⁵⁰
Reg. \$139.50

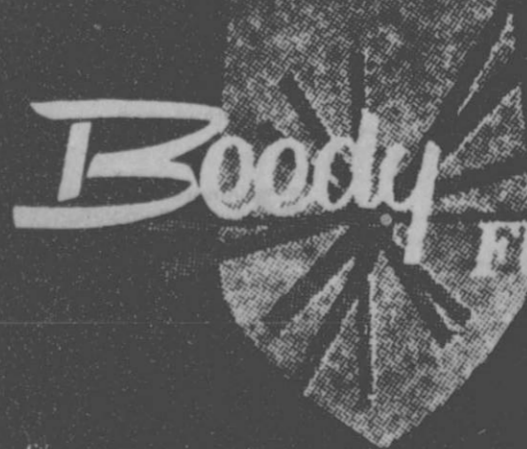


NO. 8515

Daybed
Coverlets
Starting at
\$114⁵⁰ SET

SALE **\$369⁵⁰**
Reg. \$549.50

— Quantities Limited —



BOODY FURNITURE CO.

659-3701
723 W. 7th
Spearman, Texas

plains
shopping
center