

PAGE ONE

A QUICK READ OF THE NEWS

Man guilty of assault by fish

An Idaho man has pleaded guilty to throwing salmon at U.S. Rep. Helen Chenoweth-Hage during a congressional hearing to discuss last summer's wildfires in Montana and Idaho.

Chenoweth-Hage, R-Idaho, was not injured during the Sept. 16 attack, but the hearing — being held at the University of Montana in Missoula — was recessed while she cleaned salmon from her hair and jacket.

Randall Mark, 20, of Moscow, Idaho, made a brief appearance in U.S. District Court in Missoula to change his plea from innocent to guilty. In exchange, federal prosecutors dropped a second charge accusing him of assaulting Rep. Rick Hill, R-Mont.

Hill was seated next to Chenoweth-Hage when Mark tossed a patty of canned salmon at the congresswoman in protest of her conservative views. She has blamed some of the fire problems on lack of timber cutting in national forests.

Defense attorney Craig Shannon said Mark expected to be arrested for the incident but was intent on making his protest anyway. Mark could receive up to a year in prison when he is sentenced Feb. 6.

Man slept in stolen vehicles

Don Dube should be getting plenty of rest these days — and apparently he needs it.

Dube, 21, was sentenced to 2 1/2 years in prison on seven charges involving stolen vehicles in the Grand Falls, New Brunswick, area.

Dube was twice found napping in vehicles he had just boosted.

In September, he was caught snoozing in the trunk of a car reported stolen from a local dealership. He was freed on a promise to return to court at a later date.

He didn't. He was found asleep behind the wheel of a stolen pickup.



Drawing date: Wednesday, Dec. 20
Winning numbers: 10-18-23-39-42-46
Estimated jackpot: \$13 million
Winners: 0
Next drawing: Saturday, Dec. 23
Estimated jackpot: \$17 million

On this date in history

Dec. 23 — Moses Austin arrives in Texas to begin work on securing Mexico's permission to bring in 300 families from the United States (1820).

Dec. 24 — Federal troops occupy Galveston during the Civil War (1862).

Dec. 25 — Civil war figure William Quantrill (of Quantrill's Raiders fame) shoots up the city of Sherman, Texas, during a drunken spree (1863).

LOCAL WEATHER

As of Friday, the forecast was not showing much relief from the cold weather anytime soon. Sunday morning's low was predicted at 24, dropping to 20 Monday, 16 Tuesday and 10 Wednesday. Thursday was finally expected to bounce back to 20. Daytime highs were expected to be in the 40s except for Wednesday's 38.

Editor Ronn Smith can be reached at 272-4536 or ctyankee@fivearea.com

Missed your paper? Call carrier Melissa Flores at 272-6719 or the Journal during business hours, 8:30 a.m.-5 p.m.

City to improve access to new nursing home

JOURNAL STAFF REPORT

The Muleshoe City Council has voted unanimously to pave the two remaining blocks of Avenue K in order to improve all-weather access to the site of a new nursing home that is under construction.

City Manager Rick Hanna recommended the move, saying Muleshoe's paved streets are in good shape so the annual seal-coating project (cost: about \$70,000 per year) can be skipped next year and the money used for the paving

project.

He said the cost of the Avenue K work has been estimated in the low \$60,000s.

Hanna added that some concern had been expressed about ambulance runs from the nursing home during bad weather, since they would either have to follow a curving route or use the unpaved Avenue K.

The city will try to coordinate the paving project with the state's reworking of Texas 214, which is scheduled to include new curb and gutter, Hanna

said.

The council also approved giving the city's fund depository agreement to Muleshoe State Bank for the period from Jan. 1 to Sept. 30, 2003.

Muleshoe State submitted a proposal that included 6.5 percent interest while First Bank of Muleshoe offered 6.2 percent. Hanna expressed appreciation to both, saying, "I don't think we can do that well in TexPool or any other investment pool."

Sports editors name Ramirez to second team

JOURNAL STAFF REPORT

The Associated Press sports editors' all-state picks in football were released Thursday, with Muleshoe's Danny Ramirez being listed as a second-team selection on the Class 3A roster.

This vote is based on performance during the regular season.

Other running backs sharing Ramirez's status are Amos Harmon of Brownsboro and Matthew Wade of Lamesa.

First-team running backs are Mark Cates of Falfurrias, Rean Henderson of Gatesville and George Willis of Quitman.

Seven Mules were on the honorable mention list: offensive linemen Tommy Barrera, Bradley Thomason and Stephen Woodard; defensive lineman Jeff Shelburne, linebacker Darrell Lewis; defensive back Brandon Broyles; and kicker D.J. Dominguez.

Coach David Wood said that the fact that only one player from the 14-1 team made this all-state list "tells you a lot about this team — they just played well together."

He added that the number of linemen on the honorable mention list shows the type of team effort that allowed Ramirez to amass his record-breaking rushing and scoring totals for the season.

And, of course, "our defense just had a great year — they kept making a name for themselves," Wood said.



Just as Mr. and Mrs. Santa Claus symbolize the season of goodwill toward humanity everywhere, the owners and staff of the Muleshoe Journal send out a wish for political and social healing this Christmas season. Vivian White and Buck Johnson (above) were the embodiment of the spirit of Christmas during the Heritage Foundation's old-fashioned Christmas on Dec. 2.

Public hearings to review organic-cotton guidelines

Public hearings to review the guidelines for organic cotton within active boll-weevil eradication zones are scheduled for Jan. 8 in Lubbock and Lamesa.

Provision for the hearings was included in the rules, which were adopted in June.

The rules cover indemnification eligibility and the method for calculating any compensation for organic growers who are required to destroy crops because of infestation.

The Texas Department of Agri-

culture, which will conduct the meetings, developed the rules to maintain the effectiveness of the weevil eradication program as well as to protect the integrity of the department's organic certification standards and the crops marketed under the program.

In the hearings, the department will take comments on any changes that may need to be made in the regulations for the 2001 growing season.

The hearings are scheduled to

begin at 11 a.m. in the Texas A&M University Agricultural Experiment Station, 1102 E. FM 1294 at Lubbock, and at 3 p.m. in the Dawson County Community Center, 910 S. Houston in Lamesa.

The department will take comments for 10 days beginning the day of the hearings. Those who wish may write the department at P.O. Box 12847, Austin 78711, or fax comments to (512) 463-1104.

More information is available by calling (512) 463-7593.

L&L Pallet Supply gets city and MEDC support for proposed relocation

JOURNAL STAFF REPORT

The Muleshoe City Council has approved action by the Muleshoe Economic Development Corp. to help a business relocate to Progress from Bovina.

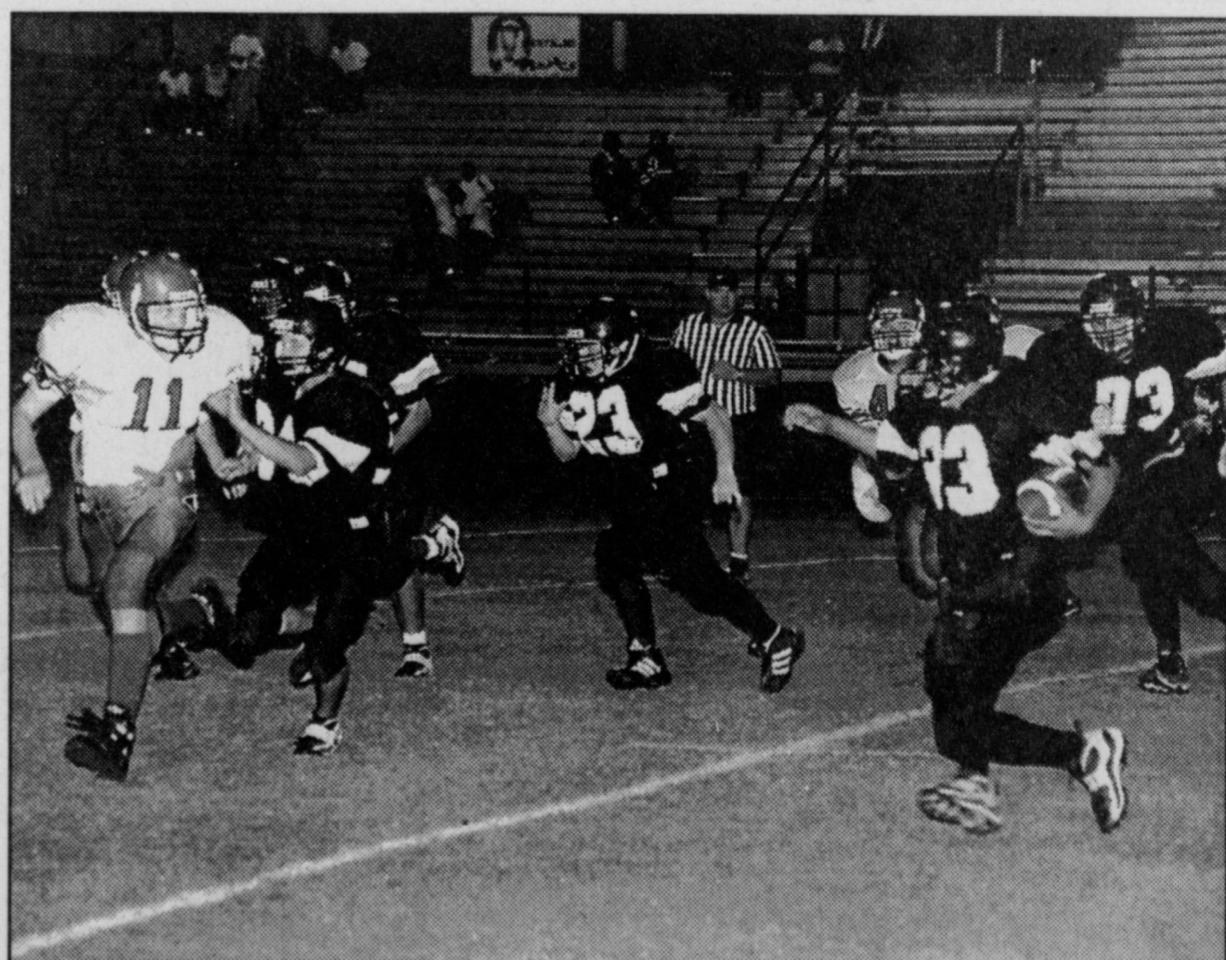
The financial help, essentially a grant, is being offered in the form of a loan that would be forgiven over a period of three years if the business continues to operate locally.

L&L Pallet Supply has proposed relocating from Bovina. The business currently employs three or four people at a time but is seeking a Wal-mart contract that could result in expansion to as many as 15.

Hanna said the business is being sought locally to diversify the agricultural economy.

Councilwoman Sharon Grant asked if this is the company that currently services Texas Sesame and Muleshoe Pea and Bean, and Hanna replied that it is.

He added that the loan to L&L would be in the amount of \$30,000 if the company remodels an existing building at Progress, or \$40,000 if a new building is built. The issue was discussed at Tuesday's city council meeting.



Courtesy photo: Mike Hahn

That wonderful year in review

One last look at the 2000 junior varsity Mules in action catches A.J. Flores (No. 33) carrying the ball against Friona as Tad Lutz (No. 34), Joel Cowart (No. 23) and Chance Turney (No. 73) work on keeping a path open. For a photo collage of the varsity Mules' championship season, see page 4.

AROUND MULESHOE

Three Way hearing set for Jan. 11

The Three Way Independent School District has scheduled a public hearing for 7:45 p.m. Jan. 11 for discussion of the district's Academic Excellence Indicator System, which will include the TAAS scores presented at the community cookout.

The hearing will be held immediately preceding the regularly scheduled school board meeting in the board room in the administration office.

Copies will be available for public viewing in the school library, principal's office and superintendent's office.

A school report card, which includes the TAAS scores, will be sent to each parent of a Three Way student along with student report cards the first week of January.

Meals on Wheels needs drivers

Volunteer drivers are needed to make deliveries for the Bailey County Meals on Wheels program, which takes meals to shut-ins and others of limited mobility.

Andrea Kemp, director of the program, said drivers may volunteer for as little as one hour a week, or even as substitute

drivers for occasional service. Training in handling the meals will be provided.

More information is available by calling Kemp at 272-3647.

Assembly of God plans open house

Muleshoe's First Assembly of God announces the open house for its 10,300-square-foot Family Life Building from 2 p.m. to 4 p.m. Dec. 30 and the dedication service Sunday morning.

Several former pastors of the church are expected to attend.

Methodists plan Christmas Eve services

The First United Methodist Church of Muleshoe has scheduled its annual Christmas Eve services for 7 p.m. and 11:30 p.m. Dec. 24.

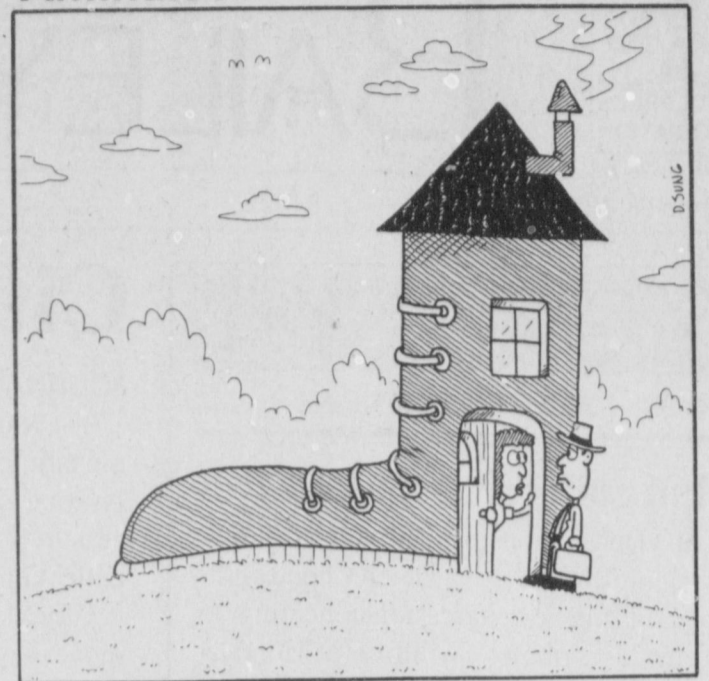
The earlier service will last about an hour and the 11:30 service ends at midnight.

A candlelight service and Communion are included in both services. The public is invited.

The deadline for items to appear in *Around Muleshoe* is 5 p.m. Monday for Thursday's editions and 5 p.m. Thursday for Sunday's editions.

Aminals

By David Sung



"I'd love to buy your products. But with so many mouths to feed, I just can't afford anything on my shoe string budget."

The spirit of Christmas is in little things

Every family has different traditions for Christmas. My family goes up to my grandma's house in Dumas, my cousins come up from Dallas and we always see some movie, usually a children's film, whether we rent it or go to a theater.

On Christmas Eve, we always drive around town looking at Christmas lights, and the kids sit in the back seat and sing "Feliz Navidad."

These may seem like silly little things that wouldn't mean anything to anyone, but these little "nothings" are what Christmas is all about.

People often get caught up

KATYE'S KALEIDOSCOPE

By Katy Cook

in materialistic things and forget that Christmas is really about giving, not receiving.

I know I have a tendency to worry about what people will give me instead of what I will give other people.

A couple of years ago, I realized that receiving isn't nearly as important as giving. My grandma showed me that.

We can get her the nicest things and she'll love them and be really happy when she gets them, but not once is her face

as bright and cheerful when she opens her presents as it is when she watches one of us open a present she gave us.

This is the spirit everyone should have, whether the present cost \$1 or \$100 — as long as it came from the heart.

Society has forgotten that, and I think it's time we remembered.

I am going to ask one thing of each of you, and I will try to do the same thing. When you are opening presents on Christ-

mas morning, stop and look at the person who gave that present to you, and thank them for what they have given you.

Because, whether you realize it or not, the giving of that present is like that person telling you, "I'm glad you're here, I'm glad you're alive, and I care enough to show you that."

Christmas really is made up of little things, and a little thing like one person relating to another person can change society's attitude toward Christmas, a little bit at a time.

(Katy Cook is a freshman at Three Way High School. This is her first column.)

Texas declared disaster area

SPECIAL TO THE JOURNAL
WASHINGTON, D.C. — U.S. Agriculture Secretary Dan Glickman last week declared Texas an agriculture disaster area, making producers eligible for USDA emergency farm loans because of losses caused by drought, excessive heat and other disasters that occurred during 2000.

"The excessive heat and drought have made a devastating year for farmers in Texas and all over the south," Glickman said. "USDA is working to help farmers in Texas and other states during these difficult times."

Also eligible, because they are contiguous to Texas, are Curry, Roosevelt, Eddy, Otero, Doña Ana, Lea and Quay counties in New Mexico.

This designation makes all qualified family-sized farm operators in both primary and contiguous counties eligible for low-interest emergency loans from the Farm Service Agency.

Farmers in eligible counties have eight months from the date of this declaration to apply for the loans to help cover part of their actual losses. FSA will consider each loan application on its own merits, taking into

account the extent of losses, security available, repayment ability and other requirements.

FSA has a variety of programs available, in addition to the emergency loan program, to help eligible farmers recover from adversity. Interested farmers may contact their local FSA offices for further information on eligibility requirements and application procedures.

Additional information is also available online at www.fsa.usda.gov/pas/disaster/assistance1.htm.

Cotton growth being eyed in Panhandle

A recent meeting in Dumas gave farmers in the northern Panhandle a chance to discuss the possibility of growing cotton.

An Extension official told them that a 10-year chart indicates that heat units in some counties could support cotton growth.

Moore County and Ochiltree County seem feasible, but Dallam County is riskier, experts told the farmers.

Bailey County Journal USPS 040-200
Established March 31, 1963. Published by Triple S Publishing, Inc. Every Sunday at 304 W. Second, Box 448, Muleshoe, TX 79347. Second Class Postage paid at Muleshoe, TX. POSTMASTER: Send address changes to the Bailey County Journal, P.O. Box 449, Muleshoe, TX 79347.

We are qualified members of:
 Panhandle Press Association, National Newspaper Association,
 West Texas Press Association and Texas Press Association

WEST TEXAS PRESS ASSOCIATION

TA MEMBER 2000
TEXAS PRESS ASSOCIATION

PPA
 Panhandle Press Association

Scot Stinnett, Publisher
Lisa Stinnett, Vice-President/Comptroller
Ronn Smith, Editor
Beatrice Morin, Classifieds
Leah Bell, Advertising

© 1990

SUBSCRIPTIONS: Muleshoe Journal and Bailey County Journal By Carrier Yearly - \$22.00
 Bailey County — by mail - \$24.00
 Elsewhere - \$26.00
 Advertising Rate Cards on Application

Advertisers should check their ad the first day of insertion. The Journals will not be liable for failure to publish an ad or for a typographical error or errors in publications except to the extent of the cost of the ad for the first day of insertion. Adjustment for errors will be limited to the cost of that portion of the ad where the error occurred.

Special Subscription Rates for College Students!

Muleshoe Journal
Local news about local folks...

Call **272-4536** to subscribe today!

THE PROFESSIONAL BODY SHOP

Wrinkle Free

BODY WORKS INC.

LIFETIME PAINT GUARANTEE (ASK US)

sikkens

- Auto, Truck (Small & Large)
- Frame Alignment
- Windshield Replacement
- Fiberglass Repair (Cars, RVs, Boats)
- Truck Painting (Large Shop Area)
- Compare Our Prices
- Insurance Work Welcome

505-762-0432
 1600 East 1st, Clovis, NM

I

T'S NOT REALLY THE THOUGHT THAT COUNTS.

Is that fruitcake looking a little too familiar? Tired of getting the same gifts year after year? Well this year, Plateau Wireless is giving you a gift that you won't feel guilty about giving yourself. This gift is easy on your wallet and on your teeth. So, get down to your local Plateau store and get yourself something you've always wanted. Plateau Wireless. People you know. Communications you trust.

- Free Motorola T-2297 phone
- Free activation
- No contract or 500 FREE weekend minutes each month
- Offer good for new activations or upgrades

People you know. Communications you trust.

Muleshoe Five Area Telephone Cooperative (806) 272-5533	Friona WT Services (806) 250-5555	Hereford WT Services (806) 364-7311
---	---	---

Wilson Appliance
(806) 272-5532

Offer good Nov. 20 through Dec. 31, 2000 while supplies last. Some restrictions may apply.

Yes, there are drought-tolerant groundcovers

By RONN SMITH
Editor

Finding a groundcover that will grow in dry soil is a particular problem for us. (By "dry" soil, I mean almost any soil in our area — even if it's a comparatively moist spot, it's probably what the books refer to as "well-drained," meaning the soil is porous and lacking in organic matter.)

If the spot gets some protection from the sun (but isn't in dense shade), some variety of lamium might work. I've written about this genus of plants several times, so I won't go into detail this time. But an advantage of lamium, in addition to its drought tolerance, is that garden centers often stock at least one variety of it.

While most lamiums fit the groundcover stereotype (not more than a few inches tall and spreading fairly rapidly), you don't have to limit your groundcovers that way.

Many local yards have beds of Missouri primrose (*Oenothera* species), and if it is grown in a bed by itself, it is a carefree plant about a foot tall (some forms get a little taller) that produces its cup-shaped light-pink blooms over a very long season. At peak bloom times, the plants can be literally covered with pink. Some people will insist on something more "unusual," but when this plant is



grown to perfection it's hard to imagine anything prettier. It does reseed, but I have not found it to produce enough seedlings to become a nuisance.

Erigeron species also cover themselves with flowers for most of the summer without a lot of moisture — and the hotter the sun, the better they like it. Most of them grow taller than 1 foot and produce daisy-like or aster-like flowers in shades of pink, lavender or white.

One very appealing variety is 'Charity,' with flowers in a pale pink. It grows 2 feet high and 2 feet wide (hey, we're getting over the idea that groundcovers need to be only 6 or 8 inches tall, right?) and is of very tidy growth.

'Charity' — and erigerons of similar size that are cultivars or from the same species — don't so much spread in typical groundcover fashion as they just form clumps. But since the foliage and flowers spread out in a globe shape, they serve as a groundcover even though the plants may

be 18 inches apart.

One thing about most erigerons: They have the reputation for being erratic. By that I mean they may be beautiful for a couple of years and then just die. I believe (and then just die. I believe (and then I do also believe) that they simply bloom themselves to death. Once you're around a bed of them, you'll see the evidence to support this theory.

It's best simply to think of them as short-lived perennials that will have to be replaced after a couple of years. The show they will provide makes it worth the extra expense; most perennials need to be dug up and divided every two or three years anyway, so it's not much extra work to plant new ones.

Now, if you want the floral display of erigerons but also want a groundcover that will stay within a few inches of the ground, there is a nice one: 'Meadow Muffin.' I do not make this stuff up.

This little plant (*Erigeron umbelliferum*) has large, very coarse, tough leaves that do indeed resemble "road apples," and they grow only about 4 inches high. The blooms are lavender, and are very large for such a small plant. Needless to say, this one won't grow 18 inches across like the bigger erigerons, so you'll need more

plants to fill the same amount of space. 'Meadow Muffin' also isn't usually available in six-packs or four-packs, so buying them individually also runs up the cost.

WeDu Nurseries reportedly introduced 'Meadow Muffin' to gardeners a few years ago, but it's now available from other mail-order nurseries — though generally not on the shelf at garden centers yet.

Another low-growing erigeron — and this one is evergreen — doesn't have a common name besides erigeron, as far as I know. *Erigeron karvinskianus* also is available from catalogs, and once in a while at garden centers. It grows only 8 inches high but 36 inches across, so you don't need many plants.

The unique thing about this species is that the flowers open as white daisies with a yellow center, but as they age they turn pink and then even a purplish shade — somewhat like cotton blooms except over a longer period. The result is that you have white, pink and purplish flowers all on the same plant.

More groundcovers will populate future columns.

Happy planting!
(Questions and comments can be directed to Garden Writer, 571 County Road 1018, Muleshoe, Texas 79347, or e-mailed to ronnsmith@hotmail.com.)

AgriFlex Credit
OPERATING FINANCING

Name Brand Crop Inputs
Flexible Credit Package
Agronomic Advice
Marketing Advice
Crop Insurance
Leasing

All from one source...

Contact your local representative:
Terry Moore
Plainview, TX
806-296-5679

Ag Services of America, Inc.
www.agservices.com 1-800-395-8505

Get the holiday cash you need while the shopping selection is still good!

Quick, Affordable Christmas Loans

CONTINENTAL CREDIT
206 S. Main Street • Muleshoe

Now Paying \$15 Referral Fee for every new customer made!

New customers must have referral card to be valid. See loan consultant Norma or Donna for details.

272-3673 • Se Habla Español

Loans while you wait. Phone applications accepted.

Mon.-Thurs.: 8:30 a.m. to 5:30 p.m. Fri.: 8:30 a.m. to 6 p.m.

It's important to keep in touch while traveling this holiday...

2000 MINUTES FOR \$39.99 FREE PHONE! FREE ACTIVATION!

FREE CASE WITH PURCHASE OF A CAR CHARGER!

CALL AMERICA TOLL FREE!

INCLUDES 750 WEEKEND MINUTES & 750 EVENING MINUTES

CELLULAR 2000

202 Main Street • Muleshoe, Texas
(806) 272-7523 or 272-5153

CELLULARONE Authorized Dealer Open: 10:00 am to 5:30 pm Offer Ends 12/31/00 Some Restrictions Apply

Phone Applications Accepted.

Read It First In The Journal!

Christmas Is Much Better In Color

If this comes under the heading of bragging, well, sorry. But it has just occurred to me that I get to go to work every day in what simply must be one of the most beautiful places anywhere in town during Christmas—the inside of our own little church.

Ah, shoot. Why be overly modest? May I share a secret? I'm proud (properly proud, I hope) of our little group, and I genuinely enjoy these folks pretty much all of

ought to be excited about his birth every day of the year, and consequently we should, theoretically speaking, be able to sing "Silent Night" at any time. But such claimers made just before singing the carol pretty much dampen the joy of crooning the tune, December or no. And if you don't sing "Silent Night" at church in December, lest someone be dangerously(?) misled into thinking that Christ was born on the 25th, well, you're probably not going to sing it with much gusto and genuine feeling in, say, June or July.

You see, back then we had a little bit of a tough time with "Silent Night" in the sanctuary (hard to believe, I know), and we never even got close to lights and candles and poinsettias and candlelight services. We were poorer for it.

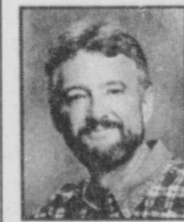
We should have let our spirits rise higher than "Jingle Bells."

Don't misunderstand. The church I grew up in blessed me in wonderful ways. But our dirth of color and beauty in December said something about a view of God and worship that was also sadly cold and colorless.

The view is much better in color. And why not? God created color! One of his best gifts, I think. And now the "Silent Night" of Christ's birth is filled for me every year with a depth of color and a richness of meaning I only dreamed of as a child.

It's Christmas, and it's beautiful—and I'm thankful to find the colors of God's love reflected more beautifully than ever in the colors and the candlelight of a quiet sanctuary blanketed in His warmth on this silent night.

Curtis Shelburne is minister of the 16th & D Church of Christ in Muleshoe.



Focus On Faith
Curtis Shelburne

the time. But never more than at Christmas.

Poinsettias. Lights. Candles. Silhouetted shepherds and wise men. Christmas carols. Christmas music. Christmas spirit. A blessing, I think, from His Spirit.

I've always enjoyed Christmas, and I had some great Christmases as a child. But Christmas at church, sadly, wasn't much to write home about. Most of our folks were nicer than their theology, thankfully, but our theology was a little on the drab side. A little thin and cold. Which made for a bit of a drab December.

Oh, we enjoyed "Jingle Bells" and "White Christmas" as much as anyone, and I loved "Silent Night" but I sang it at school (which, by the way, is where I also learned "The Lord's Prayer") more than I sang it at church. And it may well be true that Jesus probably wasn't born exactly on December 25, and we

NURSING HOME NEWS

The care center's staff and residents express thanks to the community for the gifts of holiday cheer and for the love and concern expressed throughout the year.

Thursday morning, Zona Gatewood and Joline Franklin came and directed the reflection time.

The residents' Christmas party Thursday afternoon was a great success due to the visits of Santa and his wife, Wanda; Camilo Espinoza and his daughter, Mary López; the attendance and participation of the residents and their families and nursing home and dietary staff; and also Volunteers Plus.

Friday morning, Pat Watson involved the residents in music remembrance and poetry.

Saturday morning, Buster Kittrell came to give the men shaves and haircuts.

Melvin and Wanda Kittrell, Harold and Mary Jo Burge directed the bingo bash Saturday afternoon, and Doris Jackson furnished homemade cookies for the event.

Jason Cochran and the youth of the First Assembly of God performed a Christmas play and Christmas music for the residents Thursday afternoon.

Monday, Riki Kelly brought her gymnastics classes down to perform for the residents.

Tuesday afternoon, Linda White, Claudine Embry, Mary Jo Burge, Pat Watson, Eva Nell Dale, Dorothy Turner and the activity department sham-pooed and set the residents'

hair.

Wednesday morning, Harold and Mary Jo Burge served coffee and doughnuts to the residents at coffee time. Harold Burge directed the round-table discussion. The Rev. Steve Claybrook, Brady Mason and Jim Claunch directed the devotional.

Glenda Jennings and Jackie Scoggins came Wednesday afternoon for a Christmas singing-along and puppet show.

Joe Embry and the Rev. Stacy Conner were among the center's visitors Tuesday.

Melvin and Wanda Griffin, Lewis Wayne and Wanda Shafer, and John Graves transported the residents to and from the Christmas dinner prepared for them Monday night at the

First United Methodist Church. Residents who attended were Cecil Davis, Riehl Williams, Jackie Davenport, Bootie Tiller, Clara Coffman, Aline Locke, Grace Scarbrough and Minnie Underbrow.

Guy Kendall's son and daughter-in-law, Mr and Mrs. Terry Kendall from the Houston area, visited him over the weekend. He also was recently visited by Lewis Scoggins.

The Lazbuddie Girl Scouts made Hershey Kiss mice for the residents and delivered them Wednesday afternoon.

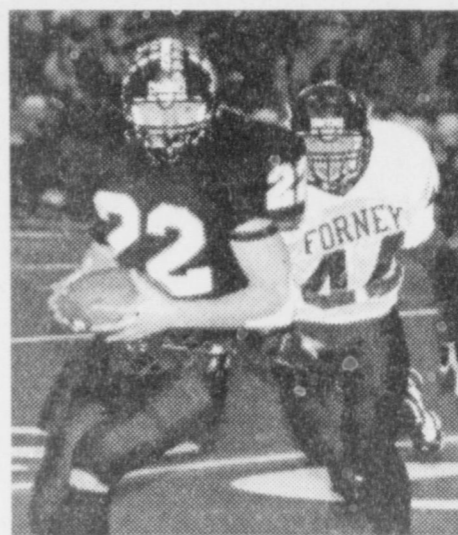
The residents' e-mail address is resident@fivearea.com. Five Area Telephone Cooperative has donated and installed a computer just for the residents to receive and send e-mail.



*"In the air,
there's a feeling
of Christmas."*

The spirit of the holiday season reminds us of how glad we are to be a part of this delightful, warm community. Thanks for helping our business succeed with your loyal support. We wish you and yours a very happy Christmas and a healthy New Year.

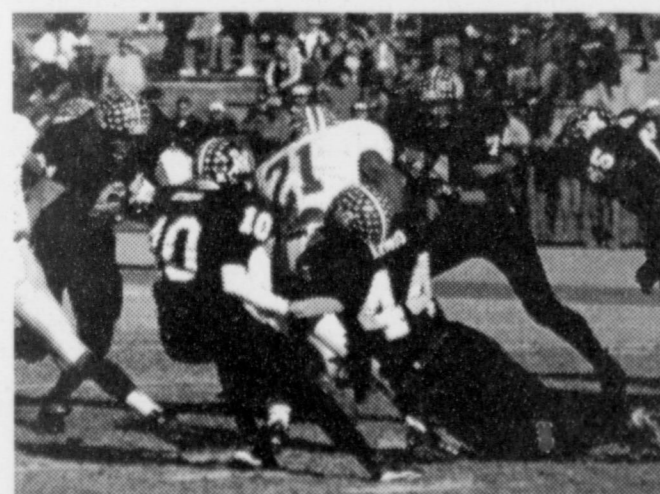
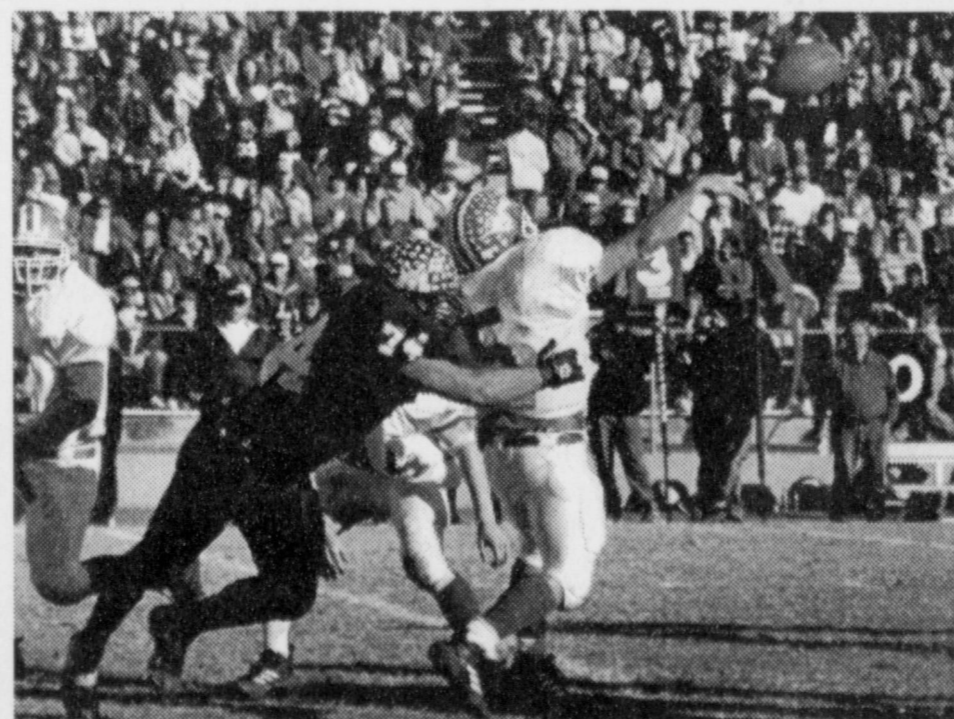
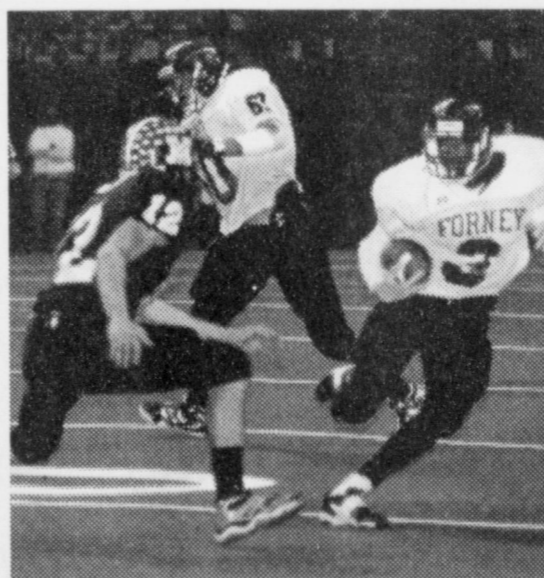
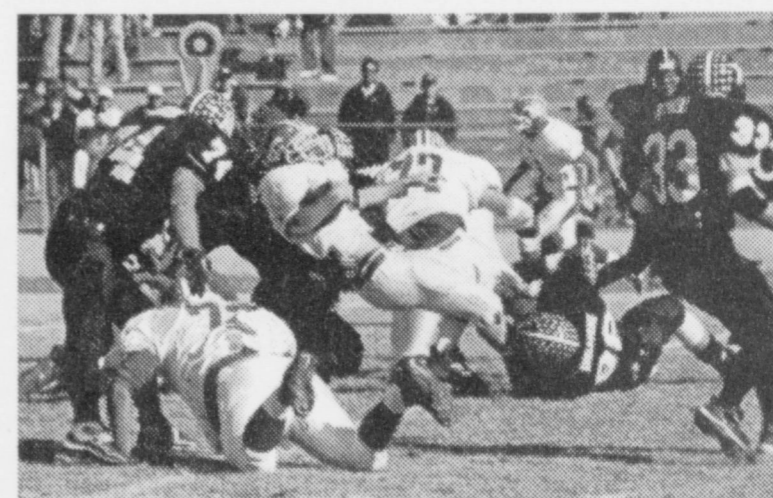
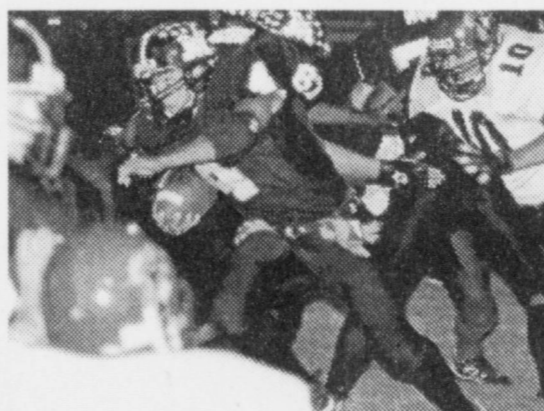
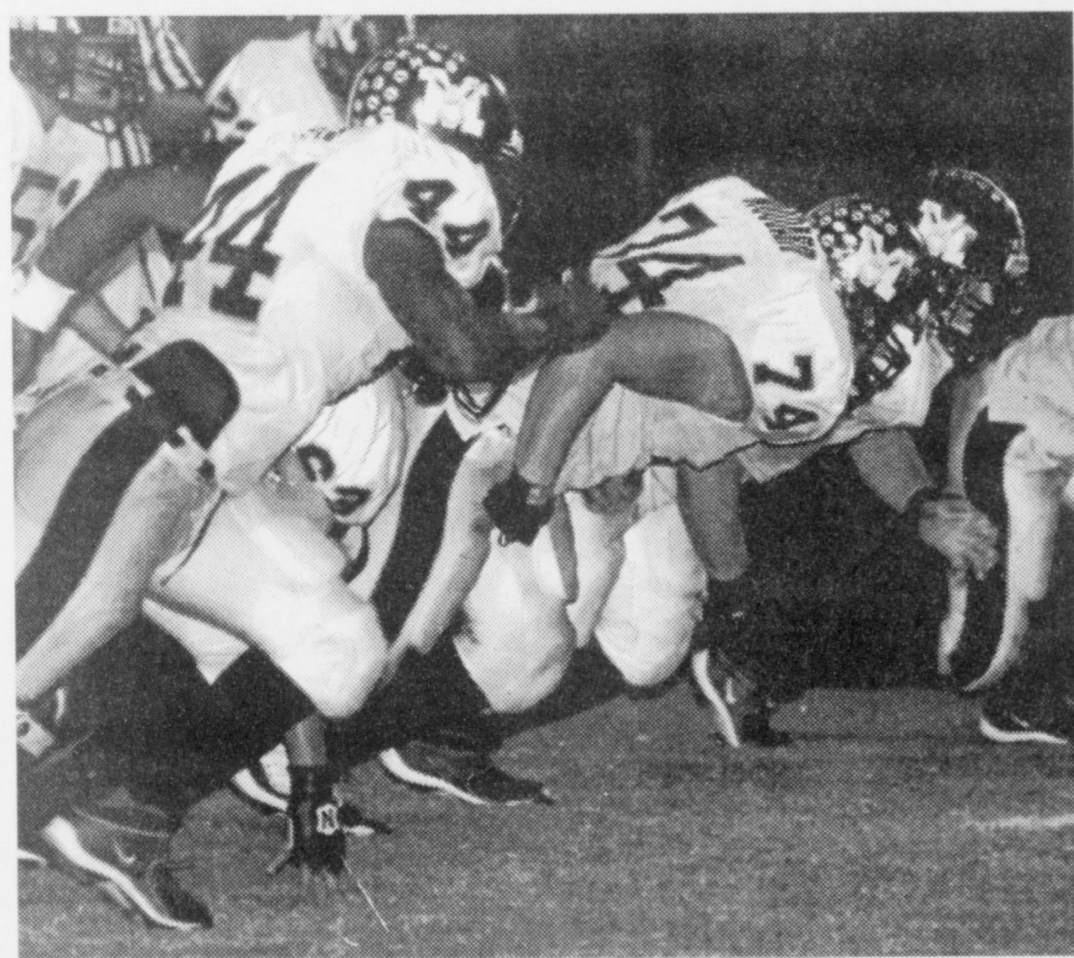
The Muleshoe Journal Crew
Scot, Lisa, Ronn, Leah, Beatrice, Yolanda, Delton, Mike, Bobby, Melissa & Mary Ann



MULESHOE FOOTBALL 2000

Amarillo Caprock	14-13
Slaton	49-20
Frona	23-13
Tulia	32-0
Seminole	34-0
Lubbock Cooper	21-14
Littlefield	36-26
Shallowater	21-14
Lubbock Roosevelt	56-0
Dimmitt	54-6
Dalhart	37-0
Denver City	26-8
Ferris	34-14
Midland Greenwood	44-13
Forney	17-41

With a big thanks to Mike Hahn, here is the Muleshoe Mules' record-breaking 14-1 football season caught on film....




BAILEY COUNTY DEVOTIONAL PAGE

"Do All" Family Enterprises

203 S. Main St. • 272-4725 • Muleshoe
 Gift Wrapping • Shipping Via UPS • Catering & Floral Design • New Location!
 Now doing Auto Repair! • Party Planning • Minor Home Repair & Remodeling

CENTRAL COMPRESS & WAREHOUSE

SUDAN, TEXAS

1315 W. American Blvd.
 272-3333
 Muleshoe, TX 

FARMERS CO-OP ASS'N

of ENOCHS
 "Your Farmers Owned Gin"
 Chemicals • Seed • Fuel & Oil • Fertilizer
 806-927-5511 Wade Baker, Mgr.

Antiques & Fine Things

of Muleshoe
 2104 W. American Blvd. • 272-4217

THE TRINITY COMPANY

MULESHOE, TEXAS


MULESHOE LIVESTOCK AUCTION

Muleshoe, TX • Sale Every Saturday
 Clayton, C.L. & Thurman Myers • 272-4201

JAMES CRANE TIRE CO., INC.

107 Main • 272-4594
 Mike Hahn Muleshoe, TX

MULESHOE ANIMAL CLINIC

GENERAL PRACTICE

 1430 US Hwy. 84 • Muleshoe, TX Office: 272-4990

PARMER Co. COTTON GROWERS Co-OP GIN

825-3701
 RON RILEY-GENERAL MGR. FARWELL, TX

BAILEY COUNTY ELECTRIC COOPERATIVE ASSN.

Muleshoe — 272-4504 Morton — 266-8600

"THE FIVE AREA TELEPHONE COOPERATIVE, INC."

West Plains Telecommunications, Inc.
 Five Area Systems, Inc., Plateau Wireless
 Five Area Long Distance - Five Area Internet
 302 Uvalde Muleshoe, USA (806) 272-5533

1ST BANK

MEMBER FDIC
 202 South First 272-4515

New Tex Truck Parts & Service

107 E. 5th St. • Muleshoe
 272-4106 or 800-918-9048
 4200 Mabry Drive • Clovis, NM
 (505) 762-7186 or (877) 762-9112

AGRO DISTRIBUTION

Hwy. 84 • 272-4203
 Muleshoe, Texas Bruce Bruns - Mgr.

WESTERN DRUG

& Something Special Gifts
 1411 W. American Blvd. 272-3106 Muleshoe

FIRST AG CREDIT MULESHOE

"Serving Parmer & Bailey Counties"
 272-3010 • Fax 272-5388
 316 Main • P.O. Box 424 • Muleshoe, TX

IRRIGATION PUMPS & POWER

ZIMMATIC CENTER-PIVOTS
 W. Hwy. 84 272-4483

TEXAS FARM BUREAU INSURANCE CO.

1612 W. American Blvd. • 272-4567 • Muleshoe

MULESHOE MOTOR CO.

1225 W. American Blvd. 272-4251

Facts About The BIBLE BY JOHN LEHTI

THE NAME OF THE GAME WAS--HOSPITALITY!

IN THE ANCIENT BIBLE WORLD HOSPITALITY WAS REGARDED AS ONE OF MAN'S BEST VIRTUES. EVEN THEIR MANY LAWS REFLECT THIS CONCERN FOR THEIR FELLOW MAN. THE LAW RESPECTING THE STRANGERS IN THEIR MIDST (LEV. 19:33,34) MAKES THIS CLEAR, AND THE LAW CONCERNING THE POOR (LEV. 25:14) GIVES THE PATTERN OF CONDUCT THEY WERE TO FOLLOW. MANY PASSAGES FROM THE NEW TESTAMENT ARE IN LINE WITH THE TRADITION OF THE OLD TESTAMENT IN THAT WE ARE URGED TO "FOLLOW AFTER HOSPITALITY" (ROM. 12:13) AND TO ALWAYS REMEMBER ABRAHAM'S EXAMPLE (HEB. 13:2) AND USE HOSPITALITY ONE TO ANOTHER WITHOUT GRUDGING! (1 PETER 4:9) SOMETIMES THE DEGREE OF HOSPITALITY WAS OVERPOWERING AS IN THE CASE OF ELIEZER WHO WAS COMMISSIONED BY ABRAHAM TO FIND A BRIDE FOR HIS SON ISAAC. ELIEZER FOUND A BRIDE, REBEKAH, AND WAS ANXIOUS TO RETURN HOME--BUT, NO WAY! THE EXTENT OF THE GENEROSITY OF REBEKAH'S FAMILY KEPT HIM VISITING WEEK AFTER WEEK UNTIL THE POOR FELLOW WORRIED THAT HE WOULD NEVER SEE ABRAHAM AGAIN.



SAVE THIS FOR YOUR SUNDAY SCHOOL SCRAPBOOK

This devotional & directory is made possible by these businesses who encourage all of us to attend worship services.

ASSEMBLY OF GOD
FIRST ASSEMBLY OF GOD
 521 South First Street • 272-3017
 Jack Stone, Min. • 272-3984
 S.S. 9:45 am, W.S. 11 am & 6:30 pm, Wed. 7:30 pm
EL BUEN PASTOR
 415 E. Ave. F • Pastor Felix Cadena
 S.S. 9:45 am, W.S. 11 am & 6 pm; Wed. 7 pm

BAPTIST
CALVARY BAPTIST
 1733 W. Ave. C. Rev. Jeff Coffman
CIRCLE BACK BAPTIST
 Intersection FM 3397 & FM 298
 Jessie Shaver, Min • 946-3676
FIRST BAPTIST
 220 West Ave. E., Dr. Stacy Conner
FIRST BAPTIST
 Lazbuddie • 965-2126
PRIMERA IGLESIA BAUTISTA
 223 E. Ave. E, Rev. Greg Guzman
PRIMITIVE BAPTIST
 621 South First, Elder Cleveland Bass, Min.
PROGRESS BAPTIST
 Progress, TX
 Bro. O.J. Bewley
PROGRESS SECOND BAPTIST
 Arthur Hays, Min.
 1st & 3rd Sundays
RICHLAND HILLS BAPTIST
 17th & West Ave. D, Randy Tucker, Pastor
ST. MATTHEWS BAPTIST
 Corner of W. Boston & W. Birch
 Floyd R. Monroe, Min.
THREE WAY BAPTIST
 927-5467
TRINITY BAPTIST
 314 E. Ave. B, Robert Brown, Min.

LUTHERAN
ST. JOHN LUTHERAN
 Lariat, TX-David Symm, Min.
 S.S. 10:30 am; W.S. 9:30 am

METHODIST
FIRST UNITED METHODIST HISPANIC MINISTRIES
 E. 5th and E. Ave. D
 Pastor Benito Cavazos
FIRST UNITED METHODIST
 507 W. 2nd St.
 Pastor Brad Reeves
LAZBUDDIE METHODIST
 965-2121
EL DIVINO SALVADOR U.M.C.
 619 E. 5th Street & Ave. G, Muleshoe, TX
 Raul Martinez, Pastor

NAZARENE
NEW VISION CHURCH OF THE NAZARENE
 814 W. Ave. C • 272-3622
 William Perhealth, Pastor-S.S. 10 & 11 am;
 W.S. 7 pm

PENTECOSTAL
UNITED PENTECOSTAL LIGHTHOUSE
 207 East Ave. G • 1-800-454-6051
 Pastor McKibben, S.S. 10 am
 Thursday, Bible Study 7 pm

INTER DENOMINATIONAL
NEW COVENANT
 Plainview Hwy.
 Steve Claybrook, Pastor
 W.S. 10 am; Wed. 7 pm

CATHOLIC
IMMACULATE CONCEPTION CATHOLIC CHURCH
 805 E. Hickory, Joseph Augustine, Min.

CHARISMATIC EPISCOPAL
ST. CLEMENTS
 1536 W. American Blvd. • 272-5954
 Father Sergio Leal
 Sun. W.S. 10:30 am

CHURCH OF CHRIST
LARIAT CHURCH OF CHRIST
 Sam Billingsley, Min.
 S.S. 10 a.m.; W.S. 11 a.m. & 6 p.m., Wed. 7 p.m.
LAZBUDDIE CHURCH OF CHRIST
 Nathan Crawford, Min.
 S.S. 9:30 am; W.S. 10:20 am & 5 pm;
 Wed. 7 pm
MULESHOE CHURCH OF CHRIST
 22nd & W. American Blvd.
 Harry Riggs, Min.
 S.S. 9:30 am; W.S. 10:20 am
 & 6 pm; Wed. 7:30 pm
16th & AVE. D CHURCH OF CHRIST
 Curtis Shelburne, Min. • 272-4619
 S.S. 10:30 am & 1:30 pm; Wed. 7:00 pm

METHODIST
FIRST UNITED METHODIST HISPANIC MINISTRIES
 E. 5th and E. Ave. D
 Pastor Benito Cavazos
FIRST UNITED METHODIST
 507 W. 2nd St.
 Pastor Brad Reeves
LAZBUDDIE METHODIST
 965-2121
EL DIVINO SALVADOR U.M.C.
 619 E. 5th Street & Ave. G, Muleshoe, TX
 Raul Martinez, Pastor

NAZARENE
NEW VISION CHURCH OF THE NAZARENE
 814 W. Ave. C • 272-3622
 William Perhealth, Pastor-S.S. 10 & 11 am;
 W.S. 7 pm

PENTECOSTAL
UNITED PENTECOSTAL LIGHTHOUSE
 207 East Ave. G • 1-800-454-6051
 Pastor McKibben, S.S. 10 am
 Thursday, Bible Study 7 pm

INTER DENOMINATIONAL
NEW COVENANT
 Plainview Hwy.
 Steve Claybrook, Pastor
 W.S. 10 am; Wed. 7 pm

CATHOLIC
IMMACULATE CONCEPTION CATHOLIC CHURCH
 805 E. Hickory, Joseph Augustine, Min.

CHARISMATIC EPISCOPAL
ST. CLEMENTS
 1536 W. American Blvd. • 272-5954
 Father Sergio Leal
 Sun. W.S. 10:30 am

CHRISTIAN
TRINITY CHRISTIAN CENTER
 1723 W. American Blvd. • 272-3877
 Reydon Stanford, Min.

WINKLES TRUCKS, INC.
 Box 757 (806) 247-2724
 Friona, TX

MOHAWK AUTO PARTS

1701 W. American Blvd.
 272-4425 Muleshoe, TX


McCormick Seeds, Inc.

400 East Ash • Muleshoe, Texas
 272-3156
 Tim McCormick Roland McCormick

United Supermarkets

Shipman's Body Shop
 Auto Painting • Wrecker Service • Free Estimates
 Tractor Glass & Windshields
 410 N. 1st Muleshoe, TX
 272-4406 FAX 272-3366

Muleshoe Feed Barn

311 W. American Blvd. 
 Muleshoe, TX
 272-5626

MULESHOE PEA & BEAN, INC.

RR 2 Box 297 272-5589
 Muleshoe, TX

WES-TEX FEED YARDS, INC.

Custom Cattle Feeding
 272-7555 Muleshoe, TX

Decorators Floral & Gifts

616 South First 272-4340
 Muleshoe, TX

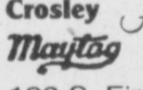
Leal's Tortilla Factory, Inc.

107 E. Ash Muleshoe, TX
 272-5772

PACO FEED YARD, LTD.

Commercial Cattle Feeders
 P.O. Box 956 265-3281
 Friona, TX
 Feller Hughs-Mgr.

Harvey Bass Appliance

Crosley And Furniture

 Serving This Area For 53 Years
 122 S. First St. • Muleshoe • 272-3030

Boehning Dairy

DRINK MORE MILK.
 Brian Boehning Earth, Texas 

Lowe's MARKETPLACE

401 W. American Blvd. • Muleshoe • 272-4585

BRUCE, INC.

HEATING & AIR CONDITIONING
 Hwy. 214 North Muleshoe 272-5114

SAIN IRRIGATION & MACHINES

Complete Pump Service
 W. American Blvd. 272-4397
 Walt Sain Muleshoe, TX 272-4148

Vic Coker Land Co.

Agricultural Real Estate
 310 Main Suite 103 • Muleshoe • 272-3100
 Vic Coker-Broker FAX 272-5666 • Res 272-2468

minsa corporation

P.O. Box 484 272-3545
 Muleshoe, TX
 FAX (806) 272-5135 (800) 852-8291

AG AVIATION

2 1/2 miles North on HWY 214
 272-3066 FAX 272-3534
 P.O. Box 68 • Muleshoe, TX

WEST CAMP GIN, INC.

Better Ginning & Courteous Service
 James & Phyllis Shepard Rt. 2 Box 1000 • 925-6681
 Muleshoe, TX


Henry Insurance Agency

"Serving You Since 1964"
 111 West Avenue B 272-4581
 Muleshoe, TX

MULESHOE VALLEY INC.

 West Hwy 84 272-4266 Muleshoe
 STEVE STANCELL - OWNER

MAPLE COOP GIN
 927-5501
 Maple, Texas

Two locations to serve you
 1900 W. American Blvd. 272-5337
 107 E. American Blvd. 272-3978

 Muleshoe, TX

WINKLES TRUCKS, INC.

 Box 757 (806) 247-2724
 Friona, TX

Leslie Powell honored with shower at church

Leslie Powell of Lubbock, bride-elect of Jim McCulley, also of Lubbock, was honored with a bridal shower Nov. 11 at the American Boulevard Church of Christ family room.

The bride-elect is the daughter of Ricky and Glenda Powell of Fort Morgan, Colo.

The prospective groom is the son of David and Connie McCulley of Lubbock.

Special guests were the bride-elect's grandmothers, Lynnell Armstrong and Marjorie Powell, both of Amarillo; the prospective groom's mother; and the bride-elect's mother.

Hostesses were Julie Broyles, Carol Cox, Jean Harlan, Diana Harrison, Dani Heathington, Hollye Hooten, Druscilla Hutton, Linda Latham, Ruth Locker, Donna Locker, Gwen Sinclair, Lenda Trussell and Polly Vann.

The hostess gift was a microwave.

The wedding was Dec. 15 at LakeRidge United Methodist Church in Lubbock.



Leslie Powell pauses during her Nov. 11 bridal shower.

LADIES GOLF ASSOCIATION

The Ladies Golf Association of the Muleshoe Country Club had its annual Christmas ornament party Dec. 20.

Hostesses were Tammy Black and Rhonda Box, and they gave a special thank-you to Laverne Winn for her help.

The exchange of ornaments was conducted in an unusual

way. The gathering was festive, with most of the women dressed in sweaters, vests, tops and skirts with a Christmas motif.

Christmas presents from "secret sisters" also were given. Members extended the community wishes for a merry Christmas.

Attending were Box, Winn,

Analita Haley, Kay Field, Jana St. Clair, Pat Kirk, Darlene Henry, Elinor Yerby, Christy Whitt, Linda Elder, Dorothy St. Clair, Evelyn Riley, Pamela Miller, Claudine Elliott, Sherry Engelking, Helen Templeton, Yolanda Phillips, Neats Fosters, Anita Allgood and Judy Wilbanks.

Texas under media microscope

AUSTIN — Warning: It has begun.

The day after Vice President Al Gore delivered his concession speech and Texas Gov. George W. Bush became president-elect, the Wall Street Journal weighed in with this headline: "Capital's Social Lions Scent Change, Seek Cues."

The gist of the story is that the hick Texans are coming to the sophisticated capital of the free world.

The story listed 23 things that soon will be "in" in Washington and 23 things destined to be "out." Among the ins: the Texas two-step, branch water and tacos. The matching outs are "The Tennessee Waltz," Whitewater and Big Macs.

While the piece is moderately amusing, it shows what Texans are in for during the Bush administration: Even more national media attention than the state received in the campaign.

During the campaign, the national media tended to focus on all of Texas' problems, from environmental matters to poverty to the quality of education.

What's coming next will be particularly onerous to all true Texans: attempts to prove that Texas still lives up to its stereotype.

For instance, if there's a real Texan who refers to water as branch water, he or she must live within pistol shot of Arkansas. Watch for a lot of photographs of cowboy hats, oil



wells and other Texas icons. That Austin has 12 bagel shops and 54 coffee shops, including more than a dozen Starbucks outlets, probably will not be mentioned. (EDITOR'S NOTE: *Keep in mind that this was written from Austin, probably by someone who doesn't realize that for many Texans, Austin has become a foreign culture in its own right.*)

As soon as the holidays are over, national reporters will be flocking to Texas to tell the rest of the world "what George W. Bush's Texas is really like."

In the McLennan County town of Crawford, the answer to that question can be summed up in this phrase: "Johnson City, 1964."

To some extent in 1960, when Lyndon Johnson became vice president, his hometown of Johnson City began to experience what the future now holds for Crawford. When Johnson was elected to the presidency in 1964 by a landslide, Johnson City prospered financially and

became internationally known. The thing already is happening in Crawford.

It's the economy again
With the long election "day" finally behind us, many Texans have found something new to worry about: the economy.

While the price of oil is up, revenue is down in Texas' "new oil" (the high-tech industry).

But the entrepreneurial spirit remains strong in Texas. Seen recently at Fifth and Lamar in downtown Austin was a street person displaying the sign "Stressed out? Yell at a homeless man, \$1."

Given all the political change to come—in Austin and across the nation—that homeless fellow may make a lot of money over the next few months.

In praise of hunter training

Though the Texas Parks and Wildlife Department won't have final stats until after the first of the year, two people died in Texas hunting accidents on Dec. 16.

Last year, six people died in hunting accidents in Texas, compared with eight in 1998.

In an effort to decrease the number of hunting-related deaths, the Legislature adopted a mandatory hunter-safety education program in 1988.

The program, which all young hunters have to take before they can get a hunting license, appears to have made a difference.

Farm Bureau picks Brown

A Texico farmer and rancher with operations in Bailey County has been elected to the board of directors of the New Mexico Farm and Livestock Bureau, the organization announced Thursday.

Dee Jay Brown has ranching interests in Roosevelt and Chaves counties, N.M., and farming in Curry County as well as Bailey

and Parmer counties in Texas.

He also is vice president of Sunland Peanut Corp. and a long-time director of the Curry County Farm Bureau.

Brown and one of his three sons raise corn, cotton, peanuts, grain sorghum, potatoes, green beans, alfalfa and other hays and a variety of vegetables.

HOSPITAL NEWS

Muleshoe Area Medical Center has reported the following patient load:

Dec. 14 — Ethel Ayres, Leslie L. Deaton, Pauline Guinn, Hazel Hay and Murpha C. Street.

Dec. 15 — Ethel Ayres and Pauline Guinn.

Dec. 16 — None reported.

Dec. 17 — None reported.

Dec. 18 — Ethel Ayres, Pauline Guinn, Mary F. Holt

and Enrique Toscano.

Dec. 19 — Gradee Adrian, Ethel Ayres, Lela Foster, Pauline Guinn, Mary F. Holt and Octavio Mora.

Dec. 20 — Gradee Adrian, Ethel Ayres, Lela Foster, Pauline Guinn, Gladys Harper, Mary F. Holt and Octavio Mora.

Dec. 21 — Gradee Adrian, Ethel Ayres, Jose L. Garcia, Larry Gregory and Pauline Guinn.

TOPS NEWS

Twenty-five Tops No. 34 members were present Dec. 21 for a meeting followed by a Christmas party. Both events were held at the Muleshoe Church of Christ.

The opening song, "The Slimmer We'll Be," was led by Alma Robertson.

Leader Laverne James presided over the meeting.

In the absence of secretary Janie Hughes, the previous week's minutes were read by Joline Franklin and were approved as read.

Alene Bryant and Betty Jo Davis, weight recorders, conducted the weigh-in.

Elaine Coburn and Lucille Harp tied for the best loser position. Bryant was the first runner-up and Rose Sain the second-runner up.

Missy Royal, the contest chairperson, is conducting the Christmas contest. Each time a member loses weight, she gets a star to go on her Christmas tree.

Coburn is leading in the contest with nine stars, followed by Tommie Fulcher with six. Harp is next in line with five stars.

The year has been a good one for TOPS No. 34, which ends the year with more members than ever before.

The group would like to thank the Muleshoe Journal staff and Magann Rennels and the Channel-17 staff for getting out the news — not just about TOPS but all the news.

The next meeting is scheduled for 5:30 p.m. Dec. 28 at the regular site. Visitors are welcome.

YEAR END CLOSEOUT SALE

The accountant says Chuck must reduce his inventory by the end of the year!

CHUCK SAYS SELL 'EM!

63

new & used vehicles MUST BE SOLD the last week of the year

DISCOUNTS

Thousands in Year End Discounts from Chuck

Discounts from new vehicle MSRP.

FINANCING

Low 1.9% Financing on Brand New Ford Trucks

All 2000 light duties in stock. OAC.

REBATES

\$2,000 Factory Rebates on Brand New Dodge Trucks

Or 0.9% & \$1,000 factory rebate on all 2001 1/2 tons in stock. OAC.

Prices are also slashed on

OVER 150

quality, used cars, trucks & sport utilities!

NEED SOME CASH?

Year End Closeout Sale Ends December 30! HURRY IN FOR BEST SELECTION!

You can have your anticipated income tax refund now!

Chuck will have a professional tax service file your 2000 tax return, you can use the money for whatever you want!

Need a truck? CALL CHUCK!

Chuck DAGGETT

(505) 356-8581 115 N Chicago Portales, NM

All vehicles subject to prior sale. *Refund anticipation loan/contract with vehicle purchase. OAC.



Season's Greetings

From Our Home To Yours

Our thoughts and fond wishes are with you for helping to make 2000 a very successful year for us, and we hope that all good things come back to you during this special season. Thanks for your generous support.

Merry Christmas & Happy New Year!

— Muleshoe Area Healthcare Center

OUR CHRISTMAS CARD TO YOU

A
J.K. and Margaret Adams
R.D. "Tub" and Pat Angeley and Misty
Mr. and Mrs. Noe Anzaldua
Alex and Cordy Aguirre and Family
Louise Agee
Lisa Aufdenkamp
Blanca Arzola

B
Jerry, Peggie and Felicia Bruton
Gladys Black
James and Dianne Brown
Barbara Blackman
Cindy and Jennifer Barnes
Harvey and Marie Bass
Alene Bryant
Charles and Tommie Bratcher
Wanda R. Brownd
Randell Bryant
Harold and Mary Jo Burge
Betty Jo Beaty
Curby and Mary Janice Brantley
Chad, Kourtnee, Britton, Brooklyn
and Brylee Beal
Charles (Chuck) Bartholf Family
Lou Ann Black
Monty, Britni and Jett Black
Terri and Stephanie Brown
Rosemary, Shari'a and Leah Bell
Nancy Barnhill

C
Marshall and Helen Cook
Anne Camp
Patsy Chance
Joe and Joyeline Costen
J.D. and Julie Cage
Gary, Stacy, Tamara and Travis Cain
Roger and Regena Clarkson
Jobey and Janet Claborn
Margaret Collins
The Chavez Family
Larry and Berta Combs
Terome, Jim Ella, Monica, Jerone
and Amelia Clemmons
Butch and Judy Cox
Mary Crane
Ruby Cox
Joe and Cassie Crandell and Children
Jimmy and Myra Copley
Ed, Carol, Jeanne and James Cox
Buck and Lynn Campbell

D
Duane and Jewel Darling
Gary and Glenda Dale
Mike and Leslie Dale Family
Cleon and Wilma Davis
Lora Dale
Cyrus and Eva Nell Dale

E
Derrel, Kathy, Kyle and Bryce Embry
Frank and Sally Ellis
Abel, Elva, Carla, Dayse and Adrian Estrada
Mr. and Mrs. Carl Ellington
Buddy Embry
Aleene Embry
Sammie Ethridge
Calvin and Lona Embry
Jerry and Louise Engelking

F
Steve, Paulette and Brice Foster
Wayne and Johnnie Ferris
Clifton Finley
Annie Floyd
Tommy Floyd
La Queta and Evelyn Freeman

G
Eldridge and Willie Mae Graves
Ruby Garner
Juanell Gable
Arthur and Keshia Graves
Melvin and Wanda Griffin
Tom and Janie Gibbins
Don and Chris Gibbins
Phil and Dolores Garrett
Mr. and Mrs. Bobby Graves
Crispin and June Green
Pauline Guinn and Family
Rammie, Mandy, Tessa and Kyan Garner
Ronnie, Vickie and Sheila Garner

H
Robert and Maurine Hooten
Ronnie and Sue Holt
Mike, Roxanne and Carson Holt
Gail Hargrove
Mike and Teri Hahn
Jerry and Barbara Haley
H.D. and Helen Hunter
Peggie Hicks
Wells and Janet Hall Family
Bruce and Patty Hartline, Aubrey, Micah,
Cory and Logan
Keith Hicks
Frank and Lavonne Hinkson
Dale Hughes
Kenneth and Darlene Henry
Lucille Harp

I
Charles and Georgette Isaac

J
Durwood and Amy Jones
Clara Lou Jones
Al and Virginia Jennings
Buck and Carolyn Johnson
Gene Paul and Coralynn Jarman

K
Buster and Wanda Kittrell
O.G. and Loyce Killingsworth
Lacie, Donna, Shane and Stephanie Kirk
Hubert, Nancy and Cari Ann Kidd
Bunt, Ruth and Kody Kitchens,
Stormy, Tristin and Ryan
Guy and Elsie Kendall
Doyle and Lela Sue King

L
Bob and Nina Landers
Jack and Anna B. Lane
Yolanda Luna and Family
David and Angie Lutz and Children
Nettie M. Long
Charles and Joan Lewis
Mart Long
Jesse and Irma Leal

M
George Y. and Clydetta Mitchell
Herman and Joyce Morrison
Jerry and Maudie Mudford
Jay, Sally, Amanda and Suzanne Messenger
Mark and Eileen Morton
Dewey Moore Family
Van and Betty McCormick
Mrs. L.F. McCormick
Ada Murrach
Humberto Mendoza
Ted and Holly Millsap
Robert, Cynthia and Mary Marines
Raymond and Tommie McGehee
Jeane and Scotty Mills
Rich, Cindy, Kole and Kristen Magby
Tim McCormick
Andres and Maggie Martinez
Bill and Yaunda Martin

N
Chad, Kayla and Kennedy Nickels
George and Dianne Nieman

O
Leon and Josie Ovalle
Diana Orr

P
Paschel Pool Jr.
Julia Patterson
Frank and Johnnie Parker
Jarrell and Olgaline Pruitt
Elaine Pruitt
Paul and Betty Poyner
Bernard and Arline Phelps
Donald and Norma Prather
Letha, Nancy and Carl Patterson
Bob and Eulaine Phillips
Glenda Price
Sam and Mary Paul
Jewell Peeler

Q
Nettie Quesenberry

R
Herb and Betty Ramage

Mike, Marilyn, Lincoln and Garrett Riley
Clinton and Maxine Rogers
Katie Roubinek
Joe and Darla Rhodes
Louis and Jane Reeder
Jack and Magann Rennels Family
Maxine Ragsdale
Brandon, Gloria and Michael Rowand
Lacretia, Whitney, Tyler and Shayla Roland
Alberto and Mary Ann Ramirez, Lisa and Adam
Trinidad Ramirez
Andy Ruiz
Antonio and Hilma Rojas

S
Juaree Smallwood
Eugene and Jenny Shaw
Gerald and Lula Maye Shanks
Benny Salcido
John and Margaret Stevens
Arturo and Rosemary Sanchez
Lucy Faye Smith
Wilma Smith
Mr. and Mrs. Lewis Scoggin
Leamon and Joy Stancell
Walt and Rose Sain
Jim and Barbara Scott
Luis and Ada Pacheco
Lillian Carol Street and Family
Dyan Shipley
Rama Smalling
Jr., Chandra, Bethenie and Brianna Sanchez

T
Raymond and Charlene Treider
David, Liz, Megan, Hillary and Kelsey Tipps
Jerry, Norma and Jessica Torres

V
Hugo, Yolanda, Victor and
Samantha Vasquez
Jerd Vinson
Bill and Eva Vinson and Joe

W
Gordon and Marilyn Wilson
Vivian White
Gladys and Cathy Wilson
Frank and Betty Wuerlein
Janet Wagnon
J.E. and Margaret Wilhite
Mr. and Mrs. James P. Wedel
Mildred Williams
Joy Whitt
Jo Wood
James and Fern Warren
Larry, Paula, Chase and Tanner Winkler
Roger, Dawn and Dan Williams
Reafor and Juanita Wenner
Paul and Judy Wilbanks
Webb Watts
Rheata White
W.T. and Pat Watson

Y
John and Marilyn Young
Terry, Glenna and Kyle Yell
Maud Young
Pat Young

Businesses
Wilson Appliance
The Rental Place
M and M Designs
Antiques and Fine Things
Thompson Insurance Agency
Muleshoe Sod Farm
First Bank of Muleshoe
Pat Angeley - Certified Public Accountant
Muleshoe Art Loft - Arline, Inez and Dale
Dr. Jobey D. Claborn
Sanitary Barber Shop
Dale Oil Company and Employees
Morrison Oil Co., Inc.
Novedades - Abel Estrada Owner
Joe's Boot Shop and Employees
State Farm Insurance - Mark Morton
Germania Insurance
Country Junction - Manager Barbara Hall
Muleshoe Trade Center
Harvey Bass Appliance - Retirement Sale
Winkler Meat Company
Noe's Used Cars
Anzaldua Bonding
T.J.'s Donuts
Williams Bros. Office Supply

Williams Athletics
Mohawk Auto Parts
Channel 17
The Fair Store
Louis C. Reeder Cattle Account
Bratcher Motor Supply
James Crane Tire Co.
Alex's Tire Service
Lambert Cleaners and Employees
KMUL - 1380 AM
Muleshoe State Bank
Five Area Telephone and West Plains
Telecommunications, Inc. and Employees
Hugo Vasquez Construction,
Lumber and Hardware
ADM Specialty Grain
McCormick's Upholstery and Drapery
Southside Welding
McCormick Seed - Tim McCormick
Lasting Impressions - Helen, Kathy and Sarah
Hereford Feed Ingredients, Inc.
Family Hair Salon - Pat Young
Farmer's Group Insurance - Wanda R. Brownd
Higginbotham-Bartlett Co., Bruce, Patty,
Freddy, Wayne and Judy
Sain Irrigation and Machine Shop
Do All Family Enterprises
Scott Car Wash
Shear Shack
Main Street Beauty Shop
Western Drug and Something Special Gifts
Muleshoe Pea and Bean, Inc.
Sweethearts Sweets and Eats - 124 E. Ave. B
Muleshoe Area Public Library - Dyan Shipley
Henry Insurance Agency, Inc.
Fry and Cox - True Value
Muleshoe Journal
Bob Stovall Printing - Wells Hall
Jarman Seed
Nieman Realty - George and Dianne Nieman
The Honey Comb - Nancy Barnhill and Employees

Special Groups

Jennyslippers
Muleshoe Rebekah Lodge No. 114
Muleshoe Theta Ro Club #115
Muleshoe Roadriders

Tributes and In Honor Of

In Honor Of: Muleshoe Football Team 2000
Given By: Robert and Maurine Hooten
A Tribute To: George Y. and Clydetta Mitchell
Given By: Robert and Maurine Hooten
In Honor Of: Ethel Ayres
Given By: Robert and Maurine Hooten
In Honor Of: Barbara Blackman
Given By: Calvin and Lona Embry
In Honor Of: Bob and Barbara Finney and Family
Given By: Anonymous

Memorials

In Memory Of: Cookie Bamert
Given By: Robert and Maurine Hooten
In Memory Of: Cookie Bamert
Given By: Calvin and Lona Embry
In Memory Of: Alvin and Opal Talley
Given By: Larry, Paula, Chase and
Tanner Winkler
In Memory Of: Jack and Pearl Cox
Given By: Ted and Holly Millsap
In Memory Of: Homer and Claudia Millsap
Given By: Ted and Holly Millsap
In Memory Of: Walter Bartholf Sr.
Given By: Charles (Chuck) Bartholf Family

Thank you for your expressions of faith and love during the past year. Through your prayers, gifts and faithful service, you have helped each of us at the Muleshoe Area Healthcare Center. May God's grace & peace overflow from your lives not only at Christmas, but throughout the coming year. Residents and Staff of the Muleshoe Area Healthcare Center and Volunteer Christmas Card Project Members



Journal photo: Yolanda Martinez

Employee of the month

Gathered to honor Beatrice Morin as the Muleshoe Chamber of Commerce employee of the month for November are (from left) Leah Bell, Ronn Smith, Sheila Stevenson, Pam McCaul, Morin, Clay Kidd, Joe Flores and Mark Washington. Morin works for the Muleshoe Journal.

JV Lady Mules lose in close encounter, 26 -22

By DELTON WILHITE
Journal correspondent

Whether it was visions of sugary plums dancing in their heads or too much holiday cheer at the school Christmas party, the Lady Mules lost their focus against the Lady Lions of Trinity Christian Academy in Lubbock on Thursday night.

Muleshoe could not put the press on tight enough or get their offense untracked long enough to put the Lady Lions away, while Trinity used turnovers and free-throws to defeat the normally high-octane Lady Mules 26-22.

The game started slowly for both teams. With four minutes on the clock in the initial period, Muleshoe's Tiffany

Flores tied the score at two. Tori Barton found Sarah Benham in the lane to finish a fast break and tie the score at four with a minute and a half showing on the clock.

Benham blocked a shot, recovered the ball, and went the length of the court before being fouled on the shot. She made one of two from the charity stripe to give the Lady Mules a 5-4 advantage at the end of one period.

After falling behind 6-5 by the three-point mark of the second period, the Lady Mules scored six points in the next minute, with Flores following her own shot and putting back a rebound. Megan Barrett stole a Trinity pass and found Flores

breaking open for two more points. The Lady Lions turned over the ball and Barrett was there to claim it for Muleshoe. She found Benham downcourt to finish the fast break and extend Muleshoe's lead to 11-6. Trinity made a bucket with three seconds showing to cut the Muleshoe lead to 11-8 at half-time.

In the third period, Barrett hit from behind the arc to give Muleshoe its largest lead of the night, 16-8, with four minutes remaining. The Lady Lions put up four unanswered points before the quarter ended, including a three-pointer at the buzzer.

Trinity claimed the lead at the start of the fourth period and Tabatha Obenhaus hit from 15 feet to regain the lead for Muleshoe.

The Lady Lions then retook the lead with 4:30 on the clock, and Muleshoe could never recover the momentum. Forced to foul as the clock began to run down, Trinity made its free throws and held on for the win.

Scoring for Muleshoe were Flores with eight, Benham with five, Barrett with three, and Obenhaus, Barton and Eva Pylant with two each.

The JV Lady Mules will need to refocus before meeting Lubbock Roosevelt's Lady Eagles (at 12:30 p.m. Dec. 28) in Sundown High School's new gymnasium.

Trinity Christian Lions smash JV Mules, 57-19

By DELTON WILHITE
Journal correspondent

It was not difficult to see the difference in the amount of court time Thursday between the JV Mules and the Lions of Lubbock's Trinity Christian Academy.

The Lions were in midseason form, and the Mules' season had just begun because of the extended Mule football season.

Trinity outran the Mules 57-19 in the Trinity Lions Den.

Chance Turney and Jordan Dale led the scoring for the Mules with four points each. Matt Luna added three and Tatom Heathington, Landon Sheets, Valentin Colunga and A.J. Flores added two each.

Flores, at point, got the Mules started when he found Turney open on the blocks for two points. But Trinity answered with a three-pointer from the corner, and they never trailed again. They led 17-4 at the end of the first quarter.

In the second quarter,

Heathington followed his own shot and put back the rebound, Sheets hit a jumper from the elbow and Luna nailed a three from the corner to end the first-half scoring for the Mules, with them trailing 35-11.

Good shots failed to fall for the Mules in the third quarter, but Colunga showed quickness and courage by driving the lane trying to create offense for the Mules. By the time the quarter ended, Trinity had added 16 points and led 51-11.

Flores drove the lane and dished the ball to Dale on the base line to get the Mules on the board in the fourth stanza. Flores found the bucket with a running jump shot in the lane and Colunga was fouled when he attempted to drive the lane late in the game.

He made both free throws, and then Turney connected on an 8-foot fall-away jumper. Turney's points were the bookends for the

Mule scoring: He made the first Muleshoe pulled down 21 rebounds and was called for 10 fouls.

FREE SONIC CONEY!
Get a free extra long cheese coney when you purchase one at regular price
ALL DAY WEDNESDAYS!



To All Our Valued Customers...

We offer our gratitude and good wishes for a happy holiday season. We look forward to serving you in the coming year!

MULESHOE MOTOR CO. FORD MERCURY

Need extra cash for the holidays?
Come see us for all your cash needs!

PERSONAL LOANS \$100 - \$1,000
CAR TITLE LOANS \$100 - \$2,500

Phone Applications Welcome
30 Minute Approval In Most Cases!
¡Se Habla Español!

Open: Mon - Friday
9 am - 6 pm (MDT)

Gold Star FINANCE

Two Convenient Locations To Serve You:

1407 N. Main-Clovis (505) 742-2737
1112 W. First-Portales (505) 356-1411

your ticket to talk

Plateau Wireless introduces Plateau To Go™ prepaid wireless

- No credit check
- No commitment
- No monthly bill

Get Plateau To Go at your local Plateau Wireless store or call 1-877-PLATEAU.
Plateau To Go. Your Ticket To Talk!

Friona WT Services (806) 250-5555	Levelland Lonestar Communications (806) 894-8881	Muleshoe Five Area Telephone (806) 272-5533
Hereford WT Services (806) 364-7311	B&E Radio Shack (806) 894-8053	Plainview Two Way Radio (806) 296-2672
Plateau (806) 638-1400		

OBITUARIES

FAYE NELL PIERCE

Services were held Thursday at Hammons Funeral Home Chapel in Littlefield for Faye Nell Pierce, 75, of Littlefield. The Rev. Benny Goss officiated. Burial was in Littlefield Cemetery.

Mrs. Pierce was born Feb. 27, 1925, in Polk County, Ark. She died Dec. 19 at University Medical Center in Lubbock.

She married Thurman Ray Pierce on Nov. 16, 1946, at Mena, Ark. They moved to Lamb County in February 1947 and lived in several communities including Sudan and Littlefield. She was known for her crochet work and was a member of the First Baptist Church of Sudan.

Mrs. Pierce is survived by her husband; a son, James E. Pierce of Abilene; two daughters, Rhonda Gail Carpenter of Muleshoe and Donna K. Wright of Littlefield; a brother, John Lee Standridge of Mena; and a sister-in-law, Rosemary Standridge of Oglesby, Tenn.

Pallbearers were Casey Wright, Kevin Wright, Allen Wright, Brandon Carpenter, Toby Carpenter and Brian Pierce.

The family suggests memorials to the American Heart Association.

VIOLA WESTCOTT

A memorial service will be announced for Viola Margaret Westcott, 94, of Topeka, Kan. Penwell-Gabel Midtown Chapel of Topeka handled cre-

mation arrangements.

Mrs. Westcott was born June 11, 1906, at Mason City, Iowa. She died Dec. 20 in a Topeka hospital.

She graduated from Mason City High School in 1923 and went to work for Peevely Dairy in St. Louis. Working there, she met cowboy star Tom Mix and served him ice cream cones.

She later worked as a seamstress in a drycleaning facility and also worked in retail clothing sales.

She married Loyd Ray Westcott on June 21, 1930, in St. Louis.

She is survived by her husband; a daughter, Joan "Jo" Rempe of Muleshoe; a son, Don Westcott of Topeka; eight grandchildren; 16 great-grandchildren; and two great-great-grandchildren.

She was preceded in death by a daughter, Jean Maxine Westcott, on Nov. 10, 1990.

The family suggests memorials to the American Cancer Society.

ARDIS G. McCRAY

Services were held Saturday at Second Baptist Church in Lubbock for Ardis G. McCray, 83, of Lubbock. Mike Waller and the Rev. Stacy Connor officiated. Burial was in Resthaven Memorial Park.

Resthaven Funeral Home of Lubbock handled arrangements.

Mr. McCray was born Sept. 27, 1917, at Crossroads in Roosevelt County, N.M. He

died Dec. 21 in Lubbock.

He moved to Smyer, Texas, at a young age and attended Lubbock schools. He had worked as a cowboy on the Spade Ranch, as a copper miner in Bisbee, Ariz., as a water-well driller around Weed, N.M., and as a motel operator in Lamesa. From 1964 to 1980, he lived at Johnson, Kan., where he farmed, served on the Community Development Board and was a member of the Rotary Club.

He married Minnie M. Altman in Clovis on Jan. 12, 1936.

He is survived by his wife; three daughters, Glenda King of Ransom Canyon, Texas, Laura Hand of Spearman, Texas, and Alice Reed of Lubbock; two sons, Jerry McCray of Crosbyton and Gary "Butch" McCray of Muleshoe; two brothers, Jimmy McCray of Dallas and Billy McCray of Blue Springs, Mo.; 17 grandchildren; and 34 great-grandchildren.

RANDY'S SHOES
Semi-Annual CLEARANCE
SHOE SALE
SALE NOW IN PROGRESS!!
Fantastic Pre-Christmas Savings on Famous Brand Fall & Winter Shoes for the Entire Family

WOMEN'S
Dress Shoes, Fashion Boots, Casuals, Athletic Shoes
NOW 20%, 30% & 50% OFF
• Naturalizer • Easy Street • Hush Puppies • Soft Spots
• Doc Martens • Ros Hommerson • Nicole • White Mountain • Eastland • Skechers • Nike

All Nikes 20% - 50% Off Mens • Ladies • Childrens

CHILDREN'S Entire Kid's Department 20% - 50% OFF Save on the Largest Selection of Kid Shoes in Town! • Stride Rite • Jumping-Jacks • Hush Puppies • Tommy Hilfiger • 9 West • Dockers • Bass • Nike • New Balance • Keds • Mia • Sketchers • K-Swiss • Caterpillar	MEN'S Dress Shoes, Casuals, Athletic, Work Boots MANY STYLES NOW ... 20% - 50% OFF • Doc Martens • Dexter • Hush Puppies • Dockers • Nunn Bush • Nike • New Balance
--	---

RANDY'S SHOES
410 Main • Downtown Clovis
9:00 a.m. - 5:30 p.m. Mon. - Sat.
"Quality Shoes at Affordable Prices Since 1970"

Journal Classifieds

STOP & SHOP

Deadlines are 5 p.m. Monday and Thursday

Call 272-4536

December 24, 2000

PUBLIC NOTICE

NOTICE OF RECEIPT OF APPLICATION AND INTENT TO OBTAIN AIR PERMIT RENEWAL PERMIT NO. 1232A APPLICATION AND PRELIMINARY DECISION

Kelly Green Commodities, Inc., Box 332, Farwell, Texas 79325, has applied to the Texas Natural Resource Conservation Commission (TNRCC) for renewal of Air Quality Permit No. 1232A which would authorize continued operation of their Seed Storage Facility located east of Muleshoe on Highway 84 in Bailey County, Texas. The existing facility will emit the following air contaminants: particulate matter and products of combustion including (but not limited to) organic compounds, sulfur dioxide, nitrogen oxides and carbon monoxide.

This application was submitted to the TNRCC on November 1, 2000. The application is available for viewing and copying at the TNRCC central office, the TNRCC Lubbock regional office, and the Bailey County Courthouse, 300 South 1st, Muleshoe, Texas. The facility's compliance file, if any exists, is available for public review in the Lubbock regional office of the TNRCC.

The TNRCC executive director had determined the application is administratively complete and will conduct a technical review of the application.

PUBLIC COMMENT/ PUBLIC MEETING You may submit public comments, a request for a public meeting, or request a contested case hearing to the Office of the Chief Clerk at the address below. The TNRCC will consider all public comments in developing a final decision on the application. The deadline to submit public comments is 15 days after newspaper notice is published. After the deadline for public comments, the executive director will prepare a response to all relevant and material or significant public comments.

The purpose of a public meeting is to provide the opportunity to submit comments or ask questions about the application. A public meeting about the application may be held if the executive director determines that there is a significant degree of public interest in the application or if requested by a local legislator. A public meeting is not a contested case hearing.

If only comments are received on the application, the response to comments, along with notice of the executive director's action on the application, will be mailed to everyone who submitted comments or is on the mailing list for this application.

If a hearing request is timely filed, the executive director will complete the technical review, may issue a preliminary decision on the application, and a Notice of Application and Preliminary Decision may be published and mailed to those who are on the mailing list for this application. That notice will contain the final deadline for submitting public comments.

After the final deadline for public comments following any required Notice of Application and Preliminary Decision, the executive director will consider the comments and prepare a response to all relevant and material, or significant public comments. If comments are received, the response to comments, along with the executive director's decision on the application, will then be mailed to everyone who submitted public comments or is on a mailing list for this application.

OPPORTUNITY FOR A CONTESTED CASE HEARING You may request a contested case hearing. A contested case hearing is a legal proceeding similar to a civil trial in state district court. Unless a written request for a contested case hearing is filed within 15 days from this notice, the executive director may approve the application. If no hearing request is received within this 15-day period, no further opportunity for hearing will be provided. A contested case hearing will only be granted based on disputed issues of fact that are relevant and material to the Commission's decision on the application. Further, the Commission will only grant a hearing on those issues raised during the public comment period and not withdrawn.

A person who may be affected by emissions of air contaminants from the facility is entitled to request a hearing. If requesting a contested case hearing, you must submit the following: (1) your name (or for a group or association, an official representative), mailing address, daytime phone number, and fax number, if any; (2) applicant's name and permit number; (3) the statement "[I/we] request a contested case hearing;" (4) a specific description of how you would be adversely affected by the application and air emissions from the facility in a way not common to the general public; (5) the location and distance of your property relative to the facility; and (6) a description of how you use the property which may be impacted by the facility. If the request is made by a group or an association, the one or more members who have standing to request a hearing, and the interests which the group or association seeks to protect, must also be identified. You may also submit your proposed adjustments to the application/permit which would satisfy your concerns. Requests for a contested case hearing must be submitted in writing within 15 days following this notice to the Office of the Chief Clerk, at the address below.

If a hearing request is timely filed, additional notice may be provided. Following the close of all applicable comment and request periods, the executive director will forward the application and any requests for contested case hearing to the TNRCC Commissioners for their consideration at a scheduled Commission meeting. If a hearing is granted, the subject of a hearing will be limited to disputed issues of fact relating to relevant and material air quality concerns raised during the comment period. Issues such as property values, noise, traffic safety, and zoning are outside of the Commission's jurisdiction to address in this proceeding.

MAILING LIST In addition to submitting public comments, you may ask to be placed on a mailing list to receive future public notices for this specific application mailed by the Office of the Chief Clerk by sending a written request to the TNRCC Office of the Chief Clerk at the address below.

INFORMATION Written public comments or requests for a public meeting or contested case hearing should be submitted to the Office of the Chief Clerk, MC-105, TNRCC, P.O. Box 13087, Austin, Texas 78711-3087. For more information about this permit application or the permitting process, please call the Office of Public Assistance, Toll Free, at 1-800-687-4040. General information regarding the TNRCC can be found at www.tnrcc.state.tx.us.

Further information may also be obtained from Kelly Green Commodities, Inc. at the address stated above or by calling Mr. Jerry Monk at (806)481-3810. Published in the Bailey County Journal December 24, 2000.

AUTOMOBILES

CHARITY CARS - DONATE your vehicle. As seen on Oprah and People Magazine. Tax deductible, free towing. We provide donated vehicles to struggling families 1-800-442-4451, www.charitycars.org.

DRIVERS WANTED

COMPANY PAID CDL training & first year income \$35K - Steven Transport - OTR drivers wanted! Non-experienced or experienced, 1-800-333-8595. EOE.

DRIVER: CONVENANT TRANSPORT *Coast to coast runs *Teams start up to 46cpm *\$1,000 sign-on bonus for experienced company drivers. For experienced drivers, 1-800-441-4394; owner/operators 1-877-848-6615, For graduate students 1-800-338-6428.

DRIVERS-OWNER/OPERATORS: Run regional. Home weekly! Paid: Base plate, permits, fuel taxes. 81cpm. Loaded and empty plus fuel surcharge. 1-800-454-2887. Arnold Transportation.

DRIVERS - CFI HIRING OTR company/student/owner operators. Company with one year experience start at \$.32cpm. Students earn \$50 per

DRIVERS WANTED

day. Owner/Operator start at \$.80cpm all miles. For more information call 1-800-CFI-DRIVE.

DRIVERS: FLEETWOOD TRANSPORTATION hiring long-haul flatbed drivers. Peterbilt equipment. Guaranteed home time and complete package of benefits. Also need long-haul owner operators. 1-888-276-9923, www.ftwd.net.

DRIVERS - YOU WILL see the difference in SRT. *Great pay. *Paid weekly/ *Excellent benefits. *\$1,250 sign-on bonus. *Student graduates welcome. Call SRT today toll free: 1-877-BIG-PAY-DAY (1-877-244-7293).

INTERSTATE LEASING - DRIVERS and Owner/Operators wanted for various runs. CDL training available. Tuition reimbursement up to \$5,000. (eoe-m/f), www.swifttrans.com. 1-800-227-5751.

SWIFT TRANSPORTATION - DRIVERS and Owner/Operators wanted for various runs. CDL training available. Tuition reimbursement up to \$3,000. (eoe-m/f), www.swifttrans.com. 1-800-284-8785.

IF YOU ARE the spouse of an over the road truck driver, we will teach you to drive a "Big Rig" w/ automatic transmission in just 2 weeks! Interested, please call 1-800-234-3748.

OTR DRIVER - MARTEN Transport Ltd. Can pay you with 1 year plus experience, 33cpm. Call 1-800-395-3331, www.marten.com.

TRUCK DRIVERS OTR -Solo (.30+ or .28+cpm). Teams (.36+cpm). Good miles, excellent equipment and benefits. One year OTR experience required. Gulf Coast Transport, 1-888-988-8666.

DRIVERS NEEDED. LOOK! Get your CDL and a great job. No money out of your pocket, if qualified. Earn up to \$800 or more. 1-800-301-6759.

343 DRIVERS NEEDED! No experience needed. Quick CDL training program available. Earn \$30,000 + 1st year. CDL Delivers, 1-800-260-0294.

DRIVERS AT CONTINENTAL Express, 'tis the season to make money. Miles, Miles, Miles! Home at your request. Class A CDL required. Call us today. 1-800-727-4374.

DRIVER - OWNER OPERATOR Average 113 cpm in five-state area running AR, TX, OK, LA, and NM. We need 39 trucks to cover current obligation. \$1,000 sign-on bonus. Base plates provided. Generous fuel surcharge and low-cost lease program. FFE has plenty of freight. Call 1-800-569-9298.

HELP WANTED

Cotton...a Texas tradition
Field Unit Supervisor
www.txbollweevil.org
The Texas Boll Weevil Eradication Foundation is recruiting for a field unit supervisor position in the Muleshoe District to be hired in mid January.
Desirable qualifications
• Cotton background
• Supervisory skills
• Public relations
• Strong computer skills
Submit your resume and cover letter to:
Human Resource Department
PO Box 5089
Ablene, TX 79608-5089
(915)677-1006
Email: jobs@txbollweevil.org
All applicants must be an insurable driver according to foundation fleet policy. EEO/Drug Free Workplace

Homeworkers Needed
\$635 weekly processing mail.
Easy! No experience needed. Call 1-800-440-1570 Ext 5085 24 Hrs

LICENSED VOCATIONAL NURSE
Seeking a part-time (LVN): Graduate of an accredited, vocational school of nursing; possess current Texas nursing license. Bilingual in English/Spanish helpful. Apply at SPHPO-208 W. Second Street, Muleshoe, Texas 79347 - Inquire: (806)272-5538. FAX: (806)272-5792. An Equal Opportunity Employer

DRIVERS WANTED

DRIVERS: ALLIED VAN Lines has openings in their special products fleet. Class A CDL with 2 yrs. OTR experience. Tractor purchase available. Average .125 cpm 1-800-634-2200, Dept. ATXS.

DRIVERS-CONTINENTAL EXPRESS wants you. Great pay, miles, hometime and support staff. Class A CDL required. Give us a call today. 1-800-727-4374.

HOMES FOR SALE

FLEXIBLE FINANCING AVAILABLE! Why rent when you can buy? 2BR, 2BA, 1400SF rancher. Needs carpet. (1815 W. Avenue 'B') \$39,900 - Make Offer - Call P.K. Ramsey @ 1-800-757-9201 X 7582 M-F Seller pays 3% to buyers agent.

Apartment For Rent
1 Bedroom
2 Bedrooms
Call 272-3771 or 946-7668

BAILEY COUNTY
29 acres near Muleshoe, off Hwy 214 N., 8.64% Interest, \$134/Mo., Owner Finance Forest America Group 800-275-7376

SERVICES

UNBELIEVABLE DEAL!
2000 MINUTES FOR \$39.99 FREE PHONE, FREE ACTIVATION! FREE CASE WITH PURCHASE OF A CAR CHARGER! CALL AMERICA TOLL FREE! INCLUDES 750 WEEKEND MINUTES & 750 EVENING MINUTES
CELLULAR 2000
202 Main Street
(806)272-7523 or 272-5153

Will do your ironing! I deliver & pick-up within Muleshoe! I provide starch! Bring this ad for a 10% discount! Also call if interested in Avon - to buy or sell! Call Denise Coldiron 272-3140.

MISCELLANEOUS

AIR CONDITIONING
Financing available on new central refrigerated air conditioning-heating equipment. As low as \$59 a month. Bad credit? Bankruptcy? No Problem! WE WILL FINANCE YOU! Air America 791-1093

Let our Classified section work for you! Call Bea Today! 806-272-4536

REAL ESTATE

Apartment For Rent
1 Bedroom
2 Bedrooms
Call 272-3771 or 946-7668

BAILEY COUNTY
29 acres near Muleshoe, off Hwy 214 N., 8.64% Interest, \$134/Mo., Owner Finance Forest America Group 800-275-7376

House for Sale
By Owner 3-2, Carport. Lg. Storage & Apt. bldg., brick veneer, fenced & cable hook-ups. N 214 on pavement Call 272-4278, mornings.

Lazbuddie Area
640 Acres - 4 Sprinklers 350 to 500 gallons water big wheat & grazing goes, possible 50-70 thousand return by June 1. Contact Wayne Clark at 806-965-2895.

Merry Christmas!

Vic Coker Land Co.
Agricultural Real Estate

- New Listing** - 160 Acres Northeast of Muleshoe in Parmer County. Center pivot. Good soil and 650 G.P.M. water.
- Northwest Lamb County** - 160 Acres with pivot. 2 Wells. \$500/Acre.
- East of Muleshoe** - 328 Acres. 90 Acres of C.R.P. 1 Large center pivot. 5 wells.
- Bailey County** - 320 Acres with Very Nice Brick Home. Large Barn. 2 Sprinklers. 6 Wells.
- Northeast of Muleshoe** - 195 Acres with center pivot. 2 wells. Lays good.
- Bailey County Dryland** - 2 Labors South of Muleshoe. Allotted. 150 Acres of growing wheat.
- Castro County Lamb County Line**, 600 Acres on Pavement. EXCELLENT WATER. 4 Wells. 3 Centerpivot sprinklers.
- 160 Acres Southwest of Muleshoe**, with sprinkler & 3 wells. Good Livestock place.
- 160 Acres**, North of Muleshoe. Nice clean farm with center pivot. Good soil. Good Yields. 2 submersible wells. Reasonably priced.
- 280 Acres in Hub Area**, Excellent soil, lays good. Excellent water. 2 Wells. Reasonably priced.
- Parmer County** - 960 Acres on Pavement. 2 Half Milers. 5 Wells. Large Barn. Modest House.
- Parmer County** - 480 Acres on Pavement. 3 Pivot/sprinklers. 2 Wells.

310 Main Street, Suite 103
Muleshoe, Texas
Office (806) 272-3100 Home (806) 965-2468

Nieman Realty

116 E. Ave. C • George Nieman, Broker • 272-5285 or 272-5286

RICHLAND HILLS - PARK RIDGE

- LOT 83, PKRDG. - \$1000.00, SEVERAL OTHER NICE LOTS ARE AVAILABLE - CALL FOR MORE INFO!!
- NICE 3-1-1 Brick, Cent. heat, evapor. air, built-ins, fans, 2000' + lv. area, fenced yd., patio, stor. bldg.!! \$57.5K!! RH-1
- JUST LISTED - NICELY REMODELED 3-2-3 Brick Home on corner lot, new paint, carpets, whirlpool tub, shower unit, & heat pump. Home also has built-ins, fireplace, fenced yd., Stor. Bldg. & MUCH MORE!!! \$79,900!! RH-2

HIGHLAND AREA

- 2-1-1 Carport, built-ins, wall furn. heat, win. evapor., 5 fans, covered patio, fenced yd. \$25K!! HL-4
- NICE 3-1-1 Brick, Cent. heat & evapor. air, nice carpet, fans, 2 stor. bldgs., fenced yd., MORE!!! \$36.5K!! HL-1

LENAU - COUNTRY CLUB AREA

- 2-1-1 Home, wall furn. heat, \$18K!! L-4

COMMERCIAL

- Duplex (2-2 bdrm. 1 bath units) plus 1 (2 or 3 bdrm) for residence or rental. \$30K!!!
- R.V./Mobile Home Park on 2.95 acres, home, office, 3 M.H. units. LET'S LOOK TODAY!!
- APPROX. 4,800' shop plus 600' office area on a 60' x 130' lot!!! PRICE REDUCED!! \$40K!!!
- GOOD INCOME PROPERTY - approx. 3490' bldg., paved parking, good net lease!! PRICED TO SELL!!
- Established Business: Land, Bldg. & Equip., \$75K!!
- Nice Building with approximately 15,450 sq. ft. of shop area plus approx. 1,044 sq. ft. office (Dual Fuel Heat Pump for Office), 6 station phone system, restrooms (1 w/shower), loading dock, approx. 195 foot frontage. MORE !!!
- 6,600 sq. ft. metal building with approximately 1080 sq. ft. additional storage area on Hwy. 70-84, 140' x 100' tract !! \$34K!!
- 200 Main & E. Ave. B-4 rental units plus upstairs & basement or renovate for your own special use!! \$65K!!

HIGH SCHOOL

- VERY NICE 3-1-1 Brick, Heat pump, DW, nice carpets, fenced yd., MORE!!! \$30's !!! HS-1
- REMODELED 3-2-1 carport Home, Cent. A&H, built-ins, new carpet & vinyl, 5 fans, new roof, MORE!! \$38K!! HS-2
- VERY NICE 3-1-1 Brick, Cent. A&H, stove, DW, fenced yd., MORE!! \$38K!! HS-4
- 3-2 Home, corner lot, floor furnace heat, fenced yd. \$25K!! HS-10
- PRICE REDUCED - NICE 3-1-1 Home, Cent. Heat & Cent. Evap. Air, built-ins, stor. bldg., fenced yd., MORE!! \$39.5K!!! HS8
- 3-1-1 Brick, Dual Fuel Heat Pump, DW, Disp., 4 fans, cov. patio, 2 stor. bldgs., fenced yd. \$34,500!! HS-3
- VERY NICE 3-1-1 Brick, Cent. A&H, 3 ceiling fans, stor. bldg., fenced yd. \$38K!! HS-5
- VERY NICE 2-1-1 Brick, Elec. Heat Pump, stove disp. fans, deck, fenced yd., MORE!! \$32.5K!! HS-13
- 3-1-1 Brick, Cent. heat, evapor. air, Dishwasher, fenced yd. \$28K!! HS-6

RURAL

- PLEASANT VALLEY, Approx. 160 acres, 2 bdrm home, 1 bath, 2 car detached garage, on pavement!!
- W. of SUDAN-NICE 3-3-2 Brick Home, 5 acre tract on Hwy. 298, Cent. Air & Heat, built-ins, large Quonset Barn, MORE!!! \$95K!!!
- 5 Acre tract on pavement close to town!
- PRICE REDUCES - 108 acres or 7 acre tract on Hwy. 70, approx. 2100' office area, 16,900' commercial bldg. w/ loading dock, 3,400' warehouse, new well, 2,800' runway!!!
- 3-2-1 Home, Cent. A&H, built-ins, fenced yd., man. spkrl., 300' stor. on .84 acre on pavement, edge of town !! \$40's!!
- PROGRESS - VERY NICE 3-2-2 Home on 21.8 acres on Hwy. 84, Elec. Heat Pump, built-ins, FP, 3 fans, 10 hp., sub. irrig. well, undgrd. tile, valves, & gated pipe!!! MORE!! \$55K !!!
- EARTH - 4-2-2 carport home, Heat Pump, fans, storage-workshop!! \$35K



MERRY CHRISTMAS TO ALL...



We will close at 7 pm on Christmas Eve.

AND TO ALL A GOOD BUY!

PRICES EFFECTIVE DECEMBER 20-26, 2000

MEAT

- X-TRA SAVINGS PAK
GROUND ROUND..... LB **\$1⁹⁹**
- BONELESS.
PORK LOIN ROAST LB **\$2⁷⁹**
- BEEF BONE-IN SMALL OR LARGE END
PRIME RIB ROAST LB **\$3⁹⁹**
- CRY-O-VAC 2 PACK BONE-IN
PORK BUTT ROAST LB **77¢**
- BONELESS FOR TAMALES
PORK MEAT LB **\$1⁷⁷**
- COOK'S BONE-IN
LIMIT 2-ADDTL. PURCHASES 97¢/LB.
SHANK PORTION HAM LB **87¢**
- COOK'S
BUTT PORTION HAM LB **\$1¹⁹**
- WITH \$50 PURCHASE 5 LB.
OR \$2.95 EACH
LIMIT 1 WITH \$50 PURCHASE
(ADDITIONAL PURCHASES 99¢/LB. OR \$4.95 EACH)
- BAR S WHOLE BONELESS HAM**..... LB **59¢**
- DECKER SPIRAL CUT
BONE-IN FULLY COOKED
WITH HONEY GLAZE PACKET
HALF HAM LB **\$1⁹⁷**
- BAR S
HALF HAM LB **\$1²⁹**
- TIP TOP
BAKING HENS..... LB **59¢**
- SUNDAY HOUSE
SMOKED TURKEYS..... LB **\$1⁴⁹**
- BAR S
BACON 12 OZ. PKG **4/⁵**
- COOKED SALAD
SHRIMP LB **\$4⁷⁹**
- CASA DE LOWE'S
CHORIZO 8 OZ. **99¢**
- BLOCK CUT FOR MENUENDO
BEEF TRIPE..... LB **59¢**
- OWENS REG. OR HOT
BREAKFAST SAUSAGE ... 2 LB. ROLL **\$3⁵⁹**
- OWENS ASSTD. VARIETIES
BREAKFAST SAUSAGE ... 1 LB. ROLL **\$1⁸⁹**
- HILLSHIRE FARM ASSTD. VARIETIES
SMOKED SAUSAGE 1 LB. PKG **\$1⁶⁹**
- HORMEL BLACK LABEL
ASSTD. VARIETIES
BACON 1 LB. PKG **2/⁵**
- HORMEL LINKS OR PATTIES
LITTLE SIZZLERS 10-12 OZ. PKG **99¢**
- BAR S
RED FRANKS..... 2 LB. PKG **\$2⁷⁹**
- BAR S
MEAT BOLOGNA 12 OZ. PKG **99¢**
- BAR S
MEAT FRANKS 12 OZ. PKG **2/⁵**
- BAR S EXTRA LEAN
HICKORY OR HONEY
SLICED HAMS 16 OZ. PKG **\$2⁹⁹**
- BAR S
CHOPPED HAM 10 OZ. PKG **\$1⁵⁹**
- BAR S COOKED HAM, HONEY COOKED
HAM OR TURKEY BREAST
SLICED MEATS..... 10 OZ. PKG **\$2²⁹**
- FROSTY ACRE WHITE OR GOLD
HOMINY 111 OZ. CAN **3/⁵**
- VALLE ROJO ASSTD.
CHILI PODS 8 OZ. PKG **3/⁵**
- "LA ESPIGA"
CORN HUSKS 6 OZ. PKG **87¢**
- RAMIREZ
MASA..... 5 LB. BAG **\$1⁹⁷**
- SHURFINE WHOLE
FANCY YAMS..... 23 OZ. CAN **88¢**
- LAY'S® PRE-PRICED \$2.99
POTATO CHIPS..... 13.25 OZ. BAG **3/⁵**
- SHURFINE STUFFED
SPANISH OLIVES 5.75 OZ. JAR **99¢**
- ALL VARIETIES.
PEPSI OR MOUNTAIN DEW 12 PK. CANS **2/⁵**
- ALL VARIETIES
PEPSI OR MOUNTAIN DEW 2 LITER BTL. **99¢**

PRODUCE

- WASHINGTON EXTRA-FANCY
LARGE
ORANGES OR RED/GOLDEN DELICIOUS APPLES LBS **2/⁵**
- SWEET JUICY
D'ANJOU PEARS LB **79¢**
- SNACK SIZE
NAVEL ORANGES..... **15/⁵**
- HOLIDAY
FRUIT BASKET..... EACH **\$9⁹⁹**
- LARGE SPECIAL SELECT
FRUIT BASKET..... EACH **\$17⁹⁹**
- NEW CROP
MIXED NUTS OR WALNUTS.... LB **\$1⁶⁹**
- FRESH BUNCH
RADISHES EACH **69¢**
- U.S. NO. 1 RUSSET
BAKING POTATOES LBS **4/⁵**
- LARGE STALK
CELERY **2/⁵**
- GARDEN FRESH
GREEN ONIONS BUNCHES **3/⁵**
- EAST TEXAS
SWEET POTATOES LBS **2/⁵**
- GARDEN FRESH
BROCCOLI LB **99¢**
- MILD MEDIUM
YELLOW ONIONS LBS **3/⁵**
- DOLE GARDEN FRESH
SALAD MIX 16 OZ. PKG **99¢**

HEALTH & BEAUTY

- ASSTD.
ALKA-SELTZER 24 CT. PKG **\$2²⁹**
- HERBAL ESSENCES ASSTD.
LOTION..... 8.5 OZ. **2/⁵**
- HERBAL ESSENCES ASSTD.
SHAMPOO OR CONDITIONER..... 10.2-12 OZ. BTL **2/⁵**
- SHURFINE WHITE FLAKED
COCONUT 14 OZ. PKG **\$1¹⁹**
- PRE-PRICED \$2.99 ASSTD. VAR.
LOWE'S JAR SPICES .. YOUR CHOICE **2/⁵**
- CORN, BLENDED, VEGETABLE OR CANOLA
SHURFINE OIL 48 OZ. BTL. **3/⁵**
- SELECT GROUP CORN, GREEN BEANS OR PEAS
DEL MONTE VEGETABLES 11-15.2 OZ. CANS **3/⁹⁹**
- BEST VALUE • PUMPKIN • PECAN
• LATTICE APPLE, CHERRY OR PEACH
8" PREBAKED PIES.... YOUR CHOICE **2/⁵**
- ASSTD. FAC GRINDS-EXCLUDES DECAF.
HILLS BROS. COFFEE 34.5-39 OZ. **\$4⁹⁹**
- CINNAMON TOAST CRUNCH OR
LUCKY CHARMS-PRE PRICED \$2.79
GENERAL MILLS CEREAL... 14 OZ. **2/⁵**
- GENERAL MILLS RICE, WHEAT OR CORN
CHEX CEREAL..... 12 OZ. BOX **2/⁵**
- NABISCO HONEY MAID
GRAHAM CRACKERS 16 OZ. BOX **2/⁵**
- NABISCO
CHEESE NIPS 13.5 OZ. BOX **\$2¹⁹**
- SHURFINE HOT
COCOA MIX 10 CT. BOX **88¢**
- SHURFINE CRUSHED, CHUNK
OR SLICED IN NATURAL JUICE
PINEAPPLE 15.2 OZ. CAN **2/⁵**
- REG./FAT FREE CHICKEN OR REG. BEEF
SHURFINE BROTH 14.5 OZ. CAN **2/⁸⁸**
- SHARI
ALMOND BARK 20 OZ. PKG **3/⁵**
- SHURFINE
PARTY PEANUTS 12 OZ. CAN **3/⁵**
- SELECT GROUP
MORRISON'S MIXES 6 OZ. PKGS. **3/⁵**
- SHURFINE
CORN FLAKES 18 OZ. BOX **99¢**
- SHURFINE REG. APPLE
OR REG./LITE CHERRY
PIE FILLING 20-21 OZ. CAN **99¢**

FROZEN & DAIRY

- GRADE A LARGE
SHURFINE EGGS..... 18 CT. PKG **87¢**
- SHURFINE
SOUR CREAM 16 OZ. TUB **97¢**
- SHURFINE ASSTD. NON-DAIRY
WHIPPED TOPPING 8 OZ. TUB **2/⁵**
- BLUE BUNNY ASSTD.
THE CHAMP! 6 PACK **\$3⁴⁹**
- BLUE BUNNY ASSTD. OR
FROZEN YOGURT
ICE CREAM..... 1/2 GAL. ROUND **2/⁵**
- 16 OZ. REG. OR LIGHT QUARTERS
• 16 OZ. SOFT TUB • 2 CT. 8 OZ. SOFT TUB
• 16 OZ. SQUEEZE
PARKAY YOUR CHOICE **99¢**
- SHURFINE ULTRA
WHIPPING CREAM 1/2 PINT **3/⁵**
- ASSTD. WHERE AVAIL.
PLAINS OR BORDEN MILK..... 1/2 GALLON **2/⁵**
- SHURFINE REG. OR LESS FAT
CREAM CHEESE 8 OZ. BOX **88¢**
- KRAFT LONGHORN CHEDDAR
OR MILD COLBY
HALFMOON CHEESE..... 14 OZ. PKG **\$2⁹⁹**
- KRAFT EX. THICK OR REG.
VELVEETA SLICES 12 OZ. PKG **\$1⁸⁸**
- FRENCH ONION OR GREEN CHILI
SHURFINE DIPS 1/2 PINT **99¢**
- ASSTD.
FLEISCHMANN'S YEAST..... 3 PK. **2/⁵**
- SHURFINE
VEGETABLE OIL SPREAD 48 OZ. TUB **99¢**
- PLAINS ASSTD.
COTTAGE CHEESE 24 OZ. TUB **2/⁵**
- SHURFINE DEEP DISH
PIE CRUST SHELLS 12 OZ. PKG **99¢**
- SHURFINE 9"
PIE CRUSTS 15 OZ.-2 PACK **99¢**
- GREEN GIANT ASSTD.
VEGETABLE SIDE DISHES 9-10 OZ. PKG **99¢**
- 11 OZ. BREADSTICKS • 8 OZ. CRESCENT ROLLS • 13.9 OZ. ORANGE DANISH ROLLS • 12.4 OZ. CINNAMON ROLLS • 11.3 OZ. DINNER ROLLS • 18 OZ. CHOCOLATE CHIP OR SUGAR COOKIES DOUGH
SHURFINE DOUGH..... YOUR CHOICE **3/⁵**
- BRAWNY WHITE OR PRINTS
PAPER TOWELS..... REG. ROLL **77¢**
- ZEE
NAPKINS 360 CT. PKG **2/⁵**
- SHURFINE HEAVY DUTY
ALUMINUM FOIL 37.5 SQ. FT. **2/⁵**
- NORTHERN WHITE
BATH TISSUE 4 ROLL PKG **99¢**
- CHINET • 15 CT. 10" PLATES • 12 CT. 10" PLATTERS • 15 CT. 10" COMPARTMENT
PAPER PLATES..... YOUR CHOICE **2/⁵**
- SHURFINE 800 IN. LONG
TRANSPARENT TAPE..... 1/2 IN. WIDE ROLL **2/⁸⁸**
- WHILE SUPPLIES LAST!
CHRISTMAS WRAP 40 SQ. FT. ROLL **99¢**
- BETTY CROCKER ASSTD.
FROSTING 12-16 OZ. CAN **2/⁵**
- BETTY CROCKER ASSTD.
CAKE MIXES 18-18.25 OZ. BOX **77¢**
- SHURFINE
POWDERED OR BROWN SUGAR 2 LB. BAG **77¢**
- SHURFINE REAL SEMI-SWEET
CHOCOLATE CHIPS 12 OZ. PKG **77¢**
- IMPERIAL PURE CANE
SUGAR 4 LB. BAG **\$1²⁹**
- GOLD MEDAL
FLOUR 5 LB. BAG **88¢**
- SHURFINE REG. OR MINI
MARSHMALLOWS 10-10.5 OZ. **2/⁵**
- ELLIS
RAW PEANUTS..... 16 OZ. PKG **2/⁵**
- SHURFINE
CORN SYRUP 32 OZ. BTL **99¢**

IN CIRCULAR COUPON • LIMIT ONE COUPON PER CUSTOMER • WHERE AVAILABLE

LARGE MEAT & CHEESE PARTY TRAY

STARTING AT \$19.99 WITH COUPON

\$5.00 OFF

EXPIRES DECEMBER 26, 2000 - GOOD ONLY AT LOWE'S
THIS COUPON FOR ADV. PURPOSES ONLY. SEE CIRCULAR FOR VALID COUPON.

Lowe's

MARKETPLACE

401 W. American Blvd. Muleshoe 272-4585

WESTERN UNION MONEY TRANSFERSM
"The fastest way to send money"

AFFILIATED
FOODS INC.
MEMBER STORE
AT PARTICIPATING STORES

WE RESERVE THE RIGHT
TO LIMIT QUANTITIES
IN TEXAS