

# BURN BAN STILL IN EFFECT FOR CALLAHAN COUNTY

Callahan County Star  
888-227-1708 or  
254-629-1707  
Fax 254-629-2092  
ecn@att.net  
www.e-cinc.com

## Callahan County Baird Star

We welcome your  
news at Callahan  
County  
Baird Star

*Baird, Officially Designated Antique Capital Of West Texas*

©2009 Eastland/Callahan County Newspapers

25¢  
31¢ By Mail

Volume 122, Number 17

Baird, Texas 79504

Thursday, April 23, 2009

### Callahan County Library News

New books, bought with Loan Star Libraries Grant money, are: Hell Bent by William G. Tapply, Mounting Fears by Stuart Woods, Singularity by Kathryn Casey, While My Sister Sleeps by Barbara Delinsky and Lethal Legacy by Linda Fairstein, all of these books are large print.

A few not so new books are: Cold Feet by Cynthia DeFelice, Marley and Me by John Grogan, True Evil by Greg Iles, Until Proven Guilty by J.A. Jance (large print) and Santa Calls by William Joyce, all of these books were also purchased with Loan Star Libraries Grant money.

From the Past

Callahan County Clarendon

May 1, 1880

Volume 1, Number 24

Died

Austin- In Belle Plain at his father's residence, at one o'clock on the morning of the 28th of April, of pneumonia, Lowery A. Austin, aged twenty years, eleven, months and eight days.

Lowery A. Austin, familiarly known as "Budd" was well known to nearly every one in our town and vicinity, was born in Collin County, Texas, and has been a resident of this county since its first organization. He was prostrated about two weeks ago, since which time he was gradually failed up to the time of his death. To say he was a favorite with all who knew him does but faintly express it. He leaves behind his father, mother, brothers, sisters and relatives who all mourn his loss, and above all he leaves a good name and an unblemished reputation. His remains were interred in the afternoon of the 28th when they were followed to their last resting place by a host of friends and relatives. The grief stricken family have the heart felt sympathies of the entire community, in this their sad bereavement.

It is now reduced to a certainty that the western extension will run by or near Eastland City thence nearly west through Red Gap on the western borders of Eastland County; thence by Tip Saunders' on a branch of Battle Creek and near Hart's ranch on Deep Creek, to Powell's ranch on Mahair, at which place the company is now engaged in erecting a supply depot. This point is about 145 miles west of this city- Fort Worth Advance.

May 8, 1880

Volume 1, Number 25

Dr. McGee will move his family to Phantom Hill in Jones County, next Monday. Mr. John J. Adkins who has been sick for over a week, we are glad to see among us again. The jail builders have resumed work again. Their derrick and other implements came from Buffalo Gap where they have just completed a jail. Callahan County also, will soon have her building completed.

### Cross Plains Community Yard Sales Saturday

A Community Wide Yard Sale will be held in Cross Plains on Saturday, April 25, with 20 individual garage/yard sales all over town. Some of the retail stores and restaurants will also have "Specials" and discounts in honor of the day. The Cross Plains Library and the Senior Citizens Center will have special sales, including a bake sale at the Senior Center.

Bargain hunters and treasure seekers are encouraged to come first to the Beta Sigma Phi (BSP)'s yard sale, sponsor of the community event, at the Robert E. Howard House Pavilion, located on Highway 36, three blocks west of the main intersection. Maps and addresses of Sale participants will be distributed there at the BSP booth. Proceeds of the BSP sale will be used for service

projects and scholarships for area residents.

Cross Plains' Main Street intersection, located 45 miles southeast of Abilene and 36 miles north of Brownwood, is Highway 36 and Highway 206. From the intersection go west on Highway 36 toward Abilene. From I-20, south from Cisco on 206, pass the High School on the left, continue to main intersection.

### DPS Report

4-12-09 to 4-18-09

#### CASES INVESTIGATED

Warnings- 87

Complaints- 41

DWI- 1

#### ACCIDENTS

There were 7 accidents investigated during this time span.

### 4-H Horse Validation

Attention Callahan County 4-H members! All horses that will be used at the District and State Horse Shows must be Validated on or before May 1, 2009. Horses not validated will not be eligible to be exhibited. If you are planning to compete at the district or state level, you need to contact the Extension Office at 325-854-5835 to make arrangements to get your animal validated.

### Admiral Cemetery Association Membership Meeting and Workday May 2

The Admiral Cemetery Association will conduct its annual membership meeting and workday at the cemetery on Saturday, May 2nd. The event will begin at 8:30 a.m. and conclude at noon. Families with loved ones buried in the cemetery are asked to come out and help remove trash, trim trees and bushes, and fill-in graves that have settled. The business meeting will include a financial report and an election to fill the expiring term on the board of directors currently held by Ralph Cummings.

The Admiral Cemetery Association is a non-profit corporation chartered by the State of Texas for the purpose of improving and maintaining this historic site.

All donations to the Admiral Cemetery Association's Maintenance Fund are greatly appreciated and are accepted at any branch of the First National Bank of Baird or may be mailed to 7257 CR 474, Baird, Texas 79504.

### Barbarian Festival Talent Show Deadline April 30

Only a few days left to get your registration in for the Barbarian Festival Talent Show. The deadline is Thursday, April 30. You could perform on stage at the Barbarian Festival on June 13th- but only if you get your registration form in by the deadline. Don't have the form? You can get it on line at barbarianfestival.net or call Talent Show Coordinator Mary Dunn at 254-725-7136.

The Talent Contest, the first held at the Barbarian Festival, will be competition between Solo and Duet Vocalists and Small Groups that can perform with CD or acoustic guitar accompaniment. No electric guitars, equipment or amplifiers. The top finalists will perform live on the stage at the Barbarian Festival.

Contest participants will be judged in two categories "14 to Adult" and "13 and Under".

More details on the contest and the registration

### Baird Girls Advance To State In Golf

Class 1A Baird earned a place at State on Tuesday, April 21st when they won Region II tournaments at Shady Oaks Golf Course in Baird.

Baird has previously

form can be found on the Barbarian Festival's website, <http://www.barbarianfestival.net>. You can also get more information on the contest and have a registration form mailed to you by calling Talent Contest Coordinator Mary Dunn at 254-725-7136. Registration fee is \$25.00 and goes toward the prize money awarded to the contest winners.

The Barbarian Festival, held the second Saturday each June in conjunction with Project Pride and Robert Howard Days, features a Car Show, Antique Tractor Show, Games, Kids Booths, Craft Booths, Antiques & Collectibles, Food, Petting Zoo, Live Music and other family attractions.

This year's festival will be held at a new location-- on the large lot immediately north of the Dollar General store. The new location provides ample space for all the booths and events.

won 7 state titles in golf. They were led by Alex Neal 75-78 and Mitzi McDowell 80-79.

The Lady Bears finished first with a team total of 700.



A beautiful scene at sunset

Texas Department of State  
Health Services  
Immunization Clinics in  
Callahan County  
Monday, May 11th  
Baird Cafetorium 400 W.  
7th

Time: 10-12  
Wednesday, May 13th  
Clyde First Baptist Church  
216 Austin  
Times: 10-12 & 1:30-3:00  
Please bring child's Immunization Records

If child is on Medicaid or  
CHIP, please bring the card  
For more information call  
325-754-4945

### Cisco Folklife Festival April 25 & 26

The 2009 Cisco Folklife Festival will be held Saturday, April 25 and Sunday, April 26 at Cisco Junior College.

Friday night, April 24 will kick off the festival festivities with the annual Lions Club Barbecue dinner from 5-7 p.m. in the food tent on the grounds of CJC. The price for the meal is \$6.00 for adults and \$4.00 for children.

The CJC Fine Arts Department will hold their Spring Concert on Friday night in the Harrell Fine Arts Building Auditorium at CJC beginning at 7:30 p.m. Admission is free.

Festival hours are Saturday 10:30 a.m. - 6:00 p.m. and Sunday 11:00 a.m. - 4:00 p.m. Admission is Adults - \$2.00 and Children \$1.00.

There will be a parade on Saturday beginning at 9:30 a.m. sponsored by the Chamber of Commerce.

A tractor pull and car/tractor show will be held immediately following the parade. Contact Herman Glueck about tractor pull 442-5196 or Jim Latson

about car show 442-4207.

A golf scramble will be held at 1:30 p.m. at the Cisco Country Club on Saturday.

Also on Saturday there will be a Sidewalk Art Contest at 2:00 p.m. Prizes will be given to best art display.

Other activities include Pioneer Demonstrations - Corn husk dolls, tissue paper flowers, clay marbles, tin punch, apple peeling; entertainment - singers, dancers, rock and roll to country & western music; arts & crafts booths - antiques, jewelry, wood work, bird houses, dolls, floral arrangements and more. There will also be plenty of great food including hot loaves of bread, cinnamon rolls, strawberry shortcake, hot dogs, hamburgers, BBQ and lots more.

The Folklife Festival is sponsored by Cisco Civic League. For additional information you may contact the Cisco Chamber 442-2537, food vendor info. call 442-1602 or arts & craft booth info. call 442-3827.

WELCOME TO BAIRD, TX - "A Happening Lil' Town" USA



PATHOS

HUMOR

HISTORY

CREATIVE NON-FICTION

CALLAHAN COUNTY

# STAR SPOTLIGHT

WRITERS SHOWCASE

(All submitters retain ownership)

## Poetry Media Service

### THE ART OF DEFLECTION

Marianne Boruch's newest poetry collection defers the usual allurements.

BY MICHAEL ROBBINS  
POETRY MEDIA SERVICE

Grace, Fallen from, by Marianne Boruch. Wesleyan University Press. \$22.95. Even the title of Marianne Boruch's new book demonstrates that she is practiced at the art of deflection, an indexer of minute changes that gradually make larger differences. Grace, Fallen from gently replicates its sense at the formal level: grace gives way to past participle until the fall is inscribed in the preposition's lowercase initial. The astonishing opening poem, "A Moment," is a showcase for Boruch's strengths. It begins:

Maybe it's common, this sort  
of first meeting. But once, before a guest house  
in Germany, the friend  
of a friend to come by, and dinner—  
that's it, we'll go to dinner, have the famous  
spargel, that rare white asparagus, only  
in May, our evening pre-arranged by phone,  
by email. I need to say again we  
hadn't met.

So far, a skillful little poem, not bad. Only the edgy distractedness of the lines—that deceptively off-handed quality of reported speech—suggests the transformations to come. Boruch is waiting at the door for the man she hasn't met, while another woman waits at the curb for someone else:

Then the friend  
of my friend — could that be?—his  
parking, his pulling himself  
out of that tiny car.  
Please understand. I'm usually  
right there rushing in, because the world  
requires that, loves the quickening  
of that. But I was  
or I wasn't. Or I was small  
but there is smaller. To my left, a door.  
Some tree flowering at my right.  
I watched as he

to that woman said my name  
so charmingly, a question, tilting  
his head, are you ...? sorry to disturb,  
are you ...? And in that pause—  
her vague focusing on him, her loose  
finding him now—I leaned forward,  
simply curious: what  
would she say? smile? yes? tell him yes?  
So thread breaks. So water in a glass  
clouds and maybe it clears.

There is so much that is right in this passage—the man "pulling himself" out of his "tiny" car; the opaquely mimetic "But I was / or I wasn't. Or I was small / but there is smaller"; the precision of "her loose / finding him now," which exquisitely nails the way a person looks around for the source as she realizes she's being addressed, her expression changing as she lights upon it. Few writers would so deftly have identified the multiplicity in such an ordinary, even boring scene. □ □ "Some tree flowering at my right": a lesser poet would have looked up the tree's name, or used the most mellifluous or metaphorical one she could find. But the poet doesn't know what sort of tree it is, so it remains an open marker of her experience, a possibility that partakes of the Ashberian without creaking beneath symbolism or music. Other poems similarly defer the allure of the readily poetic:

Somewhere out there, those crows  
won't shut up. Maybe they can't. And then  
they do. Which is why the thrush—I think  
it's a thrush—comes out  
from underneath with its weird  
echoy thing, huge now but—plaintive,  
my mother might have said.

### —From "In the Woods: a Suite"

Like Elizabeth Bishop, Boruch refuses to see more than there is in things—but her patience, her willingness to wait for the film of familiarity to slip, allows her to see what is there with a jeweler's sense of facet and flaw. The call of what might be a thrush—what am I, an ornithologist?—is a "weird / echoy thing"; "plaintive" is a poetaster's word. Boruch inhabits that Stevensian space between the beauty of inflections and the beauty of innuendoes, when the world is weird and reverberating, before thesauruses have been consulted. "Because beauty's / not generous, isn't anything / but its passage."

Michael Robbins is a doctoral candidate at the University of Chicago. His poems and reviews have appeared in The New Yorker, Chicago Review, and other publications. This article first appeared in Poetry magazine. Distributed by the Poetry Foundation. Read more about Marianne Boruch, and her poetry, at [www.poetryfoundation.org](http://www.poetryfoundation.org).

© 2009 by Michael Robbins. All rights reserved.

Submissions sought to:

Star

P.O. Box 29

Eastland, TX 76448

email: [thebairdspotlight@att.net](mailto:thebairdspotlight@att.net)

S.A.S.E. for returns

--WANTED--

20 lines,

double spaced or less

Poetry

Fiction or Non

Each entry with brief biography notes. All must be family oriented; no smut, slander or liable material.

## Honesty

Honesty is a shiny sun,  
or as dull as the night.

Honesty has a moral,  
like a rushing river.

Honesty is a switch,  
it can be turned off and on.

Honesty has a privilege,  
if it is not followed it is just a lie.

Honesty is a white paper.  
it is light and bright so you can show the truth.

Honesty has a symbol,  
and it means truth.

- Kenneth Perkovich  
Baird, Texas

## Children's Poet Laureate Presents Video Series Launches

Mary Ann Hoberman Reads Original Work and Classic Children's Poetry

CHICAGO — The Poetry Foundation is pleased to announce the launch of *Children's Poet Laureate Presents*, a video podcast series featuring the nation's Children's Poet Laureate, Mary Ann Hoberman, reading from her own work and from classic children's poetry collections. Holding a book in her lap, Hoberman addresses the camera as she reads, creating a close and friendly connection with children and parents in an atmosphere similar to that of story time at a library.

"Inspired by some of the terrific literary video series out there for kids, *Children's Poet Laureate Presents* brings Mary Ann, and her delightful reading style, into homes and classrooms, and encourages children to read more poetry," said Anne Halsey, media director for the Poetry Foundation. "The videos are in no way meant to substitute for the invaluable act of a parent or librarian reading to children, but rather are intended to allow as many children as possible to get to know Mary Ann as their Poet Laureate."

The first three releases in the series include Hoberman reading from William Jay Smith's *Laughing Time*, *The Collected Nonsense of Edward Lear*, and her collection *I Like Old Clothes*. To encourage young children to memorize poetry, Hoberman ends every video with a short verse of hers: "Every day take time to start / to learn a little poem by heart."

"Above all in this series, I want to convey the joy of poetry—reading it, reciting it, sharing it with others," Hoberman said. "I hope that the fun I had in making these videos is contagious and that they inspire their audience, young and old alike, to learn a little poem by heart."

The videos are available on the website of the Poetry Foundation, [www.poetryfoundation.org](http://www.poetryfoundation.org), and on iTunes. For more information on Mary Ann Hoberman and children's poetry, visit [www.poetryfoundation.org/programs/children](http://www.poetryfoundation.org/programs/children).  
html.

\*\*\*

**About the Poetry Foundation:** The Poetry Foundation, publisher of *Poetry* magazine and one of the largest literary organizations in the world, exists to discover and celebrate the best poetry and to place it before the largest possible audience. The Poetry Foundation seeks to be a leader in shaping a receptive climate for poetry by developing new audiences, creating new avenues for delivery, and encouraging new kinds of poetry through innovative literary prizes and programs. For more information, please visit [www.poetryfoundation.org](http://www.poetryfoundation.org).

POETRY FOUNDATION | 444 North Michigan Avenue |  
Chicago, IL 60611 | 312.787.7070

## American Life In Poetry

American Life in Poetry: Column 213

BY TED KOOSER, U.S. POET LAUREATE, 2004-2006

Bill Holm, one of the most intelligent and engaging writers of our northern plains, died on February 25th. He will be greatly missed. He and I were of the same generation and we shared the same sense of wonder, amusement, and skepticism about the course of technology. I don't yet own an Earbud, but I won't need to, now that we have Bill's poem.

### Earbud

Earbud--a tiny marble sheathed in foam  
to wear like an interior earring so you  
can enjoy private noises wherever you go,  
protected from any sudden silence.  
Only check your batteries, then copy  
a thousand secret songs and stories  
on the tiny pod you carry in your pocket.  
You are safe now from other noises made  
by other people, other machines, by chance,  
noises you have not chosen as your own.  
To get your attention, I touch your arm  
to show you the tornado or the polar bear.  
Sometimes I catch you humming or talking to the air  
as if to a shrunken lover waiting in your ear.

American Life in Poetry is made possible by The Poetry Foundation ([www.poetryfoundation.org](http://www.poetryfoundation.org)), publisher of Poetry magazine. It is also supported by the Department of English at the University of Nebraska-Lincoln. Poem copyright (c)2008 by Bill Holm, whose most recent book of poems is "Playing the Black Piano," Milkweed Editions, 2004. Poem reprinted by permission of Bill Holm.

Introduction copyright (c)2009 by The Poetry Foundation.

The introduction's author, Ted Kooser, served as United States Poet Laureate Consultant in Poetry to the Library of Congress from 2004-2006. We do not accept unsolicited manuscripts.

\*\*\*\*\*

Words You Can Use:

**Factorum:** This is an old word for you if you serve with all work. It is like an assistant that does everything.

**Hodiernal:** Today is a beautiful day, and what you say or do on or about this day is hodiernal. Every day is hodiernal, if it is happening now.

**Ineluctable:** How you find your beau when you fall in love. Irresistible is a close term. it could also refer to the less romantic attraction of magnets.

**Macrotia:** This refers to having large ears, perhaps used to refer to an elephant.

## Itsy Bitsy Raindrop

Oh itsy bitsy raindrop landing in my hand  
Were you born above the sky or fantasy land  
Whose bath have you furnished and whose feet have you cleaned  
Cicero or Nero or some Egyptian queen.

Did you quench the flames of Rome when they flew so high  
Did you bathe the brow of martyrs ere they so died  
Was your presence felt in the courts of ancient kings  
Have you rained on blessed hands or bright angel wings.

Were you in the Red Sea that buoyed the boats of men  
To watch the Son of God drive out their awful sins  
Were you in the water grave where John lay the Man  
...Yet your appearance is so plain...here in my hand.

- Weldon L. Smith  
Eastland, Texas



# Cisco Folklife Festival 2009

**Friday, April 24**
**Lions Club Barbecue Dinner**
**5:00 p.m. - 7:00 p.m.**
**\$6.00 children \$4.00**
**Located in the Food Tent on CJC grounds**
**CJC Fine Arts Dept.**
**Spring Concert**
**Harrell Fine Arts Bldg.**
**Auditorium**
**7:30 p.m.**
**Admission Is Free**
**Festival Hours:**
**Saturday 10:30 a.m. - 6:00 p.m.**
**Sunday 11:00 a.m. - 4:00 p.m.**
**Admission:**
**Adults \$2.00**
**Children \$1.00**
**Sponsored by Cisco Civic League**

## Pioneer Demonstrations

**Corn Husk Dolls, Tissue Paper Flowers,  
Clay Marbles, Tin Punch, Apple Peeling...**

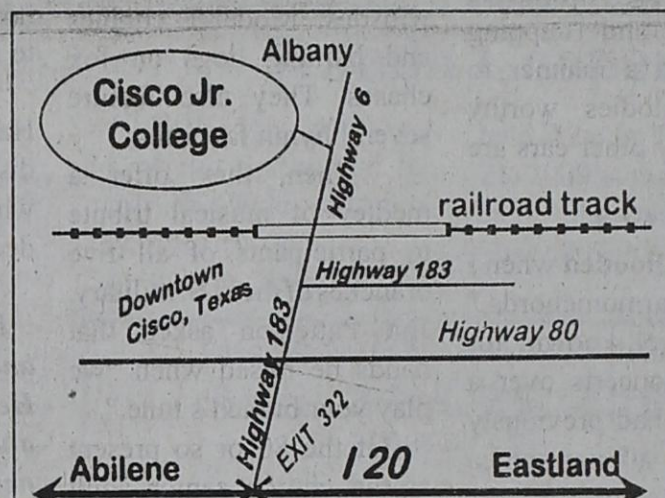
## Ongoing Entertainment

**Singers, dancers, rock and roll  
to country/western music**

## Arts & Crafts Booths

**Antiques, jewelry, wood work,  
bird houses, dolls,  
floral arrangements and more**

## Food - Food - Food

**Hot loaves of bread, cinnamon rolls,  
strawberry shortcake, hot dogs, ham-  
burgers, BBQ, lots more...**
**Saturday, April 25**
**Parade 9:30 a.m.**
**Sponsored by Chamber of Commerce**
**Golf Scramble 1:30 p.m.**
**Cisco Country Club**
**Sidewalk Art Contest**
**Begins at 2:00 p.m.**
**Prizes to best art display**
**Tractor Pull and Car/Tractor Show  
immediately following parade**


## Entertainment Schedule

**April 25 - Saturday**
**10:30 - 11:00 The Dance School - Jill Field**
**11:00 - 11:30 Donna Parrigan's Singer's**
**11:30 - 12:00 Chad Donaho & Frank Spangler**
**12:00 - 1:00 Javier & The Wing Nuts - Bob Sitton, Frank  
Spangler**
**1:00 - 1:30 Eastland Siebert Elementary -**
**"Making A Difference" Debbie Copeland**
**1:30 - 2:00 "Imposter" Patsy Cline - Alice Webb Holiday**
**2:00 - 3:30 CJC Jazz Band - Manny Martinez**
**CJC Ensemble -**
**3:30 - 4:00 Grady's Tia Kwan Do - Gary Grady**
**4:00 - 5:00 Four & More - Al Anderson**
**5:00 - 6:00 "Docrockin" Taylor Ford, Robert DeLuca, Frank  
Spangler, Jeff Bradley**
**April 26th - Sunday**
**11:00 - 12:00**
**12:00 - 1:00 A Time to Sing - Song Harvest - Ruth York**
**1:00 - 1:30 TumbleWood Gymnastics - Jenna Woods**
**1:30 - 2:00 Cisco Elementary - Seussical Musical - Cindy Webb**
**2:00 - 3:00 Tim Turnbough**
**3:00 - 3:30 Monday Nite Singers - Gilbert Copeland**
**3:30 - 4:00 Exit 343**

## Folklife Festival Vendor List

|                     |                         |         |         |
|---------------------|-------------------------|---------|---------|
| Accessories         | Studded Tee Shirts      | Sub     | 5       |
| Adams, Brenda       | Silver jewelry          | Gym     | 14      |
| Bearden, Sandra     | Dog accessories         | Gym     | 27      |
| Blakely, Cindy      | Totes cook books        | Gym     | 34 & 35 |
| Blessings to you    | Christian apparel       | Gym     | 23      |
| Bramlett, Sandra    | Embroidered Baby items  | Gym     | 7       |
| Brown, Donna        | Oil Painting            | Sub     | 16      |
| Carr, Jacqueline    | Tupperware              | Sub     | 13      |
| Jerry Choate        | Quilts, momogramming    | Gym     | 22      |
| Cordry, Jennifer    | Italian Charms          | Outside |         |
| Decker, Kelly       | Hairbows, dresses       | Gym     | 30      |
| Dewbre, Peggy       | Jewelry, purses, belts  | Sub     | 6 & 7   |
| Farley, Gene        | Pens, letter openers    | Gym     | 6       |
| Dixson, Velda       | Native Am. jewelry      | Gym     | 29      |
| Fackelman, Laura    | Jewelry, accessories    | Sub     | 12      |
| Forester, Jennifer  | Dry food mixes          | Gym     | 48      |
| Foster, Betty       | Floral, candles, dolls  | Gym     | 2 & 3   |
| Froid, Mytrie       | Pain stop, misc items   | Sub     | 10 & 11 |
| Gill, Bob           | Woodcraft               | Gym     | 31      |
| Glitz               | Sunglasses, purses      | Gym     | 12 & 13 |
| Herod, Tomi         | Western items           | Gym     | 17 & 18 |
| Hillside Quilters   | Quilting items          | Sub     | 8       |
| Hughes, Nancy       | Jewelry, crosses        | Gym     | 32      |
| It's Sew You        | Orig design soft goods  | Gym     | 37      |
| Jenthro, Cathy      | Skin care products      | Gym     | 38      |
| Johnson, Bill       | Collectibles            | Gym     | 15 & 16 |
| Kathryn's Craze     | Purses, jewelry         | Gym     | 28      |
| Keating, Sandy      | Sterling silver jewelry | Sub     | 9       |
| Lang, Mary          | Gourd bird houses       | Gym     | 39      |
| Lone Star Candy     | Candy                   | Sub     | 2       |
| McFadden, Linn      | Jewelry                 | Sub     | 24      |
| McClure, Amy        | Halos, hairbows         | Gym     | 47      |
| McLane, Hollis      | Wood lathe turned items | Gym     | 46      |
| Manning, Bob        | Magnetic Jewelry        | Sub     | 18 & 19 |
| McNeely, Jean       | Orthotics               | Gym     | 19      |
| Mendoza, Eppy       | Sports plaques, toys    | Outside |         |
| Meyer, Shirley      | Jewelry                 | Sub     | 17      |
| Miller, Courteny    | Mary Kay                | Sub     | 1       |
| Parker, Jeff        | Metal art               | Gym     | 1       |
| Pittman, Sonya      | Stone crosses           | Outside |         |
| Preston, Sheila     | Wickless candles        | Sub     | 3       |
| Ramsaier, Tina      | Canned goods ect        | Gym     | 33      |
| Richardson, Bill    | Wood & crafts           | Gym     | 25 & 36 |
| Rogers, Ashley      | Crosses, jewelry        | Gym     | 45      |
| Singleton, Bobbie J | T shirts sandals ect    | Gym     | 40      |
| Smith, Bruce        | Silver Jewelry          | Sub     | 20      |
| Sons Of Conf Vets   | Flags, books caps       | Gym     | 26      |
| Southern Edge       | Christian Gifts,        | Gym     | 9 & 10  |
| Cutlery And Gifts   | Knives & salsa          |         |         |
| Stewart, Lacy       | Gift items              | Gym     | 8       |
| Tankersley, Liza    | Hair bows, dresses      | Gym     | 4 & 5   |
| Tx Dem Women        | Information booth       | Gym     | 44      |
| Thackerson, Rachel  | Ballerina Tutus         | Gym     | 42      |
| Turner, Gloria      | Stained Glass           | Sub     | 16      |
| Treehouse Crafts    | Tx Rustic woods         | Gym     | 21      |
| Twisted C Metal Art | Metal Art               | Gym     | 42      |
| Wende, Darla        | Jewelry, Signs          | Sub     | 4       |

## Folklife Festival Food Booths

**April 25-26, 2009**
**Old Gospel Church: Turkey Legs, Sausage on a stick and home-made candy**
**CJC Athletic Trainers: Fried Fish platters and ribbon cut potatoes**
**Knights of Columbus: Fajitas and Corn on the cob**
**Boy Scouts: Pizza by the slice**
**Eastland County Soccer Association: Cotton candy and popcorn**
**Grace Sitton: Homemade eggrolls and noodles**
**Munchie Makers: Baked Potatoes, mushrooms on a stick, foot long corndogs, chicken on a stick, and shrimp on a stick**
**CHS Senior Class: Hamburgers, Cheeseburgers and taco salad**
**Mountain Top Church: Snow cones, nachos, hotdogs, and frito-pie**
**Mountain Top Youth: Funnel Cakes and onion blossoms**
**Lunch Box: BBQ platter and BBQ sandwich**
**Cisco Civic League: Strawberry Shortcakes**





## The Idle American

Commentary by Don Newbury

### Harmonica-Blowin' Round Here...

For me to feign understanding of harmonica-playing is akin to head-nodding about galaxies when the best I can offer on the topic is a croaky rendition of "Twinkle, Twinkle, Little Star."

I recall pre-school awe of adults who could produce considerable music from the little instruments we called "French harps" or "mouth organs."

It seems to me that a windbag who knows a little music would have a leg up in harmonica-playing contests. I can exhale with the best of 'em, but contorting my mouth and cupping my hands in a manner to produce melodies worthy of hearing by other ears are beyond me....

\*\*\*\*\*

Memories flooded when I heard "The Harmonichords," a quartet well-known for harmonica concerts over a vast area. (I had previously thought that all harmonica players were soloists.)

Talented and passionate, the musicians from Dallas and Garland race across harmonicas like monkeys on a midnight raid of a banana plantation. Their work is orchestra-like for many seasons. In their arsenal are instruments of all sizes, including some one-inchers with just four notes. Others span two feet with four octaves and 48 chords.

Listening to their music and banter, I heard periodic heavy breathing. Maybe this is because three of them are 85 years of age, and the senior member is 87. They're all veterans of World War II, and have made 320 appearances in 14 years. The Harmonichords faithfully practice weekly on Wednesday afternoons....

\*\*\*\*\*

They learned their skills in their youth, and their combined experience totals almost 300 years.

"We consider gigs one at a time in these days," said Jim Patterson, 87. "We aren't as young as we used to be," he joked. "Some people say they don't know where their

next meal is coming from; sometimes we don't know where our next breath is coming from."

He and his "little" brother, Bill, still move about vigorously, lugging in the equipment, then setting up speakers and microphones. Don Sanders plays the lead chromatic harmonica from a wheelchair, and Tom Bamford is also limited physically....

\*\*\*\*\*

Their repertoire consists largely of music from the 30's, 40's and 50's. Interspersed are humorous stories and novelty harmonica sounds that could be mistaken for train whistles, Model-T engines and barking dogs on fox chases. They also feature several hymn favorites.

Then, they offer a medley of musical tribute to participants of all five branches of the U.S. military. Jim Patterson asked that hands be raised when "we play your branch's tune."

Of the 80 or so present at the church senior adult luncheon where I heard "The Harmonichords," only a couple didn't have hands in the air. The rest were military veterans, parents, siblings or widows of vets. At medley's end, tears flowed freely....

\*\*\*\*\*

Following the program, I asked the musicians if they'd try to add a member when one of them has to drop out. I mentioned maybe searching for a harmonica-playing youngster, maybe 55-60 years of age. "You could call him 'Sonny,'" I added. "Then you could change your name to 'Sonny and the Harmonichords.'"

"There aren't many 'Sonnies' out there," Jim observed. "At least none that I know of who play harmonicas."...

\*\*\*\*\*

I'm afraid he nailed it. Fewer and fewer "give a HOOT."

Uh, that deserves an explanation. HOOT is an acronym for "Harmonica Organization of Texas." It meets monthly--usually with 40 or 50 members present-

-at Richland College in Dallas....

\*\*\*\*\*

On the drive home, I heard a baseball broadcaster mention the "on deck" batter.

I thought of the late Kate Smith, whose rendition of *God Bless America* thrilled our souls, and of the late Paul Harvey, whose daily radio commentaries stirred hearts across the land.

I considered Dr. Billy Graham's messages of hope and encouragement preached over a span of six-plus decades....

\*\*\*\*\*

As I scanned the radio dial, news reports were dismal, providing few reasons to smile.

I pondered what comes next, wondering if "on deck" batters await. No one has succeeded Kate Smith or Paul Harvey. And there's no one in sight with stature to match Dr. Graham's.

I'm adding "The Harmonichords" to my list of distinguished personalities who persevere with no "on deck" successors in sight....

\*\*\*\*\*

Dr. Newbury is a speaker and writer in the Metroplex. He welcomes inquiries and comments. Email: [newbury@speakerdoc.com](mailto:newbury@speakerdoc.com). Phone: 817-447-3872. Web site: [www.speakerdoc.com](http://www.speakerdoc.com).

### Players Wanted For The 18th Annual Spring Swing May 2

West Texas Catclaw Chapter of the American Business Women's Association (ABWA) proudly announces the 18th Annual Spring Swing women's golf tournament sponsored in part by Chick-fil-A Southwest Drive & SouthClack. The tournament is a four-woman scramble to be held on May 2, 2009 at the Maxwell Municipal Golf Course (soft spike shoes only), Abilene Texas. For player information contact Susan Leamy at 325-698-9345 or Paula Wray 325-695-1389. This fundraising event allows the West Texas Catclaw ABWA chapter to award educational scholarship to area students.

Tee-off is at 9:00 a.m. with team and special event prizes. Players will have an opportunity to win a Hawaii trip, Dell Computer, Hogan Irons, Boise radio/CD player, cash prizes and more. If you need a golfing partner, no problem, as arrangements will be made to get you on a team. There is a registration fee of \$60.00 each, which includes green fees, golf cart and lunch. For more information contact West Texas Catclaw Chapter members, at (325) 675-6164 or 695-1389, or mail registration and fees to ABWA Spring Swing, P.O. Box 1902, Abilene, Texas 79604. The "Spring Swing" tournament has grown from 44 entrants in the first year increasing to 136 with women coming from San Antonio, Waco, Dallas, Fort Worth, San Angelo, Midland and Odessa. The tournament has become the largest ladies golf tournament in Texas west of Fort Worth and people keep coming back because they have so much fun.

Our Chapter can be described in three words: friendship, leadership, and scholarship. ABWA offers an opportunity to discover and extend friendship to a diverse group of women. Leadership positions offer the opportunity to practice skills and develop self-confidence. Leadership and teamwork are the backbone of an ABWA chapter and of putting together a successful golf tournament.

ABWA is a national

## Track Meet Results at Cisco

District 6-2A Track Results

held Wednesday, April 15 at Cisco:

Boys

Team standings: 2. Clyde, 137.5

100: 2. Brandon Parsons, Clyde, 11.06; 3. Mason Grissom, Clyde 11.36

200: 2. Will Graham, Clyde, 22.69; 4. Devon Boran, Clyde, 23.48

400: 3. Josh Phillips, Clyde, 53.38

800: 3. Josh Phillips, Clyde, 1:11.73; 5. Will Graham, Clyde, 2:14.79

3200: 5. Robbie Harbor, Clyde, 11:55.00

110 Hurdles: 4. Colby Smith, Clyde, 16.27; 5. Matt Hair, Clyde, 16.28

300 Hurdles: 5. Matt Hair, Clyde, 44.47

400 Relay: 1. Clyde, 43.69

network of women dedicated

to helping each other reach

new heights in their careers.

ABWA is all about support,

about reaching out to each

other, giving a hand, learning

from each other, being there

for each other, and growing

together. Nationally ABWA

has 45,000 members in

1,100 chapters across the

United States.

800 Relay: 1. Clyde,

1:32.07

1600 Relay: 2. Clyde,

3:32.77

Long Jump: 4. PJ Martinez,

Clyde, 20-1

Shot Put: 6. Micheal

Garcia, Clyde, 41-2

Discus: 2. Jeff Holland,

Clyde, 125

Triple Jump: 2. PJ

Martinez, Clyde, 43-0; 6.

Tanner Welch, Clyde, 40-

9.75

High Jump: 4. Landon

Liles, Clyde, 5-8; St. Caston

Hilcher, Clyde, 5-6

Pole Vault: 4. Chris

Anderson, Clyde, 12-0

Girls

Team standings: 3. Clyde,

127

100: 4. Kasarah Seabourn,

Clyde, 13.23; 6. Lauren

Hicks, Clyde, 13.31

200: 3. Torie Lewis, Clyde,

27.25

400: 5. Brianna Gathright,

Clyde, 1:06.12

800: 3. Brianna Gathright,

Clyde, 2:41.36

1600: 4. Brittney Johnson,

Clyde, 6:31.34; 5. Lauren

Medlock, Clyde, 6:31.96

Thursday, April 23, 2009

3200: 4. Lauren Medlock,

Clyde, 14:10; 6. Brooke

Harris, Clyde, 14:35

100 Hurdles: 5. Kim

Ramos, Clyde, 17:06

300 Hurdles: 4. Kim

Ramos, Clyde, 51.19

400 Relay: 1. Clyde,

50:39

800 Relay: 1. Clyde,

1:46.62

1600 Relay: 1. Clyde,

4:10-71

Long Jump: 3. Emily Yates,

Clyde, 16-3; 6. Santanna

Astleford, Clyde, 15-4

Shot Put: 6. Casey Smith,

Clyde, 29.8.25

Triple Jump: 1. Santanna

Astleford, Clyde, 25-2.5

High Jump: 2. Amy

Withrow, Clyde, 5-2; 4.

Santanna Astleford, Clyde,

4-10

Pole Vault: 6. Drucilla

Meir, Clyde, 7-6

## Softball Results

Eastland 2, Clyde 0

Eula 9, Ranger 0

Eula 6, Ranger 1

## Baseball Results

Clyde 9, Merkel 6

Eula 26, Ranger 6

Baird 5, Albany 1

Eastland 3, Clyde 2

## OUTZKIRTS

By: David & Doreen Dotson

OUTZKIRTS.BIZ



## EMH TRAUMA SERVICES



## National Safe Kids Week

April 26<sup>th</sup> – May 3<sup>rd</sup>, 2009

**Car crashes remain the number one killer of children ages 3-14 in the United States.** However, you can greatly reduce the risk to your children by ensuring that they ride buckled up in the back seat until age 13, and that they are riding in the proper type of car seat or booster seat until an adult lap and shoulder belt fits them correctly.

Prevention begins with you! There are a few easy steps that you can take to make sure kids are safe in the car:

- Walk all the way around a parked vehicle to check for children before getting into the car.
- Make sure everyone in your vehicle buckles up for every ride!
- Use car seats when appropriate:
  - Carefully read the instructions that come with your car seat.
  - Infants: Use a rear facing car seat to at least age 1 and 20 lbs. Use your rear-facing car seat longer if the seat has higher weight and height limits.
  - Toddlers: Use a forward facing car seat until the harness no longer fits - this usually occurs by age 4 or 5.
  - School age: Use a booster seat until your child weighs between 80 and 100 pounds, is about 4 feet 9 inches tall, and can pass the **Safety Belt Fit Test** (see below). For most children, that will be between ages 8 and 12.
- Properly buckle up all children younger than 13 in a back seat on every ride. If you don't have a back seat, and your vehicle is equipped with an airbag, be sure to TURN OFF the airbag and move the seat back as far as possible.

For more information visit the Safe Kids website at [www.usa.safekids.org](http://www.usa.safekids.org)

### Safety Belt Fit Test

1. Have your child sit all the way back on the vehicle seat. Do his or her knees bend at the front edge of the seat? If they bend naturally, go to #2. If they don't, return to the booster seat.
2. Buckle the lap and shoulder belt. Be sure the lap belt rests on the upper legs or hips. If it does, go to #3. If it rests on the stomach, return to the booster seat.
3. Be sure the shoulder belt rests on the shoulder or collarbone. If it does, go to #4. If it's on the face or neck, return to the booster. Never put the shoulder belt under the child's arm or behind their back.
4. Check whether your child maintains the correct seating position for as long as you are in the car. If your child slouches or shifts positions so the safety belt touches the face, neck or stomach, return your child to the booster seat.

"People You Know Caring for People You Love"

304 S. Daugherty [www.eastlandmemorial.com](http://www.eastlandmemorial.com) 254-629-2601

## MAJESTIC THEATRE

629-1322

## HAUNTING IN CONNECTICUT

Held Over

Starring  
Virginia Madsen, Kyle Gallner

Fri. Sat. Sun. Mon.  
All Showings: 7:30 p.m. - \$4.50  
Adults Only Balcony Ticket - \$6.00  
10-Admission Card - \$40.00  
5-Admission Card - \$22.50



# Obituaries

## Angus Mike Turner

CLYDE- Angus Mike Turner, 72, of Clyde, died Monday, April 13, 2009 at his home.

Graveside services were held Thursday, April 16, 2009 at the Clyde Cemetery with Pam Foster officiating, directed by Bailey Funeral Home of Clyde.

Mr. Turner was born July 25, 1936 in Fort Worth to Arnell Mike and Aurora (Bagley) Turner. He was the widower of Patsy Ann Knutson whom he married April 6, 1962 in Weatherford. They came to Clyde in 1975 from Fort Worth. He worked for Crown, Cork and Seal as a truck driver until his retirement. He was a member of the Teamsters Union for over 30 years. He was a Baptist.

He was preceded in death by his parents; one brother, Joseph Turner and one sister, Lenore Young.

Survivors are three sons and their wives, Jesse and Michelle Robertson of Fort Worth, Tommy and Jackie Turner and Bobby and Melissa Turner all of Clyde; one daughter and husband, Cindy and Boyd White of Clyde; one brother, Jim Turner of Benbrook; four sisters, Auora Master of Crowley, Ruby Rhodes of Arlington, Mary Melendez of White Settlement and Dolores Varnum of Devine; nine grandchildren, Tiffany Sanders, Blaine McRae, Eric Robertson, Patrick White, Jeffrey Robertson, Christopher Robertson, Brandi Turner, Brandon Quintero and Ethan Quintero; two great-grandchildren and numerous nieces and nephews.

Memorials may be made to Hendrick Hospice Care P.O. Box 1922 Abilene, Texas 79604.

## Dorothy Louise Jones Chittum

ABILENE- Dorothy Louise Jones "DJ" Chittum, a lifelong resident of Abilene and the Big Country area, died Tuesday, April 14, 2009 at Scott and White Hospital in Temple, Texas.

At Dorothy's request, her body was cremated, and a private burial of her remains will be held at a later date.

Dorothy was the daughter of the late Ether Adella (Eubanks) and Joseph Edison Jones. She was born in Admiral in Callahan County, Texas, and graduated from Baird High School. She married James Horace "Jim" Chittum on July 2, 1949 in Abilene.

Dorothy worked for Humble Oil and Refining Company for a number of years. She and Jim owned two ENCO service stations in Abilene, which were

sold in 1971. They later purchased a Shell service station at FM 600 and I-20, which they operated until 1979. Dorothy was also the cashier manager at PaPa Bear Restaurant, also at FM 600 and I-20, for five years. She loved to line dance and play Bridge.

Survivors are her husband, Jim Chittum of Abilene; sons, Michael Chittum and wife, Kindra, of Texarkana, TX, and Gregory Chittum of Abilene; sisters, Jo Esther Jones of Abilene and Goldia Mae Kilpatrick of Ballinger; and three grandchildren, Cody Chittum, April Chittum and Joseph Chittum.

Memorials may be made to West Texas Rehabilitation Center 4601 Hartford, Abilene, TX 79605; Meals On Wheels Plus, Inc., P.O. Box 903, Abilene, TX 79604; or a charity of the donor's choice.

## Wanda Mae Keith Black

CLYDE- Wanda Mae Keith Black, 76, of Clyde died Thursday, April 16, 2009 at a local nursing center.

Funeral services were held at 2 p.m. Sunday, April 19, 2009 at the First Baptist Church in Clyde with Brother Billy Sellers and Rex Mike Terrill officiating. Burial followed in the Clyde Cemetery under the direction of Bailey Funeral Home.

Wanda Mae Keith Black was born January 8, 1932 in Desdemona, Texas to Willie Lee and Eunice Hobson Keith. After a 21 year battle with cancer, she went to be with her Lord and her adoring husband, Luther Black.

Wanda grew up in Eastland County and attended Carbon schools, graduating in 1949. She married Luther Black on October 14, 1950. Luther preceded her in death on March 8, 1990.

Wanda loved to care for her kids, grandkids and great-granddaughter. She also loved to make quilts for family reunions and her kids. She had a very beautiful yard and flowers and was known for her beautiful roses. She loved

her two puppies, Toi and Shadow. Wanda worked for Lawrence Brothers (formerly Super Duper and Furr's) in Clyde for 21 years, making many friends. She attended Cherry Heights Baptist Church in Clyde.

She was preceded in death by an older brother, Harold in 1933 and sisters, Patsy Honea in 1991 and Glidden Vines in 2007.

Survivors are one daughter, Nance Woods and husband Pete of Ulysses, KS; two sons, Stan Black and wife, Renee of Clyde and Brett Black and wife Mollie of Clyde; three grandsons, Brandon Black of Clyde, John Black and wife, Lauren of Bryan, and Keith Black of Clyde; one granddaughter, Kara Black of Clyde and one great-granddaughter, Courtney Black of Clyde; four brothers, Forrest Keith of Quannah, Doyle Keith of Baird, Melvin Keith and wife, Coise of Odessa and Bill Keith and wife, Betty of Olden; two sisters, Helen May and husband, Teet of Eastland and Judy Miller and husband, Bill of Nugent; and numerous nieces and nephews.

Memorials may be made to the Clyde Volunteer Fire Department and/or Hendrick Hospice Care.

## Wanda Lee Pollard Fischer

ABILENE- Wanda Lee Pollard Fischer, 85, formerly of Clyde, Texas, died Friday, April 17, 2009 at Wesley Court Nursing facility.

Funeral service was held at 10 a.m. Monday, April 20, 2009 at Sacred Heart Catholic Church with Father Robert Bush officiating. Burial followed in Elmwood Memorial Park, directed by Elliott-Hamil Funeral Home.

Pallbearers were grandsons, Steve Fischer, Brandon Fischer, Chris Fischer, David Sullivan, Jaxon Sullivan, and Nathan Hawes.

Wanda was born January 10, 1924 to the late Ommie (Hawkins) and S.L. Pollard in Moody, Texas. She attended school in Breckenridge, Texas. Wanda met Ervin Joseph Fischer while he was stationed at Camp Barkley. They married on November 1, 1943 in Breckenridge, Texas. Wanda loved watching her family grow and expressing concern for them. She took great pleasure in cooking and baking for her family. Wanda was a

people person and always took time to meet and visit with folks. She had a great love for nature. Wanda enjoyed traveling to many places. In 1990, Wanda and Ervin moved from Nugent, Texas to Clyde, Texas. She belonged to Clyde Catholic Church. After Ervin passed away, Wanda moved to Abilene from Clyde in 2005. She made many friends at the University Place and will be dearly missed by those friends.

Wanda was preceded in death by her parents; her husband; and a sister, Flora Carlson.

Survivors include three sons, Pete Fischer and wife, Beverly, of Clyde, Bill Fischer and wife, Patricia, of Keller, and Mike Fischer and wife, Cyndy of Tuscola; six grandchildren; six great-grandchildren; two sisters, Dixie Levens of Clyde and Veleta Matthews and husband, Sam of Abilene.

Memorials may be made to First United Methodist Church of Clyde Building Fund 217 Oak, Clyde, Texas 79510.

## Wanda Cooper

CLYDE- Wanda Cooper, 84, of Big Spring and formerly of Clyde, died Sunday, April 19, 2009.

Graveside services were

held at 2 p.m. Tuesday, April 21, 2009 at the Clyde Cemetery, directed by Bailey Funeral Home of Clyde.

**Industrial or Toxic CANCER**

EXPERIENCE COUNTS  
Lawyers with over 90 years combined expertise.

may occur 15 to 50 years after exposure. **MESOTHELIOMA or LUNG CANCER** may be caused by asbestos exposure, **ACUTE MYELOID LEUKEMIA** by Benzene exposure and **MELANOMA, KIDNEY or BLADDER CANCER** by coal tar pitch exposure. Family members may also be exposed by dirty clothes. Call us for professional insight.

Ryan A. Krebs, M.D., J.D.  
Doctor-Lawyer in Full-time Law Practice  
Richard A. Dodd, L.C.  
Timothy R. Cappolino, P.C.  
Board Certified Personal Injury Trial Law and Civil Trial Law by the Texas Board of Legal Specialization  
NO FEE FOR FIRST VISIT  
CAMERON, TEXAS

**1-888-MESO-FIRM**  
(1-888-637-6347)  
[www.AsbestosLaw.com](http://www.AsbestosLaw.com)

**A-QUALITY WELDING & STEEL SUPPLY**

METAL BUILDINGS • STRUCTURAL STEEL  
FABRICATION • BUILDING COMPONENTS  
WELDING SUPPLIES & GASES

**GREAT PRICES!** Metal Bldg. Clearance Sale Call Now  
700 East I-20 Cisco, TX  
(254) 442-3036  
Check out our prices updated daily [www.aqualitysteel.net](http://www.aqualitysteel.net)

**Homestead Long Term Care**  
[www.homesteadltc.com](http://www.homesteadltc.com)

- 24 Hour Skilled Nursing
- Long-term Care
- Respite Care
- Hospice Care
- Restorative Care
- Physical Therapy
- Speech Therapy
- Occupational Therapy
- IV Therapy
- Wound/Ostomy Care
- Tracheotomy Care
- Special Diets
- Tube Feedings

We accept  
Medicare • Medicaid • Private Pay  
V.A. Insurance • Private Insurance

**Homestead Nursing & Rehabilitation Of Cisco**  
1404 Front St. Cisco, TX  
254-442-4202

**encompass HOME HEALTH**

**Medicare Certified Home Health Services**

- Skilled Nursing
- Physical Therapy
- Speech Therapy
- Occupational Therapy
- Diabetic Care
- Medical Social Work
- Home Health Aides
- Psychiatric Nursing

1420 East Main Street, Eastland, TX 76448  
866-488-8200 • 254-629-8200

**ONE LORD ONE FAITH**

RANDY VADER  
JAY ROUSE

Presented by the  
**Sanctuary Choir of First Baptist Church**  
405 S. Seaman St.  
Sunday, April 26 6:00 p.m.  
No Admission Charge  
Everyone is welcome and invited to attend

Over 10,000 locations worldwide.

**254-629-1990**  
1514 East Main  
Eastland, TX 76448

**254-965-3361**  
1185 W. South Loop  
Stephenville, TX 76401

**325-646-2020**  
inside Heartland Mall  
Early, TX 76442

**325-893-9110**  
2411 S. Access Rd West  
Clyde, TX 79510

**325-356-5809**  
1102 W. Central  
Comanche, TX 76442

**CALLING ALL WOMEN!**

Be a part of the Curves / Avon Fitness Study:  
The largest fitness study for women ever.  
SIGN UP NOW - LIMIT 50 WOMEN PER CLUB

YOU WILL RECEIVE:

- A Start and Finish Fitness Evaluation
- 30 Days FREE on CurvesComplete.com - The Complete Solution to Managing your Weight
- Supervised Training from a Curves Trainer

30 Days for \$30\*  
Work Out 3 Times a Week for 4 Weeks

**Curves AVON**

CALL YOUR LOCAL CURVES CLUB TO PARTICIPATE BY APRIL 21, 2009

Come Celebrate our Western Heritage!  
**April 24 & 25, 2009**  
Dublin, TX

Friday, April 24  
Vendors for shopping, Chuckwagon Dinner, Live Entertainment, Dance with Jake Hooker and The Outsiders... AND MUCH MORE!!  
Tickets on Sale Now! Call (254) 592-1653

**2009 COWBOY CULTURE celebration**

Saturday, April 25  
Vendors, Trail Rides, Parade, Ranch Horse Competition, Mechanical Bull, Bean Cook-Off, Mounted Cowboy Shooting, Square Dancing, Kid's Fun Rodeo & Motion Bunting, Cattle Drive Through Downtown Dublin, Ranch Rides, Pony Rides, Horseshoe Your name... AND MUCH MORE!!  
For more information: (254) 592-1653 or [www.cowboyculturecelebration.com](http://www.cowboyculturecelebration.com)

Thanks to our Sponsors!!

**\$69,979 NOW THROUGH APRIL 30, 2009**  
1,683 sq. ft. • 3 or 4 Bedroom  
**LIMITED TIME ONLY!** YOU MUST SEE THIS HOME BEFORE YOU BUY ANYWHERE!

- Vinyl Thermopane Windows
- Appliance Package
- Overhead Air Ducts
- Woodburning Fireplace with Tile Raised Hearth
- Entertainment Center with 42" Plasma TV
- Tape & Textured Throughout
- Arched Doorways in Living Room and Dining Room
- and Much, Much More!

**REPUBLIC Factory Built Homes**  
1201 Early Boulevard • Early  
325-643-2654 or 800-451-7611  
[www.republichomes.net](http://www.republichomes.net)

**Callahan County Star Deadlines**  
By 5:00 p.m. Tuesdays

Sudoku Answer

|   |   |   |   |   |   |   |   |   |
|---|---|---|---|---|---|---|---|---|
| 8 | 4 | 6 | 9 | 7 | 1 | 3 | 2 | 5 |
| 1 | 2 | 5 | 8 | 4 | 3 | 7 | 6 | 9 |
| 7 | 9 | 3 | 5 | 2 | 6 | 4 | 8 | 1 |
| 9 | 6 | 8 | 3 | 1 | 5 | 2 | 7 | 4 |
| 2 | 5 | 1 | 7 | 6 | 4 | 9 | 3 | 8 |
| 4 | 3 | 7 | 2 | 8 | 9 | 5 | 1 | 6 |
| 6 | 7 | 9 | 4 | 3 | 8 | 1 | 5 | 2 |
| 5 | 8 | 2 | 1 | 9 | 7 | 6 | 4 | 3 |
| 3 | 1 | 4 | 6 | 5 | 2 | 8 | 9 | 7 |



# Country Wide Classifieds

Carbon, Gorman,  
Olden, Morton Valley,  
Desdemona, Kokomo

Cisco Press • Eastland Telegram • Ranger Times • Rising Star

Thursday, April 23, 2009

Strawn, Mingus,  
Gordon, Putnam,  
Lake Leon, Flatwoods

## FHA Advertising Rule:

FHA makes it illegal "to make, print, or publish, or cause to be made, printed, or published, any notice, statement, or advertisement, with respect to the sale or rental of a dwelling, that indicates any preference, limitation, or discrimination because of race, color, religion, sex, handicap, familial status, or national origin, or an intention to make any such preference, limitation, or discrimination."

## REAL ESTATE

Desdemona, 4 A m/l, 3-1 frame, well & septic, shop, stg. Bldg. beautiful location, large trees. \$59,900.

38 A/M/L south Gorman: Fronts FM 679, about 10 A large Pecan Trees, nice location for pond, good fences, sandy land. \$2,500 acre.

NEW: Gorman, 44A, 2-2-2 bi-level frame home, 1728 sf, central a/h, metal roof, covered upper deck, several wells, buildings, coastal. Deer, & other wildlife. \$250,000.

77 A Sipe Springs, deer & turkey, 2 stocked ponds, Live & Post Oak, mineral rights. Insulated 30 x 40 steel bldg., a/c & living quarters. Nice getaway! \$3,250 acre.

130 A, west Carbon, app. 40 a cult, 35 a coastal, pond, elec., county water. \$2,400 acre.

156 A Carbon, 1/2 wooded, 1/2 fields, lots deer & turkey, 3 ponds, nice 2-2 mh, central a/c, barn, coral, county water. Hunter's Paradise! \$4,000 acre.

179 A south of Gorman: Part wooded, part old fields, deer & hogs, 2 nice ponds, sandy soil, elec., several water wells, cabin. \$2,350 acre.

Selling Comanche, Eastland and Brown Counties since 1954 and we WANT to sell yours. We solicit and appreciate your listings.

COGBURN REAL ESTATE DE LEON OFFICE (254) 893-6666 HOME 893-2642 758-2401 www.cogburnreal-estate.com RS104

## MOBILE HOMES

3 Acres w/NEW 3/2 Home \$479/month, 5.75% 30 yrs. \$500 Dn. Stove, Refr. DW Washer/Dryer & Central AC! TrinityHomeSales.com 866-672-1499 RET34090

FREE & CLEAR in 7 Years! New 3/2 with Stove, Refrig. DW, Washer/Dryer & AC! \$1,850 Dn. \$559/mo., 8.75% TrinityHomeSales.com 866-672-1499 RET34909

## REAL ESTATE

Lot For Sale: Carbon City Lot 100 x 150. Excellent Hwy access. Warranty deed. \$2,000. Phone: 254-488-1242. E33

City of Eastland Will build to suit For Sale Hwy 6 frontage Four prime acres across from new Assist. Living Center (254) 488-1242. E37

## HOUSE FOR SALE

OWNER WILL FINANCE! 2 bedroom, 1 bath, 517 Pine, Ranger, TruStar RE 432-288-3750. E38

House For Sale By Owner: in Cisco 3 Bedroom, 2 Bath, with big work shop/2 car garage. \$65,000 OBO. 254-442-1897 home or 254-433-9982 cell. E36

Eastland 2 BRM, 1.5 bath, 513 S. Green St. Eastland \$58K. Call Chad or Melissa 325-518-2574 or 254-734-2755. Pictures and details at www.findmyroof.com/ad/55881 E33

Eastland-3 BR, 2 BA Newly remodeled, A/C & carport. 604 W. Plummer. \$35,000.00. (254) 488-1242. E104

## FOR RENT

For Rent: Small trailer house for rent in Eastland, 414 Bedford. No pets, \$300.00 deposit plus first month rent, monthly rent is \$450.00. (254) 631-0914. E40

Taking rental applications on 2 bedroom mobile homes. No pets. Work and rental references required. Rent \$350-\$450 plus deposit. 254-629-1848. E104

## FOR LEASE

Commercial property for lease, 700 square feet, office space, brand new construction, build to suit. \$600 mth. For more information call 254-485-9159. E104

## FOR LEASE

FOR LEASE OR SALE: 2 large commercial bldgs on 2 acres fenced w/1-20 frontage-Eastland. Owner financing. Dean 623-979-6732. E104

## MOBILE HOMES

HORN MANUFACTURED HOMES 6500 I-20, Ranger, TX 254-647-1300

SAVE THOUSANDS on remaining 2008 Legacy homes. 16 x 56 \$28,000, 16 x 60 only \$29,000, 32 x 44 only \$46,000, 35 x 52 only \$49,000. RBI 33526 Horn Manufactured Homes, 6500 I-20, Ranger, 254-647-1300.

2005 REDMAN 28 x 68, beautiful exterior, Hardipanel lap siding, 3 + 2 gigantic, den, rock fireplace, fabulous kitchen and more. \$4,900 down, \$419 payments, 9.25% 240 months wac, RBI 33526 Horn Manufactured Homes, 6500 I-20, Ranger, 254-647-1300.

STIMULUS MONEY available if you have not owned a home in three years. Come check it out and buy with confidence from Texas oldest retailer. RBI33526 Horn Manufactured Homes, 6500 I-20, Ranger, 254-647-1300. R40

Repos, Repos! Big selection, have 18 wides in stock, plus lots of D/wides Financing available. 817-279-8505, RBI 35823 E36

\$8,000 Cash! Receive up to \$8,000 back thru tax rebate, with new home purchase. Call for details. 817-279-8505 RBI 35823 E36

X-Large 4 or 5 Bdrm. w/acreage, \$850 mo. FHA Financing, 3.5% dn., 360 mos. 5.5% APR 817-279-8505 RBI 35823 E36

New 3 + 2 D/Wide \$375 per mo. Great Country Kitchen, Financing available. 5% dn., 7.5% APR 300 mos. 817-279-8505 RBI 35823 E36

## APTS FOR RENT

For Rent: 2 BR, 1 BA, 1221 Oddie St, Ranger, TX. \$400 a month, \$250 deposit. 254-968-4420. E104

## RAINTREE APARTMENTS

610 S. Madera office #114 (254) 629-1913 2 BD, 1 1/2 bath. Water, trash and cable paid. E36

For Rent: 1 BR, 1 Bath very nice fully furnished apartment. Includes TV, microwave, and refrigerator. All bills paid. \$600 a month. Deposit and references required. 254-442-2078 or 254-433-9622. C35

## ADVERTISE IN THE CLASSIFIEDS

## APTS FOR RENT

CEDAR RIDGE APARTMENTS Clean Unfurnished Apartments Security Guard on grounds Maintenance Total Electric Laundry Central Heat/Air Near Schools/Hospital No Pets 254-629-2805 E104

COUNTRY VILLA APARTMENTS 1-2 bedrooms, kitchen appliances, Central H/A, W/D, pool. On site security and maintenance. (Behind Pizza Inn) 1099 Lago Vista Blvd. Eastland, Texas. Call 629-2769 or 631-9504. If no answer 629-2348. E104

EASTLAND VILLAGE APARTMENTS 600 W. Sadosa Eastland, Texas 76448 (254) 629-2518

NEWLY REMODELED 1-2-3 Bedrooms Near Schools Central A/C VOUCHERS ARE NOW AVAILABLE Contact us to file your application promptly. E104

GHOLSON HOTEL APTS If you are 62 years of age or older, or 18 and older and disabled and looking for a nice quiet historic place to live, come to 215 W. Main in Ranger or call Richard at 254-647-1513. (Income limits apply). R104

KING MANOR APARTMENTS 107 Blundell Ranger (254) 647-1722

2-3 BEDROOMS • Refrigerator • Central Heat & Air • Equal Housing • Handicap Accessible • Conveniently Located! Call or Visit Us Today Mon-Thurs 9:00 AM-11:00 AM Or Call for Appointment R104

ROYAL OAKS APARTMENTS Unfurnished 1 and 2 Bedroom, Carpet, Drapes, & Kitchen Appliances. Furnished Water, Trash Pickup & TV Cable Paid. Also Laundry Room at complex. Choice neighborhood. See and compare at 1304 Royal Lane, Cisco, or call 442-3232. Vacancies not always available. C104

## HELP WANTED

Wes T Go in Ranger now hiring FT & PT positions available. Apply in person 100 Railroad Ave in Ranger. R40

## HELP WANTED

Maintenance position available. Must have experience w/welding, electrical, & general maintenance. Apply in person @ Karsten Homes 820 Industrial Blvd. Breckenridge, TX 76424 (254) 559-6100. E104

RANGER CARE CENTER A privately owned, skilled nursing facility. We are currently accepting applications for: LVN

Weekend RN, and a Kitchen Assistant Competitive wages Work in a friendly, family-oriented environment. Apply in person at: 460 W. Main St. Ranger, TX 76470 For more info: contact Renee at (254) 647-3111 E.O.E. R104

CITY SECRETARY THE CITY OF CISCO is accepting applications for City Secretary. Applications may be picked up at City Hall at 500 Conrad Hilton, Cisco, Texas 76437, or call 254-442-2111. Applications will be taken until position is filled. E.O.E. C34

HELP WANTED! DQ of Ranger Hwy 80 W now hiring day help. Strong customer service skills needed. Richeson Companies is a non-smoking environment. Background checks and drug testing required. Apply with manager, Alma Archer. R40

Cisco Water Plant Operator Performs various duties associated with the operation and maintenance of the water plant facility and be on call at various times. "C" License Operator preferred. Be able to obtain certificate within one year. The City requires high school diploma/GED, and valid Texas driver's license. Apply at City Hall, 500 Conrad Hilton, Cisco, Texas 76437. Phone 254-442-2111. C34

Career Opportunity: Seeking a family man for a position in water & sewer department, with opportunity for advancement. Must have a minimum of Class "C" Water and Sewer license, or higher. Must be willing to re-locate. Send resume with references to City Secretary, City of Strawn, P.O. Box 581 Strawn, Texas 76475, an equal opportunity employer. 254-672-5311 R36

## HELP WANTED

portunity employer. 254-672-5311 R36

Be a part of the team that brought the 2008 National La Quinta Medalia Award home to Eastland. A few housekeeper positions are open. Apply in person at the LaQuinta Inn & Suites. No phone calls. E36

CO-MANAGER DQ of Ranger now hiring Co-Managers. Looking for bright, energetic customer service leaders. Food service experience helpful. Holiday and vacation pay. Smoke and drug free environment. Background checks and drug testing. Richeson Home Office 940-549-5041, ask for Melia Strong 9-5 M-F. Other times leave message. E36

Eastland County Crisis Center is seeking a FT licensed therapist. Must have exp in issues related to victimization. Play therapy training a plus. Services to be provided to both adults and children. Send cover ltr, resume and salary requirements to info@victim-services.net, or fax to 254-629-8685. E36

Now taking applications for all shifts. Apply in person Smokin Willie's 2009 Conrad Hilton, Cisco. C104

MANAGER GORMAN DQ Food service career with top salary and bonuses for continued growth. Responsible, honest leader with people skills. Background and drug test required; smoke free. Richeson Home Office 940-549-5041 ask for Alesha Seaberry. 9-5 M-F. Other times leave message. E34

Help Wanted: I lost 21 pounds in 21 days call for more details and free samples 325-829-9872. E34

## WANT A JOB YOU WILL ENJOY?

Now hiring for FT/PT positions working with adults with mental retardation in a residential setting.

Applicants must have HS diploma or GED, current driver's license, and be at least 20 years old. Background and driving record check on potential hires.

Shifts Available:  
Sat & Sun 2P-12A  
Sat & Sun 7A-1P  
Sat & Sun 7A-2P & 4:30P-7:30P M-W

Apply Now:  
Online: [www.rockhouses.org](http://www.rockhouses.org)  
In Person: 401A E. Lens, Eastland  
E-Mail: [hr@rockhouses.org](mailto:hr@rockhouses.org)  
Phone: 254-592-9805, 254-629-8683, or 254-968-4004, Ext. 159

Rock House - Eastland 36

## RED STAR TRUCK STOP

Is Now Hiring Clerk For 2p-10p & 10p-6a Store Shifts

Apply at Red Star Truck Stop Corner of Hwy 6 & I-20 • Eastland



## HELP WANTED

Rising Star Nursing Center is accepting applications for RN or LVN full time night shift. Also part-time day shift. New pay scale, get the pay that you deserve. Applicants should apply in person at 411 South Miller St. in Rising Star or call 254-643-2681. Speak with Rachel Riley, R.N. Director of Nurses or Lori Osborn, L.V.N. Assistant Director of Nurses. RS35

E35

Taco Bell Now Hiring: For Hourly Food Service Team Members! •People first company culture •Day and Night shifts available •Competitive pay, flexible hours •Competitive training Please Come By 1430 East Main, Eastland for your application. E35

City of Eastland now taking applications for summer LIFE-GUARDS. Requires a current Red Cross Lifeguard Training Certificate including CPR and First Aid training. Must have knowledge and understanding of pool rules and the ability to follow oral and written instructions and demonstrate professionalism in appearance and judgment. Interested persons may apply at the Eastland City Hall, 113 E. Commerce between 8:00 a.m. and 5:00 p.m. Monday thru Friday. The City of Eastland is an equal opportunity employer. Red Cross certification classes will be held in Breckenridge in mid-May, come by City Hall for more information. E104

Villa Haven Health & Rehabilitation has the following opening: Charge Nurse Mon.-Fri. 2-10. Competitive salary plus \$1 shift differential, benefit package includes health, dental, and vision insurance and 401K plan. Apply at 300 S. Jackson, Breckenridge, TX 76424 or 254-559-3386. E34

## HELP WANTED

Sonic Drive-In looking for friendly employees cook and car hops. Also management opportunity. Apply in person Cisco Sonic. C104

## HELP WANTED

DQ of Eastland now hiring full and part time help for day, night and weekend shifts. Need to love working with people, meeting new faces, drug and smoke free environments. Apply in person today. E37

Valentino's Italian Restaurant & Pizza now hiring for the following positions: Wait Staff Dishwasher Cashier Apply in person. E104

Now Hiring For All Phases of Construction •Starting Pay \$10.00/hr. •Paid Vacation & Holidays •Medical •Dental •Life Insurance •401 k with 100% match up to 6% •Team Profit Sharing •Excellent Work Environment Apply in person at Karsten Homes 820 Industrial Blvd Breckenridge, TX 76424 It's All...About You! Karsten Homes Division of CMH Manufacturing E104

## BUSINESS SERVICES

We Buy Estates Large or Small 254-629-2915 254-631-9316 E62

Buck's Gun School Concealed Handgun License Classes Any Day Call Buck at 254-647-1449 R48

Lawn Care and Shredding Van Thomason 817-559-5906 E38

Ruth Schaefer Stewart, L.P.C. Licensed Professional Counselor Working with children and women's issues incorporating play, art, and sand tray Call for appointments at (254) 442-4280. C104

## LOST

LOST: Puppy - Reward 4-5 months old Boston Terrier, black, white & Brindle. Missing 4-15-09. Missed very much by family. (254) 488-0088. E33

## MISC.

New Nutrient Fusion Core 4 Weight Loss System! Call Patty: 325-214-0361. www.irepcni.com/cheat4life E33

## WANTED

Wanted: Daytime child sister in my home, light home-work, Cisco area. Reference and background check required. CPR certification. Good pay. 817-648-2401. E35

## GOVERNMENT HOUSING ASSISTANCE (SECTION 8)

Rental assistance helps pay for a family's rent. The family's self pay portion of the rent is based on 30% of their gross annual income. After all required information is completed a voucher is issued for a rental unit.

## VOUCHERS ARE NOW AVAILABLE

Contact us promptly to file your application and acquire Housing Authority Assistance. In the future there will be a waiting list for these vouchers. 254-629-2518. 51



**FOR SALE**

**For Sale**  
1974 VW, 4 speed,  
\$800. See after 5 p.m.  
442-4628.

C33



**For Sale**  
1979 Dodge PU, 4  
wheel drive, 1/2 ton,  
\$600. See after 5 p.m.  
442-4628.

C33

**WANTED**

Eastland Senior  
looking for part time  
work, odd jobs or  
mowing. Please call  
254-488-1770 after  
5:30 p.m.

E37

Want Land to cut  
oak for firewood.  
Will pay for wood in  
advance. 325-669-  
2185.

E32

Wanted: Ranch  
for lease for graz-  
ing cattle, primarily  
cow/calf operation.  
In or around East-  
land County. 817-  
243-4984.

R104

**GARAGE SALES**

**CISCO**  
HUGE YARD SALE.  
Friday & Saturday,  
April 24 & 25, 8  
a.m.-6 p.m. 504 E.  
10th St., Cisco.

C33

**CARPOR SALE:**  
Sat., April 25th  
8 a.m. to 12 p.m.  
Weather permitting.  
Some fishing stuff,  
tools, furniture. 308  
CR 102, first road  
to left on Brecken-  
ridge Hwy, Cisco.

C33

**YARD SALE:** Satur-  
day, April 25th, 8:30  
a.m.-2 p.m. 511 W. 5th,  
Cisco. Lots of col-  
lectibles.

C33

**FOR SALE:** King  
size mattress, box  
springs \$40.00; big  
refrigerator works  
fine \$100.00. Books  
of any kind. 218 W.  
8th in Cisco.

C33

**READ THE CLASSIFIEDS**

**Narcotics Anonymous**  
500 Ave. E (Ex-GI Bldg.)  
Cisco, TX 76437  
Monday 8:00 p.m.  
Open Meetings  
Wednesday 12:00 noon  
Friday 6:00 p.m.  
Book Study  
For more information  
contact 254-442-4462

**Grandpaw's Tool Shed**  
Rental, Inc.  
1304 E. Main,  
Eastland, TX 76448  
254-629-3363

Tired of all the same entertainment at  
your parties?  
We have the solution: Rent our New  
"Dunking Booth". A lot of fun for the  
whole family.

Also we have Temporary Storage  
Containers 8 x 20 at your location for  
rent.

104

**BUSINESS OPPORTUNITY****HUDDLE HOUSE.**

NEIGHBORHOOD DINER  
EXCEPTIONAL  
FRANCHISE  
OPPORTUNITY  
Seeking hands-on  
entrepreneurs for unique  
restaurant ownership.  
Opportunities available  
in Eastland, TX.  
Minimum \$200K  
liquidity and  
\$500K in assets.  
Contact: Jim Carr  
(800) 418-9555 x1256  
www.huddlehouse.com

**GARAGE SALES**

**CROSS PLAINS**  
Cross Plains Com-  
munity Wide Sale  
Saturday, April 25 8  
a.m. to 2 p.m. Stop  
at Robert E. How-  
ard House Pavilion,  
Hwy 36, 3 blks west  
of Main Intersection  
Obtain participants'  
List/Map of 20 Yard/  
Garage Sales  
Beta Sigma Phi  
Sponsor of Sale  
BSP Sale Proceeds  
for Scholarships

C34

**EASTLAND**  
MULTI-FAMILY  
YARD SALE: Friday  
& Saturday, April  
24 & 25 8 a.m. to 5  
p.m. 212 Valley Dr.,  
East near Eastland  
Cemetery.

E33

**GORMAN**  
5 FAMILY GARAGE  
SALE in Gorman:  
Sat., April 25th, 8-5.  
607 S. Brewer, fol-  
low signs.

E33

On April 25, 2009,  
Gorman will host  
our annual city  
wide garage sale.  
If you want to par-  
ticipate in this event  
and have your sale  
marked on our city  
map, please con-  
tact Cliff Vaughn  
(254-734-3933) or  
Jill Torres (254-  
734-2317). We also  
plan to have a flea  
market in the city  
park, please call for  
space. The cost for  
flea market space  
or marked sale on  
map is \$5.

E33

**RISING STAR**  
RISING STAR  
TRADE DAYS  
April 24, 25, 26  
For more info, call  
254-643-1611.

E32

**AUTO FOR SALE**

For Sale: '05 Extra  
Loaded Platinum  
(The Big One) Lin-  
coln Escalade, 7  
seater. Has every  
feature. New rub-  
ber. Ready for many  
vacations. \$13,000  
OBO plus take up  
payments. Call to  
see 254-629-2413.

E104

**FOR SALE**

**For Sale**  
Water front cabin  
on Lake Leon.  
Fully furnished,  
sleeps 4, cov-  
ered boat dock,  
crushed rock pad  
for camper RV or  
boat, nice storage  
bldg. included.  
Easy access to  
Eastland & I-20.  
254-758-2645.

35

**AUTOS FOR SALE**

Vacation Special  
For Sale: Loaded  
'01 GMC Luxury  
Van; TV, bucket  
seats, fold down  
third, excellent rub-  
ber. Ready for many  
vacations. \$5,000  
OBO. Call 254-629-  
2413.

E104

**LIVESTOCK**

Registered very  
tame longhorns for  
sale. Three year old  
bull. Good breeder  
\$600. Five year old  
cow with six week  
old calf \$500. All for  
\$1,000. Call 254-  
433-2556.

E34

**FOR SALE**

For Sale: 2005  
39 ft. Park model  
travel trailer barn  
kept, many extras.  
\$18,500. 254-647-  
5498 or cell 817-  
229-7921.

E104

Must Sell 3 door  
glass front china  
hutch in good con-  
dition; Lg. comput-  
er desk. 254-559-  
5058.

E34

**BEST BUY:** Morgan,  
10 x 12 Port. Bldg.  
Free delivery/terms  
Call 254-631-0010.

E35

12 x 20 storage  
building, built by  
mistake. Price re-  
duced, free delivery.  
Call 254-640-2824.

E35

For Sale: 1984 Ford  
Motor Home. Hun-  
ter's bargain. Runs  
good. \$2,000 or best  
offer. Call Nathan at  
254-639-2339 or  
cell 254-488-1053.

E38

**KING PILLOW-**  
TOP Mattress set.  
NEW still in plastic.  
Sell \$265. 325-428-  
9172.

E34

**ADVERTISE IN THE CLASSIFIEDS**

**WELCOMING:**  
Would-be writ-  
ers --Show Us  
Your Stuff:  
We'd like to see  
original, accu-  
rate well-written  
(neatly typed)  
rather brief fea-  
ture and hard  
news articles/  
profiles (with  
photos, if pos-  
sible) about local  
(Eastland Coun-  
ty) people with  
unusual crafts-  
manship, hob-  
bies, experiences.  
Sources will be  
checked and by-  
lines given on ac-  
ceptance, but re-  
numeration will  
be scant. Right  
writers could  
be developed  
to handle spe-  
cial assignments  
on contract ba-  
sis. Submit to:  
**FREELANCE,**  
Box 29, East-  
land, TX 76448.  
Ambitious stu-  
dents especially  
welcome. "What  
a great experi-  
ence for you!"

**FOR SALE**

Discounted Steel  
Bldgs  
Big & Small  
Standard or  
Custom Design  
Get the Deal of  
Deals!  
Mfg to Site  
www.scg-grp.com  
Source #007  
254-230-0059.

E34

**SACRIFICE** Queen  
pillow top mattress  
set. New in wrapper  
only \$165. 325-428-  
9172.

E34

Must sell **DOUBLE**  
orthopedic mattress  
set never used.  
\$155. **TWIN** mat-  
tress \$99. 325-428-  
9172.

E34

Nasa Tempurpedic  
type memory foam  
mattress set. New  
with warranty \$350.  
325-428-9172.

E34

**NOTICE**

**NOTICE TO**  
**CONTRACTORS**  
**OF PROPOSED**  
**TEXAS**  
**DEPARTMENT OF**  
**TRANSPORTA-**  
**TION (TxDOT)**  
**CONTRACTS**

Sealed proposals for  
contracts listed be-  
low will be received  
by TxDOT until the  
date(s) shown be-  
low, and then pub-  
licly read.

e-cinc.com

**CONSTRUC-  
TION/MAINTENANCE/BUILD-  
ING FACILITIES  
CONTRACT(S)**

Dist/Div: Brown-  
wood  
Contract 6103-15-  
001 for **ROADSIDE**  
**MOWING** in **EAST-**  
**LAND** County will  
be opened on May  
12, 2009 at 2:00 pm  
at the District Office  
for an estimate of  
\$145,467.00.

Plans and speci-  
fications are avail-  
able for inspection,  
along with bidding  
proposals, and ap-  
plications for the Tx-  
DOT Prequalified  
Contractor's list, at  
the applicable State  
and/or Dist/Div Of-  
fices listed below.  
If applicable, bid-  
ders must submit  
prequalification in-  
formation to TxDOT  
at least 10 days prior  
to the bid date to be  
eligible to bid on a  
project. Prequalifi-  
cation materials may  
be requested from  
the State Office listed  
below. Plans for the  
above contract(s)  
are available from  
TxDOT's website at  
www.txdot.gov and  
from reproduction  
companies at the

expense of the con-  
tractor.  
NPO: 29595  
State Office  
Constr./Maint. Divi-  
sion  
200 E. Riverside  
Dr.  
Austin, Texas  
78704  
Phone: 512-416-

2540  
Dist/Div Office(s)  
Brownwood District  
District Engineer  
2495 Highway 183  
N  
Brownwood, Texas  
76802-3227  
Phone: 325-646-  
2591  
Minimum wage  
rates are set out in

bidding documents  
and the rates will be  
part of the contract.  
TXDOT ensures that  
bidders will not be  
discriminated against  
on the grounds of  
race, color, sex, or  
national origin.  
(4-19, 4-23-09)

**FARM EQUIPMENT AUCTION  
OPEN CONSIGNMENT  
SATURDAY, JUNE 27, 2009**

**CJC Ag Grounds @ Hwy 6 North (Old Armory)**  
**PROCEEDS FOR CISCO AG BOOSTERS**  
Supporting the children of 4-H and FFA

"ACCEPTING CONSIGNMENTS NOW."  
CALL EARLY FOR YOUR EQUIPMENT  
TO BE IN ADVERTISING.

- (1) Consignment fees of 5% on equipment selling in excess of \$10,000.
- (2) Consignment fees of 7% on equipment selling in excess of \$5,000.
- (3) Consignment fees of 10% on equipment selling in excess of \$1,000.
- (4) Consignment fees of 15% on equipment selling for less than \$1,000.
- (5) There will be a \$10.00 PO Charge.

Consignments of miscellaneous other items will also be accepted on a standard auction format with the following terms and conditions:  
Consignments fees of 20% and a \$10.00 PO Charge on all supplies.

"ACCEPTING CONSIGNMENTS NOW."  
CALL EARLY FOR YOUR EQUIPMENT  
TO BE IN ADVERTISING.

Shannon Thompson at 254-442-1268 or email shannon246@hotmail.com  
LeAnn Kendall at 254-442-2579 or email lkendall@txol.net  
Laurina Bacon at 254-631-1432

Auction services are being donated by  
Ronnie Ingram #TXS11408.

5-35

**READ THE CLASSIFIEDS****ATTENTION:**

**ALL ADVERTISERS**  
This newspaper is not  
responsible for errors or  
omissions printed in error,  
except to correct them in  
the next edition. It is the  
responsibility of the adver-  
tiser to notify this newspa-  
per after the first appear-  
ance.

Our established and re-  
corded policy on newspa-  
per advertising placement  
provides that: **TRANSFER**  
**OF OWNERSHIP OF AN AD-**  
**VERTISED BUSINESS AND/OR**  
**SERVICE DOES NOT ELIMINATE**  
**THE RESPONSIBILITY FOR PAY-**  
**MENT BY THE PERSON OR FIRM**  
**THAT ORIGINALLY ORDERED**  
**THE ADVERTISEMENT.**

A one and one half  
(1 1/2) percent interest will  
be added monthly to bills  
after 30 days in arrears.

Eastland County  
Newspapers, Inc.,  
215 S. Seaman St.  
Eastland, TX 76448

**Notice:****Available At  
The Telegram:**

- Texas Messengers
- The True Story of Old Rip
- Definative Home Business
- Income Opportunity Survey
- The Story of Old Rip A Honored Toad
- An American Sampler of People You Might Know
- To Jean
- Medicine Show Revisted
- Santa Claus Bank Robbery
- Quit Smoking Personal Letter
- The Ranger Story
- The Story of My Life By Myself

**ADVERTISE AND GET RESULTS**

To advertise in  
the  
Classifieds call  
629-1707; Fax  
to  
254-629-2092;  
E-mail to: ecn@  
att.net or come  
by 215 South  
Seaman St. in  
Eastland

**Alcoholics Anonymous**

302 N. College

Eastland, TX 76448

\*\*\*

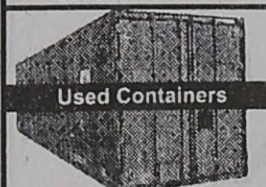
**MONDAY 6:00 p.m. (Closed-****Alcoholics Only)****TUESDAY 8:00 p.m. (Open)****THURSDAY 6:00 p.m. (Open)****Big Book Study****SATURDAY 8:00 p.m. (Open)**

\*\*\*

**442-4462 or 254-433-3340****For questions or info. call****254-631-0271****Parole/Probationers Welcome****Please No Correctional Papers****BUSINESS SERVICES**

Call  
254-629-1707  
to  
advertise  
in this  
section

Wind & Water Tight  
Rodent Proof



Used Containers  
Larry Singley 104  
Toll Free 800-992-9122  
or 817-992-9122  
We Solve Storage Problems

Advertise in the  
Business Services  
section  
call 629-1707

Master Electrician  
All Types of Work  
254-639-2964  
254-433-1782  
State Licensed 104

**A-QUALITY WELDING  
& STEEL SUPPLY**

METAL BUILDINGS • STRUCTURAL STEEL  
FABRICATION • BUILDING COMPONENTS  
WELDING SUPPLIES & GASES  
Metal Bldg. Clearance Sale Call Now  
700 East I-20 Cisco, TX  
(254) 442-3036

Check out our prices updated daily

www.aqualitysteel.net

**House Leveling &  
Foundation Repair**

By David Lee &amp; Co.

Professional Work Since 1967

\*Free Estimates\*

- No Payments Until Work Is Satisfactorily Completed
- Solid Slab • Pier & Beam • Concrete Piers •
- Block & Pad • Floor Bracing
- Steel Piers To Bedrock
- Work Guaranteed Insurance Claims

Licensed &amp; Bonded

254-629-2267 1-888-486-8588  
254-965-5635 915-675-6369

www.davidleeco.com

104



## McMurry Univ. Theatre Spring Production

ABILENE, Texas – McMurry University is proud to present June Groom, a comedy by Rick Abbot. This production is directed by senior J.D. Davis.

On the eve of Jordan's 30th birthday on July 1, three days after his marriage to Dinah, he tells his friend Marty he's sworn to Uncle Harvey to remain celibate until this birthday to receive a fortune. Jordan is trying to keep his vow even though Dinah wanted to be a June bride. In a few hours, he'll

turn 30, Harvey's check will arrive and everything will be fine. Well, not quite, because Harvey arrives to deliver the check in person, along with Aunt Bella. June Groom has a plot full of complex twists, turns, and cover-ups that everyone will enjoy.

June Groom will be performed April 23-25. Curtain is at 7:30 p.m. Tickets are \$3 for general admission and free for students, faculty, and staff. Box Office will open 30 minutes prior to the curtain.

## SUDOKU

|   |   |   |   |   |   |   |   |  |
|---|---|---|---|---|---|---|---|--|
|   |   |   | 9 |   |   |   | 2 |  |
| 1 |   |   |   |   | 3 | 7 |   |  |
|   | 9 |   | 5 |   | 6 | 4 |   |  |
|   |   | 8 |   |   |   |   |   |  |
| 2 | 5 |   | 7 | 6 |   |   |   |  |
|   |   |   |   | 8 | 9 |   |   |  |
|   |   |   | 4 | 3 |   | 1 |   |  |
|   |   | 2 |   |   | 7 | 6 | 4 |  |
| 3 |   |   |   |   | 2 |   | 9 |  |

Here's How It Works:

Sudoku puzzles are formatted as a 9x9 grid, broken down into nine 3x3 boxes. To solve a sudoku, the numbers 1 through 9 must fill each row, column and box. Each number can appear only once in each row, column and box. You can figure out the order in which the numbers will appear by using the numeric clues already provided in the boxes. The more numbers you name, the easier it gets to solve the puzzle!

We Clean The Most Neglected,  
Unsanitary Part Of Your Home:  
**YOUR AIR DUCT SYSTEM!**  
**J & J Air Conditioning, Inc.**  
106 Pogue Eastland, TX  
254-629-2251 TACLB00200C 800-585-2251



## Clyde ISD School Menu

Thursday, April 23

Breakfast: Cereal & toast or breakfast burrito, breakfast sausage pizza, fruit juice, milk

Lunch: Catfish strips, chicken nuggets, sliced turkey & gravy, mashed potatoes, rolls, green beans, orange, milk

Friday, April 24

Breakfast: Cereal & toast or biscuit, sausage, gravy or sausage in a blanket, fruit juice, milk

Lunch: Chili cheese dog, chicken burger, grilled chicken salad, baked beans, carrot & celery sticks, salad, Blue Bell ice cream, milk

Monday, April 27

Breakfast: Cereal & toast or biscuit, sausage, gravy or cheese omelet & toast, fruit juice, milk

HS & JH Lunch: Cheese sticks w/marinara, spaghetti & meatballs, corn dog, California veggies, salad, fruit, sugar cookie, milk

Intermediate & Elementary Lunch: Cheese pizza, spaghetti & meatballs, corn dog, California veggies, salad, fruit, sugar cookies, milk

Tuesday, April 28

Breakfast: Cereal & toast or breakfast burrito, breakfast sausage pizza, fruit juice, milk

Lunch: Catfish strips, ham & cheese salad, chicken nuggets, mashed potatoes, rolls, spinach, fruit, milk

Wednesday, April 29

Breakfast: Cereal & toast or biscuit, sausage, gravy or French toast sticks, fruit juice, milk

Lunch: Chicken fajita, queso grande, pepperoni pizza, corn, salad, pinto beans, fruit, milk

## 3 GMC DEALERSHIP PUBLIC AUCTIONS

Thursday, April 23, 2009 • 10:30 AM

Downey Chevrolet • 1100 W. Dallas Ave., Cooper, TX

Friday, April 24, 2009 • 10:30 AM

Jim Ulrich Motors • Hwy. 19 @ E. Loop 304, Crockett, TX

Saturday, April 25, 2009 • 10:30 AM

Ernie Guzman GMC • 22111 Katy Fwy., Houston, TX

Visit web site for complete details. Each location offers a variety of shop, service & retail equipment all selling regardless of price. Judd Grafe TX License 130888. 13% buyer's premium, 3% discount for cash or guaranteed funds.



800-328-5920  
www.grafeauction.com

Send us any photos you would like to  
be printed in color on front page.  
Send to Callahan County Baird Star  
P.O. Box 29 Eastland, TX 76448



## Baird ISD School Menu

Thursday, April 23

Breakfast: Toast and Cereal, Choice of Juice, Choice of Milk

Lunch: Hot Dogs, Pork-N-Beans, Carrot Sticks, Rosie Applesauce

Friday, April 24

Breakfast: Sausage Rolls, Choice of Juice, Choice of Milk

Lunch: Hot Dogs, Pork-N-Beans, Carrot Sticks, Rosie Applesauce

Monday, April 27

Breakfast: Breakfast Bites, Choice of Juice, Choice of Milk

Lunch: Pork Egg Rolls, Chicken Fried Rice, Broccoli & Cheese, Veggie Stir Fry, Spiced Apples

Tuesday, April 28

Breakfast: Sausage and Biscuit, Choice of Juice, Choice of Milk

Lunch: Chicken Spaghetti, Green Beans, Steamed Carrots, Garlic Bread, Fruit Salad

Wednesday, April 29

Breakfast: Long Johns, Choice of Milk, Choice of Juice

Lunch: Frito Pie, Pinto Beans, Spanish Rice, Salad, Peaches

## NOTICE

Opinions expressed in articles and letters submitted by others do not necessarily reflect the opinions or beliefs of the Owners, Managers, and Staff of Eastland County Newspapers, Inc.

Letters to the Editor: All letters must be signed with name and phone number on the letter. If it is requested "name withheld" when someone asks we will give out the name of the person who wrote the letter, so they must be signed or the letter will not be printed.

Errors and omissions will be corrected to the extent of the specific error or omission in the next edition when called to the attention of the newspaper or publisher.

## Attention: All Advertisers

This newspaper is not responsible for errors or omissions printed in error, except to correct them in the next edition. It is the responsibility of the advertiser to notify this newspaper after the first appearance.

Transfer of ownership of an advertised business and/or service does not alleviate the responsibility for payments of this obligation. A one and one half (1 & 1/2) percent interest will be added monthly to bills after 30 days in arrears.

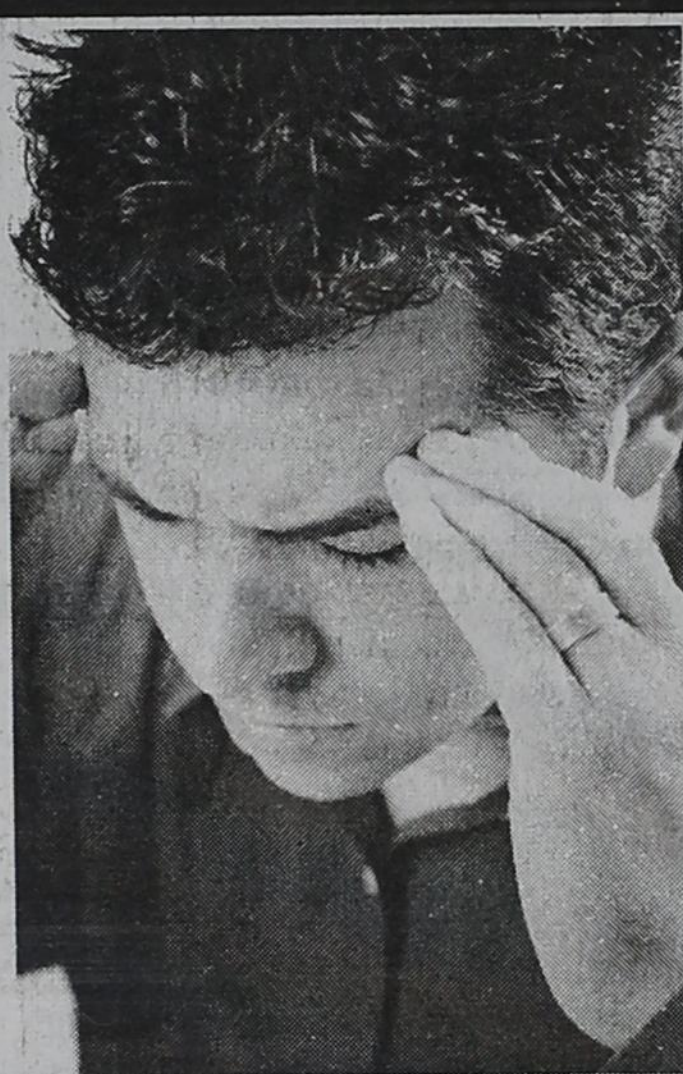
Responsibility and Liability: The Eastland County Newspapers assumes no obligation, responsibility or liability for subject matter contained in copy placed by advertisers or their agents. The advertiser agrees that all materials and copy will comply with applicable state and federal laws and regulations. It is also understood the advertiser and/or his agents jointly and separately agree to indemnify the publisher and the newspaper against all expenses, loss or damage incurred or sustained by reason of printing such copy. All advertising copy submitted is subject to approval, revision or rejection by the publisher. To be binding upon the Eastland County Newspapers' all instructions relative to the advertisement must be in written form. The Eastland County Newspapers is not bound by any terms or conditions, printed or otherwise, appearing on order blanks, advertising forms, or copy instructions, when the same is in conflict with terms and conditions of the newspapers rate card or policies. The publisher reserves the right to edit or reject advertisements deemed objectionable, illegal or of poor reproduction quality, or because of conditions beyond the newspapers control. All advertising must be on behalf of the advertiser's business or service exclusively. The Eastland County Newspapers reserves the right to insert the word Advertisement above all ads, including all copy ads which might be mistaken for news articles.

Public-Legal Notice Advertising: Rates for any public or legal notice or advertisement required by federal, state or local law or court order are in accordance with Texas Revised Statutes. Rates are based upon a 11.5 point typeset lines on a column width of 11.5 picas. Rate: 15¢ per word, per paper, per time.

## Crossword Answers

|   |   |   |   |   |   |   |   |   |   |   |   |   |
|---|---|---|---|---|---|---|---|---|---|---|---|---|
| T | I | N | C | T | M | A | M | A | S |   |   |   |
| W | R | A | P | P | I | N | G | P | A | P | E | R |
| B | O | A |   | A | N | O | D | E | R | A | F |   |
| P | E | C | I | A |   |   |   |   | C | R | I | L |
| B | E | C | C | O |   |   |   |   | O | R | E | A |
|   | D | I | M | E | S |   |   |   | B | A | I | N |
|   |   |   |   |   |   |   |   |   | D | E | C | I |
|   |   |   |   |   |   |   |   |   |   |   |   |   |
|   | R | U | C |   |   |   |   |   | W | A | T |   |
|   |   | R | E | M | O | D | E | L | E | D |   |   |
|   | D | E | F | A | M | E | D |   | G | A | M | A |
|   | I | C | O | N | I | C |   |   | B | A | D | E |
|   | B | A | R | E | X |   |   |   |   | C | A | R |
|   |   |   |   |   |   |   |   |   |   |   |   |   |
|   | C | L | M |   |   |   |   |   | R | A | M | A |
|   |   | L | A | U | N | D | R |   |   | B | A | S |
|   |   |   |   |   |   |   |   |   |   |   |   |   |
|   |   |   |   |   |   |   |   |   |   |   |   |   |
|   |   |   |   |   |   |   |   |   |   |   |   |   |
|   |   |   |   |   |   |   |   |   |   |   |   |   |
|   |   |   |   |   |   |   |   |   |   |   |   |   |
|   |   |   |   |   |   |   |   |   |   |   |   |   |
|   |   |   |   |   |   |   |   |   |   |   |   |   |
|   |   |   |   |   |   |   |   |   |   |   |   |   |
|   |   |   |   |   |   |   |   |   |   |   |   |   |
|   |   |   |   |   |   |   |   |   |   |   |   |   |
|   |   |   |   |   |   |   |   |   |   |   |   |   |
|   |   |   |   |   |   |   |   |   |   |   |   |   |
|   |   |   |   |   |   |   |   |   |   |   |   |   |
|   |   |   |   |   |   |   |   |   |   |   |   |   |
|   |   |   |   |   |   |   |   |   |   |   |   |   |
|   |   |   |   |   |   |   |   |   |   |   |   |   |
|   |   |   |   |   |   |   |   |   |   |   |   |   |
|   |   |   |   |   |   |   |   |   |   |   |   |   |
|   |   |   |   |   |   |   |   |   |   |   |   |   |
|   |   |   |   |   |   |   |   |   |   |   |   |   |
|   |   |   |   |   |   |   |   |   |   |   |   |   |
|   |   |   |   |   |   |   |   |   |   |   |   |   |
|   |   |   |   |   |   |   |   |   |   |   |   |   |
|   |   |   |   |   |   |   |   |   |   |   |   |   |
|   |   |   |   |   |   |   |   |   |   |   |   |   |
|   |   |   |   |   |   |   |   |   |   |   |   |   |
|   |   |   |   |   |   |   |   |   |   |   |   |   |
|   |   |   |   |   |   |   |   |   |   |   |   |   |
|   |   |   |   |   |   |   |   |   |   |   |   |   |
|   |   |   |   |   |   |   |   |   |   |   |   |   |
|   |   |   |   |   |   |   |   |   |   |   |   |   |
|   |   |   |   |   |   |   |   |   |   |   |   |   |
|   |   |   |   |   |   |   |   |   |   |   |   |   |
|   |   |   |   |   |   |   |   |   |   |   |   |   |
|   |   |   |   |   |   |   |   |   |   |   |   |   |
|   |   |   |   |   |   |   |   |   |   |   |   |   |
|   |   |   |   |   |   |   |   |   |   |   |   |   |
|   |   |   |   |   |   |   |   |   |   |   |   |   |
|   |   |   |   |   |   |   |   |   |   |   |   |   |
|   |   |   |   |   |   |   |   |   |   |   |   |   |
|   |   |   |   |   |   |   |   |   |   |   |   |   |
|   |   |   |   |   |   |   |   |   |   |   |   |   |
|   |   |   |   |   |   |   |   |   |   |   |   |   |
|   |   |   |   |   |   |   |   |   |   |   |   |   |
|   |   |   |   |   |   |   |   |   |   |   |   |   |
|   |   |   |   |   |   |   |   |   |   |   |   |   |
|   |   |   |   |   |   |   |   |   |   |   |   |   |
|   |   |   |   |   |   |   |   |   |   |   |   |   |
|   |   |   |   |   |   |   |   |   |   |   |   |   |
|   |   |   |   |   |   |   |   |   |   |   |   |   |
|   |   |   |   |   |   |   |   |   |   |   |   |   |
|   |   |   |   |   |   |   |   |   |   |   |   |   |
|   |   |   |   |   |   |   |   |   |   |   |   |   |
|   |   |   |   |   |   |   |   |   |   |   |   |   |
|   |   |   |   |   |   |   |   |   |   |   |   |   |
|   |   |   |   |   |   |   |   |   |   |   |   |   |
|   |   |   |   |   |   |   |   |   |   |   |   |   |
|   |   |   |   |   |   |   |   |   |   |   |   |   |
|   |   |   |   |   |   |   |   |   |   |   |   |   |
|   |   |   |   |   |   |   |   |   |   |   |   |   |
|   |   |   |   |   |   |   |   |   |   |   |   |   |
|   |   |   |   |   |   |   |   |   |   |   |   |   |
|   |   |   |   |   |   |   |   |   |   |   |   |   |
|   |   |   |   |   |   |   |   |   |   |   |   |   |
|   |   |   |   |   |   |   |   |   |   |   |   |   |
|   |   |   |   |   |   |   |   |   |   |   |   |   |
|   |   |   |   |   |   |   |   |   |   |   |   |   |
|   |   |   |   |   |   |   |   |   |   |   |   |   |
|   |   |   |   |   |   |   |   |   |   |   |   |   |
|   |   |   |   |   |   |   |   |   |   |   |   |   |
|   |   |   |   |   |   |   |   |   |   |   |   |   |
|   |   |   |   |   |   |   |   |   |   |   |   |   |
|   |   |   |   |   |   |   |   |   |   |   |   |   |
|   |   |   |   |   |   |   |   |   |   |   |   |   |
|   |   |   |   |   |   |   |   |   |   |   |   |   |
|   |   |   |   |   |   |   |   |   |   |   |   |   |
|   |   |   |   |   |   |   |   |   |   |   |   |   |
|   |   |   |   |   |   |   |   |   |   |   |   |   |
|   |   |   |   |   |   |   |   |   |   |   |   |   |
|   |   |   |   |   |   |   |   |   |   |   |   |   |
|   |   |   |   |   |   |   |   |   |   |   |   |   |
|   |   |   |   |   |   |   |   |   |   |   |   |   |
|   |   |   |   |   |   |   |   |   |   |   |   |   |
|   |   |   |   |   |   |   |   |   |   |   |   |   |
|   |   |   |   |   |   |   |   |   |   |   |   |   |
|   |   |   |   |   |   |   |   |   |   |   |   |   |
|   |   |   |   |   |   |   |   |   |   |   |   |   |
|   |   |   |   |   |   |   |   |   |   |   |   |   |
|   |   |   |   |   |   |   |   |   |   |   |   |   |
|   |   |   |   |   |   |   |   |   |   |   |   |   |
|   |   |   |   |   |   |   |   |   |   |   |   |   |
|   |   |   |   |   |   |   |   |   |   |   |   |   |
|   |   |   |   |   |   |   |   |   |   |   |   |   |
|   |   |   |   |   |   |   |   |   |   |   |   |   |
|   |   |   |   |   |   |   |   |   |   |   |   |   |
|   |   |   |   |   |   |   |   |   |   |   |   |   |
|   |   |   |   |   |   |   |   |   |   |   |   |   |
|   |   |   |   |   |   |   |   |   |   |   |   |   |

When You  
Need  
A Doctor...  
We Are Here  
For You!



## PLEXUS

## Heathcare Center

1510 Hwy 206 Cisco, Texas 76437

**DEVIN KOENIG, D.C.**  
**CYNTHIA MCNEELY, M.D.**  
**SALLY GRIEWAHN,**  
**DRPH, RN, FNP**  
**JEFF DAVIS, P.T.**

CALL TODAY!

254.442.4878

## Ann Williams Real Estate

### WILLIAMS RANCH PROPERTIES

601 Conrad Hilton Cisco 254-442-1880 www.annwilliamsrealestate.com

#### ACREAGE

**31.32 Acres** – Eastland Co- wooded mostly with oak trees, several large hills with views down to canyons & a creek, paved road frontage, very nice property, deer, turkey, hogs, dove, duck, quail, \$77,000.

**32 Acres** – Eastland Co- small pecan orchard, mostly open with some scattered trees, rolling hill with view, close to water line, excellent home site, deer, turkey, dove, quail \$2,225 per acre.

**33 Acres** – Eastland Co- Adjoining Lake Cisco, wooded mostly with live oak trees, very large hill with view perfect for home site, water well, deer, turkey, hogs, dove, quail, \$99,900

**45.75 Acres** – Eastland Co- mobile home, water well, mostly wooded with oaks, one field ideal for wildlife, small tractor, shredder, blinds & feeders, deer, turkey, hogs, dove, & quail \$114,000

**48+/- Acres** – Eastland Co- mostly wooded with oaks, small field ideal for wildlife, great recreation or home site, paved road frontage, deer, turkey, hogs, dove, & quail \$105,360

**60 Acres** – Eastland Co- Wooded & open with fields, large hill with view, pond, electricity, joins large ranches, wildlife includes deer, turkey, hogs, dove, duck, quail \$1,900 per acre

**65.43 Acres** – Eastland Co- wooded with oaks, large hill with great view, paved road frontage, deer, turkey, hogs, dove, quail \$148,000

**65.498 Acres** – Eastland Co- mobile home, wooded with oaks, two large hill with view, water well, paved road frontage, deer, turkey, hogs, dove, quail \$156,000

**66+/- Acres** – Eastland Co- mostly wooded with oaks, small field ideal for wildlife, pond, water well, rolling hill with view, home site potential, paved road frontage, deer, turkey, hogs, dove, & quail, \$144,870

**75 Acres** – Eastland Co- Mixed wooded with oaks & various fields, metal barn, 3 ponds, water line, livestock pens, lots of cross fencing, deer, turkey, hogs, dove, duck, quail \$155,000

**91 Acres** – Eastland Co- mostly wooded with oaks, small field ideal for wildlife, pond, water well, rolling hill with view, home site potential, paved road frontage, deer, turkey, hogs, dove, & quail, \$144,870

**114 Acres** – Eastland Co- mostly wooded with mature oak trees, several smaller fields, hill down to creek bottom, water well, pond, paved road frontage, wildlife includes deer, turkey, hogs, dove, duck, quail, \$250,000

**116 Acres on Sabana River** – Eastland Co- mostly wooded with oak & elm trees, Sabana River runs through the property, pond, 2 fields, camper, deer, turkey, hogs, dove, duck, & quail, \$244,000

**148 Acres** – Eastland Co- wooded mostly with oak trees, very large hill with view, ponds, creek, pond, paved road frontage, very nice property, deer, turkey, hogs, dove, duck, quail, \$2,175 per acre.

**155 Acres** – Callahan Co- mostly wooded with oaks & mesquites, three large fields, large hills & canyons, paved road frontage, deer, turkey, hogs, dove, duck, quail \$279,000

**160 Acres** – Eastland Co- very large hills and canyons, mostly wooded with red oak & live oak trees, creek, 1-large pond, 1-average pond, 1-field, great views for miles, deer, turkey, hogs, dove, duck, & quail, \$344,000

**164 Acres** – Callahan Co- mostly wooded with live oak & mesquite trees, several hills with views, creek, 2 ponds, remote & joins large ranches, deer, turkey, hogs, dove, duck, & quail \$1,890 per acre.

**208 Acres** – Eastland Co- wooded & open, oak & mesquite trees, two ponds, food plots, county road frontage, wildlife includes deer, turkey, dove, duck, & quail, \$1,870 per acre.

**241 Acres** – wooded with very large hills, post oak, live oak, 2 creeks, 2 ponds, paved road frontage, deer, turkey, hogs, dove, duck, & quail \$524,000.

#### 344 Acres on Leon River

– Eastland Co- mostly wooded with a large portion of big pecan tree bottoms, live oak & post oak trees too, several very large hills with great views, 4 different creeks & the Leon River runs through the property, 1 lake, 3 ponds, various wetland areas, lots of water, barn, water well, good fishing & lots of wildlife including deer, turkey, hogs, dove, duck, quail, \$2,500 per acre.

**445 Acres** High Fence on Leon River, 200+ genetics, nice 3 BR, 2 bath home, garage, large shop, 5-years under high fence deer management, exotic, large hills & canyons, mostly wooded, post oak, creek, 1 lake, 7 ponds, food plots, protein feeders, stands, corn feeders, observatory tower, Eastland Co. \$1,595,000.

**640 Acres** – Callahan Co- completely wooded with several very large hill ridges & canyons with views for miles, 7 ponds with several being very large, mostly live oak & mesquite, creeks, 140 feet of elevation change, good road frontage, close to Eastland Co. line, wildlife includes deer, turkey, hogs, dove, duck, & quail \$2,100 per acre

#### HOUSES

**3 BR, 1 bath**, home with CH/A, within last year carpet and ceramic floor tile was installed. Garage, carport, corner property, backyard fenced \$49,500.

**3 BR, 1 3/4 bath brick home** with CH, woodburning fireplace, gameroom, fenced backyard. Reduced to \$52,000.

**3BR, 2 bath home** with CH, some wood floors, double carport, work shop, storage bldg, \$66,500.

**3 BR, 2 bath home** with CH/A, large den, dining, kitchen combination, separate LR, large master BR with 2 closets, carport replaced, double garage, 2 lots, \$66,500.

**3 BR, 1 3/4 bath brick home** with CH/A, kitchen builtins, attached 2 vehicle garage with CH, storage building, fenced backyard, \$79,500.

**3BR, 1 bath**, home, some wood floors, detached 2 vehicle garage, shop, storage bldg, barn on approx. 18 acres, \$87,000.

**4 BR, 1 3/4 bath**, brick home, CH/A, large LR, separate DR, storm windows, storm cellar, covered patio, large storage bldg, 2 vehicle carport, fenced backyard, \$89,500.

**RECENTLY BUILT 3BR, 2 bath** home with CH/A, double pane windows, workshop, double carport, approx. 2 acres, \$90,000.

**On 2 acres**, fenced and crossfenced, 3 BR, 1 1/2 bath home, CH/A, DR plus breakfast room, metal siding, metal roof, surrounded by trees, storage bldg, barn, Reduced to \$99,500.

**Large 4 BR, 1 3/4 bath brick home** with CH/A, LR and den, WBFP in den, big utility room, many large closets, storm windows, attached 2 vehicle garage, patio, storage bldg, fenced backyard, \$112,000.

**4 BR, 2 1/2 bath brick home** with CH/A (replaced inn 2007), WBFP, nice carpet, laminate floor, double carport, detached garage or shop, corner property, \$115,000.

**Great View of Lake and Golf Course from balcony, 3 BR, 2 bath home** with 2 family rooms, central air and heat, WBFP covered balcony, drive thru 2 vehicle carport, storage bldgs, patio, many large oak trees, on approx. 1/2 acre.

**15.76 Acres** with large 2 BR, 1 3/4 bath home, CH/A, eating room between kitchen and LR, sunroom and deck off kitchen, gameroom could be used for 3rd BR, patio, double carport, storage bldg, large shop. Home built around 15 years, beam framing.

**Lots of Character** - Wonderful 6 BR, 2 full, 3/4 and 1/2 baths, 2 story home with DR, LR, breakfast nook, den with WBFP, large kitchen, utility room, balcony, 2 CH/A units, 2 vehicle garage, storage building, 3 lots, fenced backyard.

#### COMMERCIAL

**Commercial property** that fronts on Interstate 20, shop, small office building, 2 large carports, previously used for inventory sales, \$72,500. Call for details.

Broker Ann J. Williams, LLC

Jimmy Williams



## LEGAL NOTICES

### INVITATION TO BID

Westbound Water Supply Corporation is offering up for bid a 1984 Case 580E backhoe and a 1984 BELS 3 axle trailer. Bids will be sealed. The backhoe and trailer will be bid separately. They may be seen at 201 East 8th Street in Cisco, TX. Bids will need to be in the office of Westbound Water Supply before 3:00 p.m. on the 8th of May. Bids will be opened on the 11th of May. They may be mailed to P.O. Box 309, Cisco, TX 76437. Mark the envelope with the word Bid on the outside if mailed. They may be dropped off at the office located at 201 E. 8th Street, Cisco, TX. Westbound reserves the right to refuse any or all bids. Equipment shall be sold as is with no warranty implied or otherwise.

(4-19, 4-23, 4-26, 4-30, 5-3-09)

\*\*\*

### Request for Qualifications:

#### Construction Manager at Risk (One-Step Process):

The Baird Independent School District, Baird, Texas has selected the Construction Manager at Risk one-step process

to construct the campus addition to the existing elementary campus in Baird, 400 W. 7th, Baird, Texas 79504. (325) 854-1400. Estimated Construction Cost: \$1,100,000.

A Request for Qualifications package can be obtained from the Office of the Superintendent of Baird ISD; Mr. Edgar Camacho: 600 W. 7th (P.O. Box 1147), Baird, Texas 79504 (325) 854-1400 or at the office of the Architect; Stocker Hoesterey Montenegro Architects, PLLC, Mr. Mark Hoesterey: 4514 Travis Street, Dallas, TX 75205. (214) 252-3830. E-mail copies can be obtained by contacting: mhoesterey@shmarchitects.com and requesting a copy.

Proposals are to include the information requested within the RFQ package and in the sequence and format prescribed. 8 (eight) copies of the RFQ response are to be submitted to the Baird ISD Office of the Superintendent (listed above) no later than 3:00 p.m. Monday, May 4th, 2009. All other information & instructions concerning the RFQ can be found within the RFQ itself.

(4-23, 4-30-09)

## CLASSIFIEDS

### HELP WANTED

#### JOB TITLE: Summer Maintenance Tech

Performs entry-level and routine maintenance work. Work involves physical labor tasks such as: plant and landscape maintenance, maintenance of comfort stations and rights-of-way, minor equipment repair, and assisting with roadway repair. Employees at this level perform assignments following specific instructions and are subject to frequent review by the

immediate supervisor.

SALARY: \$9.07 - \$10.50 per hour

LOCATION: Callahan County Maintenance Section 132 US Hwy 283 Baird, Texas 325/854-1353

Closing Date: Open Until Filled

Applicants must be 18 years of age by June 1, 2009 and a full time college (enrolled in at least 12 semester hours) or high school student.

Applications may be picked up at any TxDot Office as well as the TxDot website www.dot.state.tx.us.

### House Leveling & Foundation Repair

By David Lee & Co.

Professional Work Since 1967

\*Free Estimates\*

No Payments Until Work Is Satisfactorily Completed

• Solid Slab • Pier & Beam • Concrete Piers •

Block & Pad • Floor Bracing

Steel Piers To Bedrock

Work Guaranteed Insurance Claims

Licensed & Bonded

254-629-2267 1-888-486-8588

254-965-5635 915-675-6369

www.davidleeandco.com

Avi T. Deshmukh, M.D., F.A.C.S.

Board Certified in Urology

Frank V. Terrell, M.D.

General Ophthalmology & Ophthalmic Surgery

Eastland Memorial Hospital

For Appointment Call

(254) 629-2601

Advertise in the newspaper and get results!!!

Completed applications may be mailed to TxDot, 132 US Hwy 283, Baird, Texas 79504 or returned to any TxDot Office.

An applicant needing an accommodation in order to apply for this job may call

the phone number of the Human Resources Office (325) 676-6817.

AN EQUAL OPPORTUNITY AFFIRMATIVE ACTION EMPLOYER (4-16, 4-23-09)

### Song Harvest Presents: "A Time To Sing" At Cisco Folklife Festival April 26

You'll be ready to rest in the shade of the big tent at the Cisco Folklife Festival come noon on Sunday, April 26, and enjoy a fresh, joyous, musical treat called "A Time To Sing," presented by Song Harvest.

Song Harvest is a music ministry begun in 1991 by seven members of the Assembly of Yahweh (7th day) at Romney, south of Cisco. It offers original, professionally recorded songs that draw the worshiper closer to the Heavenly Father by using His personal name, Yahweh. The lyrics also honor His Son Yahshua, who came in His Father's name.

Song Harvest is sponsoring a dynamic mix of solo and group acts at the Cisco Folklife Festival this year. One example is Chuck Henry of Cisco.

That starts an hour-long show featuring a talented variety of youngsters, songwriter/singers, and choral groups. Among them is Cisco's own Jordan

Wing.

Shoshana and Tim Carr, formerly of Clyde, are a talented couple you'll enjoy. Her performance of "Heal Them With Your Love" is touching and evocative. Tim recently added songwriting to his singing and guitar skills, as demonstrated by his heartfelt "Help Me Remember."

Another dynamic young songwriter/singer is Cisco native, Walker York. Much of his material is also drawn from life, but brought to the Father. He likes to accompany himself on guitar or piano, and sometimes throws in a riff on harmonica as well.

Expect much more, including a heart-grabbing children's choir and strong male voices performing the hauntingly beautiful "The Sacrifice Lamb."

Join us Sunday, April 26, from noon to one for "A Time to Sing."

### CALLAHAN COUNTY BAIRD STAR

Publication No. (USPS 085-520)

©2009 Eastland County Newspapers, Inc.

(254) 629-1707/ 1-888-227-1708

211 Market St. Baird, TX 79504

Periodical Postage Paid at Baird, Texas

under Act of Congress in March, 1870.

Published every Thursday

Publisher.....H.V. & Gaynell O'Brien  
Editor.....H.V. O'Brien

POSTMASTER: Send address changes to

Callahan County Star,

211 Market St., Baird, TX 79504

SUBSCRIPTION RATES

\$17 per year in Callahan County; \$19 per year for Counties Adjoining Callahan \$23 Out of State of Texas

### I-20 Motors Used Cars

"Serving Cisco Since 1979"

800 West Interstate 20 • Cisco, Texas

(254) 442-4262 • (817)-999-5272

1992 GMC Ext. Cab: w/lots of extras.....\$2950

2003 Mazda B2300: ext. cab, 4 cyl., 5 sp., fully loaded..\$4950

2005 Ford F150 Longbed: auto, air, 72k.....\$6995

2005 Chevy Aveo: LT 4-dr, auto, air, 39k.....\$6350

#### U.S. GOVT. CARS

3-05 Chevy Malibu Classics, loaded, 52k miles.....\$5995

04 Chevy Venture Van, Ext., loaded, 70k.....\$6500



More Cars To Choose From

### CUSTOM HOME BUILDERS SINCE 1980

Let Us Build Your New Home  
or Room Addition  
If You Can Dream It, We Can Build It!

T. J. CLARK CONSTRUCTION CO., INC.

(254) 734-2755

P. O. Box 176 111 E. Roberts St.  
Gorman, TX 76454

General Building Contractors - All Work Guaranteed  
Custom Homes - Remodeling - Commercial - Industrial - Farm  
Financing - Free Estimates - Design, Engineering & Plan Services

### Leon River Cowboy Church

"Just Good Folks Trying To Live For The Lord"

Pastor Paul Howie

254-653-2840

One mile east of the Texas Cattle Exchange

### Murder at the Rocking J Ranch

A Dramatic Teaching of the Arrest, Trials, Crucifixion, and Resurrection of Jesus

3 Sundays at 11 a.m.

March 29, April 5, April 12

9:30 a.m. Adult, Youth, & Children's Bible Study

10:30 a.m. Coffee/Donuts

11:00 a.m. Worship

### Great Times Furniture Warehouse



## Tax Refund Sale

### Take Your Pick

• 10% With Purchase of \$1500 or More

Or

• 1 Yr Financing With \$2500 or More

CERTIFIED DEALER FOR

SEALY POSTUREPEDIC

Featuring: Rustic Furniture • Ashley • Broyhill • Powell  
Dickson • Steve Silver • Home Elegance & More...

Lay Away • GE Financing • No Credit Financing

Quality Furniture at Low Prices

3100 W. Interstate 20 • Eastland, TX • 254-629-3921

www.greattimesrusticfurniture.com



## Golf Results

Golf results from Thursday, April 16 at Shady Oaks Golf Course in Baird:

**Boys**  
Team standings:  
3. Clyde, 380-341-721  
Medalists: 6. Jacob Gonzales, Clyde, 91-81-172  
Clyde 721  
Ryan Truman 92-74-166;  
Zack Hines 98-93-191; Jacob Gonzales 91-81-172; Lyle Neel 95-92-187; Justin Riley 96-87-183  
Medalists: Weston Laws 108-95-203  
Clay Doss 104-NS  
Girls  
Team standings:  
2. Clyde, 444-424-860  
Medalists: 6. Brooke Harris, Clyde, 106-98-204;  
8. Megan Gilbreath, Clyde, 103-107-210  
Clyde 869- Brook Harris 106-98-204; Megan Gilbreath 103-107-210;  
Bethany Harris 119-103-222;  
Carae Hileher 116-117-233;  
Season Davidson 124-118-242  
Medalist: Tiffany Burleson 121-130-251

Golf at Ratliff Golf Course in Odessa:  
Girls  
13. Clyde 435-413-848

Clyde 848  
Brooke Harris 104-95-199; Bethany Harris 106-102-208; Megan Gilbreath 114-104-218; Carae Hileher 111-111-222; Season Davidson 122-112-234

Golf Tuesday, April 21 at Shady Oaks, Baird:  
Girls  
Team standings: 1. Baird 353-347-700  
Medalists: 2. Alex Neal, Baird, 75-78-153; 3. Mitzi McDowell, Baird, 80-79-159  
Baird: Alex Neal 75-78-153; Mitzi McDowell 80-79-159; Michelle Robbins 97-94-191; Brittany Cook 105-96-201; Ivy Byram 101-999-200

## Track Results

Thursday, April 16 at McMurry  
Boys  
Team totals: 8. Baird 29  
1/2: 17. Eula 18  
200: 6. Cody Smith, Baird 24.07  
800: 4. Billy Nail, Baird 2:10.94  
1600: 5. Marco Muniz, Eula, 5:22.67  
3200: 4. Marco Muniz, Eula, 11:28.29

## KENNEDY FINANCIAL SERVICES

A Life Planning Firm

106 S. Seaman St. • Eastland, TX 76448 • 254-629-3863

### A Cup of Coffee and a Second Opinion

What do you not know about your investments?  
What is your advisor or broker not telling you?

From 8:00 - 9:00 am every business day, we offer a cup of coffee and a second opinion on the one investment situation that's causing you the most concern.

If we can offer an intelligent opinion, we will. If not, we'll tell you that, too.

No cost. No obligation. You can give us a call, and we'll try to help. But if you'll stop by our office, the coffee's on us.

Securities & Advisory Services offered through VSR Financial Services, Inc., a Registered Investment Adviser and Member FINRA/SIPC. Kennedy Financial Services is independent of VSR Financial Services, Inc.

Cross Plains 254-725-7361  
325-669-0999 **BI-RITE AUTO** 4th Block E. of Light, Hwy 36  
OPEN MON.-SAT. 9:00 - 5:30 CLOSED SUN. WE FINANCE

### AUTOMOBILES

|   |                |
|---|----------------|
| 00 Mercury Mystique 4 cyl., looks, runs good - red.           | \$2750         |
| 00 Lincoln Town Car, loaded & nice.                           | \$5750         |
| 02 Mercury Sable V6, nice car, white.                         | \$4150         |
| 02 Taurus SES Fully Loaded, power seats, etc., black.         | \$4495         |
| 02 Taurus SE, looks, runs good, black.                        | \$3995         |
| 01 Ford Crown Victoria, V8, runs very good, white.            | SPECIAL \$1995 |
| 99 Taurus V6, looks, runs, super good, maroon.                | \$3450         |
| 98 Ford Contour, V6 runs good, green.                         | SPECIAL \$2250 |
| 95 Mercury Cougar XR7, V6, very nice car.                     | \$2450         |
| 94 Chevy Lumina, V6, very nice car, only 91,000 miles, white. | \$2450         |
| 93 Mercury Cougar XR7, V6, Super Nice Car, green.             | \$2450         |
| 94 Dodge Intrepid, runs good, grey.                           | \$1695         |
| 95 Lincoln Mark VII, fully loaded, a very nice car.           | \$2995         |
| 94 Mercury Cougar XR7, 4.6 V8, a good car inside & out, gold. | \$2450         |

### VANS-SUVS

|   |                |
|---|----------------|
| 01 Ford Windstar V6, runs good, nice inside & out, blue.        | \$4995         |
| 00 Ford Explorer, V6, auto., 4 dr., very nice, red, SPECIAL.    | \$5250         |
| 99 Ford Explorer V6, Sport, auto., looks, runs very good, blue. | \$4750         |
| 97 Ford Explorer XLT Fully loaded and nice, black.              | SPECIAL \$3750 |
| 97 Ford Explorer V6, auto., looks, runs good, white.            | \$3495         |
| 90 Ford Bronco V6, very nice inside & out, runs good.           | \$2450         |
| 95 Ford Aerostar Van, V6, looks, runs good - red.               | \$1795         |

### DIESELS

|   |                |
|---|----------------|
| 00 Ford F350 Crew Cab, Super Duty, power stroke, 6 sp.          | \$5550         |
| 01 Ford F250 XLT, Super Duty, 4 dr., Super Cab, 6 sp.           | \$7250         |
| 01 Ford F250 XLT, Super Duty, 4 dr., Super Cab, 6 sp.           | \$7250         |
| 99 Ford F350 Crew Cab, Super Duty, 6 sp.                        | \$6750         |
| 99 Ford F250 Super Duty, 4 dr., Super Cab, 6 sp., Power Stroke. | \$5950         |
| 97 Ford F250 Heavy Duty Super Cab, Power Stroke.                | SPECIAL \$4595 |
| 97 Ford F250 Heavy Duty, Super Cab, Power Stroke, grey & white. | \$4950         |
| 95 Ford F250 Power Stroke, Super Cab, 5 sp., runs good.         | \$3995         |
| 94 Ford F350 Crew Cab, Turbo Diesel, a nice truck.              | \$4500         |
| 94 Chevy Diesel, Crew Cab, runs good, bad paint.                | \$1950         |
| 89 Ford F250 Reg. Cab, 7.3 Diesel, looks, runs very good.       | \$2150         |

### GAS TRUCKS-MISC.

|  |                 |
|--|-----------------|
| 02 Ford Ranger XLT Super Cab, V6, 5 sp., looks, runs good.         | \$5950          |
| 01 Ford F150 Super Cab 4.6 V8, auto., looks, runs good.            | \$4950          |
| 99 Ford Ranger Super Cab, new V6 w/90 day warranty, a good buy at. | \$5250          |
| 98 Chevy S-10, 4 cyl., auto., looks, runs good, green.             | \$3950          |
| 97 Ford F250 Crew Cab, V8, auto., a super nice truck, white.       | SPECIAL \$3995  |
| 84 Chevy looks, runs OK, black.                                    | Cash Only \$895 |
| 83 Chevy 3/4 Ton 454 V8, a very clean nice pickup, white.          | \$1595          |
| 85 Ford 4x4 F250, wrecker truck, everything works good.            | \$1995          |

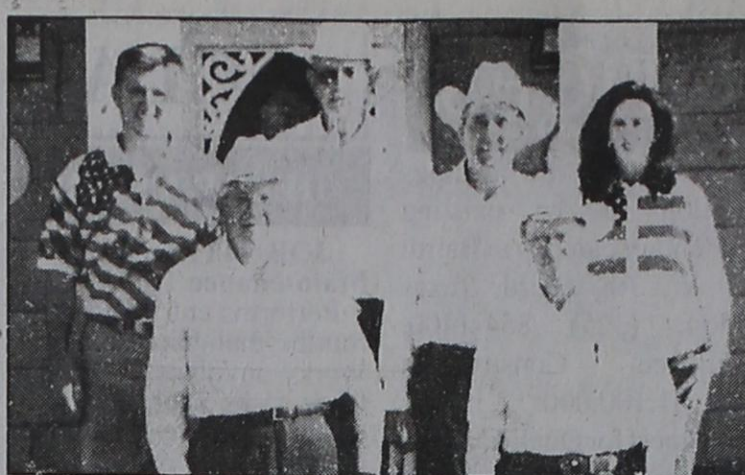
"Go With The Best"

★ ★ TRI-STAR ★ ★  
**HOME CARE**  
"Gives Quality Care"

★ Home Health Care  
★ Primary Care  
★ C.B.A.

Cisco, TX 76437  
Telephone (254) 442-4996

110 Hurdles: 2. William Russell, Baird, 16.25  
300 Hurdles: 4. Adolfo Portillo, Baird, 42.76  
800 Relay: 3. Baird, 1:33.10  
High jump: 6. Chris Whitworth, Baird, 5.04  
Girls  
Team standings: 9. Baird 22.10; 18. Eula 2  
800 Relay: 5. Baird, 1:57.51  
Shot Put: 2. Kristen Burns, Baird, 32-6.5  
Discus: 4. Kristen Burns, Baird, 98-7  
High Jump: 3. Shelby Strickland, Baird, 4.10



## Four and More To Perform

### April 25 At Cisco Folklife Festival

Four and More will be performing on Saturday, April 25, 2009 from 4 to 5 p.m. at the Cisco Folklife Festival in the entertainment tent. Available at the festival will be 2 country CDs, 1 gospel and 1 Christmas CD. They are in the process of recording their 5th CD which will be a collection of favorites. They have performed at Ernest Tubb Record Shop in Fort Worth, Hastings in Abilene, Sweetwater, Stephenville, and Brownwood, Taylor

Electric Annual Meetings, Santa Anna Festival, Randolph Dodge in Eastland and Brownwood, Coleman Annual Festival, July 4th Celebration for Pete Fisher, owner of Abilene Sales, Rockwood Church between Santa Anna and Brady, monthly musicals in Anson, Cisco, Clyde, Tye, and Strawn. They also have a gospel show 5th Fridays at Clyde Pizza House.

Performers are Tim Miller, drums from Clyde; Clent Kniffen, mandolin and pedal steel from Clyde; Al Anderson, fiddle from Cisco; Jay Hayhurst, bass from Dudley; Si Tucker, rhythm guitar from Clyde. Also pictured is Margie Schumaker who recently moved to California and got married.

Not pictured is Karla Knight from Hawley who sings with the band.

## BEAT RISING UTILITY BILLS

INSTALL PREMIUM GRADE VINYL WINDOWS

- Increases Energy Savings
- Double-Pane Insulating Glass
- Reduces Noise Outside
- 100% Transferable Lifetime Warranty

**\$185 ANY SIZE**  
Up To 120 u.i.  
PLUS INSTALLATION  
INCLUDES LOW E & ARGON



CALL FOR A FREE ESTIMATE!  
**325-670-0700**  
1233A Tracy Lynn • Abilene • Locally Owned & Operated

## ABC Printing & Office Supply

254-559-3561 Fax 254-559-2108  
139 E. Walker • Breckenridge, TX 76424

**500 Business Cards \$9.00**

Black Ink on White or Color Stock

**500 Flyers \$9.99**

Color Ink on White or Color Stock

**500 Envelopes \$31.00**

Black Ink on White #10 Regular Envelopes

Expires 3/31/08

**FREE DELIVERY**

[www.abcprintingandofficesupply.com](http://www.abcprintingandofficesupply.com)

## RONNIE'S AUTO SALES

2005 CONRAD HILTON • CISCO

254-442-9900 254-653-7367

2008 Dodge Durango, SXT Trim, V6, automatic, silver, Ext., fully loaded, 15,000 miles, factory warranty remaining.....\$13,900

2008 E-350 12 Passenger Van, XLT trim, fully loaded, 22,000 miles, factory warranty.....only \$12,900

2008 E-350 12 Passenger Van, XLT trim, fully loaded, 21,000 miles, factory warranty.....only \$12,900.

2008 E-350 12 Passenger Van, XLT trim, fully loaded, 23,000 miles, factory warranty.....only \$12,900

2003 Ford F150 Super Cab, 122,000 miles.....\$4,950

2005 Ford F250 Super Cab, 8 cyl., auto., XL, 4x4, 127,000 miles.....\$8,950

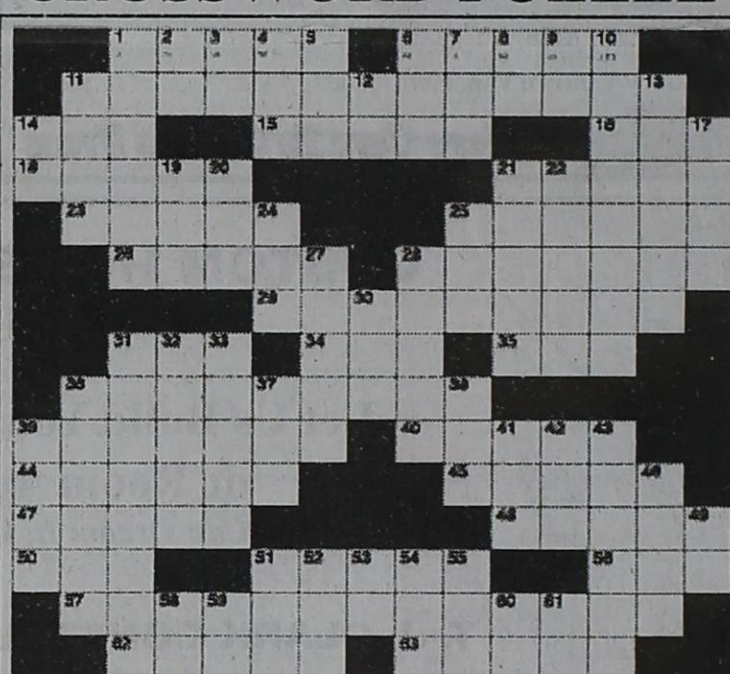
FREE CAR-FAX REPORT ON EVERY VEHICLE LISTED

## Girling Health Care

405 E. Commerce  
Eastland, Texas

254-629-1268  
800-950-0363

## CROSSWORD PUZZLE



### CLUES ACROSS

- Color lightly
- Female parents
- Present covering
- Feathered scarf
- Positive pole
- British Air Aces
- Alo \_\_\_\_ loss of hair
- Broadway's Hook, Ritchard
- Lime painting on dry plaster
- Machinery lubricant
- Smallest U.S. coins
- Resembling an angel in goodness
- Metric linear unit
- \_\_\_\_ kus: commotion
- Angkor \_\_\_\_ temple
- Radioactivity unit
- Rebuilt
- Slandered
- Pla \_\_\_\_ blood parts
- Classic style or image
- 1/2 of a German spa
- Search and rescue exercise (acr.)
- Weight unit
- Claim (abbr.)
- Soup noodles
- Similar (suffix)
- Washing receptacle
- Larceny
- Ringtail monkey genus

### CLUES DOWN

- Drew an outline
- Farm state (abbr.)
- House speaker initials
- Licensed bean counter
- Atomic #50, SN
- Million gallons per day (abbr.)
- A non-human primate
- Mom
- Associated Press
- Bread knife edge
- Sufferings
- Yes opposite
- Grower
- Int'l. fuel co.
- In a way, left
- \_\_\_\_ cake topping
- \_\_\_\_ apex
- One who weeps
- Yiddish gossip
- Largest English dictionary (abbr.)
- Leg (slang)
- Stitched
- Lots
- Iron Man Ripkin
- Change pagination
- Inh \_\_\_\_ cruel
- Tunny books
- Revoke
- Last month (abbr.)
- Put lightly
- Photograph record
- A waterproof raincoat
- Dentist group
- A set of TV programs
- Conde \_\_\_\_ Traveler magazine
- Atomic #90
- Radio direction finder (abbr.)
- Honey mooner actor Carney
- Belonging to me
- Basics
- No \_\_\_\_ fish
- Expression of uncertainty
- Point midway between N and E
- Atomic #51
- S \_\_\_\_ store name

This puzzle sponsored by



P. O. Box 877 Eastland, TX 76448